

AMOS Health and Hope



A Community Based Primary Healthcare
Approach to Water, Sanitation, and
Hygiene (WASH) in Rural Nicaragua

Sohaila Jafarian, MPH Candidate

A Ministry of Sharing Health and Hope



- “In Nicaragua, a doctor shouldn’t just be a doctor; a doctor must also be a teacher.”
- Work alongside communities to improve health, education, and development
- Through partnerships AMOS seeks:
 - Health for all people
 - A world where no child dies of a preventable disease
 - Effective and empowering health care



Photos courtesy of AMOS Health and Hope

What is Community Based Primary Health Care?



- Health is a fundamental human right
- Inter-sectoral development
- Community Participation
- Requires and promotes self-reliance
- Community participation in planning, organization, operation, and control of primary health care



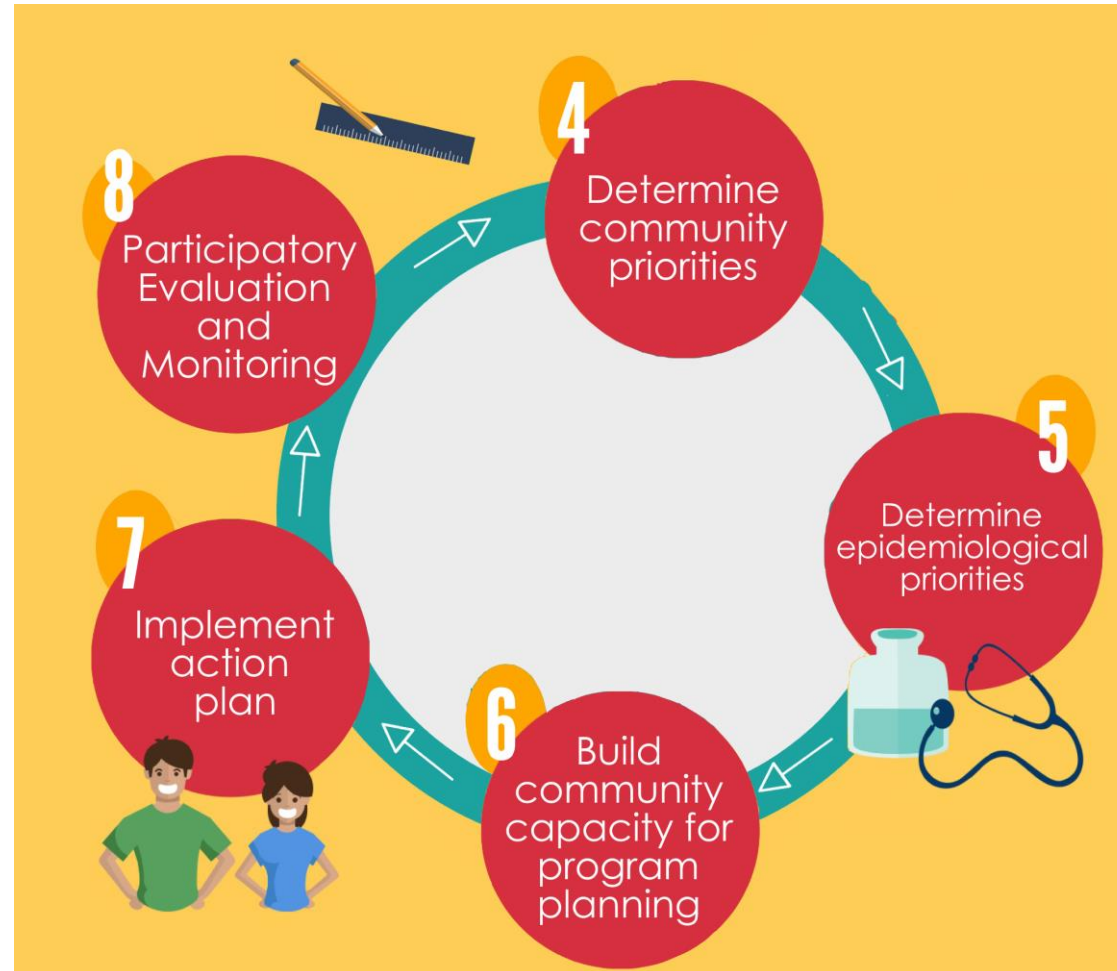
"Barefoot" doctor Shen Pan-nan checks on the commune families' health.

AMOS Community Based Primary Healthcare Model



Courtesy AMOS Health and Hope

AMOS Community Based Primary Healthcare Model

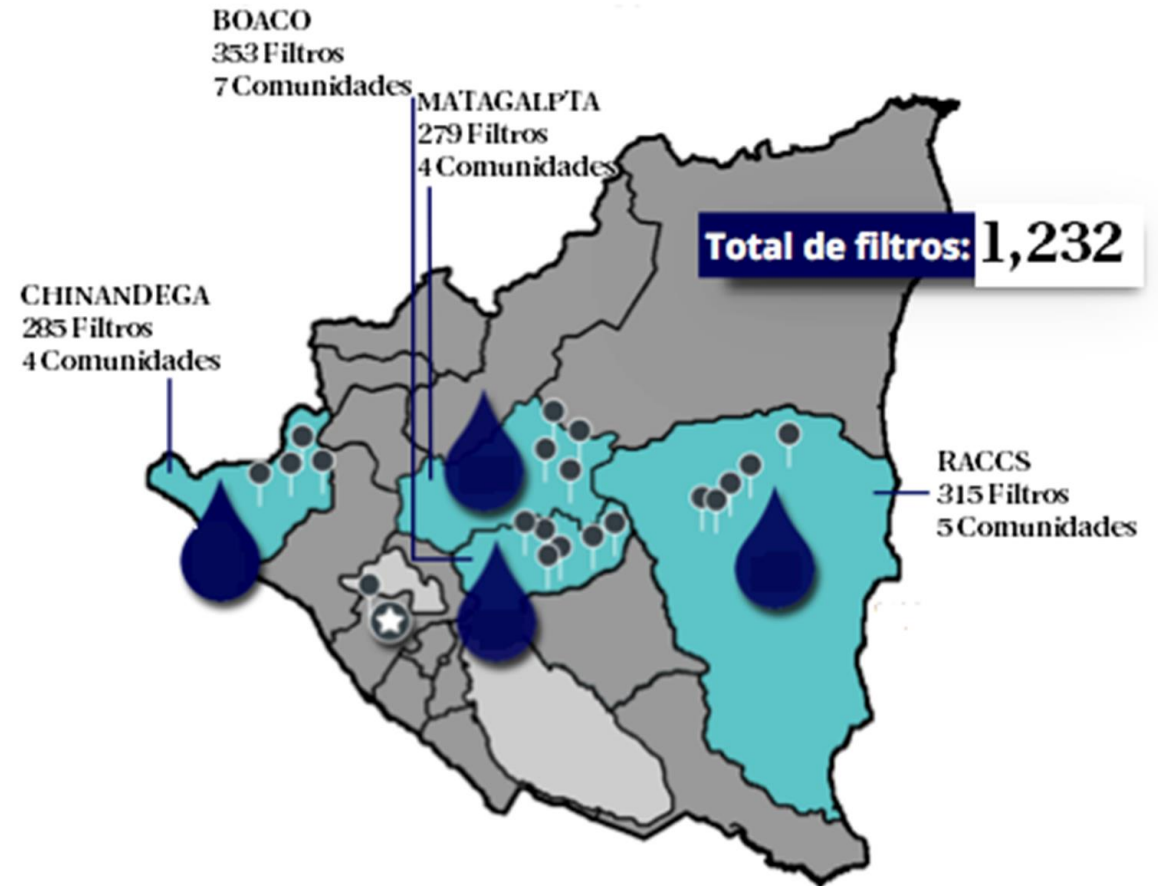


Courtesy AMOS Health and Hope

AMOS' Scope



- **Water, Sanitation, and Hygiene (WASH)**
- Maternal Care
- Child Care
- Holistic Health
- Clinic Care
- Community Development
- Lay Epidemiology
- Environmental Health



Global Health Practicum



Global Health Practicum

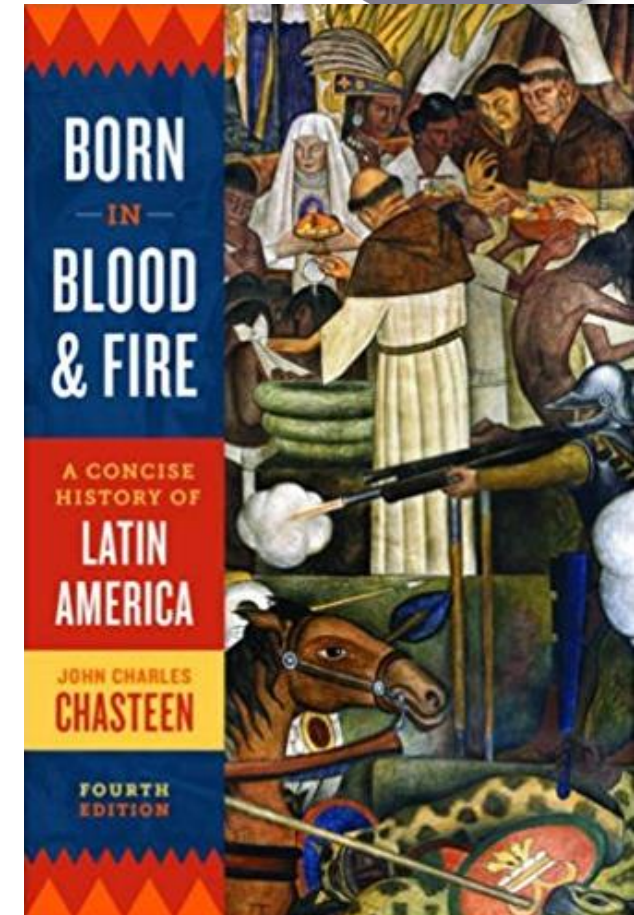


- Nicaraguan cultural and historical orientation, intercultural development
- Introduction to critical theory, power and privilege, and critical consciousness; finding out social location
- Analysis of current models for global rural health care
- Burden of disease and AMOS interventions
- Millennium Development Goals (MDG's), Sustainable Development Goals (SDG's), Global Economics, and Neoliberal Policies: Impact on Nicaragua
- Introduction to CBPHC: History, Alma Ata, and Nicaragua; Introduction to Community Based Participatory Research (CBPR) Principles and Methodology
- A Review of Social Determinants of Health
- Introduction to Community Empowerment: Theory and Philosophy
- Development of public health skills through survey administration workshops
- Material validation
- Monitoring and evaluation, curriculum development, exposure to fieldwork and rural health care setting
- Child and maternal health interventions
- Clean water interventions
- Technical report, donor report, and community report development and presentation
- Cultural and Narrative Humility, Debrief, and Faith and Health

Global Health Practicum

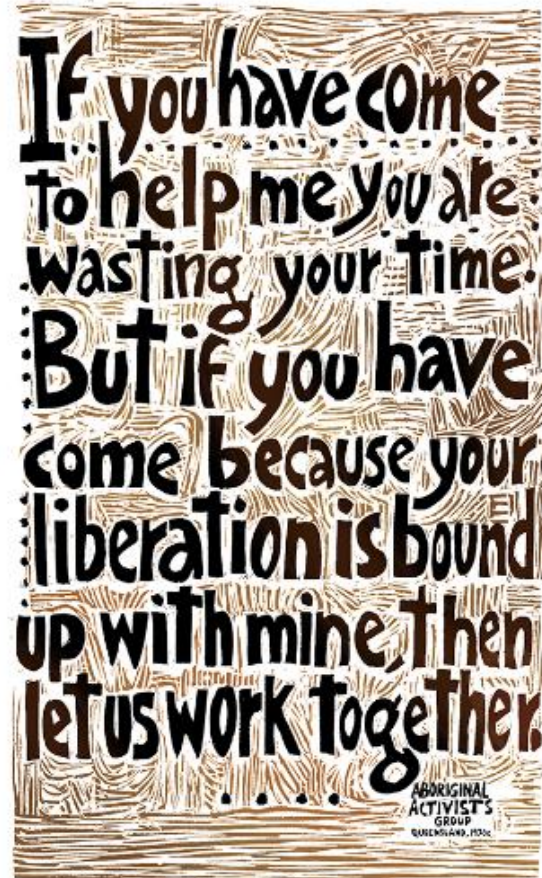


- Ensure that missionary work, along with any public health intervention, does good and not harm
- We must still be concerned with forces like power, prejudice, and poverty – these too constitute forms of violence, as they cause people harm
- Even when approached with the best intentions, we can strip communities, especially indigenous ones, of their own cultures and practices
- Ethical public health work can and should provide another way

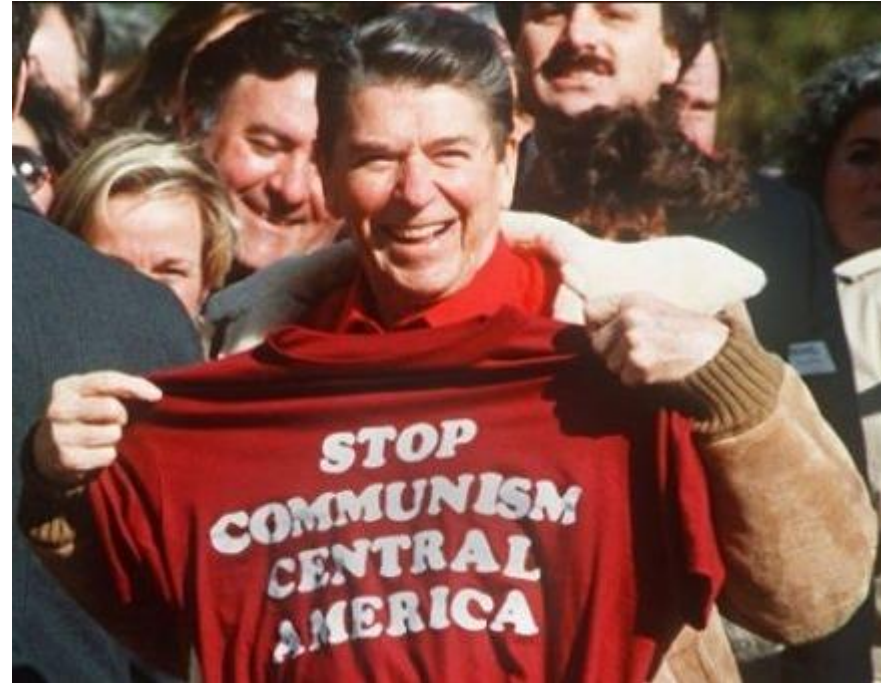


<https://www.amazon.com/Born-Blood-Fire-Concise-History/dp/0393283054>

Global Health Practicum



<http://www.rlmartstudio.com/product/liberation/>



<https://www.telesur.tv/english/opinion/The-US-Never-Stopped-Training-and-Arming-Brutal-Latin-American-Regimes--20170511-0010.html>

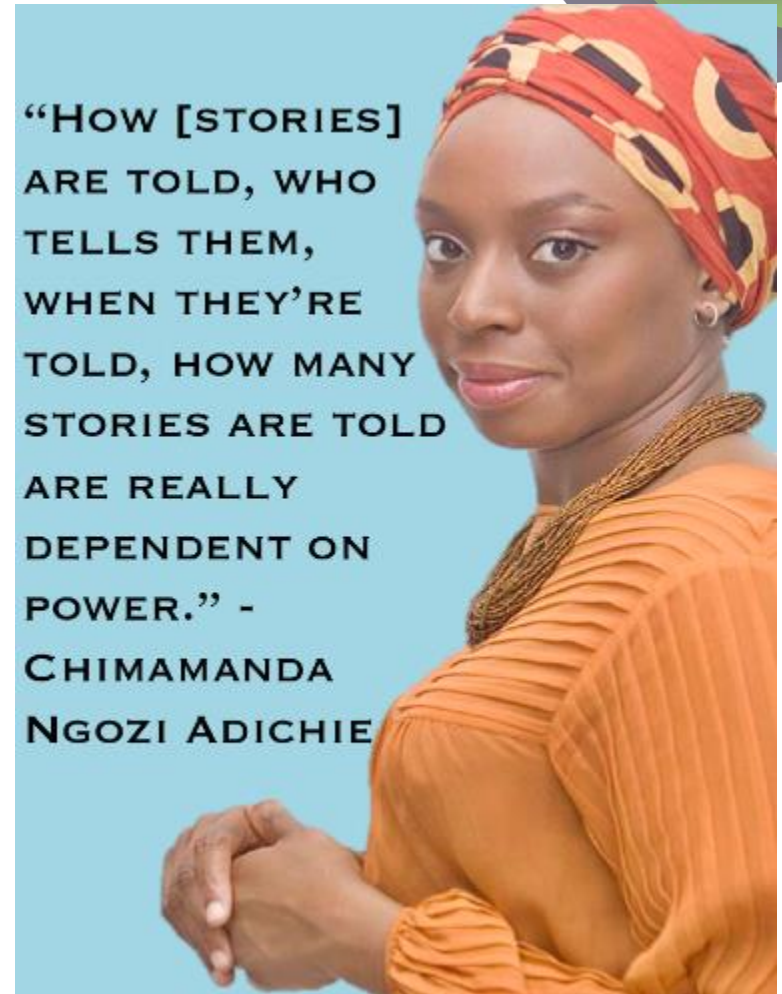


<https://www.library.wisc.edu/archives/exhibits/campus-history-projects/protests-social-action-at-uw-madison-during-the-20th-century/1980-1989/>

Is Cultural Competence Enough?



- What makes you competent in a culture?
 - Language
 - History
 - Social Norms
 - Cultural Activities
- How to practice cultural humility?
 - Lifelong learning and critical self-reflection
 - Puts parties in a mutually beneficial relationship and attempts to diminish damaging power dynamics
 - Institutional accountability



“HOW [STORIES] ARE TOLD, WHO TELLS THEM, WHEN THEY’RE TOLD, HOW MANY STORIES ARE TOLD ARE REALLY DEPENDENT ON POWER.” - CHIMAMANDA NGOZI ADICHIE

WASH in Nicaragua



- Nicaragua is 1 of 3 Latin American countries that is off track in the sanitation Millennium Development Goals
- Nicaragua has less than 50% rural sanitation coverage



Courtesy of AMOS Health and Hope

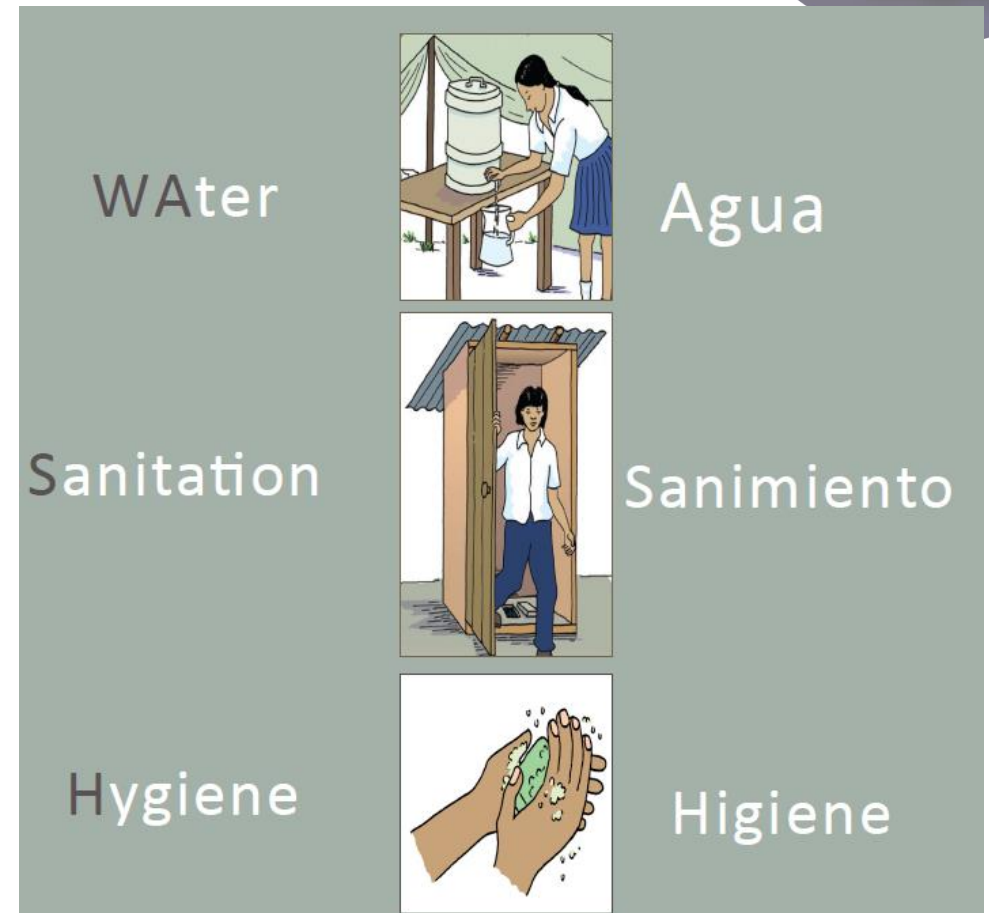


Courtesy Jonathan Chen

Water, Sanitation, and Hygiene (WASH)



- Personal hygiene
- Home hygiene
- Use and management of water
- Use and management of latrines
- Proper waste management
- Protection of water sources and the environment



Courtesy AMOS Health and Hope

Water Promotors



Courtesy Jonathan Chen



Courtesy Jonathan Chen

Monitoring and Evaluation: Knowledge, attitude, and practice (KAP) and water filter surveys



Courtesy Lester Lorente



Courtesy Johnathan Chen

Monitoring and Evaluation: Geotagging



El Bambu
GPS data and filter status from El Bambu
6/28/16-7/1/2016
9 views

All changes saved in Drive

Add layer Share Preview

GPS Data El Bambu updated.xlsx
▼ [Styled by Filter Status](#)

- Tiene filtro y funciona adecu... (26)
- No tiene filtro (4)
- No funciona adecuadamente (3)
- No esta in la casa (2)
- Destruido (1)
- OJO DE PRINCIPAL (CASERIO) (1)

Base map

A map interface showing a collection of geotagged locations. The map is titled 'El Bambu' and shows a region with several locations marked by colored pins. The pins are color-coded according to their filter status: green for 'Tiene filtro y funciona adecuadamente', yellow for 'No tiene filtro', orange for 'No funciona adecuadamente', purple for 'No esta in la casa', red for 'Destruido', and a blue star for 'OJO DE PRINCIPAL (CASERIO)'. The map also shows a search bar, navigation controls, and a legend on the left side. Labels on the map include 'EL LIBANO', 'San Pedro', and 'elicias'.

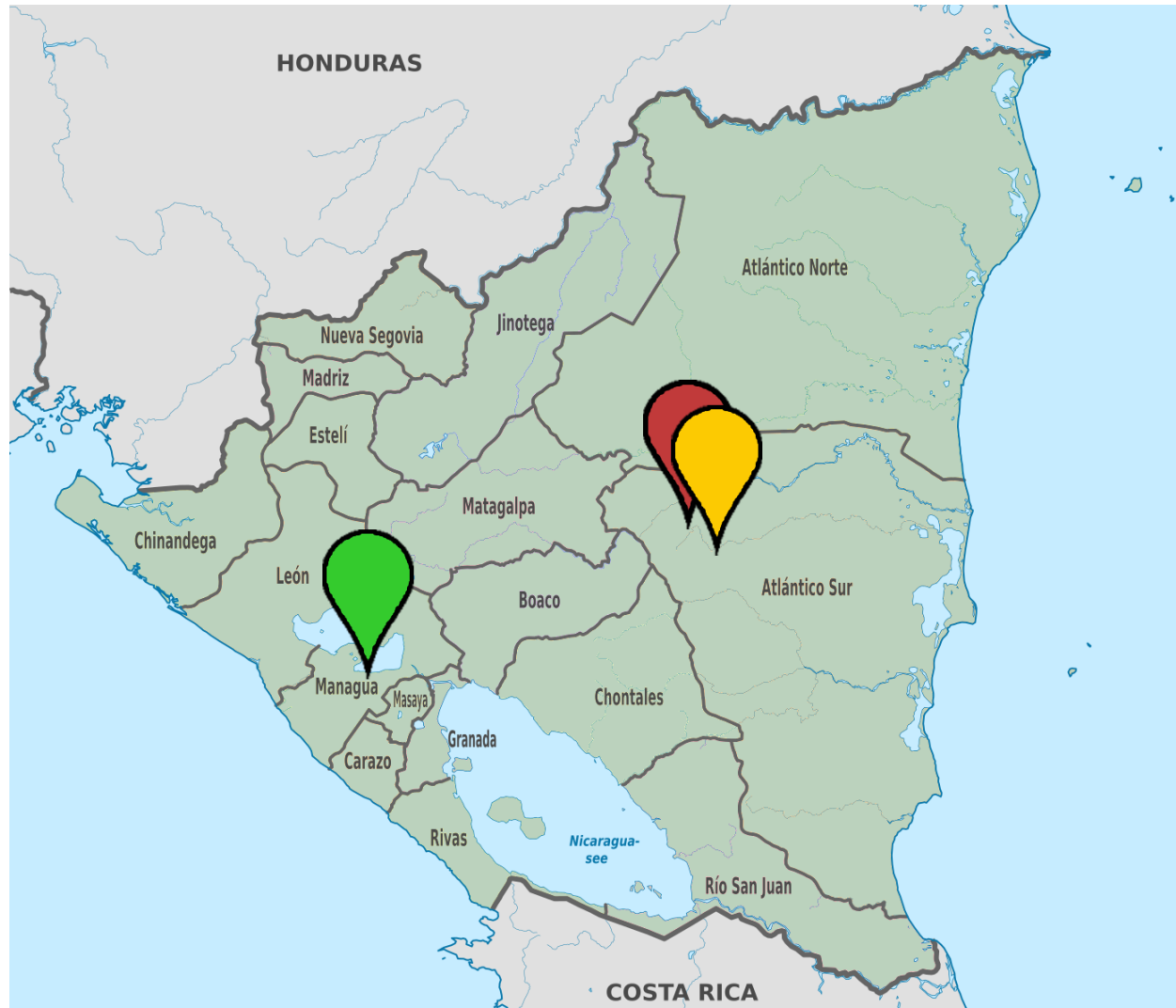
Courtesy Etienne Jaime

Logic Model Goals



- 80% of the families that live in the communities Banco de Sikia receive visits by the Water Promoters
- 80% of the houses checked had an adequate place to wash their hands
- 50% of the houses have gates in the main entrance and in the kitchen to block the access of animals to the inside of the house
- 80% of the houses provide proper maintenance to latrines
- 80% of the families properly remove the waste generated in their homes
- 80% of families that live in Banco de Sikia have a water filter or practice some method to improve water quality
- 80% reduction of recontamination of filtered water stored in recipients

My projects



El Bambu

Training and Baseline Data



#6 Protección
de fuentes de Agua
de agua (Ojo de agua)
Manantial
Cajón
Quebrada
- Pozo
- Salto
Por qué?
- Vida sin agua
- Vital (plantas)
- Animales
- Humanos
- Ecosistema

Courtesy Johnathan Chen

El Bambu

Training and Baseline Data



Courtesy Jonathan Chen

Banco de Sikia

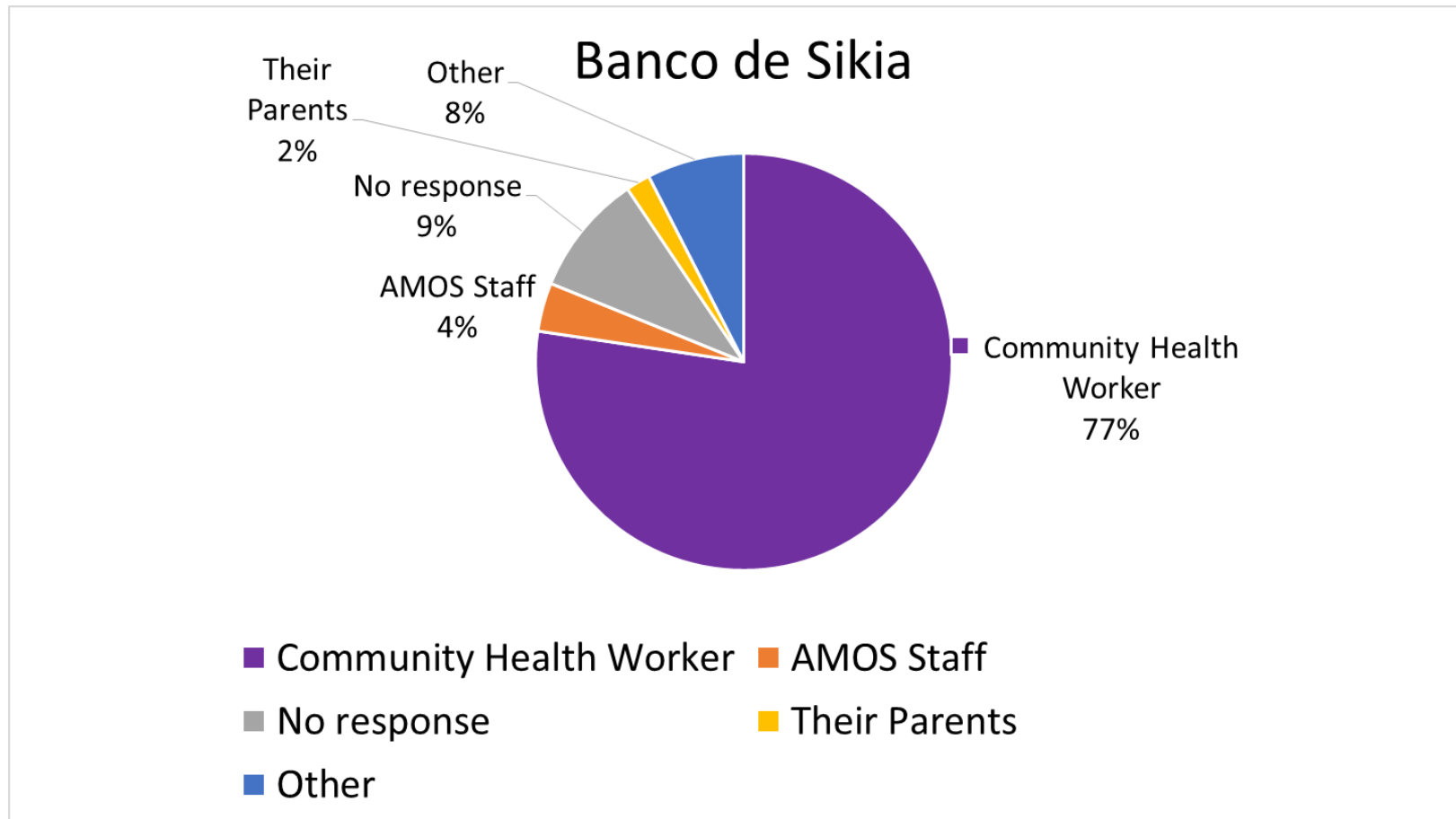
Impact Assessment and Results



Courtesy Jonathan Chen

Banco de Sikia

Impact Assessment and Results

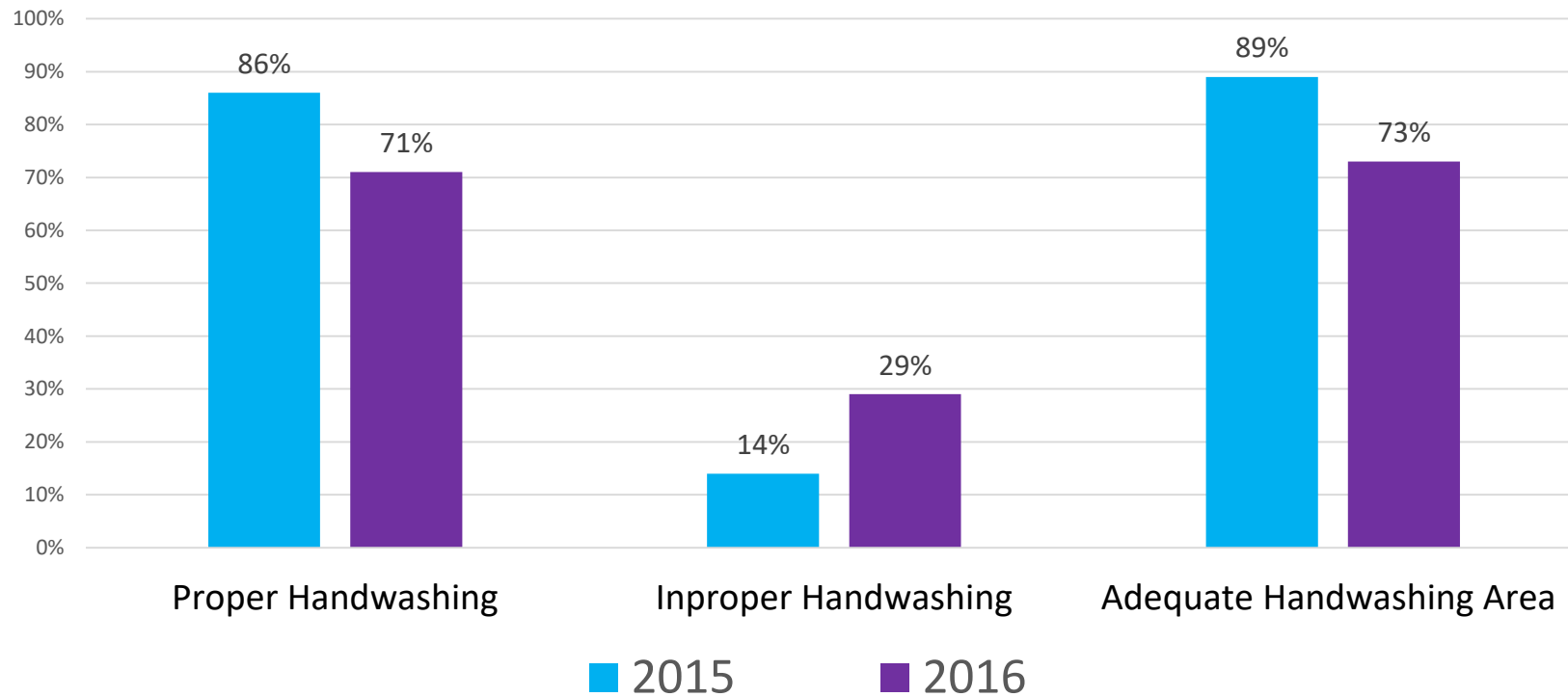


Banco de Sikia

Impact Assessment and Results



Handwashing in Banco de Sikia

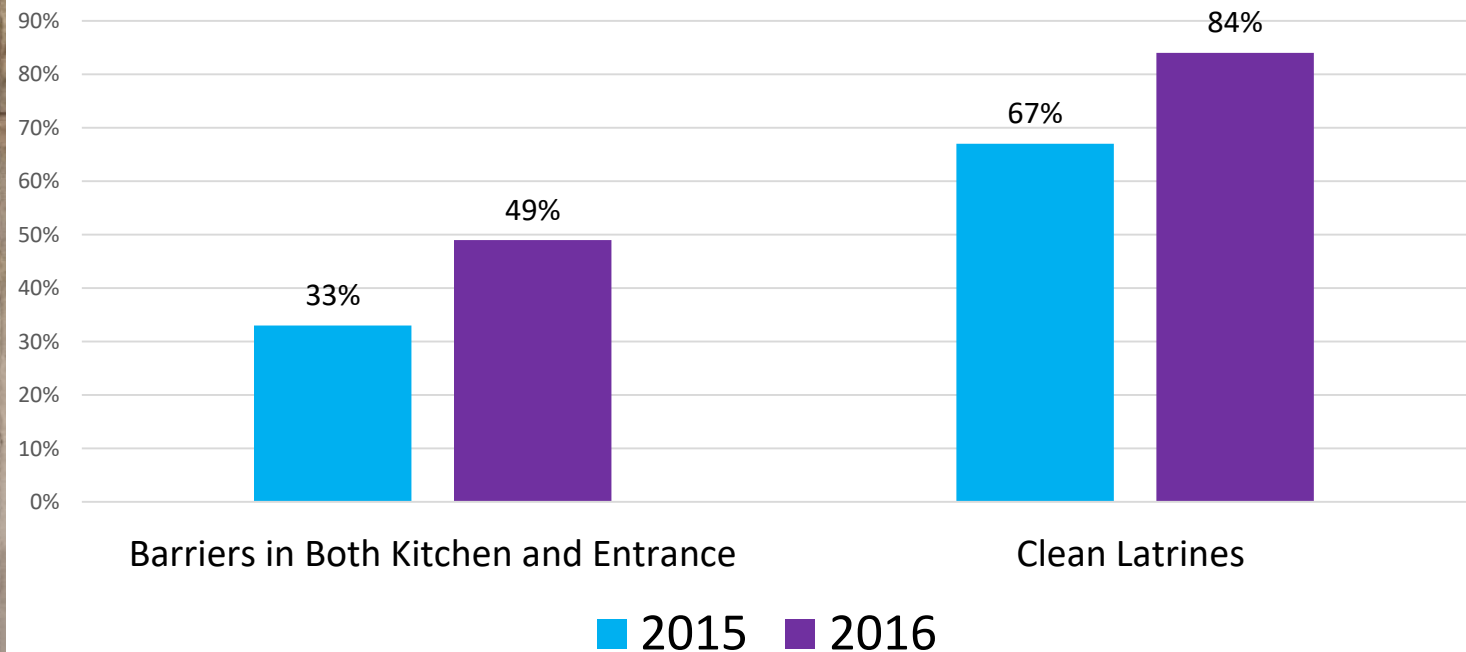


Banco de Sikia

Impact Assessment and Results



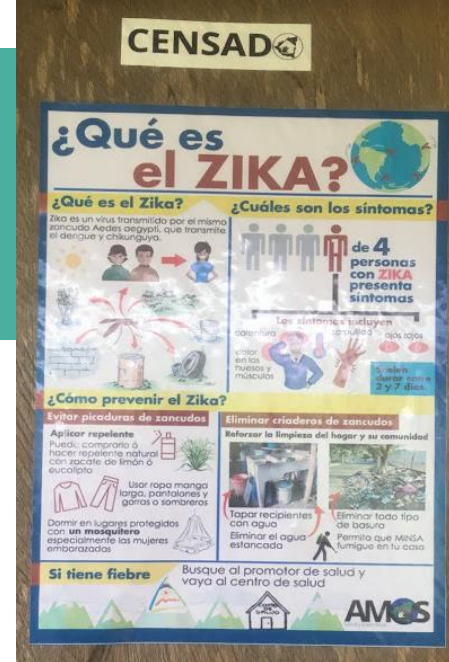
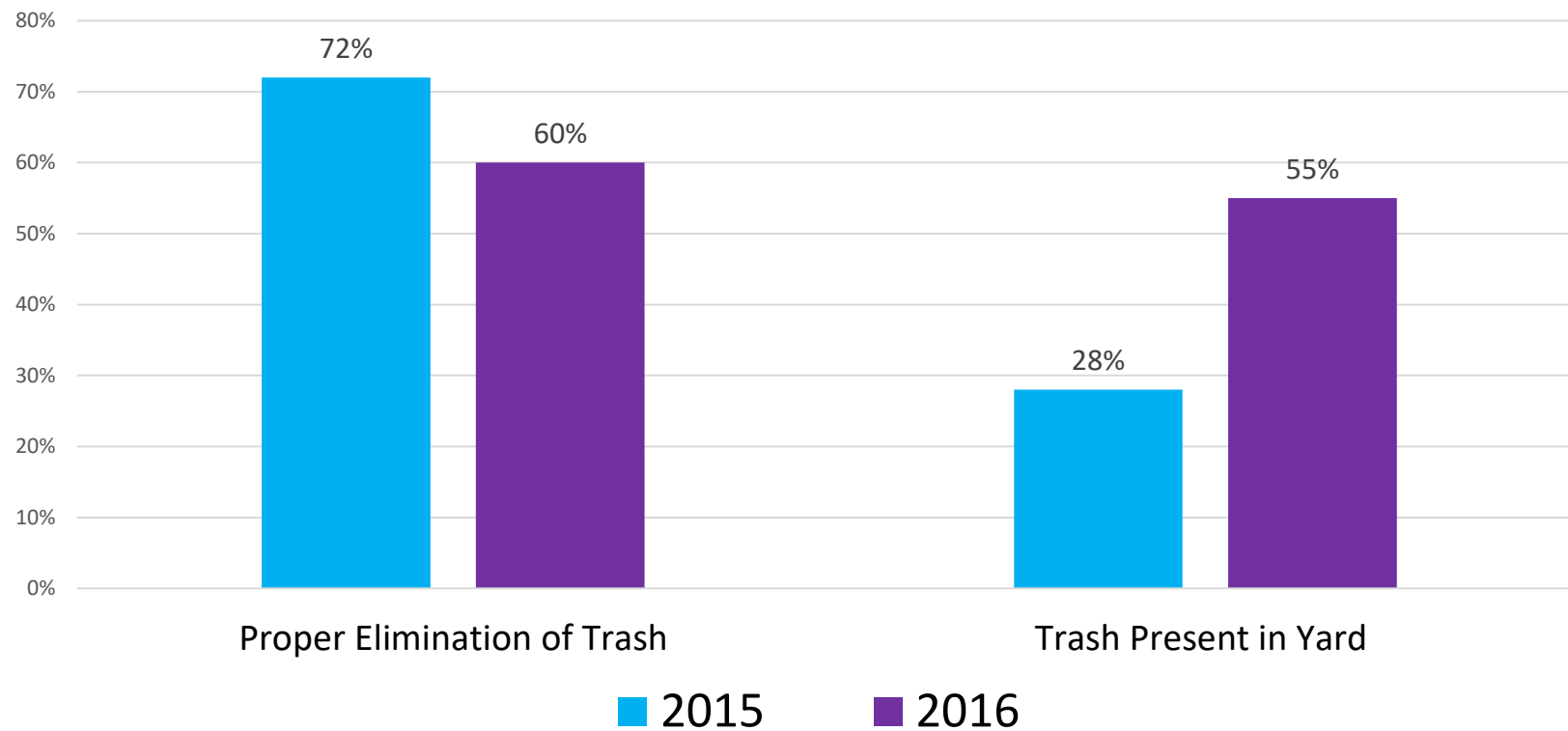
Barriers to Households and Cleanliness of Latrines



Banco de Sikia

Impact Assessment and Results

Elimination of Trash



Banco de Sikia

Impact Assessment and Results



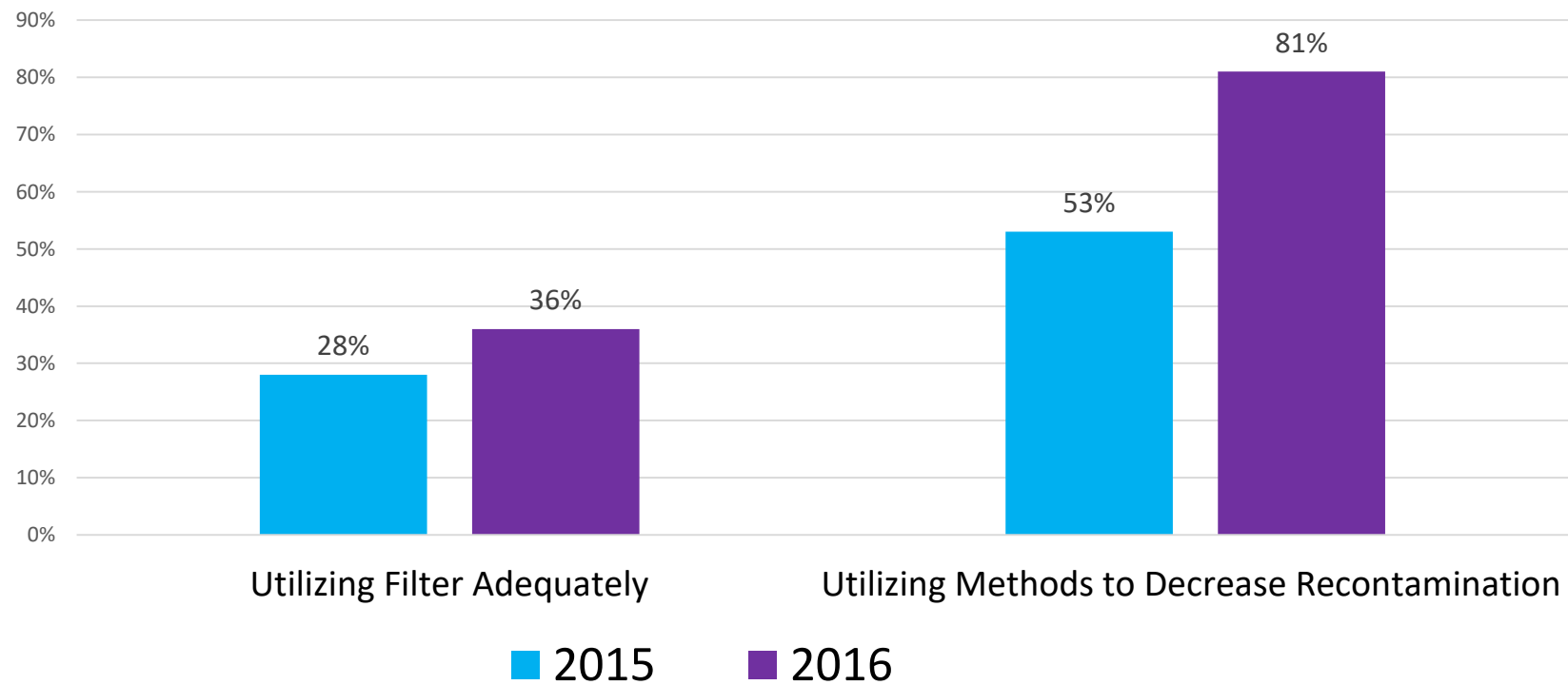
Method of Disinfection	Percent Change from 2015	Overall p-value
Chlorine	75% decrease in use from 2015	<0.001
Filter	76% increase in use from 2015	
Sedimentation	2% increase in use from 2015	
No Method Used	78% decrease from 2015	

Banco de Sikia

Impact Assessment and Results



Adequate use of Filters and Recipients



Banco de Sikia Community Report



Courtesy Lester Lorente



Courtesy Lester Lorente

Conclusions



"If you give me a fish you have fed me for a day. If you teach me to fish, then you have fed me until the river is contaminated or the shoreline is seized for development.

But if you teach me to organize then whatever the challenge I can join together with my peers and we will fashion our own solution.

The Barefoot Guide to Working with Organizations and Social Change



Courtesy Jonathan Chen

MPH Foundational Competencies



- Evaluate policies for their impact on public health and health equity
- Apply awareness of cultural values and practices to the design or implementation of public health policies or programs
- Compare the organization, structure and function of health care, public health and regulatory systems across national and international settings
- Discuss the means by which structural bias, social inequities and racism undermine health and create challenges to achieving health equity at organizational, community and societal levels
- Assess population needs, assets and capacities that affect communities' health



MPH Foundational Competencies



- Interpret results of data analysis for public health research, policy or practice
- Communicate audience-appropriate public health content, both in writing and through oral presentation
- Apply principles of leadership, governance and management, which include creating a vision, empowering others, fostering collaboration and guiding decision making
- Apply negotiation and mediation skills to address organizational or community challenges
- Perform effectively on interprofessional teams



Courtesy Lester Lorente

¡Muchas Gracias!

- AMOS Health and Hope: Dr. Laura Parajon, Lester Lorente, Donald Palacios, Jessica Hinshaw, Desiree Sanabria, John Carroll, Jonathan Chen
- Water team: Amber Gourdine, Harris Short, Scott Espich
- KSU CVM International Programs
- KSU Masters of Public Health Program
- My MPH Committee: Dr. Ellyn Mulcahy, Dr. A. Sally Davis, Dr. Justin Kastner
- Raghu Amachawadi, T.G. Nagaraja, M.M. Chengappa
- Friends and Family



Questions?

<http://www.amoshealth.org/>



Itsthetie.com

References



- https://en.wikipedia.org/wiki/Cultural_humility
- AMOS. 2016. Accessed November 22. <http://www.amoshealth.org/>.
- Force, Food Security and Nutrition Network Social and Behavioral Change Task. 2014. 'Care Groups: A Training Manual for Program Design and Implementation', *Washington, DC: Technical and Operational Performance Support Program*.
- Freire, Paulo. 1970. 'Pedagogía del oprimido': 186.
- Group, The FSN Network and CORE. 2015. 'Make Me a Change Agent: A Multisectoral SBC Resource for Community Workers and Field Staff', *Washington, DC: The TOPS Program*.
- Hosley, Cheryl. 2005. 'What's Your Theory? Tips for Conducting Program Evaluation', *Wilder Research*.
- Huda, T. M., L. Unicomb, R. B. Johnston, A. K. Halder, M. A. Yushuf Sharker, and S. P. Luby. 2012. 'Interim evaluation of a large scale sanitation, hygiene and water improvement programme on childhood diarrhea and respiratory disease in rural Bangladesh', *Soc Sci Med*, 75: 604-11.
- Jasper, C., T. T. Le, and J. Bartram. 2012. 'Water and sanitation in schools: a systematic review of the health and educational outcomes', *Int J Environ Res Public Health*, 9: 2772-87.
- Jordanova, T., R. Cronk, W. Obando, O. Z. Medina, R. Kinoshita, and J. Bartram. 2015. 'Water, sanitation, and hygiene in schools in low socio-economic regions in Nicaragua: a cross-sectional survey', *Int J Environ Res Public Health*, 12: 6197-217.
- Nanan, D., F. White, I. Azam, H. Afsar, and S. Hozhabri. 2003. 'Evaluation of a water, sanitation, and hygiene education intervention on diarrhoea in northern Pakistan', *Bull World Health Organ*, 81: 160-5.
- Robert, W. Strack, A. Lovelace Kay, Jordan Toshia Davis, and P. Holmes Anita. 2010. 'Framing Photovoice Using a Social-Ecological Logic Model as a Guide', *Health Promotion Practice*, 11: 629-36.
- Schlegelmilch, M. P., A. Lakhani, L. D. Saunders, and G. S. Jhangri. 2016. 'Evaluation of water, sanitation and hygiene program outcomes shows knowledge-behavior gaps in Coast Province, Kenya', *Pan Afr Med J*, 23: 145.
- Shaffer, Roy. 1986. 'Beyond the Dispensary (On Giving Community Balance to Primary Health Care)', *African Medical and Research Foundation*: 25-27.
- Thomas, Matt. 2015. "Independent Evidence Case Study Report." In, 44. Raleigh International: Raleigh International.
- WHO. 1978. "Declaration of Alma-Ata." In *International Conference on Primary Health Care*. Kazakhstan
- Williams, H. A., J. Gaines, M. Patrick, D. Berendes, D. Fitter, and T. Handzel. 2015. 'Perceptions of Health Communication, Water Treatment and Sanitation in Artibonite Department, Haiti, March-April 2012', *PLoS One*, 10: e0142778.
- Wood, S., J. Foster, and A. Kols. 2012. 'Understanding why women adopt and sustain home water treatment: insights from the Malawi antenatal care program', *Soc Sci Med*, 75: 634-42.
- WorldBank. 'WSP Regions: Latin America and Caribbean', Accessed August 2. <http://www.wsp.org/content/latin-america-and-caribbean>.