

GRASS

SAMPLE COPY

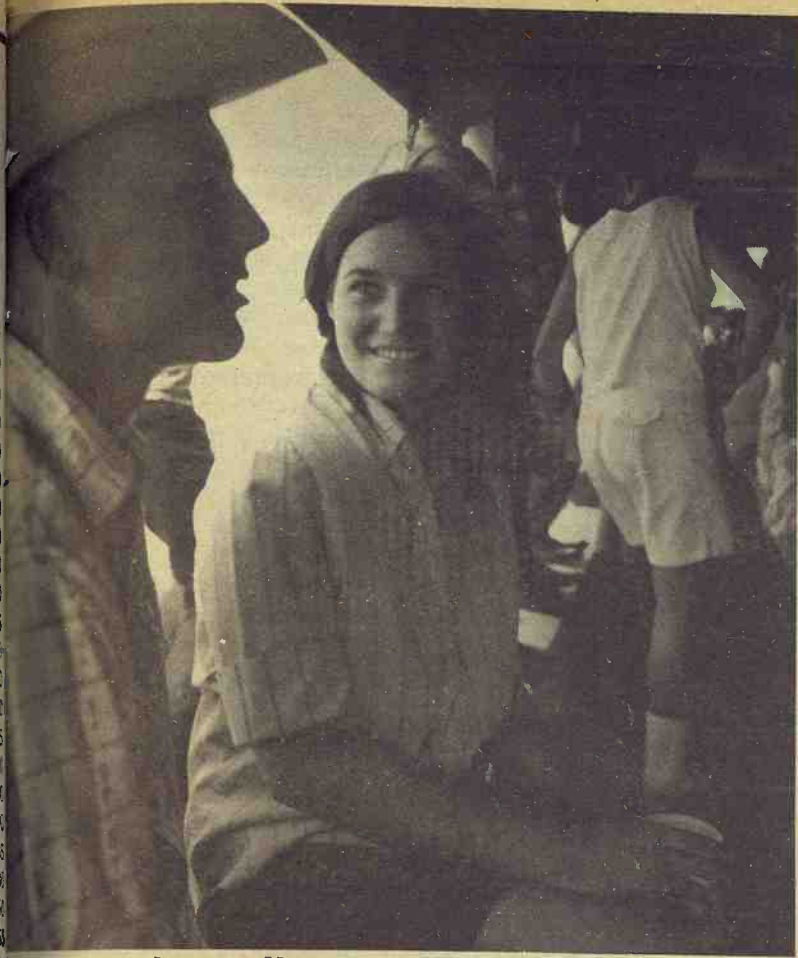
& GRAIN

14th year no. 22

July 30, 1968

Red Circle Auction

John Vanier's Red Circle Auction continues as one of the major livestock events in the G&G area each year. These pictures were taken at the 1968 event at the CK Ranch at Brookville this month.



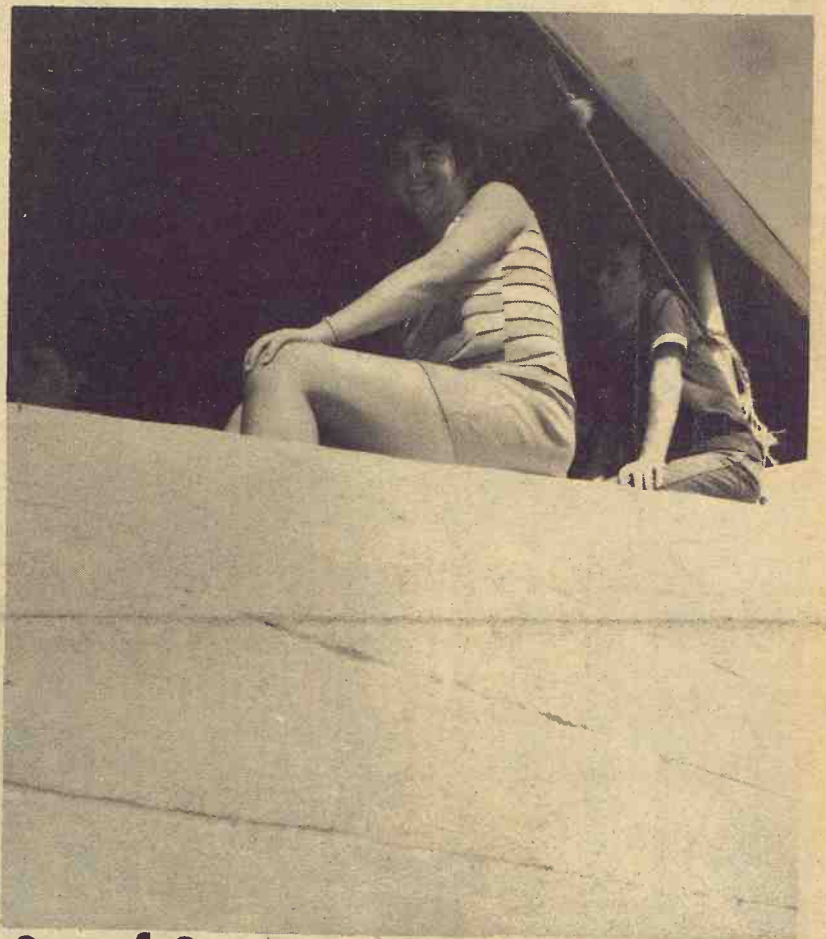
Red Circle Talk

Cheryl Lockhart of Sylvan Grove looks and listens with interest as Michael Ebert, St. George, tells about his 12 years attending the Red Circle Auction. Both will be students at Kansas State University this fall.



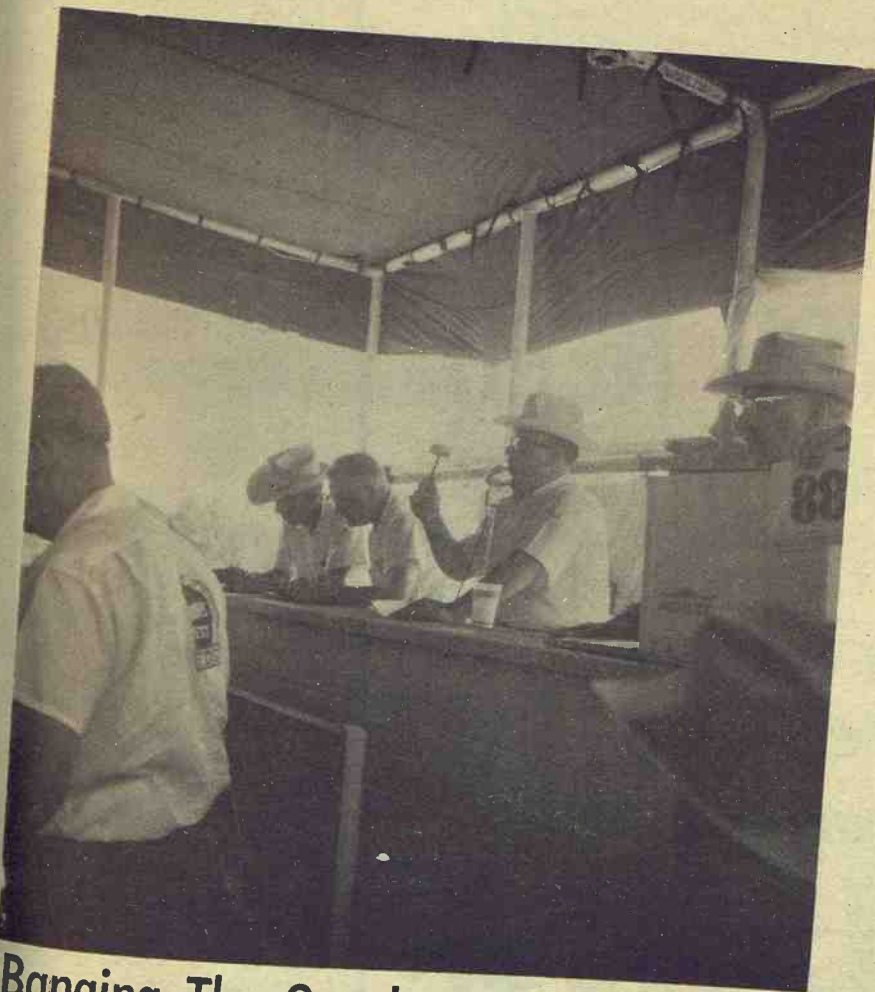
Lunch Time

At midday the auction stop for lunch. Five lines were used to feed the bidders and their families.



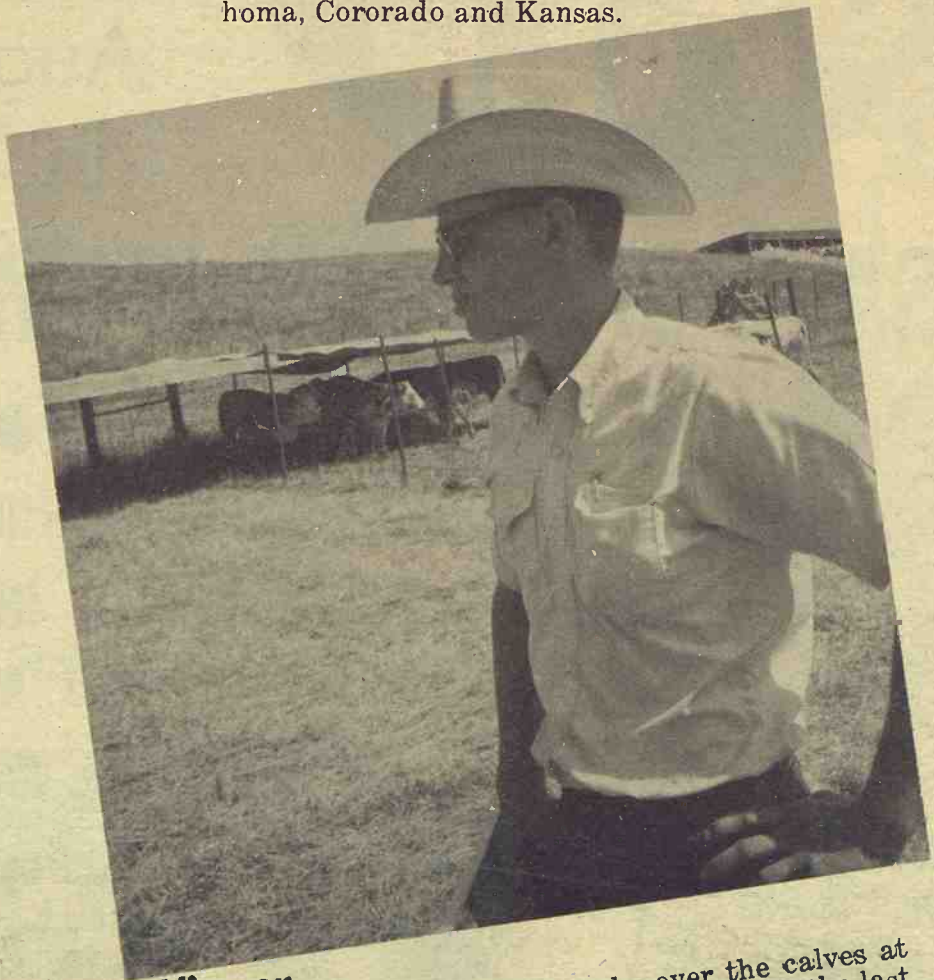
Out of Stater

Pam Schaaf, Elliott, Iowa, drove a long distance to attend the Red Circle Auction for the seventh year. Other bidders came from Nebraska, Missouri, Oklahoma, Colorado and Kansas.



Banging The Gavel

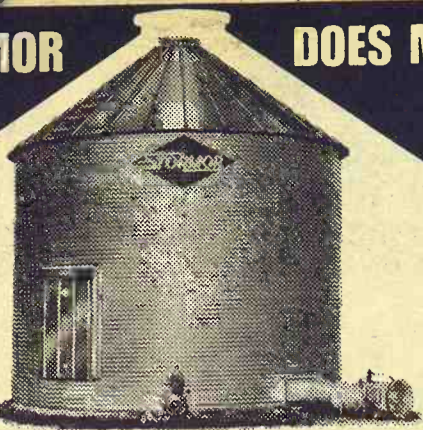
John J. Vanier, president of Gooch Feed Mill Co. (upper right) looks on as the auctioneer barks his cry. The auction has grown from 10 head of cattle for sale in 1952 to over 100 head of livestock and 10 electric sewing machines.



Winner

Joe Ebert of St. George looks over the calves at this year's sale. Joe has been a buyer for six of the last 10 years. He placed third in achievement for the work on last year's buy.

STORMOR DOES MORE



Sign Of A Great Bin

STORMOR

There's good reason why you're seeing more Stormor bins go up every year. Stormor builds them strong—out of heavy full-galvanized sheets. Stormor builds them handy—with a choice of rugged doors and wide, easy-access hatches. And Stormor builds in versatility too. When your drying needs increase, your basic bin quickly converts to an efficient Dry-O-Mation System. See us today for any Stormor bin from 1,000 to 66,400 bu.

MIX MILL SYSTEMS

JIM WAHLE PHONE CE 8-7660
ROUTE 2
JUNCTION CITY, KANSAS

- Dry-O-Mation
- Clear-Span Steel Buildings
- Batch Dryers
- Bulk Feed Bins

STORMOR INC. P. O. Box 198, Fremont, Nebr. 68025

An Improved Sheep Market

A Kansas State University economist is forecasting a drop in lamb prices this summer. But he says it will be less severe than the seasonal slump which occurs about this time of year.

Despite the drop, Robert L. Coppersmith looks for prices to remain about \$2 to \$3 higher than last year's levels throughout the summer and fall.

Sheep numbers continue to decrease, he says. Despite the good lamb prices the last few years, producers have continued to reduce their breeding stock.

On January 1, 1968, stock-ewe numbers were down 5 percent from a year earlier. Coppersmith expects total lambs produced to be off by almost the same proportion this year.

The early lamb crop in 1968 was about the same as a year earlier. The late crop this year

GRASS & GRAIN

The Mid-Kansas news weekly. Published each Tuesday at 1207 Moro, (Box 1009) Manhattan, Kansas, 66502 by

AG PRESS

Dean Coughenour
E. R. Woodward

Second class postage paid at Manhattan, Kansas.

Subscription: \$3 year
CIRCULATION 12,710

will be down 6 to 8 percent. Slaughter supplies late this year will run less than year earlier levels.

The drop in stock-ewe numbers and the smaller lamb crop point to higher prices in 1969, the economist believes.

It all adds up to this: The efficient sheep producer, with an adequate size ewe flock, should experience a profitable business during the next few years, Coppersmith says.

Wheat Show At Wichita Aug. 2

Friday, August 2, is the date of the District 4-H Wheat Show in Wichita. Another show is scheduled for Friday, August 9, in Colby.

In addition to the judging of physical samples of wheat and mill and bake samples, the event features educational presentations emphasizing quality wheat production and grain marketing, comments Don D. Pretzer, Extension economist in grain marketing, Kansas State University. Pretzer is arranging the programs for both shows. Charles Bates, Extension 4-H specialist, KSU, will discuss the 4-H grain marketing projects at the Wichita show.

On the morning program at Wichita will be John Deege, Larned, a Pawnee County 4-H'er

July 30, 1968

who was a 1967 state award winner in the quality wheat program, and winner of a grant to inspect grain marketing facilities in Texas.

Donna Schippers, Olathe, Kansas Wheat Queen, will appear. John Dukelow, Hays, son, representing the Kansas Wheat Commission, and Tom Roberts, Manhattan, president of the Kansas Wheat Improvement Association, are other program participants.

To begin the afternoon session, Bates will explain the grain marketing projects. Debra Edeblute, Garden City, area extension soils and grains specialist, KSU, will judge and discuss the physical sample entries. John Giertz, Wichita, Kansas Milling Co., is judging and discussing the mill and bake samples.

Work On Cattle Backfat Probe

AMES, Iowa — Efforts to develop and perfect a backfat probe technique for beef cattle show promise at Iowa State University. A progress report on the project was delivered by Paul O. Brackelsburg of the animal science staff at an evaluation clinic here.

The scientist uses a regression gauge used to measure backfat in swine, and his beef measurements are usually within a half of an inch of actual backfat revealed after the animal is slaughtered. It is hoped that when perfected, the probe will help breeders to select males and dams among live animals just as is done with

Paper Back 25c - 50c

Books

Largest Stock In Town

University Book Store

623 N. Manhattan Manhattan

MATTRESS & BOX SPRINGS

Specials Every Day
New Low Prices
Buy Direct

Also Complete Rebuilding Service

Manhattan Mattress Co.

414 S. 4th PR 8-5392



Clarence Watson
Republican Candidate for Sheriff of Riley Co.

VOTE for the man who knows the work of the office inside and out.

Former Sheriff of Riley Co. 7 years of experience.

2 terms as sheriff and 3 years undersheriff.

Will devote full time to the office.

Cooperate and extend courtesy to the people at all times.

Reduce expenses of the office. 2 Stunning Large Regular \$219

Cooperate with all lawyers and law officials at all times. Clarence Watson is that man for Riley Co. Sheriff.

VOTE for CLARENCE WATSON Republican for SHERIFF OF RILEY CO. Pol. Adv. paid for by friends of Clarence Watson.

Manhattan's City-Wide

3 BIG DAYS

Thursday
Friday

Saturday

AUG. 1-2-3

Dog Days and
August Clearance
In 1 Huge Event

SAVE ON EVERY ITEM YOU NEED

- Apparel ● Cars ● Hardware ● Food ● Gifts
- Jewelry ● Furniture ● Sporting- Fishing Needs

YOU NAME IT — YOU'LL FIND IT INSIDE OR OUTSIDE

Downtown ● West Loop

Blue Hills ● Boulevard Bend

FREE SQUARE DANCE

Thurs., 8:30 pm

Enjoy and see modern square dances under the stars in full costume, 3 local square dance groups:
PLACE: South 4th St. between Poyntz & Houston
EVERYONE WELCOME



— FINALS —

Annual Ken-L Rations
DOG SHOW

On Courthouse Lawn — 1:30 p.m.
SATURDAY, AUGUST 3



ALL STORES OPEN THURSDAY NIGHT

SHOP SEDLACEK'S NOW

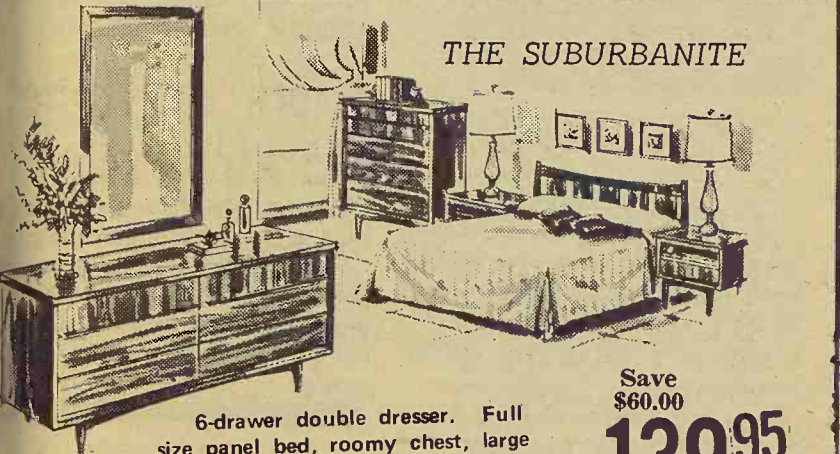
FOR REALLY OUTSTANDING SUMMER VALUES!



WALNUT FINISH CONTEMPO

Roomy 6-drawer double dresser, large bevel-edge mirror, full-size bookcase bed, 4-drawer chest.

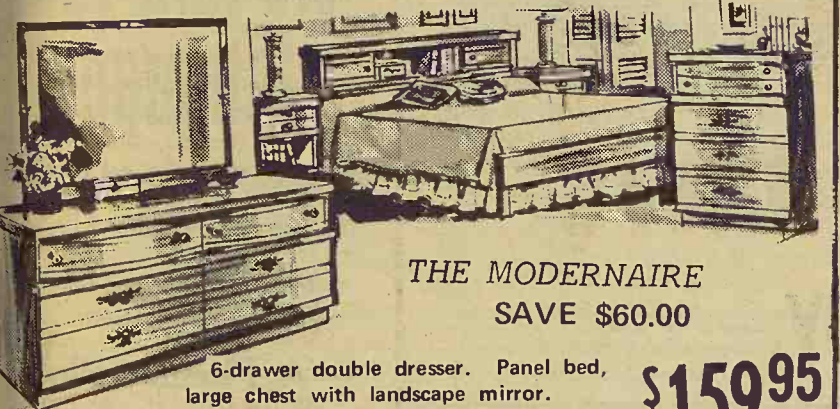
SAVE \$50.00 **119⁹⁵**



THE SUBURBANITE

6-drawer double dresser. Full size panel bed, roomy chest, large mirror. Walnut. \$199.95 value. Sale price--

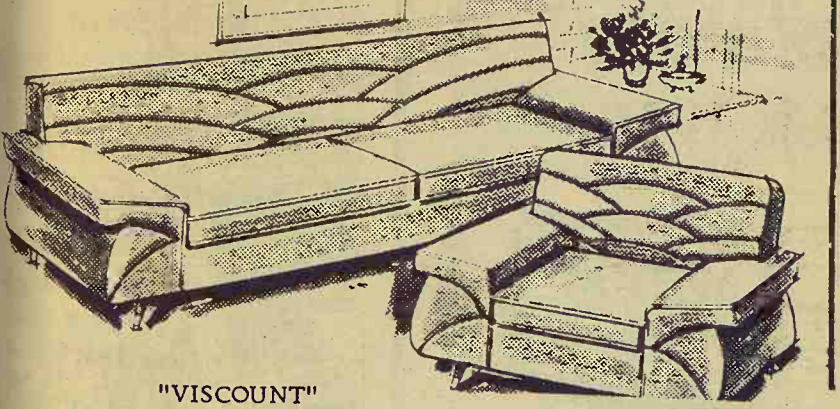
Save \$60.00 **139⁹⁵**



THE MODERNAIRE
SAVE \$60.00

6-drawer double dresser. Panel bed, large chest with landscape mirror. \$219.95 value. Sale price--

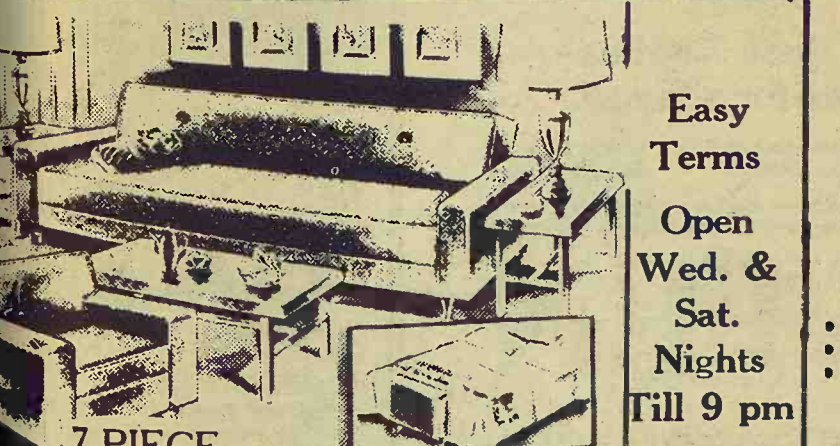
159⁹⁵



"VISCOUNT"

Boasts rich back details, moulded foam back. Reg. \$249.95

Sale Price -- **169⁹⁵**



7-PIECE LIVING ROOM OUTFIT

Includes Modern Sofa-Bed, big Chair in Rich Nylon Cover, Cocktail Table, 2 End Tables, 2 Stunning Lamps. Regular \$219.95

139⁹⁵

Easy Terms
Open Wed. & Sat. Nights
Till 9 pm

FREE Delivery Within 200 Miles

Stores lots of frozen foods ... Makes ice jet fast!

GE No Frost 16' Refrigerator-Freezer



Giant zero-degree freezer holds up to 147 lbs. Exclusive Jet Freeze ice compartment. Sub-zero air is blown over ice trays first for extra-fast freezing. Twin porcelain enamel vegetable bins. Total capacity, 2/3 bushel. Refrigerator rolls out for easy cleaning. G-E Colors or White.

269⁹⁵

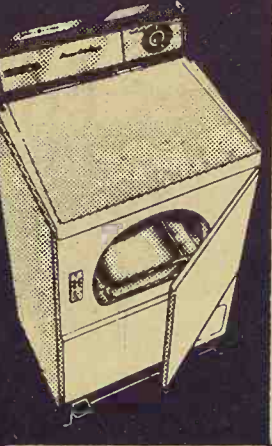
General Electric Automatic Washer



Washday Wonder
...only 24" Wide!

• Family Size Loads
... All Fabrics

149⁹⁵

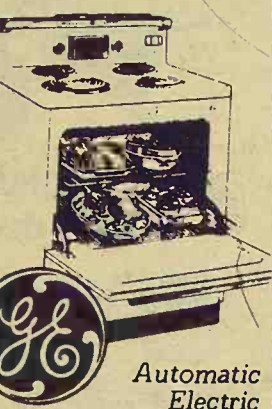


Special Permanent Press Cycle

... "no iron" garments come out wrinkle-free, ready to wear!

General Electric Premier High Speed Dryer

119⁹⁵



Automatic Electric Speed Cooking

- Big 23-In. Oven
- Easy Set Oven Timer
- Push Button Control

SEDLACEK'S PRICE. **189⁹⁵**



Self-Cleaning Carrod Units

- Porcelain Enamel
- Bake Unit Lifts Up
- Oven Door Lifts Off
- 23" Master Oven
- Push Button Control

SEDLACEK'S PRICE. **139⁹⁵**



5 Pc. Dinette Set

Wood grain table, four Bronzitone Chairs with padding, heavy vinyl cover

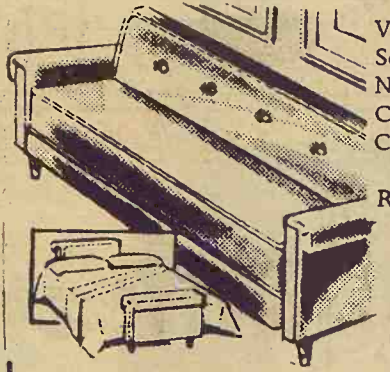
49⁹⁵



Studio Couch

Coil Spring Construction Heavy Cover

39⁹⁵



Versatile Sofa Bed Nylon Cover Coil Spring Construction

Reg. \$79.95

49⁸⁸

Murphy-Miller **KROEHLER ROCKER**

Foam Back With Nylon Frieze Cover

29⁸⁸

Murphy-Miller **KROEHLER SWIVEL ROCKER**

Reversible foam cushion with foam back.

39⁸⁸

Diamond tufted back is the keynote of this design. It swivels, it rocks. Beautiful walnut wood with self-leveling glides on base. \$59.95 value.



MODERN TURN-ABOUT ROCKER

44⁸⁸ KROEHLER
world's largest furniture maker

FURNITURE and APPLIANCE
Sedlacek's

Phone ED 7-2345

Hanover, Kansas

K-State Irrigation Expert In Romania

Russell L. Herpich, Extension irrigation engineer at Kansas State University, is visiting Romania this month to observe irrigated agriculture in that country.

The visit is at the invitation of the Romanian government and was initiated by that country's highest agricultural official and a personal friend of Herpich. Angelo Miculescu, vice president, Higher Council of Agriculture, State Farm Department, is Herpich's host. Miculescu came to Kansas in 1964 to study irrigation farming, and Herpich was his guide for farm visits throughout the state.

Large Angus Group In Flint Hills Study

Cattlemen from Missouri, Oklahoma, and Kansas studied the operations of 10 top Angus commercial cowmen in the southern Flint Hills during the recent Kansas Angus Association Tour. They saw more than 8,000 head of cattle during the two-day event around Cambridge, Moline, Howard and Sedan.

Herds visited were those of: Rafter F Ranch, Cambridge; Ferguson Ranch, Cambridge; Floyd Ranch, Sedan; Floyd Mills, Sedan; Sour Ranch, Sedan; Dwight Wallace Estate, Sedan; Coble Brothers, Moline; Weldon Russell, Howard; and Jim Perkins, Howard.

Guest speakers included Miles McKee, Dr. Harry Anthony, and Don Good, Kansas State University, and Stanley Anderson, associate director of breed improvement for the American Angus Association.



Herpich is visiting Romania this month to observe irrigated agriculture in that country.

In Romania, Herpich is visiting collective farms and farms under the State Farm Department. All agricultural work and programs are administered by the Higher Council of Agriculture. Agricultural programs in Romania are planned on a 5-year basis — for the State Farms and the State Cooperative Farms.

The area of interest in Romania is the Danube River Basin where rapid development for irrigation is now taking place under the direction of Miculescu. The Basin has a potential of 8 million acres of irrigated farming.

Romania's climate is similar to Kansas, about 10° farther north. "Their agriculture is

much like ours only they concentrate on corn," Herpich said. Irrigation methods there are similar to those in western Kansas — use of deep wells for water supplies. Soil in the Basin is rich silt.

Major use of the corn crop in Romania is for livestock feeding. They have a highly intensified livestock feeding system, according to Herpich. They are a leading producer of sunflowers, an oil seed crop. And they are strong in production of protein crops — legumes, beans and peas.

"Pork production in Romania is truly a factory undertaking

that is highly organized," Herpich said. Pork is the number one meat in Romania's diet.

Further mechanization is the key to expansion of irrigation in Romania, Herpich explained. Water has been transported mainly by gravity, and only a small amount of sprinkler system irrigation has been done. Pipelines and sprinklers will be important as the vast potential is developed, he said.

While in Romania, Herpich will visit three former Kansas State University students from that country. Dr. Ion Popescu and Dr. Ionescu Sesisti are in the College of Agriculture at

Craiova University of Bucharest; and Dr. Staicu is director of agricultural research.

Herpich was accompanied by his wife and their daughter, Jenifer. They plan to visit another daughter and her husband, Lt. and Mrs. Robert Polzey, in Frankfort, Germany, on their return flight.

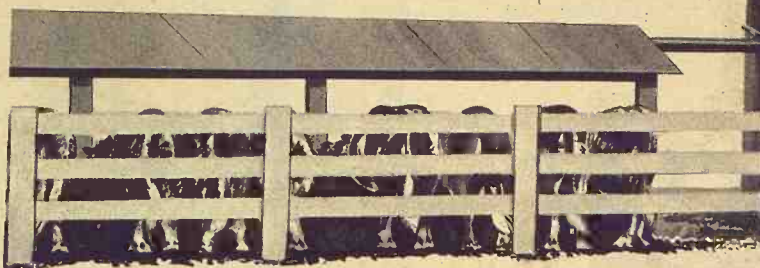


Tools Too

AGGIE
HARDWARE
1205 Moro
Manhattan, Ks.

The nicest thing about a Mix-Mill® feed processing system...

when you need it, it doesn't need you!



Your Mix-Mill® feed processing system stores, measures, mixes and grinds your concentrate, grains and other ingredients, and delivers fresh feed to the feeders automatically . . . electrically. It will deliver feed for two hours out of 24, 10 hours out of 24, or 24 hours out of 24 . . . regardless of where you are or what you're doing.

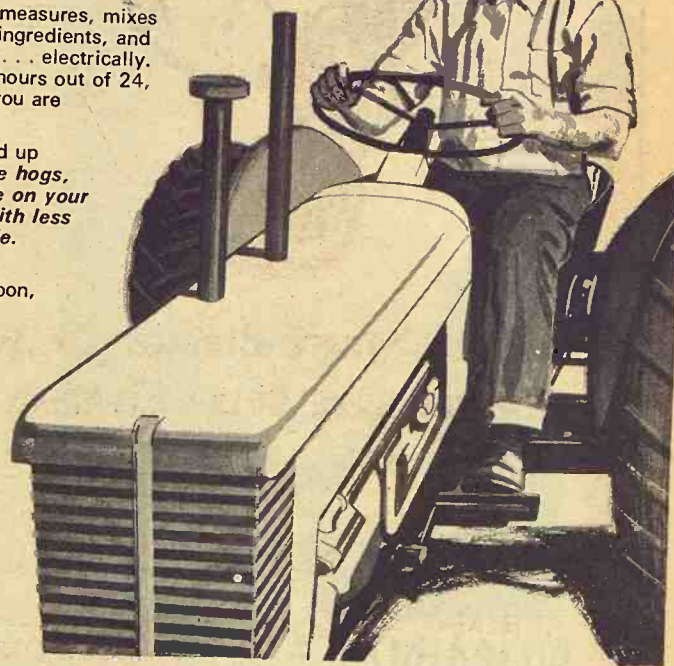
There are dozens of other advantages which add up to this. A Mix-Mill® system will feed all of the hogs, beef cattle, dairy animals, or poultry you have on your farm . . . or plan to have . . . at less cost and with less labor involved than any other method available.

The nicest thing you could do would be to make us prove it. We'll be glad to. Just fill in the coupon, and get it in the mail today.

North Central Steel Co., Inc.
116 West Second EX 2-2077
Minneapolis, Kansas 67467

Please send me details on Mix Mill® Feed Processing Systems.

Name _____
Address _____
City _____ State _____ Zip _____
No. of tons of finished feed used per year _____ (total)
No. of Hogs _____ Beef Cattle _____ Dairy Cattle _____ Poultry _____
Present source of feed: Feed Dealer Mix own feed NL



"THE STATE SHOULD ASSUME MORE FINANCING OF LOCAL LAW ENFORCEMENT FOR THE RELIEF OF PROPERTY TAXPAYERS. STATE FINANCING OF THE NEW STATEWIDE POLICE TRAINING ACADEMY WOULD BE A WAY."



RICHARD H. SEATON
PRESENT ASST. ATTY. GENERAL
NOW A CANDIDATE FOR
ATTY. GENERAL

Seaton for Atty. Gen. Comm.
Robert N. Haines, Ril. Co. Clerk

This Year Put Up
MONSANTO
SEAL-VAC
VACUUM SILAGE
NEXT TO
NO SPOILAGE

For more information, call your SEAL-VAC Dealer.

Victor Kruse
Phone 2609
Barnes, Kans.

As a past member of the House of Representatives . . . including service as Speaker . . . and as a present State Senator Charles Arthur can use this experience toward improvement of Legislative facilities and procedures. He can provide leadership and direction to bring about better coordination between the House and Senate. He will make Kansas a fine Lieutenant Governor. Help elect him.

CHARLES
Arthur
REPUBLICAN FOR
LIEUTENANT GOVERNOR

Arthur for Lt. Governor Comm.; J. Robert Wilson, Chm.



OUR DAILY BREAD

- by G&G Area Cooks

Mrs. Earl Moore, Holton
Sends Winning Recipe

Mrs. Earl Moore, R 2, Holton, is the prize winner. Her recipe follows:

HUBBLE HOUSE SALAD DRESSING

1 can tomato soup, 10½-ounce size
1½ cups Miracle Whip
2 tablespoons catsup
1 teaspoon prepared mustard
1 teaspoon salt
½ cup vinegar
½ cup salad oil
1 cup sugar
1 medium-size onion, finely chopped
Combine all ingredients and mix well. Delicious over a tossed salad. Store in refrigerator. Will keep indefinitely.

The next recipe was sent by Mrs. Jack Haist, Miltonvale:
PECAN CORNFLAKES CAKES
½ cup shortening

1½ cups butter or margarine
1½ cups sifted confectioner's sugar
1 teaspoon vanilla
1½ cups sifted all-purpose flour
1½ cups cornflakes
1 cup chopped pecans
Cream shortening, butter, sugar and vanilla until light and fluffy. Add flour, mix well. Stir in cornflakes. Divide dough into three equal portions; shape each portion into a roll about 1-inch in diameter and 12 inches long. Coat rolls with pecans. Wrap each roll in waxed paper; seal ends and refrigerate several hours or overnight. Cut into ½-inch slices; place on ungreased baking sheet and bake in 350-degree oven 12-15 minutes or until lightly browned.

Mrs. L. Joseph Wedel of Langdon, Mo., submitted the following recipe:

CHICKEN SALAD FOR A HOT DAY

½ cup salad dressing
¼ cup French dressing
½ teaspoon salt

Dash of pepper
Combine:
3 cups diced cooked chicken or turkey
1½ cups long grain rice, chilled
1 11-ounce can (1½ cups) mandarin oranges, drained
1 cup diced celery
Toss mixture together and chill for one hour.

Mrs. Delmar Faley, 1028 East Ash, Salina, sent a pork chop recipe:

PORK CHOPS & FRIED RICE

6 pork chops
1 small onion
1 cup rice (not instant)
1 can beef consommé
1 can water (hot)
Brown pork chops in 1 tablespoon shortening. Set aside. Brown rice in pork chop drippings on medium heat. Stir frequently to prevent burning. Chop onion and add to rice. Put rice and onion in casserole. Place pork chops on top. Add consommé and hot water. Bake at 350 degrees for ½ to ¾ hour. Serve with soy sauce. Hot rolls and a salad make a meal with this casserole.

Now Easy To Travel Light

Today it's not difficult to travel light.

Drip-drys, permanent press and stretch fabrics are a woman's natural allies in her battle with crowded car trunks or a husband's plea not to take "all that luggage."

Nylon, orlon and that ever-growing clan come from a suitcase unwrinkled, survive the most strenuous sightseeing trips and emerge from wash basin sudsing to dry quickly and be fresh again.

Cotton, still favored by many, will go far and well if it's been

processed or treated for no-iron laundering. If it's a stretch fabric, the dividend is ease in getting around, plus assured shape retention.

Winner Sends Thanks

Mrs. Blake Hibbard of Toronto recently won the "Our Daily Bread" recipe prize. Here is a note from Mrs. Hibbard:

"Thanks so much for the serving pitcher. It is lovely. A friend tells me Howard Johnson's at Topeka use the same pitcher on their tables. How about that? Thanks again."

LEASING

Farm and Industrial Machinery

If you can't buy it you can lease any piece of Allis-Chalmers machinery you may need, and at low rates. See Bob Martin for Industrial leasing, Jim Gates for Farm Equipment leasing.

HENRY SALES AND SERVICE

East Highway 24 and Meriden Road, Topeka, Kans. - FL 4-7641

Hook-On
Duals By Dietrich



Start At
\$106.00

B. F. Goodrich

119 N. 7th TA 3-2271
SALINA, KANSAS

IT'S TIME FOR

ACTION



NOMINATE & ELECT
RICK HARMAN
GOVERNOR
(Republican)

HERE'S WHY KANSAS NEEDS HARMAN

He is a different kind of candidate who is a welcome break with dreary traditions in politics.

—MANHATTAN MERCURY

His straightforwardness in answering questions and his promise to the people that he will serve in the office in a businesslike way rather than as a professional politician won the respect and support of those who talked with him and heard him speak.

—PARSONS SUN

His nomination by the Republican party would be a step toward introducing in Kansas the business-type public servant that has marked the party nationally.

—KANSAS CITY KANSAN

He emphasized the shifting trend to elect individuals with new ideas rather than perennial candidates.

—WICHITA EAGLE

He doesn't hesitate an instant in telling you what he thinks and has no mealy-mouthed medium of expression.

—THE EL DORADO TIMES

Harman is articulate, he has ideas and still better convictions.

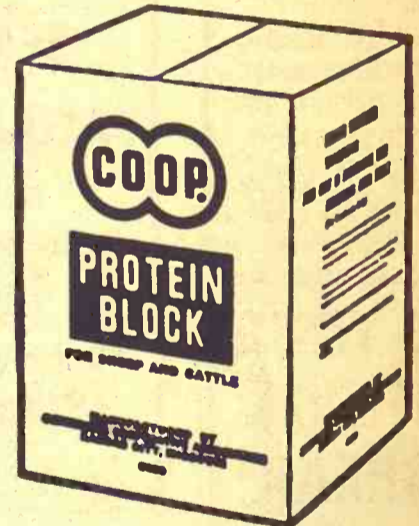
—DODGE CITY GLOBE

Political Adv. paid for by
Riley County Committee for
Rick Harman for Governor

NOW . . . YOU CAN ORDER
HIGH PROTEIN



**PROTEIN
BLOCKS**



CO-OP Protein Blocks are ideal for on-ground feeding. CO-OP Protein Blocks supply your animals with a high concentration of protein (39%), carbohydrates, vitamin A and minerals. All you do is put them on the ground. Cattle find them quickly. Cattle do well, look good and gain fast even on late summer pasture or fall cornstalk feeding with highly palatable CO-OP Protein Blocks.

LABORATORY
TESTED . . .
AND
FEEDLOT-
PROVEN

Carlton
Farm Co-op Assn.
Carlton
Telephone 31

Manhattan
Farmers Cooperative Assn.
Manhattan-Alta Vista
-Westmoreland-Onaga

Holton
Farmers Union Co-op Bus.
Assn.
Holton 364-3161
Denison 50-Mayetta 28

Greenleaf
Farmers Co-op Elevator Assn.
Greenleaf-Linn
-Washington

Junction City
Farmer-Stockman Co-op Assn.
Council Grove
-Junction City CE 8-4158

Herkimer
Herkimer Co-op Bus. Assn.
Herkimer HI 3-3824
Oketo RI 4-2341

Alma
Farmers Union Co-op
Alma Ph. 765-3612
Eskridge Ph. 449-2291

Clay Center
Farmers Union Co-op
Clay Center-Bala
-Miltonvale-Leonardville

St. Marys
Farmers Union Co-op
Business Assn.

Summertime Crab Loaf Is An Off-Beat Treat



For a delicious summertime meal, try this quick and delicious hot Crab Meat Loaf. Mushroom sauce makes a delicious accompaniment and may be made by diluting a can of condensed mushroom soup with 1/2 cup dry white wine, then heat.

CRAB LOAF

15 double crackers
1/4 teaspoon pepper
1/4 teaspoon salt
1/2 teaspoon dried dill weed
2 cans crab meat, 7 3/4 ounces each
3 tablespoons lemon juice
3 eggs, lightly beaten
1/4 cup melted butter

Between waxed paper, crush crackers with rolling pin into very fine crumbs; there should be about 1 1/4 cups. Mix with pepper, salt and dill weed; set aside. Drain crab and rinse quickly in cold water to freshen. Remove any cartilage from large pieces and mince. Mix crab well with lemon juice, eggs and butter; blend with crumb mixture. Turn into well oiled loaf pan, about 7 1/4 x 3 1/2 x 2-inch. Bake in preheated moderate oven

(350 degrees) for about 40 minutes or until firm. Let stand about five minutes in pan before turning out into serving plate. Garnish with parsley and lemon wedges. Accompany with mushroom sauce if desired. (Note: If the bottom of the pan is lined with aluminum foil, loaf slides out more easily). Yield: 5 to 6 servings.

**BRING YOUR
WATCH
TO A SPECIALIST FOR
repairs**

**Good watches
deserve
expert care!
All others
need it!**



The more expensive your watch, the more it needs the attention of experts. But ordinary watches need extra special care because keeping perfect time is not just built-in. It's the result of extra care.

SNYDERS JEWELRY

Phone: ME 2-5155
CLAY CENTER, KS.

Chocolate Frosted

Combine in tall glass 3 heaping teaspoons quick chocolate-flavored mix and a small amount of milk. Stir. Add 1 scoop ice cream and stir briskly with fork till smooth. Fill glass with cold milk. Yield: 1 serving.

GIVE YOUR FIELDS A BREAK!

And, cut your work-load in half!

A quick trip over your plowed fields with a BRADY Field Cultivator gives you the finest seedbed you've ever known. Why not attach the dolly and planter and do the entire job in one trip?

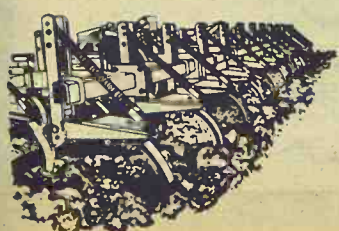
Then, also use it for summer fallowing—stubble mulching—pasture and hayland renovation. You get exact 6" or 9" shank spacings and hydraulically adjustable depth control. 3 models, each expandable. Sizes from 11 1/2' to 33 1/2' wide.

BRADY FIELD CULTIVATORS

FOR NAME OF DEALER
WRITE OR PHONE

ME 2-5100

WALT LIPS SALES
CLAY CENTER, KANS.



Right Amount

Baking a sponge cake for a jelly roll? Then you'll be glad to know that 2 tablespoons of confectioners' sugar will be just about the right amount to spread over the clean dish towel on which the cake is to be turned out.

Smothered Chicken

To prepare smothered chicken, brown a cut-up, large broiler-fryer in butter or margarine. Add half a cup of tomato juice, a bay leaf and some peppercorns. Cook, covered, until tender. Roll the chicken in seasoned flour before browning.

Hold's Sewing Scraps

A paper bag fastened to the sewing machine with tape will make a good disposable container for sewing scraps.

Grass & Grain

7

July 30, 1968

ELECT C. W. "BILL" CRITES

Democrat For
SENATOR —
GEARY-RILEY COUNTIES

Active
Realtor & Auctioneer
Active In
Community Affairs
Chairman of Highway Comm.,
Vice Chmn. Agri. Comm.
Vice Pres. Milford Lake Assn.
Elect An Active Man For
An Active Job



Political Advertisement paid for by Bill Crites himself

B.F. Goodrich

Tractor Tires

Power Grip Nylon



**FREE, FAST
MOUNTING**

4-Ply NYLON

FARM TIRES

6.00-16
or 6.70-15

\$10⁹⁵

plus F.E.T.

4-Full Ply

\$40

11.2x28
4-Ply

12.4x28 4 ply	\$ 49
13.6x28 4 ply	\$ 54
14.9x28 4 ply	\$ 61
11.2x38 4 ply	\$ 55
12.4x38 4 ply	\$ 65
13.6x38 4 ply	\$ 68
13.6x38 6 ply	\$ 79
14.9x38 6 ply	\$ 90
15.5x38 6 ply	\$ 93
16.9x34 6 ply	\$100
18.4x34 6 ply	\$105

Plus Tax And
Re-salable Tire.

BARGAIN ROW
REAR TRACTOR TIRES
New — Slight Blemish
Fully Guaranteed

9.5x24	\$32
12.4x28	\$44
12.4x38	\$59
13.6x28	\$49
13.6x38	\$62
14.9x28	\$56
6-Ply	
13.6x38	\$70
15.5x38	\$85
18.4x34	\$95
16.9x30	\$92
14.9x38	\$82
18.4x30	\$95

Plus Tax And
Re-salable Tire.

On K-15 North of Square
Phone ME 2-2167



REX KOPPEL, OWNER, CLAY CENTER, KANS.

Drill far more accurately with International precision design— from feed cups to openers

How do International 10 and 150 grain drills assure drilling accuracy?

Fluted rolls and other critical parts are precision-molded of powdered, sintered metal. Big, wide-throat cups are die-cast of corrosion-proof zinc alloy. No rough sand-cast iron! Seeds are metered out in a uniformly accurate flow. No checking, bridging or cracked seed.

An exclusive adjusting lever instantly regulates the feed cup bottom to match seed sizes—no tools needed. Ball bearing feed shifter is a precise, slop-free mechanism. Holds the exact sowing rate over the entire field.

Choose the single-disk opener with

exclusive notched landside that covers seed with the highest moisture soil. Or select exclusive front-delivery, double-disk openers that place seed down to maximum moisture. Or you may prefer regular single-disk or hoe-type openers.

Whichever opener you prefer, fertilizer can be delivered separately through corrosion-resistant delivery tubes. For extra fertilizing precision, get the double-disk opener with the exclusive separate fertilizer placement opener.

See your dealer for grain drill worth more features and an IHCC credit plan tailored to your income.



First to serve the farmer



International 10 grain drills are offered in 3 models, 13 sizes.



International 150 shovel press drills are offered in 8 sizes, 8, 10, 12, or 14-inch spacings.

BELLEVILLE
Chapman's On US hwy. 81

ABILENE
Abilene Truck & Tractor

HANOVER
Hanover Impl. Co.

LEONARDVILLE
Kendall Garage

WAKEFIELD
Auld Chevrolet

MARYSVILLE
Bruna Brothers

FALUN
Dauer Impl. Co.

HERINGTON
Pioneer Service & Sales

MINNEAPOLIS
Chapman Impl. Co.

COUNCIL GROVE
Macha-Revere

A Cut In Lamb Output

The nation's lamb production this year is estimated at 14,472,000 head, down 4 percent from 1967, the Agriculture department reports.

Production in the 13 Western sheep states was 3 per cent smaller and 6 per cent lower in the remaining states, the department said.

The number of lambs saved per 100 ewes was 94 this year, one higher than in 1967.

Western production of lambs this year was 10,114,000 head of the nation's total this year. Texas, the leading sheep state, produced 2,399,000, a decline of 17 percent from 1967.

ITCO

MOWER KNIVES AND PARTS

AC smooth heavy	10.69
AC underserrated heavy	11.15
JD underserrated heavy	10.69
JD smooth heavy	9.99
Ford smooth heavy	10.85
Ford underserrated heavy	10.75
IHC underserrated heavy	10.75
IHC smooth heavy	10.19
Viking guards, all mowers	1.15
Regular guards, all mowers	1.05
Mower clips	38c to 41c
7" wear plate	2.69
Short wear plates, chrome	33c
AC baler belts	7.85-10.35
Little Giant bale elevator, 16'	89.95
Little Giant bale elevator, 24'	122.45
Air compressors	\$84.95
Three point post hole diggers	149.95
1 Used B12 AC tractor and 42" mower	\$750

Farm Exports Star Dollar Earners For U.S.

By Leonard W. Schruben
Kansas State University

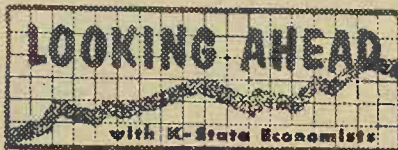
The foreign market for feed grains offers one of the brightest prospects for expanding markets for Kansas agricultural products.

Commodities harvested from 1 of every 4 acres of cropland in the U.S. move into foreign markets. We exported \$6.8 billion worth of agricultural products last year, a new record.

Agriculture has been a star dollar earner for the U.S. We have been faced with a serious balance of payments problem during recent years, because we

buy more from foreign countries than we sell.

However, agriculture has offset other trade deficits by an average of \$1 billion a year since 1964. Thus, the balance of payments deficit is lower than it would be without agricultural exports.



Wheat, feed grains, and soybeans are the principal dollar earners. Grains, oilseeds, and their products accounted for about 60 percent of the total value of U.S. agricultural exports in 1967. Wheat export sales alone amounted to \$1.2 billion and comprised about a fifth of the total.

While the value of wheat exports continues to exceed the value of feed grains (corn, sorghum, oats, and barley) exported, new opportunities for market development and expansion now appear brighter for feed grains.

Feed grain exports — primarily corn and grain sorghums — have doubled in the past 7 years. This trend is especially significant because \$945 million, or 82 percent, of these exports in the 1966-67 marketing year were commercial dollar sales. Commercial sales of feed grains in 1966-67 were 40 percent greater than commercial sales of wheat.

Significant gains have been made in commercial dollar sales of nearly all agricultural products exported. A smaller proportion of our exports are sold for foreign currencies, and a

correspondingly larger proportion are sold for dollars.

The proportion of wheat entering commercial export channels as dollar sales has increased significantly from an average of 33 percent in the 1960-64 period to 51 percent in 1966-67.

Apparently there has been a sharp adverse reaction to the implementation of the Interna-

tional Grains Agreement, but it is too early to appraise its overall impact.

In summary, prospects for increased feed grain exports by the U.S. look good over the long pull. But much depends on economic improvement in importing countries, crop production in these countries, and on how the U.S. prices gain for export.



Johnny Kaw Says:

Blood boils at a lower temperature than water.

HOLT FARM SUPPLY

Next To Sale Barn

MANHATTAN PR 6-7943



WAYNE FEEDS

WAYNE GAIN

The extra pounds of gain on Grass from "Wayne" Hi Energy Range Cubes can be your profit!

Stop by your local "Wayne" Feed Dealer and ask how you can join the satisfied group of "Wayne Gain" customers, and make an extra \$10.00 per head above feed cost! This "Wayne" gain is Profit!

Remember, Allied Mills are the builders of tomorrow's feeds today. Come in, or call, to get information on a "Wayne" gain protein to fit your livestock program.

WAYNE FEEDS ARE AVAILABLE AT THE FOLLOWING LOCATIONS

- | | |
|-----------------------|----------------------|
| Allied Mills, Inc. | Junction City, Kans. |
| Continental Grain Co. | Herington, Kans. |
| Continental Grain Co. | Home, Kans. |
| Continental Grain Co. | Morrowville, Kans. |

Manhattan Commission Co., Inc. Sale Every Thursday

Due to the rain, our run was much shorter than we expected. However, we were very happy for the rain and also sorry for the people that were flooded in this area or wherever the rain was too heavy. Our market was active on all classes of cattle with heavier calves selling at lower prices while cows were stronger, up to 75¢ cwt higher. Next week we will have a lot of buyers for good calves and yearlings and feeder cattle. So if you have to sell cattle bring them in.

FAT CATTLE & FEEDERS

2 black steers	462 @ 30.10
3 whiface steers	648 @ 28.10
1 black steer	605 @ 28.10
1 whiface steer	625 @ 28.10
3 black steers	630 @ 28.00
1 black steer	680 @ 27.10
3 whiface steers	642 @ 27.10
3 black steers	617 @ 27.10
7 black steers	611 @ 27.10
8 whiface steers	679 @ 27.10
5 black steers	620 @ 27.00
2 wf broc str	615 @ 27.00
1 black steer	640 @ 27.00
7 blkwhif str	657 @ 27.50
8 whiface steers	673 @ 27.50
5 whiface steers	605 @ 27.30
3 whiface steers	735 @ 26.70
25 black steers	884 @ 26.50
6 black steers	902 @ 26.50
2 black steers	782 @ 26.50
3 char. wf str	665 @ 26.50
1 broc. wf str	720 @ 26.30
1 whiface steer	680 @ 26.20
24 whiface str	888 @ 26.10
1 black steer	680 @ 26.10
1 blkwhif str	660 @ 26.10
2 whiface steers	812 @ 26.10
1 rn whifheif	605 @ 26.00
1 red steer	700 @ 26.00
1 whiface str	655 @ 25.80
1 blkwhif str	710 @ 25.70
5 blkwhif hfrs	631 @ 25.60
3 whiface heifs	661 @ 25.50
2 whiface heifs	605 @ 25.50

1 blkwhif hfr	635 @ 25.20
1 brindle wf str	680 @ 25.20
7 black steers	723 @ 25.10
1 whif broc str	635 @ 25.10
1 broc brind. str	1025 @ 25.00
1 blkwhif hfr	830 @ 24.60
1 black steer	670 @ 24.60
1 black steer	605 @ 23.70
7 whiface hfrs	603 @ 23.60
1 holst steer	675 @ 23.20

STEER CALVES

9 whiface steers	510 @ 30.30
1 black steer	405 @ 30.10
2 whiface str	470 @ 30.10
8 whiface str	520 @ 30.10
3 whiface str	491 @ 30.10
3 whiface str	491 @ 30.10
3 blkwhif str	370 @ 30.10
1 black steer	470 @ 30.00
13 whif steers	548 @ 29.50
3 blkwhif steers	368 @ 29.50
5 black steers	492 @ 29.30
4 whiface str	490 @ 29.30
1 whiface str	365 @ 29.25
4 whiface str	466 @ 29.10
1 black steer	485 @ 29.10
9 whiface str	514 @ 29.10
1 rn whif str	370 @ 29.00
4 whiface str	400 @ 29.00
1 whiface str	435 @ 29.00
4 black steers	512 @ 28.60
1 whiface steer	510 @ 28.60
4 whiface str	497 @ 28.60
4 blkwhif str	586 @ 28.60
6 blkwhif str	532 @ 28.50
1 rn whif str	325 @ 28.50
4 whiface str	400 @ 28.30
2 char whif str	442 @ 28.10
5 black steers	551 @ 28.10
2 rn whif str	552 @ 28.10
1 whiface str	555 @ 28.10
2 broc wf str	432 @ 28.10
2 whiface str	502 @ 28.10
3 whiface str	506 @ 28.10
2 black steers	427 @ 28.00
1 black steer	425 @ 28.00
1 roan steer	495 @ 28.00
1 broc whif str	450 @ 27.60
5 black steers	553 @ 27.50
3 blkwhif str	418 @ 27.40
1 whiface steer	450 @ 27.30
1 whiface steer	530 @ 27.30
1 whiface steer	380 @ 27.25
1 black steer	390 @ 27.25

HEIFER CALVES

1 whiface hfr	245 @ 26.90
1 whiface hfr	295 @ 26.70
6 whiface hfrs	481 @ 26.40
5 whiface hfrs	502 @ 26.40
8 whiface hfrs	467 @ 26.10
2 whiface hfrs	437 @ 26.10
4 whiface hfrs	435 @ 26.10
2 whiface hfrs	397 @ 26.10
1 rn heifer	560 @ 26.00
3 whiface hfrs	376 @ 26.00
2 whiface hfrs	515 @ 26.00
2 whiface hfrs	465 @ 26.00
7 black hfrs	435 @ 26.00
2 whiface hfrs	417 @ 26.00
3 whiface hfrs	491 @ 26.00
9 black heifs	408 @ 25.90
2 whiface heifs	470 @ 25.80
8 blkwhif hfrs	541 @ 25.80
8 whiface hfrs	531 @ 25.70
2 whiface hfrs	552 @ 25.60
2 char wf hfrs	430 @ 25.50
2 black heifs	442 @ 25.50
5 char heifers	569 @ 25.50
1 black heifer	520 @ 25.50
4 whiface hfrs	582 @ 25.50
3 black heifs	598 @ 25.40
3 black heifs	490 @ 25.40
1 whiface hfr	470 @ 25.10
14 black heifs	589 @ 25.10
5 chaf heifers	568 @ 25.10
4 black heifers	559 @ 25.00
8 blkwhif hfrs	367 @ 24.90
4 whiface hfrs	412 @ 23.50
2 whiface hfrs	417 @ 23.40
2 black heifers	450 @ 23.10
2 black heifers	565 @ 23.00

BULLS

4 whiface bulls	285 @ 31.25
1 black full	515 @ 27.20

FOR ESTIMATES

W. E. DUGAN -----Alta Vista, 229-6430
JOE RAINE -----Maple Hill, 663-2226
DON WELLS -----Manhattan, JE 9-3744
MERVIN SEXTON -----Abilene, CO 3-3449
C. J. WENTZ, bus. mgr. Manhattan, JE 9-5561

BARN PHONE -----Manhattan, PR 6-4815

Consignment Reports

WIBW radio 6:30 A.M. Thursdays
WIBW-TV 12:15 Noon Wednesdays

2 1/2 MILES EAST OF MANHATTAN ON US 24

COWS

1 whiface cow	950 @ 20.70
2 whiface cows	912 @ 20.50
1 whiface cow	1075 @ 20.30
1 holstein cow	1315 @ 19.20
2 whiface cows	1010 @ 19.10
1 holstein cow	1430 @ 19.00
1 br sw cow	1265 @ 18.90
1 gers cow	1275 @ 18.70
1 holstein cow	1360 @ 18.60
1 holstein cow	1165 @ 18.30
1 holstein cow	1255 @ 18.20
1 whiface cow	970 @ 17.90
1 holstein cow	1500 @ 17.90
1 holstein cow	1525 @ 17.80
1 holstein cow	1250 @ 17.70
1 holstein cow	1535 @ 17.70
1 whiface cow	910 @ 17.50
1 br sw cow	1360 @ 17.40
1 whiface cow	1025 @ 17.30
1 holstein cow	1520 @ 17.30
1 whiface cow	965 @ 17.20
1 whiface cow	1055 @ 17.20
1 whiface cow	735 @ 17.10
1 holstein cow	1490 @ 17.00
1 holstein cow	1190 @ 17.00
1 black cow	1225 @ 16.80
1 whiface cow	1135 @ 16.70
1 whiface cow	1060 @ 16.60
1 blkwhif cow	985 @ 16.50
1 whiface cow	1055 @ 16.50
1 red cow	935 @ 16.40
1 whiface cow	1035 @ 16.30
1 whiface cow	1235 @ 16.30
1 whiface cow	935 @ 16.30
12 whiface cows	898 @ 16.30
3 whiface cows	1162 @ 16.25
1 holst cow	1260 @ 16.20

1 whiface cow	1095 @ 16.10
1 whiface cow	1165 @ 16.00
1 whiface cow	970 @ 16.00
3 whiface cows	1002 @ 15.75
1 whiface cow	1165 @ 15.40
1 holstein cow	1055 @ 15.20
1 whiface cow	1300 @ 14.30

Special Consignments--119 choice whif fdr str, hauled 100 miles for our sale this coming Thursday.

Also, 118 choice hereford str. wt. 750 lbs. from one consign.

BUYING FAT HOGS

We buy fat hogs daily at the Manhattan Commission Co., Inc., sale barn. We buy direct with no commission to the seller.

At Manhattan
Mondays thru Saturdays

BUYING HOURS

8 a.m. to 1:00 p.m.

At Alma & Eskridge

Every Wednesday

From 8 a.m. to 1 p.m.

For information call the barn in Manhattan, PR 6-4815. Or you may call Joe Raine at Maple Hill 663-2226 or Eskridge Yard 449-2347; or Alma Yard 765-3841.

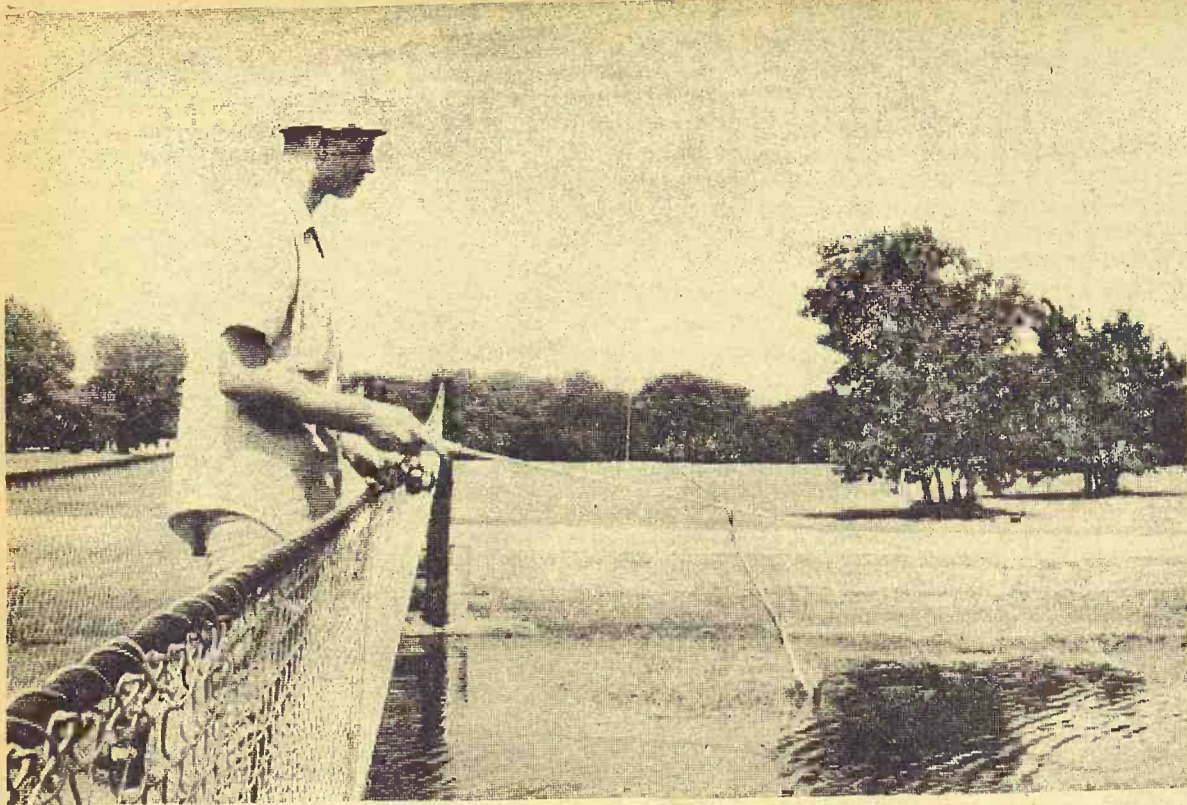
The Manhattan Commission Co., Inc.

MANHATTAN, KANSAS

East On US 24



Auctioneers: Joe Raine and Dale Feil



Fishing Spot

A new steel suspension bridge across the lake at Harvey County Park, becomes a good fishing spot for Bob Ross of Halstead.

Geary County May Make Own Welfare Decision

JUNCTION CITY — A board of county commissioners may publish monthly expenditures of the county social welfare department if it deems the citizens should be made aware of such expenditures, County Atty. Richard Medley has told Geary County commissioners.

The ruling is in conflict with an attorney general's opinion that salaries and other expenditures of the welfare department may not be published.

Atty. Gen. Robert Londerholm last March stated the county commissioners must publish a monthly statement of money allotted and for what purpose.

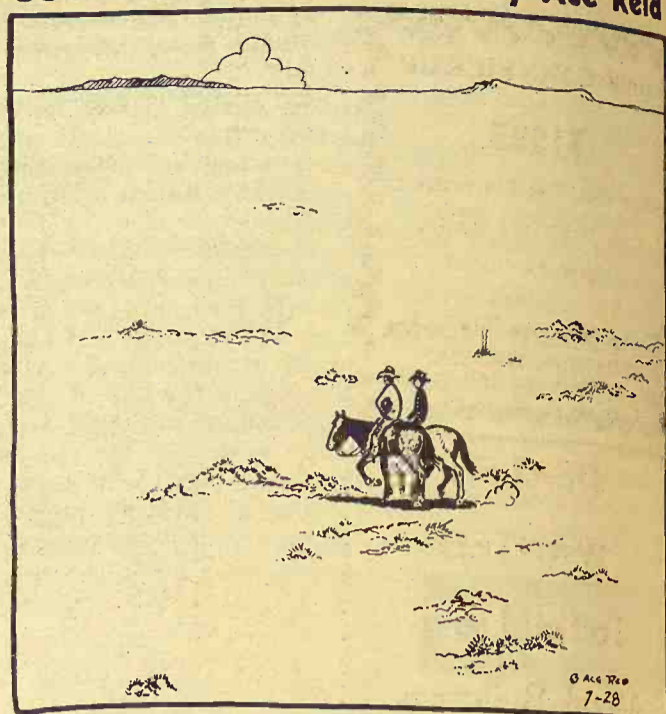
This was construed to mean welfare department salaries and other expenses without using the names of welfare recipients which is prohibited by law. Last week, Londerholm noti-

fied Medley he had been asked to review the opinion and stated he now feels salaries and other welfare expenditures cannot legally be published by county commissioners.

"It is my opinion that if the board of county commissioners feels that the citizens of the county should be made aware of the expenditures, then the sums so spent should be published. This ruling should be made by resolution at the option of the commission," Medley said.

COW POKES

By Ace Reid



"The trouble with this big ole ranch is there ain't anyplace to ever take a short cut!"

- Make your hogs market-ready 5 days earlier!
- Save an extra \$1.50 in feed per head!

SEE US FOR THE NEW



GOOCH'S BEST

SUPER 40

Gooch Super 40 now contains nearly doubled Aureomycin levels. This new Super 40 is the higher powered grain balancer that in Gooch Research Trials delivered:

- 8.5% faster gains
- 11.6% feed savings

CK PROCESSING CO.

MANHATTAN, KANS. Telephone PR 6-9269

CLAY CENTER ALFALFA MILL

CLAY CENTER, KANS. Telephone ME 2-3401

SUMMER CARPET SALE

We invite you to come in and visit our Carpet Department and see the outstanding values we have on Broadloom wall to wall carpeting and also area room size rugs.

Just Imagine Carpet, Heavy Sponge Rubber Pad and Wall To Wall Installation All For One Low, Low, Price

100% Continuous Filament Nylon CARPET In 12 or 15' width, your choice of 10 colors. NOW SPECIALLY PRICED AT \$6.95 This includes carpet, pad and wall to wall installation.	100% Acrylic Fiber CARPET In either 12 or 15 widths, over 12 colors to choose from. NOW SPECIALLY PRICED AT \$9.95 This includes carpet, sponge rubber pad and installation.	100% Acrylic Fiber CARPET 12 or 15' multi level, lod pile, random sheared to create delicate surface pattern. NOW SPECIALLY PRICED AT \$10.95 This includes carpet, sponge rubber pad and installation.	100% Continuous Filament Nylon Pile 501 CARPET Resists stains, conceals footmarks, easy to keep clean. NOW SPECIALLY PRICED AT \$8.95 This includes carpet, sponge rubber pad and installation.	100% Continuous Filament Nylon CARPET A modern sweeping mosaic pattern in a 2 level loop carpet, for consumers who want style at a real budget price. NOW SPECIALLY PRICED AT \$7.95 This includes carpet, sponge rubber pad and installation.
---	--	---	---	--

Area Rugs With Foam Rubber Backs

6x9 — 26.99	12x13.6 — 81.99	12x18 — 107.99
9x12 — 49.99	12x15 — 89.99	12x19 — 113.99
10.6x12 — 62.99	12x16 — 95.99	12x20 — 119.99
12x12 — 71.99	12x17 — 101.99	12x21 — 125.99

Your Choice of 10 Colors In Each Size!

Tibbetts Bros. Furniture

JA 7-2211

Belleville, Kansas

Program for Riley County Fair Activities Ci-Co Park, Manhattan, Kansas

Everyone Welcome

TUESDAY, AUGUST 6	
8:00 a.m. to 2:00 p.m.	Accepts all exhibits
9:00 a.m.	Parade line-up, Manhattan City Park
10:00 a.m.	Parade
	Judging Booths
2:00 p.m.	Judging Horses
3:00 p.m.	Judging Foods
8:00 p.m.	Teen Street Dance
WEDNESDAY, AUGUST 7	
8:00 a.m.	Judging Swine, Judging Crops and Garden
	Judging Clothing
	Judging Poultry
10:00 a.m.	Judging Dairy
1:00 p.m.	4-H Tractor Driving Contest
	Team pulling contest (draft)
2:00 p.m.	Judging of all Breeding Cattle
8:00 p.m.	Browning Family
THURSDAY, AUGUST 8	
8:00 a.m.	Judging Sheep, Judging Rabbits
	Judging Booths
9:00 a.m.	Room Improvements
	Judging Woodworking
	Judging Electric
	Judging all other exhibits
10:00 a.m.	Judging of Beef Steers
1:00 p.m.	Team Pulling Contest (pony)
	Judging of FFA Chapter Exhibits
	Tryout Local Talent
3:00 p.m.	Crop Judging Contest
8:00 p.m.	Local Talent Show
FRIDAY, AUGUST 9	
9:00 a.m.	Livestock Judging Contest
12:00 Noon	Release all exhibits (except livestock to be sold)
4:00 p.m.	Move livestock to the Sale Barn
7:00 p.m.	Sale of Livestock

1968 GMC PICKUP

\$1995

Wide bed, 3-spd. transmission, fresh air heater and defroster.

Dale Sharp Trucks
TOPEKA, KANSAS
600 W. Hwy. 24 CE 4-8606

DEALER

WANTED

To Sell Herco

Metal Buildings

\$20,000

Potential

- Leads Furnished
- High Commission Schedule
- Minimum Investment
- Protected Territories
- Engineering Assistant

Write now for complete information on how you can make big profits as a Herco Dealer.



THE HERRMANN COMPANY
P. O. BOX 5003
KANSAS CITY, KANSAS 66119



Down Comes The Wheaton School

The old brick school building in Wheaton, in Pottawatomie County, is being torn down. Newer classrooms, to the left, will remain, as will the gymnasium. A new building for offices and specialty rooms will be built as part of \$165,000 in work done at Wheaton and Onaga in Pottawatomie County District No. 322.



Farm Sculptor

Don Brownlee, a farmer who lives southwest of Sylvia, near Hutchinson, handcarved some chess sets five years ago and liked the work so well that he decided to try something bigger. The current result is a massive work, called "The Wrangler," which Brownlee is hammering from an 8400 pound block of limestone. Brownlee is using an air hammer for the work.

Problems In Adding Exports To East Europe

MANHATTAN — Sales of U.S. agricultural products to East Europe can be increased significantly but only if a number of trade policies are modified.

This was emphasized in a report made this past week to Secretary of Agriculture Orville L. Freeman by members of a six-man U.S. Agricultural Trade Mission to East Europe. The mission was headed by Henry Hall Wilson Jr., president of the

Chicago Board of Trade, and Roy F. Hendrickson, executive secretary of the National Federation of Grain Cooperatives, and included one Kansan, Dr. Joseph Hajda, director of the Office of International Activities at Kansas State University, Manhattan.

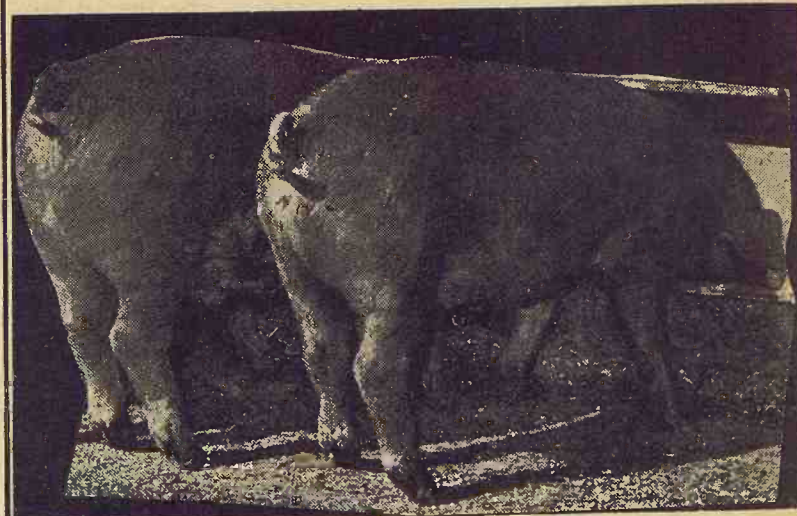
Hajda indicated it would require serious effort on a continuing basis to increase contacts among U.S. and East European businessmen and government officials. Countries visited included Yugoslavia, Romania, Poland, Hungary and Czechoslovakia.

Hajda, a native of Czechoslovakia, said both Czechoslovakia and Poland are expecting excel-

lent harvests. Production in the other countries has been cut by drought.

Purpose of the Agricultural Trade Mission was to help develop U.S. agricultural trade relations with the East European nations. This was the tenth agricultural trade mission Secretary Freeman has sent abroad since last fall to explore market potentials and make recommendations to U.S. government, agricultural and trade interests.

FINANCED Swine Feeding Contracts Available



THE COMPLETE FEEDING PROGRAM

- 40% HOG SUPPLEMENT
- 16% PIG STARTER w/ SP250
- 15% PIG GROWER w/ SP250
- TNT SOW G&L RATION
- 15% TOP SOW
- 20% SOW & PIG PELLETS
- 15% PORK MAKER
- 12% COMPLETE HOG FATTENER
- COMPLETE FULL FEED SOW RATION

This feeding contract may be just what you need to expand and increase your profits from hog feeding. And at KEY you have not only the feed that gets the results, but the plan to get you under way. Talk it over. There's no obligation.

If you want to know more about Key Hog Feeding Contracts see a Key Dealer or call collect

KEY MILLING CO.

ME 2-2141

Clay Center, Kans.

Let a Winner Lead the Way!

BOB DOLE

for

U.S. SENATE

REPUBLICAN



YOUR KIND OF KANSAN

Bob Dole, candidate for U.S. Senator, is in the Kansas tradition. Never flinching from hard tasks or decisions, he has a proven record of integrity and accomplishment. Bob Dole is friendly and approachable.

YOUR KIND OF LEADER

In 8 years as Congressman for more than half the land area of Kansas, Bob Dole has worked tirelessly to serve his constituents. His attendance record in the Congress from 1961-67 is a remarkable 97.7 percent.

Join the Other 58 Percent of voters in this area (Manhattan Mercury poll) and support this outstanding man.

Nominate a Winner ★ **BOB DOLE** ★ Tuesday, Aug. 6

YOUR KIND OF LEGISLATOR

Bob Dole has sponsored a long list of major legislation including such fields as job training programs, Food for Peace, education, law enforcement, and veterans.

YOUR KIND OF WINNER

This twice wounded, twice decorated veteran of World War II has an unbroken record of 12 decisive election victories as a county attorney, State Legislator, and U.S. Representative.

Riley County Dole-for-U.S. Senator Committee, Mrs. Warren Larson, chairman

(POL. ADV.)

GRASS & GRAIN CLASSIFIED ADVERTISING

RATES: \$1 a week for 15 words or less. Add 5¢ a word for additional words. DISCOUNTS: (with cash orders only) deduct 10% if ad runs 2 weeks. Deduct 25% if ad runs 4 weeks. REFUNDS: you may collect a refund at the Ag Press office for any unused amount paid if an ad is cancelled. CLASSIFIED DISPLAY: (boxed ads) \$1.82 a column inch. CASH: ads not accompanied by cash have a 25-cent billing charge added.
Mail To: Ag Press - P.O. Box 1009 - 1207 Moro - Manhattan, Kansas 66502 - JE 9-7558.

Notices

AUCTIONEERING

Lawrence E. Welter

AUCTIONEER
REAL ESTATE BROKER

Your Sale Solicited
Large or Small

EAST HIGHWAY US 24
MANHATTAN PR 8-3455

Real Estate
And General Sales

Large FARMS-RANCHES-ESTATES

Sold Professionally AT AUCTION
Cooperative listing and selling

Nation Wide
Gene Watson REAL ESTATE
Auctioneer-Realtor

14 Hillcrest, Hutchinson, Kan.
Call DOUG WILDIN - 316/662-7543

Ed Reimer

AUCTIONEER

We Specialize in Selling
DAIRY CATTLE

"A complete Sale Service"

Phone or write for sale
dates.

Telephone 367-2373
GOESSEL, KANSAS
"Marion County"

ROBT. G. "BOB" WILSON

Auctioneering Sales Mgr.

All Types of Sales

Phone 494-2552

Box 118 St. George, Kans.

DAIRY SUPPLIES

WAMEGO DAIRY SUPPLY

Your authorized dealer for:

DeLaval milkers
Clay push-button farm eqpt.
Mueller Bulk Tanks

Stores And Service From
Wamego & Sabetha, Kansas

For Free Estimates Call:

WAMEGO 456-7200 or
SABETHA AV 4-2958

DeLaval Clay

All Makes

Service & Repair

Dairy Equipment



Joe McClure

Ph. 229-5284 Alta Vista

MEMORIALS

CEMETERY MEMORIALS

54 Year Continuous Service
Display Located on US24
East of City Limits

SCHAUBEL

MONUMENT CO., INC.

RR 3 Box 20 ME 2-3531
Clarence Blanc, President

CLAY CENTER

MONUMENTS

MANHATTAN MONUMENT CO.

J. J. BEAUDET
Office and Display

123 No. 3rd
Office Phone Res. Phone
PR 8-5137 PR 8-4978

MANHATTAN, KANS.

LAND IMPROVEMENT

LAND IMPROVEMENT

"Soil Conservation Doesn't
Cost—It Pays"

Ponds, terraces, waterways,
and leveling, drainage ditches,
clearing, landscape grad-
ing.

Roggendorff

Conservation Construction
Arthur Roggendorff
Phone JE 9-3984
1630 OSAGE-MANHATTAN

Livestock

Dairymen — Buy The Best For Less

We have for your selection at
all times the largest supply of

FRESH SPRINGER

HOLSTEIN — GUERNSEY

JERSEY

SWISS and MILKING
SHORTHORN COWS &
HEIFERS

Financing available — up to
24 mos.

SPECIALS

100 head of open Holstein heifers

50 head Holstein heifer calves

CALVES! CALVES!

We will have 400 to 500 calves
beef cross. 2 weeks to 450 lbs.
At our barn every week for the
next several months.

W. G. WIEBE

Phone CI 4-7265
Summerfield, Kansas

WANTED TO BUY
FEEDER HOGS

40 to 100 lbs. Top prices paid.

J. D. SIMPSON
130 Grant Ave., Junction City
Phone CE 8-3754 or CE 8-3939

NATIONALLY ACCREDITED
SPF Duroc boars. Registered,
serviceable size. Harold Brumm,
RR 3, Junction City, Kans., ph.
913 CE 8-7258. x22

PUREBRED BERKSHIRES —
Serviceable age boars — open
gilts — bred sows — meat type.
Delbert Hollinger, ½ mile south
Lyons. x23

25 HOLSTEIN HEIFERS to
freshen within three months,
bred to Holstein from dams on
DHIA test. Price \$300 to \$325.
Would like to sell as group. El-
dean Banahan, Steele City, Neb.
Phone 442-2531. x22

FOR SALE — Two sound,
broke sorrel saddle mares, one
eight and one five years old, one
gelding and one mare (halter
broke). Phone 765-3388, Alma.
x22

FOR SALE — Registered mare
4-H county champion. Three
geldings, good with cattle and
children. Mrs. Robert Warren,
Eskridge, Kans. x22

FOR SALE — Registered Ang-
us bulls, two of them 28
months old, Eileenmere breed-
ings. Ralph Latzke, Chapman,
Kans. x24

4 BROWN SWISS heifers for
sale; registered 3-year-old and
two 2-year-old eligible to regis-
ter. Glen Siegle, Manhattan,
Kans., Phone PR 6-7121. SB24

HOLSTEIN SPRINGER heifers
for sale. Ready to freshen. Wil-
liam Travis, 2½ miles north of
Wamego, Kans., on Highway 99.
Phone 456-7506. x22

FOR SALE — Three Purebred
Black Poland boars, wt. 400-500
lbs. Gerald Holmberg, Belleville,
Kans., ph. JA 7-2853. x22

FOR SALE — Duroc feeder
pigs, Lyman Schurle, phone PR
8-3853 before 5:00 wkdays or
Riley HU 5-2383 after 5:00 and
weekends. SB22

TESTED HAMPSHIRE boars,
backfat probe, sonoray, age at
200, carcass data. Balthrop
Farms, 11220 East Central, Wi-
chita. x24

ESTES TRAINING Stables has
horses for sale at all times. Lou-
is Estes, Bridgeport, Kans., No.
7-2912. x27

PUREBRED CORRIEDALE
ram lambs, 150 II, extra good,
\$50. Roland Grogger, Solomon,
Kans., OL 5-2351 or OL 5-3417.
SB22

FEEDER PIGS for sale. Phone
Chapman, Kans., WA 2-4621.
SB22

NATIONALLY ACCREDITED
SPF Yorkshire open gilts and
boars from tested bloodlines.
Harvey Herra, Linn, Kans., ph.
348-2252. x24

FOR SALE — Registered Spots,
February and March boars and
open gilts. Sired by "Jim Dan-
dy" and "Mainline Style." Extra
good hams and loin. From certi-
fied sires and some certified
dams. J. V. Cundiff, Manchester,
Kansas (4½ miles north Tal-
mage. Phone 388-2369. x25

APPROXIMATELY 80 to 100
York-Hamp feeder pigs. 12 ga.
Remington automatic shotgun,
looks like new. David Demaray,
Burr Oak. x23

FOR SALE — Holstein cows to
freshen in August and Sept.
Warren Constable, Phone Wa-
terville ST 5-2624. x25

FOR SALE — Spotted Poland
tried sows and bred gilts, spring
boars and gilts. Warren Constable,
Phone Waterville 5-2624. x25

WANTED to raise dairy heifers
on contract. At least 100
head. R. W. Neaderhiser, Cuba,
Kans. x25

FOR SALE — Quarter horses,
some registered, some broke.
Bob Haynes, Rt. 1, Wamego,
Phone 456-9946. x25

FOR SALE — Registered Duroc
breeding gilts — Crackerjack
breeding. Dennis Anderson,
Lindsborg, Kans., AC 7-3105. x24

FOR SALE — Purebred York-
shire boar, good breeder. Steve
Reedy, Box 303, Concordia, Ks.,
Phone 243-4604. x22

SPF DUROC bred gilts, open
gilts and boars. Nationally ac-
credited. Phil Adrian, Mound-
ridge, Kans. Phone 345-6469.
SB25

FOR SALE — 10 York boars,
110 to 120 lbs. Phone 456-9575,
Hines Farm Center, Wamego,
Kans. SB23

FOR SALE — 10 head young
registered Hereford polled cows
and calves; also 50 silo rods.
Roe Lee, Phone 676-6224, Coun-
cil Grove, Rt. 2. SB23

FOR SALE — Ten SPF York-
shire-Hampshire bred gilts, far-
row in September. Kenneth
Visser, Wakefield, Kans. x22

FOR SALE — Hamp boars \$50.
Also good selection horses from
\$25 up. Lloyd Solt, Belvue. x22

FOR SALE — Heavy duty horse
trailer, floor mats. Factory
made, excellent condition. R. L.
McMillen, 414 S. 4th, Manhattan,
Kansas Phone 778-5302. SB24

WANTED TO BUY — 2 or 3
good Holstein milk cows, just
fresh or to freshen soon. A. H.
Carlson, Olsburg, Kans., 468-
3576. x23

Feed & Seed

FOR SALE — Alfalfa, 570 bales,
2nd cut, phone PR 6-8169, Man-
hattan. SB22

DAIRY PELLETS, range pellets
and all kinds of fertilizers.
Manhattan Milling Co., 107
Pierre, Manhattan. TF Chg

CUSTOM SILAGE Cutting —
have cutter, will cut corn, sor-
ghum, alfalfa, high moisture
milo. Junction City, Kans., Ph.
913 CE 8-3406. x25

FOR SALE — 4000 bales 1st
cutting alfalfa, wire-tied, stack-
ed, \$20 ton. 8 p.m. - 9 a.m. Ph.
TA 3-3386, Salina, Frank Zeman
x25

Automotive

GMC

TRUCKS

½ Ton - 60 Ton
Sales & Service

TRI-COUNTY MOTORS
307 N. 3rd MANHATTAN

TRUCKS

1966 Chev. ½ ton 6 cyl., 3 spd.,
wide box, 5 new tires, one
owner, like new

1967 Chev. ½ ton 6 cyl., 3-spd.,
long wide box, low mileage,
one owner

1967 IHC 2 ton, V8, 4-spd., 2 spd.,
axle, radio, 17' fold down
stock racks, one owner, good
tires, reasonably priced.

Myers Motor Co.

CHEVROLET — PONTIAC
— CADILLAC —

562-2383 562-2384
MARYSVILLE, KANSAS

Ask For Them by Number

1967 Olds Delmont 88, 4 dr. HT,
power steering, power brakes,
Stock No. 889A

1964 Olds 88 4 dr. sedan, full
power factory air cond.
Stock No. 848B

1964 Olds Super 88 4 dr. HT,
power steering, power brakes,
air cond. Stock No. 879A

1963 Olds Super 88 4 dr. HT,
full power, factory air cond.
Stock No. 823B

1963 Olds 4 dr. sedan, power
steering, power brakes, air
cond. Stock No. 888

1963 Olds 88 2 dr. HT, power
steering, power brakes. Stock
No. 8107A.

"A Business Transaction —
Not A Deal"

MANHATTAN MOTORS, INC.

BUICK — OPEL

NOW IN OUR 50th YEAR

Main Office 311-317 Houston

Used Car Lot at 214 Houston
Main Office 8-3537
Lot 6-4414

MANHATTAN, KANS.

1960 CHEVROLET

2-TON TRUCK

6 cylinder engine, 2-speed axle,
grain bed, underbody hoist,
ready to use.

1965 CHEVROLET ½ ton pick-
up, 6-cyl., 4-speed trans., radio,
heater, with 6½ ft. bed.

1965 Chevrolet pickup, ½T
Fleetside with 8' bed, 6 cyl., 4-
spd., low mileage, an excel-
lent truck.

1963 Ford ½ ton pickup, V-8 en-
gine, 4-speed transmission, 6½
ft. bed

1959 Chevrolet ½ ton pickup, V8
engine, 4-spd. trans., 6½ ft.
Stepside bed

1958 Ford ¾ ton pickup, V-8 en-
gine, 4-spd. trans., 8' Styleside
bed, heavy duty model

OBERMEYER

Marvin Obermeyer, Owner
Ph. BL 8-2255 Open to 9 p.m.

HERINGTON, KANSAS

1965 Tempest 4 dr. V8, aut.
..... \$1295
1968 Javelin 2-dr. HT ... \$2695
1964 Chev. Chevelle 4-dr., PS,
air, auto. \$1595
1968 Chev. 6 cyl., stick ... \$2195
1966 Plymouth sports sedan,
V8, automatic, PS \$1995

KEY PONTIAC INC.

305 Houston St. PR 6-9422
Used Car Lot:
231 S. 3rd St. PR 6-5021

Manhattan's Only Volume New
& Used Car Dealer.

HOME OF FINE SERVICE

Wakefield

IS A GOOD PLACE
TO BUY USED CARS
AND TRUCKS

16' boat, motor & trailer
1966 Impala 4-dr., 327 V-8, FB,
air, auto.

1965 Malibu 283 V-8, 4-dr., auto,
PS

1964 Ford Custom 500, V-8, au-
to., air

1964 Impala spt. cpe., V-8, 4-spd.

1963 Chev. Impala V8 Sport
Coupe, aut. trans.

1963 Ford F500, 4-dr., V-8, std.

1963 Ford, excell., V-8, floor aut.

1963 Rambler sta. wag., 4-dr., 6
cyl., std.

1967 Ford F500, 4-dr., V-8, auto.

1959 Metro 4-cyl., std.

1959 Bel Air 4-dr., V-8, auto.

1959 Bel Air 4-dr., V-8, auto.

TRUCKS

1965 Dodge ½T, 3-spd., V-8, pos.

1959 Chev. ½ ton 6, 4 speed

1951 Ford ¾ ton pickup

1959 IH ½T, 6-cyl., 4-spd.

1947 Chev. 2T wrecker

AULD

CHEVROLET

HO 1-5414

WAKEFIELD



FORD

1965 Chev. ½ ton Fleetside pick-
up, 6 cyl., 3-speed, extra clean,
low mileage

1965 Chev. ½ ton pickup, 6 cyl.
4-speed

1964 International Scout with
4 wheel drive

1963 Ford w/ new 15½' giant
bed & hoist, V-8, 4-spd. 2-spd.

1963 Chev. 2-ton, V8, 4-speed, 2-
speed, new 13½' bed & hoist

1963 Ford F-600, 156" W.B. chas-
sis cab, V-8, 4-speed, 2-speed
local own

1959 Ford ½ ton pickup, 6 cyl.
4-spd.

1955 Ford C600 2 ton with 13½'
bed and hoist. V-8, 4-speed

1950 Jeep 4 WD

Taylor Motor Co.

Phone EA 5-2202

WASHINGTON, KANSAS

Used Tractors & Trucks

REFUSE TRUCK

1960 International with 17 yd.
Hyde Pack, Packer body, good
unit, ready to go to work for
only \$1695

'65 FORD
2-ton with 2-spd. axle, ready to
go \$1995

'67 GMC
1 ton. Dual wheels with 10 ft.
bed. Real low mileage, only
\$2295

'60 CHEVROLET
2-ton, 2-spd. axle, only \$1195

'63 FORD FALCON
Sedan delivery with new paint,
only \$695

'62 FORD FALCON
Bus. All window, 2 seats for
\$695

We have in stock many good
road tractors, single axles and
tandem, diesel or gas

Dale Sharp

Truck Center

600 W. Hwy. 24 CE 4-8606
TOPEKA, KANSAS

1964 Chev. In
1966 Ford Fa
V8, standar
Used Eldora
1962 Volkswa
1963 Chev. C
1 used Eldor
trailer
1939 Chev.
FORD SALES
Stenbe
Ph. 446-3532
USE
HEADC
MOLIN
86 Ford F600
V-8, 15,000
65 Chev. 1 to
6-cyl., com
64 Chev. 60
327 V-8, co
63 Chev. 32
CA, air br
61 Ford 700
engine, 5 s
60 Chev. 6.
speed, 2-s

1964 Chev. Impala
1966 Ford Fairlane 2 dr. HT, V8, standard
Used Eldorado campers
1962 Volkswagen \$845
1963 Chev. Corvair Monza
1 used Eldorado 14' camping trailer
1939 Chevrolet four-door

**FORD SALES & SERVICE
Stenberg Motors**
Ph. 446-3532 Clyde, Ks. 66938

**USED TRUCK
HEADQUARTERS**
MOLINE, KANSAS

- 66 Ford F600, takes 20' bed, 330 V-8, 15,000 lb., 2-speed
- 65 Chev. 1 ton winch truck, 292 6-cyl., complete unit
- 64 Chev. 60 V-8 winch truck, 327 V-8, complete, work ready
- 63 Chev. 327 V8 tandem 132" CA, air brakes, Neeway tag
- 61 Ford 700 V-8 winch truck, 302 engine, 5 speed, complete unit
- 60 Chevy 6, 60 Series, hoist, box, speed, 2-speed
- 61 Ford F600 V-8, 4-yr. dump, 5-speed, 2-speed
- 60 Chevy 6 60 Series, hoists/box, 5-speed, 15,000 lb. 2-speed
- 60 Chevy 6 60 Series, 4-yr. dump, 5-speed, 15,000 lb. 2-speed
- 59 Dodge D700 V-8 winch truck, 5-speed, 18,000 lb. 2-speed
- 59 Dodge D700 V-8 5 yr. dump truck, 5 speed, 18,000 lb., 2-sp
- 58 Ford F750 V-8 winch truck, 5-speed, 17,000 lb., 2-speed
- 57 Ford F750 V-8 chassis, 108" CA, 5-speed, 18,000 lb., 2-speed
- 57 IHC 180 chassis, 84" CA, 5-speed, 2-speed, air brakes
- 56 Ford F750 V-8 winch truck, 5-speed, 18,000 lb., 2-speed
- 75 state highway trucks arriving next 30 days

AMES

CHEVROLET CO.
Phone 316 MI 7-3251
MOLINE, KANSAS

Late Summer Values!

- 1966 Pontiac LeMans, 2-dr., 326 V8, automatic, bucket seats, 31,000 miles. One local owner \$1995
 - 1966 Chevrolet Super Sport, 2 dr. ht, 283 V8, powerglide, power steering, bucket seats. Sold new by us \$2195
 - 1965 Ford Galaxie 500 2 dr. HT, V-8, stick shift, air conditioning, 39,000 miles, one owner \$1695
 - 1965 Rambler wagon Classic 660 4-dr., 6-cyl., automatic, power steering, power brakes, air conditioning, 28,000 miles, one local owner \$1495
 - 1962 Pontiac Bonneville 4 dr. HT, full power and air conditioning, local owner car \$950
 - 1962 Plymouth Fury convertible V8, power steering, power brakes, automatic \$895
 - 1962 Ford Galaxie 500, 4 dr., power steering, air conditioning, automatic, vinyl seats, local car \$695
 - 1962 Ford Falcon 2-dr., 6-cyl. stick shift \$495
- We have one 1968 Chevrolet drivers education car left. It has power and air conditioning, 5000 miles and priced to sell.

Handy-Stein

CHEV. - OLDS - BUICK INC.
101 S. Concord EX 2-2118
Minneapolis, Kansas 67467

TRUCKS

- 1959 Ford F100, wide box, 6 cyl., 3-speed
- 1955 Chevrolet 2-ton, 2-sp. axle. chassis & cab
- 1954 Dodge 1 1/2 ton truck, chassis & cab
- 1953 Chevrolet pickup, 4-speed
- 1954 Int. pickup, 3-speed

Kennedy Motor Co.

Your Ford Dealer
Phone BYron 2-4526
FRANKFORT, KANS.

WANTED — OLD roadster, any make, shape, or condition. Top price. Call collect 913 283-4474. x28

**1968
FORD
SELL-DOWN
In Manhattan**

WE HAVE A BIG STOCK OF 1968 MODELS TO CHOOSE FROM — WE MUST CLEAR OUR NEW CAR LOT!

TRADE NOW

SAVE! SAVE! SAVE!
Your used car will never be worth more!

OPEN EVENINGS
BANK RATE FINANCING

Skaggs (Ford) Motors

Your Transportation Headquarters
"Where Customers Send Their Friends"
2nd & Houston Phone 8-3525
MANHATTAN, KANSAS

NEW 2-TON FORD

1968 F600 series 2 speed cab & chassis, 332 V8 engine, 174" WB with 16' Giant bed

USED TRUCKS

- 1967 Ford 361 V-8, C750, a 3-ton w/ tilt cab, LWB, 2-speed axle, 9.20 tires
- 1966 Ford 352 V8 F-250 3/4 ton, Styleside, automatic
- 1965 Ford 352 V8 F100 SWB style pickup, 4 speed
- 1965 Ford 352 V8, F250, 3/4 ton pickup, 4-sp.
- 1960 Ford Six F100 style, 4-wheel drive pickup
- 1965 Chevrolet Six Custom Sport van
- 1948 Chevrolet six, 1 1/2 ton cab & chassis
- 1960 IHC six LWB 1/2 ton pickup
- 1950 IHC six LWB 1/2 ton pickup

Your  Dealer

Primrose Motors

Phone ME 2-2112
CLAY CENTER, KANSAS

USED TRUCKS

- 1967 Ford F-250, 3/4 ton pickup, 6 cyl. engine, radio, HD rear springs, very clean
- 1963 Chev. 1/2 ton pickup, 6 cyl., 4-speed transmission, stock racks
- 1966 Ford F100 4-wheel drive, 4 spd. trans., lockout hubs, very clean, low mileage
- 1965 Ford F100 Styleside pickup, 6 cyl., 3-sp. trans.
- 1958 Ford 1/2 ton V8, 4-speed
- 1962 Ford F100 pickup, 1/2 ton, long wide box, 6 cyl., 4-sp. transmission
- 1961 Ford F100 Flareside pickup, 6 cyl., 4 spd. trans., HD springs

McComas Motors

240 West 6th CH 3-3634
CONCORDIA, KANSAS

1967 CHEVROLET

50 Series, 2 ton truck, 327 engine, 2 speed axle, 15' Knapheide grain body, Heil underbody hoist, like new, ready to go.

\$4295

1959 FORD

Tilt cab, 2 ton truck, 15' Midwest grain body, 20 ton twin post hoist, 2-speed axle, V-8, 8.25 tires, 5 speed transmission

\$2295

1966 FORD

H600 Series, heater, 4-sp., 2-sp. axle, V-8, new 16-ft. Knapheide bed, Heil underbody, hoist

\$3995

Irv Schroeder

Chevrolet & Oldsmobile Inc.
HILLSBORO, KANS.
Phone 316 947-3117



1966 IH 1/2 ton pickup, V-8, 4-speed, LNB \$1195

1965 IH 1/2 ton pickup, V-8, 4-speed, radio, 7.00x16 tires, gauges, Westcoast mirrors \$1295

1964 IH Fleetcar Tractor, 450 cu. in. 199 hp. motor, 8-speed Roadranger transmission, 18.5 rear axle, power steering, full air, heavy duty springs, radio, Bostrum seats, 1,000x20 12 ply tires, westcoast mirrors, 11,000 lb. fr. axle, 2 50-gal. step tanks, power takeoff, 5th wheel \$2795

1968 Chev. 1 ton, 7,000 miles, 10-ft. steel box, V-8, 4-speed, radio \$2595

Several used El Caminos

Van-T Truck Center

3825 Topeka 913 AM 6-5151
TOPEKA, KANSAS

**Special Prices
On New
DODGE
PICKUPS**

"See the Good Guys for branded buys"

VISIT THE ALL NEW Dodge Agency In Manhattan

ON OLD US HWY 24 WEST OF WEST LOOP

Phone JE 9-9271

Shop Service For All Makes of Cars And Trucks

Ed Schram

DODGE
MANHATTAN, KS.



LARGE STOCK OF TRUCKS

- 65 Chev. tandem tractor, air, steering, brakes \$5750
- 1965 Chev. 1/2 T, 6-cyl., LWB, 4-speed \$1395
- 1964 Chev. 2-ton, LWB, 2-sp. \$2195
- 64 Ford tandem tractor \$3995
- 1962 Chev. 2 ton, 2-sp., pony axle, dump \$2450
- 62 Int'l. 2 1/2 ton tandem 13 ft. dump \$2750
- 1964 Chev. 1/2 ton LWB, V8, aut., PS, PB \$1195
- 62 International 2 1/2 ton tandem 13' dump \$2750
- 1961 IH tractor, 5-sp., 2-sp., LWB \$1295
- 1965 GMC tandem, air brakes, 5-speed, 2-speed, 11' dump body & hoist, clean \$3750
- 1958 IH 3/4 ton, 4wd \$895
- 57 American 38 ft. platform \$2250
- 1957 Ford 1/2 ton, V8, long box, automatic transmission \$345
- 1954 Chev. LWB 2 ton, hoist & box \$795
- 1951 36' all alum. air cond. mobile home \$945

Melton Motor Co., Inc.

16th and M Sts. JA 7-2201
BELLEVILLE

DEMONSTRATOR, 1966 International 4-wheel drive Scout, 8,000 miles; Sports Top; radio; bucket seats; back seat, \$1875. Christensen & Son, Inc. Phone 879-3221, Superior, Nebr. x23

PICKUP TRUCK for sale — 1965 Chevrolet 1/2 ton, Fleetside, 6 cylinder, 3-speed, 43,000 miles. A good, clean truck. Paul Kitchen, Wamego, Kans., 456-7358. x22

WANTED — Stock rack for 16' Knapheide truck bed. Alfred Titus, Cottonwood Falls, Kans. Ph. BR 8-8307. x22

TRUCKS

- 1963 Ford 1/2 ton, long wide bed, custom cab, 3-speed
 - 1964 Chev. 1/2 ton, long wide gem top
 - 1963 Chev. 1/2 ton, 4-speed
 - 1966 GMC 1/2 ton, long wide, heavy duty, V6, 27,000 miles
 - 1957 Ford 1/2 ton V8, 4 speed, blue
 - 1949 Chev. 1/2 ton, 3 speed, red Stock Racks
- We have many other cars to choose from so feel free to come in and visit with us.
- 1963 Glasscraft boat, 17-ft., Merc. big motor
 - Bank Rate Financing

C&C

AUTO SALES

MANHATTAN, KANSAS
500 N. 3rd PR 6-5221
MARYSVILLE, KANSAS
US 36 East 562-3029

TRUCKS FOR SALE

- 1961 F100, 6 cyl., 4-speed
 - 1967 F100, 8 cyl., Cruiseomatic, R&H, two-tone paint
 - 1967 F100, 8 cyl., 4-speed, R&H
 - 1964 F250 8-cyl., 4 speed
 - 1964 F600, 5 spd direct, HD, V8
 - 1964 Int. Load Star 1600, long wheel base, 5 speed, with 2 speed, PS & V8
 - 1963 F700, 5 speed, with 2 speed, and new hoist & bed
 - 1959 Int. tandem tractor diesel, in good shape
 - 1955 F100, V8, 4 speed, stock racks
 - 1949 Chevrolet 1 ton, in good shape
 - Snowflake camper, 10'
 - AC D21 tractor, 400 hr., big tires, cab
 - Gleaner C-II like new
 - Farmall Super M, 3 pt., real good cond. \$1000
 - AC 716 rot. plow
 - Case 600 combine, dsl.
- We need a loader and/or a backhoe for a JD 440
Bridgestone 175, like new

Vern Bergman Ford

DE 6-2100
SENECA, KANSAS

TRUCK HEADQUARTERS

- 1966 Chev. 2 ton, 2-speed, new 18' fold-down box
- 1966 Chev. 1 ton with 9' fold-down
- 1965 Chev. 2 ton with new 15 1/2' fold-down box and hoist
- 1964 Chev. 2 ton with new 13 1/2' box
- 1963 LCF 2 ton, 2-speed, new 16' fold-down
- 1963 GMC new 16' fold-down box
- 1965 Ford 2 ton, 2 speed, new fold-down box and hoist
- 1964 Ford 2 ton, 2 speed, new 16' fold-down
- 1948 Chev. 1 ton with 12' van box
- 1958 Volkswagen van, make nice camper

Siebe's Repair

Southern Nebraska's largest truck dealer. Distributor of Schwartz bodies and hoists. —Dealers Wanted
Phone 424-2670
JANSEN, NEBR.



- 1961 Ford 4-door
- 1967 Club wagon van
- 1963 Chev. 1/2 ton 4-wheel drive
- 1965 Chev. Impala 4 dr. sedan
- 1965 Dodge HT coupe, V-8, air, PS
- 1962 Thunderbird HT, low miles, one owner, beautiful
- 1966 Ford F-600, V-8, 2-speed, 825 tires, one owner, 174" WB, will handle 15 1/2' box \$2695
- 1965 Ford F-600 2 ton V8, 2-sp., 825 tires, 194" WB, one owner, 18-20' box \$2295
- 1967 Ford Econoline bus, 6 cyl., automatic
- 1962 Ford 1/2 ton, 3-speed
- 1967 Honda cycle, 90cc, like new \$395
- 1963 Mercury Sport HT, air

Boss Motors

106 South 7th 913 562-3696
FORD-MERCURY DEALER
MARYSVILLE, KANSAS

FOR SALE — 1962 IH twin-screw, sleeper cab, good mechanical condition, on the road. Phone 456-7364, Paul Hill, Bellevue, Kans. x22

Real Estate

Fulmer Real Estate
CATHERINE J FULMER
REALTOR



Office 456-7696
Res. 456-9281
WAMEGO

FARMS FOR SALE

Improved 200A, modern home, school bus to door, 120 acres cultivated, very good farm land that has been well cared for, balance pasture, at \$200 per acre, liberal 10 yr. contract.

Excellent investment property, 160 acres with 154 acres cultivated, no buildings, good allotments, \$32,000 to settle estate.

Improved 640, modern home on oil road, 300 acres very fine cultivated land, balance grass, \$100,000 with liberal long term contract.

Several other good offerings to show you. Call collect for appointment.

For many, many years farmers from southern and western Kansas, Oklahoma and Texas have been hauling hay, corn and milo from Washington and Republic counties. Why? Because we always have it and they often don't.

We haven't had a serious crop failure since 1936. Now why don't you come up to the rain country, raise your feed here and feed it here instead of hauling it and trying to hang on where you are now? A lot of buyers have bought out our retiring farmers and are doing that very thing. None of them ever moves away.

Kvasnicka Realty

HADDAM, KANSAS
Phone FR 6-2874
Gerald A. Kvasnicka, Realtor
Alice J. Kvasnicka, Secretary

Flint Hill Ranch

SIZE & LOCATION — 5,374 acres located in Pottawatomie County, approximately 50 miles from Topeka and 25 miles from Manhattan

PURCHASE PRICE — \$150 per acre, with \$50,000 down and balance on contract

TERRAIN & RAINFALL — Terrain undulating to rolling. Rainfall approximately 32 inches annually. Annual mean temperature 55 degrees and the average length of growing season 180 days.

HAY-LAND — There are approximately 30 acres of alfalfa, and several acres of the native grass are put up for winter feed

PASTURE — Approximately 5300 acres of native bluestem. These pastures have had excellent care and management. I believe one can safely say this is some of the best grass in Kansas.

IMPROVEMENTS — Consist of a large three bedroom home, used as a summer home by the owners. Also a six room tenant house, barns, sheds, hay barn and corrals. Fences are in good condition.

Ranch will handle 500-600 cows on a year round basis. If you're looking for a good Kansas Flint Hills ranch, this will suit.

Lloyd H. Mills

REALTORS & INSURORS
304 West St. (US 24-40 Hwy)
TOM LAMING, REALTOR
Phone 913 VI 5-2712
TONGANOXIE, KANS.

WANTED TO BUY

Large catt'e ranch, any size, in Midwest.

Write details to Box 1009 HS
MANHATTAN, KANS. 66502

TRADE \$6500 equity in 3 bedroom home for acreage. JE 9-4572, Manhattan. SB23

TRACTORS

IH 1964 F706 dsl., fully equipped
IH demo, I-656 gas, fully equip-
ped
IH 1965 F-706 gas, fully equip-
ped, clean local tractor
IH 1961 I-460 utility with IH No.
2000 loader
Allis 1959 D-14, wide front, pow-
er steering, engine recondi-
tioned
IH 1958 Farmall 450, wide front,
fully equipped, reconditioned
IH 1957 I-300 utility, Henry
loader and Henry back-hoe,
complete at \$2450
IH 1956 I-300 utility with IH No.
34 loader, hyd. bucket, both
\$795
IH Farmall F-200 with starter
and lights \$125

PLOWS

IH No. 311 3x14 fast hitch, trip
beams, SB coulters, like new
\$495
IH No. 311 3x14 3-point demon-
strator — SAVE —
Allis 3x14 mounted \$175
IH No. 209 2x14 3-point, like
new \$195
JD No. 404 disk plow, 4 disks,
power lift \$195
IH 3x14 slat MB plow chiefs,
hyd. lift \$175
IH No. 10 3x14 on rubber, power
lift \$125

TILLAGE

IH No. 400 3-section spring tooth
with evener
IH No. 401 3-section springtooth,
power set drawbar
IH No. 2 2-section springtooth
IH No. 463 4-row rear mt. culti-
vator \$495
Oliver 2-row rear mount cultiva-
tor, 3-point \$95
JD 9' wheel disk \$175
IH No. 37 whl. disk, 10'9"

HAY TOOLS

IH No. 46T hay baler, ready to
roll \$795
IH No. 45T hay baler, PTO,
chute and hitch \$100
IH No. 100 FH mower, 7' \$375
IH No. 25V 7' mower \$75
IH No. 45T baler selling for
parts

COMBINES

1958 Oliver Model 40 14', clean
local machine
Massey Harris 7' self propelled
clipper
New Holland Model 611 field
cutter, one row, PTO drive
\$295

TRUCKS

International 1 1/2 ton, duals,
13 1/2' platform, grain and
stock sides, clean \$575
1958 IH A-112 3/4 ton pickup, 6
cyl., 4-speed, overloads, long
box, bumper, clean \$550
1964 Chev. 1/2 ton, long wide box
with camper, radio, low miles
\$1425
1950 Ford 1/2 ton 4-speed pickup
\$100
Used camper-topper for 8 ft.
pickup body \$125

Mohn Implement Co.
Telephone CE 8-5101
Junction City, Kansas

USED TRACTORS

1955 850 Ford tractor
1957 450 IHC diesel
1951 Ford backhoe & front blade
1948 Ferguson TO 20
1951 Case DC
1939 Oliver & mower
1948 Allis Chalmers C

USED MACHINERY

1963 Ford 2T truck with flatbed
& hoist
John Deere rotary cutter
BMB Fury 80 H, pull type
BMB 7-ft. cutter, pull type
Mono 5-ft. rotary mower
416 Massey Ferguson plow
3-14 Massey Ferguson plow
2-14 Dearborn plow
3-14 AC plow, snap couplers
3-14 Dearborn plow
3-16 Massey roll over plow
3 pt. Ford rake
8 1/2 Flexo disc
Superior loader for 4000 tractor
8-ft. 3-pt. Winpower blade, HD
3-pt. single disc
Shawnee loader for 800 Ford
John Deere T 14 baler

M. B. Salisbury Co.

CE 3-7411
114 Quincy
TOPEKA, KANS.

TRACTOR — TRACTOR

2 730 JD diesel
1 D-17 w/ loader
1 AC CA snap coupler

USED LAWN EQUIP.

10 hp. Sear w/ mower
12 hp. B112 AC demo

MISC. EQUIP.

2 AC discs
1 IHC No. 37 disc
2 spreaders
3 blowers

Henry Sales & Service, Inc.



E. Hwy. 24
& Meriden Rd.
FL 4-7641
TOPEKA, KANSAS

TRACTORS

1955 JD 3020 dsl., wide front end
1967 JD 3020 dsl. tractor with
F145 4-14 semi-mtd. plow
1950 JD A, reconditioned
MF 35 tractor with loader
IHC 560 Gas
MF 30 tractor
1953 JD 60, good
1954 JD 70, good shape
MH 33 tractor, new sleeves &
pistons

MISCELLANEOUS

JD 16' pull springtooth harrow
JD AW 13'10" disk
Mayrath trailer sprayer, 300-
gal. tank
IHC No. 37 10'9" wheel disc,
sealed brgs., good blades
JD No. 6 forage harvester, used
one season
JD hay fluffer
Gehl 2-row forage harvester
JD 851 two wheel rake, recon-
ditioned
2 JD No. 9 mowers, completely
reconditioned

Frankfort Impl.



913 292-4458
FRANKFORT, KANS.

USED FARM MACHINERY

Rotary hoe, JD, 4-section \$250
Baler, IH 46T \$700
Swather, IH 201 14-ft. \$2100
Rake, IH No. 15 \$295
Combine, IH 101, 14-ft. \$1800
Combine, IH No. 93, 10-ft., only
used 2 years \$3400
Cultivator, IH No. HM250 \$135
Plow, JD 4x14, 3-pt. \$145
Wheel disc, Case, 14-ft., sealed
brg. \$425
Wheel disc, IH No. 37, 10 1/2 ft.,
1/2 sealed brg. \$165
Wheel disc, MM, 12-ft. \$165
Pickup, 1968 IH 1100, only 4000
miles \$2350
Travelall, 1965 1100, slick, auto.
trans. \$1750

Grimwood & Son



PA 6-5247
BURNS, KANSAS

TRACTORS

JD 4020 diesel
JD 730 diesel, good
JD 70 diesel, good
IH 424, like new
MH 44 gas

MISCELLANEOUS

Hesston 500 12' self propelled
windrower

Kansas Farm Mchy.



CE 3-1374
West 24
at Goodyear
TOPEKA

WE CAN MAKE
any size or length of
HIGH PRESSURE HOSE
for
Hydraulic Systems
including
Power Steering

Ginder

HYDRAULIC & MACHINE
1218 N. 9th Dial TA 7-3212
SALINA, KANSAS

FOR SALE — NH 66 baler, en-
gine-powered, clean, plunger &
wadboard overhauled, knotters
good. \$350. JE 9-3140, Manhat-
tan. x23



WICHITA

1 65 JD 4020 dsl., power-shift, 3-
pt., new rear tires
1 64 JD 4020 dsl., power-shift,
3-pt.
1 61 JD 4010 dsl. RC, 3 pt., dual
18.4 tires
1 63 JD 4010 dsl., HD PTO
1 60 JD 630 RC gas, 3 pt.
1 57 JD 620 RC gas, 3 pt., adj.
firt.
1 60 IHC 560 dsl., fully equipped
1 60 Ford 860 gas tractor, like
new
1 56 IHC 400 gas
1 63 JD 2010 RU dsl., new tires
1 63 AC D19 dsl with 3 pt. hitch
1 60 AC D-17 LP with 3 pt. hitch
2 JD AW 15 1/2" disk harrows
1 JD AW 12'6" disk harrow
3 JD 12 forage harvesters with
2-row row crop

TERMS AVAILABLE
Good Selection Of
Late Model Used Combines

Western Impl. Co.

2256 S. West St. WH 3-4261
WICHITA, KANS.

TRACTORS

JD 620 gas
Case chopper
JD 4020 diesel, P.S.
JD 3010 diesel
JD 70 gas
JD B
AC WD
MH 44
JD No. 9 Mower
Several used combines

R & S IMPL.



Jim Barton, Manager
Phone 486-2137
HORTON, KANSAS

BUILDINGS & BINS

We offer Sales, Erection &
Service for
BS&B Agri-Systems; Drying —
Storage and Handling Systems
"Feed Hive" — Sealed Storage
"Bacon Bin" — Hog Confinement
Star Steel Buildings
Ames Irrigation
M-C Continuous Dryers

**North Central Steel
Irrigation, Inc.**

P.O. Box 141 913 392-2077
MINNEAPOLIS, KANSAS

GOOD USED PARTS

Tractors, Combines & Farm
Machinery. We buy wrecked or
burned late model tractors &
farm machinery.

North 81 Tractor Salvage
Route 1 PR 2-5491
SEDGWICK, KANS. 67135

USED

1965 C-II Gleaner w/ cab, 18-ft.
314 IHC fast hitch plow
12' IHC wheel disc
10' AC wheel disc
1967 Baldwin A, 14'
1963 303 IHC combine, 14' with
cab
D-17 tractor, with PS
3-pt. New Holland mower
Used 3 & 4 bottom snap coupler
plows
228 2 row IHC corn head

Cuba Impl. Co.



Phone 4F 7
Cuba, Kans.

USED EQUIPMENT

2 Coby trailers
Rebuilt IH No. 50 field cutter
with 2-row head
1960 IH F340 tractor, fast hitch,
WFA
1954 IH Super MTA with FH
PS, TA, WFA
1966 Chev. 60 Series, 478 cu.
in. engine

CHAPMAN'S IHC

BELLEVILLE, KANSAS
Phone JA 7-2273

WANTED TO TRADE — An
IHC 806 fast hitch for an IHC
806 3 point hitch. Harold Stein,
Chapman, Kans. x22

**GUARANTEED
USED TRACTORS**

1 1947 M, new paint, torque
tires, 12 volt, disc. brakes,
engine overhauled, very good
1 1950 M, new paint, good tires,
engine overhauled, condition
very good
1 1951 M, new paint, good tires,
engine overhauled, excellent
condition
1 1957 F350 TA, FH, IPTO,
PS, tires good, condition very
good
1 1959 F460D, TA, FH, IPTO,
PS, super torque tires, new
paint, engine overhauled,
new TA & clutch
1 1960 F460D, TA, FH, IPTO,
PS, field & road tires, paint
good, mechanical condition
very good
1 1961 F460D, TA, FH, IPTO,
PS, new tires, paint excellent,
mechanical condition A-1
1 1962 F504, TA, FH, IPTO, tires
new tires, paint excellent,
mechanical condition A-1
1 1962 F504, TA, FH, IPTO, PS,
new tires, paint good, motor
overhauled, condition very
good
1 1960 F504, TA, FH, IPTO, tires
good, paint good, motor over-
hauled, condition very good
1 1965 F806D, big fenders, duals,
wide axle with flotation tires,
FH, 1850 actual hours. One
owner. This one is excellent.

Heiman Impl., Inc.



Ph. DE 6-2111
SENECA, KANS.

Special Prices

50 MILES FREE DELIVERY
12' AC drill disc, demo \$825
11' AC whl. disc \$677.57
2 used MC rot. ETA, 10' \$995 up
302 baler \$1499.52
A 240 corn head \$1639.33
AC 30 6-row cult. \$768.68
Fert. conversion kit for 4-6 row
AC 500 planter, incl. fert. &
bar ext. \$248.13
Emmett minimum tillage at-
tach. for 4-row planter \$315
AC 10 hp. garden tractor, demo
w/ hyd. lift & 42" mower \$795
New 68 combines, all models,
ready to go

USED EQUIPMENT

1963 Ser. 11 D 15 tractor \$2495
1949 11' SP Cockshutt, runs
good \$395
1951 IHC 125 SP combine \$295
NH hay baler \$245
WD 9 IHC tractor \$495
1965 AC D-17, Ser. 4, 3 pt., 1800
hours
Financing available with nor-
mal down payments — up to 5
year terms on new tractors and
combines and no carrying charges
till 1969 crop season.
SO — if you want to buy new
farm equipment — See us
LAST.

Hinkle's Impl. Co.



EA 5-2334
WASHINGTON, KANS.

DIESEL TRACTORS

1966 JD 4020 dsl., 3-pt.
1964 D 4020 dsl., std.
1961 JD 4010 dsl. std., recondi-
tioned
1958 JD 820 dsl. std.
1958 JD 720 dsl std., 3-pt.
1951 JD "R" dsl., new tires

COMBINES & MACHINERY

1963 JD No. 95 16-ft. combine
1959 Oliver No. 40, 14-ft.
1955 JD No. 55 14-ft.
12-ft. Krause oneway w/ keel
14-ft. Miller disk
No. 27 IHC baler, like new
No. 70 IHC 5x16 plow
No. 10 IHC 1610 drill
12-ft. JD disk
4 & 5 sec. spring tooth & car-
riers

Blanding Impl. Co.



BELOIT, KANS.
PE 8-3066

ROTO-MIXER feed box on 1955
Ford truck; also for sale Farm-
hand loader on Case DC tractor.
Jim Peters, Lehigh, Kans., Ph.
316 523-3761. SB24

FOR SALE — Surge milking
machine and two pails. Write or
see Lloyd Manthe, Olsburg, Ks.
x23

USED TRACTORS

Case 1031, fully equipped, less
than 600 hrs.
John Deere 2010, 1963, 3 pt., pwr.
strg., live PTO, wide front
1957 MH 44 dsl., 3 pt., wfe
MH 44 tricyc'e with hyd.
Real good AC WD with new
rear tires, pwr. adj. rear
wheels, overhauled
IHC M with hyd., wide front, 12
volt starting system
Tricycle WD Allis 45

USED COMBINES

1958 J D45, 10' header
1962 Ford 611, 12', with pickup
reel
MM 14'. All combines OK

USED PLOWS

Case 4-14 pull; Oliver 3-16 pull,
high clear.; IHC 4-16 pull;
Case 4-16 SR mtd.
Case 3-14 MR mtd.; AC 2-16 mtd.

MACHINERY

Case No. 200 twine ba'er
IHC No. 45T twine baler
1962 JD 14' auger swather
NH 55 side del. rake
IHC 31 mower, 7 bar
NI mower, mtd., 7 bar
NH 616 forage cutter with pick-
up att.; will sell separately
JD No. 6 single row cutter
WHEEL DISCS: Oliver 12'; JD
KBA 12'; JD RW 10'
2 Viking PTO hammermills



Porter Eqpt. Co.

ME 2-5202
Hwy. 24 East
CLAY CENTER, KANS.

SEE THESE AT KINSLEY

1959 JD 730 LP RC
1958 JD 820 dsl. tractor
1962 Oliver 1800 gas, recent
engine overhaul
9N Ford w/ step up
214W baler w/ engine \$700
224WS baler w/ engine \$1550
BMB haysaver, demonstrated
JD No. 6 forage harvester w/
1-row & mower bar
New carryover No. 12 harvest-
er on 1000 RPM
13' low Hoeme chisel w/ extra
Tedford blades
New JD 480 mower conditioner
New 1967 3020 RC dsl., w/ pow-
er shift

Kinsley Impl. Co.



East Hwy. 50
316 OL 9-2242
KINSLEY, KANS.

USED TRACTORS

Case Model LA Wheatland on
factory LP gas
Case VAC rowcrop with cultiva-
tor
I-H Model M D rowcrop with
hydraulics
Oliver 88 wheatland, live PTO,
good
USED FORAGE HARVESTERS
Gehl FH 188 8 knife Chop King
harvester with 2 row head
Papec Model 92 forage harvest-
er with 2 row head
Deere Model PC PTO with 1-row
head \$125
-Allis 4 base 16" mounted plow
with gauge wheel

Wissing Motor Co.



Ph. CO 3-2592
ABILENE, KS.

Early Fall Sale

New Case tractors, 1930's, 930's,
730's, 830's — we have all
models in stock. Int. waivers
to March, 1969 — call us. Let
us show you the advantages
of trading or buying now —
Our stock of used tractors is
very low. We need some bad-
ly. Trade now. Call collect
Longhofer Supply, Marion,
Kans. EV 2-2620.

Longhofer Supply

CASE - ALLIS CHALMERS
Phone EV 2-2620
MARION, KANSAS

FOR SALE — Small Oliver
track loader and dozer, Model
HG 42, good condition, price
\$1200. Phone 456-7364, Paul Hill,
Belvue, Kans. x22

WANTED — Good late model
Oliver corn picker. State price
and condition in first letter.
Kenneth J. Stallbarmer, Bailey-
ville, Kansas 66404. x23

TRACTORS
 1962 2010 JD gas, completely recond. \$2595
 1964 JD 1010 gas tractor \$1995
 1962 JD 2010 gas \$2295
 1957 JD 420 \$895

FIELD CUTTERS
 2 row Gehl field cutter \$895
 JD No. 6 field cutter used 2 yrs. \$1295
 JD No. 34 field cutter, cut only 100 acres \$2395
 AC 303 baler \$1295
 1962 AC D-17 dsl., 3 btm. plow, 4-row cult. \$3000

Young & Son

Impl. Co.
 Council Grove
 Kans.
 Ph. 767-5018



COMBINES

AC Roto Baler
 1967 Gleaner C-II 16'
 1963 Gleaner C, 16'
 1962 Gleaner C, 18'
 1959 IHC 151 14' combine
 1965 Gleaner A-II, 16'
 1958 Gleaner A 14'
 1960 IHC 101 12'
 1960 AC D-14 tractor
 No. 7 5 bottom semi-mtd. plow, 3-point hitch

Stlund Implement

CH 3-4088



CONCORDIA

TRACTORS
 AC 190 diesel, '66
 AC D19 dsl., '62
 M&M G1000 diesel 3 pt., 65
 M&M 705 LPG, '64
 M&M G LPG '48
 Massey Ferguson 98 diesel, '61
 IHC B275 diesel, '61
 JD B gas
 JD G gas
 AC WD with cultivator
 AC WD45 LPG '56 with cultivator

Versatile swather 15-ft., 1-year old, with hay cond., \$2450. without hay cond \$2250, must sell, phone after 6 p.m. 241-3402

81 Farm Supply

Box 587
 1030 W. Kansas
 Phone 316/
 241-0256



MCPHERSON, KANS.

SPRINGTOOTH HARROWS

1 five-sect. unit mounted on rubber
 2 3-pt. mtd. 12' that will take foldup extensions for larger tractors
 2 9' units for 2-plow tractors with 3-pt. hitches

These are universal hitches that will handle your rotary hoes and spiked tooth harrow sections.

Forge Welding

Ph. 857-3241
 CENTRALIA, KANS.

TRACTORS

1966 190, fully equipped, low hours \$4750
 1965 D-17 IV, excellent \$3675
 1964 D-19, new sleeves & pistons \$3895
 1950 Massey 101, hyd., very good \$250
 1950 IHC M, LP, 9 sp. trans., hyd. \$475
 Demo. XT with cab, loaded, save \$\$\$
 Full vision 190 XT cab, in crate \$5500

Bevan Motor Co.

AC - OLIVER - BALDWIN
 GLEANER (Sales & Service)
 742-2481 CB KLH 8161 on 21
 HIAWATHA, KANSAS

WANTED — 2 USED 18.4x38 tires. F. H. Bumm, Sedgwick, Kans., phone Halstead 835-6549. x22

BEST OFFER BUYS — Six can milk cooler in good condition, NE 4-5458. Wenslow Dolezal, Kanopolis, Kans. x22

FOR SALE — 1963 4010 JD diesel standard. Looks and runs like new. \$3995. George Larson, Miltonvale, Kans. x22

TRACTORS

1966 Moline G1000 3-point & duals
 1964 Deere 2010 RC
 1962 Deere 3010 D w/ new pistons
 1960 Deere 630, one owner
 1959 Deere 730 dsl. w/ 3-point
 1954 Deere 60, live PTO
 1954 Deere 70, slick
 1955 Deere 70 gas, p. steering
 1955 IHC 400 gas
 1955 Ford Major
 50 Moline U, 48 IHC M, 50 IHC M, 47 JD A, 46 JD G, 51 Case LA
 55 Case SC w/ 3-pt.; 50 Ford 8N
 1955 Deere 60 w/ p. steering

PLOWS

F120 JD 3x14 & 4x14, mtd.
 810 A Deere, 3x16 & 4x16
 Moline 6x16 semi-mtd. reduce-able
 IHC 5x16 wheel No. 70
 Case 4x14 wheel 1963
 Deere 66 wheel 4x14
 F120 Deere 4x16 mtd.
 2x14 IHC wheel plow

DISKS

10' IHC 37; 12' IHC 37 wheel
 16' Kewanee foldover
FIELD CUTTERS
 IHC 16 PTO w/ row head
 JD 12 PTO, w/ 2-row head
 Gehl 1964 w/ 2-row multi-belt PTO
 Case PTO single row
 Fox 2-row PTO Industrial pickup for No. 12 JD
 Pickup & mower bar for Gehl
 Case belt drive blower w/ pipe
 6' mower bar for 34 JD cutter

COMBINES

1965 Massey 410 w/ 16' cutter bar
 1963 Massey Super 92
 Couple old 55 Deeres
 Massey Super 27

BALERS

IHC 46 twine PTO
 Deere 224, wire PTO
 IHC 55, wire PTO
 New Holland 66 PTO, twine
 Couple 114W Deere balers, IPTQ

MISCELLANEOUS

851 Deere rake, 2-wheel
 Fast hitch IHC disk
 6' 3-pt. rear blade
 8x16 flat bed w/ sides
 Snowco feed wagon
 L John Deere spreader
 New Idea 503A loader
 16' Deere spring tooth on wheels
 Some good IHC & JD spring tooth sections
 20' IHC wheel spring tooth
 Quite a few 16-8 grain drills
 36' D hav & grain elevator
 Graham-Hoerne chisel
 Several good mowers
 4-row JD pull weeder

SHOUSE

Impl. Co.
 Abilene, Kans.

Store CO 3-3051
 Ed Shouse CO 3-1066
 Ron Shouse CO 3-4515

DAUER IMPLEMENT CO.

1967 McCormick 201 windrower, 14', auger platform
 1964 McCormick F-806 gas tractor
 1949 McCormick Farmall H tractor
 1967 BSA motorcycle, 3000 miles excellent condition
 1965 International Scout pickup
 Snowco feed wagon
 No. 31 IH manure loader
 8' Knapheide truck bed complete with stock racks
 IH side delivery rake on rubber, high wheel
 McCormick No. 311 3-16 plow
 1940 Farmall M with factory LP gas
 1941 M tractor
 1962 McCormick 46T twine baler
 McCormick 16x8 MF drill, low rubber and rubber press



Falun

Phone 1011
 Falun is located 20 miles southwest of Salina

FOR SALE — Good International W9 tractor, like new wtires alone cost \$300. A good buy at \$575. 119 S. Phillips, Salina, Kans. x25



BALERS

NH 66 PTO baler \$400
 IH 56W PTO baler \$695
 AC roto baler \$425
 JD 214WS PTO baler \$900
 JD 214W PTO baler \$775
 250 Ford PTO baler \$150

FORAGE HARVESTERS

Gehl 2-row chop all \$1075
 Gehl 2 row chop all \$800
 Gehl 2 row chop all \$1195
 Case 1 row \$50
 JD No. 10 flail chopper \$200

COMBINES

MH 26 10-ft. \$150
 AC 100 SP \$750
 MH 80 Special \$1250
 MH 82 with cab \$3975
 JD 40 SP \$2550
 MH 82 w/ 12-ft. \$3750
 IH 141 with cab \$1375

MISCELLANEOUS

AC blower, PTO or belt with pipe \$350
 Case 850 SP windrower \$1275
 JD blower belt with pipe \$225
 Farmhand 220 feed wagon, only slightly used \$750
 New Parker gravity box \$195
 New JD 215A SP windrower with conditioner and loaded with extra equipment — NOW ONLY \$3850

Osage Farm Eq. Co.

OSAGE CITY, KANS.
 Phone LA 8-1422

"SILO FILLING SPECIALS"

1963 Fox Industrial cutter, 2-row head, tungsten knives & bar, ready for the field, good \$1750
 1963 Fox with 2-row head, overhauled \$1595
 1963 Gehl with one row head, as is \$450
 No. 610 New Holland with 1 row head, mower bar and hay pickup, all for \$495
 Fox long table blower with PTO drive, 50 ft. pipe \$225
 IH low gear drive binder \$85

Valley Equipment



Phone 913
 AC 7-2396

LINDSBORG, KANSAS

SALINA



1 MF 65 gas, 3-pt., PTO, good cond.
 1 JD 420W gas, live PTO, slick
 1 Case LA std, with starter
 1 Case DC3 RC, PTO
 1 IHC M RC gas, priced to sell
 1 1841 ind. model Ford with loader, 3-pt., completely overhauled
 4 JD 830 dsl. tractors, priced to sell
 1 9N Ford, 3-pt., PTO, hyd., value priced
 1 Oliver 88 gas, priced right
 1 Case 930 dsl. RC, 3-pt., PTO, ready to go
 1 Case 800 gas, 3-pt., PTO, good cond.
 1 JD 60, power steering, new paint
 1 IHC 806 gas, Rockshaft, PTO, dual hyd., only 302 hours, like new condition
 1 JD 4010 dsl., 3-pt. hyd., reconditioned
 1 3010 JD gas, 3-pt. hyd.
 1 MF90 gas, PS, 3-pt., live PTO, weighted, ready to plow, cream puff cond.
 3 JD 2010 gas tractors, all reconditioned
 2 IHC 450 std. dsl., value priced
 1 IHC 400 dsl., value priced
 Over 40 good used tractors to choose from
 Financing available, no interest until March 1969. No payment until July, 1969.

Salina Impl. Co.

Box 1029 Ph. TA 3-2206
 SALINA, KANSAS 67401

ALLIS ROUND baler with new endless belts. Excellent condition. Shredded, \$500. Alfred Roeder, Seneca, Kans. x25

BRAUCHI'S OFFER

MF No. 410 combine, 1967 model, 14 ft. cab, light rotary screen, light med. slope kit, like new, in A-1 cond., cut 1 season

1 MF 410 combine, 1966 model, 14' header, MF cab, light med. slope kit, very clean combine, A-1

IHC No. 151 combine, IHC cab, 14' header, 1962 model, very clean machine, one owner, priced to sell

MF 300 combine, 13' header, lights, cab, large tires, hyd. reel, med. slope kit, in A-1 cond., 1966 model

MF 300 combine, 13' header, light med. slope kit, rotary screen, 1966 model, large tires, hyd. reel, A-1

MF 300 combine, 13' header, cab, light med. slope kit, rotary screen, large tires, 1965 model

MF No. 82 combine, 14', 1959 model in good cond., 1 owner
 MF No. 60 combine, 12' header, good cond., large tires, one owner

10' Oliver combine, 1960 model, miloguard s, in A-1 cond.

1963 Case 600 combine, cab, lights, 13' header and miloguards, in A-1 condition

1958 Massey Harris 82 combine, motor completely overhauled, 12 ft., very good combine

1959 John Deere combine, 12', good clean combine

No. 616 New Holland single row forage harvester in A-1 cond., used 1 season

Sing'e row Ford cutter, forage lawn mower type in A-1 cond., 1963 model

No. 92 Panec 1965 model. single row head in A-1 condition

MF No. 65 dieselmatic tractor, Hi Arch, new rubber, A-1 cond., one owner

MF No. 65 dieselmatic tractor, Hi Arch in good cond.

MF No. 65 gas, Hi-Arch tractor, good rubber, motor overhauled

IHC 706 diesel tractor, row corp, 1965 model, front weights, rear weights, 18.4x34 tires clean tractor

Several good used tractors in good condition. We are cleaning up. Make us an offer.

Brauchi Bros.

CASE - MASSEY-FERGUSON
 Phone HI 3-4171
 704 Center St.
 MARYSVILLE, KANSAS

HERINGTON



FIELD HARVESTERS

1967 and 1966 Gehl 2-row No. 188 Chop King
 1966 Gehl 84 Chop-All
 1965 IHC 2-row No. 50
 1964 & 1962 2-row 83 Ghels
 1959 Gehl 2-row No. 83
 1962 Gehl 1 row No. 83

These harvesters have been completely overhauled in our shop and are ready for work.

HAYING EQUIPMENT

1967 JD 480 mower conditioner
 1965 JD 215A swather
 1967 JD 24T baler
 1960 JD 14T baler
 1960 JD 10 side mt. mower
 1965 AC side del. rake

PLOWS

John Deere 810A 3 pt., 3 and 4 bottom, 14' plows
 JD F120 3-pt., 4-14
 M-H 12' wheel disk
 JD 12' wheel disk
 JD 16' springtooth harrow on rubber

TRACTORS

1966 A-C D-17 w/ 3-pt., 900 hrs.
 1965 John Deere 2010 gas
 1963 John Deere 3010 gas
 1963 John Deere 4010 diesel
 1956 John Deere 70 diesel
 1948 International M

SEE US FOR

New Hesston swathers; Gehl feed machinery; Crust Buster Harrows; G-B loaders; Danuser diggers; Lilliston rolling cultivators; Grain-O-Vators.

Tri-County Sales

George Munkres
 Phone Collect
 BL 8-2249 or BL 8-2991
 HERINGTON, KANSAS

FOR SALE — Self-propelled hay wagon, \$3500. H. L. Roberts, Strong City, Kans. Phone BR 3-8212. SB24

TRACTORS

1967 IH 656
 1964 Farmall 706D
 1960 Farmall 460
 1959 Farmall 560
 1955 Farmall 400
 1951 Massey-Harris 44
 1948 John Deere A

USED EQUIPMENT

1966 MF No. 12 PTO baler
 1960 NH No. 178 SP baler
 1960 IH No. 46 PTO baler
 IH hayrack
 IH No. 27 V mower
 JD No. 9 3-pt. hitch mower
 IHC mounted mower
 IH No. 450 414 plow
 1950 Chevy 2T truck, grain bed, stock rack

Rossville Truck & Tractor Co.

Phone 584-3560
 ROSSVILLE, KANS.

USED TRACTORS

1964 Oliver 1800 gas
 1962 Oliver 1800 gas
 AC D-17 gas
 Oliver 880 diesel
 Oliver 770 gas

PLOWS

John Deere 4-14, nearly new
 IH 3-14 3 point, nearly new
 IH 3-14; AC 3-16; MM 3-14; AC 4-14; JD 3-14
 Crust Buster, 28 ft.
 Case baler; JD harvester; Case blower; JD wheel disc
 Gehl hay conditioner
 Several grain drills
 New machinery: Oliver, Gehl, BMB, Crust Buster, B.M.B., Homelite chain saws.

Toburen Impl. Co.



ME 2-2288

CLAY CENTER, KANS.

Again we mowed our lot and this is what we found.

TRACTORS

1967 JD 4020 dsl.
 1962 JD 4010 overhauled, painted
 1962 JD 2010, wide front
 1961 JD 2010 wide front
 1959 JD 730 painted, good
 1959 JD 630 painted, good
 1957 JD 620
 1952 JD R, sell cheap
 1954 JD 60, power steering, painted
 1954 JD 60
 2 JD G
 2 JD A
 1954 JD 50
 JD B with loader
 1965 IHC 806 dsl., sharp
 1959 IHC 560 dsl.
 1958 IHC 450 dsl., overhauled, painted
 3 IHC M
 1951 IHC C Farmall
 1962 MH 65 dsl., overhauled, painted
 1954 MH 444 painted
 3 MH 44
 1948 Oliver 88
 1953 Ford Jubilee

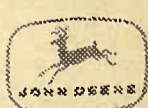
COMBINES

1961 JD 95
 1962 JD 55, cab and power strg.
 1961 JD 55 cab
 1959 JD 55 14 ft.
 1959 JD 55 12 ft.
 1957 JD 55, 12 ft.
 1959 JD 45, 12 ft.
 1962 JD 40, real sharp
 1964 MH 410 14 ft.
 1957 MH 82 12 ft.
 1956 MH 80 spec., 14 ft.

SPECIALS

New JD 215A windrower and hay cond. at a real special bargain. She has to go. If you are looking for a used one buy this. The price is no higher. JD 5090 Row Crop, always shedded, the price may fool you.

Farmers Union Hdw. & Implement



Everett Hoobler
 Mgr.
 Ph. 437-2913

ST. MARYS, KANS.

FOR SALE — John Deere B grain drill, 16-8, fertilizer, press wheels, low rubber, good paint, ready to go. Albert Fersberg, 3 miles east, 1/4 south Lost Springs, Kans. SB23

SELF LOADING Scraper, 840 JD, good condition. Gehl SP harvester with row crop and direct cut header. Walter Porter, Reading, Kans., Phone 913 528-1794. x25

USED T
 1963 4010 JD,
 1962 3010 gas
 1961 2010 JD r
 1959 630 JD, g
 1961 D15 dsl. A
 1959 D17 gas A
 1958 D17 gas A
 1962 620 JD, c
 1955 60 JD, PS
 1964 60 JD, PS
 1955 50 JD,
 1950 A JD; 19
 1951 8N Ford
 1946 G JD, lots
 1949 M IHC, c
 1948 M IHC, r
 1949 A JD, ov
 Also Sev
 Todd Tra
 Junction I
 Store Ph
 SENECA
 Tr
 4020D demo.
 3020 G
 720 D — 45
 2010 gas
 730 dsl. —
 Green Monste
 new tires, A
 USED PLOW
 One Of The I
 of Parts In T
 Co
 1963 No. 55 H
 1961 No. 95
 Hett
 WANTED —
 attachment for
 field cutter.
 Kans., Phone
 FOR SALE —
 Deere tractor
 Mugler, Rt. 1
 FOR SALE —
 City corn pic
 A-1, cheap. T
 Pherson, Kan
 No. 95 John
 header, 1967
 cab, John De
 real, cut less
 priced to sel
 son, Oketo, I
 2126, Oketo.
 WANTED —
 blower in usa
 for repairs. I
 ton, Kans.
 FOR SALE —
 bulk tank us
 Herpich, Cou
 White City I
 WANTED —
 220-730 John
 Buhler, Kans
 COMBINES
 No. 45 JD, ad
 JD, only \$125
 sey, only \$29
 JD 3010 dies
 paint. 1962 M
 new tires, p
 LP. 1959 MF
 1961. 1959 Joh
 RC. 1956 70.
 1948, 1947 D
 line GB. 1951
 Good Intern
 \$150. New 60
 point \$295. E
 er. Ford cul
 discs. New I
 cultivator. N
 tooth, below
 tractor weigh
 ers, Buhler,
 FOR SALE
 snap couple
 3114, Beattie
 FOR SALE —
 tank, with v
 Vic Danie's,
 Phone 474-32
 FOR SALE —
 sel, cab, WF
 88" rear tir
 500 hours. F
 out air conc
 ers. Also co
 machinery

Bachelor's Chances Grow Slimmer

Bad news for bachelors. It's becoming harder to stay single.

Population professionals at Northwestern University and the bureau of census show in new data that the people who choose to go it alone are becoming rare.

Of every 100,000 babies born today, 97,000 will live to age 14. Of these, 96 percent of the boys and 97 percent of the girls will marry.

Less than 15 years ago, about 8 per cent of men did not marry.

In 1960, there were 3,300,000 bachelors and 3 million spinsters in the United States.

Last year, there were 2,800,000 bachelors and 2,700,000 spinsters, despite a substantial increase in total population.

A bachelor is defined as a man over 35 and a spinster, a woman over 30.

Walter Saveland, a graduate student at Northwestern, and Dr. Paul C. Glick, demographer in the Census bureau, have worked out an actuarial-type table showing the marriage trends.

"The prospects for eventual marriage have risen to the point where all but about 2 percent of the young people are expected eventually to marry," Glick predicted.

"This development has gone so far that the main question remaining is not whether young people will ever marry but what proportion of them will marry during an optimal age range — not too young, not too old."

The bullish market in conjugality has many factors going for it, the demographer says.

Many persons are becoming free socially to marry or remarry. People are living longer, offering more opportunity to marry. Economic conditions are im-

proved.

"Employment of the wife helps things along, he adds. Most have had work experience before marriage so it is not difficult to return to work later. Statistics show that 15 percent of those with children under age 6 are working. This rises to over 40 percent among women with mature children."

Another trend is the decline in teen-age marriages. Despite this decline and an increase in divorces, the percentage of marriages is at an all-time high.

"The marrying rate is 3 to 5 times greater than the divorce rate," Glick stressed. "This is particularly true among those 25 years or over."

"Another factor is increasing remarriage. People don't stay single after a divorce or death of a spouse," he said.

1000 Expected At Area Field Days

WAMEGO — More than 1000 farmers and businessmen are expected to visit three modern farms near Wamego August 1 during the second annual Kansas Farm Management Field Day.

Persons attending the morning program at 9:30 a.m. will have a choice of seeing a cattle feeding operation at the LeRoy Miller farm 2 miles southeast of Wamego, or a dairy and poultry combination at the David Hund farm 12 miles southeast of town on Interstate 70.

Following lunch at the City Park in Wamego, the afternoon program will feature the use of high moisture corn in a cattle feeding operation at the Warren Roepke farm 12 miles southwest of town beginning at 1:45. Visitors will have an opportu-

nity to see and hear how these successful farm managers run their operations. Extension specialists from Kansas State University will be on hand to explain management decisions involved in each farm business.

Comparison of silage storage in upright and trench silos; high level crop production, both irrigated and dryland, and central feed processing systems will be discussed at the Miller and Roepke farms. Economics of feed processing will be featured at the Miller and Hund farms.

Speakers for the noon program are Dr. Carrol V. Hess, dean of Agriculture at Kansas State University, and Dr. Robert A. Bohannon, director of Extension at K-State.

The Wamego Municipal Airport located on the Miller farm

and Wayne Roesener's airstrip ¼ mile east of the Roepke farm will be available for flying farmers.

FLETCHER THE 4-1-1
JOE E. BURESCO



"DON'T BUY THE BIG GIANT ECONOMY SIZE, MOM. WE DIDN'T BRING THE PICK-UP TRUCK."

BILL AVERY... on wheat prices and the cost of a haircut

I am going to talk about Kansas farmers. As a third generation farmer, I want to discuss the impending crisis of American agriculture.

For eight years, since President Eisenhower left office, the cost of producing a bushel of wheat has climbed steadily upward. In the meantime, the purchasing power of that bushel of wheat keeps going down.

I have said this before, but I wish to repeat it because it capsules the economic dilemma of the wheat farmers.

In 1960, I could get a haircut for a bushel of wheat. This year it takes TWO bushels of wheat to get ONE haircut.

Just in the past year, farm production expenses have risen five percent.

Let me interpret this for you. In 1966, the farmers had a realized net income of \$16.4 billion. In 1967, the realized net income was approximately \$15 billion. In one year, the nation's farm production costs rose \$1.4 billion, or you can say the farmers lost \$1.4 billion.

Recent figures are even more discouraging. Last month, for example, prices rose five percent on farm machinery; building materials six percent; automobiles and services another five percent.

During the same period, however, prices farmers received for their products increased only 1½%. It has been and still is a losing battle for the farmer.

The cause of this inequitable situation is both simple and complex.

First of all, I will go back to my haircut for one bushel of wheat in 1960, and the two bushels of wheat for one haircut in 1968.

My barber's cost of living has been steadily rising. He has had to increase the price of his services to meet his obligations—his cost of living. This is a normal procedure.

Now, when the truck or train that hauls the wheat to the mill ups its price slightly, that increase is passed on to the miller. The miller's employees get a wage increase. That, and the freight increase, are passed on to the baker. Operating costs for the baker, caught within the spiral of increasing production expenditures, forces the baker to increase his prices. These increases are all passed on by one, two or three middlemen to the consumer.

Follow the same pattern in virtually every service or production—food, clothes, cars, trucks, tires, etc.—and you always wind up with the eventual customer paying higher prices.

This is no revelation to you, but you must remember that the farmer is a consumer too. However, the farmer has no way of passing on higher operating costs. He must absorb them—and from a shrinking income.

And the farmer has no control over the weather.

As you will clearly recall, 1967 was a dry year.

If it had not been for the Certificate Plan Payments, some of the dryland wheat farmers in Kansas would have been without any cash income for the year.

It is essential to the economy of Kansas that the Certificate Plan for wheat producers be continued. Under present law, the Certificate Plan is scheduled to expire in 1969.

At this particular moment I wish to point out to you that I am the only Republican seeking office who is on record for supporting the Certificate Plan in the past and in the future.

Estimated Certificate Plan payments for 1968, for the state of Kansas will total \$144,066,813. Contemplate, for a moment, the economy of Kansas being deprived of that much money. Also, I would like to point out that \$91,736,088 of the Certificate Plan payments went to our 41 Western Kansas counties, which were hardest hit by the dry year.

You can rest assured that I will continue backing the Certificate Plan with a special effort to renew it in 1969. In addition, as your Senator, I will ask for a reasonable increase to meet rising costs.

By nature, the farmer is an individualistic American who retains his right of independence and believes free enterprise is a vital part of democracy.

A recent study of the Department of Agriculture indicates that the farmer is attached to the soil, rather than to the money it will produce.

In 1966, according to the Department study, the farmer could have rented his land and taken a non-farm job and made 19 percent more money. Many are leaving the farms, but many are stubbornly hanging on, hoping for a better day.

To give you a better idea of the inexorable rise of farm production costs, let me quote these figures for the past eight years, dating from 1960.

Production costs during 1960-67, increased by \$8.2 billion, slightly more than \$1 billion yearly.

Income increased by only \$3.3 billion, less than half the costs.

"I believe in firm and equitable law enforcement for the protection of all Kansans... and would, as Attorney General, actively seek legislation as needed to keep pace with the crime of our time."



RICHARD H. SEATON
PRESENT ASST. ATTY. GENERAL
NOW A CANDIDATE FOR
ATTY. GENERAL

Seaton for Atty. Gen. Comm.
Robert N. Haines, Ril. Co. Chm.

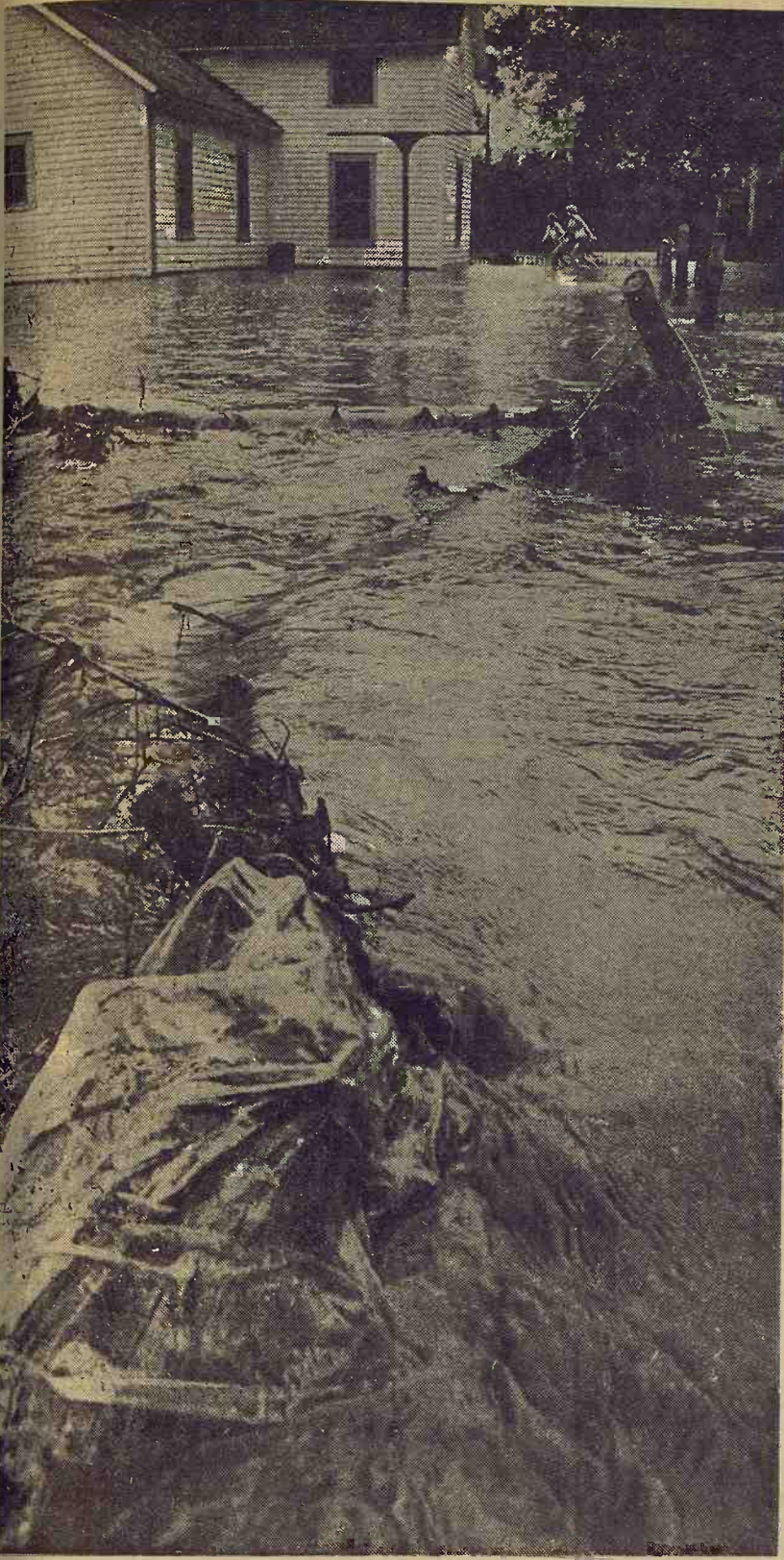


WM. H. AVERY

Nominate and Elect This Experienced Man!
FORMER STATE LEGISLATOR (4 YRS.)
U. S. CONGRESSMAN (10 YEARS)
FORMER GOVERNOR OF KANSAS
BILL AVERY
REPUBLICAN FOR United States Senator

Riley County Avery-for-Governor Committee, Mike McCarthy, chairman

Big Ro...
Report...
week, as m...
es. One pla...
north of W...
Rock Cree...
Louisv...
ones in 19...
one was th...
SERVIC...
WITH WE...
Priced...
GRA...
MANH...
Located 4...
intersection...
Dowell Cree...
I ple...
of Potta...
Zeandale...
Farr...
tion poss...
and a w...
of havin...
The...
be impor...
governme...
ue to ser...
Pol. Adv...



Big Rains In G&G Area

Reports of five-inch rains were not too uncommon last week, as most parts of the G&G area recorded at least two inches. One place that got too much rain was Louisville, a hamlet north of Wamego in Pottawatomie, which had to clean up after Rock Creek spread all over town.

Louisville is not unaccustomed to floods, having had major ones in 1929, 1941, 1951, and 1965. Some residents thought this one was the worst ever.

TEX REAL
ONWARD 55th

Cow Hera
Royal Essar
C Kato. Heir
Apparent

SERVICEABLE BULLS
WITH WEIGHT RECORDS
Priced . . . \$300 to \$500

GRANT POOLE
MANHATTAN, KANS.
Located 4 mi. south of I-70-K177
intersection, 2 mi west on Mc-
Dowell Creek Rd. Ph. PR 6-8315.

ONE FROM AREA ON ACHIEVEMENT LIST

Iowans dominated the achievement competition at the CK Ranch annual Red Circle Auction. Only G&G area winner was Bruce Day of Council Grove, whose Hereford heifers were regarded as the best in their class. Overall winner in achievement was Doyle Marquart, Van Meter, Iowa, with ewe lambs.

I pledge continued support to the best interests of the people of the 58th District, which is composed of Pottawatomie County, Wabaunsee County, and Zeandale Township.



Re-elect
Bob BROWN
Farmer-Stockman
Representative
58th District

Farm communities deserve the best representation possible. Knowledge of what is being considered and a working representative are their best means of having a voice in their state government.

The next two years, as well as every year, will be important. The man with the knowledge of state government is the one who has and wishes to continue to serve you and our state.

Pol. Adv.

Your vote will be appreciated

First Hereford ROM Show Of Season At Nebraska Fair

LINCOLN, Nebraska — The eyes of the beef cattle industry will turn to the first Hereford Register of Merit show in the 1968-69 season on September 3 and 4 at the Nebraska State Fair. "This premier ROM show is being managed by cowmen and judged by a cowman with special emphasis on the points that are of interest to commercial cattlemen," Nebraska Hereford Association President, Neal Keller, said.

"With all the attention that has been focused on the show ring recently by both commercial and registered breeders this will be an event of industry-wide interest," Keller commented. Byron Bayers, Twin Bridges, Montana, will judge the show.

Hereford breeders and allied industries in "The Beef State" have planned a program of events that will make them one of the outstanding ROM hosts for the coming season.

Heifers will be judged starting at 1:00 p.m. Tuesday, September 3 and the bulls and groups will be shown starting at 8:00 a.m. September 4. The best-ten-head judging will be on the evening of September 4 in the arena in front of the huge grandstand. Lunch will be available in the judging arena at noon on bull-judging day.

A highlight among the social activities will be a social hosted by the O. A. Cooper Co., a major Nebraska-based feed and flour manufacturer. John R. Cooper, Executive Vice-President, and many of his staff will be on hand representing the firm. Mr. Cooper reported, "There will be refreshments and snacks for visitors of all ages. We are sure everyone will enjoy joining us at 6:00 p.m. on the evening of September 3, at the Cornhusker Hotel."

Entries close August 10 and should be sent to Henry Brandt,

manager, Nebraska State Fair, P.O. Box 1966, Lincoln, Nebraska 68501.

To clean out the MESS in the Governor's Office — that's why



Just about Everybody is going to Vote for
CRUTCHER
for GOVERNOR

Pol. Adv. Irl Yeo, Chmn.



Johnny Kaw Says:

Happy is the man who is thankful for small favors.

Hercules Tire Sales

Farmer **SPECIAL** Farmer

750x20, 825x20, 900x20, 1000x20, used \$10.00 & up

CAPS, MUD & SNOW

8-17x5 8 ply, — 670x15 6 ply. — 700x16 6-ply

2 750x18 Firestone used front tractor tires & tube — \$22.00 ea.

NEW TIRES — 10-16x5, 800-16x5 — SPECIAL PRICE

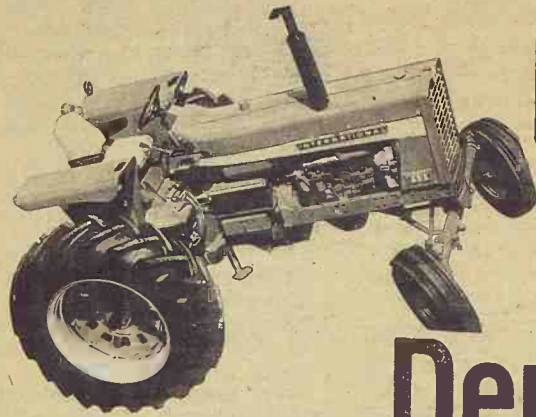
Hercules Tire Sales

601 N. Third Manhattan, Kans.
Where Prices Are Born and raised elsewhere

We Invite You To Moonlight Plowing Demonstration

STARTS 4:00 p.m.

Into the night (or out of ground).



WHERE:

Go 4 miles southeast of Clay Center, Kans., on Broughton Road.

THURSDAY, AUG. 1

This equipment will be on hand for your use
TRACTORS 856 Diesel • 756 Diesel • 454
656 Series (Hydrostatic and Gear Drive)

— PLOWS —

No. 560 6-616 • No. 550 5-16 • No. 540 4-16
No. 531 3-16 • 45 Vybra Shank Cultivator
No. 55 Chisel Plows • 340 Springtooth Harrows

YOUR HOSTS:

Auld Chevrolet — Wakefield

Kendall Garage — Leonardville

REFRESHMENTS • DRAWING



July 30, 1968



Silo Demolished

Gary Winslow of New Cambria in eastern Saline county surveys damage done by high winds on the farm of his father, D. E. Winslow, in early July. Winds toppled a 45-foot silo built of concrete blocks and the silo destroyed a metal grain bin as it fell. Both silo and bin were empty.

Certificate Payments Underway

Wheat certificate payments to farmers participating in the 1968 wheat program have a value of \$1.38 per bushel. The payments are based on the difference between the July 1, 1968, wheat parity price of \$2.63 per bushel and the national average loan rate of \$1.25 per bushel.

Certificate payments to farmers in Kansas have begun and will be substantially completed within the next month, according to the State Agricultural Stabilization and Conservation office. Feed grain program payments will be made after September 1. The wheat payments will be based on the farm's normal projected yield times the smaller of 40 percent of the farm allotment, or planted wheat acreage times \$1.38 per bushel.

Nationally, certificate payments to participating farmers will total about \$730 million. Kansas farmers will earn about \$145 million in wheat certificate payments.

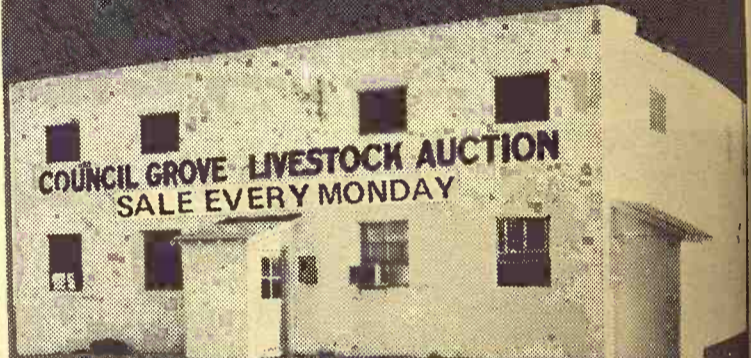
Wheat marketing certificates are authorized by the two price provisions of the Food and Agriculture Act of 1965. This guaran-

tees participating farmers 100 percent of wheat parity price for their share of the wheat used for domestic food, the ASC officials remind. This substantially bolsters farm income for wheat while permitting support of market prices through loans at levels more competitive in world trade channels.

One of the main reasons Congress passed the Act of 1965 was to improve and maintain farm income. Specific language in the Act intends that landlords, tenants, and sharecroppers share feed grain price-support and wheat certificate payments in the same proportion they share in the crops produced on the farm, the ASCS points out.

The Act further provides that these payments shall not be made if there is an attempt to exact an unfair rent or crop share or reduce the number of tenants or sharecroppers in order that some producers can earn larger program benefits.

Landlords, farm operators, tenants, and sharecroppers that do not fully understand their rights and obligations under the landlord-tenant provisions of the law should get in touch with their local county ASCS office.



COUNCIL GROVE LIVESTOCK AUCTION
SALE EVERY MONDAY

SELLING STARTS 12:30 NOON

Fat Hogs — Pigs — Cattle

In the order they are booked

TO BOOK CONSIGNMENTS OR FOR INFORMATION, CALL:




JERRY MOYLAN • PAT MOYLAN
767-5131 767-5435
WES SWENSON — 767-6388

on Highway US 56 East Edge of
Council Grove, Kans.

Banded Livestock Dealers & Order Buyers

A Chance In A Lifetime
(17 YEARS OF DEVELOPMENT)

THE ENTIRE POHLMAN HERD OF ANGUS TO SELL AS A UNIT

An opportunity for anyone interested in purchasing one of the finest registered Angus herds in the state is being offered by POHLMAN'S ANGUS RANCH in NATOMA, KANSAS.

Due to health reasons, the Pohlman's have decided to sell the entire herd. These are top quality registered Angus cattle with 1st line pedigrees.

SELLING: 135 HEAD

Registered Cows In The Cow Herd

- 68 of these with calves at side; the remainder to calf this fall
- 46 head 1967 heifers; about 1/2 of these are bred to a son of Koranmere K-17 bull.
- 55 head 1967 bulls that are being grown outright for 1969 breeding season.
- 6 herd bulls owned by the Pohlman's; 3 herd bulls, Pohlman's owning 1/2 interest in each; 1 herd bull, Pohlman's owning 1/3 interest.

For further information on this fine herd you may contact Mr. A. F. Pohlman at his residence phone 885-4322 any evening after 8:30 p.m.

These cattle must sell as a unit before August 10, 1968. If not sold prior to August 10, a dispersion sale will be held October 1, 1968 at the Hays Livestock Exchange, Hays, Ks.

POHLMAN'S ANGUS RANCH

Mr. & Mrs. A. F. Pohlman, owners
NATOMA, KANSAS

7% More Cattle In Feedlots

The number of cattle on feed July 1 in the 32 major feeding states was 7 percent greater this year than a year earlier, the Department of Agriculture has reported.

The number on feed in these states as of July 1 this year was estimated at 9,304,000 head. In-

creases from a year earlier were recorded in all weight classifications except the 1100 pounds and over class, which was down 1 percent.

Of the July 1 number on feed, cattle feeders intend to market 5,371,000 head this month. August and September, the department estimated. This would be 5 per cent above July-September 1967 marketings.

According to the estimate, feeders intended to market 31 per cent of the 3-month total in July this year, 34 per cent in August and 35 in September.

In Kansas, 421,000 head of cattle and calves were on grain feed as of July 1, which was 5 per cent more than the 1962-66 average.

In Kansas, large feedlots with a capacity of 1000 head or more were feeding 279,000 head, a record number on feed for the mid-year. The remaining cattle on feed in the state, 142,000 head, were in farm feedlots, and this number was a drop of 10 per cent from the previous year. The figures indicate a continu-

ing trend to more and more feeding in large lots in Kansas.

AUCTION

I will sell the following personal property four blocks east of the old Katy depot in White City, Kans.

Saturday, Aug. 3
at 12:30 p.m.

CLOCKS — WATCHES
Many, many alarm clocks, brass, nickel, chrome, iron, tin; 3 8-day mantle clocks; 2 cuckoo clocks; watch cases, nickel gold plated, silver by the dozen; hundreds of main springs, hair springs, gears, pendulums, dials, gears, keys... complete set of tools for fitting crystals; engraving burrs; and many Ingram, aWterbury, Elgin watches and clocks.
Complete set of eye fitting instruments and supplies.

FURNITURE & ANTIQUES
Complete line of household furniture; some antique dishes, doll toys, 3 cast banks; old stamps and valentines.
Real Estate: Modern house, good 2 car cement block garage, 2 lots.

P. S. WILLIAMS
Aucts: Remy & Sharp.
Clerk: First National Bank, White City.



Concordia

Sales Co., Inc.

Sale Every Wed.
Starting at 1:00 p.m.

CONCORDIA, KANSAS

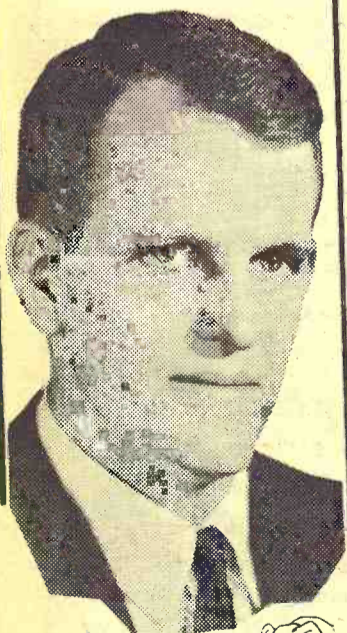
The market was steady & active and there was a good demand for stocker & feeder cattle.

THIS WEEK'S CONSIGNMENTS

35 head choice blkwf strs, 750-800 lbs.
22 choice wf strs & hfrs, 500-650 lbs.
10 wf steers, 500 lbs.

Tom Walker, Owner
Phone 243-1674
Barn 243-1074

"OUR LAWS MUST CERTAINLY BE ENFORCED FIRMLY AND EQUITABLY FOR THE PROTECTION OF ALL CITIZENS. I AM ALSO DEEPLY CONCERNED WITH THE CAUSES OF CRIME."



RICHARD H. SEATON
PRESENT ASST. ATTY. GENERAL
NOW A CANDIDATE FOR
ATTY. GENERAL

Seaton for Atty. Gen. Comm.
Robert N. Haines, Ril. Co. Chm.

First published in Grass & Grain July 30, 1968

STATE OF KANSAS
Notice of Submission of Proposed Constitutional Amendment at November 5, 1968 General Election

Pursuant to Article 14, Section 1 of the Constitution and in compliance with House Concurrent Resolution No. 1063, adopted by the legislature on March 7, 1968, a proposition will be submitted to the voters at the November 5, 1968, General Election for their approval or rejection to amend Section 2 of Article 4 of the Constitution as follows:

"Sec. 2. General elections and township elections shall be held biennially on the Tuesday succeeding the first Monday in November in the years bearing even numbers. All county and township officers shall hold their offices for a term of two years and until their successors are qualified: Provided, One county commissioner shall be elected from each of three districts, numbered 1, 2, and 3, by the voters of the district; and the legislature shall fix the time of election and the term of office of such commissioners; such election to be at a general election, and no term of office to exceed six years."

I hereby certify that the foregoing is a true copy of the proposed amendment to the Constitution of the State of Kansas contained in House Concurrent Resolution No. 1063 adopted by the 1968 Session of the legislature, the original of which is on file in my office.

ELWILL M. SHANAHAN,
(Seal) Secretary of State.



K-State Ag Engineers Get Arty

The main hallway of the department of agricultural engineering at Kansas State University, Manhattan, is decorated with a colorful new 12,500-piece mosaic, thanks to Prof. G. Alden Krider (far right) and one of his K-State architectural classes. The designer of the mosaic which portrays the four basic areas of agricultural engineering through a nine-step process is John T. Meyer, center, senior architectural major from Essexville, Mich. Looking on at left is Dr. George H. Larson, head of agricultural engineering.

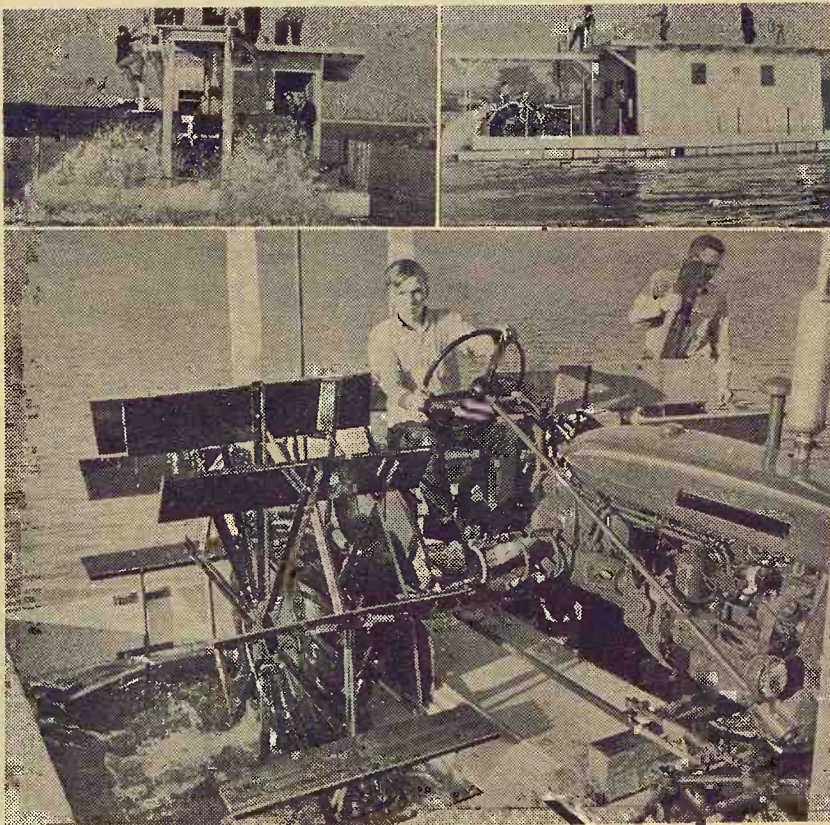
The Sprinkler Walks Thru

Wayne Schafer of McPherson stands beside a gate in one of three small, fenced areas which he irrigates with one sprinkler irrigation unit. With the gate open, Schafer says the sprinkler system just "walks on thru" when the 7-tower system comes to a fence.

He irrigates three fields this way in a 40-acre plot, and in another sector he irrigates two fields with a 40-acre system.

The fields are all fenced into smaller sections to accommodate a flock of 300 sheep on pasturage.

He irrigates a total of 120 acres with the 40-acre, seven tower system, working from one well thru underground pipe to three pivot points. One 40-acre unit is planted to heavily fertilized corn; one has part alfalfa and part sorghum feed; and in the third he intends to plant two 13-acre patches of wheat and a stand of winter graze for his sheep.



Tractor That Runs On Water

Sixteen youths from the Roseland community, members of the Teen Adventurers club will spend much of the summer with two adult leaders traveling from Chicago to New Orleans and back via the Mississippi river on a homemade paddle wheel raft, powered by a tractor they received as a gift.

Starting in mid-July, the youths and their adult helpers have revived the spirit of adventure in both young and old with their unique craft. Rail will be added to the deck for boating safety, and trial runs on the Calumet river show the raft to be seaworthy as well as exciting. The raft can be steered from the tractor seat or a wheel on the cabin deck.

Roseland Kiwanis adopted the project as an outstanding youth activity and have lent their interest and financial support. The Mississippi river trip will be highlighted by stops at main cities along the route.

The paddlewheel raft, named the Huck Finn, is powered by an International Harvester Company Farmall 104 tractor, mounted on the styrofoam and wood structure. Its two paddlewheels will operate off the rear wheels of the tractor.



Putting Queen

Judy Macy of Manhattan recently won a Putting Queen title at the Manhattan Putt-Putt golf course, one of a chain which has several franchises in the G&G area. A year ago the title at the Manhattan business, Jill Bunker of Junction City, won the national Miss Putt-Putt crown.

Tuesday Sale

Cattle prices seem to hold fairly steady. Cows showed a slight trend of strength.

CATTLE

3 wf str	413 @	29.00
15 wf str	747 @	26.75
9 mix hfrs	585 @	24.50
2 blk hfrs	682 @	22.30
4 wf hfrs	591 @	25.60
2 blk str	935 @	23.00
5 mix str	780 @	25.00
7 hol str	727 @	22.90
2 wf str	790 @	24.60
8 blk str	601 @	27.40
6 blk str	505 @	28.40
4 wf str	420 @	28.75
2 wf hfrs	460 @	24.00
3 hol str	543 @	23.70
5 mix bu	221 @	26.10
11 whibu	244 @	20.10
57 mix bu	225 @	20.00
21 red bu	225 @	20.00
10 mix bu	205 @	19.60
21 mix bu	217 @	20.00
22 mix bu	231 @	19.80
24 mix bu	222 @	20.00
10 mix bu	205 @	20.00
18 mix bu	226 @	20.00
20 mix bu	215 @	20.00
5 whibu	218 @	20.10
16 whibu	180 @	18.60
19 whibu	210 @	19.95
11 whibu	211 @	26.00
11 whibu	241 @	19.80

TODAY'S CONSIGNMENTS

- 50 hd. of wf & bwf str, 600 lbs.
- 18 mix str & heifers, 600-700 lbs.
- 22 wf steers & heifers, 700-750 lbs.
- 27 wf & bwf steers, 700-800 lbs.
- 19 wf steers & heifers, 550-625 lbs.
- 15 mix color cattle, 550-650 lbs.
- 38 wf steers, 725-750 lbs.
- 75 weigh-up bulls & cows
- 50 choice hefford & black steers & heifer calves, 450 lbs.
- 15 holstein steers, 800 lbs.

Beloit

Livestock Auction
Office Phone PE 8-3578
Don Schmitt PE 8-2547



Night Sale

Mr. and Mrs. V. W. Kreider, Abilene, were the first ones at a G&G area night sale last week. Mrs. Kreider said they can only go to night sales because her husband works during the day.

No Modesty

The Lyons Co-op Association isn't modest, per this sign on the side of its garage facilities. The Lyons Co-op has about 600 members within a 15-mile radius of Lyons. Besides petroleum facilities, it has a half-million bushel elevator, fertilizer plant, and mobile feed mill.

THE BIGGEST LITTLE CO-OP IN THE WORLD
BIGGER THAN ANY OTHER SMALL CO-OP IN THE WORLD
LYONS CO-OP ASSN

Selling Livestock at Onaga, Kans.

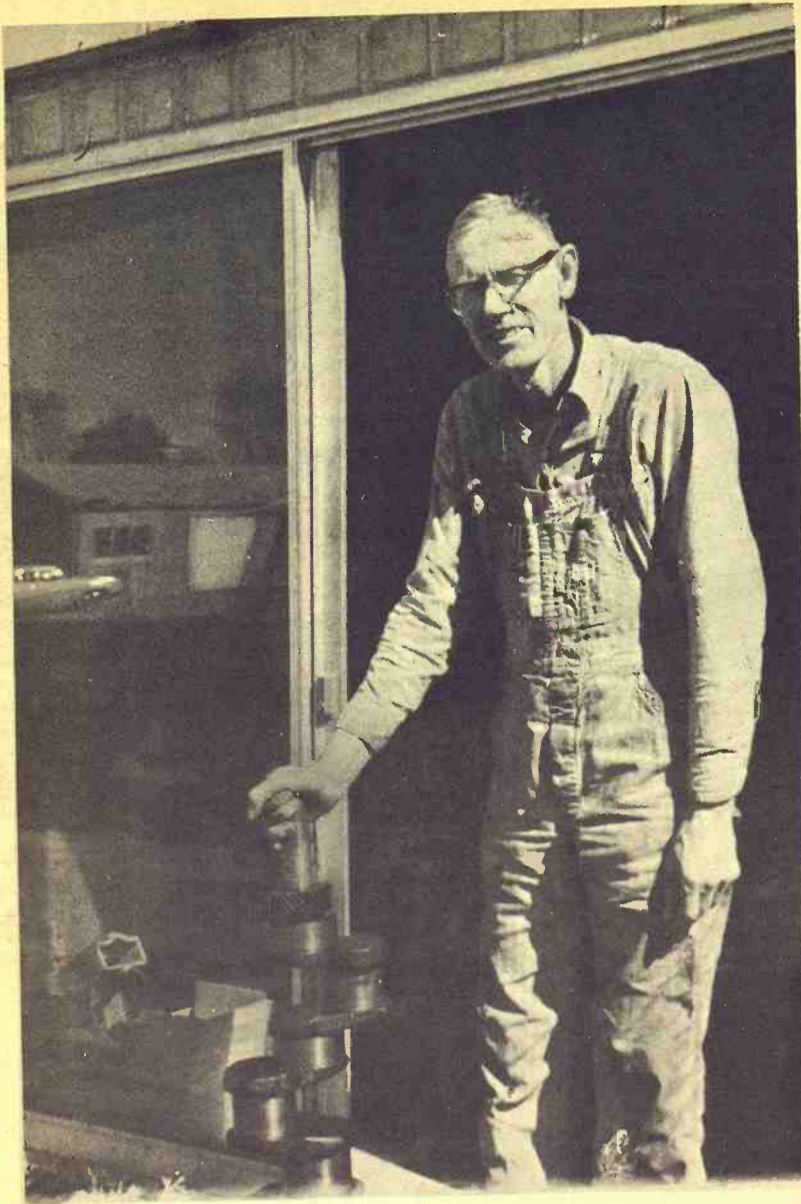
EVERY WEDNESDAY NIGHT

STARTING TIME 8 P.M.

DURING SUMMER MONTHS

Onaga Community Sale

Marvin Cottrell, Phone 889-4461 or 889-4665, ONAGA, KS.



Village Machinist

Chester Anderson operates a machine shop in Smolan in Saline county.

AUCTION

I will sell by auction the following listed items located 2 blocks east and 1 block north of the Talmage, Kansas, bank.

SAT., AUG. 10
(EVENING SALE)
Starts 6:30 p.m.

House, Lots & Personal Items

House & Lots: 3 bedroom home with living room, dining room, kitchen and bath. House fully insulated with aluminum storm windows and doors. Lots approx. 90x150 ft.

This property is located in a desirable location in Talmage, Ks. Anyone interested in this property please contact Mrs. Vivian Gormley at the house, after 6:00 in the evening, or contact Col. Carl Schnell, real estate broker, in Abilene, Kansas. Terms: 25% down day of sale, balance within 30 days or when merchantable title will be furnished.

Carl Schnell, Auctioneer
The Farmers National Bank, Abilene, Escrow Agent
HOUSEHOLD GOODS & MISC.
1965 Sylvania TV, good
Late model Westinghouse refrigerator with crosstop freezer
MW 60,000 propane heater, good

Chrome dinette set with porcelain top, 4 chairs, good
Late model 30 in. range with Peekaboo oven, good
Speed Queen wringer washer
Small Frigidaire refrigerator
Antique large square oak table with large round legs
2 antique dining room chairs
Late model divan; 2 large oak rockers, coffee table; 2 matching end tables.

17 cord electrical portable harp
Time organ, good
16 small drawer filing case
4-drawer chest; several dressers; 2 metal beds complete; antique wrought iron bed; aluminum fold up cot; library table; 2 wrought iron stands; bookcase.
Small bathroom heater, thermostat controlled; large magazine rack; serving cart; 4 TV trays with stands; old cupboard; pole lamp; 2-speed window fan.
500 gal. propane tank, good
Midget racer car; 2-wheel trailer; approx. 10'x10' camping tent and lots of camping supplies; 2 folding picnic tables; 2 electric heaters.

Mrs. Vivian Cormley

Owner
Carl & Wm. Schnell, Auctioneers
Claire Snider, Clerk
Banker: Farmers National Bank, Abilene.

MUST REGISTER

Ministers and others who are privileged to perform wedding ceremonies must register such credentials with probate judges in Kansas. This went into effect July 1.

The registering is required by provisions of Chapter 207 of 1968 Session Laws of Kansas which stipulate:

"Before any clergyman, licentiate or appointee resident is authorized to solemnize a marriage he shall file credentials of ordination, license or appointment, or other proof of such official character with the Judge of a Probate Court in the County of his residence

Hi-Tox livestock spray for flies, lice and mange. 1 gallon makes 100 gallons spray \$5.95 gal.
Terramycin soluble powder, 6.4 oz. package \$1.98
Cattle oilers from \$13.95
Calf creep feeders \$79.95 & \$149.95

Portable air compressor with 1/2 hp motor and 12 gal. tank \$69.95
Plastic covering for haystacks and silo covers in 4 or 6 mil thickness, widths from 14 ft. to 40 ft.

BLUESTEM

FARM-RANCH SUPPLY

Emporia

West Hwy. US 50

National High School Rodeo At Topeka Next Week

The biggest amateur rodeo in the world will be held in Topeka August 5th-11th.

The 1968 National High School Rodeo will draw nearly 500 contestants from 21 states, Clyde Carlyle, president of the National High School Rodeo, said.

The Topeka Round Up Club is host for the championships which will begin at 2:00 p.m. and 8:00 p.m. at the Mid America Fairgrounds on August 6th through 10th. The session on August 5th will be an all day cutting horse competition.

The finals for all the events will be held on Sunday afternoon.

Jim Shoulders, many times all around cowboy is furnishing over 1100 head of stock of bucking horses and other rodeo stock.

Two rings will be constructed in front of the grandstand for the rodeo and competition will go on simultaneously for eleven separate events including bareback riding, bull riding, bulldogging, calf roping, pole bending, barrel racing and cutting.

Sunday morning will feature a church service on horseback conducted by the famous movie actor Joel McCrea. He is scheduled to arrive in Topeka August 7th and will remain through the Sunday event.

The contestants have all qualified as one of the top three riders in each event in their own state high school rodeos. Representatives from 21 states will take part in this rodeo event. Performances of the young riders are generally on par with national professionals. Many of the past school winners have entered the professional ranks

Visit Our Retail Display Of
Lighting Fixtures

Endacott Electric Co.
309 MORO — MANHATTAN

STOCKER-FEEDER

Auction Every Thursday

At
10:30

At The

ST. JOSEPH CENTRAL MARKET
ST. JOSEPH, MO.

Contact Your
Market Agency

or

The Market Foundation
AD 8-2440 For More Information

and are among the top performers on the RCA Rodeo Circuit. Twenty-six Kansans have qualified for the State Rodeo here.

Advance tickets for the rodeo may be obtained by writing to the Rodeo Office at Suite B, 217 East 8th Street, Topeka, Kansas 66603.

Prices for advance tickets are \$1.50 per session or \$15.00 for all 11 sessions. Admission to the performances at the gates will be \$2.00 for adults and \$1.00 for children under 12 years of age.

1968 Ford F100
1/2 TON PICKUP
\$2195.00

Ford Twin I-Beam, long-wheelbase, 4 speed transmission, overloads, fresh air heater, standard and safety equipment.

Long-McArthur, Inc.

340 N. Santa Fe
SALINA, KS.

CLAY CENTER SALES CO.

Hog Sale Every Monday Starts 1:00 p.m.

Cattle Sale Every Tuesday Starts 12:30 Noon

A DEPENDABLE MARKET FOR ALL CLASSES OF CATTLE

A LEADING MARKET PLACE FOR HOGS

H. P. ROBBINS, Clay Center, ME 2-3210
R. A. BRUEGGEMANN, Clay Center, ME 2-2761
HORACE WARE, Longford, ph. 338-2439

Barn Phone ME 2-2861
CLAY CENTER, KANS.

AUCTION SALE

Friday
AUGUST 2

Starts 12:30 Noon

As we have decided to quit farming, we will sell all of the following described property at public auction at the farm located 1/2 mile south of Talmo, Kans., or 9 miles north, 4 miles east (on 148) and 1/2 mile south of Concordia, or 8 miles south, 4 miles east (on 148) and 1/2 mile south of Belleville.

Machinery

1959 620 John Deere tractor with power steering and power trol, A-1 shape
1955 John Deere 60 tractor with power steering, good shape
2 John Deere 3-16 plows with hydraulic lift on rubber
JD 10' R&W wheel disc
12' JD springtooth
Ezee-Flow 10' fert. spreader
JD 2-row cultivator, quik-tach
JD 2-row weeder
IHC 2-row weeder
Field sprayer with epoxy lined barrel, pump and booms
JD side del. rake on steel
John Deere 16-8 drill, on steel
John Deere No. 5 7' mower
3-section harrow

Loading chute on wheels
Dump rake; bale elevator
5-sec. Massey harrow
JD 2-row corn picker
Ottawa rear mount post hole digger

Combines & Trucks

1960 MH combine, 14', No. 8, good shape
1949 21A MH 14' combine
1952 Ford 2-ton truck with hoist and V-8 engine and good tires, in good shape
1948 Dodge 2-ton truck

MISCELLANEOUS

8' stock tank; 3 sheds; electric fence posts and wire; barb wire; 2 JD hydraulic cylinders
3 hp gas motor and other items.

Mr. & Mrs. D. W. (Bill) Cory

Owners
Aucts: Larry Lagasse, CH 3-1714
& Rollie Lagasse, CH 3-2215, Concordia

Clerk: Fidelity State Bank, Concordia

DICK ROGERS WILL TRY . . . HE'S YOUR KIND OF GUY



VOTE for VIGOROUS LEADERSHIP

- ★ NATIVE KANSAN
- ★ B.S. DEGREE K.S. UNIVERSITY '43
- ★ LAW DEGREE KAN. UNIVERSITY '47
- ★ VETERAN — BOMBARDIER — ITALY (1944-1945)
- ★ CITY COMMISSION, MANHATTAN (4 YEARS)
- ★ MAYOR, MANHATTAN, KANSAS (2 YEARS)
- ★ COUNTY ATTORNEY, RILEY COUNTY (1954-1958)
- ★ REPUBLICAN STATE CHAIRMAN (1962-1964)
- ★ STATE REPRESENTATIVE—57TH DIST. (4 YEARS)

Richard D. Rogers for State Senator
REPUBLICAN
15th DISTRICT

Study Could End Hail Threat

Claims that the Russians have found effective means of suppressing hailstorms has put new force into studies in America to do the same.

While there has been some scepticism that the Russian's six-year study has produced the results claimed, some scientists at the National Center for Atmospheric Research in Boulder, Colo., figure the Soviets are markedly ahead in this field of weather research and may very well be doing what they claim.

At Boulder, scientists of the federal Environmental Science Services administration and Colorado State University, admit they have a great deal to learn but are gradually gleaning data out of their indefatigable search.

For one thing, U.S. scientists are not yet certain of differences in a thunderstorm and a hailstorm.

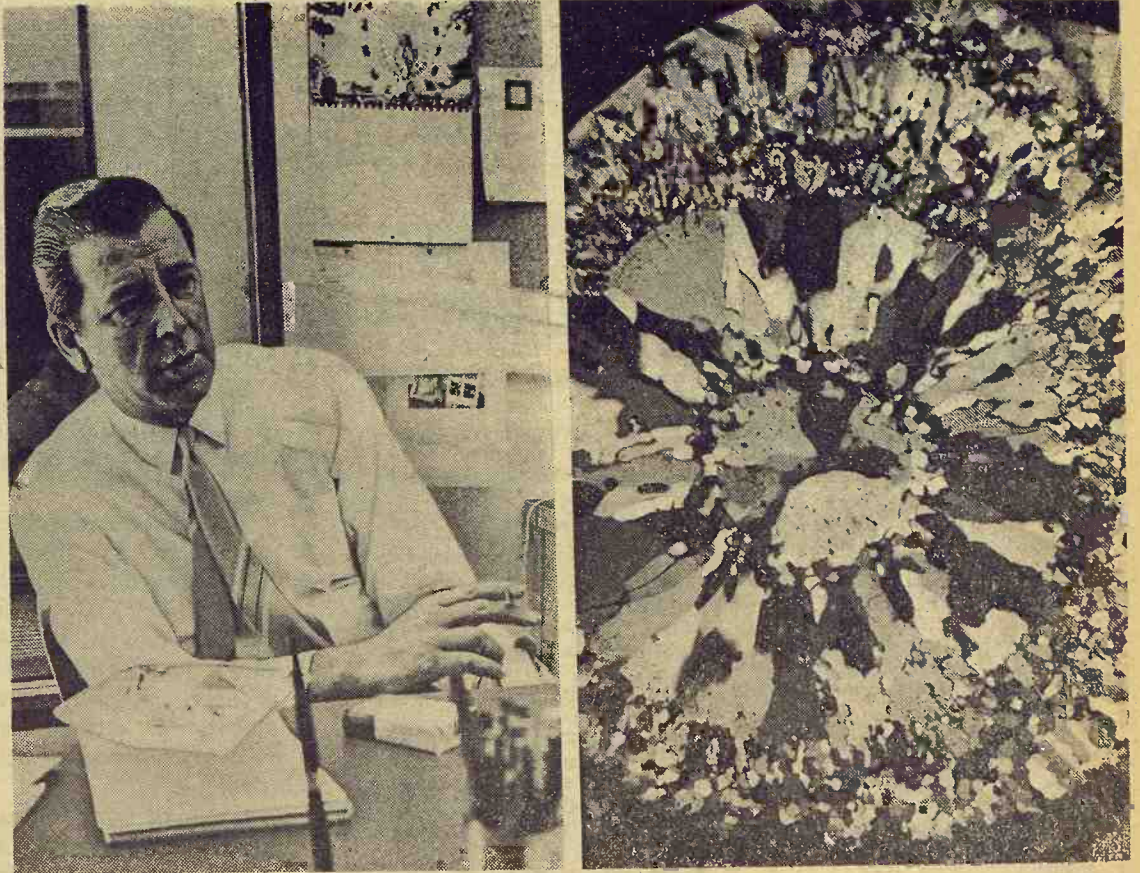
Says Dr. Guy Goyer, head of the department at Boulder "We think we know what it takes to form hail. A primary requirement is strong convection, or strong vertical updrafts. The mapping of the updraft can be carried out by using radar to track small balloons fitted with corner reflectors."

He said the temperature at the maximum updraft level had been found to be a critical factor in determining whether rain, hail or snow would fall.

"If the maximum updraft velocity occurs at a point in the cloud where the temperature is above minus 5 degrees centigrade, all you can get from such a cloud is rain. Between minus 5 degrees and 20 degrees you will get large hail, because under these conditions a few of the cloud droplets freeze and give rise to large stones. And if the temperature is lower than minus 20 degrees, droplets freeze and give rise to small hailstones, snow or snow pellets."

The subject, of course, is more complicated than that, but it points up the basic problem: define a hailstorm formation, be able to recognize it in good time, and then be able to break it up.

The most commonly accepted principle — but one on which there is not unanimity or full experimentation — is seeding clouds with freezing nuclei (silver iodide) to increase the number of hail embryos — that is, those formations from which hail can develop.



Dr. Guy Goyer is head of the study which aims to identify and suppress hailstorms. At right is a cross-section photograph of a hailstone, showing its crystal structure.

The amount of water a cloud can hold theoretically is "fixed" or held steady by the maximum updraft velocity. If the number of natural freezing nuclei is small, each ice crystal may grow into a large hailstone. But if the number is increased by seeding silver iodide, more ice crystals will form and each will receive a smaller share of the available water and thus grow to a smaller size than they would naturally.

The Soviets say they have developed a method of controlling hailstorms with radar, anti-aircraft shells and silver iodide particles.

It has been the intention of

the U.S. study group to seed several potential hailstorms with silver iodide crystals fired from a specially outfitted T-33 jet. Because of the danger in using conventional rockets, a custom-designed rocket was developed but too late for practical application this summer.

Work at the Boulder project was somewhat limited this year, because there was less hailstorm activity than usual. "We seemed to suppress hailstorms this year by our mere presence," Goyer said.

AUCTION SALE

Thurs. Evening

AUGUST 1

Starts 6:00 p.m.

I will sell at public auction my antique clocks and other items at my house at 920 Clay St., Clay Center, Kansas.

Antique oak marble top commode
Antique oak commode
Antique piano stool
4 section antique school book case
2 round oak tables
Child swing set with slide
Quick Aid heavy duty foam fire extinguisher
Randolph carbon dioxide fire extinguisher
300-lb. cap. air bubble; push type lawn mower; GE upright vacuum sweeper
Pipe vise; some thread cutters; new 1/2 inch Black & Decker heavy duty electric drill; some new planters and whatnots.
New Sears Kenmore 11-cup chrome on aluminum percolator; some new 3-piece plastic drape sets.
Antique lard press; antique cherry pitter; pair antique brass candle holders; small toy cast iron stove without lids
Some antique kerosene lamps; 1 old cistern water pump; old molding plane with

blades; old push type seed planter; some antique hand tools; a few pieces of ironstone china.
Antique clocks as listed: 1 Waterbury iron mantle clock, pat. 1878; Waterbury 2 bar strike mantle clock; Seth Thomas 1 bar strike mantle clock; Session mantle clock.
Ingraham mantle clock; Seth Thomas kitchen clock; Ingraham kitchen clock; walnut Gilbert kitchen clock.
Walnut New Haven kitchen clock; walnut Ingraham kitchen clock; Waterbury kitchen clock; E. N. Welch kitchen clock; Ansonia mantle clock; Session Westminster chime clock.
Ingraham 30-day wall regulator clock; New Haven 36 inch schoolhouse clock; Waterbury 36 inch wall regulator clock; all clocks are clean and running.
58-piece set of Wood Rose pattern dinnerware, new; some walnut and oak lumber; some new cans of paint; other miscellaneous items.

Charley W. Woods, Owner

Aucts: Foster Kretz, Elmo Steffen and Gail Hauserman

Clerk: Union State Bank

SYLVAN SALES COMPANY INC.

AND
MEYER STOCKER - FEEDER
Sylvan Grove, Kansas

SALE EVERY FRIDAY

Micky Meyer - Phone 526-3295 Mike Meyer - 526-3535
Sale Barn - Phone 526-3225

RADIO PROGRAMS:
KRSL Russell - 990 on dial Monday through Thursday - Noon at 12:40 - Friday Morning 7:15
KMMJ Grand Island Nebr., 750 on Dial 7:30 Friday Morning

AUCTION

I will sell by public auction the following listed and described items, household & antique located at 433 Northeast 8th in Abilene, Kans.

SAT., AUG. 3

Starts 12:30 Noon

Frigidaire upright large deep-freeze, like new
Small dropleaf dinette set with 4 chairs
Antique kitchen cabinet
Antique pie cupboard
Antique wash stand
Round oak table, good
Oak buffet, good
6 good oak dining room chairs
1966 Curtis Mathes stereo comb. with radio
Hide-away bed like new
Antique slant front desk
Kroeler divan & chair, like new
Walnut coffee table, like new
Good practice piano; piano bench; two late model 5 drawer chests, like new
5 drawer chest, good
Metal bed with innerspring mattress
Single bed with innerspring
2 matching bookcases
Small oak dresser; 4 rockers
Oak highboy dresser, good
Maytag wringer washer, like new
Metal bed with innerspring mat.
Oak dresser; oak library table
10 drawer wood filing cabinet
Antique wash bowl
Antique pine rope bed, good
Antique dry sink
Antique walnut dresser, good
Antique walnut dropleaf table
Antique bedspread; antique brass bucket; antique mantel clock; some dated fruit jars; 2 kerosene lamps; large jugs & crocks.
Underwood portable typewriter
Model 30 Electrolux sweeper
Paper hanging tools; lawn cart; garden tools; shovels; step ladders; dishes; cooking utensils; bedding and other misc. items.

TERMS: CASH

Mrs. Ray Witter

Owner
Carl & Wm. Schnell, Aucts.
Farmers National Bank, Cashier
Karl Harshman, Clerk

Household, Antiques, Store Goods

AUCTION SALE

Saturday

AUGUST 3

Starts 10:00 a.m.

(Note Time)

To settle the estate of Julia Wimer, we will sell at public auction at the home at 219 East Lincoln St., in Waterville, Ks.

Household Goods

Emerson upright piano and bench
Coronado frost free refrigerator freezer, good condition
Detroit Jewel gas range
Breakfast table and chairs, nearly new
Divan and chair, nearly new
Swivel rocker, nearly new
2-piece bedroom suite, like new
Oak dresser; 3 smoking stands; 2 table lamps; 2 gas heating stoves; Radiant heater; oil heater; 4 small tables; Zenith table radio; 2 utility cupboards; wringer washing machine; handy hot portable washer; 3 straight chairs.
Singer T sewing machine; set of carefree Syracuse china
Misc. dishes, pots and pans
Misc. bedding and linens
Misc. Hand tools
Extension ladder; 3 step ladders; grocery cart; garden hose.
Weyth weed sprayer; porch swing; bird bath; 5 lawn chairs; yard ornaments.

ANTIQUES

Large wall mirror; 4 rocking chairs; walnut bed; walnut grandfather clock; mantle clock; small clocks; walnut candle stand; acorn pulls; china closet; maple drop leaf table, 4 chairs; 3 folding sewing tables; bookcase with glass doors; slant front desk; oak leather chair; 2 cedar chests; trunks and storage boxes.

ANTIQUÉ DISHES

2 sets P.G. cream and sugar
2 cruets; custard glass; 1 china, 1 blue glass toothpick; Bavarian creamer, sugar, teapot; chocolate set; milk pitcher; covered butter dish; 2 water pitchers; 4 P.G. bowls; misc. pieces; berry set; sauce dishes; some pictures.
5 carnival sherbets; carnival bowl and sugar bowl; cake stand; candle sticks; 11 assorted plates; 1 hand painted and 1 Bennington bowl; covered

vegetable bowl; 2 small copotes; 2 cow bells.
Wooden bowls; coffee mill; clothes; feather fan; sandalwood fan.
SILVER, Old and New
Covered vegetable bowl; sugar bowl; butter dish; pitcher; water pitcher; platters; cream and sugar; flatware.
ORIENTAL ANTIQUES
24 hand woven Philippino baskets
Many pieces hand embroidered Philippine and Chinese linen and silks
Some Chinese dishes and brass items
Miscellaneous articles
NEW GIFT STORE ITEMS
Step tables; 2 table lamps; 2 pictures; TV antenna; new Alliance antenna rotor; set red glass dishes; set pink glass dishes; 2 egg plates; 20 misc. plates; 10 vegetable bowls; refrigerator dishes.
5 green glass bowls; 11 Fire King mugs; 50 Pyrex bowls and baking dishes; electric kitchen clock; 12 plastic baskets; 9 platters; 3 pop-up toasters; 5 jewel boxes; 2 banks; 1 tie rack; 12 plastic baskets; 3 carving sets; 2 music boxes; 2 cigarette and ash tray sets; 2-burner hot plate; electric fan; one dozen decorative bowls; 6 dozen water glasses; 10 boxes dusting powder; 6 boxes face powder; sachets; 2 dozen perfumes; bath salts; 2 folding irons; 75 vases; 15 Toby cups; 12 small Toby cups.
12 cigarette boxes; 5 cigarette lighters; 10 ash trays; 20 pair figurines; 75 pair salt and pepper shakers; 20 boxes stationery; 3 Mohawk brush sets; 30 new and used sheets; 50 new and used towels; 60 new and used table cloths; 90 pieces of new material for dresses, etc.
New muslin and sheeting in rolls; curtains and drapes; hand pieced quilted quilt; pieced velvet quilt top.

Julia Wimer Estate

Don Roche, Auct. & Real Est. Broker
Blue Rapids, Kans.

Clerk: Citizens State Bank, Waterville

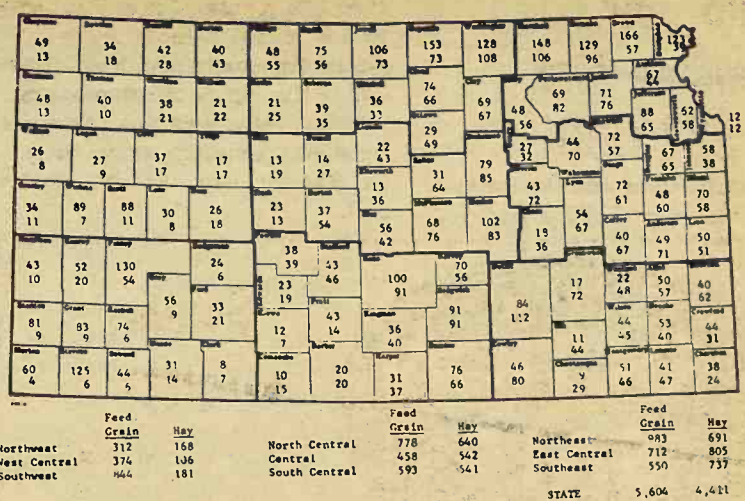
rday
ST 3
0:00 a.m.
ribed perso
mory at the
13 twisted
sses; Star
resser and
collection
ooks.
tors spoons
demitasse
ed plated
e, pickle an
an glass,
candlesticks
sugar shell
s; 35 souve
vase.
e; sterling
pickle fork
of twelve
dd serving
steak knives
es; pitcher
and creamer
owl and trap
This is silver
e, saw tooth
lated double
and hewn 5
double shell
ter water
ated double
ish dish; 1
ible bowl; 1
ad and butter
andwich tra
; blue footle
y shell footle
holder; 6 co
ers; crystal
tal ash tra
ox; solid 14
cket watch
ass clock; 2
glass clock;
and gold can
y other items
ND RINGS
watches
not listed her
Estate
Clerk: Cl
County Bu
y. Pigs
igs weigh
ses with
to \$19.50.
ing from
specially
re infor-
t.
20.40 ea
19.25 ea
19.00 ea
15.75 ea
19.60
27.40
23.05
25.90
26.60
lock
ansas
nce
CO.
IG, Manager
n, Nebraska



take, but that motorists who think they might be due a refund should contact their agents to make certain.

Assigning symbols resulted from the inadvertent use of retail price lists instead of manufacturer's price lists which normally are the basis for rating symbols.

The types of cars affected, Sullivan's office said, are the 1967 models of the Chrysler Newport, Chrysler Newport Custom, the eight-cylinder Plymouth Valiant Signet, the six-cylinder Plymouth Belvedere II, the eight-cylinder Plymouth Belvedere I and the eight-cylinder Belvedere II.



Where Cattle Feed Comes From

This map shows the average annual feed grain and hay production by counties for the years 1961-65. The top figure is for feed grains (grain sorghum, corn, oats, barley) and is in thousands of tons. The bottom figure, also in thousand tons, is for hay output.

Nitrate Difference

A field day at the Sandyland Experiment Field south of St. John September 4 should show further differences between irrigated corn having nitrate fertilizer and corn having no nitrates. Alan McMillan, ag engineer at the station, measures the current difference. The test is one of several dryland and irrigated field tests at the St. John station.

Error May Give Home Auto Insurance Refunds

Some Kansas motorists with certain models of 1967 Plymouths and Chryslers may be eligible for refunds on comprehensive and collision insurance premiums they paid, Insurance Commissioner Frank Sullivan said last week.

"The situation is caused by insurance company error in assigning a higher rate symbol to these certain vehicles than should have been applied," Sullivan said.

The state insurance commissioner said his office has not yet determined which specific companies are affected, but that most of the 300 companies doing business in Kansas probably would be involved.

He said most of the companies affected are aware of the mis-

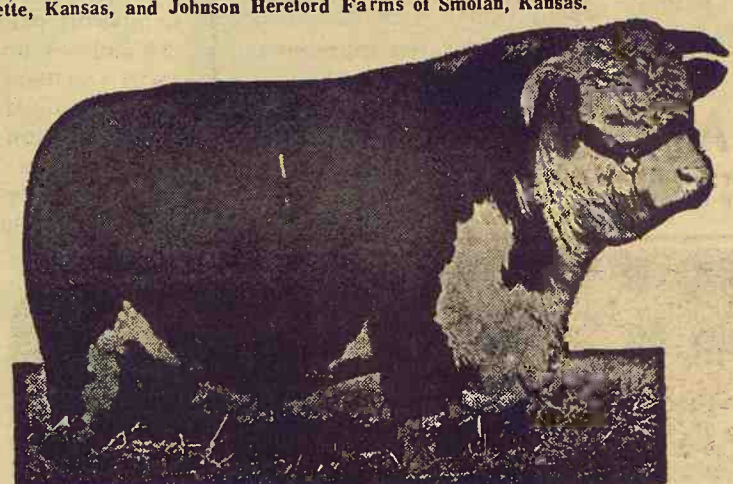
Sale of Registered Herefords

To Be Held Monday, August 5th at the Beverly Stockyards Co. at Salina, Kansas

Located on East Highway 40

Sale Time 12:30

Selling 160 registered Herefords from the ranches of Schlickau Herefords of Argonia and Haven, Kansas; Linstrom Brothers of Marquette, Kansas, and Johnson Hereford Farms of Smolan, Kansas.



SCHLICKAU OFFERING

25—Cows 3 to 5 years old, heavy with calf
25—2-Year-old heifers, heavy with calf
Above cattle mostly sired by LJC Onward 51 and are bred to Tex Real Onward 178 a 2,200 lb. bull, a son of H. D. R. Real Onward 166th.
These cows will start calving in October
25—Yearling heifers sired by Onward and Regulator bulls and are ready for service this fall
25—Open heifers off the cows are sired by Onward and Tex Onward bulls
Also offering a few 20-month-old bulls

LINSTROM BROS. OFFERING

18—Bred heifers are mostly Mischief breeding are bred to Albert Mitchell bred bulls
10—Open heifers of mostly Mischief breeding
Also offering 3 bulls

JOHNSON HEREFORD FARMS

12—Cows, some to calve this fall, some of the cows are bred to Tex Real Onward bulls
10—Yearling open heifers, ready for service this fall
Most of the females will be offered in lots of 5. All of the above cattle are registered and papers will be furnished and transferred to the buyers.

AUCTIONEER'S NOTE

The above cattle listed are a wonderful set of cattle and carry some of the best blood in these lines of Herefords. This gives you an unequalled opportunity to add to or start a new herd.

H. M. JENSEN, Auctioneer
Phone TA 3-8445, Salina, Kansas

JAMES FORSHEE, Sales Manager
CH 3-4717, Concordia, Kansas

Cattle being offered are free to go anywhere.

AUCTION SALE

Saturday
AUGUST 3

Starts 9:30 a.m.
Lunch Served

Due to the death of my husband I will sell the following items at the farm 1/2 mile west and 1/2 mile south of Kipp or 2 miles west and 4 1/2 miles north of Gypsum, Kansas.

Machinery

- 1964 IHC 806 tractor, 615 hrs., power steering, fast hitch, 2 point, gas, like new
- 1959 IHC 560 gas tractor, power steering, 2 point, row crop, radio
- 1965 IHC No. 550 plow, 5-16, steerable
- 1959 IHC No. 70 plow, 4-16
- 1964 IHC No. 47 baler
- 1964 IHC No. 16 side del. rake
- 1964 IHC No. 100 mower, 9 ft., 2 point
- 1964 IHC No. 10 drill, 7-18 double disc rubber press, fertilizer attachment
- 1966 Borrell carriers with 7 section spring tooth
- IHC 4-row planter
- IHC No. 463 cultivator, 4 row
- IHC No. 37 wheel disc, 14'
- 1965 5 section drag harrow
- 4 section rotary hoe

- MISCELLANEOUS**
- Weed sprayer on wheel with 20' boom
 - 1960 Oldsmobile car
 - 1952 Chevrolet truck, half ton
 - Post hole digger, 2 pt.
 - Davis feed mill with auger
 - 3 bale wagons, 4 wheel
 - 2 wheel trailer
 - Clipper fan mill
 - 2 1350 Eaton steel bins
 - 24' 3" auger with electric motor
 - 24' 4" auger with gas motor, on 2 wheels
 - Steel hog feeder
 - Steel cattle feeder
 - JD 3-14 plow; steel gates; manure loader; drag harrow carriers
 - 6 head lambs
- This equipment has been used very little. Has been shedded and taken excellent care of. An opportunity to buy almost new machinery at auction. Many items not mentioned.

Gene Tarn Estate

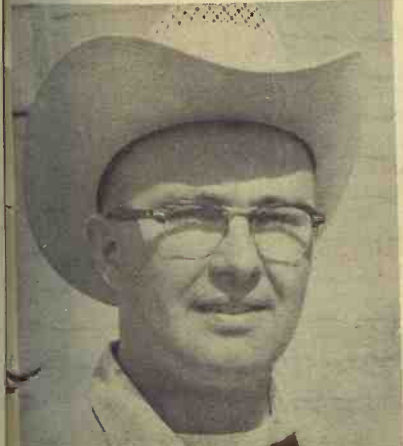
Auct: Paul M. Brown, Smolan
Phone Salemsborg 1336

Clerk: Gypsum Valley National Bank

Cloud County Livestock Commission Co.

Concordia, Kansas

Sale Every Saturday



Steady receipts on an active market with all classes of stock selling steady to stronger. Lighter weight cattle regained their loss compared with the previous week. The feeder pig market was very active. We had 200 top quality pigs offered Saturday. Although numbers were down, the price was stronger.

- STOCKER & FEEDER STEERS**
- 2 whifce steers350 @ 28.80
 - 7 blk steers420 @ 28.00
 - 3 whifce steers640 @ 26.60
 - 3 cross bred steers433 @ 28.50

- 2 whifce steers 500 @ 27.80
- 3 blkwhif steers680 @ 26.10

COWS

- 1 holstein cow 1210 @ 17.40
- 1 hol cross cow/w clf @ 210.00 pr.
- 1 whifce cow 1095 @ 18.50
- 1 jersey milk cow @ 190.00 hd.
- 2 black cows1095 @ 17.00

STOCKER & FEEDER HEIFERS

- 9 whifce heifers 340 @ 25.60
- 9 black heifers 400 @ 25.00
- 6 whifce heifers 412 @ 25.60
- 1 whifce heifer 735 @ 24.60

HOGS

- 24 mix fder pigs@ 18.25 ea.
- 10 mix fder pigs@ 18.75 ea.
- 19 weaning pigs@ 12.00 ea.
- 27 mix weaning pigs@ 15.00 ea.
- 40 weaning pigs@ 13.25 ea.
- 17 fder pigs@ 16.75 ea.
- 3 butchers.....200 @ 20.50
- 9 butchers.....215 @ 20.65
- 10 butchers 211 @ 20.60
- 4 butchers.....240 @ 20.70
- 2 sows350 @ 15.10

"Buying all classes of slaughter hogs daily 7 a.m. to 12.00 at the Sale Barn."

For Information or Estimates:
GAIL GARTON, Concordia 243-1181

LEO RAUCH, Clay Center 632-3092
Radio KNCK '1370' 6:45 T.T.S.

J.M. "MATT" DAVIS, Delphos 623-4543

G&G Calendar

- Aug. 2 — Farm sale southeast of Belleville, Kans., Mr. and Mrs. D. W. Cory. Auctions Larry Lagasse and Rollie Lagasse.
- Aug. 3 — Furniture and antiques in Concordia, Kans., Dr. E. R. and Olive Ingersoll estate. Auctions Larry Lagasse and Rollie Lagasse.
- Aug. 3 — Farm sale northwest of Gypsum, Kans., Rose Tarn, conservator of Gene Tarn estate. Auction Paul M. Brown.
- Aug. 3 — Household and antiques in Abilene, Kans., Mrs. Ray Witter. Auctions Carl and Wm. Schnell.
- Aug. 3 — Farm sale southeast of Moundridge, Kans., John Toews. Auction Ted Krehbiel.
- Aug. 3 — Watchmakers items in White City, Kans., P. S. Williams. Auctions Remy & Sharp.
- Aug. 3 — Real est., furniture & watchmakers' tools in White City, P. S. Williams. Auctions H. M. Sharp and Lee Remy.
- Aug. 3 — Farm sale northeast of Hesston, Kans., Henry Schneider. Auction Ed Reimer.
- Aug. 3 — Antique and household sale, Julie Wiemers, Hanover, Kans. Don Roche, auct.
- Aug. 3 — Antique and household sale, Julie Wimer, Waterville, Kans. Don Roche, auct.
- Aug. 4 — Cafe Equipment in Blue Rapids, Kans., Mrs. Archie Rowland. Auction Don Roche.
- Aug. 9 — Surplus CCC steel bins, Manhattan, Riley County ASCS office.
- Aug. 9 — CCC bins, site No. 4, Manhattan, Kans., auct Vernon R. Ewing.
- Aug. 10 — Farm sale southeast of Newton, Kans., Leo McCann. Auction Ted Krehbiel.
- Aug. 10 — Evening sale in Tallmage, Kans., Mrs. Vivian Gormley. Auctions Carl and Wm. Schnell.
- Aug. 10 — Farm sale southeast of Newton, Kans., Menno Nickel. Auction Ed Reimer.
- Aug. 12 — Dairy sale north of Clay Center, Kans., Hector Girard. Auction Foster Kretz.
- Aug. 14 — Farm sale southeast of Green, Kans., Mr. & Mrs. Herbert Mugler. Auction Foster Kretz.
- Aug. 17 — Household goods sale, Nina Modeen, Waterville, Kans. Don Roche, auct.
- Aug. 26 — Performance tested boar sale, Riley county fairgrounds, Manhattan, Kans., Kansas Swine Improvement Assn., R. H. Hines, supervisor.

- Aug. 30 — Lloyd Carlson family Holstein dispersal northeast of Concordia, Kans., registered & grade. John Carlin, sale mgr.
- Sept. 14 — Kansas Quarter Horse Assn., State Fair Sale, Hutchinson. Bob Wilson, Box A, St. George, Manager.
- Oct. 1 — Complete Angus cattle dispersal in Hays, Kans., Pohlman's Angus Ranch of Natoma, Kans., A. F. Pohlman.
- Oct. 7 — Polled Hereford dispersion, Otis, Kansas. Fritz Kerbs & Son. Sale mgr. Vic Roth.
- Oct. 9 — Polled Hereford dispersion, WaKeeney, Kans., San-R-Ranch. Sale Mgr. Vic Roth.
- Oct. 14 — Balthrop Farms Hampshire hog sale in Newton, Kans., John Balthrop, Wichita, Kans.
- Oct. 31 — Angus production sale, Wymore, Nebr., Double "C" Angus Farm, Clement C. Jones.
- Nov. 1 — Hammarlund & Shamrock annual Angus sale in St. Marys, Kans.
- Nov. 11 — 23rd annual Hereford production sale southwest of Haven, Kans., W. H. and Harold Tonn, Auct. Harold Tonn.
- Nov. 19 — Annual production sale of registered Herefords, Marysville, Kans. Elmer Peterson & Son.
- Nov. 20 — Annual production sale of registered Hereford cattle, Elmer L. Johnson & Sons, Smolan, Kans.
- Nov. 23 — Kocher Herefords production sale, Onaga, Ks.
- Dec. 14 — Marshall County Hereford Assn. sale in Marysville, Kans., Arlyn Scheller, sec-treas.
- Jan. 21, 1969 — Annual Rebenstorf Hereford production sale, Sylvan Grove, Kans., Elmer Rebenstorf.

Bank of Wichita, said that the Kansas associations, with 27 other associations in Oklahoma, Colorado and New Mexico loaned a total of \$651.3 million during the year. This was pictured by Lyon as a 14 percent increase in lending for the four-state district.

"The PCA's, to assist in reducing inflationary pressures in the national economy, have directed these funds into the most productive agricultural credit needs of their borrower-members," Lyon stated. On June 30, 1968, over 13,500 members had loans with the associations of the district," he said.

The Federal Intermediate Credit Bank, through the sale of debentures, provides short and intermediate term lending funds for the Production Credit Associations.

The 41 production credit associations in the four-state district

own 46 percent of the capital stock of the Federal Intermediate Credit Bank of Wichita with a total value of \$8.8 million. "Eventually," Lyon stated, "these member-owned associations will gain full ownership of the Credit Bank through the stock purchasing program.

BEE COLONIES ABOUT AVERAGE IN STATE

There are about 49,000 bee colonies in Kansas presently about average for recent years. About a sixth of the colonies are newly established. The condition of nectar on July 1 was regarded at 81% of optimum, slightly below average for recent years but better than the U.S. average of 77%.

In California, the leading honey producing state, dry weather has retarded growth of wild nectar producing plants. Minnesota — second ranking producer — figured about average.

Real 'F...
That new...
could turn...
the home...
consider the...
foundation...
gests a Kans...
soil scientis...
The K-State...
that new ho...
spend month...
most everyth...

The No. 1 Hog Market In Kansas

WASHINGTON SALES CO.

TRY US SOON
HOGS every TUESDAY
CATTLE every WEDNESDAY

YOU GET ACTION
AT THE WASHINGTON AUCTION **ED BURT**

Barn Phone EA 5-2266 Residence EA 5-2393
Washington, Kans.

J.C. LIVESTOCK SALES
INC.
SALE EVERY SATURDAY

HOGS START AT 11:00 A.M.
CATTLE AT 1:00 P.M.

Although the rain and mud kept some of our consignments away Saturday and slowed the sale somewhat, we still had a good market and a fair run of both cattle and hogs.

The cattle market was steady to strong all the way, especially cows that were \$1.00 to \$1.50 higher than a week ago. Calves were steady to strong, and feeders were strong although receipts were light on this class.

Hogs seemed to show recovery strength in the market last Saturday, with the better butchers moving through the ring at \$20.40 to \$20.60. Our four packer buyers are back and are needing all the good butcher hogs you can bring to fill their orders.

We have a lot of cattle to look over for this coming sale Saturday. We have quite a number of buyers looking for feeder cattle, so this is a good time to bring them in. Call us if we can help you on them.

Following is a sampling of the sale last Saturday:

STEER CALVES			FEEDER HEIFERS		
7 whif str	325 @	31.50	51 whif heifers	755 @	25.50
6 whif str	405 @	29.60	18 blk heifers	671 @	25.50
5 whif str	425 @	29.40	9 whif heifers	595 @	24.50
9 blk str	483 @	29.10	3 whif heifers	595 @	25.50
5 bwf str	506 @	29.00	5 whif heifers	810 @	25.50
23 blk str	520 @	28.70	HOGS		
6 blk str	554 @	28.20	22 mix butchers	229 @	20.50
7 blk str	520 @	28.95	19 mix butchers	237 @	20.50
HEIFER CALVES			35 mix butchers	218 @	20.50
4 blk heifers	454 @	26.10	21 mix butchers	221 @	20.50
8 blk heifers	467 @	25.65	22 @	20.50	
11 blk heifers	496 @	25.10	41 hamp hogs	226 @	20.50
4 whif heifers	455 @	25.40	19 red hogs	222 @	20.50
13 bwf heifers	488 @	25.30	47 mix hogs	221 @	20.50
4 whif heifers	455 @	25.40	1 red sow	350 @	17.50
COWS			1 whi sow	353 @	17.50
We had an exceptionally good run on cows; they brought from \$16.50 to \$18.00. Other cows brought from \$14.00 to \$16.50. Good hfrett cows brought from \$18.00 to \$22.00.			4 mix sows	395 @	17.50
			10 whi sows	605 @	15.50
			1 whi sow		

PIGS

Pigs were higher this week. Shoats from 50-80 lbs. brought from \$17.00 to \$19.75 per lb. Smaller pigs brought from \$16.00, and little pigs brought from \$10.00-\$13.00.

R...
TO...
We wish...
ple for m...
successfu...
We visit...
sellers a...
time and...
With big...
many of...
night an...
a lot of...
counties...
own Dic...
Most ma...
this past...
day nigh...
strong o...

1 holste...
1 holste...
1 cow...
1 cow...
1 cow...
1 cow...
1 cow...
1 cow...
1 cow...
1 cow...
1 cow

STOC...
5 bw ste...
1 bw ste...
8 black...
3 black...
8 blk & t...
3 black...
8 black...
53 whif...
6 whif...
40 whif...
16 black...
15 black...
29 blk &...
4 whif...
15 blk &...
18 red...

CAL...
For in...
obligation...
call me a...

DUD...

Ronald Rice Motors, Inc.

CHEVROLET OLDSMOBILE CADILLAC
North Kansas' Largest Volume Dealer
NW 2nd Phone CO 3-4000 ABILENE, KANS.

All New 1968 Cars & Trucks
All 1968 Demos & Executive Cars
Selling at Discounts
up to \$1000

This is the model-end clearance that hundreds of smart buyers look for each year. This is the time Ronald Rice clears the showroom and the warehouse of new cars, demonstrators and executive cars and trucks. No one but Ronald Rice Motors has a sale like this. And over 75 used cars & trucks, such as:

100 NEW CARS & TRUCKS
IN STOCK, READY FOR DELIVERY

- 1967 CHEVROLET Impala 2 dr. hardtop \$2695
327 V-8, radio, heater, automatic transmission, power steering, power brakes, air conditioner. Was \$2895.
- 1967 CHEVROLET Caprice 2 dr. Hardtop V-8 \$3095
Radio, heater, automatic transmission, power steering, power brakes, air conditioner. Was \$3295.
- 1967 FORD XL Convertible V-8 \$3095
Radio, heater, automatic transmission, power steering, power brakes, air conditioner, low mileage. Was \$3295.
- 1966 CHEVROLET Bel Air 4 dr. V-8 \$1895
Radio, heater, automatic transmission, power steering, air conditioner. Was \$2095.
- 1966 CHEVROLET Bel Air 4 dr. V-8 \$1895
Radio, heater, automatic transmission, power steering, air conditioner. Was \$1995.
- 1966 PONTIAC Starchief 2 dr. Hardtop \$2395
Radio, heater, automatic transmission, power steering, power brakes, electric seats, electric windows, air conditioner. Was \$2495.
- 1965 MUSTANG 2 dr. Hardtop \$1795
Radio, heater, 4 speed transmission. Was \$1895.
- 1965 CADILLAC Sedan deVille 4 dr. Hardtop \$3095
Radio, heater, automatic transmission, power steering, power brakes, electric seats, electric windows, air conditioner. Was \$3295.
- 1966 CHEVROLET 1/2 ton LWB Fleetside Priced Right
Real clean, V-8, 4 speed transmission, radio, heater, hitch, good tires.
- 1966 EL CAMINO Priced Right
Radio, heater, power steering, power brakes, automatic transmission, bucket seats, a real cream puff, specially priced for this sale only.
- 1966 GMC 1/2 ton LWB Fleetside Priced Right
Radio, heater, hitch, bucket seats, real clean.
- 1965 CHEVROLET 1/2 ton LWB Fleetside Priced Right
New paint, V-8, good tires, another one owner and nice.
- 1965 CHEVROLET 3/4 ton Fleetside, 292 motor Priced Right
New tires, 4 speed transmission, radio, heater, hitch, overloads.
- 1964 CHEVROLET 1/2 ton LWB V-8, regular box Priced Right
New paint, radio, heater, hitch, good.
- 1964 GMC 1/2 ton Four wheel drive Priced Right
4 speed transmission, radio, heater, good tires, overloads, ready to work.
- 1963 CHEVROLET 1/2 ton 4 speed transmission Priced Right
Heater, hitch, new paint, real good mechanically.
These and many other trucks of 1/2 ton thru 2 tons are available for this sale at real money saving prices. Also one of the largest stocks of new units to choose from.

Open Evenings Till 9 p.m.
Sundays 1 to 5 p.m.

TIP TOP

HOLLAND
BALER-TWINE
BINDER-TWINE

695 BALE
6500 WIRE
1050 per carton

Satisfaction
Guaranteed

LARSON
BUILDING CENTER
INC.

5th & Ash TA 7-4467
SALINA, KS.

LICENSED AND BONDED
BARN PH. JUNCTION CITY 'CE & 147

If you have livestock to appraise, call:

VERN LANGVARDT, Manager, 502 UPLAND
HOWARD LANGVARDT, Auctioneer, 520 UPLAND
HERB NEUMEYER, White City, Phone 349-2863

NOT...

