

ers ---418 @ 25.35
 eifers ---420 @ 25.10
 ers ---513 @ 25.00
 ers ---511 @ 24.50
 ers ---514 @ 24.50
 eifers ---463 @ 24.40
 ers ---528 @ 24.30
 ers ---493 @ 24.25
 ers ---478 @ 24.10
 ers ---516 @ 24.05
 ers ---486 @ 24.00
 eifers ---542 @ 24.00
 ers ---462 @ 24.00
 ers ---528 @ 23.80
 ers ---486 @ 23.40
 eifers ---539 @ 23.20

COWS
 ---657 @ 20.00
 ---1270 @ 16.90
 ---740 @ 16.70
 ---1307 @ 15.75
 ---1000 @ 15.50
 ---1295 @ 15.50
 ---1055 @ 15.50
 ---1280 @ 15.50
 ---1130 @ 15.30
 ---1170 @ 15.10
 ---1025 @ 15.10
 ---845 @ 14.90
 ---1228 @ 14.30
 ---1020 @ 13.80
 ---1145 @ 13.60
 ---940 @ 13.50
 ---1070 @ 13.10
 ---1425 @ 12.50

MISSION
 NY
 t. Marys
 Kans
 Salina
 Only
 at 12:00. Cattle will
 they are consigned to

of str 763 @ 24.85
 mix hfs 751 @ 21.15
 blk str 708 @ 24.78
 blk str 742 @ 23.65
 wf str 488 @ 30.40
 of hfs 459 @ 26.55
 hol str 1030 @ 20.35
 wf str 751 @ 25.35
 wf str 813 @ 24.15
 wf hfs 714 @ 22.65
 wf str 491 @ 29.80
 wf hfs 330 @ 25.85

belt hogs 260 @ 17.15
 mix hogs 224 @ 18.15
 whi hogs 224 @ 18.20
 whi hogs 218 @ 18.10
 rd hogs 231 @ 18.10
 mix hogs 233 @ 18.10
 mix hogs 260 @ 17.35
 mix hogs 215 @ 18.15
 mix hogs 230 @ 18.10
 whi hogs 225 @ 18.25
 whi hogs 225 @ 13.75
 blk pigs @ 15.10
 mix pigs @ 14.30
 whi pigs @ 14.30

anchers
 MISSION CO.
 old US 40
 arn Phone
 2211 SALINA, KS
 censed



Fifth Cutting

Quinn Steenbock of Manchester bales fifth cutting of alfalfa hay. Rains have made farming difficult in northern Dickinson County this year but they leave fields in prime condition going into winter.

GRASS & GRAIN

13th year no. 35 October 31, 1967

Here's Fall Feeder Report

Cattle and calves on grain feed for the slaughter market in Kansas feedlots totaled 468,000 head as of Oct. 1, according to the Kansas Crop and Livestock Reporting Service.

This was 2 percent less than the record high of 476,000 for this date a year ago, but up seasonally from the 402,000 head on feed July 1. Large feedlots with a capacity of 1,000 head or more had 266,000 head of cattle and calves on grain feed October 1, up 2 percent from last year and a new high for the date by commercial sized lots.

Farm feedlots had a total of 202,000 head on feed, down 6 percent from a year earlier but the fourth highest in a dozen years of record.

Grain-fed cattle marketed for slaughter during the July-September quarter totaled 310,000, 1 percent less than in the same quarter a year ago.

Cattle and calves placed on feed during the quarter were estimated at 376,000 head, 15 percent more than during the July-September quarter last year.

On October 1, some 362,000 head had been on feed less than 3 months compared with 310,000 a year ago.

Those on feed 3-6 months totaled 99,000 head, down sharply from the 147,000 last year. Those on feed over 6 months totaled 7,000 head compared with 19,000 head the previous year.

Numbers on feed by weight classification showed about one-fifth less for the weights above 900 pounds but 10 percent more for those weighing less.

Numbers this October 1 included 30,000 head weighing over 1,100 pounds, 117,000 head weighing 900-1,099 pounds, 211,000 head weighing 700-899 pounds, 100,000 head between 500-899 pounds and 10,000 head under 500 pounds.

The average daily ration of farm-fed cattle on feed consisted of 15.4 pounds of grain, 1.6 pounds of high protein feed, 1.4 pounds of hay and 9.1 pounds of silage.

Cattle feeder intentions indicate 265,000 head are expected to go to market during the October-December quarter of this year or 57 percent of the number on feed October 1. If realized, this would be 7 percent more than during the same period last year.

Major Feeding States

Cattle and calves on feed for slaughter market on October 1, 1967 in 32 major feeding states is estimated at 8,566,000 head, 2 percent more than a year ear-

lier. The increase in the number in the number of cattle and calves on feed was in those that weighed less than 700 pounds, up 13 percent.

The number on feed weighing over 700 pounds declined 3 percent. Fed cattle marketings during the past quarter were 2 percent above a year earlier. The number of cattle and calves during the quarter was up 8 percent.

The number on feed October 1 was 2 percent less than the number on feed July 1 compared with a 5 percent decrease during the same period in 1966.

Weight, Kind and Time On Feed

The number of head in each weight group and the percentage change from October 1 last year are as follows: under 500 pounds, 706,000 head, up 29 percent; 500-699 pounds, 1,870,000, up 8 percent; 700-899 pounds, 3,064,000 head, down 3 percent; 900-1,099 pounds, 2,563,000 head, no change; 1,100 and more pounds, 363,000 head, down 14 percent.

Steers and steer calves on

feed in the 32 states totaled 6,011,000 head, an increase of 1 percent from October 1 a year ago.

There were 2,539,000 heifers and heifer calves on feed, an increase of 4 percent. Cows and others on feed October 1 totaled 16,000 head, a decrease of 33 percent from a year earlier.

Cattle and calves on feed less than 3 months are estimated at 4,878,000 head, an increase of 7 percent from October 1, 1966.

The total on feed 3-6 months, at 2,419,000 head, was up 5 percent. Cattle on feed 6 months or longer totaled 1,269,000 head, down 20 percent from a year earlier.

MARKETING INTENTIONS

Of the October 1 number on feed, cattle feeders intend to market 4,894,000 head during October, November and December. If these intentions materialize, marketings will be 2 percent above October-December marketings last year from those on feed October 1.

Intentions are to market 35 percent of the three-months total during October, 31 percent during December.

CATTLE AND CALVES ON FEED BY QUARTERS, MAJOR STATES 1/

STATE	October 1, 1967		July 1, 1967		October 1, 1966		Percent of Oct. 1, 1966
	Head	%	Head	%	Head	%	
KANSAS	476	5.6	402	4.8	468	5.6	98
Illinois	510	6.0	570	6.9	530	6.3	105
Minnesota	349	4.1	385	4.6	321	3.9	92
Iowa	1,496	17.6	1,808	22.0	1,495	17.6	100
Missouri	283	3.4	291	3.5	306	3.6	106
S. Dakota	230	2.7	256	3.1	223	2.7	97
Nebraska	1,116	13.2	1,044	12.6	1,164	13.8	104
Texas	509	6.0	584	7.0	644	7.6	127
Colorado	474	5.6	487	5.8	496	5.9	105
Arizona	271	3.2	306	3.7	313	3.7	115
California	1,094	12.8	928	11.1	959	11.4	87
Other	-	-	-	-	-	-	-
States 2/	1,614	19.1	1,662	20.0	1,541	18.3	102
32 State	6,426	76.3	6,724	80.7	6,556	77.3	102

1/ Cattle and calves on feed are animals being fattened for the slaughter market on grain or other concentrates which are expected to produce a carcass that will grade good or better. 2/ Penn., Ohio, Ind., Mich., Wis., N. Dak., Ga., Fla., Ky., Tenn., Miss., Okla., Mont., Idaho, Wyo., N. Mex., Ala., Utah, Nev., Wash. and Oregon.

CATTLE AND CALVES: PLACEMENTS AND MARKETINGS, BY QUARTERS, 1966-67

STATE	NUMBER PLACED ON FEED 1/		NUMBER MARKETED 1/		July-Sept. 1967 as % of July-Sept. 1966	July-Sept. 1967 as % of July-Sept. 1966
	Head	%	Head	%		
KANSAS	326	3.9	376	4.5	115	310
Illinois	286	3.4	327	3.9	114	359
Minnesota	145	1.7	133	1.6	92	187
Iowa	621	7.4	703	8.4	113	1,015
Missouri	175	2.1	168	2.0	108	174
S. Dakota	87	1.0	104	1.2	127	137
Nebraska	776	9.2	785	9.4	101	965
Texas	357	4.2	455	5.4	127	395
Colorado	316	3.7	332	4.0	105	322
Arizona	137	1.6	180	2.1	138	183
California	551	6.5	533	6.3	95	505
Other	-	-	-	-	-	-
States 2/	967	11.5	993	11.8	103	1,014
32 State	4,754	56.5	5,120	60.8	108	5,270

1/ Includes cattle placed on feed after beginning of quarter and marketed by end of quarter. 2/ Same as footnote 2 above.

SELECTED ITEMS, KANSAS AND 32 STATES, OCTOBER 1, 1967

Breakdown of Cattle on Feed	October 1, 1967		October 1, 1966		Percent of Number on Feed
	Head	%	Head	%	
KANSAS	476	5.6	468	5.6	98
32 States	8,090	95.4	8,088	95.4	100
TOTAL	8,566	101.0	8,556	101.0	100

Kinds of Cattle	October 1, 1967		October 1, 1966		Percent of Number on Feed
	Head	%	Head	%	
Steers and Heifer Calves	71	0.8	77	0.9	0.9
Heifer and Heler Calves	29	0.3	21	0.2	0.2
Cows and Others	135	1.6	152	1.8	1.8
TOTAL	466	5.4	468	5.4	100

Weight Groups	October 1, 1967		October 1, 1966		Percent of Number on Feed
	Head	%	Head	%	
Under 500 Lbs.	2	0.0	3	0.0	0.0
500 to 699	21	0.2	100	1.2	1.2
700 to 899	45	0.5	211	2.5	2.5
900 to 1,099	25	0.3	117	1.4	1.4
1,100 Lbs. & Over	7	0.0	30	0.4	0.4
TOTAL	100	1.2	468	5.4	100



Ready For Halloween

Pumpkins by the acre are now being sold from the Muller truck farm east of Solomon. Mary Blanchett holds one of them. She says there are several acres yet to be picked.

\$500 CHAROLAIS AWARD FOR AREA YOUTH

Jan Meyer, 16, of Athol, Ks.,

has won a \$500 award from the American International Charolais Assn. for winning the St. Joseph 4-H and FFA Live Steer and Carcass Show. Meyer is a student at Kensington High School in Smith County.

ONLY \$325 Fully Guaranteed Completely Installed



The Hydraulic Hoist Anyone Can Use At A Price Everyone Can Afford!

PTO operated hydraulic hoist for 10' and smaller beds! Six ton hoisting power. Can be used on 1 ton and smaller trucks.

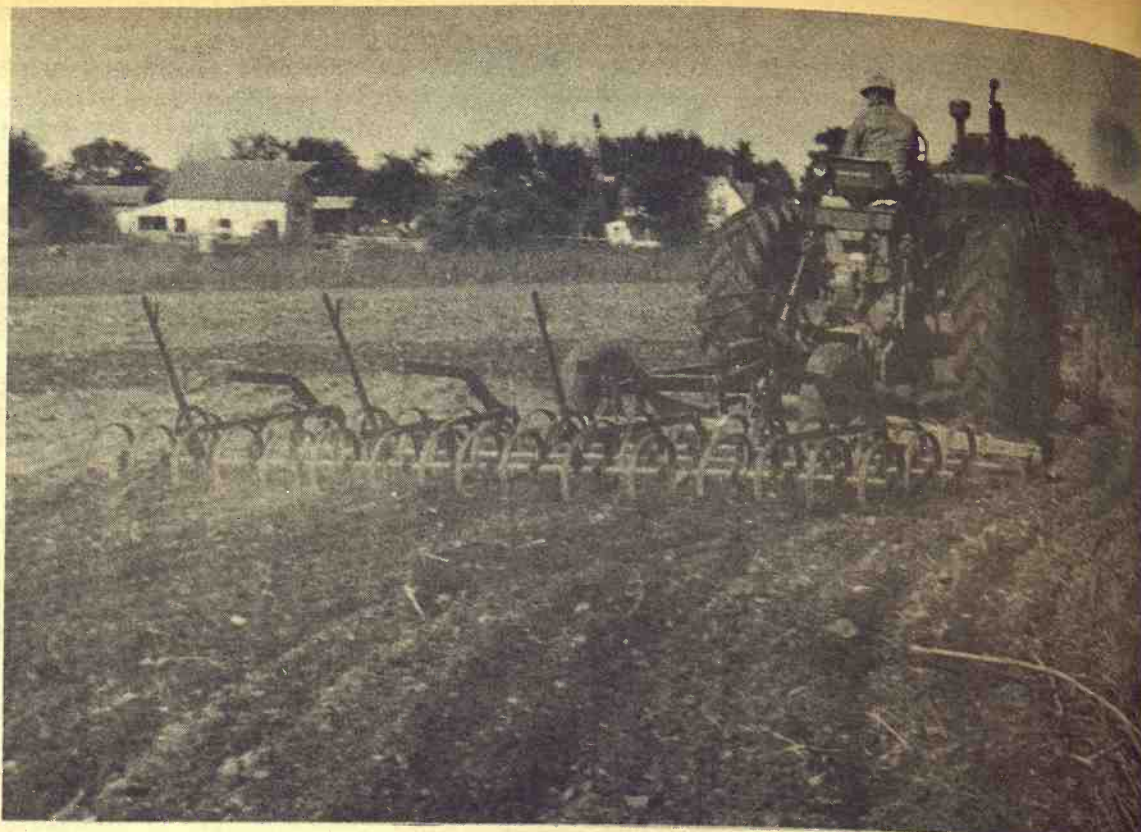
NOW — Even small trucks can have hydraulic hoisting.

Fingertip Control From Cab
Chrome Plated Piston Gives You Smooth, Positive Power



- Durable
- Practical
- Convenient

HAUL-MOR, INC. valley falls, kansas • phone 945-3211



Harrowing

Vernell Bouser harrows ground where wheat has been sown, north of Abilene.

Get More Dollars from Your Milo Crop

"STORE" PART OF THE CASH AT THE UNION NATIONAL

\$15,000 INSURANCE

BY THE FEDERAL DEPOSIT INSURANCE CORP.

OR UP TO \$105,000 FOR A FAMILY OF THREE

5% **GUARANTEED**
6 MONTH CERTIFICATES

SAVE BY MAIL ... IT'S EASY

Union National Bank
MANHATTAN, KANSAS

T. J. GRIFFITH, Chairman of the Board



FARMER AND SON NEAR BERN KILLED

BERN — A Nemaha County farmer and his son were killed last week, when a metal grain auger they were moving touched an overhead power line. Dead are George Thieme, 44, and his son, Paul Wayne, 15.

GRASS & GRAIN

The Mid-Kansas news weekly. Published each Tuesday at 1207 Moro, (Box 1009) Manhattan, Kansas, 66502 by

AG PRESS
Dean Coughenour
E. R. Woodward
Second class postage paid at Manhattan, Kansas.
Subscription: \$3 year
CIRCULATION 11,108

TIME TO TRADE and SAVE

POSSIBLY HUNDREDS of DOLLARS on most new or used **TRACTORS AND COMBINES** financed thru IHCC because

FINANCE CHARGES ARE PAID FOR YOU WELL INTO 1968!
EACH DAY YOU WAIT IS COSTING YOU MONEY

- | | |
|--------------------------------------|---------------------------------------|
| HANOVER
Hanover Impl. Co. | COUNCIL GROVE
Macha-Revere |
| LEONARDVILLE
Kendall Garage | BELLEVILLE
Chapman's On US hwy. 81 |
| HERINGTON
Pioneer Service & Sales | GYPSUM
Kuhn Impl. — OW 6411 |
| MINNEAPOLIS
Chapman Impl. Co. | WAKEFIELD
Auld Chevrolet |
| CLAY CENTER
Norquist's Inc. | MARYSVILLE
Bruna Brothers |
| ABILENE
Abilene Truck & Tractor | FALUN
Dauer Impl. Co. |

FAL...
Go...
Ye...
Agric...
other co...
influen...
farm pl...
many f...
informa...
foreign...
facts to...
own pro...
So, we...
parts at...
in suppl...
mostly g...
Foreign...
In ge...
now hav...
plies of...
carryove...
good cro...
On Jul...
the four...
tries we...
million...
more tha...
four cou...
States, C...
Australia...
corn, wh...
reats.
Wheat...
tated 1.3...
3 percent...
ber. The...
gentina...
but the...
countries...
set by bi...
and Aust...
Most o...
have goo...
world pr...
estimated...
eis, which...
the recor...
Except...
sia, most...
acreage...
But man...
had yield...
passed p...
had a go...

L.H. Simerl

Good Grain Crop Year Overseas

Agricultural developments in other countries often have much influence on the prices of U.S. farm products. Consequently, many farmers have asked for information about conditions in foreign lands. They want the facts to help them plan their own production and marketing. So, we will pass along some reports about farm production in supplies in other countries — mostly gathered by the USDA Foreign Agricultural Service.

In general, most countries now have relatively good supplies of grains. Many had large carryovers from last year and good crops this year.

On July 1, stocks of grains in the four major exporting countries were estimated at 3,700 million bushels — 3 percent more than a year before. These four countries were the United States, Canada, Argentina, and Australia; the grains included corn, wheat, rye, barley, and oats.

Wheat. Stocks of wheat totaled 1,375 million bushels — 9 percent more than a year earlier. The United States and Argentina reported smaller stocks, but the reductions in these two countries were more than offset by big increases in Canada and Australia.

Most of the world seems to have good crops this year. The world production of wheat is estimated at 10,200 million bushels, which is within 1 percent of the record output of 1966.

Except for Europe and Russia, most areas had more wheat acreage in 1967 than in 1966. But many European countries had yields per acre that far surpassed previous records. Russia had a good crop, although not

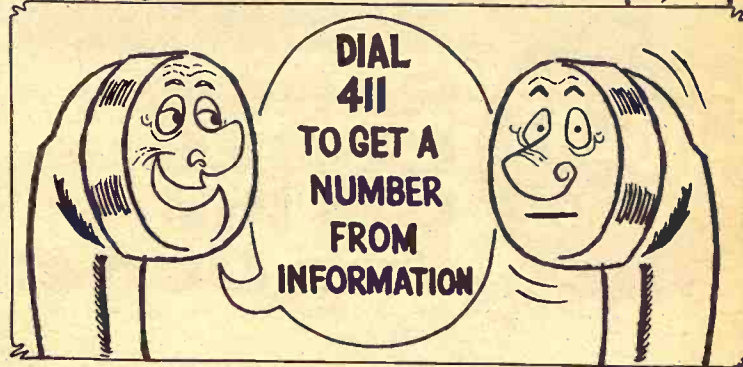
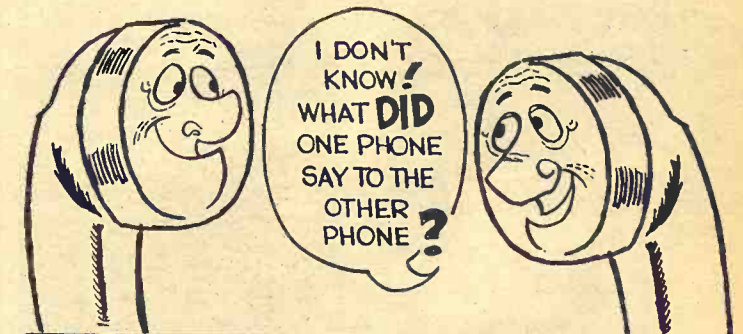
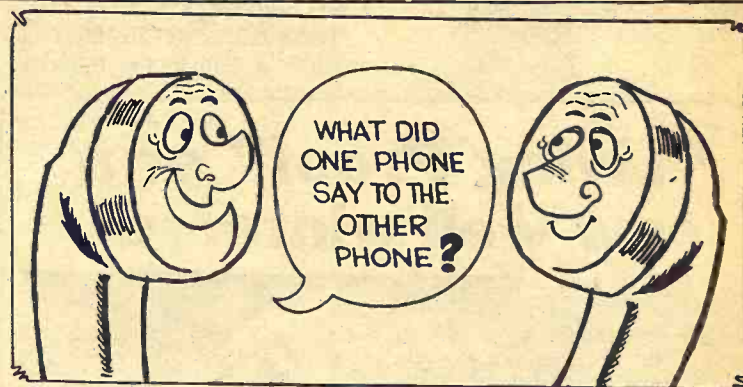
as great as the record output of a year ago. The Canadian crop, also down from last year, is about average. India and most other Asian countries had better wheat crops than the year before. Both Argentina and Australia have much bigger acreages than a year ago; they will be harvesting their crops near the end of this year.

The Australian crop has been cut by drouth, and may total only 280 million bushels — two-fifths less than last year.

Feed Grains. Both Argentina and South Africa harvested bumper corn crops last spring, so they have corn to sell in competition with U.S. corn. As of July 1, stocks of corn in the Argentine were estimated at around 190 million bushels — slightly less than a year before but 40 percent more than the 5-year 1961-65 average. South Africa is expected to have more than 100 million bushels for export this year, about four times as much as in recent years.

Europe has good feed crops this year. The total production of barley in West European countries is estimated at 1,580 million bushels — up 7 percent from 1966. The production of oats and corn also may be larger than last year, and with the big wheat crops, more wheat may be used for livestock feed this year.

L. H. Simerl
Univ. of Illinois



SOUTHWESTERN BELL

MIDWEST RENDERING & SUPPLIES BELLEVILLE, KANS.

We sell meat scraps and fat for feed. We pick up materials from butcher shops, locker plants and fresh dead animals. For service call Belleville: JA 7-5545 or your local number.

Beloit	738-3731	Jamestown	439-2655
Cawker City	781-4711	Leonardville	99
Clay Center	632-3424	Lincoln	524-9990
Clyde	446-3621	Mankato	378-3771
Downs	454-9527	Marysville	443-3726
Fairbury, Nebr. 402	729-2147	Miltonvale	427-3015
Glasco	568-2636	Minneapolis	392-3043
Hanover	337-2291	Morganville	926-3674
Hebron, Nebr. 402	768-6221	Washington	EA 5-2920
Hunter	529-2145	Smith Center	282-3751

Ruskin, Nebr. 226-2261

price protection

Book your feeds for Fall and Winter.

You get price protection . . . If the price goes up, you pay the original price. If it drops, you pay the delivery price . . . no more. You get the better end of the deal both ways.

We can do this because the CO-OP is farmer-owned. We'd better give the boss a good deal!

Call your CO-OP Feed man. He'll come around with your fall and winter feed booking program and with good information for you. If you've got problems in your feeding operation, be sure to tell him about them. He's got the answers for you.

COOP FEEDING PROGRAMS

St. Marys Farmers Union Co-op Business Assn.

Junction City Farmer-Stockman Co-op Assn Council Grove -Junction City CE 8-4158

Alma Farmers Union Co-op Alma Ph. 765-3612 Eskridge Ph 449-2291

Greenleaf Farmers Co-op Elevator Assn Greenleaf-Linn -Washington

Carlton Farmers Union Co-op CARLTON TELEPHONE 31

Manhattan FARMERS Cooperative Assn. Manhattan-Alta Vista -Westmoreland-Onaga

Clay Center FARMERS Union Co-op Clay Center-Bala -Miltonvale-Leonardville

Abilene Abilene Co-op Assn. Abilene CO 3-1660

FROM THE MAKER OF AMERICA'S NO. 1 TIRE VALUES!

A Truck Tire You Can Trust



COOPER

SUPER TRACTION TREAD TRACTION TREAD

Special tread design, extra deep for maximum all weather gripping, pulling power under any road conditions.

What do you need in tires? You always save At **FINK** TIRE SERVICE Warnego, Kans. 450-2575

To LIVE



COMBINES because PAID 968!

What do you need in tires? You always save At FINK TIRE SERVICE Warnego, Kans. 450-2575

Smokers Go For Length

Three-fifths of an inch is creating a flap in the tobacco

"Living Proof" of a cow well wintered!



GOOCH'S BEST

RANGE CUBES Get the Job Done!

These advantages in Gooch's Best get the job done — help cows winter better and build a full crop of strong calves.

- * Full Protein Value Plus Energy — puts more of the protein towards building strong calves.
- * Guaranteed Levels of True Vitamin A — a must for vigorous calves both before and after calving.
- * GBA-50 — The Gooch digestive aid that helps cattle recover more feed value from winter roughage.

C K PROCESSING

Manhattan, Kansas Telephone PR 6-9269

CLAY CENTER ALFALFA MILL

Clay Center, Kansas Telephone ME 2-3401



Finished In The Field

Milford Sutter races down the country road from field to home after drilling in field north of Abilene.

industry and presenting smokers a bewildering choice of cigarettes.

The three-fifths inch is roughly the extra length of tobacco added to king-sized filters to make cigarettes 100mm long.

Manufacturers have poured out many brands of the 100s since the longer cigarettes caught on earlier this year. One count places at 35 the types of 100s on the market, including plain and menthol versions of the same brand.

"The public's interest in longer cigarettes exceeded the industry's expectations," said a spokesman for one manufacturer.

The 100s leaped from 2 per cent of all cigarette sales in the first quarter of the year to 12 to 15 per cent now, says tobacco analyst John C. Maxwell Jr. He estimated they'll average about 10 per cent for the year.

This means that smokers will consume around 53 billion 100s of an estimated 532 billion cigarettes produced this year.

The 100s — some four inches long — cost about a penny a pack more at retail. American Tobacco Co. claims to have been the first in the 100s market with its Pall Mall 100s in late

1965. Phillip Morris followed shortly with Benson & Hedges.

Maxwell estimates that R. J. Reynolds' Winston 100s, Pall Mall and Benson & Hedges lead the field in sales. "I think it (the 100s market) is a subdivision of the filter market," said one analyst. Filters account for about 73 per cent of the market.

Only a world of time can bring you the flavor of Kentucky's Finest Bourbon



OLD CHARTER
8 years old
tick-tock-tick-tock
the Bourbon that didn't
watch the clock.

STRAIGHT BOURBON WHISKY • 86 PROOF • © OLD CHARTER DIST. CO., LOUISVILLE, KY.

If you can't say . . .

"We're finishing hogs out from \$10.50 to \$11.00 per hundred weight, total cost based on present grain costs."

...or...

"I'm saving \$1.50 to \$2.00 per head on finished hogs and bringing 45-pound hogs to market weight in only 95-100 days!"

...try Lasso Hog Supplement!

The remarkable figures above were taken from the records of one user of Lasso, the full feed ration. A starter, grower and finisher, Lasso provides a complete balance of vitamins, minerals, growth factor and Sunflower Brand Soybean Meal, nature's richest source of protein. The only place you can buy Lasso Hog Supplement is at Kansas Soya Products Company in Emporia. But, because you

buy directly from the mill, you enjoy a healthy savings on every pound. Use this power-packed 40% supplement in mixing your own feed or let us build the complete feed for you. Either way, Lasso Hog Supplement (medicated or non-medicated) can get you to market 15 to 20 days earlier than other hog supplements. For larger, earlier profits, get Lasso Hog Supplement now!

Lasso Hog Supplement, available only at

Kansas Soya Products Co., Inc.
Phone Dickens 2-7270
Emporia, Kansas



NOW SAVE 10% DURING
frontier HYBRIDS FALL FESTIVAL

- 1 Order your sorghum and corn requirements now and save 10% under regular cost. This offer expires Dec. 31, 1967.
- 2 In addition to saving 10% by ordering now, you gain increased yields and added profits when you choose Frontier hybrids.
- 3 By ordering now, you get the best choice of varieties.

SEE YOUR LOCAL FRONTIER DEALER NOW!
Or Write

THE BOWMAN SEED CO.
CONCORDIA, KANS. 66901
FOR NAME OF YOUR CLOSEST DEALER

Cotton Forecast Down Again

The U.S. will have its smallest cotton crop since 1921. USDA predicted last week that the current crop would total 8.089 million bales of 500 pounds

gross weight. That's down from the previous month's forecast and compares to 9.6 million bales produced last year and 14.9 million bales in the recent average.

The government has offered growers substantial payments for limiting planting under a program designed to reduce

surpluses accumulated from past crops.

The current cotton reserve is 12.4 million bales, but USDA officials expect the reserve to

October 31, 1967

Grass & Grain

5

drop to less than 7 million by the time of next year's cotton picking.



New Phone Number

After October 28 to call Grass & Grain, phone area code 913

JEfferson 9-7558

Grass & Grain
AG PRESS

1207 Moro — Manhattan, Ks.

MATTRESS &
BOX SPRINGS

Specials Every Day
New Low Prices
Buy Direct

Also Complete Rebuilding
Service

Manhattan

Mattress Co.

414 S. 4th

PR 8-5302



Time Switch Restores Light

The G&G area got its hour back this week.

The hour given away to start daylight saving time last April was regained Sunday when Kansas returned to standard time.

For farmers and farm suppliers — who with restaurant owners and drive-in theatre owners were among the opponents of the daylight saving switch last winter when the legislature could have killed it — the change will be a welcome one when early morning chores are done in little enough light in winter.

One of DST's opponents, Rep. W. R. Brown, Pottawatomie County, who had called daylight time "as out of place as a tractor on Fifth Avenue," said he hopes the bill can come up again next spring.

"The way I understand it, DST this year was a one-shot trial deal. I assume we can relegate it," he said.

Clocks were set back Sunday in the return to standard time.



WHAT DID
ONE PHONE CORD
SAY TO THE
OTHER
PHONE CORD?



I DON'T KNOW!
WHAT DID
ONE PHONE CORD
SAY TO THE
OTHER
PHONE CORD?



DIAL
4102
FOR REPAIR
SERVICE
NOW



SOUTHWESTERN BELL



FARM & RANCH LOANS

Is credit life insurance available on loans? Yes. The borrower pays a low cost for this insurance, if desired, to provide protection on the unpaid balance up to a maximum of \$50,000.

R. STANLEY PARSONS, Mgr.

SEE ME AT
604 HUMBOLDT PR 8-2971

Res. Phone PR 6-9044

MANHATTAN

Open Mon. through Fri.
8 a.m. to 5 p.m. (closed 12-1)

Branch Offices: CLAY CENTER & JUNCTION CITY

Federal
LAND BANK Assn. of
MANHATTAN

Serving Clay,
Pottawatomie & Riley counties.



WHEN PERCENTAGES COUNT, CHOOSE PURINA STEER FATENA

Sometimes 4% doesn't seem like much. But when 4% is your feed supplement investment, it can be mighty important.

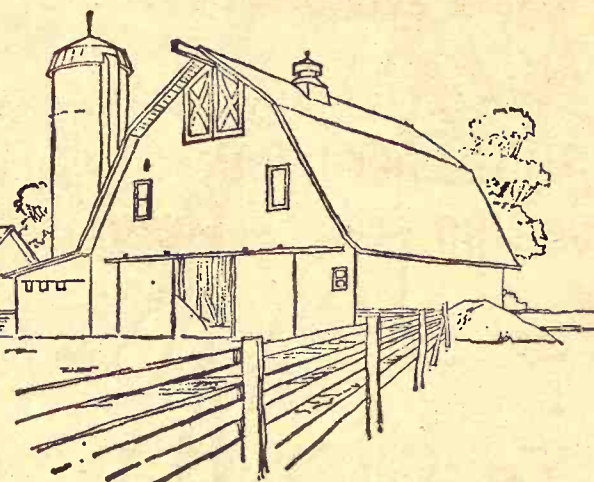
Of a cattleman's total investment, including land, feeding facilities and the cattle themselves, only about 4% is tied up in feed supplement costs, but that's a percentage which is vital to feed conversion and profits.

Good conversion means less total feed. Less total feed means lower cost production. That's why it makes sense to feed Purina Steer Fatena, a supplement built for top conversion.

Your 4% investment can make the difference. Choose the product with quality ingredients "built-to-fit" your grains, roughages and cattle; choose Purina Steer Fatena. Get it at our sign of the Checkerboard.

- | | | |
|------------------------------|-----------|---------------|
| Bartlett Grain Co. | CE 8-5134 | Junction City |
| Americus Grain Co. | 884-3465 | Americus |
| Gorden Mark Elevator .. | ME 2-3381 | Clay Center |
| Western Grain Mill | 767-5933 | Council Grove |
| Flint Hills Feed & Grain .. | PR 8-5322 | Manhattan |
| Farmers Union Feed Mill .. | 437-2434 | St. Marys |
| Mor-Kan Elevator | 349-2214 | White City |
| Reading Grain & Lumber | AN 9-3842 | Reading |

**PURINA
CHOWS**



\$10,000.00

**EXTRA INCOME
FOR EVERY 100 ACRES!**

Crop tests prove that every 100 acres of unlimed soil can earn you up to \$10,000 extra income every 10 years due only to liming when Ag-Lime* and Fertilizer are teamed up!

You're losing money if your fields are acid. Chances are, a soil test would show at least some of your fields need liming. Get those soil samples in now!

Be Sure!

use... AG LIME

Bayer Construction Co.
509 YUMA TELEPHONE PR 6-8839
MANHATTAN

Walker Stone Co.
BOX 247 TELEPHONE WA 2-4711
CHAPMAN, KANS.

OUR DAILY BREAD

— by G&G Area Cooks

Mrs. Carl Weixelman Of Wamego Is Prize Winner

Mrs. Carl Weixelman, R 2, Wamego, is the contest winner this week. Mrs. Weixelman sent the following recipe:

APPLE PIE CAKE

3 cups flour
3 tablespoons baking powder
3 teaspoons sugar
1/4 teaspoon salt
1 cup lard or shortening
3 eggs, beaten
2 tablespoons milk
Sift dry ingredients together and add shortening, mixing like pie crust. Beat eggs in separate bowl and add milk to eggs. Pour into flour mixture and mix to a soft dough, adding more milk if necessary. Roll a bottom and top crust for a 9x13 greased pan. Put apple filling between as for pie. Bake at 350 degrees for 45 minutes or until nicely browned. Frost with a thin powdered sugar icing or use your own desired topping.

Mrs. Eldon Thorman of Clay Center sent the next recipe:

MELT IN YOUR MOUTH COOKIES

1 cup butter or margarine (if you use margarine add 1

teaspoon butter flavoring)
1/3 cup sifted flour
1/3 cup powdered sugar
1 cup sifted flour
1/4 cup cornstarch (this ingredient is correct)

1 teaspoon vanilla
Drop by teaspoonful onto greased cookie sheet. Bake at 350 degrees for 12 minutes.
* * *

Mrs. B. Lockhart, Waterville: "For those little ghosts and goblins come Halloween or for just a variety, here are two good popcorn recipes."

PEANUT BUTTER POPCORN
1/2 cup unpopped corn. Pop it and then stir the following over it:

1/2 cup sugar
1/2 cup corn syrup (light or dark)

Bring the sugar and syrup to a boil and boil a few seconds. Stir in:

1/2 cup peanut butter
1/2 teaspoon vanilla
Four over popcorn, mixing well.

CARAMEL OVEN POPCORN
8 quarts popcorn
Combine the following in a heavy saucepan:

2 cups brown sugar
2 sticks margarine or butter
1/2 cup white corn syrup
1 teaspoon salt
1 teaspoon butter flavor

1 teaspoon burnt sugar flavor
Boil five minutes. Turn off heat, add 1/2 teaspoon soda, stir well. Divide popcorn into two

pan, pour half of mixture over each pan of popcorn and mix till well coated. Place in 250-degree oven one hour. Cool well. Can add peanuts and is much like crackerjacks. Can be stored in airtight containers.
* * *

The next recipe was sent by Mrs. Werner Monnich, R1, Delavan:

PINK PARTY DESSERT

2 10-ounce packages frozen strawberries, thawed
1 3-ounce package of strawberry gelatin

1/2 cup sugar
1 cup boiling water
angel food cake (leftover cake may be used or about half of a 9 or 10 inch bakery angel cake may be used)

Drain thawed berries, saving 1/4 cup syrup. Dissolve gelatin and sugar in boiling water. Add syrup and chill until very thick. Meanwhile, break the cake into small cubes and put about half the pieces into a 13x9x2-inch pan. Fold drained berries into gelatin and pour half the mixture over cake. Top with rest of cake and gelatin mixture. Chill until firm. This may be served in squares topped with whipped cream.
* * *

Mrs. Nona Griffin, R2 Glasco: "Hope you have a place for this in your paper. I love to read and use recipes out of Grass & Grain."

GREEN TOMATO MINCEMEAT

1 1/2 pints ground tart apples,

peeled
1 pint green tomatoes, ground (measure after grinding)
2 teaspoons cinnamon
1 teaspoon salt
1 teaspoon allspice
1 teaspoon cloves
3 cups sugar
1 pound raisins
1/4 cup vinegar
1 cup ground suet
Mix all together. Bring to rapid boil then simmer until thick as desired. Put into sterilized jars and seal.

Proper Way To Apply Rouge

Many women do not use rouge simply because they are unaware of how to apply it properly. Since this cosmetic adds so much to a woman's appearance it should be used.

Here is the proper way to apply rouge:

Place a tiny dot of rouge at the point the width of two fingers away from your nose. Tenderly blend the rouge upward along the cheekbone to the hairline until your cheeks shyly flush with color. Lightly press translucent powder over your face. After makeup is completed, gently pat a moist sponge over your entire face.

We Invite You To Visit Our Beautiful New - -

Bridal Shop

And To Meet

Mrs. Robert Wallerstedt

Bridal Consultant
Phone 8-3551



We Love To Plan A Wedding

As soon as you've made the momentous decision, you'll want to meet Mrs. Wallerstedt. She has a superb sense of fashion, a sure knowledge of etiquette, and flair for organizing details to make your wedding the most beautiful ever.

Betty Wallerstedt will help you choose your trousseau from head to toe, help plan your wedding no matter how simple or elaborate, even help choose your wedding invitations and social stationery if you wish. Also we invite you to use our Bride's Gift Preference Registry. All these services are complimentary of Woodward's.

Bridal Shop
Second Floor

Woodward's

DOWNTOWN

MANHATTAN

OPEN THURSDAY NIGHTS TIL' 8:30

The Latest 'Daily Bread' Prize

NYLON UTENSILS

FOR YOUR teflon-coated cookware. Dishwasher safe. Nylon construction withstands temperatures up to 495 degrees. Appliance-white with decorative black rose design on handles. Four handy pieces. A product of Norplac, Inc.

The winner each week is drawn by lot from the recipes printed.

Win one by sending us your favorite recipe — this can be main dish, leftover, salad, side dish, dessert or what have you.

1. Check your recipe carefully to be sure all ingredients are accurate and accounted for.

2. Be sure your name and address are on the entry.

3. Send it to Woman's Page Editor, Grass & Grain, Box 1009, Manhattan, Kansas.

Double Purpose Tile Cleaner

A timesaver in bathroom cleaning is a one-step application silicone cleaner which cleans tile and grout while protecting surfaces. This tile cleaner and protector is non-abrasive and even guards against mildew.

it's JOHNSON TWO-WAY RADIO

EVERYONE CAN USE IT!

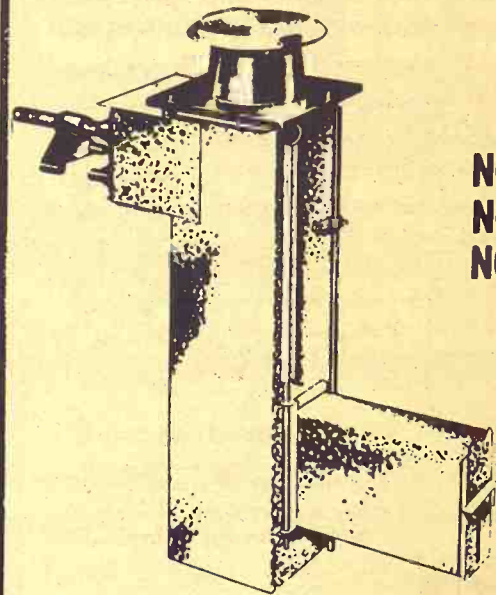


For business or pleasure, for home or office, every member of the family can keep in touch while on the move. Other models from \$99.95.

Write or call for information

John's Radio Sales
John R. Cottrell
Rt. 1 HI 3-3879
MARYSVILLE, KS.

Why Buy? Lease Your Automatic Stock Tank Heater



NO INVESTMENT
NO MAINTENANCE
NO WORRIES

Call For Prices

You'll be surprised at the economy.

Supply Limited

RESERVE YOUR NEEDS TODAY

Tri-County Skelgas Service



MANHATTAN
PR 8-4891

WAMEGO
456-7565



Indoor Gardener Will Enjoy Growing Begonias From Seeds



The gardener who wants his window sills colorful all winter with lots of flowering plants will do well to consider begonias from seeds—both the well-known everblooming begonia and the newer hybrids. Blossoms of the hybrids are larger and colors vary throughout at greater range.

Begonia seeds are fine as dust. There are over two million of them in a single ounce.

Because of their minute size the mixture in which they are planted must be ultra fine in texture. Half vermiculite and half milled sphagnum moss or half vermiculite and half finely ground neutral peat moss are

October 31, 1967

both recommended for seed sowing.

Fill flower pots, wooden flats or similar well-drained containers with whichever mixture you select. Firm with the palm of your hand, water, then merely scatter the seeds over the surface. Do not cover them. Settle them in place with a fine spray of water and pop containers into plastic refrigerator bags. Set these where temperature is from 60-65 degrees and check them occasionally to be sure the planting mixture is moist. By the end of about two weeks many seedlings will have sprouted.

As soon as the seedlings reach handleable size transplant them to two or two and one-half inch flower pots filled with half peat and half good garden soil. Keep them growing at 60 degrees, away from hot sun. Water as needed.

Every tenth day follow the watering with a weak solution of a soluble fertilizer and see how beautifully your begonias will grow and bloom for you all winter.

3rd Annual

ALL BREEDS

CLUB CALF SALE

Saturday
NOV. 4

HAWKINSON
FAGERBERG
OLSON

MANHATTAN
KANSAS

Sale Starts 12:30 p.m.
THE MANHATTAN COMMISSION CO.

30 Registered Heifers 126 Steer Club Calves

★
SHORTHORN

SHORTHORN CALVES sired by Super Jet and Compensation Perfect.

★
ANGUS

ANGUS CALVES sired by H H Bardoliermere 213 and Kileenmere 65th.

★
HEREFORD

HEREFORD CALVES sired by grandsons of Royal Husker 3rd; sons of D V Husker.

Our 1966 CLUB CALF SALE saw calves go to eight states.

For Details: Pete Hawkinson, Frankfort, Kansas



OF COURSE YOU PAID MORE FOR STEAK-MAKER - 70 and here's why you did...

Any businessman will pay a little more for a product that will deliver more total feeding results at lower costs of production.

BEFORE YOU BUY ANY FEED YARD SUPPLEMENT

Check these important facts . . .

ACTIVE DRUG INGREDIENT		Drug Additives
Diethylstilbestrol	0.0011%	
Chlortetracycline Hydrochloride	70 Grams/Ton	
GUARANTEED ANALYSIS		% of Urea
Crude Protein, not less than	32.00%	
(This includes not more than 11.5% equivalent Crude Protein from non-protein nitrogen.)		
Crude Fat, not less than	2.75%	Fiber
Crude Fiber, not more than	8.75%	
Calcium (Ca), not more than	2.75%	
Calcium (Ca), not less than	1.75%	
Phosphorus (P), not less than	1.00%	Macro Minerals
Iodine (I), not less than	0.002%	
Salt (NaCl), not more than	3.00%	Micro Minerals
Salt (NaCl), not less than	2.00%	
Zinc (Zn), not less than	0.160%	
Sulfur (S), not less than	0.065%	
Magnesium (Mg), not less than	0.030%	Vitamin Units
Cobalt (Co), not less than	0.0004%	per lb. of feed
Vitamin A, U.S.P. Units/Lb.	30,000	
Vitamin D-2, U.S.P. Units/Lb.	6,000	

Visit your Naturich dealer. He'd like to tell you more about Naturich Steak-Maker 70 and the other naturich proved cattle feeding programs.

NATURICH MILLS

Abilene Kansas
"A Finer Feed For Every Need"

One Dollar's Like Another—But There's A Difference In Loans!

Think of the future—as well as the money—when you get a long-term loan on land. A Land Bank loan gives you the lowest interest rate possible . . . always. Several times in the past, the Land Bank has reduced interest on existing loans when economic conditions permitted. With a Land Bank loan, you can pay in advance . . . without penalty. The term is long to keep payments lower and give you more flexibility in your planning. A Land Bank loan is a loan you can live with. Talk it over with your local Land Bank Association manager.

50th Year

HERINGTON

Office: 107 N. Broadway
Richard L. Worley
Serving Marion, Morris
and Dickinson Counties

MANHATTAN

Office: 6th and Humboldt
R. Stanley Parsons
Serving Pottawatomie, Riley,
Clay and Geary Counties

TOPEKA

Office: 1717 Gage Blvd.
Wm. H. Snyder, Manager
Serving Jackson, Shawnee
and Wabaunsee Counties

EMPORIA

Office: 115 West 5th
O. E. Roberts, Manager
Serving Chase, Coffey, Lyon
and Osage Counties

MARYSVILLE

Office: 211 South 10th St.
Allen L. Holeman, Manager
Serving Washington, Marshall
and Nemaha Counties

it's JOHNSON TWO-WAY RADIO EVERYONE CAN USE IT!

for business or pleasure, for home or office, every member of the family can keep in touch while on the move. Other models from \$99.95.

Write or call for information: John's Radio Sales, John R. Cottrell, Rt. 1, Marysville, KS. HI 3-3870

Lease Your Tank Heater

NO INVESTMENT NO MAINTENANCE NO WORRIES

Call For Prices You'll be surprised at the economy

UNITED YOUR NEEDS

AMEGO 56-7585

**MARSHALL FARM BUREAU
REELECTS GASTON**



Gaston Wanklyn Lindquist
MARYSVILLE — Don Gaston of Beattie has been reelected president of the Marshall County Farm Bureau. Harold Wanklyn of Frankfort was named vice president, succeeding Dewayne Lundberg of Waterville. Named directors for 3-year terms were Leslie Lindquist of Waterville; Terry Nanninga, Axtell; and Marvin White, Summerfield.

**IMPLEMENT • TRACTOR
ITCO
PARTS • ACCESSORIES**

- All new Parmak electric fence, multi-power Mark I 34.95
- Parmak brush ranger, electric 21.95
- Parmak 6 volt stocker model 15.25
- Parmak Standard field model, 6 volt 19.95
- 12 volt 25.65
- Steel electric posts 30c
- Insulators steel posts 25 for 1.75
- Battery chargers 1 1/4 amp. 6.75
- Battery chargers, 4 amp 11.19
- Battery chargers, 6 amp. 13.59
- Battery chargers, 10 amp 17.89
- Heavy duty tractor truck batteries
- Tarps, most sizes
- Hydraulic jacks 1 1/2 to 20 ton, 9.99 up
- Handi man jack, 3 ton, 48" high 19.95
- Small load binders . 1.79 & 2.09
- Tractor heaters, all models 36.95
- 14" log chains 4.98 & 7.98
- Bolts by the lb. Nails by the lb.
- Fencing staples by the lb.
- Three point post hole diggers 132.95 up
- Three point blades

**HOLT
FARM SUPPLY**

Next To Sale Barn
MANHATTAN PR 8-4343

Penneys
HOME & AUTO CENTER

**IN MANHATTAN
4th & Pierre**

**FOREMOST
Truck Mud & Snow Tires**



SIZE	PLY	PRICE	FED. EX. TAX
6.70-15	6 ply	24.50	2.83
7.00-15	6 ply	28.50	3.30
6.50-16	6 ply	26.50	3.02
7.00-16	6 ply	30.50	3.35

Phone
PR 6-9251

HOURS
Mon. & Thurs.
9:30 - 9:00

Other Days
9:30 - 5:30

Your One-Stop Headquarters for all

WINTERIZING NEEDS

Power Up With Foremost
Custom Big Power 12 Volt Battery

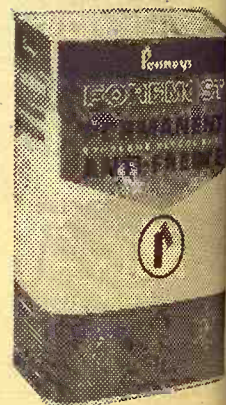


With Trade
**GUARANTEED
30 MONTHS**

Group 24

**Foremost FULL STRENGTH
Anti-Freeze & Summer Coolant**

\$1.39
 ONLY
**PER GALLON
IN GALLON TINS**



**FREE PARKING ON OUR
LOT SOUTH OF
HOME & AUTO STORE**

Manhattan Commission Co., Inc. Sale Every Thursday

Again, we had one of the largest runs of cattle that we have ever had at this sale. Prices were steady to strong in spots, while in other places they were selling lower. Selling as many cattle as we did Thursday, we realize the fact that when a firm sells as many cattle as we did Thursday, that all people aren't going to be satisfied but we sure try to give good service and get top prices for all of the cattle that we sell. Below is a partial listing:

FAT CATTLE & FEEDERS

- 1 whiface steer 610 @ 26.60
- 61 whiface steers 635 @ 25.85
- 1 whiface steer 600 @ 25.70
- 10 whiface steers 625 @ 25.70
- 35 whiface steers 662 @ 25.55
- 12 whiface steers 626 @ 25.10
- 1 whiface steer 640 @ 25.10
- 31 black steers 632 @ 25.05
- 27 black steers 728 @ 25.00
- 10 whiface steers 696 @ 25.00
- 3 whiface steers 703 @ 24.60
- 23 black steers 714 @ 24.60
- 4 whiface steers 660 @ 24.40
- 1 whiface steer 705 @ 24.30
- 13 black steers 755 @ 24.30
- 1 whiface steer 830 @ 24.20
- 26 whiface steers 743 @ 24.15
- 22 black steers 821 @ 24.05
- 24 black steers 814 @ 24.05
- 2 black steers 690 @ 24.00
- 2 black steers 740 @ 23.70
- 3 mixed steers 811 @ 23.70
- 7 whiface steers 811 @ 23.65
- 6 whiface steers 819 @ 23.25
- 35 whiface steers 842 @ 23.25
- 25 mixed heifers 648 @ 23.25
- 2 whiface steers 665 @ 22.70
- 37 holstein steers 851 @ 21.00
- 2 holstein steers 645 @ 20.40

STEER CALVES

- 1 whiface steer 235 @ 33.25
- 1 whiface steer 275 @ 33.00
- 23 whiface steers 348 @ 31.60
- 34 whiface steers 443 @ 31.40
- 18 whiface steers 433 @ 30.90

- 1 whiface steer 560 @ 30.80
- 37 whiface steers 448 @ 30.80
- 102 black steers 462 @ 30.15
- 1 black steer 265 @ 30.10
- 5 black steers 403 @ 30.00
- 3 whiface steers 331 @ 29.75
- 4 black steers 401 @ 29.60
- 2 black steers 365 @ 29.25
- 3 black steers 250 @ 29.25
- 8 whiface steers 437 @ 29.10
- 1 whiface steer 400 @ 29.10
- 8 blkwhif steers 466 @ 29.00
- 1 whiface steer 425 @ 28.80
- 8 whiface steers 506 @ 28.80
- 11 black steers 463 @ 28.75
- 2 whiface steers 335 @ 28.75
- 7 black steers 400 @ 28.60
- 6 whiface steers 386 @ 28.60
- 8 black steers 490 @ 28.60
- 15 black steers 425 @ 28.50
- 9 black steers 494 @ 28.50
- 7 whiface steers 465 @ 28.40
- 3 whiface steers 533 @ 28.30
- 3 whiface steers 423 @ 28.30
- 1 whiface steer 490 @ 28.30
- 2 black steers 500 @ 28.20
- 6 black steers 366 @ 28.20
- 1 black steer 445 @ 28.10
- 2 whiface steers 492 @ 28.00
- 7 whiface steers 510 @ 28.00
- 1 whiface steer 455 @ 28.00
- 4 whiface steers 427 @ 27.80
- 3 black steers 486 @ 27.30
- 2 brofwhif steers 507 @ 27.10
- 3 whiface steers 570 @ 27.00
- 1 black steer 455 @ 26.75
- 2 whiface steers 562 @ 25.80
- 1 whiface steer 455 @ 25.80

HEIFER CALVES

- 4 whiface heifers 232 @ 29.50
- 3 black heifers 218 @ 27.25
- 1 whiface heifer 210 @ 26.50
- 47 whiface heifers 406 @ 26.30
- 2 whiface heifers 320 @ 26.10
- 7 whiface heifers 404 @ 26.00
- 46 whiface heifers 378 @ 26.00
- 40 black heifers 435 @ 26.00
- 40 black heifers 429 @ 26.00
- 22 whiface heifers 399 @ 25.80
- 5 whiface heifers 358 @ 25.80
- 2 black heifers 355 @ 25.70
- 11 blkwhif heifers 358 @ 25.50

- 2 whiface heifers 277 @ 25.50
- 11 black heifers 416 @ 25.40
- 1 whiface heifer 300 @ 25.40
- 3 whiface heifers 421 @ 25.30
- 1 black heifer 390 @ 25.20
- 2 blkwhif heifers 227 @ 25.20
- 15 whiface heifers 458 @ 25.20
- 3 whiface heifers 456 @ 25.10
- 1 whiface heifer 425 @ 25.00
- 9 black heifers 435 @ 25.00
- 2 whiface heifers 272 @ 25.00
- 7 whiface heifers 437 @ 24.70
- 3 black heifers 466 @ 24.70
- 14 whiface heifers 506 @ 24.30
- 12 black heifers 467 @ 24.30
- 1 whiface heifer 420 @ 24.10

BULLS

- 1 whiface bull 1425 @ 21.50
- 1 whiface bull 1720 @ 20.00

COWS

- 1 whiface cow 1030 @ 20.00
- 1 brnswiss cow 1070 @ 16.90
- 1 blkwhif cow 1030 @ 16.90
- 1 whiface cow 885 @ 16.80
- 1 holstein cow 1355 @ 16.80
- 1 whiface cow 815 @ 16.60
- 1 holstein cow 955 @ 16.50
- 2 holstein cows 1120 @ 16.50
- 3 whiface cows 1090 @ 16.50
- 1 holstein cow 915 @ 16.50
- 1 whiface cow 1120 @ 16.40
- 1 whiface cow 1160 @ 16.40
- 2 holstein cows 1137 @ 16.40
- 1 whiface cow 935 @ 16.40
- 1 black cow 1140 @ 16.20

2 1/4 MILES EAST OF MANHATTAN ON US 24

- 1 red cow 850 @ 16.10
- 1 holstein cow 1215 @ 16.10
- 1 brofwhif cow 915 @ 16.10
- 1 whiface cow 1030 @ 16.00
- 1 whiface cow 765 @ 16.00
- 6 black cows 1264 @ 15.95
- 1 whiface cow 1305 @ 15.90
- 1 whiface cow 1005 @ 15.80
- 1 whiface cow 930 @ 15.70
- 5 whiface cows 1213 @ 15.65
- 1 whiface cow 990 @ 15.60
- 1 whiface cow 1120 @ 15.60
- 3 whiface cows 1120 @ 15.50
- 1 whiface cow 900 @ 15.50
- 1 brn cow 925 @ 15.40
- 1 black cow 1155 @ 15.30
- 1 whiface cow 1075 @ 15.10
- 1 spotted cow 975 @ 15.10
- 1 whiface cow 875 @ 14.80
- 1 black cow 1185 @ 14.80
- 1 whiface cow 925 @ 14.50
- 1 whiface cow 1040 @ 13.70

BUYING

FAT HOGS

We buy fat hogs daily at the Manhattan Commission Co., Inc., sale barn. We buy direct with no commission to the seller.

BUYING HOURS:

Mondays thru Fridays
 8 a.m. to 4 p.m.
Saturdays 8 a.m. - 2 p.m.
Manhattan PR 8-4415

**WE ARE ALSO BUYING
FAT HOGS AT THE
W. E. DUGAN YARDS
ALTA VISTA
SATURDAYS**

8 a.m. to 3 p.m.

Phone Alta Vista 229-6430
 or Manhattan PR 8-4415

**AT ALMA & ESKRIDGE
EVERY WEDNESDAY**

From 8 a.m. to 1 p.m.

Please do not bring hogs in for sale on Thursday afternoon, as we will be having large runs of cattle and you might not be able to unload, and they will get hot on you.

For information call the barn in Manhattan, PR 8-4415
 In Alta Vista, W. E. Dugan, 229-6303. Or you may call Joe Raine at Maple Hill MI 3-2226 or Eskridge Yard 449-2347.



FOR ESTIMATES

- W. E. DUGAN ----- Alta Vista, 229-6430
- JOE RAINE ----- Maple Hill, MI 3-2226
- DON WELLS ----- Manhattan, JE 9-3744
- MERVIN SEXTON ----- Abilene, CO 3-3449
- C. J. WENTZ, bus. mgr. Manhattan, JE 9-5561

BARN PHONE ----- Manhattan, PR 8-4415

Consignment Reports
WIBW radio 6:30 A.M. Thursdays
WIBW-TV 12:15 Noon Wednesdays

**The Manhattan Commission
Co., Inc.**

MANHATTAN, KANSAS

East On US 24



Auctioneer: Joe Raine

'Big Power Killed REA Money Bill'

Commercial urban electric utilities would like to "cannibalize" rural electric cooperatives, a top federal official said at Wichita last week.

Norman M. Clapp, Washington, D.C., administrator of the Rural Electrification Administration (REA), charged in an interview the commercial utilities exerted "enormous" influence recently in getting a proposed bill killed in Congress. The bill would have helped to strengthen the rural co-ops. He said the utilities also eventually ended the supplying of "cheap money" by REA to the co-ops.

"There was a proposal having the backing of the co-ops and the federal administration, which would have established a mixed bank," Clapp said, "similar to the federal land banks, with both federal and private capital. The bank would serve as a supplemental source of loan funds for capital improvements by the rural electric co-ops, and retire \$700 million in federal stock in maybe 50 years. Clapp said REA has loaned about \$6.5 billion at two per cent to the co-ops in 32 years. He noted some persons consider that the government is subsidizing the co-ops and losing money it could get by loaning the funds to other groups at higher rates.

He added that the now-dead proposal would have helped the co-ops to become more independent of the government in financing their own improvements, and, when the government funds issued to start the bank were repaid, could have allowed REA to go out of business.

"You get the impression from some sources that the rural utilities are infringing on the urban utilities' areas, but this isn't true," Clapp said. "If you had put a lot of money in something and developed it, wouldn't you want to stay in?"

Rather, he added — "Some of the commercial interests want to cannibalize piecemeal the stronger, more developed areas of rural districts, with the effect of skimming off the cream of territories and leaving fragments which would have higher electricity costs because of the greater difficulty of co-ops in operating over smaller areas."

Instead of continuing investment in facilities takes over, the urban utilities would save their money and wait until the local rural economies developed, Clapp said. "I'm satisfied the real issue is future growth. He said, "The urban utilities cannot recognize there is someone else in the field."

"The fairest way to settle this would be for the states to outline the service areas now in effect, and let the utilities devel-

op the territories they have," Clapp said. "I think there's a tendency to move in this direction."

Now that the proposed bill is dead, he added, the co-ops are studying alternatives to financing development, but he didn't know what might be done.

"Some method has to be found for providing supplemental financing. But completely private funds initially would cost too much.

FLETCHER 4-H'R



"GEE, DAD, YOU CAUGHT ME AT A BAD TIME TO DO THE CHORES.... I'M RESTING!"

IN MANHATTAN

4th & Pierre

Penneys

HOME & AUTO CENTER

\$14⁹⁵

With Trade
**GUARANTEED
30 MONTHS**

Group 24



MANHATTAN

You are invited to our Open House

DEDICATING OUR NEW BANKING HEADQUARTERS
POYNTZ & JULIETTE

Come "as you are" — You'll be welcome



Four drive-thru windows. Off-street free parking for more than 90 cars. Message and Time & Temperature Center on Poyntz. We've built this bank building to make our services the most convenient for you to use.

For our rural friends

BLUE VALLEY ROOM

is for you, too. This new community room for groups up to 100 — ultra-modern facilities for your club, church, class reunions and other groups — All conveniences including a spacious kitchen.

FOR YOUR FREE USE FOR THE ASKING
Available Day Or Night
TO RESERVE THE ROOM PHONE 776-4741

BANKING HOURS

Main Bank & Drive-thru
MON.-THURS.
9:30 a.m. - 4:00 p.m.
FRIDAY
9:30 a.m. - 6:30 p.m.
Installment Loan Department
MON. - THURS.
9:30 a.m. - 5:00 p.m.
FRIDAY
9:30 a.m. - 6:30 p.m.

Walk-Up Teller Windows
MON. - THURS.
8:30 a.m. - 5:00 p.m.
FRIDAY
8:30 a.m. - 6:30 p.m.
Downtown Teller Facility
MON. - FRI.
10:00 a.m. - 3:00 p.m.
SATURDAY
9:30 a.m. - 12 Noon

Main Bank Closed Saturday



MANHATTAN

100%

COMFORT
CONDITIONED

Visit The
All Electric
Blue Valley Room

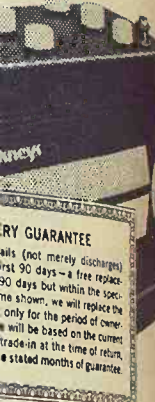
100% ELECTRIC
Includes
A DISHWASHER



THE KANSAS POWER
AND LIGHT COMPANY

NEEDS

Foremost
2 Volt Battery



TRENGTH
mer Coolant



Thursday

MANHATTAN ON US 24

BUYING

FAT HOGS

buy fat hogs daily
Manhattan Commission
Inc., sale barn. We
ect with no commissio
seller.

BUYING HOURS:
Mondays thru Fridays
8 a.m. to 4 p.m.
Saturdays 8 a.m. - 2 p.m.
Manhattan PB 6448

**WE ARE ALSO BUYING
FAT HOGS AT THE
W. E. DUGAN YARD
ALTA VISTA
SATURDAYS**

8 a.m. to 3 p.m.
phone Alta Vista 228-48
or Manhattan PB 6448

**T ALMA & ESKRIDGE
EVERY WEDNESDAY**

From 8 a.m. to 1 p.m.
ase do not bring hogs
sale on Thursday after
on, as we will be har
ge runs of cattle and
ght not be able to mak
i they will get hot on
or information call
n in Manhattan. PR 6448
n. Alta Vista, W. E. Duga
-6303. Or you may call
ne at Maple Hill 477
6 or Eskridge Yard 477

Commission
Co., Inc.

MANHATTAN, KANSAS

East On US 24

Joe Raine

Wheat Growers Set Annual Meeting At Great Bend

Three of the speakers for the annual meetings of the Kansas Wheat Commission and the Kansas Association of Wheat Growers in Great Bend Nov. 20 and 21 have been announced by heads of the two Kansas wheat groups.

Gov. Robert Docking will be

the speaker at the traditional Governor's luncheon at noon Nov. 20, says Carl A. Dumler of Russell, chairman of the Commission. "The Commission makes a report to the Governor each year," Dumler said, "and takes this opportunity during the annual meeting to honor the governor and hear from him about agriculture and the state administration."

Speaker for a legislative luncheon at noon on Nov. 21 will be Sen. Frank Carlson, says George W. Meeker of Garden City, president of the Kansas Association of Wheat Growers. Senator Carlson is one of a

small group of men who have been selected in past years as "Kansas Wheat Man of the Year" by the Commission and Wheat Growers. "State legislators and members of the Congressional delegation are being invited to this luncheon," said Meeker. "We welcome the chance to hear about the Washington scene from our Senator, and the chance to talk to our senators and representatives about wheat."

Tickets for the luncheons will be available at the registration desk in the Highland Manor motel at Great Bend during the convention, the wheat leaders

said.

Third speaker — an astronaut in the NASA manned space flight program — to appear on the evening of Nov. 21 at the joint Annual Wheat Meeting, will be Capt. Jack R. Lousma, it was announced. In addition to the appearance of Captain Lousma, NASA is providing an extensive exhibit of space materials which will be set up in the Great Bend Municipal Auditorium for inspection by those attending the meeting and by the general public. Public schools and organizations in the area are being invited to bring busloads of students and

members to Great Bend to see the space exhibit. The evening Wheat Meeting will be held in the Great Bend Municipal Auditorium.

Paper Back
Books
Largest Stock
In Town

25c - 35c
50c - 75c



University
Book Store

623 N. Manhattan Manhattan

Complete
Farmer & Stockman
Supplies

Biologics - Vaccines

Pharmaceuticals

Show Equipment

Instruments and Related

Items

Kinyon Distributing
844 N. Kansas Box 8105
TOPEKA, KANS. FL 4-1583

For Your

Complete
RECORD
NEEDS

We have a complete
line of everything.

Farm
Business
Personnel

Phone PR 6-4783

Manhattan

Typewriter Co.

217 S. 4th MANHATTAN

Mishaps Remind Of Care Needed On Parathion Spray

Threats of greenbugs in the C&G area have renewed warnings about the use of parathion, a chemical generally deemed the most effective in spraying for greenbugs and beetles.

The insecticide was blamed for the sickness of a youngster in western Kansas last week, and investigators were also saying that 34 deaths in Tijuana, Mexico, were caused by parathion.

The chemical is frequently recommended for careful spray-

ing in a number of farm applications, but there are no specific laws regulating its use.

Last week in Scott County, the illness of a 5-year old boy, Loren Wing of Shallow Water, was attributed by Dr. Dale Boles, director of the Poison Control Center at Dodge City, to parathion spray.

"There is nothing else involved at all on which to place the blame except the spraying," said Dr. Boles. "I don't think this is an isolated case, either. I think the boy is just more susceptible to the poison than other persons."

Following a spraying, several Shallow Water residents complained of severe headaches and other reactions.

Dr. Boles said parathion "is absorbed thru the skin. You don't have to consume it. It is toxic by just being in the air."

The manufacturer says it should be applied only thru aerial spraying, and after it is applied, no one should enter the sprayed field for 10 days.

The state department of Agriculture recommends that parathion be applied only when the wind is below five miles an hour. And that's where the controversy arises.

Spraying in the Scott City area was alleged to have been done while there was a stiff breeze blowing.

Bob Brittan, Scott County sheriff, said his investigation showed the wind was calm while the spraying was going on, but that the wind picked up shortly afterwards.

"Parathion is about the only thing we can use against green bugs," said one G&G area agent, Don Ingle of Wichita. "We've used it for years and have not had any reports of sickness from it."

"I don't think it can be thought of as a real problem, if

it is judiciously and cautiously applied. But it is so potent and toxic that it takes only four ounces to cover an acre.

"The field has to be quarantined for 24 to 36 hours after spraying. There is a minimum of 15 days between the time of spraying and harvesting. Most of the farmers I know, however, wait twice that long."

This was the poisonous substance that was traced by a California chemist as the cause of death for 34 persons in Tijuana, Mexico. The victims had apparently eaten bread made from grain recently sprayed with parathion. The farmer had failed to observe the 15-day waiting period between spraying and harvesting.



Tools
Too

AGGIE
HARDWARE
1205 Moro
Manhattan, Ks.

Herington FLBA Honors Three

HERINGTON — M. C. Gugler of Abilene, P. F. Friesen of Hillsboro, and W. C. Floyd of Herington were recognized for "service to agriculture" at the annual meeting of Federal Land Bank Association here.

Floyd and Paul Glatt of Enterprise were returned to the board of the Herington FLBA, which serves Dickinson, Marion, and Morris counties. Richard Worley is manager.

Other members of the board are John Gehrke of Herington, Dean Romberger of Solomon, George Boles of Abilene, and Edward Klein of Marion.

**TEX REAL
ONWARD 95th**



Cow Herd
Royal Essar
CKato, Heir
Apparent

**SERVICEABLE BULLS
WITH WEIGHT RECORDS**
Priced . . . \$300 to \$500

**GRANT POOLE
MANHATTAN, KANS.**

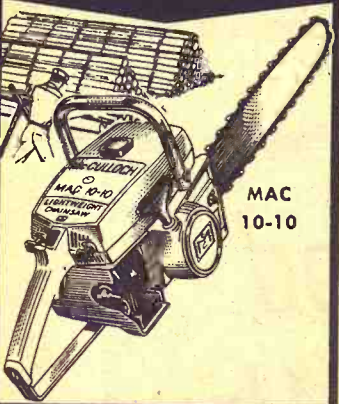
Located 4 mi. south of I-70-K177
intersection, 2 mi. west on Mc-
Dowell Creek Rd. Ph. PR 6-8315.

SAVE \$25
(From manufacturer's suggested list price on individual items)



Complete Weekend Woodcutter's Kit included with the purchase of any McCulloch lightweight saw.

Get extra saw chain, fuel can, engine oil, bar guard, flat file, round file, depth gauge, file guard, wedge, fuel additive.



THIS NEW

McCULLOCH

10-10 LIGHTWEIGHT

Will Cut a Whole
Winter's Supply of
Firewood with
McCulloch Ease!

- Weighs Only 10 1/2 Pounds! less bar and chain!
- Easy to Start—Easy to Use—Everywhere!

Do your woodcutting, trimming, land clearing the easy way! With this lightweight handful! Top lightweight value. Buy today!

- W. W. SMITH & SONS
ME 2-3148 — Clay Center
- WATERS HARDWARE
CE 8-3114 — Junction City
- K-HILL ENGINE SERVICE
PR 8-2011 — Manhattan
- VAHSOLTZ IMPL. CO.
TA 5-4521 — Salina
- WASHINGTON IMPL. CO.
EA 5-2301 — Washington
- DUMMERMUTH IMPL. CO.
HI 3-4476 — Marysville
- TODD TRACTOR & EQUIP-
MENT CO.
DE 6-2138 Seneca or AV 4-
2129 Sabetha
- DAVENPORT EQUIP. CO.
LA 8-1151 — Osage City
- YOUNG EQUIP. CO.
767-5018 — Council Grove
- JORDEN IMPLEMENT CO.
CO 3-2041 — Abilene

IT WILL PAY YOU TO SHOP AT --

FURNITURE
and
APPLIANCE

Sedlacek's

The Largest Furniture and Appliance Store of Its Kind in the Midwest.

OPEN WEDNESDAY AND SATURDAY NIGHTS TIL 9 P. M.

Free Delivery Within 200 Miles

HANOVER,

Instant Credit

KANSAS

These 2 KEY Specials
will help you pick up slack
on hog prices.



\$5

PER TON

**DISCOUNT ON
Pig Starter
and
Pig Grower**

WITH AUREO SP-250

These are the sugar sweet feeds that are highly palatable and digestible, well fortified with the essential vitamins and minerals to move your pigs along fast. KEY PIG STARTER is recommended through weaning; KEY PIG GROWER to about 70 lbs. Try these feeds at generous discount, prices which will be effective only through November 7.

SEE A KEY DEALER OR CALL COLLECT ME 2-2141

KEY MILLING CO.

Clay Center, Kansas

Oldest Insuror In State Quits Business

The oldest fire insurance company in Kansas is fading out of business.

The Midland Mutual Fire Insurance Co. of Newton, caught with heavy losses in the last five years, has surrendered its charter to the state, giving up the business after 87 years in Kansas.

The Kansas Farm Bureau Insurance is reinsuring Midland policyholders until their policies run out.

"We assumed all of their obligations as of September 1," said Ward Wright, director of KFB insurance services. "Our company is acting as a reinsurer during the dissolution of Midland. Most of their policies expire in September or October of 1968."

When current Midland policies expire, the owners will have to turn to another insurance company. Midland will cease to exist.

Started in 1887, the company was known as Mennonite Mutual until 1937, limiting its coverage to Mennonite church members and to farms.

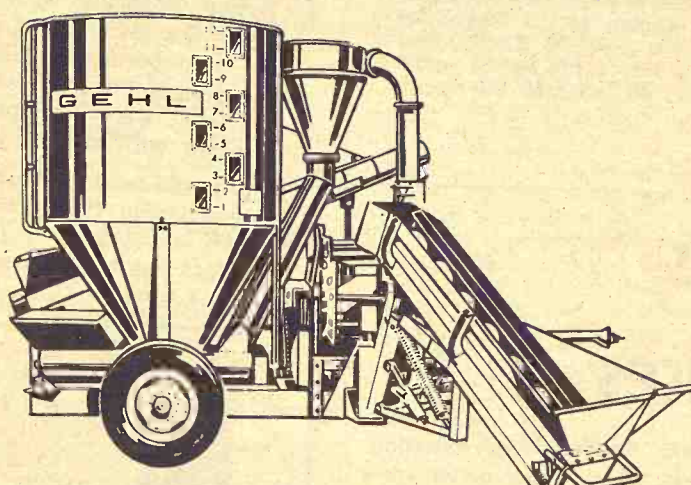
Lack of volume and heavy crop losses apparently did Midland in.

Other mutual companies in the state could have reinsured Midland during losses in recent years but not enough agreed to help.

"We were the only ones in the state who could maintain the policies for a year," said Wright. "We have more facilities than any of the other mutuals and provided better protection for the policy holders in case of large losses."

Farm Bureau has finished the task of removing more than three-quarters of a century of records. The policies, meeting minutes, and hastily scrawled notes have been filed in a corner of the company's Manhattan headquarters.

JUDGE THE GEHL MIX-ALL ON YOUR FARM!



Arrange now for a Mix-All demonstration and we'll grind and mix a few tons of feed **FREE!**

We make this offer because we're sure you'll like the Mix-All features: (1) 66 thin hammers that cut not pound . . . grain and hay to uniform size; (2) variable speed drive on the auger feeder; (3) twice as many hammers per square foot of screen area than other mills; (4) fiberglass mixing tank (optional) no rusting, no condensation, no feed bridging, no up-keep or color fading; (5) rugged construction from hitch to hopper and mill to mixer.

But . . . how about judging this for yourself? Call now to schedule a Mix-All demonstration on your farm.



- | | |
|---|----------------------------------|
| MARYSVILLE
BRUNA IMPL. CO. | CLAY CENTER
TOBUREN IMPL. CO. |
| SALINA
LINDQUIST IMPL. CO. | VALLEY FALLS
VALLEY IMPL. CO. |
| LINCOLN
RHUDY & SONS, INC. | ABILENE
WISSING MOTOR CO. |
| WAMEGO
WAMEGO TRUCK
& TRACTOR, INC. | SENECA
SENECA IMPL. CO. |
| | HERINGTON
TRI-COUNTY SALES |

Come On Over...



TO KANSAS' LARGEST FOR HIGHER EARNINGS AND MAXIMUM SAFETY

Come on over to the safety of Capitol Federal—the only financial institution in Kansas offering your savings the protection of over 350 million dollars—plus insurance—safety that cannot be matched.

Come over to extra profit, too . . . Capitol Federal pays you the highest earnings in the United States allowed by Federal law. Save by mail—It's easy—and postage is paid both ways.

5 1/4% Savings Certificates
4 mo.—\$10,000 min.
36 mo.—\$2,000 min.

75th
YEAR



**Capitol
Federal
Savings**

700 KANSAS AVE. TOPEKA
1201 TOPEKA BLVD. | LAWRENCE
2100 FAIRLAWN RD. | KANSAS CITY

"The Most Trusted Name In Savings"



Johnny Kaw
Says:

Why are important facts so hard to understand and simple ones so soon forgotten?

This Year Put Up MONSANTO SEAL-VAC VACUUM SILAGE

- Sealed Storage . . . No Air.
- Unheard of Low Cost
- Next to No Spoilage
- Highest Feeding Value of All
- Proven Performance

For more information, call your SEAL-VAC Dealer.

Victor Kruse
Phone 2609
Barnes, Kans.



For the Ease, Comfort and Economy
of Modern GAS Heating . . . Choose

Warm Morning VENTED GAS HEATERS

America's Most Beautiful Gas Heaters!

Modern Automatic Controls For Care-Free Heating:

Honeywell "Adatrol-Modusnap"—The VR-65, VR-50, V-65, V-50 and VR-165 "MA" and "MAB" models of WARM MORNING vented gas heaters are factory equipped with the famous "Adatrol-Modusnap"—a combination control incorporating 100% safety shut-off valve, manual gas valve, pilot filter, and the new "Modusnap" Thermostat for automatic temperature control. The temperature control dial for the "Modusnap" thermostat is conveniently located on the "Top-O-Matic" panel at the top rear of the cabinet.

Robertshaw Unitrol The V-20, V-30 and VR-35 series are offered with the new Unitrol 1000 ST. This is a snap throttle type control. When room needs heat, the thermostat valve snaps open to minimum flame as previously adjusted on the heater. The burner flame will then increase or decrease to maintain comfortable room temperature.

"Carpet of Comfort" Automatic Blower. WARM MORNING Gas Heaters may be equipped with blowers for floor level heat flow and improved circulation. The S-67 blower (illustrated) may be used on the V-50, VR-50, V-65 and VR-65 series, and is factory-installed on models with suffix -MAB. An adjustable Therm-O-Disc switch automatically turns blower on and off according to temperatures in heater cabinet. Model S-4 blower is offered for the smaller models, and Model S-64A for the VR-165.

Prices Start
At
\$75.95
BUY YOUR LP HEATERS
FROM THE PEOPLE WHO
CAN SERVICE THEM



the FARMERS COOPERATIVE ASSN. Manhattan, Kansas
WESTMORELAND ONAGA ALTA VISTA



Not Done Yet

Tho the American Royal marks the end of the show season for most G&G area livestock exhibitors, the Lewis Ranch at Larned is not yet through for the season. The most active show exhibitor in the state this year, the Lewis Ranch presented its best at the American Royal at Kansas City last week, the sixth major display of the year, and plans one more for the season, the National Polled Hereford Show December 4 at Columbus, Ohio.

Shown here is Joe Lewis with the 1950-pound breed champion at the Royal, ALF Beau Perfect. The Lewis Ranch acquired the now 2-year-old when he was only four months old from Hutchinson auctioneer and livestock breeder Gene Watson.

The Lewis family has shown at the Royal for 30 consecutive years. Father John M. Lewis, now 85, has been raising polled Herefords for 57 years. Sons Joe, 52, and Walter, 56, operate the ranch now.

Stepup Foreign Food Plans To Prop Sagging Farm Prices

A rapid expansion of the Food for Freedom program in underdeveloped countries has been authorized by the administration under pressure of sagging farm prices and sharp cuts in foreign aid funds.

Negotiations are actively under way with eight countries

looking to concessional sales of wheat, feed grains and edible oil for local currency, as well as repayable dollar credit. In addition, restrictions on donated food to combat malnutrition, particularly among children, have been quietly removed.

The agency for international development has cabled its missions in less developed countries that supplies are now ample for donation programs linked to self-help efforts in agricultural development. Two conditions for eligibility are that the donated food should be used to increase local farm production and should not displace commercial sales.

The A.I.D. message on donation food had the effect of revoking a notice to missions in August 1966 that 25 per cent less wheat and feed grains would be available as food aid — whether on a concessional sales basis or for donations programs — and that their requests should be tailored accordingly.

Food aid shipments dwindled to a trickle in the last half of

1966. Requests for donation food, which many underdeveloped countries use instead of money to pay workers on agricultural projects, all but stopped.



Grange Young Couple of Year

The Kansas Grange at its annual convention at Manhattan last week named Mr. and Mrs. Delvis Steffey of Lawrence as its 1967 young couple of the year. The Steffey's will represent Kansas in competition for a national title at the Grange convention at Syracuse, N.Y. Steffey no longer farms but runs a Turnpike service station east of Lawrence. They are members of a Grange at Ozawie.



Grange Honors

Named Grange Prince and Princess at the Kansas organization's state convention last week were Steve Bailey of Delia and Lynn Aaron of Corbondale.



You Can Cover Every PRODUCTION EXPENSE with a PCA LOAN!

If you've been thinking about an overall improvement program for your farm, why not talk it over with someone who knows what's involved in sound financial planning?

Your Production Credit Association understands. Get your production expense loan from the farmer-owned local PCA... pay only simple interest...and set up a repayment plan that fits your marketing plan.

SEE YOUR LOCAL PCA MAN

CONCORDIA James D. Ganson (North Central Kansas PCA)
 COUNCIL GROVE Charles E. Graham (Council Grove PCA)
 HOLTON Robert O. Green (Holton PCA)
 MANHATTAN Floyd A. Rutherford (Manhattan PCA)
 SALINA Curtis Syring (Salina PCA)

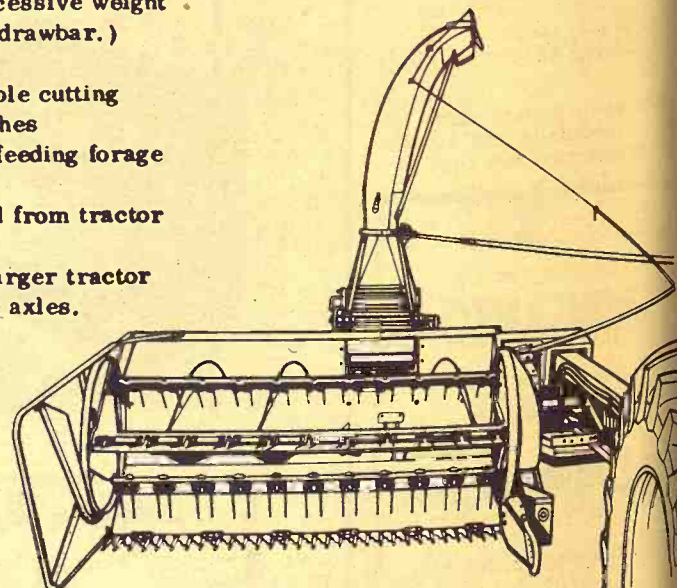
Look into the features of the CASE® 300 FORAGE HARVESTOR

- Structurally rugged without excessive weight (Built-in brawn. Light on the drawbar.)
- Roller chain and gear drive
- Heavy-duty cylinder. Adjustable cutting length from 13/64 to 2-1/8 inches
- Spring-loaded rolls for force-feeding forage
- Built-in knife sharpener
- Cutting and delivery controlled from tractor seat
- Hook the 300 to any 50 hp or larger tractor
- Swinging drawbar. Adjustable axles.

BUY CASE NOW



Interest Waived into 1968 on most Case Equipment



LOOK NOW! AT YOUR CASE DEALER'S

SALINA Vahsholtz Impl. Co.

CENTRALIA McBratney Impl. Phone 857-3815

HEBRON, NEBRASKA Ellis Implement Company Phone 768-6320

MARION Longhofer Supply

CLAY CENTER Porter Eqpt. Co. 1121 Crawford ME 2-5202

LINN Kuhlman Motor Co.

MARYSVILLE Brauchi Brothers

CHESTER, NEBR. Grabau Impl. Co.

No Date Set On Martin Byrne Case at LaCrosse

LA CROSSE — Martin J. Byrne, former head of the Kansas Farmers Union, has waived extradition, and appeared in Rush County District Court, where he posted a \$1,000 bond and was released pending arraignment.

Byrne is charged with illegal sale of Farmers Union certificates in September 1962. Ivan Krug, county attorney, said the certificates were not properly registered with the state.

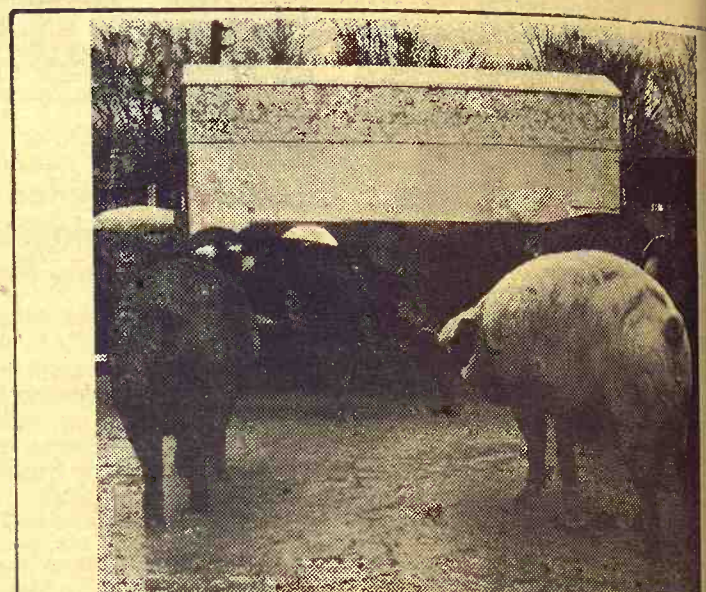
Byrne was head of the Kansas Farmers Union from 1953 to 1966.

No date has been set for preliminary hearing.



Grange Masters

Herschel Newsom, national grange master, and state master James Ingwerson conversed at the state convention of Kansas Grange last week. The convention at Manhattan was a quiet one.



Whatever your sow-feeding program, you can cut the cost with GRUEL-OMATIC®

If you use a self-feeding system for sows, the Gruel-Omatic liquid feeding system can cut your feed costs by half or more. Even if you use a controlled dry feeding method, Gruel-Omatic cuts labor costs. Increases profitability, too, by keeping sows content — you get larger litters and more uniform plgs at birth. Other profit-proven advantages of Gruel-Omatic:

- Fits your present buildings, even confinement housing
- Eliminates need for ration changes during gestation
- Sows stay content; each gets its fair share of feed
- Cuts labor costs to simple visual management
- Completely automated; eliminates all other feeders and waterers

Midwest Gruel-Omatic Co. AUTHORIZED DEALER

FRIESEN FEEDS

Telephone 316 947-3431 HILLSBORO, KANS.

CLASSIFIED ADVERTISING

RATES: \$1 a week for 15 words or less. Add 5c a word for additional words. SPECIAL: Four weeks for the price of three. Boxed ads: \$1.68 an inch per issue, flat rate. Send your ads to Ag Press, 1207 Moro, Manhattan, Kansas. Phone PR 8-4458 (25c handling charge if cash not with order.)

Notices

AUCTIONEERING

Lawrence E. Welter
AUCTIONEER
REAL ESTATE BROKER
Your Sale Solicited
Large or Small
EAST HIGHWAY US 24
MANHATTAN PR 8-3455
Real Estate
And General Sales

Ed Reimer
AUCTIONEER
We Specialize in Selling
DAIRY CATTLE
"A complete Sale Service"
Phone or write for sale
dates.
Telephone 367-2373
GOESSEL, KANSAS
"Marion County"

FARMS
RANCHES · HOTELS · CAFES

Real Estate Selling At Auction

Its experience and performance that count. If you are looking for property, as an investment or for use, stop by and inspect our listings.

DAIN'S
REAL ESTATE
Silver Lake, Kans. 532-2770
6 miles west of Topeka
On US Highway 24

ROBT. G. "BOB" WILSON
Auctioneering Sales Mgr.
All Types of Sales
Phone 494-2552
Box 118 St. George, Kans.

CONSERVATION

LAND IMPROVEMENT
"Soil Conservation Doesn't Cost—It Pays"

Ponds, terraces, waterways, and leveling, drainage ditches, clearing, landscape grading.

Roggendorff
Conservation Construction
Arthur Roggendorff
Phone JE 9-3984
1670 OSAGE-MANHATTAN

DAIRY SUPPLIES

Wamego Dairy Supply
your authorized
DELAVAL & CLAY
Dealer
MILK MACHINES
New & Used
BULK TANKS
New & Used
CLAY Beef, Dairy & Hog
Feeding Systems.
For estimates or service,
phone
917-456-7200, WAMEGO
913-AV 4-2958, SABETHA

DeLaval Clay
All Makes
Service & Repair
Dairy Equipment

Joe McClure
Ph. 229-5284 Alta Vista

MEMORIALS

Cody Memorials
Homer Rundle, Owner
Stones designed and cut by
experienced craftsmen in our
own plant.
Office & Display
4th & Grant
ME 2-2323
CLAY CENTER


Livestock

WANTED TO BUY FEEDER HOGS
40 to 100 lbs. Top prices paid.
J. D. SIMPSON
130 Grant Ave., Junction City
Phone CE 8-3754 or CE 8-3939

Dairymen — Buy The Best For Less

We have for your selection at all times the largest supply of

FRESH SPRINGER HOLSTEIN — GUERNSEY JERSEY SWISS and MILKING SHORTHORN COWS & HEIFERS

Financing available—up to 24 mos.

SPECIALS
100 head of open Holstein heifers
50 head Holstein heifer calves

CALVES! CALVES!
We will have 400 to 500 calves beef cross. 2 weeks to 450 lbs. At our barn every week for the next several months.

W. G. WIEBE
Phone CI 4-7625
Summerfield, Kansas

NATIONALLY ACCREDITED SPF Duroc and Hampshire boars. Registered, serviceable age. Call collect CE 8-7253, Harold Brumm RR no. 3, Junction City, Ks. CE 8-7258. x35

FOR SALE — Big rugged choice Duroc boars, litter mates and 1/2 brothers to boars I had on test at Manhattan. Ph. 868-2020, Frank Alexander, Corning, Kans. SB35

FOR SALE — Choice male Duroc hog, Richard Smith, Rt. 2, Wamego, Ph. 456-7410. x35

FOR SALE — Purebred Hampshire boars and gilts. Glenn E. Miller, Vermillion, Kans. Phone 382-4220. x38

FOR SALE — 22 white faced springer cows, 6 calves at side, \$165 per head. Theo. R. Stowell, Frankfort, Kans. Phone BY 2-4275. SB35

FOR SALE — 20 head of young springer Angus cows. 1 ton GMC truck, good. Ph. 765-3389. H. L. Grunewald, Alma, Kansas. x35

20 REG. Shorthorn females, (beef), 1st, 2nd & 3rd calf heifers, a few aged, 3 with calves at side. 5 heavy springers. Others to calf next summer. Also would sell some open heifers with breeding privileges to 1967 State Fair Champion. 463-2372. Burrton, Kans. SB35

PUREBRED CHAROLAIS breeding bulls, out of qualified C.M.S. Bred with the commercial man in mind. Will contract calves back at weaning. Loren Bott, Linn, Kans. 66953. x38

HOLSTEIN HEIFERS: Selling 20 head weighing 1150 lbs, ready to freshen; TB, Bangs tested, vaccinated. Phone collect days: Marysville, Kans., HI 3-3361; nights, HI 3-4251. SB35

FOR SALE — 5 registered purebred Charolais bulls, ages 16 months to 27 months. Bloodlines from 2 reserve grand champions. Bulls located at the Harry Watkins farm at Sedgwick, Kans. Owner L. A. Clark, 6th & Hillcrest, Wamego, Kans., 66547. Phone 456-9544. SB37

ANGUS COWS, 20 head for sale; good age. Phone Manhattan, Kans., PR 6-8103. SB35

NATIONALLY ACCREDITED SPF Purebred Yorkshire open gilts. Serviceable age. Floyd Meyer, Palmer, Kans., Phone 308. x38

SPF REGISTERED Duroc and Yorkshire boars. Serviceable age. Phone 753-2314. Wilbur Talkington, Matfield Green, Kans. x42

FOR SALE — Several young quarter mares, some broke the best. Choice quality and color. Phone TW 5-2441. L. Dalinghaus, Baileyville, Kans. x35

NATIONALLY ACCREDITED SPF Purebred Yorkshire open gilts and boars. Harvey Herrs. 4 miles west of Linn, Kans. Ph. DI 8-2252. x38

FOUR REGISTERED Polled Hereford bulls. 10 months to 6 yrs. old. Home weekends only. Leonard Carson, Miltonvale, Kans. SB35

DISPERSAL 75 CHOICE Angus and 10 Hereford cows, 2 to 7 yrs. old, bred to Hereford bulls, calf Feb. 20th, \$215. 17 strictly choice Angus heifers bred to Angus bulls, calf March 1, \$215. Carl Kleinsorge, Cottonwood Falls, Kans. SB35

FOR SALE — Registered Shorthorn bulls, 15 to 20 months old. Allen Lard, Clay Center, Kans. x41

FOR SALE — Charolais bulls, purebred and percentage. Make money by increasing weaning weights of your calf crop. McFadden Bros., Riley, Kans. 35

FOR SALE — 19 good Angus heifer calves, calfhood vaccinated. Seven choice Angus bull calves. 42 good Angus steer calves. Milton Hettenbach, Clements, Kans. Phone Cedarpoint 274-3338. x36

FOR SALE — 30 head good Angus calves — also 33 head of Angus cows (young). R. L. Gant, Wilsey, Kans. Telephone No. 496-2879. SB36

JOHNSON Hereford Farms sale Nov. 15, 1967, Salina, Kansas. Forty bulls, 25 registered cows and heifers, HDR Real Onward 166, Mill Iron, CK breeding, 275 coming 2 year old heifers bred to our bulls, selected through services of AHA "Hereford Country" Program from reputation herds in Nebraska Sandhills. Write for catalog, Elmer L. Johnson & Sons, Smolan, Ks. 67479. x35

SANTA GERTRUDIS bulls, certified excellent, 1-3 yrs. old. Dr. P. L. Beiderwell, Belleville, Ks. JA 7-2174. Concordia CH 3-1512 SB38

REGISTERED SHORTHORN bulls with size and quality. Dark roans to reds. Glenn E. Lacy & Son, Miltonvale, Kans. Phone 427-4513. x35

FOR SALE — Extra nice serviceable age Duroc boars. Byron Wanklyn, Home, Kans. Phone 799-2416. x37

FOR SALE — Breeding age Charolais bulls, 3/4, 1/2 and purebred breeding. Top quality, and very docile. Your inspection invited. Donald Runft, Scandia, Kans., FE 5-2582. x36

FOR SALE — Prize-winning Spotted Swine Boars and a few choice gilts, this includes 5th place Feb. boar at Neb. State Fair and also reserve junior champion at NCK Free fair. A half brother to these boars cut out as follows: Loin Eye 5.9 sq. inches, length 30.2, pct. ham & loin 44.4%. Rate of gain 2.1 lbs. per day. Joy Bros., Narka, Kans. Ph. 382. x35

NATIONALLY ACCREDITED SPF Hampshire boars, serviceable age, guaranteed. H. Wayne Shirley, Horton, Kansas, phone Powhattan 474-3349. x36

FOR SALE — Hampshire boars, serviceable age. Stanley Cairns, Greenleaf, Kans., phone 747-5795. x36

REG. SPOTTED & Yorkshire bred gilts. Jan. farrow. Also open gilts, both breeds. E. T. Lindquist, Waterville, Kans., ST 5-2358. SB37

FOR SALE — We have a large group of coming two year old Registered Hereford bulls. They are big, rugged, ready for service and the kind that will add lbs. and top market prices to your calves. We would be glad to show them to you. Sun Ranch, Salina, Kansas 67401. AC 913 TA 7-9661. P. O. Box 856. SB36

30 NICE registered Southdown bred ewes. Bred to rams of finest American and imported blood lines. Also nice selection of Southdown rams. Also baled prairie and sudan hay. Willis H. Riemann, Rt. 2, Clafin, Kansas. SB38

FOR SALE: 15 registered Shorthorn heifer calves by Broadarrow 7th. Several half sisters have been state & county 4-H winners. Glenn E. Lacy, Miltonvale, Ph. 427-4513. x37

WE HAVE a good selection of reg. Angus bulls for sale. Ready for service. Honeycutt Angus Farms, Blue Rapids, Kans. x37

WANTED TO Buy — Light-weight York boar. Ronald B. Nehsing, Alma, Kans. SB35

FOR SALE: Cross Bred York and hamp gilts and sows. 12 to 14 pig litters, breeding from Okla. State College and Nebraska. Better mothers, bigger litters. Also feeder pigs. Max Wehling, Dorrance, Kans. Ph. 666-4304. x35

FOR SALE: Holstein bull, 20 mo. old. Wesley Nauerth, 1724 So. Manhattan, Phone PR 6-5959 Manhattan. SB37

FOR SALE — Purebred Yorkshire bred gilts, bred to top indexing boar. From Missouri State Sale last spring. Two litter mate barrows. Cut out loin eyes of 6.75 and 7.80. Also will sell my old herd boar. He was litter mate to top indexing Yorkshire boar at Manhattan testing station. Leo Ball, Belleville, Kans. SB35

REG. SPOTTED & Yorkshire boars out of March & April litters, vacc. E. T. Lindquist, Waterville, Ks. ST 5-2358. sb36

BERKSHIRE and Poland China serviceable age boars. Gilts. Top quality. Delbert Hollinger, Lyons, Ks. x36

FOR SALE: Registered Angus bulls, 18 to 24 months of age, with size and quality sired by sons of Dor Macs Bardolier-mere "40" and Homeplace Eileenmere 252. Trumpp Angus Farm, 8 miles east of Clay Center, Ks. phone Green 944-2242. sb36

SEVERAL BIG type serviceable age registered Holstein bulls from 20,000 lb. dams, and from 100,000 lb. lifetime record cows. Harold Scanlan, R1, Abilene. x35

CHOICE DUROC boars, Serviceable age. Guaranteed breeders. J. G. Benyshek, Cuba, Ks. ph. 38F1. x35

Feed & Seed

DAIRY PELLETS, range pellets and all kinds of fertilizers. Manhattan Milling Co., 107 Pierre, Manhattan. TF Chg

FEED CIRCLE B Hound Dog feed for faster, healthier coyote dogs. Available at Sis Seed Co., Belleville; Farmers Elevator, Lincoln; Tescott Grain Inc., Tescott; Farmers Union Elevator, Hedville. Manufactured by Circle B Feeds, Concordia. 37

Poultry

POULTRY & EGGS wanted. Deliver or we'll pick up, Wed. Fri.-Sat. Kochs Produce, 702 Elm, Marysville, HI 3-3510. SB37

Automotive

GMC

TRUCKS
1/2 Ton - 60 Ton
Sales & Service
TRI-COUNTY MOTORS
307 N. 3rd MANHATTAN

Better Car Deals At Wakefield

NEW TRUCKS
NEW 1967 Chev. 1/2 T pickup, 4-spd., 6 cyl.
NEW 1967 Chev. 1/2 T pickup, 6 cyl., 4 spd.

USED TRUCKS
1963 Ford 1/2 T pickup, V-8, overdrive
1963 Chevrolet 1/2 ton, 4-wheel drive, 6-cylinder, 3-speed
1960 Chev. 1/2 T pickup, 6-cyl.
1959 International 1/2 ton, 6-cylinder, 4-speed
1955 Chev. 2-ton w/ grain bed & hoist
1954 Chev. 1/2 T pickup 6.
1949 Ford 1-T SWB with bed & hoist
1949 Dodge 1 1/2 ton with bed, 6-cyl., 4-speed
1940 Chevrolet 1/2 ton, 4-speed, 6 cylinder



AULD

CHEVROLET
HO 1-5414
WAKEFIELD

1964 CHEVROLET 1-TON heavy duty truck, fold down stock racks, grain sides, dual wheels, very low mileage. R. M. Myers, R 1, Waterville, ST 5-2257. SB35

Ford Motors Back To Work

SKAGGS ARE GLAD THEY DID

1967 Galaxie 4-dr. Sedan, V-8 Cruis-O-Matic, p-steering, factory air, R & H, Demonstrator. SAVE A \$1,000 ON THIS CAR!

1967 Fairlane 500 2-dr. Hardtop. V-8, automatic trans., p-steering, SelectAire conditioning, R & H, tinted glass. New SAVE!

1967 Fairlane 500 4-dr. Sedan. V-8, automatic trans., p-steering SelectAire conditioning, R & H, tinted glass. Demo. SAVE!

1967 Galaxie LTD 4-dr. Hardtop. V-8, automatic trans., vinyl roof, p-steering, SelectAire conditioning, R & H, rear seat speaker, tinted glass. Demo. SAVE!

1967 Chevrolet Bel Air 2-dr. V-8, automatic trans., R & H, factory air, 7,000 miles. New car warranty. \$2595. Discover Ford Country!

OPEN EVENINGS
BANK RATE FINANCING

Skaggs (Ford) Motors
"Where Customers Send Their Friends"
2nd & Houston Phone 8-3525

PERMANENT Anti-Freeze Sale

Zerex, Prestone, Vickers
GALLON CANS:
VICKERS AT
\$1.29 per gal.

MOTOR OILS
AT DISCOUNT

Phillips qt. 28c
Mobil qt. 29c
Conoco, Havoline, Sinclair
Qt. 34c

Klepper Oil
TOM DUNN, Mgr.
Stations at So. 17th
on Ft. Riley Blvd.
North 3rd St.
ELMER HODGES, Mgr.
MANHATTAN, KANS.

VAN-T OF TOPEKA HAS A TRUCK FOR YOU

Due to our large volume of new truck sales, we can supply you with clean used truck trade-ins. Here are just a few of a very large stock:

- 65 Chev. 1 1/2 ton 13 1/2 ft. flat bed
- 55 chev. 1 1/2 ton, 13 1/2 ft. flatbed
- 67 Chev. V-8 pickup, 3 spd.
- 65 Chev. 1/2 ton, 3 spd., 6 cylinder
- 64 Chev. 6 cylinder 3/4 ton, 4-speed
- 60 Chevrolet 1 ton V8 stake body
- 63 Chevrolet 3/4 ton 6 cylinder 4 speed
- 53 Chevrolet 1/2 ton 3 spd. V-8
- 62 Dodge 1/2 ton 6 cylinder 3 spd.
- 67 Ford V8 1/2 ton 3 spd.
- 65 Ford 1/2 ton 6 cylinder 4-speed
- 63 Ford 1/2 ton V8 automatic
- 66 Ford 1/2 ton 3 speed
- 48 Ford 1 ton grain bed
- 59 Ford 1/2 T pickup
- 66 GMC Suburban
- 67 GMC V6 1/2 ton
- 63 International dump 12' bed
- 62 Jeep pickup, 4 wheel drive

VAN-T CHEVROLET
3825 S. Topeka AM 6-5155
Service & parts open to mid-night daily; to 6 p.m. Sat. & Sun. Sales 8 a.m.-9 p.m. weekdays; 6 p.m. Sat.
TOPEKA, KANSAS

THESE USED TRUCKS SUITED FOR FARMS

- 1965 Ford F-600 V-8, 2-ton, 2-spd-5-spd; new 825-20 nylon rear tires
 - 1962 Chevy 80 series, full air, 2-spd., 409 motor, good 1000 rubber. Ideal second tractor or for small hauler. It's ready for work.
 - 1961 Ford 2-ton 2-spd., 825 tires; can mount box & hoist to suit buyer.
 - 1960 Ford 2-ton V-8 4-spd., good 13x6 Tradedwind box.
 - 2 older 1 1/2 T trucks w/ boxes; your choice at \$295.
- We have a new 1968 Chevy 50 series 2 tonner for immediate delivery. If you need a new or used truck, come to Skinner's & look over the large selection. We have a truck for you.

Skinner Chev. Co.
625 Lincoln
ME 2-2101
CLAY CENTER, KANS.

1964 16 ft. Big Ben truck bed with 42" sides, also 12 ton Garwood hoist, excellent condition. \$850. Johnston Feed Service, Olsburg, Kans., phone collect 468-3541. SB37

FOR SALE — Sun distributor machine, Stewart Warner wheel balancer 2 1/2 hp, barrett heavy duty 6" brake shoe machine. Ernest Kratina, Route 6, Topeka, Ks. 66608. x35

FOR SALE: Good 58 2 ton Chev. truck, ready to go. Extra good 4 row corn head for C Gleaner combine, used very little. Good 2 row corn head for A Gleaner combine. Roy White, Vermillion, Ks., 382-5135. SB35

Real Estate

E. H. Shane Real Estate REALTOR

Office 112 West 7th St.
Ph. CE 8-3641
Residence 224 S. Madison St.
CE 8-2439
List your farms and property with us.
E. H. SHANE Junction City

Fulmer Real Estate CATHERINE J FULMER REALTOR

Office 456-7696
Res. 456-9281
WAMEGO



FOR SALE — 160 acre farm, eighty acres under cultivation. Balance, good pasture. Will sell with or without improvements. On good highway in Riley county. Henry Bletscher, Leonardville, Kans. 66449. x35

FARMS FOR SALE

Improved 120 on oil road, modern home, school bus, 70 acres cultivated, balance grass, \$25,000. 10 yr. contract.

Unimproved 160 with 112A cultivated, balance grass, 389A wheat, 53 feed grain, \$25,000 with 10% down, 10% March 1, then \$1000 per year plus interest.

Improved 320 on Highway 81, 278A cultivated, 85.9 wheat, 75 corn, 57 milo, irrigation well with new MM motor, \$110,000.

Improved 640 on oil, school bus, modern home, 300A cultivated, balance excellent grass at \$100,000, with liberal contract.

Kvasnicka Realty
GERALD A. KVASNICKA
Realtor
HADDAM, KANS.
Ph. FR 6-2874

CATTLE PRICES TOO LOW?

Start a high profit Buffalo Hunting Preserve. Ideal Improved 1920 acre Osborne Co. Ranch, double fenced, Lake sized ponds. A-OK Realty, Wakefield, Kans.

A-OK Realty
Ph. HO 1-5691 **WAKEFIELD**

FARMS

370 acres in Norton County, consisting of 180 acres pasture, 190 acres tillable of which 110 acres are under irrigation. \$1200 worth of irrigation equipment goes with the farm. The buildings consist of a good 3 bedroom home, all carpeted, fireplace and full basement. Other buildings in fair condition. Can be purchased on contract, will consider trade. Priced \$200 per acre.

640 acres in Ottawa County, 430 acres exceptionally good pastured well watered, good fences and has loading facilities. 210 acres cultivated land. Has an outstanding modern 6 room home, good barn, garage and other buildings. Price \$160 per acre. Excellent financing may be assumed.

160 acres in Saline County, well improved modern home, barn, silo, sheds and granaries. 135 acres excellent upland farm ground. Owner anxious to sell, immediate possession of homestead, cultivated land subject to present lease. There are 140 acres nearby, all in cultivation that may be purchased with the above farm.

The Wenger Agency
REALTOR
114 S. 7th TA 7-3641
SALINA, KANSAS

Carlson Agency MANHATTAN, KANS.

FARM — LISTED RECENTLY
800-acre farm, 240 acres crop land, 80 acres planted wheat, 100 acres alfalfa, balance to milo. The pasture and meadow, good blue stem grass, good fences, lots of water, modern home, barns, large hay shed. Well arranged. Owner retiring. A real livestock farm.

1350-acre livestock ranch. 100 acres good bottom crop land, bal. pasture, pasture divided into several pastures with good fences, lots water, good grass; has not been grazed this season. With modern home, barns, sheds, canals. Located on school bus, mail route on good highway. This ranch could be bought on contract.

480-acre farm. 110 crop land, bal. pasture. Modern home, barns, sheds, silos. The pasture bluestem with good fences, plenty water. Near Manhattan.

240-acre farm, 100 acres pasture, bal. crop land. A good producing grass farm with modern home, barns, sheds. On a good road, mail route. This is one of the better farms.

For more information on these farms and others, call us. Have a number of good farms to show. Also several good pastures.

For more information on these properties, contact—

Lawrence Welter ... PR 8-3455 (Auctioneer)
Harold Carlson ... PR 8-3083

TO SETTLE ESTATE IN MANHATTAN

LARGE HOME — EUGENE FIELD DISTRICT — 4 bathrooms, 7 bedrooms, apt. basement, fireplace, spacious living & dining room, garage. Convenient to University and City Park, \$16,500.

BETWEEN AGGIEVILLE & DOWNTOWN — 3 Bedroom Bungalow, 1 1/2 baths, basement, screened porch, double garage — \$1500 Down — \$11,500.

1 BLOCK UNIVERSITY — Attractive 3 Bedroom Home, 814 Sunset, 1 1/2 baths, living & dining room carpeted, screened patio porch off dining room, gas log fireplace, full basement, garage, large lot, garden space, fruit trees — \$16,850.

SOUTHWEST LOCATION — Large corner lot with view, (3) bedrooms, woodburning fireplace, basement, attached garage, well landscaped yard, \$17,500.

For Complete Real Estate & Insurance Service Call

Maurice McNeil
Realtor
Suite No. 11
Union National Bank Building
Office PR 8-4401 Res. JE 9-5164
MANHATTAN

GOOD OLDER 6 room house in Clay Center, Kans. Extra lot with fruit trees, good neighborhood, near schools. Priced to sell. Call after 5 p.m. Thomas Mossburgh, ME 2-2945. x37

FOR SALE or Trade — 8 room modern home, Jamestown, Kansas. For information write F. E. Riggins, Centralia, Kans. x35

FOR SALE — Eighty acre choice farm, four miles northwest of Holton. Forty acres in pasture, forty acres in alfalfa & brome, fully improved, immediate possession. John Boyce, 720 Iowa, Holton, Kansas. SB35

FOR SALE — 2 bedroom house & garage, excellent landscaped yard, shade trees. Near town. Phone HU 5-2387, Riley, Kans. SB36

FOR SALE — 200 acre dairy farm. New 8 gate type barn, 2 ponds. 40x40 shed, also a 14x40. 40x50 barn. 2 boxcars. 23x34 garage. Near Perry Dam. Harold Patterson, R2, Oskaloosa, Kans. Phone 863-2574. x35

FOR SALE: Business building, \$4000. Oberlin, Kansas, \$1500 10 room house, St. George, Kansas. Lights. Gas, water, septic tank. Harry H. Teeter, 1216 Vattier, Manhattan, Kansas 66502. x37

Farm Equipment

Combine Clean-up

Our harvest is well underway. Big reduction on balance of inventory. New Masseys & Gleaners.

- 1965 Massey 300, 18.4 tires, cab cut 400 acres
- 1963 Massey 300 18.4 tires, cab, shedded \$4600
- 1961 Gleaner A with cab
- 1959 Massey 92, power steer., good shape \$2800
- 1959 Massey 82, reconditioned \$2700
- 1958 JD45 shedded, good \$1475
- 1954 JD55 12-ft. \$990
- 1961 Gleaner A cornhead \$625
- JD No. 10 cornhead \$125
- 1952 Gleaner A w/ cab \$950
- 1952 MM Uni-Harv. combine & picker \$275
- 1957 AC66, looks new \$240

Frantz Farm Eqpt.

North on 77 ph. 223-2317
ALLIS CHALMERS M-F
BEATRICE, NEBR.

LIKE NEW MM 707

Minneapolis Moline 707 diesel. less than 800 hours. Like new, with half of new warranty still on it.

Jorden Impl. Co.
CO 3-2041 **ABILENE, KS.**

FOR SALE: Papec roller mill with ear corn head. International loader. Robert Reed, Green, Ks. phone 944-2021. x36

GOOD SELECTION OF USED TRACTORS

- 1965 Farmall 706 gas, fast hitch, fully equipped
 - 1961 F-460 gas, fast hitch
 - 1961 F-560 dsl., fast hitch
 - 1962 Ford 900 dsl., SOS
 - 1953 IH Super M, wide front
 - 1958 F-350, fast hitch, power steering, fully eqpt.
 - 1958 Utility 350, F.H., o'hld.
 - 1949 IH M; 1941 JD B
- MACHINERY**
- 1966 IH 303 combine w/ cab, like new
 - 2-row cornhead for Gleaner A
 - Gehl feed wagon, 2-beaters w/ conveyor
 - Twin-Draulic loader for 900 series Ford tractor
 - 225X Letz burr mill

Kendall Garage & IMPLEMENT



Phone 122
Leonardville, Ka.

YOU'LL LIKE TRADING AT BLANDINGS IN BELOIT

- 1959 JD 830 dsl., dual hyd., elec. starter
- 1950 JD A Powr-trol & rollmatic
- 1951 JD A with JD No. 45 loader & push-off stacker
- 1952 MM G LP gas, A-1
- 12 ft. Krause tandem disc
- 12 ft. Flex-King V-plow, like new
- No. 32 Papec 1 row forage harvester, ready for field
- 1959 JD No. 55 combine, 14 ft., always shedded & farmer owned
- 1951 Gleaner A with 14 ft. platform, A-1
- 1951 JD D with individual brakes

G-B LOADERS WALDON DOZERS

Blanding Impl. Co.



PE 8-3066

BELOIT, KS.

SALINA



EARLY PLOW SPECIALS

- 1 JD F145H 5-16 3 pt. plow
- 1 JD F125 5-14 3 pt. plow
- 1 JD F45 4-16 3 pt. plow
- 1 JD F120 4-14 3 pt. plow
- 2 JD 810 4-16 3 pt. plows
- 2 JD 55 3-14 drawn plows
- 1 Case 4-16 drawn plow
- 1 IHC 4-14 2 pt. plow
- 1 IHC 4-14 drawn plow
- 2 MM 4-16 drawn plows
- 2 30 ft. grain augers
- 1 JD Model L spreader
- 1 JD model L spreader
- 1 JD No. 35 hydraulic loader
- 1 IHC 4-wheel wagon gear
- 1 Mayrath 40' bale elevator, transport truck, like new

INDUSTRIAL EQUIPMENT

- 3 JD 1010 gas crawler-loaders
- 1 JD 2010 diesel crawler-loader
- 1 JD 440 gas crawler-loader
- 1 JD 440 diesel wheel loader
- 1 JD 2010 gas wheel loader
- 1 JD 4010 diesel wheel loader
- 3 Ford 8N gas, hyd. loaders
- 1 Ford 1841 diesel wheel loader
- 2 JD 5010 8 yd. scraper
- 2 JD 830 ind. dsl. wheel tractors
- 1 IHC 2706 D 5 yd. scraper
- 1 Letourneau-Hancock D pull 9 yd scraper
- 1 Cat No. 60 9 yd. scraper
- 3 JD No. 50 backhoes
- 2 JD No. 51 backhoes

Salina Impl. Co.

Box 1029 Ph. TA 3-2206
SALINA, KANS. 67401

USED COMBINES

- 1965 Gleaner C II, 16-ft.
- 1963 Gleaner C, 16-ft., cab
- 1962 Gleaner C, 16-ft., chopper
- 1962 Gleaner C, 18-ft.
- 1956 Gleaner A; 1952 Gleaner A
- 1959 Massey 92, cab
- 1958 Massey 82
- 1958 Massey 60, 12-ft.
- 4-row corn head for earlier "C"s

Ostlund Implement



CH 3-4088

CONCORDIA

USED TRACTORS

- 4020 John Deere diesel
- 3020 John Deere Gas
- 3010 John Deere diesel
- 2010 JD wide axle, overhauled
- 60 JD; 460 IHC Utility
- 65 Massey diesel; 70 JD Std.

- USED COMBINES**
- 1964 45 JD combine
 - 1959 55 JD combine
 - No. 10 JD corn att. 45 combine
 - 26 Crust Buster
 - 10' Oliver wheel disc
 - 10' Case wheel disc
 - 12' JD wheel disc
 - 9' JD KBA disc
 - 4-16 JD hydraulic 66 plow
 - 4-14 Case hyd. plow
 - JD 16-8 Model B grain drill, 1966
 - JD 16-8 Model FB B fertilizer grain drill

- Hydraulic loader, for Ford tractor, new condition
- JD 44' hay & grain elevator, PTO drive
- Large selection of used chain saws
- 14T John Deere hay baler
- 13-7 JD FB fertilizer grain drill with new disc

W. W. Smith & Sons



ME 2-3148

CLAY CENTER

HERINGTON



TRACTORS

- 1964 JD 4020 dsl., low hours, fully equipped
- 1964 JD 3020 gas, low hrs., fully equipped
- 1956 IHC 300
- 1951 JD A; 1948 IHC M

MACHINERY

- 1966 JD 234 corn att.
- 1962 JD 210 corn att.
- No. 227 JD corn picker
- 1962 Massey 72 comb. 12'
- 1961 JD 45 combine 12'
- 1959 JD 95 combine 16'
- 1959 JD 45 combine 12'
- 1956 IH 141 combine 14'
- 1965 IHC 50 2-row harvester, real good
- 1962 Gehl 2-row w/ mower bar
- Papec 45 silage blower with pipe
- Papec 1-row harvester
- No. 30 Grain-O-Vator, 125 bu. like new

SEE US FOR:

- New Crust Buster harrows; new Hesston row crop savers
- Grain-O-Vator and Blair feed wagons.

Tri-County Sales

George Munkres
Phone Collect
BL 8-2249 or BL 8-2291
HERINGTON, KANSAS

EUREKA, KANS.



SPECIALS OF THE MONTH

- 1964 Gehl forage harvester, 2 row, also with 1-row head \$850
- 1965 New Holland haybine, excellent \$1795
- 800 Case tractor, 3-pt., wide front, with power steering \$1795
- 12-foot Kewanee disc harrow, nice \$375
- 1967 New Hesston 280 windrower 12-foot with Wisconsin engine, special price \$3950
- 1965 A-C E-240 cornhead, used 2 days only, A-1 \$395
- John Deere crimper \$375

Truskett Eqpt. Co.

Glen W. Wilson, Owner
Phone GI 3-6379 or
GI 3-5943 nights
EUREKA, KANSAS

1-STOP SERVICE

- Chain Saws
- HOMELITE & MONO**
- Priced from \$109

Service & parts for all makes. We can take care of your saw.

KIRO Service

6 miles west of Topeka on US24
Phone 913/582-2770

FOR SALE or trade for cattle, 1954 80 special 12' MF combine and hume reel. Good condition. \$1050.00 Ph. 316 585-6671. x36

USED TRACTORS
John Deere diesel
John Deere Gas
JD wide axle, overhauled
460 IHC Utility
Massey diesel; 70 JD 54
USED COMBINES
45 JD combine
55 JD combine
10 JD corn att. 45 combine
rust Buster
oliver wheel disc
ase wheel disc
D wheel disc
KBA disc
JD hydraulic 66 plow
Case hyd. plow
6-8 Model B grain drill
6-8 Model FB B fertilizer
in drill
draulic loader, for Ford
, new condition
4' hay & grain elevator
O drive
selection of used
John Deere hay baler
JD FB fertilizer grain
new disc

W. Smith & Son
ME 2-3148
CLAY CENTER

HERINGTON
TRACTORS
JD 4020 dsl., low
lly equipped
JD 3020 gas, low hrs.
equipped
IHC 300
JD A; 1948 IHC M

MACHINERY
JD 234 corn att.
JD 210 corn att.
227 JD corn picker
Massey 72 comb. 12
JD 45 combine 12
JD 95 combine 16
JD 45 combine 12
IH 141 combine 14
IHC 50 2-row harrow
al good
Gehl 2-row w/ mower
ec 45 silage blower
ec 1-row harvester
30 Grain-O-Vator, 13
ne new

SEE US FOR:
Crust Buster harrow
Hesston row crop
in-O-Vator and Blair
ons.

Tri-County Sales
George Munkres
Phone Collect
BL 8-2249 or BL 8-2250
HERINGTON, KANSAS

EUREKA, KANSAS

PECIALS OF THE MONTH
Gehl forage harvester
w, also with 1-row
New Holland haybine
llent
Case tractor, 3-pl. w/ 2
ont, with power steering
ot Kewanee disc harrow
ce
New Hesston 280
12-foot with Wisconsin
ne, special price
A-C E-240 cornhead, new
ys only, A-1
n Deere crimper

Truskett Eqpt. Co.
Glen W. Wilson, Owner
Phone GI 3-6379 or
GI 3-5943 nights
EUREKA, KANSAS

1-STOP SERVICE
Chain Saws
HOMELITE & MONROE
Priced from \$100
ice & parts for all
can take care of your

KIRO Service
les west of Topeka on
Phone 913/882-2771

SALE or trade for
80 special 12' MF
hume reel. Good
0.00 Ph. 316 885-8871
Ks.

JUNCTION CITY



USED TRACTORS

1939 IH Farmall F-20 with power lift, 2-row cultivator with cylinders \$165
1941 John Deere Model B, runs good \$75
1962 IH F-560 gas fully equipped, new tires, good
1961 IH I-340 Utility, fully equipped
1957 IH I-300 utility, TA, IN-PTO, fast hitch
1951 IH Farmall M, new tires, new paint, slick
1942 IH Farmall H, runs good, needs paint job, at \$290

MACHINES

IH 16x8 low wheel fertilizer drill, grass seeder \$295
IH 16x8 drill, fertilizer, low wheel, power lift, new spouts \$375
JD Van Brunt 16x8 plain \$25
IH No. 15 Impl. carrier with 4 sections spring tooth, good \$375
JD No. 55 3x14 plow \$125
IH No. 27V Power mower
JD No. 15A rotary chopper, looks like new at \$595
IH 4-section spring tooth harrow \$45
JD No. 14T PTO hay baler, clean local \$575
Allis 8 ft. tandem disk \$40
IH No. 46T hay baler, good \$825
IH 3x14 plow, hyd. control \$150
Jayhawk hyd. loader \$20
IH No. 100 fast hitch mower \$350
IH No. 412 4x14 semi-mount plow \$395
IH No. 314 roll over plow, 3x16, fast hitch, looks like new \$895
New Idea low wheel side del. rake \$60
IH No. 15 parallel bar side rake \$365
JD cylinder corn sheller \$25
IH No. 5 low wheel rake \$165
New Idea tractor spreader \$125
IH horse spreader \$25
NEW IH No. 303 combine, 14 ft., ready to roll, we trade
NEW IH No. 550 2 row field harvester, demonstrator
IH No. 25 2-row corn head for 91, 93 or 205 combine. Drop in, make an offer

TRUCKS

1951 IH Metro, 10 ft. body \$125
1963 IH Metro-Mite, clean \$595
1965 IH Scout, full top, radio, heater, lock out hubs \$995
1955 IH R-122, 3/4 ton pickup \$350
1954 IH R-112 pickup 8 ft. body, 4-speed, overloads \$750
1952 Ford F-3 1-ton pickup \$150

SEE OR CALL:

Herb Trimble or Lloyd Hunter

Mohn Implement Co.
Telephone CE 8-5101
Junction City, Kansas

HARVESTERS & OTHER MACHINERY

Ford 612 harvester with two row attach., ready to go
NH 616 harvester with single row head & sickle bar, clean
NH 616 harvester with single row head
Krause self-propelled harvester, ready to go
AC single row harvester
No. 30 Grain-O-Vator feed wagon
JD 12 ft. 3 pt. spring tooth, good
New Kent No. 318 springtooth, price reduced
1952 M with Schwartz wide front end, PS, special live two-way hyd., oversize pistons and sleeves, ideal for loader tractor
2 1951 WD, one with new paint
Note: See Special "For Sale" Section

SEE US FOR:

New Kent harrows; new Hesston row crop savers; Blair feed wagons.
Starting Nov. 1 New Holland starts paying 6% on your trade-ins & cash with farm delivery plans till next spring. Check with us and take advantage of this opportunity.

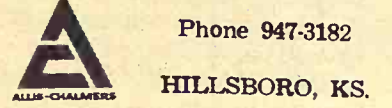
Wright Impl. Co.
South Highway 15
Phone CO 3-2061
ABILENE, KANSAS.
Nites, Harris Clark
Salina TA 3-6690
Salina TA 3-2274

FOR SALE — 5 row Hesston milo saver. Fits C Gleaner. Phone CI 4-3421, Summerfield, Kans. after 7 p.m. x36

1966 A-C C II & USED TRACTORS

1966 AC C II, 18-ft. combine, low acreage, clean
1963 Gleaner A, 14', big rubber, exceptionally clean. Shredded
1962 A-C 2-row cornhead
1966 AC 190XTD, 800 hrs., loaded
1962 AC D-17D, excellent, new tires
1962 AC D-17, clean, recent overhaul
1960 AC D-17D, new tires
1959 AC D-17D, low hours, good
Have new C II and A II combines for prompt delivery.
FOR YOUR DOWN MILO & BEANS, WE HAVE ROLL-A-CONE IN STOCK.

Jost Impl. Co.
Phone 947-3182
HILLSBORO, KS.



NEW STOCK REDUCTION Machinery Sale

YOU'LL SAVE REAL MONEY AND INTEREST IS PAID FOR YOU ON MOST ITEMS WELL INTO 1968

New 656 gas tractor
New 656 D tractor
New 706D tractor
New 806 D tractor
New 309A 3x14 3 pt. plow, demonstrated
New 311 3x16 fast hitch plow, demonstrated
New 7' trailing chisel plow, demonstrated
New No. 550 5x14 steerable plow, 3 pt. or fast hitch
New No. 560 6x16x16 steerable plow 3 pt. or fast hitch
New 4 section rotary hoe
New No. 470 wheel disk with folding extension, 18"7"
New No. 370 wheel disk 12' 12' 11' and 14 ft.
New No. 58 6 row planter
New No. 10 combination 16x8 drill
New 663 6 row rear mounted cultivator, demonstrated
No. 45 Vibra Shank mounted cultivator, 12 1/2' can be extended, demonstrated
No. 14 side rake
New No. 120 balanced head mower
New No. 200 Pitman mower
New No. 37T baler
New No. 47 T baler
New No. 303 13' combie, no cab
New 403 14' combine with cab
New No. 350 1 row field cutter
New No. 311 66" cut rotary cutter trailing
New 201 fast hitch platform carrier
New No. 200 fast hitch back fill blade, 8'
New 2001 loader with hyd. bucket
New No. 1050 grinder mixer
3 new Gandy insecticide units

Used Machinery FOR NO INTEREST WELL INTO 1968

TRACTORS

IH 806 dsl. demonstrator
1959 Ford 971-D, with cover
1951 International WD-6
1950 Massey Harris 30
1947 International M-D
1947 Allis WC with cult.
1936 Allis U; 1942 IH M

COMBINES CORNPICKERS

No. 22 cornhead w/ brackets for 101; can get brackets for 303
IH 2M & ZME cornpickers
Case pull type corn snapper
1955 International 141 with cab
International 125 self propelled
1967 Ford 612 field cutter, w/ cutter bar & RC pickup att.
Case No. 210 single row field cutter

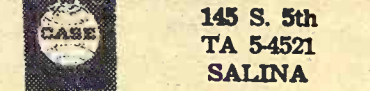
DISKS

IH 8' No. 35 wheel disk
Case 10'9" wheel disk
IH No. 36 fast hitch
JD 10'9" wheel disk
DRILLS
JD FB w/ fert. & press wheels
MM fert. grain drill
IH 16-8 fert. drill on rbr.
IH 16-8 plain drill
JD 16-8 plain drill

AULD CHEVROLET HO 1-5414 WAKEFIELD



Vahsholtz Impl. Co.
145 S. 5th
TA 5-4521
SALINA



USED TRACTORS

65 Case 931 dsl., 680 hrs.
63 Case 430 dsl.
66 Case 31 Case-O, dsl.
59 Case 801 diesel
52 DC-3 LP, foot clutch, with Eagle hitch
60 Farmall 460 gas, extra good one
51 MH 44 RC dsl., 3 pt.
62 GVI MM diesel
59 MM 445, extra good
65 Jacobsen 4 HP garden tractor, with mower
READY USED COMBINES
62 Case 600 with cab
53 Cockshutt 428 12', good
61 Gleaner cornhead, extra good
Used 4 rows of Hesston corn & milo savers

FOR SALE — Massey-Ferguson cornhead, 1960, Model 20, like new. Fits 90-92-92 Super. Robert Dean Schaefer, Neosho Rapids, Ks. Phone Emporia 316 DI 2-8344. x35

FOR SALE — A good used 2-row AC SP combine, A corn head, bolt on type. Kept inside, reasonably priced. Wanted: A good MM GVI tractor. Call 568-2528 or write Leo Berndt, Glasco, Ks. 67445. x35

FIELD CUTTERS

New JD No. 38
New JD No. 34
Near New IH No. 16
No. 20C IH; Forager MM
AC Belt table blower

COMBINES

1965 JD 95 16', cab
1958 JD 45, 12', cab
1962 JD 55 14' P.S.
1957 John Deere 45 10'
1956 John Deere 45 10'
1956 John Deere 55 14'
1954 SP 168 MM
1953 No. 127 IH
June 1 '68 Interest Waiver On These

MISCELLANEOUS

JD No. 45 loader
Farmhand loader
220X Letz, Viking PTO mills
10" Peerless roller
10' JD chisel plow
No. 30 Grain-O-Vator; Ford header

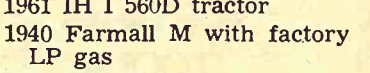
Washington Impl.
EA 5-2301
WASHINGTON



DAUER IMPLEMENT CO.

1964 IH F706D tractor, 1000 hrs.
1959 IH I 560D tractor
1961 IH I 560D tractor
1940 Farmall M with factory LP gas
1960 MF 85D tractor
IH No. 10 16x8 grain drill
IH No. 36 field cutter, excellent condition
1958 Massey-Harris 444 tractor
1967 IH 403 combine 16-ft., low acreage.
1958 F450 tractor, gas
1941 M tractor
McCormick No. 35 13 ft. wheel disk
McCormick No. 35 10'9" wheel disk
1957 McCormick 46T twine baler
1962 McCormick 46T twine baler
1964 McCormick 46W wire baler
McCormick No. 100 mower, 2 pt. hitch
One nearly new tractor tire 13.6x36 4 ply \$60
McCormick 16x8 MF drill, low rubber & rubber press

Falun
Phone 1011



IH 460 OVERHAULED
International 460 with mounted plow. Completely overhauled, tires like new.

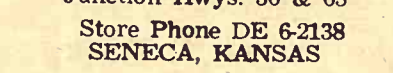
Jorden Impl. Co.
CO 3-2041 ABILENE, KS.

WANTED: Pay cash for Hesston Crop Savers. Box 406, Buhler, Ks. x35

FOR SALE Guaranteed Tractors

1961 JD 4010D; 1963 JD 3010D
1962 JD 3010 gas; 1960 JD 630
1960 IHC 560 gas; 1961 JD 2010
1957 JD 620; 1958 JD 520; 1961 JD AC D15 dsl.
1961 MF 65 gas
1955 JD 70 dsl.
1955 JD 60; 1955 Ford 860
1950 JD A; 1949 IHC M; 1951 JD B; 1951 Case DC
1951 AC WD; 1944 IHC H
Also Several Other A's & B's
COMBINES
1964 JD 40 with float springs
Gleaner 10 ft. SP
1959 AC 66; 1951 AC 60
1965 JD 210 corn attachment
MISCELLANEOUS
1958 Case picker-sheller
1961 AC 33 picker
1952 JD 226 picker
New Idea, Case, IHC & Woods pickers, 2 and 4 row
New 225X Letz PTO grinder reduced to sell
1962 Letz grinder-mixer
Wetmore PTO burr grinder

Todd Tractor Co., Inc.
Junction Hwys. 36 & 63
Store Phone DE 6-2138
SENECA, KANSAS



WICHITA



Discount Sale On Lot Reconditioned Bargains

1959 JD 630 PTO hyd. .. \$1760
1957 IH 350, fully equipped \$1000
1959 IH 340 hyd. fast hitch \$1340
1958 MH 555 dsl. PTO hyd. \$1200
1949 JD A PTO hyd. \$500
1946 JD A PTO hyd. \$280
1959 AC D17 fully equipped, \$1750
1958 JD 720 dsl. RS PTO hyd.
1959 JD 730 dsl. RC PTO hyd.
1958 JD 820 dsl. PTO hyd.
1963 JD 4010 dsl. PTO hyd.
1962 JD 3010 dsl. RC PTO hyd.
1966 Case 930 RC, fully eqipt. ped
Good Selection of other farm & industrial equipment

NO FINANCE CHARGE TILL MARCH 1, 1968

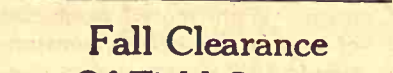
Western Impl. Co.
2256 S. West St. WH 3-4261
WICHITA, KANSAS.

Bearman Eqpt. Co.
Allis-Chalmers & Minneapolis Moline
WAMEGO, KS. 456-2310

Fall Clearance Of Field Cutters

NH SP 818 field cutter, will sell at sacrifice
Gehl self propelled No. 83, 1963 model with 2-row head, mower bar and pickup attachment. Will sell as a unit or in part.
Gethl FH No. 83 1962 model, with 2-row head
Gehl FH No. 188, 1965 Model with 2-row head.
New Holland No. 616, 1964 Model, rebuilt.
John Deere No. 6, 1964 model, 1000 rpm. PTO.
Papec 1964 model with single row.

LINDQUIST IMPL.
TA 3-2451
808 N. 10th
SALINA, KANSAS



LOOK IN AT PESCHEL'S

1959 460 Farmall tractor
1963 M-F 65 tractor
1962 3010 JD, overhauled
1959 770 Oliver; 1949 88 Oliver
No. 86 5-14 MF semi-mounted plow, like new
5 540 4-14 Oliver semi-mt. plow \$395
IHC 311 3-14 plow
IHC No. 37 10' disk

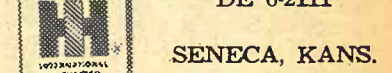
Peschel Bros.
304 Center
HI 3-4377
MARYSVILLE, KANSAS.



USED MACHINERY

101 combine 1961, cab, big tires, very clean, 1 owner, condition, excellent.
Gleaner E combine, 1965, big tires, robot, 1 owner, very good condition.
Roll-a-cone for 101 combine, used 1 year.
20C forage harvester, completely reconditioned, with row crop pickup, cutter bar
F560, 1962, fully equipped, 1 owner, A-1 condition
Super H, 1954, completely overhauled, original paint & rubber
No. 23 corn head for 151 combine \$400

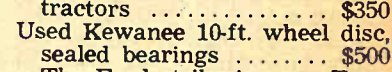
Heiman-Warnica
DE 6-2111
SENECA, KANSAS.



TRADE NOW

861 Ford gas tractor, Selecto-Speed, LPPTO, clean .. \$1750
841 Ford diesel, 12-speed, all purpose model \$1675
Fordson Major 3-point hitch, LPPTO, good power, the leader in fuel economy \$1500
8N Ford, just right for all. Can be used on every job, farm chores to field work .. \$500
2-row New Idea corn picker, mounted, fits most row crop tractors \$350
Used Kewanee 10-ft. wheel disc, sealed bearings \$500
The Ford strike is over. Tractors and equipment will soon roll again. Buy now and save before the big price increase is added. The union pay increase is certain to increase cost of production. Save on free interest and price rises.
A Krause disc will be a good investment buy this fall. Chisels are also tops in tillage tools. Let us figure with you now.
Used New Holland one-row cutter with motor \$500
Used Farm Hand stacker manure fork & stacker \$250
4-14 Ford mounted plow, very clean \$450
Used 250-bu. Habco PTO dryer, automatic loading and unloading, real good \$1950
Check with us on your needs.

D & D Farm Eqpt.
Phone
913 ME 2-5212
CLAY CENTER, KANSAS.
WATERVILLE, KANSAS.



WE HAVE COMBINES

1965 CII Gleaner, 16 ft.
1963 A Gleaner, 10 ft.
1962 A Gleaner, 14 ft.
1953 John Deere 55, 14'
1952 MH Super 27, 14 ft.
1950 Massey 26, 10 ft.
1960 Gleaner 2-row cornhead

SEE "BUTCH" BEFORE YOU BUY

Waterville Motors
A-C DODGE
Phone 913 ST 5-2731
WATERVILLE, KANSAS

FOR SALE: 2 cattle feeders. One 4-ton, one 6-ton. Joe Straub Wamego, Ks. ph. 913 456-9255. x35

FOR SALE: 1951 Super 27 14 ft. Massey combine with maize bar & recent motor overhaul. \$400 or trade for livestock. Carl Koehler, Hanover, Phone ED 7-2440. x35

FOR SALE — Nearly new Tox-Wix grain dryer. 250 bushels. Price, \$1000. Robert Chaffee, Green, Kans. WI 4-2432. x37

FOR SALE — No. 10 corn head for 45 JD combine. In running order. Price \$325. Also have hookup for 210 head for 95 combine. Ellsworth Peterson, Reading, Kans., Phone Osage City, 913 LA 8-2170. SB36

20 BIG Angus purebred cows, \$195. 38 big good quality Hereford cows, \$190. Can furnish any number of cows wanted. Paul Evans, Phone 316 439-5354, Kincaid, Kansas. SB38

WANTED TO BUY — Farm-hand stacker with hay basket & forage fork. Ronald B. Nehsing, Alma, Kans. SB35

FOR SALE — Welding cable. New, heavy duty insulation, size 1/0. Worth the money. Mike Reid, 812 Kearney, Manhattan, PR 6-6771. x35

FOR SALE — One set of new 4-row Hesston Maize Heads. Lynns Truck & Tractor, Marion, Kans. SB35

1956 ALLIS Chalmers 66 combine, cut very little. Always shedded. New canvases. Make offer. A. L. Dague, Washington, EA 5-2619. x38

LATE JOHN Deere cab for No. 55, with blower. 1 pair 12" axle extensions for 55 and 95. Nickel Brothers, LI 3-2535, Buhler. x35

SEVERAL SETS used Hesston Crop Savers. Fit most combines. Nickel Brothers, LI 3-2535, Buhler. x35

COMBINES — 1958, 1955 Gleaners. John Deeres: 1959 95; 1960, 1957, 1956 55s. TRACTORS — John Deere 70, 60, G. MF 35. 1964 MF 65. MM GVI LA Case. Fords: 1944, 1947, 1948, 1959 881, some with loaders. Davis, Ford, Twin-Draulic, Bradley loaders. Used Hesston Crop Savers. Nickel Brothers, Buhler. x35

SHELLMASTER 1200 MM corn sheller, PTO, good condition. Ernest Zorybnicky, 766-4977, Odell, Nebr. x35

FOR SALE — 1960 101 IHC with cornhead. Ready to go. Combine \$1850, corn head \$450 or both for \$2200. Wynn Bauer, Clay Center, Kansas. x36

FOR SALE — 400 gal. Sunset bulk milk tank, 3 yrs. old, like new, \$1100. 300 gal. zero tank \$600. Vic Daniels, Powhattan, Kansas. 474-3223. x36

FOR SALE — Grain-O-Vator 30 handles grain or silage, in good shape. Don Schmidt, White City, Kansas 349-2352. SB36

FOR SALE — Sampson self oiling windmill, complete with pump stand, pipes & cylinder. A. R. Christensen, Elko Hotel, Clay Center, Kans. Phone ME 2-2277. x35

IH EIGHT foot power grain binder in running order. A large iron butchering kettle. A two wheel trailer, can put 8x12 box and 20 in. tires on. Earl S. Burnett, RR1, Wheaton, Ks. 66551. x36

WANTED — Good 13'6" combination stock & grain bed. Ernest Kratina, R6, Topeka, Kans., 66608. x35

FOR SALE — 16 foot cattle self feeder, 320 bushel. Jerome Lueers, Marysville, Kans., Ph. HI 3-3832. x35

FOR SALE — Hesston corn harvester and Comfort cab for Massey 82 combine. Carl Roney, Waverly, Kans., Phone 733-2647. x35

WANTED — 3020 or 4020 JD tractor, also 56 or 57 Chev. 2 ton truck. Post office Box 45, Langdon, Kans. x38

WANTED TO Trade — Model 125 IHC combine with most of Anderson changeover, Avsherman rasps, almost new 13-24 6 ply drive tires, mounted Hess- to 4-row crop saver for a new or good used grinder-mixer mill. George Burkholder, Rt. 1, Abilene, Kans. x35

FOR SALE — Used 5 h.p. grain drying fan complete with propane burner & controls. \$390. Valley Equip., Lindsborg, Kans. AC 7-2396. SB37

WANTED — Used Farm Hand F11 loader. Stephen Rupert, Minneapolis, Kansas. x36

Miscellaneous

FOR THE ride of your life, ride a Big Horn saddle from Key Milling. Clay Center, Kans. SB TF

FOR SALE — Fuel oil furnace in excellent condition, with controls, thermostat, and registers. Very reasonable. Bill Lichtenhan, Dwight, Kansas R1, Phone Junction City CE 8-3652. x35

ARMY SURPLUS OUTSIDE WHITE PAINT \$2.93 Per Gallon

Kimberly Washable Vinyl Latex Wall Paint

FAITH'S Furniture

East US 24 PR 8-3786 MANHATTAN

GOVERNMENT SURPLUS OVERSHOES

Several thousand pair. Some priced as low, per pair:

97c

LLOYD'S SURPLUS SALES St. Marys, Kansas

WANTED: Used forced air gas furnace. State size, condition & price. Gerald Holmberg, RR2, Box 321, Belleville, Kans. Ph. JA 7-2853. x35

Pets

CIRCLE B Feed & Supply of Concordia has Fortified Hound Dog pellets that will keep your coyote, coon, or racing dogs in top condition for pennies a day. Call collect 913 CH 3-3303. x37

AMERICA'S NO. 1 stock dog, just had two litters of purebred Border Collie pups, soon ready to go. LeRoy McCosh, R1, Abilene, Buckeye 3512. x36

Help Wanted

NEED MAN for year around farm job. Can start now or later. Also interested in hiring older man to be available for part time work at lighter farm jobs. Social Security recipient could handle. Robert Brown, Mahaska, Kansas. SB36

Beef Eating To Be Up To 104 Pounds

MANHATTAN — Americans will likely cut a new record in beef eating this year — and it won't have a thing to do with music. With record production of beef in the offing, consumption in 1967 is expected to rise to nearly 104 pounds per person, breaking the previous record that's only a year old, George Ahlschwede, Extension meats specialist at Kansas State University, says.

Forecasts would put the annual production of beef at about twice that produced by the beef industry 20 years ago. In this same time span, consumption has risen from around 60 pounds to current record levels, the specialist points out.

Modern production and processing efficiencies have made it possible to provide more people with more beef, Ahlschwede says. Beef accounts for well over half the recordbreaking production of all meat — beef, pork, veal, and lamb — being produced this year, according to the National Live Stock and Meat Board.

Kansas plays an important role in the beef cattle industry. The Wheat State has large cow-calf units, a tremendous resource of grass, a modern feed processing industry, and large feed yards to help put beef right at the doorstep of the consuming public, Ahlschwede says.

Per capita consumption of all meat this year will be the second highest on record according to estimates — nearly 173 pounds per person. The record

was in 1964 when more pork, veal, and lamb were produced than will be available this year. Pork production will be higher this year than last year, and will provide consumers with an average of about 61 pounds for the year, Ahlschwede notes.

Grain Bins Lightest In A Decade

Stocks of Kansas wheat on Oct. 1, although up 12 per cent over a year earlier, were the smallest since 1951, the Kansas Crop and Livestock Reporting Service said Friday.

The combined stocks of the four major feed grains were the smallest in more than a decade.

Wheat stocks totaled 261,616, 000 bushels. Off-farm stocks, including those in mills, elevators, and warehouses or under Commodity Credit Corp. control, totaled 208,757,000 bushels, up 19 per cent over Oct. 1, 1966, but 56 per cent below average.

Farm stocks of wheat totaled 53 million bushels, down 9 per cent from 1966 and 16 per cent below average.

Stocks of the four major feed grains — old crop sorghum grain, old crop corn, oats and barley — totaled 55,567,000 bushels, the smallest aggregate supply since 1956.

Aggregate Total Down

The aggregate stock total was down 22 per cent from Oct. 1, 1966, and was less than half the 1961-65 average.

Stocks of old crop sorghum grain totaled 28,575,000 bushels, down 32 per cent from last year and 62 per cent below the average.

Stocks of old crop corn, at 17,970,000 bushels, were down five per cent from a year earlier and 29 per cent below average holdings.

Total stocks of oats — 6,297,000 bushels — were 13 per cent

AUCTION

I will sell at public auction at my home, located 3 miles east of Manhattan, Kans., on Highway 24 to Travelers Motel, then 2 miles north.

Sat., Nov. 4 Starts 1:00 p.m.

TOOLS

2 grinders; drill press; saw gummer; jointer, 6"; 2 dollies; work bench; bench grinder; ladders; 2 power trowels; electric drill; electric motor; saber saw; hand trowels; Skill saws; water pump; garden spray; hand saws; power saw blades; cement mixer; thickness planer; band saw; jointer; saw filer; saw set; saw retoucher.

MATERIAL

Plumbing supplies; plywood; paint; nails; concrete blocks; redwood 2'x4', 1'x12'; stream line door trim; carpenters hand tools; white shingles; window glass; stone; bolts; metal bridging; screws, nuts, bolts, all sizes; storm windows; windows; wedges for wall tie; lumber, all dimensions.

HOUSEHOLD

Divan; rug pad; carpet bar; chest of drawers; iron bunk beds; chrome chairs; odds and ends.

MISCELLANEOUS

Hot water heaters; water softener; truck wheels; skis; gasoline engine; lavatory; boat anchor; boat oars; wallpapering paste table; two-wheel trailer; metal building, 6'x8'; lawn mower.

TERMS—CASH

Lorren Marker OWNER
Welter & Applegate, aucts.
Harold, Carlson, Clerk.

higher than a year earlier, but 28 per cent below average.

Barley stocks, at 2,275,000 bushels, were down 35 percent from Oct. 1, 1966, 76 per cent below average and the smallest for the date since 1953.

Rye stocks, at 764,000 bushels, were 10 per cent smaller than those on hand Oct. 1, 1966, and 43 per cent smaller than the five-year average.

Set Hearing On Area Phone Transfers

ABILENE — Officials of five telephone exchanges in the south part of Dickinson County have made application to discontinue independent operations in order to join the Tri-County Telephone Association, Inc., which has its headquarters in Council Grove.

They are the exchanges at Acme, Elmo, Hope, Carlton and Navarre.

The State Corporation Commission has set Monday, December 18, at 10 a.m. in Topeka, as the date assigned for hearing on the applications.

Tri-County is an REA financed telephone cooperative asso-

AUCTION

At White City, Kans. Tues., Nov. 7 Starts 10:00 a.m.

If weather is inclement, sale will be postponed until Nov. 14.

Will sell the contents of 3 houses, some of the items having been stored for 16 years.

Antique furniture of all kinds, including 2 organs; grand piano; 8 trunks, 31 picture frames;

Lots of dressers, commodes, old clocks, high back book cases, old pictures of all kinds, antique dishes, cups, saucers, silverware.

Round clawfoot tables, 7 old lamps, dated fruit jars, lots of old books, catalogs;

Stamp collection dating back to 1855.

High beds with dressers, antique rocking chairs, old stoves, 3 new electric heaters, flat irons, 8 highback beds, churns, sewing machines, fans, refrigerators, pie cupboards.

Melodion, 65 yrs. old. Garden tools and hundreds of other items too numerous to mention.

Shore & Shore

ESTATE Herington, Kans., phone 913 BL 8-3146. Aucts: Sharp, Remy & Schnell.

1967 A-C D-15 SERIES II

Gas, Wide Front, Power Steering COMPLETELY EQUIPPED — LESS THAN 75 HOURS

For Price on this, write:

BOX 410, ABILENE, KANSAS OR PHONE CO 3-2061, ABILENE, KANSAS

THE BLITZ IS ON!!!

Beat the possibility of a price increase in 1968. Unbelievable discounts. No interest until season of use. Best Deals Possible, until October 31, on tractors, combines, hay equipment, and all other equipment. See us last.

COMBINES

1959 92 MH 14', PS
1959 82 MH 14', PS
Super 26 MH 12'
1961 101 IHC 12' PS
1962 91 IHC 10'
141 IHC 14'; 1953-55 JD 12'
210 JD cornhead, bank lube, good

4-row Hesston milo saver
420 Case 2-row mounted corn picker

TRACTORS

1959 611-B Case
4 M Farmalls, 1 WD AC, 2 BC Cases
Several other pieces of used machinery.

Financing Available, call anytime, day or night



K. M. McBratney Impl.
Phone 857-3815 Res. 857-3348
CENTRALIA, KANSAS

KANSAS' LARGEST Feeder Pig Sale FARM FRESH PIGS Kansas State Fairgrounds HUTCHINSON, KS.

Thurs. Nov. 2 1 p.m. All Sow Herds Farm Inspected

All pigs vaccinated for cholera and erysipelas; castrated, weaned, and ready to go

Sponsored by the Mid-Kansas Swine Improvement Assn., Inc.

For More Information Contact: Gerald Simon, Nashville, or Edw. D. Clarke, Lyons, or Paul Keesling, Plevna, Ph. 287-3133

Auct Joe Davenport Lunch

AUCTION

Sat., Nov. 4

Starts 12:30 p.m.

Rudy Sejkora's building west of Mobil Service Station at I-70 Chapman Interchange.

Garage Tools And Equipment

Gear head lathe, 10" swing 9' between center with 4 jaw chuck.

Hydraulic punch press, 8" capability, 3/8" to 7/16" hole in metal 150 ton cylinder cap.

Clayborn motor stand 1962 one ton GMC flat bed truck, 4 speed transmission, radio, duals.

250 amp. Forney Arc welder, 1961 model good 1300x24 12 ply motor grader tire

Air compressor, screw type bumper jack, steam cleaner, wheel balance, electric impact wrench, 2 air impact wrenches.

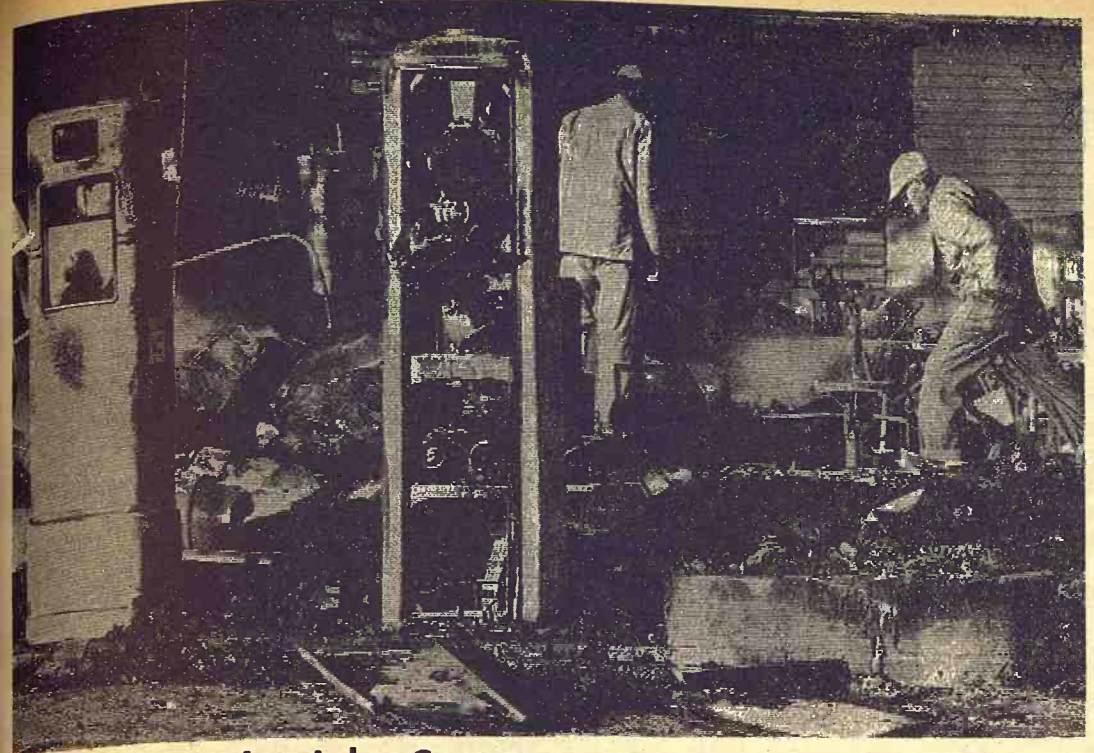
A lot of hand tools used, but in good condition.

Power hack saw, 1/2 HP electric motor, 1 1/2 pump, 1-2" pump, 2 power mowers, 2 wheel trailer, 2 squirrel cage fans, 60 CFM portable Werthington gas driven air compressor.

One Ingersoll air saw, kitchen sink, Norge refrigerator, 200 ft. hemp rope. Other articles too numerous to mention. If you have equipment to sell bring it in.

Gary Osterhaus

OWNER Aucts: C. W. Crites, Ron Montgomery. Clerk: Everett Sheets.



Fire At Ada Co-op

There wasn't much left, volunteer fire-fighters agreed, after looking over the ruins of the Ada Co-op in Ottawa county after fire destroyed the service station there last week.

Convention At Wichita Is Quiet

NFO Into All Of Kansas By Febr.

The NFO, which often does things with quite a bang, had a quiet state convention last week. About 300 were in attendance in Wichita, and they had a meeting with little noise and nothing unpredictable. National president Oren Lee Staley was there, Chris Walker of Mayetta was reelected chairman of the Kansas delegation and a national director, and Don Evertson of Melvern was also reelected a national director. The NFO resolutions of note: • Opposition to a bill which would allow wider corporate farming in Kansas. • Favor for making plans to move toward closer understand-

ing with union labor. Among visitors and speakers to the convention were Delano Bass, Kansas labor commissioner; Carl Porter, president of the Kansas Federation of Labor; Jim Yount, vice president of that organization; and Floyd Black, legislative representative for the state federation. Staley, in his remarks, declared that conditions are such that agriculture is actually facing disaster as cheap grain brings on "more hogs, heavier cattle and lower grain prices." He told the Kansans that NFO has begun to move across Kansas and that the whole state will be organized by mid-February. Additional farmers have been authorized to move into

the 55 western counties not yet having a voting delegation in the state. NFO currently operates in 28 states and is moving into seven more this year, he told them. New ones are Texas, Montana, North and South Carolina, and Vermont. Two others, unnamed, may be organized this year also, Staley said. He urged the Kansans to move strongly into the NFO grain program and told them they need to store their grain as a first step in boosting prices. "But the first is useless unless it is followed by two more," he said. "They have to bargain for price, then sell together."

Buy Or Sell STOCKERS OR FEEDERS


BY AUCTION EVERY THURSDAY

at 10:30 a.m.
Contact Your St. Joseph Market Agency
OR
Mike Wilson, Muscotah, Kansas
913 — 872-1461

ST. JOSEPH LIVESTOCK MARKET

Rest Of County Outvotes McPh's'n On Hospital

MCPHERSON — A \$500,000 bond issue to help pay for a new McPherson County Hospital failed last week, with Moundridge, Lindsborg and rural areas outvoting the city of McPherson. The rejection was by a margin of 174 — 3449 against and 3275 for. McPherson favored the proposal by 2143 votes and five nearby townships voted approval also. But Moundridge, which has a local hospital, voted against the bonds 698 to 15 and the ratio opposed was nearly as great in Lindsborg and Marquette. One rural township near Moundridge voted 116 to 0 against the bonds. Alvin Riffel, administrator of the McPherson County Hospital, said he was certain that the issue would be resubmitted to the voters at the earliest opportunity.



50th Anniversary Sale

Save Up To \$1000
ON A NEW FORD TRACTOR

20 NEW FORD TRACTORS ON DISPLAY
Buy Now And Save — Limited Time
30 Used Ford Tractors For Sale

McPherson Tractor Co.

Phone CH 1-2900
McPherson, Kansas

SALE

Saturday
NOVEMBER 4

Starts 9:30 a.m.

We will sell at public auction the following misc. items at the house located at 100 Dexter St., or just south of the viaduct in Clay Center, Ks.

Household Goods	150 gal. water hauling tank; oil tank heater; 4 in. 20 ft. leather belt; cement blocks; 100 ft. 1 in. rope; old light fixtures.
Admiral 21-in. colored TV, good	Used pipe and fittings; old windows and frame; 2 church doors; barb wire; barrels; old forge; 1 6 hp. riding lawn mower; rotary power mower; several old and junk shot guns; ammo boxes; hand sprayer; carrying carts.
Reclining chair, divan, swivel chair	Black Hawk power saw; hand tools; shovels; hammers; steel for garage door 16 ft.; 216 small misc. items not listed.
Antique Victrola; portable Victrola; Hoffman TV, one of first made; 12 case egg cooler, good; old steam boiler, works good; large window fan.	
Old radio; old Ureh story and music records! iron bank; old car tags; old stone jug; lawn chairs; show case; cast iron sink.	
Several 50 lb. lard cans; steel clothesline; T post; kero heater; 2 antique wall phones.	
LUMBER, PUMP, GUNS HAND TOOLS & MISC.	TRUCK & STOCK RACKS
Used lumber; 8 ft. overhead garage door and hardware; Jet pump and 50 ft. of pipe, used 2 yrs; 800' plastic 1 in. pipe.	1946 Dodge 1/2 ton pickup, 4 speed, grain sides, overloads, heater, good shape Set stock racks for Chev. or GMC pickup, 48 to 54 model.

Frenchy & Arlene Frigon, Owners
Aucts: Foster Kretz & Elmo Steffen, Clay Center, Ph. Morganville WA 6-4422
Clerks: Bull & Anderson, Clay Center

Registered Ayrshire DISPERSAL

SATURDAY, NOV. 4

OTHER BUSINESS INTERESTS AND FEED SHORTAGE HAVE CAUSED US TO DISCONTINUE OUR DAIRY OPERATION. WILL SELL OUR ENTIRE HERD OF REGISTERED AYRSHIRE COWS, HEIFERS & ONE BULL AT AUCTION, LOCATED 2 MILES EAST AND 1 MILE SOUTH OF ELYRIA ON BLACK TOP ROAD, OR 6 MILES SOUTHEAST OF MCPHERSON ON 81 HIGHWAY 3/4 EAST, OR 6 MILES NORTHWEST OF MOUNDRIDGE ON 81 HIGHWAY 3/4 EAST. WATCH FOR SALE SIGN.

12:30 P.M.

8 COWS JUST FRESH OR FRESHENED LAST 60 DAYS
2 COWS TO FRESHEN NOV.
4 COWS IN PRODUCTION TO FRESHEN IN EARLY 1968
4 BRED HEIFERS
5 HEIFER CALVES 10 TO 12 MONTHS OLD
1 REGISTERED BULL CALF 9 MONTHS OLD

This herd is officially calthood vaccinated, TB and Bangs tested. Health paper on each animal, daily production records, breeding and freshening dates will be given at ringside. Cows in this herd have produced up to 17,510 lbs. milk, 732 lbs. fat. Rolling herd average 436 lbs. fat. All cattle in this herd are gentle, good high udders. Here is an opportunity to buy better Ayrshire cows. For catalogue contact owner or auctioneers.

DAIRY EQUIPMENT

250-GAL. CREAMERY PACKAGE BULK TANK, GOOD
2-UNIT UNIVERSAL PIPELINE MILKER, GOOD

SELLING JOHN DEERE NO. 15 FLAIL FIELD CHOPPER, USED VERY LITTLE

MR. and Mrs. ARLO FLICKNER

AUCTIONEERS:
TED KREHBIEL, McPherson
WALTER HAND, Mulvane
Lunch on Grounds

D.H.I.A. RECORDS WILL BE GIVEN BY L. J. YODER, MCPHERSON CO. D.H.I.A. SUPERVISOR.
Not Responsible for Accidents

9th ANNUAL PRODUCTION SALE

1967

SALE AT Onaga, Kansas 1 p.m. - Fairgrounds Sat., Nov. 18
Sales Pavilion

KOCHER HEREFORDS

Selling
35 Bulls
20 Heifer Calves

Most Are Serviceable Age
For Catalogs Write:
Herman Kocher & Sons
Onaga, Kans.

ONAGA, KANSAS

Grass & Grain

already serving a...
exchanges in Morris...
yon and Chase Cour...
e entire system will...
ly be converted to dis...
n.

KANSAS' LARGEST
Feeder Pig Sale
FRESH PIGS
as State Fairgrounds
CHINSON, KS.

Nov. 2 1 p.m.
v Herds Farm Inspected

vaccinated for cholera
sipelas; castrated, was
ready to go

ored by the Mid-Kansas
Improvement Assn. Inc.

ore Information Contact
Simon, Nashville, or
Clarke, Lyons, or Paul
G, Plevna, Ph. 287-3333

oe Davenport Lusk

UCTION

at, Nov. 4

Starts 12:30 p.m.

Sejkora's building was
oil Service Station at 12
an Interchange.

Garage Tools
and Equipment

head lathe, 10" swing
between center with 4 ft.

ulic punch press, 8"
y, 3/4" to 7/16" hole
born motor stand
one ton GMC flat bed
4 speed transmission,
ials.

amp. Forney Arc welder,
model, good
x24 12 ply motor grade

compressor, screw
r jack, steam cleaner,
balance, electric imp
2 air impact wrench
t of hand tools used
d condition.

er hack saw, 1/2 HP
motor, 1 1/2 pump, 17"
2 power mowers, 2
2 squirrel cage fans,
portable Werthington
air compressor.

Ingersoll air saw, kitchen
Norge refrigerator, 200
rope. Other articles
ous to mention. If you
equipment to sell bring

ary Osterhaus
OWNER
ts: C. W. Crites, Ph.
romery.
k: Everett Sheets.

SERIES II
r Steering
S THAN 75 HOURS

S OR PHONE
KANSAS

ON!!!

se in 1968. Unbelievable
f use. Best Deals Poss
mbines, hay equipment

Hesston milo saver
ase 2-row mounted
er

TRACTORS
11-B Case
armalls, 1 WD AC, 2
es
al other pieces of use
hinery,
time, day or night

McBratney Imp.
815 Res. 857-8348
RALIA, KANSAS

Here's November Price Forecast

Slightly higher wheat prices are in the picture for November, report Kansas State University economists in their monthly market forecast.

Prices to U.S. producers fell to "world" levels this season. But the economists look for wheat to begin to show some strength during the next few months.

Their outlook for other commodities is as follows:

MANUFACTURING AND GRADE A MILK — Steady. A decrease in production and an increase in consumption should hold prices steady, but below year earlier levels.

HOGS — Steady. The fall price decline has apparently hit the bottom.

LAMBS — Steady. Prices will follow general trend of other types of livestock.

CATTLE — Steady. Competition from Poultry meat, imports, and seasonally high pork slaughter will put pressure on the wholesale meat market.

SOYBEANS — Steady to Slightly Lower. Record supplies will bring depressed prices during and after harvest. However, farmers may prevent further price declines by holding on to their beans. Prices should increase after the first of the year.

CORN & SORGHUM GRAIN — Steady to Slightly Lower. Seasonal adjustment still holding prices down.

Monday NOVEMBER 6

Starts 10:00 a.m. Lunch Served

We will sell at public auction the following machinery, buildings, household goods, antiques and collectors items on the farm located 10 south and 4 1/2 west of Clay Center, Ks.

Mchry. & Misc.

2x14 plow; drill; cultivator; mower; lister; disc; double row cultivator; 5 tooth cultivator; other old horse machinery; several iron wheels.

Hand sheller; good 4-wheel trailer on steel. Old harness and collars; power lawn mower; tarps; small cereal grinder; used lumber; gas barrels; shovels; hoes; forks; garden hose.

Chicken feeders and waterers; vise; brooder; shallow well jet pump; a lot other items too numerous to mention. 500 gal. propane tank

Buildings

2-story 7-room frame house, bath, porches, lightning rods. 1-story 3-room frame house 28x30 barn, loft and grain bin, good. 2 16x24 cattle sheds 12x40 chicken house 10x12 brooder house Single car garage, metal covered, good Outside toilet.

May 1, 1968 for removal of buildings.

HOUSEHOLD GOODS

Magic Chef gas range IHC 8 ft. refrigerator Coldspot chest-type deep freeze Maytag washing machine Gas heaters; kitchen cabinet; cabinet base; small cabinet; ironing board; bathroom stool; tub and lavatory; small tables.

Sewing machine; oil and kero. heaters; stands; 2 dressers; 2 metal beds; ping pong table; 20 in. window fan; old sofa (brown); studio divan (rose, nice); bamboo book

case; whatnot shelves; library table; chest drawers. 3 rockers; 3 leather seat chairs; 3 round bottom chairs; floor furnace; piano bench; round oak dining table; buffet; 5 dining chairs; steel wardrobe, good; 2 kitchen chairs; door mirror; other mirrors; GE electric fan; table lamps; light fixtures; TV antenna and rotor; new door knobs; door catches; magazine rack; TV tray; curtains; kitchen sink.

Water heater; gas hot plate; clocks; 2 GE radios; toys; medicine cabinet; bedding; lap robe; blankets; throw rugs; towels; linens; pots; pans; dishes; 2 coffee makers; cups; silverware; tupperware.

2 qt. ice cream freezer; canister set; and 1903 small misc. items not listed.

ANTIQUES AND COLLECTORS ITEMS

Dresser with part marble top, good; 3-piece bedroom suite, good; baby buggy; kero. lamps; wooden barrel; cast seats and other items. Large glass jugs; shoe repair stand; shoe stretcher; round oak heater; sewing machine stands; old books; organ and stool, good.

Tobacco cutter; iron tea kettle; iron muffin pan; gas irons; milk skimmer; razor straps; whet stones. Old cornet; alto horn; jugs; stone jars; turkey bell; China head and kid baby doll; old trunks; odd chairs; sewing rocker.

CCCHS annuals 1906-07-08-10-11-12; Ks. State annuals 1942, 43, 44 & 45.

Walking plow; collar box; mesh hand bag; also a lot small items.

Mr. & Mrs. Vernon Hull, Owners
Aucts: Foster Kretz & Elmo Steffen Clerk: Peoples National Clay Center, Ph. Morganville WA 6-4422. Bank, Clay Center

Area Nuns Change Habits For Dresses

SALINA — In a break with tradition, several Catholic sisters at Marymount College have been given permission to wear dresses or skirts and blouses instead of the usual religious habit.

It is part of an experiment authorized by the Sisters of St. Joseph, who operate Marymount college and other institutions in a large area.

The clothing style of the sisters has changed little since the

AUCTION

Two blocks east of the bank in TALMAGE, KANS.

SAT. NOV. 11
Starts 1:00 p.m.

We will sell by auction the following real estate in Talmage, Kans., and personal items:

5 ROOM HOUSE

Full bath and lot, approx. 100 x 200 ft., including 250 gal. propane tank.

FURNITURE & ANTIQUES to name a few:

Round oak table; antique mantle clock; antique rockers; 70,000 BTU Siegler heating stove, with fans & thermostats control, like new; 21" Zenith TV & antenna, like new; Square Maytag washer, good Magic Chef 30" gas range, good.

Wall phone and many other good household items, including some antiques.

TERMS: Cash on Personal
TERMS: Real Estate:
25% down day of sale, balance within 30 days or when merchantable title is furnished.


BERT HULL EST.
Earl Herman, clerk
Carl Schnell & Lee Remy, aucts & real estate brokers.

order was founded in 1648. The few Marymount sisters in the experiment have been given leeway in the choice of clothing. Some are wearing ordinary dresses; at least one is wearing a skirt and blouse combination. No veils are being worn.

In fact, the only distinguishing marks showing they belong to a religious order are the crosses they wear around their necks. The sisters shopped in Salina stores for the clothing they are wearing.

It is believed the sisters will

October 31, 1967
18
Grass & Grain
be allowed to wear the "civilian" clothing for several months and then a decision will be made on what, if any, changes should be made in the sisters' traditional garb.
The Sisters of St. Joseph came to Kansas in 1883. The motherhouse for this area is Concordia.



SHOW
Thurs., Nov. 2 at 1:30 p.m.
Banquet 7:00 p.m.
Judge
Joseph Winkler III
Castle Rock, Colo.

SALE
Friday, Nov. 3
9 a.m. — Junior Calf Show
11 a.m. — Junior Calf Sale
12 Noon — Sale of Show and Breeding Cattle

HEADQUARTERS: ROYAL INN MOTEL
COMMERCIAL SHORTHORN SALE
OAKLEY, KANS. NOV. 11

Auctioneers
Jake Ulrich, Luray Lee Remy, Burdick
MILTON NAGELY, Sale Mgr. Abilene, Kansas

LAND AUCTION

Monday, November 13, 1967
10:00 a.m.

at south front door, Court House, Abilene, Kansas
Described as Southeast Quarter Section 8, Township 11 South, Range 2 east of 6th P.M., containing 160 acres more or less.

This farm is known as the Guy Bennett farm located 12 miles north on old 15 Highway, 1 mile west. Farm consists of approximately 111.1 crop land. Balance is pasture, wheat 50.5 acres.

This is one of the better laying quarters in this community, has large house, good barn and granary, several other buildings, good water.

Buyer receives one-third share of wheat crop harvested summer 1968, possession of balance of farm March 1, 1968, 1967 and all prior taxes paid by sellers. Terms — 25% down payment sale day, balance when title is approved by buyer's attorney.

For further information contact Ray D. Wilson, Broker and Auctioneer, or Charles W. Bradshaw, Attorney.

STOCK COW DISPERSAL

Wednesday NOVEMBER 14

Starts 1:00 p.m. Lunch Served

We will sell as public auction our entire herd of stock cows on the farm located 6 miles southeast of Council Grove, or 2 west of Dunlap, on the Council Grove and Dunlap oil road.

Herefords, Black, Shorthorn



45 Hereford cows, 3 to 6 yrs., several calves at side, more by sale day, balance to calf in early winter
55 Black cows, 3 to 6 yrs., several calves at side, more by sale day, balance to calve early winter
15 black & blk. wf cows, 3 to 6 yrs., some calves at side, balance to calve early winter
10 Shorthorn cows, 4 to 6 yrs., some calves at side, balance to calf early winter
Holstein milk cow, 5 yrs., springer

Jersey heifer, 2 yrs., been fresh 5 weeks, broke to milk
2 Registered Angus bulls, 2 yrs., gentle and good breeders
Angus bull, 2 yrs., pure but not registered, gentle and a good breeder
Registered Hereford bull, 6 years, gentle and a good breeder, a good individual breeder, a good individual breeder, a good breeder
Registered Polled bull 2 yrs., gentle and a good breeder

NOTE: This is a good clean set of farm stock cows, calfhood vaccinated, area tested, all bred to Angus or Hereford bulls, in a good condition. Cattle will be penned and sorted, a lot good calves at side. Your inspection invited prior to sale day. Good loading facilities.

Harold R. Pracht, Owner
Aucts Foster Kretz & Elmo Steffen Clerk: Citizens State Bank, Emporia
Clay Center, Ph. Morganville WA 6-4422

MYERS RANCH

HEREFORD HERD DISPERSAL

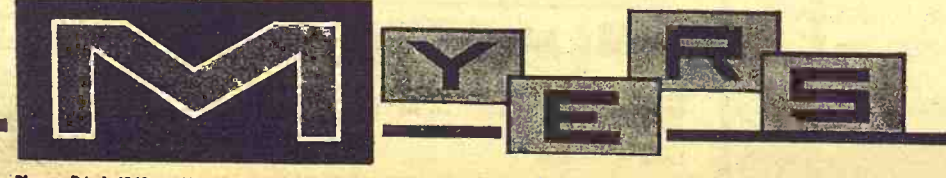
Monday, Nov. 6, 10:30 a.m. At the Ranch 6 miles south on U.S. 77 and 1 1/2 miles west of El Dorado, Kansas

SELLING 337 HEAD — 213 LOTS — 42 BULLS — 6 HERD BULLS

Including NP COLO SILVER 0509 — Northern Pump breeding in "Silver's" background almost guarantees his prepotency. He is sired by a 2250 pound bull and his dam is a line bred Colorado Domino cow. MR. IRON RUPERT 32 — Sired by NPC U Domino 6223, his dam is one of the greatest Hazlett-bred cows of the Hereford breed. NP Regulator 2585 — Sired by D Regulator Domino 23.

SELLING — 164 COWS AND BRED HEIFERS, some cows with calves by side.

GENE WATSON, Auct. & Sale Mgr. 14 Hillcrest, Hutchinson, MO 3-3174



Office Phone: DA 1-4040 — Home Phone: DA 1-4138
GEORGE M. MYERS, Owner — P.O. Box 911
ED SMITH, Herdsman

MYERS RANCH — El Dorado, Kansas

State Meat Inspection Would Go

Evan E. Wright, director of the food and drug division of the Kansas State Board of Health, says a proposed new federal meat inspection law would wipe out Kansas' inspection program.

Reps. Neal Smith, D-Iowa and Thomas S. Foley, D-Wash., were given House Rules Committee permission to bring to the full House their fight to broaden proposed new federal meat standards.

Smith and Foley said a bill approved by the House Agriculture Committee should be extended to all meat plants with gross annual sales of at least \$250,000.

They said the assumption was

that this amount of business within a state would have substantial effect on interstate commerce. A present federal program authorizes inspection only in plants shipping their products across state lines.

This program covers about 85 per cent of meat processed into various products.

Rep. Catherine May, R-Wash., said the Smith-Foley plan would mean virtual elimination of state inspection programs.

"I would agree with Mrs. May that the Foley-Smith bill would completely eliminate the state inspection programs," Wright said.

They would put state programs out of business. And that is what these people want to do — turn it over to a federal program as far down as they can go.

"I think the proposal they have, which is complete federalization of the meat inspection system, would simply wipe out any state efforts in that area," he said.

ers State Bank at Glen Elder "with intent to cheat and defraud."

Riley is under \$20,000 bond which has been signed by several Cawker City businessmen.

Sell Every Wednesday AT ONAGA 1:00 P.M.

We are expecting a nice run of cattle for this Wednesday.

Onaga Community Sale

Marvin Cottrell, Phone 889-4461 or 889-4665, ONAGA, KS.

BEVERLY STOCKYARD CO.

613 E. Pacific Telephone TA 7-4479

SALINA, KANS.

Why not move your livestock through The Beverly Stockyards? All livestock sold with consignor's approval each day of the week except Sunday. Your livestock stands on cement to eat and drink; and on good dry soil to rest.

BIG LIVESTOCK AUCTION EVERY WEDNESDAY

10 a.m. Selling Hogs — Then Cattle

After hogs, on to the PACKER & BUTCHER cattle. Then to the STOCKER & FEEDER cattle as they are consigned.

WELL EQUIPPED STOCKYARDS

These stockyards are as well equipped as any in the state of Kansas. The Yards are operated with some of the best judges of livestock in the country with top auctioneers and operated under the Stockyards Act.

NO CHARGE IF YOUR ANIMALS ARE NOT SOLD

All livestock consigned are bid on within 2 hours after unloading and in pens. Always sold subject to consignor's approval.

BONDED FOR YOUR PROTECTION JACK BEVERLY, OWNER

SHORTHORN SHOW & SALE

Friday, Nov. 3, 11 a.m. — Junior Calf Show
2 Noon — Sale of Short Horn Breeding Cattle

ROYAL INN HOTEL

ROYAL INN HOTEL, KANS. NOV. 11

SALE

House, Abilene, Kansas
6th P.M., containing

DISPERSAL

Wednesday NOVEMBER 15, 1967

WEDNESDAY

Starts 1:00 p.m. Lunch Served

ENTIRE HERD

east of Council Grove, Mo. and Dunlap oil road

ANGUS

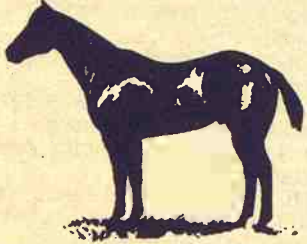
Registered Angus bulls, gentle and good breeders

ANGUS

of farm stock cows, to Angus or Hereford, penned and sorted, invited prior to sale

Crowther-Walker Quarter Horse Show String & Production Sale

SATURDAY, NOV. 4, 1:00 p.m.
New Farmers & Ranchers Livestock Commission Co. SALINA, KANSAS



—Selling—
65 1967 COLTS & FILLIES
10 PROVEN HALTER & PERFORMANCE WINNERS

Including some of the top show horses in the nation
Featuring the Get of These Stallions, to name a few:

- JIMMY MAC BEE P-92,825 — Won Get-of-Sire class at Denver in 1966.
- TOM CODY 171,345 — Sire of Bam Cody, top Jr. Cutting mare and of Tee Jay Tommy.
- DYNAMATIC P-83,625 — AA plus Grand Champ. son of Leo 1,335.

From the Studs and Broodmares represented in this sale have come several top horses that are winning at the halter & performance shows over a 20-state area. We feel this is the best colt crop we've ever raised.

Glennon & Doris Crowther, Gypsum
Ron & Wilma Crowther, Gypsum
Duane & Jo Walker, Canton

Wednesday NOVEMBER 8

Starts 11:00 a.m.
Lunch Served

Having decided to quit farming we will sell at public auction on the farm located 6 miles west of Manhattan, Ks., or 1 east of Keats on old Highway No. 24.

Cattle

25 Hereford cows, 3 to 9 yrs., some calves at side, balance to calf in fall and winter
Registered Polled Hereford bull, 6 yrs., gentle and a good breeder; a good one
NOTE: These are a good set of Hereford cattle, area tested.

Farm Machinery

- 1966 John Deere 2510 tractor, gas, wide front end, fully equipped, 350 hrs., very good
- 1963 John Deere 2010 tractor, gas, wide front end, fully equipped, 1500 hrs., very good
- 1967 Dempster 4-row, rotary moldboard lister, fertilizer, rubber press, 3 point, used only on 30 A, like new
- 1967 John Deere tool bar, with 3 beam chisels, 3 point, like new
- 1966 John Deere 5 ft. tool bar, 3 point, good
- 1963 John Deere No. 10 7 ft. power mower, side mt., very good
- 1963 John Deere 2-row weeder, 3 point, good
- 1966 Ford 10.6 ft. flex frame wheel disk, good
- 1962 Ford baler, model 250, fully equipped, good
- 1962 IHC rotary mower, 5 ft., good
- 1957 Cunningham 7 ft. hay conditioner
- 1962 John Deere 15x7 fertilizer grain drill, low rubber, power lift, very good
- 1958 John Deere 12 ft. spring tooth with 3-point hitch
- 1957 John Deere side rake, 2 wheel, on rubber, all new bearings, works like new
- 1957 Case 30 ft. hay or grain elevator, hopper, on rubber, 7 hp Wisc. mtr., used very little
- 1961 IHC No. 30 manure spreader on rubber, used very little
- 1960 Demster 7-beam chisel on rubber, good
- 1960 Ford 3x16 plow, 3 point, good

- 1966 Ford 6 ft. blade, 3 point, good
- Ford 2-row cultivator, 3 point
- Ford 2-row weeder, sled type, 3 pt.
- John Deere 3-section drag harrow and evener
- Allis 5 ft. combine with pick-up attachment, straw spreader and header attachment, good shape
- Belt harvester, 20 ft. alm. elevator, Model B
- IHC single row corn binder, good shape
- Antique wheelbarrow seeder
- Some junk iron and old horse machinery

NOTE: This is a very good line of equipment, cared for and ready to go.

TRUCKS & TRAILERS

- 1964 Chev. No. 60, 2-ton truck, new Knapheide 13 1/2 ft. bed, fold down racks, hoist, 6 cylinder, 30,000 miles, good one
- 1946 Chev. 1 1/2 ton truck with bed and fold down racks
- 1961 Electric 4-wheel trailer with flat bed, good
- 1959 Farm Hand 4-wheel trailer and bed with grain and silage sides, good
- 4-wheel trailer with flat bed and grain sides
- 2-wheel 8x14 heavy duty implement trailer

HAY, SHOP TOOLS & MISC.

- 2000 bales 1st, 2nd cuttings in hay shed
- 2 John Deere cylinders, 1 high-1 low
- Tarps; 4 bales baler twine; 2 hay or grain bunks; 75 sheets used tin, 10 and 12 ft.; Wright power saw, blade type, used very little; 50 carton type grease, Standard; hedge posts. A lot of electric fence wire; new salt feeder, never used; 2 new cattle oilers; 2 electric fencers; wire stretcher; extension ladder.
- Battery charger; steel post driver; 1/2 in. electric drill; dirt auger with 30 extension handles; shovels; forks; hand tools and many misc. items too numerous to mention.

Delay Hearing On Riley Case

BELOIT — "The preliminary hearing on charges against Edgar C. Riley, Cawker City, has been postponed until Nov. 18 or 20," Harry W. Gantenbein, Mitchell County attorney, said last week.

Riley is charged in Mitchell County Court at Beloit with six counts of obtaining money under fraudulent pretenses.

Five recovery of money civil suits are also pending against him in Mitchell County.

"They are taking Riley's deposition on the Downs bank civil suit now, Gantenbein said.

Criminal charges facing Riley are for allegedly obtaining a total of \$45,974.38 from the Trad-

another POWER PACKED PLAINVIEW FARMS SALE

Tuesday, Nov. 21

12:00 NOON CENTRAL STANDARD TIME ENTERPRISE, KANSAS

Extra Attraction To Commercial Breeders, Selling 5 Pasture Raised 2-Year-Old Bulls



1966 National Reserve Champion Bull. Half interest sold for \$14,200, Myrtlewood Farms, Lexington, Kentucky. 10 heifers and cows sell bred to him. Several of his first calves sell.



P V F Lady Mixer 62nd. Daughter of the 18th. 1967 State Fair Champion. Several sisters sell. Many bred like her sell mated to the National Champion.

- SONS AND DAUGHTERS OF POWERFUL Sires
- D Mixer Domino 18th
 - D Mixer Domino 25th
 - D Mixer Domino 38th
 - Pawnee Mixer
 - M S F Modest Lamp 3rd
 - L D R Pawnee Mixer 2nd

25 BULLS

Two year olds—18 months olds—Yearlings and Weaning Age

Free Heifer for 4-H or FFA Member
For Catalog write—Leon D. Riffel
Box 116, Rt. No. 1
Enterprise, Kansas 67441



CHOICE DOMINO IMAGE The All Meat Bull



25 FEMALES Open Heifers—Cows and Calves—Bred Heifers Bred to Deluxe Mixer 3rd & Choice Domino Image

A. H. A. Checked Pedigrees
JESSE RIFFEL & SONS
ENTERPRISE, KANSAS

Auctioneer—GENE WATSON
BARBEQUE BEEF LUNCH TO BE SERVED

Mr. & Mrs. Eldon Beichter, Owners
Aucts: Foster Kretz & Elmo Steffen
Clay Center, Ph. Morganville WA 6-4422
Clerk: Riley State Bank, Riley, Ks.

Some Signs Of Fall Greenbugs

"Farmers in Kansas who have early-seeded wheat should check fields closely for greenbug infestation," according to Extension entomologists Leroy Brooks and Dell Gates of Kansas State University, Manhattan.

Serious infestations have been reported in the Phillips County area, as well as in Nebraska and South Dakota. Entomologists from KSU are taking a survey to determine if the greenbug infestation has become widespread.

Brooks explains that greenbugs often pose a serious threat in the spring, but that fall infestations of economic proportions are rare. He points out that it takes fewer insects now to damage wheat in its early growing stages than would be necessary in the spring when plants are well established.

Greenbugs are small — about the size of the head of a pin — but they often appear in colonies. This accounts for the circular brown patches in the field which are characteristic of greenbug damage.

"This colonization, coupled with their brief growth cycle — about a week from birth to re-

productive stage — makes frequent inspections necessary if damage is to be prevented," the K-State entomologists say.

Continued warm weather favoring activity of lady bird beetles and other predatory insects which feed upon aphids probably would keep damage at a minimum. The entomologists say one lady bird beetle can eat enormous quantities of aphids and recommend spraying only if it is clear natural enemies will not wipe out the invasion.

While some fields in the Phillips County area have been decimated by greenbugs, Gates says predator numbers are high there and the predators are controlling aphids in many cases. The infestations seem to be confined to fields seeded considerably earlier than normal for the area.

The entomologists suggest that brown areas and predator numbers are more useful than greenbug counts for determining need for control measures.

EMPORIA TURNS DOWN SCHOOL BOND ISSUE

EMPORIA — A \$4.6 million bond issue for a high school and elementary school were de-

feated here last week by a 4 to 3 ratio on a 50% turnout of voters.

Hammarlund Angus Farm and Shamrock Angus Farm
5TH ANNUAL PRODUCTION SALE
FRI., NOV. 3, 1967 12:30 CST ST. MARYS, KANS.
SELLING 102 LOTS
38 BULLS — 64 FEMALES

For Full Details See Grass & Grain October 24 & October 17 Auctioneer Ray Sims

For Catalog and Information, Contact Dale Hammarlund, St. Marys, Kansas

Hammarlund Angus Farm St. Marys, Kansas Phone 913-437-2774
Shamrock Farms Manhattan, Kansas Phone 913-456-9543

Friday, Nov. 10
Starts 10:00 a.m. Lunch Served
FARM SALE AND FARM LAND

AUCTION SALE

Pursuant to the authority contained in the will of the late Allen E. Babb, as executor of said will, I will sell at public auction the following real estate and personal property, which was owned by the decedent, at farm located 8 miles southwest of Wakefield, or 16 northeast of Junction City on Highway No. 837.

Farm Machinery
John Deere No. 730 lister, on steel
John Deere 8x16 FB fertilizer grain drill, new disc, power lift, press, good shape
Massey Harris 12 ft. spring-tooth and evener
Western Land 8 ft. alfalfa roller, good
MM 10 ft. pull type tandem disc, good shape
12 ft. 6 in. grain auger, with electric motor, good
Sam Mulkey 30 ft. hay or grain elevator, gas motor, hopped, spout, on rubber, good shape
Old lumber wagon
Old hay loader on steel, good shape
4-wheel trailer with grain box
2 Electric 4-wheel trailers with steel flare boxes, good
Electric 4-wheel trailer with flatbed, good
Clipper B-2 fanning mill with electric motor, good
1966 Big Mow riding mower, very good

Cars & Trucks
1965 Ford Galaxie 500 4-door sedan, air, heater, PS automatic, radio, light blue, 19,500 miles (very nice)
1948 Ford 1½ ton truck, Giant grain bed, stock racks, good shape
1957 Ford ¾-ton pickup, overloads, wrap around bumper, 4-speed, good shape

HAY, POSTS, LUMBER & MISCELLANEOUS
3000 square bales of alfalfa and prairie hay in barn
500 Hedge posts, cedar posts; a lot of steel posts; a lot of used bricks; used tin; junk iron; harness; collars.
Stock saddle and bridle; tarps; log chains; 1 windmill tower with automatic cut off; 300 gal. gas tank; hoses and nozzle; wheel weights air compressor; feed bunk grind stone.
Cattle oilers; old tire; used lumber; barb wire; gas cans; barrels; tank heater; forks; shovels; hand tools; grease guns; a lot small and misc. items not listed.

HOUSEHOLD GOODS
Kelvinator 11 ft. refrigerator, with large freezer, good, no frost
Kenmore 30 in. gas range, good
IHC 14 ft. chest type deep freeze, good
Chrome kitchen table and 4 chairs; Coldspot window air conditioner, 1½ ton, good; 1966 Zenith color TV, very good; 3-piece maple bedroom suite; beds; dressers; chairs; dining table; sweeper; fans;
Antique chest; wardrobe; cabinet base; antique clock; ironing board; a lot household furniture and small misc. items.

REAL ESTATE
TO SELL AT 3:00 O'CLOCK

Tract No. 1
Legal Description: W½ of the SE¼ of 10-4-6 Clay County, Kansas, containing 80 acres more or less. This 80 lays well, ½ grass and ½ broke.
Has two dwellings, one is three-bedroom modern home, near new; barn, machine shed, chicken house, other small buildings, lays right along County Highway No. 837. The older dwelling on this tract is subject to a contract which allows the present tenants to retain possession of said older building until they shall vacate or move from said premises.
This agreement affects only the one dwelling and in no way affects the title or use of the remaining improvements on farm land on said tract No. 1.

Tract No. 2
Legal Description: NE¼ of Section 22, 10-4-6 p.m. Clay County, Kansas, containing 160 acres more or less, and all the portion of W½ of the SE¼ of 15-10-4-6 p.m. that has not been acquired by the United States of America, containing 50 acres more or less.
In addition to this tract the buyer is entitled to continue at lease with U.S. Government until 1971 on approximately 22 acres which is adjacent to this tract, the rental due to U.S. Government \$150.00 per year, all is cultivated land.
This tract is unimproved ½ grass and ½ broke, runs up to the Clayview recreation area of the Milford Dam. This tract is adjacent to Tract No. 1.
These tracts will be sold separately and then as unit. Seller will present tenants rights, allotments of wheat and feed grain announced day of sale.
Terms of real estate 25% down day of sale, balance when estate is closed.
Possession March 1st, 1968. Sellers to pay 1967 and all prior years taxes. Rent share of growing wheat goes to buyers.

For further information see, Executor, Attorneys or Auctioneer. Terms and settlements announced at sale time shall take precedence.
TERMS ON PERSONAL PROPERTY: Cash Day of Sale.

DAN H. MYERS III
Executer of the ALLEN E. BABB Estate

Auctioneer, Foster Kretz, Clay Center Phone Morganville WA 6-4422. Clerk: Farmers & Merchants Bank of Wakefield, Kans.
Attorneys for Estate, Fich, Myers & Johnson, Ulrich Building, Manhattan, Kans.

Grass & Grain
Saturday NOVEMBER
Starts 11:00 a.m.
Lunch Served

will sell the following
West Corner of Wood
the Lyons Church, of
of Chapman, Kansas.

ise; shovels; forks; 5
belt.
veral steel posts; 4 50
s; grain combine tank
running gears; old
drill; 2-wheel flatbed
r; ¾ hp elec. motor

steel feed bunks; 4x11
auger with ½ hp
r, like new; 2-wheel
th box; Galloway
ader on steel; good
on; 7"x40" drive belt;
mer mill good; hay
ing gear; 28 ft. exte
r, good; wheelbarrow
with 10 rollaway ch
ests; good; chicken

HOUSEHOLD ITEMS
tique baby cradle; antiq
k; large Penn. Dute
, antique.
tique iron bed, good
boiler; baby bed; high
; 3 lawn chairs; wood
ing stove, good; and
r misc. items.

HAY
pprox. 1200 bales of
second cutting of alf
ox. 3 bu. of alfalfa

Bell, Owners
The Woodbine
Clerk & Cashier

Thursday NOVEMBER
Starts 12 Noon
Lunch Served

we will sell at public
d east of Clay Center

**Y, GRAIN, STEEL BROS
FEEDERS & MISC.**
0 square bales 1st cut
fa; 450 square bales
ng alfalfa; 360 square
s prairie hay, all hay
350 bu. yellow ear
e oats.
op 60 bu. steel hog
og troughs; 2 16 ft.
ts; 14 ft. feed bunk; o
tank heater.
00 bu. Eaton steel b
cribbing; 12x14 larg
; log chain; hand spr
one seeder; 100 ft. w
; electric wiring; us
a; hedge posts.
etric mtr.; shovels; f
l tools and many misc
s too numerous to me

TRUCKS & TRAILERS
Ford ¾ ton pickup
eed, 6 cylinder, mud
ain sides, good shape
eel trailer and box
4-wheel trailer and

**HOUSEHOLD GOODS
AND ANTIQUES**
irculating heater; buff
cupboard; iron bed
ng; 2 small tables; 2
es; ironing board; 2
rs; magazine rack; 2
; battery lantern.
lectric heater and fan
den clothes dryer; p
flower pots; fruit
e jars; large wash
eam electric waffle
electr
frying grills;
ryer; 3 trays
unbeam electric skil
tric toasters; house
nterns; wall phone; pa
den shoes; glass ch
er mold; large str
kettle.
waffle irons and ma
y small misc. items

Cowell, Owners
Clerk: Peoples
Bank of Clay

ELLSWORTH COUNTY FARMLAND
Wednesday NOV. 15
at the times & locations shown below

700 Acres, Ellsworth County, Ks.

TRACT NO. 1
9 a.m.
4 miles north and 1 mile east of Kanopolis
160 ACRES
Southwest ¼ of Section 32, Township 14, Range 7
113 acres in cultivation, balance pasture, large pond, windmill, 56.9 acre wheat allotment; 22 acre feed grain base; 72 acres planted to wheat, 1967 normal yield, 21 bushels.

TRACT NO. 2
10 a.m.
½ mile south of Kanopolis
136 ACRES
Northeast ¼ of Section 1, Township 16, Range 8, west of the railroad right-of-way.
129 acres in cultivation, balance meadow, 52.5 acre wheat allotment, 19 acre barley base, 80 acres planted to wheat, 1967 normal yield 23 bushels.

TRACT NO. 3
11 a.m.
North Edge of Kanopolis
164 ACRES
Northeast ¼ of Section 25, Township 15, Range 8, and 6 blocks in City of Kanopolis.
115.5 acres in cultivation, balance pasture, 71.3 acre wheat allotment, 71 acres planted to wheat, 1967 normal yield. 21 bushels

TRACT NO. 4
12:00 Noon
Lots 28 to 30, Block 58, City of Kanopolis
3-APARTMENT HOUSE
Double Garage

TRACT NO. 5
12:30 p.m.
Fraction Lot 23 and all of Lots 24 and 25, Block 93, City of Kanopolis.
5-ROOM HOUSE

TRACT NO. 6
1:30 p.m.
2 miles west of Ellsworth
160 ACRES
Northeast ¼ of Section 26, Township 15, Range 9. 125 acres in cultivation, balance pasture, well and windmill, 71.8 acres wheat allotment, 26

acre feed grain base, 4 acre barley base, 70 acres planted to wheat. 1967 normal yield; 23 bushels. Leased for oil.

TRACT NO. 7
3 p.m.
4 miles west and 7 miles north of Ellsworth
80 ACRES
West ½ of Southwest ¼ of Section 10, Township 14, Range 9.
63 acres in cultivation, balance meadow, 34 acre wheat allotment, 34 acres planted to wheat, 1967 normal yield, 23 bushels.
½ of growing wheat and ½ of milo to be planted in 1968 goes to purchaser. ½ of 1968 wheat payments and ½ of 1968 feed grain payments go to purchaser. Present tenants must participate in 1968 wheat and feed grain programs.

TERMS: 25% down on day of sale. Balance due when clear abstract showing merchantable title is furnished. Buyer to sign a sales contract at the time down payment is made. Abstracts will not be given on tracts 4 and 5. Quit claim deeds will be given on these two tracts.

POSSESSION: Possession of ground in growing wheat Aug. 1, 1968, or when wheat is Harvested. Possession of ground to be planted to 1968 milo crop, Nov. 1, 1968 or when milo is harvested. Possession of all other open ground and pasture and meadows March 1, 1968.
1967 taxes will be paid by the sellers. All mineral rights go to the purchaser.

PLEASE NOTE: The sale of each tract will be held on each respective tract.
Anything said on sale day will take precedence over any printed matter.

INSPECTION: Real estate may be inspected anytime by calling the auctioneer.

John Klema Heirs, Owners
Sale Conducted By
VICTOR BROS SALES, Inc.
Auctioneers — Brokers — Appraisers
204½ N. Douglas Phone GR 2-4142 Ellsworth, Kansas
Victor Smischny, Auctioneer
There is no substitute for experience

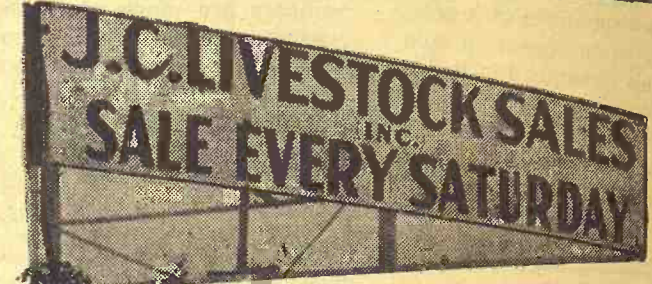
G&G Calendar

- Oct. 31 — Farmland sale north-east of Ellsworth, Kans., Emi-lie Choitz estate. Auct. Ray Gerbitz.
- Oct. 31 — Lincoln County Here-ford Assn. show & sale at Sylvan Grove, Kans., Alvin Steinberg, Lincoln, Kans., sec.
- Nov. 1 — Farm sale for Wm. Schellhorn, west of Fairbury, Nebr. Schultis & Son & Wol-ken, aucts.
- Nov. 1 — Bluestem Charolais Assn. sale in Oakley, Kans., Leo Keller, Oakley, L. S. comm.
- Nov. 1 — Stock cow dispersal sale south of Council Grove, Kans., Harold Pracht. Auct. Foster Kretz.
- Nov. 2 & 3 — Kans. Shorthorn & Polled Shorthorn Assn., show & sale, Hutchinson, Kans., Milton Nagely, sale mgr.
- Nov. 2 — Dairy cattle and hay auction for Mr. and Mrs. C. A. Hull, southeast of Diller, Nebr. Schultis & Son & Wol-ken, aucts.
- Nov. 2 — Bazaar sale at the Navarre grade school, Navarre Church of the Brethren.
- Nov. 2 — Mid-Kansas Swine Im-provement Assn. feeder pig sale in Hutchinson, Edwin D. Clarke, Lyons, sec.
- Nov. 3 — Farm sale for Bert Holcombe, south of Western, Nebr. Schultis & Son & Wol-ken, aucts.
- Nov. 3-45 — Antique show & sale in Belleville, Kans., Art Neubauer, mgr.
- Nov. 3 — Farm sale southwest of Axtell, Kans., Mrs. Elmer Lofdahl. Auct: Loren John-son.
- Nov. 3 — 5th annual Hammar-lund-Shamrock Angus sale. St. Marys, Kansas.
- Nov. 4 — Garage tools & equip-ment north of Chapman, Kans., Gary Osterhaus. Auct: C. W. Crites.
- Nov. 4 — Tools, bldg. materials & household goods east of Manhattan, Kans., Lorren Marker. Auct: Lawrence Welt-er.
- Nov. 4 — Antiques and miscel-laneous items in Mentor, Kan-sas., Ernest Lefebvre. Aucts.
- Paul M. Brown and Roger Johnson.
- Nov. 4 — Registered Ayrshire dispersal southeast of McPherson, Kans., Mr. and Mrs. Arlo Flickner. Aucts Ted Krehbiel and Walter Hand.
- Nov. 4 — Farm sale for Frank Grone, northeast of Diller, Nebr. Schultis & Son & Wol-ken, aucts.
- Nov. 4 — Farm sale southeast of Chapman, Kans., Mr. & Mrs. Orville Bell. Aucts. Schnell, Remy & Schnell.
- Nov. 4 — Crowther-Walker Quarter Horse production sale in Salina, Duane Walker, Canton, sale mgr.
- Nov. 4 — All breed calf sale in Manhattan, Olson, Fagerberg & Hawkinson, joint sale.
- Nov. 6 — Farm sale northwest of Alexandria, Nebr., for Her-man Matthies. Schultis & Son & Wolken, aucts.
- Nov. 6 — George M. Myers Hereford herd dispersal southwest of El Dorado, Kans., Gene Watson, auct. & sale mgr.
- Nov. 6 — Farm sale southwest of Clay Center, Kans., Vernon Hull. Auct. Foster Kretz.
- Nov. 7 — Kansas Polled Here-ford Assn. "blue ribbon" sale in Hutchinson, Wilbur W. White, sec.; Gene Watson, auct.
- Nov. 7 — Antiques & household in White City, Kans., Aucts Sharp, Remy & Schnell. Shore & Shore estates.
- Nov. 11 — Household goods & antiques west of Manhattan, Kans. Wayne Walter. Auct: Lawrence Welter.
- Nov. 11 — Kansas Shorthorn and Polled S.H. Assn. com-mercial cattle sale in Oakley, Kans., Milton Nagely, sale mgr.
- Nov. 11 — 22nd annual Here-ford production sale south-west of Haven, Kans., Valley View Ranch, W. H. Tonn & Son. Auct Harold Tonn.
- Nov. 11 — Farm sale & cattle dispersal east of Goessel, Kans., Elmer Friesen. Auct. Ed Reimer.
- Nov. 11 — Real estate & house-hold goods in Talmage, Kans.,

- Bert Hull estate. Aucts Schnell, Remy and Schnell.
- Nov. 13 — Farmland auction at the courthouse in Abilene, Ks., for land northwest of Abilene, known as the Guy Bennett farm. Auct. Ray D. Wilson; atty. Charles W. Bradshaw.
- Nov. 13 — Preferred stock show & sale in Hutchinson, management of Kansas Here-Assn., E. Dale Mustoe, Jr., sec.-mgr.
- Nov. 13 — Farm sale south of Concordia, Kans., Alcld Od-ette. Aucts Rollie and Larry Lagasse.
- Nov. 13 — Farm sale southeast of Barnes, Kans., Chris Holle Estate. Auct. Foster Kretz.
- Dec. 14 — Farm sale, Mahaska, Kans., Louis Fiser. Auct. Harold R. Siegel.
- Nov. 14 — Farm sale south edge of Dwight, Kans., Dale Shep-hard. Auct. Foster Kretz.
- Nov. 15 — Sale of farmland in Ellsworth, Kans., area for the heirs of the late John Klema. Auct. Victor Smischny.
- Nov. 15, 1967 — Registered Hereford sale, Smolan, John-son Hereford Farms; Elmer L. Johnson & Sons.
- Nov. 16 — Farm sale, Mr. and Mrs. Bernard Muller, south-east of Jansen, Nebr., Siegel & Schultis, Aucts.
- Nov. 17 — Farm sale for Mr. and Mrs. Francis Miller north-west of Daykin, Nebraska. Schultis & Son and Wolken, Aucts.
- Nov. 17 — Dairy sale northwest of Linn, Kans., Leonard Stone. Auct. Foster Kretz.
- Nov. 17 — J. J. Moxley Here-ford sale northeast of Council Grove, Kans.
- Nov. 18 — Farm sale for Her-man Junker southwest of Fairbury, Nebr., aucts Schul-tis & Son and Wolken.
- Nov. 18 — Farm sale and Here-ford cattle southeast of Man-hattan, Kans., Hilbert Geisler estate. Auct. Morris L. Poll-man.
- Nov. 18 — Joint Shorthorn & Polled Shorthorn sale in New-ton, Kans., Cummings-Elliott-Ralstin-Davidson-Hunt.
- Nov. 18 — House and furnish-ings in Newton, Kans., Mrs. Henry Friesen. Auct. Ed Rei-mer.
- Nov. 18 — Farm sale north of Riley, Ks., E. S. McVaugh. Auct. Foster Kretz.
- Nov. 18 — Kocher Herefords production sale in Onaga, Herman Kocher & Sons.
- Nov. 18 — State ewe sale in Hutchinson, Kans. Purebred Sheep Breeders Assn., V. E. McAdams, sec.
- Nov. 20 — Sheriff's partition sale of farm known as Enoch Derrick farm northwest of Abilene, Kans., sale at Dick-inson county courthouse in Abilene. M. A. Anderson, sheriff; John H. Lehman, at-torney for plaintiff; Ray D. Wilson, auct.
- Nov. 21 — Plainview Farms Polled Herefords production sale, Enterprise, Kans., Jesse Riffel & Sons. Auct. Gene Watson.
- Nov. 21 — Hereford production sale in Marysville, Peterson's Herefords. Elmer Peterson & Son.
- Nov. 24 — Quitting business sale, hardware store in Man-chester, Kans., Mrs. Daisy Cramer. Auct. Foster Kretz.
- Nov. 25 — Farm sale northeast of Randolph, Kans., Mrs. Ken-neth Toburen. Auct. Foster Kretz.
- Nov. 25 — Farm sale including reg. Polled Herefords north of Wamego, Kans., at the Leo Ebel farm. Aucts Lawrence Welter and Glenn Applegate.
- Nov. 25 — Farm sale for John Schwisow southeast of Jan-sen, Nebr., Schultis & Son and Wolken, Aucts.
- Nov. 25 — Fall sale of Arbuth-not Herefords, Haddam, Ks.

- Bob Arbuthnot.
- Nov. 27 — Fall sale of bulls near Brookville, Kans., CK Ranch.
- Nov. 27 — Farm sale south-west of Junction City, Kans., Albert Dietrich. Auct. Foster Kretz.
- Nov. 28 — Annual production & performance tested bull sale in Emporia, Kans., Price Angus Ranch, Reading, Kans.
- Nov. 29 — Farm sale west of Plymouth, Nebr., Clarence Weishahn, Schultis & Son and Wolken, aucts.
- Dec. 1 — 22nd annual reg. Here-ford production sale, in Clay Center. B-K Hereford Ranch; Mr. and Mrs. C. F. Berg-meier & son Fritz, Longford, Kans.
- Dec. 2 — Farm sale northeast of Fairbury, Nebr., for Alfred Bohlmeier. Schultis & Son and Wolken, aucts.
- Dec. 2 — Farm sale and carpen-ter tools east of Hesston, ,

- Kans. E. D. Byler. Auct. Ed Reimer.
- Dec. 6 — Farm sale for Melvin Bowmann southwest of Cort-land, Nebr., Schultis & Son and Wolken, aucts.
- Dec. 7 — Farm sale for Edgar Drees northeast of Daykin, Nebr., Schultis & Son and Wolken, aucts.
- Dec. 9 — General farm sale for Don Siebe north of Jansen, Nebr., Schultis & Son and Wolken, Aucts.
- Dec. 16 — Marshall County Hereford Assn. annual con-signment sale, Marysville Sales Barn.
- Jan. 20, 1968 — Rebenstorf Herefords Production sale, Elmer Rebenstorf, Sylvan Grove, Kans.
- Feb. 3, 1968 — Annual 4-H & FFA annual swine judging school in Smith Center, Kans. Also Duroc auction. Albrecht and Popp.



HOGS START AT 11:00 A.M. CATTLE AT 1:00 P.M.

A market last Saturday that looked steady on cattle, and steady to somewhat weaker on hogs, which did not reach last week's top, but maintained a strong position in the area.

The trend on calves, both steers and heifers, was for a more uniform, steady price, with no outstanding top. Our hog feeders have discovered that they can get a top price compared to any market in the area if they bring their animals to Junction City. We have regular buyers that will take all the porkers you bring in, and give you a good price for them.

SPECIAL CONSIGNMENTS

- 2 choice springer holstein heifers that could calve by Saturday.
- 15 choice whiteface cows with 8 calves at side and the balance heavy springers. These are real good cows coming with 1st and 2nd calves.
- 20 outstanding Angus heifers - 15 coming with 1st calves, 5 with 2nd calves. Probably 5 or 6 of these will have their calves on the ground and the balance will be heavy springers.
- We'll have 85 choice shoats weighing from 70 lbs. to 90 lbs., all vaccinated.
- Entire Hereford cow and calf reputation herd of Bill Fullerton, 66 cows and 63 calves.

The following is a sampling of last week's sale:

STEER CALVES		23 whiface steers		770 @ 24.40
10 black steers	450 @ 28.70	18 whiface steers	685 @ 25.55	
7 whiface steers	455 @ 30.55	18 black heifers	620 @ 22.80	
21 black steers	330 @ 29.00			
6 short horn steers	365 @ 29.90	COWS		
12 whiface steers	575 @ 27.10	Good cows sold from \$15.50 to \$17.00. Others from \$13.00 to \$15.00. Good heiferettes sold from \$17.00 to \$21.00.		
8 whiface steers	490 @ 27.80	HOGS		
1 black steer	320 @ 30.50	43 mixed butchers	218 @ 17.35	
4 red short horn sts	420 @ 27.90	15 hamp hogs	206 @ 17.25	
14 whiface steers	435 @ 28.20	12 mixed hogs	204 @ 17.40	
7 black steers	395 @ 29.90	56 mixed hogs	230 @ 16.80	
3 whiface steers	335 @ 34.00	76 mixed hogs	230 @ 16.80	
21 whiface steers	465 @ 31.20	19 red hogs	249 @ 16.90	
12 black steers	390 @ 31.00	27 red hogs	224 @ 17.30	
		SOWS		
		4 hamp sows	380 @ 15.50	
		5 mixed sows	396 @ 15.30	
		1 red sow	405 @ 15.80	
		1 hamp sow	305 @ 15.70	
		3 red sows	505 @ 14.50	
		PIGS		
		Good pigs 50 lbs and up sold from \$17.00 to \$20.25 per head. Smaller pigs went from \$14.00 to \$17.00 and real small pigs sold from \$10.00 to \$13.00.		

LICENSED AND BONDED
BARN PH. JUNCTION CITY CE 8-1471
 If you have livestock to appraise, call:
VEEN LANGVARDT, Manager, 502 UPLAND
HOWARD LANGVARDT, Auctioneer, 520 UPLAND
HERB NEUMEYER, White City, Phone 349-2863

Ronald Rice Motors, Inc.

CHEVROLET OLDSMOBILE CADILLAC
 North Kansas' Largest Volume Dealer
 NW 2nd Phone CO 3-4000 ABILENE, KANS.

Want A '63-'65?

We Have Some Good Ones.

SEE AND DRIVE ONE OF THESE:

1963 PONTIAC Grand Prix 2 dr. hardtop	\$1895
Radio, heater, automatic transmission, power steering, power brakes, air conditioner.	
1963 CADILLAC Hardtop 4 door	\$2595
Radio, heater, automatic transmission, power steering, power brakes, air conditioner, electric seat & windows.	
1963 CHEVROLET Bel Air 4-door V-8	\$1095
Radio, heater, automatic transmission, power brakes, air conditioner.	
1964 OLDSMOBILE 98 Town Sedan	\$2095
Radio, heater, automatic transmission, power steering.	
1964 VOLKSWAGEN 1500 Series 2 dr.	\$1495
Radio, heater, stick shift.	
1964 RAMBLER Classic 660 series 4 dr. wagon	\$1395
Radio, heater, automatic transmission, air conditioner.	
1964 CHEVROLET Biscayne 4 door V-8	\$1345
Radio, heater, automatic transmission, power steering, power brakes, air conditioner.	
1965 CHEVROLET Impala V-8 convertible	\$2095
Radio, heater, stick shift.	
1965 PONTIAC Catalina 2 door hardtop	\$2195
Radio, heater, automatic transmission.	
1965 CHEVELLE Malibu 2 dr. V-8 hardtop	\$1695
Radio, heater, 4-speed.	
1965 CADILLAC Coupe DeVille	\$3895
Radio, heater, automatic transmission, power steering, power brakes, air conditioner.	
1965 OLDSMOBILE Delta 88 4 door hardtop	\$2695
Radio, heater, automatic transmission, power steering, power brakes, air conditioner.	
1965 DODGE Dart 270 4 door	\$1895
Radio, heater, automatic transmission, power steering, air conditioner.	

Feed Grain Plan To Return To Acreage Diversion

The government is returning to a policy of paying farmers to reduce their feed grain acreage. Last week Secretary of Agriculture Orville Freeman said USDA was returning to its 1961-66 policy, hoping to idle 30 million acres of land used for corn, sorghums, oats, barley, and other grains used for feeding livestock.

About 20 million acres were idle this year under a limited payment system. Now the administration wants to idle 10 million more acres for a total of 30 million. Freeman said this would change this year's 2 to 3% overproduction to 2 or 3% underproduction next year.

Under the new program farmers will be required to divert

20% of their feed grain acreage in order to qualify for price supports. In addition, land taken out of production in excess of the 20%, up to 50% of a farmer's feed grain acreage, will also be eligible for diversion payments.

The diversion payments will be slightly higher this year, averaging nationally about \$48 an acre. This compares with about \$46.50 last year.

Freeman said the cost of the program was expected to be about the same as last year, \$1.5 billion. The additional cost of diversion payments, he said, would be offset by less feed grains being taken over by the government under the federal price support system.

"The workability of the program depends on the cooperation of the farmers," Freeman said. "It is a stronger program than '66. This is precisely what the program was designed to do — increase production when it is needed, then we get a little too much we work it back

again."

"Asked if he was trying to cut costs, he responded, "we're trying to get a feed grain program to operate."

Small Nut Crop But Good Prices

CHETOPA — Southeast Kansas pecan growers may have a light crop in prospect, but may be cheered by the high prices the nuts are bringing.

Jack Winzer, superintendent of the Kansas State University experiment field here, said the crop at the station will be about half of what it was last year, and that the crop generally may be light due to cool weather last spring during the pollination period.

He said the price for pecans is running about 30 to 34 cents a pound. Two factors which may keep the prices high, he said, are that Texas has a small crop and the supply of cold storage nuts is about depleted.

Freeman Takes Blame

Orville L. Freeman, secretary of agriculture, said last week at Syracuse, N.Y., farm program decisions made by his agency a year ago have turned out to be partly responsible for this year's decline in farm prices and income.

The decisions called for greatly expanded production of grains this year. At the time they were made, world supplies appeared to be tight. But subsequent developments showed that world production was larger than had been indicated.

"No one — not myself, nor the Congress, nor the scientists

and economists — had the second sight to predict this," Freeman said.

As a consequence of the program decisions, this year's wheat and feed grain crops turned out to be record size. Prices have tumbled.

Emphasizing that 1966 was a good income year for farmers, Freeman said the price drops this year "are especially hard to swallow."

Freeman declared, however, that this year's experience offers new proof that American agriculture continues to need production controls because of its vast productive capacity.

The Growing Hog Market Is At
WASHINGTON SALES CO.
 TRY US SOON
HOGS every TUESDAY
CATTLE every WEDNESDAY
 All Sales Start 1:00 p.m.
ED BURT
 Barn Phone EA 5-2266 Residence EA 5-2393
 Washington, Kans.

JOHN C. STEPHENSON & WALTER BECKER & SON
1st JOINT ANGUS PRODUCTION SALE
FRIDAY, NOVEMBER 10, 1967 — 12:30 P.M.
Downs Livestock Auction Barn — DOWNS, KANSAS
76 LOTS 23 BULLS 53 FEMALES
STEPHENSON'S: A very select group of 15 bulls and 33 females. 12 calves now, more probably by sale day.
BECKER'S: 8 bulls & 20 females. 17 cows with 13 calves. Ready-for-service bulls.
SPECIAL ATTRACTION — A top show heifer bred to a great son of ANKONIAN JINGO 2nd.
 Ray Sims, Auctioneer
PHIL LJUNGDAHL, Sale Manager, Box 1209, Dodge City, Kansas 67801
MIDWAY STOCK FARMS **BECKER ANGUS FARM**
JOHN C. STEPHENSON **WALTER BECKER & SON**
DOWNS, KANSAS 67437 **CAWKER CITY, KANSAS 67430**

Reynolds Sale Barn

ABILENE, KANS. CO 3-3394

SELLING EVERY FRIDAY AFTERNOON

Starting At 1:00 p.m.

With over 1000 cattle in the yards and many buyers, locally and from out of state, last Friday's Auction rolled along in high gear all the way through. Out of state feeders and order buyers paid 50¢ to \$1.00 higher for steers and heifers over 600 lbs. Local farmers and stockmen paid about steady prices on steer and heifer calves.

Listed below are some of the representative sales of Friday, October 27:

BULLS	1 whiface steer - 380 @ 31.00	8 mixed steers -- 790 @ 23.10
1 bull-----1270 @ 20.45	48 angus steers -- 448 @ 31.40	
1 bull-----1380 @ 20.80	2 blkwhif steers - 485 @ 29.25	STOCKER & FEEDER HEIFERS
	4 black steers --- 530 @ 28.20	14 black heifers -327 @ 26.00
COWS	2 black steers --- 485 @ 28.15	19 black heifers - 404 @ 26.00
1 holstein cow -1270 @ 16.40	2 black steers --- 485 @ 28.40	4 black heifers --- 335 @ 26.00
1 cow-----1100 @ 15.40	3 black bulls --- 446 @ 28.50	6 blkwhif heifers 543 @ 23.15
1 cow-----1075 @ 15.10	16 whiface steers 522 @ 28.60	3 black heifers -- 506 @ 23.05
1 cow-----1020 @ 15.20	1 whiface steer - 450 @ 30.00	3 whiface heifers 365 @ 24.80
1 cow-----1220 @ 15.10	3 whiface steers - 440 @ 30.10	4 black heifers -- 645 @ 23.20
1 cow-----940 @ 15.50	19 whiface steers 561 @ 27.00	2 whiface heifers 735 @ 23.40
1 cow-----1350 @ 14.80	4 black steers --- 506 @ 26.70	1 whiface heifer- 710 @ 23.20
1 cow-----1120 @ 14.50	3 black steers --- 556 @ 26.80	10 whiface heifers586 @ 22.90
1 cow-----1050 @ 15.40	7 whiface steers - 634 @ 26.25	17 whiface heifers536 @ 23.75
1 cow-----1050 @ 15.40	1 roan steer----- 610 @ 26.25	10 plain heifers - 696 @ 21.80
1 cow-----1285 @ 14.50	19 whiface steers 738 @ 24.85	12 whiface heifers722 @ 22.45
1 cow-----1330 @ 15.20	18 whiface steers 729 @ 25.25	5 whiface heifers 728 @ 22.15
STOCKER & FEEDER STEERS	39 black steers --- 741 @ 25.15	1 whiface heifer- 770 @ 23.75
5 whiface bulls-- 320 @ 31.40	3 black steers --- 626 @ 25.40	3 whiface heifers 626 @ 23.55
19 whiface steers 444 @ 31.10	20 charcross steers807 @ 23.80	42 blkcbwf med. quality heifers 659 @ 22.65
6 blkwhif steers - 386 @ 31.10	3 whiface steers - 831 @ 24.80	
2 blkwhif steers - 372 @ 30.30	4 whiface steers - 717 @ 24.50	

WE WILL HOLD A SPECIAL STOCKER AND FEEDER SALE, in conjunction with the regular Auction Friday, Nov. 3, at 1:00 P.M. Already listed:

- 112 choice hereford and hereford angus cross steers 650 to 750 lbs.
- 47 choice hereford and hereford angus cross steers 750 lbs.
- 50 choice angus steers 500 lbs. Weaned and vaccinated.
- 70 whiface and angus steers 750 to 800 lbs.

For information, requests for appraisals at no obligation, or inquiries regarding coming sales, call me at any time, day or night.

DUDE REYNOLDS Abilene, Kans.
CO 3-3394

Bring your cattle in at any time day or night; we'll handle them for you at your request.

AUCTION

Due to my health I will sell my antiques and miscellaneous in Mentor, Kansas.

SAT., NOV. 4
 Starts 9:00 a.m.
 Lunch Served

Trucks

1953 Ford 2 door hardtop V8
 1950 Studebaker 1/2 truck
 1952 Ford Station Wagon V8
 1950 Chevrolet 1/2 truck
 1950 Ford 1/2 truck V8
 2-wheel trailer

MISCELLANEOUS

Scales; tire chains, all sizes; 90 tires 15, 16 & 17 in.; 3 sets of tractor wheel weights; battery charger and tester; 2 TVs; adding machine.
 Tools; single 12 gage Hopkins and Allen; Stevens 124C 12

GUNS

Single 12 gage Hopkins and Allen; Stevens 124C 12 gauge; Lefebvre trap gun 12 gauge 12 gage trap gun; 12 gage field gun; No. 10 Remington 12 gage; Western Field 12 gage; gun cabinet; approx. 50 boxes shells 12, 16 & 22; junk iron.

Antiques

Fruit jars dated 1908 & 1958
 Bottle; clocks; 5 trunks; walnut drop leaf table; oak drop leaf table; 3 tables with crow feet.
 Brass spittoon; branding irons; barb wire collection; railroad lanterns; telephones; iron match holder.
 Cast iron seat; car parts; lamps; horse collars; dishes; books; license plates; ice cream stool.
 Many hundred items not mentioned

Ernest Lefebvre
 Assaria State Bank, Clerk
 Paul M. Brown, Smolan, Roger Johnson, Salina, Auctioneers.

Sale Every Thursday

Hogs 11:30 a.m.
 Cattle 1 p.m.

We had just an average run of cattle at our sale Thursday. The market was generally steady on all classes of cattle with the exception of cows which were up 50¢ over a week ago. The butcher hog price was up 15¢ from a week ago with an extreme top of \$17.80 and the bulk going for around \$17.60. The following is a listing of some of our consignments:

SPECIAL WESTERN CALF SALE

SATURDAY, NOVEMBER 4, 1:00 p.m.
 1,000 head light weight choice quality Angus and Hereford steer and heifer calves straight form the grass in Wyoming and Montana.

FAT CATTLE & FEEDERS	30 black bull calves --- @ 84.00
5 mixed steers ----- 30 @ 26.80	10 black bull calves --- @ 82.50
1 whiface steer----- 630 @ 25.60	
8 whiface steers --- 616 @ 25.10	HEIFER CALVES
29 whiface steers --- 657 @ 24.60	3 whiface heifers --- 423 @ 25.00
2 whiface steers --- 555 @ 24.40	4 whiface heifers --- 408 @ 24.80
2 whiface steers --- 765 @ 24.40	1 whiface heifer --- 340 @ 24.75
17 whiface steers --- 611 @ 24.25	12 whiface heifers --- 421 @ 24.40
7 whiface heifers --- 586 @ 23.60	2 whiface heifers --- 475 @ 24.30
3 whiface heifers --- 533 @ 22.80	HOGS & PIGS
4 whiface heifers --- 702 @ 22.80	23 mixed fats ----- 224 @ 17.80
6 black steers ----- 620 @ 22.80	9 hamp fats ----- 231 @ 17.80
	24 white fats ----- 220 @ 17.70
COWS	21 mix fats ----- 202 @ 17.50
1 red cow ----- 1080 @ 16.80	1 hamp sow ----- 330 @ 16.50
1 blkwhif cow ----- 1190 @ 15.90	1 white sow ----- 405 @ 15.60
1 whiface cow ----- 1015 @ 15.90	2 white cows ----- 490 @ 15.25
1 holstein cow ----- 1435 @ 15.30	1 hamp boar ----- 290 @ 15.00
1 guern cow ----- 900 @ 14.40	1 white boar ----- 560 @ 10.70
1 guern cow ----- 1100 @ 13.90	1 hamp boar ----- @ 57.50
1 jersey cow ----- 875 @ 11.90	10 mixed feeders --- 159 @ 16.90
1 holstein heifer ----- @ 195.00	7 white feeders --- 166 @ 13.25
	4 white pigs ----- @ 16.25
BULLS	36 hamp pigs ----- @ 15.00
1 black bull ----- 1345 @ 20.30	15 mixed pigs ----- @ 13.25
1 black bull ----- 1120 @ 19.90	
	RALEIGH BREEDING, MANAGER
BULL & STEER CALVES	barn HI 3-3671; home HI 3-3547
4 whiface steers --- 428 @ 29.80	Auctioneer: Larry Lagasse,
1 whiface bull calf - 360 @ 29.50	Ph. Concordia, Kans. CH 3-1714
4 black steers ----- 422 @ 29.10	
10 whiface steers --- 467 @ 28.80	
6 mixed steers ----- 499 @ 27.00	

Marysville **LIVESTOCK & COMMISSION CO.**
MARYSVILLE, KANSAS

Sell At St. Marys

Sell Or Buy Cattle & Hogs Auction Tuesdays

On receipts of 1407 cattle our market was very active. All classes of stockers and feeders were higher. Calves were 50¢ to \$1.00 higher. Heifers showed the largest upturn. Feeder steers weighing 650 to 1000 were 50¢ to 75¢ higher. Feeding heifers steady to 50¢ higher. All grades of killing cows and bulls were steady.

SPECIAL CONSIGNMENT TODAY
400 head choice Angus steer and heifer calves from the herd of Dave Karnowski. These will average out at 430 lbs. If rain prevents loading, these calves will be sold one week later, Nov. 7.

STOCKER AND FEEDER STEERS

3 blkwhif steers	560 @ 29.10
1 whiface steer	565 @ 28.70
3 black steers	565 @ 26.90
3 blkwhif steers	563 @ 26.60
1 black steer	660 @ 26.50
8 whiface steers	561 @ 26.50
4 black steers	565 @ 26.50
8 whiface steers	606 @ 26.30
8 whiface steers	572 @ 26.20
34 wf&black steers	655 @ 25.90
3 whiface steers	780 @ 25.80
6 whiface steers	580 @ 25.20
4 mixed steers	815 @ 24.70
3 black steers	671 @ 25.10
2 blkwhif steers	730 @ 25.00
47 whiface steers	732 @ 24.90
23 mixed steers	815 @ 24.70
7 whiface steers	672 @ 24.70
12 whiface steers	816 @ 24.70
5 whiface steers	736 @ 24.60
14 whiface steers	845 @ 24.50

13 mixed steers	748 @ 24.30
6 black steers	735 @ 24.25
35 whiface steers	969 @ 24.10
6 mixed steers	652 @ 24.05
7 blk&blkwhif steers	819 @ 24.05
5 black steers	744 @ 23.85
11 black steers	837 @ 23.70
9 whiface steers	816 @ 23.60
11 black steers	747 @ 23.50
9 whiface steers	783 @ 23.10
9 whiface steers	1021 @ 23.00
7 mixed steers	1012 @ 22.90
5 black steers	804 @ 22.60
3 holstein steers	856 @ 22.50
11 holstein steers	732 @ 21.90
2 holstein steers	1220 @ 20.85
17 holstein steers	793 @ 20.65
4 holstein steers	1008 @ 20.10
3 holstein steers	913 @ 19.90

STEER CALVES

1 whiface steer	210 @ 38.00
2 whiface steers	292 @ 32.60
2 whiface steers	335 @ 32.50
2 blkwhif steers	297 @ 32.50
20 black steers	325 @ 32.45
3 whiface steers	295 @ 31.30
16 blk&blkwhif steers	443 @ 31.20
3 whiface steers	420 @ 31.00
24 black steers	475 @ 30.90
2 whiface steers	362 @ 30.80
18 whiface steers	408 @ 30.75
8 black steers	462 @ 30.55

For Information or Estimates

Rezac Barn	St. Marys 437-2999
Delaine Rezac	St. Marys 437-6266
Elmer Imthurn	Maple Hill MI 3-2440
Paul Kramer	St. Marys 437-2993

6 whiface steers	440 @ 30.35
5 black steers	380 @ 30.30
6 blkwhif steers	476 @ 30.30
7 blkwhif steers	447 @ 30.25
3 whiface steers	413 @ 30.25
9 blk&blkwhif steers	481 @ 29.90
14 black steers	507 @ 29.75
17 whiface steers	490 @ 29.40
3 blkwhif steers	523 @ 29.30
9 whiface steers	451 @ 29.10
6 whiface steers	529 @ 28.35
5 blk&blkwhif steers	556 @ 28.10
9 whiface steers	523 @ 28.00

STOCKER AND FEEDER HEIFERS

5 whiface heifers	555 @ 23.85
3 whiface heifers	593 @ 23.80
3 whiface heifers	650 @ 23.60
3 black heifers	586 @ 23.60
8 whiface heifers	572 @ 23.50
3 whiface heifers	626 @ 23.35
13 mixed heifers	746 @ 23.30
12 mixed heifers	676 @ 23.20
4 blkwhif heifers	607 @ 23.15
11 blkwhif heifers	571 @ 23.10
13 whif&blk heifers	758 @ 23.05
25 blk&blkwhif heifers	649 @ 23.00
7 whiface heifers	587 @ 22.80
2 black heifers	777 @ 22.60
6 blackwhif heifers	609 @ 22.60
3 whiface heifers	566 @ 22.50
2 whifade heifers	630 @ 22.10
3 black heifers	610 @ 22.10
7 black heifers	676 @ 21.30

HEIFER CALVES

1 whiface heifer	235 @ 28.75
18 blk&blkwhif heifers	431 @ 27.30
13 black heifers	298 @ 27.25
4 whiface heifers	315 @ 26.70
13 whiface heifers	346 @ 26.30
3 whiface heifers	330 @ 26.30
15 blk&blkwhif heifers	450 @ 25.90
5 whiface heifers	393 @ 25.90
17 b k&blkwhif heifers	450 @ 25.90
4 whiface heifers	435 @ 25.90
4 whiface heifers	443 @ 25.90
6 whiface heifers	416 @ 25.90
10 black heifers	412 @ 25.25
12 whiface heifers	487 @ 25.20
5 blk&blkwhif heifers	497 @ 25.10
4 black heifers	400 @ 25.10
15 whiface heifers	501 @ 25.00
4 whiface heifers	398 @ 25.00
2 charlois heifers	430 @ 25.00
8 blkwhif heifers	483 @ 24.95
3 whiface heifers	468 @ 24.60
3 blkwhif heifers	476 @ 24.10
5 whiface heifers	488 @ 24.00
6 whiface heifers	506 @ 24.00

COWS

1 whiface heiferett	935 @ 19.30
1 whiface cow	720 @ 18.40
1 whiface cow	1155 @ 16.30
1 holstein cow	950 @ 15.60
1 whiface cow	1150 @ 15.60
1 holstein cow	1125 @ 15.60
5 whiface cows	1054 @ 15.30
1 whiface cow	1260 @ 15.30
1 whiface cow	1375 @ 15.30
5 whiface cows	1169 @ 15.30
1 whiface cow	1125 @ 15.10
1 whiface cow	955 @ 14.70

Auctioneers: Lawrence Welter, Gene Toby

LIVESTOCK COMMISSION COMPANY

Rezac



St. Marys Kansas



Central Kansas Most Modern Livestock Auction... West Side Of Salina

TWO SALES EVERY WEEK
MONDAY Hogs & Cattle
THURSDAY Cattle Only

We sold 2,638 cattle, 673 hogs last week. The hog market was agi
 We sold 2,638 cattle, 673 hogs last week. The hog market was again 50¢ lower. The cattle market was very spotted. The feeder steers and feeder heifers were about steady to 25¢ lower but the calves were 50¢ to \$1.00 lower, with the most decline on heifer calves.
 We are holding a special calf and yearling sale Friday, November 3. Expecting 3,000 or more head.

Alyward Bros., Salina	60 wf sts	872 @ 23.80
Alyward Bros., Salina	50 wf sts	839 @ 24.10
Alyward Bros., Salina	30 wf sts	847 @ 23.90
Sid Hoffman, Ellsworth	14 wf sts	582 @ 26.00
Sid Hoffman, Ellsworth	10 wf hfs	509 @ 24.70
Alberd Choitz, Ellsworth	7 wf hfs	480 @ 23.50
Melvin Sparks, Ellsworth	16 wf sts	477 @ 28.30
Melvin Sparks, Ellsworth	15 wf hfs	446 @ 24.90
Dean White, Ada	5 wf sts	463 @ 28.00
Dean White, Ada	6 wf hfs	449 @ 24.10
Jim Mortimer, Gypsum	56 wf sts	813 @ 23.90
Harold Mountain, Ada	44 wf sts	883 @ 23.75
Pat Sauble, Adar Point	147 bw sts	632 @ 24.37
Kenneth Schepman, Holyrd	5 ch sts	510 @ 25.10
John Peterman, Ellsworth	6 bbw sts	431 @ 28.00
Laton Gary, Milton	4 bbw sts	492 @ 26.20
Ray Bradshaw, Hosington	3 blk sts	283 @ 31.00
Ray Bradshaw, Hosington	10 blk sts	440 @ 27.80
Wm. Eichelberry, Genec.	8 rdrn sts	568 @ 25.20
Clarence Neinke, Ellsworth	11 wf sts	511 @ 27.80
Clarence Neinke, Ellsworth	15 wf hfs	472 @ 25.10
Lester Johnson, Assaria	13 wf hfs	435 @ 24.70
Keith Briscoe, Lincoln	12 blwf sts	597 @ 26.10
Herman Jacobson, Rox.	29 wf sts	844 @ 24.05
Herman Jacobson, Rox.	19 blwf sts	860 @ 24.10
Geo. McCormick, Beverly	10 blk sts	405 @ 30.10
Geo. McCormick, Beverly	20 wf hfs	351 @ 25.30

Roy Neinke, Ellsworth	13 wf sts	485 @ 29.30
John Vopat, Ellsworth	14 wf sts	518 @ 27.00
Ben Ireland, Marion	14 wf hfs	647 @ 23.00
Lloyd E. Oswald, Gorham	13 wf sts	465 @ 27.30
Lloyd J. Oswald, Gorham	9 wf sts	346 @ 31.10
Lloyd J. Oswald, Gorham	12 wf sts	432 @ 29.50
Lloyd J. Oswald, Gorham	19 wf hfs	378 @ 25.30
Tom Tucker, Salina	27 wf hfs	681 @ 23.10
Tom Tucker, Salina	28 blwf hs	660 @ 22.75
Jake Stubby, Durham	33 blbw sts	697 @ 24.55
Jake Stubby, Durham	24 blbw sts	713 @ 24.55
Lloyd Bishop, Canton	8 blbw hfs	540 @ 23.40
Adolph Hanneman, Linc.	15 wf bull	521 @ 25.50
Gourley Bros, Lincoln	26 wfst&b	380 @ 28.70
Gourley Bros, Lincoln	22 wf sts	438 @ 27.90

The following is a sample of last weeks sales:

CATTLE		
Carrol Oleen, Falum	14 wf sts	473 @ 28.40
Carrol Oleen, Falum	16 wf sts	576 @ 26.00
Carrol Oleen, Falum	6 wf hfs	367 @ 25.75
Rudy Leieker, Lincolnville	5 blk sts	430 @ 27.20
Rudy Leieker, Lincolnville	7 blwf sts	561 @ 25.60
George Zavesky, Ellsworth	11 blk sts	565 @ 26.00
George Zavesky, Ellsworth	5 blk hfs	553 @ 24.40
Ed Byard, Lyons	14 wf sts	463 @ 27.70
Ed Byard, Lyons	19 wf hfs	472 @ 24.10
Richard Kempke, Lorraine	8 blwf sts	434 @ 27.95
Richard Kempke, Lorraine	11 blwf hs	413 @ 24.90
charles Wescott, Minn.	18 wf sts	770 @ 23.90
Asa Hudson, Falum	10 wf sts	349 @ 30.30
Asa Hudson, Falum	18 wf sts	445 @ 28.50
Asa Hudson, Falum	13 wf hfs	416 @ 24.60
Hudson Bros., Falum	3 blwf sts	335 @ 31.00
Hudson Bros., Falum	6 blwf sts	455 @ 27.10
Melvin Klein, Salina	4 wf sts	398 @ 27.20
Melvin Klein, Salina	5 wf hfs	390 @ 25.10
George Wagner, Brkville	6 wf sts	425 @ 30.70
Bast Bros., Ellsworth	37 wf sts	438 @ 29.60
Bast Bros., Ellsworth	31 wf hfs	404 @ 25.40
Ralph Choitz	18 wf hfs	616 @ 23.25

FOR INFORMATION OR ESTIMATES
LAURENCE CLEMENCE Abilene Phone CO 3-3091
MERRILL CHRISTIANSEN Durham Phone 732-3371
BOB MUIR Salina Phone TA 3-2963

Market Reports
 Radio Station KSAL, Salina
 6:45 a.m. Every
 Monday, Wednesday & Friday
 KFRM
 6:55 a.m. Mon. through Fri.

Farmers & Ranchers

LIVESTOCK COMMISSION CO.

West on old US 40
 Barn Phone
 913 TA 5-0211 SALINA, KS.

Bonded • **Licensed**