

hfrs
 460 @ 27.50
 545 @ 27.50
 418 @ 27.50
 464 @ 27.50
 550 @ 27.50
 500 @ 27.50
 507 @ 27.50
 515 @ 27.50
 535 @ 26.50
 COWS
 810 @ 21.50
 795 @ 21.50
 860 @ 20.50
 970 @ 20.50
 900 @ 19.50
 1290 @ 19.50
 1145 @ 19.50
 1120 @ 19.50
 927 @ 18.50
 1070 @ 18.50
 1150 @ 18.50
 820 @ 18.00
 1047 @ 18.00
 1002 @ 17.75
 890 @ 17.50
 932 @ 16.50
 cows & clvs @ 318.00
 cows & clvs @ 311.00
 cows & clvs @ 302.50
 cows & clvs @ 300.00
 cows & clvs @ 285.00
 cows & clvs @ 279.00
 cows & clvs @ 276.00
 cows & clvs @ 267.50
 cows & clvs @ 250.00
 n cows & clvs @ 231.00
 cows & 2 clvs @ 218.00
 COMMISSIONARY
 St. Mary
 Kar
 Of Salina
 EK
 AY
 ttle Only
 s at 11:00 a.m. Cattle
 order they are conside
 s.
 1175 @ 18.25
 1190 @ 18.40
 1185 @ 18.25
 930 @ 17.25
 GS
 221 @ 25.50
 221 @ 25.50
 222 @ 25.50
 235 @ 25.25
 211 @ 25.25
 237 @ 25.25
 327 @ 22.50
 505 @ 21.50
 536 @ 20.50
 380 @ 22.00
 595 @ 16.50
 445 @ 18.50
 138 @ 30.50
 132 @ 29.50
 @ 25.50
 @ 27.50
 @ 24.50
 @ 27.50
 @ 27.50
 @ 25.50
 Rancher
 MISSION CO.
 on old US 40
 Barn Phone
 5-0211 SALINA
 AUCTIONEERS:
 Moore, Lee Remy, Roger Johnson
 Licensed



GRASS GRAIN

15th year no. 39
November 25, 1969

RAELENE AND 12,000 TURKEYS READY FOR THANKSGIVING

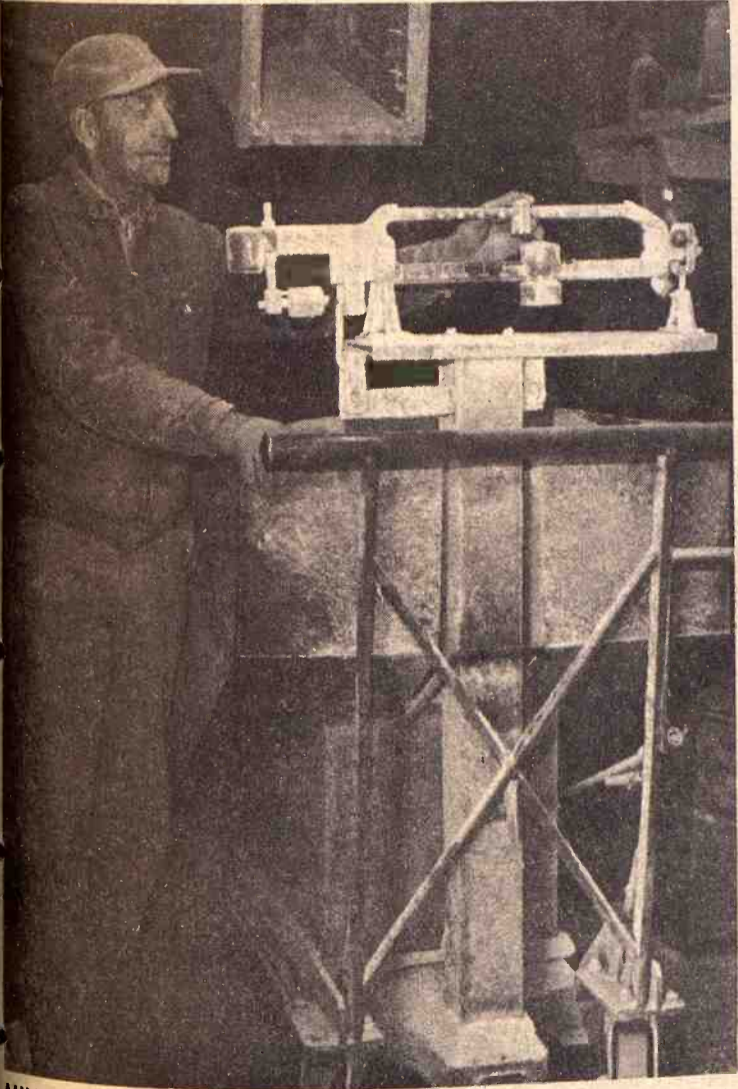
Does Raelene's smile mean turkey for Thanksgiving dinner? Raelene is the daughter of Mr. and Mrs. Richard Schmidt of McPherson. All those walking, gobbling holiday dinners that surround her are on the Hilltop Turkey Farm & Hatchery farm north of McPherson. The turkey farm is operated by Raelene's grandparents, Mr. and Mrs. Clarence Schmidt and her father Richard.

THANKSGIVING



FAMOUS FOR FLAVOR

All birds are processed on the farm. About 12 people work at processing operations. Mrs. Clarence Schmidt holds one of the birds ready for the oven. Hilltop services several locker plants in the area and operates regular weekly routes for restaurants, hotels, schools, and hospitals in Salina, Hutchinson, McPherson, and Lindsborg. Some of the trophies won by Hilltop appear on the counter behind Mrs. Schmidt.



MIXING THE FEED

Clarence Schmidt here takes care of grinding and mixing feed. Twenty-five different ingredients are mixed in feed and whole grain is fed free choice. The farm feeds all of the milo and wheat raised there and buys the rest.



TWELVE THOUSAND BIRDS

Twelve thousand birds were raised at Hilltop Turkey Farm this year. It is the only place in the state that operates a hatchery along with regular feeding and processing of turkeys. They keep about 100 birds for breeding purposes. This includes borth heavy whites and heavy broad-breasted bronze.

Major Sheep Conference At Lincoln, Nebraska

Kansas sheep breeders desiring the very latest information about sheep and wool marketing, production, management, and research will want to make plans to attend the first annual Midwest Sheep Industry Conference at the University of Nebraska Continuing Education Center, Lincoln, Nebr., Dec. 8-9.

V. E. McAdams, Kansas State University Extension sheep specialist, reports that "the confer-

2 Grass & Grain
November 25, 1969

ence should provide a comprehensive look at all aspects of the sheep industry and be beneficial to anyone in the business."

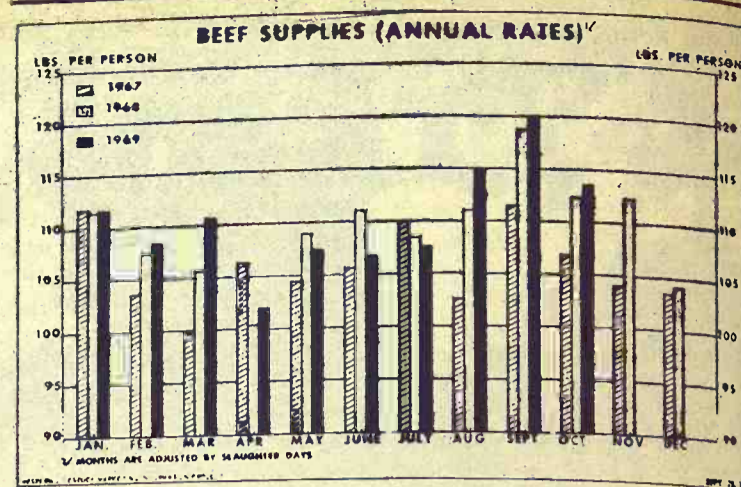
Registration for the event begins at 8:30 a.m., Dec. 8, in the second floor lobby of the Continuing Education Center located on the University of Nebraska East Campus.

The program was conceived and planned by Larry Mead, editor of the Sheep Breeder Magazine, and Ted Doane, Nebraska Extension sheep specialist. It will be sponsored by the Sheep

Councils of Nebraska, Kansas, Missouri, Oklahoma, and Arkansas.

The Monday morning program will include a discussion of sheep industry development by Ralph Grimshaw, Ohio State University sheep specialist; a comparison of domestic lamb and wool to imports by Jim Powell, president of the National Wool Growers Association; and an outline of the competition, challenges and cooperation within the sheep industry by Eugene Blish, American Sheep Producers Council.

During lunch, Clair Terrill, Agriculture Research Service, USDA, Washington, D. C., will give his predictions about the sheep



BEEF SUPPLIES

Beef production in the first half of 1970 likely will be up some from the first half of 1969, with the largest increase being in the April-June period, according to the Western Livestock Round-up. The chart compares monthly beef disappearance so far this year with earlier periods.

industry in 1980.

The afternoon session will include research reports about heat synchronization in ewes, chemical wool shearing, using electric fence for sheep, and feeding sheep on slotted floors.

The evening session will be a

GRASS & GRAIN

The Mid-Kansas news weekly. Published each Tuesday at 1207 Moro, (Box 1009) Manhattan, Kansas, 66502 by

AG PRESS

Dean Coughenour

E. R. Woodward

Second class postage paid at Manhattan, Kansas.

Subscription: \$3 year

CIRCULATION 14,200

The Most Desired Watches HAMILTON ● BULOVA ACCUTRON

All Models—Conventional & Electric
CROTON — ETERNA-MATIC
—The World's Finest—

ELEGANT DIAMONDS

BIRTHSTONE RINGS

PENDANTS

CULTURED PEARLS



You'll Find Watchmakers and Goldsmiths at

BRADSTREET'S JEWELRY

1208 Moro

Aggieville

Manhattan



You've read about it in all the magazines. You've seen it on television. Now come see it in action. The Datefinder Calendar Watchband by Speidel. It puts the whole year on your wrist — and then some. Handsome Twist-O-Flex® styles. Stainless steel, \$8.95. Yellow gold-filled, \$11.95. For any man. For any gift occasion.



Cattle in the Barger feedyard get the V.I.P. treatment...including GOOCH'S BEST!



Bill Barger

Everything in this 1500 head cattle finishing operation, owned and expertly managed by Arley Barger and son Bill, Larned, Kansas, is first-class on purpose. Everything from wide concrete aprons behind the fence-line bunks to pens designed to stay clean and solid the year around—is carefully planned to keep cattle comfortable and healthy so the feeding program built around Gooch's Best Steer Prema can deliver cattle's maximum performance. The fact that Arley and Bill Barger have year after year depended on the Gooch Program is solid evidence they consider Gooch's Best is a part of good cattle management—the V.I.P. treatment cattle need to deliver the ounces of bonus gain and feed-converting performance they are capable of producing.

Cattle feeding success begins with GOOCH'S BEST!

Coming out ahead feeding cattle takes more than finding the lowest priced supplement. You have to figure your returns from the cattle performance the feedlot supplement develops for you.

Gooch Steer Prema puts to work extra beef builders to upgrade cattle to their carcass potential faster and with greater efficiency. This developing cattle's maximum performance is the reason Gooch Steer Prema has become the "supplement choice" in the Barger's and hundreds of other successful private and commercial cattle feeding operations.

Prove to yourself—you too can come out dollars ahead on the Gooch Program. Contact the Gooch Feed Mill in Salina, Kansas (TA5-1541) for on-the-spot nutrition counseling to put your feedyard on the return-making, maximum cattle performance Gooch Program.

The GOOCH PROGRAM makes your feedlot supplement investment buy...

Gooch Steer Prema that provides cattle the important extras, Vivo-Zyme and GBA-65, to step up returns an extra \$5 per head over and above expected margins. Plus... the benefits of the Cattle Feeding Program that is so complete, it fits the demands of the most exacting cattleman: Gooch Cattle Starter Ration medicated with Aureo S-700—Gooch Beef-Guard AS-700 conditioning feed—Gooch Cattle Wormer Supplement containing Thibenzole (registered trademark of Merck & Co., Inc.) are important parts of this Gooch Program. Also... direct truck delivery, you name the time and place—laboratory analysis service—nutritional counseling when and where you need it—the feeding advances developed, tested and proved by Gooch's practical research conducted in Kansas.

**GOOCH'S
BEST**

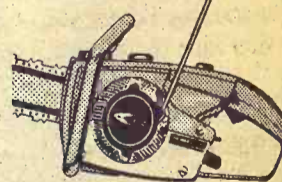
makes it easier to come out dollars ahead feeding cattle!



Johnny Kaw Says:

"To be sure of a good return on your labor — do a good deed."

PULL IT PROVE IT and receive a FREE GIFT!



No other Chain Saw starts as easy as the new HOMELITE E-Z

EXCLUSIVE SIMPLEX STARTING ASSURES FASTEST STARTS EVERY TIME...

TRY IT TODAY!

Burns - Salisbury



East Hwy. 24
PR 8-5731

MANHATTAN, KANS.

Rough Year For Sugar Beet Growers

Sugar beet producers of Western Kansas are, in many cases, taking a beating this year. The harvest is anything but sweet. Excessive moisture in most beet-growing areas and an early freeze in Northwest parts of the state are the reasons the producers aren't doing well.

The wet weather, which slowed harvest 2 to 3 weeks, coupled with the early freeze, also is affecting sugar companies' buying policies.

Sugar contents of the beets are reportedly dipping to all-time lows. Normal sugar content is around 15 percent, but this year some of the beets are averaging in the 5 percent range.

Freeze conditions affected all of the beets in the Goodland area, according to Lowell Gaiuque, agricultural manager for the Kemp Factory district of Great Western Sugar Company. "The 16-degree temperatures here one day froze the top 3 to 4 inches of the beets, but it warmed up after that, and the moisture is going out of some."

"Unless the moisture is out of the beets before they are piled, they will rot in the pile. That's the reason we are not taking any more than the factory can handle."

Giaucue estimated the harvest in the Goodland area was 4 weeks behind schedule.

Spokesmen at the Great Western plant said the sugar content is "way below" normal this year.

Growers in the Goodland area meanwhile are delivering freeze-damaged beets to the company on a pro-rata allocation which will be based on the slicing capacity of the Kemp factory west of Goodland.

Actual extraction of sugar will determine the payment for the beets. The grower will receive 60 percent of the returns and the company, 40 percent, according to Harvey Hatcher, president of the Tri-County Beet Growers Association.

In the Garden City area, the harvest is about 20 percent complete.

Lynn Holstein, American Sugar Crystal manager for the Garden City area, said tonnage of the harvest this year is up but the average sugar content is hovering at only 9 percent.

And because rotting is also a problem at Garden City, American Crystal is not stockpiling the beets either.

The ban on stockpiling has

brought threats of legal action against the company from growers in the southwest part of the state. Harold Purdy, Deerfield, representing the Ark Valley Beet Growers Association, says the crop is "pretty close to being a disaster."

Company personnel point out that the producers are not the only losers, because the sugar firms are facing unusually high costs of processing beets with extremely low sugar contents.

More Lambs In Feedlots

Sheep and lambs on feed for the slaughter market in Kansas totaled 118,000 head on November 1, an increase of 16 percent from last year, according to the Kansas Livestock Reporting Service.

Included in the total sheep & lambs on feed were those being grazed on volunteer and seeded wheat pasture, grain sorghum stubble and sugar beet tops as well as those in farm and other commercial-sized feedlots.

As of November 1 the bulk of the lambs in western Kansas were grazing on volunteer wheat fields as relatively few fields of grain sorghum had been harvested and only a limited acreage of sugar beets had been dug because of the extended wet weather conditions.

Volunteer wheat fields were providing excellent grazing and were the best since the fall of 1965. Most lambs in south central Kansas were feeding on wheat pasture, grain sorghum stubble and alfalfa.

Most of the sheep and lambs on feed November 1 were placed on feed during September and October. By weight the sheep &

lambs on feed November 1 were grouped in the following categories: under 70 pounds, 47,000; 70-79 pounds, 44,000; 80-89 pounds, 19,000, and those weighing 90 pounds and over, 8,000. Replacement feeder lambs from Texas and New Mexico were reported in plentiful supply.

Sheep And Lambs On Feed In 7 States

Sheep and lambs on feed in 7 major feeding states on November 1, 1969 are estimated at 1,551,000 head, 4 percent less than a year earlier.

Iowa, Nebraska, Kansas and California had more sheep and lambs on feed on November 1 while Colorado, South Dakota and Texas had less.

Of the November 1 total on feed, an estimated 1,350,000 head were placed during September and October and 201,000 were placed before September 1.

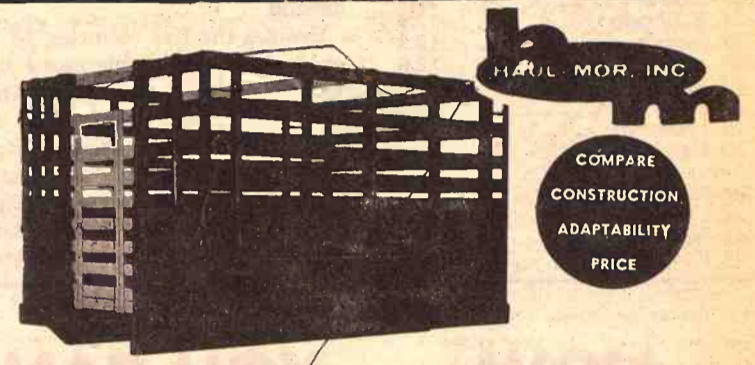
The number of sheep and lambs in each weight group on November 1 and change from a year earlier are as follows: Under 70 pounds — 330,000 head, up 34,000; 70-79 pounds — 469,000 head, down 36,000; 80-89 pounds — 390,000 head, down 63,000; 90-99 pounds — 290,000 head, up 12,000; 100 pounds and over — 72,000 head, down 8,000.

Paper Back 25c - 35c
50c - 75c

Books
Largest Stock
In Town



University Book Store
623 N. Manhattan Manhattan



Grain Body with Combination Lift-Off Rack.

7'x80" wide
8'x80" wide
9'x93" wide
10'x93" wide
12'x93" wide

13'6"x93" wide
15'6"x93" wide
16'6"x93" wide
18'x93" wide

- Regular grain body
- Hardwood lift-off rack
- Racks added to grain body give 66" height
- Perfect fit
- Furnished with 2 gates
- One for grain, one for stock rack

Special sizes easily manufactured to your requirements

When Ordering Specify Make, Model, Size of Bed
HAUL-MOR, INC., valley falls, kansas • phone 945-3211

Trapped by rising costs?



consider Purina BIR

If labor and equipment costs are putting the squeeze on you, it may be time to consider a Purina BIR program.

"Built-In-Roughage" rations bring cattle the roughages they need, right in the supplement. That means reduced production costs in handling and delivery. And, you can control the intake of grain and roughages.

Purina Steer Fatena BIR, mixed with your grain, may help cut investments and still improve feed efficiency. It's the convenient way to bring cattle the protein, roughage and energy they need for fast gains and good conversion.

If rising costs are on your mind, stop in at our sign of the Checkerboard. A Purina BIR program may be your best investment yet.

- Flint Hills Feed & Grain PR 8-5322 Manhattan
- Farmers Union Feed Mill 437-2434 St. Marys
- Mor-Kan Elevator 349-2214 White City
- Reading Grain & Lumber AN 9-3842 Reading
- Mid-Continent Elevator CE 8-4177 Junction City
- Americus Grain Co. 884-3465 Americus
- Gorden Mark Elevator ME 2-3381 Clay Center
- Western Grain Mill 767-5933 Council Grove

LOW COST PRODUCTION...
the reason more hogmen feed **PURINA®**



Everyone needs a nest egg

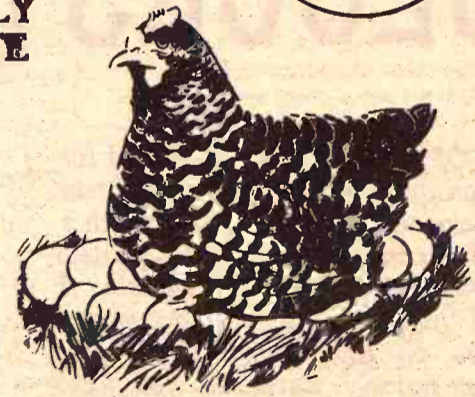
Nothing can compare to the comfortable feeling a cash reserve brings!



SAVE REGULARLY AT UNION STATE

5%

PAID ON CERTIFICATES OF DEPOSIT
In amounts of \$1000 or more
Monthly Interest Paid
on certificates of \$5000 or more if you desire.



UNION STATE BANK



CLAY CENTER, KANSAS

Member Federal Deposit Insurance Corporation.

will be up some from the April-June period, the chart compares monthly yields.

discussion of systems for sheep production that feeding, and management.

District Sheep Councils business meetings Tuesday.

reference visitors will then new U. S. Meat Animal Center in Clay Center.

with Gregory, coordinator center, will discuss the and Hudson Glimp, director sheep research, will discuss specific sheep research being carried on at the

plete details of the and information about registration and lodging is available Kansas county Extension

sure of a good return labor - do a good

hunny Kaw Says:

sure of a good return labor - do a good

sure of a good return labor - do a good

sure of a good return labor - do a good

sure of a good return labor - do a good

sure of a good return labor - do a good

sure of a good return labor - do a good

sure of a good return labor - do a good

sure of a good return labor - do a good

sure of a good return labor - do a good

sure of a good return labor - do a good

sure of a good return labor - do a good

sure of a good return labor - do a good

sure of a good return labor - do a good

sure of a good return labor - do a good

sure of a good return labor - do a good

sure of a good return labor - do a good

sure of a good return labor - do a good

sure of a good return labor - do a good

sure of a good return labor - do a good

Population Gain Is Small

...nson · El Dorado · Newton · Wellington, Winfield, Ark City and west to Medicine Lodge ... have been major popula- ... declines.

While Kansas has increased 8% in 10 years, the U.S. as a whole has gained by about 13%. Some states, like Iowa, have even had population decreases. But several states — California, Arizona, Florida, Hawaii, Alaska and Maryland — have increases close to 25% in the past decade.

In Nevada, the gain has been over 60% — making it the fastest growing state. There is some similarity of the smallest States like Nevada, Hawaii, Alaska

— growing and the smallest counties in Kansas growing. But the growth is not all on the small end of the population scale. New York, which lost its long-held title as the country's largest state to California in 1965, has grown at a rate faster than Kansas. The rate in California has been over 25% in 10 years.

Kansas' fastest growing area by far has been Johnson County, the mushrooming residential area southwest of Kansas City, which is now the state's second largest county with 216,700 people — 68% more than 10 years ago.

The fastest growing city in the state is Overland Park, now ranked 4th with 75,000 population. Of the state's 34 cities with populations of 10,000 or more, seven of them are in Johnson County — Overland Park, Prairie Village, Shawnee, Olathe, Leawood, Merriam and Roeland Park.

Aside from Johnson County, the towns with the greatest growth rate in the past decade are Garden City, Manhattan, Emporia, Lawrence, Hays and Goodland.

It is not uncommon in the 64 counties which have losses in population since 1959 that the county seat has grown. For ex-

ample, Clay Center has gained 400 in this period but that was not enough to offset a loss of more than 1000 in the rest of the county, resulting in a net loss of 700 in Clay County.

But even that sociological change, which disguises the population loss to many local boosters, has not been uniformly felt. Such towns as Coffeyville, Atchison, Eureka, Fort Scott, Iola, Larned, Marion, Pratt, Russell, Wellington and Winfield are smaller than they were 10 years ago.

The shifts in population are not in themselves calamitous. They merely declare the changes that are going on. When Provi-

dence shrunk, Chicago emerged. Boston and Baltimore did not grow, while Los Angeles and Houston skyrocketed. As these changes occur on the national scale, so they happen on a lesser plane. But in sum the changes in population are important. Within that view, Kansas is growing but not rapidly.

When Kansas was still a territory, in 1860, the population was first recorded as 107,000. By 1883 the count hit one million. It then took 72 years to hit the two million mark, in 1955. At the pace since then, it will be well past the year 2000 before the three million mark is reached.

Ottawa	6.5
Grant	6.2
Cott	6.0
Rush	5.8
Decatur	5.5
Lincoln	5.3
Ness	5.2
Chautauqua	5.2
Graham	5.2
Leade	5.2
Woodson	5.1
Rawlins	4.9
Dwards	4.8
rego	4.8
Gray	4.5
lk	4.5
kiowa	4.3
tevens	4.3
heyenne	4.3
ove	4.2
heridan	4.0
ogan	4.0
askell	3.9
orton	3.7
hase	3.6
ichita	3.3
ark	3.1
eamy	3.1
amilton	3.1
ane	3.0
dodgeman	2.9
omanche	2.9
anton	2.4
Wallace	2.3
reeley	2.2

He's headed out with another bundle of 6% cash for International EARLY DELIVERY BONUS buyers!



Will he drop it off at your place? Sure will, if you buy and take delivery of a new International tractor, combine, baler (and many other machines) between now and the end of February!

Buying early will earn you an immediate cash bonus figured at the rate of 6% per annum on the amount of cash you pay plus the value of your trade-in. For example, this bonus will apply on tractors until March 31, 1970; on combines until July 31, 1970. Your dealer has another bonus for you, too.

Under his special financial terms, you pay no finance charges 'til well into 1970. And there's more. Buy before December 31 and you may be able to take advantage of investment tax credit and depreciation allowances.

Three solid reasons to make your move to International right now. Your dealer is ready to deliver the tractor and equipment you need!

The faster you move, the bigger your bundle of cash!

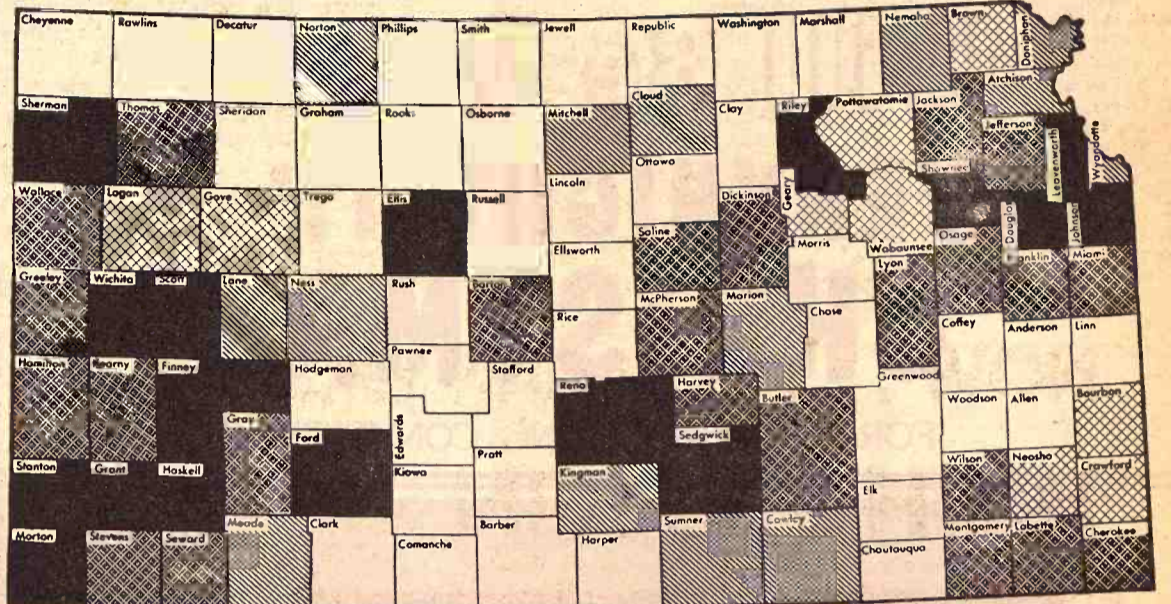


First to serve the farmer



THERE'S A DEALER NEAR YOU TO GIVE THE EARLY DELIVERY FACTS

- | | |
|--------------------------------------|----------------------------------|
| ABILENE
Abilene Truck & Tractor | HANOVER
Hanover Impl. Co. |
| LEONARDVILLE
Kendall Garage | BELLEVILLE
Chapman's on US 81 |
| MINNEAPOLIS
Chapman Impl. Co. | JUNCTION CITY
Mohn Impl. Co. |
| COUNCIL GROVE
Macha-Revere | FALUN
Dauer Impl. Co. |
| WAKEFIELD
Auld Chevrolet | MARYSVILLE
Bruna Brothers |
| HERINGTON
Pioneer Service & Sales | |



10% Gain or more Loss 2% or less
Gain 10% or less Loss 3-5% Loss more than 5%

LOAN

1%

4

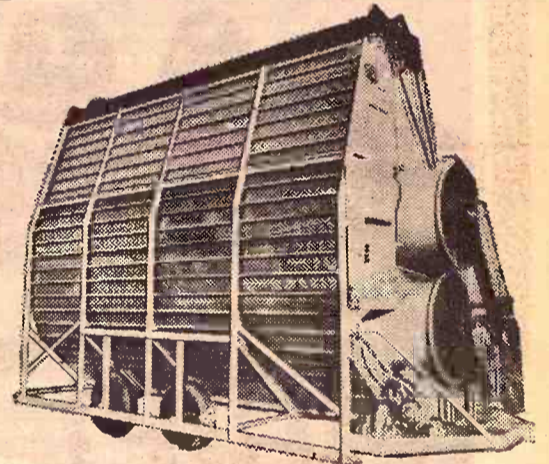
5 1/4% interest on Home Savings
think about it...
ificates of \$5000
period, put your
w and earn the
by law! Here's a
er interest earn-
ificates are auto-
ollars never stop

HOME SAVINGS & LOAN

Birth
ansas 66502
t in single payment
ase contact me at
umber address
name

BATCH AND CONTINUOUS FLOW Crop Dryers

HABCO 700-C and 1000-C



- ★ 2 Models up to 600 bushels per hour
- ★ Optimum Performance, reliability and serviceability
- ★ Easy access for inspection, cleaning and lubrication
- ★ Simplified operation
- ★ Automatic remote grain handling
- ★ Safe reliable fuel handling with solid state circuitry and flame detection
- ★ Modulated fuel control for even drying temperatures
- ★ Positive flame lockout for power failure shut down
- ★ Efficient drying with proven burner and fan drives



Replacement Parts Immediately Available
MANUFACTURED BY

T-L IRRIGATION SUPPLY CO.
Hastings, Nebraska 68901 Ph. 402-462-4128

Contact T-L for name of Dealer in your area.

Earlier Campus Schedule In '70

Beginning with the next school year, students in the state uni-

versities and colleges of Kansas will be able to enjoy the Christmas vacation without a dread of final examinations ahead.

A new calendar effective for the 1970-71 school year was an-

Penneys

Starting
November 28th

Both Downtown Manhattan PENNEY STORES

Will Be Open EVERY NIGHT TIL CHRISTMAS

FOR YOUR SHOPPING CONVENIENCE



EARLY CHRISTMAS SHOPPERS

Early Christmas shoppers at Manhattan were Mrs. Clarence Welker and daughter Darice of Fort Riley.

nounced by the State Board of Regents.

Full semester classes will open

either in the last week of August or the first week of September, about three weeks earlier than has been customary.

The fall semester then would end about Dec. 20 or 21 each year, and students would be free from classes until the start of the spring semester in mid-January.

The spring semester would end in May, at least a week earlier than at present.

Best of Show!

McCulloch's Power Mac 6—world's lightest chain saw—is a winner.

A winner with chain saw users as a whole. It's the fastest-selling, most popular lightweight chain saw ever introduced.

A winner with professionals. Mr. Charles L. Benge, president of TREES OF HOUSTON, a tree service employing 435 men and operating over 450 chain saws, says:

"Of the 206 Power Mac 6 units we've purchased to date, 204 are still on the job! We normally 'write off' a chain saw after 400 hours of operation—an average of 20 running hours per week for 20 weeks. Our records indicate that our Power Mac 6 saws are actually lasting well past 400 hours...In addition, maintenance costs on the Mac 6 have been extremely low, and there's been a noticeable increase in crew efficiency—a direct result of the saw's light weight and remarkable handling characteristics."

Yes, any way you look at it, the Power Mac 6 wins. And don't forget. Now, there's the Power Mac 6-A. "A" for automatic oiling. A very handy feature on a very handy saw.

Isn't it time you put your money on a winner? Start by looking up your McCulloch dealer in the Yellow Pages under "Saws."



FREE!

**GAS 'N' GO KIT
WHEN YOU BUY ANY
NEW McCULLOCH
CHAIN SAW**



For a limited time only! Everything you need to gas up and get going with the new McCulloch of your choice. And it all comes packaged in a handy carrying case, normally priced at \$8.85. While promotional quantities last, this kit is free at all participating McCulloch dealers with your purchase of any new McCulloch chain saw. So don't get left out. Find your McCulloch dealer fast in the Yellow Pages under "Saws."

McCulloch

6101 West Century Blvd., Dept. 42-FM, Los Angeles, Calif. 90045

See a nearby McCulloch Dealer
for Sales & Service

WASHINGTON IMPL. Co.
Washington EA 5-2301

DUMMERMUTH IMPL. Co.
Marysville 562-3990

W. W. SMITH & SONS
Clay Center ME 2-3148

CONCORDIA TRACTOR, INC.
Concordia 243-3381

BELLEVILLE IMPL. Co.
Belleville JA 7-2261

YOUNG & SONS IMPL. Co.
Council Grove 767-5018

KANSAS FARM MCHRY.
Topeka, W Hwy 24 CE 3-1374

ELLSWORTH
TRUCK AND TRACTOR
Ellsworth 472-3114

JORDEN IMPLEMENT CO.
Abilene CO 3-2041

K-HILL ENGINE SERV.
Manhattan PR 6-4181

TODD TRACTOR, INC.
Seneca DE 6-2138

WATERS HARDWARE
8th and Washington
Junction City 238-3114

Distributed by Contractors Supply, Kansas City, Missouri

Share a Memory



with a
Photo-Greeting Card
made by KODAK

Across the miles at Christmas, a KODAK Photo-Greeting Card will bring loved ones nearer. A snapshot, negative, or color slide is all you need. We'll help you choose just the right card style from our wide selection of designs.

For all things photographic
—YOUR BEST CHOICE—

MANHATTAN CAMERA SHOP

228 Poyntz
Manhattan

APPALOOS
Top Time Bob, o
as champion
at Dallas.

Call
tion - Bu
At K
University of K

NA
fee

Gehl le
combin
demon
you ma

- E
- 12
- 66
- 10
- w

These a
115MX
ers - 3
other m

WINIF
WINIFRED I
LIN
KUHLMAN M
MINNEA
CHAPMAN
NORTON
WEISHAAR BE



TOP APPALOOSA AT DALLAS

Top Time Bob, owned by Grem Simon, Colwich, Kans., took honors as champion Appaloosa stallion at the 1969 state fair of Texas at Dallas.

Don't Call It Tuition - But Fee Hike At KU

University of Kansas officials

anticipate a \$50 increase in incidental student fees a semester beginning in the fall of 1970.

Raymond Nichols, executive secretary of the university made the forecast after a review of the projected budgetary expenses for next year.

Nichols said that the state expects incidental fees to cover 25 per cent of the university's annual budget. He added that the present percentage covered by incidental fees has dropped below the level.

"University fees are at least \$50 a semester below the average for Mid-Western state universities," Nichols said. "Three years ago the present level of \$120 per semester was just above the average."

It was pointed out that Gov. Robert Docking has strongly urged that fees be increased.

Last January in his state of Kansas address, Governor Docking told the Legislature that inflationary trends would force the rise.

The proposed increase would mean that fees for Kansas residents would increase from \$170.50 to \$220.50 and for nonresident students from \$400.50 to \$45.50.

Incidental fees are the charges assessed by the state as payment for education instruction. Kansas law forbids the collection of tuition.

Steps Toward Pork Plant At Clay Center

CLAY CENTER — Only a few technical matters remain to be cleared up before construction starts on a new packing plant here, according to Larry Ortleb, president of Pork Packers International.

The facility will be designed to prepare one million hogs each year on a "chill and kill" basis, with sales of carcasses or a breakup to customer orders offered.

"The plant will be a speed operation for efficiency," Ortleb said. "We will stress quality and will be willing to pay the market price for such hogs."

The Clay County area is a heavy producer of hogs, said Ortleb. Shipments can be made easily in all directions by rail and truck.

more feeding



convenience!

See for yourself how an Arts-Way Portable grinder-mixer makes feeding easier, cuts your costs. More convenience features than any other portable!



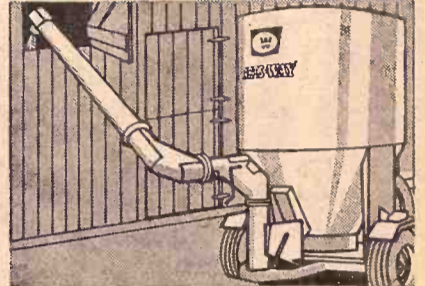
Clutch allows you to operate mixer with mill idle. 2 1/4" shaft, 2" bearings.



4-speed auger feeder is easily positioned, fits under dump wagons



20" hammermill matches any tractor. Hardened hammers reversible 4 times.



Extra-capacity mixer—plus a discharge auger that cranks easily through 324° to unload wherever you want.



Silamix® 650 The silage mixer that gives you the total mixing so important with today's liquid feeds.

- Distributed by T-L Irrigation, Hastings, Nebr.
- | | |
|------------------------------------|------------------------------------|
| Meinhardt Farm Equipment
Wamego | Steiner Implement
Sabetha |
| Eddies Service
Paxico | Hutchison Implement
Everest |
| Vahsholtz Implement
Salina | Dannenberg Implement
Holton |
| Ravencraft Implement
Whitewater | Wheeler Hardware
Larkinburg |
| C & W Implement
Courtland | Davies Implement
Hiawatha |
| Brauchi Bros.
Marysville | Hutchison Implement
Nortonville |
- Henry's, Inc. - Topeka, Kansas

NEW... biggest feedmaker built!

Gehl leads again. Big, new 120-bu. Mix-All combines "biggest-of-all" capacity plus Gehl's commercial-quality grind and mix ability. One demonstration will prove the 115MX can help you manage more livestock. Here's why:

- Exclusive hay feeder smoothly feeds bale slices to the mill.
- 120-bu. mixing tank, plus new 21-in. mill increase feedmaking capacity 40%.
- 66 thin cutting hammers—more per sq. ft. of screen area than other mills.
- 10-foot, high pivot (46") auger unloads feed where you need it.

These and many other features put the giant 115MX way ahead of competition. More farmers — 35,000 of them — own Mix-Alls than any other make.



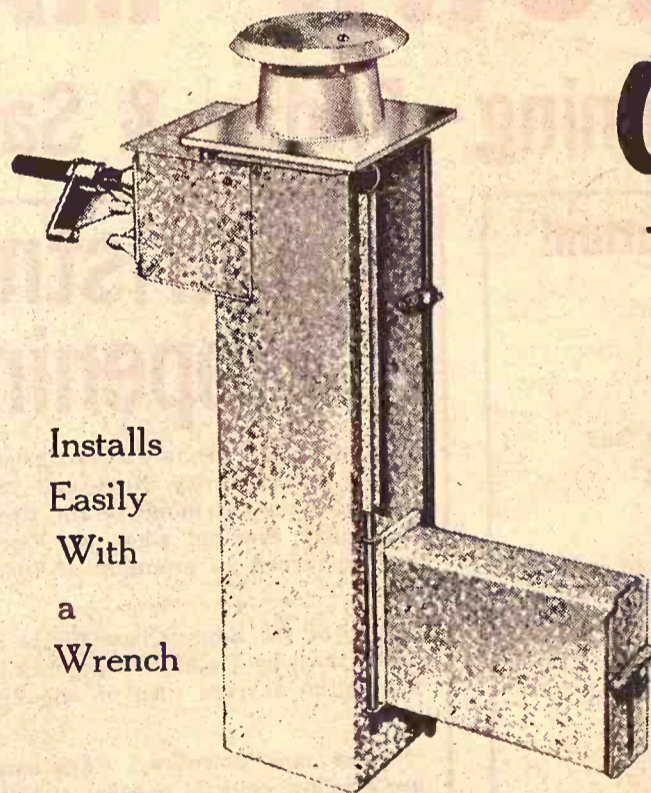
Make us Prove it with a Demonstration!

- | | |
|-------------------------------------|---|
| WINIFRED
WINIFRED IMPL. CO. | HANOVER
HANOVER IMPL. CO. |
| LINN
KUHLMAN MOTOR CO. | ROSSVILLE
ROSSVILLE TRUCK
& TRACTOR CO. |
| MINNEAPOLIS
CHAPMAN IMPL. CO. | WATERVILLE
WATERVILLE MTR. CO. |
| NORTONVILLE
WEISHAAR BROS., INC. | PERRY
SEYLER FARM SUPPLY |

Dependable Stock Tank Heaters

OWN IT

This Johnson Heater Will Work for you Year after Year and Save You Real Money



Installs Easily With a Wrench

If you're going to feed livestock next year and the year after, you'll find it wise and thrifty to own your heater.

This heater works with steel, concrete or wooden stock tanks. It works automatically on LP gas, is easily moved to other locations and is easily maintained. Guaranteed condensate control. It is galvanized to proof from severe weather, and has a total in-put of 10,500 BTU per hour. It weighs only 37 pounds.

GET YOUR HEATER FROM ANY OF THE STORES



Farmers Cooperative Assn.

- MANHATTAN ALMA ALTA VISTA WESTMORELAND

Share a Memory
Photo-Greeting Cards
made by KODAK
cross the miles at Christmas, a Photo-Greeting Card will bring loved ones closer. A snapshot, negative, or color print all you need. We'll help you choose the right card style from our wide selection of designs.
for all things photographic
YOUR BEST CHOICE
MANHATTAN CAMERA SHOP
Poyntz

Manhattan Shoppers Section



Satisfied Shopper

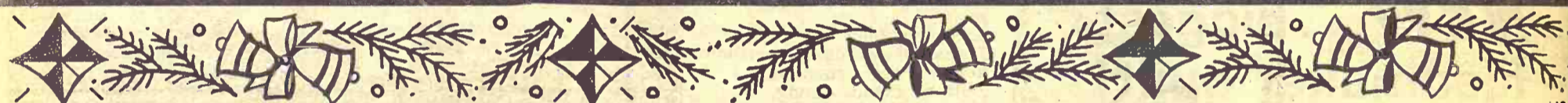
Christmas shopping will seldom produce more satisfied expressions than this one of Bobby Spencer Jr., 2603 Anderson, Manhattan, who started some of his Christmas shopping early.

Many G&G area towns will start Christmas openings this week. At Manhattan, most stores will be open shopping nights until Christmas, starting Friday.



CHRISTMAS SHOPPING TIME

Making the store rounds at Manhattan for Christmas shopping were Mrs. Walter Connell, Butch and Peggy.



YOU'RE INVITED TO OUR DOWNTOWN MANHATTAN

Christmas Opening - Friday & Saturday, Nov. 28 & 29

Shop Downtown Manhattan!

For the Gifts You Like To Give
During the . . . Holiday Season

Downtown Manhattan has
more of everything!

Bring the children by Courthouse Lawn to see Santa Claus in the Jaycees Xmas House . . . he will be there in person Friday night, Nov. 28th at 6:30 p.m. and as follows:

Mondays: 1 p.m. to 5 p.m.
Wednesdays: 1 p.m. to 5 p.m.
Saturday: 1 p.m. to 5 p.m.

FREE CANDY • FREE CANDY

Conveniently Located

PARKING LOTS

Near your favorite stores

A Christmas Happening

YOU'RE INVITED to attend Christmas Opening Friday and Saturday, November 28 and 29, and to attend the ceremony of the Christmas lights on Friday evening, when the Christmas lights will be turned on promptly at 7:00 p.m.

Be at the Santa Claus House on the Courthouse lawn by 7 p.m. to see Santa Claus and the Manhattan Jaycees turn on the lights.

The new downtown Christmas decorations are a bright, colorful pageant of 18th century lanterns, the most beautiful of all lanterns, symbolizing the warmth and atmosphere of an old fashioned Christmas, with green, silver and Glitter-Glo garlands.

Downtown stores will be open
This Friday night, Nov. 28.

MANHATTAN

Downtown Stores

Will Be Open Every Night Except

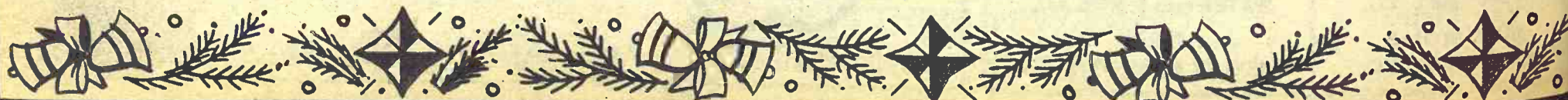
Saturdays from Dec. 8 until

Christmas!

Some stores will be open every
night starting November 28.

This ad sponsored by

**Manhattan Central Business
District, Inc.**



tan
ers
on

Company To Buy Freeze-Damaged Sugar Beets

GOODLAND — The Great Western Sugar company has agreed to accept delivery of freeze-damaged sugar beets at its Goodland factory.

Unseasonable 6- and 8-inch snows, freezing temperatures and rainy weather in October prevented growers from digging their beets. They faced almost a total crop loss until the company agreed to buy the damaged beets.

Harvey Hatcher, president of the Tri-County Growers association, said the agreement offers a chance for the growers to get the crop out of the ground, weather permitting.

Hatcher said similar agreements have been made for growers in Colorado, Wyoming, Montana and Nebraska.

Robert R. Owen, president of the company, said the season's initial payment to beet growers was down more than one half from last year, primarily because of delays in the "sugar campaign" after inclement weather.

Sugar beet farmers use the word "campaign" instead of "harvest."

Owen said the crop was somewhat higher than average in tonnage, but lower in sugar content.

An initial payment of \$25,772,000 was made Wednesday by Great Western to growers in Kansas, Colorado, Nebraska, Wyoming and Montana. In addition, a payment of 5 million dollars under the federal sugar act will be made for beets delivered through November 4.

The government payment is paid for by a tax levied on the sugar industry.



"OUR SCARECROW ISN'T DOING THE JOB SO HE CAN PRACTICE ALL HE LIKES IN OUR CORNFIELD WITHOUT NEIGHBORS COMPLAINING!"

NURS-ETTE



THE ROUND-THE-CLOCK AUTOMATIC NURSE-COW

Raise Veal, Feeder Calves Herd Replacements

Complete Line Of Medicated Milk Replacers

CARROLL'S Specialized Feeds
Phone 913-229-6454
ALTA VISTA, KANS.

or see:

Van Meter DAIRY SUPPLY
GYPSUM, KANS.

for Christmas shopping we

OUR
AN
3 & 29

TAN
COWN
es
y Night Except
Dec. 8 until
as!
be open every
November 28.

sponsored by
tral Business
istrict, Inc.

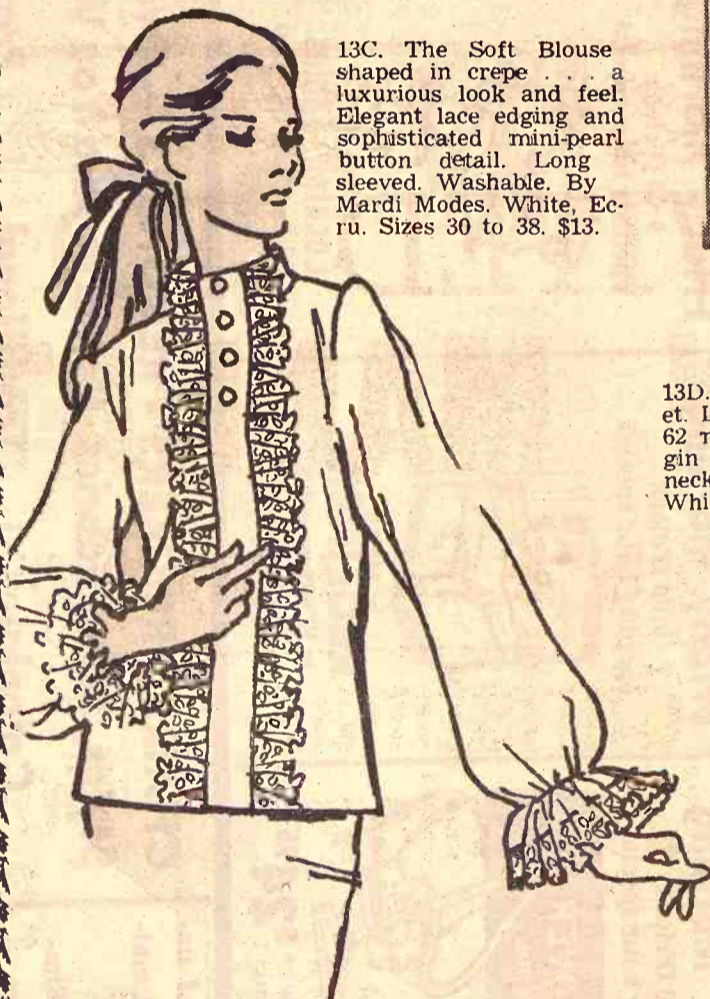
Merry Christmas Shopping

CAN BE FUN - - - AT WOODWARD'S - - - TWO BIG FLOORS FILLED WITH GIFT SUGGESTIONS FOR ALL



The Soft Blouse

13C. The Soft Blouse shaped in crepe... a luxurious look and feel. Elegant lace edging and sophisticated mini-pearl button detail. Long sleeved. Washable. By Mardi Modes. White, Ecru. Sizes 30 to 38. \$13.



Be Sure To Visit Our Large First Floor Gift Dept.

NEW BOUTIQUE SHOP
Second Floor

OPEN FRI. NIGHT, NOV. 28

Woodward's

DOWNTOWN

MANHATTAN

Ask for your Woodward Christmas catalog if you didn't receive one in the mail.

OPEN EVERY NIGHT IN DECEMBER MONDAYS THRU SAT. TIL 8:30 P.M.

Pretty Dresses

For Holiday Wear

8D. Luxurious Dacron and wool double knit... soft, supple, keeps its shape. Jewel neck dress with short sleeves and a fashion print scarf attached to wide self belt. By Puritan. Pastel Blue, Pastel Pink. Sizes 12 to 20; half sizes, 14½ to 22½. \$26.

Many other new styles for Misses, Juniors and Petites, \$28 and \$30.



Sweaters

To Bring Holiday Smiles

13D. Full-fashioned Sweater Jacket. Lavishly hand embroidered with 62 multi-colored flowers. 100% virgin wool. Hook and eye closing at neckline. By Republic Novelty. White body. Sizes S, M, L. \$13.

13E. Full-fashioned Cable Cardigan imported from Hong Kong. A perennial favorite in easy-care acrylic. All-over cabled detail, crochet buttons. By Miss Gotham. White, navy, Lt. Blue, Beige, Maize. Sizes 34 to 40. \$9.



Kitten soft
Green, pink,
blue, maize.
\$7.

Floral Print
Sleep
Shirt
\$10

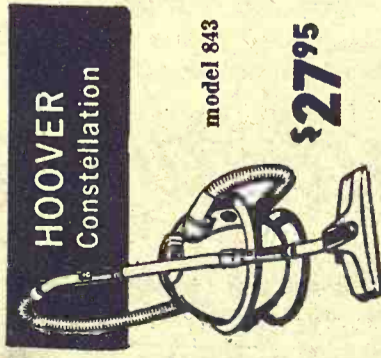
Sedlacek's

CHRISTMAS Sale

SALE STARTS FRIDAY, NOVEMBER 28th

Open Every Wednesday And
Saturday Night 'Til 9 P.M.

Friday morning
9:00 O'clock
opening hour special



HOOVER
Constellation

model 843

\$27⁹⁵

Friday morning
9:00 O'clock
opening hour special



HOOVER
Slimline

Completely new high powered motor complete with attachments

Portable Only Four **\$24⁹⁵**

Friday morning
9:00 O'clock
opening hour special



3-Position RECLINER
in VINYL covering

\$39⁹⁵

Friday morning
9:00 O'clock
opening hour special



Reg. \$9.95
Walnut finish

Cocktail Tables
While They Last **\$3⁴⁹**

Friday morning
9:00 O'clock
opening hour special



Table Lamps
Decorative Base and Shades

\$4⁹⁵

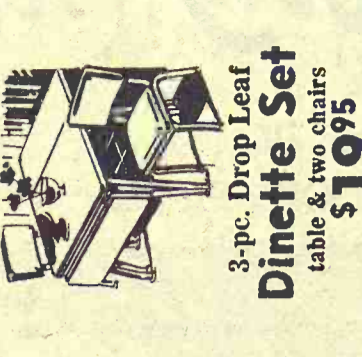
Friday morning
9:00 O'clock
opening hour special



Innerspring Mattress
180 coil springs buttontuffed

Stock Limited **\$18⁹⁵**

Friday morning
9:00 O'clock
opening hour special

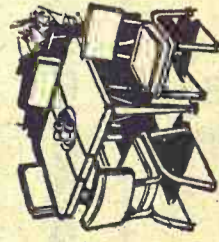


3-pc. Drop Leaf **DINETTE Set**
table & two chairs

\$19⁹⁵

Dinette Buys

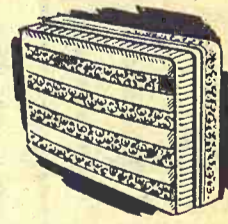
Over 300 dinette pieces. Nationally advertised brands to choose from.



5-Piece **Dinette Set**
extension table and padded chairs **\$39⁹⁵**

Over 3 carloads of nationally advertised mattresses.

King Koil, Sealy, Simmons and others



King Koil Regal smooth top mattress quilted on foam **\$79.95 Value \$59⁹⁵**

CHAIRS - ROCKERS - RECLINERS - Over 400 To Choose From. All

Styles, Sizes, Fabrics. Come In And You Will Be Amazed.

Colonial



Colonial winged lounge chair in brown upl. Reg. 79.95 **\$59⁹⁵**

Traditional



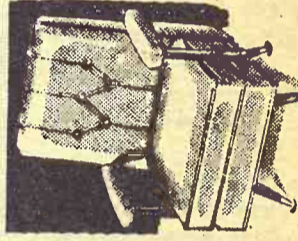
deep tufted chair foam cushions **\$99.95 Value \$69⁹⁵**

Provincial



Broyhill french provincial, reversible rubber cushion wood on arms and back Reg. \$145.00 **\$99⁸⁵**
Sale Price

Modern Rocker



High base platform rocker, solid walnut arms, a real buy Reg. \$48.95 **\$29⁹⁵**
Sale Price

TV Tray Set

4 Trays One with castors for serving One with casters for serving **\$7⁹⁵**

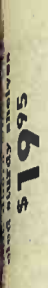


7-Piece **Living Room Group**
Davenport with matching chair - 2 end tables coffee table and two lamps

Reg. \$169.95 **\$99⁹⁵**

5-Piece Dinette Set

large table and four vinyl uphol chairs **\$19⁹⁵**



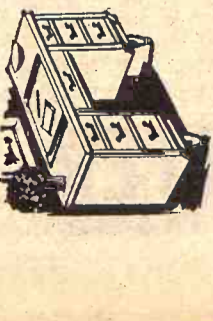
5-Piece
Dinette Set
extension table and padded chairs
\$39⁹⁵

5-Piece
Dinette Set
large table and four vinyl uphol chairs
\$49⁹⁵



1-Piece
Dinette Set
Large family size, table and 6 chairs
\$69⁹⁵

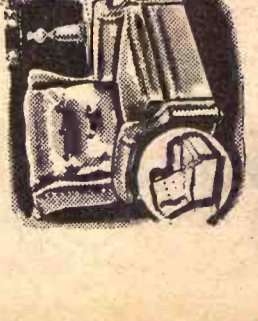
Large selection of desks. Many different styles and finishes.



Walnut finishes desk with drawer
\$26⁹⁵

4-drawer maple finish desk
\$29⁹⁵

We also stock commercial desks for offices.



Big TV Recliner
Early American winged back
\$69⁹⁵

King Koil Regal
smooth top mattress quilted on foam
\$29⁹⁵

Sofa by day bed by night
Full size mattress
\$119⁹⁵

2-Piece
Living Room Suite
reversible cushions and moulded foam back in rich nylon cover
\$149⁹⁵

Full size wet proof crib mattress
\$5⁹⁵

Baby Crib
drop-side, button lock hardware
\$29⁹⁵

The largest stock of Recliners you've ever seen

La-Z-Boy
ROCKER RECLINER
Only—**\$109⁹⁵**

Recliner has TV adjustment. Foam top seat and pillow back vinyl cover.
\$9.95 value **\$59⁹⁵**

Colonial winged lounge chair in brown upholstery
\$99.95

Mastercraft Sofa, Traditional lovely sofa, deep tufted back, reversible rubber cushions. Tailored kick pleat.
Reg. \$440.00
Sale Priced **\$249⁹⁵**

Over 1000 pieces to choose from — Sedlacek's buy bed room suites by the carloads giving you better values.

Spanish styling in pecan finish, quality veneered construction — high pressure laminated mar resistant tops. Triple dresser, mirror chest and open panel bed. Johnson-Carper.
Regular \$399.95
Sale Price **\$299⁹⁵**

The rich Heritage of early American. A collection of most engaging warmth in fine finish, Triple dresser, mirror cheston chest, spindle bed.
Reg. \$359.95
Sale Price **\$279⁹⁵**

High base platform rocker chair with reversible rubber cushions
Reg. \$49.95
Sale Price **\$29⁹⁵**

Broyhill french provincial, reversible rubber cushions
Reg. \$145.00
Sale Price **\$99⁹⁵**

9-Cup Automatic Stainless Steel Coffee Maker
\$8⁹⁵

Coil spring construction—nylon cover — use as a sofa or a bed
Reg. \$99.95
Sale Price **\$59⁹⁵**

All vinyl covered—full size innerspring mattress. Just wipe off with a damp cloth
Reg. \$289.95
Sale Price **\$189⁹⁵**

We just received a carload of General Electric appliances
over 170 major appliances now on display.

General Electric
Admiral Norge
Speed Queen
Motorola and others.

G. E. Disposal **\$22.95**
G. E. Electric Range **\$129.95**
G. E. Automatic Washer **\$149.95**
G. E. Dryer **\$89.95**
Admiral Color TV **\$269.95**
Admiral Transistor Radio **\$4.19**

G. E. Model EK5 Electric Slicing Knife
Reg. 29.95 **\$12⁹⁵**

High base platform rocker chair with reversible rubber cushions
Reg. \$49.95
Sale Price **\$29⁹⁵**

One with casters for serving
\$7⁹⁵

Double doors white enamel
eased sturdy shelves
\$19⁹⁵

Double wagon wheel
Bunk Beds
2 steel springs, ladder—2 wood beds
\$59⁹⁵

Adjustable
Leg Lounger
Vinyl covered—makes all chairs a lounge
\$7⁹⁵

BISSELL
CARPET SWEEPER
All-steel case-baked enamel finish — an ideal gift
\$5⁹⁵

HIL-BISHOP OF LEBANON-FOX-BERKLINE
EAGER AMERICANS, FURNITURE

FURNITURE and APPLIANCE

Sedlacek's

HANOVER PHONE ED 7-2345 KANSAS

Broader Investing With State Funds?

Like many other states, Kansas has been investing a portion of its state retirement fund in common stocks since its inception in 1961.

And like most of those states, Kansas had concentrated on con-

servative "backbone" commodities like public utilities, oil and chemicals.

Now, thanks to an aggressive move by Oregon, Kansas and other states may be able to see the results of a more speculative

approach to the stock market.

Oregon began buying common stocks on July 1 and, in doing so, was the first state to relinquish control of how its money would be spent. It hired three money managers and gave them equal shares to invest as they saw fit.

Since then, according to James George, investment manager of the Oregon fund, the state's

Some Surprises In Saline Co. Reappraisal

SALINA — A decline in property values in outlying shopping centers and a valuation increase in Salina's downtown core area as the result of countywide property reappraisal has surprised county officials.

Normally the situation is reversed.

The Saline County Commission, which ordered the reappraisal as required by state law, has no explanation for the situation, Chairman Carl Ramsey said.

"There is a possibility that remodeling improvements in several downtown stores had never been assessed for taxation," Ramsey said. "Although reappraisal meant valuation increases as high as 34 percent in some cases, the commissioners have found that they are not exceeding the property's actual value."

This meant some Saline County property apparently has been assessed below value for many years, Ramsey said.

Some farm property has decreased in value as the result of reappraisal, especially older property. Medium and better properties are going to increase, he added.

United Appraisal Co. did the reappraisal work under contract with the county.

growth fund has gone up 6 percent — in the same time that the Dow-Jones Industrial Average fell 2 percent.

According to Robert Kirby of Capital Guardian Trust of Los Angeles, one of the three money managers, "It's so far ahead of any government pension fund that there's no comparison."

During the period so far, Capital Trust bought one stock for Oregon at "19 or 20 and sold at 27" — something that would be difficult to accomplish if the state still held the investment reins.

What could it mean for Kansas?

John Corkhill, director of the state's retirement fund, described himself as "delighted" to know about Oregon's experiment and its success so far.

"This practice has been discussed in past years, here and elsewhere," Corkhill said. "Now that we'll have some hard facts to work with, I think it should come in for serious study by this state."

Kansas presently has about \$70 million in its fund, 25 percent of which may be invested in common stocks, according to Corkhill. At present, 22.9 percent is actually invested on a market

value basis — or 19.3 on a cost basis — about \$135 million in all.

This compares with 10 percent for Oregon. Corkhill pointed out however, that Oregon probably has a larger total fund than Kansas.

"These larger states have retirement funds a lot longer," he said. "California, for instance, has \$3.5 billion to work with."

Kansas' money is invested in 21 different industrial groups, Corkhill said, ranging from public utilities with 12.5 percent the total to surface transportation with 1.6 percent.

One state, Idaho, already has shown signs of following Oregon's lead by turning over all its convertible bonds to outside managers. Corkhill said he heard Wisconsin's state investment board recently decided to hire a manager for its variable annuity fund. California, the richest state, has retained internal money managers for some time.

The Oregon experiment has been in operation slightly more than four months, but if it is successful in the long run, Corkhill said, it would be time "a long, hard look at Kansas investment procedures."



A CHRISTMAS GIFT FOR LIFE

Give a Scholarship to
a Career in Beauty Culture
A DIPLOMA FOR A GREATER FUTURE

Classes Start
First Tuesday each Month



Crum's
LUCILLE CRUM, OWNER
CHARLES CRUM, DIRECTOR



beauty school
512 Poyntz Ave. Manhattan, Kansas

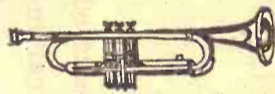
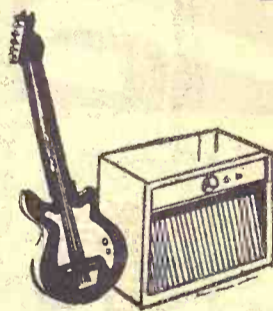
Telephone PR 6-4794.

In Manhattan

A

MUSIC GIFT

means more!



Manhattan's Music Specialists

BETTON'S

FAMILY MUSIC CENTER

117 North 3rd

Manhattan

PR 8-3432

— Surrounded by Parking Lots —

Sharpen Up!



Step out in style in
NOTCH-MOC-BOOTS
by acme

Acme puts a new edge on their famous Moc-toe design to keep you looking sharp and way ahead in footwear fashion. Come in today to see our complete selection of Notch-Moc styles—with all the built in quality and comfort features found only in Acme boots. \$19.99 to \$29.99

ACME  WORLD'S LARGEST BOOTMAKER



312 Poyntz
Downtown
Manhattan

WOMEN READ
tractor factory
talk things ov
open house of B
served about 200
Manhattan.

Values To
\$299.00

Values To
\$299.00

SAVE

value basis — or 19.3
 basis — about \$135
 n all.
 This compares with 10
 or Oregon. Corkhill
 however, that Oregon
 has a larger total fund
 Kansas.
 "These larger states
 retirement funds a lot
 he said. "California, for
 has \$3.5 billion to work
 Kansas' money is invest
 1 different industrial
 Corkhill said, ranging fr
 ic utilities with 12.5 per
 he total to surface trans
 ion with 1.6 percent.
 One state, Idaho, alrea
 shown signs of followi
 on's lead by turning ov
 s convertible bonds to
 managers. Corkhill said
 heard Wisconsin's state
 ment board recently de
 hire a manager for its
 nnuity fund. California,
 richest state, has retain
 al money managers for
 ime.
 The Oregon experime
 een in operation slightl
 han four months, but if
 successful in the long r
 ill said, it would be
 a long, hard look at
 investment procedures.



FORD MEN READY
 Ford tractor factory men Glenn Hubka, Ron Odette, and George
 McKisson talk things over before the crowd started to form at the
 recent open house of Burns-Salsbury at Manhattan. Owner Bob
 Burns served about 200 farmers at his new headquarters on US24
 west of Manhattan.

**ALLEN PANKRATZ HEADS
 DISTRICT SWINE GROUP**
 Allen Pankratz of Hillsboro
 has been elected to head the cen-
 tral Kansas district of the Kan-
 sas Swine Improvement Associa-
 tion. Other officers of the dist-

trict which includes Marion, Rice,
 McPherson, Chase, Morris,
 Geary, Dickinson and Saline
 counties, are Jerry Proffitt, Ster-
 ling; and Lester Griffith, Mar-
 ion. John Balthrop of Peabody is
 state director from the district.

**Give Your Favorite
 Horse (and Rider)
 a New Saddle
 For Christmas
 CHOOSE FROM**

**Colorado Wyeth
 and Veach**

Choose Early
 And Be Sure
 To Have It
 By Christmas

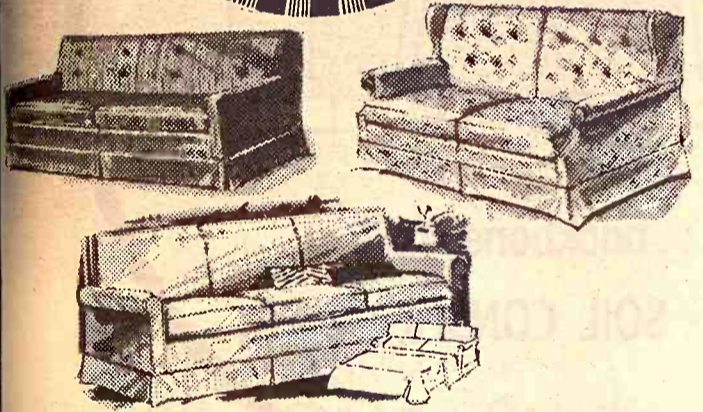


ALL TACK & SUPPLIES FOR YOUR HORSES
Farmers Coop Assn.
 2nd & Pierre Manhattan, Kansas

**OPEN
 NITES
 TILL
 8**

**K-HILL MART
 IN STORE
 WAREHOUSE
 SALE**

**TERMS
 TO
 SUIT
 YOU**



SOFA SLEEPERS

MODERN
 Values To **133⁰⁰**
 \$279.00

EARLY AMERICAN
 Values To **144⁰⁰**
 \$299.00

QUEEN SIZE
 Values To **188⁰⁰**
 \$349.00

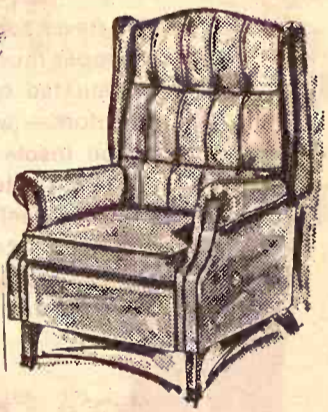
NATIONALLY
 ADVERTISED
 ORTHOPEDIC
 MATTRESS AND
 BOX SPRINGS
 SET
 Adv. Price \$179.00 Set
\$119⁰⁰
 Set



RECLINERS

Regular Value \$69.95
44⁰⁰

Regular Value \$99.95
 Rocker-Recliner
66⁰⁰



Regular Value \$109.95
 High Back with Casters
77⁰⁰

SOLID OAK
Bedroom Suite
 DOUBLE DRESSER
 WITH MIRROR
 CHEST AND SPINDLE
 BED
 Reg. Value \$259.95
\$188⁰⁰

OUR LOW COUNTRY OVERHEAD LET'S US SELL FOR LESS

K-HILL MART
 Furniture & Appliances
 East Over the Viaduct on Hiways 177 and 18 Pr 6-9707 **MANHATTAN**
 THE HOME OF CERTIFIED SERVICE

SAVE

SAVE

en Up
 n style in
 C-BOOTS
 ME
 edge on their
 design to keep
 and way ahead
 ion. Come in
 complete selec-
 c styles—with
 ality and com-
 only in Acme
 to \$29.99
 ARGEST BOOTMAKER
 312 Poyntz
 Downtown
 Manhattan

Rail Era Ends At Junction

JUNCTION CITY — An era in Junction City railroading has

come to an end when the Union Pacific Railroad abolished the final three mechanical jobs here.

The move completes liquidation of the former UP shop and mechanical force, which reached a peak during World War II.

The roundhouse and shop building are being razed. The UP at one time was the largest employer in Junction City.

Affected by the termination were J. R. Cross, mechanical foreman; D. L. Crawford, night foreman, and K. F. Fugier, relief mechanical foreman.

State Fair Officials Defend 9-Day Show

Kansas' first nine-day State Fair dipped into the red for over \$6000 this year, but Fair Secretary Wallace White says the experiment was a "great success."

Only once since White has been at the Fair's helm has the state's show event paid its own way, he says. The Fair is not considered or expected to be a profitmaking venture for the state.

Actually opponents of the nine-day fair can't really say the expansion of the Fair has cost taxpayers, he said.

Controversy has surrounded the decision to extend the Kansas State Fair to a nine-day event from its traditional six-day run.

"We figure it has probably cost about \$44,000 for the extra three days of the Fair," White said.

In the 1968 show, the Fair fig-

ures it about broke even for the first time in several years of operation. In 1968, the Fair had a total of \$484,880 in receipts. This year they are anticipating receipts to run about \$522,062.

This means the extra three days resulted in an approximate \$37,182 increase in receipts and \$44,000 in additional expenses, to put the Kansas State Fair into the red for about \$6818 for its first big nine-day extravaganza.

"As I told the legislators, I'd say the first nine-day Kansas State Fair should be termed a great success. And there are three major reasons behind my opinion," White said.

He said the three-day extension reduced the jam-packed crowd which normally attends the first three days of the Fair and spread the crowds over the nine-day period. Total fair attendance went higher too. It also

gave more time for livestock judging, spreading it out and featuring different livestock on separate days.

The extension also made possible a much larger Kansas horse show. Before, show entries ran about 100, but this year entries reached 600, White said.

Also for the first time the Kansas State Fair was able to hold a Future Farmers of America livestock show.

"I think the nine-day format promises a great potential for more revenue," White added.

Plans are presently being laid for the next nine-day Kansas State Fair in 1970.

White and the committee on grandstand entertainment for night shows will go to Chicago Dec. 1 through 3 for the International Fair Association meeting there.

FOR FINE FABRICS SHOP POUND'S

Party Fabrics for Any Occasion



Velveteen — Velvets

Bonded Crepes

Polyester Crepes

Laces



\$2⁹⁸ to \$12⁰⁰ yd.

Select Your Vogue Pattern
from Our In Stock Service

Paris Original

Couturier

Vogue Special

Young Fashionables

Pound's Fabrics
Where Fashion is
Measured by the Yard

423 Poyntz

Manhattan, Kansas

WOLVERINE[®] ACTION BOOTS



the
TRAVIS

whatever the action — there's a Wolverine[®] boot to match it

Manhattan's Newest, Most Complete Family Shoe Store
311 POYNTZ Downtown Manhattan Ph. 776-0612

Brown's
SHOE FIT COMPANY

A fit for every foot[™]

Agricultural

L I M E

... backbone of all
SOIL CONSERVATION

Kansas Limestone Ass'n, Inc.

For information
on Agri-Lime
see your local
Limestone Association
member.

The Kansas Limestone Association is organized to sponsor and encourage Limestone Research and to develop and promote the best uses of Kansas Limestone in Municipal Highway and Airfield Surfaces and Pavements and in Agricultural Applications.

SOIL CONSERVATION DEPENDS ON YOU!

- Supplies Calcium
- Deters Erosion thru legumes & deep roots
- Increases activity of all commercial fertilizers
- Provides Best All-Around Soil Building for grass & crops



See the NEW

ORIGINAL
I-B CAB

The Original I-B Cab features a rugged, rust-proof fiberglass top, strong tubular frame and vinyl-coated fabric. Four brackets evenly distribute fender load and frame and front panel are bolted solidly to tractor. Two wide doors for easy entry and dismantling. Self-storing front and side windows are removable and made of 1/4" tinted solid-tempered safety glass as is rear window.

Fits most tractors.

HARDY Supply Co. — Macksville, Kansas 67557

ve more time for living...
 dging, spreading it out...
 aturing different livestock...
 arate days.
 The extension also made...
 ole a much larger Kansas...
 rse show. Before, show...
 n about 100, but this year...
 es reached 600. White...
 Also for the first time...
 Kansas State Fair was...
 ld a Future Farmers of...
 a livestock show.
 "I think the nine-day...
 omises a great potential...
 ore revenue," White...
 Plans are presently...
 r the next nine-day...
 ate Fair in 1970.
 White and the commit...
 andstand entertainment...
 ight shows will go to...
 ec. 1 through 3 for the...
 tional Fair Association...
 g there.

Fits most tractors.

ksville, Kansas 67557

ON

Supplies Calcium

Deters Erosion thru legumes & deep roots

Increases activity of all commercial fertilizers

Provides Best All-Around Soil Building for grass & crops

ON YOU!

Turkey Growers Have Something to Give Thanks For — Better Price

If this year's Thanksgiving turkey seemed a little more expensive or there was a lesser price range to choose from, there was good reason for it. Turkey growers, who haven't had things in their favor for several years, made a small comeback this year. Turkeys were not as plentiful this year, accounting for a general increase in price. There was

almost the same production of turkeys this year as last — about 106 million birds — but this did not account for some population increase or allow for heavier consumption of turkeys during other parts of the year. Turkey consumption was up 10% to 12% the first six months of the year, as demand for turkey rose in the face of higher beef and pork prices.

In addition, heavy buying by the Government for school lunches and donations to the needy and to the armed forces has helped boost consumption and nudge prices higher. Expanded use of turkeys for processed foods also has tightened supplies of whole birds.

A couple of weeks before Thanksgiving, wholesale prices were running somewhat over 40 cents a pound — about five cents more than a year ago.

One other factor in higher retail costs has been a disposition on the part of some chains not to use turkeys as loss-leaders as they have sometimes in the past. Said one G&G area buyer for a chain: "I'd like to make a dollar on turkey for a change."

But many turkey growers think that turkeys lend themselves well to mass marketing, and groceries will continue to use them as loss leaders.

Ironically, many turkey growers won't share in any wholesale price increases that developed because they committed their flocks to buyers earlier this year at a lower price.

Last year at this time, the price of turkeys in the Midwest



WARM SEASON FOR CHRISTMAS

It was just shirt-sleeve weather when Mr. and Mrs. Clint Shirley of Manhattan started some early Christmas shopping.

averaged about 21c a pound for mostly grade A. The prediction for the current sales had been around 22½ to 23 cents. However, some farmers not tied down to a contract price who marketed late were able to get

25c. This price still will not please all turkey farmers, who think their profits have been much too small in recent years. However, forecasts in the trade are that next year's output will be somewhat larger than this year.



DO YOU KNOW WHAT DAD REALLY WANTS FOR XMAS?

A McCULLOCH CHAIN SAW

Here's the complete gift for a man who wants a product he can trust and depend on. With a new McCulloch chain saw he can tackle any wood cutting job. He can cut firewood, clear land, maintain trees around the farm, home or camp. Just name the job: there's a McCulloch to do it.

FREE CHAIN SAW FILE HOLDER

with purchase of every McCulloch saw before next Christmas.

K-HILL ENGINE SERVICE

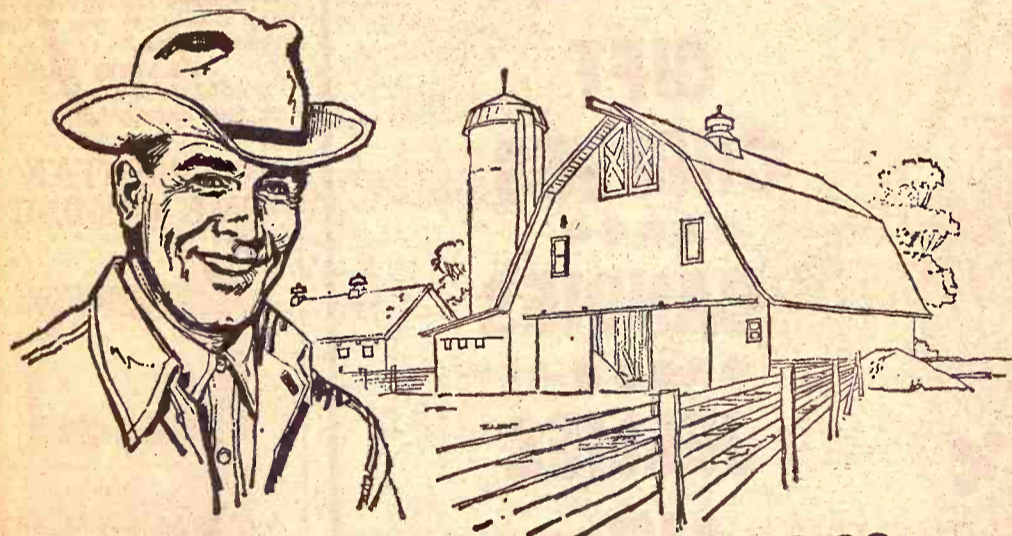
NEXT TO SALE BARN PR 6-4181
 MANHATTAN

BUY - SELL TRADE

Antiques, coins guns, stamps, books, war relics, gold, silver, clocks, swords, trunks, helmets, and currency. Odd & curious and anything else collectable.

TREASURE CHEST

308 Poyntz, Manhattan



\$10,000.00

EXTRA INCOME FOR EVERY 100 ACRES!

Crop tests prove that every 100 acres of unlimed soil can earn you up to \$10,000 extra income every 10 years due only to liming when Ag-Lime* and Fertilizer are teamed up!

You're losing money if your fields are acid. Chances are, a soil test would show at least some of your fields need liming. Get those soil samples in now!

Be Sure!

use... AG LIME

Bayer Construction & Quarries Co.

509 YUMA TELEPHONE PR 6-8839
 MANHATTAN

Walker Stone Co.

BOX 247 TELEPHONE WA 2-4711
 CHAPMAN, KANS.

FARM & RANCH LOANS

A Financial Service For The Farmer And By The Farmer

R. STANLEY PARSONS, Mgr.
 SEE ME AT
 604 HUMBOLDT PR 6-6931
 Res. Phone JE 9-8725

MANHATTAN

Open Mon. through Fri.
 8 a.m. to 5 p.m. (closed 12-1)

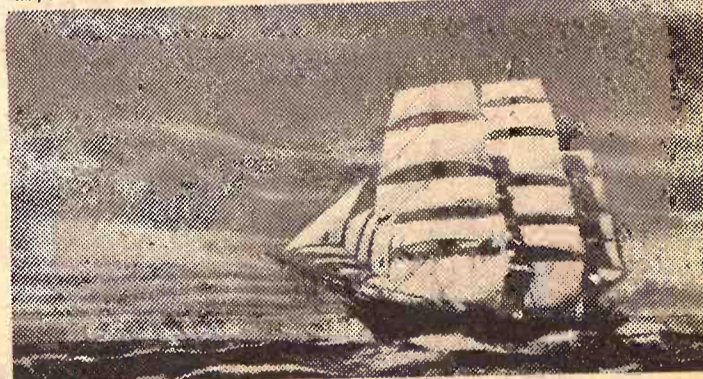
Branch Offices: CLAY CENTER & JUNCTION CITY

Federal LAND BANK Assn. of MANHATTAN

Serving Clay, Geary, Pottawatomie & Riley Counties.



Text from "The Log of the Cutty Sark" reprinted with permission of Brown, Son & Ferguson, Ltd., Publishers.



"Cutty Sark first... the rest nowhere"

THE Log of the CUTTY SARK records victory after victory. CUTTY was Number One. The best.

That proud tradition is carried on by the Scotch that took her name. Cutty Sark is America's best-selling Scotch. Cutty Sark. Number One. The best.

America's No. 1 selling Scotch



THE BUCKINGHAM CORPORATION, IMPORTERS - NEW YORK, N.Y. - DISTILLED AND BOTTLED IN SCOTLAND - BLENDED 46 PROOF

OUR DAILY BREAD

- by G&G Area Cooks

Mrs. Harold Pruitt Of Barnard Wins Container

The sender of this recipe is Mrs. Harold Pruitt, Barnard: SPICY APPLE BARS

- 1 cup light brown sugar
- 1/4 cup butter or oleo
- 1 egg
- 1/2 teaspoon vanilla
- 3/4 cup sifted flour
- 1 teaspoon baking powder
- 1/4 teaspoon salt
- 1/4 teaspoon cinnamon
- 1/2 cup chopped nuts
- 1 cup finely chopped apples

Cream sugar, butter, egg and vanilla until fluffy. Sift dry ingredients and stir in first mixture. Fold in nuts and chopped apple and spread in well-greased, floured 8-inch pan. Bake 25 minutes at 350 degrees. Don't overbake, cut into 1x2 1/2-inch bars while warm. Dust with powdered sugar while warm then serve. This recipe may be doubled.

Mrs. Bob Breen, Miltonvale: "We enjoy the paper very much and I especially like the recipes. Here is a good recipe to use for the holidays coming up."

DATE PUDDING

Beat 6 egg yolks lightly. Add 1 heaping teaspoon of baking powder and 2 cups sugar gradually then add 9 tablespoons cracker crumbs gradually. Next add 1 pound dates, cut fine and 1 cup chopped English walnuts. Beat egg whites stiff and fold in last. Bake in slow oven for one hour.

Mrs. George Varner, 237 East 6th, Chapman: "this is such a pretty salad to serve at Christmas."

CHRISTMAS SALAD

1 package each lime and cherry gelatin
Use 1 1/4 cups water instead of 2 for each box. Put red gelatin in the bottom of a large

pyrex baking dish. ("I use a 10x13-inch").

- 1 small package cream cheese
- 2 tablespoons sugar
- 2 tablespoons mayonnaise
- 1 large banana, mashed
- 2 cups small marshmallows
- 1 small can crushed pineapple, drained

Cream the cheese and sugar together; add rest of ingredients. Then whip 1/2 pint cream (unsweetened) and fold into above. Pile this mixture on the red gelatin which has set up. Have the green gelatin cooled enough, but not quite set and pour over the top.

The next recipe was sent by Mrs. W. H. Stevens, 296 16th Street, Ogden:

PERSIMMON COOKIES

- 1 teaspoon soda
- 1 cup persimmon pulp
- 1 egg beaten
- 1/2 teaspoon nutmeg
- 1/2 teaspoon salt

9th Annual Grass & Grain Bonus Recipe Contest

All recipes submitted for "Our Daily Bread" between November 8 and December 8 will automatically be entered in the special "grand prize" contest. The winner will be announced in the December 23 issue.

The grand-prize winner will be selected on the basis of originality and quality. Weekly winners will remain eligible for the special event.

The winner may choose one of the following:

- Osterizer 8-Speed Blender
- Dominion Oven Broiler
- Hamilton Beach Electric Knife
- Sunbeam Electric Grill

Good luck!

HAM LOAF & RAISIN SAUCE

Mix well:

- 1 pound ground ham
- 1 pound ground pork steak
- 1 pound hamburger

Add:

- 1 cup milk
- 2 eggs well beaten
- 3 cups crushed cornflakes
- 1/2 teaspoon dry mustard
- Salt and pepper to taste

Shape into a loaf and place in the oven which has been set at 350 degrees F. Bake for 30 minutes or until done. When the loaf has been in the oven 30 minutes baste often with liquid which has been prepared as follows:

- Mix and cook 5 minutes:
- 1 1/2 cups brown sugar
- 1 tablespoon prepared mustard
- 1/4 cup vinegar
- 1/4 cup water

CONTEST RULES

1. All recipes submitted for "Our Daily Bread" between November 8 and December 8 will be eligible. Date of entry will be postmarked date.
2. Winning recipe will be selected on basis of originality, quality.
3. Grand prize winner may select one of several prizes.
4. Weekly prize winners will not be disqualified.

TO ENTER -

Pick the holiday recipe you want to submit.

Check to make sure all ingredients are included, measurements accurate and writing is legible.

Be sure your name and address are on the entry - not just on the envelope.

Please send only one recipe at a time.

Mail entry to Woman's Page, Editor, Grass & Grain, Box 1009, Manhattan, Kansas, 66502.

The Ham Loaf is delicious served with Raisin Sauce which is made as follows: cook 1/2 lb raisins as usual. Sweeten. Add some strong liquid coffee and thicken with corn starch. If preparing for 25 people... double the Ham Loaf recipe and use 1 pound of raisins for the raisin sauce.

Mrs. Elmer Strahn, R. 3, Sabetha: "Here is a favorite holiday recipe of mine. It is rich and can easily serve eight."

MINCEMEAT CHIFFON PIE

- 1 envelope Knox gelatin
- 3/4 cup water
- 1 teaspoon rum flavoring
- 1 1/2 cups prepared mincemeat
- 2 egg whites
- 1/2 cup sugar
- 1/2 teaspoon salt
- 1 envelope (2-oz.) dessert topping mix (whipped according to directions, or 1 cup cream whipped)
- 1 9-inch baked pie shell
- Maraschino cherries

Sprinkle gelatin on water to soften. Place over low heat, stirring constantly until gelatin is dissolved. Remove from heat and stir in rum flavoring and mincemeat. Beat egg whites till stiff. Beat in sugar and salt. Fold gelatin mixture into stiffly beaten egg whites, then fold in whipped topping mix (or whipped cream). Turn into baked pie shell. Garnish top with maraschino cherries and chill until firm.

Mrs. Myrel Knott, Manhattan: "We enjoy the Grass and Grain very much. It was a Christmas present to us."

PRAIRIE CAKE

- 2 cups brown sugar
- 1 cup shortening

LET US FILL YOUR LIST

Food fits everyone - Give useful, attractive, delicious food gifts this year - many do. Just give us your list of friends, employees, or customers. We will deliver free in Manhattan or mail your gift anywhere for just the postage. Don't forget the fruit for stocking stuffers. May we fill your gift needs this Christmas?



FRUIT BASKETS

\$1.98 to \$10.95

Grocery Baskets

\$5.65 UP

HOLIDAY MEATS

USDA GRADE "A" CANNED OR WHOLE TURKEYS HAMS

GIFT CHEESES

CANDIES

JELLIES

\$1.98 up

POSTAL SERVICE

ALL THREE STORES ALL OPEN HOURS

FOOD GIFT CERTIFICATES

FOR ANY AMOUNT



OWEN DUER Vice-president

Are you ready to pay your fair share?

The Internal Revenue boys don't want us to pay more than our share, but if you haven't already done so, take steps now to run that 10 or 11 month summary of income and expense.

After all the figuring, we are ready to finance the bill.



PRODUCTION CREDIT ASSOCIATION

600 Humboldt MANHATTAN, KANSAS Ph. 913/776-7061



7 a.m. to 8 p.m. Daily 9 a.m. to 6 p.m. Sundays



9 a.m. to 9 p.m. 7 Days a Week



9 a.m. to 9 p.m. 7 Days a Week



Dutch Maid Super Markets

TEST RULES

All recipes submitted for "Our Daily Bread" between November 8 and December 1 will be eligible. Date of entry will be postmarked. Winning recipe will be selected on basis of originality, quality. Grand prize winner may select one of several prizes. Weekly prize winners will not be disqualified.

ENTER — Check the holiday recipe page to submit. We will check to make sure all ingredients are included, measurements accurate and recipe is legible. Be sure your name and address are on the entry — no exceptions. Please send only one recipe.

Mail entry to Woman's Editor, Grass & Grass, 1009, Manhattan, Kansas.

The Ham Loaf is delicious served with Raisin Sauce. Made as follows: Cook raisins as usual. Sweeten with strong liquid coffee. Break with corn starch. Boil for 25 minutes. If you like the Ham Loaf recipe, send 1 pound of raisins for sauce.

Mrs. Elmer Strahn, R. 3, says: "Here is a favorite recipe of mine. It can easily serve eight."

MEAT CHIFFON — envelope Knox gelatin, 1 cup water, 1 teaspoon rum flavoring, 1/2 cups prepared mince-meat, egg whites, 1 cup sugar, 1 teaspoon salt, envelope (2-oz.) dessert topping mix (whipped according to directions), 1 cup cream whipped, 9-inch baked pie shell, maraschino cherries.

Drizzle gelatin on water. Place over low heat, stirring constantly until gelatin is dissolved. Remove heat and stir in rum flavoring and mince-meat. Beat egg whites till stiff. Beat in sugar salt. Fold gelatin mixture stiffly beaten egg whites fold in whipped topping (or whipped cream). Turn baked pie shell. Garnish with maraschino cherries. Chill until firm.

Mrs. Myrel Knott, Manhattan, enjoys the Grass and Grass much. It was a Christmas present to us."

PRAIRIE CAKE — 1 cup brown sugar, 1 cup shortening.

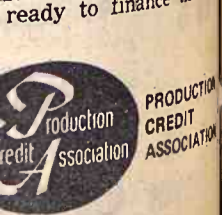
INCOME TAX TIME COMING!



Owen Duer, Vice-president.

Are you ready to pay your share? The Internal Revenue Dept. don't want us to pay more than our share, but if you haven't already done so, take action now to run that 10-month summary of income expense.

After all the figuring, are you ready to finance the bill?



Manhattan, Kansas 66501
3/776-7081

and put in refrigerator until gelatin begins to congeal. Fold in the cream and nuts and return to refrigerator until it is completely set.

Mrs. Mike Bramhall, Vermillion: "This is a dessert my family enjoys; it is so easy to make, one can make it often."

CHRISTMAS PIE
1 square butter or oleo
1 cup sugar
2 eggs
1 teaspoon flour
1 teaspoon vanilla
1 cup cooked raisins, drained
1/2 cup English walnuts or pecans

Mix well and put in an 8-inch unbaked pie shell. Bake at 375 degrees for 20-25 minutes, or until top is brown.

Mrs. Oscar Richter, Maple Hill: "Nice to serve as a hot cup after caroling."

CHRISTMAS SWEET SOUP (Sweden)
1 1/4 cup mixed dried fruits
1/2 cup white seedless raisins
3 sticks whole cinnamon
4 cups water
1/2 cup apple balls, gently cooked

2 1/2 cups pineapple juice unsweetened
1/4 cup sugar
2 tablespoons tapioca
1/4 teaspoon salt
2 teaspoons vinegar

Simmer dried fruits, cinnamon sticks in water until tender, about 30 minutes. Simmer apple balls separately until medium soft, about 12 minutes. Mix cooked fruits mixture, pineapple juice, sugar, tapioca, salt and vinegar; bring to boil. Cover, simmer for 15 minutes, stirring occasionally. Add apples; serve hot in punch cups with demitasse spoons. Other fruit juices may be used instead of pineapple juice. Apple balls may be prepared by cutting apple with fruit ball cutter. Yields 12 servings.

Other G&G area cooks sending recipes include:

- Mrs. A. L. Harris, Clay Center
- Mrs. Darrell Reed, Webber
- Mrs. Harold Hooke, Clay Center
- Mrs. Edward Broden, Miltonvale
- Mrs. Yvonne McDiffett, Alta Vista
- Mrs. Howard Truelove, Burlington
- Mrs. Howard Hall, Emporia
- Mrs. Clair Edmiston, Americus
- Mrs. W. R. Zimmerman, Alta Vista
- Mrs. Dale Hoard, Formoso
- Mrs. Ray Engle, Abilene
- Mrs. Char'es Pearce, Miltonvale
- Mrs. Eldon Thorman, Clay Center
- Mrs. Gordie Beavers, Carleton, Nebraska
- Madelyn Rombeck, Blue Rapids
- Mrs. Bernard Gieber, Belleville
- Mrs. Virgil Chaput, Clifton
- Mrs. Adolf Janssen, Emmett
- Mrs. Gerald Rindt, White City
- Mrs. C. H. Mowyer, Chapman
- Mrs. Mabel Keim, Minneapolis
- Elsie Hunsinger, Lawrence
- Mrs Dale Pressgrove, Topeka

A Way To Simplify Your Christmas Shopping

One way to simplify Christmas shopping is to buy items — in different styles, sizes and colors — appropriate for everyone on your shopping list.

Sleepwear, for example, is a gift that will please any member of the family.

Give mother and daughter — or big and little sister — a matched set of pajamas or sleep culottes in soft and comfortable cotton.

A bright idea for teenagers or younger girls is a pajama set plus. Along with colorful p.j.'s, the set has a matching sleeping bag and pillow packed in a carry-all tote that makes it ideal for slumber parties. And for the very young, there's even a doll dressed in identical culottes.

A style practical for young boys and girls from three to eight are cotton knit pajamas that eliminate the need for bedroom slippers. Feet with vinyl soles and toe caps are knitted into the pajamas. The styles come in a cheerful array of bright colors and appealing appliques.

Also new in children's sleepwear are cotton flannelette pajamas and gowns with a flame-retardant finish. The built-in

safety measure is a non-toxic finish that's said to be effective for up to 50 washings.

Ski-style pajamas in cotton knit are favorites for teenage boys and their dads.

For any man or boy, classic button-coat models in smooth cotton broadcloths or warm flannelettes are safe buys if you're in doubt about style preferences.

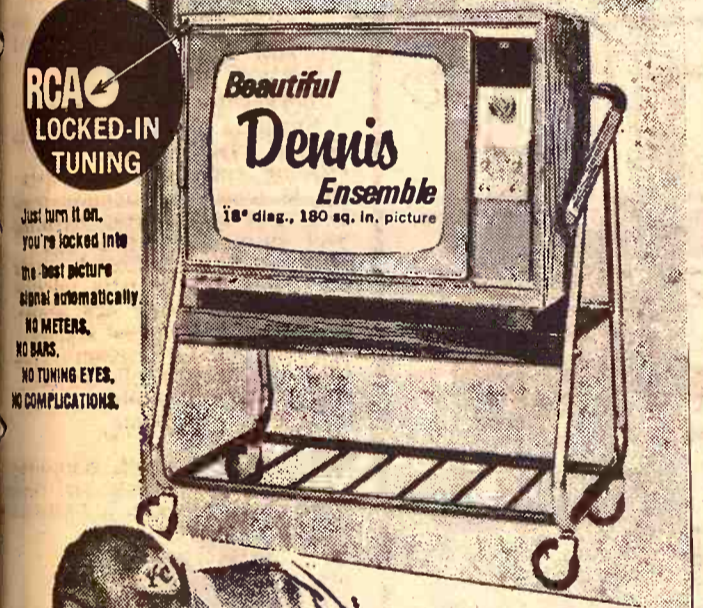
And for hardy souls who go for knee-length nightshirts, you'll find bright cotton knits decked out in bold blazer stripes that are as classy as any cat's pajamas.

Clothing Allowance Teaches Teenagers To Care For Clothes

A clothing allowance is a splendid way to teach your teenagers to be careful of their clothes. Once they have to go into their own pockets, they learn to appreciate values as they never did before.

While they are learning, it is wise, however, for an adult to go along on shopping trips to make sure their money is not put into something shoddy or a garment that is so extreme that it will be entirely out of date in another year.

RCA CHRISTMAS COLOR TV SPECIALS




\$419.95



\$468.00


CONDE Music & Electric
407 Poyntz 776-4704 MANHATTAN, KANS.

For Comfortable "Wall to Wall" Warm Floor Heat, Choose a Warm Morning GAS HEATER



PRICED And SERVICED For CUSTOMER CONVENIENCE

Spreads a CARPET OF WARMTH over the floors of your home!



SALINA SKELGAS SERVICE
G. D. Pearce, mgr.
561 N. Broadway TA 5-4432

TOPEKA SKELGAS SERVICE
Gene Sears, mgr.
E. Hwy. 24 & Meriden Rd. FL 4-7758

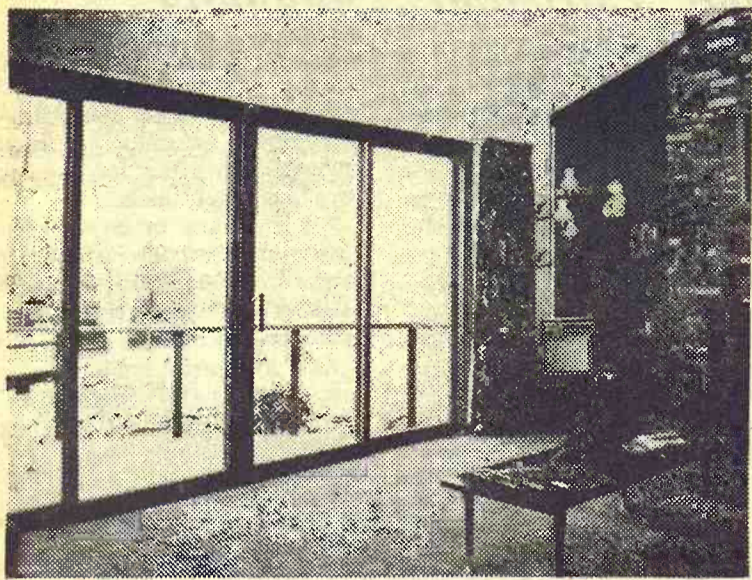
TRI-COUNTY SKELGAS SERVICE
Manhattan, Cliff Coleman, mgr.
608 So. 5th PR 6-4726

WAMEGO SKELGAS SERVICE
Gaylord Belton, mgr.
5th & Elm 456-7565

JUNCTION CITY SKELGAS SERVICE
Harold Erichsen, mgr.
560 Grant Ave. CE 8-2701

ABILENE SKELGAS SERVICE
Harold Poland, mgr.
207 N. Broadway CO 3-1440

Patio Makes Nature Part Of Room Decor



America's love of the outdoors has led to one of the most consistent building trends in recent years — extensive use of patios, decks, atriiums, terraces and balconies.

Presence of these features in homes and apartments is a proven sales attraction. And recent remodeling studies show patios leading the list of home additions.

This stress on outdoor features is not surprising. They expand the home's recreation and relaxation space, make views accessible and offer the undeniable attraction of fresh air and sunshine. When properly planned, they also enhance the home's interior beauty.

For example, a patio can visually expand the dimensions of the room adjacent to it. The patio view can become the room's visual highlight. A patio can also provide the opportunity for effective decorating schemes. It all depends on careful selection of windows and doors.

As entries, patio doors in wood sash are a popular choice. Their uninterrupted glass area gives an expansive view. The wood sash can be painted to blend with interior and exterior decor.

Insulating glass is recommended for patio doors because of the large glass areas.

Visibility should also be considered when choosing windows for the wall adjacent to the patio. Casements, sliders, awnings or hoppers — used in series or stacked from floor to ceiling — make a handsome window arrangement and give the widest possible view.

Answers to turkey Questions

Q. What is the proper way to treat what is left of the roast turkey?

A. To refrigerate: Remove stuffing from body and neck cavities. Place in bowl and refrigerate. Leftover poultry may be refrigerated whole or stripped from the bones. Refrigerate broth and gravy as soon as possible. When cooled, poultry meat, stuffing and gravy should be covered. Use within 3 to 4 days.

To freeze: Poultry meat may be wrapped and frozen. Use within 2 months. Stuffing may also be wrapped and frozen. Use within 1 month.



Q. Are hen turkeys more tender than tom (male) turkeys?

A. No. Tenderness is primarily affected by the age of the live bird. All young turkeys whether toms or hens are tender.

Q. What is the advantage of a deep-basted turkey?

A. Each slice of white meat of deep-basted turkey is tender and juicy. This is because liquid fat is added where hand basting cannot reach and the turkey inner bastes as it roasts.

BE AN EARLY BIRD!

deck her in diamonds for Christmas

small down payment holds your gift

on our **LAY-AWAY PLAN**

SNYDERS JEWELRY

Phone: ME 2-5155
CLAY CENTER, KS.

Perfect Crease

When ironing a garment, dampen the part to be creased, then lay brown paper over it and iron dry. You will find this makes a perfect crease.

Hold Back Curtains

Pin curl clips are just the

thing to hold back sheer curtains when vacuuming or airing the bedroom. These clips hold tightly yet do not damage or mark the curtains.

Handy For Drying

Spring-type clothespins suspended from the top of the clothes chute can be used to

18

Grass & Grain

November 25, 1969

hang damp towels and other items until they are dry, rather than dropping them into the basement while they are wet.

MUD & SNOW

HERCULES
POLAR 125

TIRES

4 Ply Nylon Cord Tubeless

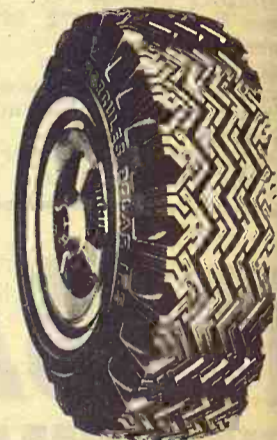
Black Sidewall White Sidewall

Size	List Price	SALE Price	List Price	SALE Price	F.E.T.
6.50-13	\$31.45	\$17.97	\$36.75	\$20.14	\$1.79
7.00-13	32.50	19.31	38.45	21.32	1.94
6.95-14	33.95	19.62	40.35	21.37	1.96
7.35-14	34.50	20.37	41.00	22.36	2.07
7.75-14	36.10	21.39	42.65	23.33	2.20
8.25-14	40.20	22.48	46.75	24.77	2.36
8.55-14	-----	-----	50.70	25.91	2.57
8.85-14(1)	-----	-----	57.85	27.50	2.84
7.35-15	34.50	20.77	41.00	22.81	2.08
7.75-15	36.10	21.35	42.65	23.08	2.21
8.25-15	40.20	22.39	46.75	24.54	2.38
8.55-15	43.90	23.34	50.70	26.13	2.57
8.85-15	-----	-----	55.60	27.08	2.83

4 Ply Nylon Cord Tube Type

Size	List Price	SALE Price	F.E.T.
7.75-15	-----	18.88	\$1.88
6.00-16*	-----	15.95	1.93

*Different Design



- Meets Every Driving Need.
 - Quicker Starts & Stops
 - Specially Siped for Quieter Running.
 - Far Greater Car Control.
- Studded Tires: Add \$5.00 to your Cost per Tire.

HERCULES TIRES

Manhattan, Ks.
610 N. 3rd
776-9453

PRE-CHRISTMAS
SPECIALS

SAVE!

ON FAMOUS BRANDS

SAVE!

KROEHLER SOFA & CHAIRS

BERKLINE RECLINERS

SEALY BEDDING

DAYSTROM DINETTES

CARPET'S Alexander Smith

And Many More

4 Floors of Fine
Quality Furniture!

USE OUR LAY-AWAY PLAN!

OPEN EVERY NIGHT
STARTING NOV. 28th
'TILL CHRISTMAS (except weekends)

KAUP FURNITURE DOWNTOWN

304 Poyntz

Manhattan

6-9491

To Drop Mobile X-Ray Units

The state has decided to drop mobile chest X-ray service offering it to Kansans for less than a quarter of a century. The dwindling incidence of tuberculosis, along with improved, cumbersome detection procedures, have decreased the need for the big truck-mounted mobile X-ray units.

Edwin Lyman, state chief health officer, said the Board of Health did not appeal the budget director's deletion of money for the mobile chest X-ray program during hearings on the state's fiscal year 1971 budget.

The only vestige of the active program remaining is a file of chest X-ray films by the mobile units, which remain for physicians who need them for comparison purposes for patients.

Dr. Lyman said the program, which began in Kansas during the fall of 1942, will be phased out by June 30, 1970 — the end of the current fiscal year.

The Dept. of Health had requested \$52,500 for the mobile chest X-ray program for next fiscal year. Dr. Lyman decided to appeal only \$9000, just enough to pay for handling the X-ray films for physicians needing them for comparison purposes.

"There are other devices in operation today that are really more satisfactory to meet the need, such as the tuberculin skin test," Dr. Lyman said.

That test is being used more, he said, especially in testing school children.

The mobile chest X-ray was used primarily by adults, espe-

cially adults in the lower socioeconomic class, and adults institutionalized in prisons or other facilities usually accessible to the units.

TB, as a killer, has declined steadily as detection techniques were improved.

In 1928, tuberculosis was the seventh leading cause of death. In 1948, it had dropped to tenth and by 1968 it had disappeared from the top 10 list of fatal diseases.

"There is still plenty of tuberculosis nationally," Dr. Lyman said. It causes about 10,000 deaths across the country each year, and there are about 50,000 reported new cases of TB nationally.

In Kansas, the number of tuberculosis cases reported was highest in 1906, when 3045 were detected and reported. Robert French, chief associate epidemiologist in the Disease Prevention and Control Section of the Board of Health, said the number of cases reported in 1969 is expected to drop below 200.

The mobile chest X-ray program was at its peak in the late 40's, French said, when the state had four mobile units on the road.

Dr. Lyman said only two trucks remain, with one "on the shelf."

ducts become contaminated. "This hazard can result in bankruptcy for many dairy plant operators," Dole said. "The primary means for overcoming the problem of pesticide contamination is in better and stricter enforcement of regulations on pesticide use. Until such measures are carried out, however, dairy manufacturers remain under the threat of sudden economic disaster through no fault of their own. The proposed amendment would help alleviate this situation."

fighting arena and a nudist camp have received the blessing of the county planning board. The board has recommended approval of special permits to cover both activities.

The cockfighting arena and nudist camp both are situated in the Tonganoxie area of Leavenworth County and operated prior to the applications for special zoning permits.

Two Leavenworth residents protested the cockfighting arena application at the planning board hearing.

Cockfighting is legal in Kansas, except on Sundays. The sport technically is not covered by cruelty to animals regulations, since chickens are fowl.

Cockfights, Nudist Camp Okayed

LEAVENWORTH — A cock-

BEAUTIFUL!
Are you looking for beautiful lighting fixtures?

Visit our showroom where you will find one of the largest stocks of lighting fixtures in Central Kansas. Also a complete stock of door chimes. For you late shoppers we are open until 8:30 Thursdays and 5:30 Saturday.

ENDACOTT ELECTRIC CO.
309 Moro • Phone PR 6-4482 • Manhattan, Kansas
Your Bank Americard welcome here

Christmas is the time for mistletoe, holly wreaths and Kayser® Panty Hose and Stockings.



They're decorations women won't put away after the holidays. They'll wear them all year long. Because they fit great and look even better.

Choose silky Agilon® and Sheer Opaques for your favorite girl.

And new Carmolon™ panty hose, for all the women in your life. One size fits short, medium and tall.

While you're at it, choose from all the styles of Kayser stockings, too.

And make it a merry, decorative Kayser Christmas.

WARD M. KELLER
MANHATTAN'S STORE FOR WOMEN

328 Poyntz phone PR 6-8836 DOWNTOWN MANHATTAN

Asks Aid For Dairies Hurt By Chemicals

Sen. Bob Dole, R-Kans., has co-sponsored an amendment which would make dairy manufacturers eligible for indemnity payments if their products are removed from commercial markets because they contain unacceptable chemical residues.

Dairy farmers now are eligible for such payments.

Dole said present monitoring capabilities are not adequate to insure that pesticide residues in milk purchased by dairy plants can be detected before large volumes of milk and dairy pro-

EASE the SQUEEZE on SANTA

SHOP HERE EARLY

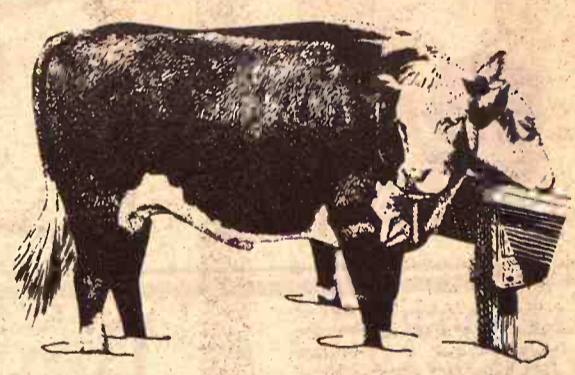
FOR MOTHER
SUNBEAM & G.E. APPLIANCES
Revere & Ecko Stainless Steel Ware
PYREX & CORNING WARE
Flint Cutlery Ware
FIESTA WARE

FOR DAD
BLACK & DECKER POWER TOOLS
Crescent & Stanley Hand Tools
SPORTING GOODS
Camping Equipment

FOR THE YOUNGSTER
Sleds — Wagons
Table Tennis Sets
Basketball & Goal Sets
Pocket Knives & Hunting Knives

AGGIE HARDWARE & ELECTRIC CO.
Dutch Boy PAINTS
1205 MORO MANHATTAN, KANSAS PH. JE. 9-7751
FREE CUSTOMER PARKING IN REAR LOT

Feed Sunflower Soybean Pellets and watch winter weight snowball.



It's a long drive to market bloom and few cattlemen can afford to sit out the winter. So, to finish ahead of the other herds this spring, feed Sunflower Soybean Meal Pellets this winter.



During winter months, most of the feed your cattle will eat merely goes to meet basic energy requirements. Most herds will be doing well to hold their own. That's why you need a super-charged protein supplement if you're looking for a substantial winter weight gain. The best one you can buy, and feed, is Sunflower Soybean Meal Pellets.

This is a supplement made from nature's richest source of protein.

Prime soybeans. They're carefully processed to preserve vital protein content while actually increasing their palatability and digestibility.



Feed Sunflower in 40% soybean meal pellets or as 36%, 32%, or 22% formulated range cubes.

Don't let cold weather hold up your herd's drive toward market bloom. Keep them moving. Supplement winter grasses with Sunflower Soybean Meal Pellets and pack on the pounds. That way, winter feeding will be more than just dead weight.

KANSAS SOYA PRODUCTS COMPANY, INC.
Dickens 2-7270 • Emporia, Kansas



November 25, 1969

Mixed Response To Hearing On Licensing Of Auto Mechanics

Detroit is taking a cool-to-hostile view of the proposed licens-

ing of automobile mechanics, which advocates contend would go far toward easing what they call a crisis in auto repair service.

But the largest importer of foreign cars, Volkswagen of America, Inc., favors the proposal.

Licensing "would improve the attitude of the public toward the mechanic and encourage more young men to enter the field," according to J. Stuart Perkins, president of the American subsidiary of the popular car's German manufacturer.

His views and those of the leading American manufacturers were aired before the anti-trust and monopoly subcommittee of the Senate Judiciary Committee. The panel, headed by Sen. Philip A. Hart, D-Mich., is investigating evidence of the high cost and low quality of auto repairs.

Hart is a leading proponent of licensing — for repair shops as well as their mechanics. He asks

"If a barber must be licensed to cut my hair, why shouldn't the man who fixes the brakes on my car be licensed?"

Anybody can be an auto mechanic today simply by calling himself one. Few of the country's 800,000 auto mechanics have undergone apprentice training and many lack even basic vocational education in the trade. Dealer shops and reputable independent garages have cornered most of the limited supply of competent repairmen. All must rely to some extent, however, on relatively unskilled labor. Service stations, with some notable exceptions, employ low-grade mechanics.

The Senate subcommittee, in hearings last year, developed evidence that repair work frequently was performed poorly, if at all. The National Automobile Dealers Association reported, on the basis of a survey of 10,000 car owners, that 64 percent of the respondents were satisfied with dealers' repair service. But Hart noted that 36 percent were dissatisfied, and suggested that the dealers' pride was misplaced.

An independent tester at Denver tested 5000 cars before and

after repairs had been performed at various shops and reported that only one in 100 had been properly repaired.

Mark W. Worden, vice president in charge of GM's marketing staff, testified that the cost of the license and of administering licensing programs would be passed on to consumers in higher repair prices, higher taxes, or both.

"License," he testified, "has never been an assurance of quality and at best is a marginal assurance of performance. In the long run, competition and the need for repeat business are the best incentives for competence in any service outlet."

GREEN'S BOOK SHOP

WE INVITE YOU TO BROWSE OUR MOST UNUSUAL STORE

DECORATIVE

Christmas Candles

BIBLES

Books for Children & Adults

DESK ACCESSORIES

PEN & PENCIL SETS
by Sheaffer • Parker • Cross
and Hallmark
PARTY SUPPLIES

Everything in Large Assortment

GIFTS OF ALL KINDS

DOWNTOWN MANHATTAN PR 8-3286

Christmas Gifts - Enjoyed Forever

Here are just a few of hundreds of items



PUSH BUTTON BLENDER

44 oz. container
odor & stain
resistant
Avocado or
White

\$24.99

LAZY SUSAN CANISTER

4 pc. set in
3 colors

\$15.98

CAN OPENER- Knife Sharpener

4 colors

\$10.88

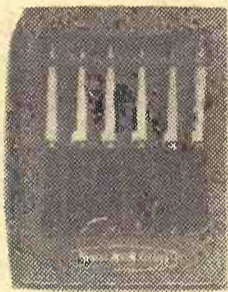


Egg Cooker
Cooks eggs
any way you
want.

\$19.98

ELECTRIC BUN & BREAD WARMER various colors

up to \$10.98



STEAK SET

Stag Handles
6 pc.

\$6.98

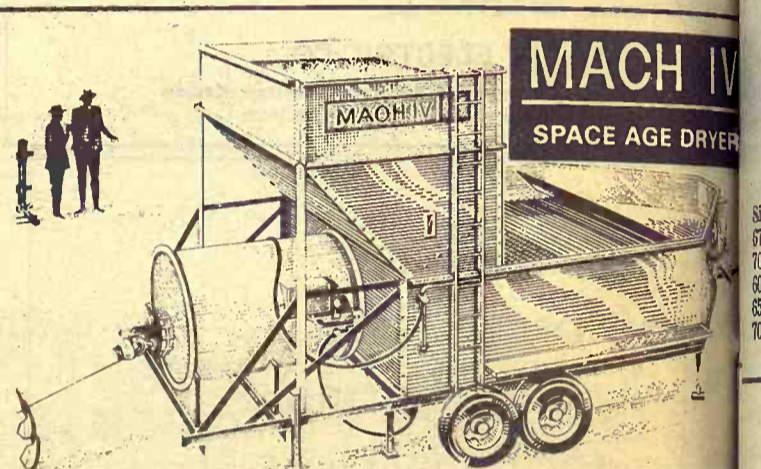
CORNING WARE

YOUNG MODERNS SET — Includes 9" covered skillet, 1 qt. & 1 1/4 qt. covered sauce pans, 1 qt. saucemaker and 2 petite pans. \$19.95 value Special \$16.88

Town & Country Hardware, Inc.

"Your Downtown Gift Center"

406 Poyntz Ave. Phone 776-6691
Manhattan, Kansas



DRIES • CLEANS • CONVEYS 300 BU/HR

Floats the Grain on Air Alone — No Moving Parts

- 10 points or more moisture removal
- 5,000,000 BTU/HR propane heat
- pto-powered 35,000 CFM fan

No moving parts in this dryer ever to break, wear out, adjust or maintain! No electric motors to go bad. MACH IV is the dryer you've read about for unsurpassed efficiency, high-speed drying action and trouble-free operation.

Balanced heat and air surrounds every kernel as grain floats through dryer on a cushion of air for even,

faster drying. Provides excellent dry grain quality. Positive temperature control—no hot spots or wide variations in moisture. MACH IV even removes foreign material and cleans the grain as it flows through the dryer.

Readily portable drying capacity that keeps ahead of six-row combines. Gravity-flow wet grain holding bin with extension hopper.

12 INCH AERATION
FANS & DUCTS
IN STOCK

North Central Steel Co., Inc.

116 West 2nd Phone EX 2-2077
MINNEAPOLIS, KANS.

SALE EVERY
WEDNESDAY

Beverly Stockyards Co.

Salina, Kansas

Barn Phone TA 7-4479

With a large run of livestock on hand at our sale Wednesday the market looked 50¢ to \$1.00 higher on all classes of cattle.

Listed below are a few sales from our auction:

CATTLE			
Glen Meyers, Abilene	32 b&bwf str	517 @	31.30
Walt Shirack, Solomon	11 wf str	394 @	35.65
Kern Livestock, Bavaria	96 blk hfrs	675 @	28.00
Warren Campbell, Geneseo	1 shrthrn bull	760 @	21.50
Ed Dent & Sons, Bavaria	33 wf hfrs	614 @	26.90
Ed Dent & Sons, Bavaria	7 b & bwf hfrs	662 @	26.65
Carl Olin, Assaria	1 blk wf str	750 @	28.50
Russell & Campbell, Geneseo	2 blk wf str	442 @	33.70
Robert Campbell, Geneseo	1 sw str	470 @	26.00

Luther Jorg, New Cambria	1 blk str	565 @	29.20
Glen Meyers, Abilene	25 mixed str	572 @	31.20
Louis Ade, Carlton	9 b & bwf hfrs	665 @	27.00
Walt Shirack, Solomon	3 blk str	331 @	36.00
G.S. Ricker, Kanopolis	1 wf str	335 @	34.40
Elmer Ricker, Kanopolis	2 wf str	357 @	34.50
Gordon Webster, Brookville	1 blk cow	1175 @	18.70
Ottawa County	1 wf rn cow	1190 @	19.20
Will Schuddle, Ellsworth	3 wf str	363 @	35.30
Elmer Schneider, Ellsworth	3 blk wf str	455 @	34.00
Vick Vanek, Kanopolis	1 shrthrn bull	1455 @	21.90
Delbert Rathbun, Ellsworth	1 wf cow	1115 @	18.35
Walt Shirack, Solomon	15 wf hfrs	379 @	31.00
Russell & Campbell, Geneseo	2 wf str	410 @	33.60
Gordon Webster, Brookville	1 wf bull	1600 @	21.40

Delbert Duryea, Ellsworth	4 wf str	462 @	33.90
James Walker, Glasco	2 blk hfrs	632 @	25.10
Will Schuddle, Ellsworth	3 wf hfrs	380 @	30.40

HOGS

Ray Shank, New Cambria	8 spotted butch	231 @	25.55
James Vanek, Wilson	6 mixed butch	233 @	25.50
Lyle Webb, Tescott	4 hamp butch	268 @	24.65
Art Weis, Minneapolis	7 mixed butch	219 @	25.45
Palmer Price, Salina	5 white butch	216 @	25.45
Olin Clinton, Minneapolis	1 blk sow	295 @	23.00
Berkley Bros., Tescott	27 mixed butch	238 @	25.45
Garvin Hog Ranch, Solomon	4 mixed butch	232 @	25.35
James Forshee, Aurora	16 mixed butch	247 @	25.50

For more information about prices for your livestock get in touch with us and we will come and look at them.

Beverly Stockyards Co., Salina, Kansas,

Located on east edge of Salina on old highway 40

JACK BEVERLY, Salina TA 3-3191 BOB GRACE, Salina TA 7-1541
HARLAN JENSEN, Salina TA 5-0912 JIM FORSHEE, Concordia CH 3-4717

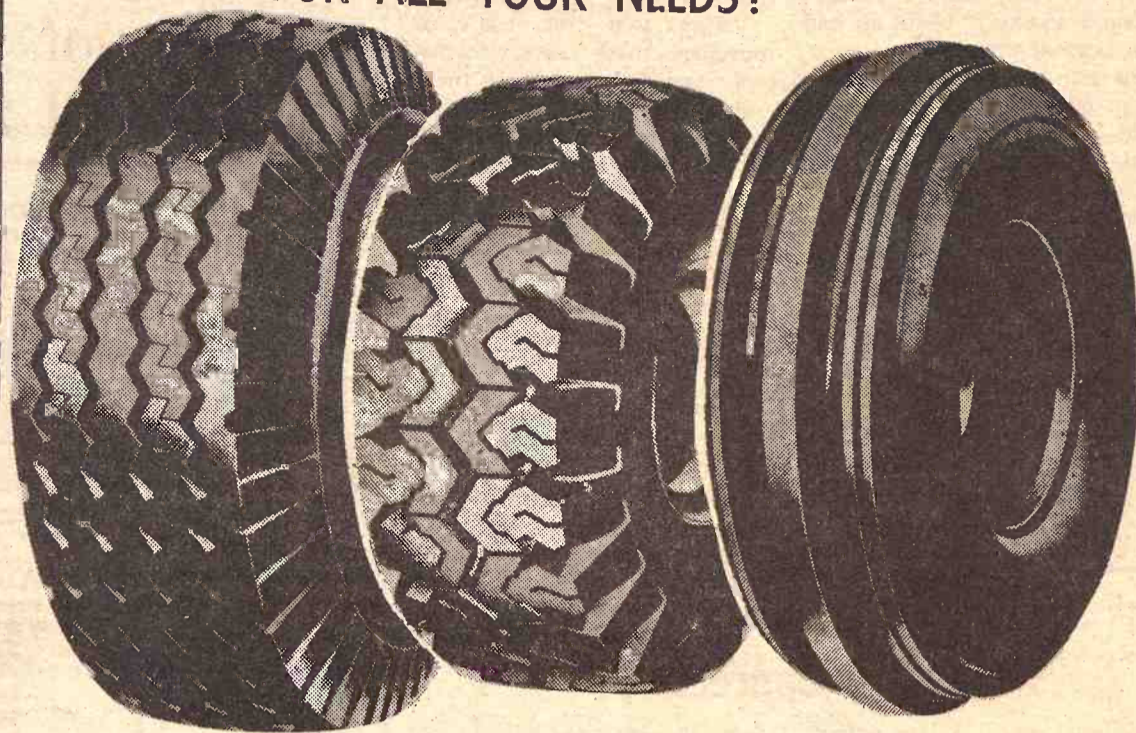
Market reports on KFRM every
Wednesday morning at 7:15 and
every Wednesday on KSAL at
11:30.

Downtown **MANHATTAN**
Penneys AUTOCENTER

FOR ALL YOUR NEEDS!



See **FLOYD WOODWORTH**
For all automotive needs!
He has 20 years experience
in this area!



Get Your Truck And Tractor Tires Now!

(Highway Tread)			(Mud Grip)			TRACTOR FRONTS			
Size	Price	fed. tax	Size	Price	fed. tax	Size	Price	Ply	fed. tax
670x15	\$20	2.40	670x15	25.50	2.76	550x16	13.00	4	.86
700x15	\$27	2.85	700x15	30.50	3.27	550x16	15.60	6	.95
600x16	\$20	2.39	650x16	26.50	2.96	600x16	16.25	4	.98
650x16	\$22	2.62	700x16	31.50	3.33	600x16	17.50	6	1.09
700x16	\$26	3.00	750x16	39.50	4.16				

Open Monday and Thursday Nights Til 9:00 p.m.

Also Shop Penneys Catalog Phone PR 6-4711 for Service

**Irrigators Meet
At Great Bend**

GREAT BEND — Water management techniques for the 1970's is the theme of the annual meeting of the Kansas Irrigation and Reclamation Association slated for Dec. 4 in the Knights of Columbus Building at Great Bend.

The first morning session concerns water development activities in the lower Arkansas River basin. Lt. Col. Edward Fike, deputy Tulsa District Engineer, and Wayne Ferguson, chief of the Arkansas River Planning Section, both of the Army Corps of Engineers at Tulsa, will lead the discussion.

Second morning session features Jay Spencer, Flow Central Division of the Rockwell Mfg. Co. His topic of "Just Add Water" deals with the timely and efficient use of water through precise measurement. He will demonstrate some new water-metering devices from his company.

Dr. Floyd Smith, acting vice-president for agriculture at Kansas State University, will discuss irrigation research aimed at the 1970s during the first afternoon meeting.

New developments in sprinkler irrigation will be pointed out by Donald Sisson, manager of technical services for the L. R. Melson Mfg. Co. Lynn Shuyler, KSU Extension irrigation engineer, will discuss the broadening application of pipelines for irrigation.

The annual business meeting at 4 p.m. will be highlighted by the election of new officers for the organization.

Manhattan Commission Co.

NO SALE THIS WEEK THURSDAY

I
N
C.

SALE EVERY

Thursday

2 1/2 MILES EAST OF MANHATTAN ON US 24



Whether it's beef, pork, or poultry you'll be eating — We hope your digestion is first-rate and you'll have a restful holiday, as we expect to have.

SPECIAL SALE
SATURDAY, NOV. 29
Starts 1:00 p.m.
Alfred Capoun Est.
Reg. Herefords Sale

Joe Raine
Don Wells
Merv Sexton

* **NOV. 29** *
* **Capoun Cattle** *
* **Only —** *
* **No other cattle** *

The market at our sale last week Thursday was steady, a good active market on all classes of cattle. The run of cattle again was heavy. We will have no sale this coming Thursday due to the Thanksgiving holiday, but are expecting a very large run of cattle for next week, Thursday, Dec. 4.

**FULL REPORT
ON OUR SALE
LAST THURSDAY
WILL APPEAR IN
GRASS & GRAIN
NEXT WEEK,
DEC. 2**

FOR ESTIMATES
W. E. DUGAN . . . Alta Vista, 229-6430
JOE RAINE . . . Maple Hill, 663-2226
DON WELLS . . . Manhattan, 539-3744
MERVIN SEXTON . . . Abilene, 263-3449
WALT SUTTER. . . Junc. City, 238-5685
BARN PHONE . . . Manhattan, 776-4815
JOE RAINE, Auctioneer

Consignment Reports
WIBW Radio 6:30 A.M. Thursdays
WIBW - TV 12:15 Noon Wednesdays
BUYING FAT HOGS
At Manhattan . . . Tuesdays & Saturdays
At Alma Every Tuesday
At Eskridge Every Wednesday
Buying Hours 8 a.m.-12: all locations.
For information call the barn in Manhattan, PR6-4815. Or you may call Joe Raine at Maple Hill 663-2226, or Eskridge yard 449-2347, or Alma yard 765-3841.

Nothing Sweet In Sugar Beet Fracas

GARDEN CITY — Finney County District Court Judge Bert J. Vance last Thursday issued a temporary restraining order against American Crystal Sugar Co., Denver.

The order instructed American Crystal to begin honoring at once its 1969 contract with beet producers in five southwest Kansas counties.

Ark Valley Beet Growers Association initiated the action, saying producers would suffer irreparable injury unless American Crystal began accepting beets at its six dumps in southwest Kansas.

Farmers ordinarily leave beets at dumps to await shipment to the company plant.

Involved are 116 farmers with 22,000 acres of beets in Finney, Kearney, Haskell, Grant and Stanton counties.

The action was the latest in a series of events in which the 1969 sugar beet harvest is becoming the worst on record. The main reason is excessive moisture in the region this year, which reduced sugar content and increased spoilage.

Sugar content of beets has dipped from an average of 14 to 16 percent to less than 3 percent. While tonnage is up, beets have

been spoiling at an unusually high rate.

Because of both factors, American Crystal Nov. 12 told producers in the Ark Valley it no longer could stockpile beets as had been normal procedure.

The company also said it could accept beets only as fast as they could be processed at its Rocky Ford, Colo., plant.

C. W. Briggs, president of American Crystal, met with producers earlier and requested they sign a revision of the 1969 contract to that effect.

Producers refused to sign the agreement, saying it would give American Crystal full control over disposition of the crop with producers taking most of the loss.

As a result, American Crystal refused to accept beets, bringing charges of harassment from

growers.

American Crystal in a statement said:

"This year's beet crop in the Arkansas Valley is the lowest in sugar content in the memory of company officials and is low particularly in the Kansas portion of the company growing area. Compounding the problem is the fact that beets cannot be stockpiled without possible spoilage."

Briggs said, "We just cannot purchase these beets and profitably handle and process them. Without a special agreement, we have to start rejecting beets as unsuitable under the beet contract."

Ark Valley growers placed the value of the 1969 crop at \$5 to \$6 million and estimated many producers could lose as much as \$50,000 unless the crop could be harvested. The restraining orders were served Thursday afternoon by the sheriff's departments in the five counties.

American Crystal officials at a dump north of Holcomb in Finney County ordered the dump closed upon being served the pa-

pers. Later in the day all dumps were reopened to accept beets upon direct orders from American Crystal Denver headquarters.



Proudly Announces
The All New...

Line of Truck Tires THAT WILL SAVE YOU MONEY

HAULSTAR NYLON TRUCK

Size	Ply	Price	Ex. Tax
6.70x15	6	\$18	\$2.40
7.00x15	6	\$23	\$2.85
6.00x16	6	\$16	\$2.39
6.50x16	6	\$19	\$2.62
7.00x16	6	\$23	\$3.00
7.50x16	8	\$32	\$3.65
7.50x17*	8	\$39	\$4.25
7.00x18*	8	\$38	\$3.92
7.50x20	10	\$38	\$5.13
8.25x20	10	\$43	\$6.18

* Available in Haulstar only



POWERSTAR ES NYLON TRUCK

Size	Ply	Price	Ex. Tax
6.70/7.10x15*	6	\$25	\$2.86
7.00x15*	6	\$30	\$3.27
6.00x16*	6	—	\$2.64
6.50x16*	6	\$26	\$2.96
7.00x16	6	\$30	\$3.33
7.50x16	8	\$40	\$4.16
7.50x17	8	\$42	\$4.97

* These sizes are pinned for studs



On K-15 North of the Square Phone ME 2-2167
CLAY CENTER, KANS.

Also available at Rex's Deep Rock in Abilene
and Rex's OK Tire Store, Grant Ave., Junction City

Gifts a father or husband will really appreciate—

- | | | | |
|---|--------------|--|--------------|
| Insulated sweat shirts with hood | \$5.95 | Same as above but 80,000 BTU | 169.95 |
| Insulated jackets | 8.35 & 12.25 | Air tanks | 16.50 |
| Servis insulated pacs .. | 13.99 | 1/2 hp red & white best quality air compressors, Christmas special (while they last) | \$79.95 |
| 3 ton hyd. jacks | 14.95 | Same as above but 3/4 hp | \$89.95 |
| 5 ton hyd. jacks | 17.95 | Engine heaters .. | 7.59 & 10.65 |
| 8 ton hyd. jacks | 19.95 | 50' 12 ga. extension cord .. | 7.79 |
| 12 ton hyd. jacks | 25.75 | 100' 12 ga. extension cord .. | 13.79 |
| Handyman jacks | 21.49 | Tractor radios | \$64.95 |
| 15" crescent type wrench .. | 5.89 | 14 pc. open end wrench set 3/8" to 1 1/4" | \$22.95 |
| 6 amp battery charger .. | 13.95 | | |
| 6A battery charger .. | 13.95 | | |
| 10A battery charger .. | 18.19 | | |
| Queen-B space heater, 50,000 BTU, completely automatic and safe | 129.95 | | |

HOLT FARM SUPPLY

ITCO Next To Sale Barn — MANHATTAN

LETTERS

BOY, WERE WE DUMB!

Once in a while one sees something in a newspaper that he can get a big laugh out of, and the Grass & Grain of Nov. 18 does the trick.

I'm referring to the picture of the man standing by his combine with the heading a Super Big One. The combine, the article says, is owned by Fred Beekman, Odell, Nebr., and can thresh 60 bushels a minute. I doubt if there are very many combines that will unload that many bushels after it is threshed, let alone thresh it. Think of the trucks needed to haul it away!

Now, let's take that 25 mile an hour speed. Can't you just see him speeding along in the field at that speed? I doubt if it will run 25 miles an hour down the highway. Let's question more statements like that, or people will think with that kind of equipment we don't have to work very much.

Nevertheless, I enjoy Grass & Grain.

Lawrence Katzer
NEODESHA

Of all the dumb mistakes that have appeared in Grass & Grain over the years, the cutline under that picture must rank close to the top. Readers of Grass & Grain may consider it an act of mercy if they do not remind us further of that particular bit of empty-headedness.



Johnny Kaw Says:

"Sports should be considered as the dessert with the main course in School."



AGGIE HARDWARE
1205 Moro MANHATTAN

Dr. James Crow: father of his country's whiskey.



James Crow developed the first quality-control distilling process—and created smoother, mellower Old Crow.

Nothing finer has happened to Bourbon in seven generations. Old Crow.

Japan Wants More Beef
Production of beef in Japan jumped 15 percent this year as consumer demand still strips the rise in domestic output, says the Agriculture Department.
Therefore, Japanese meat imports are expected to increase by 18 percent this year to meet the demand. Foreign Agricultural Service in a report.
Japan continues to be a net importer from Communist China for health reasons, but has lifted restrictions on other sources, including Ireland and Malaysia. Other suppliers include the United States, Canada, Australia, New Zealand, New Zealand and the Republic of South Africa.

IRON SPECIAL
and all extras 16' header
EQUIPMENT
d painted. \$325
up for 4010. \$750
5 tractor \$125
ings \$100
ight for hauling grain \$45

NEW MACHINE SHED
Dennis Cooley (left) and Arnold Swanson of Gypsum are shown here building a new machine shed on the James Pettie farm south of Gypsum. Part of the material was salvaged from a shed that was blown down last June.

CHLICKAU HEREFORDS
Dec. 6, 1969 10:30 a.m.
Have lunch with us

PRODUCTION SALE
AND THE DISPERSION OF THE
A. R. Schlickau Estate
HAVEN, KANSAS — at the ranch 1 mile south, 1/4 east of Haven, just off Highway K96.

80 BULLS ● 140 FEMALES
Serviceable Age Cows with calves at foot, and bred and open heifers.
FEATURING THE GET & SERVICE OF:
TEX REAL ONWARD 178; LJC ONWARD 51st and other Schlickau herd sires

If you are looking for cattle with a little more size, bone and ruggedness, be with us Sat., Dec. 6. We are selling our first in class Heifer at Phoenix and Champion Female at Denver, Amarillo and Fort Worth, along with other outstanding bloodlines.
FREE DELIVERY on the purchase of Four Lots or More, to One Address.

For further details and your copy of our catalog, contact:
GEORGE SCHLICKAU
Haven, Kansas 67543
Phone 465-7749
or
HARRY SCHLUCKAU
Argonia, Kansas 67543
Phone 478-2392

CHLICKAU HEREFORDS
HAVEN KANSAS



NEW MACHINE SHED
Dennis Cooley (left) and Arnold Swanson of Gypsum are shown here building a new machine shed on the James Pettie farm south of Gypsum. Part of the material was salvaged from a shed that was blown down last June.

WICHITA HOSPITALS HIKE RATES AGAIN
Room rates have gone up again at Wesley and St. Francis hospitals at Wichita. The increases amount to \$2 to \$5 per day. New rates at St. Francis are \$45 a day for a private room, \$39.50 for a ward. Rates vary at Wesley. Some are higher and some are lower than the St. Francis rates. St. Francis had 831 beds; Wesley, 674.

5-Cent Hershey Bar Is No More

It was never a subject that came up very often in conversation but one could always tell something about the world price of chocolate by the size of Hershey's 5-cent chocolate bar.
If the price was normal the size of the nickel bar was one ounce. When the price got higher the bar shrunk to 3/8 of an ounce, but the price stayed at a nickel.
The price has stayed at a nickel, tho recently the size has gone down to 3/4 of an ounce.
Soon, there will be no more price indicator. Hershey Foods Corporation has announced that it is discontinuing its 5-cent candy bar, the cornerstone on

which founder Milton Hershey built his chocolate empire.
Hershey makes bars in various sizes. Presumably the smallest will be a dime bar, after current inventories are sold.

SHORTHORN LASSIES NAME MRS. REYNOLDS
Mrs. Carol Reynolds of Cuba has been elected president of the Kansas Shorthorn Lassies, auxiliary to the Kansas Shorthorn Association. Other officers are Mrs. Allen Eller, Greensburg; Mrs. William Sluss, El Dorado; Mrs. Norman Roux, Moundridge; Mrs. Leo Schmitz, Marysville; Mrs. Edgar Crockett, Kinsley; Mrs. L. M. Selanders, Garnett; and Mrs. Wallace Lindberg, Galva.

MAJOR BANKRUPTCY INCREASE AT WICHITA
Bankruptcy petitions have reached record heights in district court in Wichita, which serves that city and a large portion of Kansas. In eight months — March thru October — bankruptcy filings were 86% over a year ago. Business bankruptcies in the same period were up from 20 to 54 for the same period.

MR. HOG FEEDER:
SAVE \$7
Per Ton On Your Feed
BOOK 10 TONS OR MORE
Ask A KEY Dealer Or Call
KEY MILLING CO.
Clay Center, Kans.

We Always Sell For Less

A complete line of building materials, pre-finished paneling, builders hardware, doors - dimension lumber - plywood - floor tile - Everything for contractor, farmer & "do-it-yourselfer"

ALL NECESSARY MATERIALS TO REBUILD OR BUILD POLE BARN, SHEDS, OUTBUILDINGS

Corrugated metal sq. ft. .995	3/4" Particle Board, Reg. 4.16
2x4 — 2x6 dimension lumber, board ft. — 10c	Slightly damaged \$2.56
1/2" 4x8 Particle Board, Reg. 3.52	1/4" 2x4 sanded plywood each 49c
Slightly damaged \$1.95	3/8" 4x8 CD sheathing plywood \$2.56
	2x4 8' studs, each 53c

PANELING

4x7 Lauan Panels — Choice of 4 colors **\$3.19**

The Punishment Panel (by Georgia-Pacific) 4x8 Vinyl Covered Oak **\$3.59**

BLANKETS
(while they last)
100% Virgin Acrylic & Thermal Weaves reg. 9.99 to 10.99 **\$4.95 Each**

BEDDING
100% COTTON PERCALE SHEETS
King, flat or fitted (Reg. 5.75) **\$3.95**
Queen, fitted (Reg. 4.27) **\$2.95**

Men's 1-Piece Insulated UNION SUITS — 100% Combed Cotton (\$5.49 Value) 3 pr. \$9.95

Reg. 11.97
MEN'S WORK SHOES 7.95

Reg. 13.97
LACED BOOTS 8.95

1320 WATT ELECTRIC HEATERS
Reg. 9.77 **Sale 6.95**

Recliners & Recliner Rockers
CLOTH OR VINYL COVERED
Don't Wait — They Won't Last
Regularly Selling At Stores — 89.95 - 129.95
AT MORRISON'S While They Last
\$59.95
Your Choice

FENCE CHARGERS — Solid State, 110V 3800 total volt output, will handle 3 miles of fence. Reg. \$38.95 SALE \$24.95 and \$19.95

Largest Supply of Building Materials In Central Kansas. WE WILL NOT BE UNDERSOLD!

MORRISON Warehouse & Lumber
Your Discount Building Supply Headquarters
724 North 13th SALINA, KANSAS TA 3-3001

November 25, 1969

transOcean, based in Houston, is engaged in petroleum, natural gas production and exploration in North America. Swift, a diversified corporation, said funds for the transaction will be generated internally as described as the acquisition in Swift's history.

We got GROWING PAINS

attle
ed.
oom
head
WIBW Mondays 6:35 am
k Sale Barn
er & Auctioneer
BARN 913 733-2381
st Advertiser"

Saturday DECEMBER 6
Starts 1:00 P.M.
MELVERN, KANSAS

Mr. and Mrs. I. E. Gault, following described property in the Gaults Building, Street in Melvern, Kansas. Philco refrigerator, good m rockers; 7 piece dinner chest of drawers; portable separate speaker; (old) lamp; 2 typewriters (old); old piano; wooden bar; ment of household goods. t's business in early 1960's.

DERSON
ka Roy Rickert, Clerk

HOLSTEIN DISPERSAL

Friday NOVEMBER 28
Starts 1:00 p.m.
Lunch Served

at the place 1 mile east, north, 1/2 mile east, then erg, Kans.; or 1 mile south, then 5 miles west, 1 mile south in field.

old Ayrshire cow, to freshen in Dec.
old Holstein cow, fresh in Aug.
old Ayrshire cow, fresh in July
yr. old Holstein cows, to freshen in Dec. & Jan.
old Holstein cow, to freshen in Jan.
old Holstein cow, fresh in April
yr. old Holstein heifer, freshen after Jan. 1
oming 2 yr. old Holstein heifers, to freshen in Feb.
oming 2 yr. old Holstein heifers
nearling Holstein heifers
olstein heifer calves, 3 mos. old
stein heifer baby calf

ithin 30 days of sale.

SHIPMENT
c milker, with No. 73 De electric motor, with ce

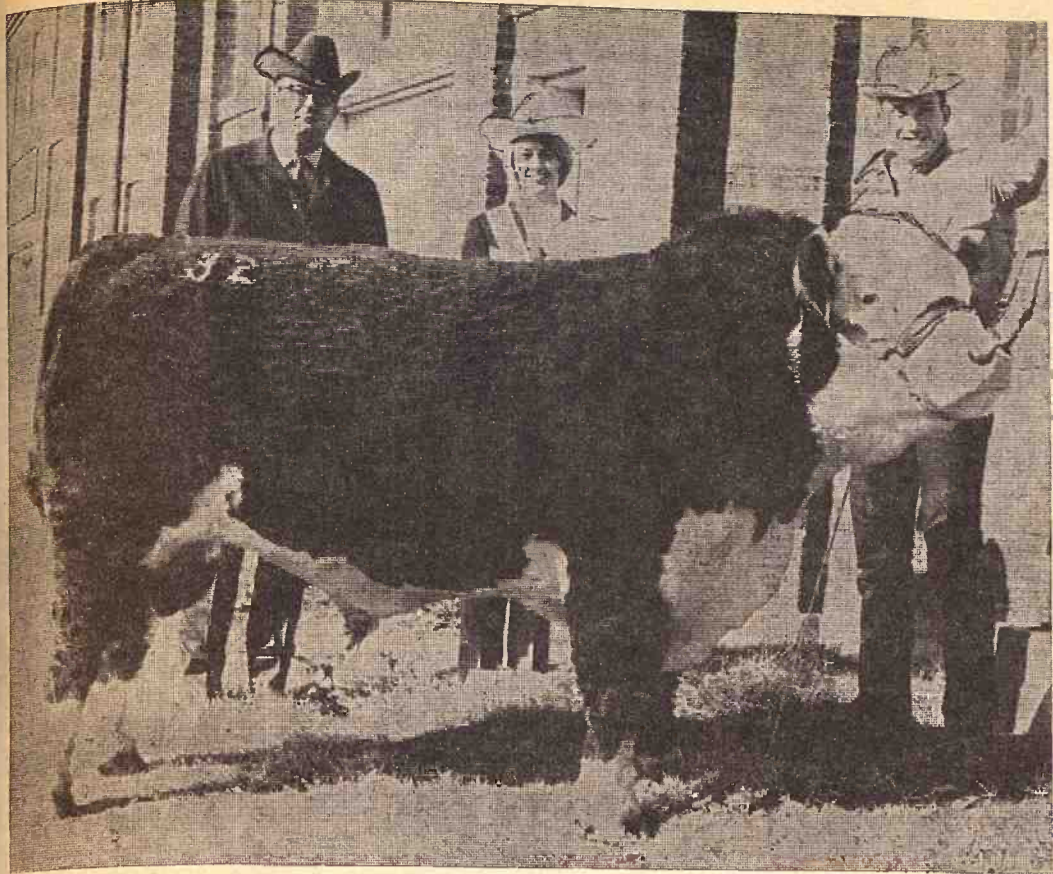
wash vat

ASH

IA LUHRING
Phone AL 3-7691

en, Livestock, Real Estate
St., Fairbury, Nebr., Phone
Nebr., phone 793-3005; Dr.
793-3081.

, Washington, Kans.



BEST POLLED HERFORD AT BLUE RIBBON SHOW

Grand champion bull at the Kansas Polled Hereford Association's Blue Ribbon show at Hutchinson was this 2-year old, Alf Pawnee Rocket 32, owned by Alfalfa Lawn Farms of Larned. The bull sold for \$1275 to Lygrisse Polled Herefords of Benton.

Shown here are Jim Strawn, Clinton, Okla., show judge; Joyce Flory, Baldwin City, Miss Kansas Pollette; and John Lewis of Alfalfa Lawn Farms.

U.S. Judgment on Gold Price Looks Good

The price of gold has continued to slide on Europe's free markets. In London and Zurich it hit record lows for two consecutive days last week.

The fall in the gold price was seen in financial communities as a sign of returning confidence in the strength of paper money.

It was also a victory for the U.S. policy of refusing to increase the official gold price of \$35 an ounce last year when the metal was under tremendous speculative buying pressure.

In effect, an increase in the official price would have devalued the dollar. The drop in the price of gold on the free market, where the rate is allowed to fluctuate, has served to take pressure off the dollar.

At the height of the speculative rush into gold last spring, the metal was selling for as much as \$44 an ounce on the free markets.

Last week it was \$36 an ounce

in London, the first time the London price had dropped under \$37 an ounce since the free market opened here on April 1, 1968.

In Zurich, gold was selling between \$36.00 and \$36.25 an ounce.

The declining price in recent months has followed the pattern the United States and West European governments sought when they established free markets in gold in March 1968. It has worked to the disadvantage of South Africa.

The free market gold price has been declining this year as the world's monetary system regained strength. The French devaluation, the West German revaluation, the British economic recovery all helped the return to stability.

South Africa, which mines 80 percent of the free world's gold, has sold in the free market, driving the price down.

At first, South Africa held off gold sales, hoping the free market price would rise to its advantage. But as the free market price dropped, South Africa has been selling at the highest price it can get.

May Be A Need For More Sugar Production

The United States may need at least 10,900,000 tons of sugar in 1970 and another 100,000 could be required to offset the federal ban on cyclamate, the artificial sweetener, the Agriculture Department announced.

The department said it is considering that 6,755,000 short tons of sugar be supplied from U.S. mainland and offshore areas and that 4,145,000 more come from foreign suppliers.

The proposed 1970 sugar quota compares with 10,800,000 tons

AUCTION

To settle the estate of the late Herman A. Bammes, I will sell at public auction his garage equipment and shop tools at the garage located on Main St. in Leonardville, Kans.

Sat., November 29

Starts 9:00 a.m.

This is a large sale and will take all day. Sale will stop 1 hour at noon.

GARAGE SALE

Air compressors; battery chargers; brake rivet machine; dispensers oil and grease; forge; greaser, high pressure; chain hoist;

Grinders, valve, hard seat and bench; electric drills and saws; floor jacks; hones, pin, cylinder, brake cyl.;

Lathes, wood and armature Reamers; taps and dies; micrometers; timing and test equip.; special wrenches, sockets, tools; vises;

Torches, welding and cutting Radiator repair tank; work benches; shelves; cabinets; new and used auto parts;

Model T parts Model A & B parts, early V-8 to now Ford, Chev. and other model parts

46 Ford car Hardware and brass fittings Shop built tractor made out of Model A

Model A and T parts and manuals, books Many small items used in small town garage.

Terms: Cash day of Sale.

Elmer L. Bammes,

Adm. of Herman A. Bammes Estate. Clerk: C. T. Benninga, Leonardville, Kans. Aucts: Foster Kretz Auction Service, Clay Center, Kans., ph. WA 6-4422, Morganville.

asked thus far for 1969.

Officials said population increases and other factors initially indicate a need of 11 million tons, but that "evaluation of other conditions" is unusually complicated.

For one thing, sugar requirements of fruit packers next year may not reach the record level of 1969.

"The cyclamate order banning the artificial sweetener could result in sugar usage of say, 100,000 tons but this depends in part upon the Food and Drug administration's attitude toward mixtures of saccharin and sugar or corn syrup," the department said.

November 25, 1969

Grass & Grain 31

Widespread use of such mixtures could have a net adverse effect on sugar consumption, officials added.

Recommended quotas and proportions by areas, in short tons, included:

Domestic beet sugar area, 3,263,333 tons; mainland cane area 1,186,667; Hawaii 1,150,000; Puerto Rico 1,140,000, and Virgin Islands 15,000.

FINAL WEEK

FALL SUIT SALE

Entire Stock Of Suits, Sport Coats 20% Cash Discount

HYDE PARK CURLEE • MERIT SEWELL 1 Rack, 1/2 Price

Bauer Clothing

"For Men & Boys" CLAY CENTER, KANSAS OPEN EVERY THURSDAY NIGHT

HALF SECTION OF GRASSLAND

HOUSE AND BARN 25 Miles West of Topeka

In the Topeka phone book area. Good fences. Good roads. Worlds of water. Small 2-bedroom modern home. Barn.

For Sale By **JIM KIRKEMINDE** 135 E. 29th Topeka, Kans. Ph. 266-4590

Wednesday

AUCTION SALE

DECEMBER 3

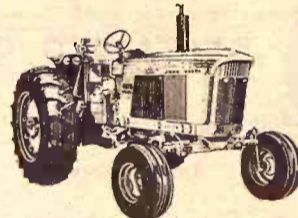
Starts 10:30 a.m.

Lunch Served

Due to the death of my husband, I will hold a clean sweep farm sale at the farm located 8 miles east of Manhattan on Hwy. 18 to Zeandale, then 1/2 mile north, then 1/2 mile east.

Farm Machinery

1965 Ford 1/2 T pickup
1961 John Deere 4010 diesel tractor



Set of dual wheels for 4010

1959 M&M 5 Star tractor, propane

1952 M&M Z-A tractor, propane

1962 John Deere No. 55 combine, 14' cut, with corn head

Gehl field cutter with 2 row & 1 row attachments

Roll-O-Cone for 14' cutter bar

1962 John Deere F145 5-14 semi-mtd. plow

John Deere 16-5 wheel disk

John Deere 28' springtooth harrow, 3 pt., foldup wings

1968 Century weed sprayer with 6 row booms, 150 gal. tank, mounted

1963 Clark Flex-O-Tine 15' harrow

Gotcher 14' anhydrous fertilizer with 100 gal. tank, mtd.

100 gal. anhydrous tank

John Deere No. 494 4 row planter with fertilizer boxes

John Deere No. 40 4 row cultivator

John Deere 4 row weeder, nearly new

Grain-O-Vator No. 30

1966 New Holland 5' rotary cutter

1950 M&M 16-8 grain drill

36' Viking elevator with gas motor

Terms: Cash

Not Responsible For Accidents

MRS. LAWRENCE EVINS, Owner

Aucts: Glen Applegate and Lawrence Welter

Clerk: Harold Carlson

MR. HOG FEEDER: SAVE \$7 Per Ton On Your Feed BOOK 10 TONS OR MORE Ask A KEY Dealer Or Call KEY MILLING CO. Clay Center, Kans.

LIVESTOCK

AUCTION

Sale Every Wed.

1:00 p.m.

KCNK MON.-WED.-FRI. 6:45

Auctioneers LARRY LAGASSE CH 31714 ROLLIE LAGASSE CH 32215

For info. or estimates TOM WALKER Barn 243-1074 Home 243-1674

Concordia Sales Co.

CONCORDIA

KANSAS



LAST CUTTING OF ALFALFA

George White of R.R. No. 1 Canton is shown here picking up the last cutting of alfalfa hay for this year. He said the hay was rained on after it was cut and again after it was baled. His son, James, was driving the truck. White operates a cattle farm with 150 Angus cows and 20 Charolais cows.



Bob Fischer

AREA MANUFACTURER ON NATIONAL BOARD

HOLTON—Robert L. Fischer of the BMB Company here has been elected a director of the Farm Equipment Manufacturers Assn. at its annual convention.

LONGFORD SCHOOL VOTE IS DECEMBER 13

LONGFORD—The date for voters to accept or reject a proposal to close the Longford High School has been set. It's December 13. If the school is closed, students will go to either the Wakefield or Clay Center high schools.

KAW VALLEY IRRIGATORS CONVENE AT TOPEKA
TOPEKA—The annual meeting of the Kaw Valley Irrigators Association will be held Monday, December 8, at the Holiday Inn North at 10 a.m.

FIRE DESTROYS FARM NEAR CHESTER, NEBR.
CHESTER, NEBR.—Fire gutted the home, leveled a barn, and damaged livestock pens at the farm of Maurice Mitchell southwest of here (northwest of Belleville, Ks.).

RILEY NFO MEETING IS DECEMBER 1

The December meeting of the Riley County NFO will be at the Randolph grade school at 7:30 p.m., Monday, December 1.

FORMER JD DEALER BOB KONGS IS DEAD
BELLEVILLE—A. Robert Kongs, former owner of the John Deere agency in Belleville, died last week at the age of 48. Kongs was one of three brothers who have owned JD dealerships along US36

REGISTERED POLLED & HORNED

TUES., DEC. 2

Starts 9:30 a.m.
Lunch Served

93 HEAD

1/2 mile north of Ceresco, Nebr. on US 77 or 10 miles south of Wahoo, Nebr.; or 15 miles north of Lincoln, Nebr. on US Hwy. 77.



SELLING 93 HEAD

33 registered Shorthorn cows
33 registered Shorthorn bull & heifer calves from above cows
5 registered Shorthorn cows, coming with 2nd calf
3 registered Shorthorn heifers with 1st calves at side
8 registered Shorthorn heifers, coming with 1st calf
6 purebred Shorthorn heifers coming with 1st calf
1 registered Shorthorn bull, 3 years old
1 registered Shorthorn bull 2 years old

This is an outstanding set of cattle and should appeal to breeders of registered herds, 4-H Club and FFA members and all cattlemen. Cattle sell at 1:00 p.m.

FARM MACHINERY & MISCELLANEOUS

Farm machinery sells first. This includes a very large inventory of well maintained pieces, such as: 2 tractors, 1965 IHC 706 gas, FH; and 1953 IH Super M gas. A 1957 Ford 3/4 T V8 pickup with stock rack.
1965 IH 403 combine with cab, 14', power steering
All the tillage too's, cultivating, electric fencing etc., etc., and some household items.

CLAYTON JOHNSON, Owner

Delbert Manske & Glenn Karloff, Auctioneers & Clerk
443-3512 443-3584 — Wahoo, Nebr.

LAND AUCTION

400 ACRES

CLOUD COUNTY LAND

Thursday, December 4, 1969

Starts 10:30 a.m.

SALE WILL BE HELD IN YOUTH BUILDING
GLASCO, KANS.

Location Of Land: 4 miles east and 2 1/2 miles north of Glasco
Tract No. 1 — The south half (S 1/2) of the Northwest Quarter (NW 1/4) of Section 34, Township 7 South, Range 4 West, Cloud County, Kansas, consisting of 80 acres more or less. Corn 10 acres; wheat allotment 22; feed grain base 21; conserving acres 8; pasture 4 acres.

Tract No. 2 — The Northeast Quarter (NE 1/4) of Section 34, Township 7 South, Range 4 West, Cloud County, Kansas, consisting of 160 acres more or less. Corn 10 acres; wheat allotment 35; feed grain base 32; conserving acres 12; pasture 48 acres.

Tract No. 3 — The Southeast Quarter (SE 1/4) of Section 34, Township 7 South, Range 4 West, Cloud County, Kansas, consisting of 160 acres more or less. Wheat allotment 65; feed grain base 8; conserving acres 5; pasture 30 acres.

Purchaser will receive landowner's one-third share of wheat crop and ASCS payments.

Method Of Selling: Tracts No. 1, 2 and 3 will be offered separately and then in a unit to sell in whichever manner brings the highest price.

Possession: March 1, 1970 on open ground. On ground now planted to wheat as soon as the 1970 crop is harvested.
Terms: 29% down. Balance in three equal annual payments together with interest at 6 1/2% per annum on unpaid balance, or all cash will be accepted.

Sawhill Brothers, Owners

For Additional Information Contact:
Rowland Real Estate Agency, Great Bend, Kansas
Phones: 316 792-4497 & 316 793-8257
Gerald Zimmer Real Estate, Beloit, Kansas, Phone 738-2010



LEONTYNE PRICE

Release More Water At Milford, Tuttle Creek

Water releases at Milford and Tuttle Creek reservoirs have been stepped up to keep up navigational levels at Kansas City.

Cold weather upstream on the Missouri river has cut the normal flow of water.

At the start of this week the rate of discharge at Milford was at 2500 cubic feet per second.

Both reservoirs were slightly above conservation level when the increased outflow started. By the end of the week both should be two feet below the conservation mark.

LEONTYNE PRICE AT WICHITA IN JANUARY

Leontyne Price, leading soprano of the Metropolitan Opera, will appear in Wichita January 11. The recital will be at 8:30 p.m. at the Century II concert hall.

RED CLOVER SEED CROP LIGHTEST SINCE '57

The red clover seed crop in Kansas in 1969 was the lightest since 1957. The State Crop Reporting Service figured the crop at 675,000 pounds of clean seed, lightly smaller than last year's crop. About 9000 acres were harvested.

BEST COWGIRL AT INTERCOLLEGIATE SHOW

Patti Mattox of Derby won the Best All-Around Cowgirl title at the Inter-



Patti Mattox

collegiate Rodeo association competition at Fargo, N.D. She won first place in the calf roping and barrel racing events. She attends Kansas State University and is a member of the K-State rodeo team.

TWO G&G AREA MEN ON HEREFORD BOARD

New members of the board of directors of the American Hereford Association are George Schlickau of Haven, Kansas, and Alfred Meeks, Taylor, Nebr.



Sylvan SALE CO., INC.

Sylvan Grove, Ks.
FRIDAY SALES EACH WEEK
Selling 1000-1500 fresh country stocker and feeder cattle, calves and stock cows each week.
Mike Meyer 913-526-3535
Micky Meyer 913-526-3225

Quinter LIVESTOCK COMM. CO.

Quinter, Ks.
MONDAY SALES EACH WEEK
Selling 1000-1500 fresh country stocker and feeder cattle, calves and stock cows each week.
Jay Meyer 913-754-3354

Meyer Stocker Feeder Order Buying Service

Featuring Cattle Direct From The Country
Mike Meyer, Sylvan Grove, Ks.
Micky Meyer, Sylvan Grove
Jay Meyer, Quinter, Ks.

**Friday
DECEMBER 5**

Starts 10:30 a.m.
Lunch Served

AUCTION SALE

As we sold the farm, we will sell the following property at public auction located 6 miles west on Highway 36, 7 1/4 miles south of Marysville, Kans.; or 4 miles northwest of Waterville, Kans. Watch for sale signs.

LIVESTOCK

13 cows, 4 to 6 years
1 cow with calf
1 Hereford registered bull
1 spotted saddle horse, well broke
9 Hamp sows
3 Hamp & York cross sows
6 Hamp & York gilts
30 Hamp & York pigs
1 Hamp boar

Farm Machinery

John Deere G, 1952 tractor
JD A, 1944, with scoop & blade
John Deere mounted lister, with fertilizer boxes
John Deere B, 1946
John Deere cultivator for A, B, G
John Deere curler; JD No. 5 mower
John Deere 14T baler
IHC wheel disc; IHC side rake
Kelly Ryan elevator
G. I. corn picker

G. I. fertilizer spreader
1949 21A MH combine
2 hay trailer; box wagon
IHC plow, 3-16 on rubber
M-M 2-14 plow on rubber
A-C grain drill
Sears Roebuck hammer mill & belt
Weed sprayer with hand gun on rubber
PTO post hole digger
Portable loading chute

HAY, POSTS, GAS TANKS, MISCELLANEOUS

1800 bales alfalfa, first, second and third cutting
175 bales straw
300-gal. & 100-gal. gas tanks
Factory built stock rack to fit 1/2 ton pickup, wide box, steel
2 hyd. cyl.; some ear corn; hog trough, waterers & feeders; cement blocks; stock tanks; hog panels; old iron and many other articles too numerous to mention.
Some household items.

TERMS: CASH

Roy & Dorothy Baumberger, Own.

Aucts: Raleigh Breeding, Marysville; Don Roche, Blue Rapids. Clerk: Citizens State Bank, Waterville.

Sylvan SALE CO., INC.

Sylvan Grove, Ks.
FRIDAY SALES EACH WEEK
Selling 1000-1500 fresh country stocker and feeder cattle, calves and stock cows each week.
Mike Meyer 913-526-3535
Micky Meyer 913-526-3225

Quinter LIVESTOCK COMM. CO.

Quinter, Ks.
MONDAY SALES EACH WEEK
Selling 1000-1500 fresh country stocker and feeder cattle, calves and stock cows each week.
Jay Meyer 913-754-3354

Meyer Stocker Feeder Order Buying Service

Featuring Cattle Direct From The Country
Mike Meyer, Sylvan Grove, Ks.
Micky Meyer, Sylvan Grove
Jay Meyer, Quinter, Ks.

LAND AUCTION

400 ACRES

CLOUD COUNTY LAND

Thursday, December 4, 1969

Starts 10:30 a.m.

SALE WILL BE HELD IN YOUTH BUILDING
GLASCO, KANS.

Location Of Land: 4 miles east and 2 1/2 miles north of Glasco
Tract No. 1 — The south half (S 1/2) of the Northwest Quarter (NW 1/4) of Section 34, Township 7 South, Range 4 West, Cloud County, Kansas, consisting of 80 acres more or less. Corn 10 acres; wheat allotment 22; feed grain base 21; conserving acres 8; pasture 4 acres.

Tract No. 2 — The Northeast Quarter (NE 1/4) of Section 34, Township 7 South, Range 4 West, Cloud County, Kansas, consisting of 160 acres more or less. Corn 10 acres; wheat allotment 35; feed grain base 32; conserving acres 12; pasture 48 acres.

Tract No. 3 — The Southeast Quarter (SE 1/4) of Section 34, Township 7 South, Range 4 West, Cloud County, Kansas, consisting of 160 acres more or less. Wheat allotment 65; feed grain base 8; conserving acres 5; pasture 30 acres.

Purchaser will receive landowner's one-third share of wheat crop and ASCS payments.

Method Of Selling: Tracts No. 1, 2 and 3 will be offered separately and then in a unit to sell in whichever manner brings the highest price.

Possession: March 1, 1970 on open ground. On ground now planted to wheat as soon as the 1970 crop is harvested.
Terms: 29% down. Balance in three equal annual payments together with interest at 6 1/2% per annum on unpaid balance, or all cash will be accepted.

Sawhill Brothers, Owners

For Additional Information Contact:
Rowland Real Estate Agency, Great Bend, Kansas
Phones: 316 792-4497 & 316 793-8257
Gerald Zimmer Real Estate, Beloit, Kansas, Phone 738-2010

Assn. Of Conservation Districts Convention At Wichita

WICHITA — The 25th annual convention of the Kansas Association of Soil Conservation Districts will be held here November 1-2.

The Broadview Hotel will be the convention site for the silver anniversary of the state organization of county districts formed in 1945.

Harold Johnson of Dwight is

president of the organization. Directors are Bartos Brown, Jennings; Nathan Hayse, Mullinville; Lyle Baure, Harper; and Pat Sauble, Cedar Point.

The session of Monday morning, December 1, will feature a keynote address by Richard Longmire, Pauls Valley, Okla., a director of the national association. Senator Bob Dole will ad-

dress the afternoon session. A series of committee sessions is also planned for the afternoon, and meetings will be held that evening.

Entertainment will be by the Nau Pau Polynesian dancers.

More committee meetings will follow on Tuesday, with Governor Robert Docking addressing the association at a noon dinner.

Polled Bulls Average \$540 At Blue Ribbon Sale

HUTCHINSON — The Blue Ribbon show of the Kansas Polled Hereford Association here grossed \$17,760 with 29 bulls averaging \$540 and five heifers \$402.

The champion bull, consigned by the John Lewis family of Alfa Lawn Farms of Larned, sold for \$1275 to Lygrisse Polled Herefords of Benton.

The reserve bull sold for \$700 to Walbert Ravinstein of Rago. Consignor was Claude Trueblood & Son of Osage City.

The champion heifer, consigned by Trueblood, brought \$500 from V.A.D. Polled Herefords of Sterling.

The reserve champion heifer consigned by Mrs. Harry Smith & Sons, Richfield, sold for \$475 to Ray Hotman of Muscotah.

In addition, nine club steer calves sold at the auction for \$190 average.

Arnold Wittorff of Inman was sale manager. Gene Watson was auctioneer.

CITY SEDGWICK COUNTY CONSERVATION WINNERS

WICHITA — Bankers Conservation awards in the Sedgwick County Soil Conservation District will go to Paul Farber and W. E. Shields, Derby; Clarence Maechten, Clearwater; Pete Leendertse, Wichita; and Maynard Mohr, Derby.

Marshall County Hereford Assn.

21st SALE

Sat., Dec. 6 at 12:30 Noon

In The Marysville Sale Barn
¼ Mile West of Marysville off Hwy. 77

MARYSVILLE, KANS.

30 BULLS • 2 FEMALES
(28 Bulls Are Serviceable Age)



THESE ARE ALL CLEAN-PEDIGREED CATTLE FROM THE FOLLOWING HERDS:

CLYDE BREEDING, Herkimer
DON BREEDING, Marysville
GERHARDT DETTKE & SON (Polled), Marysville
GERDES POLLED HEREFORDS, Wymore, Nebr.
G & R HEREFORDS, (Polled), Marysville
WALDEMAR HANKE & SON, Waterville
HENRY W. HOPPENSTEDT, Herkimer
RAYMOND H. SCHELLER & SONS, Waterville
HAROLD STUMP, Blue Rapids

Raleigh Breeding, Auctioneer

For Sale Catalog Contact:

ARLYN SCHELLER, Rt. 1 Marysville, Kans. 66508

AUCTION SALE

Wednesday
NOVEMBER 26

Starts 11:00 a.m.

Lunch Served

Having purchased Ace Hardware in Hebron, I will sell at public auction at the place 3 miles north of Hebron, Nebr., on Hiway 81 to Monument Corner then 8 miles east, 1 north, 1 ¼ east or 2 miles south ¼ west of Alexandria or 1 ¼ east of Gil-ead then 5 miles north on Hiway 76 then ¼ mile west.

MACHINERY

1963 Kent 18' folding spring tooth on rubber
New Holland 2-wheel side rake with rubber mounted teeth
Allis Chalmers round baler
IH No. 448 4-row mounted rotary moldboard lister, rubber press wheels and marker
IH No. 463 4-row mounted cultivator
IH No. 100 balance head fast hitch, 7' mower
8 2-point blade
IH No. 27 7' mower
IH No. 24 mounted picker
IH 4-row Go-Dig
IH No. 250 2-row cultivator
IH 2-row mounted lister
Kewanee 12 ½' wheel tandem disc
Kewanee 11' wheel tandem disc
Kewanee 36' elevator
MM 4-16 Power Trol plow on rubber
2 John Deere go-digs
IH 4 bar side rake
Oliver 16x8 grain drill
Wood's Bros. single row corn picker
New Idea 2-wheel manure spreader
10' Duckfoot; 24' harrow
John Deere hammer mill
Case 6' Oneway
Case side rake; wheel bale loader
Sickle head for Gehl 1-row en-silage cutter
4 wheel trailer on Model T chassis
MM 216 plow
2-wheel trailer
International No. 25 mower for parts
Grain auger
Deluxe fenders to fit 560 or 656 tractor
Crown fenders to fit most IH tractors

POULTRY

40 Black Australaup hens
20 white hens
Several Bantam hens and roosters

TRACTORS

1963 IH Model 560 gas tractor fast hitch, TA, live PTO, power steering, excellent condition
1956 IH Model 300 Utility tractor with TA, live PTO
Freeman loader mounted on IH tractor
1949 IH Model H tractor
1942 JD Model A tractor
COMBINES
1954 Baldwin Model A 14' combine
1954 Baldwin Model A 12' combine, with oab
8' pickup to fit Baldwin combine
Allis Chalmers 5' combine

TRUCKS

1968 Model 160 Honda motor cycle like new, 3300 actual miles
1966 Chevrolet ¼T pickup with Fleetside box, grain sides and stock rack, 25,000 actual miles
Good 1959 1 ½T Chevrolet 13 ½' fold down box, Harsh hoist, 39,000 miles
Good 1949 GMC 2T truck, 2-speed axle, fold down box, Harsh hoist
Truck grill guard; truck flares
Front axle for 1 ½T truck

HARDWARE MERCHANDISE FEED

600 bales alfalfa, outside
1000 round bales alfalfa in barn
1968 silage pile

HORSES

4 yr. old Shetland Chestnut mare
3 yr. old Shetland blue roan stallion

HOUSEHOLD GOODS LOTS MISCELLANEOUS

TERMS: CASH.

WILFRID F. HERGOTT

Alexandria Phone 749-4064 or Hebron 768-6053

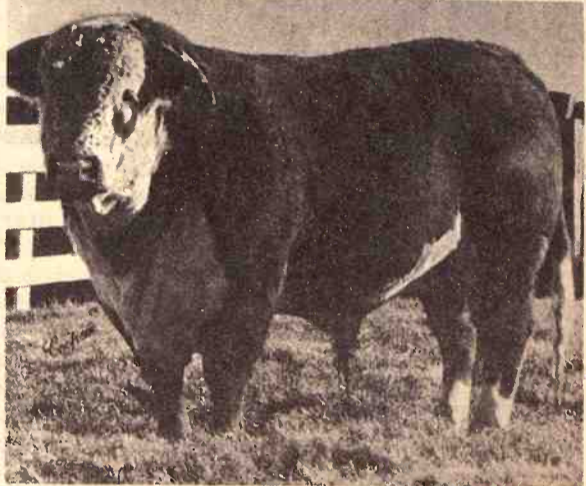
SCHULTIS AND SON AND WOLKEN, AUCTIONEERS
Livestock Real Estate and General Farm Sales

IRVIN SCHULTIS
1109 K Street, Fairbury, Nebr.
Phone 729-2435.

WAYNE SCHULTIS
Diller, Nebr.
Diller Phone 793-3005.

DUANE WOLKEN

Diller, Nebr., Diller Phone 793-3081
CLERK: Thayer County Bank, Hebron, Nebr.



Introducing TT COMMAND 427 from Bergens at Walla Walla, Wash.

Son of TTMCK, Command 82, one of the breed's top carcass bulls. Owned with Strykers.

Also new HH KIMBOLTON H805.
Son of Heathmans 2600 lb. Kimbolton Tiberius IU

FOR SALE

• 20 bulls, 2 years this spring
The tops are still there and they are good.

• 15 bulls, a year old now
Some of the greatest we have raised.

Come soon and have your pick and buy the private treaty way. Gain records available on all bulls.

-OTHER HERD SIRES-

AHR Royal Husker 8, 9, 39 and 41
JPC Tex Onword 25 and 42
S Vanguard 8000 and 8034
AHR Vagabond 739

Under a Total Performance Program that is producing results, we are confident that we can now provide our customers with more profitable Herefords. We invite you to stop by for a visit anytime.

AMSTEIN HEREFORD RANCH

Dedicated to the production of a more profitable commercial Hereford

DUANE PETERS, Herdsman
Phone: Clifton 913 455-3420

BILL AMSTEIN, at ranch
Phone: Clifton 923 455-3628

CLIFTON, KANSAS 66937

Located 8 miles west and 9 miles north of Clay Center, or 4 miles south of Clifton.

LAND AUCTION

Cora M. Holzwarth Estate Sale
THURSDAY, DECEMBER 4, 1969

10:00 A.M.

At the South front door of the Court House, Abilene, Kansas, there will be sold at public auction to the highest bidder: Northwest Quarter (NW¼) of Section Eight (8), Township Fifteen (15) South, Range One (1) East of the 6th P.M., Dickinson County, Kansas.

The above-described real estate will be sold at auction to the highest bidder. The landlord's share of 1969 crops and A.S.C. payments are reserved to seller. Seller will pay the 1969 taxes and covenants that all prior taxes are paid.

Records of the A.S.C. office show 155 acres in cultivation Wheat allotment of 49.8 acres; feed grain base of 70 acres; and conserving base of 9 acres.

The property is subject to tenant's rights of Larry Feltbush under oral lease for 1970 wheat crop and winter barley and any crop benefit payments for same with one-third of landlord's share to buyer. The possession of land planted to wheat (50 acres) and winter barley (3 acres) surrendered to buyer after harvest in summer of 1970. Possession of balance of land surrendered to buyer December 31, 1969.

LOCATION: Farm is located 3 ½ miles west of Holland in Wheatland Township and 1 mile east of the Saline County Line.

TERMS: Warranty deed and abstract for merchantable title will be furnished buyer. Buyer to pay 25% down on the day of sale; balance upon delivery of deed and abstract. Buyer will be expected to sign a written contract of purchase at the time of sale.

Any special terms and variations from above will be announced at the time of sale and will supersede or supplement above information.

FOR FURTHER INFORMATION, CONTACT ANY OF THE FOLLOWING PERSONS:
Ray Wilson, Real Estate Broker & Auctioneer, Abilene, Ks.
John H. Lehman, Executor and Attorney, Abilene, Kansas.

USDA Backs Off On Sale Of Stored Milo

The Agriculture Department announced last Friday it had rescinded its plan to release 13.1 million hundredweight of sorghum grain.

tions earlier had complained that release of the grain "would have a disastrous effect on the market."

The Agriculture Department said it had changed its mind because a Nov. 19 announcement of its sorghum grain plans had brought an "unusually sharp drop in grain sorghum cash market prices."

The department had announced it would terminate on Jan. 15 an extended price support loan program on 1967 and 1968-crop sorghum grain stored in commercial warehouses.

Officials said the grain was needed to help meet U.S. export commitments the rest of this year since current estimates of use are larger than this year's crop.

The department said the intention of the Wednesday announcement was "to give farmers ample time in which to plan for redemption and marketing of the grain sorghum under loan prior to resale loan call on Jan. 15, 1970 and not to reduce farm prices."

As a result of the latest action, the department said the grain sorghum loans will be permitted to continue through regular maturity dates of June 30, 1970, in Oklahoma and Texas, and July 31, 1970 in all other states.

The grain, totaling about 23 million bushels, which the department had planned to bring out of storage, is held in Texas, Kansas, Nebraska and New Mexico.

The coalition which had asked

the department to cancel its order to call in the resealed grain represents 24 organizations including the National Grange, Farmers Union and National Farmers Organization.

SELL EVERY WEDNESDAY

At Onaga 1:00 P.M.

CATTLE AND HOGS

We specialize in farm fresh cattle and hogs. Always plenty of buyers for your animals. If you have cattle to sell, call us and we'll be glad to come out and appraise them.

Onaga Community Sale

Marvin Cottrell, Phone 889-4461 or 889-4665, ONAGA, KS

FEEDYARD AUCTION

SHADY BEND, KANSAS

LINCOLN COUNTY

Saturday, December 6

Commencing at 10 a. m.

--- FEED YARD ---
145 ACRES

1,800 head capacity
Bunk Line Feeders
12 Self Feeders
2 Water Wells
Automatic Heated Waterers in each pen.
New Scales
Trailer House
Ford Truck with John Deere Feeder Box
Oliver Tractor with Davis Loader

Terms: 25% down on day of sale. Balance due when clear abstract showing merchantable title is furnished.

Possession: When purchaser accepts title and pays full purchase price.

Inspection: Real estate may be inspected anytime by calling the auctioneer, or Bob Nelson at Lincoln, Kansas.

The auction will be held on the premises.

Any statement made sale day takes precedence over any printed matter.

SALINE VALLEY FEED YARDS, INC. OWNERS

SALE CONDUCTED BY

VICTOR BROS. SALES, Inc.



Auctioneers Brokers Appraisers
204½ N. Douglas Ellsworth, Kansas
Phone 472-4142 or CL2-3611
Victor Smischny, Auctioneer
There is no substitute for experience.



Selling two proven herd sire sons of CT ROLLO HAZFORD, the noted Testmeier-Goft son of SLF BEAU ROLLO 14.

ALSO SELLING —

- 40 great brood matrons
- 20 long-yearling bulls
- 40 high quality calves
- 20 beautiful bred heifers

Charles Corkle, Norfolk, Nebr., and Harlan Jensen, Salina, Kans. — Auctioneers

For Catalog or Information Contact —

CHUCK'S LS SALE SERVICE
Chuck Cook, Colon, Nebr.

or after Dec. 2, at Hebron Sale Barn or Wayfarer Motel.

Polled Hereford DISPERSION

of the Herd of

Elmer J. WILLIAMS

& Sons
NORA, NEBR.

12:00 Noon — Saturday

DECEMBER 6

At the Sale Pavilion in
HEBRON, NEBR.

Only in a dispersion sale can you buy the best of a breeder's herd!

FFA and 4-H members can select project animals from this offering.

Cattlemen and farmers can select bulls to suit their purposes.

LAST OF THE YEAR Consignment Horse Sale FRIDAY NIGHT, DEC. 5

J. C. LIVESTOCK SALE BARN, Junction City
Duane Gugler Howard Langvardt Vern Langvardt

WHAT THESE CATTLE NEED IS YEAR-ROUND FINANCING

PCA is a leading source of extended Credit in the Flint Hills Ranges



Short term loans, with terminal re-payment notes, just won't do the job of financing, as so many feeders know. What you need to build a herd and feed a herd is a financing arrangement pointed to a marketing time. This is especially true in private feed lot operations. To compete successfully, you must compete also in the money market. We may have just what you've needed and wanted.

For Year-Round Cattle Financing In the Flint Hills . . . See Us.



COUNCIL GROVE

315 West Main
THE COUNCIL GROVE
Production Credit Assn.
Charles E. Graham, President
Phone 767-5515
Bill Alspaw, Vice President
and Fieldman

Serving Dickinson, Marion, Morris, Chase, & Lyon counties.

MANHATTAN

6th & Humboldt
THE MANHATTAN
Production Credit Assn.
Floyd A. Rutherford, President
Phone PR-67061
Owen Duer, Vice President
Ray Cohorst, Fieldman

Serving Clay, Geary, Marshall, Pottawatomie, Riley & Wabaunsee counties.

Coffey County Livestock Market

WEDNESDAY NOON
Burlington, Kans.

EARLY CONSIGNMENTS FOR WEDN., NOV. 26

40 choice str & hfr calves — 400-500. These calves are out of registered cattle.
29 good blk & bwf str & hfr calves 400-450
29 medium yearling steers 500-600
17 wf feeder hfrs 600-650
24 bwf str & hfr calves 350-400
Also one lot of stock hogs.

MARKET REPORT FOR WEDN., NOV. 19

The market was fully steady.
Steer calves 350-500 @ 33.50-37.00. These were good quality. Good quality heifer calves 350-500 @ 28.50-31.00. Good to choice yearling steers 550-700 @ 30.50-33.00. Feeder hfrs 600-700 @ 26.50-27.50. Med. str 500-700 @ 25.00-28.00. Med. hfrs 500-700 @ 22.50-25.00. Cows, canners @ 15.00-18.00. Cows, cutters & utility @ 18.00-20.00. Bulls @ 22.50-24.50. Stock hogs were fully steady. Pigs 40-60 lbs. @ 18.00-20.00 the head.

BOTH SALES — SAME MANAGEMENT FOR INFORMATION, CALL

RAYMOND VAUGHN
BURLINGTON
Home 364-2581
Market 364-9576

HERB ROCKHILL
EUREKA
Home 583-5493
Market 583-9946

Eureka Auction Sale

MONDAY 1 p.m.
Eureka, Kans.

Some 850 head of cattle went through the ring last Saturday in our final special stocker & feeder sale of the season. It was a good sale, well-attended with buyers and the market was strong, as shown by the following brief report:

Steer calves @ 33.50-37.00
Heifer calves @ 29.00-31.75
Yearling steers @ 27.50-31.50
Feeder heifers @ 25.00-28.50

A special consignment from the herd of Albert Schroeder brought good prices all the way. The steer calves 500 lbs. @ 35.50 and 465 lb. heifer calves @ 30.40. These were Angus, Hereford, and crossbreds.

We are figuring on a good sale this coming Monday, Dec. 1; and another exceptionally good sale the week following. Consignments will be published next week for the Dec. 8 sale.

Less Milk, Eggs Used-But Chicken Consumption Up



**MACHINERY SPECIALIST
JOHN FERGUSON RETIRES**

John M. Ferguson, state leader Engineering Extension, has retired after 32 years at Kansas State University and 20 years as state leader. Among his duties over the years was a major role in World War II in the rationing of machinery.

Consumers in 1969 drank less milk and ate fewer eggs, but they fried, fricasseed and barbecued more chicken than ever, according to preliminary estimates by the Agriculture Department.

Higher prices for beef and pork may have contributed to the boost in poultry products, but department officials have not fully analyzed the factors.

Despite peak retail beef and veal prices this year, the experts say per capita consumption will average 113 pounds, the same as in 1968. The only appreciable shrink in the red meat category was for pork, reported at 64.7 pounds per capita compared with 66 pounds last year.

Lamb and mutton, on a downward trend since World War II, accounted for 3.4 pounds per capita this year, compared with 3.8 in 1968.

Per capita consumption of eggs was forecast at 313 for 1969,

compared with 321 last year, and the fewest since 313 reported in 1966. Ten years ago, Americans averaged 352 eggs each, and in 1945 per capita use was 403.

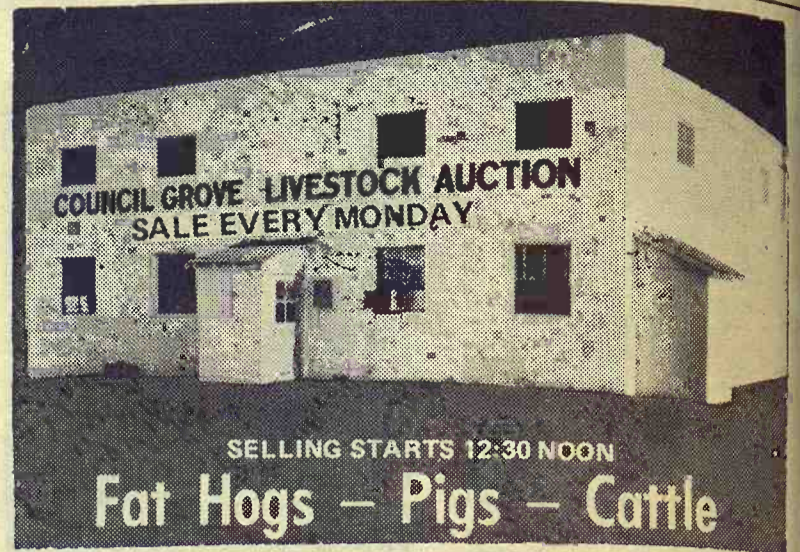
Chicken-eating has more than doubled since 1946-49 and this year is expected to average 47.1 pounds per capita, two pounds more than in 1968 and nearly 12 pounds more than a decade earlier.

Turkey consumption for 1969 was forecast at 8.2 pounds per capita, exceeded only by 8.6 pounds in 1967, the department said.

Milk production has declined steadily the past five years, reflecting a long-term reduction in milk cow numbers and fewer herds. Output this year is indicated at 116.2 billion pounds, down about one billion from

1968. Total consumption also has dropped, but demand this year

has been large enough to keep farm and retail prices higher than in 1968.



**SELLING STARTS 12:30 NOON
Fat Hogs — Pigs — Cattle**

We had a good active market last week with receipts of 480 head of cattle and 333 head of hogs. All classes of cattle were steady to strong. We had a large consignment of feeder steers, which were selling strong to \$1.00 higher. Top on fat hogs \$25.25.

Below is a partial listing of last week's sale:

CATTLE		HOGS	
4 black steers	822 @ 28.10	1 jer cow	830 @ 18.50
3 Holst steers	960 @ 23.00	1 Holst cow	1130 @ 18.40
25 whit'eface steers	618 @ 31.60	1 blk cow	815 @ 18.40
28 wf & blk bf str	568 @ 32.00	1 Holst cow	1420 @ 19.40
28 wf & blk bf str	658 @ 31.50	1 wf cow	980 @ 18.20
59 wf & blk bf str	741 @ 29.90	1 blk cow	890 @ 20.10
50 wf & blk bf str	731 @ 30.10		
14 wf hrn str	402 @ 36.00	24 r spot fat	220 @ 25.25
9 blk steers	407 @ 36.00	9 mixed fat	223 @ 24.90
10 wf steers	407 @ 34.50	14 w & h fat	233 @ 24.90
33 wf heifers	388 @ 30.80	7 white fat	210 @ 25.00
4 wf heifers	387 @ 29.75	10 mixed fat	228 @ 24.95

Listen Monday to WIBW 6:10 to 6:45 a.m. for listings of next week's sale.

TO LIST CONSIGNMENTS OR FOR INFORMATION CALL:

SALE BARN PHONE 767-5435

**JERRY MOYLAN
767-6640**

**PAT MOYLAN
767-5435**

on Highway US 56 East Edge of
Council Grove, Kans.
Bonded Livestock Dealers & Order Buyers



"GOOD THING WE HAVE BALL POINT PENS IN SCHOOL NOWADAYS OR THE GIRLS WOULD BE STICKING YOUR HAIR IN THE INKWELLS!"

**Friday
NOVEMBER 28**
Starts 9:30 a.m.
Lunch Served

I have lived for the past 74 years on this farm and my wife and I have decided because of our health to retire from the more active duties of the farm and will sell at public auction on the farm located 8 miles southeast of Clay Center on Co. road No. 396 then 1 1/2 miles south and 1/2 east. (Watch for sale signs.)

CATTLE
Holstein cow, 8 yrs., been fresh 60 days, giving 5 gal.
Jersey cow, 8 yrs., been fresh 60 days, giving 5 gal.

Farm Machinery
1953 Allis WD tractor, LPO, L hyd., quick tach, good rubber, good
1952 Ferguson No. 30 tractor, fully equipped, swinging draw bar, good rubber, good
1939 Allis WC tractor, on fair rubber, fair
1954 Allis No. 100 SP 9', good motor
1959 Ford single-row corn picker, fully mounted, good
1958 Case No. 140W hay baler, good shape
IHC 2-row weeder, No. 35
IHC No. 10 hamstermill with feed table
IHC 7' springtooth and even-er
IHC 4-row weeder, pull type
Case 32' hay or grain elevator, on rubber, with Wisconsin engine, good
Case side rake, 4 bar, rubber on rear
MM side rake
Kewanee 10' wheel disk
Allis HD 2 row cultivator, fits WD or 45 tractor
JD 4B cylinder corn sheller
JD 12' springtooth & even-er
JD 12x8 grain drill
JD 18' 3 sec. drag harrow with steel folding even-er
JD 2x16 plow on steel
2 Ferguson 2 row listers, 3 pt., 1 has rotary moldboards
Ford 7' 3 pt. mower
Ferguson 7' tandem disc, 3 pt.
David Bradley 7' tandem disc, pull type
Shop built 2-row stalk cutter; 3 pt. subsoiler; metal frame farm sled; dirt scoop, 3 pt.; 6' 3 pt. blade; Shop Built 3 pt. potato digger.
Hand corn sheller, all steel, good shape; 2 row cultivator with tractor hitch; antique leverless 3-section drag harrow; Clipper fanning mill; full set screens & motor.
IHC 10' dump rake; 6' horse mower; steel buzz saw frame and blade, fit WC or WD; 18' 4" grain auger with motor

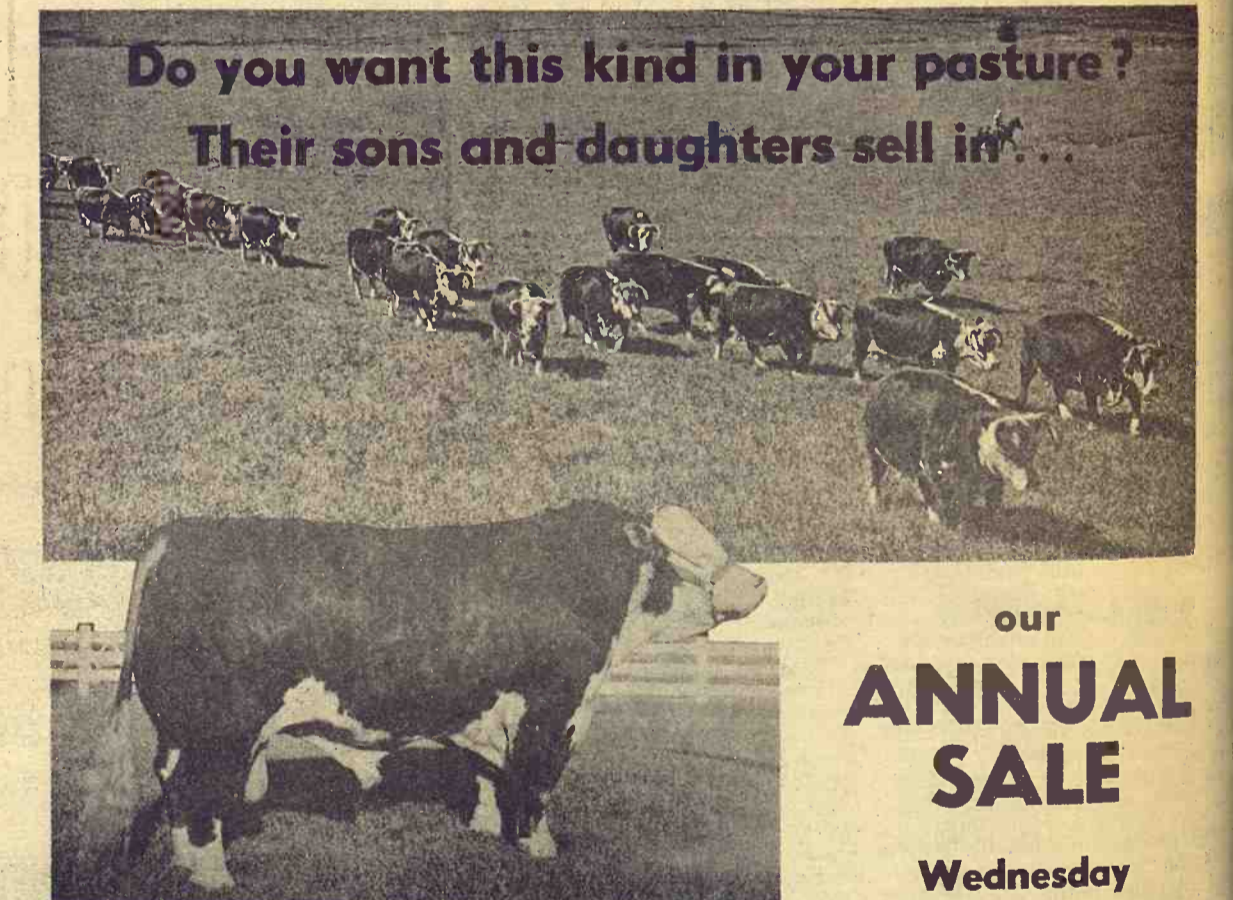
MISC. SHOP & HAND TOOLS
2 rolls wooden cribbing
Oak lumber; 50' 6" hammermill belt; IHC 3-S electric cream separator.
Jacuzzi deep well jet pump, with near new motor; several ft. 1 1/2" & 2" well pipe.
Hay barn fork; Emocnyie pitless platform scale; 250' of 1 1/2" manila rope; 4 850x14 used tires; 3 670x15 used tires; vise.
Hot water tank; storm windows; some chicken feeders & waterers; hand and garden tools; scoop; diggers; saw, and the usual load of small misc. items used on the farm.

TRUCK & TRAILER
1951 Chev. 3/4 ton pickup, grain sides, overloads, 4 spd., good rubber, fair condition.
4-wheel trailer with grain box

HOUSEHOLD GOODS
Kitchen table and 2 chairs
Dining table and 6 chairs
Rockers; recliner; iron bed; bath scales; set of Book of Knowledge; set Grolier Encyclopedias (both '45 edition)
21" Zenith TV; Singer treadle sewing machine; Kenmore oil heater; curtain stretchers; utensils; mops; jars; other items not listed.

ANTIQUE AND COLLECTORS ITEMS
Stand tables; dressers
2 mahogany chairs & stand table
Wrought iron pedestal; brass jardiniere with pedestal; copper bath tub; Edison phonograph; old phones; dining chairs; 2 child's chairs; child's rocker.
Kerosene lamps; lantern
Hand made rocker
Round oak dining table with pedestal and 5 leaves
Roll top desk; writing desk; wash stand; iron kettle; ironing board; steam cooker, 60 years; sad iron & handle; heating stove; metal tobacco cans; coffee pots; large oil can; trunk; 20 lb. flat iron.
10 gauge shotgun; bird cage; library table; organ stool; iron legs; piano stool, claw feet; dishes and kitchen utensils and items not listed.

TERMS: CASH Day of Sale.
Mr. & Mrs.
AKIN SHERBERT, Owners
Aucts: Foster Kretz Auction Service, Clay Center, Kans., Phone WA 6-4422, Morganville.
Clerk: Peoples National Bank, Clay Center, Kans.



**Do you want this kind in your pasture?
Their sons and daughters sell in...**

JPC TEX ONWARD 24

Tex Adv Onward 3	Tex Golden Advance	HDR Real Onw 166
November 7, 1965	Tex Silvr Princess 2	Donna Anna 90
Rose 80	C Real Domino	Silver Prince 34
	Rose 58	Miss Domino 2
		Bear Creek Pr. 98
		Dees Princess 14
		Blanchard Return 80
		Rose 18

His service will be featured in our December 10 sale. Owned jointly with Delaney Herefords, Schlickau Herefords and Kansas State University. His 3 year 8 month weight was 2,210 pounds.

Located 6 miles east on US 56 and 4 miles south of Council Grove.
WRITE FOR CATALOG
LUNCH TIME — 11:30 A.M.
SALE TIME — 12:30 P.M.

60 head of Real Silver Domino, Colorado Domino and Regent bred cattle from sires that average over 2,100 lbs.

35 bulls — service age, with weights available

25 females — our entire 1967 fall replacement heifer crop bred to JPC Tex Onward 24, one of the greatest sons of America's leading sire TEX ADV ONWARD 3

Our bulls that are pasture raised will equal the best in weight for age and conformation.

J.J. MOXLEY & SONS
HALL — TOM — GEORGE
COUNCIL GROVE, KANSAS 66846
Phone: 315/787-2376

Market topping Hereford cattle for our customers — farmers and ranchers — proves the merit of our 44 year constructive breeding program.

Water To Fall Again At Niagara

The dribble that has barely wet the American Falls since summer will spring soon into a roaring cascade that, along with the still-flowing Horseshoe Falls, has lured honeymooners and tourists for years.

The Army Engineers have announced that a cofferdam that turned off the falls for an erosion study will be removed this week.

The dam, erected last June, diverted the Niagara river over neighboring Horseshoe Falls and left the rocky riverbed above the American Falls virtually dry.

Col. Ray Hansen, Buffalo district engineer for the Army engineers, said power equipment will begin removing the earth cofferdam Tuesday. Work will continue 24 hours a day — with a break for Thanksgiving — until water again rushes over the

rapids and plunges into the gorge below.

Hansen said the dam should be entirely removed by Nov. 29.

Geologists studied the riverbed and the rocky face of the falls

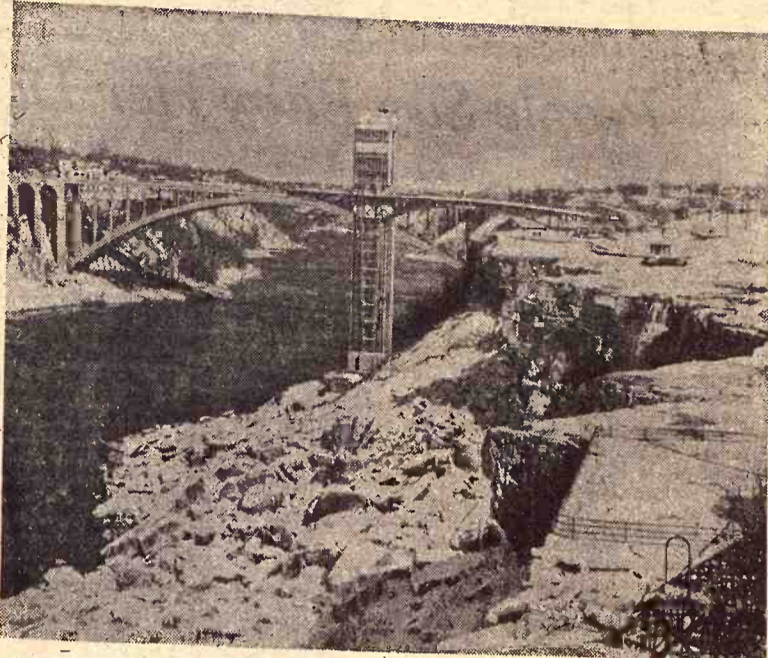
during the summer months trying to learn what has caused a pileup of 400,000 cubic feet of rock at the foot of the cataract.

The results of their study are to be turned over to an international joint commission by October 1971.

den's carmakers have adopted and the knowledge Folksam has gained in its own repair business is saving Swedish insurance firms about 14 million dollars a

year in repair costs.

The savings are passed on to policyholders in the form of lower premiums, he added.



SOON TO DROP WATER AGAIN

Eight inches of snow covered the riverbed of the dewatered American falls at Niagara Falls last week. The Army Corps of Engineers blocked the torrent with a cofferdam in June to conduct tests on the riverbed.

Cars Too Flimsy, Repairs Costly, Say Insurers

The inability of delicately built automobiles to withstand even very low-speed collisions is needlessly inflating the nation's highway loss bill, Dr. William Haddon Jr., president of the Insurance Institute for Highway Safety, says.

Dr. Haddon addressed the National Association of Independent Insurers at St. Louis.

Two Swedish insurance executives told of a system of rating individual models of cars for insurance purposes on the basis of their cost to repair. Owners of cars rated as less costly to repair are charged lower premiums.

The other speakers were Dr.

Thomas Manos of the Detroit University School of Engineering and Hans Gustafson, chief engineer for the Folksam Insurance Co. of Stockholm.

Manos said reparability is now low on the list of design influences, but it will rise up the line in much the same way safety has in the last three years.

"Public opinion, as well as various government and private industry groups, are bringing mounting pressure on Detroit to make cars easier and less costly to repair," Manos said.

There is no reason why a car cannot be made safer and easier to repair and at the same time remain stylish and salable, he said.

Gustafson said a repair classification system which all of Swe-

AUCTION SALE

**Saturday
NOVEMBER 29**

Starts 1:00 p.m.
Lunch Served

I will sell at public auction, at the place 2 miles north and 1 mile west of the Salebarn in Hebron, Nebr.

Farm Machinery

Side rake on rubber
2 grain drill hitch cart
MM old tandem disc
Fanning mill; old press drill
One hole hand corn sheller
IH 6' mower
Some old machinery

HAY

3000 bales alfalfa hay in barn
1400 bales alfalfa hay piled outside

ANTIQUES

Wicker baby buggy
Large antique bottle
Several other antique items

CAR

1963 Rambler Ambassador, power steering, power brakes and air conditioning, in good running condition

HOUSEHOLD GOODS

Gas hot water heater; Great Western wood heater; davenport; fruit jars; Maytag washer; DeLaval electric cream separator; floor lamp; double drain sink.

MISCELLANEOUS

Panel Ray gas heater; overhead wagon hoist; milk cooler; umbrella; 2 feed tanks.
Other items too numerous to mention.

TERMS: CASH.

EDWARD J. SCHUTZ, Estate

Phone 768-2247, Route 2, Hebron, Nebr.
Clerk: Bruning State Bank, Bruning, Nebr.

Aucts: Schultis & Son & Wolken, Livestock, Real Estate and General Farm Sales: Irvin Schultis, 1109 K St., Fairbury, Nebr., Phone 729-2435; Wayne Schultis, Diller, Nebr., Diller phone 793-3005; Duane Wolken, Diller, Nebr., Diller phone 793-3081.

Herington Livestock Auction Co

Sale Every **Tuesday**

Operating under Federal Supervision & Bonded for your protection.

STOCKER & FEEDER STEERS	
2 blk str	340 @ 37.40
2 wf str	387 @ 37.10
11 wf str	437 @ 36.00
5 wf str	405 @ 35.10
10 wf str	500 @ 34.80
3 wf str	477 @ 34.80
2 wf str	310 @ 34.10
2 wf str	430 @ 33.50
4 wf str	515 @ 33.30
4 wf str	485 @ 32.80
2 blk str	440 @ 32.00
2 white str	505 @ 31.40
3 blk str	450 @ 30.70
6 wf str	670 @ 30.00
2 wf str	630 @ 29.85
2 blk str	500 @ 29.00
3 wf str	785 @ 28.80
6 wf str q	708 @ 28.25
2 wf str	935 @ 27.50

STOCKER & FEEDER HEIFERS	
2 blk hfr	290 @ 32.25
4 wf hfr	310 @ 34.00
5 wf hfr	354 @ 31.60
7 wf hfr	392 @ 30.60
3 wf hfr	438 @ 30.25
6 blk hfr	404 @ 30.10
4 wf hfr	315 @ 30.10
9 wf hfr	480 @ 30.05
2 blk hfr	435 @ 29.75
6 white hfr	426 @ 29.70
6 wf hfr	568 @ 26.60
2 wf hfr	518 @ 26.50
3 wf hfr	600 @ 25.90
2 wf hfr	755 @ 25.10

BUTCHER COWS	
1 wf cow	1210 @ 19.80
3 blk cows	1328 @ 19.10
1 wf cow	1010 @ 19.30
1 blk cow	990 @ 19.10
1 wf cow	1070 @ 19.10
1 m cow	965 @ 19.30
2 blk cows	1980 @ 18.65
1 jersey cow	830 @ 18.50
1 holst cow	1245 @ 18.90
1 blk cow	1175 @ 17.50
1 wf cow	915 @ 17.00
1 wf cow	960 @ 17.70
2 wf cow	1980 @ 18.65
1 wf cow	1095 @ 15.50
2 wf cows	1655 @ 14.35

BUTCHER BULLS	
1 wf bull	1475 @ 23.65
1 blk bull	1245 @ 23.60
1 wf bull	1040 @ 22.80

our ANNUAL SALE

**Wednesday
November 10, 1969
AT THE RANCH**

US 56 and 4 miles south of Council Grove, Mo.
WRITE FOR CATALOG

LUNCH TIME — 11:30 A.M.
SALE TIME — 12:30 P.M.

If you have cattle to sell, call collect C. C. Wendt BL 8-2529 Herington, Wm. Schnell BL 8-2039 Herington, Ted Haefner, 316-924-5446, Lincolnville.

Herington Livestock Auction Co.

Herington, Kans.

REMINDER AUCTION

We have decided to quit farming. We will sell at public auction the following machinery and livestock at the farm located south of Manhattan on Highway 177 to Riley County Road 911, east 6 miles on black-top and east 2 1/4 on gravel to Pillsbury Crossing.

SAT., NOV. 29
Starts 10:00 a.m.

LIVESTOCK

24 HEAD

10 Hereford cows, 2 to 8 yrs. old
1 Polled Hereford bull, registered, will not guarantee papers
9 Hereford spring calves
1 Hereford yearling heifer
1 BWF heifer calf
1 BWF 2 year old cow
1 black cow

These cows have been raised by the Henton's, they produce big calves, and are bred to start calving in March.

MACHINERY

Includes:
2 M Farmalls, both in good condition with good rubber F20 Farmall with hydraulic lift and hand made milo header
A complete line of implements and farm tools. Also a few pieces of machinery consigned by A. J. Schepp.

For Full Listings See
Grass & Grain Nov. 18

ELDON & JOHN HENTON

Auctioneers:
Bob Wilson and Vern Ewing

A Very Special Sale for Buyers of Fancy Hereford Cattle



We will sell the entire herd of Registered Hereford Cattle of the Alfred Capoun Estate.

SATURDAY, NOVEMBER 29

STARTS AT 1:00 P.M. AT
THE MANHATTAN COMMISSION CO.
Sale Barn East of Manhattan, Kans.

17 BULLS • 59 FEMALES

Most of the cows have calves or will calf by sale day.

This is One Of The Outstanding Herds of Registered Herefords In The State Of Kansas

Cattle are mostly Colorado Domino & Mischief Breeding Papers Will Be Transferred
Cattle Will Be Sold In Lots To Suit Buyer.
Auctioneers note: These are outstanding reg. Hereford cattle.

ALSO TO BE SOLD —

6 year old mare & colt — 9 year old cow horse
2 year old colorful Appaloosa — Riding equipment

ALFRED CAPOUN Estate

Gilbert Capoun, administrator

Cattle Will Be Cared For 24 Hrs. After Sale
At Buyers' Risk

SELLING: ONE HERD BULL

D REGULATOR DOMINO 34
3 Years Old — Bred by Schlickaus (Outstanding)

5 two year old bulls
11 yearling bulls
9 two year old heifers, open
7 three year old cows
8 four year old cows
11 five year old cows
9 six year old cows
3 seven year old cows
6 eight year old cows
6 older cows

Auctioneer: Joe Raine

on cyclamate-sweetened...
 es has been "strengthened"
 They said Finch had made
 clear October 18 cyclamate
 would continue to be available
 to those who may need it
 for medical purposes. For
 erages, that's no longer the
 case. Finch ordered the
 withdrawal of the sweetener
 after laboratory tests probed
 bladder cancer in rats at
 levels 50 times higher than
 recommended for humans.
 The secretary eased the
 economic blow on the multi-
 dollar industry after receiving
 recommendations from a
 can advisory panel headed
 Dr. Roger O. Egeberg, his
 assistant.
 The panel met earlier
 week "to consider the possible
 harmful effects of the sweetener
 in relation to its potential
 effects," HEW said in its
 report.
 Finch never has been
 optimistic about keeping cyclamate
 totally off the market.
 In a November 11 interview
 an educational television
 station, he said the law should
 be revised to give more leeway
 in setting maximum or tolerance
 levels for cancer-causing additives.
 "The important thing is
 that the public ought to know
 a danger there," he said.
 who's to say that using
 or some other diet drink
 cola, isn't better for you
 than the problem of overweight
 diabetes?"



Details Coming On Firing Of Jerry Fowler?

There may or may not be more details this week from the Kansas Wheat Commission on the firing of Gerald C. Fowler, who has been administrator for 10 years.

Myron Krenzin, assistant administrator, has been named acting head of the commission, a semi-government agency supported by a check-off of wheat sales. The agency's primary duty is to promote wheat sales.

Fowler was relieved of his duties last week after Lawrence Brennan of Dodge City, commission chairman, said that discrepancies had been found in the commission's financial records.

Brennan said restitution of \$540 has been made to the commission's account. He said there would be an audit of the commission's financial records.

State Auditor Clay Hedrick said everything appeared to be in order when the post-audit department audited the records of the Wheat Commission in September.

Fowler told news media that he first heard of his dismissal on a radio report, and that Brennan had not mentioned anything about the affair in a conversation just a few hours before the dismissal was made public.

SHE SAWS

Mrs. Ida Marie Cobun of rural Olsburg, Kans., finds out that lightweight power saws make it possible to do some of man's work around the place. Here she is shown trying out a McCulloch at a sawdust place near Manhattan. Watching her is Johnny Brooks, owner of Hill Engine Service where the power saw demonstration was held last week.

AUCTION SALE

Monday
DECEMBER 1

Starts 12:00 Noon
Lunch Served

Having sold the farm we will sell at public auction on the farm located 4 miles east of White City or 6 miles southwest of Dwight, Kans., on Highway No. 4.

Farm Machinery

- 1963 Case 930 tractor, diesel, wide front end, L-hyd., h.p.o., low hours, good rubber, very good
- 1964 John Deere No. 666, 5x16 plow on rubber, radex lays, hyd. control, very good
- 1964 IHC No. 450-A, 4 row top planter, fertilizer, rubber press, markers, hyd. control, pull type w/ herbicide boxes, very good
- 1968 Dempster Model 830, 4-row culti-matic single beam, settings from 30 to 40 in. rows, like new
- 1966 weed sprayer, trailer type, with 110-gal. epoxy tank, like new
- New 6" grain bin unit for dryer
- MM 15' chisel on rubber, good Case 8' offset disc, good shape
- Post hole digger, 3 point, PTO, good
- Antique 2 hole corn sheller

HAND TOOLS & MISC. ITEMS

- 2 4" hyd. cylinders & hoese
- 2 basement steel posts; door track; storm doors; McCulloch chain saw; used lumber; galvanized tin in sheets; hedge posts.
- 353 new red 8" brick; 235 new white 12" brick; hand and garden tools.
- One trailer load of small miscellaneous items used on the farm.

ANTIQUES & COLLECTORS ITEMS

- Office chair; center table; Bentwood rocker; princess chair; drop leaf table.
- Fainting couch, very nice; Few other items not listed. All is refinished and very nice. Also springs with good innerspring mattress; coffee & end tables.

MOBILE HOME

- 1966 Central 12x65 Mobile Home, all furnished, with custom made divan & chair, National forced air furnace, Coleman central air conditioner.
- New in May 1969, drapes with swags. Has 2 bedrooms, bath, kitchen, utility room, 12x18 living room, all is 2x6 and 2x4 constructed, all paneled in light wood.
- This home is very nice. Your inspection invited prior to sale day. Possession of mobile home given Dec. 15, 1969.

TRUCK & TRAILER

- 1951 IHC 1 ton truck bed, grain sides and stock rack, hoist, duals, 4-speed, heater, good shape
- Implement trailer, 8x16 bed, tandem, tilt bed, with electric winch, very good
- 2-wheel trailer chassis

TERMS: CASH day of Sale.

EARL M. BARTLEY, Owner

Aucts: Foster Kretz Auction Service, C'ay Center, Kans., Phone WA 6-4422, Morganville.

Clerk: Bennington State Bank, Bennington, Kans.

Reynolds Sale Barn

ABILENE, KANS.

Selling Every

FRIDAY

STARTS 1:00 P.M.

- 17 grainfed hfrs 847 @ 25.60
- 7 grainfed hfrs 958 @ 24.55

BULLS

- 3 bulls 700 @ 27.25
- 1 bull 1630 @ 21.90
- 1 bull 1820 @ 21.75
- 1 bull 1290 @ 21.10
- 1 bull 1180 @ 21.50

COWS

- 1 cow 910 @ 22.30
- 1 cow 850 @ 23.80
- 1 cow 840 @ 23.80
- 10 cows 1050 @ 20.45
- 1 cow 910 @ 20.50
- 1 cow 940 @ 20.40
- 1 cow 1450 @ 19.40
- 9 cows 1118 @ 19.25
- 1 cow 990 @ 19.50
- 2 cows 1345 @ 19.70
- 1 cow 1050 @ 18.90
- 1 cow 1120 @ 18.60
- 6 cows 1146 @ 18.95
- 5 cows 1356 @ 18.50
- 4 cows 1532 @ 18.50
- 1 cow 1040 @ 18.90
- 1 cow 1320 @ 18.80
- 1 cow 960 @ 18.50
- 1 cow 1090 @ 18.70
- 2 cows 1420 @ 19.45
- 1 cow 1160 @ 19.10

Already listed for Friday, Nov. 28:
 1 load of the best Angus feeder steers—800 lbs.—strictly green that we've ever sold.
 30 ch. Angus hfrs—375 lbs.
 40 outstanding Angus hfrs—450
 32 ch. wf hfrs—450
 33 ch. wf&Ang. strs—350



Many buyers paid from strong to higher for the good run of cattle here here last Friday.

Listed below are representative sales from last Friday, November 21:

STOCKER & FEEDER STEERS

- 9 blk str & bulls 421 @ 35.00
- 4 wf str 395 @ 34.60
- 5 blk & bwf str 448 @ 34.00
- 3 blk str 556 @ 32.60
- 3 blk str 546 @ 32.80
- 5 wf str & bulls 462 @ 33.50
- 3 wf str 510 @ 33.00
- 5 wf str 556 @ 33.10
- 9 wf str 586 @ 32.90
- 15 bwf str 556 @ 32.00
- 32 fleshy wf str 673 @ 31.25
- 56 fleshy b/bwf 696 @ 29.60
- 14 fleshy wf str 740 @ 30.40
- 4 fleshy bwf str 645 @ 30.20
- 3 blk str 663 @ 30.15
- 12 fleshy shrthrn 720 @ 28.90
- 6 holst str 806 @ 24.30

STOCKER & FEEDER HEIFERS

- 3 shrthrn hfrs 213 @ 34.25
- 9 bwf hfrs 278 @ 33.00
- 56 b & bwf hfrs 419 @ 32.25
- 12 wf hfrs 400 @ 32.70
- 20 b & bwf hfrs 389 @ 31.90
- 19 bwf hfrs 402 @ 31.90
- 40 wf hfrs 417 @ 31.50
- 26 blk hfrs 416 @ 31.50
- 4 blk & bwf hfrs 485 @ 30.75
- 8 wf hfrs 495 @ 30.70
- 8 fleshy blk hfrs 481 @ 29.25
- 14 b & bwf hfrs 477 @ 31.10
- 9 wf hfrs 530 @ 28.40
- 17 b&bwf hfrs 447 @ 29.20
- 7 wf hfrs 502 @ 30.30

YARDMEN ON DUTY 24 HOURS A DAY

For more information call

Dude or Randy Reynolds,

CO 3-4303 or CO 3-3394

or Dan Reynolds CO 3-4721.

DUDE REYNOLDS Abilene, Kans.

Bring your cattle in at any time day or night; we'll handle them for you at your request.

Sale Every Thursday

Hogs 11:30 a.m.
Cattle 1 p.m.

Thanksgiving

NOV. 27

NO SALE

THIS WEEK

Due to the Thanksgiving Holiday

SALE AS USUAL

NEXT THURSDAY

See Grass & Grain next week for report of our sale last Thursday.

We Wish You All

a

Satisfying Holiday

Marysville

RALEIGH BREEDING, MANAGER

barn 562-3671; home 562-3547

Auctioneer: Larry Lagasse, Ph. Concordia, Kans. CH 3-1714

LIVESTOCK & COMMISSION CO.
MARYSVILLE, KANSAS

