



For The Spirit of Kansas. BLESSED IN AFFLICTION.

BY E. ELLEN CHERRY. Afflicted by Thy hand, O God, Help me to bear the chastening rod...

MR. GRASSEY'S SECRET.

BY AMY RANDOLPH. "So you have made up your mind to come and live with us, Mrs. Hedgington?" said Mr. Grassey...

"And he's one of the kind—sardonic, is it? or satirical, or sarcastic—" "I'm sure I don't know, ma," said Mrs. Grassey.

er-in-law hurried up stairs to impart her tidings to Mr. Grassey's wife. Sophia listened, wrung her hands and wept.

"Perhaps so, my dear," said Mrs. Grassey. And Mrs. Hedgington never came back to stay at the residence of her son-in-law again.

Young Folks' Column.

DEAR MR. EDITOR:—I thought I would write for the "Young Folks' Column" again. We had a heavy rain here on the 3d.

Vertical handwritten text on the right margin.

THE SPIRIT OF KANSAS.

LAWRENCE, WEDNESDAY, JULY 16, 1879.

Vatrons' Department.

NATIONAL GRANGE. Master—Samuel E. Adams, of Minnesota. Secretary—Wm. M. Ireland, Washington, D. C. Treasurer—F. M. McDowell, Wayne, N. Y.

Wheat Culture. [Essay read before Douglas Grange, No. 225, June 29, 1879, by J. F. Chevalier, and sent to THE SPIRIT for publication.]

Worthy Master, Siblings and Brothers:—At our last meeting you requested me to soon have something to say on the subject of wheat culture.

Every farmer should have a place prepared to receive all the manure from the stables. That place should not be a pit, but ought to be lower than the ground around it in order to retain enough moisture after a rain so the whole will rot well together and not lose its virtue.

Co-operation in Boston. The annual meeting of the shareholders of the Boston (Mass.) co-operative store, says the Portsmouth (N. H.) Weekly, of the 5th inst., was held last week.

Never burn your straw, but make it rot by scattering it in the lowest place in your yard. In increasing the quantity of manure you fill your granaries and cribs.

Manure should be hauled out from five to six loads to the acre. In continuing this way for several years you will have fertilized your hundred acres. The production of one application of manure will last three years.

Tribute of Respect. WHEREAS, It has pleased the Divine Master, the supreme ruler of the universe, to remove from our mid-t by death our sister, Eliza A. Pearson, on the 7th day of June, A. D. 1879;

WHEREAS, By her death the members of Delaware Grange, No. 38, have lost an earnest and faithful member, a zealous worker, a firm friend of every principle of honesty and true christian piety;

Resolved, That a copy of these resolutions be sent to the bereaved family, and one to THE SPIRIT OF KANSAS and Oskaloosa Weekly Sickle for publication.

Chairman of Committee. W. F. LEACH, Secretary. DIMON, Kans., July 11, 1879.

Why am I a Granger? While the principles, purposes and work of the grange have been uniform and unchanged, it will readily be acknowledged that many persons joined the order with expectations and designs foreign to, what was contemplated by its founders.

While the principles, purposes and work of the grange have been uniform and unchanged, it will readily be acknowledged that many persons joined the order with expectations and designs foreign to, what was contemplated by its founders.

outgrowth of the times, having for its object the advancement of agriculture and the highest good to the tiller of the soil. With these diverse opinions and purposes the order swept through the land like a whirlwind.

Full course of study in Ancient and Modern Languages, Law and Normal departments now established. Music by competent instructor. Fall session opens September 10.

Thirty thousand acres of choice lands in Anderson, Woodson and Coffey counties for sale on very reasonable terms.

W. J. HAUGHA WOUT, Land Agent, Neosho Falls, Kansas

THE WHITE SEWING MACHINE. This machine possesses more advantages and satisfies those who use it better than any other machine on the market.

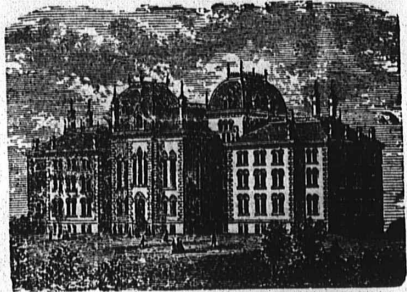
It has more capacity and power than any other family sewing machine. It is not complicated with cog-gears nor large cams.

Its working parts are case-hardened iron or steel, and so arranged that any wear can be taken up simply by the turn of a screw.

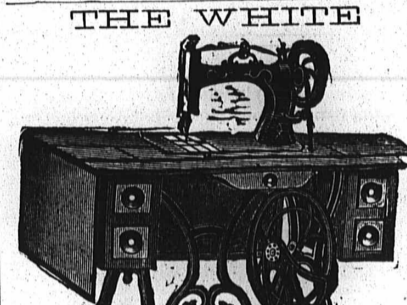
Its shuttle is comparatively self-threading, made of solid steel, and carries a larger bobbin than almost any other family sewing machine.

Its work is all enclosed and free from dust, and so arranged that neither the garment being sewed nor the operator will become soiled.

UNIVERSITY OF KANSAS 1879.



Full course of study in Ancient and Modern Languages, Law and Normal departments now established.



THE WHITE SEWING MACHINE. This machine possesses more advantages and satisfies those who use it better than any other machine on the market.

It has more capacity and power than any other family sewing machine. It is not complicated with cog-gears nor large cams.

Its working parts are case-hardened iron or steel, and so arranged that any wear can be taken up simply by the turn of a screw.

Its shuttle is comparatively self-threading, made of solid steel, and carries a larger bobbin than almost any other family sewing machine.

Its work is all enclosed and free from dust, and so arranged that neither the garment being sewed nor the operator will become soiled.

It has a device by which bobbins can be filled without running the entire machine, thereby relieving the operator of the necessity of removing the work or attachments, as is the case in nearly all other machines.

It is elegantly ornamented and finished, and its cabinet work is unsurpassed.

The result of this combination is the "WHITE," the most durable, the cheapest, best and largest family sewing machine in the world.

HENDERSON'S

CASH GROCERY HOUSE

PRICE-LIST.

Stop! Read! What Ready Cash Will Do!

Table listing various grocery items and their prices, including sugar, coffee, and flour.

SYRUPS WERE NEVER SO LOW.

Table listing syrups and their prices, including White Drips, Silver Drips, and Honey Drip.

CALIFORNIA STRAINED HONEY 15 CENTS PER POUND.

Table listing specialty items and their prices, including Black Tea, Japan Sittings, and Roasted Coffees.

TEAS, TEAS.

Table listing various types of tea and their prices.

ROASTED COFFEES.

Table listing various types of roasted coffee and their prices.

WOODENWARE, WOODENWARE.

Table listing various types of woodenware and their prices.

COFFEES, COFFEES.

Table listing various types of coffee and their prices.

VINEGARS, VINEGARS.

Table listing various types of vinegars and their prices.

STARCHES.

Table listing various types of starches and their prices.

DRIED FRUITS.

Table listing various types of dried fruits and their prices.

FISH, FISH.

Table listing various types of fish and their prices.

MISCELLANEOUS.

Table listing various miscellaneous items and their prices.

TOBACCO.

Table listing various types of tobacco and their prices.

CANNED GOODS.

Table listing various types of canned goods and their prices.

WHAT CASH WILL DO FOR THEM.

Table listing various types of goods and their prices.

Ayer's

Sarsaparilla



For Scrofula, and all scrofulous diseases, Erysipelas, Ross, or St. Anthony's Fire, Eruptions and Eruptive diseases of the skin, Ulcerations of the Liver, Stomach, Kidneys, Lungs, Pimples, Pusules, Boils, Blotches, Tumors, Tetter, Salt Rheum, Scald Head, Ringworm, Ulcers, Sores, Rheumatism, Neuralgia, Pain in the Bones, Side and Head, Female Weakness, Sterility, Leucorrhoea, arising from internal ulceration, and Uterine disease, Syphilitic and Mercurial diseases, Dropsy, Dyspepsia, Emaciation, General Debility, and for Purifying the Blood.

This Sarsaparilla is a combination of vegetable alteratives—Stillingia, Mandrake, Yellow Dock—with the Iodides of Potassium and Iron, and is the most efficacious medicine yet known for the diseases it is intended to cure.

Certificates attesting its virtues have accumulated, and are constantly being received, and as many of these cases are publicly known, they furnish convincing evidence of the superiority of this Sarsaparilla over every other alterative medicine.

REMEMBER THE PLACE,

HENDERSON'S CASH GROCERY HOUSE,

J. S. HENDERSON. LAWRENCE, KANSAS.

ESTABLISHED 1873.

GEO. R. BARSE.

ANDY J. SNIDER.

Barse & Snider,

COMMISSION MERCHANTS

For the sale of Live Stock.

KANSAS STOCK YARDS, KANSAS CITY, MO.

Consignments solicited. Personal attention paid to the care and sale of all stock. We make all sales in person. Special attention paid to the feeding and watering of stock. Business for 1876 over three million (\$3,000,000) dollars.



We manufacture and keep on hand a full and fine assortment of

COFFINS, CASES AND CASKETS!

Of superior quality at moderate prices. Our Warerooms are at the

Corner of Henry and Vermont streets, Lawrence, Kansas.

HILL & MENDENHALL.











**THE LATEST MARKETS.**

**Produce Markets.**  
St. Louis, July 15, 1879.

Flour—XX	43 @ 4.25
XXX	48 @ 4.75
Family	48 @ 5.50
Wheat—No. 2 fall	97 @ 95
No. 3 red	94 @ 95
Corn—No. 2	35 @ 35 1/2
Oats	30 @ 30 1/2
Rye	47 @ 54
Barley	50 @ 65
Pork	9 65 @ 9 75
Lard	5 65 @ 6 00
Butter—Dairy	12 @ 14
Country	7 @ 19
Eggs	7 @ 12

Chicago, July 15, 1879.

Wheat—No. 2 spring	81 00 @ 1 01
No. 3	88 @ 90
Rejected	97 @ 67 1/2
Corn	34 @ 37
Oats	31 @ 31 1/2
Pork	8 70 @ 8 75
Lard	5 80 @ 5 90

Kansas City, July 15, 1879.

Wheat—No. 2 fall	95 @ 96
No. 3 fall	91 @ 91 1/2
No. 4	81 @ 85
Corn—No. 2	30 @ 35
Oats	30 @ 30 1/2
Rye—No. 2	36 @ 45

**Live Stock Markets.**  
Kansas City, July 15, 1879.

Cattle—Choice nat. steers av. 1,400	\$4.20 @ 4.50
Good ship, steers av. 1,350	3.90 @ 4.15
Fair butcher, steers av. 1,000	3.35 @ 3.90
Good feed, steers av. 1,100	3.00 @ 3.50
Good stock steers av. 900	2.25 @ 2.90
Good to choice fat cows	2.50 @ 2.90
Common cows and heifers	2.00 @ 2.40
Hogs—Packers	3.35 @ 3.60

St. Louis, July 15, 1879.

Hogs, slow; heavy	\$3.25 @ 3.80
-------------------	---------------

Chicago, July 15, 1879.

Cattle, heavy native shipping firm and active; steers, \$4.00 @ 5.20; fair to good cattle \$4.00 to \$4.40; Texans, \$2.25 to \$2.75.

Hogs, heavy, \$3.50 @ 3.65; light, \$3.85 @ 4.00. Receipts for last twenty-four hours 11,000. Market slow and lower.

In Kansas City leading articles of produce are quoted as follows: Butter, good, 9 @ 12 1/2 c.; cheese, prime Kansas, 5 1/2 @ 7 c.; eggs, 7 @ 2 1/2 c.; broom-corn, 2 @ 3 c. per lb; chickens, young, per doz., \$1.00 @ 1.65; potatoes, 35 @ 40 c.; cabbage, 40 c. per doz.; cherries, best, 35 c. per gallon; apples, 90 c. @ \$1.15 per bushel; peaches, \$1.00 @ 1.50 per box of 1/2 bushel; tomatoes, \$2 per bushel.

Flour in Kansas City is quoted as follows: Fancy brands, 3 sack, \$2.85 @ 3.00; XXX, \$2.40 @ 2.50. Rye flour, \$1.85. Corn meal 7 hundred, 85 c.

There is little change since last week in wheat. Corn has fluctuated a little in most markets. It is just the same as last week in Kansas City.

Rye and other grain nominal.

In Liverpool, July 14, winter wheat was 9s. @ 9s. 6d., spring wheat 7s. 10d. @ 8s. 6d. In New York No. 2 winter was \$1.20 @ 1.21, No. 2 spring \$1.11.

For future delivery, No. 2 wheat in St. Louis is quoted at 98 @ 99 c. July, 98 1/2 c. August, and 98 c. September. In Chicago No. 2 is 99 c. @ \$1.00 July, 98 1/2 @ 99 c. August, and 97 1/2 c. September. In Kansas City No. 2 is 95 @ 96 c. July, No. 3 is 91 c. July, and 88 c. August.

Wheat at Kansas City is 20 cents higher than it was one year ago; corn is 2 cents higher.

The highest figures on corn at Kansas City (35 c.) are for white; mixed corn is only 30 c.

Cattle continue dull and there is a reduction in prices at Kansas City. Most of the sales are cheap stuff at from \$2.10 to \$3.00.

Hogs are a shade lower. There has been almost a panic in pork and bacon at Chicago. It affected lard and dry salt meats.

Money yesterday in New York was quoted at 2 1/4 @ 3/4 per cent.; prime mercantile paper, 3 @ 4 1/4 per cent. The stock market opened active and advanced. Towards the close a slight decline took place and a falling off on the general list of 1/4 @ 3/4. Government bonds firmer; railroad bonds generally strong.

The following is the visible supply of wheat and corn, comprising the stocks in granary at the principal points of accumulation at lake and seaboard ports, and in transit by rail, July 5, 1879:

In store at	Wheat, bu.	Corn, bu.
New York	1,159,019	1,917,747
New York, afloat	110,000	140,000
Albany	800	28,500
Buffalo	1,815,246	736,385
Chicago	3,825,035	3,199,922
Milwaukee	1,499,035	15,443
Duluth	154,846	49,061
Toledo	134,424	288,640
Detroit	165,800	11,024
Oswego	180,000	140,000
St. Louis	127,667	696,746
Boston	1,300	208,507
Toronto	129,200	200
Montreal	135,999	118,566
Philadelphia	163,531	683,822
Peoria	11,761	117,621
Indianapolis	6,200	21,300
Kansas City	76,348	45,108
Baltimore	296,440	736,434
Rail shipments, week	285,227	656,388
Lake shipments, week	1,357,125	1,052,486
On canal	555,000	686,000

Total July 5, 1879..... 12,184,153 11,547,230  
Total June 14, 1879..... 13,990,328 11,060,721  
Total July 6, 1878..... 4,612,453 7,374,431  
Total July 7, 1877..... 2,331,860 9,189,468

The following is from a Cincinnati paper: "There is no essential change in the general outlook for the crops. Severe storms last week in Iowa, Minnesota and Wisconsin resulted in some local damage, but generally the wheat which was prostrated righted again after the storm, and the prospects are daily improving for a full crop of spring wheat. Oats are generally heading out better than was expected. It is quite possible that the crop, like the winter wheat, will prove to be exceptionally good in most sections of the West. The accounts from all parts of the West regarding corn are decidedly favorable. The weather in this vicinity is of that forcing character (damp and hot) which is so disagreeable, but which fairly makes the corn jump."

**THE TWO LARGEST SHOWS IN THE WORLD!  
LAWRENCE, Friday, JULY 25.**

**THE BIGGEST, BEST AND GREATEST SHOW ON EARTH!  
THE GREAT LONDON CIRCUS!!**

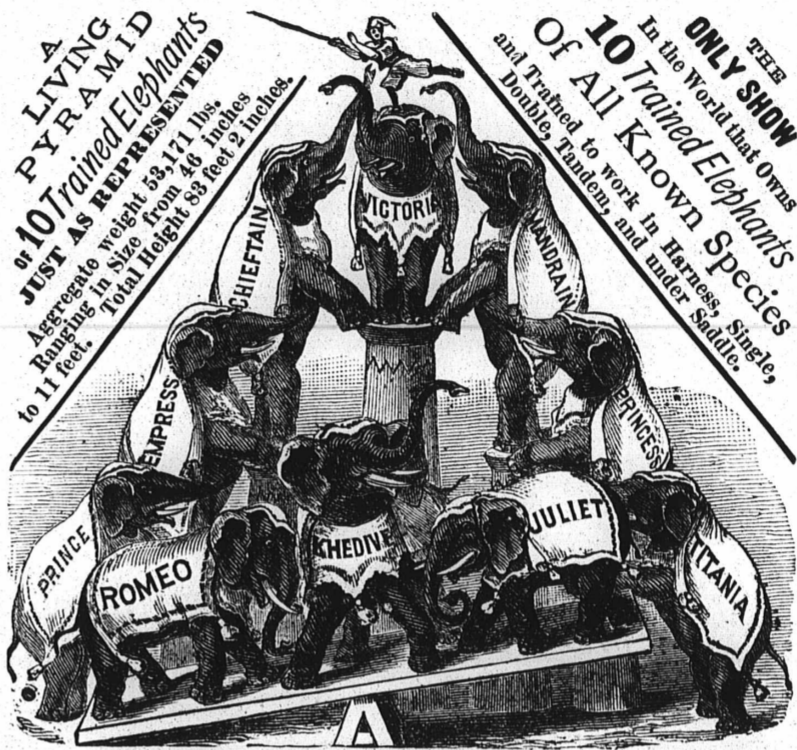
**THE BRUSH Electric Light**  
The Bright, Brilliant, Beautiful Illuminating Power of the Age!

OUR CANVAS LIGHTED WITH DAZZLING BRILLIANCY.

Procured at an expense of \$15,000. The only Show that can afford to use the **Brush Electric Light**. Requiring a 30-Horse Steam Engine, requiring a 40-Horse Power Boiler, making 900 revolutions per minute.

**18 Electric Light Chandeliers!**

Yielding a Volume of Light equal to 35,000 Gas Jets. Our Motive Power the most complete and perfect.



**A NEW CREATION  
IN THE AMUSEMENT WORLD**

Unprecedented in Conception, Unparalleled in Diversity and Magnitude, Unexampled in Magnificence, and Unequaled in Attraction.

**BEYOND ALL DOUBT OR CAVIL**  
The Most Costly and Attractive AMUSEMENT ORGANIZATION IN THE WORLD.

**10 Puissant and Performing ELEPHANTS**  
Chieftain, Mandaria, Princess, Sultan, Victoria, Of the World-famed Great London Circus, and Titania, Khedive, Romeo, Juliet, and Prince, Celebrated throughout Christendom as the "Great International" Elephants, consolidated in one Monster Herd, each individual of which is wonderfully trained, and aggregating in combination 83 feet 2 inches in height, 53,171 pounds in weight.

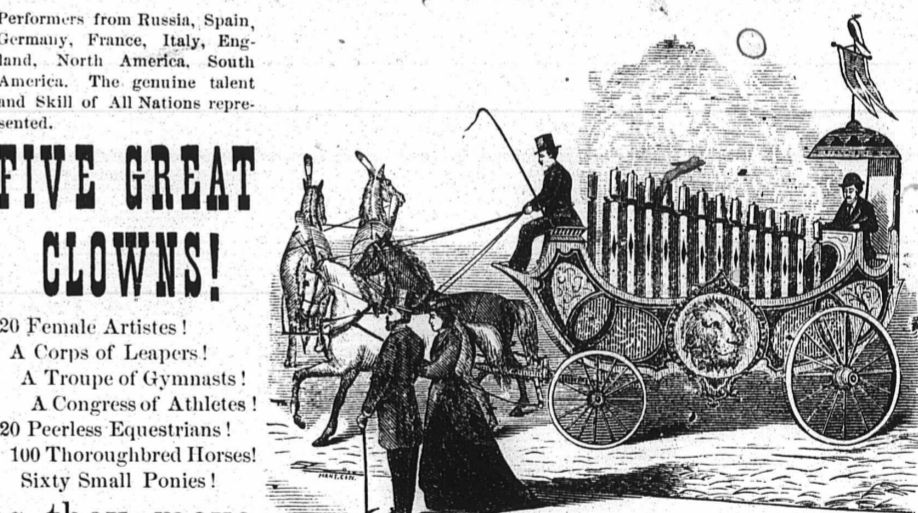
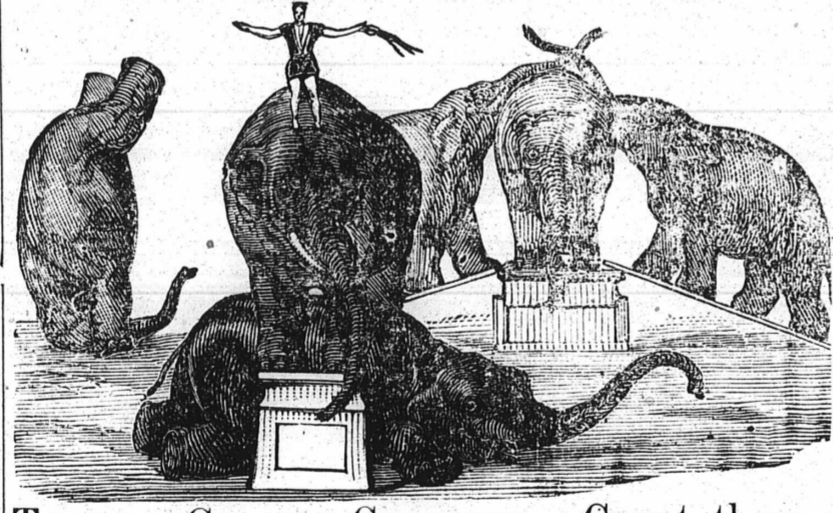
**SANGER'S BRITISH MENAGERIE!**  
Has been Consolidated with the Great International Shows, and the

**2 Big Circuses and 2 Big Menageries**

Will Both Exhibit on the Same Day for One Price of Admission.

**COOPER, BAILEY & CO'S CROWNING TRIUMPH!**

A COMBINATION EQUAL TO ANY TEN SHOWS IN THE WORLD.  
**Its Department of Zoology the Most Perfect!  
THE CIRCUS IS THE VERY BEST IN THE WORLD**



**TWENTY GOLDEN CHARIOTS.** Count them as they move.

**THREE GREAT BANDS!** Notice them in the Street Parade. Ten Monster Elephants in Line of March. **100 GOLD-ENCUSTED DENS, VANS AND CAGES!** No More, No Less! The entire outfit and paraphernalia so complete that rivalry is improbable and superiority impossible. **SEE and JUDGE FOR YOURSELVES.**

**Lawrence Markets.**  
The following are to-day's prices: Butter, 6 @ 10 c.; eggs, 8 c. per doz.; poultry—chickens, live, \$1.25 @ 2.00 per doz., dressed 6 c. per lb; turkeys, live, 6 c. per lb, dressed 8 c. per lb; potatoes, 30 @ 40 c.; corn, 27 @ 30 c.; wheat—No. 2 old 85 c., new 75 c.; lard, 4 1/2 c.; hogs, \$3.00 @ 3.20; cattle—feeders \$3.00 @ 3.25, shippers \$3.25 @ 4.00, cows, \$2.25 @ 2.50; wood, \$4.00 per cord; hay, \$4.00 per ton. Vegetables in great abundance; prices nominal.

**MARY MANNING, WHO RESIDES IN THE county of Webster and state of Iowa, will take notice that Benjamin S. W. Manning did, on the 21st day of June, A. D. 1879, file his petition in the district court of Douglas county, Kansas, charging the said Mary Manning of being guilty of extreme cruelty and gross neglect of duty, and asking that he may be divorced from the said Mary Manning, and for other relief; and that said Mary Manning is required to answer the said petition on or before the 13th day of August, A. D. 1879, or the same will be taken as true and divorce shall be rendered accordingly.**  
BENJAMIN S. W. MANNING.  
By WINFIELD FREEMAN, his Attorney.  
June 21, 1879.

**THE CANADA SOUTHERN RAILWAY LINES.**  
The only route through Canada under American management.

**THE SHORT & QUICK LINE TO THE EAST VIA Buffalo and Niagara Falls.**  
Direct connections made at Detroit and Toledo with all RAILROAD TRAINS from West, North and South.

**Wagner Sleeping and Parlor Cars.**  
On all Trains to Principal Points East.

Any information as to tickets, connections, sleeping car accommodations, etc., cheerfully given on application to the undersigned.  
**FRANK E. SNOW,**  
Gen'l Pass. and Ticket Ag't, DETROIT.

**THE NATIONAL BANK OF LAWRENCE,**  
OF LAWRENCE,  
UNITED STATES DEPOSITORY.  
CAPITAL \$100,000.

**COLLECTIONS MADE**  
On all points in the United States and Canada.

**Sight Drafts on Europe Drawn in sums to suit.**

J. E. McCoy - President  
J. S. Crew - Vice-President  
A. Hadley - Cashier  
J. E. Newlin - Asst't Cashier

**THE CRYSTAL PALACE BARBER SHOP**  
Under First National Bank.

All work done in the latest style. Prices reasonable. Customers all treated alike.  
JOHN M. MITCHELL, Prop'r.

**\$250,000 TO LOAN!**  
On Improved Farms,  
**AT REASONABLE RATES.**  
J. E. WATKINS & CO.,  
Lawrence, Kansas.

**Real Estate Agency.**  
JAS. E. WATSON & CO.  
Taxes paid for non-residents, abstracts of title furnished. Office in Standard building.