

533
F8
K3
47/1

per

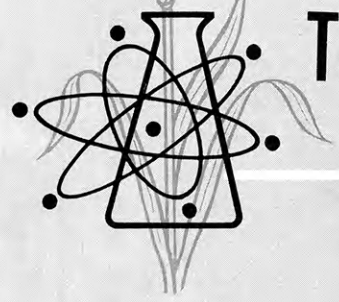
SD 8

Fall, 1976

RECEIVED

OCT 1976

THE LIBRARY
KANSAS STATE UNIVERSITY



THE *Kansas*



FUTURE FARMER



Rich Hull, 1976-77 State Alumni Chairman

Editor—Dan R. Marrs

Vol. XXXXVII

No. 1

National Officers

- President**
Bobby Tucker, Mincola, Texas
- Secretary**
Mike Jackson, Tipton, Indiana
- Central Region Vice President**
Ron Wilson, Manhattan, Kansas
- Eastern Region Vice President**
Doug Loudenslager, Morral, Ohio
- Southern Region Vice President**
Elton Bouldin, Boaz, Alabama
- Western Region Vice President**
Leonard Anderson, Jr., Albin, Wyoming

State Officers

- President**
Jay Selanders, Garnett
- Vice President**
Kerry Zillinger, Phillipsburg
- Secretary**
Jeff Zillinger, Phillipsburg
- Treasurer**
Larry Lankard, Garnett
- Reporter**
Steve Handke, Atchison County
- Sentinel**
Clint Rusk, Medicine Lodge

District Officers

SOUTH CENTRAL
President, Mona Rusk, Medicine Lodge; Vice President, Ron Ediger, Haven; Secretary, Doug Carlson, Buhler; Treasurer, Alden Linnebur, Winfield; Reporter, John Toews, Moundridge; Sentinel, Gregory Krenke, Haven; Advisor, Eddie DeVore, Newton.

SOUTHWEST
President, Shawn Runkle, Holcomb; Vice President, Jeff Klein, Fowler; Secretary, Wayne Craighead, Jetmore; Treasurer, Mark Lohmeyer, Garden City; Reporter, Susan Hastings, Hanston; Sentinel, Paul Hill, Holcomb; Advisor, Alva Burch, Holcomb.

NORTHEAST
President, Don Ebert, Westmoreland; Vice President, Bob Cummings, Troy; Secretary, Robert Green, Valley Heights; Treasurer, Steve Goodman, Royal Valley; Reporter, Ron Ebert, Westmoreland; Sentinel, Eli Wenger, Powhattan; Advisor, Bill Hunter, Westmoreland.

EAST CENTRAL
President, Sheryl Neblock, Central Heights; Vice President, Pat Wiederholt, Garnett; Secretary, Phil Fanning, Mission Valley; Treasurer, Steve Loschke, Osage City; Reporter, Kevin Brown, Mission Valley; Sentinel, Brenda Hundley, Seaman; Advisor, Don Benjamin, Central Heights.

SOUTHEAST
President, Chuck Johnston, Coffeyville; Vice President, Susan Van Cleave, Cherryvale; Secretary, Debbie Clubine, Caney; Treasurer, Alysia Allen, Coffeyville; Reporter, Bob Gieger, Uniontown; Sentinel, Tim Rogers, Uniontown; Advisor, Eldred Harris, Coffeyville.

NORTH CENTRAL
President, Dee James, Clay Center; Vice President, Cindy Ricketts, Clay Center; Secretary, Ron Ditmars, Washington; Treasurer, Curtis Shamberg, Jewell; Reporter, Charles Hatch, Salina; Sentinel, Charles Hansen, Concordia; Advisor, Paul Young, Clay Center.

NORTHWEST
President, Terry Nelson, Norton; Vice President, Alan Weiser, Phillipsburg; Secretary, Lorna Sultor, Palco; Treasurer, C. J. Riemann, Hill City; Reporter, Brad Stoppel, Russell; Sentinel, Robert Wyatt, Norton; Advisor, Bob Broeckelman, Norton.

State FFA Executive Committee

- Dean Prochaska, Topeka
Dr. James Albracht, Manhattan
Dr. Carroll V. Hess, Manhattan
Jay Selanders, Garnett
Prof. P. N. Stevenson, Manhattan
Jim Housman, Columbus
Jerry M. Gee, Pratt
Jay Mayfield, Caney
Dan R. Marrs, Topeka
Kerry Zillinger, Phillipsburg

TABLE OF CONTENTS

President Ford and the Family Farm	3
Call to National FFA Convention	3
Alumni Incorporates	4
Prochaska Named Director of Vocational Education	4
National Leadership Conference	5
State FFA Livestock Show	6
Summary of FFA Livestock Entries	8
State Fair FFA Livestock Judging	9
State Fair Agricultural Mechanics	9
Four Clifton Youths Win in National Judging Event	10
Agriculture Mechanics	10
FFA Booths	10
Markle State Sweetheart	11
New Kiddies Barnyard	11
Westy Member to AIC	12
District Officers Conference	12
Chapter Reports	12-15
Troy Farm Tour	13
From the President's Desk	16

Cover Story

“Let's Make It Unanimous...”

Rich Hull, Chairman of the Kansas FFA Alumni Association and Farm Director at the WIBW Stations in Topeka, reports that 1977 will be a year of many changes in the FFA Alumni Association.

The motto for the National Association in 1976 was, “a year of commitment.” The coming months will be a commitment for the Kansas Association. Nationally there has been an 80 percent growth in active members. This year has seen considerable growth in the Kansas Association and with changes implemented at the last annual meeting of the alumni, 1977 could be our biggest year of growth.

At the last annual meeting of the alumni, a motion passed unanimously to incorporate the Kansas FFA Alumni Association as a tax free organization. This will help us in several ways, the most important being that we will now be able to raise monies to support some of the state-wide FFA projects. As with any incorporation a great deal of paper work is involved and final approval should be obtained within 30 days.

A strong FFA alumni affiliate is very important to every FFA chapter. There are many ways, through an organized effort, the FFA Alumni can serve and support the FFA. The Alumni was founded to give a means for us to jointly support and serve the FFA at the local, state and national organization.

If you haven't formed a local alumni affiliate as yet, don't wait another month. Appoint a committee. Let's make it unanimous support for the organization that supports FFA. (Photo courtesy WIBW-Topeka)

President Ford and the Family Farm

In brief remarks to FFA leaders assembled on the White House lawn, President Ford expressed his belief in the family structure and in the importance of the family farm. "The family farm is important to this nation," said Ford emphasizing that "We must continue to have strong family farms." President Ford also told the officers that although the nation is celebrating 200 years of progress, "We haven't finished yet. We must take the vision of our forefathers and complete their dreams," he said.

The meeting with President Ford followed a breakfast on Capitol Hill for congressmen and senators from every state. One hundred and sixty congressmen and senators attended the breakfast and many more were represented by staff members. The breakfast, now in its ninth year, is an opportunity for state officers to visit informally with their elected representatives and is a chance for congressional leaders to discuss government with young leaders of the future.

In a brief address to the 380 FFA and government leaders, Eliot Estes, President of General Motors Corporation



President Gerald R. Ford welcomes Jay Selanders, President of the Kansas FFA Association, to the White House during the State Presidents' Conference.

urged that the nation continue to pursue a policy of encouraging technological advancement. "There are opponents of technology who want a national policy of zero technical growth," Estes said. "Certainly, we must weigh the risks and benefits of new technology, but if we are to continue to progress, we cannot afford to put arbitrary limits on technology. We cannot stand still," Estes told

the congressional and FFA leaders, "it is in your hands whether we progress in our nation's third century."

The week in Washington began last Sunday with registration and the opening session outlining the week of conference activities. Senator Robert Dole (R. Kansas) opened the first session Monday morning with a discussion of

Continued on page 4

Call to National FFA Convention

Fellow FFA Members:

By the power vested in me as President of the Future Farmers of America, I am pleased to issue the call for all chapters in good standing to send representatives to the National FFA Convention in Kansas City, Missouri, November 9-12, in the Municipal Auditorium. The 49th Annual Convention will crown a year of accomplishments by our members and will initiate next year's achievements.

This year's convention promises to be the most successful yet. As the largest youth convention, we will be attracting national leaders to our stage along with award winners, degree recipients, Foundation sponsors and other VIP's.

The convention has again been moved forward one day to schedule an official business session on Tuesday

afternoon, November 9, to give greater flexibility to the program and shorten the convention sessions. The national officers will conduct a Vespers Program on Tuesday evening, before officially opening the convention on Wednesday morning. Each session will be filled with the sharing of thoughts, official FFA business, ceremonies, recognition of achievements, and showing of sincere appreciation to those who support Agricultural Education/FFA, especially through the National FFA Foundation.

It is a time of special pageantry with the "Stars over America," and the Auditorium will be filled with music provided by the National FFA Chorus and the National FFA Band, as over 20,000 members and friends look on.

I encourage members from each

chapter to participate in all sessions, visit the Agricultural Career Show and the FFA Day at the American Royal. In addition to six chapter representatives or 10% of the chapter membership, each State Association is also entitled to have its official delegates and award winners in attendance.

The fine image of our organization has been portrayed in the past at every convention. I have faith that if the rules of proper dress and the Code of Ethics are observed by all members while in Kansas City, our image shall continue in its finest tradition.

Help make the 49th National FFA Convention the most educational, inspirational and successful yet. I'll see you in November.

Sincerely

Bobby Tucker



Secretary of Agriculture Earl Butz and General Motors youth activities coordinator Ronald O. Woods (left) greet Jay Selanders, President of the Kansas FFA Association, during the Future Farmers of America State Presidents' Conference in Washington, D.C., sponsored by General Motors Corporation. The week-long conference is designed to help new state officers be more effective leaders by expanding their knowledge of the FFA and national agricultural issues.

Secretary of Agriculture Earl Butz and General Motors youth activities coordinator Ronald O. Woods (left) greet Kerry Zillinger, Vice President of the Kansas FFA Association during the Future Farmers of America State Presidents' Conference in Washington, D.C., sponsored by General Motors Corporation.

President Ford and the Family Farm
Continued from page 3

current agricultural legislation on the floor of the House and Senate. In a panel discussion on "Issues Facing the Industry of Agriculture," participants heard the views of people involved in Washington agricultural legislation. Participants on the panel included John Datt, Director of the Washington Office of the American Farm Bureau Federation; James T. Conner, Washington Representative of Chemagro Chemical Company, and Dr. Don Paarlberg, Director of Economics, U.S. Department of Agriculture.

Following visits to congressmen and senators on Capitol Hill, the state presidents gathered at the U.S. Department

of Agriculture for a special meeting with Secretary of Agriculture Earl Butz who told the officers that as agriculture students they "represent a great industry."

Citing the importance of agriculture in foreign trade, Butz said "Agriculture with \$22 billion in annual exports represents our number one source of foreign exchange, and enables this nation to have a strong balance of payments."

Butz urged the FFA state officers to pursue their leadership goals. "The main product of rural America is the leadership potential for the future," he said, challenging them to "dream, try new ideas and not be afraid to break out of a rut." He said the profit incentive is the

"gas that makes this country go" and urged the students to do all in their power to keep government from discouraging advancement by passing legislation that over regulates and discourages development.

The final day of the action packed week, began with a leadership workshop conducted by the six national officers. Guest speaker Walt. J. Smith of the J. I. Case Company, of Racine, Wisconsin, posed the question "Would You Sign the Declaration of Independence". He pointed out that most of the signers were farmers, and others were men of wealth who had a great deal to lose as a result of their actions.

The week concluded at a bicentennial banquet hosted by General Motors and featuring an American buffet with foods from across the nation.

Alumni Incorporates

The State FFA Alumni has completed the requirements for incorporation. This new structure will be very instrumental in the supportive effort of the Alumni for Kansas FFA members, chapters, and the State Association.

Richard Hull, State Alumni chairman and Farm Director at WIBW Radio and TV in Topeka, put many hours into the incorporation effort. The plans for the State Alumni organization is to serve as a fund raising foundation for various FFA awards and activities. Currently, these awards and activities are coming from the members'

State dues. Hopefully, State dues will not need to change to offset increased costs.

Many meetings have been spent on the role of a State Alumni Association and the feasibility of a Kansas FFA Foundation. Now the Alumni have identified their role as that foundation. The ultimate goal of the State Alumni is, of course, to help the individual member. That help is coming by their helping sponsor District and State awards.

The Kansas Association of FFA is proud of the State Alumni and the able leadership which has guided it to its present status.

Prochaska Named Director of Vocational Education

Dean Prochaska, State FFA Advisor since 1972, was named Director of Vocational Education for Kansas by the State Department of Education.

Prochaska's new role will be to coordinate all areas of vocational education in Kansas. He succeeds Dr. John Snyder who has held the post since 1966.

Mr. Prochaska started teaching vocational agriculture in 1949 at Silver Lake. Prior to coming into the State Vocational Agriculture office in 1970, he also taught in Buckeye, Arizona, Chapman and Manhattan.

National Leadership Conference

Several Kansas FFA chapter officers attended the Bicentennial edition of the Washington Leadership Conference, in Washington, D.C. held this past summer. The week long conference was held at the National FFA Center near the Nation's Capitol.

The FFA conference program is designed to improve leadership skills, develop an understanding of the national heritage, and prepare FFA members for more effective leadership roles in their chapter and community.

The Conference is also a forum for the exchange of FFA chapter activity ideas among members across the nation.

Besides the training sessions, the 1976 program included visits to Mt. Vernon Plantation, the National Archives, Smithsonian Institute, Arlington National Cemetery, and several other historic monuments and memorials in and around the Capitol.

A highlight of the conference for the participants was visits to the offices of their congressmen and representatives.



Dee James, from the Clay Center Chapter, is greeted by Mike Jackson, National FFA Secretary, at the National FFA Leadership Conference.



Jeff Mellott and Harlin Unruh, from the Peabody Chapter, are greeted by Les Anderson, National FFA Vice President, at the National FFA Leadership Conference.



Craig Clark, from the Mankato Chapter, visits with Mike Jackson, National FFA Secretary, at the National FFA Leadership Conference.



Steve Franken and Mark Stock from the Troy Chapter, are welcomed to the National FFA Leadership Conference by Mike Jackson, National FFA Secretary.



Tim Schulze (left) from the Norton Chapter with Doug Loudenslager, National FFA Vice President, at the National FFA Leadership Conference.



State FFA Livestock Show

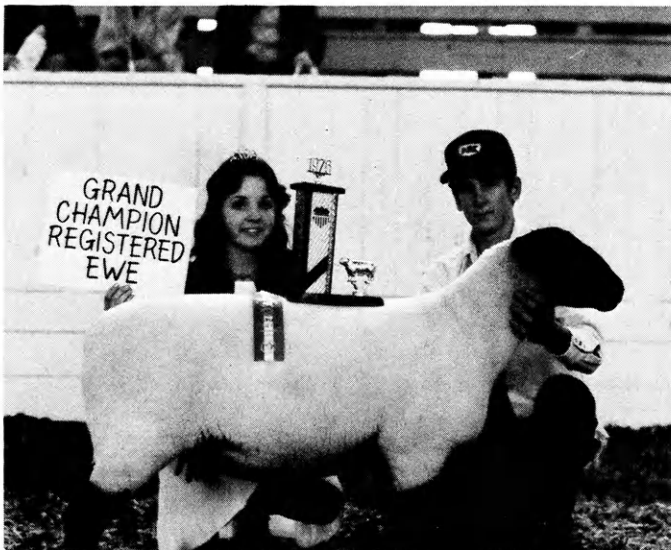
One hundred sixty Kansas FFA members from 40 chapters exhibited nearly 300 head of animals at the 1976 Kansas FFA Livestock Show at the State Fair in Hutchinson. The show, which started in 1969, has grown each year, this year being the biggest on record.

Excellence was commonplace among all the animals exhibited. One hundred twenty-eight swine, eighty-eight sheep, and eighty beef animals were on parade. Fiftythree of the beef animals were steers.

The top animals in swine and beef went on for carcass evaluation, with Brett Eberle from the Newton chapter having the champion swine carcass. His medium weight barrow had a ham/loin index of 168.2, with an unadjusted loinage area of seven square inches.



Grand Champion Market Lamb—Michelle Green, Arkansas City. Pictured with Michelle is Lynne Markle, State FFA Sweetheart.



Grand Champion Registered Ewe—Brent Meyer, Sabetha Chapter. Pictured with Brent is Lynne Markle, State FFA Sweetheart.



Grand Champion Commercial Ewe—Marcia Gatz, Newton Chapter. Pictured with Marcia is Lynne Markle, FFA Sweetheart.



Grand Champion Registered Heifer—Scott Davies, Hiawatha Chapter. Pictured with Scott is Lynne Markle, State FFA Sweetheart.



Grand Champion Showmanship—Dee James, Clay Center Chapter. Pictured with Dee is Lynne Markle, State FFA Sweetheart.



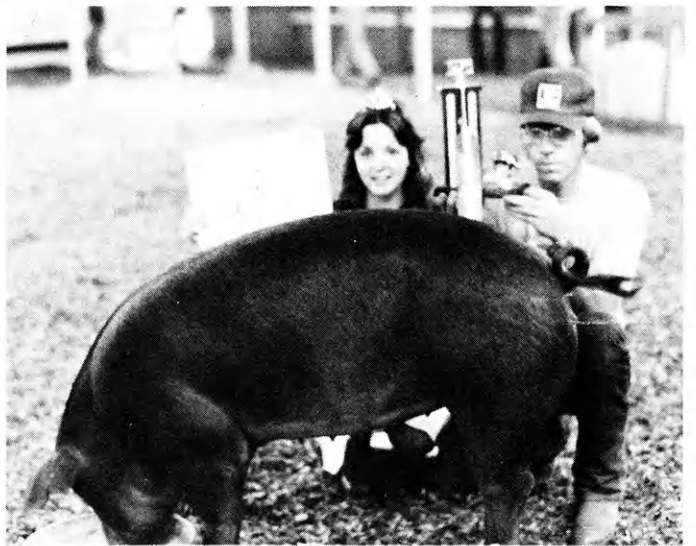
Grand Champion Steer—Rochelle McLean, Eureka Chapter. Pictured with Rochelle is Lynne Markle, State FFA Sweetheart.



Grand Champion Commercial Gilt—David Eastwood, Prairie View Chapter. Pictured with David is Lynne Markle, State FFA Sweetheart.



Grand Champion Market Barrow—Douglas Schwartz, Washington Chapter. Pictured with Doug is Lynne Markle, State FFA Sweetheart.



Grand Champion Registered Gilt—Lance Markley, West Elk Chapter. Pictured with Lance is Lynne Markle, State FFA Sweetheart.

Summary of FFA Livestock Entries

1976 Kansas State Fair

Beef

- Registered Angus Senior Heifer:** 1st. Curt Raab, Seaman.
- Registered Angus Summer Yearling Heifer:** 1st. Grant Griffiths, Clay Center; 2nd. Chris Rorabaugh, Lebanon.
- Registered Angus Junior Yearling Heifer:** 1st. Scott Davies, Hiawatha; 2nd. Tim Dierksen, Chaparral; 3rd. Barry McCurry, Haven; 4th. Robert Allen, Louisburg; 5th. Grant Griffiths, Clay Center.
- Registered Hereford Senior Heifer Calf:** 1st. Jeff Filenger, Wamego; 2nd. Robin Rusk, Medicine Lodge; 3rd. Craig Brawner, Haven.
- Registered Hereford Summer Yearling Heifer:** 1st. Denny Hoffman, Buhler; 2nd. Joe Wilcox, Chaparral; 3rd. Monty Hoffman, Buhler; 4th. Chris Kettler, Paola; 5th. Laura LeGalle, Paola.
- Registered Shorthorn Summer Yearling Heifer:** 1st. Chris Studer, Sabetha; 2nd. Becky Stiggins, Seaman.
- Registered Exotic Junior Yearling Heifer:** 1st. Eric Guenther, Paola.
- Registered Exotic Junior Yearling Heifer:** Lori Fagg, Paola.
- Grand Champion Registered Heifer:** 1st. Scott Davies, Hiawatha.
- Reserved Grand Champion Registered Heifer:** 1st. Joni Snapp, Westmoreland.
- Light Weight Steers:** 1st. Jeff Ebert, Westmoreland; 2nd. Barb Priest, Sabetha; 3rd. Mona Rusk, Medicine Lodge; 4th. Jeff Ebert, Westmoreland; 5th. Cindy Curry, St. Francis.
- Medium Weight Steers:** 1st. Gregg Stewart, Washington; 2nd. Loy James, Clay Center; 3rd. Dana McLean, Eureka; 4th. Dave Priest, Sabetha; 5th. Cindy Curry, St. Francis.
- Heavy Weight Steers:** 1st. Rochelle McLean, Eureka; 2nd. Kent Stewart, Washington; 3rd. Scott Willbrant, Washington; 4th. Robert Allen, Louisburg; 5th. Joshline McLean, Eureka.
- Grand Champion Steer:** 1st. Rochelle McLean, Eureka.
- Reserve Grand Champion Steer:** 1st. Gregg Stewart, Washington.
- Third Champion Steer:** 1st. Kent Stewart, Washington.
- Fourth Champion Steer:** 1st. Jeff Ebert, Westmoreland.
- Fifth Champion Steer:** 1st. Scott Willbrant, Washington.

Swine

- January Registered Gilt:** 1st. Lance Markley, Howard; 2nd. Faye Ploeger, Sabetha; 3rd. Faye Ploeger, Sabetha; 4th. Lori Thompson, Haven.
- February Registered Gilt:** 1st. Mark Gronau, Newton; 2nd. Cory Maydew, Lebanon; 3rd. Mark Gronau, Newton; 4th. Max Menefee, Paola; 5th. Robbie Miller.
- March Registered Gilt:** 1st. Gail Sage, Mission Valley; 2nd. Robbie Miller, Council Grove.
- Grand Champion Registered Gilt:** 1st. Lance Markley, West Elk.
- Reserve Champion Registered Gilt:** 1st. Faye Ploeger, Sabetha.
- January Commercial Gilt:** 1st. Lori Thompson, Haven; 2nd. Diane Ediger, Haven; 3rd. Tim Dierksen, Chaparral; 4th. Ron Ediger, Haven; 5th. Lance Markley, West Elk.
- February Commercial Gilt:** 1st. David Eastwood, Prairie View; 2nd. Lorena Croucher, Garnett; 3rd. Lorena Croucher, Garnett; 4th. Greg Kater, Newton; 5th. Dee Nulik, Arkansas City.
- March Commercial Gilt:** 1st. Susie Gumsauley, Sabetha; 2nd. Greg Jackson, Prairie View; 3rd. Ron Ediger, Haven; 4th. Mark Fenton, Chaparral; 5th. Lorena Croucher, Garnett.
- Grand Champion Commercial Gilt:** 1st. David Eastwood, Prairie View.
- Reserve Champion Gilt:** 1st. Lorena Croucher, Garnett.
- Light Weight Market Barrows:** 1st. Robert Bacon, Council Grove; 2nd. Loy James, Clay Center; 3rd. Marcia Gatz, Newton; 4th. Jeff Bryant, Arkansas City; 5th. Doug Ebert, Westmoreland.
- Light Medium Weight Market Barrows:** 1st. Douglas Schwartz, Washington; 2nd. Douglas Schwartz, Washington; 3rd. Marcia Gatz, Newton; 4th. Matt Shipley, Lebanon; 5th. Bill Befort, Lebanon.
- Medium Weight Market Barrows:** 1st. Jeff Ebert, Westmoreland; 2nd. Brett Eberle, Newton; 3rd. Lance Markley, West Elk; 4th. Jeff Ebert, Westmoreland; 5th. Terry Ala, Prairie View.
- Heavy Medium Weight Market Barrows:** 1st. Douglas Schwartz, Washington; 2nd. Matt Shipley, Lebanon; 3rd. Dee Nulik, Arkansas City; 4th. Lori Thompson, Haven; 5th. Keith Bacon, Council Grove.
- Heavy Weight Market Barrows:** 1st. Mark

Metzler, Mission Valley; 2nd. Tim Dierksen, Chaparral; 3rd. Robbie Miller, Council Grove; 4th. Lorena Croucher, Garnett; 5th. Mark Fenton, Chaparral.

Grand Champion Market Barrow: 1st. Douglas Schwartz, Washington.

Reserve Market Barrow: 1st. Douglas Schwartz, Washington.

Third Champion Market Barrow: 1st. Matt Shipley, Lebanon.

Fourth Champion Market Barrow: 1st. Dee Nulik, Arkansas City.

Fifth Champion Market Barrow: 1st. Mark Metzler, Mission Valley.

Sheep

- Registered Spring Hampshire Ewe:** 1st. Jeff Ebert, Westmoreland.
- Registered Spring Suffolk Ewe:** 1st. Brent Meyer, Sabetha; 2nd. Jeff Ebert, St. George; 3rd. Darren Ryan, Chaparral; 4th. Benton Cauble, Haven; 5th. Sandra Hundley, Seaman.
- Registered Yearling Hampshire Ewe:** 1st. Jeff Ebert, Westmoreland; 2nd. Marcia Gatz, Newton.
- Registered Yearling Suffolk Ewe:** 1st. Brent Meyer, Sabetha; 2nd. Nathan Long, Chaparral; 3rd. Jeff Ebert, Westmoreland; 4th. Benton Cauble, Haven; 5th. Sharon George, Lebanon.
- Registered Yearling Dorset Ewe:** 1st. Brett Eberle, Newton; 2nd. Brett Eberle, Newton.
- Grand Champion Registered Ewe:** 1st. Brent Meyer, Sabetha.
- Reserve Grand Champion Registered Ewe:** 1st. Jeff Ebert, Westmoreland.
- Crossbred Commercial Spring Ewe:** 1st. Brent Meyer, Sabetha; 2nd. Marcia Gatz, Newton; 3rd. Marcia Gatz, Newton; 4th. Julie Shively, Lebanon; 5th. Jeff Ebert, Westmoreland.
- Crossbred Commercial Yearling Ewe:** 1st. Marcia Gatz, Newton; 2nd. Brent Meyer, Sabetha; 3rd. Sandra Hundley, Seaman; 4th. Glen Schmidt, Haven.
- Grand Champion Commercial Ewe:** 1st. Marcia Gatz, Newton.
- Reserve Champion Commercial Ewe:** 1st. Brent Meyer, Sabetha.
- Light Weight Market Lambs:** 1st. Marcia Gatz, Newton; 2nd. Marcia Gatz, Newton; 3rd. Donna Smith, Garden City; 4th. Tom Rutledge, Mission Valley; 5th. Alan

Continued on page 9

Summary of FFA Livestock Entries
Continued from page 8

Sage, Mission Valley.

Light Medium Weight Market Lambs: 1st. Rex Fishburn, Haven; 2nd. Pat Smith, Arkansas City; 3rd. Benton Cauble, Haven; 4th. Neal Williams, Newton; 5th. Joni Snapp, Westmoreland.

Medium Weight Market Lambs: 1st. Brett Eberle, Newton; 2nd. Marcia Gatz, Newton; 3rd. Donna Smith, Garden City; 4th. Donna Smith, Garden City; 5th. Carla Wolgamott, South Barber.

Heavy Medium Weight Market Lambs: 1st. Brett Eberle, Newton; 2nd. Brett Eberle, Newton; 3rd. Jeff Eberle, Newton; 4th. Carla Wolgamott, South Barber; 5th. Tim Brown, Lebanon.

Heavy Weight Market Lambs: 1st. Michelle Greene, Arkansas City; 2nd. Jeff Ebert, Westmoreland; 3rd. Shelly Wolgamott, South Barber; 4th. James Long, Chaparral; 5th. Gregg Stewart, Washington.

Handling

Beef Showmanship: 1st. Dee James, Clay Center; 2nd. Joshline McLean, Eureka; 3rd. Mona Rusk, Medicine Lodge; 4th. Rochelle McLean, Eureka; 5th. Robin Rusk, Medicine Lodge.

Swine Showmanship: 1st. Brett Eberle, Newton.

Sheep Showmanship: 1st. Brent Eberle, Newton; 2nd. Brent Meyer, Sabetha; 3rd. Marcia Gatz, Newton; 4th. Michelle Greene; 5th. Jeff Ebert, Westmoreland.

Grand Champion Showmanship: 1st. Dee James, Clay Center.

Reserve Grand Champion Showmanship: 1st. Brett Eberle, Newton.

Herdsmanship: Grand Champion—Seaman; Reserve Champion—Eureka; Third Champion—Leoti; Fourth Champion—Prairie View; Fifth Champion—Mission Valley.



State Fair FFA Livestock Judging

The Medicine Lodge Chapter took top honors in the FFA Livestock Judging Contest at the State Fair with two team members, Mona Rusk and Steve Dick, placing as first and second high individuals respectively.

The second team was Coffeyville, followed by Uniontown, 3rd; Labette County, 4th; Jetmore, 5th; Haven, 6th; Girard, 7th; Royal Valley, 8th; Paola, 9th; and Plainville, 10th.

Matt Kees, Plainville, was third high individual followed by Sheryl Neblock, Central Heights, 4th; and Brad Stappel, Russell, 5th.

For the first time, postsecondary judging teams were invited to the contest. The Colby Community College team was first with Cloud County Community College, second; Allen County Community College, third; and Dodge City Community College fourth.



First Place State Fair Judging Team—left to right back row: Allen Dick, Steve Dick, Lynne Markle (State FFA Sweetheart), Mr. Richard Poland. Left to right front row: Mona Rusk, Robin Rusk

State Fair Agricultural Mechanics

Nearly seventy exhibits were on display at the Kansas State Fair from vocational agriculture departments across the state. Sixty were individual construction and nine were repair projects.

Ellinwood walked away with top honors for chapter display, a display consisting of four construction projects.

Pat Gatton, from Ellinwood, had the top construction project which earned him the \$500.00 Hesston Scholarship. The first runner-up, who had the second place project, was Kevin Kramp, also from Ellinwood.

David Pressier from Haven had the first place machinery repair project with an excellent job done on a John Deere tractor.

In the chapter exhibits, Ellinwood was followed by Moundridge, 2nd; Goessel, 3rd; Garnett, 4th; Mankato, 5th; Plainville, 6th; Wilson, 7th; Chapman, 8th; Pike Valley, 9th; and Kingman, 10th.

Four Clifton Youths Win in National Judging Event

Three Clifton youths are among 32 winners among 14,872 official entries in the 1976 National Livestock Producer Livestock judging contest sponsored by the *National Livestock Producer Magazine*.

Sam Tiemeyer finished third in the Junior division which had 8,215 entries and Larry Michels grabbed eighth place.

Rodney Davies grabbed fourth in the Men's division, which had 3,998 entries.

All three entered the judging contest last spring in Clifton High School's Vocational Agriculture Class taught by

Powell Heide.

The judging was done by examining pictures of six classes of livestock: two beef, two swine, one sheep and one horse.

Another Clifton student, Jeff Barnes, placed in the top 30 in the junior division, said Powell Heide.

The top 10 winners in the three categories—Men's, Women's and Juniors—all were identified in this month's *National Livestock Producer Magazine*.

There were three other Kansas youths who placed in the three judging categories. They were Brian Burger, Altamont, who finished 6th in the Junior di-

vision; Ed Hall, Sublette, who finished 9th in the Men's division and Judy Kaufman, Humboldt, who finished in a three-way tie for 10th place in the Women's division.

In the top 30 winners—10 in each division—there was no other city that claimed three winners in the nationwide competition. In fact, no other city had two who placed in the top 10 of the three divisions.

Heide said that in total scoring Sam Tiemeyer's third place was just two points off first place. Tiemeyer had 278 and the first place winner had 280 points.



Mid America Fair

Agriculture Mechanics

A grain wagon running gear built by Larry Breuel, from the Prairie View chapter took top honors with Paul Morano's bale mover placing second. Paul was also from Prairie View.

In chapter displays, Prairie View was first; Clay Center, second; Paola, third; and Powhattan, fourth.

The first place repair project was a reconditioned Allis-Chalmers tractor from the Seaman chapter.

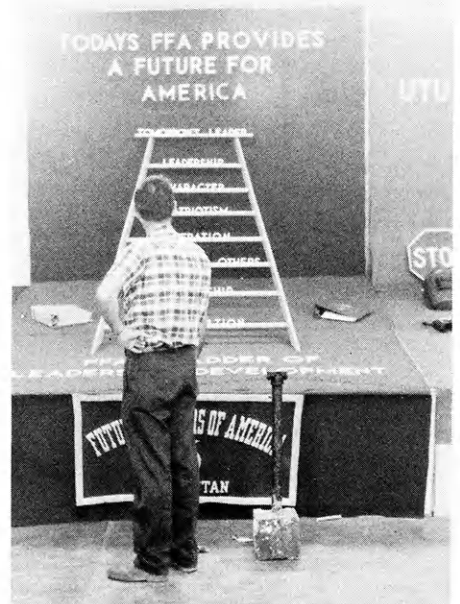
FFA Booths

The Manhattan chapter lead a field of 17 chapters in the educational booth display. The St. George chapter was second and will be along with the Manhattan chapter, asked to display their booth at the 1977 State FFA Convention.

The remaining top ten booths in order were: Mission Valley, Prairie View, Marysville, Clay Center, Atchison County, Royal Valley, Riley County, and Osage City.



The first place agricultural mechanics exhibit at the Mid-America Fair.



Manhattan's first place FFA Educational Booth at the Mid-America Fair.

New Kiddies Barnyard



The sweethearts and their state officer escorts in front of the all new Kiddies Barnyard. (photo courtesy of Kansas Farmer-Stockman)



Bright colors, lots of room, and a permanent structure best describes the new Kiddies Barnyard building at the Kansas State Fair. The *Kansas Farmer-Stockman Magazine*, in an agreement with Astro Buildings, was responsible for the excellent new structure.

Earl Holloway, Advertising Manager for *Kansas Farmer-Stockman* put many hours into securing the building for the FFA's use. Mr. Holloway was a 1956 State Farmer Degree holder from the Kincaid chapter. His advisor was Mr. Sam Harris, who is presently advisor of the Garnett chapter.

The new Astro building is 48' x 90' and was featured on the front cover of the September issue of the *Kansas Farmer-Stockman Magazine*. Located on the northeast corner of the Fairgrounds, the new location affords a more prominent exhibition of the farm mechanics projects of Vocational Agriculture students.

Several chapters from the South Central District were responsible for helping set up the building as well as stocking it with animals. The set-up chapters were: Haven, Buhler, Inman, Moundridge, and Peabody. Chapters which furnished animals were: Buhler, Ellinwood, Haven, Lindsborg, Moundridge, and Peabody.

Sweetheart candidates tour Kiddies Barnyard. Left to right, Sara Stuewe, escorted by Kerry Zillinger, State Vice President; Lynne Markle, (who was later named 1976-77 State Sweetheart), escorted by Jeff Zillinger, State FFA Secretary; and Debbie Wilson, escorted by Sam Brownback, 1974-75 State FFA President. (photo courtesy Kansas Farmer-Stockman)

Markle State Sweetheart

Lynne Markle, representing the Southeast District and the Cherryvale chapter, was crowned 1976-77 State FFA Sweetheart in ceremonies at the State Fair Grandstand. Lynne received her cape from immediate past State Sweetheart, Luann Bell, from the Smith Center chapter.

First runner-up for State Sweetheart was Renetta Christiansen representing the South Central District and the

Haven chapter. Renetta received a \$25.00 Savings Bond from Great Bend Manufacturing for her second place winnings.

A Bernina Sewing Machine from Mid West Sewing Center in Wichita, a \$100.00 Savings Bond from Great Bend Manufacturing, a \$100.00 cash award from Ford Tractor Division, and flowers and crown from *Kansas Farmer-Stockman* were the winnings of Lynne for being named State Sweet-

heart.

Other contestants in the contest were: Sara Stuewe from Norton and the Northwest District; Joleen Raab from the Seaman chapter and the East Central District; Debbie Wilson representing the North Central District and the Washington chapter; Sherry Whitesell from the Holton chapter and the Northeast District; and Kelly Steele, from the Tribune chapter and the Southwest District.



The District officers, State officers, and District advisors who attended the District Officers Conference at Rock Springs Ranch.

District Officers Conference

"Reach, Rebound, and Run", was the theme of the 1976 District Officers Conference held at Rock Springs Ranch, October 2 and 3. Sharpening the leadership skills of the officers was the goal of the conference.

Group cooperation, human relations, public speaking, and philosophy were all laced through the two-day conference, which was organized and carried out by the state officers.

John Jr. Armstrong, President of Kansas Farm Bureau, gave challenging remarks to the group. Mr. Armstrong who has been a firm supporter of Vocational Agriculture and the FFA, received his State Farmer Degree in 1941, when he was a member of the Atchison County FFA Chapter.

CHAPTER REPORTS



District officers who attended the American Institute of Cooperation meeting, left to right: Shawn Runkle, Holcomb; Mona Rusk, Medicine Lodge; Terry Nelson, Norton; Sheryl Neblock, Central Heights; Chuck Johnston, Coffeyville; Charles Hanson, Concordia; and Don Ebert, Westmoreland.

Northeast Chapter

Westy Member to AIC

Don Ebert, St. George, attended the National Institute on Cooperative Education at Virginia Polytechnical Institute and State University (VPI & SU) from July 25-29, 1976.

About 850 young people were gathered at this national meeting of agricultural, educational, and agricultural cooperative leaders. Sponsored by the American Institute of Cooperation, (AIC), the national educational organization for farmer cooperatives headquartered in Washington, D.C., the University, and Virginia cooperatives, this meeting draws about 2,500 youth,

young farmer couples, and adults.

The young people, called Youth Scholars, have a number of special sessions of their own and also attend the general sessions where speakers' topics support the 1976 theme, "Cooperatives—Committed to America's Future."

Most of these Youth Scholars have won competitions—speaking or essay contests, special quizzes, or exhibited special leadership qualities that have made them eligible to attend the meeting.

Don was awarded the trip to UPI from the Kansas Co-op Council for being selected as Northeast District

President of the FFA. Don is the son of Mr. and Mrs. B. M. Ebert of St. George.

During the meeting, a boy and a girl are chosen from the group as Associate Trustees (Youth), with the girl also serving as Miss AIC. They represent AIC and cooperatives at many meetings around the country throughout the upcoming year—speaking at annual cooperative meetings, going to state and national meetings of youth organizations and cooperatives, and the like. The Youth Scholars and Young Farmer Couples attending also staged a variety show the last night of the meeting.

Ron Ebert
Northeast District Reporter
KANSAS FUTURE FARMER

Holcomb Chapter

Holcomb FFA Booth Places Second at State Fair

The Finney County Collective Booth erected by members of the Holcomb FFA Chapter placed second in the western division competition at the Kansas State Fair in Hutchinson. The Educational booth consisted of varieties of fruits, vegetables, wheat, oats, grain sorghums, corn, legumes and grasses grown in Finney County.

Members of the Holcomb Chapter furnished materials for the booth from farmers and gardeners in the Holcomb area. Collection for the booth started at wheat harvest with students selecting wheat bundles and one-gallon samples of each wheat variety to be sorted and cleaned. It took approximately 2½ weeks to properly clean the eight gallons of seed required for the booth. This marked the first year that the Holcomb FFA has had a booth at the State Fair and the first time that Finney County was represented in the Collective Booth Competition.

Shawn Runkle, Clint Nordstrom, Greg Holsted, Tony Leiker, Cindy Quint, Craig Adam and Mr. Burch set up the booth Friday evening. The Holcomb FFA would like to take this opportunity to thank everyone who contributed in any way to make the booth a success. A special thanks goes to Dale Edelblute, Extension Crops Specialist and Jack Kyle, Horticulturist at the Garden City Experiment Station for their ideas, help and encouragement in planning the booth.

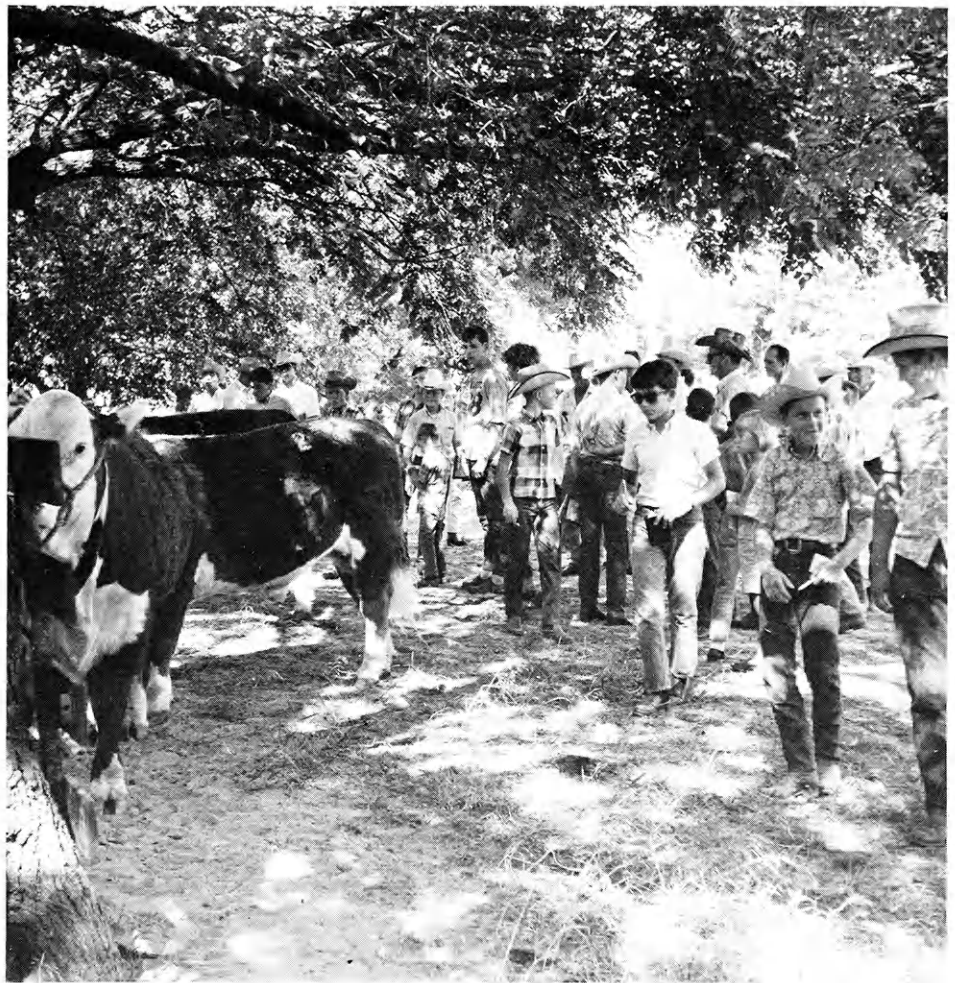
Shawn Runkle
Holcomb Chapter Reporter

Troy Chapter

Troy Wins NE Meats

The Troy FFA Chapter won the Northeast District Meats Judging Contest, Monday September 27 at the Bern Locker in Bern, Kansas.

Troy won with a point total of 956 out of a possible 1,200 points. Twelve teams competed in the contest which consisted of placing wholesale cuts of loins,



Livestock judging scene at South Central District Field Day.

Medicine Lodge Chapter

Nestled amongst numerous native red cedars, in a secluded canyon, FFA members and advisors from the South Central District recently enjoyed the first field day of that area. This weekend affair was held on the picturesque Rusk Ranch located near Sun City,

chucks, ribs and rounds; identification of retail cuts and grading of beef (both yield and quality grades).

Steve Franken (326) third high individual, Mark Stock (318) tied for fifth high, and John Zeltwanger (312) seventh high composed the team.

Others from Troy that competed were Roger Ross, Bernard Sutton, Bill Callahan, Mike Masters, Harry Losson, Eddie Stahl, Jon Herpich, and Joe Neumann.

Mark Stock
Chapter Reporter

Kansas in the heart of the beautiful Gypsum Hills. One hundred strong, FFA boys and girls came from near and far for a varied program of education and evaluation, as well a fun and fellowship.

Mona Rusk, president of the South Central District, along with her family, fellow officers and in cooperation with the local Medicine Lodge Chapter,

Continued on page 15

Troy Farm Tour

The Troy FFA Chapter held a farm tour of three members farming programs, Sunday August 29, Mr. Barnett, FFA advisor, and 30 members and guests toured Bob Cumming's irrigation system, Mack Jarrett's sheep herd, and Jerry Johnson's swine farrowing operation.

After the tours, the group went to Mr. Barnett's house for a weiner roast, watermelon feed, and recreation.

Mark Stock, Reporter
Troy Chapter

Hill City Chapter

Officer Camp

The Hill City FFA chapter officer camp, which was held August 17 and 18, was attended by the Hill City FFA officers and the Atwood FFA officers.

The camp was held primarily to decide the dates of special events, to select special speakers and for leadership training practices. Some topics discussed at the camp that were also discussed at the State Leadership Camp were Food for America program, Work Experience Abroad program, BOAC, safety program, proficiency awards, chapter banquet, wildlife damage control and state chapter awards.

The officers also held rap sessions to discuss chapter activities. Some of the activities discussed were to improve agricultural experience programs of members, the swine cooperative, the chapter farm, the FFA banquet and the FFA points system.

Parliamentary procedure and a study of FFA information also received a good deal of attention as a portion of each session was set aside to work on these skills.

The alumni also participated in the chapter camp. Brad Trexler, past State FFA President; Dan Worcester, Star Farmer of America; and Phil Stinemetz, past state FFA officer and alumni president, all encouraged the officers.

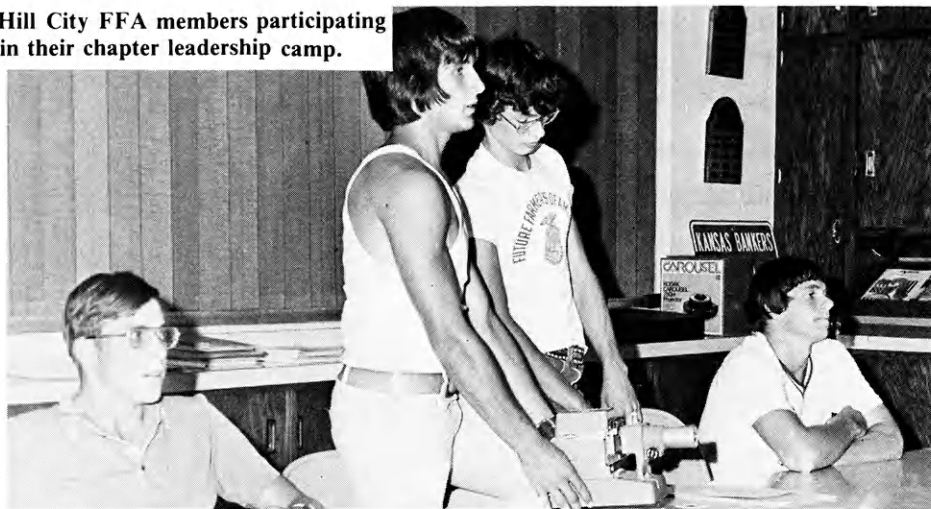
Some other special speakers were Charles Nighswonger, district supervisor of the FHA; Wayne Roberts, representative of KAYS-TV; Kelso Williams, ASCS representative; and Don Paxson, salesman for Northwest Irrigation and Electric.

One of the highlights of the camp was the slide presentation of the National FFA Leadership Conference in Washington attended by C.J. Riemann and Lewis Worcester. The two representatives met all of the national officers and other leaders stationed in Washington.

The Atwood FFA officers also attended the annual Hill City event. They participated in discussions and rap sessions, and the two chapters exchanged ideas on activities.

J. P. Worcester
Hill City FFA Reporter

Hill City FFA members participating in their chapter leadership camp.



State Camp a Success

Sixty-two chapters were in attendance at the 1976 State FFA Camp, held at Rock Springs Ranch in July.

Chapter officers gained knowledge in public speaking, chapter activities, and ways to increase participation of their chapter members. The camp wasn't all work, as great fun was had in the water follies and sporting events.

Campers were divided into ten groups, each group named after a breed of beef animals. The groups, called

herds, were pitted against each other for all activities and were awarded points for their participation and/or winning an event.

The ranking of the herds, from one through ten, and their scores were: Shorthorn (242.13); Angus (236.53); Longhorn (234.03); Charolais (227.99); Hereford (223.31); Devon (221.99); Brahma (221.13); Simmental (214.6); Galloway (211.64); and Limousin (208.67).



Wranglers of the 1976 State FFA Camp, back row left to right: C. J. Riemann, Susan VanCleave, Paul Morano, Mark Forsyth, and Pat Wiederholt. Front row: Charles Hatch, Junelle Zerr, Ron Ditmars, Phil Fanning, and Lorena Croucher.



Camp Officers, left to right: Ron Ediger, Reporter; Alan Weiser, Vice President; Dee James, President; Cindy Ricketts, Secretary; Greg Krenke, Treasurer; and Robin Rusk, Sentinel.

Medicine Lodge Chapter
Continued from page 13

served as host for the occasion. Guests were extended a western-style hospitality that included three home-cooked meals, a chartered trail ride, livestock and land judging contests, softball and volleyball games, guitar picking and singing, a moving vesper service and outstanding speeches by district and state personalities.

An impressive flag ceremony, conducted by the state FFA president, Jay Selanders of Garnett; state secretary, Jeff Zillinger of Phillipsburg; district vice-president, Ron Ediger and district sentinel, Greg Krenke both of Haven, kicked-off the field day activities. Assisting, with a trumpet solo of The Star Spangled Banner, was Dan Probst of Medicine Lodge.

Doug Ott, field representative for the American Hereford Association, and assisted by Keith Kisling of Burlington, Oklahoma, directed an informative type demonstration just prior to the livestock judging contest. Five classes of cattle, sheep and swine were then appraised, with much emphasis on oral reasons. It was a valuable learning session for all participants.

A hearty noon meal fortified everyone for the land judging clinic which followed. Vic Griswold, area conservationist assigned to Barber county, was in charge of the contest and was aided by Ray Etheridge, local county agricultural agent. An assortment of classes, including two sites of slope measurement, challenged the know-how of the FFA'ers. This land judging school

served as a preparatory course for the official district contest to be held in late October.

Thirteen year old Clay Rusk, a future-future farmer, took a large horse-back group on a two and one-half hour trail ride through the scenic Gyp Hills. Civilization melted away as the gorgeous red earth, flecked with the white of the gypsum and topped with green cedars, presented a panorama to the mounted brigade.

At the conclusion of the trail ride, an icy pop break was most welcomed. Few details had been overlooked to add to the camper's comfort. Even portable showers had been rigged-up with large tanks of water hovering over-head.

As evening approached, a bonfire was lit in preparation for the evening meal and program. The cozy fire, which was kept burning throughout the night, wasn't the only source of light and warmth. There was a happy glow on the faces of all those in attendance as the weekend of activity unfolded. This fine gathering of dedicated FFA young people generated its own spark; and pleas for another such get-together next year were being voiced even before the first day was yet completed.

After supper, the group settled down to some first-class country western music. John Clarke, local artist from Medicine Lodge, Kansas, entertained with his guitar and fine voice. Thus, the mood was set for Renetta Christensen, the District Sweetheart from Haven, Kansas to speak. Behind a study podium, which sported a large FFA em-

blem, Renetta gave a challenging message. She urged participation and would settle for no less than the very best each FFA'er had to offer.

The night was still young, and field day campers were in for even more treats. The state FFA president and secretary—both students at Kansas State University— were on hand to speak and inspire the membership. Jeff Zillinger spoke first, and commanded the attention of all as he moved forward and greeted each camper on a one-to-one basis. Equally impressive was the speech given by the state president, Jay Selanders. When he was finished, each attentive member was confident that he, too, could climb to the top of the FFA ladder of success.

A warm breakfast greeted the chilled group on Sunday morning, and after the physical nourishment, spiritual nourishment was provided in the form of a vesper service, complete with printed bulletins. The Reverend Clarence Beam of Coats, Kansas encouraged the Future Farmers of America to "Always Include God in Your Work".

The South Central District officers, who include Mona Rusk, president; Ron Ediger, vice-president; Doug Carlson, secretary; Alden Linnebur, treasurer; John Toews, Reporter; and Greg Krenke, Sentinel, had worked together diligently for the success of this first field day; and they have every right to be proud, because it was truly a hum-dinger!

Robin Rusk, reporter
Medicine Lodge FFA Chapter

From the President's Desk

With the school year now in full swing our FFA activities are being put into high gear across the state.

The District Officers attended the District Officers Conference which had "Reach, Rebound, and Run", for its theme. And with the Greenhands now primed and ready by attending their District Greenhand Conferences, now is the time to put that theme into action.

The FFA is filled with opportunities, and it is up to us to reach for those opportunities and run with them. Reach for the opportunity to participate on a judging team, parliamentary procedure team, or work in your chapter's activities such as the Safety Program or Food for America Program. Then take a hold on that opportunity and run with it. Do your best to score.

It has been said that, God isn't likely to give you a good harvest if you haven't planted the seed. Now is the time for us to reach for those opportunities and plant that seed so we can have a good harvest and put the Kansas FFA into high gear.

Sincerely,

Jay Selanders

Jay Selanders, President
Kansas Association of FFA

KANSAS ASSOCIATION OF FFA
DIVISION OF VOCATIONAL EDUCATION
STATE DEPARTMENT OF EDUCATION
120 EAST TENTH STREET
TOPEKA, KANSAS 66612

NON-PROFIT ORGANIZATION
U.S. POSTAGE
PAID
TOPEKA, KANSAS
PERMIT NO. 507



502SERIAL----1*102243 1177
DC0000
SERIALS DEPT
KANS STATE UNIV LIB
MANHATTAN KS 66502