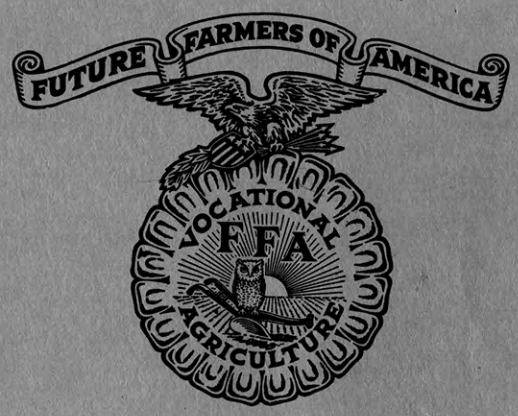


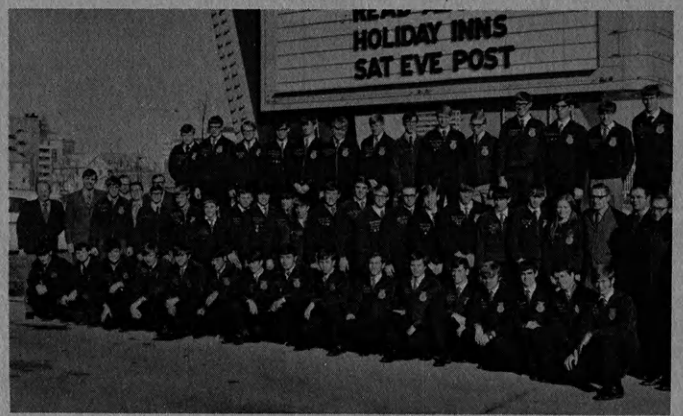
S
533
F8
K3
43/3
pet

SD8

The Kansas Future Farmer



National FFA Week, February 19-26



District Officer Leadership Conference

THE KANSAS FUTURE FARMER
Harold Shoaf, Editor

OFFICERS OF THE KANSAS ASSOCIATION OF
FUTURE FARMERS OF AMERICA

Mark Mayfield, President Caney	Terry Lawrence, Reporter Winfield
Chris Schmidt, Vice-Pres. Atwood	Steve Hittle, Sentinel Hugoton
Jay Armstrong, Secretary Atchison Co.	Harold Shoaf, Exec. Sec. Topeka
Ralph Wilson, Treasurer Arkansas City	C. C. Eustace, Advisor Topeka

Volume XXXXII

February 3, 1972

No. 3

TABLE OF CONTENTS

PICTURE SECTION	
District Leadership Conference Speakers.....	1
District Officer Leadership Conference	2
Powhattan FFA Tours Research Center	4
ACTIVITIES SECTION	
Final BOAC Application Change	5
Superior Chapter Applications	5
State Gold Emblem Chapter Award Application.....	6
District FFA Officers Plan Future	6
Lieutenant Governor Speaks to FFA	6
Prairie View Represents Kansas in National Land Judging Contest.....	7
National FFA Week, February 19-26	8
Kansas Association of Bank Agricultural Representatives Will Recognize District Star Farmers	8
Kansas Electrification Council Will Recognize District And State Electrification Winners.....	8
Labette County Community High School #1 in FFA Member- ship for the Second Year	9
FFA Membership By Districts	9
Interesting Chapter Meeting Presentations.....	10
Vocational Training vs. Unemployment.....	10
District Achievement Banquets	11
Rodeo and Showmanship Clinic at KSU.....	11
CONVENTION SECTION	
State Rules For FFA Speech Contest	12

Date Of State FFA Convention	18
National FFA President Featured Speaker	18
Convention Talent Needed	18
State Officer Selection	18
State Farmer Pictures	18
KSU Housing For FFA At State Convention.....	19
Second FFA Talent Show	19
Parliamentary Procedure Contest	19
CHAPTER AND DISTRICT SECTION	
Powhattan FFA On Research Trip	20
East Central District FFA	20
Southeast District FFA	20
Washington Chapter Sponsors Picker-Fiddler Contest.....	21
Hill City Officers Take Trip To Denver	21

PICTURE SECTION

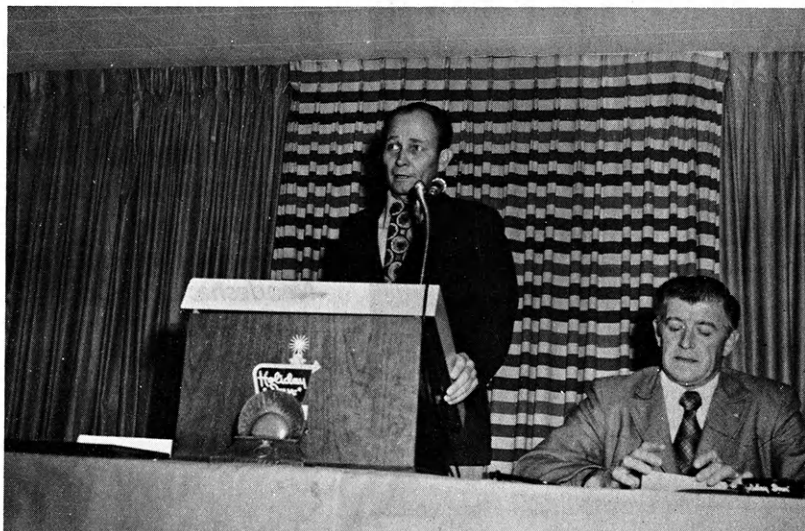
For complete stories of the pictures in this section, please refer to the Activities Section.



DISTRICT LEADERSHIP CONFERENCE SPEAKERS

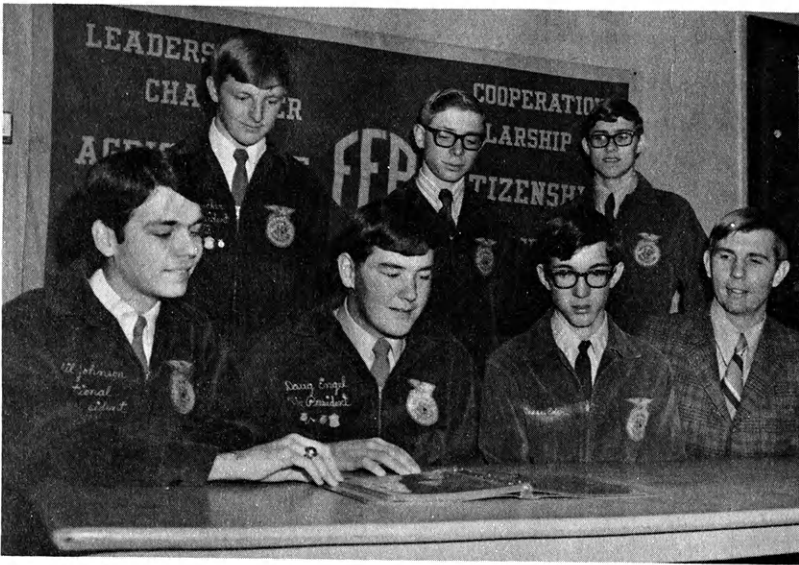


Former FFA member, Lieutenant Governor Reynolds Shultz, Delivered the feature address at the conference. "Kansas needs you, members of the FFA."

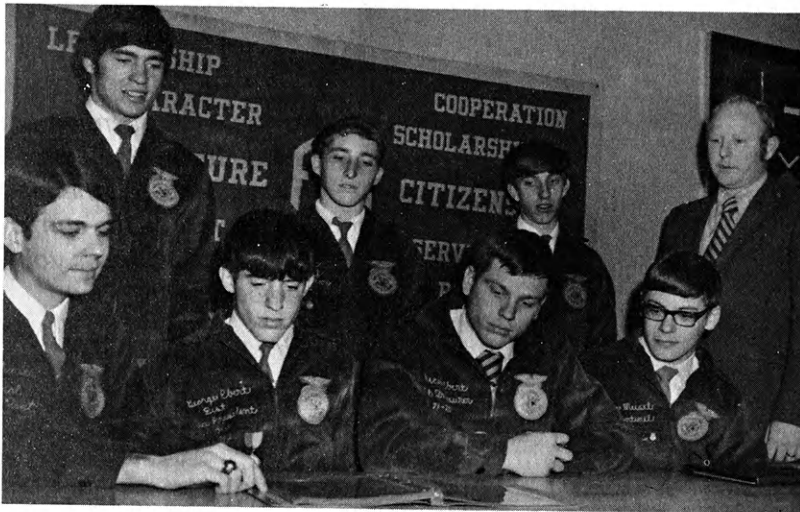


John Snyder, Assistant Commissioner of Vocational Education, addressed the Leadership Conference on "Youth With a Purpose."

DISTRICT OFFICER LEADERSHIP CONFERENCE



SW District -- Front Row (l. to r.) Phil Johnson, National Vice President, Nebraska; Doug Engel, Vice President, Garden City; Jeff Eder, acting Reporter, Leoti; and Gale Seibert, district advisor. Back row -- Cary Tucker, President, Jetmore; Bill Danler, acting Secretary, Holcomb; and Marty Gleason, Sentinel, Hanston.

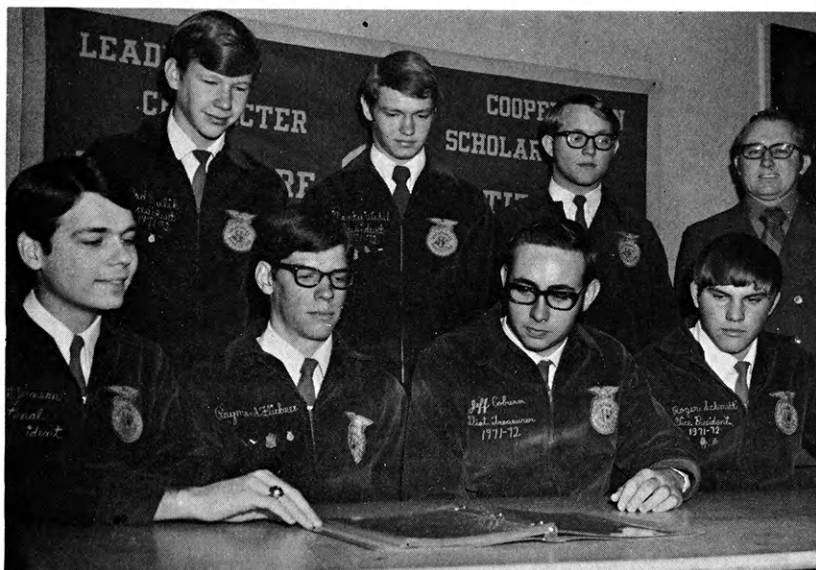


NE District -- Front row (l. to r.) Phil Johnson; George Ebert, Vice President, Westmoreland; Rick Ebert, Treasurer, Westmoreland; Gary Musil, Sentinel, Frankfort; and Ron Hollandsworth, District advisor. Back row -- Garry Oswald President, Powhattan; Robert Gilsdorf, Secretary, Onaga; and Tim Schlodder, Reporter, Holton.

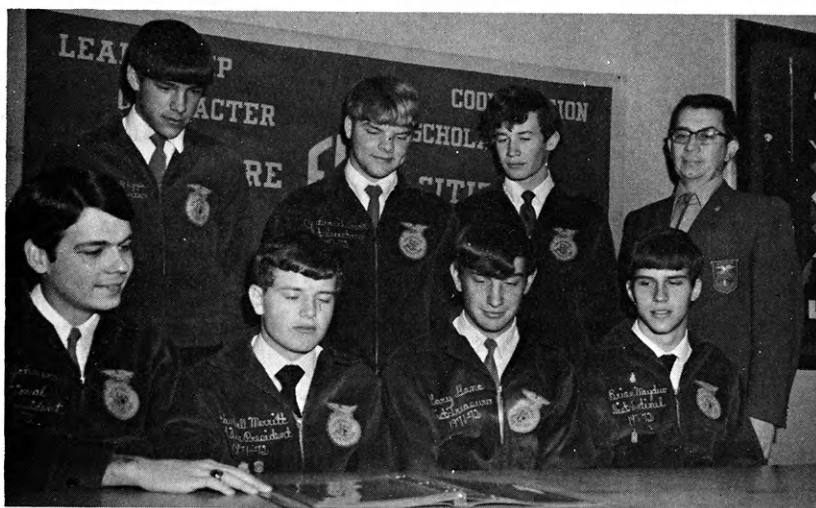


SE District -- Front row (l. to r.) Phil Johnson; Don Perkins, Secretary, Caney; Larry Asbury, Reporter, Altamont; and Dean Knewtson, district advisor. Back row -- Joe Newland, President, Neodesha; Cole Conard, Treasurer, Severy (North Elk); and John Brooks, Sentinel, Caney.

SC District -- Front row (l. to r.)
 Phil Johnson; Ray Flickner, Vice
 President, Moundridge; Jeff
 Coburn, Treasurer, Arkansas City;
 and Roger Schmidt, Sentinel,
 Winfield. Back row -- Rod Nulik,
 President, Arkansas City; Monty
 Wedel, Secretary, Moundridge;
 Robert Watts, Reporter, Peabody;
 and Delbert Schrag, district advisor.

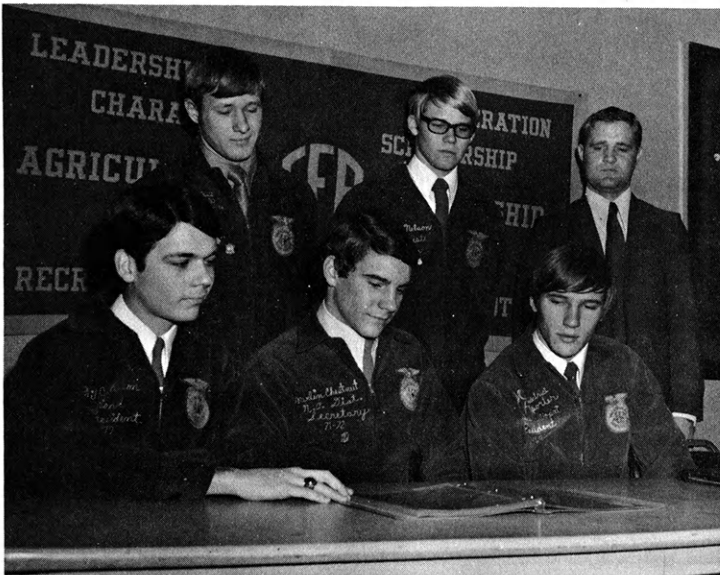


NW District -- Front row (l. to r.)
 Phil Johnson; Randall Merritt,
 Vice President, Lebanon; Gary
 Gano, Treasurer, Hill City; and
 Brian Maydew, Sentinel, Lebanon.
 Back row -- Edgar Rippe, acting
 President, Atwood; Joe Broeckel-
 man, Secretary, Oakley; Don
 Clonch, Reporter, Phillipsburg;
 and Bill Wood, district advisor.



EC District -- Front row (l. to r.)
 Phil Johnson; Ben Smith, acting
 Vice President, Seaman (Topeka),
 Karl Dakin, Sentinel, Louisburg;
 and David Nottingham, Treasurer,
 Lawrence. Back row -- Richard
 Morrell, President, Blue Mound;
 Dan Hanschu, Secretary, Seaman;
 Sharon Cummings, Reporter,
 Seaman; and Dennis Polson, act-
 ing district advisor.





NC District -- Front row (l. to r.) Phil Johnson; Merlin Chestnut, Secretary, Clay Center; and Richard Vopat, Reporter, Wilson. Back row -- Curtis Stoffer, President, Abilene; David Nelson, Treasurer, Manhattan; and Wilber Stites, district advisor.

POWHATTAN FFA TOURS RESEARCH CENTER



ACTIVITIES SECTION



FFA WEEK

February 19-26

"Youth With A Purpose"

FINAL BOAC APPLICATION CHANGE

(Advisors Note)

Part I application form should be sent to KVATA Vice Presidents by February 15. All chapters answering yes to 11 of the 16 questions will be recognized as FFA chapter builders. A special plaque will be presented at the District Achievement Banquet.

Part II BOAC application should be sent to the State Office in Topeka by May 1. Fifty percent of the district winners will receive a state plaque at the State FFA Convention, provided Form 2 is filled out.

Chapters will be ranked gold, silver, and bronze and will receive appropriate spurs to be attached to the state plaque. Spurs will be presented each ensuing year.

One of the gold emblem BOAC chapters will be chosen as the state BOAC winner and will receive the Governor's Citation at the State FFA Convention.

Congratulations to all FFA chapters working to make their community a better place to live.

SUPERIOR CHAPTER APPLICATIONS

(Advisors Note)

There has been a change in chapter recognition this year. The standard chapter recognition award has been eliminated.

Send Form I (new form) chapter award program application to the KVATA Vice-President in your district by February 15. If your chapter has met requirements of item one, and 30 of the remaining 35 requirements, your chapter qualifies as a superior chapter.

The first year your chapter receives a superior award you will receive a 12-year plaque. After the chapter has earned a state superior award plaque, a spur engraved "superior" will be presented to the chapter each year it is rated a state superior chapter. This award will be made at the District Achievement Banquet.

STATE GOLD EMBLEM CHAPTER AWARD APPLICATION

Chapters desiring to apply for the gold emblem chapter award should fill out Form II (new form) and mail it to the State Office by May 1.

State recognition will be given to the top 17 gold emblem chapters of the state. Those receiving the gold emblem award for the first time will receive a large plaque. Special spurs are provided on the plaque for engraving for those gold emblem chapters receiving this recognition after the plaque presentation.

A beautiful first place and second place plaque will be awarded to the top chapters in the state. These two chapters will represent Kansas in the national contest. (Sears has discontinued the \$100 award to first and second place state chapters).

DISTRICT FFA OFFICERS PLAN FUTURE

The second District Officers' Leadership Conference was held in Topeka on December 28 and 29, 1971. The opportunity to share ideas on a national, state, and local level seems to be one of the successful secrets of FFA members.

Districts were given a check to cover 25¢ dues for each FFA member in the district. This will assist district officers and local chapters, as well as to implement district activities.

Congratulations to all who had a part in making the District Officers' Leadership Conference a success.

LIEUTENANT GOVERNOR SPEAKS TO FFA

Featured speaker at the 1971 District Officers' Leadership Conference in Topeka, December 28 and 29, was Lieutenant Governor Reynolds Shultz, a former FFA member and vo-ag student at Lawrence. He related a number of very interesting events during his FFA days. "Some of the most enjoyable times that I had when I was in high school was when I was a member of the FFA and in the ag class," stated Shultz. Below are some additional statements from Shultz's address:

"Today, and it will remain this way, Kansas is an agricultural state. It will always be an agricultural state."

"To be a farmer now you've got to be a businessman."

"We produce cheaper foods in this country than any where else. Each farmer today feeds 45 people. Not too many years ago it was that a farmer would feed 20 to 25 people."

"Laborer, factory worker, or somebody that works in the office -- for every dollar that he takes home it only costs him 15¢ to feed himself; and there is not a country in the world that can match that."

"We are not getting enough young people back on the farms."

"We do need to encourage and we do need to do everything in our power to try to get young people to come back to the farm."

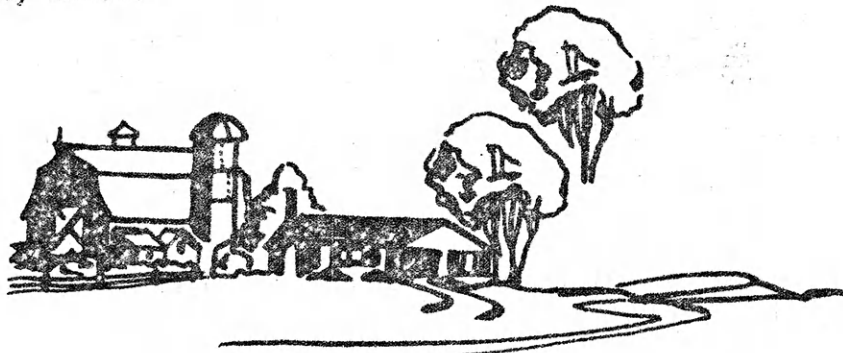
"One of the areas that, in my opinion, has been neglected for years is vocational technical education, of which I am a firm supporter."

"I was fortunate this year to talk to three graduating classes from vo-tech schools. Every one of these young people that graduated this year from schools that I talked to had a job -- every one of them."

"Kansas needs you, members of the Future Farmers of America. Also, Kansas needs, I would say, Future Farmers of Kansas."

(A VIP presentation by Mark Mayfield, State FFA President)

"Thank you, Mark. Of all things I have received, this will hang in my office. I think it is the nicest thing that has ever happened to me, and I want to thank you many, many times."



PRAIRIE VIEW REPRESENTS KANSAS
IN NATIONAL LAND JUDGING CONTEST

A correction in the December, 1971, issue of the Kansas FFA Newsletter should be made. The southeast state Land Judging winner was Prairie View FFA chapter of LaCygne. The advisors are Ralph Harvey and Marvin Creager.

Prairie View FFA chapter will be one of the five teams representing Kansas in the National Land Judging Contest in Oklahoma City, Oklahoma in May, 1972.

NATIONAL FFA WEEKFEBRUARY 19 - 26

Tim Burke, National FFA President, urges every local chapter to take advantage of the 1972 National FFA Week celebration to gain public awareness for vocational agriculture and the FFA. The theme for 1972 is "Youth With a Purpose." Like any other activity, the success of FFA Week depends on careful planning. You will have more enthusiasm when all members are involved.

Chapters are urged to send articles, pictures, reports, or samples of activities to: FFA Week Scrapbook, The National Future Farmer, P. O. Box 15130, Alexandria, Virginia 22309.

KANSAS ASSOCIATION OF BANK AGRICULTURAL
REPRESENTATIVES WILL RECOGNIZE DISTRICT STAR FARMERS

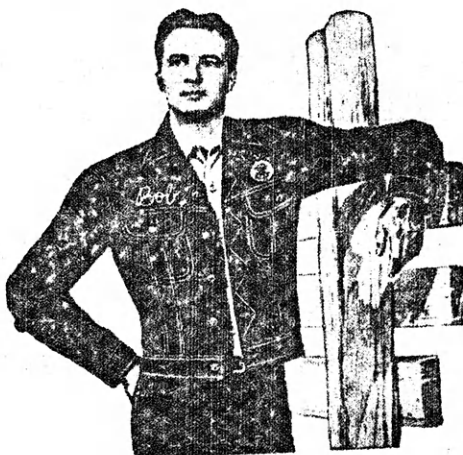
The Kansas Association of FFA is pleased to announce that the Kansas Association of Bank Agricultural Representatives (KABAR) will recognize the District Star Farmer of each district.

The KABAR representative will be present at each District Banquet to make the award.

KANSAS ELECTRIFICATION COUNCIL WILL RECOGNIZE
DISTRICT AND STATE ELECTRIFICATION WINNERS

The Kansas Association of FFA is pleased to announce that the Kansas Electrification Council will recognize district electrification winners, as well as choose the state electrification winner.

A KEC representative will be present at each district achievement banquet to make the top electrification award.



LABETTE COUNTY COMMUNITY HIGH SCHOOL
#1 IN FFA MEMBERSHIP FOR THE SECOND YEAR

Congratulations to Labette County Community High School of Altamont for the number one position of FFA members in the state of Kansas. There are 110 members in the Altamont chapter.

Other chapters with 60 or more members are as follows:

- | | |
|--------------------|-------------------|
| Leoti - 100 | Hoyt - 65 |
| Garden City - 91 | Manhattan - 64 |
| LaCygne - 89 | Coffeyville - 63 |
| Arkansas City - 81 | Great Bend - 63 |
| Marysville - 79 | Paola - 63 |
| Winfield - 75 | Abilene - 62 |
| Garnett - 70 | WaKeeney - 62 |
| Fort Scott - 69 | Yates Center - 61 |
| Smith Center - 67 | Russell - 61 |
| Effingham - 66 | Girard - 61 |
| Riverton - 66 | Eskridge - 60 |

FFA MEMBERSHIP BY DISTRICTS

	<u>1969</u>	<u>1970</u>	<u>1971</u>	<u>1972</u>
NE	688	703	724	736
SW	548	589	568	615
EC	817	699	718	758
NW	1,222	1,183	1,048	942
SE	1,008	1,004	1,010	997
SC	1,031	881	992	880
NC	851	910	852	886
	<u>6,165</u>	<u>5,969</u>	<u>5,912</u>	<u>5,814</u>

Note: Since several chapters have not reported yet this year, the 1972 report is not quite accurate.



INTERESTING CHAPTER MEETING PRESENTATIONS

Two Kansas FFA members have recently returned from European soil where they participated in the National FFA organization's Work Experience Abroad program. Both of these members would be delighted to present programs for FFA chapter meetings or programs for other groups, such as churches, civic clubs, etc.

David Hawkinson of the Erie FFA Chapter spent six months in Sweden on a hog farm. David's address is Savonburg, Kansas 66772.

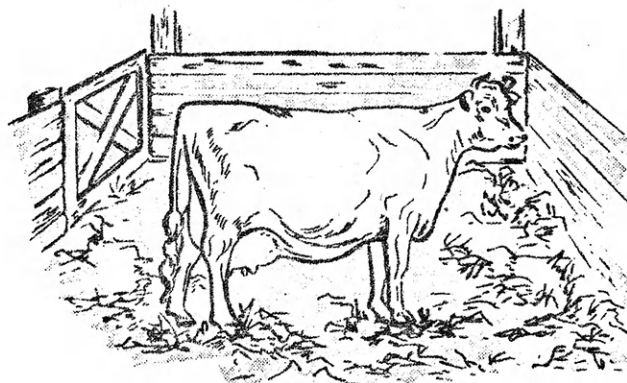
Dennis Kuykendall of Iola spent three months in Switzerland on two dairy farms. Dennis' address is R. R. #3, Iola, Kansas 66749.

VOCATIONAL TRAINING vs. UNEMPLOYMENT

Dropouts -- The dropout rate in public and non-public schools between grades 5 and 12 is 24%. The dropout rate in vocational education programs is only 1%.

Unemployment -- Unemployment is a vital subject in today's society. Compare the employment rate of vocational education students with that of their peers:

<u>Type of Student</u>	<u>Unemployment Rate</u>
Post-secondary vocational education graduate	3.0%
Secondary vocational education graduate	5.7%
High school graduate, 20-21 years of age	9.2%
High school graduate, 18-19 years of age	13.4%
High school dropout, 16-21 years of age	21.5%



DISTRICT ACHIEVEMENT BANQUETS

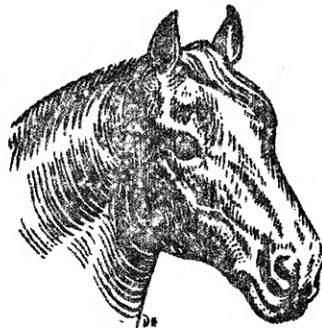
<u>Date</u>	<u>District</u>	<u>Place</u>	<u>Host Advisor</u>	<u>State Staff</u>	<u>State FFA Officer</u>
March 18	NE	Wamego	Ron Hollandsworth	Eustace	Wilson
March 29	EC	Garnett	Sam Harris	Shoaf	Armstrong
April 3	NW	Atwood	Billy Wood	Prochaska	Schmidt Mayfield
April 5	SW	Garden City	Gale Seibert Tom Challacombe	Wineinger	Hittle
April 8	NC	Salina	Wilbur Stites	Prochaska	Lawrence
April 15	SC	McPherson	Allen Baldwin Delbert Schrag Richard Ramsdale	Wineinger	Mayfield
April 15	SE	Iola	Ed Zahn	Shoaf	Wilson

RODEO AND SHOWMANSHIP CLINIC AT KSU

The KSU Chaparazos Rodeo Club is sponsoring a Rodeo and Showmanship Clinic. The Showmanship Clinic will consist of the correct way to show quarter horses in halter and western pleasure. The Rodeo Promotion Clinic will include films of International Rodeo Association Humane Society and technical points of interest, plus highlights of the Intercollegiate Rodeo Association National Final Rodeo.

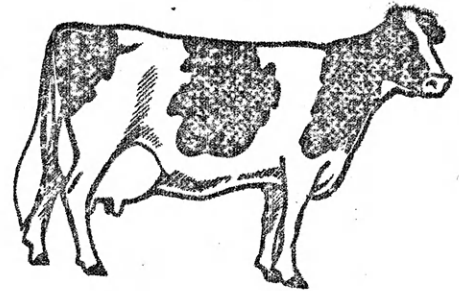
This clinic will be held at Weber Hall on the KSU campus on Saturday, February 26, 1972. All FFA members and vo-ag classes are invited to attend.

For further information contact Dale Hudson in Manhattan, phone 913-539-6539.



CONVENTION

SECTION



STATE RULES FOR FFA SPEECH CONTEST

I. General Plan

- A. Each of the seven FFA districts may enter a maximum of five contestants from their six-to-eight minute division in the State FFA Public Speaking Contest. Where there are less than 15 entries in the district six-to-eight minute division, then one third, or major fraction thereof, of the contestants are eligible to enter State competition. This policy insures that contestants in the State Speech Contest will have placed in the upper one third of their district contest. The following table is presented to clarify the above policy.

<u>Number of Participants</u> <u>(Six-to-Eight Minute Div.)</u> <u>in District Contest</u>	<u>Number of Participants</u> <u>Allowed in State Contest</u>
14 or more	5
11 through 13	4
8 through 10	3
5 through 7	2
2 through 4	1
1	0

- B. There is no limit as to the number of members from any one chapter who shall be eligible to compete in the State FFA Speech Contest as long as the policy above is not violated.
- C. Each of the seven FFA districts are to establish their own FFA Speech Contest rules for their district contest. It is recommended that the district contests follow the plan of the State contest.

- D. The preliminaries of the State FFA Speech Contest will be held on the KSU campus in Manhattan, 9:00 a. m. , May 31, during the State FFA Convention. Williams Auditorium and Justin Hall have been reserved for the preliminaries of the Public Speaking Contest. The finals will be held in the University Auditorium on the campus at 3:20 p. m. , May 31.
- E. Two members will be selected from each of the two preliminary groups to participate in the finals.
- F. Three typewritten copies of the speech entered in the State Contest will be required. Manuscripts must be in the hands of Larry Erpelding, Holton Hall, Kansas State University, by Monday, April 17. One original and two carbons will be acceptable. Please be certain that good carbon paper is used in order that the copies can be easily read.
- G. Contestants may choose any current subject for their speeches which is of an agricultural character (nature), and which is of general interest to the public. Official judges of any FFA Speech Contest shall disqualify a contestant if he speaks on a nonagricultural subject.
- H. The State FFA Speech Contest winner will represent the Kansas FFA in the Central Regional Speech Contest held at 8:00 a. m. in the Little Theatre of the Municipal Auditorium, Kansas City, Missouri, on Tuesday of the week of the National FFA Convention.

II. Eligibility

- A. When selected to compete in the State FFA Speech Contest, contestants must be active members of FFA chapters that are in good standing with the Kansas Association of FFA and the National FFA Organization.
- B. The State Speech Contest will be open only to boys less than 21 years of age who are regularly enrolled in all-day high school classes of vocational agriculture during the current calendar year, or who are still in high school, but have completed all the vocational agriculture offered.
- C. Each contestant's manuscript will be the result of his own effort. It is expected that he will take advantage of all available training facilities in his local school in developing his speaking ability. Facts and working data may be taken from any source.

III. Contest Rules

A. Time

1. Each speech shall be a minimum of six minutes in length and a maximum of eight minutes.
2. Deductions of 20 points per minute or major fraction thereof will be made from the score of each judge for a speech under six minutes or over eight minutes in length. This would mean that an individual should have points deducted if his speech ranged from 5 minutes, 31 seconds, to 8 minutes, 29 seconds.
3. Each contestant will be allowed five minutes additional time in which he will be asked questions relating to his speech.

B. Order of Appearance

1. Drawings will be made for order of appearance by a disinterested party prior to the date of the speech contest.
2. Speech contestants who plan to participate in either the Agricultural Judging or Farm Mechanics Contest on Monday of the State Contests must obtain permission to compete in the speech contest from Larry Erpelding, KSU, Ag. Ed. Office, at the time copies of the speech are submitted for judging.

C. Bibliography

1. All candidates in the FFA Public Speaking Contest should give credit to others where any direct quotes, phrases, or special dates are used in the manuscript in order not to be guilty of plagiarism.
2. A bibliography MUST be included as part of the public speaker's manuscript and direct quotes from any other source of information must be marked in "quotes" on the manuscript and be identified in the bibliography. Failure to do so will automatically disqualify a contestant.

IV. Scoring

A. Explanation of Scoresheet Points

Part I. -- For Scoring Contest and Composition

1. Content of the manuscript includes:
Importance and appropriateness of the subject

Suitability of the material used
 Accuracy of the statements included
 Evidence of purpose
 Completeness and accuracy of bibliography

2. Composition of the manuscript includes:
 - Organization of the content
 - Unity of thought
 - Logical development
 - Language used
 - Sentence structure
 - Accomplishment of purpose -- conclusions

Part II - For Scoring Delivery of Production

1. Voice includes:

Quality	Pitch	Force
Articulation	Pronunciation	
2. Stage presence includes:
 - Personal appearance
 - Poise and body posture
 - Attitude
 - Confidence
 - Personality
 - Ease before audience
3. Power of expression includes:
 - Conveyance of thought and meaning
 - Fluency
 - Emphasis
 - Directness
 - Sincerity
 - Communicative ability
4. Response to questions includes:
 - Ability to satisfactorily answer the questions on the speech which are asked by the judges indicating originality, familiarity with subject, and ability to think quickly.
5. General effect includes:
 - Extent to which the speech was interesting, understandable, convincing, pleasing, and held attention.



- B. The scorecard on page 17 will be used by judges in the State FFA Speech Contest, and may be used by district judges in order to be consistent with the state and national rules.

- V. Awards: The National FFA Foundation will present the following cash and medal awards:
- A. State Awards
 - 1. First place receives \$100 and plaque
 - 2. Second place receives \$50 and plaque
 - 3. Third place receives \$25 and plaque
 - B. District awards
 - 1. First place receives \$15 and plaque
- VI. References
- A. Facts and working data may be secured from any source



DATE OF STATE FFA CONVENTION

The 44th Annual State FFA Convention will be held on the Kansas State University campus in Manhattan on May 31 and June 1. Plan now to attend!

NATIONAL FFA PRESIDENT FEATURED SPEAKER

Tim Burke, National FFA President from New Hampton, Iowa, will be a featured speaker at the Kansas FFA Convention this year. Tim was elected to his post at the National FFA Convention in Kansas City last October.

CONVENTION TALENT NEEDED

The Kansas Association of FFA is in need of talent for the State FFA Convention. The talent makes the convention more enjoyable and entertaining.

If your chapter has an individual or group that would like to perform at the State Convention, please contact Harold Shoaf, State FFA Office, 120 East Tenth Street, Topeka, Kansas, and inform him of the type of talent and the day the individual or group desires to perform.

STATE OFFICER SELECTION

The State Officer Selection Committee will meet at 1:00 p. m. , Tuesday, May 30 at the Holiday Inn in Manhattan.

STATE FARMER PICTURES

State Farmer pictures will be taken on the north steps of the new University Auditorium at 5:15 p. m. on Tuesday, May 30, by Mr. Von Reeusen of KSU.



KSU HOUSING FOR FFA AT STATE CONVENTION

FFA members and advisors may stay in KSU housing at the following prices:

1 night -- \$5.00

2 nights -- \$8.50

3 nights -- \$12.00

(The above prices do not include meals)

Payment and enrollment may be made at registration time. The registration office will be open in Derby Food Center from 4:00 - 6:00 p. m. , Tuesday, May 30; and from 8:00 to 10:00 a. m. , Wednesday, May 31.



The advisor should enroll all of his FFA members and pay with one check if possible. Checks should be made out to Kansas State University.

Two sheets and a pillow will be furnished each person by KSU. FFA members and advisors should bring, soap, towels, and a blanket. Don't overlook the blanket as rooms are air conditioned.

SECOND FFA TALENT SHOW

The second State FFA Talent Show will be presented at the State FFA Convention, Thursday, June 1, 6:30 p. m. It will be held in the Forum in the KSU Student Union. All FFA members desiring to participate should contact Bob Broeckelman, Holton Hall, Kansas State University.

This is an opportunity for a good time and to share in the activities of the State FFA Convention. Recognition awards will be given to those participating. Your assistance will be appreciated.

PARLIAMENTARY PROCEDURE CONTEST

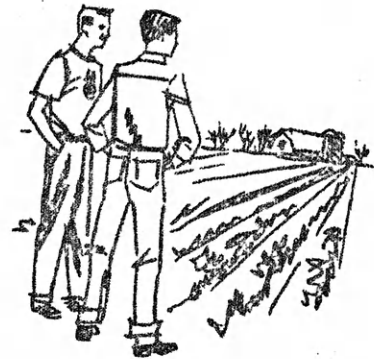
The State FFA Parliamentary Procedure Contest will be held at 3:00 p. m. , Tuesday, May 30, in Williams Auditorium. The following schools will represent their district in the State Contest:

Jetmore, SW
Hill City, NW
Garnett, EC

Powhattan, NE
Arkansas City, SC

Concordia, NC
Caney, SE

CHAPTER AND DISTRICT SECTION



POWHATTAN FFA ON RESEARCH TRIP

On November 4, 19 members of the Powhattan FFA chapter participated in a tour of feed and research facilities of the Moorman Feed Company at Quincy, Illinois. The members left at 5:00 a. m. in cars driven by local Moorman dealers. The group arrived at 9:30 and was treated to a light lunch. They then toured the Feed and Research Center and observed how feed concentrates are produced and tested. A smorgasbord dinner was then served at the center's cafeteria.

In the afternoon, the group toured the Research Farm outside of Quincy. Here the feeds receive field testing. After that, they started the trip home ending a day of fun and learning.

EAST CENTRAL DISTRICT FFA

The Lebo chapter held a Public Speaking contest on January 8, 1972. The winners in the respective divisions were Sharon Cummings, Seaman chapter, Senior; Gary Chandlers, Garnett chapter, Junior; Layton Smith, Mission Valley chapter, Sophomore; and Bill Miller, Mission Valley chapter, Freshman. The hostess of the contest was Cynthia Johnson, Lebo FFA Sweetheart.

After the contest the East Central District FFA meeting was held. Items of business that were discussed were the district banquet, a horse judging contest, a program on station WDAF for National FFA Week, having the district elections in the spring, a greenhand camp, and the reimbursement of district officers for their expenses.

SOUTHEAST DISTRICT FFA

The Southeast District officers held their first meeting on October 26 at Neodesha. Items discussed were a fellowship tour, district banquet, the budget for the year, and many other activities for the coming year. The district officers also participated in the Leadership Conference held in Topeka on December 28 and 29.

This year's southeast district banquet will be held at Iola on April 15. The Sweetheart selection will be at Girard on May 13.

WASHINGTON CHAPTER SPONSORS PICKER-FIDDLER CONTEST

Mary Duke singing "Woman of the World" and "You Ain't Woman Enough" was the winning vocalist in the third annual Washington Picker-Fiddler Contest sponsored by the Washington FFA chapter.

The FFA chapter president and vice president served as Masters of Ceremony for this country - western music show. They introduced the contestants and kept the audience entertained between performances. Other members sold tickets, helped as stage hands, and sold concessions.

HILL CITY OFFICERS TAKE TRIP TO DENVER

The officers, advisor Joe Farrell, and Don Nickelson attended the National Western Livestock Show in Denver, Colorado on January 15, 16, and 17. They left early Saturday morning. After arriving in Denver, they toured Robinson's Dairy, Denver Post, the Museum of Natural History, and the International Beef Breeder's Association. In the evening they attended a show.

On Sunday they viewed the Denver Stockyards and attended the National Western Rodeo. That evening they participated in recreation at a recreation center. They started back to Hill City on Monday morning, stopping on the way at the Great Western Sugar Beet Company.

