

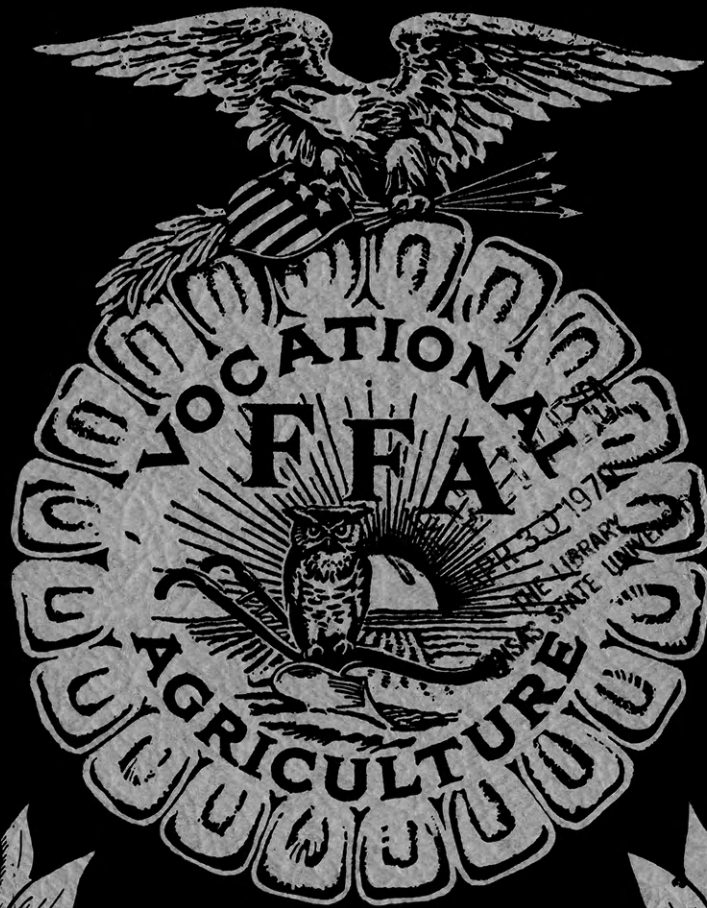
per

NOV 14 1969

508

33  
8  
3  
02

# *The* KANSAS Future Farmer



*Published by*  
**THE KANSAS ASSOCIATION  
 FUTURE FARMERS OF AMERICA**

NATIONAL OFFICERS, FUTURE FARMERS OF AMERICA  
1969-70

Constituting the  
NATIONAL BOARD OF STUDENT OFFICERS

- PRESIDENT . . . . . Harry Birdwell  
Box B, Fletcher, Oklahoma
- VICE PRESIDENT, NORTH ATLANTIC REGION . . . . . Donald Shinn  
New York Avenue, Columbus, New Jersey
- VICE PRESIDENT, SOUTHERN REGION . . . . . C. W. St. John  
Route 1, Box 117, Redfield, Arkansas
- VICE PRESIDENT, PACIFIC REGION . . . . . David Dietz  
Route 1, Box 398, Canby, Oregon
- VICE PRESIDENT, CENTRAL REGION . . . . . Steven Zumbach  
Route 1, Manchester, Iowa
- NATIONAL SECRETARY . . . . . Dennis Pharris  
Route 1, Hillsboro, Texas
- ADVISOR . . . . . H. N. Hunsicker  
Washington, D. C.
- EXECUTIVE SECRETARY . . . . . William Paul Gray  
Washington, D. C.
- TREASURER . . . . . J. M. Campbell  
Woodstock, Virginia

-----FFA-----

NATIONAL FFA BOARD OF DIRECTORS

- H. N. Hunsicker, Chairman, Office of Education, Washington, D. C.
- George R. Cochran, State Supervisor, Agricultural Education, St. Paul, Minn.
- James Fink, State Supervisor, Agricultural Education, Harrisburg, Pennsylvania
- V. B. Hairr, State Supervisor, Agricultural Education, Raleigh, North Carolina
- John W. Lacey, Office of Education, Denver, Colorado
- Byron F. Rawls, Office of Education, Kansas City, Missouri
- Jesse A. Taft, Office of Education, Boston, Massachusetts
- J. W. Warren, Office of Education, Charlottesville, Virginia

THE KANSAS FUTURE FARMER  
Harold Shoaf, Editor

OFFICERS OF THE KANSAS ASSOCIATION  
FUTURE FARMERS OF AMERICA

Lauren Libby, President Smith Center	Bob Price, Reporter Norcatour
Thomas O'Neil, Vice President Marysville	Danny McMillan Garden City
Glenn Stucky, Secretary Moundridge	Harold Shoaf, Executive Secretary Topeka
Charles Van Petten, Treasurer Eskridge	C. C. Eustace, State Advisor Topeka

Volume XXXX

November 14, 1969

No. 2

TABLE OF CONTENTS

PICTURE SECTION:

National FFA Convention . . . . .	1
State FFA Sweetheart . . . . .	2
State FFA Livestock Show . . . . .	3
National Contests . . . . .	5

ACTIVITIES SECTION:

42nd National FFA Convention . . . . .	6
Girls Admitted to the FFA . . . . .	6
Kansas Chapters Rate High in National Competition . . . . .	7
Harry Wayne Birdwell National FFA President . . . . .	8
Pennsylvania Has Star Farmer of America . . . . .	9
Arizona Has Star Agri-Businessman of America . . . . .	9
Distinguished Service Awards . . . . .	11
Distinguished Service Citations . . . . .	11
FFA Honors 25-Year Donors . . . . .	11
New Chairman Named for FFA Foundation Sponsoring Committee . . . . .	11
Kansas Placed Fourth in Central Regional Public Speaking Contest . . . . .	12
Seven Kansans Receive American Farmer Degrees . . . . .	12
Jeffrey Altwegg Receives Regional Dairy Award . . . . .	12
Future Farmers of America Membership by States . . . . .	13
Federal Land Bank of Wichita Sponsors Parliamentary Procedure Contests . . . . .	14
1969 Leadership Schools . . . . .	14
1969-70 District FFA Officers . . . . .	15
Information Contest . . . . .	16

Table of Contents (cont.)

Gold Emblem Ritual Teams . . . . .	17
Gold Emblem Parliamentary Procedure Teams . . . . .	18
Kansas State Fair . . . . .	19
New FFA Sweetheart Chosen . . . . .	19
Note to Advisor of 1970 District FFA Sweethearts . . . . .	19
David Ray Wins Hesston Scholarship . . . . .	19
Winfield Wins Farm Mechanics Exhibit . . . . .	20
Cooperative Booths Contest . . . . .	20
1969 Kansas State Fair FFA Livestock Show . . . . .	20
Mid America Fair . . . . .	22
State FFA Meats Contest . . . . .	22
Official FFA Calendar Program . . . . .	22

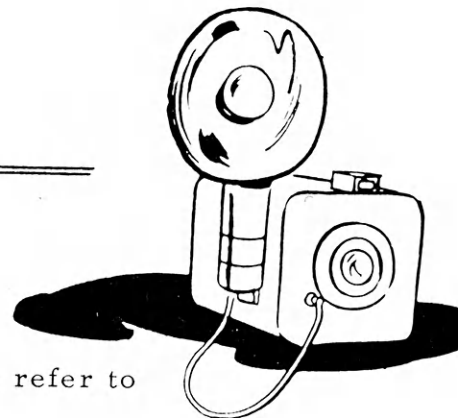
ANNOUNCEMENT SECTION:

State FFA Officers . . . . .	23
1969 Sheep Judging Contest . . . . .	24
1970 FFA Camp . . . . .	24
1969-70 FFA Awards . . . . .	24
Work Experience Abroad . . . . .	28
National Chapter Impact Conference . . . . .	28
National Leadership and Citizenship Conference . . . . .	29
1970 Junior Poultry and Egg Fact Finding Conference . . . . .	29

CHAPTER SECTION:

East Central District Sweetheart Contest . . . . .	30
Hill City . . . . .	30

# PICTURE SECTION



For complete stories of the pictures in this section, please refer to the Activities Section.

## NATIONAL FFA CONVENTION



Assistant Commissioner John Snyder observes the changing of the FFA image. With Mr. Snyder is Marlene Phelps, Ohio, who was the first FFA girl to sing with the National Chorus.



Altoona FFA Chapter placed second in the nation in poultry judging at the National Convention. Left to right, Herb Stites, Coach John Davis, Allen Dannels, and Robert Travis.



Bill Glunt studies Kansas Association of FFA exhibit at the National Convention.



Kansas FFA delegates to the National Convention, left to right, Lauren Libby, State President; and Tom O'Neil, State Vice President.

STATE FFA SWEETHEART



Veldean Scott, Council Grove FFA Chapter



Seven FFA District Sweethearts and escorts and State Past Sweetheart, Donna Jo Guinn, and escort, Past State President Gregory Hands



Left to right, State FFA Sweetheart and State FFA President, Lauren Libby.



East Central District Sweetheart contestants riding in the Wabaunsee Co. Fair Parade at Alma. Left to right, Sally Smith, Burlingame; Nancy Theel, Alma; and Leana Long, Blue Mound.

FFA LIVESTOCK SHOW

Left to right are Mr. John Keas, State Fair Board; Donna Jo Guinn, past State FFA Sweetheart; Ralph Wilson, Arkansas City FFA Chapter; and the grand champion market hog.



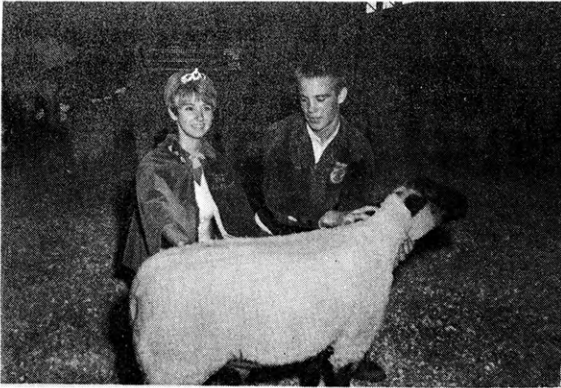
Left to right are past State FFA Sweetheart Donna Jo Guinn and Randy Marrs, Arkansas City, who was the number one swine showman. The silver plaque was sponsored by the Kansas Junior Livestock Association.



Left to right is Darroll Grant, graduate student, KSU; and Craig Ballinger, Arkansas City FFA Chapter, with the grand champion pork carcass trophy.



The Kansas Sheep and Wool Growers Auxiliary supplied a trophy for the reserve grand champion lamb and the grand champion and reserve grand champion herdsman. Left to right are Mrs. Joe Green, Coordinator of the Kansas Miss Wool activities; Donna Jo Guinn, past State FFA Sweetheart; Mrs. Wilma Taylor, secretary of the Auxiliary; and the reserve grand champion lamb shown by Ken Ebert, Westmoreland FFA Chapter.



Left to right, past State FFA Sweetheart Donna Jo Guinn; and Ed Roether, Council Grove Chapter; and the grand champion market lamb.

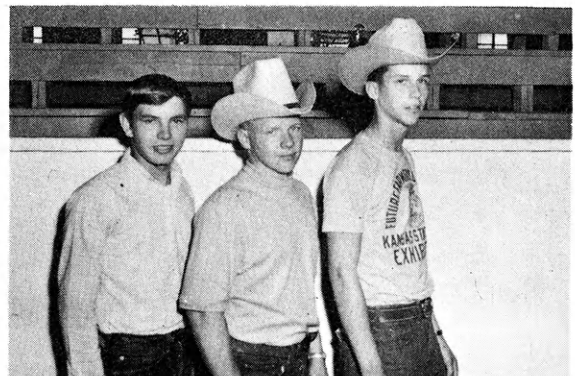
Grand champion market beef animal shown by Rick Ebert of Westmoreland.



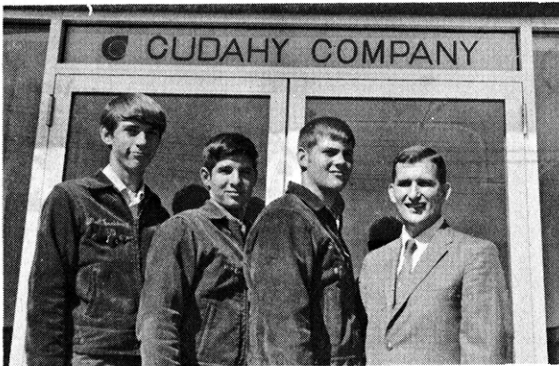
First place FFA judging team, Kansas State Fair, left to right, Charles Wilmoth, Mark McDaniel, Dwayne Messner, and Gary Parli, coach.



High three FFA livestock judges, Kansas State Fair, were, from left to right, Dwayne Messner, Caney; Keith Nulik, Arkansas City; and Brian Moyden, Lebanon.

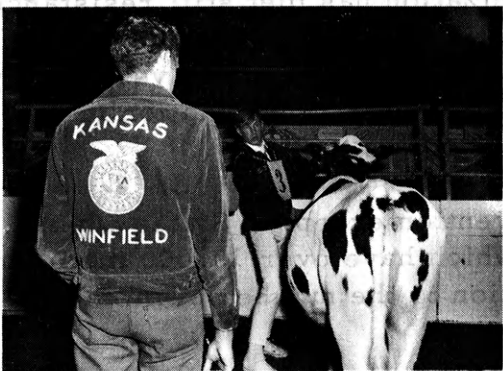
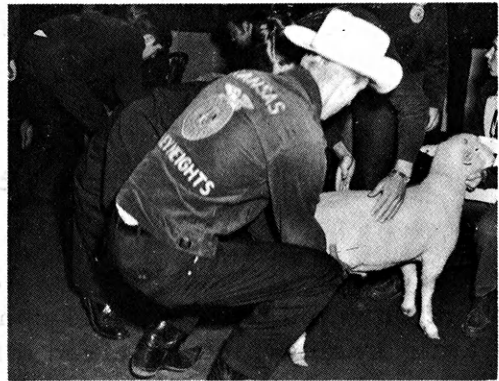






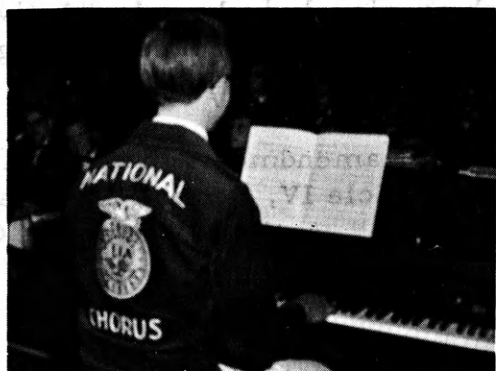
First place State FFA Meats Team, left to right, Albert Facklam, Lon Colton, Ken Kramer, and instructor Alan Friedemann.

Larry Berger, Valley Heights FFA Chapter, examines a leg of lamb at the National Livestock Contest.



Winfield FFA represented Kansas at the National FFA Dairy Judging Contest.

Dennis Deines, WaKeeney, was honored the second year in a row to be the National FFA Chorus pianist.



# ACTIVITIES

---

---

## SECTION



### 42nd NATIONAL FFA CONVENTION

#### GIRLS ADMITTED TO THE FFA

In a close vote, delegates to the 42nd National Future Farmers of America Convention voted to amend the constitution to admit girls into membership. The amendment, which required a two thirds vote, passed by only two votes; 76 delegates voting for and 35 members against the change.

The amendment to allow girls in the national organization has met stiff resistance when it has been introduced in five previous conventions. This year's close vote came after nearly 20 minutes of spirited debate. The amendment was voted on by 115 FFA student delegates representing the 450,000 member organization for students of vocational agriculture.

Two delegates from each State are sent to the convention except in States where membership in the FFA exceeds 10,000. States which have over 10,000 members are allowed to send additional delegates in proportion to the number of members over this quota.

The amendment merely eliminates the word "male" in Article IV, Section B, which previously had read: "Active Membership - any male student who is regularly enrolled in vocational agriculture is entitled to become an active member of any chartered FFA chapter."

Two other amendments to the National FFA Convention were passed by the delegate body. Article IV, Section A, (2) should now read "alumni" deleting the word "associate." Article IV, Section C, delete "associate" and insert "alumni."

KANSAS CHAPTERS RATE HIGH IN NATIONAL COMPETITIONALTOONA--SECOND IN POULTRY

Kansas was represented in the National Poultry Contest by the Altoona FFA Chapter. Thirty-two State teams participated. Members of the team were Robert Travis (gold), Allen Dannels (gold), and Herb Stites (gold). Robert Travis was third high individual in the contest.

VALLEY HEIGHTS--SIXTH IN LIVESTOCK

Valley Heights High School placed sixth in competition with 45 teams from other States. The team members included Larry Berger (gold), Loren Berger (gold), and Joe Mertz (gold).

LONGFORD--FIFTH IN MEATS

Longford ranked fifth in the gold division in national competition with 33 other teams. Members of the team were Lon Colton (gold), Kim Kramer (gold), and Albert Facklam (silver).

WINFIELD--SILVER DAIRY PRODUCTS

Winfield placed 13th in the silver division in competition with 31 States. Members of the team were Dean Whitehill (gold), Max Scholfield (silver), and Steve Hamlin (bronze).

WINFIELD--SILVER DAIRY JUDGING

Winfield placed in the silver division in competition with 44 teams. Dean Whitehill (gold), Steve Hamlin (silver), and Max Scholfield (participant) were the members of the team.

GOLD AND SILVER EMBLEM CHAPTERS

Council Grove was one of the 72 outstanding local chapters honored at the 42nd National FFA Convention in Kansas City, receiving the gold emblem award. Forty-six chapters received the silver emblem award. Atchison County Community High School was one of the 28 chapters receiving the bronze emblem award. There are approximately 8,500 local high school chapters with associations in 49 States and Puerto Rico. Each State association was permitted to enter two or more local chapters depending on membership in the national award program. Judging was done by agricultural specialists representing the U. S. Office of Education.

COUNCIL GROVE--SILVER IN SAFETY

Twenty-eight local chapters of the Future Farmers of America were presented gold emblem safety awards at the National Convention. The

Kansas Association, represented by the Council Grove FFA Chapter, was one of the 21 chapters to receive the silver emblem award. Twenty chapters received the bronze emblem award.

The chapters were recognized for their accomplishments in safety promotion during the 1968-69 school year. Each chapter received a special plaque or in the case of those chapters who received a plaque in past years, a spur was provided for the plaque by the Future Farmer Foundation. Judging for the awards was done by agricultural specialists representing the U.S. Office of Education.

#### HARRY WAYNE BIRDWELL NATIONAL FFA PRESIDENT

Harry Wayne Birdwell, 20, of Fletcher, Oklahoma, was elected at the 42nd National FFA Convention to serve as National president of the Future Farmers of America. Birdwell was elected to preside over the 450,000 member organization.

The son of Mr. and Mrs. Walter Birdwell, Harry currently shares in a partnership with his father on a farm located 2 1/2 miles southeast of Fletcher. The Birdwell operation consists of 80 acres of pasture, which the family owns, and an additional 40 acres of pasture, which young Birdwell rents.

Although the Birdwell family lives in Southwest Oklahoma, an area which is sometimes very dry, they have solved their water problems by constructing three small lakes with the help of a Federal Government project. The lakes not only provide stock and irrigation water, but also serve as an ideal area for future development as a recreation facility.

Birdwell is currently attending Oklahoma State University, where he is a junior majoring in radio-TV broadcasting. He is considering a career in agricultural broadcasting.

An experienced FFA leader, Birdwell was a vice president of the Oklahoma State FFA Association in 1967-68 and president in 1968-69. He has won three State FFA speaking contests and was presented the American Farmer Degree at this year's National Convention. In high school, Birdwell was an alternate All State selection in basketball, and junior and senior class president. In college, Birdwell has been on the Dean's Honor Roll four semesters, and has been active in several organizations.

Birdwell will drop out of college for a year to fulfill the duties of National president of the Future Farmers of America. During that year he will spend approximately three-fourths of his time traveling in the interests of the FFA. The officers receive no salary, but their travel expenses are paid by the FFA organization.

PENNSYLVANIA HAS STAR FARMER OF AMERICA

Oscar J. Manbeck, 21, of Bethel, Pennsylvania, who is a member of Conrad Weiser FFA Chapter, was named Star Farmer of America at the 42nd National FFA Convention. Manbeck is a dairy farmer. He received a \$1,000 cash award and national recognition in an impressive ceremony before 11,500 members, teachers, and guests.

Oscar began his career in agriculture on his parent's 365-acre dairy farm. As a freshman he developed his project program to the point that he was presented the Star Greenhand award. After receiving the Star Greenhand award, Oscar's father encouraged his interest in farming by saying, "Oscar, if you work as hard for the American Farmer degree as you did for the Star Greenhand award, you might make it." This was all the encouragement Oscar needed to set his goal to become an American Farmer.

In the seven years since he enrolled in vocational agriculture, Oscar has increased his farming operations from three head of swine and thirteen acres of crops to a 365-acre dairy farm with a milking herd of 125 head.

Oscar's story doesn't end here. He has proven that a young man, a Future Farmer of America, can become established in farming in a day when farming is big business. He is meeting the challenge by becoming big in his own right. To improve and further develop his dairy enterprise, a new dairy barn has been constructed. This new free stall barn is large enough to house 121 cows. Also under construction, or in the planning stage, are a heifer stable and a milking parlor. With such ambitious plans, it is apparent that Oscar and Sandra Manbeck feel that there is a bright enough future in farming to make it their life's work.

ARIZONA HAS STAR AGRI-BUSINESSMAN OF AMERICA

Ken Dunagan, 20, of Willcox, Arizona, was the first FFA member to be named Star Agri-Businessman of America in ceremonies at the 42nd National FFA Convention in Kansas City. Dunagan, a member of Willcox FFA Chapter, operates a custom harvesting, spraying, and feedlot operation in partnership with his father.

The \$1000 award, with its accompanying national recognition, was presented in an impressive ceremony in front of more than 11,500 FFA members, teachers and guests. To be eligible for recognition as Star Agri-Businessman of America, the candidate had to meet the requirements of the American Farmer Degree. Selection of the Star Agri-Businessman of America is based on achievement in production agriculture, and in one or more areas of non-producing agriculture as well as leadership in FFA activities.

Ken Dunagan, Star Agri-Businessman of America, operates a custom harvesting, spraying, and feedlot operation in partnership with his father, Marvin Dunagan, at Willcox, Arizona. Mr. Dunagan is employed as a farmer manager so practically all management and operation of the custom business is Ken's responsibility. The partners do hold regular meetings to discuss problems and make management decisions.

Ken was unable to have an extensive farming program when he enrolled in vocational agriculture because the family situation at the time would not permit it. After graduation from Willcox High School in 1966, he went to work full time for a neighbor on a work experience program. Later that summer, he found a good buy on a used spray rig and after checking with some farmers in the area, decided there existed a need for this type of service. He financed the spray rig with a PCA loan and was in business. His custom spraying operation received a boost when another company moved its ground spraying operation out of the area leaving Ken and his dad the only ones in the Willcox area licensed and bonded to do custom ground spraying.

Custom harvesting was added to the operation when the Dunagans were offered the opportunity to purchase a combine from a friend. They already had one truck and bought another to haul grain. The combine was financed through a bank and the trucks, including those purchased later, were paid for out of custom operation receipts.

The cattle feeding operation was started when a neighbor sold some feed to a cattle dealer and the Dunagans arranged to feed the cattler in their lot.

Ken has full ownership of one pick-up truck, one trailer, and \$1,500 worth of shop equipment. He also owns 50 percent interest in five trucks, two pick-ups, one combine, one spray rig, two tractors, one portable welder, two trailers, and two water tanks.

Ken is a good mechanic even though he was born with only one hand. The other arm terminates below the elbow. He has reconditioned all equipment to insure greater field performance, appearance, and eventually higher resale value. He takes great pride in the very small loss of time due to breakdowns during the custom season. In addition, he has earned some money rebuilding truck and irrigation well engines for neighbors during the slack season.

Further expansion of the business is already being planned. This includes adding next year a full line of cultivating equipment, two tractors, plows, discs, land plane, and cultivating equipment. The following year, plans call for adding equipment to thin and cultivate sugar beets to complete the custom business.

The young agri-businessman has won the FFA Foundation's State Farm Mechanics award and has served as reporter and sentinel of his local chapter.

Ken says, "I enjoy the custom business and plan to make it my life's occupation."

### DISTINGUISHED SERVICE AWARDS

Distinguished service awards were presented to 20 persons who have made outstanding contributions to the development of the FFA. The Distinguished Service plaques are presented only to persons who have given outstanding service to vocational agriculture and the FFA over a period of many years. Those receiving awards at the 1969 convention from Kansas were Mr. Jim Leathers and Professor D. L. MacKintosh.

### DISTINGUISHED SERVICE CITATIONS

Distinguished service citations were presented to five organizations that have made outstanding contributions in service to agriculture and the FFA. Mr. Lyle Yost, president, Hesston Corporation, received the FFA plaque representing Farm and Industrial Equipment Institute of Chicago, Illinois. This organization of men and industries, dedicated to providing better mechanical equipment to agriculture, has assisted the National FFA organization for many years. Members of this institute have helped write curricula for agricultural mechanics classes, have served on judging committees, and have hosted National FFA Officers on the Good Will Tour.

### FFA HONORS 25-YEAR DONORS

Four nationally known business and industrial concerns were presented plaques at the convention in appreciation of their 25-year support. The companies honored were Massey-Ferguson, Inc., Des Moines, Iowa; Mid-States Steel and Wire Company, Crawfordsville, Indiana; Successful Farming, Des Moines, Iowa; and Westinghouse Educational Foundation, Pittsburgh, Pennsylvania.

The FFA Foundation is supported by annual contributions totaling nearly \$225,000 from nearly 500 business and industrial concerns, organizations, and individuals. It provides the funds for incentive awards that encourage vocational agriculture students to do better work in their study, development of supervised farming programs, and participation in leadership activities. The FFA Foundation was established late in 1944.

### NEW CHAIRMAN NAMED FOR FFA FOUNDATION SPONSORING COMMITTEE

Sam White, Jr., Cleveland, Ohio, President of the White Farm Equipment Company subsidiary of the White Motor Company, has been named to serve during 1970 as chairman of the Sponsoring Committee for the Future Farmers of America Foundation, Inc.

Mr. White is now chairman of the Board of the Farm and Industrial Equipment Institute and is a frequent spokesman for the farm and construction equipment industry. He is a strong advocate for the marketing of these products through independent retail dealerships and serves as chairman of the industry's Dealer Contact Committee. For many years he has been a staunch supporter of Future Farmers of America.



### KANSAS PLACED 4th IN CENTRAL REGIONAL PUBLIC SPEAKING CONTEST

The Kansas Association of FFA was represented in the Central Regional Public Speaking Contest by Wayne Converse of Eskridge, Kansas. Wayne placed fourth.

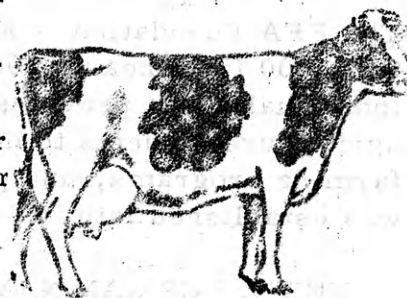
The first place Central Regional winner, Edward B. Hatchett, of Glasgow, Kentucky, was also the winner of the National Public Speaking Contest. Hatchett delivered his winning speech titled "RURAL AMERICA--OUR HOPE FOR THE FUTURE" before an audience of nearly 9,000 FFA members and their guests. He was presented a \$300 cash award for his winning speech. Copies of his speech are available by writing the State Office.

### SEVEN KANSANS RECEIVE AMERICAN FARMER DEGREES

Kansans receiving a gold key and certificate from the FFA for achieving the degree of American Farmer at the National FFA Convention were Richard Chambers, Oberlin; Richard Gottlob, Arkansas City; Samuel Hands, Garden City; Gail E. Kueser, Garnett; Dale M. Kueser, Garnett; Robert E. Wiles, Leoti; and Orvill Stigge, Washington.

### JEFFRY ALTWEGG RECEIVES REGIONAL DAIRY AWARD

Jeffry Altwegg, 18, Riley, Kansas, a member of the Blue Valley FFA Chapter, was awarded a regional prize of \$200 for his accomplishments in dairy farming. A 560-acre farm provided the resources for Jeffry to earn the Central Region award in dairy farming. Jeffry is one of four Altwegg brothers to study vocational agriculture at Blue Valley. At the present time Jeffry and his brother, Darrel, are managing the entire farming operation. Their father, Laurence Altwegg, was born and raised on the farm and did most of the work until recently when he had to retire because of ill health.



Jeffry graduated from high school last spring. Through his four years of training in vocational agriculture he has developed a program that includes ownership of 29 head of Holstein cows, 14 sows, 104 pigs, one boar, one third interest in 145 acres of crops, and 50 percent interest in a Grade A dairy barn which has Herringbone stalls, a 600 gallon bulk milk tank, and other dairy barn equipment with a total inventory value of over \$26,000.

Jeffry plans to stay on the farm and eventually go into a partnership with his brothers and increase the size of their operation.



## FUTURE FARMERS OF AMERICA MEMBERSHIP BY STATES

July 1969

State Association	FFA Membership	Number of Chapters
Alabama	24,643	386
*Alaska	---	---
Arizona	2,210	39
Arkansas	17,607	274
California	14,489	247
Colorado	2,703	65
Connecticut	834	17
Delaware	403	11
Florida	12,537	241
Georgia	22,986	292
*Guam	---	---
Hawaii	984	21
Idaho	3,464	68
Illinois	16,677	429
Indiana	9,972	230
Iowa	10,610	234
Kansas	6,334	164
Kentucky	13,808	168
Louisiana	12,192	244
Maine	483	15
Maryland	2,063	42
Massachusetts	744	11
Michigan	9,773	179
Minnesota	13,363	270
Mississippi	13,671	259
Missouri	12,297	230
Montana	2,269	61
Nebraska	5,288	117
Nevada	407	13
New Hampshire	299	9
New Jersey	876	23
New Mexico	2,456	60
New York	4,960	179
North Carolina	31,896	411
North Dakota	3,504	65
Ohio	13,216	304
Oklahoma	16,555	350
Oregon	4,366	95
Pennsylvania	8,941	211
Puerto Rico	1,550	38

Rhode Island	343	8
South Carolina	13,089	261
South Dakota	2,908	67
Tennessee	17,434	244
Texas	49,107	840
Utah	3,458	43
Vermont	564	20
Virginia	13,724	199
*Virgin Islands	41	1
Washington	5,753	131
West Virginia	4,507	78
Wisconsin	15,530	270
Wyoming	1,569	47
<b>TOTALS</b>	<b>449,457</b>	<b>8,281</b>

\*Affiliated Chapters

### FEDERAL LAND BANK OF WICHITA SPONSORS PARLIAMENTARY PROCEDURE CONTEST

The seven district winners of the parliamentary procedure contest will participate in a State contest held at Kansas State University, Manhattan, on April 27. The Federal Land Bank of Wichita recognizes outstanding achievement of chapters by presenting a \$40 check to each of the seven district winners who compete in the State contest. First place State parliamentary procedure team will receive a plaque and a check for \$50 with medals given to each of the six team members. Second, third, and fourth place teams will receive a plaque.

The Kansas Association of FFA appreciates the cooperative effort of the Federal Land Bank of Wichita in assisting in the promotion of parliamentary procedure on a State-wide basis. A member of the first place State team in parliamentary procedure will serve as parliamentarian to the State FFA Convention.

### 1969 LEADERSHIP SCHOOLS

The fall leadership school for chapter officers has proven to be one of the most successful activities of the year. Chapters who did not participate in all three divisions should plan to do so in 1970.

#### Leadership School Participation

	<u>Chapters</u> <u>1968</u>	<u>Percentage</u> <u>1968</u>	<u>Chapters</u> <u>1969</u>	<u>Percentage</u> <u>1969</u>
Information	124	75%	120	74%
Ritual	126	75%	121	74%
Parliamentary Procedure	93	57%	105	65%

1969-70 DISTRICT FFA OFFICERSEast Central

President	Merrill Crawford	Seaman
Vice President	Marvin Sluder	Blue Mound
Secretary	Phil Scritchfield	Seaman
Treasurer	Bill Poovey	Garnett
Reporter	Brent Miller	Alma
Sentinel	Steve Bohn	Eskridge

North Central

President	Ronnie Roth	Clay Center
Vice President	Paul Westerman	Ellsworth
Secretary	Marion McMillian	Concordia
Treasurer	Michael Krathy	Wilson
Reporter	Edwin Klippenger	Jewell
Sentinel	Jerry Russell	Manhattan

Northeast

President	Jay Montgomery	Sabetha
Vice President	Rick Hossfield	Powhattan
Secretary	Mike Harding	Hoyt
Treasurer	George Williams	Rossville
Reporter	Rick Taliferro	Effingham
Sentinel	David Carnahan	Wamego

South Central

President	Doug Deets	Arkansas City
Vice President	Bob Schrag	Moundridge
Secretary	Tom Herbers	Winfield
Treasurer	Rod Rahn	Arkansas City
Reporter	Bennie Gehring	Moundridge
Sentinel	Steve Lefever	Peabody

Southwest

President	Bill Glunt	Jetmore
Vice President	Mike Ramsey	Garden City
Secretary	Kevin Sterling	Garden City
Treasurer	Bernie Reinert	Ensign
Reporter	Steve Hittle	Hugoton
Sentinel	Mark Low	Fowler

Northwest

President	Jorn Keller	St. Francis
Vice President	Gary Worcester	Hill City
Secretary	Phil Stinemetz	Hill City
Treasurer	Stanley Jackson	Smith Center
Reporter	Phil Sandelin	WaKeeney
Sentinel	Steve Noren	Oberlin

Southeast

President	John Womack	Iola
Vice President	Kent Hansen	Altamont
Secretary	Dean Jessee	Cherokee
Treasurer	James Miller	Neodesha
Reporter	Jay Merrill	Erie
Sentinel	Randy Hall	Columbus

INFORMATION CONTEST

High individuals in the State in the FFA Information Contest (100 points possible) were as follows:

<u>Rank</u>	<u>Name</u>	<u>Chapter</u>	<u>Score</u>
1st	Mike Mayfield	Caney	100
2nd	Steve Newby	Haven	96
	Tim Diener	Hillsboro	96
	Kent Nulik	Arkansas City	96
	Jess Hendrickson	Garden City	96
	Roger Holste	Atwood	96
7th	Ron Collins	Williamsburg	92
	Allan Chestnut	Clay Center	92
	Phil Dodds	Clay Center	92
	Dwight Johnson	Manhattan	92
	Jerry Russell	Manhattan	92
	David Carnahan	Wamego	92
	Fayne Finger	Powhattan	92
	Eugene Skoch	Powhattan	92
	Wesley McCarty	Stafford	92
	Rod Rahn	Arkansas City	92
	Ray Tipton	Arkansas City	92
	John Peterson	McPherson	92
	Louis Wegerer	Marion	92
	Glenn Langenegger	Peabody	92
	Terry Lawrence	Winfield	92
	Bennie Gehring	Moundridge	92

Mark Jacques	Haven	92
Steve Lefever	Peabody	92
Daryl Bartel	Hillsboro	92
Bill Glunt	Jetmore	92
Verlyn Engler	Holcomb	92

High chapters in the State in the Information Contest (total possible score for six officers was 600 points) were as follows:

<u>Rank</u>	<u>Chapter</u>	<u>Advisor</u>	<u>Score</u>
1st	Arkansas City	Larry Schmidt	532
2nd	Powhattan	Jim Zwonitzer	528
3rd	Garden City	Gale Seibert, T. Challacombe	508
4th	Winfield	John Baird, Jim Quillin	500
5th	Moundridge	Dan Marrs, Wayne Powell	498
6th	Caney	Gary Parli, Virgil Roper	496
7th	Wamego	Ron Hollandsworth	492
8th	Manhattan	Dean Prochaska	488
	Fort Scott	Milton Kohrs	488
	Hillsboro	Truman Diener	488
	Peabody	Gary Jones	488
12th	Concordia	Steve Reedy	484
13th	Hugoton	Kenneth Pfaff	481
14th	Atwood	Billy Wood	480
	Russell	Sam Stenzel	480
	Alma	Ron Schultz	480
	Valley Heights	Willis Ringen	480
	Clay Center	Les Olsen	480

#### GOLD EMBLEM RITUAL TEAMS

##### At Belleville:

Riley County  
Washington  
Herington  
Concordia  
Manhattan

Charles Smith  
Robert Schwindt  
Darrel Mounkes  
Steve Reedy  
Dean Prochaska

##### At Effingham:

Powhattan  
Sabetha  
Highland

Jim Zwonitzer  
Lloyd Barnett  
Lyle Chadwell

##### At Buhler:

##### At Neodesha:

Uniont own  
Altamont

Caney

Columbus

Wilbur Hart  
Oscar Ingram  
Ernest Callison  
Gary Parli  
Virgil Roper  
Dean Knewtson  
James Housman

Moundridge

Winfield

Arkansas City

Peabody

Hillsboro

Haven

McPherson

Dan Marrs

Wayne Powell

John Baird

Jim Quillin

Larry Schmidt

Gary Jones

Truman Diener

John Akers

Richard Ramsdale

Delbert Schrag

At Dodge City:

Fowler  
Hugoton  
Ford  
Dodge City  
  
Garden City  
  
Lakin

Oran Nunemaker  
Kenneth Pfaff  
David Thompson  
Allen Starosta  
Gerald Schmitt  
Gale Seibert  
Thomas Challacombe  
Dean Hoppas

At Hill City:

Russell  
Plainville  
Smith Center  
Hill City  
Norton  
Hays  
Oakley  
WaKeeney

Sam Stenzel  
Norman Hildwein  
Charles Mantz  
Joe Farrell  
Carl Wahlmeier  
Edward Schukman  
Leon Rathbun  
Les Allison

At Williamsburg:

Eskridge  
Seaman  
Garnett  
Williamsburg

T. D. Fanning  
James Hundley  
Sam Harris  
Earl Anderson

GOLD EMBLEM PARLIAMENTARY PROCEDURE TEAMSAt Belleville :

Jewell  
Wilson  
Riley County  
Concordia

Allan Elstrom  
James Patry  
Charles Smith  
Steve Reedy

At Effingham:

Powhattan  
Valley Heights  
Effingham

Jim Zwonitzer  
Willis Ringen  
Roy Eck

At Neodesha:

Caney  
  
Columbus  
  
Neodesha  
Erie  
Altamont  
  
Cherokee

Gary Parli  
Virgil Roper  
Dean Knewton  
James Housman  
Wayne Coltrain  
Wilber Buntin  
Oscar Ingram  
Ernest Callison  
Larry Coltrane

At Buhler:

Peabody  
Winfield  
  
Moundridge  
  
Kingman  
Arkansas City  
McPherson

Gary Jones  
John Baird  
Jim Quillin  
Dan Marrs  
Wayne Powell  
Leon Sowers  
Larry Schmidt  
Richard Ramsdale  
Delbert Schrag

At Dodge City:

Hugoton  
Garden City  
  
Jetmore

Kenneth Pfaff  
Gale Seibert  
Thomas Challacombe  
Byron Ullery

At Hill City:

Hill City  
Norton  
Oakley  
Atwood  
Oberlin  
WaKeeney

Joe Farrell  
Carl Wahlmeier  
Leon Rathbun  
Billy Wood  
Don Guinn  
Les Allison

At Williamsburg:

Eskridge  
Garnett  
Seaman

T. D. Fanning  
Sam Harris  
James Hundley

KANSAS STATE FAIRNEW FFA SWEETHEART CHOSEN

To The Outstanding Members of the Kansas Future Farmers of America:

It gives me great pleasure to represent one of the State's finest youth organizations, the FFA, as State Sweetheart.

I will do my utmost to reign in the manner which will command respect and develop pride in our organization. Kansas Future Farmers have much in which to be proud, for they will be the leaders in the nation's agricultural industry.

I am looking forward to visiting as many chapters and meeting as many members of the FFA as possible during my reign.

Veldean Scott  
1969-70 State FFA Sweetheart

NOTE TO ADVISORS OF 1970 DISTRICT FFA SWEETHEARTS

The Kansas Farmer-Stockman will need a picture of the District FFA Sweetheart not later than Tuesday, August 11. This is necessary in order that an article can be written with color pictures for the September issue of the Kansas Farmer-Stockman.

DAVID RAY WINS HESSTON SCHOLARSHIP

David Ray, 17 year old senior at Winfield High School, was awarded a \$500 "Agri-Engineering" scholarship at the Kansas State Fair. This award is given annually by Hesston Corporation, Kansas' largest farm equipment manufacturer.

Ray won the individual competition this year in the FFA machinery show with an all-purpose grader blade which can be pulled by a farm tractor. He expended more than 200 hours of time on the project. The blade, 12 feet wide, can be raised, lowered, and tilted from controls on the tractor seat. The project cost him about \$500.



The \$500 scholarship will be available through any college or university in Kansas. Presenting a plaque to Ray at the fair was Nelson Galle, employee relations manager at Hesston and a former vo-ag instructor.

### WINFIELD WINS FARM MECHANICS EXHIBIT

Ten schools participated in the farm mechanics exhibit at the State Fair in Hutchinson with Winfield placing first. The first place individual construction project, a multi-purpose blade, was made by David Ray of Winfield.

The first place repair project was done by Randy Westfall of Haven. The project was a Minneapolis Moline tractor which had been repaired, tuned, and painted.

Plans for 1970 are for four construction projects to make a complete chapter exhibit. A separate maintenance and repair project class is planned to include farm tractors, tillage, harvesting, spraying, or fertilizing farm machinery and for large stationary farm power units. An entry in this class will consist of one project.

Prize money in the amount of \$300 was requested to be allocated to be used for the top five projects in the farm machinery repair exhibit. It is hoped that the dividing of exhibits into two classes will draw more exhibits to the fair.

### COOPERATIVE BOOTHS CONTEST

Congratulations to Don Kimball and his FFA chapter for winning first place in the Cooperative Booths Contest at the Kansas State Fair in Hutchinson.

### 1969 KANSAS STATE FAIR FFA LIVESTOCK SHOW

This was the first year in Kansas that a State Livestock show had been held specifically for FFA members. The new activity attempted to give members a realistic and educational view of the livestock industry.



Nearly 100 Kansas FFA members participated in the event for the first year. The grand champion lamb was shown by Ed Roether of the Council Grove FFA Chapter. His lamb was a 120-pound Hampshire-Suffolk cross.

The grand champion steer was shown by Rick Ebert of the Westmoreland FFA Chapter.

The grand champion market hog was shown by Ralph Wilson of the Arkansas City FFA Chapter. All of the hogs exhibited with the exception of one were taken to the Maurer-Neuer Packing plant at Arkansas City and slaughtered. They were





then judged and scored according to the ham loin index system. The grand champion carcass was a pig owned by Craig Ballinger of the Arkansas City FFA Chapter. Craig's 209-pound Hampshire yielded 77.98 percent. This top carcass had a loin eye of 6.12 square inches and a ham loin index of 138.9. The "golden pork chop" of the show was from a 203-pound pig shown by Dale Franklin of the Lebanon FFA Chapter. The size of this loin eye was 6.87 square inches.

The champion sheep showman was Rick Ebert of the Westmoreland FFA Chapter. The champion beef showman was Ken Ebert of the Westmoreland FFA Chapter. The champion hog showman was Randy Marrs of the Arkansas City FFA Chapter. Both top herdsmen in the sheep division were from the Lebanon FFA Chapter. Champion sheep herdsman was Randall Warner and reserve champion herdsman was Steve Abbott. The champion beef herdsman was Ken Ebert of the Westmoreland FFA Chapter, champion swine herdsman was Randall Warner of the Lebanon FFA Chapter.

A large number of persons and individuals were responsible for making this first show the success that it was. The Mauer-Neuer people at Arkansas City certainly contributed a great deal of time, cooperation, and financial assistance in making the carcass show the success that it was. For a complete listing of all of those who are responsible for the show, please refer to the booklet which has been provided to each FFA chapter, "1969 Kansas State Fair FFA Livestock Show Summary."

Many FFA members are anticipating the 1970 livestock show at the Kansas State Fair. Final decisions concerning the show will not be made until about January 1. You may rest assured, however, that market classes will be similar to what they were in 1969. Another feature to be added to the show will be breeding classes to include young and mature females and young males such as lambs, boars, and bulls. Dairy classes also will be available for all females and young males. The State association is making an attempt to add cash awards to the program. It is not too early to start programs to be shown in the 1970 fair. Emphasis more than ever in 1970 and on into the future will be on rate of gain. FFA members will be asked to keep records on weights and possibly other data on their market animals. The livestock show program combines a learning experience and a practical farming operation. Complete details of the rules for the 1970 activity may be obtained from your local FFA advisor by the first of the year.

The winning team of the Kansas State Fair Livestock Judging Contest was Caney. The members participating on this team were Dwayne Messner, Mark McDaniel, and Charles Wilmoth. The Caney chapter will now represent the Kansas Association of FFA at the National Western Livestock Show at Denver, Colorado, next January.

MID AMERICA FAIR

The Lawrence FFA Chapter won first place in the agricultural mechanics projects at the Mid America Fair. They had the grand champion construction project, which was a portable loading chute shown by Duane Newman of the Lawrence FFA Chapter. The grand champion repair project was also shown by a Lawrence member, Allen Houk. His repair project was a weed sprayer. The top booth at the Mid America Fair was constructed by the Eskridge FFA Chapter. The main theme of the booth was "FFA--Emphasis Agriculture."

STATE FFA MEATS CONTEST

Thirteen chapters participated in the 1969 State FFA Meats Contest held in Wichita on October 7. The top chapter was the Longford FFA Chapter. Other chapters ranking in the top five were Haven, second; Eskridge, third; Manhattan, fourth; and Concordia, fifth. The top individual of the total contest was Al Germann of Manhattan. The top individual grader was Earl Miller of the Lawrence FFA Chapter. The top individual on identification was Al Germann of the Manhattan chapter. The top individual in placing the judging classes was Dan Olsen of the Eureka FFA Chapter.

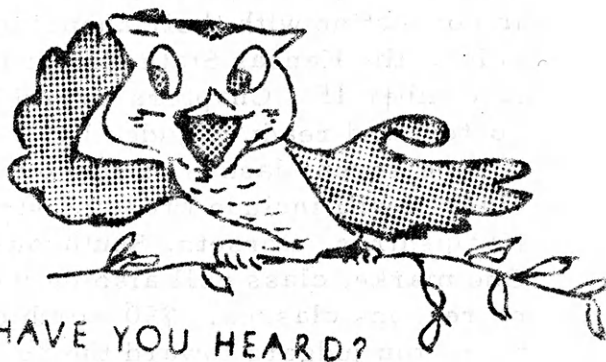
OFFICIAL FFA CALENDAR PROGRAM

The following chapters are participating in the National FFA Calendar Program from Kansas:

Goessel	John Morgan
Kingman	Leon Sowers
Altamont	Oscar Ingram, Ernest Callison
Lawrence	Earle Simmons, Stan Larson
Manhattan	Dean Prochaska
McPherson	Richard Ramsdale, Delbert Schrag
Peabody	Gary Jones
Plainville	Norman Hildwein
Riley County	Charles Smith
Williamsburg	Earl Anderson
Winfield	John Baird
	Jim Quillin

# ANNOUNCEMENT

## SECTION



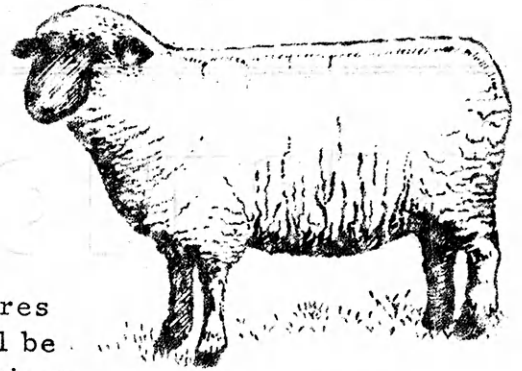
### STATE FFA OFFICERS

The State FFA Officers are anxious to cooperate and be of service to local FFA chapters. It has been the custom for chapters to pay only the actual expenses of the State officer who attends an activity of the chapter. The following addresses and phone numbers are made available to chapters for their convenience.

<u>Name &amp; Office</u>	<u>Home Address &amp; Phone No.</u>	<u>College Address &amp; Phone No.</u>
Lauren Libby President	R. R. #3 Smith Center 66967 (913) 543 2151	Alpha Gamma Rho 1919 Platt Manhattan 66502 (913) 539 2365
Thomas O'Neil Vice President	610 North 6th Marysville 66508 (913) 562 3526	Alpha Delta Fraternity 1533 College Topeka 66621 (913) FL 71785
Glenn Stucky Secretary	R. R. 2, Box 116 Galva 67443 (316) 345 2428	1212 N. Severance, Apt. 5 Hutchinson 67501 No Phone
Charles Van Petten Treasurer	Route 1 Eskridge 66423 (913) 449 2512	819 Haymaker, KSU Manhattan 66502 (913) JE 92221
Bob Price Reporter	RFD #1 Norcatur 67653 (913) 693 4409	1221 Thurston Street Manhattan 66502 (913) 776 9476
Danny McMillan Sentinel	South Star Route Garden City 67848 (316) 276 6030	Same as home address and phone number

1969 SHEEP JUDGING CONTEST

The Kansas Sheep Breeders Association will host a junior judging contest to be held in connection with their annual ewe show and sale at the Kansas State Fairgrounds on November 15. Chapters should be at the contest and ready to judge by 9 a. m. There will be seven classes of sheep to judge. The classes will include breeding stock of Suffolks, Hampshires, Dorsets, Southdowns, and Shropshires. One market class will also be judged. There will be no reasons classes. \$90 worth of credit will be given to the top judges toward the purchase of animals to be sold at the sale following the judging contest. First place will have \$25 credit, second place will have \$15 credit, third through seventh place will have \$10 credit each.

1970 FFA CAMP

The 1970 FFA Camp will be held at Rock Springs Ranch July 29 through August 1.

1969-70 FFA AWARDS

I. The following foundation awards will be offered in 1969-70 on district and State levels unless otherwise stated. Deadline for district and State applications is February 14 unless otherwise stated. Applications are available on request from the State office. All State foundation awards will be made at State convention. District foundation awards should be made at the District Achievement Banquet.

A. Agribusiness Award--This award will be offered to those members whose work experience programs train them in providing services and supplies for farming operations or in processing and marketing farm products. Application due State office on April 13.

State

Plaque and \$200 (Award will be made at State FFA Convention)

No District Award

B. Agricultural Production Placement Award--This award will recognize achievement in gaining skills and experience from either work on a farm or in some other production phase of agriculture such as greenhouses, nurseries, etc. Occupational experience through placement

does not involve ownership of production enterprises. Application due State office on April 13.

State \$80 and plaque (Award will be made at State FFA Convention)

No District Award

- C. Natural Resources Development--FFA members will be awarded recognition for their personal efforts in conservation and improvement of agricultural resources for recreation; beautification; total environmental development; multiple use of forests, water, and wildlife for private and public use.

State \$80 + plaque (Award will be made at State FFA Convention)

District Award \$15 + plaque

- D. Star Farmer of Kansas \$150 + plaque  
District Star Farmer \$ 40 + plaque

E. Farm Safety

1. State Foundation Winner (application due April 13) \$100
  - a. Kansas Farm Bureau FFA Safety Awards
    - (1) Expense-paid trip for seven FFA members and one advisor to National Safety Congress
    - (2) Trophies to top four chapters
    - (3) Plaque to top chapter in each of seven districts  
Certificate to second and third place district winners
  - b. Kansas Safety Council (Special award presentation Topeka)
    - (1) \$200--1st place chapter
    - (2) \$100--2nd place chapter

F. Public Speaking

1. State
  - 1st \$100
  - 2nd \$ 50
  - 3rd \$ 25
  - 4th \$ 10
2. District \$ 15 + plaque

G. Agricultural Mechanics

1. State \$80 + plaque
2. District \$15 + plaque

H. Dairy		
1. State		\$80 + plaque
2. District		\$15 + plaque
I. Crops		
1. State		\$80 + plaque
2. District		\$15 + plaque
J. Beef		
1. District		\$15 + plaque
K. Swine		
1. District		\$15 + plaque
L. Sheep		
1. District		\$15 + plaque
M. Livestock Farming (beef, sheep, swine)		
1. State		\$80 + plaque
N. Farm and Home Electrification		
1. State		\$80 + plaque
2. District		\$15 + plaque
O. Poultry		
1. State		\$80 + plaque
2. District		\$15 + plaque
P. Home Improvement		
1. State		\$80 + plaque
2. District		\$15 + plaque
Q. Ornamental Horticulture		
1. State		\$80 + plaque
2. District		\$15 + plaque
R. Soil and Water Management		
1. State		\$80 + plaque
2. District		\$15 + plaque

An FFA member may enter only two District Agricultural Proficiency Awards in any one year.

If an FFA member is named Star District Proficiency Award winner in two areas, he should have a counsel with his advisor and parents to decide which award he should try to attain on the State level. The second place district winner would then be eligible in the area not selected by the district star winner. The

district director is responsible to notify the State office of the choice of the FFA member and to supply the name of the second place winner in that area immediately following the district selection meeting.

## II. Better Chapter Award Form III--Applications due State office April 13

Sponsor--Sears-Roebuck Foundation

1st Place	Plaque and \$100
2nd Place	Plaque and \$100
State Gold Emblem Chapters	Plaque

Applications are available from State office. Award presented at State FFA Convention.

Better Chapter award Form I and II due State office February 14.

Standard and superior awards given at District Achievement Banquet.

## III. Cooperative Activities

Sponsor--Kansas Cooperative Council

### A. Chapter Cooperative Activities

1. 1st Place State Plaque  
Advisor of top chapter receives an all-expense paid trip to American Institute of Cooperatives Meeting. The location of the meeting changes each year.

Application included in Better Chapter Application, Form III, Division II, Cooperation. Due State Office on April 13.

### 2. District

- a. 1st place in each of 7 districts Plaque & \$50 to chapter
  - b. 2nd place in each of 7 districts Plaque & \$35 to chapter
  - c. 3rd place in each of 7 districts Plaque & \$15 to chapter
- District & State Coop winners given at State Convention

### B. Cooperative Quiz Contest

1. No State Award
2. Winner in each of 7 districts Plaque & \$50 to chapter  
High individual in each district--Scholarship trip to AIC

District awards given at District Achievement Banquets.

WORK EXPERIENCE ABROAD

Work Experience Abroad is a program for qualified FFA members who are interested in spending some time on a farm in another country to gain experience, represent FFA and the United States as a junior "ambassador", and exchange ideas to improve agriculture and rural youth organizations around the world.

Requirements for participation in the program include: be between 16-21 years old; have good practical experience in farming, horticulture, or other specialized fields of interest; have recommendations from the vo-ag teacher and two other persons; be in good health and have adequate health and accident insurance; have a working knowledge of the language (or, be willing to take and complete a school approved or home study short course after being accepted for the program.

The selected participants will be taken in as members of the family and work with them on the farm. Assigned tasks vary according to ability and hours will vary with country and season. In many cases, work will be harder than the custom in the United States. In addition to room and board, the exchange students receive \$50 to \$110 per month from the host family.

Agreements to conduct the Work Experience Abroad program have been completed with these countries: Austria, Denmark, France, Germany, Holland, New Zealand, Norway, Sweden, Switzerland, and the United Kingdom (England and Scotland). At a later date, agreements may be concluded with Australia and Czechoslovakia and can be requested by WEA applicants for 1970.

The exact cost for the WEA 1970 program will not be known until after January 1 when new air transportation rates are announced; however, it will be approximately \$500. Only a limited number of applications can be accepted for WEA 1970.

Members interested in participating should request application forms from the State office or contact the National FFA Center. Deadline date for applications to be in the State office is January 15, 1970.

NATIONAL CHAPTER IMPACT CONFERENCE

The 1970 Chapter Impact Conference will be held at the National FFA Center, Alexandria, Virginia, on June 15 - 20, June 22 - 27, and June 28 - July 3. The primary objective will be to improve the effectiveness of FFA chapters through the study of State and national activities and the nationwide exchange of chapter program ideas and techniques. National FFA officers will lead discussion sessions on topics, such as--using foundation incentive awards, building a chapter community development program, improving chapter public relations, and financing chapter activities.

For further information contact the State FFA Office, Topeka, Kansas.



### NATIONAL LEADERSHIP & CITIZENSHIP CONFERENCE

The National Leadership & Citizenship Conference will be held at the National FFA Center, Alexandria, Virginia, on July 6 - 11, July 13 - 18, and August 3 - 8. The primary objective is to extend and expand to a national level FFA officer citizenship awareness and leadership development opportunities. Conference participants will work with National FFA officers, exchange ideas with other FFA members from across the country, and discuss agricultural career opportunities with national leaders of business, industry and government. The conference agenda also includes planned inspirational programs at historical monuments and memorials in the nation's capital.

The application deadline for the National Leadership & Citizenship Conference is May 15. For further information, contact the State FFA Office, Topeka, Kansas.

### 1970 JUNIOR POULTRY AND EGG FACT FINDING CONFERENCE

The 1970 Junior Poultry and Egg Fact Finding Conference will be held in Kansas City from February 12 through February 15. Four Kansas FFA members have been selected to represent the Kansas FFA Association at this conference. They are as follows:

Jim McClung	Winfield FFA Chapter
Terry Lawrence	Winfield FFA Chapter
Jim Muley	Iola FFA Chapter
Murray Thole	Stafford FFA Chapter



# CHAPTER



# SECTION

## EAST CENTRAL DISTRICT SWEETHEART CONTEST

The East Central Sweetheart Contest was co-sponsored by the Alma and Eskridge FFA Chapters. The contest was held in Alma in conjunction with the Wabaunsee County Fair on August 13.

There were eight girls participating: Veldean Scott, Council Grove; Sally Smith, Burlingame; Leana Long, Blue Mound; Nancy Theel, Alma; Anne Appelhanz, Seaman; Mildred Garrell, Parker; Patty Brownlee, Paola; and Kathy Waddell, Crest.

During the afternoon the candidates were interviewed by two judges. The sweetheart was selected on the basis of poise, personality, beauty, and the participation in high school and FFA activities. The highlight of the day was when the candidates rode in convertibles in the fair parade, with the chapter banners displayed in front of the cars. Later in the evening the presentation of the District Sweetheart was made during the Variety Show at the fair. Veldean Scott of the Council Grove FFA Chapter was selected as District Sweetheart to represent this district in State competition.

## HILL CITY

Sixty-five members and their fathers attended the annual Father and Son Watermelon Feed held by the Hill City FFA Chapter. Attending the event were Lauren Libby, State president, and Bob Price, State reporter, and Ron Quint, former State secretary from Hill City.

A cooperative wheat project is being carried on by the chapter. It consists of ten acres of Scout Wheat. Shares are available at \$5 a share.

The chapter volunteered to collect donations for the United Cerebral Palsy Fund.

The local game warden, Bud Crumbine, gave a very interesting talk on the hunting seasons and regulations. Afterward, the members had the opportunity to ask questions.