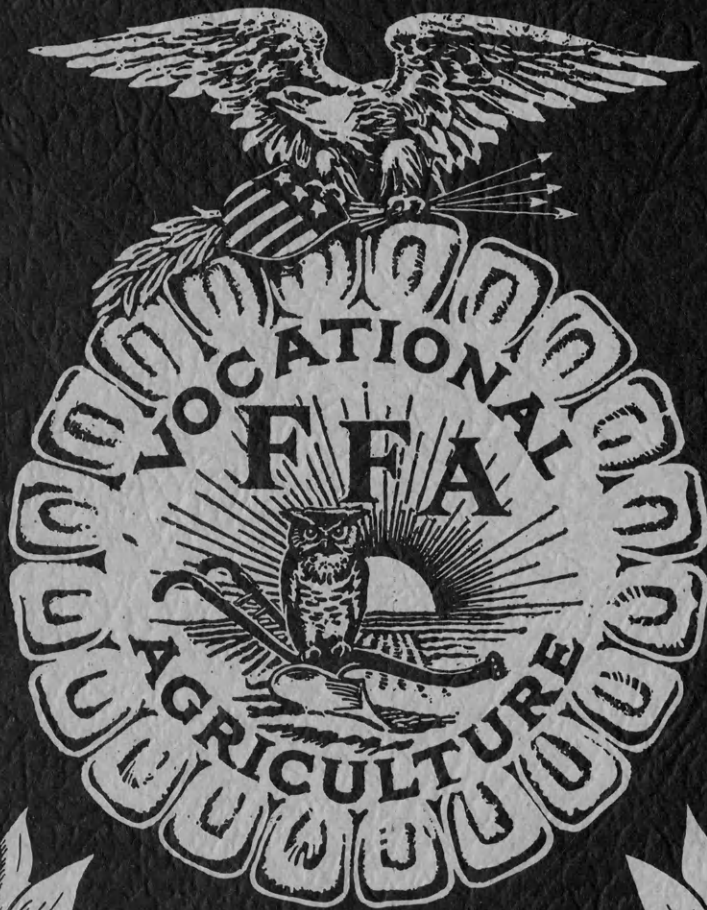


The KANSAS Future Farmer



Published by
THE KANSAS ASSOCIATION
FUTURE FARMERS OF AMERICA

NATIONAL OFFICERS, FUTURE FARMERS OF AMERICA
1967-68

Constituting the
NATIONAL BOARD OF STUDENT OFFICERS

PRESIDENT..... Greg L. Bamford
Haxtun, Colorado
VICE PRESIDENT, NORTH ATLANTIC REGION..... Richard Jones
Route 2, Hamilton, New York
VICE PRESIDENT, SOUTHERN REGION..... Robert D. Rish
RFD 1, Pelion, South Carolina
VICE PRESIDENT, PACIFIC REGION..... John C. Gemmill
Route 2, Box 697, Peoria, Arizona
VICE PRESIDENT, CENTRAL REGION..... William Boehm
Route 1, Mosinee, Wisconsin
NATIONAL SECRETARY..... Paul Diehl
Route 6, Butler, Missouri
ADVISOR..... H. N. Hunsicker
Washington, D. C.
EXECUTIVE SECRETARY..... Wm. Paul Gray
Washington, D. C.
TREASURER..... J. M. Campbell
Woodstock, Virginia

-----FFA-----

NATIONAL FFA BOARD OF DIRECTORS

H. N. Hunsicker, Chairman, U. S. Office of Education, Washington, D. C.
Joseph K. Bailey, U. S. Office of Education, Denver, Colorado
H. E. Edwards, U. S. Office of Education, Chicago, Illinois
M. C. Gaar, U. S. Office of Education, Atlanta, Georgia
Jesse A. Taft, U. S. Office of Education, Boston, Massachusetts
Dale C. Aebischer, Chief, Agricultural Education, Madison, Wisconsin
T. L. Faulkner, State Supervisor, Agricultural Education, Montgomery, Alabama
Percy Kirk, State Director, Agricultural Education, Cheyenne, Wyoming
W. H. Wayman, State Supervisor, Agricultural Education, Charleston, W. Virginia

THE KANSAS FUTURE FARMER
Earl Wineinger, Editor

OFFICERS OF THE KANSAS ASSOCIATION
FUTURE FARMERS OF AMERICA

Gregory Hands, President
Garden City

Steve Davis, Reporter
Hugoton

Danny Scott, Vice Presiden
Caney

Kenneth Conway, Sentinel
Plainville

Kent Hamilton, Secretary
Wichita County

Harold Shoaf, Executive Secretary
Topeka

Alan Johnson, Treasurer
Frankfort

C. C. Eustace, State Advisor
Topeka

Volume XXXVIII

May 15, 1968

No. 3

TABLE OF CONTENTS

PICTURE SECTION

Star Farmer of Kansas.....	1
1968-69 State FFA Officers.....	1
Honorary State Farmers.....	2
40th CONVENTION HIGHLIGHTS:	
Parliamentary Procedure.....	4
Vespers.....	5
Delegate Breakfast.....	6
Second Session.....	7
State Farmers.....	8
Third Session.....	9
Fourth Session.....	10
State Contest Winners.....	12

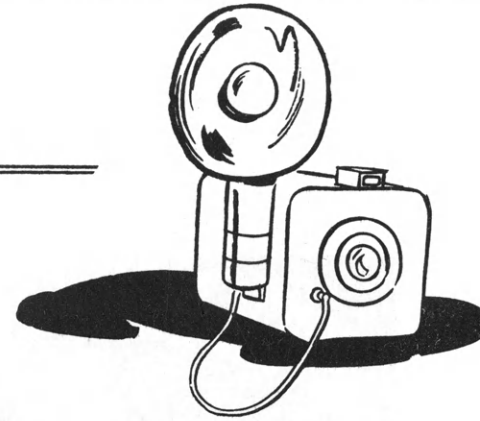
ACTIVITIES SECTION

Parliamentary Procedure Contest.....	15
Chapter Award Program Report.....	15
Co-op Activities Awards.....	17
Public Speaking Awards.....	17
State Farmers.....	18
Scrapbook Contest.....	21
1968 Honorary State Farmers.....	22
1968 Distinguished Service Awards.....	22
Santa Fe Scholarships.....	22
Union Pacific Scholarships.....	22
1968 National FFA Foundation Award Winners.....	23
Safety Awards.....	28
1968-69 State FFA Officers.....	28
State Contest Results.....	29

ANNOUNCEMENT SECTION

New Officers to Start Activities..... 31
Invitation to Camp..... 31
Camp Registration Blank..... 33
Wrangler Application..... 33
Come to the Fairs..... 34
Leadership School Study..... 34
Entertainment for National FFA Convention..... 34
Kansas Junior Livestock Field Day..... 34
American Farmers Selected..... 35

PICTURE SECTION



For complete stories of the pictures in this section, please refer to the Activities Section.

STAR FARMER OF KANSAS



Kenneth Conway of the Plainville FFA Chapter is the Star Farmer of Kansas for 1968-69. Kenneth is shown above with his vocational education instructor in agriculture, Marvin Hachmeister, to the right; and his parents, Mr. and Mrs. Loyd Conway.

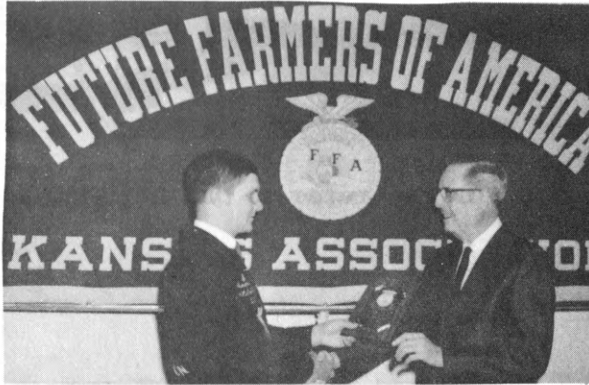
1968-69 STATE FFA OFFICERS



1968-69 officers of the Kansas Association of Future Farmers of America are shown above. From left to right are Greg Hands, President, Garden City; Danny Scott, Vice President, Caney; Kent Hamilton, Secretary, Leoti; Alan Johnson, Treasurer, Frankfort; Steve Davis, Reporter, Hugoton, and Kenneth Conway, Sentinel, Plainville.

HONORARY STATE FARMERS

Dale Raymond, State President, confers the Honorary State Farmer Degree on:



Professor Harold Harper
Agronomy Department
Kansas State University



Dr. James Albracht
Agriculture Education
Kansas State University



Kenneth Pfaff
President of KVATA
Hugoton FFA Advisor



Dr. Carroll V. Hess
School of Agriculture
Kansas State University



Bill Rule, Regional Director

Honorary State Farmers (cont.)



Joe Smerchek
Secretary-Treasurer
Kansas Farm Bureau



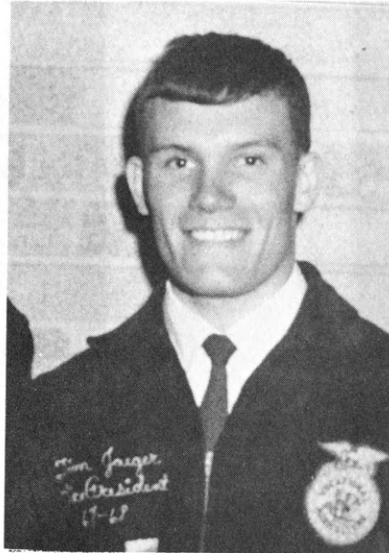
George Smith
Editor
The Kansas Farmer



John Snyder
Director
State Board for Vocational
Education



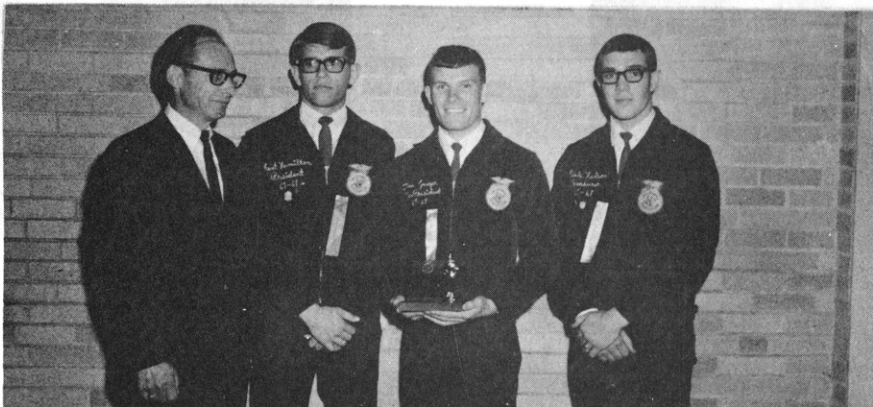
Wallace White
Secretary
Kansas State Fair

40th CONVENTION HIGHLIGHTSPARLIAMENTARY PROCEDURE

Tim Jaeger
State Parliamentarian

Tim Jaeger of the Leoti FFA Chapter served as State FFA Parliamentarian during the 40th Convention of the Kansas Association of Future Farmers of America. Tim earned the State office by being a key member on the winning team of the State Parliamentary Procedure Contest.

He has been active in numerous other activities such as State FFA Camp where he was selected as a wrangler, district and State contests, athletics, and numerous other events on the local level.



The Leoti FFA Chapter captured the top honors in the State Parliamentary Procedure Contest. Bob Randle is shown above and to the left. Mr. Randle is representing the Federal Land Bank which sponsors the Parliamentary Procedure Contests on both the district and State level. Pictured from left to right are Bob Randle; Kent Hamilton, chapter President; Tim Jaeger, chapter Vice President; and Dale Hudson, chapter Treasurer. Not available for this

40th Convention Highlights (cont.)

VESPERS

Charles McAtee, Director of the Kansas Penal Institutions, is shown here with Marcia Evans, State FFA Sweetheart, and Dale Raymond, State FFA President. McAtee was the principal speaker at the Vespers Services.

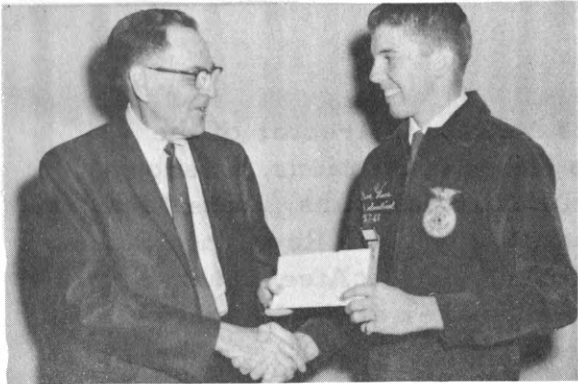
The Eskridge FFA Glee provided music during the Vespers Services.



The State Penitentiary's Beacon of Hope Choir also provided music during the Vespers Services which started the State FFA Convention activities.

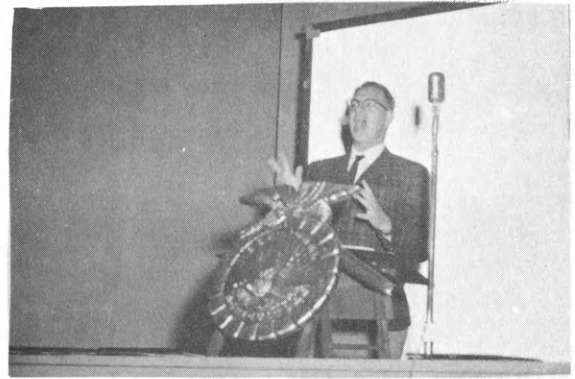


40th Convention Highlights (cont.)

DELEGATE BREAKFAST

Ken Smith of the Manhattan Sears Store is shown here presenting a check to the Kansas Association of FFA to sponsor a number of FFA activities including the Delegate Breakfast. Accepting the check on behalf of the State FFA Association is Steve Haas, State Sentinel.

Getting the Delegate Breakfast off to a good start was Jerry Gee, vocational education instructor in agriculture from Stafford, with some lively group singing.



Receiving the Distinguished Service Award at the Delegate Breakfast were from left to right, R. E. Derousseau of the Boogart Meat Products of Concordia; John Shireman, Superintendent of Schools at Cherokee; and John Keas, long-time friend of the FFA and Kansas farmers from Effingham.

The fathers of State FFA officers received the Honorary State Farmer Degree and the mothers received a special certificate of appreciation. Left to right are the Raymonds, Bogners, Quints, Handkes, Samples, and Haases. Mike Samples' parents received the honors a year ago when he was awarded the State Star Farmer Award.



40th Convention Highlights (cont.)

SECOND SESSION

Mr. Hal Hellebust, Executive Secretary of the Kansas Co-op Council, was on hand to make the official presentations for the Co-op Activities Awards. Winning first place was the Council Grove Chapter. Mr. Hellebust is shown here with two members of the Council Grove Chapter and Gordon Morrison, advisor of the Council Grove Chapter.

One of the highlights of the 40th Kansas FFA Convention was a report by Al Austin of WIBW Radio and TV News Department. Mr. Austin related many of his experiences in Viet Nam during a recent trip there.



Steve Davis (right) of the Hugoton FFA Chapter won first place in the State Public Speaking Contest. Presenting the award is Larry Epley (left), President of the K-State Collegiate FFA Chapter.



Madelyn Gantenbein of Chapman provided organ music at many times throughout the convention proceedings. Madelyn is the former President of the Kansas Association of Future Homemakers of America.



40th Convention Highlights (cont.)

STATE FARMERS



The 1968 Class of Kansas State Farmers

40th Convention Highlights (cont.)

THIRD SESSION

The State FFA Chorus performed during the Monday evening session of the Convention after a day of rehearsing. Directing the group was Professor Rodney Walker of the Kansas State University Music Department.

Darrell Cardell was selected to receive the Harry Darby Scholarship. This is one of the top awards given through the Kansas Association of FFA. Presenting the award is Dr. Raymond Agan, head teacher educator of the Agricultural Education Division of the Kansas State University College of Education.



Ed Bogner (left) presents Greg Hands (center) of Garden City the top chapter award in the State. Looking on is Ira Mann (right), advisor of the Garden City FFA Chapter.

A total of nineteen chapters have received the Gold Emblem classification for 1968. Advisors and presidents are shown here.



40th Convention Highlights (cont.)

FOURTH SESSION

Leaders in the Kansas Association of Future Homemakers of America attended several sessions of the convention. Pictured here are Carol Oberle, Assistant Supervisor in Vocational Home Economics; Mrs. Gantenbein, mother of the former FHA President; Wilma Ludwig, Assistant Supervisor in Vocational Home Economics; and Jean Gaunt, current FHA President of the Kansas Association. Jean spoke to the convention delegates. Elizabeth Herschler, State Vocational Home Economics Supervisor, attended an earlier session of the convention.

Loren Simmons of Santa Fe made a special presentation to the Kansas FFA Association. The check is used to promote a number of activities and two sizable scholarships.



Mr. Floyd D. Wentz is shown with some of the scholarship winners of the Union Pacific Scholarships.

Paul Diehl, National Student FFA Secretary from Missouri, spoke to the convention delegates and was always on hand to inspire delegates and offer sound advice to all.



40th Convention Highlights (cont.)



Foundation award winners.

Larry Kuhlman and Edgar Beesley are shown here carrying out some of their responsibilities as stage crew helpers. This is a very essential part of the convention to make it operate smoothly. The stage crew was furnished by the Oakley Chapter. Edgar was also the winner of the Eastern Division Scrapbook Contest.



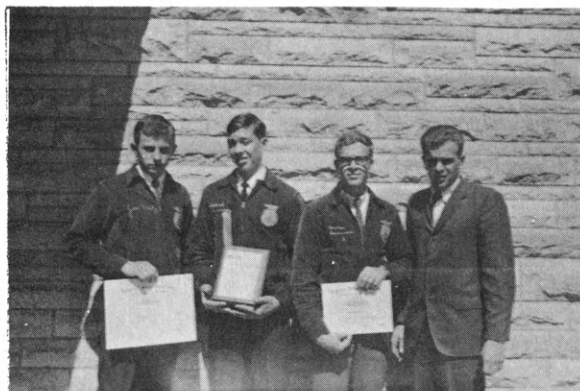
Greg Hands is shown here receiving the gavel from Dale Raymond as State President of the Kansas Association of FFA.



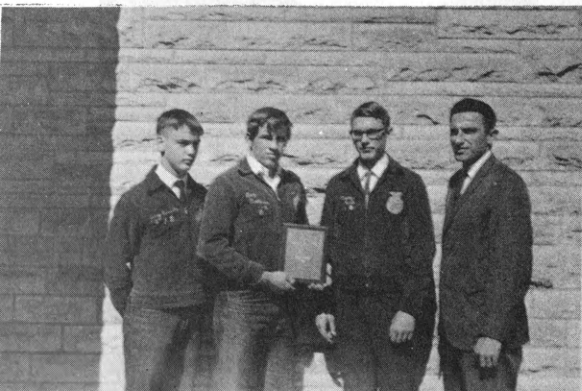
STATE CONTEST WINNERS



Animal Husbandry State Winners--
Alta Vista FFA Chapter (left to right)
Melvin Falk
Mike McDiffett
Jerald Bohn
Darrell Stites, Coach



Dairy Judging State Winners--
Newton FFA Chapter (left to right)
Jim Meetz
Richard Sauerwein
Charles Sauerwein
Larry Schmidt, Coach

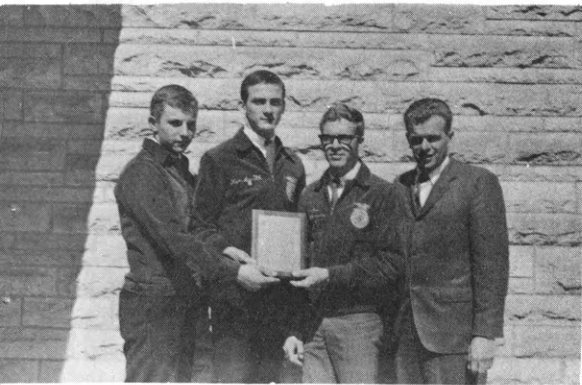


Poultry Judging State Winners--
Manhattan FFA Chapter (left to right)
Jerry Russell
Ray Prestwood
Tapley Kent
Dean Prochaska, Coach



Newswriting and Eastern Scrapbook
State Winners
Council Grove FFA Chapter (left to
right)
Frank Buchman
Gordon Morrison, Coach

State Contest Winners (cont.)



Crops State Winners--
 Newton FFA Chapter (left to right)
 Jim Meetz
 Ken Smith
 Charles Sauerwein
 Larry Schmidt, Coach



Entomology State Winners--
 Columbus FFA Chapter (left to right)
 Bill Ross
 Daryell Thompson
 Dean Knewton, Coach



Horticulture State Winners--
 Manhattan FFA Chapter (left to right)
 Keith Johnson, Student Teacher
 Jerry Russell
 Steve Rogers
 Dean Prochaska, Coach

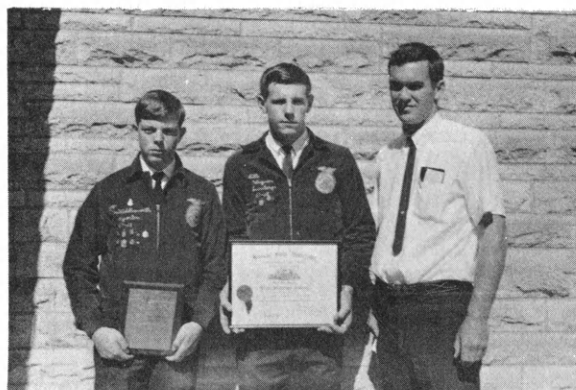


Soil Conservation State Winners--
 McPherson FFA Chapter (left to right)
 Gary Jantz
 Marvin Johnson (not pictured)
 Delbert Schrag, Coach
 Richard Ramsdale, Coach (not
 pictured)

State Contest Winners (cont.)



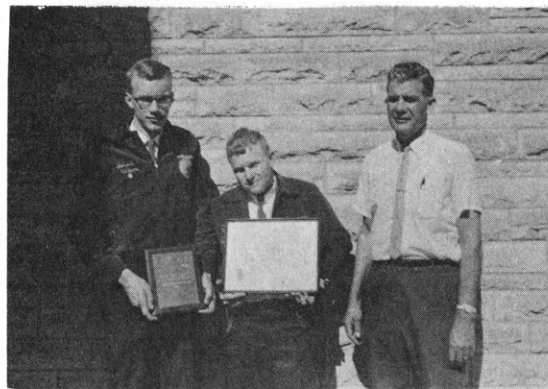
Farm Welding State Winners--
 Altamont FFA Chapter (left to right)
 Steve Griffith
 Gale Hellwig
 Oscar Ingram, Coach
 Jack Shell, Coach (not pictured)



Carpentry and Concrete State Winners--
 Altamont FFA Chapter (left to right)
 Richard Cook
 Gale Hellwig
 Henry Payne, Coach
 Jack Shell, Coach (not pictured)



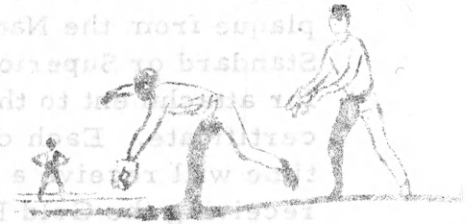
Farm Shop Tools State Winners--
 Altamont FFA Chapter (left to right)
 Jay VanMiddlesworth
 Bill Wagner
 Henry Payne, Coach
 Jack Shell, Coach (not pictured)



Farm Power and Machinery State Winner --
 Altoona FFA Chapter (left to right)
 Steven Carter
 Robert Travis
 John Davis, Coach

ACTIVITIES

SECTION



CONVENTION ACTIVITIES

PARLIAMENTARY PROCEDURE CONTEST

The Leoti FFA Chapter officers won the State Parliamentary Procedure Contest with Winfield--second, Columbus--third, and Jewell--fourth. The awards were provided by the Federal Land Bank of Wichita.

Some FFA members will be interested in the questions asked during the contest.

Question: A motion has been brought before the house to postpone the question indefinitely. It is seconded. Another member amends the motion to read: that we postpone the question until our next regular meeting. What is the next step to be taken by the President?

Answer: President would say: You are out of order. The motion to postpone definitely is not amendable.

Question: When can a motion to take a recess be debated?

Answer: Only when no other business is pending because it is then considered a main motion.

Judges for the State Parliamentary Procedure Contest were Vernon Geissler of the Kansas State University Placement Center, David Mugler of the Kansas State University College of Agriculture, and Larry Erpelding of the Kansas State University Ag Education staff.

CHAPTER AWARD PROGRAM REPORT

The Kansas Association has continued to use the State Gold Emblem, the Superior, and the Standard Chapter Awards in recognizing the merit of local FFA chapter programs.

The Kansas Gold Emblem chapters were selected from the chapters that ranked in the Superior Division of the National Chapter Awards Program. Only ten percent of the State's chapters can receive the Gold Emblem Award. Each chapter which receives the Superior Award for the first time will receive a plaque from the National FFA Foundation. A chapter receiving either the Standard or Superior Award will receive a smaller plastic classification plate for attachment to their plaques. The Gold Emblem chapters receive a State certificate. Each chapter which receives the Gold Emblem Award for the first time will receive a plaque from the Sears-Roebuck Foundation. A chapter receiving the Gold Emblem Award after receiving the award earlier will receive a spur to be attached to the original plaque.

There was a total of 84 chapters who submitted reports of their chapter programs during the 1967-68 FFA year. The results of these National Emblem Award reports are as follows:

<u>Kansas Gold Emblem</u>		12. Eureka	47. Southeast
		13. Ford	48. Troy
1. Arkansas City		14. Garnett	49. WaKeeney
2. Atchison County		15. Girard	50. Wamego
3. Caney		16. Goessel	51. Washington
4. Chapman		17. Highland	52. Wilson
5. Concordia		18. Hoxie	
6. Council Grove		19. Hugoton	<u>Standard Chapter Awards</u>
7. Ellsworth		20. Inman	1. Blue Mound
8. Eskridge		21. Iola	2. Cherryvale
9. Fort Scott		22. Jetmore	3. Ensign
10. Garden City		23. Kingman	4. Harper
11. Hill City		24. Lawrence	5. Hoisington
12. Hope		25. Lebanon	6. Jennings
13. Manhattan		26. Lebo	7. Kiowa
14. Paola		27. Marion	8. LaCygne
15. Peabody		28. Marysville	9. Leoti
16. Stockton		29. Miltonvale	10. Medicine Lodge
17. Uniontown		30. Moundridge	11. Natoma
18. Valley Heights		31. Neodesha	12. Paradise
19. Winfield		32. Ness City	13. Pretty Prairie
		33. Newton	
<u>Superior Chapter Awards</u>		34. Norcatur	
1. Alma		35. North Central	
2. Altamont		36. Northern Valley	
3. Altoona		37. Norton	
4. Atwood		38. Oberlin	
5. Bazine		39. Parker	
6. Bird City		40. Phillipsburg	
7. Buhler		41. Plainville	
8. Columbus		42. Riley	
9. Crest		43. Russell	
10. Ellinwood		44. Sabetha	
11. Erie		45. St. Francis	

Kansas entries in the National Chapter Award Program will be Garden City and Council Grove. Garden City ranked first and Council Grove second in the State Chapter Award Program. Each of these Chapters received \$100 from the Sears-Roebuck Foundation.

CO-OP ACTIVITIES AWARDS

The Kansas Cooperative Council has sponsored the Cooperative Activities Contest Awards for the eighth year in 1968. The chapter in each district which is judged to have had the best cooperative activity program receives a wall plaque and a \$50 cash award. Second place receives \$35 and third place \$15. The advisor of the top chapter in the State wins an all-expense paid trip to the National AIC Meeting. This year's AIC Meeting is to be held at Virginia Polytechnic Institute at Blacksburg, Virginia. The State winner also enters the National Cooperative Activities Contest.

The following is a summary of 1968 winners in the Cooperative Activities Contest.

Southeast District

- 1st Fort Scott
- 2nd Caney
- 3rd Uniontown

Southwest District

- 1st Garden City
- 2nd (No Entry)
- 3rd (No Entry)

South Central District

- 1st Peabody
- 2nd Winfield
- 3rd (No Entry)

Northeast District

- 1st Marysville
- 2nd Valley Heights
- 3rd Troy

East Central District

- 1st Council Grove
- 2nd Eskridge
- 3rd Williamsburg

North Central District

- 1st Manhattan
- 2nd Chapman
- 3rd Hope

Northwest District

- 1st Hill City
- 2nd Plainville
- 3rd Stockton

STATE WINNER -- Council GrovePUBLIC SPEAKING AWARDS

The Thirty-ninth State FFA Public Speaking Contest was held on the campus of Kansas State University, Monday, April 29, 1968. The preliminaries were held in two sections, with the first two places in each section reaching the finals. The four finalists presented their speeches during the second general session of the convention. The winners of the first four places were as follows.

1st--Steve Davis--Hugoton Chapter
"FFA--Challenging Youth in Agriculture"

2nd--Kent Hamilton--Leoti Chapter
"Water for Today and Tomorrow"

3rd--Danny Scott--Caney Chapter
"Challenges and Problems for Future Leaders"

4th--Roger Jarmer--Garden City Chapter

"The Life Abundant"

Other contestants and the titles of their speeches were as follows. (Listed alphabetically by schools.)

<u>Name</u>	<u>Chapter</u>	<u>Title</u>
John Schletzbaum	Atchison County	"Why a Future Farmer Should Attend College"
Larry Tittel	Bazine	"Unrest in Rural America"
Roger Haack	Bird City	"Pricing of Farm Products"
Jack Hockett	Caney	"The Farmer's Plight"
Wayne Converse	Eskridge	"Foods for the Future"
George Sorrick	Eskridge	"Part-Time Farming"
Ted Weishaar	Eureka	"The Future of Farming"
Darrell Cardell	Garnett	"A Future in Agribusiness"
Rockey Nickel	Goessel	"What is FFA?"
Dwight Goering	Inman	"Agriculture's Great Challenge"
Dale Nottingham	Lawrence	"The Challenge is Up to You"
Kent Baker	Manhattan	"The Farmer's Dilemma"
Jerry Longren	Manhattan	"The Hand That Feeds"
Don Pruitt	Miltonvale	"Society's Forgotten Man"
Jim Meetz	Newton	"American Agriculture--Hope for the Future"
Bob Price	Norcatour	"Tiny Threads of Waste"
Ted Thiele	Norton	"Farming--Glamour in the Future"
Galen Rokey	Sabetha	"A Good FFA Citizen"
Robert Bailey	Seaman	"Veterinary Medicine"
James Wishart	Southeast	"Sportsman--Farmer Courtesy"
Ted Odle	Stockton	"The Boys in Blue Jackets"
Pat Murphy	Uniontown	"Agriculture and Our Future"
Loren Berger	Valley Heights	"Synthetic Foods"
Richard Reynolds	Winfield	"Second Thoughts"

STATE FARMERS

A total of 126 FFA members representing 72 different chapters were raised to the State Farmer Degree on Monday evening, April 29, 1968. This ceremony took place in activities associated with the 40th State FFA Convention. This raises the total number of FFA members who have received the State Farmer Degree in the history of the Kansas Association to 3651.

The 1968 State Farmers are as follows:

Alma

Jack Umbehrr

Altamont

Richard Cook
 Dwight Cooper
 Steven Griffith
 Donald Hellwig
 David Hubbell
 Mark McKee
 Danny Peterson
 James VanMiddlesworth
 William Wagner

Altoona

Larry Callarman

Arkansas City

Paul Cully
 Robert Gottloby
 Martin McCorgary
 Kendall Reed

Atchison County

Jerry Lewman
 John Schletzbaum

Atwood

Albin Cahoj

Bazine

Lonnie Stieben

Buhler

Austin Ray

Caney

Danny Scott
 Danny Thorne

Chapman

Gary Palmateer

Clay Center

Phillip Brown
 David Chestnut
 Jim Wohler

Columbus

Bill Ross
 Daryell Thompson

Concordia

Dennis Burt

Council Grove

Frank Buchman

Elk City

Kenton Springer

Ellsworth

Stephen Donley
 Mike Vanek
 Thomas Weinhold

Ensign

Ronald Luthi

Erie

Terry Thiesing

Flint Hills

Kenneth DeDonder

Ford

Rodney Schoonover

Fort Scott

Paul Perry

Frankfort

Alan Johnson

Garden City

Jerry Brown
 Benny Huschka
 Roger Jarmer
 Danny McMillan
 Tim Stone

Garnett

Darrell Cardell
 Thomas Tush

Goessel

Rodney Peters

Hill City

Rick Davignon
Ronald Radcliffe
James Switzer

Holton

Frank Carson
Galen Cashman

Hoxie

Jim Deibert
Jim Walden

Hugoton

Steve Davis

Inman

David Nachtigal
Kenneth Schroeder

Jewell

Calvin Bohnert
Jim Dooley

Kingman

Michael Demmer

Kiowa

Gary Schupbach

Lawrence

Dennis Alexander
Richard Conner
Dale Nottingham
Ronald Rice

Lebanon

Roger Fricker
Larry Stanley

Lebo

Michael Croucher

Leoti

Kent Hamilton
Tim Jaeger

Manhattan

Kent Baker
Jerry Longren

Marion

William Schimpf

Marysville

James Cain
David Haddon
Lowell Larson

Miltonvale

Ken Jay Fuller
Edward Kearn
Don Pruitt

Moundridge

Ernie Goering, Jr.
Tom Graber
Gary Regier

Newton

Jim Meetz
Charles Sauerwein
Kenneth Smith

Norcaton

John Mapes
Stephen Miller
Gary Ritter

North Central

Billy Hoffman

Northern Valley

Steve Archer
Phillip Lowry

Norton

David Applegate
Stanley Applegate
Pat Taylor
Wayne Thiele

Oberlin

Gerald Benda
Charles Hessenflow
Merald VanVleet

Paola

Merle McKoon

Troy

Joe Anderson

Peabody

Gary Langenegger
Phillip McPheeters

Uniontown

Joseph George
Timothy Murphy
Charles Reed

Plainville

Kenneth Conway

Valley Hights

Eugene Korte

Riley County

Richard Schurle

WaKeeney

Donald Lynn
Charles Tinkler

Rossville

Oscar Gideon, Jr.

Wamego

Tom Bairow
Dewayne Burgess

St. Francis

Patrick Stuart

Washington

Lonnie Sawin

Seaman

Robert Bailey
Jim Hermann

Westmoreland

Joseph Ebert

Severy

Brain Mack

Williamsburg

Lance Hart

Silver Lake

Johnny Lindstrom

Wilson

Marvin Kratky

Smith Center

James Gwennap

Winfield

Richard Biddle

Stockton

Rodney Carsten

Tribune

Steve Graber

SCRAPBOOK CONTEST

Eleven scrapbooks were displayed during the State FFA Convention. This contest not only increases interest among local chapter reporters to organize and display scrapbooks, but also provides other chapter members and advisors an opportunity to gain ideas for possible use in their chapters. Possibly this is the most important value of the contest.

Winning the Scrapbook Contest was the Council Grove and Oakley Reporters. These reporters received a leather briefcase from the High Plains Journal which was represented by Mr. Hal Wills.

1968 HONORARY STATE FARMERS

Honorary State Farmers for 1968 are as follows.

Mr. C. W. Rule
The Sears-Roebuck Foundation
Kansas City, Missouri

Mr. Kenneth Pfaff
KVATA
Hugoton, Kansas

Dr. Carroll V. Hess
School of Agriculture
Kansas State University
Manhattan, Kansas

Professor Harold Harper
Agronomy Department
Kansas State University
Manhattan, Kansas

Dr. James Albracht
Agriculture Education
Kansas State University
Manhattan, Kansas

Mr. Joe Smerchek
Kansas Farm Bureau
Manhattan, Kansas

Mr. Wallace White
Kansas State Fair
Hutchinson, Kansas

Mr. John Snyder
State Board for Vocational Education
Topeka, Kansas

Fathers of 1967-68 State FFA Officers

Mr. George L. Smith
The Kansas Farmer
Topeka, Kansas

1968 DISTINGUISHED SERVICE AWARDS

Mr. John Shireman
Superintendent of Schools
Cherokee, Kansas

Mr. R. E. Derusseau, Manager
Boogart Meats Products Company
Concordia, Kansas

Mr. John Keas
Effingham, Kansas

SANTA FE SCHOLARSHIPS

The Santa Fe Railway annually provides two scholarships to outstanding vocational agriculture students in Kansas. The value of these scholarships is \$500 each. The 1968 winners are Kenneth Conway of Plainville and John Welborn of Meriden.

UNION PACIFIC SCHOLARSHIPS

The Union Pacific Railway annually provides a \$200 scholarship to a vocational agriculture student attending a school located in a county in which the Union Pacific Railway operates. In 1968 twelve young men were winners of this scholarship and were presented certificates of recognition during the 40th State FFA Convention.

The 1968 scholarship winners and their local chapters are as follows.

Gary Burkholder	Abilene	John Welborn	Meriden
Terry Steinshouer	Downs	Kenneth Conway	Plainville
Alan Johnson	Frankfort	Robert Evans	Sabetha
Richard Conner	Lawrence	Joe Strahm	Sabetha
Dale Nottingham	Lawrence	Robbie Morrison	Salina
Edward K. Baker	Manhattan	James Crawford	Seaman

1968 NATIONAL FFA FOUNDATION AWARD WINNERS IN KANSAS

Seventy-nine cash awards, totaling \$3175, were presented to Kansas FFA members and chapters. The winners were as follows.

Star Farmer of Kansas

Kenneth Conway, Plainville \$200

District Star Farmers

Kent Hamilton, Leoti \$ 50
 Phillip Brown, Clay Center \$ 50
 Paul Cully, Arkansas City \$ 50
 Dale Nottingham, Lawrence \$ 50
 John Schletzbaum, Atchison Co. \$ 50
 Richard Cook, Altamont \$ 50

BEEF PRODUCTION AWARD

State Winner

Kenneth Conway, Plainville \$100

District Winners

Ken Jay Fuller, Miltonvale \$ 20
 Paul Cully, Arkansas City \$ 20
 Bernard Huschka, Garden City \$ 20
 Michael Croucher, Lebo \$ 20
 Rick Sprang, Atchison County \$ 20
 Danny Maxson, Altamont \$ 20

CROP PRODUCTION AWARD

State Winner

Harlan Davies, Lebo \$100

District Winners

David Chestnut, Clay Center \$ 20
 Paul Cully, Arkansas City \$ 20
 Greg Hands, Garden City \$ 20
 William Weber III, Troy \$ 20
 Bob Collins, Fort Scott \$ 20
 Pat Taylor, Norton \$ 20

DAIRY PRODUCTION AWARD

State Winner

William Wagner, Altamont \$100

District Winners

James Wohler, Clay Center \$ 20
 Roger Jarmer, Garden City \$ 20
 John Hanser, Paola \$ 20
 Rick Sprang, Atchison County \$ 20
 Charles Tinkler, Jr., WaKeeney \$ 20

FARM ELECTRIFICATION AWARD

State Winner

L. David Hubbell, Altamont \$100

District Winners

Ken Jay Fuller, Miltonvale \$ 20
 Austin Ray, Buhler \$ 20
 Galen Edgecomb, Garnett \$ 20
 Steve Coder, Atchison County \$ 20
 Rick Davignon, Hill City \$ 20

FARM FORESTRY AWARD

State Winner

Larry Bailey, Fort Scott \$100

District Winner

Larry Berger, Valley Heights \$ 20

FARM MECHANICS AWARDState Winner

Jim Switzer, Hill City \$100

District Winners

Calvin Bohnert, Jewell \$ 20

Martin McCorgary, Arkansas City \$ 20

Danny McMillan, Garden City \$ 20

Dale Nottingham, Lawrence \$ 20

Oscar Gideon, Jr., Rossville \$ 20

Terry Thiesing, Erie \$ 20

HOME IMPROVEMENT AWARDState Winner

Jerry Lewman, Atchison County \$100

District Winners

Harry Buche, Miltonvale \$ 20

Myron Thiessen, Peabody \$ 20

Frank Buchman, Council Grove \$ 20

James VanMiddlesworth, Altamont \$ 20

Ronnie Radcliffe, Hill City \$ 20

NATURAL RESOURCES DEVELOPMENTState Winner

Gilbert Loewen, Peabody \$100

ORNAMENTAL HORTICULTURE AWARDState Winner

John Back, Haven \$100

POULTRY PRODUCTION AWARDState Winner

Danny Oplotnik, Southeast \$100

District Winners

Mike Frey, Chapman \$ 20

Robert Dehn, Williamsburg \$ 20

Jim Jensen, Atchison County \$ 20

FARM SAFETY AWARDState Winner

Garden City Chapter \$100

District Winners

Chapman Chapter \$ 20

Goessel Chapter \$ 20

Williamsburg Chapter \$ 20

Caney Chapter \$ 20

Stockton Chapter \$ 20

SHEEP PRODUCTION AWARDState Winner

Rodney Carsten, Stockton \$100

District Winners

Kenneth Schroeder, Inman \$ 20

Philip Scritchfield, Seaman \$ 20

Darrel Stoller, Sabetha \$ 20

Mark McKee, Altamont \$ 20

SOIL CONSERVATION AWARDState Winner

Jackie Rathbun, Ellsworth \$100

District Winners

Neil McPheeters, Peabody \$ 20

John Schletzbaum, Atchison Co. \$ 20

Donald Hellwig, Altamont \$ 20

SWINE PRODUCTION AWARDState Winner

Leonard Schaben, WaKeeney \$100

District Winners

Phillip Brown, Clay Center \$ 20

Rodney Peters, Goessel \$ 20

Kent Hamilton, Leoti \$ 20

Ronald Wilson, Council Grove \$ 20

Mike Navinsky, Atchison County \$ 20

Richard Cook, Altamont \$ 20

PUBLIC SPEAKING AWARDState Winner

Steve Davis, Hugoton \$100

Second Place Winner

Kent Hamilton, Leoti \$ 50

Third Place Winner

Donny Scott, Caney \$ 25

The following is a summary of the programs of the State Foundation Award winners

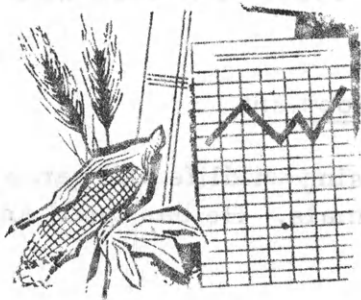
Beef Production

Kenneth Conway has twenty high grade Angus cattle. He produced 11,300 pounds of beef last year with a one hundred percent calf crop. He used latest sprays for parasites and vaccinated all calves. He uses a selected registered Angus bull. He has built in the vocational agriculture shop a new loading chute, cutting pens, and other equipment.



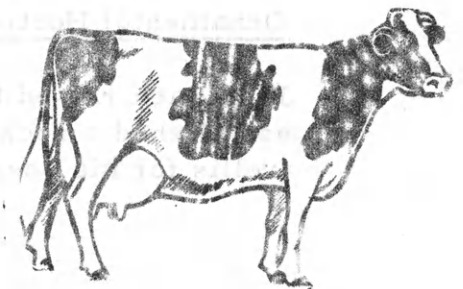
Crops Production

Harlan Davies had ninety-five acres of crops in 1967. This included twenty-eight acres of wheat, forty-two acres of milo, and twenty-five acres of beans. His wheat averaged thirty-three bushels per acre, his milo sixty-three bushels, and his beans thirty bushels. He uses approved practices in crop production and soil management. He has built and repaired crop equipment in shop.



Dairy Production

William Wagner has six Holstein cows in his dairy herd. Their average milk production for 1967 was 12,500 pounds and 430 pounds of butterfat. He uses artificial insemination and follows the best feeding practices for his herd. He is a member of D. H. I. A.

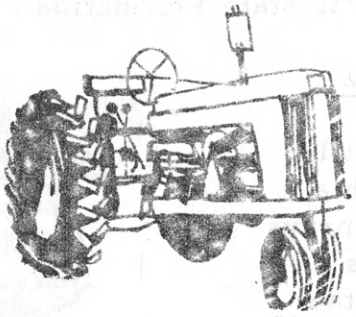


Farm Electrification

L. David Hubbell has wired his home, farm, and vocational agriculture shop. He has assisted neighbors in the use of electricity. He has had the responsibility of wiring his home, the barn, and the garage. He drew up the plans for each of these prior to the wiring. He has repaired two coffee pots, numerous toasters, an air compressor, three motors, two yard lights, numerous extension cords, and switches. He has completed work in the vocational agriculture department, one consisting of the wiring of several electric boards. One of the major jobs completed at school was to wire and set a fuse box. He has been of assistance to his neighbors in wiring their homes.

Farm Forestry

Larry Bailey started his forestry in his freshman year with 1500 Scotch and Colorado Blue Spruce from the University of Kansas. In his sophomore year he established a Pecan grove of 300 seedlings. In 1968, 125 apple trees of several varieties were planted. He has installed an irrigation system in his apple orchard. He plans to enter a forestry school next year and then become a State Forester.



Farm Mechanics

Jim Switzer owns a complete set of shop equipment including arc and gas welders. He has built and assisted building a barn, corrals, loading chutes, sorting pens, and other livestock equipment. He has displayed machinery at the fair and has won many awards in shop.

Home Improvement

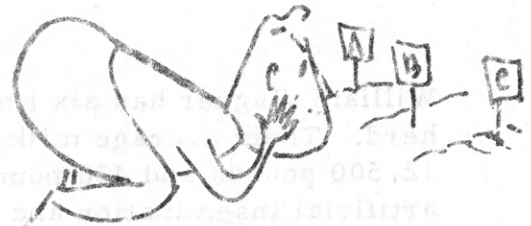
Jerry Lewman helped build an addition to the family farm home. New fences were constructed around the farmstead. A new picket fence around the yard as well as establishing a lawn was accomplished in 1967. The barn was painted and out buildings repaired and painted.

Natural Resources Development

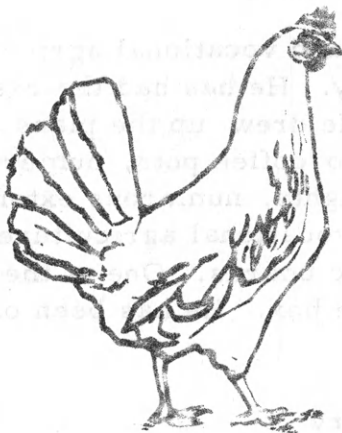
Gilbert Loewen has an extensive program of raising wildlife and game birds. He has raised pet coyote, coons, and other wild animals. He has quail and pheasants for sale.

Ornamental Horticulture

John Back raised tomato plants. He established a rock garden and built a trellis for his roses.



Poultry Production



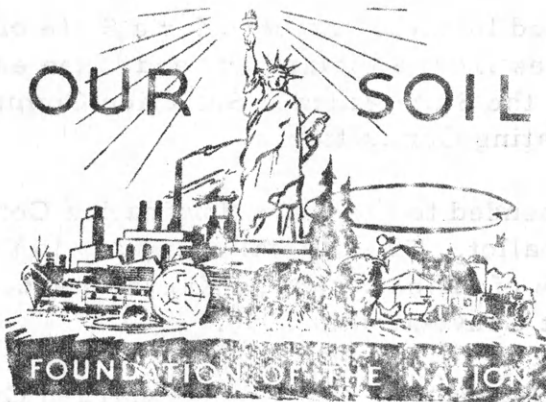
Dan Oplotnik has six hundred Leghorn hens in his laying flock. His average production was seventy percent from September to January. He buys day old pullets and raises them to production age. The eggs are cleaned, graded, and sold locally to grocery stores, restaurants, and individuals.

Sheep Production

Rodney Carsten is a junior at Stockton High School and had a total of 153 sheep in 1967. He produced a total of nearly 5,000 pounds of lambs last year. He weaned a 130% lamb crop. He is very conscientious of feed efficiency and approved practices by weighing them at birth and at weaning, proper identification, figuring and mixing feed rations, and making the best use of antibiotics and vaccination to control disease and improper feed efficiency to control internal and external parasites. He shears his own sheep and markets the wool with the Midwest Wool Cooperative. He anticipates increasing his wool crop next year.



Soil Conservation



Jackie Rathbun has been actively involved in soil conservation for a number of years. He now operates a 160 acre farm which he subleases from his father. Prior to his taking over this farm, a soil conservation plan had not been made. Through his effort a complete plan has now been made with the cooperation of the Soil Conservation Service. Through proper grazing, spraying of bindweed, crop rotation, and proper fertilization, the yield has doubled. Additional terraces and waterways are planned for 1968. A complete plan for future needs has been made by Jackie.

Swine Production

Leonard Schaben had forty sows in his breeding herd and sold 784 hogs last year. He produced 74,800 pounds of pork. His average litter size was 9.8 pigs. The pigs are sold as feeder pigs. Leonard uses a high quality herd boar and has started selling breeding stock. He plans to build a forty crate farrowing barn and increase his herd to two hundred sows.



1968 STATE SAFETY AWARDS IN FFASTATE RANKING

1st Garden City
 2nd Caney
 3rd Atchison County
 4th Stockton

North Central

1st Chapman

South Central

1st Goessel

East Central

1st Williamsburg

DISTRICT RANKINGSSouthwest

1st Garden City

Southeast

1st Caney

Northwest

1st Stockton

MEET YOUR 1968-69 STATE FFA OFFICERS

Thirty-nine candidates were nominated by their chapters for a State office in the FFA. Where the number of candidates from a district exceeded the established quota based on district membership, the State Farmer Selection Committee made recommendations to the State Nominating Committee.

Twenty-two candidates were recommended to the State Nominating Committee. From these, ten names went on the ballot. The official delegates to the 40th Convention elected the following state of officers for the Kansas Association to serve until the conclusion of the 41st Convention in 1969.

President	Gregory Hands	Garden City Chapter
Vice President	Danny Scott	Caney Chapter
Secretary	Kent Hamilton	Wichita County Chapter
Treasurer	Alan Johnson	Frankfort Chapter
Reporter	Steve Davis	Hugoton Chapter
Sentinel	Kenneth Conway	Plainville Chapter

OTHER HIGHLIGHTS OF THE 40th STATE FFA CONVENTION

1. Kenneth Conway of the Plainville FFA Chapter was declared Star Farmer of Kansas for 1968.
2. The Vespers Service was enjoyed by over 700 FFA members and advisors. Musical numbers were presented by the Eskridge FFA Glee and the Beacon of Hope Choir of the State Penitentiary. The State FFA officers handled the prayers, scriptures, and dedications. Special speaker for the evening was Mr. Charles McAtee, Director of the Kansas Penal Institutions.

3. Paul Diehl, National FFA Secretary, represented the National organization at the Kansas FFA Convention. His inspirational talks and visits with delegates, parents, and friends will long be remembered. His leadership and assistance made the 40th Annual State Convention one of the outstanding conventions in the Kansas Association history.
4. Featured speakers at the 40th State FFA Convention were: Paul Diehl, National FFA officer; Charles McAtee, Director of Penal Institutions; and Al Austin, News Department of WIBW.
5. Special presentations were made by Loren Simmons of Santa Fe Railway, Floyd Wentz of Union Pacific Railway, Hal Hellebust of the Kansas Co-op Council, Ken Smith of the Sears-Roebuck Foundation, and Hal Wells of the High Plains Journal.
6. Professor Rodney Walker, Kansas State University, directed the thirty members of the State FFA Chorus.

STATE CONTEST RESULTS

Top Five Teams--Dairy Products

Clay Center

McPherson

Manhattan

Belleville

Washington

Top Five Teams--Entomology

Columbus

Ness City

McPherson

Winfield

Lawrence

Top Five Teams--Farm Shop Tools

Labette County (Altamont)

Downs

Ellsworth

Goessel

McPherson

Top Five Teams--Farm Welding

Labette County (Altamont)

Columbus

Girard

Hill City

LaCrosse

Top Five Teams--Farm Power and Machinery

Altoona

Labette County (Altamont)

Hill City

Columbus

Abilene

Top Five Teams--Farm Carpentry and Concrete

Labette County (Altamont)

Hill City

Norton

Chapman

Winfield

Top Five Teams--Rural Electrification

Miltonvale

Hillsboro

Hill City

Labette County (Altamont)

Paola

Top Five Teams--Soil Conservation

McPherson

Wichita County (Leoti)

Labette County (Altamont)

Neodesha

Concordia

Top Five Teams--Horticulture

Manhattan
Meriden
Great Bend
Seaman
Winfield

Top Five Teams--Crops Judging

Newton
Labette County (Altamont)
Marion
Meriden
Manhattan

Top Five Teams--Dairy Judging

Newton
Blue Mound
Lawrence
Chapman
Lebo

Top Five Teams--Poultry Judging

Manhattan
Neodesha
Caney
Altoona
Stockton

Top Five Teams--Animal Husbandry

Alta Vista
Lebanon
Lawrence
Lebo
Caney
Newton

STATE CONTEST RESULTS

Top Five Teams--Farm Machinery

Altoona
Labette County (Altamont)
Hill City
Columbus
Abilene

Top Five Teams--Dairy Products

Clay Center
McPherson
Manhattan
Belleville
Washington

Top Five Teams--Farm Carpentry and Concrete

Labette County (Altamont)
Hill City
Morton
Chapman
Winfield

Top Five Teams--Entomology

Columbus
Hess City
McPherson
Winfield
Lawrence

Top Five Teams--Rural Electrification

Millersburg
Hillsboro
Hill City
Labette County (Altamont)
Topeka

Top Five Teams--Farm Shop Tools

Labette County (Altamont)
Dodge
Ellsworth
Goessel
McPherson

Top Five Teams--Soil Conservation

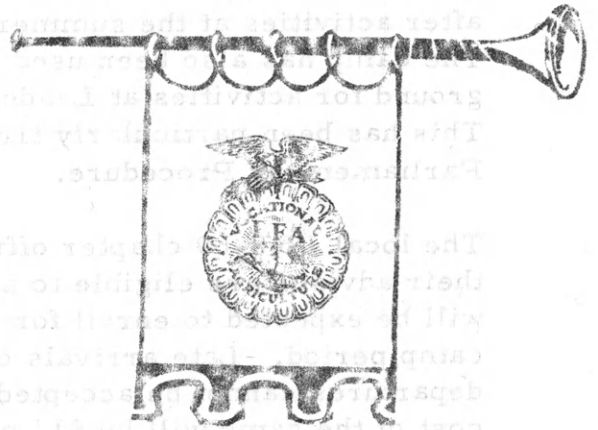
McPherson
Wichita County (La. Co.)
Labette County (Altamont)
Neodesha
Concordia

Top Five Teams--Farm Welding

Labette County (Altamont)
Columbia
Gardner
Hill City
LaCrosse

ANNOUNCEMENT

SECTION



NEW OFFICERS TO START ACTIVITIES

It doesn't take long for new officers to become involved in their new responsibilities. These new officers will be very busy during the coming year and will have opportunity to meet many local FFA members.

Some of the most immediate responsibilities facing the new officers will be:

1. A trip to Washington, D. C., to the National FFA Conference for one State officer from each State. This conference will permit a new State officer to observe first-hand the operation of the Federal government and the National FFA organization.
2. Attendance at Camp Miniwanca in Michigan by two State officers.
3. Attending the Sub-Regional Conference in Kansas City by all State officers.
4. State Officer Meeting prior to the Sub-Regional Conference and FFA Camp.
5. Supervising the State FFA Camp.

INVITATION TO CAMP

All local FFA chapter officers for the 1968-69 FFA year and advisors are invited to attend the Ninth State FFA Leadership Training Camp. The camp has been scheduled from 3:00 p.m., August 3, 1968, until 1:00 p.m., August 6, 1968. The camp will be held at Rock Springs Ranch which is located thirteen miles south of Junction City, Kansas.

This camp will help train, motivate, and inspire new chapter officers to carry out their duties and responsibilities. This activity will also assist candidates applying for State Farmer, American Farmer, State officer, and in Superior Chapter Awards. No other one activity can do as much in creating a group spirit in the local chapter officers. Leadership School in September will be patterned after activities at the summer camp.

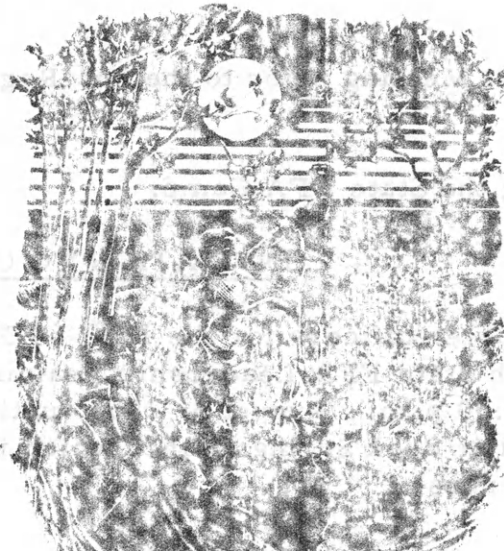
The camp has also been used as a proving ground for activities at Leadership School. This has been particularly true in Parliamentary Procedure.

The local 1968-69 chapter officers with their advisor are eligible to attend and will be expected to enroll for the entire camp period. Late arrivals or early departures cannot be accepted. The total cost of the camp will be \$13 per person. This includes nine meals, camp insurance from local community and return, two official FFA Camp T-Shirts, and all facilities available at the camp. Each camper will furnish his own bedroll, towels, toilet articles, personal leadership material, and enthusiasm.



The Kansas Association of Bank Agricultural Representatives (KABAR) is again going to provide the awards for the camp. This group also plans to sponsor a session of the camp emphasizing the free enterprise system and citizenship. Mr. Harold Walker of Arkansas City is the coordinator of FFA and KABAR relations.

The following registration blank asks for a definite committment of chapters wishing to enroll. If more chapters enroll than the camp can accommodate, chapters will be enrolled on a "first-come, first-serve basis." The State office is in need of the number of campers in order to aid planning. The registration blank must be returned by June 15.



CAMP REGISTRATION BLANK

The following FFA officers from the _____ Chapter are planning to attend the State FFA Leadership Training Conference at Rock Springs Ranch, Junction City, August 3-6, 1968.

- 1. President _____
- 2. Vice President _____
- 3. Secretary _____
- 4. Treasurer _____
- 5. Reporter _____
- 6. Sentinel _____
- 7. Advisor _____

Please find enclosed a check for \$ _____ (\$1.00 per person). The remaining \$12.00 per person will be paid on arrival at camp. We understand that if we fail to attend camp as planned, we will forfeit the \$1.00 pre-enrollment fee. Payment by check will assist the camp banker and conserve time of enrollment. Make all checks payable to the Kansas Association of FFA.

WRANGLER APPLICATION

Campers interested in a Wrangler position should complete the following form and return it to the State office not later than June 15. Any camper is eligible for this.

Name _____ Chapter _____ Age _____

Class 1968-69 School Year _____ No. in High School Class _____

No. in Chapter _____ Offices held in your local chapter _____

Leadership activities you have participated in with your local chapter _____

Other high school leadership activities _____

Present Farming Program _____

What are your plans for the future _____

COME TO THE FAIRS

It is not too early to start planning for the Mid America Fair in Topeka and the Kansas State Fair in Hutchinson. The following activities are being planned

Mid America Fair

Agricultural Mechanics Chapter Displays
Construction Ag Mechanics Awards (Individual)
Repair Ag Mechanics Awards (Individual)
Small Engines Clinic
Agricultural Mechanics Skill Awards
Educational Booths
County Collective Booths

Kansas State Fair

Agricultural Mechanics Chapter Displays
Construction Ag Mechanics Awards (Individual)
Repair Ag Mechanics Awards (Individual)
Small Engines Clinic
County Collective Booths
Kiddies' Barnyard
State Sweetheart Activities

Local chapters will need to assist with several phases of these activities. If your chapter is interested in helping, please let the State office know as soon as possible.

LEADERSHIP SCHOOL STUDY

A number of chapters develop study sheets for summer to prepare for the Leadership School information test next fall. The references for the test will be the same pattern as last year. Questions may come from the 1967 November issue and the 1968 April, May, and September issues of the Kansas Future Farmer.

NATIONAL FFA CONVENTION NEEDS ENTERTAINMENT

If you would like to appear on the FFA Talent Program at the National Convention next October, please contact this office immediately. This is an opportunity to serve the Kansas Association and the National FFA organization as well as developing your own talent.

KJLA FIFTH ANNUAL FIELD DAY

The Kansas Junior Livestock Association has scheduled its Fifth Annual Field Day to be held July 12, 1968, at the Rusk Ranch, near Sun City, Kansas.

AMERICAN FARMERS SELECTED

Seven FFA members have been selected by the Kansas Association of FFA to receive the American Farmer Degree at the 41st National FFA Convention in October. The FFA members are:

Tom Bradbury of the Uniontown FFA Chapter
Leonard Davison of the Garnett FFA Chapter
Alan Guttery of the Osborne FFA Chapter
Greg Farber of the Mulvane FFA Chapter
Tom Collins of the Fort Scott FFA Chapter
John Stigge of the Washington FFA Chapter
Kenny DeDonder of the Flint Hills FFA Chapter

Bradbury will be the Kansas candidate for the coveted Central Regional Star Farmer. Dennis Shurtz has been nominated by the Kansas Association for a National FFA organization officer. Dennis received the American Farmer Degree last October.

The following is a brief resume' of each of the seven 1968 American Farmers from Kansas.

Tom Bradbury--Uniontown

Tom Bradbury, son of Mrs. Vyrel Bradbury of the Uniontown community, is a 1965 graduate of the Uniontown High School and an active member of the Uniontown FFA Chapter. Tom's current farm experience program includes 38 beef cows, 27 beef heifers, 17 miscellaneous beef cattle, 29 acres of alfalfa, 40 acres of corn, 7 acres of grain sorghum, 8 acres of oats, and 12 acres of silage corn. His farm machinery and equipment inventory totals nearly \$16,500. His net worth is \$71,442.35 with assets totaling more than \$80,000. Tom's father died in 1967 leaving the total farm operation to Tom. Tom had also been in charge prior to his father's death due to a prolonged illness of his father. Since then 306 acres of land has either been deeded or purchased to and by Tom.

In 1965 Tom was selected as Central FFA Regional Dairy Winner and attended the National Dairy Show at Waterloo, Iowa, and the National FFA Convention to receive recognition for this honor. Tom has participated in numerous other FFA and community activities. He is currently in the National Guard and was selected as an honor graduate and a squad leader of that group.

Tom's vocational education instructor in agriculture is Mr. Wilbur Hart and his high school principal is Mr. Carl A. Otto.

Leonard Davison--Garnett

Leonard Davison, son of Mr. and Mrs. Marvin Davison of the Garnett community, is a 1965 graduate of Garnett High School and an active member of the Garnett FFA Chapter. Leonard currently has ten head of beef cattle and rents fifty acres of corn and fifty acres of wheat on a 2/3 basis. Leonard has developed a sizable inventory of farm machinery and equipment. Leonard's net worth is nearly \$16,000 with over \$26,000 in assets.

In FFA leadership Leonard has served as President and Reporter of his local FFA chapter, selected as President of the District Master Ritual team, and elected as a wrangler at State FFA Leadership Training Camp. Leonard has also been active in the local Young Farmers organization, Farm Bureau, and the local church.

Mr. Bob Davis was Leonard's vocational education instructor in agriculture during his high school training. Currently Mr. Sam Harris is in charge of the vocational education in agriculture at Garnett High School and Mr. Claron G. Cole is the principal.

Alan Guttery--Osborne

Alan Guttery, son of Mr. and Mrs. Porter Guttery of the Alton community, is a 1965 graduate of Osborne Rural High School and an active member of the Osborne FFA Chapter. Alan's current farm experience program includes a twenty-five percent interest in 80 heifer calves, 74 steer calves, 174 cows, 6 bulls, 209 acres of wheat, and 45 acres of alfalfa. As of January 1, Alan had a net worth of \$55,342 and a total assets figure of nearly \$128,000. Currently Alan is pursuing a degree in agriculture at Fort Hays State College at Hays. After college he plans to return to the farm where he and his father plan to farm a 50-50 agreement situation and extend their farm operation to more land and cattle.

Alan's leadership abilities are illustrated by his being selected as a wrangler at State FFA Leadership Training Camp, ranking seventh in a Statewide FFA information test, participating in nearby radio programs, and participating in numerous other FFA, cooperative, and school activities.

Mr. Jim Macy was Alan's vocational education instructor in agriculture during his high school training. Currently Mr. Marvin Parrack is in charge of the vocational education in agriculture at Osborne High School and Mr. Stanley Abel is superintendent of the Osborne School System.

Greg Farber--Mulvane

Greg Farber, son of Mr. and Mrs. Paul Farber of the Derby community, is a 1965 graduate of Mulvane High School and an active member of the Mulvane FFA Chapter. Greg's 1967 farm experience program shows a supply of 42 dairy cows and 54 head of hogs. Greg works closely with his father and older brother, David, in the total family farm operation. David received the American Farmer Degree two years ago. The Farber farm has a unique way of marketing the products of their farm directly to the consumers. Most of their customers come from Wichita or the Wichita area. They are currently constructing a distribution building where milk, garden produce, meat, and other farm products from the Farber farm will be sold to their customers.

Greg attended one year of college at Hutchinson Junior College where he studied accounting and business and ranked in the top ten percent of his class. Greg has also been active in numerous FFA, school, and community activities.

Mr. Francis Shoup is Greg's instructor of vocational education in agriculture and Mr. Lyle E. Couch is principal.

Tom Collins--Fort Scott

Tom Collins, son of Mr. and Mrs. Lewis Collins of the Fort Scott community, is a 1965 graduate from Fort Scott High School and an active member of the Fort Scott FFA Chapter. In 1967 Tom had a total supply of 45 beef cattle, six sows, 153 market hogs, 102 acres of wheat, and 33 acres of soybeans in his farm experience program. During 1967 Tom reduced the cost per pound of gain of his market hogs from twelve cents to 11.2 cents, and he reached market weight ten days sooner. Tom's net worth on January 1 was \$20,346.80.

Tom has been active in local FFA chapter activities such as attending the American Royal, National FFA Convention, National Safety Congress, leadership schools, and leadership training camp; giving radio programs; and participating in public speaking contests, parliamentary procedure activities, and numerous other cooperative and judging activities.

Mr. Milton Kohrs is Tom's instructor of vocational education in agriculture and Mr. R. E. Hicks is superintendent.

John Stigge--Washington

John Stigge, son of Mr. and Mrs. John E. Stigge of the Washington community, is a 1965 graduate from Washington Rural High School and was an active member of the Washington FFA Chapter. John's farm experience program consists of 1/6 interest in 997 market cattle and 1/6 interest in 217 acres of wheat. John has bought a 1/6 interest of all of his father's livestock, machinery, and equipment. A partnership has been organized between John, his father, and his brother Orville. John's net worth on January 1 was \$15,218.47, and his assets totaled over \$51,000.

John has been very active in his local chapter's FFA activities and judging contests. He has also been especially active in his local church youth organization, Young Farmer organization, and is serving in the Army Reserve where he was selected as the outstanding first-year soldier of his battalion, served as drill instructor of his company, and served as the Colonel's orderly of the Army Reserve Regiment.

Mr. Don Kastl was John's vocational education instructor in agriculture during his high school training. Currently Mr. Gary Gish is in charge of the vocational education in agriculture at Washington High School and Mr. Wayne R. Elliott is superintendent of the Washington School System.

Kenny DeDonder--Flint Hills (Emporia)

Kenny DeDonder, son of Mr. and Mrs. Leo DeDonder of the Reading community, is a 1965 graduate from Reading High School, and a 1967 graduate of the Flint Hills Area Vocational-Technical School of Emporia where he studied vocational education in agriculture and was an active member of the Flint Hills (Emporia) FFA Chapter.

Kenny's farm experience program consists of 57 head of beef cattle, 13 sows, 125 pigs, three horses, and 30 acres of corn which is totally owned and operated by Kenny. In addition to Kenny's own operation, he also manages a farm nearby which includes 92 cows, 25 acres of wheat, 75 acres of corn, and 20 acres of alfalfa. The agreement with the owner of the neighboring farm provides that Kenny will receive $\frac{2}{3}$ of all crops and $\frac{2}{3}$ of the calf crop while Kenny furnishes labor, management, and all expenses of the crops. The cow herd is grazed on the owner's pasture and the feed fed is raised on the owner's crop ground. Kenny owns 120 acres of land which was purchased from earnings from his farm experience program.

Mr. Eugene Walker was Kenny's vocational education instructor in agriculture during his training at the Flint Hills Area Vocational-Technical School at Emporia. The current instructor is Mr. Bob Farrar with Mr. Richard Metcalf as Director and Mr. Eugene Walker as Assistant Director of the Area Vocational-Technical School at Emporia.