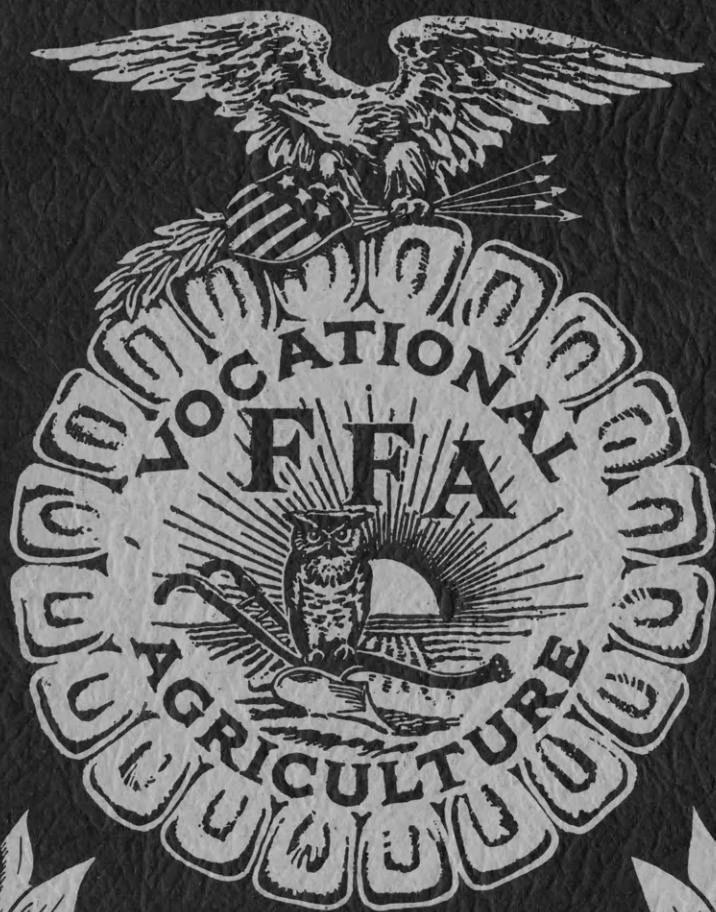


SEP 15 1967

The KANSAS Future Farmer



Published by
THE KANSAS ASSOCIATION
FUTURE FARMERS OF AMERICA

NATIONAL OFFICERS, FUTURE FARMERS OF AMERICA
1966-1967

Constituting the
NATIONAL BOARD OF STUDENT OFFICERS

PRESIDENT.....	Gary L. Swan
Jasper, New York	
VICE PRESIDENT, NORTH ATLANTIC REGION.....	Harold Brubaker
Route #1, Box 147, Mount Joy, Pennsylvania	
VICE PRESIDENT, SOUTHERN REGION.....	Monte N. Reese
Box 481, Mooreland, Oklahoma	
VICE PRESIDENT, PACIFIC REGION.....	Richard Morrison
P. O. Box 464, Gilbert, Arizona	
VICE PRESIDENT, CENTRAL REGION.....	Keaton Vandemark
Route #2, Elida, Ohio	
STUDENT SECRETARY.....	Paul A. Tarpley
Route #1, Box 26-B, Trout, Louisiana	
ADVISOR.....	H. N. Hunsicker
Washington, D. C.	
EXECUTIVE SECRETARY.....	Wm. Paul Gray
Washington, D. C.	
TREASURER.....	J. M. Campbell
Woodstock, Virginia	

----- FFA -----

NATIONAL FFA BOARD OF DIRECTORS

- H. N. Hunsicker, Chairman, U. S. Office of Education, Washington, D. C.
- Joseph K. Bailey, U. S. Office of Education, Denver, Colorado
- H. E. Edwards, U. S. Office of Education, Chicago, Illinois
- M. C. Gaar, U. S. Office of Education, Atlanta, Georgia
- Jesse A. Taft, U. S. Office of Education, Boston, Massachusetts
- Dale C. Aebischer, Chief, Agricultural Education, Madison, Wisconsin
- T. L. Faulkner, State Supervisor, Agricultural Education, Montgomery, Alabama
- Percy Kirk, State Director, Agricultural Education, Cheyenne, Wyoming
- W. H. Wayman, State Supervisor, Agricultural Education, Charleston, W. Vir.

THE KANSAS FUTURE FARMER

Harold Shoaf, Editor

OFFICERS OF THE KANSAS ASSOCIATION
FUTURE FARMERS OF AMERICA

Dale Raymond, President
Garnett

Michael Samples, Reporter
Erie

Ed Bogner, Vice President
Winfield

Steve Haas, Sentinel
Fort Scott

Ronald Quint, Secretary
Hill City

Harold Shoaf, Executive Secretary
Topeka

Terry Handke, Treasurer
Horton

C. C. Eustace, State Advisor
Topeka

Volume XXXVIII

September 1, 1967

No. 1

TABLE OF CONTENTS

PICTURE SECTION

Darby Future Farmer of America Agricultural Education Scholarship.	1
Ag-Related Awards.	1
1967 Leadership Camp Highlights.	2
Camp Picture.	3
FFA Regional Leadership School.	4
FHA Leaders Explain Table Etiquette.	5
Fort Scott Chapter.	5
Eskridge Chapter.	5
Atwood Chapter.	5
Joe Detrixhe Receives National Recognition.	5

ACTIVITIES SECTION

Darby Future Farmer of America Agricultural Education Scholarship.	6
1967 Leadership Camp.	6
1967 FFA Leadership Schools.	7
FFA Information Contest.	8
Parliamentary Procedure.	8

ANNOUNCEMENT SECTION

Call to the National Convention.	11
National FFA Convention Registration of Chapters and Judging Teams.	12
Official Kansas Delegates to the 40th National FFA Convention.	13
Tickets and Tours.	14
1967 National FFA Band.	14
1967 National FFA Chorus.	14
Ed Bogner Enters Central Regional Public Speaking Contest.	15
1967 American Farmers.	15
Kansas Entries in National Competition.	16
National Better Chapter Entries.	16

OFFICERS OF THE KANSAS ASSOCIATION

Dues and Magazine Subscriptions.....	61
Program of Work.....	61

CHAPTER SECTION

Eskridge.....	71
Atwood.....	81
Marysville.....	81

Harold Spaul Executive Secretary Topeka	Ronald Quint Secretary H H City
C. C. Dutton, State Advisor Topeka	Terry Handker, Treasurer Horton

No. September 1, 1967 Volume XXXVIII

TABLE OF CONTENTS

PICTURE SECTION

Darby Future Farmer of America Agricultural Education Scholarship.....	1
Ag-Related Awards.....	1
1967 Leadership Camp Highlights.....	2
Camp Picture.....	3
FFA Regional Leadership School.....	4
FHA Leaders Explain Table Etiquette.....	5
Fort Scott Chapter.....	5
Eskridge Chapter.....	5
Atwood Chapter.....	5
Joe Drixke Receives National Recognition.....	5

ACTIVITIES SECTION

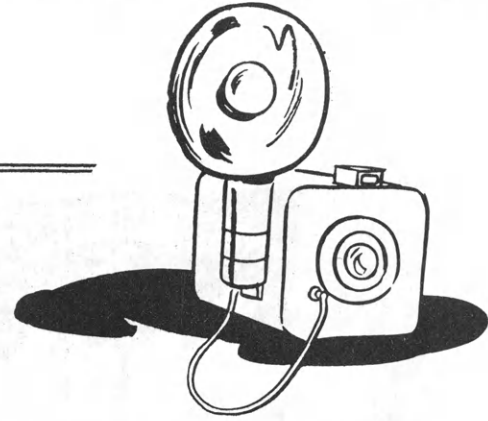
Darby Future Farmer of America Agricultural Education Scholarship.....	6
1967 Leadership Camp.....	6
1967 FFA Leadership School.....	7
FFA Information Contest.....	8
Parliamentary Procedures.....	8

ANNOUNCEMENT SECTION

Call to the National Convention.....	11
National FFA Convention Registration of Chapters and Judging Teams.....	12
Official Kansas Delegates to the 40th National FFA Convention.....	13
Tickets and Tours.....	14
1967 National FFA Band.....	14
1967 National FFA Chorus.....	14
Ed Bohner Wins Central Regional Public Speaking Contest.....	15
1967 American Farmers.....	15
Kansas Entries in National Competition.....	15
National Better Chapter Entries.....	16

S533
F8
K3
V.38

PICTURE SECTION



For complete stories of the pictures in this section, please refer to the Activities Section.

DARBY FUTURE FARMER OF AMERICA AGRICULTURAL EDUCATION SCHOLARSHIP



The Harry Darby Future Farmer of America Agricultural Education Scholarship award of \$500 is presented to Scott Sparks, Kingman Chapter, by Dr. Raymond Agan, Head Teacher Trainer, Kansas State University.

AG-RELATED AWARDS



Fredonia FFA vice president, Richard Fortner, receives a \$100 check from Harold Shoaf, Executive Secretary, Kansas Association of FFA, as recognition for the first-place chapter in ag-related occupations in Kansas. Fredonia instructor is Larry Kendall.



Robert Larson, McPherson FFA Chapter, receives a \$100 check from the National FFA Foundation for placing first in Kansas in the Ag-Related Occupations Contest. McPherson instructors are Richard Ramsdale and Delbert Schrag.

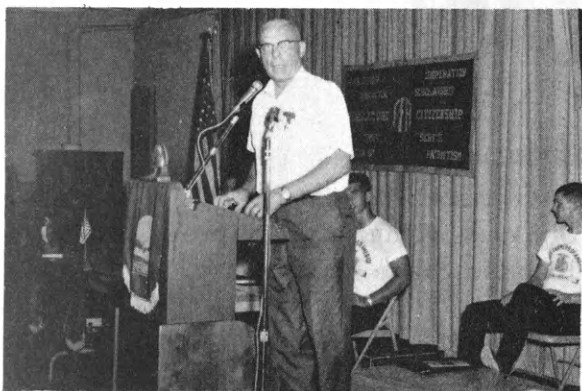
1967 LEADERSHIP CAMP



Camp officers left to right are: President Ron Rodcliffe, Hill City Vice President Tom Hall, Oakley Secretary Jerry Hinson, Eskridge Treasurer Doug Deets, Fredonia Reporter George Sorrick, Eskridge Sentinel John Hazell, Altamont



Bill Post, folklore song recording artist, proved not only to be a professional singer, but a "Mule-Skinner" as well.



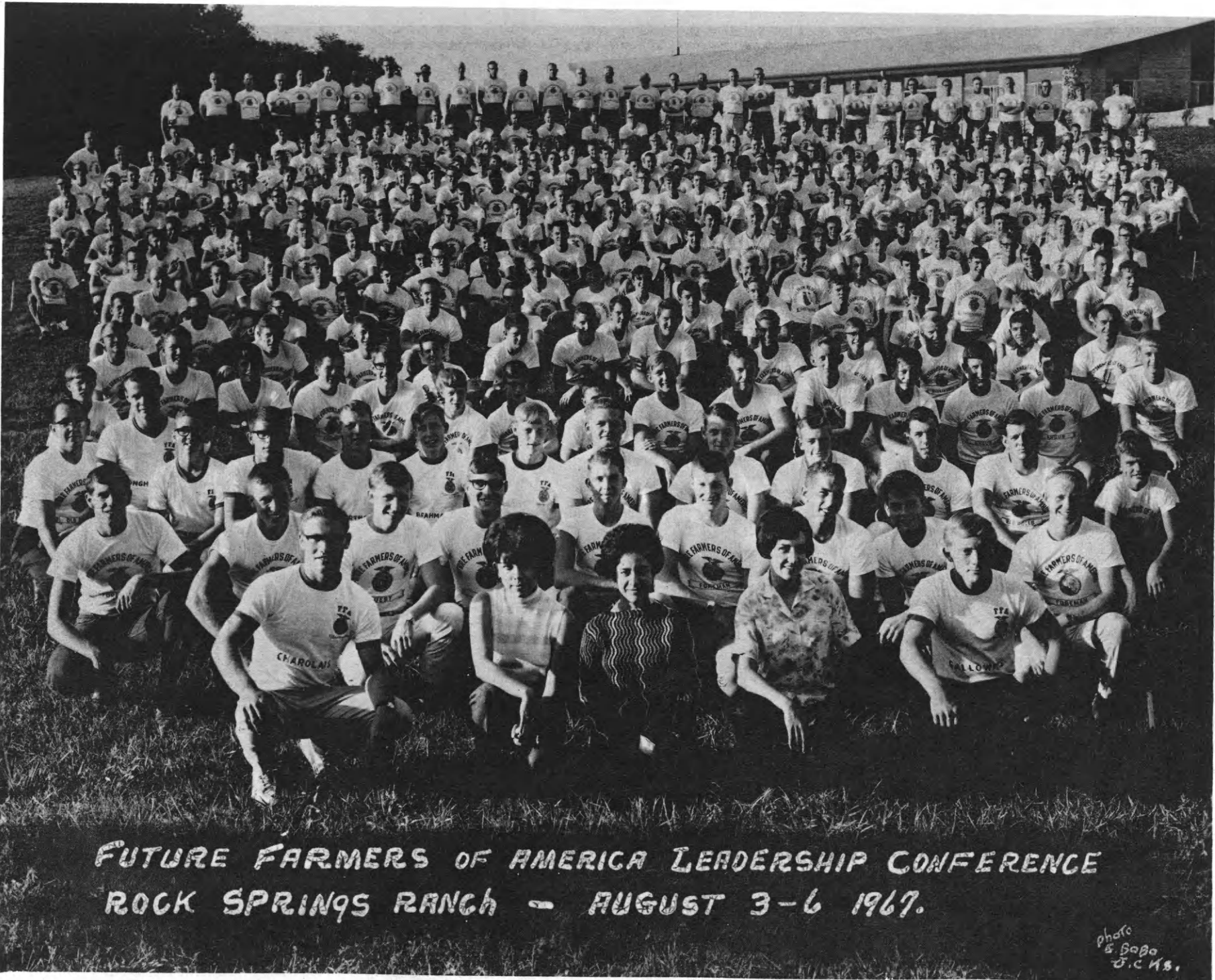
Bud Kilker, executive vice president of the Kansas State Chamber of Commerce, gave an inspirational challenge on the topic, "Education for Leadership in Our Changing World."



First place trap shoot honors went to Roger Gill, Effingham. Don Kastl, Beloit Area School instructor, supervised the activity.



Three State officers presented corsages to visiting Mexico City teachers who attended the camp. The teachers names were Maria Las Angeles Escorar, Ilda Marchan, and Beatrice Rivera.



FUTURE FARMERS OF AMERICA LEADERSHIP CONFERENCE
ROCK SPRINGS RANCH - AUGUST 3-6 1967.

photo
S. Baba
D.C.H.S.

FFA REGIONAL LEADERSHIP SCHOOL
Kansas City, Missouri
July, 1967

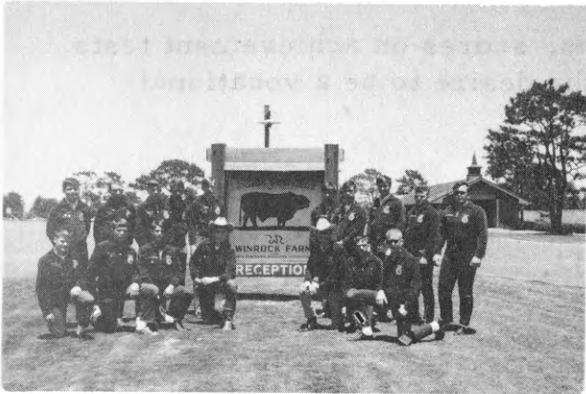




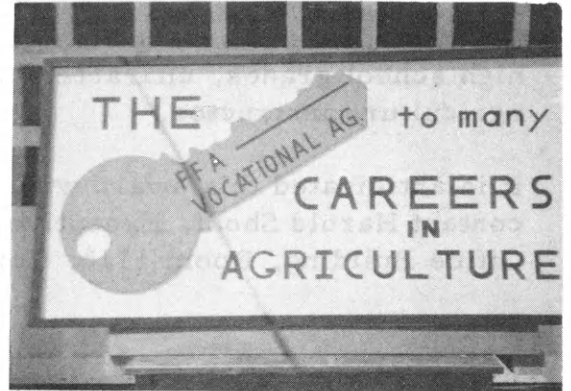
Barbara Hook, National committee member of FHA for Teen Times, and assistant supervisor of Home Economics, Carol Oberly, explain the finer points in meal etiquette.



Fort Scott FFA members, Rodney Farmer, Doug Niemeir, Steve Wolf, and Ronny Wunderly appear on the local radio station in the interest of safety. The Fort Scott Chapter received a gold emblem rating in regional competition involving thirteen States.



Seventeen FFA members from the Eskridge Chapter visited Governor Rockefeller's ranch in Arkansas.



The FFA chapter from Atwood entered a float in the parade at the Rawlins County Fair. This is a picture of the sign the chapter chose to accentuate the float.



Former National FFA officer, Joe Detrixhe of Ames, Kansas, receives special recognition from Freedom Foundation of Valley Forge for his part in being co-author of the FFA pageant, "Old Glory." The script was a patriotic pageant that was presented at the past National FFA Convention in Kansas City.

ACTIVITIES

SECTION



DARBY FUTURE FARMER OF AMERICA AGRICULTURAL EDUCATION SCHOLARSHIP

A 1967 graduate of Kingman Rural High School, Scott Sparks, was the recipient of the \$500 Harry Darby Future Farmer of America Agricultural Education Scholarship. The award was presented at the Annual KVATA Banquet, Kansas State University, on June 8. Dr. Raymond Agan, Head Teacher Trainer, Agricultural Education, Kansas State University, made the presentation.

The scholarship is given by Mr. Darby, a long-time friend of Kansas Future Farmers, for the purpose of attracting to the teaching profession students of outstanding ability and sincerity of purpose.

The award was based on high school FFA activities, scores on achievement tests, high school grades, character, personality, and the desire to be a vocational agriculture instructor.

It is anticipated this award will be repeated this year. For further information, contact Harold Shoaf, Executive Secretary, Kansas Association of FFA, State Office Building, Room 1116, Topeka, Kansas 66612.

* * * * *

1967 LEADERSHIP CAMP

A record number of 57 chapters attended the Eighth Annual FFA Leadership Camp at Rock Springs Ranch from August 3-6. A total of 317 members and advisors participated in the leadership activities. The camp objective is to assist local chapter officers in becoming effective leaders.

Mr. Bill Post, a former FFA member and now a National folklore song recording artist, proved not only to be a professional singer, but a top-notch "Mule-Skinner" as well.

Mr. Bud Kilker, Executive Vice President of the Kansas State Chamber of Commerce, gave an inspirational and challenging address on the topic, "Education for Leadership in Our Changing World." He predicted a doubling of the population in the next thirty years along with the doubling of knowledge in five years. He stated this would make a college degree almost essential.

The guest speaker and entertainer, as well as the camp leadership awards, were presented by Kansas Association of Bank Agricultural Representatives. A special thanks to Mr. Max Dickerson, President, KABAR, and his members for their interest in developing leadership in the youth of today.

* * * * *

1967 FFA LEADERSHIP SCHOOLS

The delegates of the State FFA Convention recommended that officers be selected on a district basis. In order to meet with the wishes of the delegates, leadership schools will be held this year on a district basis. There is a possibility of district award banquets in which the district officers would participate. This would recognize outstanding district foundation award winners and State Farmer applicants as well as other outstanding FFA members. District officers would play a key role in this activity. Seven FFA district schools are planned this year.

The objective of the school is to develop leadership in chapter officers. Each chapter will compete in his own district. All chapters are urged to take advantage of this opportunity.

Host schools have been asked not to use vocational agriculture instructors as judges or score tabulators insofar as possible. This will allow the instructors to observe and evaluate the activities of the school. The tentative program is as follows.

Welcome by host president
 Evening instructions
 Information and Parliamentary Procedure Quiz
 Parliamentary Procedure and Ritual Contest
 (Suggest both activities be divided into A and B groups)
 Evening meal at 6:30 p. m.
 Host chapter demonstrates introducing a speaker
 State officer address
 Parliamentary A vs. Parliamentary B
 (Groups compete for first place chapter)
 A Group Ritual vs. B Group Ritual
 (Groups compete for first place chapter)
 A Master Ritual vs. B Master Ritual
 (Groups compete for Master Ritual Team of Leadership School)
 Business Session
 Selecting district officers
 Other
 Awards
 Closing Ceremony by district officers
 Advisors of district officer president will serve in the closing ceremony

The Federal Land Bank of Wichita will sponsor the awards for the leadership schools.

SCHEDULE OF 1967 DISTRICT FFA LEADERSHIP SCHOOLS

<u>Date</u>	<u>District</u>	<u>Place</u>	<u>Teacher</u>	<u>State Staff</u>	<u>State Officer</u>
September 26	EC	Burlingame	Fred Pearson	Shoaf	D. Raymond
September 26	SC	Haven	John Akers	Wineinger	E. Bogner
September 26	NE	Holton	Robert Houk	Eustace	T. Handke
September 26	NC	Miltonvale	Bill Fuller	Rawson	S. Haas
September 27	SW	Dodge City	Allen Starosta	Wineinger	E. Bogner
September 27	NW	Hoxie	George Lambert	Rawson	R. Quint
September 27	SE	Neodesha	Wayne Coltrain	Shoaf	M. Samples

* * * * *

FFA INFORMATION CONTEST

The FFA Information Contest will consist of fifty questions. The test should not take over fifteen minutes.

1. Questions will be taken from the Official FFA Manual and the November 1966, January 1967, April 1967, May 1967, and September 1967 issues of the Kansas Future Farmer newsletter.
2. The test will not include names of winners of district, State, or National contests.
3. The test will not include names or home chapters of American Farmer candidates.
4. The test will not cover names of regional vice presidents or board of directors of the National Organization.
5. Questions on parliamentary procedure will not be included in the information test.

PARLIAMENTARY PROCEDURE

I. General Plan

- A. Each of the seven district FFA Leadership Schools will select a winning team. The winning team will be eligible to compete in the State contest.

II. Eligibility

- A. A team shall be composed of six constitutional officers.
- B. There is no limit as to the number of years an individual may participate on both the district and State levels regardless of his placing on either level.

Parliamentary Procedure (cont.)

III. Contest Rules

- A. See pages 43-46 in the January 15, 1967 issue of the Kansas Future Farmer newsletter.

IV. 1967 Changes

- A. Twenty true-false questions on parliamentary procedure will be given at the same time the information test is given.
- B. Each correct question will count one point in the total score.
- C. Fifty points allotted for debate.
- D. The parliamentary procedure quiz should be completed in ten minutes.
- E. It is suggested that two judges be used for parliamentary procedure. It is recommended that one judge score the first six items on the score sheet, and the other judge score the remaining items. Vocational agriculture instructors in an adjoining district would make excellent judges.

(Please refer to score sheet on following page.)

* * * * *

Perfect Score	Abilities Demonstrated	Team Score			
		1	2	3	4
	Call to Order				
20	Poise and personal appearance of presiding officer and manner displayed (1)				
40	Poise, appearance, and manner displayed by team				
10	Grammar and sentence structure (2)				
20	General effect and the use of realistic measures				
10	Secretary's minutes (used in case of tie)				
20	Effective use of debate				
RANKING MOTIONS (Ranked according to precedence)					
A. PRIVILEGED MOTIONS:					
		S	D	A	VOTE
10	To fix time to adjourn (4)	Y	N	(7)	M
10	To adjourn (5)	Y	N	N	M
10	To take a recess (6)	Y	N	(7)	M
10	To raise a question or privilege	N	N	N	(8)
10	To call for the order of the day	N	N	N	(9)
10	To pass the gavel	N	N	N	
B. SUBSIDIARY MOTIONS:					
10	To lay on the table	Y	N	N	M
10	To call for the previous question	Y	N	N	2/3
10	To limit or extend time of debate	Y	N	(7)	2/3
10	To postpone definitely (to certain time)	Y	Y	Y	M
10	To commit or refer	Y	Y	Y	M
10	To amend proposed amendment	Y	(10)	N	M
10	To amend	Y	(10)	Y	M
10	To postpone indefinitely	Y	Y	N	M
C. MAIN MOTIONS:					
30	Main motion (to introduce business)	Y	Y	Y	M
NON-RANKING MOTIONS					
A. INCIDENTAL MOTIONS:					
10	To raise a point of order	N	N	N	(11)
10	To appeal from the decision of chair	Y	(12)	N	M
10	To suspend the rules	Y	N	N	2/3
10	To object to consideration of a question	N	N	N	2/3
10	To divide the question	(13)	N	Y	M
10	To call for a division of house	N	N	N	(14)
10	To nominate	N	(15)	(15)	(15)
10	To rise to a parliamentary inquiry	N	N	N	N
10	To rise to request information	N	N	N	N
10	To withdraw a motion	N	N	N	N
10	To provide manner of voting	Y	N	Y	Y
B. UNCLASSIFIED MOTIONS:					
10	To take from the table	Y	N	N	M
10	To reconsider	Y	(16)	N	M
10	To ratify	Y	Y	Y	M
30	Debate (5 points each for 6 times debate is used)				
20	Response to judge's questioning (State contest only)				
30	FINAL SCORE				
Key: "D" - DEBATABLE; "A" - AMENDABLE; "M" - MAJORITY VOTE;					
"Y" - YES; "N" - NO					

ANNOUNCEMENT

SECTION



CALL TO THE NATIONAL CONVENTION

As your State president, I am issuing a call to all chapters to send delegates to the 40th National FFA Convention, which will be held in the Municipal Auditorium in Kansas City, Missouri, October 10-13, 1967.

Each chapter is allowed to send a maximum of six carefully selected members to attend the National Convention, provided they come with properly completed official registration cards. When you receive your brochure, "You and Your National FFA Convention," I urge you to review this with your advisor. To many people, the FFA jacket is a symbol of our organization; so remember you are not representing the Kansas Association or your local chapter, but the National FFA Organization as well. Therefore, I encourage each of you to wear your jacket properly and with pride during all official convention activities.

You will have a rare opportunity to hear many highly respected people and inspirational speakers. The convention sessions are designed to demonstrate and promote new leadership training and to leave a renewed dedication to the aims and purposes of the FFA and vocational agriculture within every FFA member.

Your State officers will be representing you and the State Association during the convention. I am looking forward to seeing and visiting with you in Kansas City.

Dale Raymond, President
Kansas Association of FFA

As your National FFA President, I issue a call for all State Associations to send delegates to the 40th National Convention, which will be held in the Municipal Auditorium, Kansas City, Missouri, October 11-13, 1967.

A fitting introduction to the convention program is scheduled Tuesday evening, October 10, when the National officers will present a Vespers Program. Many highly respected personages and inspirational speakers will highlight our convention as we celebrate the 50th anniversary of vocational agriculture. I urge attendance at all sessions which are planned to conduct business, recognize

outstanding achievements, demonstrate and promote leadership, elect new officers, while setting new goals for the coming year. I am confident that everyone in attendance will return home thoroughly inspired with renewed dedication to the aims and purposes of vocational agriculture and the FFA.

All chartered State Associations in good standing with the National Organization are expected to send two official delegates and two alternates from the active membership. Official delegates should arrive in Kansas City for the 10:00 a. m. delegate registration, which will be followed by the Officer-Delegate Luncheon at 11:45 a. m. on Tuesday, October 10. A short briefing session on organizational matters will follow with convention committees meeting that afternoon. State associations should also have in attendance at the convention, those candidates recommended for the American Farmer Degree, candidates for National office, those members who are to receive awards, and others who have official business at the convention.

I encourage all local chapters to send representatives to the National Convention. Each chapter is entitled to a maximum of six or ten percent of the total membership, whichever is greater. This number does not include National or regional award winners, members of the Courtesy Corps, or other special participants. I urge your chapter to carefully select the representatives to the convention and request they come to Kansas City with properly completed official registration cards. When you receive your brochure, "You and Your National FFA Convention," please review it with your advisor. Remember the FFA jacket, to many people, is a symbol of our organization. Each member has the responsibility of wearing his jacket properly throughout his stay in Kansas City.

Our 40th Annual Convention will highlight our FFA year and prove to be a great success with the enthusiasm, help, and cooperation of all present. I look forward to seeing you in Kansas City.

Gary Swan, President
National FFA Association

* * * * *

NATIONAL FFA CONVENTION REGISTRATION OF CHAPTERS

Registration will be made by chapters, except for official delegates, band and chorus members, American Farmer candidates, student teachers, State staff members, parents, and guests. Registration cards are available on request from Harold Shoaf, Executive Secretary, Kansas Association of FFA, State Office Building, Room 1116, Topeka, Kansas 66612.

The registration card will provide space for the names of the representatives of each chapter, plus the signatures of the vocational agriculture teacher and the local administrator.

Attendance at the National Convention will be limited to not more than six carefully selected members and one advisor from any given chapter, or ten percent of the chapter membership, whichever is greater.

The following members will not be counted in the local chapter quota: courtesy corps assistants, stage crew assistants, official State delegates, American Farmer Degree candidates, contestants in the National Public Speaking and Judging contests, regional and National FFA Foundation Award winners, and members of the National FFA Band and Chorus.

The following procedure will be followed.

1. Upon arrival in Kansas City, the advisor or chaperon of each chapter will present the completed registration card of his group at the registration desk in the Municipal Auditorium.
2. Each member will receive an identification card. This identification card will be required of all members as an admission pass to evening sessions.
3. No registration cards for chapters will be available in Kansas City. They must be obtained from the State Office and completed before the member leaves home.

Registration of Judging Teams:

1. Judging team members and coaches will register on the FFA chapter's official registration cards.
2. Team coaches will confirm the names of all contestants in advance of the respective contests at the registration desk, Municipal Auditorium, Kansas City, from 10:00 a.m. to 2:30 p.m. on Tuesday and Wednesday, October 10 and 11.

* * * * *

OFFICIAL KANSAS DELEGATES TO THE 40th NATIONAL FFA CONVENTION

Dale Raymond, State FFA president, Garnett FFA Chapter, and Ed Bogner, State FFA vice president, Winfield FFA Chapter, will represent the Kansas Association of FFA as official FFA delegates to the National FFA Convention, October 11-13, 1967.

Ron Quint, State FFA secretary, Hill City FFA Chapter, and Terry Handke, State FFA treasurer, Effingham FFA Chapter, will serve as alternates.

Delegates will be located in the President Hotel.

* * * * *

TICKETS AND TOURS

Tickets for the American Royal Horse Show matinee on Friday afternoon, October 13, will be sold at the registration desk in the Municipal Auditorium on Thursday from 9:00 a. m. to 5:00 p. m. Price of tickets is \$.50.

Tickets for the FFA Educational Tour of Kansas City, scheduled for 1:00 p. m. on Tuesday, October 10, and 1:00 p. m. on Thursday, October 12, will be sold at the registration desk from 9:00 a. m. to 12:45 p. m. on the respective days. Price of tickets is \$.60.

* * * * *

1967 NATIONAL FFA BAND

The National FFA Band will again be under the direction of Mr. R. Cedric Anderson of Cedar Rapids, Iowa. The band, known as the "suitcase" band, will furnish music for the National FFA Convention.

Seven Kansas FFA members have been selected to serve with the National FFA Band. In addition to the convention, the band will perform during the opening sessions of the American Royal Parade, Saturday, October 14.

All Kansas FFA members can be proud of the following young men who have been selected for this outstanding band.

Robert Bailey of the Seaman FFA Chapter
 Jim Bauck of the Leoti FFA Chapter
 Frank Gary of the Miltonvale FFA Chapter
 Wesley McCarty of the Stafford FFA Chapter
 Neil McPheeters of the Peabody FFA Chapter
 Roger Russell of the Downs FFA Chapter
 Roger Heiman of the Jewell FFA Chapter

* * * * *

1967 NATIONAL FFA CHORUS

The National FFA Chorus will again be under the direction of Mr. I. S. Glover, Sylvester, Georgia. The chorus will be made up of 75 to 80 voices.

Three Kansas Future Farmers will have opportunity to participate in the 1967 National Chorus. The three members are as follows.

Max Coleman of the Miltonvale FFA Chapter
 Ken Jay Fuller of the Miltonvale FFA Chapter
 David J. Howard of the Oakley FFA Chapter

* * * * *

ED BOGNER ENTERS CENTRAL REGIONAL PUBLIC SPEAKING CONTEST

The Kansas Association of FFA will be represented in the Central Regional Public Speaking Contest by Ed Bogner of the Winfield FFA Chapter.

The regional contest will be held at 8:30 a. m. , Tuesday, October 10, in the Music Hall of the Municipal Auditorium in Kansas City, Missouri. Dr. Earl Kantner of Ohio will act as contest superintendent.

The winner of the Central Regional Contest will be one of the four finalists in the National Public Speaking Contest on Wednesday evening, October 11, in the Municipal Auditorium, Kansas City, Missouri.

* * * * *

1967 AMERICAN FARMERS

The National Board of Student Officers and the National Board of Directors of the Future Farmers of America have recommended seven Kansas Future Farmers to receive the coveted award of the American Farmer Degree. The action of the Board of Directors must be confirmed by the official delegates to the 1967 National FFA Convention.

The American Farmer Degree Ceremony and award will be held on Wednesday afternoon, October 11, in the Municipal Auditorium, Kansas City, Missouri.

Each American Farmer Degree winner will receive a certificate, gold key that symbolizes the Degree, and a check for \$75 from the Future Farmers of America, Inc. Candidates must be present in order to receive the \$75.

448 Future Farmers from across the Nation have been recommended by the FFA Board of Directors to receive this Degree. The Degree is limited so that only approximately one FFA member in one thousand may receive it in any year.

Candidates who have been nominated from Kansas are as follows.

Larry Goss of the Garden City FFA Chapter
Warren Grable of the Troy FFA Chapter
Terry Odle of the Stockton FFA Chapter
Richard Perry of the Fort Scott FFA Chapter
LeRoy Schrader of the Atchison County FFA Chapter
Dennis Shurtz of the Arkansas City FFA Chapter
George Warren of the Eskridge FFA Chapter

KANSAS ENTRIES IN NATIONAL COMPETITION

MEATS--Kansas representative in the National Meats Contest will be the winner of the State Meats Contest. The State Meats Contest will be held at the Cudahy Packing Plant in Wichita, Kansas, on October 3, 1967.

LIVESTOCK JUDGING--Newton FFA Chapter, Finley Parish, Advisor

POULTRY JUDGING--Manhattan FFA Chapter, Dean Prochaska, Advisor

DAIRY JUDGING--Seaman Chapter, Jim Hundley, Advisor

DAIRY PRODUCTS JUDGING--McPherson FFA Chapter, Delbert Schrag and Richard Ramsdale, Advisors

* * * * *

NATIONAL BETTER CHAPTER ENTRIES

The Atchison County and Garden City Chapters will represent Kansas in the National Better Chapter Contest.

The National Gold Emblem Chapters will receive recognition on Wednesday, October 11, at the National Convention.

* * * * *

DUES AND MAGAZINE SUBSCRIPTIONS

The State and National FFA dues for 1967-68 will be \$1.00. This includes the National Future Farmer Magazine. All members must pay the \$1.00 to be an official FFA member.

The dues should be forwarded to the State Office with the magazine subscriptions. Please use only the National form for submitting magazine subscriptions and dues. Magazine subscriptions will be forwarded to the National office as soon as they are received in the State Office.

It is suggested that dues and magazine subscriptions be sent in by September 15 so that every member may receive the first issue of the National Future Farmer Magazine. The most convenient time for collecting for dues is at the beginning of the school term.

* * * * *

PROGRAM OF WORK

The chapter program of work is due in the State Office by October 31. A chapter must submit a program of work by October 31 to be eligible for participation in district and State FFA activities during 1967-68.

CHAPTER

SECTION



ESKRIDGE

Ask any former Eskridge FFA member what was one of his most memorable experiences during high school, and he is likely to say the FFA Spring Educational Trip.

These trips allow the Eskridge members to visit various phases of agribusiness, new and different developments in agriculture, and unique areas of farming and ranching. The boys also get a view of American society that is different from their own and have an opportunity to see the beauty of our Nation.

This year's trip to Arkansas was one of the best that the chapter has ever taken. The eighteen FFA members that went on the trip and advisor, T. D. Fanning, were especially impressed with the warmth and friendship shown to them wherever they went. It was as if the National Blue FFA jacket that each boy wore was a key that could unlock many doors.

The first stop was at the Braum dairy in Emporia, which milks 700 cows and supplies much of the milk for the Peter Pan Ice Cream Plants. Then on to the Mesner Duroc hog farm, in Caney, Kansas. This nationally known hog producer proved that you do not have to be a big physical unit to be good, as his farm totaled only forty-seven acres. Another stop in Kansas was the Labette County High School Vocational Agriculture Farm.

The first stop in Arkansas was at the huge vertically integrated Tyson poultry enterprise in Springdale. This was followed by one of the most unusual tours which was at the Widerkehr vineyard and winery at Altus.

The chapter toured both of Governor Rockefeller's Arkansas ranches, the Santa Gertrudis show ranch on Peti Jean Mountain, as well as his working cattle ranch near Carslile. At Morrilton, the boys were taken through Arkansas Kraft, a paper mill which utilizes timber pulp.

An entire day was spent in the Stuttgart area as guests of the vocational agriculture instructor, Dale Bennett. The local farming practices were studied which included rice culture, fish farming, uses of airplanes in agriculture, and a visit to the largest marketing cooperative in America, which of course handled rice.

In northern Arkansas, the Eskridge Chapter was guest of the Harrison Vocational Agriculture Department. It was here they learned about timber and lumber under the instruction of a National forester. They also visited various lumber industries that utilized the timber that was studied previously.

The feelings of the boys can best be expressed by the Eskridge FFA Chapter president for 1967-68, George Bowers, who said, "The only feature I didn't like about it is that I am now a senior and this is the last spring educational trip I will be able to go on."

* * * * *

ATWOOD

The Atwood FFA Chapter participated in the Rawlins County 4-H Fair. The chapter entered a float in the parade, erected an educational booth, and participated in livestock judging and the tractor driving rodeo.

The float material would be available for other chapters to rent at a cost of \$5. Advisor Billy Wood feels that other chapters could make use of this sign at banquets, fair exhibits, or for eighth grade information day. The sign is 4'x8' and constructed with one-half inch exterior plywood with appropriate lettering of National Blue and Corn Gold.

* * * * *

MARYSVILLE

Congratulations to Ron Schmitz who placed fourth in the National Land Judging Contest in Oklahoma City, April, 1967.

* * * * *