

S  
534  
.K2  
C64  
1935

UNIV.  
ARCHIVES

*the*  
WHO'S WHOOT



1935

*the*  
WHO'S WHOOT

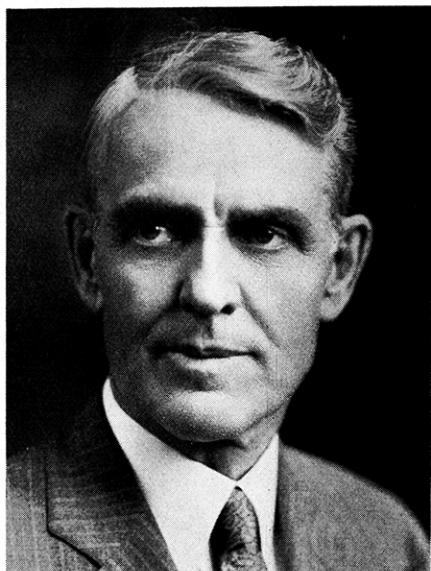


*Published by*  
THE COLLEGIATE 4-H CLUB

Kansas State College  
*of*  
Agriculture and Applied Science  
Manhattan, Kansas

*For*  
The Who's Who 4-H Club of Kansas

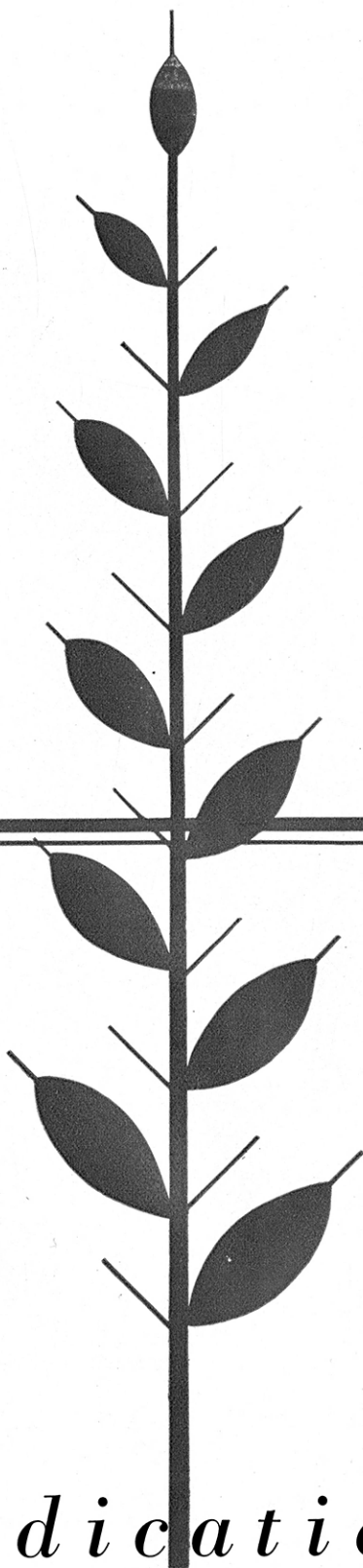
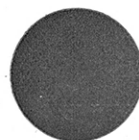
1 9 3 5



HON. ARTHUR CAPPER  
Senior Kansas Senator

To one whose support and understanding of 4-H club members has inspired them to great achievements.

*D e d i c a t i o n*



UNIV  
S  
534  
K2  
C64  
1935  
c. 2

# THE PREFACE



## 4-H Club Work

### TRAINS HEAD TO—

Think  
Plan  
Reason

### TRAINS HANDS TO BE—

Useful  
Helpful  
Skillful

### TRAINS HEART TO BE—

Kind  
True  
Sympathetic

### TRAINS HEALTH TO—

Resist Disease  
Enjoy Life  
Make for Efficiency

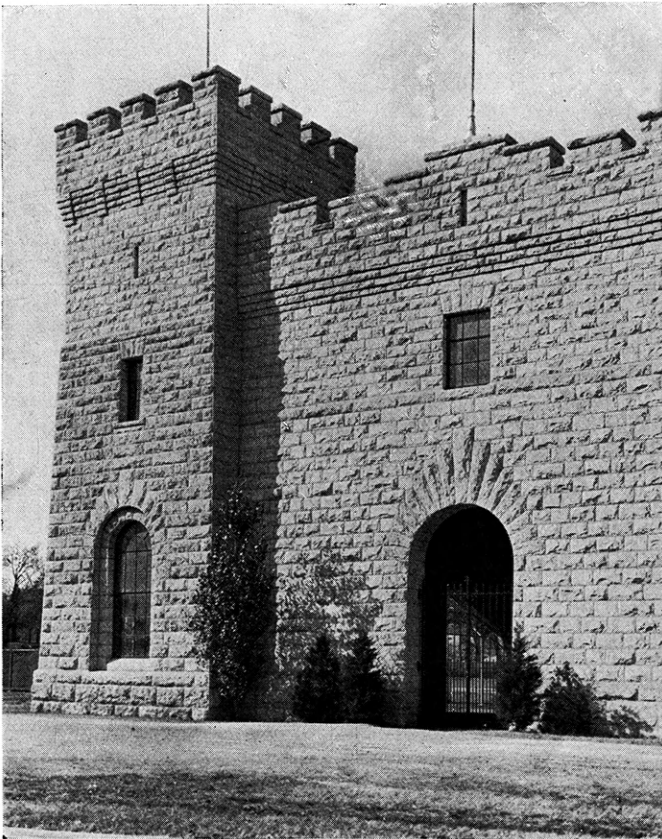
### CLUB PLEDGE

I pledge my head to clearer thinking, my heart to greater loyalty, my hands to larger service, and my health to better living for my club, my community, and my country.

### CLUB MOTTO

*"To make the best better."*



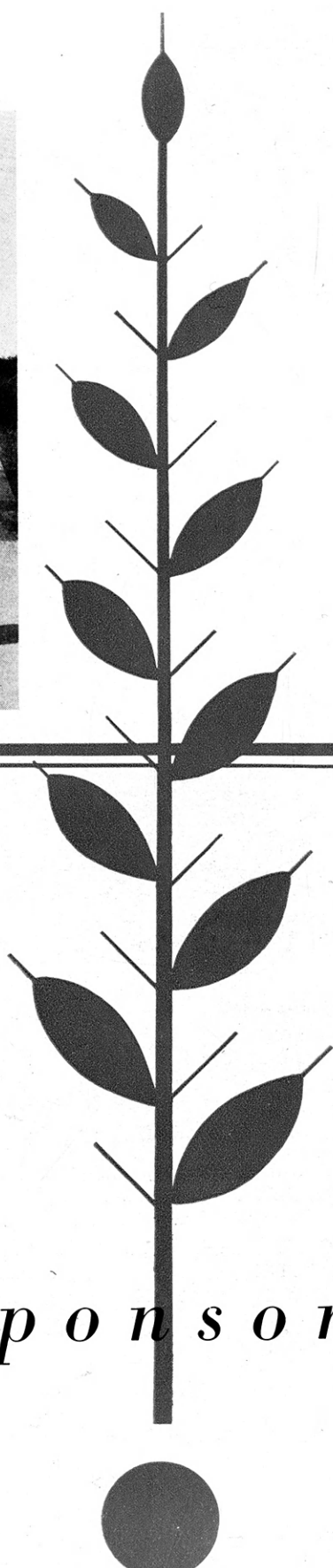


**CONTENTS**  
**SPONSORS**  
**COLLEGIANS**  
**CHAMPIONS**  
**WHO'S WHO**  
**ACTIVITIES**  
**ADVERTISERS**

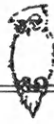


M. H. Coe  
State Club Leader

H. Umberger  
Dean of Extension



*S p o n s o r s*



# College Executives



F. D. FARRELL (Center)..... *President of K. S. C.*  
 J. T. WILLARD..... *Vice President of K. S. C.*  
 H. UMBERGER..... *Dean of Extension*  
 L. E. CALL..... *Dean of Agriculture*  
 E. L. HOLTON..... *Dean of Summer School*  
 MARGARET M. JUSTIN..... *Dean of Home Economics*  
 R. A. SEATON..... *Dean of Engineering*  
 R. R. DYKSTRA..... *Dean of Veterinary Medicine*  
 J. E. ACKERT..... *Dean of Graduate School*  
 R. W. BABCOCK..... *Dean of General Study*





# Advisory Members



Right to Left—

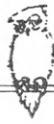
- M. H. COE.....*State Club Leader*
- AMY KELLY.....*State Home Demonstration Leader*

Right to Left—

- LORA HILYARD.....*Assistant State Club Leader*
- A. J. SCHOTH.....*Assistant State Club Leader*
- MABEL SMITH.....*Assistant State Club Leader*







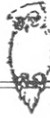
## Extension Workers



To this group of county agricultural agents and home demonstration agents, the members of the 4-H clubs in Kansas owe much of their success. They always stand ready to guide club work through success and failure. This group works under the supervision of the state specialists and Kansas State College, Manhattan, Kansas. These people work in cooperation with the state leaders, Mr. M. H. Coe, Miss Lora Hilyard, Miss Mabel Smith, and Mr. A. J. Schoth. Through the combined efforts of all these people, 4-H club work is made a successful program in Kansas.

The 4-H club members all over Kansas sincerely appreciate the efforts of these people to further the 4-H program in Kansas.



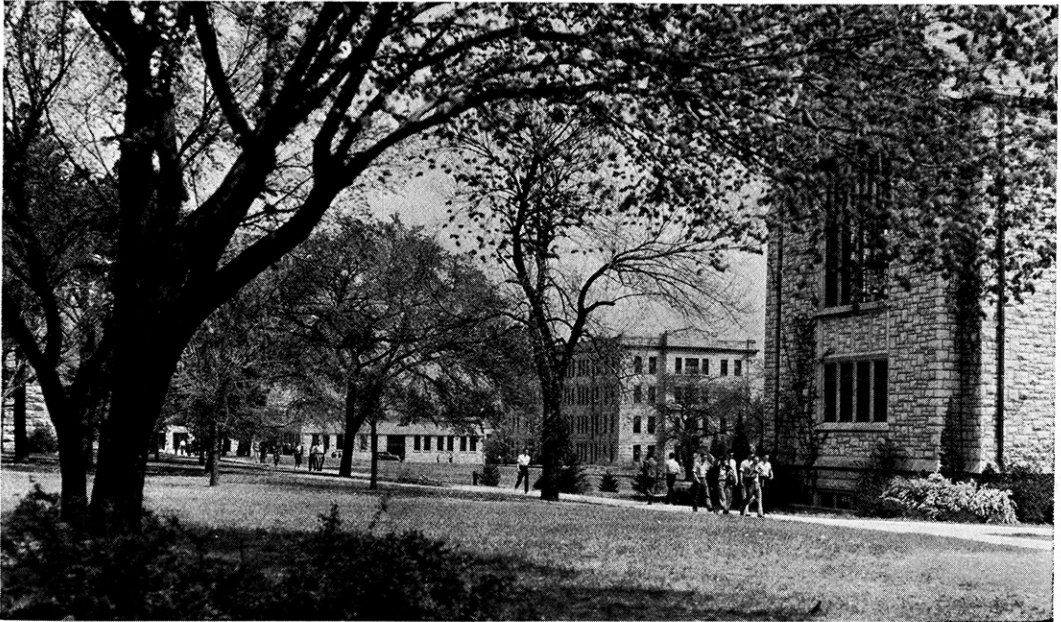


*Our Friend*

**MRS. IDA HOGUE WILSON**

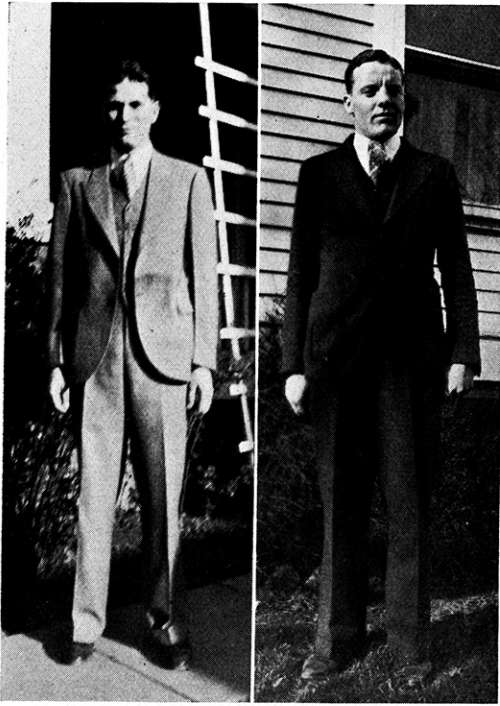
Mrs. Ida Hogue Wilson, former office secretary in the State 4-H Club office, is one whose friendship and services will long be remembered by the members of the Collegiate 4-H Club, the 4-H clubs and all those who knew her. For the past six years she has been a vivid personality in the 4-H club office guiding and advising those who came in contact with her. Mrs. Wilson gave up her position in the Club office and was married to James Wilson, January 30, 1935.





*On the Campus*

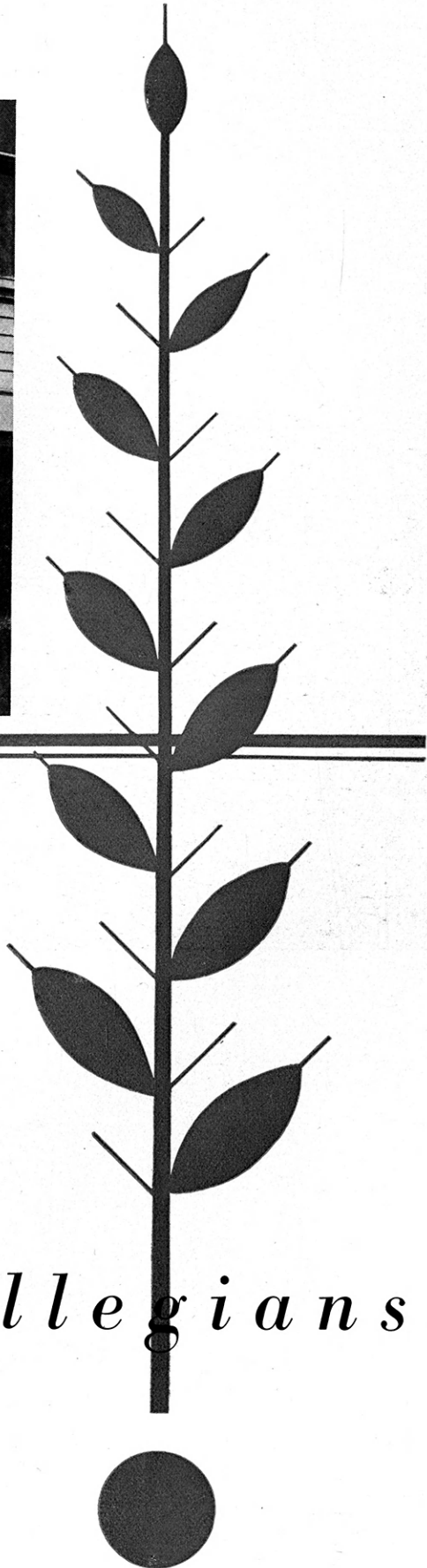
Looking north from near  
the library between class  
periods.

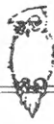


Walter Lewis  
President  
First Semester  
COLLEGIATE 4-H CLUB

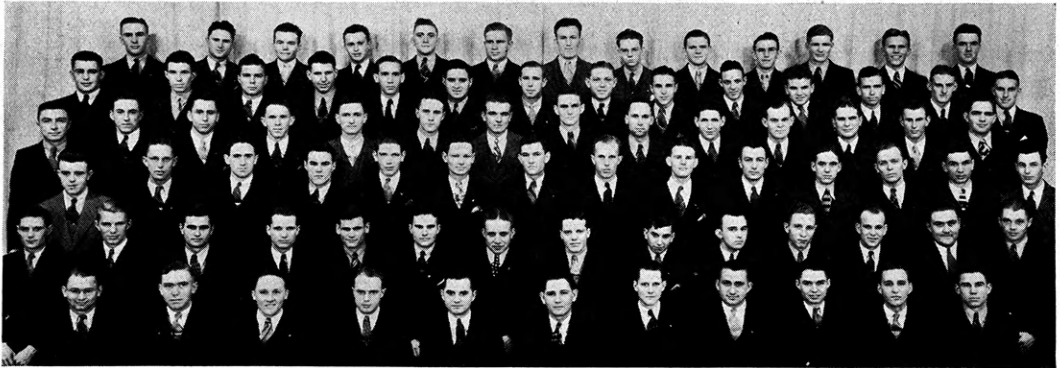
Frank Jordan  
President  
Second Semester  
COLLEGIATE 4-H CLUB

*Collegians*





## Collegiate 4-H Club

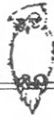


Although organized as recently as 1927, the Collegiate 4-H Club now has an active membership of two hundred and eight and is recognized as being one of the most outstanding student organizations on the campus.

The Collegiate Club is composed of young men and women who were former 4-H Club members. It has two business meetings and one social function each month. It serves to further 4-H Club ideals and to bind its members together in systematic work.

Among the activities of the club are included: editing Who's Whoot; contributing to a fifteen hundred dollar loan fund available to 4-H students attending college; assisting with Round-up; conducting 4-H club programs from station KSAC; and furthering Rural Life Betterment.





# Who's Whoot Staff



Editor ..... Ruby Corr  
 Assistant Editor..... Robert Spencer  
 Business Manager ..... Lebert Shultz  
 Assistant Business Manager..... Edwin McColm

*Champions*  
 Alvin Mistler  
 Lorena Ott  
 Arthur Aushman

*Jokes*  
 Joe Wetta  
 Arloa Bradsky  
 Frank Jordan

*Who's Whoot*  
 Lena Maris Hurst  
 Violet Greenwood  
 Irvin Beal

*Snaps*  
 Vernal Roth  
 Ellen Brownlee  
 Gwendolyn Painter  
 Ceora Caven  
 Richard King  
 Glenn Shultz

*Writing and Cuts*  
 Iola Meier  
 Wayne Herring  
 Joe Spencer  
 Clayton Buster  
 Robert Featheringill

*County*  
 Gertrude Greenwood  
 Violet Bauer  
 Virginia Herst  
 Ralph Dent  
 Charles Beer  
 Florence Phillips



# American Country Life Conference



UNKNOWN SOLDIER



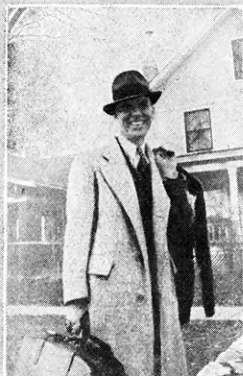
YOUTH AT THE FOUNTAIN



VIRGINIA GIN



LINCOLN MEMORIAL



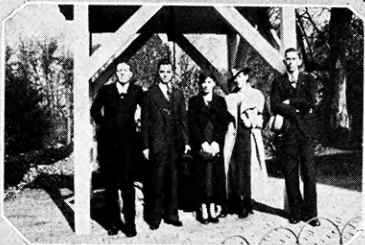
SPONSOR ?



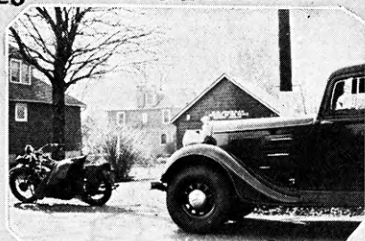
AL & THE GIRLS



OUR CONFERENCE DELEGATE



THE DELEGATES



FIFTEEN DOLLARS



## Kansas Rural Youth Association



On the left is pictures taken at the national rural life conference which was held November 16-19 in Washington, D. C. Iola Meier, Grace Burson, Robert Spencer, Frank Jordan, and Lebert Shultz attended the conference as representatives of the Kansas 4-H Clubs. All of these representatives were Collegiate 4-H Club members. Mr. A. J. Schoth, Assistant 4-H Club leader, accompanied the group. The problems discussed were those facing the rural youth today, such as the A.A.A., Tennessee Valley project, and rehabilitation work.

Above is a picture which was taken at the first annual Kansas Rural Life Conference which was held at the Kansas State College, March 29, 30 and 31 with 129 delegates from 18 counties of Kansas in attendance. The purpose of the conference was to bring together young people between the ages of 18 and 30 for the purpose of considering the more important problems facing rural youth today. The theme of the conference was, "Better Rural Living."

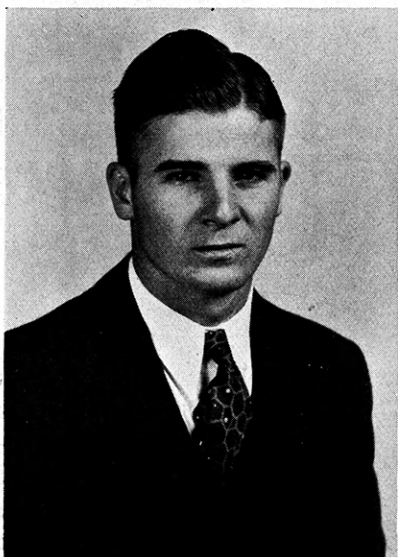
The conference was sponsored by the collegiate 4-H club of Kansas State College. Valuable assistance was given by Dr. E. L. Kirkpatrick, University of Wisconsin, and Eugene Merritt, from the extension division of the Department of Agriculture.

One definite result was the formation of the State organization known as the Kansas Rural Life Association which will hold an annual meeting every March at Kansas State College. Officers elected for 1935 are: Howard Moreen, Saline county, president; Edna Mae Reynolds, Montgomery county, and Kenneth Middleton, Johnson county, vice president; Marje Blythe, Morris county, secretary.





## Honor Students



Robert Latta

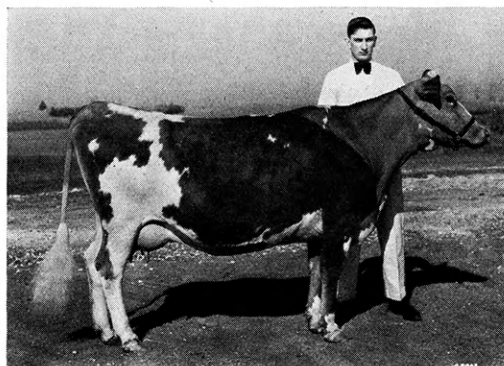
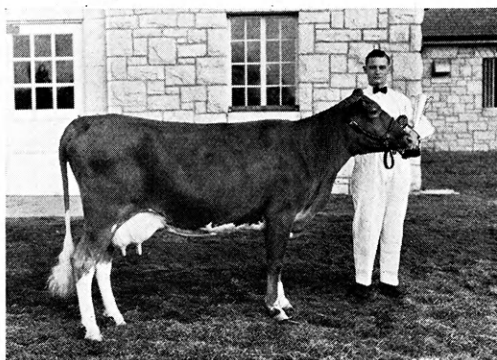


Oren Reusser

Robert T. Latta, Holton, and Oren J. Reusser, Wellington, were the honor students of the Freshman class of the Division of Agriculture in 1934-35. Both men are active in the Collegiate 4-H Club. The fraternity of Alpha Zeta awarded these men gold medals in reward for their scholastic achievement. This is the thirteenth year this award has been made. Robert has a Collegiate record in wrestling almost as outstanding as his scholarship record. Oren has been very active in club work before entering college. He has been State Pig Club champion, State Livestock champion, and a winner of an American Youth Foundation Scholarship to Camp Miniwanca, Shelby, Michigan.



## Little American Royal



Upper left—Maurice I. Wycoff of Luray, the silver cup he won, and the lamb he showed in winning the animal husbandry section of the Little American Royal in 1934.

Lower left—Carl H. Beyer of Fairview, and the Guernsey with which he won the dairy section of the Little American Royal in 1934.

Upper right—Edwin L. Schuetz of Mercier, and the Guernsey cow with which he won the dairy section in 1935.

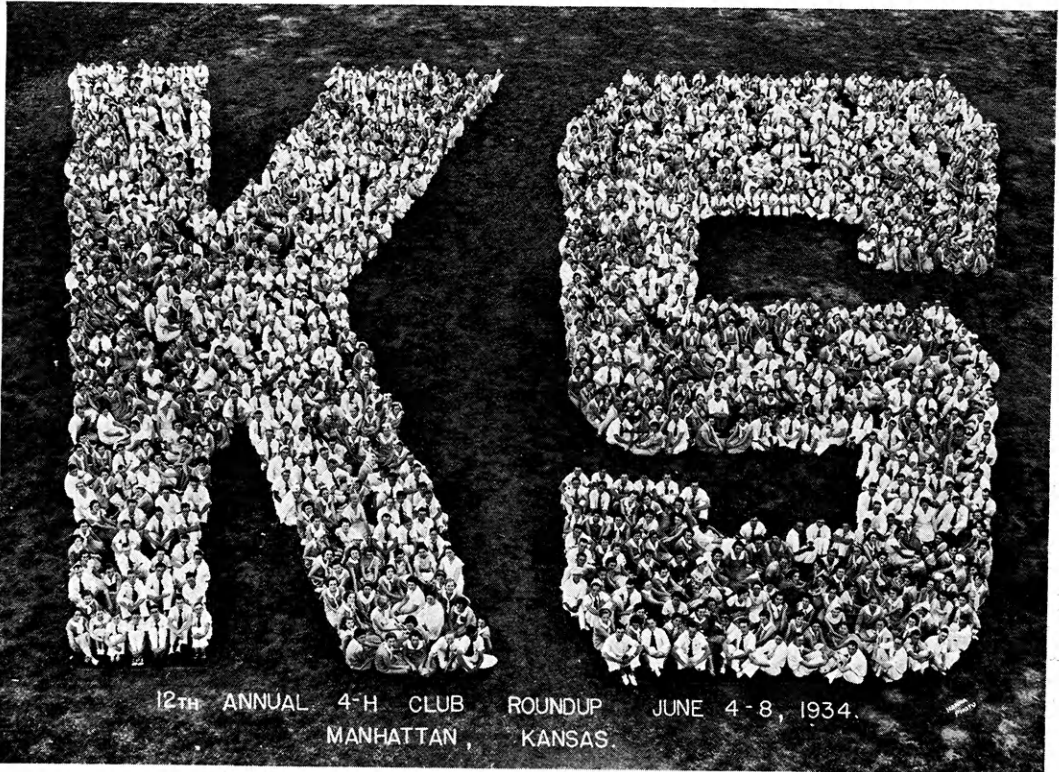
Lower right—Willis R. Wenrich of Oxford, and the Hereford steer with which he won the animal husbandry section in 1935.

These four men are active members in the Collegiate 4-H Club and contribute a greater part of their success to their previous 4-H Club training.





## Round-Up



The twelfth annual Kansas State 4-H Round-up attended by one thousand one hundred and eighty-four boys and girls and their leaders from one hundred Kansas counties was held on the Kansas State College campus on June 4-8. One of the main purposes of the Round-up is to bring together in annual convention 4-H people who have interests in common as a result of their work together. The week's program consisted of inspirational and educational work centering around the work of various 4-H projects, health, athletics and the music contest. Definite instructions on the practical side of 4-H Club work and a splendid leadership program for adult and junior leaders presented by Dr. Gemmell completed the program. The week drew to a close with Friday night's banquet in Nichol's Gymnasium with Arthur Bell as toastmaster. Everyone left for their respective homes Saturday morning knowing that Round-up week was a week well spent.

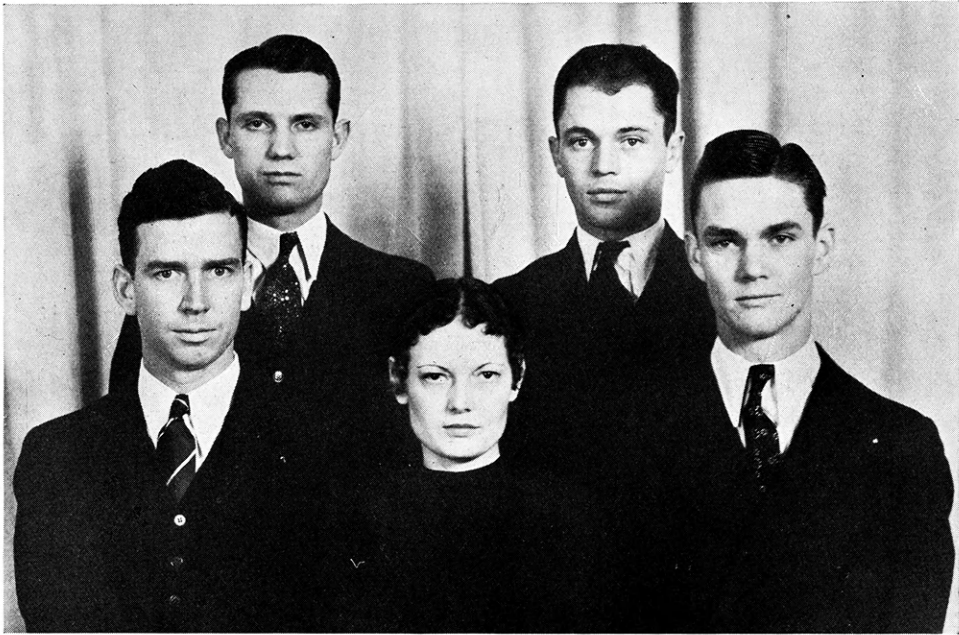


## Dinner Dance



The sixth annual banquet of the Collegiate 4-H Club was held at the Masonic Temple, December 14, 1934. C. E. Rarick, President of Fort Hays State College, gave the address of the evening. The invocation was given by Dr. A. A. Holtz. Musical numbers were rendered by the Collegiate 4-H quartette, and an instrumental trio. Dance numbers were given by the Lillian Amos School of Dancing. Howard Moreen was toastmaster. The decorations were carried out in red, green and silver. Table decorations included red candles in natural wood candle-holders and silver stars. A dance at the Avalon Ballroom concluded a very enjoyable evening.

## Collegiate 4-H Club Quartette



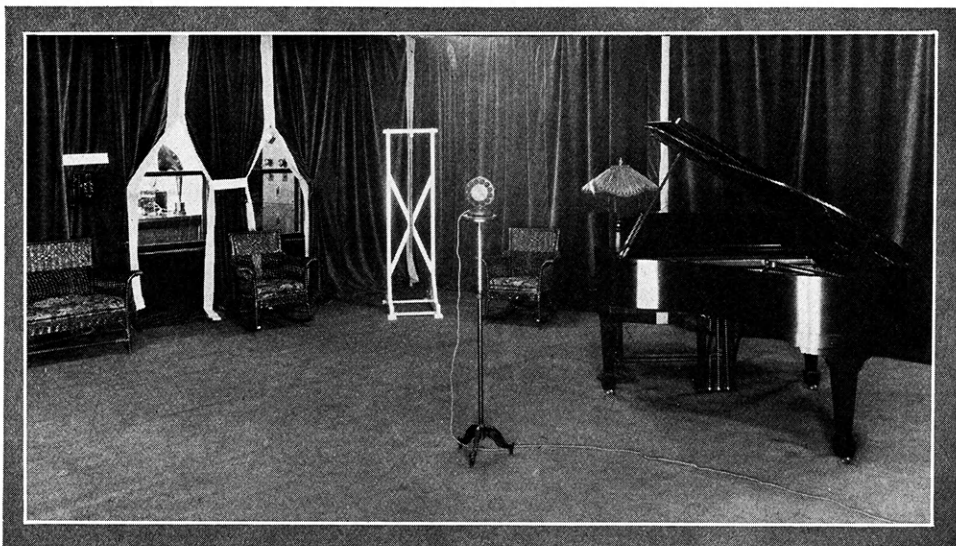
The Collegiate 4-H Club quartette was organized in 1927. The purpose of this group is to represent the Collegiate Club on their programs during the year. They have sung at the annual National 4-H Achievement broadcasts from station WREN, Lawrence, the Collegiate Dinner dance, the Farm and Home week program, the 4-H Radio broadcasts, club meetings and on many other programs during the year.

The quartette, under the leadership of Miss Hilda Grossman of the Music Department, can be commended on their achievements of the past year.

Members of the quartette are: Clair Porter, Stafford County, first tenor; Wilton Thomas, Clay County, baritone; James Williams, Ford County, bass; Roy Freeland, Atchison County, second tenor. They were accompanied by Lucille Herndon, Lane County.



## Kansas 4-H Club Radio Programs



Since 1926 the Kansas State Collegiate 4-H Club has sponsored a weekly radio program.

This program is known as the "Kansas 4-H Club Broadcast" comes from Station KSAC. The broadcast consists of two parts. From 12:30 to 1:30 a program is presented by members of the Collegiate 4-H Club consisting of musical numbers, readings, talks relating to club work, and talks by faculty members. A music appreciation program is broadcast from 1:30 to 2:30 under the direction of Jessie Dean.

Mr. Coe presides at these broadcasts assisted by Grace Burson and Frank Jordan.

Material relating directly to 4-H work make these broadcasts of special interest to all 4-H members.

# Collegiate Snaps



COWPUNCHERS



AG BEAUTY QUEEN  
GEORGIANA AVERY



IT WAS SUMMER



ELLEN



WHAT A SMILE



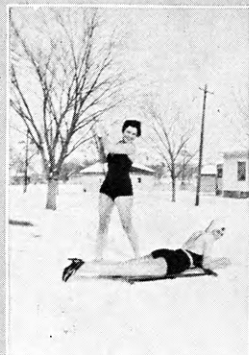
SISTER ?



THE SWIMMING POOL



WHY JOE !



THEY CAN TAKE IT



WHAT A PARTY



IN THE FOUNTAIN





# Collegiate Snaps



COLLEGIATES



RESTING



TARZAN



MΦE TRIO



CLOVIA



BEAT K.U.



LONDON BRIDGE



PEACE



AT WASHINGTON



PALS



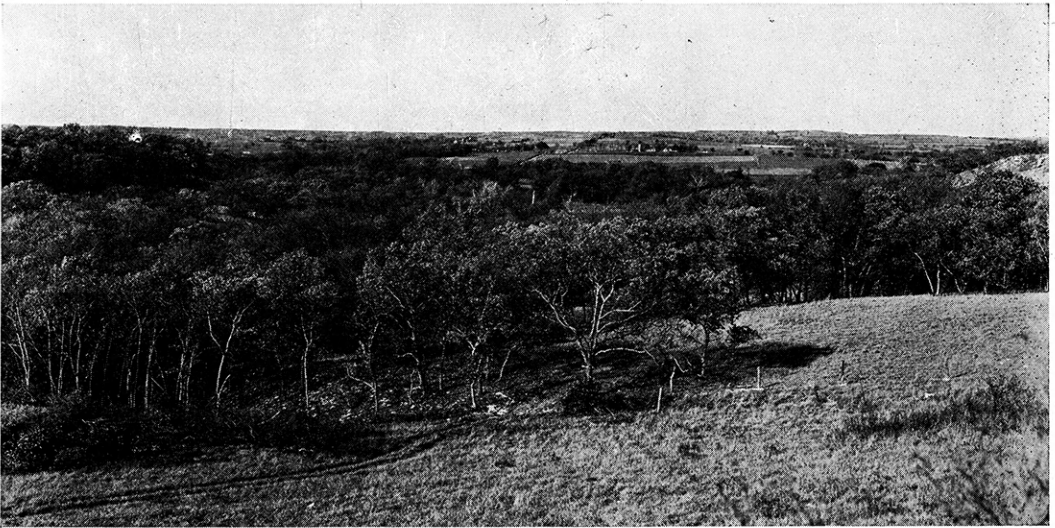
CO-EDS



ON TOP







*Adjacent to Manhattan*

Bird's Eye View of the  
Fairman Lake Site

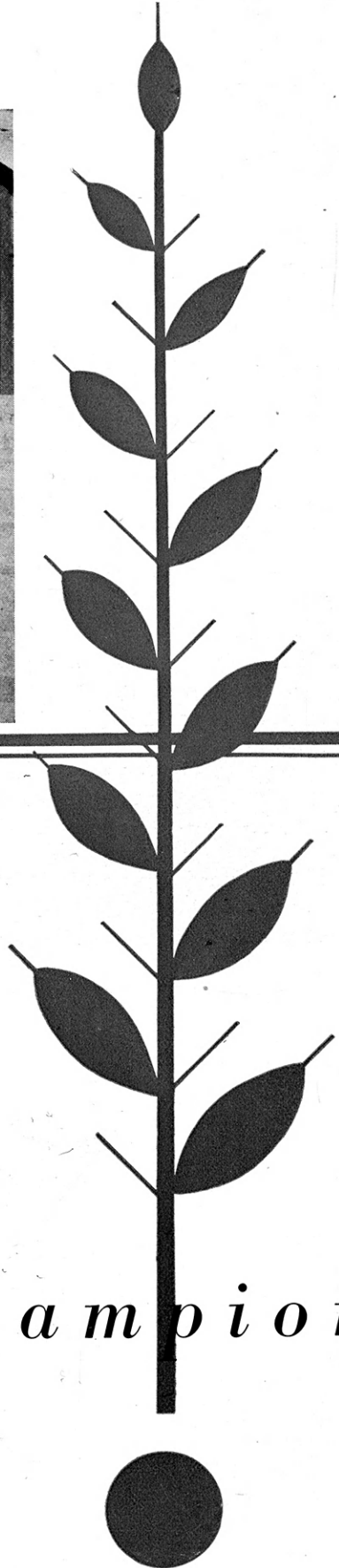


Ruby Corr

Joe Wetta

LEADERS OF MERIT

*Champions*



## RUBY CORR, Sedgwick County

A 4-H Club member since 1928 during which time she has completed fifty-three projects. Ruby's project work includes both home economics and agricultural projects, and she has won notable success in both. Ruby has taken a very active part in all community, county, and state activities, including fifty-six public demonstrations and a number of judging teams, exhibits, camps, tours, educational programs, and organization work. In 1931, she was chosen baby beef champion from Sedgwick County. She was chosen State Champion 4-H Club reporter in 1932, and won a trip to the National Club Congress in Chicago. Ruby has assisted in organizing a number of clubs. She has coached judging and demonstration teams, and was clothing and canning leader in 1932, 1933, and 1934 in her local club. In 1932, she coached twelve demonstration teams, seven of which placed in her county and went to the State Fair. She is a member of the county and State Who's Who Club. She is the present secretary of the State Who's Who Club and is vice president of the Master 4-H Club in the state. In 1934, Ruby attended the National Club Camp at Washington, D. C. Ruby has worked unceasingly and unselfishly in the promotion of 4-H Club work and in bringing its advantages to others. She had been equally active in her college work at K.S.C. where she is a Junior. She has been vice president of the Collegiate 4-H Club; is president of Clovia; a member of Prix, the honorary Junior Girls' organization of the college; and is the editor of the 1935 Who's Who's Who.

## JOE WETTA, Sedgwick County

A 4-H Club member since 1929, during which time he has completed twenty-two projects, including Leadership, Livestock, crops, and potatoes. He is the present president of the State Master 4-H Club. He was president of the State Who's Who Club in 1933, and is president of the Sedgwick County Who's Who Club. He was mayor of the State Leadership Camp at Wichita in 1934. He organized the Colwich 4-H Club and helped to organize the Sedgwick County Who's Who Club. His club made sixty-four exhibits in interstate, state, and county shows in 1932. Each year he has assisted in putting on the Sedgwick County 4-H Fair since it started in 1929. He has been an active community leader in Sedgwick County club work since 1932. In 1931, he was State crops champion, winning a trip to the International Club Congress at Chicago, and was State Livestock Champion in 1932, winning the Thomas E. Wilson award, the gold watch. He attended the National Club Camp at Washington, D. C., in 1933, as the outstanding boy leader in Kansas. At present, Joe is enrolled at Kansas State College, majoring in Agricultural Economics. He is an active member of the Collegiate 4-H Club, serving as chairman on many committees. Joe is untiring in his efforts; during 1932 he spent ninety-nine days in active club work and drove more than 3400 miles in its promotion. He has always been willing and ready to help in every way.





### THE CHICAGO TRIP

Kansas 4-H Club members are represented each year at the National 4-H Club Congress by various county and state champions who win their trips by virtue of their achievements in project and leadership work in their respective clubs and counties. This year fifty-two club members with representatives of the state department made the trip to Chicago.

These trips and the entertainment afforded the club members while in Chicago are made possible by the cooperation and support given 4-H Club work by large commercial business concerns. The week's stay was one continual program planned especially for the fifteen hundred club members enrolled at the National Club Congress from nearly every state in the Union and Ontario, Canada. Headquarters for the Kansas group while in Chicago were at the Congress Hotel.

The daily programs included trips through important commercial plants such as various packing houses, the International Harvester Company, Chicago stockyards, Chicago theaters, and other places of interest such as the Planetarium, Chicago Zoological Park, Lincoln Park, Merchandise Mart, Marshall Fields Store, Field Museum, and Shedd Aquarium in addition to various luncheons and dinners.

The club members' own banquet for everyone at the Congress was an outstanding event which featured a very interesting and inspirational program. The Kansas group held a dinner party of their own the last night they were in Chicago. This promoted a lot of friendship and acquaintances among this group of boys and girls.

All in all, it was a very educational and inspirational trip which every club member would appreciate to the utmost.



## Demonstration Team



"Color Harmony" was the topic of the winning state demonstration selected at the contest held during the state fair. The members of this team were Carlene Schnackenberg and Clara Mabel Eastwood of Sedgwick County. There were awarded a trip to the National Club Congress in Chicago.

Seventy-seven teams participated in the state contest held during the State Fair. All teams entered in this contest were selected as a result of a county contest held during the month of August.





## State Judging Team



The State Champion Livestock judging team of Clay County composed of Frank Neal, James Hatfield and Harold Hartner was chosen at a county fair in September to represent the county at the state fair at Hutchinson, and at the Fat Stock Show in Wichita. The team won first place at Wichita with Frank Neal and James Hatfield tying for second high place. James Hatfield placed first high individual at Hutchinson. The team attended the National 4-H Club Congress at Chicago, placing sixth.

Left to right. Top row—J. B. Taylor, County Agent; C. C. Elling, Extension and Livestock Specialist. Second row—Frank Neal; James Hatfield, and Harold Hartner.



## National Encampment



Four outstanding 4-H Club members, as a reward of their superior service rendered in 4-H Club leadership, were awarded trips to the Eighth National 4-H Club Congress held at Washington, D. C., on June 13-21, 1934. The delegates from this state were: Ruby Corr, Sedgwick County; Evelyn Harley, Cherokee County; Harry Stauffer, Mitchell County, and Edgar Delmez, Crawford County.

Delegates from all parts of the United States attended the encampment, thus bringing together the distinguished and able 4-H people from most of the states for an exchange of ideas and formation of sentiment as to the purpose and objectives of 4-H club work.

The camp programs consisted of assemblies, inspirational discussions, conferences, campfire programs, and sight seeing tours. The camp was held on the grounds of the Smithsonian Institution. Some of the interesting historical places visited included Arlington National Cemetery, Tomb of Unknown Soldier, Washington Monument, Library of Congress, Capitol Building, White House, Lincoln Memorial, Natural History Building and Arts and Industries Building.

On the return trip from Washington, the Kansas delegation attended the World's Fair in Chicago. Here they took a boat ride and encountered a storm. They also rode the Sky Ride and visited the burnt stock yards. They arrived home after two weeks of inspirational fellowship to continue their leadership work with more inspiration than before.



# Washington Snaps



UNDER NIAGARA FALLS



RUBY & EVELYN



MR. COE, MISS SMITH,  
AND MR. JOHNSON



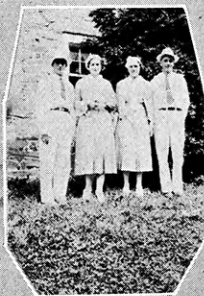
INDEPENDENCE HALL



AT MOUNT VERNON



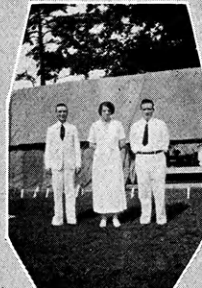
URN DECORATIONS



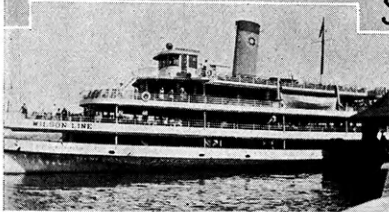
1934 DELEGATION



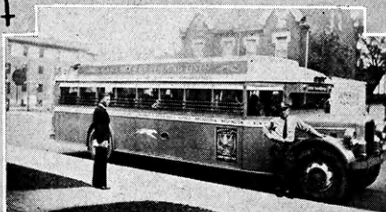
SHOWING OFF



CHAPERONS



TO MOUNT VERNON

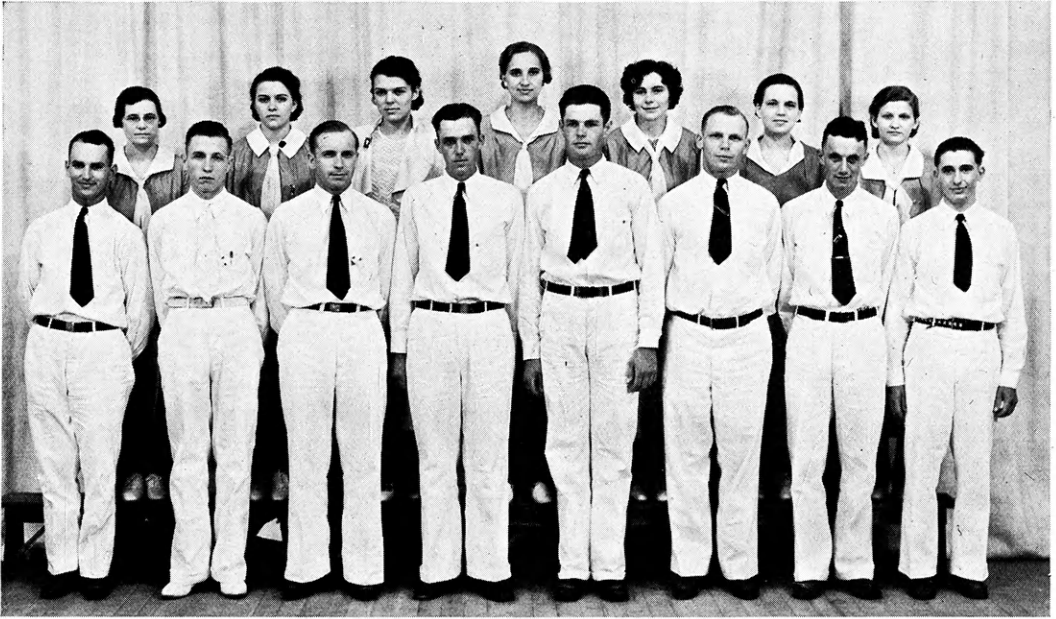


THE TRANSPORTATION





## The Master 4-H Club



Those former club members who have been recognized as rendering distinguished service to 4-H Club work through their leadership activities are now receiving recognition in the Master 4-H Club of Kansas. The club was organized at the Seventh 4-H Club Round-up held at Manhattan, in June, 1929.

The new members for 1934 were: Ruby Corr, Sedgwick County; Evelyn Harley, Cherokee County; Harry Stauffer, Mitchell County; and Edgar Delmer, Crawford County.

The Master 4-H Club meets each year at the round-up, bringing together the most active leaders in the work for the discussion of leadership problems and activities as well as the renewal of old acquaintances. The members of the Master 4-H Club are those that attend the National Encampment.

Since the origin of the camp in 1927, two girls and two boys from Kansas have attended each year. In 1927 they were Louise Lumb, Clay County; Mary Tilton, Mitchell County; Frank Zitnik, Cherokee County, and Frank Parsons, Sherman County. The 1929 delegation included Lois Starbuck, Sherman County; Nola McCormick, Sedgwick County; Lloyd Davies, Lyon County, and Leonard Rees, Dickinson County. Those attending the 1929 encampment were Mary Hellner, Lyon County; Ellen Blair, Franklin County; Ben Kohrs, Dickinson County, and Boyd Worthington, Harper County. In 1930, Jeanette Gamble, Montgomery County; Olga Larson, Lincoln County; Gaylord Munson, Geary County, and Albert Pease, Bourbon County. In 1931, Vera Crispin, Jewell County; Florence Melchert, Franklin County; George McColm, Lyon County; Milton Kohrs, Dickinson County, and Pius Hostetler, Harper County. In 1932, Virginia Wagner, Franklin County; Lottie Keasling, Cowley County.



# State and National Champs



RACHEL FEATHERINGILL  
STATE CANNING CHAMP



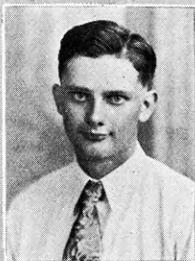
IRENE BEARDWELL  
SWINE CHAMP.



ANNA HOLOVACK  
CO-OP MKT. TRIP



LENA MARIE HURST  
STATE 4-H REPORTER CHAMP.



WENDELL VEATCH  
SHEEP CHAMP.



HAROLD O'BRIEN  
POULTRY CHAMP.



PATRICIA BEEZLEY  
STATE BAKING CHAMP



KIRK ADAMS  
BEST GROOMED BOY



PAULINE HALLMAN  
CANNING CHAMP.



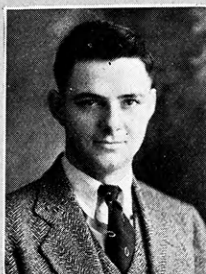
RALPH SCHOLZ  
BABY BEEF CHAMP



MARGARET HITES  
BEST GROOMED GIRL



PHILLIP ROUP  
CO-OP TRIP WINNER



RUSSELL KENDRICK  
CROPS CHAMP



NADINE BROWN  
STATE HOME ECON CHAMP



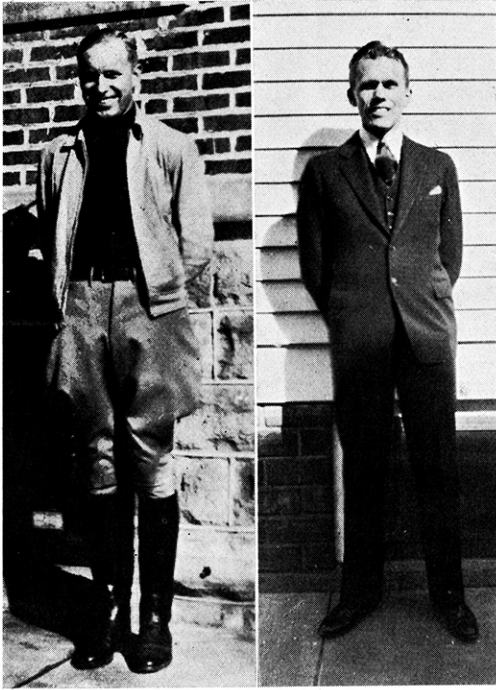
MARGARET McCOLM  
LIVESTOCK CHAMP.





*K. S. C. Products*

A Group of Sheep From  
the College Flock

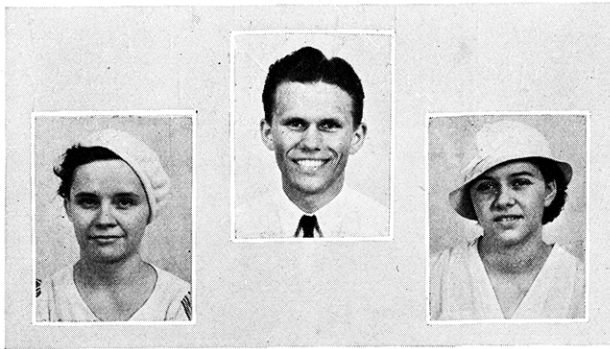


Frank Zitnik  
Sponsor

Robt. Featheringill  
President



*W h o ' s W h o*



*Officers of the State Who's Who  
1934-35*

- ROBERT FEATHERINGILL, *President*  
HELEN HAYWARD, *Vice President*  
RUBY CORR, *Secretary*





Marcy, Frank—Geary County  
State Sheep Champion, 1932

Holshouser, Norman—Morris County  
National Club Congress dwinner, 1933

Singmaster, Clarence—Linn County  
Baby Beef Champion, 1927

Roesler, Edith—Geary County  
County Music Appreciation Champion,  
1932-33

Streeter, Charles—Geary County  
County Dairy Champion, 1930-31-32

Hills, La Veda—Douglas County  
County Health Champion, 1932-33-34

Montgomery, James—Graham County  
Union Pacific Scholarship, 1932

Brown, Betty—Lyon County  
Outstanding in county leadership

Brown, Raymond—Morris County  
Completed swine and poultry projects

Brownlee, Ellen—Reno County  
National Club Congress winner, 1932

Bergsten, Leon—Riley County  
Completed gardening, poultry, baby beef,  
and sheep projects

Hall, Anna Belle—Bourbon County  
County Room Improvement Champion,  
1933

Zielgar, Lad—Geary County  
County Gardening Champion

Heft, Nadeen—Comanche County  
Leadership, clothing, and baking projects

Youngmeyer, Junior—Sedgwick County  
Pres. of State Model Meeting winning  
group, 1934

Walker, Fern—Finney County  
County Leadership Champion, 1933

Kohl, Maurine—Sedgwick County  
County Group Sheep Champion, 1930

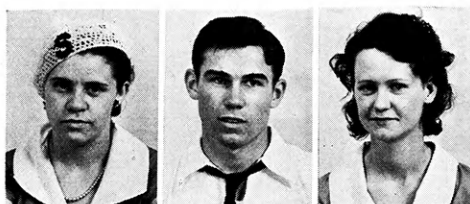
Darling, Nola—Morris County  
County Canning Champion, 1932-33

Schackelford, Earle—Bourbon County  
County Swine Champion

Schroeler, La Verne—Ellsworth County  
County Clothing Champion, 1932

Endicott, Lawrence—Crawford County  
Swine, poultry, baby beef, potatoes, and  
leadership projects





Somers, Margaret—Sedgwick County  
Member of winning State Model meeting,  
1934

Elling, Roland—Riley County  
Union Pacific Scholarship Award

Nichols, Helen—Comanche County  
County Foods Champion, 1933



Hodgson, Irwin—Rice County  
County Beef Champion, 1933

Switzer, Grace—Morris County  
Clothing and baking projects

Maupin, Betty Lou—Shawnee County  
Outstanding in canning



Shaffner, Pauline—Geary County  
Outstanding club reporter, 1932

Combest, Blanihe—Ness County  
Poultry, baking, clothing, and leadership  
projects

Dorgan, Helen—Morris County  
Clothing, baking, and room improvement  
projects



McGonigle, Norval—Reno County  
Baby beef and poultry projects

Rutherford, Ione—Harper County  
Outstanding in canning

Hohn, La Verne—Clay County  
Outstanding in baking and health



Salley, Ruth—Shawnee County  
Outstanding in baking and clothing projects

Beezley, Patricia—Crawford County  
Baking Champion, 1933

Lindgren, Richard—Morris County  
County Beef Champion



Wreath, Martha—Riley County  
Clothing, poultry, and baking projects

Reinecke, Leola—Bourbon County  
Baking, clothing, and canning projects

Mason, Mary Bell—Bourbon County  
Baking and clothing projects

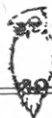


Rundle, Earl—Cowley County  
Outstanding in leadership in county, 1933

Greenwood, Gertrude—Wyandotte County  
Union Pacific Scholarship, 1932

Anderson, Thomas—Lyon County  
Thomas E. Wilson Medal Award

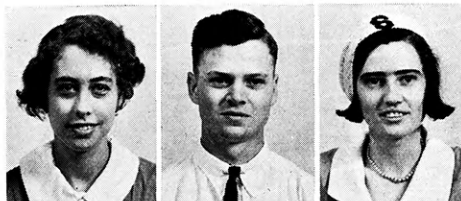




Byam, Glee—Bourbon County  
Outstanding in clothing in 1934

Sotterlee, Thad—Saline County  
Outstanding in health, 1933

Somers, Mary—Sedgwick County  
Member of State Model Meeting winners,  
1934



Shull, Harold—Riley County  
Swine, potatoes, sheep, and leadership  
projects

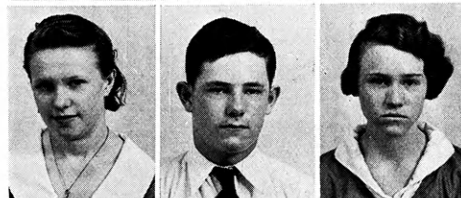
Hobbie, Wilma—Mitchell County  
Second place individual in Home Econom-  
ics in county, 1933



Rundus, Joe—Republic County  
County Angus Champion, 1933

Cannon, Sarah Ann—Lyon County  
Outstanding in poultry and clothing  
projects

Edwards, Harry—Lyon County  
Outstanding in music appreciation



Bryan, Bernice—Clay County  
Clothing, baking and canning projects

Williams, Roscoe—Comanche County  
Attended Round-up, 1934

Wilson, Evelyn—Jefferson County  
Clothing, baking, and baby beef projects

White, Wallace—Comanche County  
National Club Congress winner, 1933



Penson, Carolyn—Leavenworth County  
County Health Champion

Blubough, Clair—Bourbon County  
County Swine Champion, 1928

Hurst, Lena Marie—Sedgwick County  
National Club Congress winner, 1934



Abrahams, Dean—Republic County  
County Duroc Barrow Champion, 1932

Johnson, Barbara—Republic County  
Canning, sewing, baking, and leadership  
projects

McGaugh, Velma—Finney County  
County Style Revue winner, 1933



Brink, Pearl—Sedgwick County  
National Club Congress winner, 1933

Beery, Darlene—Cowley County  
Outstanding in clothing, 1929

Wetta, Alfons—Sedgwick County  
Swine and leadership projects







Kellogg, Grace—Douglas County  
Union Pacific Scholarship, 1933

Harding, Edith—Jewell County  
County Style Review Champion, 1933

Featheringill, Jack—Montgomery County  
County Crops Champion, 1933

Havely, Mary Lorane—Jackson County  
Copper cup award, 1933

Morton, Roland—Clay County  
Outstanding in dairy projects

Huston, Pauline—Riley County  
National Club Congress at Chicago, 1932

Krenzin, Ralph—Edwards County  
County Champion in general 4-H work,  
1932

Story, Mary—Johnson County  
Clothing and leadership projects

Dunbar, Helen—Cowley County  
County Home Economics Champion, 1933

Nelson, Opal—Clay County  
Baking, room improvement, and garden  
projects

York, Fred—Riley County  
County Poultry Champion, 1930

Jones, Marjorie—Ford County  
Canning and baking projects

Drew, Grace—Barton County  
National Club Congress winner, 1932-33

Bacon, William—Lyon County  
County Music Champion, 1932-33-34

Eastwood, Clara Mabel—Sedgwick County  
National Club Congress winner, 1934

Carr, Lois—Sedgwick County  
Outstanding in baking and canning

Porter, Dorene—Republic County  
Union Pacific Scholarship, 1932

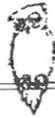
McGonigle, Glenn—Reno County  
County Health Champion, 1934

Fearing, June—Jewell County  
National Club Congress winner, 1933

Bacon, Beatrice—Morris County  
Dairy, baking, and swine projects

Benedict, Alice—Bourbon County  
Outstanding in music appreciation





Archer, Mary Lois—Russell County  
Outstanding in health contests

Green, Edgar W.—Linn County  
Sheep and dairy projects

Boone, Joyce—Greenwood County  
Baking, sewing, canning, and room improvement projects

Jones, Marcella—Geary County  
Clothing, baking, canning, and poultry projects

Bachar, Lee—Russell County  
Baby beef, sorghum, and leadership projects

Moore, Amy—Ellis County  
Baking, sewing, and leadership projects

Shannon, Vera—Harper County  
Clothing, baking, room improvement, poultry, and gardening

Gross, Glenn—Russell County  
Baby beef, sheep, and leadership projects

Singmaster, Faye—Linn County  
Sewing, baking, canning, and leadership projects

Benning, Alice—Montgomery County  
Clothing, baking, and leadership projects

Gwin, Verda—Geary County  
Clothing, gardening, and poultry projects

Barton, Hampton—Cowley County  
Baby beef and sheep projects

Sayre, Rachael—Chase County  
Sewing, baking, canning, and poultry projects

Benedict, Margaret—Bourbon County  
Sewing, baking, and gardening projects

Moss, Robert—Sheridan County  
Union Pacific Scholarship, 1933

Payer, Wayre—Coffey County  
Baby beef as major project

Wilson, Irene—Miami County  
Room improvement, sewing, and baking projects

Johnson, Nadine—Barton County  
Clothing and baking projects

Korf, Vivian—Gray County  
County Home Economics Champion, 1933

Kingsley, Harry—Ellis County  
Swine, baby beef, and sorghum projects

Smith, Ella—Montgomery County  
Baking and sewing projects





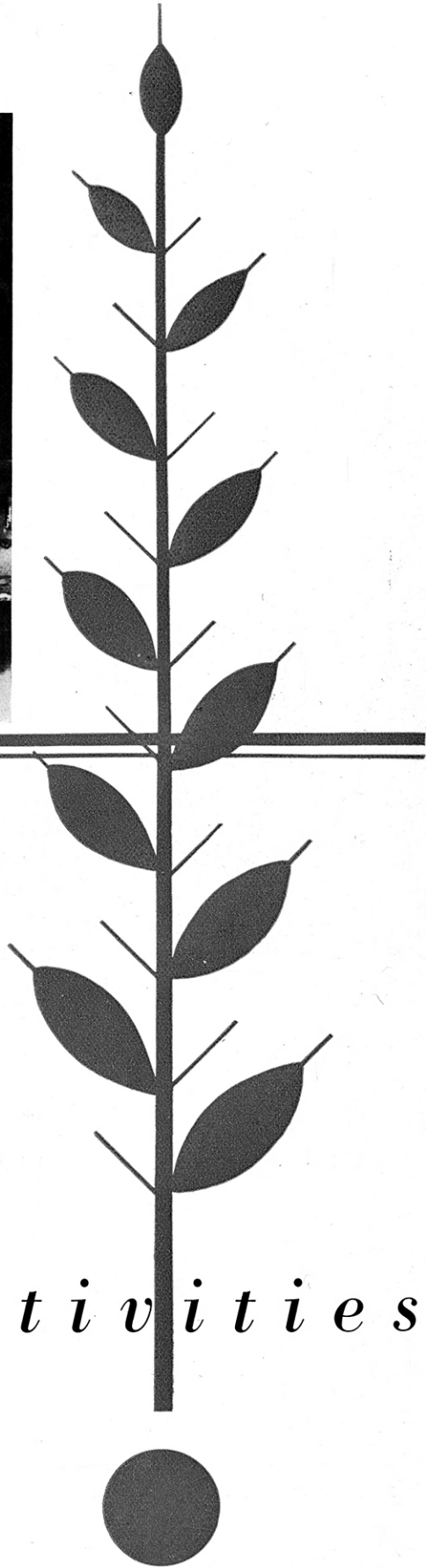
*Looking West*

East Entrance to Campus  
After a Light Snowfall.



Alice Turnbull      Wayne Payer  
STATE HEALTH CHAMPION

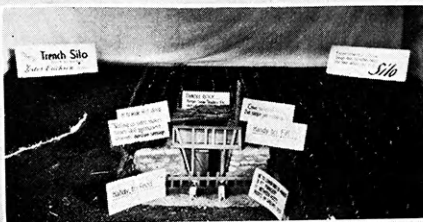
*A c t i v i t i e s*



# Geary



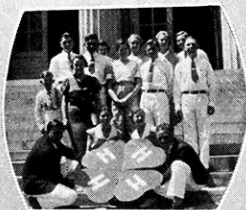
MAYOR 1934



TRENCH SILO BOOTH



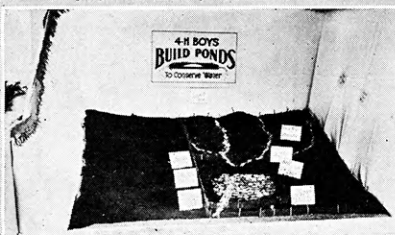
COUNTY  
STYLE SHOW



MODEL MEETING



HEALTH CHAMPS



POND BOOTH



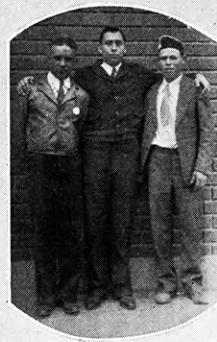
MEAT JUDGING  
TEAM



STYLE & BEST GROOMED



U.S. RECOVERY PROGRAM



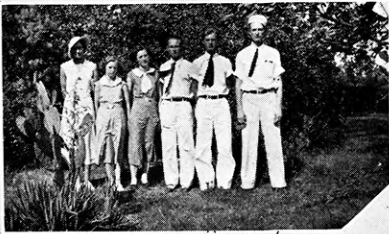
LIVESTOCK TEAM



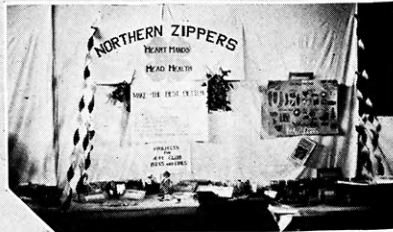
COUNTY GROUP AT WICHITA



# Wallace



ROUND-UP DELEGATES



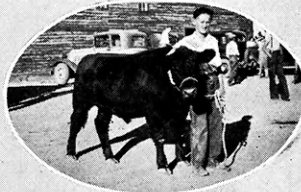
PRIZE WINNING BOOTH



RIBBON HOLDERS



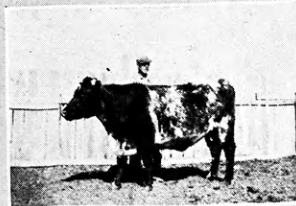
ANOTHER CHAMP



ACHIEVEMENT EXHIBIT



LOYAL BOOSTERS



BULA



EUNICE AND



BOOTH EXHIBIT



ALINE AND



WIDE AWAKE CLUB



ACHIEVEMENT DAY

# Ellis



GARDEN EXHIBIT



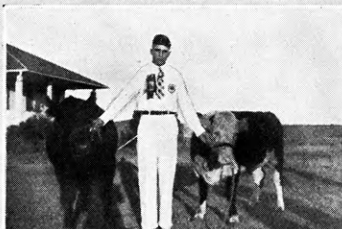
ROUND-UP DELEGATION



BUCKEYE 4-H CLUB GIRLS



WHO'S WHO MEMBERS



HARRY AND HIS BABY BEEVES



CHAMP.



PRIZE WINNING BABYBEEF



PRIZE WINNING SOW AND LITTER



# Morris



COUNTY BEEF CHAMP



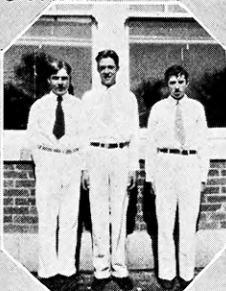
COUNTY CLOTHING CHAMP



ROUND-UP DELEGATION



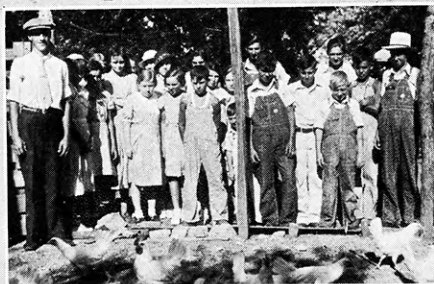
COUNTY HEALTH CHAMPS



BAKING JUDGES



DEMONSTRATION TEAM



CLUB TOUR



CHICAGO TRIP WINNER



CLUB CAMP

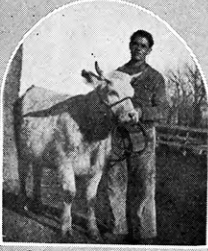


THE CHAMP





# Pratt



CHAMPION



WATER LOVERS



DEMO. TEAM



BEST GROOMED



ROUND-UP DELEGATES



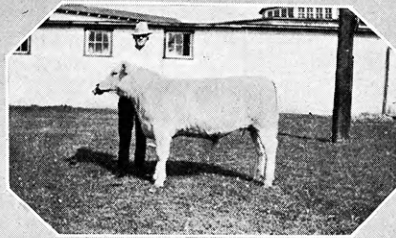
ROCK ISLAND WINNER



4-H CAMP



HEALTH CHAMPS



EVANS AND —



STYLE REVIEW



MODEL CLUB



JUNIOR AND NORMAN





# Comanche



COUNTY WHEAT CHAMP



DEMONSTRATION TEAM



BEST GROOMED GIRL



STATE CHAMP LIVE STOCK DEMO. TEAM



GRAND CHAMPION BEEF



STYLE REVUE CHAMP



MERLE AND HIS SHEEP



COUNTY HEALTH CHAMPS



4 H CLUB



BEST GROOMED BOY



NEGROES—ACHIEVEMENT PROGRAM—INDIANS





# Jefferson



BAKING JUDGES



PRIZE WINNER



CANNING CHAMPS.



NORTONVILLE 4-H CLUB



DEMO. TEAM



THREE IS COMPANY



JUST TWO



ROUND-UP DELEGATION



BAKING TEAM



COUNTY PICNIC



A SURE WINNER



# Cloud



PRIZE DRESSES



DALLAS AND JEWEL



PRIZE WINNER



DALLAS AND HIS SHEEP



LEADERSHIP



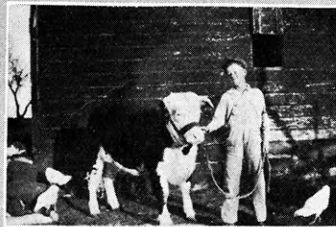
MILTONVALE 4-H CLUB



JUNIOR AND PROJECT



BILLY AND —



PRIZE CALF



# Barton



BEST GROOMED—



BAKING CHAMP.



STYLE REVUE CHAMP.



BEST GROOMED—



CHICAGO TRIP WINNER



OUTSTANDING CLUB



WHO'S WHOOT MEMBERS



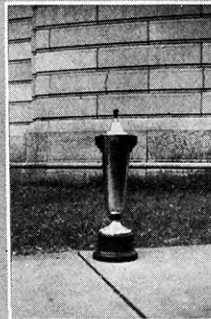
GARDEN CHAMP.



MUSIC CHAMP.



DEMO. TEAM



KAN. BANK. ASS. CUP



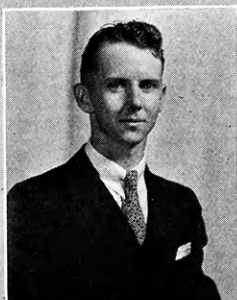
HEALTH CHAMP.



# Lincoln



SEC. OF HUSTLERS CLUB



U.P. SCHOLARSHIP WINNER



PRES. OF HUSTLERS CLUB



PRIZE WINNER



MODEL MEETING



KEN AND HIS CALVES



DEMO. TEAM



PRES.-CO. COUNCIL



JUDGING TEAM



HEALTH CHAMPS.



ROUND-UP DELEGATION



CAMP DELEGATES



DEMO. TEAM



# Clay



LEADERSHIP CHAMP.



STATE CHAMP. LIVESTOCK JUDGE



CHICAGO TRIP WINNER



HEALTH CHAMP.



LIVESTOCK JUDGING TEAM



STATE REVUE CHAMP.



CANNING JUDGING CHAMP.



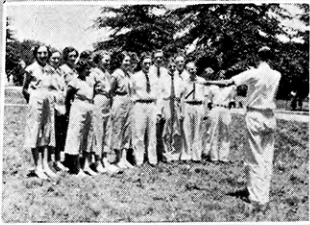
HEALTH CHAMP.



DEMO. TEAM



# Crawford



ROUND-UP CHORUS



STATE BAKING CHAMP



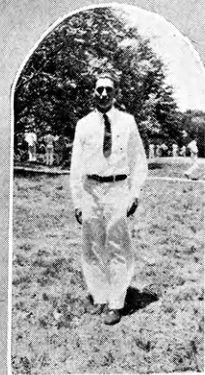
4-H CAMP



HEALTH CHAMPS



DISHWASHING TIME



WASHINGTON TRIP WINNER



SHOWMANSHIP CHAMPION



PRIZE WINNER



COUNTY FAIR



WINNERS





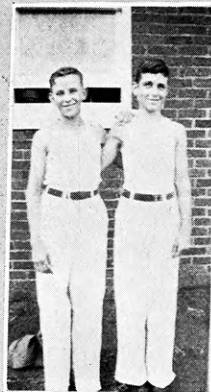
# Lyon



STATE CHAMP.  
DEMO. TEAM



BEST GROOMED GIRL



STATE CHAMP.  
HEALTH DEMO. TEAM



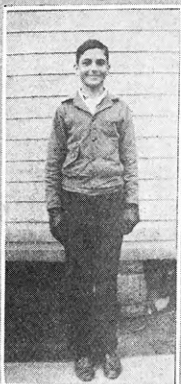
PRESIDENT  
COUNTY COUNCIL



STATE HOME  
E.C. CHAMP.



PRES. OF CHAMP.  
MODEL MEETING



JUNIOR  
HEALTH CHAMP.



OFFICERS OF RINKER CLUB



COUNTY  
HEALTH CHAMP.



COUNTY MUSIC CHAMP.



COUNTY CORN CHAMP.

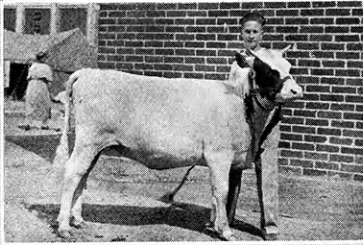


STATE LIVESTOCK CHAMP.

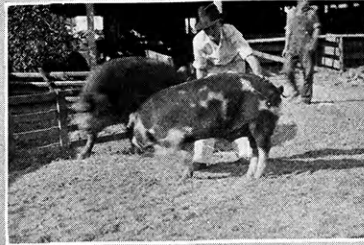




# Sedgwick



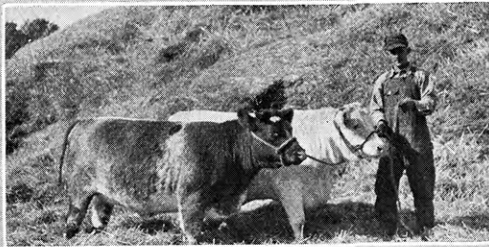
STATE CHAMP.



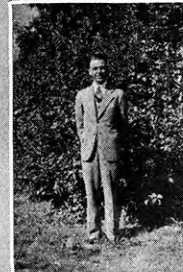
KEITH & HIS CHAMP



WASHINGTON TRIP WINNER



STATE CHAMPIONS



CHICAGO TRIP WINNER



CHICAGO TRIP WINNERS



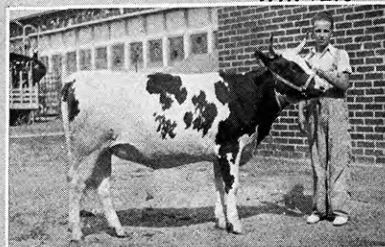
STATE MODEL MEETING GROUP



CHICAGO TRIP WINNER



KANSAS NATIONAL CHAMP.



STATE FITTING & SHOWING CHAMP.



# Rice



WINNERS



AT THE COUNTY FAIR



DELEGS. AT COUNTY FAIR



GLENN AND PROJECT



SISTERS AND PROJECTS



PROJECTS



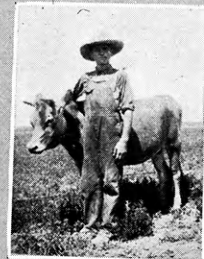
ETTA AND HER PIGS



WINNER



PRIZE WINNERS



PROJECTS



IRL AND PRIZE WINNERS



COUNTY GRAND CHAMP.



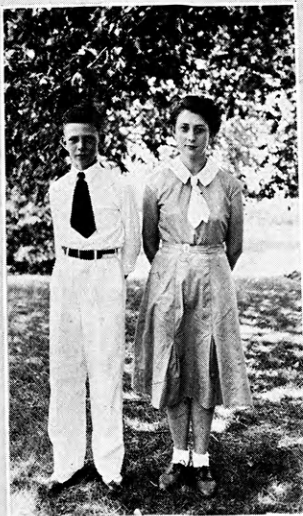
COUNTY FAIR



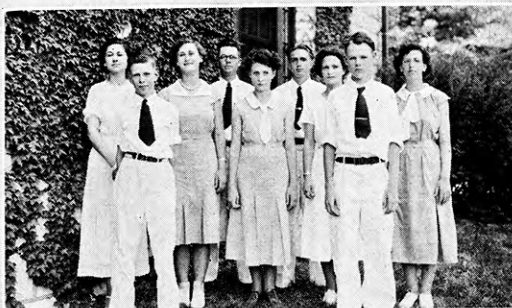
PROJECTS



# Greenwood



COUNTY HEALTH CHAMPS.



ROUND-UP DELEGATION



STYLE REVUE



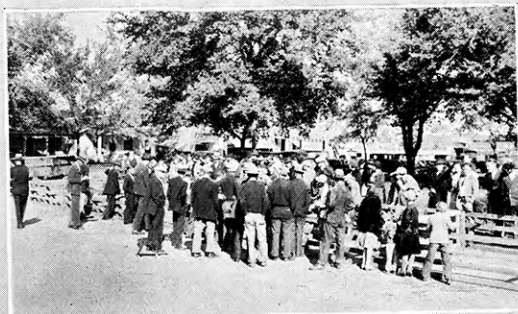
GIRLS AT ROUND-UP



A 4-H CLUB



JUNIOR LEADERS



JUDGING PIG EXHIBIT





# Bourbon



STYLE REVUE  
CHAMP.



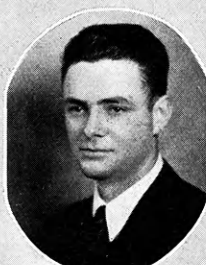
CAPPER SCHOLARSHIP



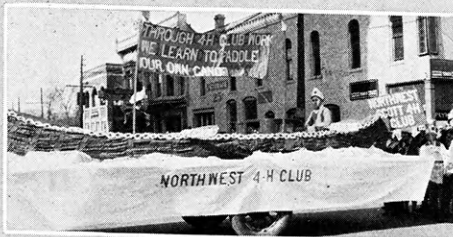
COUNTY HEALTH  
CHAMPS.



ROUND-UP DELEGATES



STATE CORN  
CHAMP.



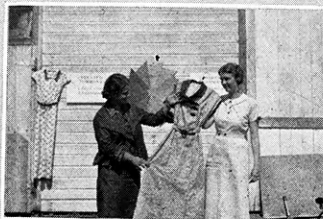
PRIZE WINNER



COUNTY LEADERSHIP  
CHAMP.



MODEL MEETING GROUP



DEMO. TEAM





# Sherman



BETTY'S GARDEN



CARROL MOGGE AND HIS POULTRY



GRAND CHAMPION



RESERVE CHAMPION



1st Place Winner-1934  
4-H Club Roundup-Manhattan

COUNTY BAND



COUNTY HEALTH CHAMP.



ROUND-UP GROUP



# Saline



CLOVER LEAF 4-H



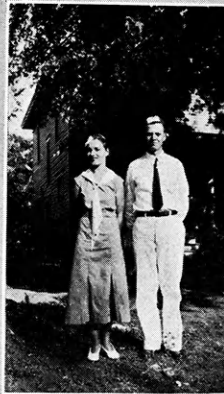
CLOVER LEAF ORCHESTRA



4-H FALL FESTIVAL FLOAT



BROOKVILLE BUSTERS



HEALTH CHAMPS.



MISS SHAFFER & CHAMP JERSEYS



PRIZE WINNER



MENTOR 4-H CLUB



# Riley



STYLE REVUE



LIVESTOCK JUDGE



CLEO. FEAR



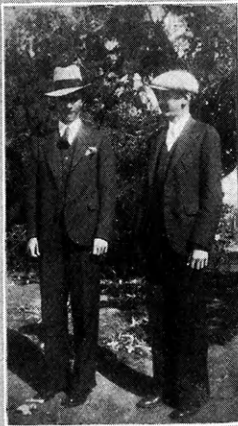
CO. POULTYRY  
CHAMP.



CO. CANNING  
CHAMP.



PRES. 4-H  
COUNCIL



MUGLER BROS.



COUNTY CHAMPIONS



OUTSTANDING MEMBER



CARL ELLING



CO. SHEEP CHAMP.



STYLE REVUE CHAMP.





# Republic



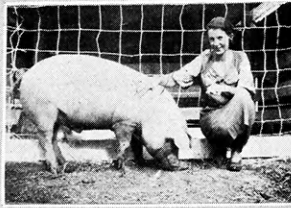
HOME EC. CHAMP



BEST GROOMED



DAIRY CHAMP



CHAMPION



BEEF CHAMP



1<sup>ST</sup> AT HUTCHINSON



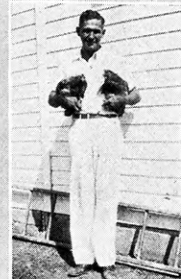
MORLAN & PORTER



SHEEP & SWINE CHAMP



COUNTY CHORUS



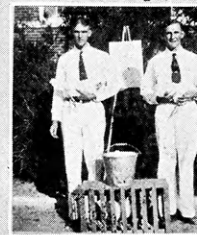
POULTRY CHAMP



JUDGING TEAM  
1<sup>ST</sup> AT HUTCHINSON



COUNTY BAND



DEMONSTRATION  
TEAM





# Labette



COUNTY HEALTH CHAMP



PRIZE WINNER



A WINNER



HOME EC CHAMP



AT THE PICNIC



A 4-H CLUB



BEST GROOMED



SHEEP PROJECTS



ROUND-UP DELEGATION



STATE POULTRY CHAMP



# Harper



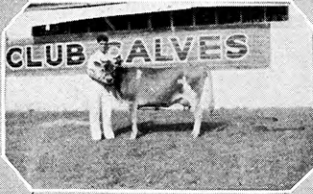
HARPER HIGH SCHOOL 4-H CLUB



BEST GROOMED



4-H GIRLS & THEIR MOTHERS



CHAMPION



DAIRY CHAMPS.



PALS



CHAMP AT HUTCHINSON



BABY BEEVES



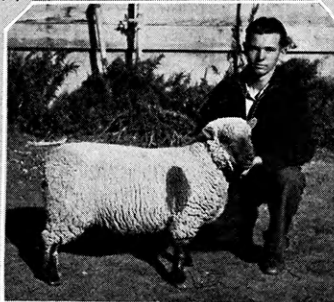
CAMP AT STAFFORD



THE GANG AT CAMP.



STATE CHAMP.



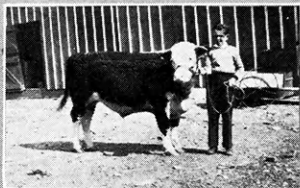
PRIZE WINNER



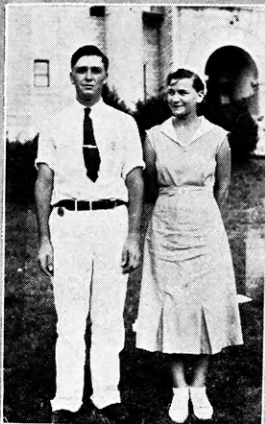
3RD. AT WATERLOO



# Linn



COUNTY CHAMPION



HEALTH CHAMPS.



WINNING 4-H CLUB



A FINE 4-H HERD



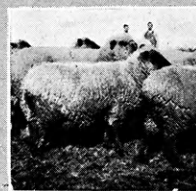
BEGINNERS



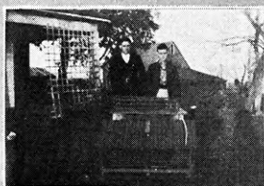
BROS. & PROJECTS



ROUND-UP DELEGATION



4-H FLOCK



DEMONSTRATION CHAMPS.



A PRIZE WINNER



CLOTHING GIRLS

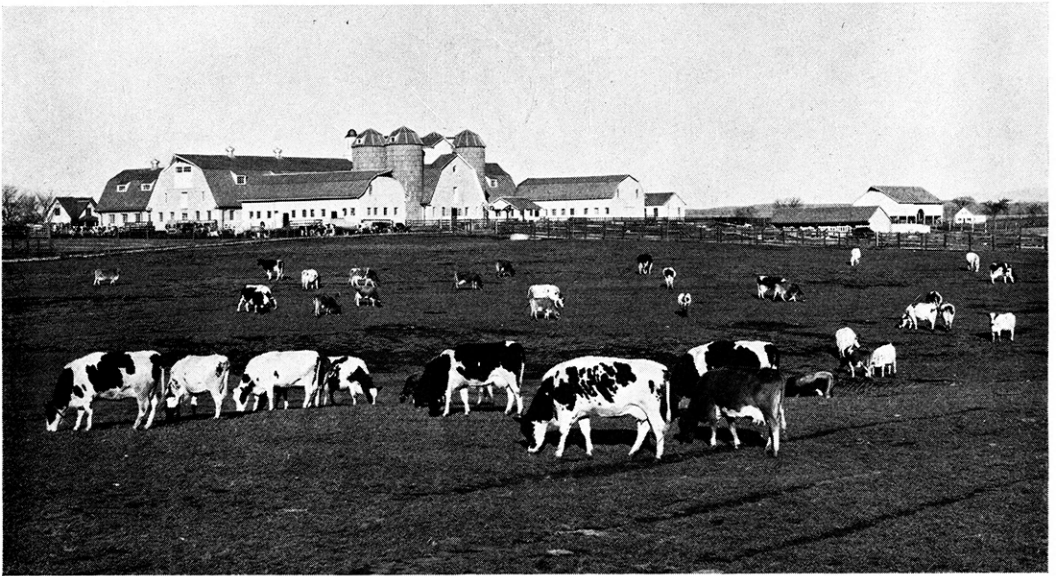


FIVE YEARS— FORTY-TWO PRIZES



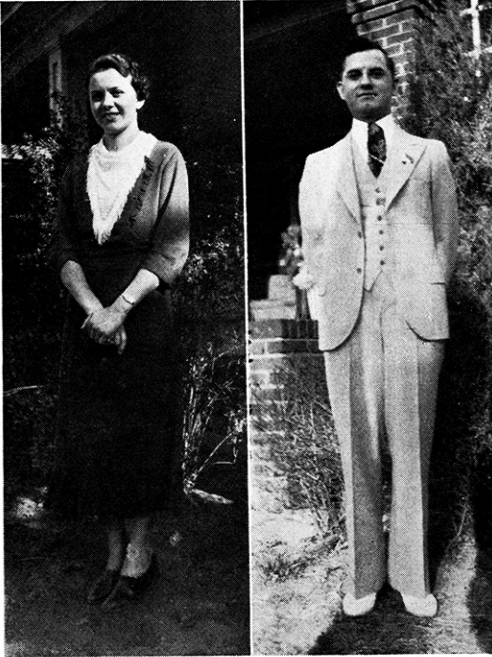
CANNING CHAMPION





*Dairy Barn*

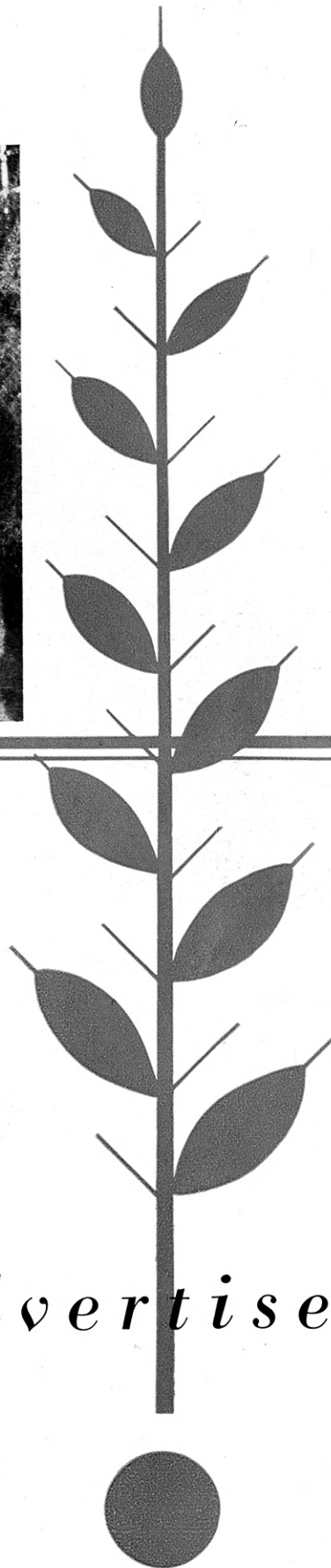
The New Dairy Barn and  
Part of the College Dairy  
Herd



Ruby Corr  
Editor

Lebert Shultz  
Business Manager

*Advertisers*





Sears, Roebuck and Co. Mail Order Plant and Retail Store—15th at Cleveland, Kansas City, Mo.

## *“To Make the Best Better”*

Sears congratulates the 4-H Clubs of Kansas on such a worthy motto! Such, also, is the aim of Sears, Roebuck and Co. throughout all its branches. Rigid scientific tests in the laboratories determine the best raw materials. Close inspections insure highest quality in all finished products. And efficient service brings the “best” to your door, just when you want it! For real satisfaction . . . Shop with Sears!

**4-H Club Members Are Always Welcome at**

# **Sears, Roebuck and Co.**

**15th St. at Cleveland**

**Kansas City, Mo.**

*Retail Stores in These Kansas Cities*

**Wichita**

**Topeka**

**Hutchinson**

**Coffeyville**





**ATTEND**  
**THE KANSAS NATIONAL**  
**4-H C-LUB FAT STOCK SHOW**

**NOVEMBER 11 TO 15, 1935**

*"The Fat Stock Show Devoted Exclusive to All the  
4-H Clubs of Kansas"*

**And Visit**

**THE KANSAS LIVESTOCK MARKET**  
**THE WICHITA UNION STOCK YARDS**

*"The Market That Satisfies"*

**ASK YOUR DAD**

●  
**Who makes Red Bottom Stock  
Tanks and Red Top Grain Bins  
and he will answer**

●  
**COLUMBIA STEEL  
TANK COMPANY  
KANSAS CITY, MO.**

**GREETINGS**



**To the Members of the  
4-H Clubs With the Best  
Wishes of**

**ARTHUR CAPPER**





With a—

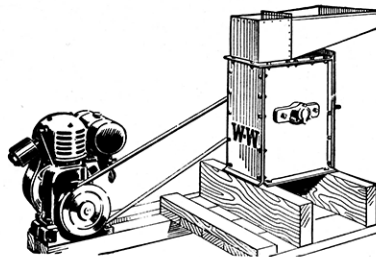
**JOHN DEERE TRACTOR**

You Can Save  
From \$1.00 to \$2.00 per day  
in fuel costs alone!

**John Deere Plow Company**

KANSAS CITY, MO.

Feed Grinders  
Water System  
Irrigation Pumps  
Grain Blowers  
Air Circulators  
Electric A. C. Welders



*Thank You*

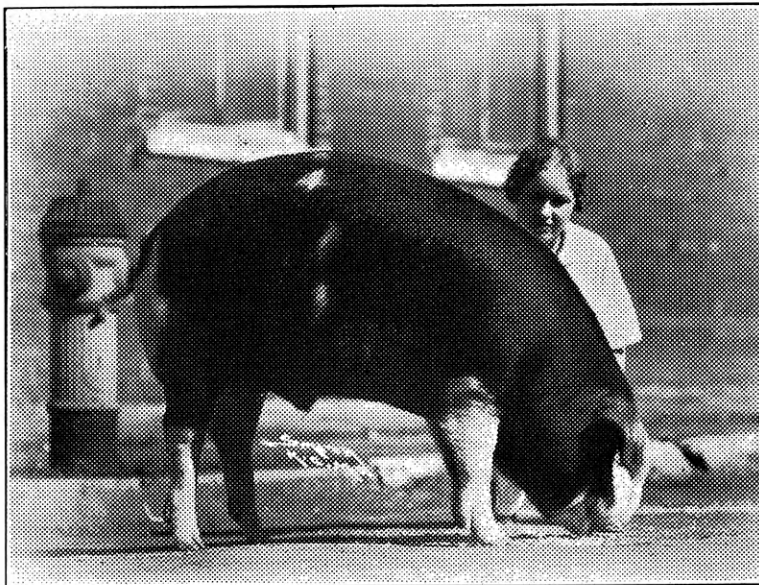
For Allowing Us to Cooperate in This Publication

YOURS IS A WORTHWHILE CLUB

**THE W-W FEED GRINDER CORP.**

WICHITA, KANSAS





Ruth Angle, Courtland, Kansas, with her Poland China barrow which was Grand Champion of Junior Divisions, 1934 American Royal Show at Kansas City. Sold by John Clay & Co. to Professional & Business Women's Club, Kansas City, at \$25.00 per cwt., top price.

**When You Have Cattle, Hogs, Sheep to Market—  
When You Want Stockers or Feeders—**

**IT PAYS TO DEAL WITH**

**JOHN CLAY & COMPANY**

**LIVESTOCK COMMISSION**

**Established in 1886**

**KANSAS CITY STOCK YARDS**

We also have our own completely equipped offices at Chicago, Omaha, St. Joseph, St. Louis, Ft. Worth, Denver, Sioux City, St. Paul, Ogden.



# HOTEL PRESIDENT

KANSAS CITY, MO.

*Garage in Connection—Coffee Shop*

All Rooms With Bath

Rates from \$2.00

Compliments of the

**KANSAS LIVESTOCK  
ASSOCIATION**

With All Good Wishes to

**4-H CLUB MEMBERS**

**OLIVER**

Farm Equipment Company



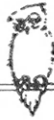
Makers of the Highest Quality Farm Equipment. Demanded by the Modern Farmer.



**OLIVER FARM  
EQUIPMENT COMPANY**

KANSAS CITY, MO.





Compliments of  
**NATIONAL** *Bellas Hess, Inc.*  
New York City and Kansas City, Mo.



*Style Specialists by Mail Since 1888*

We welcome your patronage, and cordially invite you to pay us a personal visit

**The  
LIBERTY LIFE  
Insurance Company  
of Kansas  
TOPEKA**

**A wife sometimes objects to  
Life Insurance—  
A widow never.**

We are happy to list in our accomplishments the fact that we have always sponsored and promoted 4-H Club Work.

**Boys and Girls—We Believe  
in You**

**Producers Commission  
Association**

**Farmer Owned and Controlled**

**St. Joseph, Mo.      Kansas City, Mo.  
Members of the National Live Stock  
Marketing Association**





**NO COVER CHARGE** Bud Tracy and His Orchestra **NO MINIMUM CHARGE**  
**Good Food and Good Music—A Gay Time You Will Enjoy**  
 at the

**BALTIMORE BUFFET SUPPER CLUB**

Hotel Baltimore  
 11th Street Entrance  
 KANSAS CITY, MO.



*It's*

**Comfortable—** in spacious  
 guest rooms.

**Convenient—** in location  
 next door to  
 everything in  
 downtown  
 Kansas City

**Rooms With Bath \$2.00 Up**

at the

**Hotel Baltimore**

Thos. C. Bourke, Mgr.  
 KANSAS CITY, MO.



# SAVOY HOTEL

9th & Central, Kansas City, Missouri

**Assisting All Possible in the Promotion of 4-H Clubs Interests**

Special rates for American Royal week. 75c per person per night for a room with bath occupied by two persons. 60c per person per night for room with bath occupied by four persons—good beds, no cots.

**You Will Enjoy Real Hospitality at the Savoy**

**These Rates Are Special to 4-H Groups Only**



**The Hotel Commonwealth**  
**400**

*Rooms With Bath and Radio*

**\$2<sup>00</sup> and \$3<sup>00</sup>**

*Popular Priced Coffee Shop*

**GARAGE ADJOINS HOTEL**

**KANSAS CITY**  
BROADWAY OFF 12th

**1935**  
**Kansas Free Fair**  
**4-H Club Show**  
**TOPEKA**  
**SEPT. 9-14**

**More Than Double the Prize Money of Last Year**

Always vitally interested in 4-H Club activities, this year the Kansas Free Fair will present to these representative boys and girls . . . .

**A NEW 4-H CLUB LIVESTOCK BUILDING**

MAURICE JENCKS,  
Manager-Secretary.

## For Girls Only

The girls graduating from Oklahoma A. & M. College today will be the homemakers of tomorrow.

Today, you may not be interested in Home Canning or Kerr Jars. . . . but tomorrow, that's a different story. Eventually you probably will be very much interested in homemaking and home canning.

At that time, we want you to remember what we tell you here, that Kerr Jars are the original "Self-Sealing" Jars. They are simple, safe and sure and have been the choice of discriminating homemakers and home economics teachers for over 33 years.

When the time comes that you want information on Kerr Jars, Caps and Lids—whether it is in a day or so or ten years from today—just write us for FREE Home Canning Literature. However, your mother, sister or aunt would be glad to have this valuable canning literature, so why not write now? Should you have problems on any phase of home canning, our Research and Educational Department will be glad to hear from you and to help you.

Remember, for the home canning of ALL Products—Fruits, Vegetables or Meats—by ALL Methods, use only genuine Kerr Jars, Caps and Lids.



**KERR GLASS MANUFACTURING  
CORP.**  
Sand Springs, Okla.

**Make Your Home Canning and Preserving Easier, Safer,  
and More Successful by Using "Atlas Jars"**



Write to Department "C" for complete information regarding their National Canning Contests open to 4-H Club Members and to Home Economic Students; also for latest edition, "ATLAS Book of Recipes and Helpful Information about Canning."

**HAZEL-ATLAS GLASS COMPANY**  
Wheeling, W. Va.



# **PROPER BREEDING PROPER FEEDING PROPER MARKETING**

Are the three main factors that have brought success to the livestock industry.

In order to secure best returns for your efforts in breeding and feeding livestock should be marketed under competitive conditions.

The Kansas City Stock Yards has many buyers for each kind and class. Their purchases are made under competitive conditions that insure greatest net returns.

The American Royal Live Stock Show to be held this year, October 19-26 extends a cordial invitation to all the people of Kansas, and especially to Boys and Girls members of 4-H Clubs.

**The Kansas City Stock Yards Co.  
American Royal Live Stock Show**





# *Autographs*

