

6307
K 165
Series

June, 1963

15 Cents

KANSAS 4-H

Journal

The 4-H Family Magazine

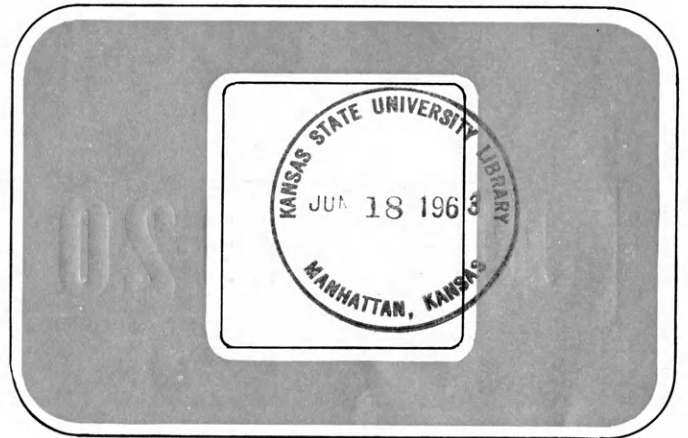
Kansas 4-H Foundation, Inc., Publisher

A SALUTE TO

U. 9:6

KANSAS BANKERS

50



YEARS

OF CONTINUOUS SUPPORT TO 4-H CLUB WORK



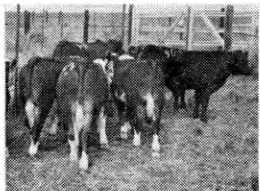
Boys and Girls, this can be you



JULY 19-20

at the CK Ranch
Brookville, Kansas

Bidding and Buying one of these with the Gooch Red Circles you save from Gooch's Best Feeds and Food Products!



40 STEER CALVES



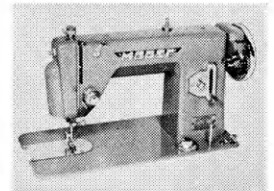
40 REGISTERED GILTS



5 REGISTERED HEREFORD
HEIFERS



5 REGISTERED HOLSTEIN
HEIFERS



10 MORSE SUPER
SEWING MACHINES

at the 12th Annual (no money)

GOOCH



AUCTION

Ask your Gooch Dealer, Mill Representative or write the nearest mill office for the Red Circle Auction brochure that describes the \$480 in Achievement Awards — the \$300 Gooch Scholarship — the 4-H Club Square Dancing contest planned for the 12th Annual Gooch Red Circle Auction.

GOOCH FEED MILL COMPANY

- Salina, Kansas
- Lincoln, Nebraska
- Dalhart, Texas
- Vicksburg, Mississippi
- Council Bluffs, Iowa

No Magic in 4-H; Just Reality

IT'S BIG! That's one way to describe 4-H. Twenty-two million Americans are former 4-H Club members. More than 2 1/3 million youngsters in the United States are now enrolled and Kansas has more than 31 thousand.

The real measure of 4-H is in the job it does for youth.

The main requirement of membership is a willingness to learn by doing, and "to make the best better"—the club motto. One must also agree to work on a project and follow 4-H ideals and standards.

The great reality in 4-H work is discovering the "why" as well as the "how" by those who take part. Let's see more youth benefit from this great organization by "expanding" 4-H.

A Letter

Dear Editors

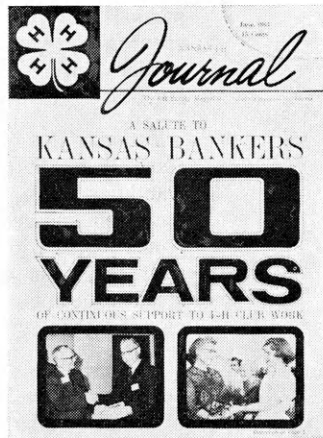
Enclosed please find our check for our share of the 4-H Journal subscriptions for the 4-H Club families in Cherokee county.

We are more than happy to do our share towards supporting and extending 4-H work in our county and we feel that this is some of the best advertising money that we spend.

Many of our 4-H families and members have expressed their appreciation for the Journal and we do know that it is a worthwhile publication.

A. F. Leonhard
Vice President
The American National Bank
Baxter Springs, Kansas

**OUR
COVER**



The Golden Anniversary of continuous backing of 4-H in Kansas by the Bankers Association represents a commorable achievement. It is our pleasure to present this announcement to you in our June issue.

The left picture on the cover represents the fine support many people and businesses are giving to the Kansas 4-H Foundation. Memberships and Shares are awarded to these interested donors.

The right cover picture represents the sincere appreciation 4-H'ers have of the fine things these interested persons and businesses are doing for 4-H in Kansas.



KANSAS 4-H
Journal

Vol. IX, No. 6

June, 1963

IN THIS ISSUE

4-H Foundation Resolution 4
(Kansas Bankers 50 Years)

Bankers Golden Anniversary 4

Games To Share With You 9

Music Appreciation 10
(Song of the Month Feature)

Echoes of Cheers! 11
By Gary Lafferty

Learning Cuts of Meat 12
By Lora Mae Smith

Lucky? You bet! 14
By Gregg Thomas

Launch With Desire;
Complete With Fulfillment 14
By Sue Eckermann

Project 4-H Club 17
(A short story by Margaret Jacobsmeyer)

Rock Springs Ranch Enters 18th Season 19

Your Best Foot Forward 19
By Mari Carpenter

This is Kansas 4-H 20
(Pictures from 4-H'ers)

Ideas That Work 22

Don Esslinger..... Editor

Editorial and Business Office

Phone JE 9-2211 Ext. 208 — Manhattan, Kansas

Published Monthly By
KANSAS 4-H FOUNDATION, INC.

J. Harold Johnson.....Executive Director

BOARD OF TRUSTEES

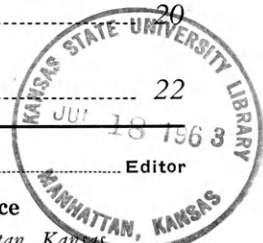
- W. Dale Critser, Chrm.Wichita
- E. B. Shawver, Vice Chrm.Wichita
- D. J. Atha.....Shawnee Mission
- *Harry Darby.....Kansas City
- Mrs. Olive Garvey.....Wichita
- Clifford Hope.....Garden City
- A. D. Jellison.....Junction City
- Harold E. Jones.....Manhattan
- J. J. Moxley.....Council Grove
- George B. Powers.....Wichita
- Roger E. Regnier.....Manhattan
- Dolph Simons.....Lawrence
- *Lester Weatherwax.....Wichita
- *Fred D. Wilson.....Andover
- *Advisory Members

Second Class Postage Paid at Lawrence, Kansas. Return Form 3579 to Kansas 4-H Journal, Manhattan, Kansas.

Advertising rates and circulation data on request.

Group subscriptions \$1.00 per year. Individual subscription \$1.50 per year. Single copy .15 cents.

Use of the 4-H name and symbol approved by the Secretary of Agriculture of the United States, January 23, 1951, under the provisions of the law as reenacted by Sec. 707 of the Act of June 25, 1948 Public Law No. 772, 80th Congress (10 USC 797)



Resolution

WHEREAS, Boys and Girls 4-H Club Work, an informal educational program available to all youth, has made a record which will go down in history as a great contribution toward preserving the American way of life, and is recognized for its work in developing good citizens, with more than 200,000 Kansas 4-H alumni assuming roles of adult leadership; and

WHEREAS, the Bankers of Kansas have always given encouragement and financial support to worthwhile programs and activities for young people; and

WHEREAS, with early records indicating support to "home culture," "corn," "pig," and other clubs for boys and girls which clubs were the forerunners of 4-H Clubs; and

WHEREAS, the records of Boys and Girls Club Work in 1914 report that "state winners in the various contests were decided upon and \$225 in cash prizes, contributed by Kansas Bankers Association, distributed;" and further, this support by Kansas Bankers Association having been continued since that time, with hundreds of 4-H members receiving educational trips and other recognition, as well as financial assistance with projects, many of which laid the foundation for future careers; and

WHEREAS, 1963 is the 50th anniversary of Kansas Bankers Association support to 4-H Club work; now therefore

Be it resolved by the Board of Trustees of the Kansas 4-H Foundation, Inc., that: our organization acknowledge with sincere gratitude the continuous friendship and financial support of the Bankers of this state and the Kansas Bankers Association; and further, we recommend that this Golden Anniversary year be observed by 4-H youth and their leaders through suitable celebrations and expressions of appreciation.

BANKERS Golden Anniversary

This year marks the 50th Anniversary of Kansas Bankers' Association continuous support to 4-H Club work—a record of which each organization may well be proud. Individual banks throughout the state have, also, given strong support from the very beginning of 4-H work.

In the words of J. Harold Johnson, executive director of the Kansas 4-H Foundation, "this recognition has been of tremendous value in stimulating achievement in the 4-H program."

The Foundation commended the bankers of Kansas and the KBA in a resolution adopted recently, pointing up the 50th anniversary of Kansas Bankers Association support.

This is the year when 4-H Clubs—members, leaders and parents—will say "Thank you, Mr. Banker." Bankers Golden Anniversary Birthday Cakes, baked and decorated by 4-H girls, will make their appearance in nearly every county. Initiative will be up to each 4-H Club.

On a state-wide basis, June 6 is a red-letter day—a special certificate will be presented to representatives of Kansas Bankers' Association. The ceremony will be viewed by the Round-up delegation including 4-H'ers from every county.

Farm youth club work began at the turn of the century when select corn seed was given to boys to plant and to make an exhibit at the next Farmers Institute. The corn "demonstrations" expanded into pig clubs, calf clubs and sponsored projects in beef, pigs, poultry, garden, sewing, canning and bread making.

Perhaps the "Capper Clubs" which provided credit to farm boys and girls wanting a poultry, pig or calf project is best remembered in Kansas. Local banks joined with other groups, such as railroads, county fair committees, livestock breeding associations, and civic clubs in giving support.

A Kansas banker, W. Dale Critser, executive vice-president of Fourth National Bank, Wichita, is the Foundation chairman and has served as such since the founding in 1952 and many bankers throughout the state have taken an active part in supporting the program. Three other banker trustees serving the Foundation are W. Laird Dean, chairman, merchants National, Topeka (recently deceased); A. D. Jellison, chairman, Central National, Junction City; Fred D. Wilson, chairman, Andover State, Andover.

A HOMETOWN KANSAS BANK . . .
for everyone . . . individual,
family, estate, business,
organization, and corporation.
You are invited to visit with us.



The
FOURTH NATIONAL BANK
and TRUST COMPANY, Wichita
MEMBER FEDERAL DEPOSIT INSURANCE CORPORATION



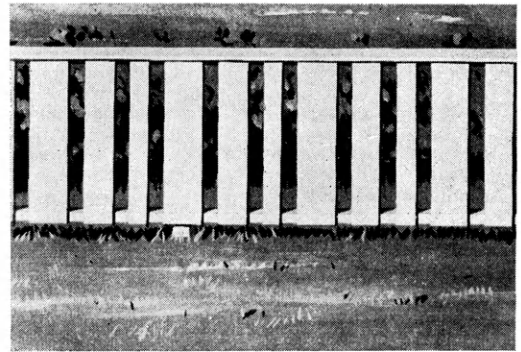
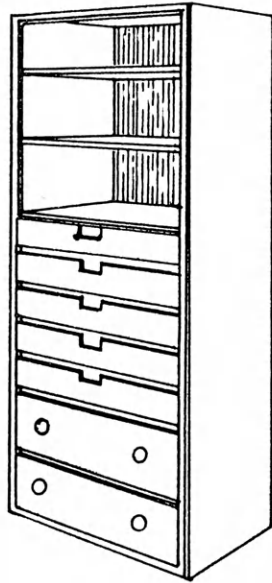
Alliance Companies
McPherson, Kansas
FIRE — CASUALTY — LIFE
Serving Kansas Since 1888

Respiratory Diseases, both acute and chronic, are a leading cause of disability and death in the United States today.

FREE!!

New 4-H Woodworking Plans

**CLOSET
STORAGE
CABINET**



A YARD FENCE, NO. 2

*Plans for These Projects Are
Available At The Lumber Dealers
Listed on These Pages. Ask For Them.*

**Insect
Display Box**



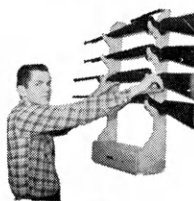
**Vertical
Shoe Rack**



**Sewing
Cabinet**



**Handy
Gun Rack**



**Rotating Selection
Tool Rack**



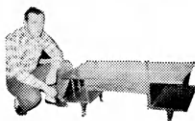
Shoe Shine Kit



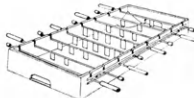
**Cart with
Removable
Trays**



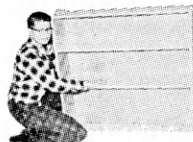
**Two-Level
Coffee Table**



**Football
Game**



Book Case



Pounding Board



Magazine Rack

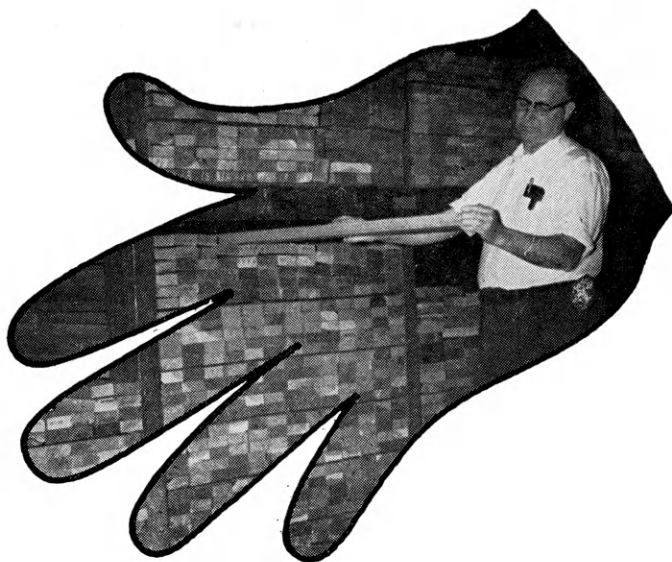


Walnut Chest



For other FREE 4-H woodworking plans, see the next pages.

Always on hand... YOUR LUMBERMAN is your best friend when you need good material



Abilene
Central Lumber Company

Agra
Agra Lumber Company

Alton
Alton Lumber and Coal Company

Arkansas City
Central Lumber Company

Asherville
Asherville Lumber and Coal Company

Ashland
Don Spotts Lumber Company
Home Lumber and Supply Co.

Atchison
Hixon Lumber Company

Atwood
Atwood Lumber Company

Augusta
Safford Lumber Company
The J. W. Metz Lumber Company

Beloit
Peoples Lumber and Coal Company

Bern
Bern Lumber Company

Bird City
The Bird City Equity Mercantile
Exchange
Griffin Lumber Company

Brownell
Richolson Lumber and Hardware
Company, Inc.

Cawker City
Cawker City Lumber Company

Chanute
Smith Lumber Company

Chapman
Sanborn Lumber Company

Colby
Hardman Lumber and Coal Company
Hess Lumber Company

Coldwater
Home Lumber and Supply Co.

Concordia
Sanborn Lumber Co.

Cottonwood Falls
Burgner-Bowman-Mathews Lumber Co.

Denison
Denison Lumber and Hardware
Company

Denton
C. H. Gish Company

Dodge City
The T. M. Deal Lumber Company
International Paper Co., Long Bell Div.

Easton
Easton Lumber Company

Elkhart
Elkhart Lumber Co.
The Star Lumber Company

Emporia
Home Lumber and Supply Co.
The Smith Lumber Company

Eureka
A. C. Houston Lumber Company

Everest
Alexander Lumber Company

Fowler
The T. M. Deal Lumber Company, Inc.

Fredonia
The Home Lumber & Supply Co.

Garden City
Ed Porter Lumber Company

Garnett
Star Grain and Lumber Company

Gaylord
Hardman Lumber Company

Glen Elder
Dickinson Lumber Company

Goodland
Hardman Lumber Company
Rasure Lumber Company

Great Bend
Everitt Lumber Company
Whitesell Lumber Company

Greensburg
Home Lumber and Supply Co.

Hartford
Thomas Lumber Company

Hays
Hardman Lumber Corporation, Inc.

Healy
Healy Co-op Elevator Company

Hill City
Hardman Lumber Company

Hillsboro
Hillsboro Lumber Company

Holton
Holton Lumber Company

Holyrood
Home Lumber and Supply Co.

Horton
Horton Lumber Company, INC.

Hugoton
The Star Lumber Company

Hutchinson
Davis Lumber & Building Center, Inc.
F. E. Perry Lumber Company

Iola
Klein Lumber Company

Johnson
Seyb-Tucker Lumber and Implement
Company

Kinsley
Kinsley Co-op Exchange Lumber Yard
Home Lumber and Supply Co.

LaCygne
Blaker Lumber and Grain Company

LaHarpe
Blaker Lumber and Grain Company
Diebolt Lumber and Supply

Lakin
Hart and Company
Lakin Lumber Company, Inc.

Lancaster
T. E. Snowden Lumber Company

Lansing
International Paper Co., Long-Bell Div

Larned
Clutter-Lindas Lumber Company

Lawrence
Woods Lumber Company
Logan-Moore Lumber Company

Lebanon
Lebanon Lumber Company

Lenora
Lenora Lumber Company

Liberal
The Star Lumber Company

Little River
The T. M. Deal Lumber Company, Inc.

Macksville
Home Lumber and Supply Co.

Madison
Madison Lumber Company

Manhattan
Griffith Lumber Company
Ramey Brothers

Mankato
Mankato Lumber Co.

Marysville
Howell Lumber Co.

Meade
Home Lumber and Supply Co.

Minneola
The T. M. Deal Lumber Company, Inc.

Moundridge
Clayton Vogt Lumber Co., Inc.

Neodesha
O. E. Woods Lumber Company

Ness City
Rock Island Lumber Co.

Norton
Norton Lumber Company

Nortonville
Alexander Lumber Company

Oakley
Oakley Lumber Company
Golden Belt Lumber Company

FREE 4-H Woodworking Plans
Available at Lumber Yards
Listed On These Pages
They Display This Emblem



THE lumber dealers listed on these two pages are supporting the 4-H woodworking project with this information and free woodworking plans. Get your plans from them.

Oberlin
Building Supply Headquarters

Offerle
Offerle Co-op Lumber Co.

Olathe
Cowley Lumber and Hardware Company

Onaga
Onaga Lumber & Grain Co.

Oswego
Home Lumber and Supply Co.

Ottawa
Hubbard Lumber Company, Inc.

Paradise
Paradise Lumber Company

Parker
Blaker Lumber and Grain Company

Parsons
O. E. Woods Lumber Co.

Phillipsburg
Hardman Lumber Company

Plains
Home Lumber and Supply Co.

Pleasanton
Blaker Lumber and Grain Company

Prescott
Prescott Lumber Company

Pretty Prairie
The George W. Ulitch Lumber Company

Protection
Home Lumber and Supply Co.

Russell
Hardman Lumber Company of Russell Inc.

St. Francis
St. Francis Equity Exchange

St. Marys
St. Marys Lumber Company

St. John
English Lumber and Supply Company
Home Lumber and Supply Co.

Salina
Everett Lumber Co., Inc.

Satanta
The T. M. Deal Lumber Company, Inc.

Seneca
Koelzer Lumber Company
Seneca Lumber Company

Severy
Tolman-Gibbon Lumber Company

Smith Center
Mid-West Lumber Company
Smith Center Lumber Company

Stafford
The T. M. Deal Lumber Co., Inc.
Home Lumber and Supply Co.

Stockton
Stockton Lumber Company
The Golden Belt Lumber Co.

Sublette
The T. M. Deal Lumber Company, Inc.

Syracuse
Everitt Lumber Company, Inc.

Tonganoxie
Hunter Lumber Company

Topeka
Whelan Lumber Company
Main Store, 715 E. 4th
Pauline Branch at Pauline
Highland Crest Branch, 200 E. 29th
Seabrook Branch, 2019 Gage

Ulysses
The T. M. Deal Lumber Company, Inc.
Ulysses Lumber Co.

WaKeeney
Hardman Builders Supply Company

Wakefield
Sanborn Lumber Company

Wathena
Farmers Grain and Lumber Company

Wichita
Lawrence Lumber Company
Stockyards Cash and Carry Lumber Co.
Alexander Lumber Company

Wilson
Hoch Lumber Company
Wilson Lumber Company

Winfield
A. B. Everly Lumber Company

Woodbine
Kohler Lumber Company

Zenda
The George W. Ulitch Lumber Company

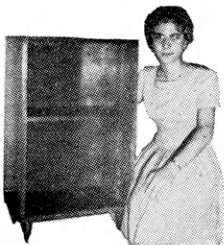
Missouri

Kansas City
The George W. Ulitch Lumber Company, 11432 Truman Road

**Ask For
Your 4-H
Woodworking
Plans.**

**Looking for Woodworking Ideas?
See Any of These Lumber Dealers
for a Free 4-H Woodworking Plan**

Bedside Stand



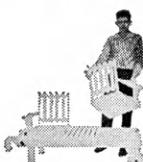
Simple Work Bench



Chest of Drawers



Lawn Set



Bill's Baseball Rack



Patio Planter



Two Games



Yard Cart



Child's Step Stool and Chair



OTHERS

- | | |
|--------------------|-----------------|
| Gate Sign | Coffee Table |
| Martin House | Back Yard Fence |
| Hanging | Lazy Susan |
| Flower Box | Tete-A-Tete |
| Funny Book | Bathroom |
| Rack | Holding Gate |
| Dog House | Wall Cabinet |
| Picnic Table | Sandbox |
| Sheep | Blue Bird House |
| Blocking Box | Picnic Bench |
| Bookcase | Mail and |
| Headboard | Memo Board |
| Collapsible Visual | Christmas |
| Aid Stand | Tree Gifts |
| Typing Desk | Automatic |
| and Bench | Bird Feeder |
| Toy Stove | |

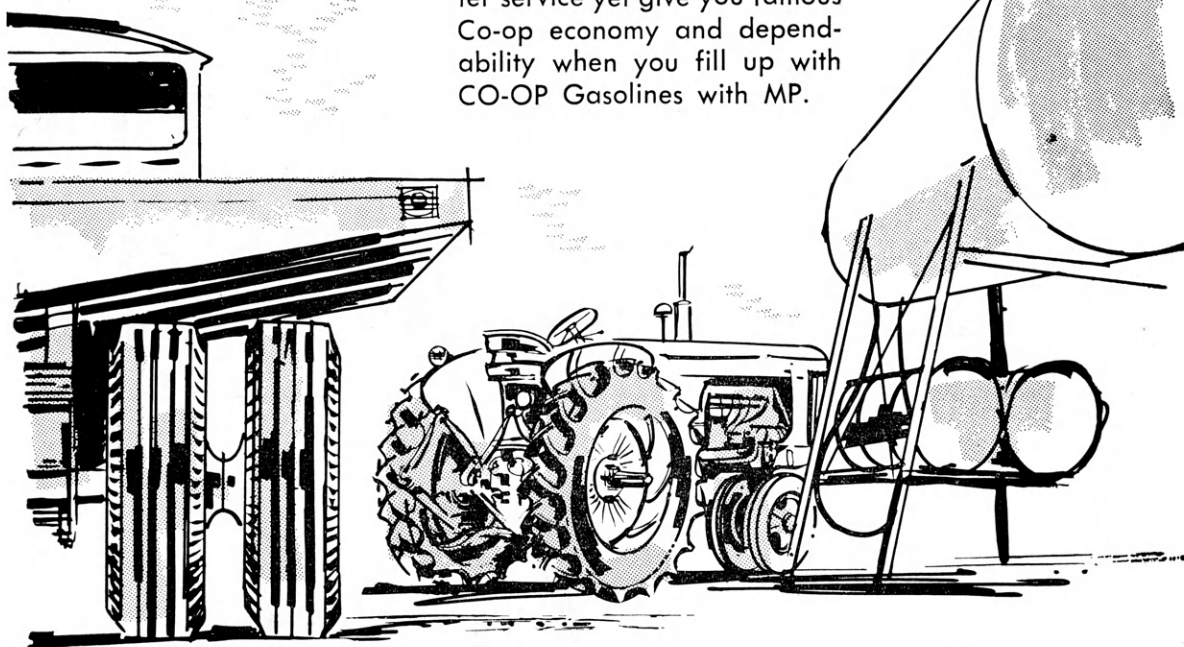
Protect Your Farm Engine Power and Service with

COOP GASOLINES

PLUS mp*

** In both Regular
and Ethyl*

MP is a surface-active additive that not only effectively removes carburetor deposits, but also keeps your tractor carburetor free of new deposits. Your farm engines, including tractors, trucks and cars will pack more power, give better service yet give you famous Co-op economy and dependability when you fill up with CO-OP Gasolines with MP.



MP Saves You More Truck and Tractor Power— Yet Costs You Nothing Extra!

CO-OP Gasolines plus MP are made in farmer-owned CO-OP Refineries under strict quality control standards to serve you best. MP additive is in both Regular and Ethyl . . . so choose the CO-OP Gasoline that meets your needs best. It's CO-OP Gasoline for quality, service and economy.

**Ask for CO-OP Gasoline with MP at Your Co-op or call Your
Co-op Tanktruck Salesman**

CONSUMERS COOPERATIVE ASSOCIATION

KANSAS CITY, MISSOURI

GAMES

TO SHARE WITH YOU

By Dick Tomkinson, Specialist in 4-H

RECREATION

Thanks to Carol Harris of Sumner County, Kansas, 1962 4-H State Recreation winner for sharing "Autograph Bingo" and to her mother, Mrs. Ralph Harris, community club leader, for sharing "Wahoo".

Carol says "Autograph Bingo" is lots of fun and it helps people get acquainted. (This makes a good "starter" game to use before the business meeting begins. It gives the members something to do plus getting acquainted and having fun.)

"AUTOGRAPH BINGO"

| | | | | |
|------------|-------------|-------------|-------------|-------------|
| Dick Brown | Ann Hall | Paul Jones | Betty Allen | Duane Ryan |
| Alice Mann | Mike Sand | Gerry Rupp | Vicky Spark | Dixie Shrag |
| Mary Miner | Carol King | Alan Long | Sue Swift | Gaye French |
| Monty Lang | Nancy Payne | Roger Sitts | John Hull | Paul Schull |
| Ruth Dyer | Ed Esau | Van Myer | Peg Burk | Paula Lang |

Prepare papers as indicated with 25 squares. Pass them out to each person present. They sign one another's paper by putting their name in 1 of the squares. When the leader is ready he or she will call a name. All who have that name on their paper will cross out that square. The person whose name was called then calls a name from his paper. Again the name called is crossed off on all papers. This continues until someone has 5 squares in a row crossed out and yells "Bingo". It may be vertical, horizontal or diagonal.

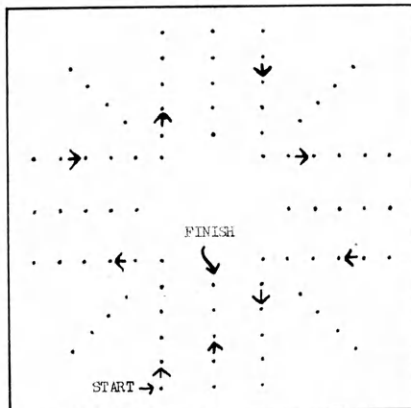
"WAHOO"

"Wahoo is a good homemade game that our family enjoys" states Mrs. Harris. (Also "Wahoo" can be used for early comers at your 4-H meeting.)

Drill holes, as indicated, big enough to hold marbles. Each player uses 4 marbles and 1 dice.

Place colored marbles in each corner 4 alike to each player.

Wahoo is started by rolling dice. A player can begin only if a 1 or 6 is rolled. If any other number turns up, he passes the dice to the next player. When a 1 or 6 is rolled, start in the



20 1/2" x 2 1/2" - 1/2" Plywood
1 1/2" Between Center of Holes

lower left corner directly in front of player. Proceed around the board, with marbles, as indicated by arrows. Player moves the number of spaces to match number he rolls with dice. Anytime a 6 is rolled, player gets

another roll and move. A player cannot jump one of his own marbles, but, may jump marbles of other players. If another player's marble is where your marble is to stop the other player's marble must go back to the corner for a new start. Your marble takes its place. Each time a marble is removed from play that player must once again roll a 1 or 6 to start it around the board.

The first player to have all 4 of his marbles completely in his own finish line wins. Remember a marble can always be removed as long as it remains on the board and in a position where another marble may land.

Share your favorite dance, song, game, skit, ect. with other 4-H'ers by sending it to the State 4-H Office.

Needed

Two used pianos—in good condition—for use at Rock Springs Ranch. Contact Merle Eyestone, Director, Rt. 1, Junction City.

Kansas 4-H Journal Sponsors

WELCOME TO THESE NEW SPONSORS

Marion
Lincolnville Farmers Union Co-op,
Lincolnville

Morris
Farmers Co-op Association,
Alta Vista
Farmers and Drovers Bank,
Council Grove

Hunter Sales Co., Council Grove
McClintock Motor Company,
Council Grove
Mor-Kan Grain Company,
White City
Rural Electric Cooperative Ass'n.,
Council Grove
Wilsey Co-op, Wilsey

These Sponsors Have Renewed Their County Support of the Kansas 4-H Journal

Barton
The First National Bank,
Great Bend

Cheyenne
Citizens State Bank, St. Francis

Ford
Bucklin State Bank, Bucklin
Farmers State Bank, Bucklin
Fidelity State Bank, Dodge City
First National Bank, Dodge City
Ford County State Bank, Spearville

Marion
Farmers Cooperative Ass'n., Marion
Farmers Co-op Equity Union,
Hillsboro
Farmers Cooperative Grain Ass'n.,
Durham
Farmers Cooperative Grain &
Merchantile Co., Lehigh
Marion County Co-op Ass'n.,
Durham
Peabody Co-op Equity Exchange,
Peabody
Tampa Cooperative Ass'n., Tampa
Tip-Top Dairies Company, Hillsboro

Labette
American State Bank, Oswego
Chetopa State Bank, Chetopa
First National Bank, Edna
First National Bank, Oswego
First National Bank, Parsons
Labette County State Bank,
Altamont
Parsons Commercial Bank, Parsons
State Bank of Parsons, Parsons

Morris
Morris County Farm Bureau,
Council Grove

Wabaunsee
Alta Vista State Bank, Alta Vista
Eskridge State Bank, Eskridge
First National Bank, Alma
First National Bank, Harveyville
The Stockgrowers State Bank,
Maple Hill

HYMNS, GOSPELS, AND SPIRITUALS

Learning to know the music of the church can be a very interesting music appreciation project.

SPIRITUALS

First let's think about the Spirituals. You know, of course, that these are most often associated with the negroes of the South. But listen closely to them and see what they are saying.

Over and over you will hear expressions of sorrow, resignation, and protest; and see how often these songs will tell you of the negro's dream of going up and up to that land of sunshine and beauty. "Jacob's Ladder" and "Dem Golden Stairs" are two examples of this. Listen too for songs that tell for the longed Black Messiah who will lead his people out of bondage. "Go Down Moses" is one of these songs. Try to get a

record by Marian Andersen or Mahilia Jackson for your group to listen to. Learn something about the lives of these great negro women and see if you can understand more fully why they are able to sing the songs of their people with such deep feeling.

GOSPEL HYMNS

Another kind of sacred music is called the Gospel Hymn. Many churches use these gospel songs in their church services because they have simple, lilting tunes and the congregation likes to sing them. The word Gospel means "good news", and these songs often tell the story of Jesus and man's relation to him. Sometimes we hear Gospel tunes referred to as old time songs. That is not really true when we realize most of them are only something less than a hundred years old compared to many of the true hymns that may be centuries old. Music critics tell us that most Gospel music is not really very good music and may not live too much longer. Many people feel that these songs most truly reflect their own religious feeling.

HYMNS

The more formal Protestant churches use only true hymns. The hymn is defined as a song of praise to God and is sung as an act of worship. "All Hail the Power of Jesus's Name" and "Joyful, Joyful We Adore Thee" are two hymns that are examples of songs that express worship. Many students of hymnody say that only the great music of the world is worthy to be used in the church, and only hymns whose words make a statement of worship should be used. Many songs called true hymns by some churches are rejected as being unworthy by others. "Onward Christian Soldiers" stirs up such a disagreement. What do you think, is it a true hymn?

Examine your own church's song book. Are the hymns gospel hymns or are they true hymns? Do you like the songs used in your church? Why?

Carolyn Noteman, Lyon county, goes . .



. . from this . . . to this and back again

as she gives her demonstration in

PERSONAL DEVELOPMENT

Carolyn has added a spark to the appearance phase of the Personal Development project with her demonstration—"Teenage Monster."

During the demonstration, with the help of make-up and other equipment, she shows how some teenage girls look—and later—how they should look.

She has given this demonstration many times since it was originally presented at the Lyon county 4-H Club Day. One of her performances was on television during National 4-H Club Week.

Appearance is one of the seven phases of the Personal Development project. This project, although relatively new, is one of the most popular 4-H projects among teenage members.

SOUTHWESTERN BELL



TELEPHONE COMPANY

Elizabeth Jones of the Rinker 4-H Club, Lyon county, is selecting her Personal Development project phases.



Echoes of Cheers!

By Gary Lafferty
County Club Agent
Lyon County

4-H Personal Development project work is on a county-wide basis in Lyon county.

The 1963 program was planned for the year by a committee of county-wide project leaders, club members and the agent last October.

It includes seven county-wide meetings. The final is an outing to put into practice what has been learned. Each meeting is handled by the project leaders and club members. Members alternate so several take part in the leadership of the program.

Topics in this years program include:

November—Dating: Getting a date and what to do on a date were highlights.

January—Character Develop-

ment: Cecil Eyestone, State 4-H Specialist, spoke on "Thoughtfulness, Everyday courtesies, and Behavior problems. How to make and keep friends were other topics presented on the program."

March — Relationship With Others was emphasized with the social activities aspect in mind.

April—Grooming and Appearance: Special guest—Miss Eleanor Echo, 4-H Stylist for Simplicity Pattern Co., New York.

May — Career Exploration: Guest—Dr. Duane Acker, Director of Resident Instruction in Agriculture, Kansas State University. Topics — Why attend college, preparation for college and college life.

July — Citizenship will be the program highlight. Local Government officials will be guest speakers.

August — Wrap-up Party: A meal, dance, and fun games to practice what has been learned.

Members invite their non-4-H friends to attend these meetings. There is a lot of interest and enthusiasm in the Personal Development project in Lyon county.

Next year we are planning a larger and more emphasized program with an increase in members. We feel this years' program has helped us hold the interest of many of our older club members.

Below at left are, from left; Larry Beyer, Sharilyn Wyatt, Marilyn Wyatt and Terry Jones who were members of a panel discussion presented at a Personal Development project meeting on dating. At right are, from left; Tom Dicken, Belinda Carter, Don Berrie and Linda Bugbee who led a discussion on manners. Here they are demonstrating the proper seating of their dates.



Learning O

They Stress How to S

By Lora Mae Smith
Larned, Kansas

Meat Utilization is a favorite activity of twenty-two 4-H members who are enrolled in Pawnee County 4-H Clubs. But why do they attend meeting after meeting and participate in each so willingly? Perhaps the answer lies in the fact that their meat utilization leader, Mrs. Walter Lewis, and the four older junior leaders plan the year's program in October. They plan a meeting for each month.

THE MEETINGS

Each of the planned meetings are made as educational as possible. The first few meetings are devoted to teaching the members how to draw the cuts.

At the first meeting the older junior leaders who have been on a county meat judging team help the members draw the loin cuts. The cuts of the round and shoulder are studied at the next two meetings. By drawing the cuts of meat, the members learn to identify meat by the bone and muscle structure. Mrs. Lewis sets up meat judging schools for the remaining meetings.

Most of these usually include a meat cutting demonstration by the local meat processor, Leon Rankin, or colored slides showing cuts of meat. At these county judging schools, members identify the cuts of meat and turn in their identification sheets. Mrs. Lewis records the results and uses these to select the county meat judging team. But no actual thought is given to a judging team until the last of August.

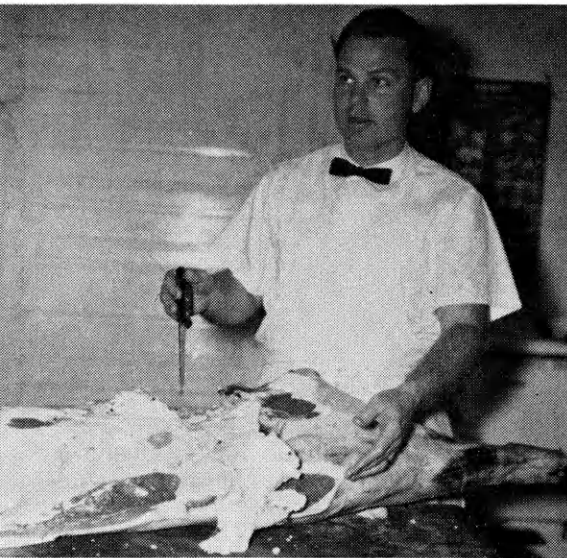
PROPER COOKING IS EMPHASIZED

Two meetings emphasizing the proper cooking of meat are held each year. One involves the dry heat cooking of tender cuts of meat and the other is on cooking less tender cuts of meat with moist heat. While the girls



Above: Getting a look at a beef hanging in the cooler helps to visualize how the cutting is done and from where the cuts are taken in relation to the live animal. Donniss Johnson is getting a close look at two sides of beef.

Below: Leon is probably saying, "where is the most expensive cut of beef?" or "what is a good dressing percentage for beef?", as he begins to cut up the hind quarter.



Pawnee county Meat Utilization program leader and Junior Mrs. Walter Lewis and Janet Beer. They arranged the cuts for the work-out.

Whether it be westerns, comedy, or an educational program, "Willie Wirehand" brings entertainment to you in your living room.

Television is just one of the many benefits of rural electrification to the farmer.



**KANSAS ELECTRIC
COOPERATIVES, INC.**

420 W. 9th

Topeka, Kansas



Cuts Of Meat

for and Cook Meat

are busily preparing the cuts of meat inside, the boys cook meat on the grill outside.

The meat cooked in the morning made a delicious noon meal for the members and their leader. In this way the members learn how to cook cuts of meat using the correct methods and how to prepare sauces to serve with the cuts.

ALL MEMBERS INVITED

The main concern of the Pawnee County Meat Utilization program is to give each member an opportunity to learn how to identify and cook cuts of meat. This is one of the reasons why there is no age limit on who can enroll in meat utilization. The members, both boys and girls, are exposed to an excellent atmosphere of education with Mrs. Lewis as their leader and the information that she passes on to them.

HELP FROM BUSINESSMAN

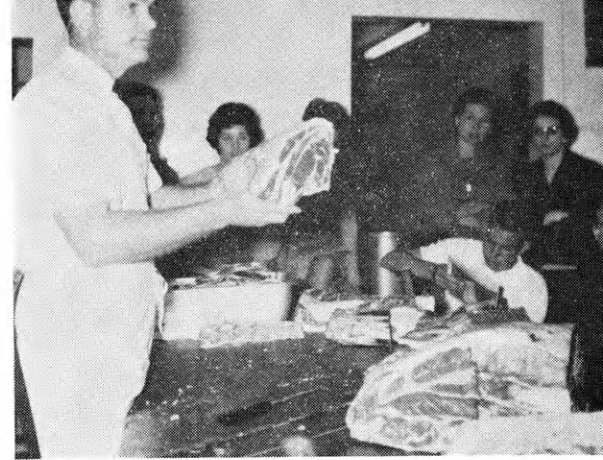
Another person who aids in the meat utilization program is Leon Rankin, Rankin Meat Shop. He is very helpful in promoting the meat identification phase by cutting halves of beef and pork carcasses each year for the members. All of the 4-H members appreciate his wonderful cooperation.

MEMBERS ENJOY IT

Dedria Dipman, one of the four older junior leaders who help with the Pawnee County Meat Utilization program, has this to say about it: "I really enjoy helping with such a growing activity, and I hope that soon it will become a project because of the many activities that it involves."

So this is the way the meat utilization program works in Pawnee County. Any county can organize a similar program, and its members can have the same benefits.

From left; Ruth Tombaugh, Dedria Dipman, Lora Mae Smith, identification and discussed them with the other 4-H'ers following



Above: Leon Rankin, local meat processor, is discussing cuts of beef during a cutting demonstration. Here he is working with the front quarter. The cutting was done in plain view of all 4-H'ers and parents in attendance.

Below: During the identification work-out, all members, parents and leader take part. From left are Donnis Johnson, Marsha Morill, Mrs. Lewis and Jon Deege.



now it's Pepsi
for those who think young

*and a tip of our cap to
Kansas 4-H members!

KANSAS PEPSI BOTTLERS ASSOCIATION



The cast of the play "Willie Gets Brain Fever"—left to right, front; Helen Turpin, Judy Medsker, Donna Turpin, Marilyn Coufal and Anita Ross. Back; Jerry Meng, Gregg Thomas and Jim Bush.

By Gregg Thomas
 Reporter
 Brenner Circle B
 Doniphan County

Lucky? You Bet!

"Do we have to practice again tonight?" How many times the members of the Brenner Circle B 4-H Club must have asked that question, the weeks before the County 4-H Day. "I don't want to give that demonstration again tonight." "Your left hand, start with your LEFT hand!" These were a few other comments repeated over and over. Sometimes the leaders and the members both wondered if it was worth it.

Then came The Day! The wind tried to blow it right off the calendar, but we had practiced too hard to let a "big blow" bother us. For some of us, it was our first time to take part in a 4-H activity. For others it was a challenge to do better than we had done in the past.

The day went along rapidly. We were busy giving six Project and Activity talks, five demonstrations, a one act play, singing in the chorus, dancing a Folk Game, and giving a musical game demonstration.

As all the clubs in the county gathered in the Auditorium to hear the judges decisions and their reasons; we wished we had practiced a little harder and more

willingly. But as the awards were announced, we were proud our parents and leaders had been firm and insistent.

The Regional was quite a challenge, but our speakers, demonstrators, and actors were all anxious to participate. It

surely wasn't an "ill wind" that reached 75 miles per hour while we were singing and promenading our partners.

Lucky? You bet! So next year we are going to work extra hard to try to do better than our best this year.

Launch With Desire,

By Sue Eckermann
 Sumner County

I always admired the junior leaders of our club and county when I was a young 4-H member. I was so very happy when I reached the eligible age for taking junior leadership as part of my 4-H program. During the years I have been a junior leader, the knowledge, skills, and experience gained are too numerous and various to mention. It is through Junior Leadership groups and 4-H programs such as these that we set, reach, and raise our high standards and values of truth.

Complete With Fulfillment

Selection And Effort Are
 "Musts"

There are so many different 4-H projects available that it is difficult to make a choice of a few. Each 4-H member should try to select projects most adaptable to him and his needs. I feel there is, however, one basic project which is adoptable to all 4-H'ers 14 years and older. The project to which I refer is junior leadership, and I think **each** and **every** member should participate in at least a few of the many things it offers.

Whether a junior leader is selling pop at a concession stand

for 4-H fair, helping an 11 year old member fill out their first record sheets, giving a program number at the Leaders' Banquet, or pouring tea at the Business Men's Picnic, the beneficial skills, knowledge, and experiences gained can never be destroyed or taken away.

Junior Leadership Offers So Much

Perhaps the most important part of junior leadership is the ability one gains to help younger 4-H members discover and develop new skills, talents, responsibilities, and objectives. In assisting other members, 4-H'ers often add to their own knowledge as well as further develop their personality and character. These things are important because they are what make us what we are, and we must live with ourselves throughout life.

Our annual Christmas Banquet and Dance held during Christmas vacation faced us with many questions on proper eating, talking, dancing, and socializing manners to be used that evening. I don't think I was the only junior leader in Sumner County who caught up on reading various parts of Emily Post's *Etiquette* for the big occasion!!

What More Could One Want?

Through the efforts of each and every 4-H junior leader, 4-H clubs and programs are bound to continue growing, prospering, and improving. Through the participation in this project, friendships are expanded, personal confidence is increased, responsibility is undertaken, work is accomplished, experience is gained, beneficial truths are realized, strong objectives are maintained, understanding is developed, efficiency notes appreciation, excellence is noticed through mastery, accomplishment are rewarded, and achievements are magnified.

What more could one want from a project!?!?

Wanted

Four or five saddles, new or used, for Rock Springs Ranch stables. Contact Merle Eyestone, Director, Rt. 1, Junction City.

PARTICIPATION PRIMES THE PUMP...



The basic philosophy of Farm Bureau includes the belief that every Farm Bureau member (husband and wife in each family) shall have an opportunity to participate in official policy-making activities of the organization. Every member availing himself of this opportunity should assume the obligation of making this opportunity meaningful by serious and objective study of actual information on each issue on which he expresses himself.

The county Policy committee has the responsibility of providing opportunities for members to study and discuss all issues in which farmers have an interest, and to make recommendations to the state Program of Work based on the conclusions adopted by a majority of members in the county. It is understood that study and discussion by members is not limited to those issues which the state committee has listed.

The county Policy committee conducts a county-wide meeting September 1 to 10. The full meeting should by formal vote accept, reject or amend the recommendations of all sub-committees. The committee meets as quickly as possible after the county-wide meeting to edit reports from sub-committees and to prepare the final report to the state Program of Work committee.

The county committee arranges an October meeting where tentative resolutions from the state Program of Work committee are studied and discussed and where delegates to the state convention are instructed.

Kansas Farm Bureau

105 County Farm Bureaus

Working Together



FOR MY CLUB,
MY COMMUNITY
AND MY COUNTRY

KANSAS 4-H CLUB WORK—EXPANDING CIRCLE OF UNDERSTANDING AND PROGRESS!

The youth of Kansas—greatest asset of the State—enhances its value immeasurably through active 4-H Club work.

We can all be grateful for the greater understanding 4-H promotes—in ever-widening circles that reach out from each individual 4-H member through his Club, his Community and his Country to better understanding of the World we live in.



Folger Coffee Co.
Kansas City



Project 4-H Club

By
Margaret Jacobsmeyer

"If I may interrupt you two ladies for a minute," Mr. Perkins said jokingly, "we're home."

"Already?" Lyn turned to Sue, "I didn't know you lived so close to the railroad station."

"We don't," Sue said surprised at finding herself in her own driveway.

Mrs. Perkins laughed. "You two have been so busy talking you haven't even noticed the time—we've been driving for a half hour."

Sue offered an explanation. "We've got a lot of catching up to do—we haven't seen each other for a whole month."

"Do you have to do it all at once?" Mr. Perkins teased. "After all—you'll be together for two weeks."

"I don't see how we can possibly do all the things we have to get done in just two weeks," Sue said anxiously, "couldn't you make it three or four?"

"I wish I could," Lyn said, "but I can't let Mike and Larry down on our truck garden—they're dividing my share of the work as it is."

"I know." Sue sighed and started getting out of the car, "I was just doing some wishful thinking."

Mrs. Perkins nodded sympathetically, "why don't you take Lyn to your room—she might want to change into something cooler and I'll fix you a cold drink."

"Are you real tired from the train trip?" Sue asked when the two girls were alone in her room.

"No—I'll be fine as soon as I've changed clothes."

"Good!" Sue exclaimed, "I've invited some of the kids from around here to come over and meet you after supper so we can start putting in some plugs for 4-H. If I'm going to try to get a 4-H Club started here we don't have any time to lose."

"That's fine with me—what did you have in mind?" Lyn asked.

"That's what we're going to have to figure out—I think we ought to approach it kind of casually." Sue walked back and forth while Lyn changed into shorts and a blouse. "I've got it," she said, "you can wear your 4-H blouse—that ought to arouse some curiosity."

"I didn't bring it," Lyn said, "I didn't think there'd be any place to wear it—wait a minute—I did bring my 4-H emblem necklace."

"That might even be better."

"Your snacks are waiting out on the screen porch," Mrs. Perkins said through the door.

"Thanks Mom—we'll be right there."

"Mmmmm—this is just what I needed," Lyn put down the tall frosty glass of lemonade and reached for a cookie.

Sue took a thoughtful sip from her glass. "We ought to have another plan," she said, "just in case the necklace doesn't do the job."

"We could make some 4-H cookies in the shape of a four-leaf clover—" Lyn began.

"That's a swell idea, I could say that we're serving them in your honor—oh but we don't have that kind of a cookie cutter."

"We don't need one—we'll make a cardboard pattern to lay on the dough and cut them out with a sharp knife—"

"—And after we frost them we can take Mom's cake decorating tube and make 'H's' on each leaf," Sue added.

"And just for good measure we could make 4-H puzzles like the Early Birds handed out at 4-H Days for your friends to take home."

Sue jumped up and stood at attention. "Sue Perkins ready for duty and awaiting your instructions."

"We'll need more recruits if we're going to get Operation 4-H Club launched by sundown," Lyn said with a laugh.

"Aye aye sir—or whatever they say in the

Army." Sue giggled, "let's go tell my mother she's been drafted."

Lyn and Sue had just changed their clothes and were brushing their hair when the doorbell rang and Sue's guests starting arriving.

"Let them in will you please Mom—we're not quite ready," Sue called.

"I didn't think we'd get everything done," Lyn confessed, "but we did it."

Sue nodded. "Now keep your fingers crossed that all our work pays off."

Sue introduced Lyn to the group waiting in the family room and added something that was not in the plans. "Lyn and I were in 4-H together."

"What's that?" a girl Sue had introduced as Jill asked.

"That's a club for farmer's kids," a tall freckle-faced boy named Tom answered quickly.

"It is no—" Sue began hotly and broke off.

Lyn couldn't help smiling at Sue's earlier remark to be casual.

"Tom's right," the girl next to him said, "I have some cousins who live on the farm and they belong to a 4-H Club."

Lyn's eyes met Sue's. Do something! Sue seemed to say.

"Did you know that you don't have to live on a farm to be in 4-H?" Lyn asked.

The girl with the cousins shrugged her shoulders. "I didn't think you were allowed to keep cows in town."

Tom laughed and everybody including Lyn and Sue joined in when he said, "we have pretty strict zoning laws."

"Cows are a 4-H project," Lyn told the group, "but so are automobiles, and cooking, and photography, and home improvement, and I'll bet you don't have zoning laws against any of those."

"Did I hear you mention automobiles?" the boy with the crew cut suddenly became interested in the conversation.

"Yes, if you take automotive as a project you learn basic care of a car and how to operate it efficiently, plus a lot of other information."

"Hmmm," the boy exclaimed thoughtfully and went over to sit beside Tom. "Sounds all right." Lyn heard him say.

"It lets me out," Tom answered with a yawn, "I won't be able to get a license for another year."

Lyn knew she needed Tom's support and she'd have to get it fast. The girl sitting next to him got up and Lyn took her place. "What do you plan on doing after you get out of school?" she asked.

"I might be an architect or an engineer—I like to mess around with things—why?"

"I was just wondering if there might be something in 4-H that would help you, and I think I know just the thing."

"Yeah? What's that?"

"Landscape Design and Improvement."

"What makes you think that would help me?"

"In that project you make your home grounds more useful and attractive—you could build retaining walls or walks, you could even build a patio—looks like that would be something a future architect would find helpful."

There was silence and Lyn saw that everyone was looking at them. Tom seemed to be thinking. When he finally said something it was almost as if he was talking to himself.

"Dad's been saying we ought to build a patio for the last couple of years—"

"My Mom's been after me to cook," one of the girls said, "she doesn't want me to start out being a housewife like she did—she always says she didn't even know how to boil water."

"You know—" Tom looked all around the room, "—that 4-H sounds okay—how do you go about joining one?"

"Starting one you mean," Sue said with a wide grin for Lyn.

"Starting—joining—whatever it is you do," Tom said.

"I know what," Sue said, "I'll get the refreshments and while we're eating Lyn can clue us in."

"What clever cookies," Jill said as Sue passed the plate of four-leaf clovers—are they for luck, I noticed you're wearing one on your necklace Lyn."

"It's the 4-H emblem," Lyn explained.

"What does it mean?" a girl they called Mary asked.

"I know ladies are supposed to be first—" Tom said good-naturedly, "but what about my question?"

"I'd like to ask something too," another voice said.

"Please," Lyn laughed, "one at a time. If nobody minds, I'll start with Tom's question. The first thing we do is see the County Extension Agent." Lyn went on to explain the part he would play, and from across the room Sue signaled a "C" with her thumb and index finger—their signal that everything was under control.

Look for the "4-H PUZZLE" on page 23 of this issue.



FABRICATED STEEL and ALLOY PRODUCTS
Tanks, Bins, Hoppers, Elevated Water Tanks,
Contract Manufacturing of Farm Implements
and Industrial Equipment.

HARRY DARBY
THE DARBY CORPORATION
KANSAS CITY, MISSOURI

ROCK SPRINGS RANCH ENTERS 18th SEASON

Rock Springs Ranch is now open for year round use. The 1963 year will mark a first in which groups have used the Center's facilities each month. In 1962, January, February and March were without schedules.

Nearly 10,000 youth and adults, representing 60 different groups, took part in the 1962 operations. There were 7,400 campers who stayed at Rock Springs for more than one day.

Of the 60 groups registering, 42 were in the summer session period and 14 in the fall period. The increased fall attendance was made possible with the availability of William's Dining Hall. This structure increased dining facilities from 250 to 500 persons. Winterized housing is a limiting factor in accepting groups of more than 100.

The visitation by the Kansas 4-H Round-up delegates in June last year brought the largest single day attendance at the Center, when more than 1800 participated in the annual barbecue, and Friends of 4-H Day.

New groups using Rock Springs Ranch facilities during 1962 included the Kansas Future Farmers Association, Kansas Farm Bureau Youth Citizenship Conference, Kansas Christian Women's Fellowship Retreat, and the State 4-H Electric Conference. Four college social sororities were new last year. They included Gamma Phi Beta, Delta Delta, Delta, and Alpha Omega Pi, from Kansas University and Chi Omega from Kansas State University.

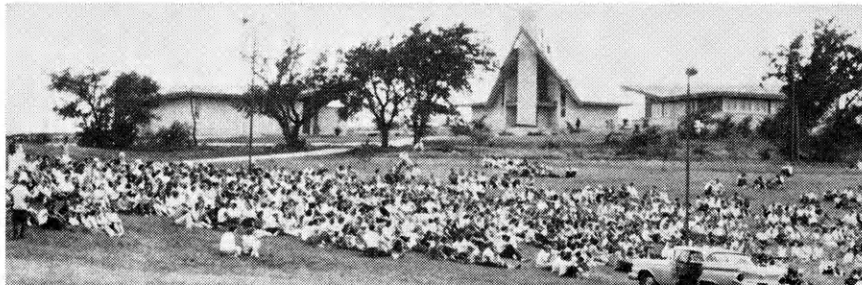
New church organizations were the Junction City Methodist Youth; Manhattan Methodist Youth; Walthers-Lutheran, Manhattan; Brudertal Mennonites Church; and Ecumenical Conference. Tabor College and NoMaCo were also new groups in attendance.

Extension groups, primarily 4-H members, represented 59% of the total attendance last year. School organizations or school related groups registered 17%; church organizations, 12%; sor-

orities and fraternities, 4%; and other organizations, 8%. Kayettes in two sessions enrolled 634 campers for the single largest group in regular attendance.

Rock Springs Ranch, state 4-H Center, is one of the services offered to the youth and adults

of the state by the Kansas 4-H Foundation. Organizations or individuals interested in securing additional information about Rock Springs Ranch or other services of the Kansas 4-H Foundation may write to their office, Umberger Hall, K.S.U., Manhattan, Kansas.



A Familiar Sight at Rock Spring Ranch

Your Best Foot Forward

By Mari Carpenter, Age 10
Colby, Kansas
Thomas County

Have you ever been caught with bad posture? This question was the introduction to a demonstration given by Brenda Morris and myself at the Thomas county 4-H Day.

The subject was posture. Here are several things we pointed out in our demonstration.

The "Basic 3" in posture are sitting, standing, and walking. To help improve these you must be sure to get the right kinds of food and enough rest.

Good posture doesn't just happen, one has to work at it.

When you sit; sit tall. Sit with your shoulders back, but not quite touching the back of the chair.

Also, remember to keep your feet flat on the floor. When someone is all slouched down you can compare that body with a factory with one wall caved in and the workers crawling around to get their work done.

When standing; stand straight. Keep your heels, hips, shoulders and head back. When someone is all hunched over it looks as though they are hiding.

Also the organs can't work properly. For instance, the lungs



Brenda Morris, left, and Mari Carpenter

can't expand as well and it is harder for you to breathe. When you can't breathe well you get tired. A good way to check your standing is to stand against a flat wall, making sure your hips, heels, head and shoulders are touching.

When you walk; put your best foot forward. To do this remember to walk with your toes pointing straight ahead. Also, walk with your chin in slightly to help with your balance. Don't make it seem as though you are hinting for a punch.

Remember, good posture makes you look better, feel better, and work better. Then you will make a better impression on the people around you.

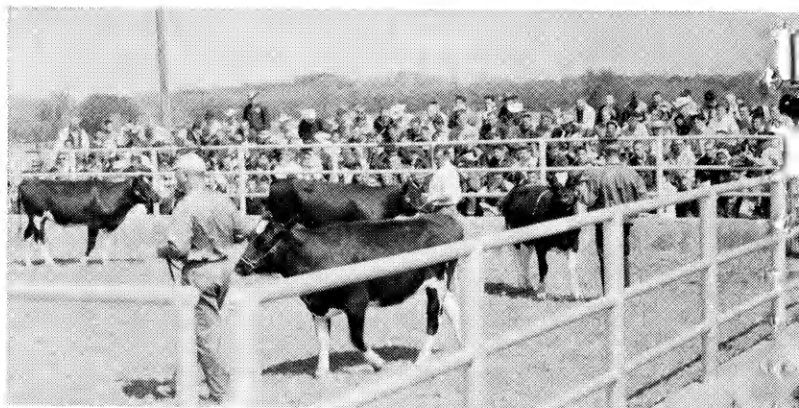
Brenda and I like to think of our bodies as our homes and to take good care of our homes we think posture is a very important tool.

THIS IS KANSAS



A fast growing 4-H project in Kansas is the Dog Project.

Mr. A. I. Van Cleave, editor, and Mrs. Raymond Houston, both of Ottawa, look over one of the weekly stories submitted to the Ottawa Herald by the 4-H clubs of the county. Mrs. Houston represents one of the clubs.



Just part of a day of judging at Hays Round-Up.



4-H Division Winners of the 12th Annual International Land Judging Contest in Oklahoma from Washington county, Kansas.

Miss Barbara Swartz, President of the Busy Warkers 4-H Club, Morris county, is pinning a white carnation on Mr. Ralph Collier, the first adult leader of the club.



4-H

SEND IN YOUR PICTURES

We want pictures taken by Kansas 4-H'ers. Prizes will be given for all pictures used in the Journal.

The picture need not be on 4-H Club work, but pictures with subjects related to 4-H Clubs are preferred. Action pictures are desired.

All pictures should be glossy prints at least five by seven inches in size unless accompanied by the negative.

Photographs should be accompanied by a short statement explaining the picture and including the names of persons shown.

Entrants should designate their choice of the following prizes. A year's subscription to the National 4-H Club News, one roll of color film—sizes 620, 120, 616, 116, 127 or 35 mm only, or a 4-H Club photograph album.

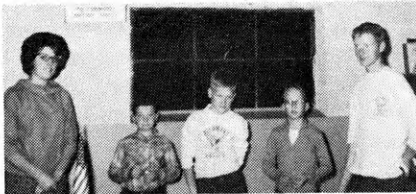
4-H members, parents, leaders, county agents or friends of 4-H may send in pictures.



Mr. Samuel A. Montague, Director of Operations, People-To-People Headquarters, shows members of the Rainbow 4-H Club, Franklin county, a letter from another country as they tour the facilities and hear about Pen Pal opportunities.

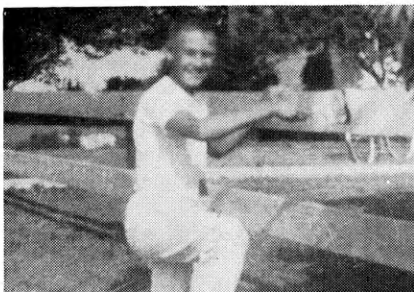


This 4-H Ensemble from the Damar 4-H Club, Rooks county, has fun singing. They were a regional blue ribbon group.



Janet Forcum, President of the Harmony Sunflower 4-H Club, Greenwood county, is welcoming these boys into the club. They are, from left; Janet, Brian Swisher, Sam Fouts, Mark Schmidt and Jack Fouts.

Vance Ehmke, Lane county 4-H'er, paints his front yard fence as a part of his home beautification project.



YOUR SAVINGS BUY MORE SAVED NOW ... SPENT LATER



VISIT YOUR NEAREST KANSAS Savings & Loan

- Arkansas City**
First Federal Savings and Loan Ass'n. of Arkansas City
- Augusta**
The Commercial Savings and Loan Ass'n.
- Beloit**
First Federal Savings and Loan Ass'n. of Beloit
- Clay Center**
Northwestern Federal Savings and Loan Ass'n. of Clay Center
- Dodge City**
First Federal Savings and Loan Ass'n. of Dodge City
- El Dorado**
Mid-Continent Federal Savings and Loan Ass'n. of El Dorado
- Fort Scott**
Liberty Savings and Loan Ass'n.
- Garnett**
The Garnett Savings and Loan Association
- Great Bend**
The Prudential Building and Loan Ass'n.
- Hays**
The Hays Building and Loan Ass'n.
- Hutchinson**
First Federal Savings and Loan Ass'n. of Hutchinson
- Iola**
The Security Savings and Loan Ass'n.
- Larned**
The Larned Savings and Loan Ass'n.
- Lawrence**
Capitol Federal Savings and Loan
- Leavenworth**
The Leavenworth Mutual Building Loaning and Savings Ass'n.
- Liberal**
First Federal Savings and Loan Ass'n. of Liberal
- McPherson**
The Pioneer Savings and Loan Association of McPherson
- Mission**
Capitol Federal Savings and Loan Ass'n.
- Newton**
First Federal Savings and Loan Ass'n. of Newton
- Oberlin**
Reserve Building and Loan Association of Oberlin
- Ottawa**
Ottawa Savings and Loan Ass'n.
- Parsons**
First Federal Savings and Loan Ass'n. of Parsons
- Pittsburg**
First Federal Savings and Loan Ass'n.
- Plainville**
Rooks County Savings Ass'n. of Plainville
- Pratt**
The Western Savings Ass'n.
- Salina**
The Homestead Building and Loan Ass'n.
- Topeka**
Capitol Federal Savings and Loan Ass'n. at 6th and Kansas, and 12th and Topeka Blvd.
- Wellington**
First Federal Savings and Loan Ass'n. of Sumner County
- Wichita**
The Commercial Savings and Loan Ass'n. at 4601 E. Douglas Avenue and 147 North Market Street



Ideas That Work

Community Service

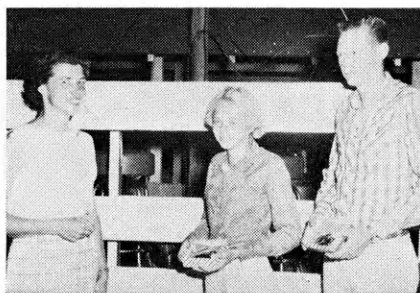
The Central 4-H Club, Cherokee County, decided the county 4-H building needed some redecorating done—so we took the job on. Since, there were a lot of younger members in the club the Jr. Leaders met during the Easter holidays and spent the day painting the inside.

Later in the month, the younger members met to wash windows, wash the floors, clean cabinets, and etc. with the Jr. Leaders help. We found this was a good way to have fun, besides having a community project.

Jean Evans
President

Have Fun — Raise Money

Two silver belt buckles were awarded to the top boy and girl at the 4-H Show-D-O held at the Cowley County Fair.



Mrs. Walter David, Dexter, is shown presenting the awards to Kathy Hartman of the Martha Washington 4-H Club and Junior Shorter of the Dexter 4-H Club.

Approximately 80 4-H members entered in wheel barrow racing, rooster racing, pole bending, barrel racing, ribbon racing and wild steer riding.

Proceeds for the show went to raise money to send an IFYE to another country. Approximately 750 people attended the event.

Club Anniversary

The River Ramblers 4-H Club of Pawnee County celebrated its 15th anniversary at the Pawnee Rock School Sunday, April 21, with a tea and program to which former members were invited.

Former members present were Lynn Darcey, Mrs. Don (Sandra Nairn) Haun, Mrs. Harold (Glennis Unruh) Couchman, Mrs. Jerry (Millicent Schultz) Thompson, and James Nairn. A number of persons unable to come, sent greetings to the club.

About 60 members and guests answered roll call with 4-H memories. Present club members gave their district blue

ribbon musical play, "A Visit with the Bach Family." Younger members danced the minuet, and 3 eight-year old girls gave a playlet, "The Tea Party", written especially for county 4-H Club Day by Shiela Sutton Schmidt, club recreation leader. Mrs. Gerald Nairn, community leader for over ten years, reviewed the club's history. At one time the club's membership consisted of only 5 girls; present enrollment is 10 boys and 14 girls.



Pictured are leaders and former members of the club. From left, they are: Mrs. Dewey Schultz, Lynn Darcey, Shandra Haun, Glennis Couchman, Millicent Thompson, Mrs. Gerald Nairn, James Nairn and Keith Mull.

Reporter
Glenn Mull

Help with Polio Clinic

Did you get your Sabin Polio Vaccine? The Abilene Aggies 4-H Club helped on the publicity committee of the clinic in Dickinson county as a part of the Health Community Service project.

Twenty of the younger members placed posters advertising the dates, times and places of the clinics. The posters were displayed at all service stations, grocery stores, clothing stores, show stores, drug stores, jewelery stores, and car dealers in Abilene, Hope, Herrington, Chapman, Soloman and Enterprise.

The club also served coffee in the evening to the nurses and people helping at the clinic in Abilene. This is one of

Ideas In Brief

Mr. Jim Harmon, Manager of the Quivira Game Refuge recently gave an interesting program to members of the Hays 4-H Club, **Reno** county . . . Lt. Wilson of the Hutchinson Police Department presented the film, "Knowing is not Enough" and passed out yellow flags and decals as safety reminders to members of the Reno 23 4-H Club, **Reno** county . . . Members of the T 'n T 4-H Club, **Wyandotte** county, planned a hike to Wyandotte county lake with a picnic at the destination . . . "Im-

Reporter's Notice: The Kansas 4-H Journal would like to print interesting stories of your local club events, activities, members and leaders.

Local club meeting stories, if submitted, should contain something unusual or of interest to people outside your county.

Outstanding projects, services or events of your club, or stories of individuals within your club that would give ideas to other 4-H'ers would make excellent stories.

Prizes will be awarded all blue award stories each month. Please state your choice (1) a year's subscription to the National 4-H Club News or (2) a hard cover loose leaf 4-H notebook.

the ways the Abilene Aggies 4-H Club members are following HEALTH TO BETTER LIVING.

Reporter
Abilene Aggies

4-H Recreation

The coming of the bowling lanes to Sharon Springs has brought a new form of recreation that is not limited to the older set of people. Various organizations sponsor teams of the younger set, one of which is the Smoky Valley 4-H Club. Of course the members of the Smoky Valley team are all club members.

In an interview the team members stated the only trouble they had was learning to hit the pins. They like bowling very much and also like the fact



the league is something that they are participating in which the adults have no part.

A valuable lesson is being learned also, that of keeping the every Saturday morning appointments.

Members shown in the picture are, from left: Paul Steineke, Connie Brack, Leonard Ritter, and Elaine McNerny. Other members and substitutes are Wanda Woodmancy, Sharon Billenwilms, Loyal Brund, Jerry Van Allen and Terry White.

Maridell Goings
Reporter

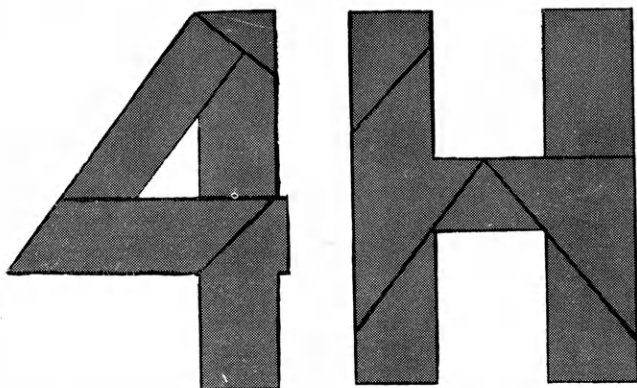
portant things about the United States President" was the topic for roll call at the Morris 4-H Club meeting, **Wyandotte** county . . . Jeanne Maring of the Bird City Go-Getters 4-H Club, **Cheyenne** county, demonstrated choosing color in clothing by using the color wheel . . . Members of the Richland Livewires 4-H Club, **Harvey** county, held a "Kid's Night" meeting of their club . . . The Gem-Go-Getters were guests of the Bently Eagles, **Harvey** county, at their annual exchange meeting . . . Mike Bruch gave a talk entitled "Desolation or Conservation" at the meeting of the Arling-

ton 4-H Club, **Reno** county . . . The Sylvia and Plevna 4-H Clubs, **Reno** county, held joint meetings—they had different roll call and business meetings but joined together in the program and recreation . . . Members of the Brauer Beavers 4-H Club, **Wyandotte** county, helped out with civil defense by displaying model shelters as their National 4-H Week display . . . Members of the White Church No. 1 4-H Club, **Wyandotte** county, are making toys for an orphanage . . . A safety talk on mowing the lawn was given by Harold Murphy of the Country Pals 4-H Club, **Thomas** county . . . Members of the Mitchell 4-H Club, **Reno** county, voted to have a box social . . . "Hercules Nite Out" was a one-act play given by members of the Obee 4-H Club, **Reno** county, at their meeting . . . "Sailboat Sandwiches" were made by Roseanne Hopp in a meal service demonstration at the meeting of the Go-Getters 4-H Club, **Cheyenne** county . . . The Advance 4-H Club, **Wyandotte** county, had a special parents' night program to explain the basis of 4-H . . . The Grinter-Go-Getters 4-H Club members, **Wyandotte** county, had their annual box supper recently . . . Members of the Manning Jayhawkers 4-H Club, **Scott** county, enjoyed pictures shown by Mr. and Mrs. Dill Van Antwerp of their round-the-world trip . . . The Newton City Slickers, **Harvey** county, voted to sell car blinkers and auto license books as a money raising project . . . The Highland 4-H Club, **Harvey** county, held a Fun Night for all interested club members, parents and leaders in the county . . . Sherri Dolezal's talk to members of the Salem 4-H Club, **Reno** county, was "Wash Day! Weather or Not" . . . Members of the Langdon 4-H Club, **Reno** county, plan to give their 4-H Sunday services at the Pretty Prairie Rest Home . . . The Bonner Springs 4-H Club **Wyandotte** county, presented a gift to Mr. and Mrs. Frank Stockwell who are retiring as leaders of the club . . . Mrs. Robert Tyson, foods project leader of the Stony Point and Grinter-Go-Getters 4-H Clubs, **Wyandotte** county, planned to discuss her experiences at State 4-H Leaders Conference at the county 4-H council meeting . . . The service committee of the Manning Jayhawkers 4-H Club, **Scott** county, are collecting old greeting cards from mem-

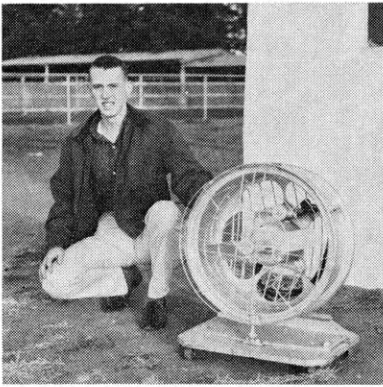
bers to be given to a lady who makes scrap books to give to children's hospitals . . . Members of the Highland 4-H Club, **Harvey** county, saw slides shown by Mrs. Richard Schmidt who recently was on an expedition to the Arctic . . . Marlene Davis told about her pen pal in New Zealand and Belinda Creasser told about her pen pal in France in a People-To-People talk at the meeting of the Bendley Eagle 4-H Club, **Harvey** county . . . Members of the Ninnescah 4-H Club, **Reno** county, enjoyed two numbers from earlier 4-H Club Day competition at their meeting . . . Theresa Zimmerling gave some bicycle rules at the meeting of the Home City Hustlers 4-H Club, **Marshall** county . . . Eighteen members, five adults and one guest of the Smokey Valley 4-H Club, **Wallace** county, participated in the Tri-State 4-H Square Dance Festival in Goodland . . . Members of the Advance 4-H Club, **Wyandotte** county, answered roll call by introducing their parents at their special Parents' Night . . . Members of the White Church 4-H Club No. 1, **Wyandotte** county, had a taffy pull as their recreation . . . Duane Westfahl talked about traffic fatalities on farms in his talk at the meeting of the Lucky 13 4-H Club, **Harvey** county . . . Mrs. Creola Charles Baker of the Kansas Highway Commission told members of the Kellas 4-H Club, **Harvey** county, how many safety projects 4-H members can help with . . . Cheryl Bramley of the Huntsville 4-H Club, **Reno** county, used a different approach in choosing songs for group singing by asking the oldest boy and girl member to choose their favorite . . . Monte Bowen gave an interesting demonstration on how to bake chopped apple cookies at the meeting of the Hays 4-H Club, **Reno** county . . . Members of the Rock Creek Boosters 4-H Club, **Jefferson** county, hosted the Meriden 4-H'ers in an exchange meeting . . . The **Wyandotte** county 4-H Council voted to purchase a saddle for Rock Springs Ranch . . . Members of the Stony Point 4-H Club, **Wyandotte** county, cooperated with the Girl Scout Troop in helping with their teacher appreciation dinner . . . Games played at the meeting of the Mustard Seeds 4-H Club, **Saline** county, were "Tight-Rope Walking" and "Going Through the Hoop" . . . Members of the Hedville Sunshiners 4-H

Club, **Saline** county, have planned their 4-H Family Fun Night . . . The program by parents at the meeting of the Arlington 4-H Club, **Reno** county, was a mock television show "Who's Telling the Truth" . . . The Obee 4-H Club, **Reno** county, is sponsoring a first aid course in their community . . . The Huntsville Club, **Reno** county, recently gathered and sold 13,000 lbs. of scrap paper . . . The North Reno 4-H Auto Care members, **Reno** county, are rebuilding a Model T Ford and plan to display it at the County 4-H Fair . . . The program for the meeting of the Kipp Wide Awake 4-H Club, **Saline** county, was given by members of the Kipp Lions Club . . . Members of the Ichi-ban 4-H Club, **Saline** county, have planned a hayrack ride . . . The Cloverleaf 4-H Club members, **Saline** county, have planned to have extra recreation every other month . . . "Have Trash? Will Haul!" was the slogan of the Willing Workers 4-H Club, **Saline** county, as they picked up and hauled trash for the residents of New Cambria for Kansas Clean-up Week . . . The Nearman 4-H Club, **Wyandotte** county, gave door prizes to parents at their special parents night program . . . Recently two new 4-H clubs were formed in Quindaro township, **Wyandotte** county, which expresses new interest in 4-H . . . "Signs of Spring" was the roll call of the Horanif Hustlers 4-H Club meeting, **Wyandotte** county . . . Willing Workers 4-H members, **Saline** county, canvassed New Cambria for cancer society donations . . . Roll call at the meeting of the Mentor 4-H Club, **Saline** county, was "A Rule About Eating" . . . The Willing Workers members, **Saline** county, put up a health display for the Kansas State Medical Convention Ladies Auxiliary . . . Special entertainment at the meeting of the Hutch Merry Metros 4-H Club, **Reno** county, was given by a quartet brought by Mrs. Pucell . . . A bubble gum contest was part of recreation at the meeting of the Mitchell 4-H Club, **Reno** county . . . Boys of the Prosperity 4-H Club, **Reno** county, helped trim the trees around their community . . . Members of the White Church No. 1 4-H Club, **Wyandotte** county, planned to have a sunrise breakfast on 4-H Sunday . . . Instead of the regular monthly business meeting recently, the Shawnee Spitfires club, **Wyandotte** county, had a roller skating party . . .

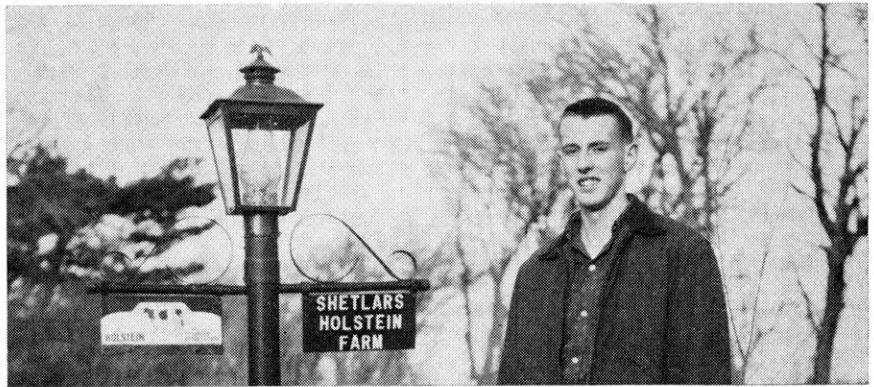
4-H PUZZLE



Trace the Puzzle on a piece of construction paper or lightweight cardboard. Cut out the 4-H Emblem along the outline. Then cut each piece into the sections shown by the heavy lines. Discard the white area in the "4". Label the five pieces of the 4 with the number four, and the seven pieces of the H with the letter "H", so you can keep the pieces separate. Now with the magazine closed, try to put the 4-H Emblem together again. Try it on your family and friends.



... a fan Jim constructed for use around the farm.



JIM SHETLAR, SUMNER COUNTY 4-H'ER, SAYS 4-H ELECTRIC PROJECT, "... IS OF GREAT VALUE TO ANY 4-H MEMBER."

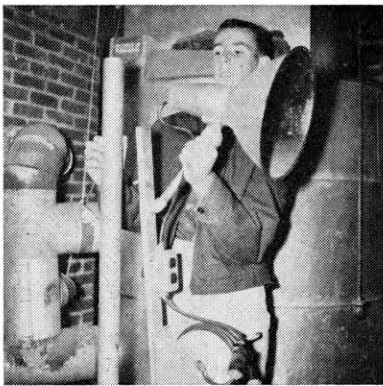
Elaborating on the subject, Jim said, "Our world is becoming more and more automated and usually these labor saving devices are operated with electricity. Knowing a small bit about electricity will probably not only save time but money. Our constant contact with electricity almost requires us to know something about it."

"The electrical project is one of the 'projects of the future. Its importance is continually growing and the project is growing."

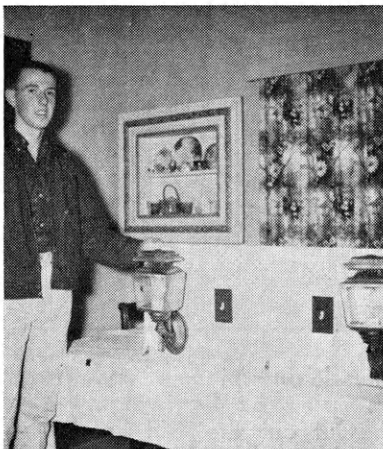
Jim Shetlar, who is 17 and a nine year veteran of 4-H, knows whereof he speaks, too, as "... our whole farm is practically one big electrical nerve center. We have to have electricity to milk our cows and to feed them (automatic silo-unloader.)" The Shetlars' Holstein Farm is near Conway Springs.

Now in his third year, Jim has completed all three phases of electric project. During that time he has made a number of useful items for the farm, some of which are shown in the pictures at left. All of his projects are made mostly of "junk" and other materials salvaged from around the farm.

Jim's other 4-H projects include dairy, junior leadership, personal development, and crops. He is now a freshman student at Southwestern College.



Jim shows the adjustments he can make with one of the versatile work lights he designed and built.



... antique lanterns Jim converted to electric operation for use on the porch of the Shetlar home.

WATCH THIS
PAGE FOR IDEAS
ON FARM AND
HOME ELECTRIC
PROJECTS

Electric Light and Power Companies in Kansas

The Kansas Power and Light Company Central Kansas Power Company
Kansas City Power & Light Company Kansas Gas and Electric Company
Western Light & Telephone Company