



February, 1962

50 Cents

KANSAS 4-H

Journal



The 4-H Family Magazine

Kansas 4-H Foundation, Inc., Publisher

V 8: 2

630.7
K165
Serials

ARTICLES

Why a College Education?	4
Guidelines for a Lifetime	6
For a Better Job in 1970	12
You Can Finance a College Education	13
Get a Head Start in Summer School	14
Your Future . . . in Agriculture	15
A Dream Come True	16
What to Expect, How to Prepare for College	18
Kansas 4-H Foundation	20
Home Ec Trains Homemakers	23
College Directory	25
Private Colleges	27
Public Colleges	43

COLLEGE DIRECTORY

Bethel College	28
Baker University	29
Bethany College	29
College of Emporia	30
Friends University	31
Kansas Wesleyan University	32
Marymount College	33
McPherson College	34
Mount St. Scholastica College	35
St. Benedict's College	35
Ottawa University	36
St. Mary College	37
St. Mary of the Plains College	38
Southwestern College	40
Sterling College	41
Sacred Heart College	42
Fort Hays Kansas State College	44
Kansas State College	46
Washburn University	46
Kansas State Teachers College	47
Kansas State University	48
University of Kansas	52

College and Careers Issue

There's a World of Opportunity for
 You in Feed Industry—
 When you earn a degree in Feed
 Technology in the world's only feed
 tech curriculum at
 Kansas State University



Students in feed technology at Kansas State University weigh out drugs and vitamins to make a feed premix.

These Formula Feed Manufacturers invite you and your group to visit the mills listed below and learn first hand more about this fast growing industry and the valuable contribution it is making to modern agriculture.

AGRICULTURAL DEVELOPMENT CO.
 Division of Bartlett & Co.
 Kansas City

ARROW FEED MILLS
 Junction City

BECKER FEED MILL
 Galva

BEACON DIV. OF TEXTRON INC.
 Professional Feeds Division
 Kansas City

BLAIR MLG. & ELEVATOR CO.
 Atchison

BULLER FEED MILLS
 Halstead

CIRCLE B
 Concordia

GOOCH FEED MILLS
 Salina

HARVEST BRAND, INC.
 Pittsburg

HONNEGERS, INC.
 Topeka

HUMBOLDT ELEV. MILLS
 Humboldt

KANSAS SOYA PRODUCTS CO.
 Emporia

KELSO MLG. CO., INC.
 Pittsburg

KEY MILLING CO.
 Clay Center

LIGHT GRAIN & MLG. CO., INC
 Liberal

NATURICH MILLS
 Abilene

PLUSH MILLS
 Glasco

SUPERSWEET FEEDS
 Salina

WINTERSCHIEDT MLG. CO.
 Seneca

WALNUT CREEK MLG. CO.
 Great Bend

Ranking among our nation's top thirteen industries, the manufacture of today's scientific feeds for poultry, cattle, swine and sheep offers outstanding opportunities for serious minded young men.

This fact has been proved again by K-State feed technology graduates who find THREE times as many job opportunities as there are qualified men.

The reason is simple. With our rapidly growing population, farmers need constantly higher tonnage to produce the foodstuffs so vital to our nation's welfare.

Today, three out of every five farm boys must leave the farm for lack of opportunity. If you want to stay in agriculture and can qualify, there's opportunity for you in the feed technology field—one of the fastest growing in the United States.

There's a wide variety of jobs in the feed industry. If you have a flair for science, if you love mechanics and machinery, sales, accounting or management, there's a place for you in these feed industry vocations—

- *Production Manager
- *Nutritionist
- *Feed Mill Engineer
- *Salesman
- *Chemist
- *In advertising
- *Business Management

**SCHOLARSHIP FUNDS ARE AVAILABLE
 TO QUALIFIED APPLICANTS**

Mail this coupon—Get the whole story now.

.....

• Dr. C. Peairs Wilson Name _____

• Kansas State University

• Manhattan, Kansas Address _____

• Please mail free _____

• brochure about the Feed _____

• Tech program, and more _____

• information about jobs in _____

• Agribusiness. School _____

•

.....

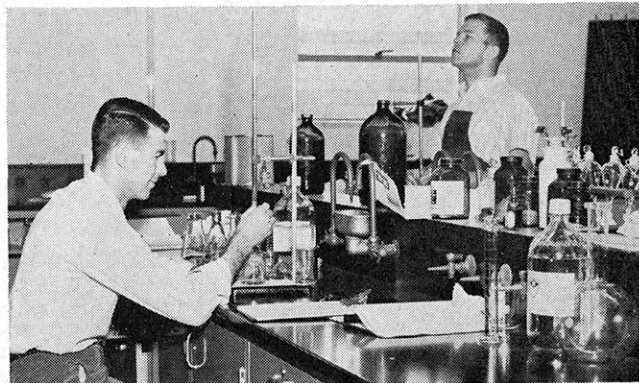
A FARM RELATED CAREER IS WAITING FOR YOU

MANHATTAN, KANSAS
1962

**ENROLL at
KANSAS STATE UNIVERSITY**

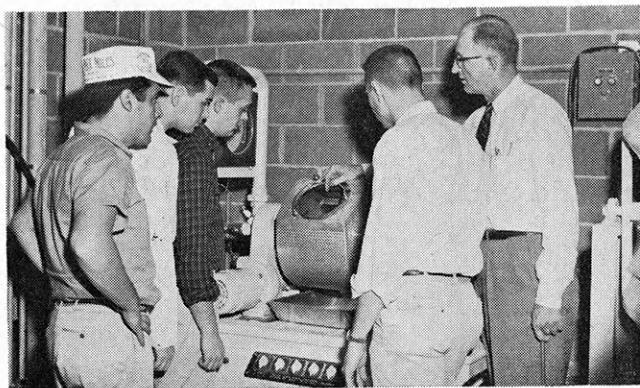
0.7
65
the **ONLY UNIVERSITY** in the **WORLD**

offering **COLLEGE DEGREES** in
MILLING, where the



SUPPLY of GRADUATES from the

**DEPARTMENT of FLOUR
and FEED MILLING INDUSTRIES
NEVER MEETS the DEMAND**



POSITIONS IN:

Grain Elevator Management	Cereal Chemist
Foreign Grain Marketing	Products Control
Milling Superintendent or Manager	Equipment Engineering
Flour Mill Construction	

IF YOU are INTERESTED

WRITE:

**Scholarships
Available**

**Dr. J. A. Shellenberger
Department of Flour and Feed Milling Industries
Kansas State University
Manhattan, Kansas**

COURSES WHICH CAN BE A PART OF THE CURRICULUM:

English	Qualities of Wheat & Flour	Experimental Baking	Economics
Mathematics	Milling Technology	Grading of Cereals	Psychology
Statistics	Flour & Feed Analysis	Electrical Engineering	Entomology
Chemistry	Flour Mill Construction	Mechanical Engineering	Air or Military Science
Biochemistry	Physics	Business	Foreign Language

This Ad Space Contributed By

Kansas Wheat Improvement Association

Manhattan

Why a College Education?

By Dale Apel

It has become increasingly apparent a greater majority of the young people growing up on farms will leave the rural areas.

The increasing size of the farm and the increasing efficiency of farm labor sees to that.

When a farmer can efficiently buy another quarter section of land and a bigger tractor to cultivate it with no increase in help, the total number of farms will decrease.



Preparing a Child for Adoption

Should You Be A Social Worker?

Yes, If -

- You Like People
- You Are Tolerant
- You Are a Good Listener

Social Workers Help—

- Children in Trouble
- The Medically and Emotionally Ill
- The Physically Handicapped
- The Aged
- To Strengthen the Family

Qualifications include college education, and for more responsible positions a Masters degree in social work. Graduate scholarships are available.

Salaries range from \$3600 to \$9500

Write to: State Department of Social Welfare, State Office Building, Topeka, Kansas

Both Good and Bad

This trend certainly has its advantages (as well as some disadvantages). As farmers become more efficient in their operations, they boost their net incomes and standard of living to the point where the farmer's standard of living, today, compares favorably in every way with the man in the city.

Surely it's better for there to be a few less farmers with a top standard of living than for there to be a larger number of farmers falling into the peasant category.

This trend, however, poses some problems for the boy growing up on the farm.

Until the last few years, many people still clung to the time-honored tradition of encouraging all farm boys to become farmers, ignoring the fact there were fewer opportunities for these boys to become farmers.

This thinking still prevails among some who are afraid of alienating their farm clients or customers by seeming to encourage boys to leave the farm.

Most who are honest with themselves and with others recommend the farm boys think seriously of off farm employment, especially if it doesn't appear economically feasible for the boy to consider farming.

Agribusiness

Emphasis has been placed, in recent years, on encouraging boys to examine opportunities in agribusiness (industries allied with agriculture). With their background in agriculture, these boys would have the jump on

city boys with the same capabilities and dispositions.

But whether farm boys seek jobs in agribusiness or in some other entirely different field of their own choice—business, law, medicine, etc.—they generally need an education beyond the high school level. Most do, that is, if they expect to make the most of their capabilities.

Traditionally, fewer boys and girls in rural areas go to college than is the case with their city counterparts. This appears to be due, primarily, to the lack of the proper environment in their community. There is not enough encouragement of the boy or girl to seek a college education.

Fewer Farm Students

A study of high school graduates in Minnesota indicated less than half as many farm boys and girls as city boys and girls went to college. This study blamed lack of adequate counseling facilities in some of the smaller high schools. Another factor was the lack of appreciation, among many rural people, of the economic and aesthetic advantages of college training.

Then, too, many farm boys look at the relatively good starting wages offered in many factories and retail businesses. They tend to overlook the fact many of these jobs lack potential for advancement. There is a relatively low demand and an even lower opportunity for advancement for the ordinary wage earner.

Most jobs offering potential for advancement are jobs requiring a college degree.

(Continued on page 39)

Kansas 4-H Journal

VOL. VIII, No. 2 February, 1962

Dale Apel.....Editor

Editorial and Business Office

Phone JE 9-2211 Ext. 208

Manhattan, Kansas

Published Monthly By

KANSAS 4-H FOUNDATION, INC.

J. Harold Johnson.....Executive Director

BOARD OF TRUSTEES

W. Dale Critser, Chrm.....Wichita
E. B. Shawver, Vice Chrm.....Wichita
D. J. Atha.....Shawnee Mission
*Harry Darby.....Kansas City
*W. Laird Dean.....Topeka
Mrs. Olive Garvey.....Wichita
*Clifford Hope.....Garden City
A. D. Jellison.....Junction City

Harold E. Jones.....Manhattan
J. J. Moxley.....Council Grove
George B. Powers.....Wichita
Roger E. Regnier.....Manhattan
Dolph Simons.....Lawrence
*Lester Weatherwax.....Wichita
Fred D. Wilson.....Andover
*Advisory Members

Second Class Postage Paid at Lawrence, Kansas. Return Form 3579 to Kansas 4-H Journal, Manhattan, Kansas.

Advertising rates and circulation data on request.

Group subscriptions \$1.00 per year. Individual subscription \$1.50 per year. Single copy 15 cents.

Use of the 4-H name and symbol approved by the Secretary of Agriculture of the United States, January 23, 1951, under the provisions of the law as reenacted by Sec. 707 of the Act of June 25, 1948 Public Law No. 772, 80th Congress (10 USC 797)

Letters

If you have ideas or 4-H Club experiences that you would like to write about or if there is something you like or dislike about the Kansas 4-H Journal, write to the Editor, Kansas 4-H Journal, Manhattan, Kansas.

Leaders, parents, members, agents and 4-H friends are invited to write.

Appreciate Letter Shower

Dear Editor:

We hope you can find some small space in the 4-H Journal to greet our hundreds of friends who sent flowers, wires, letters and cards to gladden our hearts on the occasion of our fiftieth wedding anniversary.

No one will ever guess our complete surprise when George Powers (a member of the Kansas 4-H Foundation Board of Trustees) stepped out of a large group and presented us with a tray of all these. They represented greetings from Agents, Leaders, Foundation Committee members and numerous 4-H Clubs, signing as Clubs and individuals.

You can understand that it would be quite impossible to acknowledge all of these greetings. Through your fine Journal, please express our undying appreciation.

Again, we are indebted to our Kansas 4-H friends and can only pledge again our dedication to anything and everything that might further our great 4-H program.

Very sincerely yours,
Mr. and Mrs.
Lester Weatherwax

Information on Kansas 4-H Foundation

Numerous 4-H members have written asking for basic information on the Kansas 4-H foundation to use as a background for 4-H promotional talks.

On page 20 and 21 of this issue of the Kansas 4-H Journal is a summary of the history, aims, purposes, and some of the activities of the Kansas 4-H Foundation.

You may want to save these pages for future reference.

LOVING CARE IS NEEDED WHEN YOU'RE DRIVING, TOO



IT'S smart to use seat belts because they reduce the chances of accidental injury by almost half and can save lives.

The facts prove that the seat belt is one of the most effective means now available to dramatically reduce casualties to motorists. Careful analysis of auto accidents by crash injury research experts shows that:

- ★ You're much safer inside the car and a seat belt will keep you there. Seat belts can prevent as many as a fourth of the passenger car occupant fatalities, just by keeping motorists from being thrown out of the car during accidents. They can save thousands of lives every year.
- ★ You're less likely to get hurt if you're held in place by a seat belt. For example, if a crash throws you forward toward the dashboard, the belt holds you back. Even if your head does hit the dash, the blow is only one-fourth as severe. That can mean the difference between a minor injury and a major one.
- ★ You're safer when the driver is kept behind the wheel in an emergency. If somebody crashes into your car while you are driving or you must swerve violently, a seat belt prevents your being thrown from behind the wheel and you can control your car to prevent an additional crash.

Kansas Farm Bureau

105 County Farm Bureaus
Working Together

In Selecting Your Vocation, Consider

Interests Aptitudes Values

By Donald P. Hoyt

Choosing a vocation is one of the most important decisions each of us will ever make. The "proper" way to make this choice has never been a great mystery.

Frank Parsons, the father of vocational guidance, put it this way 50 years ago. "First, know yourself, second, know the world of work, third, apply true reasoning between these two sets of facts."

This idea sounds simple, but most of you will find doing it is one of the most difficult

This article was originally written for the February, 1961 Kansas 4-H Journal. It is reprinted because it is, in the editor's opinion, one of the best concisely and simply written articles on the subject.

chores you have ever tried. Why is it so hard? Let's examine the process, step by step.

Know Yourself

What should you know about yourself? Our experience is people often stop too soon in trying to know themselves. Some students, after taking an interest test in which they scored high as an accountant, for example, say "Well, then, I should be an accountant." This is the same as saying interests are all that need to be considered in choosing our occupation.

How foolish this would be. For example, I believe I have no stronger personal interest than my interest in music. Tests confirm my feelings. However, inability to carry a tune in a bucket pretty well eliminates music for me as a realistic profession.

This tragic example shows aptitudes (the ability to perform certain types of tasks) need to be considered in planning your career.

Personality Important

A knowledge of aptitudes and

interest is generally not enough to make a good career choice. A man once took a sales job because he liked people and travel, and because he could talk easily and be at ease with people.

He later quit to become a policeman. He liked his new job much better. When asked why, he said, "Because on this job the customer is always wrong." The story shows that personality characteristics (such as pleasantness, tendency to be outgoing, warmth, etc.) are important in making vocational choices.

Having analyzed your interests, abilities, and personality, you should be able to know yourself well enough to choose a vocation. But there is another complication.

Personal Values

I counseled a student the other day who could work well with his fingers and hands. He could quickly and accurately work with dials, screws, and other small objects requiring a fine touch. In addition, he liked mechanical things. He acknowledged being something of a lone wolf—he liked to work alone.

I asked him why he didn't become a safe cracker since he seemed to have the interests, ability and personality for it. Of course, I wasn't serious, but I did try to point out to him that a good job choice involves the matter of "personal values."

The question of being honest or dishonest is a "value" question, but an easy one for most of us since we've been taught we should be honest.

Other value choices are not so easy. For example, would you and your family rather live in urban or rural areas? Would you rather have job security or the opportunity to advance? Would you rather make lots of money, or be in a profession you felt was more beneficial to man-

kind? Would making more money for your family be more important than doing something you'd like to do better?

Know the World of Work

Even if one does come to know himself quite well, he still has to come to know occupations.

Let me offer one word of caution here. Most guidance offices will have job information describing the duties, training, outlook, and wages for almost any job.

Don't let your questions about jobs stop there. Jobs also differ importantly in the style of life they provide. A coast-to-coast truck driver, a lawyer, and a life insurance salesman may have identical salaries of \$10,000 a year.

Their friends, social life, family life, and community life, however, will be vastly different. But the point to bear in mind is that, when you commit yourself to a field of work, you commit yourself to a lot more than 40 hours a week. In many ways your choice of jobs will be related to who your friends are, what a social evening is, and even what seems to be important in life generally.

Reasoning

When you've learned what you can about yourself, and about jobs, the problem is to put them together. Probably the best way is to let your imagination run wild.

Try to see yourself leading the life of a lawyer, auto mechanic, farmer, or whatever else you've thought about.

See how well it "fits." If you can do this well, you should feel a fairly strong liking or dislike for these various roles. You can generally trust these reactions.

Let me say a word or two about guidance services. Use counselors; use guidance tests, use your parents and friends,

(Continued on page 34)

FREE!!

New 4-H Woodworking Plans

*Start Your 1962 4-H
Woodworking Project Now!
Plans at Listed Lumber Yards*

LAZY SUSAN

Don Burgess, Junior Judges Club in Franklin county, made this very attractive lazy susan for his mother from scrap material his father brought home from construction jobs. Don, 13, used different kinds of mahogany wood. He received a blue ribbon on it at the Mid-America Fair. Costing \$3.61 (approximately), plans are available at lumber yards listed on the following pages.



MAGAZINE RACK

Mrs. Glenn Smith says of this magazine rack her son, Charles, made for her, "We like it because it shows the back of magazines, you can find them easier." Charles, Uniontown 4-H Club in Bourbon county, made each shelf just wide enough for certain magazines. It's made of solid walnut except for the plywood back. Costing \$7.80, plans are available at lumber yards listed on the following pages.

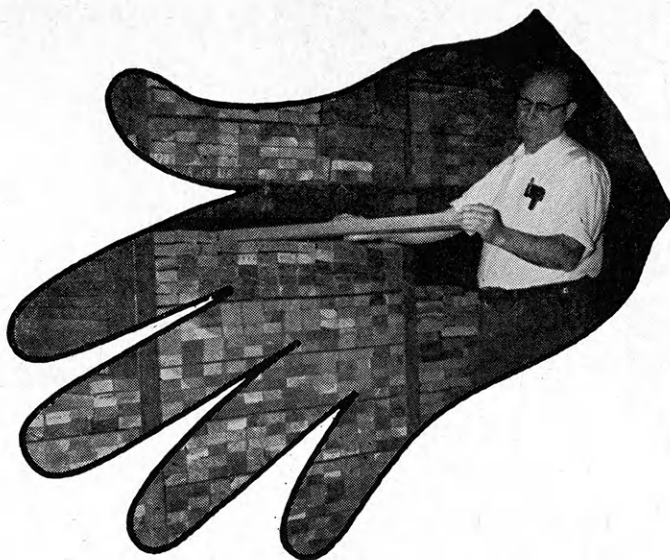


Plans for These Two Projects Are

Available At The Lumber Dealers

Listed on The Next Two Pages. Ask For Them.

Always on hand... YOUR LUMBERMAN is your best friend when you need good material



Abilene
Central Lumber Company

Agra
Agra Lumber Company

Almena
Foster Lumber Company

Alt Vista
Wolgast Lumber Company

Alton
Alton Lumber and Coal Company

Anthony
Rock Island Lumber Company
Arkansas City
Central Lumber Company

Asherville
Asherville Lumber and Coal Company

Ashland
Don Spotts Lumber Company
Home Lumber and Supply Co.

Atchison
Hixon Lumber Company

Atwood
Atwood Lumber Company
Foster Lumber Company

Basehor
Basehor Lumber Company

Bazine
Humburg's

Beloit
Murray Lumber Company
Peoples Lumber and Coal Company

Bern
Bern Lumber Company

Bird City
The Bird City Equity Mercantile
Exchange
Griffin Lumber Company

Bison
Humburg Lumber Company, Inc.

Bonner Springs
Bonner Springs Lumber Company

Brownell
Richolson Lumber and Hardware
Company, Inc.

Bucyrus
The Blaker Lumber and Grain Company

Buhler
Buhler Lumber Inc.

Burr Oak
Burr Oak Lumber and Coal Company

Cawker City
Cawker City Lumber Company

Chanute
Smith Lumber Company

Chapman
Sanborn Lumber Company

Cimarron
Wilson Lumber Company, Inc.

Clay Center
Kansas Lumber Company

Coffeyville
Kansas Lumber Company

Colby
Foster Lumber Company
Hardman Lumber and Coal Company
Hess Lumber Company

Coldwater
Home Lumber and Supply Co.

Concordia
Leidigh Lumber Company
Sanborn Lumber Co.

DeSoto
DeSoto Lumber Company

Denison
Denison Lumber and Hardware
Company

Denton
C. H. Gish Company

Dodge City
The T. M. Deal Lumber Company

Dwight
Johnson Lumber Co.

Easton
Easton Lumber Company

Edgerton
Edgerton Lumber Company

Edna
The McCoy Lumber Co.

El Dorado
Home Lumber Company

Elkhart
Elkhart Lumber Co.
The Star Lumber Company

Emporia
Home Lumber and Supply Co.
Kansas Lumber Company
The Smith Lumber Company

Erie
Howard Bros. Lumber Company

Eureka
A. C. Houston Lumber Company
Rock Island Lumber Company

Everest
Alexander Lumber Company

Fowler
The T. M. Deal Lumber Company, Inc.

Frankfort
Searle and Chapin Lumber Company

Garden City
Ed Porter Lumber Company

Gardner
Gardner Lumber Company

Garnett
Star Grain and Lumber Company

Gaylord
Hardman Lumber Company

Glen Elder
Dickinson Lumber Company

Goodland
Foster Lumber Company
Hardman Lumber Company
Rasure Lumber Company

Great Bend
Everitt Lumber Company
Foster Lumber Company
Rock Island Lumber Company
Whitesell Lumber Company

Greensburg
Home Lumber and Supply Co.

Halstead
Harris Lumber Company

Harper
Rock Island Lumber Company

Hartford
Thomas Lumber Company

Hays
Hardman Lumber Corporation, Inc.

Healy
Healy Co-op Elevator Company

Hesston
Kropf Lumber Company

Hill City
Farmers Lumber Company
Hardman Lumber Company

Hillsboro
Hillsboro Lumber Company

Hoisington
Foster Lumber Company

Holton
Brown-Hedge Lumber Company
Holton Lumber Company

Holyrood
Home Lumber and Supply Co.

Horton
Horton Lumber Company, INC.

Hoxie
Foster Lumber Company

Hugoton
The Star Lumber Company

Humboldt
Barfoot Lumber Company

Hutchinson
F. E. Perry Lumber Company

Inman
Inman Lumber Company

Independence
Rock Island Lumber Company

Iola
Klein Lumber Company

Jennings
Foster Lumber Company

Jetmore
Foster Lumber Company

Johnson
Seyb-Tucker Lumber and Implement
Company

Junction City
Home Lumber Company
Rock Island Lumber Company

Kinsley
Kinsley Co-op Exchange Lumber Yard
Home Lumber and Supply Co.

LaCygne
Blaker Lumber and Grain Company

LaHarpe
Blaker Lumber and Grain Company
Diebolt Lumber and Supply

Lakin
Hart and Company
Lakin Lumber Company, Inc.

FREE 4-H Woodworking Plans
Available at Lumber Yards
Listed On These Pages
They Display This Emblem



THE lumber dealers listed on these two pages are supporting the 4-H woodworking project with this information and free woodworking plans. Get your plans from them.

Lancaster
T. E. Snowden Lumber Company

Lansing
International Paper Company, Long-Bell Division

Larned
Antrim Lumber Company
Clutter-Lindas Lumber Company

Lawrence
Woods Lumber Company
Logan-Moore Lumber Company

Lebanon
Lebanon Lumber Company

Lenexa
Lenexa Lumber Company

Lenora
Lenora Lumber Company

Leoti
Foster Lumber Company

Liberal
The Star Lumber Company

Lincoln
Leidigh and Havens Lumber Company

Little River
The T. M. Deal Lumber Company, Inc.

Longford
Longford Lumber & Grain Co.

Louisburg
Louisburg Lumber Company

Lyons
Foster Lumber Company

Macksville
Home Lumber and Supply Co.

Madison
Madison Lumber Company

Manhattan
Griffith Lumber Company
Kansas Lumber Company
Ramey Brothers

Marysville
Foster Lumber Company

Matfield Green
Paul Bell Hardware-Lumber-Feed

McPherson
Lake Superior Lumber Company
McPherson Lumber Company

Medicine Lodge
P. W. Doherty Lumber Company

Meade
Home Lumber and Supply Co.

Minneola
The T. M. Deal Lumber Company, Inc.

Moundridge
Clayton Vogt Lumber Co., Inc.

Neodesha
O. E. Woods Lumber Company

Ness City
Rock Island Lumber Company

Newton
The Houston-Doughty Lumber Company

Nickerson
The D. J. Fair Lumber Company

Norton
Foster Lumber Company
Newbury Lumber Company
Norton Lumber Company

Nortonville
Alexander Lumber Company

Norwich
H. S. Eshnour & Sons

Oakley
Oakley Lumber Company
Golden Belt Lumber Company

Oberlin
Building Supply Headquarters
Foster Lumber Company

Olathe
Cowley Lumber and Hardware Company
Hodges Brothers

Osawatimie
Leidigh and Havens Lumber Company
Osawatimie Lumber Company

Oswego
Home Lumber and Supply Co.

Ottawa
Hubbard Lumber Company, Inc.

Overland Park
Overland Park Lumber Company

Paradise
Paradise Lumber Company

Parker
Blaker Lumber and Grain Company

Phillipsburg
Hardman Lumber Company
Home Lumber Company

Plains
Home Lumber and Supply Co.

Pleasanton
Blaker Lumber and Grain Company

Pratt
The Ortmeier Lumber Company

Prescott
Prescott Lumber Company

Pretty Prairie
The George W. Ulitch Lumber Company

Protection
Home Lumber and Supply Co.

Riley
Alexander Lumber Company

Russell
Russell
Hardman Lumber Company of Russell Inc.

St. Francis
Foster Lumber Company
St. Francis Equity Exchange

St. Marys
St. Marys Lumber Company

St. John
English Lumber and Supply Company
Home Lumber and Supply Co.

Salina
Larson Lumber Company, Inc.
Leidigh and Havens Lumber Company

Satanta
The T. M. Deal Lumber Company, Inc.

Scott City
Foster Lumber Company

Selden
Foster Lumber Company

Seneca
Koelzer Lumber Company
Seneca Lumber Company

Severy
Tolman-Gibbon Lumber Company

Silver Lake
J. Thomas Lumber Company

Sharon Springs
Foster Lumber Company

Smith Center
Mid-West Lumber Company
Smith Center Lumber Company

Spring Hill
Spring Hill Lumber Company

Stafford
The T. M. Deal Lumber Co., Inc.
Home Lumber and Supply Co.

Stanley
Stanley Lumber Company

Sterling
The D. J. Fair Lumber Company

Stockton
Stockton Lumber Company

Sublette
The T. M. Deal Lumber Company, Inc.

Syracuse
Everitt Lumber Company, Inc.
Foster Lumber Company

Sylvia
The D. J. Fair Lumber Company

Talmage
Talmage Lumber and Hardware Co.

Tonganoxie
Tonganoxie Lumber Co.

Topeka
Whelan Lumber Company
Main Store, 715 E. 4th
Pauline Branch at Pauline
Highland Crest Branch, 200 E. 29th
Seabrook Branch, 2019 Gage

Tribune
Foster Lumber Company

Ulysses
The T. M. Deal Lumber Company, Inc.
Ulysses Lumber Co.

WaKeeney
Hardman Builders Supply Company

Wakefield
Sanborn Lumber Company

Wathena
Farmers Grain and Lumber Company

Wellington
Wellington Lumber and Supply Company, Inc.

Wichita
Lawrence Lumber Company
Rock Island Lumber Company
Stockyards Cash and Carry Lumber Co.
Alexander Lumber Company

Wilson
Hoch Lumber Company
Wilson Lumber Company

Winfield
Deal Lumber and Hardware Company, Inc.
A. B. Everly Lumber Company

Woodbine
Kohler Lumber Company

Yates Center
F. H. Conger and Son

Zenda
The George W. Ulitch Lumber Company

Missouri

Kansas City
The George W. Ulitch Lumber Company, 11432 Truman Road

Any one of 17 4-H
Woodworking Plans Available
At Lumber Yards Listed
On These Pages
They Display This Emblem



Looking for Woodworking Ideas?

See Any of These Lumber Dealers for a Free 4-H Woodworking Plan

See The Following Pages
and Page 7 for Pictures
of Available Plans

Local Lumber Yards Listed on Pages 8 & 9 Make This 4-H Woodworking Plan Service Available. Ask Them For Your 4-H Woodworking Plans.

AUTOMATIC BIRD FEEDER



ROTATING SELECTION TOOL RACK



FUNNY BOOK RACK



SHEEP BLOCKING BOX



TOY STOVE



CHEST OF DRAWERS



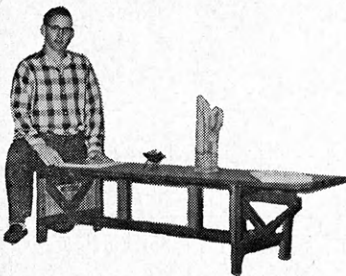
COLLAPSIBLE VISUAL AID STAND



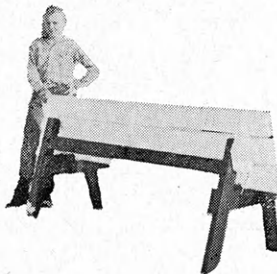
CHILD'S STEP STOOL AND CHAIR



COFFEE TABLE



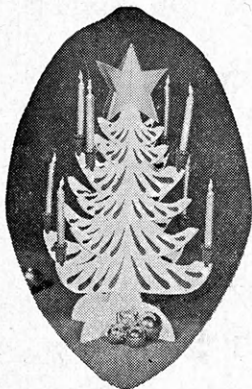
PICNIC TABLE



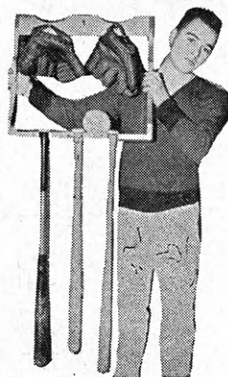
SANDBOX



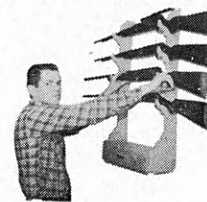
CHRISTMAS TREE GIFTS



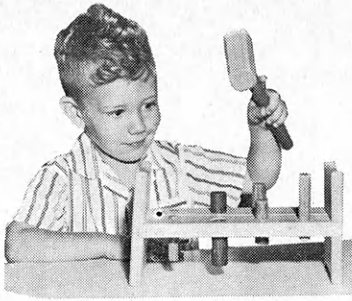
BILL'S BASEBALL RACK



HANDY GUN RACK



POUNDING BOARD

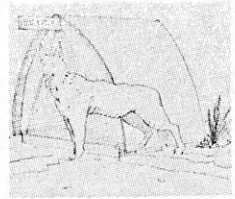


*Get FREE 4-H Woodworking Plans at
Lumber Yards Listed on Two Previous Pages*

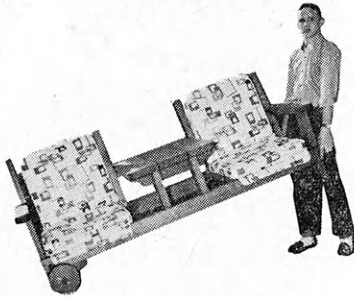
BLUE BIRD HOUSE



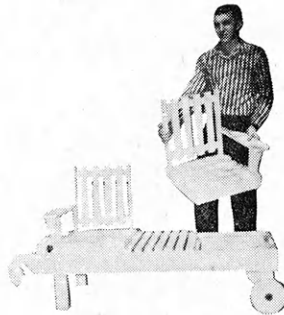
DOG HOUSE



TETE-A-TETE



LAWN SEAT



BOOKCASE HEADBOARD



MAIL AND MEMO BOARD



TYPING DESK AND BENCH



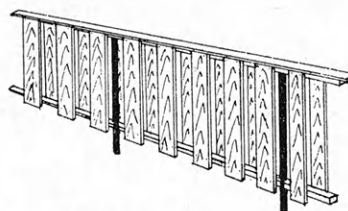
BATHROOM WALL CABINET



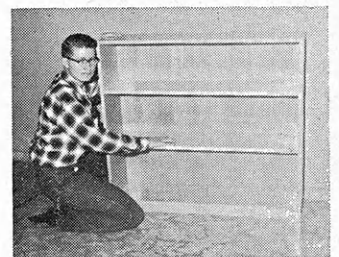
GATE SIGN



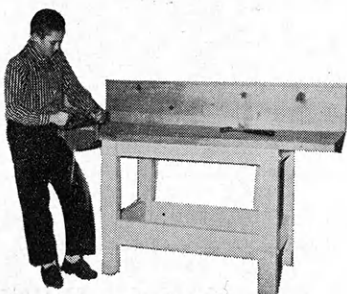
A BACK YARD FENCE



BOOK CASE



SIMPLE WORK BENCH



HOLDING GATE

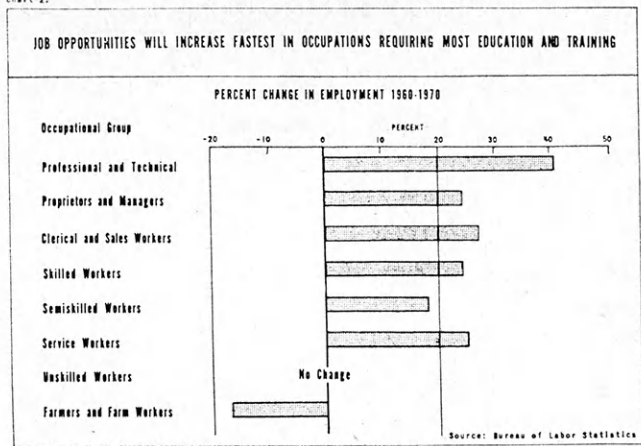


YARD CART



For a Better Job in 1970, Continue Your Education Now

Chart 2.



Continuing your education is becoming increasingly important, for at least two reasons.

First, it will better prepare you for any job. Second, it will probably prepare you for those jobs which, in the next ten years, will have the greatest growth in numbers.

All told, employment will rise about 20% in the next ten years. Some industries will grow faster than others. Service groups, for example, will grow faster than production industries such as manufacturing and farming.

More Education Required

The chart at upper right shows that those occupation groups which will provide the most job opportunities ten years from now are those which require more schooling.

Seventy-five percent of those in the professional and technical workers group, which will grow the fastest in the ten-year period, have some college education. Unskilled workers, whose job opportunities remain static,

include more employees with less than a high school education than any other group.

More Opportunities for Trained Workers

Whichever the field young people enter, it will be the trained person who will have the best jobs in those fields. This has always been true and it will become increasingly true.

The chart at upper right shows the rate of growth for various occupation groups in the next ten years.

Low Growth Potential in Farming

The reason for the 4-H Clubs being increasingly concerned with helping farm boys and girls to find good off-farm jobs is emphasized both in the chart showing the growth of jobs available in different industries (at the lower left) and in the chart at upper right which shows the number of jobs in 1970 for various occupation groups.

These charts do not mean there are no opportunities in agriculture for the farm boy. A soil technologist or chemist will find a wealth of opportunity because his job, in this classification, is included with the professional and technical occupation group.

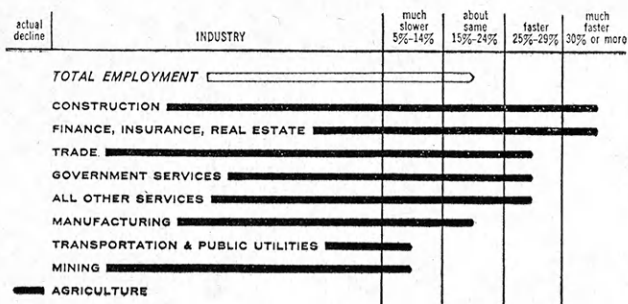
Job Hunting Gets Rougher

These charts and other studies make one thing clear. Young people starting their careers in the next few years will find tough competition in landing their first jobs—because of the large number of people in this age group.

Many experts encourage these young people to stay in school as long as possible to prepare for the advancement breaks which will come to them later.

In other words, by continuing your education, you will not only be better prepared for any job, but you will probably be preparing yourself for those jobs which, in the next ten years, will have the greatest growth.

See how growth in the number of jobs in these industries is expected to compare with the 20% rise in total employment in the next ten years.



Source: Bureau of Labor Statistics, U. S. Department of Labor

Chart 3.

THE KIND AND AMOUNT OF EDUCATION YOUNG PERSONS RECEIVE AFFECT THEIR LIFE-TIME CAREERS

PEOPLE WHO WORK IN THESE OCCUPATIONS	HAVE THIS KIND OF EDUCATION:		
	Less than high school graduation	High school graduation	Some college education
Professional and Technical Workers	6	19	75
Proprietors and Managers	38	33	29
Clerical or Sales Workers	25	53	22
Skilled Workers	59	33	8
Semiskilled Workers	70	26	4
Service Workers	69	25	6
Unskilled Workers	80	17	3
Farmers and Farm Workers	76	19	5

Loans, Scholarships, Part-Time and Summer Work

A college education pays dividends. The financial returns are apparent. By acquiring four years of college a youth can expect to increase his life's earnings by an average of \$100,000.

Less apparent but probably even more valuable are the intangible benefits — broader interests, a wider circle of friends, and a greater understanding of

This article was taken from portions of a similar article on financing a college education by John Sjo of the KSU economics department.

the world we live in. These are things which money can't buy and time can't take away.

Costs Not to Go To College

The cost of NOT going to college can be measured in terms of lower earning capacity for capable youth. A second cost is to society in terms of lost talents. Thus, both the individual and society have a stake in making sacrifices to insure opportunity for a college education.

Fewer Farm Youth in College

Many of these lost talents are among farm people. Fewer farm youth prepare themselves for an occupation than most other occupational groups. The Bureau of the Census found that only 34% of the farm youth anticipate going to college.

The unprepared youth must accept lower paying jobs and jobs of lower social and cultural prestige. A high school gradu-

(Continued on page 42)

Sample Budget for a Nine Month College Term

Estimated Cost of One Year of College	
Enrollment Fees	\$ 208*
Books and Supplies	60
Room and Board	660
Clothing, Laundry, Cleaning	100
Entertainment and Activities	100
Estimated Total Cost	\$1,128
Estimated Income for One Year	
Scholarship	\$ 200
Savings from Summer Job	200
Part-time Job (16 hours weekly at 75c)	400
Student Loan	330
Estimated Total Income	\$1,130

* Tuition and enrollment fees will vary considerably between schools.

Kansas 4-H Journal Sponsors

WELCOME TO THESE NEW SPONSORS

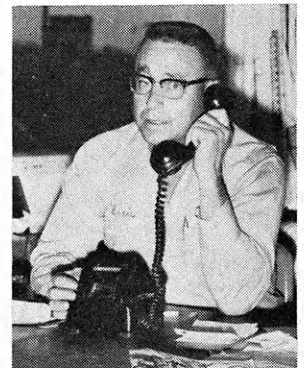
Pottawatomie
Union State Bank of Olsburg, Olsburg

These Sponsors Have Renewed Their County Support of the Kansas 4-H Journal

Pottawatomie
Kaw Valley State and Savings Bank, Wamego
St. Marys State Bank, St. Marys
First National, Wamego
First National Bank, Onaga

"Hello . . . I'm Calling YOU About A Career in the Petroleum Industry"

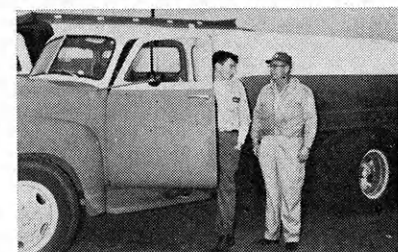
says ERNIE LONG, Haviland



"More cars and trucks on the road every day mean more opportunities than ever in this business," says Ernie Long. "I'd advise a young fellow to start work in a service station to see if he likes it and is suited to this type work. Then, later, he may want to take over a station of his own or apply for an agent's job."



Mr. Long started with Standard in 1941 as an agent's helper at Coats, Kansas. Through the years he has worked his way up. Today he operates a service station, motel, cafe, and an LP gas truck and tank wagon. He services about 115 farmer customers in his area. "We've had a very good living in this business and when you enjoy the work you're doing you're happy," says Mr. Long.



Why don't you investigate the varied careers offered you in the petroleum field? Write today for full information to—

Kansas Petroleum Industries Committee

204-A Insurance Building, Wichita

You May Be Able to Get a Head Start in Summer School

The wise boy or girl is planning as far ahead as possible for education beyond high school graduation.

Some start planning as early as junior high school. Many students, knowing they must use their time most efficiently, feel they cannot afford to educate themselves only nine months a year.

So they plan on attending one or more summer sessions during their college term.

Many students find it advantageous to attend summer school following high school graduation. They see many reasons for enrolling in summer school.

In the first place, transition from high school to college may

be easier for those going to summer school. Statistics show few who attend summer school drop out of college because of low grades.

Summer school may provide a more relaxing time to learn one's way about the campus, and to become acquainted with the faculty before the great mass of students arrive in the fall.

Arriving in the early summer, boys who expect to live off campus during the fall and winter may have a better opportunity to locate more desirable rooms.

If a student plans to work part-time, summer school gives him or her two months to find a regular part-time job. This student may have an advantage over those who wait till fall.

Those working part-time can take lighter loads (and perhaps make better grades) and still graduate in four years' time if they attend summer sessions.

Those planning on scientific or professional careers which require schooling beyond the college degree can save a full year's time by attending three summer sessions.

Statistics show most students would be far ahead financially to borrow the money necessary to attend summer school rather than try to pay one's way working in the summer. The total one will need to borrow may well be less than the cost of the new car many buy on graduation.

Some students with grade point deficiencies may find it possible to eliminate the deficiencies during the summer.

It is interesting to note about one-fourth of all those now in college will continue schooling next summer.

Colleges and universities are realizing more and more the importance of summer school. That is why, at last count, all five state colleges and universities, five of the public junior colleges, and twelve of the four-year private schools in Kansas will hold 1962 summer sessions.

Who Else wants to win Friends?



Many 4-H'ers, through the Personal Development project, are learning ways to get along better with others—and how to win more friends.

You, too, can start now on this project. Ask your county extension agent for the handbook on the Personal Development project and select your area for improvement from among: manners, relationship with others, appearance, expression, career exploration, character development or philosophy of life.

You may be interested too, in the medals, certificates, savings bonds, and trips given as awards by the Southwestern Bell Telephone Company.

SOUTHWESTERN BELL



TELEPHONE COMPANY

Your Future May Be

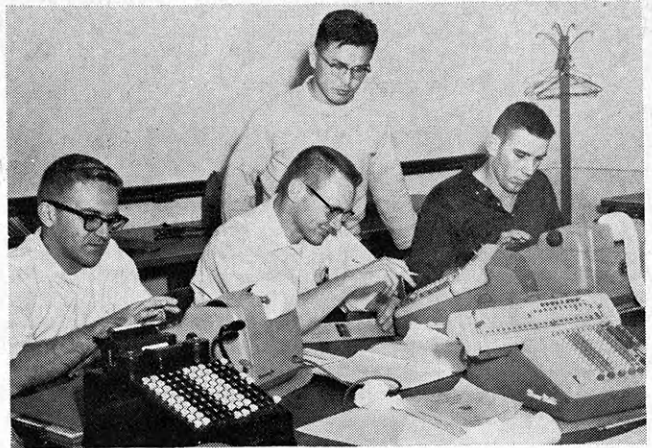
in

Farming

or in

Agribusiness

Both are Agriculture



Farm, and farm related industries, too, are in an age of industrial management when men and machines combine to give answers instead of guesses. Both farmers and workers in agribusiness need to know (as these students are learning) the tools by which to manipulate the machines to find the answers.

The farm youth has many avenues open to him in seeking a career.

A farm background is excellent preparation not only for farming but, also, for jobs in the many industries which process farm products, in industries which supply the things the farmer buys, and in many areas of public service.

Some of you will find a career in farming. This is a rewarding and interesting life.

Many with a farm background may prefer to find a career in industries related to farming or in public service related to agriculture. These can use their farm experience to advantage in other parts of the broad field of agriculture.

Farm Background is Asset

One of the richest assets is the experience you have gained growing up on the farm. Years of study could not duplicate this experience. You know farmers and their problems. When a person has such a valuable asset, he should find out how he can make the best use of it.

Of the 65 million people employed in the United States, about 26 million work for some agriculture related industry. Only eight million are farmers.

The over 18 million off-farm jobs in agriculture may make

possible your future in agriculture.

You Have Slight Edge

You are not alone in seeking these jobs. Your cousins and friends in the town will also be interested in a career in agriculture. You are a jump ahead—they don't have a decade of farm experience.

But don't think you will get a job before your city cousin just because you grew up on a farm. It is an advantage that you have only if you are as well qualified to do the specific task as is the city youth.

For example, a farm girl who applies for a job as secretary to the manager of the local cooperative will not get the job just because she has had farm experience. She must also be a skilled typist, be able to write shorthand, and be able to organize the business files. If she cannot, the job will go to her city friend who is a skilled secretary.

Need More Training

To compete for a career in the off-farm part of agriculture, you must be prepared. The highest paying positions and the ones of greatest prestige go to the technically trained youth.

In the past, farm youth have been at a disadvantage in the non-farm job market. Farm boys

and girls have not had the training and education the city youth have had. Did you know that 67 percent of the professional workers' children, 48 percent of the white collar workers' children, and 26 percent of laborers' children go on to college, but only 24 percent of farmers' children do so?

You get greater satisfaction when you know your preparation makes you a more useful citizen in society. Also, preparation for your career helps assure you a position of greater prestige.

Three Types of Jobs

Let us consider the types of jobs you can expect to find in agriculture.

First, the factories and businesses that supply farmers with products and services used on the farms provide a variety of job opportunities.

The manufacturer of these products, the farm machinery factories, fertilizer plants, and oil refineries hire laborers, skilled laborers such as machinists, office personnel, chemists, engineers, and salesmen. The insurance companies and the banks who deal with farmers need salesmen and office help.

Second, the processing and distributing of the products produced on the farm requires some

(Continued on page 30)



A portion of Sandra Herring's present herd of cattle.

After Nine Years Planning, Working

A Dream Comes True !!

“It’s not too early to start when you are 10,” says 4-H’er and parents.

A dream is coming true for blond, blue-eyed Sandra Herring, Franklin county Far and Near 4-H Club member.

Since the early 1950’s, Sandra has dreamed of a college education. But more than just dreaming, Sandra and her parents, Mr. and Mrs. Roy Herring, did some planning too.

Today, Sandra is a freshman at Kansas State University. Her beef sales have totaled nearly \$5,500 during the past nine years.

In addition to financing a college education, Sandra was named state 4-H beef winner and

was awarded a trip to the National 4-H Congress in Chicago last December.

First Sale

Sandra’s first sale was a Hereford steer “Dummy” which brought her \$23 a hundred-weight. Sandra then added to this money with a loan from her father and bought a top quality registered Hereford heifer. This heifer has been the foundation for her present herd.

Sandra remembers doing chores on her parent’s farm to pay the feed bill those first years. She’s paid all her expenses since 1955 from the sale of

her calves.

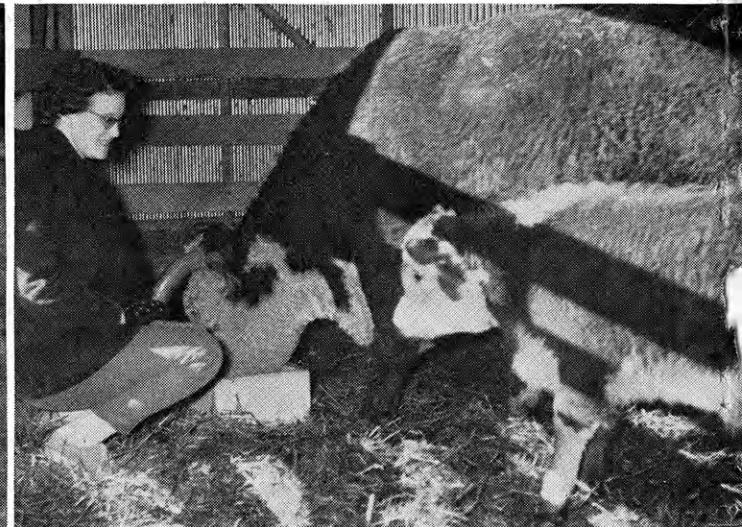
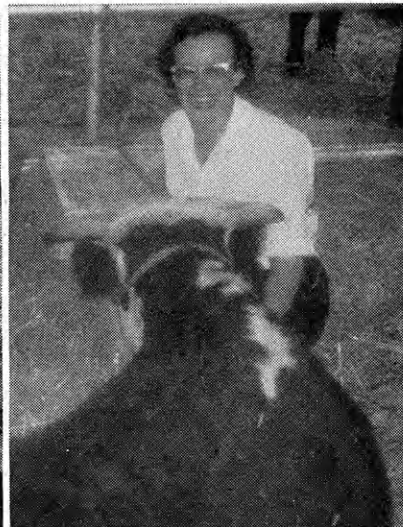
Present Herd

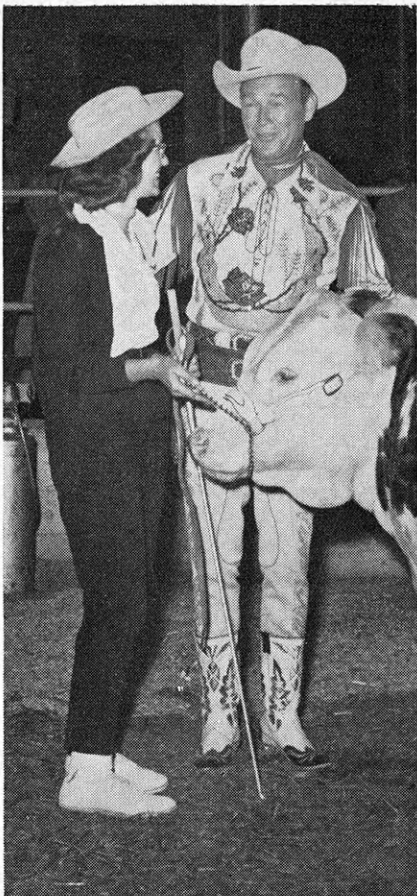
At present she has three cows, two heifers, two steers and three calves. This is in addition to beef sales totaling nearly \$5,500 in her nine years of 4-H.

Sandra has fattened 18 baby beeves, five of which were raised by her foundation cow. Her foundation cow, now affectionately called “Old Lady,” has also raised two State Fair champion heifers. One of “Old Lady’s” steer calves was also champion at the State Fair.

In addition to exhibiting at the fair, she has taken part in

Left, Sandra at age 10, with the steer “Dummy” she sold to help finance her first registered Hereford cow. Center, Sandra exhibits at the 1961 fairs, and, right, Sandra with one of her cows and the latest offspring.





Sandra Herring with Roy Rogers and Sandra's top steer at the 1959 Mid America Fair.

17 livestock judging contests, 13 fitting and showing contests and has been a member of several county livestock judging teams.

Recommends Project

Sandra, of course, likes to see other boys and girls take an interest in the beef project and, perhaps, help pay for their college education, too. "But do not pay a lot of money for a baby beef project," advises Sandra. She paid no more than average prices for all but one of her steer projects.

Her parents call the breeding beef project the insurance policy for Sandra's college education. When asked if he could have helped more than one child the way he has helped Sandra, her father replied he could have for an average sized family.

Other Rewards

Sandra explains that, in addition to the college education she has financed with her beef projects, one satisfaction she gets from her 4-H work is in meeting people and making new friends. One of the best known persons she has met is Roy

(Continued on page 37)

How About The Newspaper Business?

If you are thinking about following a business or professional career, why not spend an hour visiting with your home town editor and learn about the possibilities in journalism?

The newspaper business offers an opportunity for a most interesting and rewarding life for the young man or woman who has a broad educational background, a liking for people, courage, and a desire to have an active part in the American way of life.

A good newspaper man has the satisfaction of knowing that he is helping others to a better life. He remembers that "The People Have The Right To Know" and, that there is no better way to have a well informed Democracy than through the printed word.

Before you make up your mind on your life's work, please think seriously about journalism. Thousands have found it a most enjoyable and rewarding career. Maybe you?

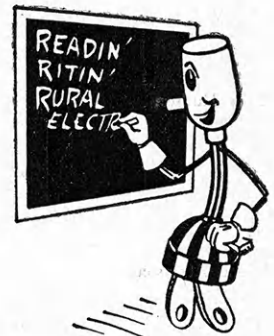
The Journal-World

Lawrence, Kansas

"The HOME Newspaper for 13,000 Families"



The 37 Rural Electric Cooperatives have over 56,000 miles of electric lines bringing electricity to your homes so that you can live better electrically.



For the modern 4-H farmer this low cost efficient electric power is equal to many hired hands.

Kansas Electric Cooperatives, Inc.

420 W. 9th—Topeka, Kansas



Alliance Companies

McPherson, Kansas

FIRE — CASUALTY — LIFE

Serving Kansas Since 1888

Former 4-H'ers Tell What to Expect, How to Prepare For College

Each Kansas four-year college was asked to have one of their students (who had been a 4-H member) fill out a questionnaire pertaining to their college experience.

Purpose of the questions was to get information which might be of value to high school students in looking forward to their own college.

Replies were received from 13 schools. The students are pictured below and their replies are summarized at right.

The student's school and home county is also indicated.



Anita Wenger



Jerry Dahlsten



Ted Muilenburg



Avis Morton



Beth Hudson



Martha Streeter



Marlene Atkinson



Sondra Owens



Irene Healy



Virginia Habiger



Georgine Coleman



Joanne Prim



Judy Meek

Questions

Anita Wenger
Brown County
Baker University

What high school subjects are most helpful to you in your college work?

Typing, English, algebra, physics, history and government

What difference(s) do you notice between high school and college?

Professors expect students to spend more time and do more precise work for classes. Your time's your own and it's up to you to plan it wisely.

Jerry Dahlsten
McPherson County
Bethany College

English, algebra, geometry, chemistry and biology

Biggest difference is in the amount of studying required.

Ted Muilenburg
Elk & Lyon Counties
College of Emporia

English, shop, and journalism

The student is allowed to think more in college, he is treated more like an adult. Close relationship between teacher and student.

Avis Morton
Decatur County
Fort Hays State College

Biology, chemistry, science, home ec, social science

College allows the student to take the responsibility of completing work and encourages individual thinking.

Beth Hudson
Labette County
Kansas State College

English, math and chemistry

Your course work is your privilege and your responsibility.

Martha Streeter
Riley County
Kansas State University

Chemistry, English, biology, and home ec since I plan to go into home economics work.

You have to choose your activities, you can't be in all. It's up to the individual as to what and how much is learned.

Marlene Atkinson
Saline County
Kansas Wesleyan Univ.

Because I have more writing in college, English has been most helpful.

You learn to stand alone in college. Education comes to mean more to you. You learn to study harder and more.

Sondra Owens
Gove County
McPherson College

English is very helpful. Typing is, too, in working on term papers. My science courses were helpful but I miss not having taken chemistry.

I have large assignments and more outside reading. I am on my own more to decide when and how much studying I must do.

Irene Healy
Sedgwick County
Mount St. Scholastica College

English, math, biology and chemistry

There's a more adult atmosphere in college life. Students have more mature attitudes and goals, and no one is forced to study.

Virginia Habiger
Saline County
St. Mary of the Plains College

English, math, science and home economics

In college the student is assigned work and he does it for his own benefit.

Georgine Coleman
Jackson County
Sterling College

English, history and science

A college student is strictly on his own. It's up to him how he budgets his time and how much effort he puts on studies.

Joanne Prim
Douglas County
University of Kansas

English, typing and math helped me most. By typing my own papers, I am able to catch errors a typist unfamiliar with my topic may not notice.

One of my biggest challenges was learning to manage my time. New students must also learn how to get along with their roommates.

Judy Meek
Montgomery and Shawnee Counties
Washburn University

I think English is by far the most important. Science, history and political science are also helpful.

College professors expect much more from students and they get it. In college out-of-class study assumes greater importance.

What advice would you give to high school students planning to attend your college?	What different sources of funds are you using to finance your college education?	What benefits do you hope to receive from your college education?	How did you decide where to go to college and why did you decide on this school?
Set your goals high in studies and activities, budget your time from the beginning, be willing to accept help from others.	Scholarships earned in 4-H, church and college, working 5 to 10 hours a week, my own savings, and parents' assistance.	An education to help me earn a living to benefit others as well as myself, a greater awareness of the world and a better understanding of the people in the world, and an opportunity to personally develop.	I wrote to several colleges, studied their catalogs and visited campuses. I decided on Baker because it was a Methodist college and because I had a scholarship there.
Learn to study while you are in high school.	I have a \$200 scholarship and profits from raising deferred fed steers the past five years.	I hope to receive training for my future life's occupation. I also believe the social life in college will be a valuable asset later.	At a small school a person is able to develop a closer personal relationship with other students. I chose Bethany College because I lived near the campus and because Bethany has an excellent academic record.
Be ready to work hard to get all you can out of your education. Check to see if there are any scholarships available.	I have a scholarship, work at the campus in the winter, and in town during the summer. It isn't hard to find a job in Emporia.	C of E is a liberal arts school. Besides learning about special fields, I hope to graduate a well-rounded individual.	My high school counselor helped me select colleges to write for catalogs. Studying the catalogs narrowed the choice to three. I chose C of E, a college of 600 student population with a well rounded curriculum.
Attend the college most related to your vocational interests and then obtain a varied education at that institution.	Part time work and help from my parents.	I hope to gain a working knowledge of home economics enabling me to teach this subject and to be a more successful homemaker.	With advice from high school teachers and my parents, I decided I could get a satisfactory education at a reasonable financial output at Fort Hays Kansas State College.
High school students should learn to study. They should take courses that require concentration.	I work at school and at the J. C. Penney Store in my home town on weekends. I am working my way through college.	I want very much to teach home economics. I feel my college education will make this possible and I also will gain both socially and intellectually.	I felt KSC had a good program in home economics, my major, and, therefore, I accepted the scholarship I had applied for and won.
Learn to study, read at the adult level, and be well informed on many subjects and the news.	Part time work, savings and parents assistance.	I hope to gain a career to follow if it is necessary I work. I hope to learn to get along with all types of people, and to have a broader, well-rounded education in more than just my academic subjects.	It's close to home, has an excellent home ec school, it's not too expensive, and my parents are alumni of the school.
Be willing and eager to do the best, good high school grades are important. Be positive in all you do.	A good percent of my finances come from my work. I also have borrowed from the National Defense Loan Fund.	I hope to become a well-rounded useful community citizen as well as preparation so I may go into the work I enjoy, working with children as a teacher.	Kansas Wesleyan is my church's college (my first reason). Everyone at KWU seemed eager to help, and I preferred a small college to a larger one.
Learn how to study and get the most out of it. If you know in what you want to specialize, take high school subjects to help prepare you.	The calves I've sold from a heifer my grandparents gave me when I was small has furnished some money. My other 4-H projects and my work furnishes more.	I hope to become a home ec teacher. A college education is the means by which one obtains the job he wants, better wages and good working conditions.	I liked the idea of attending a small school. I felt I could know most of the students and this is true. McPherson College offered the courses I wanted, so I decided I'd rather attend a small college.
Take all the college preparatory courses possible, learn to support your school and join in the spirit, come prepared to work hard.	Assistance from parents, a summer job, a campus job during the winter and grants-in-aid.	I hope to gain a more deep and fuller appreciation of life, and an ability to take my place in society and to contribute to my environment.	I first decided in my own mind what I wanted from college. Then, after seeking information from different schools, I found the Mount offered a full liberal arts curriculum, had excellent teachers, and that it offered opportunities for cultural and spiritual stimulation.
I would recommend they participate in a number of extra-curricular activities. I'd suggest taking courses in English, math, science and foreign languages.	My father is helping and I'm financing the remainder by working in the college bookstore and by working during the summer.	My education should provide me the knowledge to enter the teaching field, but, more important, I hope to be developed morally, intellectually, culturally, and physically.	I first listed the things I wanted from college (a Catholic four-year college with an education curriculum). St. Mary of the Plains offered this and so I applied and was granted permission to enroll.
When you study, study hard; when you relax, enjoy yourselves. Students who do half and half are the ones who seem to get behind.	My parents help all they can, I have received several scholarships and I plan to work during the summer.	I hope to be more mature and ready to settle down to live a good Christian life. I hope my college education will give me a wide field of interest to help me enjoy life to the fullest.	I graduated from a small high school and wanted to go to a small Christian College. Our minister took us to Senior Day at Sterling. I felt right at home and decided that was where I would go.
This may sound a little ridiculous, but know how to read and write.	Scholarships, parent and relatives' aid, personal savings and earnings are financing my college. I've found I can "earn" more money in scholarships by studying than by working.	In general, I want to achieve understanding through learning. Specifically, I hope to acquire a double major in journalism and English so I will have several careers from which to choose.	KU is near my home and it has an accredited school of journalism. Several members of my family have gone here.
Take and retain all the English possible. Take basic courses instead of vocational preparation courses, learn to study and think for yourself.	I work as a life-guard in the summer, teach a few classes at the YW, and work as a secretary part time. I have a small scholarship and my parents helped me some.	I already realize I cannot learn everything I would like to know in four short years. I know now a college education is only a start and I hope it will teach me where to look for whatever I want to learn in the future.	Washburn was convenient and I could save money by staying at home. There are lots of job opportunities in Topeka. Washburn is a highly rated school and has a top physical education department where I wanted to major.

SUPPORTING ALL 4-H YOUTH IN THE KANSAS 4-

PROVIDES

College scholarships as incentives to high achievement in 4-H work and to assist worthy students to obtain higher education

Scholarships to Camp Miniwanca, Michigan

Scholarships to Music Camp, Health Conference, Adult Leaders Conference

Trips to National 4-H Conference, Washington, D. C.; to study 4-H in other states—promotional activity; to National Club Congress; to winners in the wheat project; to American Royal; to dairy winners; to Poultry Fact Finding Conference; to winning health club, American Royal; to home improvement winners, Kansas City

Awards—medals and/or watches in the corn, elec-

tric, garden and potatoes, horse, legumes and grasses, poultry, rabbit, sheep, soil conservation, sorghum, wheat, demonstration, promotional activity, reporters programs

Awards—other than medals and watches—recreation, swine, garden, home improvement, personal improvement, junior leadership

Key Awards

Livestock judging trips

State talent contest expenses

Leader training

More than \$17,000 is budgeted annually for trips and incentives.

The Kansas 4-H Foundation Helps Build 4-H

THE KANSAS 4-H JOURNAL

A 4-H family magazine published by the Foundation to emphasize accomplishments of 4-H members and the important part parents have in the program. Each month some 21,000 4-H families are better informed and have greater pride in their 4-H work as a result of this publication.

PROMOTING INTERNATIONAL UNDERSTANDING

Funds are provided for foreign participants' travel during their visit to Kansas; for promotional literature; orientation and special get-togethers; and encouraging outstanding Kansas youth to participate as International Farm Youth Exchange delegates. During the past 11 years, \$97,616 was expended as the total Kansas share of the IFYE program.

ROCK SPRINGS RANCH

As a service to youth and leaders—the Foundation operates and is developing Rock Springs Ranch, state 4-H center, where more than 6,000 young people and their leaders annually receive instruction and inspiration. Since opening in 1946, over 91,000 have used the center—church, school, and youth groups, in addition to 4-H'ers throughout Kansas.

4-H SUPPLY SERVICE

Makes easily available official pins, medals, and other materials important to 4-H Club work. A Foundation revolving fund of some \$15,000 provides this much needed service to counties.

4-H Helps Prepare for Higher Education

4-H - - America's Greatest Informal Education for Youth

THEIR EDUCATIONAL EFFORTS

H H F O U N D A T I O N

WAS ESTABLISHED

in 1952; its sole purpose to assist the Kansas Extension Service in promoting the state 4-H Club program. A Board of Trustees of 11 members directs the Foundation work. A staff is employed to conduct the various assignments; such as publishing the Kansas 4-H Journal, operating and developing Rock Springs Ranch, and administering other Foundation operations.

Committees of public spirited citizens have been named by the Foundation to provide leadership in the counties. This is one of the most fundamental and important steps in the organizational set-up. Only through aggressive, interested leadership throughout the state can the Foundation be fully effective. 4-H Alumni are represented on county committees to co-ordinate the annual Roll Call.

4-H—Inspiration for a Higher Education—4-H

ALL SUPPORT

All support for the Foundation program comes from private sources, one of the basic strengths of the Foundation. This includes the annual "Membership" which many local 4-H Clubs carry. Obtaining donors and servicing awards programs is an important function of the Foundation.

Investments in 4-H youth pay dividends permanently for the good of all mankind. The Kansas 4-H Foundation makes possible unlimited opportunities to further strengthen 4-H Club work. Each dollar invested helps some 4-H'er or leader to higher achievement by providing incentives, improving leadership training facilities, or promoting international understanding.

Education Makes Sense—It Pays!

ALUMNI ROLL CALL—

Established to give former 4-H'ers an opportunity to give financial support to the present 4-H program. It is the only organized way Alumni have to help the state-wide 4-H program with private funds. The Roll Call, a program of the Kansas 4-H Foundation, is directed by a board of 15 Alumni. Some counties have an Alumni representative on the Foundation county committee.

MEMORIALS ARE POSSIBLE THROUGH THE FOUNDATION

Some possible projects which become "living" memorials through the development of youth.

Bronze plaques appropriately designate the donor and the dedication.

FOR GENERAL USE:

Endowments to the Foundation—the annual income to be used for needed projects in 4-H and IFYE. Scholarships, various awards, and many others.

FOR ROCK SPRINGS RANCH:

Permanent cottages for year around use
Shelter house—for holding classes and discussion groups
Water fountains
Gardens—featuring native wild flowers and plants
Nature trails for hikes and horseback riding
Primitive or wilderness camping areas
Recreation equipment, etc.

Included in this issue of the Kansas 4-H Journal are institutions of higher learning worthy of your consideration.

Consider Carefully Plans for Your Higher Education

The Ploughing Song

"The Ploughing Song" is one of the oldest and best known of national 4-H Club songs.

Although it is sometimes referred to as a song for boys' clubs, we do not have separate clubs in Kansas, so it is truly an all 4-H song.

When The Ploughing Song was introduced at National 4-H Club Camp in 1927, the same year Dreaming was first sung, there were no other songs written especially for 4-H work.

Miss Fannie Buchanan, who wrote the words for The Ploughing Song, was influenced by her father's experiences as a pioneer farm boy. He knew, and often told his daughter, of the exhilaration of turning the sod on a fine spring morning, and he kept that joy throughout his long life.

Miss Buchanan told once of watching 4-H Club boys judging sheep in a sunny meadow. She learned from them the need to look for "density of wool," and suddenly she realized these "lads of the flock" were learning far more than the petting and feeding of a lamb. They were learning lessons in mental application which would stay with them always.

In the music, Miss Rena Parrish created a tune which is as sturdy as a plowman and has a rhythm that strides along with him step by step, but which, in these mechanical days, can be whistled or sung from the tractor or as well. (Note that Miss Buchanan also teamed with Miss Parrish to write Dreaming, the January Song of the Month).

The Ploughing Song is an excellent marching song, usable whenever a stirring tune is needed. Every 4-H member, in every club in Kansas, should be able to sing all of the Ploughing Song, without reading.

This means song leaders should use this song often enough, at regular sessions and when the club sings "just for

(Continued on page 37)



They've FOUND the SECRET of SAVING . . .

and that secret is to pay yourself first every payday. Make sure that what you save earns high profits in complete insured safety . . . every time. That means save now at your nearest . . .

Progressive KANSAS Savings and Loan association

Arkansas City
First Federal Savings and Loan Ass'n of Arkansas City

Augusta
The Commercial Savings and Loan Assn.

Beloit
The Beloit Building and Loan Assn.
First Federal Savings and Loan Assn. of Beloit

Clay Center
Northwestern Federal Savings and Loan Ass'n. of Clay Center

Dodge City
First Federal Savings and Loan Ass'n. of Dodge City

El Dorado
Mid-Continent Federal Savings and Loan Assn. of El Dorado

Emporia
The Columbia Building and Loan Assn.

Erie
The Erie Savings and Loan Assn.

Fort Scott
Liberty Savings and Loan Assn.

Garnett
The Garnett Savings and Loan Association

Great Bend
The Prudential Building and Loan Assn.

Hays
The Hays Building and Loan Assn.

Hutchinson
First Federal Savings and Loan Assn. of Hutchinson

Iola
The Security Savings and Loan Assn.

Larned
The Larned Savings and Loan Assn.

Lawrence
Capitol Federal Savings and Loan

Leavenworth
The Leavenworth Mutual Building, Loaning and Savings Assn.

Liberal
First Federal Savings and Loan Assn. of Liberal

Lyons
The Lyons Savings and Loan Assn.

McPherson
The Pioneer Savings and Loan Association of McPherson

Mission
Capitol Federal Savings and Loan Assn.

Newton
First Federal Savings and Loan Assn. of Newton

Oberlin
Reserve Building and Loan Association of Oberlin

Ottawa
Ottawa Savings and Loan Assn.

Overland Park
The Overland Park Savings and Loan Assn.

Parsons
First Federal Savings and Loan Assn. of Parsons

Plainville
Rooks County Savings Assn. of Plainville

Pratt
The Western Savings Assn.

Salina
The Homestead Building and Loan Assn.

Topeka
Capitol Federal Savings and Loan Assn. at 6th and Kansas, and 12th and Topeka Blvd.

Wichita
The Commercial Savings and Loan Assn. at 4601 E. Douglas Avenue and 147 North Market Street



Home Ec Training, Career Will Help to Make Better Homemaker

People in our country are living longer . . . and in all probability the young people of today will have life spans which cover more years than those of their parents.

Life Span Approach

Young people, therefore, need to consider the "Life Span Approach" to their lives. This means they need to have a realistic understanding of the future. For young women this means they will—

- a. Marry early
- b. Have children early
- c. Then have 25 to 30 years of time on their hands after the children have left home.

The young women of today will be not only wives and mothers but wage earners too. The woman college graduate of today will probably work outside her home for 25 years. Girls now in high school can look forward to working outside their homes for as many or even more years.

Education of women is of importance for their own greatest happiness and as a basis for the best contribution in any of the roles they may fill—as wives of college-educated men, as leaders in community affairs, as teachers of their own children or as part-time or full-time professional workers outside the home in middle age.

Too often we hear it is a waste of time and money to educate women because they "just get married anyhow." This idea is completely false, of course. Wives and mothers need as much education as they can possibly get to make their best contribution to society.

Education in Life Plan

All capable young students should put education beyond high school in their life plan.

Girls with ability need to make plans to prepare themselves to work in professions which are challenging, interesting and which pay well.

Those who do not prepare themselves beyond their high school education will be limited to short-term, semi-skilled, sometimes monotonous jobs, with little hope for advancement. The salary will be definitely below average. Yet the chances are they will be working for pay about one-fourth of their lives.

Look for Best Possibilities

Young people who plan to go on to college should look into the possibilities available to them. Girls should consider the advantages of a degree in the field of home economics.

Home economics has developed an unusual educational program for those concerned with home and family. This, of course, means it is adapted to the particular interests and responsibilities of women.

All over the country there are shortages of people with specialized training in home economics.

Always Need Home Ec Agents

There is not one month of the year when all Kansas counties have a home economics agent.

Kansas is not the only state needing home ec agents. Other states write asking our graduates to consider positions on their staffs. Remember, home economics extension is only one

of the many fields available for home economics graduates to consider.

High school home economics teachers are not graduating in sufficient numbers to fill the positions available. Every year Kansas State University has more requests than graduates.

Demand Ten Times Supply

The American Dietetics Association reports ten times as many demands as trained persons available for dietitians.

Home economists in business are always being sought by Kansas and other business firms.

The girl who earns a university degree in home economics will have the following advantages—

1. **Become aware of the Life Span Approach** to the pattern of today's living.

2. **Acquire a broad general education** along with a specialty of her choice.

3. **Become a creative homemaker, a stimulating wife, and a well-trained mother.**

4. **Equip herself for a career** as a home economist for immediate use or in the future after children are gone from home.

5. **May choose one of the many professions** in the expanding home economics field. One

(Continued on page 41)

A student in child development not only prepares herself for a career, but she is preparing herself for a career as a mother and housewife.





the four leaf clover”

... and what we see never looked better!

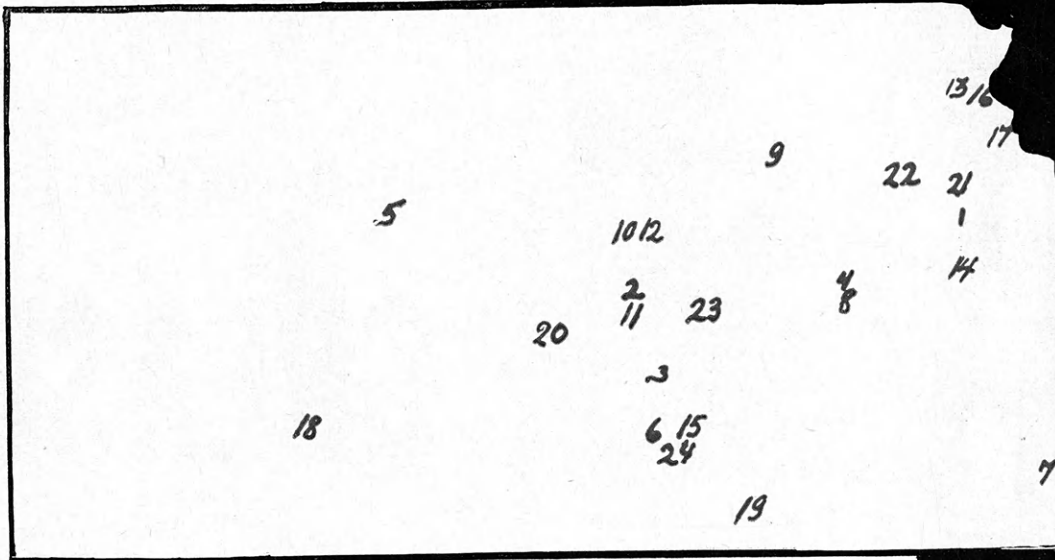
We pledge our continued support
to your clubs, your Kansas 4-H
Foundation, and your Rock Springs Ranch.

The Folger Coffee Co.
KANSAS CITY, MO.



KANSAS 4-H JOURNAL

KANSAS FOUR-YEAR COLLEGE AND UNIVERSITY DIRECTORY



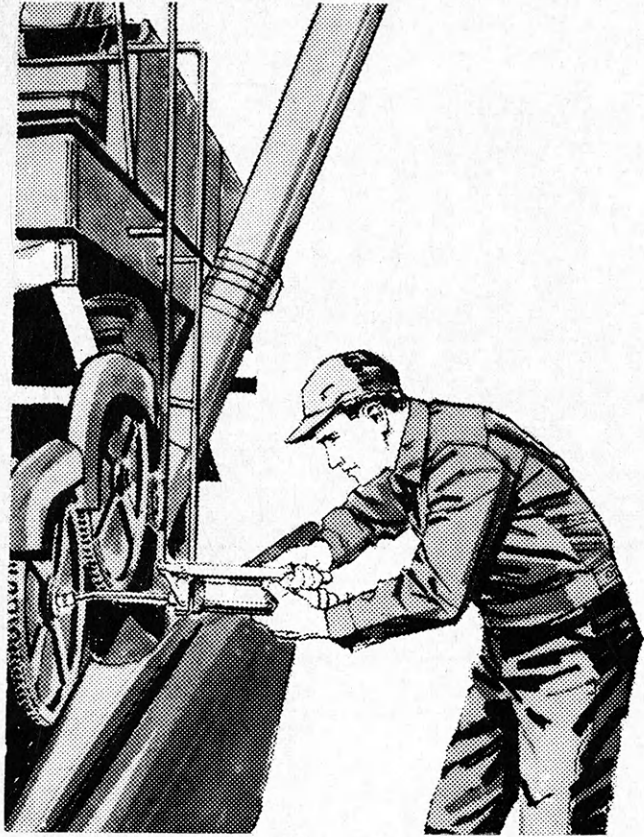
INDEX

1. Baker University, Baldwin.....	29
2. Bethany College, Lindsborg.....	29
3. Bethel College, North Newton.....	28
4. College of Emporia, Emporia.....	30
5. Fort Hays Kansas State College, Hays.....	44
6. Friends University, Wichita.....	31
7. Kansas State College, Pittsburg.....	46
8. Kansas State Teachers College, Emporia.....	47
9. Kansas State University, Manhattan.....	48
10. Kansas Wesleyan University, Salina.....	32
11. McPherson College, McPherson.....	34
12. Marymount College, Salina.....	33
13. Mount St. Scholastica College, Atchison.....	35
14. Ottawa University, Ottawa.....	36
15. Sacred Heart College, Wichita.....	42
16. St. Benedict's College, Atchison.....	35
17. St. Mary College, Xavier.....	37
18. St. Mary of the Plains College, Dodge City.....	38
19. Southwestern College, Winfield.....	40
20. Sterling College, Sterling.....	41
21. University of Kansas, Lawrence.....	52
22. Washburn University of Topeka, Topeka.....	46

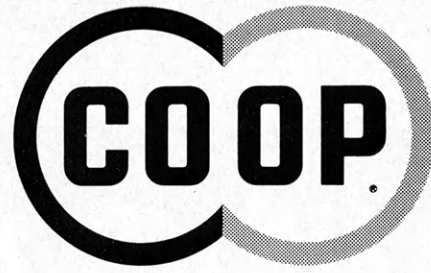
OTHER KANSAS FOUR-YEAR COLLEGES AND UNIVERSITIES

- 23. Tabor College, Hillsboro
- 24. University of Wichita, Wichita

Enrollment figures used in the description of each Kansas four-year college or university has been standardized to mean the equated full-time enrollment. This figure may be either more or less than the "head count" enrollment commonly used in newspaper publicity.



NOW, AN IDEAL ALL-WEATHER ANY-TEMPERATURE LUBRICANT, the *finest* Multi-Purpose Grease you can use, recommended without reservation for chassis lubrication, wheel bearings, water pumps, universal joints or for ball or roller bearings.



GOLDEN FILM

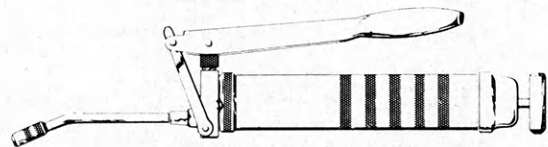
multi-purpose

GREASE!



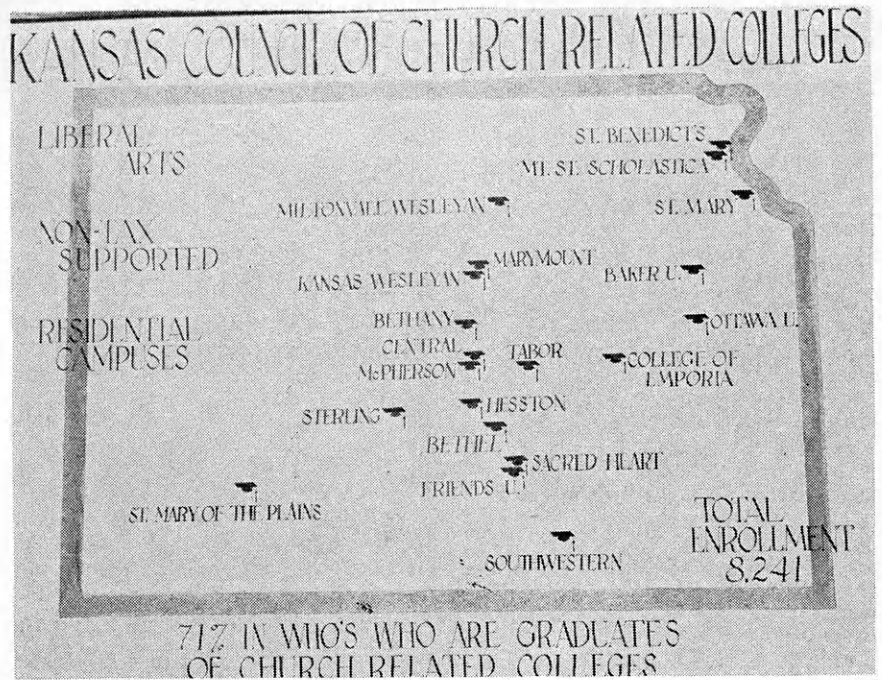
see how
GOLDEN FILM
clings...

CO-OP GOLDEN FILM is tougher, "tacky", and clings like no other Multi-Purpose Grease. Improved and excellent mechanical stability, completely resistant to water, extreme heat, bitter cold; contains an extreme pressure additive, provides reduced oil leakage. Truly Multi-Purpose, truly translucent golden in color (NO fillers, NO soaps).



see your co-op today . . . CONSUMERS COOPERATIVE ASSOCIATION
KANSAS CITY, MISSOURI

*The Place,
In Higher Education,
of*



Church Related Colleges

By Dr. C. O. Strohl, President
Kansas Council on Church Related Colleges
and President, Southwestern College

The Kansas Council of Church Related Colleges are independent colleges (non-tax supported). As such they are in line with a historic trend stemming from the Middle Ages, the Renaissance, the Reformation, and early American History.

Christian Higher Education free from the control of government is essential to human freedom and democracy. These independent colleges give rise to Christian culture and preserve its dynamic character.

Dr. C. O. Strohl



In fulfilling their role, the Kansas Council of Church Related Colleges seek to provide—

1. An atmosphere of Christian inspiration as well as intellectual stimulation.
2. A strong program of the Liberal Arts.
3. A professionally trained and dedicated faculty.
4. Adequate academic buildings with classrooms and laboratories.
5. Residences for both men and women.

When the highest quality of the liberal arts is given purpose and illumination by Christianity at its best, and when a campus is moved and motivated and inspired by a faculty and students who have faith in the Christian scheme of things, there you have Christian Higher Education in action.

Faculty members are prepared with their graduate degrees plus their dedication to Christ and His Church. They understand and appreciate the importance of Christian values. There are many outstanding men and women who gravitate to the smaller campus because they believe profoundly in its uniqueness.

Students are recognized as individuals. They are personally known, loved, and respected. They are encouraged because their teachers see undeveloped skills, talents, and possibilities in each of them.

Intelligent and logical answers to life's great questions are within reach. Such questions include—

1. Who am I?
2. Is God real?
3. What kind of a world do I really live in?
4. What shall I do with my life?

5. And many others equally important.

Many young people discover themselves while on the college campus. They surprise themselves as they emerge competent leaders in various areas of scholarship and campus life. They develop a sense of mission as they link their lives with a great cause. In so doing they find something big enough to live for—some great profession that captures all their intellectual and spiritual power.

Contrast this end product with the student who is educated, but who has never discovered a purpose for his life. The most dangerous man in the world is an educated man without an understanding of moral and spiritual values. He knows How but does not know Why. This makes these colleges unique and different.

Really the destiny of our world depends upon a commitment to Christian Higher Education. The foundations of our national life are basically moral. Christian Higher Education is no longer an adjunct to civilization. It is, rather, the base from which all important problems are to be attached. Its role is as vital in this great expanding century as it was when Kansas was a territory and our country was a struggling emergent nation.

Therefore, this is not only a time for education, but for greatness in education. Greatness lies in a people who are intellectually masterful, spiritually sound, as well as technically trained and skilled.

We believe that in the providence of Almighty God the colleges of the Council are destined to face with humility but with courage an unheralded future as great Christian Liberal Arts Colleges.

Midland National Bank

Newton, Kansas

SAVE WITH US

Member F. D. I. C.

First National Bank

Newton, Kansas

Member F. D. I. C.

THE BETHEL CLINIC

Newton, Kansas

"Heart of the Nation Station"

KJRG AM 950 KC
FM 92.1 MC

Newton, Kansas

Robert Carroll Hairdressing

219 Main

AT 3-4650



BETHEL COLLEGE

NEWTON

Bethel College is a Christian liberal arts college founded in 1887 by Mennonite pioneers. The college is fully accredited by the North Central Ass'n. of Colleges and Secondary Schools, the American Ass'n. of Colleges for Teacher Education and by N. C. A. T. E.

A new modern women's and a new men's residence halls with an additional wing to be built to both dormitories will be completed in the spring of 1963. There is also a well

equipped science hall on the campus.

In the Knapp and Breenbaum study of 1953, Bethel ranked 32nd among 562 accredited U. S. Colleges and universities in the production of scholars (those receiving graduate fellowships, scholarships or PhD degrees). Bethel emphasizes general education in the basic intellectual disciplines of the arts and sciences, but with a definitely Christian emphasis.

Enrollment: 465

Full-Time Teaching Faculty: 35 of whom 16 have earned doctorates

Tuition and Fees: \$200 per quarter including student publications, athletic events, plays, library privileges, health fee, aptitude tests, tuition and fees.

Board and Room: \$155 to \$175 per quarter.

Scholarship and Loan Funds: 30 scholarships averaging \$250 and 40 loans averaging \$700 are granted annually.

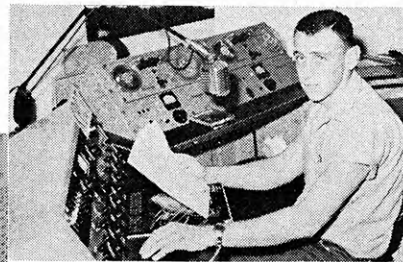
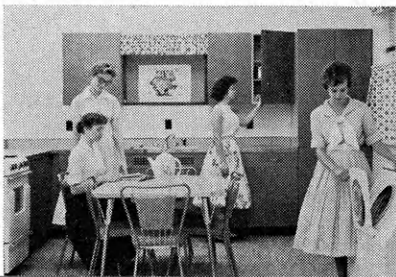
Work Opportunities: There are opportunities for 165 students to be employed on the campus and at least 40 in town.

Curriculum:

B.S. and B.A. degrees are offered. Professional preparation is available in such fields as teaching, industrial arts, business, and, in cooperation with the Bethel Deaconess Hospital, nursing and medical technology.

Pre-professional training is provided for the ministry, medicine,

dentistry, pharmacy, engineering, law, journalism, social work, and accounting.



For Further Information, Write—
Admissions Counselor
Bethel College
North Newton

These Firms and Individuals are Proud to
Recommend Bethel College to Kansas Boys and Girls

Elmer P. Zehr Insurance
601½ Main

**First Federal Savings & Loan Ass'n.
of Newton**

100 E. Broadway

Frey's Jewelry
133 W. 6th

Graber's Hardware, Inc.
200 W. Broadway

Gray-Ward Sporting Goods
618 Main

Guest House Cafeteria
610 Main

Midland Mutual Fire Insurance Co.
119 W. 6th

Miller's Quality Dry Cleaning
424 E. Broadway and 704 Main

Newton Skating Palace
130 E. 3rd

Randy's Steaks, Inc.
115 S. Kansas

Wilson Drug Store
525 Main

Why a College Education

(Continued from page 4)

Material Difference

That is the reason boys with an eighth grade education can expect to earn \$120,000 during a lifetime as compared with \$175,000 for a high school graduate and \$275,000 for a college graduate.

These figures are based on past records. All studies indicate that these differences will grow

sharply as the number of jobs requiring a college education increases and the number of jobs in the "wage earner" category decreases.

We've ignored, so far, the intangible values of a college education. There are many of these. Some say the intangibles, other than the technical skills learned, are, alone, worth the cost of a college education.

Cultural Benefits

College life exposes many boys

and girls to cultural advantages not found in their home community. Art exhibits, musical programs, serious (and light) discussions with fellow students and with learned professors in an encouraging college atmosphere gives many their first heady taste of these subjects.

If they are qualified, all parents owe it to their children not to let them pass up the "opportunity of a lifetime" in college.

Baldwin State Bank

Member F.D.I.C.
Capital \$300,000.00

Baldwin, Kansas
Phone 594-6421

These Firms and Individuals are Proud to Recommend Baker University to Kansas Boys and Girls

Four Winds Motel
E. Highway 56
Standard Oil
Lee Newman, Agent

BAKER UNIVERSITY, BALDWIN

Baker University was established by the Methodist Church in 1858. It is accredited by the North Central Ass'n. of Colleges and Secondary Schools.

Cooperative programs with Duke University, Bethany Hospital, Wesley Hospital, KU Medical Center, Stanford, KU and KSU make possible degrees in forestry, nursing, medical technology and engineering.

Enrollment: 633

Full-Time Teaching Faculty: 48 of whom 15 have earned doctorates

Tuition: \$600 per nine-month year

Board and Room: \$620 per nine-month year

Scholarship, Grants-in-Aid and Loan Funds: 189 grants-in-aid and schol-

arships awarded on the basis of need and scholastic ability.

Work Opportunities: A rather elaborate work program used by many students to help with tuition payments.

Curriculum:

English, Journalism and Speech, Foreign Languages, Philosophy and Religion, Economics and Business Administration, Education, History and Political Science, Home Economics, Psychology, Sociology, Biology, Chemistry and Geology, Health, Physical Education and Recreation, Mathematics, Physics, Art, Music.

For Further Information, Write—

Director of Admissions,
Baker University, Baldwin

FARMERS STATE BANK

Lindsborg, Kansas



WE OFFER

FULL SERVICE BANKING
TO THE COMMUNITY

Member FDIC



MARQUETTE - LINDSBORG - McPHERSON

Bethany College



New Hahn Physical Education Building dedicated December 6, 1961 on the Bethany College campus.

Bethany College is a coeducational college of liberal arts and sciences supported by the Lutheran Church. Bethany is accredited by the NCA, the Nat'l. Ass'n. of Schools of Music, the National Council for Accreditation of Teacher Education, Council on Medical Education and Hospitals, and State Board of Education.

Bethany cooperates in an engineering degree program with KSU, KU, and Wichita U. and in a medical technology or nursing degree program with Trinity Lutheran Hospital, Kansas City.

Teaching is the primary interest at Bethany. Both lower and upper division classes are taught by regular college faculty. Bethany has a new science, physical education and men's dorm buildings. A new women's dorm is under construction.

Bethany is the home of Messiah Chorus. It is proud of its academic programs in music, art, liberal arts and sciences, and teacher education.

Enrollment: 498

Full-Time Teaching Faculty: 37

Tuition and Fees: \$315 per semester including tuition, student activities, athletic events, concerts, plays, lab fees, etc.

Room and Board: \$235 to \$315 per semester

Scholarship and Loan Funds: 114 scholarships averaging \$250, 50 loans averaging \$500.

Degrees: Bethany offers a curriculum leading to following—B. A., B. S., B. of Music and B. of Fine Arts.

Majors are offered in the following areas: Art, Biology, Business-Economics, Chemistry, Elementary Education, English, French, German, History, Mathematics, Music, Philosophy and Religion, Physical Education, Physics, Sociology, Spanish.

For Further Information, Write—
Director of Admissions
BETHANY COLLEGE
LINDSBORG

Farmers Union Elevator Co.

Co-op Products and
Grain Storage

Branches at
Falun and Bridgeport
LINDSBORG, KANSAS

These Firms are Proud to Recommend Bethany College to Kansas Boys and Girls

Davis Coffee House
King Oscar Coffee

Wayne's Market
129 N. Main

Future in Agriculture

(Continued from page 15)

11 million persons to take the product from the farm to the consumer. The millers, the packers, the canneries and freezing plants, the dairy processors, the trucker, and the railroads hire

men and women of many skills.

Third, in public service many farm youth find their career. These are the scientists who make up the staffs of the extension service, the agricultural colleges, soil conservation service, vocational agriculture and homemaker teachers, and many

other services of the U. S. Department of Agriculture.

For information and help, talk to your 4-H Club agent, high school teacher, or local employment agency. They will be glad to visit with you and tell you where you may go for further information.

The Oldest Bank in Lyon County serving the Emporia community for 76 years.

For complete banking services.

THE CITIZENS NATIONAL BANK

Emporia, Kansas

1886 1962

We salute The College of Emporia for the fine contribution to the Liberal Arts Field of Education.

Member Federal Deposit Insurance Corp.

(It does make a difference where you do your banking)

While in College
Let this bank be your
Emporia Bank

EMPORIA STATE BANK and AUTO BANK

Emporia, Kansas

Member of the Federal
Deposit Insurance Corp.

DAYTON'S

803 Commercial

Toys—Hobbies—Crafts

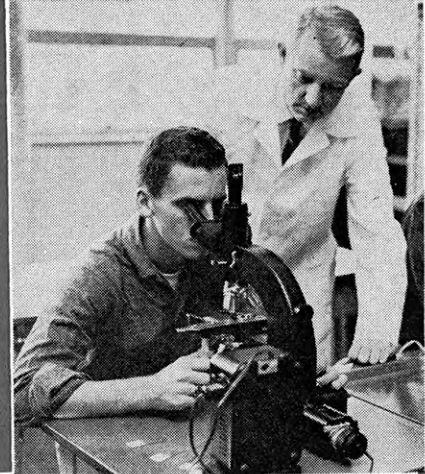
- ★ Toys for the Little Tots in your lives
- ★ Complete Hobby Supplies for all ages
- ★ Crafts and Art Supplies for every creative ability
- ★ OPEN: Wednesdays till 8:30 p.m. for your shopping convenience

We are proud to be associated with and promote College of Emporia

Thomas Lumber Company
Hartford, Kansas

COLLEGE of EMPORIA

EMPORIA



The College of Emporia was chartered in 1882 by the Presbyterian Synod of Kansas. It is accredited by the North Central Ass'n. of Colleges and Secondary Schools, the American Ass'n. of University Women, and the Kansas State Board of Public Instruction.

Mabee Hall of Science, completed four years ago, has the latest of equipment for all phases of scientific endeavor. Outstanding students in science have the opportunity to do research work under the direction of Dr. Hugh Myers (pictured above), chairman of the division, who has received more than \$100,000 in grants from the Public Health Service in the past year for orthodontic research.

The College of Emporia has a nationally-famous football "cemetery" where all vanquished football opponents are buried, complete with funeral oration and headstone properly inscribed with the score of the game and the date of the victory.

Enrollment: 612

Full-Time Teaching Faculty: 37

Tuition and Fees: \$275 per semester including tuition, yearbook, health service, activities, student paper, etc.

Room and Board: \$225 per semester.

Scholarship and Loan Funds: 30 scholarships averaging \$200 are awarded annually. An average of 50 loans averaging \$250 are granted annually.

Work Opportunities: There are at least 70 on and off campus jobs available for students.

Curriculum:

B.A. and B.S. degrees are offered with the following majors—

English, modern language and literature, religion and philosophy, music and art, biology and geology, chemistry, mathematics, physics, history, political science, psychology, sociology, business education, education, homemaking, nursing education, and physical education.

For Further Information, Write—
Director of Admissions,
College of Emporia, Emporia

These Firms and Individuals are Proud to Recommend
College of Emporia for Kansas Boys and Girls

Beatrice Foods Company
Meadow Gold Dairy Products
The Broadview Hotel
For Reservation, Phone DI 2-6220
Giger Livestock Sales
Route 5

Hunter Advertising, Inc.
610 Merchant DI 2-8266
Kansas Soya Products Company
East Fifth Avenue
The Broadview Hotel
Phone DI 2-6220 for Reservations

Union News Company
Savarin Restaurants
Kansas Turnpike

Roberts-Blue-Barnett
Funeral Home
Emporia, Kansas

MANY DIMENSIONAL MAN...

Man has many dimensions, and the balanced development of each is a very real and attainable goal at Friends University. For Friends was built and continues its building on the true concept of a Christian College. There is a close academic, spiritual and social intimacy between students, faculty and administration . . . an intimacy which makes the University experience memorable as well as rewarding. Said simply, it's the intimacy of sharing.

At Friends, students share generously in the total experience of living and learning closely together. By this concept of sharing, academics become more meaningful, friendships more enduring, and the spiritual life deepens. At Friends we help each other shape our own many dimensions, academically, socially, spiritually.



Friends University

WICHITA 13, KANSAS

Kansas Wesleyan University

Kansas Wesleyan University, celebrating its 75th anniversary this year, was founded by the Methodist Episcopal Church. It is a liberal arts college offering courses leading to an A. B. degree. It is fully accredited by the North Central Ass'n. of Colleges and Secondary

Schools, the Nat'l. Ass'n. of Church-Related Colleges and the Nat'l. Ass'n. of Methodist Colleges.

Kansas Wesleyan is located in Salina, a city of 43,000. Emphasis is placed on top quality instruction and small classes. A new dormitory for 150 men was op-

Salina

ened in September. A new dorm for 100 girls will be open in 1963. Other buildings new within ten years are a library, fine arts building, married student housing, and a student center on the ground floor of the Hall of the Pioneers.

Mutual of Omaha

Your Good Neighbor

Hospitalization
Income Protection
Accident Insurance

E. M. Boyce, General Agent
1612 E. Iron Salina, Kansas

EVANS GRAIN COMPANY

Board of Trade Building

Salina, Kansas

TAylor 7-4484

MCCUNE BIRD STORAGE & SUPPLIES, INC.
254 NORTH SANTA FE
SALINA, KANSAS
PHONE TA 7-5432

WORLD'S
LARGEST
INDEX

Agent

Trust your
Allied Man
Allied Van Lines

HAROLD J. URBANEK
PRESIDENT

Michaelson Construction Co.
South Industrial Area

McCune Paper Co.

Wholesale

Paper Products
and
Paper Specialists

254 N. Santa Fe

TA 7-4444

EVERYTHING
FOR

EVERY WELDER
LARGE or SMALL

BROWN WELDING SUPPLY
SALINA, KANSAS

Enrollment: 517

Full-Time Teaching Faculty: 36 of whom $\frac{1}{3}$ have earned doctorates.

Tuition and Fees: \$1250 for nine-month year including tuition, room, board, private music lessons, insurance, concerts, lecture series and student activities.

Scholarship Funds: Approximately 138 scholarships totaling \$22,000 available annually. Awarded strictly on the basis of need.

Work Opportunities: Approximately 75% of the students work, either on campus or in Salina to earn $\frac{1}{4}$ or more of their expenses.

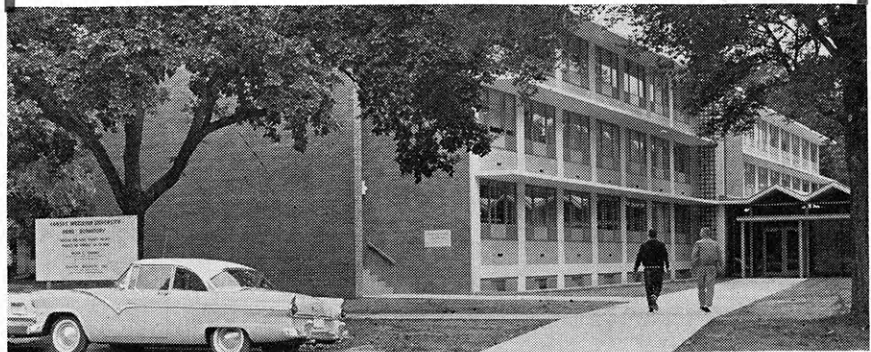
Curriculum:

Art	Business Administration
Biology	Education
Chemistry	English
Economics	History
Physical Education	Home Economics
Political Science	Languages
Psychology	Mathematics
Physics	Music
Religion and Philosophy	Sociology
Religious Education	Speech and Dramatics

For Further Information, Write—

Director of Admissions Counseling, Kansas Wesleyan University, Salina

This new dormitory at Kansas Wesleyan houses 150 men.



These Firms and Individuals are Proud to Recommend Kansas Wesleyan University and Marymount College to Kansas Boys and Girls

Baer Radio and TV
306 E. Walnut

Hoyt-West Ready-To-Wear
141 N. Santa Fe

Barragree's United Rent-All
1200 W. Crawford

Keith's TV and Radio
314 W. Cloud

Carl Miller Trash Service
1321 N. 4th

Log Cabin Motel
440 N. Broadway

Casebeer Supply, Inc.
1007 W. North

Low's Drug Store
109 N. Santa Fe



"MISS MARYMOUNT"

is Mary Alice Shea, Salina. She's the girl who, in the opinion of her fellow students, best represents the aims of Marymount and the ideals of womanhood.

Marymount is a Catholic liberal arts college for women operated by the Sisters of St. Joseph, Concordia. Founded in 1922, Marymount facilities include a new residence hall and a new fine arts building. It is fully accredited by the North Central Ass'n. of Colleges and Secondary Schools, Nat'l. Council for the Accreditation of Teacher Education, and

the University of Kansas.

Marymount students participate in radio and television programs in music, art, drama, science, languages and religion. Distinctive educational programs include research in history and in biological sciences, particularly in cancer. The College sponsors a youth symphony for high school students in the region.

Enrollment: 380

Full-Time Teaching Faculty: 51 of whom 15 have earned doctorates

Tuition and Fees: \$280 per semester including all course fees; activity, health and library fees; NFCCS, gown rental; Artist Series; and student publications.

Board and Room Costs: \$300 per semester.

Scholarship and Loan Funds: 60 scholarships varying from \$100 to \$150 and some 55 loans averaging \$740 are granted annually.

Work Opportunities: Approximately 85 students are annually employed on campus. About 20% of the students earn 1/4 or more of their expenses.

Curriculum:

B.A., B.S., B. of Music and B. of Music Education are offered.

- | | |
|--------------------|---------------------------------------|
| Mathematics | Economics and Business Administration |
| Sociology | Philosophy |
| English | Psychology |
| Music | Ancient Languages |
| Home Economics | Modern Languages |
| Physical Education | Education |
| History | Nursing |
| Art | Chemistry |
| | Biology |

For Further Information Write

Sister Euphrasia, Director of Admissions

MARYMOUNT COLLEGE

SALINA

These Firms and Individuals are Proud to Recommend Marymount College and Kansas Wesleyan University to Kansas Boys and Girls

Memorial Art Company

1608 S. 9th

Ricks IGA Foodliner

Elmore Shopping Center

Salina Farm Supply

901 N. Broadway

Salina Implement Company

601 S. Broadway

Stevenson Clothing Company

112 N. Santa Fe

Vernon Jewelers

123 N. Santa Fe

Wenthe Brothers "66" Service

701 S. 9th

The Lee Hardware Co.

Salina, Kansas

Serving Kansas Dealers
Over 59 Years

Morrison Grain Co., Inc.

Bonded Storage
Grain Merchandisers

SALINA, KANSAS

Riddle Concrete, Inc.

Riddle Quarries, Inc.

Salina, Kansas

SALINA RENTALS

Contractor's—Household and Yard
Equipment

Trailer—Local and One-way

See Rentals in Phone Directory

PHONE TA 3-4001

251 North 13th St. Salina, Kansas
1 1/2 Blocks South of Union Station

THE PLANTERS STATE BANK

SALINA, KANSAS

Known For Good Shoes
Since 1910

GEO. SEITZ SHOE CO.

Salina, Kansas

Selecting Vocation

(Continued from page 6)

use people who are successful in different occupations — use any source which will provide you with good information about yourself and careers.

Many students find good old fashioned bull-sessions with

their friends, parents or advisors helpful. As someone once said, "How do I know what I think until I listen to myself?"

These people can be very helpful to you in supplying information and in letting you listen to yourself. But don't misuse them. Don't ask them to

tell you what's important (money, security, etc.), and don't let them tell you what decision to make. You were born free, which means you have not only the right but the responsibility of conducting your own affairs in the manner which will be most rewarding to you.



A Complete Service Cooperative

Groceries, Hardware, Petroleum, Feed, Fertilizer, Seeds, and Grains

Owned By The People We Serve

Farmers Cooperative Ass'n.

423 North Maple
401 North Hickory
McPHERSON, KANSAS

The W-R Milling Company

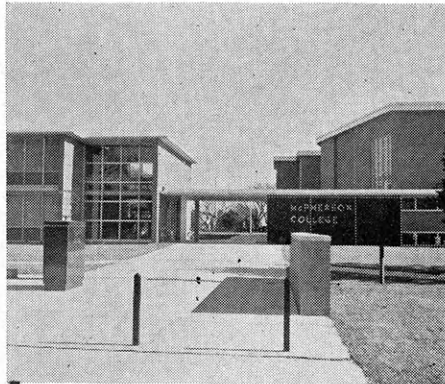
McPherson, Kansas

McPherson County Farm Bureau Assn. and Insurance Services

920 W. Kansas McPherson

KING'S
Moving & Storage

AGENTS FOR ATLAS VAN LINES
McPherson and Junction City



McPHERSON COLLEGE

McPHERSON, KANSAS

McPherson College, organized in 1887, is affiliated with the Church of the Brethren. Located in a county seat town of 10,000, McPherson College is accredited by the North Central Ass'n. of Colleges and Secondary Schools, the Kansas Board of Education and the American Ass'n. of Col-

leges of Teacher Education.

Specialities at this four-year liberal arts college include teacher education, and agriculture and rural life. The College has a new administration building and 1200-seat auditorium. A new student center and girls' dormitory were opened in 1961.

Enrollment: 517.

Full-Time Teaching Faculty: 34.

Tuition and Fees: \$302 per semester including tuition for 15 credit hours, insurance, health service, activity fee and periodicals.

Room and Board: \$269 to \$284 per semester.

Scholarship and Loan Funds: 66 scholarships averaging \$285 and 120 loans averaging \$430.

Work Opportunities: 20% of the students work on campus and 40% of the students work in town.

Curriculum:

B.S. and B.A. degrees offered in the following fields—

English and Literature	Mathematics
Music Education	Economics and Business Administration
Applied Music	History
Philosophy and Religion	Sociology
Biology	Education and Psychology
Chemistry	Home Economics
Physics	Industrial Arts
	Agriculture and Rural Life

Courses are also offered in art, journalism, languages, physical education, speech and drama.

The McPherson & Citizens State Bank

A Good Bank to Grow With

Member F.D.I.C.

HAWLEY HARDWARE
219 N. Main
McPherson, Kansas

For Further Information, Write—

Mr. Guy Hayes,
Director of Admissions
McPherson College, McPherson

These Firms and Individuals are Proud to Recommend McPherson College to Kansas Boys and Girls

Alliance Agency
110 E. Kansas

J. C. Penney Co., Inc.
119 N. Main

Roth's Mid-Kansas Produce
310 N. Oak

SAINT BENEDICT'S COLLEGE

ATCHISON

St. Benedict's College is a Catholic men's residence college conducted by the Benedictine Fathers with two-thirds of the faculty being Benedictine priests. It is accredited by the North Central Ass'n. of Colleges and Secondary Schools, the Board of Regents of the State of New York, the University of Kansas and the Kansas State Board of Education.

Enrollment 762.

Full-Time Teaching Faculty: 40 of whom approximately 1/3 have earned doctorates

Tuition and Fees: \$325 per semester including tuition and fees.

Room and Board: \$330 to \$365 per semester.

Scholarship Funds: 100 scholarships averaging \$450 are awarded. About 100 loans averaging \$500 are made annually.

For Further Information, Write—
Registrar, St. Benedict's College, Atchison

St. Benedict's has cooperative academic, social, and fine arts programs with Mount St. Scholastica College for Women in Atchison. An electronic language laboratory, and an indoor swimming pool appeal to many students. All programs of study at St. Benedict's have a liberal arts core.

Work Opportunities: About 130 students earned \$25,682 during the past school year. Additional job opportunities are available to students in Atchison.

Curriculum:

A.B., B.S., and B. of Music Education degrees are offered in 17 major programs of study. Curriculum includes a 3-2 engineering program with KSU, KU and Notre Dame, a preparatory program leading to teacher certification for secondary schools, and studies leading to priesthood and Benedictine Brotherhood.

THE EXCHANGE NATIONAL BANK

ATCHISON, KANSAS

Member FDIC

H & M BUICK-PONTIAC CO., INC.

Buick-Pontiac ★ G.M.C. Trucks

SALES AND SERVICE



118 South Eighth Street
ATCHISON, KANSAS

MIDWEST SOLVENTS COMPANY, INC.

D. S. P. KANS. - 1

1300 MAIN STREET
ATCHISON, KANSAS

MOUNT ST. SCHOLASTICA COLLEGE

ATCHISON

Mount Saint Scholastica College is a Catholic liberal arts college for women conducted by the Benedictine Sisters. Located in a city of 15,000, the Mount was established in 1863 as an academy. It has been a senior college since 1930.

The Mount is accredited by the North Central Ass'n. of Colleges and Secondary Schools, State Department

Enrollment: 485.

Full-Time Teaching Faculty: 37 of whom 16 have earned doctorates

Tuition and Fees: \$275 per semester including tuition, activity fee, insurance and laboratory fees.

Board and Room: \$450 to \$550 per semester.

Scholarship and Loan Funds: 20 to 30 scholarships averaging \$350. 30 to 40 loans averaging \$800 are made annually.

Work Opportunities: Extensive. Students can earn \$200 to \$300 per year on a limited work schedule.

For Further Information, Write—

Director of Admissions, Mount St. Scholastica College, Atchison

of Public Instruction and the National Council for Accreditation of Teacher Education.

The Mount has twin college advantages, associated with St. Benedict's College for men. A new library will open in 1962. Distinctive educational programs include dietetics, medical technology, teacher education, music and music education.

Curriculum: Degrees offered include

A.B., B.S., B.S. in Ed., B. in M.E., B. in Music.

There are special subject matter programs in music, medical technology, teacher education and dietetics.

Other major programs include biology, chemistry, economics, education, health and physical education, music, philosophy, English, French, history, home economics, Latin, mathematics, political science, psychology, sociology and Spanish.

Van Liew's Super Market

Groceries and Meats

Frozen Food Lockers
926 North Fifth Street

Montgomery Ward

726 Commercial

ATCHISON, KANSAS

C-G-F Grain Company, Inc.

Grain Merchants — Bonded Storage

Phone EM 7-1621 Atchison, Kansas

Dictionaries — Stationery
Greeting Cards — Bibles

TONSINGS STATIONERY
& BOOK STORE

427 Commercial

These Firms and Individuals are Proud to Recommend Mount St. Scholastica and St. Benedict's College for Kansas Boys and Girls

Ball, Lowry, Stillings & Caplinger
Blair Building

Domann Drug
601 Commercial

Kirwan-Intfen Furniture Company
623-625 Commercial Street

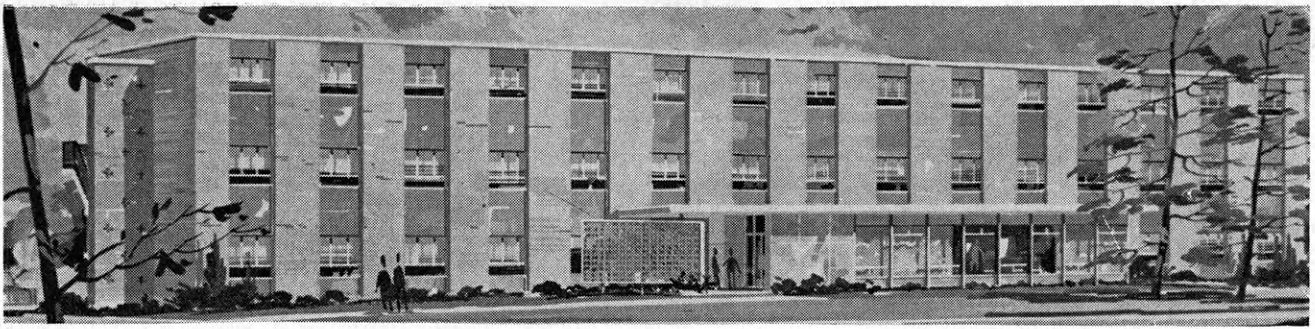
Lutz Bros. Sales & Service
835 Commercial

Mullins Bros. Hardware Co.
819 Main

O'Keefe, McKelvey, O'Keefe & O'Keefe
Professional Bldg.

The Lockwood Co., Inc.
125 N. Fifth

Thompson's Restaurant
117-19 N. 5th St.



Price Hall for men, the newest residence hall at Ottawa University, was opened in September, 1961.

OTTAWA UNIVERSITY

OTTAWA

Compliments

**Peoples
National Bank**

Ottawa, Kansas

Member F. D. I. C.

**Ready-Mix Concrete
Cement Brick Products
Co., Inc.**

P. O. Box 134
OTTAWA, KANSAS

**THE BENNETT
CREAMERY CO.**

"Better Dairy Products"
For Over 55 Years

**Ottawa Savings & Loan
Association**

109 East Second Street
Serving This Area Since 1889

Ottawa University is a four-year liberal arts university with 610 students from 35 states and nine other nations. It is accredited by the North Central Association and other agencies.

Its widely recognized program of education enables students to gain breadth of understanding and a comprehensive knowledge in specialized fields.

Students prepare for careers in business, teaching, law, medicine, the sciences, agribusiness, government service, music, art, the ministry, writing and other professions.

The curriculum is organized in seven divisions. Students major in selected divisions or in the 17 departments. They work toward A. B., Sc. B. or Mus. Ed. B. degrees. The emphasis is upon the individual. Each student has a major share in fashioning his personal program of study to meet his own objectives and needs.

Unique features of the program include an honors plan through which brilliant students may work on projects of a research nature, an elective summer reading program and a student personnel service.

Extra-curricular activities include, among others, music, radio (students operate their own FCC licensed radio station, KTJO-FM), debate, drama, publications, athletics, Christian missions, student government and departmental clubs. All students belong to the Greek letter social clubs.

Costs range from \$1,225 to \$1,325 per year including board, room, tuition, activity and other fees, and health and accident insurance. Scholarships and loan funds (national Defense loan fund is one) provide aid to a large number of students.

For further information, write to
Gene Miller, Director of Admissions

These Firms and Individuals are Proud to Recommend
Ottawa University to Kansas Boys and Girls

Crestview Nursing Home
West 7th Street Terrace

Drs. Lofgreen & Lofgreen
203 W. 3rd

Plaza Theatre
209 S. Main CH 2-4650

Price Motor Ford Sales
113-119 W. 3rd

For A Fine Education
Ottawa University

For Fine Banking Service
The First National Bank of Ottawa, Kansas

Member F. D. I. C.

A Dream Come True

(Continued from page 17)

Rogers, at the 1959 Mid-America Fair. She was thrilled and honored to have her picture taken with Roy, a 4-H alumnus.

In her 4-H promotional talk a year ago, Sandra's theme was that the ribbons and trophies she has received would soon be

stored, but that the values of 4-H would remain with her through college and on through her life ahead.

Song of the Month

(Continued from page 22)

fun" so all members will have the words ready on their lips when the tune is heard.

Sometimes, singers seem to

have trouble with the "order" of two phrases in the chorus, "Lads of the field and flock," and, "Men of the coming years."

An easy way to remember the order and to avoid interchanging is that boys are lads before they become men, so, lads come in the first line of the chorus, and men in the next.

Choose a College for Women



In 1858, the pioneer Sisters of Charity of Leavenworth founded an academy which, over the years, grew into a four-year degree granting institution in 1930. Today, Saint Mary College offers purposeful, intelligent, Christ-centered living to young women desirous of developing their intellectual and artistic gifts.

This month the Saint Mary College faculty and students moved into a new, very modern and well-equipped science building and language laboratory. Saint Mary College is fully accredited. It is primarily a boarding school with students coming from all over the U.S. and from 17 foreign countries.

Located near Kansas City, emphasis is placed on a liberal arts program.

Enrollment: 447.

Full-Time Teaching Faculty: 40.

Tuition and Fees: \$162.50 per semester including tuition, health and lecture fee, electricity, rental of table silver and napkins, college publications, athletic fee, towel service and activities fee.

Room and Board: \$350 to \$400 per semester.

Scholarship and Loan Funds: A number of scholarships averaging \$1,000 over a four year period are granted. A limited number of loans averaging \$250 to \$500 are granted annually. The College also participates in the National Defense Student Loan Program.

Work Opportunities: Secretarial, receptionist, soda fountain, cafeteria, library and assist department chairman work available on campus making it possible to earn \$150 a year.

Curriculum:

B.A., B.S., B.M. and B.M.Ed. degrees offered with majors in the following—art, biology, chemistry, dietetics, drama, economics and business, education, English, French, history, home economics, Latin, mathematics, medical librarianship, medical technology, music, music education, nursing education, philosophy, physical education, sociology, Spanish, speech, theology.

For Further Information, Write—
Director of Admissions

SAINT MARY COLLEGE

Xavier,
Kansas

These Firms and Individuals are Proud to Recommend
St. Mary College to Kansas Boys and Girls

Alpha Floral, Inc.
211 S. 5th

Christy's Auto Salvage
Route 1

Ed Reilly Insurance Agency
113 S. 5th

Compliments of
American Printing Company
401 South 5th Street
Leavenworth, Kansas

KCLO

"The Heart of the Nation Station"
1410 on the Dial
5000 Watts — MU 2-1410

Julius Kaaz Const. Co., Inc.
LEAVENWORTH, KANSAS

"If it's worth doing,
It's worth doing right"

First National Bank of Leavenworth

Oldest Bank In Kansas Est. 1856

MEMBER F.D.I.C.

Leavenworth National Bank

401 Delaware MU 2-0951

Leavenworth, Kansas

MONTGOMERY WARD

Leavenworth, Kansas

INTERNATIONAL PAPER COMPANY

Long-Bell Division
LANSING, KANSAS

LEAVENWORTH MUTUAL Bldg., Loaning & Savings Ass'n.

100 South 4th
Leavenworth, Kansas
INSURED SAVINGS
& HOME LOANS

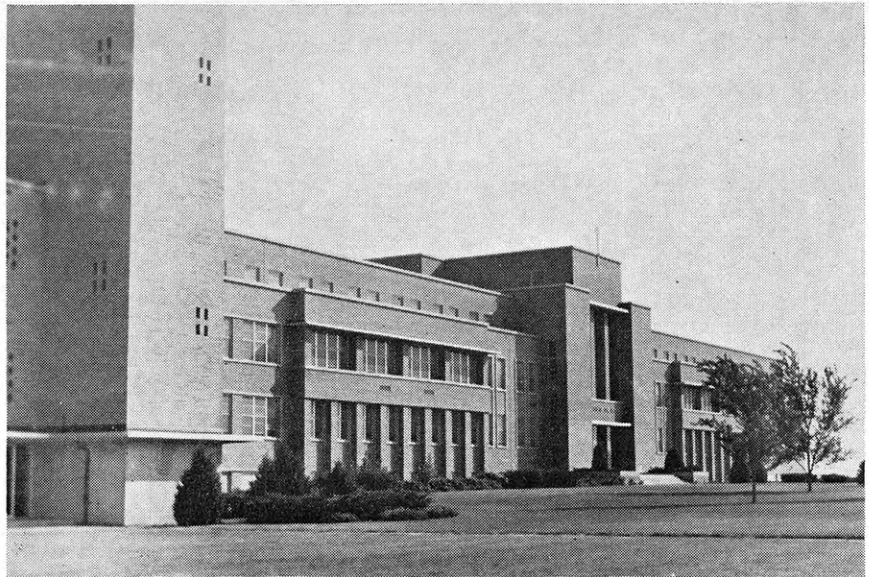
First National Bank

Dodge City, Kansas

Drive-in Walk-up

Free Parking While Banking

Member F.D.I.C.



St. Mary of the Plains College is a Catholic four-year educational college conducted by the Sisters of St. Joseph of Wichita.

Founded in 1952, St. Mary of the Plains is approved by the University of Kansas, accredited by the State Department of Public Instruction, accepted by the North Central

Ass'n. of Colleges and Secondary Schools as a candidate for membership, and is affiliated with the Catholic University of America.

The faculty of diocesan priests, Sisters of St. Joseph, laymen and laywomen provide a close student-teacher relationship, an asset to maximum achievement.

Enrollment: 425

Full-Time Teaching Faculty: 33

Tuition and Fees: \$250 per semester including tuition, general fee and health insurance.

Room and Board: \$300 per semester

Scholarship and Loan Funds: Seventy scholarships averaging \$300 awarded annually. Approximately 40 loans averaging \$500 are made annually.

Work Opportunities: Office, library, cafeteria, maintenance, secretarial, sales, food service and farming work opportunities on the campus, in Dodge City and on nearby farms.

Plaza Lanes

2200 First Ave.
DODGE CITY

"Welcome Students"
"Let's Go Bowling"

WINTER FEED YARD, INC.

Kansas' Finest T-Bone Factory

P. O. Box 115
DODGE CITY, KANSAS

F. W. Woolworth Co.

America's Family Store

Satisfaction Guaranteed or Money Refunded

706 Second Ave.

L. B. Hancock, Inc.

Realtors—Insurance—Loans

FHA Approved Mortgagee

1300 W. Wyatt Earp Blvd.

Dodge City

saint mary of the plains

These Firms and Individuals are Proud to Recommend Saint Mary of the Plains College to Kansas Boys and Girls

Bob Johnson's
Kopper Corner

Brady Implement Co., Inc.
400 E. Trail

Burks' Plumbing and Heating
609 W. Wyatt Earp Blvd.

Central Grocery & Market
108 E. Oak

Crane Service—Phone HU 3-4031
400 Military

Dodge City Medical Center
2020 Central

Dodge City Implement Company
310 W. Trail

The Fairmont Foods Company
203 Maple

First Federal Savings & Loan Ass'n.
207 Gunsmoke

J. L. Hart Construction Company
Highway 52

John Stickney, Inc.
1409 W. Wyatt Earp Blvd.

Lembright Glass Shop
214 Woodland Ave.

the distinctive difference four-year liberal arts a catholic coeducational college

conducted by the sisters of saint joseph

Curriculum:

B. A., B. of Music, B. S. in Medical Technology, B. S. in Nursing and B. S. in Education offered with these major fields—

Biology	Medical Technology
Business Administration	Music: Music Education, Piano, Voice
Chemistry	Nursing
Education: Elementary and Secondary	Philosophy and Religion
English	Speech and Drama
French and Spanish	Pre-professional training in engineering and agriculture
History and Social Science	
Home Economics	
Mathematics	

For Further Information, Write—

Registrar, St. Mary of the Plains College, Dodge City

ns college, dodge city

These Firms and Individuals are Proud to Recommend
Saint Mary of the Plains College to Kansas Boys and Girls

Montgomery Ward & Company
1st and Gunsmoke

Nevins Hardware Company
305 W. Wyatt Earp Blvd.

Pay Day Market
201 S. 2nd

Pepsi-Cola Bottling Company
1103 W. Wyatt Earp Blvd.

Sam's Shoe Shop & Hat Works
409 2nd Avenue

Scheib's Bookkeeping Service
610 2nd Avenue

Silver Spur Lodge & Restaurant
1510 W. Wyatt Earp Blvd.

Susie's Secretarial Service
209½ W. Spruce

Warshaw's Men's Wear
600 2nd Avenue

Dr. L. G. Weide, Dentist
1806 Hart

Through the years this bank has been an active booster for 4-H. We urge local members to consider the Dodge City College to further their education after High School.

FIDELITY STATE BANK

Dodge City, Kansas

Member FDIC
Member Federal Reserve System

KINDSVATER TRUCK LINES

Dodge City, Kansas

WE HAUL

Cattle Grain and Feeds
Farm Machinery Gasoline
Dry and Liquid Fertilizer

Phone: HUnter 3-6191 Office

HUnter 3-7852 Residence

3,210,000 BUSHELS OF FEDERAL LICENSED
AND BONDED STORAGE

THE WRIGHT CO-OPERATIVE EXCHANGE

Groceries - Gas - Oil - Grain - Lumber
Appliances - Machinery - Feed

WRIGHT, KANSAS

"There's no substitute for a Cooperative"

Pennington Sporting Goods Co.

Western Kansas Only
Complete Sporting
Goods Store

207 W. Wyatt Earp Blvd.
HUnter 3-5221 and HUnter 3-4331
DODGE CITY, KANSAS

The Southwest Milk Producers Association

"All We Have We Owe to Udders"



Southwestern College

WINFIELD

Southwestern College is a four year liberal arts college affiliated with the Methodist Church. Providing an atmosphere of Christian inspiration and intellectual stimulation, Southwestern has a professionally trained and dedicated faculty with modern physical facilities.

Southwestern is accredited by the

North Central Association of Colleges and Secondary Schools, Nat'l. Council for Accreditation of Teacher Education, and the Nat'l. Ass'n. of Schools of Music. Southwestern is building a new fine arts building, and has a home economics department, and a new child development center.

Enrollment: 671

Full-Time Teaching Faculty: 39 of whom 11 have earned doctorates.

Tuition and Fees: \$1,296 for all tuition, fees, room and board.

Scholarship and Loan Funds: 250 scholarships averaging \$250 awarded annually. 150 loans averaging \$400 made during past year.

Work Opportunities: Available in State Hospital and Training Center, in Winfield and on campus. About 67% of students earn 1/4 or more of their expenses.

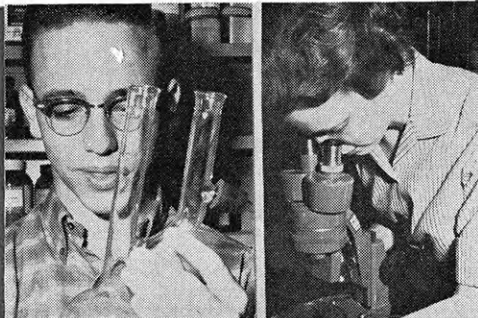
Curriculum:

A liberal arts program confirming a B. A., or B. of Music degree is offered in the following areas—

Art	Psychology	Physics
English	Secretarial	Chemistry
History	Public School Music	Home Economics
Mathematics	Physical Education	Elementary Education
Music	Sociology	Business and Economics
Speech	Biology	Dramatics

Preprofessional work in law, medicine, and the ministry.

For Further Information,
Write
Director of Admissions
Southwestern College
Winfield



First National Bank

Winfield, Kansas

Full
Service
Bank

Member F.D.I.C.

Quality Brand
Meats

Sheneman

Market & Packing Plant

Winfield, Kansas

CA 1-2610

For Your Building Needs

Dial CA 1-0250

A. B. Everly Lumber Co.

201 W. 9th

Winfield, Kansas

BIRD'S REXALL DRUGS

YOUR PRESCRIPTION STORE

Russell Stover Candies

Phone CA 1-0450

Calvert's

DEPARTMENT STORE

These Firms and Individuals are
Proud to Recommend
Southwestern College
to Kansas Boys and Girls

C. R. Anthony Company

906 Main

Farmers Insurance Group

108 W. 9th

Cate Furniture Company

801 Main

Manny Hardware

907 Main

McLellan's

814 Main

First Federal Savings & Loan Ass'n.

110 E. 9th

Home Economics

(Continued from page 23)

position is a stepping stone to advancement.

6. Earn above average salary as a home economist. This is true in Kansas and across the country. Average starting salary of home economists was \$4,040 in 1957-58. This was in the top three of women's oc-

cupations for starting salaries.

7. Be warmly welcomed into the work field . . . home economists often do not have to look for a job . . . the "job" looks for them . . . employers seek the graduate.

8. May choose a field of interest within home economics suited to her temperament—interior decoration for those interested in art; foods and nutri-

tion or textiles research for those strongly interested in science; foods or equipment demonstrating for those interested in appearing before groups of people; child development for those interested in psychology; teaching or extension for those interested in working closely and directly with a group of people; clothing retailing for those interested in the merchandising field.

STERLING COLLEGE

STERLING

Sterling College, founded in 1887, is affiliated with the United Presbyterian Church. It is fully accredited by the North Central Ass'n of Colleges and Secondary Schools, and by the State Board of Education for teacher certification.

Sterling offers a complete liberal arts program, also allowing the student to major in one of a number of areas. Specialities in instruction include teacher education, music, home economics, sciences, and Christian Education. A new student union building has been completed and a new men's dormitory will be available by September, 1962.

The College has an active forensics program of drama, speech and debate.

Enrollment: 447.
Full-Time Teaching Faculty: 34 including 9 who have earned doctorates.

Tuition and Fees: \$290 including all tuition and fees exclusive of music.

Room and Board: Room—\$72 to \$81 per semester. Board—\$180 per semester for 21 meals weekly.

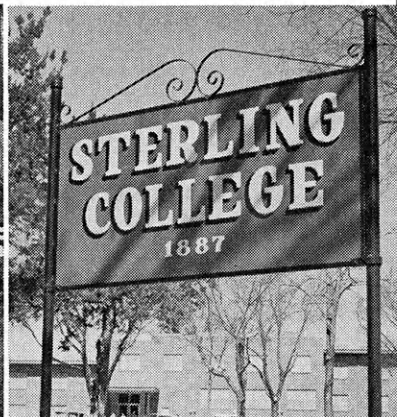
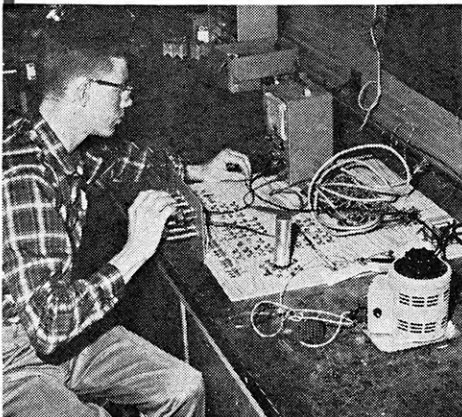
Scholarships, Grants-in-Aid and Loan Funds: 43 scholarships averaging \$150, 112 grants-in-aid averaging \$200, and 75 loans averaging \$500 annually.

Work Opportunities: Approximately 55% earn ¼ or more of their expenses in a wide variety of work opportunities on campus, in Sterling and on nearby farms.

Curriculum: Bachelor's degrees offered. Subject matter areas include art, Bible and Philosophy, Christian Education, English, languages, music, speech, biology, chemistry, home economics, mathematics, physics, economics and business, education, geography, health and physical education, history, library science, psychology, and sociology.

For Further Information, Write—Admissions Counselor, Sterling College, Sterling

Left, Dennis McMahan works on a study of resistors in his physics course. The project is the result of two years work. Right, McCreery Hall on the Sterling College campus.



These Firms and Individuals are Proud to Recommend Sterling College to Kansas Boys and Girls

Dora's Cafe
111 S. Broadway
Engbrecht's Hatchery
603 E. Monroe

Hawkins Hardware
121 S. Broadway
The Peoples Savings & Loan Ass'n.
211 S. Broadway

You
Are
Always Welcome
in
Sterling

THE
FARMERS
STATE
BANK

STERLING, KANSAS

DEPOSITS INSURED BY F.D.I.C.

Congratulations
to
Sterling College

on their
Continued Growth
and for their
Contribution to the
Sterling Community

FARMER'S
CO-OP UNION

Sterling

Financing College

(Continued from page 13)

ate can expect to earn about one-half as much as a college graduate, and a grade school graduate can expect to earn only about one-third that of the college graduate over his lifetime.

Finances No Bar

College officials state that no capable youth need stay out of college for lack of finances. Aid can be secured through scholarships, loans, and part-time employment.

Scholarships are not limited to the brilliant high school students. There are hundreds of scholarship programs in the country. All capable students (B students) have a good

chance of being awarded one.

The colleges and universities themselves offer over a quarter of a million scholarships. Thousands of others are offered by civic clubs, churches, alumni groups, foundations, state and federal agencies, corporations, and labor unions.

Loans Help Out

A scholarship may not pay all expenses. Often the scholarship is only for tuition. Other financial assistance may be needed. Most colleges can help the deservng student through its student loan fund. Such loans are generally long-term, repayable after graduation. Interest rates are low and in some cases there is no interest charge.

Funds provided by the Na-

tional Defense Education Act of the Federal government have greatly increased the funds available to the colleges for student loans.

The student with no assistance from home who must go it alone, even though he may be able to get a scholarship and/or a loan, will need to consider working part time to help meet the costs. Many students are "working" their way through school. It is estimated that fully one-half of all college students in the United States are paying a part of their educational bill by part-time work.

Job Opportunities

Businessmen in college towns are accustomed to getting a portion of their labor force from part-time student employees. The colleges themselves provide many opportunities. The dormitories, cafeterias, maintenance, and janitor services, offices, and research laboratories all rely upon student help.

Kansas College Helps

Notice, in the college directory section of this issue, that scholarships, loans and job opportunities are listed to indicate the help you may get in going to college.

Advice and Assistance

You can seek advice and assistance in getting financial help through (1) your high school principal, (2) the registrar of one or more colleges, (3) your county extension agents, or (4) the church or civic clubs in your community. This is the time of year to make plans for next fall. Many deadlines for applications are on or before April 1.

Available guidebooks on scholarship and financial aid for the college student include—

"Financial Aids for College Students: Undergraduate." This is available for \$1 from the Superintendent of Documents, Government Printing Office, Washington, D. C. Or your congressman may be able to send you a copy upon request at no charge.

"Need a Lift?" may be obtained for 15 cents from the American Legion, Box 1055, Indianapolis 6, Indiana.

"Financing Higher Education" is free and can be obtained from your banker.

Sacred Heart College

An accredited, four-year, liberal arts college for women

Wichita
Kansas

For a better YOU —

Sacred Heart offers—

*Degrees of Bachelor of Arts, Science, Music

*Majors in art, biology, business education, education, English, history, home economics, medical technology, music, secretarial science.

*A basic education at reasonable cost. Tuition of \$175 per semester including fees, insurance and student publications. Board and room of \$300 per semester. Approxi-

*A friendly, family atmosphere

mately 40 scholarships averaging \$200 each are awarded annually. Loan funds are available so practically all who apply receive the amount they need. A large percentage of the students work on campus and in Wichita.

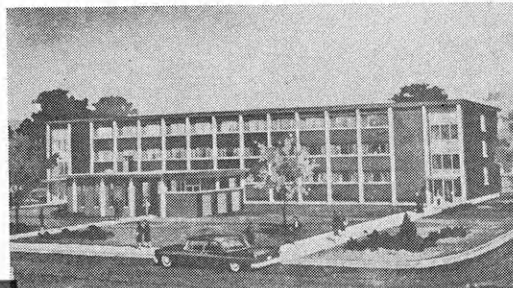
*Enrollment (Equated Full-Time): 251

*Full-Time Teaching Faculty: 37

Write:

Admissions Director
Sacred Heart College
Wichita, Kansas

McNeill Hall
Campus Residence



Educators Investment Co. of Kansas, Inc.

535 Petroleum Building
Wichita 2, Kansas

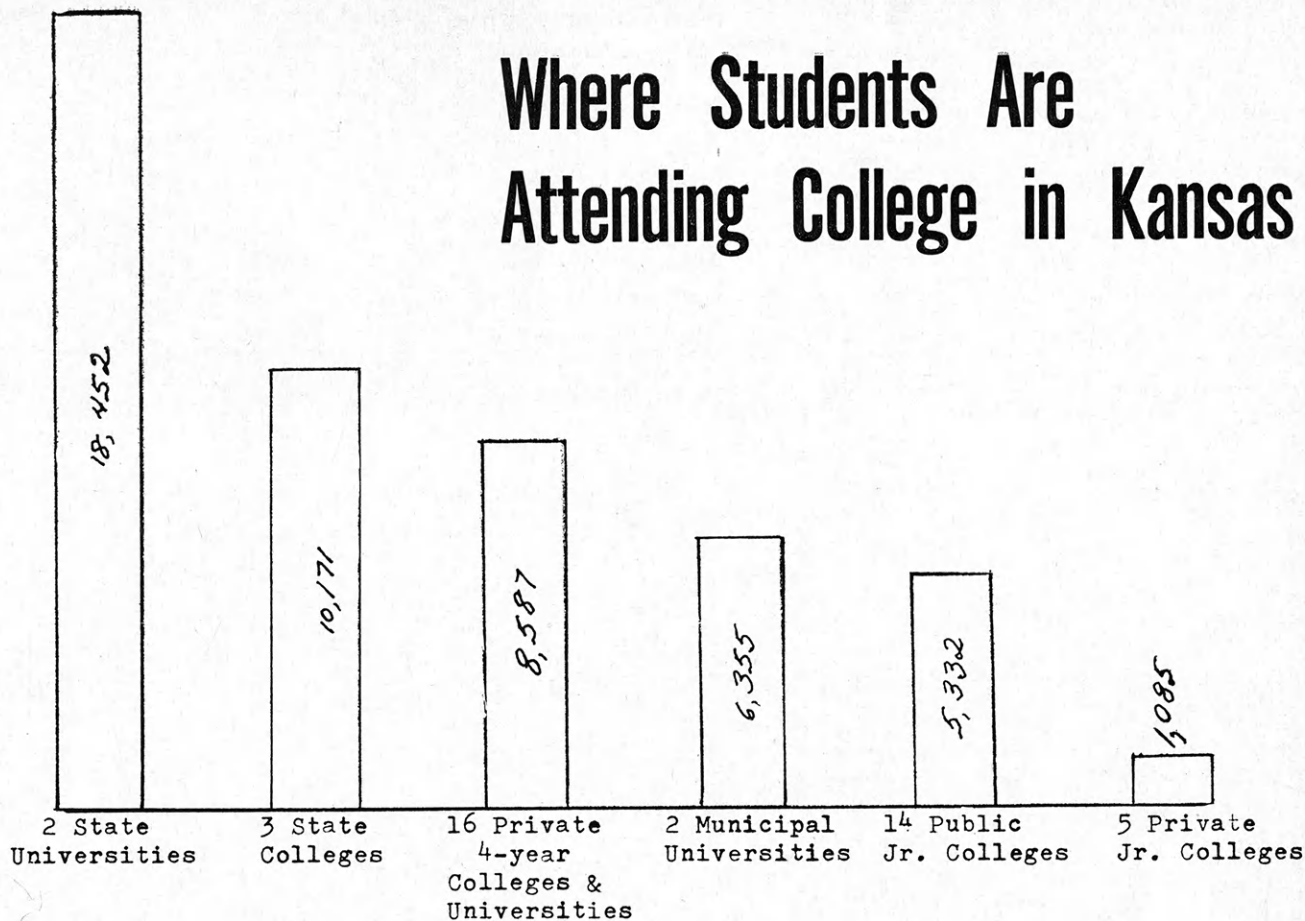
Personal Loans to Kansas Educators

These Firms are Proud
to Recommend
Sacred Heart College
to Kansas Boys and Girls

Cook & Colver Inc.
Schweiter Building

State Bank of Colwich
Colwich

Where Students Are Attending College in Kansas



Fall, 1961, Full-Time Equivalent Enrollments in Kansas Colleges & Universities
(Source : Kansas Educational Directory, 1961-2)

Tax Supported Higher Education in Kansas

Whitley Austin, Chairman
Kansas Board of Regents

Ever since Kansas became a State, its people have shown their deep belief that there should be the opportunity for its young people and adult citizens to benefit from attending college. They have believed, too, that this opportunity should be provided in both public and privately supported institutions.

Quality education has been a responsibility of the State for the State institutions, and of the municipalities for the junior colleges and municipal universities. This public and private support of colleges and universities stems from a deep concern for the welfare of our children and Kansas. We realize our society requires an increasing proportion of its citizens to have both broad and highly technical educations.

From the very beginning, Kansas has contributed taxes for higher education. The Constitution of the State of Kansas, adopted in 1859, contains several provisions for the establishment of tax supported colleges and universities. Three of our five state schools were organized shortly after Statehood was granted—Kansas State University at Manhattan and Kansas State Teachers

College at Emporia in 1863, and the University of Kansas in 1864. Fort Hays Kansas State College was added to the state system in 1901, and Kansas State College at Pittsburg was founded in 1903.

By law, all graduates of accredited high schools in Kansas are entitled to admission in the freshman class at any of the five state institutions.

Students need merely ask that the college of their choice be sent a transcript of their high school record duly signed by the principal, certifying satisfactory completion of the high school course of study.

The Kansas Legislature has authorized a number of cities in Kansas to tax their citizens for local two-year or four-year colleges and universities. Consequently, there are now fourteen tax supported two-year community or junior colleges in Kansas, and two municipal universities. The legislature now provides some additional financial assistance to these institutions from State tax funds.

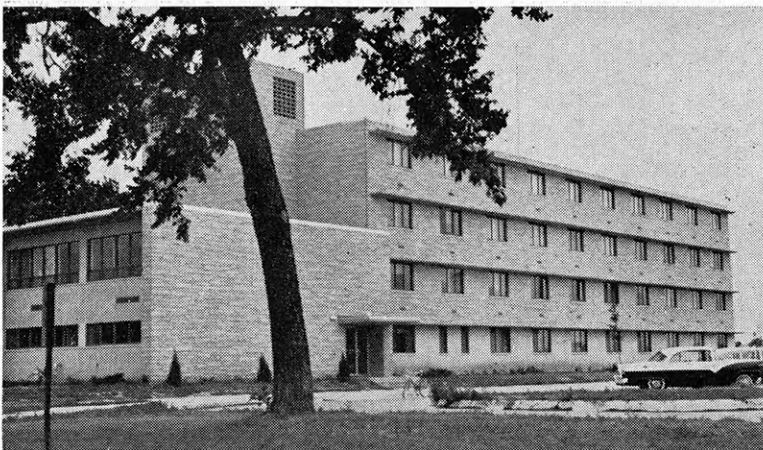
All public and private colleges in Kansas are needed to get the job done. Each institution has particular strengths and the quality of education in Kansas institutions is generally high.

It is important, however, for each boy and girl to give careful thought to whether

he or she has the desire, willingness to work, and the interest in going to college. This decision should be made as early as possible, for many courses in high school will be required as preparation. If the decision is for a college education, then the prospective college student must plan carefully. It is not necessary for him to have decided finally on a course of study or a profession when he enters college, but it is helpful. Because the Kansas tax supported colleges and universities offer study in almost every phase of education, Kansas boys and girls are not limited in their choice.

Of great concern to the Board of Regents is the tragic waste of human resources represented by capable boys and girls who do not go to college or who drop out before completing their education. The reasons are varied, but all too often they may be traced to lack of perseverance and lack of ambition than to lack of ability.

The objectives of higher education always have been to prepare free man to use their freedom and their abilities for their own benefit and the benefit of their fellows. There never has been a time in history when it was more necessary for our young people to reach these objectives than now. I urge each qualified high school graduate to attend the college of his choice.



FORT HAYS KANSAS STATE COLLEGE HAYS

Fort Hays Kansas State College is under the control of the Kansas State Board of Regents. Fort Hays State is accredited by the North Central Association of Colleges and Secondary Schools, the National Council for Accreditation of Teacher Education, the National Association of Schools of Music and the American Association of University Women.

Fort Hays has distinctive educational programs in the sciences, business, music, industrial arts and education. Largest division of the College is teacher education. The College is world-renowned for its program and research on grasslands and range management.

Originally a branch of Emporia Normal School, the college was founded on land deeded to the state by the U. S. Government. It was originally a part of the Fort Hays Military Reservation.

Buildings and equipment of special interest to prospective students include a new, half-million dollar addition to Science Hall; a college farm providing for grasslands research; recently installed language laboratory; a modern applied arts building for industrial arts, art and home economics; reading laboratory; and modern fa-

ilities for teaching of business and economics. A new speech and music building is planned.

Fort Hays State has a unique method of providing directed teaching for students in area communities. It has a one-year secretarial program which gives full college credit, a nurse education program leading to a diploma or, in four years, to a college degree.

Enrollment: 3269

Full-Time Teaching Faculty: 154 of which 45 have earned doctorates

Tuition and Fees: \$77 per semester including incidental, health, Memorial Union. No tuition or special laboratory fees charged.

Board and Room: \$300 per semester

Scholarship and Loan Funds: 175 scholarships averaging \$130. 328 loans averaging \$300 are made annually.

Work Opportunities: 581 jobs are available to students on campus and about 200 are available in Hays.

Midwest Tobacco & Candy Co.
811 Fort
Hays, Kansas

For Further Information, Write
Dean of the College
Fort Hays Kansas State College, Hays

Wiesner's Inc.
A Good Place to Trade
HAYS KANSAS

First National Bank
Hays, Kansas
Member F.D.I.C.



Dr. Lewis in a student teaching class at Fort Hays Kansas State College.

Curriculum:

Degrees offered include B. A., B. S., B. in Music, Specialist in Education, and a Master's degree in most subject fields.

- | | | |
|----------------------|--------------------|-------------------|
| Agriculture | Journalism | Spanish |
| Art | Geology | Library Science |
| Biology | General Science | Mathematics |
| Botany | Health | Music |
| Chemistry | Physical Education | Applied Music |
| Economics | Recreation | Nurse Education |
| Business | History | Philosophy |
| Secretarial | Home Economics | Physics |
| Commercial Education | Industrial Arts | Political Science |
| Geography | French | Sociology |
| Education | German | Anthropology |
| English | Latin | Psychology |
| Literature | | Speech |
| Biblical Literature | | Zoology |

Pre-professional courses offered in dentistry, engineering, law, medical technology, medicine, pharmacy, theology and journalism.

The Farmers State Bank

Hays, Kansas

The bank where you feel at home



MA 4-6542

GRAVES



TRUCK LINE, INC.
HAYS, KANSAS

Home Lumber Company

Complete Building Supplies and Service

8th & Vine Street Hays, Kansas

Fort Hays Alumni Ass'n.

FORT HAYS KANSAS STATE COLLEGE

Kobler Rambler Co.

AUTO SERVICE CENTER

124 E. 8th

Hays, Kansas

Are YOU Looking Into the FUTURE?

Be prepared, choose a good College —when in Hays make ours, your Drug Store.

HAYS CITY DRUG STORE

Producers Gas Equities, Inc.

HAYS, KANSAS

Serving the Oil Industry in Western Kansas

These Firms and Individuals are Proud to Recommend Fort Hays Kansas State College to Kansas Boys and Girls

A. L. Duckwall Store
1103 Main

Al's Bootery
Al F. Rupp, Owner—809 Main

Ann's Dress Shop
Main at 13th

Ed Dies—State Farm Insurance
212 E. 23rd—MA 4-4041

Farmers Insurance Agency
Farmers State Bank

Federal Land Bank Ass'n. of Hays
207 W. 12th

Fox Theatre
Midwest's Finest—1202 Main

Great Guns, Inc.
Perforating & Logging—1706 Vine

Delmas Haney, Attorney
Farmers State Bank Building

Jep's Super Service
Phillips 66 Products—1300 Main

KAYS Broadcasting Station
2450 Hall

Lamer Hotel
1200 Main

Music Manor, Inc.
Everything in Music—207 W. 10th

Henry F. Pierce Insurance Service
Lamer Hotel Building

Smion Roth, Jr., Attorney
Court House

Ted Schulte Insurance
117 W. 8th

Vitzum, Inc.
113 E. 13th

WASHBURN UNIVERSITY of TOPEKA

TOPEKA

Compliments

MERCHANTS NATIONAL BANK

Topeka, Kansas

Member F.D.I.C.

These Firms and Individuals are Proud to Recommend Washburn University to Kansas Boys and Girls

Beatrice Foods Company
2nd and Polk

Chamber of Commerce
Box 640

Gaines & Son Funeral Home
1182 Buchanan Street

Ira Price Cafe
Highway 24 and North Kansas

Whelan's Inc.
715 E. 4th

For Grade A Poultry
and

Farm Fresh Canded Eggs

See or Call

Pittsburg Produce

Phone Adams 1-1970 317 E. 4th

Wright's Greenhouse, Inc.

Friends of Kansas State College of Pittsburg
From its Beginning

Forest and Walnut ADams 1-6400

These Firms and Individuals are Proud to Recommend Kansas State College of Pittsburg to Kansas Boys and Girls.

Beck & Hill Market
303 N. Broadway

Bob's Textile Care Services
1608 S. Broadway

Foodtown Super Markets Inc.
Pittsburg

J. C. Penney Co., Inc.
522 N. Broadway

Keller, Wilbert, Palmer & Botkin
Attorneys at Law Nat'l Bank Bldg.

Washburn University was chartered as Lincoln College in 1865. The name was changed to Washburn College in 1868 in honor of a sizeable contribution from Ichabod Washburn, a successful industrialist from Massachusetts.

In 1941 the college was accepted by the citizens of Topeka and became Washburn Municipal University. In 1952 the name was changed to Washburn University of Topeka.

Washburn is fully accredited by the North Central Ass'n. of Colleges and Secondary Schools, the Kansas State Board of Education, the Nat'l. Council for Accreditation of Teacher Education, the Ass'n. of American Law Schools, the American Bar Ass'n., the American Ass'n. of University Women and the Nat'l. Ass'n. of Schools of Music.

The 1961-62 equated full-time enrollment was 2,266 with an equated full-time teaching faculty of 112.

Tuition is \$10 per semester hour for Topeka residents, \$11 per semester hour for non-residents. Graduate students in law and education pay \$12 per semester hour. All students pay \$10 per semester activity fee. Room and board in University residence halls is \$665 per school year.

Washburn University annually awards almost \$50,000 in nearly 300 scholarships. There are also various loan funds available for qualified students.

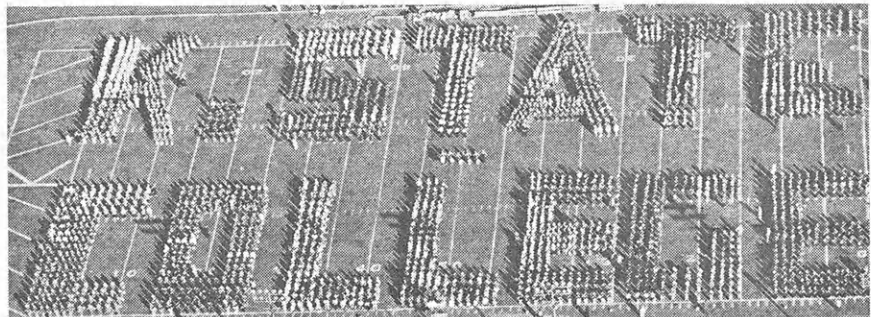
Almost three-fourths of the Washburn student body earn part or all of their expenses. Topeka offers many student work opportunities.

Washburn University offers A.B., B.B.A., B.S., B.F.A., B.M., B.Ed., M.Ed., and L.L.B. degrees.

Bachelor degrees are offered in art, commerce, economics, and business administration, education, English, history, modern foreign languages, music, Philosophy, political science, psychology, sociology, biology, chemistry, home economics, mathematics, physics and astronomy. Graduate degrees are offered in law and elementary education.

There are also pre-professional courses designed for further graduate study in dentistry, medicine and theology. There is a pre-professional training curriculum in conjunction with Stormont-Vail hospital leading to a career in medical technology.

For further information, write—
The Registrar, Washburn University of Topeka, Topeka.



Nearly 4,000 visiting high bandsman at Homecoming.

Kansas State College of Pittsburg, founded in 1903, is governed by the Kansas State Board of Regents. It is accredited by the North Central Ass'n. of Colleges and Secondary Schools.

Distinctive educational programs include education, industrial education, and art, and business administration.

Enrollment: 3129
Full-Time Teaching Faculty: 147 of whom 65 have earned doctorates.

Tuition and Fees: \$78 per semester including enrollment, student center, health, activity, and book rental.

Board and Room Costs: \$602 for a nine-month year.

Scholarship and Loan Funds: Approximately 100 scholarships varying from \$100 to \$600 each. Approximately 150 loans averaging \$231 are

made annually.

Work Opportunities: More than 570 student are employed by the College with some jobs available in Pittsburg.

Curriculum: B. A., B. S., B. in F. A., B. of Music, M. A., M. S., and specialist in Education degrees are offered. Subject matter areas include—art, business, elementary education, English, foreign languages, home economics, industrial arts, journalism, library science, mathematics, mechanic arts, music, physical education, psychology, speech, biological-physical and social sciences. Pre-professional work in engineering, dentistry, medicine, vet medicine, nursing and law.

For Further Information, Write—
Director of Public Information,
Kansas State College, Pittsburg

KANSAS STATE COLLEGE of PITTSBURG

PITTSBURG

THE KANSAS STATE TEACHERS COLLEGE EMPORIA

The Kansas State Teachers College, Emporia, is recognized as one of the outstanding teachers colleges in the United States. During the fall semester of 1961, a total of 4,215 equated full-time college level resident students were enrolled.

The college operates on a year-round basis and it is possible for a student to obtain a degree in three years by attending one or more summer sessions.

Two hundred and one faculty members serve Teachers College students.

Tuition and fees amount to \$74.50 per semester. This covers such items as laboratory fees, the yearbook, school newspaper, activity ticket and health fee.

Students may attend the Teachers College for approximately \$317 a semester including fees and board and room.

Women students may live in the Women's Dormitory for between \$215 and \$265 per semester, depending on the number of girls in each room. Men students live in the air-conditioned Men's Dormitory for \$273 per semester. Off-campus housing is available for approximately \$20 per month. The women's dormitories accommodate about 600 women and 118 young men may live in the men's dormitory.

About 200 scholarships are awarded annually by the Faculty Academic Scholarship Committee of the Teachers College. The Scholarship Committee also administers a student loan program.

Many students work part or full-time to pay college expenses. Work is available in college offices and on the campus. Emporia businesses are very cooperative in providing jobs for students.

The Teachers College prepares students for careers in teaching (which includes school administration and counseling) and librarianship.

The Women's Dormitory at KSTC overlooks scenic Lake Wooster.



Consider a Career in . . . TEACHING

Write:

INFORMATION OFFICER
THE KANSAS STATE
TEACHERS COLLEGE
EMPORIA

Campus buildings include modern science laboratories, the William Allen White Memorial Library, modern, well-equipped classrooms, the Thomas W. Butcher Children's School (kindergarten through grade 6), Roosevelt Junior and Senior High School, Student Union, and Cafeteria.

The Teachers College is fully accredited. It is authorized by the Kansas State Board of Regents to award the following degrees:

- Bachelor of Science in Education
- Bachelor of Science in Business
- Bachelor of Music Education
- Bachelor of Music
- Bachelor of Arts
- Master of Arts
- Master of Science
- Specialist in Education

Inquiries for additional information should be directed to—

Division of Field Services, Kansas
State Teachers College, Emporia.

The Oldest Bank in Lyon County serving the Emporia community for 76 years.

For complete banking services.

THE CITIZENS NATIONAL BANK

Emporia, Kansas

1886

1962

We salute The Kansas State Teachers College for their fine contribution to the Teaching Profession of our Nation.

Member Federal Deposit Insurance Corp.

(It does make a difference where you do your banking)

While in College
Let this bank be your
Emporia Bank

EMPORIA STATE BANK and AUTO BANK

Emporia, Kansas

Member of the Federal
Deposit Insurance Corp.



These Firms and Individuals are Proud to Recommend
Kansas State Teachers College to Kansas Boys and Girls

Beatrice Foods Company
Meadow Gold Dairy Products
Dayton's Toys, Hobbies, Crafts
803 Commercial

Giger Livestock Sales
Route 5

Hunter Advertising, Inc.
610 Merchant DI 2-8266

The Broadview Hotel
Phone DI 2-6220 for Reservations

Kansas Soya Products Company
East Fifth Avenue

Union News Company
Savarin Restaurants
Kansas Turnpike

DR. W. S. HANCOCK
OPTOMETRIST

*Specializing in the
Fitting of Glasses*

418 Commercial

DI 2-0622

ANDERSON CATTLE CO., INC.

Feeders of Livestock

PHONE DI 2-0330

EMPORIA, KANSAS

Roberts-Blue-Barnett
Funeral Home

Emporia, Kansas

KANSAS STATE UNIVERSITY

Manhattan

We are living in a changing world. May we urge you to attend Kansas State University to prepare yourself for the future.

You are cordially invited to use our downtown bank and our Motor Bank while you are living in Manhattan.

First National Bank

Manhattan, Kansas

Member F.D.I.C.

Kansas State University was serving the youth of Kansas even before the "iron horse" joined the east coast to the west coast.

Here was an educational institution dedicated to the proposition that "A man's reach should exceed his grasp"—he should be able "to look farther than his eyes could see."

Though today's Space Age student faces a frontier much different than the one faced by his counterpart of a hundred years ago, the excitement of learning remains the same. Education has always been an adventure for those who plan for tomorrow.

K-State is eager to assist young people who seek to meet the challenge of the future. President McCain has said: "Show me any youth in our State with

demonstrated ability to succeed in one of our courses and we shall make it possible for him to attend this University regardless of his financial circumstances."

During the past ten years, K-State's physical plant has more than doubled in size. Hand in hand with this physical expansion, marked growth in emphasis upon culture, scholarship and research has taken place.

To furnish maximum educational opportunity to the student, the University is organized into six schools: Agriculture, Arts and Sciences, Engineering and Architecture, Graduate, Home Economics, and Veterinary Medicine. Fifty-two departments of instruction are to be found in the various schools.

Opportunities in The

School of Agriculture

Approximately 4,000 acres of land are used for experimental work and instruction. Specialized facilities include greenhouses for horticultural and field crops; a dairy manufacturing plant; a flour mill; a feed mill; a livestock slaughter and meat processing plant; and specialized laboratories for soils, field crops, horticultural crops, entomology, poultry and poultry products, and statistical computations.

The School is organized into nine departments: Agricultural Economics, Agronomy, Animal Husbandry, Biochemistry, Dairy Husbandry, Entomology, Flour and Feed Milling Industries, Horticulture, and Poultry Husbandry.

Modern agriculture is based upon the application of science, technology, and sound business management to the production, marketing, processing, and distribution of food and fiber.

In the six four-year curriculums offered in the School of Agriculture,

Students study in Farrell Library which houses more than 250,000 catalogued volumes plus periodicals, newspapers, maps, and other printed materials.



HAYS FURNITURE UPHOLSTERY



PR 8-5594

MANHATTAN
KANSAS

CALL PR 8-2005

for
MILK—HALF and HALF
Whipping Cream
Buttermilk—Chocolate Drink
Cottage Cheese—Ice Cream
Serve

CITY DAIRY PRODUCTS
313 S. 4th Street

ALL OFFICIAL

TEXT BOOKS

at

Ted Varney's

UNIVERSITY BOOK STORE

Where you get the best deal.

These Firms and Individuals are Proud to Recommend
Kansas State University to Kansas Boys and Girls

Aggie Hardware & Electric Company
1205 Moro

Bennington Plumbing and Heating
105 S. 5th

J. D. Coursen, D. C.
616 N. 12th

Cowan, Ferrol E.
1616 Poyntz

DeLuxe Cleaners
706 N. Manhattan

**Dodd's Home Furnishings
& Appliances**
409 Poyntz

Henton Plumbing and Heating
324 Fremont

Kaup Furniture Co.
304 Poyntz

Lumb's Hy-Klas Food Store
1407 Denison

**Manhattan New Car Dealers
Association**

Richards Auto Parts
210 Poyntz

Schwerdt Motor Company
1125 Moro

Seven-Up Bottling Company
120 Poyntz

Waddell Tire Company
6th and Riley

Yeo & Trubey Electric Co.
1204 Moro

**Make Reservations Now For Your
Banquets—Wedding Receptions**

Seating Capacity up to 300
All banquet rooms air-conditioned

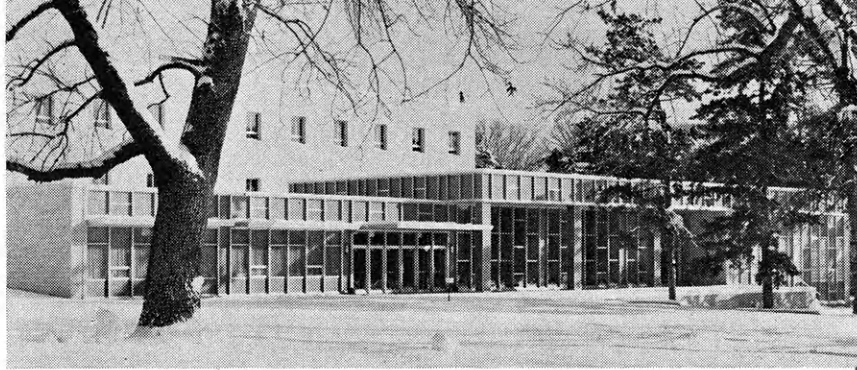
Wareham Hotel
FOOD SERVICE

D. C. MARTIN, Catering Mgr.
Phone 8-2374

Blaker's Studio Royal

1200 Moro

Ph. 8-3434



Justin Hall now houses the School of Home Economics. This modern, three story, limestone structure is air-conditioned and contains, in addition to classrooms, an auditorium and offices.

students may prepare for farming and ranching, for the scientific investigation of agricultural problems, for agricultural extension work, for the teaching of vocational agriculture in high schools and agriculture in colleges, for responsible positions in industries and governmental agencies related to agriculture, and for a variety of other public and private services of an agricultural nature.

The Curriculum in Agriculture is designed as a broad and flexible curriculum; the other five are specialized. All six curriculums require the same courses in the freshman year with the exception of Landscape Architecture. The four other curriculums are: Agricultural Education, Dairy Manufacturing, Feed Technology, and Milling Technology.

The instructional program of the School of Agriculture has two objectives. The first is to develop in students those qualities which mark the man of liberal education. The second is to prepare the student to enter and advance in the occupation of his choice.

Opportunities in The School of Arts & Sciences

Work given by the School of Arts and Sciences was prescribed in the original act establishing Kansas State. It is now the largest of the six schools which comprise the University.

Through the efforts of a distinguished faculty actively engaged in teaching and research, students are encouraged in the greatest possible development of their capacities as responsible individuals and members of society. Here they obtain a broad preparation for life and secure a sound basis in professional training.

The twenty-three departments are organized into six areas with eight individualized curriculums: General, Humanities, Social Science, Biological Science, Physical Science, Business Administration, Education, and Applied Music.

To stimulate and develop the unusual abilities of those students who have outstanding academic records in high school and on University entrance examinations, the School provides an Honors Program. Students of unusual academic potential who are interested in careers as college teachers are invited to apply for the Ford Foundation Five-Year Master's Program.

The departments which comprise the School of Arts and Sciences are the following: Bacteriology; Botany and Plant Pathology; Business Administration; Chemistry; Economics and Sociology; Education; English; General Studies; Geology and Geography; History, Political Science, and Philosophy;

Mathematics; Air Science; Military Science; Modern Languages; Music; Physical Education; Physics; Psychology; Speech; Statistics; Technical Journalism; and Zoology.

Opportunities in The School of Engineering and Architecture

The world in which we live has in part been shaped by the more than 8,000 men and women who have been graduated by this School. They've designed and built highways and bridges, dams and irrigation systems, machines to produce goods and machines to produce machines, light and power systems, and all kinds of houses and public buildings.

Courses in the freshman year are virtually the same for all engineering students, and there is relatively little variation among curriculums the second year. The first two years are devoted to laying a solid foundation in mathematics and the physical sciences. Architecture is a five-year program.

Newest department in this School is that of Nuclear Engineering. As a result of substantial grants from the Atomic Energy Commission, the laboratories in nuclear engineering at Kansas State University are being greatly expanded.

Other departments are as follows: Agricultural Engineering, Applied Mechanics, Architecture and Allied Arts, Chemical Engineering, Civil Engineering, Electrical Engineering, Industrial Engineering, Mechanical Engineering, and Nuclear Engineering.

Automation and rocket propulsion are just two of the recent developments which require the application of the basic principles of thermodynamics, heat transfer, machine design, and fluid mechanics. Truly, the engineer is at the throttle in today's world.

A new nuclear science and engineering building to house a 10,000-watt critical reactor will be completed during the school year 1962-1963.

Opportunities in The School of Home Economics

Justin Hall now houses the School of Home Economics. This new limestone building provides three stories of air-conditioned classrooms, laboratories, auditorium, and offices.

Six departments are now under one roof—Art, Clothing and Textiles, Family and Child Development, Family Economics, Foods and Nutrition, and Institutional Management.

The home economist who wants to see the world can use her profession to take her to far places. Some gradu-

You Will Enjoy . . .

KANSAS STATE UNIVERSITY

Our special student representative will be here at the bank to welcome you and to give you FREE personalized checks . . . from the bank that wants to serve you!

You will enjoy using the

UNION NATIONAL BANK

"the bank with the clock"

TOM GRIFFITH
CHAIRMAN OF THE BOARD

4-H'ERS
ARE ALWAYS
WELCOME
AT

DUCKWALL'S

Downtown and Aggieville

Manhattan Typewriter Co.

"Complete Sales & Service Organization"

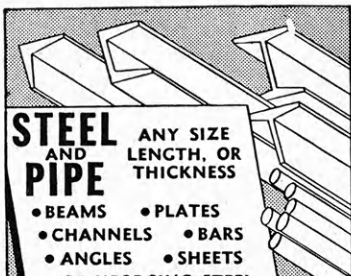
217 So. 4th Phone: PR 8-4174
PR 8-4241

Stickel Cleaners

714 N. 12th

KANSAS STATE UNIVERSITY

Manhattan



STEEL AND PIPE ANY SIZE LENGTH, OR THICKNESS

- BEAMS
- CHANNELS
- ANGLES
- REINFORCING STEEL
- PLATES
- BARS
- SHEETS

Steel & Pipe Supply Co.
PR. 8-4440
2ND & OSAGE
MANHATTAN, KANSAS

Griffith Lumber Co.

112 No. 2nd
PR 8-4477

Complete Line of Building Materials

*Satisfaction Guaranteed
or
Your Money Back*

Sears Roebuck and Co.

When in Manhattan

WARD M. KELLER
MANHATTAN'S STORE FOR WOMEN

—To Outfit You From Head to Toe—

College Cleaners and Shirt Salon

1216 Moro Ph. 8-2390

Walters Sand Co., Inc.

(Since 1925)

Manhattan, Kansas

ates are teaching high school or college students or carrying on adult education in Korea, the Philippines, Pakistan, or The Netherlands, as well as in the United States.

Other graduates are working for the nation's big food and equipment manufacturers or are serving as interior decoration editors of magazines or as home department editors on newspapers.

Still others are dietitians in hospitals, college residence halls, or are in the Army or Navy. Some are in social welfare work or working with exceptional children in our great cities. Many are home economics agents in the counties of Kansas and other states. Some are nurses and others are in clothing retailing in large stores.

Six curriculums are open to the student: Home Economics (with options), Dietetics and Institutional Management, Restaurant Management, Home Economics with Liberal Arts, Home Economics and Journalism, and Home Economics and Nursing.

The first curriculum named is a flexible one in which students select options according to their interests: clothing and textiles, family and child development, family economics, foods and nutrition, research, home economics extension, or teaching home economics in high school.

The curriculum in Home Economics and Nursing is unique in that four semesters and two summers are spent at K-State and then 24 months classroom and clinical experience at the Medical Center in Kansas City is taken.

Graduate nurses with bachelor of science degrees are in demand as teachers in schools of nursing and for the more responsible positions in hospitals.

Opportunities in The School of Veterinary Medicine

Veterinary courses were first introduced at the University in 1868. How-

ever the School of Veterinary Medicine was formally established in 1905. Since that time over 1,900 men and women have been granted the degree Doctor of Veterinary Medicine.

The four departments within the School are: Anatomy, Physiology, Pathology, and Surgery and Medicine.

The School of Veterinary Medicine has three buildings for instruction. These contain adequately and modernly equipped classrooms, laboratories, and an up-to-date veterinary library.

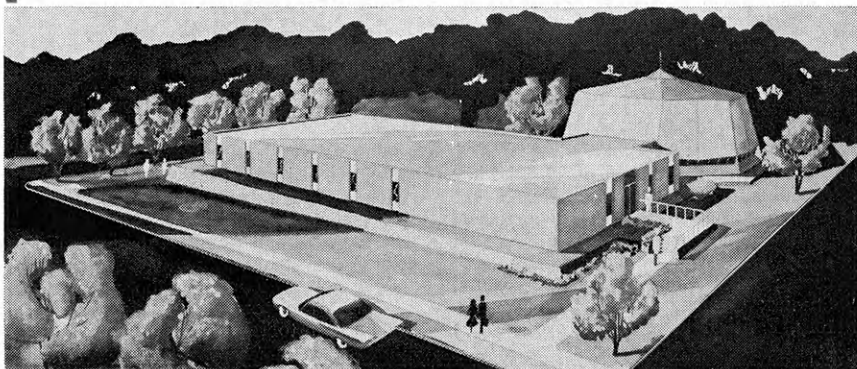
A modern veterinary clinical hospital building, Dykstra Veterinary Hospital, was recently completed which was designed specifically for the instruction of students in all phases of clinical medicine and surgery. Approximately 30,000 animals are treated yearly by the K-State veterinary medical staff. In addition the School has a group of buildings one mile north of the campus known as the Veterinary Research Laboratories.

Six years of study beyond high school are required to earn the degree of Doctor of Veterinary Medicine. Completion of the two-year pre-veterinary pre-professional curriculum leads to the degree of Bachelor of Science. Completion of this work and the final two years in the professional curriculum leads to the degree of Doctor of Veterinary Medicine.

The great livestock industry assures the competent graduate veterinarian an excellent opportunity to establish a career in the private practice of veterinary medicine. Other career possibilities are to be found in government service at the national, state, or city level. Teaching and research open up other avenues of service to the doctor of veterinary medicine.

The number of students admitted to the professional curriculum in veterinary medicine is limited. When all other factors are equal, first preference is given to applicants who are residents of Kansas.

Nuclear Science and Engineering laboratories are under construction at Kansas State University. A Triga Mark II reactor is to be installed in the octagonal bay shown above. The University will then have one of the most versatile nuclear reactor facilities in the entire world.



Miss Kansas Centennial of 1961 was pert, vivacious Gayla Leigh Shoemake of El Dorado. With all her activities she stayed on the scholastic honors program at Kansas State University.



Opportunities in The Graduate School

Admission to graduate study does not imply admission to candidacy for an advanced degree. Such candidacy is determined only after the student has demonstrated his ability to do graduate work.

Academic work leading to the master's degree is offered in sixty-six fields at Kansas State University. Academic work leading to the doctor of philosophy degree is offered in twenty-two fields.

In 1932 the Board of Regents authorized the institution to confer "upon students completing the requirements therefor the degree of doctor of philosophy, and to offer in the departments of chemistry, milling industry, bacteriology, and entomology graduate work leading to that degree."

Since that date the Board has amended this action several times so as to authorize additional departments to offer the doctorate. In 1959 Kansas State University was authorized to award the master of arts degree in the traditional fields.

The Master of Science Degree, the Master of Arts Degree, the Specialist in Law, the School of Veterinary Medicine Education Degree (one year of study beyond the master's degree), and the Doctor of Philosophy Degree are now awarded by Kansas State University's Graduate School.

Most of the original research conducted by graduate students is carried on in close co-operation with the Experiment Station of Agriculture and Engineering and the Bureau of General Research. This work is making enormous contributions to scientific knowledge.

To facilitate research work, teaching, and the acquisition of advanced degrees, the University has established graduate assistantships and research assistantships in most departments. Two major loan programs are in operation to assist graduate students in pursuing their degrees.

The international reputation of the graduate program is attested to by the number of foreign scholars who make Kansas State University their headquarters while in the U. S.

Enrollment: 8390

Full-Time Teaching Faculty: 574

Tuition and Fees: \$104 per semester including incidental, health, Union Building and Annex, and student activities fees.

Room and Board: \$540 to \$660 a year, Cooperative Houses—\$450 a year.

Scholarship and Loan Funds: 453 scholarships averaging \$252 are awarded annually. A total of 1,495 loans (including short term emergency loans) totaling \$457,000 are made annually.

Work Opportunities: More than half of the students work to pay all or part of their college expenses.

For Further Information, Write—
Director of Admissions,
Kansas State University, Manhattan

WE SERVE KANSAS STATE UNIVERSITY

STUDENTS
WITH
NEW TEXTBOOKS
USED TEXTBOOKS
REFERENCE BOOKS
AND ALL
SUPPLIES

CAMPUS BOOK STORE

DOEBELES IGA FOODLINER

Fruits—Vegetables—Groceries
and Meats

517 N. Third Phone 8-4923

Free Coffee

Every Day Low Prices

Free Delivery Joe Doebele, Prop.

CAMPUS CLEANERS

30 Years of Service

1219 MORO

H. H. LANGFORD

BUZZELL'S OFFICE EQUIPMENT

Corner 4th and Houston

SALES—SERVICE—RENTALS
Manhattan, Kansas

Chappell's
ALL STAR
MANHATTAN, KANSAS

Paul Dooley, Jeweler

Engraving — Repair

Aggieville Shopping Center
Since 1924

ZOOLOGY — ARCHEOLOGY — ARCHITECTURAL ENGINEERING — ARCHITECTURE — ARMY R.O.T.C. — ART — ART EDUCATION — ASTRONOMY — ATOMIC ENERGY — APPAREL MERCHANDISING — BACTERIOLOGY — BASSOON — BIOCHEMISTRY — BOTANY — BUSINESS ADMINISTRATION — CARILLON — CERAMICS — CHEMICAL ENGINEERING — CHEMISTRY — CHILD DEVELOPMENT — CHINESE — MANAGERSHIP — CIVIL ENGINEERING — CLARINET — CLINICAL PSYCHOLOGY — CLOTHING RETAILING — COACHING — COMMERCIAL — COMMUNICATIONS ENGINEERING — COMPOSITION (MUSIC) — COUNSELING PSYCHOLOGY — CREATIVE WRITING — DESIGN — METRICS — DRAMA — DRAWING — ECONOMICS — EDITORIAL WRITING — EDUCATION — ELECTRICAL ENGINEERING — ELEMENTARY EDUCATION — ENGINEERING PHYSICS — ENGLISH — ENTOMOLOGY — FAR EASTERN AREA PROGRAM — FASHION ILLUSTRATION — FLUTE — FRENCH — FRENCH HORN — FUNCTIONAL MUSIC — GEOGRAPHY — GEOLOGY — GEOPHYSICS — GERMAN — GOVERNMENT ADMINISTRATION — HARP — HISTORY — HISTORY OF ART — HISTORY OF SCIENCE — HOME ECONOMICS — HUMANITIES — INTERNATIONAL RELATIONS — ILLUSTRATION — INDUSTRIAL DESIGN — INDUSTRIAL ADMINISTRATION — INDUSTRIAL TECHNOLOGY — INTERIOR DESIGN — INTERNATIONAL RELATIONS — ITALIAN — JAPANESE — JEWELRY — JOURNALISM — LABORATORY — LABORATORY TECHNOLOGY — LATIN AND GREEK — LATIN-AMERICAN AREA — LAW — LIBERAL ARTS — LINGUISTICS — MARKETING — MARINE COMMERCE — MATHEMATICS — MECHANICAL ENGINEERING — MEDICAL TECHNOLOGY — MEDICINE — METALLURGICAL ENGINEERING — MINERALOGY — MUSEUM ADMINISTRATION — MUSIC — MUSIC EDUCATION — MUSIC HISTORY — MUSIC THEORY — MUSIC THERAPY — NURSING — R.O.T.C. — NEWS WRITING — NUCLEAR SCIENCE — NURSING — OCCUPATIONAL THERAPY — ORGAN — PAINTING — PALEONTOLOGY — PERSONNEL ADMINISTRATION — PETROLEUM ENGINEERING — PETROLEUM GEOLOGY — PHARMACY — PHILOSOPHY — PHILOSOPHY OF SCIENCE — PHYSICAL EDUCATION — PHYSICAL THERAPY — PHYSICS — PHYSIOLOGY — PIANO — POLITICAL SCIENCE — PORTUGUESE — POWER ENGINEERING — PRINT MAKING — PSYCHOLOGY — PUBLIC ADMINISTRATION — PUBLIC HEALTH — RADIO AND TV — RADIATION — PHYSICS — RECREATION (PUBLIC) — RUSSIAN — SANITARY ENGINEERING — SCANDINAVIAN — SCHOOL ADMINISTRATION — SCULPTURE — MATERIAL TRAINING — SILVERSMITHING — SLAVIC AREA PROGRAM — SOCIAL SCIENCE — SOCIAL WORK — SOCIOLOGY — SPANISH — SPEECH CORRECTION — TEACHING — TEACHERS OF DEAF — TELEVISION — TEXTILE DESIGN — THEATER AND VOICE — THERAPY — THERAPY DESIGN — TRUMPET — VIOLIN — VIOLA — VIOLONCELLO — VOCATIONAL GUIDANCE — VOICE — X-RAY — TECHNOLOGY — ZOOLOGY

ON CHOOSING A UNIVERSITY



WHEN A YOUNG PERSON has made the major decision that he wants to extend his education into college—a decision that more than one of every two young Kansans is making today—he begins to look around at institutions of higher education to decide for himself what kind of educational experience each has to offer. Each is unique, just as each individual is unique and has unique needs and desires. At best, the individual's needs and desires find the institution that can fulfill them.

The factor of major significance about the University of Kansas is that it is a university. It can be described further as a state-supported university and as the largest university in Kansas, although only medium sized as state universities go—but most important, a university.

More than any other institution of higher education in the state, the University of Kansas is concerned with graduate education and with research. These two responsibilities add meaning to the term "university." They mean faculty members who not only have earned terminal degrees in their respective areas but who are not content merely to give back to students what they themselves once learned. Rather they are involved in adding to the sum of human knowledge and in passing on to their students the methods and tools with which Man has understood and mastered his environment.

The inquiring atmosphere of research permeates an entire university, involving in it not only faculty and graduate students but undergraduate students as well. Even K.U. freshmen may find themselves working on research projects; some sixty undergraduate students at the University of Kansas this year are being paid by national and local foundations to help senior scientists with their research.

A university also means a gathering together of schools and colleges offering undergraduate, professional, and graduate degrees. Each school, governed by its own faculty, has a large measure of independence in admitting students, in making



academic rules, and in setting graduation requirements.

At the University of Kansas, the schools are the College of Liberal Arts and Sciences, the Graduate School, and the schools of Business, Education, Engineering and Architecture, Fine Arts, Journalism, Law, Medicine, and Pharmacy.

Freshmen may enter one of four K.U. schools directly—the College, the School of Engineering and Architecture, the School of Fine Arts, or the department of Physical Education of the School of Education.

The College of Liberal Arts and Sciences provides programs in the natural and social sciences and the humanities leading to bachelor of arts or bachelor of science degrees. In addition the College provides two years of liberal education as preparation for students who enter the two-year programs of Business, of Education, of Journalism, and of Nursing, or the three-year program of Pharmacy.

Students who have earned a bachelor's degree may apply for admission to the three-year program of law, to the four-year program of Medicine, or to the Graduate School, which provides an opportunity to work toward master's degrees and doctorates.

A university also is a campus. The green K.U. campus on top of Mount Oread with its distinctive red-roofed buildings and its long view over the Wakarusa and Kansas River valleys is world famous for its beauty.

The main campus of 750 acres is located at Lawrence (population: 33,000), 25 miles from the state capital, Topeka, and 42 miles from the metropolitan center of Kansas City. The K.U. Medical Center is at Kansas City, Kansas. In the University's ten schools, 1,000 teachers give 2,500 different courses to more than 10,000 students.

The University is a small city in itself, with its own daily newspaper, radio stations, and magazines, its own hospital,

residences, restaurants, theaters, museums, recreational facilities, power plant, telephone system . . .

But all this size and complexity means not impersonality but maximum opportunity for the individual to identify his particular talent, to develop his abilities as far as they will go, to participate in a wealth of cultural opportunities. K.U. is big because it is the sum of many small parts: most classes consist of 20-25 students or less, and the living group is 50 students or less, even in the largest residence hall.

The University of Kansas has a tradition of excellence beginning not long after its founding in 1866. The first chapters of Phi Beta Kappa and of Sigma Xi west of the Mississippi were founded on Mount Oread.

The 1958 volume of "Who's Who in America" contains the names of 246 living persons who received their first degree from the University of Kansas. In a study of male graduates who received their first degree between 1920 and 1949 and are listed in this volume, K.U. ranked among the top five state universities—with more than one of every 95 graduates recognized.

The 1954 edition of "Who's Who in Engineering in the United States" contained the names of 301 K.U. graduates in engineering, ranking K.U. ninth among the 177 engineering schools included—and fourth in percentage terms.

The University is one of the few state universities with a system of distinguished professorships which increases the regular professorial salary by a substantial grant from private endowment.

More than five faculty members each year, on the average, receive Fulbright grants for teaching and research in foreign countries. Nearly 400 faculty members produce more than 1600 scholarly articles and books every year, and more than a dozen members of the art departments exhibit works in nearly 80 museums and shows and members of the music departments perform by invitation with symphony

orchestras and opera companies, or as soloists, in this country, Latin America, and Europe.

During the past year, the total research effort of the University reached \$6½ million.

The academic programs of the University have produced graduates who rank with graduates anywhere. K.U. is the only state university in the nation to have Rhodes Scholars in 1959, 1960, and 1961; no state university had more Woodrow Wilson fellowships awarded for 1961; and no university, private or public, had more students receive Danforth fellowships.

This is the sort of information a prospective student should find out about any institution of higher education in which he is interested. Before he makes any decision, however, he should visit the university or college, breathe in its atmosphere, talk with its students and its faculty members.

A prospective student also has practical questions to ask about a university: how do I get admitted? how much will it cost? where will I live? how do I apply for financial aid?

Who Is Admitted

Any graduate of an accredited Kansas high school who has not previously attended a college will be admitted to K.U. A limited number of well-qualified out-of-state students are accepted for admission.

By June 1 for fall-semester admission and one month before the start of the spring semester or summer session, the prospective student should send to the Director of Admissions a completed application blank and have a transcript of his high school record and his record at any college he has attended sent directly from the institution to the Director of Admissions.

Expenses of Students

Most students—residents of Kansas or foreign students—pay incidental fees of



\$70 a semester; non-residents pay \$225 a semester. Campus privilege fees are paid by almost every student; they include a health fee of \$12 a semester, Student Union fee of \$10 a semester, and an activity fee of \$12 a semester. These fees entitle the student to dispensary care for ordinary illnesses and to special medical services at nominal rates, to the use of the Student Union, to admission without charge to most campus events and to the privilege of purchasing reserved seat football tickets at a special price, to a *University Daily Kansan*, and to participation in other activities.

Total fees for most students are \$104 a semester for residents of Kansas, \$259 for non-residents.

Living Accommodations

A variety of living accommodations is available at K.U.: scholarship halls, residence halls, fraternities and sororities, rooming houses and private homes, cooperative houses, and apartments for married students. The University does everything in its power to help the student find a satisfactory place to live.

Men may live in one of five scholarship halls which have been given to the University. Each houses 50 men who perform all the daily work in the house and share the costs of operation. Costs average about \$45 a month. Admission to these halls is granted as a scholarship to men with high scholastic standing who need financial assistance. Applications must be in the hands of the Men's Scholarship Hall Committee before Feb. 15.

Women have four scholarship halls. Costs average \$35 a month. Applications should be sent to the Women's Scholarship Hall Committee before Feb. 15.

The University's residence halls provide comfortable quarters and meals for about 3,000 students. The cost for board and room is about \$75 a month. Placement is made according to receipt of signed contracts. Men should apply to the Dean of Men; women, to the Dean of Women.

Twenty-seven social fraternities and thir-

teen sororities maintain chapter houses near the campus. They provide comfortable accommodations for about 1500 men and 700 women. Membership is by invitation, with men's rush week before enrollment in the fall, women's rush week between the fall and spring semesters of the freshman year.

Monthly house bills vary from \$80 to \$95, not including fees, or, in some cases, extra charges. Men may obtain full information about fraternity life from the Dean of Men; women should inquire of the Dean of Women about sororities.

A large number of men and some upper-class and graduate women live in private homes and rooming houses. A list of rooms for men is kept on a day-to-day basis in the Housing Office. A list of approved rooms for women is available from the Dean of Women. Students should visit Lawrence as early as possible to make their selections in person.

Married students will find a large choice of privately owned apartments or houses in and around Lawrence. Information is available from the Housing Office. Stouffer Place, a modern housing project operated by the University, consists of one and two-bedroom apartments which rent, with basic furniture, for \$60 and \$70 a month respectively, not including utilities. Applications should be made to the Housing Office.

Students who live in rooming houses and homes where meals are not served will find good food at reasonable prices in the two cafeterias at the Kansas Union. Students should expect to pay about \$2 to \$2.50 a day for meals. Privately operated restaurants also are available near the campus.

The basic two-semester cost for an undergraduate student attending the University of Kansas will average about \$1,300, including fees, board and room, books, and a small amount for personal expenses.

Financial Aid

Students who need financial help to attend the University of Kansas are the

special concern of K.U.'s Aids and Awards Program. Each year the University provides or administers more than 1,250 scholarships with a cash value in excess of \$500,000, including payments to R.O.T.C. juniors and seniors. About 3,000 loans totaling more than \$475,000 are made every year from Kansas University Endowment Association funds. In addition, another \$300,000 is made available to K.U. Students each year for long-term loans under the National Defense Student Loan Program.

One of every three students receives scholarship or loan fund aid from the University, many from more than one source. In addition, about one student of every three holds a part-time job during the school year.

Four main considerations guide the awarding of scholarships: genuine interest in attending K.U.; a superior academic record; financial need; citizenship.

For scholarships desired in the fall, the Office of Aids and Awards must receive applications by Feb. 15; for the spring semester, by December 1. At the time of application students should request their appropriate high school official to send a transcript of their high school credits for seven semesters (or six, if seven are not available) to the Office of Aids and Awards. In addition, a second transcript of their high school credits must accompany their application for admission and be sent to the Director of Admissions. Applications for scholarships may be obtained from high school principals, high school counselors, or the K.U. Office of Aids and Awards.

Many loans are for short terms. Major long-term loans of as much as \$1,000 a year are available under the National Defense Student Loan Program. They may be repaid over a ten-year period beginning after graduation.

The Office of Aids and Awards maintains an employment bureau to help students find part-time and summer jobs in the University, in stores and commercial establishments of the community, and in



private homes. Interested students should apply in person at the Office of Aids and Awards. Most jobs for the fall semester are listed in early September.

Other Questions

Among the other questions that occur to the prospective student are these: what courses should I study in high school? why does K.U. give placement examinations and how are they used? what other examinations are required? how will I know what to do when I get to K.U.? when and where do I enroll in the courses I will be taking?

Preparation for College

High school students who have ambitions to attend college are wise to take what is commonly called a college-preparatory program, which includes as much English, foreign language, mathematics, science, and social studies as possible.

Success in college, however, depends as much upon the thoroughness of the work done in high school as upon the kinds of courses taken. A student who does not apply himself in high school may find himself seriously handicapped in his college studies.

Students who take college-level work in high school may receive advanced placement and advanced-standing credit by passing appropriate examinations.

Placement in Courses

The academic preparation of students entering the University of Kansas generally is good. In recent years more than eighty per cent of entering freshmen were ranked in the top half of their high-school graduating classes. Students come to the University, however, from all kinds and sizes of high schools and with various levels of ability and preparation.

To start students in their K.U. studies at the level appropriate to their abilities and preparations, K.U. gives placement examinations to entering undergraduate students before the start of their classes at K.U. The examinations consist of scholastic aptitude and achievement tests. They

are used to determine where, in the sequence of courses in various subjects, a student should begin.

The University remains conscious of the needs of students whose academic opportunities may not have been adequate in certain fields and takes steps to insure that they will have a chance equal to that of students who have been more fortunate. The University of Kansas believes that all students should have equal opportunity to make the most of their individual talents.

Physical Examination

Medical care for students is part of the University of Kansas tradition, along with a complete guidance and counseling program. In order to provide such care, K.U. physicians must have a medical history and examination for each student enrolled.

Prior to registration each new student must send or bring to the Student Health Service a medical history which he has filled out with the help of his family and a record of a physical examination performed by a physician licensed to practice in the state in which the examination is performed.

Forms for the medical history and examination, together with instructions, will be sent to the new student by the Director of Admissions.

Orientation

The preparation of students for college life and studies begins long before the students actually enroll. High-school students bound for K.U. should learn as much as possible about the University as early as possible so that they may make realistic educational and financial plans.

Prospective students will find a visit to the campus particularly valuable so that they may meet the University people with whom they will be associated and receive their advice.

A formal period of orientation is scheduled for all new students at the beginning of each semester and summer session. The program is designed to help new students get acquainted with many aspects of the University and to provide each student's

individual faculty advisor with information about the student that will help them plan the student's course of study.

Students entering as new students in September are urged to attend one of a special series of summer orientation meetings known as "K.U. Previews." These are two-day visits to the campus during which the new freshman may consult with University staff members about his educational plans and may take the required placement examinations. Announcement of K.U. Preview programs is made early in the summer to all freshmen who have filed application for admission by that time.

Enrollment in Classes

Students enroll in classes immediately before the opening of classes at the beginning of the fall and spring semesters and the summer session. Schedules are prepared and issued by the Registrar showing enrollment dates, the time at which the individual student will enroll, the place of enrollment, the method of enrollment, and the courses which he will be offered during the term.

Planning a Course Schedule

The final question students ask about a university is: what courses will I take?

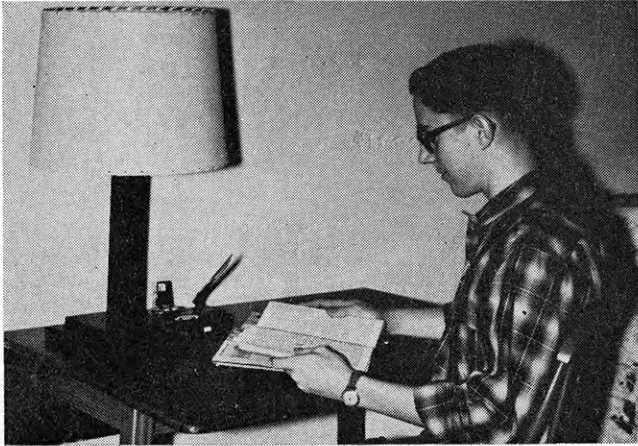
The answer to this question will be found in the descriptive material about each school in the University and in discussions with the student's dean and his faculty adviser.

Prospective students who want more information about the University of Kansas should write the Director of Admissions for one of the following booklets:

- K.U.—Quality in Education
- Aids to a K.U. Education
- The College of Liberal Arts and Sciences
- The School of Business
- The School of Education
- The School of Engineering and Architecture
- The School of Fine Arts
- The School of Journalism
- The School of Law
- The School of Medicine
- The School of Pharmacy

CIRCULATION DESK
LIBRARY
KANSAS STATE COLLEGE
MANHATTAN, KANSAS

MISC KSC



Tom planned and installed the wiring for his room in the basement of his family home. He also made the lamp he uses while studying.

"Thomas Foster Has Done An Outstanding Job In Electricity The Past Three Years"

This was the comment made by Bill VanSike, Barton County 4-H Club agent, when talking about Tommy Foster, a 16 year old youngster who has been a member of the Great Bend Lucky 4's Club in Barton County for 6 years.

Tom's Mother also had something to say. "The electricity project has been very good for my son. He has learned to treat electricity in a safe way. He

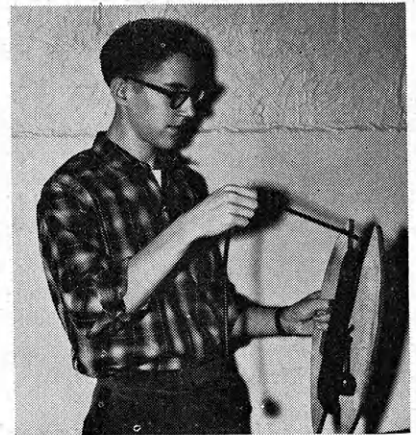
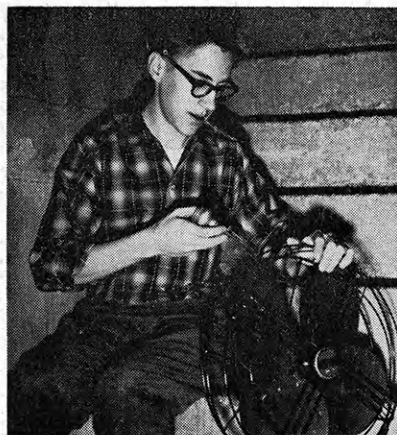
has learned to repair electric equipment around the home and he has taken on responsibility in helping younger members to learn safety and make things for their homes."

In his 4-H narrative, Tommy says, "The main reason I make a certain project is because there is a place in our home where it can be used. By doing this, all my projects are used and they do not just lie around unused."

With the help of John Rhoads, a junior leader, Tom made this photo flood lamp stand. To show his appreciation for the help, Tom gave the lamp stand to John Rhoads.

Tom repairs and keeps in top shape the electrical appliance around the home . . . including this fan for summer time use.

Tom made three extension cords in his 4-H electric project. Because he wanted to keep them neat and orderly, he built an extension cord holder.



**WATCH THIS
PAGE FOR IDEAS
ON FARM AND
HOME ELECTRIC
PROJECTS**

Electric Light and Power Companies in Kansas

The Kansas Power and Light Company

Central Kansas Power Company

Kansas City Power & Light Company

Kansas Gas and Electric Company

Western Light & Telephone Company