

KANSAS

APRIL, 1961

4-H Journal

The 4-H Family Magazine

Kansas 4-H Foundation, Inc., Publisher

V7:4

In This Issue

Three Phases of Beef

Page 3

Summer 4-H Activities

Page 4

New Woodworking
Projects

Page 7

Dawn's Wonder—A
'Lucky Four' Story

Pages 10 and 11

Report of Your Kansas
4-H Foundation

Pages 13 to 18

You, Too, Can Fix
Up Your Home

Page 21

Kansas 4-H Journal
Sponsors

Page 22 and 23

Thanks to Journal
Sponsors

Page 26

Old Own Club Building

Page 27

15 Cents



Leo Oller, Comanche county Loyal Huskers Club, has taken the beef heifer project each year, except the first, he has been in 4-H. For more information on beef projects, see page 3.



The Kansas 4-H Foundation

Dedicated to the development of better citizens
and a stronger foundation for freedom and
democratic living.

THE FOLGER COFFEE COMPANY • Kansas City, Missouri



These Members Show Three 4-H Beef Projects Members Can Take

These two 4-H members are taking, as projects, the three different phases of the beef project for Kansas 4-H'ers.

Steer Projects

Elmer Burk II, Rawlins county, is taking two baby beef and 25 deferred fed steers as his project. He supplements his beef projects with grain and forage sorghum, wheat, leadership and home beautification.

Elmer, in his 9th 4-H year, is president of the Beardsley Beavers Club. He was a National 4-H Congress delegate last fall.

Deferred Project

He purchased his deferred steers November 5 (417 pounds each) for 28 cents a pound. He is full feeding them on silage, supplemented with prairie hay and 1½ pounds per day of soybean pellets. He reports the steers are gaining about 1¼ pounds a day.

His baby beef steers, the same age as his deferred steers, are fed 12 to 15 pounds per day of rolled mix supplemented with beef chow. The rolled mix is one-half milo, one-quarter barley and one-quarter oats.

Heifers, Cow and Calf

Leo Oller, Comanche county, has taken a different route with his beef project. He took poultry as his first 4-H project, made a \$60 profit and bought a registered Hereford heifer. In the three years he has taken the heifer project, he has had two calves—a heifer which he has kept to add to his cow herd and a steer which he plans to sell for cash this summer or fall.

He estimates the value of his project, now, at \$875.

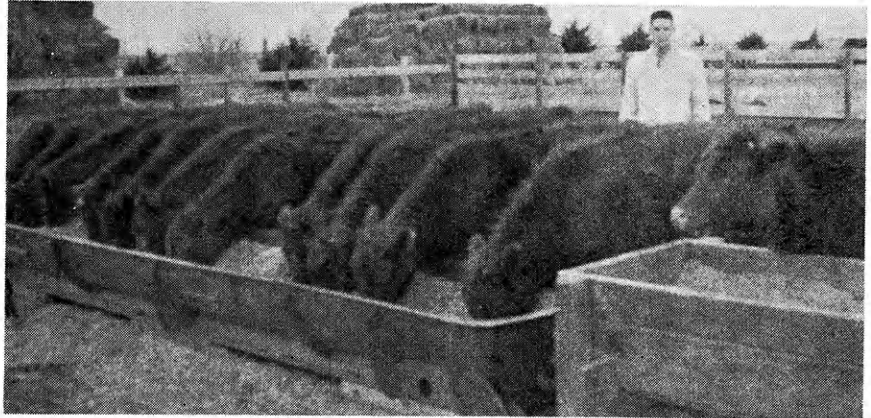
Increase Herd

Leo plans to keep on increasing his herd to about 10 cows, at which time he will probably have graduated from high school and will then be in a position to set up a farm of his own, make arrangements for the maintenance of the herd while he is in college or dispose of the herd for money

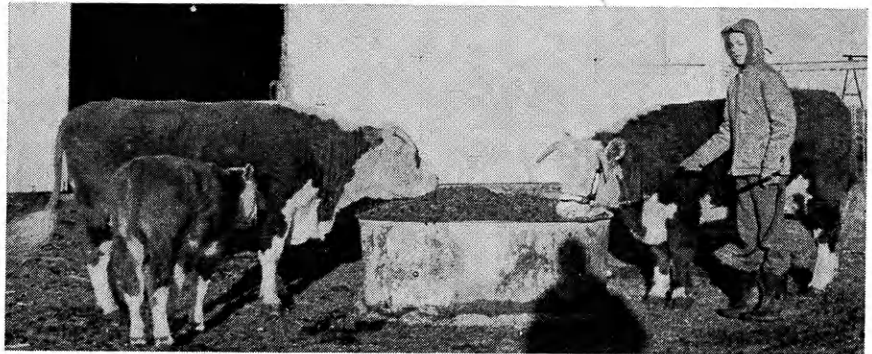
to continue his education.


His father, Ernest, Jr., says, "I think the beef heifer project is a real good project for 4-H'ers because they have something when they get through with it.

The project is continuous and they don't have a lot of cash on hand at the end of the year. Many boys of 4-H age don't have the judgment to do a good job of managing this money."



Above, Elmer Burk II, Rawlins county, with his 25-deferred beef steer project. Below, Leo Oller, Comanche county, has taken the beef heifer project four years, now has three head in a growing Hereford beef herd.





Alliance Companies

McPherson, Kansas

FIRE — CASUALTY — LIFE

Serving Kansas Since 1888

Kansas 4-H Journal

VOL. VII, No. 4 April, 1961
Dale Apel.....Editor

Editorial and Business Office

Phone JE 9-2211 Ext. 208
Manhattan, Kansas

Published Monthly By

KANSAS 4-H FOUNDATION, INC.

J. Harold Johnson.....Executive Director
BOARD OF TRUSTEES

W. Dale Critser, Chrm.....Wichita
E. B. Shawver, Vice Chrm.....Wichita
D. J. Atha.....Shawnee Mission
*Harry Darby.....Kansas City
*W. Laird Dean.....Topeka
Mrs. Olive Garvey.....Wichita
*Clifford Hope.....Garden City
A. D. Jellison.....Junction City

Harold E. Jones.....Manhattan
J. J. Moxley.....Council Grove
George B. Powers.....Wichita
Roger E. Regnier.....Manhattan
Dolph Simons.....Lawrence
*Lester Weatherwax.....Wichita
Fred D. Wilson.....Andover

*Advisory Members

Second Class Postage Paid at Lawrence, Kansas.

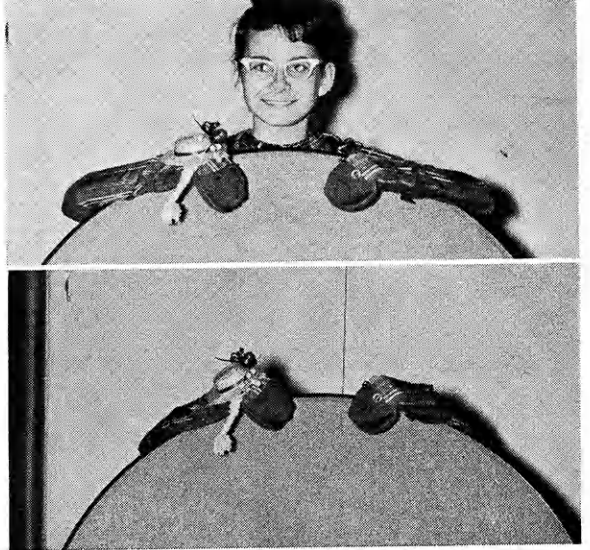
Advertising rates and circulation data on request.

Group subscriptions \$1.00 per year.
Individual subscription \$1.50 per year.
Single copy 15 cents.

Use of the 4-H name and symbol approved by the Secretary of Agriculture of the United States, January 23, 1951, under the provisions of the law as reenacted by Sec. 707 of the Act of June 25, 1948 Public Law No. 772, 80th Congress (10 USC 797)

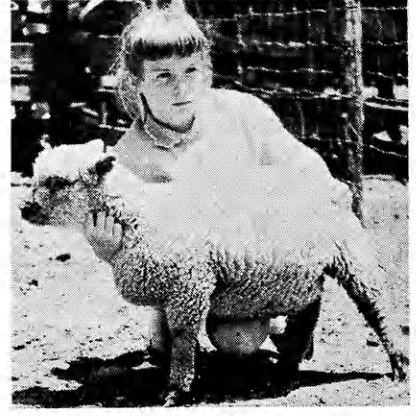
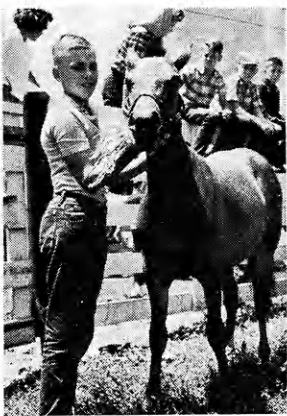


It's snack time for Steven Werner as Cheryl Starky, 10-year-old member of the Go-Getters Club, Greeley county, gives him a strawberry float and fruit as part of her "Snacks and Little Lunches" foods project.



Nancy Cockrum, 11, Go-Getters Club in Stanton county, has lots of fun giving surprise number safety skits with these puppets she has made. She has given two safety skits including one at a model meeting.

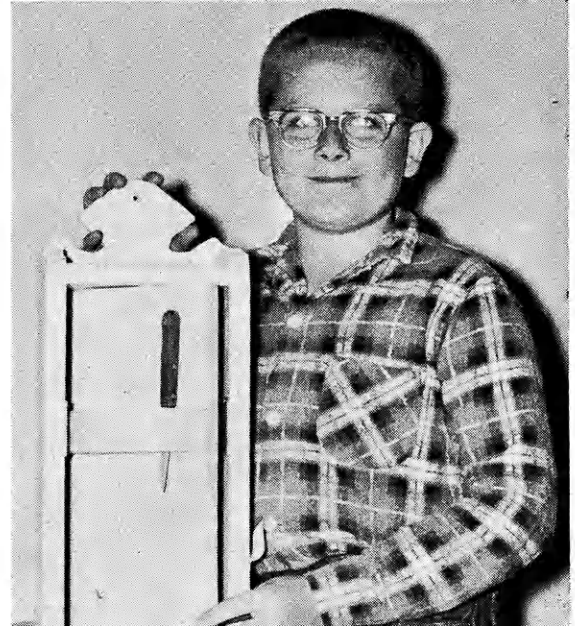
You Can Have Fun With These 4-H Club Projects and Activities This Summer



Eighty-five members of the Mulvane Club, Sedgwick county, attended the 15 stops on their club tour at which members explained their method of conducting their project. Members, traveling in farm trucks, also guessed at the weight of animal

and garden projects. A sack lunch ended the tour. Pictured are (left) Frank Cobb with his colt, (center) Norma Strode, Sharon Heersche, Martha Strode and Janet Heersche with their Holsteins, and (right) Donna Somers with her lamb.

Bobbie Lou Smades, 13, is a member of the Pleasant Valley Club, Wichita county. She shows off the cotton school dress she made to Jackie Gerstberger and Marysen Minor. The dress, costing about \$3, is of brown, pink and green print.



David Dyke, Harper county's Tip Top Club, made this knife holder for his Mother's new kitchen. It holds seven knives of various sizes. Other woodworking he has made include a swing seat and broom holder.

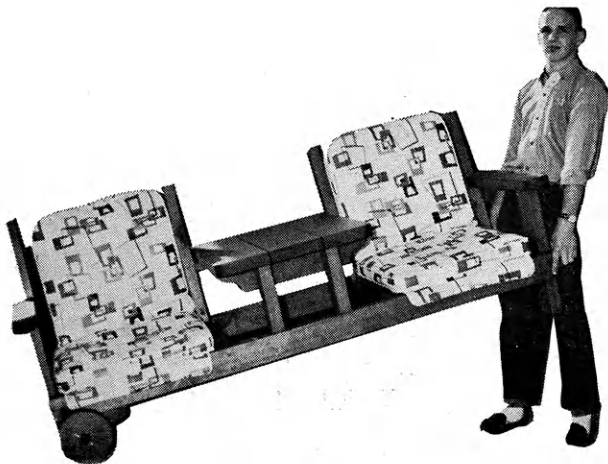
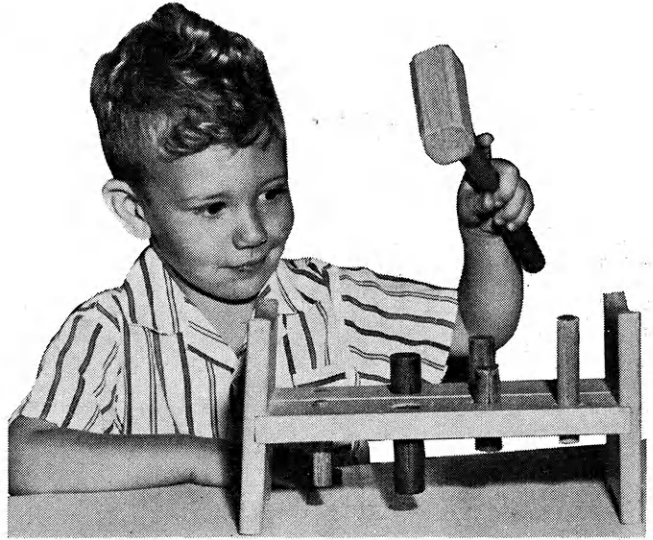
FREE!!

New 4-H Woodworking Plans

*Start Now on Your 1961 4-H
Woodworking Project!!! You
Can Make and Exhibit—*

A Pounding Board for Little
Brother or Sister

Toys like this pounding board will help your little brother or sister learn to use their wrists and fingers. For complete details on how to make this pounding board, see the lumber dealers listed on the following two pages.



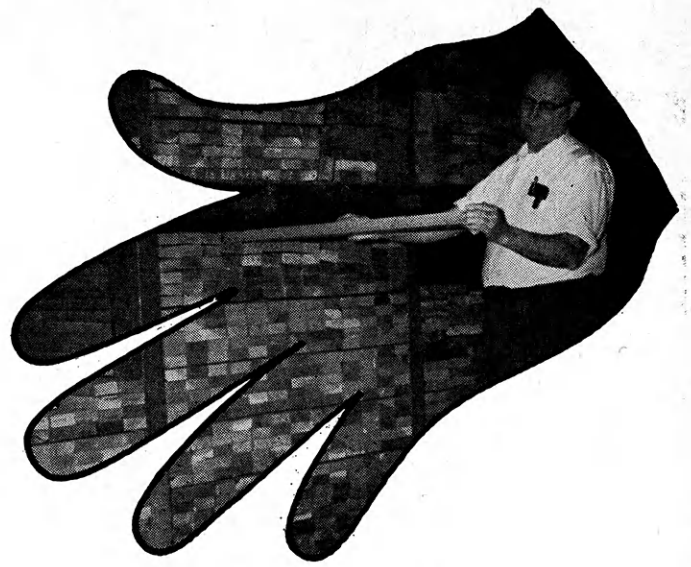
Tete-A-Tete for Your Yard

Roger Shepherd, 15-year-old member of the Clippers Club, Sumner county, made this Tete-A-Tete for his family. Winning a blue ribbon at the 1960 Kansas State Fair, Roger says it cost \$25 including about \$12 for the cushions. Complete plans and instructions may be obtained from the lumber dealers listed on the following pages.

*Plans for These Two Projects Are
Available At The Lumber Dealers
Listed on The Next Two Pages. Ask For Them.*

For other FREE 4-H woodworking plans, see the next pages.

Always on hand... YOUR LUMBERMAN is your best friend when you need good material



- | | | |
|--|---|--|
| Abilene
Central Lumber Company | Bonner Springs
Bonner Springs Lumber Company | Gardner
Gardner Lumber Company |
| Agra
Agra Lumber Company | Brownell
Richolson Lumber and Hardware
Company, Inc. | Gaylord
Hardman Lumber Company |
| Almena
Foster Lumber Company | Bucyrus
The Blaker Lumber and Grain Company | Glen Elder
Dickinson Lumber Company |
| Alt Vista
Wolgast Lumber Company | Buhler
Buhler Lumber Inc. | Goodland
Foster Lumber Company
Hardman Lumber Company
Rasure Lumber Company |
| Alton
Alton Lumber and Coal Company | Burr Oak
Burr Oak Lumber and Coal Company | Gorham
Russell Lumber Company |
| Anthony
Rock Island Lumber Company | Cawker City
Cawker City Lumber Company | Great Bend
Everitt Lumber Company
Foster Lumber Company
Rock Island Lumber Company
Whitesell Lumber Company |
| Arkansas City
Central Lumber Company | Chanute
Smith Lumber Company | Greensburg
Home Lumber and Supply Co. |
| Asherville
Asherville Lumber and Coal Company | Chapman
Sanborn Lumber Company | Halstead
Harris Lumber Company |
| Ashland
Don Spotts Lumber Company
Home Lumber and Supply Co. | Cimarron
Anawalt-Campbell Mercantile Company
Wilson Lumber Company, Inc. | Harper
Rock Island Lumber Company |
| Atchison
Hixon Lumber Company | Clay Center
Kansas Lumber Company | Hartford
Thomas Lumber Company |
| Attica
Crowell Lumber Company | Coffeyville
The Home Lumber and Supply
Company, Inc.
Kansas Lumber Company | Hays
Hardman Lumber Corporation, Inc. |
| Atwood
Atwood Lumber Company
Foster Lumber Company | Colby
Foster Lumber Company
Hardman Lumber and Coal Company
Hess Lumber Company | Healy
Healy Co-op Elevator Company |
| Basehor
Basehor Lumber Company | Coldwater
Gilchrist Lumber Company
Home Lumber and Supply Co. | Hesston
Kropf Lumber Company |
| Bazine
Humburg's | Concordia
Leidigh Lumber Company
Sanborn Lumber Co. | Hill City
Farmers Lumber Company
Hardman Lumber Company |
| Beloit
Beloit Lumber Company
Murray Lumber Company
Peoples Lumber and Coal Company | DeSoto
DeSoto Lumber Company | Hillsboro
Hillsboro Lumber Company |
| Bern
Bern Lumber Company | Denison
Denison Lumber and Hardware
Company | Hoisington
Foster Lumber Company |
| Bird City
The Bird City Equity Mercantile
Exchange
Griffin Lumber Company | Denton
C. H. Gish Company | Holton
Brown-Hedge Lumber Company
Holton Lumber Company |
| Bison
Humburg Lumber Company, Inc. | Devon
Devon Lumber Company | Holyrood
Home Lumber and Supply Co. |
| | Dodge City
The T. M. Deal Lumber Company | Hoxie
Foster Lumber Company |
| | Edgerton
Edgerton Lumber Company | Hugoton
The Star Lumber Company |
| | Edna
The McCoy Lumber Company | Humboldt
Barfoot Lumber Company |
| | El Dorado
Home Lumber Company | Hutchinson
F. E. Perry Lumber Company
George Stuckey Lumber |
| | Elkhart
The Star Lumber Company | Inman
Inman Lumber Company |
| | Emporia
Home Lumber and Supply Co.
Kansas Lumber Company
The Smith Lumber Company | Independence
Rock Island Lumber Company |
| | Erie
Howard Bros. Lumber Company | Iola
Klein Lumber Company |
| | Eureka
A. C. Houston Lumber Company
Rock Island Lumber Company | Jennings
Foster Lumber Company |
| | Everest
Alexander Lumber Company | Jetmore
Foster Lumber Company |
| | Fowler
The T. M. Deal Lumber Company, Inc. | Johnson
Seyb-Tucker Lumber and Implement
Company |
| | Frankfort
Searle and Chapin Lumber Company | Junction City
Home Lumber Company
Rock Island Lumber Company |
| | Fredonia
The Home Lumber and Supply
Company, Inc. | Kinsley
Kinsley Co-op Exchange Lumber Yard
Home Lumber and Supply Co. |
| | Garden City
Ed Porter Lumber Company | LaCygne
Blaker Lumber and Grain Company |
| | | LaHarpe
Blaker Lumber and Grain Company
Diebolt Lumber and Supply |

FREE 4-H Woodworking Plans
Available at Lumber Yards
Listed On These Pages
They Display This Emblem



THE lumber dealers listed on these two pages are supporting the 4-H woodworking project with this information and free woodworking plans. Get your plans from them.

Lakin
Hart and Company
Lakin Lumber Company, Inc.

Lancaster
T. E. Snowden Lumber Company

Lansing
International Paper Company, Long-Bell Division

Larned
Antrim Lumber Company
Clutter-Lindas Lumber Company

Lawrence
Woods Lumber Company

Lebanon
Lebanon Lumber Company

Lenexa
Lenexa Lumber Company

Lenora
Lenora Lumber Company

Leoti
Foster Lumber Company

Liberal
The Star Lumber Company

Lincoln
Leidigh and Havens Lumber Company

Little River
The T. M. Deal Lumber Company, Inc.

Longford
Longford Lumber & Grain Co.

Louisburg
Louisburg Lumber Company

Lyons
Foster Lumber Company

Macksville
Home Lumber and Supply Co.

Manhattan
Griffith Lumber Company
Kansas Lumber Company
Ramey Brothers

Marysville
Foster Lumber Company

Matfield Green
Paul Bell Hardware-Lumber-Feed

McPherson
Lake Superior Lumber Company
McPherson Lumber Company

Meade
Home Lumber and Supply Co.

Minneola
The T. M. Deal Lumber Company, Inc.

Moundridge
Clayton Vogt Lumber Co., Inc.

Neodesha
O. E. Woods Lumber Company

Ness City
Rock Island Lumber Company

Newton
The Houston-Doughty Lumber Company

Nickerson
The D. J. Fair Lumber Company

Norton
Foster Lumber Company
Newbury Lumber Company
Norton Lumber Company

Nortonville
Alexander Lumber Company

Norwich
H. S. Bshnaur & Sons

Oakley
Oakley Lumber Company

Oberlin
Foster Lumber Company

Olathe
Cowley Lumber and Hardware Company
Hodges Brothers

Osawatomie
Leidigh and Havens Lumber Company
Osawatomie Lumber Company

Oswego
Home Lumber and Supply Co.

Ottawa
Hubbard Lumber Company, Inc.

Overland Park
Overland Park Lumber Company

Palmer
Meyer Lumber Co.

Paradise
Paradise Lumber Company

Parker
Blaker Lumber and Grain Company

Parsons
The Home Lumber and Supply Company, Inc.

Phillipsburg
Hardman Lumber Company
Home Lumber Company

Plains
Home Lumber and Supply Co.

Pleasanton
Blaker Lumber and Grain Company

Pratt
The Ortmeyer Lumber Company

Prescott
Prescott Lumber Company

Pretty Prairie
The George W. Ulitch Lumber Company

Protection
Home Lumber and Supply Co.

Riley
Alexander Lumber Company

Russell
Hardman Lumber Company of Russell Inc.

St. Francis
Foster Lumber Company
St. Francis Equity Exchange

St. Marys
St. Marys Lumber Company

St. John
English Lumber and Supply Company
Home Lumber and Supply Co.

Salina
Larson Lumber Company, Inc.
Leidigh and Havens Lumber Company
Michaelsen Lumber Company

Satanta
The T. M. Deal Lumber Company, Inc.

Scott City
Foster Lumber Company

Selden
Foster Lumber Company

Seneca
Koelzer Lumber Company
Seneca Lumber Company

Severy
Tolman-Gibbon Lumber Company

Silver Lake
J. Thomas Lumber Company

Sharon Springs
Foster Lumber Company

Smith Center
Mid-West Lumber Company
Smith Center Lumber Company

Spring Hill
Spring Hill Lumber Company

Stafford
The T. M. Deal Lumber Co., Inc.
Home Lumber and Supply Co.

Stanley
Stanley Lumber Company

Sterling
The D. J. Fair Lumber Company

Stockton
Stockton Lumber Company

Sublette
The T. M. Deal Lumber Company, Inc.

Summerfield
Meyer Lumber and Hardware

Syracuse
Foster Lumber Company

Sylvia
The D. J. Fair Lumber Company

Topeka
Whelan Lumber Company
Main Store, 715 E. 4th
Pauline Branch at Pauline
Highland Crest Branch, 200 E. 29th
Seabrook Branch, 2019 Gage

Tribune
Foster Lumber Company

Ulysses
The T. M. Deal Lumber Company, Inc.

WaKeeney
Hardman Builders Supply Company

Wakefield
Sanborn Lumber Company

Wathena
Farmers Grain and Lumber Company

Wellington
Antrim Lumber Company
Wellington Lumber and Supply Company, Inc.

Wichita
Lawrence Lumber Company
Rock Island Lumber Company
Stockyards Cash and Carry Lumber Co.

Wilson
Hoch Lumber Company
Wilson Lumber Company

Winfield
Deal Lumber and Hardware Company, Inc.
A. B. Everly Lumber Company

Woodbine
Kohler Lumber Company

Yates Center
F. H. Conger and Son

Zenda
The George W. Ulitch Lumber Company

Missouri

Kansas City
The George W. Ulitch Lumber Company, 11432 Truman Road

Any one of 17 4-H
Woodworking Plans Available
At Lumber Yards Listed
On These Pages
They Display This Emblem



Looking for Woodworking Ideas?

**See Any of These Lumber Dealers
for a Free 4-H Woodworking Plan**

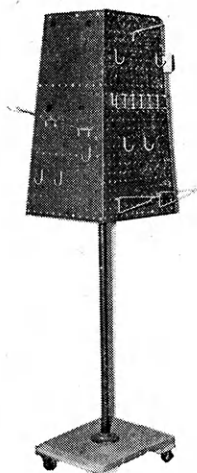
**See The Following Pages
and Page 7 for Pictures
of Available Plans**

Local Lumber Yards Listed on Pages 6 & 7 Make This 4-H Woodworking Plan Service Available. Ask Them For Your 4-H Woodworking Plans.

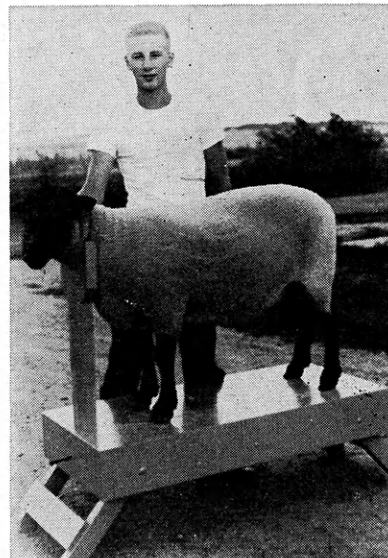
AUTOMATIC BIRD FEEDER



ROTATING SELECTION TOOL RACK



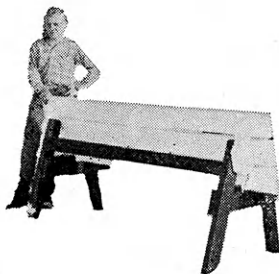
SHEEP BLOCKING BOX



TOY STOVE



PICNIC TABLE



COFFEE TABLE



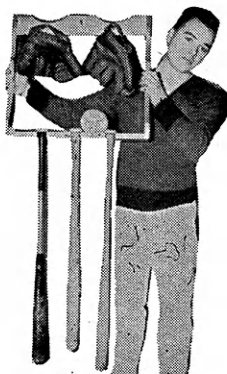
SANDBOX



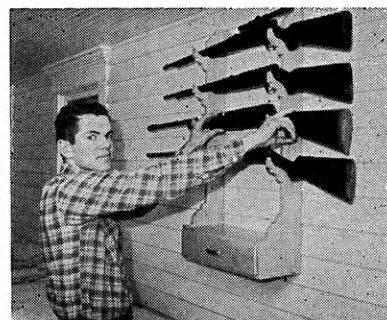
CHRISTMAS TREE GIFTS



BILL'S BASEBALL RACK



HANDY GUN RACK



Get FREE 4-H Woodworking Plans at
Lumber Yards Listed on the Two Previous Pages

Get Started Now on Your 4-H Woodworking Project

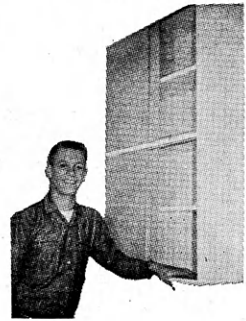
MAIL AND MEMO BOARD



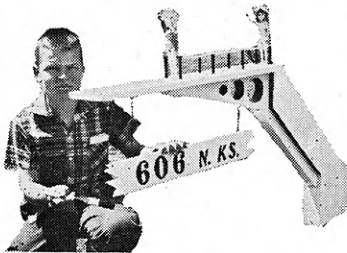
TYPING DESK AND BENCH



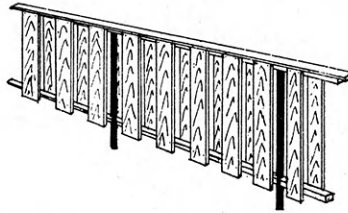
BATHROOM WALL CABINET



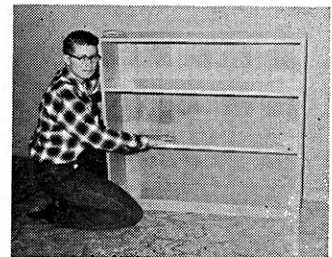
GATE SIGN



A BACK YARD FENCE



BOOK CASE



SIMPLE WORK BENCH



HOLDING GATE



YARD CART



DAWN'S WONDER



By ANNE COLVER

Jill was half asleep and full of good dinner. The family had come home late from a square dance party the county 4-H Council had given in honor of their leaders. Jill gave a last yawn and settled her head comfortably. She was just drifting off to sleep when something her father said brought her suddenly wide-awake.

He was talking about Alex, the new boy who had come to live with the Marshall's. "I've asked the boy to come over to the ranch Saturday," he said. "I want him to look at Dolly. I don't like the way the mare has been acting and when Dr. Young saw her last week he wasn't encouraging."

"Doc says she has the heaves pretty bad. And being in foal has made her worse. I may have to send her away but I want Alex's opinion first. I've never seen a boy understand animals the way he does. Ed Marshall says he almost seems to talk to them."

When Alex came to the Miller ranch on Saturday, he and Jill's father got straight to business. They walked out to the barn, talking earnestly.

Standing by herself, Jill watched Alex look over the little mare. She saw him put his hands on Dolly's side and then bend down and put his ear close while he listened to her heavy, painful breathing.

There was no doubt about it, Alex told Mr. Miller, the mare had the heaves, and she was bound to get worse before her foal was born. "Unless she has special feeding and handling and careful exercise, I'm afraid you can't hope to pull her through," Alex said, shaking his head. "It's too bad. A mare with a tendency to heaves shouldn't have been bred in the first place."

"I know," Mr. Miller said. "That's just what Dr. Young said. I suppose I was foolish to have bought a mare that had already been bred without knowing more about her. But she's always been a pet and I hated to see her sold to a dealer."

"Now the question is, what can we do? All this special feeding and handling the mare's needs will take time and that's one thing I haven't got. With the rest of my stock and the ranch to manage, I have more work than I can do as it is."

"I wish I could help you," Alex said. He patted Dolly's neck. The mare stood very still under his hand, almost as if she knew something important was being decided.

Mr. Miller shook his head. "I wouldn't think of expecting it," he said. "I'm afraid I'll have to let Dolly go. Dr. Young says they might take her at Smith's breeding farm if I'd be willing to give them the foal."

"I know she won't get the kind of attention we'd give her," Mr. Miller admitted, "But there's just no choice." He started to turn away. "Well thanks anyway, Alex. I wanted your opinion before I told Doc to go ahead with the arrangements."

Until that moment Jill had stood perfectly still. Now suddenly, almost before she realized what she was going to say, she asked her father. "I can do it, Daddy. I know I can. If Alex will tell me what to do and show me how to do it, I can do every single thing Dolly needs and you won't have to send her away. Please, Daddy."

Mr. Miller hesitated. "Now wait a minute, Jilly; not so fast. Taking care of this mare is going to be a mighty hard job. Remember, she won't foal for another two months. Even then, if she comes through safely, she'll still need plenty of care; so will her colt. I just don't want you to take on something that will be too much for you."

"It wouldn't be too much," Jill shook her head. "I know I can do it. Look at all the time I waste on movies and TV and talking to Sally on the telephone. I'll give up every one of them and spend every minute working with Dolly."

Before her father could answer, Jill swung around to face Alex. "Alex, I know I'm not as

smart as you when it comes to horses. But I want to learn—if you'll just help me. Will you, Alex?" Jill was pleading. "Please Alex?"

For a minute that seemed endless to Jill, Alex looked straight at her. "All right," he said. "If you'll take care of Dolly, and your father is willing to let you, I'll help as much as I can."

Next morning Alex was back. Jill was ready and waiting. She was wearing blue jeans and her brother's old gray sweater. For the next hour she listened while Alex told her how to take care of Dolly.

First of all, he explained, she had to understand that heaves in a horse was like an allergy in a person. Any kind of dust made a horse heave more, and one really bad heaving spell could kill a mare in Dolly's condition.

Hay and grain are full of dust. So the first thing was to wet down Dolly's feed. For exercise, Alex went on, the mare needed at least an hour every day. She couldn't be ridden and she couldn't be turned loose in pasture. "It means walking her," Alex said. "Lead her carefully, but keep her moving. Take her outdoors if the weather is good—in the barn if it's raining. But be sure she gets an hour or more every day."

That evening, after Jill had bedded Dolly for the night, she stood in the stall and listened to the mare's breathing. Maybe she was imagining, but already it sounded a little easier. She laid her forehead against the warm neck. "Dolly," she whispered. "I won't fail you."

It was a stormy night when Jill knew that Dolly's colt was going to be born. For the last week she had been worried. In spite of all their care, Dolly's breathing had become painfully hard. Alex had to come by almost every day. But there was nothing he could do. He and Jill could only stand beside the stall, watching the little mare heave for each breath.

"Is she going to be all right?" Jill asked Alex over and over.

"I hope so," was all that he would say. But Jill always felt better when Alex stood beside her. Jill knew he too was suffering for the brave little mare.

"After all Dolly and I have been through together, I just can't let anything happen to her," Jill said desperately. "It's so awful to know that she needs help and not to be able to give it to her."

"Dr. Young has promised to come over when Dolly foals," Jill's father had said. "He knows she's going to have a hard time."

But when the night came, a sleeted rain was falling and the freezing wind turned the roads to a glare of ice.

Jill came in from the barn, her blue eyes filled with distress. "I just know it's going to happen tonight," she said. "Dolly's walking back and forth and back and forth in her stall. And Daddy, her breathing is awful. She's just gasping. Can we get Dr. Young?"

"I'm afraid Doc can't possibly make it on a night like this, or Alex either," Mr. Miller shook his head soberly. "If Dolly foals tonight, we'll have to manage alone, the best we can."

Later, when Jill and her father stood beside the stall, Jill's hands were clasped. With every gasping breath that Dolly drew, Jill could feel the pain herself.

"I never knew I could care about anything as much as this," she said finally, in a low voice.

"I know it's hard, Jilly," Mr. Miller nodded soberly. He looked anxiously at Jill's white face. "Maybe you'd better go back to the house and wait."

Then Alex came. He examined Dolly and then said, "We can't save her. Unless Dr. Young gets

here, I'm afraid she won't make it."

"Oh Dolly," Jill begged silently. "Don't give up. Please try just a little longer."

When the barn door was flung open, they turned in astonishment. Dr. Young couldn't have made it, but there he was—his black bag in his hand.

"Now let's see what we can do," he said. After one quick look at Dolly, he opened his bag. "I'll try an injection of cortisone. That should help her breath."

Sometime later Dr. Young exclaimed, "You've got a colt, Jill. It looks like a fine one."

Dolly had made it. Jill wanted to look at the colt, but her eyes were too blurred to see. She didn't dare trust her voice to speak. Instead, she turned and walked to the end of the barn. Looking up through the high window, she saw the last star glimmer faintly in the light of dawn. "It's a new day," she said to herself. "A wonderful day."

Back at Dolly's stall, Jill bent with the others to look at the little mare who lay resting with her baby beside her. The colt was a little chestnut with a white blaze on his nose.

Dr. Young turned to Jill with a smile. "Have you got a name for him?"

Jill took a long breath. "Yes," she said. She looked back toward the window where the sky was growing lighter. "His name is Dawn's Wonder."



(This is the second of three stories condensed for the Kansas 4-H Journal from the book "Lucky Four," a novel for young people written by Anne Colver and published by Duell, Sloan and Pearce of New York, copywritten 1960. The book is a story of the Merry Makers Club, Marshall County, Kansas. Copies may be purchased for \$2.95. Orders of ten or more copies will be entitled to a substantial discount. Address orders to the Kansas 4-H Journal, Umberger Hall, KSU, Manhattan.)



Shown are residents of the Home of the Plains home in Sterling with members of the Rice county Bon Ame Club. Club members held their 4-H Sunday service in the home, felt they could help make happier the lives of several people who are seldom visited by friends or relatives.

Club Observes Sunday in Elder Citizens Home

The "Home of the Plains" in Sterling was the place chosen by the Bon Ame Club, Rice county, for their 1960 4-H Sunday.

4-H Sunday has been observed regularly by the Bon Ame members and leaders with the members planning what they would like to do.

For the last few years the members have chosen to hold a special service of their own at the home in Sterling. They have found, through this service, they can make happier the lives of people who seldom are visited by friends or relatives.

A welcome, group singing, reading from the scriptures, a religious story, a poem, religious music, prayer, and ceremonies were all part of the program.

This 4-H Sunday was enjoyed very much and it warmed the hearts of all the members attending. A 4-H Sunday can bring to each one a ray of sunshine and joy if it is carried on in a sincere and reverent manner. It can help the members of your 4-H Club to become better acquainted with the older members of your community and help them learn to share their good times with all.

The Bon Ame Club is 27 years old. It has 42 members.

National 4-H Sunday in 1961 is May 7. Local 4-H Sunday services may be held at any convenient time.

Members of the Bon Ame Club, Rice county, participate in the 4-H Sunday Service held by the Club at the Home of the Plains home in Sterling.



A HOMERUN OF SAVINGS...



Spring



All-Star PAINT SALE

Save as much as \$1.11 a gallon on spring and summer painting needs

Run for our paint department right now and take advantage of these amazing paint values. FIRST you get wide selection. SECOND you get bright, long-lasting colors. THIRD you get the highest quality paint stocks and HOME-TOWN service you can't match anywhere.

This is not a "clearance" but a special-savings sale on the seven top-favorites

... ALL FRESH STOCKS. COME! SEE! SAVE!



CO-OP Grade 1 White House Paint
Regular \$6.75 a Gallon

\$5.69

CO-OP INTENSE RED HOUSE & BARN PAINT
Reg. \$7.65 Gal.

\$6.59*

CO-OP CREOSOTE WHITE HOUSE & BARN PAINT
Reg. \$4.65 Gal.

\$3.69*

CO-OP GRADE 1 HOUSE PAINT PRIMER
Reg. \$6.70 Gal.

\$5.59*

CO-OP WHITE BARN PAINT
Reg. \$5.80 Gal.

\$4.69*

CO-OP INTENSE WHITE HOUSE PAINT
Reg. \$5.80 Gal.

\$4.69*

CO-OP SUPER RED ROOF & BARN PAINT
Reg. \$3.95 Gal.

\$3.19*

BIG BRUSH VALUES TOO!

Pure Bristle 4" Wall Brush, #8W **\$3.98**

CO-OP Special Nylon 4" Wall Brush **\$3.98**

2" Nylon Sash Brush, #15W **\$1.35**

SAVE AN EXTRA 10c PER GALLON ... BUY IN 5-GALLON CANS

Come in and Save!

SALE NOW ON AT MOST CCA-MEMBER CO-OPS

CONSUMERS COOPERATIVE ASSOCIATION

Kansas City, Missouri




Important in the Foundation's program is "service to members." Foundation sponsored trips with thrilling climaxes like this are fitting rewards for achievement. Awards, scholarships and recog-


nitions are essential incentives provided by the Foundation and are designed to continue a strong 4-H program.

KANSAS 4-H FOUNDATION

HONOR ROLL

The donors listed on the 1960 Honor Roll of the Kansas 4-H Foundation have these things in common—a basic belief in the 4-H program, a desire to be part of this dynamic movement, an awareness of the needs of 4-H, and a knowledge that the Foundation is helping to fill these needs.

 The program of the Foundation is based on the fundamental premise that 4-H Club work is an educational, developmental program that will help mature our boys and girls into positive-thinking, progressive, self-reliant citizens.

Yes, The Kansas 4-H Foundation offers a way for 4-H members and families to help themselves, for 4-H alumni to strengthen the organization that was instrumental in their early development, and for friends of 4-H to express, through their gifts, their faith in the youth of Kansas. 



HONOR ROLL 1960

Presented here is the Honor Roll of 1960.

donors . . . those who have made possible the work of the Kansas 4-H Foundation. Take pride in reviewing this list of public spirited contributors.

The listing includes all who contributed during 1960, for whatever purpose—IFYE, educational trips, scholarships, Alumni Roll Call, or improvements at Rock Springs Ranch.

The figure preceding the name indicates the number of years of support since the Foundation Membership and Share Recognition plan was started in June, 1954. Every effort has been made to avoid errors. Please notify the Foundation if any contributor has been inadvertently left off the Honor Roll.

ALUMNI ROLL CALL • 1960

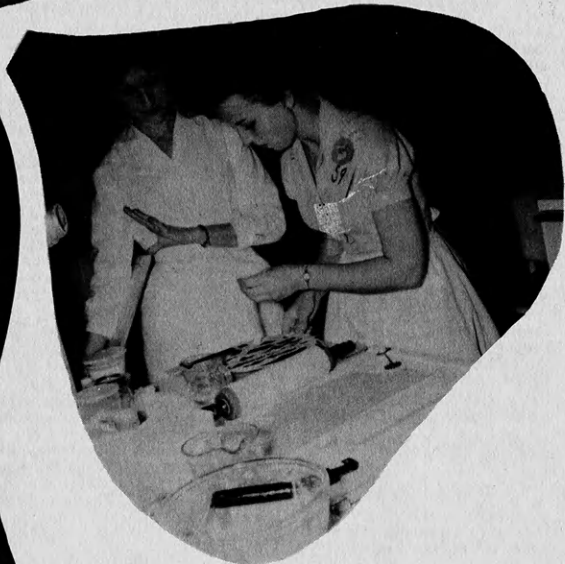
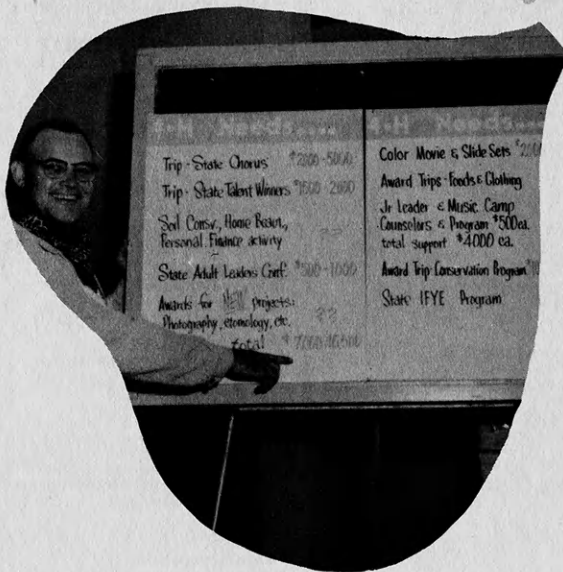
Amount — \$737.00

<p>A</p> <p>2 Adams, Mr. and Mrs. Gilbert & Robert L.</p> <p>2 Anderson, Alvin A. Anonymous (Roseburg, Ore.)</p> <p>2 Apel, Dale</p> <p>B</p> <p>1 Bailey, Mrs. M. L.</p> <p>1 Baker, Mrs. Chester</p> <p>1 Barr, Mr. and Mrs. Bernard</p> <p>2 Bassett, Janice Fauss</p> <p>1 Bates, Kay</p> <p>1 Bauer, Mrs. William</p> <p>2 Bebermeyer, Mrs. Marvin</p> <p>1 Becker, Dorothy M.</p> <p>2 Beezley, Patricia A.</p> <p>2 Bell, C. Arthur</p> <p>1 Bertholf, W. H.</p> <p>2 Boehlke, Mrs. Alice</p> <p>1 Bonjour, Julia</p> <p>2 Booth, Arden</p> <p>1 Bowman, Mr. and Mrs. Herb</p> <p>1 Bradley, Mrs. W. F.</p> <p>1 Brant, John</p> <p>2 Bugbee, Mrs. W. E.</p> <p>2 Butler, Mr. and Mrs. Glen</p> <p>C</p> <p>2 Carter, Lola Adams</p> <p>2 Cassidy, Mr. and Mrs. Bob</p> <p>2 Cauble, Mr. and Mrs. Dean</p> <p>2 Chambers, J. Wayne</p> <p>1 Circle, James E.</p> <p>2 Clark, Elmo V.</p> <p>2 Coberly, Goldie</p> <p>1 Conger, Mr. and Mrs. Carl</p> <p>2 Conover, Margaret H.</p> <p>2 Cooper, William J.</p> <p>1 Cott, Mr. and Mrs. Herman, Jr.</p> <p>2 Crooks, Mrs. A. H.</p> <p>2 Cubit, Mr. and Mrs. James</p> <p>2 Cunningham, Mr. and Mrs. Kenneth</p> <p>D</p> <p>2 Dalbom, Mr. and Mrs. Harold M.</p> <p>2 Davis, Mr. and Mrs. Kenneth</p> <p>2 Davies, Lloyd M.</p> <p>2 Delmez, Edgar</p> <p>1 Dickerson, Max M.</p> <p>2 Dies, Mrs. Edgar</p>	<p>2 Drapel, Janice</p> <p>2 Dressler, H. A.</p> <p>2 Dyson, Nelsene Froman</p> <p>E</p> <p>2 Edwards, Mr. and Mrs. Robt. O.</p> <p>2 Eldred, Mr. and Mrs. Ervin, Jr.</p> <p>2 Elias, Mrs. Allen</p> <p>1 Enders, Paul</p> <p>2 Erb, Mrs. Melvin D.</p> <p>1 Essmiller, Mrs. Ralph</p> <p>2 Eyestone, Mr. and Mrs. Merle</p> <p>F</p> <p>2 Fauss, Mrs. R. L.</p> <p>2 Felt, Sylvia</p> <p>1 Finlayson, Ernest</p> <p>2 Forrest, James E.</p> <p>2 Frazier, Elaine</p> <p>2 Frey, Otto</p> <p>2 Friesen, Evelyn & L. Walter</p> <p>G</p> <p>1 Garrison, Mr. and Mrs. Donald</p> <p>2 Garten, Mr. and Mrs. Clarence</p> <p>2 Garten, Mr. and Mrs. Frank</p> <p>1 Gatz, Bernard C.</p> <p>2 Gfeller, Mr. and Mrs. Chas. W.</p> <p>2 Gfeller, Mr. and Mrs. Grant</p> <p>2 Gillmore, Ralph E.</p> <p>2 Goering, Mr. and Mrs. Lloyd</p> <p>2 Goerl, Vincent K.</p> <p>2 Gore, Keith E.</p> <p>H</p> <p>2 Hamilton, Mrs. Dean</p> <p>1 Hammarlund, Dale</p> <p>1 Hamon, Charles</p> <p>2 Haslett, Max</p> <p>1 Hatfield, Mr. and Mrs. Jas. R.</p> <p>1 Hazen, Mrs. W. E.</p> <p>2 Hearn, Marion L.</p> <p>1 Henry, Mr. and Mrs. J. LeRoy</p> <p>2 Higley, Mrs. William</p> <p>1 Hopper, Mrs. Nadine Brown</p> <p>2 Hostetler, Pius H.</p> <p>1 Hottman, Mrs. Orren F.</p> <p>1 Houghton, Clifford</p> <p>1 Hower, Mrs. Mary</p>	<p>J</p> <p>1 Jacob, Mr. and Mrs. Russell L.</p> <p>1 Jahnke, Fern</p> <p>2 Janousek, Joyce</p> <p>1 Jewell, Jack H.</p> <p>1 Johnson, Mrs. Gaylord G.</p> <p>2 Johnson, Stella</p> <p>2 Jones, Mariellen</p> <p>2 Jordan, Dr. and Mrs. Frank</p> <p>2 Jurgens, Mrs. John</p> <p>K</p> <p>1 Kopley, John L.</p> <p>1 Kerbs, Freddie J.</p> <p>2 Kirkwood, Frances</p> <p>2 Klamm, David D.</p> <p>2 Kostner, Adrian</p> <p>2 Kurtz, Wayne</p> <p>1 Kutina, A. Raymond</p> <p>L</p> <p>2 Lagasse, Capt. and Mrs. Lyle E.</p> <p>1 Lassman, Mr. and Mrs. Robt.</p> <p>2 Lawson, Constance L.</p> <p>1 Lawton, Mrs. Robt.</p> <p>2 Lehw, Harry</p> <p>1 Levering, Wilbur</p> <p>2 Lewis, Mr. and Mrs. Walter M.</p> <p>1 Lindon, Mrs. Martin</p> <p>2 Lobmeyer, Mr. and Mrs. Louis</p> <p>1 Lord, Mrs. Charlie R.</p> <p>2 Luthi, Mr. and Mrs. Raymond A.</p> <p>M</p> <p>2 McElroy, Mr. and Mrs. O. L.</p> <p>2 McGaugh, Velma</p> <p>2 McGhee, Shirley Ann</p> <p>1 McIlwee, Jeane Newell</p> <p>1 McKee, Mr. and Mrs. Carl, Jr.</p> <p>2 Madden, Phillip</p> <p>2 Manry, Mr. and Mrs. E. C.</p> <p>2 Marshall, Mrs. John E. and Coralee</p> <p>1 Mayhew, Mrs. Donald</p> <p>2 Merica, Marvin E.</p> <p>2 Mermis, Mrs. Leo F.</p> <p>2 Mills, Mr. and Mrs. Lambert</p> <p>1 Mistler, A. J.</p> <p>2 Moore, Francis J.</p> <p>2 Morgan, L. D.</p> <p>1 Morton, Dale</p> <p>2 Mull, Mrs. Keith W.</p> <p>2 Murray, W. L.</p> <p>1 Musil, Theodore F.</p>	<p>N</p> <p>1 Nagel, Glenn S. and Betty</p> <p>2 Neilan, Mr. and Mrs. Joe</p> <p>2 Nelson, Evelyn N.</p> <p>2 Nelson, Mrs. LaVern</p> <p>2 Newby, Marietta Winters</p> <p>1 Newton, Dorothy A.</p> <p>2 Niles, Mr. and Mrs. Irving R.</p> <p>2 Nixon, Mrs. Robert S.</p> <p>O</p> <p>2 O'Brien, Mr. and Mrs. Harold T.</p> <p>2 O'Neill, Mr. and Mrs. Larry</p> <p>1 Orsborn, Mr. and Mrs. Lawrence J.</p> <p>1 Ottaway, Lois M.</p> <p>P</p> <p>1 Paulsen, Leo</p> <p>2 Paulsen, Mr. and Mrs. Rex E.</p> <p>2 Pease, Mr. and Mrs. Albert A.</p> <p>2 Peck, Mrs. Larry</p> <p>1 Pearce, Kenneth</p> <p>1 Pendergraft, Mr. and Mrs. Keith</p> <p>2 Peterkord, Mary</p> <p>2 Peterson, Arlyn</p> <p>2 Pine, Wilfred H.</p> <p>1 Pivonka, Barbara</p> <p>2 Price, Mr. and Mrs. Wilmot B.</p> <p>1 Pucket, Dale W.</p> <p>1 Pulliam, Mr. and Mrs. Duane</p> <p>R</p> <p>2 Ramsour, Mr. and Mrs. Walter A.</p> <p>2 Read, Isabel</p> <p>2 Reehling, Mrs. Cecil B.</p> <p>2 Rees, Richard D.</p> <p>2 Reich, Mrs. Wilma H.</p> <p>2 Rice, Shirley S.</p> <p>2 Richardson, Mrs. J. C.</p> <p>1 Ricker, Floyd</p> <p>2 Robb, Edith Elaine</p> <p>2 Robb, Mr. and Mrs. Ronald</p> <p>2 Robson, Dean E.</p> <p>1 Rogers, Irene</p> <p>2 Ross, Mr. and Mrs. Marvin E.</p> <p>2 Rusco, Larry Gene</p> <p>S</p> <p>2 Sanford, Dr. and Mrs. Paul E.</p> <p>1 Schaper, Mrs. Maxine</p>	<p>2 Scheuerman, Mrs. Everett</p> <p>2 Schlickau, Harry</p> <p>2 Schmitt, Mrs. Ben</p> <p>2 Schooley, Mrs. Maurice A.</p> <p>2 Schroeder, Elizabeth</p> <p>1 Seacat, Mrs. George</p> <p>1 Sellers, Betty</p> <p>1 Seuser, Lester</p> <p>2 Shepherd, Mrs. Betty W.</p> <p>1 Sidesinger, Mrs. Clarence</p> <p>2 Smerchek, Mr. and Mrs. J. D.</p> <p>2 Smith, Mary Ann and Tom E.</p> <p>2 Smith, Mrs. R. V.</p> <p>2 Smith, Mrs. William</p> <p>2 Stallard, Mr. and Mrs. Wayne M.</p> <p>1 Streefer, Charles and Martha</p> <p>2 Strickler, Ivan</p> <p>1 Sundgren, Dr. Vincel</p> <p>T</p> <p>2 Tasker, Mr. and Mrs. Dale E.</p> <p>2 Teagarden, Mr. and Mrs. Carl J.</p> <p>2 Thompson, Brenda Tjaden</p> <p>2 Tjaden, Mr. and Mrs. Lyle J.</p> <p>2 Truman, Maxine</p> <p>2 Tubach, Mrs. Jim</p> <p>1 Tweed, Glen</p> <p>U</p> <p>2 Upham, Major and Mrs. Roy</p> <p>V</p> <p>2 Vann, Mr. and Mrs. Willis</p> <p>2 VanSkiike, Mr. and Mrs. Harry</p> <p>2 VanSkiike, William V.</p> <p>2 Vining, Mr. and Mrs. Cecil E.</p> <p>2 Vinson, Carolee Y.</p> <p>1 Vogel, W. A.</p> <p>W</p> <p>2 Walquist, Harvey M.</p> <p>1 Walton, Marjorie Presnall</p> <p>1 Weber, Mrs. Wm. W.</p> <p>2 Wells, Charles</p> <p>2 Wilkinson, Shirley M.</p> <p>1 Williams, Mrs. Jack J.</p> <p>2 Williams, Mrs. Lester</p> <p>2 Wineinger, Earl</p> <p>1 Wreath, George C.</p> <p>1 Wyckoff, Maurice</p> <p>Z</p> <p>2 Zitnik, Frank</p>
--	--	---	--	---

IFYE ALUMNI and HOST FAMILY CAMPAIGN • 1960

Amount — \$982.90

<p>A</p> <p>2 Adams, Mrs. P. E.</p> <p>1 Adams Brothers Salesbook Company</p> <p>1 Anderson, Mrs. Bert H.</p> <p>B</p> <p>2 Baker, Mr. and Mrs. W. L.</p> <p>2 Banker, Aldean Knocke</p> <p>1 Barrier, Max</p> <p>1 Bassett, Janice Fauss</p> <p>1 Behnke, Mr. and Mrs. Merrill</p> <p>1 Bird, Elmer J.</p> <p>1 Blackwood, Mr. and Mrs. R. W.</p> <p>1 Bolton, Mr. and Mrs. Virgil</p> <p>1 Borell, George</p> <p>2 Brehm, Merle</p> <p>2 Brownlee, Mr. and Mrs. Irving</p> <p>C</p> <p>1 Cauble, Dean</p> <p>1 Childs, Orville</p> <p>1 Churchill, Josephine J.</p> <p>2 Circle, James E.</p> <p>1 CK Processing Company</p>	<p>2 Clark, Billy D.</p> <p>1 Clary, Mr. and Mrs. Don</p> <p>2 Colglazier, Mr. and Mrs. Ron</p> <p>1 Colwell, Mrs. George</p> <p>1 Conner, Mr. and Mrs. Lester</p> <p>2 Cool, Mr. and Mrs. Joe H.</p> <p>1 Cranston, Wayne</p> <p>1 Crawford County 4-H Council</p> <p>D</p> <p>1 Daniels, Oren W.</p> <p>1 Davidson, J. M.</p> <p>2 DeLange, Verdan</p> <p>2 Dickerson, Edward</p> <p>2 Dietz, Henry</p> <p>1 Dirks, Mr. and Mrs. Carl</p> <p>1 Domsch, Ann Eklund</p> <p>2 Douthit, Emily</p> <p>2 Douthit, Jim W.</p> <p>1 Droge, Leslie A.</p> <p>1 Dyck, Cornie E.</p> <p>E</p> <p>1 Eisele, Mr. and Mrs. George</p> <p>2 Eklund, Carl</p>	<p>2 Engle, Joan</p> <p>1 Entriokin, Mr. and Mrs. Frank</p> <p>F</p> <p>2 Faidley, Mrs. Karl</p> <p>2 Faidley, Paul</p> <p>2 Fauss, Mr. and Mrs. R. L.</p> <p>2 Foeshee, Mr. and Mrs. Claude</p> <p>1 Federal Land Bank, Colby</p> <p>1 Federal Land Bank, Concordia</p> <p>1 Foster Lumber Company</p> <p>1 Freeman, Mr. and Mrs. R. E.</p> <p>1 Funk, Edwin R.</p> <p>G</p> <p>1 Galle, Dale S.</p> <p>1 Garnett Lions Club</p> <p>1 Garnett Rotary Club</p> <p>2 Gaumer, Wesley</p> <p>1 Glasco Grain Company</p> <p>1 Glasco Lions Club</p> <p>1 Goering, Mr. and Mrs. Lloyd</p> <p>1 Gooch, James L.</p>	<p>1 Goodfellow, Mr. and Mrs. Donald</p> <p>2 Graham, Mr. and Mrs. Spencer</p> <p>2 Greene, Mr. and Mrs. J. H.</p> <p>1 Griffin, Mr. and Mrs. James A.</p> <p>1 Gruver, Thomas A.</p> <p>2 Guthrie, Mrs. Charles W.</p> <p>1 Gillen, Carl A.</p> <p>H</p> <p>1 Hansen, Marilyn</p> <p>2 Harper, Mr. and Mrs. Fred</p> <p>1 Harper, Mrs. John</p> <p>2 Haskin, Glenn</p> <p>2 Hassler, K. C. and Elaine</p> <p>1 Haun, Mr. and Mrs. Harold</p> <p>1 Hayden, Mr. and Mrs. Mervin</p> <p>2 Hayse, Nathan</p> <p>1 Hazen, Mr. and Mrs. W. E.</p> <p>1 Hines, Durward</p> <p>1 Hobrock, Kenneth</p> <p>2 Huntington, Irlene</p>	<p>J</p> <p>2 Jackson, S. Lester</p> <p>1 Jolly Homemakers Unit Crawford Co.</p> <p>2 Jones, Mr. and Mrs. Eugene</p> <p>1 Jones, Taylor L.</p> <p>1 Josserand, Guy, Jr.</p> <p>K</p> <p>2 Kaiser, Mr. and Mrs. Joe L.</p> <p>1 Keen, Alvin C.</p> <p>1 Kilbourn, Mrs. Robert</p> <p>1 Klenda, Albert</p> <p>1 Kleymann, Frederick</p> <p>1 Knappenberger, Dr. Joe</p> <p>L</p> <p>1 Laidig, Floyd</p> <p>2 Larson, C. R.</p> <p>1 Larson, Wilbur F.</p> <p>1 Leonard, Ralph H.</p> <p>2 Lewis, Clarence E.</p> <p>2 Lindholm, Mr. and Mrs. E. C.</p>
---	---	---	---	---



The International Farm Youth Exchange promotes international understanding and is an integral part of the Foundation's program. Shown here are two girls from India in the Chapel at Rock Springs. Imagine the stories they will tell when they return home! The Kansas group of IFYE travelers will also profit greatly from their working experiences and observations in far off lands.

Dr. Harold Jones, State Director of Agricultural Extension Work is seen explaining a few of the 4-H needs to a group of community leaders. These needs will be met through Foundation support and, in turn, the Foundation needs the support of all.

Parent cooperation is best cultivated by visits to the Ranch at registration time as we see above. Also, by reading the Foundation sponsored **Kansas 4-H Journal**, parents can keep abreast of all 4-H activities.



HONOR ROLL 1960

HONOR ROLL 1960

- | | | | |
|---|--|---|---|
| <p>M</p> <p>1 McDaniel, Harry
2 McGuire, N. D.
1 McKee, Mr. and Mrs. Carl, Jr.
1 Mears, Paul
1 Medford, Mrs. Robt. C.
1 Medley, Cecil
2 Meinen, Stanley R.
2 Miksch, Charles D.
2 Miksch, Mr. and Mrs. Forrest E.
1 Miller, LeRoy
1 Monday Study Club, Greenleaf
1 Morgan, Brenda
1 Moyer, John R.
1 Munger, C. W.
2 Murrey, Chester
2 Myers, Allen B.</p> <p>N</p> <p>2 Neel, Ailiff
1 Neher, M. E.
2 Nikkel, T. P.
1 Nuttle, James R.</p> <p>O</p> <p>1 Odgers, Mrs. Lawrence H.
1 Odgers, Marvin C.</p> | <p>2 Olomon, Chas. P., Jr.
1 Olson, Willard
2 Oltjen, Mr. and Mrs. Emmett
2 Oltjen, John L.
2 Oswald, Mr. and Mrs. Don
2 Otte, Alvin</p> <p>P</p> <p>1 Partch, Mr. and Mrs. Rodney
2 Peirce, Walter C.
1 Penner, Willis D.
2 Perusic, Eunice
2 Budenbender
1 Plush, Mrs. E. V.</p> <p>R</p> <p>2 Raleigh, Francis J.
2 Ramsey, Mr. and Mrs. Glen
1 Ramsey, Wayne
2 Rees, Norris
2 Remy, Gerald
2 Reusser, Mr. and Mrs. Rae
2 Roepke, H. F.
1 Rumsey, Gary
2 Rumsey, George</p> | <p>2 Rusk, Mr. and Mrs. Ray
2 Russell, M. L.</p> <p>S</p> <p>2 Salyer, Paul
2 Schmedemann, Mr. and Mrs. Ivan
1 Siebert, Rex
1 Sims, Lloyd E.
1 Sliferette HDU, Crawford Co.
2 Smerchek, Mr. and Mrs. F. J.
1 Smith, Hubert
2 Snook, Dr. R. R.
1 Sourk, Mr. and Mrs. Ward
1 Sprenger, Henry
1 Strahm, Oscar
1 Sunflower Study Club, Glasco
1 Sunrise 4-H Club, Ellsworth Co.</p> <p>T</p> <p>1 Thomson, Mr. and Mrs. John C.
2 Tillotson, Mr. and Mrs. R. J.</p> | <p>2 Tjaden, Mrs. L. J.
2 Todd, Mr. and Mrs. John
1 Trumbull, L. L.
1 Tuley, Mr. and Mrs. Kenneth M.
1 Tuma, Harold
2 Tuttle, Mr. and Mrs. Floyd</p> <p>V</p> <p>1 Vanskike, Mr. and Mrs. Harry</p> <p>W</p> <p>2 Walker, Mr. and Mrs. Howard R.
1 Weixelman, Donald B.
1 Wertz, Mr. and Mrs. George
1 Wilbur, George R.
1 Williams, C. M.
1 Wittmer, Harlan</p> <p>Y</p> <p>1 Yoder, Mr. and Mrs. Royal F.</p> <p>Z</p> <p>2 Zweifel, Earl</p> |
|---|--|---|---|

EXTENSION 4-H and HOME ECONOMICS

- | | | |
|--|--|---|
| <p>ALLEN COUNTY</p> <p>1 Allen County 4-H Council</p> <p>ANDERSON COUNTY</p> <p>1 Tom Creek Hustlers 4-H
1 Lucky 13 4-H</p> <p>ATCHISON COUNTY</p> <p>1 Co-operative 4-H
1 Old Huron Busy Bees 4-H</p> <p>BOURBON COUNTY</p> <p>2 Bourbon County 4-H Council</p> <p>BROWN COUNTY</p> <p>2 Brown County 4-H Council
2 Robinson Meadowlark 4-H</p> <p>BUTLER COUNTY</p> <p>1 Benton Busy Bees 4-H
1 Blue Beavers 4-H
4 Chelsea Be-Square 4-H
3 Flint Hills 4-H
3 Glencoe Hustlers 4-H
2 Helping Hand 4-H
3 Skyliners 4-H
4 Vanora Vigils 4-H</p> <p>CHASE COUNTY</p> <p>2 Bazaar 4-H
2 Chase County 4-H Council
1 Clements 4-H
1 C. W. F. 4-H
1 Emerald 4-H
1 Flint Hills 4-H
1 Gladstone 4-H
1 Lucky 13 4-H
1 Toledo 4-H</p> <p>CHEYENNE COUNTY</p> <p>2 Cheyenne County 4-H Council and Junior Leaders</p> <p>COFFEY COUNTY</p> <p>2 Busy Bees 4-H
2 Coffey County Home Economics Advisory Committee
1 Coffey County Wonder Workers 4-H
2 Jolly Booster 4-H
2 Liberty 4-H
1 Otter Creek Boosters 4-H
2 Stringtown Bombers 4-H
2 Willing Workers 4-H</p> <p>COWLEY COUNTY</p> <p>4 Cowley County 4-H Clubs</p> <p>DECATUR COUNTY</p> <p>1 Happy Hustlers 4-H
4 Lone Star Hustlers 4-H</p> <p>DICKINSON COUNTY</p> <p>3 Harmony Hustlers 4-H</p> <p>DOUGLAS COUNTY</p> <p>2 Bellevue 4-H
2 Cardinal 4-H
2 Clinton Busy Bees 4-H
2 Cottonwood 4-H
1 Douglas County 4-H Clubs
2 Eudora 4-H
2 Four Leaf Clover 4-H</p> | <p>2 Jayhawk 4-H
3 Kanwaka 4-H
2 Lone Star 4-H
2 Marion Boosters 4-H
2 Meadowlark 4-H
4 Palmyra 4-H
2 Rock Chalk 4-H
2 Stull Busy Beavers 4-H
2 Sunflower 4-H
2 Vinland Valley 4-H
2 Worden Workers 4-H</p> <p>EDWARDS COUNTY</p> <p>4 Edwards County 4-H Council</p> <p>ELLIS COUNTY</p> <p>2 Ellis County 4-H Council
2 Saline Valley 4-H
3 Winner's 4-H</p> <p>FRANKLIN COUNTY</p> <p>1 Acorn Rustlers 4-H
1 Berea Boosters 4-H
1 Clover Leaf 4-H
1 Elm Leaf 4-H
1 Far and Near 4-H
2 Franklin County 4-H Council
1 Full O' Pep 4-H
1 Greenwood Rockets 4-H
1 Jayhawk 4-H
1 Junior Judges 4-H
1 Lucky Clover 4-H
1 Pottawatomie Valley 4-H
1 Princeton Jolly Workers 4-H
3 Rainbow 4-H
1 Rambling Ranchers 4-H
2 Silver Leaf 4-H
1 Victory Workers 4-H
1 Westerners 4-H</p> <p>GRAHAM COUNTY</p> <p>3 Graham County 4-H Council</p> <p>HARPER COUNTY</p> <p>1 Buccaneers 4-H
2 Hilltoppers 4-H
3 Tip top 4-H</p> <p>JEFFERSON COUNTY</p> <p>4 Bill Town Go-Getters 4-H
3 Bluemound 4-H
4 Boyle Boosters 4-H
4 Cedar Circle 4-H
3 Fairview 4-H
3 Golden Valley 4-H
4 Grantville 4-H
3 Jolly Juniors 4-H
4 McLouth Country Kids 4-H
4 McLouth Crackerjacks 4-H
4 Meriden 4-H
3 Mooney Creek Cowboys 4-H
4 Nesbit Redhots 4-H
3 Nortonville 4-H
4 Prosperity 4-H
4 Rock Creek Boosters 4-H
4 Valley Victors 4-H
4 Winchester Possums 4-H</p> <p>JOHNSON COUNTY</p> <p>1 Bonita Hummers HDU
1 Greenwood Meadowlarks 4-H
1 Sharon 4-H
1 Stanley Buccaneers 4-H
2 Sunnyside 4-H
3 Zion Zippers 4-H</p> | <p>LEAVENWORTH COUNTY</p> <p>1 Basehor Skyliners 4-H
1 Bell 4-H
1 Dafer Jets 4-H
1 Eight Mile 4-H
1 Fairmount 4-H
1 Green Promise 4-H
1 Happy Hollow 4-H
1 Valley View 4-H</p> <p>LINCOLN COUNTY</p> <p>1 Beverly Boosters 4-H
2 Jr. Sunflower 4-H
2 Lincoln Sunrise 4-H
1 Rainbow 4-H
2 Salt Creek 4-H
2 Sylvan Hustlers 4-H
1 Westfall Homemakers HDU</p> <p>LINN COUNTY</p> <p>2 Busy Bugs 4-H
3 Busy Workers 4-H
2 Cadmus 4-H
2 Flying C 4-H
1 Four-Leaf Clover 4-H
2 Jayhawker 4-H
2 Linn County 4-H Council
2 Lucky Ridgers 4-H
3 Parker 4-H
3 Valley Rangers 4-H</p> <p>LYON COUNTY</p> <p>2 Badger Creek 4-H
2 Chamness 4-H
1 Duck Creek Pals 4-H
1 Fleming Friends 4-H
1 Flint Hills 4-H
3 Frost 4-H
1 Logan Avenue 4-H
1 Maydale Busy Beavers 4-H
1 Merry Mixers 4-H
1 Model Boosters 4-H
1 Reading 4-H
1 Sunnyside 4-H</p> <p>McPHERSON COUNTY</p> <p>1 Goering, Jan Craig
1 Goering, Judilee
2 Lucky Leaf 4-H
2 McPherson County 4-H Council</p> <p>MARION COUNTY</p> <p>4 French Creek Valley 4-H
4 Goessel Goal Getters 4-H
1 Grand Central 4-H
4 Happy Hustlers 4-H
5 Harmony Hustlers 4-H
3 Jayhawk 4-H
3 Jolly Jays 4-H
2 Lincolnville Live Wires 4-H
1 Marion Go-Getters 4-H
1 Marion County Home Economics Advisory Committee
5 Peabody Hustlers 4-H
4 Pilsen Lucky 13 4-H
4 Ramona Red Chiefs 4-H
4 Silver Creek 4-H
6 South Cottonwood 4-H
4 Summit Boosters 4-H
5 Tampa Triple T's 4-H
3 Willing Workers 4-H</p> <p>MARSHALL COUNTY</p> <p>1 Richland Center 4-H
2 Sunflower 4-H</p> |
|--|--|---|

HONOR ROLL 1960

- MIAMI COUNTY**
 3 Miami County 4-H Council
- MITCHELL COUNTY**
 1 Mitchell County 4-H Council
- MORRIS COUNTY**
 2 Burdick Hustlers 4-H
 4 Delavan 4-H
 1 Dwight Sunflower 4-H
 1 Flint Hills 4-H
 1 Four Mile 4-H
 2 Morris County 4-H Council
 3 Neosho Valley 4-H
 1 Parkerville Progress 4-H
 1 Willing Workers 4-H
 2 Wilsey Busy Bees 4-H

- NEMAHA COUNTY**
 3 Nemaha County 4-H Council

- NEOSHO COUNTY**
 1 Best Yet 4-H
 1 Jolly Go Getters 4-H
 1 Neosho County 4-H Council

- NORTON COUNTY**
 2 Busy Beavers 4-H
 2 Busy Jayhawkers 4-H
 2 Emmett Farmineers HDU
 2 Golden Harvesters 4-H

- OSAGE COUNTY**
 6 Carbondale Rustlers 4-H
 2 Olivet Livewires 4-H
 3 Osage County 4-H Clubs
 2 Pleasant Run 4-H
 1 Willing Workers 4-H

- OSBORNE COUNTY**
 3 Osborne County 4-H Council

- OTTAWA COUNTY**
 1 Lamar 4-H
 1 Lucky 7 4-H
 1 Ottawa County 4-H Council
 4 Rockhill 4-H

- PAWNEE COUNTY**
 2 Burdett Blue Ribbons 4-H
 1 Zook Zippers 4-H

- PHILLIPS COUNTY**
 1 Blue Mound 4-H
 1 City Slickers 4-H
 1 Solomon Valley 4-H

- RENO COUNTY**
 3 Langdon 4-H
 1 North Reno 4-H
 3 Reno County 4-H Council
 2 Walnut Willing Workers 4-H

- RICE COUNTY**
 3 Fairplay 4-H
 1 Lyons Conquerors 4-H

- RILEY COUNTY**
 1 Be Busy 4-H
 1 Blue Valley 4-H
 1 Bonfire 4-H
 1 Cloverleaf 4-H
 1 College Hill 4-H
 1 Happy Go Lucky 4-H
 1 Jolly 18 4-H
 2 Kaw Valley 4-H
 1 Lee Hilltoppers 4-H
 1 Leonardville Hustlers 4-H
 1 Lucky 4-H
 1 Magic 4-H
 1 Pillsbury 4-H
 3 Strong 4-H
 1 Swede Creek 4-H
 1 Wildcat 4-H
 1 Zeandale 4-H

- ROOKS COUNTY**
 1 Damar 4-H
 5 4W 4-H
 2 Livewires 4-H
 2 Palco 4-H
 1 Star 4-H

- SALINE COUNTY**
 1 Bavaria 4-H
 1 Brookville 4-H
 1 Cloverleaf 4-H
 1 Eighty-One Hustlers 4-H
 2 Friendly Valley 4-H
 1 Gypsum Valley 4-H
 1 Hedville Sunshine 4-H
 1 Ichiban 4-H
 1 Kipp Wide Awake 4-H
 1 Saline County 4-H Council
 1 Saline Valley 4-H
 1 Smoky View 4-H
 1 Sunny Valley 4-H
 1 Sunrise 4-H
 5 Willing Workers 4-H

- SEDGWICK COUNTY**
 5 Cheney Gremlins 4-H
 2 Derby 4-H
 5 Furley 4-H
 2 Goddard 4-H
 3 Greenwich 4-H
 5 Kechi 4-H
 4 Riverview 4-H
 1 Rose Hill Rustlers 4-H
 4 Sedgwick County 4-H Clubs
 3 Sunnydale 4-H

- SHAWNEE COUNTY**
 4 Dover 4-H
 5 Happy Homemakers HDU
 4 Highlander 4-H
 5 Kaw Hawks 4-H
 4 Pleasant Hill 4-H
 6 Riverside 4-H
 4 Rochester Heights 4-H

- 4 Rossville Rustlers 4-H
 3 Shawnee County 4-H Council
 3 Shawnee Jayhawkers 4-H
 4 Silver Lake 4-H
 5 Shunga Valley 4-H
 4 Wanamaker 4-H

- STAFFORD COUNTY**
 2 Cloverleaf 4-H

- STANTON COUNTY**
 2 Big Bow 4-H

- STEVENS COUNTY**
 2 Moscow Zippers 4-H
 2 Cardinal 4-H
 1 Clippers 4-H
 1 Home Valley Meadowlarks 4-H
 2 Jolly Workers 4-H
 1 Paradise Valley 4-H
 2 Perth 4-H
 6 Rome Rockets 4-H
 2 Skylark 4-H
 1 Slate Valley Pushers 4-H
 2 South Haven Hustlers 4-H
 2 Sunflower 4-H
 2 20th Malaby Pushers 4-H
 3 Walton Willing Workers 4-H

- THOMAS COUNTY**
 2 Thomas County 4-H Council

- TREGO COUNTY**
 2 Banner 4-H
 1 Busy Beavers 4-H
 2 Cedar Bluff 4-H
 2 Ogallah 4-H
 1 Trego County 4-H Council
 2 WaKe 4-H

- WABAUNSEE COUNTY**
 1 Kaw Valley 4-H

- WASHINGTON COUNTY**
 6 Busy Bee 4-H
 1 Happy Workers 4-H

- WILSON COUNTY**
 1 Buffalo Boosters 4-H
 1 High Prairie Pioneers 4-H
 1 Skyrocket 4-H
 1 Verdigris Valley 4-H
 3 Vilas Viking 4-H

- WOODSON COUNTY**
 1 Woodson County 4-H Council
 5 Woodson County Home Economics Advisory Council

- WYANDOTTE COUNTY**
 4 Hazel Grove 4-H
 4 Horaniff Hustlers 4-H
 4 Morris 4-H
 1 Tasty Makers 4-H

FRIENDS OF 4-H

- A**
 2 Anderson Cattle Company
 5 Andover State Bank

- B**
 1 Berwick Co-op Oil Company
 4 Bevelhymmer, H. C.
 6 Bly, Erna
 1 Boyce, Hugh
 1 Brandner, Lowell
 2 Brown, Ralph
 2 Butler Mfg. Corp. Foundation
 1 Buzick, H. J., Jr.

- C**
 1 Chapel, Jor
 1 Cassoday Lions Club
 7 Cities Service Oil Company
 6 Critser, W. Dale

- F**
 7 Federal Cartridge Corporation
 7 Folger & Company, J. A.
 5 Fox & Company, Elmer E.

- G**
 1 Gilmore, Mary E.
 3 Great Atlantic & Pacific Tea Company

- H**
 1 Hall, Howard E.
 6 Hicks, Mr. and Mrs. W. H.
 7 Holstein-Friesian Ass'n of Kansas

- 2 Houghton, James H.
 5 Huff, Ruth K.
 5 Hurlburt, Jack

- I**
 7 International Harvester Company

- J**
 7 Jellison, A. D.
 4 John Deere Plow Company
 6 Johnson, J. Harold

- K**
 7 Kansas Ayrshire Breeders' Ass'n
 7 Kansas Bankers' Association
 5 Kansas Brown Swiss Breeders
 7 Kansas City Power and Light Company
 7 KCREA—Electric Power Suppliers of Kansas
 7 Kansas Gas and Electric Company
 7 Kansas Power and Light Company
 4 Kansas Farm Bureau & Ins. Services
 6 Kansas Co-op Council
 7 Kansas Guernsey Breeders' Ass'n
 7 Kansas Jersey Cattle Club
 2 Kansas 7-Up Bottlers
 6 Kansas Turkey Federation

- M**
 1 Mini-Max Provisions, Inc.
 2 Morawitz, Mr. and Mrs. Carl

- N**
 1 Naturich Mills
 3 Nitsch, J. C.

- P**
 1 Peoples State Bank, McDonald

- R**
 2 Robbins, E. C.

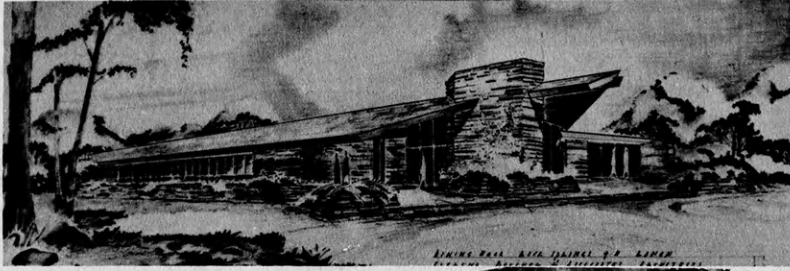
- S**
 7 Safeway Stores, Inc.
 1 Safeway Stores, Inc.—Egg Dept.
 7 Sears-Roebuck Foundation
 6 Seymour Foods, Inc.
 3 Simons, Dolph
 1 Southwestern Bell Telephone Company
 7 Spencer Chemical Company
 7 Standard Oil Foundation
 1 Starlight Literary Club
 1 Stockdale HDU
 2 Sunflower Tip Top Dairies
 5 Sutherland Lumber Company
 3 Swift and Company, Salina

- W**
 4 Wallingford Foundation
 7 Watkins Company, J. R.
 7 Western Light & Telephone
 7 Wilson, Fred D.
 6 Wisconsin Alumni Research Foundation
 1 Woods, David S.
 5 Woolworth Company, F. W.

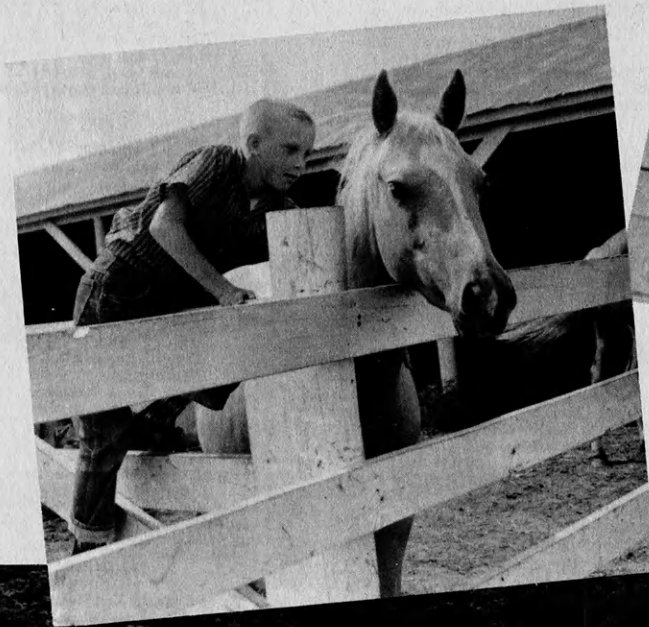
- Y**
 2 Yost, W. W.

ck Springs
 dation pro-
 draws a lot
 left is the
 completed
 -next addi-
 -ies. Below
 Houghton
 ses at the
 rative for
 e exciting
 ansas 4-H
 he Chuck
 cent lead-
 -rings.





Developing facilities at Rock Springs Ranch is a continuing Foundation program and one that always draws a lot of attention. Pictured to the left is the architect's drawing of the completed L. C. Williams dining hall—next addition to Rock Springs' facilities. Below is the newly completed Houghton Memorial Fountain. The horses at the Ranch are always cooperative for photographers and provide exciting recreation too! Service to Kansas 4-H leaders is typified by the Chuck Wagon scene taken at a recent leaders' conference at Rock Springs.



This Is My Father's World

The affinity of God with nature is beautifully illustrated in this fine hymn. The author of the words reveals the relationship with God that he feels, as he sees and hears the wonderful sights and sounds of nature all about him.

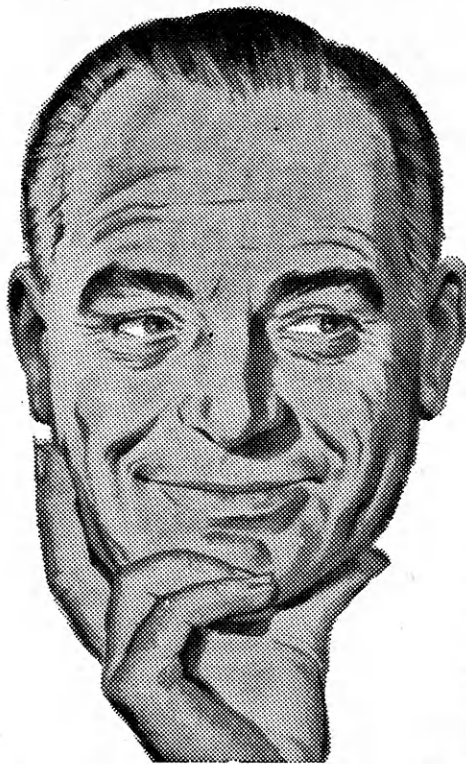
"This is My Father's World"*** was written by Maltbie D. Babcock, a minister who loved the outdoors. The first two verses illustrate the feeling of awe and wonder as the hand of God is revealed to man, through flowers, skies, rocks, trees and "all that's fair". In the third verse the author is saying that "The battle against evil must go on, and once that battle is won, this will be in all ways, 'My Father's World'".

This beautiful hymn would be a wise choice for such a sacred service as most clubs observe on 4-H Sunday. 4-H boys and girls should have a feeling of closeness with God and nature, as they sing this hymn. Every word has real meaning, especially for those whose lives are lived in close association with the outdoors. Practice this hymn at club meetings before 4-H Sunday, and plan to use it also at other inspirational services where sacred music is appropriate.

**Page 40, National 4-H Club Song Book and page 63, Joyous Singing



"There aren't any shells for it, sir! This one scares the game to death!"



Successful men KNOW

PART OF ALL YOU EARN IS YOURS TO KEEP

And if you're wise you'll keep your funds where earnings are high and insured safe by the Federal Savings and Loan Insurance Corporation.

VISIT YOUR NEAREST **PROGRESSIVE** **KANSAS** Savings & Loan Assoc.

- Arkansas City**
First Federal Savings and Loan Ass'n of Arkansas City
- Augusta**
The Commercial Savings and Loan Assn.
- Beloit**
The Beloit Building and Loan Assn.
First Federal Savings and Loan Assn. of Beloit
- Clay Center**
Northwestern Federal Savings and Loan Ass'n. of Clay Center
- Dodge City**
First Federal Savings and Loan Ass'n. of Dodge City
- El Dorado**
Eureka Federal Savings and Loan Association
Mid-Continent Federal Savings and Loan Assn. of El Dorado
- Emporia**
The Columbia Building and Loan Assn.
- Erie**
The Erie Savings and Loan Assn.
- Fort Scott**
Liberty Savings and Loan Assn.
- Garnett**
The Garnett Savings and Loan Association
- Great Bend**
The Prudential Building and Loan Assn.
- Hays**
The Hays Building and Loan Assn.
- Hutchinson**
First Federal Savings and Loan Assn. of Hutchinson
- Iola**
The Security Savings and Loan Assn.
- Larned**
The Larned Savings and Loan Assn.
- Lawrence**
Capitol Federal Savings and Loan Assn.
- Leavenworth**
The Leavenworth Mutual Building, Loaning and Savings Assn.
- Liberal**
First Federal Savings and Loan Assn. of Liberal
- Lyons**
The Lyons Savings and Loan Assn.
- McPherson**
The Pioneer Savings and Loan Association of McPherson
- Mission**
Capitol Federal Savings and Loan Assn.
- Newton**
First Federal Savings and Loan Assn. of Newton
- Norton**
Norton County Savings and Loan Association
- Ottawa**
Ottawa Savings and Loan Assn.
- Overland Park**
The Overland Park Savings and Loan Assn.
- Parsons**
First Federal Savings and Loan Assn. of Parsons
- Plainville**
Rooks County Savings Assn. of Plainville
- Pratt**
The Western Savings Assn.
- Salina**
The Homestead Building and Loan Assn.
- Topeka**
Capitol Federal Savings and Loan Assn. at 6th and Kansas, and 12th and Topeka Blvd.
- Wichita**
The Commercial Savings and Loan Assn. at 4601 E. Douglas Avenue and 147 North Market Street

All Accounts in These
Savings and Loan Associations



Insured by the Federal Savings and Loan Insurance Corporation
\$10,000 for each account
\$70,000 for a family of three

From 4-H Projects To A Life Time Career



Daryl Dirks recovered this chair, made and finished the storage box—stool, and made the lamp and table as a part of his nine-year home improvement project. The items are now used in a basement recreation room.

Daryl refinished and recovered these attractive dining room chairs as well as refinished the table, hung the drapes and refinished the walls in this very attractive dining room.



Left, Daryl Dirks, Ford County member and national 4-H home improvement winner last fall, writes a note for his mother on the combination mail box-bulletin board-blackboard he made for use in the family kitchen. Right, Daryl refinished

For Daryl Dirks, 4-H home improvement has been a stepping stone to a career in interior decoration.

Daryl, a 10-year Ford county member, won a \$400 scholarship as one of six national 4-H home improvement winners last fall. While attending the National 4-H Congress, stories appeared in the local paper telling of his work.

A local interior decorator called Daryl's mother, asking if he would be interested in an afternoon job. His mother said she would have him call when he returned from Chicago.

He now works for this interior decorator in the afternoons (going to Dodge City Junior College in the mornings), getting additional valuable experience for the time he will be working full time.

Daryl has taken home improvement nine years. He says, "I've gained much valuable knowledge; it's helped me make wise choices in purchasing sheets, towels, curtain materials, floor coverings, etc. I have learned color harmony through the use of the color wheel and how to save by refinishing furniture and making wise choices."

Daryl completed 11 rooms in the nine years. His and his

mother's bedroom were redecorated twice. Other rooms he has improved include the kitchen, bathroom, entrance hall, guest bedroom, and sun, living, wash, dining and recreation rooms.

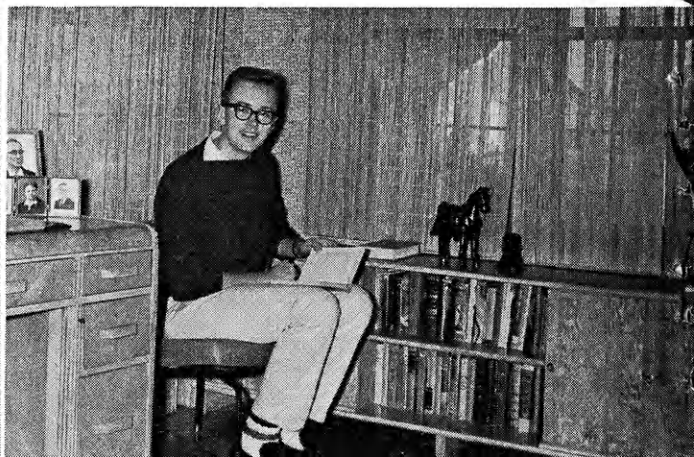
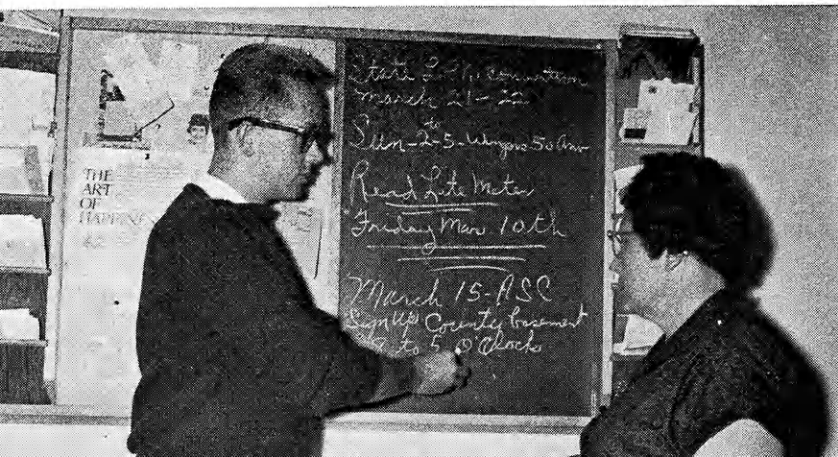
The total cost of the improvements has been \$3,222.08. He estimates the total value at \$4,939.09. He has worked a total of 1,257 hours on the project.

"In home improvement you don't make cash," Daryl says, "but you do save money by learning the economical and practical choices to make in buying furniture, drapes, sheets, etc. You also save money by doing the work yourself, by learning to refinish old furniture and making something new out of something old and worn out."

"In my home improvement project, my mother pays for the new furniture, paint and supplies since it is for the whole family," Daryl continues. "I will pay for some small items."

Some specific projects Daryl Dirks has completed include: refinish piano, refinish and paint cupboards, paint dining room suite, refinish desk, paint refrigerator, refinish bedroom suite, paint walls, build 12 pieces of furniture, paint service cart, steam off old wallpaper before painting.

the desk, laid inlaid linoleum on the floor, built the book case and cabinets, hung bamboo curtains on the windows, and repapered the walls in this study. It was one of eleven rooms he has redecorated in the home.



RSR Memorial To Honor Dan Petracek

A memorial project at Rock Springs Ranch has been selected by Mr. and Mrs. Julius Petracek, Oberlin, in memory of their son, Daniel, and his family who lost their lives in an auto accident near Hays.

The memorial structure will be designed to emphasize citizenship and world understanding. It will serve as a shelter at the State 4-H Center.

Dan Petracek was an IFYE delegate to Greece.

At the request of Mr. and Mrs. Petracek, Dan's IFYE friends, alumni and host families are being given an opportunity to participate. Earl Palmberg, Topeka, Chairman of the Rock Springs Ranch Committee says, "This is

(Continued on page 25)

Many Areas To Be Discussed at 4-H Leaders Conference

A highlight of the year for 350 4-H leaders is the Leaders Conference in Hutchinson April 18 to 20.

Leaders will have opportunities to visit with Extension specialists, meet new friends, see outstanding exhibits and record books, enjoy good music and fellowship, exchange ideas, and enter into group discussions.

Kansas State University extension personnel scheduled to attend and the areas they will discuss with leaders are Christine Wiggins—clothing, Mildred Walker—meats, Larry Lang—working with teenagers, Dell Gates—entomology, Charles Parks—home grounds beautification, Ruth Wells—foods, Mary Dean Holle—careers for youth, Dale Schindler—woodworking, Lot Taylor—livestock and Glenn Busset—photography.

Leaders interested in attending should contact their county extension agents by April 11. Scholarships are available to leaders having completed 10 years of service at the end of their 1960 club year.

Need Recreation Tips For Your Club?

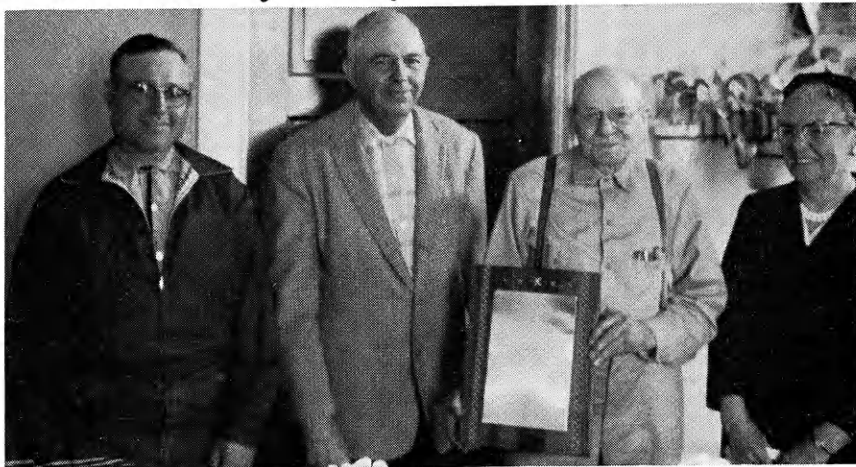
Leaders Note!! Are you interested in recreation? Do you need new ideas for games, crafts, camping, music, outdoor living, nature trails, human relations, hobbies and other recreational areas?



Learning skills in outdoor cookery is part of the outdoor living program at the Kansas Recreation Workshop each year.

Then plan to attend the 1961 Recreation Workshop May 8 to 12 at Rock Springs. Registration is open to any adult providing leadership to 4-H, scouts, church units or any other program.

Honors Early Day 4-H Organizer



Congratulating Dr. Wirth R. Barnard, second from right, on his long-time work with Republic county 4-H Clubs, is Dale Presnal, first secretary of the Liberty Rose Creek Club organized in 1932; Lawrence Eickman and Mrs. E. J. Richards, first community leaders of the club.

Long before there was a county extension agent in Republic county, there were 4-H Clubs.

Thanks to Wirth R. Barnard, DVM, several (five or six) 4-H Clubs were organized in the county about 1933. The Talmo-Wayne club is one still active.

Dr. Barnard said that when he heard they had 4-H Clubs in neighboring Washington county,

State-Wide IFYE Fund Nears Half-Way Mark

Nearly half the goal of \$2,000 for the Kansas International Farm Youth Exchange program has been contributed by Kansas IFYE alumni, host families, and parents.

Contributions from 154 persons or families totaling \$906.40 were reported by IFYE Funds Campaign chairman Fred Harped and Gary Rumsey.

The money will be used to pay the Kansas cost of sending 1961 Kansas IFYE delegates overseas. This cost, \$1,000 each for nine Kansans, will be provided, in part, by an \$800 quota assigned to each of the nine counties having IFYE delegates.

The remaining \$200 per delegate is to be raised state-wide.

Additional contributions to this fund may be made to the Kansas 4-H Foundation, Umberger Hall, KSU, Manhattan.

For additional information contact Roberta Anderson, Umberger Hall, KSU, Manhattan.

he decided there should be some in Republic county also. "What's good enough for Washington county is good enough for Republic county," he is reported to have said.

In addition to organizing early 4-H Clubs, Dr. Barnard, for 51 years a practicing veterinarian in Belleville, organized the city library and the local vocational agriculture chapter.



Kansas 4-H Journal

The Kansas 4-H Journal is sponsored in each of the 104 counties by the business firms listed below. 4-H Club members and leaders might do well to

- Allen**
Allen County State Bank, Iola
- Anderson**
Garnett State Savings Bank, Garnett
- Atchison**
Blair Milling & Elevator Co., Inc., Atchison
George W. Kerford Quarry Company, Atchison
Pillsbury Company, Feed Division, Atchison
Sunflower Tip Top Dairies Company, Valley Falls
Waisner & Shelver Ladies Ready-To-Wear, Atchison
- Barber**
The First National Bank, Medicine Lodge
- Barton**
The First National Bank, Great Bend
- Bourbon**
Citizens National Bank, Ft. Scott
Farmers Coop Association, Ft. Scott
Liberty Savings and Loan Association, Ft. Scott
National Farm Loan Association, Ft. Scott
The Bank of Bronson, Bronson
Union State Bank, Uniontown
- Brown**
Bank of Robinson, Robinson
Citizens State Bank, Hiawatha
Farmers State Bank, Fairview
Home State Bank, Horton
The Bank of Horton, Horton
The Morrill & Janes Bank, Hiawatha
The Morrill State Bank, Morrill
The Union State Bank, Everest
- Butler**
Andover State Bank, Andover
Augusta State Bank, Augusta
Bank of Whitewater, Whitewater
Benton State Bank, Benton
Citizens State Bank of El Dorado, El Dorado
El Dorado National Bank, El Dorado
Exchange State Bank, Douglass
Mid-Continent Federal Savings and Loan Association, El Dorado
The Potwin State Bank, Potwin
The Prairie State Bank, Augusta
The Rose Hill State Bank, Rose Hill
The State Bank of Leon, Leon
Walnut Valley State Bank, El Dorado
- Chase**
Exchange National Bank, Cottonwood Falls
Peoples Exchange Bank, Elmdale
Strong City State Bank, Strong City
- Chautauqua**
The Sedan State Bank, Sedan
- Cherokee**
American National Bank, Baxter Springs
Baxter State Bank, Baxter Springs
Citizens Bank of Weir, Weir City
Columbus State Bank, Columbus
First National Bank of Columbus, Columbus
- Cheyenne**
Citizens State Bank, St. Francis
- Clark**
Citizens State Bank, Ashland
Peoples State Bank, Minneola
Stockgrowers State Bank, Ashland
- Clay**
Union State Bank, Clay Center
- Cloud**
Citizens State Bank, Miltonvale
Cloud County Bank, Concordia
Exchange National Bank, Clyde
Fidelity State Bank, Concordia
First National Bank, Glasco
Jamestown State Bank, Jamestown
- Coffey**
Peoples National Bank, Burlington
- Comanche**
Peoples State Bank, Coldwater
- Cowley**
The First National Bank, Winfield
The Home National Bank of Arkansas City, Arkansas City
- Crawford**
Farmers State Bank, Walnut
First National Bank, Girard
First State Bank, Arma
First State Bank of Pittsburg, Pittsburg
- Girard National Bank, Girard
Hepler State Bank, Hepler
Home State Bank, Arcadia
McCune State Bank, McCune
Miners State Bank, Frontenac
National Bank of Pittsburg, Pittsburg
- Decatur**
Decatur Co-op Association, Oberlin
- Dickinson**
Farmers National Bank, Abilene
- Doniphan**
Doniphan County Electric Co-op Association, Inc., Troy
- Douglas**
Coles's—Hillcrest—Rusty's IGA Food-liners, Lawrence
Farmers Co-op Association, Lawrence
First National Bank, Lawrence
- Edwards**
Home State Bank, Lewis
- Elk**
Exchange State Bank, Moline
First National Bank, Howard
Home State Bank, Longton
Howard National Bank, Howard
- Ellis**
Ellis State Bank, Ellis
Farmers National Bank, Victoria
Farmers State Bank, Hays
First National Bank, Hays
- Ellsworth**
Bank of Holyrood, Holyrood
Citizens State Bank, Ellsworth
Kanopolis State Bank, Kanopolis
Lorraine State Bank, Lorraine
Wilson State Bank, Wilson
- Finney**
Fidelity State Bank, Garden City
Garden National Bank, Garden City
- Ford**
Bucklin State Bank, Bucklin
Farmers State Bank, Bucklin
Fidelity State Bank, Dodge City
First National Bank, Dodge City
Ford County State Bank, Spearville
- Franklin**
Peoples National Bank, Ottawa
The Wellsville Bank, Wellsville
- Geary**
Central National Bank, Junction City
First National Bank, Junction City
- Gove**
First National Bank, Quinter
Peoples State Bank, Grinnell
The Citizens State Bank, Grainfield
- Graham**
Farmers & Merchants Bank, Hill City
- Grant**
The Grant County State Bank, Ulysses
- Gray**
Farmers State Bank, Ingalls
First National Bank in Cimarron, Cimarron
The Montezuma State Bank, Montezuma
- Greeley**
First National Bank, Tribune
- Greenwood**
C. K. Rawlings Insurance, Eureka
Citizens National Bank, Eureka
Eureka Federal Savings and Loan Association, Eureka
Hartong's, Inc., Eureka
Home National Bank, Eureka
McManis Implement Company, Eureka
Race Parks Oil Company, Eureka
The A. C. Houston Lumber Company, Eureka
- Hamilton**
First National Bank, Syracuse
The Valley State Bank, Syracuse
- Harper**
Anthony Farmers Co-operative Elevator, Anthony
Danville Co-op Association, Danville
Farmers Co-op Business Association, Corwin
State Line Grain Company, Manchester, Oklahoma
- Harvey**
Harvey County Bankers Association
- Haskell**
Haskell County State Bank, Sublette
- Hodgeman**
Farmers State Bank, Jetmore
Hanston State Bank, Hanston
- Jackson**
Cox Implement Company, Holton
Dannenberg Implement Company, Holton
Duffy's IGA Foodliner, Holton
Eubanks Implement Company, Holton
Farmers Union Co-op. Association, Holton
Holton Lumber Company, Holton
Lueck Grain Company, Netawaka
Sock & Fern Freese's A&W Drive-In, Holton
Symons Truck and Tractor, Holton
Western Auto Associate Store, Holton
- Jefferson**
Jefferson County Home Demonstration Units
Leavenworth-Jefferson Electric Cooperative, McLouth
Sunflower Tip Top Dairies Company, Valley Falls
- Jewell**
First National Bank, Formoso
First National Bank in Mankato, Mankato
The Burr Oak State Bank, Burr Oak
The Citizens State Bank, Jewell
The Randall National Bank, Randall
The State Bank of Esbon, Esbon
The State Exchange Bank, Mankato
- Johnson**
DeSoto State Bank, DeSoto
Farmers Bank, Gardner
Farmers State Bank, Lenexa
First National Bank, Olathe
Patrons Co-operative Bank, Olathe
Shawnee State Savings Bank, Olathe
State Bank of Spring Hill, Spring Hill
State Bank of Stanley, Stanley
- Kearny**
Farmers Co-operative, Lakin and Kendall
- Kingman**
C. R. Calvert Company, Kingman
- Kiowa**
First State Bank, Mullinville
Greensburg State Bank, Greensburg
Haviland State Bank, Haviland
- Labette**
American State Bank, Oswego
Chetopa State Bank, Chetopa
First National Bank, Edna
First National Bank, Oswego
First National Bank, Parsons
Labette County State Bank, Altamont
Parsons Commercial Bank, Parsons
State Bank of Parsons, Parsons
- Lane**
First National Bank, Dighton
First State Bank, Healy
- Leavenworth**
First National Bank, Leavenworth
- Lincoln**
Sylvan State Bank, Sylvan Grove
- Linn**
Bank of Pleasanton, Pleasanton
Centerville State Bank, Centerville
Farmers and Merchants Bank, Mound City
Farmers State Bank, Blue Mound
First National Bank, Pleasanton
Linn County Bank, LaCygne
Parker State Bank, Parker
Prescott State Bank, Prescott
- Logan**
Farmers State Bank, Oakley
Farmers State Bank, Winona
- Lyon**
Citizens National Bank, Emporia
- Marion**
Tip Top Dairies, Hillsboro
- Marshall**
Citizens State Bank, Marysville
Citizens State Bank, Waterville
Exchange Bank of Schmidt & Koester, Marysville
First National Bank, Beattie
First National Bank, Summerfield
First National Bank in Frankfort, Frankfort
Oketo State Bank, Oketo
The Bremen State Bank, Bremen
The State Bank of Axtell, Axtell
The State Bank of Blue Rapids, Blue Rapids
Vermillion State Bank, Vermillion

Journal Sponsors



express their appreciation to these sponsors for the contribution they are making in supporting and encouraging the 4-H members.

McPherson

Farmers Union Elevator Company, Lindsborg
Moundridge Co-operative Elevator Ass'n., Moundridge
The Co-operative Farmers Union Elevator Company, Marquette
The Farmers Co-operative Ass'n., McPherson
The Farmers Co-operative Grain and Supply Company, Canton

Meade

First National Bank, Meade
Fowler State Bank, Fowler
Plains State Bank, Plains

Miami

American State Bank, Osawatomie
Bank of Louisburg, Louisburg
Citizens State Bank, Paola
First National Bank, Louisburg
First National Bank, Osawatomie
Miami County National Bank, Paola

Mitchell

Farmers and Merchants State Bank, Cawker City
Farmers State Bank, Asherville
Farmers State Bank, Hunter
First National Bank, Beloit
Simpson State Bank, Simpson
The Guaranty State Bank, Beloit
Tipton State Bank, Tipton
Traders State Bank, Glen Elder

Montgomery

Citizens National Bank, Independence
First National Bank, Coffeyville

Morris

Morris County Cooperative Ass'n., Delavan
Morris County Farm Bureau, Council Grove

Morton

Addington's Elevator, Elkhart
Burt Elder Insurance, Elkhart
Co-operative Equity Exchange, Elkhart
Elkhart Implement, Elkhart
Fisher's International, Elkhart
Norman's Implement, Elkhart
Rolla Co-operative Equity Exchange, Rolla
Star Lumber Company, Elkhart
The First State Bank, Elkhart

Nemaha

Winterscheidt Milling Company, Seneca

Neosho

The Neosho Valley Co-op. Creamery Association, Erie

Ness

Bazine State Bank, Bazine
Citizens State Bank, Utica
Farmers State Bank, Ransom
The First State Bank, Ness City
The First State Bank, Ransom

Norton

C&H Implement Company, Norton
Freddie Equipment Company, Norton

Osborne

Downs National Bank, Downs
Farmers National Bank, Osborne
First State Bank, Osborne
State Bank of Downs, Downs
The First State Bank, Portis

Osage

Bob McNabb, Melvern
Bulmer Grain Company, Michigan Valley
Farmers Co-op Elevator, Overbrook
Holm and Furneaux, Burlingame
Hoyt Farm Implement Company, Overbrook
Melvern Lockers, Market and Slaughterhouse, Melvern
Milken Farm Equipment, Burlingame
Osage Farm Equipment Company, Osage City
Ross A. Coffman and Sons, Inc., Overbrook
Surber Grain Company, Carbondale
Williams Oil Company, Lyndon

Ottawa

Bohnenblust Implement Company, Minneapolis

Chapman Implement Company, Minneapolis
Gilley's Firestone & Implement, Minneapolis
Hoover Implement Company, Minneapolis
Weidler Farm Supply, Minneapolis

Pawnee

First State Bank, Larned

Phillips

First National Bank, Phillipsburg

Pottawatomie

Farmers State Bank, Westmoreland
First National Bank, Onaga
First National Bank, Wamego
Havensville State Bank, Havensville
Kaw Valley State and Savings Bank, Wamego
St. Marys State Bank, St Marys

Pratt

Cairo Co-op Equity Exchange, Cairo
Iuka Co-op Exchange, Iuka
Pratt Equity Exchange, Pratt
Preston Co-op Grain and Mercantile Co., Preston
Sawyer Co-op Equity Exchange, Sawyer
The Farmers Grain and Mercantile Company, Cullison

Rawlins

Farmers National Bank, Atwood
Farmers State Bank, Ludell
Peoples' State Bank, McDonald
State Bank of Atwood, Atwood
State Bank of Herndon, Herndon

Reno

Hutchinson National Bank & Trust Co., Hutchinson
Winchester Packing Company, Hutchinson

Rice

Burke Grain Company, Little River
Central Kansas Elevator, Lyons
Farmers Co-op Union, Sterling
Farmers State Bank, Sterling
Moll's Market, Little River
Pepsi-Cola Bottling Co., Lyons

Riley

First National Bank, Manhattan
Leonardville State Bank, Leonardville
Union National Bank, Manhattan

Rooks

Western Auto Associate Store, Stockton

Rush

Farmers and Merchants State Bank, La Crosse

Russell

Farmers State Bank, Lucas
Russell State Bank, Russell

Saline

The Farmers National Bank, Salina

Scott

First National Bank, Scott City
Modoc State Bank, Modoc

Sedgwick

Sedgwick County Bankers Association

Seward

Citizens State Bank, Liberal
First National Bank, Liberal
People's National Bank, Liberal

Shawnee

Ed Marling Stores, Topeka
Main Store, 616-618 Kansas
North Topeka Store, 901-907 N. Kansas
Holiday Square Store, 29th and Topeka

Sheridan

Farmers State Bank, Selden
First National Bank, Hoxie
Hoxie State Bank, Hoxie
Mickey's Hardware, Hoxie

Sherman

The First National Bank, Goodland

Smith

Conaway Implement, Athol
Farmers Co-op Grain Association, Athol

Stafford

Farmers and Merchants State Bank, Macksville
Farmers National Bank, Stafford
First National Bank, St. John
Hudson State Bank, Hudson
Macksville State Bank, Macksville
St. John National Bank, St. John

Stanton

Collingwood Grain Company, Johnson, Manter, and Big Bow

Stevens

The Citizens State Bank, Hugoton

Sumner

Wolcott & Lincoln, Inc., Wellington

Thomas

Farmers and Merchants State Bank, Colby

Trego

Collyer Co-op Association, Collyer
First National Bank, Collyer
Midwest Market, Wakeeney
Great Plains Dairy, Wakeeney
Schreiner Oil Service, Ogallah
Trego County Farm Bureau, Wakeeney
Utica Grain Company, Utica

Wabaunsee

The Alta Vista State Bank, Alta Vista
The Eskridge State Bank, Eskridge
The First National Bank, Alma
The First National Bank, Harveyville
The Stockgrowers State Bank, Maple Hill

Wallace

Peoples State Bank, Sharon Springs

Washington

Davison Grain Company, Washington
Farmers Coop Elevator Association, Greenleaf
First National Bank, Washington
Washington County Cooperative Creamery Company, Linn
Washington County Farm Bureau Association, Washington

Wichita

First State Bank, Leoti

Wilson

Airosprayer Company, Neodesha
Allison-Nevitt-Jefferson-Pitzer Veterinary Clinic
Carl Kuntz Implement Company, Altoona
Cox Grain Company, Fredonia
First National Bank in Fredonia, Fredonia
First National Bank, Neodesha
Foodtown Super Market, Fredonia
Fredonia Co-op Ass'n., Fredonia
Glenn Wiggins Drug Store, Fredonia
Home Lumber and Supply Company, Fredonia
Joe Armstrong Equipment, Fredonia
Nebraska, Kansas, Colorado Grain Co., Inc., Neodesha
O. E. Woods Lumber Company, Neodesha
Radiant Electric Co-op, Inc., Fredonia
Schoolcraft Lumber Company, Fredonia
Self Service Grocery, Fredonia
State Bank of Fredonia, Fredonia
Wilson County Farm Bureau, Fredonia

Woodson

J. E. Sowder Seed Company, Toronto
State Exchange Bank, Yates Center
Woodson County Co-operative Association, Yates Center

Wyandotte

Bishop Lumber, Muncie
Coleman Implement Company, Bonner Springs
Commercial State Bank, Bonner Springs
Home State Bank of Kansas City, Kansas
McCormick Farm Equipment Store, Kansas City
State Tractor and Implement Company, Kansas City
The Brotherhood State Bank, Kansas City



Mike Willard, Madison Pace-Setters Club in Greenwood county, presents a check to Ross Clopton, Greenwood county Agricultural Hall of Fame chairman. This was the first contribution made to the Greenwood county chairman.



Jerry Bazil and Ronnie Symington, Riverview Club in Sedgwick county, waste no time in using an encyclopedia reference in their county extension office to plan an electric demonstration for county 4-H day. The set was presented the county office by the Kansas Division of Field Enterprises.



All Gove county 4-H'ers took TB skin tests in a campaign conducted by the 4-H Clubs. Girls from each of the county's clubs helped at clinics held at each school. Pictured here are Anna Marie Bryant, Judy Wertz and Virginia Courtney.

Pictures From Kansas 4-H'ers

SEND IN YOUR PICTURES

We want pictures taken by Kansas 4-H'ers. Prizes will be given for all pictures used in the Journal.

The picture need not be on 4-H Club work, but pictures with subjects related to 4-H Clubs are preferred. Action pictures are desired.

All pictures should be glossy prints at least five by seven inches in size unless accompanied by the negative.

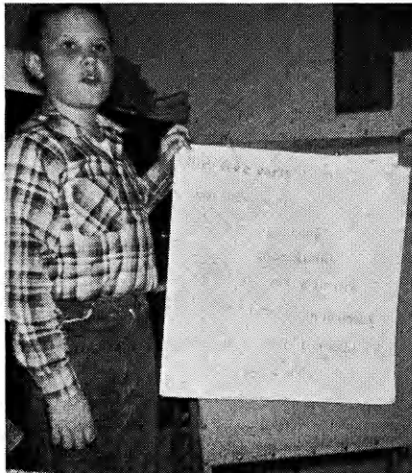
Photographs should be accompanied by a short statement explaining the picture and including the names of persons shown.

Entrants should designate their choice of the following prizes. A year's subscription to the National 4-H Club News, one roll of color film—sizes 620, 120, 616, 116, 127 or 35 mm only, or a 4-H Club photograph album.

4-H members, parents, leaders, county agents or friends of 4-H may send in pictures.



Jo Elaine Sloan, Happy Hustlers Club, was selected as the top 1960 Finney county 4-H secretary. She receives an award from the Garden City Co-op. George Voth, general manager, is making the award.



Allan Bouchey gives his talk on "Fire Safety at Christmas" at the Christmas party of the Livewire Club, Rooks county.

The Kansas Centennial was the theme for a ceremony used by the Maple Leaf Rustlers Club, Stevens county, in their model meeting. The Centennial seal was made on flannel

graph. The flags represent the flags that have flown over the land that is now Kansas—Texas, France, Spain, Mexico, Kansas and the United States.



New Awards For Junior Leaders

Two new awards programs for the 4-H junior leadership project have been announced by J. Harold Johnson, executive director of the Kansas 4-H Foundation, and Roger E. Regnier, State 4-H Club Leader.

Donor of new awards for Kansas junior leaders is Consumers Cooperative Association, Kansas City. CCA is a cooperative serving more than 350 Kansas cooperatives with wholesale sup-

The program provides special recognition for those delegates attending the state Junior Leadership Conference at Rock Springs Ranch, scholarships for counselors at the Conference, and a special fund for Conference program features.

An additional award provides an educational trip for a blue award group of junior leaders.

New National Awards

A new national awards program has been provided by the Sears Foundation. It provides medals for county winners, a trip to the National 4-H Congress for the state winner in the project, and scholarships for national winners.

Kansas Bankers' Awards

These two new awards programs will supplement a 30-year awards program provided by the Kansas Bankers Association. Among other things, the Kansas Bankers' Association provides funds for expenses of National 4-H Conference Delegates to Washington, D. C.

RSR Memorial

(Continued from page 21)

a project which everyone may well support because it has the dual purpose of honoring a fine young Kansas family, as well as providing additional facilities for the 4-H Center. This, and future generations of youth, will receive inspiration from the Petracek memorial."

Checks may be made payable to the Kansas 4-H Foundation, listed for the Petracek Memorial and mailed to Umberger Hall, KSU, Manhattan.

HISTORY LESSON



Nations which live by the great principles of Christianity, freedom and dignity of the individual will endure. We need to rededicate ourselves to active participation in programs which will preserve these principles upon which our republic was founded and developed.

There is a tendency on the part of too many people to shirk their duties as citizens and to react indifferently to the needs of our country. To combat this indifference, every home, school, and voluntary organization should encourage appreciation of the origin, history, and meaning of civic education for all Americans, including new citizens, and immigrant aliens.

We urge that all Americans, as individuals and groups, undertake with renewed vigor the basic responsibility of citizenship. This includes voting; active participation by the individual in the political party of his choice; a continuing study of local, state, national and international issues; and sound citizenship programs in our homes, schools, local organizations, and institutions.

Kansas Farm Bureau

105 County Farm Bureaus
Working Together



Above, Margaret Sughrue and Carol Pfeifer, Up and Atom Club, dip and drain doughnuts which are later served to employees of the Garden National and Fidelity State Banks, Garden City. The banks are Finney county sponsors of the Kansas 4-H Journal. Shown serving John Burnside of the Fidelity State Bank, below, are Judy Oeding and Janice Craig.



4-H Club Says "Thanks" with Coffee and Doughnuts for Two Garden City Banks

As a result of their Kansas 4-H Journal sponsorship in Finney county, employees and officers of Garden City's two banks were treated to coffee and doughnuts by Up and Atom Club members.

The banks—Garden National and Fidelity State—also provide trips to the American Royal for two outstanding Finney county junior leaders each year.

In previous years the Club secretary had written letters to the banks thanking them for their Journal sponsorship. This year the members decided a personal appearance with coffee and doughnuts would be a better way to show how much they really appreciated the banks' efforts.

The dough was prepared at the home of leaders Mr. and Mrs. Lyle Ashworth Friday night. Members of the Club's com-

munity relations committee came early Saturday morning to fry doughnuts and make coffee.

Committee members then divided into two groups to take the coffee and doughnuts to the two banks.

The appearance of the 4-H'ers with the refreshments really stopped banking operations. The large trays of doughnuts and the coffee soon disappeared. Then the 4-H'ers were bombarded with questions about 4-H. Bank officers also conducted the members on a tour of the bank to show the different operations.

'That was the easiest way to get acquainted that I ever saw' was the comment of one of the 4-H'ers as the group left for home. Everyone seemed to think the operation "Doughnuts and Coffee" was very successful.

To Meet a Problem

Everyone Worked for 4-H Building Project

The Star Valley Club, Decatur county, had a problem.

Their meetings were held in the Legion Hall, Lebanon, Neb. Since the club had 53 members, the Hall, in addition to being inconvenient, was too small.

Besides monthly meetings, the club had many outside activities with no place for them.

The only solution, it seemed, was to build their own building.

So, in the spring of 1956, the club rented a 97-acre field. The ground was summer fallowed with boys and their fathers do-

ing the field work. The girls and mothers brought food for a delicious meal following the work.

In 1957 the plot was put to milo, yielding 2600 bushels for the club and netting \$2191.96 toward the building fund.

In 1958 the ground was again summer fallowed, growing barley in 1959. This year's crop was 45 bushels per acre, netting 3084 bushels, selling for \$1,975.15.

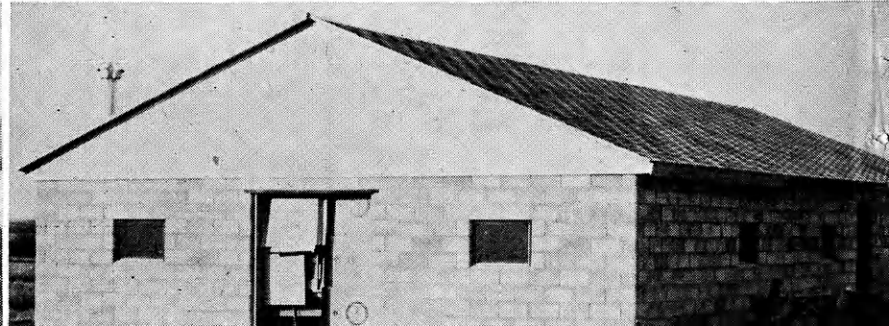
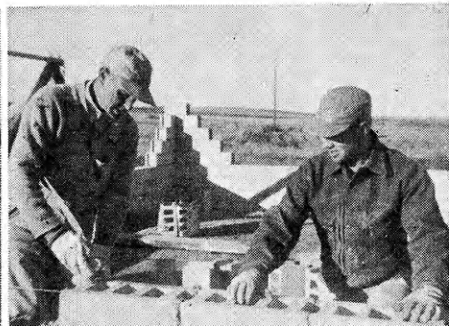
The building was now ready to take form. It was set on a plot purchased by the local HDU. The

60x28 foot building was made of cement blocks, cement floor and shingle roof. It was heated with gas and one end was walled off for the kitchen.

All the work, except for leveling the land and building the cement footing, was voluntary.

Everyone in the community worked hard to make their dream a reality. Most of the work was done by the 4-H Club. Star Valley members have met their problem. The building will prove to be of great value to them and to their community.

More than \$4,000 from a milo and a barley crop (barley labor as shown at center) of a 28' x 60' 4-H Club building (shown at right) for the Star Valley Club in Decatur county.



An Exciting New Project

Full details
now available



in this
Booklet

Your County Extension Agent Has Copies
Ask Your Local Leader or County Extension Office for One

SOUTHWESTERN BELL



TELEPHONE COMPANY

Ideas That Work

Reporter's Notice: The Kansas 4-H Journal would like to print interesting stories of your local club events, activities, members and leaders. Local club meeting stories, if submitted, should contain something unusual or of interest to people outside your county.

Outstanding projects, services or events of your club, or stories of individuals within your club that would give ideas to other 4-H'ers would make excellent stories.

Prizes will be awarded all blue award stories each month. Please state your choice (1) a year's subscription to the National 4-H Club News or (2) a hard cover loose leaf 4-H notebook.

Six Clubs Have Been Active 155 Years

Two of Clark county's six 4-H Clubs will be celebrating their 25th anniversary this year.

The clubs are the Sitka Hustlers and the Englewood Blazers. Both were organized in 1936 when the depression years began to show signs of letting up.

Prior to this time only two 4-H Clubs were organized in the county. These two clubs—organized in 1923 and still in existence—are the Bearcreek Boosters and the Lexington Clubs.

A partial description of the birth of 4-H in Clark county as taken from the 1923 Extension Council annual report by agricultural agent R. W. McCall reads as follows:

"Boys and girls club work was confined to organizing two pig clubs. It was decided to make both clubs sow and litter clubs and the best Poland China and Duroc Jersey gilts available were purchased. A membership of 15

boys and 3 girls were enrolled and carried their projects through in fair shape till records closed November 1st.

"Owing to high prices of feed and low prices and small demand for purebred hogs the pig club members showed little profit in any case and considerable losses in others. However, purebred stock was brought to 14 farms where 115 pigs were produced. This doubtless will be the means of interesting others in purebred hogs."

The remaining two Clark county clubs are the Acres Club, organized in 1947, and the Minneola Boosters club now observing its 15th anniversary.

Reporter

Solicit for Heart Campaign

February 26 was Heart Sunday for members of the Tiny Toilers Club, Pawnee county.

Forty members met at the chairman's home. A red heart was pinned on their lapel and they were handed an envelope containing the necessary equipment.

Each member was to canvass a certain area in Larned. The younger members were accompanied by adults, the older members canvassed by themselves.

4-H'ers canvassed the city in 2½ hours, collecting a total of \$369.14 for the American Heart Association.

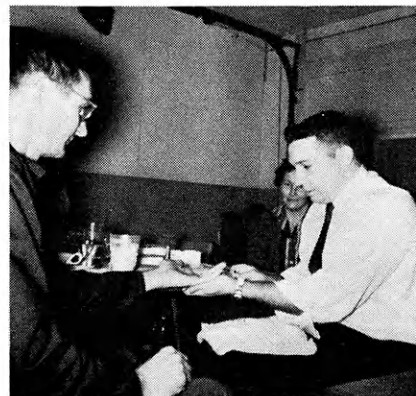
Marcia Lucas, Rep.

Test for Diabetes

When Andover Aces members, Sedgwick county, found out diabetes is usually an inherited disease which, if discovered in time, could be controlled by diet, they decided on a diabetes test program as their community service project.

The Club sponsored a free diabetes blood sugar test in the garage of one of their community leaders. Anyone in the community 18 years old or older was eligible.

The Sedgwick County Health Association furnished the equipment and nurses to help the many 4-H'ers, par-



Mr. Starky and Mrs. Billie Hanson, parents of members in the Andover Aces Club, help with the diabetes test project by pricking the finger of an unknown man.

ents and leaders of the Club conduct the test. 120 people took the test.

Barbara Gardner, Rep

Ideas in Brief

All 18 members of the Madison Pace Setter Club, Greenwood county, participated in the county 4-H Day and in the model meeting contest . . . Terry Palmgren led a discussion on the "dangers of Trampolines" at the February meeting of the Brownville Jayhawkers Club, Thomas county . . . The Lawn Ridge Club, Cheyenne county, gave \$3 to the Heart Fund . . . Jo Ann Maring, Patty Dorsch, Jimmy Gleason, Mary Lou Seitz, Mary Jones and Danny Jones are six new members of the Go Getters Club, Cheyenne county . . . Members of the Salem Club, Reno county, served 97



"Life on Mars! Life on Mars!"

Kansas 4-H Journal Sponsors

These Sponsors Have Renewed Their County Support of the Kansas 4-H Journal

- Anderson**
Garnett State Savings Bank, Garnett
- Barber**
The First National Bank, Medicine Lodge
- Clark**
Citizens State Bank, Ashland
Peoples State Bank, Minneola
Stockgrowers State Bank, Ashland
- Decatur**
Decatur Co-op Association, Oberlin
- Edwards**
Home State Bank, Lewis
- Grant**
Grant County State Bank, Ulysses
- Hamilton**
First National Bank, Syracuse
The Valley State Bank, Syracuse
- Hodgeman**
Farmers State Bank, Jetmore
Hanston State Bank, Hanston
- Jackson**
Cox Implement Company, Holton
Eubanks Implement Company, Holton
Farmers Union Co-op Association, Holton
Holton Lumber Company, Holton
Lueck Grain Company, Netawaka
- Labette**
American State Bank, Oswego
Chetopa State Bank, Chetopa
First National Bank, Edna
First National Bank, Oswego
First National Bank, Parsons
Labette County State Bank, Altamont
Parsons Commercial Bank, Parsons
State Bank of Parsons, Parsons
- Meade**
First National Bank, Meade
Fowler State Bank, Fowler
Plains State Bank, Plains

- Miami**
American State Bank, Osawatomie
Bank of Louisburg, Louisburg
- Mitchell**
Farmers and Merchants State Bank, Cawker City
Farmers State Bank, Asherville
Farmers State Bank, Hunter
First National Bank, Beloit
Simpson State Bank, Simpson
The Guaranty State Bank, Beloit
Tipton State Bank, Tipton
Traders State Bank, Glen Elder
- Montgomery**
Citizens National Bank, Independence
First National Bank in Coffeyville
- Pawnee**
First State Bank, Larned
- Pottawatomie**
First National Bank, Onaga
- Rooks**
Western Auto Associate Store, Stockton
- Russell**
Farmers State Bank, Lucas
Russell State Bank, Russell
- Saline**
The Farmers National Bank, Salina
- Wilson**
Cox Grain Company, Fredonia
First National Bank in Fredonia, Fredonia
First National Bank, Neodesha
Fredonia Co-op Ass'n., Fredonia
Glen Wiggans Drug Store, Fredonia
Home Lumber and Supply Company, Fredonia
Joe Armstrong Equipment, Fredonia
O. E. Woods Lumber Company, Neodesha
Radiant Electric Co-op Inc., Fredonia
Self Service Grocery, Fredonia
State Bank of Fredonia, Fredonia
Wilson County Farm Bureau, Fredonia

people at the Nickerson Debate Tournament, netting \$77.50 for the county's IFYE fund . . . Honored for 20 years 4-H leadership at the **Harvey** county 4-H achievement banquet were Mr. and Mrs. Clayton McClure of the Richland Livewires Club . . . Two new members, initiated at the February meeting, makes a total of 30 for Bird City Go Getters Club, **Cheyenne** county . . . Twenty-six members answered roll call at the February meeting of the Richland Club, **Harvey** county, with a health slogan . . . Hollywood bird-lovers flew to a joint meeting of the Jayhawk Club, **Ottawa** county, February 9, in a play at the Cole school as parents entertained the members . . . For the second year, a panel of two adults and one junior leader will judge each event at the **Wyandotte** county 4-H Days . . . Grinter-Go-Getters' newly organized band will participate in **Wyandotte** county 4-H Day activities . . . Members of the Campus Champions Club, **Harvey** county, will contribute to the county IFYE fund by giving one cent for each pound of their weight . . . Twenty-four first year 4-H photography members were present at a photo project meeting in **Newton**. Junior leaders Kathy Manning and Charles Graber assisted leader John Lockwood with demonstrations on "How to Load a Camera" and "Holding a Camera Steady" . . . Naming your valentine was the roll call at the Lucky 13 Club meeting, **Harvey** county . . . Members of the Pawnee Peppers Club, **Pawnee** county, presented a folk game "Put Your Little Foot" as their number on the program for the State Hospital patients. Three other musical numbers were also included in the annual community relations project for the club . . . Members of the Hayes Club, **Reno** county, have voted to express appreciation to the Hutchinson National Bank and Trust Company, and the Winchester Packing Company for their sponsorship of the **Kansas 4-H Journal** . . . Members of the Partridge

Club, **Reno** county, have started work on their new record books . . . Dianna Montford demonstrated "How to Cut Out a Dress Using a Pattern" at a meeting of the Plevna Club, **Reno** county . . . A cupid's verse was the answer to roll call for the February meeting of the Obee Club, **Reno** county . . . A fishing pond, booths of foodstuffs, sewing articles and crafts will be featured along with bingo at a carnival sponsored by the Reno 23 Club, **Reno** county, in February . . . Sled riding was recreation at the February meeting of the Sylvia Club, **Reno** county . . . Naming a "vegetable that begins with one initial of my name" was roll call for the North Reno Club, **Reno** county, meeting . . . County club agent Jim Childers explained the auto care and safety project at a recent meeting of the Arlington Club, **Reno** county . . . George Schlickau and Erwin Thalman, former members of the Haven

Club, **Reno** county, gave a demonstration on "Various Rations of Feed for Show Cattle" at a recent meeting of the club. Special guests were any **Reno** county 4-H member interested in beef projects . . . Community leaders, project leaders and officers of the Morris Club, **Wyandotte** county, added a purple seal to their club charter in a special ceremony at a recent meeting. This is the club's first purple seal in 21 years of leadership under Mrs. I. N. Hart . . . Funds from a box supper sponsored by the Grinter-Go-Getters Club, **Wyandotte** county, will be added to the club treasury . . . Shirley Hendrickson gave a photography demonstration at a recent meeting of the Advance Club, **Wyandotte** county . . . "Your Heart is Your Life" was the title of a talk given by Connie Countryman at a recent meeting of the Shawnee Spitfires Club, **Wyandotte** county.



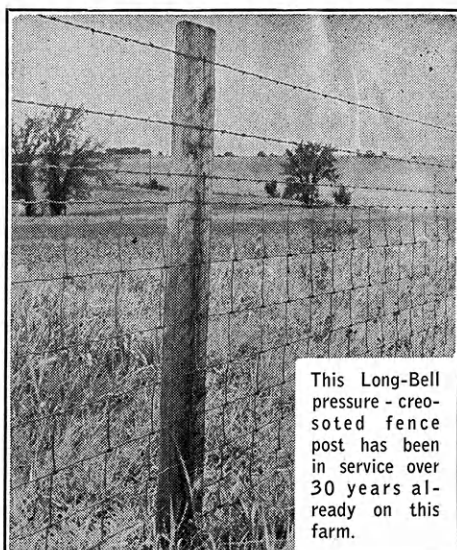
Good power tools in the farm shop can help make a success of your other farming projects. Take advantage of low-cost electric power.



Kansas Electric Cooperatives, Inc.

420 W. 9th

Topeka, Kansas



This Long-Bell pressure-treated fence post has been in service over 30 years already on this farm.

FENCE FOR YOUR FUTURE

WITH

"Long-Bell" Time Tested Posts

Long-Bell pressure-treated posts are the finest that can be bought. Made by the first company to commercially distribute this lifetime product and sold under a 35-year service replacement policy, they are still the choice of farmers everywhere who buy performance-tested products.



FOR "LONG-BELL" PRESSURE-TREATED PRODUCTS SEE YOUR RETAIL LUMBER DEALER.

Electricity Useful In Many 4-H Projects

For Jim Yager of Scott County, 4-H and the 4-H electric project are almost synonymous. He has participated in electric projects for six of the seven years he has been a member in the Lake Wide Awake 4-H Club.

Like other progressive 4-Hers, Jim has made good use of electricity in many of his other projects, such as gardening, poultry, woodworking, tractor care, crops, entomology, and junior leadership.

In his 1960 record book, Jim says "the biggest time-saving equipment used by he and his family are an electric egg washer and a washer-dryer.

Jim's father, Leslie Yager, is leader for the Scott County 4-H electric project members. He recently attended the electric leader training clinic held in Hutchinson that was sponsored by the electric power suppliers of Kansas through CREA.

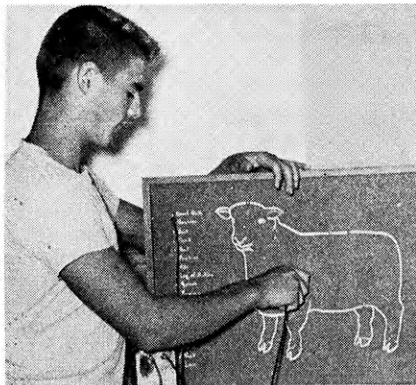
Jim has made several lamps in his 4-H woodworking project, including one of rolling pins, shaving soap bowls and an old wooden salad bowl.

In using electricity in his other projects, Jim says, "I used an electric sander and saw in my woodworking project, an electric water pump to water my garden, an electric heat lamp and fan for my poultry project and a seed cleaner for my crops."

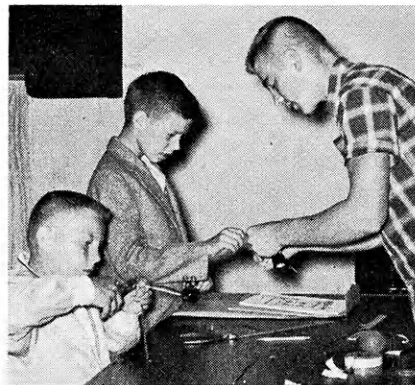
"In junior leadership I have given a number of electric demonstrations, helped wire the county fair 4-H exhibit building and helped my father teach the 4-H electric project classes."

Some of the demonstrations Jim has given at local and county-wide electric meetings include "Don't Be A Conductor," "Proper Soldering Methods," "Proper Wire Splices" and "Proper Methods to Make An Extension Cord."

To help teach younger members (older members and adults, too) the parts of a sheep so they can better judge livestock, Jim made this electric demonstration board.



Jim was a junior leader assistant project leader for the Scott county electric project. Here he is shown helping some of the county's 4-Hers make test lights.

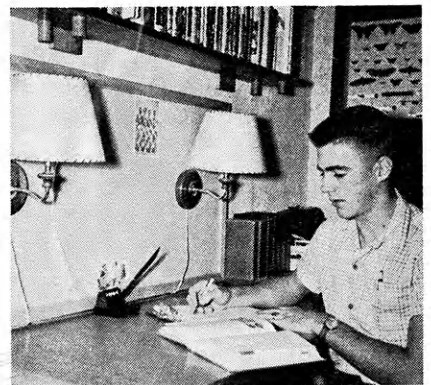


Jim and his father, Leslie, clean an electric motor, one of the many things Jim has done in 6 years of electric project work.



As a junior leader Jim helped to wire the 4-H exhibit building at the Scott county fair grounds.

Leslie Yager, Scott county electric project leader, attended the state electric leaders' training clinic in Hutchinson recently where he made this study center for Jim.



**WATCH THIS
 PAGE FOR IDEAS
 ON FARM AND
 HOME ELECTRIC
 PROJECTS**

Electric Light and Power Companies in Kansas

The Kansas Power and Light Company

Central Kansas Power Company

Kansas City Power & Light Company

Kansas Gas and Electric Company

Western Light & Telephone Company