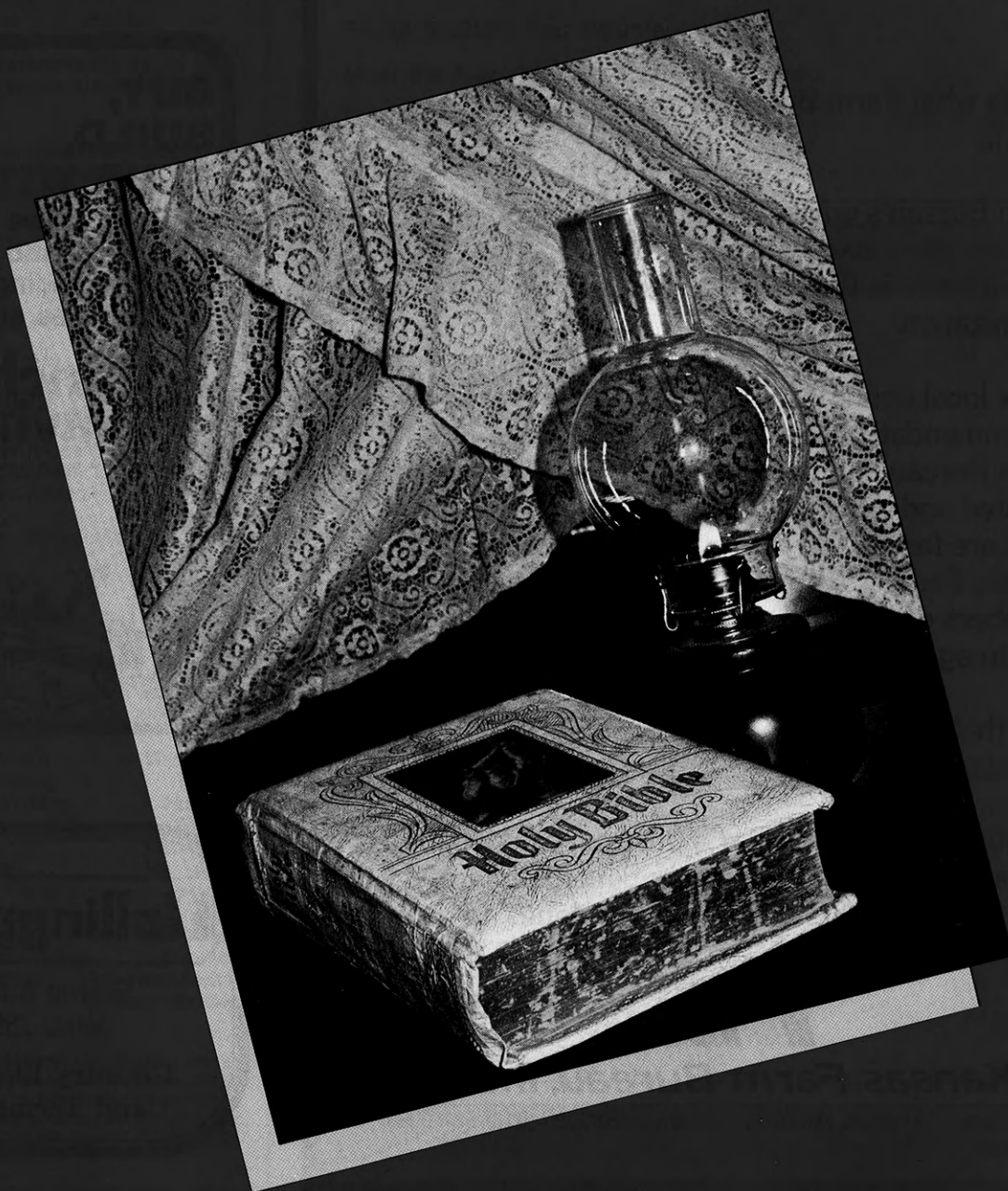


*We Wish You  
Peace and Joy  
Throughout the  
Coming Year...*

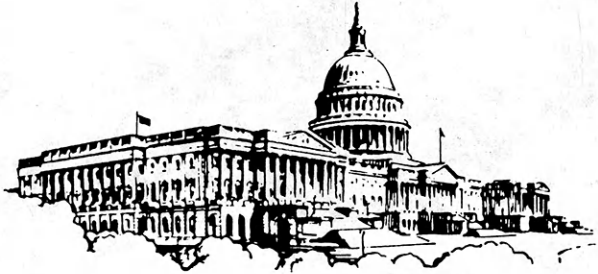
# KANSAS 4-H JOURNAL

The Family Magazine

November/December



# “ACTION REQUESTED!”



That's what Farm Bureau members say each year...

Farm Bureau's grassroots policy development process gives every member an opportunity to have a voice in the state's largest farm organization.

Once local county views are known, the policy recommendations are taken to the Kansas Farm Bureau annual meeting, where issues are debated and decided. National recommendations are forwarded to the American Farm Bureau Federation annual meeting. Local members decide what is and what isn't important to agriculture.

And that's why we are a "grassroots" organization.

Whether it's a farm bill or a problem with local roads and bridges, Farm Bureau members are able to get together and get things done.



**Kansas Farm Bureau, Inc.**

2321 Anderson Avenue, Manhattan, Kansas 66502 / (913) 537-2261

## We Relish Your Business!



**CONSOLIDATED  
Printing-Salina  
1-800-432-0266  
SERVING ALL OF KANSAS**

## BUY, BUILD, SAVE WITH US

- Competitive rates on savings and loans
- High-yielding C.D.'s
- 17 offices statewide

 **anchor  
savings**  
ASSOCIATION



**Collingwood**  
GRAIN INC.

*Serving Kansas  
Since 1890*

**Country Elevators  
and Terminals**



# KANSAS 4-H JOURNAL

**VOLUME XXXIV NO. 11  
NOV./DEC. 1988**

**Rhonda Wessel Atkinson ... Editor  
Linda Akin ... Secretary**

Address all correspondence:  
Kansas 4-H Journal  
116 Umberger Hall, KSU  
Manhattan, Kansas 66506  
Phone (913) 532-5881

Single subscriptions are \$4 per year.  
Group subscriptions are available upon  
request.

Kansas 4-H Journal is published  
10 times a year by  
**KANSAS 4-H FOUNDATION, INC.**

Bill Riley ... Executive Director  
Trisha Cash ... Secretary  
Ann Carr ... Asst. Treasurer

## BOARD OF TRUSTEES

Governor Mike Hayden,  
Honorary Chairman  
Martha Wreath Streeter,  
Chrm. ... Manhattan  
Glee S. Smith, Immediate  
Past Chrm. ... Larned  
Thomas M. Potter,  
Vice Chrm. ... Wichita  
John Junior Armstrong,  
Treas. ... Muscotah  
Ross Beach ... Hays  
Richard Dillon ... Hutchinson  
Marilyn Pence Galle ... Moundridge  
Balfour S. Jeffrey ... Topeka  
J. Harold Johnson ... Manhattan  
Wilbur E. Levering ... Topeka  
Bernard E. Nordling ... Hugoton  
Ron Robb ... Topeka  
C.R. Salmon ... Manhattan  
Walter Woods ... Manhattan  
Mrs. Dwane Wallace ... Wichita  
\*Glenn M. Busset ... Manhattan  
\*Roger E. Regnier ... Manhattan  
\*Dolph Simons, Sr. ... Lawrence  
\*Robert Wagstaff ... Shawnee Mission  
\*Advisory Member

Use of the 4-H name and symbol approved  
by the Secretary of Agriculture of the United  
States, January 23, 1951, under the provisions  
of the laws as reenacted by Sec. 707 of the Act  
of June 25, 1948. Public Law No. 772 80th Con-  
gress (10 USC 797).

## In This Issue

Clubs Meeting Phase III Challenge .....	4-5
1989 IFYE Ambassador Program Announced .....	6
Pilot Dog Program Award .....	7
4-H Journal Sponsor Recognition .....	8-9
4-H'er Sets Gypsy Moth Traps .....	10-11
Salute to State Fair Volunteers .....	12-14
Meet the New 4-H Demonstration Trainers .....	15-17
Flicks for 4-H Meetings .....	18-19
Special Thanks .....	22

## Advertisers' Index

Farm Bureau .....	2
Consolidated Printing .....	2
Anchor Savings .....	2
Collingwood Grain .....	2
Favorite Recipes Press .....	5
Kansas Lumber Dealers .....	20-21
Dillons Food Stores .....	21
Kansas Wheat Commission .....	21
Kansas Farm Bureau Insurance .....	23
Kansas Savings and Loan .....	23
Capitol Federal Savings .....	23
Sangamon Mills, Inc. ....	23

Cover Photography by Chip Herrenbruck, Cherokee Co.



# Clubs Meeting Phase III Challenge

## Sold at First Sight

By Beth Esfeld  
Busy Buzzers 4-H Club  
Barton County

Kansas 4-H Clubs  
Participating In  
"Kansas Courtyard"  
Campaign

- BARTON CO.  
Busy Buzzers 4-H Club
- CHEYENNE CO.  
**Pleasant Hill 4-H Club**
- DOUGLAS CO.  
Meadowlark 4-H Club  
Four Leaf Clover 4-H Club
- FRANKLIN CO.  
**Silver Leaf 4-H Club**
- GEARY CO.  
**McDowell Creek 4-H Club**
- HARVEY CO.  
Sedgwick Sunflowers 4-H Club
- JEFFERSON CO.  
**Grantville Circle G 4-H Club**
- KIOWA CO.  
Jayhawker 4-H Club
- LANE CO.  
**Dighton Goldiggers 4-H Club**
- LYON CO.  
**Sunnyside 4-H Club**
- MARION CO.  
**Florence Jayhawk 4-H Club**
- MIAMI CO.  
Rolling Hills 4-H Club
- MITCHELL CO.  
Post Rock 4-H Club
- MONTGOMERY CO.  
Valley Victors 4-H Club
- PAWNEE CO.  
Rozell Rockets 4-H Club
- PHILLIPS CO.  
Sunnyside 4-H Club
- POTTAWATOMIE CO.  
Black Jack 4-H Club
- ROOKS CO.  
Woodston Sunflower 4-H Club
- SALINE CO.  
4-H Ambassadors  
Sod Busters 4-H Club  
Space-Agers 4-H Club
- SHAWNEE CO.  
Pleasant Hill 4-H Club
- SMITH CO.  
4-Oaks 4-H Club
- STATEWIDE  
**Butler Collegiate 4-H Club**  
**KSU Collegiate 4-H Club**  
**Kansas IFYE Association**

Clubs listed in BOLD type have turned in their money. (Listing is through 11/3/88 press deadline.)

**B**usy Buzzer's 4-H, Barton Co., began their three week cook-book sale a week after the state fair.

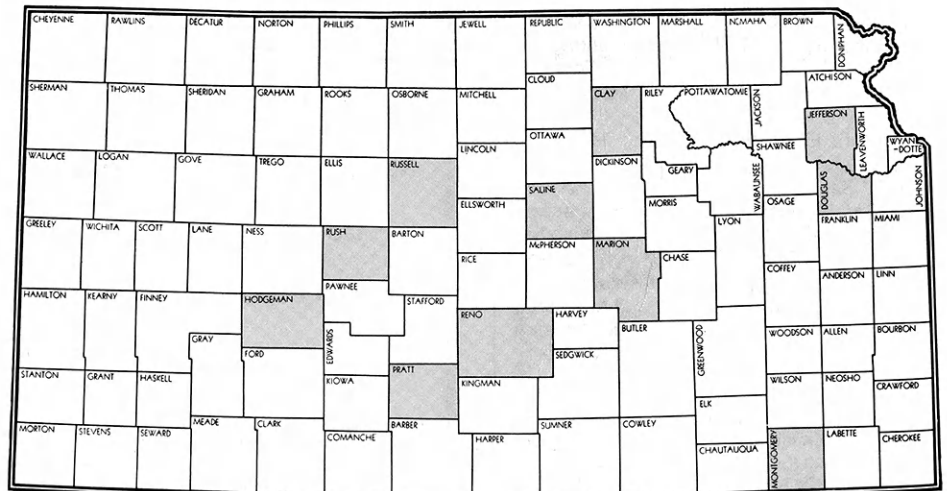
After seeing a copy of **Essence of KANSAS!**, the club members unanimously agreed that it was something they wanted to sell. Since a new club year was starting, we agreed that it would serve two purposes: (1) a service project - we voted to pledge money to the National 4-H Center Courtyard Project; and (2) a money making endeavor to replenish a dwindling club treasury.

Initially, we set our goal of selling

three cases. We also set an individual family goal of five books per family. Each family took a book for "showing" and took orders. What made it easy was the books could be ordered and received within a week. Most people didn't mind waiting - for those that did mind, we just happened to have a few extras for immediately delivery.

To market the books, we contacted the local newspapers. They did a very nice article, emphasizing the beauty and usefulness of the cookbook on their weekly "food page." A local discount store allowed us to sell from

(Continued on Page 5)



Immediately after the Phase III kick-off, 11 4-H Councils have already endorsed the Kansas Courtyard project. Join the campaign! Show your support by sending your endorsement to the Kansas 4-H Foundation today! (Forms in September 4-H Journal).





# Favorite Recipes Press

A division of Great American Opportunities, Inc.

Dear Kansas 4-H'ers,

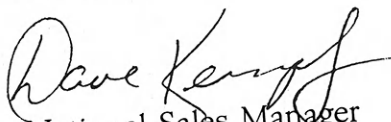
Congratulations! Cookbook sales of **Essence of KANSAS!** are a tremendous success and your spirit and enthusiasm for the first-ever Kansas 4-H cookbook is overwhelming.

Do you realize the Kansas 4-H Foundation ordered your second printing on Oct. 3, only 24 days after your state fair kickoff? You have sold over 11,500 books in that short period of time. We at Favorite Recipes Press and Great American Opportunities are hard at work on the second printing of 15,000 books due off the press the last week of November. With booming sales, the current book inventory is depleted. Please continue to place your book orders so shipping labels may be prepared to avoid any delays.

**Essence of KANSAS!** states, "Kansas 4-H'ers are dedicated to project excellence." You should be proud of a job well done, and we challenge you to continue your record-breaking pace of selling **Essence of KANSAS!**

Again, congratulations on a job well done! We look forward to your continued success.

Sincerely,

  
National Sales Manager

their lobby for an entire weekend. Selling at ladies bowling night also proved profitable. One copy made it to a beauty shop and was passed around - the phone almost rang off the hook with orders. Almost every copy sold had a slip of paper with it, stating who could be called to order more. We sold nearly a case on call backs.

Some of the favorable comments

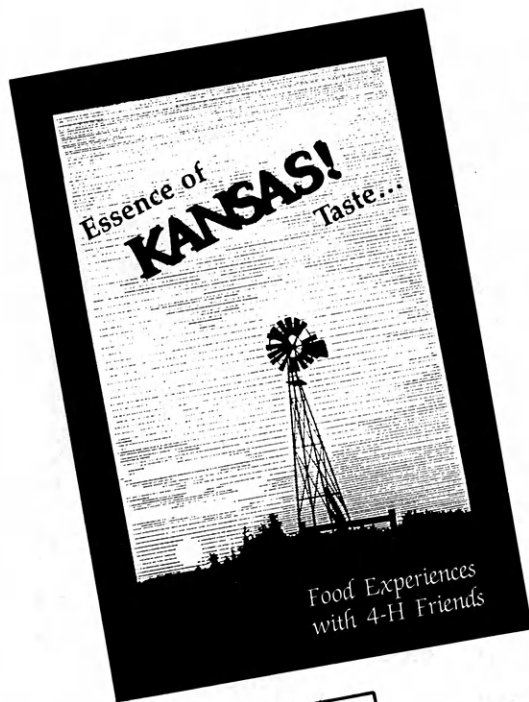
we received were about the beautiful color photographs, nutritional breakdown and spacing of recipes on the page.

At the end of our sale period of three weeks, we had sold seven cases (168 books). The day after we completed sales, we had three phone calls asking for 14 books total ... here we go again!

A happy ending to our successful story - eight cases sold and a few orders turned over to another Barton Co. 4-H Club.

We highly recommend the sale of **Essence of Kansas!** as a club project, which proves to be fast, fun, satisfying and profitable.

# A 4-H Fund Raiser - A Step Ahead Campaign



## A project of the Kansas 4-H Foundation

### Unique to Kansas 4-H

- ★ features winning 4-H color photography
- ★ tempting recipes contributed by statewide 4-H friends
- ★ 4-H ownership with pride

### Quality Publication

- ★ premiere "first of its kind" statewide book
- ★ nutritional analysis of each recipe
- ★ 388 recipes for 208 pages
- ★ limited edition hardback copies

### Statewide Sales Support

- ★ sales training sessions
- ★ Foundation statewide promotion/publicity/posters/press releases
- ★ professionally designed retail marketing display packages/kits

### Sunflower Cookies

- |                            |                            |
|----------------------------|----------------------------|
| 1 cup shortening           | 1/2 teaspoon baking powder |
| 1 cup sugar                | 1/4 teaspoon salt          |
| 1 cup packed brown sugar   | 2 cups quick-cooking oats  |
| 2 eggs                     | 1 cup flaked coconut       |
| 1 teaspoon vanilla extract | 1 cup sunflower seed       |
| 1 teaspoon soda            |                            |

Cream shortening, sugar and brown sugar in mixer bowl until light and fluffy. Blend in eggs and vanilla. Add sifted soda, baking powder and salt; mix well. Stir in oats, coconut and sunflower seed. Drop by spoonfuls onto ungreased cookie sheet. Bake at 350° for 8 to 10 minutes or until brown. Cool on wire rack.

Yield: 36 cookies.

Approx Per Cookie: Cal 154; Prot 2.0 gr; T Fat 9.5 gr; Chol 14.0 mg; Carbo 16.2 gr; Sod 53.7 mg; Potas 85.0 mg.

Holly Bigge, Stockton

### Club/County/State Benefits

- ★ good value product - \$10 retail
- ★ clubs can use \$3 for Campaign credit and recognition

### Sales Plan

- ★ a product to generate consumer demand
- ★ independent club participation possible
- ★ books ordered direct on toll-free number - shipped within 48 to 72 hours
- ★ available for prime retail marketing period - holiday gift sales

Contact your County Extension Agent for more information.

Send your name, address and phone to us and receive your own copy of Triple C. Requests to the Kansas 4-H Foundation, 116 Umberger Hall, KSU, Manhattan, KS 66502.

Clubs  
Courtyard  
Cookbooks

An informational newsletter from the KANSAS 4-H FOUNDATION on what's happening in A STEP AHEAD: The Kansas 4-H Campaign Phase III

# 1989 IFYE Ambassador Program Announced

The 1989 IFYE Ambassador Program has been announced by the National 4-H Council, according to Jim Ploger, Kansas IFYE Coordinator.

The Ambassador Program is designed for youth 15 to 19 years of age for a five week international experience outside the United States. During the program, the youth will "live the culture" with a host family and travel the country with a group leader. They will explore cities and towns and learn about fascinating international dimensions of some of their favorite 4-H projects.

Applications are due at the Kansas State 4-H Office by February 1, 1989. For applications, contact your local Extension Office or the State 4-H Office.

All of the Ambassador programs will be five weeks long, beginning on June 24, 1989, and ending on August 2. Each will include approximately three weeks with host families and two weeks of tours and workshops in or near the targeted country.

The cost for participants range from \$1,790 to \$3,195 depending on the country of destination.

With the successful response to last year's programs, Ambassador programs will continue with an international project emphasis highlighting adventure into the study of a culture and one of the following special areas:

SWEDEN: Natural Resources

ITALY: Small Business and Entrepreneurship

GERMANY: Camping and Canoeing

UNITED KINGDOM: Expressive Arts

NETHERLANDS: Water and Water Quality

SPAIN: Spanish

BELGIUM: Food/Nutrition and Hotel Management

FRANCE: International Careers

SWITZERLAND: Agriculture

LUXEMBOURG: Foreign Language Learning

AUSTRALIA: Photography

NEW ZEALAND: Sheep

TAIWAN: Education and Youth Programs

COSTA RICA: Citizenship

All countries have a limit of the number of participants. Applications are accepted on a first-come, first-served basis.

Kansas has had 74 youth participate in the IFYE Ambassador program since its inception about 20 years ago.

Hill's Science Diet Foods and Kansas 4-H Introduce...

## A Pilot Dog Program for Kansas 4-H'ers to Begin Training Puppies for the Visually Impaired

The independence and freedom offered by a guide dog to a sightless person is a gift beyond measure.

You can help give this special gift by participating in a unique program funded by a grant to the Kansas 4-H Foundation by Hill's Pet Products, makers of Science Diet Canine Growth and other foods for different times in the lives of dogs and cats.

Five puppies will be flown to Kansas by Delta Airlines in early January and additional puppies will be available throughout the year.

As a participating 4-H family, you bring the puppy into your home for one year and introduce him to as many different circumstances as possible. After the one year period, the dog is returned to Pilot Dogs, Inc., in Columbus, Ohio, to begin professional guide dog training. Successful guide dogs are placed with sightless recipients across the United States at no charge.

You can make a difference! Contact the State 4-H office for an official application. The deadline is Dec. 15.

**This project is brought to you by a grant to the Kansas 4-H Foundation, Inc., by Hill's Pet Products.**



PO BOX 148 • TOPEKA KS 66601 • 913 354 8523

DIVISION OF COLGATE-PALMOLIVE COMPANY

### MINIMUM QUALIFICATIONS FOR ADOPTING 4-H FAMILY

1. Current 4-H member enrolled in the dog project.
2. 4-H'er must be at least 12 years of age.
3. Puppy must be raised in the house.
4. Minimum 8'x12' enclosed outdoor run available.
5. Science Diet dog food allowance provided by Hill's Pet Products.
6. Veterinary care paid by the 4-H family.
7. Puppy must attend an obedience training course.
8. Socialization of puppy to different environments a priority.
9. Puppy will be returned to Pilot Dogs, Inc., at one year of age.

Additional Project  
Sponsors:

Delta Airlines  
Pilot Dogs, Inc.  
KSU Extension Service  
Kansas 4-H Foundation



Have you said thank you to your *Kansas 4-H Journal* sponsor? These sponsors bring the 4-H Journal free to almost all 4-H families in the state.

The 4-H Journal is the only state 4-H magazine in the nation. A project of the Kansas 4-H Foundation, the Journal is a communication tool which unifies the state, a form of youth recognition and a promotional tool for the Kansas 4-H club program.

We think the Journal is important. We hope you do, too. Please help ensure the continuance of the Journal by thanking your Journal sponsor today.

Bold face type designates sponsors of 20 years or more, and those with an asterick are sponsors of 35 years or more.

- ANDERSON**  
Anderson County 4-H Council
- ATCHISON**  
Rockwell International, Atchison  
Saunders Manufacturing Co., Atchison
- BARBER**  
\*First National Bank, Medicine Lodge  
Barber County 4-H Council
- BARTON**  
American State Bank & Trust., Great Bend  
Great Bend Co-op Association, Great Bend
- BOURBON**  
Citizens National Bank, Fort Scott  
Liberty Savings and Loan Association, Fort Scott  
Security State Bank, Fort Scott  
Union State Bank, Uniontown  
Bourbon County 4-H Council
- BROWN**  
The Bank of Horton, Horton  
The Bank of Robinson, Robinson  
Citizens State Bank, Hiawatha  
Farmers State Bank, Fairview  
The Morrill and James Bank, Hiawatha  
Morrill State Bank, Sabetha  
The Union State Bank, Everest
- BUTLER**  
Bank of Whitewater, Whitewater  
\*First National Bank & Trust, El Dorado  
National Bank of El Dorado, El Dorado  
Potwin State Bank, Potwin  
Rose Hill State Bank, Rose Hill  
State Bank of Leon, Leon  
Walnut Valley State Bank, El Dorado  
Butler County 4-H Council
- CHASE**  
\*Exchange National Bank, Cottonwood Falls  
\*The Peoples Exchange Bank, Elmdale  
Chase County 4-H Council
- CHAUTAQUA**  
Chautauque County 4-H Council
- CHEROKEE**  
Evan's Health Mart Drug, Columbus  
The Hartley Agency, Inc., Baxter Springs  
The Walberts and Timberlake Hardware & Furniture  
Company, Columbus  
H.D. Youngman Contractor, Inc., Baxter Springs  
Cherokee County 4-H Council
- CHEYENNE**  
Security State Bank, Bird City  
Cheyenne County 4-H Council
- CLARK**  
Citizens State Bank, Ashland  
Stockgrowers State Bank, Ashland  
Clark County 4-H Council
- CLAY**  
\*Union State Bank, Clay Center  
Clay County 4-H Council
- CLOUD**  
Citizens State Bank, Miltonvale  
Cloud County Bank and Trust, Concordia  
Exchange Bank of Clyde, Clyde  
\*The First National Bank of Glasco, Glasco  
People's Heritage Federal Savings & Loan  
Association, Concordia  
Cloud County 4-H Council
- COFFEY**  
Coffey County 4-H Council
- COMANCHE**  
\*The Peoples State Bank, Coldwater
- COWLEY**  
The First National Bank, Winfield  
The Home National Bank of Arkansas City,  
Arkansas City  
Cowley County 4-H Council
- CRAWFORD**  
Bank IV, Pittsburg  
The City National Bank of Pittsburg, Pittsburg  
Farmers State Bank, Walnut  
First National Bank, Girard  
First State Bank, Arma  
The First State Bank and Trust Company, Pittsburg  
Girard National Bank, Girard  
Hepler State Bank, Hepler
- DECATUR**  
Decatur Co-op Association, Oberlin
- DICKINSON**  
\*Farmers National Bank, Abilene

- DONIPHAN**  
Atchison County Co-op, Denton  
Doniphan County REA, Troy  
Farm Credit Services, Hiawatha  
Farmers State Bank, Watheha  
Troy State Bank, Troy  
Valley Grain & Fertilizer, Highland
- DOUGLAS**  
Douglas County State Bank, Lawrence  
Douglas County 4-H Council
- EDWARDS**  
The Home State Bank, Lewis
- ELK**  
Elk County 4-H Council
- ELLIS**  
\*Ellis State Bank, Ellis  
\*Farmers National Bank, Victoria  
\*First National Bank, Hays  
Farmers State Bank & Trust Co., Hays  
Ellis County 4-H Council
- ELLSWORTH**  
\*The Bank of Holyrood, Holyrood  
\*Citizens State Bank and Trust, Ellsworth  
\*Kanopolis State Bank, Kanopolis  
\*Lorraine State Bank, Lorraine  
\*Wilson State Bank, Wilson
- FINNEY**  
\*Fidelity State Bank, Garden City  
First National Bank of Holcomb, Holcomb  
\*Garden National Bank, Garden City  
Western State Bank, Garden City  
Finney County 4-H Council
- FORD**  
\*Bucklin State Bank, Bucklin  
Farmers State Bank, Bucklin  
\*Fidelity State Bank and Trust, Dodge City  
\*First National Bank, Spearville  
\*First National Bank & Trust, Dodge City  
\*Ford County State Bank, Spearville
- FRANKLIN**  
Franklin County 4-H Council
- GEARY**  
\*Central National Bank, Junction City  
J.C. Chamber of Commerce, Junction City
- GOVE**  
Howard & Ruth Cheney, Grainfield  
\*First National Bank, Quinter  
Grainfield Elevator, Inc., Grainfield  
Peoples State Bank, Grinnell
- GRAHAM**  
Citizens State Bank, Morland  
Consolidated State Bank, Hill City  
Farmers State Bank, Bogue  
\*Farmers and Merchants Bank, Hill City
- GRANT**  
\*Grant County State Bank, Ulysses  
Southwest Kansas National Bank, Ulysses  
Grant County 4-H Council
- GRAY**  
\*Farmers State Bank, Ingalls  
\*First National Bank in Cimarron, Cimarron  
\*Montezuma State Bank, Montezuma  
Gray County 4-H Council
- GREELEY**  
\*First National Bank, Tribune  
Greeley County 4-H Council
- GREENWOOD**  
Citizens National Bank, Eureka  
Emch Feed and Elevator Company, Madison  
Engle's Super Saver Food Center, Madison  
Eureka Federal Savings and Loan, Eureka  
First National Bank, Madison  
First National Bank, Hamilton  
Freeman's T.V. and Appliance, Eureka  
Home Bank and Trust Company, Eureka  
Home Lumber Company, Eureka  
Knight's Lumber, Hardware & Gifts, Severy  
Parks Oil Company, Eureka
- HAMILTON**  
First National Bank, Syracuse  
\*Valley State Bank, Syracuse  
Hamilton County 4-H Council
- HARPER**  
Anthony Farmers Co-op Elevator, Anthony  
Danville Co-op Association, Danville  
OK Grain, Kiowa

- State Line Grain Company, Manchester  
Harper County 4-H Council
- HARVEY**  
\*Bank IV, Newton  
\*First Bank of Newton, Newton  
\*The Halstead Bank, Halstead  
\*Hesston State Bank, Hesston  
\*Midland National Bank, Newton  
\*Sedgwick State Bank, Sedgwick  
\*State Bank of Burrton, Burrton  
\*Walton State Bank, Walton  
Harvey County 4-H Council
- HASKELL**  
\*The Haskell County State Bank, Sublette  
Haskell County 4-H Council
- HODGEMAN**  
\*Farmers State Bank, Jetmore  
\*Hanston State Bank, Hanston  
Hodgeman County 4-H Council
- JACKSON**  
Clark Chevrolet/Olds, Inc., Holton  
Holton Lions Club, Holton  
Jackson County Farm Bureau, Holton  
Jackson Farmers, Inc., Holton  
Oldham's Farm Sausage, Kansas City  
Jackson County 4-H Council
- JEFFERSON**  
Leavenworth-Jefferson Electric Co-op, McLouth  
Jefferson EHU Council  
Jefferson County 4-H Council
- JEWELL**  
Jewell County 4-H Council
- JOHNSON**  
Bank IV, Olathe  
First National Bank, Olathe  
Olathe State Bank, Olathe  
State Bank of Spring Hill, Spring Hill  
State Bank of Stanley, Stanley  
Johnson County 4-H Council
- KEARNY**  
Kearny County Feeders, Inc., Lakin
- KINGMAN**  
C.R. Calvert Company, Inc., Kingman
- KIOWA**  
Columbia Savings, Greensburg  
\*Greensburg State Bank, Greensburg  
\*Haviland State Bank, Haviland  
Kiowa County 4-H Council
- LABETTE**  
American State Bank, Oswego  
Chetopa State Bank and Trust, Chetopa  
First National Bank, Oswego  
First National Bank and Trust, Parsons  
First State Bank of Edna, Edna  
Labette County State Bank, Altamont  
Labette County 4-H Council
- LANE**  
\*First National Bank, Dighton  
First State Bank, Healy  
Lane County 4-H Council
- LEAVENWORTH**  
First State Bank & Trust, Tonganoxie  
Leavenworth County 4-H Council
- LINCOLN**  
Lincoln County 4-H Council
- LINN**  
Bank of Pleasanton, Pleasanton  
Farmers State Bank, Blue Mound  
First State Bank, Pleasanton  
Linn County Bank, La Cygne  
Linn County Farm Bureau, Mound City  
Prescott State Bank, Prescott  
Linn County 4-H Council
- LOGAN**  
\*Farmers State Bank, Oakley  
Gamma Pi Alpha Sorority, Oakley  
Logan County 4-H Council
- LYON**  
Americus State Bank, Americus  
Bluestem Farm and Ranch, Emporia  
Bunge Corporation, Emporia  
Columbia Savings, Emporia  
Eureka Federal Savings, Emporia  
Farm Credit Services, Emporia  
Hartford State Bank, Hartford  
Lyon County Farm Bureau, Emporia  
Lyon County State Bank, Emporia  
Olpe State Bank, Olpe  
Reading State Bank, Reading  
Lyon County 4-H Council
- MARION**  
Ag Service, Inc., Hillsboro  
Cooperative Grain and Supply, Hillsboro  
Crossroads Federal Credit Union, Goessel  
Durham State Bank, Durham  
Jayhawk 4-H Club, Florence  
Mid-Kansas Co-op, Moundridge  
Ratzlaff Automotive, Goessel  
Schmidt Studio, Goessel  
Sears Catalog Store, Marion  
Shaffer's Store, Lehigh  
Spring Valley Farm, Marion  
Windy-Pond Holsteins, Goessel  
Tampa Cooperative Association, Tampa  
Wheatland Bank of Goessel, Goessel
- MARSHALL**  
Blue Valley National Bank, Marysville  
Citizens State Bank, Marysville  
Citizens State Bank, Waterville  
Exchange Bank of Schmidt and Koester, Marysville  
First National Bank, Frankfort  
First National Bank, Summerfield





# Sponsors

- Marshall County Bank, Beattie**  
**State Bank of Axtell, Axtell**  
**State Bank of Blue Rapids, Blue Rapids**  
**Vermillion State Bank, Vermillion**
- MEADE**  
 Meade Co-op, Meade  
 \*Plains State Bank, Plains  
 Meade County 4-H Council
- MIAMI**  
**The Bank of Louisburg, Louisburg**  
 Eddy-Birchard Funeral Home, Osawatomie  
**First National Bank, Louisburg**  
 Miami Veterinary Clinic, Inc., Paola  
 Mossman Lumber Co., Louisburg  
 Progressive 4-H Club, Paola  
 Sinclair Rexall Drugs, Inc., Osawatomie  
 Miami County 4-H Council
- MITCHELL**  
 \*Farmers and Merchants State Bank, Cawker City  
 \*Farmers State Bank, Hunter  
 \*Farmers State Bank of Simpson, Simpson  
 \*First National Bank, Beloit  
 \*Guaranty State Bank, Beloit  
 \*Tipton State Bank, Tipton  
 \*Traders State Bank, Glen Elder
- MONTGOMERY**  
 Citizens National Bank, Independence  
 People's State Bank, Cherryvale  
 Montgomery County 4-H Council
- MORRIS**  
 Morris County 4-H Council
- MORTON**  
**Elkhart Cooperative Equity Exchange, Elkhart**  
 Elkhart T.V. Cable System, Elkhart  
**Elkhart True Value Lumber, Elkhart**  
 First National Bank, Elkhart  
**First State Bank, Elkhart**  
**Janzen-Elder Insurance and Real Estate, Inc., Elkhart**  
 Morton County Fair Association, Elkhart  
 Riley Chevrolet, Elkhart  
**Rolla Cooperative Equity Exchange, Rolla**  
 Morton County 4-H Council
- MCPHERSON**  
 McPherson County 4-H Development Fund
- NEMAHA**  
 Baileyville State Bank, Seneca  
 Citizens State Bank & Trust Co., Seneca  
 Community National Bank, Seneca  
**Farmers Co-op Elevator, Sabetha**  
 Farmers State Bank, Corning  
 Farmers State Bank, Sabetha  
 First National Bank, Centralia  
 First National Bank, Goff  
 First National Bank, Wetmore  
 Lortscher Agri-Service, Inc., Bern  
 Morrill State Bank & Trust Co., Sabetha  
**Nemaha County Co-op Association, Seneca**  
 Seneca Elevator Company, Seneca  
 State Bank of Bern, Bern
- NEOSHO**  
 Ash Grove Cement Company, Chanute  
 Lester T. Sunderland Foundation, Kansas City, MO  
 Nu-Wa Industries, Chanute  
 Neosho County 4-H Council
- NESS**  
 \*Bazine State Bank, Bazine  
 \*Citizens State Bank, Utica  
 \*First State Bank, Ness City  
 \*First State Bank of Ransom, Ransom  
 Ness County 4-H Council
- NORTON**  
 Exchange Bank of Lenora, Lenora  
 First Security Bank & Trust, Norton  
 First State Bank, Alma  
 First State Bank, Norton  
**Kellings Fine Foods, Norton**  
 Lenora Mercantile Exchange, Lenora  
 Norton Appliance and Furniture, Norton  
**Norton County Farm Bureau, Norton**  
 Rural Telephone Service Company, Inc., Lenora  
 Security Abstract Co., Norton  
 Norton County 4-H Council
- OSAGE**  
 Anstaett Angus Farm, Carbondale  
 Calvin Williams Law Office, Carbondale  
 Carbondale Pro Hardware, Carbondale  
 Dayhoff Elevator, Osage City  
 DeBaun International, Osage City  
 Dew Drop Inn, Osage City  
 Farm Bureau Ins., Ira Allen, Carbondale  
 Mr. & Mrs. Dean Gardner, Osage City  
 Handyman Hardware, Osage City  
 Haskins Conoco, Osage City  
 Jones Service Station, Melvern  
 Dr. Gerald Kerns, Osage City  
 Lyndon State Bank, Melvern  
**McNabb Grocery, Melvern**  
**Melvorn Food Center, Melvern**  
 Osage Consignment Auction, Lyndon  
 Osage Lions Club, Osage City  
 Skip's Thriftway, Carbondale  
 State Bank of Carbondale, Carbondale  
 Stella's Hair Cottage, Osage City  
 Steve White Agency, Osage City  
 The Pepper Patch, Carbondale  
 Workforce, Carbondale
- OSBORNE**  
**Downs National Bank, Downs**  
**Farmers National Bank, Osborne**  
**First National Bank of Natoma, Natoma**  
**First State Bank, Osborne**  
**First State Bank of Portis, Portis**  
**State Bank of Downs, Downs**  
 Osborne County 4-H Council
- OTTAWA**  
 Delphos Co-op, Delphos  
**Hoover's of Minneapolis, Inc., Minneapolis**  
**Loit Implement Company, Minneapolis**  
 Ottawa County 4-H Council
- PAWNEE**  
 \*First National Bank & Trust, Larned  
 \*First State Bank, Larned
- PHILLIPS**  
 \*First National Bank, Phillipsburg
- POTTAWATOMIE**  
**First National Bank, Wamego**  
**Farmers State Bank, Westmoreland**  
 J. Warren Hildreth, Wamego  
**Kaw Valley State Bank and Trust, Wamego**  
**St. Marys State Bank, St. Marys**  
**Union State Bank of Olsburg, Olsburg**  
 Pottawatomie County 4-H Council
- PRATT**  
**Cairo Co-op Equity Exchange, Cunningham**  
**Cairo Co-op, Preston**  
**Cullison Co-op, Pratt**  
**Iuka Co-op Exchange, Iuka**  
**Sawyer Co-op Equity Exchange, Sawyer**  
 Pratt County 4-H Council
- RAWLINS**  
**Farmers Bank and Trust, Atwood**  
**Farmers State Bank, Ludell**  
**Peoples State Bank, McDonald**  
**State Bank of Atwood, Atwood**  
 Rawlins County 4-H Council
- RENO**  
 Bank of Kansas, South Hutchinson  
 Buhler State Bank, Buhler  
 Central Bank and Trust, Hutchinson  
 Citizens State Bank, Arlington  
 Commerce Bank of Hutchinson, Hutchinson  
 Farmers State Bank, Yoder  
 First National Bank, Hutchinson  
 Haven State Bank, Haven  
**Hutchinson National Bank and Trust, Hutchinson**  
 Nickerson State Bank, Nickerson  
 State Bank of Plevna, Plevna  
 State Bank of Pretty Prairie, Pretty Prairie  
 Turon State Bank, Turon
- REPUBLIC**  
**Arbuthnot's Drug Company, Belleville**  
 The Walthers Oil Company, Cuba  
 Republic County 4-H Council
- RICE**  
 Alden State Bank, Alden  
**Bushton Grain and Supply, Chase**  
**Central Kansas Elevator, Lyons**  
**Chandler Bank, Lyons**  
**Collingwood Grain, Inc., Little River**  
**Farmers Co-op of Alden, Lyons, Sterling and Pollard**  
**Farmers State Bank, Sterling**  
**First National Bank, Sterling**  
**Home State Bank, Little River**  
 Lyons IGA Store, Lyons  
 Lyons Savings and Loan, Lyons  
**Pepsi-Cola Bottling Company, Hays**  
 Raymond State Bank, Raymond  
 Charles and Estelle Schmidt, Geneseo  
 Rice County 4-H Council
- RILEY**  
 Riley County 4-H Foundation, Manhattan  
 Vista Drive-In Restaurant, Manhattan
- ROOKS**  
 Central Kansas Credit Union, Stockton  
**First National Bank, Palco**  
 Norton-Decatur Co-op Electric Company, Norton  
 Rooks County 4-H Council
- RUSH**  
 Otis State Bank, Otis  
 Bison State Bank, Bison  
 Farmers Bank & Trust, La Crosse  
 Nekoma State Bank, La Crosse  
 Rush County 4-H Council
- RUSSELL**  
 Gorham State Bank, Gorham  
 Home State Bank, Russell  
 Peoples State Bank, Luray  
**Russell State Bank, Russell**  
 Russell County 4-H Council
- SALINE**  
 Assaria State Bank, Assaria  
 Farmers State Bank, Falun  
 First Bank and Trust, Salina  
**First National Bank and Trust, Salina**  
 Gypsum Valley Bank, Gypsum  
 National Bank of America, Salina  
 Salina Area Chamber of Commerce, Salina  
 Saline County 4-H Council
- SCOTT**  
 \*First National Bank, Scott City  
 \*Security State Bank, Scott City
- SEDGWICK**  
**Bank IV, Wichita**  
**Citizens State Bank, Cheney**  
**First National Bank in Wichita, Wichita**  
**Home State Bank, Clearwater**  
 Sedgwick County 4-H Achievement Foundation
- SEWARD**  
 \*Citizens State Bank, Liberal  
 \*First National Bank, Liberal  
 \*Peoples National Bank, Liberal  
 Seward County 4-H Council
- SHAWNEE**  
 Goodyear Tire & Rubber Co., Topeka  
 Silver Lake Bank, Silver Lake  
 4-H Activity Fund
- SHERIDAN**  
**First National Bank of Hoxie, Hoxie**  
**Mickey Hardware, Hoxie**  
 Selden State Bank  
**State Bank of Hoxie, Hoxie**
- SHERMAN**  
 Fairleigh Feeders II, Inc., Goodland  
 T-Bone Feeders, Inc., Goodland
- SMITH**  
**Farmers National Bank, Gaylor**  
**First National Bank, Kensington**  
**First National Bank, Lebanon**  
**First National Bank, Smith Center**  
**The Smith County State Bank and Trust Company, Smith Center**
- STAFFORD**  
 \*Farmers and Merchants State Bank, Macksville  
 \*Farmers National Bank, Stafford  
 \*First National Bank and Trust, St. John  
 \*Hudson State Bank, Hudson  
 \*Macksville State Bank, Macksville  
 \*St. John National Bank, St. John  
 Stafford County 4-H Council
- STANTON**  
**Collingwood Grain, Inc., Hutchinson**  
 Stanton County 4-H Council
- STEVENS**  
 \*Citizens State Bank, Hugoton  
 Stevens County 4-H Council
- SUMNER**  
 Farmers Cooperative Grain Company, Caldwell  
 Farmers Cooperative Grain Company, Conway Springs  
 Hunnewell Elevator, South Haven  
**McDaniel Grain Company, Geuda Springs**  
**McDaniel-Wapels, Inc., Wellington**  
 Ross Industries, Wellington  
**Wolcott and Lincoln, Inc., Corbin, Milan, Perth, Riverdale, South Haven, Wellington**  
 Sumner County 4-H Council
- THOMAS**  
 Abilene Hustlers 4-H Club  
 Bartlett & Company Grain, Rexford  
 Brewster Prairie Gem 4-H Club  
 Gem 4-H Club  
 Menlo-Rexford Co-op Association, Menlo  
 Rexford Grain, Rexford  
 Solomon Valley 4-H Club  
 Tumbleweed 4-H Club
- TREGO**  
 Dinkel Oil Company, Collyer  
 Eberle Oil Company, WaKeeney  
 Malsom Implement Company, Collyer  
 Dave & Joan Roberts, WaKeeney  
**Schreiner's Service Station, Ogallah**  
 Trego County 4-H Council
- WABAUNSEE**  
**Alta Vista State Bank, Alta Vista**  
**\*First National Bank, Alma**  
**\*First National Bank, Harveyville**  
 Flint Hills Bank of Eskridge, Eskridge  
**\*The Stockgrowers State Bank, Maple Hill**  
 Wabaunsee County 4-H Council
- WALLACE**  
 Wallace County 4-H Council
- WASHINGTON**  
 Washington County 4-H Council
- WICHITA**  
 \*First State Bank, Leoti  
 Wichita County 4-H Council
- WILSON**  
 Dr. Bert Chronister, Neodesha  
**Cox Grain, Inc., Fredonia**  
**First National Bank, Fredonia**  
**First Neodesha Bank, Neodesha**  
**Fredonia Co-op Association, Fredonia**  
 IGA-Fredonia, Fredonia  
**Neodesha Building Supply, Neodesha**  
**Radiant Electric Co-op, Inc., Fredonia**  
**State Bank of Fredonia, Fredonia**  
**Wilson County Farm Bureau, Fredonia**  
 Wilson County 4-H Council
- WOODSON**  
 Mr. Bill Mentzer, Piqua  
**J.E. Sower Seed Company, Toronto**  
 Ms. Gail Tracey, Toronto  
 Yates Center Branch Bank, Yates Center  
 Woodson County 4-H Council
- WYANDOTTE**  
**Brotherhood State Bank and Trust, Kansas City**  
**Coleman Implement Company, Bonner Springs**  
**Commercial State Bank, Bonner Springs**  
**Home State Bank, Kansas City**  
 Kaw Valley State Bank & Trust, Kansas City  
 Welborn Animal Hospital, Kansas City  
 Wyandotte County 4-H Council



## 4-H'er Sets Gypsy Moth Traps

By Kendall G. Schaaf  
Johnson Co.

**W**hat is a trap for gypsy moths and why does the state of Kansas set traps for such insects?

I am a ten-year member of the Greenwood Meadowlarks 4-H Club located in the northeastern section of Kansas — Johnson County. I have been awed by the little critters that we share habitation with on this planet called earth. Little critters — meaning insects! Entomology, the study and collection of insects, has been the main focal point of my 4-H projects.

I was involved with a very unique learning experience this past summer in setting out 40 gypsy moth traps in the northeast section of our state. I set the traps out in Johnson, Wyandotte, Leavenworth, and Miami counties, working closely with the Kansas State Board of Agriculture Plant Health Division, State Entomologist, Bill Hilbert; and my Johnson County 4-H Extension Agent, Dennis Patton. I set the traps out in early June and checked regularly every month during June, July, August, and September.

A gypsy moth is an insect belonging to the order of Lepidoptera (butterflies and moths). One distinction between moths and butterflies is that moths have a feathery type antenna and are usually seen flying at night.

The gypsy moth is a native of the Old World having migrated to the New World by means of eggs laid on transportable objects. The adult moth will lay eggs on fenders, picnic tables and other outdoor equipment then these are later transported to different

regions in the United States.

The gypsy moth caterpillars (larvae) feed on foliage and will defoliate trees in a very short time. We need to protect our trees for future generations and to do this the state of Kansas is one of the states that participates in the national control of the moth being introduced in the midwest.

The cardboard trap is coated with a non-drying vaseline-type goop. When the male gypsy moth comes to investigate — they are trapped. I labeled each trap with state, county and trap number and where each trap was located. I stapled the pheromone plastic strip (a chemically attractive sexual scent), to each trap and assembled the cardboard trap by punching holes in the top to thread heavy twine so each trap would be secured in trees. I had to take into consideration the alignment of the trap to the prevailing wind so the pheromone would attract the males and thus entice them into the trap. The traps needed to be hung out of sight so that any human tampering would not be involved. I placed the traps around the Kansas City area, camp sites, camper sales and service, state park and recreational areas, large truck terminals/stops, parking areas near tourist attractions, railroad yards that receive cars from Eastern states, nurseries, weight stations and roadside rest areas. I covered a total of over 1200 miles in setting, monthly checking and collecting the traps.

I also set out 7 Japanese beetle traps in the railroad yards in Kansas City, Kansas in early June. The Japanese beetle traps are a state-funded project that I checked each week and collected the beetles caught

and reported this information to Mr. Hilbert. This project is important as well to gardeners, farmers, homeowners, and business owners of Kansas since Japanese beetles are ravenous eaters of foliage. They are not native to Kansas. The Japanese beetles were introduced to the United States in the early 1900's. The traps work on a funnel principal. A clove-like smelling pheromone is spread around a funnel. When the male beetles come to investigate the pheromone, they fall into the funnel, and are unable to get out.

I have shared the gypsy moth and Japanese beetle educational information with county and state-wide presentations at my local club tour, local and county entomology meetings, and regional Johnson County Lawn Care Fair.

I have also promoted the study of entomology by displaying my insect collections and educational box at local schools, nursing homes, Shawnee historical events and local, county and state fairs.

This past summer I taught 176 youngsters at three county day camps and used sun printing to teach the kids about entomology and forestry. At the largest day camp I had the kids make their own insect traps out of pine boards and screen that I had previously cut to size.

I have enjoyed sharing, working and learning more about the critters that you and I live with everyday. After all, insects are a fact of life and others who have studied them, like me, find them to be quite interesting in their ways of survival and protection.



*Kendall Schaaf, Johnson Co., ▶  
discusses his display with interested  
on-lookers.*

*Kendall displays his  
gypsy moth trap. ▼*

*Photos by: William S. Sullins, Extension  
Communications specialist, Kansas State  
University.*





# Thank You... State Fair

We salute these 483 volunteers who donated their personal time to make long miles and personal expense these volunteers put forth today's Kansas 4-H youth. For those who checked-in entries, we extend our sincere appreciation, and congratulate the assistance, the Kansas State Fair could not maintain the 4-H division of the state fair brings together 4 in one of the state's largest events shown stressed to all 4-H members, and the state fair under your excellent leadership these young people. Unfortunately we will miss someone, and for any oversights. If you who is not listed, please name and county state 4-H

## ARTS & CRAFTS

- Cherokee Co.**  
Phyllis Kriesel
- Clark Co.**  
Cathy Thorsell
- Edwards Co.**  
Cathy Counts
- Ottawa Co.**  
Sandy Shields
- Rooks Co.**  
Clarene Goodheart
- Seward Co.**  
Jan Toot

## BANNERS

- Lyon Co.**  
Larry Browning  
Sandy Browning
- Sedgwick Co.**  
Bill Fultz

## BEEF SHOW

- Cowley Co.**  
Chris Baker
- Dickinson Co.**  
Anita Conley  
Dennis Will
- Gray Co.**  
Doug Stuckey
- Harvey Co.**  
Ann Religa
- Kansas State University**  
Larry Corah  
Patsy Houghton  
Terry Weeden
- Lane Co.**  
Evan Winchester
- Lyon Co.**  
David Pace
- Osage Co.**  
Ron Graber
- Phillips Co.**  
Bud Malmberg
- Stevens Co.**  
Gary Gold
- Sumner Co.**  
Julie Koci
- Woodson Co.**  
Dale Lanham

## BEEF QUIZ BOWL

- Norton Co.**  
Keith VanSkiel

## BEEES

- Franklin Co.**  
Gary Ross

## CLOTHING CLERKS

- Allen Co.**  
Marge Sharp
- Finney Co.**  
Scarlet Rauth
- Geary Co.**  
Audrey Arends
- Osborne Co.**  
Mary Golladay
- Rice Co.**  
Ann Hayes  
Estelle Reed
- Sedgwick Co.**  
Deanne DeGood  
Sandy Rhodes  
Kathleen Reichenberger  
Janell Smith
- Stafford Co.**  
Judy Seibert

- Sumner Co.**  
Anna Mae Patton
- Wichita Co.**  
Belinda Oldham

## CLOTHING CHECK-OUT

- Finney Co.**  
Stacey Warner
- Ness Co.**  
Julie Blakeslee
- Osborne Co.**  
Mary Fisher-Rotman
- Republic Co.**  
Susan Krumm
- Scott Co.**  
Betty LaToush
- Sherman Co.**  
Linda Wright
- Smith Co.**  
Jodi Besthorn

## CLOTHING DISPLAY

- Decatur Co.**  
Tammy Edwards
- Geary Co.**  
Donna Martinson
- Graham Co.**  
Anita Davis
- Hodgeman Co.**  
Linda Walter
- Riley Co.**  
Sharolyn Flaming
- Stanton Co.**  
Lori Whitehair

## CROCHET & KNITTING CHECK-OUT

- Jefferson Co.**  
Cindy Williams
- Miami Co.**  
Crystal Coffman
- Phillips Co.**  
Vicky Overly
- Sumner Co.**  
Linda Mirt

## CROCHET & KNITTING DISPLAY

- Ellis Co.**  
Carla Morrill
- Rooks Co.**  
Clarene Goodheart  
Loren Goodheart
- HOME ENVIRONMENT**
- McPherson Co.**  
Linda Pettijohn
- Stafford Co.**  
Linda Gleason

## CROPS

- Finney Co.**  
Dean Whitehill
- Ford Co.**  
Nancy Jo Kent  
Diane Kline  
Don Wiles
- Gray Co.**  
Doug Stucky
- Jewell Co.**  
Bill Wood
- Lyon Co.**  
Charlotte Lans
- McPherson Co.**  
Jana Habiger
- Pawnee Co.**  
Bob Frisbee
- Riley Co.**  
Dave Regehr
- Russell Co.**  
Del Jepsen
- Saline Co.**  
Tom Maxwell
- Scott Co.**  
Dale Fjell
- Seward Co.**  
Merrill Mikesell

## DAIRY JUDGING

- Clay Co.**  
Greg McClure
- Dickinson Co.**  
David Myers
- Franklin Co.**  
Bob Bozworth
- Harvey Co.**  
Duane Thiessen
- Jackson Co.**  
Michael Coe
- Marion Co.**  
Sheryl Funk
- Morton Co.**  
Rod Williams
- Riley Co.**  
Russell Brown  
Greg Doud  
Mike Mee  
Cindy Siemans  
Pam Withers
- Saline Co.**  
Pam VanHorn
- Washington Co.**  
Terry Ohlde

## DAIRY GOATS

- Dickinson Co.**  
Gary Yocum  
Jan Yocum
- Reno Co.**  
Estes Robinson  
Virginia Robinson

- Sedgwick Co.**  
Wallace Lindenmuth

- Stafford Co.**  
Willard Williams

## DAIRY SHOW

- Morton Co.**  
Rod Williams

## DAIRY QUIZ BOWL

- Miami Co.**  
Herschel George

## DEMONSTRATION CONTEST

- Reno Co.**  
Chris Wilson

## DOG

- Cloud Co.**  
Sarah Holbert
- Finney Co.**  
Sandra Brennan  
Becky Walsh
- Jefferson Co.**  
Denise Kobuszewski
- Lyon Co.**  
Amy Randolph
- McPherson Co.**  
Sherry Siemens
- Neosho Co.**  
Marta Laylander
- Phillips Co.**  
Tabatha Goracke  
Sandy Olmsted  
Thelma Thacker
- Reno Co.**  
Kim Dickerson  
Lynn Kennedy  
Bruno Marx  
Jan Maskil  
Jesse Neill  
Rita Neill  
Sandy Talbert  
Craig Williams

- Riley Co.**  
Cheryl May  
Alice Michaels

- Sedgwick Co.**  
Janice Pope  
Penny Pope  
Marvalene Ray  
Enas Walker

- Wabaunsee Co.**  
Kirsten Pease

- Washington Co.**  
Glenda Keller

- Wichita Co.**  
Stephanie Routon

## ELECTRIC

- Barton Co.**  
Mark Cunningham  
Joe Murphy
- Clay Co.**  
Roscoe Barksdale
- Dickinson Co.**  
Kelly Bush
- Ellsworth Co.**  
Dale Wielhold
- Osage Co.**  
Dick Golladay
- Pratt Co.**  
Les Polo
- Reno Co.**  
Ron Harms
- Riley Co.**  
Joe Harner  
Pat Murphy
- Sedgwick Co.**  
Dean Harding
- Sumner Co.**  
Mark Brown
- Trego Co.**  
Vernon Wilson

## ENTOMOLOGY

- Ellis Co.**  
Terry Mannell
- Sheridan Co.**  
Dale Weishaur

## FORESTRY

- Kingman Co.**  
Norm Schlesener
- Riley Co.**  
Bill Louchs
- Shawnee Co.**  
Gray Boutz



# Volunteers

activities at the 1988 Kansas State Fair a success. The countless hours, demonstrates the dedication and commitment of those leading to those who ran the shows ... to those who check-out late you on a job well done. Without your volunteer volume and quality of activities at its current level. families and friends statewide to participate in Kansas 4-H. Project excellence is the quality of events and activities at the fair. This listing sets a good example for you in a listing such as this, we apologize in advance if you do not know of someone who would like to send their name to the office.

## FASHION REVUE

- Allen Co.**  
Brenda Allen  
Gayla Allen  
Jeanice Cress  
Ellen Thompson
- Anderson Co.**  
Nancy Schuster
- Bourbon Co.**  
Joyce Fowler  
Barbara Coyan  
Beverly Helton  
Lisa Jackson  
Joyce Sinn  
Michelle Smith
- Cherokee Co.**  
Evon Goettel  
Phyllis Kriesel  
Shawna Maxwell
- Coffey Co.**  
Rita Dawson
- Crawford Co.**  
Gayle Price  
Juanita Johnson
- Elk Co.**  
Shelby Perkins
- Franklin Co.**  
Marcia Mages
- Geary Co.**  
Michelle Munson
- Greenwood Co.**  
Jan Stephens
- Labette Co.**  
Marvin Anderegg  
Jean Rowland
- Linn Co.**  
Lisa Pawlowski
- Lyon Co.**  
Gregg Hoy  
Marilyn Hoy  
Janet Rediker  
Elaine Sexson  
Carol Wagner
- Miami Co.**  
Crystal Coffman
- Montgomery Co.**  
Linda Carr  
Brian Swisher

**Morris Co.**  
Ann Sparke

**Neosho Co.**  
Lois Carlson

**Osage Co.**  
Fran Richmond

**Southeast Area**  
Mariellen Appleby

**Wilson Co.**  
Amy Brown

**Woodson Co.**  
DeAnn Hiss  
Elinor Hiss

## FOODS & NUTRITION

- Barton Co.**  
Joyce Estfeld  
Barbara Lilyhorn  
Janae Pike  
Ranee Pike
  - Finney Co.**  
Becky Walsh
  - Franklin Co.**  
Marcia Mages
  - Geary Co.**  
Sue Penn  
Lisa Teetzen
  - Harvey Co.**  
Marcia Hahn
  - Kingman Co.**  
Marilyn Glenn  
Twila Hill
  - Leavenworth Co.**  
Dorothy Klammm
  - Marion Co.**  
Kathy Goodin
  - Marshall Co.**  
Gloria Gaston
  - McPherson Co.**  
Fern Raleigh
  - Pottawatomie Co.**  
Carol Fink
  - Sedgwick Co.**  
Paula Webb  
Becky Wondra
- ## GEOLOGY
- Finney Co.**  
Jason Louk
  - Pottawatomie Co.**  
Lois Bartley

**Saline Co.**  
Pat Linquist  
Jo Johnson  
Tammy Johnson

## HOME ENVIRONMENT

**McPherson Co.**  
Linda Pettijohn

**Stafford Co.**  
Linda Gleason

## HOME ECONOMICS QUIZ BOWL

**Allen Co.**  
Jeanice Cress

**Cherokee Co.**  
Evon Goettel

**Cheyenne Co.**  
Libby Curry  
Vicki Cress

**Clay Co.**  
Verna Musselman

**Elk Co.**  
Shelby Perkins

**Gove Co.**  
Tranda Watts

**Grant Co.**  
Cathy Engler

**Greeley Co.**  
Diane Nielson

**Hamilton Co.**  
Becky Wallace

**Kingman Co.**  
Marilyn Glenn

**Lane Co.**  
Connie Bretz

**Linn Co.**  
Lisa Pawlowski

**Marion Co.**  
Kathy Goodin

**Mitchell Co.**  
Mary Schrandt

**Montgomery Co.**  
Linda Carr

**Neosho Co.**  
Lois Carlson

**Pratt Co.**  
Jean Clarkson-Frisbie

**Reno Co.**  
Phyllis Howerton  
Scharon Merriman

**Scott Co.**  
Betty LaTough

**Wilson Co.**  
Amy Brown

## HORSE

**Anderson Co.**  
Deanna Fuhrman  
Duane Fuhrman

**Barton Co.**  
Steve Couch  
Rick Feldman

**Butler Co.**  
Larry Bernstorf  
Gene Maggard

**Clark Co.**  
Rick Nelson

**Coffey Co.**  
Rita Dawson

**Ellis Co.**  
Rosemary Smith

**Gove Co.**  
Marvin Slaybaugh

**Greenwood Co.**  
Marcia Bailey  
Jeff Davidson

**Haskell Co.**  
Ron Wilcox

**Johnson Co.**  
Dean Wall  
Karen Wall  
Judy White

**Lane Co.**  
Jerry Rieman

**Leavenworth Co.**  
Bill Rollins  
Linda Rollins

**Lyon Co.**  
Charlotte Wessel

**Marion Co.**  
Steve Tonn

**McPherson Co.**  
Jana Habiger

**Meade Co.**  
Max Papay

**Montgomery Co.**  
Don Smallwood

**Morris Co.**  
Frank Buchman  
Margaret Buchman

**Phillips Co.**  
Bud Malmburg

**Rawlins Co.**  
Ann Domsch

**Reno Co.**  
Bill Horton  
Don Kueck

**Riley Co.**  
Kathy Anderson  
Tami Camac  
Anne Lenhart  
Bernard Wells  
Kathy Vink

**Rooks Co.**  
Allen Dinkel

**Saline Co.**  
Allen Likes  
Dena Tabler

**Scott Co.**  
Everett Miller

**Shawnee Co.**  
Glen Beck  
Naoma Beck  
Scott Beck  
Eldon Clawson  
Don Hildebrand  
Flora Hildebrand  
Bill Kemp

**Stevens Co.**  
Gordon Christensen

**Washington Co.**  
Larry Nutsch

## HORTICULTURE

**Harvey Co.**  
Ann Religa

**Lincoln Co.**  
Milton Krainbill

**Lyon Co.**  
Linda Kurzen  
Harry Stephens

**McPherson Co.**  
Linda Pettijohn

**Reno Co.**  
Bob Neier

**Rice Co.**  
Lori Shoemaker

**Riley Co.**  
Kent Kimmons  
Larry Leuthold  
Chuck Marr

**Sheridan Co.**  
Dana Belshe

## LIVESTOCK JUDGING CONTEST

**Allen Co.**  
Tom Maxwell

**Anderson Co.**  
Maurice Harrington

**Barber Co.**  
Todd Wheelock

**Bourbon Co.**  
Glen Newcomer

**Brown Co.**  
Alan Ladd

**Butler Co.**  
Virgil Biby  
John Boyd

**Cheyenne Co.**  
Mike Bandel  
Daryl Vandike

**Clay Co.**  
Greg McClure

**Coffey Co.**  
Warren Bell

**Cowley Co.**  
Chris Baker

**Crawford Co.**  
Jim Mengarelli  
Bill Mein

**Edwards Co.**  
Gerry Dreher

**Haskell Co.**  
Terry Troutt

**Johnson Co.**  
Rick Miller

# '88 State Fair Volunteers

Congratulations on a Job Well Done!

**Labette Co.**  
Marvin Anderegg

**Lane Co.**  
Evan Winchester

**Lyon Co.**  
Mike Barnett  
Dave Pace

**Marion Co.**  
Steve Tonn

**McPherson Co.**  
Dale Ladd

**Meade Co.**  
Bruce McCarley

**Mitchell Co.**  
Gary Fike

**Montgomery Co.**  
Brian Swisher

**Norton Co.**  
Keith VanSlike

**Osage Co.**  
Ron Graber

**Phillips Co.**  
Bud Malmberg

**Reno Co.**  
Stacey Krehbiel

**Republic Co.**  
Melanie Mainquist

**Riley Co.**  
Mark Frisbie  
Brian Hines  
Melisa Kinder  
Scott Shvey

**Saline Co.**  
Carl Garten

**Sedgwick Co.**  
Eric Otte

**Smith Co.**  
John Wagner

**Stafford Co.**  
Brett Fox

**Sumner Co.**  
Julie Koci

**Wichita Co.**  
Larry Kater

**Wilson Co.**  
Tim Beck  
Todd Marple

**Woodson Co.**  
Dale Lanham

## MEATS JUDGING CONTEST

**Allen Co.**  
Coy Allen

**Butler Co.**  
Rob McCoy

**Crawford Co.**  
Cara Nick

**Franklin Co.**  
Jo Ellen Arnold

**Jefferson Co.**  
Dr. Denise Kobuszewski

**Lyon Co.**  
Darrell Douglas  
Linda Kurzen  
Bill Lahr  
Rick Lahr  
Dave Pace  
Doug Price  
John Price  
Penny Price  
Shelia Price

**McPherson Co.**  
Scott Eilert

**Riley Co.**  
Jim Townsend  
Lee Weide

## PHOTOGRAPHY EVENTS

**Butler Co.**  
Mrs. Lee Whiteside

**Cowley Co.**  
Elise Campbell  
Kathy Gann  
Tori Gann

**Crawford Co.**  
Martha Price

**Chase Co.**  
Brenda Bruch

**Douglas Co.**  
Ruth Branham  
Brent Lathrom

**Ford Co.**  
Clayton Hall  
Nancy Kent

**Harvey Co.**  
Cyril Brown  
Kathy Murphy  
Sara Murphy

**Jefferson Co.**  
Rhonda Tomlinson

**Leavenworth Co.**  
Sy Nyhart

**Miami Co.**  
Kathy Bartlett

**Norton Co.**  
Evelyn Field

**Reno Co.**  
Kathy Geffert  
Bob Davis  
Kathleen Hildenbrand  
Connie Krusemark  
Jami Krusemark  
Ken Krusemark  
Scott Krusemark  
Carrick Williams  
Craig Williams  
Sharla Williams

**Riley Co.**  
Linda Kleiner  
Walker Kleiner  
Don Kleiner

**Sedgwick Co.**  
Jewel Frankenberg  
Eric Otte  
Greg Otte  
Nancy Otte  
Dale Stelz  
Sandi Stelz

**Shawnee Co.**  
Jana Ramonda  
Kathleen Ramonda

**Thomas Co.**  
Jeannie Engel  
Shawna Engel

**Washington Co.**  
Annette Harlan  
Bob Harlan  
Rebecca Harlan

## POULTRY EXHIBIT

**Kiowa Co.**  
Melva Bernard

## POULTRY JUDGING CONTEST

**Cowley Co.**  
Mrs. Harold Chanbacher

**Harvey Co.**  
Virginia Street

**Rush Co.**  
Mrs. Wayne Conard  
Wayne Conard

## RABBIT

**Butler Co.**  
Tom Little  
Brian Maddox  
Jason Maddox  
Jim Maddox

**Ellsworth Co.**  
Carol Kottman  
Lloyd Kottman

**Finney Co.**  
Rosemary York  
Sara York

**Geary Co.**  
Doug Brackney  
Gail Brackney  
Terry Brackney

**Harvey Co.**  
Robert Fraser  
Sandy Fraser

**Johnson Co.**  
Clarence Lindsey  
Tim Rogers

**Lyon Co.**  
Keith Sexson

**Mitchell Co.**  
Louis Magette

**Ness Co.**  
Paul Versaw

**Pawnee Co.**  
Bob Frisbie

**Reno Co.**  
Randy Dickerson

**Rice Co.**  
Don DeWerrf

**Rush Co.**  
Gene Algrim

**Saline Co.**  
Dennis Bowman

**Sedgwick Co.**  
Calib Michaud  
Evon Michaud  
Gary Michaud  
Sarah Michaud

**Stafford Co.**  
Andrea Addison  
Barbara Addison  
Conall Addison  
Ken Spangenburg

**Wabaunsee Co.**  
Joann Farr  
Tom Farr

## ROCKETRY

**Norton Co.**  
Bill VanSlike

## SHEEP SHOW

**Crawford Co.**  
Jackie McClaskey

**Doniphan Co.**  
James Hundley  
Bill Wood

**Ellsworth Co.**  
Gordon Homeier  
Kirk Roe

**Finney Co.**  
Todd Whitmore

**Franklin Co.**  
Stan Milkien

**Grant Co.**  
Darl Henson

**Jewell Co.**  
Heidi Rathbun

**Lyon Co.**  
Larry Browning  
John Price

**Osborne Co.**  
Vernon Schweer

**Republic Co.**  
Dale Hostinski

## SHOWCASE OF ARTS & CRAFTS

**Atchison Co.**  
Melanie Hundley

**Barton Co.**  
Barbara Davenport  
Doug McNett

**Bourbon Co.**  
Lisa Jackson

**Cherokee Co.**  
Rebecca Grant  
Phyllis Kriesel  
Hilary Lee

**Clay Co.**  
Kurt Benfer

**Cloud Co.**  
Terry Carlgren

**Douglas Co.**  
Cherrie Lawrence  
Tammy Whitesell

**Ellis Co.**  
Michelle Herman  
Mark Herman

**Finney Co.**  
Annette Batchelder  
Julie Ohmes  
Barbara Tiberghien

**Geary Co.**  
Michelle Munson

**Gove Co.**  
Joe Blubaugh

**Grant Co.**  
Shonda Leighty

**Harvey Co.**  
Jon Grill

**Jackson Co.**  
Kristi Nightingale  
Traci Nightingale

**Johnson Co.**  
Donald Lies  
Lisa VanHercke

**Leavenworth Co.**  
Trina Lobmeyer  
Heather Mosbacher  
David Nowak  
Matt Nowak  
Ted Nowak  
Danny Saunders

**Meade Co.**  
Kit Rogers

**Mitchell Co.**  
Laurie Adams

**Norton Co.**  
Beverly Kindle

**Ottawa Co.**  
Jake Breeding  
Aaron Clanton  
Karyn Hyde

**Phillips Co.**  
Bobby Thompson  
Renee Thompson  
Lisa Tien

**Reno Co.**  
Kelli Cape  
Carrie Loomis

**Riley Co.**  
Jana Denning  
Toby Denning

**Russell Co.**  
Kim Deines

**Shawnee Co.**  
Laurie Peterson  
Michele Peterson

**Sherman Co.**  
Dana Belshe

**Wabaunsee Co.**  
Mary Claussen  
Amy Mathies  
Chuck McNall

## SWINE SHOW

**Anderson Co.**  
Mark Rickenbaugh

**Cowley Co.**  
Tony Small

**Ellis Co.**  
Joe Wary

**Finney Co.**  
Matt Bribica

**Jewell Co.**  
Jim Droddy  
Ted Thummel  
Billy Wood

**Republic Co.**  
Bob Gilbert

**Roots Co.**  
Allen Dinkel

**Shawnee Co.**  
Kristi Kelly

**Sumner Co.**  
Ed LeValley

**Wabaunsee Co.**  
T.D. Fanning

## WILDLIFE AND NATURAL RESOURCES

**Finney Co.**  
Keith Landgraf

**Republic Co.**  
Brad Claycamp

**Saline Co.**  
Brian Bolte  
Becky Bowman  
Tammy Johnson  
Leslie Manning  
Preston Richard  
Jeremy Schropp

**Sedgwick Co.**  
Luke Naylor  
Sean Naylor

## WOODWORKING

**Cloud Co.**  
Darryl Hosie

**Coffey Co.**  
Warren Bell

**Geary Co.**  
Chuck Otte

**Riley Co.**  
Jim Kunkel

**Sheridan Co.**  
Dale Weishar



# Meet the New 4-H Demonstration Trainers

**N**ineteen experienced leaders have volunteered to "train the trainers" for 4-H public presentations. These are not only experienced, but also equipped and recommended people. They are ready to come to your county to train those adult volunteers who will be helping 4-H members develop demonstrations and other public presentations.

Trainers are prepared to respond to requests from county Extension agents in their own and adjacent counties. They are supplied with teaching materials including the video tape, "More than Meets the Eye," developed by former Extension 4-H specialist Charles Bates.

Gerry Cole, Extension 4-H assistant in Reno Co., coordinates the program. She is known to many for her work in supervising the Kansas State Fair demonstration contest.

In order to have volunteer trainers close to all counties, the search continues for an additional six to ten trainers. Those who wish to volunteer or recommend someone should ask their county Extension office to forward their information to William Borst, Extension 4-H and Youth Specialist.

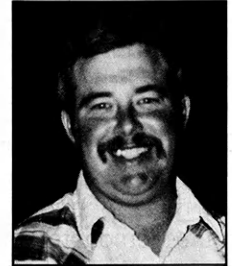
To get in contact with one of these demonstration trainers, contact your county Extension agent who will help you set up a training workshop in your area.



Geraldine (Gerry) Cole  
Reno Co.



Yvonne Eggers  
Cheyenne Co.



Richard Geist  
Reno Co.



Mary Ann Jones  
Rooks Co.



Lisa Lauxman  
Lyon Co.



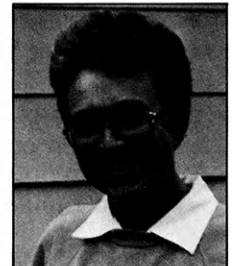
Sherry Leighty  
Grant Co.



E. May "Pat" Lindquist  
Saline Co.



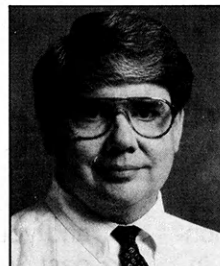
Anne Olmstead  
Sumner Co.



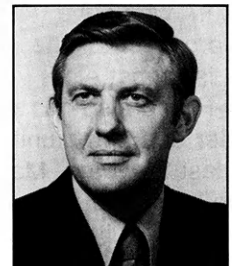
Mary Jo Meyer  
Saline Co.



Mary Ann Saunders  
Leavenworth Co.



Lee Tiberghien  
Finney Co.



Dick Welton  
Riley Co.

(Continued on Page 16)

NOT PICTURED: Carolyn Bond, Franklin Co.; Marjorie Hornbaker, Greeley Co.; Karen Ring, Ford Co.; Linda Robbins, Franklin Co.; Jan Graff, Pratt Co.; Pat Nichols, Osborne Co.; Mary Schleicher, Franklin Co.



## Demonstration Trainers Cover Kansas

### **Carolyn Bond Franklin Co.**

Carolyn Bond is involved in the 4-H program as a volunteer in Franklin Co. She will be working with the demonstration teacher team from Franklin Co. with Linda Robbins and Mary Schleicher.

### **Geraldine (Gerry) Cole Reno Co.**

Gerry was a County Home Extension Economist in Marion Co., (1959-62) and in Phillips Co. (1962-65) where she conducted many demonstration training sessions on the local, county, state and regional levels. Currently, she is a certified Home Economist by the American Home Economic Association. She has judged demonstrations for 20 years at the state fair and has been the coordinator for the state 4-H demonstration contest for the past five years.

### **Yvonne Eggers Cheyenne Co.**

Yvonne is the mother of five 4-H'ers who have been involved in the program for the past 22 years. She is a past eight year member of 4-H and also has been a project leader and community leader over the last 20 years. Many youth have benefited from her assistance with 4-H talks, demonstrations, and her involvement in numerous training programs throughout the years. Yvonne continues volunteering her help in these areas because she has, "a real interest and desire to help youth."

### **Richard Geist Reno Co.**

Richard has served as a Reno Co. demonstration trainer since 1986 and has been a demonstration judge at the county, regional and state fair level for ten years. He was a ten year member of 4-H participating in the livestock, woodworking and leadership projects. Richard is a life-time farmer-stockman and 1977 graduate of Kansas State University.

### **Jan Graff Pratt Co.**

Jan has attended regional demonstration training sessions in Hutchinson, and has conducted demonstration trainer sessions in Pratt Co. Jan also coordinated a regional 4-H Family Fling in Kingman Co. She has judged demonstrations and illustrated talks at the Kingman Co. 4-H Days, as well as, helped many 4-H'ers prepare demonstrations and public speaking presentations. "I believe speaking before a group is one of the most important life skills the 4-H program teaches," she said.

### **Marjorie Hornbaker Greeley Co.**

Marjorie has given many adult and youth demonstrations in the past 30 years and has participated in 4-H leader training classes to advance her skills as a 4-H demonstration and public speaking leader. She has helped organize a 4-H club and has served as a project leader for 15 years. She is a

20-year project leader and has been involved in 4-H Council for several years.

### **Mary Ann Jones Rooks Co.**

Mary Ann has been the arts and crafts project leader for the Woodston Sunflower 4-H Club for the past eight years. She was a community leader in North Dakota for two years and the sewing and foods project leader for four years. She has participated in the 4-H demonstration training sessions conducted by Charles Bates and has been a project judge and demonstration judge at the state fair.

### **Lisa Lauxman Lyon Co.**

Lisa is a former 4-H member with emphasis on demonstrations and public speaking from Dickinson Co. As Lyon Co. Extension 4-H agent developing the position of county public presentations coordinator, Lisa presented a mini-session at the 1987 North Central Regional 4-H Leaders Forum on the "One Minute Public Presentation."

### **Sherry Leighty Grant Co.**

Sherry has attended training for 4-H demonstration judging at Seward County Community Junior College, and has judged several County Club Days and Regional Club Days, as well as, clothing construction, style revues and foods competitions. Sherry is also





a school system Forensics judge. She has nine years of adult 4-H leadership, and her oldest daughter was a state interview finalist in public speaking allowing them to attend the 1988 Emerald Circle Banquet.

**E. May "Pat" Lindquist  
Saline Co.**

"I lead a 4-H club of 59 members at whose monthly meetings talks and demonstrations are a must," Pat said. "In the very beginning, I attended a leader training session one weekend at Hutchinson's Encampment where I learned the 4-H way of demonstrating. Since then, I have attended schools at Wichita and Salina conducted by Charles Bates allowing for updates of ideas to pass on to my 4-H speakers and leaders," she said. "For over 40 years, I have devoted my life to improving youth through 4-H, and I intend to continue," she said.

**Mary Jo Meyer  
Saline Co.**

"I was in 4-H as a youth only a few years, and it was an enjoyable experience. We have five children, and they were all active in 4-H. I served as a community leader, a program development committee member and a project leader. I have been involved in 4-H at least 20 years," Mary Jo said. It started out helping our children and studying the demonstration leaflets from K-State. Then I attended training workshops so I could become informed. I have been judging demonstrations on a county level for about five years, she said.

**Pat Nichols  
Osborne Co.**

Pat has been involved in 4-H work for 22 years. She has been a county horse project leader, judged demonstrations and public presentations at area counties and the Kansas State Fair. She is interested in speaking and does demonstrations for area community and state organizations. Speech was a minor area of study for Pat in college.

**Anne Olmstead  
Sumner Co.**

Anne was a nine-year 4-H member who has served as community leader for 6 years, project leader for 15 years, 4-H advisory board member for six years and a member of the executive board for five years. She has attended two training sessions in Sumner Co. and a regional workshop in Wichita.

**Karen Ring  
Ford Co.**

Karen has been involved in many aspects of the 4-H program for 15 years. She currently assists her husband as the community club leader. Over the years, she has been successful in working with youngsters in public presentations, and looks forward to her responsibilities as a demonstration trainer.

**Linda Robbins  
Franklin Co.**

Linda has participated as a 4-H community club leader and county

LABO coordinator for Franklin Co. She has two teenagers involved in 4-H, and she is a para-professional at a Pomona grade school.

**Mary Ann Saunders  
Leavenworth Co.**

"The most important thing I do is to give kids the confidence to speak in front of a group and enjoy it," Mary Ann said. She attended Emporia State University majoring in speech with emphasis in theatre and design. For 11 years she has been teaching classes in exercise, stress control, Christmas crafts, drawing and watercolor. Mary Ann is also a certified Toastmaster member, and says her teaching and participation in Toastmasters keep her in front of an audience making her "practice what she preaches to 4-H members."

**Mary Schleicher  
Franklin Co.**

Mary has served as a community club leader and currently has two teens actively involved in the 4-H program. She has been a demonstration judge in several surrounding counties over the years. Mary is also a second-grade teacher in Franklin Co.

**Lee Tiberghien  
Finney Co.**

Lee has judged public speaking at local and regional 4-H days for nine years and has judged 4-H

*(Continued on Page 22)*

# Flicks for 4-H Meetings!



Learn how to do new things, improve your skills or simply develop a new interest. These video tapes, film strips and slide sets are for your use. These make excellent winter meeting material when 4-H'ers are not frantically working on fair projects and it's too cold to go outside. The materials are collected and presented by specialists in the field highlighted, and are available to you at no cost. Contact your county Extension agent to help you order the materials you want. There are also more items available so ask to see the 1988 Audio Visual Catalog published by the Instructional Media Center, Department of Extension Communication.

SS - Slide Set

F - Film

VTR - Video Tape Recorder

## A

Accessories Make A Difference (SS)  
Allergin Theory (SS)  
Ambassadors Tell 4-H Story (SS)  
American Paint Horse (SS)  
Annual 4-H Dairy Conference (SS)  
Art of Giving Oral Judging Reasons (VTR)

## B

Baby Pig Management (VTR)  
Basic Casting From A To Z (F)  
Begin To Sew (VTR)  
Beginnings Of Black & White Printing (SS)  
Beginnings Of PhotoComposition (SS)  
Birds Around You (SS)  
Black American Culture & Cuisine (SS)  
Blue Sky Below My Feet (VTR)  
Bombarding Things (F)  
Breeding & Kidding (F)  
Breeds Of Beef Cattle (SS)

## C

Care Of Your Clothes (SS)  
Careers (F)  
Championship Material (VTR)  
Choices And Crises - The Teenage Pressure Cooker (VTR)  
Clothing Strategy (SS)  
Collecting Bugs For Entomology Collections (VTR)  
Commodity Marketing (SS)  
Construction Tips (VTR)  
Cookie Craft (SS)  
Count-Down (F)  
Count-Down (VTR)  
County 4-H Project Coordinators (VTR)  
Creative Accents (VTR)

## D

Dairy Cattle Judging (SS)  
Dairy Goat Selection (SS)  
Developing A Coaching Philosophy For Shooting Sports (SS)  
Developing Capable Young People (VTR)  
Developing Capable Young People (VTR)  
Development Of Chicken Embryo (SS)  
Dogs (SS)  
Doing Your Own Slide Set (SS)  
Drugs Are Like That (F)

## E

Effective Use Of Lenses (SS)  
Energy & Living Things (F)  
Exhibiting & Judging Vegetables  
Exhibiting Beef Cattle (VTR)  
Existing Light Photography (SS)  
Exhibiting & Judging Vegetables (SS)  
Exploring World Through Geology (SS)

## F

Fabric Know How (VTR)  
Family In 4-H (SS)  
Fashion In Your Future (FS)  
Fashion Modeling (S)  
Feeding Your Club Calf (SS)  
Fiber And Fabrics  
Fish Identification (SS)  
Fishing Small Ponds (F)  
Fitting Beef Steers (VTR)  
Fitting Market Steers For Show (SS)  
Fitting Slacks (VTR)  
Fleischmann's Yeast Education Programs (VTR)  
Food And Nutrition (VTR)  
For All Kansas Kids (SS)  
4-H Action In All Seasons (F)  
4-H Bicycle Series I (SS)  
1-Bicycle Driving Responsibilities (SS)  
2-Types Of Bicycles & Sizing (SS)  
3-Bicycle Tool Kit (SS)  
4-Can You Stop? Types Brakes (SS)  
4-H Bicycle Series II (SS)  
1-Bicycle Wheel Maintenance (SS)  
2-From Flat To Mobile, Tire Repair (SS)  
3-From Heat To Foot, Bearings (SS)  
4-Accessories, Needed Or Nice (SS)  
4-H Century Bike Ride (SS)  
4-H Club Congress (SS)  
4-H Discovery Days  
4-H Entomology (SS)  
4-H Fashion Review '83 (SS)  
4-H Camp Counselors Roles And Responsibilities (VTR)  
4-H Horse Project (SS-Series)  
1-Genetics Of Coal Color (SS)  
2-Horse Safety, Catching, Leading (SS)  
3-Horse Safety, Saddling, Bridling (SS)  
4-What A Judge Looks For (SS)  
5-Intermediate Trail Riding (SS)  
6-Internal Parasites Of Horses (SS)  
7-Practical Horse Psychology (SS)  
8-Pre-Bit Hackamore Training (SS)  
9-Health Hints For Horses (SS)  
10-Basic Foot Care & Shoeing (SS)  
11-Saddle Selection (SS)  
12-Horse Training By Driving (SS)  
13-Buy A Horse-Not Trouble (SS)  
14-Horse Safety For Hunt Seat (SS)  
15-Long Line Training (SS)  
16-Plaiting Hunter's Mane & Tail (SS)  
4-H Is More (VTR)  
4-H Modeling (VTR)  
4-H National Congress (VTR)  
4-H Photo Print Mounting Methods (SS)  
4-H Record Books (VTR)

4-H Shooting Sports - Something For Everyone (SS)  
4-H Shooting Sports (F/VTR-Series)  
1-Kid Who Can't Miss (F/VTR)  
2-Rifle Fund: Firing Shot (F/VTR)  
3-Rifle Fund: Stand & Prone (F/VTR)  
4-Rifle Fund: Kneel & Sit (F/VTR)  
5-Pistol Shooting Fund (F/VTR)  
6-Shotgun Shooting Fund (F/VTR)  
4-H Vet Sc I, Normal Animal (SS-Series)  
1-Attitude & Behavior (SS)  
2-Skin, Membranes & Intest. (SS)  
3-Body Temp, Pulse & Resp (SS)  
4-Maintaining Animal Health (SS)  
5-Cleaning & Disinfection (SS)  
6-Cells Of The Animal Body (SS)  
7-Tissues Of The Animal Body (SS)  
8-Organs & Syst Of An Body (SS)  
4-H Vet Sc II, Anim Disease (SS-Series)  
1-Intro To Disease (SS)  
2-Bacteria & Disease (SS)  
3-Viruses & Disease (SS)  
4-External Parasites (SS)  
5-Internal Parasites (SS)  
6-Nutrition & Disease (SS)  
7-Poisons & Disease (SS)  
8-Stress & Disease (SS)  
9-Heredity & Disease (SS)  
4-H, What's It All About (F)  
From The Heartland - AIDS (VTR)  
From The Heartland - Facts About Aids (VTR)  
From The Heartland - Sexually Transmitted Diseases

## G

German American Culture & Cuisine (SS)  
Get Ready, Get Set, Grow (VTR)  
Getting Involved (F)  
Getting It All Together (F)  
Getting It All Together (VTR)  
Good Eating Plan (SS)  
Gravity and Forces (VTR)  
Great American Eating Machine (VTR)  
1-Why Do We Eat (VTR)  
2-Where Does Food Come From (VTR)  
3-What's Good For Me (VTR)  
4-What's A Balanced Diet (VTR)  
Great Nutrition Turn On (F)  
Great Nutrition Turn On (VTR)  
Grooming For Success (SS)  
Guinea Pigs & Hamsters (SS)



## H

Halloween Speciality Breads (VTR)  
Hats Off To Leaders (SS)  
Hats Off To Leaders (VTR)  
Health Program Tips For Club Calves (SS)  
Here's To You With Poise (SS)  
Hogwash (VTR)  
Home Alone (VTR)  
Home Use Of Microcomputers (SS)  
Homemade Breads (SS)  
How To Have An Accident (VTR)

## I

If (SS)  
IFYE Report-Japan (SS)  
IFYE-Mauritius (SS)  
IFYE-Poland (SS)  
IFYE-Sweden (SS)  
IFYE-Tiawan (SS)  
IFYE-Thailand (SS)  
Imaginative Use Of Filters (SS)

## J

John Deere Safety Series (VTR)  
Joining The 4-H Dog Care Program (SS)  
Judging Colored Dairy Breeds (SS)  
Judging 4-H Entomology Collections (VTR)  
Judging Holstein Dairy Cattle (SS)  
Judging Horses On Conformation (SS)  
Judging Steers & Judging Heifers (VTR)

## K

Kansas 4-H Is For All Kansas Kids (SS)  
Kansas Mammals (SS)  
Kansas State Fair Foods Judging (VTR)  
Kid Who Can't Miss (F)  
Kid Who Can't Miss (VTR)  
Kids And Calcium (VTR)  
Kids In The Kitchen (VTR)

## L

Livestock Judging I (SS)  
Livestock Judging II (S)  
Living In A Nuclear Age (F-Series)  
1-Bombarding Things (F)  
2-Discovering The Atom (F)  
3-Nuclear Energy & Living Things (F)  
4-Power From The Atom (F)  
5-Radioisotopes (F)  
6-Society & Things Nuclear (F)  
Lucky: The 4-H Clowns (SS)

## M

Meat Identification (SS)  
Meat Identification Lessons 1-2-3 (SS)  
Meat Identification Lessons 4-5-6 (SS)  
Meat Identification Lessons 7-8-9 (SS)  
Meat Judging Classes (SS)  
Microwave Meals (SS)  
Microwaving Secrets (VTR)  
Mini 4-H Clubs (SS)  
Minigardens (F)  
Miscues With Machines (SS)  
More For Less (F)  
More Than Meets The Eye (VTR)  
Motivating Kids To Sew (VTR)

## Mulligan Stew (F & VTR-Series)

1-Great Nutrition Turn On (F/VTR)  
2-Look Inside Yourself (F/VTR)  
3-Flim Flam Man (V/VTR)  
4-Getting It All Together (F/VTR)  
5-Count-Down (F/VTR)  
6-Racer That Lost His Edge (F/VTR)  
Muskrat Trapping Techniques (VTR)  
My Grandson Lew (F)

## N

Nuclear Energy & Living Things (F)

## O

OBIS (F)  
On The Move With 4-H (SS)  
On The Right Channel (F)  
On The Right Channel (VTR)  
101 Meat Identification Cuts (SS)

## P

Pets Need More Than Love (SS)  
Photo Reports Make It Happen (SS)  
Photographers & Film They Choose (SS)  
Photographic Terms & Definitions (SS)  
Photographic People (SS)  
Photography In 4-H: What Camera Does (SS)  
Photography Is Seeing (SS)  
Photography Series: 35mm (SS)  
1-Advanced Black & White Printing (SS)  
2-Basic Picture-Taking Techniques (SS)  
3-Beginning Black & White Printing (SS)  
4-Beginnings Of Photo Comp (SS)  
5-Camera: How It Works (SS)  
6-Effective Use Of Lenses (SS)  
Pistol Shooting Fundamentals (F)  
Pistol Shooting Fundamentals (VTR)  
Plan To See Rock Springs (SS)  
Plant Identification (SS)  
Postures On Parade (SS)  
Power Tool Safety (SS)  
Project Enrollment Fair (VTR)

## R

Rabbits (SS)  
Rabbit Breeds And Varieties (VTR)  
Rabbit Disease And Health (VTR)  
Rabbit Feeding And Nutrition (VTR)  
Rabbit Housing And Equipment (VTR)  
Rabbit Management Tips (VTR)  
Racer That Lost His Edge (F)  
Racer That Lost His Edge (VTR)  
Radioisotopes (F)  
Recognition Of High Risk Youth (VTR)  
Reflecting On Responsibility (F)  
Reflecting On Responsibility (VTR)  
Reptiles & Amphibians (SS)  
Responding To High Risk Youth (VTR)  
Rifle Fundamentals: Firing Shot (F)  
Rifle Fundamentals: Firing Shot (VTR)  
Rifle Fundamentals: Kneel & Sit (F)  
Rifle Fundamentals: Kneel & Sit (VTR)  
Rifle Fundamentals: Stand & Prone (F)  
Rifle Fundamentals: Stand & Prone (VTR)  
Rifle Shooting Fundamentals (VTR)  
Rock Springs 4-H Center (VTR)

## S

Safe Operation Of Farm Tractors (F)  
Selecting 4-H Club Calves (SS)  
Selection Of A Youth Project Heifer (SS)  
Selecting Rabbits For Breeding Stock (VTR)  
Self-Help For Children (VTR)  
Sex: A Topic Of Conversation For Parents  
Of Young Children (VTR)  
Sex: A Topic Of Conversation With Dr.  
Sol Gordon (VTR)  
Sex: A Topic Of Conversation For Parents  
Of Teenagers (VTR)  
Sex: A Topic Of Conversation For Teenagers  
(VTR)  
Sharing The Load (SS)  
Sharing Volunteer Leadership (SS)  
Shotgun Shooting Fundamentals (F)  
Shotgun Shooting Fundamentals (VTR)  
Show Me Hunter (F)  
Showing Beef Cattle (SS)  
Something For Everyone-The Kansas  
Shooting Sports Program (VTR)  
Something To Sing About (SS)  
Speed Tailoring (VTR)  
Successful Vegetable Gardening (SS)  
Survival Of The Fittest (F)  
Swine Breed Identification (VTR)  
Swine Judging (SS)

## T

Teens In Distress (VTR)  
This Business Of 4-H (SS)  
This Is 4-H (SS)  
To Be A Man (F)  
To Be A Woman (F)  
Tools For 4-H Leaders (SS)  
Tractor Safety Begins With You (VTR)  
Tractor Safety For Use In Ag (F)  
Tractor Safety For Use In Ag (VTR)  
Tractor Safety Is No Accident (F)  
Tractor Safety Is No Accident (VTR)  
Tractor Safety On The Farm (SS)  
Tractor Safety On The Road (SS)  
Tractor Tragedy (SS)  
Trade-Offs (VTR-Series)  
1-Malcolm Decides (VTR)  
2-We Decide (VTR)  
3-Give & Take (VTR)  
4-Less & More (VTR)  
5-Does It Pay (VTR)  
6-Learning & Earning (VTR)

## U

Understand Genetics & Breeding (SS)

## W

Wearable Art (VTR)  
We're On Our Way (F)  
What An Equine Judge Looks For (SS)  
What's A Balanced Diet (VTR)  
What's Good For Me (VTR)  
Wheat Science (SS)  
Where Does Food Come From (VTR)  
Why Do We Eat (VTR)  
Wildlife Habitat & The Hunter (F)

## Y

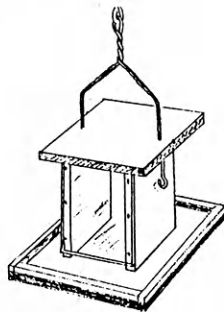
You & Your Child In 4-H (VTR)



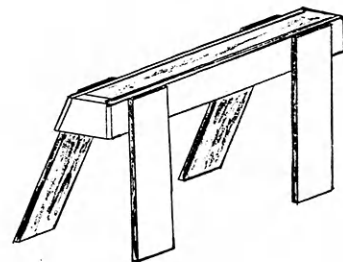


# Free!

## 4-H Woodworking Plans from YOUR PARTICIPATING LUMBER DEALER



**HANGING BIRD FEEDER**



**SAWHORSE**

**These plans  
are available:**

both designs by  
**John Mustain, age 11**  
Kansas Kids Club, Wilson County

**For your free plans, see your participating lumber dealer; he will also help you select the material you need.**

**ABILENE**  
Abilene Lumber, Inc.

**ASHLAND**  
Don Spotts Lumber Company

**ATCHISON**  
Beverly Lumber Co., Inc.

**BELOIT**  
Peoples Lumber Co.

**BURLINGTON**  
Burlington Lumber & Supply

**CIMARRON**  
Stephens Lumber of Cimarron

**CLAY CENTER**  
Fullington's

**CONCORDIA**  
Mid-West Lumber Company

**EL DORADO**  
Home Lumber & Supply Co.

**EMPORIA**  
Fleming Lumber & Material Co.  
Mark II Lumber

**ERIE**  
Johnson & Son Lumber Co.

**EUREKA**  
Home Lumber & Supply Co.

**FREDONIA**  
Schoolcraft Lumber Co.

**GALVA**  
Galva Lumber, Inc.

**GARDEN CITY**  
Fankhauser, Inc.

**HUTCHINSON**  
Davis Home Center  
Kightlinger's

**INDEPENDENCE**  
Sandott Sentry Home Center

**IOLA**  
Klein Lumber Company

**JOHNSON**  
Seyb-Tucker Lumber and  
Implement Company

**JUNCTION CITY**  
Builders Lumber, Inc.

**KINGMAN**  
Kingman Lumber Co.

**LaHARPE**  
Diebolt Lumber and Supply

**LANSING**  
Lansing Lumber, Inc.

**LARNED**  
T.M. Deal Lumber Co.

**MANHATTAN**  
Cash Lumber & Hardware

**NEWTON**  
Claassen Hardware &  
Lumber Co.

**NICKERSON**  
The Home Lumber &  
Supply Co.

**NORTONVILLE**  
Nortonville Lumber, Inc.

**OTTAWA**  
Hubbard Lumber  
Company, Inc.

**PAOLA**  
Miami Lumber, Inc.

**PARSONS**  
Woods-Seward Lumber Co.

**PITTSBURG**  
Broadway Lumber Co., Inc.  
True Value Home Center

**PRATT**  
W.R. Green Lumber, Inc.



## Woodworking Plans Available:

Accent Table  
Bluebird House  
Book Rack  
Bulletin Board  
Car Creeper  
Cherrywood Cabinet  
Child's Toy Wagon  
Child's Rocker  
Computer Desk  
Cutting Board  
Darning Doll  
Deacon's Bench  
Dog House  
Easel  
Garden Seat  
Hanging Bird Feeder  
Key Rack  
Lawn Chair  
Letter Holder  
Magazine Rack Table  
Mantel Clock  
Novelty Rocking Horse  
Pedestal Desk  
Pet Food Bin  
Picnic Table  
Plant Stand  
Planter - Mailbox  
Porch Swing  
Redwood Cart  
Revere Coat Rack  
Roll Top Desk  
Rolling Pin  
Salt & Mineral Box  
Sawhorse  
Step Stool with Storage  
Stereo Case  
Tennis Rack  
Towel Storage Rack  
Wall Book Shelf  
Walnut Headboard

### RUSSELL

Schwaller Lumber

### SALINA

Easterday-Boster Lumber Co.

### SHARON SPRINGS

Hennick Lumber & Supply Co.

### ST. JOHN

English Lumber & Supply Co.

### SYRACUSE

Hess Lumber Co.

### ULYSSES

Sunflower Lumber Co., Inc.

### WASHINGTON

Washington Lumber Co.

### WILSON

Hoch Lumber Company

### WINFIELD

A.B. Everly Lumber Co., Inc.  
Everitt Lumber Co., Inc.

### WRIGHT

Right Co-op Assn.



# The Best Food Store In Town!

*Our People Make it Happen!*

## The Kansas Wheat Commission is proud to ...

*\*provide a grain marketing tour to the Port of Houston, Texas, for state wheat quality project winners and the State Fair wheat variety booth winner*

*\*provide seed wheat for 4-H'ers in the wheat variety plot project*

*\*co-sponsor 4-H Wheat Shows*

**The Kansas Wheat Commission  
and Kansas 4-H members —  
promoting Kansas as a world  
leader in wheat production!**





A Big "Thanks" to the wonderful  
4-H folks of the Haskell County  
area. You've been Great!

Kit Griffin  
Haskell Co.

Thank you Sherry Meier and Lyle  
Stohs. We appreciate you —  
Trailblazer 4-H members and  
Parents.

R.A. Finlayson  
Marshall Co.

To Aunt Sandy and Jamey,  
Thanks for all your help this year as my  
club leaders.

Love,  
Matthew Theiss  
Brauer Beaver 4-H Club

A special thank you to the John Ray Janke  
family for all the work they put into the  
Leonardville Hustlers 4-H Club.

Joyce Froyer  
Riley Co.

Carol Burnum and Allison Carpenter,  
We really appreciate your many hours of  
volunteer time, as community leaders of  
Bearcreek 4-H Club.

Thanks,  
Heather and Shonda Leighty  
Grant Co.

A special thanks to Shirley Gray and  
Albert Noble, our community leaders,  
from the Flint Hills 4-H Club, Rosalia.

Julie Austin  
Vice President  
Flint Hills 4-H Club  
Butler Co.

Thank you Ruth Ann Carlson for helping  
me with my talk, teaching me to count back  
change, and reviewing my record book with  
me. Mom and I both appreciate all your  
personal attention and encouragement.  
Thank you for caring and sharing.

Love,  
Fred Silhan  
Marion Co.

### *Demonstration Trainers Cover Kansas (cont.)*

---

demonstrations at the state fair. In addition, Lee has also conducted public speaking seminars as a part of a team in Southwest Kansas. Professionally, he has been a high school and college speech instructor since 1964, and currently is a college forensic coach at Garden City Community College where he has had students competing in the national tournaments in informative speech with visual aids for eight years. He has been named as the outstanding college speech instructor by the Kansas Speech Communication Association and has served as a regional chairperson for that organization.

**Dick Welton**  
Riley Co.

Dick has worked with 4-H and FFA members for many years in training and preparation of agricultural demonstrations. As a vocational agriculture teacher in Nebraska and Colorado, he coached demonstration teams for county and state competition. His teams have appeared at state and national level competition. He has served as a Riley Co. demonstration leader under Charles Bates and has worked with College Hill Club members for the past eight years to prepare their entries for county 4-H days. He is a teacher-educator in agriculture teaching undergraduates how to teach.

---

Grant Go-Getters 4-H Club of County sends a special thank you to Mrs. Don Martin for her many years of service to our club and its members.

Mrs. Kathy Martin  
Clay Co.

Thank you Dorothy Overall for forty-years - Sewing Leader. You helped us learn how "to make the best better."  
From Skylark 4-H Club

# Wherever You Live in the Sunflower State....



*City or Country...  
We've got Kansas covered!*

**WITH A FULL LINE OF INSURANCE PLANS  
AND OVER 400 AGENTS STATEWIDE.**

Outstanding coverage.  
Rates that are right. And  
with agents in every  
county and over 70 claims  
adjustors statewide, we'll  
be there — fast  
— when you need us.

Why not discover how  
we can make you — or  
your piece of Kansas —  
more secure.



## Farm Bureau Insurance

FARM BUREAU MUTUAL • KANSAS FARM BUREAU LIFE • KFB INSURANCE COMPANIES

More money for post-high school education comes from family income and savings then from any other source. Be prepared; early in life start a savings account at your

## Kansas Savings and Loan

### Hutchinson

Valley Federal Savings & Loan Assn.

### Leavenworth

Citizens Mutual Savings & Loan Assn.

### Lyons

Lyons Savings & Loan Assn.

### Manhattan

Manhattan Federal Savings & Loan Assn.

## Discovery Days Class Ideas Needed

Is there a skill or subject that you have always wanted offered as a class at Discovery Days? If so, let Nancy Anderson in the State 4-H Office know about it. There is no guarantee that it will happen this year, but you will have planted the idea for future use. Send suggestions to:

State 4-H Office  
Kansas State University  
201 Umberger Hall  
Manhattan, KS 66506

**Capitol  
Federal  
Savings**



TOPEKA  
GREATER KANSAS CITY  
MANHATTAN LAWRENCE OLATHE  
EMPORIA SALINA WICHITA

## Money For Your Treasury

OVER 2 MILLION  
Sunflower Dishcloths



WERE SOLD LAST YEAR BY MEMBERS OF  
GROUPS, SOCIETIES, CLUBS, ETC.

THEY ENABLE YOU TO EARN MONEY FOR  
YOUR TREASURY AND MAKE FRIENDS FOR  
YOUR ORGANIZATION.

Sample FREE to Official.

SANGAMON MILLS, INC., Cohoes, N.Y. 12047

KJ

Established 1915



Photo by: Lisa Leuthold  
Riley Co.

37906529

Non-Profit Organization  
U.S. Postage  
**PAID**  
Permit No. 86  
Salina, Kansas