

4-H Journal

The 4-H Family Magazine

Kansas 4-H Foundation, Inc., Publisher

v. 5: 12

In This Issue

Plans for Model Meetings
Page 3

Christmas Is Here
Page 5

4-H'ers Tour K. C.
Page 6

Honored at Wichita
Page 8

New Woodworking Ideas
and Plans for Christmas
Pages 9 to 13

Dessert and Stuffin'
for Xmas
Page 14

More Christmas Ideas
Page 16

Who's Responsible
for 4-H?
Page 20

Journal Subject Index
for 1957, 1958 and 1959
Page 21

15 Cents



Markel Ball, Wyandotte county 4-H'er, is tying a ribbon around a jar of orange jelly she is giving as a Christmas gift. She made or canned each of the items pictured—all were given as Christmas gifts. For more Christmas ideas see pages 5, 9 and 16.

A Salute to 4-H Donors

It's been my pleasure to attend two rather outstanding 4-H events during the last two months.

One was the American Royal 4-H Conference in Kansas City; the second was the 4-H recognition event in Wichita November 6 and 7.

Six different groups of 4-H'ers were given special recognition at these two events. You'll see pictures of their activities on pages 6, 8, 15 and 22 in this magazine.

One thing that made these two events so nice was the wonderful sponsors which provided the funds for the occasion. Most 4-H sponsors are exceptional people or organizations.

The relationships 4-H have with most business sponsors are

Have you and your club thought about the possibility of sending a Christmas card, a box of candy or cookies to your local Kansas 4-H Journal sponsor? You'll find a complete list of Journal sponsors in the September, Kansas 4-H Journal.

truly great ones. They are a very important part of the 4-H program and are frequently given insufficient recognition.

Sponsors such as the ones providing the special trips to the American Royal and to Wichita don't want your thank you letters to put in their scrap books. They would like to know if they are performing a worthwhile

service for Kansas 4-H'ers. You can help tell them they are by writing a note or dropping in and saying "thanks" to your local representative of these and other 4-H donors.

Letters

If you have ideas or 4-H Club experiences that you would like to write about or if there is something you like or dislike about the Kansas 4-H Journal, write to the Editor, Kansas 4-H Journal, Manhattan, Kansas. Leaders, parents, members, agents and 4-H friends are invited to write.

Nationwide Congratulations for 4-H in Review

It is with real thanks and appreciation that I received your "Kansas 4-H in Review," and it is tremendous. One of our counties two years ago prepared a type of annual which was merely a collection of 4-H Club pictures and activities in the one county . . . At that time we were told that there was only one other state that had something similar to that which was Kansas, and ours was no comparison to the publication you have gotten out. Keep up the good work.

John F. Younger
State 4-H and YMW Leader
South Dakota

May I again compliment you for the excellent manner in which you have handled the work of producing the Kansas 4-H Journal. Not only for the "Review" issue just received but for all the issues throughout the year.

E. H. Teagarden, Coordinator of Extension Program Analysis

My sincere congratulations on the September issue of the Kansas 4-H Journal. This publication should make a lot of people proud that they are 4-H Club members and expand the already fine support you have for Club work in your state.

Mylo S. Downey
Associate Leader
4-H Club and YMW Program
Federal Extension Service
Washington, D. C.

I have just read the September Kansas 4-H Journal, "Kansas 4-H in Review." My congratulations to all the staff that made this special edition possible.

Harold E. Jones
Director
Kansas Extension Service

I want to congratulate you and the Collegiate 4-H Club staff for the excellent "Kansas 4-H in Review." This is one of the finest pieces of literature pulled together on 4-H Club work that I have seen in a long time. The many articles on the various segments of 4-H club work give an excellent picture of 4-H club work in Kansas. Of course, this information is valuable to 4-H members, their families, club leaders, extension agents, and friends of 4-H club work. Although I have many fond memories of the old WHO'S

(Continued on page 19)

Kansas 4-H Journal

Vol. V, No. 12 December, 1959
Date April.....Editor

Editorial and Business Office

Phone PR 6-8811 Ext. 208
Manhattan, Kansas

Published Monthly By
KANSAS 4-H FOUNDATION, INC.

Entered at the postoffice in Lawrence, Kansas, as second-class matter under the Act of March 3rd, 1879.

Advertising rates and circulation data on request.

Group subscriptions \$1.00 per year.
Individual subscription \$1.50 per year.
Single copy 15 cents.

BOARD OF TRUSTEES

W. Dale Critser, Chrm.....Wichita
Clifford Hope, Vice Chrm.....Garden City
R. B. Christy.....Scott City
Harry Darby.....Kansas City
W. Laird Dean.....Topeka
A. D. Jellison.....Junction City
Harold E. Jones.....Manhattan
George B. Powers.....Wichita
Roger E. Regnier.....Manhattan
E. B. Shawver.....Wichita
Fred D. Wilson.....Andover

Use of the 4-H name and symbol approved by the Secretary of Agriculture of the United States, January 23, 1951, under the provisions of the law as reenacted by Sec. 707 of the Act of June 25, 1948 Public Law No. 772, 80th Congress (10 USC 797)

Cooperatives are

Kansas people building Kansas Communities because

Cooperatives are always

locally owned and locally controlled

Kansas Cooperative Council

701 Jackson Street, Topeka

FARMERS
LOW-COST
Complete Protection
Policy

FIRE &
AAUTO

INSURANCE

ALLIANCE COMPANIES

McPherson, Kansas

Name write to
Address

SERVING KANSAS SINCE 1888

A Model Meeting Every Month

With a new 4-H year getting underway, clubs are planning for next year's events. One of the first of these will be county 4-H Club Days. A very important part of the Club Days are model meetings.

A model meeting should not be a once-a-year affair, rehearsed frantically before 4-H Club Day and then forgotten once it is presented. If members do not learn and practice the ideas put forth in model meeting competition, the basic reason for it is wasted. Every club meeting should be, in effect, a model meeting.

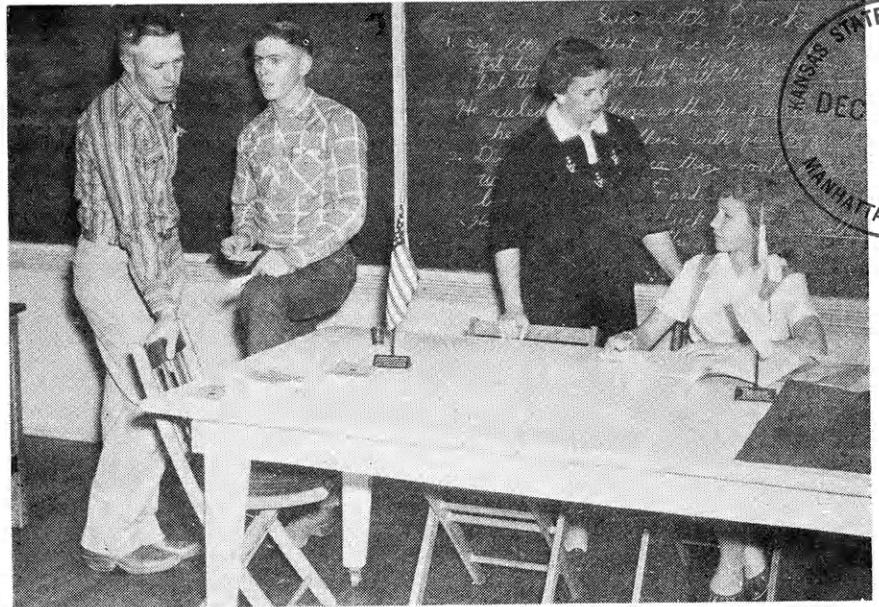
Just as with your project work, planning is one of the first steps. This starts when a committee or the officers meet and decide the club program for the year. For the model meeting to be presented, involve all the club members in planning what the meeting will include. Any person is much more interested in something he has helped plan.

As in anything — First and Foremost—**READ THE RULES!** Excellent meetings have been disqualified at Club Days because not all of the things required by the rules were included in the meeting.

Assign responsibility to different members for the various areas. The leader or the president may need to talk with them occasionally to see how they are getting along, but each person should be responsible for seeing his section of the meeting is prepared. This not only involves more club members, it also prevents a few people from working themselves to death doing everything.

Work for originality in your meeting. Judges like to see some new ideas in ceremonies, programs and recreation. Ceremonies such as the placing of a seal on a charter, honoring the leader, and initiating new members, have been done hundreds of times.

How about honoring your parents by presenting a skit show-

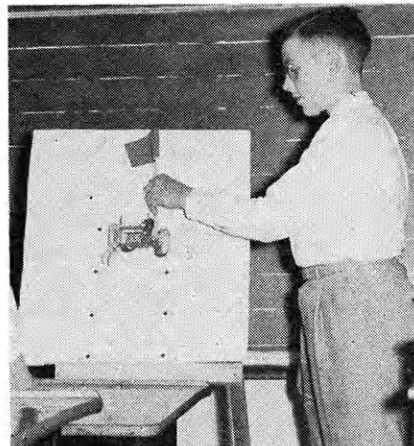


PLANNING SETS THE PACE. Planning by officers and leaders before the club meeting is essential. Officers and leaders of the Chase county Bazaar club plan before the meeting begins. Left to right, are: Elmore Stout, leader; Ronnie Scott, president; Mrs. Elmore Stout, and Velva Burton, secretary.

ing all the things they do for the club? With all the bright ideas that pop up in 4-H, most clubs should have no trouble coming up with something new and different, if members and leaders get their heads together and do a little thinking.

You will probably plan the business part of your model meeting, but how about the rest of the club meetings throughout the year? Do your officers and leaders have a pre-planning session on the business meeting before the club meets? This does not have to be a complicated affair. It may mean they come to the meeting place 20 minutes or a half hour early. Officers and

VISUALS ADD INTEREST. The use of visuals in a project talk add interest to it. In project talks as in all other phases work for some originality in idea and presentation. Lynn Canning, Republic county, is talking on safety.

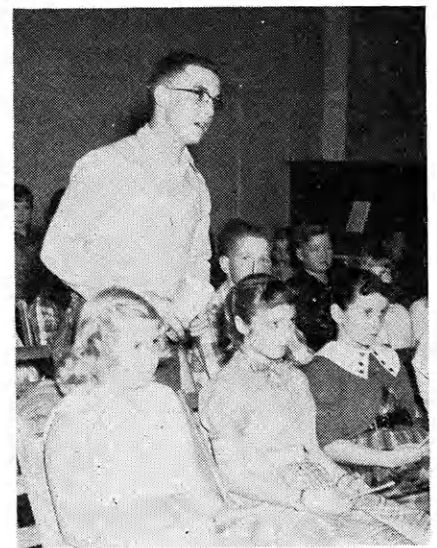


leaders think over the business that should come before the club so nothing is omitted and so unimportant things do not take up too much time.

The officers should have alternate suggestions so members can discuss them and decide which they would rather do.

Now you're ready for your model meeting. You've planned and you've come up with some original ideas. How about your next regular club meeting? Won't you make it a model meeting, too?

PRACTICE, PRACTICE. Using the rules and ideas learned in model meetings results in better club meetings all year long. Once members have learned the proper procedure, they will not hesitate to use it. What's more, they will enjoy doing so.



FOR HEALTHIER, HAPPIER AMERICANS !



The National Food Conference program is designed to meet needs which have been long recognized. It serves the interests of all.

Last year, it was supported by 57 food related organizations who recognized that the National Food Conference is the only group in being which speaks for no one segment of the industry, for no one commodity.

The theme of the 1960 conference to be held in Chicago, February 11-13, is "Food Comes First For Youth Power."

Farm Bureau, other organizations and the food industry are working together in this effort to increase public understanding of the positive story of food from farm to table.

Kansas Farm Bureau
105 County Farm Bureaus
Working Together



Game Corner

By Harlan Copeland
State 4-H Office

The December recreation notebook award goes to Bernard Schell of the Oakland Go-Getters Club, Shawnee county.

Back to Art

Players stand in a line and each pins a 3 by 5 card or paper on the back of the person in front of him. The leader starts a "follow-the-leader" march in single file around the room, keeping time to music which should vary in tempo. While marching each player tries to draw a given object appropriate to the season (Pumpkin, rabbit, etc.) on the card on the back of the person in front of him. It is fun to see the results.

Toothpick Pick-Up

Divide group in two teams. In front of each team have a pair of work gloves. At the other end of the room have two pop bottles and two piles of toothpicks. The first player on each team puts on the gloves, runs to the pop bottle, picks up five toothpicks, one at a time, and places each one in the pop bottle. He then runs back, takes off the gloves and gives them to the next person on his team. This person then takes his turn placing the toothpicks in the bottle, and so on. Of course, the first team through wins.

TRAIN DODGE BALL

A ring is formed by the players. Three players step into the center of the circle. They stand in single file, one behind the other. Each places his hands on the hips of the one in front of him. The ball is then given to the last person in the line of three with the ball. The group of three can rotate within the circle. By quickly passing the ball around the circle it will be possible to hit the last man. When the last man is hit, he takes his place in the outside circle. The person who threw the ball and hit him then becomes the first man in the line of three inside the circle.



The parents' night taffy pull sees David Griffith giving his part in the demonstration on pulling taffy. Mr. and Mrs. Houser, right, were the parents in charge of the demonstration procedures.

Sand Springs Rustlers Have Fun With Christmas Party, Taffy Pull

An old fashioned taffy pull and Christmas gift exchange are two 1959 recreation highlights for the Sand Springs Rustlers Club, Dickinson county.

The occasion for the taffy pull is the parents' night meeting. Parents of the club members frequently have humorous skits as part of the program but this time saw something different. The taffy pull was the "demonstration" in the club program with the club members doing the demonstrating.

Christmas time is always a merry time for the Sand Springs Rustlers Club members. For 18 years the club has made a huge, beautifully decorated Christmas

tree and a gift exchange for the 4-H'ers.

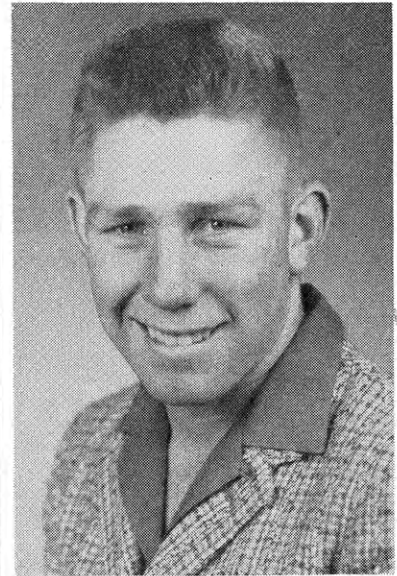
Refreshments are served on a long serving table decorated in Christmas style. Carols are sung by the members awaiting the arrival of Santa.

Their most recent Christmas table was decorated with a snow-sprayed tumbleweed, centered by a tall white candle and high-lighted with Christmas balls. White napkins, cut in the shape of Christmas trees and decorated with several bright colored stars, were used. The punch bowl was surrounded with evergreen and Christmas balls. Punch, fancy sandwiches and cookies were served.

Shown at the colorfully decorated serving table at the Club's Christmas party are Elizabeth Griffiths and Linda Gaskill.



It Was a 'Breeze' Getting Up the Program



GLEN SEIFERT
President of Hornets 4-H Club
of Leavenworth, Kansas

I'm Glen Seifert, President of the Hornets 4-H Club, Leavenworth County.

We were having a neighboring club as guests for the evening and it was up to me to get up the program. It was no problem. I selected a FREE film from the catalog furnished by the telephone company. It was very appropriate.

There is quite a variety to choose from—film on safety, home decorations, correct telephone usage—film with good music.

If you need programs for your 4-H club, church or teen-age group, why not fill out the attached coupon and send for the film catalog.

SOUTHWESTERN BELL TELEPHONE CO.

**Area Information Manager
Southwestern Bell Telephone Co.
823 Quincy
Topeka, Kansas**

Please send me a free copy
of your 1959 PROGRAMS
catalog.

Name

Address

City



Five top Kansas 4-H home improvement girls toured this luxury apartment as one stop on their two day Kansas City visit. Mead Rogers of the Sears Foundation, center, is pictured with Rosemary Albright, Bourbon county; Diane Conover, Sedgwick; Phyllis Beeson, Montgomery; Linda Kelscey, Shawnee; and Ann Hamilton, Saline. The Sears Foundation annually provides for the trip.

Wheat, Health, H. I. Winners Tour K. C.

A group of Kansas county wheat winners tour Kansas State Board of Agriculture laboratories as Willard Cantin of the Equity Union Grain Company explains some of the laboratory workings. The Kansas City Chamber of Commerce and Board of Trade provide trips to the American Royal 4-H Conference for Kansas county wheat winners each year.

Top Kansas 4-H'ers in three different projects are given special honors during the American Royal in Kansas City each fall.

4-H'ers in the wheat and home improvement project and the health activity are honored on special tours in addition to visiting the Royal and many Kansas City spots of interest.

Folger's Coffee Company are hosts for members and leaders representing the club selected as outstanding for work in the health activity. A special highlight of their program is a tour through the Folger Kansas City plant.

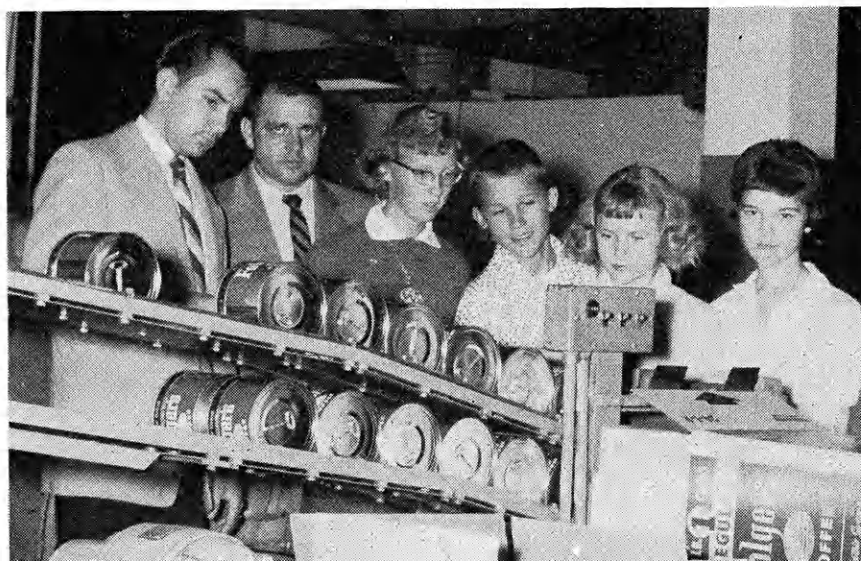
County wheat champions are guests of the Kansas City Chamber of Commerce and Board of Trade for the Royal 4-H Conference. Special tours include the State Board of Agriculture laboratory, Board of Trade floor, and a large terminal elevator.

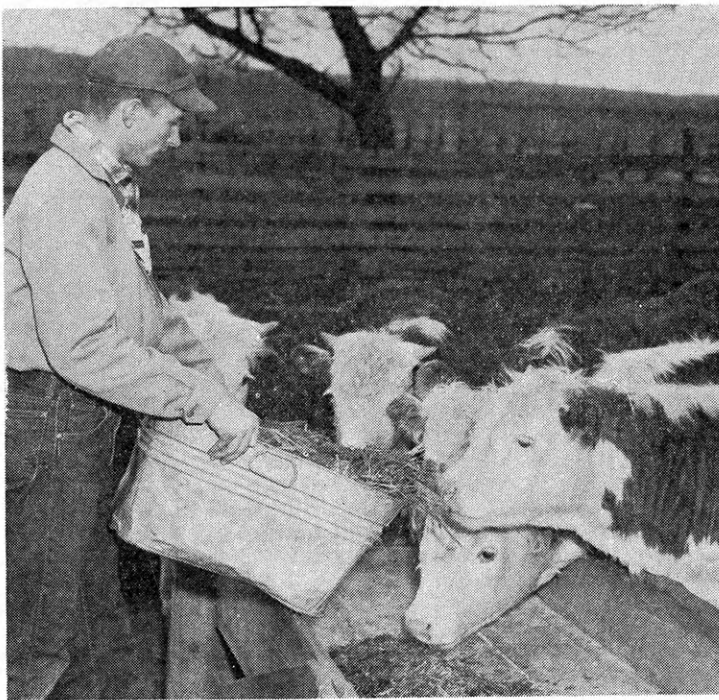
For the last three years, the five members whose records showed outstanding accomplishment in home improvement have been guests of Sears Foundation in a special tour of furniture stores, art gallery, and model furnished homes. A special highlight in 1959 was the tour of seven furnished show apartments in a new luxury apartment building.

The group also visited three top Kansas City furniture stores.



On a tour of the Folger Coffee Company's Kansas City plant are members of the Shunga Valley Club, Shawnee county, county club agent Merle Eystone and a representative of Folger's. Folger's annually provides a trip to the American Royal 4-H Conference for the state's top health club.





2 WAY PROFIT FOR YOU

At Your Kansas Savings and Loan

1. **THEY SAFEGUARD** your savings—insure them safe up to \$70,000 for a family of three.

2. **THEY PAY** you big dividends—always constant with safety and availability.

VISIT YOUR NEAREST **Progressive** **KANSAS** Savings & Loan Associations

Arkansas City
First Federal Savings and Loan Ass'n. of Arkansas City

Augusta
The Commercial Savings and Loan Assn.

Beloit
The Beloit Building and Loan Assn.
First Federal Savings and Loan Assn. of Beloit

Chanute
The Chanute Building and Loan Assn.

Clay Center
Northwestern Federal Savings and Loan Ass'n. of Clay Center

Dodge City
First Federal Savings and Loan Ass'n. of Dodge City

El Dorado
Mid-Continent Federal Savings and Loan Assn. of El Dorado

Emporia
The Columbia Building and Loan Assn.

Erie
The Erie Savings and Loan Assn.

Fort Scott
Liberty Savings and Loan Assn.

Goodland
Goodland Savings and Loan Assn.

Great Bend
The Prudential Building and Loan Assn.

Hays
The Hays Building and Loan Assn.

Hutchinson
First Federal Savings and Loan Assn. of Hutchinson
Valley Federal Savings and Loan Assn. of Hutchinson

Iola
The Security Savings and Loan Assn.

Kansas City
American Federal Savings and Loan Assn. of Kansas City
Anchor Savings and Loan Assn.

Kinsley
The Kinsley Savings and Loan Assn.

Larned
The Larned Savings and Loan Assn.

Lawrence
Anchor Savings and Loan Assn.
Capitol Federal Savings and Loan Assn.

Leavenworth
The Leavenworth Mutual Building, Loaning and Savings Assn.

Liberal
First Federal Savings and Loan Assn. of Liberal

Lyons
The Lyons Savings and Loan Assn.

Mission
Anchor Savings and Loan Assn.
Capitol Federal Savings and Loan Assn.

Newton
First Federal Savings and Loan Assn. of Newton

Ottawa
Anchor Savings and Loan Assn.
Ottawa Savings and Loan Assn.

Overland Park
Jayhawk Savings Assn.
The Overland Park Savings and Loan Assn.

Parsons
First Federal Savings and Loan Ass'n. of Parsons

Plainville
Rooks County Savings Assn. of Plainville

Pratt
The Western Savings Assn.

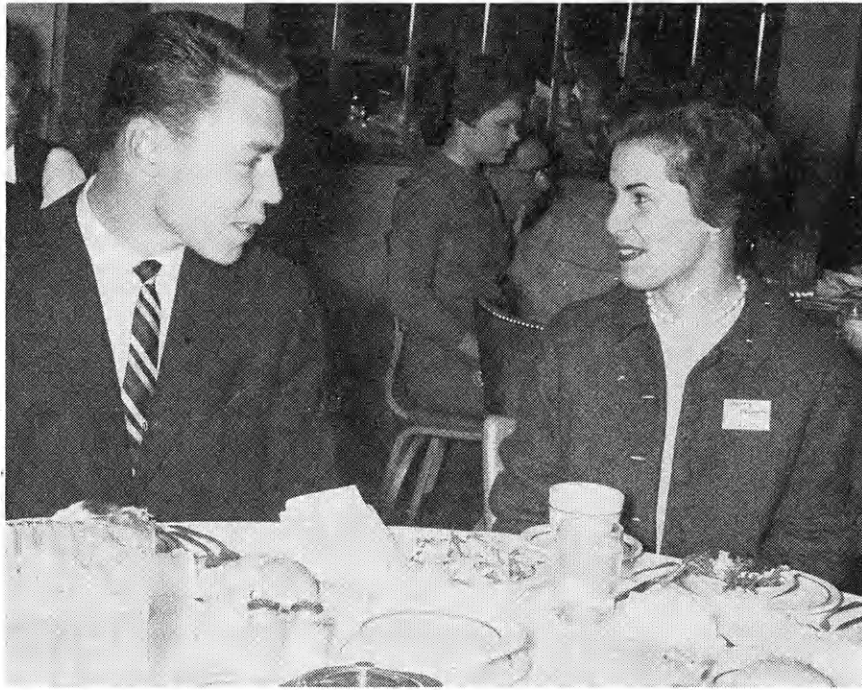
Salina
The Homestead Building and Loan Assn.

Tonganoxie
The Tonganoxie Building and Loan Assn.

Topeka
Capitol Federal Savings and Loan Assn. at 6th and Kansas, and 12th and Topeka Blvd.
Postal Savings and Loan Assn.
The City Homes Savings and Loan Assn.

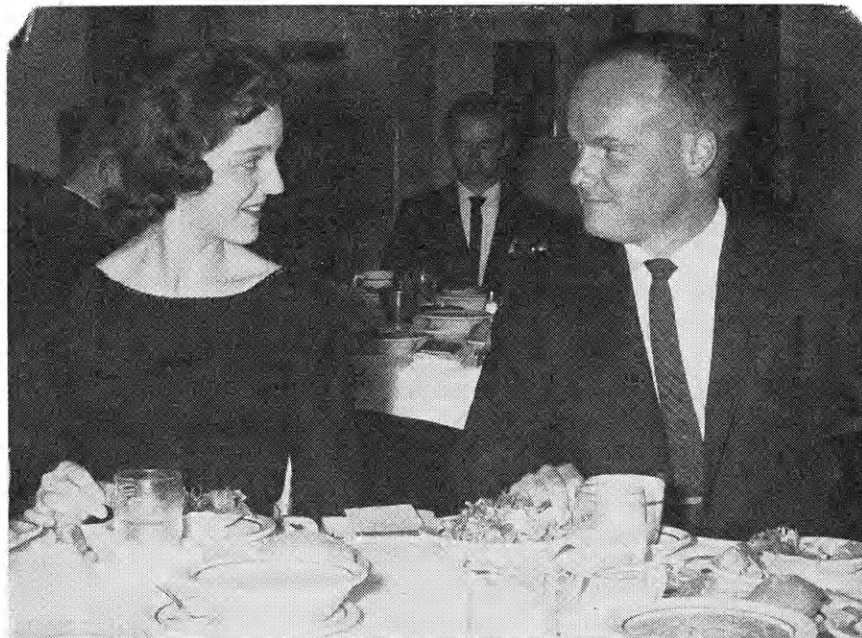
Wichita
The Commercial Savings and Loan Assn. at 4601 E Douglas, 113 South Main and Boulevard Plaza

Recreation, Auto, Electric Winners Honored



Derby Refining Company advertising manager Jim Roberts visits with auto project trip winner Betty Thompson, Norton county, at the awards banquet held for top 4-H'ers in the auto, electric and recreation projects on November 6 in Wichita.

Margaret Sughrue, Finney county, visits with Power Supplier representative Wilson Cadam at the recognition event award banquet in Wichita November 6.



Left, certificates to two of the 16 4-H recreation winners attending the Wichita recognition event November 6 and 7 are presented by John Frazier, left, and Allen Seale, center, representing the Kansas Seven-Up

4-H members and clubs with outstanding records of accomplishment in recreation, auto care and safety, and electric projects were honored at a special recognition event held in Wichita November 6 and 7.

Additional pictures of this event are carried on pages 15 and 22. Picking up the tab for the two-day event were three "Friends of 4-H."

Derby Refining Company was donor for the auto care and safety project; the power suppliers of Kansas, including both electric companies and the co-operatives, provide funds for leader training and awards in the electric project. The Seven-Up Bottlers of Kansas provide awards for winners in the recreation activity.

On the first day's program at the Wichita event the entire group toured Boeing Airplane Company's main plant and the Seven-Up Bottling Company. An awards banquet and free tickets to "South Pacific" ended the day.

Saturday morning the group split into three. Recreation winners toured the Wichita U. student union, the Institute of Logopedics and a Wichita crafts center. Electric winners toured the Kansas Gas and Electric Company service center and heard a lecture on "Electrical Trends for the Future."

The auto care and safety group toured the Derby Refinery and had a discussion on "Ideas for the Auto Project."

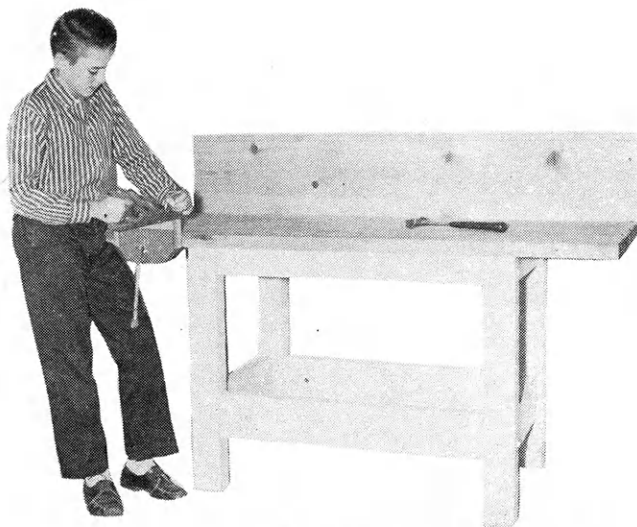
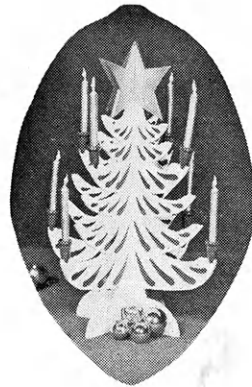
Bottlers Association. Members pictured are Margaret Moss, Pratt county; Lois Reed, Cowley; and Bernard Hotzel, Lyon. Right, a group of the recreation winners are shown the Wichita Seven-Up bottling plant by John Frazier.



MAKING THE BEST BETTER WITH WOOD

For Christmas:

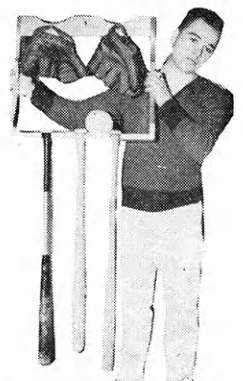
This decorative tree comes apart for storage after the Holiday season. You can paint it with your own designs. Ask for the easy-to follow-pattern at any participating lumber yard.



You Can Make It

Lynel Klasen, Marion County, decided a workbench was essential for his woodworking. Other 4-H'ers can now use Lynel's plans to make their own workbenches. Available from participating lumber yards.

Plans for Bill's Baseball Rack are still available at the listed lumber dealers.



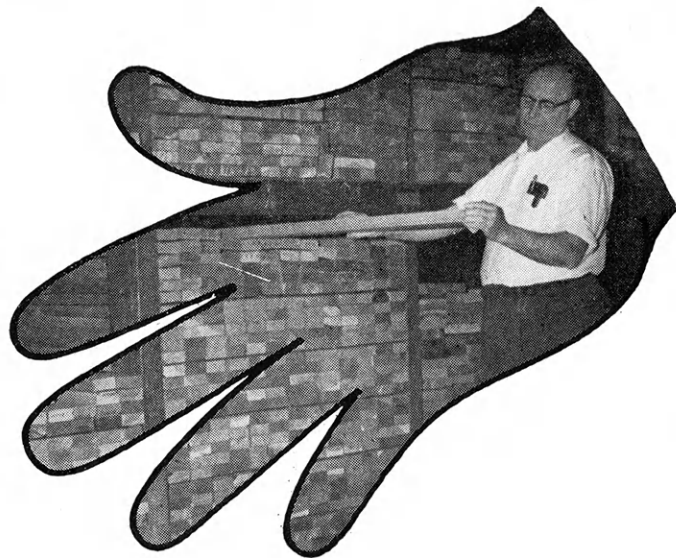
=====
Plans for These Items Are

Available At The Listed Lumber

Dealers. Ask For Them.
=====

Always on hand...

YOUR LUMBERMAN is your best friend when you need good material

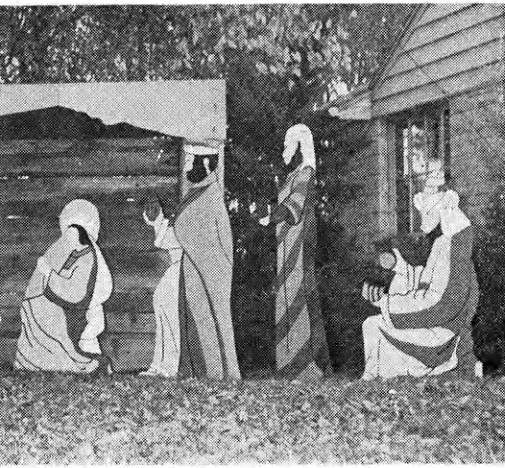


- Abilene**
Central Lumber Company
- Agra**
Agra Lumber Company
- Albert**
Albert Lumber-Hardware and
Appliance Company
- Alma**
Wolgast & Haefke Lumber Company
- Alta Vista**
Wolgast Lumber Company
- Altamont**
Farmers Co-op Elevator Company
- Alton**
Alton Lumber and Coal Company
- Andale**
Comley Lumber Company of Andale
Inc.
- Arma**
Bosinio Lumber Yard
- Anthony**
Rock Island Lumber Company
- Arkansas City**
Central Lumber Company
- Asherville**
Asherville Lumber and Coal Company
- Ashland**
Don Spotts Lumber Company
Home Lumber and Supply Co.
- Atchison**
J. B. Russell Inc.
- Attica**
Crowell Lumber Company
- Basehor**
Basehor Lumber Company
- Bazine**
Humburg's
- Beloit**
Murray Lumber Company
Peoples Lumber and Coal Company
- Bern**
Bern Lumber Company
- Bird City**
The Bird City Equity Mercantile
Exchange
Griffin Lumber Company
- Bison**
Humburg Lumber Company, Inc.
- Bonner Springs**
Bonner Springs Lumber Company
- Brownell**
Richolson Lumber and Hardware
Company, Inc.
- Bucyrus**
The Blaker Lumber and Grain Company
- Buhler**
Buhler Lumber Inc.
- Burlingame**
Burlingame Lumber Company
- Burr Oak**
Burr Oak Lumber and Coal Company
- Burrton**
Harris Lumber Company
- Cawker City**
Cawker City Lumber Company
- Chanute**
Smith Lumber Company
- Chapman**
Sanborn Lumber Company
- Cheney**
Comley Lumber Company of Cheney,
Inc.
- Cimarron**
Wilson Lumber Company, Inc.
- Clay Center**
Erickson Building Supply, Inc.
Fullington's
Kansas Lumber Company
- Clearwater**
The Clearwater Lumber Company
- Coffeyville**
Kansas Lumber Company
- Colby**
Hardman Lumber and Coal Company
Hess Lumber Company
- Coldwater**
Gilchrist Lumber Company
Home Lumber and Supply Co.
- Colwich**
Hoffman Lumber Company
- Concordia**
Leidigh Lumber Company
Sanborn Lumber Co.
- Corbin**
Corbin Lumber Company
- Council Grove**
Rhodes Lumber
- DeSoto**
DeSoto Lumber Company
- Denison**
Denison Lumber and Hardware
Company
- Denton**
C. H. Gish Company
- Devon**
Devon Lumber Company
- Dighton**
Kingsley Lumber Company, Inc.
- Dodge City**
The T. M. Deal Lumber Company
- Downs**
Central Lumber Company
- Edgerton**
Edgerton Lumber Company
- Edna**
The McCoy Lumber Company
- El Dorado**
Home Lumber Company
- Elk City**
Elk City Lumber Company
- Ellis**
Golden Belt Co-op Assn., Inc.
- Emporia**
Fleming Lumber and Material Company
Home Lumber and Supply Co.
Kansas Lumber Company
Nickelson Lumber Company
The Smith Lumber Company
- Erie**
Howard Bros. Lumber Company
- Eskridge**
Clinton L. Scott Lumber Company
- Eudora**
Eudora Lumber Company
- Eureka**
Rock Island Lumber Company
- Everest**
Alexander Lumber Company
- Fowler**
The T. M. Deal Lumber Company, Inc.
- Frankfort**
Andrew Johnson and Son
Searle and Chapin Lumber Company
- Garden City**
Ed Porter Lumber Company
- Garden Plain**
Fisher Lumber Company
- Gardner**
Gardner Lumber Company
- Garnett**
Star Grain and Lumber
- Gaylord**
Hardman Lumber Company
- Geneseo**
The Crihfield-Teeter Lumber Company
- Girard**
Rhodes Lumber Company
- Glasco**
The Golden Belt Lumber Company
- Glen Elder**
Dickinson Lumber Company
- Goodland**
Hardman Lumber Company
Rasure Lumber Company
- Gorham**
Russell Lumber Company
- Great Bend**
Everitt Lumber Company
Rock Island Lumber Company
Whitesell Lumber Company
- Greeley**
Greeley Lumber Company
- Greensburg**
Home Lumber and Supply Co.
- Grainfield**
The Golden Belt Lumber Company
- Grinnell**
The Golden Belt Lumber Company
- Halstead**
Harris Lumber Company
- Harper**
Rock Island Lumber Company
- Hartford**
Thomas Lumber Company
- Hays**
Hardman Lumber Corporation, Inc.
- Healy**
Healy Co-op Elevator Company
- Hesston**
Kropf Lumber Company
- Highland**
Highland Lumber Company
- Hill City**
Farmers Lumber Company
Hardman Lumber Company
- Hillsboro**
Hillsboro Lumber Company
- Holton**
Brown-Hedge Lumber Company
Holton Lumber Company
- Holyrood**
Home Lumber and Supply Co.
- Home**
M. H. Kramme Lumber and Hardware
- Hope**
Roehrman Lumber and Hardware
- Horton**
Horton Lumber Company, Inc.

THE lumber dealers listed on these two pages are supporting the 4-H woodworking project with this information and free woodworking plans. Get your plans from them.

- Hugoton**
Parsons Lumber Company
- Humboldt**
Barfoot Lumber Company
- Hutchinson**
F. E. Perry Lumber Company
The Fair-Detter Lumber Company
George Stuckey Lumber
- Inman**
Inman Lumber Company
- Independence**
Rock Island Lumber Company
- Iola**
Klein Lumber Company
- Jetmore**
Lindas Lumber Company
- Johnson**
Seyb-Tucker Lumber and Implement Company
- Junction City**
Rock Island Lumber Company
- Kansas City**
Logan-Moore Lumber Company
- Kensington**
The Golden Belt Lumber Company
- Kinsley**
Kinsley Co-op Exchange Lumber Yard
Home Lumber and Supply Co.
- LaCrosse**
Wilhelm Lumber Company
- LaCygne**
Blaker Lumber and Grain Company
- LaHarpe**
Blaker Lumber and Grain Company
- Lakin**
Hart and Company
Lakin Lumber Company, Inc.
- Lansing**
International Paper Company, Long-Bell Division
- Larned**
Clutter-Lindas Lumber Company
- Lawrence**
Logan-Moore Lumber Company
Woods Lumber Company
- Lebanon**
Lebanon Lumber Company
- Lenexa**
Lenexa Lumber Company
- Lenora**
Lenora Lumber Company
- Lincoln**
Leidigh and Havens Lumber Company
Nitsch Lumber and Supply Company
- Lindsborg**
Carlson Lumber Yard
- Little River**
The T. M. Deal Lumber Company, Inc.
- Logan**
The Hansen Lumber Company
Logan Lumber Company
- Longford**
Longford Lumber & Grain Co.
- Louisburg**
Louisburg Lumber Company
- Lyons**
Foster Lumber Company
- Macksville**
Home Lumber and Supply Co.
- Manhattan**
The Golden Belt Lumber Company
Griffith Lumber Company
Kansas Lumber Company
Ramey Brothers
- Matfield Green**
Paul Bell Hardware-Lumber-Feed
- McPherson**
Deal Lumber Company, Inc.
Lake Superior Lumber Company
McPherson Lumber Company
- Meade**
Home Lumber and Supply Co.
- Medicine Lodge**
P. M. Doherty Lumber Company
- Milford**
Milford Lumber Company
- Minneola**
The T. M. Deal Lumber Company, Inc.
- Moundridge**
Clayton Vogt Lumber Co., Inc.
- Mt. Hope**
Mt. Hope Lumber and Supply
- Mulvane**
Mulvane Lumber Company
- Murdock**
Comley Lumber Company of Murdock Inc.
- Ness City**
Rock Island Lumber Company
- Nickerson**
The D. J. Fair Lumber Company
- Norton**
Newbury Lumber Company
- Nortonville**
Alexander Lumber Company
- Norwich**
H. S. Eshnaur & Sons
- Oakley**
The Golden Belt Lumber Company
Oakley Lumber Company
- Offerle**
Offerle Co-op Grain and Supply Company
- Olathe**
Cowley Lumber and Hardware Company
Hodges Brothers
- Osawatomie**
Leidigh and Havens Lumber Company
Osawatomie Lumber Company
- Oswego**
Home Lumber and Supply Co.
- Osborne**
Lewis A. Hardman Lumber Company
- Ottawa**
Hubbard Lumber Company, Inc.
Nuzman Lumber
Ottawa Lumber Company
- Overbrook**
Overbrook Lumber Company
- Overland Park**
Overland Park Lumber Company
- Paradise**
Paradise Lumber Company
- Parker**
Blaker Lumber and Grain Company
- Pawnee Rock**
Clutter-Lindas Lumber Company
- Phillipsburg**
Hardman Lumber Company
Home Lumber Company
- Plains**
Home Lumber and Supply Co.
- Pleasanton**
Blaker Lumber and Grain Company
- Pomona**
Pomona Lumber Company
- Pratt**
W. R. Green Lumber Company
The Ortmeyer Lumber Company
- Prescott**
Prescott Lumber Company
- Pretty Prairie**
The George W. Ulitch Lumber Company
- Protection**
Home Lumber and Supply Co.
- Quinter**
Quinter Building Material Company
- Rossville**
Hesse Lumber Company
- Russell**
Hardman Lumber Company of Russell Inc.
- Sabetha**
Farmers and Merchants Lumber
- St. Francis**
St. Francis Equity Exchange
- St. Marys**
Long's Lumber Yard
St. Marys Lumber Company
- St. John**
Home Lumber and Supply Co.
- Salina**
E. D. Bishop Lumber Company
Larson Lumber Company, Inc.
Leidigh and Havens Lumber Company
Michaelsen Lumber Company
- Satanta**
The T. M. Deal Lumber Company, Inc.
- Sedgwick**
The Sedgwick Lumber Company
- Seneca**
Koelzer Lumber Company
- Severy**
Tolman-Gibbon Lumber Company
- Sharon Springs**
Lee Carter Lumber Company
- Silver Lake**
J. Thomas Lumber Company
- Smith Center**
Smith Center Lumber Company
- Spring Hill**
Spring Hill Lumber Company
- Stafford**
The T. M. Deal Lumber Co., Inc.
Home Lumber and Supply Co.
- Stanley**
Stanley Lumber Company
- Sterling**
The D. J. Fair Lumber Company
- Stockton**
The Golden Belt Lumber Company
Stockton Lumber Company
- Strawn**
Kansas Soya Products Company, Inc.
- Sublette**
The T. M. Deal Lumber Company, Inc.
- Sylvia**
The D. J. Fair Lumber Company
- Talmage**
Talmage Lumber and Hardware Company
- Tampa**
Murphy Lumber Company
- Tipton**
Tipton Lumber Company
- Topeka**
Shawnee Lumber Company, 1805 Kansas
Whelan Lumber Company
Main Store, 715 E. 4th
Pauline Branch at Pauline
Highland Crest Branch, 200 E. 29th
Seabrook Branch, 2019 Gage
- Toronto**
Toronto Lumber Company
- Ulysses**
The T. M. Deal Lumber Company, Inc.
- Victoria**
The Golden Belt Lumber Company
- WaKeeney**
Hardman Builders Supply Company
- Wakefield**
Sanborn Lumber Company
- Wathena**
Farmers Grain and Lumber Company
- Waverly**
Star Grain and Lumber Co.
- Wellington**
Wellington Lumber and Supply Company, Inc.
- Wellsville**
Star Grain and Lumber Company
- Wetmore**
Wetmore Lumber Company
- White Cloud**
White Cloud Lumber Company
- Wichita**
Farm Cash Lumber Company
Al Reiff Lumber Company
E. A. Riley Lumber Company
Rock Island Lumber Company
Stockyards Cash and Carry Lumber Company
- Wilson**
Hoch Lumber Company
Wilson Lumber Company
- Winfield**
Deal Lumber and Hardware Company, Inc.
A. B. Everly Lumber Company
Thompson Lumber Company
- Winona**
The Golden Belt Lumber Company
- Woodbine**
Kohler Lumber Company
- Yates Center**
F. H. Conger and Son
- Zenda**
The George W. Ulitch Lumber Company
- Missouri**
- Kansas City**
The George W. Ulitch Lumber Company, 11432 Truman Road

for Mother

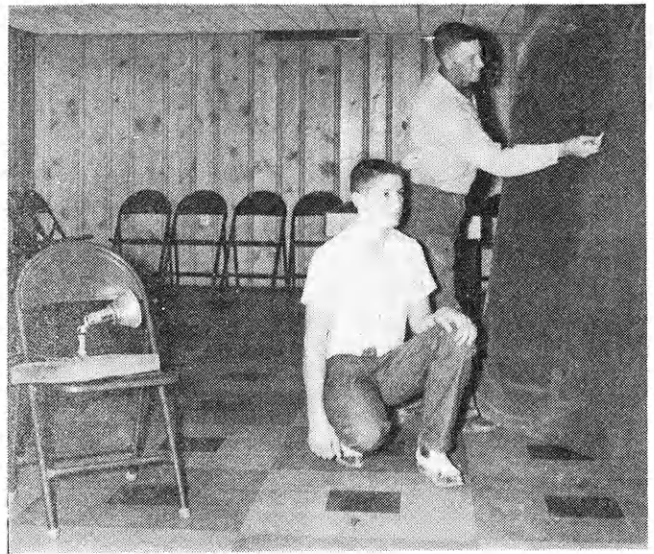
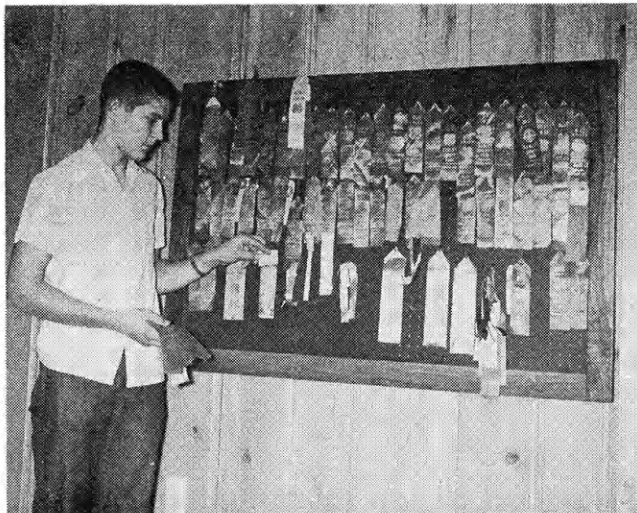


"Too, the commercial figures were three dimensional, which would have created a storage problem," Larry said, "While our flat ones can be stored very easily."

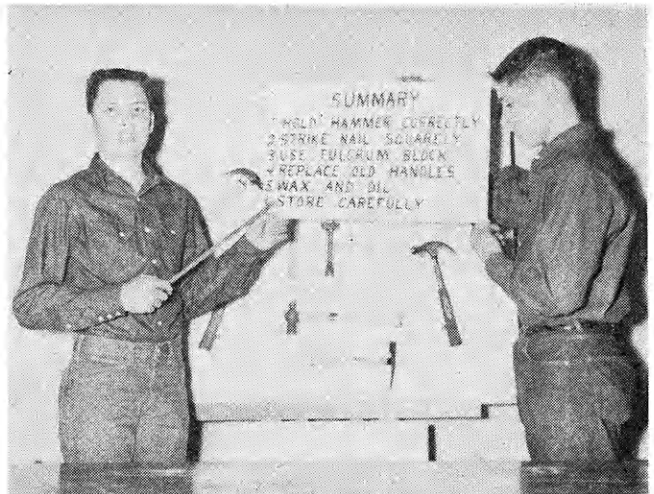
Larry has put his woodworking to use in making repairs about the farm and in building needed articles, such as feed bunks, rose trellises, and magazine racks. This knowledge will always be helpful for his future plans which include farming in partnership with his father.

Larry is a member of the Akron 4-H Club in Cowley County. His parents are Mr. and Mrs. Kerry Hittle, R. R. 1, Winfield, Kansas.

This walnut and pegboard bulletin board was another of Larry's projects. He hung the board in the recreation room and is presently using it to display the many ribbons he has won in club work.



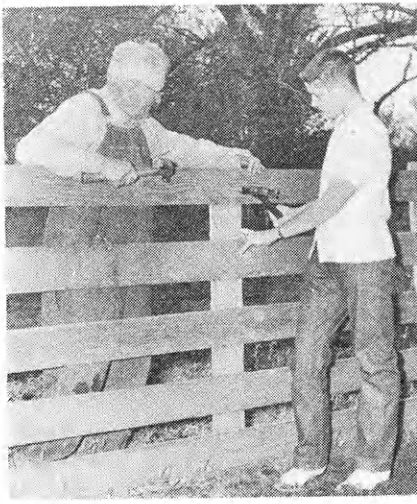
Mr. Krepps, the woodworking leader, shows how they drew around the shadow cast on the Masonite to get the figures used in the Nativity Scene. After drawing around the shadow the figures were cut out with a saber saw.



Larry and a friend, Wesley Moore, have given a number of team demonstrations. Some have concerned their woodworking project. This one on hammers earned them a top blue rating at the County 4-H Day.

Feed bunks for the Hittle's Angus cattle were also made by Larry. This again is part of the very practical and useful knowledge that results from woodworking. Larry's dad is justifiably proud of the skill his son has gained.





Larry helps dad mend one of the corral fences on their farm. This kind of knowledge, learned in woodworking, is especially valuable to a farmer.



The Hittle's magazine rack was always full so Larry built another one as part of his woodworking project. The three small dividers in the top tray will hold the small miscellaneous items that always need a place in any room. Larry's mother is examining the magazine rack.

"I think this has made a great deal of publicity for 4-H work for my mother tells everyone who will listen about her Christmas surprise." Larry Hittle thinks that this "surprise," a Nativity scene, has brought him the most satisfaction of any of his woodworking projects.

This idea began to grow a number of years ago when Larry's mother started talking about her desire for a Nativity Scene to put up in the yard at Christmas. She collected several commercial folders of the kind she wanted, but the scenes cost several hundred dollars.

"We had talked about the possibility of making one, but she thought we had given up the idea," Larry grinned. "I talked with my woodworking leader, Mr. Wayne Krepps, showed him the folder, and he thought we could do it. My dad agreed heartily with the idea and promised to pay for all the materials we used."

Larry and Mr. Krepps bought Masonite for the figures and took it to Mr. Krepps shop. They used live models. Larry and Mr. Krepps' son posed for the shepherds and Wise Men, and Mrs. Krepps posed for the Virgin Mary. They used a strong spot light which cast the model's shadow on the masonite. Then they drew around the edge of the shadow.

They cut them out with a saber saw, and using the commercial folder as a model, drew

A new paint job and some needed additions were added to the Akron 4-H Club's food stand before the Cowley County Fair. The Junior Leaders worked on reroofing the stand and putting a floor in it. They also built two six foot extensions onto it.



FOR CHRISTMAS

A Surprise



and painted in the faces and clothing.

"It took us several weeks as we began in early October and finished about a week before Christmas. We had to work at night and mostly on week-ends because I was busy at school and in the fields in the daytime." Larry said.

The climax to all the hard work came when they set up the scene in Mr. Krepps' shop. He asked Mrs. Hittle to stop by to see some work he was doing.

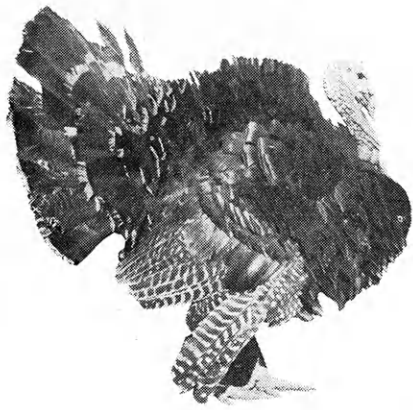
"I shall never forget her face when she saw the scene," Larry said. "Tears filled her eyes and she was speechless."

"I had always wanted a Nativity Scene," Mrs. Hittle commented, "But I was never more surprised than when I actually got one."

An amazing sidelight on the situation was that Mrs. Hittle had been fussing at Larry for being gone from home and being down at the Krepps so much.

The original scene was built in 1958 and this year Larry is planning to add an angel and some camels to it. The figures are held upright by 1 by 4's which are driven into the ground and then fastened to the back of the figures.

Total cost for the project was \$53.60 and Larry places a value on it of \$150, a big reduction from the \$400 to \$1000 it would have cost to buy already made.



New Trimmin's For That Christmas Turkey

Everyone knows that stuffed miserable feeling which comes from eating too much Christmas dinner. It's almost as traditional as the turkey.

Why not add some new ideas to the dinner this year? It can be just as delicious without being a heavy, starchy meal.

Gertrude Allen, extension nutritionist, suggests instead of having dressing, potatoes and hot rolls all in the same meal, you leave out the potatoes entirely since there are so many other good things to eat.

Save the hot rolls for the evening meal. This Christmas night meal usually consists of leftovers from the Christmas dinner. A hot food and a nice touch is added by serving the hot rolls then. They will be much more appreciated than at noon when they would be only one of several wonderful foods.

In these days of freezers and brown-and-serve rolls, Mother won't have to stay in the kitchen all afternoon preparing them. And it will lighten her Christmas dinner work if she doesn't have to worry about rolls then.

By the time dessert appears after the Christmas dinner, most of us can only groan, but we go ahead and eat it anyway. Miss Allen suggests in place of a filling and calorie-heavy pie, you serve a quick and delicious fruit dessert.

Again the freezer (or the grocery store) plays a part. The dessert pictured below consists of a half peach filled with a scoop of ice cream with some frozen raspberries over the top. It's simple for Mother to prepare and delicious to eat. The flavor combination will surprise

you.

There are, of course, some traditional Christmas foods no one wants to miss—the turkey, complete with dressing and gravy, and cranberries (if the fuss over them is ended by then.)

Making good gravy is an accomplishment some women never learn. Miss Allen has these ideas for gravy making—

First determine how much gravy you want to make. Then allow 1½ to 2 tablespoons of fat to each cup of gravy. Pour off all the fat you don't need.

To the fat add an equal amount of flour, 1½ to 2 tablespoons. Stir this and cook until the gravy is thickened and smooth. Adding hot liquid to the fat and flour will cause it to cook too quickly and the gravy may be lumpy.

For liquid, Miss Allen suggests using the broth the giblets were cooked in, mixed with a little milk. This procedure will make a gravy of medium thickness. If you like a thinner gravy, use only 1½ tablespoons of fat and flour per cup of gravy. Pouring

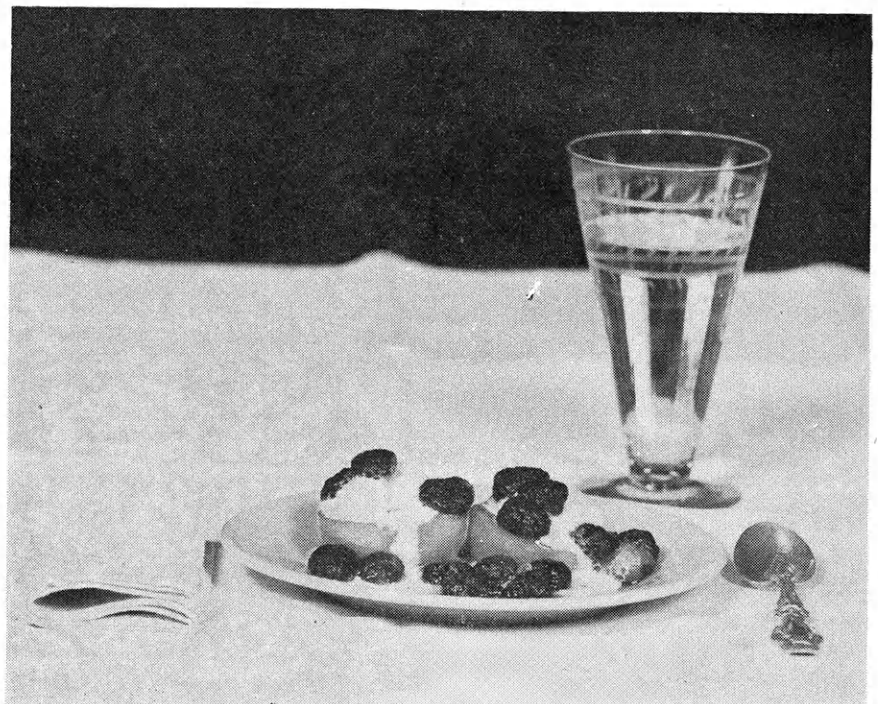
off the excess will eliminate having globules of fat on the top of the finished gravy. The cooked giblets may be chopped and added to the gravy, too.

Recipes for dressing are almost as many and varied as there are cooks in kitchens. This is a good basic recipe. After you master it, you may want to experiment and add your own flavoring touches. This recipe will make enough dressing for 12-16 pound turkey.

Heat two tablespoons chopped onion and 2 to 3 cups finely chopped celery in ½ to ¾ cup of butter or chicken fat. Do not fry, but simply cook slightly.

Add this to two quarts soft bread crumbs. Also add two tablespoons chopped parsley and two teaspoons each of salt and sage. The proportions of salt and sage will vary according to individual taste. But with sage, too little is better than too much.

Beat four eggs and mix with four cups milk. Pour this over the crumb mixture. Mix this well but lightly and stuff your turkey.



AWARDS PRESENTED AT AUTO PROJECT BANQUET

Outstanding Kansas Auto Project 4-H'ers were feted to an awards trip and banquet November 6 and 7 in Wichita.

The 4-H'ers making the trip were selected on the basis of their achievement and interest in the project. They were accompanied by local leaders and extension agents.

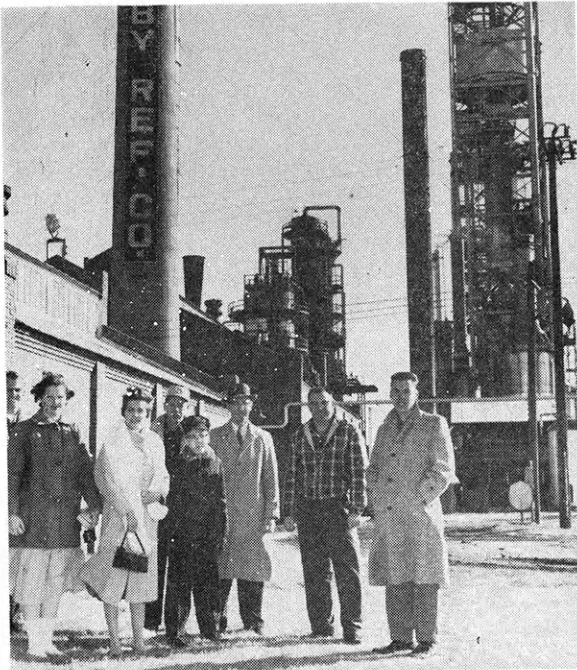
During their two day visit they toured Boeing Aircraft Co., Seven Up Bottling Co. and the Derby Refining Co.

The awards banquet was held at the Lassen Hotel Nov. 6. Presiding over the event was Roger Regnier, State 4-H leader.

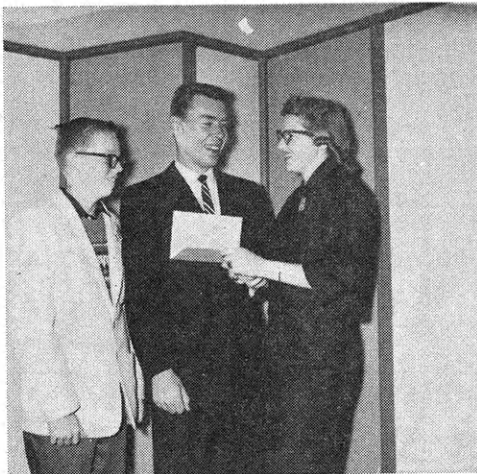
Jim Roberts, Derby Refining Company representative, presented certificates of achievement to 4-H'ers:

Bob Foxworthy, Carol Lipscomb, Butler County; Steve Alford, Grant County; Larry Richardson, Morgan Wayland, Labette County; Kenneth Thomas, Lyon County; Betty Thompson, Sonja Combs, Norton County; Delores Martin, Tracy Robey, Saline County and David Cutter, Diane Pottroff, Seward County.

Make your car a 5-Star Performer with new DERBY STAR-TANE. Combines anti-rust, anti-ice and detergent in all DERBY gasolines at NO EXTRA COST! Derby STAR-TANE works wonders in the delicate fuel system of your car. It cleans carburetors and keeps them clean. It prevents icing. It stops corrosion. Fill'er up with Derby regular or premium today—both have STAR-TANE.



The 4-H'ers toured the Derby Refinery early Saturday morning.



Roberts, center, presents certificates to Tracy Robey, Saline county, left, and Sonja Combs, Norton County.



Sitting in a conference on the 4-H Auto Project are Betty Thompson, Norton county; Robert Thompson, Norton, leader; Bob Foxworthy Butler; Carol Lipscomb, Butler; Steve Alford, Grant; Sonja Combs, Norton. The group discussed things they had done in the project, suggestions for improvement in the project.



DERBY REFINING COMPANY
Wichita, Kansas.

Pictures From Kansas 4-H'ers

SEND IN YOUR PICTURES

We want pictures taken by Kansas 4-H'ers. Prizes will be given for all pictures used in the Journal.

The picture need not be on 4-H Club work, but pictures with subjects related to 4-H Clubs are preferred. Action pictures are desired.

All pictures should be glossy prints at least five by seven inches in size unless accompanied by the negative.

Photographs should be accompanied by a short statement explaining the picture and including the names of persons shown.

Entrants should designate their choice of the following prizes. A year's subscription to the National 4-H Club News, one roll of color film—sizes 620, 120, 616, 116, 127 or 35 mm only, or a 4-H Club photograph album.

4-H members, parents, leaders, county agents or friends of 4-H may send in pictures.



The Baileyville Skyliners, Nemaha county, use a novel way to exchange gifts. Both the balloons and the gifts are numbered. Members throw darts at the balloons and receive the gift with the same number as the balloon they break. Left to right: Marilyn Rettele, Verna McCaffery, Kathleen Holt-haus, and Virginia McCaffery.

Members of the Drury Millers, Sumner county, stencil the school's name on its folding chairs. Joyce Ward, Sondra Slothower and Jean Ward are painting while Walter Goddard holds a chair for the photographer.

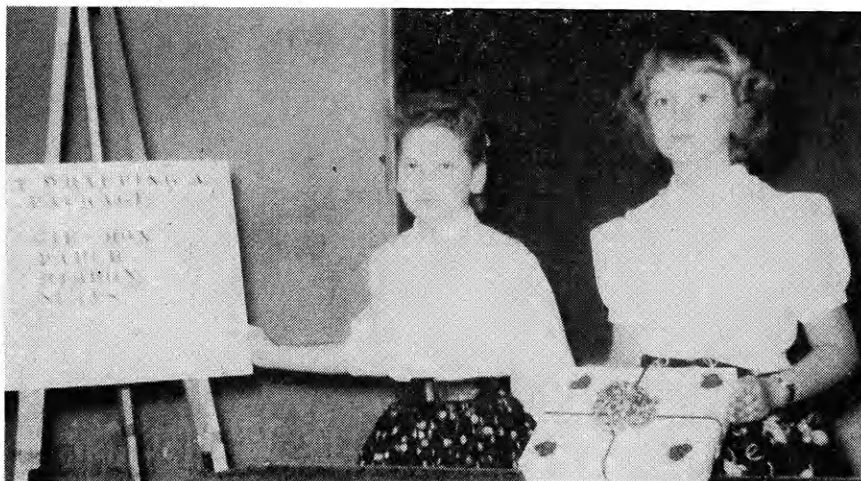


Ruth Ann Brown and Linda Brumback fill containers with cookies for shut-ins. Their club, the Quincy Go-Getters, Greenwood county, will take the cookies to the Lyndon Nursing Home and to elderly residents in town. BELOW: Jan Sue Howell and Aletha Carlson of the Udall 4-H Club, Cowley county, won a blue ribbon on this demonstration, "Gift Wrapping a Package" at their county 4-H Day.



Members of the Centraila Aces 4-H Club of Nemaha County worked together making safety reflectors out of tin cans filled with cement and wrapped with reflecting tape. These cans are kept in each family's car to be set out on the road in case of emergency. Walter Steckel was chairman of the project.

Clean-up after a 4-H party really isn't too bad judging from the expression on Larry Warner's face. Larry is a member of the S.W. Kearny 4-H Club. Armed with the family sweeper and a razor blade, he's giving Santa a shave.



Tuckel Enters Regional Contest



Emmett Tuckel, Douglas county 4-H'er, accepts a certificate of participation and congratulations from C. N. Hinkle, agricultural engineer with the Standard Oil Company, Chicago. Emmett placed fifth in the Regional 4-H Tractor Driving Contest held in October in the Stephens College, Mo. arena. The smiling young lady is Julia King, a first year Stephens student from Salina. Emmett competed with 18 other young men in the event. They were required to prove their tractor driving skill as well as take written examinations on their knowledge of tractor maintenance and safety rules. The Missouri Extension Service was host for the event. Awards were sponsored in the Central States by the Standard Oil Foundation.

We will Furnish ALL *MATERIALS for this 40' x 60' FARM BUILDING for only

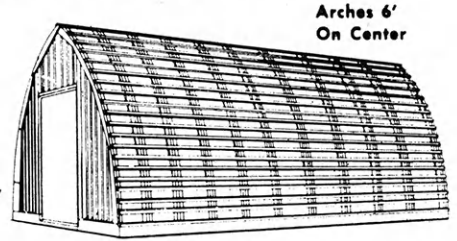
\$2271

Covered with 29 ga. Galvanized Iron

\$2581

Covered with Kaiser Diamond Rib Aluminum

*Prices cover all materials above foundation. No labor or State Sales Tax included!



IDEAL FOR FARM MACHINERY STORAGE

... or may be converted to CATTLE BARN, BROODER HOUSE, COMBINATION UNIT or GRAIN STORAGE with Arches 4' on center.

YOU GET: MORE USABLE SPACE... GREAT STRENGTH and LONG LIFE... PRESERVATIVE TREATED ARCHES and LESS MOISTURE CONDENSATION



International Paper COMPANY



This 40' x 60' Building can be purchased for cash or financed thru the loan agency of your choice. However, we will be glad to help you arrange financing to meet your personal requirements.

From FOLGER'S...



MERRY CHRISTMAS

The Folger Coffee Co.
Kansas City, Mo.

Ideas That Work

Reporter's Notice: The Kansas 4-H Journal would like to print interesting stories of your local club events, activities, members and leaders.

Local club meeting stories, if submitted, should contain something unusual or of interest to people outside your county.

Outstanding projects, services or events of your club, or stories of individuals within your club that would give ideas to other 4-H'ers would make excellent stories.

Prizes will be awarded all blue award stories each month. Please state your choice (1) a year's subscription to the National 4-H Club News or (2) a hard cover loose leaf 4-H notebook.

Parents Tell of "Good Old Days"

"And for croup give the child a mixture of one teaspoon of molasses and one teaspoon of goose grease. This is very effective." This was part of the health talk at Saline Valley club's parents' night program.

The inspiration for the program was Salina's centennial theme, "Wagons to Wings," and program numbers dated back to early days.

A project talk on "Crops" was given by a parent who had had the project 25 years before. He was raising Turkey Red wheat and expected to sell it for 30 cents a bushel. He planned an entry at the county fair which was to be held in a tent.

Making butter by shaking a jar of cream was another demonstration. During the recreation period parents had their waists measured and many longed for the good old days.

Ann Hamilton, reporter

Pepper Sale Earns Sound System

As a premium for the sale of 400 boxes of pepper at \$1.00 each, Silver Leaf club of Franklin county earned a sound system and record player. It was put to use March 29 as more than 200 4-H members and leaders gathered in Memorial auditorium at Ottawa for an evening of square dancing and folk games.

Winners of prizes for salesmanship were James Dunn and Diane Bones. The sales team captained by Roger Keith won the contest and were guests for the evening. All members who sold over fifteen boxes were awarded name plates.

Roger Keith, reporter

Willing Workers Are Also Willing Givers

The Willing Workers Club, Saline county, are not only Willing Workers but also "Willing Givers."

It has been a special project of the club to give to all the worthy causes they could. In all they have given to about 25 different organizations during the past year. Some of the causes include polio, cancer, Rock Springs Ranch, CARE and Heart Fund. The total amounts to about \$260.

By being "Willing Workers" the club has managed to keep a large treasury. They have cleaned schoolhouses, served lunch at farm sales, had food and candy sales, and worked at various county events and community projects.

Janet Stauffer, Reporter

Quartet Helps Keep Interest of Older 4-Hers

A Sedgwick county junior leader has found one way of holding the interest of three boys this year. She helped organize a trombone quartet.

Marilyn Mauck, trombone player and senior at Goddard High School, worked with three freshman boys who were also 4-H members. She had the help of the school music teacher.

Marilyn held a number of practice sessions and instructed the boys herself. One boy was only a first year trombone student.

Marilyn's instructions and the group's practicing paid off at the county and regional 4-H Day where the group received blue ratings.

Karen Mauck, Reporter

Many Conservation Projects

The conservation committee of the Shunga Valley Club has been most active this year.

At the January meeting they gave a demonstration of several simple ways to feed the wild song birds. This demonstration was used in the Club's model meeting—winning a top blue rating at the county and regional 4-H Days.

The committee presented each family in the Tecumseh and Shunga Valley clubs with an easy to assemble wren house. The pieces had been pre-cut by members of the committee. It was at the April meeting the committee also called attention to the critical housing shortage that has almost eliminated the wood duck population. They displayed a number of predator proof wood duck

nesting boxes the committee had constructed. The group later delivered 21 of the boxes to the Marais Des Cygnes Wildlife refuge.

Several field trips on bird study were included in the group's schedule. Each member had a list of at least forty different birds they have seen. They are now working on a list of 20 birds that are especially useful to the farmer.

The club's committee presented a wildlife program for the West Topeka Kiwanis Club. For the county fair they arranged for a wildlife exhibition truck. At the Oak Grange Hall they established a conservation library.

One of the future plans of the committee is the establishment of a 360 acre game preserve in their community.

Charles Howell, Reporter

IFYE Gives Report on Belgium

730 people to the square mile live in Belgium, a country smaller than Texas, said Herman Vermeiren, Belgian IFYE, at a meeting of the Rozel Hustlers, Pawnee county.

"It is necessary to speak several languages in Europe," he remarked. "It is not like the U.S. where you can travel thousands of miles and still use the same language."

The two main languages in Belgium are French and Flemish.

Radio, TV and electricity are the same as in the U.S., but the cities have old winding streets. Most houses are made of bricks.

Chickens are raised in buildings three to four stories high to conserve space—in Belgium no land is wasted.

When asked about American food, Herman says he likes the taste of watermelon but wonders if it wouldn't be easier to drink a glass of water.

Raylene Scott, Reporter

New Ceremony

Something a little different in a candle lighting ceremony has been developed by the Sunnyridge 4-H Club, Geary county. Junior leader Glenna Zieber explains that the club is like a candle—the fire must be kept alive by fuel from the wax for the candle and from the members for the club. Club members representing the 4-H's tell the meaning of the pledge as they light candles to illuminate a 4-H emblem. The four members light the candles of the other members and leaders as the ceremony is concluded by singing "Follow the Gleam."

Sheryl Say, Rep.

Rope Halter Worth \$100

A rope halter worth \$100! Wow!

Well, anyway, that's what Galen Slifer of the Abbeyville Club, Reno county, says his is worth. "You see, this

is the halter I used to catch the calf that entitled me to the \$100 heifer given by the Hutchinson Chamber of Commerce."

Galen demonstrated at his club meeting exact details on making such a halter. He guaranteed his halter only to hold a calf, not to catch it.

Galen's brother, Marvin, doesn't believe he has made a cake worth \$100 but he might have come close on his yellow sponge cake that won a blue ribbon at the State Fair. In an illustrated talk entitled "The Disgrace of a Cake Pan", Marvin told the club of eight cake failures and the possible causes for them.

Marvin Slifer, Rep.

The Roy Froetschner family had ten members in 4-H with a total of 84 years 4-H experience.

Shirlene Spreier, Rep.

Ideas in Brief

At the October meeting of the Hayes 4-H Club, **Reno** county, Mrs. Wilbur Kinamon was mistress of ceremonies for "It Could Be You." She related embarrassing moments of parents and leaders . . . The **Ford** county Richland Boosters used "Show Me" as the theme for their achievement night. In skit form the Junior Leaders told and showed "Mr. Show Me" the benefits of 4-H and how it helps people even after they are no longer members. "Mr. Show Me" was finally convinced after he talked with two bums (Junior Leaders in costume) who had never been 4-H members . . . The Partridge Upstreamers, **Reno** county, elected new officers in October . . . Diane Barngrover gave a music appreciation quiz to members of the D.I.Y. Jrs., **Ford** county, at the September meeting . . . The Happy-go-Lucky Club, **Riley** county, saw a film, "The Right Turn," at its achievement party. The film concerned the good of 4-H, who can join and what makes 4-H tick . . . "Hobbies" was the theme for the November meeting of the **Gove** county Hackberry 4-H club . . . "Your Eyes" was the subject of a health talk given by Wayne Musil for the Home City Hustlers, **Marshall** county . . . Highlight of Achievement Night for the Country Pals, **Thomas** county, was the announcement that the club had won its fourteenth consecutive purple seal . . . Philip Godfrey of the **Labette** county Thrifty Thrivers has a different colored wool blanket made from the wool of his own sheep for each of the five years he has enrolled in the sheep project . . . The **Reno** county Salem 4-H'ers voted to take

a float to the Christmas parade in Wichita this year . . . October was election month for the Rozel Hustlers, **Pawnee** county . . . Thirty-one members and parents of the Fairview 4-H Club, **Jefferson** county, spent a day in Kansa City touring the Swift packing house and the American Royal exhibits. They also attended the matinee performance of the Royal horse show. The 4-H'ers earned the money for this trip by selling refreshments at their community dance.

Letters

(Continued from page 2)

WHOOT, the "4-H in Review" is much more educational and helpful.

Stanley R. Meinen
Assistant to the Ex. Director
National 4-H Club Foundation
Washington, D. C.

Following the installment plan I have been reading your September 4-H in Review. This number is excellent as to its organization . . . The articles on important subjects, especially the development of older youth interest, are very good. Your Kansas advertisers seem to be very generous in support of your work especially in this Review issue. I have mailed other issues of your Journal to C. T. Liao, 4-H Leader, 25 Nan Hai Road, Taipai, Taiwan. They are doing fine work with the 40,000 members.

A. B. Graham
Columbus, Ohio

Horn Thanks Campers

Charles Hoyt
Assistant State Club Leader
Kansas State University

Dear Mr. Hoyt:

Thank you very kindly for your letter enclosing letters written by the delegates who were in attendance at the 4-H Club Conservation Camp. We know Kansas will continue to carry on this good work in conservation. If it were not for the State 4-H Club Leaders, the County Agents, and all the other workers, the program would never be a success.

Through the Kansas 4-H Journal I would like to give my personal greeting to each of the 4-H'ers who attended Conservation Camp this year. I also want to add "thank you for all the wonderful letters you 4-H'ers sent me. I sincerely appreciate them.

S. L. Horn, President
Federal Cartridge Corporation

Club Appreciates Book

I was presented the Club recreation game book at the Minneapolis Chamber of Commerce picnic and was very happy to receive it. Thank you very much as I know our club will make use of it.

Pete Hanes
Rockhill Club
Ottawa County

Kansas 4-H Journal Sponsors

Welcome to These New Sponsors

JEFFERSON

Roy Baker Quarry, Valley Falls
Sunflower Tip Top Dairies, Company, Valley Falls

These Sponsors Have Renewed Their County Support of the Kansas 4-H Journal

CLOUD

Citizens State Bank, Miltonvale
First National Bank, Glasco
Jamestown State Bank, Jamestown

GOVE

First National Bank, Quinter
Peoples State Bank, Grinnell
The Citizens State Bank, Grainfield

KIOWA

First State Bank, Mullinville
Greensburg State Bank, Greensburg
Haviland State Bank, Haviland

LYON

Citizens National Bank, Emporia

McPHERSON

Farmers Union Elevator Company, Lindsborg
Moundridge Co-Operative Elevator Ass'n., Moundridge

The Co-Operative Farmers Union Elevator Company, Marquette
The Farmers Co-Operative Ass'n., McPherson

The Farmers Co-Operative Grain and Supply Company, Canton

NEMAHA

Winterscheidt Milling Company, Seneca

STANTON

Collingwood Grain Inc., Johnson, Manter and Big Bow

STEVENS

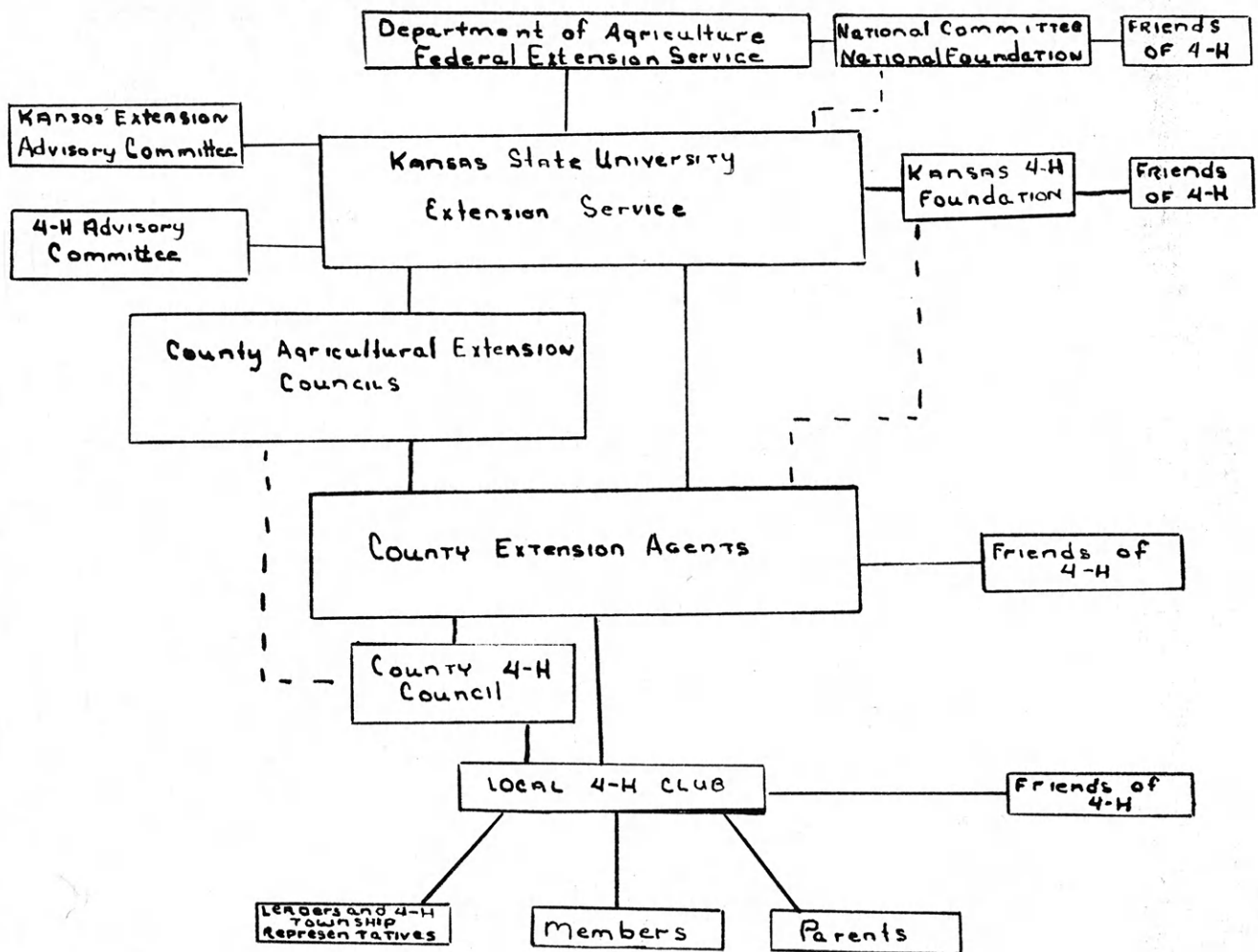
The Citizens State Bank, Hugoton

SUMNER

Wolcott & Lincoln, Inc., Wellington

WALLACE

Wallace County Farm Bureau, Sharon Springs



Who's Responsible for 4-H?

By Roger E. Regnier
Kansas 4-H Club Leader

Who's responsible for 4-H? Would a discussion on this subject be a good topic for one of your 4-H Club meetings?

Is it the National Committee on Boys and Girls Club Work—the Extension Service of the Land Grant College—the Kansas 4-H Foundation—the U. S. Department of Agriculture—the public schools?

It's a hard question to answer briefly and yet give a correct answer. The Cooperative Extension Service of the Land Grant College in each state is the best answer, but it needs explanation. Your county club agent, home economics agent or agricultural agent, while not wearing a "professor's" title, is a member of Kansas State University's faculty.

The Cooperative Extension Service is so named because fed-

eral, state and county governments cooperate with the people in a county in planning, conducting and financing educational programs. It's basic principle is to "take the University to the people." This is done by the county agents' role as college faculty members.

County extension offices are integrated with state and national educational programs by a trained staff of specialists, supervisors and administrative personnel organized in nine departments of the Extension Division at Kansas State University.

The nine departments are Boys and Girls Club, Home Economics, Agricultural Specialists, Engineering Extension, Extension Information, Programs and Training, County Agent Work, Continuing Education, and Radio and Television Extension.

4-H, then, is a government

sponsored program the same as the public schools. Volunteer local leaders, trained and assisted by county extension agents, make 4-H Club work "go" on the local level.

While 4-H is government supported and organized, private persons and organizations like to help. Awards, incentives, scholarships, and facilities can be supplied from private funds.

The Kansas 4-H Foundation, on a state level, the National Committee on Boys and Girls Club work and the National 4-H Foundation, on a national level, are supplementary organizations set up to help 4-H.

Each of these organizations solicit, holds and expends funds to promote 4-H. The Kansas 4-H Journal, is a project of the Kansas 4-H Foundation.

The diagram above shows the organizational pattern for 4-H.

Kansas 4-H Journal Index by Subject

January, 1957 Through December, 1959

- Achievement Meetings... November, 1957; September, 1958 and September 1959.
- Alumni... September, 1957; November, 1959.
- American Royal 4-H Conference... September, 1958; September and November, 1959.
- Auto Care and Safety... March, 1958 and every month since.
- Beef Cattle... April, July and August 1957; March, April, September and November, 1958; February, April, July, September and November, 1959.
- Best Groomed Boy... July, 1957; September, 1958; July and September, 1959.
- Booths... February, 1957; June, 1958; January, June and September, 1959.
- Bread Making... April, 1957 and October, 1958.
- Businessmen's Picnics... May and September, 1958; September, 1959.
- Camps... May, August and September, 1957; June and September, 1958; May, September and October, 1959.
- Careers... April and August, 1957; February and September, 1958; February, April and September, 1959.
- Cherry Pie Baking Contests... January, February and November, 1957; February, 1958.
- City 4-H Clubs... October and November, 1958.
- Civic Supporters... September, 1958.
- Clothing... March, May, June, July and December, 1957; February, March, June, July, September, November and December, 1958; January, February, April, May, June, July, August, September and October, 1959.
- Club Achievements... April and June, 1958; January, 1959.
- Club and County Exchanges... February, 1957; September, 1958.
- Club and Project Meetings... September, 1958; September and October, 1959.
- Collegiate 4-H Club... September, 1958; September, 1959.
- Colt Project... January, 1957; April and September, 1958; August and September, 1959.
- Community Relations... September, 1958.
- Community Service Projects... January, February, April, May, June, July, September, October, November and December, 1957; January, February, March, June, July, August, September, October, November, and December, 1958; January, February, March, May, June, July, August, September, October, November and December, 1959.
- Conservation... March, April, May and September, 1958; July and September, 1959.
- Conservation Camp... September, 1958; September, 1959.
- Council Meetings... September, 1958.
- County and Club Events, Miscellaneous... September, 1958; September, 1959.
- Crops... July, 1957; September and December, 1958; June and September, 1959.
- Dairy Cattle... July and August, 1957; July and September, 1958; May, June and September, 1959.
- Dairy Princess... May, 1957; May and July, 1958; June, 1959.
- Demonstrations... January, February, April, June, July and August, 1957; January, March, September, October and November, 1958; April, June and September, 1959.
- Dog Project... November, 1958 and September, 1959.
- Dramatics, 4-H... January, May and October, 1957; September, 1958.
- Electric Project... March, 1957, and every month since.
- Entomology... September, 1957; September and December, 1958; February, September and October, 1959.
- Fairs, County and State... October, 1957; July, August, September, and October, 1958; August, September and October, 1959.
- Farm City Week... November, 1957.
- Floats... May, June and November, 1957; July, 1959.
- Folk Games... January and February, 1957; January, April, September and December, 1958; January, April, June, September and October, 1959.
- Foods Projects... June and July, 1957; March, May, June, August, September and November, 1958; January, March, April, May, June, August, September, October, November and December, 1959.
- Forestry Project... November, 1958 and September, 1959.
- Four-H Club Days... January, 1957; January and September, 1958; September, 1959.
- Friends of 4-H... February, March, July and September, 1957; August, 1958; January, February, March, June, July, September and October, 1959.
- Fun Nights... March, 1957.
- Garden... February and September, 1958; March, August, September and October, 1959.
- Grain Marketing... September, 1958.
- Grooming... September, 1958.
- Health... June, July, September and December, 1957; February, March, September and November, 1958; July, August, September and November, 1959.
- Health Conference... September and October, 1958; June and September, 1959.
- Home Beautification... March and July, 1957; February and September, 1958; January, April, May and September, 1959.
- Home Improvement... May, September and November, 1957; January, March, June, July, September and December, 1958; June, September and November, 1959.
- Judging... April, May, June and July, 1957; April, July and September, 1958; February, April, May, June and September, 1959.
- Junior Leadership... January, August and November, 1957; July, September, and November, 1958; April, July and September, 1959.
- Junior Leadership Camp... September, 1958; September, 1959.
- Kansas 4-H Foundation... March, 1957; February, March, September and December, 1958; September, 1959.
- Kansas 4-H in Review... July, 1957; September, 1958; February and September, 1959.
- Leaders... February, April, May, June and December, 1957; April, May, June, September and December, 1958; March, May, August and September, 1959.
- Leaders Conference... September, 1958; April and September, 1959.
- Meats Identification and Judging... November, 1957; August and September, 1958.
- Members' Achievements... January, February, June, September and October, 1957; January and November, 1959.
- Model Meetings... January, 1957; October, 1958; December, 1959.
- Money Raising Projects... February, March, May, June, July and September, 1957; January, February, March, April, May, September and December, 1958; August, September and October, 1959.
- Music... January and October, 1957; January, April, May, June, July, and September, 1958; January, February, June and September, 1959.
- National 4-H Conference... September, 1958; September, 1959.
- National 4-H Club Congress... January and November, 1957; September, 1958; September, 1959.
- National 4-H Club Week... February, 1957; April and September, 1959.
- Officers... February, October, November, and December, 1957; September, 1958; August and September, 1959.
- Older Member Organizations... September, 1958; September, 1959.
- Parents... March, 1957; January, March, July and September, 1958; August, September and October, 1959.
- Parliamentary Procedure... August, 1959.
- People to People and IFYE... February, March, May, June, July, August, September, October, November and December, 1957; April, September and December, 1958; January, March, April, September, October and November, 1959.
- Personal Finance... September, 1958; March, September and October, 1959.
- Photography... September, 1958.
- Poultry Project... February and December, 1957; January, April, September and November, 1958; August and September, 1959.
- Program Planning... August, 1958.
- Project Selection... August, 1958.
- Project Talks... December, 1957; September, 1958; November, 1959.
- Promotional Activity... September, 1958; September, 1959.
- Promotional Talks... January, 1957; December, 1958; November, 1959.
- Rabbits... November, 1957; January and September, 1958; August and September, 1959.
- Radio Programs... September, 1959.
- Recreation... Each month since January, 1957.
- Rock Springs Ranch... February, June, September, October and December, 1957; July, August, September and October, 1958; June and July, 1959.
- Round-up... April and May, 1957; May and September, 1958; May and September, 1959.
- Safety... March, April, May, and November, 1957; March, August, September, November and December, 1958; August, September, October and November, 1959.
- Scholarships... April, 1957.
- Securing and Keeping Members... September, 1959.
- Sheep... June, 1957; September and December, 1958; February, August and September, 1959.
- Soil Conservation... September, 1958; May and September, 1959.
- Southwest 4-H Camp... September, 1958; June and July, 1959.
- Spring Shows... September, 1958.
- Sunday, 4-H... April, 1957; May and July, 1958; April and September, 1959.
- Swine... May, July, September, November and December, 1957; June, 1958; January, May, August and September, 1959.
- Talent Contest... January and June, 1957; January, June and September, 1958; April, September and October, 1959.
- Tours... April and August, 1957; January, May and September, 1958; May and September, 1959.
- Tractor Project... December, 1957; September, 1958; January and September, 1959.
- Uniforms... April, May and October, 1957.
- Wheat... July, 1958; December, 1958.
- Woodworking... April, 1957; March, May, September and November, 1958; January, September, October and December, 1959.



Wilson Cadman, representing Kansas power suppliers, presents certificates of achievement to Tom Norris, Sumner county, and Margaret Sughrue, Finney.

Top Electric 4-H'ers Attend Wichita Event

Ten top winners in the 4-H electric project were honored at a two-day recognition program in Wichita November 6 and 7.

Members honored were Arden Vernon, Lyon county; Kenneth Schuster, Jewell; Larry Laird, Decatur; Maurice Ericksen, Greenwood; Margaret Sughrue, Finney; Michael Watson, Sedgwick; Karen Knoll, Smith; Thomas Norris, Sumner; Frederick Peterson, McPherson; and James Cormode, Atchison.

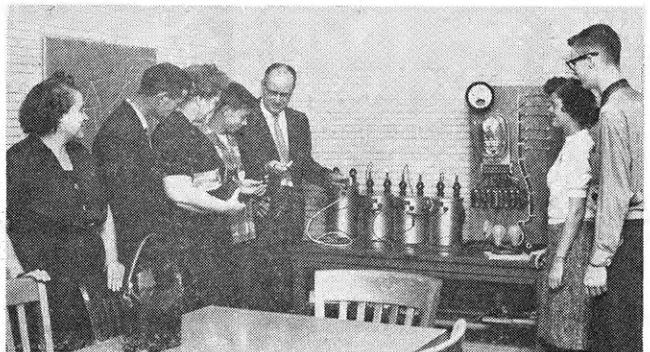
Program for the two-day Wichita visit included tours of the Boeing Airplane Company, Wichita Seven-up Bottling Company, and Kansas Gas and Electric Company's meter and service departments.

The electric group heard Nora Steg, KG and E home economist, give an illustrated talk on "Electrical Trends for the Future." A recognition dinner and attendance at the movie "South Pacific" were highlights the first evening.

This educational trip is provided annually for outstanding 4-H electric members by the power suppliers of Kansas.



Left, at Boeing Airplane Company's facilities, Frederick Peterson, McPherson county; Maurice Ericksen, Greenwood; Kenneth Schuster, Jewell; and Tom Norris, Sumner, see a nearly completed B-52. Below, a tour of the K G and E meter department training laboratory shows Superintendent Ralph Youngstaff demonstrate operation of miniature transformers used in training meter men.



**WATCH THIS
PAGE FOR IDEAS
ON FARM AND
HOME ELECTRIC
PROJECTS**

Electric Light and Power Companies in Kansas

The Kansas Power and Light Company

Central Kansas Power Company

Kansas City Power & Light Company

Kansas Gas and Electric Company

Western Light & Telephone Company

Wheatland Electric Cooperative