

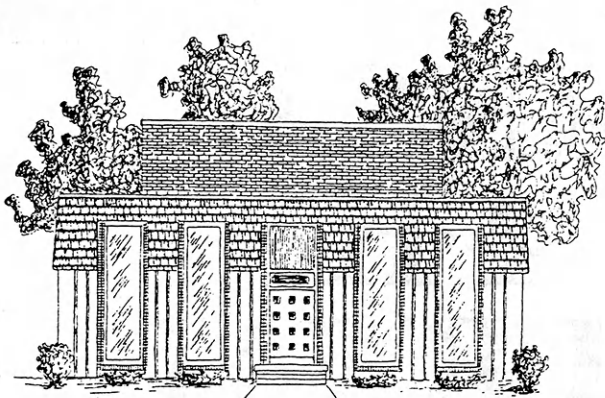
**Featuring  
4-H  
Camping**

# KANSAS 4-H JOURNAL

The Family Magazine

May 1988





# Clovia 4-H Cooperative House

ENJOY ... College life among others with interests and experiences like your own. Single female students with a 4-H or similar background.

Fort Hays Clovia

SAVE ... up to \$600 as compared to residence hall living by assisting with house operations and management. Clovia is one of the most economical organized living groups at Kansas State and Fort Hays State Universities.

HAVE FUN ... Traditional Clovia social activities include formals, semi-formals, functions and exchange dinners with fraternities. Clovia members participate in intramural sports and other extra-curricular events. Clovia provides the opportunity for you to meet others and get involved in campus activities.

HURRY ... Space is limited! Complete and mail attached form to:

**Kansas State University**

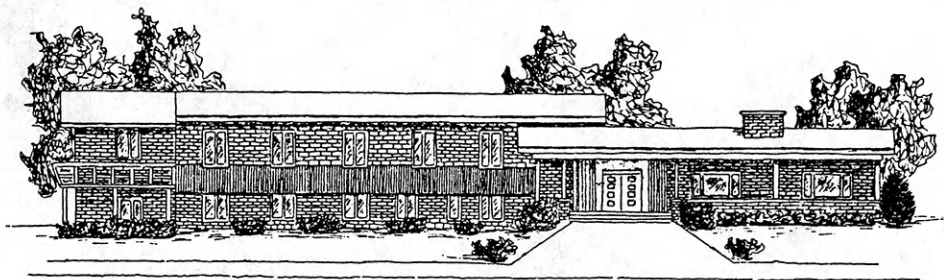
Clovia 4-H Cooperative House  
1200 Pioneer Lane  
Manhattan, KS 66502  
(913) 539-3575

-or-

**Fort Hays State University**

Clovia 4-H Cooperative House  
209 W. 5th  
Hays, KS 67601  
(913) 625-4052

Manhattan  
Clovia



Please send me more information about the Clovia 4-H Cooperative House unique college-living option.

Name \_\_\_\_\_ County \_\_\_\_\_

Address \_\_\_\_\_ City \_\_\_\_\_

State \_\_\_\_\_ Zip \_\_\_\_\_

Year in school:  Freshman       Sophomore       Junior       Senior

*Clovia: A project of the Kansas 4-H Foundation.*



# KANSAS 4-H JOURNAL

**VOLUME XXXIV NO. 5  
May 1988**

**Rhonda Wessel Atkinson ... Editor  
Linda Akin ... Secretary**

Address all correspondence:  
Kansas 4-H Journal  
116 Umberger Hall, KSU  
Manhattan, Kansas 66506  
Phone (913) 532-5881

Single subscriptions are \$4 per year.  
Group subscriptions are available upon request.

Kansas 4-H Journal is published  
10 times a year by  
**KANSAS 4-H FOUNDATION, INC.**

Bill Riley ... Executive Director  
Trisha Cash ... Secretary  
Ann Carr ... Asst. Treasurer

## BOARD OF TRUSTEES

Governor Mike Hayden  
Honorary Chairman  
Glee S. Smith, Chrm. ... Larned  
Martha Wreath Streeter  
Vice-Chrm. ... Manhattan  
John Junior Armstrong,  
Treas. ... Muscotah  
Ross Beach ... Hays  
Richard Dillon ... Hutchinson  
Marilyn Pence Galle ... Moundridge  
Mrs. Olive Garvey ... Wichita  
Balfour S. Jeffrey ... Topeka  
J. Harold Johnson ... Manhattan  
Wilbur E. Levering ... Topeka  
Bernard E. Nordling ... Hugoton  
Thomas M. Potter ... Wichita  
C.R. Salmon ... Manhattan  
Tom Shirley ... Dodge City  
Walter Woods ... Manhattan  
Robert Wagstaff ... Shawnee Mission  
Mrs. Dwane Wallace ... Wichita  
\*Glenn M. Busset ... Manhattan  
\*Roger E. Regnier ... Manhattan  
\*Dolph Simons, Sr. ... Lawrence  
\*Advisory Member

Use of the 4-H name and symbol approved by the Secretary of Agriculture of the United States, January 23, 1951, under the provisions of the laws as reenacted by Sec. 707 of the Act of June 25, 1948, Public Law No. 772 80th Congress (10 USC 797).

## In This Issue

Important State Fair Rule Changes .....	4
Wheat Variety Test Plot Program .....	5
Extension 4-H Specialists Retire .....	6
4-H Camp '88 .....	7
Outdoor Development at Rock Springs .....	8
Special Notices .....	9
Range Youth Camp .....	10
Camper's Budget Planning Guide .....	12-13

## Advertisers' Index

Clovia Scholarship Houses .....	2
Rock Springs 4-H Center .....	11
Consolidated Printing .....	13
Kansas Savings and Loan .....	13
Kansas Livestock Association .....	14
Kansas Farm Bureau .....	15
Sangamon Mills .....	15
Collingwood Grain .....	15
Capitol Federal Savings .....	15
Anchor Savings .....	15
The Pathfinder .....	16

Cover Photography by Jennie Honas, Sedgwick County



# Important State Fair Rule Changes

**S**ummerized for your information are the major changes for the 4-H Division of the 1988 Kansas State Fair.

Schedule changes:

- Beef Heifers — Saturday, Sept. 10, 10:00 a.m.
- Beef Steers — Saturday, Sept. 10, 12 noon
- Market Barrows — Saturday, Sept. 10, 8:00 a.m.
- Breeding Swine — Saturday, Sept. 10, 3:00 p.m.
- Market Lambs — Saturday, Sept. 10, 3:00 p.m.
- Breeding Sheep — Sunday, Sept. 11, 8:00 a.m.
- Round Robin Showmanship Contest — Sunday, Sept. 11, 1:30 p.m.
- Dog Showmanship — Saturday, Sept. 17, 10:00 a.m. (check-in for showmanship is 8:30-9:45)
- Dog Obedience check-in is noon-12:45 p.m.

All exhibits are open to 10-18 year olds, except minimum age for poultry and rabbit exhibits is 9 years of age by Fair time.

Pre-entries for Showcase, Mini-style show and Demonstrations may be submitted any time during the summer up until August 15.

Poultry — each member is limited to 2 entries in all classes except Pigeons.

Foods/Nutrition —

1. Read GENERAL REGULATIONS.
2. A member may exhibit only one baked product and one educational display in this Division. Member must exhibit under the phase they are enrolled in. Recipes are required for Class 6224 - International Foods, and Class 6226A - Advanced Foods, and recommended, but not required, for all other food-nutrition exhibits.
3. Entire product must be entered and uncut. Exhibit 3 cookies, 3 muffins, etc.

4. Attach white and green gummed food labels to bottom of plate or cardboard.

5. For this division, quick breads do NOT contain yeast.

6. 4-H'ers are encouraged to use whole grain flours, fruits, nuts, etc.

7. Remove baked products from pans and place on paper plates or cardboard. Do not send food in pans or dishes.

8. Exhibits should be in FOOD PLASTIC BAGS or BOXES. (Foods will be judged Friday and sold on Saturday so food will need to be quickly re-wrapped for overnight.)

9. Carefully secure the entry form to the outside of the wrapped exhibit. DO NOT WRAP IN PLASTIC.

10. All unfrosted cakes should be exhibited in an upright position with crust showing, except for those cakes made with special designs such as bundt cakes. They should have top crust side down.

11. Space is limited for judging so use small paper plates when possible for foods exhibits. Only the exhibit is judged. The container is not judged.

12. Foods with custard type filling and frostings or other perishable foods should not be exhibited for safety reasons.

13. All exhibits must be baked, and loaves must be whole and uncut. Cookies and rolls must be same shape and same recipe.

14. Educational exhibits - if a poster, it must not be larger than 22x28". May be notebooks or other displays. Total space required for display must be no more than 12" high by 12" deep and 18" long. NO card table exhibits. Name and county must be clearly marked on educational displays.

- 6220 Snacks and Mini Meals
- A. Baked or unbaked cookies
  - B. Educational exhibit
- 6221 Discover Kansas Foods
- A. Baked cookies
  - B. Quick bread - any kind or shape
  - C. Educational exhibit

- 6222 Fit It All Together I
- A. Quick bread - any kind or shape
  - B. Educational exhibit
- 6223 Fit It All Together II
- A. Baked cookies
  - B. Loaf quick bread
  - C. Cake - may be unfrosted
  - D. Educational exhibit
- 6224 Foods With An International Flavor (must include country origin and recipe)
- A. International yeast bread
  - B. International quick bread
  - C. International cookies
  - D. Educational exhibit
- 6225 Yeast Breads
- A. Three yeast rolls
  - B. Yeast loaf
  - C. Specialty bread - example, three pretzels, three bread sticks, a fruit bread, or tea ring
  - D. Educational exhibit
- 6226 Advanced Foods
- A. A baked food made from a recipe which you have changed to improve the nutritional value. Include recipes.
  - B. Food gift package - at least three different items in a suitable container.
  - C. A decorated food item - MUST BE A FOOD ITEM, not a decorated box.
  - D. Dried food - two kinds of dried foods, to be in a small jar, clear plastic bag, or other see-through container. Suggested amounts: 1/3 to 1/2 cup, or three or four pieces, per exhibit.
  - E. Educational exhibit

*Demonstrations* - A new Horse Demonstration class has been added for those members desiring to represent Kansas at the National Horse Classic in Denver.

*Fashion Revue* - Senior Public Fashion Revues will be held outside at the Fair's Lake Talbot area.





# Wheat Variety Test Plot Program

**Y**ou can combine farming, research and fun all in one by enrolling in the State 4-H Wheat Variety Test Plot Program. You'll be given five varieties of certified seed wheat, five steel wheat variety signs and a large steel plot sign with your name on it so friends and neighbors will notice your test plots. All of these supplies are free — you just supply approximately 1½ acres of ground (from Dad, a relative or a neighbor) and the labor.

What's in it for you? For one thing, you'll learn a lot more about five different varieties of wheat than you ever thought possible. In case you're trying for a scholarship, trip or award with your 4-H records, this event adds more strength to your total record book.

And that's not all. You are urged to exhibit your seed wheat in a special booth at the county fair for lots of people to see. Who knows? Your wheat booth may be one of the ten selected to be displayed at the Kansas State Fair in September. These booths are always some of the most attractive and educational displays on the whole fairgrounds. Every booth exhibitor is a winner — donors offer the following prizes:

- First Place Booth — All-expense-paid group marketing trip to KSU and Kansas City
- Second Place Booth — A quality engraved wristwatch
- Third Place Booth — \$25.00 cash and engraved plaque
- Fourth Place Booth — \$15.00 cash and engraved plaque
- Fifth Place Booth — \$10.00 cash and engraved plaque
- Sixth through Tenth Place Booths — Engraved walnut plaques
- State Fair ribbon awarded for each booth exhibit.

Call your Extension Office *soon* to enroll or if you need more information. You must enroll by July 10 if you're planning to participate. Time must be allowed for certified seed to be ordered, secured, sacked and shipped to you before planting time.



▲ Dana Hibbard  
Harper County

◀ By Eldon Weaver  
South Central Area Extension  
4-H Youth Specialist



# Extension 4-H Specialists Retire

**T**he Kansas 4-H program says good-bye to two outstanding state Extension 4-H Youth Specialists as they retire.

Charles Bates, a 4-H youth specialist with the Extension 4-H program for 32 years, and Lois Redman, with 34 years of service to the program, retired earlier this year.

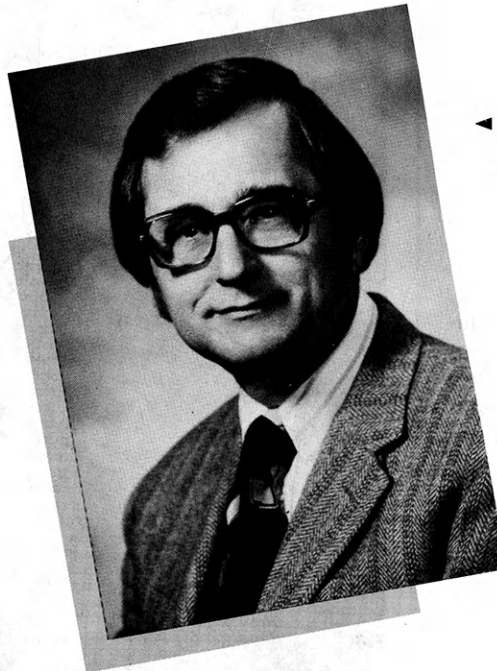
Friends and staff members honored the two with a reception on March 11 at the K-State Union in Manhattan.

Both Bates and Redman have contributed countless hours of service to Kansas 4-H and have brought national attention and recognition to many projects they've designed and implemented over the years.

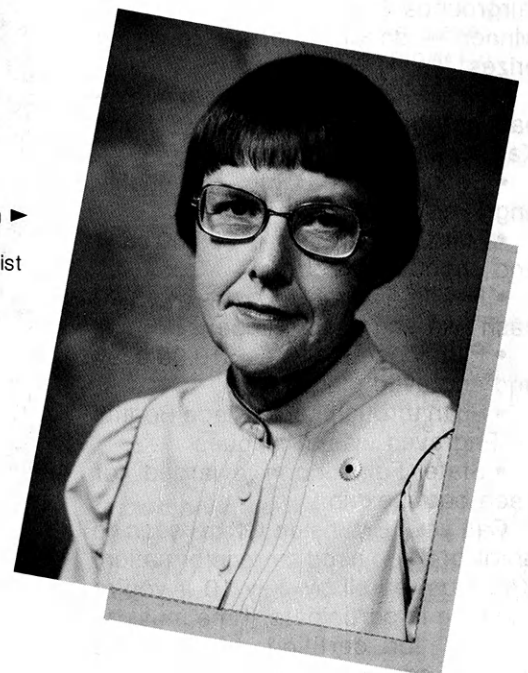
The Kansas 4-H Ambassador program, which was developed by Charles Bates, is used as a nationwide example to help other states set-up their 4-H ambassador programs. In addition to the Ambassador program, Bates has been instrumental in demonstrations and public speaking, Citizenship Washington Focus, Heritage Encounter, and dairy projects.

The international programs in Kansas have grown over the years under the leadership of Lois Redman and today is the largest international program in the United States. Redman has also provided leadership for home economics, foods and nutrition, home economics judging, and 4-H Discovery Days.

"Both Charles and Lois have been truly dedicated to 4-H over the years and have continued to perfect their programs to best serve Kansas 4-H youth. They will be missed, and we wish them well in their retirement," said C.R. Salmon, Kansas State 4-H Leader.



◀ **Charles Bates**  
Extension 4-H  
Youth Specialist



**Lois Redman** ▶  
Extension 4-H  
Youth Specialist



# 4-H Camp '88

Going to camp to have fun is the main reason kids go to camp, but while they're having fun, they are also learning.

The camping experience teaches the five life skills of: a positive self concept, decision making, a positive relationship with others, concern about the community and an inquiring mind.

"Camping is often one of the first times a youngster makes a decision on his own, and then sees the ramifications of that decision," Emily B. Kling, Extension Specialist, 4-H Youth Programs said.

To make a child's stay at camp a fun learning experience, you may want to follow these tips:

- Be enthusiastic and promote the camping experience as a fun adventure.
- Don't send too much money, and teach a child to take care of money.
- Encourage safety in the sun — drink plenty of fluids and bring plenty of lotion.
- Stress the child should always let someone know where he's going.
- Make clear the child should inform a counselor if he's not feeling well.
- Help a child pack so as not to over or under pack, and remind him to shower and change often.
- Don't send valuables with a child going to camp.
- Most of all — tell them to have fun!

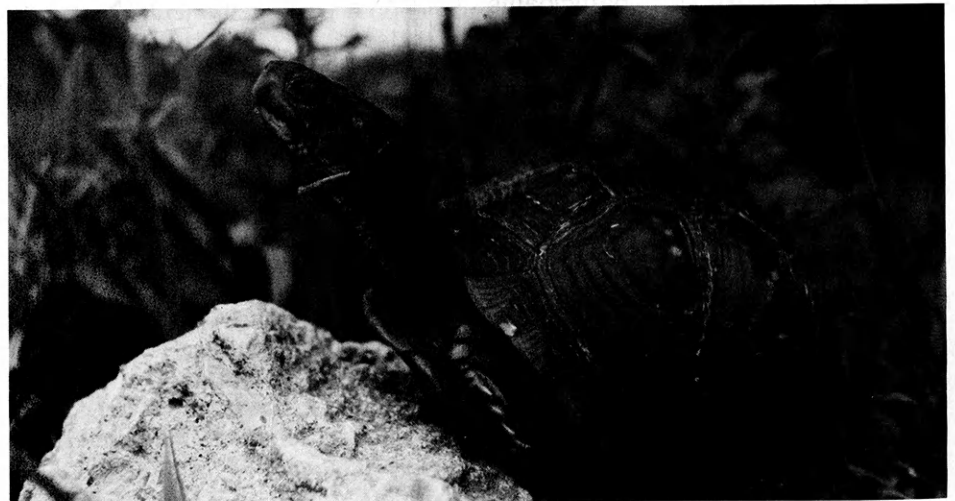


▲ **Mike Evancho**  
Thomas County



◀ **Becky Shoffner**  
Sumner County

▼ **Travis Taggart**  
Allen County





# Outdoor Development at Rock Springs

**F**un ... leadership training ... group interaction ... and creative thinking opportunities await those attending camp at Rock Springs 4-H Center with the addition of a new ropes leadership training course.

The course is currently under construction at the center, and the low elements will be completed by June 1. The 4-H adventure ropes leadership course experience is an outdoor educational program designed to promote:

- Positive group interaction
- Positive individual self-worth
- Non-competitiveness in a group-oriented activity.

The ropes course is physically and emotionally challenging, and it offers opportunity for personal growth at ones own individual level.

The course is designed to be a fun way of learning new concepts and skills. All 4-H'ers and other participants need to put forth a genuine effort to receive the maximum benefits the course is designed to offer.

The overall benefits are the same as any other outdoor education program at the Rock Springs 4-H Center in that the programs must:

- Develop and strengthen the mental and physical skills of youth, volunteer leaders and other users of the facilities.
- Offer a challenge to participants to accomplish a high level of self-confidence, individual self-worth, personal growth and achievement.
- Strengthen interpersonal relationship skills of youth and adults so as to become a functioning team member.
- Involve 4-H'ers and adults in a group-oriented experience.
- Develop leadership life skills in order that participants become contributing members of society.
- Develop an appreciation for and respect of the outdoors, animal life, weather, and other areas of nature.

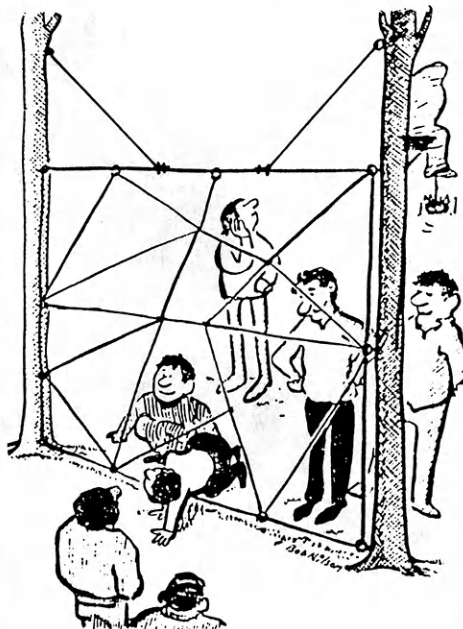
In addition to the ropes leadership course, a new rifle range, pistol range and horse stable are being built at the Wa Shun Ga area, and the Wa Shun Ga archery range has been renovated.

An orienteering course, with varying

distances and degrees of challenge, is almost ready for use. The course is designed to teach participants to use a map and compass through the investigation of the natural areas of Rock Springs.

## Spidersweb

A put-up/take-down, customized, fabricated "web" which incorporates the latest in high tech spider design and spinning. The group must try to get through the web without touching any web material (or the spider gets you — you knew that). As each web opening is used by an individual, it is "closed" to further passage by anyone else until all are safely through.



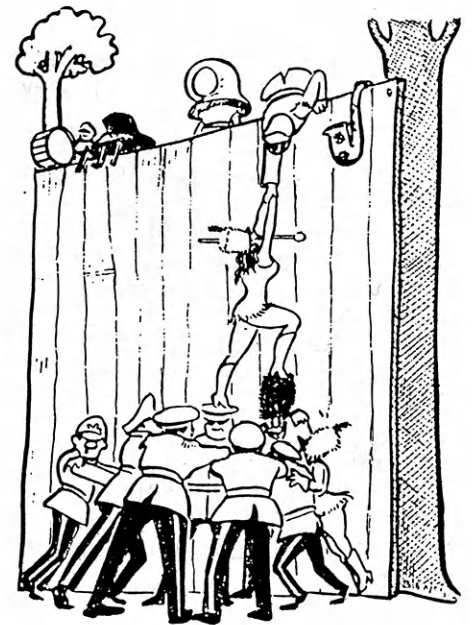
### Benefits/Challenges

*Group cooperation; trust, unself-conscious touching, suspense, spontaneous approval, frustration, thinking ahead.*

## The Wall

A classic initiative problem.

See how quickly and efficiently your entire group can safely get up and over the 12' smooth-sided wall. These obstacle walls are built from 8' to 14' high, depending upon the age and adeptness of the participants.



### Benefits/Challenges

*Thinking through the problem, working together, trust, physically demanding, fear, exhilaration, pride.*





## Camp Schedules

**June 6-9:** Barber, Barton, Edwards, Ellis, Ellsworth, Harper, Kingman, Pawnee, Pratt, Osborne, Rush, Russell, Stafford

**June 9-12:** Allen, Atchinson, Anderson, Bourbon, Coffey, Linn, Jefferson, Nemaha, Neosho, Wilson, Woodson

**June 12-15:** Dickinson, Geary, Marion, McPherson, Rice, Saline

**June 16-19:** Douglas, Franklin, Johnson and Miami

**June 19-22:** Cheyenne, Decatur, Graham, Logan, Ness, Norton, Phillips, Rawlins, Rooks, Sheridan, Sherman, Smith, Thomas, Wallace

**June 22-25:** Clay, Cloud, Jewell, Lincoln, Marshall, Mitchell, Ottawa, Republic, Washington

**June 25-28:** Chase, Cherokee, Crasford, Haskell, Lyon, Morris, Scott, Sumner

**June 28-July 1:** Leavenworth, Shawnee, Osage, Sedgwick, Wyandotte

**July 5-8:** Brown, Doniphan, Jackson, Pottawatomie, Riley, Wabaunsee

**July 8-11:** Butler, Cowley, Elk, Greenwood, Harvey, Reno

## Health Cards

Health cards should be used for all camps and trips. Parents or guardians *must* sign them in the presence of a *notary public*. Many hospitals and doctors are refusing to treat minors unless their health forms have been notarized.

## Saline County 4-H Club Wins Wildlife Program

The Friendly Valley 4-H club in Salina has won the National Wildlife Federation Backyard Wildlife Habitat Awards Program.

Clubs in nine states were invited to participate in the program which is designed to develop a community area such as local parks, schools, churches or a section of private property for wildlife.

## Butler County Youth Named Youth Conservationist of the Year

Darren Jackson, Butler Co., was named the Youth Conservationist of the Year by the Kansas Wildlife Federation. This award is the only youth award the Wildlife Federation presents each year. Jackson has developed acres for wildlife, learned about taxidermy at Discovery Days which is now a class he teaches, and has donated many of his pieces to various groups and individuals.

## Proposed 4-H Postage Stamp

The Hegne Hustlers 4-H Club of Norman County, Minnesota, has submitted a proposal for a U.S. Postage Stamp commemorating the 75th Anniversary of 4-H in the United States, in 1990.

We would appreciate your support, as a State organization, a county or civic organization, or as a family or individual.

Simply send a letter to the address listed below explaining that your club endorses the proposal for the U.S. Postage Stamp commemorating the 75th Anniversary of 4-H in the United States in 1990.

Include in the letter that the Hegne Hustlers 4-H Club of Norman County, Minnesota, has submitted a request for such a stamp. Our club requests that you approve this timely proposal.

Mail requests to: Citizens' Stamp Advisory Committee, U.S. Postal Service, c/o L'Enfant Plaza, SW, Washington, DC 20260-6351.

## Hands-On Horse Clinic

**May 7th-8th**  
**Goodland, Kansas 67735**  
**(913) 899-7110**

4-H Open sponsored by Sunflower Quarter Horse Circuit, Inc. Conducted by professional trainers.

## Dog Show

Mid-Kansas Invitational 4-H Dog Show  
Hutchinson, KS — June 4, 1988  
Entries must be in by May 15, 1988  
All counties welcome.

**For more information:**

Sharon Moots  
3815 E. 56th  
Hutchinson, KS 67502  
(316) 663-5317



# Kansas Range Youth Camp

by Kirk Astroth  
Southeast Area Extension  
4-H Youth Specialist



*Range Youth Camp is designed to develop an appreciation for Rangelands and an understanding of management techniques.*

**W**hile Kansas is usually known as America's bread basket because of our leading role in wheat production, Kansas could also be called the nation's meat counter. Kansas ranks third among all states for numbers of cattle on feed, fourth in the nation in total red meat production, and second only to Texas in numbers of cattle slaughtered. Kansas is a meat-producing state.

Kansas excels in meat production, in part, because of our extensive native prairies. These lands — called rangelands — are usually unsuitable to cultivation, but provide abundant plant growth for domestic livestock, wildlife habitat, soil protection, and recreation activities. Our own Flint Hills are the largest remaining expanse of native prairie left in the United States. It is not coincidental that our state song is "Home on the Range."

While Western states contain the majority of U.S. rangelands, Kansas' ranges are much more productive because of our amply rainfall. Over 20 million acres — or about 1/3 of the state — are classified as rangeland in Kansas. These rangelands represent an important renewable natural resource.

Committed to protecting our rangelands, members of the Kansas-Oklahoma Section of the Society for Range Management each year (and for the past 26 years) sponsor and conduct the Kansas Range Youth Camp. The counselors are all adult SRM members and come from a variety of professions associated with range management: ranchers, researchers, SCS, the Extension Service, and Fish and Game. The purpose of the camp is to provide Kansas youth with an appreciation for

our rangelands and with an understanding of proper management techniques.

Kansas Range Youth Camp is July 13-16 at the Wa-Shun-Ga area of the Rock Springs 4-H Center. The camp is open to any high school youth and each participant is usually sponsored by a local Soil Conservation District, so that all expenses are paid. More of a school than a camp, these youth gain a better understanding of range management through classes as well as practical, hands-on experiences.

Most evenings are spent in the adjacent native Flint Hills pastures learning how to identify and classify nearly 80 important range plants. One day is also filled with various mini-sessions which focus on topics like range ecology, stocking rates, livestock grazing systems, wildlife uses of range, and soils. In the field, a soil scientist uses a probe to show how soils develop and demonstrates the relationship between soil composition, depth, and range sites.

Small groups work together to identify and clip all the plants in a small area to determine total forage production, and range condition and trend. Clipping is an effective method of helping a rancher to determine an appropriate stocking rate.

Certainly, the highlight of the camp is the all-day tour. Each year, this tour is different, but in the past, campers have visited the KSU Range Research Pastures north of Manhattan and the Simpson Ranch near the Konza Prairie.

This summer the group toured the SCS Plant Materials Center and the Lyons Angus Ranch in Geary County. By visiting with local ranchers, students get to observe range improvement practices like water developments, native grass seedings, and brush control projects.

Following the tour, campers are treated to some of Kansas' finest steaks, with all the trimmings, prepared and served by the counselors. While there is a lot of education that goes on at Range Camp, there is also ample time for rest and recreation — like swimming, canoeing and softball.

The final day of camp includes the range identification contest. After three days of intensive training, everyone is challenged to identify 50 important range plants on a course set out in the Flint Hills. The top contestants receive a plaque and copy of the book, *Range and Pasture Plants*. While the results are tallied, each of the counselors share some insight into possible careers in range management — from research to Extension, to ranch management.

Kansas Range Youth Camp builds an appreciation for rangeland as an important natural resource and that its proper management is beneficial to all Kansans. For more information about the Range Youth Camp and how to apply for a full-tuition scholarship, contact your local Soil Conservation Service office. Plan to spend a few days next summer, at home on the range. Registration deadline is June 1.

# ROCK SPRINGS



Attention, Kansas  
4-H Clubs:  
Use Your 4-H  
Center Year-Round!

Start  
Planning Now!

## 4-H CENTER

### Yours to Use

The Rock Springs 4-H Center is exactly that — a 4-H center designed for your use. Yes, you go to summer camp at Rock Springs, but you can also enjoy the complex at other times throughout the year. Start planning now for your next:

- Leadership Training Workshop
- Fall and Winter Planning Retreat
- Project Fair or Seminar
- Hay Ride, Trail Ride or Hike

Let us help coordinate the equipment, activities and schedule for your club or county outing so you can simply enjoy the learning environment and fun offered at Rock Springs.

### Housing

Your group will be housed in comfortable cottages with double decker bunk beds in dormitory style quarters or shared bedroom-bath units designed to enhance the group enthusiasm and cooperative spirit shared at Rock Springs.

### Meals

Traditionally, Rock Springs' meals are served family-style. However, you can arrange to have picnics, barbecues and banquets for your special club outing at the center. Be sure to ask us about preparing snacks and beverages for breaks throughout your stay with us.

### Equipment Rental

If you are planning an activity away from Rock Springs and need equipment, we can help. You can rent canoes, canoe trailers, lifejackets, backpacks, backpack tents, and much more from the center by just writing us at: Rock Springs 4-H Center, R.R. 1 Box 55, Junction City, KS 66441, or give us a call at (913) 257-3221.

### Reservations:

Ms. Teri Springer  
Scheduling Coordinator  
116 Umberger Hall  
Kansas State University  
Manhattan, Kansas 66506  
(913) 532-5881





## Rock Springs 4-H Center

### Souvenirs for '88

Postcards	\$ .05
Kansas 4-H pin	.25
Combs	.25
#1 Kid pin	.25
Key rings	.50
Styrofoam ball	.50
Rock Springs plastic cup	.75
Treasure bag:	
small	1.00
large	1.25
Visor	1.25
Frisbee	2.50
4-H painter hat	3.00
Rock Springs stationery	3.50
Rock Springs hat	4.00
Shirt: (various colors & designs)	
youth	\$4, \$5, \$6
adult	\$6, \$7
Numbered Rock Spring belt buckle	12.00

\*Prices are subject to change.

### Snack Bar

Ice cream:	
sandwich, bar	\$ .30
drumstick	.40
malt cup	.50
Drinks: pop, lemonade,	
tea	.45, .55, .65
Chips	.40
Beef jerky	.40
Gum	.40
Candy	.45
Cotton candy	.50
Popcorn:	
small	.40
large	.50
Snow Cone	.45, .55, .65
Nachos	1.25
Rock Springs cup	
with pop	1.25
refill	.65

\*Prices are subject to change.



# Camper's Budget Planning Guide

**F**inancial responsibility is one of the skills 4-H'ers can learn through the 4-H program, and summer camp at Rock Springs 4-H Center provides an excellent opportunity for members to manage money on their own without the direct supervision of their parents.

To help prepare your camper to successfully complete this task, you may want to sit down together and plan a budget sheet for the time he's at camp.

A current price list of snack bar and souvenir items is provided for your use as you plan a daily budget, and the prices are subject to slight adjustments.

**DAY 1 ...**  
 Snacks ..... \_\_\_\_\_  
 \_\_\_\_\_  
 \_\_\_\_\_  
 \_\_\_\_\_  
 Souvenirs ..... \_\_\_\_\_  
 \_\_\_\_\_  
 \_\_\_\_\_

**Day 1**  
 Total Expenditures ... \_\_\_\_\_

**DAY 2 ...**  
 Snacks ..... \_\_\_\_\_  
 \_\_\_\_\_  
 \_\_\_\_\_  
 \_\_\_\_\_  
 Souvenirs ..... \_\_\_\_\_  
 \_\_\_\_\_  
 \_\_\_\_\_

**Day 2**  
 Total Expenditures .. \_\_\_\_\_

**DAY 3 ...**  
 Snacks ..... \_\_\_\_\_  
 \_\_\_\_\_  
 \_\_\_\_\_  
 \_\_\_\_\_  
 Souvenirs ..... \_\_\_\_\_  
 \_\_\_\_\_  
 \_\_\_\_\_

**Day 3**  
 Total Expenditures .. \_\_\_\_\_

**DAY 4 ...**  
 Snacks ..... \_\_\_\_\_  
 \_\_\_\_\_  
 \_\_\_\_\_  
 \_\_\_\_\_  
 Souvenirs ..... \_\_\_\_\_  
 \_\_\_\_\_  
 \_\_\_\_\_

**Day 4**  
 Total Expenditures .. \_\_\_\_\_

Total Expenditures for  
 Snacks and Souvenirs ... \_\_\_\_\_  
 \_\_\_\_\_  
 \_\_\_\_\_

**Total Camping Expense:**  
 Camping Fees ..... \_\_\_\_\_  
 Travel Expense ..... \_\_\_\_\_  
 Snacks and Souvenirs ... \_\_\_\_\_  
 Miscellaneous Expense .. \_\_\_\_\_  
 Total Expenses ..... \_\_\_\_\_

**We Relish Your Business!**

CALL-IN ORDERS WELCOME

**CONSOLIDATED Printing Salina**  
 1-800-432-0266  
 SERVING ALL OF KANSAS

More money for post-high school education comes from family income and savings than from any other source. Be prepared; early in life start a savings account at your

## Kansas Savings and Loan

<b>Hutchinson</b> Valley Federal Savings & Loan Assn.	<b>Lyons</b> Lyons Savings & Loan Assn.	<b>Medicine Lodge</b> The Barber County Savings & Loan Assn.
<b>Leavenworth</b> Citizens Mutual Savings & Loan Assn.	<b>Manhattan</b> Manhattan Federal Savings & Loan Assn.	<b>Plainville and Stockton</b> Rooks County Savings Assn.

# Kansas' investment in the \$1.00 per head beef checkoff

March 31, 1988

TO: All Kansas 4-H Members

The date of May 10, 1988, will be a very important time for this country's beef industry. On that day, you have the opportunity to vote on the national \$1.00 per head beef check-off.

There are several key points I hope you will keep in mind about voting.

- 1) If you have owned cattle in your name between October 1, 1986, and March 31, 1988, you are eligible to vote. Since many 4-H members own cattle for 4-H projects, they have the chance to vote. There is no age restriction for voting.

- 2) Voting will take place on May 10 at local county extension offices during regular office hours. Registration and voting will be the same day.

- 3) If you can't go to your county extension office during business hours on May 10 you can obtain an absentee ballot by requesting one from Absentee Ballot Request, P.O. Box 96, Manhattan, Kansas 66502. Send a note asking for the ballot, give your address and your county and sign your name. This request must occur during April. After you get the ballot, fill it out and return it to your local county extension office by May 3.

There are several important factors in the structure of the check-off program which should be reviewed. These include:

- 1) The program is run by producers.
- 2) All producers and importers pay their share based on the number of cattle they handle.
- 3) The law sets a 5% cap for administration of the program. For the first year of operation, these costs were held below 3%.

Beef is coming back as a result of the check-off program efforts, and if the check-off continues, even greater improvement in consumer attitudes and consumption will occur.

These things will help make a better future for young people who want to raise cattle for a career. Help the beef industry have a bright future; exercise your privilege to vote on May 10.

Sincerely,

Dee Likes  
Executive Vice President  
Kansas Livestock Association

# WANTED

## LEADERS

### who want



#### AN OPPORTUNITY TO...

- develop leadership
- build self-esteem
- meet new friends
- hear outstanding speakers
- participate in group activities
- learn more about our American heritage and freedoms and have fun!!

Three days of intensive sessions will be offered stressing our American heritage and re-emphasizing the basic principles upon which our country was founded.

#### COME JOIN US

#### **Kansas Farm Bureau Citizenship Seminar**

May 31-June 4, 1988  
 Rock Springs Ranch 4-H Center  
 (Located near Junction City, KS)



#### Money For Your Treasury

OVER 2 MILLION  
 Sunflower Dishcloths



WERE SOLD LAST YEAR BY MEMBERS OF GROUPS, SOCIETIES, CLUBS, ETC.

THEY ENABLE YOU TO EARN MONEY FOR YOUR TREASURY AND MAKE FRIENDS FOR YOUR ORGANIZATION.

Sample FREE to Official.

SANGAMON MILLS, INC., Cohoes, N.Y. 12047  
 KJ Established 1915

### Collingwood

GRAIN INC.

*Serving Kansas  
 Since 1890*

**Country Elevators  
 and Terminals**

### Capitol Federal Savings



TOPEKA  
 GREATER KANSAS CITY  
 MANHATTAN LAWRENCE OLATHE  
 EMPORIA SALINA WICHITA

### BUY, BUILD, SAVE WITH US

- Competitive rates on savings and loans
- High-yielding C.D.'s
- 17 offices statewide

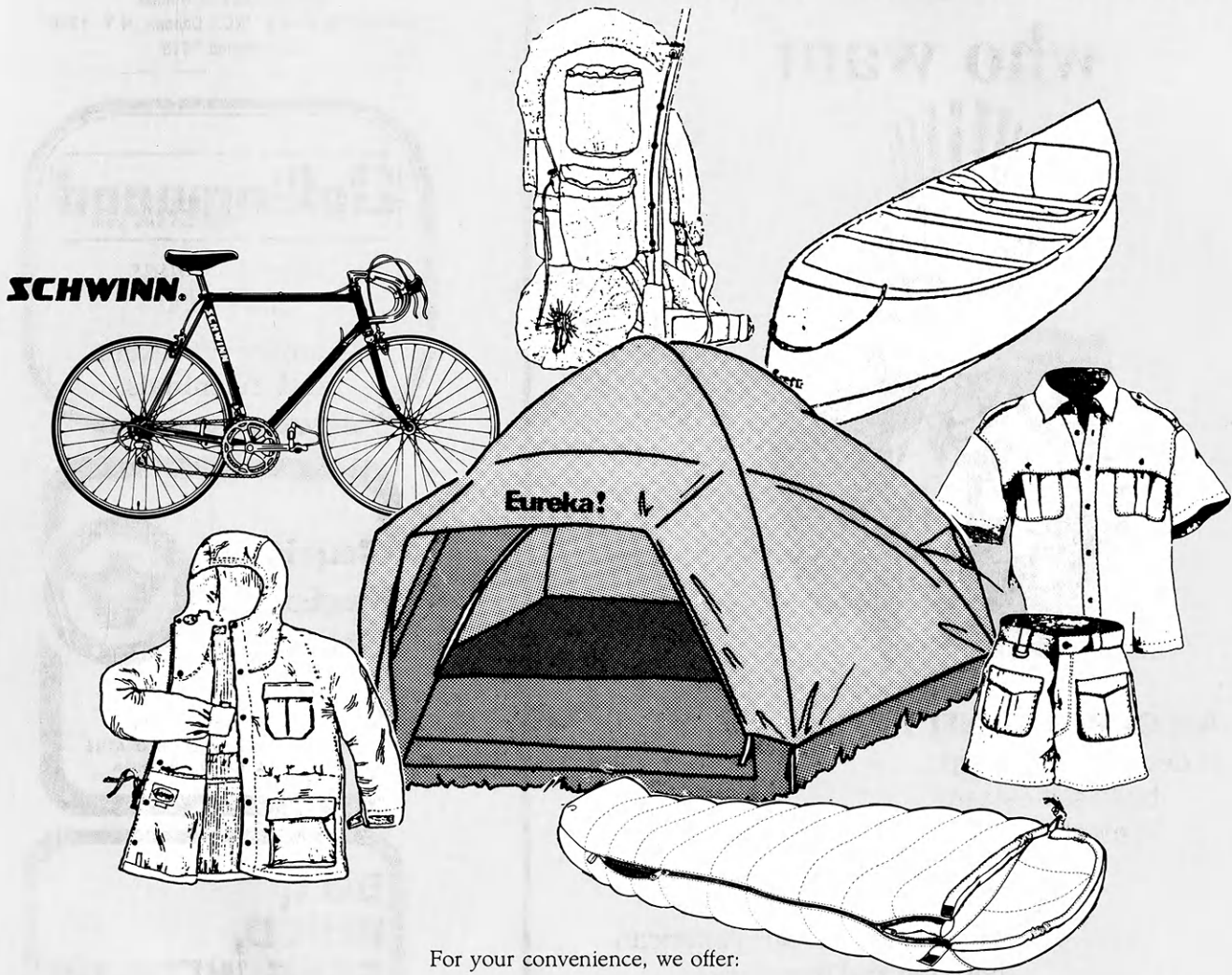




# Kansas' Outdoor Outfitters

quality outdoor products and exceptional service  
for

- BACKPACKING • CAMPING • BICYCLING
- CANOEING • CLIMBING • SAILBOARDING
- DOWNHILL AND CROSS COUNTRY SKIING



For your convenience, we offer:

- \* Appointments for demonstrations of outdoor products
- \* Planning and coordinating group camping equipment needs
- \* A statewide newsletter with outdoor recreation tips and product information
- \* In-store bicycle repair service

- State sponsor 4-H bicycle project
- Official distributor, Boy Scouts of America, Girl Scouts of America

YES, I want to receive your free newsletter about outdoor events, technical products, special sales.

\_\_\_\_\_ (name)

\_\_\_\_\_ (address)

\_\_\_\_\_ (city, state, zip)



**OUTDOOR EQUIPMENT SPECIALISTS**

**1111 Moro Aggieville/Manhattan (913) 539-5639**

Serving Kansas since 1975 - Store Hours: M-F 9-6; TH 9-8; Sat 9-5

Non-Profit Organization  
U.S. Postage  
**PAID**  
Permit No. 86  
Salina, Kansas

Mail to:  
The Pathfinder  
1111 Moro  
Manhattan, KS 66502  
(913) 539-5639