

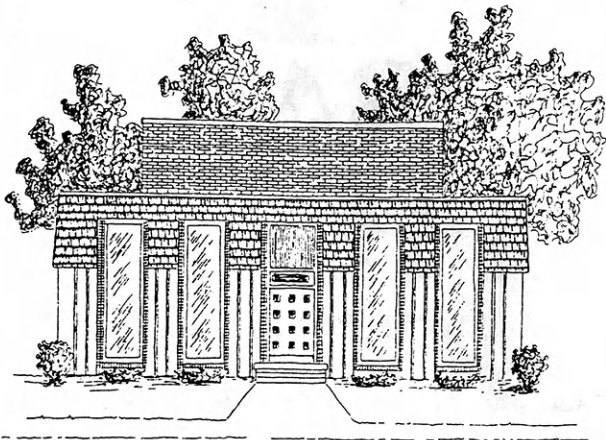
**Awards Program...
Promoting Project
Excellence**

KANSAS 4-H JOURNAL

The Family Magazine

April 1988





Clovia 4-H Cooperative House

ENJOY ... College life among others with interests and experiences like your own. Single female students with a 4-H or similar background.

Fort Hays Clovia

SAVE ... up to \$600 as compared to residence hall living by assisting with house operations and management. Clovia is one of the most economical organized living groups at Kansas State and Fort Hays State Universities.

HAVE FUN ... Traditional Clovia social activities include formals, semi-formals, functions and exchange dinners with fraternities. Clovia members participate in intramural sports and other extra-curricular events. Clovia provides the opportunity for you to meet others and get involved in campus activities.

HURRY ... Space is limited! Complete and mail attached form to:

Kansas State University

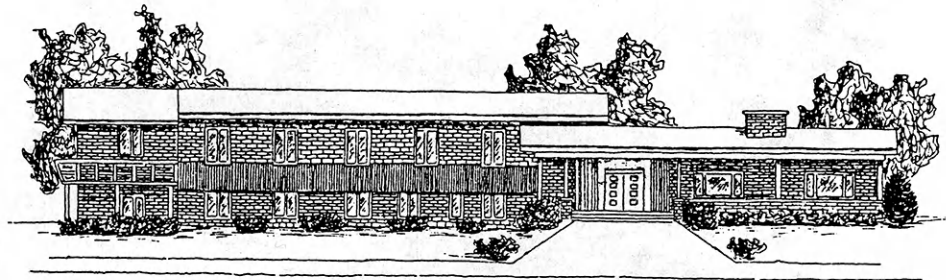
Clovia 4-H Cooperative House
1200 Pioneer Lane
Manhattan, KS 66502
(913) 539-3575

-or-

Fort Hays State University

Clovia 4-H Cooperative House
209 W. 5th
Hays, KS 67601
(913) 625-4052

Manhattan
Clovia



Please send me more information about the Clovia 4-H Cooperative House unique college-living option.

Name _____ County _____

Address _____ City _____

State _____ Zip _____

Year in school: Freshman Sophomore Junior Senior

Clovia: A project of the Kansas 4-H Foundation.



KANSAS 4-H JOURNAL

VOLUME XXXIV NO. 4
April 1988

Rhonda Wessel Atkinson . . . Editor
Linda Akin Secretary

Address all correspondence:
Kansas 4-H Journal
116 Umberger Hall, KSU
Manhattan, Kansas 66506
Phone (913) 532-5881

Single subscriptions are \$4 per year.
Group subscriptions are available upon request.

Kansas 4-H Journal is published
10 times a year by
KANSAS 4-H FOUNDATION, INC.

Bill Riley Executive Director
Trisha Cash Secretary
Ann Carr Asst. Treasurer

BOARD OF TRUSTEES

Governor Mike Hayden
Honorary Chairman
Glee S. Smith, Chrm. Larned
Martha Wreath Streeter
Vice-Chrm. Manhattan
John Junior Armstrong,
Treas. Muscotah
Ross Beach Hays
Richard Dillon Hutchinson
Marilyn Pence Galle Moundridge
Mrs. Olive Garvey Wichita
Balfour S. Jeffrey Topeka
J. Harold Johnson Manhattan
Wilbur E. Levering Topeka
Bernard E. Nordling Hugoton
Thomas M. Potter Wichita
C.R. Salmon Manhattan
Tom Shirley Dodge City
Walter Woods Manhattan
Robert Wagstaff Shawnee Mission
Mrs. Dwane Wallace Wichita
*Glenn M. Busset Manhattan
*Roger E. Regnier Manhattan
*Dolph Simons, Sr. Lawrence
*Advisory Member

Use of the 4-H name and symbol approved
by the Secretary of Agriculture of the United
States, January 23, 1951, under the provisions
of the laws as reenacted by Sec. 707 of the Act
of June 25, 1948, Public Law No. 772 80th Congress (10 USC 797).

In This Issue

National Judging Team Champs Receive Recognition in Topeka	4
Kansas 4-H Awards	5-8
Substance Abuse Prevention Program	9-10
Kansas 4-H Foundation Support	11-14
Butler County Enters County Endowment Program	15
Wildlife and Fisheries Leader Wins National Award	16
Preparing for Japanese Guests	17
4-H'er Returns Home From Olympics	18
Groups Reaching Out Recognition	22-23

Advertisers' Index

Clovia Scholarship Houses	2
H.M. Ives & Sons, Inc.	15
Kansas Farm Bureau	19
Sangamon Mills, Inc.	19
Capitol Federal Savings	19
Collingwood Grain, Inc.	19
Anchor Savings	19
Kansas Lumber Dealers	20-21
Southwind Invitational Club Lamb Sale	21
Kansas Savings and Loans	21
Consolidated Printing	23
17th Annual Tuttle Classic Pig and Lamb Sale	23

Cover Photography by Rhonda Clark, Cherokee County



National Judging Team Champs Receive Recognition in Topeka

The Labette County livestock judging team was recognized with a special resolution passed by the Kansas House of Representatives earlier this year.

The resolution was passed to honor the accomplishments of the team which won the national livestock judging contest in Louisville, Kentucky. Members of the team were photographed with Governor Mike Haden, and Representative Jack Lacey hosted the group throughout the day's activities.

Representative Jack Lacey's presentation to the Kansas House of Representatives was as follows:

"Mr. Speaker and Members of the House of Representatives:

It is an honor and a pleasure to present to you the National Championship team from Chetopa, Labette County, Kansas.

On November 16 and 17, 1987, this team won the overall National 4-H Livestock Judging Contest in Louisville, Kentucky.

They will be representing the United States and the state of Kansas at the International Competition in Edinburg, Scotland, June 22, 1988. I present to you team members ..."

Labette Co., however, was not the only county which represented Kansas at national contests last year. The Morris Co. livestock judging team won first at the American Royal National contest in Kansas City, and Chautauqua Co. was fifth overall at the National Western Livestock Judging Contest in Denver.



In Governor's Office (left to right) Mike Stine, Daren Slater, Douglas H. Dean, Chad Stine, Ross Albertini, Governor Mike Hayden, Clay Walker, Pat Turowski, C.R. Salmon, Marvin K. Anderegg.

In horse judging competition, Stanton Co. placed second at the National Western 4-H Horse Classic in Denver, and Johnson Co. was fourth at the Quarter Horse Congress in Columbus, Ohio.

In meats judging, Lyon Co. was

seventh at the National Western in Denver, and Johnson Co. was tenth at the American Royal in Kansas City.

Many of these Judging team trips are made possible through the efforts of the Kansas 4-H Foundation and its many donors.



Motivating and Encouraging Project Excellence

The Kansas 4-H Department and the Kansas 4-H Foundation is pleased to provide 4-H Families with the following awards information.

These are the projected awards for the 1987-88 4-H year. A (n) indicates a national donor and (s) a state donor made possible through the Kansas 4-H Foundation. Sectional award winners eligible to qualify for trips to the National 4-H Congress are noted with **. Kansas 4-H Foundation awards medallions to all state project winners and sponsors the Emerald Circle Banquet for state winners, finalists and their parents.

AWARD PROGRAM	DONOR	COUNTY	STATE	NATIONAL
Achievement	Ford Motor Company (N)	Medals	Trip to National 4-H Congress	9 \$1,000 scholarships
Agricultural	Case IH (N) and Purina Mills (N)	Medals	Trip to National 4-H Congress	6 \$1,000 scholarships
Alumni	Beatrice/Hunt-Wesson (N) and Orville Redenbacher's	Medals	Certificate	8 trips to National 4-H Congress and gold pin.
	Master 4-H Club (S)		4 plaques	
Arts & Crafts	Reid Foundation (S)	Medals	\$75 Bond	
Beef	Wrangler Jeans (N) Kansas Beef Council (S)	Medals	Certificate and pin Trip to National 4-H Congress	6 \$1,000 scholarships
Bees	Kansas Honey Producers Assoc. (S)	Medals and award	Trip to KHPA Annual Meeting	
Bicycle	The Pathfinder (S)	Medals	Gift Items	
Bread	Fleischman's Yeast Inc. (N)	Medals	Trip to National 4-H Congress	6 \$1,500 scholarships
Bucket Calf	The Folgers Coffee Company (S)	Medals		
Citizenship	The Coca-Cola Foundation (N)	Medals	Trip to National 4-H Congress	9 \$1,000 scholarships
Clothing	Coats & Clark Inc. (N) K.T. Wiedemann Foundation (S)	Medals	Certificate and pin Trip to National 4-H Congress	4 \$1,000 scholarships
Conservation of Natural Resources	Deere and Company (N)	Medal Club Certificates	Trip to National 4-H Congress	6 \$1,000 scholarships
Crochet	Reid Foundation (S)	Medals	\$75 Bond	
Crop Production and Management	National 4-H Council (N) Duckwall-Alco Stores, Inc. (S)	Medals	Trip to National 4-H Congress	4 \$1,000 scholarships



Kansas 4-H Awards Program

AWARD PROGRAM	DONOR	COUNTY	STATE	NATIONAL
*Dairy	American Cyanamid Co. (N) Land O'Lakes, Inc. (N)		Certificate and pin	6 \$1,000 scholarships
Dairy Production	Flint Hills Dairy Goat Club (S) Kansas Ayrshire Breeders (S) Kansas Dairy Herd Improvement Assoc. (S) Kansas Jersey Cattle Assn. (S) Midland United Dairy (S) Holstein Friesian (S)		4-5 Trips to National 4-H Dairy Conference	
*Dairy Foods	Carnation Company (N)	Medals	Certificate and pin	6 \$1,000 scholarships
*Dog Care and Training	Purina Dog Foods Group Ralston Purina Company (N)	Medals	Transistor radio	6 \$1,000 scholarships
Ecology	Dillon Food Stores of Kansas (S)	Medals	Camera	
Electric Energy	Westinghouse Electric Corporation (N)	Medals	Trip to National 4-H Congress	6 \$1,000 scholarships
*Entomology	Mobay Corporation (N) Agricultural Chemical Division	Medals	\$75 U.S. Savings Bond	6 \$1,000 scholarships
*Fashion Revue	Simplicity Pattern Co. Inc. (N) Viking White Sewing Machine Company	Medals	Trip to National 4-H Congress	4 \$1,000 scholarships
Food/Nutrition	The General Foods Fund, Inc. (N)	Medals	Trip to National 4-H Congress	6 \$1,000 scholarships
*Food Conservation Preservation and Safety	Heinz Vinegar	Medals	Trip to National 4-H Congress	4 \$1,000 scholarships
Forestry	International Paper Co. Foundation (N)	Medals	Trip to National 4-H Congress	6 \$1,000 scholarships
Fun With Children	Dillon Food Stores of Kansas (S)	Medals	Camera	
Fur Harvester	Kansas Fur Harvesters Assoc. (S)		2 \$100 U.S. Savings Bonds	
Gardening/Horticulture	Chevron Chemical Company (N) Kansas 4-H Foundation (S) Heifner Nursery & Garden Center (S)	Medals	Trip to National 4-H Congress	5 \$1,000 scholarships
Geology	Kansas Independent Oil & Gas Assoc. (S)	Medals		
Health	Kraft, Inc. (N)	Medals	Trip to National 4-H Congress	8 \$1,000 scholarships
Horse	American Quarter Horse Assoc. (N) H.M. Ives & Sons (S)	Medals	Certificate and pin Trip to National 4-H Congress	6 Trips to National 4-H Congress and 6 \$1,000 scholarships
International Focus	Kansas IFYE Alumni Assoc. (S)	2 Certificates	Certificate and Trip to 4-H International Feast	
Knitting	Reid Foundation (S)	Medals	\$75 Bond	
Leadership	Firestone Trust Fund (N)	Medals	Trip to National 4-H Congress	9 \$1,000 scholarships
Livestock	Kansas Livestock Assoc. (S)	Medals	Trip to National 4-H Congress	
Meats	Kansas Beef Council (S)	Medal	Trip to National 4-H Congress	
Newswriting	Kansas 4-H Foundation (S)		9 Trips to 4-H Discovery Days	
Petroleum Power	Amoco Foundation, Inc. (N)	Medals	Trip to National 4-H Congress	6 \$1,000 scholarships
Pets	Dillon Food Stores of Kansas (S)	Medals	Camera	
Photography	Eastman Kodak Company (N)	Medals	Trip to National 4-H Congress	6 \$1,000 scholarships
Pigeon	Kansas Pigeon Association (S)	Medals	Certificate	
Poultry	Kansas Poultry Association (S) Barr's Poultry (S) Mr. and Mrs. M.E. Jackson (S)	Medals	2 Trips to Midwest Poultry Federation Conference	



Kansas 4-H Awards Program

AWARD PROGRAM	DONOR	COUNTY	STATE	NATIONAL
Public Speaking	UNOCAL Corporation (N) Kansas 4-H Foundation (S)	Medals	Trip to National 4-H Congress 4 Watches to 4-H'ers giving presentations on the Kansas 4-H Foundation	6 \$1,000 scholarships
Rabbit	Kansas State Rabbit Breeders Assoc. (S) Kansas 4-H Foundation (S)	Medals	Engraved Silver Bowl	
Reading	Tom & Mariellen Appleby (S)	Medals		
Recreation	Safeway Stores, Inc. (S)	Medals	Camera	
Rocketry	The Folger Coffee Company (S)	Medals		
Safety	General Motors Foundation, Inc. (N)	Medals	Trip to National 4-H Congress	8 \$1,000 scholarships
Santa Fe Achievement	Santa Fe Railway		6 Trips to National 4-H Congress 4 \$750 scholarships	
Self-Determined	Dillon Food Stores of Kansas (S)	Medals	Camera	
Sheep	American Sheep Producers Council (N) Kansas Sheep Association (S)	Medals	Trip to National 4-H Congress	4 \$1,000 scholarships 4 Trips to National 4-H Congress
Swine	Pfizer, Inc. (N) National Pork Producers Council (N) Kansas Pork Producers Council (S) Daniel Schmidt Memorial Trust (S)	Medals	Certificate and pin Trip to National 4-H Congress Award to 2nd place winner	4 \$1,000 scholarships 4 Trips to National 4-H Congress
*Veterinary Science	The Upjohn Company Auxiliary to the Kansas Veterinary Medicine Association (S)	Medals Certificate	Certificate and pin Award	6 \$1,000 scholarships
Wheat Quality	Kansas Wheat Commission (S)		Wheat Marketing Study Tour	
*Wildlife & Fisheries	Jeep Corporation (N) National Wildlife Federation (N)	Medals	Certificate and pin	6 \$1,000 scholarships
Wood Science	Kansas 4-H Foundation (S)	Medals	Trip to National 4-H Congress	

**SECTIONAL AWARDS — must be a sectional winner in order to receive a trip to National 4-H Congress

AWARDS IN OTHER SPECIAL PROGRAMS AND EVENTS

AWARD PROGRAM	DONOR	COUNTY	STATE
Crops Contest	Kansas State Fair (S) County Weed Directors Assoc. (S) Kansas Grain Sorghum Growers Assoc. (S)		Educational trip for 4 members and one leader of top crops contest team at Kansas State Fair Award to top 3 Individuals Medallions to team members of top 2 teams
Beef Quiz Bowl	Lyons Angus (S) Frank and Jan Lyons O-Lazy-Y Ranch (S) Jim and Shirley Thomas Holland Limousin (S) Ron and Carolyn Holland Schlickau Herefords (S) George and Lois Schlickau Brinks Brangus Glen Brinkman		Cash premium
Dairy	Mid America Dairymen, Inc. (S) Kansas State Fair (S)		Trip to top judging team at State Fair to National Dairy Conference
Home Economics Judging Contest	Kansas State Fair (S)		Educational trip for top 3 individuals from the top 3 county teams at Kansas State Fair, plus 1 leader of each



Kansas 4-H Awards Program

AWARD PROGRAM	DONOR	COUNTY	STATE
<i>Horse</i>	Contributions to the Kansas 4-H Foundation		Out-of-State judging contest trip to top horse judging teams
<i>Horticulture</i>	Kansas State Fair (S)		Trip to National Horticulture Judging Contest to top judging team
<i>Key Award</i>	Farm Credit Services (S)	Certificate, tie clasp or necklace to top 1% of outstanding 4-H'ers 16 and older	
<i>Land Judging</i>	Kansas Farm Bureau Safety Department (S)		Medals, ribbons, plaque to top team in each of the five districts
<i>Leadership</i>	KABAR (S) Kansas Bankers Association (S)		Trips to National 4-H Conference
<i>Livestock</i>	Kansas State Fair (S) Kansas Farm Bureau Safety Department (S) Kansas 4-H Foundation (S)		Trip to Louisville, KY National 4-H Livestock Judging Contest for top judging team at State Fair. Trip to Denver, National Western Stock Show Judging Contest for 2nd place judging team at State Fair Trip to American Royal for 3rd place team
<i>Meat Identification and Judging Contest</i>	Kansas State Fair (S) Beef Empire Days (S) Frances A. Lewis (S)		Trip to American Royal for top team at State Fair Trip to second place team Special Awards
<i>Poultry Demonstrations</i>	Kansas Poultry Association (S)		Trip to National 4-H Poultry Conference
<i>Safety</i>	Kansas Farm Bureau Safety Department (S)		Cash awards to the top 9 clubs and 1 scholarships to an individual from each club to attend the Kansas Farm Bureau Youth Safety Seminar at RSR. Cash awards to all participating clubs
<i>Sheep</i>	to be announced and the KS Sheep Association		1,000 in special premiums to be divided among top market lambs at Kansas State Fair
<i>Swine</i>	Kansas Purebred Committee (S) Oldham's Farm Sausage, Inc. (S) Arkansas City Packing Co. (S) Pork Packers International Inc. (S) Key Milling Company (S) Custom Ag Products, Inc. (S) Kent Feeds, Inc. (S) Central Soya-Master Mix Feed (S)		Grand Champion: \$250 and engraved wristwatch Reserve Champion: \$200 3rd Place: \$150 and trophy 4th Place: \$100 and trophy 5th Place: \$50 and trophy
<i>Wheat Variety Contest</i>	Kansas Wheat Commission (S) Kansas Crop Improvement Assoc. (S) Kansas Grain & Feed Dealers Assoc. (S) Dixie Portland Flour Mills, Inc. (S)	Seed Wheat for participants	1st - Educational Trip 2nd - Watch 3rd to 5th - Cash Premiums and Award Plaques 6th to 10th - Plaques Educational Materials
<i>District 4H Wheat</i>	Flour Miller Division, Western Region of Cargill, Inc. (S) Bertrand Elevator, Inc. (S) ADM Milling Company (S) Stafford County Flour Milling Co.(S) Wall - Rogalsky Milling Co. (S) Garvey Elevators, Inc. (S) Bunge Corporation (S) Bertrand Elevator, Inc. (S) Kansas Assoc. of Wheat Growers(S) Union Equity Cooperative (S) Lincoln Grain, Inc. (S)		Premiums in both physical sample and mill-bake divisions 1st - \$100 2nd - \$50 3rd - \$25 4th - \$15 5th - \$10



Substance Abuse Prevention Program

Kansas 4-H clubs have the opportunity to pilot a new program designed to prevent substance abuse. The materials are aimed at grade school age boys and girls — the audience where education for substance abuse is most effective. Teenage 4-H'ers may be used to conduct the meetings and teach the lessons; thus, increasing their knowledge and commitment.

To participate, a club is asked to dedicate 10 meetings throughout the 1988-89 year to the substance abuse prevention program. The meetings will feature building a positive self concept and decision making skills in addition to many others. Each meeting averages about 60 minutes.

"The substance abuse prevention program offers planned roll calls, ceremonies, program numbers, recreation and suggested refreshments for each meeting. Clubs will still conduct their regular business meeting as a part of this program," said Dale Apel, Extension 4-H youth specialist.

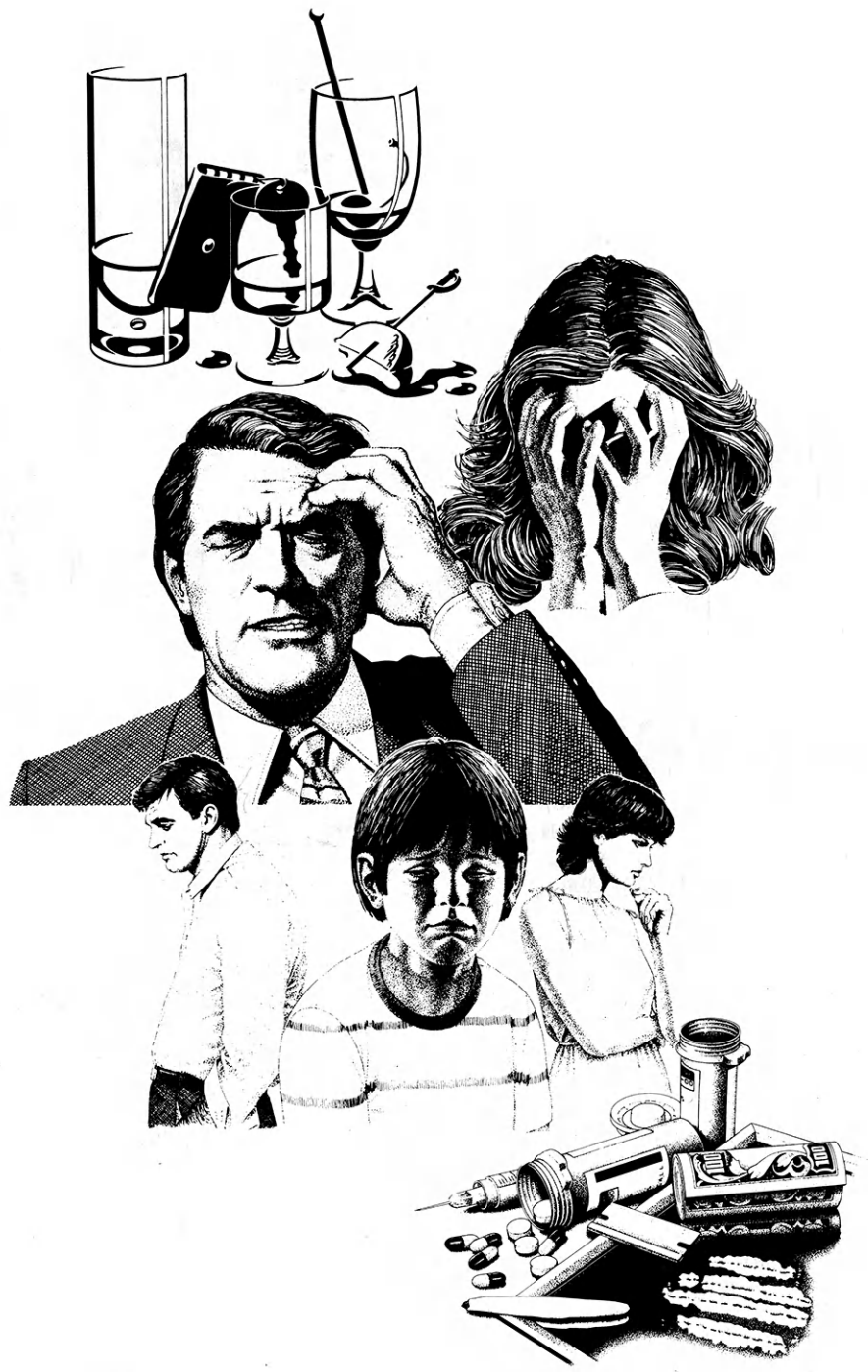
Two leaders from each club in the program will need to attend a Friday and Saturday training workshop in June at locations central to the participating clubs.

The major emphasis of the program is to help youth with decision making, resisting peer pressure, building self-esteem and providing information about chemical drugs and their effects.

Committee members Dale Apel, Marcia McFarland, Kirk Astroth, Nada Thoden and Mike Bradshaw attended drug education meetings, and read volumes of educational material being used throughout the country to design the suggested meeting materials for the substance abuse prevention program.

The program is funded by a grant from the Kansas 4-H Foundation.

(continued)





Promotes Positive Self Concept

(continued from page 9)

The ten lessons include:

1. **UNIQUENESS** - designed to promote a positive self image through exploration of such concepts as:
 - What Makes Me Unique
 - My Likes and Dislikes
 - Personal Strengths
 - Me and My Body
 - Accepting Differences
 - Families
 - A Feeling Dimension
 - Spectrum of Feelings
2. **COMMUNICATIONS** - designed to enhance the communication skills of:
 - Listening
 - Sharing
 - Attention Getting
3. **FEELINGS** - exploring the concepts of anger, happiness, and self awareness through the topics:
 - What are Feelings
 - A Feeling Dimension
 - Spectrum of Feelings
4. **VALUES AND GOALS** - developing decision making skills through discussions of:
 - Discovering Values
 - Goal Setting
 - Helping Others Feel Good
5. **LEARNING ABOUT DRUGS** - raising member awareness of drugs through exploration of:
 - What is a Drug
 - Drugs - Their Uses and Abuses
 - Poisons in the Home
6. **DECISION MAKING AND DRUGS** - designed to increase decision making skills regarding the topics of:
 - Problem Solving
 - The Decision Continuum
 - Who Influences Choices
 - Reasons for Drug Use
 - Risks in Using Drugs



7. **FRIENDS AND DRUGS** - exploring the concepts of:
 - Friendship
 - Understanding Friends
 - Accepting Differences
 - Effects of Drugs
 - Chemical Dependency
8. **DECISION MAKING II** - creating good decision making skills through exploring such topics as:
 - Understanding Mistakes
 - Accepting Mistakes
 - Communicating Your Decisions
9. **PEER PRESSURE AND DRUGS** - designed to acquaint members with the pressures exerted by their peers through exploring the topics:
 - What is Peer Pressure
 - How to Handle Peer Pressure
 - Who Influences Peer Pressure

- Interpreting Advertising
 - Consequences of Drug Use and Abuse
10. **POSITIVE PEER PRESSURE** - exploring positive peer pressure through the topics:
 - Healthy Ways to Have Fun
 - Independence
 - Cooperation
 - Celebrating Yourself

"We are pleased with the response so far and encourage more clubs to participate in the substance abuse pilot program which should be educational to not only members, but 4-H leaders and parents, as well," Apel said.

Clubs in Ford, Geary, Lincoln, Meade, Saline and Trego counties, have already volunteered to pilot the program.

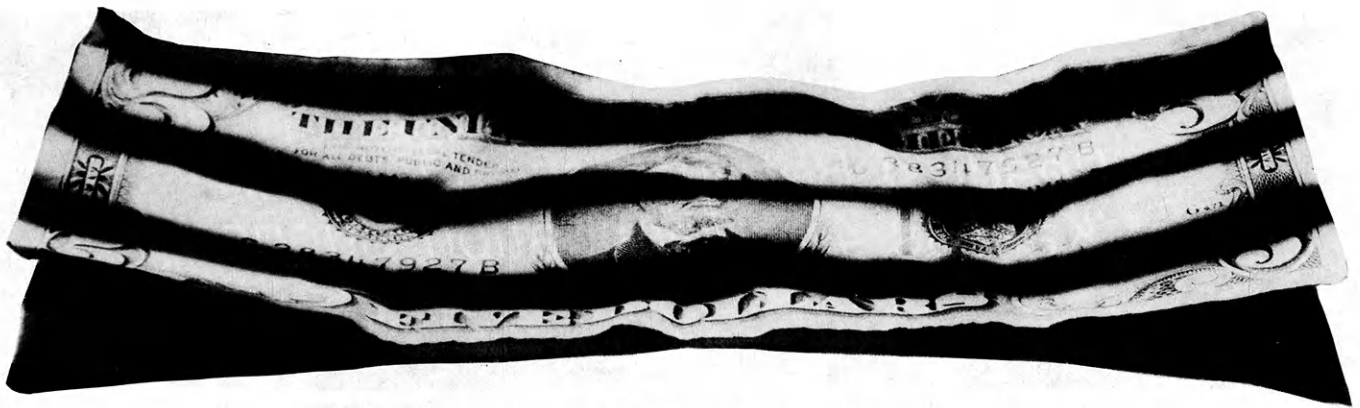
Reading Between the Lines ... of Kansas 4-H Foundation Support



▲
Sarah Orr
Douglas County

Sometimes the real story is found in what you read between the lines ... and between the lines of the partnership of the Kansas 4-H Foundation and Kansas 4-H are the dollars and "cents" for not just statewide programs, but also *many* 4-H activities in your club, county and community.

The benefits will become more clear as you see through the following information. By casting new light on this unique partnership, the role of the Kansas 4-H Foundation in support of Kansas 4-H will make "cents."



Kansas 4-H Foundation County Financial Benefits and Participation

Numerous requests for a summary of services and financial support from the 4-H Foundation as it applies to the individual counties have been received, especially during the A STEP AHEAD 4-H campaign.

The following information covers many areas of financial support and services in which the Foundation is directly or indirectly involved. Some of the areas involve total financial support by the Foundation and others include partial support, sponsors or special services. Participation numbers generally reflect direct activities and do not attempt to quantify secondary benefits. For example, leader training clinic participation numbers do not identify the number of 4-H members receiving benefits from the leader training programs.

No attempt has been made to quantify or value the numerous general activities through which the Foundation promotes the 4-H program on a statewide basis.

All dollar figures represent the 1987-88 year, and the participation numbers represent the past year statewide totals.

<p>Rock Springs 4-H Center Rock Springs 4-H Center is a nationally recognized camping and conference center encompassing 415 acres of the Kansas Flint Hills. The center was purchased early in 1946, and by June 1946 Kansas 4-H clubs raised the money for the purchase price and celebrated by burning the mortgage. Those clubs along with many others and generous donors have built one of the nation's finest 4-H centers ... one both present and future Kansans can enjoy.</p>	ROCK SPRINGS:	County 4-H Camps - Number of 4-H Youth Campers	4,416
		Electric - Participants	30
		Horse Panorama - Participants	100
		Dog Conference - Participants	150
		Shooting Sports Workshop - Participants	100
		Hunting, Fishing, Fur Harvesting School	100
		Heritage Encounter Camp - Participants	45
		Educational Displays - Arts/Craft Photography	52 20
		Employment Positions - Summer Season	40
		Value of Rock Springs 4-H Center Camping Equipment provided to Counties	\$2,000

<p>Kansas 4-H Journal The Kansas 4-H Journal stands alone as the only statewide 4-H magazine in the nation. This publication reaches the homes of 15,000 4-H families in all the 105 Kansas counties. It is published 10 times a year on four million pages. Over 400 county 4-H Journal sponsors provide \$3 gift subscriptions to 4-H families in their home counties.</p>	4-H JOURNAL:	Subscriptions	15,000
		Sponsor subscription support Foundation Support in Addition to Subscriptions	\$45,000 \$45,000
		Discovery Days Catalog, College Guide, Project Selection Guide, Awards Listing, State Fair Guidelines, Audio Visual Listing.	

Educational Scholarships

The Kansas 4-H Foundation considers educational scholarships a high priority in its efforts to support and strengthen the 4-H program. Each year the Kansas 4-H Journal publishes a careers and education issue to promote higher education and career training for 4-H members. As in the past, the Foundation will continue to strive to establish new 4-H scholarships to help defray the increasing costs of higher education.

SCHOLARSHIPS:	Number of College Scholarships	29
	*not including 15 Union Pacific Scholarships	
	Dollar Value of College Scholarships	\$14,350
	Annual Scholarship Banquet Honorees	65
	Annual Scholarship Banquet Funds Allocated	\$800
	Professional Improvement Scholarships	\$800

Clovia Scholarship Houses

Clovia Scholarships houses at Fort Hays State and Kansas State Universities allows 4-H alumnae to continue the 4-H ideology in a cooperative living environment.

CLOVIA:	Number of Residents - Full Capacity	97
	Value of Available Scholarships	\$30,000

Awards, Trips and Activities

The Foundation is pleased to provide awards, trips and special recognition activities which motivates and encourages 4-H project excellence. The recognition provided is on the county, state and national level.

AWARDS:	County Award Medals (55 projects)	5,154
	Key Awards	290
	Emerald Circle Banquet - Honorees	111
	- Funds Allocated	\$9,200
	National 4-H Congress Trips	11
	State Project Awards/Recognition	52
	Judging Team Trips	9

Kansas 4-H Alumni

The Kansas 4-H Foundation is trying to locate the 4-H alumni from Kansas, and has held reunions in honor of their 4-H participation and support. In 1987, those registered in the Clover Countdown took part in celebration of the 75th anniversary of the Kansas State Fair. An alumni headquarters tent with 4-H memorabilia and special reunions highlighted the two week celebration.

4-H ALUMNI:	Clover Countdown Registrations (to-date)	13,000
	State Alumni Awards	6
	Hospitality/State Fair - Number of People	4,000
	- Funds Allocated	\$5,000

The Foundation manages this list of alumni names and distributes the county list of resident alumni to each county each year.

Supply Service

The Foundation purchases and maintains an inventory of 4-H supplies. It is through the volume buying that counties are able to purchase these items at a reduced cost from the 4-H Foundation. The supplies stocked range from recordbook covers to animal ear tags.

SUPPLIES:	41 Supply Items/Annual Value	\$25,000
------------------	--	----------

4-H Program Support

Many of the 4-H programs available to 4-H'ers are funded through the efforts of the Kansas 4-H Foundation. These innovative and unique programs offer learning experiences in addition to the traditional 4-H programs available. The 1987-88 project year will be supported by \$86,615 generated from contributions to the Foundation. The projects selected to receive support are prioritized by a committee of county Extension personnel. Once the submitted proposals are reviewed and prioritized, the Foundation reviews the list and makes grants accordingly. These special grants support the availability of material and/or training for all 105 Kansas counties.

PROGRAM SUPPORT:		
	GRO Program, (Member Expansion)	\$15,000
	"Get Set" Substance Abuse Training	\$1,210
	NC Regional Leaders Forum	\$800
	"Blue Sky Below My Feet"	\$4,059
	(Enrichment for Foods, Clothing and Gravity)	
	Electric Clinic	\$1,500
	Project Selection Guide and Awards Listing ...	\$6,000
	Horse Quiz Bowl Computer Program	\$200
	4-H Curriculum Management	\$2,000
	Capable Kids Can: Latch Key	\$2,850
	Animal Science AV Aids	\$450
	Intermediate Home Ec Judging	\$250
	Home Ec/Ag AV Teaching Aids	\$2,000
	Halloween Specialty Breads	\$5,013
	Heritage Encounter Citizenship Camp	\$2,275
	Organizational Leaders Training (L.L.L.)	\$4,750
	Teen Leader College	\$8,000
	Multi-State Shooting Sports Workshop	\$2,077
	Entomology School Enrichment Training	\$930
	Centers of Excellence in Youth Programming ...	\$6,000
	SC Multi-County 4-H Family Fling	\$700
	Innovative County Grants - Value	\$8,000
	Innovative County Grants - Number of	12-15
	Counties Annually	

International Programs

International programs are supported in four areas by the Foundation; Paraguay, International 4-H Youth Exchange (IFYE), LABO (language laboratory) inbound and LABO outbound.

Kansas ranks first nationally in international programs with nearly 13,000 individuals involved which is almost twice as many as the second place state.

INTERNATIONAL PROGRAMS:		
	Stipend Volunteers, International Prog.	\$4,500
	IFYE Representatives - Number of Delegates ...	4
	IFYE Reps - Scholarship Value \$800 each	\$3,200
	Inbound IFYE Delegates	6
	IFYE Host Families	20
	LABO Outbound Delegates	14
	LABO Inbound Delegates	97
	LABO Host Families	97



Butler Co. Enters County Endowment Program; A Project of the Kansas 4-H Foundation

The Butler Co. 4-H Foundation recently joined the County Endowment program offered by the Kansas 4-H Foundation.

Butler Co. Program Development Committee Chairman, Ray Connell, presented the \$23,000 check to Bill Riley, executive director of the Kansas 4-H Foundation in a recent meeting in Eldorado

"We are pleased to provide this opportunity for Butler County to invest their funds in this new program for county fund management," Riley said.

The County Endowment program is designed to allow county programs the opportunity to take advantage of the permanent endowment trust agreement the Kansas 4-H Foundation has established.

The objectives of this program include:

- To establish a specific endowment fund in the name of a participating county
- To create public trust in placement of funds in a county fund program
- To provide assistance in all aspects of investment management through established procedures of the Kansas 4-H Foundation.
- To encourage counties to promote tax deductible gifts to 4-H
- To allow the county to benefit from the established fiduciary role of the Kansas 4-H Foundation
- To provide an adequate and effective vehicle for major gifts and estate designation for county and state 4-H benefits
- To create a cooperative linkage for fund-raising efforts between the Kansas 4-H Foundation and the county participants



Counties benefit from this program which allows for all the advantages of tax deductible gifts without creating management and operational requirements of a foundation with earnings of the fund available for use by the county.

Butler Co. 4-H Foundation has entered into a County endowment program with the Kansas 4-H Foundation by depositing an initial check of County foundation monies in the sum of \$23,000. Pictured left to right: C.R. Salmon, State 4-H Leader; Ray Connell, Chairman of Butler Co. 4-H Program Development Committee; Bill Riley, Executive Director of the Kansas 4-H Foundation; and Dave Kehler, Butler Co. 4-H Agent.

H. M. IVES & SONS, INC.

PRINTERS

406 Jefferson

Topeka, Kansas 66601

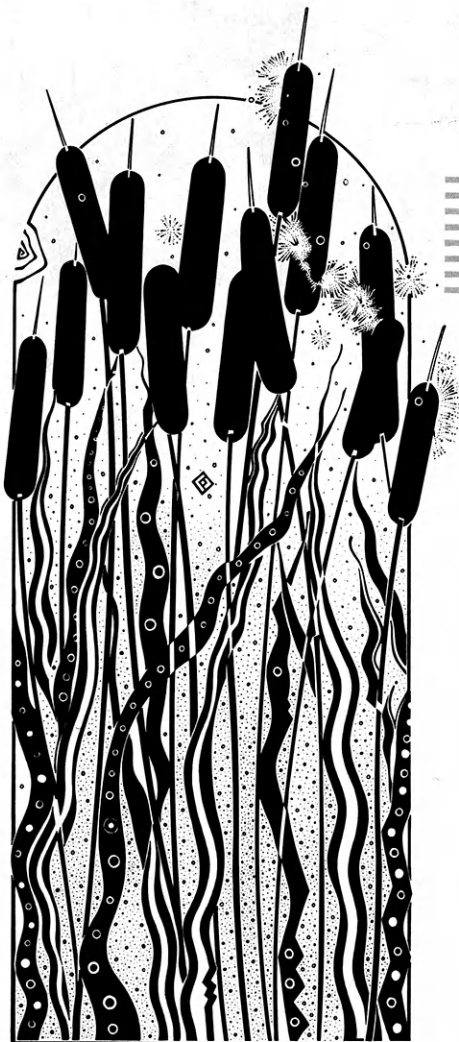
A Kansas Printing Family Tradition Since 1905



Wildlife and Fisheries Leader Wins National Award



Pat Lindquist
Saline County



Pat Lindquist, wildlife and fisheries leader in Saline County, recently received a national award for her service.

The award was sponsored by the U.S. Fish and Wildlife Service and was presented at the 53rd North American Wildlife and Natural Resources Conference in late March. Lindquist was one of six national winners.

She has been an active volunteer leader for 26 years, and an elementary school teacher. Lindquist is the community club leader for a club that's over 60 years old.

Her contributions to 4-H and natural resource conservation project are numerous. Lindquist's 4-H'ers have arranged wildlife displays in schools, city libraries and in downtown store windows to make the public more aware of their activities and to show appreciation for wildlife. She has made many presentations to school classes teaching about the value of birds, reptiles, mammals and amphibians.

She has set up displays at malls exhibiting collections of reptiles and amphibians so that the public could view these various projects up close. In ad-

dition, she has organized clean-up of the city park in Brookville, planted trees and flowers, and directed the teaching of wildlife conservation in the 13 city schools.

As for future plans, Lindquist has set a number of goals. Among them are to set up a wildlife area demonstrating backyard wildlife habitat; increase enrollment in the wildlife and fishing projects; establish a county-wide wildlife and fisheries club available to any youth in the area; continue judging contest pertaining to fish and wildlife; continue informing the public about the wildlife programs through public displays, radio and news reporting, and to attempt to set up a place at the state fair so that local award winners could receive additional recognition.

"The best gift and award is the satisfaction that I have helped someone better understand nature and respect it and to preserve it. The happy expression when someone has succeeded is an award in itself and makes me want to continue as a leader," Lindquist said.



Preparing for Japanese Guests

County Coordinators recently met at Rock Springs 4-H center for the LABO training workshop. Orientation to the LABO program contained tips on the structure of the exchange down to the traditional foods.

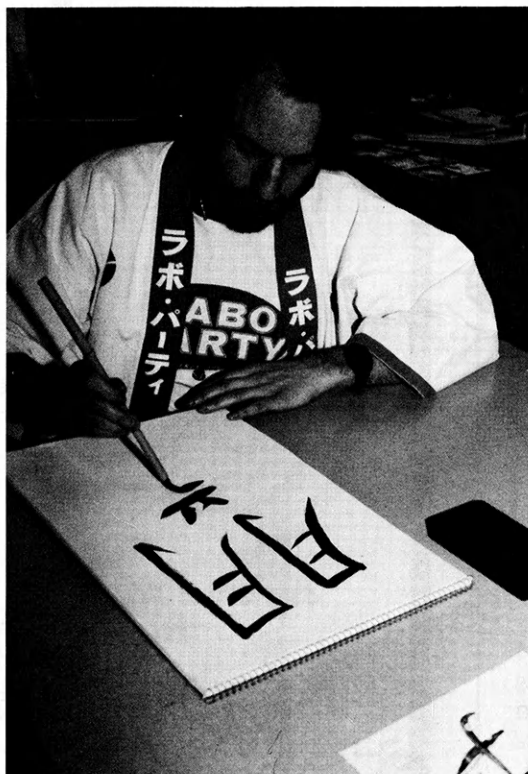
LABO, meaning language laboratory, is a program in Japan which encourages youth to learn languages in the country of their choice.

The 1988 LABO delegates will arrive in Kansas July 22, and they will attend LABO camp at the Rock Springs 4-H Center until July 25. At that time, they will go to their host families throughout the state until Aug. 19. The LABO participants will leave from Wichita on Aug. 20.

During a break at the workshop, leaders set up displays, shared experiences and posed for photographs.

Kansas Ranks first nationally in international programs with over 13,000 youth participating ... that's almost twice the second place state.

The Kansas 4-H Foundation supports both the LABO inbound and outbound programs in addition to two other international programs.





4-H'er Returns Home From Olympics; Enjoys Visit with Canadian 4-H Family

EDITOR'S NOTE: Melissa Fitzgerald is eight years old and is a member of the Glendale Reapers 4-H Club in Pratt County. She and her family have just returned from the Winter Olympics in Calgary, Canada, and she shares her experiences of a visit with a Canadian 4-H family.

by Melissa Fitzgerald
Pratt County

Going to the Winter Olympics in Calgary, Canada was a dream come true for my family. We all planned, worked, and saved for four years in order to make it happen. The experience even included more than just the Olympic events!

Before we left, my mom wrote a letter to Alberta Extension asking if there were some way we could arrange a 4-H exchange. They sent our names to Andrea Hanson, a 4-H Agent from Airdrie, just outside of Calgary. We arranged to meet after we arrived in Canada.

Andrea picked us up at a shipping center one morning and took us to her family's farm. We spent a relaxing day in the Alberta countryside which is flatter than Kansas! We met her parents, Sandra and Bonner, sister Janice and exchange student Christian Christiausen from Denmark. They raise registered Herefords, wheat, barley,

oats and canola, an oil seed which they irrigate. They fed us a great dinner all raised on the farm.

All afternoon we compared 4-H, farming and life in general between our two countries. They can be in 4-H from age 10 to 21, and are really involved in the livestock projects. They don't have as many projects as we do, but they seem to do a lot more camping

and exchange activities. We hope in the future to arrange some club exchanges.

The Olympic games were stupendous! We saw speed skating, luge, hockey and men's figure skating. Calgary was awesome! I've already started saving for the next Olympics in Albertville, France in 1992.



Melissa Fitzgerald with Hidi and Howdy, the Olympic mascots.

Wherever You Live in the Sunflower State....



*City or Country...
We've got Kansas covered!*

**WITH A FULL LINE OF INSURANCE PLANS
AND OVER 400 AGENTS STATEWIDE.**

Outstanding coverage.
Rates that are right. And
with agents in every
county and over 70 claims
adjustors statewide, we'll
be there — fast
— when you need us.

Why not discover how
we can make you — or
your piece of Kansas —
more secure.



Farm Bureau Insurance

FARM BUREAU MUTUAL • KANSAS FARM BUREAU LIFE • KFB INSURANCE COMPANIES

Money For Your Treasury

OVER 2 MILLION
Sunflower Dishcloths



WERE SOLD LAST YEAR BY MEMBERS OF
GROUPS, SOCIETIES, CLUBS, ETC.

THEY ENABLE YOU TO EARN MONEY FOR
YOUR TREASURY AND MAKE FRIENDS FOR
YOUR ORGANIZATION.

Sample FREE to Official.

SANGAMON MILLS, INC., Cohoes, N.Y. 12047
KJ Established 1915

Capitol Federal Savings



TOPEKA
GREATER KANSAS CITY
MANHATTAN LAWRENCE OLATHE
EMPORIA SALINA WICHITA

Collingwood GRAIN INC.

Serving Kansas
Since 1890

Country Elevators
and Terminals

BUY, BUILD, SAVE WITH US

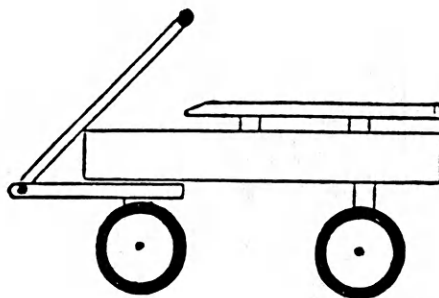
- Competitive rates on savings and loans
- High-yielding C.D.'s
- 17 offices statewide

**anchor
savings**
ASSOCIATION

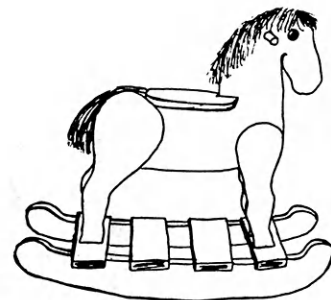


Free!

4-H Woodworking Plans from YOUR PARTICIPATING LUMBER DEALER



CHILD'S TOY WAGON
Repeat of a popular
design by
Eric Casper, Riley County



NOVELTY ROCKING HORSE
Repeat of a popular
design by
Julie Logback, McPherson, County

**These plans
are available:**

**For your free plans, see your participating lumber dealer; he will also help you
select the material you need.**

ABILENE
Abilene Lumber, Inc.

ASHLAND
Don Spotts Lumber Company

ATCHISON
Beverly Lumber Co., Inc.

BELOIT
Peoples Lumber Co.

BURLINGTON
Burlington Lumber & Supply

CIMARRON
Stephens Lumber of Cimarron

CLAY CENTER
Fullington's

CONCORDIA
Mid-West Lumber Company

EL DORADO
Home Lumber & Supply Co.

EMPORIA
Fleming Lumber & Material Co.
Mark II Lumber

ERIE
Johnson & Son Lumber Co.

EUREKA
Home Lumber & Supply Co.

FREDONIA
Schoolcraft Lumber Co.

GALVA
Galva Lumber, Inc.

GARDEN CITY
Fankhauser, Inc.

HUTCHINSON
Davis Home Center
Kightlinger's

INDEPENDENCE
Sandott Sentry Home Center

IOLA
Klein Lumber Company

JOHNSON
Seyb-Tucker Lumber and
Implement Company

JUNCTION CITY
Builders Lumber, Inc.

KINGMAN
Kingman Lumber Co.

LaHARPE
Diebolt Lumber and Supply

LANSING
Lansing Lumber, Inc.

LARNED
T.M. Deal Lumber Co.

MANHATTAN
Cash Lumber & Hardware

NEWTON
Claassen Hardware &
Lumber Co.

NICKERSON
The Home Lumber &
Supply Co.

NORTONVILLE
Nortonville Lumber, Inc.

OTTAWA
Hubbard Lumber
Company, Inc.

PAOLA
Miami Lumber, Inc.

PARSONS
Woods-Seward Lumber Co.

PITTSBURG
Broadway Lumber Co., Inc.
True Value Home Center

PRATT
W.R. Green Lumber, Inc.

Woodworking Plans Available:

Accent Table
 Bluebird House
 Book Rack
 Bulletin Board
 Cherry Wood Cabinet
 Child's Toy Wagon
 Child's Rocker
 Computer Desk
 Cutting Board
 Darning Doll
 Deacon's Bench
 Dog House
 Dresser Valet
 Easel
 Garden Seat
 Key Rack
 Letter Holder
 Mantel Clock
 Martin Bird House
 Novelty Rocking Horse
 Patio Chair
 Pedestal Desk
 Pet Food Bin
 Plant Stand
 Planter - Mailbox
 Porch Swing
 Redwood Cart
 Revere Coat Rack
 Roll Top Desk
 Rolling Pin
 Stereo Case
 Tennis Rack
 Towel Storage Rack
 Wall Book Shelf
 Walnut Headboard
 Wren House

Submit Woodworking Plans; Receive 4-H Journal Recognition

The 4-H Journal publishes woodworking plans submitted by 4-H members, leaders and parents in the ad featuring Kansas working dealers.

To submit your plans for consideration of publication, send a detailed copy of the plan along with a drawing to use in the woodworking dealers ad.

In addition to the ad, the Journal staff creates a brochure for each plan used in the Journal and mails them to the participating woodworking dealers to distribute to their customers.

You may also want to send a photograph of your finished product along with your plans, and be sure to clearly write your name, age, address, county

and club on the plans so you will receive the appropriate recognition if your plan is selected for publication.

By participating in the woodworking plan program, you can provide new plans to other 4-H'ers enrolled in the woodworking project, and receive recognition for your work. Please remember to submit a variety of plans so younger members will have a project they can tackle easily, and older members will find a project that will challenge their woodworking skills.

Send your plans to:

The Kansas 4-H Journal
 116 Umberger Hall
 Manhattan, KS 66506

RUSSELL
 Schwaller Lumber

SALINA
 Easterday-Boster Lumber Co.

SHARON SPRINGS
 Hennick Lumber & Supply Co.

ST. JOHN
 English Lumber & Supply Co.

SYRACUSE
 Hess Lumber Co.

TOPEKA
 Whelan's Inc.

ULYSSES
 Sunflower Lumber Co., Inc.

WASHINGTON
 Washington Lumber Co.

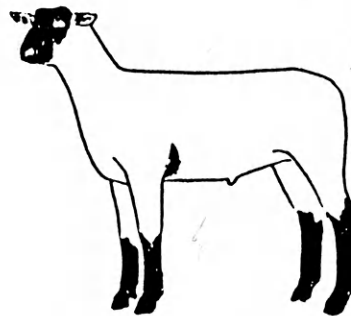
WILSON
 Hoch Lumber Company

WINFIELD
 A.B. Everly Lumber Co., Inc.
 Everitt Lumber Co., Inc.

WRIGHT
 Right Co-op Assn.

SOUTHWIND INVITATIONAL CLUB LAMB SALE

Sunday, April 24, 1988
 2 P.M. - Franklin County Fairgrounds
 Ottawa, Kansas



OTTAWA

Catalog:
 J&R Compton
 Rt. 4, Box 79
 Ottawa, KS 66067
 (913) 255-4532

©Roberta J. Compton 1987

More money for post-high school education comes from family income and savings than from any other source. Be prepared; early in life start a savings account at your

Kansas Savings and Loan

Hutchinson
 Valley Federal Savings
 & Loan Assn.

Leavenworth
 Citizens Mutual Savings
 & Loan Assn.

Lyons
 Lyons Savings &
 Loan Assn.

Manhattan
 Manhattan Federal Savings
 & Loan Assn.

Medicine Lodge
 The Barber County
 Savings & Loan Assn.
Plainville and Stockton
 Rooks County Savings
 Assn.



As of March 17, 1988, **138** clubs in **37** Kansas counties have documented their participation in the GRO program. Recognized for their 4-H club expansion efforts are:

- 2508** . . . 4-H'ers who re-enrolled
- 372** . . . 4-H'ers who have recruited their first new member
- 131** . . . 4-H'ers who have recruited more than one new member
- 159** . . . 4-H families who have recruited one new family
- 135** . . . 4-H clubs that accomplished any one or all of the following goals; retained at least 60% of their current members, recruited 5 new members, created 1 new club

Due to the efforts of these 4-H'ers, **906** new 4-H members were recruited. Congratulations to the Kansas 4-H clubs and their leaders recognized for their participation in the GRO program!

Thank You Organizational Leaders and 4-H Youth

NORTHWEST AREA

Gove County
Quinter
Roetta Mann

Golden Plains
Judith L. Tuttle

Graham County
Eastside
Deborah Robinson

Ness County
Prairie Schooners
Jean Schlegel

Norton County
Prairie Dog
Alice Barnett

Busy Beavers
Cathy Hanchett

Good Hope Boosters
Regina Stark

4-Square
Greta Thiele

Cedar Ridge
Shannon K. Horton

Busy Jayhawkers
Pam Cuthbertson

Osborne County
Eager Beavers
Donna D. George

Sumner
Wilda Carswell

Phillips County
Lone Prairie
Joyce Tien

Agra Trailblazers
Jo Ann Rice

Deer Creek
Darlene Imm
Renee Thompson

Rooks County
East Plainville
Susan Morris

Helpful Hands
Patti Stout

Mt. Pleasant
Kathy Stice

Russell County
Big Creek
Sheila Busch
Peggy Anschutz

Lone Star
Susan Krug

Smoky Hill River
Mary Lee Bohnen

Wolf Creek Valley
Kathy Zweifel

Paradise Dell
Debra Noffsinger
Rhonda Strecker

Smith County
Busy Bees
Ginger Smith

Busy Bears
Pat Baetz

NORTHEAST AREA

Clay County
Cloverleaf
Bonnie J. Snook

Hayes Boosters
Marsha Pittenger
Verna Lee Musselman

Cloud County
Miltonvale Hustlers
Glenda Cyr

Hill and Dale
Mary Buss

Doniphan County
Circle B
William Turpin

Sunflower
Sharon Groh

Doniphan Star
Marilyn Anderson

Bendena
Kathy Albers

Douglas County
Fourleaf Clover
Paula L. Johnston

Eudora
Frances L. Whitesell

Jefferson County
Mooney Creek
Charles Noll

Prosperity
Richard Malm

Lucky Four
Al Funk

Billtown
Lucy Patterson

Clover Power
Isabel Adams

Rock Creek Boosters
Mary Anne Lawrence

Grantville Circle G
Bobbie Clough

Valley Victors
William R. Conser
Mary Jo Hamon

Fairview
Sherry Seifert

Johnson County
Sunnyside
Nancy Lammers

Busy Bees
Vickie Wilson

Leavenworth County
Basehor Rustlers
Mr. and Mrs. Eugene Theno

Bell
Nancy Anderson

Boling
Mr. and Mrs. Joe Wood

Fairmont
Mr. and Mrs. Matt Nowak

Glenwood
Dr. Larry Ringel

Green Promise
Elvira Winkler

Happy Helpers
Mr. and Mrs. Bob Rose

Happy Hollow
Helen Stewart

Livewires
LaVera Aufdemberge

Lucky Clover
Barbara Kirkman

Mayginnis Hustlers
Jackie Lee

Reno Bobwhites
Donna Wiley

Goal Rushers
Joan Seely

Stranger Creek
Wanda Packer

Leavenworth Leaders
Joelyn Fevurly

Marshall County
Happy Horseshoe
Janet Turner

Sunflower
Audrey Yaussi

Axtell Busy Bees
Norma Perry

Home City Hustlers
Carol Koch

SOUTH CENTRAL AREA

Barber County
Hazelton
Cleo Jahay

Sharon Valley
Rayann Rucker

Sunflower
Sue Marshall

Stateline
Glenda Alexander

Gyp Hill Pioneers
Frances Larkin

Sunny Larkers
Sandra J. Myers

B-Square
Fern Bell

Butler County
Flint Hills
Shirley Gray

Ellsworth County
Jayhawk
Carol Kottman

Kingman County
Hawk
Peggy Graber

St. Leo Challengers
Jane Fischer

Whispering Willow
Jane Patterson

Zenda Zoomers
Iona Westerman

Marion County
Ramona Redchiefs
Gloria Martin

Florence Jayhawk
Judy Mills
Leah Sellers

Happy Hustler's
Vickie Kraus

Ottawa County
Culver Livewires
Donna Stirn

Woodsdale
Alberta Myers
John Hyde

Delphos
Patti Breeding
Kay Mckain

Sedgwick County
Mt. Hope
Maureen Barty

Colwich Hustlers
Barbara J. Simon

Westlink Whiz Kids
Jack E. Doyle

Delano
Dianne DeGood

Goddard
Nancy Reynolds

Riverview
Sue Parks

Andale Jets
Joan Winter

Sumner County
Belle Plaine Buccaneers
Cheri Brandt

SOUTHEAST AREA

Allen County
Prairie Dell
Mrs. L.D. Wilks

Bourbon County
Drywood
Mr. and Mrs. Larry Grimes

Northwest
Cindy Foxx

Hiattville
Lloyd W. Callow

Pawnee
Patricia Simpson

Goodluck
Wilma Hibdon

Chautauqua County
CedarVale GoGetters
Becky Green

Sedan Willing Workers
Sally Whited

Greenwood County
Willow Valley Go-Getters
Marcia Bailey

Fancy Mustangs
Barbara Robison

Madison Pacesetters
Paul Clark

Lucky 13
Ruby Robert

Harmony Sunflowers
Kay Bogle

Fall River 55ers
Carol Palmesier

Union Shockers
Richard Stapleford

Miami County
Rolling Hills
Henrietta E. Hutting

Montgomery County
Bolton Trailblazers
Don and Marilyn Wittum

Busy Band
Roger D. McFall

Valley Victors
Donna Leyda

Up and Coming
Marsha and Junior LeRoy

Wilson County
Homebuilders
Judy Sims
Marilyn Kidd

SOUTHWEST AREA

Finney County
Wide Awake
Linda Batchelder
Sue Heiman

Happy Hustlers
Pansy Fryman
Barbara Goss
Merle Witt

Finney Flyers
Connie Gross
David Sells
Phil Sloderbeck

Eager Beavers
Sheila Eakin

Go-Getters
Roxann Beach
Hazel Tancayo

Ford County
Happy Hustler
Patty Sanko
Theresa Barnett

Valley Boosters
Dina Reynolds
Linda Martin

Wright Wonders Workers
Betty Burkhardt
Diane Lix

Wilroads Garden
Ann Delzeit
Judy Ricke

Prairie Schooners
Doug Ring
Joe Kliesen

Richland Boosters
Arlene Davis
Alice Goertz
Joanie McClure

DIY Juniors
Niles and Sue Wiseman
Max and Carolyn Estes

Grant County
Cloverleaf
Karen Clyde

Bearcreek
Allison Carpenter

Full-o-Pep
Kristy Crites

Cimarron
Terrie Hiner

Greely County
Thrifty Thrivers/GoGetters
Bonnie Wineinger

Straight Ahead Strivers
Terry Elder

Pawnee County
Burdett Blue Ribbons
Beverly and Leon Steffen

Pawnee Peppers
Robert and Jane Jackson
Margaret and Jerry Larson

Tiny Toilers
Glenn and Elaine Mull

Pawnee Rock Panthers
Louanna Hanes
Ernest Hipp

Zook Zippers
Benny Bowman
Kathy Hammecke

Gem Dandy's
Janet Fleske
Richard and Marcia King

Rozel Rockets
Susan Snodgrass
Dallas Hiebert

The GRO program is funded through a grant by the Kansas 4-H Foundation.

Welcome New Kansas 4-H Clubs

NEW CLUBS CREATED AS PART OF THE GRO PROGRAM

Barber County

Kiowa
Organizational leaders:
Bill Legleiter
Konnie Ott
No officers
12 members
Created by Hazelton 4-H Club

Ford County

Miller Panthers
Organizational leaders:
Rita Saunders
Marcy Henton
No officers
23 members
Created by Rita Saunders

Grant County

Sky High
Organizational leaders:
Bob and Pat Dennis
Other leaders:
Ruth Moore
Ruth Siebert
Officers:

Karen Dennis, president
Scott Dennis, vice-president
Andrea Dennis, secretary
Lisa Dennis, treasurer
4 members
Created by Pat Dennis

Gray County

Ensign Lasers
Organizational leaders:
Sue Travis
No officers
5 members
Created by Leanne Manning and Doug Stucky

Greenwood County

Olimax Swingers
Organizational leaders:
Mark and Sherry True
Sharon McDonald
Club Advisory Committee:
Linda Hurley
Dale Spaht
Don Stephens
Officers:
Laura Cross, president
Joe McDonald, vice-president
Joyce Cross, secretary
Kevin Bechtle, treasurer
Other officers:
Jimmy Cross
Dallas Purkeypille
Elizabeth True
Rachel True
22 members
Created by Sherry and Mark True

Johnson County

Lucky Clovers
Organizational leaders:
Jeanette Gerald
Debbie Patrick
Officers will rotate first year
16 members
Created by Jeanette Gerald and Dennis L. Patton

Lincoln County

Bullfoot Creek
Organizational leaders:
Emilie and Sid Wacker
Other leaders:
Bonnie Cheney
Glenda Bartholomew
Cindy Feldkamp
Darryl Cheney
Tami Splitter

Officers:
Ben Errebo, president
Shay Muettler, vice-president
Gwen Wehrman, secretary
Jeremy Wacker, treasurer

Other officers:

Tonya Splitter
Audra Wacker
Talena Errebo
Heidi Wehrman
Aaron Cheney
Justin Bartholomew
16 members
Created by Emilie Wacker/Sylvan Hustler
4-H Club

Rice County

Cottonwood
Organizational leaders:
Nancy Heine
Carolyn Kern
Other leaders:
Ed Kern
Clark Coleman

Officers:
Tony Standlee, president
Eric Hays, vice-president
Heather Spangler, secretary
Rachel Steffan, treasurer

Other officers:

Becky Heine
Clara Young
Robbie Hays
Rachel Heine
Cameron Coleman
Candra Coleman
Marjorie Kern
Maggie Proffitt
Clara Young
Eric Hays
19 members
Created by Nancy Heine

Sedgwick County

Midtown
Organizational leaders:
Laura Shriner
Phyllis Bradburn

Officers:

Teresa Bradburn, president
Jessica Roberts, vice-president
Beth Bradburn, secretary
Misty Castillo, treasurer

Other officers:

Trung Mike Ngo
12 members
Created by Laura Shriner, Phyllis Bradburn, Bill Fultz

Shawnee County

West Indianola Mustangs
Organizational leaders:

Vickie Lesser
Carol Mongold
Parents Committee:
Ron Wayman
Joyce Abbott
Carol Snyder

Officers:

Matt Snyder, president
Amanda Mongold, vice-president
Wendy Ruegg, secretary
Shelly Abbott, treasurer

Other officers:

Jennifer Gilbert
Becky Wheeler
Melissa Myers
Jessica Abbott
Rhonda Mongold
Megan Peterman
Matt Snyder
Rob Laird
30 members
Created by Rob Laird/Pleasant Hill 4-H Club

Hudson School

Organizational leader:
Nancy Kalthoff

Other leaders:

Cindy Lines
Diane Gorrell

No officers

25 members
Created by Nancy Kalthoff

Wilson County

Buffalo Blazers
Organizational leader:
Cindy Schlotterbeck

Other leader:

Linda Stoldt

Officers:

Zelda Schlotterbeck, president
Bobbie Stoldt, vice-president
Mike Robinson, secretary
Tonya Schlotterbeck, treasurer

Other officers:

Erik Dice
Emily Dice
Irving Robinson
Bear Stoldt
Heather Schlotterbeck
13 members
Created by Cassandra Elsworth

We Relish Your Business!

CALL IN ORDERS WELCOME

CONSOLIDATED Printing-Salina
1-800-432-0266
SERVING ALL OF KANSAS

17th Annual Tuttle Classic Pig & Lamb Sale

CICO Park, Manhattan, KS
April 30, 1988 — 1:00 p.m.

Lamb Cosignors:
Ebert Sheep Farm
Glynash Farms
Double M Hampshires
Oscar Krouse

25 Hampshire Wethers
30 Suffolk Wethers
25 Crossbred Wethers
7 Dorset Wethers
5 Registered Hampshire Ewe Lambs
4 Registered Dorset Ewe Lambs
5 Commercial Ewe Lambs

— Selling —

Pig Cosignors:
Bus Bond & Sons
Gary Hellebust
Kirby Anders
Robert Fink

20 Duroc Barrows
10 Crossbred Barrows
15 Hampshire Barrows
5 Yorkshire Barrows
5 Spot Barrows
5 Registered Duroc Gilts
10 Commercial Gilts

For Information:

Jeff Ebert - Rt. 1, Box 324 - St. George, KS 66535 - (913) 494-2436
These consignors have produced winning lambs and pigs on the county, state and national level for several years.

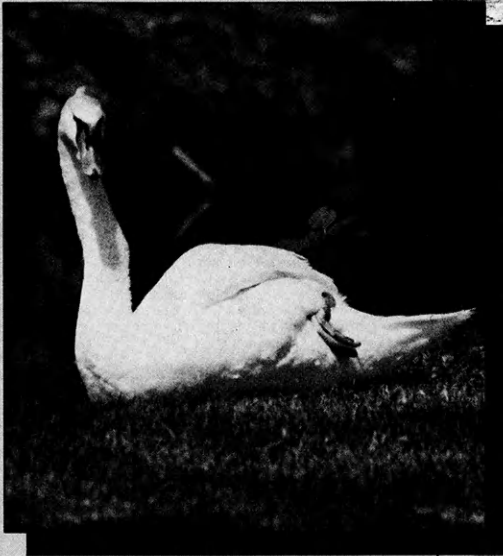
Featuring Winning 4-H Photography



Andy Anderson
Doniphan County
Doniphan Star Club
Age 12



Dusty Ormiston
Kingman County
Cunningham 4-H Club



Dru Saddler
Thomas County



Dustin Wiens
Cowley County
Martha Washington 4-H Club
Age 11

Non-Profit Organization
U.S. Postage
PAID
Permit No. 86
Salina, Kansas