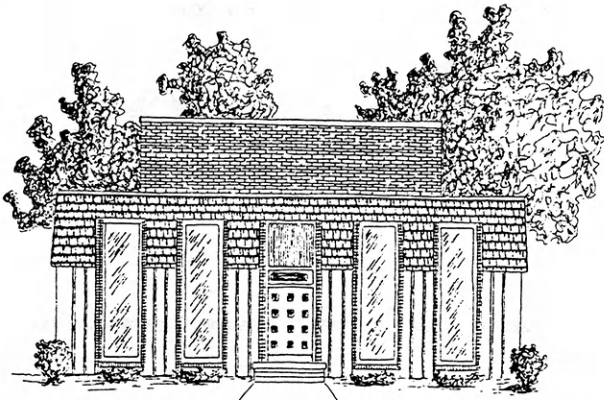


Kansas 4-H Journal

The Family Magazine

April 1987





Clovia 4-H Cooperative House

ENJOY ... College life among others with interests and experiences like your own. Single female students with a 4-H or similar background.

Fort Hays Clovia

SAVE ... up to \$600 as compared to residence hall living by assisting with house operations and management. Clovia is one of the most economical organized living groups at Kansas State and Fort Hays State Universities.

HAVE FUN ... Traditional Clovia social activities include formals, semi-formals, functions and exchange dinners with fraternities. Clovia members participate in intramural sports and other extra-curricular events. Clovia provides the opportunity for you to meet others and get involved in campus activities.

HURRY ... Space is limited! Complete and mail attached form to:

Kansas State University

Clovia 4-H Cooperative House
1200 Pioneer Lane
Manhattan, KS 66502
(913) 539-3575

-or-

Fort Hays State University

Clovia 4-H Cooperative House
209 W. 5th
Hays, KS 67601
(913) 625-4052

Manhattan
Clovia



Please send me more information about the Clovia 4-H Cooperative House unique college-living option.

Name _____ County _____

Address _____ City _____

State _____ Zip _____

Year in school: Freshman Sophomore Junior Senior

Clovia: A project of the Kansas 4-H Foundation.

Kansas 4-H Journal

VOLUME XXXIII, NO. 3
April 1987

Rhonda Wessel Atkinson ... Editor
Glenda Eichman Secretary

Address all correspondence:
Kansas 4-H Journal
116 Umberger Hall, KSU
Manhattan, Kansas 66506
Phone (913) 532-5881

Single subscriptions are \$4 per year.
Group subscriptions are available upon request.

Kansas 4-H Journal is published
10 times a year by
KANSAS 4-H FOUNDATION, INC.

Bill Riley Executive Director
Merle Eyestone . . . Field Representative
Trisha Cash Secretary
Ann Carr Asst. Treasurer

BOARD OF TRUSTEES

Governor Mike Hayden
Honorary Chairman
Glee S. Smith, Chrm. Larned
Martha Wreath Streeter
Vice-Chrm. Manhattan
John Junior Armstrong,
Treas. Manhattan
Ross Beach Hays
Richard Dillon Hutchinson
Marilyn Pence Galle Moundridge
Mrs. Olive Garvey Wichita
Balfour S. Jeffrey Topeka
J. Harold Johnson Manhattan
Wilbur E. Levering Topeka
Thomas M. Potter Wichita
C.R. Salmon Manhattan
Tom Shirley Dodge City
Fred Sobering Manhattan
Walter Woods Manhattan
Robert Wagstaff Shawnee Mission
Mrs. Dwane Wallace Wichita
*Glen M. Bussett Manhattan
*Sen. Frank Carlson Concordia
*Roger E. Regnier Manhattan
*Dolph Simons, Sr. Lawrence
*Advisory Member

Use of the 4-H name and symbol approved by the Secretary of Agriculture of the United States, January 23, 1951, under the provisions of the laws as reenacted by Sec. 707 of the Act of June 25, 1948. Public Law No. 772 80th Congress (10 USC 797).

In This Issue

From your State 4-H Leader	4
North Central Regional Leadership Forum	5-7
Recognition Needed	8
Awards Insert	9-12
Shawnee County's Rundown of Clover Countdown	13
Computer Day Camp	14-17
4-H Memorabilia Needed	17
Tag A Child	18
Commercial Cattle Feeding	19
4-H'er Wins Trip to Marketing Symposium	20
It's Okay to Play	21-22
Johnson Makes the Most of Making the Best Better	23-24
10 Qualities 4-H Presidential Tray Candidates Should Possess	23
Heritage Encounter	25
State Geology Field Trip Planned	26
7-11 Only	26
Master Club Luncheon	26
Taxes, 4-H Program Not Exempt	26
4-H Camp	27
Rock Springs 4-H Center Open Before Discovery Days	27
4-H Forestry	27
Opening Minds Keynote Speakers	32

Advertisers' Index

Clovia 4-H Cooperative House	2
Woodworking Plans	28
16th Annual Tuttle Classic Pigs & Lamb Sale	29
Kansas Savings and Loan	29
Grass and Grain	29
Clovia	29
Consolidated Printing	29
Sangamon Mills	30
Chambers Farm	30
41st Annual Kansas Ram Sale	30
Southwind Invitational Club Lamb Sale	30
Lazy Creek Suffolks	30
Collingwood Grain, Inc.	30
Anchor Savings	30
J Bar J Trailer Sales	31
Mengarelli Farms	31

Kansas 4-H Program

A Time To Show It Off Through Leader Training

By: C.R. Salmon

In this issue, you will be reading about a tremendous opportunity for Kansas 4-H volunteers and parents called North Central Regional Leadership Forum. The twelve state event is scheduled for October 29 - November 1 on the Kansas State University campus.

For the past eleven years Kansas volunteers and parents have been traveling to other midwest states and now it's time for Kansas to "show off its 4-H program." This is a golden opportunity for Kansas counties to send a bus load of volunteers to the North Central Regional Leader Forum. Your county Extension office should have announcement brochures which contain additional information. If you are looking for an action-packed, fun, and motivating weekend, consider attending the 1987 North Central Regional Leaders Forum. Kansas is serving as host to approximately 350 volunteers from twelve different states in the midwest.

This is a wonderful opportunity for you as 4-H parents and volunteers to hear some tremendous motivational speakers, to hear other 4-H volunteers talk about their county and club programs and to share informally with other 4-H volunteers and parents from twelve Midwestern states. The committee has planned and scheduled forty-six different seminars and workshops for you to choose from. They have put together a very educational and challenging program. We hope you will come and help us celebrate the theme, "Opening Minds."

The cost will be \$135 which is a very nominal fee when you consider the excellent speakers, support materials, and fellowship provided. The overall purpose of the annual Forum is to provide an opportunity for "trainers to train trainers" which means we are training volunteers and parents to return to their counties to train other volunteers and parents on skills and knowledge about work-

ing with youth.

The Forum is being chaired by Betty Rhodes and Janet Kiser and advised by Dr. Charlie Lang, Kansas 4-H Youth Staff member. The committee has been planning and promoting the Forum for the past two years.

The Forum is being partially funded by a national grant from the J.C. Penney foundation.

I have visited with several leaders and parents who have attended previous Regional Forums and they return highly motivated and recharged with new ideas for "making the best better."

If you've often thought of participating in a regional or national leader forum, but just never thought you had the time or the resources, this fall you have a golden opportunity to participate in the North Central Regional Leaders Forum here at Kansas State University.

*C.R. Salmon
Assistant Director of Extension
4-H-Youth Programs*

Team Up!

By: Dr. Charlie Lang

Those who have attended previous forums recommend sending volunteers who are part of a team. While individual participation is certainly acceptable and meaningful, a closer look shows how teams have created results with positive impact.

Usually a county 4-H Program Development Committee reviews their current or proposed program efforts with the description of the mini-sessions. If the county believes their program could benefit from participation in the forum, then they start the action to select a team(s), start planning what they will do, and find the

financial support for the team. These groups of two, three, or four volunteers can represent a club, several clubs, or a specific phase of the county 4-H program.

Experience with Kansas counties shows that teams with a plan usually "dig into" these forums with determination and are eager to implement action programs back home. Teams usually decide among themselves the sessions they need to attend.

On top of everything else, forums are great battery charging sessions for volunteers. And why not. Its great to feel good while learning.

Extension Specialist, 4-H-Youth Programs

1. Leader Learning Lab I, II, III, IV
by Marcia McFarland, Extension Specialist, 4-H - Youth, Club/Group Meeting Programs, Kansas.

Examples from a four part series of workshops for organizational leaders which offer activities that teach self-esteem, listening and responding skills, group decision making, identification and clarification of values and measuring and celebration with groups. Participants should plan to enroll in all four series.

2. Gavel Games

by Jan Stephens and Jeff Davidson, County Extension Agents, Kansas
A team of four 4-H'ers act as officers for a model meeting. This method has proven to be an effective tool for learning parliamentary procedure and being able to react quickly to parliamentary situations.

3. Feeling Good About Yourself

by Lorraine Davis, 4-H Volunteer, Kansas
Emphasis will be on what you think of yourself and how important it is compared to what others think of you.

4. Motivating Yourself and Others
by Pat Boscoe, Assistant Vice-President, Student Affairs, KSU

A step-by-step system of establishing a climate to motivate yourself and volunteers. Exciting ideas, strategies and techniques will be presented.

5. A Whole-Hearted Approach for Clothing Master Leaders

by Marilyn Stryker, Extension Specialist, Clothing, Kansas

This session explores what leaders can do to help kids grow and feel good about themselves. 4-H clothing projects help kids develop life skills through a variety of learning experiences.

6. Letting Eager Adults Develop Every Resource — 'L-E-A-D-E-R'

by Carol Ott, 4-H Volunteer, Kansas
This session will discuss the effectiveness of Leadership Committees.

7. Friends Indeed

by Charles A. Smith, Extension Specialist, Human Development, Kansas

The program "Friends Indeed" is a workshop to help you understand stress and ways you can respond effectively to another's distress, whether from a death in the family, farm failure or problems in school.

8. Getting Your Foot Through The Classroom Door

by Diane D. McNeill, County Extension 4-H Agent, Kansas

This session will discuss programs for youth in the school. Topics included are: contact people, program areas and scheduling.

9. Kite Making

by Warren Bailey, Ohio

This activity leads itself well to day camps. Participants will learn how to make kites from home made materials.

10. A New Program to Enhance 4-H Youth Life Skills

by Charles T. Bates, Extension Specialist, 4-H, Youth Statewide Events, Kansas

A new program designed to extend and enhance public presentation opportunities for more 4-H youth in developing life-skills. The program focuses on the responsibility for training via County Demonstration Coordinator.

11. We Are Needed

by Jane A. Serrien, 4-H Volunteer, Kansas

This is a school enrichment program using the "Bread in a Bag" technique. Many Extension Programs have been a vital resource for school such as Foods, Clothing and Family Living.

12. Letting Others Have Control

by Dr. Ivan Scheier, Consultant and Keynote Speaker (Friday only)

Delegating - Letting others have control - Successful volunteer involvement.

13. Trip Camping

by Lynn Herr, 4-H Volunteer, Ohio

4-H camping trips for teens age 13 - 19 using "Outward Bound" experimental learning concepts and utilizing national and state park campgrounds and outdoor education facilities. High adventure trip camping can include whitewater rafting, rock climbing, mountain hiking and group camping.

14. The One Minute Public Presentation

by Lisa Ramsey, County Extension 4-H Agent, Kansas

This is a training session developed for a club volunteer position entitled the Public Presentation Coordinator. The One Minute technique will help alleviate the shaking knees, sweaty palms and dry mouth symptoms and maximize your individual presentation talents. This session will enable you to help train others to perform public presentations.

15. Mood-Altering Chemicals, Families in Crisis

by Maurice J. Schade, Counselor, St. John's Treatment, Junction City, Kansas

This session will illustrate and discuss the interpersonal and intrapersonal dynamics attendant to the development and maintenance of human dependency disorders as well as recovery from these disorders.

16. How To Teach Recreation, Part I and II

by Mary Lee Bailey, Ohio

New ideas for volunteer trainers on teaching recreation to others — so they can lead recreation. Part II is a continuation of Part I. Participants can but are not required to take both.

North Central Regional Leadership Forum

Experience Opening Minds

by Karen Streeter, Promotional Committee Chairman

Are you tired of doing the same things in your 4-H club? Can you use some new excitement with your members? Do you need more volunteers to help you? If you answered yes to any of the above questions, plan to be in Manhattan October 29-November 1 for the North Central Regional Leaders Forum. From the opening dinner Thursday evening, to the closing ceremonies Sunday morning, come prepared with your paper and pen for all the ideas and information you'll gain. Not only will you hear some dynamic keynote speakers, but you'll have the opportunity to meet and share with leaders from Kansas and 11 other states.

This is a tremendous oppor-

tunity for everyone in Kansas. Not for another 12 years will we have the opportunity to host this event. You don't have to be a community leader to attend. Any 4-H volunteer, parent or agent is urged to attend. This is the perfect time to bring some of those new volunteers and have them catch the "4-H fever." Everyone can gain so many new ideas, and we want you to share your successes with the rest.

Besides the keynote speakers and mini sessions a lot of fun lies in store for you. Dorothy, The Tin Man, The Scarecrow, and The Cowardly Lion will be around to entertain you. A DJ dance is planned.

We'll have a masked Halloween party (don't worry about

providing your own mask, we'll provide everything for you). Kansas folk lore awaits you at Rock Springs Ranch, and then you'll have your choice for Saturday afternoon. Visit the Eisenhower Center in Abilene, tour Fort Riley or the Veterinary Complex at Kansas State University, or you can do what everyone wants to do when they leave home — shop in Aggieville or Manhattan's new downtown mall.

The committee has worked hard to bring the best to you so take advantage of this opportunity. For more information and registration forms contact your county office. Plan to be in Manhattan in October to "Open YOUR Mind."

17. Getting Together - Families and 4-H

by Jodi L. Besthorn, County Extension Home Economist and Director, Kansas

When joining 4-H, the learning experiences are exciting, but also can be challenging, especially for the parents. A New Family Coordinator may be the solution for your club.

18. Mini 4-H

by Sheila A. Gains, County Extension 4-H Agent, Kansas

Discussion will explore the concept and need for small 4-H groups, review the scope of Mini 4-H across the nation, give an overall view of the program, how it is functioning in Kansas and lead a discussion on how the program can be utilized or adapted in counties.

19. How to Direct Children Into Acting

by Becky Kerschen, 4-H Volunteer, Kansas

This session will focus on how to get children interested in acting and also how to use story telling as a way of increasing that interest.

20. Just Charge Ahead

by Carol L. Huneycutt, Riley Extension 4-H Agent, Kansas

Development of 4-H Program based on perceived community needs and an evaluation of ongoing programs. Will explain how implementation of volunteer management system will provide ongoing program continuity.

21. Teen Lock-In Programs

by Barb Romanowski, 4-H Volunteer, Wisconsin

Lock-ins deal with 2 to 3 counties participating in the lock-in at the YMCA. The ages are generally 9th grade and up.

22. Up, Up and Away

by Sharon Molzen, County Extension Home Economist and Cindy Siemens, County Extension 4-H Agent, Kansas

History of kites and their uses will start off the session. The different styles of kites will be shown and discussed. Participants will then have the opportunity to make kites of their own, using their own creativity for their designs.

North Central Regional Leadership Forum

- 23. Enrollment Fair**
by Mary Hittle, 4-H Volunteer, Kansas
Discussion on how an Enrollment Fair can be a means of advertising 4-H to others and recruiting new members.
- 24. Club Projects**
by Harry and Sharon Drake, 4-H Volunteers, Kansas
Discussion on ideas and activities a club can do as a club project.
- 25. Unlike a Maytag Repairman**
by Linda Bisbee, 4-H Volunteer, Kansas
This session will discuss forming a support network for Community Leaders.
- 26. Making Meetings Exciting**
by Shari Boelke, 4-H Volunteer, Kansas
New ideas to use during club meetings to make them more exciting and more interesting for members will be given.
- 27. Group involvement in Goal Setting**
by Bernis Parker, 4-H Volunteer, Kansas
A Goal is not an impossible dream. Learn methods for volunteer leaders to involve the youth in group goal setting. This will involve group building, group involvement, practice steps in goal obtaining and use of praise and reward in obtaining goal.
- 28. Unlocking Your Potential**
by Linda Kirgan, Certified Consultant, Human Resource Development, Illinois
Survey given to discern personal leadership style. All styles described in session and the groups works on personalizing and accepting others for their given strengths.
- 29. Sharing Adult Leadership in Community Clubs**
by Gail King, 4-H Volunteer, Kansas
This session will describe a "Parents' Committee" and the process of breaking down club leadership responsibilities into smaller jobs that can be accomplished by today's busy parents.
- 30. We Want To Have Fun Too!**
by Robert Peterson, 4-H Volunteer, South Dakota
How to teach in a closed atmosphere and have fun while learning. South Dakota has developed "Key Leaders" in project areas. Key leaders teach club project leaders and in some instances members directly. Workshop participants will briefly discuss teaching techniques to use with adults and then role play various vignettes. Participants should bring subject material in which they are interested.
- 31. Latchkey 4-H Programs**
by Dr. Arlinda Nauman, 4-H Youth Specialist, South Dakota
South Dakota has a Latchkey Program which includes lessons for youth plus handouts and newsletters for parents.
- 32. Volunteers for the Future — Teen Leadership Development**
by Virginia Gobeli, Extension Specialist, Nebraska
This workshop focuses on teen leadership development through a 4-H Leadership Development Model. The content will consist of exploration and discussion of leadership life skills, how the leadership curriculum provides for development of leadership skills and the role of teens as volunteers in the 4-H program. Specifics — Leadership model consisting of Leadership Curriculum Matrix, Leadership Opportunities Matrix, Leadership Life Skills Matrix and Teens as a Resource.
- 33. Fund-Raising — A Sharing of Ideas**
by Susie Skinner, County Extension Agent and Cathy Wegener, 4-H Volunteer, Ohio
Sharing a way that the county includes many 4-H leaders and parents in a major money making activity. Through teamwork and organization the 4-H Committee has conducted several successful fundraising activities that raise nearly \$10,000 annually. The committee has learned what questions to ask and how to evaluate.
- 34. Building Strong Councils, Boards, and Committees Is A Shared Accomplishment**
by Kathryn Penrod, Extension Specialist/Youth, Indiana
The session will include an opportunity to explore the L-O-O-P Model of involving volunteers in the process of building sufficient and effective groups. The L-O-O-P Model helps volunteers understand the phases of involving volunteers while working towards goals. Participants will be given a chance to apply the L-O-O-P concepts taught and analyze aspects of their own volunteer work.
- 35. Personal Development - Decision Making Skills**
by Ruth Wagner and Sue Weinbrecht, 4-H Volunteers, Iowa
This topic revolves around a personal development approach to leadership and decision making. It is aimed at the younger 4-H members.
- 36. Blue Sky Below My Feet**
by Bill Fultz, County Extension 4-H Agent, Kansas
NASA and 4-H join together to explore space technology. It involves three half hour video programs featuring NASA shuttle astronauts exploring Gravity, Fiber and Fabrics and Food Nutrition. Much application for project enrichment in clubs or as a school program.
- 37. Club Community Service and Citizenship Projects**
by Ruth Wagner and Sue Weinbrecht, 4-H Volunteers, Iowa
This would involve planning and implementing club projects emphasizing the community service and citizenship aspect. It would include grant applications and other methods of procuring funds for such projects.
- 38. 4-H Volunteer Force, An Advocates Program**
by Youth Development Volunteer, Wisconsin
The Volunteer Force serves as traveling advocates for increasing volunteer involvement, ownership, commitment, and responsibility for 4-H program management. Participants will discuss replicating ideas for their own states and counties.
- 39. Kids and Animals - The Big Step Caring**
by Dr. Marvin Samuelson, D.V.M., Kansas State University
This seminar looks at the research about how people learn to care for others because of the bond between a 4-H'er and an animal.
- 40. Shooting Sports**
by Dave E. Kehler, County Extension 4-H Agent, Kansas
A combination of hunter safety and enjoyable hunting.
- 41. 4-H For the Very Young**
by Carri Whitaker, 4-H Volunteer, Kansas
Hands-on explanation of 4-H groups for the 4, 6 and 7 year olds.
- 42. Success Through Situational Leadership**
by Edie Oliver, 4-H Volunteer, Kansas
Situational Leadership stresses the importance of adapting leadership style to the situation at hand. We will discuss styles of leadership and how to choose the most appropriate style for the situations (people and tasks) which a 4-H volunteer leader would likely encounter.
- 43. How can 4-H Serve Low Income**
by Edie Jorns, School Social Worker, Manhattan, Kansas
Presentation will include: characteristics of low-income families, and obstacles which prevent low-income from participating in 4-H. Will also give examples of how 4-H has successfully worked with low-income.
- 44. Designing a County 4-H Volunteer Management System**
by William Borst, Area Extension Specialist, 4-H - Youth Kansas
Using successful agents and their middle management volunteers as resources.
- 45. Creative Thinking**
by Sandra Shields, County Extension Home Economist, Kansas
Ways to get new ideas into the program at the club or county level.
- 46. Fun While Learning in the Dog Project**
by Sarah Holbert, 4-H Volunteer, President, State Dog Development Committee, Kansas
This session will give ideas for creative project meetings, community service projects and statewide events dog project members can attend.

Recognition Needed

Level Differs For Each Individual Member

By: Steve Fisher, Extension Specialist 4-H—Youth Programs

Recognition is something that everyone needs and deserves — but the type of recognition we value will differ with each person and with developmental stages as children and adults. For some 4-H'ers, regularly attending meetings or participating in an educational experience is an accomplishment and is worthy of recognition. This is especially true of the beginning 4-H'er and youth participating in short term 4-H activities. Some young people are challenged by setting their own personal goals and working to achieve them. Working to achieve pre-established standards of excellence challenges other youth. A highly structured experience that leads to a championship or other single award such as a state, national trip or scholarship is generally more motivating to adolescents and teens.

We cannot continue to think there is one way of recognizing or rewarding 4-H'ers. The original philosophical basis for awards in the 4-H program was to motivate youth to strive for excellence in

project work. In a recent meeting of Kansas county Extension agents and 4-H volunteers, awards were seen as rewards for 4-H'ers doing good project work.

In 1985, the Kansas 4-H department conducted a survey of Kansas parents and children to find out what rewards have proved most helpful when motivating youth to continue learning. When parents were asked how important various rewards were for their children, the highest ranked answer was compliments from an adult group leader; secondly, compliments from parents; thirdly, compliments from friends followed by plaques or trophies, trips, clothing, medals or pins.

The Kansas children interviewed all said they wanted to please and get praise from their parents and families. Even second graders wanted to please and get compliments. The opinions of friends, and coaches, and group leaders were also important. The younger children mentioned fewer tangible rewards. Third graders said

it was important for them to work with others in getting recognition for participating whether they won or not. Most younger children preferred group rewards though some valued individual accomplishments. Seventh and ninth graders preferred working with team mates and preferred receiving compliments to most material rewards.

We do know that highly competitive structured competition is motivating for some people. Arthur Combs in his book, *"Myths in Education,"* indicated that about one third of the population is motivated by competition. Another one third had no strong feelings about competition one way or another and the last one third do not like competition and in fact will not participate if they know they have to compete.

With this information in mind it is clear that county 4-H trips and awards committees, program development committees, professional staff, parents and leaders must work to achieve a balance of the various types of recognition for their 4-H members. 4-H members should be allowed to choose what level of recognition they may want to achieve. It is especially important for parents and leaders to not impose their values upon their children.

The summary of award programs that follows list those awards which have sponsorship at the state or national level. You may have additional awards at the county level in addition to the programs listed here. The donor for each award is also listed. Any new member who received a medal sponsored by a state or national donor will find their complete mailing address on the envelope when they receive their medal at County achievement time. 4-H'ers should be encouraged to say thank you to the donors of their awards. Not only does this teach members a valuable lesson, but it also helps the donor feel that they are doing something worthwhile.

Kansas 4-H Awards Program



The Kansas 4-H Department and the Kansas 4-H Foundation is pleased to provide 4-H Families with the following awards information.

These are the projected awards for the 1986-87 4-H year. A (n) indicates a national donor and (s) a state donor made possible through the Kansas 4-H Foundation. Sectional award winners eligible to qualify for trips to the National 4-H Congress are noted with **. Kansas 4-H Foundation awards medallions to all state project winners and sponsors the Emerald Circle Banquet for state winners, finalists and their parents.

AWARD PROGRAM	DONOR	COUNTY	STATE	NATIONAL
Achievement	Ford Motor Company (N)	Medals	Trip to National 4-H Congress	9 \$1,000 scholarships
Agricultural	Case IH (N) and Purina Mills (N)	Medals	Trip to National 4-H Congress	6 \$1,000 scholarships
Alumni	Beatrice/Hunt-Wesson (N) and Orville Redenbacher's	Medals	Certificate	8 trips to National 4-H Congress and gold pin.
	Master 4-H Club (S)		4 plaques	
Arts & Crafts	Reid Foundation (S)	Medals	\$75 Bond	
Beef	Wrangler Brand (N) Kansas Beef Council (S)	Medals	Certificate and pin Trip to National 4-H Congress	6 \$1,000 scholarships
Bees	Kansas Honey Producers Assoc. (S)	Medals	Trip to KHPA Annual Meeting and award	
Bicycle	National 4-H Council (N)			4 trips to National 4-H Congress and 4 \$1,000 scholarships
	The Pathfinder (S)	Medals	Gift items	
Bread	Fleischmann's Yeast Inc. (N)	Medals	Trip to National 4-H Congress	6 \$1,500 scholarships
Bucket Calf	The Folger Coffee Company (S)	Medals		
Citizenship	The Coca-Cola Foundation (N)	Medals	Trip to National 4-H Congress	9 \$1,000 scholarships
Clothing	Coats & Clark Inc. (N) K.T. Wiedemann Foundation (S)	Medals	Certificate and pin Trip to National 4-H Congress	6 \$1,000 scholarships
Conservation of Natural Resources	Deere and Company (N)	Medal Club Certificates	Trip to National 4-H Congress	6 \$1,000 scholarships

Kansas 4-H Awards Program

AWARD PROGRAM	DONOR	COUNTY	STATE	NATIONAL
Consumer Education	National 4-H Council (N)			4 Trips to National 4-H Congress and 4 \$1,000 scholarships
Crochet	Reid Foundation (S)	Medal	\$75 Bond	
Crop Production and Management	National 4-H Council (N) Duckwall-Alco Stores, Inc. (S)	2 Medals	Trip to National 4-H Congress	4 \$1,000 scholarships
* Dairy	American Cyanamid Co. (N) Land O'Lakes, Inc. (N)		Certificate and pin	6 \$1,000 scholarships
Dairy Production	Flint Hills Dairy Goat Club (S) Kansas Ayrshire Breeders (S) Kansas Dairy Herd Improvement Assoc. (S) Kansas Jersey Cattle Assn. (S) Midland United Dairy (S) Holstein Friesian (S)		4-5 Trips to National 4-H Dairy Conference	
* Dairy Foods	Carnation Company (N)	Medals	Certificate and pin	6 \$1,000 scholarships
* Dog Care and Training	Purina Dog Foods Group, Ralston Purina Company (N)	Medals	Transistor radio	6 \$1,000 scholarships
Ecology	Dillon Food Stores of Kansas (S)	Medals	Camera	
Electric Energy	Westinghouse Electric Corporation (N)	Medals	Trip to National 4-H Congress	6 \$1,000 scholarships
** Entomology	Mobay Corporation (N) Agricultural Chemical Division	Medals	\$75 U.S. Savings Bond	6 \$1,000 scholarships
Fashion Revue	Simplicity Pattern Co. Inc. (N) Viking White Sewing Machine Company (N)	Medals	Trip to National 4-H Congress	6 \$1,000 scholarships
Food/Nutrition	The General Foods Fund, Inc. (N)	Medals	Trip to National 4-H Congress	6 \$1,000 scholarships
Food Preservation	Kerr Glass Manufacturing Corp. (N)	Medals	Trip to National 4-H Congress	6 \$1,000 scholarships
Forestry	International Paper Co. Foundation (N)	Medals	Trip to National 4-H Congress	6 \$1,000 scholarships
Fun With Children	Dillon Food Stores of Kansas (S)	Medals	Camera	
Fur Harvester	Kansas Fur Harvesters Assoc. (S)		2 \$100 U.S. Savings Bonds	
Gardening/Horticulture	Chevron Chemical Company (N) Kansas Association of Nurserymen (S) Heifner Nursery & Garden Center (S)	Medals	\$75 U.S. Savings Bond Trip to National 4-H Congress	8 \$1,000 scholarships
Geology	Kansas Independent Oil & Gas Assoc. (S)	Medals		
Health	Kraft, Inc. (N)	Medals	Trip to National 4-H Congress	8 \$1,000 scholarships
Home Environment	National 4-H Council (N)			4 Trips to National 4-H Congress and 4 \$1,000 scholarships
Home Management	National 4-H Council (N)			4 Trips to National 4-H Congress and 4 \$1,000 scholarships
Horse	American Quarter Horse Assoc. (N) H.M. Ives & Sons (S)	Medals	Certificate and pin Trip to National 4-H Congress	6 Trips to National 4-H Congress and 6 \$1,000 scholarships
International Focus	Kansas IFYE Alumni Assoc. (S)	2 Certificates	Certificate and Trip to 4-H International Feast	
Knitting	Reid Foundation (S)	Medals	\$75 Bond	
Leadership	Firestone Trust Fund (N)	Medals	Trip to National 4-H Congress	9 \$1,000 scholarships
Livestock	Kansas Livestock Assoc. (S)	Medals	Trip to National 4-H Congress	

Kansas 4-H Awards Program

AWARD PROGRAM	DONOR	COUNTY	STATE	NATIONAL
Meats	Kansas Beef Council (S)	Medals	Educational trip to National Livestock Meat Board	
Newswriting	Montgomery Publications (S)		9 Trips to 4-H Discovery Days	
Petroleum Power	Amoco Foundation, Inc. (N)	Medals	Trip to National 4-H Congress	6 \$1,000 scholarships
Pets	Dillon Food Stores of Kansas (S)	Medals	Camera	
Photography	Eastman Kodak Company (N)	Medals	Trip to National 4-H Congress	6 \$1,500 scholarships
Pigeon	Kansas Pigeon Association (S)	Medals	Certificate	
Poultry	Kansas Poultry Association (S) Barr's Poultry (S) Mr. and Mrs. M.E. Jackson (S)	Medals	2 Trips to Midwest Poultry Federation Conference	
Public Speaking	UNOCAL Corporation (N) Kansas 4-H Foundation (S)	Medals	Trip to National 4-H Congress 4 Watches to 4-H'ers giving presentations on the Kansas 4-H Foundation	6 \$1,000 scholarships
Rabbit	Kansas State Rabbit Breeders Assoc. (S) Kansas 4-H Foundation (S)	Medals	Engraved Silver Bowl	
Reading	Tom & Mariellen Appleby (S)	Medals		
Recreation	Safeway Stores, Inc. (S)	Medals	Camera	
Rocketry	The Folger Coffee Company (S)	Medals		
Safety	General Motors Foundation, Inc. (N)	Medals	Trip to National 4-H Congress	8 \$1,000 scholarships
Santa Fe Achievement	Santa Fe Railway		6 Trips to National 4-H Congress 4 \$750 scholarships	
Self-Determined	Dillon Food Stores of Kansas (S)	Medals	Camera	
Sheep	American Sheep Producers Council (N) Kansas Sheep Association (S)	Medals	Trip to National 4-H Congress	4 \$1,000 scholarships 4 Trips to National 4-H Congress
Swine	Pfizer Inc., (N) National Pork Producers Council (N) Kansas Pork Producers Council (S) Daniel Schmidt Memorial Trust (S)	Medals	Certificate and pin Trip to National 4-H Congress Award to 2nd place winner	4 \$1,000 scholarships 4 Trips to National 4-H Congress
*Veterinary Science	The Upjohn Company Auxiliary to the Kansas Veterinary Medicine Association (S)	Medals Certificate	Certificate and pin Award	6 \$1,000 scholarships
Wheat Quality	Kansas Wheat Commission (S)		Wheat Marketing Study Tour	
**Wildlife & Fisheries	Jeep Corporation (N) National Wildlife Federation (N)	Medals	Certificate and pin	6 \$1,000 scholarships
Wood Science	Friends of Kenneth H. Anderson (N) Kansas 4-H Foundation (S)	Medals	Trips to National 4-H Congress	4 \$1,000 scholarships 4 Trips to National 4-H Congress

**SECTIONAL AWARDS — must be a sectional winner in order to receive a trip to National 4-H Congress

AWARDS IN OTHER SPECIAL PROGRAMS AND EVENTS

AWARD PROGRAM	DONOR	COUNTY	STATE
Crops Contest	Kansas State Fair (S) County Weed Directors Assoc. (S) Kansas Grain Sorghum Growers Assoc. (S)		Educational trip for 4 members and one leader of top crops contest team at Kansas State Fair Award to top 3 Individuals Medallions to team members of top 2 teams

Kansas 4-H Awards Program

AWARD PROGRAM	DONOR	COUNTY	STATE
Dairy	Mid America Dairymen, Inc. (S) Kansas State Fair (S)		Trip to top judging team at State Fair to National Dairy Conference
Home Economics Judging Contest	Kansas State Fair (S)		Educational trip for top 3 individuals from the top 3 county teams at Kansas State Fair, plus 1 leader of each
Horse	Contributions to the Kansas 4-H Foundation		Out-of-state judging contest trip to top horse judging team
Horticulture	Kansas State Fair (S)		Trip to National Horticulture Judging Contest to top judging team
Key Award	Farm Credit Services(S)	Certificate, tie clasp or necklace to top 1% of outstanding 4-H'ers 16 and older	
Land Judging	Kansas Farm Bureau Safety Department (S)		Medals, ribbons, plaque to top team in each of the five districts
Leadership	KABAR (S) Kansas Bankers Association (S)		Trips to National 4-H Conference
Livestock	Kansas State Fair (S) Kansas Farm Bureau Safety Department (S) Kansas 4-H Foundation (S)		Trip to Louisville, KY National 4-H Livestock Judging Contest for top judging team at State Fair. Trip to Denver, National Western Stock Show Judging Contest for 2nd place judging team at State Fair. Trip to American Royal for 3rd place team.
Meat Identification and Judging Contest	Kansas State Fair (S) Beef Empire Days (S) Walter and Frances Lewis (S)		Trip to American Royal for top team at State Fair Trip to second place team Special Awards
Poultry Demonstrations	Kansas Poultry Association (S)		Trip to National 4-H Poultry Conference
Safety	Kansas Farm Bureau Safety Department (S)		Cash awards to the top 9 clubs and 1 scholarships to an individual from each club to attend the Kansas Farm Bureau Youth Safety Seminar at RSR. Cash awards to all participating clubs.
Sheep	to be announced		1,000 in special premiums to be divided among top market lambs at Kansas State Fair.
Swine	Kansas Purebred Committee (S) Oldham's Farm Sausage, Inc. (S) Arkansas City Packing Co. (S) Pork Packers International Inc. (S) Key Milling Company (S) Custom Ag Products, Inc. (S) Kent Feeds, Inc. (S) Central Soya-Master Mix Feed (S)		Grand Champion: \$250 and engraved wristwatch Reserve Champion: \$200 3rd Place: \$150 and trophy 4th Place: \$100 and trophy 5th Place: \$50 and trophy
Tractor Driving Contest	Amoco Oil Company (N) Kansas City Hardware and Tractor Club (S) Western Retail Implement & Hardware Assoc. (S)		Trip to Regional Tractor Contest Provides caps and T-shirts for participants in tractor driving contest
Wheat Variety Contest	Kansas Wheat Commission (S) Kansas Crop Improvement Assoc. (S) Kansas Grain & Feed Dealers Assoc. (S) Dixie Portland Flour Mills, Inc. (S)	Seed Wheat for participants	1st - Educational Trip 2nd - Watch 3rd to 5th - Cash Premiums and Award Plaques 6th to 10th - Plaques Educational Materials
District 4H Wheat	Flour Miller Division, Western Region of Cargill, Inc. (S) Bertrand Elevator, Inc. (S) ADM Milling Company (S) Stafford County Flour Milling Co. (S) Wall - Rogalsky Milling Co. (S) Garvey Elevators, Inc. (S) Bunge Corporation (S) Bertrand Elevator, Inc. (S) Kansas Assoc. of Wheat Growers (S) Union Equity Cooperative (S) Lincoln Grain, Inc. (S)		Premiums in both physical sample and mill-bake divisions 1st - \$100 2nd - \$ 50 3rd - \$ 25 4th - \$ 15 5th - \$ 10

Shawnee County's

Rundown of Alumni Clover Countdown

By: Helen Dillad, Shawnee County

- Letter to each club leader, informing them that money donations (given by local businesses) would be given to two top clubs turning in "signed up" alumni — and merchandising certificates to top members in clubs.
- Conducted an "Oldest Living Alumni" contest in county — two people were recognized on achievement night.
- Articles in Extension News — and the Topeka Capital-Journal.
- Contacted TV stations and several radio stations for coverage — either live or slides or script — during 4-H week and later. Of course, other counties benefited from this, too.
- Used ambassadors for a "call-in" night (Local business opened office with use of four phones). Not too successful as a "call-in" — but we had a "call-out" from member lists of extinct clubs in Shawnee County.
- Plan to have a sign-up booth at County 4-H days last of February with ambassadors manning it.
- Topeka Public Library display — with sign up sheets.
- Table displays at major shopping mall (contracts also made at local craft shows).
- We still have alumni in various clubs making contacts by phone. It has been an exciting venture — but the committee knows that there are many more to be signed up in Shawnee County.

Attention All Kansas Alumni

Return to: Kansas 4-H Foundation
Alumni Division
Umberger Hall, Room 116
Kansas State University
Manhattan, Kansas 66506

***If you are a 4-H alumna,
you are important.***



Name _____ (Last First Maiden)

Current Address _____ (Street, P.O. Box or RR Town Zip County)

Is spouse a 4-H alum? Yes No Name _____ (First Last Maiden)

Your 4-H Membership Experience
Club _____ County _____ State _____
During the '20s _____ '30s _____ '40s _____ '50s _____ '60s _____ '70s _____ '80s _____ (check one)

4-H Participation, Honors & Recognition (Check where appropriate)

National 4-H Congress <input type="checkbox"/>	State Fair <input type="checkbox"/>	State Award <input type="checkbox"/>
Key Award <input type="checkbox"/>	Collegiate Club <input type="checkbox"/>	Other (list) _____
National 4-H Conference <input type="checkbox"/>	Clovia <input type="checkbox"/>	_____

1987 4-H Computer Day Camp

Do you want to provide a "hands on" opportunity for your 4-H'ers, ages 8-18, to learn more about computers at a reasonable price and close to home? Make plans to have a computer day camp in your county or with a neighboring county.

Computer day camp classes will be taught by members of the 4-H Computer Project Developmental Committee. They are donating their time so as many 4-H'ers as possible can have the opportunity to attend a day camp.

Dates, Costs, Responsibilities

Computer day camp classes are available June 15 - August 15. Send in your class reservation form as early as possible in order to get your first choice.

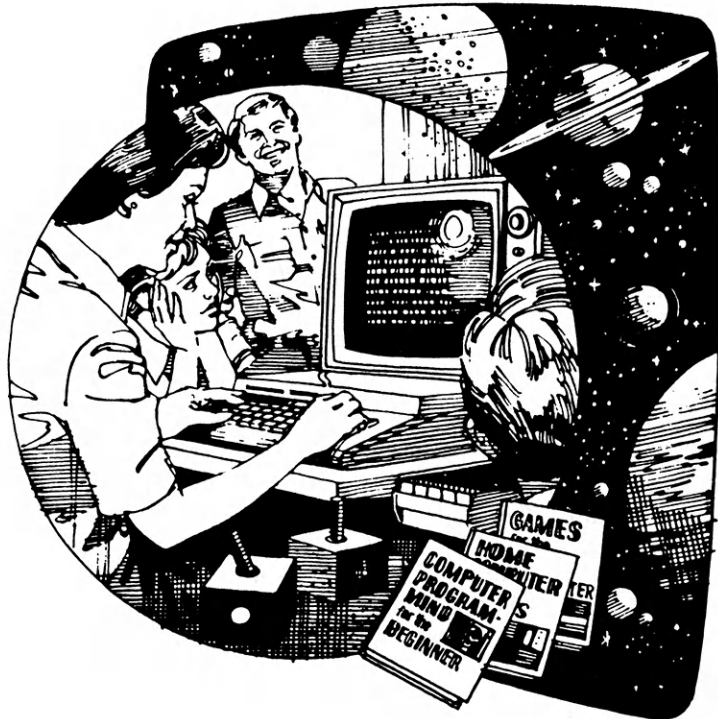
The county pays a flat fee of \$150. If your instructor has to travel over 200 miles round trip, you must also pay 20.5 cents per mile for the additional miles over 200.

Developmental Committee provides:

- Instructor
- Computer paper
- Handouts
- Software
- Certificate of Participation
- Recreation Equipment
- Instructor's travel expense (up to 200 miles round trip)

County Day Camp Committee provides:

- Air conditioned classroom
- Computer (must be the same type i.e. all Apples, IBM compatibles, Radio Shack, TRS 80's, or Commodore 64's)
- Printer(s)
- Insurance (if computers are not already covered)



- 1 Lunch
- 4 Snacks
- 2 Adult assistants to supervise recreation periods and assist computer instructor (don't need computer expertise - just people who want to learn)
- Outdoor recreation area close to classroom
- Lodging for the instructor - either at a motel or with a 4-H family

Day Camp Schedule

Each day camp schedule is:
Day 1: 1 p.m.-5 p.m. County provides a snack.

Day 2: 8:30 a.m.-5 p.m. Campers bring a sack lunch. County provides 2 snacks.

Day 3: 8:30 a.m.-1 p.m. County provides a snack and a lunch. The celebration "graduation" occurs during lunch.

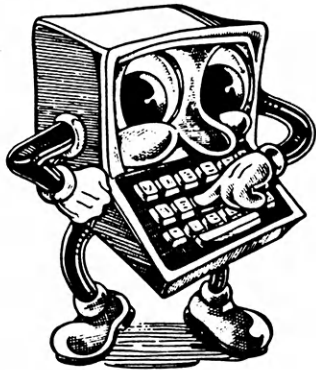
Recreation Period

There will be a 30 minute recreation period when the campers need a break from computer instruction. Counties should provide several adults to supervise the recreation. These people should be interested in computers and interested in "auditing" the class. The development committee will provide frisbees, kick balls, nerf balls, whiffle balls, etc.

Cancellation Policy

You can cancel your computer day camp up to one week before the day camp is to begin and receive the full \$150 deposit. If you cancel within a week of your dates, you'll receive \$75 of your deposit.

Computer Day Camp



Classes Offered

The following classes will be taught by Computer Project Developmental Committee members. The preferred locations are based upon the distances they are willing to travel from their homes. Please promote each class for one skill level only, i.e., Beginning Data Base or Intermediate Word Processing. There should not be more than two campers per computer.

Introduction to Logo

Discover computer programming without complex line numbers and codes. Keyboard skills are not required. Participants will learn programming logic, problem solving, and graphics.

Hardware . . . Apple II with minimum of 64K Printer with screen dump interface (for graphics)
 Prerequisite 8 years old
 Preferred
 Location . . . NE Kansas
 Days Weekdays

Introduction to Basic-A

Learn the language of your home computer. You'll learn the "basics" - strings, indirect statements, direct statements, line numbers, loops, REM, DIM, IF/THEN statements, etc.

Hardware . . . Commodore
 Prerequisite 10 years old
 Preferred
 Location . . . Statewide
 Days Thursday through Saturday

Introduction to Basic-B

Learn the language of your home computer. You'll learn the "basics" - strings, indirect statements, direct statements, line numbers, loops, REM, DIM, IF/THEN statements, etc.

Hardware . . . MS-DOS (IBM or IBM Compatible computers, such as Zenith)
 Prerequisite 10 years old
 Preferred
 Location . . . NE and SE Kansas
 Days Weekdays

Assembler

A machine language for the "real computer jock." For advanced students only.

Hardware . . . Commodore
 Prerequisite Advance BASIC
 Preferred
 Location . . . SC Kansas
 Days Negotiable

Spreadsheet - C

Spreadsheets let you work with numeric information you normally arrange in rows and columns. With a flick of the wrist, you can tie all kinds of "what ifs" together. Compare and contrast the endless possibilities of your ideas. This skill is a plus for many 4-H projects.

Hardware . . . MS-DOS (IBM Compatible) or Commodore
 Prerequisite Introduction to BASIC, 5th grade and up
 Preferred
 Location . . . SC Kansas
 Days Negotiable

DATA BASE-A

A data base stores information and let's you have access to it under different topics. Use a data base to study your homework, keep track of friends and their addresses or budget your money.

Hardware . . . Commodore
 Prerequisite Introduction to BASIC
 Preferred
 Location . . . Statewide
 Days Thursday through Saturday

DATA BASE-B

A data base stores information and lets you have access to it under different topics. Use a data base to study your homework, keep track of friends and their addresses or budget your money.

Hardware . . . MS-DOS (IBM, IBM Compatible, such as Zenith)
 Prerequisite Introduction to BASIC
 Preferred
 Location . . . NE and SE Kansas
 Days Weekdays

APPLEWORKS

Appleworks is an integrated software for Apple II computers. Learn word processing, spreadsheet, and data base skills.

Hardware . . . Apple IIc or IIe
 Prerequisites Introduction to BASIC, 5th grade and up
 Preferred
 Location . . . NW and SW Kansas
 Days Weekends

Deskmate

Deskmate is an integrated software for TRS 80 Model IV computers. Learn word processing, spreadsheet, and data base skills.

Hardware . . . TRS 80 Model IV
 Prerequisites Introduction to BASIC; 5th grade and up
 Preferred
 Location . . . NW and SW Kansas
 Days Weekends

Home Economics Software

Try out some of the home economics software that is on the educational and commercial market. This is a subject matter oriented class.

Hardware . . . Apple II
 Prerequisite None
 Preferred
 Location . . . SE Kansas
 Days Weekdays

Computer Day Camp

Spreadsheets-A

Spreadsheets let you work with numeric information you normally arrange in rows and columns. With a flick of your wrist, you can tie all kinds of "what ifs" together. Compare and contrast the endless possibilities of your ideas. This skill is a plus for many 4-H projects.

Hardware . . . Commodore
Prerequisites Introduction to BASIC; 5th grade and up

Preferred
Location . . . Statewide
Days Thursday through Saturday

Spreadsheets-B

Spreadsheets let you work with numeric information you normally arrange in rows and columns. With a flick of the wrist, you can tie all kinds of "what ifs" together. Compare and contrast the endless possibilities of your ideas. This skill is a plus for many 4-H projects.

Hardware . . . MS-DOS (IBM Compatible)
Prerequisites Introduction to BASIC; 5th grade and up

Preferred
Location . . . NE and SE Kansas
Days Weekdays

Agriculture Software

Try out some of the agriculture software that is on the educational and commercial market. This is a subject matter oriented class.

Hardware . . . Apple II
Prerequisite None
Preferred
Location . . . SE Kansas
Days Weekdays

Word Processing-A

Learn how to type, edit, and print in many different formats. Use these skills to do school assignments, 4-H record books, and letters. Word processing makes re-copying obsolete.

Hardware . . . Apple II
Prerequisite Minimum 25 words per minute

Preferred
Location . . . NE Kansas
Days Weekdays

Word Processing-B

Learn how to type, edit, and print in many different formats. Use these skills to do school assignments, 4-H record books,

and letters. Word processing makes re-copying obsolete.

Hardware . . . Commodore
Prerequisite Minimum 25 words per minute

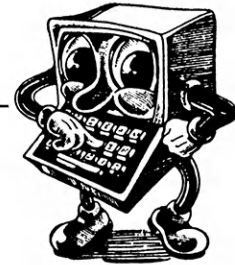
Preferred
Location . . . Statewide
Days Thursday through Saturday

Word Processing-C

Learn how to type, edit, and print in many different formats. Use these skills to do school assignments, 4-H record books, and letters. Word processing makes re-copying obsolete.

Hardware . . . MS-DOS (Commodore, IBM, or IBM Compatible, such as Zenith)
Prerequisite Minimum 25 words per minute

Preferred
Location . . . SC Kansas
Days Negotiable



Steps in Planning Your Computer Day Camp

Follow these steps if you want to provide a computer day camp for your 4-H'ers in your county:

1. Determine which of the computer classes you want for your day camp. (One class per day camp). Ask your 4-H'ers or your computer project leaders which class would be best.
2. Decide if you want to have a joint day camp with a neighboring county.
3. Find a location for the day camp. You must provide the

computers (and at least one printer) for the day camp. Check with schools, businesses, or computer stores to see if you can use their hardware. These institutions generally carry insurance on their equipment. Remember that the topic and location in the state determine what type of hardware is required for your day camp. THE NUMBER OF COMPUTERS AVAILABLE DETERMINES THE NUMBER OF DAY CAMPERS. There can be no

more than two campers per computer.

4. Contact your county agent with plans up to this point. The agent will send in a class reservation form to Emily Kling, Extension Specialist, 4-H — Youth Programs, by May 15. You must include a check for \$150 payable to the Kansas 4-H Foundation. Reservations are accepted on a first-come, first-serve basis. Don't send out promotional materials yet.

Computer Day Camp

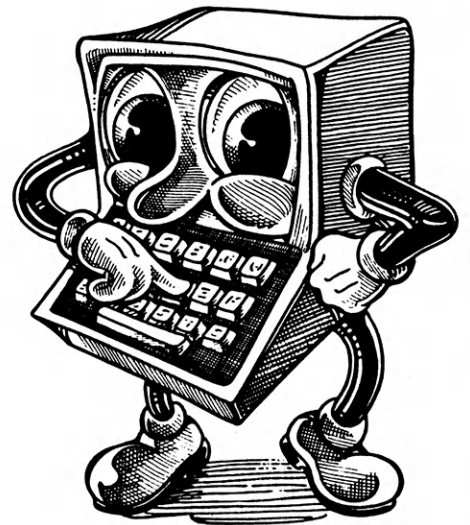
5. Decide how much to charge your computer day campers. You'll want to base the fee upon the number of campers you want *plus* the cost of 1 lunch and 4 snacks per camper. For example, if you have 10 computers and 20 campers, your base cost per person would be \$7.50. Then you would add the cost of the snacks and meal. Similarly, if you have 5 computers and 10 campers, your base cost per person would be \$15.

6. Kling will determine which instructor will best suit your needs. She will put your agent in contact with the instructor. Agents should call the instructor. Please give Kling the finalized dates and location of your computer day camp.

7. After your requested dates and class have been confirmed, you should promote the day camp in your county. Camera ready copy of the logo and title is provided in sizes suitable for pamphlets and

fliers. PLEASE PROMOTE THE CLASS FOR 1 SKILL LEVEL ONLY, i.e. Beginning Data Base or Intermediate Word Processing.

Start Planning Now!
For more information or assistance, contact your County Extension office.



4-H Memorabilia Needed for State Fair Display

A special feature of the 1987 Kansas State Fair will be a "nostalgia display" of artifacts dating back to the first official state fair held here in 1913.

"We are planning a variety of ways to celebrate our 75th anniversary," Fair Executive Secretary Bob Gottschalk said, "and we believe a display of souvenirs and memorabilia from over the years is very appropriate."

He explained that apparently there was no attempt during the

early years to maintain an organized record of photographs, premium books, or other fair material. "Therefore, we are counting on Kansans around the state to help us fill out our display," Gottschalk said.

"We have a somewhat random, although interesting, collection of various items we've amassed over the years, but we're sure people have kept all kinds of souvenirs, ribbons, program books, photographs, and other memorabilia from early fairs. We hope anyone having

material like that will let us know," he added.

Anyone who would consider loaning The Fair items for the "nostalgia display" should call the Kansas State Fair office at (316) 662-6611 or send a description of the material to Gottschalk at 2000 North Popular, Hutchinson, Kansas 67502.

The 1987 Official Kansas State Fair is scheduled for September 11-20.

For more information contact the State 4-H Office at 913-532-5800.

For Safety's Sake

Tag A Child

Have you ever listened to a news story of a missing child or an accident involving a school bus, and breathed a silent prayer of relief that your child was safe at home? But how protected is your child in an emergency situation? Could he remember your work number or his doctor's name? Thanks to a Butler County 4-H Club, New Horizons in Augusta, many children in the area now carry Livesaver I.D. tags and no longer have to worry.

What, you ask, is a Lifesaver I.D. tag? It is a small tag about the size of a care label in a shirt. It can be sewn into a piece of clothing or laced into a shoe. The tag provides a place for name, address, emergency phone numbers, insurance company, blood type, allergies, doctor's name and number, and a consent form for parents to sign so that emergency treatment can be administered immediately. Emergency medical personnel and law enforcement officers have been alerted to watch for the tags in any emergency situation. In short, these tags could save a life.

Members of the New Horizons 4-H Club chose Lifesaver I.D. tags as one of their citizenship projects this year. Members of the committee ordered 1500 tags, and then contacted the schools and preschools to ask them to allow the club to hand out the tags to the classes. The response was unanimous. Twelve kindergarten classes and 8 preschool classes accepted the invitation. A schedule was set up for the distribution. Groups consisting of two members and an adult visited each class. They



gave a short talk telling how the tags were used and why they are important. Each child was given a tag and a sheet of information to take home. Many children asked for additional tags for brothers and sisters. The distribution lasted a week, during which time the club members learned how to present a talk to children between the ages of three and five, and answer questions so they would understand.

The New Horizons club introduced their Lifesaver idea to the public by using the theme on their float in the United Way parade. They continued the theme by making a window

display for National 4-H Week. A local business, Shirts 'n' Stuff, is continuing to hand out I.D. tags for anyone who failed to obtain one during the distribution. Since our distribution in November, the fight to protect our children has been expanded into neighboring Sedgwick County. The Wichita Federation of Teachers, KAKE TV, and Custom Quik Shop, all of Wichita, have made the tags available to all school children in the Wichita area.

Do you have a tag in your shoe?

—Erin Smith, Reporter
New Horizons 4-H Club

Commercial Cattle Feeding New Project

The Western Kansas 4-H Steer Futurity is the name of a new project which enables Kansas 4-H youth to feed up to three head of steers in a commercial feedyard environment. Twenty-four 4-H'ers from six western Kansas counties are feeding forty-one head of steers in this year's project. The objective of the project is to allow 4-H'ers an opportunity to experience the on-goings of the commercial cattle feeding industry. The project is sponsored by Kansas State University Cooperative Extension Service and is being conducted at Kearny County Feeders, Lakin, Kansas.

The project begins with the selection of one to three steers by the 4-H member. All cattle must be owned and receive a series of prescribed vaccinations at least three weeks prior to delivery to the feedyard in November. Following delivery 4-H'ers receive a monthly feed bill statement much the same as regular feedyard customers.

A tour of Kearny County Feeders was held to familiarize project members with the various segments of a commercial cattle feedyard. Presentations were made by the feedyard veterinarian on vaccination and health programs, the nutritionist on feeds and rations fed, and the feedyard management on cattle marketing and feedlot operations.



At the conclusion of the project a slaughter plant tour will be conducted to familiarize the 4-H'ers with the meat packing industry. Members will also be allowed to view their animal's carcasses and relate visual live animal characteristics with carcass characteristics.

Successful completion of the project requires that the 4-H'er complete a project record sheet detailing their project financial plan and profitability.

Awards are presented in three categories: average daily gain, carcass value, and overall value where daily gain and carcass value are combined. First place finishers in each category receive \$150 plus a plaque, second place winners receive

\$100 and a certificate and third place finishers receive \$50 and a certificate. Sponsors for this year's awards are the First National Bank of Syracuse, Kearny County Bank of Lakin, Kearny County Feeders of Lakin, Valley State Bank of Syracuse, Great Plains Chemical of Garden City, First National Bank of Holcomb, Cowtown Feeders of Syracuse, Grant County Feeders of Ulysses, Scott Laudert of Garden City, Wheatlands Brangus of Lakin, and Plunkett Feedlot of Syracuse.

Information on this and future projects can be obtained by contacting Brad Fuller, Extension Agricultural Agent at the Kearney County Extension Office, Lakin, Kansas, 316-355-6551.



4-H'er Wins Trip to Marketing Symposium

"As a farmer with my own acreage, I am very concerned about changing prices. I need to know all I can."

By: De McGlashon
Kansas State University
Extension Communications Specialist

A Lyon County 4-H member, who earned more than \$34,000 raising and marketing crops and cattle, has won a trip to the 36th Annual 4-H Commodity Marketing Symposium at the Chicago Hilton and Towers.

Larry Fowler, 17, Route 1, Emporia, is among 32 young people selected by the Cooperative Extension Service to attend the April 26-29 educational event sponsored by The Chicago Board of Trade. Fowler's work in his 4-H commodity marketing project was the basis for his choice.

Fowler, son of Harry and Marjory Fowler, lives on a 3,000-acre farm and attends Emporia High School. He plans a career in agriculture.

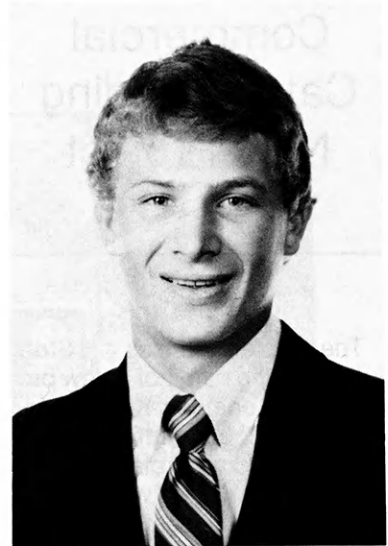
A 4-H member for 10 years, Fowler earned a total profit of some \$22,291 on the 100 acres of corn, wheat, milo, alfalfa and hay he harvested and sold during the past six years. He also net-

ted \$11,950 profit on his market cattle.

"As a farmer with my own acreage, I am very concerned about changing prices. I need to know all I can," he said. Fowler said he worked with his father to fatten at least two pens of cattle a year. "My dad took a June bid on a pen of fat cattle during the year. We kept a constant check on the market, but we lost money."

Fowler said through his commodity marketing projects he learned to read market prices in the newspapers, to evaluate hedging practices, to chart wheat and cattle markets for a year, to incorporate the futures market in the overall financial planning of the family farm and to sell fat cattle.

He visited elevators where grain was milled, and he watched the sacking of flour, talked with brokers about how prices affect



markets and income, toured the Kansas City Board of Trade and visited the Houston port of entry to see how farm products are exported.

The 4-H Commodity Marketing Symposium is designed to help young people understand how the basic principles of marketing, distribution and utilization apply to commodities sold in cash markets and traded in futures markets of major exchanges.

Delegates will participate in seminars, tours and activities that focus on the use of futures markets as a management tool and that help in adapting market information and functions to their ongoing 4-H projects.

A highlight of the symposium is the rare opportunity the delegates have to visit the floor at The Chicago Board of Trade as the market opens and to shadow traders who are buying and selling futures contracts. After trading closes, the 4-H'ers will participate in a simulated pit trading exercise. In addition, delegates will meet with Board of Trade officials, listen to traders and marketing representatives and tour points of interest in Chicago.

It's Okay To Play!

10 Ways to Create a More Interesting Meeting

By: Marcia McFarland, Extension Specialist, 4-H—Youth Programs

Extension professionals have been hearing for years that 4-H meetings are boring. In fact, many clubs have had to devise *rules* to force members to attend meetings because the meetings themselves did not draw people to attend. For the past six years, *specific* ideas to help club meetings become *important* and meaningful to members have been a major focus of Extension professionals. Ideas were presented in a handbook for Kansas club leaders published in 1982 entitled, "*Out of Ideas? A Leaders Handbook.*" Those ideas and some supplemental material produced since 1982 are capsulized in the following 10 point suggestions:

1

Remember that people are *always* more interested in activities they have had a part in planning. By using all of your members in the planning process, you will be more likely to plan activities that appeal to the entire club. Help for doing this is available through Organizational Leader Training, Phase II, through *Out of Ideas: A Leaders Handbook,* and through an instructional video tape entitled, "*Involve Them All.*"

2

Seat club members in a circle rather than in rows. If your club has more than 25 members you may want to use two circles — one inside the other, and include parents in the circle. They should not be sitting at the back of the room isolated from the club talking to one another.

Feature

3

Keep business meetings short — no longer than 10 minutes. It may be necessary twice a year to have a lengthy business meeting such as officer elections or program planning meeting. But, this should happen *no more* than twice a year.

6

Consider using project meeting materials for programs. (Project clubs already do this successfully)

7

Consider using school enrichment materials for programs. Some materials well suited for meetings are:
 "Ag is the Classroom" resources; "Trade-Offs," a six meeting programs for older members; "Great American Eating Machine," a four meeting program for younger members; "Wheat Science," slide set; "Mini-Gardens," materials.

4

Start each meeting with group building activities that help members talk to each other about themselves. Plan to have members talk in pairs and then in small groups of six. Suggested topics are listed in "*Out of Ideas: A Leaders Handbook*." Other ideas are taught in all four phases of Organizational Leaders Training.

9

Consider planning a Quiz Bowl for a program. Skillathon and Tours are also fun. See *Out of Ideas; A Leaders Handbook* for details.

8

Consider using materials dealing with youth issues (Please let them identify their issues.) Some that may surface are:

10

Allow a large block of time for singing and up-to-date games. It is *OK to Play*.

5

Use Project Talks and Demonstrations for meeting programs *no more than four times* a year. Large clubs may want to divide their group into small units of 8-10 people, and have young members present their talks to these small groups allowing several talks to occur at the same time. Talks to the total club should be given by older, experienced members with presumably more interesting talks.

Substance abuse - use speakers (mental health personnel, counselors, social workers) use *Get Smart* materials or *Just Say No* materials. Extension 4-H may be providing additional resources this coming year.

Farm Stress - use "Heartache in the Heartland" video tape followed by small group discussions or panel discussions. Use *The Stress Connections* materials.

Self-Esteem - plan a week-end retreat focusing on learning to know and like self. Use self-esteem activity programs. Organizational Leader Training I has activities for this purpose.

Family Communications - use family strengths project material ideas for a program. Use 4-H Night at the Movies material developed by Tony Jurich to help families talk over topics presented in the movies.

Membership Scholarship

A \$65 membership scholarship is offered by the Kansas Crop Improvement Association in Manhattan.

Applicants must be a high school 4-H or FFA member producing certified seed as a project.

For more information and application, contact KICA, 2000 Kimball Avenue, Manhattan, KS 66502.

Johnson Makes the Most of "Making the Best Better."

"I would encourage youth to get the most out of 4-H ... it takes more than being in projects and going to meetings ... it takes jumping in and getting involved ... it takes being a leader."

4-H produces leaders ... leaders like Steve Johnson.

He is an alumnus of the Friendly Valley 4-H Club in Saline County. Johnson, son of Eldon and Ramona Johnson, is a 10 year 4-H member with numerous accomplishments.

"It all started working on demonstrations down in the basement with dad ... lapping up all the comments and criticism. I think everyone giving demonstrations remembers mom or dad, brothers or sisters or someone telling them what they're doing wrong," Johnson said.

Next, he began getting involved in speech contests and classes offered through his school. Johnson's interest and experience in the 4-H public speaking project played a major role in his success in these events.

The list doesn't end there. He went on to the National-Sectional of the American Legion Oratorical Contest with a tie for first place.

Then, he traveled to Washington D.C., served as the National President of the Rural Electric Cooperative Youth Executive Committee and went to the National 4-H Congress as a representative of Westinghouse.

Followed by, a term as a Youth

Associate Trustee of the American Institute of Cooperation. One of only two youth in the United States chosen for this honor.

By this time, Johnson was chosen as the State 4-H Public Speaking Champion and was back in Chicago for the National 4-H Congress.

He was selected to return to Congress the following year serving as a youth delegate on the planning committee for the National 4-H Congress. The committee met at various times during the year planning the Congress and then he attended Congress to help with the management and operation of this large event.

The summer was spent as an intern for Senator Dole in Washington D.C. Johnson was assigned to ag issues. He spoke with farmers about their problems and concerns. A lot of the time he said farmers called for information that he could send out.

Add to the list, Student Body President at Kansas State University. 4-H contacts, parliamentary procedure and public speaking all contributing to his election and success as president.

10 Qualities 4-H Presidential Tray Candidates should possess:

- Involvement in 4-H
- Leadership — in club, county, state and National 4-H programs and activities
- Community service oriented
- A good citizen - "This is a key area."
- Knowledge of issues
- Ability to communicate *sincerely*
- Enthusiasm
- Positive personality
- Interviewing skills
- Talent of working and interacting with people

—Steve Johnson
1986 Presidential Tray
Selection Committee

Note:

Presidential Candidates are invited to interview at the National 4-H Congress.

Feature

There is still more. Johnson was selected to interview candidates for the highest honor given in the 4-H program — the Presidential Tray — so he went back to the National 4-H Congress again.

After all these accomplishments, what does Steve Johnson have to say about his 4-H experience?

"It certainly played a major role in everything I have done and will do in the future.

I would encourage youth to get the most out of 4-H ... it takes more than being in projects and going to meetings ... it takes jumping in and being involved ... being a leader ... and helping others ... there are so many opportunities ... you have to push yourself ... 4-H can help you get a long way."

Sounds confident ... but did Steve Johnson ever have a case of nerves before giving a public speaking presentation?

"Yes ... oh yes ...," he said.



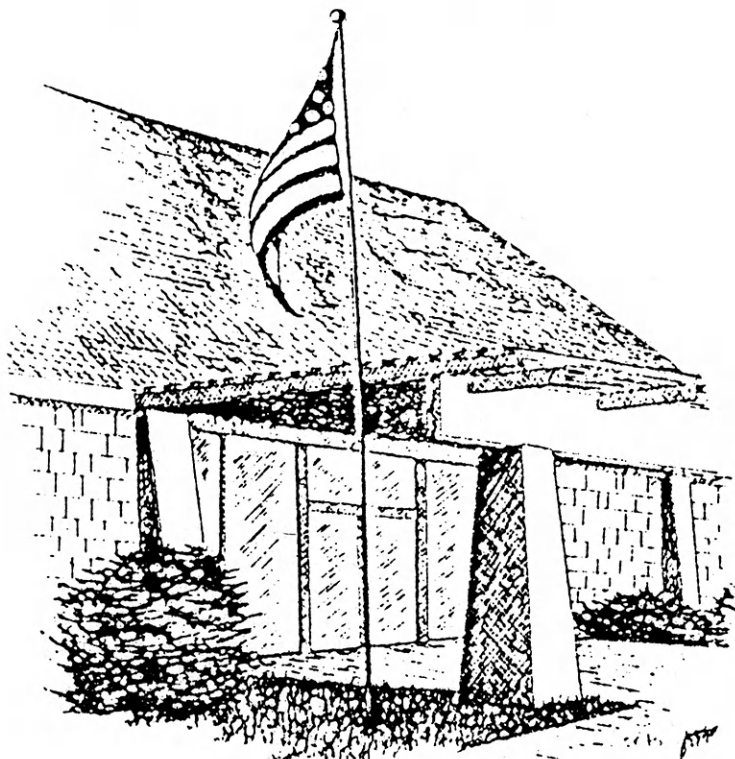
Steve Johnson discusses issues with Jon Levin, President of Varney's Bookstore in Manhattan, at a Manhattan Chamber of Commerce meeting.

Photographs by Robert Squires, Kansas State Collegian Photographer and sophomore in Journalism and Mass Communications.



As Student Body President, Steve Johnson believes in solving the problems of those he serves by keeping in touch.

HERITAGE ENCOUNTER



*By: Kevin Wake and
Lisa Altenbernd
1986 National 4-H
Conference Delegates*

He Kids! If you are in the sixth, seventh, or eighth grades and if you are tired of regular county camp, then why not try a new summer experience? Come to Heritage Encounter of Kansas (HEK) camp at Rock Springs Ranch. The dates of the camp run Thursday, June 18th through Sunday, June 21st. The total camp fee is \$70.00. The Kansas 4-H Foundation is providing a \$25.00 scholarship towards each camp fee which leaves a balance of only \$45.00 for each camper to pay. This fee will pay for all meals, trips, plus a T-shirt to take home with you!

The camp, which is filled with exciting activities, is geared toward the theme of government. Just a few educational experiences include a tour of the State Capitol and Rotunda, a tour of the Kansas State Historical Museum (both are in Topeka), and a flag etiquette session. A special time has been set aside for the youth to relive old crafts such as wheat weaving, tin punch, husk dolls, as well as many others. A special demonstration on "Flint Knapping" (the making of arrow heads) will be given too! The campers will also have time to swim, tour

Rock Springs Ranch, meet new friends, and take advantage of other fun activities the ranch has to offer.

A few highlights that were enjoyed by most of the youth during last year's camp (the first year the camp was offered) were the Saturday tour, early crafts, "Sharing my Heritage," group building, and making new friends. Most of the responses from last year's campers were positive and if they were given the chance to come back, they would.

Don't wait any longer! Go to your local camp coordinator or see your county Extension agent and ask for a camp registration. Remember that this camp is filled by a first come, first serve basis and only 40 fortunate youth will be able to attend. Add some spice to your summer camp experiences and attend HEK!

State Geology Field Trip Planned

The state geology field trip is June 13-14 in Cowley, Greenwood, Chautauqua and Elk counties.

The field trip begins at 9:00 a.m. on the Cowley County Fairgrounds west of Winfield on US 160.

A specimen identification session is scheduled for Saturday evening at the north end of the grandstand. Specific itineraries will be available at the fairgrounds. Members of the

Geology Developmental Committee and interested people will have a short meeting Saturday evening to discuss changes in the geology project and to select officers. Adults and youth are encouraged to participate on the committee.

Camping on the fairgrounds is \$2 per night. Please send names, addresses and the days they plan to attend to: Nora Faye Ross, 15850 Stratford Row, Wichita, KS 67230.

7-11 Only!

The Wide Awake 4-H Club of Finney County has created a new "club." The 7-11 club is open to first and second year members of Wide Awake.

The 7-11 Club was started four years ago by community leaders Linda Batchelder and Sue Heiman. At the very first meeting, members voted on the name. 7-11 was chosen because the ages ranged from seven to eleven. It was started so the younger members wouldn't get lost in the shuffle of things at the clubs monthly meetings.

Parliamentary procedure, home economics judging, and record books are just a few of the things discussed at the meetings. Each person is given a chance to make a motion and give a program number. At the first meeting each year, the 4-H colors, motto, emblem and pledge is explained.

The leaders, Shelley Johnston and Annette Batchelder, meet around three different times each year with the members. They feel it is a sufficient amount of meetings since there is only 13-15 members. The age limit had to be enforced because everyone enjoyed it so much, no one wanted to quit.

Parents and members alike have become more involved in Wide Awake monthly meetings and events. The younger members are no longer afraid to speak and they understand what is going on.

Hopefully, the 7-11 club will be around several more years and maybe other clubs can start a 7-11 Club of their own!!

*Annette Batchelder
Shelley Johnston*

Master Club Luncheon

Time: Noon

Date: June 2, 1987

Place: K-State Union, Manhattan

Taxes ...

4-H Program Not Exempt

A recent request to identify the Kansas 4-H program as a "non-profit, educational institution" and to the program a state tax exemption status has been denied.

Therefore, all 4-H clubs, county 4-H programs and affiliated organizations are "...required to pay Kansas sales or compensatory (use) tax on all purchases of tangible personal property or services for its use." This means we must pay tax on:

- food purchases for meetings, camps, and food stands
- camper fees at Rock Springs Ranch
- trophies, plaques and awards
- others

A similar ruling was handed to Boy Scouts and Girl Scouts. At this time, all clubs and county 4-H organizations must pay the state sales tax.

Items of Interest

Camp Teaches Life Skills

Going to camp to have fun is the main reason kids go to camp, but while they're having fun, they are also learning.

The camping experience teaches the five life skills of: a positive self concept, decision making, a positive relationship with others, concern about the community and an inquiring mind.

"Camping is often one of the first times a youngster makes a decision on his own, and then sees the ramifications of that decision," Emily B. Kling, Extension Specialist, 4-H—Youth Programs said.

To make a child's stay at camp a fun learning experience, you may want to follow these tips:

- Be enthusiastic and promote the camping experience as a fun adventure.

- Don't send too much money, and teach a child to take care of money.
- Encourage safety in the sun — drink plenty of fluids and bring plenty of lotion.
- Make clear the child should inform a counselor if he's not feeling well.
- Stress the child should always let someone know where he's going.
- Help a child pack so as to not to over or under pack, and remind him to shower and change often.
- Don't send valuables with a child going to camp.
- Most of all — tell them to have fun!

1987 4-H Camp Schedules

June 8-11: Allen, Atchison, Anderson, Bourbon, Coffey, Linn, Jefferson, Nemaha, Neosho, Wilson, Woodson

June 11-14: Dickinson, Geary, Marion, McPherson, Rice, Saline.

June 15-18: Douglas, Franklin, Johnson, Miami

June 18-21: Cheyenne, Decatur, Graham, Logan, Ness, Norton, Phillips, Rawlins, Rooks, Sheridan, Sherman, Smith, Thomas, Wallace

June 21-23: Clay, Cloud, Jewell, Lincoln, Marshall, Mitchell, Ottawa, Republic, Washington

June 24-27: Chase, Cherokee, Crawford, Haskell, Lyon, Morris, Scott, Sumner

June 27-30: Leavenworth, Shawnee, Osage, Sedgwick, Wyandotte

June 30-July 3: Brown, Doniphan, Jackson, Pottawatomie, Riley, Wabaunsee

July 7-10: Butler, Cowley, Elk, Greenwood, Harvey, Reno

RSR Open Discovery Days

Stay at Rock Springs 4-H Center on your way to Discovery Days.

Lois Redman and Emily B. Kling, Extension Specialists, 4-H — Youth Programs and coordinators of Discovery Days, say Rock Springs is open the evening of June 1 for those who want to come early.

A special package offers an overnight stay with breakfast for \$5 or supper, an overnight stay and breakfast for \$8.50. 4-H'ers can bring their own bedding or bedding will be provided for \$2.

Call the Kansas 4-H Foundation, 913-532-5881 to make reservations.

4-H Forestry Invitational

The Fairmount 4-H Club of Leavenworth County is hosting a 4-H Forestry Invitational Aug. 22 on the campus of Saint Mary College.

To participate in the contest, members must make a leaf press, collect some leaves and study the 4-H forestry materials.

The invitational is divided in three parts: a leaf identification quiz, a written test and a compass orientation course.

Fairmount 4-H'ers will press leaves for those having trouble collecting leaves. Contact your

County Extension office if leaves are needed.

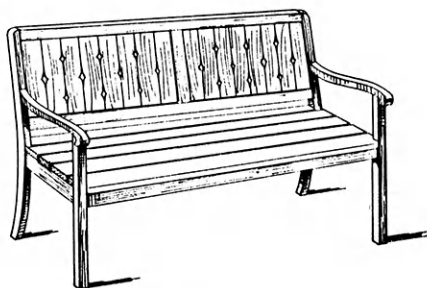
Cost of the invitational is \$5 per person registered before August 8. Registration at the door is \$6.

Copies of the National 4-H Forestry Program booklets are available through the Colson Company, 4-H Service Department, 901 North Main Street, Paris, Illinois 61944 or call 1-800-637-7654 and ask for an order form. There is a fee for the booklets and shipping.

Free!

4-H Woodworking Plans from YOUR PARTICIPATING LUMBER DEALER

These plans
are available:



Garden Seat



Child's Rocker

For your free plans, see your participating lumber dealer; he will also help you select the material you need.

AMERICUS
Americus Building Materials

ASHLAND
Don Spotts Lumber Company

ATCHISON
Beverly Lumber Co., Inc.

BELLEVILLE
Belleville Lumber & Coal

BELOIT
Peoples Lumber Co.

BLUE RAPIDS
Blue Rapids Lumber Company

CLAY CENTER
Fullington's

CONCORDIA
Mid-West Lumber Company

EL DORADO
Home Lumber & Supply Co.

EMPORIA
Americus Building Materials
Fleming Lumber & Material Co.
Mark II Lumber

ERIE
Johnson & Son Lumber Co.

EUREKA
Home Lumber & Supply Co.

FREDONIA
Schoolcraft Lumber Co.

GALVA
Galva Lumber, Inc.

GARDEN CITY
Fankhauser, Inc.

GREAT BEND
Everitt Lumber Co., Inc.

HUTCHINSON
Kightlinger's

INDEPENDENCE
Sandott Sentry Home Center

IOLA
Klein Lumber Company

JOHNSON
Seyb-Tucker Lumber and
Implement Company

JUNCTION CITY
Builders Lumber, Inc.

LaHARPE
Diebolt Lumber and Supply

LANSING
Lansing Lumber, Inc.

LARNED
T.M. Deal Lumber Co.

MANHATTAN
Cash Lumber & Hardware

MANKATO
Mid-West Lumber Company

NEWTON
Claassen Hardware &
Lumber Co.

NICKERSON
The Home Lumber &
Supply Co.

NORTONVILLE
Nortonville Lumber, Inc.

OFFERLE
Offerle Co-op Grain &
Supply Co.

OTTAWA
Hubbard Lumber
Company, Inc.
Ottawa Lumber Co.

PARSONS
Woods-Seward Lumber Co.

PITTSBURG
Broadway Lumber Co., Inc.

PRATT
W.R. Green Lumber, Inc.

RUSSELL
Schwaller Lumber

SALINA
Easterday-Boster Lumber Co.

Woodworking Plans Available:

Accent Table
 Bicycle Parking Rack
 Bluebird House
 Boot Jack
 Bulletin Board
 Car Creeper
 Chain-Saw Box
 Cherry Wood Cabinet
 Child's Toy Wagon
 Child's Rocker
 Computer Desk
 Deacon's Bench
 Dog House
 Dresser Valet
 Easel
 Garden Seat
 Martin Bird House
 Night Stand
 Novelty Rocking Horse
 Patio Chair
 Pedestal Desk
 Pet Food Bin
 Plant Stand
 Porch Swing
 Redwood Cart
 Roll Top Desk
 Rolling Pin
 Stereo Case
 Tool Box
 Towel Storage Rack
 Wall Book Shelf
 Walnut Headboard
 Wooden Stool
 Wren House

16th Annual Tuttle Classic Pigs & Lamb Sale

CICO Park, Manhattan, KS
April 25, 1987 — 12:00 noon

Lamb Consignors:
 Ebert Sheep Farm
 Double M Hampshires
 Oscar Krouse

Pig Consignors:
 Bus Bond & Sons
 Bob Williams
 Kirby Anders
 Robert Fink

—Selling—

25 Hampshire Wethers
 25 Suffolk Wethers
 20 Crossbred Wethers
 3 Dorset Wethers
 3 Registered Hampshire Ewe Lambs
 3 Registered Suffolk Ewe Lambs
 2 Registered Dorset Ewe Lambs
 5 Commercial

15 Duroc Barrows
 15 Crossbred Barrows
 15 Hampshire Barrows
 5 Yorkshire
 10 Commercial Gilts

For Information:

Jeff Ebert - Rt. 1, Box 324 - St. George, KS 66535 - (913) 494-2436
 These consignors have produced winning lambs and pigs on the county, state and national level for several years.

More money for post-high school education comes from family income and savings than from any other source. Be prepared; early in life start a savings account at your

Kansas Savings and Loan

Fort Scott
 Liberty Savings & Loan Assn.

Leavenworth
 Citizens Mutual Savings & Loan Assn.

Medicine Lodge
 The Barber County Savings & Loan Assn.

Garnett
 The Garnett Savings & Loan Assn.

Lyons
 Lyons Savings & Loan Assn.

Plainville and Stockton
 Rooks County Savings Assn.

Hutchinson
 Valley Federal Savings & Loan Assn.

Manhattan
 Manhattan Federal Savings & Loan Assn.

ST. JOHN
 English Lumber & Supply Co., Inc.

SYRACUSE
 Hess Lumber Co.

TOPEKA
 Whelan's Inc.

ULYSSES
 Sunflower Lumber Co., Inc.

WILSON
 Hoch Lumber Company

WINFIELD
 A.B. Everly Lumber Co., Inc.
 Everitt Lumber Co., Inc.

WRIGHT
 Right Co-op Assn.

ZENDA
 Farmers & Builders Lumber Co.

GRASS & GRAIN

A farmer's newsweekly published each Tuesday

Complete Agriculture News & Advertising;
 Featuring 4-H Stories & Photos
Call or write today:
Box 1009, Manhattan, KS 66502
(913) 539-7558

HOUSE MOTHER: Clovia 4-H scholarship house at K-State University has opening for housemother, 1987-88 school year. Requires some knowledge in meal management, budgeting and counseling. Call or write:
 Clovia
 1200 Pioneer Lane
 Manhattan, KS 66502
 (913) 539-3575



CONSOLIDATED
 Printing & Stationery
 SALINA, KANSAS

1-800-432-0266

- ★ 4-Color Printers
- ★ Black & White and Letterpress
- ★ Authorized Minolta Copier Dealer
- ★ Office Supplies
- ★ Furniture
- ★ Scriptomatic Addressing Machines

SERVING ALL OF KANSAS
 For All Of Your
 Office & Printing Needs!

Money For Your Treasury

OVER 2 MILLION
Sunflower Dishcloths



WERE SOLD LAST YEAR BY MEMBERS OF
GROUPS, SOCIETIES, CLUBS, ETC.

THEY ENABLE YOU TO EARN MONEY FOR
YOUR TREASURY AND MAKE FRIENDS FOR
YOUR ORGANIZATION.

Sample FREE to Official.

SANGAMON MILLS, INC., Cohoes, N.Y. 12047
KJ Established 1915

**Chambers Farm
Sheep Day
Sat. April 25, 1987**

Judging contest, free lamb lunch &
sale. Registered Suffolk, Dorset &
Hampshire cross.

R.R. 2 Wellsville, KS 66092
or call (913) 883-2317

**LAZY CREEK
Suffolks**

**Major Dispersal
Selling Privately From
the Farm**

*4 Reg. Yearling Suffolk Ewes
12 Reg. Brood Suffolk Ewes
9 Com. Ewes Mostly Suffolk
Most of 87 Lamb Crop*

Call or Write

**Douglas Musick
Route 1
Harveyville, KS 66431
(913) 589-2590**

**41st annual
KANSAS RAM SALE**

Sheep Barn, Kansas State Fairgrounds, Hutchinson, KS

Friday and Saturday, April 17 and 18

1 p.m., Friday, April 17 Show Rams and Ewes
8 a.m., Saturday, April 18 Club Lamb Show
10 a.m., Saturday, April 18 Breeding Ewe Sale
1 p.m., Saturday, April 19 Ram Sale
followed by club lamb sale.

For catalog information contact:

**Clifford Spaeth
Weber Hall
KSU
Manhattan, KS 66506
913-532-6131**

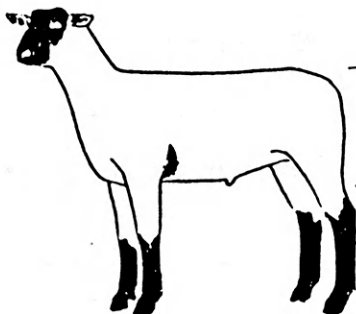
Collingwood
GRAIN INC.

*Serving Kansas
Since 1890*

**Country Elevators
and Terminals**

**SOUTHWIND INVITATIONAL CLUB
LAMB SALE**

Sunday, April 26, 1987
2 P.M. - Franklin County Fairgrounds
Ottawa, Kansas



OTTAWA

Catalog:
J&R Compton
Rt. 4, Box 79
Ottawa, KS 66067
(913) 255-4532

**BUY,
BUILD,
SAVE WITH US**

- Competitive rates on savings and loans
- High-yielding C.D.'s
- 17 offices statewide

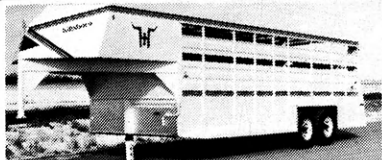
anchor
savings
ASSOCIATION



HILLSBORO PRODUCTS



RIGHT ON THE MONEY!

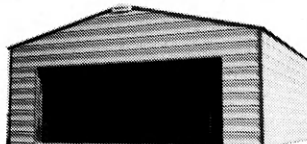


STEEL - Distinctive aero-dynamic styling

- Windbreaker front—pulls easy
- Sizes - 6x16, 6x20, 7x16, 7x18, 7x20, 7x22, 7x24 and 7x28
- Many standard features

The stock trailer for people who want high quality and energy savings with reasonable prices.

HILLSBORO BUILDINGS



- All galvanized frame • Widths of 18' and 24' • Sidewalls - 9' and 12'
- Lengths - 18' and longer

9 Bar 9 Trailer Sales

Steve Jackson
733-1106

13000 E. 47th St. So.
Derby, KS 67037

MENGARELLI FARMS

INVITATIONAL CLUB LAMB SALE

Friday, April 24, 1987
7:00 p.m.

at

Crawford County Fairgrounds

Located 1½ miles East of Girard, Ks. on Highway 57.

FOR MORE INFORMATION CONTACT:

Jim & Ann Mengarelli
Rt. 3 - Girard, KS 66743
(316) 724-8426

Curtis Willems
Rt. 4 - Parsons, KS 67357
(316) 421-3798

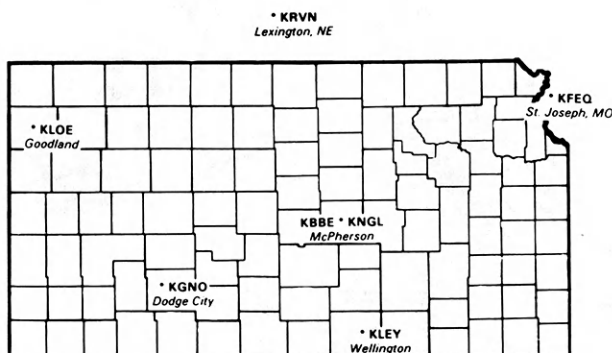
Darren Hibdon
Rt. 4 - Ft. Scott, KS
(316) 223-2074

...“FARM NEWS UPDATE!”...

It is necessary for individuals associated with agriculture to be well-informed about issues relative to their livelihood.

“FARM WEEKEND” is a valuable radio news source, providing agriculturalists state-wide with current farm markets, weather forecasts and Kansas farm news.

“FARM WEEKEND” is jointly sponsored by these major radio stations and Kansas Farm Bureau.



SATURDAY

KLOE, Goodland	730 AM.....	6:45 a.m.
KGNO, Dodge City	1370 AM.....	6:15 a.m.
KLEY, Wellington	1130 AM.....	12:45 p.m.
KFEQ, St. Joseph, Mo	680 AM.....	6:35 a.m.
KNGL, McPherson	1540 AM.....	12:45 p.m.
KBBE, McPherson96.7 FM.....	12:45 p.m.

SUNDAY

KRVN, Lexington, Ne.....	880 AM.....	7:45 a.m.
--------------------------	-------------	-----------



Farm Bureau

2321 Anderson Avenue
Manhattan, Kansas 66502
(913) 537-2261

North Central Regional Leadership Forum

Non-Profit Organization
U.S. Postage
PAID
Permit No. 86
Salina, Kansas

- Kansas State University
- October 29-November 1
- See Pages 4-8

Keynote Speakers:



Dr. Jim Boyer

In his dynamic style, Dr. Jim Boyer, renowned speaker and educator, paints a verbal picture of how important 4-H can be in the lives of developing boys and girls. Dr. Boyer has worked with the National 4-H Agents Association, Urban 4-H programs, and other volunteer agencies. One of his great gifts is his ability to clarify the needs of young people and then to show how these needs become opportunities for adult 4-H volunteers. He makes you feel good about taking time to help youngsters ... indeed to share in the opening of their minds.

Opening Minds



Ivan Scheier

After listening to a verbal picture of the opportunities with youth, you will discover the realities for designing a system to help volunteers coming into the program. Ivan Scheier, consultant and expert-by-experience, has long been an advocate of the volunteer middle management

programs. Drawing on his own background, he will help you design in your mind how you, too, can help volunteers succeed. What has worked for him through-out the country will be yours to try after his appearance in Manhattan, Kansas.

**The Kansas 4-H Journal,
a Project of the Kansas 4-H Foundation**