

Kansas 4-H Journal

The Family Magazine

June 1986



**The Lawrence Lindquist Family
1986 Kansas 4-H Family of the Year**



The Phillips County 4-H Council recognized The First National Bank, Phillipsburg, for 35 years of continuous sponsorship of the Kansas 4-H Journal with a presentation of a plaque at the county's 4-H Achievement Night. The bank purchases subscriptions to the Journal for all 4-H families in the county. From left to right are Dennis Deschner, vice president; Shad Geger, agricultural loan specialist; Sally Hopson, 4-H Council president; Charles Moyer, executive vice president and trust officer; and Russ Bowman, cashier and installment loan officer.

Foundation supports 4-H

The Kansas 4-H Foundation received or paid out \$320,000 in 1985 in support of the Kansas 4-H program. Of that, about 57% was donated dollars. The remaining funds were paid in by 4-H'ers for trips such as the LABO exchange, international trips, Kansas City 4-H Conference, Citizenship-Washington Focus, and Discovery Days.

About \$5,000 was reserved for international programs and \$128,000 paid out for activities, trips and projects. Of the \$128,000, \$33,961 was spent for awards and medals; \$18,022, scholarships; and \$76,047, leadership project development, innovative county programs, support materials and other 4-H programs.

The Foundation also provided support for Rock Springs Ranch, the *Kansas 4-H Journal*, Southwest Camp, and Clovia scholarship houses at Fort Hays State University and Kansas State University.

Friend of 4-H is recognized

G&S Implement, Hugoton, was recognized by Stevens County as the county's Friend of 4-H at the annual Businessmen's Picnic. The purpose of the picnic is to thank businesses who have contributed to the 4-H program.

Each 4-H'er invites one business person to the picnic, meets that person at the door and eats with him.

"It's a good experience for the kids," says Stevens County Home Economist Janice Guerrero.

Field trip planned

The state geology field trip is planned for June 14 and 15 in the southwest Kansas counties of Clark, Ford, Hodgeman, and Lane.

The tour will begin Saturday morning, June 14, at the Clark County State Fishing Lake, 11 miles south of Kingsdown on K-94. Those who participate in the tour will have the opportunity to collect the following rocks and minerals: opal (opaque, clear, dendritic, and black), Kiowa sandstone, Cheyenne sandstone, jasper, selenite, volcanic ash, crude oil shale, limestone, dolomite, and Kansas diamonds. Fossils that can be collected are pelecypods, shark's teeth, fish vertebrate, turtle shell, and bone fragments.

For additional information, contact Norma Henton, Route 4, Dodge City, Ks. 67801, (316) 227-8374.

Advisory recommends Journal endowment

The *Kansas 4-H Journal* advisory, at its March 20 meeting, recommended the establishment of an endowment fund from which earnings can be used for annual Journal operations. The recommendation will be presented to the Kansas 4-H Foundation Board of Trustees at the board's fall meeting in October.

The advisory recognized the importance of advertising revenue to the *Journal* and recommended greater emphasis be placed on selling advertising. Subscription prices for 4-H families will remain at the present level. The group rate (40 or more) of \$3 has not increased since 1982.

Promotion of the *Journal* was encouraged with possibly a booth at the Kansas State Fair.

Editorial contributions to the *Journal* are encouraged and will be used as space permits. The July issue will feature county fairs; the August issue, the state fair and projects; and September,

achievements. The 4-H Roundup will continue to be carried in the *Journal*. The southwest area will be featured in the July issue; southeast, August; northwest, September; and northeast, October.

A project of the Kansas 4-H Foundation, the *Kansas 4-H Journal* is a communication tool which unifies the state, a form of youth recognition and a promotional tool for the Kansas 4-H club program.

Journal advisory members are Frank Buchman, Manhattan; Dave Brenn, Garden City; Ray Withers, Erie; Anita Conley, Abilene; Rachele Mengarelli, Howard; Kay Hunter, Leavenworth; Diane Nielsen, Tribune; Janis Fengel, Hesston; Allen Dinkel, Stockton; Vicky Overley, Phillipsburg; Art Johnson, Oskaloosa; and Marcia McFarland, state 4-H specialist. Ex officio members are Merle Eyestone, executive director of the Kansas 4-H Foundation; C.R. Salmon, state 4-H leader; and Joan Istas, editor, *Kansas 4-H Journal*.

State fair volunteers needed

Volunteers are needed to help with 4-H activities at the Kansas State Fair in Hutchinson, Sept. 5-15.

Lois Redman, state 4-H specialist, says people are needed to help with displays, take entries, assist with contests, and clerk for judges. Livestock and home economics judging contests and the 4-H Showcase especially need volunteers.

This is good leader training

Club enrollment is up by 28

Saline County 4-H club enrollment jumped 28 to 404 this year. Saline County 4-H Agent Pam Van Horn says the increase is greatly due to the efforts of the 4-H Ambassadors.

The Ambassadors have promoted 4-H

experience, Redman says. A clothing leader who clerks all day with a clothing judge learns what to look for when judging clothing. Volunteers also will be helping kids, Redman says.

Adult and teen leaders interested in working at the Kansas State Fair should contact their county Extension agent by July 1.

to the kids and parents. Parents have gotten excited about 4-H then the kids have gotten excited, Van Horn says. The excitement of the older kids has filtered down to the younger kids.

"There's an energy flow going here."

About the cover

The 1986 Kansas 4-H Family of the Year is featured on the cover of the June issue. From left to right, back row, are Tom, a student a Kansas State University; Jack, Lawrence; Gary, Marysville; Dan, Topeka; Bob, Blue Rapids; and Jim, Manhattan. In the front row are Gladys, Lawrence, and Judy, also a student at K-State. See pages 4 and 5 for story and more photos.

Kansas 4-H Journal

Volume XXXII, No. 5
June, 1986

Joan Istas Editor
Glenda Fox Secretary

Address all correspondence:
Kansas 4-H Journal
116 Umberger Hall, KSU
Manhattan, Kansas 66506
Phone (913) 532-5881

Single subscriptions are \$4 per year. Group subscriptions are available upon request.

Kansas 4-H Journal is published
10 times a year by
KANSAS 4-H FOUNDATION, INC.

Merle Eyestone Executive Director
Trisha Cash Secretary
Ann Carr Asst. Treasurer

BOARD OF TRUSTEES

Governor John Carlin
Honorary Chairman

Glee Smith, Chrm. Larned
Mrs. Charles Streeter, Vice-Chrm. ... Manhattan
John Junior Armstrong, Treas. ... Manhattan
Duane Acker Manhattan
Ross Beach Hays
Mrs. Edna Collingwood Johnson
Richard Dillon Hutchinson
Marilyn Pence Galle Moundridge
Mrs. Olive Garvey Wichita
Balfour S. Jeffrey Topeka
J. Harold Johnson Manhattan
Wilbur E. Levering Topeka
Thomas M. Potter Wichita
C.R. Salmon Manhattan
Tom Shirley Dodge City
Fred Sobering Manhattan
Robert Wagstaff Shawnee Mission
Mrs. Dwane Wallace Wichita
*Glenn M. Busset Manhattan
*Sen. Frank Carlson Concordia
*Sen. Harry Darby Kansas City
*W. Dale Critser Wichita
*Roger E. Regnier Manhattan
*Dolph Simons, Sr. Lawrence
*Advisory Member

JUNE 1986

"I pledge my heart to greater loyalty." SASNAK 4-H Club members Trina Sahlfeld and Amy Webb open parliamentary procedure games in Saline County by saying the 4-H pledge. Trina acted as president during the business meeting and Amy, as secretary. For more about gavel games, see page 22.



Celebrating 35 years

by Joan Istas

I'd like to send up balloons in celebration, write your names across the sky, shoot off fireworks ... But even these displays wouldn't be adequate thanks to the 133 businesses across the state who have supported the *Kansas 4-H Journal* for 30 years or more.

Twelve of these businesses have records of 35 years of Journal support; 44 with 34 years of support.

These 123 banks and 10 other businesses purchase subscriptions to the Journal for 4-H families in their counties. In some instances, one business might sponsor Journal subscriptions for all families in the county.

That's a great commitment of dollars and a strong belief in the importance of the Journal to the health of the Kansas 4-H program.

Thank you to the Farmers National Bank of Abilene, Central National Bank of Junction City, Farmers State Bank of Ingalls, First National Bank of Cimarron, First State Bank of Mullinville, Greensburg State Bank, Greensburg, Haviland State Bank, Haviland, Citizens National Bank & Trust Company, Emporia, Plains State Bank, Plains, Fowler State Bank, Fowler, First National Bank of Phillipsburg and Citizens State Bank of Hugoton for your 35 years of support.

You have touched a lot of lives in those 35 years and helped strengthen the Kansas 4-H program.

Thank you to all Journal sponsors (A complete list is on pages 8 and 9.) for helping Kansas remain the only state with a magazine that goes to almost every 4-H family.

Please add your thanks to ours. Thank your Journal sponsor today.

Ernest helps 4-H'ers celebrate

Famous TV star, Ernest, seen on the KSN television network, was a special guest at a recent meeting of the Shamrock 4-H Club. Ernest, really Shamrock's own Susan Soper, appeared at the meeting to help celebrate the club's performance at Regional Club Days.

The Shamrock Club captured top honors in model meeting competition for the second year in a row. Club members attributed the victory to 1½ months of hard work, many hours of practice and making motions properly.

Barbara Depenbusch and Bob Epler also recognized club members by giving individuals special titles and presenting

each with a homemade purple rosette with the award written on it.

Titles included loud speaker champion, best game player, safe money keeper, good chair sitter, most improved loud speaker, quiet motion maker, best idea award (that got voted down), Miss Songbird, best pencil pusher, upcoming madame president, best name left out of roll call, Madame Gavel, most enthusiastic game player.

Best discussion discussor, long distance driving award, predictable member award, best female vocalist of the year, and best salute leader.

-Craig Depenbusch

Named 4-H family of year

4-H means leadership for L



Gladys and Lawrence Lindquist review the 20 years of the Waterville Busy Beavers 4-H Club in pictures. Gladys is proud of the club's 19 purple seals on the club charter (shown in background).

by Joan Istas

Leadership describes the involvement in 4-H of the Lawrence Lindquist family, rural Waterville.

Lawrence and Gladys helped organize the Waterville Busy Beavers 4-H Club 20 years ago and both have served as project leaders. As one of two community club leaders the past 15 years, Gladys also has helped direct the club. And, she can always be found conducting the club chorus at 4-H Days.

All seven of the Lindquist children — Jim, Bob, Gary, Jack, Dan, Tom, and Judy — served as club officers and most led the club as president.

Today, Tom and Judy still are club project leaders and Judy is a member of Collegiate 4-H at Kansas State University, where she is a student.

As the Riley County Extension director, Jim helps plan the 4-H program in that county, is advisor to the Riley County 4-H Foundation and invariably accepts invitations to club potluck achievement dinners each fall.

As Douglas County agricultural agent, Jack is heavily involved in the county fair, judges 4-H electricity and wood-working fair exhibits and annually attends county camp at Rock Springs Ranch 4-H Center.

"I have been going to county camp six years since I got out of 4-H and I still want to go," Jack says.

"Our family just always got involved; we tried to do everything," says Dan, now an employee with WIBW in Topeka.

Because of that involvement and a record of service in other community activities, the Lindquist family was honored June 8 as the 1986 4-H Family of the Year at Friends of 4-H Day at Rock Springs Ranch 4-H Center.

The Lindquist family is the eighth 4-H Family of the Year to be recognized by the Kansas 4-H Foundation.

"I swear by 4-H; I think it's wonderful for the kids," Gladys says.

"I think 4-H is a well-planned program for children to learn from. It's one place where the family can be together; it stresses family togetherness."

Though neither Gladys nor Lawrence were in 4-H as youngsters, they recognized it as an educational opportunity for their kids and jumped into the program feet first.

Six of the nine family members were present at the charter meeting of the Waterville Busy Beavers 4-H Club and Jim served as the first club president.

"... 4-H is a well-planned program for children to learn from."

All club members soon became "our kids" to Gladys and Lawrence as they hosted club parties, taught innumerable kids to cook, make arts and crafts, care for swine and dairy projects and loaned their truck to pull the club float.

Gladys went to county camp at Rock Springs as a counselor and judged at livestock judging contests right alongside the kids. She even placed first at one judging contest.

She is so committed to her cooking project group that she recalls the year she was unable to teach those classes as one of her greatest disappointments in 4-H.

"I missed the kids so much I about died (of disappointment)," she says.

The Marshall County leader reads the *Kansas 4-H Journal* to obtain new ideas for club and project meetings.

Gladys always tries to make learning fun and often goes that extra mile to do so. The boys in her cooking group remember the caps and aprons she made for them and club day participants look forward to the annual club skating party where they celebrate club day achievements.

She encourages kids to do their own work — to do the best job they can.

"It isn't the ribbon you get, but what you learn that's important," she tells them.

Parents are encouraged to come to both project and club meetings. Kids respond to parental interest, Gladys explains.

Club goals are set by the Junior Leaders and they usually follow the guidelines once recommended by the state 4-H office. Parliamentary procedure is stressed at club meetings. A safety talk is part of every meeting and parents' night is an annual event.

Community projects are conducted throughout the year. Annually the club promotes 4-H with a window display, float in the parade and booth and banner at the county fair.

Gladys is proud of the 19 purple seals on the club charter and the fact that the club has 27 members — the same number as when it was chartered.

Even greater successes are the kids the Lindquists have helped mature in 4-H, like the girl who was so timid she cried the first time she answered roll call.

"I could just see her develop out of this little, timid kid into a lady. Last year she served as club president," Gladys says.

The Lindquists believe many of the successes of their own seven children are due to 4-H.

"Because of their experience in 4-H, they aren't afraid to

Lindquist family

get up in front of people and talk," Gladys says. "Dan was top salesman for WIBW last year; he never could have done that without his 4-H experience."

Performing solos and vocal ensembles at 4-H Club Days helped Jim, Jack and Dan develop talent that landed them parts with K-State Singers when they attended college. Judy performed with the Great Society Singers at Cloud County Community College.

Livestock was a major 4-H enterprise for all the Lindquist children. Jim and Bob developed swine herds that gave them a start in their own careers — Bob as a farmer near Blue Rapids, and Jim to finance his college education.

Though Jim's first market hog died a week before he could show it at the county fair, most of his 4-H experiences were happy ones. He fondly remembers county camp at Rock Springs Ranch, Rock Springs Ranch State 4-H Music Camp and the county fair.

He chuckles when he recalls spending the night sleeping on a gunny sack beside his cattle at the county fair rather than tell anyone he hadn't brought bedding.

As club president, Jim enjoyed planning the program with the community leaders and presiding over the meeting. By doing so, he learned how to work with others and developed leadership qualities.

By giving oral reasons at livestock judging contests, he gained confidence and learned to organize his thoughts. He enjoyed filling out his record book and has found record keeping a valuable skill in his job.

Bob was active in Junior Leaders, served as club president and attended State 4-H Leadership Camp at Rock Springs. At club meetings, he learned parliamentary procedure that later helped him preside over meetings of the Young Farmers.

Bob and Gary learned to cook in their mother's cooking group as did most of the other Lindquist kids.

"I learned how to survive by taking cooking. That's something everybody needs to know," Gary says. Gary developed leadership skills in 4-H that now help him in his job as paint room supervisor of Landoll Manufacturing Company of Marysville.

4-H taught Jack responsibility, gave him confidence in dealing with people and taught him how to communicate with others.

"Any successes I've had can be attributed to my 4-H experiences. I think I use what I gained in 4-H nearly every day," Jack says. "I'd do it again but I'd put more emphasis on records. Records are so important, especially in what I'm doing. Good records show where you've been and where you're going."

Jack, who began Extension work as the Dickinson County 4-H Agent, believes 4-H is the foundation of Extension. "Extension began with the 4-H corn and pig clubs; today, parents learn as much in 4-H as the kids do," he says.

As the last of the Lindquist children, Judy tagged along to 4-H activities long before she was old enough to be a member.

She remembers saving a place in the snack line for Jack, who was club president at the time, and crying because she was sent home to bed while her brothers finished the club float.

She is remembered as the Lindquist family member who kissed her pig goodbye at the county fair and rode on a fair float, her leg in a cast, displaying her foot, still dirty from work



By working with kids in the 4-H Fun With Children project, Judy discovered she liked working with kids and chose a career in elementary education. Judy's 4-H experience also helped her obtain a job as an aide in a Manhattan pre-school.



The Lindquist family is (standing, left to right) Tom and Liz, Georgina and Bob, Jack and Mary, Dan and Megan, Gary and Cathy, and Jack and Lindy. (Seated, left to right) Jim and Liz's daughter, Molly Beth, Bob and Georgina's son, Todd, and newborn daughter, Gladys; Lawrence, Judy, and Gary and Cathy's daughter, April. Not pictured is Gary and Cathy's 8-year-old son, Lance.

at the fair.

She'd like to forget the steer that took brother Tom on a two-mile chase from the fairgrounds and the many times the sewing machine broke down as she struggled to finish a last-minute fair garment.

Today, she realizes those trials as well as the ribbons and the medals she won helped her grow as an individual and welded the Lindquist family even closer together.

The life of the Lindquist family has always seemed to rotate around 4-H and undoubtedly it will continue to do so as the latest generation begins their 4-H careers.

As Dan says, "It's Lindquist family tradition to be in 4-H until you can't be in 4-H anymore."

4-H rabbits double for school project

"I just wanted to know. I was going to be tanning some hides and I needed to know which tanning solution worked best on rabbit skins," 13-year-old Pratt County 4-H'er Daniel Ebert explains why he tested four different tanning solutions for a school science experiment.

Daniel, who is enrolled in the 4-H rabbit project tested salt/acid, salt/alum, salt/alum/formaldehyde and KWIK-TAN, a commercial tanning solution on the New Zealand White rabbit skins he had raised.

"I liked the salt/alum solution," Daniel says. "It fleshed easier and it was fairly soft and had an even color on the leather side of the fur."

Daniel's experiment, "The Solution

Solution," impressed the judges so much it captured second prize in the USD 382 Science Fair — a \$150 scholarship to Pratt County Community College.

The Pratt Pioneers 4-H Club member enjoyed tanning the hides and plans to continue the work as part of his 4-H rabbit project. Until he's ready to tan the hides, he'll store them in his parents' freezer.

The winning entry in the school science fair could also be called a 4-H entry. Richland Rustlers 4-H member Frances Bitter, 10, who also is enrolled in the 4-H rabbit project, won the fair with her entry titled, "Snuffle, Sniffle, Achoo, Achoo." She also was awarded a scholarship to Pratt Community College.

When one of Frances' Chinchilla Stains was diagnosed as having the incurable disease, Snuffles, Frances refused to accept the veterinarian's prognosis of incurable. She took samples of the rabbit's mucus and grew the bacteria. She treated the cultures with 13 different medicines and, of the 13, found that

chlortetracycline stopped the bacterial growth in the cultures almost completely.

Frances is treating the rabbit with this medicine for 10 days then will culture it again to see if the disease has been eradicated.

Frances charted the experiment to present it at the science fair.

"I learned how to grow bacteria. I learned a lot from the experiment," Frances says.

The Richland Rustlers 4-H'er also was awarded a scholarship to Pratt County Community College.

Frances has four Chinchilla Satins and Black Satins in the rabbit project. She gives talks and demonstrations about rabbits and shows them at fairs and area shows. Showing is her favorite part of the project.

"That's fun," she says.

Barrow Show is July 18 and 19

Education is stressed at the first Kansas Youth Barrow Show at Cico Park in Manhattan, July 18 and 19.

The show, which is open to Kansas 4-H and FFA members between the ages of 8 and 19, features a judging contest, market hog symposium and a practical test to identify and answer various questions about swine husbandry, Friday, July 18.

Saturday's show begins with a junior and senior showmanship contest at 8:30 a.m. A barrow and gilt and market hog show is scheduled for 9:30 a.m.

BUY, BUILD, SAVE WITH US

- Competitive rates on savings and loans
- High-yielding C.D.'s
- 17 offices statewide

Junction City • Goodland
Columbus • Council Grove • Topeka
Lawrence • Olathe • Kansas City



anchor savings
ASSOCIATION





CONSOLIDATED
Printing & Stationery
SALINA, KANSAS

1-800-432-0266

- ★ 4-Color Printers
- ★ Black & White and Letterpress
- ★ Authorized Minolta Copier Dealer
- ★ Office Supplies
- ★ Furniture
- ★ Scriptomatic Addressing Machines

SERVING ALL OF KANSAS
For All Of Your
Office & Printing Needs!

More money for post-high school education comes from family income and savings than from any other source. Be prepared; early in life start a savings account at your

Kansas Savings and Loan

<p>Fort Scott Liberty Savings & Loan Assn.</p> <p>Garnett The Garnett Savings & Loan Assn.</p> <p>Hutchinson Valley Federal Savings & Loan Assn.</p>	<p>Leavenworth Citizens Mutual Savings & Loan Assn.</p> <p>Lyons Lyons Savings & Loan Assn.</p> <p>Manhattan Manhattan Federal Savings & Loan Assn.</p>	<p>Medicine Lodge The Barber County Savings & Loan Assn.</p> <p>Plainville and Stockton Rooks County Savings Assn.</p>
---	--	--

Capitol Federal Savings



TOPEKA
GREATER KANSAS CITY
MANHATTAN LAWRENCE OLATHE
EMPORIA SALINA WICHITA

ESLIC
Insured
to \$100,000
Per Account

Collingwood
GRAIN INC.

*Serving Kansas
Since 1890*

**Country Elevators
and Terminals**

Exchange student participates Club days is family activity

by Joan Istas

4-H is a family activity for the Joe Davidson family, rural Delphos. Tanya, 18, is a 10-year 4-H club member and Lyle, 15, a seven-year 4-H club member.

Both are active in the Delphos 4-H Club where Tanya is president and Lyle, vice president. When County Club Days arrive, the whole family gets involved as Mrs. Davidson encourages her almost 30 piano students to participate and Joe comes to watch Tanya and Lyle perform in activities ranging from public speaking and singing, to presenting readings and piano and instrumental solos.

With this kind of family involvement, it was just natural for Marta Tarrida, an American Intercultural Student Exchange from Barcelona, Spain, to join 4-H shortly after she became a member of the Davidson family in August.

"Tanya had a meeting in September. I thought it was really neat. Lyle and Tanya said, 'You can be involved in 4-H, too,' so I joined. We don't have anything like this in Spain," the 16-year-old youth explains.

Marta said the 4-H club is good in that it helps mix people of different ages. In the United States she has found that people often associate only with those of their own age. This is not true of people in Spain.

Like the rest of the Davidson family, Marta performed at County Club Days in the spring. A piano student since the age of 9, Marta has continued her education in piano under Mrs. Davidson.

Marta presented a trio and minuet by Bach at County Club Days and was awarded a reserve top blue, one ribbon below her host sister. When Tanya was unable to go to Regional Club Days because of a school conflict, Marta represented Ottawa County at regional competition and was awarded a blue ribbon.

Also at County Club Days, Marta accompanied a younger club member who played the saxophone, sang in the club chorus directed by Tanya, participated in the club's model meeting and presented a talk on euthanasia in public speaking.

Marta says she was just plain nervous at County Club Days and especially scared before her public speaking presentation. "When I get scared, the words don't come in English," she explains.

Marta prepared for her speech by researching five sources on the topic, wrote her speech, practiced, practiced and practiced some more and jotted a few notes on note cards for reference.

When presenting her speech, she tried not to refer to her notes, spoke loudly and maintained eye contact with her audience.

"I think it was hard," Marta says. "In school, giving a speech is something you have to do. In 4-H, it's something you want to do. You have to do much better; you have to be better prepared.

"I think it's wonderful you have something like County Club Days because if you have some talent you have the opportunity to display it.

"It helps build a person's self confidence to perform in front of people. When I was playing the piano, my hands were shaking. Now, I'm starting to do much better."

"County Club Days are fun," Tanya agrees. "They give you a chance to grow and learn and be around other kids in the county."



Marta practices the piano.



The Davidson family is (back row, left to right) Lyle, Joe, Mrs. Davidson; (front row, left to right) Tanya and Marta.

Kansas 4-H Journal

1986 Sponsor Listing

Have you said thank you to your Kansas 4-H Journal sponsor? These sponsors bring the 4-H Journal free to almost all 4-H families in the state.

The 4-H Journal is the only state 4-H magazine in the nation. A project of the Kansas 4-H Foundation, the Journal is a communication tool which unifies the state, a form of youth recognition and a promotional tool for the Kansas 4-H club program.

We think the Journal is important. We hope you do, too. Please help ensure the continuance of the Journal by thanking your Journal sponsor today.

An * designates sponsors of 20 years or more, bold face type, sponsors of 30 years or more.

ALLEN
* Mrs. Gwen E. Wilson Memorial Scholarship Fund

ANDERSON
Anderson County 4-H Council

ATCHISON
Atchison County 4-H Council
Saunders Manufacturing Co., Kansas City, KS

BARBER
* **First National Bank, Medicine Lodge**
Barber County 4-H Council

BARTON
American State Bank & Trust., Great Bend
Great Bend Co-op Association, Great Bend

BOURBON
* Citizens National Bank, Fort Scott
* Double Circle Farm Supply, Fort Scott
* Liberty Savings and Loan Association, Fort Scott
* Security State Bank, Fort Scott
* Union State Bank, Uniontown
Bourbon County 4-H Council

BROWN
* The Bank of Horton, Horton
* The Bank of Robinson, Robinson
* Citizens State Bank, Hiawatha
* Farmers State Bank, Fairview
* The Morrill and Janes Bank, Hiawatha
* Morrill State Bank, Sabetha
* The Union State Bank, Everest

BUTLER
* **Benton State Bank, Benton**
* **First National Bank and Trust, El Dorado**
National Bank of El Dorado, El Dorado
* **Potwin State Bank, Potwin**
* **Prairie State Bank, Augusta**
* **State Bank of Leon, Leon**
* **Walnut Valley State Bank, El Dorado**
Butler County 4-H Council

CHASE
* **Exchange National Bank, Cottonwood Falls**
* **The Peoples Exchange Bank, Elmdale**
Chase County 4-H Council

CHAUTAQUA
Cedar Vale State Bank
Chautauqua County Farm Bureau
First National Bank of Sedan

CHEROKEE
American National Bank, Baxter Springs
Evan's Drug, Columbus
The Hartley Agency, Inc., Baxter Springs
The Walberts and Timberlake Hardware & Furniture Company, Columbus
H.D. Youngman Contractor, Inc., Baxter Springs
Cherokee County 4-H Council

CHEYENNE
* **Citizens State Bank, St. Francis**
Cheyenne County 4-H Council

CLARK
* Citizens State Bank, Ashland
* Stockgrowers State Bank, Ashland

CLAY
* **Union State Bank, Clay Center**
Clay County 4-H Council

CLOUD
* **Citizens State Bank, Miltonvale**
* Cloud County Bank and Trust, Concordia
* Exchange Bank of Clyde, Clyde
* First Bank and Trust, Concordia
* **The First National Bank of Glasco, Glasco**
Cloud County 4-H Council

COFFEY
Coffey County 4-H Council

COMANCHE
* The Peoples State Bank, Coldwater

COWLEY
* **The First National Bank, Winfield**
* **The Home National Bank of Arkansas City, Arkansas City**
Cowley County 4-H Council

CRAWFORD
* The City National Bank of Pittsburg, Pittsburg
* Farmers State Bank, Walnut
* First National Bank, Girard
* First State Bank, Arma
* The First State Bank and Trust Company, Pittsburg
* Girard National Bank, Girard
* Hepler State Bank, Hepler
* McCune State Bank, McCune
* National Bank of Pittsburg, Pittsburg

DECATUR
* Decatur Co-op Association, Oberlin

DICKINSON
* **Farmers National Bank, Abilene**

DONIPHAN
Atchison County Co-op, Denton
Doniphan County REA, Troy
Farmers State Bank, Wathena
Robinson Farmers Co-op, Leona
Troy State Bank, Troy
Valley Grain & Fertilizer, Highland
Doniphan County 4-H Council

DOUGLAS
* Douglas County State Bank, Lawrence
Douglas County 4-H Council

EDWARDS
* **The Home State Bank, Lewis**

ELK
* Exchange State Bank, Moline
* Home State Bank, Longton
* Howard State Bank, Howard
Elk County 4-H Council

ELLIS
* **Ellis State Bank, Ellis**
* **Farmers National Bank, Victoria**
* **First National Bank, Hays**
* Hays State Bank, Hays
Farmers State Bank, Hays

ELLSWORTH
* The Bank of Holyrood, Holyrood
* Citizens State Bank and Trust, Ellsworth
* Kanopolis State Bank, Kanopolis
* Lorraine State Bank, Lorraine
* Wilson State Bank, Wilson
Ellsworth County 4-H Council

FINNEY
* **Fidelity State Bank, Garden City**
First National Bank of Holcomb, Holcomb
Fourth Bank of Garden City, Garden City
* **Garden National Bank, Garden City**
Western State Bank, Garden City
Finney County 4-H Council

FORD
* **Bucklin State Bank, Bucklin**
* **Farmers State Bank, Bucklin**
* **Fidelity State Bank and Trust, Dodge City**
* **First National Bank, Spearville**
* **First National Bank, Dodge City**
* **Ford County State Bank, Spearville**

FRANKLIN
Franklin County 4-H Council

GEARY
* **Central National Bank, Junction City**
J.C. Chamber of Commerce, Junction City

GOVE
Deges Barber Style Shop, Grainfield
* **First National Bank, Quinter**
Grainfield Elevator, Inc., Grainfield
* **Peoples State Bank, Grinnell**

GRAHAM
Citizens State Bank, Morland
* **Farmers and Merchants Bank, Hill City**

GRANT
* **Grant County State Bank, Ulysses**
Grant County 4-H Council

GRAY
* **Farmers State Bank, Ingalls**
* **First National Bank in Cimarron, Cimarron**
* **Montezuma State Bank, Montezuma**
Gray County 4-H Council

GREELEY
* **First National Bank, Tribune**
Greeley County 4-H Council

GREENWOOD
* Citizens National Bank, Eureka
* Ernich Feed and Elevator Company, Madison
* Engle's Super Saver Food Center, Madison
* **Eureka Federal Savings and Loan, Eureka**
First National Bank, Madison
First National Bank of Hamilton, Hamilton
* Freeman's T.V. and Appliance, Eureka
* Home Bank and Trust Company, Eureka
* **Home Lumber Company, Eureka**
* **Parks Oil Company, Eureka**
Severy State Bank, Severy

HAMILTON
* **First National Bank, Syracuse**
* **Valley State Bank, Syracuse**
Hamilton County 4-H Council

HARPER
* **Anthony Farmers Co-op Elevator, Anthony**
* **Danville Co-op Association, Danville**
* **Farmers Co-op Business Association, Hazelton**
* **State Line Grain Company, Manchester**
Harper County 4-H Council

HARVEY

* **First Bank of Newton, Newton**
* **The Halstead Bank, Halstead**
* **Hesston State Bank, Hesston**
* **Kansas State Bank, Newton**
* **Midland National Bank, Newton**
* **Sedgwick State Bank, Sedgwick**
* **State Bank of Burrton, Burrton**
* **Walton State Bank, Walton**
Harvey County 4-H Council

HASKELL
* **The Haskell County State Bank, Sublette**
Haskell County 4-H Council

HODGEMAN
* **Farmers State Bank, Jetmore**
* **Hanston State Bank, Hanston**
Hodgeman County 4-H Council

JACKSON
Clark Chevrolet/Olds, Inc., Holton
Holton Lions Club, Holton
Jackson County Farm Bureau, Holton
Jackson Farmers, Inc., Holton
Oldham's Farm Sausage, Lee Summit, MO
Jackson County 4-H Council

JEFFERSON
* **Leavenworth-Jefferson Electric Co-op, McLouth**
* **Jefferson EHU Council**
Jefferson County 4-H Council

JEWELL
* **Burr Oak State Bank, Burr Oak**
* **Citizens State Bank, Jewell**
* **First National Bank, Mankato**
* **The Formosa Bank, Formosa**
* **The Randall Bank, Randall**
* **State Bank of Esbon, Esbon**
* **State Exchange Bank, Mankato**

JOHNSON
* **Farmers Bank and Trust Company, Gardner**
* **First National Bank, Olathe**
* **Olathe State Bank, Olathe**
* **Patrons State Bank and Trust, Olathe**
* **Shawnee State Bank, Shawnee**
* **State Bank of Spring Hill, Spring Hill**
* **State Bank of Stanley, Stanley**
Johnson County 4-H Council

KEARNY
Kearny County Feeders, Inc., Lakin

KINGMAN
C.R. Calvert Company, Kingman

KIOWA
* **First State Bank, Mullinville**
* **Greensburg State Bank, Greensburg**
* **Haviland State Bank, Haviland**
Kiowa County 4-H Council

LABETTE
* **American State Bank, Oswego**
* **First National Bank, Oswego**
* **Chetopa State Bank and Trust, Chetopa**
* **First National Bank and Trust, Parsons**
* **First State Bank, Edna**
* **Labette County State Bank, Altamont**
* **Parsons Commercial Bank, Parsons**
Labette County 4-H Council

LANE
* **First National Bank, Dighton**
* **First State Bank, Healy**
Lane County 4-H Council

LEAVENWORTH
* **First State Bank, Tonganoxie**
Leavenworth County 4-H Council

LINCOLN
* **Sylvan State Bank, Sylvan Grove**
Lincoln County 4-H Council

LINN
* **Bank of Pleasanton, Pleasanton**
* **Farmers State Bank, Blue Mound**
* **First State Bank, Pleasanton**
* **Linn County Bank, LaCygne**
* **Prescott State Bank, Prescott**
Linn County 4-H Council

LOGAN
* **Farmers State Bank, Oakley**
Logan County 4-H Council

LYON
Americus State Bank, Americus
Bluestem Farm and Ranch, Emporia
* **Citizens National Bank and Trust Company, Emporia**
Federal Land Bank Association, Emporia
Hartford State Bank, Hartford
Lyon County Farm Bureau, Emporia
Lyon County 4-H Council

MARION
Ag Service, Inc., Hillsboro
* **Cooperative Grain and Supply, Hillsboro**
* **Farmers Grain Cooperative, Peabody**
* **G & R Implement Company, Durham**
Jayhawk 4-H Club
Miller Funeral Home, Goessel
Peabody Achievers 4-H Club
Ramona Red Chief 4-H Club
Ratzlaff Draperies, Inc., Goessel
Schmidt Studio, Goessel
Sears Catalog Store, Marion
* **Tampa Co-operative Association, Tampa**
Tampa Triple T's 4-H Club
Wheatland Bank of Goessel, Goessel
Willing Workers 4-H Club

MARSHALL
* **Blue Valley National Bank, Marysville**
* **Bremen State Bank, Bremen**
* **Citizens State Bank, Marysville**
* **Citizens State Bank, Waterville**
* **Exchange Bank of Schmidt and Koester, Marysville**
* **First National Bank, Frankfort**

Kansas 4-H Journal

1986 Sponsor Listing

- First National Bank, Summerfield
- Marshall County Bank, Beattie
- State Bank of Axtell, Axtell
- State Bank of Blue Rapids, Blue Rapids
- Vermillion State Bank, Vermillion

- MEADE**
- Fowler State Bank, Fowler
 - Plains State Bank, Plains
 - Meade County 4-H Council

- MIAMI**
- Eddy Birchard Funeral Home, Osawatotomie
 - First National Bank of Osawatotomie, Osawatotomie
 - Miami Veterinary Clinic, Inc., Paola
 - Sinclair Rexall Drugs, Inc., Osawatotomie
 - Wilson and Son Funeral Home, Paola

- MITCHELL**
- Farmers and Merchants State Bank, Cawker City
 - Farmers State Bank, Hunter
 - Farmers State Bank of Simpson, Simpson
 - First National Bank, Beloit
 - Guaranty State Bank, Beloit
 - Tipton State Bank, Tipton
 - Traders State Bank, Glen Elder

- MONTGOMERY**
- Citadel, Independence
 - People's State Bank, Cherryvale
 - Montgomery County 4-H Council

- MORRIS**
- Morris County 4-H Council

- MORTON**
- Elkhart Cooperative Equity Exchange, Elkhart
 - Elkhart T.V. Cable System, Elkhart
 - Elkhart True Value Lumber, Elkhart
 - First National Bank, Elkhart
 - First State Bank, Elkhart
 - Janzen-Elder Insurance and Real Estate, Inc., Elkhart
 - Morton County Fair Association, Elkhart
 - Nusser Oil Company, Elkhart
 - Rolla Cooperative Equity Exchange, Rolla
 - Morton County 4-H Council

- McPHERSON**
- McPherson County 4-H Development Fund

- NEMAHA**
- Baileyville State Bank, Seneca
 - Citizens State Bank & Trust Co., Seneca
 - Community National Bank, Seneca
 - Farmers Co-op Elevator, Sabetha
 - Farmers State Bank, Coming
 - Farmers State Bank, Sabetha
 - First National Bank, Centralia
 - First National Bank, Goff
 - First National Bank, Wetmore
 - Lortscher Agri-Service, Inc., Bern
 - Morrill State Bank & Trust Co., Sabetha
 - Nemaha County Co-op Association, Seneca
 - Seneca Elevator Company, Seneca
 - State Bank of Bern, Bern
 - Vermillion Grain Company, Inc., Vermillion

- NEOSHO**
- GEO Churchill Pumping, Chanute
 - NUWA Industries, Chanute
 - Lester T. Sunderland Foundation, Kansas City, MO

- NESS**
- Bazine State Bank, Bazine
 - Citizens State Bank, Utica
 - First State Bank, Ness City
 - First State Bank of Ransom, Ransom
 - Ness County 4-H Council

- NORTON**
- Exchange Bank of Lenora, Lenora
 - First State Bank, Almena
 - Kellings Fine Foods, Norton
 - Lenora Mercantile Exchange, Lenora
 - Norton Appliance and Furniture, Norton
 - Norton County Farm Bureau, Norton
 - Norton Livestock Auction, Norton
 - Rural Telephone Service Company, Inc., Lenora
 - Norton County 4-H Council

- OSAGE**
- Aaron's Homestore, Carbondale
 - Anstaett Angus Farm, Carbondale
 - Burlingame Co-op, Burlingame
 - Burlingame Locker, Burlingame
 - First State Bank, Burlingame
 - J and R Cafe, Burlingame
 - Jo's Place, Burlingame
 - Jones Service Station, Melvern
 - Dr. Charles Mossman, D.C., Burlingame
 - McNabb Grocery Store, Melvern
 - Melvern Food Center, Melvern
 - Osage County Chronicle, Burlingame
 - Satzler Hardware, Burlingame
 - Skip's Thriftway, Carbondale
 - Spalding Pharmacy and Variety, Burlingame
 - State Bank of Carbondale, Carbondale
 - Taylor Real Estate and Insurance, Burlingame
 - Calvin K. Williams, Attorney, Carbondale
 - Williams Pharmacy, Carbondale

- OSBORNE**
- Downs National Bank, Downs
 - Farmers National Bank, Osborne
 - First National Bank of Natoma, Natoma
 - First State Bank, Osborne
 - First State Bank of Portis, Portis
 - State Bank of Downs, Downs
 - Osborne County 4-H Council

- OTTAWA**
- Delphos Co-op, Delphos
 - Hoover's of Minneapolis, Inc., Minneapolis
 - Lott Implement Company, Minneapolis
 - 4-H Booster Club, Minneapolis
 - Ottawa County 4-H Council

- PAWNEE**
- First National Bank, Larned
 - First State Bank, Larned

- PHILLIPS**
- First National Bank, Phillipsburg
- POTTAWATOMIE**
- First National Bank, Wamego
 - Farmers State Bank, Westmoreland
 - J. Warren Hildreth, Wamego
 - Kaw Valley State Bank and Trust, Wamego
 - St. Marys State Bank, St. Marys
 - Union State Bank of Olsburg, Olsburg
 - Pottawatomie County 4-H Council

- PRATT**
- Cairo Co-op Equity Exchange, Cairo
 - Cullison Co-op, Pratt
 - Iuka Co-op Exchange, Iuka
 - Preston Co-op Grain and Mercantile Co., Preston
 - Sawyer Co-op Equity Exchange, Sawyer
 - Pratt County 4-H Council

- RAWLINS**
- Farmers Bank and Trust, Atwood
 - Farmers State Bank, Ludell
 - Peoples State Bank, McDonald
 - State Bank of Atwood, Atwood
 - Rawlins County 4-H Council

- RENO**
- Buhler State Bank, Buhler
 - Central State Bank, Hutchinson
 - Citizens State Bank, Arlington
 - Commerce Bank of Hutchinson, Hutchinson
 - Farmers State Bank, Yoder
 - First National Bank, Hutchinson
 - Haven State Bank, Haven
 - Hutchinson National Bank and Trust, Hutchinson
 - Nickerson State Bank, Nickerson
 - State Bank of Kansas, South Hutchinson
 - State Bank of Plevna, Plevna
 - State Bank of Pretty Prairie, Pretty Prairie
 - Sylvia State Bank, Sylvia
 - Turon State Bank, Turon

- REPUBLIC**
- Arbuthnot's Drug Company, Belleville
 - First National Bank, Belleville
 - The Walthers Oil Company, Cuba
 - Republic County 4-H Council

- RICE**
- Alden State Bank, Alden
 - Bushton Grain and Supply, Chase
 - Central Kansas Elevator, Lyons
 - Chandler Bank, Lyons
 - Charles and Estelle Schmidt, Geneseo
 - Collingwood Grain, Inc., Little River
 - Farmers Co-op of Alden, Lyons, Sterling and Pollard,
 - Farmers State Bank, Sterling
 - First National Bank, Sterling
 - Home State Bank, Little River
 - Lyons IGA Store, Lyons
 - Lyons Savings and Loan, Lyons
 - Palace Drug, Geneseo
 - Pepsi-Cola Bottling Company, Hays
 - Raymond State Bank, Raymond
 - Rice County State Bank, Chase
 - Rice County 4-H Council

- RILEY**
- Riley County 4-H Foundation, Manhattan
 - Vista Drive-In Restaurant, Manhattan
 - Riley County 4-H Council

- ROOKS**
- Central Kansas Credit Union
 - First National Bank, Palco
 - Norton-Decatur Co-op Electric Co., Norton
 - Rooks County 4-H Council

- RUSH**
- Rush County Banker's Association, Bison
 - Rush County 4-H Council

- RUSSELL**
- Farmers State Bank, Lucas
 - Gorham State Bank, Gorham
 - Peoples State Bank, Luray
 - Russell State Bank, Russell
 - Russell County 4-H Council

- SALINE**
- Assaria State Bank, Assaria
 - Falun State Bank, Falun
 - First Bank and Trust, Salina
 - First National Bank and Trust, Salina
 - Gypsum Valley Bank, Gypsum
 - National Bank of America, Salina
 - Salina Area Chamber of Commerce, Salina
 - Saline County 4-H Council

- SCOTT**
- First National Bank, Scott City
 - Security State Bank, Scott City

- SEDGWICK**
- Chisholm Trail State Bank, Wichita
 - Citizens State Bank, Cheney
 - First National Bank in Wichita, Wichita
 - Bank IV, Wichita
 - Home State Bank, Clearwater
 - State Bank of Colwich, Colwich
 - Sedgwick County 4-H Achievement Foundation

- SEWARD**
- Citizens State Bank, Liberal
 - First National Bank, Liberal
 - Peoples National Bank, Liberal
 - Seward County 4-H Council

- SHAWNEE**
- Goodvear Tire and Rubber Company, Topeka
 - Shawnee Co. 4-H Activity Fund
 - Silver Lake Bank, Silver Lake

- SHERIDAN**
- First National Bank, Hoxie
 - Hoxie State Bank, Hoxie
 - Mickey's Hardware, Hoxie
 - Selden State Bank, Selden
 - Sheridan County 4-H Council

- SHERMAN**
- T-Bone Feeders, Inc., Goodland
- SMITH**
- Farmers National Bank, Gaylord
 - First National Bank, Kensington
 - First National Bank, Lebanon
 - First National Bank, Smith Center
 - The Smith County State Bank and Trust Company, Smith Center

- STAFFORD**
- Farmers and Merchants State Bank, Macksville
 - Farmers National Bank, Stafford
 - First National Bank and Trust, St. John
 - Hudson State Bank, Hudson
 - Macksville State Bank, Macksville
 - St. John National Bank, St. John
 - Stafford County 4-H Council

- STANTON**
- Collingwood Grain, Inc., Johnson
 - Stanton County 4-H Council

- STEVENS**
- Citizens State Bank, Hugoton
 - Stevens County 4-H Council

- SUMNER**
- Danville Co-op Grain Company, Argonia
 - Farmers Cooperative Grain, Wellington
 - Farmers Cooperative Grain Company, Caldwell
 - Farmers Cooperative Grain Company, Conway Springs
 - Hunnewell Elevator, South Haven
 - McDaniel Grain Company, Gueda Springs
 - McDaniel-Wapels, Inc., Wellington
 - Oxford Milling Company, Oxford
 - Ross Industries, Wellington
 - Wolcott and Lincoln, Inc., Corbin
 - Wolcott and Lincoln, Inc., Milan
 - Wolcott and Lincoln, Inc., Perth
 - Wolcott and Lincoln, Inc., Riverdale
 - Wolcott and Lincoln, Inc., South Haven
 - Wolcott and Lincoln, Inc., Wellington
 - Sumner County 4-H Council

- THOMAS**
- Farmers and Merchants Bank, Colby
 - People's State Bank of Rexford, Rexford

- TREGO**
- Eberle Oil Company, WaKeeney
 - Dinkel Oil Company, Collyer
 - Malsom Implement Company, Collyer
 - Schreiner's Service Station, Ogallah
 - Trego County 4-H Council

- WABAUNSEE**
- Alta Vista State Bank, Alta Vista
 - First National Bank, Alma
 - First National Bank, Harveyville
 - Flint Hills Bank of Eskridge, Eskridge
 - The Stockgrowers State Bank, Maple Hill
 - Wabausee County 4-H Council

- WALLACE**
- People's State Bank, Sharon Springs
 - Wallace County 4-H Council

- WASHINGTON**
- Washington County 4-H Council

- WICHITA**
- First State Bank, Leoti
 - Wichita County 4-H Council

- WILSON**
- Cox Grain, Inc., Fredonia
 - First National Bank, Fredonia
 - First National Bank, Neodesha
 - Fredonia Co-op Association, Fredonia
 - Neodesha Co-op, Neodesha
 - Neodesha Building Supply, Neodesha
 - Radiant Electric Co-op, Inc., Fredonia
 - Self-Service Grocery, Fredonia
 - State Bank of Fredonia, Fredonia
 - Wiggins Pharmacy, Fredonia
 - Wilson County Farm Bureau, Fredonia
 - Wilson County 4-H Council

- WOODSON**
- J.E. Sowder Seed Company, Toronto
 - Woodson County 4-H Council

- WYANDOTTE**
- Ag Images, Kansas City
 - Brotherhood State Bank and Trust, Kansas City
 - Coleman Implement Company, Bonner Springs
 - Commercial State Bank, Bonner Springs
 - Home State Bank, Kansas City
 - Melba's Fabrics, Kansas City
 - Pet Palace, Kansas City
 - SACO Petroleum, Kansas City
 - Welborn Animal Hospital, Kansas City
 - Wyandotte County 4-H Council



Chris Brull types all his stories for his 4-H records on the computer. "I can get things done a lot faster with the word processor," Chris says.

4-H'er looks at computer record

by Joan Istas

"I feel like if I don't do the records, I'm not completing the project," says 15-year-old Chris Brull of the Ellis Sunflower 4-H Club in Ellis County.

"I kind of like getting the pins at the Achievement Banquet. Keeping records is something you've got to do. It will help you later in life."

Because he believes records are important, Chris' goal in the computer project this year is to develop a record for that project.

Chris, who took computer as a self-determined project for two years and now is enrolled in the new computer project, explains that computer project members must use the self-determined project record.

"I'd like to see a record with more guidelines," he says.

Computer is Chris' favorite 4-H project.

"Computers are kind of fun to work with. I can get things done a lot faster with the word processor," Chris says.

He writes all his stories for his 4-H record book on the computer he has in his room at home.

Learning how to operate a computer isn't difficult, Chris says. He began learning about the computer when his father brought one home three years ago. At first he learned by reading the manual. When his mother took a computer class

at Fort Hays State University, he learned from her.

Chris taught himself graphics and music on the computer. He especially enjoys playing games on the computer.

He has written games for his own use and has written programs for his mother's sixth grade math class. He also has written programs for his dad and would like to write a program that will be printed in a computer magazine.

As his club's computer project leader last year, Chris held three meetings in which he talked about the different parts of the computer and taught the kids basic commands. They were able to print their name in graphics on the computer.

Chris has expanded his knowledge of computer by giving public speaking presentations about computers at County Club Days and Regional Club Days. In his last speech, he told about computer piracy.

Because he is knowledgeable about computers, it isn't difficult for Chris to present these speeches. It is becoming easier for him to speak in public because of his speaking experience in 4-H and school speech classes.

Chris also enjoys his geology and sheep projects and says he has learned a lot in these projects.

The Ellis Sunflowers Club member says 4-H is a lot of fun.

"You meet a lot of people and you learn some stuff," he says.

4-H members help people of community

The 101 Go Getters 4-H Club of Labette County said thanks to the people of their community by investing time and energy in it through the People to People project.

Club members delivered Christmas baskets to shut-ins and the nursing home and presented club day numbers to nursing home residents. A break dance demonstration was popular among residents.

For December roll call, each club member brought canned goods for Christmas baskets for the underprivileged in the community.

Flowers planted in the downtown area brought smiles to the faces of many when they bloomed in the spring.

Club members raised \$107 for the Kansas Cystic Fibrosis Foundation with a skate-a-thon and \$175 for the Statue of Liberty with a concession stand at the city's Oswegofest in October.

Another \$100 was donated to help defray medical expenses of a 2-year-old who was born with a liver disease and was awaiting a liver transplant.

At a heritage dinner, each family brought a dish indigenous to their heritage. The evening was capped by foreign folk tales told by a professional storyteller.

"As a leader of this club, I have been thrilled with the guts, energy and sincere caring shown by our members. They have learned valuable life skills: to relate to other people and to function with concern for their community," said Kristen Redburn, club leader. And, she added, they have learned that it can be fun to help others.

"It is good to help other people, and it makes me feel good, too," a club member said in her story.

"In People to People, I learned to think about others and to help them, too," wrote another club member.

People to People is now known as International Focus. Those interested in the project can sign up for it under International Focus on the enrollment card.

Boosters buy hog

The Grant County 4-H Council Boosters purchase one of the hogs sold at the 4-H market animal sale at the county fair each year. Last year each Booster paid \$20 for the purchase. The hog is butchered for the county's 4-H Achievement Night supper.

Kansas 4-H Foundation

1985 Honor Roll



Today's Youth ... Tomorrow's Leaders

1985 donors are honored at this time

by Glee Smith
Chairman Board of Trustees
Kansas 4-H Foundation, Inc.

Officers and members of the Board of Trustees of the Kansas 4-H Foundation, Inc. extend our sincere appreciation and best wishes to those of you whom we honor at this time on the Kansas 4-H Honor Roll.

In 1985 there were 1,564 of you who, as individuals, business firms and organizations, helped to promote the 4-H program in Kansas with contributions to the 4-H Foundation.

The Foundation is the organization charged with the responsibility and the opportunity to provide enhancement funds for the 4-H program in the Cooperative Extension Service, as well as the basic funds for support of Rock Springs Ranch 4-H Center at Junction City, leadership training, Kansas 4-H Journal and trips and scholarships and awards.

Our Foundation also provides support and direction for the Southwest 4-H Center at Dodge City, international organizations and two Clovia 4-H houses on the campuses of Kansas State University and Fort Hays State University.

Total contributions from the 1,564 contributors during 1985 amounted to \$319,720.00. These contributions, combined with in-

come from other sources, such as our endowment income, enabled us to continue to expand 4-H services and opportunities throughout our state, as well as support a continued growth and development at the 4-H Rock Springs Center. Rock Springs continues to be one of the outstanding facilities for youth training and recreational activities in the entire midwest.

Members of the board of the 4-H Foundation are happy to have the opportunity to contribute to the leadership and planning necessary to make the Foundation an effective implement of service for the 4-H programs in Kansas. The success of our efforts is, however, entirely dependent upon the generosity and philanthropy of you, the donors, whom we honor at this time.

Many of us visit Rock Springs Center frequently, to observe the program in action, not only on special occasions such as board meetings and Friends of 4-H Day, but also at other times when hundreds of young people are in residence for training and recreational programs.

The 4-H program and its benefits continue to expand in Kansas and that expansion of opportunity is directly related to your generosity. All of us involved in the 4-H program are grateful for your support and with the continued help, we can keep the 4-H program growing in service and opportunity for young people throughout our state.

1985 Kansas 4-H Foundation Honor Roll

EXECUTIVE

- 10 Hansen Foundation, Dane G.
- 3 McDonald, Mrs. William M.

SPONSOR

- 5 Cray Foundation, Cloud L.
- 15 Dillon, Richard W.
- 9 Finnup Foundation Trust
- 19 Frye, Raymond G.
- 25 Garvey Foundation Inc.
- 12 Humphreys, Mr. and Mrs. Lewis H.
- 9 Jenner Trust, Hazel M.
- 35 National 4-H Council
- 6 Pizza Hut Inc.
- 26 Southwestern Bell Foundation
- 17 Starkey, Winona M.
- 12 Wehrman, Claude
- 16 Wiedemann Foundation, K.T.

PATRON

- 5 Archer, Rex D. and Kate C.
- 6 Beech Aircraft Foundation
- 1 Bernina Sewing Machine Company
- 8 Breidenthal Fnd., Willard J. and Mary G.
- 18 Carpenter 4-H Foundation Inc., William
- 8 Dillon Stores
- 15 Dubbs, Clara L.
- 11 Duckwall-Alco Stores Inc.
- 10 Eby, Martin K. and Lillian
- 25 Eyestone, Merle and Willa Deanne
- 26 Farmland Industries Inc.
- 25 Federal Land Bank of Wichita
- 12 Fourth National Bank Charitable Trust
- 33 Fox and Company Foundation
- 1 Gault-Hussey Charitable Trust
- 1 Grant and Company, Alexander
- 11 Hesston Corporation
- 30 Hicks, Mr. and Mrs. W.H.
- 5 Hildebrand, Mr. and Mrs. Don
- 8 Holmes, Mrs. O.W.
- 14 Jeffrey, Mr. and Mrs. Balfour S.
- 7 Jenner Trust, John W.
- 11 Jordan, Frank and Gwen
- 6 KABAR
- 33 Kansas Bankers Association
- 11 Kansas Extension Homemakers Council
- 33 Kansas Farm Electrification Council
- 3 Kansas Fur Harvesters
- 34 Kansas State Fair
- 4 Kansas State University Ag. Alumni
- 9 Lindon, Mrs. Martin
- 4 Mahieu, A.B.
- 1 Martin, C.R.
- 3 Orscheln Farm and Home Supply Inc.
- 3 Pioneer Hi-Bred International Inc.
- 3 Reid Foundation, Price R. and Flora A.
- 12 Rice Foundation, Ethel and Raymond F.
- 6 Rolph, Darrel
- 1 Shroyer, Dr. Terry A.
- 7 Smith, Mr. and Mrs. Glee S.
- 1 Spring Creek Farms
- 1 TSC Industries Inc.
- 14 Texas Educational Association
- 2 Winter, Shipman

FRIEND

- 3 ADM Milling Company
- 11 Atkinson, Emily Jane
- 13 Burlington Northern Foundation
- 18 Busset, Glenn M. and Rosemary
- 3 Cargill Inc.
- 4 Dickerson, Mrs. Max
- 1 Dominy, Charles E.
- 1 Duckers, Jr., Harry
- 11 Dulaney-Johnston-Priest
- 33 Federal Cartridge Corporation
- 33 Folger Coffee Company
- 8 Galle Family, Nelson
- 12 Harcourt Brace Jovanovich Publications
- 23 Ives and Sons, H.M.
- 23 Jellison Benevolent Society
- 33 Johnson, J. Harold and LaVerne
- 9 Kansas Beef Council
- 1 Kansas Commercial Fish Growers Assn.
- 33 Kansas Farm Bureau
- 17 Kansas IFYE Alumni Association
- 11 Kansas Livestock Association
- 10 Kansas Pork Producers Seedstock Comm.
- 5 Kansas Sheep Association
- 1 Kansas-Paraguay Partnership Inc.
- 3 Landfield Fund, Michael S.
- 1 Pinkall, Robert L. and Karen N.
- 21 Production Credit Associations of Kansas
- 1 Quackenbush, E.R. and Olga C.
- 1 Stelbar Oil Corporation Inc.
- 7 Vista At Lawrence Inc.
- 3 Wenger, Mr. and Mrs. Donald
- 22 Wichita Bank for Cooperatives

Honor Roll of Donors

- 1 Abbuhi, Gary L. and Lois M.
- 1 Abraham, Jon
- 1 Achterberg, C.M.
- 9 Adair, John A. and Grace S.
- 7 Ahsmuhs, Mr. and Mrs. William K.
- 7 Akin, Mrs. Tom (Dorothy)
- 9 Albers, Clyde and Lois
- 1 Albert, Timothy and Teresa
- 3 Albrecht, Bernadine and Myron
- 2 Allen, Gayla Jo
- 1 Allen, H. Raymond and Arleta
- 1 Allen-Woodson Camp Group
- 3 Allphin, Charles
- 3 Altenbernd, Homer C.
- 3 American State Bank and Trust Company, Great Bend
- 4 Anderson Family, David B.
- 8 Anderson Foundation, E.T. and Cora F.
- 3 Anderson, John H. and Nancy
- 3 Ark City Packing Company
- 8 Armstrong, Mr. and Mrs. John J.
- 3 Astroth, Kirk
- 7 Atchison County Farm Bureau
- 1 Automotive Controls Corporation, Independence
- 7 Ayers, Mrs. K. Wayne
- 3 Baker, Larry
- 1 Baker, Mr. and Mrs. Bill
- 1 Bales, Mrs. Dane
- 4 Bandel, Tom and Sandra
- 4 Bank IV - Newton
- 11 Bank of Commerce and Trust Co., Wellington
- 6 Banker, Aldean
- 3 Barber, Richard A.
- 1 Baril General Contractor Inc., R.M., Manhattan
- 23 Barr, Mr. and Mrs. Bernard
- 3 Beach, Mrs. Marianna

Honor Roll of Donors

- 1 Bebermeyer, Mr. and Mrs. Marvin J.
9 Beesley Farms Inc., Gove
13 Beezley Dairy Farm, Girard
3 Bell, Richard and Debra
4 Benne, William and Veronica
1 Benortham Family, Tom
5 Berrie, Donald M. and Ann
12 Bert, Mr. and Mrs. Raymond
7 Bertrand Elevators Inc., Monument
1 Bicknell, O. Gene
1 Bigge Family, Tom
1 Bilyeu, Roger D. and GERALYN
16 Bird, Byron G. and Donna M.
3 Birkeland, Wilma Evans
6 Black, Dr. and Mrs. C.V.
5 Black, Mr. and Mrs. John V.
1 Blecha, Amos and Joyce
7 Bloom, Mr. and Mrs. L.A.
8 Bluestem Farm and Ranch Supply
Inc., Emporia
3 Bob's Moundridge
7 Boehm, Ralph and Mary
5 Boettcher, Jarold and Barbara
7 Bohannon, Dr. and Mrs. Robert
1 Bohata, Emil and Ruth
14 Bolt, Mr. and Mrs. W. Fred
1 Bond, Rodney L.
3 Boone, Wilford and Mary Lou
16 Booth, Arden
1 Booth, Louise
16 Border, Mary Elsie
15 Borst, William H.
4 Bourbon, County Farm Bureau
2 Bowers, Jane Ann
5 Bowman, Mr. and Mrs. Herb
10 Bradley, Dr. and Mrs. W.F.
3 Brink, Jarvis and Nancy
10 Brookover Feed Yards Inc.,
Garden City
1 Brown Family Reunion
2 Brown, Joseph R. and Linda M.
1 Brown, William and Linda
1 Brown-Wabaunsee Camp Group
1 Bruzina, Dennis R.
1 Bunge Corporation, Hutchinson
1 Bunge Corporation, Kansas City
5 Bunger, Mr. and Mrs. Bill
3 Burmeister, Ferdinand
3 Burns, Errol G.
4 Burson, Mr. and Mrs. Dennis
4 Butler, Mrs. Julianne Zajic
1 Butler, Patrick and Norma
1 Butler-Reno Camp Group
1 Byler Lumber Company Inc.,
Wellington
1 Cameron, Jeanette K.
6 Carlson, Mr. and Mrs. Frank
1 Carmichael, Roy and Mildred
20 Carr, Francis E.
8 Carr, Keith and Ann
7 Carswell, Harold and Pat
11 Cash, Wally and Trisha
17 Caspar Sr., Mr. and Mrs. Charles L.
3 Catlin, Glenn
11 Caul, Jean F.
6 Central Charities Foundation Inc.
Junction City
1 Central Soya, Hastings, NE
1 CertainTeed Corporation, McPherson
11 Cessna Foundation Inc., Wichita
7 Chadwell, Mr. and Mrs. Roger
1 Chamber of Commerce, Moline
3 Chang, Cheng S. and Chien C.
20 Chapman, William and Claudine
1 Chappell, Virginia
7 Chase County Farm Bureau
1 Chase-Sumner Camp Group
10 Cheek, Roy and Seva
6 Cherokee County Farm Bureau
Assoc. Inc.
13 Citizens Bank and Trust Company,
Manhattan
9 Citizens State Bank, Cheney
3 Citizens State Bank, Morland
2 Clanton, Steven and Susan
1 Clark, Larry and Elaine
3 Claussen Jr. Family, Dr. Verne
2 Clovia Alumni Association
3 Cobb, Mary Catharine
4 Cobean, Robert and Frances
23 Coberly, Goldie
1 Coe, Mr. and Mrs. Harold G.
20 Cole M.D., Ward M.
15 Cole, Mr. and Mrs. Robert
1 College of Architecture and Design,
KSU
1 College of Engineering, KSU
1 College of Home Economics, KSU
10 Collingwood Grain, Inc., Hutchinson
1 Compton, Patricia E. Russell
1 Compton, Steven and Marilyn
10 Conard, Mrs. Marie
1 Conard, Ray J.
3 Condray, Robert and Judy
1 Conger, Mrs. Mary
8 Conover, Margaret Hites
3 Conrade, Mr. and Mrs. Russell
3 Considine, Mr. and Mrs. Gene
3 Cooper Family, Steve
13 Cooper, Mrs. Margaret
6 Cooperative Grain and Supply,
Hillsboro
3 Cope, William W. and Lois-Jo
5 Copeland Family, The Janet
1 Cornelsen, Mr. and Mrs. Charles R.
24 Counter, Mrs. Perry
4 County Weed Directors Assn. of
Kansas
13 Cox, Lawrence J. and Jessie V.
1 Crane Family, Donald
1 Crotts, Mary
1 Crouse, Larry and Evelyn
1 Croy, Mildred Foster
27 Cubit, James and Helen
10 Cudney, Ray E. and Joy L.
3 Custom Ag Products Inc., Beloit
1 Dahm, Arlene R.
2 Daily, Duane D.
4 Dale, Mr. and Mrs. Melvin
1 Danker Roofing and Siding Inc.,
Manhattan
1 Davies, J. Clinton
3 Davis, Bob and Carol
1 Day, Arlis and Vada
3 DeWerff, Vernon and Marian
2 Delta Kappa Gamma
4 Denner, Fred E.
5 Denton, Mr. and Mrs. Leland
3 Deutscher, Mr. and Mrs. Ronald
3 Devlin Family, Tom
7 Dewerff, Don
1 Dick, Ralph R. and Myra Bell
2 Dickinson, Robert and Janice
24 Dies, Edgar and Geneva
11 Dillard, Dean I.
11 Dillon, Mrs. Helen
7 Dixie Portland Flour Mills, Inc.
Arkansas City
1 Douglas County Flower & Garden
Show
1 Douglas-Miami Camp Group
4 Droge, Leslie and Lola
3 Duitsman, Thula Mae
4 Dunsmore, Sandra Shaw
1 Eaton, Mr. and Mrs. Lyle
3 Ebert Family, Verlyn
10 Eckermann, Louis D. and Vera B.
1 Edds, Norma Jean Patterson
1 Edmonds, Victor and Mary D.
12 Edwards, Mrs. John E.
11 Effen, Harvey
8 El Dorado Times, The
1 Elk County Farm Bureau Association
3 Elliott, Beryle L.
7 Elliott, Mr. and Mrs. Harold
4 Elliott, Mr. and Mrs. Loren
3 Elsass, Ralph and Mary
3 Emporia Wholesale Coffee Co.
5 Engelkemier Family, Larry
10 Enochs, Richmond M.
5 Epler, Mr. and Mrs. John M.
1 Erickson, La Ronn and Carla
10 Etherton, Mr. and Mrs. Robert L.
3 Evan's Drug, Columbus
5 Evans Jr., Mr. and Mrs. Richard
3 Evans Real Estate & Insurance Inc.,
Tonganoxie
24 Eyestone, Cecil and Phyllis
3 Eyestone, Gail L.
1 Fager, Maurice F.
2 Fair, Bobby and Betty
2 Fair, Ed and Shirley
3 Fair, Fred
3 Falun State Bank
1 Farm Credit Banks of Wichita
8 Farmers State Bank, Sabetha
2 Farmers State Bank, Yoder
10 Farmers and Merchants State Bank,
Argonia
23 Felt, Esther L.
6 Fendorf, James and Gloria
1 Figgins, Jay and Judy

Note: The figures preceding the name indicate the number of years of support since the Kansas 4-H Foundation Membership and Share Recognition Plan was started in 1953. Please call omissions to our attention.

Honor Roll of Donors

- 5 Fincham, Mr. and Mrs. Donald
 4 Finger, Mr. and Mrs. Leonard
 12 Fink, Ben J. and Dorothy
 4 First Federal Savings Bank,
 Wellington
 9 First National Bank, Wellington
 8 First National Bank of Conway
 Springs
 11 First State Bank, Healy
 12 First State Bank and Trust,
 Tonganoxie
 7 Fisher Family, Steve
 3 Fitzgerald, Sturgeon and Leola
 12 Flanders, Mr. and Mrs. Raleigh B.
 3 Flint Hills Foods Inc., Alma
 15 Floyd, Mr. and Mrs. R.D.
 5 Ford, Roy D. and Sylvia
 1 Forsberg, Verneene
 3 Fowler Jr. Family, Harry
 1 Fowler, Larry
 3 Fox Family, David
 8 Franklin, Paul T.
 3 Frisbie, Mr. and Mrs. Floyd "Bud"
 18 Fry, Ralph A.
 8 Funk, Genevieve
 1 Funk, Mr. and Mrs. Rodger
 3 Gallagher Family, John
 8 Galle, Dale S. and Bertha
 1 Galle, Russ and Pam
 1 Gardiner, Edmond
 1 Gardner, Elmer and Margaret
 1 Garinger, Dale A. and Clede Ann
 3 Garrigues, Maxine Wilson
 27 Garten, Mr. and Mrs. Frank
 1 Garvey Elevators Inc., Hutchinson
 3 Geary County Farm Bureau
 7 Geitz, James Herman
 3 Getty, William and Audrey
 3 Gfeller Family, Mr. and Mrs. Wayne
 2 Gfeller, Mark and Joan
 16 Gfeller, Mr. and Mrs. Harvey
 3 Giefer Family, Larry
 5 Gilliland, Don A. and Sara C.
 3 Gillum, Bertha
 2 Gilmore, Merna D.
 14 Givens, Mr. and Mrs. Don
 3 Goering Family, Larry
 1 Goertz, Delbert
 11 Goff, Mr. and Mrs. Harold A.
 1 Good, Wayne L.
 4 Goodfellow, Mr. and Mrs. Donald
 5 Goodheart, Loren and Clarene
 1 Goodholm, Paul and Emily
 14 Goyen, Mr. and Mrs. Lester
 8 Grant County Conservation District
 7 Greenwood County Farm Bureau
 3 Grelinger, Robert and Susan
 11 Griffin, Mr. and Mrs. James
 2 Grill, Jr., Mr. and Mrs. J.R.
 1 Grilloit, David
 1 Grimm, Jimmy
 3 Grimm, Mr. and Mrs. Gerald
 14 Groene, Mrs. Edith
 22 Gugler, Donald P. and Evelyn F.
 23 Gwin, Paul B.
 21 Haines, Joe D. and Nancy
 14 Halbleib, George and Hilda
 6 Hall Family, Bob
 5 Hall, Mr. and Mrs. C.T.
 4 Hamilton Family, Mr. and Mrs. Jim
 25 Hamilton, Mr. and Mrs. Dean
 3 Hammon, Mr. and Mrs. Don
 10 Hamon, John and Bertha
 8 Hanks, Mr. and Mrs. E. Joe
 11 Hanna, Mr. and Mrs. John B.
 9 Harding, Mrs. Warren G.
 7 Harper County Farm Bureau
 9 Hartford State Bank
 15 Haskin, Mr. and Mrs. Glenn
 5 Haskin, Sam and Dorothy
 8 Hatfield, Mr. and Mrs. James
 1 Hawley, John L. and Jocelyn J.
 2 Haynes, Nicole
 1 Heart of Kansas Camp Group
 8 Hedrick Foundation, Frank and
 Harriet, Wichita
 6 Henry, P.C.
 1 Hepler State Bank, The
 3 Herron, Don and Vae Jene
 11 Hesston State Bank, The
 3 Hildreth Jr. DDS PA, J. Warren
 3 Hilt, Henry, Billie and Susan
 1 Hinegardner, Lottie
 1 Hinman, Dennis L. and Ella
 1 Hitt, Loren W. and Beverly R.
 7 Hixson, Warren C. and Sharon G.
 10 Hlasney, Faye Uhrlich
 3 Hobble, Don and Maxine
 12 Hoffer, Mrs. Emma
 1 Holaday, Raymond and Loree
 1 Holland, Ronald and Carolyn
 3 Holliday Family, The Richard
 30 Holstein Friesian Association of
 Kansas
 14 Honstead, Arliss
 8 Hook, Maynard C. and Helen
 25 Hoover, Mr. and Mrs. L.J.
 1 Hostetler, Pius H. and Dora A.
 7 Hottman, Marjorie J.
 3 Houchin Family, Jerry and Sheila
 1 Houdyshell, Gladys
 1 Howard's Electronics, Dighton
 9 Hoyt, Mr. and Mrs. Gordon E.
 3 Huddleston, Jerry
 1 Humble, Patrick and Marla
 9 Hummel Family, Mr. and Mrs.
 Charles
 17 Humphrey, Mrs. Henry A.
 3 Hundley, Mr. and Mrs. Ed
 5 Hunt Family, Melvin
 1 Hunt, Thaine and Carol
 1 Hunter, John M. and Naomi R.
 1 Hwang, Mr. and Mrs. Ching Lai
 5 Ice, Tony
 1 Immekus, Douglas and Sharon
 14 Ingle, Don and Frances
 1 Iola Bank and Trust Company
 5 Ireland, James L. and Lynn
 2 J.S. Packing Company, Inc.,
 Ellsworth
 11 Jackson, Mr. and Mrs. M.E.
 1 Jackson, Norman and Betty
 1 Jagels, Lorene
 5 Janne, Melvin and Deloris
 5 Jenner, Ruby M.
 1 Johnson, Melvin and Susan
 5 Johnson, Mr. and Mrs. Einar
 1 Johnson, Mr. and Mrs. Kenneth
 11 Johnson, Mr. and Mrs. Raymond
 4 Jones, Mr. and Mrs. Kenneth
 10 Jorns, Mr. and Mrs. Arnold B. (Ben)
 4 Kane Family, William D.
 5 Kansas Appaloosa Horse Club
 11 Kansas Association of Nurserymen
 1 Kansas Association of Wheat
 Growers
 26 Kansas Ayrshire Breeders
 Association
 1 Kansas Bowhunters Association, Inc.
 26 Kansas Brown Swiss Association
 11 Kansas City Implement and Tractor
 Club
 3 Kansas Council of Women
 10 Kansas Dairy Herd Improvement
 Assoc.
 21 Kansas Electric Cooperatives Inc.
 21 Kansas Jersey Cattle Club
 3 Kansas Master Farm Homemakers
 Guild
 10 Kansas Pork Producers Council
 12 Kansas Quarter Horse Association
 4 Kansas State Rabbit Breeders
 Association
 1 Karnowski Family, David J.
 3 Kasper, Mr. and Mrs. Robert
 1 Keen, Carol Bigsby
 5 Keener Family, Patrick A.
 5 Keesling Family, Donald
 1 Keesling-Clarke, Diana
 3 Kelly, Irene
 1 Kelly, Ronald and Marilyn
 6 Kendall, John and Juanita
 3 Kent Feeds Inc., Muscatine, Iowa
 1 Kersting's Auction Service, Offerle
 3 Key Milling Company Inc.,
 Clay Center
 1 King, David
 3 King, Mr. and Mrs. Charles W.
 8 Kingman County Farm Bureau
 11 Kinkaid Jr., Mr. and Mrs. Roy C.
 24 Kirkwood, Miss Francis
 3 Kiser, Harvey and Janet
 13 Klenda, Albert and Pauline
 5 Kleymann, Blane F.
 8 Knobel, Chris and Barbara
 6 Koenig Family, Dr. and Mrs.
 Michael M.
 1 Kohman, Mrs. Henry L.
 1 Koleczek, Adam and Jeanette
 3 Kriesel, Phyllis
 4 Krug, Morris and Barbara
 1 Kufahl, Mr. and Mrs. Loyd
 4 Kuhn, Mrs. Eugene (Gene)

Note: The figures preceding the name indicate the number of years of support since the Kansas 4-H Foundation Membership and Share Recognition Plan was started in 1953. Please call omissions to our attention.

Honor Roll of Donors

- 3 Lamb, Mike and Jana
 1 Lampe, Les and Karen
 1 Land, Keith
 5 Lang Family, Charles
 2 Lange, Stephen J.
 2 Lanham, Eugene
 3 Larkin Family, Kenneth
 11 Lauer, Mr. and Mrs. Clarence
 1 Laughlin, Penny R.
 12 Lee Company, Salina
 3 Lee, Jim and Viola
 1 Lee, Song Ping and Li Ying
 3 Legleiter, Cletus and Rita
 8 Lemon, Mr. and Mrs. George C.
 1 Leonard, Gerald and Judith
 3 Leonardville State Bank
 1 Lewis, Mr. and Mrs. Joe W.
 1 Lin, Chii Dong and Shu Mei
 4 Lindelof, Mr. and Mrs. S.M.
 8 Lindholm, Nora B.
 7 Lindquist, Jack W. and Lindy R.
 3 Lindquist, James L. and Mary
 6 Long, David and Gloria
 1 Long, Jonne A.
 11 Lotker, Mr. and Mrs. Floyd Lee
 8 Loughridge, Wayne
 3 Lowe, Mr. and Mrs. Feryl
 5 Lowell, Dorine Porter
 1 Ludlum, Steven and Lorna
 4 Lunkwitz, Frank and Adela
 9 Lunt, Harry B.
 5 Luthi, Mr. and Mrs. Robert
 1 Lynch, Mr. and Mrs. Bert
 1 Lyons, Frank and Jan
 12 Mackey, Mr. and Mrs. Frank
 1 Maddox Family, Jim
 2 Magnuson Family, Jerry
 3 Makalous, Clifford and Betty
 7 Manry, Mr. and Mrs. E. Clifford
 1 Maring, Jack and Ann
 4 Markley, Howard A. and Geta
 9 Marr, Charles W. and Joyce
 3 Marrs, Joyce C.
 1 Martin, Kathy
 1 Martin, Les and Cheryl
 16 Master Farmer Homemaker
 Operating Fund
 12 Matson, Leonard
 1 Mayer, Robert R. and Marjorie
 8 Mayfield State Bank
 3 McAdam, Tom and Bonnie
 6 McCormick, Dr. and Mrs. Eugene C.
 1 McDaniel, Dot
 5 McDougal, Delmar and Kay
 1 McElwain, Larry and Jan
 5 McElwee Family, Carl
 8 McGaugh, Velma M.
 19 McGinness, Kenneth E. and
 Jo Anne H.
 6 McGrew Tire Company Inc.,
 Junction City
 3 McKee, Jim and Judy
 1 McKinney, Mary Alice Doll
 5 McKinney, Robert and Judith
 3 Meade, Hugh E.
 8 Mears, Paul and Helen
 5 Medlin, Mr. and Mrs. Bob
 1 Meier, Ewald and Eileen
 1 Melichar, Albert L. and Turi E.
 8 Meng, Jerry and Mary
 2 Mensch, Gertrude L.
 7 Mertz, Harold and Jeanne
 8 Miami County Farm Bureau
 17 Mickey, Mr. and Mrs. Vernon L.
 14 Mid-America Dairymen Inc.,
 Omaha, NE
 14 Midland United Dairy Industry
 Assoc., Ankeny, IA
 2 Miller Family, Don
 1 Miller, Delbert C. and Rosemary P.
 2 Miller, Herman C. and Garnet
 3 Miller, Mr. and Mrs. Max
 8 Mogge, Mr. and Mrs. Carroll A.
 3 Molzen, Larry K. and Sharon B.
 12 Montgomery Publications Inc.,
 Junction City
 1 Montgomery, Clara and William
 10 Montgomery, Mr. and Mrs. Don
 1 Moore, J.R. and Katharine
 4 Moore, Mr. and Mrs. Bob
 12 Morgan, Mr. and Mrs. L.D.
 6 Moridge Manufacturing Inc.,
 Moundridge
 9 Morris County Farm Bureau Assoc.
 1 Morris, Philip M. and Patricia A.
 17 Morrison Grain Elevator,
 Junction City
 5 Morse, John R. and Kay Stine
 3 Moshier, Loren and Deanna
 3 Mosier, Mr. and Mrs. William
 15 Mott, Mrs. C.C.
 7 Mueller, Mr. and Mrs. Marvin
 16 Mull, Mr. and Mrs. Keith
 9 Mulvane State Bank
 8 Munsell, Opie B.
 10 Munson Family, Charles
 21 Munson, Gaylord
 22 Munson, Ralph C.
 5 Murphy, Pat and Ann
 13 Murrey, Mr. and Mrs. Chester
 9 Musil, Elmer R. and Ellen B.
 6 Mutual Savings Association,
 Leavenworth
 6 Myers, LaVerne and Jeanette
 1 Neaderhiser, Ben and Phyllis
 3 Nease, Linda J.
 4 Neiswender, Raymond
 5 Nelson, L. Wilburn
 5 Nelson, Mr. and Mrs. LaVern
 7 Nelson, Nancy C. and Brett E.
 6 Nemaha County United Charities
 4 Neosho County Farm Bureau
 1 Neosho River Houndsmen
 7 New, Bill and Loris
 11 Niccum, Mrs. Elwin W.
 3 Nicholas, W.C. and Marcile
 5 Ninemire, Mr. and Mrs. Gerald
 19 Nixon, Robert and Floy
 2 Noll, Mark and Joanne
 20 Norby, Oscar W. and Pauline
 2 Nordstrom, Dale and Joan
 1 Northwest Counties Camp Group
 5 Norton, Charles and Audrey
 6 Nunemaker, Wesley and Twila
 3 O'Dell, Juanita
 4 Odgers, Marvin and Barbara
 7 Ohnemiller, Alma L.
 3 Oldham's Farm Sausage Inc., Holton
 2 Olmstead Family, Edwin
 3 Olsen M.D., Phillip
 1 Olsson, Ada M.
 1 Olsson, Phillip and Marion
 25 Orsborn, Charlotte H.
 23 Ottaway, Lois M.
 21 Otte, Mr. and Mrs. Alvin
 1 Oyerly, Patricia Joan
 3 PYW Dorrance
 6 Pacey, Mr. and Mrs. Franklin
 3 Palmberg, Mr. and Mrs. Earl A.
 7 Paola Lumber and Coal Company
 9 Park, Mrs. Margaret
 10 Parker, Don and Alice
 3 Parry, Alberta M.
 1 Patrick, Ethelyne
 1 Pauley, Byron and Shirly
 1 Paulsen, Mr. and Mrs. Dennis N.
 3 Pawnee County Farm Bureau
 1 Paxson, Beryl and Marcella
 2 Pearson, Clint and Lisa
 3 Peckham, Jerry and Sue
 11 Peirce, Walter C. and Frances
 1 Pelton, Chris and Lorna Sutor
 10 Pendelton, Mr. and Mrs. Al
 1 Peoples State Bank, The, McDonald
 1 Peter Family, Mary Lou
 3 Pettitt, Mrs. Alice
 4 Phi State
 3 Phillips Family, Darrell
 4 Pike, Ellis and Edna T.
 8 Pine Family, The Roger
 1 Pittser, Mr. and Mrs. David
 19 Plessey Inc. - Welco Division,
 Wellington
 12 Plested Jr., William
 3 Plunkett, Richard
 3 Poindexter, Jimmie and Virginia
 3 Pork Packers International Inc.,
 Downs
 7 Postier, Galen and Shirley
 1 Poston, Carl and Jessie
 11 Potter, Thomas M.
 4 Powell, Mrs. Alyce Mae
 12 Prawl, Mr. and Mrs. Warren L.
 23 Presnal, Glade C.
 22 Presnal, Mr. and Mrs. Ross
 4 Prince, Paul and Sheila
 1 Prochaska-Cue, Kathy
 1 Pruett, Ronald and Carole
 3 Quade, Mrs. D.R.
 5 Raab, Bertha V.

Note: The figures preceding the name indicate the number of years of support since the Kansas 4-H Foundation Membership and Share Recognition Plan was started in 1953. Please call omissions to our attention.

Honor Roll of Donors

- | | | |
|---|--|--|
| <p>1 Radcliffe, B.K. and Paula
 10 Rahjes, Doyle and Charlotte
 4 Rankin, Mr. and Mrs. Scott F.
 7 Redman, A. Lois
 1 Reed, Anna
 5 Rees, Norris
 24 Regnier, Mr. and Mrs. Roger E.
 6 Reichenberger, T.W. and K.A.
 1 Reilly Family, Larry
 5 Reitz, Richard and Vera
 8 Renn, R.J.
 12 Reusser, Rae and Athol
 1 Rezac, Dennis and Nancy Ann
 6 Rezac, Don and Barbara
 3 Richards, Mr. and Mrs. Lawrence
 1 Richmond Lions Club
 5 Rickson Family, Warren
 4 Ridley, Ron and Darca Ann
 1 Right Cooperative Association, The
 Wright
 3 Riley, John B.
 18 Riley, Mr. and Mrs. William M.
 1 Robb, Mr. and Mrs. Ronald
 12 Robbins, Benny and Linda
 1 Robinson Family, R.C.
 13 Robinson, Elsie C.
 3 Robinson, Mrs. Truman A.
 3 Robinson, Pauline M.
 12 Robson, Mrs. Marie A.
 1 Rodrock Family, Darol
 12 Roesler, Mr. and Mrs. Otto R.
 17 Rogers, Irene
 1 Rogers, Jim
 4 Rosenhagen, Mr. and Mrs. Richard
 3 Rowe, Mr. and Mrs. Sam
 12 Rupp, Mr. and Mrs. Clarence
 18 Rusk, Ralph and Georgia
 14 Rusk, Ray and Roberta
 4 Russell State Bank
 5 Russell, Arden and Cheryl
 3 Rutherford, Jesse
 3 Ryan, Joseph P. and Angela B.</p> | <p>1 Superior Supply Company, Wichita
 3 Security State Bank, Scott City
 2 Seibert, Mr. and Mrs. Gary
 1 Seitz, Bill
 4 Selby, Jon L. and Barbara K.
 1 Seuser, Lester
 3 Shank, Dennis and Gaylene
 13 Shaw, Libbie E.
 13 Shaw, Willard B. and Elsie
 26 Shepherd, Mr. and Mrs. Ronald
 5 Shields, Bruce and Sandy
 1 Shields, Joel and Mary Ann
 11 Shipman, Larry and Judy
 1 Shirley, Tom
 1 Short Family, Dick
 4 Shupe, Mrs. Roy
 1 Siemens, Cindy
 8 Sievers, Mr. and Mrs. Harold
 10 Sigley, Mr. and Mrs. Allen
 2 Simmons, Mrs. Earl
 3 Simms, Nancy, Roger, Jeanette
 and Ed
 29 Simons Sr., Dolph
 1 Six County Camp Association
 21 Slaten, Grace
 1 Sloan, Gwen and Harlan
 3 Slyter Family, Damon
 9 Smith County State Bank and Trust
 Co., Smith Center
 5 Smith Family, O. Jerry
 4 Smith, Dr. and Mrs. Boyd
 3 Smith, Jack
 3 Smith, Steve and Suzan
 1 Snyder, Mr. and Mrs. Lance
 6 Sommers, Mr. and Mrs. Harold
 1 Sperry, Richard E. and Mary Alice
 6 Springer, Teri
 5 St. Marys State Bank
 1 Stackley, Arlan and Mary
 3 Stafford County Flour Mills
 Company, Hudson
 2 Stahl, Mr. and Mrs. J. Michael
 3 Stallard, Wayne M. and Wanda S.
 3 Stanion Wholesale Electric
 Company, Pratt
 4 Stanion, Tom and Susan
 8 State Bank of Conway Springs
 3 State Bank of Plevna
 8 State Bank of Satanta
 1 Steffen, Michael and Cheryl
 4 Steffen, Mr. and Mrs. Leon E.
 3 Steffey, Helen and Norm
 4 Stephens, Don and Jan
 4 Stephens, Harry L.
 13 Stewart III, Mr. and Mrs. John T.
 9 Stock Exchange Bank, The Caldwell
 6 Strauss, William and Lois
 24 Streeter, Martha Wreath
 22 Strickler, Mr. and Mrs. Ivan
 3 Studer Jr., Mr. and Mrs. Phil
 3 Stutz, Duane and Elva
 9 Sucht, Leon A. and Elizabeth
 6 Sumner County Family Care Center
 P.A., Wellington
 9 Sumner-Cowley Electric Cooperative
 Inc., Wellington</p> | <p>4 Svaty Family, Ron and Pat
 3 Swanwick Family, Bob
 5 Sweany, Jim and Alice
 10 Sweat, Ron and Janet

 1 Taiwanese Association of Kansas,
 Manhattan
 19 Taylor, Ethel M.
 21 Teagarden, Mr. and Mrs. Earl H.
 9 Teagarden, Robert and Iva
 2 Tegtmeier, Mrs. Dana
 1 Temming, Mr. and Mrs. Paul
 14 Tennant, Marjorie Ann
 2 Thackrey, Mrs. Jessie Dean
 1 Thiel, Duane and Judy
 5 Thieme Family, Robert
 3 Thomas, Gerald and Bonnie
 7 Thomas, Mr. and Mrs. Homer W.
 3 Thompson, Wayne M. and Eula A.
 4 Tiao, Joe and Inge
 4 Tiberghien, Lee W.
 14 Tillotson, Mr. and Mrs. Raymond J.
 1 Tilton, Ralph and Betty
 11 Tjaden, Wayne
 15 Todd, Mr. and Mrs. Charles C.
 5 Torrey, Frank W. and Paula M.
 2 Trabert, Mr. and Mrs. John
 10 Truax, Mr. and Mrs. L.L.
 23 Truman, Maxine
 3 Tuggle, Thomas M. and Suzanne F.
 13 Turnbull, Ruth N.

 3 Union State Bank, Clay Center
 2 Union State Bank, Everest

 5 Vahsholtz Inc., Merle W., Herington
 1 Van Skike, Keith and Karen
 12 Veltman Enterprises, Topeka
 2 Vesecky, Mr. and Mrs. Clarence
 9 Visser, George and Lorene
 14 Visser, W. Edward
 4 Vista at Topeka Inc.
 9 Vogel, John H. and Irene
 11 Vogt, Mr. and Mrs. Roland

 7 Waetzig, Scott and Maurine
 27 Walker, Mr. and Mrs. Howard R.
 2 Walker, W.H.
 3 Wall-Rogalsky Milling Company,
 McPherson
 3 Walters, D.L. and Ann
 9 Walton, Keith and Celia
 2 Walton, Marjorie
 1 Warner, Bill and Barb
 6 Warner, Jim and Stacey
 2 Warren, Allen and Beth
 3 Warren, Roger D. and Linda
 6 Washington County Farm Bureau
 10 Wasserman, Gilbert and Edith
 1 Watts, Marion and Rose
 1 Weatherbie, Virginia Sedgwick
 11 Weathers, Mrs. George E.
 11 Weaver, Eldon and Mildred
 18 Wellington Daily News
 3 Wenger, Leo and Peggy</p> |
|---|--|--|

Note: The figures preceding the name indicate the number of years of support since the Kansas 4-H Foundation Membership and Share Recognition Plan was started in 1953. Please call omissions to our attention.

Honor Roll of Donors

- | | | |
|--|--------------------------------------|------------------------------------|
| 3 Wenger, Mrs. Leon | 1 Wille, Alfred and Myra | 4 Woods Family, Ray |
| 9 Werner, Mr. and Mrs. K. Dale | 5 Williams, James D. and Victoria E. | 4 Woods Jr., Mrs. Clyde (Louise) |
| 11 Wertzberger, Georgia | 7 Willis, William G. and Jean | 1 Woods, Walter and Jackie |
| 1 Wesche, Gary | 23 Wilson, John L. | 10 Works, Mrs. George |
| 11 Western Retail Implement and
Hardware, Kansas City | 12 Wilson, John and Glenna | 2 Wylie, David and Mary |
| 11 Wetta, Joseph L. and Virginia M. | 3 Wilson, Mr. and Mrs. Gary L. | 2 Young, Dell |
| 3 Whipple, Mr. and Mrs. Jerry | 9 Wilson, Mr. and Mrs. R.E. | 3 Zaremba, Mr. and Mrs. Stanley R. |
| 5 White, Dr. and Mrs. James R. | 1 Wilson, Robert S. and Pamela | 3 Zeller, Fred and Gail |
| 3 Whitefield, James | 1 Windisch, Mr. and Mrs. John | 3 Zenor, Larry and Linda |
| 9 Whitehair, Mr. and Mrs. Raymond | 7 Wing, Mark and Karen | 3 Zielsdorf, Richard and Jesse |
| 1 Whitted, Donald and June | 3 Winger, R.W. and Frances | 4 Zimmerman Family, Allen |
| 1 Wienck, Sharon | 1 Wingfield, Norraine M. | 4 Zimmerman Family, Jerry |
| 22 Wild, Mrs. Violet J. Carroll | 3 Wolf, Wallace and Lulabel | 1 Zimmerman, Jay W. |
| 1 Wiles, Darrel and Virginia | 3 Wolfe, Wallace and Thelma | |
| | 1 Wood, Fern | |

Extension Home Economics & 4-H Groups

- | | | |
|--|---------------------------------------|--|
| ANDERSON COUNTY | 12 Smilin' Thru 4-H Club | 13 Good Hope 4-H Club |
| 7 Colony Hi-Point 4-H Club | COMANCHE COUNTY | 27 Winner's 4-H Club |
| 2 Seekers Not Slackers 4-H Club | 5 Kiowa Creek 4-H Club | ELLSWORTH COUNTY |
| ATCHISON COUNTY | COWLEY COUNTY | 11 Elkhorn 4-H Club |
| 5 Lancaster Lightning 4-H Club | 10 Floral 4-H Club | 19 Ellsworth County 4-H Council |
| BARBER COUNTY | 10 Martha Washington 4-H Club | 19 Trying Tommies 4-H Club |
| 15 B-Square 4-H Club | 7 Otto 4-H Club | FORD COUNTY |
| 10 Gyp Hills Pioneers 4-H Club | 11 Tisdale 4-H Club | 15 Happy Hour EHU |
| 13 Lone Eagle 4-H Club | CRAWFORD COUNTY | 10 Prairie Schooners 4-H Club |
| 7 Mingona Boosters 4-H Club | 5 Farlington Best Yet 4-H Club | 5 Town and Twenty EHU |
| 1 Sharon Valley 4-H Club | 1 Happy Hustlers 4-H Club | FRANKLIN COUNTY |
| BARTON COUNTY | DECATUR COUNTY | 16 Full O' Pep 4-H Club |
| 10 Busy Buzzers 4-H Club | 11 Maverick 4-H Club | 6 Rambling Ranchers 4-H Club |
| 14 Fairview Scouts 4-H Club | 12 Star Valley 4-H Club | GEARY COUNTY |
| BOURBON COUNTY | DICKINSON COUNTY | 8 Brookside 4-H Club |
| 5 Uniontown 4-H Club | 9 Fragrant Hill 4-H Club | 1 McDowell Creek 4-H Club |
| BROWN COUNTY | 11 Harmony Hustlers 4-H Club | GOVE COUNTY |
| 12 Fairview Willing Workers 4-H Club | 13 Holland Sunflowers 4-H Club | 18 Hackberry 4-H Club |
| 23 Robinson Meadowlarks 4-H Club | 18 Jolly Jayhawkers 4-H Club | GRAHAM COUNTY |
| BUTLER COUNTY | 12 Lyon Prospectors 4-H Club | 13 Graham County 4-H Council |
| 2 Benton Busy Bees 4-H Club | 11 Navarre Boosters 4-H Club | 10 Solomon Valley 4-H Club |
| 4 Burns Go-Getters 4-H Club | 9 Willowdale 4-H Club | GRANT COUNTY |
| 8 Cassoday Boosters 4-H Club | DONIPHAN COUNTY | 5 Bearcreek Boosters 4-H Club |
| 25 Flint Hills 4-H Club | 8 Circle B 4-H Club | GREELEY COUNTY |
| 4 Four Mile EHU | DOUGLAS COUNTY | 19 Go-Getters 4-H Club |
| 6 Haverhill Happy Hustlers 4-H
Club | 10 Buffalo Boosters 4-H Club | 18 Golden Opportunities 4-H Club |
| 25 Hickory Helpers 4-H Club | 23 Cottonwood 4-H Club | 17 Straight Ahead Strivers 4-H Club |
| 11 Lily Lake 4-H Club | 1 Douglas County 4-H Council | 19 Thrifty Thrivers 4-H Club |
| CHASE COUNTY | 3 Douglas County Extension
Council | GREENWOOD COUNTY |
| 3 Diamond 4-H Club | 13 Eudora 4-H Club | 6 Lucky 13 4-H Club |
| 8 Toledo 4-H Club | 15 Four-Leaf Clover 4-H Club | 13 Upper Fall River Jayhawkers 4-H
Club |
| CHEROKEE | 25 Kanwaka 4-H Club | HARPER COUNTY |
| 2 Melrose Mustangs 4-H Club | 11 Kanza 4-H Club | 5 Spring Robins 4-H Club |
| CHEYENNE | 10 Lone Star 4-H Club | 10 Sunnyside 4-H Club |
| 8 Go-Getters 4-H Club | 19 Sunflower 4-H Club | HARVEY COUNTY |
| CLAY COUNTY | 17 Vinland Valley 4-H Club | 11 Richland Livewires 4-H Club |
| 4 Cloverleaf 4-H Club | EDWARDS COUNTY | 17 Sedgwick Sunflowers 4-H Club |
| 12 Hayes Boosters 4-H Club | 19 Better Homes EHU | HASKELL COUNTY |
| 4 Lincoln Creek 4-H Club | 22 Sunflower 4-H Club | 8 Sehasco 4-H Club |
| 3 Sturdy Oak 4-H Club | 7 Trenton Workers 4-H Club | HODGEMAN COUNTY |
| 9 Washington Headliners 4-H Club | ELK COUNTY | 8 Busy Bee Jrs. 4-H Club |
| CLOUD COUNTY | 4 Elk County 4-H Council | JACKSON COUNTY |
| 10 Hopewell Corners 4-H Club | 11 Flint Hill Boosters 4-H Club | 6 Denison Builders 4-H Club |
| 11 Miltonvale Hustlers 4-H Club | 10 Paw Paw Lucky Clovers 4-H Club | 13 Pleasant Valley Rustlers 4-H Club |
| 9 Solomon Valley 4-H Club | ELLIS COUNTY | JEFFERSON COUNTY |
| COFFEY COUNTY | 3 Buckeye EHU | 13 Crackerjacks 4-H Club |
| 18 Blue Ribbon 4-H Club | 8 Gemini Jrs. 4-H Club | 5 Lucky Four 4-H Club |

Note: The figures preceding the name indicate the number of years of support since the Kansas 4-H Foundation Membership and Share Recognition Plan was started in 1953. Please call omissions to our attention.

Extension Home Economics & 4-H Groups

- 11 Valley Victors 4-H Club
JEWELL COUNTY
 11 Buffalo Valley 4-H Club
JOHNSON COUNTY
 11 Busy Bees 4-H Club
 8 Clear Creek 4-H Club
 13 Greenwood Meadowlarks 4-H Club
 6 Happy Helpers 4-H Club
 21 Sharon 4-H Club
 9 Spring Hill Rustlers 4-H Club
 16 Sunnyside 4-H Club
KINGMAN COUNTY
 12 Vinita 4-H Club
KIOWA COUNTY
 5 Jayhawkers 4-H Club
 10 Southwestern Royals 4-H Club
 19 Upward Strivers 4-H Club
LANE COUNTY
 4 Shields Jayhawks 4-H Club
 3 Spring Creek EHU
LEAVENWORTH COUNTY
 8 Basehor Rustlers 4-H Club
 5 Happy Helpers 4-H Club
 11 Happy Hollow 4-H Club
 17 Lucky Clover 4-H Club
LOGAN COUNTY
 10 Annie Oakley 4-H Club
 9 Monument 4-H Club
LYON COUNTY
 9 Chamness 4-H Club
 17 Frost 4-H Club
 13 Lyon County 4-H Council
 11 Reading 4-H Club
 16 Riverside 4-H Club
MARION COUNTY
 8 Florence Jayhawk 4-H Club
 11 Friendly EHU
 22 Happy Hustlers 4-H Club
 14 Lincolnville Wide-Awake 4-H Club
 13 Ramona Red Chiefs 4-H Club
MARSHALL COUNTY
 9 Bremen Hustlers 4-H Club
 6 Happy Harvesters 4-H Club
 7 Wide Awake 4-H Club
McPHERSON COUNTY
 18 Empire Best 4-H Club
 3 Galva Go-Getters EHU
 13 Livewire 4-H Club
 16 New Frontier Unlimited 4-H Club
 3 Santa Fe Trail 4-H Club
 1 Sunflower EHU
MIAMI COUNTY
 7 Busy Beavers 4-H Club
 7 Franklin 4-H Club
 4 Progressive 4-H Club
 3 Rolling Hills 4-H Club
MITCHELL COUNTY
 11 Hunter 4-H Club
 1 Post Rock 4-H Club
 3 Sunflower 4-H Club
 15 Tipton 4-H Club
 10 Triangle Boosters 4-H Club
 3 West Beloit EHU
MONTGOMERY COUNTY
 9 Drum Creek EHU
 12 Gingham Aprons EHU
 8 Up and Coming 4-H Club
 5 Valley Victors 4-H Club
MORRIS COUNTY
 3 Four Mile EHU
 5 Valley EHU
 12 Willing Workers 4-H Club
MORTON COUNTY
 16 Best-Yet 4-H Club
NEMAHA COUNTY
 7 Centralia Aces 4-H Club
NEOSHO COUNTY
 9 Jolly Jayhawkers 4-H Club
NESS COUNTY
 12 Utica Meadowlarks 4-H Club
OSAGE COUNTY
 16 Melvern Junior Highline 4-H Club
 3 Michigan Valley 4-H Club
 13 North Osage 4-H Club
 1 Osage County 4-H Junior Leadership Club
OSBORNE COUNTY
 10 Liberty Bell 4-H Club
 6 Sumner 4-H Club
OTTAWA COUNTY
 15 Livewires 4-H Club
PAWNEE COUNTY
 13 Burdett Blue Ribbons 4-H Club
 10 Rozel Rockets 4-H Club
 15 Tiny Toilers 4-H Club
PHILLIPS COUNTY
 25 Deer Creek 4-H Club
POTTAWATOMIE COUNTY
 32 Blackjack 4-H Club
PRATT COUNTY
 18 Glendale Reapers 4-H Club
 7 Golden Valley EHU
 1 Pratt Pioneers 4-H Club
 19 Preston 4-H Club
 20 Richland Rustlers 4-H Club
RENO COUNTY
 4 Central Hustlers 4-H Club
REPUBLIC COUNTY
 7 Merry Meadowlarks 4-H Club
 5 Munden 4-H Club
 5 Pawnee Indians 4-H Club
 9 Republic Pioneers 4-H Club
 5 Rydal Rustlers 4-H Club
 9 Sherdahl Boosters 4-H Club
RILEY COUNTY
 1 Cloverleaf 4-H Club
 14 College Hill 4-H Club
 15 Kaw Valley EHU
 3 Leonardville EHU
 9 Leonardville Hustlers 4-H Club
ROOKS COUNTY
 11 Bow Creek 4-H Club
 10 Eager Beaver 4-H Club
 12 Palco 4-H Club
 22 Rooks County 4-H Council
RUSH
 8 Otis Go-Getters 4-H Club
RUSSELL COUNTY
 11 Big Creek 4-H Club
 11 Paradise Dell 4-H Club
SALINE COUNTY
 11 Cloverleaf 4-H Club
 18 Mentor 4-H Club
 16 Smoky View 4-H Club
 10 Space Agers 4-H Club
SCOTT COUNTY
 12 Lake Wide Awake 4-H Club
SEDGWICK COUNTY
 12 Andover Aces 4-H Club
 1 Clearwater Indians 4-H Club
 16 Rolling Hills 4-H Club
 12 Valley Victors 4-H Club
SHAWNEE COUNTY
 6 Decker 4-H Club
 24 Pleasant Hill 4-H Club
 24 Riverside 4-H Club
 26 Shunga Valley 4-H Club
SHERIDAN COUNTY
 7 Angelus 4-H Club
SHERMAN COUNTY
 17 Beaver Valley 4-H Club
SMITH COUNTY
 9 Four Oaks 4-H Club
 6 Meadowlark 4-H Club
STANTON COUNTY
 19 Big Bow 4-H Club
SUMNER COUNTY
 9 Drury Millers 4-H Club
 3 Golden Buffaloes 4-H Club
 11 Redwing 4-H Club
 3 Slate Creek EHU
THOMAS COUNTY
 6 Abilene Hustlers 4-H Club
 9 Gem 4-H Club
TREGO COUNTY
 16 WaKeeney Willing Workers 4-H Club
WASHINGTON COUNTY
 22 Busy Bee 4-H Club
 3 Doing Dozen EHU
 8 Linn Livewires 4-H Club
WAUBAUNSEE COUNTY
 11 Blue Ridge 4-H Club
 8 Cottonwood 4-H Club
 11 Friendly Farmers 4-H Club
 6 Happy Valley 4-H Club
 12 Maple Hill Hustlers 4-H Club
 5 Newbury 4-H Club
WILSON COUNTY
 3 Busy Beavers 4-H Club
 5 Homebuilders 4-H Club
 6 Kansas Kids 4-H Club
 2 Lucky Horseshoe 4-H Club
WYANDOTTE COUNTY
 11 Brauer Beavers 4-H Club
 4 Challengers 4-H Club
 5 White Church EHU
 11 Wolcott Wanderers 4-H Club
 4 Wyandotte Pioneers 4-H Club

The Kansas 4-H Foundation Executive Honor Roll denotes donors of \$25,000 or more; Sponsor, donors of \$5,000 to \$24,999; Patron, \$1,000 to \$4,999; Friend, \$500 to \$999.

Note: The figures preceding the name indicate the number of years of support since the Kansas 4-H Foundation Membership and Share Recognition Plan was started in 1953. Please call omissions to our attention.

Meets needs of 9- to 12-year-olds

Rock Springs is unique to Kansas

by Joan Istas

Rock Springs Ranch 4-H Center helps meet the needs of Kansas 4-H'ers 9 to 12 years of age, former Barton County 4-H'er Marie Mater told National 4-H Conference delegates in the consulting group, life-long 4-H, ages 9 to 12.

Marie represented Kansas at the National 4-H Conference in Washington D.C. along with Lisa Altenbernd, Douglas County, and Kevin Wake, Leavenworth County. Becky Randall, Johnson County, was the 4-H Ambassador representative from Kansas.

"Rock Springs is 4-H in Kansas."

"I really plugged 4-H camp," said Marie, who was a 10-year member of the Hoisington Jets 4-H Club until she enrolled at Washburn University in September of 1985.

"I think Rock Springs Ranch is just a wonderful facility. Rock Springs is 4-H in Kansas.

"The Kansas 4-H Foundation holds title to Rock Springs. It's like all of us own it. It's like our camp. That makes a difference."

Marie attended county camp as a 4-H'er and later as a counselor.

"I really enjoyed being a counselor. It was fun; it was a learning experience for me," she said. She praised the county camp program at Rock Springs.

4-H camp teaches the life skills of the 4-H program, Marie said. 4-H'ers gain motor skills by learning how to swim, canoe, ride horseback, shoot a bow and arrow, and shoot a rifle. They gain self confidence when they become proficient at those skills.

4-H'ers learn concepts of everyday living by setting, clearing and serving a table, picking up their clothes and taking care of themselves. They obtain a degree of independence by doing so. Mom isn't there to do it for them, Marie said.

Kids learn a moral sense of right and wrong by taking care of the camp while they are at Rock Springs.

They learn to get along and work with others by being a part of the camping group in which they live. They have to learn cooperation.

"The whole thing of 4-H camp meets the life skills," Marie said. "I think Rock Springs is the greatest."

The consultation group on 9- to 12-year-old 4-H'ers made a goal to meet the physical, social, intellectual and emotional needs and capabilities of 4-H members in that age group through existing programs and by developing new programs.

This means stressing parental involvement in 4-H, Marie said. Parents should understand the 4-H program and their importance in it.

Kids in this age range should be encouraged to establish long range goals in 4-H as well as short term goals. Little congresses and lock-ins on a county and district level and the establishment of crisis management centers focusing on decision making were recommended.

The committee on life-long 4-H teens Kevin participated in recommended that 4-H sponsor teen awareness programs, interstate exchanges, camps and retreats and community club congresses for teens; that the Extension office act as a placement center to obtain jobs for 4-H teens where they would work



for experience and not pay; and that 4-H be promoted on radio, television and in the newspaper.

In the discussion group, 4-H and societal issues, Lisa looked at how 4-H could address the problems of substance abuse, suicide and sexuality. A program of workshops and pamphlets that could be implemented in the schools was recommended. 4-H can inform the community about the facts of these abuses, the Meadowlarks 4-H Club member said.

Lisa discovered that Discovery Days and Rock Springs Ranch are unique to Kansas.

"Not all states have a facility like Rock Springs. Rock Springs is special," Lisa said. "Considering the experience kids get, it doesn't cost very much. I was a counselor last year and I had a blast.

"Discovery Days is pretty unique. It offers kids a mini college experience. It's a good program."

National 4-H Conference was more than meetings. 4-H'ers had an opportunity to visit with their congressmen, tour historical sites and meet other 4-H'ers and leaders.

The Kansas delegates said they enjoyed the conference, that it was worthwhile and they recommend it for other 4-H'ers.

"I was impressed with the way we could all sit down and logically look at a problem and come up with a solution," Marie said.

A political science major, Marie looked in awe at the Lincoln Memorial, the Jefferson Memorial and the Declaration of Independence.

"Here I've been studying these things for 13 years and it's right here. I got really emotional. It really makes you proud to be an American," Marie said.

"I really liked the way people were so outgoing and friendly," Kevin said. "I made so many different friends. It was hard on Friday trying to leave."

"The Kansas delegation was the highlight of the conference," Lisa added. "We did everything together. Our advisor (4-H leader from Ellis County, Rosemary Smith) was so great. There was a new and funny experience everytime we turned around.

"The conference wasn't a vacation. It was just a good learning experience where we made a lot of friends that we will remember a long time. I feel like I really learned a lot about the 4-H program."

Lucky-H is family club

by Joan Istas

The Lucky-H 4-H Club of Reno County is a family club. Parents of each family serve as one of two sets of community club leaders. Families serve on committees and attend project and community club meetings together.

"We are not babysitters. 4-H is a family activity," says Kathy Geffert, who with her husband, Lynn, make up one pair of the set of community club leaders.

Parents of all kids who join the Lucky-H 4-H Club sign a parents' pledge saying they will be project leaders, that they will support the efforts of the 4-H program and that they will participate as a family unit. Every parent also knows he will be community leader one day.

Two sets of community leaders (A set consists of parents of a family unit. A single parent would serve as one unit.) serve one two-year term on a rotating basis. Community leaders cannot succeed themselves.

One community leader is responsible for records and organization and one is responsible for leadership information.

Three families serve on the parents' committee for three-year terms.

The Parents' Committee is responsible for filling vacant positions on the committee and obtaining community leaders and project leaders.

Every family has the opportunity to choose to serve on one of five standing committees — finance, tours, 4-H Sunday, 4-H carnival, and booth and banner.

The eight Junior Leaders set club goals each year.

The club meets Sunday afternoons to eliminate conflicts with school and other activities and because Sunday is a family day.

Project meetings often precede club meetings to cut down on travel time of family members. The 35 club members come from three different communities, span 25 miles and include four different phone exchanges.

Parliamentary procedure is practiced at every club meeting.

"We know what roll call is. Kids get a program book and there is a program chairman. Kids know they have the right to address the chair and say something," says Steve Westfahl, who with his wife, Margy, serve as the other set of community leaders. "Parliamentary pro-

cedure is just a necessity for an organization to function properly."

The club year began with a demonstration on how to give project talks and demonstrations. With the exception of first-year members, all 4-H'ers are encouraged to give a project talk or demonstration.

"The whole emphasis of 4-H is to learn how to be part of an organization, to get up and talk before a group," says Westfahl, who was a 4-H'er as a kid.

All members are encouraged to complete their record books.

"Every child can fill out his record book," Mrs. Geffert says. "If we're going to put in all this time, the least we can do is complete the project which includes the record book."

The Lucky-H Club is in its first year as a 4-H club. Families joined Lucky-H from four different clubs in Reno County. Eight of the club members are first-year 4-H members.

"We never recruited. People were looking for this opportunity," Westfahl says.

Westfahl and Mrs. Geffert believe the club is successful.

"The want, the desire to make a club work has to be there. We had 20 families who wanted to make the Lucky-H 4-H Club work," Mrs. Geffert says.

Horse club sponsors give-away

The Kansas Arabian Horse Club is sponsoring an essay contest for 4-H'ers in which they can win an Arabian horse. All Kansas 4-H'ers, 7 to 19 years of age, are eligible to enter.

Twenty finalists will be notified by mail and interviewed at the Kansas State Fair in Hutchinson. Two registered purebred or half Arabian geldings will be awarded in three age groups, 7 to 10 years, 11 to 14 years, and 15 to 19 years. Horses will be presented at the state fair.

For additional information, contact the Kansas Arabian Horse Club, P.O. Box 1745, Hutchinson, Kansas 67504-1745, (316) 663-8562 or (316) 663-9124.

Promote 4-H with the 4-H Journal

Promote the 4-H club program with a subscription to the *Kansas 4-H Journal* to local libraries, community supporters and leaders, even doctors' offices. Send \$4 to: Kansas 4-H Journal, 116 Umberger, KSU, Manhattan, KS 66506.

TRUCKS

Help Bring
Better Living
To Kansas Farms,
Homes, Industries

*If You've Got It — A
Truck Brought It!*



KANSAS MOTOR CARRIERS ASSOCIATION
2900 Topeka Blvd.
Box 1673
TOPEKA, KANSAS 66601

4-H'er learns through the rabbit project

by Joan Istas

The 4-H rabbit project has taken Wabaunsee County 4-H'er Joe Farr to the county fair and the state fair. It's given him an opportunity to meet new people, give demonstrations and learn about caring for an animal.

A member of the Newbury 4-H Club, Joe enrolled in the rabbit project five years ago when he joined 4-H. He continues to take the project today because he likes rabbits.

"You get to see them win if you work with them," Joe says. "All you have to do is work with a rabbit, and even the wildest one will calm down."

Joe has exhibited in rabbit showmanship at the Kansas State Fair in Hutchinson three years and also works as a volunteer at the state fair rabbit show.

The Wabaunsee County 4-H'er primarily raises Rex and Satins and especially likes the Rex breed. The Rex produces good meat, has high quality fur and makes a good pet because it has an excellent disposition, Joe says.

"I love their fur; they have a short, dense fur."

Joe sells a few rabbits to 4-H'ers, but primarily raises them for meat for the Farr family. The whole family pitches in to butcher 10 to 12 rabbits at a time.

Rabbits are an easy animal to care for, Joe says. They don't take much feed or room. He keeps his rabbits in pens on an acre of the 10-acre Farr back yard.

Joe is a member of the American Rabbit Breeders Association.

The Wabaunsee County 4-H'er especially enjoys meeting people in 4-H and is proud of the purple ribbons he has won at the state fair.

"4-H is a good learning experience," Joe says. "It's taught me how to meet people, how to socialize, how to teach kids. It's helped me to learn. It's just a lot of fun."

Gavel games are successful

Eight Reno County 4-H clubs participated in parliamentary procedure games held for the first time in that county. Each team drew for a parliamentary problem and presented a business meeting.

The morning ended with pizza for everyone.



Joe Farr demonstrates how to show a rabbit to a young friend.

State fair will feature first food quiz bowl

A food quiz bowl will be held at the Kansas State Fair for the first time this year. The bowl will begin at 10:30 a.m. in the area of the 4-H Encampment Building on the fairgrounds.

Lois Redman, state 4-H specialist, explains that the food bowl is a popular way for 4-H'ers to learn subject matter about foods and nutrition. It will help them grow and develop by giving them the opportunity to speak before an audience.

Hopefully the bowl will give more kids the opportunity to participate at the state fair, Redman says.

The food bowl will not replace the home economics judging contest, according to Redman. Method of selecting a food quiz bowl team is left up to each individual county.

Each county can send a team of four and one alternate to the state contest. Contestants must be 12- to 19-years-old before Jan. 1.

All of the questions for the bowl will be taken from 4-H foods and nutrition project materials. Counties who wish to participate must submit 10 questions by June 15 to one of the following home economists: Janet Rediker, Lyon County; Diane Helmuth, Douglas County; Diann Gerstner, Thomas County; Mary Jo Berger, Comanche; and Teresa Lang, Sedgwick.

Counties in the southeast area should select questions from the project

materials, "Neat to Eat Snacks" and "Snacks and Mini Meals"; southcentral, "International Foods" and "Teens Entertain"; northeast, "All American Foods" and "Breads"; northwest, "Fit It All Together"; and southwest, "Quick Meals".

The bowl will be single elimination. Twenty-four questions will be asked in the first round; 36 in the final round. Half of the questions will be directed to an individual. The other half of the questions will be toss up, where any team member can answer.

There will not be bonus questions, but five bonus points will be awarded when all team members have answered a question correctly. Ribbons will be awarded to the winning team.

Volunteers will be needed to operate the quiz bowl contest. Those interested in helping should contact the county Extension office.

Money For Your Treasury

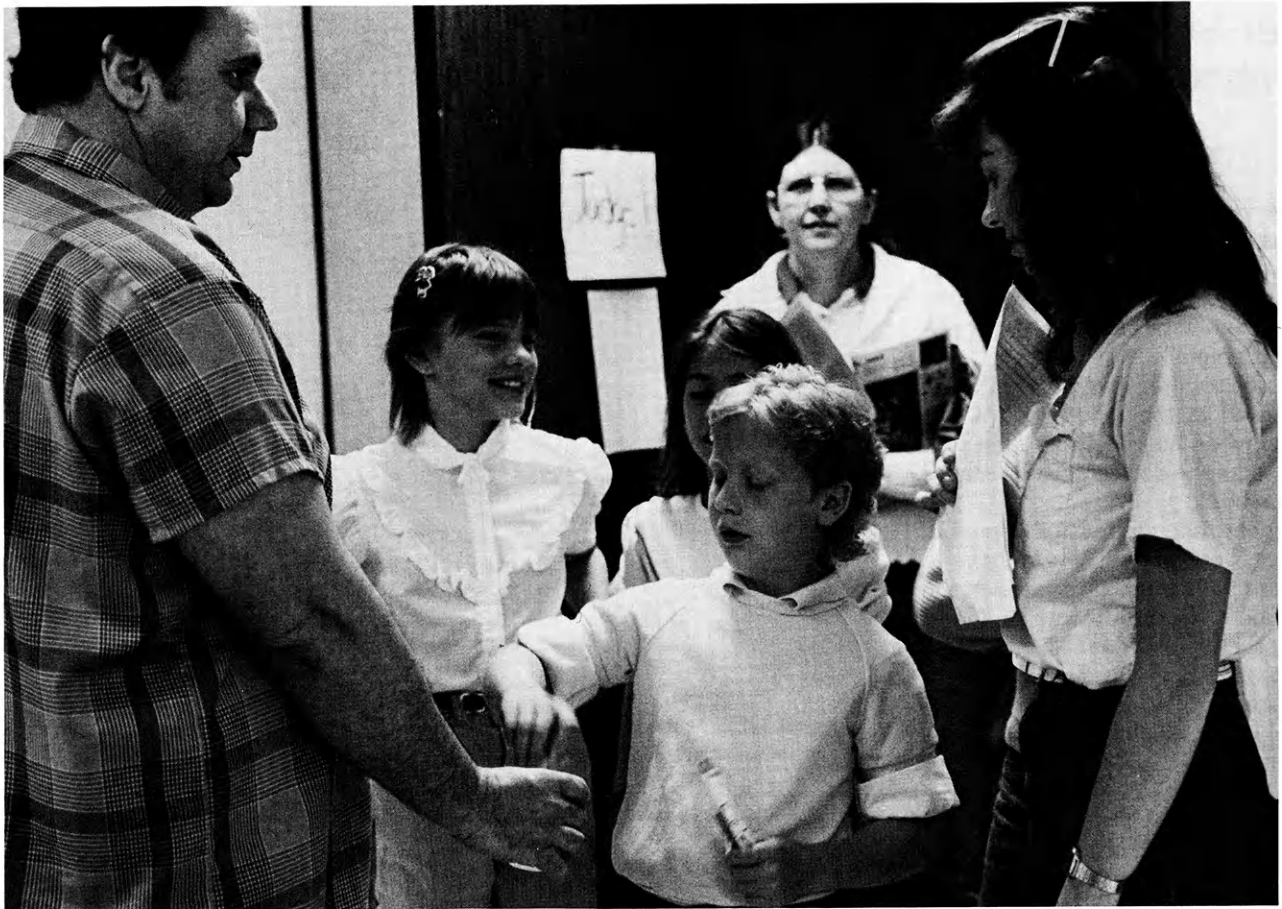
OVER 2 MILLION
Sunflower Dishcloths



WERE SOLD LAST YEAR BY MEMBERS OF
GROUPS, SOCIETIES, CLUBS, ETC.

THEY ENABLE YOU TO EARN MONEY FOR
YOUR TREASURY AND MAKE FRIENDS FOR
YOUR ORGANIZATION.

Sample FREE to Official.
SANGAMON MILLS, INC., Cohoes, N.Y. 12047
KJ Established 1915



4-H'ers draw for the office they will represent in parliamentary procedure games.

Gavel games improve meetings

by Joan Istas

Gavel games are improving club meetings in Saline County. SASNAK 4-H club members have participated in gavel games since they were started in Saline County in the fall of 1984, and Eldon Stauffer, community club leader, says club meetings are better as a result.

This year SASNAK had three teams competing in gavel games and the Space Agers Club, two.

Nancy Deckert, SASNAK member who participated in gavel games competition the last two years and coached a junior team this year, says gavel games helped her learn parliamentary procedure because she had to look up different motions.

Nancy became acquainted with parliamentary procedure when at the age of 10 she was elected parliamentarian of the Swinging 4-H Club.

"I knew nothing about parliamentary procedure, but Mom helped me," Nancy says. She has continued to learn about parliamentary procedure by holding a variety of club offices in SASNAK, where she transferred when the Swinging Club disbanded.

Asked this year to coach a junior team

(7- to 10-year-olds) for county gavel games competition, Nancy encouraged kids to sign up by telling them it was a fun activity.

She held four two-hour meetings to outline rules and to practice for competition.

In competition, the four junior team members, Trina Sahlfeld, Cindy Labes, Amy Webb and Sheila Balaun, drew for an office and conducted a business meeting. In that meeting, they were required to make a main motion, table a motion and call for a division.

They also took a 30-point test about parliamentary procedure.

Those in intermediate competition (11- to 13-year-olds) had to conduct the three motions required of the juniors and amend a motion, take a motion from the table and withdraw a motion.

Seniors, 14 years and older, were required to conduct those six motions and an additional three motions of their choice.

Nancy, who is president of the Saline County 4-H Council, the county-wide Ambassador group and her high school biology club, says parliamentary procedure is very important in getting the

whole group involved in the meeting, to maintain order and to keep discussions from dragging on.

She says it is difficult, as in the instance of her biology club, to conduct business when no one is knowledgeable about parliamentary procedure. With the exception of one youth who is a 4-H'er, none of the biology club members even knows how to make a motion.

Pam Van Horn, Saline County 4-H agent, says gavel games are held in Saline County because members of the 4-H Program Development Committee and several parents have indicated that parliamentary procedure is an important part of 4-H. Model meetings were discontinued over 10 years ago.

"It is important for 4-H club members to know how to conduct a business meeting," she says.

She anticipates club participation in gavel games to continue to increase.

Camp attendance is up

Barton County reports county camp attendance at Rock Springs Ranch from that county continues to increase. Last year over 70 kids from Barton County attended county camp.

Junior Leaders raise funds with skate

About 126 youths from Woodson, Neosho, Miami, Anderson, Greenwood and Allen counties attended an all night skate sponsored by the Allen County Junior Leaders Club.

The skate was the second sponsored by the Junior Leaders. About 100 kids attended the first skate a year ago east of Iola.

The 24 Allen County Junior Leaders planned the event. Brochures were mailed to 20 different counties and to all Allen County 4-H'ers 12 years of age and older. Movies were selected and food planned.

The Junior Leaders also set the admission price of \$5 and offered prizes for largest club attendance from Allen County, largest club attendance from outside Allen County, club coming the greatest distance, club bringing the most boys from Allen County and club bringing the most boys outside Allen County.

The skate was a lock in; doors were locked at 11 p.m. Anyone leaving after 11 p.m. was escorted to their car by a security guard.

Organizing the event was a learning experience for the Junior Leaders, says L.D. Wilks, who with his wife, Susie, serve as advisors to the Junior Leaders. The kids learn about organization, about planning an event and about the process of putting on a fund raising event.

The skating rink shares the proceeds with the Junior Leaders. This year the Junior Leaders Club cleared \$210. That money will be used for a club trip. The Junior Leaders went to Worlds of Fun in 1983 and on a canoe trip in 1985.

Outing is fun for 4-H'ers

The Franklin County 4-H Horse Club raised money for a trip to Oklahoma City last year by parking cars, having bake sales, a raffle drawing, and pony rides.

Highlights of the trip included visiting the National Cowboy Hall of Fame, the Oklahoma Horseshoeing School, viewing the dressage championships and touring the Faulkner Quarter Horse Farm, home of Quarter Horse halter champion, Impressive.

The group also visited the Lazy E Roping Arena, the largest covered arena in the U.S. There the 4-H'ers met Ben Johnson, John Wayne's famous movie partner.

"The trip was a lot of fun and an educational experience — it was well worthwhile," said sponsor Brenda Cox.

-Julie Mettenburg, reporter

Telling The Farm Story



FACT: Farmers constitute less than three percent of the total population.

FACT: The farmer's share of consumer's food dollar is 25 cents.

FACT: 21 percent of all jobs in this country are created by agriculture.

FACT: One-third of all cultivated acres are under conservation tillage.

Are you aware of these and other important agricultural facts? If you're not urban consumers, you probably don't know these facts.

As young agricultural leaders it is your job to know and communicate the farmer's story to the non-farm public. Don't wait for tomorrow. Now is your time to be a spokesperson for agriculture.

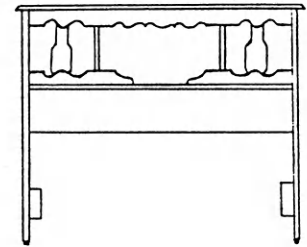
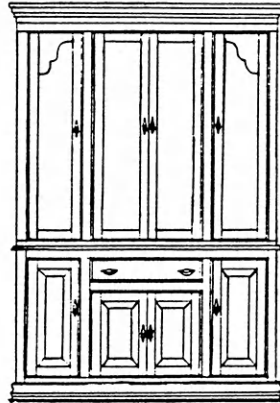
Contact your county Farm Bureau to learn how you can help tell the farmer's story.

KB Kansas Farm Bureau, Inc.

2321 Anderson Avenue, Manhattan, Kansas 66502 / (913) 537-2261

Free!

4-H Woodworking Plans from YOUR LUMBER DEALER



**These plans
are available:**

**Cherry Wood Cabinet
by Chris Bartel
Reno County
Buhler 4-H Club**

**Walnut Headboard
by Trent Hallagin
Ellis County
Sunflowers 4-H Club**

For your free plans, see your lumber dealer; he will also help you select the material you need.

AMERICUS
Americus Building Materials

ERIE
Johnson & Son Lumber Co.

IOLA
Klein Lumber Company

NICKERSON
The Home Lumber & Supply Co.

ASHLAND
Don Spotts Lumber Company

EUREKA
Home Lumber & Supply Co.

JOHNSON
Seyb-Tucker Lumber and Implement Company

NORTONVILLE
Nortonville Lumber, Inc.

ATCHISON
Beverly Lumber Co., Inc.

FREDONIA
Schoolcraft Lumber Co.

JUNCTION CITY
Builders Lumber, Inc.

OFFERLE
Offerle Co-op Grain & Supply Co.

BELLEVILLE
Belleville Lumber & Coal

GALVA
Galva Lumber, Inc.

LaHARPE
Diebolt Lumber and Supply

OTTAWA
Hubbard Lumber Company, Inc.
Ottawa Lumber Co.

BELOIT
Peoples Lumber Co.

GARDEN CITY
Fankhauser, Inc.

LANSING
Lansing Lumber, Inc.

PARSONS
Woods-Seward Lumber Co.

BLUE RAPIDS
Blue Rapids Lumber Company

GREAT BEND
Everitt Lumber Co., Inc.

LARNED
T.M. Deal Lumber Co.

PITTSBURG
Broadway Lumber Co., Inc.

CLAY CENTER
Fullington's

HARPER
Town & Country Lumber Co.

MANHATTAN
Cash Lumber & Hardware

PRATT
W.R. Green Lumber, Inc.

CONCORDIA
Mid-West Lumber Company

HUTCHINSON
Kightlinger's

MANKATO
Mid-West Lumber Company

RUSSELL
Schwaller Lumber

EL DORADO
Home Lumber & Supply Co.

INDEPENDENCE
Sandott Sentry Home Center

NEWTON
Claassen Hardware & Lumber Co.

SALINA
Easterday-Boster Lumber Co.

EMPORIA
Americus Building Materials
Fleming Lumber & Material Co.
Mark II Lumber

SCOTT CITY
Stephens Lumber Company

OTHER PLANS AVAILABLE

Accent Table
 Barn Cupola
 Bird Feeder
 Bicycle Parking Rack
 Bluebird House
 Boot Jack
 Car Creeper
 Chain-Saw Box
 Child's Toy Wagon
 Computer Desk
 Deacon's Bench
 Dresser Valet
 Gun Rack
 Hall Tree
 Martin Bird House
 Microwave Stand
 Night Stand
 Oak Chair
 Paper Towel Holder
 Patio Table
 Pedestal Desk
 Pet Food Bin
 Plant Stand
 Redwood Cart
 Rolling Pin
 Revere Coat Rack
 Rocking Horse
 Stereo Case
 Spoon Rack
 Toy Boat
 Wooden Stool
 Work Table
 Wren House
 Tool Box

ST. JOHN
 English Lumber &
 Supply Co., Inc.

SYRACUSE
 Hess Lumber Co.

TOPEKA
 Whelan's Inc.

ULYSSES
 Sunflower Lumber Co., Inc.

WICHITA
 Star Lumber & Supply Co.
 (two locations)

WILSON
 Hoch Lumber Company

WINFIELD
 A.B. Everly Lumber Co., Inc.
 Everitt Lumber Co., Inc.

WRIGHT
 Right Co-op Assn.

ZENDA
 Farmers & Builders Lumber Co.

4-H'er builds cabinet

Chris Bartel began building toy tractors and trucks in the 4-H woodworking project when he was 10. Today, he builds furniture in his father, LeWayne's shop in Hutchinson.

The Buhler 4-H Club member's most recent project was a cherry wood cabinet which was awarded a purple ribbon at both the county fair and the Kansas State Fair.

Like all his woodworking projects, Chris, with his father's help, began by



Chris Bartel shows the cherry wood cabinet he made.

designing the plans for the cabinet.

"I had some ideas and Dad and I sat down and drew them up together," Chris says. "The plan has to be complete enough to build."

Chris says building the cabinet is the toughest woodworking project he has undertaken, thus far. "It's just bigger; it took longer than any other project I've done," the Reno County 4-H'er explains.

Chris found making the top of the cabinet the hardest part of the project because he had to keep the lumber straight while it ran over a shaper.

He especially enjoyed staining the cabinet and spraying it with lacquer. And he has been rewarded with many compliments since he finished the cabinet.

Chris uses lumber from his Dad's shop for his woodworking projects and reimburses LeWayne later. The cabinet was an expensive project. Hinges alone cost \$18 a pair. Chris estimates he has \$700 of materials in the cabinet.

LeWayne has been Chris' woodworking teacher throughout Chris' years in 4-H. He is a demanding teacher.

"Dad is the hardest, toughest teacher I ever had," Chris says.

Chris has promoted the woodworking project by giving talks at his club and county club days.

"Woodworking is interesting to do. I like the end product," he tells 4-H'ers.

Are you in a pickle? Try Picklepower

There are times when everyone gets "in a pickle." 4-H'ers in Harvey County have the opportunity to practice thinking about how to get out of pickles at the Picklepower Contest.

Held at 4-H Club Day, Picklepower participants are given two situations (probable pickles they'd get into). They choose one they'd like to deal with, then sign up for a time to present their solution to a judge.

The judge evaluates them on their

thought process: Have they considered numerous alternatives? Are they willing to suffer the consequences of their decision? Were they able to communicate their solution verbally?

Everyone who participates gets a real pickle (dill are the most popular) and a certificate. However, two are chosen from both the junior and senior division for top awards in the Picklepower Contest.

Club celebrates 50th

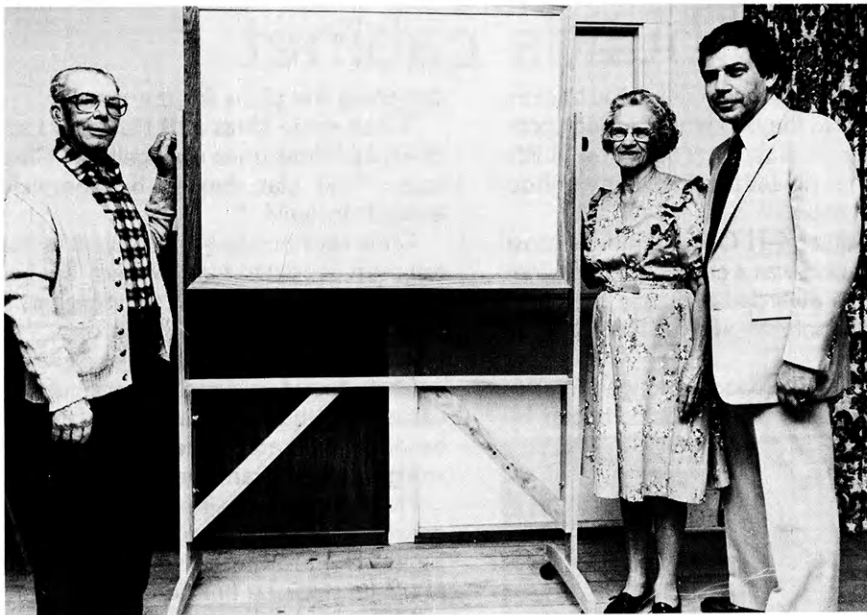
Richland Boosters 4-H Club members of Ford County celebrated the club's 50th anniversary recently with a potluck dinner and meeting for past and present members.

The club was named after the Richland Valley School and the kids who went there.

Members brought souvenirs, record books and trophies earned throughout

the years. Past community and project leaders shared special memories.

Norma Jean Hamilton, charter member, was honored for the work she has done for the club the past 50 years. Other charter members who attended the celebration were Vera Caskill McDermott, Andrew Mike Stauth, Norval Lembright, and Frank Davis, Jr.



Clarence Alpers and Ruby Schrader are presented the combination bulletin-board by Leon Dunn.

4-H'ers recognize leaders

Jolly Workers 4-H Club members of Stafford County recently recognized former community club leaders Clarence Alpers and Ruby Schrader.

About 100 club members, former members and 4-H supporters gathered for the potluck dinner at the Hudson Community Hall. Darrell Breising, Manhattan, who was a club member when Alpers and Mrs. Schrader were community leaders, helped dedicate a combination bulletin-board in honor of the two long-time leaders. The board was purchased with funds donated by Breising and the Jolly Workers 4-H Club.

The board will be left in the community hall where it will be used by the club and community groups who also meet there.

Alpers was a community club leader for 25 years and Mrs. Schrader a community club leader and sewing leader for 37 years.

Breising, who donated funds to honor the two leaders, said he wanted to thank them for the part they played in making his life successful. Now vice president of education at the American Institute of Baking in Manhattan, Breising said Alpers and Mrs. Schrader helped make 4-H possible in the community where he grew up.

Because of 4-H, Breising said, he learned to stand up and speak before groups at an early age. Today he speaks before groups worldwide.

4-H taught Breising responsibility and the ability to organize. As club president for seven years and 4-H Council president, Breising developed leadership qualities. He has used the parliamentary procedure he learned in the community club to chair various community and civic organizations, including the Manhattan Rotary Club.

Leon Dunn, a 4-H leader in the club today, said because of dedicated people like Mrs. Schrader and Alpers, many members of the Jolly Workers have gone on to achieve success.

He noted that former club member Paul Hitz was one of the first engineers on the space program.

The Jolly Workers 4-H Club was organized in 1937 by Maurice Francis upon his return from the National 4-H Conference in Washington, D.C.

-Jennifer Dunn, reporter

4-H trivia bowl is a hit

A 4-H Trivia Bowl was part of Cloud County's 4-H Achievement Night. The bowl, which involved parents, leaders and community club members, consisted of three rounds. Each correct question was worth five points. Five points were subtracted for each wrong answer.

Questions included:

How many boys and girls can Rock Springs hold during the summer? 700

What town is Rock Springs nearest to? Junction City

Who is the executive director of the Kansas 4-H Foundation? Merle Eyestone
Boys and girls who wish to join 4-H

must be between the ages of? 7 and 19

What is the home economics project with the largest enrollment? Arts and crafts


Where are the two Clovia houses in Kansas located? Kansas State University and Fort Hays State University

How many 4-H projects are listed on the enrollment card including phases? 278

The 4-H year in Kansas begins? In October

How many leaves are on the 4-H four leaf clover? Four





The Best Food Store In Town!

Our People Make it Happen!

4-H roundup featuring the southcentral area

Sweep 'N-Creep is the name of the Hesston 4-H Club's annual money raising event. 4-H members and parents meet to sweep the parking lot of a local bank once a year. Afterwards they enjoy a hayrack ride and weiner roast in the country. Among activities have been ghost stories and haunted walks.

Mother's Night and Father's Night are annual events for the Richland Livewires 4-H Club of Harvey County. Mothers are recognized at the May meeting and receive a carnation. Fathers receive a sack of peanuts at Father's Night, usually held in January.

The eight members of the Florence Jayhawk 4-H Club do many community service projects. In January, the club planted a thornless honey locust tree in the park in downtown Florence. Each spring the club purchases wooden barrels for Florence's Main and plants flowers in them.

Community service projects include collecting papers for the county-wide Junior Leaders Club paper drive, contributing food to the local food bank and serving the concession stand at all Florence Middle School home football and basketball games.

Club members enjoy going Christmas caroling and taking plates of cookies and fruit to shut-ins. During the month of July, the Jayhawk 4-H Club provides the program for the local senior citizens' meeting.

-Julie Sellers, reporter

The Halstead Cloverleaf 4-H Club of Harvey County held a Day Camp for the club's younger 4-H members in July of last year. A special program on parliamentary procedure and judging was presented by Cindy Siemens, Harvey County 4-H agent. The club's junior leaders served as counselors and leaders and parents led craft activities as well as a scavenger hunt and nature walk.

A 4-H Teen Lock-In was held for Shawnee County 4-H'ers in the eighth grade and above. Programs on self-esteem, parent-teen relationships, leadership and dating were part of the evening. A dance was followed by pizza and games.

Geary County 4-H members recently spent a Sunday afternoon learning livestock judging skills.

The day began with judges giving type demonstrations on horses, swine, beef and sheep to show 4-H'ers desirable characteristics of each species.

The 37 4-H'ers divided into three groups to judge five classes: horses, beef heifers, market steers, market lambs, and market hogs. Each 4-H member had the opportunity to present oral reasons and explain to the judges why they placed the class as they did. The day ended with a hamburger fry and potluck supper.

An Easter egg hunt was organized by members of the Golden Buffaloes in Sumner County as a community service project.

The event was held in Argonia's Salter Park. 4-H'ers hid 600 eggs, registered children in four age groups, led games for early arrivals and handed out prize money donated by Argonia merchants.

One Easter bunny and 120 children attended the event.

Rocketry is a new project for Theaker 4-H Club members of Cowley County. Five 4-H'ers participated in the project in 1985 and 12 are enrolled this year. The project consists of selection of kits, building the rockets (including gluing, sealing, painting and placing decals) and launching the rockets. Safety is stressed during launch. 4-H'ers calculate the speed and height the rockets travel. Rockets are displayed at the county fair.

-Jay Doughten, reporter

The Lucky-H 4-H Club of Reno County sponsored two CPR training clinics for people in the community.

Shawnee Riders 4-H Club member Jackie Maupin has been awarded the \$300 Vista Restaurant 4-H Scholarship for Shawnee County 4-H'ers. The daughter of Mr. and Mrs. Donald Maupin, Jackie is a senior at Washburn Rural High School in Topeka. She has served as secretary and president of her 4-H club and been active in the county-wide horse club. She received the 4-H Key Award in 1985. The scholarship is established with the Kansas 4-H Foundation.

Jackson County 4-H Junior Leaders know how to relieve the winter blahs. A large group of teenagers and their sponsors took to the slopes at Winter Park, Colo., for four days of fun in the snow. Experienced skiers took right to the slopes and beginners took lessons before attempting harder slopes. 4-H'ers spent days skiing and evenings swimming, skating, playing volleyball, using the weight equipment or sauna, playing cards, and playing basketball. The group arrived home extremely sunburned, but all had a great time.

-Traci Nightingale, reporter

The Ellis Sunflowers 4-H Club, Ellis County, is paying half of county camp fees at Rock Springs Ranch and half of Discovery Days registration for club members. A club trip to the Cosmosphere in Hutchinson also is planned this year. Club members raise funds by serving at concession stands.

Summer means fun for the Crawford County Lucky Riders 4-H Club. This summer the Lucky Riders will sponsor four county shodeos consisting of the following events: showmanship, horsemanship, western pleasure, ride-a-buck, egg and spoon, and timed events. A running total of each event will be kept and an awards banquet will be held at the end of the shodeos.

Lucky Riders also will sponsor a series of clinics on grooming, showmanship, horsemanship, timed events, roping, and care of horses.

-Anna Deplue

Shamrock 4-H Club members of Cherokee County bowled to raise \$24.11 to fight multiple sclerosis. Total points earned in a game were matched with money by the 4-H'er. High bowler for the event was Stephine Clouser, with Brent Maxwell second and Becky Johnson, third. Low scores were compiled by Eric Spieth, Jason Wells, Monica Overman, Brian Andrews, Tammy Pritchett, Kim Correll, and Mara North. High and low point bowlers were awarded candy bars.

The office of card chairman in the Waterville Busy Beavers 4-H Club of Marshall County involves one more child. The card chairman announces birthdays of club members at club meetings and sends cards to members who are ill.

Finney County 4-H'er Keith Landgraf is the Kansas winner of the 1986 American Beekeeping Federation essay contest.

Members of the Shawnee County Shawnee 76'ers 4-H Club cake decorating class baked and decorated cakes for the 125th birthday of Kansas. The cakes were displayed at the state capitol on Kansas Day and served to visitors.

Contributions are welcome

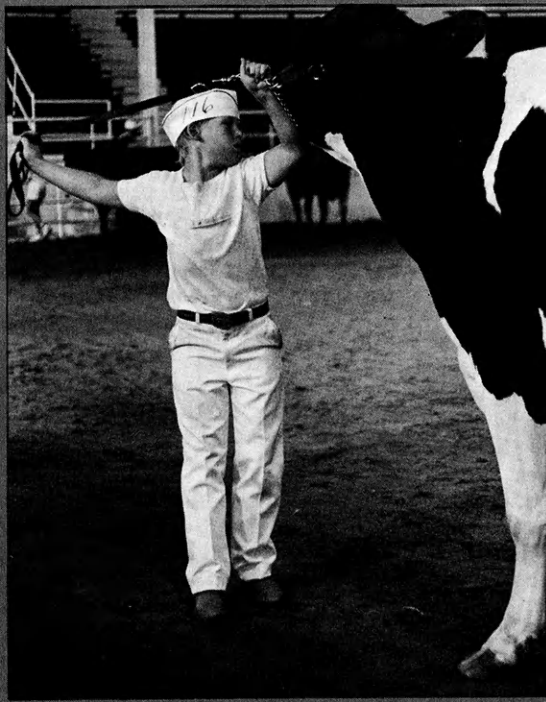
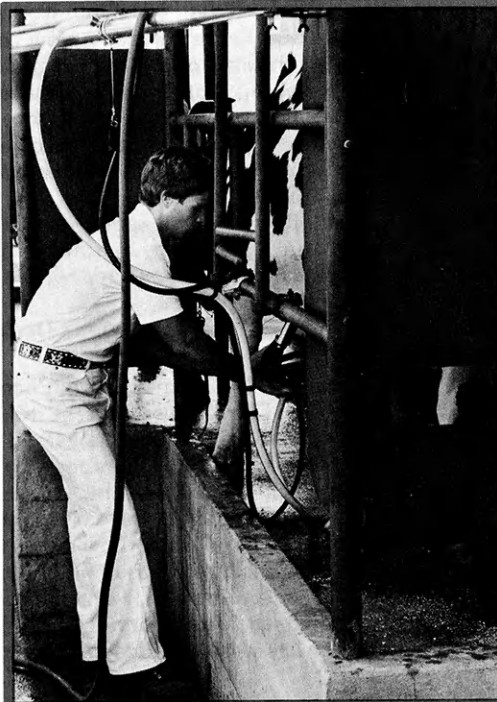
Contributions for this page and editorials for the editorial page are welcome. Of special interest for 4-H Roundup are fund raising ideas, community service, stories that show giving, club projects, ideas for strengthening clubs and recruiting new 4-H members. Club reporters especially are encouraged to contribute.

The southwest area will be featured in the July 4-H Roundup; southeast, August; northwest, September; and northeast, October. Material for area roundups must be submitted 45 days previous to date of publication which is the first of each month.

Material should include the name, address and phone number of the contributor and should be sent to the Kansas 4-H Journal, 116 Umberger, KSU, Manhattan, KS 66506. For the return of pictures, include a self-addressed, stamped envelope.

Non-Profit Organization
U.S. Postage
PAID
Permit No. 86
Salina, Kansas

**Serving the Kansas 4-H club program for over 35 years:
the Kansas 4-H Journal, a project of the Kansas 4-H
Foundation.**



**All-Breeds
Dairy
Show
Returns
to Salina
in August**

