

KANSAS

June, 1959

4-H Journal

The 4-H Family Magazine

Kansas 4-H Foundation, Inc., Publisher

v. 516

In This Issue

New Recreation Awards
Page 3

Clothing Judging
Page 5

H. I. Project
Page 6

Recreation Tips
Page 7

Booth Hints
Page 8

Thanks to Sponsors
Page 10

New RSR Buildings
Page 11

Dairy Fitting Tips
Page 14 & 15

Co-op Cottage To Be Built
Page 16

Ag Field Trip
Page 16

W. Camp Cleanup
Page 19

15 Cents



Kansas Dairy Princess, Jane Raymond, Montgomery County, poses for a June Dairy Month picture with one of her father's prize Guernsey cows. For more details, see page three.

Boys! Girls!

Get Prize Livestock
and Sewing Machines
for your project . . .



8th Annual Gooch

Red Circle "No Money" Auction

**2 Big Fun-
Packed Days**

JULY 24th & 25th

CK RANCH

BROOKVILLE,
KANSAS

Plan now to participate in this famous "no money" auction and all-round good time. . . at the big CK Ranch. You can buy the fine animals and sewing machines offered only with Gooch Red Circle points that are on all bags and packages of Gooch's Best Feed and Foods. So, better start saving them now so you can take home a fine animal or sewing machine.

ANNUAL ACHIEVEMENT AWARD—1st Prize, \$300 College Scholarship. Buyers from last year's Red Circle Auction will compete for 29 cash awards totaling \$470 in addition to the Gooch Grand Award of a \$300 College Scholarship. If you're a successful bidder at this year's auction, you may win an Achievement Award next year.

Choose from 90 Prize Animals — Plus 10 Morse Sewing Machines

40
Purebred
**STEER
CALVES**

5
Registered
**HOLSTEIN
HEIFERS**

10 Morse
Super-Dial
**SEWING
MACHINES**

5
Registered
**HEREFORD
HEIFERS**

40
Registered
GILTS

Plan now to attend. Wear your Western clothes and have a real bang-up time. . . plus the opportunity of bidding for these fine animals and sewing machines.

"Buy" these highly bred animals or the sewing machines with GOOCH RED CIRCLE POINTS from all Gooch's Best Feeds and Food Products.



Ask any Gooch Food or Feed Dealer for a copy of the rules and list of animals to be sold.

**GOOCH'S BEST FEEDS
GOOCH'S BEST FOODS**

SALINA, KANSAS
LINCOLN, NEBRASKA

DALHART, TEXAS
COUNCIL BLUFFS, IOWA
VICKSBURG, MISSISSIPPI

Seven-Up Bottlers To Provide Rec. Awards

Kansas Seven-Up Bottlers will sponsor a program of awards for county and state winners in the 4-H recreation activity, effective immediately.

Award winners will be selected this fall at the time county winners are nominated for state awards.

The awards include \$25 for the purchase of recreation equipment for each of the top ten clubs submitting the best general recreation program report. A maximum of six 4-H Club members and two adult leaders from a top club will receive an educational trip in the fall.

Educational trips are also provided for ten 4-H members, selected on the basis of their outstanding participation in the recreation activity.

Certificates will be awarded one county winner (individual) in each county.

Kansas Seven-up Bottlers have been consistent advertisers in the Kansas 4-H Journal since its establishment. They plan to continue their advertising program.

Kansas 4-H Journal

Vol. V, No. 6 June, 1959
Dale Apel.....Editor

Editorial and Business Office

Phone PR 6-8811 Ext. 208

Manhattan, Kansas

Published Monthly By

KANSAS 4-H FOUNDATION, INC.

BOARD OF TRUSTEES

W. Dale Critser, Chrm.....Wichita
Clifford Hope, Vice Chrm.Garden City
R. B. ChristyScott City
Harry Darby.....Kansas City
W. Laird Dean.....Topeka
A. D. Jellison.....Junction City
Harold E. Jones.....Manhattan
George B. Powers.....Wichita
Roger E. Regnier.....Manhattan
E. B. Shawver.....Wichita
Fred D. Wilson.....Andover

Use of the 4-H name and symbol approved by the Secretary of Agriculture of the United States, January 23, 1951, under the provisions of the law as reenacted by Sec. 707 of the Act of June 25, 1948 Public Law No. 772, 80th Congress (10 USC 797)

Entered at the postoffice in Lawrence, Kansas, as second-class matter under the Act of March 3rd, 1879.

Advertising rates and circulation data on request.

Group subscriptions \$1.00 per year.
Individual subscription \$1.50 per year.
Single copy 15 cents.

Cover Story

June is dairy month. Many counties will, this month, be holding county contests to determine county dairy princess.

Local 4-H Clubs are urged to submit nominations for these county contests. For more details on the contest and awards to be given, see the Kansas Dairy Association advertisement in the May Kansas 4-H Journal.

Jane Raymond, Kansas 4-H Journal cover girl for June, was a Montgomery county 4-H member. She is now a sophomore at Independence Junior College.

Letters

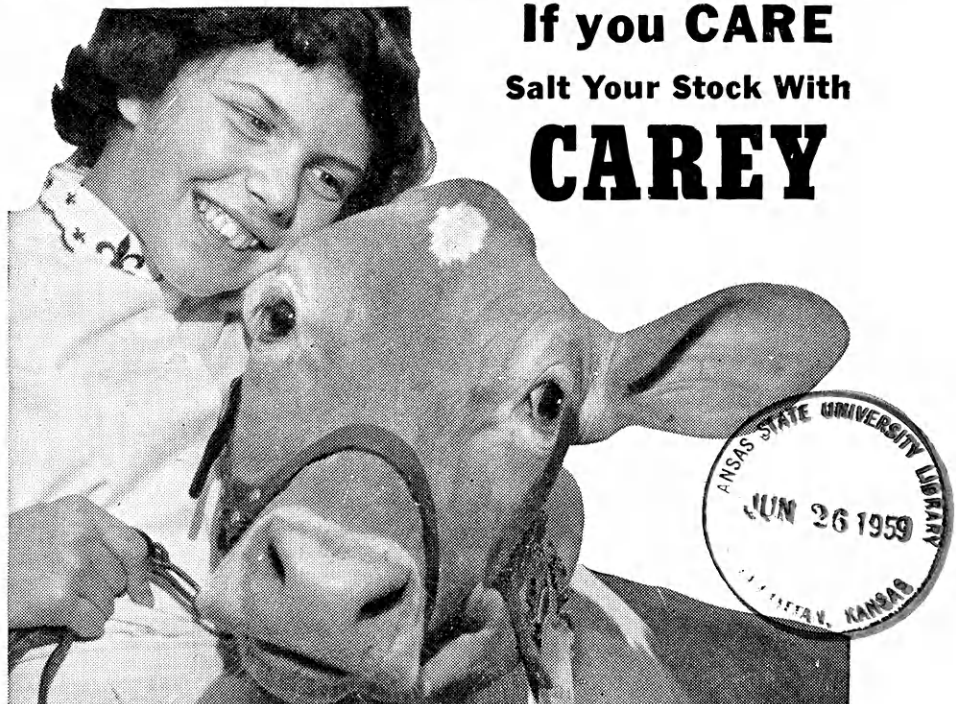
If you have ideas or 4-H Club experiences that you would like to write about or if there is something you like or dislike about the Kansas 4-H Journal, write to the Editor, Kansas 4-H Journal, Manhattan, Kansas.

Leaders, parents, members, agents and 4-H friends are invited to write.

Nice Letters from Nice People

We enjoy sponsoring the 4-H Journal because our club members show so much appreciation

(Continued on page 9)



If you CARE Salt Your Stock With CAREY

CAREY TRACE MINERALIZED SALT CAREY MINERAL SUPPLEMENT WITH SALT

Yes, if you want to keep your animals "in the pink" . . . giving you top production . . . then supply other minerals, too, when you salt them. Agricultural tests demonstrate both the need for minerals and the payoff in profits. And the easy, economical way is to salt your stock with mineralized Carey Salt. For just a few extra pennies Carey gives you these important advantages:

1. Mineralized with trace quantities of pure Iron, Iodine, Manganese, Copper, Cobalt and Zinc—plus Calcium and Phosphorus in Carey Mineral Supplement with Salt.
2. Flavorized with tasty feeding molasses that encourages animals to lick needed amounts.
3. Stabilized with compatible minerals that keep the same analysis from first lick to last.

PHENOTHIAZINE—to control internal parasites—also now available in Carey Trace Mineralized Salt with Phenothiazine. 50-, 100-lb. bags.



Both available in 50-lb. blocks or bags and 100-lb. bags.

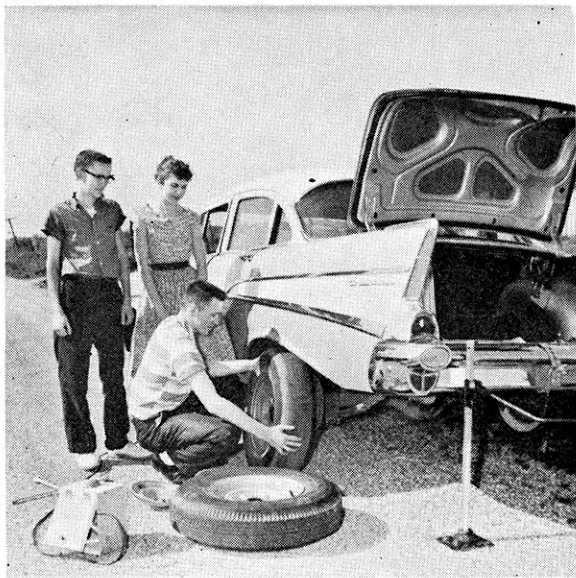
CAREY
The Carey Salt Company, Hutchinson, Kansas

AUTO PROJECT MEMBERSHIP RISES



The Labette County auto project membership roster showed an increase of 9 members this year, bringing the total membership to 30. Fifteen of the 21 members who participated in last year's sessions re-enrolled this year.

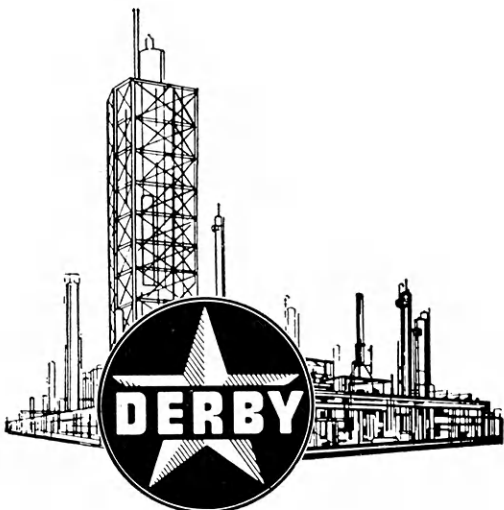
Various activities are scheduled for this year's auto project members. Car keeping will be emphasized for the beginners by County Club Agent Willis Jordan. The beginners will learn the simple maintenance of their car.



Other county-wide meetings to be held by Jordan will include a session on lubrication, fuel systems and ignition, a car care demonstration meeting and a roдео at the county fair.

In the photograph at the upper left, Larry Richardson is practicing the art of changing a tire the right way. Billy Foreman and Ardis Jordan watch as Richardson places the tire on the wheel at the lower left.

- **DERBY ULTRA-QUALITY GASOLINES**
- **DERBY FLEX-LUBE MOTOR OILS**
- **DERBY LUBRICANTS AND GREASES**
- **DERBY TRACTOR AND DIESEL FUELS**
- **DERBY ROAD AND ROOFING ASPHALTS**



DERBY REFINING COMPANY
Wichita, Kansas.



No. 1
Does the pattern have a right or left direction? An up and down?

No. 3
If the design would not match would this non-matching at seam be as evident as it might be in other designs?



Every Girl Does Judging

Every 4-H'er does judging whether or not you enter a formal contest. You decide what pattern to use for your material, if the material looks well on you and will suit your needs. Personal preference as to color and design enters into your choice.

One Problem

When you enter a judging contest you must train yourself to consider only the problem at hand in the terms given, regardless of personal preference. Remember, too, you may learn from this, facts that will show you that your personal preference may not be the best design for the pattern and the person.

Size of Plaid

Consider these four plaid dresses. The problem is: Which plaid is in keeping with the size of the small girl shown? You are to consider only SIZE of plaid.

Think through what you already know about plaids and their proper proportions. Jot down these ideas on paper and apply them to each dress. Several additional ideas you should consider about each plaid are listed under the pictures. Now, putting together what you knew and the ideas given here, how do you rate these?

The Answer

The specialists rated them 1, 2, 4, 3 because—

No. 1 follows the design principle that size of plaid is best when scaled and proportioned to size of wearer. Both the lengthwise and crosswise design is in proportion to the small girl.

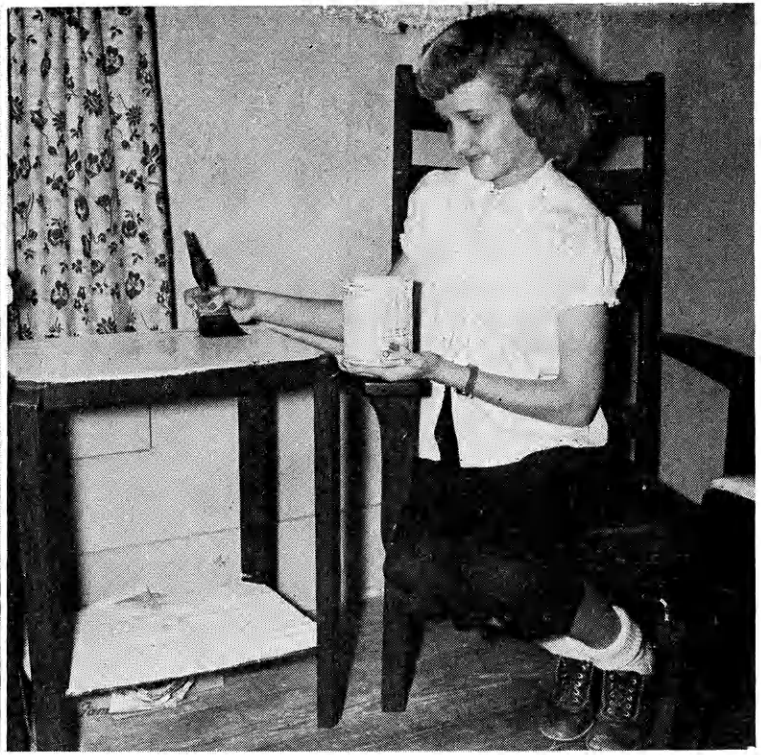
All the other plaids are of large repeats. The repeat in No. 2 is much smaller than that in 3 or 4. In 4 the repeat is almost too large for the bodice of the dress. In 3 the plaid is so large that no complete lengthwise pattern of it can be placed on the small girl's body.



No. 2
May pattern piece be laid either up or down?

No. 4
Would there be a loss in fabric because of matching designs at seams?





There are many aspects to 4-H home improvement. Left, Ardith Nusser, 12-year old Morton county 4-H'er, keeps her room neat and clean as part of her home improvement project. Right, it isn't always possible

to buy new furniture for a home improvement project so Ardith painted portions of her dark furniture a contrasting color.

Ardith is proud of her attractive clean dresser—finds it pleasant to use.



H. I. Is Often Do-It-Yourself

This was the first year in home improvement for Ardith Nusser of the Watch-Us-Grow Club, Morton county. She did enough, however, to be selected as county home improvement winner.

This year she plans to do another room in her family's home as well as add a few touches to her own bedroom.

The curtain material and bed-

spread were just about the only items Ardith purchased. The rest she did herself with what she had at hand. She made a wastebasket of an ice cream carton—painting it to match the decor of the room.

She made her curtains of black and white denim material. She repainted the dark wood trim in her room a turquoise color—the same for the floral wallpaper.

Below left, Ardith Nusser cut down the head of an old fashioned bed for the foot of her new one, used the old foot for the head. Here she makes her bed as part of her project. She uses a red throw pillow and rug as an offsetting color. Right, Ardith made the curtains for her bedroom window.





Game Corner

By Harlan Copeland
State 4-H Office

Wins Notebook

The game of the month this month was submitted by Valetta Moore of the Murdock Wranglers, Butler County. She receives a three ring notebook for use as a recreation scrapbook.

This is her suggestion for 4-H recreation. "A fortune teller and two helpers surprised 4-H'ers by telling them secrets about themselves. Each one stood in front of the crystal ball and was told about his hobby. (Stand-up posters showing a member's hobby and picture were given to him. Parents supplied the information.) Joye Bachelder, adult recreation leader, Betty Schwemmer, and Connie Bachelder in gypsy costumes told their fortunes.

Stunts and Challenges

How about some stunts and challenges for recreation this month? Here are a few suggestions.

Place one hand where the other hand cannot reach it (on the elbow).

Chinese get-up—sit back-to-back in pairs, with arms locked. Try to get up. First pair wins.

Cracker Relay—two people each eat a cracker. See who can whistle first.

Catch Penny—put two pennies on elbow. Shake off and catch with same hand.

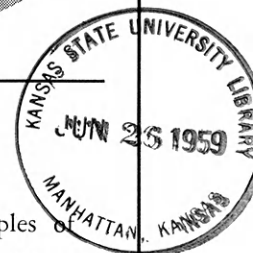
Make a clockwise circle on the floor with right foot and at the same time, a figure six in the air with right hand.

Grasp nose with right hand and right ear with left hand. Change hands over to left ear with right hand and nose with left hand. Reverse five times without missing.

Chicken fight — two players stand in circle about eight feet in diameter drawn on ground. Each stands and grasps own ankles. Then each tries to push the other out of the circle or off balance. One player loses when he or she leaves circle, releases either hand, or touches ground with any part of body other than feet.



Two good signs that Kansas agriculture is progressing



Both 4-H and Co-op are examples of teamwork in action. Both use it without sacrificing the individual. In fact, it is teamwork to the benefit of each individual, the beginner and the established farmer.

Teamwork means sharing. For the young man or woman in 4-H it means sharing in knowledge, experience and projects. Your co-op carries this idea of sharing one step further.

Through fair prices and patronage refunds your cooperative helps toward a more bountiful life on the farm.

Today and Tomorrow, Successful Farming
and Co-ops Go Hand-in-Hand

Consumers Cooperative Association
Kansas City, Missouri



Tips For Good 4-H Fair Booths

By E. G. Warner

KSU Assoc. Extension Editor

The booth interprets 4-H Club activities to the viewers. Have just one idea. The purpose of the booth is to tell the public in a graphic way the story of club work. Remember that a clever idea simply presented is generally the most effective.

Here, in outline form, are some tips for you for making 4-H Club booths.

Subject—choose one which will attract and hold attention and tell the story quickly and convincingly.

Plan—list ideas, make rough sketches, have a center of interest.

Signs—use a short catchy title, utilize different sizes and shapes, keep lettering small but large enough to read, keep lettering simple.

Photographs—enlarge dull finish photos for impact, mount near eye level.

Lighting—keep the booth well lighted, use the light effectively.

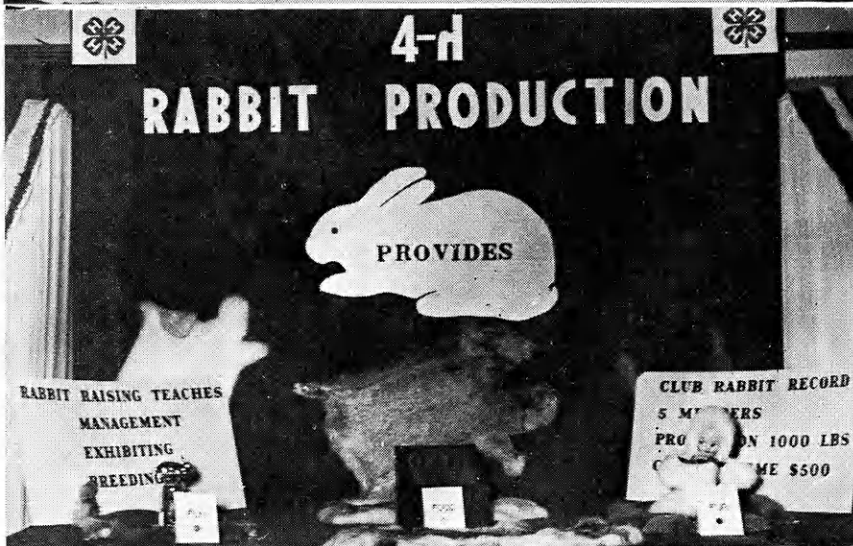
Action—consider live objects, use flashing lights, use slides or tape recorders.

Color—bright colors catch the eye, develop contrast between objects and background, colors should be related to harmonize.

Five Points For A Good Booth

- 1—Keep it simple
- 2—Make it attractive
- 3—Keep words down
- 4—Use color, light and action
- 5—Use one idea and stick to it

The booth at the top left is not cluttered, can be seen at a glance, has one center of interest and is tied in with 4-H work. Center, this booth is tied directly with 4-H and shows real value for 4-H; the lettering is good and there is one theme. Bottom left, this booth does not tie in as directly with 4-H as much as it might but it has originality, one theme and it is easy to see what they mean. Below, this booth is simple, has one theme but might be criticized for not tying in directly with 4-H.



Letters

(Continued from page 3)

of it and have expressed it in so many ways.

Frank O. Oberg
Union State Bank
Clay Center

Congratulations on another fine issue for February. I'd like to send our friends at Hercules Powder Company a copy and call their attention to page 10.

Ty Thompson
National Committee on
Boys and Girls Club Work

Every issue of the Kansas 4-H Journal is excellent. We look forward to seeing the good material you include and also how well you tell the story. Could you send me the picture at the top of page 3 of the March issue?

Fern Shipley
Federal Extension Service

I am glad to enclose a check for the sponsorship of the 4-H Journal for the folks in Dickinson county. You really have a nice magazine and I enjoy reading it.

M. C. Gugler
The Farmers National Bank
Abilene

I feel sure that everyone has appreciated the wonderful job the Kansas 4-H Journal is doing in communicating the 4-H story to the folks in Kansas. It is most difficult to measure the value of a magazine like this one in dollars and cents.

John W. Banning
Federal Extension Service

Stan Meinen has just passed along a copy of the Kansas 4-H Journal. It is an excellent publication and I want to add my congratulations to those you have already received from the many folks throughout the country.

Ted Hutchcroft
National 4-H Club Foundation

I was especially interested in your story of John Carlin. I know many of our 4-H members know of the honors which have come to John. A story like yours on

(Continued on page 18)

SINKING FAST....



Sound money is the foundation of a free enterprise system. When inflation destroys the value of money, it destroys the basis for private operation of the economy and forces the substitution of government controls.

What does this mean to you? It means that if inflation destroys the private competitive enterprise system, you could lose your freedom and eventually your property through the process of political controls replacing economic law. This could happen—it has happened in other countries.

Those who push increased government spending at the expense of the government going further in debt are really promoting inflation—regardless of their objectives.

Inflation can be stopped, but only when it is understood that dollar depreciation hurts everyone. Inflation can be stopped, and the time is now!

Kansas Farm Bureau

105 County Farm Bureaus
Working Together



Members and leaders of the Sandy Hill Club, Sherman county, serve coffee and cake to the employees of the First National Bank in Good-

land in appreciation of the bank's sponsoring the Kansas 4-H Journal.

4-H Clubs Thank Sponsors

The Kansas 4-H Journal is now sponsored in 102 Kansas counties by one or more local business men or groups. For a complete list of the Kansas 4-H journal sponsors see the March issue of the magazine.

Pictured on this page are some of the things various 4-H Clubs have done to show their appreciation to the sponsors. Your club may wish to do

Top below, Rawlins county 4-H representative A. B. Fisher, right, presents "Meritorious Service" plaques to bankers Joe Yager, W. R. Horton, Jr., Lloyd Vieux, and Ross Wingfield in recognition of their sponsoring the Kansas 4-H Journal. Bottom, at the covered dish dinner given in honor of their local banker by the Parker Club in recognition of his sponsoring the Kansas 4-H Journal, pictured Mrs. Alma Giles, Linn Co. HEA, Mr. J. W. Franse, Mr. James Tyson, Mrs. Fransne and Mrs. Tyson.

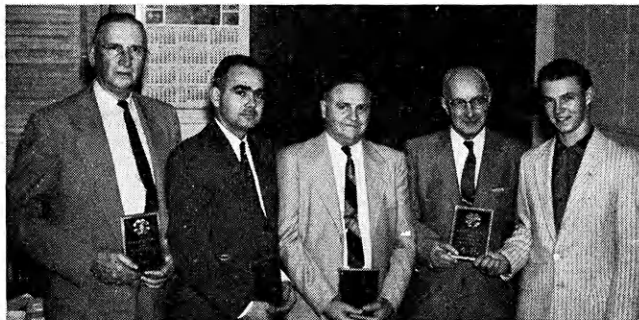
something like this for one or more of your sponsors.

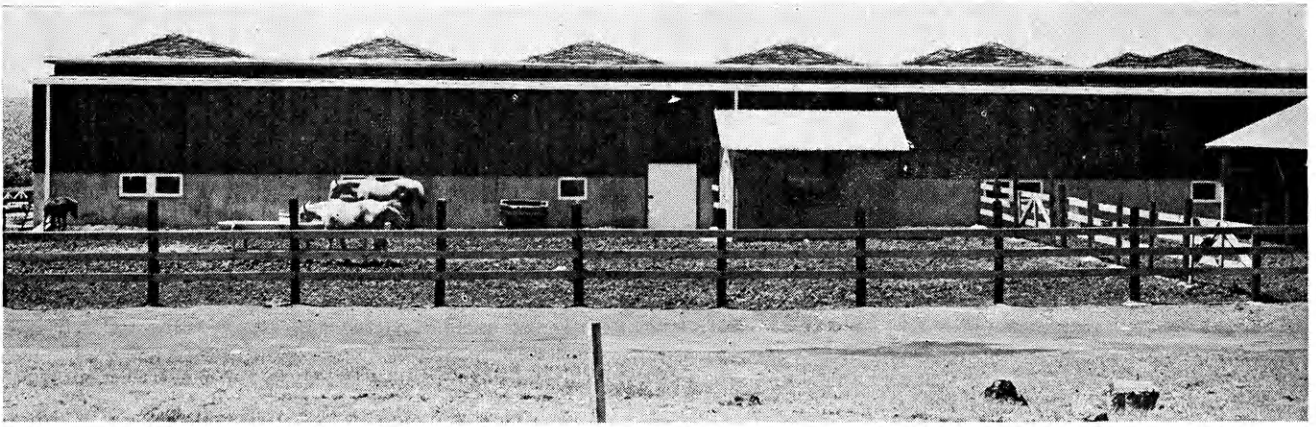
The Edwards County 4-H Council presented a "Meritorious Service" plaque to their sponsor—the Home State Bank of Lewis. The Sunflower 4-H Club in Edwards county baked cookies and cakes which they took to the bank as a token of appreciation. Other clubs sent cards and letters of thanks.

The Parker Club in Linn county entertained their bankers at a covered dish dinner. After the dinner the Club presented a model meeting. The bankers responded with a short talk.

In Rawlins county the County 4-H Council presented their five bankers "Meritorious Service" plaques. In Sherman county the Sandy Hill Club not only made cake for their banker sponsor but they made coffee, too, and served both to bank employees during a Saturday morning coffee break.

Edwards County 4-H council officers Leona Kallaus, Howard Newsom, Donna Ary and Alberta Kingry present a "Meritorious Service" plaque to Lewis Banker, Bob Bugbee, Home State Bank.





Showing a back view of the new Christy stables at Rock Springs Ranch, the building is made of concrete and redwood. The fireproof concrete roof is the only one of its kind on a farm building in the U. S. The picture at right shows a front view.



Four New Buildings Ready For Rock Springs Ranch Use

Four new major structures will be ready for campers at Rock Springs Ranch this summer.

Three will be formally opened for use at the Round-up session at Rock Springs Ranch June 3. The three are the Asa Payne Cottage, the Christy stables and the shelter house. Funds for the cottage were contributed by the Garveys of Wichita and Colby, shelter house funds by the Collegiate 4-H Club at KSU, and stable funds by R. B. Christy of Scott City.

The dining hall, while the basement is complete and ready for

use, will not be completed until additional funds from the 4-H Clubs are received.

Asa Payne Cottage

The Payne cottage will hold 34 persons, includes bath room facilities and lounge. It overlooks the dining hall and will be ready for use by any camp group at Rock Springs this summer.

The Shelter

The shelter will include a fireplace and will be especially useful for cook-outs and for small group meetings.

The Stables

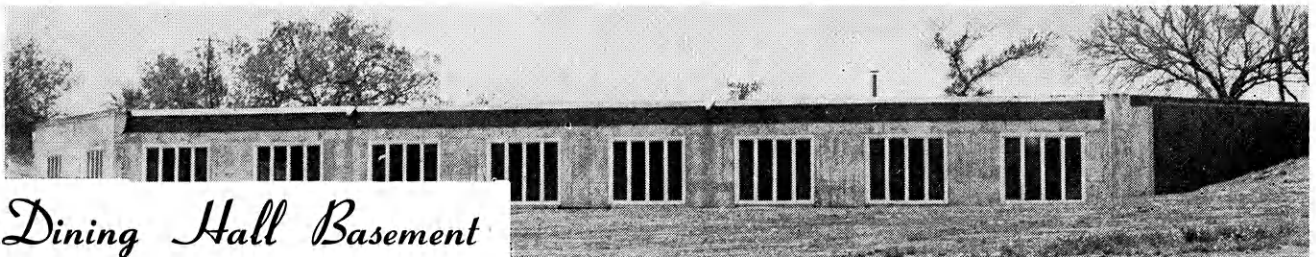
The stables, made of redwood

and cement, have a new type concrete fireproof roof—the only roof of its kind on farm buildings in the U. S. They will house 20 horses. It also has storage rooms and a mow for feed.

Dining Hall Basement

The dining hall basement will be available for meetings and recreation. It will be especially desirable as a shelter during bad weather that comes occasionally during the summer at Rock Springs.

Two small frame buildings have been built in the girls' tent area. The buildings will hold 22 each.



Dining Hall Basement

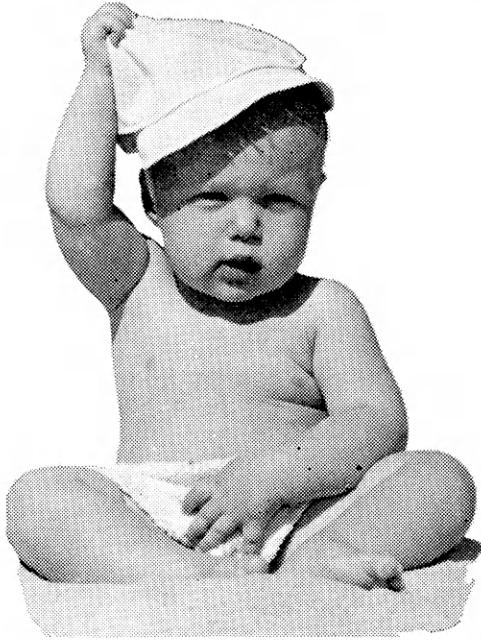


Asa Payne Cottage

IS
HIS

FUTURE

A
PROBLEM



NOT IF YOU PREPARE **NOW** GIVE HIS FUTURE

- ★ **PROFIT —**
Generous high earnings on savings.
- ★ **AVAILABILITY —**
Savings always available upon demand.
- ★ **SAFETY —**
Insured safe by a Federal agency up to \$70,000
for a family of three.

PROGRESSIVE

KANSAS Savings and Loan

Arkansas City
First Federal Savings and Loan
Ass'n. of Arkansas City

Augusta
The Commercial Savings and Loan
Assn.

Beloit
The Beloit Building and Loan Assn.
First Federal Savings and Loan
Assn. of Beloit

Chanute
The Chanute Building and Loan
Assn.

Clay Center
Northwestern Federal Savings and
Loan Ass'n. of Clay Center

Dodge City
First Federal Savings and Loan
Ass'n. of Dodge City

El Dorado
Mid-Continent Federal Savings and
Loan Ass'n. of El Dorado

Emporia
The Columbia Building and Loan
Assn.

Erie
The Erie Savings and Loan Assn.

Fort Scott
Liberty Savings and Loan Assn.

Goodland
Goodland Savings and Loan Assn.

Great Bend
The Prudential Building and Loan
Assn.

Hays
The Hays Building and Loan Assn.

Hutchinson
First Federal Savings and Loan
Assn. of Hutchinson
Valley Federal Savings and Loan
Assn. of Hutchinson

Iola
The Security Savings and Loan
Assn.

Kansas City
American Federal Savings and Loan
Assn. of Kansas City
Anchor Savings and Loan Assn.

Kinsley
The Kinsley Savings and Loan Assn.

Larned
The Larned Savings and Loan Assn.

Lawrence
Anchor Savings and Loan Assn.
Capitol Federal Savings and Loan
Assn.

Leavenworth
The Leavenworth Mutual Building,
Loaning and Savings Assn.

Liberal
First Federal Savings and Loan
Assn. of Liberal

Lyons
The Lyons Savings and Loan Assn.

Mission
Anchor Savings and Loan Assn.
Capitol Federal Savings and Loan
Assn.

4-H Conference 1959 Schedule

Listed below is the schedule for state 4-H conferences at Rock Springs Ranch this summer. If you would like to attend any of them, and are 14 years of age or older, contact your county extension agent for details.

Pre-registration dates are in advance of the dates shown for the conferences. Contact your agent for pre-registration dates and for details on county selection.

State Music Camp—June 2 to 6

Junior Leadership Conference—
June 29 to July 3

Chicago Trip Winners Reunion—
July 25 to 26

State Health Conference—
July 29 to August 3

State Conservation Camp—
August 3 to 8

Master 4-H Club—August 9
IFYE Alumni—August 29 to 30

associations

Newton
First Federal Savings and Loan
Assn. of Newton

Ottawa
Anchor Savings and Loan Assn.
Ottawa Savings and Loan Assn.

Overland Park
Jayhawk Savings Assn.
The Overland Park Savings and
Loan Assn.

Parsons
First Federal Savings and Loan
Ass'n. of Parsons

Plainville
Rooks County Savings Assn. of
Plainville

Pratt
The Western Savings Assn.

Salina
The Homestead Building and Loan
Assn.

Tonganoxie
The Tonganoxie Building and Loan
Assn.

Topeka
Capitol Federal Savings and Loan
Assn. at 6th and Kansas, and 12th
and Topeka Blvd.
Postal Savings and Loan Assn.
The City Homes Savings and Loan
Assn.

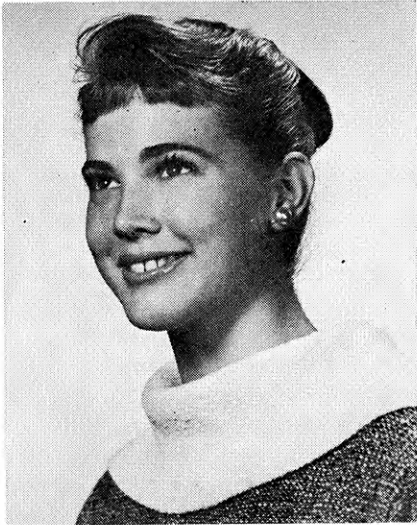
Wichita
The Commercial Savings and Loan
Assn. at 4601 E Douglas, 113 South
Main and Boulevard Plaza

AMERICA'S FASTEST GROWING FINANCIAL INDUSTRY

Miss Kansas To Attend Health Conf.

One of the instructors for the state health conference at Rock Springs Ranch, July 29 to August 3 will be Miss Sharon Whitacre, Mission.

Miss Whitacre was Miss Kan-



Miss Sharon Whitacre

sas in 1958-1959 and will attend the conference as State Teen-age Chairman of The National Foundation.

Miss Whitacre will lead a



Ogallah Club members, Trego county, show capes, caps and flags used in their special Memorial Day drill team performance.

Ogallah Renews Memorial Program

Ogallah 4-H'ers renewed a community tradition this year when they assumed responsibility for the Memorial Day service. Many persons in the community had been concerned when this annual event had been dropped. The Ogallah 4-H club voted to supply

special interest session on careers in nursing and physical therapy. She will also lead a class in "personality."

Scholarship sponsor for the State Health Conference is the J. A. Folger Coffee Company, Kansas City.

the leadership in cooperation with the community and again have an old-fashioned Memorial Day service with flag drill.

Ten younger members of the club formed a drill team and a committee of mothers made attractive caps and capes for them. The 4-H chorus and a quartet from a local church furnished appropriate music. Club members gave the invocation, benediction, and a special Memorial Day reading. The Rev. Walter Flesher of WaKeeney gave the address.

The club felt this was a community service project worthy of their best efforts.

compliments
of a friend

* on the terrific job the Kansas 4-H Clubs are doing to help keep our Nation strong, alert and growing.

The Folger Coffee Co.
Kansas City, Missouri



4-H Dairy Family Gives Tips on

By Tom, Steve and Carol Jean Smith
Doniphan County 4-H Members

The first step is to select the right heifer. The main points to keep in mind in selecting a club heifer are—

1. Age and size — an animal born shortly after the base date and that has grown well will show advantageously over one that is small.

2. Breed type — it's obvious there is no use trying to win with an animal that does not conform to breed standards.

3. Stage of lactation — a cow that is comparatively fresh always shows better.

Fred Smith was a National Congress trip winner from Doniphan county when he was a 4-H member. Now his children are outstanding 4-H dairy cattle exhibitors. They have combined their efforts to bring you some tips on fitting dairy cattle.

Next month we'll bring you some hints on fitting beef cattle from a Chautauqua county 4-H member.

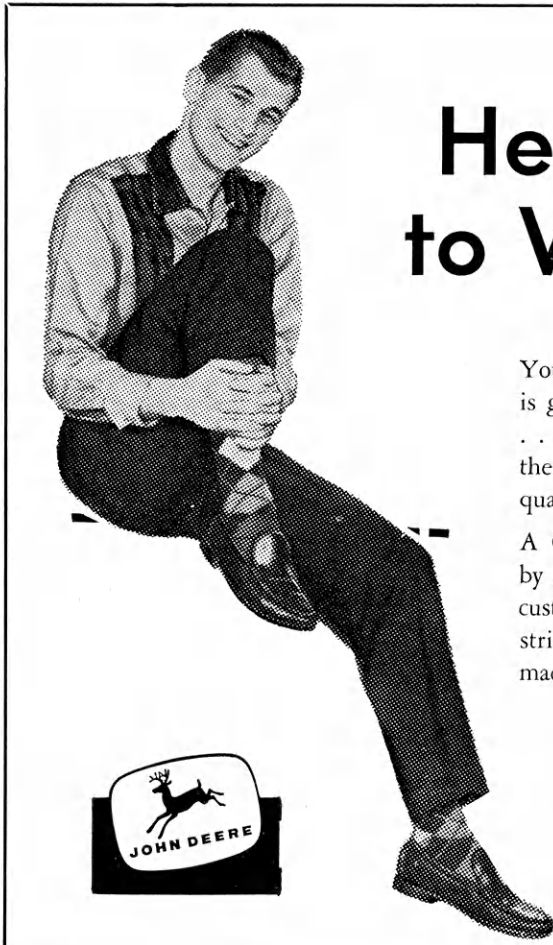
We like to turn our yearling heifers and cows out on grass in

the spring. This tends to physic the animals. Bring them to the barn about June 15 to July 1.

Fitting Ration

The animals should be started with a ration such as corn, bran, oats and oil meal, or you can get a regular prepared fitting ration. To this ration add soaked beet pulp, using twice as much beet pulp as grain mixture.

As soon as the heifers or cows are in the barn they should be blanketed and brushed (pictures 1 through 3 above demonstrated by Carol Jean Smith). Any kind



Here's The Secret to Winning Friends

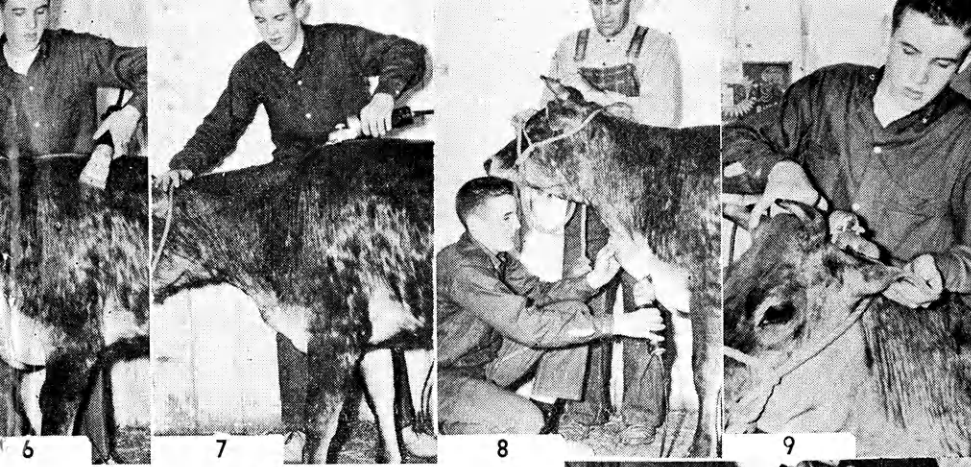
You've noticed that the boy or girl who easily wins friends is genuinely interested in the other person. This is their secret . . . having a real interest in the ideas, opinions and goals of the other fellow and having an appreciation for the best qualities of each individual.

A Company too, wins loyal friends much in the same way— by constantly thinking in terms of the needs and wishes of its customers. We at John Deere prize your friendship and will strive to always bring you the very best in farm equipment machinery.



JOHN DEERE COMPANY

Kansas City, Missouri



Dairy Fitting

of blanket will do but duck will outwear burlap. Daily brushing is essential to put the hair and hide in a soft pliable condition.

The fore bellies on the heifers are often not clipped as the long hair tends to add depth to the body. Minor irregularities in the top line can be helped by a good job of clipping (picture 4 demonstrated by Tom Smith). Clipping the legs comes next (picture 5).

Clip Down

If we are showing our heifers at an early spring show we do not like to clip up on the neck and shoulders because this gives a rather skinned appearance to the rest of the body. We go down the neck and shoulders with the clippers (picture 6) and later in the summer we go up the neck and shoulders.

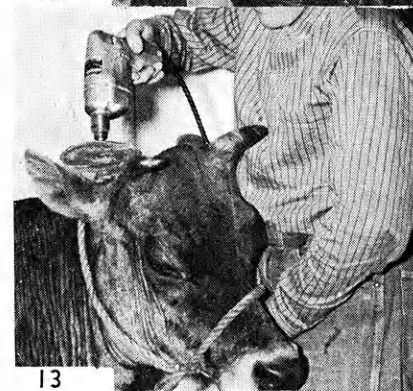
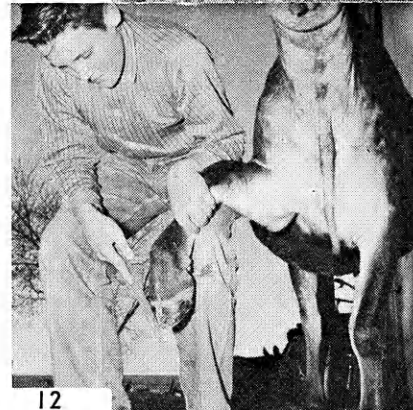
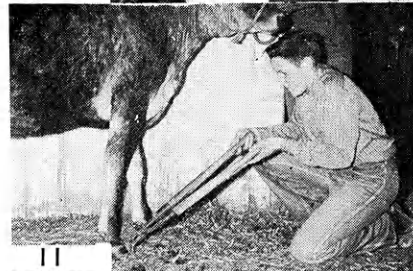
Also included in your clipping job is the top of the neck (picture 7), dewlap (picture 8), ears (picture 9), and face (picture 10 with father F. H. Smith assisting).

Trim Feet

Animals with long feet cannot walk properly. The long toes can be cut off either with a chisel or nippers (picture 11 demonstrated by Steven Smith, holding is Tom). A rasp will help in shaping up the feet after trimming (picture 12).

Trim and Polish Horns

Horns should be trimmed to a desirable size, smoothed and then oiled. We like to use an electric sander (picture 13) or an electric drill with sand paper to take off the rough edges. A saw, chisel or rasp may be used. Emery cloth is used to finish up the job (picture 14).



I'm Listing Films We Plan To Use At Our Summer Camp

They're all obtained FREE OF CHARGE from the Southwestern Bell Telephone Co. There are dozens of movies on safety, science and other subjects to choose from. All that is required is the prompt return of the films and a competent operator to run the projector.

If you need films for your camp or summer project meeting why not send for their FREE BOOKLET as I did. For convenience use the coupon below.

SOUTHWESTERN BELL TELEPHONE CO.

Area Information Manager
Southwestern Bell Telephone Co.
823 Quincy
Topeka, Kansas

Please send me a free copy of your 1959 PROGRAMS catalog.

Name

Address

City

We will Furnish ALL *MATERIALS for this 40' x 60' FARM BUILDING for only

\$2271

Covered with 29 ga. Galvanized Iron

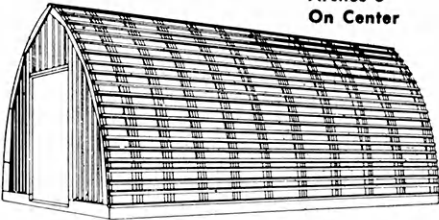
\$2581

Covered with Kaiser Diamond Rib Aluminum

*Prices cover all materials above foundation. No labor or State Sales Tax included!

Arches 6' On Center

IDEAL FOR FARM MACHINERY STORAGE



... or may be converted to CATTLE BARN, BROODER HOUSE, COMBINATION UNIT or GRAIN STORAGE with Arches 4' on center.

YOU GET: MORE USABLE SPACE... GREAT STRENGTH and LONG LIFE... PRESERVATIVE TREATED ARCHES and LESS MOISTURE CONDENSATION

This 40' x 60' Building can be purchased for cash or financed thru the loan agency of your choice. However, we will be glad to help you arrange financing to meet your personal requirements.



Rock Springs Cottage To Be Built By Cooperatives

Rock Springs Ranch's second permanent cottage will be finished early this summer. Funds for the cottage were contributed to the Kansas 4-H Foundation by the cooperatives of Kansas through the Kansas Cooperative Council.

James McGuire, Co-op Council executive secretary, presented a check for the cottage to Foundation executive director J. Harold Johnson at the Council's annual meeting in Hutchinson.

In making the presentation McGuire said, "Our people are rural Kansas. We owe much to 4-H for what it has given us and we will support it for what it can do for the people of our communities and our country in years to come."

Work on the cottage has already started and it will be available about July 15. It, like the Asa Payne cottage, will house 34 people and will include a meeting room and bathroom facilities.

Contributions for the cottage are still being accepted by the Cooperative Council from cooperatives throughout the state.



Kansas 4-H Journal sponsor and Wellington grain broker Rod Cartmill explains how markets are established to a group of visiting Sumner county 4-H members.



COPYRIGHT 1944 HARRY DARBY

"Cowboy Brand"

FABRICATED STEEL and ALLOY PRODUCTS
Tanks, Bins, Hoppers, Elevated Water Tanks, Contract Manufacturing of Farm Implements and industrial Equipment.



Crops Class Visits Mill, Grain Broker, Bakery

Wellington businesses were hosts when a new tour event was inaugurated in Sumner county. Fifteen 4-H'ers enrolled in crops projects visited related industries.

At the Wolcott and Lincoln grain brokers' office, manager Rod Cartmill explained how markets are established and gave illustrations of cash and futures trading. He is shown in the picture with a group of the 4-H'ers.

At the Hunter Mill, James Lamkin, cereal chemist, showed the group through the experimental mill and bakery. In the laboratory he explained the tests which are run on wheat and flour. Terminal elevator facilities and the flour mill were also visited.

The day wound up with a visit to the Sumner county soil testing lab.



Pictured above are members of the twelve piece novelty band of the Busy Band Club, Montgomery county.



An "Ole Fashion Girl" was the title for the folk game entry of the Osage Rustlers Club, Miami county, in the regional 4-H Day at Baldwin.



Lamb project anyone? Janet Fox of Pawnee county has two. Comparing the two is county agent Clif Manry.



Charles Schaben of the Highpoint Hustlers Club, Ness county, demonstrates "Making a Rope Halter" at the county 4-H Day.

Rat control is being emphasized in Rice county as in many Kansas counties this year. Pictured here is Ronnie Leonard of the Lyons Conquerors Club with six cans of rat poison and two rat poison containers.



Pictures From Kansas 4-H'ers

SEND IN YOUR PICTURES

We want pictures taken by Kansas 4-H'ers. Prizes will be given for all pictures used in the Journal.

The picture need not be on 4-H Club work, but pictures with subjects related to 4-H Clubs are preferred. Action pictures are desired.

All pictures should be glossy prints at least five by seven inchest in size unless accompanied by the negative.

Photographs should be accompanied by a short statement explaining the picture and including the names of persons shown.

Entrants should designate their choice of the following prizes. A year's subscription to the National 4-H Club News, one roll of color film—sizes 620, 120, 616, 116, 127 or 35 mm only, or a 4-H Club photograph album.

4-H members, parents, leaders, county agents or friends of 4-H may send in pictures.



As a junior leader in the Busy Bee Club, Stevens county, Charlotte Persinger gives tips on judging cupcakes to first year cooking members Alice McClrath and Karen Timmons.



The five Anderson county boys that placed first in judging at the Geary County Better Livestock are front, Jim Hicks and Gene Raymond; back, George Roberts, Darol Rodrock and Dale Hinkle. This is the second consecutive year the club has won this trophy.

At a picnic project meeting of the KC-OK Club, Wyandotte county, Janet Morkel demonstrates "Making Lemonade for the group." The finished product was enjoyed by all.



Ideas That Work

Reporter's Notice: The Kansas 4-H Journal would like to print interesting stories of your local club events, activities, members and leaders.

Local club meeting stories, if submitted, should contain something unusual or of interest to people outside your county.

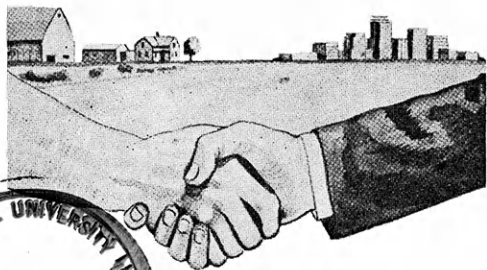
Outstanding projects, services or events of your club, or stories of individuals within your club that would give ideas to other 4-H'ers would make excellent stories.

Prizes will be awarded all blue award stories each month. Please state your choice (1) a year's subscription to the National 4-H Club News or (2) a hard cover loose leaf 4-H notebook.

Ideas in Brief

Cherry pie is the favorite dessert of members of the Lawn Ridge Club, Cheyenne county, according to a recent roll call . . . Kellas Club presented the program for the Richland Club, Harvey county, at an exchange meeting of the two clubs . . . "Short'nin' Bread" and

"On the Levee" were songs played for music appreciation by Charles Magoffin of the Salem Club, Reno county . . . The Hilary Club, Sedgwick county, starts their meeting with recreation . . . The Huntsville Helpers were guests of the Plevna Sunflower Club at their April meeting. Both are in Reno county . . . Talks on artificial respiration and the importance of drinking pure water plus a health quiz on parts of the body were highlights of the All Health program of the Abbyville Club, Reno county . . . Windmills, dolls, flower pots, and suitcases were some of the boxes sold at the Country Pals Club, Thomas county, box supper for a total profit of \$83.10 . . . 4-H'ers in Stanton county are striving for a membership of 100, an all time high. They plan to celebrate with a skating party if successful . . . The girls sextette of the Meriden Club, Jefferson county, was invited to sing at the Jefferson county Home Demonstration Unit Spring Tea . . . Stevens county Maple Leaf Rustlers Junior Leaders sold out on their cake and pie sale within an hour and a half. They credited advance publicity, newspaper and radio advertisements with their success . . . The Moscow Zippers and the Maple Leaf Rustlers Club, Stevens county, have held meetings in the same building with business sessions separate, recreation and refreshments were held together . . . Movies taken at the county and regional 4-H Days was part of the program at the Junior Riverview Club Sedgwick county . . . Twenty-five members of the Riverview Senior Club, Sedgwick county, have signed up for the 4-H auto project . . . A newly organized club in Pawnee county—the Lincoln Live-wires—were guests of the Rozel Hustlers club at their May meeting.



A Farmers' Co-op
brings
Town & Country
Together

It's your farm business extended on to Main Street

KANSAS COOPERATIVE COUNCIL

701 Jackson St., Topeka

FARMERS
LOW-COST
Complete Protection
Policy

FIRE
And
Auto

INSURANCE
Please Send Information
Name _____
Address _____

FARMERS-ALLIANCE INSURANCE — McPHERSON, KANSAS

Kansas 4-H Journal Sponsors

Welcome to These New Sponsors

Atchison
Pillsbury Company, Feed Division
Atchison

These Sponsors Have Renewed Their County Support of the Kansas 4-H Journal

Atchison
Blair Milling and Elevator Company, Atchison
George W. Kerford Quarry Company, Atchison
Sunflower Cooperative Creamery, Valley Falls
Waisner and Shelver Ladies Ready-To-Wear, Atchison

Chase
Exchange National Bank, Cottonwood Falls
Peoples Exchange Bank, Elmdale
Strong City State Bank, Strong City

Chautauqua
Sedan State Bank, Sedan

Crawford
Farmers State Bank, Walnut
First National Bank, Girard
First State Bank, Arma
First State Bank of Pittsburg, Pittsburg
Girard National Bank, Girard
Hepler State Bank, Hepler
Home State Bank, Arcadia
McCune State Bank, McCune
Miners State Bank, Frontenac
National Bank of Pittsburg, Pittsburg

Franklin
Peoples National Bank, Ottawa
The Wellsville Bank, Wellsville

Geary
Central National Bank, Junction City
First National Bank, Junction City

Jewell
First National Bank, Formoso
First National Bank in Mankato, Mankato
The Burr Oak State Bank, Burr Oak
The Citizens State Bank, Jewell
The Randall National Bank, Randall
The State Bank of Esbon, Esbon
The State Exchange Bank, Mankato

Kearny
Farmers Cooperative, Lakin and Kendall

Morton
Addington's Elevator, Elkhart
Burt Elder Insurance, Elkhart
Cooperative Equity Exchange, Elkhart
Elkhart Implement, Elkhart
Fisher's International, Elkhart
Norman's Implement, Elkhart
Rolla Cooperative Equity Exchange, Rolla
Star Lumber Company, Elkhart
The First State Bank, Elkhart

Rawlins
Farmers National Bank, Atwood
Farmers State Bank, Ludell
Peoples State Bank, McDonald
State Bank of Atwood, Atwood
State Bank of Herndon, Herndon

Reno
Hutchinson National Bank and Trust Company, Hutchinson
Winchester Packing Company, Hutchinson

Letters

(Continued from page 9)

his project work and club activities can show club members that it may be possible for them to accomplish the same.

Your 4-H Journal has continued to improve. It is a big help to 4-H work in our county.

Gene Ott
County Agricultural Agent
Graham County

We are very pleased to report to you that the bankers felt that the Journal is a very worthwhile publication and that they are very glad to continue to support it.

Donald K. Peterson
Assistant County Agent
Jewell County

Tribute to Young Members

Dear Editor:

I'd like to pay tribute to Judy Ostrander, 11, of the Anson Atoms Club, Sumner county, for the very fine talk on "Safety in the Kitchen" she has given at county and regional 4-H Days—earning a blue both times.

I think the recognition she has won this year should certainly be mentioned in the Journal so all younger 4-H'ers will see what can be accomplished with a lot of determination and work.

Mike Ostrander, Clippers Club
Sumner county

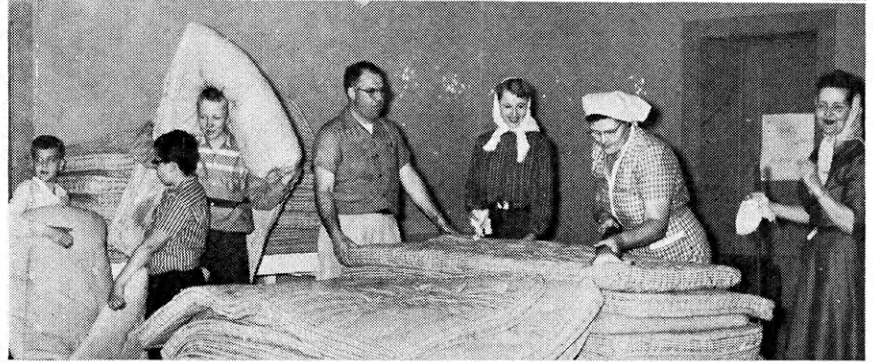
Have They Set Record?

Dear Editor:

The Lyons Conquerors Club, Rice county, think they have set a record (for our county at least) by initiating 14 new members at our last meeting. Ronnie Leonard conducted the ceremony while Judy Engelland played soft background music. Elma Smith sang "A Place in the Sun" while the new 4-H'ers signed the constitution and by-laws.

Judy Engelland, Rep.

Summer Preparations at S. W. Camp



Community service project for Southwest Kansas 4-H'ers and agents each spring is a clean-up of the Southwest 4-H Camp at Dodge City. Top, the grounds get a cleaning and grass is burned. Bottom, agents and members clean the mattresses for another summer's use.

Buy That Car At \$150 Less?

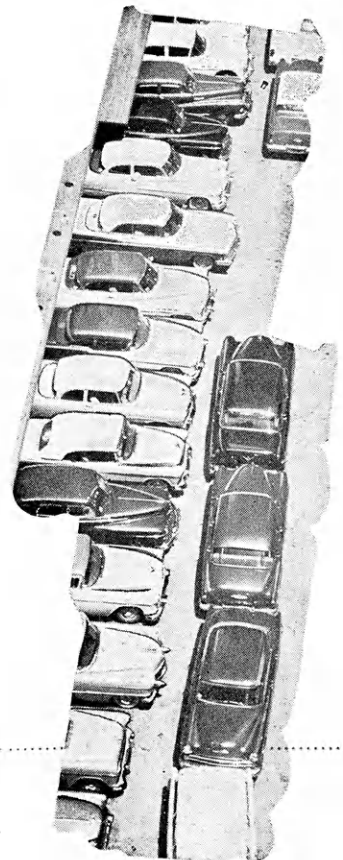
**CHANCES ARE YOU CAN...
IF YOU USE OUR "BANK PLAN"**

It might seem impossible, but you may be able to save this kind of money on almost any new or used car. If you use this remarkable plan you may save 3 ways: (1) Low bank rates.

(2) Rock-bottom insurance premiums. (3) The cost of the car itself by becoming a cash buyer. Before you purchase any car, give your pocketbook a break and get the full story on State Farm's "Bank Plan". Your friendly State Farm agent handles all of the details. Plan to see him soon—you'll be glad you did.



*For Name of Nearest Agent—
Look in the Yellow Pages.*



**STATE FARM MUTUAL
AUTOMOBILE INSURANCE COMPANY**

Home Office: BLOOMINGTON, ILLINOIS



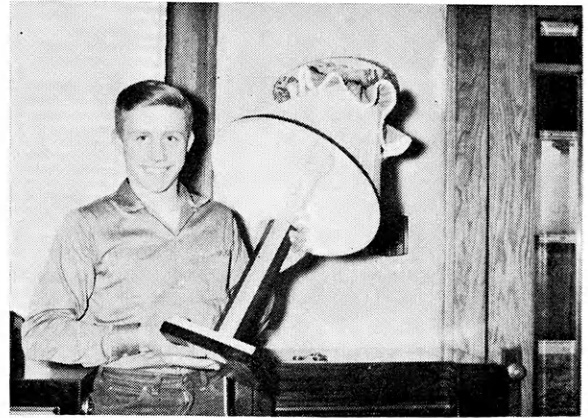
CIRCULATION DESK
LIBRARY
KANSAS STATE COLLEGE
MANHATTAN, KANSAS

MISC KSC

FAMILY FOOTSTEPS PAVE THE WAY FOR KENNETH SCHUSTER

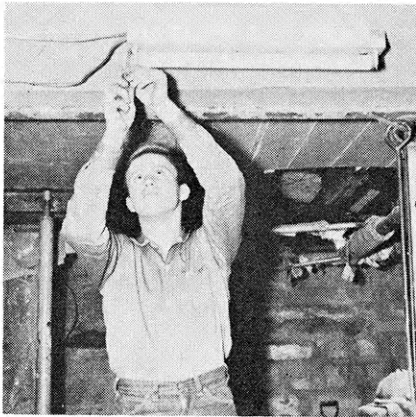
With older brothers and sisters preceding him in 4-H work and his parents serving as electric leaders of the club, it was only natural that Kenneth should become one of the Wide-A-Wake 4-H Clubs most active members.

A member of the Jewell County club for seven years, Kenneth's projects include: Beef, home grounds beautification, crops, woodworking, junior leadership, swine entomology and grain marketing. Kenneth had reserve champion exhibits at the County Fair in 1957 and Grand Champion exhibit in 1958.

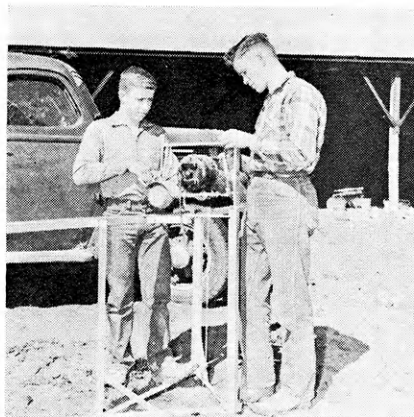


Kenneth Schuster proudly displays the electric lamp he made as part of his 4-H electric project.

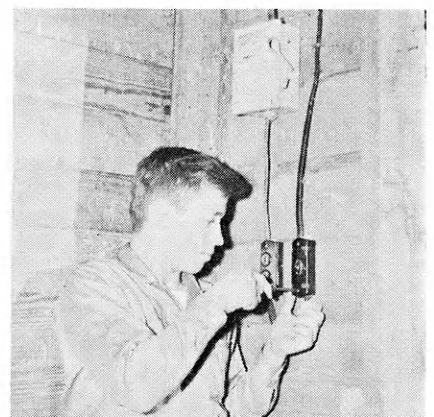
In four years of work on his electrical project, Ken has wired one barn completely and part of another, put fluorescent lighting in the basement of the family home, reswitched an electric drill, made an electric lamp, wired for additional yard light and wired the chicken house for lights.



Kenneth makes a final adjustment in the installation of a fluorescent light he put in the family home basement.



Kenneth and older brother, Richard, utilize the electric sickle grinder they made for use on the farm.



Kenneth is shown as he completed the wiring job in one of the two barns he wired.

**WATCH THIS
PAGE FOR IDEAS
ON FARM AND
HOME ELECTRIC
PROJECTS**

Electric Light and Power Companies in Kansas

The Kansas Power and Light Company
Kansas City Power & Light Company
Western Light & Telephone Company

Central Kansas Power Company
Kansas Gas and Electric Company
Southwest Kansas Power Company