

33  
3  
3  
1

17  
PR9

# Kansas 4-H Journal

Illustration by Barb Pihl

31-

January 1981

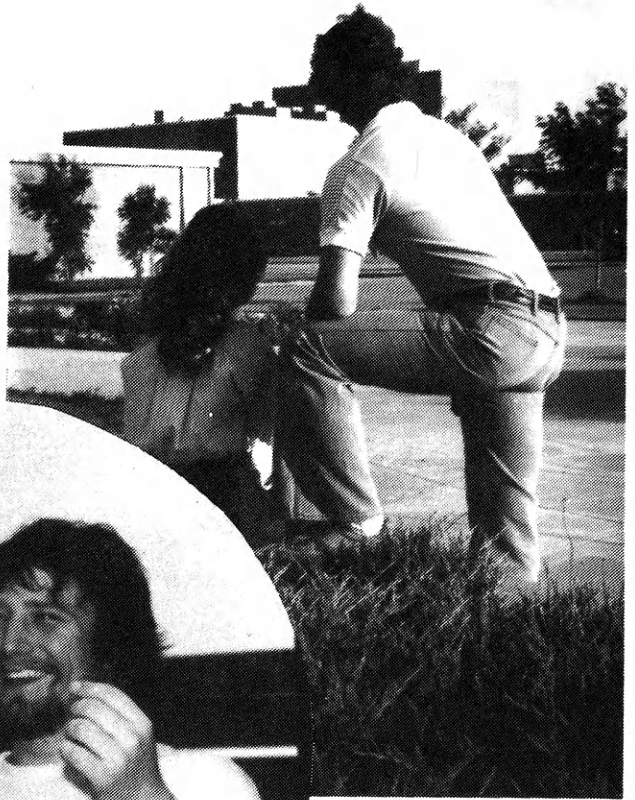


Volume 11  
January 1981  
Price  
KANSAS STATE UNIVERSITY

## Education and Careers

# Room to Grow

at  
Garden City  
Community College



**For more information, contact:**

Office of Admissions  
Garden City Community College  
801 Campus Drive  
Garden City, KS 67846  
Phone: 316-276-7611

## Education and Careers

**People are needed in these occupations** ..... 5  
**Kansas two-year colleges** ..... 11  
**The basic industry: Agriculture and ag-related business**  
**Vo-tech schools teach technical skills in ag fields** ..... 8  
**Community colleges offer training for agriculture** ..... 9  
**Ag graduates are in demand** ..... 19  
**Marketing forms the link from farmer to consumer** ..... 22  
**Getting started in farming** ..... 24  
**Consider a dual degree** ..... 25  
**Baking is a people-pleasing business** ..... 26  
**Financial aid for students** ..... 27  
**Two health-related careers:**  
**Medical technology** ..... 30  
**Music therapy** ..... 32  
**Kansas four-year colleges** ..... 34, 35  
**Ending a career before it starts** ..... 36  
**Advertisers' Index** ..... 39

Glenna Wilson ..... Editor  
 Teri Springer ..... Secretary



Kansas 4-H Journal is published 10 times a year by  
**KANSAS 4-H FOUNDATION, INC.**

Merle Eyestone ..... Executive Director  
 Trisha Cash ..... Secretary  
 Ann Walker ..... Asst. Treasurer

Address all correspondence:  
 Kansas 4-H Journal  
 Umberger Hall, KSU  
 Manhattan, Kansas 66506  
 Phone 913-532-5881

### BOARD OF TRUSTEES

Governor John Carlin  
 Honorary Chairman

Richard Dillon, Chrm. .... Hutchinson  
 Wm. M. McDonald, Vice-Chrm. .... Shawnee Mission  
 Mrs. Charles Streeter, Treas. .... Manhattan  
 Duane Acker ..... Manhattan  
 John Junior Armstrong ..... Manhattan  
 Ross Beach ..... Hays  
 Glenn M. Busset ..... Manhattan  
 Mrs. Edna Collingwood ..... Johnson  
 W. Dale Critser ..... Wichita  
 Max Dickerson ..... Kansas City  
 John O. Dunbar ..... Manhattan  
 Mrs. Olive Garvey ..... Wichita  
 Bill House ..... Cedar Vale  
 Balfour S. Jeffrey ..... Topeka  
 J. Harold Johnson ..... Manhattan  
 John D. Montgomery ..... Junction City  
 George Netrels ..... Pittsburg  
 George B. Powers ..... Wichita  
 Glee Smith ..... Larned  
 Mrs. Dwane Wallace ..... Wichita  
 \*Sen. Frank Carlson ..... Concordia  
 \*Harry Darby ..... Kansas City  
 \*Harold E. Jones ..... Manhattan  
 \*Roger E. Regnier ..... Manhattan  
 \*Dolph Simons, Sr. .... Lawrence  
 \*Advisory Member

Use of the 4-H name and symbol approved by the secretary of Agriculture of the United States, January 23, 1951, under the provisions of the laws as reenacted by Sec. 707 of the Act of June 25, 1948, Public Law No. 772 80th Congress (10 USC 797).

# Career decision-making: A series of choices

By Margery A. Neely, Ph.D.  
 Manhattan

Career decision-making is actually a series of choices. This is true even when a person chooses one training program or "major" during the latter teen years. The reasons that there are a series of choices are both personal and work-world characteristics.

Personal characteristics that require a series of choices include changes in what one wishes from one's job in the way of satisfaction, the fact that people change jobs from five to nine times during their careers, and the motivation to improve one's skills.

Work-world characteristics include the particular types of jobs that are available when one is seeking a job; the fact that some jobs become obsolete and others come into being every year; and changing qualifications for jobs.

With this process of choices in mind, no decision has to be irreversible. Each little decision will provide direction for some later decisions. Within job clusters that appeal to a person (because of values and personal aptitudes and interests), there are many careers to choose from.

The types of job clusters that have appeal are those with which a person is familiar. These may be business, medicine, science, communications, transportation, farming-forestry, and so on.

The first step in decision-making is information-seeking and trying on various career roles—either through work, volunteer work, observing a favorite person work, or reading.

Jobs that one chooses NOT to pursue provide important information: ask why the job is not attractive. The answer provides a clue to those aspects of jobs that are disliked and not valued.

Gradually, a pattern emerges of the attractive aspects of certain job clusters, with jobs one has ability to do. One must be able to carry out a job competently, for an employer is interested in skillfully executed work, not in the statement that the work interests you and that is why you should be hired.

This brings us to the second step in decision-making—choosing alternatives to concentrate on. Does one wish to work alone or with people, indoors or out, in a large city or small, in a set routine or with constant change, with ideas or things? The alternatives to choose are those that seem to offer the greatest probability for satisfactory employment. It is possible to guess at the consequences of choosing to emphasize certain alternatives over others.

The last stage is that of putting choices into action, through training programs, on-the-job training, or postsecondary education. Then adjust the choices as needed, either during training or while engaged in paid work.

## About the cover

This issue of Kansas 4-H Journal is enhanced with art created by Kansas State University students in a graphics class taught by David Harnes.

The cover design by Barb Pihl of Falun tells a lot about today's agriculture.

It's a field open to both men and women and there's lots of work to do.

Producing crops and livestock is still the basic business of farming. But then these products have to be processed and delivered to a place where consumers can buy them. Machinery has to be designed and

built, sold and delivered. Fertilizers and farm chemicals must be developed and manufactured. Feeds must be mixed for farm animals and for pets. Capital must be made available, information about agriculture published, problems thoughtfully considered.

So there's a place in agriculture and related businesses for men and women with a variety of different interests, skills and training.

Other students whose illustrations can be found in this issue are Cathy Rohleder, pages 19 and 26; Vito Polizzi, page 22; Robin Peppers, page 22; and Lisa Beam, page 24.

## **PRINTING . . . one of the oldest crafts in the world.**

Did you know the printing industry is the seventh largest industry in the United States?

Think of the career opportunities that can offer you!  
Thousands!

You can choose to learn skills in a wide variety of areas: as a typesetter, cameraman, press operator, layout and design person, bindery machine operator, color separator, platemaker, cost estimator, production control manager, purchasing agent or equipment maintenance person, to name a few. You may be especially dexterous or may learn to use artistic, financial or mechanical skills — all are needed.

Skills can be learned in high school, vocational schools, junior colleges or in a four-year college. Excellent schools are available in Kansas.

Visit your local printer and tour his plant for a close-up look. Or visit our plant when you are in Lawrence.

### **LAWRENCE PRINTING SERVICE, INC.**

**Box 1400**

**Lawrence, Ks. 66044**

**512 E. 9th St.**

**(913) 843-4600**

# **Opportunity for 4-H Members**

As a 4-H Club Member you are used to being where the action is. Working with a bank you can continue to be in the center of your community.

Many banks now have early advancement to positions of responsibility. It's your future ... and banking offers an excellent opportunity for an interesting and rewarding future.

# **YOU CAN DO IT!**

at your

**FULL  
SERVICE  
KANSAS  
BANK**

# People are needed in these occupations

By Janet Price  
Research Analyst  
Department of Human Resources

Occupations that are in demand at United States job service offices and that don't require four years of college include secretary, bookkeeper, machinist, toolmaker, insurance agent and licensed practical nurse.

There are various ways to enter these occupations. For example, workers may have to complete a specified amount of education or training to qualify for them or may possess certain skills, aptitudes or experience.

In addition, individuals in some occupations have to be licensed or certified by the state before being allowed to work.

The following is a brief description of the methods of entry into these demand occupations.



To become a secretary, an individual should have a high school education and possess good English, spelling and typing skills. Office training from a business school, college or vocational-technical school may be required by some employers.



Graduation from high school with some courses in business, arithmetic, bookkeeping and the principles of accounting is necessary to meet the minimum qualifications for most bookkeeping jobs. On-the-job training then may still be necessary.

However, some employers prefer people who have taken business courses at a business school or a junior college and also have had some experience with transactions in accounts payable and receivable. A knowledge of computerized operations for bookkeeping may be helpful, too.

Machinists frequently learn their trade on the job, but a four-year formal apprenticeship is the best way to become an all-around machinist. A typical apprentice program consists of 8,000 hours of shop training and 570 hours of related classroom instruction. A vocational or high school education, including physics, mathematics and machine shop, provides a good background for this training.

There are a variety of ways to acquire the skills to become a toolmaker. These include on-the-job training, vocational school, and apprenticeship. In addition, workers may obtain more training. The best way to learn this trade, however, is through a formal apprenticeship.

Persons interested in one of these programs should have a high school or vocational education, a working knowledge of physics and mathematics, considerable mechanical aptitude and the ability to do precision work. Some employers test applicants to determine their suitability for the trade.

To sell insurance in any state, agents must be licensed by the state where they want to work. In Kansas, as in most states, interested persons are required to pass a written examination. To take the exam, they must fill out an application form, present their high school or college diploma, and pay an examination fee. The tests cover the general fundamentals of the insurance business, its legal aspects and matters relating to the various insurance specialties. An individual may choose to be tested only on certain specialties. Those who pass must be certified by the insurance company where they plan to work before finally being licensed. Agents often receive training at these agencies in preparation for the exam.

Some insurance companies will hire applicants who have a high

(Continued on page 17)



## CRUM'S BEAUTY COLLEGE

International Approved Pivot Point College — National approved Accredited College

Lucille Crum Jelinek — Owner

*Crum's*

- STUDENTS ARE TRAINED TO DO THE VERY LATEST HAIR CUTS & STYLES
- ADVANCE PIVOT POINT CLASS
  - FIVE TRAINED PIVOT POINT INSTRUCTORS
  - BEOG & VETERAN ACCEPTED
  - CLASSES START 1ST TUESDAY OF EVERY OTHER MONTH

**EVERY SERVICE CLOSELY SUPERVISED**

*Hair Styling Appointments Appreciated Monday thru Friday*

**CLOSED SATURDAYS & SUNDAYS**

**776-4794**

512 POYNTZ MANHATTAN, KS

 **REDKEN**

# Occupational Opportunities — Plan

CAREER AREAS	AVTS CENTERS													
	NEWTON	ARKANSAS CITY	EMPORIA	Kansas City	TOPEKA	Liberal	Manhattan	RELOIT	ATCHISON	GOODLAND	Salina	COFFEYVILLE	DODGE CITY	Wichita
AGRICULTURE EDUCATION														
Agriculture Production	H	P	X		X	X		X				X	H	
Farm & Ranch Management			P									P		
Agribusiness Supplies/Service		P			X								X	
Agricultural/Farm Mechanics	H							X						
Ornamental Horticulture					X								X	X
Farm Business Analysis							P		P		P			
DISTRIBUTIVE OCCUPATIONS														
Distributive Education	H		X	H	X	H	X	X	X		H	X	H	X
Retail Management		P												
HEALTH OCCUPATIONS														
Dental Assisting			P								P			P
Medical Lab Tech. (Certified)		P												P
Practical Nurse (Vocational)	P		P	P	X		P	P	P					P
Nursing Assistance (Aide)			P	P	X					X	X	X		P
Mental Health Technician		P												P
Medical Assistant						X								
Health Assistant (Coop)				H										
Medical Secretary					X									P
HOME ECONOMICS AND RELATED OCCUPATIONS														
Home Health/ Nursing Home Aide											P			P
Coop Home Ec. Occupational Prep.	H										P			H
Care & Guidance of Children					X						P			X
Clothing Prod. & Services											P			H
Consumer & Homemaking	H										H	H		
Fashion Merchandising														P
Food Management: Prod. & Services			X	X				X		X	X	X	X	X

CAREER AREAS	AVTS CENTERS													
	NEWTON	ARKANSAS CITY	EMPORIA	Kansas City	TOPEKA	Liberal	Manhattan	RELOIT	ATCHISON	GOODLAND	Salina	COFFEYVILLE	DODGE CITY	Wichita
Home Furnishings (Drapery Const.)												P		P
Vocational Home Ec.	H					H								
Dietetic Assistant								P					P	
OFFICE OCCUPATIONS														
Secretarial	H	X	X	X	X	X	X	X	X	P	H	X	X	X
Accounting/Bookkeeping		X	X	X	X	X	X	X	X			X		P
Data Processing/ Computer Pgm.		X			X		P	X	X	P				P
Data Entry					X									P
Legal Secretary														P
Clerical		X	X	X	X	X	X	X	X	P		X	X	X
TRADE AND INDUSTRIAL OCCUPATIONS														
Air Conditioning and Refrigeration				X	X	X	P				X			X
Auto Body Repair				X	X		X		X	P	X		X	X
Mechanics/Auto or Truck	X	X	X	X	X	X	X	X	X	P	X	X	X	X
Automotive Machine Shop				X		X								
Automotive Parts Management				X		X								
Aircraft Maintenance												H		P
Commercial Art									X		X			
Commercial Photography					X									
Building Maintenance				X	X									H
Carpentry	X	X		X		X	X	X	X	P	X	X	X	X
Aircraft Instrument Maintenance														P
Aircraft Sheet Metal & Fabrication											X			P
Airframe or Powerplant														P
Technical Illustration														P
Avionics														P
Electricity		X			X			X		P				X
Industrial Equipment Mechanics					P									P
Machine Tool & Die			X											P

X — For High School — Post High and/or Adults

H — For High School Students Only

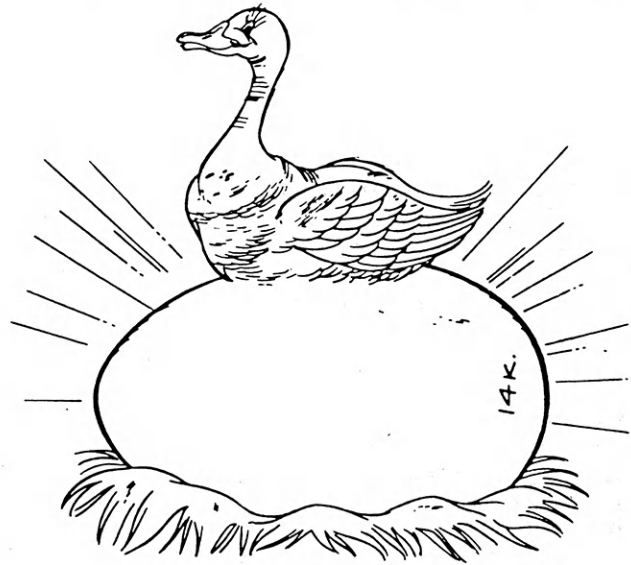
P — For Post High and/or Adults Only

Kansas Association of Area Voc

# Your Future Now!

# VOCATIONAL EDUCATION Your Golden Opportunity

CAREER AREAS	AVTS CENTERS													
	NEWTON	ARKANSAS CITY	EMPORIA	Kansas City	TOPEKA	Liberal	Manhattan	BELOIT	ATCHISON	GOODLAND	Salina	COFFEYVILLE	DODGE CITY	Wichita
Manufacturing Engineer Technician	P	P												
Sheetmetal Fabrication	X													
Heavy Equipment Operator								P						
Masonry/Bricklaying						X		X	X			X		
Plumbing & Heating & Air Conditioning								X		P				
Custodial Service Cert.											P			
Diesel Mechanic						X		P		P	X			X
Drafting		X		X	X	X	P		X	P	X	X		X
Industrial Electrician								X	X					X
Electrical Lineman							P							
Electronic Occupations		X	X	X		X		X		P	X			X
Telephone Communications Tech.										P				
Radio & TV Repair			X		X	X		X		P	X		X	X
Graphic Arts	X		X	X	X		X		X			X		X
Litho-Offset Printing	X		X	X	X		X		X		X			X
Machine Shop	X	X	X	X	X						X	X	X	X
Welding	X	X	X	X	X	X	X	X	X	P	X	X	X	X
Cosmetology		P		X						P			P	
Plastics Occupations														X
Law Enforcement Training		P												
Small Engine/Marine Repair				H	X									H
Motorcycle Mechanics														H X
Cabinet Making								X						X
Coop. Ind. Training	H			H	X						X			X
Truck Driving													P	P
TECHNICAL EDUCATION														
Civil Technology					X									
Environmental Water/Clean Water											P			
Engineering Technology		P												P



## NORTHEAST KANSAS AVTS

Melvorn Deckard, Director  
1501 Riley  
P.O. Box 277  
Atchison, Kansas 66002  
913-367-6204

## LIBERAL AVTS

Melvin F. Corn, Director  
P.O. Box 1599  
Liberal, Kansas 67901  
316-624-2551

## NORTH CENTRAL KANSAS AVTS

Dr. Bob Severance, Director  
1320 North Walnut  
Box 626  
Beloit, Kansas 67420  
913-738-2276

## MANHATTAN AVTS

Bill Berry, Director  
3136 Dickens Avenue  
Manhattan, Kansas 66502  
913-539-7431

## SOUTHEAST KANSAS AVTS

Richard R. McWhorter, Director  
Sixth and Roosevelt  
Coffeyville, Kansas 67337  
316-251-3910

## CENTRAL KANSAS AVTS

Dr. Dale Brooks, Director  
218 East 7th Street  
P.O. Box 545  
Newton, Kansas 67114  
316-283-0930

## SOUTHWEST KANSAS AVTS

Dr. Eddie Estes, Director  
Second & Comanche  
P.O. Box 1576  
Dodge City, Kansas 67801  
316-225-0285

## KANSAS CITY AVTS

Harry L. Falgren, Director  
2220 North 59th Street  
Kansas City, Kansas 66104  
913-334-1000

## FLINT HILLS AVTS

Richard Metcalf, Director  
3301 West 18th Avenue  
Emporia, Kansas 66801  
316-342-6404

## SALINA AVTS

Eugene Lundgrin, Director  
2562 Scanlan Avenue  
Salina, Kansas 67403  
913-825-2261

## COWLEY COUNTY AVTS

A.F. Buffo, Director  
125 South Second Street  
Arkansas City, Kansas 67005  
316-442-0430

## KAW AVTS

Roy J. Berry, Director  
5724 Huntoon  
Topeka, Kansas 66604  
913-272-8680

## NORTHWEST KANSAS AVTS

Larry Keirns, Director  
1209 Harrison  
P.O. Box 668  
Goodland, Kansas 67735  
913-899-3641

## WICHITA AVTS

Richard Ladd, Director  
301 South Grove  
Wichita, Kansas 67211  
316-265-0771

## Tech Schools

# Vo-tech schools teach technical skills in ag fields

By Dr. Dale Brooks  
 Director  
 Central Kansas Area Vocational  
 Technical School  
 Newton

The 14 area vo tech schools located throughout the state are offering agriculture and agriculture-related programs of one to two years in length leading into immediate employment. The schools have strong placement programs

which assist students with the selection of employment opportunities.

Several schools report that the ag program graduates' beginning salary range is as high or higher than that of any of the other programs offered by the school.

The growth and expansion of the agricultural economy of Kansas has opened employment opportunities for individuals with technical and managerial skill needed by farms, ranches, agricultural supply and

manufacturing firms doing business in the midwest.

Students having a rich ag background, who have lived on a farm and assisted with family farm production, who then complete one of the vo tech programs will find that they possess the knowledge and skill that prospective employers are searching for.

Listed below are schools and programs that are offered by the Kansas vo techs.

SCHOOL	PROGRAM	MAJOR UNITS OF INSTRUCTION	LENGTH OF PROGRAM
<b>Southwest Kansas AVTS</b> Second & Comanche P.O. Box 1576 Dodge City, KS 67801	Floral Design  Sales	Floral Design For Christmas, Weddings, Funerals, Holidays and General Sales Flower Care and Identification Flower Shop Management Floral Marketing	9 months, 3 hours per day
SALARY RANGE OF PAST GRADUATES \$4.50 - \$5.50 PER HOUR			
<b>Flint Hills AVTS</b> 301 West 18 Avenue Emporia, KS 66801	Feed Lot and Ranch Management	Beef Cattle Management Livestock Management Livestock Nutrition Animal Health Crops and Soil Farm & Ranch Management Ag Math	9 months, 6 hours per day plus supervised work experience
SALARY RANGE OF PAST GRADUATES \$9,000 to \$15,000 ANNUALLY			
<b>Northwest Kansas AVTS</b> P.O. Box 668 Goodland, KS 67735	Farm & Diesel Mechanics	Engines—Gas & Diesel Power Trans, Air Conditioning Electrical and Carburetion Hydraulics & Diesel	12 months, 6 hours per day plus supervised work experience
SALARY RANGE OF PAST GRADUATES \$9,000 to \$15,000 ANNUALLY			
<b>KAW AVTS</b> 5724 Huntoon Topeka, KS 66604	Production Agriculture & Agri-Business	Ag Mechanics Animal Science Crop & Soil Management Farm Management	9 months, 6 hours per day plus supervised work experience
SALARY RANGE OF PAST GRADUATES \$8,000 to \$12,000 ANNUALLY			
<b>Liberal AVTS</b> 2215 North KS P.O. Box 1599 Liberal, KS 67901	Ag Production Crop Technician	Farm Equipment Mechanics-Welding Diesel Engines & Hydraulics Crop Production Irrigation, Marketing Soils & Fertilizers, Chemicals	9 months, 6 hours per day plus 540 hours of supervised work experience
SALARY RANGE FOR PAST GRADUATES \$10,000 to \$15,000 ANNUALLY			
<b>Cowley County AVTS</b> 125 South 2nd Street Arkansas City, KS 67005	Agriculture Technology	Farm and Ranch Management Crop Production Livestock Production Irrigation, Marketing Soils & Fertilizers, Chemicals	18 months (65 credit hours)
SALARY RANGE OF PAST GRADUATES \$10,000 to \$15,000 ANNUALLY			



**Cowley County AVTS**  
125 South 2nd Street  
Arkansas City, KS 67005

Agri-Business  
Technology

Ag Sales  
Ag Business Law  
Ag Economics  
Basic Accounting  
Ag Business Management  
Crop Management  
Grain Handling and Storage

18 months  
(65 credit hours)  
Supervised work  
experience

**SALARY RANGE OF PAST GRADUATES \$10,000 to \$15,000 ANNUALLY**

**Southeast Kansas AVTS**  
Sixth and Roosevelt Street  
Coffeyville, KS. 67337

Farm and Ranch  
Management  
(775 Acre Campus)

Beef Cattle Feedlot  
Cow-Calf Management  
Crops-Soils and Irrigation  
Swine Production  
Farm Business Management  
Machinery Management

9 months, 6 hours  
per day plus  
Supervised work  
experience

**Manhattan AVTS**  
3136 Dickens Avenue  
Manhattan, KS 66502

Farm Business  
Analysis

Farm Records  
& Accounts  
  
Tax Management  
Record Analyses  
Planning Farm Production

4 years for  
farm operators of  
the Manhattan area

**Wichita AVTS**  
301 South Grove  
Wichita, KS 67221

Horticulture

Green House Propagation  
  
Plant & Insect Identification  
  
Planting Medium Landscaping  
  
Horticulture Business

43 weeks of  
open entry/  
open exit

**SALARY RANGE OF PAST GRADUATES \$8,000 to \$12,000 ANNUALLY**

**North Central Kansas AVTS**  
P.O. Box 626  
Beloit, KS 67420

Production  
Agriculture

Animal Science  
Crop Production  
Soil Science  
Ag Business Management

9 months, 6 hours  
per day

**SALARY RANGE OF PAST GRADUATES \$8,000 to \$12,000 ANNUALLY**

## Community colleges offer training for agriculture

By Melinda Spannenberg  
Garden City Community College

Often high school graduates with an interest in agriculture believe that getting right to work on the farm is the best thing for them.

Many community college graduates are proving that this is not necessarily so.

Even two years of college experience can help young farmers and agriculture related workers to get better jobs, run more successful farming operations and make more money than do their friends who do not continue their education.

The additional experience offered through agriculture and business programs usually proves helpful even to those students who have grown up on a farm.

"The kid who grows up on a farm usually sees only that operation," according to Ira Mann, director of agriculture at Garden City Com-

munity College, Garden City.

"The advantage of at least two years of college work is that the student gets to see how other operations work and to learn some added technical information that he can use in future decisions," Mann said.

Garden City Community College offers a seven month field study program in which students receive college credit for work done out in the field. This may be on their own family farm, working on someone else's farm, working in a feed lot or in whatever their main area of interest is.

A similar program is offered at Barton County Community College, Great Bend.

Mann believes there are three advantages to completing a two-year degree program with the field study option.

"They get job experience which helps in hiring, the education is practical and up-to-date and it gives

them a reference for future employment," he said.

Colby Community College, Colby; Allen County Community College, Iola; and BCCC have their own farms for students to use for actual lab experience.

"Community colleges without farms or field study programs place students with employers in field

(Continued on page 15)

**Money For Your Treasury**

**OVER 2 MILLION**

**Sunflower Dishcloths**



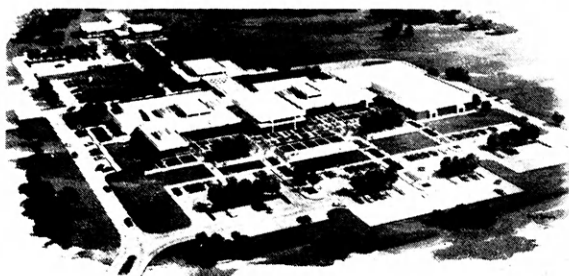
WERE SOLD LAST YEAR BY MEMBERS OF GROUPS, SOCIETIES, CLUBS, ETC.

THEY ENABLE YOU TO EARN MONEY FOR YOUR TREASURY AND MAKE FRIENDS FOR YOUR ORGANIZATION

**Sample FREE to Official.**

**SANGAMON MILLS, INC., Cohoes, N. Y. 12047**  
KJ Established 1915

# THIS IS ALLEN COUNTY COMMUNITY COLLEGE



Fully accredited by the North Central Association of Colleges and Secondary Schools and by the Kansas Department of Public Instruction. Two-year Associate of Arts Degree. ACCC is a two year public community college — a college mindful of, and responsive to, the needs of youth, and of the community.

ACCC offers a low cost—high quality education in:

- GENERAL EDUCATION
- COLLEGE TRANSFER
- VOCATIONAL-TECHNICAL

INTRODUCING—NEW AGRICULTURE PROGRAMS

One and two year programs in Farm Management, Agri-business, and General Agriculture.



Write: Director of Admissions

ALLEN COUNTY COMMUNITY COLLEGE  
IOLA, KANSAS 66749  
Phone (316) 365-5116

# SUMMER HELP WANTED

Join an adventurous summer staff!

Rock Springs Ranch  
Lake Perry 4-H Center  
Southwest 4-H Center

*Now accepting applications for  
summer employment — 1981*

For information and application write or call:

Kansas 4-H Foundation  
116 Umberger, KSU  
Manhattan, KS 66506  
913-532-5881

Or

Rock Springs Ranch  
R #1 Box 55  
Junction City, KS 66441  
913-257-3221

# Plan your future with us!

Complete the first two years of most bachelor's degree programs in science, music, history, art, mathematics, physical education and other areas of general studies. Or, choose a one or two year career program.

We offer career programs in:

Agriculture  
Automotive Technology  
Business Occupations  
Child Care  
Computer Science  
Cosmetology

Criminal Justice  
Diesel Mechanics  
Drafting  
Electronics  
Gunsmithing  
Heating and Air Conditioning  
Home Economics

Interior Design  
Machine Technology  
Medical Laboratory Technician  
Mid-Management  
Nursing  
Occupational Therapy  
Petroleum Technology  
Secretarial Office Training



# BARTON COUNTY COMMUNITY COLLEGE



Great Bend, Kansas 67530

(316) 792-2701

# KANSAS TWO-YEAR COLLEGES

	Location	(Equated Full-Time) Enrollment Fall, 1980	Tuition Per Sem. (Kans. Res.) Fall, 1980	Room & Board Per Sem. Fall, 1980	On Campus Housing Capacity	WRITE OR CALL FOR INFORMATION TO
<b>Public Community Colleges</b>						
Allen County Community College	Iola	565	\$10 credit hr.	\$600	96	Registrar, Allen County Community College, 1801 N. Cottonwood, Iola, Kans. 66749. 316-365-5116.
Barton County Community College	Great Bend	1,200	\$10 credit hr.	\$725	200	Dean of Admissions, Barton County Comm. College, Great Bend, Kans. 67530. 316-792-2701 (Ext. 212).
Butler County Community College	El Dorado	1,203	\$220	\$700	130	Director of Admissions, Butler County Community College, El Dorado, Kans. 67042. 316-321-5083.
Cloud County Community College	Concordia	835	\$14.75 (Inc. Fees)	\$350 (Room only)	200	J.W. Carlson, Dir. of Admissions, Cloud County Community College, Concordia, Kans. 66901.
Coffeyville Community College	Coffeyville	748.5	\$10 credit hr.	\$595	196	Dir. of Admissions, Coffeyville Community College, Coffeyville, Kans. 67337. 316-251-7700.
Colby Community College	Colby	850	\$12 credit hr.	\$660-700	264	Joe Mildretler, Dean of Admissions, Colby Community College, Colby, Kans. 67701. 800-432-7966.
Cowley County Community College & Vocational-Technical School	Arkansas City	755	\$10 credit hr.	\$800	114	W.S. Scott, Dean of Students, Cowley County Community College, Arkansas City, Kans. 67005. 316-442-0430.
Dodge City Community College	Dodge City	1,239	\$10 credit hr.	\$695-800	250	Bob Bartkoski, Director of Admissions, Dodge City Community College, Dodge City, Kans. 67801. 225-1321, 1-800-742-9519 (Ext. 217).
Fort Scott Community College	Fort Scott	698	\$10 credit hr.	\$675	120	Registrar, Fort Scott Community College, 2108 S. Horton, Fort Scott, Kans. 66701. 316-223-2700.
Garden City Community College	Garden City	1,200	\$10 credit hr.	\$675	289	Director of Admissions, Garden City Community College, Garden City, Kans. 67846.
Highland Community College	Highland	669	\$180	\$600-700	240	Douglas L. Fitch, Dean of Student Affairs, Highland Community College, Highland, Kans. 66035. 913-442-3238.
Hutchinson Community College	Hutchinson	1,762	\$10 credit hr.	\$683	400	Director of Admissions, Hutchinson Community College, Hutchinson, Kans. 67501. 316-663-3500.
Independence Community College	Independence	605	\$10 credit hr.	\$750	96	Director of Admissions, Independence Community College, Independence, Kans. 67301. 316-331-4100 (Ext. 31).
Johnson County Community College	Overland Park	3,389	\$17.50 credit hr.			Director of Admissions, Johnson County Community College, College Blvd. & Quivira Rd., Overland Park, Kans. 66210. 913-677-8503.
Kansas City Kansas Community College	Kansas City	3,580	\$12 credit hr.			Director of Admissions & Registrar, Kansas City Kans. Community College, 7250 State Ave., Kansas City, Kans. 66112. 913-334-1100.
Labette Community College	Parsons	824	\$13 credit hr.			Labette Community College, 200 South 14th St., Parsons, Kans. 67357. 316-421-6700.
Neosho County Community College	Chanute	445	\$10 credit hr.	\$600	80	Homer F. Bearrick, Dean of Students, Neosho County Community College, Chanute, Kans. 66720. 316-431-2820.
Pratt Community College	Pratt	527	\$10 credit hr.	\$732.50	104	Director of Admissions, Pratt Community College, Pratt, Kans. 67124. 316-672-5641.
Seward County Community College	Liberal	1115	\$14 credit hr.	\$750	88	Dean of Student Services, Seward County College, Liberal, Kans. 67901. 316-624-1951.
<b>Private Two-Year Colleges</b>						
Central College	McPherson	288	\$1,300 (ave.)	\$800	285	Director of Admissions, Central College, McPherson, Kans. 67460. 316-241-0723.
Donnelly College	Kansas City	440	\$1,228	\$717	596	Donnelly College, 1236 Sandusky, Kansas City, Kans. 66102.
Hesston College	Hesston	660	\$1,345	\$790	300	Student Services Department, Hesston College, Hesston, Kans. 67062. 316-327-4221.
St. John's College	Winfield	305	\$1,140	\$750	375	Wallace Behrhorst, Director of Admissions, St. John's College, Winfield, Kans. 67156. 316-221-4000 (Ext. 34).
<b>State Technical Institutes</b>						
Kansas Technical Institute	Salina	395	\$172.50	\$750	135	Director of Admissions, Kansas Technical Institute, Salina, Kans. 67401.
Vocational Technical Institute (Pittsburg State University)	Pittsburg	294	\$107.25	\$726-958	1264	William Gary Ward, Director, Vocational Technical Institute, Pittsburg State University, Pittsburg, Kans. 66762. 316-231-7000 (Ext. 401).

# *Let's Get Acquainted!*

## **Colby Community College...**

... is a college offering programs for students who will transfer to other colleges and universities and those who want to go to work after one or two years ...

... is a two-year community college in Northwest Kansas ...

... this year has students from 85 Kansas counties, 18 states and four foreign countries ...

... stresses practical experience in its career programs — agri-business, beef cattle production, farm and ranch management, horse production, sheep management and technology, swine science, alcohol fuel production, counseling the addicted, mental health technician, practical nursing, optometric technician, physical therapist assistant, animal hospital technology, exotic and small animal management, child care, mid-management, secretarial science, radio-television, printing ...

... offers the first two years of transfer programs including biology, computer science, math, chemistry, engineering, chiropractic, dentistry, forestry, geology, medicine, registered nursing, medical technology, pharmacy, respiratory therapy, physical education, recreation, art, music, drama, speech, modern languages, library science, journalism, English, economics, accounting, business administration, criminology, religion,

education, law, history, political science, home economics, social work, sociology, psychology, veterinary medicine, physical therapy, animal science, general agriculture, agriculture education, agriculture economics, agronomy, agribusiness ...

... is based on a 14-year-old campus that includes on-campus housing, a swimming pool, a college farm (northeast of Colby), library, student union, comfortably furnished classrooms and well-equipped laboratories ...

... provides many student services including financial aid, counseling, student health service and a large number of organizations and activities ...

... gives you the opportunity to continue athletic competition or to continue performing in one of the fine arts ...

... is fully accredited by the North Central Association and the credit hours earned are transferrable to other colleges and universities ...

... believes that students are the most important people on the campus and deserving of high quality teaching and advising from instructors who know that aiding students is their main responsibility ...

... offers a three-part summer school program in addition to the two regular semesters.

**That's a little about us. To learn more, write to us or come for a visit.  
That way we can learn about you.**



*For more information about Colby Community College, contact the Admissions Office, Colby Community College, 1255 South Range, Colby, Kansas 67701. The telephone number is 913-462-3984.*

**colby community college**

1255 South Range, Colby, Kansas 67701  
913/462 3984

ATTEND THE



# WESTERN FARM SHOW

Feb. 23-24-25 / 9 am-5 pm / <sup>4 pm</sup> Wednesday

**American Royal  
Exposition Building  
Kansas City, Mo.**



**FREE Admission**

Parking - \$2.00  
PER CAR



LARGEST INDOOR FARM MACHINERY  
SHOW IN THE MIDDLE WEST



TRUCK and TRACTOR PULLS

Special Free Entertainment  
For the Ladies



## FORT SCOTT COMMUNITY COLLEGE FORT SCOTT, KANSAS



Fort Scott Community College offers an Agriculture Program that is articulated with 4 year colleges and university transfer program. Also a diversified curriculum to accommodate those desiring to increase their practical knowledge and skills in the agriculture field.

Accredited by the State Board of Education and North Central Association of Colleges and Secondary Schools.

For further information please complete the following and mail to Admissions, Fort Scott Community College, 2108 S. Horton, Fort Scott, Kansas 66701.

Name \_\_\_\_\_

Mailing Address \_\_\_\_\_

Phone \_\_\_\_\_

Information desired: \_\_\_\_\_

## Cowley County Community College

Your agriculture education  
goes beyond the four walls of  
a classroom

On-the-job experience is a major part of all our agriculture programs. If you're interested in crop production, livestock production, agri-business, or if you want to transfer to a four-year institution, CCCC has a program for you.

If agriculture is in your future, you can start on your future today by calling (316) 442-0430, extension 62, or writing

Agriculture Programs  
**Cowley County Community  
College-AVTS  
Arkansas City,  
Kansas 67005**





# BUTLER COUNTY COMMUNITY COLLEGE

**YOU CAN RECEIVE EDUCATION AND TRAINING TOWARD MANY  
CAREER CHOICES AT BUTLER COUNTY COMMUNITY COLLEGE**

At Butler County Community College, we share the life and learning experiences of old and new educational ideas.

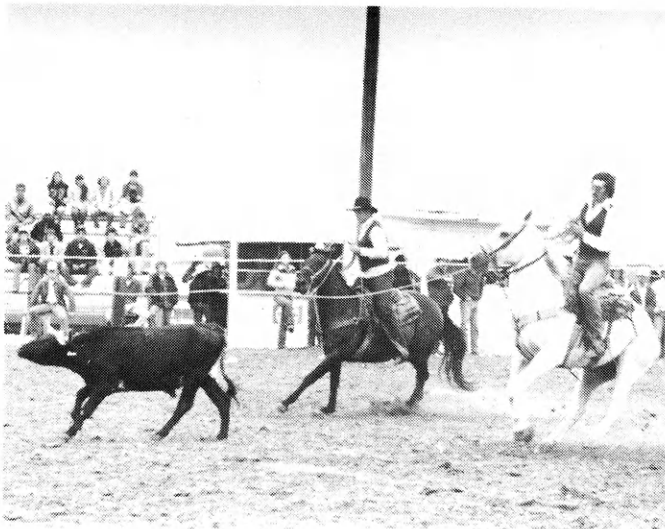
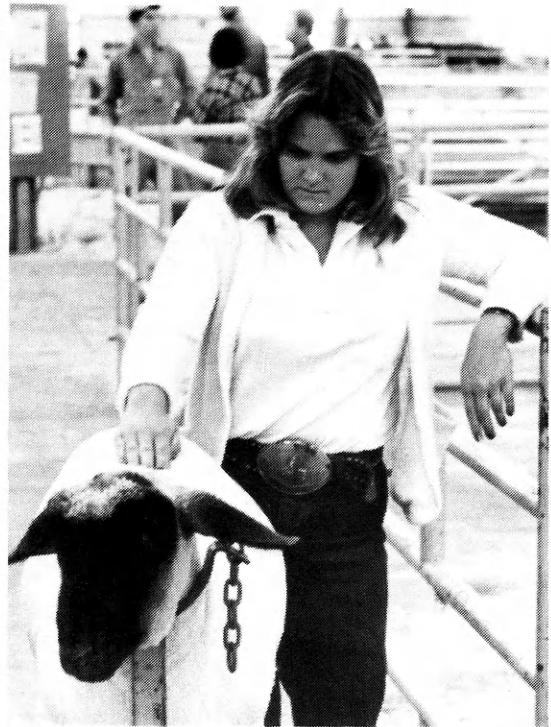
We've committed ourselves to meet the demands of change, as is evidenced by our agricultural program.

Nursing, Vocational-Technical programs, Business, Science, Music and Drama—these, and many more courses are available at Butler County. Sports and student activities are, of course a part of campus life, including **RODEO AND LIVESTOCK JUDGING TEAMS** and a **COLLEGIATE 4-H** organization.

Our beautiful campus, located in the Flint-hills/Bluestem Prairie of Kansas, meets student and community needs for a friendly, healthy experience in life and learning.

Butler County Community College is a personal experience with people, where students, both young and older, interact in a community that cares about you.

Let us tell you more!!!!!!



**Butler County Community College  
P.O. Box 888  
El Dorado, KS 67042**

Please send free Brochure and information to:

Name \_\_\_\_\_

School \_\_\_\_\_

Address \_\_\_\_\_

Zip \_\_\_\_\_

Graduation date \_\_\_\_\_

Area of Interest \_\_\_\_\_

**Financial Aid Available**

## Community Colleges

(Continued from page 9)

experience where they are supervised by both the employer and instructor," Les Olsen, education program specialist in agriculture education for the Kansas State Department of Education, said.

"Most generally, if students have good training in agriculture, there are no problems for students seeking jobs," Olsen said, "especially in the areas of Co-ops, agri-business and in areas where they can move up into mid-management.

"Everything is becoming more technical and advanced," Olsen said. "If students are experienced, they can convert that to dollars, so it's a definite plus for them."

According to a survey taken by GCCC four years ago, the majority of their graduates in agriculture return to home farms after completing the two-year program. Some transfer to four-year colleges.

Speaking for Barton County, "about 20 per cent of our graduates go on to complete advanced degrees," Gerry Gee said. He is head of agriculture at Barton County Community College.

"While many of our students go back home to family partnerships or corporations, we have an extremely good placement record in agri-business and farm/ranch management as well," Gee said.

Some graduates may start up toward \$12,000 to \$14,000 per year in agri-business, Gee said, while

some farm and ranch graduates may earn \$1,000 a month with a house furnished, plus utilities and a beef a year.

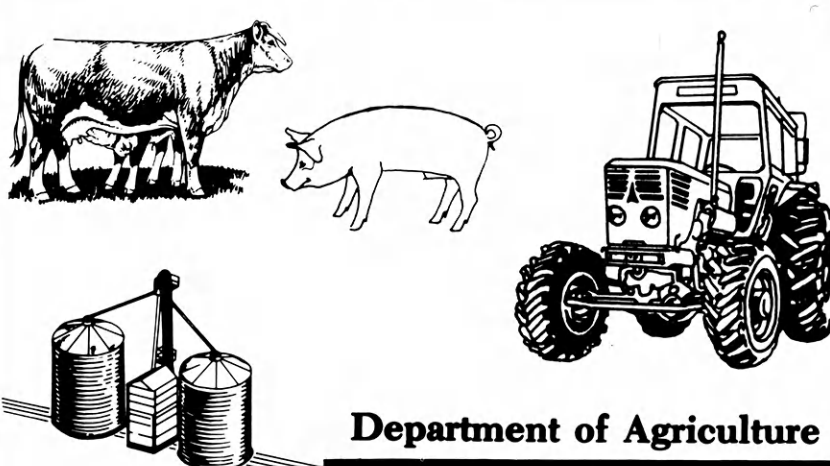
Mann claims Ken Burch as one of his success stories. Burch was one of the first feed lot technology graduates from GCCC.

Burch did his field study at Mor-

ris Feed, now Blackfoot Feed Yard, east of Garden City. He is currently manager of Gray County Feed Yards, south of Cimarron, which handles 20,000 head of cattle.

Referring to his two years at GCCC, "they put a lot of the basics

(Continued on page 17)



**Department of Agriculture**

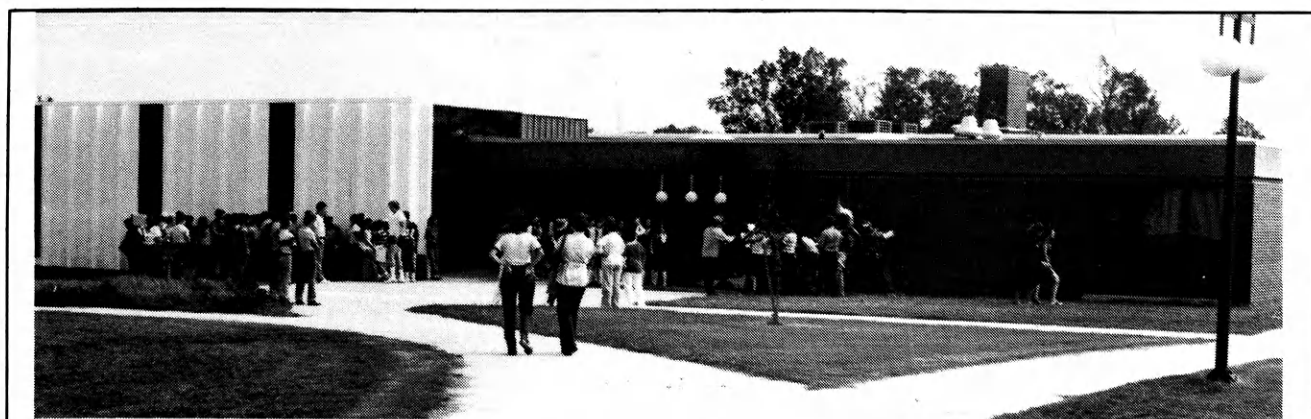
# HIGHLAND COMMUNITY COLLEGE

**INVESTIGATE:**  
The wealth of learning opportunities available today in Agriculture!!

For more information and a FREE GIFT—call or write to:

Highland Community College  
Agriculture Department

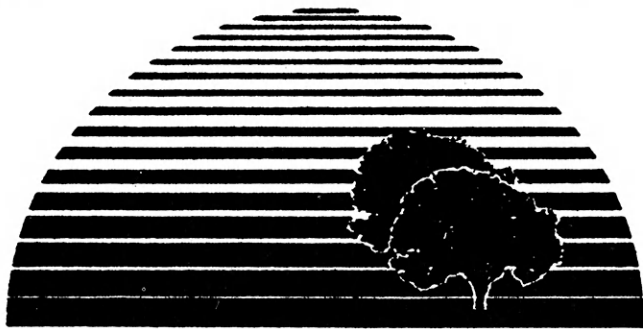
**Highland, Kansas 66035**  
Phone: 913/442-3238



## INDEPENDENCE COMMUNITY COLLEGE

**Box 708 Independence, Kansas 67301 Phone 316-331-4100**  
 • 52 Acre Campus • Free Tutors • Small Classes • Housing • Sports  
*New Programs in Computers, Cosmetology, Nursing*

**"THE COLLEGE THAT CARES"**



## Hutchinson Community College

For decades the word agriculture has referred to agriculture production or farming — a major American industry that employs over three million workers.

But today the word encompasses more than just farm production. It is closely related to many other industries in the economy—food and fiber processing, marketing and distribution industries, farm implement producers and dealers, and feed and fertilizer manufacturers.

Hutchinson Community College continues to meet the demand for specially trained agriculture personnel by offering students technical and transfer agriculture programs.



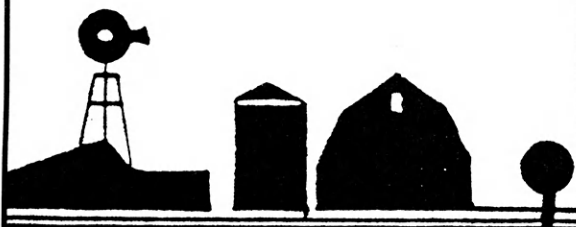
Agriculture was once thought to be a male career field. This is no longer the case since opportunities exist for men and women in a wide variety of agriculture careers.



If your interest, values, and abilities indicate you would enjoy an agricultural career, take advantage of the opportunities such as the following:

- |                                 |                                    |
|---------------------------------|------------------------------------|
| <i>Agronomist</i>               | <i>Dairy Technologist</i>          |
| <i>Horticulturist</i>           | <i>Agriculture Engineer</i>        |
| <i>Microbiologist</i>           | <i>Geneticist</i>                  |
| <i>Park Ranger</i>              | <i>Ag-Business Manager</i>         |
| <i>Livestock Specialist</i>     | <i>County 4-H Agent</i>            |
| <i>Animal Scientist</i>         | <i>Ag-Production Sales</i>         |
| <i>Agriculture Seed Analyst</i> | <i>Soil Conservationist</i>        |
| <i>Chemist</i>                  | <i>Pesticide Management</i>        |
| <i>Plant Scientist</i>          | <i>Agricultural Economist</i>      |
| <i>Grain Buyer</i>              | <i>Natural Resource Management</i> |
| <i>Food Chemist</i>             | <i>Poultry Scientist</i>           |
| <i>Farm Loan Officer</i>        | <i>Milling Management</i>          |
| <i>Rancher</i>                  | <i>Farm Machinery Mechanics</i>    |
| <i>Farmer</i>                   | <i>Farm Equipment Sales</i>        |
| <i>County Agriculture Agent</i> |                                    |

## Hutchinson Community College



For information send to:  
**HCC ADMISSIONS DIRECTOR**  
 1300 North Plum  
 Hutchinson, Ks. 67501

Name \_\_\_\_\_

Address \_\_\_\_\_

City \_\_\_\_\_

State \_\_\_\_\_ Zip \_\_\_\_\_

(316) 665-3535



## Community Colleges

(Continued from page 15)

into you, plus give you a chance to work through it," Burch said. "I got classroom work as well as outside-the-classroom work," he added.

Gene Davis, Sublette, is another GCCC graduate. He did his field study experience at home under the supervision of his father and is now farming in semi-partnership with his father.

Davis believes his college experience has especially helped him in the economics of agriculture. He also took courses in mechanics, fertilizer and other related areas that now help him in his farming operation.

Rod Schemm is a GCCC graduate who continued his education, completing both his bachelor of science degree and his master's degree. He is presently feed foreman at Hitch Feed Lot, Guymon, Oklahoma, which handles more than 40,000 head of cattle.

"Everything covered (at GCCC) was applicable to the trade," he said. "Along with the advanced education, being in contact with a lot of people left me in better shape as far as personnel and overall management goes."

"The two year program at GCCC prepared me for the how, what needs to be done and how to get it done, while the why aspects are covered in the advanced degrees," Schemm said.

Whether a student plans to take a few courses, complete an associate degree or transfer for more advanced degrees at a larger college or university, Burch seemed to sum it all up when he said, "practical application of what you've learned is what it's all about."

## People are needed

(Continued from page 5)

school education, but they may prefer college graduates. Those who have taken courses in insurance, business law, economics, accounting and finance may find them helpful.

The practical nursing profession is closely regulated in all the states and the District of Columbia. To qualify for licensure, individuals must complete a state-approved educational program and must pass a written examination.



R.N./L.P.N. Nursing\*Insurance Technology  
Accounting Clerk\*Child Care\*Agriculture Technology  
Secretarial Technology\*Fashion Merchandising  
Radio/TV Communications\*Distributive Education  
4 Year Transfer\*Coed Dorm  
Horse Science

316-225-1321 or toll free 1-800-742-9519

**The BEST KEPT SECRET in Kansas  
is**

## CLOUD COUNTY COMMUNITY COLLEGE

- |  |  |
|--|--|
| <input type="checkbox"/> Agri-Business               | <input type="checkbox"/> Child Care & Guidance       |
| <input type="checkbox"/> Production Agriculture      | <input type="checkbox"/> Secretarial Science         |
| <input type="checkbox"/> Farm & Ranch Management     | <input type="checkbox"/> Legal Secretary             |
| <input type="checkbox"/> Ag Supplies & Services      | <input type="checkbox"/> Medical Secretary           |
| <input type="checkbox"/> Rural Building Construction | <input type="checkbox"/> Supervisory/Management      |
| <input type="checkbox"/> Elevator Management         | <input type="checkbox"/> Travel Tourism              |
| <input type="checkbox"/> Feedlot Technology          | <input type="checkbox"/> Nursing Home Administration |
| <input type="checkbox"/> Cow-Calf Technology         | <input type="checkbox"/> Radio Production            |
| <input type="checkbox"/> Swine Technology            | <input type="checkbox"/> Geriatric Aide              |
| <input type="checkbox"/> Associate Degree Nursing    | <input type="checkbox"/> Nurse Aide                  |
|  | <input type="checkbox"/> Medication Aide             |

Both **One** and **Two** year programs in many of the above areas.

\*\*\*\*\*

*We provide an Associate Degree transfer program in most professional areas such as Business, Education, Engineering, Home-Economics, Pre-Medicine, Music, etc.*

\*\*\*\*\*

**For information about The BEST KEPT SECRET in Kansas ask for a catalog!**

### Contact:

Director of Admissions  
Cloud County Community College  
Concordia, Kansas 66901  
Phone: 913-243-1435

The requirements for enrollment in one of these programs vary from an eighth grade to a high school education. Aptitude tests may also be given for admittance. Programs are available at many vocational,

technical, or trade schools, junior colleges, health agencies, private institutions and hospitals. They include classroom instruction and clinical practice and usually last about one year.

---

# The Magnificent Seven

---

Kansas has the lucky seven combination of schools which offer uncompromising education at a surprisingly low cost. One of the seven regents' schools is near you. At least one of them has the kind of specialty program that interests you. All of them are friendly, helpful, and dedicated to fulfilling your educational goal.

Call or write for further information from each school.

## **EMPORIA STATE UNIVERSITY**

Director of Admissions  
Emporia, Kansas 66801  
316-343-1200

## **KANSAS TECHNICAL INSTITUTE**

Director of Admissions  
Salina, Kansas 67401  
913-825-0275

## **FORT HAYS STATE UNIVERSITY**

Director of Admissions  
Hays, Kansas 67601  
913-628-4222

## **PITTSBURG STATE UNIVERSITY**

Director of Admissions  
Pittsburg, Kansas 66762  
316-231-7000

## **KANSAS STATE UNIVERSITY**

Director of Admissions  
Manhattan, Kansas 66506  
1-800-432-8270 toll-free (Kansas only)  
913-532-6250

## **UNIVERSITY OF KANSAS**

Director of Admissions  
Lawrence, Kansas 66045  
913-864-4422

## **WICHITA STATE UNIVERSITY**

Director of Admissions  
Wichita, Kansas 67208  
316-689-3085

# Ag graduates are in demand

By Becky Vining  
Intern  
National FFA Center  
Alexandria, Virginia

The future for college agriculture graduates looks bright, says David Kraus, assistant director of the Kansas State University Career Planning and Placement Center. The technically-trained bachelor's degree graduates attract 26 percent of the employee recruiters to the university even though they make up only 17 percent of the student population.

Graduates in grain science and industry, food science, crop protection, ag education, ag journalism and sales and management trainee positions are especially in demand.

Grain science offers the best paying salaries and strongest demand, Kraus said. Last spring milling science graduates started at an average \$1,600 a month, bakery science at \$1,500 and feed science at \$17,500 a year.

"We're not even close to meeting job demands with graduates," said Charles Deyoe, head of the KSU Department of Grain Science and Industry. "It's rare if a student isn't placed before graduation. I've seen students with summer experience hired a year before graduation. We could easily place double, possibly triple, the number of graduates we have."

Whether a student majors in ag economics, animal sciences or horticulture, job opportunities are available in the entire spectrum of agribusiness sales and marketing.

"Some students think because they majored in a certain field they're restricted to certain occupations, but that's not necessarily

true," Kraus said. "Employers want a graduate who understands agriculture or has an ag background. They are looking for people who can communicate with farmers, empathize with them and understand them."

An agricultural economics degree leads to some of these sales and marketing jobs but also to careers in banking, government agencies and farm management.

"Ag economics is a matter of using knowledge basic to agriculture and of integrating the science of economics and putting them together to maximize profits," said Milton Manuel, head of the KSU Department of Economics. The students design their curriculums to meet career objectives and start with an average annual salary of \$14,500.

Though enrollments are fairly small, the demand for food science graduates is high, Kraus said. Food companies from around the nation hire college graduates for quality control, product development, management and other positions.

In horticultural therapy, an average six jobs are available for each graduate starting at \$13,500 annually. These professionals use plants to work with people in community-based programs, corrections, gerontology, mental health or developmental disabilities.

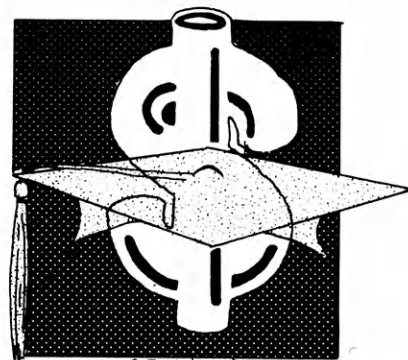
Crop protection and agronomy degrees lead to many job opportunities including working for crop consulting firms and ag chemical companies.

Crop protection combines entomology, plant pathology and other disciplines to provide integrated pest management. Agronomy is the study of crops and soils, and graduates usually start at \$1,000 to \$1,400 a month.

The demand for agricultural education graduates is strong since about half farm or enter industry rather than teach vocational agriculture.

Ag journalism graduates are needed in magazine and newspaper work, public relations and radio/TV. Starting salaries range from \$1,000 to \$1,300 a month.

Ag mechanization is a critical link between science and the farmer. The strongest demand for graduates is in



business and industry where jobs average \$18,000 annually, but many also farm or work for agricultural services.

For horticulture, natural resource management and other four-year agriculture degrees, Kraus said job demands remain above that for general studies. The future for these agriculture graduates look bright because people will always have to eat. Trained agriculturalists must get the job done.

*Editor's Note: In addition to the state's land-grant institution, Kansas State University at Manhattan, other Kansas colleges offer degrees in agriculture.*

*Fort Hays State University at Hays offers a four-year curriculum with an agri-business degree, preparing students for positions in banks, in private lending institutions, in federal lending institutions, in industry and as farm and ranch managers. Degrees can also be earned in animal science, crop science and soil science.*

"Our ag graduates are in demand," Jenkins said. "We wish we had more of them."

"Because of the need for higher productivity on ranches and farms, the demand for college-educated farm managers and workers is increasing," Donna Ruder, career counselor and associate director of the career planning and placement service, said.

"Food production is more of a science than ever before, with technology affecting farming as well as other industries. Also, farming is a business, and many students who return to the farm benefit from courses in agri-business," Ruder said.

*Among the private colleges with four-year programs in agriculture are Tabor College at Hillsboro, McPherson College, and Friends University at Wichita.*



C. Rohleder '80

# LEADERSHIP DEVELOPMENT IS THE KEY

## Announcing the 1980 Kansas 4-H Key Award Winners



Of all the honors that can be gained in 4-H work, none is more prestigious than the Kansas 4-H Key Award. Regulations for Key Award consideration are stringent; only about one percent of the state's members are given this recognition each year. Candidates must first meet mandatory requirements which include a minimum of three years of club work completed, participation in at least two out-of-county events, enrollment in Junior Leadership during the current year, and two letters of recommendation — one of which must be from the adult leader of the club.

In addition to these and other basic qualifications, each nominee for the 4-H Key Award must have demonstrated outstanding

contributions in leadership, citizenship, and community service. Exhibits, demonstrations, judging, public relations work, the holding of offices, and evidence of handling increased responsibilities in projects are also considered by the State Awards Committee when determining whether a 4-H'er has earned this honor.

With so many factors considered, the 4-H Key Award obviously is recognition for leadership development. Simply stated, it recognizes members who have lived up to the high ideals expressed by the 4-H pledge. It is an award to strive for with determination...to win with a feeling of accomplishment... and to wear with pride. Congratulations, winners!

### Allen

Mike Setter  
Vickie Stanley  
Julie Butts

### Anderson

Ron Ratliff  
Marilyn Lickteig  
Vicki Ann McGhee

### Atchison

Gina Lynn Taliaferro  
Kelly Hegarty

### Barber

Linda Bell  
Debbie Rowe

### Barton

Kevin Ganoung  
Mark Ummen  
Karen Blakeslee  
Lorri DeWerff

### Bourbon

Scott Holeman  
Kelli Lynn Egbert  
Linda Morrell

### Brown

Bob Larson  
Brian Sommers  
Jeffrey Brockhoff

### Butler

Scott Chilcott  
David Arlan Stackley  
Deana Marie Auer  
Paula Harms  
Amanda Johnson  
Diana Sundgren

### Chase

Janice A. Danford

### Chautauqua

Patrick Coward

### Cherokee

Charles W. Atkinson  
Julie Kay Frobish

### Cheyenne

Rod Weeden

### Clark

Gisele McMinimy

### Clay

Francine Martin  
Maureen Fowles

### Cloud

Richard Lewis  
Nadine Breen  
Jill Kocher

### Coffey

R. D. Linsey  
Luanne Raaf

### Comanche

Allen Park

### Cowley

David Donley  
Tannie Eugene Olsen  
Steve Tackett  
Tami Christinson  
Becky C. Vick

### Crawford

Eddie Grant  
Kenny Ralph

### Decatur

Bill Vacura  
Penny Fisher

### Dickinson

Aaron Ford  
Dan Jones  
Jeffrey Spangler  
Deanna Beetch  
Connie Mills  
Karen Garten  
Julia Beemer  
Lorie Hettenbach  
Laurie Hoffman  
Teddi Bankes

### Doniphan

Jacqueline Dorrell

**Douglas**  
Mark E. Johnston  
Rick Lawrence  
Dorran Mullins  
Donetta J. Lawrence  
Sarah Schaake

**Edwards**  
Merle Craig

**Elk**  
Steve Walker  
John D. Huntington

**Ellis**  
Mark Bannister  
Timothy Branda  
Donna Younker

**Finney**  
Cindy Martin  
Jennifer Fillmore  
Pamela Greene  
Kathryn A. Drees

**Ford**  
Kent Venters  
DeLane Unruh  
Wanda Henton  
Jenane Vogel  
Bonnie Ring

**Franklin**  
Randy Arwood  
Steven Hausler  
Roger Maxwell  
Linda Blake

**Geary**  
Mary Boller  
Anita Lichtenhan  
Denise Sader  
Judy Strauss

**Gove**  
Donald Lubbers  
Myrna J. Tuttle

**Graham**  
Christine Davis  
Julie Farrell  
Lori Billips

**Grant**  
Ross MacKinnon  
Peggy Sewell

**Gray**  
David Strawn  
Lisa Campbell

**Greeley**  
Mona Harper

**Greenwood**  
Kim Boone  
Joanie Lawrence  
Teresa Casey  
Rochelle McLean

**Hamilton**  
Janell Grinstead  
Peggy Shorter  
Cheryl Cook

**Harper**  
Mary Kaye Wiemeyer  
Suzanne Pulliam  
Marie McCully

**Harvey**  
Denise Sauerwein  
Sandy Suderman

**Haskell**  
Lisa Dunham  
Dan Clawson

**Hodgeman**  
Ronda Whitman

**Jackson**  
Carrie Zibell

**Jefferson**  
Shawn McGee  
Michael McNary  
Labecca K. Mueller  
Darla Jean Clare

**Jewell**  
Shelley Purcell  
Ramona Bird

**Johnson**  
Mark Davidson  
Karl Allen  
David Lies  
Marty Greene  
Marilyn Linsey  
Marlene Swanson

**Kearny**  
Wade Horton

**Kingman**  
Marc Lindholm

**Kiowa**  
Melinda Douglass

**Labette**  
Donald Richardson  
Brenda Baird  
Lynette Landrith  
Earlene Brownnewell

**Lane**  
Monica Ellis

**Leavenworth**  
Gary D. Hein  
Mark A. Baker  
Karen Lynn Baker  
CeCe Todd  
Laurena Hunnell  
Stacy Seely  
Ruth Hoppe  
Michelle Anderson

**Lincoln**  
Nancy Day  
Connie Burt

**Linn**  
Michelle Marie Wade  
Roberta M. Lewis

**Lyon**  
Brian Rees  
Tom L. Arndt  
Cody Luginsland  
William V. Williams  
Nancy Burenheide  
Cherryl Browning

**McPherson**  
Kevin Krehbiel  
Randy Galle  
Nikki Schrag  
Denise Shields

**Marion**  
Ron Wineinger

**Marshall**  
Joyce Miller  
Nancy Linkugel  
Becky Cohorst  
Brenda Holle

**Meade**  
Rachel Bartel  
Jill Dufield

**Miami**  
David Kill  
Randal John Hendrickson  
Malea Lynn Husted  
Robbin A. Cornett  
Ann M. Kane

**Mitchell**  
James Moritz  
Joni Lynne James

**Montgomery**  
Casey Diver  
James Hall  
Robert Lattin  
Tony Yates  
Sherri Holliday  
Pam Seger

**Morris**  
Denise Rae Shepherd  
Missy Orr

**Morton**  
Kent Swinney  
Pete M. D. Milburn  
Shari Ann Lewis

**Nemaha**  
Don Rottinghaus  
Sandra Tegtmeier  
Ellen Marie Ketter

**Neosho**  
Jack E. Simmons  
Doug Angleton  
Rosene Kilgore

**Ness**  
Kimberly Foes  
Michelle Stum

**Norton**  
Marlene Price  
Sara Field

**Osage**  
Sara Sue Thomas  
Diane J. Green

**Ottawa**  
Diane M. Ranney  
Debra Berry

**Pawnee**  
Kerry Froetschner  
Sharon Bowman

**Phillips**  
Sheryl K. Gaines  
Darcie Hanke

**Pottawatomie**  
Stanley E. Bartley  
Michael Witt  
Diane M. Legleiter  
Kay Honig

**Pratt**  
Tom Black  
Eric Strobel  
Ruth Janelle Heflin

**Rawlins**  
Lisa Marie Fisher

**Reno**  
Rod A. Maskil  
Mike Schweppe  
Mark A. DeCou  
James Schlickau  
Myra Horton  
Sandra Ehling

**Republic**  
Maurice Waite  
Marcy Isaacson  
Gale Johnson  
Michele Stehno  
Angela Havel  
Lori Havel  
Chris Mikesell  
Lester Shoemaker

**Rice**  
Kyle Barta  
Sharon Peverley  
Rozanne Zwick

**Riley**  
Keith Westervelt  
Gary Wesche  
Eric Larson  
Teri Zentz  
Diana Kay Harbour  
Melinda Bea Schurle

**Rooks**  
Scott Haley  
Tammy Odle

**Rush**  
Jody Reichel  
Lori Luft

**Russell**  
Lynetta Janne  
Connie Shaffer

**Saline**  
Wayne Carlson  
Scott Johnson  
Con Enright  
Cristy Blase  
Kathy Mundell  
Anita Conley  
Dilyn Kelley  
DeAnne Tarn

**Scott**  
Wesley Rauth  
Aleta Yardley  
Sharon Marie Mollenkamp

**Sedgwick**  
Dave Gruenbacher  
Diana Rhodes  
Linda Long  
Mary McHenry  
Ruth Spexarth  
Teri Loughman

**Seward**  
Mary Eastman

**Shawnee**  
David Jeffrey Gabriel  
Carol J. Schmitz  
Mary L. Beems  
Jolene Wheeler  
Lisa Stadler

**Sheridan**  
Stacie L. Dickman  
Laurie Baalman

**Sherman**  
Gary McClung  
Traci Price  
Kim Pettibone

**Smith**  
Karen M. Ratliff  
Mary Schalansky

**Stafford**  
Marsha Kittle

**Stevens**  
Thais Holmes

**Sumner**  
Derald Nuse  
Glenda Humbert

**Thomas**  
Susan Goetsch  
Tanya Crabtree

**Trego**  
Joseph Schamberger  
Lisa Hillman

**Wabaunsee**  
Sally M. Hatfield  
Sherri Beach  
Ruth Glover

**Washington**  
Ricky Hauschel  
Kathy Rippe

**Wichita**  
Carol Berend  
Charla Blau  
Susan Bergh

**Wilson**  
Melissa Ann Miller

**Woodson**  
Jeff Lauber

**Wyandotte**  
Joe Buehler  
Candy Buehler  
Martha Stiglich



**Congratulations from the  
Kansas Federal  
Land Bank Associations**

Chanute	Emporia-Topeka	Hutchinson	Marysville
Colby	Garden City	Larned-Pratt	Ness City
Concordia	Hays	Lawrence	Ottawa
Dodge City	Hiawatha	Manhattan-Abilene	Wichita

**Close to the Land...  
and the people who work it.**

# Marketing helps to form the link from farmer to consumer

By Roderick Turnbull  
Director of Public Affairs  
Kansas City Board of Trade  
Kansas City, Missouri

*Editor's note: Probably no native Kansan has written more about agriculture than has Roderick Turnbull. For 40 years he covered the farm scene for the Kansas City Star as its agricultural editor. He was also editor of the Weekly Star Farmer.*

*Turnbull has been president of the American Agricultural Editors Association.*

*After retirement from the Star, Turnbull began a new career as Director of Public Affairs for the Kansas City Board of Trade.*

*There he continues to write on agricultural topics, primarily the grain business, with his weekly releases going to some 135 newspaper and farm magazine editors across the country, and to 35 radio stations. Also, each week he makes a Voice of America broadcast on a subject pertaining to American agriculture.*

*The Journal is especially proud to present an article by the dean of agricultural journalists, Roderick Turnbull.*

The food business has a built-in growth factor—every year there are more people in the world than there were the year before. In addition, hundreds of millions of people in the world would like to eat a little better and many of them can and are eating more or higher quality foods such as meat, milk and eggs.



*R. C. S.*

The result of this combination—more people all the time and some of them eating better—is a major reason for the virtual explosion in world trade in grains in which the United States accounts for the major share.

Food is big business; in fact, the biggest of all. It always has been and always will be. The major fundamental in this business is the producer, the farmer. Or maybe it could be said that the major fundamental is the land, but land does not produce much without man.

In any case, the food business, starting with the farmer, has many fundamental tasks to perform, including, as examples, storage in elevators and on farms, and transportation. In addition, nothing is more important than a marketing system.

Farming is unique in that the producers of almost any commodity number in the thousands, even hundreds of thousands in the case of grains. It is not like the motor car industry, for instance, in which three or four giant companies produce 90 to 100 percent of the nation's total output and relatively few dealers market the entire product.

No feasible way exists for Japan, when buying 10 million bushels of wheat, to get a pickup truck and drive from farm to farm (and then to a ship at the Gulf) to fulfill its requirements. Japan has to work through an export firm which gathers the 10 million bushels from many elevators and by barge or trains gets the grain to the port.

The United States has a grain marketing system that literally "grew up" from experience to meet the needs of the United States. It has to fit the United States, which is different from any other country in the world. One of the big differences is that the United States exports more grain than all the other exporting nations of the world put together.

Said another way, the U.S. must have a marketing system that lets it move more grain overseas than all the other exporting nations put together.

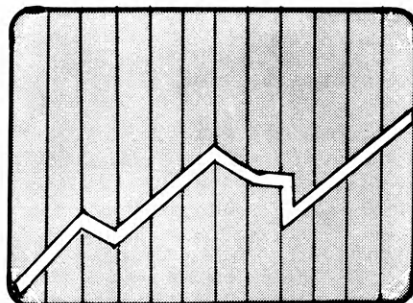
This doesn't move in one day. It doesn't all move at harvest time.

In fact, nearly all U.S. grain is put either in a farm bin or local elevator

at harvest time and when the local elevator is filled, some of it is moved to a big elevator at a terminal market such as Hutchinson, Wichita, Salina or Kansas City.

From the farm bins or the elevators the grain is moved all year long to places all over the world. The U.S. exports about 100 million bushels of grains of all kinds to overseas markets every week in the year. This is in addition to a huge domestic trade.

This grain has a value at the market place every day in the year, not just the day the exporter, flour mill or feed lot wants to buy.



Because of trading in futures which is an integral part of the American marketing system, a value exists for the grain when it is planted, while it is growing, when it is harvested and as long as it is in the bin before somebody somewhere in the world eats it. The value never pleases both the buyer and seller as the buyer wants a low price and the seller a high value. But when buyer and seller trade, they trade on a free and open market. Nobody makes them trade.

From farm to consumer, the marketing system employs thousands of people, including people working in elevators, within the grain companies all over the world, in transportation, finance and many other activities.

**Collingwood**  
GRAIN INC.

Serving Kansas  
Since 1890

**Country Elevators  
and Terminals**

Harvests are seasonal, but the marketing of grains is a continuing process all year long. In this country we like to eat three times a day, every day. So do people all around the world. To be assured of this possibility, importing countries around the world depend upon our

futures markets to help them time their purchases, just as our farmers and grain merchants use the same markets to determine when to sell. In other words, the marketing system functions for both buyers and sellers. This is an absolute necessity.

## BAKER UNIVERSITY

*the First Tradition in  
Kansas Higher Education*

Incorporated in 1858

**Write: Baker University,  
Baldwin City, Kansas 66006**



**sterling  
college**

Sterling, Kansas 67579

You stand on the threshold of one of the most important decisions of your life. We want you to seek out the very best in Christian higher education—it would be tragic to settle for less. We are ready to share the details of Sterling's distinctiveness and to assist you in planning your educational future.

(Please send me info. on SC)  
Director of Admissions  
**STERLING COLLEGE**  
STERLING, KS. 67579

Name .....  
Address .....  
City ..... State ..... Zip .....

You Are  
Always Welcome  
in Sterling

**THE FARMERS  
STATE BANK**  
STERLING, KANSAS



SERVING THE  
LAND OF QUIVIRA

DEPOSITS INSURED BY F.D.I.C.

## BALDWIN STATE BANK

Capital \$1,750,000

Member F.D.I.C.

Baldwin City, Kansas

Phone 594-6421



Agricultural dual degree  
Vocational Home Economics  
Multi-direction in Business  
Administration

## SOUTHWESTERN COLLEGE

Office of Admissions

WINFIELD, KANSAS 67156

316-221-4150

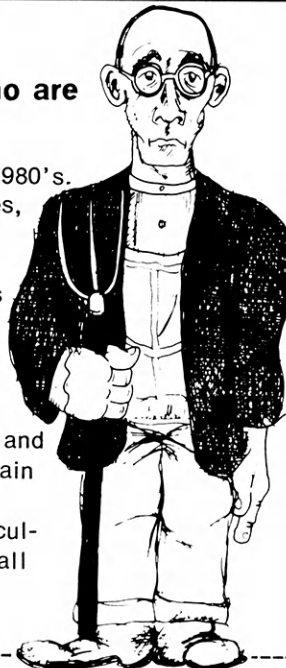
## The world needs agriculturists who are outstanding in their field.

This old joke has new meaning for the 1980's. High cost energy, world-wide food shortages, and an endangered environment demand attention now.

But it takes more than a pair of overalls and a big tractor to tackle tough problems like these!

Tabor offers a degree in agriculture that is designed to prepare people for an active role in agriculture, for their own betterment and that of the world. In short, our goal is to train outstanding agriculturists.

For more information about Tabor's agriculture program, send in the coupon below or call Barry Jackson at (316) 947-3121, ex. 319.



Name \_\_\_\_\_

Address \_\_\_\_\_

City \_\_\_\_\_ State \_\_\_\_\_ Zip \_\_\_\_\_

Phone # \_\_\_\_\_ Yr. of H.S. Grad. \_\_\_\_\_

**TABOR COLLEGE - HILLSBORO, KANSAS 67063**

## First National Bank

Full  
Service  
Bank

Member of F.D.I.C.

Winfield, Kansas

# Getting started in farming

By George Brandsberg  
Assistant Extension Editor  
Agricultural Economics  
Kansas State University

Almost anyone who has ever lived on a farm and liked it dreams of farming for a living. It's easy to get excited about working outdoors with growing things, getting plenty of fresh air and being your own boss. The benefits of farm life are easy enough to list. But obtaining those benefits is something else.

"For a young person with no resources to attempt to enter full-time farming by himself, the probability of succeeding is very low," observes Wilton Thomas, a retired agricultural economist who helps teach Kansas State University's

winter short course for young farmers.

"Nothing is impossible, but the number of fellows who are making an entry into agriculture that way now can't be very high because we're talking about a high investment business. If you're fortunate enough to rent a full economic farm unit that you can make a living on, you can probably get the machinery to make it work. Without proven experience, young people don't often obtain that kind of base to start."

Sounds discouraging, doesn't it? On the brighter side, the Kansas Department of Human Resources estimates there will be job openings for about 5,000 farmers and farm

workers a year between now and 1985. Even so, only those who are lucky and those with the grit to make a go of it will find a niche in agriculture.

"Not everyone who wants to go into farming has an opportunity. But then not everyone who wants to run a hardware store has a chance to start right out, either," Thomas adds. "You have to work your way in the hard way before you're a manager of a business in most cases. That's surely true in farming."

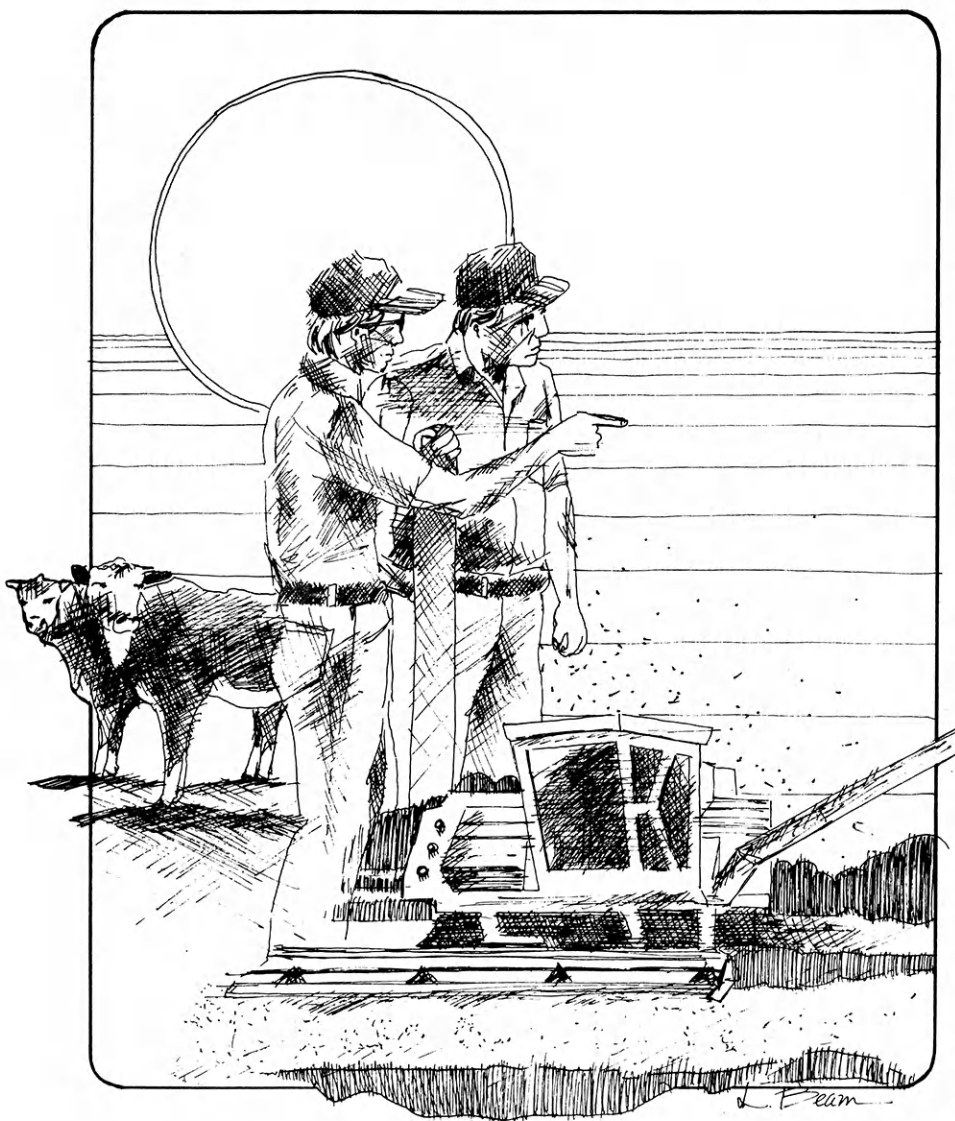
**Starting on your own.** The first rung on the traditional ladder of farming success started with a youngster working as unpaid labor on the family farm, then hiring out as a farm worker and possibly becoming foreman or manager of a part of someone else's farm business, such as its livestock or crops phase.

The next step up was to become a tenant farmer and build up a line of machinery or a herd of livestock and the wherewithal to make a down payment on a farm or ranch. Near the top of the ladder came owning a farm, paid for in part with borrowed money. The traditional ladder of success still works for some, but financial growth is often too slow to provide a suitable income and achieve independence in a lifetime. It's a lot better if you have someone to give you a boost up that ladder.

"Most of the kids who come to us for a loan to get started come from a farm and their dad is willing to help them," observes Jane Biesenthal, supervisor of the Farmers Home Administration office in Emporia. "If they want to buy a piece of farmland and they can use dad's machinery to farm it, or if they have some livestock of their own, we may be able to help them."

"It's really tough to get started from scratch at today's interest rates unless you have help from home or some kinds of off-farm income," she stresses.

**Part-time farming.** This involves taking a job in town or working for a neighbor for wages and running your farm during the available time





left—evenings and weekends, mainly.

"Some people are entering agriculture this way and some are leaving it by going part-time," Thomas points out. "If you can get a place to live and some land to farm, if you're good enough, strong enough and ambitious enough, there's time enough outside of a 40-hour-a-week job to make some kinds of part-time farm business go."

**Starting with someone else.** Possibly the most practical way to get into farming full-time is to join an already going operation that needs more labor and management in the business.

"This may turn out to be a brother who has a start. More often it's a father or father-in-law, sometimes an uncle, sometimes an older person in the neighborhood who's a friend and takes a young fellow in," Thomas says.

These starts should lead to some formal kind of arrangement such as a partnership or a corporation. In exploring entering a farm business with others, all parties involved must consider how well they get along together, whether the farm business can support two or more families and whether everyone involved shares the same goals.

Before jumping right in and signing a "permanent" partnership

agreement, say, between father and son, they should plan to have a trial period of working together for a year or two to make sure they can work well together.

Many articles and publications have been written on ways of forming and entering farm business organizations. Your county extension office should be able to provide you with helpful information.

Besides hard work, it takes good management to make a go of farming. In spite of all the obstacles, thousands of young people will enter production agriculture in the years ahead.

### Consider a dual degree

Kansas State University and the independent colleges of Kansas are cooperating in a unique dual degree program.

The concept combines the strength of the private college—an excellent liberal arts education that includes a sensitive world view of mankind—with the strength of the state's land-grant university—technical competency-based education.

"The result is a new kind of graduate who not only has a world view but who also has the specialized training so desperately needed to help people in the Third World countries," says Dwight Wiebe, developer and director of the program.

"Graduates of this new program, with government or church support, will be able to go and teach people in the Third World how to feed themselves.

"By combining commitment with competency through the dual degree program we'll build a reservoir of trained people prepared to serve the less fortunate, both at home and abroad."

The program combines three years of liberal arts at a private college with a year and a summer school at KSU. When the student completes work at both schools, he can have a Bachelor of Science from KSU and a Bachelor of Arts from his original college.

And best of all, the graduate should have insights—whether his\* program was in agriculture, home economics, or in education—into practical ways to help to solve some of the world's problems.

From information in the  
March 1979 *K-Stater*

\*"His" means "his or hers."

**More money for post-high school education comes from family income and savings than from any other source. Be prepared; early in life start a savings account at your**

## Kansas Savings and Loan

**Arkansas City**  
First Federal Savings and Loan Assn.

**El Dorado**  
Mid-Continent Federal Savings and Loan Assn.

**Eureka**  
Eureka Federal Savings & Loan Assn.

**Fort Scott**  
Liberty Savings and Loan Assn.

**Garnett**  
The Garnett Savings and Loan Assn.

**Hutchinson**  
Valley Federal Savings & Loan Assn.

**Leavenworth**  
Citizens Mutual Savings and Loan Assn.  
Leavenworth Mutual Savings and Loan Assn.

**Liberal**  
Frontier Federal Savings and Loan Assn.

**Lyons**  
Lyons Savings and Loan Assn.

**Manhattan**  
Manhattan Federal Savings and Loan Assn.

**McPherson**  
Pioneer Savings and Loan Assn.

**Medicine Lodge**  
The Barber County Savings and Loan Assn.

**Ottawa**  
Franklin Savings Assn.

**Parsons**  
Mid-America Federal Savings and Loan Assn.

**Plainville and Stockton**  
Rooks County Savings Assn.

## F H S U

means Fort Hays State University and it stands for education. If you are seeking a quality education and like quiet, unpolluted atmosphere, then Fort Hays State University is for you. Write the Office of University Relations, Hays, Kansas 67601, for more information.

## Producers Gas Equities, Inc.

HAYS, KANSAS  
Serving the Oil Industry  
in Western Kansas

This Firm Proudly Recommends Fort Hays State University.  
State Farm Insurance Co.—Ed Dies  
Phone 625-9041 2204 Vine St. Box 212  
Hays, Kansas 67601

**Capitol  
Federal  
Savings**



**Safer For Your Money**

TOPEKA  
GREATER KANSAS CITY  
MANHATTAN LAWRENCE OLATHE  
EMPORIA SALINA WICHITA

An old process using new technology—

# Baking is a people-pleasing business!

By Larry Wood  
Director of Communications  
American Institute of Baking  
Manhattan

Baking is a people-pleasing business, and the smell of fresh-baked bread, hot from the oven, pleases almost everybody. And baking is a big business, too—with annual sales of nearly ten billion dollars worth of baked goods. It's an industry that uses over 400 million bushels of wheat a year, produces an average of 50 million loaves of bread a day, and employs about 250,000 workers all across the United States.

Today's modern baking process is basically the same as it has been for thousands of years—mix the ingredients, wait for the action of the yeast to raise the dough and then bake the product in an oven.

## Technology aids production

However, modern technology in the form of automated equipment, scientific formulas and computers, and highly educated employees have helped this basic industry to increase productivity and expand consumer acceptance of an ages old product.

More than half of the employees in the baking industry are production workers. Other people work in quality control, research, sales, plant operations, administration and management. The opportunities for employment within all areas of this industry are unlimited.

Production workers in modern baking operations usually have titles that refer to the machines they

operate. For example, **mixer operators** are the people who weigh and mix the basic ingredients; **divider operators** run machines that cut, weigh and shape the dough into desired shapes; **molder operators** run machines that press out air bubbles, make dough into loaves or sweet goods, and place them into pans; **oven operators** load and unload ovens, controlling the baking temperatures and times; **helpers** do just that, help wherever needed to keep the production lines moving; **slicing and packaging machine operators** run the machines that slice and wrap bread or other bakery products; **receiving, shipping and stock clerks** record shipments and keep inventories of ingredients and finished products; **route sales workers and supervisors** are responsible for delivering the product to wholesale and retail outlets; **maintenance engineers** and helpers keep all the production and support equipment working smoothly to keep the baked product moving from raw flour to golden loaf.

## Bakers work in a clean environment

Production workers in bakeries work in a clean environment that must constantly meet local, state and federal regulations for cleanliness. Many modern bakeries are air conditioned, but others are not. And, with all the equipment and ovens working, it can be quite hot!

Since bakery products are perishable, they are made daily, and many bakeries operate around the clock—with employees working in eight-hour shifts.

The average pay is about \$7.50 per hour for production workers, while supervisors, managers and administrators may be paid annually, with salaries ranging from \$12,000 up to \$30,000 or more. Bakers are employed in all parts of the country, from small retail shops in local communities to large plants employing hundreds of people under one roof.

To learn their jobs, workers in the baking industry may be trained on-

the-job, or may complete several months or years of experience or advanced education. Some skilled production jobs take years of training to completely learn.

Most production workers may begin as apprentices after completion of high school. This apprenticeship period may last several years and includes both on-the-job training and classroom instruction. Production workers also may learn baking skills in the Armed Forces and through vocational training schools and university programs.

For more information on a career in the baking industry, write to the sources listed below.

## Sources of Additional Information

School of Baking Catalogue. Single copy free.

Correspondence Course in the Science of Baking Catalogue. Single copy free.

Bread in the Making. Illustrated, 15 pages. Single copy \$.45.

Bread is A Slice of Life. Audiovisual program. \$29.95 plus \$3.00 postage.

American Institute of Baking  
1213 Bakers Way  
Manhattan, Kansas 66502

Careers in the 18 Billion Dollar Baking Industry. Free.

Guide to Baking Schools and Scholarships. Free.

Allied Trades of the Baking Industry  
5240 West Irving Park Road  
Chicago, IL 60641

Bakers. Occupational Brief No. 1. \$1.00.  
Route Sales Workers. Occupational Brief No. 78. \$1.00.

Chronicle Guidance Publications, Inc.  
P.O. Box 271  
Moravia, NY 13118

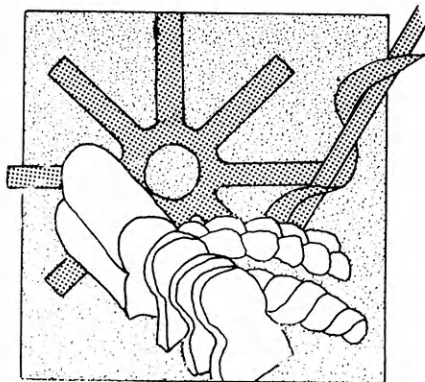
Associated Retail Bakers of America,  
Presidential Building, Suite 250, 6525  
Belcrest Road, Hyattsville, MD 20782.

American Society of Bakery Engineers,  
Room 1921, Two North Riverside Plaza,  
Chicago, IL 60606.

Department of Grain Science and Industry,  
Kansas State University, Manhattan, KS  
66506.

Dunwoody Industrial Institute, 818  
Wayzata Boulevard, Minneapolis, MN  
55403.

Bakery, Confectionery, and Tobacco  
Workers' International Union, 1828 L Street,  
N.W., Washington, DC 20036.



# Financial aid for students

By Carroll Beardslee  
Fort Hays State University

You might be able to get financial assistance for college, you say, if only you could wade through all that red tape and decipher all that financial mumbo-jumbo. But applying for and obtaining financial assistance isn't all that difficult if you take it step by step.

The following information was prepared to help insure that your application will be given every consideration for financial aid.

## How to apply for financial assistance

1. Obtain an American College Testing Family Financial Statement Packet from your high school counselor or college financial aid office. Included in this packet will be the following documents: ACT's Family Financial Statement, Kansas Student Data Form 1981-82, instructions for completing the necessary forms and a financial aid code listing.

2. Read all instructions very carefully. Failure to provide accurate and complete information on all documents will delay your application process.

3. Complete ACT's Family Financial Statement and mail it to ACT in the envelope provided. IMPORTANT: Use 1980 income information and request that the results of your FFS be sent to the school of your choice by entering their code in item 76. There is a \$5.00 minimum fee charged for this service.

NOTE: Since consideration for other types of Federal student assistance will not be given until the results of the Basic Educational Opportunity Grant are known, all undergraduate students must apply for the BEOG by marking (a) in item #74

(Continued on page 28)



Many employers can give you the answer: Because to fill responsible jobs, they often look for college graduates who have held responsible jobs.

As an Army officer, you have to manage men, materials, and money. Your first year out of college, you shoulder greater responsibilities, at an earlier age, than most other graduates.

So it's no wonder that many employers, looking for demonstrated leadership, rate "Army officer" above most other qualifications. Or why career-minded college students so often take Army ROTC.

In addition to what Army ROTC can mean to you after college,

Call or write the Professor of Military Science at a school near you.

Dodge City Community College  
Dodge City, Kansas 67801  
(316) 225-1321, Ext. 228

Garden City Community College  
Garden City, Kansas 67846  
(316) 276-7611, Ext. 115

Fort Hays State University  
Hays, Kansas 67601  
(913) 628-4381

Kansas State University  
Military Science Building  
Manhattan, Kansas 66506  
(913) 532-6754

Wichita State University  
Wichita, Kansas 67208  
(316) 689-3347

Pittsburg State University  
1701 South Broadway  
Hartman Hall  
Pittsburg, Kansas 66762  
(316) 231-7000, Ext. 271

University of Kansas  
203 Military Science Bldg.  
P.O. Box 2009  
Lawrence, Kansas 66045  
(913) 864-3311

Interested in good government?

Interested in good citizenship?

Interested in Kansas?

If your answer is "Yes" you'll want the 1980 edition of "*Kansas Government*."

A valuable reference book written by William M. Douglass in layman's language, it explains how our state and local units of government function.

Each of the 26 chapters cover a different facet of government.

Inexpensive and informative, this book will be a good addition to every Kansas family's library. And it will be especially useful for school libraries and for government teachers and citizenship leaders. 4-H members enrolled in citizenship will find its information helpful.

You can order "*Kansas Government*" for \$4.75 from **Municipal Press, Box 2755, Topeka, KS 66601**. Order it today.

## Have you ever considered how "Army officer" would look on your job application?

there are many important benefits while you're in college. Scholarship opportunities. Practical leadership and management experience. And a monthly subsistence allowance of \$100 a month for up to 20 months during your last two years of college.

But most important is the challenge. Being an Army officer means giving your absolute best. Then getting the people you supervise or command to give theirs.

It means working at one of the toughest, most rewarding jobs of your life. Weigh that carefully. Then decide how "Army officer" would look on your job application.

# ARMY ROTC. LEARN WHAT IT TAKES TO LEAD.

## Financial aids

(Continued from page 27)

of the ACT Family Financial Statement. Graduate students are not eligible for Basic Grants and would mark "c" for financial aid consideration.

4. Complete the Kansas Student Data Form 1981-82 and either mail it directly to the school of your choice or to ACT with your 1981-82 Family Financial Statement.

5. The information submitted to ACT on your Family Financial Statement will generate a BEOG Student Eligibility Report. It will be sent directly to you, the applicant. Student Eligibility Reports are not sent to the university. Be sure to deliver your BOEG Student Eligibility Report (whether eligible or not) to the Office of Student Financial Aid.

6. If convenient, applicants are encouraged to make arrangements for a personal interview with a financial aid counselor. Each student's financial situation is a unique and personal one which can be best understood and adequately met through a personal interview with the applicant.

### National Direct Student Loans

Through the NDSL program, the student may borrow up to \$1,250 each academic year. The actual amount of the loan depends on financial need of the applicant. If there aren't enough funds to meet all requests, preference is given to bright students and to those with greatest financial need.

The repayment period and interest begin six months after the student leaves school. Interest is 4 percent, with the repayment period 10 years. Payment can be deferred if the student goes on to school, or if he serves in the Armed Services or in Vista or the Peace Corps.

It's possible to repay the loan in service instead of money. If the borrower becomes a teacher in a school with many students from low income families, the loan is reduced each year of teaching until in five years it is considered as paid. The same is true if the person teaches handicapped children.

To qualify for NDS loans, the person must:

- be a United States citizen,
- be at least a half-time student,
- show financial need based on the family's financial statement. Special consideration is given to students with superior academic records.

### Guaranteed Student Loan Program

The Higher Education Assistance Foundation assists students to get low-cost loans for educational purposes. HEAF does not make loans directly to students. Instead it guarantees loans made by commercial lending institutions and by the Kansas Student loan program. The guarantee permits the lender to make loans to students who haven't much collateral.

In a year an applicant may borrow only the expected cost of his education less other financial aid. He can't borrow more

than \$2,500 during an academic year, or more than \$7,500 all together. The interest rate is 9 percent.

The Office of Education pays the interest while the student is in school. His repayment begins 6 months after the student leaves college. The repayment period is usually between 5 and 10 years, with the minimum monthly payment \$30.

\*"He" means "he or she."

### Nursing Student Loan and Nursing Scholarship Programs

Loans up to \$1,500 a year are available under the Nursing Student Loan Program. The amount of the loan depends on the financial need of the applicant. No repayment is necessary and no interest charged until 9 months after the student leaves college. Then the minimum repayment is \$15 per month. Interest is 3 percent on unpaid balance and repayment of principal and interest may be extended up to 10 years.

If the student changes major areas of study from the field of nursing, the loan immediately becomes due.

Under the Nursing Scholarship Program, only students with exceptional financial need who need such financial assistance to pursue the course of study may be awarded scholarships. The maximum scholarship awarded for any school year is \$1,500, or the amount of financial need, whichever is less. In determining student need, the principles used for a nursing scholarship are identical to those used for a nursing loan. NOTE: Nursing scholarships do not need to be repaid.

### Institutional Loan Fund

Loan funds made possible by contributions from individuals and organizations are available to students on short or long-term basis. Please consult the Office of Student Financial Aids for additional information.

### Supplemental Educational Opportunity Grants

Federal grants provide for awards to undergraduate students whose families can contribute little or nothing to the student's education and who without the grant would be unable to attend college. The selection of recipients is made by the Office of Student Financial Aids from among the most needy applicants and in accordance with guidelines established by the Office of Education. The number and amount of these grants will depend upon the availability of funds from the Federal government.

SEOG's are not loans and do not need to be repaid, but schools are required to provide at least an equal amount of scholarship, loan or employment assistance from its own funds or from funds administered by the college as a "matching" contribution.

SEOG's may be renewed each year, not to exceed four years.

QUALIFICATIONS: Students must show academic promise, be accepted for enrollment on at least one-half time basis, make satisfactory progress toward a degree and show evidence of exceptional financial need based on an analysis of the family financial statement.

### Basic Educational Opportunity Grant

The Higher Education Amendments of 1972 authorized the Basic Education Opportunity Grant Program. The BEOG is intended to be a financial base available to all undergraduate students attending institutions of higher education to which other forms of aid may be added to meet the applicant's total financial need. Such grants are made to a maximum of \$1,800 per year and are non-repayable. The amount of the grant is determined by a federal formula and is based upon the parent's ability to assist with the student's educational cost. The amount of the grant is not controlled by the individual or the college.



Bill Nye, Director

## kansas school of FLORAL DESIGN

A Career With A Future

**A COURSE DESIGNED TO TRAIN  
STUDENTS IN THE FLORAL INDUSTRY**

- Professional Instruction in Floral Design & Business.
- Classes starting every few weeks.
- Approved by the State of Kansas Board of Education. Bonded.

Write Or Call For A Free Class Brochure

939 1/2 Massachusetts, Lawrence, Ks. 66044 913/843-1400

### College Work-Study Program

The purpose of the CWSP is to expand part-time employment opportunities for students from low-income families who are in need of the earnings from part-time employment in order to attend an institution of higher education. Federal grants are made to institutions of higher education to enable them to provide job opportunities for such students. The institution may arrange for the employment of its eligible students in work for the institution or for off-campus work in the public interest with a public or private nonprofit organization.

Under the CWSP a student averages 15 hours work per week while classes are in session, and may not total more than 40 hours per week during vacations and periods of nonenrollment. Every effort is made to place students in jobs related to their career objectives.

**QUALIFICATIONS:** A student must be enrolled on a full-time basis, be able to make satisfactory progress toward a degree while working, and demonstrate a definite financial need based on an analysis of the family financial statement.

### Part-Time Employment

Most colleges also provide a job placement service for full-time students who wish to work part-time during the year and who are not eligible for the College Work-Study Program. Any student desiring part-time employment on campus or work off campus in the community may apply.

It is extremely difficult to place any student in a specific job before the student has registered and knows the hours he will be available for employment. The new student should not expect to have a part-time job waiting for him when he arrives on campus.

### Veterans Administration Benefits

Veterans and dependents of deceased or disabled veterans are eligible for a monthly entitlement while attending school. Benefits are also available through the Veteran's Work-Study Program and the Tutoring Program.

### Other sources of financial assistance

**Social Security Benefits:** The Social Security law provides monthly benefits to children when a parent on whom they were dependent dies or starts receiving Social Security retirement or disability benefits. The payments can be made until age 22 provided the child is a full-time student and single. For further information contact the nearest Social Security Office.

**Vocational Rehabilitation Benefits.** For information on assistance to persons with physical or mental disabilities contact the nearest Vocational Rehabilitation district office.

Keep in mind: Since this information is being prepared before the state and federal governments have determined their levels of funding, the impact (and in some cases the existence) of these financial assistance programs is dependent upon the appropriation of funds.

### Ask about scholarships

Scholarships may be another source of funds for college. To find out which ones may be available to you, talk with your high school counselor or write to the college which you plan to attend.

## Earn over \$2,000 while you're learning.

That's what you can earn with the Air Guard. While you learn one of today's most valuable job skills. Find out more about career training that pays. Contact us.

**The most important part-time job in America.**



The Guard belongs.

### KANSAS AIR NATIONAL GUARD RECRUITING OFFICE

Master Sergeant John Kimball  
Technical Sergeant Charles McLeod

184th TACTICAL FIGHTER GROUP  
McCConnell Air Force Base, Ks. 67221  
Telephone: (316) 685-8071

**Call Collect Today**

## LABETTE COMMUNITY COLLEGE



### Vocational/Occupational Programs

Agri-Business X-Ray Technician  
Farm Business Analysis Inhalation Therapy  
Construction Trades Nursing  
Cooperative Industrial Training Criminal Justice  
Welding

Ag-Ro Club (agriculture-rodeo)  
Livestock Judging Team

### Comprehensive Transfer and Associate Degree Programs

Fully Accredited by North Central Association of Colleges and Secondary Schools and National League of Nursing  
Inter-Collegiate Wrestling: Experienced Athletic Director  
**Instructors:** Steve Lynn, Agriculture; Mike Eastwood, Agriculture; Kenneth Rheums, Construction; Ron Eads, CIT Coordinator

### Write or call:

Dean of Student Services  
**LABETTE COMMUNITY COLLEGE**  
Box 957  
Parsons, Kansas 67357 Telephone: 316-421-6700

An important member of the health team —

## The medical technologist

*Editor's note: This article was compiled from material prepared by Sharon Zablotney, chairperson of the Department of Medical Technology in the College of Health Related Professions, Wichita State University, and from an interview with Geralyn Avery, head of medical technology at Lafene Student Health Center, Kansas State University, Manhattan.*

Often when one goes to the doctor, he'll say, "We'll need some lab tests."

The person who will do the laboratory work is a medical technologist.

The first step in making the tests is to collect a sample of blood or urine or a tiny piece of tissue from the patient's body.

Then the medical technologist will examine the specimen with a microscope or another precision in-

strument. She may look for one specific thing, such as the red blood count, or for a variety of things which the doctor needs to know.

"One can learn hundreds of things from the blood alone," Geralyn Avery, head medical technologist at Lafene Student Health Center, Kansas State University, said. "Blood tests will show what bacteria are present, what will control them, how the disease is progressing, the level of the patient's blood sugar or cholesterol. These are just a few of the things the blood can tell."

### MT performs and interprets tests

The medical technologist is expected to perform the tests on body fluids or tissue and correctly interpret the information gained. The

doctor will use this information to diagnose and treat illness.

To be able to do this complex work, the person interested in becoming a medical technologist attends college for at least three years, and then interns in a clinical laboratory. During the college work, the students completes 16 semester hours of chemistry and 16 semester hours of biology.

One can attend many Kansas colleges for the initial course work. Professional courses in medical technology are offered at Providence-St. Mary Hospital and the University of Kansas, Kansas City; Topeka School of Medical Technology, Topeka; and St. Joseph Medical Center, Wesley Medical Center, and St. Francis Medical Center, all in Wichita.

Due to the variety and complexity of the laboratory procedures, specialization is common.

For example, clinical chemistry technologists specialize in determining the presence and quantity of chemical substances in blood and other body fluids.

## CAREER OPPORTUNITIES UNLIMITED

The variety of careers in health offers rich scope for the inquiring mind, as well as the excitement and gratification of helping advance man's progress in dealing with himself and his environment.

In spite of the growing number of persons in the health professions, the supply has not kept pace with the demand for services. The opportunities are truly unlimited! Whatever your choice—medicine, dentistry, nursing, public health, pharmacy, medical technology, medical assistance, biophysics, biochemistry, bacteriology, to mention only a few—*your* prospects will be what you make them, determined by *your* interest and capacity, *your* training, *your* decisions, *your* work.

The Kansas Medical Society and the Kansas Farm Bureau have a joint program, *Mediserve*, designed to identify and assist Kansas students gain admission to the medical school. The intent of this program was to assure that Kansas-trained medical students will remain to practice in this state. For further information, please contact: Ms. Mary Wiersma, Kansas Farm Bureau, 2321 Anderson Street, Manhattan, Kansas 66502. Telephone: 913-537-2261.

*The Kansas Medical Society*

1300 Topeka

Topeka, Kansas 66612

Hematology technologists perform tests for clotting factors and study blood cells to facilitate diagnosis of illness.

Microbiology technologists identify bacteria, fungi, parasites and other pathogenic organisms present in the body.

Blood bank technologists perform an array of transfusion services to assure the safety and appropriateness of transfusing blood and its components.

In addition, with the expansion of the clinical laboratory medical technologists have assumed responsibilities in evaluating and im-

plementing new tests and procedures, as well as supervising and teaching other clinical laboratory personnel.

Following completion of their educational program, medical technologists may take national certification examinations. These examinations are offered by several agencies such as American Medical Technologists, Board of Registry, Department of HEW, International Society of Clinical Laboratory Technologists, and National Certification Agency for Medical Laboratory Personnel. These credentials are used by medical technologists to demonstrate their

competence to perform laboratory tests and procedures.

## Employment opportunities are good

Employment opportunities have been and continue to be very good for medical technologists. Jobs can be found in hospital and private clinical laboratories, public health agencies, industrial laboratories, health maintenance organizations, research institutions, teaching institutions, and in medical programs sponsored by the Peace Corps, VISTA, and Project Hope. The growth of the health care industry during the next decade will continue to increase these job opportunities for medical technologists.

Salaries for medical technologists vary with geographic location and employer; in larger cities, salaries may be higher than in smaller towns. Generally, salaries are competitive with other professions with similar education and training. Starting salaries for medical technologists may range from \$12,000 to \$16,000.

What characteristics will help a student to become a good medical technologist?

"First, the person should care about the health of human beings," Avery said. "Medical technology is a service profession, similar to nursing and practicing medicine.

"Then the technologist must like science and math and be willing and able to do precise work.

"Another needed characteristic is the ability to work under pressure; sometimes the tests must be done and interpreted at once.

"And last, it really helps if you like people!"



## A World of Opportunity



**manhattan**  
CHRISTIAN COLLEGE

1407 Anderson Avenue  
Manhattan, Kansas 66502  
telephone 913 539-3571

*Manhattan Christian College* offers a world of opportunities to students interested in a Christian college education. Because of the high quality of academics at Manhattan, we have been able to establish widely varied, cooperative programs with our neighbor, Kansas State University (which is right across the street from our campus). Programs are available that offer bachelors degrees at both institutions and that offer graduation from Manhattan with a second major at Kansas State.

*We really offer the best of two worlds.* The positive atmosphere of a small Christian college and the programs and facilities of a large state university. And for those interested in studying for a professional ministry, Manhattan offers nationally respected programs in the preaching ministry, missions, Christian education and church music.

Manhattan students are also eligible to apply for federal financial assistance as well as many institutional financial aid programs.

To find out about programs that may interest you, write to us at the above address or call.

*Manhattan Christian College. A world of opportunity for you.*

**FBC** Friends  
Bible  
College

Haviland, Kansas 67059  
316-862-5252

# Helping others, liking music combine for music therapists

George Duerksen, Ph.D., R.M.T.  
Chairman, Department of  
Music Education and Music Therapy  
University of Kansas, Lawrence

A music therapy career challenges those who enjoy helping others and who like music. The music therapy profession serves a broad variety of patients and clients. Some music therapists work in mental hospitals such as Topeka State Hospital, Larned State Hospital, Osawatomie State Hospital, and the Menninger Clinic. Other music therapists work in other institutions such as the Parsons State Hospital and Training School. Private institutions for the handicapped such as Lakemary Center in Paola frequently hire music therapists. Increasing numbers of music therapists work in general hospitals, such as St. Francis Hospital in Wichita, and in educational systems such as the Topeka and Shawnee Mission public schools.

An increasing number of music therapists work as private or corporate practitioners. Some work with individuals or small groups of clients in private studios similar to those used by private music teachers. Such private practitioners work closely with psychologists, psychiatrists, and counselors who refer clients to them.

In some cases music therapists have joined other professionals (such as occupational therapists, special educators, and recreational specialists) to form companies. These companies operate clinics and provide services to nursing homes, sheltered workshops, and other health care agencies. Recently, music therapists have become active in community mental health centers where their work is preventive as well as remedial, and from where they become involved in a broad spectrum of community musical activities.

The professional workday varies, depending on the nature of the job and the individual music therapist. In some cases therapy may be done in a one-to-one situation much like the private lesson; it may be done in small groups, in classes, or in music performance ensembles. In the course of a single day's work, the music therapist may need to be a conductor, a music teacher, a performer, an accompanist, a dance instructor, an instrument repair specialist, a background music programmer, a musical show producer, and a high fidelity sound expert. All of these roles must be "second nature" so the therapist can concentrate on the client.

Because the music which will best serve the client is used, the therapist works with a variety of musical styles including rock, folk, country-western, popular, jazz, classical, gospel, electronic and ethnic music.

Sometimes the treatment goals of music therapy require highly polished musical performances, but often they do not. Thus, the music therapist who needs to experience high quality performance usually

**WASHBURN UNIVERSITY CONGRATULATES  
ALL KANSAS 4-H MEMBERS!**



**LET'S GO  
WITH THE  
ICHABODS**

**QUALITY EDUCATION IN A BEAUTIFUL  
SETTING**

College of Arts and Sciences  
School of Law  
School of Business  
Nursing Program  
Graduate Program  
Evening College  
Summer Session

**WASHBURN UNIVERSITY  
1700 College  
Topeka, Kansas 66621**

**Catch that  
Pepsi Spirit.  
Drink it in!**

**KANSAS PEPSI-COLA  
BOTTLERS ASSOCIATION**



seeks those experiences off the job rather than in work with clients. Some clients do not, or can not, change rapidly. Individuals who cannot tolerate imperfect performance, who are frustrated by slow improvement or change, and who dislike working with a broad variety of musical styles may not enjoy the work music therapists must do. But persons for whom these factors are not problems, and who like to work with others in service careers, often find music therapy an appealing choice.

Preparation for entry into the profession involves successful completion of a four-year college major in music therapy and six months of internship in a program approved by the National Association for Music Therapy (NAMT). This work leads to certification as a Registered Music Therapist (RMT). RMT certification is required for civil service music therapy appointments in many state hospital systems, and often is specified as a prerequisite for other music therapy clinical positions.

Salary levels for music therapists employed in institutions vary, but they often equal or surpass the salaries of public school music teachers in the same geographical area

Now 62 colleges and universities in the United States offer undergraduate music therapy curricula approved by the National Association for Music Therapy. Twelve of these schools offer approved master's degrees as well. The only approved program in Kansas is at the University of Kansas in Lawrence.

The KU music therapy program was the first in the United States to develop specific classes and research facilities for learning of the influences of music on behavior. It currently leads other schools in operating an on-campus clinic for instruction and research.

For general information about the field, and the complete list of schools which offer approved degrees in music therapy, write to National Association for Music Therapy, P.O. Box 610, Lawrence, KS 66044.



**Kansas Farm Bureau**  
*congratulates*

## **Sand Springs Rustlers, Dickinson County**

*for outstanding work in  
the 4-H safety program.*

As part of the winning 4-H club in Kansas in the safety program, eight members and two leaders of Sand Springs Rustlers will go to Kansas 4-H Congress. Donor of the trip is the Safety Division of Kansas Farm Bureau.

Here are some of the things which members of this 4-H club did in 1980:

- They placed stickers with the number of the local Crisis Hot Line on pay phones, and they distributed the new telephone number in other ways;
- taught poison prevention classes to grade school children;
- made window displays and a fair booth with safety themes;
- presented a TV program and 54 radio programs giving safety information;
- and sent safety articles to Kansas 4-H Journal.

Other 4-H clubs whose members did outstanding work in safety are:

**Glittering Stones, Cherokee County**  
**Meadowlark, Douglas**  
**Hi-Plains, Logan**  
**Happy Harvesters, Marshall**  
**Hoot-N-Holler, Miami**  
**Best Yet, Neosho**  
**Tiny Toilers, Pawnee**  
**Victory, Pottawatomie**  
**Sunny Valley, Saline**

These clubs will receive \$25 for their club treasury, and a scholarship for one member to go to the Kansas Farm Bureau Safety Seminar at Rock Springs Ranch. The 4-H members who go must be 14 or 15 by June 2, 1981.

Think about how important safety is in your home, on the highway, at school and at work. Think what your 4-H club can do to make these places safer. Set your goal to work together to make your community a safer place to live.

## **Kansas Farm Bureau**

Safety Division

Manhattan, Kansas

# Kansas Four-Year Colleges

## Fall Semester, 1980

School	Location	(Equated Full-Time) Enrollment	Type	Affiliation	Accreditation
<b>Baker University</b>	Baldwin	841	Coed	Methodist	Kansas State Dept. of Public Instruction; Nat'l. Council for Accred. of Teacher Education; Univ. Senate of the Methodist Church; American Assoc. of Univ. Women*
<b>Benedictine College</b>	Atchison	1045	Coed	Catholic	Nat'l. Council for Accred. of Teacher Education; State Dept. of Public Instruction; Nat'l. Association of Schools of Music; Nat'l. Catholic Education Assn.*
<b>Bethany College</b>	Lindsborg	833	Coed	Lutheran	Kansas State Department of Public Instruction; Council for Social Work Ed., Nat. Assoc. of Schools of Music; NCATE*
<b>Bethel College</b>	North Newton	731	Coed	Mennonite	Kansas State Department of Public Instruction, AAUW; North Central Regional Association on Social Work Education.
<b>Emporia State University</b>	Emporia	5,133	Coed	State	Fully Accredited by the North Central Accrediting Association and by various professional accrediting agencies.
<b>Fort Hays State University</b>	Hays	4,665	Coed	State	St. Dept. of Pub. Instr.; Ks. St. Bd. of Nurs., Amer. Assn. of Col. for Teach. Ed.; Natl. Assn. of Bus. Train. Insts.; Natl. Council for Accred. of Teacher Ed.; Natl. Assn. of Schs. of Music; AAUW; N. Cen. Rgnl. Assn.; Council of Grad. Schs.; Natl. League for Nurs.*
<b>Friends University</b>	Wichita	746	Coed	Soc. of Friends	Nat'l. Council for Accred. of Teacher Education; Nat'l. Assn. of Schools of Music*; Kansas State Board of Education
<b>Friends Bible College</b>	Haviland	123	Coed	Independent	American Assoc. of Bible Colleges
<b>Kansas Newman College</b>	Wichita	546	Coed	Catholic	Kansas State Dept. of Public Instruction; National Catholic Educational Assoc.*
<b>Kansas State University</b>	Manhattan	17,947	Coed	State	Fully accredited by the North Central Accrediting Association and by various professional accrediting agencies.
<b>Kansas Wesleyan</b>	Salina	424	Coed	Methodist	University Senate of the Methodist Church; AAUW; Kansas State Dept. of Education; North Central Regional Assn.*
<b>Manhattan Christian College</b>	Manhattan	304	Coed	Christian	American Association of Bible Colleges.
<b>Marymount College of Kansas</b>	Salina	662	Coed	Catholic	Nat'l. Council for Accred. of Teacher Education; Nat'l. League for Nursing, Nat'l. Assn. of Schools of Music*; Kan. St. Board of Education.
<b>McPherson College</b>	McPherson	505	Coed	Brethren	Kansas State Department of Education; Kansas Assn. of Colleges and Universities; North Central Regional Assn.*; Kan. State Board of Education.
<b>Mid-America Nazarene College</b>	Olathe	1,354	Coed	Nazarene	Kansas Board of Nursing, Kansas State Department of Education*
<b>Ottawa University</b>	Ottawa	536	Coed	Baptist	Kansas State Dept. of Public Instruction; American Baptist University*
<b>Pittsburg State University</b>	Pittsburg	4,652	Coed	State	Natl. Council for Accred. of Teacher Ed.; Natl. Assn. of Schools of Music; Natl. Univ. Extens. Assn.; Am. Assoc. of Col. for Teacher Ed.; Am. Chemical Soc., Natl. League for Nursing*; Accred. Bd. of Eng. & Technology
<b>Saint Mary College</b>	Leavenworth	650	Women	Catholic	Nat'l. Council for Accred. of Teacher Education; Nat'l. Association of Schools of Music; Nat'l. Council for Accred. of Teacher Education*.
<b>Saint Mary of the Plains College</b>	Dodge City	702	Coed	Catholic	Kansas State Department of Public Instruction; Nat'l. Association of Schools of Music; Nat'l. Council for Accred. of Teacher Education*.
<b>Southwestern College</b>	Winfield	602	Coed	United Methodist	Kansas State Department of Public Instruction; Nat'l. Association of Schools of Music; Kans. State Elementary and Secondary Teacher Ed. Programs.
<b>Sterling College</b>	Sterling	494	Coed	Presbyterian	Kansas State Department of Public Instruction; American Association of University Women; Nat'l. Crediting Assoc. Teacher Education*.
<b>Tabor College</b>	Hillsboro	445	Coed	Mennonite	Nat'l. Association of Schools of Music; Kansas State Department of Public Instruction*, Council of Social Work Ed.
<b>University of Kansas</b>	Lawrence	22,189	Coed	State	Prof. Accred.; Arch.; Art; Busi.; Chem.; Engin.; Journ.; Law; Medical Tech.; Medicine; Music; Nursing; Occup. Ther.; Pharm.; Phys. Ther.; Psych.; Social Work; Speech Path. & Audio.; Teacher Ed.; Radiation Ther.; Respir. Ther.; Med. record admin.
<b>Washburn University</b>	Topeka	4,269	Coed	Municipal	Nat'l. Council for Accred. Teacher Education; Assn. of American Law Schools; American Bar Assn., American Assn. of Univ. Women; Nat'l. Assn. of Schools of Music*
<b>Wichita State University</b>	Wichita	10,756	Coed	State	Nat'l. Council for Accred. Teacher Education; Nat'l. Assn. of Schools of Music; Engineers; Council for Professional Development; American Chemical Society Committee for the Professional Training of Chemists*, Council on Dental Education; American Assembly of Collegiate Schools of Business; North Central Nat. League for Nursing; Amer. Med. Assn. Bd. of Schools

# Information for the Academic Year Beginning Fall 1980

Tuition and Fees Academic Year*	Board and Room in Residence Halls Academic Year**	On Campus Housing Capacity	SCHOLARSHIPS		WRITE OR CALL FOR INFORMATION TO
			No.	Average Amount	
\$2,660	\$1,490	800	426	921	Director of Admission, Baker University, Baldwin City, Kansas 66006. 913-594-6451.
2,800	1,630	1,000	285	1,000	Benedicene College, Director of Admissions, North Campus, Atchison, Kansas 66002. 913-367-5340.
2,390	1,571	706	300	500	Director of Admissions, Bethany College, Lindsborg, Kansas 67456. 913-227-3311 (Ext. 111).
2,784	1,589	620	400	450	Office of Admissions, Bethel College, North Newton, Kansas 67117. 316-283-2500.
609	1,420-1,680	1,506	650	400	Office of Admissions, Emporia State University, Emporia, Kansas 66801. 800-362-2578.
23 per credit hour	1,220-1,552 (includes 10, 15 or 20 meal plan)	1,599	630	350	Registrar & Director of Admissions, Fort Hays State University, Hays, Kansas 67601. 913-628-4222.
2,930	1,420	188	385	565	Office of Admissions, Friends University, Wichita, Kansas 67213.
2,806	1,400	115	97	469	Director of Admissions, Friends Bible College, Haviland, Kansas 67059. 316-862-5252.
2,400 for 30 hrs.	1,490	277	145	500 (per year)	Director of Admissions, Kansas Newman College, Wichita, Kansas 67213.
764	1,450	4,600	1,700 +	500	Director of Admissions, Kansas State University, Manhattan, Kansas 66506. 913-632-6250.
2,795	1,623	500	175	790 (per year)	Director of Admissions, Kansas Wesleyan, Salina, Kansas 67401.
1,611	1,780	168	70	250 (per year)	Director of Admissions, Manhattan Christian College, Manhattan, Kansas 66502. 913-539-3571.
2,400	1,486	288	270	700	Director of Admissions, Marymount College, Salina, Kansas 67401.
2,800	1,590 (average)	450	Unrestricted number available.	450	Director of Admissions, McPherson College, McPherson, Kansas 67460. 316-241-5155.
2,018	1,590	950	600	600	Director of Recruitment, Mid-America Nazarene College, Box 1776, Olathe, Kansas 66061. 913-782-3750.
2,842	1,596	768	550	650	Director of Admissions, Ottawa University, Ottawa, Kansas 66067. 913-242-6445.
580.50	1,685 (average)	950	665	390	Director of Admissions, Pittsburg State University, Pittsburg, Kansas 66762.
2,050	1,400	365	300	1,000	Director of Admissions, Saint Mary College, Leavenworth, Kansas 66048. 913-682-5151 (Ext. 240).
2,640	1,650	490	470	300 renewable each semester	Director of Admissions, Saint Mary of the Plains College, Dodge City, Kansas 67801.
2,480	1,566	565	560	500	Director of Admissions, Southwestern College, Winfield, Kansas 67156. 316-221-4150 (Ext. 36).
2,770	1,430	551	200	800 (renewable for 4 yrs.)	Director of Admissions, Sterling College, Sterling, Kansas 67579. 316-378-2113 (Ext. 278 = Collect).
2,668	1,570	380	250	450	Director of Admissions, Tabor College, Hillsboro, Kansas 67063. (316-947-3121 (Ext. 221-Collect).
771.20	1,512-1,527	5,200	2,150	470	Office of Admissions and Records, University of Kansas, Lawrence, Kansas 66045.
\$24 per hour plus \$3 per hour fee, plus \$10 activity fee	1,700	339	500	300	Registrar and Director of Admissions, Washburn University, Topeka, Kansas 66621.
782	1,737	860	1,451	505	Director of Admissions, Wichita State University, Wichita, Kansas 67208. 800-362-2594.

\*\*Prices may vary because of different meal plans, kinds of rooms, and services available.

# Ending a career before it starts

By Kathleen Ward

Assistant Extension Editor, 4-H — Youth

Ending a career before it gets started isn't hard. Just become a parent. Then you'll be too busy with 2 a.m. feedings and with trying to make ends meet to worry about training for the job of your dreams.

You might think that in a time of easy access to birth control that becoming a parent in your teens wouldn't be a worry.

But it is. And it should be, says Mike Bradshaw, Kansas State University extension health specialist.

Bradshaw says one in 10 girls between ages 15 and 19 will get pregnant **this year**. Another 15,000 girls under age 15 also will get pregnant.

Why? Bradshaw believes most of the reasons come down to worries about using birth control devices, to misinformation, to lack of thought and to the great pressures teenagers are under today.

The health specialist does not believe that lack of information about birth control is the reason our country is having such a rash of teenager pregnancies.

He says studies of teenagers show that some worry about the morality of using birth control. Some worry about the safety of using birth control devices or believe that the devices would interfere with sex. Many teenagers worry that thinking ahead, being prepared with a birth control device, can make them look as if they're "after it" or as if they're deliberately planning to do a social wrong, rather than "getting carried away."

By the time they consider using birth control, it's often too late. Health studies indicate that girls show up to learn about birth control three to six months after they start having sex. Unfortunately, other studies show that 20 percent of those million girls who'll get pregnant this year will become an expectant mother within a month of starting to have sex.

County health department professionals, who often counsel teens about birth control, have discovered a startling fact about today's teenagers. Although they seem to be sophisticated on the subject, many teens have some weird ideas about sex.

Researchers have also discovered this when they've questioned pregnant teenagers. In one study, almost all the expectant mothers hadn't planned to get pregnant. Over half had thought they **couldn't** get pregnant—because they didn't have sex often, because they were so young, because it was the "right" time of the month or because their partner had said he would withdraw at the "right" time.

"Once you've started menstruating, 'once is enough' to get you pregnant," Bradshaw points out. "Of course, you can get pregnant only during the three or four days a month during which intercourse can lead to a fertilized egg. But we have a great amount of evidence that trying to pinpoint those days is not a good way to practice birth control. It's a particularly bad method for teens, because their cycles are so irregular."

Bradshaw says that withdrawal, douches and other methods teens tell themselves will prevent pregnancy are equally unreliable.

Bradshaw adds, however, that probably the most common reason for teenage pregnancies is that the boy and girl don't think. They just do. Necking somehow turns into petting, which somehow turns into having sex.

And many teenagers encounter pressure to have sex.

"In today's world we are bombarded with sex appeals, sex-related stories and ideas about sex that attract mass media audiences," Bradshaw says. "People are climbing into bed with each other on TV programs every night."

Added to that is the fact that teenagers change so fast that they are almost always insecure. All teens seem to believe that something about them looks funny or ugly and that they're not as popular as they should be.

A result is real pressure in the boy's locker room when the guys hint that something's wrong with you if you're not constantly trying to have sex.

This pressure leads to another: "But if you loved me, you would. I love you. **BOY** do I love you!"

And asking a girl to have sex is a real risk! What if she laughs! What if she doesn't laugh and you end up a father?!

**FREE**



**KANSAS NEWMAN COLLEGE**

3100 McCormick Ave./Wichita, Kansas 67213/(316) 942-4291

- General information on 4-yr. & 2-yr. courses of study on this modern 51-acre campus.
- Financial aids data, including Kansas Tuition Grants (providing quality education at a small private college is affordable.)
- Reservation for interview on campus.
- Personal phone call from a student. (Hear it like it is at KNC!)

Name \_\_\_\_\_

Address \_\_\_\_\_

Phone \_\_\_\_\_

## CASH FOR NEWSPAPERS

**\$20 per ton**

Large quantities picked up when our truck is in your area. Approximately 10 ton or more.

**Thermal Shield, Inc.**

1001 North Kauffman Road  
Hesston, Kansas 67062  
Call 316/327-2131

## SAINT MARY COLLEGE

**Leavenworth, Kansas**

This Firm Proudly Recommends  
**SAINT MARY COLLEGE.**

**CHRISTY'S AUTO SALVAGE**  
Route 1

Another result is the "Everybody's doing it" line, even though everyone also knows that just isn't so.

And another result is that teenagers get love and sex confused.

While the boys are in the locker room bragging about how experienced they are, girls usually are in the dressing room, telling each other that the way girls prove they're "okay" is by "getting" someone to love them. And if you're insecure, "proving your love" may seem the best way to insure that you "get" your man.

"Unfortunately, what you actually may get is pregnant," Bradshaw says. "Sex isn't love and it doesn't buy love, either. If it did, our nation's prostitutes would be our national romantic idols! Actually, sex doesn't even insure that someone will continue dating you. In fact, if one or both partners feel guilty about having sex, that could spell the end of a relationship."

High school students may have an additional pressure that relates to all the other pressures. As the end of high school days comes closer and closer, teenagers may worry. Some

face separations from boyfriends or girlfriends. Some worry about starting a new, grown-up life alone. Some face jobs where the prospect of meeting many potential dates seems slim.

These lonely feelings and insecurities can cause a rapid increase in teens who try to feel better about themselves and to cement relationships by having sex.

And a good number of teens decide not to chance the uncertainties of the future. They say such

(Continued on page 38)

## VOCATIONAL — OCCUPATIONAL — UNIVERSITY TRANSFER PROGRAMS

These programs can put you in a highly skilled job!

Carpentry

Plumbing and Pipefitting

Welding

Electronics

Business

Practical Nursing

*Financial aid and housing available.*

**A comprehensive community college serving Kansas since 1936.**

**NEOSHO COUNTY COMMUNITY COLLEGE**  
1000 SOUTH ALLEN  
CHANUTE, KANSAS 66720

316-431-2820

**nccc**

## Take two years at a Christian College and prepare for a job.



Learn a skill you'll need in tomorrow's job market. Save time and money by learning it in only two years.

Study at a college that's small enough to be concerned about you as an individual. Develop life-long friends among Central's instructors and the other students.

Experience the personal and spiritual growth you've been wanting. Central will challenge you to a deeper commitment to Jesus Christ, and to serving others.

**Central College**

**Central College** McPherson, Kansas 67460

Yes, I want to know more about the benefits of attending Central College. I've checked my field of interest below:

- |  |   |
|--|---|
| <input type="checkbox"/> accounting              | <input type="checkbox"/> library          |
| <input type="checkbox"/> agri-business           | <input type="checkbox"/> technology       |
| <input type="checkbox"/> aviation                | <input type="checkbox"/> piano            |
| <input type="checkbox"/> auto                    | <input type="checkbox"/> instruction      |
| <input type="checkbox"/> mechanics               | <input type="checkbox"/> pre-nursing      |
| <input type="checkbox"/> Bible/Christian service | <input type="checkbox"/> recreation       |
| <input type="checkbox"/> business management     | <input type="checkbox"/> leadership       |
| <input type="checkbox"/> carpentry               | <input type="checkbox"/> secretarial      |
| <input type="checkbox"/> child care              | <input type="checkbox"/> social service   |
| <input type="checkbox"/> data processing         | <input type="checkbox"/> associate        |
| <input type="checkbox"/> dietetics               | <input type="checkbox"/> transfer program |
|  | <input type="checkbox"/> other            |

Name \_\_\_\_\_

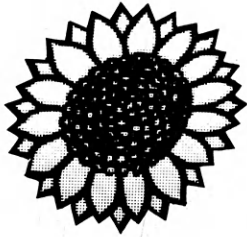
Address \_\_\_\_\_

City \_\_\_\_\_

State \_\_\_\_\_ Zip \_\_\_\_\_

Phone \_\_\_\_\_ Yr. grad. \_\_\_\_\_

Church affiliation \_\_\_\_\_



# IN THE SUNFLOWER STATE... WE BELIEVE IN LOOKING AFTER OUR OWN!

Because we insure only  
Kansas people ~ And  
we're here to stay ~  
in the Sunflower State!

See Your Local Agent



FARM BUREAU MUTUAL • KANSAS FARM LIFE • KFB INSURANCE CO.

## Ending a career before it starts (Continued from page 37)

things as "He may have his faults, but I'll never meet someone I love as much as John" or "I'll be going away to college next year and the thought that we're going to be apart is making my girlfriend and me closer and closer."

But what they really mean is "I've got to get married while the getting's good" or "I'm scared of going to college and not knowing anyone and not sharing things with my girlfriend anymore. Things are going to change, and I may not like the changes!"

This leads to a rash of marriages around graduation time. It also leads to pregnancies that happen "accidentally on purpose" so that teens will "have" to get married.

Unfortunately, people who marry in their teen years usually find they grow up to be people who don't like each other. The divorce rate for couples who are 18 years old or younger when they marry is about 80 percent within five years.

---

*You have years to find a mate to share your life*

---

Bradshaw advises teens, "Believe you've got years and years ahead to find the mate you want to share your life and body with. You'll probably fall in love several times, because there are a great number of people that you could love and be happy with. Also, believe you're going to grow and change in your 20s; the person who seems so 'right' now probably won't be the ideal for you at age 25."

Bradshaw also tells teens, "Think about sex **before** you get into an emotion-filled situation. Talk to older people whose opinions you respect. Don't worry about what friends or dates tell you; decide what **you** believe is right for you."

Bradshaw says teens who examine sex honestly may find they actually have good reasons for not having sex. Typical reasons include:

- I want to be a virgin when I get married. I want to share sex only with one special person.
- I don't think I can handle sex now. If and when I ever have sex, I want it to be good, not a hassle for me and the person I love.

• I want to be a practicing Christian, so I'm not into that.

• I've got plans for my future and I can't chance ruining those plans by getting into a heavy relationship now.

• My life is such a mess already, I don't think I could handle the complications of having sex, too.

Bradshaw believes such teens should be true to themselves by allowing themselves the right not to want to have sex.

"The only way not having sex could 'ruin' a relationship is if sex is the only thing one partner wants out of it," Bradshaw adds.

The health specialist also advises teens to "wise-up" about how pregnancy producing situations develop.

Bradshaw says, "A well-thought-out decision about whether to have sex just isn't going to happen if you wait to make it until you've gone to

an uncle's empty cabin for the day and—because you have no activities planned or friends along—find yourself into some heavy making out."

#### 4 year Liberal Arts College In Central Kansas

Majors available to you:

- Agriculture
- Agri-Business
- Auto Restoration
- Business Adm.
- Early Childhood
- Environmental Science
- Home Economics
- Interior Design
- Special Education
- & Many Others

For free catalog write:

**Director of Admission  
McPherson College  
McPherson, KS 67460**

McPherson College does not discriminate on the basis of age, race, color, religion, handicap or national or ethnic origin.

**McPherson  
College**

**NATIONAL  
COOPERATIVE  
REFINERY  
ASSOCIATION**

McPherson, Kansas

Exploration  
Production  
Purchasing  
Pipelining  
Refining  
Distribution

Fuels for the Farms  
of Mid-America

**The W-R Milling  
Company**

McPherson, Kansas

#### OTTAWA UNIVERSITY

**COME JOIN US — WE'RE  
GOING FOR THE FUTURE**

Ottawa University, a leader in academics, athletics, and career specializations. Student centered education with a Christian influence.

Ottawa, Kansas, 66067, Tel. 913-242-6445

*OU admits students with handicaps & of any sex, color, religion, national, political, socio-economic or ethnic origin.*

## ST. MARY OF THE PLAINS COLLEGE

Dodge City, Kansas

We believe in:

Jesus Christ  
Students

High Academic Standards

New degree programs:

Agri-Business

Criminal Justice

Nursing

Social Work

## Advertiser's Index

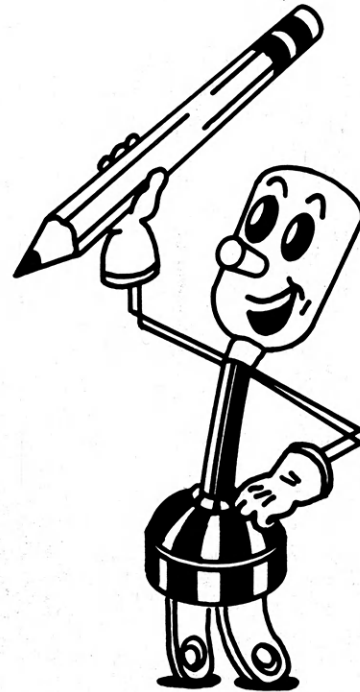
Allen County Community College.....	10
Army ROTC.....	27
Baldwin Advertiser.....	23
Barton County Community College.....	10
Butler County Community College.....	14
Capitol Federal Savings.....	25
Central College, McPherson.....	37
Cloud County Community College, Concordia.....	17
Colby Community College.....	12
Collingwood Grain, Hutchinson.....	22
Cowley County Community College, Arkansas City.....	13
Crum's Beauty College, Manhattan.....	5
Dodge City Community College.....	17
Farm Bureau Insurance, Manhattan.....	38
Federal Land Bank, Wichita.....	20,21
Fort Scott Community College.....	13
Friends Bible College, Haviland.....	31
Garden City Community College.....	2
Hays Advertisers.....	25
Highland Community College.....	15
Hutchinson Community College.....	16
Independence Community College.....	15
Kansas Air National Guard.....	29
Kansas Area Vocational-Technical Schools.....	6,7
Kansas Bankers Association.....	4
Kansas 4-H Foundation.....	10
"Kansas Government".....	27
Kansas Medical Society.....	30
Kansas Newman College.....	36
Kansas Pepsi-Cola Bottlers Assoc.....	32
Kansas' Regents Schools.....	18
Kansas Savings Associations.....	25
Kansas School of Floral Design, Lawrence.....	28
Labette Community College, Parsons.....	29
Lawrence Printing Service.....	4
Leavenworth Advertiser.....	36
Manhattan Christian College.....	31
McPherson Advertisers.....	39
Neosho Community College, Chanute.....	37
Ottawa University.....	39
Rural Electric Cooperatives.....	40
Safety Division, Kansas Farm Bureau.....	33
Saint Mary of the Plains College, Dodge City.....	39
Sangamon Mills, Cohoes, New York.....	9
Sterling Advertiser.....	23
Tabor College, Hillsboro.....	23
Thermal Shield, Hesston.....	36
Washburn University, Topeka.....	32
Western Farm Show, Kansas City, Missouri.....	13
Winfield Advertiser.....	23

# Winterizing Check-list ...

*CLIP AND SAVE!*

- Check out your home's insulation and add insulation where needed. Don't forget inside walls and under floors, in addition to the attic.
- Install storm windows and storm doors. Weatherstripping prevents heat loss around windows and doors.
- Caulk around your windows and other open areas such as fireplace outlets and vents.
- Set furnace thermostat at 65 degrees and leave it.
- Wash only full loads in clothes washer and dry only full loads in clothes dryer.
- Set water heater temperature at 140 degrees.
- Repair leaky faucets, especially the hot water faucet since a faucet leaking one drop per second wastes approximately 2,500 gallons of water.
- Use small appliances to prepare food when possible, and utilize the oven to cook complete meals, not just one item at a time.
- Insulate the hot water pipes, particularly in unheated areas.

Cut your energy cost ...  
Winterize your home ...



- Service your furnace regularly, changing the filter often.
- Open the curtains and drapes to let warm sunlight in during the daytime, close the curtains and drapes at night to help cut down heat loss.
- Turn off electrical appliances when not in use, particularly the television set and radios.
- Avoid using vents that remove moisture from the bathroom or kitchen, since the moisture helps to promote comfort during cold days when the furnace is burning moisture out of the air.

