

Kansas 4-H Journal

The 4-H Family Magazine

June 1975





ATTENTION 4-H'ers!!

BE SURE TO ENTER THE FARM BUREAU SAFETY PROGRAM FOR '75



(A) A trip to Kansas 4-H Congress at Wichita, Nov. 6-8 for 8 members and 2 leaders of top 4-H Club in safety activities.



(B) A \$25.00 cash award for the next 9 4-H Clubs selected.



(C) *In addition, one member of each of these named clubs will receive a scholarship to participate in the Kansas Farm Bureau Youth Safety Seminar, this scholarship to be worth approximately \$25.00.

*(Members must meet the age requirement for the Youth Safety Seminar, being 14 by June 1 of the participating year, or 15 of that year, but not as old as 16 as of June 1.)

Here's How To Enter

See your Extension Agent NOW for the necessary information or write Kansas Farm Bureau, Safety Division, Manhattan, Kansas 66502.

DONOR OF AWARDS FOR THE 4-H SAFETY PROGRAM

KANSAS FARM BUREAU

SAFETY DIVISION

MANHATTAN

Tour day 4
 Key to a successful tour 4
 New award for leadership 6
 Ford team tops 6
 Ideas and news7,18
 National 4-H poster contest 8
 Kitchen Bowl 8
 Kansas 4-H Foundation Honor Roll 9-16
 Old Glory17
 Being a dog's best friend19
 What to look for when judging cattle 21
 District 4-H Horse Shows22
 Family Fun Page23

Wm. M. RileyManaging Editor
 Marie RuppAssociate Editor
 Glenna Wilson.....Production Editor
 Kathy BarthelSecretary

Address all correspondence:
 Kansas 4-H Journal
 Umberger Hall, KSU
 Manhattan, Kansas 66506

Phone 913-532-5881

Kansas 4-H Journal is published monthly by
KANSAS 4-H FOUNDATION, INC.

Merle EyestoneExecutive Director
 William Riley Jr.Associate Director
 J. Harold JohnsonField Representative
 Trisha CashSecretary
 Marilee ShogrenTreasurer

BOARD OF TRUSTEES

Governor Robert Bennett
 Honorary Chairman

Balfour S. Jeffrey, ChrmTopeka
 Ross Beach, Vice-ChrmHays
 John D. Montgomery, Treas Junction City
 Robert A. BohannonManhattan
 Glenn M. BussetManhattan
 W. Dale CritserWichita
 Ned FlemingTopeka
 Mrs. Olive GarveyWichita
 William M. McDonaldKansas City, Mo.
 J. J. MoxleyCouncil Grove
 George B. PowersWichita
 Dolph Simons, SrLawrence
 John T. StewartWellington
 N. T. VeatchKansas City
 Mrs. Dwane WallaceWichita
 *Sen. Frank CarlsonConcordia
 *Harry DarbyKansas City
 *Harold E. JonesManhattan
 *Roger E. RegnierManhattan
 *E. B. ShawverManhattan
 *Advisory Member

Second Class Postage Paid at Manhattan, Kansas
 and additional mailing offices. Return Form 3579
 to Kansas 4-H Journal, Manhattan, Kansas 66506.

Advertising rates and circulation data on
 request.

Group subscriptions \$2.00 per year. Individual
 subscription \$2.50 per year.

Use of the 4-H name and symbol approved
 by the Secretary of Agriculture of the United
 States, January 23, 1951, under the provisions
 of the laws as reenacted by Sec. 707 of the Act
 of June 25, 1948 Public Law No. 772 80th
 Congress (10 USC 797).

Goal for Kansas 4-H:

“Meet young people wherever they live”

By Governor Robert Bennett
 State of Kansas

In my message to the 1975 Legislature I stressed that education has been and should continue to be a No. 1 Kansas priority. I pledged my administration to work for quality education at all levels.

This recognizes the fact that our most precious state resource is our youth, that unless this resource is adequately tended it may be depleted beyond recall and that without this resource the future of this great nation would be materially in danger.

This resource — our youth — is found on the farm and in the city. Thus, the goal for Kansas 4-H should be to meet young people wherever they live and to help them recognize the opportunities that are theirs.

The challenge to 4-H leaders, volunteer and professional, is to recognize that resource development — youth development — cannot take place without an emphatic understanding by, of, and between our rural and urban youth.

We have witnessed the success of international farm youth exchange programs. I submit to you that exchange programs within our own state would aid immeasurably in human development. Our farm and small town youth could profit by a week in the city. Our city youth would benefit by a week “on the farm.”

Even though various sections of our great state have, at times, complained of being left out or neglected, I submit that all of us should reaffirm our dedication to the concept that Kansas is one state. Problems of our cities affect agriculture. Problems of agriculture are of concern to every Kansan.

4-H can play a major role in developing this shared understanding.

To this end I urge all 4-H members — rural and urban — to branch out, to take some of the electives, to participate in some of the newly developed projects which will help in developing an understanding of all Kansas people and institutions.

Get involved in your communities, develop a better understanding of government, get active in your government. The future of Kansas government is in your hands. What you do with it and how you treat it depends, in no small way, on what you learn of government.

And that has much to do with the future of Kansas in general.

In conclusion, it is my pleasure to salute the more than 30,000 4-H members, their parents, and the hundreds of persons active in 4-H leadership across Kansas. Your program, your projects, and your dedication have made you better citizens. Your efforts are building a better Kansas.

About the cover

On June 14, we celebrate Flag Day. It is my fervent hope that people will proudly fly this symbol of our great United States. Remember, it does represent the fifty states comprising our Country.

To me, seeing the flag waving proudly at the top of the staff brings a mental picture of the beauty of this land and of the brave men who signed the Declaration of Independence and sacrificed all to bring about the unity of a new Nation. On

this day we salute a beautiful symbol of a democratic nation and a great free people. Our flag has given heart, courage, hope, and strength to Americans throughout our nation's history. It has flown over us in times of trouble and of triumph, and it flies today as a sign to all that we are proud of this country's heritage.

We hope you all will take pride in displaying our country's flag on this Flag Day and on all the other holidays.

Marie Rupp

Tour day

Photos and text
by Scott Dugan
Delia

High water and mud didn't stop the Delia Earlybirds 4-H Club of Jackson County from going on their annual tour of the club members' homes and seeing what the members are doing for their projects. Tour day came just after heavy rains in Jackson County, but the 4-H members loaded into cars and pickups and off they went. Members visited the homes of nine of the club families and the day ended with a potluck supper.

Mr. and Mrs. Lloyd Miller are the club leaders.

The key to a successful tour: planning

By Charles Bates
State 4-H Staff

Does your 4-H club need a new spark of interest?

A 4-H club tour may be just what your club needs for an added touch of enthusiasm and a new spark of interest. During spring, many 4-H clubs begin thinking about their 4-H club tours. 4-H members want to do things, go places, meet people, improve themselves, and help others. 4-H tours can do much to stimulate interest and enthusiasm in 4-H work.

Just about every successful undertaking achieves its goal because it is well planned in advance. This applies to 4-H tours as well as to

anything else. You want your club tour to be a success; then you must have a plan.

Planning is the KEY to a successful and meaningful 4-H tour. Too many tours have been held without complete, detailed planning. In fact, some tours are planned a few days before they are held. Lack of planning can create a club disaster when the tour might have been one of the most meaningful experiences of the entire 4-H year.

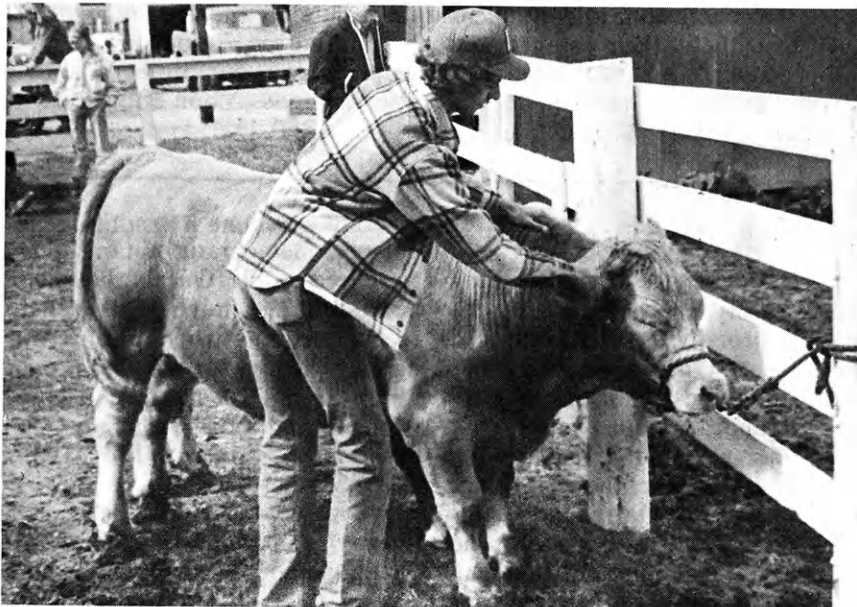
Well planned 4-H tours can provide opportunities for 4-H'ers to have pleasant and worthwhile learning experiences which will help satisfy each of the basic wants. Tours arouse and promote interest among 4-H'ers, leaders, parents, and the general public. Tours also serve to improve the quality of project work and encourage record completion as well as providing an opportunity for the entire club to

Getting started



One by one the cars and trucks went through the high waters of Soldier Creek. We crossed the high water twice on the tour.

Seeing projects—Beef



Kell Lee Parr's steer stood contentedly while everyone looked him over.

Wheat



Club member Carl Williams showed us his acres of wheat.

become involved in an activity in which all can participate.

Choose type of tour

There are many types and variations of 4-H tours, but most are classified as (1) tours of all projects or (2) tours of related projects.

The tours of all projects include visits to projects of 4-H'ers in a community or club area. On the tours, 4-H'ers have an opportunity to show and explain their projects, to tell of the improved practices adopted and new skills learned, and to answer questions.

Tours of related projects may be planned by larger clubs. Large clubs may wish to divide a club tour into agriculture and related areas or home economics and related areas in order to complete a tour in one day or half day. However, a large club may wish to conduct two tours holding them at different times of the year or consecutive weeks.

Decide on time of year

Tours can be held almost anytime during the year, depending on type and purpose of tour. They are usually held in late June and July when the project work is far enough along to show the approved and recommended practices used.

Some clubs have their tours early in the 4-H year. This enables the 4-H'er to put to use the sugges-

tions and recommendations received in regard to his project. Each club, however, should decide the time best suited to its conditions and needs. Creativity and imagination are the keys to unique and unusual tours.

Tours should be planned well in advance by the club or by a special committee appointed by the club. This special committee should include 4-H'ers, adult leaders, parents and others, depending on the size and nature of the tour.

Make final plans

In planning, the tour committee should decide on:

- * What will be the date, time, and meeting place for the tour?
- * What will be the route of tour? What type and quantity of transportation will be needed?
- * Will a meal be included on the tour? At the beginning or at the end or midway?
- * What special features will be included in the program such as judging classes, demonstrations, project talks, exhibits, or recreation?
- * Are guests to be invited?
- * What kind of publicity will be needed for the tour and who will be responsible for it?

Have a purpose

Tours that are most effective educationally are those that are

planned with a definite purpose in mind. A timetable should be prepared showing number of stops, location of stops, and activities planned for each stop.

Consider safety

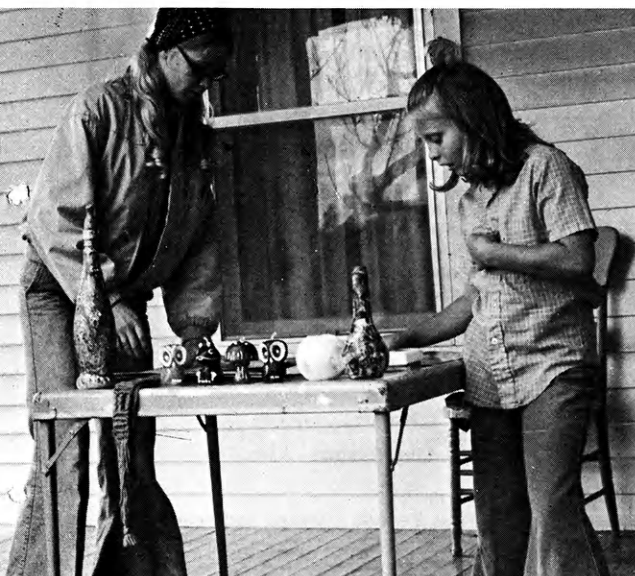
Safety should be a major item in the planning of the tour. Sufficient time needs to be allowed at each stop to allow all to observe items of interest and for questions and discussions. Allowing time for this gives meaning and purpose to a club tour. Total involvement of the club creates maximum interest and might be accomplished by allowing the planning to be done by a number of sub-committees to include meal, transportation, and recreation. However, these should function within the overall plans.

Evaluate the tour

The final job of a tour committee is that of evaluating the tour just completed and making recommendations for the one to be planned for next year.

Yes, a well planned 4-H club tour can add a new spark of interest and bring relief from boredom and fatigue.

Crafts



Deborah and Beverly Little showed the club some of the crafts they had done this year.

Ending the tour



First to the table for the potluck supper are Randal Little, Carl Williams, Kell Lee Parr, and club leader Lloyd Miller.



Karen Stainbrook, president of Cadmus 4-H Club, Linn County, is pictured with Carlos Ximenes, exchange student from Brazil, who showed slides of his native country and talked to the Cadmus 4-H Club members and parents at a recent meeting.

Carlos lived with the Roy Stroup Family of rural La Cygne for the first three months of his six months' stay in the United States under International Fellowship, Inc. For the second three months the 16 year old high school junior is with the Bill Atwood family.

The 5 year 4-H fund drive

Chase County 4-H members are planning a major fundraising activity on June 14. For the auction sale at the fairgrounds at Cottonwood Falls, 4-H members, their families, and anyone else may contribute miscellaneous nonperishable items, such as furniture, tools, and household items. The 4-H'ers will receive all income from the donated auctioned items.

Others in the community who wish to sell larger things, such as farm machinery and equipment and large pieces of furniture, and who would also like to make a contribution to 4-H work, may consign these articles to the sale, letting the 4-H members receive 5 per cent of the amount received.

Part of the profit will go to the five year 4-H fund drive.

New award for leadership

An additional group award for leadership will provide a trip for ten 4-H members to Kansas 4-H Congress in Wichita November 6-8. The award will recognize accomplishments of a group of older members, 12 years old or older, either a club or a county group.

For your club or group records to

be judged for this award, include this information:

- Statement of goals set
- Record of goals accomplished
- Number and variety of leadership experiences, focusing on individual and group leadership in service to the community or in statewide programs.

- Impact of the group leadership efforts, summarized in a 500 word story

Records are to be in the state 4-H office no later than August 29. They will be judged at the same time as records for Acres for Wildlife, Citizenship in Action, conservation, health, people to people, recreation, and safety.

If you have questions relative to this award, write to Charles Bates, State 4-H Office, Umberger Hall, KSU Manhattan, Kansas 66506.

Ford team tops in land judging

The Ford County team won first place overall among 4-H teams at the International Land and Range Judging contest in Oklahoma City May 1. Charles Nicholson was high individual, with Debbi Clair second. The other team members were Bryan Owens and Lane Newell.

Ford County also had the team which placed third in homesite evaluation. Wes Owens was fourth individual and Lane Newell was fifth. Other team members were Bryan Owens and Charles Nicholson.

Coach of the team was Don Wiles, Ford County extension director, assisted by Margaret Wilson, 4-H agent.

The Best

SPRING TONIC



is a savings account in a Kansas Savings and Loan Association. Your dollars will earn high returns in complete insured safety—visit your nearest

KANSAS Savings & Loan

<p>Arkansas City First Federal Savings and Loan Assn.</p> <p>Clay Center Northwestern Federal Savings and Loan Assn.</p> <p>El Dorado Mid-Continent Federal Savings and Loan Assn.</p> <p>Eureka Eureka Federal Savings & Loan Assn.</p> <p>Fort Scott Liberty Savings and Loan Assn.</p> <p>Garnett The Garnett Savings and Loan Assn.</p> <p>Hutchinson Valley Federal Savings & Loan Assn.—1020 North Main</p>	<p>Leavenworth Citizens' Mutual Building and Loan Assn. Leavenworth Mutual Savings and Loan Assn.</p> <p>Liberal Frontier Federal Savings and Loan Assn.</p> <p>Manhattan Home Savings and Loan Assn. Manhattan Federal Savings and Loan Assn.</p> <p>McPherson Pioneer Savings and Loan Assn.</p> <p>Medicine Lodge The Barber County Savings and Loan Assn.</p> <p>Ottawa Franklin Savings Assn.</p> <p>Parsons First Federal Savings and Loan Assn.</p> <p>Plainville Rooks County Savings Assn.</p>
--	---

INSURED SAFE

IDEAS & News

The Cottonwood 4-H Club at Wamego in Pottawatomie County and the Strong 4-H Club in Riley County had exchange meetings in April, with each club giving the program at the other's meeting. Mrs. Marie Dellen, Mrs. Alice Caine, and Mrs. Jim Brooks are the Strong 4-H Club community leaders. Dennis Weixleman and Mrs. Carolyn Rosell are community leaders for Cottonwood 4-H Club.

Top blue winners at Chautauqua County 4-H Day at Sedan were: Sharon Long, Cathy Magnus, Janice Pinard, John Jeffrey, Christa Fadely, Brian Wigton, Lisa Staton, Lura Fuller, Nora Ful-

ler, Darlene Adkins, and Cedar Vale Go-Getters 4-H Club. Members from these clubs participated: Elgin Eager Beavers, Niotaze Hummingbirds, Cedar Vale Go-Getters, Sedan Junior Willing Workers, and Sedan Senior Willing Workers. Lori Martin is reporter for Sedan Senior Willing Workers.

Burrton 4-H Club, Harvey County, was host to Macon 4-H Club at an exchange meeting in April. Each group had its own business meeting and the two clubs had the program together

For parents' night Walt Patton of Hesston Union Champions 4-H Club, Harvey County, an exchange student, spoke and showed slides about Switzerland.

Northwest 4-H Club had 46 entries in Bourbon County 4-H Day events. At Regional 4-H Day in Iola, top blue ribbons went to model meetings, to an

accordian solo by Rhonda Stringer, and to the square dance group composed of Larry Henry, Jeanette Munden, Mark Hixon, Vicki Munden, Roger Simpson, Jennifer McKenna, Mike Baker, and Nedra Caldwell. Blue ribbons went to Carey Spencer and Quita Matson for acrobatic dance and to Mike Baker for his project talk. Michele Savage is reporter.

The Rose Hill Rustlers 4-H Club chorus of 42 members won top blue at Regional 4-H Day at Madison. Reporter Diana Reed writes that the club has a membership of 77 "kids from second graders to seniors in high school." She thinks it is the largest 4-H club in Butler County.

Hill and Dale 4-H Club presented two square dances and one round dance at 4-H Day in Cloud County, and one square dance represented the club at Regional 4-H Day. In appreciation for the dancing lessons she had given the club members, Janie Lewis, and Cindy Jackson gave a gift to Mrs. Lila Cleveland at the club's parents' night. Richard Lewis is reporter.

Mike Jones, Concordia, reports that Hopewell Corners 4-H Club of Cloud County presented a model meeting for the Fairview Hilltoppers 4-H Club at the clubs' exchange meeting in April.

Eight members of the Bobcats 4-H Club in Johnson County received ribbons at 4-H day in Olathe. Mike Veatch earned a blue rating in piano solo and Kathy and Laura Gradwohl received red ribbons for their demonstrations. Julie Mullen reports. Awarded red ribbons for instrumental solos were Katie Veatch, Julie Mullen, Mark Mullen, Elizabeth Katherman, and Lauren Fulton.

These sponsors will provide your Kansas 4-H Journal subscription for the coming year.

Be sure to thank them!

BROWN

Citizens State Bank, Hiawatha
Farmers State Bank, Fairview
Morrill State Bank, Morrill
The Bank of Horton, Horton
The Bank of Robinson, Robinson
The Morrill & Janes Bank, Hiawatha
The Union State Bank, Everest
Brown County 4-H Council

CHAUTAUQUA

Sedan State Bank, Sedan

CLARK

Clark County 4-H Council

CRAWFORD

Farmers State Bank, Walnut
First National Bank, Girard
First State Bank, Arma
Girard National Bank, Girard
Hepler State Bank, Hepler
Home State Bank, Arcadia
McCune State Bank, McCune
Miners State Bank, Frontenac
National Bank of Pittsburg, Pittsburg
The City National Bank of Pittsburg, Pittsburg
The First State Bank & Trust Co., Pittsburg

FORD

Ford County 4-H Council

GEARY

*Central National Bank, Junction City
*First National Bank, Junction City

GREELEY

Greeley County 4-H Council

GREENWOOD

Greenwood County 4-H Council

HAMILTON

Hamilton County 4-H Council

KEARNY

Farmers Cooperative, Lakin

LEAVENWORTH

Leavenworth County 4-H Council

OSAGE

Anderson Plumbing & Heating, Osage City
Benner-Williams Furniture, Osage City
Robert Billquist, Post Master, Scranton
Bradley's Car Wash, Carbondale
Bremer Elevator, Lyndon
Bulmer Grain Company, Quenemo
Burn's Skyview Ranch, Lyndon
Casa De Moda, Lyndon
Ross A. Coffman & Sons, Overbrook
D & D Grocery, Vassar
DeBaun-International Inc., Osage City
Discount Tire Service, Scranton
Eyelanders Super Saver, Scranton
Fager Plumbing & Heating, Osage City
Feltner Funeral Home, Lyndon
Gambles, Lyndon
William Hutchison, Scranton
Lyndon State Bank, Lyndon
McNabb's Hy-Klas Food Store, Melvern
Martin Material Co., Inc., Osage City
Melvern Food Center, Melvern
Michigan Valley Garage, Michigan Valley
Neihart Insurance, Lyndon
R & R Farm Supply, Carbondale
Scranton Tavern, Scranton
Skip's Super Saver, Carbondale
Smith's Cash & Carry, Michigan Valley
Swanson's Insurance, Lyndon
The First National Bank, Overbrook
The Kansas State Bank, Overbrook
The Overbrook Farmers Union Co-op, Overbrook

Tutcher's Magic Gas, Overbrook
Vassar Elevator, Vassar
Wayne's Clothing, Lyndon
Williams Oil Company, Lyndon

RAWLINS

Rawlins County 4-H Council

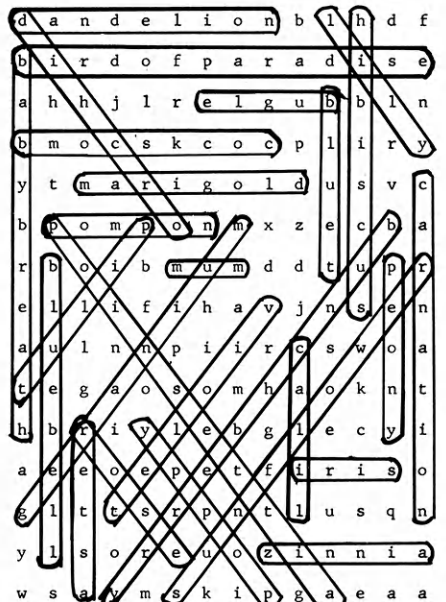
RUSSELL

Russell County 4-H Council

SHAWNEE

Falley's Markets, Topeka
Southwest State Bank, Topeka

*These banks have sponsored Kansas 4-H Journal for 20 or more years.



The puzzle is on page 23.

National 4-H poster exhibit

Get out your poster board and watercolors— or ink, crayon, acrylic, charcoal, oils, or collage materials— and make a poster for the national 4-H poster art exhibit. Themes to illustrate are: 4-H— Room to Grow; We Are Involved; and You've Got a Friend in 4-H.

Some counties may have a poster contest, with the winning entries sent to the state 4-H office. If your county does not have a contest, you

may send your individual poster to the state 4-H office before September 1. The address is State 4-H Office, Umberger Hall, KSU, Manhattan, Kansas 66506.

Each state may submit three entries for exhibit at the 1975 National 4-H Congress at the Conrad Hilton Hotel, Chicago, Illinois. The 1976 poster design will be based on ideas presented in the entries in the exhibit. Coats and Clark, Inc., will

provide a certificate and medallion seal for all entries from the states.

Posters must be designed on, or affixed to, .016 ply construction poster board (solid fiber board) of 14" x 22" dimensions, either horizontal or vertical. Any medium may be used if not three dimensional.

On the page facing this page is a reproduction of this year's poster with the slogan, "We can Make It Happen." A copy of the poster was given to Kansas 4-H Journal by Coats and Clark Inc., New York, New York.

Designing, printing, and distributing of the 4-H poster has been sponsored by Coats and Clark since 1944. From 1944 until 1970, the poster was designed by a professional artist and approved by 4-H state leaders, Sue Schaefer, educational representative for Coats and Clark, explained. At the National 4-H Conference in 1969 the young people discussed the poster and the need for participation by 4-H'ers in its selection.

So the Federal Extension Service and the National 4-H Service Committee planned a 4-H Poster/Art Program, encouraging any 4-H'er to submit designs portraying 4-H. The response was overwhelming and the entries were judged by 4-H'ers attending the 1970 National 4-H Conference. The top posters and slogans selected by the 4-H'ers along with their recommendations were given to a professional artist who produced a final rendition of the poster. This became the 1971 4-H poster "4-H Bridges the Gap."

Since then the design and slogan of the poster have been made and selected by 4-H members.

Kitchen Bowl

For the January 4-H Journal, Elaine Stich from Chanute wrote an article about Chinese cookery. At our request she sent the recipe for almond float, the Chinese dessert mentioned in the article.

Elaine writes, "Almond float is light and refreshing, and it may be served at any meal. If desired, pineapples, peaches, pears, or fruit cocktail can be used instead of mandarin oranges, but the latter have a decidedly Oriental flavor. This dessert can be made the day before. Leftovers can be kept in the refrigerator for several days."

Almond Float

- ¾ cup undiluted evaporated milk
- 1 envelope unflavored gelatin
- 1¼ cups cold water
- 1 small can mandarin oranges
- 8 maraschino cherries
- 6 tablespoons sugar
- 1 tablespoon almond extract

Heat the ¾ cup evaporated milk, the 1¼ cups water and the 6 tablespoons sugar to just below boiling.

Dissolve the unflavored gelatin in 3 tablespoons water and add the dissolved gelatin to the milk and stir until completely mixed.

Cool. Add almond extract.

Pour into a rectangular glass pan and keep in refrigerator till it sets, preferably 24 hours.

Cut into diamond shaped pieces and float in syrup with oranges and cherries.

Syrup for Float

Dissolve ¼ cup sugar in 2 cups warm water. Cool. Add 1 teaspoon almond extract and the juice of the mandarin oranges. Use about ¼ cup with each serving, and 3 segments of mandarin oranges in individual serving dishes. Top with cherry halves.

Yield: 8 servings.

Suzi Winteroth's flaky Danish pastry was a purple ribbon winner at a 4-H favorite food show in Norton County. Suzi, a member of Busy Jayhawkers 4-H Club, writes that she likes to try different recipes, especially those using herbs and spices. She also likes to cook foreign foods and to travel to exciting and interesting places. Suzi lives in Norton.

Flaky Danish Crescent

- 1 package active dry yeast
- ¼ cup warm water
- 2 cups sifted all-purpose flour
- 1 tablespoon sugar
- ½ teaspoon salt
- ½ cup chilled butter or margarine
- ¼ cup milk, scalded
- 1 slightly beaten egg yolk

Meringue

Fold ½ cup sugar and 1 teaspoon cinnamon into stiff-beaten egg white.

½ cup chopped almonds or pecans

Soften yeast in water. Sift together dry ingredients; cut in butter till some of the mixture is like corn meal and some the size of peas. Mix cooled milk and egg yolk; add with yeast to flour, stirring to make a soft dough. Cover; chill a few hours or overnight.

Half dough (keep half chilled). On floured surface roll one piece in 12 by 9 inch rectangle, about ⅛ inch thick. Reserve 2 tablespoons meringue for glaze; spread dough with half of remainder. Sprinkle with half of nuts. Roll as for jellyroll, starting at the long side. Seal edges and ends. Place roll, seam down, on baking sheet. Shape in crescent; flatten slightly. Repeat with remaining dough. Cover; let rise till double. Brush with reserved meringue. Garnish with thinly sliced almonds or pecans. Bake at 375 degrees for about 20 minutes. Makes 2 crescents.



Mr. and Mrs. Clarence Williams receive a plaque from Donald Jenkins, president of Rose Hill Rustlers 4-H Club, in appreciation for the Williams's support in the Fat Stock Sale at the Butler County Fair in 1973 and 1974. There is space on the plaque for recognition in future years.

INVESTMENTS in 4-H through the KANSAS 4-H FOUNDATION



WE
CAN
MAKE
IT HAPPEN

The Kansas 4-H Foundation offers a way for 4-H members and families to help themselves, for 4-H alumni to strengthen the organization that was instrumental in their early development, and for friends of 4-H to express, through their gifts, their faith in the youth of Kansas.

HONORING 1974 KANSAS 4-H FOUNDATION DONORS

Remarks from the Executive Director of the Kansas 4-H Foundation:



**Dr. Merle
Eyestone**

The year 1974 opened a new direction for Kansas 4-H programs and for Kansas 4-H Foundation.

Extension and Foundation staff members along with hundreds of Kansas 4-H'ers are working together on the statewide \$700,000 fund drive, the first statewide 4-H drive in 18 years. The drive opens the way for new outdoor education programs, and for the development of facilities needed in decades ahead as 4-H membership increases and new leaders are trained.

With these present and future needs determined, county committees, extension agents, and selected individuals are making things happen. Counties have set goals to raise nearly \$325,000 and Kansas 4-H

Foundation is also working to collect \$350,000 during the next four years.

The interest and support of the 4-H program by citizens of our state continually amaze me. In a year when some farm prices were low and farm expenses high, our national economy uncertain, and problems most everywhere, we still have increasing numbers of individuals, firms, and foundations investing in our youth program. The number of annual donors in 1974 exceeded 1,500. Included in this number were 279 4-H clubs, 276 EHU units, 97 businesses, and a dozen foundations.

The 4-H program is the responsibility of the Kansas Extension Service; however, many of its successes are made possible by the people of our

state who are enthusiastic and supportive of the youth in the 4-H program. Through generous support from the private sector, the state's 50,000 young people touched by 4-H can be most proud of their state 4-H leadership center, Rock Springs Ranch; the outdoor education center at Lake Perry; the international programs; leadership training; Clovia 4-H House; and Kansas 4-H Journal.

Donors also make scholarships, awards, and trips available, and will help develop a Hi-Plains Center in western Kansas.

To those of you making all these things possible, thank you!

**Merle Eyestone
Executive Director
Kansas 4-H Foundation**

This honor roll of friends of 4-H lists the good citizens who have contributed to 4-H work in 1974

- 1 Acheson, Mr. and Mrs. Clinton C.
- 1 Ackerman, Alice
- 1 Adams, Lawrence
- 1 Ahnert, Mrs. Louis A.
- 1 Ahsmuhs, Mr. and Mrs. William
- 1 Amer, Floyd J.
- 2 Anderson, Mrs. Bert H.
- 1 Anderson, Judy
- 2 Anderson, Thelma C.
- 16 Apel, Mr. and Mrs. Dale
- 12 Appleby, Maryellen
- 10 Area, Donald and Marjorie
- 1 Arkansas Valley State Bank, Valley Center
- 2 Ashley, Donald J.
- 1 Atkinson, Daisy E.
- 3 Atkinson, Emily Jane
- 1 Babcock, Irvin R.
- 1 Baker, Kirk
- 12 Baker, Louis A.
- 1 Bales, Leo
- 2 Barker, Norman
- 1 Barnett, Francis L.
- 12 Barr, Mr. and Mrs. Bernard
- 2 Barthel, Rodney and Kathy
- 9 Bates, Mr. and Mrs. Kay L.
- 1 Bates, Mr. and Mrs. Lynn S.
- 2 Bathurst, Mr. and Mrs. Dale R.
- 1 Baughman Foundation
- 1 Bays, Barbara
- 1 Beck, Glenn H.
- 1 Bechtel, Leda Vernon
- 5 Becker, Mr. and Mrs. Joe
- 2 Becker, Jr., Mr. and Mrs. Lavern
- 1 Beech Aircraft Foundation
- 1 Beems, Harold M.
- 8 Beninga, Mr. and Mrs. C.T.
- 1 Bert and Wetta Sales, Inc.
- 16 Bevelhymmer, H.C.
- 1 Bieberly, Frank G.
- 1 Biles, Larry E.
- 1 Billings, Mrs. Ada

- 1 Binder, Edward and Betty
- 6 Bird, Mr. and Mrs. Byron G.
- 1 Bishop, Gilbert
- 1 Bishop, Rose
- 1 Biswell, C.R.
- 1 Blackburn, Winnie
- 4 Blackwelder, Jennie
- 1 Blanck, Raymond
- 20 Bly, Erna
- 1 Bogle, T. Roy
- 3 Bohannon, Robert and Vera Jean
- 4 Bolt, W. Fred
- 1 Bonewitz, Ralph and Cora Jane
- 6 Booth, Arden
- 5 Border, Mary E.
- 1 Borst Nursery and Garden Center
- 4 Borst, William and Family
- 1 Boughton, K.T.
- 1 Bounds, Billie and Barry
- 1 Bowman, Mr. and Mrs. Herb
- 12 Boyce, Mr. and Mrs. Hugh
- 2 Bradley Bros.
- 2 Brady, Elaine
- 1 Brainard, C.L.
- 1 Brammer, Eugene (Family)
- 1 Brannan, Betty Jean
- 1 Brazda, Edward A.
- 1 Breeden, Dr. Lowell D.
- 1 Brewer, Lena
- 1 Briggs, Vivian
- 1 Brill, Martha E.
- 1 Brink, William H.
- 1 Broadhurst, Mr. and Mrs. M.L.
- 1 Brobst, Karl E.
- 1 Brooks, Miss Blanche
- 1 Brown, Phil (Family)
- 13 Brown, Mr. and Mrs. Ralph E.
- 1 Brown, Vernon
- 1 Brown, Wayne E.
- 1 Browning, Robert L.
- 1 Buckley, Thomas L. (Family)
- 1 Bulk, Herbert

- 1 Burchett, Lowell (Family)
- 1 Burdett State Bank, Burdett
- 1 Burke, Jack M.
- 1 Burkhard, Kenneth
- 2 Burlington Northern Foundation
- 1 Burroughs, A.L.
- 7 Busset, Glenn and Rosemary
- 6 Butler Rural Electric Coop. Association
- 1 Butterfield, Max
- 1 Calbeck, John
- 1 Caley, Dr. and Mrs. Homer K.
- 1 Caldwell, Carl D.
- 1 Campbell, Clifford
- 2 Campbell, L.B.
- 1 Campbell, Robert
- 2 Cantrell, Mr. and Mrs. Dale L.
- 1 Carls, Dale
- 4 Carlson, Mr. and Mrs. Frank
- 1 Carlson, Jean K.
- 1 Carpenter, Dr. and Mrs. Frank
- 9 Carr, Francis E.
- 1 Carrier, Mr. and Mrs. Clyde
- 11 Carroll, Mr. and Mrs. Nathan
- 1 Carter, Anthony B.
- 6 Caspar, Sr., Mr. and Mrs. Charles
- 1 Caviness, Ermel
- 10 Central National Bank, Junction City
- 1 Champion, Harold
- 1 Chandler, George
- 1 Chandler, Lois and Jerome
- 8 Chapman, Mr. and Mrs. William
- 1 Claydon, T.J.
- 1 Christiansen, Arley
- 1 Cina, Patricia A.
- 2 Citizens State Bank, Cheney
- 4 Citizens State Bank, Ellsworth
- 3 Citizens State Bank, Manhattan
- 1 Clark, Mary Porter
- 2 Clawson, Mr. and Mrs. Eldon L.
- 1 Clearwater Cooperative Assn.
- 1 Cline, Wayne L.

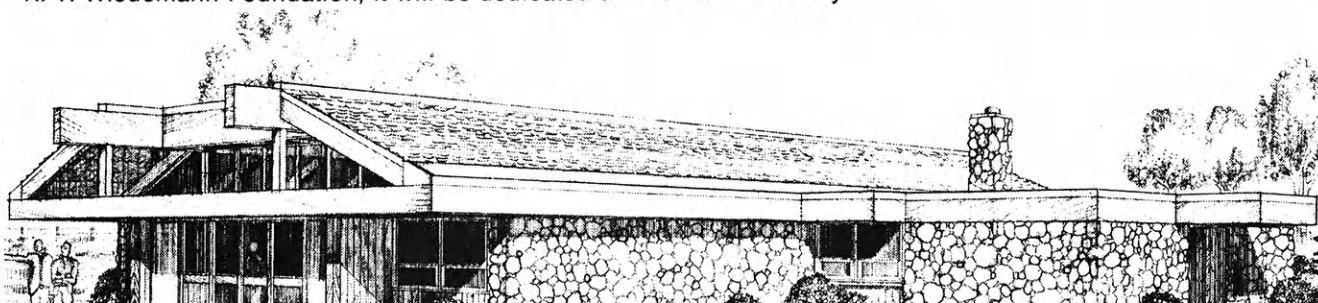
- 1 Clonts, Hallie
- 1 Clowe, Charles F.
- 1 Coberly, Miss Goldie
- 1 Coe, Maynard H.
- 1 Coffman, Gladys
- 4 Cole, Mr. and Mrs. Robert
- 9 Cole, Dr. and Mrs. Ward M.
- 1 Coleman, Fred
- 1 Colglazier, Ronald and Elin
- 7 Collinge, Dr. Irwin
- 1 Combes, Keith
- 1 Combs, Lyle E.
- 1 Commercial State Bank, Long Island
- 2 Conard, Marie S.
- 1 Cook, C.W.
- 2 Cooper, Margaret
- 1 Corah, Larry
- 12 Counter, Mr. and Mrs. Perry
- 2 Cox, Lawrence J.
- 1 Crist, Rosemary
- 20 Critser, W. Dale
- 16 Cubit, James and Helen
- 3 DaVault, Mr. and Mrs. Homer
- 1 Dean, C.H.
- 2 DeVore, Mr. and Mrs. Jasper
- 1 Dexter, Miriam L.
- 10 Diacon, Dr. and Mrs. James L.
- 1 Dicken, Mr. and Mrs. D. Dean
- 6 Dickerson, Mr. and Mrs. Edward
- 2 Dickman, Claire
- 13 Dies, Mrs. Edgar
- 2 Diekman, Sara Mae
- 1 Dierking, Gary R.
- 1 Dietz, Mr. and Mrs. Henry
- 1 Dillon, Mr. and Mrs. C.J.
- 2 Dole, Senator Robert
- 1 Domer, Dr. R.R.
- 1 Dorn, Albert S.
- 1 Doss, George
- 1 Doud, Mr. and Mrs. Charles
- 1 Drake, Marilyn M.
- 1 Dreger, Walter and Martha
- 1 Dresser, Robert E.
- 1 Dulaney, Johnston, and Priest
- 4 Dubbs, Clara Louise
- 1 Edwards, Mrs. Edris C.
- 1 Efken, Harvey
- 2 Eicher, Mr. and Mrs. Harry

- 1 Eldons Westlink Service
1 Ellis, Jr., Roscoe
3 Ellis State Bank, Ellis
1 Ellithorpe, Vera
2 Engler, Mr. and Mrs. Robert A.
1 Engler, Roy W.
1 Enoch, Ransom
1 Enochs, Jr., Richmond M.
1 Epp, Otto
2 Ernest, Felix H.
1 Evans, Mrs. John C.
1 Evans, Sr., S. Dean
13 Eyestone, Cecil L.
14 Eyestone, Merle L.
- 6 Fager, Mr. and Mrs. Lawrence
2 Farm Bureau Second District
1 Farmers Cooperative Elevator Co., Mt. Hope
1 Farmers and Merchants State Bank, Derby
1 Farmers National Bank, Victoria
14 Farmland Industries, Inc.
1 Faw, Dr. Richard
21 Federal Cartridge Corp.
9 Federal Intermediate Credit Bank
14 Federal Land Bank, Wichita
12 Felt, Esther L.
12 Felt, Sylvia S.
1 Feuerbacher, Irene
1 Figurski, D.L.
2 Filley, Dr. Vernon
2 Fincham, Mr. and Mrs. Donald
1 Fink, Ben J.
1 Finley, Mr. and Mrs. Philip B.
1 Finnup Land Company
1 First National Bank, Derby
2 First National Bank, Fredonia
1 First National Bank, Hoxie
10 First National Bank, Junction City
3 First National Bank, Larned
1 First National Bank, Neodesha
1 First National Bank, Wichita Charitable Trust
1 First State Bank, Tonganoxie
1 Fitzgerald, Mr. and Mrs. Mike
1 Flanders, Raleigh B.
1 Fleenor, Jacob
1 Flinchbaugh, Dr. and Mrs. B.L.
1 Flohr, Veryl Dean
1 Florine, Hazel K.
2 Flory, Virgil H.
1 Floyd, Chesney
2 Floyd, Mrs. R.D.
21 Folders Coffee Co.
1 Follett, Roy H.
1 Foos, Virginia
13 Fooshee, Mr. and Mrs. Claude L.
1 Ford, Rex E.
5 Foreman, Mr. and Mrs. Alanson
2 Fowler, David W.
19 Fox & Co., Elmer E.
1 Frazier, Leslie P.
3 Frey, Lester
1 Frisbie, George
1 Frisbie, Mr. and Mrs. Floyd
1 Fritts, Edythe L.
7 Fry, Mr. and Mrs. Ralph A.
7 Frye, Mr. and Mrs. Raymond G.
- 1 Gabriel, III, David J.
2 Galey, Mr. and Mrs. Thomas F.
1 Gallaher, Mr. and Mrs. Harold G.
3 Galle, Mr. and Mrs. Dale S.
4 Garden City Coop. Equity Exchange
1 Garden Plain State Bank
1 Garfield Coop. Co.
16 Garten, Mr. and Mrs. Frank
15 Garvey Foundation
1 Gaskill, Karen
1 Gas Service Company, Kansas City, Mo.
1 Gates, Dell E.
1 Gaylor, Freda and Harry
1 Geisler, James C.
1 Germann, Mr. and Mrs. G. Fred
5 Gfeller, Mr. and Mrs. Harvey
1 Gheens, Rosalee P.
1 Gibson, Alice M.
19 Gillmore, Ralph E.
3 Givens, Mr. and Mrs. Don
1 Gleason, Maurice (Family)
2 Goertz, Harvey E. and Rose
8 Golightley, Mrs. Ernest
1 Good, Don L.
1 Goodrum, Mrs. R.E.
1 Goodyear Tire & Rubber Co., Topeka
- 2 Gore, Keith E.
1 Govert, Helen
1 Govert, Joe
5 Goyen, Mr. and Mrs. C. Dell
1 Graham, Ralf O.
2 Grant County Conservation District
1 Griffith, Mr. and Mrs. Charles
1 Griffith, Paul W.
1 Grimes, Eva Miller
3 Groene, Mrs. Joseph (Edith)
1 Grover, Mr. and Mrs. Howard
1 Grubb, Minnie
1 Grubb, Patricia
21 Gugler, Mr. and Mrs. Donald P.
9 Gugler, M.C.
12 Gwin, Paul B.
- 1 Hackerott, Nancy
1 Haddock, John-Ford, Inc.
3 Hagenmaier, Arthur W.
10 Haines, Joe D.
3 Halbleib, Mr. and Mrs. George J.
2 Hall, W. Carlton
14 Hamilton, Mr. and Mrs. Dean
1 Hamm's Construction Co.
1 Haney, Mrs. Ross
3 Hanna, Mr. and Mrs. John B.
1 Harman, Alma
1 Harris, Charles
1 Harris, Clark
1 Harris, Mrs. Elmer
1 Harris, Gail and Sons
1 Harris, Pearl
1 Harris, Mrs. R.W.
3 Haskin, Mr. and Mrs. Glenn
1 Hatch, Mrs. Henry
1 Hatesohl, Mr. and Mrs. Lowell
2 Hatfield, Edna M.
1 Hawk, Mrs. C.D.
1 Hawkinson, Melanie and Brent
2 Heinly, Mrs. Kayann
1 Heitschmidt, Harold W.
1 Henderson, F. Robert
1 Herl, Cynthia
7 Hesston Corporation
2 Hesston Foundation
1 Hey, Rebecca Ethel
20 Hicks, Mr. and Mrs. W.H.
1 Hill, Bob
1 Hill, Gerald
1 Hill, Justin
1 Hinderliter, Mrs. Norman
1 Hindman, D.A.
1 Hladik, Jim
1 Hlasney, Faye Uhlrich
1 Hoard, Bertha
1 Hobbie, Kermit
2 Hodgeman County Board of Supervisors
1 Hodgson, Mr. and Mrs. Art
2 Hoffer, Mr. and Mrs. Chester
1 Holle, LaVern (President, Farmers National Bank, Agra)
2 Holmes, Blanche
1 Holmes, Elwyn S.
21 Holstein-Friesian Association of Kansas, Inc.
1 Home State Bank, Clearwater
3 Honstead, Arliss
14 Hoover, Mr. and Mrs. Laurence J.
4 Horlacher, Mr. and Mrs. Wayne
1 Hornbaker, Dean
1 Hornbaker, Karen
1 Hornbaker, Royal
1 Howell, Dr. J. Allen
1 Howell, Mrs. R.E.
2 House, Mr. and Mrs. Harlan B.
1 Houston, W.G. and Son
1 Hoxie State Bank
8 Hubbard, C.R.
16 Huff, Ruth K.
6 Humboldt National Bank
1 Humburg Lumber Company, Bison
11 Humphrey, Henry A.
1 Humphreys, L.P. and Son
1 Hunt, Margaret and Chase
1 Huston, Mr. and Mrs. Keith
3 Ingle, Don
2 Irvin, Mr. and Mrs. Harley
14 Ives, H.M. & Sons, Inc.
1 Iwig, Warren R.
- 2 Jackson, Dwight S.
1 Jackson, Mr. and Mrs. M.E.
10 Jackson, S. Lester
1 Jacobs, Mrs. Hyde S.
5 Jensen, Miss Mabel
1 Jones, Jarvis L.
1 Jones, Taylor
1 Johnson, Helen L.
20 Johnson, Mr. and Mrs. J. Harold
1 Johnson, Naomi M.
2 Johnson, Mr. and Mrs. Raymond E.
2 Jorns, Arnold B.
- 4 Kaiser, Kenneth and Vera
1 Kansas American Revolution Bicentennial Commission
1 Kansas Association of Nurserymen
1 Kansas Assn. of Osteopathic Medicine
21 Kansas Bankers Assn.
19 Kansas Brown Swiss Assn., Inc.
11 Kansas Electric Coops.
21 Kansas Electric Suppliers
19 Kansas Farm Bureau & Ins. Services
3 Kansas Farmer
1 Kansas Federation of Women's Clubs
14 Kansas Guernsey Breeders Assn.
3 Kansas I.F.Y.E. Alumni Assn.
17 Kansas Jersey Cattle Club
1 Kansas Master Farmer Homemakers Guild
16 Kansas Milking Shorthorn Soc.
1 Kansas-Nebraska Natural Gas Co., Inc.
3 Kansas Pinto Horse Assn.
3 Kansas Quarter Horse Assn.
5 Kansas Saddle Horse Assn., Inc.
1 Kansas Soybean Assn.
20 Kansas State Ayrshire Breeders Assn.
3 Kansas Western Horsemen's Assn.
1 Kansas Women for Highway Safety, Inc.
6 Keas, John C.
1 Kendall, Jerry D.
1 Kent Mfg. Co., Inc.
1 King, Claude L.
1 King, Jr., Mr. and Mrs. Richard F.
2 King Travel Service
15 Kirkwood, Frances
2 Klenda, Mr. and Mrs. Albert
1 Kleymann Brothers
12 Kleymann, Mr. and Mrs. Fred
7 Knappenberger, Dr. Joe F. and Opal
19 Knopke Bros.—Contractors Supply Co.
1 Knutson, Herbert
2 Koch, Mrs. Lawrence
3 Koci, Mr. and Mrs. Russell I.
1 Koehn, Harold
8 Kramer, Martha M.
1 Krull, Leslie E.
6 K.T. Wiedemann Foundation, Inc.
1 Kucera, Richard
6 Kugler, John M.
1 Kutter, Marge
1 Kutter Ranch
1 Kysar, Ernest
- 1 Lackey, Mr. and Mrs. James E.
1 Lambert, Mr. and Mrs. Duane
1 Landes, Ruby C.
1 Langemeier, Larry N.
1 Lantz, Kenneth G.
1 Larson, Anns
1 Larson, George H.
1 Laver, Mr. and Mrs. Clarence
1 Lawson, John
1 Leach, Hugh and Glinda
10 Lear, J.T.
2 Lee Hardware Co.
6 Lemon, Mr. J.C.
1 Leonard, Mrs. Ralph H.
1 Leonard, Mr. and Mrs. Ronnie
1 Levering, Wilbur
1 Lewis, Dean
1 Lewis, Joe W.
1 Lewis, Robert W.
2 Lewis, Mr. and Mrs. Walter M.
1 Liggett, W.L.
1 Light, Jr., Charles
1 Lightner, Frank W.
2 Linder, Mrs. Lee
1 Lindholm, Nora B.
1 Lindon, Mr. and Mrs. Martin
1 Lindquist, Mr. and Mrs. A.W.
1 Lizer, Earl—Real Estate
1 Lobmeyer, Nick
- 1 Logan, Mr. and Mrs. Dale
1 Longabach, Mr. and Mrs. Clarence
1 Loughridge, Wayne
1 Loyd, Donald G.
2 Loyd, Marjorie
12 Lull, Linton C.
3 Lunt, Mr. and Mrs. Harry
- 1 McAninch, Lloyd L.
1 McBurney, E.C.
1 McCain, Dr. James A.
2 McCallen, Velma S.
1 McCauley, Wayne H.
1 McDanel, Elden P.
1 McDiarmid, George
1 McFadden, O.C.
8 McGinness, Kenneth and Jo Anne
1 McKibben, Mrs. Margaret
2 McKnight, Virginia M.
1 McReynolds, Kenneth L.
1 Macon Improvement
1 Makalous, Ray
1 Marr, Charles W.
2 Massey, Bessie A.
1 Matlock, Lester-Realtor
14 Matney, Peggy Zweifel
1 Maupintour, Inc.
5 Maxson, Mr. and Mrs. Dale D.
4 Mayall, J.R. and Alice
1 Mears, P.&H. Inc.
1 Medlin, Mr. and Mrs. Roger
1 Mermis, Mrs. Richard
1 Meyer, Ella M.
1 Meyer, Jimmy
1 Meyer, Katherine L.
2 Miami County Farm Bureau Assn.
1 Michigan 4-H Foundation
5 Mickey, Mr. and Mrs. Vernon L.
1 Middlekauff, Rose E.
3 Midland United Dairy Industry Assn.
1 Miller, Clyde H.
1 Miller, Elsie Lee
1 Miller, F. Lucille
10 Mills, Mr. and Mrs. Lambert D.
1 Minenter, Mary
1 Mitchell Public Inc.
1 Modern Homes Inc.
1 Moffet, S.N.
3 Mogge, Mr. and Mrs. Carroll A.
1 Molz, Dixie
2 Montgomery, Aurel W.
1 Montgomery, Mrs. Harry
1 Mooney, Mr. and Mrs. William
1 More, Margaret G.
7 Morgan, Mr. and Mrs. Fred G.
1 Morris County Farm Bureau
1 Morrison, Frank D.
2 Morton County Farm Bureau
5 Mott, Mrs. C.C.
2 Mott, Nora
3 Muchnic Foundation
5 Mull, Mr. and Mrs. Keith
10 Munson, Gaylord R.
10 Munson, Ralph C.
1 Murphy, J. Patrick
2 Murrey, Mr. and Mrs. Chester
1 Muse, Mr. and Mrs. Charles K.
1 Musil, E. Lee
10 Musil, Mr. and Mrs. Theo. F.
1 Mutual Security Life Co.
1 Myzer, Mrs. S.S.
- 1 Nation Incorp.
1 National Bank of Wichita
2 National 4-H Service Committee
1 Neely, Margery A.
1 Neff, Leonard and Margaret
1 Neil, Edith A.
1 Nelson, Anita M.
1 Nelson, DeVere V.
2 Nelson, Vaughn L. and Betty Jo
1 Neosho County Farm Bureau
1 Neufield, Dorothy H.
4 Neuschwander, Ocie and John
1 Newport, Mr. and Mrs. Larry
1 Newsome, Bob
1 Nicolay, Bessie M.
1 Nighswonger, Jim
1 Nilson, Erich B.
12 Nitsch, John C.
8 Nixon, Mr. and Mrs. Robert S.
9 Norby, Mr. and Mrs. Oscar W.

- | | | | |
|--------------------------------------|--------------------------------------|--|--|
| 1 Norris Brothers, Inc. | 2 Roberts, Mr. and Mrs. M.H. | 1 Sourk, Helen | 4 Vieux, Mr. and Mrs. Cecil |
| 1 Norton, C.L. | 2 Robinson, Elsie | 11 Sourk, Mr. and Mrs. Ward | 1 Vilander, Leon (Family) |
| 7 Norton County Farm Bureau Assn. | 1 Robinson, John | 15 Southwestern Bell Telephone | 3 Vining, Mr. and Mrs. Cecil E. |
| 2 Novotny, Mrs. William | 2 Robson, Mrs. Marie A. | 1 Southwest National Bank, Wichita | 6 Visser, Mr. and Mrs. Ed |
| 1 Nuss, Melvin | 1 Rockwell International Corp. | 14 Spring Lake Stock Farm | 1 Vogel, John H. |
| 1 Oelke, Esther | 3 Roesler, Otto R. | 1 Stadler, Mr. and Mrs. David | 1 Vogt, Roland |
| 2 Olomon, Jr., Mr. and Mrs. Charles | 1 Rogers, Charles D. | 2 Stanley, Jr. Judge Arthur J. | 1 Vogt, R.W. and Mary |
| 2 Olson, Carolyn | 8 Rogers, Irene | 3 Starkey, Beverly R. | |
| 14 Orsborne, Lawrence | 2 Rogers, Pauline | 1 Starkey, Winona | 1 Waetzig, Scott |
| 1 Osborne County Crop Improv. Assn. | 1 Rogers, Warner | 1 State Bank of Colwich | 1 Wagstaff Land & Cattle Co. |
| 3 Osborne, Robert R. | 1 Rogers, Mr. and Mrs. W. Fred | 1 Steinbauer, Dr. Robert A. | 1 Waldren, Buford |
| 12 Ottaway, Lois M. | 10 Rolfs, E.W. | 1 Stenger, Joyce | 1 Waldren, Deryl |
| 10 Otte, Mr. and Mrs. Alvin | 1 Rolley, Harold | 5 Stephens, MaryLee Sourk | 15 Walker, Mr. and Mrs. Howard R. |
| 1 Owens, Everett J. | 1 Ross, John | 1 Stephenson, Mr. and Mrs. John C. | 9 Wallace, Mr. and Mrs. Dwane L. |
| 1 Page, Mr. and Mrs. Dean | 5 Rowland, Virginia Sourk | 2 Stewart, III, John T. | 2 Warner, Carl S. |
| 1 Paine, Dorothy | 1 Ruggles, Frank | 1 Stewart, Paul | 1 Wasserman, Edith |
| 1 Palmburg, James | 9 Ruhnke, Mr. and Mrs. John | 1 Stickler, John and Joan | 1 Wasserman, Susan |
| 1 Parish, George | 1 Rumold, Lloyd D. | 1 Stockton, Mrs. Mattie | 1 Watson, Marvin |
| 1 Parker, William H. | 2 Rupp, Clarence and Marie | 1 Stous, Richard | 3 Wear, Mr. and Mrs. Henry C. |
| 1 Parris, Mr. and Mrs. Fred M. | 8 Rusk, Mr. and Mrs. Ralph | 13 Streeter, Mr. and Mrs. Charles L. | 1 Weaver, A. Juanita |
| 1 Patterson, Jerry E. | 2 Rusk, Mr. and Mrs. Ray | 12 Strickler, Mr. and Mrs. Ivan K. | 1 Weaver, Arthur B. |
| 1 Paulsen, Mr. and Mrs. Fred | 1 Russell, Elton | 1 Strobel, Vernon | 1 Wehrman, Claude |
| 1 Pawnee Beef Builders Inc. | 16 Russell, Mr. and Mrs. M.L. | 1 Suburban West State Bank, Goddard | 1 Welch, Patricia DeeAnn |
| 2 Pawnee County Co-op | 2 Rusk, Mrs. Lucile | 1 Sunflower Mfg. Co. | 1 Weller, Harold and Family |
| 1 Peachey, Ed. A. | 2 Ruth, Mrs. Vila A. | 1 Tarman, Oliver | 1 Wells, Ruth I. |
| 1 Peachey, Effie | 4 Ryan, James J. | 1 Tarwater, R.A. | 1 Wendling, Leo T. |
| 1 Pearl, Emery | | 1 Taylor, Dale | 1 Werner, Willard |
| 1 Pearson, Buck | 21 Safeway Stores, Inc. | 8 Taylor, Ethel | 1 Wertzberger, Georgia |
| 1 Penner, Karen | 1 Salley, J.H. | 1 Taylor, Jess | 9 Westside Dairy, Inc., Junction City |
| 1 Perry, Ralph H. | 13 Samuelson, Mr. and Mrs. Armin | 2 Taylor, Richard P. | 1 West Acres Bowl, Inc. |
| 1 Peterson, E. Jack | 1 Samuelson, DVM, Marvin L. | 11 Teagarden, Mr. and Mrs. Earl H. | 1 Westermeyer, Mrs. Louise |
| 1 Peterson, Mr. and Mrs. Ernest | 1 Sander, Raymond (Family) | 5 Tennant, Marjorie A. | 1 Westinghouse Elec. Corp. |
| 1 Peterson, Mr. and Mrs. Verlin H. | 1 Sanford Co-op Grain and Supply Co. | 4 Texas Educational Assn. | 1 Wetmore Fair Assn. |
| 2 Pierce, Mr. and Mrs. Walter C. | 1 Schendel, Robert R. | 3 The Henry Krause Charitable Foundation | 1 Wheatley, Edna |
| 1 Pierpoint, E.J. | 1 Schindler, Dale E. | 2 The Times Publishing Company | 2 Wheat State Morgan Horse Assn. |
| 1 Pine, Raymond | 1 Schlender, John R. | 1 Thomas, Charles | 1 Wheeler, L.C. |
| 1 Pitman, Dr. W.D. | 1 Schmidt, Pauline W. | 1 Thomas, Dr. and Mrs. Kenneth E. | 2 Whipps, Loren and Lucille |
| 8 Plessey Inc. — Welco Division | 1 Schmitz, L.V. | 1 Thompson, Jr., D.H. | 1 Whitaker, Wayne |
| 2 Poole, Mr. and Mrs. Grover C. | 1 Schneider, Zenaide | 1 Thompson, Robt. E. | 1 White, M.K. |
| 1 Pottberg, H. Ralph | 1 Schoeff, Robert W. | 2 Thomson, Mr. and Mrs. John C. | 1 Whitson, Tom |
| 1 Potter, Rev. Truman W. | 1 Schrock, Mark D. | 3 Tillotson, Mr. and Mrs. R.J. | 11 Wichita Bank for Cooperatives |
| 1 Pratt, John | 3 Schroeder, Dr. Gail | 1 Titus, Ralph | 1 Wilbur, M.C. |
| 1 Prawl, Warren | 1 Schroeder, Mr. and Mrs. William | 2 Tjaden, Mr. and Mrs. Wayne | 1 Wilburn, Hugh |
| 12 Presnal, Glade C. | 1 Schropp, Ida | 1 Tobias, Mr. and Mrs. Ansel W. | 2 William Carpenter 4-H Foundation, Inc. |
| 11 Presnal, Mr. and Mrs. Ross | 1 Schwartz, Mr. and Mrs. Charles J. | 1 Todd, Mr. and Mrs. Arthur and Family | 2 Williams, Odd |
| 1 Pressgrove, Dale | 1 Scoggan, Clarence | 3 Todd, Mr. and Mrs. Charles C. | 2 Williams, Skipper |
| 1 Prestwood, Wilma | 2 Scott, Mr. and Mrs. Wavern L. | 1 Todd, Chester R. | 2 Williams, Mr. and Mrs. Wayne |
| 1 Price, Gerald | 6 Security Benefit Life Ins. Co. | 1 Tonar, Mr. and Mrs. Ed | 1 Willis, Mr. and Mrs. Paul M. |
| 1 Pritchard, Ben | 10 Security State Bank, Wellington | 1 Town & Country Food Mkts., Inc. | 1 Willis, Mr. and Mrs. William G. |
| 1 Quarzite Stone Co., Inc. | 1 Sessler, Charles W. | 1 Trayner, Danny and Charlene | 12 Wilson, John L. |
| 2 Raab, A.E. | 2 Setter, Mr. and Mrs. Andrew | 1 Treat, Jay L. | 2 Wilson, John and Glenna |
| 2 Rahjes, Mr. and Mrs. Doyle D. | 3 Seymour Foods, Inc. | 1 Trigg, Mrs. Harry | 2 Wilson State Bank |
| 3 Rambur Stables, Inc. | 1 Shafer, C.C. Kirt | 1 Trotter, D.M. | 1 Wimberly, Owen |
| 2 Ramsour, Walter and Doris | 1 Shafer, David E. | 3 Truax, Mr. and Mrs. L.L. | 1 Woelk, Lewis E. |
| 1 Randle, Ed | 1 Shaffer, Bernice | 12 Truman, Maxine | 5 Wolfenbarger & McCulley Architects |
| 1 Ratcliff, Dewey J. | 4 Shaw, Mr. and Mrs. Lawrence | 1 Tubach, Patsy E. | 1 Woodard, Mr. and Mrs. Gail |
| 1 Raybourn, Bessie A. | 1 Shaw, Willard | 1 Tucker, M.A. | 1 Woods, Mrs. Robert |
| 1 Rayl, Charles and Florence | 14 Shawver, E.B. | 8 Turnbull, Mr. and Mrs. J.K. | 19 Woolworth Co., F.W. |
| 1 Raymond and Ethel Rice Foundation | 15 Shepherd, Mr. and Mrs. Ronald D. | 1 Union Coop Grain Co. | 4 Wright, A.W. |
| 1 Redeker, Norma J. | 1 Shields, Glenn E. | 1 United American State Bank & Trust Co.,
Wichita | 1 Wyandotte County Fair Assn., Inc. |
| 13 Regnier, Mr. and Mrs. Roger E. | 2 Shogren, Merle and Marilee | 1 Unruh, Chester R. | 1 Yergatian, Mr. and Mrs. Charles |
| 1 Reinhardt, L.R. | 1 Shook, Loretta | 9 Upham, Mr. and Mrs. Ralph | 1 Yingling, Larry |
| 3 Reitz, Dr. and Mrs. Leland | 1 Shriver, Glen | 1 Utermoehlen, Mr. and Mrs. Ralph and Tommy | 1 Young, Glen |
| 2 Reusser, Rae and Athol | 1 Sim, Opal E. | | |
| 1 Rice, Mr. and Mrs. Jimmie | 18 Simons, Dolph | 1 Vacin, Gary L. | 1 Zabel, Mrs. Marjorie |
| 1 Richardson, Dr. and Mrs. D. | 1 Sitton, Hilan E. | 13 Vanskike, Mrs. Harry | 2 Zabokrtsky, Bill |
| 1 Richardson, Mrs. Ray | 3 Six, Mrs. Deal | 14 Veatch, N.T. | 1 Ziemer, Preston |
| 1 Rieger, Harland K. (Family) | 10 Slaten, Mr. and Mrs. J.M. | 1 Veltman, Floyd | 1 Zoellner, Keith O. |
| 7 Riley, Jr. Mr. and Mrs. William M. | 1 Slinkman, Zoe E. | 1 Vester, Richard | 14 Zweifel, Barbara |
| 1 Ringler, Mr. and Mrs. Wilber E. | 1 Smith Mfg. | 1 Victor Ranch | 16 Zweifel, Mr. and Mrs. Robert |
| 2 Rishel, Mr. and Mrs. Carl | 2 Sohlberg, Jr., Dr. Robert | | 14 Zweifel, Jr., Mr. and Mrs. Robert |
| 1 Ritchie, A.S. | 5 Sourk, Ed | | |
| 1 Rivenburg, Kenneth | | | |
| 1 Rivenburg, Rhonda | | | |
| 1 Robbins, Benny | | | |

Note: The figures preceding the name indicate the number of years of support since the Kansas 4-H Foundation Membership and Share Recognition Plan was started in 1954. Please call omissions to our attention.

This is an artist's drawing of the Wiedemann Dining Hall at Wa Shun Ga. A gift from Mrs. Gladys Wiedemann and the K. T. Wiedemann Foundation, it will be dedicated at Friends of 4-H Day June 5.



Extension home economics and 4-H and other groups—

Many Kansas 4-H clubs and extension homemaking units and other organizations regularly contribute to 4-H work by sending a donation to Kansas 4-H Foundation. Those who contributed in 1974 are listed here as more friends of 4-H.

ALLEN COUNTY 2 Iola Homemakers E.H.U.	2 Enterprise Livewires 4-H Club 2 Flora E.H.U. 3 Holland Sunflowers 4-H Club 2 Hope Homebuilders E.H.U. 1 Indian Hill Chapman Valley E.H.U. 5 Lyon Prospectors 4-H Club 3 Navarre 4-H Club 1 Salomon Wranglers 4-H Club 1 Sherman E.H.U. 1 Talmage Talent Users E.H.U.	GRAHAM COUNTY 2 Happy Crickets 4-H Club 5 Penokee 4-H Club 5 Solomon Valley 4-H Club	2 Night Owl E.H.U. 9 Oxford Hustlers 4-H Club 5 Pioneer 4-H Club 4 Shamrock 4-H Club 12 Sharon 4-H Club 5 Stanley Buccaneers 4-H Club 8 Sunnyside 4-H Club 1 The Different Drummer 4-H Club 1 Tonkawa E.H.U. 12 Zion Zippers 4-H Club
ATCHISON COUNTY 1 Atchison E.H.U. 1 Brush Creek E.H.U. 1 Curlew E.H.U. 1 Effingham E.H.U. 1 Farmerette E.H.U. 1 Farmington E.H.U. 1 Friendly Farmers 4-H Club 3 Good Intent 4-H Club 1 Independence E.H.U. 1 Night-Owl E.H.U. 1 Parallel E.H.U. 1 Terry, E.H.U.	DONIPHAN COUNTY 4 Bendena 4-H Club 1 Busy Bees E.H.U. 1 Moray H.D.U.	GRANT COUNTY 1 A.A.U.W. (Ulysses Branch) 1 Ulysses B.P.W. Club	KEARNY COUNTY 1 Kearny County 4-H Council 3 Sunset 4-H Club
BARBER COUNTY 4 B-Square 4-H Club 6 Gyp Hills Pioneers 4-H Club 9 State Line 4-H Club	DOUGLAS COUNTY 1 Brookdale E.H.U. 5 Clinton E.H.U. 11 Cottonwood 4-H Club 4 Douglas County 4-H Council 6 Jayhawk 4-H Club 16 Kanawaka 4-H Club 1 Kansas University Collegiate 4-H Club 2 Kaw Valley E.H.U. 10 Meadow Lark 4-H Club 3 Oakridge E.H.U. 1 South Dopuglas E.H.U. 13 Stull Busy Beavers 4-H Club 6 Sunflower 4-H Club 8 Vinland Valley 4-H Club 3 Worden Workers 4-H Club	GRAY COUNTY 6 Charleston Astronaut's 4-H Club 3 Ensign Boosters 4-H Club 4 Gray County 4-H Council	KINGMAN COUNTY 3 Alameda H.D.U. 9 Belmont Willing Workers 4-H Club 6 Cunningham 4-H Club 6 Galesburg 4-H Club 2 Harmony E.H.U. 7 Hawk 4-H Club 4 Kingman County 4-H Council 4 Norwich 4-H Club 5 Vinita 4-H Club 6 Zenda Zoomers 4-H Club
BARTON COUNTY 1 A.A.U.W. (Great Bend Branch) 5 Comanche E.H.U. 3 Fairview Scouts 4-H Club 3 Fort Zarah 4-H Club 6 Logan E.H.U. 1 Todays People E.H.U. 4 20th Century E.H.U.	ELLIS COUNTY 2 A.A.U.W. (Hays Branch) 1 Century Federated Club 2 Ellis County 4-H Council 1 Ellis County 4-H Jr. Leadership Club 1 Ellis Sunflower 4-H Club 2 Go Getters 4-H Club 1 Pleasant Creek E.H.U. 12 Saline River Satellites 4-H Club 2 Smoky Hill Atomics 4-H Club 2 Sunnybrook H.E.U. 1 TeePee E.H.U. 2 Town & Country E.H.U. 16 Winners 4-H Club	GREENWOOD COUNTY 2 A.A.U.W. (Greenwood Branch) 1 Bachelor Buttons 4-H Club 1 Bachelor E.H.U. 1 Climax Swingers 4-H Club 1 49'ers E.H.U. 4 Greenwood County 4-H Council 2 Greenwood County H.E.U. (Affairs Comm.) 1 Harmony Sunflowers 4-H Club 2 Lamont Boosters 4-H Club 1 Landergerin E.H.U. 1 Lucky 13 4-H Club 1 Madison Pacesetters 4-H Club 1 Prairie Light E.H.U. 1 Quincy E.H.U. 1 Severy E.H.U. 1 Town & Country E.H.U. 1 Union Shockers 4-H Club 3 Upper Fall River Jayhawkers 4-H Club 1 Willow Valley E.H.U.	KIOWA COUNTY 4 Busy Bees 4-H Club 2 Southwestern Royals 4-H Club 8 Upward Strivers 4-H Club
BOURBON COUNTY 1 Sundowners E.H.U.	ELLIS COUNTY 2 A.A.U.W. (Hays Branch) 1 Century Federated Club 2 Ellis County 4-H Council 1 Ellis County 4-H Jr. Leadership Club 1 Ellis Sunflower 4-H Club 2 Go Getters 4-H Club 1 Pleasant Creek E.H.U. 12 Saline River Satellites 4-H Club 2 Smoky Hill Atomics 4-H Club 2 Sunnybrook H.E.U. 1 TeePee E.H.U. 2 Town & Country E.H.U. 16 Winners 4-H Club	HAMILTON COUNTY 8 C-4 4-H Club	LABETTE COUNTY 1 A.A.U.W. (Parsons Branch) 3 Angola Hustlers 4-H Club 1 Labette County E.H.C.
BROWN COUNTY 1 Hiawatha Jayhawkers 4-H Club 1 Unit Affairs Council	ELLIS COUNTY 2 A.A.U.W. (Hays Branch) 1 Century Federated Club 2 Ellis County 4-H Council 1 Ellis County 4-H Jr. Leadership Club 1 Ellis Sunflower 4-H Club 2 Go Getters 4-H Club 1 Pleasant Creek E.H.U. 12 Saline River Satellites 4-H Club 2 Smoky Hill Atomics 4-H Club 2 Sunnybrook H.E.U. 1 TeePee E.H.U. 2 Town & Country E.H.U. 16 Winners 4-H Club	HARPER COUNTY 6 Harper Co. Activity Fund 2 Sunnyside 4-H Club	LANE COUNTY 5 Eager Beavers 4-H Club 2 Town & Country E.H.U.
BUTLER COUNTY 8 Elm Creek Emeralds 4-H Club 11 Flint Hills 4-H Club 1 Highland E.H.U. 4 Purple Heart 4-H Club	ELLIS COUNTY 2 A.A.U.W. (Hays Branch) 1 Century Federated Club 2 Ellis County 4-H Council 1 Ellis County 4-H Jr. Leadership Club 1 Ellis Sunflower 4-H Club 2 Go Getters 4-H Club 1 Pleasant Creek E.H.U. 12 Saline River Satellites 4-H Club 2 Smoky Hill Atomics 4-H Club 2 Sunnybrook H.E.U. 1 TeePee E.H.U. 2 Town & Country E.H.U. 16 Winners 4-H Club	HARVEY COUNTY 1 A.A.U.W. (Newton Branch) 6 Harvey County 4-H Council 2 Lucky 13 4-H Club 2 Newton City Slickers 4-H Club 4 Richland Livewire 4-H Club 1 Round Robin Unit 1 Sunflowerettes Unit 2 Sunset Gals E.H.U.	LEAVENWORTH COUNTY 2 Busy Beavers 4-H Club 5 Glenwood 4-H Club 2 Jolly Workers 4-H Club 7 Lucky Clover 4-H Club 6 Nine Mile 4-H Club
CHAUTAUQUA COUNTY 1 Chautauqua Co. E.H.U. 1 Sedan Sr. Willing Workers	ELLIS COUNTY 2 A.A.U.W. (Hays Branch) 1 Century Federated Club 2 Ellis County 4-H Council 1 Ellis County 4-H Jr. Leadership Club 1 Ellis Sunflower 4-H Club 2 Go Getters 4-H Club 1 Pleasant Creek E.H.U. 12 Saline River Satellites 4-H Club 2 Smoky Hill Atomics 4-H Club 2 Sunnybrook H.E.U. 1 TeePee E.H.U. 2 Town & Country E.H.U. 16 Winners 4-H Club	HASKELL COUNTY 6 Colusa Go Getters 4-H Club 2 Sehasco 4-H Club	LINCOLN COUNTY 2 American Legion—Sylvan Unit #359 2 Denmark Dames E.H.U. 1 Northwest Rainbow E.H.U. 2 Scotts Lassies E.H.U. 2 Westfall Homemakers E.H.U.
CHEYENNE COUNTY 1 A.A.U.W. (St. Francis Branch) 2 Bird City Go Getters 4-H Club 5 Happy Lark 4-H Club	ELLIS COUNTY 2 A.A.U.W. (Hays Branch) 1 Century Federated Club 2 Ellis County 4-H Council 1 Ellis County 4-H Jr. Leadership Club 1 Ellis Sunflower 4-H Club 2 Go Getters 4-H Club 1 Pleasant Creek E.H.U. 12 Saline River Satellites 4-H Club 2 Smoky Hill Atomics 4-H Club 2 Sunnybrook H.E.U. 1 TeePee E.H.U. 2 Town & Country E.H.U. 16 Winners 4-H Club	JACKSON COUNTY 1 Delia Early Birds 4-H Club 2 Denison Builders 4-H Club 2 Hoyt Livewires 4-H Club 1 Lucky Star 4-H Club 8 Mayetta Mustangs 4-H Club 1 Pleasant Valley 4-H Rustlers	LINN COUNTY 2 A.A.U.W. (Marias Des Cygnes Branch) 4 Linn County 4-H Council
CHEROKEE COUNTY 1 Columbus Jaycee Jaynes	EDWARDS COUNTY 4 Better Homes H.D.U. 12 Sunflower 4-H Club 9 Trousdale E.H.U.	JEFFERSON COUNTY 15 Grantville 4-H Club	LOGAN COUNTY 1 Annie Oakley E.H.U.
CLARK COUNTY 3 Bearcreek Boosters 4-H Club	EDWARDS COUNTY 4 Better Homes H.D.U. 12 Sunflower 4-H Club 9 Trousdale E.H.U.	JEWELL COUNTY 1 Brown Creek E.H.U. 7 Buffalo Valley 4-H Club 1 Formoso Willing Workers 4-H Club 8 Mankato Eager Beavers 4-H Club 4 Webber Wide Awake 4-H Club	LYON COUNTY 8 Admire 4-H Club 1 A.A.U.W. 8 Rinker 4-H Club 4 Walnut 4-H Club
CLAY COUNTY 1 Clay Co. Unit Affairs Council 7 Industry Hustlers 4-H Club 4 Mulberry Busy Bees 4-H Club	ELK COUNTY 2 Paw Paw Lucky Clover 4-H Club	JOHNSON COUNTY 1 A.A.U.W. (Olathe Branch) 1 A.A.U.W. (Shawnee Mission Branch) 1 Bethel E.H.U. 2 Cedarwoods 4-H Club 2 Clear Creek 4-H Club 1 Highland E.H.U. 3 Ideal Homemakers E.H.U. 3 Lenexa Farmerettes E.H.U. 8 Little Cedar Jr. 4-H Club 4 Morning Glory 4-H Club	MARION COUNTY 1 Community Mothers E.H.U. 2 Friendly E.H.U. 7 Marion County 4-H Council 7 Willing Workers 4-H Council
CLOUD COUNTY 9 Sunny 4-H Club	FINNEY COUNTY 4 Beacon Boosters 4-H Club 1 Beacon Light E.H.U. 1 Gay Niters E.H.U. 1 Nite Flowers E.H.U. 5 Sherlock Strivers 4-H Club		MARSHALL COUNTY 4 Home City Hustlers 4-H Club 7 Richland Center 4-H Club
COFFEY COUNTY 8 Blue Ribbon 4-H Club	FORD COUNTY 6 Happy Hour H.D.U. 2 Hi Flyers 4-H Club		MIAMI COUNTY 2 Baker E.H.U.
COWLEY COUNTY 1 Cooperette E.H.U. 1 Ga-Center E.H.U. 1 Grandview E.H.U. 1 I.X.L. Unit 1 Otto E.H.U. 3 Town & Country E.H.U. 8 Udall 4-H Club	FRANKLIN COUNTY 1 A.A.U.W. (Ottawa Branch) 5 Full of Pep 4-H Club 1 Happy Home Makers E.H.U. 1 Loyal Neighbors E.H.U. 2 Trail Blazers 4-H Club		MITCHELL COUNTY 8 Cloverleaf 4-H Club
DECATUR COUNTY 1 Maverick 4-H Club 1 Star Valley 4-H Club	GOVE COUNTY 1 Big Creek E.H.U. 8 Hackberry 4-H Club		MONTGOMERY COUNTY 1 A.A.U.W. (Cherryvale Branch) 2 A.A.U.W. (Independence Branch) 6 Bankers Ever Ready E.H.U. 3 Caney Chums E.H.U. 2 Cherry Chums E.H.U. 4 Coe Workers E.H.U.
DICKINSON COUNTY 3 Carry Creek Rustlers 4-H Club 2 Detroit Ramblers 4-H Club			

- 1 Drum Creek E.H.U.
 7 Elk River Homemakers Unit
 4 Gingham Aprons E.H.U.
 3 Loyal Workers E.H.U.
 5 Pleasant Hill Pals E.H.U.
 5 River Rangers E.H.U.
 7 Sycamore Valley E.H.U.
 1 Westside Workers E.H.U.
- MORRIS COUNTY**
 5 Big John 4-H Club
 3 Burdick Hustlers 4-H Club
 2 Busy Workers 4-H Club
 8 Delavan 4-H Club
 9 Dwight Sunflowers 4-H Club
 4 Flint Hills 4-H Club
 9 Neosho Valley 4-H Club
 6 Willing Workers 4-H Club
 5 Wilsey Busy Bees 4-H Club
- MORTON COUNTY**
 2 Dermot 4-H Club
 7 Richfield Best Yet 4-H Club
- NEMAHA COUNTY**
 1 Busy Jayhawkers 4-H Club
 1 Hustlers 4-H Club
 9 Nemaha County 4-H Council
 2 Red Vermillion 4-H Club
 2 Wetmore Cardinals 4-H Club
- NEOSHO COUNTY**
 1 Sunny Homemakers E.H.U.
- NESS COUNTY**
 2 Schoharie 4-H Club
- OSAGE COUNTY**
 20 Carbondale Rustlers 4-H Club
 3 Osage County E.H.C.
 1 Valley Brook Club
- OSBORNE COUNTY**
 1 Blue Hills 4-H Club
 10 Osborne County 4-H Council
- OTTAWA COUNTY**
 9 Culver Livewires 4-H Club
- PAWNEE COUNTY**
 1 Better Homemakers Unit
 2 Burdett Blue Ribbons 4-H Club
 3 Community Improvement Club
 2 Merry Matrons E.H.U.
 2 Pawnee Peppers 4-H Club
 2 Tiny Toilers 4-H Club
 2 Zook E.H.U.
- PHILLIPS COUNTY**
 14 Deer Creek 4-H Club
- POTTAWATOMIE COUNTY**
 19 Blackjack 4-H Club
 3 Fostoria E.H.U.
 3 Green Valley E.H.U.
 2 Kaw Better Homes E.H.U.
 5 Kaw Valley E.H.U.
 6 Laclede E.H.U.
 6 Louisville E.H.U.
 6 Olsburg Boosters 4-H Club
 8 Saint George E.H.U.
 6 Vermillion E.H.U.
- PRATT COUNTY**
 1 A.A.U.W. (Pratt Branch)
 6 Glendale Reapers 4-H Club
 4 Lincoln Climbers 4-H Club
 8 Preston 4-H Club
 11 Richland Rustlers 4-H Club
 7 Sawyer Hustlers 4-H Club
- RAWLINS COUNTY**
 1 Chardon 4-H Club
- RENO COUNTY**
 1 A.A.U.W. (Hutchinson Branch)
 1 Haven Womens Club
 1 Medford E.H.U.
- RICE COUNTY**
 1 A.A.U.W. (Sterling Branch)
 4 Chase We Willing Workers 4-H Club
 7 Country Pals 4-H Club
 14 Fairplay 4-H Club
 3 Lyon Learners 4-H Club
 8 Pleasant View 4-H Club
 1 Walnut E.H.U.
- RILEY COUNTY**
 1 A.A.U.W. (Manhattan Branch)
 4 Be Busy 4-H Club
 6 Bonfire 4-H Club
 5 Cloverleaf 4-H Club
 6 College Hill 4-H Club
 2 College Hill E.H.U.
 2 Collegiate 4-H Club
 1 Dilligent E.H.U.
 1 Domestic Dames E.H.U.
 2 Gingham Gals E.H.U.
 7 Happy-Go-Lucky 4-H Club
 1 Harmony E.H.U.
 6 Kaw Valley E.H.U.
 6 Lee Hill Toppers 4-H Club
 3 Ogden E.H.U.
 4 Pillsbury 4-H Club
 2 Prairie Rose E.H.U.
 1 Riley County E.H.U.
 5 Riley County 4-H Council
 1 Riley Co. Unit Affairs Council
 2 Stardusters E.H.U.
 8 Strong 4-H Club
 4 Wildcat 4-H Club
 9 Zeandale 4-H Club
- ROOKS COUNTY**
 2 Bow Creek 4-H Club
 6 Busy Bee 4-H Club
 2 Eager Beavers 4-H Club
 3 East Plainville 4-H Club
 15 4-W 4-H Club
 1 Helpful Hands 4-H Club
 3 Livewire 4-H Club
 4 Mt. Pleasant 4-H Club
 5 Palco 4-H Club
 11 Rooks County 4-H Council
 16 Star 4-H Club
 2 Stockton Jayhawkers 4-H Club
 4 Woodston Sunflower 4-H Club
- RUSH COUNTY**
 2 Lone Star 4-H Club
- RUSSELL COUNTY**
 1 A.A.U.W. (Russell Branch)
 1 Big Creek 4-H Club
 4 City Slickers 4-H Club
 2 East Wolf 4-H Club
 2 Jayhawk 4-H Club
 4 Lone Star 4-H Club
 5 Paradise Dell 4-H Club
 3 Russell County 4-H Council
 1 Russell County Homemakers Council
 3 Smoline 4-H Club
 3 Sunflower 4-H Club
 1 Wolf Creek Valley 4-H Club
- SALINE COUNTY**
 5 Falon 4-H Club
 7 Friendly Valley 4-H Club
 8 Smoky View 4-H Club
 2 Space Agers 4-H Club
 8 Saline Valley 4-H Club
- SCOTT COUNTY**
 1 Lucky Clover 4-H Club
- SEDGWICK COUNTY**
 1 Andale E.H.U.
 1 Aurora E.H.U.
 1 Blue Haze E.H.U.
 1 Bonanza E.H.U.
 1 Chatterboxes E.H.U.
 1 Cheney E.H.U.
 1 Clearwater E.H.U.
 1 College Hill E.H.U.
 1 Delano E.H.U.
 12 Delano 4-H Club
 1 Derby E.H.U.
 1 Eager Beavers 4-H Club
 1 Eagle E.H.U.
 1 Evening Belles E.H.U.
 1 Gabby Gals E.H.U.
 1 Golden Triangel E.H.U.
 1 Gypsume E.H.U.
 1 Happy Days E.H.U.
 1 Independence E.H.U.
 2 Jayhawk E.H.U.
 1 Jefferettes E.H.U.
 2 Jolly Workers E.H.U.
 1 Kechi E.H.U.
 1 Laugh & Learn E.H.U.
 1 Mt. Vernon Eager Beavers 4-H Club
 1 Ohio E.H.U.
- SEWARD COUNTY**
 3 Seward County 4-H Council
- SHAWNEE COUNTY**
 1 A.A.U.W. (Topeka Branch)
 7 American Legion of Kansas
 3 Auburn 4-H Club
 4 Decker 4-H Club
 8 Dover 4-H Club
 1 Elmont Wildcats 4-H Club
 4 Grove 4-H Club
 12 Happy Homemakers E.H.U.
 2 Harmony Hustlers 4-H Club
 14 Highlander 4-H Club
 8 Indian Creek 4-H Club
 1 K-4 Queens E.H.U.
 1 Liberty Extension Unit
 1 Menoken Extension Unit
 14 Pleasant Hill 4-H Club
 16 Riverside 4-H Club
 18 Rochester Heights 4-H Club
 2 Shawnee County E.H.U.
 1 Shawnee Jayhawkers 4-H Club
 16 Shunga Valley 4-H Club
 2 Stull Busy Beavers 4-H Club
 2 Topeka Home Economists in Homemaking Group II
- SHERIDAN COUNTY**
 9 Hi-Plains 4-H Club
 1 Home Improvers E.H.U.
 1 Hoxie L.L.L.
 6 Sheridan County 4-H Council
- SHERMAN COUNTY**
 1 A.A.U.W. (Goodland Branch)
 5 Goodland Go Getters 4-H Club
 7 Jolly Workers 4-H Club
 2 Stateline E.H.U.
- SMITH COUNTY**
 1 Middle Cedar E.H.U.
 1 Solomon Valley E.H.U.
 1 Thrifty Homemakers Unit
- STAFFORD COUNTY**
 2 Happy Homemakers E.H.U.
- STEVENS COUNTY**
 3 Cloverleaf Cowboys 4-H Club
 1 Friendly Neighbors E.H.U.
 1 High Point E.H.U.
 9 Maple Leaf Rustlers 4-H Club
- SUMNER COUNTY**
 3 Avon Home Builders E.H.U.
 2 Drury Star E.H.U.
- THOMAS COUNTY**
 2 Sunflower Ext. Unit
 1 Thomas County Special Fund
 1 Tumbleweed 4-H Club
- TREGO COUNTY**
 1 Live and Learn E.H.U.
 2 South Downer E.H.U.
 7 South Downer 4-H Club
- WALLACE COUNTY**
 3 Wallace County 4-H Council
- WASHINGTON COUNTY**
 1 American Legion - Barnes
 1 Busy Bee 4-H Club
- WABAUNSEE COUNTY**
 2 Alma E.H.U.
 1 Happy Homemakers E.H.U.
 2 Harveyville Hi-Lites
 1 Hi-Plane E.H.U.
 2 Ideal Homemakers E.H.U.
- WICHITA COUNTY**
 2 Busy Beavers 4-H Club
 5 Helping Hand Unit
 1 Home Builders E.H.U.
 6 Leoti Anns Unit
 6 Lydia Homemakers Unit
- WILSON COUNTY**
 1 Sweet Town Gems Unit
- WOODSON COUNTY**
 1 Lucky 13 E.H.U.
- WYANDOTTE COUNTY**
 1 A.A.U.W. (Kansas City Branch)
 1 Bethel Blenders E.H.U.
 2 Bethelletes H.D.U.
 1 Bonner Springs E.H.U.
 1 Busy Belles E.H.U.
 18 Horanif Rustlers 4-H Club
 1 Kitchen Rangers E.H.U.
 1 Merry Janes E.H.U.
 1 Mission E.H.U.
 1 Morris E.H.U.
 1 Prairie Dels E.H.U.
 1 Stony Point E.H.U.
 2 White Church E.H.U.
 1 Wolcott Wonders 4-H Club
 2 Wyandotte County 4-H Council

Kansas delegates to National 4-H Conference in Washington, D.C. "get it all together" for the bicentennial as they share ideas and programs for honoring the nation's 200th birthday. Left to right are Janet Stoffer of Abilene, Mrs. Kathy Meyer who is a member of the Kansas State University Extension Service home economics staff in Manhattan, Douglas Claassen of Whitewater, Ronald Koelsch of Great Bend, and Jan Dugan of Alton. Nearly 250 delegates from 50 states, the District of Columbia, Puerto Rico, the Virgin Islands and Canada took part in the Conference April 19-24 at the National 4-H Center. They explored issues of concern to youth, met members of Congress and staff members of more than 40 federal agencies and national organizations.



Many honored with foundation memorials

Memorials to honor the memory of relatives and friends and to express affection and respect for living persons have been established through Kansas 4-H Foundation.

Some memorial gifts are for specific items; some are unrestricted for use in the Foundation wherever there is need. Some are for scholarships or for equipment or buildings.

Below are listed persons contributing to memorials during 1974:

FOR VONDA BEARD

Centralia Acres 4-H Club

FOR DONALD BLOCKSOME

Ransom Jr. Farmers 4-H Club

FOR PAUL L. BURNHAM, JR.

Mr. and Mrs. A. D. Ahlers

Malvina Albauer
Mary Ann Arzola
Margie Babcock
Maggie Barrett
Fern Battagler
Mr. and Mrs. Fred Bauer
Carolyn Bell
Bonnie Blackburn
Dena Borrand
Dixie Boston
Maxine Brand
Ella Burgess
Mrs. Pauline Burnham
Hazel B. Byers
Francie Cameron
Clara Castro
Donna Coghill
Dee Coleman
Shirley Cookson
Marge Covell
Nancy DiGeorge
Charlene Dyer
Helen Dyer
Dorothy and KC Egling
Pam Elliot
Darlene Ellis
Mr. and Mrs. Joe Even
Sue Evisizer
Colleen Fallon
Sue Ficken
Sarah Fish
Martha Foltz
D. Gagliano
Lorena Gardner
Norma Gee
Helen Glahn
Janice Glendening
Eleanor Gray
Mr. and Mrs. Wayne A. Gray
Maxine Gundelfinger
Mr. and Mrs. Paul C. Gunderman
Martha Hare
Terry Harrington
Mrs. Sam T. Harvel
Ann E. Harvey
Carol Haynes
Dorothy Heckman
Cheryl Hedrick
Janet Hedges
Mr. and Mrs. Lyle Hedlund
Kaye Hill
Irma Hilliard
C. W. Holm
Joy Holt
Judy Howard
Cheryl Hufford
Lenora Hufford
Elizabeth James
Leota Johnson
Madeline and Bill Johnson
Margaret Jones
Freda Jordan
Kathryn Keane
Judy Keck
Jo and John Kelly

B. J. Kent
Sue Kincaid
Norma Klein
Linda Lashure
Mr. and Mrs. W. H. Ledbetter
Sharon Lee
Mr. and Mrs. Walter E. Lietzen
Norma Locke
June Long
Chris Lunn
Henry and Louise Mammen
Penny Marquis
Imogene Martin
Jan Mathews
Betty McCardie
Jackie Mellon
Delores Munguia
Ruth Nave
Claudia Nelson
Helen Newland
Barb Norwat
Teresa M. Perez
M. Phelps
Louise Prine
Maggie Tischinski Pyle
Margie Rule
G. (Haugh) Saling
Harriet Scholtz
Waldene Scott
Max Seabaugh
Margaret Shields
Wanda Showalter
Betty Smith
Anna Smoyer
Betty Soptic
Paul Steider
Betty Stetler
Becky Tooley
Betty Treadway
Helen Watkins
Carol Wilson
Mrs. Jaunita Wolf
E. Worner
Sherri Wright

FOR LAVENA CLARK AND TIM WESTERMAN

Virginia and Harry Kellar

FOR H. W. CLUTTER FAMILY

Bill and Helen Palmer

FOR JESSE C. GRAHAM

Lone Star 4-H Club

FOR MILTON C. GUGLER

4-H Families in Dickinson County
Winn, Bogan & Johnson, Attorneys

FOR CLARA B. GWIN

Mrs. Elmer Bird
Mrs. Harry C. Bird
Mrs. Bertha Cook
William and Lois Frost
Roy E. Gwin
Mrs. Margaret Hebrank
Charles and Deanna Munson
Ralph and Gaylord Munson
Grover and Louisa Poole
Mr. and Mrs. Paul E. Sanford

FOR OLIVER M. HOLLIDAY

Mr. and Mrs. Walter Anston
Mr. and Mrs. R. D. Babcock
Mr. and Mrs. Pratt Barndollar
C. Robert Belt & Co.

Mr. and Mrs. Jerry Bever
Mr. and Mrs. Jim Bever
Mr. and Mrs. Mervyn Bever
Mr. and Mrs. Robert Bever
Mr. and Mrs. A. F. Bills
Walter and Deanna Booth
Mr. and Mrs. Dale Carr
Mr. and Mrs. Leo Charvat
Mr. and Mrs. V. H. Curliis and Dave
Mr. and Mrs. K. Eikenberry
Mr. and Mrs. John Evans
Vivian Fansler
Mr. and Mrs. Wayne Felts
Roy C. Fouch
Mr. and Mrs. Elmer Haggatt
Kenneth Holliday
Ralph and John Holliday
Sherri and Leif Holliday
Mr. and Mrs. Jim D. Kebert
Mr. and Mrs. James Krause
Mrs. Floreine Lewman
Mr. and Mrs. Gregory Lewman
Mr. and Mrs. Guy Lewman
Jack and Marilyn Lively
Barbara Marston
Mr. and Mrs. W. Moberly
Montgomery County Conservation District
Montgomery County 4-H Council
Patricia Neufeld
Bruce or Perdita Nichol
Mr. and Mrs. Robert F. O'Brien
Peppy Progressive 4-H Club
Mr. and Mrs. Charles Price
Frank and Irene Price
Mr. and Mrs. Myron Price
Mr. and Mrs. Emil W. Roesky, Jr.
Mrs. Fern R. Rouch
Mr. and Mrs. Willis A. Rutter
Mr. and Mrs. Don Sale and Family
Mr. and Mrs. Everett Slater
Mr. and Mrs. Leo Smith
Mr. and Mrs. Darrell Stonecipher
Mr. and Mrs. Paul Stritzke
Mr. and Mrs. Lonnie Thompson
Larry and Juday Traxson
George Weber
John Weber

FOR AVERY JONES

Greeley County 4-H Council

FOR MRS. ANNA B. MURBACK

Rustlers 4-H Club

FOR RICHARD L. RIFFEL

Mr. and Mrs. Leon D. Riffel

FOR MRS. LOUISA SCOTT

Mrs. Opal S. Collins and Family
Mrs. Jackie Hogen and Family
Mr. J. W. Scott
Ray D. Wilson

FOR EARL R. SEFTON

Mrs. Stella Benest
Ben Berry
Mr. and Mrs. Grover J. Berry
Mrs. Edna Bixler
Mrs. John Brady
Mrs. Sarah Crellin
Mr. and Mrs. A. H. Duncan
Mr. and Mrs. Allen Duncan
Mrs. Margaret Emerson
Mr. and Mrs. Harry E. Eshelman
Mr. and Mrs. Jim Everley
Mr. and Mrs. Randolph Henry
Mr. and Mrs. Don Hobbie
Mr. and Mrs. Rex Hobbie
Mr. and Mrs. Elmer Stahl
Mrs. Frank Wilson, Sr.
Mr. and Mrs. Frank Wilson, Jr.
Mr. and Mrs. Harold Wilson

FOR DR. FLOYD O. STEELE

Mrs. Floyd O. Steele

FOR MRS. MARY VANSKIKE

Mr. and Mrs. P. Wilbur Allee
Mr. Jeff Allison
Mr. and Mrs. Bob Anstine
Mr. and Mrs. Albert Bacastow

Mr. and Mrs. Albert Bacastow, Jr.
Mr. and Mrs. H. C. Bacastow
Mr. Harry Bacastow
Mr. and Mrs. Phil Bahruth
Mrs. Beryln Baird
Mr. and Mrs. C. Jack Baird
Mr. Danny Ball
Mr. and Mrs. Vance Balzen
Mrs. Venna Barnes
Mr. and Mrs. R. L. Barnthouse
Mr. and Mrs. William D. Baucus
Mr. Harley F. Bechtel
Mrs. Lavina Bittle
Mr. and Mrs. Wayne Bittle
The Bland Community School
Mr. and Mrs. John M. Blatchford
Ellen C. Bossi
Mr. and Mrs. Tom Bossi
Mrs. V. V. Bossi
Mr. and Mrs. Leon Bradley
Mrs. Edna Brewer
Mr. and Mrs. Eugene Brinkman and Family
Mr. Melvin Broughman
Mr. and Mrs. Earle Brown
Mr. and Mrs. L. J. Bruce
Mr. S. L. Burdick
Mr. Loren Burkhardt
Busy Buzzers 4-H Club
Mr. and Mrs. Edward Buzzi
Mr. and Mrs. F. E. Buzzi
Mr. and Mrs. Bennard Clark
Mr. and Mrs. Ed Clark
Mr. and Mrs. Joe Clark
Mr. and Mrs. Paul L. Clark
Comanche Lucky 4
Mrs. Flossie Z. Confer
Mr. and Mrs. Carl Daveese
Grace L. Davell
Mr. and Mrs. J. L. Davler
Mr. and Mrs. George Day
Mr. and Mrs. Jim Dent
Mr. and Mrs. John Dermid
Mrs. Sarah Donaldson
Mr. and Mrs. Roy Dowler and Families
Mrs. Addison Downing
East Bolton 4-H Club
Miss Ellen Eck
Mr. and Mrs. Ralph Essmiller
Dorothy Faidly
Fairview Scouts 4-H Club
Mr. Harvey Fanshier
Mr. Randy Fanshier
Mr. and Mrs. Robert Fanshier
Fort Zarah 4-H Club
June Foust
Mrs. Genevieve Gage
Mr. and Mrs. Jack Gage
Mrs. Dona Glasgow
Mr. and Mrs. Louis J. Gochis
Mr. and Mrs. Roland Hamn
Mr. and Mrs. Roy Hamn
Clara L. Hardy
Mr. Lloyd Harmon
Mr. and Mrs. Don Harper
Mr. and Mrs. William B. Hill
Mr. and Mrs. Roy A. Hine
Mrs. Ina Hinsey
Hoisington Jets 4-H Club
Home National Bank of Arkansas City
Homesteaders, Eureka
Mr. and Mrs. Elden Huffman
Mr. and Mrs. Don W. Hunt
Mr. and Mrs. Robert Hunt
Walter A. Hunt
I.X.L. Keh Unit
Anna P. Johnson
ITSOK HEU
Judy Kennedy
Mr. and Mrs. Warren Kennedy
C. A. Klink
Edith A. Klink
Edith and Charles Klink
Mrs. Frank S. Koehler
Mr. Richard Koelsch
Mr. and Mrs. Victor Koelsch
Mr. and Mrs. Ervin Knocke
Lakin Go-Getters 4-H Club
Mr. and Mrs. Joe Lanning
Mr. and Mrs. Bill Marrs

Mr. and Mrs. Allen Mayhill
Miss Dorothy Mayhill
Mr. and Mrs. Robert Mayhill
Mr. and Mrs. Sam Mayhill
Olive R. McMillin
Mr. Charlie Mitchell
Mr. and Mrs. Dieter Mitchell
Mr. and Mrs. Fred Morrow
Oscar W. Norby
Mrs. Elizabeth D. Ohnmacht
Bess R. Oldroyd
Mr. and Mrs. Ralph Opie
P.E.O. Chapter G.H.
Mr. and Mrs. Perry Pearman
Mrs. Ruth E. Poland
Mrs. Nelson Powell
Mrs. Carl Pratt
Mr. and Mrs. Leo Pudden
Mr. and Mrs. Claude Reed
Mrs. Helen Reed

Mr. and Mrs. Benton E. Rice
Mrs. Ben Rinehart
Mr. and Mrs. John Robson
Mr. and Mrs. Ed Rose
Mr. J. B. Rutter
Mr. and Mrs. Charles R. Sanford
Mr. and Mrs. Paul E. Sanford
Carol I. Scheuffer
Mrs. Melissa Scott
Mr. and Mrs. Mike Shelburn
Mr. and Mrs. Bill Sheldon
Mr. and Mrs. J. Bruce Shields
Mr. and Mrs. Orville Smock
Berneice B. Southcott
Mr. John Stacy
Mr. and Mrs. Max Stacy
Mr. and Mrs. Herman Strange
Floyd O. Thompson
Dr. and Mrs. N. R. Turner
Mr. and Mrs. Harold Walker

Mr. and Mrs. Dwight S. Waters
Mr. and Mrs. H. S. Westhoff
Mr. and Mrs. Tom Whipple
Mr. and Mrs. Melvin Whyte
Mrs. H. W. Widener
Albert, Aletha and Donald Williams
Mr. and Mrs. Floyd E. Wright

FOR MRS. J. B. WHITLEY
Esther Felt
Mr. and Mrs. Jess M. Slaten
Jean Young

FOR RODNEY K. ZILLINGER
Phillips County 4-H Council,
4-H Clubs and Members

ROCK SPRINGS RANCH TREE WALK MEMORIALS

FOR PAUL L. BURNHAM, JR.
Friends and Family

FOR COLLISON FAMILY
Collison Family

FOR JOHN E. EDWARDS
Mrs. Edris Edwards

FOR EUGENE D. MELTON
Industry Hustlers 4-H Club
Melton Memorial Fund

FOR ZAIDA MAY MORRISON
Marva Morrison

FOR MRS. HARRY VANSKIKE
Dorothy and Bill VanSkiike

The Kansas 4-H Foundation, a non-profit educational corporation, was established to make it possible for all citizens and organizations to share in furthering the 4-H program of the Kansas Cooperative Extension Service. The Foundation is dedicated to getting the highest return from each and every donor's investment in our State's number one resource—its youth.

4-H'ers have a responsibility

Do 4-H members have any responsibility in the financial needs of the Kansas 4-H Foundation? 4-H clubs are one of a few organizations to which a member can belong without paying dues. Let's take a look at all that a 4-H member gets through the 4-H program. On the county level, a 4-H'er receives the guidance and leadership of trained leaders. Also, he has the privilege of receiving valuable information from conferences, seminars, workshops, training sessions, and schools. New projects and programs complete with materials are constantly being introduced to accommodate the increasing number of 4-H'ers. In addition to these benefits, the 4-H'er participates in funded county events such as county 4-H days, judging schools and contests, best groomed boy and style revue contests, Mr. and Miss 4-H contests, county camps, and the county fair. Also, there are special conferences to which delegates are sent.

There are a number of state events which many 4-H'ers are privileged to be a part of through participation on the local and county levels. All these activities for the benefit of 4-H'ers require that money be paid out for trained instructors, judges, facilities, ribbons, awards, and trips. Extension service funds provide for the basic 4-H programs, but private resources through Kansas 4-H Foundation pay for many of the extra things.

At the present time, there is a need

By Mike Keener
Shawnee

for \$700,000 for leader development, program enrichment, and camping facilities. The 4-H Foundation is attempting to raise half this amount, \$350,000, through private sources. The counties are to be responsible for raising the remaining half, \$350,000.

We 4-H'ers in Johnson County and eastern Kansas don't realize how fortunate we are in having access to such a beautiful, up-to-date facility as Rock Springs Ranch. The camp area in Ford County for 4-H'ers in western Kansas is lacking in many respects! It needs so much to up-date it that consideration is being given to another site for a camp for western Kansas 4-H'ers. It is not feasible for 4-H'ers in that region to have to drive to Rock Springs for training sessions, programs, and camping.

The proposed improvements for the campsite at Lake Perry near Topeka have been questioned as being necessary when Rock Springs is not too many miles away. It must be understood that the Lake Perry campsite is to have completely different programs which will offer 4-H'ers much more in environmental camping.

Also, because the 4-H population in eastern Kansas is so much greater than in western Kansas, much more is spent in eastern Kansas for printed materials and leader training.

I feel we're being selfish, as a part of the 4-H family of Kansas, when we don't accept responsibility for helping to raise the needed funds for our 4-H programs. Johnson County has asked each club member to raise approximately \$25 over a three-year period for his share of the total \$350,000 assessed for 4-H'ers to raise. Our club, the Greenwood Meadowlarks of Shawnee and our parents feel that each 4-H member has a responsibility for the financial needs of our State 4-H Foundation.

We worked the admission gates and the concession stands at the Optimist ball park all summer and our pay was given to our treasurer. We held a carnival and a bake sale at a local shopping center, we walked for the Walk For Mankind, gathered and sold walnuts to raise money for the 4-H Foundation. We are planning even more fundraising activities. Records are kept on each member so that he knows the status of his earnings to date. We work hard but we also have a lot of fun and togetherness while we're working!

I challenge you to look back over your 4-H experiences, to think about less fortunate 4-H'ers in other parts of the state, and ask yourself if 4-H owes you something or if you have a responsibility to 4-H!

Think about it! As a member of the 4-H family of Kansas, you have a responsibility in the financial needs of our state 4-H Foundation!

Old Glory

By Marie Rupp
Manhattan

After a few years of discontent and controversy, the American flag has again regained the old meaning of patriotism and unity as Americans prepare to fly Old Glory on June 14, the 59th celebration of Flag Day.

The history of Flag Day stems from a resolution adopted by the Marine Committee of the Continental Congress on June 15, 1777. Although numerous programs were

FLAG DAY
JUNE 14th



eventually instituted to honor the flag. Flag Day wasn't given formal recognition until May 30, 1916, when President Wilson officially proclaimed the day.

As a symbol of the United States, the national flag represents ideals of individual liberty, justice and equal opportunity.

There are only seven places in the United States where the national flag is sanctioned to fly 24 hours a day. Four of them are in Maryland; they are Fort McHenry, Baltimore, where the "Star Spangled Banner" was written by Francis Scott Key on September 13, 1814; Flag House Square, Baltimore; Key's birthplace at Keysville; and over Key's grave near the entrance to Mt. Olivet Cemetery in Frederick. Other places where the flag flies constantly are the U.S. Marine Corps Memorial in Arlington, Virginia; a war memorial in Worcester, Massachusetts; and the East and West porticos of the U.S. Capitol Building in Washington, D. C. The Stars and Stripes appear over the Senate and House wings only when those groups are in session.

There are specific rules to follow

in handling the flag, so it would be a worthwhile project for all the family members to learn how to properly display and respect the flag. The Federal Flag Code makes these points:

- It is universal custom to display the flag from sunrise to sunset on buildings and on flagstaffs, however, the flag may be displayed at night upon special occasions when it is desired to produce a patriotic effect.
- The flag should be hoisted briskly and lowered ceremoniously.
- The flag should never touch anything beneath it, such as the ground, the floor, water, or merchandise.
- The flag should not be embroidered on such articles as cushions or handkerchiefs and the like; printed or otherwise impressed on paper napkins or boxes or anything that is designed for temporary use and discarded; or used as any portion of a costume or athletic uniform.

Probably you'll display the flag from a staff projecting at an angle from a window, a porch railing, or the front of the house. When the flag is displayed in this manner, the blue field always goes to the peak of the staff.

If a flag is displayed in a manner other than being flown from a staff, it should be displayed flat, whether indoors or out.

There is a preferred way to fold the flag. It should be first folded lengthwise in halves, then quarters, with the blue field on the outside. While one person holds it by the blue field, another makes a triangular fold in the opposite end and continues to fold it in triangles until the flag resembles a cocked hat, with only the blue field showing.

The flag can be displayed on all days when the weather permits and especially on these days: New Year's Day, Inauguration Day, Lincoln's Birthday, Washington's Birthday, Easter Sunday, Mother's Day, Armed Forces Day, Memorial Day (half staff until noon), Flag Day, Independence Day, Labor Day, Constitution and Citizenship Day, Columbus Day, Veterans Day, Thanksgiving Day, Christmas Day, and such other days as may be proclaimed by the President of the United States, the birthdays of states (dates of admission), and state holidays.

Fly the flag proudly—and fly it right.



June 1775

"Men, you are all marksmen—don't one of you fire until you see the whites of their eyes."

That was General Isreal Putnam's order to his men at the Battle of Bunker Hill near Boston on June 17, 1774.

The outnumbered Americans, short of ammunition, did hold their fire until the British were near. As ammunition ran out, the Americans retreated. But British losses had been so great that the British were discouraged and the Americans were encouraged to believe that eventually they could win the war.

Leaders attend forum in Washington, D.C.

Seventy-one 4-H leaders from 23 counties attended the National 4-H Leader Forum at the National 4-H Center in Washington, D.C. in April.

Developed around a theme of citizenship, the forum focused on ways in which leaders can improve techniques to better serve 4-H members in their community. The session was filled with listening, learning, sharing, and touring.

Most interesting part of the seminar was seeing Washington, D.C., and listening to speakers from the national 4-H staff.

In addition to work sessions and exchanging ideas on youth work, leaders had an opportunity to study their heritage through visits to many historical sites in the nation's capital. During a day on Capitol Hill, they had an opportunity to discuss contemporary issues with members of Congress. Senator Dole and Congressmen Keys, Winn, Shriver, and Skubitz met with the 4-H leaders and discussed current issues.

The 4-H leader forums are conducted throughout the year by the National 4-H Foundation in behalf of the Cooperative Extension Service. The Kansas 4-H Foundation helped sponsor this first leader forum attended by Kansas 4-H leaders.

IDEAS * & News

Wildlife conservation is the club project for **Strong 4-H Club** in **Riley County**. The club members joined the **Kansas Wildlife Federation**, gave a gift subscription to a nursery school of the magazine **Ranger Rick**, and had a display at the county fish and game show. **Kathy Brooks** has been county wildlife winner for four years.

Members of **Best Yet 4-H Club** of **Neosho County** and their guests from **Full-of-Pep 4-H Club** of **Allen County** saw a slide presentation called "Operation Lifesaver" which was sent by **Kansas Farm Bureau** for the club to use. The **Kansas State Highway Commission** and the **railroads** have joined in a program in an effort to reduce the needless waste of lives and property caused by accidents at railroad crossings. **Randy Reinhardt** is reporter for the **Neosho County 4-H club**.

Members of **Warren Star 4-H Club** in **Sherman County** are promoting health this year. They have collected for arthritis and cancer funds, and sold poppies to help disabled veterans. They have promoted the placing of fire extinguishers in all homes and vehicles in their farm community, and have had a window display on "Dangers of Cigarette Smoking." With other activities planned. **Leland Gattshall** writes, "Even though we are one of the smaller clubs with mostly younger members, community service is a large part of the **Warren Stars 4-H program**."

On a Saturday in March 15 members and 3 adults of **Industry Hustlers 4-H Club** in **Clay County** had a cleanup day at the **Industry Community Center**. They swept and mopped, washed windows, and dusted. At noon they had a sack lunch.

The **Industry Community Center** was the **Industry School** until 1970. Now the school is used for 4-H meetings, community, and other kinds of meetings. The club is taking recreation as a club project. **Brenda Steffen**, club reporter, writes.

The **Brewster Prairie Gem 4-H Club** of **Thomas County** received blue ribbons on everything entered in **Regional 4-H Day**. These included a trumpet solo played by **Jon McKee**, a jazz dance featuring **Sherri, Shelli, and Shane Mayer**, a model meeting, and an original skit entitled "Remember When." The club has been invited to perform the skit at the annual **Brewster Farmers Co-op meeting**. **Bonnie Crabtree** reports.

HOW TO LOSE WORLD MARKETS ...



Is the export business important to you?

You bet.

Wheat alone . . . we're now harvesting another bin-busting crop . . . we'll sell three-fourths of what we grow to foreign customers.

Our export business makes for profit on your farm and makes it possible to buy the millions of tons of Arab oil we need to keep our tractors, trucks, trains, and factories rolling.

Without foreign oil we stop.

Without a big business in farm exports, we don't buy oil.

—a thought from Farm Bureau

Being a dog's best friend

By Connie Secrest
Junior Leader

Johnson County 4-H Dog Club

Teaching young dogs new tricks is what the members of the Johnson County 4-H Dog Club are doing this year. About 40 members from age 7 to 16 are training dogs that vary in size, shape, and breed, and range in age from 5 months to 3 years. This will be the sixth year the club has been active.

4-H'ers interested in the dog care and training project in Johnson County started attending the monthly meetings in October and November, when the program consisted of an owner or handler of dogs demonstrating the training and grooming of different breeds. Also, information and rules about the spring training and other events were explained and discussed. These meetings were held at the Johnson County Fairgrounds in Gardner.

In February, registration was closed for this year, and an annual mass inoculation was held, with the cooperation of a local veterinarian. This year it was Dr. Knocke from Gardner. In spite of the cold, nasty weather, there was a good turnout. The inoculation is held because the dogs must have shots in compliance with fair rules for animals when showing at the fair, as well as local city laws. The

dogs must have current vaccinations, even if they do not receive them at the club mass inoculation, before they are allowed to start their training.

In March the members watched a film entitled "Training You to Train Your Dog." The next activity was orientation night, the last Wednesday in April this year, when each dog's collar and lead were checked by the training directors. The dog and member-trainer were then placed in classes according to the dog's size and training phase. The directors and trainers of the classes are members of the Greater Kansas City German Shepherd Dog Club, an organization that has helped the club since it started. The club leader is Mrs. Mary Davis of Shawnee Mission. Trainers' helpers are usually junior leaders associated with the club.

Finally training sessions started, this year in May, and continued once a week in the evening for 10 weeks. The members worked their dogs at home about thirty minutes a day on the class lessons on the other days of the week.

The dog is trained in one of three phases: Beginners, where the member trains his dog on lead to heel, sit, sit-stay, down-stay, recall, figure eight, paces, and turns; Novice, where training is the same obedience exercises except off lead; and Advanced Novice, where the dog performs off lead, having learned some special "tricks." This year an Advanced Beginners class has been added for those beginners that completed beginners but are not quite ready for novice training. After these 10 weeks, graduation will be held, this year in July, where the dog is judged in competition with others in his class and phase on obedience performance.

At the fair in August, a dog show will be held: one night is an obedience training performance, and another night is a fitting-and-showing performance. Fitting-and-showing is a class in which a member learns to "show" his dog in a manner similar to a professional handler. This is much different from obedience training and is taught separately. When a dog completes his phase and passes in obedience, either at graduation or the fair, he can train in the next phase the next

year if he decides to continue. To complete the year, the club usually has a picnic in the summer to honor the trainers and directors.

The dog care and training project is very rewarding for the 4-H member with a dog. A mutual feeling between dog and owner can develop in which the owner understands and meets the needs of his dog, and the dog respects and responds to his owner, both done with love. So really, the age is not what makes the difference in how a dog behaves. It is the relationship between the dog and the owner, and this project, through the meetings and training experiences, is one way the 4-Her can learn to be his dog's best friend.

Eighteen Kansans to tour Europe this summer

Mr. and Mrs. Cecil Eyestone will accompany 16 Kansas youth and 14 youth from other states participating in the 4-H Citizen Ambassador program this summer. Those selected from Kansas to take part include: Cindy Bird, Liberal; Jamie Compaan, Norton; Tracy Cook, Syracuse; Diane Botkin, Argonia; Caroline Gebhardt, Pratt; Elaine Geist, Minneapolis; April Hatcher and Becky Toppliff, Goodland; Starla Krause, Modoc; Rodney Hammarland, St. Marys; Kayne Klema, Russell; Suzanne Muller, Council Grove; Donna Mahnken, Pittsburg; Robert Roth, Green; Roxanne Smith, Yates Center; and Melissa Wiley, Leavenworth.

They will spend 39 days in Washington, D.C., England, Belgium, Switzerland, Germany, Hungary, Austria, Russia, France, Denmark, and Holland.



Eighty-seven animals received rabies or distemper shots or both at a rabies clinic sponsored by Warren Star 4-H Club members in Sherman County. One patient is pictured.

Money For Your Treasury

OVER 2 MILLION

Sunflower Dishcloths



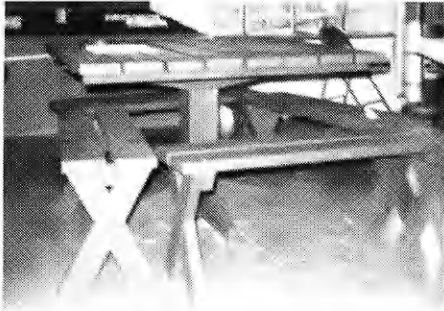
WERE SOLD LAST YEAR BY MEMBERS OF GROUPS, SOCIETIES, CLUBS, ETC.

THEY ENABLE YOU TO EARN MONEY FOR YOUR TREASURY AND MAKE FRIENDS FOR YOUR ORGANIZATION

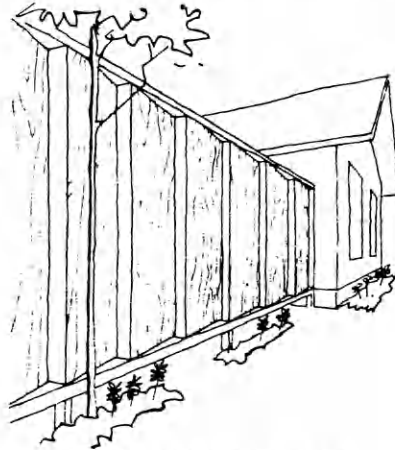
Sample FREE to Official.

SANGAMON MILLS, INC., Cohoes, N. Y. 12047
Established 1915

Free 4-H Woodworking Plans from YOUR LUMBER DEALER



Pedestal Picnic Table and Benches



Vertical Step Fence

Plans for All These Projects Are Available at The Lumber Dealers Listed on This Page. Ask for Them.

OTHER PLANS AVAILABLE

Sheep Blocking Box	Bluebird Box
Dairy Barn Desk	Foldaway Table
Wren House	Outdoor Storage Unit
Coat Caddy	Picnic Table
Nativity Crache	Extension Dining Table
String Art	Martin House
Extension Cord Reel	Work Bench
Tool Holder	Gun Cabinet
Wheeled Lawn Table	Shoe Shine Stand
Wheelbarrow	Wall Desk
Portable Sandbox	Built-In Magazine & Book Rack
Outdoor Serving Wagon	Rocking Horse
Hot Pad Holder	Moveable Toy Storage
Mitten or Hose Dryer	Mod Squad Lawn Chair
Picnic Chest	Chess Table
Sectional Piano Tables	Record Cabinet
Sewing Cabinet	Bookcase
Bathroom Vanity	Portable Planter Screen
Entry Closet	Ply-Tent
Garden Entrance Trellis	Wind Vane
	Bird Feeder
	Christmas Card Display
	Table Soccer
	Walnut Shelf Clock
	Table Podium
	Feed Bunk

Ashland
Don Spotts Lumber Company

Atchison
J. B. Russell, Inc.

Axtell
Meyer Lumber & Hardware Company

Beloit
Peoples Lumber & Coal Co.

Blue Rapids
Blue Rapids Lumber Company

Clay Center
Fullingtons

Downs
Downs Lumber Company

Ellinwood
Home Lumber & Supply Co.

Ellsworth
Ellsworth Lumber

Erie
Johnson & Son Lumber Co.

Eureka
A. C. Houston Lumber Company

Fredonia
Schoolcraft Lumber Co.

Garden City
Cash & Carry Lumber Co., Inc.

Great Bend
Everitt Lumber Co., Inc.

Greensburg
Hildinger's Lumber, Hardware & Ready Mix

Hanover
Hanover Lumber Co.

Harper
Town & Country Lumber Co.

Hiawatha
Motsinger Lumber Co.

Hillsboro
Hillsboro Lumber Co.
The Lumberyard Inc.

Holton
Holton Lumber Company

Hugoton
The Star Lumber Company

Iola
Klein Lumber Company

Johnson
Seyb-Tucker Lumber and Implement Company

Junction City
Builders Lumber Inc.

Kechi
Buck Alley Lumber

Kinsley
The Kinsley Cooperative Exchange

LaHarpe
Diebolt Lumber and Supply

Lakin
Tate and Company

Lansing
Lansing Lumber, Inc.

Lamed
T. M. Deal Lumber Co.

Liberal
The Star Lumber Company

Manhattan
Ramey Brothers

Mankato
Mankato Lumber Company

Marysville
Howell Lumber Company

Minneapolis
Dingee Lumber Co.

Moundridge
Clayton Vogt Lumber Co., Inc.

Newton
National Building Centers
Home Care Center

Nickerson
The Home Lumber & Supply Co.

Norton
Norton Lumber Company

Oberlin
Nichols Building Supply, Inc.

Offerle
Offerle Co-Op Grain & Supply Co.

Olathe
Cowley Lumber & Hardware Co.

Osage City
Martin Material Co., Inc.

Osborne
Lewis A. Hardman Lumber Co.
Osborne Lumber Company

Ottawa
Hubbard Lumber Company, Inc.

Paola
Miami County Lumber Co., Inc.

Parsons
Woods-Seward Lumber Co.

Pittsburg
Broadway Lumber Co., Inc.

Pratt
W. R. Green Lumber Co., Inc.

Redfield
Redfield Lumber Company

Russell
Houston Lumber Company

St. Francis
St. Francis Equity Exchange

Salina
Easterday-Boster Lumber Co.

Seneca
Meyer Lumber & Hardware Co., Inc.

Stafford
T. M. Deal Lumber Co.

Syracuse
Hess Lumber Co.

Tribune
Foster Lumber Company, Inc.

Wichita
Alexander Lumber Co., Inc.
Star Lumber & Supply Co.

Wilson
Hoch Lumber Company

Winfield
A. B. Everly Lumber Co.
Everitt Lumber Co., Inc.

Wright
Right Coop. Assn.

What to look for when judging dairy cattle

By John Cubit
Garnett

John Cubit, now a senior at Kansas State University in agriculture education, was a member of Lucky 13 4-H Club in Anderson County for 10 years. In 1971 he was the state winner in the swine project. John's article on dairy judging is based on experience and knowledge gained as a member of the dairy judging team at KSU.

Success with dairy cattle depends upon a well-balanced program of breeding for production and type. The life-time level of production, conformation, and health, are closely associated with breeding.

Today's dairyman must know how to judge and observe his cattle in order to be a good breeder and feeder, and to cope with management problems.

The dairyman must have a thorough knowledge of the desirable conformation of all parts of the animal to be successful in evaluating and selecting the individual animals for his own needs. This serves as an ideal or standard with which comparisons are made.

The ability to explain the major and minor differences that justify the placings of various individuals is as important as the final decision itself. Only if the judge knows the names of every part of a dairy cow is this possible.

Unified score card

The beginning judge should become familiar with the unified score card, accepted by all the major dairy breeds in the United States.

The adoption of the unified score card was based on the fundamental concept that a good dairy animal has certain common characteristics that are more basic than her particular color, shape, size and other breed characteristics. The unified score card uniformly considers the basic points for all breeds and, at the same time, takes into consideration the characteristics that account for the differences in the individuality and general appearance of each breed.

The unified score card is divided into four divisions of observation. The divisions are general appearance, dairy character, body capacity, and mammary system. General

appearance and mammary system are the two divisions stressed most.

General appearance

In evaluating general appearance, all parts of the cow should be taken into consideration. A total of 30 points is allotted to general appearance on the score card for dairy cows.

In order for a dairy cow to receive a perfect score of 30 points, she should show good breed characteristics, those required by the individual breed organization of which she is a member. She should show a lot of style, which is a good indication of physical fitness, and includes development, symmetry and balance. Her head should be clean cut and proportionate to the size of her body. She should have strong jaws, large, bright eyes and her forehead should be broad and moderately dished. The bridge of her nose should be straight, and her ears should be of medium size and alertly carried.

Her shoulder blades should be set smoothly and tightly against her body. It is of great importance that her back be straight and strong and have a broad loin which is nearly level. A long, wide rump, which is clean cut and nearly level from hooks to pins, is desired. She should be high and wide apart in her thurls and possess a square tail setting.

When viewed from the side her hind legs should be nearly perpendicular from hock to pastern. From the rear view they should be straight. Her fore legs should be medium in length, straight, wide apart, and squarely placed. Her hocks should be cleanly moulded and she should be standing upon short, strong pasterns with her feet having good depth of heel.

Dairy character

The evidence of milking ability, angularity, and general openness are the factors in considering dairy character. A dairy cow should be clean and sharp over her withers and clean about her neck, blending smoothly into her shoulders. She should have a good spring of ribs and her thighs should be incurving to flat, and wide apart from the rear view, thus providing ample room for the udder and its rear attachment.

Body capacity

Power is the best term to describe desired body capacity. The ideal dairy cow shows ample capacity throughout and a lot of strength and vigor. Depth is desired in both fore and rear rib and through the chest. She should possess a great deal of size, scale, and upstandingness.

Mammary system

When considering the mammary system, look for an udder that is well veined throughout. It should be symmetrical, moderately long, wide and deep, and showing moderate cleavage between halves, and the quarters should be evenly balanced. The udder should have a high and wide rear attachment and the fore udder should be carried further forward, blending smoothly into the animal's body. The floor of the udder should be nearly level with four uniform size teats, of medium length, squarely placed under each quarter.

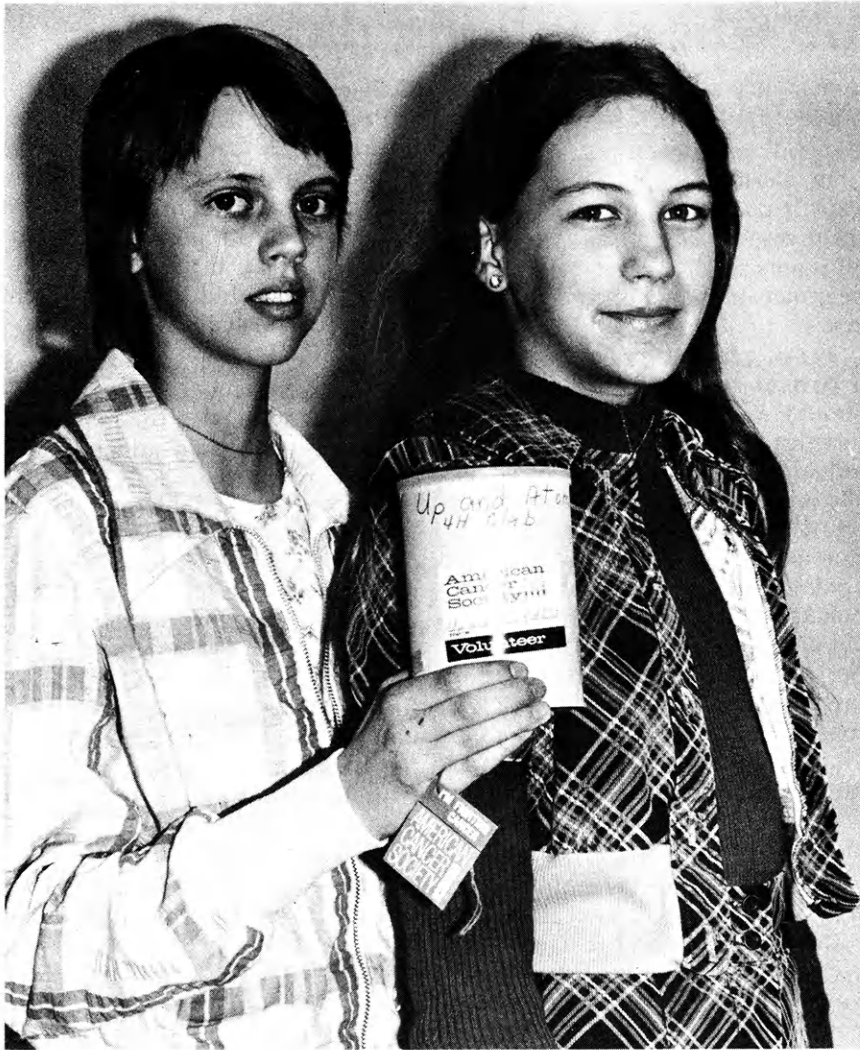
Dairy cow judging has inspired many young people to get involved and participate in dairy judging contests. The excitement is best illustrated when hearing young judges prepare a set of reasons. A set of reasons is no more than a person's formal statement declaring how he placed the class and the reasons supporting his placing.

The quality of cows in production today is due to the selecting and breeding toward an ideal model. With more dairymen aware of the importance of judging dairy cows, the dairy industry will become more efficient.

Trip to Minnesota

A group of 4-H members in Cowley County, are looking forward to an exchange trip to Washington County in Minnesota in July. Last summer about 40 4-H members from southeastern Minnesota visited families in Cowley County. Mostly urban young people, they especially enjoyed events and places which related to country living.

The junior leaders' organization in Cowley County is planning the trip. To help to pay their expenses, they sold magazine subscriptions through the Reader's Digest QSP plan.



A total of \$146.95 was collected for the American Cancer Crusade by 25 members of Up and Atom 4-H Club at Chanute in Neosho County. Tracy Sharp, holding the can, and Tamara Olson, co-chairman of the health committee, planned the project. This is the 13th year the club has assisted in the cancer drive, and the 3rd year the club members have collected more than \$100.

Judging school at Hays

A record number of 4-H and FFA judging teams, 399, took part in the Fort Hays Experiment Station judging school and contest in April.

Of the 259 4-H livestock judging teams, the high team was East Plainville from Rooks County. The next four club teams in order and their counties were Triangle Boosters, Mitchell; Riverview, Osborne; Speed Skyliners, Phillips; and Lone Star, Russell. The top individual was Lewis Worcester from Graham County. Kathy LaRosh, Osborne County, and Dean Hrabe, Rooks County, tied for second.

Spring Creek Hustlers of Graham County had the high home economics team of the 119 entered. The next four clubs with their counties were Penn, Osborne; Woodsdale, Ottawa; Friendly Valley,

Saline; and Busy Buzzers, Barton. Three girls tied for high score; they are Debra Berry, Ottawa County; Karma Overmiller, Smith County, and Connie Gouldie, Osborne County.

The top FFA livestock judging team was from Quinter High School, with Kerry Zillinger from Phillipsburg the high individual.

District 4-H Horse Shows

Growth in the 4-H horse program has led to the establishment of an additional 4-H district horse show this summer. The following dates and locations have been announced.

- July 15 Hoxie
- July 16 McPherson
- July 17 Manhattan
- July 18 Lyndon

"Thank you" booklet to Folger Coffee Co. from Osborne Co. club

Members of the Sumner 4-H Club in Osborne County expressed their thanks in a concrete way to Folger Coffee Company, sponsor of the trip to Kansas 4-H Congress which the club won as 1974 state health winner.

In appreciation for the company's generosity, the club members prepared a "Thank you" booklet to send to T.L. Paulson, a representative of Folger Coffee Company.

Included in the booklet is a picture of the 4-H club, a thank you letter, a list of the club's activities promoting good health, and pictures of the 4-H'ers at Kansas 4-H Congress.

Mrs. Deryl Carswell, Alton, is community leader.

Ottawa County 4-H Horse Show

The fourth annual Ottawa County 4-H Horse Show will be held Friday, June 13, at the Tescott Saddle Club arena, with the Culver Livewires 4-H'ers as hosts.

Entries will open at 5:30 p.m. with show time at 6:30. There will be showmanship, horsemanship, reining classes, races, and many fun events.

State and district dress code rules will be required. Dress code consists of white shirts and blue jeans for the showmanship, horsemanship, and reining classes.

The arena is located one mile east and one-fourth north of Tescott. Any one wishing for more information may write to Janet Lee, Rt. 1, Minneapolis, Kansas 67467.

- July 21 Oskaloosa
- July 22 Iola
- July 23 Mulvane
- July 24 Garden City

Entry forms for these district shows are to be obtained from the county extension office. They need to be completed and into the state 4-H office by June 27.

Family Fun Page

Q. How many wives can a man marry in a day?

- A. 16. 4 better
4 worse
4 richer
4 poorer

Kim Kolman, Cuba

Al: This bracelet used to belong to a millionaire, dear.

Sal: Really, darling? Who?

Al: Woolworth.

Kelli Byrne, Wichita

Man: Is your mom at home?

Boy: Yes.

Man: I thought your mom was at home.

Boy: She is. I live next door.

Terry Couchman, Clay Center

Kim: I bet I can make you say blue.

Cathy: Oh, no.

Kim: Knock, knock.

Cathy: Who's there?

Kim: Blue.

Cathy: Blue who

Kim: I told you I could make you say blue.

Cara Dinkel, Lebanon

Joe: Is your TV on?

Liz: Yes.

Joe: Is it a good fit?

Q: What has four legs but can not walk?

A: A table.

John: Do you have Prince Albert in a can?

Clerk: Yes.

John: Better let him out!

Martha Beatty, Lyndon

Daffynishuns

Water cooler—thirst aid kit
Rotisserie—ferris wheel for chickens

Band-aid—fund for needy musicians

Quadruplets—Four crying out loud

Buccaneer—a silly price to pay for corn

Surgeon—big operator

Squirrel's nest—nutcracker suite

Erosion—a cub scout washing his hands

Angela Havel, Narka

Find the flowers.

lilac

orchid

pompon

dandelion

bird of paradise

tulip

poinsettia

hibiscus

lily

zinnia

bunchberry

geranium

poppy

violet

sunflower

rose

mum

cockscorn

iris

carnation

peony

marigold

baby breath

bluet

bugle

aster

bluebell

d a n d e l i o n b l h d f
b i r d o f p a r a d i s e
a h h j l r e l g u b b l n
b m o c s k c o c p l i r y
y t m a r i g o l d u s v c
b p o m p o n m x z e c b a
r b o i b m u m d d t u p r
e l l i f i h a v j n s e n
a u l n n p i i r c s w o a
t e g a o s o m h a o k n t
h b r i y l e b g l e c y i
a e e o e p e t f i r i s o
g l t t s r p n t l u s q n
y l s o r e u o z i n n i a
w s a y m s k i p g a e a a

Q. If you throw a blue rock into the Red Sea, what would happen to the rock?

A. It would get wet.

Jackie Sheeley, Nortonville

Q. What has four wheels and flies?

A. A garbage truck.

Knock, knock.

Who's there?

Omelet.

Omelet who?

Omeletting you figure out the rest of this joke.

Trica Holm, Burns

Q. What does a duck do when he flies down?

A. He quacks up.

Connie Regier, Burrton

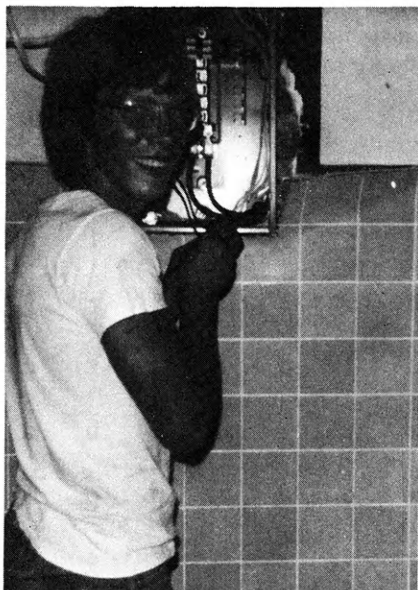
Each person sending jokes used on the Fun page will receive a little spiral notebook and memo pad, unless he has previously received a prize. When jokes are duplicates, the one postmarked earlier wins the prize.

Answers are on page 7.

Stephanie Pringle, Yates Center

High school sophomore is five year county champion

Steve Misegadis, Rush Center, is taking the electric project for the sixth year and has been named the Rush County champion for five years. He has given five different demonstrations many times and two of them were given at the Kansas State Fair.



Steve installed a larger circuit breaker in a house the family was remodeling. He added two more circuits to serve the electric needs of the house.

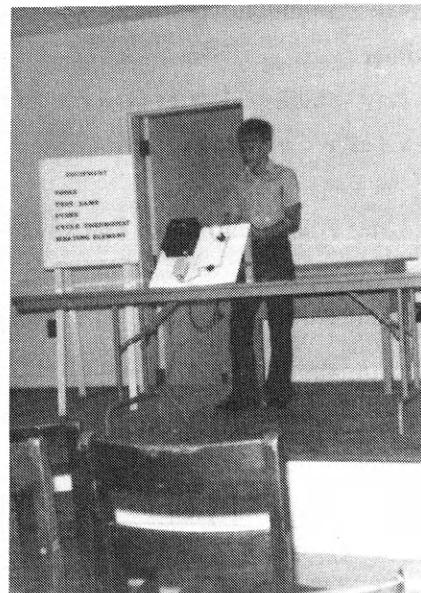
Some of his exhibits at the state fair over the years were a radio, ohmmeter, and a display board of wiring. He has also made three lamps, a portable lamp for outside use, a radio from a kit, and a continuity checker.

Steve also helped wire an addition to the family home, rewired a house they were remodeling, repaired many radios, television sets, vacuum cleaners, and other appliances, and has installed TV antennas.

"I help my Dad's TV and appliance shop and get a lot of experience in replacing parts and checking out some of the smaller jobs. During the summer I help with the air conditioner installation," Steve writes.

"The past two years I've been electric junior leader. I was honored to attend the 1974 Kansas 4-H Congress.

"I'm a sophomore at the LaCrosse High School, a member of Walnut City 4-H Club. During my eight years in 4-H work, I've enjoyed several projects, including wheat, gardening, landscaping, junior leadership, and electricity, also arts and crafts."



In 1972 Steve gave a demonstration at the state fair on how to repair a clothes dryer.

What are you or your family doing to conserve energy? Please send your ideas, with illustrations if possible, to Electric Page, Kansas 4-H Journal, Umberger Hall, KSU, Manhattan, Kansas 66506.

Watch This Page For Ideas On Farm And Home Electric Projects

ELECTRIC LIGHT and POWER COMPANIES in KANSAS

The Kansas Power and Light Company

Central Kansas Power Company

Kansas City Power & Light Company

Kansas Gas and Electric Company

Western Power Division of Central Telephone & Utilities Corporation

