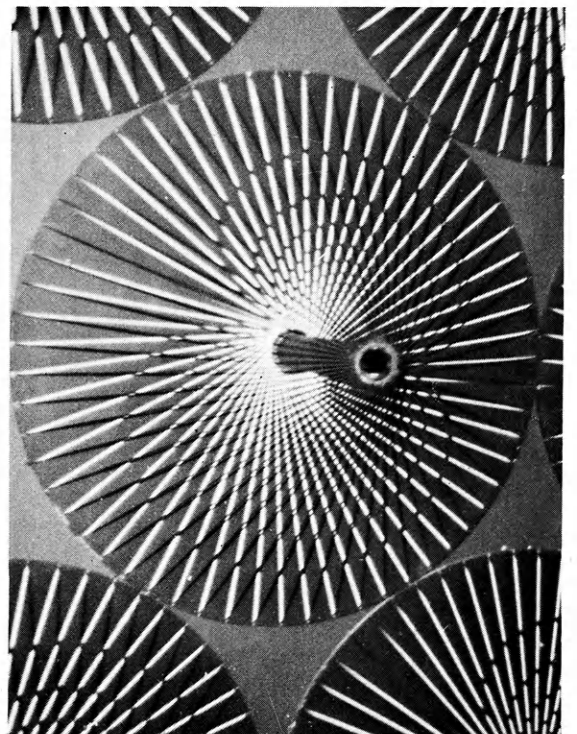
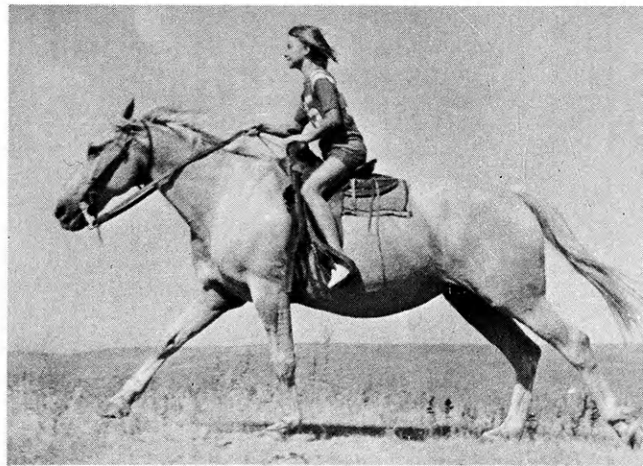
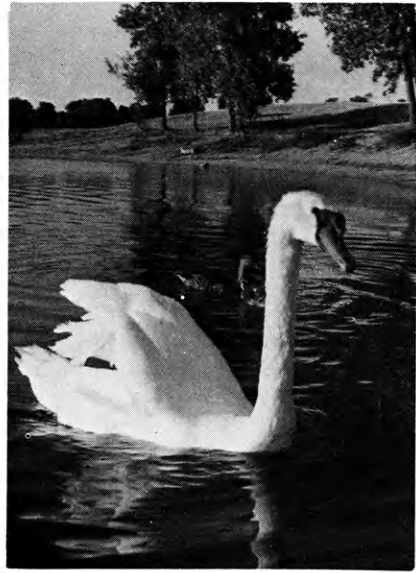
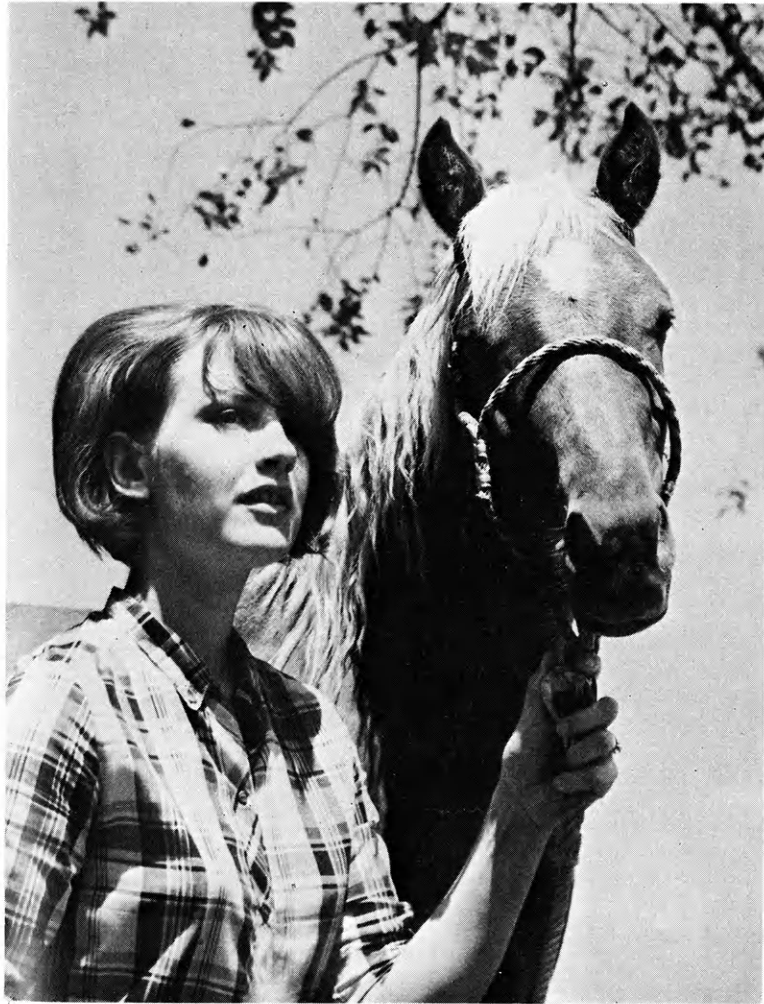


Kansas 4-H August, 1969

Journal

The 4-H Family Magazine





**CO-OP makes
the difference in
home laundry**

CO-OP REGAL WASHER

- 18-lb. Capacity Tub-Adjustable Water Level Control
- Recirculating Lint Filter
- Cold Water Switch
- Fabric Conditioner
- Safety Lid Switch
- White, Coppertone, Avocado
- And more features for greater value, dependable performance

MODEL 9LW

CO-OP REGAL DRYER

- Easy Selection Of Proper Drying Cycle
- Conveniently Located Lint Filter
- Safety Door Switch
- Anti-Wrinkle Cool Down
- White, Coppertone, Avocado
- Sanitizing Ozone Lamp
- Anti-Wrinkle Cool Down At End Of Cycle
- Permanent Press Audible Cycle
- And more features for fast, safe, thorough drying Of All Fabrics.

MODEL 9LE



Make it your brand.

IN THIS ISSUE

78 teen delegates to short courses 4

Changes in the Kansas State
Fair promise a new look 5

New dimensions—a pictorial
essay on 4-H photography 6, 7

In today's mail—
4-H Foundation news 10

A special day for friends of 4-H 11

Ideas and news 12

"I'd like to join 4-H" 13

Review editor seeks story of
your county 15

Wm. M. Riley.....**Managing Editor**
Marie Rupp.....**Associate Editor**
Susanne Johnson.....**Production Editor**

Published Monthly By

KANSAS 4-H FOUNDATION, INC.

J. Harold Johnson.....Executive Director
Merle Eystone.....Associate Director
William Riley, Jr.....Assistant Director
Erna Bly.....Sec. Asst. Treasurer

BOARD OF TRUSTEES

Governor Robert Docking
Honorary Chairman

W. Dale Critser, Chrm.....Wichita
Dolph Simons, Vice Chrm.....Lawrence
Balfour S. Jeffrey, Treas.....Topeka
Robert A. BohannonManhattan
Glenn M. Busset.....Manhattan
*Sen. Frank Carlson.....Concordia
*Harry Darby.....Kansas City
*Ray E. FrisbieMcDonald
Mrs. Olive Garvey.....Wichita
Clifford Hope.....Garden City
†A. D. Jellison.....Junction City
*Harold E. JonesManhattan
J. J. Moxley.....Council Grove
George B. Powers.....Wichita
*Roger E. Regnier.....Manhattan
N. T. Veatch.....Kansas City
E. B. Shawver.....Wichita
†Fred D. Wilson.....Andover
*Advisory Member
†Trustee Emeritus

Editorial and Business Office

Phone 913-532-6621

Umberger Hall
Kansas State University
Manhattan, Kansas 66502

Second Class Postage Paid at Lawrence, Kansas. Return Form 3579 to Kansas 4-H Journal, Manhattan, Kansas 66502.

Advertising rates and circulation data on request.

Group subscriptions \$1.00 per year.
Individual subscriptions \$1.50 per year.
Single copy 15 cents.

Use of the 4-H name and symbol approved by the Secretary of Agriculture of the United States, January 23, 1951, under the provisions of the law as reenacted by Sec. 707 of the Act of June 25, 1948 Public Law No. 772 80th Congress (10 USC 797).

The pressures of life

By Dr. Glenn M. Busset
State 4-H Leader

Some persons are able to withstand greater levels of stress than others. Psychologists often refer to this phenomenon as a H.T.T., that is, a high tolerance threshold. These are the people who "keep their cool" under tension and pressure. People who pop-off quickly have a low threshold of tolerance. The reasons for this great variation are extremely complex and are not really the subject of this editorial. That's something between just you and your psychiatrist.

Everyone needs a place of retreat from the pressures of living. The means of respite are so numerous and so varied that there would seem to be choices available to everyone. The duration of retreat from the strain of life can vary as widely as a moment of personal prayer, to a month's vacation with pay. The methods can vary from service above self, to alcohol and the Barbituric escape route of the 'peace of mind' drugs. When someone says, "I'd just like to get away from it all," he is expressing the need for a retreat, a respite from life. He feels that his threshold of tolerance has about been reached. He has "had it up to here."

People everywhere make their choices of how to meet life's pressures, although many drift into responses without consciously making a choice or a decision. This, too, is a decision; that is, they have chosen not to decide. They simply react.

Without presuming how anyone else could or should seek a hobby, a relaxation or a retreat, we mention the possibility of an interest available to anyone in Kansas. In June there came to our desk a delightful new book¹, prepared for the family to use together. With this easy-to-read, well-illustrated book as a guide, any family, 4-H club, project group, or individual can make quick, on-the-spot identification of trees, shrubs and woody vines. From acacia to zanthoxylum, the 114 species are covered in attractive detail. It is not a book for the professional or the advanced student, but for the person, family or group who seek their respite, their retreat, their relaxation in the outdoors—not necessarily forests, just outdoors.

Knowing your way around the backyard, the city park, or in the 1,358,000 acres of commercial forest in Kansas is useful. Such a hobby or retreat is perhaps the most economical relaxation available, short of sleeping in front of the television.

If your contacts with some of the more weird inhabitants of today's world leave you shaken, consider this quotation from Robert Sherwood's, **The Petrified Forest**.

"Nature is biting back. Not with the old weapons—floods, plaques, holocausts. We can neutralize them. She is fighting back with strange instruments called neuroses. She's deliberately inflicting mankind with the jitters. She's taking the world away from the intellectuals and giving it back to the apes."

We don't mean to frighten anyone with this prediction or to imply a parallel between the hairy humanoid denizens and the greater anthropoids. You won't find apes out on your retreat with **Trees, Shrubs, and Woody Vines**, but you might find some pretty nice people. One of them could be you.

¹ **Trees, Shrubs, and Woody Vines in Kansas**, Stephens, H. A., The University Press of Kansas, Lawrence, \$3.95.

OUR COVER

The best of 4-H photography is this month's cover theme. Photographs featured in this issue are purple and blue ribbon winners at last year's State Fair and are on display at Rock Springs Ranch. Cover photos are (clockwise) a swan by Mike Driscoll, Sedgwick

County; a sister on horseback by Deborah Dee Wiles, Ford County; a French art exhibit at Texas' Hemisfair by Barbara Eck, Harvey County; a farm scene by Steve Bozarth, Seward County; and a sister with her horse by Gary Underwood, McPherson County. Additional photographs are on pages 6 and 7.

78 teen delegates to short courses

Seventy-eight Kansas teenagers are delegates to Citizenship Short Courses this month at National 4-H Center in Washington, D.C.

Half of the Sunflower state group is at the center now and the other group will participate in the course Aug. 10-16, according to John B. Hanna, Extension 4-H specialist.

A week of concentrated exploration of citizenship responsibilities plus meeting government officials and touring points of interest in the nation's capital make up the schedule for Short Course participants.

Delegates are:

Brown County — Wanda Compton, Juanita Jean Ahrens, Max E. Fridell, Gloria Grimm; Cherokee—Marie Nunn; Cheyenne — Dennis D. Busby, Patty Busse; Cowley—Susan J. Little; Crawford—Diana Jo Elnicki; Franklin — Kathryn Janette Loyd; Geary—Connie Poole, Kathy Poole, Richard Gustason; Grant—Jerry Jo Tilson; Harvey—Ron Gatz; Jefferson—Rebecca Shaffer; Kingman—Sharon Biggs, Bill Campbell; Leavenworth — Sandy Eberth, Cheryl Wiley; McPherson — Becky Raleigh; Marion — Emily Goertz, Mary Beth Kjellin; Morton — Celia Coen, Sherry Trahern, Wayne A. Burns, Russel K. Jackson; Neosho — Judy Tipping; Osborne—Judy Streit; Pawnee—Jon Deege; Reno—Linda Pattinson; Seward—Kristi Swearingen, Carol Wilcox; Stevens — Mark Randle, Renee Anderson, Hal Morgan, Laurie Lairmore; Thomas —

Mari Carpenter; Washington—Jim Krueger.

Delegates for the Aug. 10-16 Short Course are:

Barton—Tym Warrick, Cora Deckert; Bourbon—Linda Kay Callow; Butler—Beverly Jean Meyer; Cowley—Barbara Story, Dean A. Whitehill, Bill Muret; Elk—Bruce L. Wilmeth; Ford—Kathy Robinson, Carol Maxwell; Gray—Bernie Reinert, Susan Herrman; Jefferson — Robin Ann Bigham, Rick Bigham, Chuck Bigham, Kathy Wade, Belinda

Crawford; Lane—Carol Shaffer, Cheryl Roemer, Peggy Shay, Mona Adams;

Leavenworth — Timothy M. Millsap; McPherson—Eric Larson; Mitchell — Marcia McClintock; Norton — Nancy Brandyberry; Osage — Carol Fellman, Pamela Sue Qualls; Pawnee — Phil Froetschner; Rice—Patti L. Glass; Russell—Kim Richards, Rita Dumler; Scott —Celia Scott, Bill Herman; Shawnee—Mark Mannell, Paul H. Jackson; Connie Jean Smith; Sherman—Tom Duell; Wyandotte—Jeanie Lucero, Rebecca Shaw.

Jackson County 4-H honors the Kennedys

Jackson County's 4-H "family of the month" is the Bernard Kennedys of Mayetta, reports Butch Harris, reporter of the Pleasant Valley Rustlers 4-H club.

Five Kennedy children join their parents, who are community leaders, in 4-H work.

The youngest, Paul, is president of the Pleasant Valley Rustlers and a past treasurer. He has had a calf project every year and is on the honor roll at Holton high school.

The four older Kennedys also have been 4-H winners. They're Charles, Mary, Margo and Janey.

Just published!

TREES, SHRUBS, AND WOODY VINES IN KANSAS

By H. A. Stephens

Illustrated with 833 photos and 114 drawings and maps.

Here it is at last—the book you have long wanted and needed. Every significant tree, shrub, and woody vine in the Kansas area is described and illustrated. Two full pages are allotted to each plant, with simple but complete description and guidance for on-the-spot identification. The photographs illustrate bark, bud, leaf, flower, and full plants; outline maps indicate areas where the plants are found. This information is at your fingertips on hikes, camping, or at home, as this handy volume fits easily into your knapsack.

250 pages

paperbound \$3.95

clothbound \$6.75

The University Press of Kansas

358 Watson Library
Lawrence, Kansas
66044

Please send me copies of

TREES, SHRUBS, AND WOODY VINES IN KANSAS @ \$3.95 (paper)
\$6.75 (cloth)

Name.....

Address.....

City.....

State..... Zip Code.....

Payment enclosed

Something new is the key to the 1969 Kansas State Fair at Hutchinson.

For the first time in the fair's history, dates include two weekends. The 4-H horse show, formerly a one-day affair, will take over Exhibition Center two days this year. And 4-H clothing exhibits will have a new look and take on an educational air.

Fair dates this year are Sept. 13 through 21, a departure from the regular one-weekend dates.

Two days promise to make a better horse show, one of the fastest growing parts of the Kansas State Fair activities. The event will be Saturday and Sunday, Sept. 20 and 21. Horses will be stalled in the open class barns Friday and Saturday nights or brought to the grounds only on the day of showing, reports Cecil Eyestone, Extension 4-H specialist.

Halter classes go before the judges beginning Saturday morning with performance classes slated Sunday. Halter classes include, by age, filly or mare, gelding, stallion and a showmanship class.

Youth are divided by age for classes in the performance show. Classes are western horsemanship, pleasure, reining and equitation. Additional classes Saturday night are pole bending, barrel racing and calf roping.

Only purebred animals will be accepted in halter classes for breed champions. Proof of registration must appear on identification certificates.

Eyestone cautions 4-H participants in any livestock classes to check carefully the premium list for the 4-H division of the Kansas State Fair to insure their exhibits meet all the requirements for competition. Copies of the premium list may be obtained from the county Extension office.

4-H clothing exhibits will have a new look and a more educational aspect at the fair this year, according to Arliss Honstead, Extension 4-H specialist.

Fair goers will see the step-by-step development of clothing skills that 4-H'ers experience in the projects' six phases. Exhibits also will highlight new trends in fabrics, fashion and construction.

Informal style shows each day will add to clothing exhibits.

One of the new classes in nutrition for 4-H'ers at the Kansas State Fair, and many of the county shows, highlights the four food groups. The 4-H'ers plan one day's balanced meals, including snacks and show how the daily requirements for each of the four food groups was met.

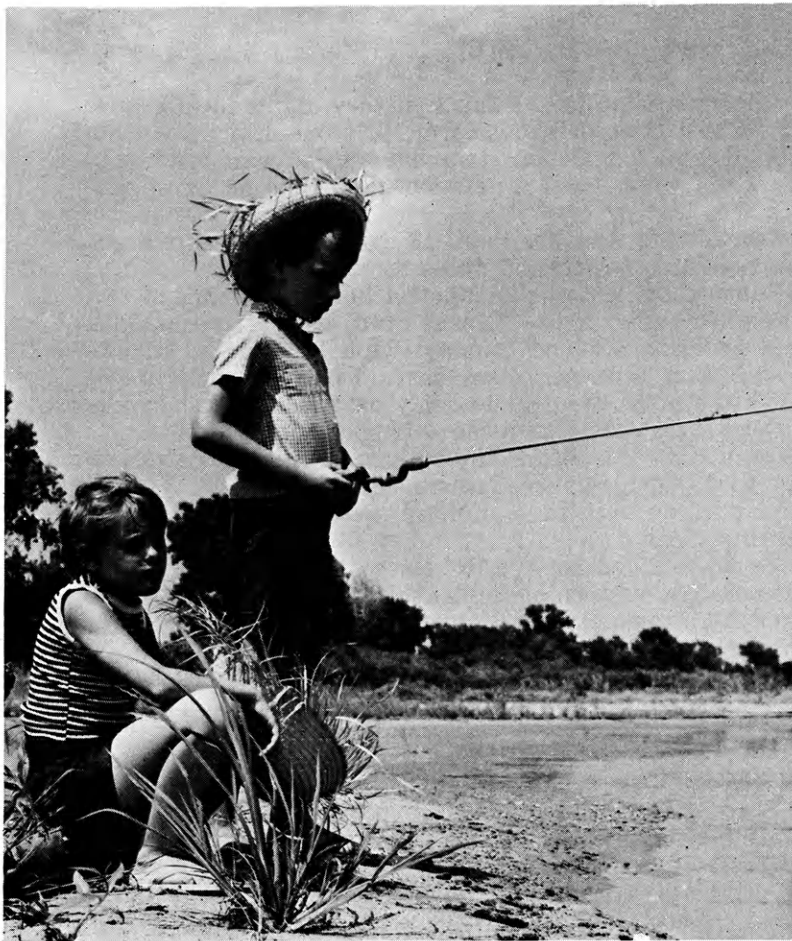
The four groups are — milk, vegetable-fruit, meat, and bread-cereal.

*Changes in the
Kansas State Fair
in '69 promise*

a new look

Two weekends, two-day horse show and clothing exhibits all are new this year.

IT'S FAIR TIME '69!

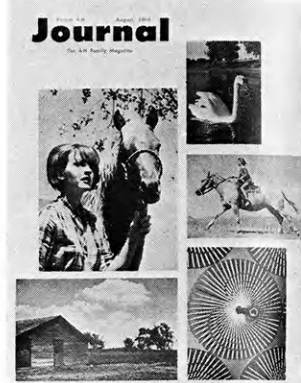


Hard-luck fishermen by Keith Wren, Sedgwick County.

New dimension is the byword for 4-H photography, a fast-growing project which last year enrolled 3,000 Kansas youth.

Photography is an art. And it is an occupation. The young photographer begins to "see" his world through the frame of his camera. "That would make a good picture," is a frequent statement, or thought. Things he ignored in his everyday world suddenly are subjects for the camera's eye. Objects taken for granted now are subjects for the artful photographer.

Animals, people and landscapes dominate the 18 photographs on display at Rock Springs Ranch, state 4-H leadership training center near Junction City. The photographs all are purple and blue ribbon winners at last year's Kansas State Fair at Hutchinson. Sixteen of the winning pictures are seen on these pages and on the cover.



4-H photographers whose pictures are on display are: Debbie Denton, Shawnee County; Greg Bird and Steve Bozarth, Seward; Galen Childs and Kent Holcomb, Reno; Mike Driscoll and Keith Wren, Sedgwick; Deborah Johnson and Glynda Miller, Douglas; Deborah Dee Wiles, Ford; Brian Voight, Barton, Kyle Tomlinson, Stafford; Bob Brinkmeyer, Finney; Gary Earl, Phillips; Barbara Eck, Harvey; Meldody McNeal, Wallace; Rhonda Cory, Rice; and Gary Underwood, McPherson.

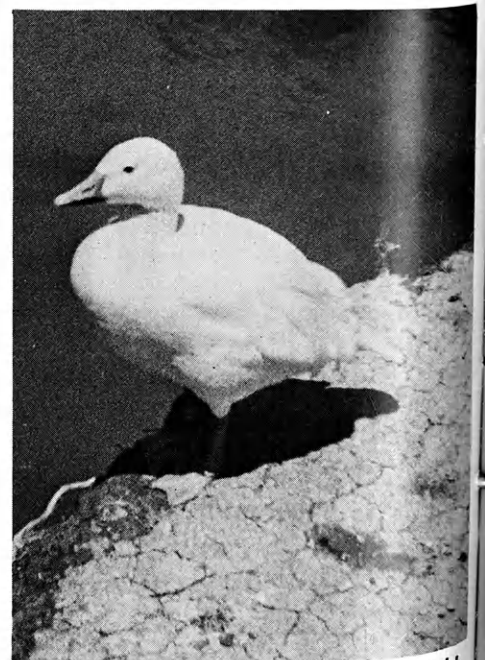


"Castles in the Sand" by Rhonda Cory, Rice County.

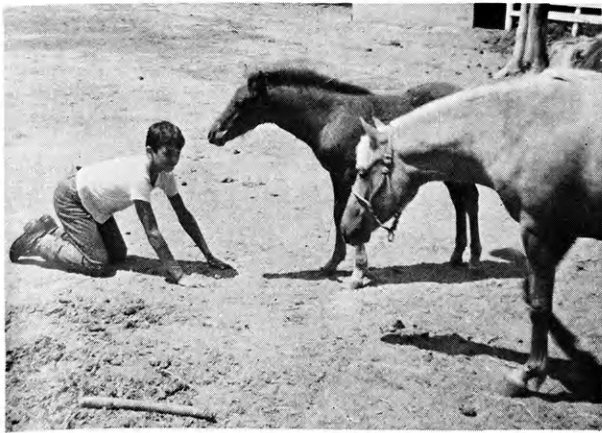


"Land of the Free" by Glynda Miller, Douglas County.

new



"Color Me Lonely" by Brian Voight, Barton County.



"Animals" by Galen Childs, Reno County.



"Boating" at Scott Park, by Bob Brinkmeyer, Finney County.

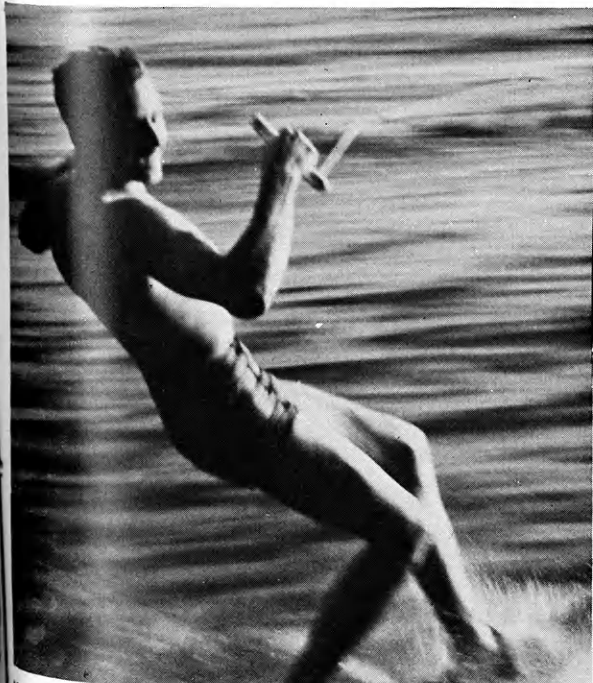


The Heyl family fishing, by Melody McNeal, Wallace County.

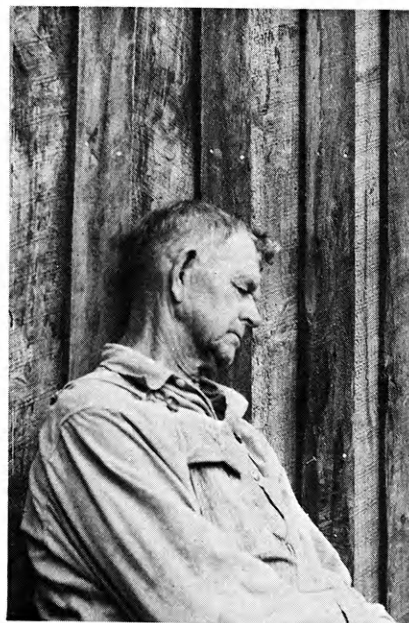


Refuge from the rain, by Debbie Denton, Shawnee County.

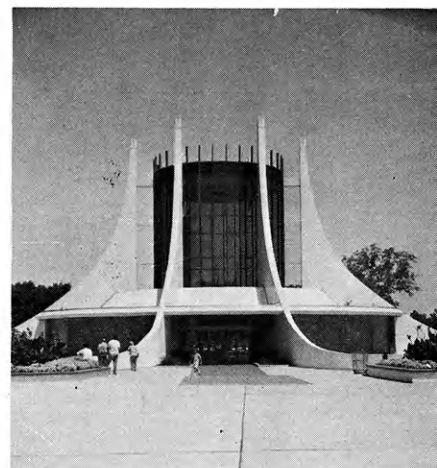
dimensions



"The Skier" by Kyle Tomlinson, Stafford County.



Grandpa napping, by Deborah Johnson, Douglas County.

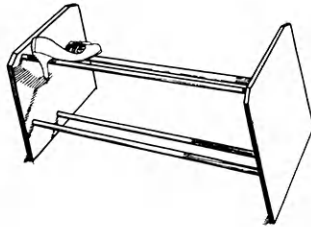


"The Ape House at Kansas City Zoo" by Gary Earl, Phillips County.

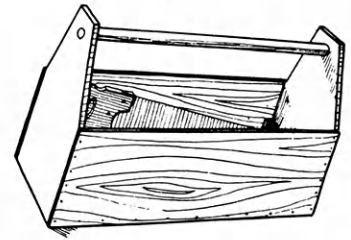
Free!

4-H Woodworking Plans from YOUR LUMBER DEALER

**TWO NEW
PROJECT
IDEAS NOW
AVAILABLE**



SHOE RACK



TOOL BOX

See these Lumbermen for your FREE Plans — they are your best friend when you need good material

Anthony
Valley Lumber Company

Argonia
Mack-Welling Lumber Co.

Ashland
Don Spotts Lumber Company
Home Lumber and Supply Co.

Bern
Bern Lumber Company

Burden
Alexander Lumber Co.

Chanute
Gray Lumber Company

Clay Center
Fullingtons

Clyde
Geo. W. Hays & Son, Inc.

Coldwater
Home Lumber and Supply Co.

Edna
Edna Lumber and Supply Co.

Ellinwood
Home Lumber & Supply Co.

Ellsworth
Ellsworth Lumber

Emporia
Home Lumber and Supply Co.

Eureka
A. C. Houston Lumber
Company

Fredonia
The Home Lumber & Supply
Company

Garden City
McAllister-Fitzgerald Lumber
Co.

Gardner
Gardner Lumber Company

Garnett
Star Grain and Lumber
Company

Goodland
Rasure Lumber Company
Foster Lumber Company

Hanston
Halling Hardware & Supply

Healy
Healy Co-op Elevator
Company

Hiawatha
Motsinger Lumber Co.

Hillsboro
Hillsboro Lumber Co.

Holton
Holton Lumber Company

Hugoton
The Star Lumber Company

Independence
Sandott Lumber, Inc.

Iola
Klein Lumber Company

Johnson
Seyb-Tucker Lumber and
Implement Company

Junction City
Builders Lumber Inc.

Kechi
Buck Alley Lumber

Kinsley
Kinsley Co-op Exchange
Lumber Yard

LaHarpe
Diebolt Lumber and Supply

Lakin
Tate and Company

Lansing
Lansing Lumber, Inc.

Larned
Clutter-Lindas Lumber Co.

Lawrence
Woods Lumber Company
Logan-Moore Lumber Co.
McConnell Lumber Company

Liberal
The Star Lumber Company

Lyons
Antrim Lumber

Macksville
Home Lumber and Supply Co.

Manhattan
Ramey Brothers

Closet Valet



Woodworking Bench



Bird Feeder



Utility Cabinet

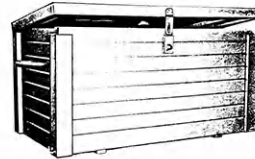


THESE PLANS ARE AVAILABLE

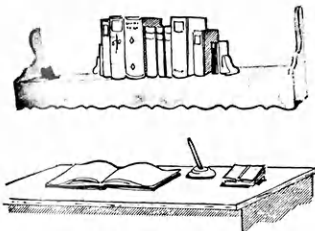


Tool Caddy

- | | | | |
|---------------------------|------------------------------|-------------------------------|------------------------|
| Mail Box | Collapsible Visual Aid Stand | Garden Trellis | Canoe Sailing Rig |
| Portable Towel Rack | Cart with Removable Trays | Bicycle Rack | Tail Gate Kitchen |
| Lazy Susan | Back Yard Fence | Hog House | Chest of Drawers |
| Box Hockey | Magazine Rack | Open Top Sawhorse | Table Lamps |
| Holding Gate | Sheep Blocking Box | Insect Display Box | Desk |
| Sail Boat | Child's Desk | Dairy Barn Desk | End Table |
| Dog House | Hobby Horse | Wishing Well Planter | Wren House |
| Sand Box | Rabbit Carrier | Coffee Table | Picnic Table & Benches |
| Comic Book Rack | Camp Kitchen | Salt and Pepper Set | B-B Gun Rack |
| Childs Step Stool & Chair | Chick Feeder | Colonial Bookcase and Cabinet | Redwood Planter |
| | | Lawn Lounge | Drafting Table |
| | | Porch Swing | Child's Picnic Table |



Show Box



Bookshelf Light



Patio Planter



Tennis Padl-Pak



Night Table

Mankato
Mankato Lumber Company

Marysville
Howell Lumber Company

Meade
Home Lumber and Supply Co.

Minneapolis
Dingee Lumber Co.

Moundridge
Clayton Vogt Lumber Co. Inc.

Newton
Antrim Lumber Company

Norton
Norton Lumber Company

Nortonville
Alexander Lumber Company

Oberlin
Building Supply Headquarters
Oberlin Lumber Company

Offerle
Offerle Co-op Lumber Co.

Olathe
Cowley Lumber and Hardware Company
Hodges Bros. Lumber Co.

Osage City
Martin Material Co., Inc.

Osborne
Lewis A. Hardman Lumber Co.

Oswego
Home Lumber and Supply Co.

Ottawa
Hubbard Lumber Company, Inc.

Parsons
O. E. Woods Lumber Co.

Pittsburg
Broadway Lumber Co., Inc.

Plains
Home Lumber and Supply Co.

Pratt
W. R. Green Lumber Co., Inc.

Pretty Prairie
The George W. Ulitch Lumber Company

Protection
Home Lumber and Supply Co.

St. Francis
St. Francis Equity Exchange

Salina
Esterday-Boster Lumber Co.
Larson Building Center

Scott City
McAllister-Fitzgerald Lumber Co.

Seneca
Seneca Lumber Company

Spearville
Farmers Grain & Supply Lumber Dept.

Stockton
B & B Lumber & Supply

Syracuse
Foster Lumber Co. Inc.

Tribune
Foster Lumber Company, Inc.

Ulysses
T. M. Deal Lumber Co.

Wichita
Stockyards Cash and Carry Lumber Co.
Alexander Lumber Company Inc.
Star Lumber & Supply Co.

Wilson
Hoch Lumber Company

Winfield
A. B. Everly Lumber Co.
Everitt Lumber Co., Inc.

Wright
Right Coop. Assn.

Zenda
The George W. Ulitch Lumber Company

Missouri

Independence
The George W. Ulitch Lumber Company, 11432 Truman Road



In Today's Mail

Winds rake Rock Springs



Felled trees and downed power lines surround the craft center.



Huge trees lie on their sides near the trout pond at the Ranch House.



Rubble from the storm, looking southeast from the shuffleboard slab.

Four hundred trees were destroyed and hundreds more damaged June 21 when high winds ravaged Rock Springs Ranch, closing the state 4-H center four days and forcing five camp groups to re-schedule.

Men from nearby Ft. Riley and Extension Service foresters assisted 4-H officials in the massive clean-up operation. Army generators were used to supply interim power until electricity was restored four days after the storm which swept central and eastern Kansas.

No one was injured during the storm. There were no campers at Rock Springs that night and staff housed at the center escaped injury.

A hay shed was the only building destroyed. However, there was varying amounts of damage to several roofs, windows and doors from wind, water, flying debris and falling limbs, according to J. Harold Johnson, executive director of the Kansas 4-H Foundation.

County 4-H groups who re-scheduled camp sessions because of the storm were Johnson, Miami, Franklin and Shawnee. An independent group from Goessel also had planned to use the facilities.

4-H officials said it was impossible to assess the damage in dollars and cents, but said a complete inventory of the damage would be taken when clean-up was complete.

Ceremonies dedicate Weatherwax cottage

Dedication ceremonies were hosted July 20 for the Lester F. Weatherwax memorial cottage at Rock Springs Ranch.

The \$30,000 cottage, which will accommodate 34 persons, boosts Rock Springs' winter capacity to 300.

"The Weatherwax Cottage" was a gift of the late Samuel F. Wallingford, and Mrs. Wallingford, of Wichita.



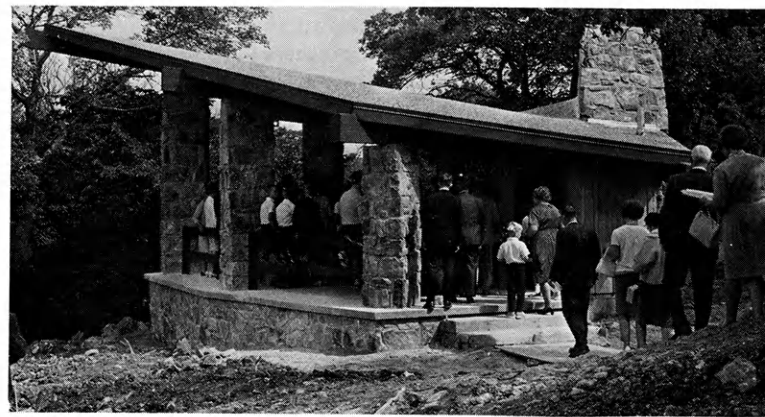
Rush County 4-H'ers sing out "Up with People"

A special day for

friends of 4-H



Leon A. Siebert, right, accepts a citation honoring the Kansas Bankers Association for 55 years' participation in the Kansas 4-H Foundation. Presenting the award is W. Dale Critser, chairman of the Foundation's board of trustees. Siebert is an Abilene banker.



Visitors wind toward the Master Farmer—Master Farm Homemaker shelter for dedication ceremonies of the recently-completed structure at Rock Springs Ranch.

A. D. Jellison, trustee emeritus, of the Kansas 4-H Foundation, recalls a memory with John Ruhnke, right, a friend of 4-H.

Mrs. Olive Garvey of Wichita, right, registers for "Friends of 4-H Day" at Rock Springs. Mrs. Garvey is a member of the board of trustees of the Kansas 4-H Foundation.



IDEAS * & News

Doug Shank, Brian Pickering and Nancy Sanger are new members of the 81-Hustlers 4-H club of Saline County. Welcome to 4-H!

A picnic and vesper services were the highlight recently of a meeting of the Sedgwick Sunflower 4-H club of Harvey County. Seventy-two persons—members, parents and guests—attended. Vesper services on 4-H Sunday were dedicated to the high school students who “graduated” this year from 4-H. They’re Kathy Allen, Mike Titus, Mike Porter, Diana Hershberger and Janice Jacob.

Members of the Rock Creek 4-H club of Jefferson County each had a part recently in the club’s observance of 4-H Sunday. A basket dinner and films of Korea followed the church service.

Nine new members have joined the Mustard Seeds 4-H club of Saline County. They’re Jerry Asbridge, Elaine Asbridge, Lee Ella Asbridge, Julie Fritz, Laurie Fritz, Michelle Gile, Denise Gile, Sue Gile and Tim Daily. Welcome to 4-H!

A brother and sister, Coleen and Bruce Scott, are new members of the Brookville club, also of Saline County.

Lori Wesley and Lisa Wesley are new members of the Gypsum Valley 4-H club of Saline County.

Catholic members of the Hanover 4-H club of Washington County participated in Mass as part of 4-H Sunday in May. Darrell Doebele and Robert Janders, Jr., both club members, were Mass servers. Other club members were in a procession carrying various banners, the American Flag and the 4-H flag. Mary Leis recited the club pledge and gave a short talk explaining 4-H Sunday. Other participants were Barbara Doebele, Connie Doebele, Diane Trave-lute and Debbie Doebele.

Several Mentor 4-H’ers of Saline County participated in 4-H Sunday services at St. Pauls Lutheran Church. They were: Carol Delker, Peggy James, Scott Nichols, Brenda Jording, Rose Jilka, Margaret Tinkler, Susan Harris and Caerine Jilka.



The first Farm Bureau in Kansas was organized in Leavenworth County August 1, 1912. Montgomery and Cowley counties were the next to be organized. By the summer of 1917 there were 18 county Farm Bureaus in Kansas and by October, 1918, there were 43.

In 1919 the organized county Farm Bureaus met to consider the organization of a federation of county Farm Bureaus to work in the field of legislation, taxation, transportation and marketing.

Since that time Kansas Farm Bureau has been working as a state organization to promote the development of the most profitable and permanent system of agriculture; the most wholesome and satisfactory living conditions; the highest ideals in home and community life; a general interest in the business of farming and in rural life and providing service-to-member programs deemed feasible and desirable by the membership.

Since 1919 the organization has grown until today all 105 counties are affiliated in Kansas Farm Bureau with a total membership of 84,670 farm families.

Kansas Farm Bureau

105 County Farm Bureaus

Working Together

"I'd like to join 4-H"

4-H'ers need to extend personal invitation to friends to join the fun!

By John B. Hanna
Extension 4-H Specialist

When a fellow goes duck hunting and a flock of ducks gets up, he doesn't just blaze away with his shotgun hoping to drop some ducks. No sir, he takes aim on one duck. That's the way he gets his limit.

Like the wise hunter, personal invitation is one of the best ways to get other young people to join 4-H. You, a 4-H'er, can help get more girls and boys in 4-H.

Have you invited your friends to your 4-H meeting? What bet-

ter way to show them how much fun you have in 4-H? If your 4-H club has a tour, invite a friend to go with you. It's fair month. Invite a friend or two to go to your fair with you on a day when you have time to show them around. Take time to show them some projects they can take in 4-H.

You may say, "Anyone can join 4-H. Who needs an invitation?"

Not many young persons come and say, "I'd like to join 4-H." But if they're invited by a friend, they may become a 4-H member.

More than half of the pre-high school students in Barber County replied to a questionnaire they had never been invited to join a 4-H club. Yet two out of five said they would have seriously considered joining. Forty-eight per cent of Barber County's high schoolers said they never had been invited to join a 4-H club.

County 4-H day is another good 4-H showplace. Boys and girls still can become 4-H'ers after 4-H day, so why not invite some of your friends to go to 4-H day?

Give other young people a chance to have fun in 4-H. Ask them to join today!



ALLIANCE INSURANCE COMPANIES
McPherson, Kansas
FIRE — CASUALTY — LIFE
Serving Kansas Since 1888

FOURTH ANNUAL

KANSAS ALL BREEDS JUNIOR DAIRY SHOW

Salina, Kansas

Kenwood Park

August 22 & 23

(Entries accepted until August 16)

A state-wide show for 4-H & FFA

Eight show classes plus Jr. and Sr. Fitting and Showing and County Herd Class of 5 Animals.

Ayrshire • Brown Swiss • Guernsey
Holstein • Jersey • Milking Shorthorn

Ribbons and Premiums for all classes

PLUS—SPECIAL BREED AWARDS

Animals in place Friday at 3:00 p.m. Exhibitor banquet at 6:30 p.m. Friday at 4-H Building, sponsored by American Dairy Association of Kansas. Calf Sale will be held Friday evening. Judging begins Saturday morning in Agriculture Hall.

Sponsored By

Agricultural Committee, Salina Chamber of Commerce and Kansas Interbreed Dairy Council in cooperation with the Kansas Extension Service and FFA

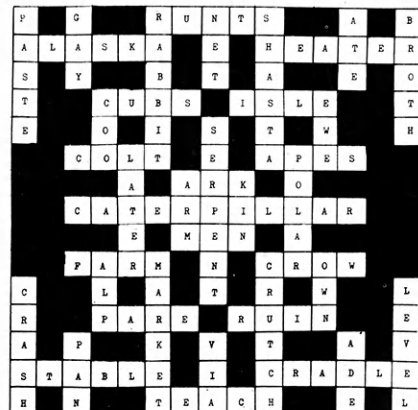
**Write for entry to: Chamber of Commerce,
P. O. Box 596
Salina, Kansas 67401
Attn. Wilma E. McCormack**

Kathleen Wood new winner

Kathleen Wood of Clements has been named the second recipient of the \$350 Harry Darby scholarship. The other winner is Linda Keys of Council Grove.

The July issue of the Kansas 4-H Journal incorrectly stated Vicki Bell of Lebanon was winner of the Darby scholarship because Vicki disqualified herself too late for printers to make the change. Kathleen was named after Vicki said she would marry this summer, making her ineligible to receive the award.

Solution to Crossword





SURPRISED FATHERS—Three fathers were taken by surprise during parents' night of the Deer Creek 4-H club of Phillips County when they were asked to come to the front and prepare "French Creme". Aprons, cooking equipment and a recipe were furnished to the surprised fathers.

Parents' night holds surprises for three 'chefs'

By Sue Van Allen
Deer Creek 4-H club

On parents' night this year, Deer Creek 4-H club of Phillips County decided to test the culinary skills of three fathers.

During the meeting, the fathers unexpectedly were called to the front and handed aprons and cooking equipment. They were asked to prepare "French Creme" for the members as the recipe was read to them.

Some of their tactics were hilarious, but the results were surprisingly edible. The club's boy Junior Leaders judged the men on their efforts and a small gift was presented to the best chef of the night.

Classified Ads

Classified Rates — 12c per word, 5% discount for 6 annual insertions, 10% discount for 12 annual insertions. Payment in advance.

FARROWING STALLS—Complete \$26.75. Dealerships available. Free literature. **DOLLY ENTERPRISES**, 101 Main, Colchester, Illinois 62326.

CALF CREEP FEEDERS—30 Bu. Capacity \$92.50. Dealerships available. Free literature. **DOLLY ENTERPRISES**, 101 Main, Colchester, Illinois 62326.

PICK-UP TRUCK STOCK RACKS — All steel construction \$109.50. Dealerships available. Free literature. **DOLLY ENTERPRISES**, 101 Main, Colchester, Ill. 62326

PILLOWSLIP, Electrostatically correct, preserves hair-do. Best quality Satin, \$2.50 ppd. State color—Pink, Blue, Yellow. Marysville Mfg. & Dist., Marysville, Mo.

These Kansas 4-H Journal Sponsors Have Renewed Their County Support

ELLSWORTH

Citizens State Bank, Ellsworth
Kanopolis State Bank, Kanopolis
The Bank of Holyrood, Holyrood
Wilson State Bank, Wilson

GRAHAM

Farmers & Merchants Bank,
Hill City

OTTAWA

Chapman Implement Co.,
Minneapolis

Gilley's Automotive, Minneapolis
Handy-Stein Chev. Olds-Buick,
Minneapolis
Hoover, Incorporated, Minneapolis
Lott Implement Company,
Minneapolis

PHILLIPS

First National Bank, Phillipsburg

ROOKS

Rooks County 4-H Council, Stockton

IT'S TIME

to

SAVE



PUT YOUR SAVINGS TO WORK

Arkansas City
First Federal Savings and Loan Assn.

Clay Center
Northwestern Federal Savings and Loan Assn.

Dodge City
First Federal Savings and Loan Assn.

El Dorado
Mid-Continent Federal Savings and Loan Assn.

Fort Scott
Liberty Savings and Loan Assn.

Garnett
The Garnett Savings and Loan Association

Hays
The Hays Building and Loan Assn.

Hutchinson
Valley Federal Savings & Loan Association—1020 North Main

Leavenworth
Leavenworth Mutual Savings and Loan Assn.

Liberal
First Federal Savings and Loan Assn.

McPherson
The Pioneer Savings and Loan Association

Newton
First Federal Savings and Loan Assn.

Ottawa
Ottawa Savings and Loan Assn.

Parsons
First Federal Savings and Loan Assn.

Plainville
Rooks County Savings Assn.

Kansas Savings & Loan Associations



MEETING A NEED—Helping to meet the need for trees at the Agricultural Hall of Fame, the Oxford Hustlers 4-H Club, Olathe, donated and planted a six-foot Pin Oak. Standing in front of the national center are, from left, Doug Allen, Janis Coleman, Alice Voigts, Karen Allen and Mary Kay Huggins. Behind the 4-H'ers is Robert Bricker, executive vice president of the center.



COMMUNITY PROJECT—The Horanif Hustlers 4-H Club, as one of its community service projects, planted several trees at the Agricultural Hall of Fame near Bonner Springs and at the Wyandotte County Fairgrounds. Pictured, from left, are Christianne Vaught, Linda Horvat, Eric Vaught and Chris Vaught.

Review editor seeks story of *your* county

(Editor's note: A former Osage County 4-H'er, Gary D. Thompson, has been named editor of the 1970 4-H in Review. The youngest of four boys, Gary will be a senior at Kansas State University. Home is a farm near Michigan Valley, south of Topeka. Gary was active in the North Osage 4-H club 10 years and carried projects ranging from electricity to gardening to cooking.)

By Gary D. Thompson
Editor, 1970 4-H in Review

Another busy year of 4-H will soon be coming to an exciting close with fair time already here. As you think over the past year, I am sure you remember many fun and rewarding activities that your club and county has carried out. How about sharing them with other 4-H'ers across the state?

Each September the 4-H in Review is published to give 4-H'ers and their leaders an opportunity to exchange ideas. However, your participation is needed to make the Review successful. Both pictures and stories are needed. So, start taking pictures and writing stories now for the

September 1970 issue of 4-H in Review.

The stories may feature a project, community service event, or other new or outstanding activity of your group. Any pictures you have should be accompanied by an explanation of county, what, when, where and whom. The pictures must be black and white for use in the Review.

Turn your stories and pictures in to your county agent who will forward them or send them directly to the Kansas 4-H in Review, Umberger Hall, Kansas State University, Manhattan, Kansas 66502. The deadline for receiving material in the state office is February 1.

I know each of you has carried out some exciting ideas for promoting 4-H this past year. Your idea may be just what another club needs to spark up its program, "to make the best better." The staff is looking forward to receiving your stories and pictures. We hope to have ideas from every county, but this can happen only with your cooperation and participation.

Crossword of the Month

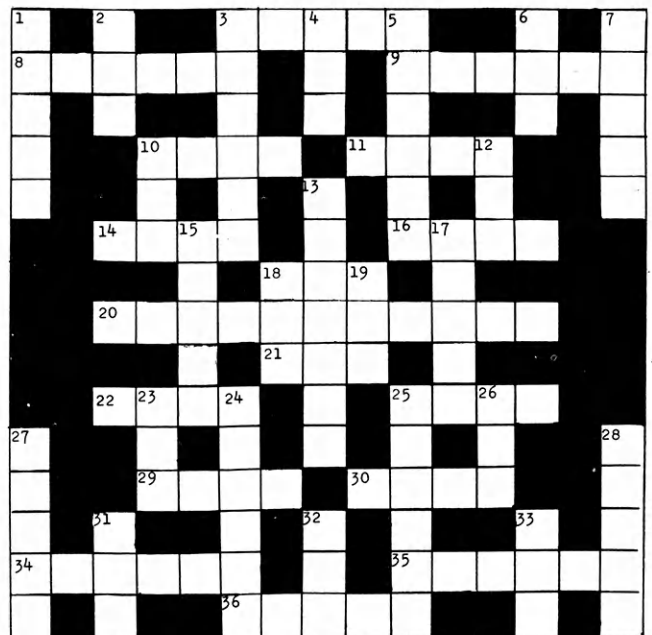
Solution on page 13

ACROSS

3. Animals of stunted growth
8. Juneau is capital of _____
9. What is used to warm an auto
10. Baby bears
11. Small island
14. Baby horse
16. Monkeys
18. Where Noah kept his animals
20. Woolly worm
21. Grown-up boys
22. Home and land in country
25. A black bird
29. Peel
30. Something that has been destroyed
34. Building for horses
35. Baby's bed that rocks
36. Instruct

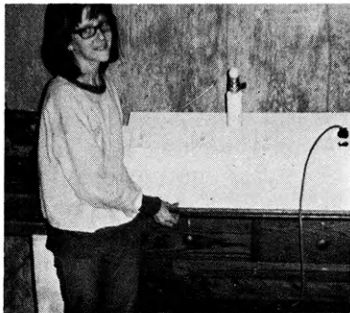
DOWN

1. Glue
2. Happy _____
3. Bunny _____
4. Used for catching butterflies
5. Mount _____ (California)
6. Had dinner
7. Meat liquid (clear soup)
10. _____ coo clock
12. Lamb's mother
13. A large snake
15. At a future time
17. _____ bear
18. What hand is attached to
19. Relative
23. Swiss mountain
24. Place to shop
25. Used for walking if foot is injured
26. Possess
27. Sudden hitting with force (as two cars coming together)
29. Even
31. Used for frying
32. By way of
33. Summer drink made from fruit

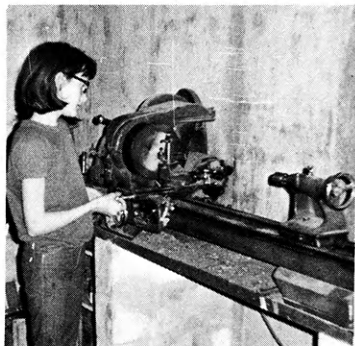


A girl in the electric project?

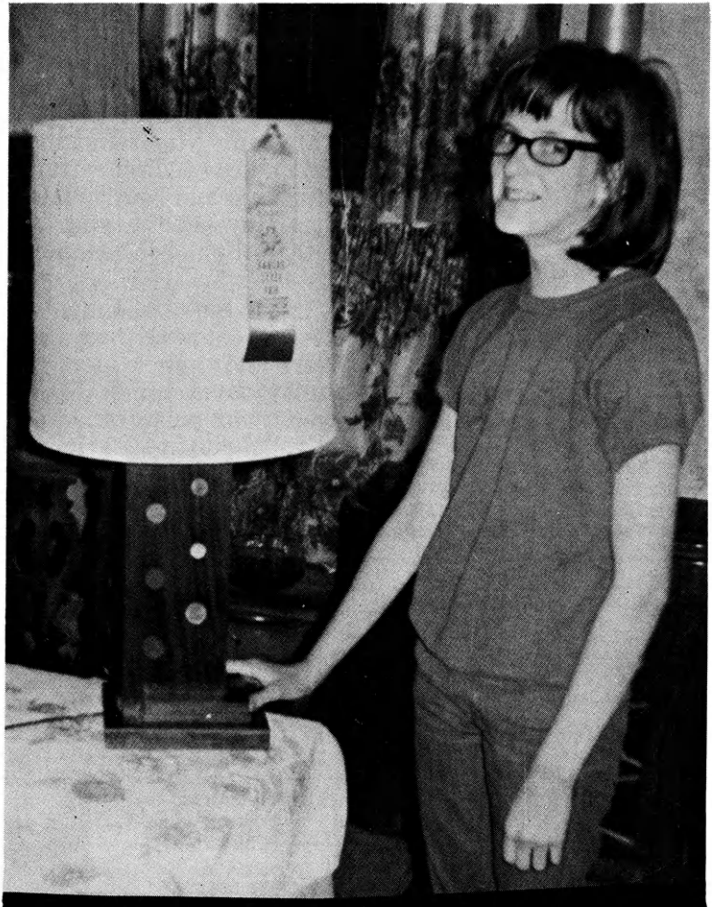
That's right, and 13-year-old Joyce Mills specializes in purple and blue ribbons! So watch out, fellows!!



RESERVE CHAMP—Joyce's demonstration board won reserve champion honors at the Jefferson County 4-H fair and a purple ribbon at the Mid-America and State fairs. The three- and four-way switches control a yard light. Joyce is parliamentarian of the Rock Creek Boosters.



PRECISION WORK—Joyce uses a lathe to sculpt blue ribbon winners, cedar dressing table lamps. She is a member of the Rock Creek Boosters 4-H club of Jefferson County.



COIN LAMP—Coins decorate the base of this lamp which took purple ribbons at three fairs: Hutchinson, Topeka and Jefferson County. Joyce, who has been in the electric program three years, stands by her winner. Joyce is a double purple ribbon winner at the State Fair at Hutchinson and received a trip to the Kansas Congress at Wichita.



* Watch This Page For Ideas On Farm And Home Electric Projects

ELECTRIC LIGHT and POWER COMPANIES in KANSAS

The Kansas Power and Light Company
Kansas City Power & Light Company

Central Kansas Power Company
Kansas Gas and Electric Company

Western Power Division of Central Telephone & Utilities Corporation