

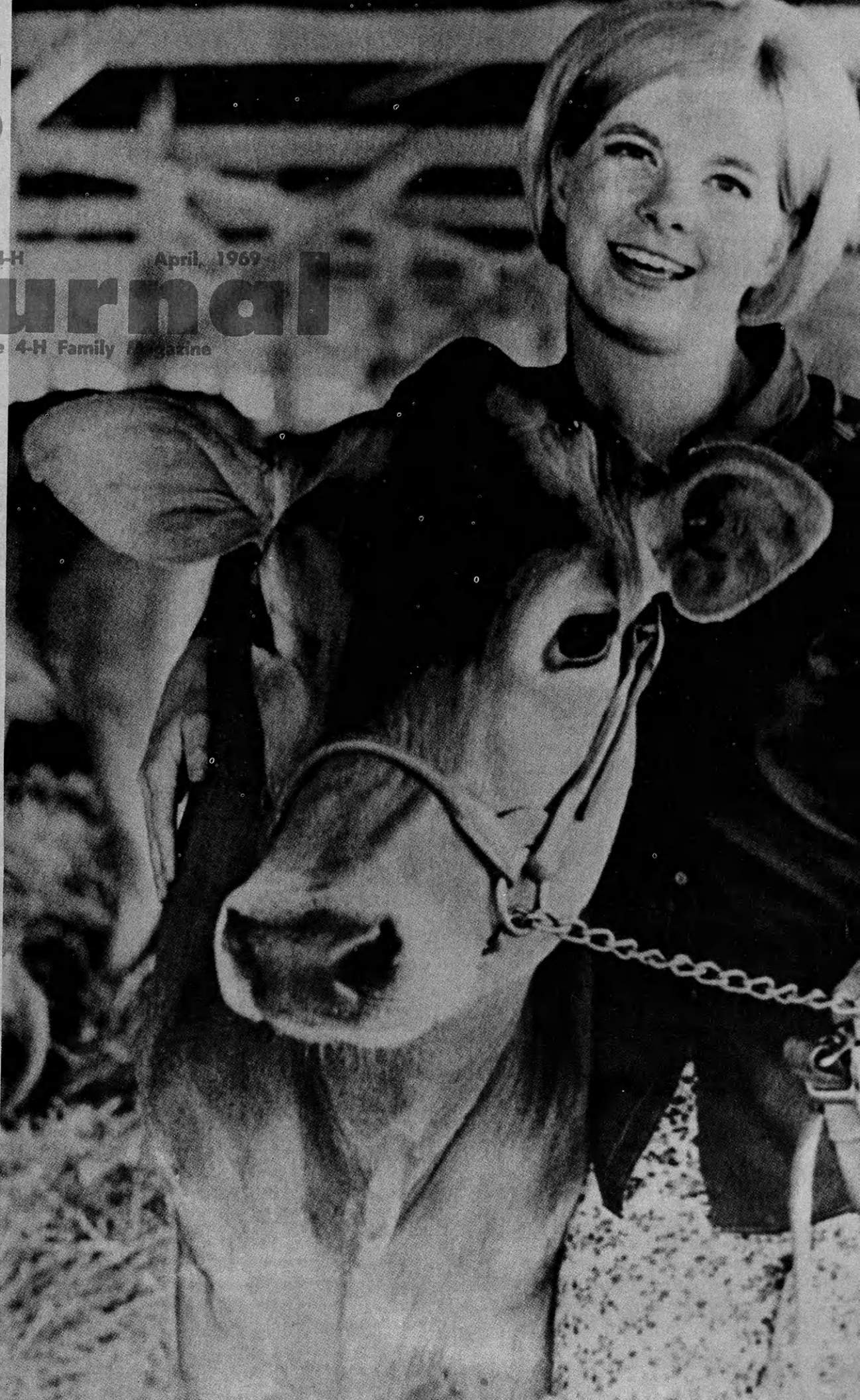


Kansas 4-H

April, 1969

Journal

The 4-H Family Magazine



Engine using CO-OP Motor Oil registers 361,650 miles.



It isn't easy to read mileage on this dial. But it's there. Actually you're looking at an hour meter off a tractor owned by Ralph Thurston of Radcliffe, Iowa. It indicates 7,233 engine hours — the equivalent of driving a vehicle 361,650 miles. Thurston put these hours on a single tractor. And even more remarkable, the tractor never had a major engine overhaul. CO-OP 10W-30 oil was used exclusively. Greatest wear measured on any engine part was less than .003". (The engine was disassembled and examined at Farmland Industries Laboratory.) And as Thurston himself put it, "It was unbelievable how clean the engine was."

Such performance was strictly unwarranted.

This tractor didn't have the famous CO-OP 3-Year, 3000-Hour Motor Oil Warranty.* The "Massey 44" was already 10 years old when the warranty was introduced in 1965. But you can bet that any new tractor Thurston buys will have warranty protection. He knows CO-OP Motor Oils can support any certification of quality, even one this demanding. How about you? If you've just bought a new tractor or are planning to this spring, shouldn't you see your Co-op for details of this outstanding guarantee?

*Your Cooperative will repair or replace at its expense the following parts of a warranted engine that fails under normal use: crankshaft and bearings, pistons, piston pins and bushings, piston rings, camshaft and bearings, cylinder walls, and valve lifters. This warranty does not cover damage unrelated to lubrication or caused by negligence or abuse, nor any engine which has been modified in any manner inconsistent with the engine manufacturer's recommendations.

FARMLAND INDUSTRIES
KANSAS CITY, MISSOURI

IN THIS ISSUE**In Today's Mail—**

4-H Foundation News	4
Cover Story—Judges	
Make It All Worth It	5
4-H Club Answers	
Marine's Plea	7
Collegiates to National	
4-H Meet	11
Ideas & News	14
Family Fun Page	15

Wm. M. Riley.....Managing Editor
Marie Rupp.....Associate Editor
Susanne Johnson.....Production Editor

Published Monthly By
KANSAS 4-H FOUNDATION, INC.

J. Harold Johnson.....Executive Director
Merle Eyestone.....Associate Director
William Riley, Jr......Assistant Director
Erna Bly.....Sec. Asst. Treasurer

BOARD OF TRUSTEES

Governor Robert Docking
Honorary Chairman

W. Dale Critser, Chrm......Wichita
Dolph Simons, Vice Chrm......Lawrence
Balfour S. Jeffrey, Treas......Topeka
Robert A. Bohannon.....Manhattan
Glenn M. Busset.....Manhattan
***Sen. Frank Carlson**.....Concordia
***Harry Darby**.....Kansas City
Mrs. Olive Garvey.....Wichita
Clifford Hope.....Garden City
†**A. D. Jellison**.....Junction City
***Harold E. Jones**.....Manhattan
J. J. Moxley.....Council Grove
George B. Powers.....Wichita
***Roger E. Regnier**.....Manhattan
N. T. Veatch.....Kansas City
E. B. Shawver.....Wichita
†**Fred D. Wilson**.....Andover
*Advisory Member
†Trustee Emeritus

Editorial and Business Office

Phone 913-532-6621
Umberger Hall
Kansas State University
Manhattan, Kansas 66502

Second Class Postage Paid at Lawrence, Kansas. Return Form 3579 to Kansas 4-H Journal, Manhattan, Kansas 66502.

Advertising rates and circulation data on request.

Group subscriptions \$1.00 per year.
Individual subscriptions \$1.50 per year.
Single copy 15 cents.

Use of the 4-H name and symbol approved by the Secretary of Agriculture of the United States, January 23, 1951, under the provisions of the law as reenacted by Sec. 707 of the Act of June 25, 1948 Public Law No. 772 80th Congress (10 USC 797).

I Believe in Miracles

By Glenn M. Busset
State 4-H Leader

The close approach of the Easter season reminds us that the fabric of our lives is closely interwoven with an implied acceptance of the miraculous. The greatest miracle of the many in the Christian spectrum occurs at Easter. Even the pre-Christian origin of the Easter season involved the miracle of the world becoming green, alive and abundant after the long, dark difficult winter. But when our sophisticated world insists on a disdain of the symbolic, we must prepare ourselves to answer the questions of our children about the existence of miracles.

The child easily accepts the presence of miracles. His uncluttered mind admits fairies, pixies, the Easter bunny, Jack Frost, Santa Claus, and ghosts as reasonable explanations for the unknown, the unexplained. The child's conversation is filled with an easy acceptance of the miraculous as he explains to himself and to others how he relates to growing life experiences. He lives in the grand world of "make believe." The eager eyes of children structure a world of magical things, of symbolism and wonder. Yet as we live with them and see them grow in their belief whereby they do not need symbols, as much as they need the wonder and magic of life, we begin to see early that children really do not take symbols like Santa Claus seriously. Almost imperceptibly the well adjusted child realizes these expressions of the miraculous are man's way of saying that he is happy and wants to do something for others—others that he would also like to see happy.

Many miracles are available to all of us—the greatness of color and form in a painting, in a sunrise or in a flower's brilliance; the miracle of music that seems somehow to reach inside our senses; the shape of a tree in winter and the elegance of a fresh snowy hillside; the claws of a kitten that suddenly become the touch of velvet; the clean feeling of early morning before people awake and change it; the clear call of a brilliant cardinal from the highest tree; the sudden summer storm; the enormous, constantly changing theatre of the sky; the sudden widening of a child's eyes as you capture his attention; the miracle of the human body as it functions and replaces itself with new growth—all these are the elements of the miraculous, the miracle of living, that we ought to keep active in our lives.

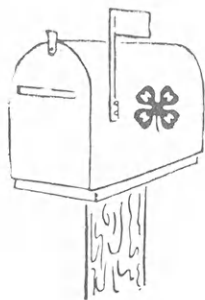
Those of us who have contact with small children, even in the early years of 4-H membership, should help them maintain or regain the element of the miraculous, the miracle of living, of life itself. We ought not be ashamed of or apologize for this creative understanding that serves a wonderful purpose in our lives. This is what we ought to keep keen in our own lives and personalities, so we can in turn teach those whose lives we touch, sometimes even so briefly, to be aware of the real miracle of living. A sense of expectancy is bright in a child. This feeling of expectancy makes great things (miracles) happen.

This is what I mean when I say, **Yes, I believe in miracles.**

OUR COVER

Cover photo for the 4-H Journal this month is Glenda Schurle, a Riley County 4-H'er, shown with her champion Jersey. Glenda, a high school senior, has tak-

en the dairy project nine years and writes of her experiences on page 5 of this issue. Tedious record-keeping and fatigue become history, Glenda says, when the judge says "a job well done".



Wichita Honors Olive Garvey, 4-H Trustee

A trustee of the Kansas 4-H Foundation, Mrs. Olive Garvey, received the Distinguished Service Award and was named 1969 "Salesman of the Year" recently by the Sales and Marketing Executives of Wichita.

Fred Kimball, senior vice president of Kansas Gas and Electric Co. of Wichita, presented the awards to Mrs. Garvey at the executives' annual meeting. Mrs. Garvey, he said, is "best known for spiritual, educational and cultural contributions to Kansas."

Mrs. Garvey is listed in Who's Who of American Women and Who's Who in the West. She is president of the Garvey Foundation, the state's largest private foundation, which provides financial and scholarship support to many organizations and schools.

As 1968 chairman of the Wichita Area Chamber of Commerce's Livability Committee, Mrs. Garvey provided leadership for planning river beautification, recommendations for Sedgwick County Zoological Society, for establishing a new Wichita arts museum and for developing adequate mass transportation plans for Wichita. A brochure highlighting the city's recreational assets was another product of the committee.

Rock Springs Ranch

Rock Springs Ranch, a leading symbol of the strength of the Kansas 4-H program, is recognized as one of the most outstanding facilities of its type in the United States.

Many Kansans receive their introduction to Kansas 4-H as members of non-4-H groups that use Rock Springs Ranch for retreats, training programs and conferences. Their appreciative attitude for the atmosphere at Rock Springs is reflective of the warm welcome and friendly service of the center staff. The



Don Gugler

real backbone of this service is the permanent, year-round staff that carries out its duties with pride and eagerness in their opportunity to serve Rock Springs guests.

The Kansas 4-H Journal recognizes these Rock Springs employees and their efforts in the development of this training center for the young people of Kansas.

The next issues will provide opportunities for our readers to

symbol of strength

become more acquainted with our center staff.

As life-long residents of the Woodbine area, Mr. and Mrs. Don Gugler have knowledge and interest in Rock Springs that dates to those days before it was purchased as the 4-H leadership center.

The Guglers, like many of the Rock Springs neighbors, were interested in the purchase of the ranch for a 4-H leadership center but their interest soon developed into a relationship of dedication and effort. Many Woodbine area residents have assisted at Rock Springs over the many years, but few can claim the length of service given by this family.

Evelyn Gugler serves as Food Service Director but gives credit to her staff for the many praises given the kitchen at Rock Springs. A high point was reached when the kitchen served 628 meals for a full camp session in the summer of 1968. Mrs. Gugler felt her staff met this challenge in a tremendous way, and she expressed pride in the attitude and effort of all who helped.

The oldest of eight children, Mrs. Gugler spent several years teaching school and today finds her hours of relaxation best filled with reading, writing letters and sewing. A member of the Lyona United Methodist

(Continued to page 13)

Judges Make It All Worth It

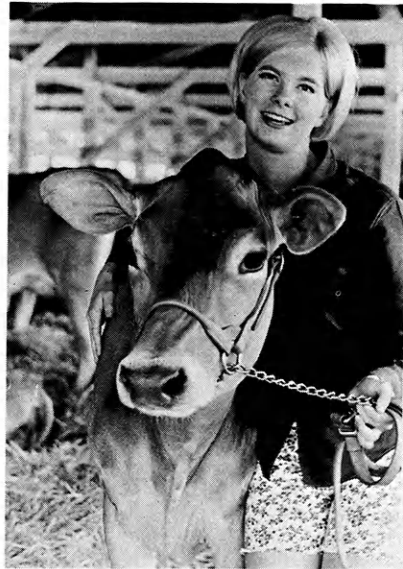
A job well done' makes you forget all the bad times

(Editor's note—Tedious record-keeping and complete fatigue become history when the judge says "a job well done", Glenda Schurle, a member of Riley County's Wildcat 4-H Club, said recently. Glenda, a high school senior, reflects on her nine years in 4-H.

BY GLENDA SCHURLE
Riley County Wildcat 4-H

4-H is never dull, if you apply a lot of work. I've taken the dairy project for nine years, and I have nine highlights in my 4-H years. Each year brings something new and challenging.

This year proved to be another series of highlights from county fair to the North American Dairy Show in Columbus, Ohio. I had champion Jersey at the Riley County and Topeka fairs. At the Kansas All-Breeds Jr. Dairy Show my county had the top herd of which I was an exhibitor. The county received the T. Hobart McVay Traveling Trophy. Kansas State Fair proved to be the most rewarding; I had grand and reserve champion



Jersey, and I was first in showmanship.

This was the first time in history Kansas took a Jersey herd to the North American Dairy Show. I was proud to have Jerseys that were a part of the Kansas Jr. Herd. We placed seventh in a class of fourteen

state herds from the United States. Our herd display of sunflowers on bright blue backdrop with a light post received the top award. While at the All-American I was honored by being chosen second runner-up, from twenty girls over the United States, for the National Jersey Jug Queen. I received eleventh in the United States for the 1967 National Jersey Youth Production Contest.

Although my dairy project and record keeping seems tedious at times, my toes stepped upon, bumps, sore fingers, and tired muscles, to me this is all past history when the judge gives you a rewarding compliment and says, "a job well done."

As this year passes I look back on the experiences and new friends I've encountered. Each year I learn more and strive for a better year. When 4-II years have passed, I hope to put to use my knowledge gained through 4-II.

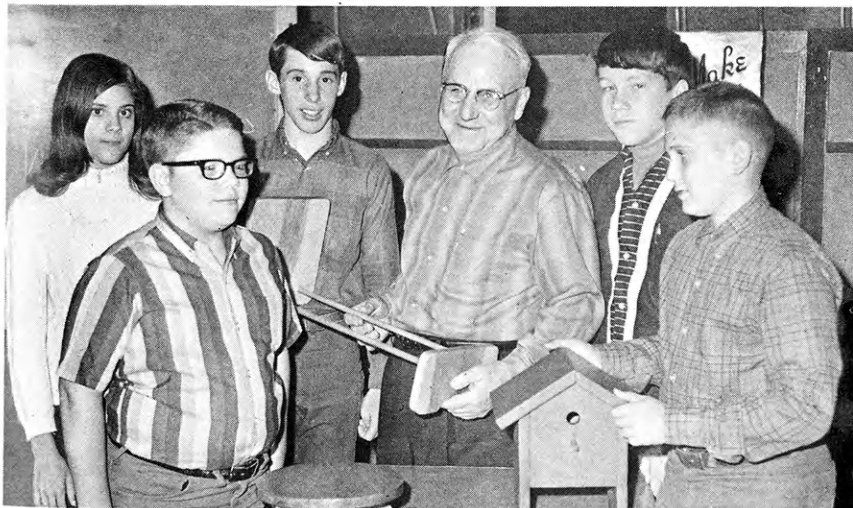
Phillips 4-H Boosts Use of City Library

The library is the place to look for Lakeside 4-II'ers of Phillips County!!

4-II'ers searched for something they could do to aid Kirwin's retired and elderly persons who could not get downtown. Finally, they struck on the idea of providing books and magazines from the City Library to these shut-ins. The library is on the second floor of City Hall and was unreachable for many of the town's older citizens.

With the help of the librarian, Lakesiders made out a list of books and magazines to check in and out every two weeks.

Not only are Kirwin residents able to make use of the library, they welcome the smiling faces and laughter of the young visitors.



WOOD WORKS WONDERS—Sixty-three Barton County 4-H'ers are avid students of Albert Williams, fourth from left, of Great Bend, county 4-H woodwork leader. "Woods to use for 4-H projects" and "Wood Fasteners" was Williams' February topic at the Barton County 4-H Building. Shown talking with Williams are, from left, Rhonda Jordan, City Slickers Club; Bertha Besthorn, Cleveland 4-H Club; Rick Koelsch, Busy Buzzers; Steve Jonas, Albion Jets; and Kent Romine, Busy Buzzers. Besides being county 4-H woodwork leader, Williams also serves as Barton County's 4-H project chairman.



KANSAS REJECTS CHAMP—Quinine, a 1,105-pound steer rejected by a Kansas saleyard, was chosen junior show champion over 343 steers at the National Western Stock Show in Denver. The steer, owned by Brad Ott of Kiowa, later topped 294 open show steers to be named Grand Champion of the Show. Denver's Brown Palace Hotel bought "Quinine" for \$7.50 a pound. Shown with Brad, from left, are Flynn W. Stewar, president, American Angus Association, Wichita Falls, Texas; Harlan Ritchie, Michigan State University, judge; Marquie Sharp, Colorado Angus Queen, Greeley; Nick Petry, show president; and Brad's twin brother, Doug Ott, holding trophy.

Pence 'Adopts' Senior Citizens

Can you imagine having a birthday or Christmas without a present?

The Pence Busy Beavers 4-H Club Junior Leaders considered this and "adopted" five senior citizens at the Park Lane rest-home in Scott City. They are Mrs. Belva Stephens, Mrs. Lulu Schaffer, Mrs. Florence Welch, Ed Welch and Everett Hall.

The Junior Leaders provide a present for each adopted member for their birthday, Christmas and Valentine's Day. Each month leaders write a newsy letter to the adopted members. And they visit in person when they have a minute to spare!

Another project of the Pence Junior Leaders is keeping the Pence Community Cemetery neat and in good repair. Last summer the cemetery was fenced and mowed by 4-H'ers.

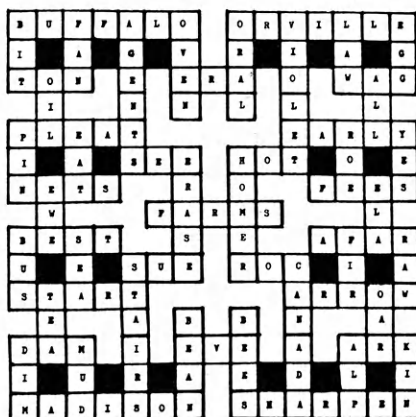
Scott County Junior Leaders are Sheila Rose, Janet Turley, Norman Scott, Danny Staata,

Glenda Staata, Darlene Rohrbough, Kathryn Rohrbough, and Jennifer Herman. — by Janet Turley, Pence 4-H Club.

New Member

Tom Unruh has been initiated into the Highland 4-H Club of Harvey County.

Family Fun Page Answers



1—black, 2—bleak, 3—blank, 4—blink, 5—brick, 6—brook, 7—brisk, 8—book, 9—bunk, 10—bank

IT'S TIME
to
SAVE



**PUT YOUR SAVINGS
TO WORK**

- Arkansas City**
First Federal Savings and Loan Assn.
 - Clay Center**
Northwestern Federal Savings and Loan Assn.
 - Dodge City**
First Federal Savings and Loan Assn.
 - El Dorado**
Mid-Continent Federal Savings and Loan Assn.
 - Fort Scott**
Liberty Savings and Loan Assn.
 - Garnett**
The Garnett Savings and Loan Association
 - Hays**
The Hays Building and Loan Assn.
 - Hutchinson**
Valley Federal Savings & Loan Association—1020 North Main
 - Leavenworth**
Leavenworth Mutual Savings and Loan Assn.
 - Liberal**
First Federal Savings and Loan Assn.
 - McPherson**
The Pioneer Savings and Loan Association
 - Newton**
First Federal Savings and Loan Assn.
 - Ottawa**
Ottawa Savings and Loan Assn.
 - Parsons**
First Federal Savings and Loan Assn.
 - Plainville**
Rooks County Savings Assn.
- Kansas
Savings & Loan
Associations**

4-H Club Answers Marine's Plea

The small Vietnamese boy clutched the puppet and smiled for the Marine who had come to take his picture.

Click.

Three young girls huddled together bashfully as they modeled new clothes for the American with the camera.

Click.

Photographs like these, and others like them, are mementos treasured by the Zenda Zoomers 4-H Club of Kingman County. To the Zenda Zoomers at least, the pictures represent long hours of gathering clothes, packing, and preparing them for shipment to the Hoa Khank Childrens Hospital at Da Nang.

Seventeen boxes of clothing answered a plea from a former Zenda Zoomer, Chris Harris, touched by the sight of children in rags. Harris is a Marine stationed at Da Nang.

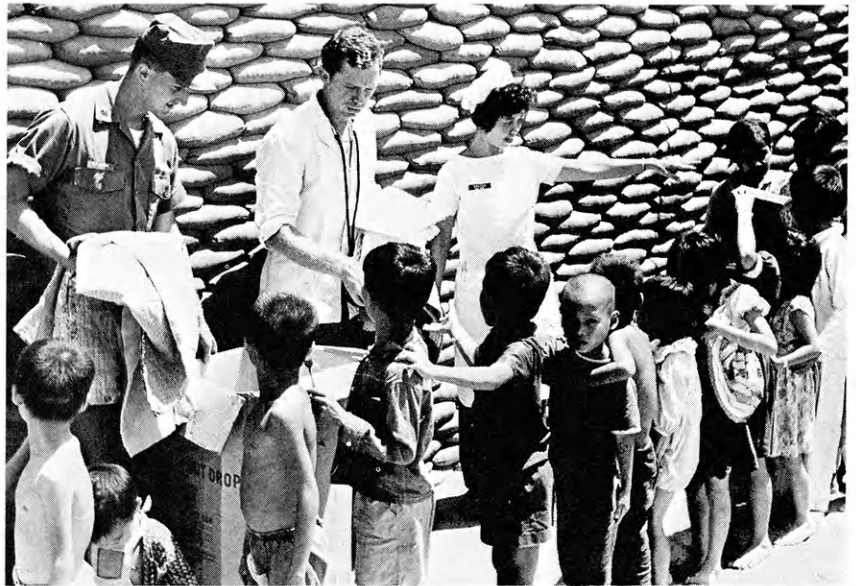
Harris wrote the club about the hundreds of orphans and displaced children who come to the



Happiness is. . .

hospital without adequate clothing. He promised personally to distribute the clothing. Zenda Zoomers went to work and with the help of the Kingman County 4-H Council, much of the clothing was collected at the Kingman County Fair.

Packed tightly, the wire-wrap-



MAKES GOOD A PROMISE—Chris Harris, left, is shown holding up his end of a bargain to the Zenda Zoomers 4-H Club in Kingman County. Harris, who is stationed in Vietnam with the Marine Corps, appealed to his former 4-H club for clothing to supply a Marine-operated hospital at Da Nang and said if the clothing were provided, he personally would distribute it. Here, young Vietnamese await their turn at the 376 pounds of clothing.

ped bundles weighed 376 pounds.

The Marine Amphibious Force mailed a certificate to the club, which reads in part: "Your contribution to the United States Marine Corps civic action program in the Republic of Vietnam is received with sincere appreciation as another step in the establishment of a nation dedicated to the cause of freedom".

Zenda Zoomers gained national attention from the Vietnamese clothing project and a second service project closer to home. Remodeling of a city-owned meeting room and the clothing drive caught the eye of Parents Magazine. The magazine named the Zenda Zoomers one of 71 youth clubs in the nation to receive a "Youth Group Achievement Award".

Lions Club members gave the Zoomers \$300 to turn an unused room into an attractive meeting place in what once was the community opera house. The result was a 20-by 40-foot facelifting.

Zenda Zoomers covered the walls with plasterboard and painted them light green, lowered the 12-foot ceiling to 8, installed fluorescent lights, added

two doorways and even moved a stairway.

Finishing touches were added by applying elbow grease to a floor mop!

Mich McMichael, Kingman mayor, said the carpentry and electrical work were the best he had seen, even among professionals.

Name New President Barton Junior Leaders

Sandra Griffith of the Fort Zarah 4-II Club has been elected president of the Barton County Junior Leaders. A member of the City Slickers, Rhonda Jordan, was named vice-president.

Other officers: Beverly Borron, Great Bend Lucky 4-II'ers, secretary; Judy Robinson, Hoisington Harmonizers, treasurer; Mark Yahne, Fort Zarah, reporter; and Donna Varsh, Fairview Scouts, and Roger VanSlike, Lucky 4-II'ers, recreational leaders.

Free!

4-H Woodworking Plans from YOUR LUMBER DEALER

**TWO NEW
PROJECT
IDEAS NOW
AVAILABLE**



B-B GUN RACK



REDWOOD PLANTER

*See these Lumbermen for your FREE Plans — they
are your best friend when you need good material*

Argonia
Mack-Welling Lumber Co.

Ashland
Don Spotts Lumber Company
Home Lumber and Supply Co.

Atchison
Hixon Lumber Company

Bern
Bern Lumber Company

Burden
Alexander Lumber Co.

Caney
O. E. Woods Lumber Co.

Clay Center
Fullingtons

Clyde
Geo. W. Hays & Son, Inc.

Coldwater
Home Lumber and Supply Co.

Ellinwood
Home Lumber & Supply Co.

Ellsworth
Ellsworth Lumber

Emporia
Home Lumber and Supply Co.

Eureka
A. C. Houston Lumber
Company

Fredonia
The Home Lumber & Supply
Company

Garden City
McAllister-Fitzgerald Lumber
Co.

Garnett
Star Grain and Lumber
Company

Goodland
Rasure Lumber Company
Foster Lumber Company

Greensburg
Home Lumber and Supply Co.

Hanston
Halling Hardware & Supply

Healy
Healy Co-op Elevator
Company

Hiawatha
Motsinger Lumber Co.

Hillsboro
Hillsboro Lumber Co.

Holton
Holton Lumber Company

Hugoton
The Star Lumber Company

Independence
Sandott Lumber, Inc.

Iola
Klein Lumber Company

Johnson
Seyb-Tucker Lumber and
Implement Company

Junction City
Builders Lumber Inc.

Kechi
Buck Alley Lumber

Kinsley
Kinsley Co-op Exchange
Lumber Yard

LaHarpe
Diebolt Lumber and Supply

Lakin
Tate and Company

Lancaster
T. E. Snowden Lumber
Company

Lansing
Lansing Lumber, Inc.

Larned
Clutter-Lindas Lumber Co.

Lawrence
Woods Lumber Company
Logan-Moore Lumber Co.
McConnell Lumber Company

Liberal
The Star Lumber Company

Longford
Longford Lumber & Grain
Company

Lovewell
Scoular-Bishop Grain Co.

Lyons
Antrim Lumber

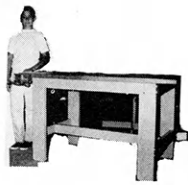
Macksville
Home Lumber and Supply Co.

Manhattan
Ramey Brothers

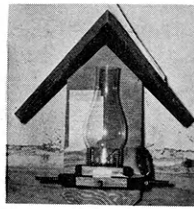
Closet Valet



Woodworking Bench



Bird Feeder

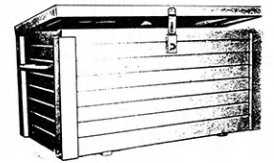


Utility Cabinet



THESE PLANS ARE AVAILABLE

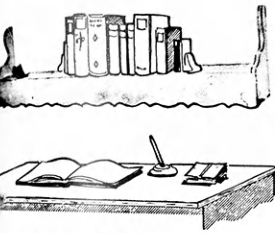
Mail Box	Comic Book Rack	Rabbit Carrier	Colonial Bookcase and Cabinet
Portable Towel Rack	Childs Step Stool & Chair	Camp Kitchen	Lawn Lounge
Lazy Susan	Collapsible Visual Aid Stand	Chick Feeder	Porch Swing
Folding Table	Cart with Removable Trays	Garden Trellis	Canoe Sailing Rig
Box Hockey	Back Yard Fence	Bicycle Rack	Tail Gate Kitchen
Picnic Bench	Magazine Rack	Hog House	Chest of Drawers
Holding Gate	Sheep Blocking Box	Open Top Sawhorse	Table Lamps
Sail Boat	Child's Desk	Insect Display Box	Desk
Baseball Rack	Gun Rack	Dairy Barn Desk	End Table
Dog House	Hobby Horse	Wishing Well Planter	Wren House
Tool Caddy		Coffee Table	Picnic Table & Benches
Sand Box		Salt and Pepper Set	



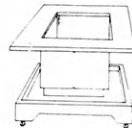
Show Box



Lawn Chair



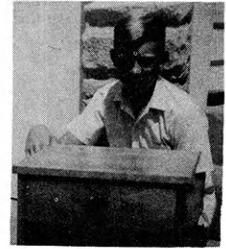
Bookshelf Light



Patio Planter



Tennis Padl-Pak



Night Table

Mankato Mankato Lumber Company	Oberlin Building Supply Headquarters	Plains Home Lumber and Supply Co.	Tribune Foster Lumber Company, Inc.
Marysville Howell Lumber Company	Offerle Offerle Co-op Lumber Co.	Pretty Prairie The George W. Ulch Lumber Company	Ulysses T. M. Deal Lumber Co.
Meade Home Lumber and Supply Co.	Olathe Cowley Lumber and Hardware Company Hodges Bros. Lumber Co.	Protection Home Lumber and Supply Co.	Wichita Lawrence Lumber Company Stockyards Cash and Carry Lumber Co. Alexander Lumber Company Inc. Star Lumber & Supply Co.
Minneapolis Dingee Lumber Co.	Osage City Martin Material Co., Inc.	St. Francis St. Francis Equity Exchange	Wilson Hoch Lumber Company
Moundridge Clayton Vogt Lumber Co. Inc.	Osborne Lewis A. Hardman Lumber Co.	Salina Esterday-Boster Lumber Co. Larson Building Center	Winfield A. B. Everly Lumber Co.
Newton Antrim Lumber Company	Oswego Home Lumber and Supply Co.	Scott City McAllister-Fitzgerald Lumber Co.	Zenda The George W. Ulch Lumber Company
Nickerson D. J. Fair Lumber Co., Inc.	Ottawa Hubbard Lumber Company, Inc.	Seneca Seneca Lumber Company	Missouri
Norton Norton Lumber Company	Paola Miami County Lumber Co.	Spearville Farmers Grain & Supply Lumber Dept.	Independence The George W. Ulch Lumber Company, 11432 Truman Road
Nortonville Alexander Lumber Company	Parsons O. E. Woods Lumber Co.	Stockton B & B Lumber & Supply	
	Pittsburg Broadway Lumber Co., Inc.	Syracuse Foster Lumber Co. Inc.	



STUFF, SEAL, SORT—A mountain of 12,000 envelopes was tackled by Leavenworth County's Happy Hollow 4-H'ers who stuffed, sealed, addressed, sorted and mailed pamphlets for the March of Dimes. The 32 club members and parents pitched in on the community project.

Have You Said *Thank You?*

To Your **4-H Journal Sponsor**

**THESE SPONSORS HAVE
GIVEN THEIR SUPPORT
FOR THE COMING YEAR**

- ALLEN**
Allen County State Bank, Iola
Humboldt National Bank, Humboldt
Iola State Bank, Iola
- CLAY**
Union State Bank, Clay Center
- COFFEY**
Peoples National Bank, Burlington
- COWLEY**
The First National Bank, Winfield
The Home National Bank of
Arkansas City, Arkansas City
- DICKINSON**
Farmers National Bank, Abilene
- FORD**
Bucklin State Bank, Bucklin
Farmers State Bank, Bucklin
Fidelity State Bank, Dodge City
First National Bank, Dodge City
First National Bank, Spearville
Ford County State Bank, Spearville
- GREELEY**
First National Bank, Tribune
- JACKSON**
Affiliated Leasing, Holton
- JEFFERSON**
N. R. Hamm Quarry, Inc., Perry
- MITCHELL**
Farmers State Bank, Asherville
Farmers State Bank, Hunter
Farmers & Merchants State Bank,
Cawker City
First National Bank, Beloit
Simpson State Bank, Simpson
The Guaranty State Bank, Beloit
Tipton State Bank, Tipton
Traders State Bank, Glen Elder
- NEOSHO**
Neosho County 4-H Boosters,
St. Paul
- NESS**
Citizens State Bank, Utica
First State Bank, Ness City
First State Bank, Ransom
Bazine State Bank, Bazine
- REPUBLIC**
Tibbitts Brothers Furniture &
Funeral Home, Belleville
- RILEY**
Citizens State Bank, Manhattan
Leonardville State Bank,
Leonardville
Riley State Bank, Riley
- RUSH**
Farmers & Merchants State Bank,
LaCrosse
- SHERIDAN**
Farmers State Bank, Selden
First National Bank, Hoxie
Hoxie State Bank, Hoxie
Mickey's Hardware, Hoxie
- STAFFORD**
Farmers & Merchants State Bank,
Macksville
Farmers National Bank, Stafford
First National Bank, St. John
Hudson State Bank, Hudson
Macksville State Bank, Macksville
St. John National Bank, St. John
- WYANDOTTE**
Turner State Bank, Turner

Leavenworth 4-H'ers stuff, seal, stamp and sort 12,000 envelopes

Cramped fingers and parched mouths were the order of the day recently for 32 Leavenworth 4-H members who stuffed, sealed, addressed, sorted and mailed 12,000 envelopes for the March of Dimes.

This is the third year Leavenworth 4-H'ers have undertaken the March of Dimes project for the city clerk's office. Club members find the task time consuming, but say they wouldn't trade projects with anyone. Besides, even parents get into the act of envelope stuffing!

Filling Christmas bags for U. S. servicemen in Vietnam was a holiday project of the Happy Hollow Club. "Baggies" were stuffed with stationery,

envelopes, pens, soap dish, toothbrush container, canned nuts, washcloth, soap, fingernail clippers and taken to the Red Cross office who mailed them overseas.

A grocery basket for a needy family is a traditional holiday project of Happy Hollow.

Checking road signs is another task undertaken by Happy Hollow members. Several years ago, the club made 18 road signs naming roads in the community, attached them to steel posts and installed them to aid persons not familiar with the area. Residents also found it speeded calls for ambulance, fire and sheriff's officers.



**ALLIANCE INSURANCE
COMPANIES**
McPherson, Kansas
FIRE — CASUALTY — LIFE
Serving Kansas Since 1888

Collegiates to National 4-H Meet

Four college freshmen will represent Kansas this month at the National 4-H Conference in Washington, D.C.

State delegates to the six-day meeting, April 20 to 25, are Cathy Millsap, Bonner Springs; Judy Friederich, Green; Kent Hamilton, Leoti; and Roger H. Van Hoozer, Girard.

Cathy is a freshman at Kansas State University and a member of the Leavenworth County Glenwood 4-H Club. She is the daughter of Mr. and Mrs. William Millsap.

Judy, a student at Fort Hays Kansas State College, is a member of the Clay County Hayes Boosters 4-H Club and the daughter of Mr. and Mrs. Armin Friederich.

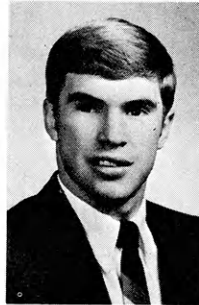
Sterling is the college home of Kent. He is a member of the Wichita County Busy Beavers 4-H Club and the son of Mr. and Mrs. Roger D. Hamilton.

Roger, son of Mr. and Mrs. Howard A. Van Hoozer, calls Washburn University his home away from home. He is a member of the Farlington Best-Yet 4-H Club in Crawford County.

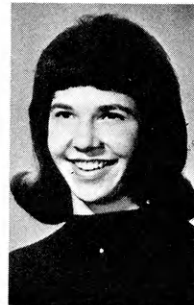
Cathy "majored" in home economics projects with public speaking and junior leadership projects also having an important part in her 4-H work. She attended the 1967 4-H Citizenship Short Course in Washington, D.C., and was a 4-H Round-Up delegate. She describes 4-H as her "greatest asset" and values "the knowledge and experiences plus the high ideals, citizenship, and friendships in 4-H."

Cathy served as junior leader in the knitting project, talked on the 4-H program at civic clubs and community meetings, and assisted with fairs and judging schools.

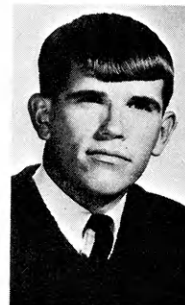
"Helping others as you learn,"



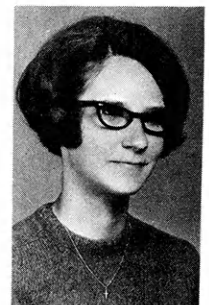
**Roger
Van Hoozer**



**Cathy
Millsap**



**Kent
Hamilton**



**Judy
Friederich**

is the way Judy describes her junior leadership work. She also attended the National 4-H Citizenship Short Course. Judy has been president of her club and gave 12 talks on citizenship including presentations to non-4-H groups.

Foods and nutrition, clothing, beef, and citizenship are the major projects for this National 4-H Conference delegate.

Kent lists junior leadership, personal development, swine and beef as his projects. He is using profits from livestock projects to pay college expenses. Kent has participated in Camp Minwanca, Co-op Camp, and State

4-H Junior Leadership Conference in addition to Boy's State and Kansas FFA events.

Roger has emphasized the dog project with beef, public speaking, recreation, safety, horse, health, personal development, and reading as other projects. Roger raises Greyhounds and follows their racing records with interest.

Junior leadership is described as "most rewarding and successful" by this 4-H'er who has served as club president and president of the county junior leader group. He was a counselor at the 1968 State 4-H Junior Leadership Conference.

Shouting Taboo at Auction

Wild hand waving and shouted bids were taboo at the Leavenworth County "silent auction". Bidding on calves for 4-H beef projects was done without a sound.

Price sheets were placed on the pen of each animal. Steers were sold by the pound and heifers by the head, with the minimum bid jump set at 25 cents. Owners checked the lowest bid they would accept.

Prospective buyers had two hours to survey the animals and place bids. 4-H'ers milled about the pens and kept a close eye on their bid to make sure no one topped it. At the end of the two hours, the person with the highest bid was the new owner.

The Leavenworth County Beef Improvement Association originated the idea of the silent auction to relieve some of the pressures usually present at buying time.

Here are your:

1969 County Farm Bureau Safety Chairmen

Allen Mrs. Harold McIntyre Route 2, Iola	Doniphan Mrs. George Gilmore Highland	Hodgeman Ralph Ewy Hanston	Morris Mrs. Harold Holm Dwight	Scott Henry Mooney 1112 Myrtle, Scott City
Anderson Mrs. Kenneth Alexander Greely	Douglas Mrs. Russel Houk Route 1, Lawrence	Jackson Mrs. Mabel Harris Soldier	Morton Wylie Gore Elkhart	Sedgwick Mrs. Bob Hill R.R. 1, Burrton
Atchison Mrs. Fred Hubbard Muscotah	Edwards Mrs. Edgar Crockett Route 2, Box 103, Kinsley	Jefferson Mrs. Roy Ottensmeier Oskaloosa	Nemaha Raymond Dobbins Goff	Seward Betty Heitschmidt Route 1, Liberal
Barber Mrs. Edwin Lenkner Coats	Elk Wayne Keast R.F.D., Howard	Jewell Mrs. Nelson Keeler Formosa	Neosho Mrs. Frank Stich Route 4, Chanute	Shawnee Mrs. Edwin Niccum 5031 Indian Creek Topeka
Barton Mrs. Darrell Keener Olmitz	Ellis Joseph W. Herman Hillside Drive, Hays	Johnson Merle Voigts Route 1, Box 43, Gardner	Ness Mrs. Francis Thornburg Utica	Sheridan George Lambert 1541 Noble, Hoxie
Bourbon Mrs. Walter Collins Route 3, Fort Scott	Ellsworth Mrs. Alex J. Vodraska, Sr. R.F.D. 1, Box 98, Wilson	Kearny Mrs. Teresa Madie Lakin	Norton Mrs. Nellie R. Lawson 411 East Wilberforce Norton	Sherman Ruth Howard 717 Cherry, Goodland
Brown Mrs. Leon Wenger Powhattan	Finney Mrs. Cecil Snodgrass South Star Route Garden City	Kingman Mrs. Ruby Stucky Murdock Route, Murdock	Osage Mrs. Betty Bremer Lyndon	Smith Mrs. Virginia Dean Lebanon
Butler Alton R. Macy Route 1, Augusta	Ford Vernon Agur North Star Route Dodge City	Kiowa Beverly Ralstin R.R., Mullinville	Osborne Mrs. Homer L. Grimes R.R. 1, Alton	Stafford Mrs. Russell Dunn Route 2, St. John
Chase H. Nelson Simmons R.R. 1, Strong City	Franklin Mrs. Raymond Wagner Richmond	Labette Mrs. Jimmie Johnston Route 1, Edna	Ottawa Paul Shannon Miltonvale	Stanton Clarence Morris, Jr. Johnston
Chautauqua Mrs. Dola Aiken Havana	Geary Mrs. Betty Luttman Route 1, Wakefield	Lane Beverly Moomaw Dighton	Pawnee Robert Salmans Belpre	Stevens Ralph Cutter R.R. 1, Box 110 Hugoton
Cherokee Mrs. Ralph O'Malley Route 1, Scammon	Gove Mr. & Mrs. Lloyd Webster Route 1, Quinter	Leavenworth Mrs. Eugene Ryan Route 3, Leavenworth	Phillips Mrs. William Rupke Prairie View	Sumner Mrs. Jack Ryman Route 3, South Haven
Cheyenne Ward Harvey Haigler, Nebraska	Graham Mary Zohner Penokee	Lincoln Mrs. Victor Suelter R.F.D. 2, Lincoln	Pottawatomie Thomas Ebert St. George	Thomas Ronald R. Higerd Gem
Clark M. & Mrs. Raymond Lunsford R.R., Ashland	Grant Mrs. Cora Drake 918 Baughman, Ulysses	Linn Mrs. Worland Cox Blue Mound	Pratt Mrs. John Brant Sawyer	Trego Mrs. John March WaKecney
Clay Floyd Parry Morganville	Gray Mrs. Barbara McFarland Cimarron	Logan Mrs. Delbert Rose Russell Springs	Rawlins Mrs. Frances Downing 612 South Fourth, Atwood	Wabunsee Mrs. Harold Rolf Alta Vista
Cloud Mrs. Orville Doyen Rice	Greeley Mrs. Bill Tuttle Tribune	Lyon Mrs. Russell Jacob Route 1, Emporia	Reno William Culver Alden	Wallace Mrs. Ray C. Clark R.R. 1, Wallace
Coffey Mrs. Mary Skillman Route 1, Waverly	Greenwood Mrs. John Huntington Route 1, Eureka	Marion Mrs. Warren Fike Ramona	Republic Mrs. Henry Baxa Agenda	Washington Mrs. Walter Schnelle Mahaska
Comanche Robert E. Carrier Wilmore	Hamilton Jacob O. Johnson Syracuse	Marshall Mrs. Edwin Stock Axtell	Rice Dwight Alexander Route 1, Geneseo	Wichita Mrs. A. E. Anderson Leoti
Cowley Mrs. Dewitt Ahlerich Route 1, Winfield	Harper Mrs. Erwin Davis Route 2, Harper	Meade J. J. Jenkinson, Jr. Montezuma	Riley Ralph Larson R.R. 2, Riley	Wilson Kenneth Lambert Route 4, Fredonia
Crawford Mrs. Russell Murdock Route 1, Girard	Harvey Robert Siemens Route 1, Walton	Miami Mrs. David Wilson R.R. 1, Box 108, Osawatomic	Rooks Robert Ballard Stockton	Woodson Mrs. Peggy Ferree Route 3, Yates Center
Decatur Mrs. Wesley Gaumer Oberlin	Haskell Carolyn Bird R.F.D., Sublette	Mitchell Mrs. John Prochaska Simpson	Rush Mrs. Raymond Weltmer McCracken	Wyandotte Mrs. Don Miller 2300 North 99th Kansas City
Dickinson Mrs. James Gaskill Route 4, Abilene		Montgomery Mrs. Denzell Jones Route 2, Box 94 Independence	Russell Mrs. William E. Bosch R.R. 1, Gorham	

Contact Your County Safety
Chairman for Information and
Demonstration.

Kansas Farm Bureau Safety Department

Rock Springs

(Continued from page 4)

Church, and an active member and officer of the Women's Society of Christian Service, Mrs. Gugler finds her Rock Springs work an opportunity to assist in the influence of the young people of Kansas.

Don Gugler's many talents have provided numerous contributions to the program at Rock Springs Ranch. In the summer months, he is in charge of the handicraft program and in the winter months Gugler is responsible for the condition of the cottages for the many guests of the center.

Much time could be taken in

the explanation of Gugler's varied interests, and his willingness to share these with the Rock Springs visitors, but he is no doubt most proud of the many friends he has developed through his experiences at Rock Springs. He finds enjoyment in presenting these friends and his family with the results of his talents, usually with some item both decorative and useful. Gugler suffers the frustration of finding too little time in his schedule to spend on his woodworking, leathercraft, fly tying, rock work and other hobbies.

Perhaps Gugler's favorite activity, though, is to take Rock

Sunflower 4-H Points To Kansas for Fishing

Did you know Kansas is a top fishing state?

Neither did the Ellis Sunflowers 4-H Club until they studied fishing for their first-year conservation project.

The newly-organized Ellis Sunflowers set out to accomplish three things: to acquaint members, parents and leaders with the value of fishing as a recreational sport; to teach what fishing is all about; and to introduce Kansas fishing possibilities to club members and the public.

Members began their fishing study through pamphlets and films, then had a lesson in casting and finally graduated to the ol' fishing hole itself and caught some winners!

Surprised Sponsors

Homemade cookies were a pleasant surprise recently for Mr. and Mrs. Milton Gugler from the Dickinson County Willowdale 4-H Club.

Gugler is president of the Farmers National Bank of Abilene, sponsor of Dickinson County for the Kansas 4-H Journal.



Evelyn Gugler

Springs visitors on a tour of the blue heron rookery near the campsite. The blue heron nesting place is acclaimed as one of few in the Midwest. Photographers and naturalists come from several states to observe the rookery, and Gugler is the "local expert."

The Guglers have three children: Dean, 25-years-old and a graduate of Bethel College; Bruce, 19, serving in the U. S. Navy; and Ardis, 17, a senior at Chapman High School. All three were members of the Carry Creek Rustlers 4-H Club.

The Guglers truly are a 4-H family.



4-H'ers Update Farm Directory

Everything's up to date in Kearny County—even the farm directory!

Hi-Landers 4-H Club worked long hours to update the farm directory to include 20 families. Boys in the club are credited with doing most of the work, buying and cutting wood, sanding, varnishing, and erecting the sign near the community building.

This spring, Hi-Landers plan to plant trees around the community building. Evergreens and Chinese elm have been chosen because of their beauty and also their usefulness as a wind-break.

AIRLINE

CAREER TRAINING IN

- Passenger Service
- Communications
- Reservations
- Ticketing
- Travel Agent, etc.

Airline employees enjoy air travel passes to exciting cities, meet interesting personalities, lead active lives, get good pay with advancement opportunities, security...many fringe benefits!



Start your training at home NOW without interfering with your present occupation, or take our short full-time resident course. Schools in HARTFORD, KANSAS CITY, and LOS ANGELES; plus Canadian office in WINDSOR. Low tuition. Pay as you learn.

If you are high school graduate (or senior), 17 to 34, mail coupon for colorful FREE booklet. NO obligation.

FREE Clip and mail today

To: Dept KFH-49
Airlines Training Division, Atlantic School
2020 Grand Kansas City, Mo. 64108 Founded 1949
 If under 17, check here for additional guidance information.

(PRINT)
Name _____
Address _____
City _____ State _____
Phone _____ Age _____ County _____

Accredited Member NHSC and NATTS

IDEAS * & News *

Here are some ideas for roll call: your favorite food, what you plan for 4-H days, your favorite joke, a fact about some historical figure, what animal you would like to be if you were not a human, a winter friend, your favorite chewing gum, the number of years you've been in 4-H, a country you would like to tour and why, a place you've visited in Kansas, naming a newly-elected official in your county.

A Bluestem 4-H'er in Butler County, Greg Fox, has been named a 1969 Scholastic Art Award winner. He was one of three ninth graders to receive the honor from the Kansas Cultural Arts Commission and Scholastic Magazine. Greg's Winning entry was a hooked wall hanging mounted on walnut. Hats off to Greg!

Willing Workers of Saline County provided Valentine cheer for women of the Ashlawn Rest Home by baking and decorating heart-shaped cookies and delivering them to the residents.

Two new members have been initiated into the Walton Willing Workers in Harvey County. They're Debbie Klassen and Janet Klingenberg!

Newton City Slickers, also of Harvey County, gained two members recently. Kurt Lang and James Arellano joined the 4-H Club Feb. 21.

Harvey County added still two more members at a recent meeting of the Kellas 4-H Club. They're Karen Regier and Kathryn Patterson!

The Bavaria 4-H'ers of Saline County will be host this month to Parents' Night and a potluck supper. The annual meeting is set April 14 at the 4-H Building.

50th. Anniversary



Farm Bureau is the largest voluntary farm organization organized for legislative representation. There are 1,796,641 member families in the United States and 83,042 member families in Kansas.

Farm Bureau is political, but not partisan. The issue, not the politician or party, is the important factor. Farm Bureau leaders and officials are men and women of both political parties.

Farm Bureau policies originate at the grass roots. Elected leaders are farmers. Active farmers control Farm Bureau because voting membership is limited to those whose principal income is from farming.

Farm Bureau is a general farm organization working for the best interests of all farmers and producers of all agricultural commodities.

Farm Bureau owes allegiance to no one but its dues-paying members because membership dues are the only source of finances.

Farm Bureau is a strong, respected influence in the program to preserve our freedoms, the private enterprise system and the American Way of Life.

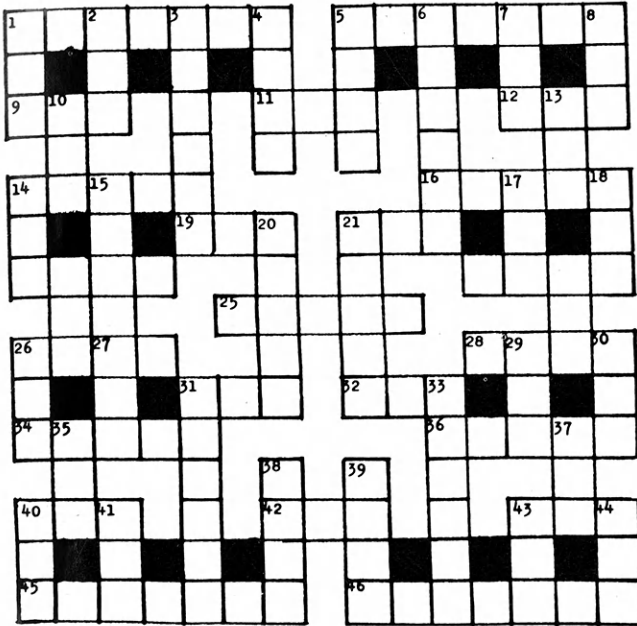
Kansas Farm Bureau

105 County Farm Bureaus

Working Together

Family Fun Page

Fun Page Answers
On Page 6



ACROSS

1. Bill Cody
5. & Wilbur Wright
9. Heavy weight
11. A time
12. What dog does with tail when happy
14. Folded over part in a skirt
16. Ahead of time
19. To look at
21. Extremely warm
22. Traps
24. Costs
25. Country homes and lands
26. The finest
28. At a distance
31. Bring legal action
32. Strong bird in Arabian stories
34. Begin
36. Fits into a bow
40. Holds back a lake
42. Night before holiday
43. Noah's boat
45. U. S. President James
46. Put a point on, as a pencil

DOWN

1. Small part
2. Used for cooling
3. Representatives
4. Where cakes are baked
5. Spoken
6. Light lavender color
7. Legal
8. Where chicken comes from
10. Liquid grease
13. Everything
14. Sharp-pointed fastener
15. Take a meal
17. Fish eggs
18. Affirmative answer
20. To rub out
21. What all baseball hitters want
23. Lamb's mother
26. Public transportation
27. Large body of water
29. A tree
30. Uncooked
31. Steps
33. Country on our northern border
35. A drink
37. Used to paddle a boat
38. Vegetable (green, navy)
39. Honey insects
40. Not bright
41. Wet dirt
43. Swiss mountain
44. Relative

Classified Ads

Classified Rates — 12c per word, 5% discount for 6 annual insertions, 10% discount for 12 annual insertions. Payment in advance.

FARROWING STALLS—Complete \$26.75. Dealerships available. Free literature. **DOLLY ENTERPRISES**, 101 Main, Colchester, Illinois 62326.

CALF CREEP FEEDERS—30 Bu. Capacity \$92.50. Dealerships available. Free literature. **DOLLY ENTERPRISES**, 101 Main, Colchester, Illinois 62326.

WATERMELON SEED: Certified and Non-Certified of highest quality. Free Catalog. Willhite Melon Seed Farms. Poolville, Texas 76076 or Weatherford, Texas 76086

Yearling Appaloosa Stud Colt, Eligible to register, top quality. Clarida Farm, Quinter, Kansas 67752.

LOANS ALL TYPES

\$10,000 to \$100,000,000
Anywhere in USA and Canada
FISHER Real Estate-Mortgage Corp.
Mortgage Brokers, Joy, Illn. 61260

PICK-UP TRUCK STOCK RACKS — All steel construction \$109.50. Dealerships available. Free literature. **DOLLY ENTERPRISES**, 101 Main, Colchester, Ill. 62326

600 ASSORTED SWEET ONION plants with free planting guide, \$3.00 postpaid. Topco, "Home of the Sweet Onion," Farmersville, Texas 75031

PILLOWSLIP, Electrostatically correct, preserves hair-do. Best quality Satin, \$2.50 ppd. State color—Pink, Blue, Yellow. Marysville Mfg. & Dist., Marysville, Mo.

The Journal Needs More Jokes for the Family Fun Page. Please Send Your Best Joke to:

Kansas 4-H Journal
Umberger Hall, KSU
Manhattan, Kans. 66502

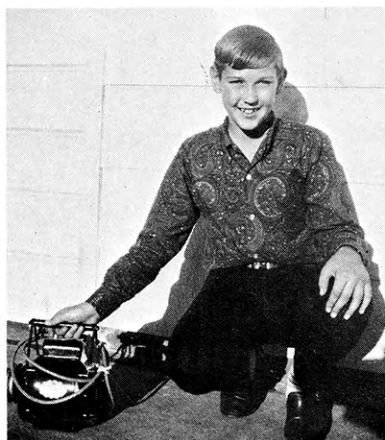
"B TO K" WORDS

Fill in the blank spaces to complete the words.

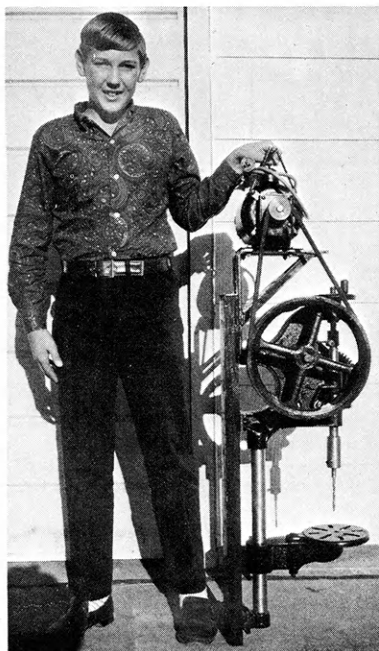
1. B _____ K Color of night
2. B _____ K Dreary
3. B _____ K Empty space
4. B _____ K Open & shut eyes quickly
5. B _____ K Block for building
6. B _____ K Stream
7. B _____ K Lively
8. B _____ K Reading material
9. B _____ K Cowboy's bed
10. B _____ K Where money is kept

Blue ribbons put Barber County in spotlight

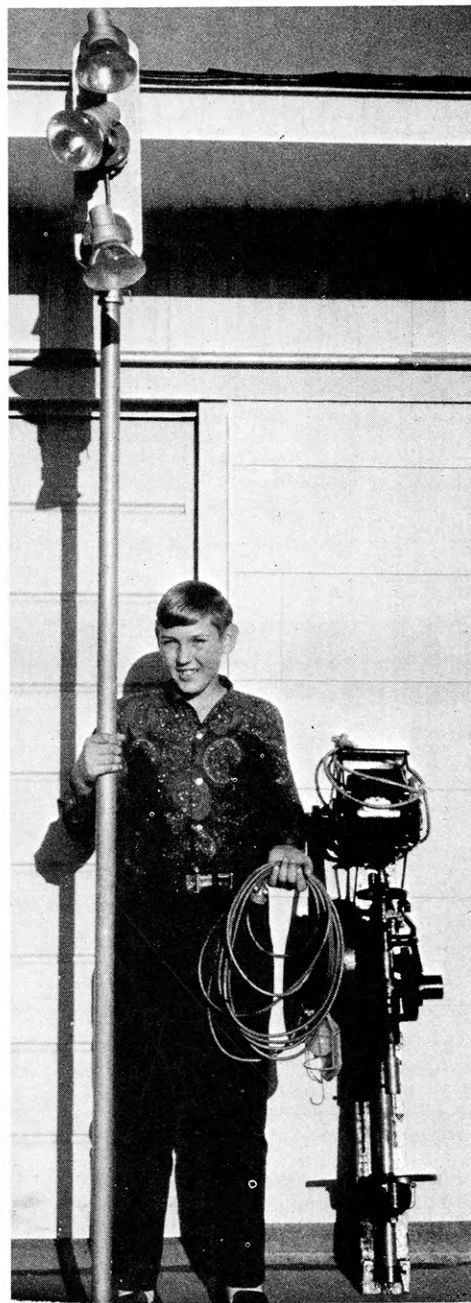
4-H electric projects are useful
— and they're fun too!



FAIR ENTRY—Calvin Boyd of Barber County has taken electric projects three years in his 4-H club. Here he is shown with an electric motor he made and showed at the Barber County Fair.



BLUE RIBBON—One of Calvin's pet projects was this electric drill he assembled. One of the reasons the drill is special to Calvin is that it was a blue-ribbon winner at the state fair in 1967!



THREE PROJECTS—Here Calvin shows off three electric projects he has made in 4-H. The tall outdoor light was a blue-ribbon winner at the state fair, like the electric drill leaning against the wall. He holds a drop cord. Calvin also has helped to wire a building.



Watch This Page For Ideas On Farm And Home Electric Projects
ELECTRIC LIGHT and POWER COMPANIES in KANSAS

The Kansas Power and Light Company
Kansas City Power & Light Company
Western Power Division of Central

Central Kansas Power Company
Kansas Gas and Electric Company
Telephone & Utilities Corporation