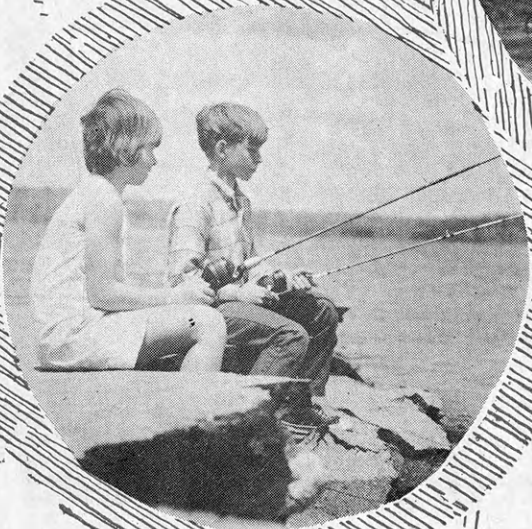
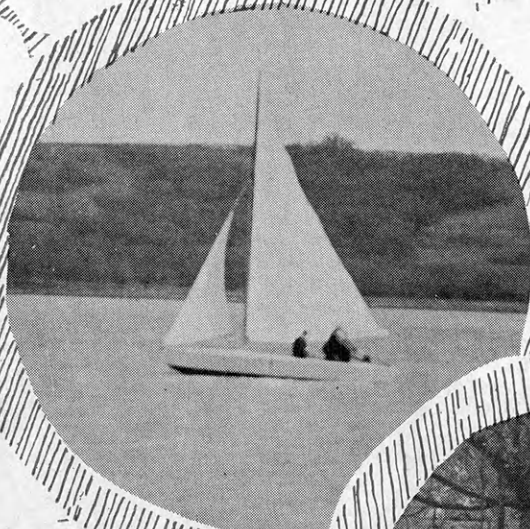


533
K3
K3

Kansas 4-H

Journal

June 1968



REC'D
MAY 0 1968
KANSAS STATE UNIVERSITY

Featured in this issue:

Boating

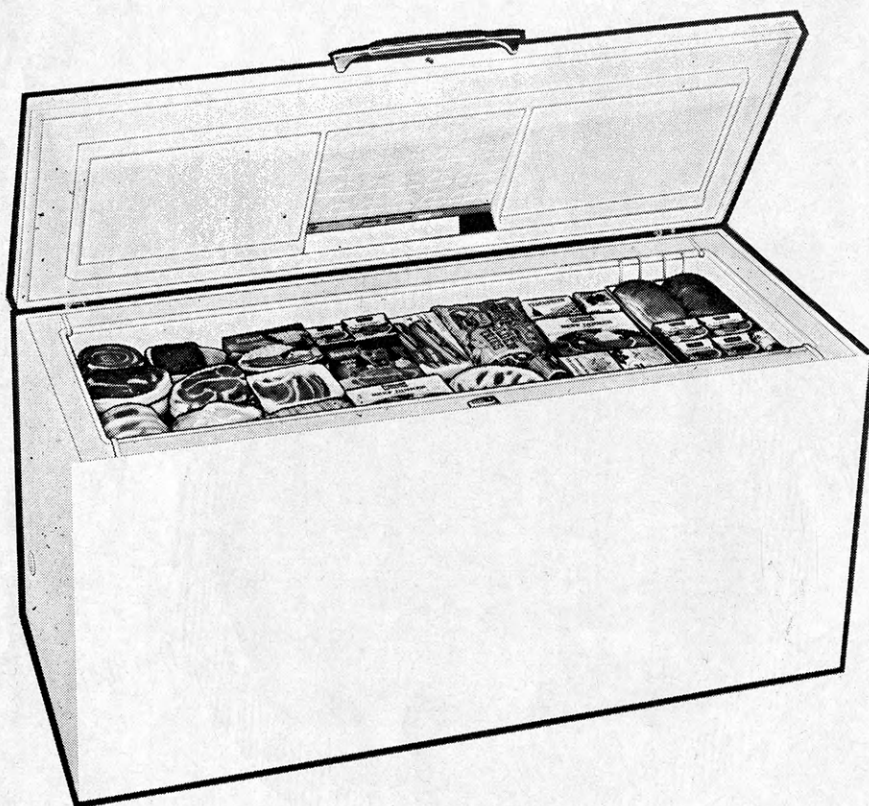
Camping

Fishing

**Kansas 4-H Foundation
Honor Roll**

805 lb. capacity CO-OP CHEST FREEZER

THERE'S ROOM GALORE IN 23 CU. FT. to freeze 'n store a big supply of perishables. Priced to fit a limited budget. Made to serve a growing family. For your convenience, one basket, one divider, magnetic door gasket, lock and key, defrost drain, flex-seal lid, interior light and polyurethane insulation are standard features. Hurry in and see this CO-OP Chest Freezer. Model PH238. It's an unusual bargain.



\$209⁹⁵*
23 cu. ft.

ASK ABOUT THE OTHER FINE CO-OP FREEZER VALUES.

Models available in capacities from 541 pounds up to 978 pounds. Priced as low as \$199.95.*

*At participating Co-ops. Suggested retail prices do not include delivery, installation or local taxes.



... make it your brand

FARMLAND INDUSTRIES
KANSAS CITY, MISSOURI

IN THIS ISSUE

A Giant "Outdoor" Step
By: Thayne Smith 4

Towing A Trailer? Here's How 5

4-H Offers Opportunity
for Camping 7
By: Dick Tomkinson

Camping Out Tips 7

Map of State Park Recreational
Areas and Facilities 8

Kansas 4-H Foundation
Honor Roll 9-16

Small Craft Safety Tips 17

Camp Out Cooking 19

Ideas and News 22

Published Monthly By
KANSAS 4-H FOUNDATION, INC.

J. Harold Johnson.....Executive Director
Merle Eyestone.....Associate Director
Erna Bly.....Sec. Asst. Treasurer

BOARD OF TRUSTEES

Governor Robert Docking
Honorary Chairman

W. Dale Critser, Chrm.....Wichita
Dolph Simons, Vice Chrm.....Lawrence
Balfour S. Jeffrey, Treas.....Topeka
Glenn M. Busset.....Manhattan
*Harry Darby.....Kansas City
Mrs. Olive Garvey.....Wichita
Clifford Hope.....Garden City
†A. D. Jellison.....Junction City
Harold E. Jones.....Manhattan
J. J. Moxley.....Council Grove
George B. Powers.....Wichita
*Roger E. Regnier.....Manhattan
N. T. Veatch.....Kansas City
E. B. Shawver.....Wichita
†Fred D. Wilson.....Andover
*Advisory Member
†Trustee Emeritus

Editorial and Business Office

Phone 913-532-6621

Manhattan, Kansas 66502

Second Class Postage Paid at Lawrence,
Kansas. Return Form 3579 to Kansas 4-H
Journal, Manhattan, Kansas 66502.

Advertising rates and circulation data
on request.

Group subscriptions \$1.00 per year.
Individual subscriptions \$1.50 per year.
Single copy 15 cents.

Use of the 4-H name and symbol ap-
proved by the Secretary of Agriculture of
the United States, January 23, 1951,
under the provisions of the law as
re-enacted by Sec. 707 of the Act of June
25, 1948 Public Law No. 772, 80th Con-
gress (10 USC 797).

A Time To Honor -- And To Think of The Future

It is with sincere gratitude and a deep sense of pride that we honor "Friends of 4-H" in this issue of the Kansas 4-H Journal. The Honor Roll includes the names of all who have given of their resources that Kansas 4-H youth may be better prepared to meet life's challenges. We salute each of you, and say "thanks, for 4-H"!

The many letters received from 4-H'ers, their parents, and local leaders testify to the value of donor support. Whether an educational trip, scholarship, a college home at Clovia, expense-paid leader training conference, a camping experience at Rock Springs Ranch, or inspiration gained from the Kansas 4-H Journal, the efforts of contributors are appreciated.

Serving 4-H

Unselfishly serving 4-H, in addition to the thousands of local volunteer club leaders, are the dedicated Foundation county committees and district chairmen. Some 400 strong, they are saying to all Kansans, "Here is the way to lay your hand on the shoulder of youth—your contribution to the Foundation helps boys and girls become more effective citizens—truly an investment in our greatest resource."

Young people today stand tall; they have unlimited opportunities which will result in tremendous accomplishments in the years ahead. This is possible because of all that has gone before—the pioneers in their struggles to establish freedom, followed by generations who toiled to develop the God-given resources of this great land. It can truly be said that today's youth stand on the shoulders of past generations—a firm foundation on which to build for the future.

A Time to Say "Thanks"

The week of June 3-8 has been set aside as "Kansas 4-H Appreciation Week." This is a special opportunity for 4-H'ers to say "thanks" to all who support their work—parents, leaders, Extension staff, public officials, and all donors. Foundation county committees remind us that it is also a time for friends of 4-H to continue their interest and to express gratitude for the good being accomplished through the 4-H program.

And a Challenge to 4-H

Many of you who are active in 4-H are donors too. But why not a contribution from every 4-H Club in Kansas? Your joint efforts could perform wonders for the state-wide 4-H program. Let's set a goal for 1968—a contribution to the Foundation from every club in the state!

See Kansas

Since man first earned a day of leisure, he has been curious about what existed around the bend in the road.

Never before has a nation had the leisure time, affluence and mobility that are taken for granted in this nation today. As a result, tens of millions of people each year head out along the open road on weekends and summer holidays to explore, to rest or just to get away from it all.

Kansas offers a multitude of things to see and do on a summer vacation. In every area of the state there are places to visit which have historical background or are of modern economic significance. It is good to study and learn about your state. It is even better to travel through it—to see and smell it and taste it—you will experience the thrill of unsurpassed scenery.

If you're planning a short vacation (or even a lengthy one), why not consider Kansas as the place to start? See page 8 for a map of the State Park Recreational Areas and Facilities.

A GIANT "OUTDOOR" STEP



By **Thayne Smith**

It was a nippy October morning in 1963, and three men were leaving the outlet at Pomona Reservoir near Topeka, heading for home after a successful hour of fishing.

One of my companions turned to me and stated, in all seriousness: "I've taken my last fishing trip to Minnesota. What we've done this morning proves that Kansas has come of age in outdoor recreation."

I've often recalled his remarks since that time, because I've found them most adequate and truthful during the past eight years.

On that particular morning, the three of us had caught a limit of 15 walleye—a fish considered native to cold, northern waters—in a matter of a few minutes. They were nice, round fish—healthy in every respect and their beauty in the early-morning Autumn sun would have gladdened the heart of any sportsman.

It was about 1960 that the walleye came into prominence in Kansas, after being successfully stocked at Fall River and Kanopolis Reservoirs a few years previously. At that time, too, more big lakes were being added to the handful that Kansas possessed. More small, popular state lakes were being constructed.

The fruits of another state agency, the Kansas Park and Resources Authority, were blossoming, too — and the Sunflower State for the first time in history was starting to appeal to a large number of campers.

With the big reservoirs, of course, came boats, boats and more boats for the simple fact that there was plenty of space (and water) to use them, and fish to catch from them, and quiet coves in which to sail and ski.

This popularity actually started in about 1950, with the completion of Kanopolis. Other lakes, like Fall River, Cedar Bluff, Toronto, Tuttle Creek and others followed. It was not until about 1960, however, that they became numerous enough that they actually "dotted" the map of Kansas. The Park Authority, in charge of constructing and developing Kansas' system of parks at Federal reservoirs, was not a reality until 1957, and it was 1960 before many of the excellent camping areas, shower-latrines buildings, modern toilets and picnic "toadstools," swimming beaches and bath houses which we now enjoy, were completed.

Today, these facilities and many more are to be found at state parks operated by the KPA at 14 reservoirs and three former state lakes.

Today, Kansas boasts 17 completed reservoirs which you can place in the "big lake" category. There are three others—Glen Elder, Perry and Melvern—under construction.

In addition, Kansas has more than 40 state lakes, operated by the Kansas Forestry, Fish and Game Commission, which provide excellent fishing, basic camping facilities, and other outdoor recreation facilities.

These water areas have also provided another popular form of recreation for thousands of persons, although it is often overlooked by those who chronicle such things. That is public hunting. Many of the small state lakes are opened to public hunting each Fall. All the major reservoirs boast vast public hunting areas, generally located on the upper ends of the impoundments. A large percentage of these public lands are also administered by the Fish and Game Commission, and undergo constant development and improvement to provide abundant waterfowl and upland game, species for the Kansas hunter. As a result, today there are more than 250,000 acres of public hunting lands in the state.

In recent years, Kansas achievements in the outdoor recreation field—and the facilities which it has provided the "outdoor" public—would be hard for any other state to equal.

The strides have been great, even while the steps taken have been orderly and well-planned, as they should be, making sure that the public gets the best facilities for its recreation dollar.

There are many today like my fishing friend that morning at Pomona Lake five years ago, who have found — sometimes much to their surprise — that Kansas has excellent fishing, or hunting, boating or camping to offer.

It's even a greater marvel when you realize that much of this has been accomplished in just a few short years, and that we're just getting started.

My friend was right. Kansas has come of age in outdoor recreation.

THE AUTHOR

Thayne Smith is the chief of the Information-Education division of the Kansas Fish and Game Commission at Pratt, Kansas; is a native Kansan and has spent most of his life in the state. For several years he has edited a column in 175 Kansas newspapers called "The Kansas Sportsman." Prior to his present position, Mr. Smith was a free-lance outdoor writer and photographer and was also the editor of the Kansas "Outdoors" magazine.



Towing A Trailer? Here's How

America's highways are dotted on weekends with the nations' trailer-boat, and camper fleet—all on wheels. People are enjoying America like never before. There are an estimated 11½ million recreational vehicles on the road today, and there may well be 5 million in another seven years. About 65 per cent of these are trailers towed by passenger cars or light trucks. The balance are truck mounted campers and the self-powered motor homes.

Let's take a look at what's required to properly tow a trailer. These guides are for light trailers, primarily folding-type campers and boat trailers.

1. They should never be overloaded. Gross permissible weight, usually indicated on a decal or plate, should not be exceeded. And gross weight means exactly that; the weight of everything, including not only the boat and motor, but also all the gear (fuel, ice, fishing tackle and assorted oddments stowed aboard).

2. The towing vehicle should have a pair of mirrors. A good, frame-mounted hitch should be used. Bumper hitches are not recommended. It should have a heavy duty turn signal flasher to maintain a constant flashing rate, with or without the trailer.

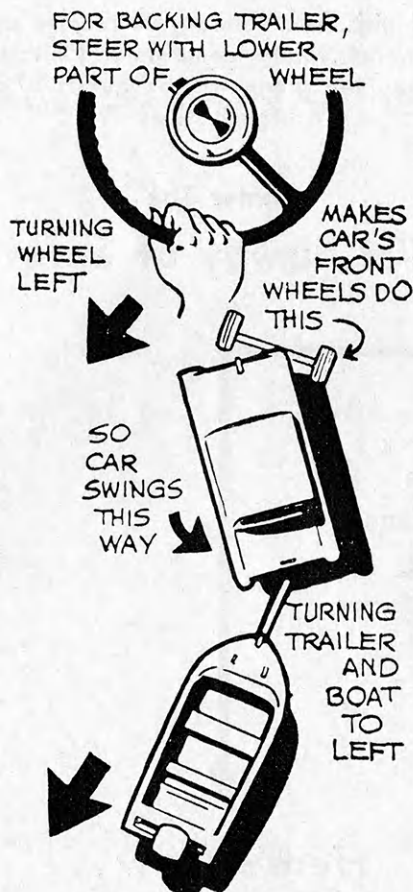
3. Some people dunk trailers when launching boats, submerging the wheel hubs in the water. This is a practice to be avoided, particularly in salt water. The wheel bearings should be checked at a service station from time to time.

4. The trailer should have a spare tire—even trailer tires go flat now and then.

5. For all but very light trailers a V-8 engine is a must. The larger the trailer, the more engine is needed. Automatic transmissions are almost universally recommended. They have more torque multiplication for starting and climbing hills than a manual. Also they are water-cooled, rugged and have no clutch problems.

6. With a trailer it should be remembered that the equivalent of an extra-long automobile is being driven. More room must be allowed on turns; corners should not be cut. More room must be allowed to pass a car or truck; there should be no haste in cutting back to that right-hand lane. Extra room must be allowed for stopping and jackrabbit starts should be avoided.

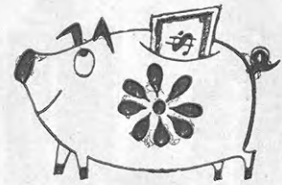
7. Backing a trailer is something else again. It sometimes refuses to go where it is directed. Here is a simple trick that solves all backing problems.



Steering should be done with the hand on the bottom of the wheel. In order to back the trailer to the left, the bottom of the wheel should be pushed left; to back right, the wheel's bottom is pushed right. It's that simple to maintain mastery over direction. The only other thing to bear in mind is not to oversteer. This may jackknife the trailer.

(Continue on page 19)

NOW is the time to save



- Arkansas City**
First Federal Savings and Loan Assn.
- Beloit**
First Federal Savings and Loan Assn.
- Clay Center**
Northwestern Federal Savings and Loan Assn.
- Dodge City**
First Federal Savings and Loan Assn.
- El Dorado**
Mid-Continent Federal Savings and Loan Assn.
- Fort Scott**
Liberty Savings and Loan Assn.
- Garnett**
The Garnett Savings and Loan Association
- Great Bend**
The Prudential Building and Loan Assn.
- Hays**
The Hays Building and Loan Assn.
- Hutchinson**
Valley Federal Savings & Loan Association—1020 North Main
- Leavenworth**
Leavenworth Mutual Savings and Loan Assn.
- Liberal**
First Federal Savings and Loan Assn.
- McPherson**
The Pioneer Savings and Loan Association
- Newton**
First Federal Savings and Loan Assn.
- Ottawa**
Ottawa Savings and Loan Assn.
- Parsons**
First Federal Savings and Loan Assn.
- Plainville**
Rooks County Savings Assn.

Kansas Savings & Loan Associations

Chicago!



WIN A FREE TRIP

Five 4-H boys and girls from Kansas will receive an all expense paid trip to the National Safety Congress in Chicago in October. While in Chicago the group will be guests of many national organizations.

Enter The 4-H Survey of Safety

Others Will Win Safety Ballpoint Pens

A "Safety Pen" award for ALL 4-H members who complete Safety Surveys and Return Checks.

- ON THE FARM
- ON THE HIGHWAYS
- IN THE HOME
- EVERYWHERE THERE ARE PEOPLE

Here's How...

See your Extension Agent NOW for the necessary information. Make plans with your leader and fellow 4-H'ers to conduct the Surveys.

DONOR OF AWARDS FOR THE 4-H SAFETY PROGRAM

KANSAS FARM BUREAU

SAFETY DEPARTMENT

MANHATTAN

4-H Offers Opportunities For Camping

by Dick Tomkinson

The kinds of questions which persistently come to us are: (1) What are we doing in 4-H to help get jobs and be more employable? (2) What is 4-H doing and what can it do to increase opportunity for youth to have more recreation, sports, and improve their physical fitness? (3) What is 4-H doing in camping, particularly for low-income youth? Can more inner-city youth be involved in 4-H camps — regular camps, special camps, day camps, and special overnight camping experiences? (4) What is 4-H doing to maintain and increase its level of activity in the summer, particularly in view of the massive closing down of school systems during the summer? Can more educational opportunities be provided? (5) What is 4-H doing in the areas of health and nutrition, particularly in view of the recent report on nutrition status? (Taken from a letter from E. Dean Vaughan, Director, 4-H Youth Development Division, Federal Extension Service.)

How can camping help answer these questions?

Regarding work, research shows most people lose their jobs because they can't get along with others, not because they lack skills. Thus, camping offers many opportunities for youth to work, play, and learn to get along and live with others.

Concerning recreation, sports, and physical fitness, what better place than camp to teach skills, attitudes, and knowledge, and also practice recreational activities that youth can use now and the rest of their lives?

Regarding nutrition, hardy appetites develop at camps and thus a natural setting is provided to stress good eating habits and its effect on sound bodies and minds.

Regarding schools closing for the summer, camping offers a real opportunity to learn by doing, in the great outdoors. Educators have long advocated teachings in camp situations those things that can best be taught in the great outdoors. Not all the best learning takes place in the classroom.

Can 4-H offer camping to more youth than it presently does, both 4-H members and non 4-H members?

Girl scouting and boy scouting promote three kinds or types

of camping; (1) day camping, (2) resident camping, (3) troop camping (club or group camping for 4-H).

4-H leaders and agents are now beginning to see the value for youth in camping and are in the process of expanding our 4-H camping programs.

Types of Camping for 4-H

All over Kansas, leaders and agents are telling us about the day camps they are providing for 4-H'ers. Usually younger members are given a camping experience fairly close to home for a day or a series of days. A nearby lake, stream, woods, park, farm, or field can provide an interesting site for such a camp.

An example of a day's program might include:

8:30 a.m. — Meet at central point — either walk or ride to camp site

9:00-11:30 a.m. — Nature study and hikes

11:30-1:00 p.m. — Cook own lunch (hot dogs, aluminum foil cookery, etc.)

1:00 — 1:30 p.m. Rest and chat

1:30 p.m.—Arts and crafts

2:30 p.m. — Outdoor games, sports, or water activities like fishing, swimming, wading, etc.

3:30-4:00 p.m.—Leave for home

The main advantages of day camping are: its inexpensive, takes little space and equipment, leaders and junior leaders can usually assist if its only in the daytime and they aren't away from home overnight, and it introduces children to the outdoors.

Resident Camping

Most 4-H'ers have participated in this type of camping. 4-H'ers usually attend a three day camp session at a permanent camp site with sleeping, eating, and recreational facilities. Rock Springs Ranch and Southwest Camp at Dodge City are examples of resident camping sites.

Club or Group Camping

A group of 4-H'ers and their leaders may plan and have an

overnight, week-end, or traveling camp experience. Half the fun comes from planning the camp experience.

To help 4-H Clubs and special interest groups with group camping, the Kansas 4-H Foundation has built a two-wheel trailer that groups can rent for \$2 a day, plus replacing anything they use or break, such as paper plates, cups, napkins. The trailer has 25 pup tents, plus cooking and camping equipment for 50 campers. Contact your Extension Office if you wish to reserve the trailer.

As Thayne Smith says in his article in this issue, "There are plenty of lakes and reservoirs for camping". We hope that 4-H'ers will enjoy day or a club camp this year!

CAMPING OUT TIPS



Do you often feel like "getting away from it all"? Then the life of camping is just what you need—the challenge of living in nature's wonderland.

Camping is one activity that requires advance planning if it is to be enjoyable. You should have the necessary equipment and know how to use it. You need to learn basic camping skills and to know how to cope with the elements.

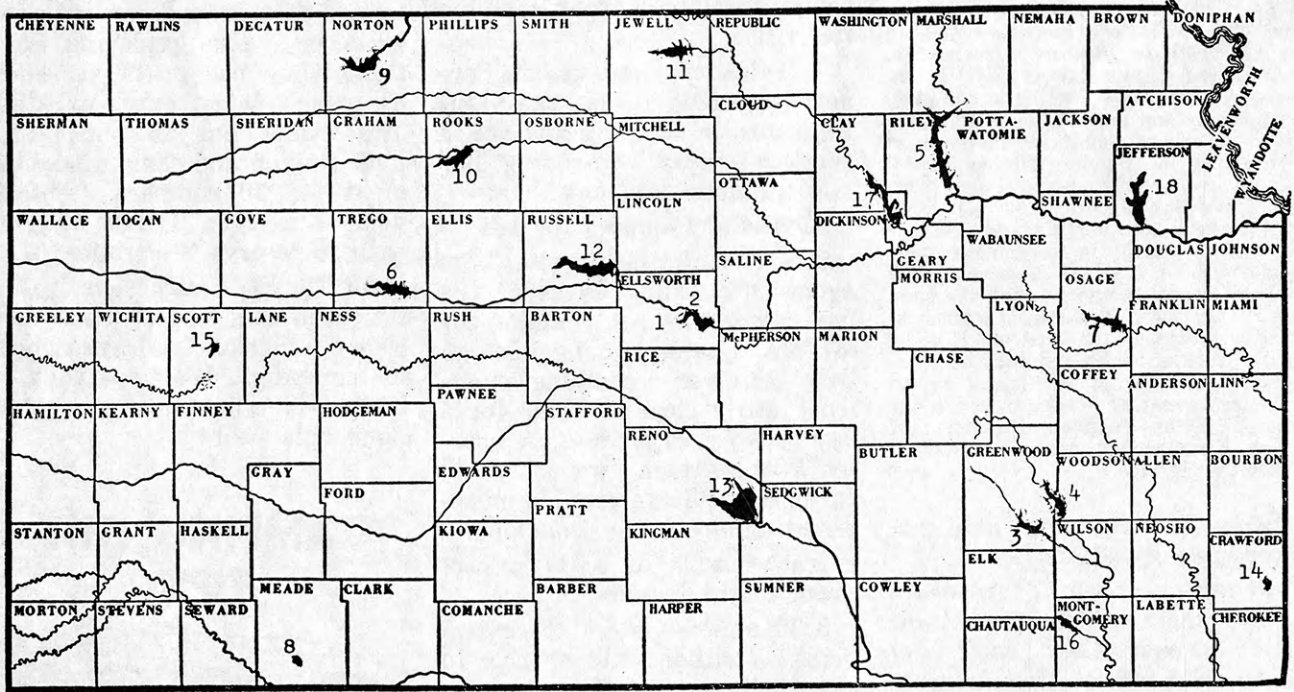
Start making a list of the essentials and another list of the non-essentials (luxuries—which would make camping easier). If you find you do not have room, then you can leave the non-essential list at home. Here is what we consider the necessities:

Bedding	Icebox
Clothespins and line	Life jackets
Cooking & cleaning items	Personal clothing
Cots, sleeping bags	Radio
First-aid kit	Raingear
Flashlight	Shovel
Food	Stove
Hammer	Tent
Hatchet	Tent heater
	Water container

(Continue on page 19)

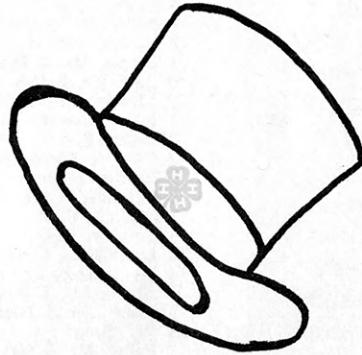
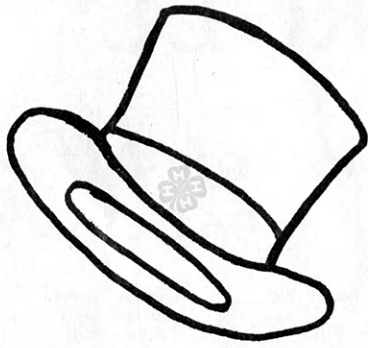
STATE PARK RECREATIONAL AREAS AND FACILITIES

The finest outdoor recreational opportunities are provided by the Kansas Park and Resources Authority at 26 state park areas. All park areas are adjacent to state lakes or federal reservoirs with the exception of Mushroom Rock State Park. Annual park permits are \$5.00 and temporary permits are \$1.00 per day.



STATE PARK	COUNTY	STATE PARK AREAS	LOCATION	Shower & Latrine	Camping Area	Picnic Area	Modern Toilets	Drinking Water	Pit Toilets	Boat Launching	Marina	Trailer Park
1. Mushroom Rock	Ellsworth	Mushroom Rock	17 m. SE Ellsworth	X	X	X	X	X	X	X	X	X
2. Kanopolis	Ellsworth	South Shore	21 m. SE Ellsworth	X	X	X	X	X	X	X	X	X
3. Fall River	Greenwood	South Shore	23 m. W Chanute	X	X	X	X	X	X	X	X	X
		North Shore	23 m. W Chanute	X	X	X	X	X	X	X	X	X
4. Toronto	Woodson	South Shore	17 m. SW Yates Center	X	X	X	X	X	X	X	X	X
		Toronto Point	17 m. SW Yates Center	X	X	X	X	X	X	X	X	X
5. Tuttle Creek	Pottawatomie & Riley	River Pond	5 m. N Manhattan	X	X	X	X	X	X	X	X	X
		Spillway	5 m. N Manhattan	*	X	X	X	X	X	X	X	X
		Fancy Creek	25 m. N Manhattan	X	X	X	X	X	X	X	X	X
6. Cedar Bluff	Trego	Randolph	25 m. N Manhattan	X	X	X	X	X	X	X	X	X
		South Shore	23 m. SE WaKeeney	*	X	X	X	X	X	X	X	X
7. Pomona	Osage	North Shore	23 m. SE WaKeeney	X	X	X	X	X	X	X	X	X
		Vassar	16 m. W Ottawa	X	X	X	X	X	X	X	X	X
8. Meade	Meade	Carboly	29 m. S Topeka	X	X	X	X	X	X	X	X	X
		Entire Lake	13 m. SW Meade	X	X	X	X	X	X	X	X	X
9. Norton	Norton	Entire Lake	3 m. W Norton	X	X	X	X	X	X	X	X	
10. Webster	Rooks	Entire Lake	8 m. W Stockton	X	X	X	X	X	X	X	X	
11. Lovewell	Jewell	Entire Lake	15 m. NE Mankato	X	X	X	X	X	X	X	X	
12. Wilson	Russell	Entire Lake	8 m. N Wilson	X	X	X	X	X	X	X	X	
13. Cheney	Reno, Kingman & Sedgwick	Hell Creek	20 m. NW Wichita	X	X	X	X	X	X	X	X	X
		West Shore	20 m. NW Wichita	X	X	X	X	X	X	X	X	X
14. Crawford	Crawford	Entire Lake	10 m. N Girard	X	X	X	X	X	X	X	X	
15. Scott	Scott	Entire Lake	12 m. N Scott City	X	X	X	X	X	X	X	X	
16. Elk City	Montgomery	Entire Lake	7 m. NW Independence	*	X	X	*	*	X	X	*	
17. Milford	Geary	Entire Lake	7 m. NW Junction City	X	X	X	*	*	X	X	*	
18. Perry	Jefferson	Squaw Creek	16 m. NE Topeka	*	*	*	*	*	*	*	*	*
		Pleasant View Area	16 m. NE Topeka	*	*	*	*	*	*	*	*	*

* Under construction or future planned.



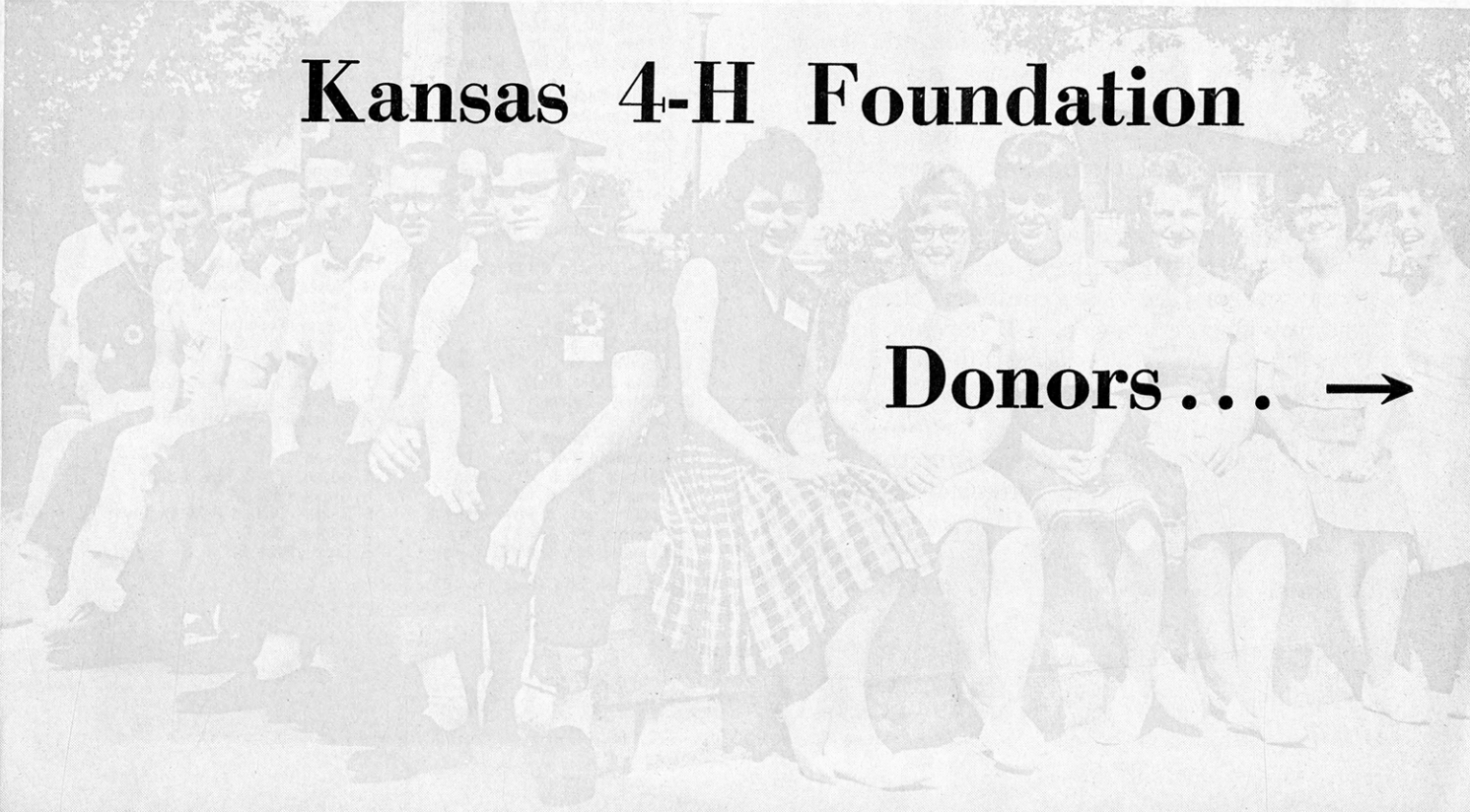
Hats Off!

to the

1967

Kansas 4-H Foundation

Donors . . . →



1967 HONOR ROLL*

Friends of 4-H — 1967



An Open Letter

As a youth and as an adult, 4-H Club work provided me with enumerable enriching and rewarding personal experiences. I am proud of having been a 4-H'er in my youth. I am grateful to those leaders and others whose counsel, time and money made my participation in 4-H possible.

As Director of the Kansas Cooperative Extension Service during the past twelve years, I have had constant opportunities to observe the advantages 4-H has provided today's youth in increasing their skills, choosing careers, gaining leadership abilities and in becoming better citizens. As a trustee of the Kansas 4-H Foundation, I have come to know and appreciate many of the people whose time and resources have helped make the development of 4-H youth possible.

For both the 4-H Foundation and the Cooperative Extension Service, may I express appreciation for your help in making 4-H one of the most potent forces in this country for the development of good citizens.

These are troubled times; times in which good citizenship is more important than ever before. I am confident that you adults, whether you are 4-H parents, leaders or donors, will successfully meet the challenges that lie ahead for 4-H in Kansas.

Harold E. Jones, Director
Cooperative Extension Service
Kansas State University

- | | |
|--|---------------------------------------|
| 8 Adams Business Forms, Inc. | 1 Coursen, Lenora |
| 1 Adams, Everett | 3 Cox, M. Lester |
| 4 Allen, Mr. & Mrs. Elton | 13 Critser, W. Dale |
| 8 Allen, Mr. & Mrs. Harvey | 1 Culver, Mrs. William H. |
| 2 Allen, Martin W. | |
| 1 Allied Mills, Inc. | 2 Dale Sharp, Inc. |
| 1 Altsoy, Gladys | 1 Davis, Mrs. Fred |
| 2 Altman, H. C. | 1 Daylor, Mrs. Larry |
| 9 Anderson Cattle Company | 2 Deaver, Mr. & Mrs. Harlan |
| 2 Anderson, Dustan | 8 Dewell, Mr. & Mrs. Carl V. |
| 9 Apel, Dale | 3 Diacon, Dr. James L. |
| 5 Appleby, Mr. & Mrs. Tom | 4 Dickerson, Mr. & Mrs. Edward |
| 1 Arnold, Mrs. Floyd | 8 Dies, Mr. & Mrs. Edgar |
| | 2 Dietrich, Ralph |
| 1 Bailes, Ollie L. | 4 Dillon, Helen Woodard |
| 5 Baker, Louis A. | 5 Dillon, J. S. & Sons |
| 2 Baker, Mr. & Mrs. Russell J. | 1 Dodson, C. Merrill |
| 2 Barnes, John H. | 9 Dressler, H. A. |
| 1 Barnes, Mr. & Mrs. Marvin | |
| 6 Barr, Mr. & Mrs. Bernard | 1 Eaton, Mrs. Shirley |
| 2 Barrow, Mrs. Vernon | 2 Ed Marling Stores, Inc. |
| 1 Bauer, Edward | 1 Eicher, Mr. & Mrs. Harry L. |
| 2 Bayer, Burke | 1 Elledge, Mrs. Verle |
| 2 Beatrice Foods Company | 3 Ervin Bros., Inc. |
| 5 Beezley Farm | 7 Essmiller, Mr. & Mrs. Ralph |
| 3 Benander, Lawrence E. | 1 Evans, Mr. & Mrs. R. L. |
| 1 Beninga, C. T. | 6 Eyestone, Cecil |
| 1 Bergner, Edna | 5 Eyestone, Mr. & Mrs. Merle |
| 10 Bevelhymmer, H. C. | |
| 6 Blankenship, Una Kay | 3 Falley's Market, Inc. |
| 4 Blecha, Mr. & Mrs. Amos | 7 Farmland Industries, Inc. |
| 3 Bloom, Mr. & Mrs. L. A. | 14 Federal Cartridge Corp. |
| 13 Bly, Erna | 7 Federal Land Bank, Wichita |
| 1 Boller, Mr. & Mrs. Walter | 1 Federal Land Bank Assn., Hutchinson |
| 3 Bolt, W. Fred | 5 Felt, Esther L. |
| 3 Boone, Mr. & Mrs. Wm. I. | 5 Felt, Sylvia S. |
| 7 Booth, Arden | 3 Fields, Mr. & Mrs. Samuel A. |
| 1 Borst, Wm. H. | 3 First National Bank, Junction City |
| 3 Bowman Farm Implement Co. | 2 First National Bank, Larned |
| 5 Boyce, Mr. & Mrs. Hugh | 3 First National Bank, Pratt |
| 1 Briggs, Mr. & Mrs. John W. | 7 Flint Hills Rural Electric Co-op |
| 2 Brooks, Mrs. Carroll | 14 Folger Coffee Company |
| 6 Brown, Ralph E. | 8 Fooshee, Mr. & Mrs. Claude L. |
| 1 Bryant, Mr. & Mrs. Elmer A. | 1 Foreman, Mr. & Mrs. Alanson |
| 2 Bryden, W. J., Jr. | 12 Fox & Company, Elmer E. |
| 3 Busset, Mr. & Mrs. Glenn M. | 6 Frazier, Mrs. Gene |
| | 1 Friederich, Randy |
| 2 Capitol Federal Savings & Loan Assn. | 1 Frisbie, Mr. & Mrs. R. E. |
| 1 Carr, Cathy | 1 Fry, Mr. & Mrs. Ralph A. |
| 3 Carr, Francis E. | 4 Fullerton, Mrs. Averil |
| 2 Carroll, Mr. & Mrs. Nathan | |
| 1 Caspar, Mr. & Mrs. Charles R. | 4 Galle, Mr. & Mrs. Nelson D. |
| 3 Central National Bank, Junction City | 8 Garten, Mr. & Mrs. Clarence |
| 17 Cities Service Oil Company | 9 Garten, Mr. & Mrs. Frank |
| 1 Citizens State Bank, Ellsworth | 8 Garvey Foundation |
| 1 Clark, E. Jean | 1 Gehrke, Mr. & Mrs. John |
| 1 Clary, Mr. & Mrs. Don | 1 Geist, Wayne |
| 6 Clemence, Mr. & Mrs. Joe | 1 Gfeller, Mr. & Mrs. Harvey |
| 3 Coats State Bank | 7 Gillmore, Ralph E. |
| 8 Coberly, Goldie | 2 Gollightley, Mrs. Ernest |
| 1 Coen, Floyd O. | 8 Gore, Keith E. |
| 3 Cole, Dr. Ward M. | 2 Goyen, C. D. |
| 13 Collegiate 4-H Club | 1 Goyen, Mr. & Mrs. Lester |
| 6 Collinge, Dr. & Mrs. Irwin J. | 6 Gross, Paul M. |
| 6 Conover, Mr. & Mrs. H. M. | 6 Gugler, Donald P. & Evelyn |
| 6 Counter, Mr. & Mrs. Henry E. | 2 Gugler, M. C. |
| 6 Counter, Mr. & Mrs. Perry | 5 Gwin, Paul B. |
| 3 Counter, Mr. & Mrs. Wayne | |

* Includes the past twelve months

YOU ARE ASSISTING

- 3 Haines, Joe D.
7 Hamilton, Mrs. Dean
6 Hamon, Mr. & Mrs. Charles
1 Harding, Clifford L.
1 Harris, Mrs. Gail
3 Harris, Carol
7 Harry Darby Foundation
1 Hartman, Mrs. Harold
6 Hassman, Mr. & Mrs. Irvan
6 Hatfield, Mr. & Mrs. James R.
1 Hawk, Mr. & Mrs. Covell D.
8 Heersche, Mr. & Mrs. George
1 Heinz, Mr. & Mrs. Kasper
1 Helm, James, Clarence, Marjorie
4 Henry, Mr. & Mrs. J. LeRoy
1 Hess, Carroll V.
13 Hicks, Mr. & Mrs. W. H.
2 Highland Park State Bank
3 Hildebrand, Mr. & Mrs. Don M.
1 Hinrichs, H. S.
2 Hockens, Mr. & Mrs. Ralf E.
5 Holgerson, C. E.
1 Holladay, Mr. & Mrs. Alfred E.
1 Honstead, Arliss
7 Hoover, Mr. & Mrs. Laurence J.
7 Hottman, Mrs. Oren F.
9 Houghton, Mr. & Mrs. James H.
2 House, Mr. & Mrs. Kenneth B.
1 Hubbard, C. R.
11 Huff, Ruth K.
4 Humphrey, Henry A.
13 International Harvester Company
3 Iuka State Bank
7 Ives, H. M. & Sons
8 Jackson, S. Lester
14 Jellison, A. D.
1 Jensen, Mabel
3 Jerry's I.G.A.
13 Johnson, Mr. & Mrs. J. Harold
1 Johnson, Mr. & Mrs. Mervin B.
8 Jones, Mr. & Mrs. Eugene
5 Jones, Harold E.
3 Juergensen, Mr. & Mrs. Calvin
2 Junction City Daily Union
2 Junction City-Ft. Riley-Manhattan Trans. Co.
3 Junction City Telephone Company
14 Kansas Ayrshire Breeders Assn.
14 Kansas Bankers' Assn.
12 Kansas Brown Swiss Breeders Assn.
14 Kansas City Power & Light Company
4 Kansas Electric Co-ops.
11 Kansas Farm Bureau & Insurance Services
14 Kansas Gas & Electric Company
10 Kansas Jersey Cattle Club
14 Kansas Power & Light Co.
2 Kansas Production Credit Assns. & Federal Intermediate Credit Bank
9 Kansas 7-Up Bottlers Assn.
1 Kaw Valley Produce Company
14 KCREA—Electric Power Suppliers of Kansas
3 Keller, Mr. & Mrs. Earl
1 Kemp, Phyllis E.
4 Kershaw, O. Willard
2 Killian, Howard S.
2 King Travel Service
4 Kiowa County Farm Bureau
8 Kirkwood, Frances
4 Klamm, Mr. & Mrs. David
5 Kleymann, Mr. & Mrs. Fred
3 Knapp, Wayne
1 Knoll, Mrs. Marvin
3 Kramer, Martha M.
1 Kraus, Mr. & Mrs. Carl W.
1 Krumrey, Kate
3 Kugler, Mr. & Mrs. John
3 Laing, Verne M.
1 Lang, Ruth
1 Lang, Velma Burger
6 Larson, Richard E.
6 Larson, Robert
3 Larson, Thaine
3 Lauer, Mr. & Mrs. Clarence
1 Leach, Glinda B.
3 Lear, J. T.
3 Lemon, J. C.
6 Leonard, Ralph M.
6 Levering, Wilbur
2 Lilliequist, Mr. & Mrs. W. R.
7 Linden, Mrs. Martin
2 Lindholm, Mr. & Mrs. Ernest C.
1 Lindholm, John
8 Lobmeyer, Mr. & Mrs. Louis
1 Long, Mr. & Mrs. Wm. A.
10 Lull, Linton C.
2 Lunt, Harry
3 Luther, H. E.
1 Luthi, Harold
8 Manry, Mr. & Mrs. E. Clifford
2 Mark Morris Assoc., Inc.
5 Marshall, Charles L.
1 Martin, Mr. & Mrs. Ernest C.
5 Mathews, Guy D.
14 McCausland, Ross
8 McClelland, H. W.
2 McClung, Irvin A. Family
5 McElroy, Mr. & Mrs. O. L.
7 McGhee, Mrs. Gareld
1 McGinness, Kenneth E.
3 McKnight, Virginia
2 McMinimy, Mr. & Mrs. V. W.
2 Merchants National Bank, Topeka
3 Mid-Continent Elevators
7 Mills, Lambert & Rosalea
4 Mink, Virginia Balthrop
3 Mohn Implement Company
6 Monson, Janet Ruth
4 Morgan, Albert
2 Morris, Mrs. Dale, Jr.
3 Morrison Grain Elevator
1 Morton, Ronald R.
2 Mott, Mrs. C. C.
3 Munson, Gaylord R.
3 Munson, Ralph C.
8 Murray, W. L.
13 National Dairy Products Corp.
1 Neilan, Charlotte Henry
1 Nichols, Robt. E.
8 Niles, Mr. & Mrs. Irving R.
7 Nitsch, John
5 Nixon, Mrs. Robert S.
1 Noller Motors, Inc.
1 Nolte, Mrs. Sylvester J.
4 Norby, Oscar
1 Nutt, Donald O.
1 Oelschlager, Ervin
3 Oller, Ernest J.
8 Orsborn, Mr. & Mrs. Lawrence J.
7 Ottaway, Lois M.
2 Otte, Mr. & Mrs. Alvin
2 Overstreet, Ron
3 Packard, Bryan
1 Paulsen, Mr. & Mrs. Fred H.
1 Perrier, Mr. & Mrs. John
2 Phipps-Price Clinic
1 Pilgrim Youth Society
2 Pine, Mr. & Mrs. Roger
8 Pine, Wilfred
1 Pinkney, Mrs. R. J.
2 Power Constructors, Inc.
5 Powers, George B.
1 Pratt Feed Lot
4 Presnal, Glade C.
4 Presnal, Mr. & Mrs. Ross
1 Priest, Frank
1 Pugh Family, Ralph
21 Quinlan, L. R.
3 Quint, Veva M.
1 Ramsey, Mr. & Mrs. John W.
1 Rankin, Mr. & Mrs. Scott
6 Regnier, Roger E.
9 Rice, Shirley
1 Riffey, Clyde
4 Robbins, Richard W.
2 Roessler, Otto R.
2 Rohrer, Mr. & Mrs. Milton E.
3 Rolfs, E. W.
4 Ross, Mrs. F. B.
3 Rowland, Virginia Sourk
2 Ruhnke, Mr. & Mrs. John H.
1 Rundle, Homer
1 Rusk, Ralph
1 Rusk, Ray & Roberta
8 Russell, Mr. & Mrs. M. L.
14 Safeway Stores, Inc.
6 Samuelson, Mr. & Mrs. Armin
4 San Ore Construction Co.
2 Schendel Quality Pest Control
2 Schinerer, Clyde
8 Schmidt, Mrs. Ben
3 Scott, Mr. & Mrs. Wavern
2 Security Benefit Life Insurance Co.
1 Sears, Robert E.
14 Sears-Roebuck Foundation
3 Security State Bank, Sumner County
2 Seymour Foods Company
4 Shands, Jobelle A.
1 Shelor, Mr. & Mrs. Ralph
1 Shepherd, Cecile J.
8 Shepherd, Mrs. Ronald
1 Shideler, Mr. & Mrs. Jay
1 Sievers, Mr. & Mrs. Harold
1 Simmons, Clyde
11 Simons, Dolph
1 Simpson, Mr. & Mrs. Roderick H.
5 Sites, Ralph E.
3 Slaten, Mr. & Mrs. J. M.
6 Smerchek, Mr. & Mrs. J. D.
1 Smith, Mabel R.
1 Smith, Mr. & Mrs. O. E.
8 Smith, Mrs. R. V.
6 Smith, Mr. & Mrs. Tom
1 Snyder, Russell
1 Sourk, Ed
4 Sourk, Mrs. Ward
2 Southwest State Bank, Topeka
8 Southwestern Bell Telephone Co.
2 Spears, L. H.
7 Springlake Stock Farm
8 Stallard, Mr. & Mrs. Wayne
1 Stanton, Mr. & Mrs. Lawrence
1 Starkey, Mrs. R. M.
1 Stephens, Mary Lee Sourk
1 Stewart, Mr. & Mrs. Benton
7 Streeter, Mr. & Mrs. Charles
8 Strickler, Mr. & Mrs. Ivan
2 Stumph, Joe
3 Sutcliffe, J. M.
12 Sutherland Lumber Company
1 Tate, Sue
2 Taylor, Ethel
2 Taylor, Marie
4 Teagarden, Mr. & Mrs. E. H.
2 Thomas, Blanche
2 Topeka State Bank
2 Topliff, Mr. & Mrs. Elwyn
2 Turnbull, J. K.
2 Upham, Mr. & Mrs. Ralph E.
3 Van Horn, Mr. & Mrs. Harold
1 VanLew, Vera M.
7 Vanskike, Mr. & Mrs. Harry
6 Veatch, N. T.
5 Velthoen, Mr. & Mrs. Vernon
2 Vieux, Mr. & Mrs. Cecil
3 Visser, Mr. & Mrs. Ed
1 Waldren, Mrs. Lloyd
1 Walker, George Wayne
2 Walker, Harold
9 Walker, Mr. & Mrs. Howard R.
2 Walker, Mr. & Mrs. Joe M.
2 Walker Stone Company
2 Wall-Diffenderfer Mortuary
2 Wallace, R. K.
7 Walton, Mrs. Keith
1 Warfield, Lucile Newell
1 Wasson, Mr. & Mrs. Albert
1 Wasson, Mr. & Mrs. Jim
1 Welco, Inc.
1 Weller, Wayne
5 Wells, Mrs. Norma Mae
3 Weside All Star Dairy
14 Western Power & Gas
1 Westervelt, Mr. & Mrs. Darrell D.
5 Wetta, Joseph L.
1 Wenger, Mrs. Leon E.
2 Wheatley, Lulu
1 White, Mr. & Mrs. David
14 WIBW Radio-TV
4 Wichita Bank of Cooperatives
2 Williams, Mr. & Mrs. Ira M.
6 Wilson, John L.
1 Windhorst, Mr. & Mrs. Ernest
1 Winger, Mr. & Mrs. Dwight
1 Winger, Lawrence E.
2 Woods, David S.
12 Woolworth Company, F. W.
7 Wright, Mrs. Chester
6 Wyckoff, Maurice I.
1 Yarrow, Delmar L.
1 Yenzler, Mack
5 Yingling Chevrolet Motor Co.
2 Yoder, Mr. & Mrs. Royal
1 Young, Howard A.
1 Young, Mary Frances
1 Zarger, Mrs. Robert
7 Zweifel, Barbara
9 Zweifel, Bernice
7 Zweifel, Peggy
9 Zweifel, Robert
7 Zweifel, Robert, Jr.

*Includes the past twelve months

Note: The figure preceding the name indicates the number of years of support since the Kansas 4-H Foundation Membership and Share Recognition Plan was started in 1954. Please call omissions to our attention.

4-H YOUTH ACHIEVE

EDUCATION - - - MOTIVATION

Extension 4-H and Home Economics — 1967

ALLEN COUNTY

- 1 Lively Ones 4-H

ANDERSON COUNTY

- 5 Anderson County 4-H Council

BARBER COUNTY

- 1 Lake City Go-Getters 4-H
- 3 Lone Eagle 4-H
- 4 Mingona Boosters 4-H
- 2 Stateline 4-H

BARTON COUNTY

- 1 Albion Center EHU
- 1 Bartonettes EHU
- 1 Cheyenne EHU
- 1 Cleveland 4-H
- 1 Comanche EHU
- 1 Heizer Livewires 4-H
- 1 Logan EHU

BROWN COUNTY

- 9 Robinson Meadowlarks 4-H
- 1 Zion Zippers 4-H

BUTLER COUNTY

- 8 Flint Hills 4-H
- 10 Hickory Helpers 4-H
- 4 Towanda Rustlers 4-H

CHEROKEE COUNTY

- 1 Neutral HDU

CHEYENNE COUNTY

- 5 Cheyenne County 4-H Council

CLAY COUNTY

- 2 Hayes Boosters 4-H
- 4 Industry Hustlers 4-H

CLOUD COUNTY

- 4 Cloud County 4-H Council

COFFEY COUNTY

- 5 Blue Ribbon 4-H
- 5 Busy Bees 4-H
- 3 Jolly Booster 4-H
- 3 Tip Top 4-H

COMANCHE COUNTY

- 3 Comanche County 4-H Council

COWLEY COUNTY

- 6 Cambridge 4-H
- 2 City Farmers 4-H
- 7 Cowley County 4-H Council
- 1 Cowley County Home Ec. Adv. Comm.
- 2 Dexter 4-H
- 2 Evening Star 4-H
- 2 Liberty 4-H
- 2 Polo 4-H
- 2 Tisdale 4-H
- 2 Udall 4-H

CRAWFORD COUNTY

- 6 Sliferette HDU

DICKINSON COUNTY

- 3 Lyon Prospectors 4-H
- 1 Swenson Creek Rustlers 4-H
- 1 Woodbine HDU

DOUGLAS COUNTY

- 6 Cottonwood 4-H
- 4 Jayhawk 4-H
- 10 Kanwaka 4-H

5 Meadowlark 4-H

- 6 Palmyra 4-H
- 7 Stull Busy Beavers 4-H
- 7 Sunflower 4-H
- 5 Vinland Valley 4-H

EDWARDS COUNTY

- 6 Better Homes HDU
- 1 Eager Beavers 4-H
- 1 Loganville EHU
- 5 Trousdale HDU

ELLIS COUNTY

- 6 Good Hope 4-H
- 6 Saline River Satellites 4-H
- 10 Winner's 4-H

ELLSWORTH COUNTY

- 5 Trying Tommies 4-H

FORD COUNTY

- 3 Cozy Corner 4-H
- 1 Happy Hour Homemakers EHU
- 1 Harmony Homemakers EHU
- 3 Richland Boosters 4-H
- 1 Today's Women EHU
- 1 Town Twenty EHU
- 3 Westside Ramblers 4-H
- 2 Wilburn Willing Workers 4-H
- 3 Wilroad's Gardens 4-H

FRANKLIN COUNTY

- 1 Franklin County 4-H Foundation
- 8 Pottawatomie Valley 4-H

GOVE COUNTY

- 4 Meadowlark 4-H

GRAHAM COUNTY

- 2 Bow Creek Builders 4-H
- 1 Happy Crickets 4-H
- 2 Hill City Centennial 4-H
- 3 Millbrook Sunshiners 4-H
- 2 Penokee 4-H
- 2 Prairie Wildcats 4-H
- 3 Solomon Valley 4-H
- 2 Spring Creek Hustlers 4-H
- 1 Sunrise HDU

GRAY COUNTY

- 1 Ensign Boosters 4-H
- 1 Home Culture EHU
- 3 Sky High 4-H

GREELEY COUNTY

- 2 Go-Getters 4-H
- 3 Thrifty Thrivers 4-H

GREENWOOD COUNTY

- 1 Modern Pace Setters 4-H

HARPER COUNTY

- 7 Freeport Trailblazers 4-H

HARVEY COUNTY

- 2 Kellas 4-H
- 3 Sedgwick Sunflower 4-H
- 1 Town Toppers 4-H
- 3 Walton Willing Workers 4-H

HASKELL COUNTY

- 2 Colusa Go-Getters 4-H
- 1 Lakeview Livewire 4-H
- 1 Santa Fe Trail Blazers 4-H

HODGEMAN COUNTY

- 6 Pawnee Valley Boosters 4-H

JACKSON COUNTY

- 2 Happy-Go-Lucky 4-H

JEFFERSON COUNTY

- 11 Grantville 4-H
- 8 Rock Creek Boosters 4-H

JEWELL COUNTY

- 3 Buffalo Valley 4-H
- 4 Formoso Willing Workers 4-H
- 3 Mankato Eager Beavers 4-H
- 4 Whitemound Builders 4-H
- 4 White Rock Hustlers 4-H

JOHNSON COUNTY

- 1 Busy Bees 4-H
- 2 DeSoto 4-H Adventurers
- 1 Village Sunflower 4-H

KEARNY COUNTY

- 5 Hi-Landers 4-H

KINGMAN COUNTY

- 3 Adams Happy-Go-Lucky 4-H
- 6 Belmont Willing Workers 4-H
- 4 Busy Bee 4-H
- 3 Cunningham 4-H
- 4 Galesburg 4-H
- 8 Hawk 4-H
- 5 Nashville Meadowlarks 4-H
- 3 Norwich Boosters 4-H
- 5 Penalosa 4-H
- 4 Spivey Sunflower 4-H
- 4 Vinita Happy Hearts 4-H
- 4 Whispering Willow 4-H
- 3 Willowdale Pathfinders 4-H
- 4 Zenda Zoomers 4-H

KIOWA COUNTY

- 3 Upward Strivers 4-H

LANE COUNTY

- 4 Eager Beavers 4-H

LEAVENWORTH COUNTY

- 4 Busy Beavers 4-H
- 1 Lucky Clover 4-H
- 4 Nine Mile 4-H

LINCOLN COUNTY

- 6 Sylvan Hustlers 4-H

LOGAN COUNTY

- 1 Hi-Plains 4-H
- 4 Logan County 4-H Council
- 1 Lucky Diamond 4-H
- 3 Monument 4-H
- 1 Rainbow 4-H
- 1 Smoky 4-H
- 2 Winona 4-H

LYON COUNTY

- 6 Busy Bees 4-H
- 8 Model Boosters 4-H
- 6 Reading 4-H

McPHERSON COUNTY

- 6 Andover 4-H
- 7 Better Farms 4-H
- 5 Conway 4-H
- 5 Cottonwood 4-H
- 2 Country Cousins 4-H
- 7 Empire Best 4-H
- 6 Friendly Fremont 4-H
- 6 Golden Opportunity 4-H

6 Good Luck 4-H

- 6 Green Valley 4-H
- 6 Lindsborg Golden '60 4-H
- 6 Livewire 4-H
- 9 Lucky Leaf 4-H
- 4 New Frontiers 4-H
- 6 Smoky Valley 4-H
- 7 Sunflower 4-H

MARION COUNTY

- 9 Happy Hustlers 4-H
- 6 Marion County 4-H Council
- 11 Tampa Triple T's 4-H

MARSHALL COUNTY

- 2 Merry Makers 4-H

MIAMI COUNTY

- 2 Mound Builders 4-H

MITCHELL COUNTY

- 7 Asherville Achievers 4-H
- 4 Cloverleaf 4-H
- 7 Fairview 4-H
- 5 Future Citizens 4-H
- 7 Tipton 4-H
- 3 Triangle Boosters 4-H
- 7 West Beloit 4-H

MONTGOMERY COUNTY

- 2 Duck Creek Boosters 4-H

MORRIS COUNTY

- 6 Dwight Sunflower 4-H

MORTON COUNTY

- 1 Richfield Best Yet 4-H

NEMAHA COUNTY

- 2 Centralia Aces 4-H

NEOSHO COUNTY

- 1 Neosho County 4-H Boosters Club

NESS COUNTY

- 4 Sunshine 4-H

NORTON COUNTY

- 5 Busy Beavers 4-H
- 5 Cedar Ridge 4-H
- 6 Four Square 4-H
- 4 Good Hope Boosters 4-H
- 2 Norton County 4-H Council

OSAGE COUNTY

- 13 Carbondale Rustlers 4-H
- 6 Willing Workers 4-H

OSBORNE COUNTY

- 2 Corinth 4-H
- 1 Cosmopolitan EHU
- 9 Osborne County 4-H Council
- 1 Solomon Valley EHU

OTTAWA COUNTY

- 5 Culver Livewires 4-H
- 2 Solomon Valley 4-H
- 4 Woodsdale 4-H

PAWNEE COUNTY

- 1 Lincoln Livewires 4-H

PHILLIPS COUNTY

- 7 Deer Creek 4-H

INSPIRATION - - - RECOGNITION

POTTAWATOMIE COUNTY

- 13 Blackjack 4-H
- 2 Broderick EHU
- 6 Flush Community 4-H
- 1 Independence HDU
- 2 Kaw Better Homes Unit
- 1 Kaw Valley 4-H
- 2 Kaw Valley EHU
- 2 LaCleda EHU
- 3 Louisville EHU
- 1 Olsburg EHU
- 2 Onaga Home Workers Unit
- 3 Pottawatomie County Adv. Comm.
- 3 Rock Creek EHU
- 4 St. George HDU
- 7 Vermillion 4-H
- 3 Vermillion HDU
- 3 Wheaton 4-H

PRATT COUNTY

- 3 Ashton Busy Bees 4-H
- 2 Eager Beavers 4-H
- 6 Golden Valley 4-H
- 4 Lincoln Bluebirds 4-H
- 4 Pleasant Climbers 4-H
- 2 Pratt County 4-H Council
- 3 Preston 4-H
- 6 Richland Rustlers 4-H
- 4 Sawyer Hustlers 4-H
- 1 Willing Workers 4-H

RAWLINS COUNTY

- 1 Cloverleaf 4-H
- 1 Dellwood 4-H

RENO COUNTY

- 2 Buhler 4-H
- 1 Castleton 4-H
- 4 Huntsville Helpers 4-H
- 9 Langdon 4-H
- 3 Mitchell 4-H
- 4 Ninnescah 4-H
- 3 North Reno 4-H
- 5 Partridge 4-H
- 7 Plevna Sunflowers 4-H
- 3 Pretty Prairie 4-H
- 4 Prosperity 4-H
- 7 Reno County 4-H Council
- 7 Salem 4-H
- 3 Sylvia 4-H
- 5 Turon Lucky 4-H
- 9 Walnut Willing Workers 4-H

REPUBLIC COUNTY

- 1 Munden 4-H
- 6 Republic County 4-H Council

RICE COUNTY

- 1 City Slickers 4-H
- 4 Pleasant View 4-H
- 8 Valley Bluebirds 4-H

RILEY COUNTY

- 5 Happy Go Lucky 4-H
- 1 Randolph Ramblers 4-H
- 5 Zeandale 4-H

ROOKS COUNTY

- 5 Busy Bee 4-H
- 12 4 W 4-H
- 7 Rooks County 4-H Council
- 9 Star 4-H
- 3 Woodston Sunflower 4-H

RUSH COUNTY

- 1 Rush County 4-H Foundation

RUSSELL COUNTY

- 2 City Slickers 4-H

SALINE COUNTY

- 5 Bavaria Live Wires 4-H
- 5 Cloverleaf 4-H
- 5 81 Hustlers 4-H
- 1 Falun EHU
- 4 Falun 4-H
- 6 Friendly Valley 4-H
- 4 Ichi-ban 4-H
- 7 Mentor 4-H
- 6 Saline Valley 4-H
- 6 Smoky View 4-H
- 10 Willing Workers 4-H

SCOTT COUNTY

- 4 Go-Getters 4-H
- 4 Lake Wide Awake 4-H
- 4 Lucky Clover 4-H
- 4 Manning Jayhawks 4-H
- 4 Pence Busy Beavers 4-H
- 5 Scott County 4-H Council & Wm. Carpenter 4-H Foundation
- 4 Town and Country 4-H

SEDGWICK COUNTY

- 7 Bentley Eagles 4-H
- 5 Eastridge 4-H
- 8 Delano 4-H
- 7 Furley 4-H
- 7 Goddard 4-H
- 6 Hilary 4-H
- 10 Kechi 4-H
- 7 Mt. Hope 4-H
- 6 Oatville 4-H
- 4 Peck Ramblers 4-H
- 10 Riverview 4-H
- 2 Wichita Indians 4-H

SHAWNEE COUNTY

- 5 Dover 4-H
- 9 Highlander 4-H
- 3 Indian Creek 4-H
- 7 Kaw Valley 4-H
- 9 Oakland Go-Getters 4-H
- 9 Pleasant Hill 4-H
- 11 Riverside 4-H
- 11 Rochester Heights 4-H
- 10 Shawnee Jayhawkers 4-H
- 11 Shunga Valley 4-H
- 7 Silver Lake 4-H
- 6 Wakarusa Valley 4-H
- 8 Wanamaker 4-H

SHERIDAN COUNTY

- 5 Hi-Plains 4-H

SHERMAN COUNTY

- 6 Beaver Valley 4-H
- 9 Glendale Livewires 4-H
- 3 Prairie Dale 4-H
- 4 Ruleton Eager Beavers 4-H

STAFFORD COUNTY

- 1 Eden Valley Hustlers 4-H

STANTON COUNTY

- 7 Big Bow 4-H
- 3 Jr. Sunflowers 4-H
- 2 Worthwhile EHU

STEVENS COUNTY

- 3 Jolly Jayhawkers 4-H

SUMNER COUNTY

- 5 Clippers 4-H
- 9 Perth 4-H
- 9 20th Malaby Pushers 4-H

TREGO COUNTY

- 2 Busy Kansans 4-H
- 2 Jolly Mixers HDU
- 3 WaKeeney Willing Workers 4-H

WABAUNSEE COUNTY

- 3 Friendly Farmers 4-H
- 2 Harveyville 4-H
- 3 Maple Hill Hustlers 4-H

WALLACE COUNTY

- 6 Harrison Endeavors 4-H

WASHINGTON COUNTY

- 2 Greenleaf 4-H

WILSON COUNTY

- 6 Wilson County 4-H Council

WYANDOTTE COUNTY

- 2 Advance 4-H
- 5 Brauer Beavers 4-H
- 8 Hazel Grove 4-H
- 12 Horaniff Hustlers 4-H
- 3 Wolcott 4-H

Memorials

Erma Richard for Mrs. Ray Austin

Doris M. Linville for Kenneth Colglazier

Friends of Mr. & Mrs. Ronald Colglazier for Kenneth Colglazier

The Wayne Larson Family for Mary Edith Haas

Junior Farmers 4-H, Ellis County for Walter C. Joy

Coffman, Jones & Hederstedt for Mrs. John Neilson

Mrs. Vincent Uhlich, Family & Friends for Vincent Uhlich

Mr. & Mrs. William Lendon for M. S. Winter

FOR ED ROBBINS—

Beard, Luther
Booth, Mr. & Mrs. Don
Braden, Geneva K.
Braden, Mrs. Howard
Brookover Feed Yards, Inc.
Brown, Joe
Brown, Mr. & Mrs. Kenneth

Campbell, Mr. & Mrs. Amos
Chitwood, Mr. & Mrs. Jerry
Cobb, Mr. & Mrs. J. D.

Davis, Mrs. Ellen
DeGarmo, Mr. & Mrs. Alvin

Gallup, Edward R.
Gallup, Frederick W.
Gallup, Mrs. Wm. Dennison
Gardner, Howard W. & Margaret G.

Hall, Mr. & Mrs. Raymond
Heimple, H. H.
Hutchinson, Mr. & Mrs. Glen

Johnston, Mr. & Mrs. Tommy

Laing, Mr. & Mrs. Verne M.
Lester, Mr. & Mrs. H. D.
Lock, Mr. & Mrs. Chet

Milburn, Mr. & Mrs. Glenn L.

Olander, J. Willard

Peoples Exchange Bank, Elmdale
Piester, Mr. & Mrs. Carl
Pyle, Mr. & Mrs. Jack

Rice, Mr. & Mrs. Ronald
Robbins, Mr. & Mrs. Edward
Denmore

Robbins, Edward D., Jr.
Robbins, Thad C. & Elizabeth D.
Roberts, Mr. & Mrs. William V.
Robinson, Don

Rupp, Mr. & Mrs. Robert

Schoepel, Mrs. Marie
Septer, Mr. & Mrs. Harley
Seydell, Mr. & Mrs. E. Morris
Shawver, Mr. & Mrs. E. B. II
Starks, Mr. & Mrs. Darl

Turnbull, Mr. & Mrs. Tracy

Vestring Brothers

Wallace, Mr. & Mrs. Dwane L.
Wright, Mr. & Mrs. John

FOR LESTER F. WEATHERWAX

Busy Bee Juniors 4-H, Hodgeman County

Country Pals 4-H, Rice County

Green Acres 4-H, Butler County

Herndon, May Beth
Hodgeman County 4-H Council

Jellison, A. D.

Kiwanis Chorus, Wichita

Mighty Mitchell 4-H, Rice County

Newton City Slickers 4-H,
Harvey County

Peck Ramblers 4-H, Sedgwick County
Penokee 4-H, Graham County
Polo 4-H, Cowley County

Rustlers 4-H, Nemaha County

Sawyer Hustlers 4-H, Pratt County

Vanskike, Mr. & Mrs. Harry

PRIVATE SUPPORT OF

By Glenn M. Busset
State 4-H Leader

If it were possible to reach into every 4-H Club in these 50 states and choose one 4-H member from each, the selection would reveal a bewildering array of age projects, experiences and learning opportunities. Attempting to make up a statistical composite of a "typical" 4-H member from these 95,000 samples would be as frustrating as trying to identify a "typical" American. At first glance, the only thing these 4-H'ers would seem to have in common would be the name of 4-H.

A closer analysis, however, would reveal an unexpected common denominator that runs through the experiences of 4-H'ers like a bright thread. No matter where any of these young people live or what their project experiences are, it would be difficult to find one who had not benefitted from help and encouragement originating outside the "green circle" of club and community. The Arizona 4-H'er attending her first achievement banquet; the Nebraska boy selling his baby beef project; the Alabama girl receiving a style revue medal; the West Virginia 4-H member attending State 4-H Conservation Camp; the New York club member receiving a packet of garden seeds—these boys and girls are beneficiaries of someone's thoughtfulness and support. A dentist bought two achievement banquet tickets; an insurance firm bid on a calf; a great commercial concern included a budget item for style revue medals; a company interested in conservation provided scholarships for the Extension Service to administer; a small seed company packaged seed kits for upstate and underprivileged children; and none knew that the other was helping encourage boys and girls to accomplish, to succeed in doing something worthwhile. Few ever knew the boy or girl who benefitted from their support but they did know the name 4-H and by their participation expressed confidence in its objectives and methods.

An Extension agent in central Kansas was required to prepare a term paper at an Extension summer school. He chose *Private Support of 4-H* as his topic and when he completed his basic fact finding, he was amazed that his county received more than \$11,000 assistance annually to encourage 4-H work. He came away from summer school with a much deeper appreciation for private support. He should have; his summer's educational experience was partially paid for by a scholarship from a private concern.

There are three separate yet closely interlocked benefits when an individual or a company makes resources available to 4-H. These will, of course, be categorized in different orders of importance by the different people who read and react to them:

1. Boys and girls know when they are being noticed, when they are being appreciated. The "watched pot" does boil. The horizon of adulthood that

"Thank You" are still the best two words we



4-H—WHO BENEFITS?

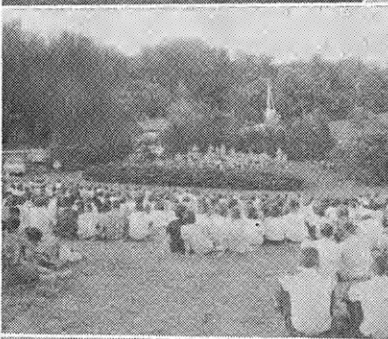
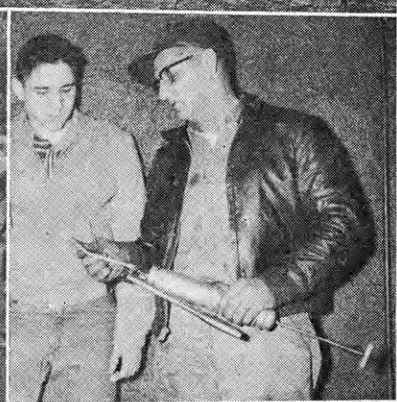
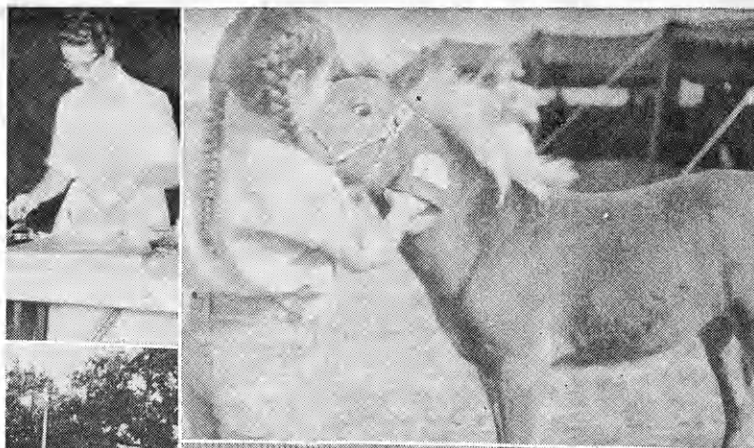
stretches far into the seemingly impossible distance is relieved by the familiar and friendly figures of interested adults who have cared enough to provide incentives and rewards for those who accomplish. The great business concern cannot "notice" each member personally, but the pin, the medal, the trip, the scholarship says, "You have achieved. You are important to us. We appreciate you."

2. In a world that seems to be moving young people steadily toward the hypnotic, the neurotic and the idiotic, deeply concerned people are looking for a stabilizing influence, a force for good, to which they can give support. When these people as individuals or as representatives of business, religious, civic, or educational concerns come to know and appreciate the objectives of 4-H work, they attempt to satisfy their social conscience by support of such work. There is a "good feeling" about supporting 4-H or any other youth serving group with high educational objectives.
3. The Extension Service functions as a "branch" of the land-grant university to promote and administer 4-H work, and in so doing is bound by all the strictures and limitations as well as enjoying the benefits of university associations. The University is supported by taxation and fees. There are no fees in 4-H, and there are limitations in the use of tax monies. Many needs in 4-H work cannot be met easily, if at all, by taxation funds. Private support of 4-H permits a flexibility that unleashes a flood of programming aids.

Perhaps the greatest benefit of private support to 4-H, through administration by the Extension Service, is to add immensely to the depth and breadth of youth education experiences. Trips, tours, scholarships, incentives, medals, awards, camps, and conferences offered and paid for by private support add enormously to the flexibility and attractiveness of the university's educational program for youth, the 4-H Clubs. It is really this freedom of movement that has permitted 4-H to become more than just another academic idea and has made it into an organization that has captured the imagination of more than 20 million Americans and spread to nearly 75 foreign countries.

It is a tremendous tribute to 4-H that so many philanthropic individuals and organizations are making financial contributions to further stimulate and develop the 4-H program. Those of us whose whole lives have been caught up in the impact of the 4-H idea are convinced there is no better investment in the world.

now to express gratitude and appreciation.



The Service You Helped Provide To 4-H Members and Their Leaders - -

While the entire program of the Foundation is designed to benefit 4-H Club work, some specific examples of assistance in 1967 include: (Selections are made by Extension Service regularly established awards committees.)

16 College scholarships awarded to needy and worthy 4-H members

Trips to 4-H Members to —

National 4-H Club Congress, Chicago

Wichita 4-H Congress—"Blue Award" winners in weed control, electric, foods, crops, personal development projects, certain judging teams, and citizenship

National 4-H Dairy Conference and National Safety Congress, Chicago

National 4-H Conference, Washington, D.C.

National Citizenship Short Course, Washington, D.C.

National Poultry Fact Finding Conference, Kansas City

Leadership training scholarships to K-State Music Camp, conservation and health camps, junior leadership conference, county project chairmen development clinic, adult leaders conference, recreation workshop, and electric clinic

The "Key Award" was presented to the top 1 to 1½ percent of the state 4-H membership

Special recognition was presented in home improvement, crops, swine, and several other projects

400 Subscriptions to National 4-H News were awarded leaders in 24 counties

20 Counselors were provided expenses for assistance at State Junior Leadership Conference at Rock Springs Ranch

Furnishings and equipment for Clovia 4-H Scholarship House

The above, and many other services to 4-H were the result of financial support given by public spirited individuals, firms, and organizations. These various items run in cost from less than \$100 to \$6,500 annually.

The Kansas 4-H Foundation joins forces with the National 4-H Service Committee and the National 4-H Foundation in many important projects.



Small Craft Safety Tips

Stop and think how many boating lakes are close enough for a day's recreation, and Kansas suddenly becomes a mind's picture of "water fun in the plains." This is a good time to think about water safety rules, John Ferguson, Extension Engineer at Kansas State University, reminds.

- Be sure the boat is sound and safe.

- Stay with a boat should it overturn, regardless of swimming ability. Float with the boat until help comes or "leg-oar" it to shore.

- Don't overpower the boat. It's safer to be underpowered. Check manufacturers specifications for maximum horsepower for different models and sizes of boats.

- Avoid overloading a boat with passengers or equipment. Also, distribute load evenly. Most boat manufacturers specify maximum safety loads.

- Don't boat in rough waters, and don't boat with a storm brewing.

- Supply a U.S. Coast Guard approved life jacket for each boat passenger.

- Refuse to go out in a leaking boat. Bilge pump should be regular equipment.

- Use common sense in boating. Avoid rocks, snags, and

stumps. Cut motor before reaching shore. Don't stand in a boat. And when getting in a boat, step carefully to the middle.

- Know and obey boating laws and regulations. Be courteous to other boaters. Avoid horseplay.

- Check boat and equipment periodically for wear, cracks, or strains.



Mouth-to-Mouth Resuscitation

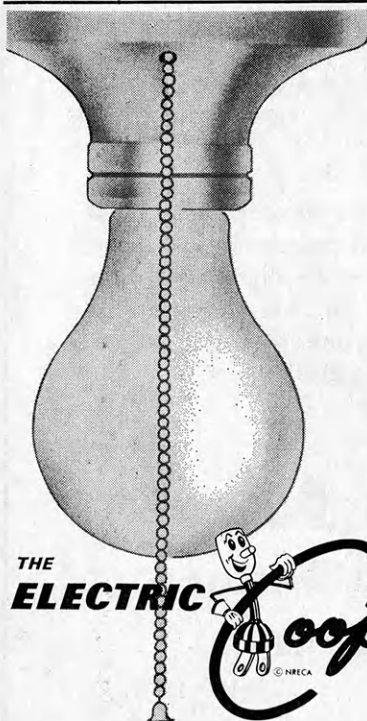
1. Remove any foreign matter from the mouth. Then tilt the head back until the chin is pointed upward.

2. Hold the jaw in a "jutting out" position.

3. Place your mouth tightly over victim's mouth and close his nostrils with your other hand. Blow into victim's mouth until chest rises. Remove your mouth and allow air to come out. Repeat.

4. If unable to get air into lungs of victim, and head and jaw positions are correct, suspect foreign matter in the throat. Roll victim onto his side and slap him on back several times. Wipe out mouth. Then repeat the first three steps.

For adults—blow 12 times per minute. For children — blow gently 20 times per minute.



WHY ARE THERE ELECTRIC COOPERATIVES?

It's simple!

Electric Cooperatives came into being to provide electric power to folks in rural areas. Other power suppliers considered it unprofitable to extend their service to sparsely settled areas.

We are still in business to supply these areas with the electricity they need. As the areas grow and develop they will need new and improved service. It's up to us to provide it.

THE **ELECTRIC** Cooperatives OF KANSAS

Thank You

4-H Journal Sponsor

THESE SPONSORS HAVE GIVEN THEIR SUPPORT FOR THE COMING YEAR

- BROWN**
Citizens State Bank, Hiawatha
Farmers State Bank, Fairview
Morrill State Bank, Morrill
The Bank of Horton, Horton
The Bank of Robinson, Robinson
The Morrill & Janes Bank, Hiawatha
The Union State Bank, Everest
- CHAUTAUQUA**
Sedan State Bank, Sedan
- CRAWFORD**
Farmers State Bank, Walnut
First State Bank, Arma
First National Bank, Girard
First State Bank of Pittsburg, Pittsburg
Girard National Bank, Girard
Hepler State Bank, Hepler
Home State Bank, Arcadia
McCune State Bank, McCune
Miners State Bank, Frontenac
National Bank of Pittsburg, Pittsburg
The City National Bank of Pittsburg, Pittsburg
- FORD**
Bucklin State Bank, Bucklin
Farmers State Bank, Bucklin
Fidelity State Bank, Dodge City
First National Bank, Dodge City
First National Bank, Spearville
Ford County State Bank, Spearville
- GEARY**
Central National Bank, Junction City
First National Bank, Junction City
- JEWELL**
Burr Oak State Bank, Burr Oak
Citizens State Bank, Jewell
First National Bank of Formoso, Formoso
First National Bank, Mankato
Randall National Bank, Randall
State Bank of Esbon, Esbon
State Exchange Bank, Mankato
- KEARNY**
Farmers Cooperative, Lakin
- MARION**
Aulne Grain Co., Marion
Burns Farmers Co-op, Burns
Canada Grain Co., Marion
Co-operative Grain & Supply, Hillsboro
Co-operative Grain & Supply, Lehigh
Co-operative Grain & Supply, Marion
Crossroads Co-op Assn., of Goessel & Newton, Goessel
Farmers Co-op Grain Assn., Durham
Friesen Feeds, Hillsboro
Lincolnville Co-op Assn., Lincolnville
Marion County Co-op, Durham
Peabody Co-op Equity Exc., Peabody
Pierce Oil Co. & Fertilizer Service, Marion
Ramona Co-op Elevator Co., Ramona
Peabody Sausage House, Peabody
Tampa Co-op Assn., Tampa
Tip Top Dairies Co., Hillsboro
- RAWLINS**
Farmers National Bank, Atwood
Farmers State Bank, Ludell
Peoples State Bank, McDonald
State Bank of Atwood, Atwood
State Bank of Herndon, Herndon
- MORRIS**
Farmers Cooperative Assn., Alta Vista
Farmers & Drovers Bank, Council Grove
Farmer Stockman Co-op Association, Council Grove
Flint Hills Rural Electric Co-op Assn., Inc., Council Grove
Hunter Sales Company, Council Grove
Mor-Kan Grain Company, White City
Morris County Farm Bureau Association, Council Grove

Former 4-H'ers From Six Colleges At Rock Springs Ranch

Clean up, fix up, paint up was the order of the day as Collegiate 4-H members from six Kansas universities and colleges took part in the annual spring work day at Rock Springs Ranch, state 4-H Center, near Junction City.

The Collegiate 4-H Clubs represented on May 4 and 5, reports Cecil Eyestone, Extension 4-H specialist, Kansas State University, were University of Kansas, Fort Hays Kansas State College, Kansas State College at Pittsburg, Kansas State Teachers College at Emporia, Butler County Community Junior College at ElDorado, and KSU.

To assist in preparing Rock Springs Ranch for the summer season the former 4-H'ers now attending college painted tables and benches, cleaned the fish pond, put on fresh mattress covers, raked trash, and cut and hauled wood for future campfires.

After a day's work the students relaxed with a dinner and dance. Before returning to their campuses Sunday they attended a worship service presented by the University of Kansas Collegiate 4-H members.



Pat O'Brate, KU and Martin Keller of Fort Hays Kans. State College are shown cleaning the fish pond at Rock Springs Ranch.

UNWELCOME GUESTS AT THE FARM



Inflation is a most serious economic problem. The American dollar has lost more than one-half the purchasing power that it had in 1940. This has caused serious hardship to many citizens with fixed incomes and has had an adverse effect on our entire domestic economy. It is also affecting the stability of the dollar in foreign exchange.

The continued clamor that deficit spending is justified by some "crisis" and the acceptance by many people of a continuing decline in the value of the dollar as an inevitable development serve to emphasize the serious nature of this problem.

Government policies which affect the supply of money and credit should be directed toward promoting a relatively stable general price level together with high employment and rising productivity. Government also has a responsibility to so conduct its affairs as to inspire confidence that extremes of inflation and deflation will be controlled.

Kansas Farm Bureau

105 County Farm Bureaus

Working Together

Camp Out Cooking

QUICK SPAGHETTI

1 can cooked spaghetti and tomato sauce
 1/2 lb. hamburger (browned)
 1/4 cup water used to rinse out can
 1 tbsp. dry instant onion
 a sprinkle of instant garlic salt

Extra cheese can be added if desired. Also if you do not have hamburger try sliced vienna sausage. Heat and eat. Serve with green beans and french bread toasted and a lettuce salad.

BAKED POTATO

Wrap a strip of bacon around each potato or you may make a small hole in each potato and fill with butter. Wrap in foil and drop in coals. They cook in an hour.

FISH BAKE

Lay bacon slice on sheet of foil—then lay a salt and peppered fillet of fish on bacon—another slice of bacon—another fillet. Alternate until you have four fillets of fish and five slices of bacon. Wrap foil tightly and bed in hot coals for 30 minutes. Prepare at least one such package for each person.

BISCUIT JELLY STICKS

Follow the directions on the box, mix up and roll out enough biscuit mix dough to make 24 biscuits. Roll dough around toasting sticks, making each bread stick about five inches long. Toast

slowly over a low fire. Take your time so the center of the bread stick will be well done.

When the bread stick is well done and golden brown, remove from toasting stick. Fill center of bread stick with your favorite jelly or preserve. Serves 12

CHOPPED STEAK LUNCH

Wrap hamburger patty, chopped onions, a peeled and quartered potato in double thickness of foil. Toss in coals for 30 minutes. One for each.

BAKED APPLES

Core apples and fill hole with sugar, cinnamon and butter. Wrap in foil—drop in coals for 20 to 30 minutes.

CORNER BEEF AND CABBAGE

Take a slab of corned beef, a wedge of cabbage, a peeled and quartered potato and a tablespoon of water. Wrap the whole thing in double foil and place package in coals for 30 minutes.

CAMPER'S DESSERT

3 cans (13 oz. size) Fruit Cocktail
 1/2 pkg. bite-size marshmallows
 Several bananas, sliced

Mix everything together and eat.

Serve in paper cups with cookies. Serves 12.

PINEAPPLE ANGELS (DESSERT)

Buy a large loaf of unsliced bread from the bakery. Cut the bread into big cubes, each one about one-inch by one-inch. Dip the bread into sweetened condensed milk (the thick, sweet kind).

Put the bread with a chunk or two of pineapple chunklets on the end of a toasting stick. Toast over the campfire until the bread is lightly browned. Serves twelve.

Towing A Trailer

(Continued from page 5)

8. Two tail lights and two stop lights are necessary in Kansas, and any unit manufactured after 1959 must have turn signals as well. A safety-device—chain, cable or bar—also is required. In Kansas, trailers must be licensed if the gross weight of the towed unit—trailer, boat, motor—is more than 2,000 pounds.

Splice, Don't Tie

Should an anchor or mooring line break, instead of knotting it together, splice it. Some knots can take up to 50 per cent out of a rope's efficiency while a splice will allow a rope to retain almost 95 per cent of its original strength.

Do It Lightly

When beaching a boat, many boaters will simply ram the bow up on the beach. But it's better to take the boat into shallow water, shutting off the motor and tipping it up, then stepping over the side and easing the boat to the beach.

Camping Tips

(Continued from page 7)

You can make your non-essential list yourself. Tack up both lists and check off each item as you load it in the car or boat.

A very handy piece of camping equipment is a camp kitchen—a box that organizes all the cooking utensils, food and miscellaneous odds and ends so they are easy to locate and carry. These can be purchased or you could make it yourself. See page 20.

Now, for the food—and just about everything tastes good around a campfire, so allow a little extra for those vigorous outdoor appetites. Variety is important but try to make it simple, as you do not want to spend all your time cooking. Plan

menus carefully, listing every food for every meal. Look for main dishes that cook quickly in one pan, and are economical and nourishing. List all of the food you will have to take. Shop early. Purchase all or most of the foods you will need a day or two before you leave. You will save last minute scurry and will be less likely to forget something. Simple camp menus can be found above.

If you are new at camping—why don't you have a trial run of putting up your tent in your own backyard. You will learn how to pitch the tent and use the stove, and you can see if everything is working properly—the kids will love it.

"Vacation" Puzzle Answer
 SCHOOL IS OUT



**ALLIANCE INSURANCE
 COMPANIES**

McPherson, Kansas

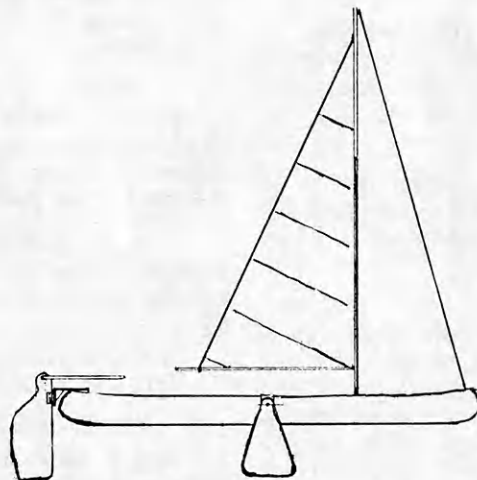
FIRE — CASUALTY — LIFE

Serving Kansas Since 1888

Free!

4-H Woodworking Plans from YOUR LUMBER DEALER

**TWO NEW
PROJECT
IDEAS NOW
AVAILABLE**



CANOE SAILING RIG



TAIL GATE KITCHEN

See these Lumbermen for your FREE Plans — they are your best friend when you need good material

Agra Agra Lumber Company	Elkhart Elkhart Lumber Co.	Hays Hardman Lumber Corporation, Inc.	Kensington Kensington Lumber Company
Argonia Mack-Welling Lumber Co.	Ellinwood Home Lumber & Supply Co.	Healy Healy Co-op Elevator Company	Kinsley Kinsley Co-op Exchange Lumber Yard
Ashland Don Spotts Lumber Company Home Lumber and Supply Co.	Ellsworth Ellsworth Lumber	Hiawatha Motsinger Lumber Co.	LaHarpe Diebolt Lumber and Supply
Atchison Hixon Lumber Company	Emporia Home Lumber and Supply Co. The Smith Lumber Company	Hill City Hardman Lumber Company	Lakin Tate and Company
Beloit Peoples Lumber and Coal Company	Eureka A. C. Houston Lumber Company	Hillsboro Hillsboro Lumber Co.	Lancaster T. E. Snowden Lumber Company
Bern Bern Lumber Company	Fredonia The Home Lumber & Supply Company	Holton Holton Lumber Company	Lansing Lansing Lumber, Inc.
Burden Alexander Lumber Co.	Garden City McAllister-Fitzgerald Lumber Co.	Home Home City Lumber & Hardware	Larned Clutter-Lindas Lumber Co.
Caney O. E. Woods Lumber Co.	Garden Plain Fisher Lumber Company	Hope Roehrman Lumber & Hardware	Lawrence Woods Lumber Company Logan-Moore Lumber Co. McConnell Lumber Company
Cawker City Cawker City Lumber Company	Garnett Star Grain and Lumber Company	Hugoton The Star Lumber Company	Lebanon Lebanon Lumber Company
Chanute Smith Lumber Company	Gaylord Hardman Lumber Company	Independence O. F. Woods Lumber Co. Sandott Lumber, Inc.	Lenora Lenora Lumber Company
Clay Center Fullingtons	Glen Elder Dickinson Lumber Company	Iola Klein Lumber Company	Liberal The Star Lumber Company
Clyde Geo. W. Hays & Son, Inc.	Goodland Hardman Lumber Company Rasure Lumber Company Foster Lumber Company	Johnson Seyb-Tucker Lumber and Implement Company	Linn Rice-Johntz Lumber Co.
Colby Hardman Lumber and Coal Company	Greensburg Home Lumber and Supply Co.	Junction City Builders Lumber Inc.	Longford Longford Lumber & Grain Company
Coldwater Home Lumber and Supply Co.		Kechi Buck Alley Lumber	Macksville Home Lumber and Supply Co.

Toy Chest



Utility Cabinet

Woodworking Bench



Show Box

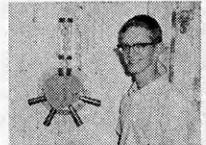
Study Center



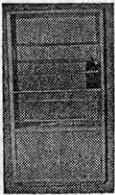
THESE PLANS ARE AVAILABLE

Lawn Chair	Martin Bird House	Sheep Blocking Box	Bicycle Rack
Mail Box	Dog House	Child's Desk	Hog House
Portable Towel Rack	Patio Planter	Gun Rack	Colonial Bookcase and Cabinet
Lazy Susan	Comic Book Rack	Hobby Desk	Open Top Sawhorse
Danish Coffee Table	Childs Step Stool & Chair	Camp Stool	Insect Display Box
Folding Table	Collapsible Visual Aid Stand	Hobby Horse	Dairy Barn Desk
Box Hockey	Cart with Removable Trays	Bookshelf Light	Coffee Table
Picnic Bench	Back Yard Fence	Rabbit Carrier	Salt and Pepper Set
Holding Gate	Magazine Rack	Camp Kitchen	Lawn Chair
Sail Boat		Chick Feeder	Porch Swing
Baseball Rack		Garden Trellis	

Tennis Padl-Pak



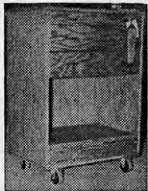
Closet Valet



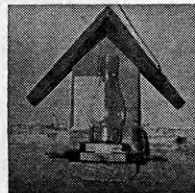
Night Table



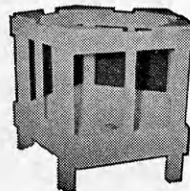
Tool Caddy



Bird Feeder



Self Feeder for Sheep



Manhattan
Ramey Brothers

Mankato
Mankato Lumber Company

Marion
Mack-Welling Lumber Co.

Marysville
Howell Lumber Company

Meade
Home Lumber and Supply Co.

Minneapolis
Dingee Lumber Co.

Moundridge
Clayton Vogt Lumber Co., Inc.

Neodesha
O. E. Woods Lumber Co.

Ness City
Right Cooperative Association

Newton
Antrim Lumber Company

Nickerson
D. J. Fair Lumber Co., Inc.

Norton
Norton Lumber Company
Newbury Lumber & Ready Mix Co.

Nortonville
Alexander Lumber Company

Oakley
Oakley Lumber Company

Oberlin
Building Supply Headquarters

Offerle
Offerle Co-op Lumber Co.

Olathe
Cowley Lumber and Hardware Company

Onaga
Onaga Lumber & Grain Co.

Osage City
Martin Material Co., Inc.

Osborne
Lewis A. Hardman Lumber Co.

Oswego
Home Lumber and Supply Co.

Ottawa
Hubbard Lumber Company, Inc.

Paola
Miami County Lumber Co.

Parsons
O. E. Woods Lumber Co.

Phillipsburg
Hardman Lumber Company

Pittsburg
Broadway Lumber Co., Inc.

Plains
Home Lumber and Supply Co.

Pretty Prairie
The George W. Ulch Lumber Company

Protection
Home Lumber and Supply Co.

Russell
Hardman Lumber Company of Russell Inc.

St. Francis
St. Francis Equity Exchange

Salina
Easterday-Roster Lumber Co
Larson Building Center

Scandia
Klima Lumber Co.

Scott City
McAllister-Fitzgerald Lumber Co.

Seneca
Koelzer Lumber Company
Seneca Lumber Company

Severy
Tolman-Gibbon Lumber Company

Smith Center
Smith Center Lumber Co.

Spearville
Farmers Grain & Supply Lumber Dept.

Stafford
Home Lumber and Supply Co.

Stockton
Stockton Lumber Company
B & B Lumber & Supply

Syracuse
Foster Lumber Co. Inc.

Tribune
Foster Lumber Company, Inc.

Ulysses
T. M. Deal Lumber Co.

Wakeeney
Hardman Builders Supply Co.

Wichita
Lawrence Lumber Company
Stockyards Cash and Carry Lumber Co.
Alexander Lumber Company Inc.
Star Lumber & Supply Co.

Williamsburg
Williamsburg Lumber Yard

Wilson
Hoch Lumber Company

Winfield
A. B. Everly Lumber Co.

Zenda
The George W. Ulch Lumber Company

Missouri

Independence
The George W. Ulch Lumber Company, 11432 Truman Road

Is This a Record? Wiebe Family Has 8 in Newton Club

4-H has always been a family affair, but seldom with the enthusiasm exhibited by the Gus Wiebe family of Newton. Mr. and Mrs. Wiebe are both adult leaders of the Newton City Slickers 4-H Club, and eight of the nine Wiebe children are members of the same club.

Mr. Wiebe is a woodworking leader and is also the leader for the club aviation project. Mrs. Wiebe has been community leader for two years and was foods leader for six years.

With one to five projects each, the Wiebe children have a total of 21 main projects. Helen, 18, has been a 4-H member for 9 years and is a Key Award winner. Mary, 17, has been in 4-H for 8 years; David, 16, 7 years; and Betsy, 14, 6 years. Jimmy, 13, and Kathy, 12, have been in 4-H for 4 years; Donnie, 11, 3 years; and Carol, 8, 1 year. Seven-year-old Mark, who is too young to be in 4-H, describes his position in the family as "not a 4-H member, yet."

The entire Wiebe family has enjoyed the 4-H program, Mrs. Wiebe said, and all have benefited from the good training from project work and the association with a good group.



The Wiebe family are pictured

Top Row: Jimmy, Mary, David, Helen.
Middle Row: Betsy, Mr. Wiebe, Mrs. Wiebe.
Bottom Row: Carol, Donnie, Mark, Kathy.



Wins in 4-H Safety Program

John D. Montgomery, Director of the Kansas Highway Commission congratulates Rick Bigham, president of the Grantville 4-H Club of Jefferson County in winning 2nd place in the state 4-H safety program. The club received \$100 for the purchase of safety equipment for their community. They plan to buy fire extinguishers for the two local churches and a tape recorder for the club room. The remainder will be used for ribbons and trophies for the annual Jefferson County 4-H Safety Day which the club sponsors. Also shown in the picture are Bill Rhynas, Club Community Leader; Kathy Wade, Belinda Crawford, Chuck Bigham, Robin Bigham, Charlene Kendall, and Mrs. Robert Bigham, Safety Project Leader.

Entomology Clinic Held at Salina

The North Central Kansas Entomology Clinic, held April 6 at Salina, attracted nearly 100 amateur entomologists from nine counties. 4-H members from Cloud, Dickinson, Ellsworth, Lincoln, McPherson, Reno, Rice, Russell and Saline counties participated in the event which featured a lecture by Dr. Dell Gates, a specialist in entomology with the K-State agriculture extension service.

Other highlights included slides of insects, an insect identification contest, talks and demonstrations, a critique of 4-H insect collections, displays, booths and insect handouts.

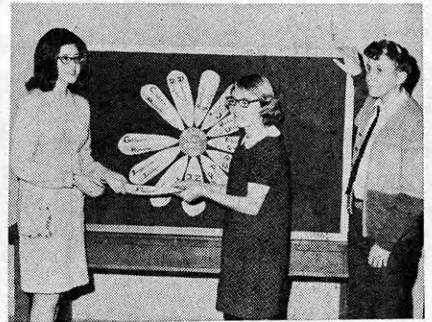
The Entomology Clinic was organized by Mrs. O. S. Fent, Salina, the Saline County project chairman.

Reading Project For Sunrise 4-H

The Lincoln Sunrise 4-H Club in Lincoln County had all 41 members enrolled in the Reading Project last year. The minimum requirements were a total of 5 books read of which two are non-fiction.

They had a total of 887 books recorded. The average was 21 books per member. Linda Gabelmann led with 195 followed by Cathy VonFange with 49, Terri Nelson with 48, Linda Lewis with 39, Dale Lewis with 34, and Sherry Smith with 33. All types of books were selected.

This club has had another project the past three years and that is decorating the bulletin board at the Public Library. A new theme is put up about every two weeks.



Linda Gabelmann, Linda Lewis and Leroy Bosch are pictured here as they changed the bulletin board at the library.

Mrs. Keith Jorgensen is the Project Leader of the club.

Lucky Four's Begin Record Book Project

Lucky Four 4-H Club members of Washington County, have started a record book of 4-H members who have started 4-H as a youngster and been a member through their 4 years of high school.

As a member graduates from high school he or she will compile a record of his 4-H work and submit it to be put in the 4-H record book.

This book will be kept at the club house in Brantford.

The book has four members entered.

Irma Jean Matson
Jr. Leader, Reporting

Make A First-Aid Kit

by: Kay Jensen

Are you prepared in case of an accident, tornado, or atomic fallout? Everyone should have First-Aid kits. You should have a First-Aid kit not only in the house, but also in your car, truck, boat, and on your tractor. One should also have a kit prepared to take to your fallout shelter. Large band-aid boxes are good containers for kits to be put in vehicles; however, any container that will hold all the articles and still have the lid on tight may be used.

The following is a suggested list for a First-Aid kit to be used for minor injuries.

- Merthiolate
- Burn Ointment
- Sterile gauze dressings, individually wrapped.
- Adhesive tape around match
- Needles
- Band-Aid, assorted
- Safety razor blade
- Tweezers
- Small Scissors
- Aspirin
- Q-Tips, covered
- Tourniquet with safety pins or clamps

Many small items may be added to the above list if you so desire, but the important thing is you may need your First-Aid kit soon, so be prepared and have First-Aid kits available wherever you are.

(Kay is 16 years old and has been a member of the Valley Victors 4-H Club in Montgomery County 9 years. She has been taking Health as a project for the last 8 years)

"VACATION" PUZZLE

Fill in the blanks to match the definition. Under each letter is a number. Transfer the letter to the blank above the same number below and you will have solved the puzzle.

WORD	DEFINITION
— — —	Belonging to him
3 7 1	Rest in chair
— — —	Liquid grease
1 7 11	Chilly
— — —	Close (as a door)
4 7 6	
2 9 5 6	
— — —	
8 3 10 11	
1 2 3 4 5 6 7 8 9 10 11	

(Answer on page 19)

Classified Ads

Classified Rates — 12c per word, 5% discount for 6 annual insertions, 10% discount for 12 annual insertions. Payment in advance.

FARM EQUIPMENT

CALF CREEP FEEDERS—30 Bu. Capacity \$88.50. Dealerships available. Free Literature. Dolly Enterprises, 101 Main, Colchester, Illinois 62326.

FARROWING STALLS—Complete \$24.95. Dealership available. Free literature. Dolly Enterprises, 101 Main, Colchester, Illinois 62326.

LIVESTOCK

Select a lasting 4-H project for both pleasure and profit. Buy a registered Quarter Horse Colt! The Kansas Quarter Horse Association has an outstanding Youth Program plus being the only breed association to pay \$3,500.00 in prize money to weanling and yearling Futurity Colts at the 1967 Kansas State Fair. Write: KQHA, P.O. Box 773, Manhattan, Kansas 66502.

LUMBER

WALNUT TIMBER, WRITE: Paul Keller, Box 191, Troy, Kansas.

WALNUT TIMBER, Certified check. Kansas-Missouri Walnut Log Company, Box 391, Leavenworth, Kansas.

COINS AND STAMPS

I PAY \$250 EACH FOR 1924 1c Green Franklin stamps, rotary perforated eleven (\$2,500 unused). Send 25c for illustrated folders showing amazing prices paid for old stamps, coins, collections. Vincent, 85KH, Bronx, New York 10458.

500 DIFFERENT WORLDWIDE STAMPS for \$1.00. Smith, 508E Brooks, College Station, Texas 77840.

BRITISH HALF-PENNIES, size of U.S. quarter. 10 different \$1.00 postpaid. Brashear's 4th St., Corbin, Kentucky 40701

RABBITS

RABBITS; Pedigreed Checkered Giants, Palominos, Dutch. Enclose Stamp for Price list. Everton 214 E. 27th, Topeka, Kansas 66605.

EARN \$10,000 YEARLY Raising Angora Rabbit Wool and Breeding Stock for us. Information 25c coin. American Angora Company, Malta 8, Mont. 59538.

MISCELLANEOUS

LOANS ALL TYPES

\$10,000 to \$100,000,000
Anywhere in USA and Canada
FISHER Real Estate-Mortgage Corp.
Mortgage Brokers, Joy, Illn. 61260

MAKE BIG MONEY RAISING CHIN-CHILLAS FOR us. Information 25c. KEENEY BROTHERS, New Freedom, Penna. 17349

HARD TO FIND Old-Time Country Songs, New Record Albums. Free Circular. Uncle Jim O'Neal, Box A, Arcadia, California.

BEAUTIFUL MACHINE QUILTING for Quilts, Spreads and Yardage. Finest workmanship. Reasonable prices. FREE information. Quality Quilting, Stover, Missouri.

HOMEOWNERS—SAVE BIG MONEY, by repairing your own plumbing. For experienced, professional advice send your problems and \$3 to, Burcando, 319 Cardinal Crest, Jackson, Mich. 49202

"Midway the New Turf grass for Kansas" Brown Landscape Service, Quinter, Kansas 67752

LEARN A TRADE. Approved retail grocers-GI. Southwestern College of Meat Cutters, 1301 South May Ave., Oklahoma City, Oklahoma 73108

Free toy pattern with Fancyfemales, Northbend, Nebr. 68649 Crafts, hobbies, homemaking. 40c Yearbook—\$1.00

EVERLASTING FENCE POSTS—3c each. Simple brush on Formula—\$1.00. CER-UNION, Phillipsburg, Kansas 67661

Save Baby Pigs: Electric heat brooding, prefabricated pads embedded in concrete. Buy direct at lower prices. Send plans, free design layout, sample. Raehco, Box 488 KJ Centerville, Iowa 52544

Labette County Nifty Thrifty Revue

The Thrifty Thrivers 4-H Club of Labette County held their tenth annual Nifty Thrifty Revue. The Revue is the club's largest money making event of the year.

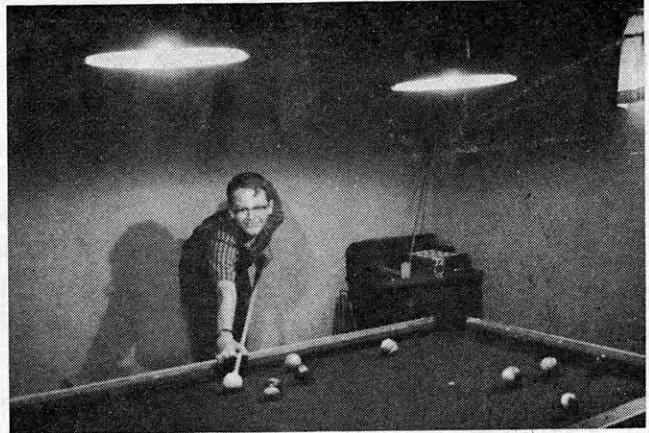
Some of the best numbers from 4-H Days are presented for the program. These numbers include square dances, chorus, band, project talks, and demonstrations. Afterward, cake walks are held. The cakes are baked and donated by the 4-H families. There is a fish pond, the proceeds of which go to a worthy cause. There is a door prize and several other money making activities.

The purpose of the Nifty Thrifty Revue is to advertise the work and accomplishments of 4-H, to give added experience for those individuals who will later perform at Regional 4-H Day, to provide funds for 4-H activities, and to provide entertainment.

Jack Sullivan, Reporter

4-H Electric Project Proves Helpful

David McIntyre is an active member of the Acres 4-H Club in Clark County and has been a member for five years. His other projects beside electric, include; grooming, health and safety, junior leadership, landscape design, recreation and woodworking.



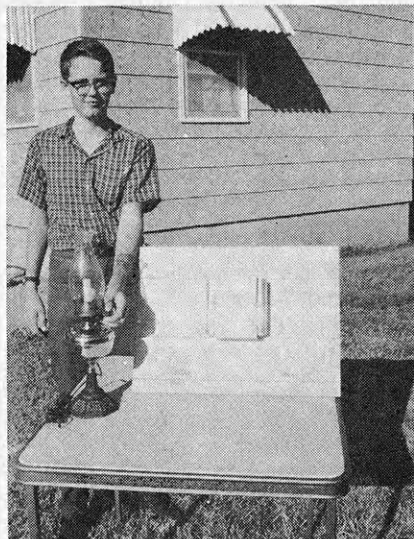
The two lights installed above the pool table was one of David's projects this year. The recreation room in the basement is enjoyed by the family and friends.

David Applies His Electric Knowledge To Useful Farm and Home Improvements

This light was used in building the 4-H float for county fair. It has a switch and outlet with two lights to light a large area.

David entered the doorbell as a wiring display and will install it in his grandmothers home. The lamp, also his grandmothers, was converted to electric by using switch, adapter, bulb and a gas mantle. This was a kerosene lamp with a brass bowl and iron base.

On the table before David is a demonstration board of the 3-way switch to be used in the garage. The Dolly projector light has been used as spot lights for church, style revue, and the achievement banquet. David made the delayed fuse block to protect motors, and the double outlet extension with switch for shop use. The extension cord is used at the county fair.



* Watch This Page For Ideas On Farm And Home Electric Projects

ELECTRIC LIGHT and POWER COMPANIES in KANSAS

The Kansas Power and Light Company
Kansas City Power & Light Company

Central Kansas Power Company
Kansas Gas and Electric Company

Western Power and Gas Company, Inc.