



November, 1966

15 Cents

KANSAS 4-H

Journal

The 4-H Family Magazine

Kansas 4-H Foundation, Inc., Publisher





*your participating cooperative
announces . . .*

YOUTH FEEDER AWARDS

**A program of achievement recognition
for 4-H and FFA members with
animals on CO-OP Feed.**

Register now for these awards:

FIRST AWARD

1967 Case Tractor
(1966 model shown)

SECOND AWARD

Ford Bronco Roadster

THIRD AWARD

G. E. Color Television Set

FOURTH AWARD

Huffy Garden Tractor

FIFTH AWARDS

10 G. E. Portable Television Sets

to enter:

Register with your local Co-op.

Participating cooperatives have official registration forms. Stop in and fill one out when you start your animal project. You may register now if you like.

Entry form will be mailed to you.

After registration with your cooperative, you will receive an official entry form for Youth Feeder Awards in the mail. This entry form will have space to fill in your feeding and care records, ask you to provide a photograph of you and your animal together, and ask you to answer why you chose CO-OP Feed in 100 words or less. After your animal project is completed, send in your com-

pleted entry form before November 1, 1967.

Presentation of Awards - December, 1967.

You don't have to be a show winner to receive awards. Recipients of awards will be chosen solely on the basis of information sent in with the official entry form.

Entries will be judged by an independent panel of 4-H and FFA state representatives. Awards will be made on the basis of sincerity, interest in the animal project, and according to the guiding philosophy of the 4-H or FFA organization to which the entrant belongs. Awards will be officially presented by Farmland Industries in December, 1967.

State and Interstate Shows — Cash Awards
Additional, cash awards will be presented

to 4-H and FFA members with grand champions over all breeds for beef, swine, dairy, chicken, turkey, sheep and horse in 1967 shows. For winners in these state and interstate show categories, local cooperatives will present Farmland Industries' checks in the amounts of \$200.00 for interstate show winners, and \$100.00 for state show winners. For show winners to qualify for cash awards, animals must be fed on CO-OP Feeds and Farmland Industries must be supplied with a completed official entry form with photograph of youth and show animal. Cash awards will be presented in December, 1967.

Stop in soon at your cooperative. Register for Youth Feeder Awards.



FEEDS

"Quality backed by profit-minded research."

FARMLAND INDUSTRIES, INC. KANSAS CITY, MISSOURI

"PROTECT THE CHILDREN"

Theme for the 1966 Christmas Seal Campaign

As deputy of the 1966 Christmas Seal campaign in Kansas I would like to bring to your attention some facts about tuberculosis.

4-H stresses health in its program and I feel that cooperating in this campaign and helping eradicate tuberculosis would make a very good health program for 4-H clubs and members.

The theme of the 1966 Christmas Seal campaign is "Protect the Children." I have a special interest in this campaign for two reasons.

First, I was a victim of TB last December after a severe case of pneumonia and second, I am one of Doc Adams' deputies in this year's campaign. Milburn Stone, a native of Kansas, is Doc Adams of "Gunsmoke" and is the honorary chairman of the Christmas Seal campaign in Kansas.

TB strikes at any age. It strikes without much warning. You catch it from someone who has it—and right now 250,000 of your fellow-Americans have TB.

What's more, 100,000 of these people may not even know they are sick. Some of them find out too late. That's needless tragedy, because doctors know how to cure TB, especially when they find it early.

There are two good tests to find out if you have TB. The tuberculin skin test (which is painless & simple) discovers if TB germs have entered your body. If the test is positive, the next step is the chest X-ray to find out if the germs have done any damage to the lungs.

Children and most grown-ups should have a tuberculin test every year, as long as the test is negative. If TB is discovered early, treatment can begin immediately and TB can be stopped. Patients can return to normal life and jobs and there is no danger to others.

We need 100% participation of every individual getting a tuberculin skin test every year, followed by a chest X-ray if the skin test is positive.

Also, help support the Christmas Seal campaign by purchasing Christmas Seals. 93% of the money from Christmas Seals stays in Kansas. Let's "Protect the Children" by stamping out TB and really live up to our 4-H pledge, "I pledge my health to better living for my club, my community and my country."

Carl W. Wollard
Tisdale 4-H Club, Cowley County
Deputy Honorary Chairman

OUR COVER

This is a race to see who is faster at unwrapping sticks of gum with gloves on their hands. It was recreation at the meeting of the Friendly Farmers 4-H Club, Wabaunsee county.

Debbie Williams tries her hand at the task while team members Linda Wall, center, and Cindy Converse look on with helpful enthusiasm.

You many read more about this club and their activities on page 4.



Vol. XII, No. 11

November, 1966

IN THIS ISSUE

FEATURES

<i>Friendly Farmers Focus</i>	
<i>On Service</i>	4
<i>Teaching Boys and Girls In</i>	
<i>4-H: How They Learn</i>	10
By Loren E. Whipps	
<i>Clubs Take Turns</i>	
<i>On 4-H Radio Show</i>	11
By Gary Staiger	
<i>"Old Shoe" Is Setting For</i>	
<i>4-H Appreciation Day</i>	12
<i>4-H'ers Advise Songs</i>	
<i>For Moods</i>	12

DEPARTMENTS

<i>Family Fun Page</i>	6
<i>Let's Have A</i>	
<i>Christmas Party</i>	8
By Dick Tomkinson	
<i>Ideas That Work</i>	14

Don EsslingerEditor

Editorial and Business Office

Phone JE 9-2211 Ext. 208
Manhattan, Kansas 66502

Published Monthly By

KANSAS 4-H FOUNDATION, INC.

J. Harold Johnson.....Executive Director
Merle Eyestone.....Associate Director

BOARD OF TRUSTEES

Governor William H. Avery
Honorary Chairman

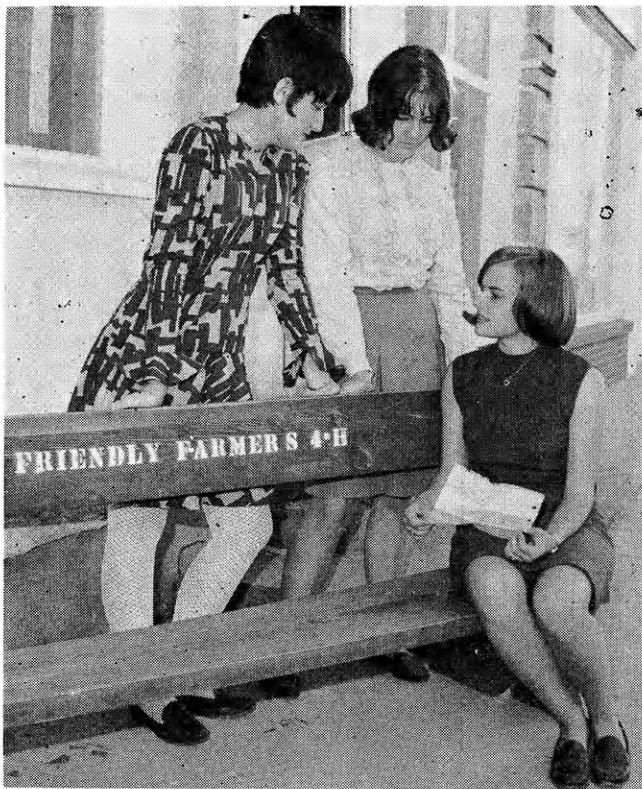
W. Dale Critser, Chrm.	Wichita
E. B. Shawver, Vice Chrm.	Wichita
Balfour S. Jeffrey, Treas.	Topeka
Glenn M. Busset.....	Manhattan
*Harry Darby.....	Kansas City
Mrs. Olive Garvey.....	Wichita
Clifford Hope.....	Garden City
†A. D. Jellison.....	Junction City
Harold E. Jones.....	Manhattan
J. J. Moxley.....	Council Grove
George B. Powers.....	Wichita
*Roger E. Regnier.....	Manhattan
N. T. Veatch.....	Kansas City
Dolph Simons.....	Lawrence
*Lester Weatherwax.....	Wichita
†Fred D. Wilson.....	Andover
*Advisory Member	
†Trustee Emeritus	

Second Class Postage Paid at Lawrence, Kansas. Return Form 3579 to Kansas 4-H Journal, Manhattan, Kansas. 66502

Advertising rates and circulation data on request.

Group subscriptions \$1.00 per year. Individual subscriptions \$1.50 per year. Single copy 15 cents.

Use of the 4-H name and symbol approved by the Secretary of Agriculture of the United States, January 23, 1951, under the provisions of the law as reenacted by Sec. 707 of the Act of June 25, 1948 Public Law No. 772, 80th Congress (10 USC 797)



A sign of the Friendly Farmers 4-H Club participation in community service are benches provided for the Eskridge main street. L-R, Diane Rush, club treasurer; Marla Immenschuh, member of the community service committee; and Chris Van Petten, president, visit about the Club's service to the community.

Friendly Farmers Focus On Service

"See you at 4-H tonight," is an expression you might hear in some Kansas communities once in a while.

You are likely to hear it around Eskridge more often than many places.

Why? Because in this Flint Hills community of around 600 the Friendly Farmers 4-H Club is a focus of interest. One could easily say, without controversy, that this 4-H club is the leading service organization in the community.

Listen to after school crowds in a local cafe and you will hear statements like the one above. Look around main street and you will see half a dozen sidewalk benches placed there by the Club.

Drive around Lake Wabaunsee near the town and you will observe picnic sites furnished by the Friendly Farmers 4-H Club. Around the county fair grounds at Alma you will see more evi-

dence of the work of this group along with others in the county.

Community service has had strong emphasis with the Friendly Farmers 4-H Club. Last year's club expenses totaled nearly 700 dollars, a large portion of it for service projects.

Club leader Bill Turnbull described the work of these youth as an "active citizenship experience."

Organized in 1941, the Friendly Farmers now have as members three children of the charter president, Max Martin. "I probably showed the last draft horse in the county," he recalled.

Activities of the club indicate emphasis on family participation. A special family affair, traditional with the club, is an annual soup supper. Their trail ride, horse show and each monthly meeting all boast parent interest and participation.

Service projects of the club range from giving annually to

the Kansas 4-H Foundation to donating to local churches. Three years ago they organized a horse show, a benefit for a little girl who was burned, and it has become an annual event.

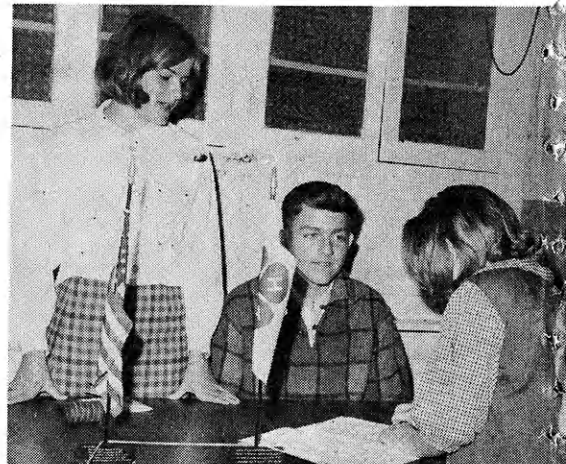
The Club gives one-fifth of the prize money for floats at the annual Halloween parade in Eskridge and helps pay for the dance band and program following the football game.

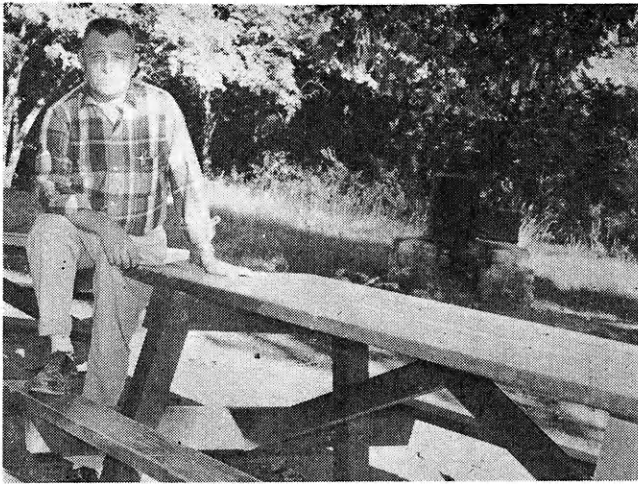
Members of the club are supporting the establishment of a year-round skating rink in Eskridge, promoted by a federated club. They have honored their leaders with gifts to the county fair, contributed to the Cancer Drive, and annually host local businessmen at a special supper to show appreciation for their support of 4-H.

The Friendly Farmers take baskets to needy families and remember the elderly people of their community at Christmas time. The local rodeo grounds, painted by the 4-H'ers, is cleaned each year by them prior to the annual event.

Money for these service projects is raised in various ways including serving group meals, and the annual horse show. News of 4-H activities occupies a prominent spot in the Eskridge INDEPENDENT, local weekly newspaper.

Sheri Henderson, a new member of the Friendly Farmers 4-H Club, signs the secretary's book as Chris Van Petten, president and Mike Turnbull, secretary, look on.





Bill Turnbull, community leader, tells about the picnic sites around Lake Wabaunsee furnished by the Club. The tables were built, painted and placed by club members.

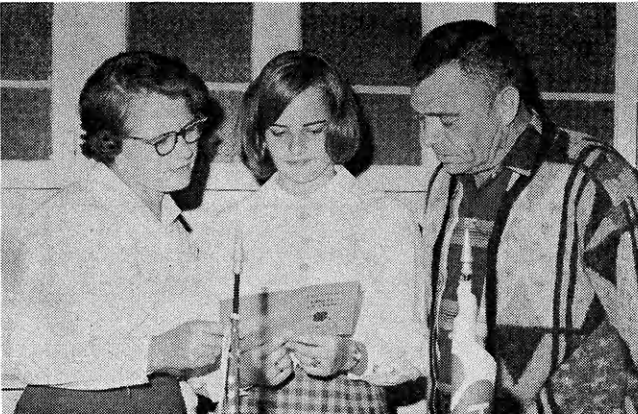


The annual trail ride of Friendly Farmer 4-H'ers and their families is a one day affair, open to all who want to take part. A cook-out is the noon feature.



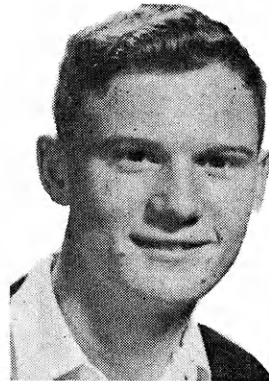
Members and leaders of the Club planted trees at the shore of Lake Wabaunsee several years ago. The lake is owned by Eskridge.

Chris Van Petten, club president, center, confers with community leaders Mrs. Ruth Van Petten and Bill Turbull.



JOHN DEERE ANNOUNCES

Kansas' 1966 4-H
Winner in Conservation
of Natural Resources



Philip Todd
Shawnee county

Philip, 17, will be Kansas' representative in this project at the National 4-H Congress in Chicago this month.

He has been active in conservation on the 547 acre family farm the past seven years. Through talks and demonstrations he has informed others and encouraged more conservation work.

Active in land judging, Philip was a member of a national contest team in 1965. He has helped coach others in land judging the past two years and has attended State 4-H Conservation Camp.

Of his conservation work Philip says, "You can not measure the experience I have received."

Program of Awards

Soil

Water

Wildlife

Grassland

Forest

National—Six educational scholarships of \$500 each.

State—All-expense trip to the National 4-H Congress in Chicago for the State winner.

County—Four gold-filled medals of honor for the blue award group.

John Deere is proud to have a part in the 4-H Conservation Projects by sponsoring awards for outstanding work.



JOHN DEERE
KANSAS CITY, MO.

Anatomy—Something that everyone has, but it looks better on a girl.

An old lady was visiting the city for the first time. She saw a sign on the front of a tall building that read: "Smiths Manufacturing Company."

"Goodness," she remarked, "I've heard of Smiths, but I never new they made them!"

Beverly Crabb
Fredonia

Bobby: What part of a car kills the most people?

Norman: The nut behind the wheel.

Candyce Larson
Jamestown

Peggy: Will you join me in a bowl of soup?

Patty: Do you think there is room for us both?

Cecilia Kasl
Cuba

Buzz: First I had tonsilitis, followed by appendicitis and pneumonia. After that I got erysipelas with hepatitis. Following that I got poliomyelitis and finally ended up with neuritis. Then they gave me hypodermics and inoculations.

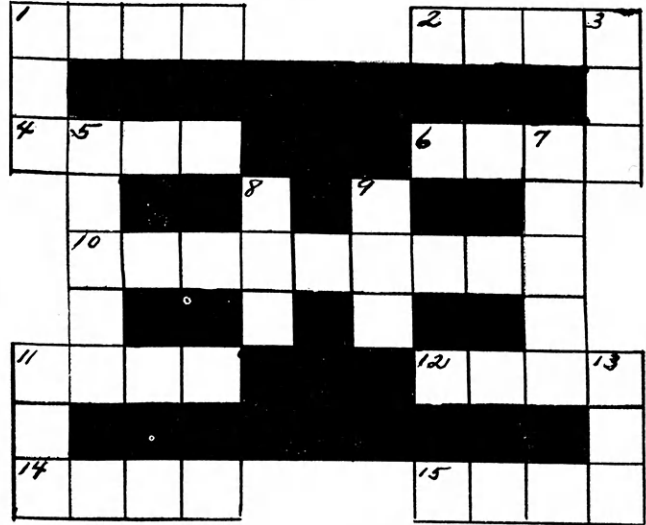
Butch: Boy, you had a time!

Buzz: I'll say! I thought I'd never pull through that spelling test.

Cindy Dandliker
Robinson



"I don't care what it is . . . why didn't we get one?"



Across

1. Throw lightly
2. What has gone before
4. Performs
6. Running contest
10. Daily reading material
11. Seeing organs
12. It rings
14. Girl's baby (toy)
15. Large boat

Down

1. Afternoon drink
3. Man's neckware
5. Sweets
7. Christmas song
8. Snake
9. Knock
11. Last part
13. Part of mouth

PROJECT SCRAMBLED WORD

This month's scrambled words are names of 4-H projects. See if you can unscramble them.

- | | |
|---------------------|------------------|
| 1. tloignc | 7. ndarge |
| 2. dosof | 8. pyhrgatooph |
| 3. febe | 9. nsewi |
| 4. yarid | 10. atf ablm |
| 5. meoh ptrnoevmmie | 11. tvarseinoocn |
| 6. rtelceci | 12. procs |

Passenger to pilot: How are we doing?

Pilot: We're lost but we're making good time.

Donna Stanbrough
Council Grove

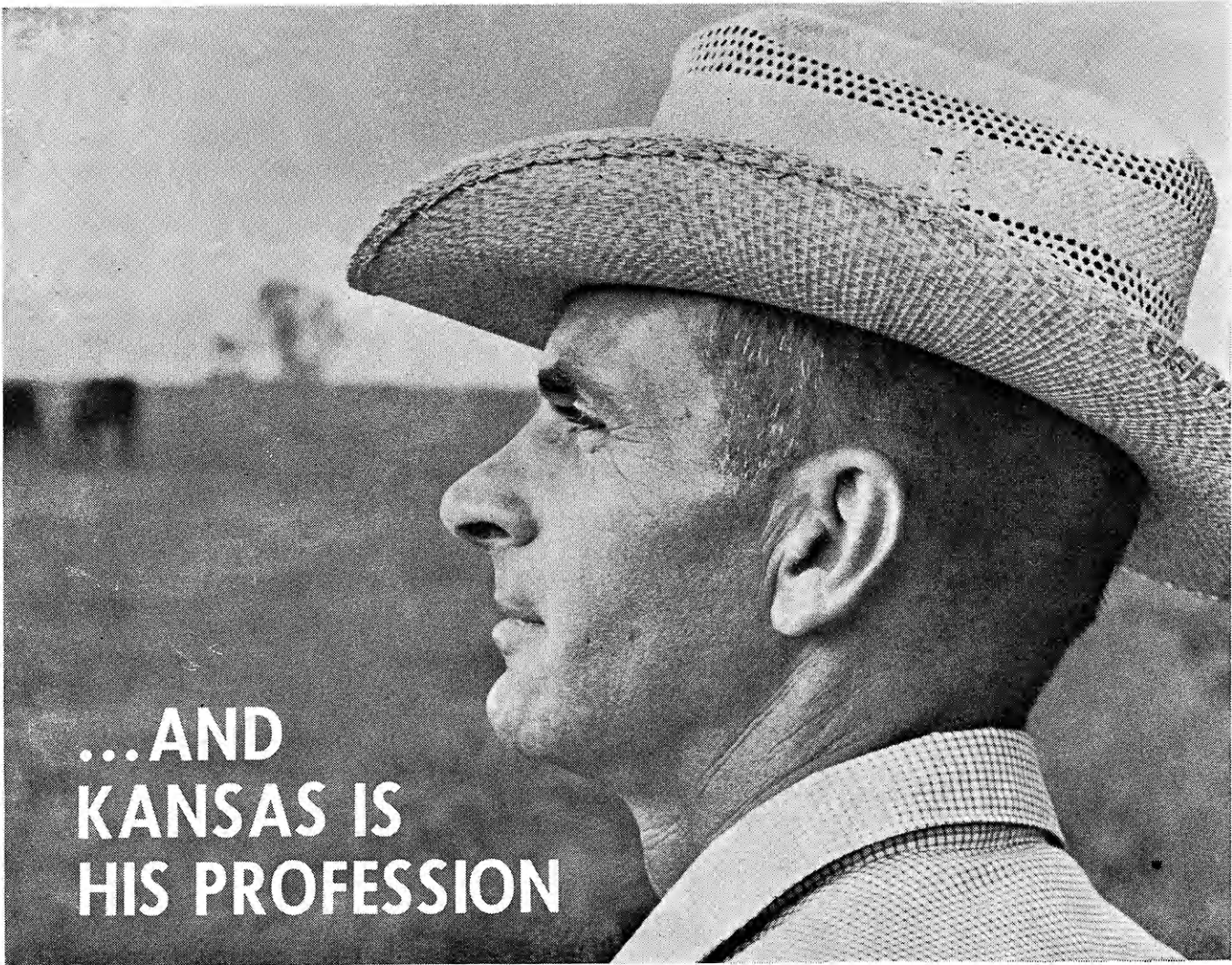
Jim: What did the colt say when he was asked to make a speech?

Greg: I don't know.

Jim: You'll have to excuse me, I'm just a little hoarse.

Patty Douthit
Riverton

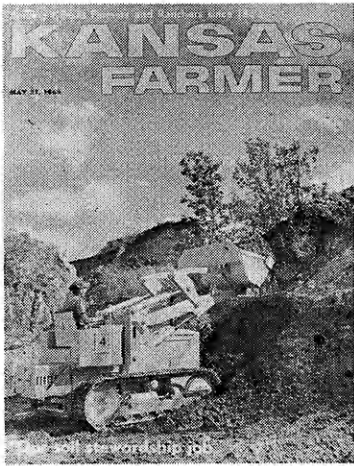
Editor's Note: Send in your favorite joke. We will give you credit for sending it in and we can let many others enjoy this joke and puzzle page. . . . Send to Kansas 4-H Journal, Manhattan, Kansas.



**...AND
KANSAS IS
HIS PROFESSION**

You know the man under the stetson . . . you may know him as a rancher in the Flint Hills of Kansas or as a farmer in Cloud County . . . most farm people know him as Associate Editor of KANSAS FARMER . . . George Smith is his name and Kansas is his profession.

You can meet George anyplace in Kansas . . . in wheat, corn and milo fields, in feedlots, barnyards and pastureland. If there is a story to write about Kansas agriculture, look for him . . . he'll be there. George Smith is as close to the soil as the people who work it. He reports Kansas agriculture as he sees it, clearly and accurately. You can take a good close look at Kansas agriculture through the eyes of George Smith by reading his articles in KANSAS FARMER. The information is pertinent, concise and accurate. . . just what you want in a farm magazine.



**KANSAS
FARMER**

109 West Ninth St., Topeka, Kans.

Editors Note—For the coming year this column will be in two sections: 1) Informational and instructional; and 2) Activities—songs, games, dances, skits, etc.—for your family or club. You are invited to share your favorite games and other recreational activity through this column.



LET'S HAVE A CHRISTMAS PARTY

By Dick Tomkinson

Many 4-H Clubs have Christmas parties. Often a successful example of something suggests ideas you can use. With this in mind, I asked Mrs. Edgar Dies, community leader of the Winners 4-H Club in Ellis County, to tell about their Christmas party last year.

Mrs. Dies and Mrs. George Ruder felt that since they were

a city club, many of the parents and leaders did not know each other. Would a family Christmas party help them get acquainted? They arranged for a family pot luck dinner and over 100 people attended. After eating, the children decorated a Christmas tree while the adults visited.

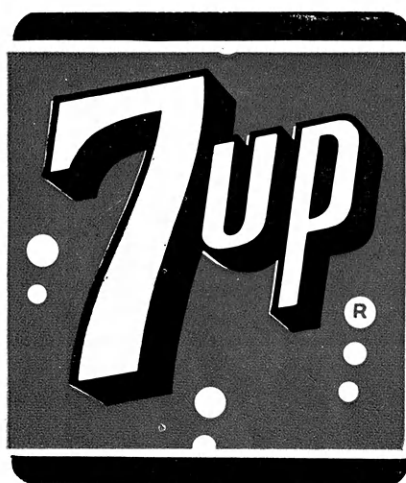
The 4-H'ers strung popcorn and cranberries, made chains of

construction paper, and put other decorations on the tree supplied by parents and leaders. They also assembled a portable fireplace.

After the tree was decorated, 4-H members told about various Christmas customs and symbols such as Holly, hanging of stockings, gifts, candles, cards, mistletoe, tree, etc.

Seven-Up Presents 4

Member and Club



Get Real Action

7-Up Your Thirst Away

Ten recreation winners receive an educational trip and certificates of recognition for outstanding work in recreation.

Two leaders and six members of the top 4-H club in recreation receive an educational trip and the club gets recreational equipment.

BLUE AWARD CLUBS

These Kansas 4-H Clubs will receive recreation equipment in recognition of their outstanding recreation programs.

Robinson Meadowlarks, Brown
Cedar Vale Go Getters,
Chautauqua
Winners, Ellis
Town and Country, Franklin
Oxford Hustlers, Johnson

Gem Dandys, Pawnee
Richland Rustlers, Pratt
Jayhawk, Russell
Willing Workers, Saline
Mulvane, Sedgwick

Seven-Up is Proud to Provide 4-H Recreation Awards
Kansas Seven-Up Bottlers Association

Mrs. Dies secured the bulletin, "Christmas", from the county Extension office. This bulletin gives a brief background on the various customs and symbols of Christmas and tells how Christmas is celebrated in different countries. (This might be interesting to have 4-H members of foreign students report on how Christmas is celebrated in other countries at your party.)

Following this, a foreign student from Jordan showed slides and told of his visit to the Holy Land.

Next, they sang Christmas carols and other songs and, of course, this always goes over well at this time of year. Traditional with the Winners 4-H Club is the visit from Santa Claus. His entry cue is with the singing of Jingle Bells.

For the gift exchange, Santa handed out the packages the 8 to 13 year olds brought. The cost was limited to 50 to 75 cents for each gift. Each gift was marked, "For a boy" or "For a girl" and suggested age.

The children 14 years and older donated 50 cents to CROP.

You might ask your club to donate to CROP or some other worthy organization or needy family. The club members gave gifts to the community leaders and the project leaders received a one year's subscription to the **National 4-H News**.

For children too young for 4-H, parents were notified that if they wanted their child to receive a gift from Santa Claus, they should bring one marked for him or her.

Since this Christmas party was so well received by the Winners 4-H Club, perhaps you could use part of their party ideas.

Other Ideas

At Christmas time, music fills the air so try a rhythm band. Play Christmas songs using sticks, tambourines, blocks of wood with sandpaper, bells, hair combs folded in paper to blow on, and other instruments.

Another idea young people like is to tell Santa Claus, on a tape recorder, what you want for Christmas. Maybe someone in your club or Extension office can loan you a tape recorder.

The fun comes when you listen to the tape.

Also it might be fun to record and listen to some of the songs sung by the group or the rhythm band played.

Charades are popular and you might have groups or families act out what they want for Christmas. Try a craft night—ask 4-H'ers to make Christmas cards or decorations, etc. — for something different.

Sy Nyhart, Russell County Club Agent, reports that some of the clubs in their county enjoy Christmas caroling for shut-ins and old folks. Also, some of the clubs adopt a needy family for Christmas through the Welfare Department.

For more Christmas ideas, see the "Fun Encyclopedia".

Send your favorite games or ideas to the Kansas 4-H Journal or to Dick Tomkinson, Specialist in 4-H, Kansas State University, Manhattan, Kansas 66502. If yours is selected for the column you will receive a prize.

4-H Recreation Awards

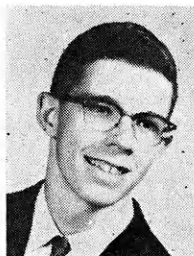
Recognition

TOP CLUBS

The Cedar Vale Go Getters 4-H Club, Chautauqua county is the top pick in club recreation for the past year.

TOP MEMBERS

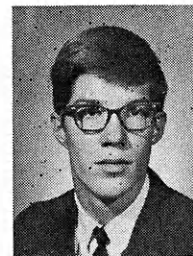
These ten 4-H'ers are winners of a trip to the Wichita Recognition Event.



Steve Jenkins
Pratt



Carol Ann Sauerwein
Harvey



Gary Burkholder
Dickinson



Karon Snyder
Chautauqua



Carla Hendricks*
Cheyenne



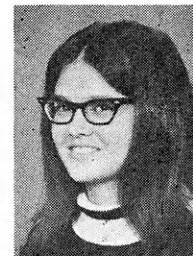
Nancy Nichols
Greenwood



Pamela Plumb
Marshall



Sandra Kees
Sedgwick



Twila Gore*
Pawnee



Lee Ann Harding
Rooks

* Previously won the trip.

This article is especially for
parents, leaders and junior leaders.

Teaching Boys & Girls in 4-H:

How They Learn

By Loren E. Whipps
District Extension Economist
Kansas Extension Service

Part V

Helping 4-H Club members learn through successive experiences to make wise choices is one of the basic responsibilities of the club leaders, especially the project leaders who are more or less specialists in their own chosen project field.

Each club member is constantly becoming something more than he or she was before and, slowly or rapidly, is passing through the phases of growth characteristic of all club members.

Perceptive leaders know this, but also recognize each member as a separate personality with initiative and creative abilities. Each has an inner drive to succeed, to understand, and to direct his efforts toward what for him are worthwhile endeavors.

This is the leader's big challenge; to make democracy a way of life for his club of junior citizens; to create a club where the contributions of individuals can be in keeping with their abilities and where each club member is a universe within himself, while still retaining his buoyant interest in the life about him and reflecting his joy in living, growing and learning.

4-H members learn many helpful things during their career as a 4-H member. Understanding leaders along with the cooperation of the parents will carefully guide each member toward the following goals:

- (1) Wholesome Attitude.
- (2) Automatic Behavior Patterns.
- (3) Deep Appreciations.
- (4) Creative Expression.
- (5) Independent Thinking and Problem Solving.
- (6) Widening Understanding, Knowledge, and Skills.

Wholesome Attitudes

A club member's progress toward any of these goals contributes to the realization of each of the others. When the maximum development of the individual is the major emphasis of the club, each member is helped toward satisfactory relationships with people and the world around him.

Satisfactory human relationships are basic to successful living in the world today. Wholesome attitudes toward people, toward things, toward situations, and toward activities, are the foundation of democratic living, and building a better citizen for tomorrow.

Club members demonstrate by their attitudes the impact of any given situation upon them. Do they go about things eagerly or reluctantly? What are their attitudes toward each other, toward their leader or leaders, toward their club, toward each club activity and finally toward their own personally chosen individual club project?

The real challenge to a leader comes in seeing the year by year growth within individual club members, and in guiding them toward attitudes that may not at first be evident to the casual observer.

Club members learn to cooperate and readily acquire wholesome attitudes if given sufficient opportunity. The leader must be willing to go more than half way to be fair and just.

The leaders understanding of the member's basic needs, and the leaders ability to meet it, determines the type of guidance that will bring effective changes in the club members attitude.

Automatic Behavior Patterns

There are many things which the adult does everyday without giving any particular thought to the process. The young club member, in order to do some of these same things, has to give complete attention to each movement.

Patterns of behavior are built up through participation. However, merely going through a routine of doing the same thing in the same way many times does not guarantee the pattern will become completely automatic unless the club member enters into it wholeheart-

edly, both when practicing at home or during a club meeting.

The club member must be guided; he needs to be supervised; and until a behavior pattern becomes automatic for him, he must realize how important it is to accomplish the task at hand.

Deep Appreciations

The bigger part of being a successful leader is appreciating what a club member is trying to do and the ways in which he may meet his problems.

The young club member responds to any genuine approach, and if he has constantly before him a consisting expression of sincere appreciation, it will become a natural part of him.

Creative Expression

A good leader realizes the value of encouraging creative expression among his club members. What stifles creative expression? Usually fear of ridicule. The 4-H club under careful guidance, through activity can help the members bring out their hidden talents.

As the member participates in group activity, particularly in such activities as personal development, much can be done to develop creative expression.

Independent Thinking and Problem Solving

America needs a literate population; even more, she needs people who are willing to cooperate with others, while still thinking independently and solving their own problems; a people who approach each new task with enthusiasm, imagination, and vision.

One of the objectives of any 4-H club is to develop thinking among the members. Leaders are constantly alert to this fact in setting up the 4-H yearly program.

Purposeful individuals who first review all the facets of a question and then consciously choose the way that is most



Mr. Whipps is a native of Republic county. He attended public schools there and was graduated from Kansas State University in 1938 with a degree in Agricultural Education and Agricultural Economics. He assumed his present duties in July of this year prior to which he was Sherman county agricultural agent seven years. He taught vocational agriculture at Goodland, was on the staff at Kansas State University for five years was assistant supervisor for agricultural education of the Kansas State Board for Vocational Education. Mr. Whipps earned the M. S. degree from Colorado State University in Agricultural Education in 1953. He is married to the former Lucille Rosenburger of Greensburg who has been an extension agent and is presently an elementary school teacher. Mr. Whipps is active in church and Rotary.

beneficial to the group; not the way that would further their own selfish interests.

4-H members who learn to become such individuals are educated, not only intellectually, but socially and emotionally as well, and each is ready to become a constructive member of society.

Understanding, Knowledge, and Skills

Nothing can more clearly present an illustration of the relationship of understanding, knowledge, and skills to attitudes, behavior patterns, appreciation, creative expression, and independent thinking than can club members and leaders working in the kitchen, laying out patterns in the sewing room, checking growing crops in the fields or figuring profitable rations for their livestock projects.

The home farm, and garden serves as the classroom in many ways. The real learning processes are brought about by actually doing the job step by step.

When you are teaching club members to understand and remember what they learn, you are not just interested in presenting facts to them; you are interested in what is happening to the member and the quality of thinking ability which is being developed.

There is a basic difference between teaching subject matter and teaching club members to use subject matter for various purposes, through knowing and understanding.

Clubs Take Turns On 4-H Radio Show

By Gary L. Staiger

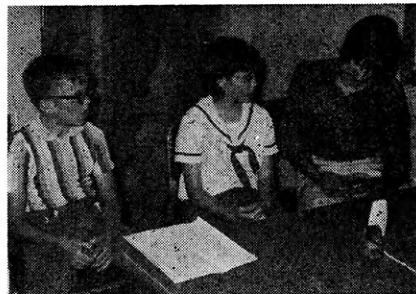
4-H Club members in Seward county are now planning and recording their own radio shows thanks to radio station KSCB in Liberal.

KSCB was looking for ways to use 4-H young people in their programming. As a result they asked clubs in the immediately surrounding counties, including those in Oklahoma to the south to prepare a fifteen minute program, according to a pre-arranged schedule.

Seward county clubs elected to try this as a method of 4-H promotion. A time was set for the program and a schedule was worked out with each club, so they knew how many programs they were to prepare. They also were given the dates and time of each presentation. This enabled them to plan ahead.

There were some problems involved, including getting the young people assembled and prepared for "live" programs. Getting good material together was a chore for some of the clubs.

Several of the clubs secured a parent to be a program leader. This leader helps gather material, makes sure the members are prepared and sees that the program is made. A tape re-



Members of the Sunset 4-H Club record their radio program at the extension office. Members are Rod Abbott, Beth Malin, and Elizabeth Fitzgerald.

order at the extension office was made available, and the clubs were encouraged to "tape" their programs, so needed corrections could be made. The programs were all scheduled and the clubs have done very well in having programs ready.

The members enjoy the opportunity to be on radio, and it is giving the listening area a keen insight into 4-H Club work and what 4-H'ers do.

BOOST Kansas 4-H Clubs
 Kansas Youth
Invest in Programs of
Kansas 4-H Foundation
 212 Umberger Hall KSU
 Manhattan Kansas



**SAVE AT
 THESE
 KANSAS
 SAVINGS
 AND
 LOAN
 ASSOCIATIONS**

NOW IS THE TIME TO SAVE Watch It Grow!

(INSURED SAFETY)

- | | |
|---|---|
| <p>Arkansas City
 First Federal Savings and Loan Ass'n. of Arkansas City</p> <p>Augusta
 American Savings Association</p> <p>Beloit
 First Federal Savings and Loan Ass'n. of Beloit</p> <p>Clay Center
 Northwestern Federal Savings and Loan Ass'n. of Clay Center</p> <p>Dodge City
 First Federal Savings and Loan Ass'n. of Dodge City</p> <p>El Dorado
 Mid-Continent Federal Savings and Loan Ass'n. of El Dorado</p> <p>Fort Scott
 Liberty Savings and Loan Ass'n.</p> <p>Garnett
 The Garnett Savings and Loan Association</p> <p>Great Bend
 The Prudential Building and Loan Ass'n.</p> <p>Hays
 The Hays Building and Loan Ass'n.</p> <p>Iola
 The Security Savings and Loan Ass'n.</p> | <p>Leavenworth
 Leavenworth Mutual Savings and Loan Ass'n.</p> <p>Liberal
 First Federal Savings and Loan Ass'n. of Liberal</p> <p>McPherson
 The Pioneer Savings and Loan Association of McPherson</p> <p>Newton
 First Federal Savings and Loan Ass'n. of Newton</p> <p>Ottawa
 Ottawa Savings and Loan Ass'n.</p> <p>Parsons
 First Federal Savings and Loan Ass'n. of Parsons</p> <p>Pittsburg
 First Federal Savings and Loan Ass'n.</p> <p>Plainville
 Rooks County Savings Ass'n. of Plainville</p> <p>Wellington
 First Federal Savings and Loan Ass'n. of Sumner County</p> <p>Wichita
 American Savings Association of Wichita, Home Office First and Main: East—4601 E. Douglas Ave.</p> |
|---|---|



Stafford county 4-H'ers provide free donuts and coffee for Friends of 4-H during National 4-H Club week.

4-H'ers Advise Songs For Moods

Songs are for recreation, and recreation is for singing, say Joan Sunderland and Kathy Wenger.

Joan and Kathy are Brown county 4-H'ers who gave their County Fair demonstration on "Songs for Moods."

"We feel that group singing develops poise, personality, and friendliness at all club meetings. It is also a good form of recreation and good therapy for moodiness," Joan said.

There are songs for every mood, according to the girls. They suggest several songs for different moods.

Joan suggests singing in the shower if you wake up feeling grouchy or out of sorts. The acoustics are wonderful and your voice will sound like a million.

In the morning start the day with "Wake and Sing." When you are worried, sing "Bye Bye Blackbird." When you feel nervous or restless, sing "Smiles." When you are lonely or homesick sing "Home on the Range." If its Courage you need sing "Rock of Ages." And when you are in love sing "Let Me Call You Sweetheart."

Kathy and Joan suggest you try their "Song Mood Psychology" and remember . . .

Whether you're mood is grouchy, worried, nervous, lonely or sad,

Sing the right song can help you feel glad

So remember to start your day with a song

Then the day, it just can't go wrong.

"Old Shoe" Is Setting For 4-H Appreciation Day

A nurse rhyme, an idea and a lot of hard work brought a shoe into existence. The shoe, belonging to the famous "old woman who lived in a shoe," has created its own history since its completion.

Built by 4-H members in Stafford county, the shoe was originally fashioned for use as the main prop for the "Mother Goose Fantasy" Style Show, but was used earlier in the annual County Fair Parade to publicize

the style show. In this role it captured the sweepstakes prize.

It's third public appearance was also during a parade — a float for the Little Britches Rodeo celebration, this time with emphasis on the value of 4-H membership.

Barton county capitalized on the ingenuity of her sister county by borrowing the shoe for their fashion show.

The biggest compliment came when a State Fair committee asked to use the shoe for the State Fair 4-H Style Show at Hutchinson in September.

The shoe again found its worth as Stafford county 4-H'ers celebrated National 4-H Club Week. Members of the Antrim Steamliners and Eden Valley Hustlers Clubs extended hospitality to local business people in the area.

Coffee and doughnuts were served throughout the day to more than 200 "Friends of 4-H" from the colossal shoe "Coffee House"; set up on St. John's main street.

COMING UP!
EDUCATION AND CAREERS
ISSUE
 (Feb. issue of Kansas 4-H Journal)
 Special school circulation reaches all high schools in Kansas (30,000 seniors).
 Advertising Deadline — Jan. 1, 1967

ALLIANCE INSURANCE COMPANIES
 McPherson, Kansas
FIRE — CASUALTY — LIFE
 Serving Kansas Since 1888



ALL HAIL!

1965 WINNERS in 4-H Personal Development

Allen Linda Wall	Dickinson Linda Booth	Jackson Sheryl Claycamp	Ness Eldon Schriock Penny Irvin	Seward John Bozarth Vickie DeCamp
Anderson Gerald Ohmes	Douglas Steve Fornelli Jeannie Worthington	Jefferson Jo Turner	Norton Jan Combs Julie Murphy	Shawnee Sherry Love
Atchison Joe E. Miller Connie Lockhart	Edwards Debra Sparke	Jewell Darrell Marr Ruth Blattner	Ottawa John Jagger Sue Tasker	Sheridan Patrick Campbell Mary Lou Winter
Barber Harold Kimball Patsy Thomas	Elk Kim Moore Beth Osborne	Johnson Chuck Stevens Linda Hayne	Pawnee Twila Gore	Sherman Barbara Bolt
Barton Mark Calcara Sandy Griffith	Ellis Keith Holste Jane Holste	Kearny Harriet Trussell	Phillips Karolyn Kellogg	Stafford Jerry Long Trudie Long
Bourbon Ann Callow	Ellsworth Darell Ptacek	Kingman Don Hellar	Pottawatomie Lois Dodge	Stevens Steve Davis Cynthia Thompson
Brown Max Fridell Glenda Fridell	Finney Kathy York	Labette Carl Johnson	Pratt Denise Reed	Sumner Lynn Powell
Butler Linda Burden	Ford Darlene Romine	Leavenworth David Thiel Paula Casey	Reno Shirley Blank	Thomas Steven Friesen Mary Beth Chase
Chautauqua Corrine Malone	Franklin Bob Krueger Nancy Hewitt	Lincoln Arleta Lohmann	Republic Linda Fraser	Wabaussee Doug Morton Marlene Gurtler
Cherokee Mike Moore Patty Douthit	Geary Joyce Roesler	McPherson Roger Juhnke Myrna Lindholm	Rice Stephen Vincent Adele Johnson	Wilson Christine Nelson
Cheyenne Gary Lillich Jeanne Maring	Gove Kathy Jensen	Marion Rita Williams	Rooks Mike Kreller Kathy Kreller	Woodson Carol Habiger
Clark Karen Lunsford	Grant Tim Lewis LaVon Moore	Marshall David Pike Pam Plumb	Rush Ken Georg Kathy Schroeder	Wyandotte Steven Breedlove Marsha Rusbarsky
Clay Linda Spellman	Gray Cheryl Faulkner	Miami Albert Schendel Ann Scheffer	Russell Steve Gatten Jackie Fink	Greeley Randy Waldren Mary Nelle Neuschwander
Cloud Donna Trude	Greenwood Bob Wenzler Mary Hibbard	Montgomery Mike Wood Diane Harclerode	Saline Bruce Johnson Karen McDaniel	Chase Joyce Giger
Coffey Virginia Griffin	Hamilton John Dana Wood	Morris Corlis Ridenour	Scott Rickie Holmes Barbara Nelson	Lyon Steve McIlvain
Crawford Jerome Beezley Janis Goff	Harper Janis McCoy	Nemaha Don Meyer Jeanne Wenger	Sedgwick Randy Wood Janice Wood	Lane Delilah Shay Riley
Decatur Ernest May Janice Wesch	Harvey Ron Gatz Judy Dreier	Neosho Doug Lopeman		Howard Goff Jeanine Davis

We at Southwestern Bell Telephone Company are proud to have a part in this 4-H project by sponsoring awards for outstanding work.

SOUTHWESTERN BELL



TELEPHONE COMPANY

Sound the Drums!

STATE WINNERS

Keith Holste Ellis	Janice Wood Sedgwick	John Jagger Ottawa	Patty Douthit Cherokee
-----------------------	-------------------------	-----------------------	---------------------------

DISTRICT WINNERS

Denise Reed Pratt	Ken Georg Rush	Karen McDaniel Saline
Dana Wood Hamilton	Randal Wood Sedgwick	Kim Moore Elk
Karolyn Kellogg Phillips	Darrell Marr Jewell	Carol Habiger Woodson
	Paula Case Leavenworth	

WINNERS AT LARGE

Joe E. Miller Atchison
Linda Hayne Johnson
Twila Gore Pawnee

The Personal Development project is for all teenagers! Whether it's world affairs, dating, or career discussion . . . whether you enjoy books or music . . . there's something you will like. It's a great project for the teen group in your club or county.

Ideas That Work



Club Sponsors Fire Prevention Demonstration

A fire prevention demonstration was sponsored by the Derby 4-H Club, Sedgwick county for the Derby community and surrounding area.

Featured speaker and authority on the "Safe Use of Fire" was Max Thomas, chief fire instructor, Kansas State University Extension Service.

Thomas spoke of the many household articles which might become dangerous if they came in contact with intense heat. He illustrated the flammability of items used everyday such as hair spray and bug spray.

"Most people buy cleaners and forget to read the fine print," Thomas stated.

"Never use gasoline for cleaning," he said. Another important point brought out was the extinguishing of a simple stove fire. "Always keep a lid handy and just slide it over the pan. This cuts off the air and the fire will die," he said. He also noted that baking soda is good for extinguishing fires.

Here Mr. Thomas shows how to put out a stove fire by use of a lid. Safety committee members watching are (l. to r.) John A. Lauber, Ann Sooter, Sandra Range, Janice Range, Mrs. John Lauber and Nancy Keller.

Nancy Keller



4-H'ers Raise Garden as Project

Planting a garden plot for the Anbe Home for Senior citizens in Norton, is an annual community project for the Busy Beaver's club, Norton county.

Each week during the garden season, a junior leader is responsible for the care of the garden for a week, with the help of two or three 4-H families.

This provides cooperation, fun, and visiting among the young and the older.

The senior citizens enjoy coming to the garden and visiting with the members.

This project also provides the Anbe Home with fresh vegetables from the garden. When more supply of vegetables were picked from the garden than were needed, the excess was sold

Reporter's Notice: The Kansas 4-H Journal would like to print interesting stories of your local club events, activities, members and leaders.

Local club meeting stories, if submitted, should contain something unusual or of interest to people outside your county.

Outstanding projects, services or events of your club, or stories of individuals within your club that would give ideas to other 4-H'ers would make excellent stories.

Prizes will be awarded all blue award stories each month. Please state your choice (1) a year's subscription to the National 4-H News, (2) a hard cover loose leaf 4-H notebook, (3) Photograph album or (4) Roll of film—sizes 120, 35 mm, 616 or 620.

and the proceeds spent for white sheet blankets for the Home.

Pictured are Mary Hoover, Mary and Marla Miller, Julie Murphy, Dronda McMuller, and Susan Persinger. Kris Miller (far left) is looking on.

Dronda McMullen

Style Show Highlights Meeting

An unusual style show highlighted a meeting of the Hesston Union Champions, Harvey county. Nancy Kastiz and Diane Drier presented the show. The styles worn by the models were typified by an evening gown (of course it was a nightgown), to set off the gown, the model wore a stunning three-karat necklace (of real carrots). To make the gown bouffant, it featured a can-can (juice can) petticoat. Five other models were similiary dressed.

Connie Dreier

4-H'ers Make Road Safety Survey

Members of the Freeport club, Harper county made a road safety survey, as a part of their club safety project.

Members made a list of hazards which they felt existed between their homes and the Freeport School, where they hold their meetings.

The hazards were marked on a large map of the area. When the map was completed, James McCoy presented it to Jack Scott, Harper County Engineer, for his consideration.

Janis McCoy

Club Provides Rest Stop

The Walton and Highland 4-H Clubs, Harvey county, provided a rest stop for travelers. A total of 173 cars and 692 people were given a choice of free iced tea, coffee, chocolate milk and cookies.

The cookies were furnished by the 4-H families and the milk by the 4-H dairy men.

Don Sauerwein

4-H'ers Help With Bicycle Check

Two members of the Willing Workers club, Saline county, worked with the Salina Police Department in a Bicycle Safety Check and Registration.

The members, Sue Schenewerk and Stephan White helped by placing safety reflector stickers on the bicycles. Approximately 200 bicycles were checked during the afternoon.

The check was sponsored by the Willing Worker's 4-H Club, the Saline County Police Department, KLSI Radio, and the Coca Cola company.

Registered Quarter Horses

Conformation-Disposition-Intelligence

"We have Horses with Show Ability"

C. A. COFER

3641 N. Maize Road

Wichita, Kansas 67205

Phone 316 RO6-0172

These Kansas 4-H Journal Sponsors Have Renewed Their County Support

Douglas

First National Bank, Lawrence
Rusty's Food Centers, Lawrence

Ellis

The Ellis State Bank, Ellis
The First National Bank, Hays
The Farmers State Bank, Hays
Farmers National Bank, Victoria
Hays National Bank, Hays

Franklin

Peoples National Bank, Ottawa
Wellsville Bank, Wellsville

Gove

Citizens State Bank, Grainfield
People's State Bank, Grinnell
First National Bank, Quinter

Kiowa

First State Bank, Mullinville
Greensburg State Bank, Greensburg
Haviland State Bank, Haviland

McPherson

Mid-Kansas Co-op Association,
Moundridge
The Farmers Co-op, McPherson
The Farmers Co-op Grain & Supply,
Canton

Republic

Arbuthnot's Drug Co., Belleville
Tibbitts Bros. Furniture & Funeral
Home, Belleville
Kravmore Dinner Bell &
Service Station, Belleville

Riley

Citizens State Bank, Manhattan
The Riley State Bank, Manhattan

Wallace

Peoples State Bank, Sharon Springs

Wilson

Home Lumber & Supply Co.,
Fredonia

Fredonia Co-op Ass'n., Fredonia
Glenn Wiggans Drugstore, Fredonia
First National Bank in Fredonia,
Fredonia

O. E. Woods Lumber, Neodesha
Self-Service Grocery, Fredonia
Joe Armstrong Equipment, Fredonia
Foodtown Super Market, Fredonia
Radiant Electric Co-op, Inc.,
Fredonia

First National Bank, Neodesha
Cox Grain Company, Fredonia
State Bank of Fredonia, Fredonia

Council Sells Snow Cones

The Decatur county 4-H Council raised money by selling snow cones during the afternoon air show at the fair grounds at Oberlin. The group raised \$48 dollars.

Mrs. Edwin Wolfram

Club Fights for Safety

A fight for safety must continue on. Members of the Shamrock 4-H Club of Cherokee county just completed clearing 23 intersections in their community.

They have given this service to the community for over 10 years in hope that it will save lives.

Vickie Mosler

4-H'ers Camp Out

An overnight camp-out was a new experience for many members of the Greenwood Meadowlarks Senior 4-H Club, Johnson county.

The members planned the camp-out from tents, to hand soap and menus. No water was available, except creek water and no modern conveniences were available. Insurance was included in the total cost of the outing.

Nineteen members and three leaders cooked their meals over an outdoor fire and slept under the stars.

Mrs. R. M. Kachersperger

Club Works on Health Activity

Health was the club activity for members of the Mustard Seeds Club, Saline county. The club worked primarily with community health drives and assisted the TB X-Ray clinic.

The group held a public window display contest in which they again promoted the Health project. The members gave health talks and demonstrations at several meetings.

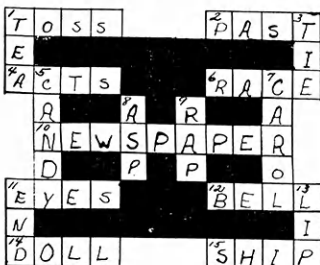
The group helped with the "Topeka Tornado Relief" by sending clothing, food, and drugs, collected by the members.

An Individual health file material was provided for each member, in addition to completing a club health file. Rounding out the year the club's health record was compiled and entered with the club's health notebook in county competition.

Fun Page Answers

Scrambled Word Answers

Clothing, foods, beef, dairy, home improvement, electric, garden, photography, swine, fat lamb, conservation, crops.



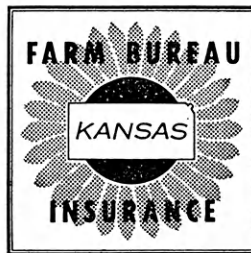
he doesn't know it yet, but . . .
***a part of his future
 is in there.***

His dad's Farm Bureau Insurance agent is delivering a Kansas Farm Life policy that will one day pay for his college education.

He doesn't find it exciting right now. But when he's grown, he'll understand and appreciate his parents' foresight and planning which made possible his advanced education. That day will be one of his parents most gratifying moments.

Kansas Farm Life's Education Program is the sound, practical, economical way to be sure the plans you have for your children's future schooling will be fulfilled. The sooner you start, the easier it is.

See your Farm Bureau Insurance agent soon. He carries a part of the future with him.



**See Your Local
 FARM BUREAU
 INSURANCE
 Agent**

REGISTRATION DESK
LIBRARY
KANSAS STATE COLLEGE
MANHATTAN, KANSAS
RISC KSC

4-H ELECTRIC LEADERS CLINIC

ROCK SPRINGS RANCH

December 8 and 9

This is your opportunity to learn from experts in electricity. They are on hand to instruct and guide you in practical sessions to help you become a more effective 4-H Electric Leader.

A feature at the Clinic this year will be electronics. Always popular is the construction workshop during which leaders work on their own project.



Mrs. Ethel Self, Extension Home Management Specialist, tells leaders about "Lighting for Sight" in a training session at the clinic last year.

FREE SCHOLARSHIPS FOR ALL ADULT LEADERS

PROGRAM HIGHLIGHTS

December 8 (Thursday)

- Boys, Girls and Electricity Teaching; Our Job
- Living With Electricity
- Electronics, Basic
- Special Evening Program—K-State Singers

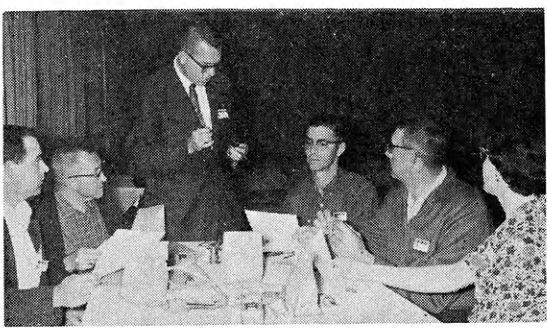
December 9 (Friday)

- Lighting For Today
- Something For The Girls
- Electronics Workshop
- Special Project Workshops



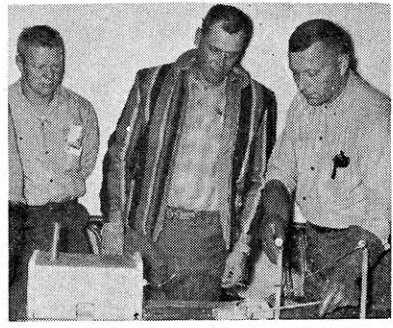
Spotting defects in projects was part of a project training session for leaders last year.

CONTACT YOUR COUNTY EXTENSION AGENTS FOR INFORMATION



Carrol Glanville, Kansas City Power and Light Company representative assists a group of leaders in the special project workshop a year ago.

Sponsored by
Kansas Power Suppliers
in cooperation with the
Kansas 4-H Foundation
and the Kansas
Extension Service



Arleigh Herink, right, Flint Hills Rural Electric Cooperative Association representative, demonstrates safety near fallen high voltage lines.



* Watch This Page For Ideas On Farm And Home Electric Projects

ELECTRIC LIGHT and POWER COMPANIES in KANSAS

- The Kansas Power and Light Company
- Kansas City Power & Light Company
- Western Power and Gas Company, Inc.
- Central Kansas Power Company
- Kansas Gas and Electric Company