



June, 1965

15 Cents

KANSAS 4-H

Journal

The 4-H Family Magazine

Kansas 4-H Foundation, Inc., Publisher



RECEIVED

JUN 7 1965

THE LIBRARY
KANSAS STATE UNIVERSITY

GET YOUR CLUB PROJECT FOR "NO-MONEY"!

Boys and Girls, save Gooch Red
Circles to bid and buy the animal of
your choice at the 14th Annual

**GOOCH'S
BEST**

RED CIRCLE AUCTION

CK RANCH
BROOKVILLE,
KANSAS

JULY 23 & 24

**No Money—only Gooch Red Circles can
be used to bid and buy your choice of**

- 40 Steer Calves
- 40 Registered Gilts
- 10 Sewing Machines
- 5 Registered Hereford Heifers
- 5 Registered Holstein Heifers

(ask your Dealer to work with you "Saving" Red Circles)

SPECIAL FEATURE!

More Boys and Girls will have a better than ever
opportunity of getting calves and gilts at the 1965
Red Circle Auction. Start collecting Red Circles
NOW—then come to the Red Circle Auction July
23 & 24 and learn how.

GOOCH FEED MILL COMPANY

Salina, Kansas; Lincoln, Nebraska;
Dalhart, Texas; Vicksburg, Mississippi

Editor's Note:

Occasionally the 4-H Journal receives letters commenting on the magazine and 4-H club work. Below are two letters recently received in our office. One of the letters was passed on to us by Roger Regnier, state club leader, as a testimonial to club work.

Dear Mr. Regnier,

In July I began work as a home economist for the Union Electric Company in St. Louis. I spend most of my time demonstrating and giving cooking schools for both students and adults.

During the past summer, I spent a great deal of time judging food and clothing at 4-H county fairs.

I am certain that my 4-H background had a great deal to do with my being offered a position with Union Electric. The director said she always has been pleased with home economists who had a 4-H background.

Through my 4-H club work I have had training in demonstrating, working with people, speaking publicly, and judging. All of this training has proved to be of great value to me in my present position.

I wish to extend my great thanks to all of you on the state staff for your help. The value I gained from 4-H cannot be measured in dollars. I will always appreciate all it has done for me.

Sincerely,

Ellen Hollingsworth Bloom

Dear Editor:

Three of my friends and I would like to have extra copies of the May issue of the 4-H Journal.

We enjoy the magazine very much, especially the articles and pictures from the 4-H'ers all over the state.

Keep the good magazine coming. It's fun to read.

Sincerely,

Mrs. Ross Presnal
Gooddard, Kansas

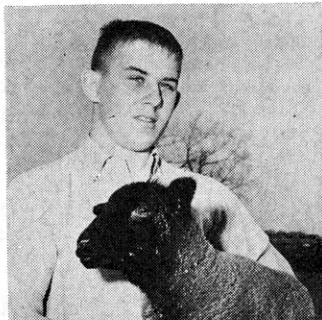
FEATURE COPY NEED

What is your club doing that is different or unusual? Do you have a unique way of making money or some new project that is worth letting the rest of the clubs in the state know about?

We would like to hear from you with pictures and stories about your county or club. We want your ideas to pass along to others. The Journal is your magazine, let us hear from you.

OUR COVER

A two month old Suffolk Lamb is held by Richard Hartman, Stony Point 4-H club, Wyandotte county. Richard, who has completed all phases of the sheep project, is preparing for summer shows and fairs. He and his brother, Larry, manage a flock. The sales will be used for their college education. (Photograph by S. Gilbert, Kansas City, Mo.)



KANSAS 4-H
Journal

Vol. XI, No. 6

June, 1965

IN THIS ISSUE

FEATURES

Annual Round-Up Evolved From Humble Beginning 6

4-H Judging Team Headed for England 7

Story of the Kansas 4-H Foundation 9

DEPARTMENTS

Family Fun Page 5

Recreation 17
By Dick Tomkinson

State 4-H Staff 18

Ideas That Work and Ideas In Brief 22

Don Esslinger Editor
Brad Lowell Assistant Editor

Editorial and Business Office

Phone JE 9-2211 Ext. 208
Manhattan, Kansas

Published Monthly By

KANSAS 4-H FOUNDATION, INC.

J. Harold Johnson.....Executive Director
Merle Eyestone.....Associate Director

BOARD OF TRUSTEES

Governor William H. Avery
Honorary Chairman

- W. Dale Critser, Chrm.Wichita
- E. B. Shawver, Vice Chrm.Wichita
- *Harry Darby.....Kansas City
- Mrs. Olive Garvey.....Wichita
- Clifford Hope.....Garden City
- †A. D. Jellison.....Junction City
- Harold L. Jones.....Manhattan
- J. J. Moxley.....Council Grove
- George B. Powers.....Wichita
- Roger B. Regnier.....Manhattan
- Dolph Simons.....Lawrence
- *Lester Weatherwax.....Wichita
- †Fred D. Wilson.....Andover
- *Advisory Members
- †Trustees Emeritus

Second Class Postage Paid at Lawrence, Kansas. Return Form 3579 to Kansas 4-H Journal, Manhattan, Kansas.

Advertising rates and circulation data on request.

Group subscriptions \$1.00 per year.
Individual subscription \$1.50 per year.
Single copy 15 cents.

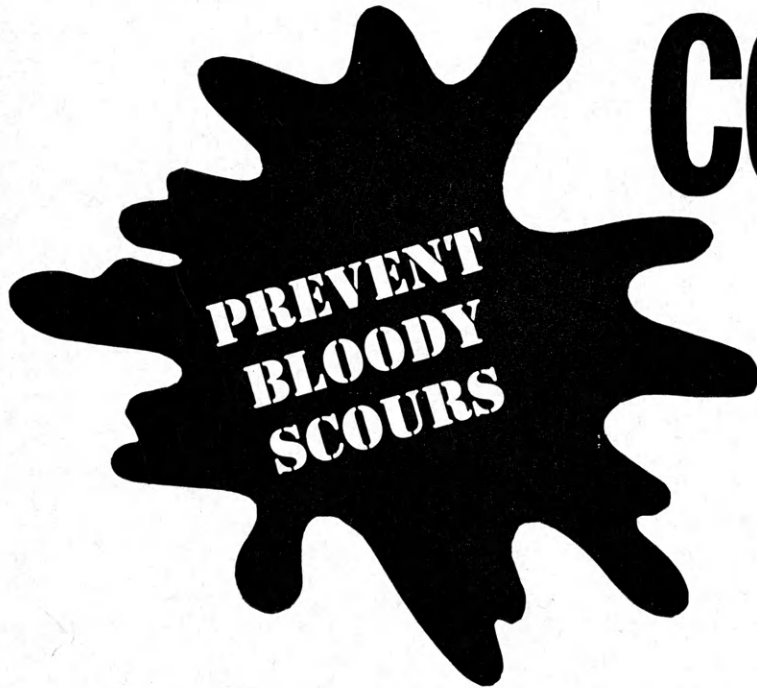
Use of the 4-H name and symbol approved by the Secretary of Agriculture of the United States, January 23, 1951, under the provisions of the law as reenacted by Sec. 707 of the Act of June 25, 1948 Public Law No. 772, 80th Congress (10 USC 797)



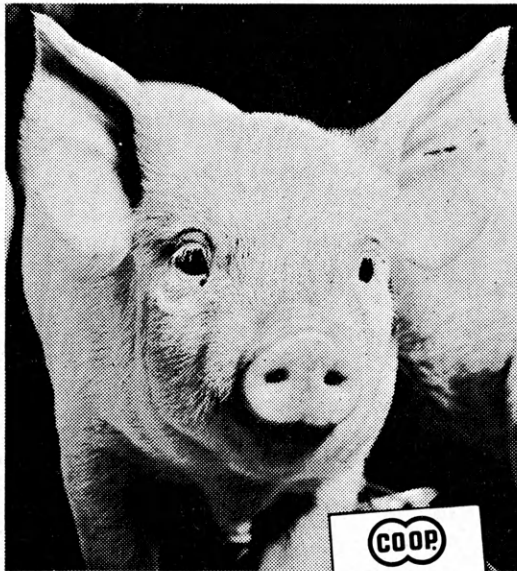
PIG FEEDS

CONTAIN

TYLAN



Already proved for complete balanced nutrition and low-cost gains — CO-OP Pig Feeds with Tylan give your feeding profits a still greater boost.



TYLAN

is the new antibiotic that can stop swine dysentery, commonly called bloody scours, before it happens — and can control it even after an outbreak occurs.

CO-OP Pig Feeds with Tylan mean more of your pigs surviving to market, more pigs gaining faster, with better conversion — more dollars return on your feeding investment.

THE VALUE OF TYLAN FOR HEMORRHAGIC ENTERITIS (BLOODY SCOURS) IN EXPERIMENTALLY INFECTED PIGS (ELANCO)

Treatment	PEN 1 Tylan	PEN 2 Control-No Medication
Number of Pigs Started	24	24
Total Starting Weight, Lbs.	875	880
Total Finishing Weight, Lbs.	3191	991
Total Weight Gain, Lbs.	2316	119
Total Feed Consumed, Lbs.	6550	2450
Feed Conversion	2.82	20.6
Average Daily Gain, Lbs.	1.45	0.14



ASK FOR CO-OP PIG FEEDS WITH THE "C" LABEL — THE "C" DENOTES TYLAN ADDED

CONSUMERS COOPERATIVE ASSOCIATION

KANSAS CITY, MISSOURI

Sign in meat department of a super-market: "T-bones 25 cents—with meat \$3."

Sign of the times—Outside a garage: "Cars washed, \$2. Midgets dunked, 75 cents"

Question: What is a bikini?

Answer: Two bandannas and a worried look.

By Sare Aye, Muncie

Question: What's the best way to catch a squirrel?

Answer: Crawl up a tree and act like a nut.

By Madonna Kaskie, Wichita

A beatnik on a motorcycle was going up a one way street, the wrong way, when an officer stopped him and said. "Buddy didn't you see the arrow?" The beatnik said, "Like man I didn't even see the Indians."

By Joan Huffles, Seneca

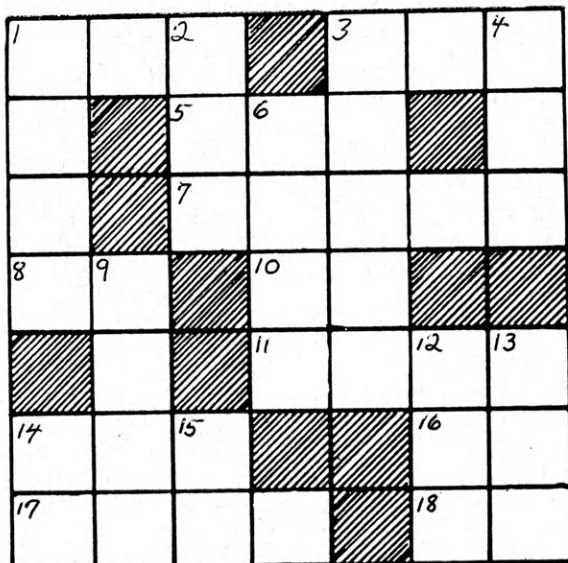


"Whatcha making . . . sawdust?"

Scrambled Words

Here are words common to a 4-H Club meeting. Unscramble them.

- | | |
|------------|---------------|
| 1. ootnim | 7. dnosec |
| 2. tevo | 8. esraycter |
| 3. untisem | 9. niptserde |
| 4. rosetpr | 10. urrertsae |
| 5. aogmrrp | 11. klat |
| 6. icsmu | 12. jonarud |



4-H'er and New Project

With the spirit of a true pioneer, a young 4-H'er wanted to start a new project. He wrote this letter to a pet supply company:

"Dear Sirs: Please send me two mon-gooses . . ."

On the advice of another he started over:

"Dear Sirs: Please send me a pair of mon-geese . . ."

This didn't seem right to him so in desperation, he felt he succeeded with his third try:

"Dear Sirs: Please send me a mongoose. Thank you, H. Brown. P.S. Aw, shucks—as long as you're sending one, might as well send me two."

ACROSS

1. Small bite
3. Observe
5. Month (abbrev.)
7. Truth established
8. Negative reply
10. Either
11. Give good service
14. Allow
16. Dad
17. White flakes
18. Esther Williams (initials)

DOWN

1. Mid-day
2. Soda (drink)
3. Shop
4. Pixie
6. Black bird
9. Not closed
12. Type of monkey
13. Uncooked
14. Lone Star (initials)
15. Belonging with

Editor's Note: Send in your favorite joke. We will give you credit for sending it in and we can let many others enjoy this joke and puzzle page. . . . Send to Kansas 4-H Journal, Manhattan, Kansas.

Annual Round-up Evolved From Humble Beginning

The Kansas 4-H Club Round-up can trace its beginnings back to a group of 12 boys, apparently corn club members, who attended the Farmers Institute at Kansas State College in January of 1906.

From this humble assembly Round-up gradually evolved through an expanded program and increased attendance into an event that is greatly anticipated each spring by hundreds of 4-H club members across the state.

State club office records indicate that 350 club members from 50 counties attended Farmers Institute in 1907. Although this event was not actually a club round-up in the present sense of the word, it was the beginning of an annual meeting of Kansas agricultural boys at Kansas State College.

The records further disclose that in 1915, 265 boys and girls from 48 counties attended a contest held in connection with Farmers Institute in Manhattan.

Attendance at Farm and Home Week in 1919 was greatly reduced by a flu epidemic, holding attendance to 65 brave girls and boys. Many of those in attendance had received expense paid trips from the State Bankers Association for winning state honors. Most of the others received expense money from local Chambers of Commerce and other organizations.

Eventhough another flu epidemic resulted in the cancellation of Farm and Home Week in 1920, a special club week was held in April since a number of the club members had been awarded free trips to Manhattan.

Although everyone concerned felt that the special club week a success, it was not adopted as an annual practice because it was felt that more boys and girls could attend when it was held in connection with Farm and Home Week.

During 1921 and 1922 a special effort was made to get the state and county winners into

Manhattan during Farm and Home Week for special club program. Other boys and girls were welcome, but not many attended.

Even with the success of the club week from the stand point of interest, the state office felt that coming, as it did in the midst of the big farmers meeting, the club members did not receive adequate recognition and attention. For this reason and the continued complaint about missing school, the state staff decided to hold a separate club week in the early part of May of 1923 after school was out.

It was hoped that the change to a separate week would become an annual club event attended by both state and county winners as well as representatives from each club in the state.

The second annual club Round-up held in May, 1924, was attended by nearly 400, representing a substantial increase over 1923. The attendance trophy was won by Meade county with 36 delegates who came from more than 300 miles.

As in 1927 the highlight of 1928 club Round-up was a music appreciation contest conducted for the second time by Miss Streeter of the Victor Talking Machine Company. Miss Streeter reported that she never before had seen such progress during a year's time. Individual and club prizes were awarded in the contest that attracted more than 1200 entrants.

A new and interesting feature at Round-up in 1928 was the introduction of harmonica study under the direction of James Hartley of the Hohner Harmonica Company. Classes were given to an advanced group of club members, a beginners group and to club leaders.

For the third successful year in 1929 the music appreciation contest was conducted by Miss Streeter. She said that the progress was even greater than ever before and that musical endeavor in Kansas was certainly finding a fertile field. James



No longer do 4-H'ers have to stand in the chow line out in the hot sun in front of the old cafeteria during Round-up on the campus of Kansas State University. Now they have to stand in the chow line in the new air-conditioned Student Union.

Hartley again directed the Harmonica study.

In 1933 recreation received increased emphasis with Earl Regnier, a former Kansas club member who received training at the National Recreation School in New York, training leaders during the day to lead evening play sessions.

Every boy and girl attending Round-up that year entered the music appreciation contest. Catherine Strouse, Emporia State Teacher's College, was in charge of the music appreciation work for the first time.

By 1939 attendance at the annual event had grown from 12 boys in 1906 to 1375 club delegates representing each of the state's 105 counties.

During the past 25 years, Round-up has developed into a week of inspiration, of learning and of friendship.

The current Round-up program is designed to give club members insight and understanding of many different facets of 4-H club work. The week-long rally provides the opportunity for club members to develop a keener appreciation of a program that contributes to building better citizens for tomorrow.

It is anticipated by the state club leaders that the 1965 Round-up will be the best one yet. Club members and leaders can be assured that there will be a continued effort to obtain perfection in the state 4-H program.

4-H Judging Team Headed for England

A 4-H dairy judging team from Cowley county will represent the United States in the 36th International Dairy Cattle Judging Contest at the Royal Show, Stoneleigh Abbey, Warwickshire, England, July 7.

Team members are Virginia Weir, Geuda Springs, Cleo Rogers, Arkansas City, and Carl Wollard and David Brothers, Burden. Francis Bliss, Cowley county club agent, is team coach. Bliss, his wife, and Mrs. John Weir will accompany the team to the contest.

The 4-H'ers earned the right to represent this country in the international competition by winning dairy judging contests at the 1964 Kansas State Fair and the National Dairy Congress in Waterloo, Iowa.

Miss Weir was first place individual judge in both contests.

The team will fly to Scotland June 21 and spend some time preparing for the contest and attend the Royal Highland Show in Ayr County. They will be at Royal Show in England July 5 to 8.

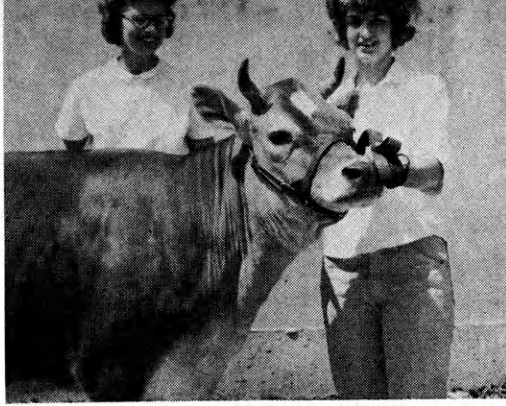
Following the Show, the team will visit the Isles of Guernsey and Jersey on the way to Paris. From Paris they will travel by station wagon to Switzerland, Germany, and the Netherlands. In each country they will visit dairy farms and processing facilities. The return trip will be on the SS Rotterdam.

Miss Weir and Rogers are members of Theaker 4-H club. Miss Weir is a 10 year 4-H member, while Rogers has been active in club work for 8 years. Both attend Arkansas City High School.

Wollard and Brothers are members of Tisdale 4-H club. Brothers is a freshman at Arkansas City Junior College. An eight-year 4-H member, Wollard is a junior at Dexter High School.

Many hours of practice in judging dairy stock is on the busy schedule for team members as they prepare for the international contest.

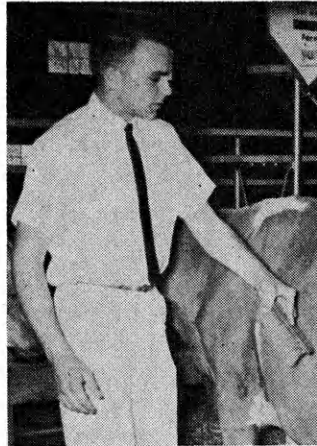
The trip is being financed by



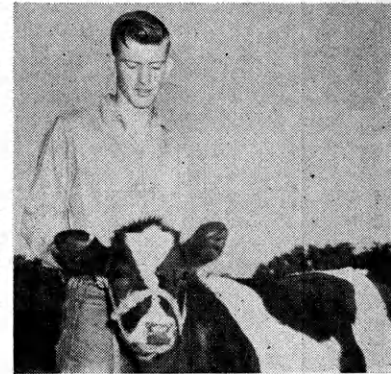
Virginia Weir and her mother, Mrs. John Weir, above, are eagerly awaiting their trip to England this summer. The top individual judge on the team, Virginia has completed the dairy, dairy production, clothing, foods, photography, beef, swine and junior leadership projects.



David Brothers, above, is preparing for a Dairy Show in Arkansas City. Another outstanding judge, Brothers placed second in individual judging at the Mid America Show in 1963 and first in 1964.



Carl Wollard, left, is a veteran of 94 dairy exhibits and 25 dairy judging contests. He was individual winner at the Oklahoma Dairy Show in 1964.



A two-year member of the winning 4-H team at the All Breed Dairy Show in Arkansas City, Cleo Rogers, right, is looking forward to the trip.

contributions from leaders in the Kansas dairy industry and dairy breed associations as well as the Kansas 4-H Foundation.

On Saturday, June 5, the Arkansas City and Winfield

Chambers of Commerce are sponsoring a recognition and "sendoff" dinner for the team. Governor William H. Avery has accepted an invitation to attend the dinner.

a simple flip of the switch

Every member of the rural family can now have electricity with just a flip of the switch, thanks to Electric Cooperatives.

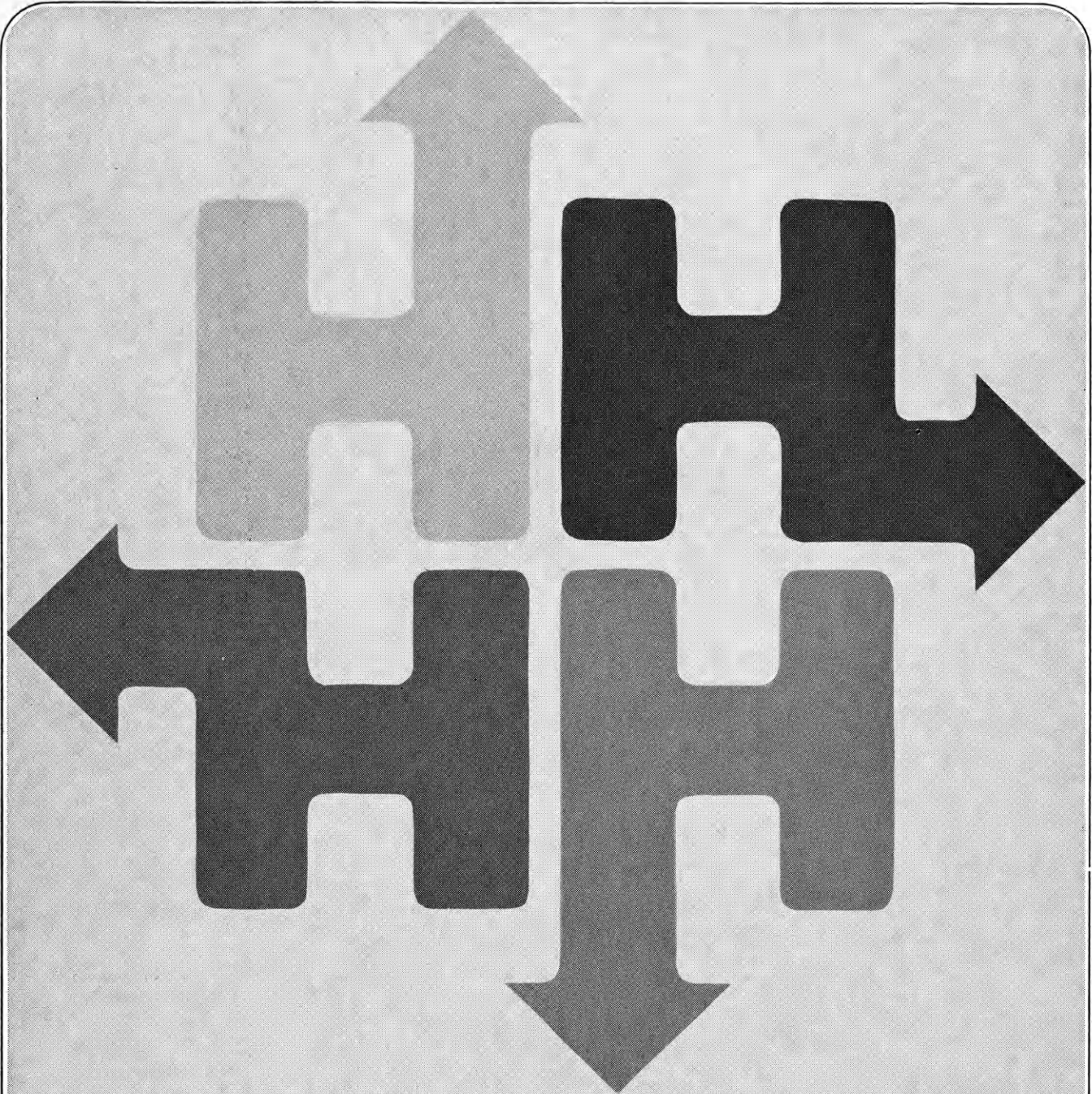
This ample supply of low-cost power didn't come easily. It is the result of forward-thinking people working together to build and develop Electric Cooperatives to get the electrical power they could not buy elsewhere.



THE ELECTRIC  **cooperatives**
OF KANSAS

420 West 9th, Topeka, Kansas

CE 5-5321



IN EVERY WAY . . . KANSAS 4-H SPREADS ITS INFLUENCE. EACH 4-H CLUB MEMBER'S SELF-IMPROVEMENT PROGRAM BENEFITS THE CLUB, THE COMMUNITY, OUR COUNTRY—AND THE WORLD. ❀ CLEAR-THINKING **HEADS, WARM **HEARTS**, WILLING AND ABLE **HANDS**, SOUND **HEALTH** OF BODY AND MIND—NEVER HAVE THESE BEEN MORE PRECIOUS TO THE NATION THAN NOW. MAY EACH YEAR INCREASE YOUR NUMBERS. ❀**

FOLGER COFFEE CO.—Kansas City





*“ . . . For
Better
Living*

*for my club,
my community,
and
my country.”*



... the Story of the Kansas 4-H Foundation

4-H Is A Family Affair; Education In The Home

In its desire to assist the 4-H family, the Foundation has published the Kansas 4-H Journal since 1956.

The Foundation recognizing that 4-H is a family affair, established the Journal as a source of fresh ideas and information for the entire family.

Over the years the Journal has become the voice of Kansas 4-H, providing an exchange of proven ideas as well as a dependable guide to improved programs.

Through the Journal the Foundation hopes to continue assisting the family in molding a home from which come benefits to the community, the state, nation: yes, even the world.



Scholarships and Awards Offer Incentives for Higher Achievement

The Foundation disbursed \$34,839.06 for scholarships and awards in 1964 as incentives for higher achievement in the 4-H program.

In addition \$8,543.55 of Foundation funds was used to purchase supplies for use by counties in their awards programs. While this is a revolving fund, it requires a sizable inventory of supplies.

As of December 31, \$22,376.56 in restricted funds was on hand for awards and leadership training.

Many Kansas firms, organizations, and public spirited individuals help make this encouragement possible.

Much credit goes to the National 4-H Service Committee, Chicago, not only for developing interest in 4-H among this country's large business organizations, but, also, for the help in establishing the Kansas Committee on 4-H Club work. Senator Frank Carlson (then Governor) issued the invitation which resulted in the state committee from which the Foundation evolved.

The Foundation is gratified by the many acknowledgments of its participation received each year from individual award winners.

"Thanks for the beautiful pen and pencil set . . . I am really proud of it. I just finished my

eighth year in 4-H. I wish every boy and girl could belong to 4-H; it is one of the best places to learn . . .," one 4-H'er said in a letter of appreciation to the Foundation office.

Another states, "Thanks for the lovely Elgin watch. I was thrilled to receive it . . .;" and still another said, "I'm certainly proud to be a 4-H member and



I am grateful for the incentive the 4-H Foundation has given me."

These illustrate benefits received by the hundreds of club members who were encouraged through various medals, trips, scholarships and other awards.

CONTACT

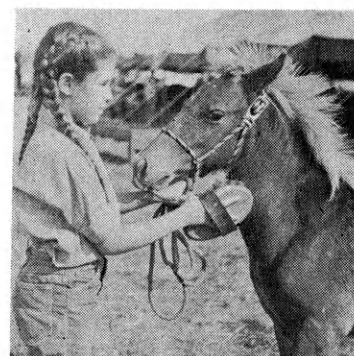
Kansas 4-H Foundation
212 Umberger Hall
KSU, Manhattan, Kans.
JEfferson 9-2211, Ex. 208

The Member and The Project are Foundation Concerns

The Kansas 4-H Foundation is interested in the individual 4-H member. This concern is the focus of Foundation programs.

Individual project work, the basic idea of 4-H, is the tool by which youngsters develop—in skills, knowledge and leadership ability—into responsible adults. Project work gives the member an experience helpful in preparing for further education and a career.

The "learning by doing" experience in 4-H is important to individual growth. The Foundation wants to encourage more of it by participating in programs



which promote membership and stimulate greater achievement. In 4-H, the all-important individual will experience pride of ownership, accomplishment, a feeling of success and expressions like "job well done" from those who care.

What Does the Kansas 4-H Foundation Do?

The purpose of the Kansas 4-H Foundation is to make private funds or gifts available to benefit the state 4-H program.

The Foundation looks to the Extension Service, Kansas State University, for guidance in determining the needs of the state program that can best be met with private funds.

Through many and varied channels, Extension personnel determine immediate plans and long-range goals. Advisory committees, leaders from the Federal Extension Service, studies in this and other states, all help, and are continually working to improve the informal educational 4-H program.

The 4-H program *needs* which can best be met by private funds are reflected through these many sources. The Foundation places its entire support upon these needs.

CLUBS MAKE 10th "Investment In 4-H"

**OUR HATS ARE OFF TO SUCH
HELPFUL YOUNGESTERS!!!!**

We are proud that 4-H'ers invest in their own program. The listing which follows in the Honor Roll is testimony to 4-H Club support. It is with real pride and pleasure that we recognize the Carbondale Rustlers 4-H of Osage County and the Blackjack 4-H of Pottawatomie County for an unbroken 10-year record of contributing to the Kansas 4-H program through the Foundation. Many clubs are in 4 to 8 year category.

The Horaniff Hustlers 4-H'ers of Wyandotte County have an enviable record, also. Organized 8 years ago, they have contributed a membership (a minimum of \$1 per member) each of the 8 years. What's more, they have set as their goal the filling of all 35 circles for seals on their membership certificate. (A seal is given each year a membership is contributed.) Doubtless by that time it will be an unbreakable habit.

Foundation Progresses; Plan Increases Support

1964 was a year of great financial progress for the Kansas 4-H Foundation. District chairmen and county committees carried forward a new plan adopted by Foundation Trustees as a means to broaden the base of financial support.

As a result, \$9,000.97 was raised to add new features to Kansas 4-H work. Disbursements of these funds included \$3500 for a new movie now in production, "The Kansas 4-H Story;" \$1800 in additional funds was allocated for the IFYE program; \$1700 was provided for membership promotional material through the 4-H Journal in selected counties; and \$750 was appropriated for water and sewer development at Rock Springs Ranch. In addition several other awards and leadership training scholarships were made possible by the increased funds.

During the year the Foundation also established a trust fund to handle special endowments to the Kansas 4-H program.



13th Year A Success; Look for Greater Service

The Foundation's 13th year, 1964, brought in more financial assistance to the 4-H program than any previous year. This, in the State Club Leader's words, "has great value and makes the state 4-H program more flexible."

Several important studies and training conferences were made possible. The future of 32,000 young people creates many needs. Foundation service assists in meeting these needs. The Foundation "family" is working as a unit to accomplish this.

Who is the Foundation family? It is a large one—county committee men and women in most of the 105 counties, a district chairman in each of 6 districts, the board of 11 trustees, 4 advisory trustees, and a small staff in the headquarters office, plus every donor.

As this large family goes into concentrated action, greater service can be expected.

Trust Fund Established

A welcomed addition to the Foundation program in 1964 was establishment of a trust contract by the Board of Trustees to administer special endowments to the Kansas 4-H program.

A substantial gift by a friend of 4-H established a new trust fund which will open additional educational opportunities for deserving 4-H members. The trust is perpetual with income only being used for scholarships and similar educational needs.

A former 4-H girl provided the first endowment for the benefit of Kansas 4-H with a \$5000 gift. Several other endowments for various purposes have been received since Foundation trusts were first started.



IFYE: Learning Another Way of Life By Living It

Around the world, yet right at home. Not a day passed by that somewhere in the world International Farm Youth Exchange (IFYE) participants are learning a different way of life by living, working and sharing experience with rural people of other lands.

A bridge of better understanding is built by each IFYE between his homeland and his host country.

IFYEs are not technicians, but they do share their knowledge and agricultural skills with their hosts. They have helped to transplant the "4-H Club idea" to dozens of newly developing countries.

The above information from a brochure published by the National 4-H Club Foundation outlines the International Farm Youth Exchange objective. The

vision and aggressive leadership given through the National 4-H Club Foundation is largely responsible for the splendid work and the scope of this exchange program. The major portion of the financial support is from this source also.

In Kansas, the 4-H Foundation is helping raise the \$1000 per delegate. For 1965, each county sending a delegate pays \$700, the Foundation pays the additional \$300.

The spirit of IFYE continues to grow as the young people assume new leadership responsibilities in their communities and work to strengthen understanding among the peoples of the world.

IFYE plays an important part in the growth of "4-H-like" youth programs in newly developing countries around the world.

Leader Scholarships Provided for Training In New Concept

The rapidly changing world demands changes within it. The state 4-H staff, as a result of a Foundation sponsored study trip to other states, sees the need for a change in the adult 4-H leadership plan to include county project chairmen. Money is needed to put this plan into practice. The Foundation is striving to meet this need through its only source of income—private contributions. Some \$650 was used from funds raised by County Committees in 1964 for the first such training conference at Rock Springs Ranch.



Membership Promotion

One of the Foundation's more important aims is to help Extension workers "sell" the Kansas 4-H program to as many eligible 4-H members as possible.

By publicizing the exciting and beneficial experiences available in 4-H club work in the 4-H Journal as well as the many awards won each year by 4-H members, the Foundation informs youth of the many advantages to be gained from the 4-H program. Billboards throughout the state, provided through the Foundation, also helped sell the 4-H program.

Special attention must be given a volunteer program such as 4-H if it is to attract and interest those for whom it exists. For this reason the Foundation places heavy emphasis on the important job of promoting 4-H club work.

4-H Alumni Are Important to Foundation Work

The Foundation provides a means by which those who have benefited from the 4-H program can reciprocate. The Foundation looks to those who have personally experienced the benefits of 4-H as a source of real help with the present needs of the program.

Without the gifts from 4-H Alumni some of the value of the program would be lost. Many are cooperating "to make the best better." Many more are needed.

The Alumni Roll Call was established by the Foundation to provide an opportunity for such assistance. Alumni representatives on County Committees provide the leadership for promoting the annual Roll Call.

Rock Springs Ranch — State 4-H Leadership Training Center

Growth in Service

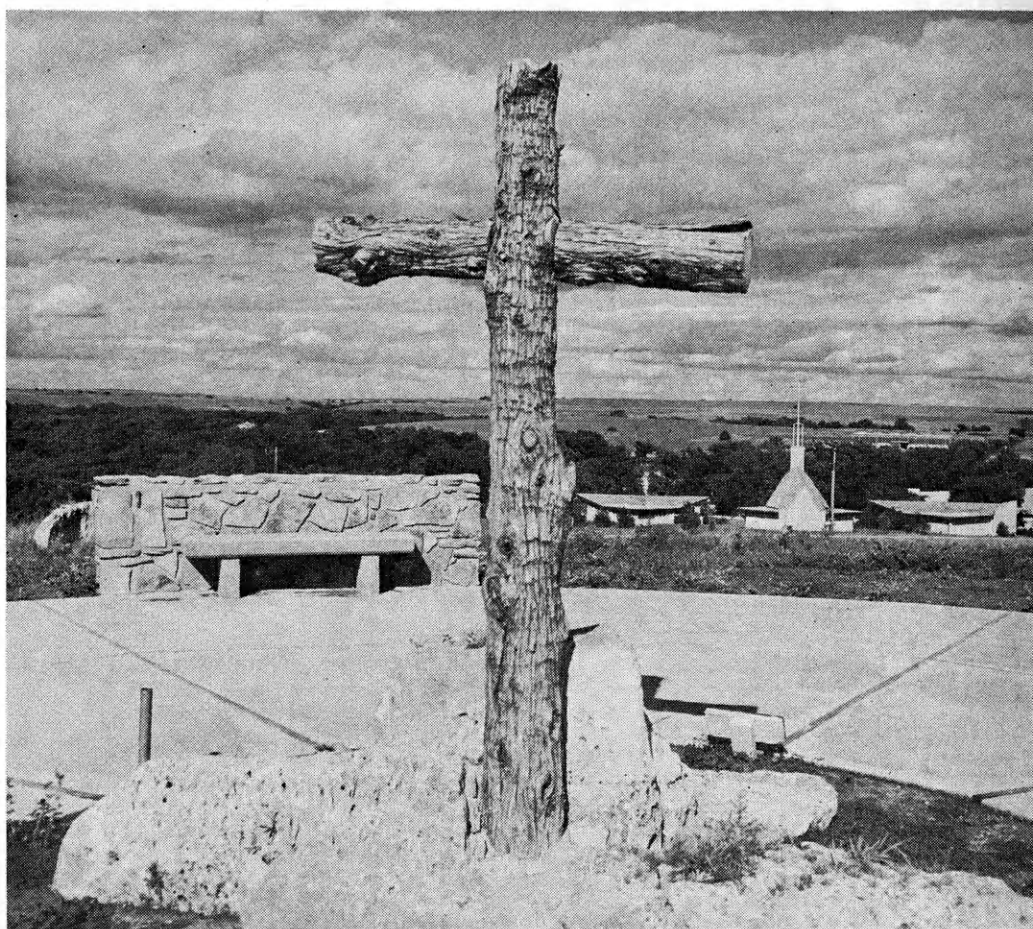
New Facilities Are High Priority

Since opening on a very small scale the summer of 1946 (2,267 club members and their leaders participating) use of the State 4-H Center has increased steadily. Its record year was 1964 with 10,621 participants. More than 110,000 persons have officially registered in that 19-year period (12 months utilization during the last 3 years; previously only the 3 summer months could be scheduled). Lack of winterized facilities made it necessary to close down early in the fall and open late in the spring. At the present time, it is possible to house 430 during summer, and 150 during winter months. More permanent housing is an urgent need. Many groups must be turned away because of insufficient housing.

Insofar as the schedule permits, Rock Springs is available to any worthy group. The 4-H'ers have priority, of course, but the fact that many "outside" the 4-H program gave generously toward the development of this State 4-H Center is appreciated. An interesting fact is that most non-4-H groups using the Center have within their ranks 4-H members or 4-H alumni.

The Foundation is pleased with the service rendered through the Rock Springs facilities.

Wilbur Levering, left, and Mrs. Frank Jordon, Co-Chairmen of the 4-H Alumni Roll Call, visit with Dale Critser, Chairman of the Kansas 4-H Foundation Board of Trustees.



4-H Foundation MEMORIALS

Another important service provided by the Kansas 4-H Foundation is the administration of memorials for individuals and organizations.

These memorials have been in the form of scholarships, trusts, and buildings or furnishings. The smallest amounts have been 50 cents from a 4-H'er, and \$1 from a club honoring their first president; the largest single contribution was more than \$275,000 for a building at Rock Springs Ranch.

Whatever the purpose of the memorial the honored memory is carried on in association with 4-H, and the Foundation realizes greater opportunity to be of service to future generations.

Leaders Conference At Hutchinson

To help assure the continuance of able and enthusiastic leadership in the 4-H program, the Foundation offered 100 scholarships to the State Leaders Conference in Hutchinson this year.

Knowing the success of the whole 4-H program hinges on able leadership, the Foundation wants to do its share in encouraging and helping develop leadership skills and interests.

To the 10,000 4-H volunteer leaders of Kansas, the great strength behind the 4-H program, the entire Foundation organization is most grateful. Our efforts in your behalf are joyfully given.

You Serve Youth through the **Kansas 4-H Foundation**

In appreciation to those who made possible, through private financial support, some of the fine things in the Kansas 4-H Program, this

HONOR ROLL

I S D E D I C A T E D

Our sincere thanks to you who, during 1964, contributed to the training of youth through the Kansas 4-H Foundation.

4-H is informal education supplementing training in the home, church, and school in helping members reach citizenship potentials. That so many individuals and organizations recognize its value to our state and nation is most assuring.

The figure preceding the name indicates the number of years of support since the **Foundation Membership and Share Recognition plan was started in June, 1954**. Every effort has been made to avoid errors or omissions. Please notify the Foundation if any contributor has been left off the Honor Roll.

Friends of 4-H — 1964

A

- 1 Aggie Hardware & Electric Co.
- 2 Albright, Penrose S.
- 1 American National Bank, Baxter Springs
- 6 Anderson Cattle Company
- 5 Atha, Donald J.
- 4 Atha, Donald J. & Family
- 4 Atha, Joseph S. & Family
- 1 Citizens State Bank, Morland
- 1 City Dairy
- 1 Coca-Cola Bottling Co., Manhattan
- 1 Cole, Dr. Ward M.
- 1 Columbus State Bank
- 1 Consolidated Motors
- 1 Consolidated State Bank, Hill City
- 2 Co-op Farm Chemicals Ass'n.
- 4 Consumers-Cooperative Ass'n.
- 10 Critser, W. Dale

B

- 2 Baker, Louis A.
- 1 Bayer Construction Co., Inc.
- 2 Beardmore, H. K.
- 8 Bevelhymmer, H. C.
- 2 Blaes, Emmet A.
- 10 Bly, Erna
- 1 Boyce, Hugh
- 4 Brown, Ralph E.
- 1 Brown, S. M.
- 2 Buhler Mills
- 1 Burliew-Cowan Funeral Home
- 1 Buster, Donald L.
- 3 Buzick, H. S., Jr.
- 1 Buzzell's Office Equipment

C

- 1 C. D. Jennings & Green Company
- 1 Central State Bank, Reno Co.
- 2 Charitable Foundation, H. W. Cardwell
- 1 Cherokee Co. Reg. Livestock Br. Ass'n.
- 1 Cherryvale Grain Company
- 1 CK Processing Co., Inc.
- 11 Cities Service Oil Company

D

- 1 Daugherty, Bill & Dianne
- 1 Davis Mfg., Inc.
- 1 Dawson, Robert W.
- 5 Dewell, Mr. & Mrs. Carl V.
- 4 DeWitt, Durward G.
- 2 Dillon, J. S. & Sons
- 2 Dodson Mfg. Company
- 1 Doebele's IGA Foodliner

F

- 1 Falley's Market, Inc.
- 1 Farmers Co-op Ass'n, Manhattan
- 3 Farmers Co-op Commission Company
- 2 Farmers & Merchants Bank, Hill City
- 1 Farmers & Merchants State Bank, Colby
- 1 Farmers & Merchants State Bank, Reno Co.
- 1 Farmers State Bank, Bogue
- 11 Federal Cartridge Corporation
- 4 Federal Land Bank, Wichita

G

- 1 Goetsch-Irvine Motor Co., Inc.
- 1 Goff, Lyle D.
- 1 Goodman, Nightingale, McPherson Company
- 1 Graves Truck Line
- 1 Greener Pastures Recog. Program
- 1 Green's Book Store
- 1 Griffith, Connie L.
- 1 Griffith Lumber Company
- 1 Griffith Oil Company
- 2 Gross, Paul
- 3 Gugler, Donald P. & Evelyn
- 2 Gwin, Paul B.

H

- 1 Halligan Feed & Produce
- 1 Hanover Implement Company
- 1 Hansen, D. G.
- 1 Harder, Menno
- 1 Hardman Lumber Company
- 2 Harms, Edwin M.
- 4 Harry Darby Foundation
- 2 Hay, L. C.
- 1 Henry Krause Charitable Foundation
- 2 Herndon, May Beth
- 1 Hesston Mfg. Company

- 1 Hiebert, Theo A.
- 2 Hi-Plains Co-op Ass'n, Thomas County
- 2 Holgerson, C. E.
- 11 Holstein-Friesian Ass'n, of Kansas
- 3 Hoover, Lawrence J.
- 6 Houghton, James H.
- 9 Huff, Ruth K.

I

- 2 Ise, Frank H.
- 4 Ives, H. M. & Sons

J

- 1 J. C. Penney Co., Manhattan
- 11 Jellison, A. D.
- 10 Johnson, J. Harold

K

- 11 Kansas Ayrshire Breeders Ass'n
- 11 Kansas Bankers Association
- 9 Kansas Brown Swiss Breeders Ass'n
- 11 Kansas City Power & Light Company
- 11 KCREA—Electric Power Suppliers of Kansas
- 1 Kansas Electric Cooperatives
- 8 Kansas Farm Bureau & Insurance Services
- 11 Kansas Gas & Electric Company
- 8 Kansas Milking Shorthorn Society

L

- 2 Laing, Verne M.
- 2 Laybourn Foundation
- 4 Leonard, Ralph H.
- 1 Lindsborg Min-A-Max Store

M

- 1 McPherson Concrete Products Co.
- 1 McPherson County Farm Bureau Ass'n
- 1 Manhattan Federal Savings & Loan Ass'n
- 1 Manhattan Wholesale Meat Co., Inc.
- 2 Marcus, Sam
- 1 Massey-Ferguson, Inc., Reno Co.
- 1 Master Breeders Hatchery
- 1 Montgomery Ward, Manhattan
- 6 Morawitz, Carl
- 2 Murfin Drilling Company

Friends of 4-H — 1964 (Continued)

- | | | | | |
|---|--|---|--|---|
| <p>N</p> <p>10 National Dairy Products Corp.
1 Nickelson, Florence
1 Northwest Kansas PCA</p> <p>O</p> <p>2 Oakes, E. W.
2 Oberg, Frank O.</p> <p>P</p> <p>1 Packard, Bryan
1 Pepsi-Cola Bottling Co., Manhattan</p> | <p>1 Perle Bottger's Aggieville Marine Center
1 Peterson Bros.
1 Phelon, Mrs. Elmer
1 Preston, Clifford</p> <p>Q</p> <p>18 Quinlan, L. R.</p> <p>R</p> <p>1 Radio Station KMAN
2 Reed, Elmer W.
4 Regnier, Roger E.
3 Richardson, Edw. L.
2 Rittenoure, L. W.
1 Roeckers, John H.
3 Ross, Don C.</p> | <p>S</p> <p>11 Safeway Stores, Inc.
1 Sam Saroff & Co., Inc.
1 San Ore Construction Company
4 Schmidt, H. M.
1 Schone, J. A.
1 Sear-Roebuck & Co., Manhattan
11 Sears-Roebuck Foundation
1 Seaton Publishing Co.
1 Security Elevator Co., Reno County
4 Shawver, E. B.
1 Sid Bacon Motor Company
1 Slaten, J. M.
1 Smith County 4-H Foundation
5 Southwestern Bell Telephone Co.
4 Springlake Stock Farm</p> | <p>11 Standard Oil Foundation
1 Stevenson's, Manhattan
2 Springer, V. C.
9 Sutherland Lumber Company</p> <p>T</p> <p>1 Teagarden, E. H.
1 Thomas County Farmers Union
2 Thomas County National Bank
1 Thompson Transport Company
1 Torkelson, Herman
1 Town & Farm Company
1 Tri-County Motor Company</p> <p>V</p> <p>1 Valley Equipment Company
3 Veatch, N. T.
1 Viking Mfg. Company</p> | <p>W</p> <p>1 Wallace, Dwight S.
8 Wallingford Foundation
11 Watkins Products, Inc.
1 Watson—Mayflower
11 Weatherwax, Lester F.
11 Western Light & Telephone Co., Reno County
2 Williams, Dick
3 Wilson, John L.
1 Winchester Packing Company
9 Woolworth Company, F. W.
2 World Company
1 Wright, A. W.</p> <p>Y</p> <p>2 Yingling Chevrolet Company</p> |
|---|--|---|--|---|

Alumni Roll Call — 1964

- | | | | | |
|---|--|--|---|--|
| <p>A</p> <p>1 Allen, Mr. & Mrs. Elton
5 Allen, Harvey G.
6 Apel, Dale
3 Arnold, Mr. & Mrs. Dean W.</p> <p>B</p> <p>4 Barr, Mr. & Mrs. Bernard
6 Bassett, Janice Fauss
2 Bates, Kay
3 Blankenship, Una Kay
2 Blecha, Mr. & Mrs. Amos
5 Booth, Arden
1 Buell, Rex
5 Butler, Mr. & Mrs. Gen</p> <p>C</p> <p>6 Chambers, J. Wayne
6 Coberly, Goldie
4 Clemence, Mr. & Mrs. Joe
1 Cole, Mr. & Mrs. Robert
4 Collinge, Dr. & Mrs. Irwin J.
3 Counter, Henry E.
3 Counter, Mr. & Mrs. Perry
6 Cubit, James & Helen</p> <p>D</p> <p>6 Dies, Mrs. Edgar
6 Dressler, H. A.</p> <p>E</p> <p>5 Enders, Paul
6 Erb, Mrs. Melvin</p> | <p>5 Essmiller, Mr. & Mrs. Ralph
3 Eystone, Cecil</p> <p>F</p> <p>6 Fauss, Mrs. R. L.</p> <p>G</p> <p>5 Garrison, Mr. & Mrs. Donald
6 Garten, Mrs. & Mrs. Clarence
6 Garten, Mr. & Mrs. Frank
1 Gibson, Hugh
1 Gibson, JoNell
2 Grover, Wayne
2 Grover, Mr. & Mrs. Oria F.</p> <p>H</p> <p>5 Hamilton, Mrs. Dean
3 Hamon, Mr. & Mrs. Charles
4 Hamon, John
4 Hammarlund, Mr. & Mrs. Dale
4 Hassman, Mr. & Mrs. Irvan
4 Hatfield, Mr. & Mrs. James H.
5 Heersche, Mr. & Mrs. George
1 Heiman, Robert
5 Heitschmidt, Mr. & Mrs. Marvin
1 Hildebrand, Don
6 Hostetler, Pius H.
6 Hottman, Mrs. Orren F.</p> <p>J</p> <p>5 Jordan, Dr. & Mrs. Frank
6 Jurgens, Mrs. John</p> | <p>K</p> <p>2 Keller, Dr. & Mrs. E. I.
5 Kirkwood, Francis
2 Kleyman, Mr. & Mrs. Fred
3 Knappenberger, Joe</p> <p>L</p> <p>3 Larson, Janet
3 Larson, Robert
1 Lenhart, Heda & J. L.
4 Levering, Wilbur
4 Lewis, Mr. & Mrs. Joe W.
6 Lewis, Mr. & Mrs. Walter
4 Lindon, Mrs. Martin
6 Lobmeyer, Mr. & Mrs. Louis
3 Long, Mrs. Eldon
2 Lundstrom, Carolyn Myers</p> <p>M</p> <p>4 McGaugh, Velma
6 Manry, Mr. & Mrs. E. Clifford
5 Marshall, Mrs. J. E.
1 McKnight, Virginia
4 Martin, Walter W. & Gavona J.
4 Mermis, Mrs. Leo F.
5 Mills, Lambert & Rosalea
2 Mink, Mrs. Bill
6 Morgan, Mr. Mrs. L. D.
6 Mull, Mrs. Keith W.
6 Murray, W. Lovillo
4 Musil, Esther M.
5 Musil, Mr. & Mrs. Theo. F.</p> | <p>N</p> <p>6 Niles, Mrs. & Mrs. Irving R.
2 Norby, Oscar</p> <p>O</p> <p>6 O'Neill, Mr. & Mrs. Larry
5 Osborn, Mr. & Mrs. Lawrence J.
4 Ottaway, Lois</p> <p>P</p> <p>2 Paulson, John R.
6 Pine, Mr. & Mrs. Wilfred H.
5 Price, Wilmot B.
6 Pucket, Dale W.</p> <p>R</p> <p>2 Ramsour, Harold H.
4 Read, Isabel
6 Reehling, Mrs. Cecil B.
6 Rice, Shirley
1 Robinson, Betty
3 Rogers, Irene
2 Rowland, Virginia Sourk
2 Russel, Darrell A.</p> <p>S</p> <p>6 Schmitt, Mrs. Ben
2 Shands, Jobelle A.
6 Shepherd, Mrs. Ronald
4 Smerchek, Mrs. J. D.
5 Smith, Mrs. R. V.
6 Stallard, Mr. & Mrs. Wayne</p> | <p>1 Starkey, Beverly R.
1 Stephens, Mrs. Norman
4 Streeter, Mr. & Mrs. Charles
6 Strickler, Mr. & Mrs. Ivan
1 Sturgeon, Dale E.</p> <p>T</p> <p>5 Teagarden, Mr. & Mrs. Carl J.
6 Truman, Mrs. Maxine</p> <p>U</p> <p>1 Uhlrich, Mrs. Vincent
3 Unger, Harry A.</p> <p>V</p> <p>5 VanSkiike, Mr. & Mrs. Harry
5 VanSkiike, William V.
6 Vann, Mr. & Mrs. Willis B.
6 Vining, Mr. & Mrs. Cecil E.</p> <p>W</p> <p>4 Walquist, Harvey
5 Walton, Mrs. Keith
2 Wells, Mrs. Norma Mae
3 Williams, Mrs. Jack J.
3 Wingert, George D.
4 Wright, Mrs. Chester
3 Wyckoff, Maurice I.</p> <p>Z</p> <p>6 Zitnik, Frank
6 Zweifel, Bernice
6 Zweifel, Robert</p> |
|---|--|--|---|--|

IFYE Alumni and Host Family Campaign — 1964

- | | | | | |
|---|--|--|--|--|
| <p>A</p> <p>5 Adams Business Forms, Inc.
2 Addleman Pioneer 4-H, Decatur County
5 Anderson, Mrs. Bert H.
2 Angel, Mr. & Mrs. John
1 Aspegren, Mr. & Mrs. Robert</p> <p>B</p> <p>2 Baird, John R.
5 Banker, Mrs. Dean
2 Barrett, Mr. & Mrs. Jack
2 Becker, LaVern
2 Beezley, William
1 Behnke, Marceline J.
2 Boyce, Hugh & Family
5 Brehm, Merle</p> <p>C</p> <p>2 Calusa 4-H Club, Haskell County
5 Cauble, Mr. & Mrs. Dean
8 Collegiate 4-H Club
6 Cool, Mr. & Mrs. Joe H.</p> <p>D</p> <p>3 Deckinger, Marilyn H.
5 DeLange, Verdán & Family</p> | <p>2 DeVore, Mr. & Mrs. Jasper
2 Dies, Mr. & Mrs. Edgar
5 Dietz, Mr. & Mrs. Henry</p> <p>E</p> <p>1 Elliott, Loren O.
2 Elliott, Wilfred</p> <p>F</p> <p>5 Faidley, Paul
6 Fooshee, Mr. & Mrs. Claude</p> <p>G</p> <p>6 Garvey Foundation
2 Gooch, Jim
4 Goyen, Mr. & Mrs. Lester
2 Graber, C. J.
2 Gruver, Clifford</p> <p>H</p> <p>2 Hamilton, Mrs. Dean
6 Harper, Mr. & Mrs. Fred
1 Harper, Norman F.
6 Haskin, Mr. & Mrs. Glenn
4 Haun, Mr. & Mrs. Harold
3 Herring, Mr. & Mrs. Roy
11 Hicks, Mr. & Mrs. W. H.
1 Hildebrand, Don</p> | <p>J</p> <p>6 Jackson, S. Lester
4 Jansonius, William
6 Jones, Mr. & Mrs. Eugene
3 Judy, Hal E.</p> <p>K</p> <p>1 Kansas Bankers' Association
1 Kepley, Ralph D.
3 Kuckelman, Mr. & Mrs. Frank</p> <p>L</p> <p>1 Larson, Larry
4 Leonard, Ralph H.
5 Lewis, Clarence E.</p> <p>M</p> <p>2 McClure, Mr. & Mrs. Herbert R. & Family
5 McGuire, N. D.
3 McKee, Mr. & Mrs. Carl, Jr.
2 Medford, Mrs. R. E.
1 Millbrook Sunshiners 4-H, Graham County
1 Moritz, Beverly
5 Murrey, Chester</p> <p>N</p> <p>4 Neher, M. E.</p> | <p>O</p> <p>1 Odgers, Carol Ann
5 Odgers, Marvin C.
5 Olomon, Chas. P., Jr.
6 Oltjen, Mr. & Mrs. Emmett
6 Oltjen, John
1 101 Go Getters 4-H, Labette County
6 Otte, Mr. & Mrs. Alvin
1 Oxford Hustlers 4-H, Johnson County</p> <p>P</p> <p>4 Patton, Mr. & Mrs. L. Bruce
2 Pearson, Mr. & Mrs. H. S.
5 Pierce, Mr. & Mrs. Walter
1 Pine, Roger C.
2 Presnal, Glade C.
1 Presnal, Mr. & Mrs. Ross
4 Preston, Mr. & Mrs. Clifford</p> <p>R</p> <p>6 Raleigh, Francis J.
6 Ramsey, Mr. & Mrs. Glen
6 Reusser, Mr. & Mrs. Rae
6 Rusk, Mr. & Mrs. Ray</p> <p>S</p> <p>5 Salyer, Mr. & Mrs. Paul</p> | <p>3 Samuelson, Armin
4 Schlesener, Mr. & Mrs. Norman
4 Schultz, Mrs. Ron
4 Shaffer, Mrs. Clarence
4 Sims, Lloyd E.
4 Sliferette H.D. U.
6 Smerchek, Margaret
1 Smith, Eugene
5 Sprenger, Henry
2 Stenzel, Evelyn Dyck
3 Sucht, Leon A.</p> <p>T</p> <p>6 Tillotson, Mrs. & Mrs. R. J.
4 Tjaden, Mrs. & Mrs. Lyle
5 Tuttle, Mrs. & Mrs. Floyd</p> <p>V</p> <p>3 VanSickle, Mr. & Mrs. Vincent
4 VanSkiike, Mr. & Mrs. Harry</p> <p>W</p> <p>6 Walker, Mr. & Mrs. Howard
2 Ward, Mr. & Mrs. Chester
1 Wiltfong, Patricia
1 Wise Owl 4-H, Thomas County</p> <p>Y</p> <p>5 Yoder, Mr. & Mrs. Royal F.</p> |
|---|--|--|--|--|

Extension 4-H and Home Economics — 1964

ANDERSON COUNTY

- 3 Cherry Mound 4-H
- 2 Flying W 4-H
- 3 Lucky Diamond 4-H
- 3 Lucky 13 4-H
- 3 Seekers Not Slackers 4-H
- 2 Silver Arrow 4-H

BARBER COUNTY

- 2 Lone Eagle 4-H
- 2 Mingona Boosters 4-H

BOURBON COUNTY

- 2 Northwest Scott 4-H

BROWN COUNTY

- 1 Lucky Clover 4-H
- 6 Robinson Meadowlark 4-H

BUTLER COUNTY

- 3 Benton Busy Bees 4-H
- 1 Bloomington Boosters 4-H
- 6 Butler County 4-H Council
- 9 El Dorado Boosters 4-H
- 8 Elm Creek Emeralds 4-H
- 6 Flint Hills 4-H
- 1 Four Winds 4-H
- 1 Go-Getters 4-H
- 8 Hickory Helpers 4-H
- 5 Murdock Wranglers 4-H
- 3 Rock Creek 4-H
- 6 Rose Hill Rustlers 4-H
- 3 Towanda Rustlers 4-H
- 1 Town and Country 4-H

CHASE COUNTY

- 5 Bazaar 4-H
- 3 Cedar Point 4-H
- 6 Chase County 4-H Council
- 4 Emerald 4-H
- 4 Flint Hills 4-H
- 4 Gladstone 4-H
- 4 Lucky 13 4-H

CHAUTAQUA COUNTY

- 1 Elgin Eager Beavers 4-H

CHEROKEE COUNTY

- 3 Helmic Gingersnaps 4-H

CLAY COUNTY

- 4 Clay County 4-H Council

COFFEY COUNTY

- 2 Blue Ribbon 4-H
- 4 Coffey County 4-H Council
- 4 Stringtown Bombers 4-H

CRAWFORD COUNTY

- 3 Crawford County 4-H Council

DECATUR COUNTY

- 4 Decatur County 4-H Council

DICKINSON COUNTY

- 4 Dickinson County 4-H Council
- 1 Lyon Prospectors 4-H

DONIPHAN COUNTY

- 2 Doniphan County 4-H Council

DOUGLAS COUNTY

- 3 Cottonwood 4-H
- 7 Kanwaka 4-H
- 4 Sunflower 4-H
- 4 Stull Busy Beavers 4-H

EDWARDS COUNTY

- 3 Better Homes H.D.U.
- 3 Happy-Clover 4-H
- 3 Lucky Clover 4-H
- 6 Sunflower 4-H
- 3 Trousdale H.D.U.
- 3 Wayne Workers 4-H

ELLIS COUNTY

- 2 Saline River Satellites 4-H
- 7 Winner's 4-H

FINNEY COUNTY

- 4 Finney County 4-H Council

FRANKLIN COUNTY

- 2 Berea Boosters 4-H
- 4 Franklin County 4-H Council
- 2 Far and Near 4-H
- 2 Junior Judges 4-H
- 5 Pottawatomie Valley 4-H
- 3 Princeton Jolly Workers 4-H
- 7 Rainbow 4-H
- 3 Rambling Ranchers 4-H
- 1 Trail Blazers 4-H
- 3 Westerners 4-H

GOVE COUNTY

- 4 Gove County 4-H Council
- 3 Hackberry 4-H
- 1 Meadowlark 4-H
- 1 Quinter 4-H

GRAHAM COUNTY

- 1 Business Women's HDU
- 1 Busy Bee HDU
- 1 Centennial 4-H
- 1 Cherry Lynn HDU
- 1 East Morland HDU
- 1 Harmony Home Builders HDU
- 1 Lucky Antelopes 4-H
- 1 Millbrook Sunshiners 4-H
- 1 Pioneer Sisters HDU
- 1 Prairie Wildcats 4-H
- 1 Rainbow, Jr. HDU
- 1 Solomon Valley 4-H
- 1 Spring Creek Hustlers 4-H
- 1 Sunshine HDU
- 1 Willing Workers HDU
- 1 Wise Owl 4-H

GRAY COUNTY

- 2 Sky High 4-H

GREELEY COUNTY

- 1 Go-Getters 4-H

GREENWOOD COUNTY

- 3 Greenwood County 4-H Council

HARPER COUNTY

- 4 Freeport Trailblazers 4-H
- 1 Harper County 4-H Council

HARVEY COUNTY

- 1 Centennial 4-H
- 1 Kansas Jayhawkers 4-H

JACKSON COUNTY

- 4 Mayetta Mustangs 4-H
- 2 Pleasant Valley Rustlers 4-H

JEFFERSON COUNTY

- 5 Fairview 4-H
- 8 Grantville 4-H
- 6 McLouth Country Kids 4-H
- 6 Meriden 4-H
- 6 Nesbitt Redhots 4-H
- 6 Rock Creek Boosters 4-H

JEWELL COUNTY

- 2 Formoso Willing Workers 4-H
- 2 Harrison Highlights 4-H
- 1 Jewell County 4-H Council
- 2 Mankato Eager Beavers 4-H
- 2 Odessa 4-H
- 2 Webber Wide Awake 4-H
- 2 Whitemound Builders 4-H
- 2 White Rock Hustlers 4-H

JOHNSON COUNTY

- 2 Little Cedar Jr. 4-H
- 2 Little Cedar Sr. 4-H
- 1 Shamrock 4-H
- 3 Sharon 4-H
- 6 Zion Zippers 4-H

KEARNY COUNTY

- 3 Hi-Landers 4-H

KINGMAN COUNTY

- 3 Belmont 4-H
- 5 Hawk 4-H
- 2 Penalosa 4-H

LEAVENWORTH COUNTY

- 2 Happy Hollow 4-H
- 3 Valley View 4-H

LINCOLN COUNTY

- 2 Rainbow 4-H

LOGAN COUNTY

- 2 Good Luck 4-H

LYON COUNTY

- 4 Admire 4-H
- 4 Badger Creek 4-H
- 1 Busy Beavers 4-H
- 3 Busy Bees 4-H
- 6 Chamness 4-H
- 1 Cloverleaf 4-H
- 5 Duck Creek Pals 4-H
- 4 Flint Hills 4-H
- 6 Frost 4-H
- 5 Logan Avenue 4-H
- 4 Lyon County 4-H Council
- 1 Lyon County Home Economics Advisory Council
- 3 Merry Mixers 4-H
- 5 Model Boosters 4-H
- 5 Neosho Valley 4-H
- 4 Reading 4-H
- 4 Rinker 4-H
- 5 Sunflower 4-H
- 4 Sunnyside 4-H
- 1 Walnut 4-H

McPHERSON COUNTY

- 3 Andover 4-H
- 4 Better Farms 4-H
- 4 Cloverleaf 4-H
- 4 Empire Best 4-H
- 3 Friendly Fremont 4-H
- 3 Good Luck 4-H
- 3 Lindsborg Golden '60 4-H
- 3 Livewire 4-H
- 5 Lucky Leaf 4-H
- 1 New Frontier 4-H
- 3 Roxbury Hustlers 4-H
- 3 Smoky Valley 4-H
- 4 Sunflower 4-H

MARION COUNTY

- 6 Goessel Goal Getters 4-H
- 8 Happy Hustlers 4-H
- 6 Harmony Hustlers 4-H
- 5 Lincolnville Wide-Awake 4-H
- 8 South Cottonwood 4-H

MARSHALL COUNTY

- 4 Marshall County 4-H Council

MEADE COUNTY

- 1 Three C 4-H

MITCHELL COUNTY

- 5 Asherville Achievers 4-H
- 1 Cloverleaf 4-H
- 5 Fairview 4-H
- 4 Tipton 4-H
- 4 West Beloit 4-H

MORRIS COUNTY

- 4 Dwight Sunflowers 4-H

NEMAHA COUNTY

- 1 Rustlers 4-H

NEOSHO COUNTY

- 4 Ever Ready 4-H

NESS COUNTY

- 2 Arnold Boosters 4-H
- 7 Prairie Schooners 4-H
- 2 Sunshine 4-H

OSAGE COUNTY

- 1 Agency HDU
- 1 Barclay HDU
- 3 Burlingame 4-H
- 6 Busy Bee 4-H
- 1 Carbondale HDU
- 10 Carbondale Rustlers 4-H
- 1 Domestic Dames HDU
- 4 Fairfax 4-H
- 1 Fairfax HDU
- 1 Friendly Neighbor HDU
- 4 Full O'Pep 4-H
- 1 Golden Link HDU
- 1 Harmony HDU

1 Home Economics Advisory Board

- 1 Homemakers HDU
- 1 Lyndon HDU
- 3 Lyndon Leaders 4-H
- 1 Melvern HDU
- 4 Melvern Jr. Highlines 4-H
- 1 Michigan Valley HDU
- 1 Overbrook HDU
- 6 Scranton Scramblers 4-H
- 3 Valley Brook 4-H
- 1 Valley Brook HDU
- 1 Valley Brook Jrs. HDU
- 1 Vassar HDU
- 1 West Lyndon HDU
- 4 Willing Workers 4-H
- 1 Work & Play HDU

OSBORNE COUNTY

- 1 Corinth 4-H
- 6 Osborne County 4-H Council

OTTAWA COUNTY

- 2 Culver Livewires 4-H
- 4 Delphos 4-H
- 3 Double R 4-H
- 6 Ottawa County 4-H Council
- 3 Pleasant Valley 4-H
- 1 Spring Hill 4-H
- 1 Woodsdale 4-H

PHILLIPS COUNTY

- 3 City Slickers 4-H
- 4 Deer Creek 4-H
- 3 Phillips County 4-H Council

POTTAWATOMIE COUNTY

- 10 Blackjack 4-H
- 2 Cloverleaf 4-H
- 3 Flush Community 4-H
- 6 Olsburg Boosters 4-H
- 4 Vermillion 4-H
- 1 Wheaton 4-H

PRATT COUNTY

- 3 Richland Rustlers 4-H

RENO COUNTY

- 7 Langdon 4-H
- 2 North Reno 4-H
- 4 Plevna Sunflower 4-H
- 2 Prosperity 4-H
- 4 Reno County 4-H Council
- 6 Walnut Willing Workers 4-H

RICE COUNTY

- 5 Bushton Boosters 4-H
- 7 Fairplay 4-H
- 4 Jolly Aldenites 4-H
- 5 Lyons Conquerors 4-H
- 2 Pleasant View 4-H
- 3 Raymond Lucky 4's 4-H
- 5 Rice County 4-H Council
- 5 Valley Bluebirds 4-H

RILEY COUNTY

- 4 Lucky 4-H
- 4 Magic 4-H
- 3 Swede Creek 4-H
- 5 Zeandale 4-H

ROOKS COUNTY

- 2 Bow Creek Valley 4-H
- 9 4 W 4-H
- 6 Star 4-H

RUSH COUNTY

- 2 Timken Roller Bearings 4-H

RUSSELL COUNTY

- 4 Zweifel, Barbara
- 4 Zweifel, Bobby
- 4 Zweifel, Peggy

SALINE COUNTY

- 4 Brookville 4-H

SCOTT COUNTY

- 1 Go-Getters 4-H
- 1 Lake Wide Awake 4-H
- 1 Lucky Clover 4-H
- 1 Manning Jayhawkers 4-H
- 1 Pence 4-H

3 Scott County 4-H Council

- 1 Town & Country 4-H
- 1 Up-N-Atom 4-H
- 1 Vaqueroes 4-H

SEDGWICK COUNTY

- 4 Bentley Eagle 4-H
- 3 Clonmel 4-H
- 2 Colwich 4-H
- 5 Delano 4-H
- 5 Derby 4-H
- 2 Eastridge 4-H
- 3 Enterprise Eagles 4-H
- 4 Hilary 4-H
- 1 Indians 4-H
- 8 Kechi 4-H
- 1 Maize 4-H
- 4 Mt. Hope 4-H
- 4 Mulvane 4-H
- 2 Oatville 4-H
- 1 Peck 4-H
- 3 Ripley Reapers 4-H
- 3 Riverside 4-H
- 6 Riverview 4-H
- 4 Rolling Hills 4-H
- 5 Sunnydale 4-H
- 3 Valley Victors 4-H

SHAWNEE COUNTY

- 9 Happy Homemakers HDU
- 2 Indian Creek 4-H
- 8 Rochester Heights 4-H
- 7 Shawnee Jayhawkers 4-H
- 7 Shunga Valley 4-H
- 4 Wakarusa Valley 4-H

SHERIDAN COUNTY

- 2 Angelus 4-H
- 1 Selden Meadowlarks 4-H
- 5 Sheridan County 4-H Council
- 1 Sunshine 4-H

SHERMAN COUNTY

- 3 Beaver Valley 4-H
- 6 Glendale Livewires 4-H
- 2 Goodland Co-Getters 4-H
- 1 Ruleton Eager Beavers 4-H
- 2 Warren Star Busy Bees 4-H

SMITH COUNTY

- 1 Athol Atoms 4-H
- 4 Smith County 4-H Council

STANTON COUNTY

- 5 Big Bow 4-H
- 2 Go-Getters 4-H
- 2 Sunflower 4-H
- 1 Worthwhile HDU

STEVENS COUNTY

- 2 Mapleleaf Rustlers 4-H

SUMNER COUNTY

- 6 Cardinal 4-H
- 3 Clippers 4-H
- 3 Jolly Workers 4-H
- 6 Perth 4-H
- 9 Rome Rockets 4-H
- 6 20th Malaby Pushers 4-H

THOMAS COUNTY

- 6 Thomas County 4-H Council

WABAUNSEE COUNTY

- 1 Friendly Farmers 4-H
- 3 Hinerville 4-H

WALLACE COUNTY

- 3 Harrison Endeavors 4-H

WASHINGTON COUNTY

- 8 Busy Bee 4-H
- 3 Washington County 4-H Council

WYANDOTTE COUNTY

- 4 Brauer Beavers 4-H
- 1 Friendship 10 4-H
- 7 Hazel Grove 4-H
- 8 Horaniff Hustlers 4-H
- 1 Wolcott 4-H

RECREATION

By Dick Tomkinson

Now that the weather is nice and school will soon be out, many clubs and project groups will be planning one or more tours.

Sometimes leaders announce a tour and visit only the homes of those 4-H'ers who come to the meeting place. Other 4-H leaders pool or consolidate stops in their planned tour. Thus at the first stop, members show and explain all the sewing and clothing projects. At the next stop or home, they see a wood-working shop and all the articles 4-H'ers taking woodworking have made.

At least one stop should be for recreation or fun. For example, the starting place could be at a park or school playground where the 4-H'ers can play before the tour begins for 30 minutes or so. Thus, all the 4-H'ers are on time to start the tour.

Another idea is to have the last stop at a swimming pool or lake. Tell 4-H'ers to bring their swim suits, towel and money if there is a charge to swim.

Marjorie Dunn, on the state 4-H staff, said in New York some clubs end their tours with a watermelon feed and others with a hayrack ride.

Project groups that have evening tours can end with a theater or skating party. Cecil Eye-stone, state 4-H staff, said some clubs in Montgomery County include a ball game between their own members or between clubs.

Of course picnics and lawn parties are always popular with parents and 4-H'ers. Your lawn party can include croquet, badminton, lawn bowling, rope skipping and pony rides if available. At picnics, include the old favorite games and competition like tug-of-war, sack races, egg toss, foot races, baseball throwing, pie eating (with hands behind back) contests.

Recently at a recreation training meeting in Wabaunsee County, the 4-H leaders were discussing their 4-H tours. Some leaders hold their tours on Sunday afternoon and they reported

many parents were able to attend. Other leaders said Sunday was a poor day to hold a tour. Another suggestion was to consolidate the stops and hold the tour some evening during the week when the parents can participate with the children.

A color movie "Planning a 4-H Tour" can be shown at your club meeting to show the advantages of a tour. The film can be ordered from the State 4-H

Club Office, Purdue University, W. Lafayette, Indiana. Return postage is the only cost.

The leaflet "4-H Tours" available from your County Extension office lists the purposes and suggestions on planning your tour. Tours are enjoyable for 4-H'ers and parents. Let them know recreation is included, and enthusiasm and attendance will be up to help achieve your tour goals.



ALLIANCE INSURANCE COMPANIES

McPherson, Kansas

FIRE — CASUALTY — LIFE

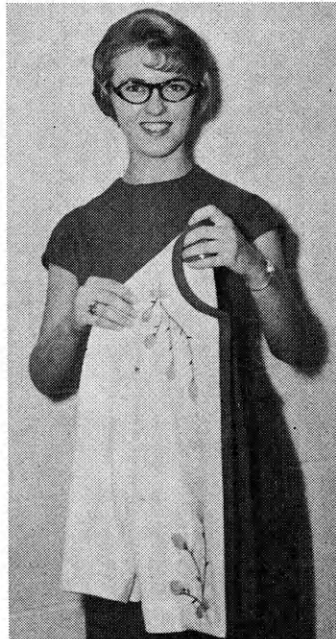
Serving Kansas Since 1888

**"POISE
and
POSTURE
improves
one's
APPEARANCE,"**

**Says 4-H'er
Janice Howell
Stafford County**



In her many demonstration talks Janice describes ways to carry clutch and strap handbags.



Janice recommends, when removing a jacket, to drop it back on the shoulders and then gently slide arms from sleeves.

In summing up her experience in the personal development project Janice says, "We learn things we need and use all the time. All your rewards are personal and you'll get as much out of it as you put into it."

Janice in her work in the personal development project has emphasized appearance and manners. Her accomplishments include a county style revue championship in 1963 and a District-State championship in 1964. She attended Wichita Recognition event last fall, serving on an advisory committee to make recommendations for improving the project.

Janice has been a member of the Eden Valley 4-H club for nine years and has been enrolled in the personal development project since it was established in 1961.

The people at Southwestern Bell Telephone Company are proud to have a part in this 4-H project by sponsoring awards for outstanding work.

SOUTHWESTERN BELL



TELEPHONE COMPANY



State 4-H Staff



We Like Rock Springs

These pictures were taken at the Farm Bureau sponsored citizenship seminar for high school students held annually at Rock Springs Ranch in August.

We like Rock Springs because it provides excellent accommodations for a conference like ours. The 4-H Foundation and the Ranch staff are very important members of our citizenship seminar team. This splendid cooperation and the fine facilities have made an important contribution to our program each year.

Official Farm Bureau policy approved by the voting delegates representing the 105 member county Farm Bureaus includes the following statement:

"Young people have a special stake in the outcome of current attempts by some people to change our economic system and our form of self-government. They need to learn the great truths underlying our American system and participate actively in programs designed to strengthen it.

"We therefore commend our county Farm Bureaus for their splendid support of citizenship seminars for high school students conducted by Oklahoma Christian College in Oklahoma City and our own Kansas Farm Bureau Seminar held at Rock Springs Ranch this year. We ask that the board of directors of Kansas Farm Bureau establish the Rock Springs Seminar as an event to be conducted annually as a very important part of our citizenship program and urge continued county Farm Bureau participation in the support of both seminars."

Kansas Farm Bureau

105 County Farm Bureaus
Working Together



Marjorie Dunn, extension supervisor of the Southwest District, is just beginning her tenth month on the state staff at Kansas State University.

Reflecting on her initial impressions of the state 4-H program, Miss Dunn said that Kansas 4-H club members are more interested in business and international activities. "They also seem to be more concerned with reaching beyond their local environment," she added.

The former New York State Extension staff member, said that Kansas 4-H offers a wider program for older 4-H youth, including such things as personal development and career exploration.

Miss Dunn attributes growing up in 4-H club work and the assistance given her by extension personnel as being instrumental in her decision to seek a career in the extension service.

In addition Miss Dunn said that extension people are the kind of people that she likes to work with. She describes extension personnel as being professional and informed as well as human and helpful.

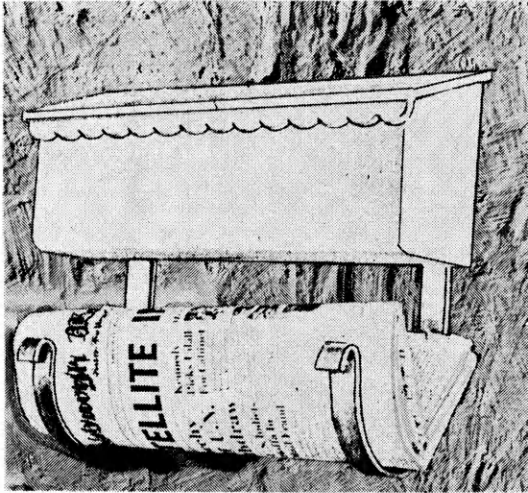
Miss Dunn, who served as an associate club agent in Saratoga county, is responsible for state leadership in the 4-H club foods and nutrition projects and the older youth programs.

A graduate of Buffalo State Teachers College, Buffalo, N. Y., she received her Masters Degree in Extension Education from Colorado State University in 1964. She is a member of Kappa Delta Pi and Phi Upsilon Omicron honoraries.

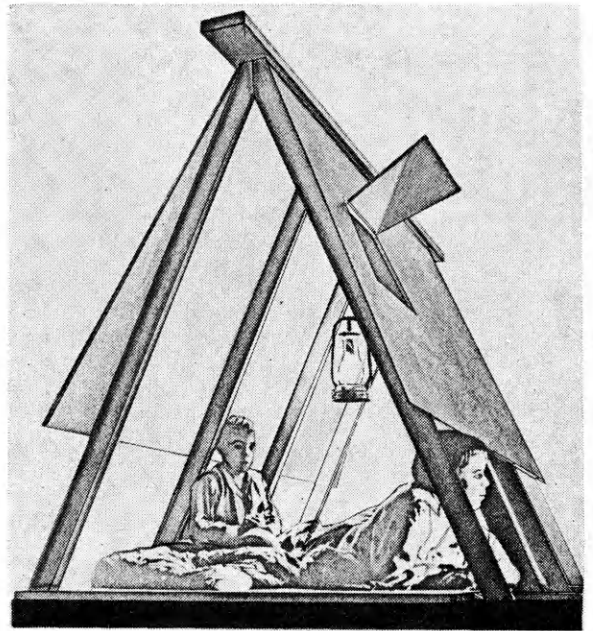
Her hobbies and interests include camping, music, photography, working with teachers and learning the Spanish language.

FREE!!

New 4-H Woodworking Plans



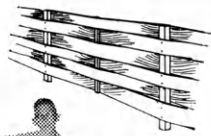
MAIL BOX



WOOD PLAY TENT

Plans for These Projects Are Available At The Lumber Dealers Listed on These Pages. Ask For Them.

Insect Display Box

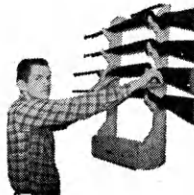


Yard Fence No. 3



End Table

Handy Gun Rack



Rotating Selection Tool Rack



Shoe Shine Kit



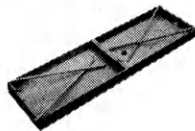
Cart with Removable Trays



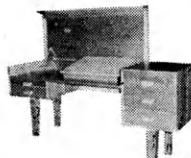
Study Center



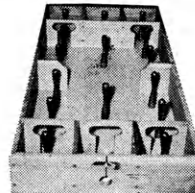
Box Hockey



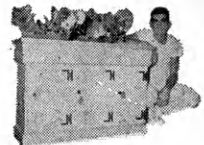
Hobby Desk



Devil Game



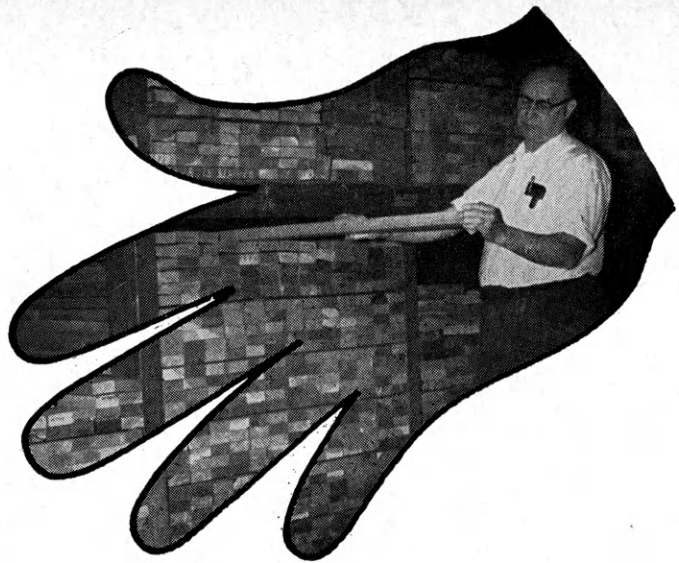
Indoor Planter



For other FREE 4-H woodworking plans, see the next pages.

Always on hand... YOUR LUMBERMAN

is your best friend when
you need good material



- | | | |
|---|---|--|
| Ablene
Central Lumber Company | Ellsworth
Lake Superior Lumber Co. | Johnson
Seyb-Tucker Lumber and Implement Company |
| Agra
Agra Lumber Company | Emporia
Home Lumber and Supply Co.
The Smith Lumber Company | Kinsley
Kinsley Co-op Exchange Lumber Yard
Home Lumber and Supply Co. |
| Alton
Alton Lumber and Coal Company | Eureka
A. C. Houston Lumber Company | Kiowa
The J. W. Metz Lbr. Co. |
| Asherville
Asherville Lumber and Coal Company | Everest
Alexander Lumber Company | LaCrosse
LaCrosse Lumber Company |
| Ashland
Don Spotts Lumber Company
Home Lumber and Supply Co. | Fredonia
The Home Lumber & Supply Co. | LaHarpe
Diebolt Lumber and Supply |
| Atchison
Hixon Lumber Company | Garden City
McAllister-Fitzgerald Lumber Co. | Lakin
Tate and Company
Lakin Lumber Company, Inc. |
| Beloit
Peoples Lumber and Coal Company | Garnett
Star Grain and Lumber Company | Lancaster
T. E. Snowden Lumber Company |
| Bern
Bern Lumber Company | Gaylord
Hardman Lumber Company | Lansing
T. E.
International Paper Co., Long-Bell Div. |
| Bird City
The Bird City Equity Mercantile
Exchange
Griffin Lumber Company | Glen Elder
Dickinson Lumber Company | Larned
Clutter-Lindas Lumber Company |
| Brownell
Richolson Lumber and Hardware
Company, Inc. | Goodland
Hardman Lumber Company
Rasure Lumber Company | Lawrence
Woods Lumber Company
Logan-Moore Lumber Company |
| Cawker City
Cawker City Lumber Company | Great Bend
Whitesell Lumber Company | Lebanon
Lebanon Lumber Company |
| Chanute
Smith Lumber Company | Greeley
Greeley Lumber Co. | Lenora
Lenora Lumber Company |
| Chapman
Sanborn Lumber Company | Greensburg
Home Lumber and Supply Co. | Liberal
The Star Lumber Company |
| Chase
Chase Cooperative Union | Hartford
Thomas Lumber Company | Longford
Longford Lumber & Grain Co. |
| Clafin
Houston Lumber Co. | Hays
Hardman Lumber Corporation, Inc.
Schwaller Lumber Co., Inc. | Macksville
Home Lumber and Supply Co. |
| Colby
Hardman Lumber and Coal Company
Hess Lumber Company | Healy
Healy Co-op Elevator Company | Madison
Madison Lumber Company |
| Coldwater
Home Lumber and Supply Co. | Hill City
Hardman Lumber Company | Manhattan
Griffith Lumber Company
Ramey Brothers |
| Concordia
Sanborn Lumber Co. | Hillsboro
Burkholder Lumber Co. | Mankato
Mankato Lumber Co. |
| Cottonwood Falls
Burgner-Bowman-Mathews Lumber Co. | Holton
Holton Lumber Company | Marysville
Howell Lumber Co. |
| Denison
Denison Lumber and Hardware
Company | Holyrood
Home Lumber and Supply Co. | Meade
Home Lumber and Supply Co. |
| Denton
C. H. Gish Company | Home
Home City Lumber & Hardware | Medicine Lodge
P. W. Doherty Lumber Company |
| Elkhart
Elkhart Lumber Co.
The Star Lumber Company | Hugoton
The Star Lumber Company | Moundridge
Clayton Vogt Lumber Co., Inc. |
| | Hutchinson
Easterday Lumber Company | Neodesha
O. E. Woods Lumber Company |
| | Iola
Klein Lumber Company | |

Looking for Woodworking Ideas?



See Any of These Lumber Dealers for a Free 4-H Woodworking Plan

Ness City
Rock Island Lumber Co.

Norton
Norton Lumber Company

Nortonville
Alexander Lumber Company

Oakley
Oakley Lumber Company
Golden Belt Lumber Company

Oberlin
Building Supply Headquarters

Offerle
Offerle Co-op Lumber Co.

Olathe
Cowley Lumber and Hardware
Company

Onaga
Onaga Lumber & Grain Co.

Oswego
Home Lumber and Supply Co.

Ottawa
Hubbard Lumber Company, Inc.

Parsons
O. E. Woods Lumber Co.

Phillipsburg
Hardman Lumber Company

Plains
Home Lumber and Supply Co.

Prescott
Prescott Lumber Company

Pretty Prairie
The George W. Ulth Lumber Company

Protection
Home Lumber and Supply Co.

Russell
Hardman Lumber Company of Russell
Inc.

St. Francis
St. Francis Equity Exchange

St. Marys
St. Marys Lumber Company

St. John
Home Lumber and Supply Co.

Salina
Everitt Lumber Company, Inc.

Scott City
McAllister-Fitzgerald Lumber Co.

Seneca
Koelzer Lumber Company
Seneca Lumber Company

Severy
Tolman-Gibbon Lumber Company

Sharon Springs
Hennick Lumber & Supply

Smith Center
Smith Center Lumber Company

Stafford
Home Lumber and Supply Co.

Stockton
Stockton Lumber Company
The Golden Belt Lumber Co.

Wakeeney
Hardman Builders Supply Company

Wichita
Lawrence Lumber Company
Stockyards Cash and Carry Lumber Co.
Alexander Lumber Company
Star Lumber & Supply Co., Inc.

Wilson
Hoch Lumber Company

Winfield
A. B. Everly Lumber Company

Woodbine
Kohler Lumber Company

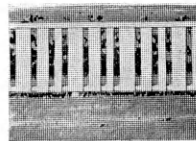
Zenda
The George W. Ulth Lumber Company

Missouri

Independence
The George W. Ulth Lumber
Company, 11432 Truman Road

Ask For Your 4-H Woodworking Plans.

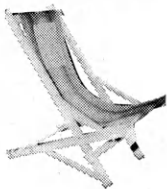
Yard Fence, No. 2



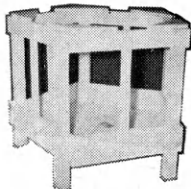
**Closet
Storage
Cabinet**



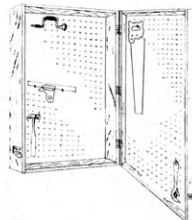
**Folding
Lawn Chair**



**Self Feeder
for Sheep**



Tool Storage



Yard Cart



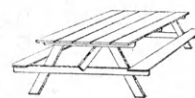
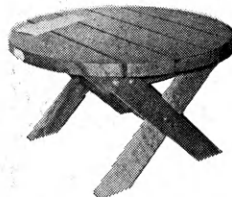
**Simple Work
Bench**



**Patio
Planter**



Patio Table

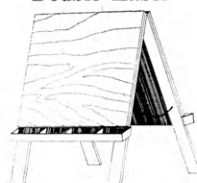


Picnic Table

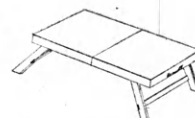
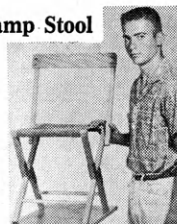
Toy Chest



Double Easel



Camp Stool



Folding Table

OTHERS

Lawn Set

- | | |
|---------------------------------|---------------------------|
| Child's Step
Stool and Chair | Small Animal
Trap |
| Wheel Barrow
Planter | Two-Level
Coffee Table |
| Fishing Rod Rack | Walnut Chest |
| Book Case | Football Game |
| Baseball Rack | Steptable |
| Magazine Rack | Pounding Board |
| Bedside Stand | Two Games |
| Vertical
Shoe Rack | Sewing
Cabinet |
| Gate Sign | Coffee Table |
| Martin House | Back Yard Fence |
| Tete-A-Tete | Lazy Susan |
| Toy Stove | Holding Gate |
| Dog House | Wall Cabinet |
| Picnic Table | Sandbox |
| Picnic Bench | Blue Bird House |
| Hanging
Flower Box | Funny Book
Rack |
| Bookcase
Headboard | Mail and
Memo Board |
| Collapsible Visual
Aid Stand | Christmas
Tree Gifts |
| Typing Desk
and Bench | Automatic
Bird Feeder |

Ideas That Work

Cookies Add Dough To Treasury

As a money making project this year the KC-OK 4-H club, Wyandotte county, is taking orders for sugar cookies. The club will fill orders by the cookie or by the dozen.

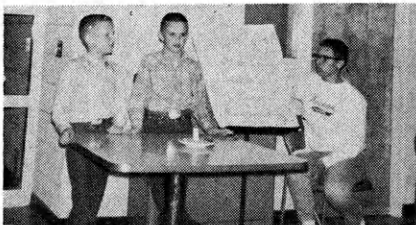
The cookies are made at the Food Project Leaders home by the club members and delivered fresh to the homes requesting them.

Club President Markel Ball reports that the project has been fun and has helped the food project members as well as adding money to the club treasury.



Two members of the KC-OK 4-H club prepare sugar cookies for delivery in one of the club's money making projects.

A Candle You Can Eat



Wayne McKinney and Greg Slaven, Weskan Future Farmers 4-H club; Wallace county, gave a demonstration entitled, "A Candle You Can Eat."

The candle was made with the following ingredients: a lettuce leaf, a pineapple slice for the base, a half of a banana for the candle and a cherry for the flame.

Camping Program Held in Reno County

A family camping program and demonstration sponsored by the County Recreation Committee was held recently in Reno county. The purpose of the ses-

sion was to show interested families some of the important matters to consider in a summer family camping program that some of the families that have camped previously have discovered. Discussion was also held on the facilities available within the State.

Senior 4-H Club Formed

Hoping to cut down the number of high-school age 4-H "drop-outs" in Labette county, a Senior 4-H club was organized. This club is for 4-H members and former members of high school age.

Meetings will include personal development project lessons and various types of recreation. Leaders of this newly organized club are Mr. and Mrs. Ralph Peters and Mr. and Mrs. Kenneth Carey.

Members may belong to this club in addition to their community club or may belong only to the Senior club.

Pretty Boxes to Catch a Fellow

"Going, going, gone!" was the cry of Walter Hand, auctioneer of the old fashioned box supper sponsored by the recreation committee of the Mulvane 4-H club, Sedgwick county.

Boxes of every color, shape and design were made by the girls of the club for the auction. The boxes were judged in three separate categories.

After supper, many interesting contests were held. The contests were: Boys with the biggest ears; a chorus line of fathers vied for the title of "best can-can dancer" with the winner receiving a can-can; girl with the biggest mouth, who was awarded a long, long zipper; and the prettiest mother in her homemade hat; and the most "love-sick couple" who received a jar of dill pickles.



Mr. and Mrs. Walter Hand look at the boxes they selected as the best at an old fashioned box supper sponsored by the recreation committee of the Mulvane 4-H club.

Editor's Note: The Kansas 4-H Journal thrives on ideas—those that have been tried successfully by clubs throughout the state and that can be used by other clubs and members. Brief accounts of a community service project, an unusual club meeting, a unique handling of a project are just a few of the topics we can use on the "Ideas" section of the Journal. Send them to the Kansas 4-H Journal, Kansas State University, Manhattan. Copy deadlines are on the first of the preceding month. (July 1 for August issue)

Ideas In Brief

Edwards County—County 4-H members and leaders were given a Simplicity Fashion Show in the extension rooms in Kinsley. There were many different styles, colors and fabrics in a variety of styles. Many ideas were shown in jumpers, suits, shifts and even a formal.

Debra Sparke, reporter

Butler County—The beginning knitting class of five young ladies ranging in age from 9 to 12 of the Elm Creek Emeralds 4-H club held a raffle of knitted articles to raise money to buy yarn for a project. They used the yarn to make a lap afagan and 7 pair of house slippers which were presented to the St. Joseph's Little Sisters of the Poor Nursing Home in El Dorado. Mrs. Donald Sammens is the project leader.

Mrs. Donald Mossman, reporter

Rush County—The Timken Rollerbearings 4-H club donated groceries and food cooked by 4-H club mothers to a needy family recently. Each month the club works on a different health project.

Loarn Bucl, reporter

Harvey County—The parents of the Highland 4-H club members presented a hilarious fashion show for recreation at the club's annual parents night. Warren Cummings modeled the latest in "The Sleepy Time Look." Don Brubacker modeled the "Perfect Creation for Kansas." Eldon Goering, modeling the latest "Wet Look," and Waldo Voth, modeling the "Newest in Cocktail Dresses" closed out the show.

Family Fun Page Answers

Scrambled Words: 1. motion 2. vote 3. minutes 4. reports 5. program 6. music 7. second 8. secretary 9. president 10. treasurer 11. talk 12. adjourn.



KANSAS

4-H Journal Sponsors

NEW SPONSORS

Crawford

The City National Bank of
Pittsburg, Pittsburg

**These Have Renewed
Their County Support**

Brown

Bank of Robinson, Robinson
Citizens State Bank, Hiawatha
Farmers State Bank, Fairview
The Bank of Horton, Horton
The Morrill & Jane Bank, Hiawatha
The Morrill State Bank, Morrill
The Union State Bank, Everest

Chass

Peoples Exchange Bank, Elmdale

Chautauqua

The Sedan State Bank, Sedan

Crawford

Farmers State Bank, Walnut
First National Bank, Girard
First State Bank, Arma
First State Bank of Pittsburg,
Pittsburg
Girard National Bank, Girard
Hepler State Bank, Hepler
Home State Bank, Arcadia
McCune State Bank, McCune
Miners State Bank, Frontenac
National Bank of Pittsburg,
Pittsburg

Franklin

Peoples National Bank, Ottawa
The Wellsville Bank, Wellsville

Geary

Central National Bank, Junction
City

First National Bank, Junction City

Greenwood

Citizens National Bank, Eureka
Eureka Federal Savings and Loan
Association, Eureka
Freeman's Tire and Appliance,
Eureka
Home National Bank, Eureka
Race Parks Oil Company, Eureka
The A. C. Houston Lumber
Company, Eureka
Ward A. McGinnis, Eureka

Jewell

Burr Oak State Bank, Burr Oak
Citizens State Bank, Jewell
First National Bank of Formoso,
Formoso

First National Bank, Mankato
Randall National Bank Randall
State Bank of Esbon, Esbon
State Exchange Bank, Mankato

Kearny

Farmers Co-operative, Lakin

Morris

Farmers and Drovers Bank, Council
Grove
Farmers Co-op Association,
Alta Vista
Flint Hills Rural Electric Co-op,
Council Grove
Farmer Stockman Co-op
Association, Council Grove
Hunter Sales Company,
Council Grove
McClintock Motor Company,
Council Grove
Mor-Kan Grain Company,
White City
Morris County Farm Bureau
Association, Council Grove

Nemaha

Farmers Cooperative Elevator,
Sabetha
Farmers Elevator Co., Seneca
Graham Grain Company, Oneida
Winterscheidt Milling Co., Seneca

Osage

Bostrom Grocery & Locker, Melvern
Bremer & Stanley Grain & Feed,
Lyndon
Bulmer Grain Co., Michigan Valley
Burlingame Co-op Elevator,
Burlingame
Coffman Bros. Equipment Co.,
Overbrook
Farmers Union Co-op Association,
Overbrook
Hoyt Equipment Company,
Overbrook
Laurence Ulrich, Carbondale
McNabb Grocery, Melvern
Osage City Grain Company,
Osage City
Scranton Grain Co., Scranton
Williams Oil Co., Lyndon

Pottawatomie

Kaw Valley State Bank of Wamego,
Wamego

Wabaunsee

Alta Vista State Bank, Alta Vista
Eskridge State Bank, Eskridge
First National Bank, Alma
First National Bank, Harveyville
The Stockgrowers State Bank,
Maple Hill



This seal means that your money is insured safe up to \$10,000.00 by the Federal Savings and Loan Insurance Corporation. Save now —tomorrow for sure.

VISIT YOUR NEAREST KANSAS *Savings & Loan*

Arkansas City

First Federal Savings and Loan
Ass'n. of Arkansas City

Augusta

American Savings Association

Beloit

First Federal Savings and Loan
Ass'n. of Beloit

Clay Center

Northwestern Federal Savings and
Loan Ass'n. of Clay Center

Dodge City

First Federal Savings and Loan
Ass'n. of Dodge City

El Dorado

Mid-Continent Federal Savings and
Loan Ass'n. of El Dorado

Fort Scott

Liberty Savings and Loan Ass'n.

Garnett

The Garnett Savings and Loan
Association

Great Bend

The Prudential Building and Loan
Ass'n.

Hays

The Hays Building and Loan Ass'n.

Hutchinson

First Federal Savings and Loan
Ass'n. of Hutchinson

Iola

The Security Savings and Loan
Ass'n.

Lawrence

Capitol Federal Savings and Loan
Association, 5th and Vermont
Streets

Leavenworth

Leavenworth Mutual Savings and
Loan Ass'n.

Liberal

First Federal Savings and Loan
Ass'n. of Liberal

McPherson

The Pioneer Savings and Loan
Association of McPherson

Newton

First Federal Savings and Loan
Ass'n. of Newton

Ottawa

Ottawa Savings and Loan Ass'n.

Parsons

First Federal Savings and Loan
Ass'n. of Parsons

Pittsburg

First Federal Savings and Loan
Ass'n.

Plainville

Rooks County Savings Ass'n. of
Plainville

Pratt

The Western Saving Ass'n.

Salina

The Homestead Building and Loan
Ass'n.

Shawnee-Mission

Capitol Federal Saving & Loan
Ass'n. at 5251 Johnson Dr.,
95th & Nail and
Meadow Lake Shopping Center

Topeka

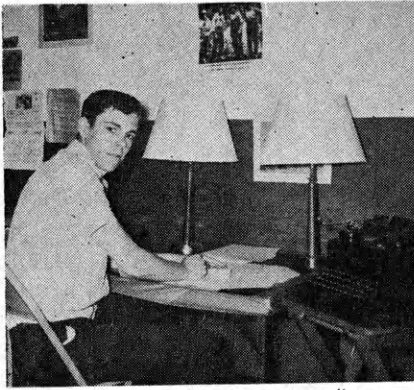
Capitol Federal Savings and Loan
Ass'n. at 700 Kansas Ave,
1201 Topeka Blvd. and
2100 Fairlawn Rd.

Wellington

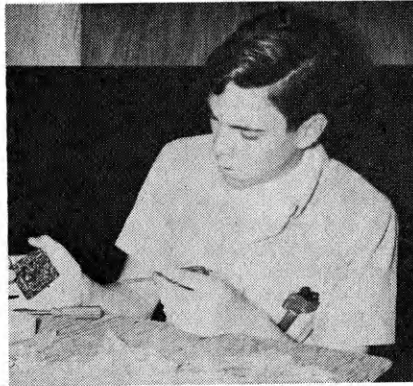
First Federal Savings and Loan
Ass'n. of Sumner County

Wichita

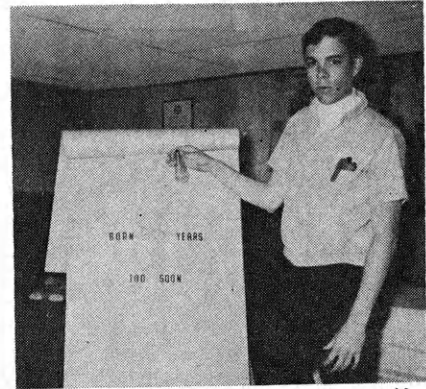
American Savings Association of
Wichita, 4601 E. Douglas Avenue
and 129 E. First Street



George Wilson says that in most reading areas two lamps should be used instead of one, particularly in study areas since it is one of the hardest jobs on our eyes.



George is eyeing another county blue ribbon in the electric project. He has already started work on the project he will enter in the fair this summer.



Old bulbs, says George, have about everything we don't want in household lighting; glare, no protection, and little or no diffusion of light.

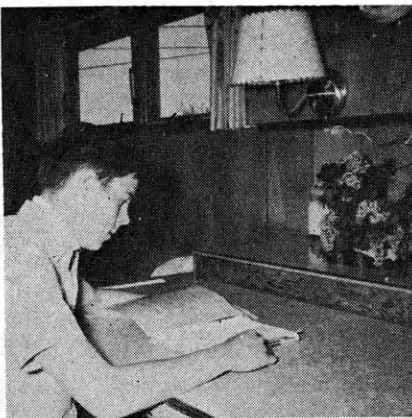
Better Light — Better Sight

George Wilson, Barton county, recommends consultation with local power suppliers for suggestions before planning changes in household lighting.

George Wilson, Great Bend Lucky 4-H club, has emphasized interior lighting in his work in the 4-H electric project. He has concentrated his project work on constructing and wiring lamps and light fixtures in the family home as well as demonstration talks at club and county events.

His electric project accomplishments include an extension cord, a portable outdoor lamp, two-way switch board, two table lamps, repairs of household fixtures and planned an electric outlet.

The Great Bend high school sophomore has given demonstrations on cleaning lamp shades, correct lighting for different jobs, tying an underwriters knot, and various kinds of wires.

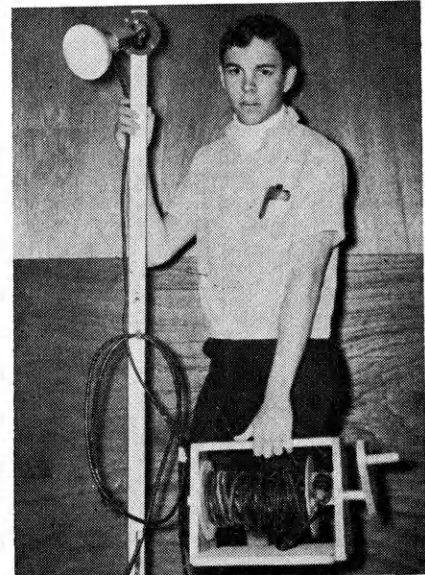


This lamp is an attractive as well as beneficial addition to the Wilson kitchen. George explains that many homes have only adequate light to view television, but few have enough light for reading.

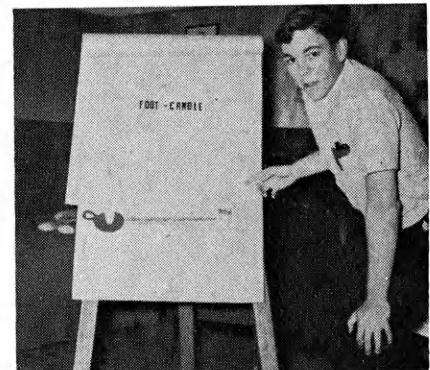
George's awards include county championships in both electric and entomology and a state blue award trip to Wichita last fall. His other projects are woodwork, room improvement, landscape and recreation.

George is working on a walkie-talkie for his project this year and plans to enter it in county competition this summer. A six-year member in 4-H club work, George is currently enrolled for his fifth year in the electric project.

He has filled every club office and currently is serving as president of the county council.



George is holding the portable lamp he made as one of his electric projects. The cord reel makes it easy to move the lamp from place to place without having to worry about getting the cord tangled.



In this demonstration talk, George explains that a foot candle is the amount of light one candle will give on an object 12 inches away.



* Watch This Page For Ideas On Farm And Home Electric Projects

ELECTRIC LIGHT and POWER COMPANIES in KANSAS

The Kansas Power and Light Company
Kansas City Power & Light Company

Central Kansas Power Company
Kansas Gas and Electric Company

Western Light & Telephone Company