

Figure S1. Tentative structure of 18:3/18:3/18:3 acMGDG detected in wounded wheat leaves.

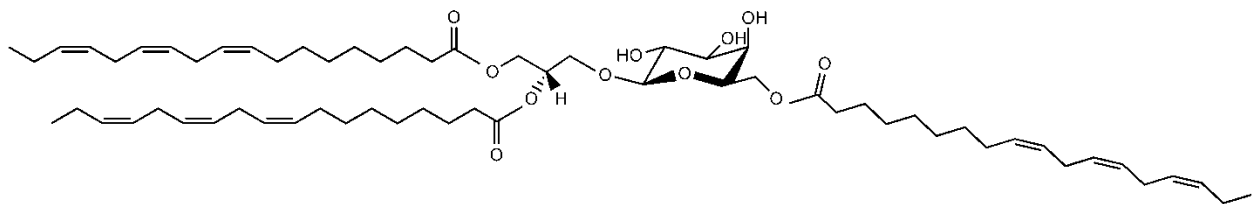


Figure S2. Acclimated and non-acclimated *Arabidopsis thaliana* Col-0 after freezing at -8 °C for 2 h. Numbers on the left indicate time (h) at 21 °C after freezing treatment.

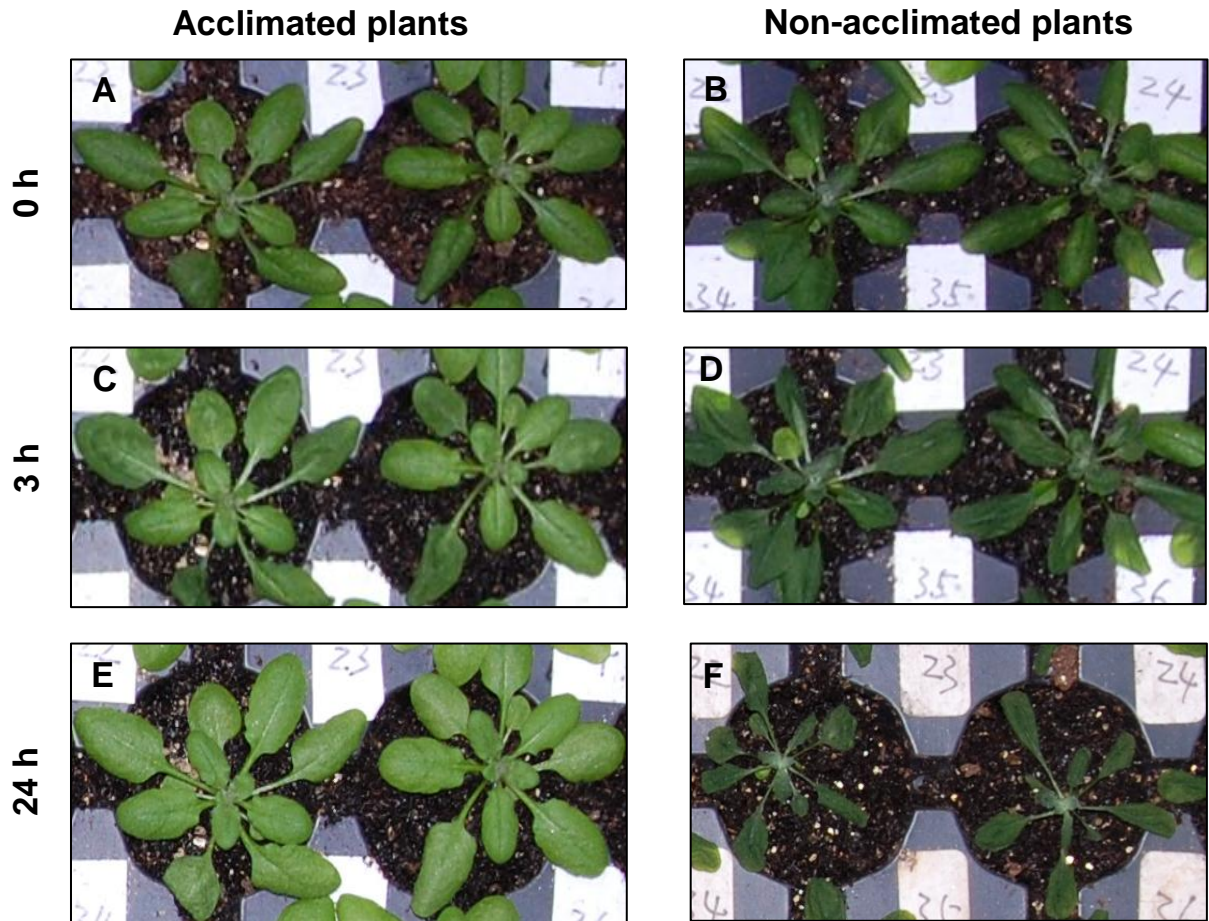


Figure S3. Total free OPDA and JA after wounding and re-wounding of Col-0 plants. A: total free OPDA, B: total free JA in ng/mg of leaf fresh weight. Total OPDA is sum of *cis*- and *trans*-OPDA. Total JA is sum of *cis*- and *trans*-JA.

