

February, 1964

KANSAS 4-H

Journal

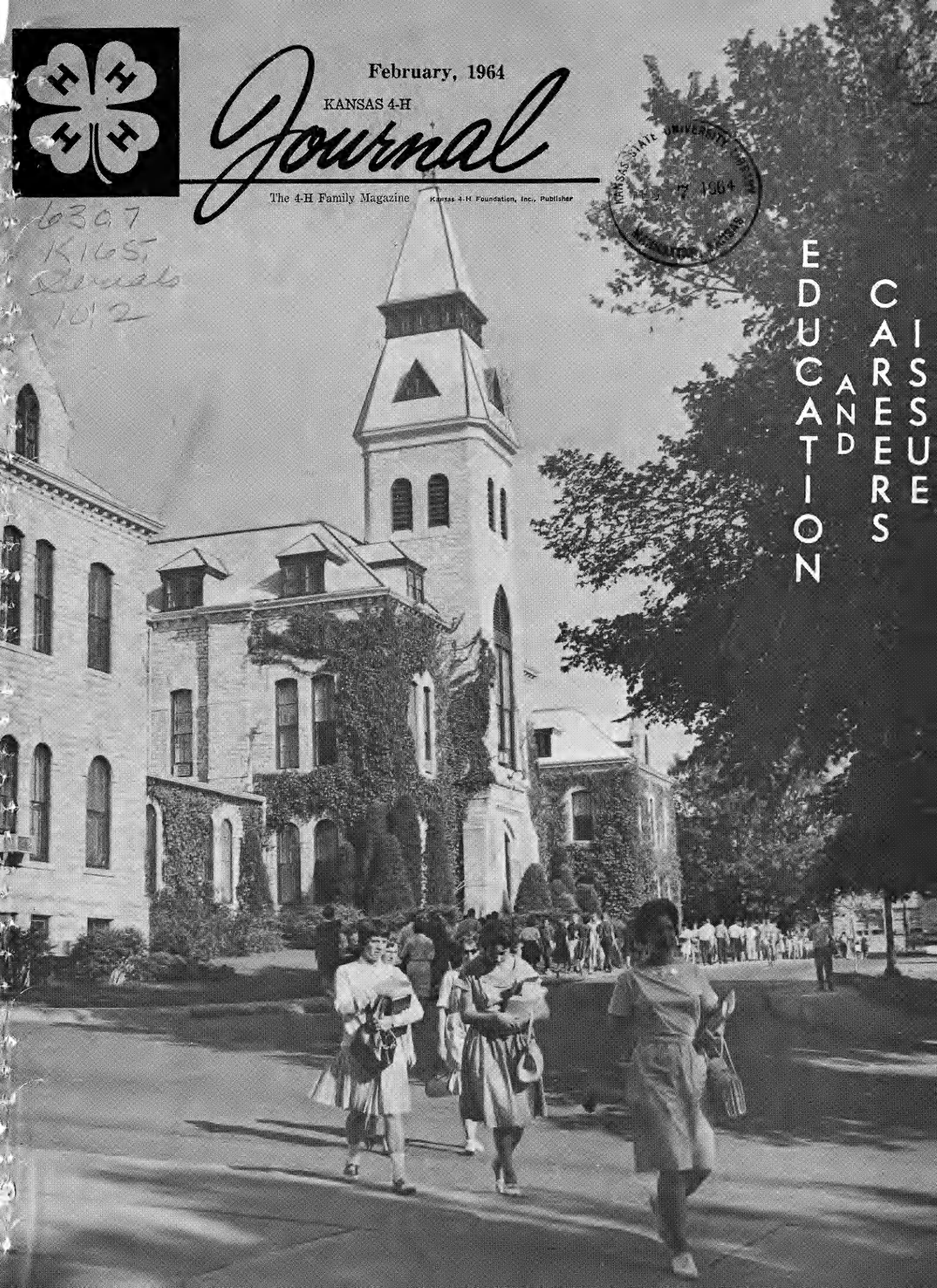
The 4-H Family Magazine

Kansas 4-H Foundation, Inc., Publisher



EDUCATION
AND
CAREERS

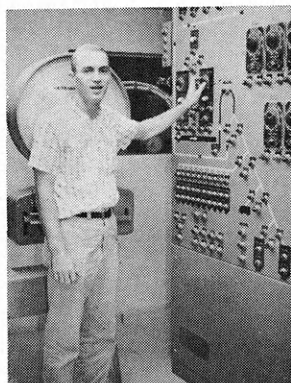
6397
K165
Serials
1012



Kansas State University

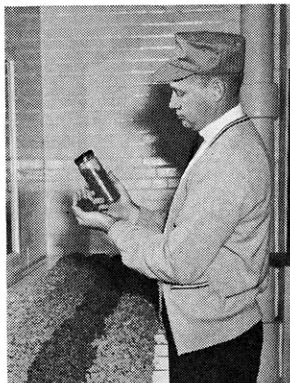
FEED TECH GRADUATES HAVE THE "EDGE" ON TOP CAREERS

FEED PRODUCTION
MILL ENGINEERING
NUTRITION
QUALITY CONTROL
PURCHASING
SALES AND ADVERTISING
MANAGEMENT



WAYNE SCHOPE

Wayne is operating a panel to control the weighing and mixing of poultry feeds in a commercial feed milling operation.



LOWELL ALLEY

As Quality Control Manager for a large midwestern feed manufacturer he is responsible for maintaining high quality of all manufactured products.



BILL BOWER

As Manager of Purchasing for his company he keeps a close check of the prices of ingredients to be used in the commercial manufacturing of feeds.

The Dynamic FORMULA FEED INDUSTRY Invites You To Consider These Facts:

Arrow Feed Mills
Junction City

Becker Feed & Supply, Inc.
Galva

Blair Milling & Elevator Co.
Atchison

Buhler Feed Mills
Halstead

Circle B Feeds
Concordia

Gooch Feed Mills
Salina

As our population climbs, so does the demand for high quality foods made possible by quality FEEDS. The unique Feed Tech facilities at KSU give the finest academic and practical experience available anywhere in the world.

Each year, there are more jobs open than there are graduates to fill them. Take advantage of your agricultural background, start planning NOW for an interesting, productive and rewarding career in America's great and growing Formula Feed Industry.

SCHOLARSHIPS
AVAILABLE
TO QUALIFIED
APPLICANTS

Investigate!



FILL OUT COUPON
AND MAIL IT IN
RIGHT NOW.

Harvest Brand, Inc.
Pittsburg

Humbolt Elev. Mills
Humbolt

Kansas Soya Products Co.
Emporia

Kelso Milling Co., Inc.
Pittsburg

Key Milling Co.
Clay Center

Naturich Mills
Abilene

Plush Mills
Glasco

Supersweet Feeds
Salina

Winterscheidt Milling Co.
Seneca

Walnut Creek Milling Co.
Great Bend

Sponsors of this ad are members of
KANSAS FORMULA FEED MANUFACTURERS

Dr. Duane Acker, K.S. University, Manhattan, Ks.
Please mail free brochure about the Feed Tech
program and information about jobs in Agribusi-
ness.

Name

Address

School



KANSAS 4-H *Journal*

Vol. X, No. 2

February, 1964



CONTENTS

Choices: An Important One	4
<i>By Charles Watkins</i>	
New Horizons in Training Opportunities	9
<i>By Thaine D. McCormick</i>	
Kansas Beauty Schools	12
How To Choose A College	13
<i>By James K. Hitt</i>	
Kansas College Enrollment	16
Borrow For Learning, Pay While Earning	17
Statistical Reference on Kansas Four-Year Colleges and Universities	22
Kansas 4-Year Colleges and Universities	25
What 4-H'ers Say About College	28
Kansas Junior College Directory	33
4-H Projects Help Pay the Way	34
A Special Message to High School Students	39

Advertiser Index

Alliance Companies, McPherson	13	Lansing Advertisers	38
Atchison Advertisers	16, 17	Leavenworth Advertisers	38
Baldwin Advertisers	7	Lindsborg Advertisers	6
Bar Association of the State of Kansas, The, Topeka	6	Lumber Dealers of Kansas	41, 42, 43
Central Technical Institute, Kansas City, Mo.	11	Manhattan Advertisers	18, 19, 20
Consumers Cooperative Association, Kansas City, Mo.	40	McPherson Advertisers	10
Dodge City Advertisers	34, 35	Midwest Feed Manufacturers Association, Kansas City	2
Electric Light and Power Companies of Kansas	44	Newton Advertisers	32
Emporia Advertisers	31	Ottawa Advertisers	38
Federal Crop Insurance Corporation	13	Pittsburg Advertisers	11
Folger Coffee Company, Kansas City	24	Salina Advertisers	14, 15
Hays Advertisers	8	Savings and Loan Associations	30
Junior Colleges of Kansas	32, 33	Southwestern Bell Telephone Company ...	16
Kansas Beauty Schools	12	State Department of Social Welfare, Topeka	37
Kansas Electric Cooperatives, Inc., Topeka .	8	Sterling Advertisers	39
Kansas Farm Bureau and Insurance Services, Manhattan	5	Topeka Advertisers	37
Kansas Medical Society	11	University of Kansas	21
Kansas Pepsi Bottlers Association	13	Wichita Area Advertisers	4
Kansas Petroleum Industries Committee, Wichita	7	Winfield Advertisers	36
		World Company, The, Lawrence	34

Don Esslinger.....Editor

Editorial and Business Office

Phone JE 9-2211 Ext. 208
Manhattan, Kansas

Published Monthly By KANSAS 4-H FOUNDATION, INC.

J. Harold Johnson.....Executive Director
Merle Eyestone.....Associate Director

BOARD OF TRUSTEES

Governor John Anderson
Honorary Chairman
W. Dale Critser, Chrm.Wichita
E. B. Shawver, Vice Chrm.Wichita
D. J. Atha.....Shawnee Mission
*Harry Darby.....Kansas City
Mrs. Olive Garvey.....Wichita
Clifford Hope.....Garden City
A. D. Jellison.....Junction City
Harold E. Jones.....Manhattan
J. J. Moxley.....Council Grove
George B. Powers.....Wichita
Roger E. Regnier.....Manhattan
Dolph Simons.....Lawrence
*Lester Weatherwax.....Wichita
*Fred D. Wilson.....Andover
*Advisory Members

Second Class Postage Paid at Lawrence,
Kansas. Return Form 3579 to Kansas 4-H
Journal, Manhattan, Kansas.

Advertising rates and circulation data
on request.

Group subscriptions \$1.00 per year.
Individual subscription \$1.50 per year.
Single copy 15 cents.

Use of the 4-H name and symbol ap-
proved by the Secretary of Agriculture of
the United States, January 23, 1951,
under the provisions of the law as
reenacted by Sec. 707 of the Act of June
25, 1948 Public Law No. 772, 80th Con-
gress (10 USC 797)

Choices: AN IMPORTANT ONE

By Charles B. Watkins
Director of Guidance & Pupil
Personnel Services State Depart-
ment of Public Instruction

Each of you, throughout your lifetime, has many, many choices to make. Every choice is a decision, and you make such decisions many times a day in your everyday living. You may be aware of most of the choices that are there to be made, but because of the habits you have established in your ways of doing things, in some instances you may not be aware that a choice is to be made or has been made.

Choices that affect your life may have been made before you were born. Some choices your parents made, the things they did, where they lived, even your mother's choice of foods and physical activities before you

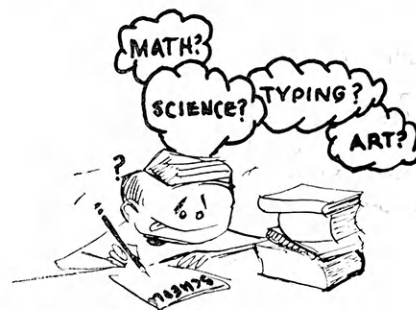
were born have all affected your life.

When you were a baby and during your very early years you had many choices to make, but someone else, usually your parents, made most of these decisions for you. You exercised choice-making yourself sometimes when you chose a certain toy to play with in preference to others. You may have had some choice in the foods you ate by eating more willingly the foods you liked and refusing to eat these foods you did not like.

Most of your life, because you were young, your parents, friends, teachers, and others helped you make choices. Most of them felt that because of their experience with decision-making they could be of some help to you. For the most part when your family and others assisted you in making a choice it was for your own good, whether you realized it or not. Perhaps you did not want to admit it.

As you grew older, started to school and began to be able to think and reason for yourself, you should have been permitted to make some of your own decisions. The older you become, the more opportunity you should have to make choices for yourself. During your early school life you have many everyday choices to make; for example: What should I wear to school today? What should I eat for

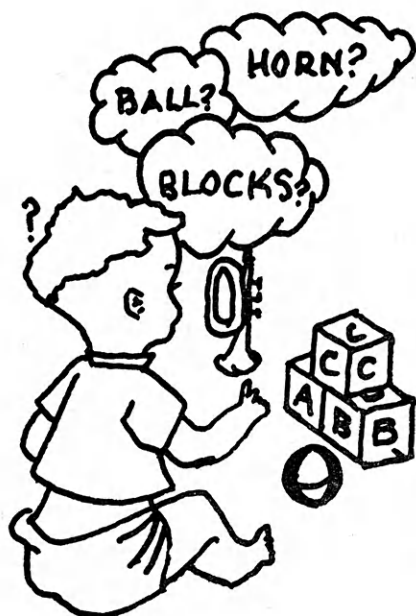
breakfast? Shall I go to Sunday school this Sunday? Should I take a bath tonight or in the morning? Sometimes your parents, brothers, or sisters may influence these decisions of



yours. Sometimes other factors may influence these decisions. How cold the weather is may affect your choice of clothes; how hungry you are may affect your choice of what you eat for breakfast.

The choices mentioned are minor ones, of course. The practice you receive in making sound decisions for the minor choices will help you when the time comes for you to make major decisions. The earlier during your lifetime that you are able to show your parents and teachers that you have the intelligence and maturity to make sound choices, the sooner they will allow you to make many decisions and choices for yourself.

As you get to junior high school or high school age the number of choices seems to increase. Many times in school you make choices about what courses to take, which young people you want for your close boy or girl friends, what extra class activ-



SACRED HEART COLLEGE, WICHITA

This Firm Proudly Recommends
Sacred Heart College.
State Bank of Coldwich
Coldwich

An accredited 4-year liberal arts
college for women.
See: Pages 22, 26 and 28

— SEE —

Claudia Harris

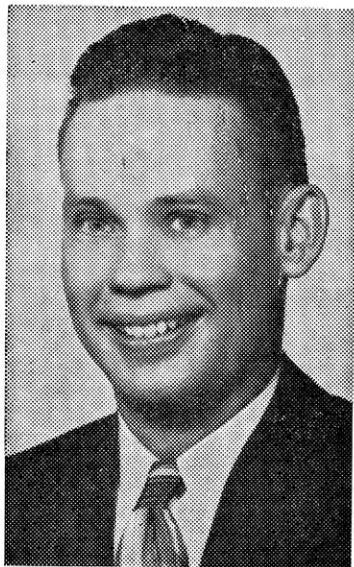
**National 4-H Bread Baking
Champ from Lawrence, Kansas**
at the cooking demonstration
twice each day at the
WESTERN FARM SHOW

Feb. 25-26

Municipal Auditorium
Kansas City, Mo.

ities you will join. You ask yourself: Shall I go out for football, try out for cheerleader, or try out for the play?

During this period of an increasing number of situations in which you have opportunities to make decisions, there are many persons who are willing and many who are able to assist you in making your choices. Your parents and older brothers and sisters, your teachers, your minister, your 4-H leader, your school counselor, and many



Charles B. Watkins is Director of Guidance and Pupil Personnel Services, State Department of Public Instruction, Topeka, Kansas. He has held this position for four and one-half years and was formerly a high school principal, teacher, and coach.

Mr. Watkins attended high school at Frankfort and holds B.S. and M.S. Degrees from Kansas State University.

others are in a position to assist you. These people should assist you in understanding yourself and your capabilities, aptitudes, interests, personality, and limitations. They should also help you understand the consequences which would result from all possible choices you may have and let you be the person who makes the final decisions. You can learn to be self-reliant, self-confident, and self-governing only by learning to make sound choices yourself.

One of the most important decisions you will ever have to make will be your choice of a career. You have the right and privilege in the United States of America to decide of your own free will which career field you wish to enter. It is up to you

"BUT I BUILT WITH YOUR TYPE OF AGRICULTURAL TECHNOLOGY!"



We believe in the American capitalistic, private competitive enterprise system in which property is privately owned, privately managed and operated for profit and individual satisfaction. We believe in a competitive business environment in which supply and demand are the primary determinates of market prices, the use of productive resources, and the distribution of output.

We believe in the right of every man to choose his own occupation; to be rewarded according to his contribution to society; and to save, invest, spend, or convey to his heirs his earnings as he chooses.

These principles are consistent with our religious values and the highest goals of mankind. They contribute to the diffusion of power essential to the preservation of liberty. They have produced an unparalleled volume of goods and services and supported widespread educational and religious opportunity.

Kansas Farm Bureau

105 County Farm Bureaus
Working Together

Farmers Union Elevator Co.

Co-op Products and Grain Storage

Branches at
Falun and Bridgeport
LINDSBORG, KANSAS

These Firms Proudly Recommend
Bethany

John E. Altenborg
113 E. Lincoln

Davis Coffee House
King Oscar Coffee
103 S. Main

BETHANY COLLEGE

Lindsborg, Kansas

★ **A Four Year Liberal Arts College**

★ **Scholarship Deadline April 1st.**

★ **Write: Director of Admissions**

Also see pages 22, 25 and 28

to use caution, common sense, and care in choosing a career.

Sometimes you may have to toss a coin to help you decide what to do. Should you go to the movie or to Mary's party? Heads it's the movies; tails it's the party. This might be a satisfactory way to choose between these two



events or many similar choices, but when it comes to choosing a career, there's no place for coin-tossing.

Choosing the professional or vocational field you plan to enter is much too important for snap or chance decisions. It is an equally serious error merely to drift into the most available line of work without consideration of what the job offers in your future. What you do for a living and how much you like it will have a great effect upon your future happiness and peace of mind.

Fortunately for you now there is no need to rush into a decision. As a young person you have one commodity which many adults would like to have. That is time—time to plan, time to explore, time to experiment, and time to make careful and intelligent choices concerning preparation for your future. Some day you must make a choice, but before that time comes you should use this precious time for planning and preparation so that it will be the soundest and wisest choice for you.

Again, the first step in your career planning is to use every resource possible to assist you

PLANNING TO STUDY LAW?

Students looking forward to the study of law in graduate school and admission to practice this learned profession can prepare for a successful career by selecting basic courses in high school and college. For the student and their faculty advisors, the following courses are recommended:

I. INFORMATION STUDIES

A. Social Studies

1. History

- a. High School—World History, American or U. S. History
- b. College—8 to 12 hours, including European History, English History, and English Legal History

2. Political Science

- a. High School—1 year
- b. College—8 to 12 hours, including American Government, Comparative Government, and International Relations.

3. Economics

- a. High School—1 year (if given)
- b. College—8 to 12 hours, including Economic Principles, Money and Banking, and 6 hours of accounting.

4. Sociology (Survey course in College)

B. Natural Sciences:

1. Biological Sciences

- a. High School—1 year (Biology)
- b. College—8 to 10 hours, including Physiology, Zoology or Bacteriology.

2. Physical Sciences

- a. High School—1 year of Physics or Chemistry
- b. College—10 hours, including Chemistry, Physics, or Geology (2 out of 3).

II BASIC THOUGHT COURSES:

1. Mathematics

- a. High School—2 years
- b. College—5 to 10 hours, including Algebra, Trigonometry, Analytic Geometry

2. Philosophy

- a. High School—
- b. College—6 hours, General Psychology and Abnormal Psychology

III STUDIES DESIGNED TO GIVE ACCURACY AND CLARITY OF EXPRESSION:

1. English

- a. High School—All courses offered
- b. College—20 to 25 hours, including the basic Rhetoric and English Literature courses (i.e. 10 hours), Advanced writing courses (5 hours), Shakespeare (4 hours), Classic Literature (3 hours), Public Speaking (2 hours) and Bible (3 hours).

2. Ancient Language

- a. High School—2 or more years of Latin.
- b. College—2 semesters (if course was not taken in high school)

3. Modern Languages

- a. High School—2 years
- b. College—10 hours



**THE BAR ASSOCIATION
of the STATE OF KANSAS**

COLUMBIAN BLDG.—TOPEKA

in understanding yourself. Your school counselor, if you have one, or your principal and teachers probably are the best qualified persons to assist you in this endeavor to understand yourself. You must have an understanding of your general academic ability or scholastic aptitude and any special aptitudes you may have. Your interests, that is, the things that you like to do, are also an important key for you. You should know your strengths and weaknesses.

Your past school record is another clue to understanding yourself. In what courses did you get the best grades? What courses did you like best? In what extra-curricular activities did you participate and which did you like best? What things seem most worth doing?

Another experience that is valuable in understanding oneself is testing. Almost all of you are exposed to tests of mental ability and achievement and possible tests of interest and personality. Each of these gives a clue to what your aptitudes, interests, and achievements are. Tests are not absolute, only an indication that may help you in understanding yourself.

Understanding oneself is only one part of the future. The other part is the rapidly unfolding world of work. This is a fast changing world as far as jobs are concerned. It is estimated that in just fifteen years, 1,900 jobs that exist now will have disappeared and many more will probably take their places. This emphasizes the necessity of broad planning and a firm base in education so that retraining will be possible.

You must see the broad horizons of careers. You should read all you can about occupations in which you are interested. You should talk with other people about their different kinds of work. If you live in a small community where there are not many occupations represented, it is especially important that you read very widely and find out about those kinds of career futures that seem to hold a partic-

Baker University

**Oldest 4-year liberal arts college
in Kansas . . .**

**BAKER BUILDS
CHARACTER**

Also see pages 22, 25 and 28

Baker University
Baldwin, Kansas

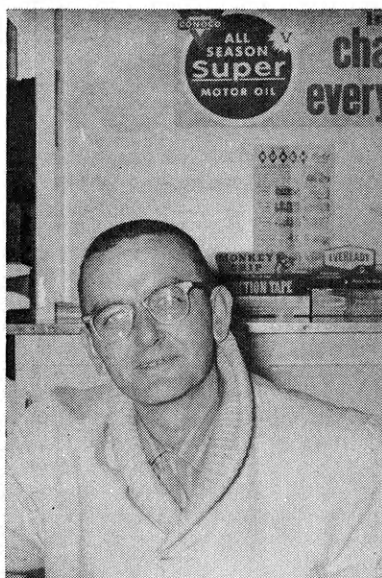
BALDWIN STATE BANK

Member F.D.I.C.

Capital \$300,000.00

Baldwin, Kansas

Phone 594-6421



In the OIL BUSINESS—

**jobber or station manager—
you are your own boss,"**

says

**Robert M. Pickrell,
Barnard, Kansas**

Mr. Pickrell is a partner in the Barnard Home Oil Company with home office in Barnard.

Mr. Pickrell attended the University of Kansas and majored in business marketing. Led by a desire to be in business for himself, following the service he joined his Father-in-Law as a partner in the company.

With emphasis on service to farmer customers, everything needed for mechanized equipment is on supply at the five stations managed or leased by Mr. Pickrell's firm. They also operate their own transport for making deliveries to the stations.

Mr. Pickrell says, "Never discourage a young fellow from going into the oil business, you have the opportunity to be in all phases of the work. And you are doing it for yourself."



Mr. Pickrell says he enjoys the work in the petroleum business. Knowing a lot of people is one point in favor. He envies young people in Kansas to learn more about this growing industry.

Act now—investigate the varied careers offered you in the petroleum field.

Write to—

Kansas Petroleum Industries Committee

204-A Insurance Building, Wichita

a new word for you . . .

e • lec' • tri • con' • o • my

(n.) . . . the amount of business and the standard of living resulting from the buying power made possible by the availability of electricity.

The Electric Cooperatives of Kansas have helped bring a greater Electriconomy to all . . . by making adequate electric power available in rural areas. This power has helped bring more productive farming . . . brings new business and industry to rural Kansas . . . a vital contribution to a growing Kansas for an even greater Electriconomy in the future.



420 WEST 9TH, TOPEKA, KANSAS

CE 5-5321

lar interest for you. You should begin to do this exploring during junior high school and continue during high school. You may change your career views each year as you go through school, but you can keep your interests open if you continually seek to expand your horizons of information about the world of work.

The future belongs to those who prepare for it. Planning your education and career is essential if you are to be ready for the opportunities of the future. Even though you may not be completely certain of your future career at the time of high school graduation, you will be much closer to a sound and intelligent decision for the future if you have planned intelligently each year. Make your career a CHOICE—not a CHANCE.

The Farmers State Bank

Hays, Kansas

The bank where you feel at home



MA 4-6542

First National Bank

Hays, Kansas

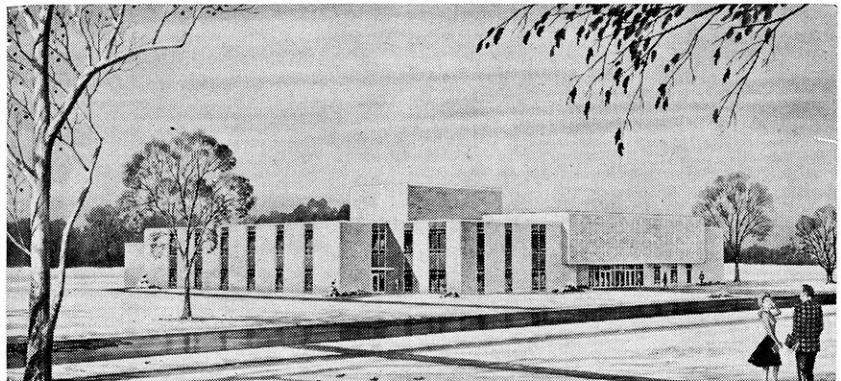
1888 76th Anniversary 1964

Member F.D.I.C.

Producers Gas Equities, Inc.

HAYS, KANSAS

Serving the Oil Industry
in Western Kansas



Malloy Hall, new speech and music building, is now under construction at Fort Hays State.

FORT HAYS KANSAS STATE COLLEGE

Fort Hays State has distinctive educational programs in the sciences, business, music, industrial arts and education. Largest division of the College is teacher education. The College is world-renowned for its program and research on grasslands and range management.

Also see pages 22, 25 and 28

Write—News & Publications Office, Fort Hays Kansas State College, Hays

Midwest Tobacco & Candy Co.

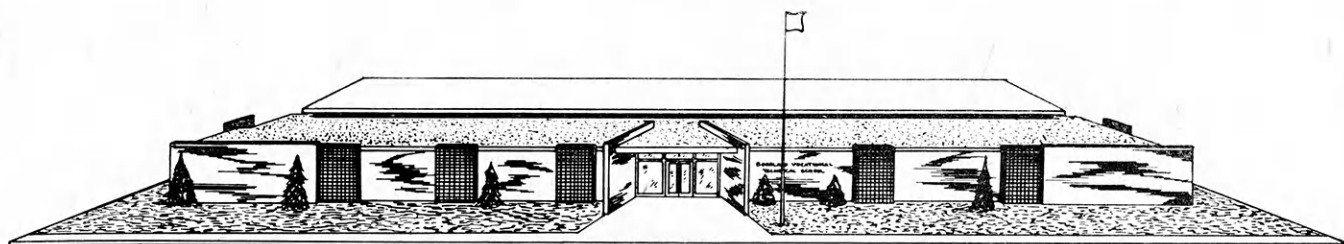
811 Fort
Hays, Kansas

MOBILE Countryside HOMES

Extension Rooms for all Models
Buy with Pride at Countryside
MAX HOFFMAN Market 4-4428
815 East 8th St., Hays, Kansas

These Firms Proudly Recommend
Fort Hays Kansas State College

Al's Bootery
809 Main
A. L. Duckwall Stores Co.
1103 Main
Farmers Insurance Agency
718 Main
Dr. J. P. Haigler, M.D.
234 W. 11th
Hays City Drug Store
1013 Main
Jack & Jill Shop
1100 Main Street
Lamer Hotel
1200 Main
Ted Schulte, Insurance
117 W. 8th
S. E. Shade & Son Contractors
212 E. 23rd MA 4-4041
418 E. 9th
State Farm Insurance—Ed Dies
212 E. 23rd MA 4-4041



Northwest Kansas Vocational-Technical School at Gooland now under construction.

New Horizons

in training opportunities

By Thaine D. McCormick

Thaine D. McCormick is State Director of Vocational Education. He has been associated with industrial and vocational education in the public schools of Oklahoma and Kansas for more than twenty years.

McCormick holds BS and MS degrees from Oklahoma State University. He has been in teacher education and on the graduate faculty at Oklahoma State University and Kansas State College of Pittsburg.

He was a member of the original faculty which established Okinawa University after World War II as assistant head of the mechanical technical division.

In addition to his experience in industrial and vocational education, McCormick is a cabinet maker by trade and has worked in the construction business.



A New Kind of School

New on the Kansas horizon is a system of area vocational-technical schools which will put modern occupational training within reach of all young men and women still in high school or after graduation. The Kansas Legislature and the Federal Congress recently passed legislation which recognizes a primary responsibility to provide all youth with modern vocational-technical training opportunities. This State's greatest asset lies in the skills and occupational competencies of its people and in the potential productivity of youth who are preparing to enter employment. A statewide system of area vocational-technical schools is being developed which will offer comprehensive training programs to equip youth and adults to accept employment in a wide range of interesting skilled and technical occupations.

You and the Area Schools

If you are interested in employment in an interesting and well-paying occupation as a technician or skilled worker, the development of these schools will be of interest to you. The objective of area vocational-technical schools will be to prepare people to become employable upon completion of the vocational curriculum. Courses will be offered for jobs in industrial occupations, health occupations, agriculture and agricultural-related occupations, home and community service occupations, and business occupations. Course offerings will be based on the need for such trained workers. Occupations listed are typical of those which will be taught in area schools. While not all of courses listed will be offered at every school, each school will provide a minimum of five curriculums, ranging in length from six months to two years. Area schools will provide training in three or more of the major areas of industrial, agricultural, business, and home and community service occupations.

Industrial and Health Occupations

Skilled Trades:

Air conditioning and refrigeration
Automobile body repair
Automobile mechanics
Aviation mechanics
Carpentry and cabinetmaking
Cosmetology
Diesel mechanics
Fabric maintenance (dry cleaning and laundering)
Electrical construction and maintenance

Drafting
Office machine repair
Commercial photography
Printing
Plumbing
Radio and television servicing
Small engine repair
Welding
Electrical appliance servicing

Technical Occupations:

Electronics technology
Industrial technology
Metal processing technology
Chemical technology

Tool design technology
Instrumentation technology
Data processing technology
Construction technology

Health Occupations:

Practical nursing
Medical laboratory assistant
Nurse aides
Ward clerks

Medical X-ray assistant
Dental assistant
Medical office assistant

Farm and Farm-Related Occupations

General farming
Ranching
Landscaping
Farm and heavy equipment operators
Fertilizing technician
Farm implement sales and service

Farm records and analysis specialist
Soil conservation technician
Veterinary assistant
Nursery workers
Irrigation technician
Feed salesman

Home and Community Service Occupations

Child day-care center worker
Management aide in Federally-aided, low-rent public housing projects
Visiting homemaker
Hotel and motel housekeeping aide
Supervised food service worker

School lunch worker
Personal wardrobe maintenance specialist
Companion to an elderly person
Family dinner service specialist
Homemaker's assistant

Business Occupations

Retail trade
Wholesale trade
Transportation
Finance, insurance, and real estate
Business services
Sales workers

Managers, officials, and proprietors
Clerical workers
Clerk typist
Secretary
Junior accountant

If you think you may not be able or do not wish to attend college, you may wish to take advantage of training opportunities which will be available



MCPHERSON COLLEGE

- Accredited
- Four year coeducational
- Church related

Also see pages 22, 26 and 28

The Farmers Cooperative



McPherson
Little River

National Cooperative Refinery Association

Refiner - Transporter - Producer
Of Kansas Crude Oil

For further information, Write

Mr. Guy Hays
Director of Admissions
McPherson College, McPherson

SAN-ORE CONSTRUCTION CO., INC.

320 N. Baer
Phone CH 1-2240
McPherson, Kansas

The W-R Milling Company

McPherson, Kansas

McPherson County Farm Bureau Assn. and Insurance Services

920 W. Kansas

McPherson

Peoples State Bank

We Welcome Student Accounts
Member F.D.I.C.

at the area vocational-technical schools. Today's world of work requires young people who are well trained. The State's expanding economy will create many employment opportunities in ag-

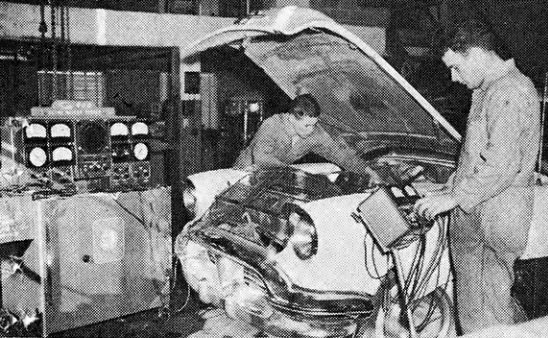


riculture, agricultural business, skilled trades, business, industry, merchandising, service occupations, and the technical and health fields, as well as in home and community occupations requiring homemaking skills for those young people who acquire the needed skill and knowledge.

Progress Report

If the area vocational-technical school seems to promise the kind of educational opportunity you have been wishing for, you will be interested in when these schools are expected to begin operation. At this writing, the State Board for Vocational Education has approved six locations for area schools. Locations already determined include: Topeka, Emporia, Beloit, Coffeyville, Goodland, and a plan for a cooperative multi-center program involving Hutchinson, Newton, and McPherson. Most of these schools hope to begin training by September 1964 in existing or rented facilities. Construction has already started at

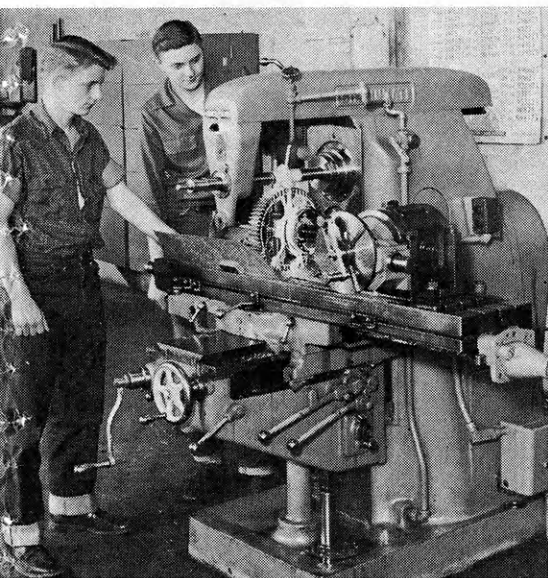




Goodland on a new \$400,000 modern building which will house their new vocational-technical school. New buildings are also being planned for most of the other centers, ranging in cost from \$400,000 to \$1,000,000. It is hoped that by September 1965, schools already approved, along with two additional schools, will be operating in permanent, modern facilities.

Making Plans

If you are undecided about your choice of career and how you will prepare yourself for your future job, you will want to watch the development of the area vocational-technical schools in Kansas. The advant-



age to you of being able to live at home and save room and board and other expenses which would be incurred if you left home for an education, plus the possibility of continuing to work in your home community while preparing for a technical job, may provide you with new horizons heretofore not available to young men and women of Kansas.

Investigate A Trade School Opportunity!

CENTRAL TECHNICAL INSTITUTE

★ ELECTRONICS

Engineering Technicians, Broadcast, Servicing, etc.

★ AUTOMATION

Data Processing, Tabulator, Programming, etc.

Central Can Prepare You Quickly for Excellent Salary, Security and Advancement in These Fast-Growing Fields. Enroll NOW for 1964 Classes. Over 50,000 Graduates Since 1931. FREE CATALOG.

Write

Here...

CENTRAL TECHNICAL INSTITUTE

1644 Wyandotte Street Kansas City 8, Missouri

Please send Free copy of new 1964 catalog

Name _____ Age _____

Address _____ Phone _____

City _____ County _____ State _____

Check Interest: ☐ Classroom ☐ Home Study K9024

KANSAS STATE COLLEGE

OF PITTSBURG, KANSAS

—See: Pages

22, 26 and 28

—Write

Office of Admissions for further information.

FOODTOWN SUPER MARKET

1806 N. Broadway
612 S. Broadway
312 W. 4th

Wright's Greenhouse, Inc.

Friends of Kansas State College of Pittsburg
From its Beginning

Forest and Walnut ADams 1-6400
James B. Wright

CAREER OPPORTUNITIES UNLIMITED



The variety of careers in health offers rich scope for the inquiring mind, as well as the excitement and gratification of helping advance man's progress in dealing with himself and his environment.

In spite of the growing number of persons in the health professions, the supply has not kept pace with the demand for services. The opportunities are truly unlimited! Whatever your choice—medicine, dentistry, nursing, public health, pharmacy, medical technology, biophysics, biochemistry, bacteriology, to mention only a few—your prospects will be what you make them, determined by your interest and capacity, your training, your decisions, your work.

The Kansas Medical Society

315 West 4th

Topeka, Kansas

Your Future can be Bright with a **BEAUTY CAREER**

Beauty is big business! Every working day at least two million women in the United States patronize more than 100,000 beauty salons.

And to meet the personnel needs of this business, beauty schools offer training to both men and women who are interested in a rewarding career.

Although requirements for entering the beauty field vary from state to state, minimum age is 17 years.

Advanced education is helpful but not essential. Completion of the eighth grade or equivalent is the minimum education requirement.

A beauty culture education will cost from \$150 to \$500 for a complete course. This will vary from school to school depending upon location, facilities, and the length of the course.

There are no special requirements but persons with natural artistry, mechanical and sales abilities find these qualities an advantage in their work.

The future is promising to beauty school graduates. The demand for trained operators exceeds the supply. After sufficient experience, developed by shop training, many beauticians open their own businesses.

Beauty training provides security. It is financially rewarding and a girl can always return to her beauty Career even after she has married and raised a family.

High school students who are interested in beauty careers should discuss their aptitudes with their vocational guidance director. Talking with beauty shop operators and visiting a beauty school will also help them make a decision concerning a beauty career.

Contact These Schools . . .

VERNON'S SCHOOL OF COSMETOLOGY



EXPERT TRAINING
TO QUALIFY GRADUATES
TO PERFORM A HIGHER GRADE
OF BEAUTY SERVICE

Wichita, Kansas

AM 5-2150

For School Brochure

WRITE —

303-305 W. Douglas Ave.
Wichita, Kansas

CRUM'S BEAUTY SCHOOL

Manhattan, Kansas

State Approved

9 months course

Classes starting each month

Write us for FREE brochure

Dormitory room & board available



**YOU WANT
YOUR FUTURE
TO HOLD . . .**

- ★ Success
- ★ Security
- ★ High Pay

- ★ Fun
- ★ Reputation
- ★ Fulfillment

CHOOSE A BEAUTY CAREER

Write for FREE Brochure



HOUSE OF
heavilin

School of BEAUTY

7318 W. 80th Overland Park, Kansas

OTHER LOCATIONS

Kansas City, Mo.
5700 Troost
3951 Main
12th & Hardesty

Sedalia, Mo.
1716 W. 9th

How To Choose A College

By James K. Hitt
Director of Admissions and
Registrar.
The University of Kansas



As registrar and director of admissions at the University of Kansas, James K. Hitt is responsible for the registration and enrollment of more than 12,000 students.

Hitt is a K.U. graduate and holds the A.B. and M.A. degrees in mathematics. He taught at Dodge City Junior College and the University of Wichita from 1936 until 1940 when he assumed his present position at K.U.

Hitt is president-elect (1964-65 term) of the American Association of Collegiate Registrars and Admissions Officers, and organization which he has previously served as secretary and as vice president.

Many articles have been written about the high school student's difficult task of selecting a college, and a wide variety of advice is available to him. Choosing a college may be almost as important as choosing a wife or husband, for the college you eventually decide to attend—and what you learn there—will deeply affect the rest of your life.

The apparent difficulty of get-

ting into college, as described in magazines and newspapers, on television and radio, which play up "The Closing College Door" and paint dismal pictures of the difficulty students will have in getting into college may have discouraged you or your parents. True, more young men and women are going to college than ever have gone in the past, and college facilities will have to be

PLAN NOW...

To Insure the
ALL-RISK way

New! New! New!

**GRAIN SORGHUM
INSURANCE**

CORN INSURANCE

2-WAY
PROTECTION
GUARANTEES

Quality

Quantity

FEDERAL
ALL-RISK
CROP
INSURANCE
HAS BOTH

Against: Frost • drought • excess
moisture • heavy rain • blight
• cob rot • wind • and all other
natural hazards.

Federal Crop Insurance Corp.

U. S. Dept. of Agriculture
Manhattan Kansas

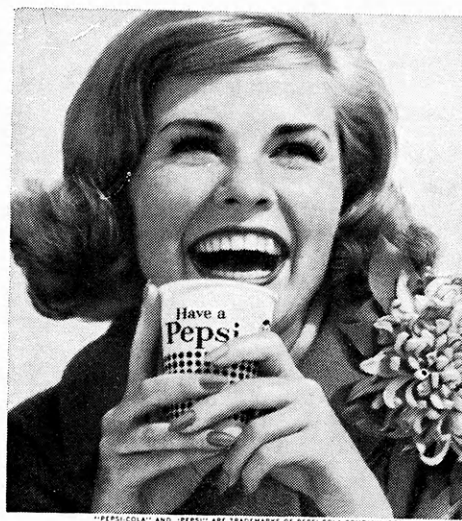


Alliance Companies

McPherson, Kansas

FIRE — CASUALTY — LIFE

Serving Kansas Since 1888



**now
it's
Pepsi**
for those who
think young

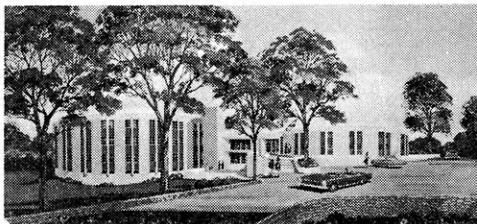


caps off to KANSAS 4-H MEMBERS from
KANSAS PEPSI BOTTLERS ASSOCIATION

MARYMOUNT COLLEGE

Salina, Kansas

Miss Marymount Jane Meyer, Conway Springs, exemplifies the aims of Marymount College and the ideals of womanhood. Attendants are Agnes Farrell (standing, left), Hill City; Mary Carroll, Manhattan; Kathy Monty, Salina; and Sherry Shavlik, Norfolk, Nebr.



Antoinette Hall, new Marymount College 174-bed residence for freshmen and sophomores, will be ready for occupancy in the spring of 1964. It is believed that this is the first circular college residence in the United States.



* Marymount was founded in 1922 and was the first four-year liberal arts college exclusively for women in Kansas.

* Marymount strives to develop Christian women of strong moral character and sound judgement, women who will be an uplifting influence in their homes, in their church, and in their community.

* Over 500 students are enrolled from 25 states and several foreign lands.

* Your Marymount education is a personalized education beginning with your first contact with the director of admissions. The unique feature of a Marymount education is individual classroom instruction with personal counseling available at all times.

Write to:

The Director of Admissions
Box No. 6
Marymount College

Also See—

Pages 22, 26 and 28

These Firms Proudly Recommend
Kansas Wesleyan University and
Marymount.

Barragree's United Rent-Alls

1200 W. Crawford

Bell Motor Company

Rambler Sales and Service

325 N. Santa Fe

Consolidated Printing & Stationery Co.

113 North Santa Fe Ave.

Globe Sheet Metal Works

South Industrial Area

Gutsch Agency

117 S. 7th

The Homestead Bldg. & Loan Ass'n.

104 East Iron

Low's Drug Store

109 N. Santa Fe

Memorial Art Company

1608 S. 9th

Carl Miller Trash Service

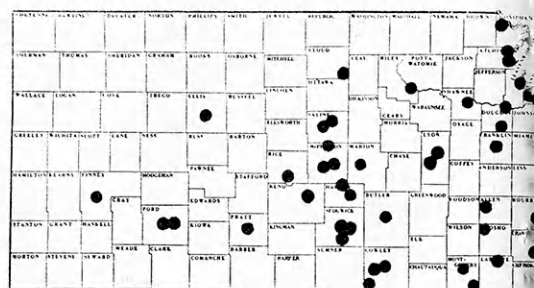
1321 N. 4th

Salina Implement Co.

601 S. Broadway

massively expanded in order to accomodate the increases. In Kansas, however, I believe there always will be room for Kansas high school graduates who are qualified to go to college.

If you were to make up a checklist to help you reach a decision, you would want to include such items as: academic programs, intellectual climate, extracurricular opportunities, student morale, cost, the availability of scholarships, loans, jobs . . . More important than any of these is quality. Is this the best institution for you to attend?



Location map of Kansas Colleges and Universities. Forty-three in all, this includes State Colleges and Universities, a Municipal University, Private Colleges and Universities, Public Junior Colleges, and Private Two-Years Colleges.

In thinking about how to choose a college, I suggest that you first concentrate on the colleges that are available to you in the state of Kansas. Here is a wide variety of good institutions of all kinds: junior colleges, four year colleges, and universities, colleges for girls, and colleges for boys. Just about every kind of institution that is available in the nation has its counterpart in Kansas, and the curriculum which is not available in one or another college in Kansas is rare indeed.

Attending college in Kansas has significant advantages. First, you probably can go to college in Kansas cheaper than you can attend any college outside the state. If you attend a publicly supported institution outside the state, the out-of-state fees charged will be greater than the fees at one of your own state institutions. If you attend a private institution outside the state, almost invariably you will find that the tuition is higher than that charged at comparable

GRAVES
TRUCK LINE
INC.

Serving the Middlewest
Since 1935

EVANS GRAIN COMPANY

Board of Trade Building

Salina, Kansas

TAylor 7-4484

Everitt
LUMBER CO., INC.
SALINA, KANSAS

**THE PLANTERS
STATE BANK**

Salina, Kansas

Member F.D.I.C.

**GRAIN MANAGEMENT
ASSOC., INC.**

644 S. Ohio

Salina, Kansas

institutions inside Kansas.

Personal attention to the college students is important. Personal attention comes about in a variety of ways; Kansas high school officials, for instance, have more information about Kansas colleges than they have about institutions outside the state. Kansas colleges, on the other hand, are closely articulated with Kansas high schools. This mutual interest brings about an integration in courses of study and sets the stage for close personal relationships between students and faculty on the college campus in Kansas, no matter how large or how small.

Students who attend Kansas colleges are more likely to find employment in the state following graduation than those who choose to attend college elsewhere. This can prove beneficial both to the student and to the Kansas community in which he settles.

Finally, the quality of Kansas colleges and universities is equal to that found anywhere in the nation. Do not let familiarity blind you to the national stature of Kansas institutions.

I would urge all graduates of Kansas high schools who are planning to go on to college to consider first the excellent colleges and universities of Kansas before making their final decision. Information about Kansas colleges is easy to find: this issue of the **Kansas 4-H Journal** describes many of them, and the **Kansas Handbook of Post-High School Educational Opportunities**, produced by the Kansas Personnel and Guidance Association, offers a brief description of each Kansas college, and is available to you in your high school counselor's office.

Supplementing these brief descriptions are the catalogs of the various colleges. Study them carefully, visit the campuses to gather at first hand your own impressions of environment and quality which cannot be obtained any other way, and consider seriously the real educational advantages that lie within your grasp and within the borders of the state.



Kansas Wesleyan University coeds gather in the lounge of the new dormitory for women.

KANSAS WESLEYAN Invites YOU

1. To visit its friendly campus in Salina
2. To learn more about its quality liberal arts curriculum
3. To meet members of its outstanding faculty

An Admissions counselor will help you plan your program to fill your individual needs.

For further details:

See pages 22, 26 and 28

and/or

Write:

Director of Admissions

KANSAS WESLEYAN UNIVERSITY
Salina, Kansas

These Firms Proudly Recommend
Marymount and Kansas Wesleyan
University.

Salina Mercantile Company

104-106 N. Santa Fe

Salina Rentals

251 N. 13th

The Salina Supply Co.

300 N. Santa Fe

Salina Tractor Co., Inc.

Chicago & 81 Overpass

Spaeth's Office Service

Underwood-Olivette Agents

114 E. Iron

Stevenson Clothing Co.

112 N. Santa Fe

Stiefel's Department Store

Downtown Salina

The Lee Hardware Co.

Salina, Kansas

Serving Kansas Dealers
Over 60 Years

Morrison Grain Co., Inc.

Bonded Storage
Grain Merchandisers

SALINA, KANSAS

FIRST STATE BANK OF SALINA

Salina's most convenient bank

Simpson - Laybourn Miller & Stark

Wholesale Grain Merchants

SALINA, KANSAS

The "BIG CIRCLE"



4-H'ers invite non-members to join them in meetings

Shown, above, is part of the "Big Circle" of 4-H members and their friends who carried out a series of county-wide senior project meetings in Shawnee county.

The new group, called the Shacoka's, coined this word to name their group. It is taken from the words, Shawnee County, Kansas.

The group planned and carried out county-wide meetings on citizenship, careers and personal development. The meetings were open to all teenagers in the county.

The people at Southwestern Bell Telephone Company feel this method of group work is strengthening our youth who are our leaders of tomorrow. They are proud to be associated with the 4-H Personal Development Project and to offer awards for outstanding work.

SOUTHWESTERN BELL



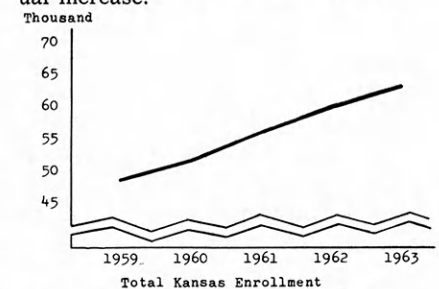
TELEPHONE COMPANY



Kansas College Enrollment

Total college and university enrollment is increasing in Kansas. The total for fall 1963 was 63,560, an increase of 6% over 1962.

The chart below illustrates this gradual increase.



The four-year colleges and universities had a total enrollment last fall of 55,426 while the junior and two-year colleges had a total fall enrollment of 8,134.

Enrollment in all Kansas colleges and universities last fall shows the following breakdown with % increase or decrease compared to the previous year.

State Colleges & Universities	34,670 (+6%)
Municipal Universities	10,651 (+13%)
Private Colleges & Universities	10,105 (-.7%)
Public Jr. Colleges	6,600 (+9%)
Private Jr. Colleges	1,534 (-14%)

The source of this material is a report by Worth A. Fletcher, Registrar, University of Wichita, October 22, 1963.

ST. BENEDICT'S COLLEGE

Atchison, Kansas



A Catholic Liberal Arts college for men conducted for more than a hundred years by monks of the Order of St. Benedict.

See: Pages 22, 27 and 28

For detailed information write the Registrar.

These Firms Proudly Recommend St. Benedicts and St. Schlastica Colleges.

Ball, Lowry, Stillings & Caplinger
Blair Bldg.
Bartlett Seed Co.
800 Main
Wm. E. Block, A.I.A.
318 Commercial
Henderson Drug Store
930 N. 5th
Kirwan-Intfen Furniture Co., Inc.
623-625 Commercial St.

Van Liew's Super Market

Groceries and Meats
Frozen Food Lockers
926 North Fifth Street



BORROW FOR LEARNING PAY WHILE EARNING

To the high school senior who would like to attend college but is unable to because of a lack of finances, several avenues are open. He may apply for a scholarship if his academic record is outstanding. He may plan a longer period of time to get his education because of working part-time during school or alternating full time work with school semesters.

Loan Funds

A prominent source of financial aid to the college student who needs help are loan funds. Loan funds are playing an ever-increasing part in helping students finance their education.

Collecting a financial debt long before they have earning power may discourage some students in using loan funds. One of the best arguments presented in defense of loan funds is that a student just out of high school and in a new job will "borrow" to buy a new car. His monthly payments are on an object which decreases in value.

On the other hand, a college education increases in value. The potential earning power of the college graduate will make a thousand dollars loan seem minute.

The conveniences of present day college loan programs pro-

vide another incentive to borrow. Low interest rates and postponement of the payment until after graduation are features of several loan funds.

There are several types of loan funds: governmental, private enterprise, private individual, university, etc. Following is a discussion of three loan programs, two which are available to qualified applicants throughout Kansas.

National Defense Act

The National Defense Education Act of 1958 created a student loan program by which the student may borrow a maximum of \$1,000 in any academic year.

(Continued on page 20)

These Firms Proudly Recommend
Mt. St. Scholastica and St. Benedicts
Colleges.

Mullins Bros. Hardware Co.

819 Main

Norton's Fabricon Invisible

Reweaving Co.

1604 Pacific

O'Keefe, McKelvy,

O'Keefe & O'Keefe

503 Commercial Street

Thompson's Restaurant

117-19 N. 5th St.

Tonsings Stationery & Book Store

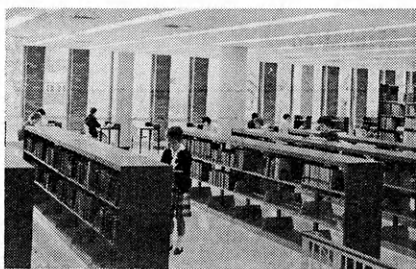
719 Commercial

C-G-F Grain Company, Inc.

Grain Merchants — Bonded Storage

Phone EM 7-1621 Atchison, Kansas

HA 1-7143 Kansas City, Mo.



The central reading room of the new Feeney Memorial Library on the Mount St. Scholastica college campus. The library, dedicated in November 1961, built to house approximately 150,000 volumes, is well lighted, and is air cooled in summer. Within the library building is a lecture hall, an audio-visual center, rare books room, research and seminar rooms. Individual study desks and tables for groups are to be found in well-lighted areas.

See—Pages 22, 26 & 28.

Mount Saint Scholastica College is a Catholic liberal arts college for women conducted by the Benedictine Sisters. First established as an academy, it has been a senior college since 1930. The Mount has twin college advantages, associated with St. Benedict's College for men.

MOUNT ST. SCHOLASTICA COLLEGE
Atchison, Kansas

**ALL OFFICIAL
TEXT BOOKS**

at
Ted Varney's
UNIVERSITY BOOK STORE
Where you get the best deal.

Chappell's
ALL STAR
DAIRY
MANHATTAN, KANSAS

**Make Reservations Now For Your
Banquets — Wedding Receptions**
Seating Capacity up to 300
All banquet rooms air-conditioned

Wareham Hotel
FOOD SERVICE
D. C. MARTIN, Catering Mgr.
Phone 8-2374

Here's Your School

**KANSAS
STATE
UNIVERSITY**

Our special student represent-
ative will be here at the bank
to welcome you and to give
you **F R E E** personalized
checks . . . from the bank
that wants to serve you!

Here's Your Bank

**UNION
NATIONAL
BANK**

Bank at time and temperature Corner!

TOM GRIFFITH
Chairman of the Board

SAM SAROFF, President

C. E. NELSON, V. P. & Gen. Mgr.

Phone PRescott 8-4446

Third and Yuma Streets

**SAM SAROFF
& CO., INC**

**Quality fresh and frozen
fruits and vegetables**

MANHATTAN, KANSAS

**WE SERVE
KANSAS STATE
UNIVERSITY
STUDENTS
WITH
NEW TEXTBOOKS
USED TEXTBOOKS
REFERENCE BOOKS
AND ALL
SUPPLIES**

**CAMPUS
BOOK STORE**

**HAYS FURNITURE
UPHOLSTERY**

716 Galaxy Dr.

PR 8-5594

MANHATTAN, KANSAS



**These Firms are Boosters of
Kansas State University**

**You Can Count on Us . . .
Quality costs no more at Sears**

**Sears, Roebuck
and Co.**

Manhattan Kansas

**DOEBELES IGA
FOODLINER**

**Fruits—Vegetables—Groceries
and Meats**

517 N. Third Phone PR 8-4923

Free Coffee

Every Day Low Prices

**Free Delivery Joe Doebele, Prop.
Have grown larger to Serve you Better**

**Manhattan
Typewriter Co.**

**"Complete Sales & Service
Organization"**

217 So. 4th

**Phone: PR 8-4174
PR 8-4241**

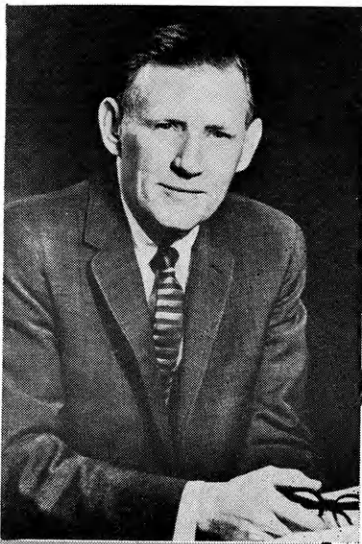
Remington Rand Agency

Griffith Lumber Co.

112 No. 2nd

PR 8-4477

Complete Line of Building Materials



James A. McCain
President

Kansas State University

at Manhattan

An Open Letter . . .

Whether to attend a university and what university to choose are among the most crucial decisions of a lifetime. To make such decisions wisely, one should be informed about higher education generally and characteristics of the particular institution under consideration.

Kansas State University, the nation's first land-grant institution, is a center of intellectual activity charged with the responsibility of conserving knowledge, disseminating new knowledge, and teaching students useful information on the campus. We at K-State consider the education of students to be our primary obligation.

Kansas State with its library collection of a quarter of a million books, a dynamic research program, and a system of resident instruction involving more than 9,000 students and 500 teachers is, of course, a complete university and one of distinction. We commend the information in this article to your thoughtful consideration.

James A. McCain
President

... about the University

Friendly and democratic atmosphere long has prevailed on the campus and in the classroom.

Personal attention to the individual needs and problems of the student is a matter of pride with a faculty and administration. A basic goal is to insure an "individualized" education for students enrolled at K-State.

High quality of instruction is available at all levels—from the freshman class through the graduate school. Nationally and internationally-known specialists share with students in the classroom their extensive knowledge and experience in basic and applied research.

Wide variety of academic offerings in many fields contributes to the best liberal and professional education.

One of the finest counseling services in the Mid-West, staffed by highly-trained professional counselors, is available to students at all times to assist with their personal and academic problems.

The most modern health service, rated as one of the finest in the nation, is available to all students, day and night. For many students, medical facilities at K-State are more readily available than in their own home town.

Low-cost education is a principle to which land-grant institutions such as Kansas State are dedicated. In addition, scholarships, loans, and part-time jobs assist hundreds of worthy and needy students each year to gain an education.

Prestige of being a K-State graduate grows through the years. Among its graduates are distinguished leaders in the sciences, education, agriculture, industry, and the military—in fact in every field of human endeavor.

International affiliations, such as the cultural exchange arrangement with Justus Liebig University at Giessen, Germany, and the technical assistance programs in India and Nigeria, offer the student an enriched life on the campus as well as eventual opportunities to study and work abroad.

(Continued on next page)

For Further Information, write—

Dean of Records and Admission
Kansas State University
Manhattan, Kansas

Stickel Cleaners

714 N. 12th

Paul Dooley, Jeweler

Engraving — Repair

Aggieville Shopping Center
Since 1924

Official Kansas State
University Rings (K.S.U.)

BUZZELL'S OFFICE EQUIPMENT

Corner 4th and Houston
SALES—SERVICE—RENTALS
Manhattan, Kansas

CALL PR 8-2005

for

MILK—HALF and HALF
Whipping Cream
Buttermilk—Chocolate Drink
Cottage Cheese—Ice Cream
Serve

CITY DAIRY PRODUCTS

313 S. 4th Street

Now is the time to begin making plans to attend college next year.

We extend an invitation to the future students of Kansas State University to make the 1st National Bank of Manhattan, your bank while attending college.

The 1st National Bank has a special checking account designed for students.

THINK **1st**
National Bank

Manhattan, Kansas

Employment opportunities are excellent in all fields through one of the best university placement services anywhere. This service is available without cost to K-Staters throughout their lives.

K-State doesn't forget its students. Constant contact is maintained with graduates through the alumni association, job placement service, departmental publications and activi-

Roy Hull BUSINESS MACHINE

1212 Moro in Aggieville
SALES — SERVICE — RENTALS
Royal Typewriters
Victor Adders & Calculators

ties—to mention only a few of the lifetime advantages enjoyed by graduates of Kansas State University. To them, K-State will be their second home.

These Firms Are Proud To Recommend Kansas State University to Kansas Boys and Girls.

Aggie Hardware & Electric Company
1205 Moro

Coca-Cola Bottling Co.
120 Poyntz

Norton Rexall Drug Store
331 Poyntz

Seven-Up Bottling Company
120 Poyntz

Waddell Tire Company
6th & Riley

Borrow for Learning

(Continued From Page 17)

Loans for an entire educational program may not exceed \$5,000 per student and the borrower must be a full time student..

Interest starts at 3% annually beginning one year after the student borrower ceases to be a full time student. The first repayment is due two years after the borrower ceases to be a full time student. Repayment schedules normally provide for ten annual installments.

If the borrower teaches in the public elementary or secondary schools, 10% of the loan may be cancelled for each year of teaching to a maximum of 50% of the loan. This feature of the loan makes it very favorable to future teachers.

Interest does not accrue and all repayment schedules are halted when the borrower returns to a full time student status or is serving in the Armed Forces of the United States. Three years is the maximum service time allowance.

All students, including entering freshmen and transfer students, are eligible to apply for the N.D.E.A. loans. Applicants should write to the Loan Officer of the college where they plan to attend.

Banks Lend at Low Cost

Commerical banks across the country are now lending money as a public service to college students who need help with college expenses. The United Student Aid Funds, Inc. was created as a non-profit organization which would create a reserve fund with which to guarantee student loans

otherwise unbacked by collateral.

Each participating college contributes a reserve to USA funds to underwrite the loan. The college must approve the student's application for a loan and advises the student's bank about his standing and college expenses.

Eligibility for the loan requires that the student attends a college participating in USA funds and that he has completed his freshman year.

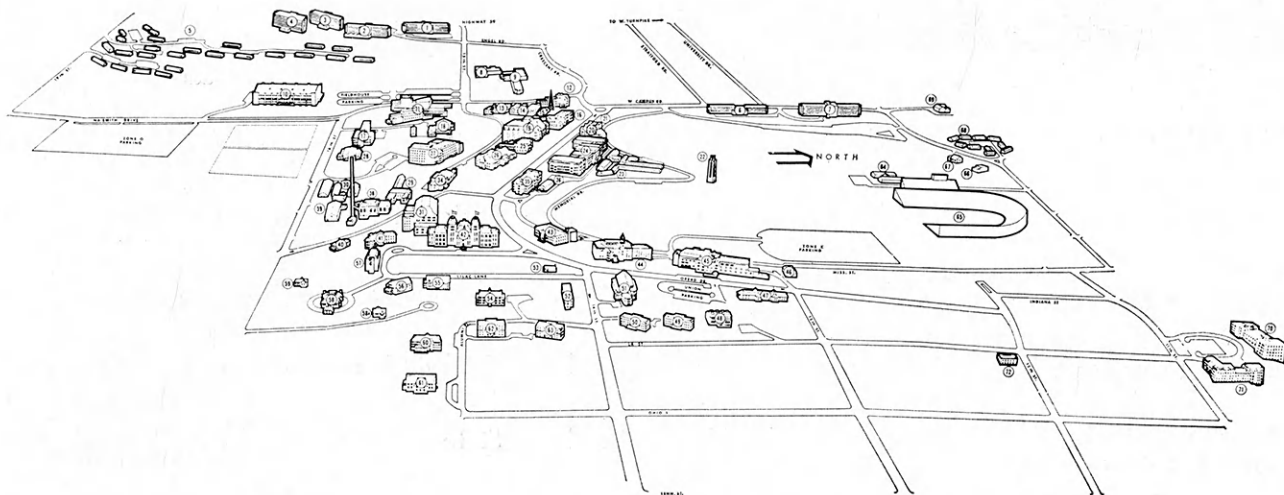
The student may borrow up to \$1,000 a year or a combined total of \$3,000 for undergraduate and \$4,000 for graduate education. The amount of each loan is determined during a discussion between the student and his bank.

Repayments begin the first day of the fifth month after the student finishes his education. Payments are spread over 36 monthly installments with none less than \$30. If the student leaves college before graduation, monthly repayments begin within 30 days but may take up to three years to be repaid.

No notes under this plan may bear more than 6% simple interest. This rate is considered to be a "break-even" rate for Kansas banks.

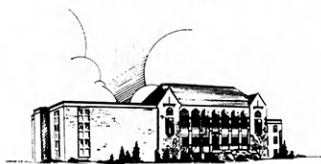
All of the four year colleges and universities in Kansas are participating in this loan program. Interested students should contact their college loan officer and their hometown bank for detailed information.

(Continued on page 30)



u-ni-ver-si-ty (u'ne-vur'se-ti), *n.* [*pl.* UNIVERSITIES (-tiz)], [ME. *universite*; OFr. *universite*; L. *universitas*, the whole, universe, society, guild < *universus*; see UNIVERSE], 1. an educational institution of the highest level, typically with one or more undergraduate schools, or colleges, together with a program of graduate studies and a number of professional schools, and authorized to confer various degrees, as the bachelor's, master's, and doctor's . . .

U-ni-ver-si-ty of Kan-sas (kan'zes), *n.* 1. the state university of Kansas; an educational institution of the highest level. 2. consists of seven undergraduate schools: the College of Liberal Arts and Sciences and the professional Schools of Business, Education, Engineering and Architecture, Fine Arts, Journalism, and Pharmacy; and three schools of graduate studies: the Graduate School, the School of Law, and the School of Medicine. 3. authorized to confer eight different bachelor's degrees in 75 different major fields, nine master's degrees, and the degrees of specialist in education, doctor of education, doctor of medicine and doctor of philosophy . . .



WATSON LIBRARY
one million books

fresh-men (fresh'men), *n.* 1. at the University of Kansas have 4,200 modern living spaces available to them. 2. may be awarded scholarships or loans, or hold

jobs. 3. have many counseling services available, including an individual adviser, the Guidance Bureau, the Reading and Study Clinic . . . 4. are assigned to classes according to their ability and preparation. 5. have opportunities to extend themselves to the limits of their abilities in academic work and in extracurricular activities. 6. pay fees of \$122 a semester, if resident of Kansas; \$287, if non-resident.



NEW ENGINEERING BUILDING

stu-dents (stoo'd'ntz), *n.* 1. who are interested in the widest possible choice in courses, majors, and careers. 2. who would like to earn a degree second to none in the state or the nation. 3. who welcome the possibility of summer study, or a junior year, abroad. 4. who desire the best chance at such post-graduate educational opportunities as the Woodrow Wilson and Danforth Fellowships. 5. who wish to join some 50,000 K. U. alumni who have earned one or more degrees from K. U. should . . .



A NEW RESIDENCE HALL

write (rit), *v.t.* 1. for further information to the Director of Admissions and 2. ask for *K.U.—Quality in Education*. 3. *Aids to a K.U. Education*, or 4. the catalog of one of the ten schools.

U-ni-ver-si-ty of Kan-sas

Law-rence

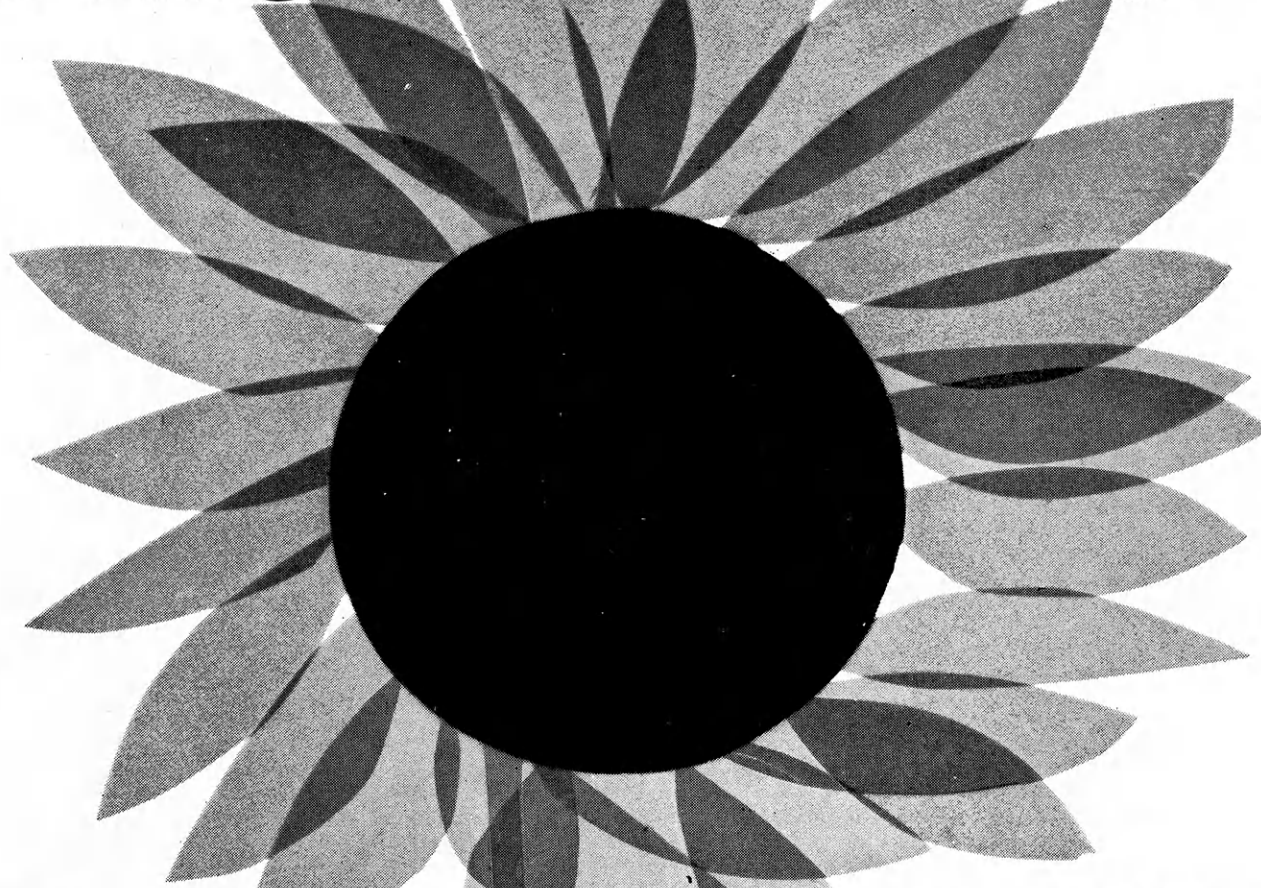
Kansas 4-Year Colleges

SCHOOL	Location	Enrollment	Type	Affiliation	Accreditation
Baker University	Baldwin	729	Coed	Methodist	Kansas State Department of Public Instruction*
Bethany College	Lindsborg	525	Coed	Lutheran	Kansas State Department of Public Instruction*
Bethel College	Newton	465	Coed	Mennonite	Nat'l. Council for Accred. Teacher Education*
College of Emporia	Emporia	677	Coed	Presbyterian	American Association of University Women*
Fort Hays Kansas State College	Hays	3,449	Coed	State	Nat'l. Coun. for Accred. of Teacher Education; Nat'l. Ass'n. of Schools of Music; American Association of University Women*
Friends University	Wichita	435	Coed	Soc. of Friends	Nat'l. Council for Accred. of Teacher Education; Nat'l. Association of Schools of Music*
Kansas State College of Pittsburg	Pittsburg	3,650	Coed	State	Nat'l. Council for Accred. of Teacher Education; Nat'l. Association of Schools of Music; Nat'l. University Extension Association; American Association of Colleges for Teacher Education*
Kansas State Teachers College	Emporia	4,580	Coed	State	Nat'l. Council for Accred. of Teacher Education*
Kansas State University	Manhattan	8,932	Coed	State	Professional Accred.; Arch.; Chem.; Engineering; Journalism; Music; Veterinary Medicine*
Kansas Wesleyan	Salina	565	Coed	Methodist	University Senate of the Methodist Church*
Marymount College	Salina	415	Women	Catholic	Nat'l. Council for Accred. of Teacher Education*
McPherson College	McPherson	592	Coed	Brethren	Nat'l. Council for Accred. of Teacher Education*
Mt. St. Scholastica	Atchison	470	Women	Catholic	Nat'l. Council for Accred. of Teacher Education*
Ottawa University	Ottawa	713	Coed	Baptist	American Baptist University*
Sacred Heart	Wichita	262	Women	Catholic	Kansas State Department of Public Instruction
St. Benedict's College	Atchison	552	Men	Catholic	Nat'l. Catholic Education Association*
Saint Mary College	Xavier	524	Women	Catholic	Nat'l. Council for Accred. of Teacher Education; Nat'l. Association of Schools of Music*
Saint Mary of the Plains College	Dodge City	449	Coed	Catholic	University of Kansas and Kansas St. Department of Public Instruction*
Southwestern College	Winfield	605	Coed	Methodist	Nat'l. Council for Accred. of Teacher Education; Nat'l. Association of Schools of Music*
Sterling College	Sterling	516	Coed	Presbyterian	American Medical Association as pre-medical school*
Tabor College	Hillsboro	373	Coed	Mennonite	University of Kansas and Kansas State Board of Education
University of Kansas	Lawrence	12,301	Coed	State	Nat'l. Council for Accred. of Teacher Education*
University of Wichita	Wichita	4,818	Coed	State	Nat'l. Council for Accred. of Teacher Education*
Washburn University	Topeka	2,721	Coed	Municipal	Nat'l. Council for Accred. of Teacher Education; Association of American Law Schools; American Bar Association; American Association of Univ. Women; Nat'l. Ass'n. of Schools of Music*

* Is accredited by North Central Association of Colleges and Secondary Schools.

Tuition Per Sem.	Room & Board Per Sem.	On Campus Housing Capacity	SCHOLARSHIP		LOANS	
			No.	Average Amount	No.	Average Amount
337.50	310-345	350	50	\$250	25	\$250
315	270	400	115	\$250	59	\$460
225 (quarter)	195 (quarter)	500	45	\$200	80	\$600
667.50	375	400	40	\$400	30	\$300
92	325	1,000	115	\$175	455	\$490
325	315	188	100	\$200	50	\$400
89	90	1,521	300	\$160	600	\$300
89.50	285	1,150	200	\$175	625	\$400
122	350	2,494	585	\$290	2,183	\$281
400	350	413	100	\$200	100	\$500
312.50	362.50	351	30	\$100-300	63	\$620
340	294-331.50	470	80-90	\$285	130	\$425
300	280-290	near 400	20	\$350	50-60	\$1,000
single fee \$1,485		505	total \$45,000		total \$100,000	
200	325	120	40-50	\$150 per sem.	40-50	\$750 per yr.
375	330-365	515	83	\$635	186	\$610
225	320	400	40	\$1,400 for 4 years	30	\$500
275	375	420	94	\$150	44	\$800
370	310	464	250	\$250	250	\$400
325	315	450	53	\$150	125	\$500
350	300	300	40	\$150	125	\$500
122	700 per yr.	4,000	1,500	\$250	4,500	\$500
12.50-15 per credit hour plus other small fee	330	449	343	\$270	1,150	\$300
10-11 per credit hour plus \$10 activity fee per semester	697	339	448	\$200	79	\$346

FLOWERING !



FLOURISHING !



KANSAS with farming so important to its progress, can well find particular pride and encouragement in the strength and vitality evinced by the 32,000 young people now active in its 4-H CLUBS!

It is a source of pleasure to us that we are able to help further the growth and activities of Kansas 4-H Club youth!

FOLGER COFFEE CO. Kansas City



KANSAS

4-Year

COLLEGES

BAKER UNIVERSITY

History:

Established by the Methodist Church in 1858 and merged with Missouri Wesleyan College in 1930.

Work Opportunities:

Positions for part-time work

are available on campus and some jobs are available in Baldwin.

Of Special Interest:

Cooperative programs with other schools make possible degrees in engineering, nursing, and medical technology.

Baker Library is home of the Quayle Bible Collection.

Write to:

Director of Admissions, Baker University, Baldwin City, Kansas.

BETHANY COLLEGE

History:

Founded in 1881, it is affiliated with the Lutheran Church in America and is supported by the Central States Synod of L.C.A.

Work Opportunities:

Clerical and Janitorial positions on campus and with business houses in Lindsborg.

Of Special Interest:

A pre-professional curriculum in Christian service and social

work in addition to cooperative degree arrangements are part of the education program.

Write to:

Director of Admissions, Bethany College, Lindsborg.

BETHEL COLLEGE

History:

Founded in 1887 by Mennonite pioneers, it is deeply steeped in a tradition of Christian purpose, fellowship, and service.

Work Opportunities:

About 150 jobs on campus and 100 in town jobs are available.

Of Special Interest:

Kauffman Museum and Historical Library are located on

campus. The Mennonite Folk Festival will be held on campus April 3 and 4.

Write to:

Admissions Counselor, Bethel College, North Newton.

COLLEGE OF EMPORIA

History:

Founded in 1882 by the Synod of Kansas, the first classes were held in a downtown building in 1883.

Work Opportunities:

On campus jobs are available

according to the need of the student; students may also find work in the city.

Of Special Interest:

Pre-professional opportunities include preparation in dentistry, engineering, law, medicine, medical technology, nursing,

pharmacy, veterinary medicine, and ministry.

Write to:

Raymond H. Elbert, Director of Admissions, the College of Emporia, Emporia.

FORT HAYS KANSAS STATE COLLEGE

History:

Originally a branch of Emporia Normal School, the college was founded on land deeded to the state by the U.S. Government.

Work Opportunities:

About 650 jobs are available on campus during spring and fall; about 600 are available in the city.

Of Special Interest:

Over 50 per cent of the grad-

uates become teachers. A Career Day has been scheduled for April 14.

Write to:

News and Publications Office, Fort Hays Kansas State College, Hays.

FRIENDS UNIVERSITY

Work Opportunities:

On campus work opportunities are limited for new students; however many jobs are avail-

able off campus.

Of Special Interest:

Twenty-one fields of study include Bible and Bible and Philosophy. Pre-professional cours-

es train for dentistry, medicine, nursing, and law.

Write to:

Office of Admissions, Friends University, Wichita.

KANSAS STATE COLLEGE
OF PITTSBURG

History:

Founded in 1903, its growth of functions is indicated by names over the years: State Manual Training Normal School, 1903; Kansas State Teachers College

of Pittsburg, 1923; and Kansas State College of Pittsburg, 1959.

Work Opportunities:

1500 students are employed on campus, 1000 are employed off campus.

Of Special Interest:

A physics and mathematics

laboratory building was completed this year and the Student Union building will be doubled by fall, 1964.

Write to:

Office of Admissions, Kansas State College of Pittsburg, Pittsburg.

KANSAS STATE
TEACHERS COLLEGE

History:

Established as a teachers college by the Kansas Legislature in 1863, the College has been dedicated to that mission for the past 100 years.

Work Opportunities:

A number of student jobs are available in departments on campus. Approximately 560 jobs are available in the city.

Of Special Interest:

The Director of Field Services conducts tours of the campus for students interested in con-

tinuing their education, and faculty members in the departments are available to visit with students and their parents every weekday and Saturday.

Write to:

Dr. J. J. Weigand, Director of Field Services, Kansas State Teachers College, Emporia, Kansas.

KANSAS STATE UNIVERSITY

History:

Bluemont Central College was established in 1859 and became Kansas State Agricultural College in 1863, the nation's first landgrant institution. It became a university in 1959.

Work Opportunities:

2,395 jobs are available on campus and more than two-thirds of the students earn all or part of their college expenses.

Of Special Interest:

Special events for spring 1964

include Engineer Open House, March 13-14; and Ag Day, April 11.

Write to:

Dean of Admissions and Records, Kansas State University, Manhattan.

KANSAS WESLEYAN UNIVERSITY

History:

Founded by the Methodist Episcopal Church in 1886.

Work Opportunities:

Many student assistants are employed on campus and job

opportunities in Salina are very good.

Of Special Interest:

Special programs include a United Nations Semester, a Washington Semester, a summer in Mexico, and a Semester Abroad. A Home Economics

fair is scheduled for March 14 and a Fine Arts Festival for the first week in May.

Write to:

Director of Admissions, Kansas Wesleyan University, Salina.

MARYMOUNT COLLEGE

History:

Founded in 1922, it is the oldest college for women in Kansas. It is conducted by the Sisters of St. Joseph of Concordia.

Work Opportunities:

About 85 students are annually employed on campus. About 20 per cent of the students earn a fourth or more of their expenses.

Of Special Interest:

A liberal arts education pre-

pares for many professions including language interpretation.

Write to:

Admissions Director, Marymount College, Salina.

MCPHERSON COLLEGE

History:

Organized in 1887, it is denominationally sponsored by the Church of the Brethren.

Work Opportunities:

25 to 30 per cent of the students work on campus and 30 to 35 per cent work in the city.

Of Special Interest:

Scholarship interviews will be

conducted March 6 and March 14 or 21.

Write to:

Guy Hayes, Director of Admissions, McPherson College, McPherson.

MT. ST. SCHOLASTICA COLLEGE

History:

Established in 1863, conducted by the Benedictine Sisters.

Work Opportunities:

Students can earn \$200 to \$300

per year on a limited work schedule on campus.

Of Special Interest:

Student groups are invited to make arrangements to visit at any time. Many groups are hosted each year. There are

twin college advantages with St. Benedicts College for men.

Write to:

Director of Admissions, Mount St. Scholastica College, Atchison, Kansas.

OTTAWA UNIVERSITY

History:

Founded in 1865.

Work Opportunities:

Jobs for students are available on campus and in Ottawa.

Of Special Interest:

Eight of the fourteen buildings on campus are new.

Write to:

Admissions Office, Ottawa University, Ottawa.

SACRED HEART COLLEGE

History:

Founded in 1933 by The Sisters Adorers of the Most Precious Blood.

Work Opportunities:

Secretarial, receptionist, cafeteria and library on campus, and unlimited in the city.

Of Special Interest:

The special honors program

allows maximum individual work. A Senior Day is planned in the Spring.

Write to:

Director of Admissions, Sacred Heart College, Wichita, Kansas.

SAINT BENEDICT'S COLLEGE	<p>Work Opportunities: 150 on campus work positions are available; a flexible number of jobs are available in Atchison.</p> <p>Of Special Interest: A 130,000 volume library and</p>	<p>an extensive intramural athletic program are outstanding features of the school.</p> <p>Write to: Registrar, St. Benedict's College, Atchison.</p>
SAINT MARY COLLEGE	<p>Work Opportunities: Positions in offices, the library, and as receptionists, switchboard operators, and cafeteria help are available on campus.</p> <p>Of Special Interest: A date for spring Open House</p>	<p>has not been set. Students are welcome to come to the campus if they write for appointment.</p> <p>Write to: Director of Admissions, Saint Mary College, Xavier.</p>
SAINT MARY OF THE PLAINS COLLEGE	<p>Work Opportunities: On campus jobs include maintenance, cafeteria, bookstore, library, office, and secretarial. Off campus work includes retail sales, service firms, and Country Club.</p> <p>Of Special Interest: A pre-professional agriculture</p>	<p>program is based on requirements of the College of Agriculture at Kansas State University.</p> <p>Write to: Director of Admissions, Saint Mary of the Plains College, Dodge City.</p>
SOUTHWESTERN COLLEGE	<p>History: Founded in 1885, the campus has been completely rebuilt since 1950.</p> <p>Work Opportunities: Jobs are available in the State</p> <p>Hospital and Training Center at Winfield and on campus. 67 per cent of the students earn a fourth or more of their expenses.</p> <p>Of Special Interest: Special programs include a Washington Semester, Drew</p>	<p>University Semester on the United Nations, an a Seplman College Exchange Program.</p> <p>Write to: Director of Admissions, Southwestern College, Winfield.</p>
STERLING COLLEGE	<p>was changed to Sterling in 1919.</p> <p>Work Opportunities: Campus jobs include office, library, lab, cafeteria, maintenance, and custodial work. Work in town is limited.</p>	<p>Of Special Interest: An Honors program for superior students is emphasized.</p> <p>Write to: President William McCreery, Sterling College, Sterling.</p>
TABOR COLLEGE	<p>on campus. A few jobs are available in Hillsboro.</p> <p>Of Special Interest: Pre-Professional courses in Dental, Engineering, Medical, Home Economics, Medical Technology, Ministerial and</p>	<p>Missionary, Nursing, Optometry and Vet Medicine. The Oratorio, "The Creation", is scheduled for April 19.</p> <p>Write to: Director of Admissions, Tabor College, Hillsboro, Kansas.</p>
UNIVERSITY OF KANSAS	<p>History: Classes began on September 12, 1886, following the establishment by the Kansas Legislature.</p> <p>Work Opportunities: Near one-half of the students</p> <p>at the University have some kind of part time work on or off campus.</p> <p>Of Special Interest: The Medical School and Law School are opportunities in addition to Pharmacy and many other professional programs. The Rock Chalk Review is</p>	<p>Feb. 28 and 29; Kansas Relays and Engineering Exposition, April 17 and 18; and a Jazz Festival, April 25.</p> <p>Write to: Director of Admissions or Aids & Awards Office, KU, Lawrence, Kansas.</p>
UNIVERSITY OF WICHITA	<p>Work Opportunities: Clerical, custodial, technical assistants, library, and other jobs are available on campus. Saleswork, clerical, and labor jobs are available in the city of Wichita.</p>	<p>Of Special Interest: Pre-professional curriculums include law, medicine, dentistry, pharmacy, optometry, and theology.</p> <p>Write to: Dr. Worth Fletcher, Registrar, University of Wichita, Wichita.</p>
WASHBURN UNIVERSITY	<p>Work Opportunities: Clerical and maintenance work are available on campus; off campus positions in Topeka business firms are unlimited.</p> <p>Of Special Interest: Educational facilities include a</p>	<p>planetarium and observatory with large telescope and a 54,000 volume law library.</p> <p>Write to: Registrar and Director of Admissions, Washburn University, Topeka.</p>

Former 4-H'ers Talk About College

The prospective college student has many questions to which he must find answers as he prepares and enters college. These include "What high school courses should I take? How will college be different from high school? How can I finance my education? Which college should I attend?"

These former 4-H members are now attending a four-year school. Here are their answers to questions about preparing for and going to school.

Bethany College



Verna Hiner
Junior—
Music Education
Cloud County

Bethel College



Larry Goering
Freshman—
Pre-Agriculture
Harvey County

College of Emporia



Charles Kayser
Senior—English
Lyon County

What high school subjects are most helpful to you in your college work?

English with emphasis on composition and critical analysis, foreign language, science—both physical and biological, and music, for my major.

Chemistry, biology, math, vocational agriculture, and English.

English and physical education.

What difference(s) do you notice between high school and college?

In college, there is a greater emphasis on scholastics and it is necessary to study harder. College students have to make their own decisions and take the responsibility of self-discipline and management of time.

College students have fewer subjects to study at any particular semester or quarter but consequently study in more detail than high school. More time is spent on college work and fewer social activities.

I find that one has more freedom in his leisure time, but must put more time and effort into study.

What advice would you give to high school students planning to attend your college?

In high school, take two years of a foreign language. Try to learn now how to manage time well and develop good study habits. Send applications for admission and scholarships early.

Learn the material in high school because your chances of learning and understanding the fundamentals are much greater in high school. College will be much easier if you do this.

Concentrate on comprehensive reading. I think it would be wise to study extensively and take extra courses in fields of major interest.

How are you financing your college education?

A scholarship from Bethany College, A National Defense Student loan, Harry Darby Foundation Scholarship, income from 4-H dairy projects, and parental support.

Scholarships and my own summer earnings as well as part time jobs.

I am receiving financial aid from a college scholarship and a personal scholarship fund. I also work at part time jobs whenever possible.

How did you decide where to go to college and why did you decide on this school?

I had an interview at a college career day with the admissions director from Bethany. I wanted to be a music major and knew that Bethany has an excellent reputation in this field.

Bethel college is only 4½ miles from my home so I am staying at home to help defray college expenses. Bethel offers a two year pre-agriculture course that will allow me to transfer 100% of my credits to Kansas State University.

I was influenced somewhat by both parents and teachers to attend college. My high school athletic coach influenced my choice of college.

Fort Hays Kansas State College



Vicky Irvin
Sophomore—
Home Economics
Ness County

Kansas State College of Pittsburg



Karen De Lange
Junior—
Elementary Education
Crawford County

Saint Benedict's College



Mike Hermes
Sophomore—English
Nemaha County

St. Mary College



Susan Anderson
Freshman—
Elementary Education
Sweet Grass County,
Montana

Saint Mary of the Plains



Marth Strode
Sophomore—
Elementary Education
Sedgwick County

English, math, clothing, and biology were most helpful. My typing has been very helpful because I have had to type papers for class work.

My four years of English and background in advanced algebra and trigonometry in high school are the subjects which have proven to be the most helpful to me in my college work.

A good sound basis in English will help the college student more than anything else. There just aren't any courses in college in which one doesn't have to write book reports, term papers, or essays.

I have found English, biology, and speech to be very helpful.

English is the most helpful but science and math are very useful. Typing is also helpful to type term papers, theses, and various assignments.

College classes may be so large that they are strictly lecture classes whereas in high school the classes were small and you received much individual attention. In high school we lived at home. Here we have to adjust to living with others.

The main difference that I noted is that one is more independent and therefore, the decisions made by the student will determine whether or not he is mature enough socially as well as mentally to adjust to college life.

In college, the pace is so much more rapid. The college student covers as much ground in one semester as he would in a high school year. And there is so much to read.

In college you must study more. You are on your own so far as getting your studying done and you must learn to budget your time.

It is up to you to do your homework and get it handed in. There isn't someone to push you along. College courses require much more homework than high school courses.

I would advise four years of English in high school and take more of an interest in the courses they enroll in.

Develop good study habits now while you are in high school and they will prove to be very valuable to you throughout your college career.

Do lots of reading. Learn how to read fast with full comprehension. Get a sound basis in English, math and foreign languages, but especially in English. And get set to do some pretty hard work.

Learn how to study. Take courses which will help you when you get to college, not ones in which you can get good grades easily. Learn to get things done ahead of a dead line.

Be sure to enroll early since so many students are planning to attend college. Take preparatory courses. Learn good study habits while in high school.

My folks are helping me finance my education and I also have a job on the campus working in the library.

I am employed at the college during the school year and since I live on a farm, I work at home with the understanding that the money earned at this time will be used toward my college education.

I have a partial scholarship and I work during the summer. My father supplies the rest.

My parents are financing my college education.

My dairy projects have aided me my first two years. I also work in the summers at a local restaurant. These two usually cover the costs but if not my parents aid me when needed.

Probably the biggest reason why I decided to attend Fort Hays State was the fact that it is a small school and it offers most of the classes that I really wanted to take.

I wanted to enter the teaching profession and was well acquainted with the fact that Kansas State College of Pittsburg has a known reputation for producing efficient teachers.

I chose St. Benedict's because it is a small liberal arts school. The relations between faculty and the student body are personal. The curriculum is more rigorous, but it provides a wider, fuller education.

The Sisters of Charity gave me information on Saint Mary College and after comparing it with information on other colleges, I decided I would like Saint Mary best.

I chose Saint Mary of the Plains after talking with a close friend who had attended there, it was a coed college, and it was away from home so I could mature and become independent.

Friends University



Sam Eberly
Junior—Agriculture
Sedgwick County

All shop courses ((woodworking, metalwork, drafting), chemistry, English, and typing.

Learn to budget my time. No one tells you to study.

Take high school subjects seriously.

Part time work on campus, scholarship (honor assistant), and sale of livestock.

I liked the small campus atmosphere as well as it being close to home and being able to commute was necessary in order to finance my education.

Kansas State University



Annette Buckland
Freshman—Home
Economics & Liberal Arts
Rooks County

English grammar, world history, and creative writing.

In several of my college classes there are more students than the entire enrollment of my high school. Another adjustment is learning to allot your time wisely and efficiently. It takes a constant effort to balance studies and activities.

Form good study habits in high school and acquire the basic fundamentals such as math and English. I found it a good idea to check the college catalogue for any prerequisites.

I have a 4-H Union Pacific Scholarship and a National Defense Education Act loan. By living in Smurthwaite House, a girl's scholarship hall, I save around \$250 a year in living expenses. Summer earnings also help.

I tried to explore curriculum advantages, campus, and scholarship possibilities at the schools in which I was most interested. K-State's reputation as having an outstanding school of home economics influenced my decision.

Kansas Wesleyan Univ.



Carol Albright
Sophomore—
Home Economics
Thomas County

English, home economics, government, and math were helpful high school courses.

In college there is a more serious attitude toward getting an education.

A high school student should develop good study habits; it will be easier to study in college. Be willing to have an open mind toward all the new ideas that are presented in college classes.

My mother is paying the bulk of my tuition. My church has given me \$50 per year. I received a 4-H scholarship of \$100. On weekends I have a part time job to earn my spending money.

My sister attended Wesleyan. As a high school student visiting the campus, I thought the students were friendly. I wanted the advantages of a small school where I feel one can have more personal attention from the instructors.

Marymount College



Janet Stauffer
Freshman—Biology
Saline County

I would recommend courses in the humanities, English, the physical and biological sciences, math, a pre-philosophy course, and foreign language.

College study is more detailed. The individual must adapt the ability to associate the knowledge obtained from one class with that of all others.

Realize that many opportunities are available for self-development. Use all those you can but never neglect the better educational program.

I am attending school on a \$1200 honor scholarship and a \$500 4-H scholarship.

The college I chose offers a well-rounded academic curriculum in all areas. It offers a close student-instructor relationship and has maintained the highest of educational and moral standards. The schools expenses are low and I live ten miles from the college.

McPherson College



Galen Neher
Freshman—Science
Gove County

All science, math, history, and English courses have created good background material for college courses. My high school typing course has given me the ability to do neat work.

The big difference is that of learning to do everything on one's own. It is up to the individual to plan all of his activities as well as to plan the time and place to do them.

Learn to budget your time and make good use of what time is available.

I am paying a large portion of my expenses from money earned through 4-H projects. The remainder will be paid by my parents.

I wanted to attend a church-related liberal arts college. I selected McPherson College from among the liberal arts colleges because it is affiliated with my church.

Southwestern College



Ranny Tomson
Sophomore—Speech
Hamilton County

Basically English, typing, and history.

The rate at which a subject is covered in the classrooms. In high school a week may be spent on one chapter of a text. However several chapters may be lectured on in one college class period.

Work to your potential and be prepared in areas of composition and English. A considerable amount of expression is done on paper in college and it is imperative that one has access to a wide vocabulary and to word usage.

Summer work, National Defense Education Act loan, Methodist Student Loan, and private loans.

I decided to attend Southwestern by talking with past graduates and by visiting the campus. My choice stemmed around the academic requirements that Southwestern College maintains and the fact that it is a liberal arts, co-educational, Christian college.

Sterling College



Rosaleen Boldt
Sophomore—Music Major
Rice County

Fundamentals in music courses, band, and chorus are most helpful because of my major. General courses such as English, speech, and a good math background are useful.

The most important difference is personal independence. We must decide vocation, curriculum, and friends. Also, college students are more concerned about what they do with their time and lives.

Students first must want to come to a small college where they can get personal attention in their learning. Also, the students should want to profit from the great spiritual emphasis given or it will be nothing but a handicap to their freedom.

At the present time, I am working in the Publicity Office at the College. I am also receiving funds from the National Defense Loan.

Sterling is only 14 miles from my home. I knew several that were going there and how well they liked it. Several of my relatives including my sister have attended Sterling.

University of Kansas



Danielle Goering
Sophomore—Liberal Arts
McPherson County

Each high school course has been helpful. English, especially the fourth year, and most of all, debate, for its help in listening, writing, reading, notetaking, and speaking ability.

The most obvious difference to me was independence. I would also mention original thinking instead of memorization of facts, increase of time necessary for studying, and in my case, size of classes, campus, etc.

To learn creative, original thinking! Too many high school students memorize facts from a book so that they might pass the test. These students simply do not know how to approach a "what do you think?" or "analyze" type test.

Scholarships and summer earnings. If necessary I will use loans. I plan to keep financial aid from my parents to a minimum.

Learning to think, to live with one's fellowman, to find pride in one's university, nation, and in humanity itself, carries with it a fulfillment and satisfaction to which nothing can compare. I expect to gain education, inspiration, understanding, satisfaction, and joy.

University of Wichita



Jay Rex Jolley
Senior—Music Education
Saline County

English and English Literature were the most helpful. Biology was helpful to a very limited extent.

Pertaining to educational studies, I feel the only real change is the amount of time spent on studies. College courses involve twice as much study!

Attain the highest possible grades in high school, learn to proportion your time wisely—and try to set some goal which you really want to attain.

My financial resources have for the most part been earned by working throughout the summers—at good paying "union" jobs. My parents and a 4-H scholarship also have been a big help.

I reached my decision to attend the University of Wichita after counseling with my high school music teacher and the superintendent of schools. I also visited the campus to see the facilities and meet members of the faculty.

Washburn University



Karen Mohney
Freshman—Social Work
Shawnee County

The subjects which are the most help to me are English, physiology, and psychology.

Most of my classes are lecture classes with not outside assignments due. If you do not study on your own, you will be lost when an exam comes. Another difference is all the extra time I have during the day to study.

Learn how to study.

My parents are financing my education.

Washburn is in Topeka where I live. It is an excellent liberal arts university and also has a good sociology department which interested me.



Watch Your Savings Grow!

IN AN INSURED SAFE SAVINGS ACCOUNT

at Your Nearest Kansas *Savings & Loan*

Arkansas City
First Federal Savings and Loan Ass'n. of Arkansas City

Augusta
American Savings Association

Beloit
First Federal Savings and Loan Ass'n. of Beloit

Clay Center
Northwestern Federal Savings and Loan Ass'n. of Clay Center

Dodge City
First Federal Savings and Loan Ass'n. of Dodge City

El Dorado
Mid-Continent Federal Savings and Loan Ass'n. of El Dorado

Fort Scott
Liberty Savings and Loan Ass'n.

Garnett
The Garnett Savings and Loan Association

Great Bend
The Prudential Building and Loan Ass'n.

Hays
The Hays Building and Loan Ass'n.

Hutchinson
First Federal Savings and Loan Ass'n. of Hutchinson

Iola
The Security Savings and Loan Ass'n.

Larned
The Larned Savings and Loan Ass'n.

Lawrence
Capitol Federal Savings and Loan

Leavenworth
The Leavenworth Mutual Building Loaning and Savings Ass'n.

Liberal
First Federal Savings and Loan Ass'n. of Liberal

McPherson
The Pioneer Savings and Loan Association of McPherson

Mission
Capitol Federal Savings and Loan Ass'n.

Newton
First Federal Savings and Loan Ass'n. of Newton

Oberlin
Reserve Building and Loan Association of Oberlin

Ottawa
Ottawa Savings and Loan Ass'n.

Parsons
First Federal Savings and Loan Ass'n. of Parsons

Pittsburg
First Federal Savings and Loan Ass'n.

Plainville
Rooks County Savings Ass'n. of Plainville

Pratt
The Western Savings Ass'n.

Salina
The Homestead Building and Loan Ass'n.

Topeka
Capitol Federal Savings and Loan Ass'n. at 6th and Kansas, and 12th and Topeka Blvd.

Wellington
First Federal Savings and Loan Ass'n. of Sumner County

Wichita
American Savings Association of Wichita, 4601 E. Douglas Avenue and 147 North Market Street



Borrow for Learning

(Continued from page 20)

Private Loan Funds

The following description of a loan fund will give the student an idea of the possibilities in small loans or could serve as a pattern for counties which are interested in establishing college loan funds.

In Linn County, 4-H is helping send former 4-H'ers to college. The county 4-H council provides a fund from which a qualified applicant may borrow up to \$500.

The applicant must have had four or more years of 4-H club work with at least one year's membership in Linn County. He need not live in Linn County if he has belonged to a Linn County 4-H club.

A grade average of C in high school is necessary and a C grade average is required after entering college. The applicant can not be currently receiving a scholarship toward college work.

Only students working toward a bachelor degree and attending a four-year school or a junior college are eligible. The amount of the loan is limited to \$200 per year except seniors who may borrow \$300. All loans may be subject to approval of the loan committee and are limited to the funds available.

The mortgagee agrees to make a payment of principal with zero interest until date of receiving a bachelor degree or the equivalent. Upon graduation, the rate of interest is 8% on the unpaid balance until the note is paid. Principal and unpaid interest will be due and payable twelve months after graduation. Payments of \$25 each are the minimum.

If the mortgagee drops from school or has a break in continuous schooling, the 8% interest will revert to the date of the loan with interest and principal due within 60 days from drop out or break unless other arrangements are made with the scholarship committee of the Linn County 4-H Council.

The agreement is signed by the 4-H Council committee, the mortgagee, and the parents or guardians of the mortgagee.

"Almost every Kansas student is taught at sometime or another by a graduate of the Teachers College."

The Kansas State Teachers College

EMPORIA

Also See: Pages 22, 26 & 28

These Firms Proudly Recommend Kansas State Teachers College.

Broadview Hotel
Phone DI 2-6220 for Reservations

Giger Sales Co.
Route 5

Emporia State Bank and Auto Bank
601 Commercial and 8th & Merchant

INSIST ON QUALITY PROTEIN
44% SOYBEAN MEAL

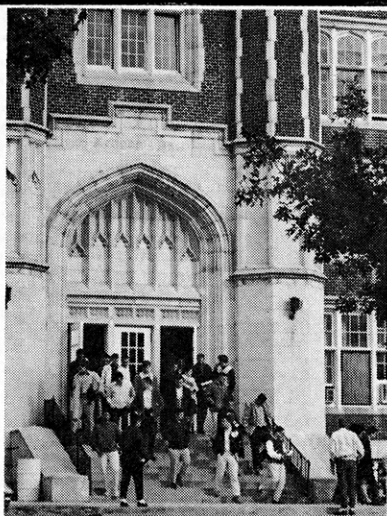


SUNFLOWER BRAND

By

Kansas Soya Products Co.
Emporia, Kansas Di 2-7270

**IN
EMPORIA**



ANDERSON CATTLE CO., INC.

Feeders of Livestock

Emporia, Kansas

Phone DI 2-0330 P. O. Box 399

These Firms Proudly Recommend
the College of Emporia

Broadview Hotel
Phone DI 2-6220 for Reservations
Emporia State Bank and Auto Bank
601 Commercial and 8th & Merchant
Giger Sales Co.
Route 5

One of the fastest-growing colleges in the midwest, the College of Emporia equips young men and women with the higher education needed for full, meaningful lives. This is accomplished by a strong, up-to-date curriculum, a distinguished and learned faculty, and a full extra-curricular program.

Although it has more than doubled in enrollment in the past three years, the College of Emporia still is small enough to provide individual attention to each student;

yet it is large enough to offer a full program of advanced learning to prepare students for a lifetime career.

Founded in 1882, the College of Emporia is affiliated with the United Presbyterian Church in the U.S.A. It has students of many faiths, and its enrollment includes students from many sections of the nation. In addition to a strong Liberal Arts program, the college offers pre-professional training in many different areas, and is affiliated with other universities and colleges in these programs.

Also see: Pages 22, 25, & 28

COLLEGE OF EMPORIA

Our hats are Off to the
Kansas State Teachers College
of Emporia

THE CITIZENS NATIONAL BANK & AUTO BANK

6th & Commercial St.
Emporia, Kansas

The Bank with the
Time & Temperature Sign

Member Federal Deposit
Insurance Corp.

Roberts-Blue-Barnett Funeral Home

Emporia, Kansas

The Welcome Mat is out
at

THE CITIZENS NATIONAL BANK & AUTO BANK

6th & Commercial St.
Emporia, Kansas

For all College of
Emporia Students.
Remember the Bank
With the Time &
Temperature Sign.

Member Federal Deposit
Insurance Corp.

Roberts-Blue-Barnett Funeral Home

Emporia, Kansas

BETHEL COLLEGE

Newton, Kansas

Bethel College is a Christian liberal arts college founded in 1887 by Mennonite pioneers.

A new modern women's and a new men's residence hall with an additional wing to both dormitories have been completed.

In the Knapp and Greenbaum study of 1953, Bethel ranked 32nd among 562 accredited U. S. Colleges and universities in the production of scholars (those receiving graduate fellowships, scholarships or PhD degrees).

Bethel emphasizes general education in the basic intellectual disciplines of the arts and sciences, but with a definitely Christian emphasis.



For Further Information, Write—

Admissions Counselor
Bethel College
North Newton

Also See: Pages 22, 25 and 28

MIDLAND NATIONAL BANK

Full Service Banking

Member F.D.I.C.
NEWTON, KANSAS

THE BETHEL CLINIC

Newton, Kansas

MAKE
BETHEL COLLEGE
at
NEWTON, KANSAS
YOUR CHOICE

First National Bank
Newton, Kansas

**"Heart of the Nation
Station"**

KJRG AM 950KC
FM 92.3MC
Newton, Kansas

These Firms Proudly Recommend
Bethel

First Federal Savings & Loan Assn.
100 E. Broadway

Frey's
Quality Jeweler
133 W. 6th

Houston-Doughty Lumber Co.
200 E. 6th
Meadowlark Homestead
Route 4

Midland Mutual Fire Insurance Co.
119 W. 6th

Newton Skating Palace
130 E. 3rd

Wilson Drug Store
525 Main

Elmer P. Zehr, Insurance
601½ Main

Take a look THE KANSAS

St. John's College

WINFIELD, KANSAS

St. John's College, Winfield, Kansas, is a Christian coeducational junior college founded in 1893 by Lutheran laymen, Mr. J. P. Baden, and operated now under the auspices of The Lutheran Church—Missouri Synod. It is fully accredited by the North Central Association of Colleges and Secondary Schools and the Kansas Department of Public Instruction, and credits earned at St. John's are readily transferable to other colleges and universities.

St. John's has an excellent student-faculty ratio and an extensive counseling and advisor program.

St. John's offers the junior college programs of study for both men and women who wish to prepare for full-time service in the Lutheran church as pastors, teachers, parish workers, and deaconesses, and also terminal and transfer programs in business, liberal arts, and pre-professional courses (law, medicine, engineering, etc.).

Intercollegiate athletics for men in basketball, soccer, baseball, tennis, golf, and track. Intramural sports for men and women. Local Greek-letter societies. Three large choirs. All-American student-published newspaper. Intercollegiate and intramural fornications and debate.

Physical education building dedicated in 1959. One of the finest junior college libraries in the Middle West, dedicated in 1961. Scheduled for construction are a new campus center and fine arts building.

Enrollment: 240 representing 29 states

Faculty: 29 full-time and 2 part-time

Tuition and fees: approximately \$925 per year for tuition, room, board, linen service, health insurance, yearbook, and other fees. Slightly higher tuition for those not preparing for full-time service in the Lutheran church. Scholarships, loan funds, and part-time employment available.

Admission Requirements: C average and rank in upper 60% of graduating class, recommendation, health report.

For further information write:
Director of Student Recruitment
St. John's College
Winfield, Kansas

at . . .

JR. COLLEGES

In addition to these there are Jr. Colleges at Arkansas City, Chanute, Coffeyville, Dodge City, El Dorado, Fort Scott, Garden City, Hutchinson, Independence, Iola, Kansas City, and Parsons.

MILTONVALE WESLEYAN COLLEGE

Miltonvale, Kansas



MWC's Hall of Science to be completed this spring

EDUCATION IN DEPTH

A wholesome balance between academic excellence and forthright Christian purpose.

JUNIOR COLLEGE CURRICULUMS: General Education, Teacher Training, Business, Music Education, Pre-Science, Pre-Engineering, Pre-Nursing, Ministerial Training.

ACCREDITED by the Kansas State Board of Education and the University of Kansas.

ESTIMATED EXPENSES (for one year):
Board, Room, Tuition, Fees—\$1,045.
Tuition and Fees only—\$490.

FOR ADDITIONAL INFORMATION WRITE:

OFFICE OF ADMISSIONS
MILTONVALE WESLEYAN COLLEGE
Miltonvale, Kansas

HESSTON COLLEGE

Hesston, Kansas

was established by the Mennonite Church in 1909. It is accredited as a Junior College by the Kansas State Department of Public Instruction and holds a "candidate" status for membership in the North Central Association.

Enrollment: 276

Teaching Faculty: 21

Tuition: \$367 per semester

Board and Room: Men—\$290 Women—\$270 (per semester)

Scholarships, Grants, Aid and Loan Funds: Available and awarded on the basis of need and scholastic ability.

Work Opportunities: On campus as well as off campus. Students have opportunity to work approximately 15 hrs. per week and earn \$200-300 or more a year.

Curriculum: The student may select a liberal arts program, courses from art to zoology, to lay a foundation for the last two years of College.

For further information, write:

Admissions Counsellor
Hesston College
Hesston, Kansas

Pratt Junior College

Pratt, Kansas

**Fully Accredited by State Department of Education—
Two Years—Associate of Arts Degree**

Pratt County College is a two-year, non-profit college that was organized in 1938. It is controlled by the Pratt Board of Education and the County Board of Regents. The college is fully accredited by the State Board of Education which means that work taken at the college is recognized by other colleges and universities. The work is transferred without difficulty or loss of credits. Eighty percent of the 1963 graduates are continuing their education this year in higher institutions in fourteen different states.

The specific advantages of being a Pratt County College student are: an excellent faculty; friendly, informal atmosphere; small classes and personal attention; outstanding student personnel services; economical cost for course and registration fees about \$80 a year; convenient location to transportation and shopping center; services of trained counselors; access to a five-building campus, including an excellent new cafeteria; student honors program; opportunity for leadership and social development in many activities.

Pratt is a friendly city of 8500 people with many opportunities for students to find employment. The merchants and citizens are pleased to welcome the students to the community and are proud to recommend the college to Kansas boys and girls.

Scholarships, grants-in-aid, and loan funds are available and are awarded on the basis of need and scholarship ability.

Programs of Study:

College Parallel Division: Art, Agriculture, Business Administration, Dentistry, Engineering, Forestry, Game Management, Home Economics, Law, Liberal Arts, Medicine, Medical Technology, Mortuary Science, Music, Pharmacy, Physical Education, Radio Broadcasting, Veterinary Medicine, Teacher Education.

Terminal Division (Vocational & Semi-Professional): Accounting, Agriculture, Industrial Arts, Laboratory Technician, Secretarial Training, Vocational Office Training (on the job training).

For further information, Write
The Office of Admissions
Pratt County College
Pratt, Kansas

This space sponsored by Pratt Junior College and
The First National Bank, Pratt, Kansas
Member F.D.I.C.

The People's Bank, Pratt, Kansas
Member F.D.I.C.

Central College

McPherson, Kansas

Central College is celebrating its fiftieth anniversary during 1964. As Kansas' oldest accredited junior college, it has a proud tradition of offering basic general education courses to students interested in a distinctly evangelistic, Christian college.

Enrollment: Co-education. Freshman class of 90 and sophomore class of 60. 70% of the students live on campus.

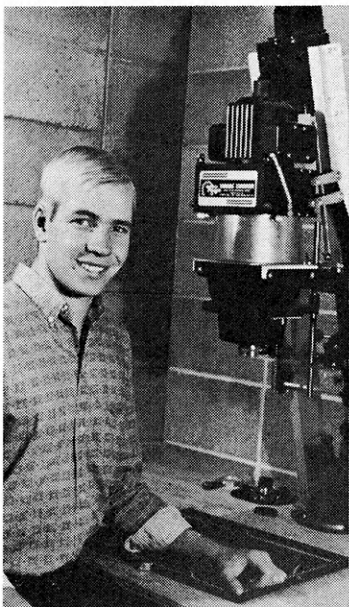
Tuition and fees: Tuition \$18 per semester hour. A year's expenses would be approximately \$550 tuition, and \$550 board and room.

Scholarship, loan, and student work: Scholarships range from \$50 to \$400 per year. NDEA loan available, varying from \$100-\$600 per year. Campus work \$150-\$200 per year.

Curriculum: Associate in Arts Degree at the completion of two years. General education courses leading to most professional areas. Associate in General Studies Degree for students in terminal program. For further information, write

Director of Admissions
Central College
McPherson, Kansas

4-H PROJECTS HELP PAY THE WAY



Three 4-H projects are helping a former 4-H'er pay his own college bills. Don Hart, a junior in business and agriculture at Colorado State University, is a former member of the Morris 4-H Club in Wyandotte County.

Vegetables, Beef, Photography

Vegetables, beef, and photography are the three projects which form the basis of Hart's income. Each year, in partnership with his mother, father, and brother, Bob, he is respons-

How About The Newspaper Business?

If you are thinking about following a business or professional career, why not spend an hour visiting with your home town editor and learn about the possibilities in journalism?

The newspaper business offers an opportunity for a most interesting and rewarding life for the young man or woman who has a broad educational background, a liking for people, courage, and a desire to have an active part in the American way of life.

A good newspaper man has the satisfaction of knowing that he is helping others to a better life. He remembers that "The people Have The Right To Know" and, that there is no better way to have a well informed Democracy than through the printed word.

Before you make up your mind on your life's work, please think seriously about journalism. Thousands have found it a most enjoyable and rewarding career. Maybe you?

The Journal-World

Lawrence, Kansas

"The HOME Newspaper for 13,000 Families"

SAINT MARY

the distinctive difference

A CATHOLIC COEDUCATIONAL FOUR-YEAR LIBERAL ARTS COLLEGE

- Fully accredited member of North Central Association of Colleges and Secondary Schools
- Approved by the University of Kansas
- Accredited by the Kansas State Department of Public Instruction

DEGREES

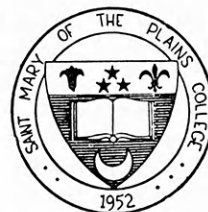
Degrees in Liberal Arts, Music Education, Medical Technology, Nursing

PREPROFESSIONAL PROGRAMS

Two-year programs in Agriculture and Engineering

Residence facilities for
Men and Women
120 Acre Campus

SAINT MARY OF THE PLAINS COLLEGE



Write—

Director of Admissions
St. Mary of the Plains College,
Dodge City,

PENNINGTON ATHLETIC GOODS

"WESTERN KANSAS' FINEST
WHOLESALE TEAM OUTFITTERS"

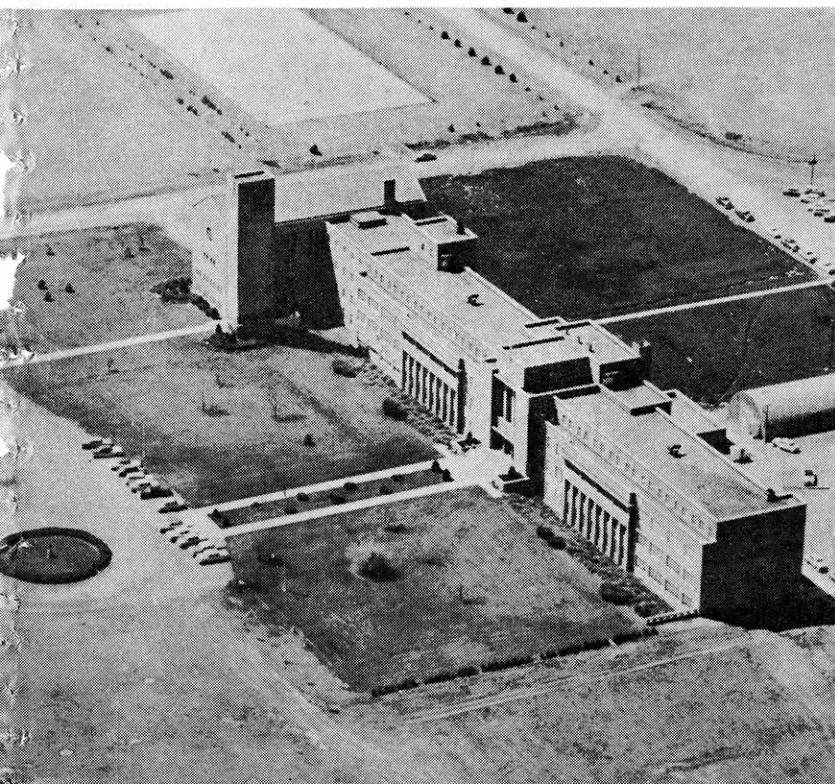
Phone HU 3-5221
409 W. Wyatt Earp Box 688
Dodge City, Kansas



2200 First Ave.
DODGE CITY
"Welcome Students"
"Let's Go Bowling"

OF THE PLAINS COLLEGE

Dodge City, Kansas



Curriculum:

B. A., B. of Music, B. S. in Medical Technology, B. S. in Nursing and B. S. in Education offered with these major fields—

Biology
Business Administration
Chemistry
Education:
Elementary and Secondary
English
French and Spanish
History and Social Science
Home Economics

Mathematics
Medical Technology
Music: Music Education,
Piano, Voice
Nursing
Philosophy and Religion
Speech and Drama
Pre-professional training in
engineering and agriculture

Also see: Pages 22, 27, & 28

These firms proudly recommend St. Mary of the Plains College.

Brady Implement Company, Inc.
400 E. Trail

Central Grocery & Market
108 E. Oak

Crane Motor Service
Phone HU 3-4031
400 Military

Dodge City Implement Company
310 W. Trail

First Federal Savings & Loan Ass'n.
207 Gunsmoke

Lembright Glass Shop
214 Woodland Ave.

Pepsi-Cola Bottling Company
1103 W. Wyatt Earp Blvd.

Sam's Shoe Shop & Hat Works
409 2nd Ave.

Jess Scheib's Bookkeeping Service
610 2nd Ave.

Silver Spur Lodge & Restaurant
1510 W. Wyatt Earp Blvd.

John Stickney, Inc.
1409 W. Wyatt Earp Blvd.

Susie's Secretarial Service
209½ W. Spruce

Dr. L. G. Weide, Dentist
1806 Hart

F. W. Woolworth Co.
706 2nd Ave.

THE RIGHT CO-OP ASSOCIATION

Wright, Ness City & Wilroads

First National Bank

Dodge City, Kansas

Drive-in Walk-up

Free Parking While Banking

Member F.D.I.C.

Through the years this bank has been an active booster for 4-H. We urge local members to consider the Dodge City College to further their education after High School.

FIDELITY STATE BANK

Dodge City, Kansas

Member FDIC

Member Federal Reserve System

L. B. Hancock, Inc

Realtors—Insurance—Loans
FHA Approved Mortgagee
1300 W. Wyatt Earp Blvd.
Dodge City

The Southwest Milk Producers Association

"All We Have We Owe to Udders"

SOUTHWESTERN COLLEGE

Windfield, Kansas



New \$500,000 Student Center

A fully accredited 4-year liberal arts college.

Also See — Pages 22, 27 and 28

First National Bank

Winfield, Kansas

Full
Service
Bank

Member F.D.I.C.

For Your Building Needs
Dial CA 1-0250

**A. B. Everly
Lumber Co.**

210 W. 9th

Winfield, Kansas

Calvert's
DEPARTMENT STORE

We Are Proud to Be
the Home of
Southwestern College

CHAMBER OF COMMERCE
Winfield, Kansas

Quality Brand
Meats

Sheneman

Market & Packing Plant
Winfield, Kansas CA 1-2610

BIRD'S REXALL DRUGS

YOUR PRESCRIPTION STORE
Russell Stover Candies
Phone CA 1-0450

These Firms Proudly Recommend
Southwestern College.

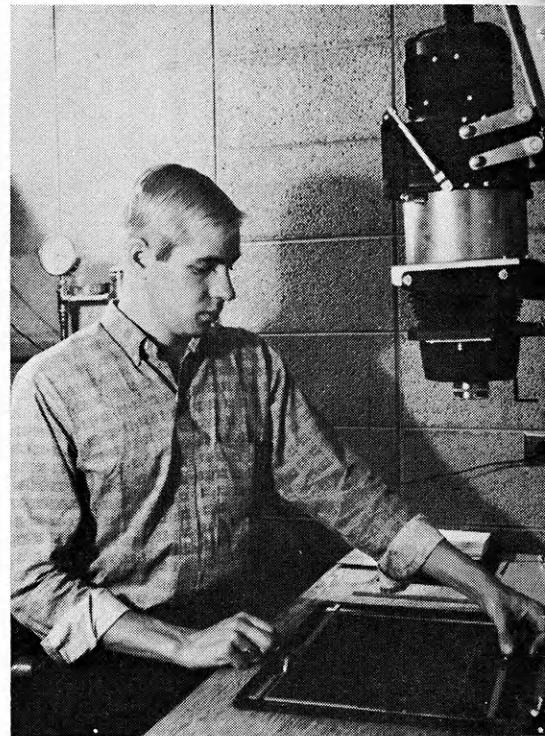
Banks Insurance
CA 1-9510 915 Millington
Collier's Lanes
Highway 160 East
Drum's Food Market
121 College
Dungey & Son
711 Main
J. W. Powers
Real Estate & Insurance
118½ East 9th St.

ible for a sizable truck farming operation. Sweet corn, beans, melons, and other crops raised on the Hart and neighboring farms are sold through a roadside stand managed by Don.

Don's beef project has been developed into a heard of cows. Profits are made from the sale of calves.

The business he has built from his 4-H photography project is perhaps the most interesting way Don earns money to meet college expenses.

As a freshman, Don relied



upon his parents' support. Last year, as a sophomore, he began his "party picture" business where he took color pictures at the many college parties, had them commercially processed, mounted the prints in imprinted and dated folders and delivered within two weeks. Students paid \$1 for each print. In addition, he took extra pictures free of charge for the organization's scrapbooks.

When more than one party was held on a given evening, Don hired other students to take pictures. He has employed as many as five on especially busy nights.

Works For Newspaper

Since he was in the photography business, Don contracted

to take pictures for the **Collegian**, the university daily paper. Before the year was over he was promoted to head photographer with a salary.

Carrying his cameras with him gave him several opportunities for off-campus news pictures. He got exclusive pictures and a story on a forest fire west of Loveland, Colorado, and of a fatal auto accident on the edge of Fort Collins. These were sold to the Fort Collins **Coloradoan** and stimulated news wire interest.

During his sophomore year, Hart figures his photography work paid for two new cameras and his room and board. Income from his cow herd and vegetable marketing businesses added enough income to pay all other school and living expenses for the year. He had enough money left to cover a couple weeks vacation in Mexico with a fraternity brother.

Don is continuing his party picture business and **Collegiate** work during this, his junior year. He expects more business during the current year and has hired another student as secretary to catalog, file, prepare folders, and deliver pictures. In addition, the university has hired him to assist the college photographer in such work as research, publicity, sports, university news and commercial photography.

Active On Campus

Busy? Yes, but Don is doing pretty well as a student. He is a member of Alpha Gamma Rho, social fraternity where he edited last year's newsletter. He was chairman of the 1963 College Day Parade, a big event at the university. He owns a car, but prefers to ride his bicycle, especially on trips into the nearby mountains.

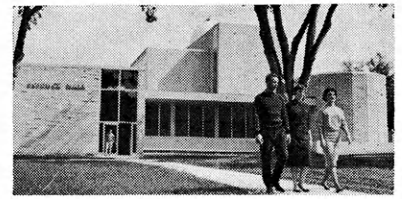
Don has managed to maintain a "B" average for his freshman and sophomore years. His scholastic achievement has earned him membership in Alpha Zeta, national honorary agriculture fraternity.

WASHBURN UNIVERSITY OF TOPEKA

Washburn's atmosphere is one of friendliness among students and faculty. It is large enough to provide a variety of courses, but not so large that a student feels "lost in the crowd."

Daytime classes welcome 2,400 full-time students; evening classes, 1,300. In addition to classes and campus activities, students may attend cultural and athletic events in Topeka.

See pages: 22, 27 and 28



Stoffer Science Hall

These Firms Proudly Recommend Washburn University.

Blaylock Drug Company
4 Convenient Locations
Ira Price Cafe
Hi-Way 24 & N. Kans.
Topeka Chamber of Commerce
Box 640
Whelan's Inc.
715 E. 4th

Hook nose . . . bun . . . black dress ?

NO! "We are not ancient," declares Jennie Asch, social worker of the Salina County Department of Social Welfare. "It's wonderful work," emphasizes another social worker and others say:



"My most ardent regret is that social work is new in my life . . . it's appealing, rewarding, challenging and never boring."

Dennis Papp, Topeka

"It helped me realize the value of human worth."

Barbara L. Krasney, Wyandotte County



"A social worker will tolerate and not condemn, have respect for the client, and understanding."

Grace Nimmo, Sedgwick County

"Social work makes demands, but in return it gives the promise of rewards beyond the monetary."

Verle C. Kellogg, Norton County



" . . . service to others . . . show me reality . . . broadens my outlook on life . . . challenges all my capabilities . . ."

Catherine Lesperance, Cloud County



Interested? read on

Leaders in the field of social work are concerned because the need for social workers is increasing faster than they are being trained. "We are going to need many more social workers in the next few years," reports W. Van Alexander, director of personnel manager for the State Department of Social Welfare. Courses in sociology, psychology, economics and home economics are especially good but a bachelor degree with any major is the only educational requirement.

Learn through summer work

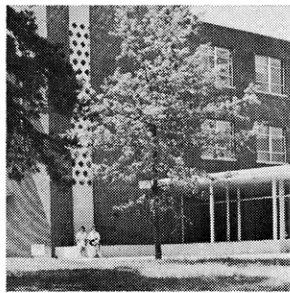
Kansas has a paid summer work experience program for potential social workers. This is an opportunity for college students to test their interest in social work through first hand work experience..

For more information on this program write: Director of Staff Development, State Department of Social Welfare, Topeka, Kansas

SAINT MARY COLLEGE

Xavier, Kansas

Saint Mary College offers purposeful, intelligent, Christ-centered living to young women desirous of developing their intellectual and artistic gifts.



A beautiful new dining hall was opened in 1963, and a new dormitory will be ready in 1964. A modern and well equipped science building and language laboratory are recent completions.

Also See: Pages 22, 27 and 28

INTERNATIONAL PAPER COMPANY

Long-Bell Division
LANSING, KANSAS

Julius Kaaz Const. Co., Inc.
LEAVENWORTH, KANSAS

"If it's worth doing,
It's worth doing right"

These Firms Proudly Recommend
Saint Mary College.

B & I Acceptance Company
5th & Cherokee

Christy's Auto Salvage
Route 1

A. M. Geiger Cement Co.
1411 S. 2nd St.

Lake's Auto Salvage
4th & Marion

Ed Reilly & Sons, Insurers-Realtors
5th and Delaware

First National Bank of Leavenworth

Oldest Bank In Kansas Est. 1856

MEMBER F.D.I.C.

LEAVENWORTH MUTUAL
Bldg, Loaning & Savings Ass'n.
100 South 4th
Leavenworth, Kansas
INSURED SAVINGS
& HOME LOANS

OTTAWA UNIVERSITY

Ottawa's widely recognized program of education enables students to gain breadth of understanding and a comprehensive knowledge in specialized fields.

Students may prepare for careers in business, teaching, law, medicine, the sciences, agribusiness, government service, music, art, the ministry, writing and other professions. Also a unique honors plan is available.

A University Union was completed in 1963 and the Myers Library and Mammel Art Center are recent additions. Residence halls for both men and women and apartments for married students are available.

For A Fine Education

Ottawa University
For Fine Banking Service

**The First National Bank
of Ottawa, Kansas**

Member F. D. I. C.

See: Pages 22, 26 and 28

For more information write—
Tom Dillen
Director of Admissions

**THE BENNETT
CREAMERY CO.**

"Better Dairy Products"
For Over 59 Years

OTTAWA, KANSAS

**Ottawa Savings & Loan
Association**

109 East Second Street
Serving This Area Since 1889

Compliments

**Peoples
National Bank**

Ottawa, Kansas

Member F.D.I.C.

A Special Message to High School Students

Like most young people, you may have dreamed already about some kind of future for yourself. You may even have visualized a particular job.

How much do you really know about the job, about the tedious part as well as the possible glamour, about the exact educational, temperamental or even physical requirements which must be met? Have you visited and interviewed anyone in such a job?

In career exploration, where do you begin? You can begin with yourself. You can begin with an effort to understand your own interests and abilities, both as you see them and as others see them.

You can learn about yourself by examining many aspects of your life—school work, jobs you have held, and everyday experiences. Try to recognize their significance in terms of four factors which help to make up what is sometimes called your “personality profile.” These factors are your—

- *Interests
- *Aptitudes
- *Temperament
- *Capacity for Education

After (1) analyzing yourself, you will want to (2) explore different career op-

portunities, compare the career opportunities with your “personality profile,” and (3) shift the opportunities so as to make some general decisions as to the road you want to take.

A fourth step in career exploration is to consider the preparation you’ll have to make for the career fields you wish to pursue. Whatever your career choice, you’ll need further training beyond high school. It may be a trade school, business college, apprenticeship or some other form of training. For nearly 50% of the high school graduates, it’ll be college.

The Career Exploration Program of Kansas State University’s Extension Service will cover all of these points—

- *Know Yourself
- *Learn of Many Career Opportunities
- *Sifting the Opportunities
- *Prepar for Your Future.

New workbooks and handbooks are available now for leaders, county extension agents and boys and girls who wish to study career exploration.

Who Can Take Part?

You and all your friends can study and discuss career exploration as a part of the Senior 4-H Program for all young adults. It’s been especially designed for

all high school students 15 to 19 years of age.

Your own small, informal group is the core. There’s nothing to “join,” no dues to pay. You simply meet informally as often as you wish for as long as you wish with five to fifteen interested friends, at a time and place of your choosing.

You Can Take These Easy Steps

1. Show this folder to some friends and buddies. Invite five to fifteen interested friends to join you in the special interest area of your choice.

2. Contact your County Extension Office in your county seat town for resource information on one or more of the listed topics, or other topics of your choosing. If they do not have resource material, see your city or school librarian.

3. You and your friends ask the informed adult of your choice to help you as a resource person.

4. In cooperation with the resource person, set a time and place for your first meeting.

That’s all! From this point on, your group will run itself. Start setting up your group today! Explore careers and start planning your future now!

STERLING COLLEGE

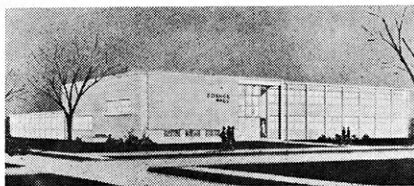
Sterling, Kansas

You Are
Always Welcome
in Sterling

THE FARMERS
STATE BANK

STERLING, KANSAS

DEPOSITS INSURED BY F.D.I.C.



THOMPSON HALL OF SCIENCE
now under construction

Academic excellency in a Christian Atmosphere

Pride in the Past . . .

77 years of quality education; hundreds of graduates in responsible positions; faithful to the Presbyterian heritage.

Faith in the Future . . .

Growing enrollment; an expanding campus; significant support from Church and Alumni; greater academic excellence in qualified faculty, superior students, and challenging honors program.

Write: Dr. William McCreery, President, Sterling College, Sterling, Kansas.

Also See pages 22, 27 and 28

This Firm Proudly Recommends
Sterling College.

Gamble Store
141 S. Broadway

Congratulations
to
Sterling College

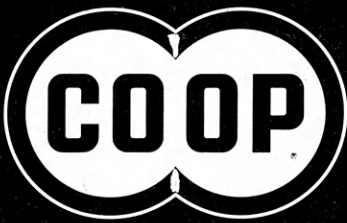
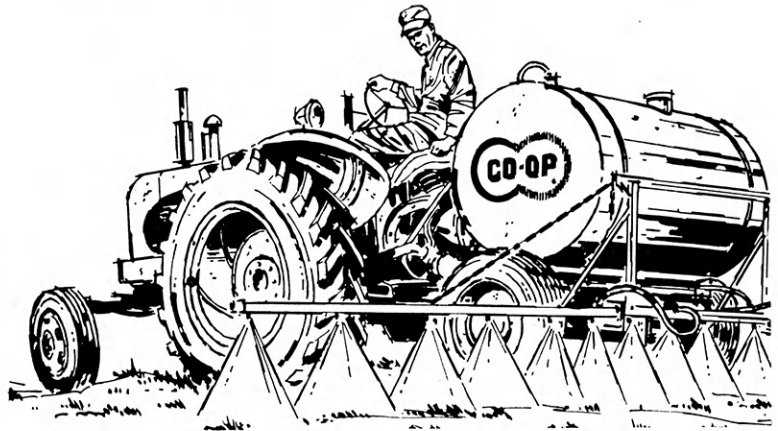
on their
Continued Growth
and for their
Contribution to the
Sterling Community

**FARMER'S
CO-OP UNION**

Sterling

TOP
DRESS
WHEAT

NOW



NITROGEN SOLUTIONS

The stakes are big, prices are favorable, and your opportunity is best now for top dressing your wheat with CO-OP Nitrogen Solutions.

State Experiment Stations show nitrogen solutions are equivalent in crop response to "dry" fertilizers. In easy-on liquid form, CO-OP Nitrogen Solutions go to work at once to build big wheat yields. Just 36 cents worth can produce an extra bushel, now worth \$2.00.

TOP DRESS NOW and enjoy the advantages of low prices, ample supply, avoiding wet fields in spring.

SEE YOUR CO-OP TODAY!...

CONSUMERS COOPERATIVE ASSOCIATION

KANSAS CITY, MISSOURI

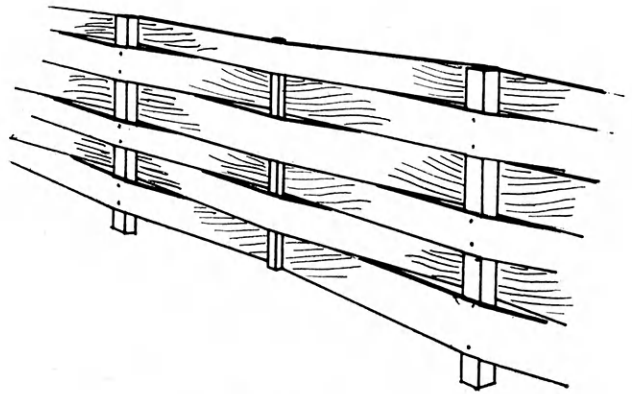
FREE!!

New 4-H Woodworking Plans



END TABLE

Allen Shorthill, Shawnee County, built this table from his original design.



YARD FENCE NO. 3

*Plans for These Projects Are
Available At The Lumber Dealers
Listed on These Pages. Ask For Them.*

**Insect
Display Box**



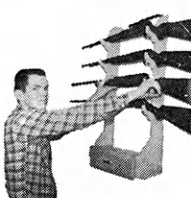
**Vertical
Shoe Rack**



**Sewing
Cabinet**



**Handy
Gun Rack**



**Rotating Selection
Tool Rack**



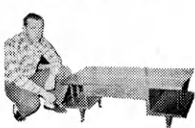
Shoe Shine Kit



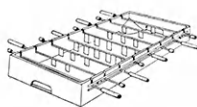
**Cart with
Removable
Trays**



**Two-Level
Coffee Table**



**Football
Game**



Book Case



Pounding Board



Magazine Rack



Walnut Chest



Always on hand... YOUR LUMBERMAN

is your best friend when
you need good material



Abilene Central Lumber Company	Emporia Home Lumber and Supply Co. The Smith Lumber Company	LaCygne Blaker Lumber and Grain Company
Agra Agra Lumber Company	Eureka A. C. Houston Lumber Company	LaHarpe Blaker Lumber and Grain Company Diebolt Lumber and Supply
Alton Alton Lumber and Coal Company	Everest Alexander Lumber Company	Lakin Hart and Company Lakin Lumber Company, Inc.
Arkansas City Central Lumber Company	Fowler The T. M. Deal Lumber Company, Inc.	Lancaster T. E. Snowden Lumber Company
Asherville Asherville Lumber and Coal Company	Fredonia The Home Lumber & Supply Co.	Lansing International Paper Co., Long-Bell Div
Ashland Don Spotts Lumber Company Home Lumber and Supply Co.	Garnett Star Grain and Lumber Company	Larned Clutter-Lindas Lumber Company
Atchison Hixon Lumber Company	Gaylord Hardman Lumber Company	Lawrence Woods Lumber Company Logan-Moore Lumber Company
Atwood Atwood Lumber Company	Glen Elder Dickinson Lumber Company	Lebanon Lebanon Lumber Company
Augusta The J. W. Metz Lumber Company	Goodland Hardman Lumber Company Rasure Lumber Company	Lenora Lenora Lumber Company
Beloit Peoples Lumber and Coal Company	Great Bend Whitesell Lumber Company	Liberal The Star Lumber Company
Bern Bern Lumber Company	Greensburg Home Lumber and Supply Co.	Little River The T. M. Deal Lumber Company, Inc.
Bird City The Bird City Equity Mercantile Exchange Griffin Lumber Company	Hartford Thomas Lumber Company	Macksville Home Lumber and Supply Co.
Brownell Richolson Lumber and Hardware Company, Inc.	Hays Hardman Lumber Corporation, Inc.	Madison Madison Lumber Company
Cawker City Cawker City Lumber Company	Healy Healy Co-op Elevator Company	Manhattan Griffith Lumber Company Ramey Brothers
Chanute Smith Lumber Company	Hill City Hardman Lumber Company	Mankato Mankato Lumber Co.
Chapman Sanborn Lumber Company	Hillsboro Hillsboro Lumber Company	Marysville Howell Lumber Co.
Colby Hardman Lumber and Coal Company Hess Lumber Company	Holton Holton Lumber Company	Meade Home Lumber and Supply Co.
Coldwater Home Lumber and Supply Co.	Holyrood Home Lumber and Supply Co.	Minneola The T. M. Deal Lumber Company, Inc.
Concordia Sanborn Lumber Co.	Hugoton The Star Lumber Company	Moundridge Clayton Vogt Lumber Co., Inc.
Cottonwood Falls Burgner-Bowman-Mathews Lumber Co.	Iola Klein Lumber Company	Neodesha O. E. Woods Lumber Company
Denison Denison Lumber and Hardware Company	Johnson Seyb-Tucker Lumber and Implement Company	Ness City Rock Island Lumber Co.
Denton C. H. Gish Company	Kinsley Kinsley Co-op Exchange Lumber Yard Home Lumber and Supply Co.	Norton Norton Lumber Company
Dodge City The T. M. Deal Lumber Company		Nortonville Alexander Lumber Company
Elkhart Elkhart Lumber Co. The Star Lumber Company		Oakley Oakley Lumber Company Golden Belt Lumber Company

Looking for Woodworking Ideas?



See Any of These Lumber Dealers for a Free 4-H Woodworking Plan

Oberlin
Building Supply Headquarters

Offerle
Offerle Co-op Lumber Co.

Olathe
Cowley Lumber and Hardware Company

Onaga
Onaga Lumber & Grain Co.

Oswego
Home Lumber and Supply Co.

Ottawa
Hubbard Lumber Company, Inc.

Paradise
Paradise Lumber Company

Parsons
O. E. Woods Lumber Co.

Phillipsburg
Hardman Lumber Company

Plains
Home Lumber and Supply Co.

Pleasanton
Blaker Lumber and Grain Company

Prescott
Prescott Lumber Company

Pretty Prairie
The George W. Ulitch Lumber Company

Protection
Home Lumber and Supply Co.

Russell
Hardman Lumber Company of Russell Inc.

St. Francis
St. Francis Equity Exchange

St. Marys
St. Marys Lumber Company

St. John
English Lumber and Supply Company
Home Lumber and Supply Co.

Salina
Everett Lumber Co., Inc.

Satanta
The T. M. Deal Lumber Company, Inc.

Seneca
Koelzer Lumber Company
Seneca Lumber Company

Severy
Tolman-Gibbon Lumber Company

Smith Center
Smith Center Lumber Company

Stafford
The T. M. Deal Lumber Co., Inc.
Home Lumber and Supply Co.

Stockton
Stockton Lumber Company
The Golden Belt Lumber Co.

Sublette
The T. M. Deal Lumber Company, Inc.

Syracuse
Everitt Lumber Company, Inc.

Ulysses
The T. M. Deal Lumber Company, Inc.
Ulysses Lumber Co.

WaKeeney
Hardman Builders Supply Company

Wakefield
Sanborn Lumber Company

Wathena
Farmers Grain and Lumber Company

Wichita
Lawrence Lumber Company
Stockyards Cash and Carry Lumber Co.
Alexander Lumber Company

Wilson
Hoch Lumber Company

Winfield
A. B. Everly Lumber Company

Woodbine
Kohler Lumber Company

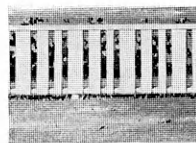
Zenda
The George W. Ulitch Lumber Company

Missouri

Independence
The George W. Ulitch Lumber Company, 11432 Truman Road

Ask For Your 4-H Woodworking Plans.

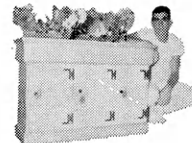
Yard Fence, No. 2



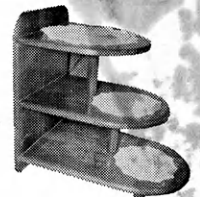
Closet
Storage
Cabinet



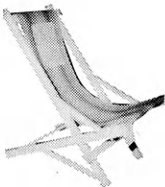
Indoor Planter



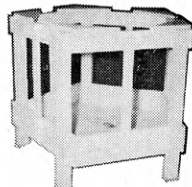
Stepstair



Folding
Lawn Chair



Self Feeder
for Sheep



Bill's Baseball
Rack



Yard Cart



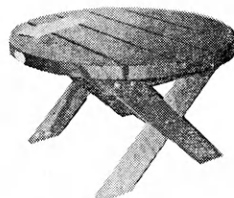
Simple Work
Bench



Patio
Planter



Patio Table



Child's Step
Stool and Chair



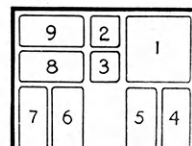
Wheel Barrow
Planter



Lawn Set



Two Games



OTHERS

Bedside Stand	Chest of Drawers
Gate Sign	Coffee Table
Martin House	Back Yard Fence
Tete-A-Tete	Lazy Susan
Toy Stove	Holding Gate
Dog House	Wall Cabinet
Picnic Table	Sandbox
Picnic Bench	Blue Bird House
Hanging Flower Box	Funny Book Rack
Bookcase Headboard	Mail and Memo Board
Collapsible Visual Aid Stand	Christmas Tree Gifts
Typing Desk and Bench	Automatic Bird Feeder
	Sheep Blocking Box

We SALUTE Electric Project Winners

The Investor-owned electric companies of Kansas proudly salute the Electric Project winners listed below. These worthy 4-H'ers have received Westinghouse Medals for the fine work. If you are not currently enrolled, join the many 4-H'ers in this project to learn more about electricity and the proper care and use of electrical equipment. Contact your club leader for more information.

Kansas Champion: Lyle Bergstrom, Republic County
County-wide Electric Program Award: Scott county

1963 Electric Winners

LABET
Danny nbrandt
Ronnie lis
Ker s
C e ownwell
LEWIS
Lester Stein
Iart isler
LINCOLN
Donald Zvolanek
Rar. Dee Scott
Armin Kelly
Valter Simpson
LINN
Pat Concannon
Ray Hodgson
LOGAN
Gene Luther
George Kemp
LYON
Kenny DeDonder
Danny Gasche
Bill Seefeldt
Larry DeDonder
McPHERSON
Dick Russell
Darrell Plenert
MARION
Warren Hett*
Dennis Buethe
MARSHALL
David Pike
Donald Prigel
Douglas Musil
Donald Stock
MADE
Ray Brannan
Larry Thompson
MIAMI
Darrell Caldwell
David Myers
Arthur Skinner
Dave Smith

MONTGOMERY
David Jones
Bob Stritzke
Jim Mathis
Richard Hastings
MORRIS
Sonja Garanson
Doug Maley
Damon Burton
Virgil Wigle
MORTON
Gene Milburn
NEMAHA
Charles Schlaegel
Daniel Ronnebaum
NEOSHO
Bob Bower
Ronnie Smith
Jim Norris
NESS
Rod Blocksom*
Kenneth Schuler
Dennis Atwell
NORTON
Lester Mizell
David Cuthbertson
OSAGE
Bryce Romine
Kent Gragg
Charles Cronn
David Bush
OSBORNE
Roy Roenne
OTTAWA
Paul Muller
Steve Clanton
Pete Hanes
Larry Kirn
PAWNEE
Ardis Webster
Alan Coddington
George Morrill
Jack Merkel

POTTAWATOMIE
Marlin Jones
Danny Pugh
Jim William
Larry Carlson
PRATT
Alan McFall
RENO
Charles Newcom
Mike Klatt
Arlen Proffitt
Bobby Walsten
REPUBLIC
Lyle Bergstrom*
Juanita Bergstrom
David Kasl
Don Blecha
RICE
Marlin McFarland
Roger Leonard
Howard Partington
Jimmy Mehl
ROOKS
Don McLaughlin
Charles Lambert
Ronnie Keirns
RUSH
Doyle Kirby
RUSSELL
Albert Clow
Roger Berry
SALINE
Loren Johnson
Mike Egan
Bruce Johnson
John Summers
SCOTT
Norma McReynolds
Kenbe Goertzen
Kenneth Trout
Leta Marmon

SEDGWICK
Greg LaCoss
Ron Symington
Terry Maxfield
SHAWNEE
Kent Palmberg
Bob Prochaska
Daniel Gee
SHERIDAN
Larry Hill
David Taylor
Johnny Jamison
Alfred Campbell
SHERMAN
Donald Snethen
Richard Daise
SMITH
Lauren Dean Libby
STAFFORD
Tony Delp
STANTON
Wendell Nicholas
SUMNER
Clifford Sneed
Wayne Petrik
Roger Shepherd
Paul Blankenship
THOMAS
Harold Murphy
Roy Murphy
WABAUNSEE
Jim Gehrt
Jerry Hatfield
WALLACE
Robert Becker
WASHINGTON
Billy Gene Hoffman
Glenda Odgers
Richard Krueger
WILSON
Lee Kidd
Ronnie York
Sam Atherton
Barbara Crabb
WYANDOTTE
Stephen Martin
Tommy Dennis

* Received an educational trip to the annual Wichita Recognition Event.

WATCH THIS
PAGE FOR IDEAS
ON FARM AND
HOME ELECTRIC
PROJECTS

Electric Light and Power Companies in Kansas

The Kansas Power and Light Company Central Kansas Power Company
Kansas City Power & Light Company Kansas Gas and Electric Company
Western Light & Telephone Company