

Special

1961 Kansas College Directory

page 23



KANSAS

FEBRUARY, 1961

4-H Journal

The 4-H Family Magazine

Kansas 4-H Foundation, Inc., Publisher

15 Cents

How To Choose a Vocation

page 3

Financing Your College Education

page 16

New Woodworking Plans	7
Job Opportunities - - in 1970!!	13
1961 IFYE's Announced	14
Kansas College Fixed Costs	15
You Have a Future in Agriculture	18
For a Career in Home Economics	20



BRAINS TRAINING

..... it takes **BOTH** to qualify for a top
spot on today's highly-specialized
FOOD PRODUCTION TEAM!

You are cordially invited to
visit any of these Kansas
**FORMULA FEED
MANUFACTURERS**
for first-hand information
on this vital food-production area.

AGRICULTURAL DEVELOPMENT CO.
Division of Bartlett & Co.
Kansas City

ARROW FEED MILLS
Junction City

BLAIR MLG. & ELEVATOR CO.
Atchison

BULLER FEED MILLS
Halstead

GOOCH FEED MILLS
Salina

HUMBOLDT ELEV. MILLS
Humboldt

KANSAS SOYA PRODUCTS CO.
Emporia

KELSO MLG. CO., INC.
Pittsburg

KEY MILLING CO.
Clay Center

LIGHT GRAIN & MLG. CO., INC.
Liberal

NATURICH MILLS
Abilene

PLUSH MILLS
Glasco

SPENCER KELLOGG & SONS, INC.
Professional Feeds Division
Kansas City

SUPERSWEET FEEDS
Salina

WINTERSCHIEDT MLG. CO.
Seneca

WALNUT CREEK MLG. CO.
Great Bend

The efficient production of
MEAT, MILK AND EGGS
has become a complex and ex-
tremely technical business, re-
quiring the best "brains" and
sound, practical training to keep
abreast of the needs of Amer-
ica's ever-growing population.



CAN YOU QUALIFY? If you have "what it takes", and
are willing to acquire the training you will need, you will be
welcomed into a challenging *and rewarding* career in one of
our nation's largest and most vital areas of opportunity—
modern AGRIBUSINESS.

One of the finest door-openers to this kind of future is
the Feed Technology program at Kansas State University—
the only program of its kind in the world, with a compre-
hensive curriculum aimed at giving you the background and
the practical training that your future employer will be look-
ing for.

Why not talk it over now, with your county agent and
vo-ag teacher? Visit some of the feed mills listed at the left,
if you can, and ask them. And, by all means, mail the coupon
below for the free brochure; you should know all the facts
before you make a final decision on your future career.

**SCHOLARSHIP FUNDS ARE AVAILABLE
TO QUALIFIED APPLICANTS**

Mail this coupon—Get the whole story now.

.....

Dr. C. Peairs Wilson
Kansas State University
Manhattan, Kansas

Name _____

Address _____

School _____

Please mail free
brochure about the Feed
Tech program, and more
information about jobs in
Agribusiness.

.....

Guidelines For a Lifetime

By Donald P. Hoyt, Director
KSU Counseling Center

Choosing a vocation is one of the most important decisions each of us will ever make. The "proper" way to make this choice has never been a great mystery.

Frank Parsons, the father of vocational guidance, put it this way 50 years ago. "First, know yourself, second, know the world of work, third, apply true reasoning between these two sets of facts."

This idea sounds simple, but most of you will find doing it is one of the most difficult chores you have ever tried. Why is it so hard? Let's examine the process, step by step.

Know Yourself

What should you know about yourself? Our experience is people often stop too soon in trying to know themselves. Some students, after taking an interest test in which they scored high as an accountant, for ex-

ample, say "Well, then, I should be an accountant." This is the same as saying interests are all that need to be considered in choosing our occupation.

How foolish this would be. For example, I believe I have no stronger personal interest than my interest in music. Tests confirm my feelings. However, inability to carry a tune in a bucket pretty well eliminates music for me as a realistic profession.

This tragic example shows aptitudes (the ability to perform

certain types of tasks) need to be considered in planning your career.

Personality Important

A knowledge of aptitudes and interest is generally not enough to make a good career choice. A man once took a sales job because he liked people and travel, and because he could talk easily and be at ease with people.

He later quit to become a policeman. He liked his new job much better. When asked why, he said, "Because on this job the customer is always wrong." The

(Continued on Page 4)

Kansas 4-H Journal

Vol. VII, No. 2

February, 1961

Dale Apel.....Editor

Editorial and Business Office

Phone JE 9-2211 Ext. 208

Manhattan, Kansas

Published Monthly By

KANSAS 4-H FOUNDATION, INC.

J. Harold Johnson.....Executive Director

BOARD OF TRUSTEES

W. Dale Critser, Chrm.....Wichita

E. B. Shawver, Vice Chrm.....Wichita

Don Atha.....Mission

Clifford Hope.....Garden City

A. D. Jellison.....Junction City

Harold E. Jones.....Manhattan

J. J. Moxley.....Council Grove

George B. Powers.....Wichita

Roger E. Regnier.....Manhattan

Dolph Simons.....Lawrence

Fred D. Wilson.....Andover

ADVISORY MEMBERS

Harry Darby.....Kansas City

W. Laird Dean.....Topeka

Second Class Postage Paid at Lawrence, Kansas.

Advertising rates and circulation data on request.

Group subscriptions \$1.00 per year.

Individual subscription \$1.50 per year.

Single copy 15 cents.

Use of the 4-H name and symbol approved by the Secretary of Agriculture of the United States, January 23, 1951, under the provisions of the law as reenacted by Sec. 707 of the Act of June 25, 1948 Public Law No. 772, 80th Congress (10 USC 797)

A Reminder . . .

BE SURE TO ENTER THE

Personal Development Project for Kansas 4-H Club Teenagers

Based on YOUR:

Appearance

Manners

Speech and Writing

Character Development

Personality

Philosophy of Life

Career Exploration

Awards will be provided winners at the county, district and state levels. See your county extension agent for complete project details.

SOUTHWESTERN BELL



TELEPHONE COMPANY

All The Livelong Day



Henry Suburban reaches out at 7 o'clock of a wintry morning to turn off the alarm clock (price: \$5; tax, 50¢). He pushes down the electric blanket (price: \$28; tax 84¢), climbs sleepily out of bed. He walks across the bedroom floor of his house (price: \$12,000; annual property tax, \$209) and switches on the electricity, lighting a bulb (price: 33¢; tax, 2¢).

To music from a bedroom radio (price: \$30; tax, \$1.80), Henry shaves with his electric razor (see above). As a radio newscaster reports that Henry's state is preparing to increase income taxes and impose a general sales tax on everything anyone buys, Henry slaps a handful of bay rum (price: \$1.30; tax, 13¢) across his jowls.

He dresses quickly, hurriedly fastening cuff links (price: \$5; tax, 50¢) and tie clasp (price: \$3; tax, 30¢), puts on his Swiss wrist watch (price: \$60; tax \$6), and rushes downstairs. Tucked under one arm is a leather briefcase (price: \$25; tax, \$2.50) which carries papers from his real estate office, including one deed (property valued at \$3,000; stamp tax, \$3.30).

In the kitchen he's just in time to snatch two slices of bread (at least 151 hidden taxes) from the electric toaster (price: \$16; tax, 48¢), lift his coffee from the gas stove (price: \$190; tax \$5.70), and grab a glass of fruit juice from the refrigerator (price: \$300; tax, \$9).

A glance out the window shows it's begun to snow, so he calls to his wife (marriage license: \$2) to telephone (monthly telephone bill: \$12; tax, \$1.20) for a taxi. Too many other people want taxis on a snowy morning so Henry gets out his own car (price: \$2,500; total taxes \$518) and drives (operator's license: \$3) to the railroad station.

Henry relaxes at the station with a cigarette (price per pack: 33¢; tax, 15¢), lit by a match (tax: 2¢ per 1,000). Aboard the train, he settles down to a hand of bridge with three cronies, using of course, a deck of cards (price: 40¢; tax, 13¢).

In the city on his way to the office, Henry stops to buy a roll of camera film (price: 40¢; tax, 2¢) that he promised his son (registration of birth: \$1), and the lipstick (price: \$1; tax, 10¢) he promised his wife.

Arriving eventually at the office, Henry sighs (no tax) and settles to a day's work (annual income: \$7,500; Federal and state income tax, \$986). If he works hard for the rest of his life, he will be able to provide the government with a handsome slice of inheritance tax. And if he dies in a state that is fiscally tolerant, he can take comfort in the thought that his casket—provided that it costs less than \$100—will be exempt from any sales tax.

Credit to the Tax Foundation, Inc., 30 Rockefeller Plaza, New York 20, N. Y.

Kansas Farm Bureau

105 County Farm Bureaus

Working Together

Interests

(Continued from Page 3)

story shows that personality characteristics (such as pleasantness, tendency to be outgoing, warmth, etc.) are important in making vocational choices.

Having analyzed your interests, abilities, and personality, you should be able to know yourself well enough to choose a vocation. But there is another complication.

Personal Values

I counseled a student the other day who could work well with his fingers and hands. He could quickly and accurately work with dials, screws, and other small objects requiring a fine touch. In addition, he liked mechanical things. He acknowledged being something of a lone wolf—he liked to work alone.

I asked him why he didn't become a safe cracker since he seemed to have the interests, ability and personality for it. Of course, I wasn't serious, but I did try to point out to him that a good job choice involves the matter of "personal values."

The question of being honest or dishonest is a "value" question, but an easy one for most of us since we've been taught we should be honest.

Other value choices are not so easy. For example, would you and your family rather live in urban or rural areas? Would you rather have job security or the opportunity to advance? Would you rather make lots of money, or be in a profession you felt was more beneficial to mankind? Would making more money for your family be more important than doing something you'd like to do better?

Know the World of Work

Even if one does come to know himself quite well, he still has to come to know occupations.

Let me offer one word of caution here. Most guidance offices will have job information describing the duties, training, outlook, and wages for almost any job.

Don't let your questions about jobs stop there. Jobs also differ

Abilities, Values are Vocational Factors



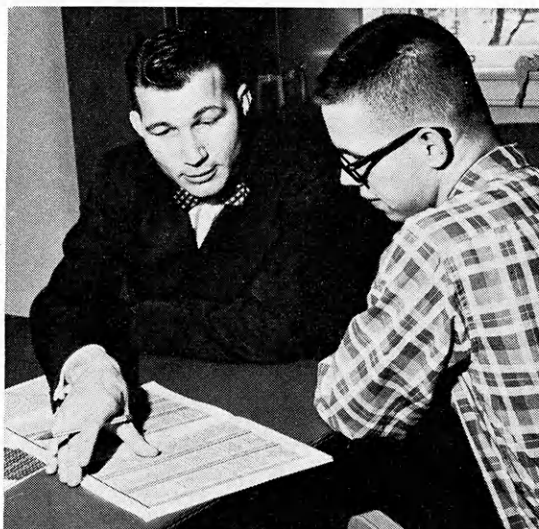
importantly in the style of life they provide. A coast-to-coast truck driver, a lawyer, and a life insurance salesman may have identical salaries of \$10,-000 a year.

Their friends, social life, family life, and community life, however, will be vastly different. But the point to bear in mind is that, when you commit yourself to a field of work, you commit yourself to a lot more than 40 hours a week. In many ways your choice of jobs will be related to who your friends are, what a social evening is, and even what seems to be important in life generally.

Reasoning

When you've learned what

(Continued on Page 12)



CAREER COUNSELING AT FORT HAYS STATE COLLEGE—Dr. Emerald Dechant, counselor at Fort Hays State College, Hays, discusses career possibilities with Gail Schwindt of La Crosse. Schwindt, a sophomore, is a former Rush County 4-H member.

TABLE 11.3. TWO-WAY CLASSIFICATION OF OCCUPATIONS

Level	Group							
	I. Service	II. Business Contact	III. Organization	IV. Technology	V. Outdoor	VII. Science	VII. General Cultural	VIII. Arts and Entertainment
1	Personal therapists Social work supervisors Counselors	Promoters	United States President and Cabinet officers Industrial tycoons International bankers	Inventive geniuses Consulting or chief engineers Ships' commanders	Consulting specialists	Research scientists University, college faculties Medical specialists Museum curators	Supreme Court Justices University, college faculties Prophets Scholars	Creative artists Performers, great Teachers, university equivalent Museum curators
	Social workers Occupational therapists Probation, truant officers (with training)	Promoters Public relations counselors	Certified public accountants Business and government executives Union officials Brokers, average	Applied scientists Factory managers Ships' officers Engineers	Applied scientists Landowners and operators, large Landscape architects	Scientists, semi-independent Nurses Pharmacists Veterinarians	Editors Teachers, high school and elementary	Athletes Art critics Designers Music arrangers
3	YMCA officials Detectives, police sergeants Welfare workers City inspectors	Salesmen: auto, bond, insurance, etc. Dealers, retail and wholesale Confidence men	Accountants, average Employment managers Owners, catering, dry-cleaning, etc.	Aviators Contractors Foremen (DOT I) Radio operators	County agents Farm owners Forest rangers Fish, game wardens	Technicians, medical, X-ray, museum Weather observers Chiropractors	Justices of the Peace Radio announcers Reporters Librarians	Ad writers Designers Interior decorators Showmen
4	Barbers Chefs Practical nurses Policemen	Auctioneers Buyers (DOT I) House canvassers Interviewers, poll	Cashiers Clerks, credit, express, etc. Foremen, warehouse Salesclerks	Blacksmiths Electricians Foremen (DOT II) Mechanics, average	Laboratory testers, dairy products, etc. Miners Oil well drillers	Technical assistants	Law clerks	Advertising artists Decorators, window, etc. Photographers Racing car drivers
5	Taxi drivers General houseworkers Waiters City firemen	Peddlers	Clerks, file, stock, etc. Notaries Runners Typists	Bulldozer operators Deliverymen Smelter workers Truck drivers	Gardeners Farm tenants Teamsters, cow-punchers Miner's helpers	Veterinary hospital attendants		Illustrators, greeting cards Showcard writers Stagehands
	Chambermaids Hospital attendants Elevator operators Watchmen		Messenger boys	Helpers Laborers Wrappers Yardmen	Dairy hands Farm laborers Lumberjacks	Nontechnical helpers in scientific organization		

The chart above classifies occupations on the basis of interest, going across the page. Vertically, the levels are arranged with Level 1 at the top requiring the most skill and/or training; lower levels require less responsibility, skill and/or training.

A one sentence summary of

each of the groups follows. This chart is reproduced from Anne Roe's book, "Psychology of Occupation," published by John Wiley and Sons, New York.

Service—concerned with serving and attending to the personal tastes, needs and welfare of other persons.

Business Contact—concerned with the face-to-face sale of commodities, investments, real estate, and services.

Organization—managerial and white collar jobs in business, industry, and

government, the occupations concerned primarily with the organization and efficient functioning of commercial enterprise and of government activities.

Technology—concerned with the production, maintenance and transportation of commodities and utilities.

Outdoor—agricultural, fishery, forestry, mining, and kindred occupations.

Science—scientific theory and its application under specified circumstances, other than technology.

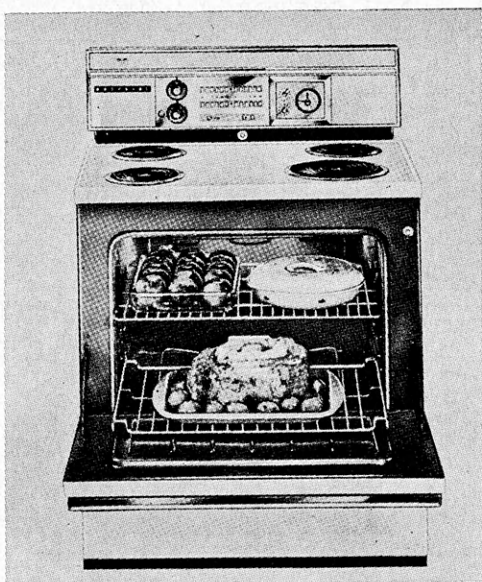
General Cultural—education, journalism, law, the ministry, linguistics, and so on.

CONGRATULATIONS
Miss Zena Gore, Pawnee County
New Kansas State Champion
National Cherry Pie Baking Contest

Hotpoint

OFFICIAL RANGE
National Cherry Pie Baking Contest

★
MORE WOMEN COOK ON RANGES MADE BY
Hotpoint
THAN ON ANY OTHER KIND



Hotpoint 30" Electric Range
Model RB43A

**FEATURES OF THE
CHAMPION'S RANGE**

- ★ Oven timing clock and minute timer
- ★ Wide super oven can cook a feast for 30 people
- ★ Full-width storage drawer on bottom
- ★ Appliance outlet for toaster, iron or other 115-volt appliances
- ★ Lighted back panel and oven light

CHERRY PIE SPECIAL

**THIS HOTPOINT PUSHBUTTON ELECTRIC RANGE
OR 39" RC46A**

ONLY \$199⁹⁵
WITH TRADE

SEE YOUR NEAREST HOTPOINT DEALER

FREE!!

New 4-H Woodworking Plans

*For Your 4-H Woodworking
Project, You Can Make —*

A Toy Stove for Little Sister

Imitating mommy is lots of fun for girls. To help your sister with her "make believe" you can make her this play stove. Complete plans are available at your lumber dealers.



A Modern Typing Desk and Bench

Total cost for this attractive typing desk and bench, made by Jimmie Feagins, Bourbon county, was only \$12.92. For complete blueprints and drawing sketch, see your lumber dealer.

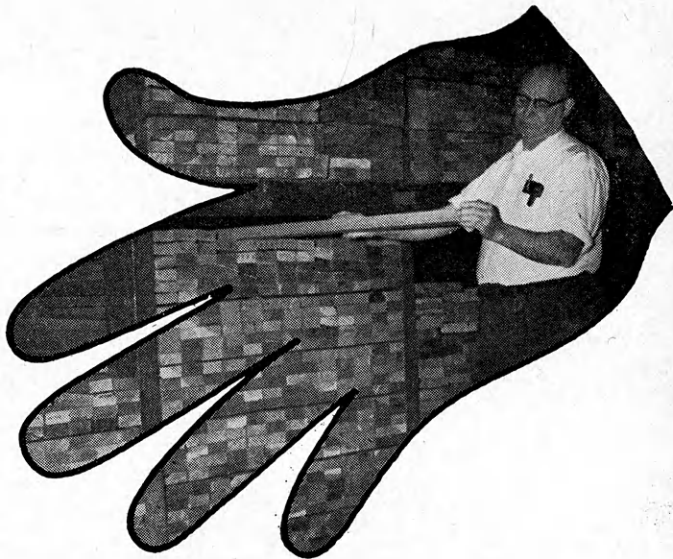
Plans for These Two Projects Are

Available At The Lumber Dealers

Listed on The Next Two Pages. Ask For Them.

For other FREE 4-H woodworking plans, see the next pages.

Always on hand... YOUR LUMBERMAN is your best friend when you need good material



Abilene
Central Lumber Company
Agra
Agra Lumber Company
Almena
Foster Lumber Company
Alta Vista
Wolgast Lumber Company
Alton
Alton Lumber and Coal Company
Anthony
Rock Island Lumber Company
Arkansas City
Central Lumber Company
Asherville
Asherville Lumber and Coal Company
Ashland
Don Spotts Lumber Company
Home Lumber and Supply Co.
Atchison
Hixon Lumber Company
Attica
Crowell Lumber Company
Atwood
Atwood Lumber Company
Foster Lumber Company
Basehor
Basehor Lumber Company
Bazine
Humburg's
Beloit
Beloit Lumber Company
Murray Lumber Company
Peoples Lumber and Coal Company
Bern
Bern Lumber Company
Bird City
The Bird City Equity Mercantile
Exchange
Griffin Lumber Company
Bison
Humburg Lumber Company, Inc.

Bonner Springs
Bonner Springs Lumber Company
Brownell
Richolson Lumber and Hardware
Company, Inc.
Bucyrus
The Blaker Lumber and Grain Company
Buhler
Buhler Lumber Inc.
Burr Oak
Burr Oak Lumber and Coal Company
Cawker City
Cawker City Lumber Company
Chanute
Smith Lumber Company
Chapman
Sanborn Lumber Company
Cimarron
Anawalt-Campbell Mercantile Company
Wilson Lumber Company, Inc.
Clay Center
Kansas Lumber Company
Coffeyville
The Home Lumber and Supply
Company, Inc.
Kansas Lumber Company
Colby
Foster Lumber Company
Hardman Lumber and Coal Company
Hess Lumber Company
Coldwater
Gilchrist Lumber Company
Home Lumber and Supply Co.
Concordia
Leidigh Lumber Company
Sanborn Lumber Co.
DeSoto
DeSoto Lumber Company
Denison
Denison Lumber and Hardware
Company
Denton
C. H. Gish Company
Devon
Devon Lumber Company
Dodge City
The T. M. Deal Lumber Company
Edgerton
Edgerton Lumber Company
Edna
The McCoy Lumber Company
El Dorado
Home Lumber Company
Elkhart
The Star Lumber Company
Emporia
Home Lumber and Supply Co.
Kansas Lumber Company
The Smith Lumber Company
Erie
Howard Bros. Lumber Company
Johnson and Son, Inc.
Eureka
A. C. Houston Lumber Company
Rock Island Lumber Company
Everest
Alexander Lumber Company
Fowler
The T. M. Deal Lumber Company, Inc.
Frankfort
Searle and Chapin Lumber Company
Fredonia
The Home Lumber and Supply
Company, Inc.
Garden City
Ed Porter Lumber Company

Gardner
Gardner Lumber Company
Gaylord
Hardman Lumber Company
Glen Elder
Dickinson Lumber Company
Goodland
Foster Lumber Company
Hardman Lumber Company
Rasure Lumber Company
Gorham
Russell Lumber Company
Great Bend
Everitt Lumber Company
Foster Lumber Company
Rock Island Lumber Company
Whitesell Lumber Company
Greensburg
Home Lumber and Supply Co.
Halstead
Harris Lumber Company
Harper
Rock Island Lumber Company
Hartford
Thomas Lumber Company
Hays
Hardman Lumber Corporation, Inc.
Healy
Healy Co-op Elevator Company
Hesston
Kropf Lumber Company
Hill City
Farmers Lumber Company
Hardman Lumber Company
Hillsboro
Hillsboro Lumber Company
Hoisington
Foster Lumber Company
Holton
Brown-Hedge Lumber Company
Holton Lumber Company
Holyrood
Home Lumber and Supply Co.
Hoxie
Foster Lumber Company
Hugoton
The Star Lumber Company
Humboldt
Barfoot Lumber Company
Hutchinson
F. E. Perry Lumber Company
George Stuckey Lumber
Inman
Inman Lumber Company
Independence
Rock Island Lumber Company
Iola
Klein Lumber Company
Jennings
Foster Lumber Company
Jetmore
Foster Lumber Company
Johnson
Seyb-Tucker Lumber and Implement
Company
Junction City
Home Lumber Company
Rock Island Lumber Company
Kinsley
Kinsley Co-op Exchange Lumber Yard
Home Lumber and Supply Co.
LaCygne
Blaker Lumber and Grain Company
LaHarpe
Blaker Lumber and Grain Company
Diebolt Lumber and Supply

FREE 4-H Woodworking Plans
Available at Lumber Yards
Listed On These Pages
They Display This Emblem



THE lumber dealers listed on these two pages are supporting the 4-H woodworking project with this information and free woodworking plans. Get your plans from them.

Lakin
Hart and Company
Lakin Lumber Company, Inc.

Lancaster
T. E. Snowden Lumber Company

Lansing
International Paper Company, Long-Bell Division

Larned
Antrim Lumber Company
Clutter-Lindas Lumber Company

Lawrence
Woods Lumber Company

Lebanon
Lebanon Lumber Company

Lenexa
Lenexa Lumber Company

Lenora
Lenora Lumber Company

Leoti
Foster Lumber Company

Liberal
The Star Lumber Company

Lincoln
Leidigh and Havens Lumber Company

Little River
The T. M. Deal Lumber Company, Inc.

Longford
Longford Lumber & Grain Co.

Louisburg
Louisburg Lumber Company

Lyons
Foster Lumber Company

Macksville
Home Lumber and Supply Co.

Manhattan
Griffith Lumber Company
Kansas Lumber Company
Ramey Brothers

Marysville
Foster Lumber Company

Matfield Green
Paul Bell Hardware-Lumber-Feed

McPherson
Lake Superior Lumber Company
McPherson Lumber Company

Meade
Home Lumber and Supply Co.

Minneola
The T. M. Deal Lumber Company, Inc.

Moundridge
Clayton Vogt Lumber Co., Inc.

Neodesha
O. E. Woods Lumber Company

Ness City
Rock Island Lumber Company

Newton
The Houston-Doughty Lumber Company

Nickerson
The D. J. Fair Lumber Company

Norton
Foster Lumber Company
Newbury Lumber Company
Norton Lumber Company

Nortonville
Alexander Lumber Company

Norwich
H. S. Eshnaur & Sons

Oakley
Oakley Lumber Company

Oberlin
Foster Lumber Company

Olathe
Cowley Lumber and Hardware Company
Hodges Brothers

Osawatomie
Leidigh and Havens Lumber Company
Osawatomie Lumber Company

Oswego
Home Lumber and Supply Co.

Ottawa
Hubbard Lumber Company, Inc.

Overland Park
Overland Park Lumber Company

Palmer
Meyer Lumber Co.

Paradise
Paradise Lumber Company

Parker
Blaker Lumber and Grain Company

Parsons
The Home Lumber and Supply Company, Inc.

Phillipsburg
Hardman Lumber Company
Home Lumber Company

Plains
Home Lumber and Supply Co.

Pleasanton
Blaker Lumber and Grain Company

Pratt
The Ortmeier Lumber Company

Prescott
Prescott Lumber Company

Pretty Prairie
The George W. Ulitch Lumber Company

Protection
Home Lumber and Supply Co.

Riley
Alexander Lumber Company

Russell
Hardman Lumber Company of Russell Inc.

St. Francis
Foster Lumber Company
St. Francis Equity Exchange

St. Marys
St. Marys Lumber Company

St. John
English Lumber and Supply Company
Home Lumber and Supply Co.

Salina
Larson Lumber Company, Inc.
Leidigh and Havens Lumber Company
Michaelsen Lumber Company

Satanta
The T. M. Deal Lumber Company, Inc.

Scott City
Foster Lumber Company

Selden
Foster Lumber Company

Seneca
Koelzer Lumber Company
Seneca Lumber Company

Severy
Tolman-Gibbon Lumber Company

Silver Lake
J. Thomas Lumber Company

Sharon Springs
Foster Lumber Company

Smith Center
Mid-West Lumber Company
Smith Center Lumber Company

Spring Hill
Spring Hill Lumber Company

Stafford
The T. M. Deal Lumber Co., Inc.
Home Lumber and Supply Co.

Stanley
Stanley Lumber Company

Sterling
The D. J. Fair Lumber Company

Stockton
Stockton Lumber Company

Sublette
The T. M. Deal Lumber Company, Inc.

Summerfield
Meyer Lumber and Hardware

Syracuse
Foster Lumber Company

Sylvia
The D. J. Fair Lumber Company

Topeka
Whelan Lumber Company
Main Store, 715 E. 4th
Pauline Branch at Pauline
Highland Crest Branch, 200 E. 29th
Seabrook Branch, 2019 Gage

Tribune
Foster Lumber Company

Ulysses
The T. M. Deal Lumber Company, Inc.

WaKeeney
Hardman Builders Supply Company

Wakefield
Sanborn Lumber Company

Wathena
Farmers Grain and Lumber Company

Wellington
Antrim Lumber Company
Wellington Lumber and Supply Company, Inc.

Wichita
Lawrence Lumber Company
Rock Island Lumber Company
Stockyards Cash and Carry Lumber Co.

Wilson
Hoch Lumber Company
Wilson Lumber Company

Winfield
Deal Lumber and Hardware Company, Inc.
A. B. Everly Lumber Company

Woodbine
Kohler Lumber Company

Yates Center
F. H. Conger and Son

Zenda
The George W. Ulitch Lumber Company

Missouri

Kansas City
The George W. Ulitch Lumber Company, 11432 Truman Road

Any one of 17 4-H
Woodworking Plans Available
At Lumber Yards Listed
On These Pages
They Display This Emblem



Looking for Woodworking Ideas?

See Any of These Lumber Dealers for a Free 4-H Woodworking Plan

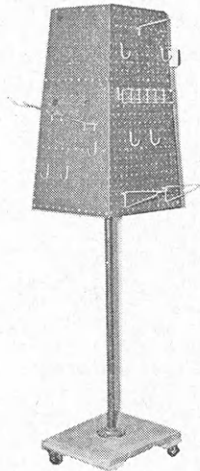
See The Following Pages
and Page 7 for Pictures
of Available Plans

Local Lumber Yards Listed on Pages 8 & 9 Make This 4-H Woodworking Plan Service Available. Ask Them For Your 4-H Woodworking Plans.

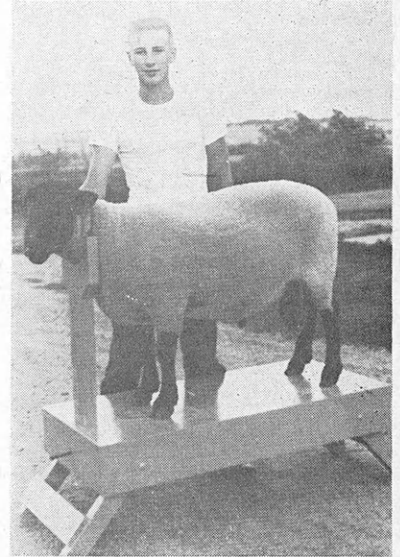
AUTOMATIC BIRD FEEDER



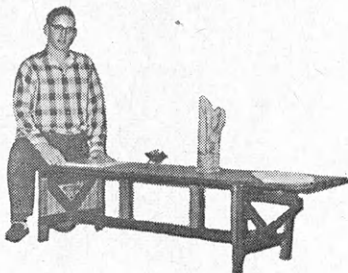
ROTATING SELECTION TOOL RACK



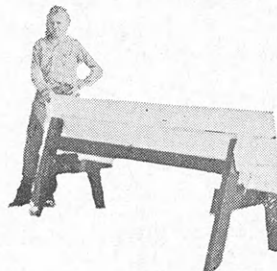
SHEEP BLOCKING BOX



COFFEE TABLE



PICNIC TABLE



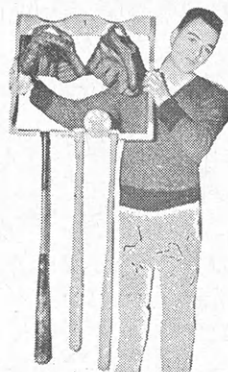
SANDBOX



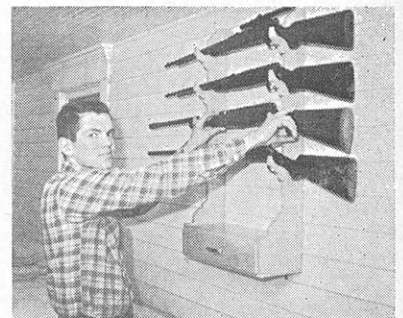
CHRISTMAS TREE GIFTS



BILL'S BASEBALL RACK



HANDY GUN RACK



*Get FREE 4-H Woodworking Plans at
Lumber Yards Listed on the Two Previous Pages*

*Get Started Now on Your
4-H Woodworking Project*

Mail and Memo Board



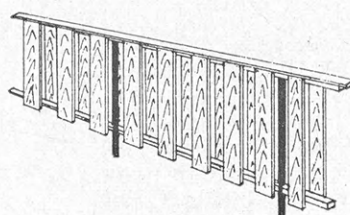
Bathroom Wall Cabinet



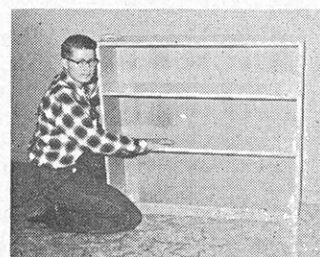
GATE SIGN



A BACK YARD FENCE



BOOK CASE



SIMPLE WORK BENCH



HOLDING GATE



YARD CART



Tell Me Why

There is no 4-H song that symbolizes St. Valentine's Day, February's popular festival of romance and affection.

The song that perhaps is most popular with Kansas 4-H boys and girls, and that has an element of the romantic, is a well known college song, "Tell Me Why". More 4-H boys and girls have learned to sing and appreciate this song, at county and

state camps and other state events, than any other folk song.

"Tell Me Why" meets the requirements of being a folk song in that neither the author of the words nor the composer of the music is known. It has long been popular at fraternity "sings" all through this part of the country.

Although it is printed in the National 4-H Song Book (page 53) and in Joyous Singing (page 29) with only the two verses, many 4-H members have learned the third verse, as follows:

I surely think that God
above,

Created you for me to love;
And picked you out from
all the rest,

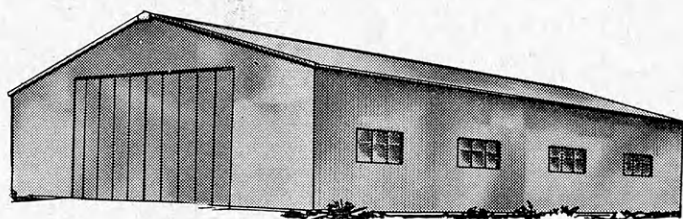
Because he knew I'd love
you best.

Although this song seems to fit in best when sung around a dying campfire at the close of a busy day of camping, it also is appropriate during February and the observance of Valentine's Day with the red paper hearts and evidences of affection to "Be My Valentine."

Help the younger members to sing it, and use the little-known third verse as a fitting climax to a beautiful folk song.



model BF BIG CHIEF STEEL BUILDINGS



offer complete... • **VERSATILITY**
• **UTILITY** • **ECONOMY** • **DURABILITY**

VERSATILITY—Almost unlimited uses: Grain, hay storage; warehouse, machinery or equipment storage; dairy barn, animal shelter, brooder house, etc.

UTILITY—Clearspan construction lets you use every square inch of floor space. Big Chief Buildings can be enlarged . . . moved too.

DURABILITY—Rugged, rigid box frame arches, galvanized rib-formed steel covering assures long building life and low maintenance cost. Big Chief Buildings withstand heavy snow loads, high winds, are bird-proof and rodent-proof.

ECONOMY—Precision fabrication at factory assures perfect fit of all parts . . . no special skills or tools needed for erection. Instructions supplied. (Factory-trained crew available, if you prefer.)



**AT YOUR NEARBY
COOPERATIVE**

CONSUMERS COOPERATIVE ASSOCIATION — KANSAS CITY, MO.

Choosing Your Vocation

(Continued from Page 5)

you can about yourself, and about jobs, the problem is to put them together. Probably the best way is to let your imagination run wild.

Try to see yourself leading the life of a lawyer, auto mechanic, farmer, or whatever else you've thought about.

See how well it "fits." If you can do this well, you should feel a fairly strong liking or dislike for these various roles. You can generally trust these reactions.

Let me say a word or two about guidance services. Use counselors, use guidance tests, use your parents and friends, use people who are successful in different occupations—use any source which will provide you with good information about yourself and careers.

Many students find good old fashioned bull-sessions with their friends, parents or advisors helpful. As someone once said, "How do I know what I think until I listen to myself?"

These people can be very helpful to you in supplying information and in letting you listen to yourself. But don't misuse them. Don't ask them to tell you what's important (money, security, etc.), and don't let them tell you what decision to make. You were born free, which means you have not only the right but the responsibility of conducting your own affairs in the manner which will be most rewarding to you.

Most Job Opportunities, in 1970, Will Be in Jobs Requiring More Education

"Startling changes will take place in the American labor force during the next years," says Secretary of Labor James Mitchell.

All told, employment will rise about 20% in the next ten years. Some industries will grow faster than others. Service groups, for example, will grow faster than production industries such as manufacturing and farming.

The chart at the right shows the growth in the number of jobs in various industries, for the next ten years, compared with the 20% rise in total employment.

More Opportunities for Trained Workers

Whichever the field young people enter, it will be the trained person who will have the best jobs in those fields. This has always been true and it will become increasingly true.

The chart at lower left shows the rate of growth for various occupation groups in the next ten years.

Low Growth Potential in Farming

The reason for the 4-H Clubs being increasingly concerned over helping farm boys and girls to find good off-farm jobs is emphasized both in the chart showing the growth of jobs available in different industries (at the right) and in the chart at lower left which shows the number of jobs in 1970 for var-

ious occupation groups.

These charts do not mean there are no opportunities in agriculture for the farm boy. A soil technologist or chemist will find a wealth of opportunity because his job, in this classification, is included with the professional and technical occupation group.

More Education Required

The chart at lower left shows that those occupation groups which will provide the most job opportunities ten years from now are those which require more schooling.

Seventy-five percent of those in the professional and technical workers group, which will grow the fastest in the ten-year period, have some college education. Unskilled workers, which remains static as far as job opportunities is concerned, has

more employees with less than a high school education than any other group.

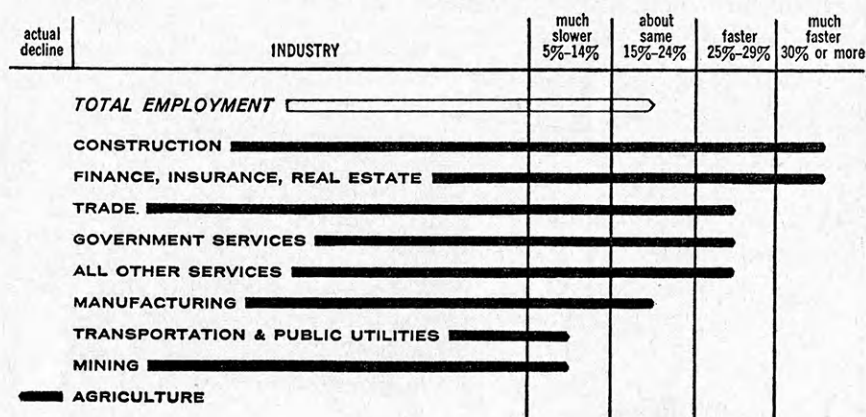
Job Hunting Gets Rougher

These charts and other studies make one thing clear. Young people starting their careers in the next few years will find tough competition in landing their first jobs—because of the large number of people in this age group.

Many experts encourage these young people to stay in school as long as possible to prepare for the advancement breaks which will come to them later.

In other words, by continuing your education, you will not only be better prepared for any job, but you will probably be preparing yourself for those jobs which, in the next ten years, will have the greatest growth.

See how growth in the number of jobs in these industries is expected to compare with the 20% rise in total employment in the next ten years.



Source: Bureau of Labor Statistics, U. S. Department of Labor

Chart 2.

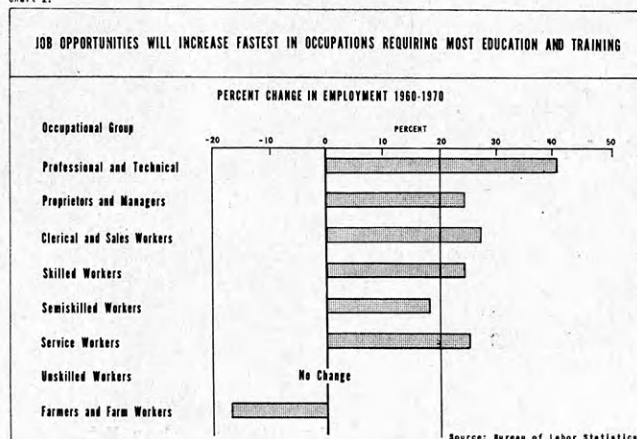


Chart 3.

THE KIND AND AMOUNT OF EDUCATION YOUNG PERSONS RECEIVE AFFECT THEIR LIFE-TIME CAREERS			
PEOPLE WHO WORK IN THESE OCCUPATIONS	HAVE THIS KIND OF EDUCATION:		
	Less than high school graduation	High school graduation	Some college education
Professional and Technical Workers	6	19	75
Proprietors and Managers	38	33	29
Clerical or Sales Workers	25	53	22
Skilled Workers	59	33	8
Semiskilled Workers	70	26	4
Service Workers	69	25	6
Unskilled Workers	80	17	3
Farmers and Farm Workers	76	19	5

How About The Newspaper Business?

If you are thinking about following a business or professional career, why not spend an hour visiting with your home town editor and learn about the possibilities in journalism?

The newspaper business offers an opportunity for a most interesting and rewarding life for the young man or woman who has a broad educational background, a liking for people, courage, and a desire to have an active part in the American way of life.

A good newspaper man has the satisfaction of knowing that he is helping others to a better life. He remembers that "The People Have The Right To Know" and, that there is no better way to have a well informed Democracy than through the printed word.

Before you make up your mind on your life's work, please think seriously about journalism. Thousands have found it a most enjoyable and rewarding career. Maybe you?

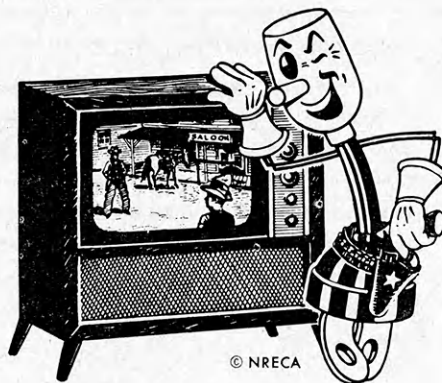
The Journal-World

Lawrence, Kansas

"The HOME Newspaper for More Than 12,000 Families"

Whether it be westerns, comedy, or an educational program, "Willie Wiredhand" brings entertainment to you in your living room.

Television is just one of the many benefits of rural electrification to the farmer.



**Kansas Electric
Cooperatives, Inc.**

420 W. 9th

Topeka, Kansas

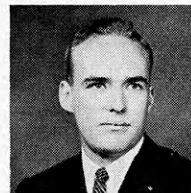
Nine Kansans to Be 1961 IFYE's

Nine Kansas youth have been named International Farm Youth Exchange delegates during 1961.

The delegates are pictured below. Their home town and the country they will visit are listed with each picture.

The Kansans are a part of 115 delegates from 40 states scheduled to visit 43 countries in 1961.

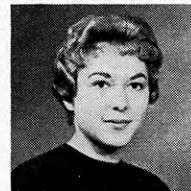
The two-way exchange of youth is directed by the Kansas 4-H Club Foundation and the Kansas Extension Service on the state level. The exchange is financed by the voluntary contributions of 4-H Club members and leaders, business and industrial firms, foundations, and interested individuals.



Hal Judy, Hutchinson
Luxembourg



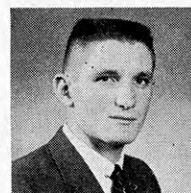
David Woolfolk, Pratt
Columbia



Darlene Dewey,
Delphos
Switzerland



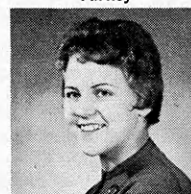
Mary Jo Mauler,
Olmitz
Japan



Bill New, Leavenworth
Turkey



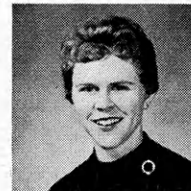
George Eisele, Altoona
Argentina



Marcia Ann Rygaard,
Germany



Evelyn Dyck, Newton
Poland



Janice Laidig, Danbury, Neb.
Chile

FARMERS
LOW-COST
Complete Protection
Policy

FIRE &
AUTO

INSURANCE

write to
ALLIANCE COMPANIES
McPherson, Kansas

Name
Address

SERVING KANSAS SINCE 1888

Board and Room, Tuition and Fee Costs

How much does it cost to go to college?

The figure will vary with each student's spending habits. The amount spent for entertainment, clothes, laundry, travel and incidentals may vary from \$100 to \$1,000 or more per year.

The figures in the table below show the nine-month term tuition costs for most Kansas four-year colleges and universities. Unless otherwise indicated, all the information was taken from the book "American Uni-

versities and Colleges," American Council on Education, Washington, D. C., Eighth Edition, 1960. Information was originally supplied by the school.

Estimated figures for board and room are also indicated. These may vary with the individual student in all instances except where the school charges a fixed amount.

While these cost figures may be of interest, prospective students and their parents are cautioned against placing undue

emphasis upon them.

These costs are, of course, subject to change. Board and room costs may not have been figured by the different schools on the same basis. Travel and other costs will vary.

In addition, the quality of education and curriculum available at the different schools, as evaluated by each individual prospective student, should probably have more weight in determining the school choice than these cost figures.

College or University	Tuition and Fees	Room and Board
Baker University, Baldwin	\$ 572	\$540-575
Bethany College, Lindsborg	522	580
Bethel College, North Newton	600	510
College of Emporia, Emporia	475	390
Ft. Hays Kansas State College, Hays	162	560
Friends University, Wichita	540	630
Kansas State College of Pittsburg	168	602
Kans. State Teachers College, Emporia	139	486
Kansas State University, Manhattan	208	520-600
Kansas Wesleyan University, Salina	1,060	includes room & board
McPherson College, McPherson	500	490-520
*Manhattan Bible College, Manhattan	199	280
Marymount College, Salina	300	550-700
Mt. St. Scholastica College, Atchison	387	520
Ottawa University, Ottawa	1,045-1,100	includes room & board
*Sacred Heart College, Wichita	300	460
St. Benedict's College, Atchison	525	630-660

College or University	Tuition and Fees	Room and Board
St. Mary College, Xavier	385	640
*St. Mary of the Plains College, Dodge City	350	550
Southwestern College, Winfield	1,090	includes room & board
Sterling College, Sterling	419	480
*Tabor College, Hillsboro	390	400
University of Kansas, Lawrence	208	630
University of Wichita, Wichita	408**	610
Washburn University of Topeka, Topeka	155**	630-657

*Tuition, board and room costs taken from the 1959-60 College Facts Chart published by the National Beta Club, Spartanburg, S. C., from information furnished by the respective colleges.

**Tuition for Kansas residents outside the city limits of the site of the University.



Loans, Scholarships, Part-Time and

By John Sjo
KSU Economics Department

A college education pays dividends. The financial returns are apparent. By acquiring four years of college a youth can expect to increase his life's earnings by an average of \$100,000.

Less apparent but probably even more valuable are the intangible benefits — broader interests, a wider circle of friends, and a greater understanding of the world we live in. These are things which money can't buy and time can't take away.

A major portion of this article was written by John Sjo, K-State University Economics Department, for publication in the February, 1961, Kansas Agricultural Situation.

Costs Not to Go to College

The cost of NOT going to college can be measured in terms of lower earning capacity for capable youth. A second cost is to society in terms of lost talents. Thus, both the individual and society have a stake in making sacrifices to insure opportunity for a college education.

The belief that a college education is beyond the means of families of limited income is a misconception. **Lack of money need not keep our farm youth out of college.**

The greatest loss to our nation is the unused talent of people who have not had the opportunity to develop their talents. A potentially great scientist, his-

torian, politician, or businessman may be an unskilled worker because the opportunity to develop his talents has not been explored.

Fewer Farm Youth in College

Many of these lost talents are among farm people. Fewer farm youth prepare themselves for an occupation than most other occupational groups. The Bureau of the Census found that only 34% of the farm youth anticipate going to college.

Of the non-farm youth 51% plan to attend college. Many farm youth must find employment in industry in competition with urban reared youth. Training beyond high school is needed by a farm youth if he is to hold his own with his city cousins in the search for jobs.

The unprepared youth must accept lower paying jobs and jobs of lower social and cultural prestige. A high school graduate can expect to earn about one-half as much as a college graduate, and a grade school graduate can expect to earn only about one-third that of the college graduate over his lifetime.

Finances No Bar to College

College officials state that no capable youth need stay out of college for lack of finances. Aid can be secured through scholarships, loans, and part-time employment.

Scholarships are not limited to the brilliant high school students. There are hundreds of scholarship programs in the

country. All capable students (B students) have a good chance of being awarded one.

The colleges and universities themselves offer over a quarter of a million scholarships. Thousands of others are offered by civic clubs, churches, alumni groups, foundations, state and federal agencies, corporations, and labor unions.

Thousands of Scholarships

A report from 19 of Kansas' four year colleges and universities indicate these schools alone award, annually, more than 5,000 different scholarships totaling nearly \$1,200,000.

Information and application forms for scholarships at the various colleges and universities may be obtained by writing the Director of Admissions of the respective school.

The deadline for submitting completed applications is generally in the early spring or late winter months prior to the fall semester in which the student intends to enroll.

The scholarship house program of many colleges provide free or low cost rent and low cost board. The student residents in a scholarship house share in the work of the house—cooking, cleaning. Thus, by such cooperative efforts, living costs are minimized.

Loans Help Out

A scholarship may not pay all expenses. Often the scholarship is only for tuition. Other financial assistance may be needed. Most colleges can help the deserving student through its student loan fund. Such loans are generally long-term, repayable after graduation. Interest rates are low and in some cases there is no interest charge.

Funds provided by the National Defense Education Act of the Federal government has greatly increased the funds available to the colleges for student loans.

Millions in Loan Funds

Again, reports from 19 Kansas four-year colleges and universities indicate more than \$1,-

Sample Budget for a Nine Month College Term

Estimated Cost of One Year of College		Estimated Income for One Year	
Enrollment Fees	\$ 208*	Scholarship	\$ 200
Books and Supplies	60	Savings from Summer Job	200
Room and Board	660	Part-time Job (16 hours weekly at 75c)	400
Clothing, Laundry, Cleaning	100	Student Loan	330
Entertainment and Activities	100		
Estimated Total Cost	\$1,128	Estimated Total Income	\$1,130

*Tuition and enrollment fees will vary considerably between schools.

Summer Work

250,000 of loan funds are available annually to students.

The student with no assistance from home who must go it alone, even though he may be able to get a scholarship and/or a loan, will need to consider working part time to help meet the costs. Many students are "working" their way through school. It is estimated that fully one-half of all college students in the United States are paying a part of their educational bill by part-time work.

Job Opportunities

Businessmen in college towns are accustomed to getting a portion of their labor force from part-time student employees. The colleges themselves provide many opportunities. The dormitories, cafeterias, maintenance and janitor services, offices, and research laboratories all rely upon student help.

College Costs Vary

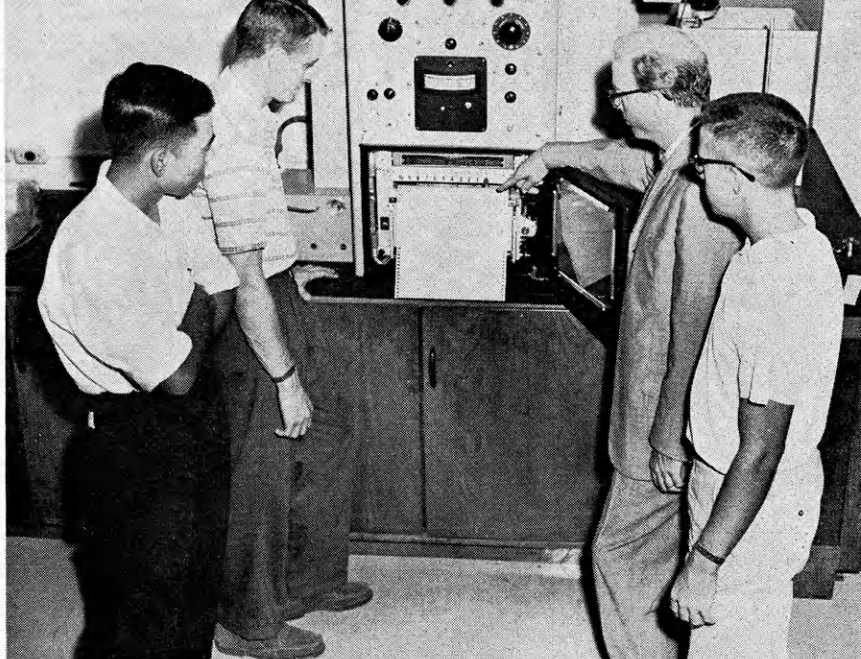
The cost of a college education depends largely upon the spending habits of the student. However, there are some costs that cannot be changed such as enrollment fees and tuition. Others such as clothing and entertainment depend largely upon the student's spending habits and management ability.

One should keep in mind it can cost more, lots more, if the student dresses expensively, has an automobile, or spends freely for entertainment. Or it can even cost less, if the student is frugal and a careful manager.

A schedule of tuition costs and estimated board and room costs for most Kansas four-year colleges and universities is included on page 15.

It is not easy to go it alone—but it is worth it. The sacrifice to get the education gives your boy or girl the basis for a more meaningful, useful life and a higher standard of living.

Each year the disadvantage to the unprepared youth becomes greater. The labor force continuously requires more highly



Three Kansas State College of Pittsburg students are helping finance their college education by working on a chemistry research project. The three students, shown here with program director Dr. Joe M. Walker, are working on strip pit research, surface film studies and an organic research problem.

trained laborers. Now is the time to get busy because it is to the advantage of your youth.

Advice and Assistance

You can seek advice and assistance in getting financial help through (1) your high school principal, (2) the registrar of one of more colleges, (3) your county extension agents, or (4) the church or civic clubs in your community. This is the time of year to make plans for next fall. Many deadlines for applications are on or before April 1.

Available guidebooks on scholarship and financial aid for the college student include—

* "Financial Aids for College

Students: Undergraduate." This is available for \$1 from the Superintendent of Documents, Government Printing Office, Washington, 25, D. C. Or your congressman may be able to send you a copy upon request at no charge.

* "Need a Lift?" This can be ordered for 15 cents a copy from the Education and Scholarship Committee, American Legion, P.O. Box 1055, Indianapolis 6, Indiana.

* "Financing Higher Education." This is free and can be obtained through your local banker.

Kansas 4-H Journal Sponsors

WELCOME TO THESE NEW SPONSORS

Cloud

Citizens State Bank, Miltonvale
Cloud County Bank, Concordia
Exchange National Bank, Clyde
Fidelity State Bank, Concordia
First National Bank, Glasco

Jamestown State Bank, Jamestown

Trego

Collyer Co-op Association, Collyer

Wallace

Peoples State Bank, Sharon Springs

These Sponsors Have Renewed Their County Support of the Kansas 4-H Journal

Johnson

DeSoto State Bank, DeSoto
Farmers Bank, Gardner
Farmers State Bank, Lenexa
First National Bank, Olathe
Patrons Co-operative Bank, Olathe
Shawnee State Savings Bank, Shawnee

State Bank of Spring Hill, Spring Hill

State Bank of Stanley, Stanley

Ottawa

Bohnenblust Implement Company, Minneapolis

Chapman Implement Company, Minneapolis

Gilley's Firestone and Implement, Minneapolis

Hoover Implement Company, Minneapolis

Weidler Farm Supply, Minneapolis

Pottawatomie

Farmers State Bank, Westmoreland

First National Bank, Wamego

Kaw Valley State and Savings Bank, Wamego

St. Marys State Bank, St. Marys

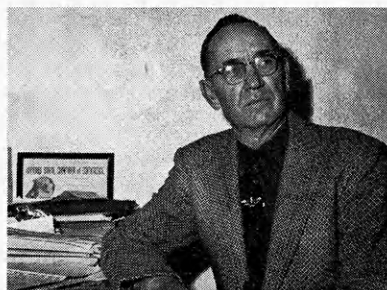
Sumner

Wolcott & Lincoln, Inc., Wellington



Members of the 1960 Kansas 4-H Round-up chorus just before they sing for the final Round-up assembly program. Sixty-seven 4-H'ers sang in the chorus. Pictured at the left is

Morris Hayes, chorus director. At the extreme right is Manuel Panquil, accompanist. A recording was made of selections sung by the chorus for the final Round-up program.



"Look at the Opportunities in the growing Petroleum Industry"

says Merlin Taylor, Colby

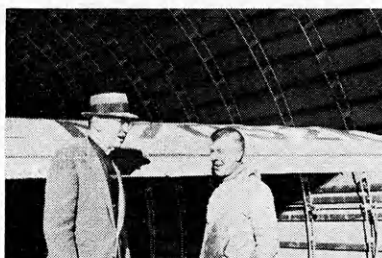
"There have always been, and always will be opportunities in the oil business. I've been in the petroleum business since I was sixteen years old and it's a rewarding field," says Mr. Taylor. "From starting as a driver for a tank-wagon oil delivery route, to operating my own business I've gained experience in many phases of the petroleum industry."

"If you have the desire to be a success in the petroleum business and are anxious and willing to work . . . first get a good education," advises Mr. Taylor. "If possible, major in business administration in college. Then gain experience through working for a reliable oil marketing company. Eventually you can own and operate your own business. It'll pay you to get all the facts about this fascinating field."

Act now—investigate the varied careers offered you in the petroleum field. Write to—

Kansas Petroleum Industries Committee
204-A Insurance Building, Wichita

YOUR CAREER ?



Top: Mr. Taylor talks to the manager of the Colby airport. Center: Since 1926, Mr. Taylor has leased and operated this service station. Bottom: His truck driver talks with Mr. Taylor about the farm and dealer gas deliveries.

4-H'ers Urged To Apply for State 4-H Chorus

Kansas 4-H members interested in singing in the 1961 State 4-H Chorus should ask their extension agent for application blanks.

Sixty to seventy 4-H members will be selected by the chorus director. No more than one application for each voice — soprano, alto, tenor and bass — may be submitted from each county. Counties may determine their own selection procedures. All applications are due in the State 4-H Office by March.

Members applying may have attended Round-up once before but must not have participated in the 1960 State Chorus. They must have been 14 years old by January 1. They may have been members of the 1959 Chorus.

Chorus members will be selected largely on the basis of an evaluation form filled out by each applicant's music teacher. Every effort will be made to get representation from as many counties as possible.

Announcement of chorus members will be made shortly after March 15, at which time members will be sent practice music. There will be approximately 11 hours of rehearsal at Round-up before the program is presented at the final assembly.

You Have a Future in Agriculture

By John Sjo

KSU Economics Department

The farm youth has many avenues open to him in seeking a career.

A farm background is excellent preparation not only for farming but, also, for jobs in the many industries which process farm products, in industries which supply the things the farmer buys, and in many areas of public service.

Some of you will find a career in farming. This is a rewarding and interesting life.

John Sjo, KSU Economics Professor, is a former Saline county 4-H member and Dickinson county club agent. He has worked as an agricultural officer for the State Department at Copenhagen, Denmark and now teaches farm management and a course in International Agriculture at Kansas State University.

Many with a farm background may prefer to find a career in industries related to farming or in public service related to agriculture. These can use their farm experience to advantage in other parts of the broad field of agriculture.

Farm Background is Asset

One of the richest assets is the experience you have gained growing up on the farm. Years of study could not duplicate this experience. You know farmers and their problems. When a person has such a valuable asset,

he should find out how he can make the best use of it.

Of the 65 million people employed in the United States, about 26 million work for some agriculture related industry. Only eight million are farmers.

The over 18 million off-farm jobs in agriculture may make possible your future in agriculture.

You Have Slight Edge

You are not alone in seeking these jobs. Your cousins and friends in the towns will also be interested in a career in agriculture. You are a jump ahead—they don't have a decade of farm experience.

But don't think you will get a job before your city cousin just because you grew up on a farm. It is an advantage that you have only if you are as well qualified to do the specific task as is the city youth.

For example, a farm girl who applies for a job as secretary to the manager of the local co-operative will not get the job just because she has had farm experience. She must also be a skilled typist, be able to write shorthand, and be able to organize the business files. If she cannot, the job will go to her city friend who is a skilled secretary.

Need More Training

To compete for a career in the off-farm part of agriculture, you must be prepared. The highest paying positions and the ones

of greatest prestige go to the technically trained youth.

In the past, farm youth have been at a disadvantage in the non-farm job market. Farm boys and girls have not had the training and education the city youth have had. Did you know that 67 percent of the professional workers' children, 48 percent of the white collar workers' children, and 26 percent of laborers' children go on to college, but only 24 percent of farmers' children do so?

Training Gives Money, Satisfaction

It is estimated a youth with a grade school education can expect to have a life's earnings of \$120,000. With four years of high school he will have \$175,000 and with four years of college \$275,000.

You get greater satisfaction when you know your preparation makes you a more useful citizen in society. Also, preparation for your career helps assure you a position of greater prestige.

Three Types of Jobs

Let us consider the types of jobs you can expect to find in agriculture.

First, the factories and businesses that supply farmers with products and services used on the farms provide a variety of job opportunities.

The manufacturer of these

(Continued on Page 27)

EACH YEAR— 15,000 NEW JOBS IN THESE 8 FIELDS

AGRICULTURAL RESEARCH	AGRICULTURAL INDUSTRY	AGRICULTURAL BUSINESS	AGRICULTURAL EDUCATION	AGRICULTURAL COMMUNICATIONS	AGRICULTURAL CONSERVATION	AGRICULTURAL SERVICES	FARMING AND RANCHING
1,000	3,000	3,000	3,000	500	1,000	1,500	2,000
Production	Machinery and Equipment	Banking and Credit Insurance	Vocational Agriculture	Farm Reporting	Soil	Inspection and Regulation:	General
Marketing	Food Processing	Farm Management	Agricultural Extension	Newspapers	Water	Food and Feed	Grain
Economics	Grain and Seed Processing	Cooperative Management	College Instruction	Market Reporting	Range	Seed and Fertilizer	Dairy
Agricultural Engineering	Meat and Poultry Packing	Land Appraisal	Governmental Agencies	Publications	Forest	Agricultural Chemicals	Swine
Equipment and Utilities	Fertilizer and Lime	Grading, Packaging and Labeling	Farm Organizations	Magazines	Fish	Plant and Animal Quarantine	Beef
Processing	Pesticides and Herbicides	Marketing	Industrial Agencies	Photography	Wildlife	Quality Control and Grading	Sheep
New Uses and Methods	Feed Manufacturing	Storage and Warehousing	Business Firms	Motion Pictures	Parks	Organizations and Foundations	Poultry
New Products	Dairy Processing	Transportation	International Technical Aid	Radio	Turf	Agricultural Technicians	Cotton
By-Products	Fats and Oils	Farm Utilities		Recording		Agricultural Consultants	Forage
Conservation	Textiles and Fibers	Custom Services		Television		Agricultural Statisticians	Fruits
Reclamation	Buildings and Utilities	Private Businesses		Advertising		Veterinarians	Vegetables
Rural Sociology	Forest Products			Exhibiting		Foreign Agricultural Service	Tobacco
				Training			Seeds
							Nursery
							Specialty

Training and a Career in Home Will Help You Become a Better

By Doretta S. Hoffman, Dean
School of Home Economics
Kansas State University

Education, Education, Education! These three words were the answer a well-known Washington correspondent for one of our major networks gave to the question, "What is the solution to the large number of problems facing our nation and the world?"

The leaders in our country are aware that our nation, as well as society as a whole, are in dire need of the full potential of all the brain power available.

To have ability to learn is not enough . . . this ability needs to be developed by more students getting more higher education.

Young people need to continue their education beyond high school in order to be ready to

take on the responsibilities which lie ahead of them.

People in our country are living longer . . . and in all probability the young people of today will have life spans which cover more years than those of their parents.

Life Span Approach

Young people, therefore, need to consider the "Life Span Approach" to their lives. This means they need to have a realistic understanding of the future. For young women this means they will—

- Marry early
- Have children early
- Then have 25 to 30 years of time on their hands after the children have left home.

The young women of today will be not only wives and mothers but wage earners too. The woman college graduate of to-

day will probably work outside her home for 25 years. Girls now in high school can look forward to working outside their homes for as many or even more years.

Education of women is of importance for their own greatest happiness and as a basis for the best contribution in any of the roles they may fill—as wives of college-educated men, as leaders in community affairs, as teachers of their own children or as part-time or full-time professional workers outside the home in middle age.

Too often we hear it is a waste of time and money to educate women because they "just get married anyhow." This idea is completely false, of course. Wives and mothers need as much education as they can possibly get to make their best contribution to society.

Larned 4-H'er is Top Pie Baker

Zena Gore, Larned, took top honors in the state cherry pie contest in Wichita, January 7. Runner-up was Amy Lou Gaddie, Bazaar. Seventy-four participated in the contest.

Other purple ribbon winners were Judith Elaine Peterson, Coldwater; Carolyn Myers,

Wichita; Patricia Ebel, Russell; Patricia Correll, Satanta; Barbara Symms, Atchison; Linda Keller, St. Francis; and Carol Harris, Wellington.

Awards were presented contestants and winners by the Great Atlantic and Pacific Tea Company, and the Kansas Gas

and Electric Company. Hotpoint Appliance Co. furnished stoves for the event and the Kansas Gas and Electric Company furnished the facilities. The Kansas 4-H Foundation arranged for the awards.

Miss Gore will participate in the national contest in Chicago in late February.

Winning Recipe

Filling

Mix together $\frac{2}{3}$ c sugar, 2 T cornstarch and a dash of salt. Gradually add $\frac{3}{4}$ c cherry juice. Cook until mixture is thick and clear. Remove from heat and add 2 c frozen cherries (thawed and drained), $\frac{1}{8}$ t almond extract, 3 or 4 drops red food coloring and 2 T butter. Let cool while making crust.

Crust

Sift 2 c all purpose flour and add 1 t salt. Blend in $\frac{3}{4}$ c vegetable shortening with pastry blender until about the size of large peas. Stir in $\frac{1}{2}$ c milk. Press into ball and divide into half, one ball slightly larger than the other. Place largest ball on floured pastry cloth and roll out for nine-inch pie. Fit in nine-inch pie pan. Roll out the other ball of dough and cut into strips $\frac{1}{2}$ inch wide. Pour filling into pie crust, weave lattice top and flute edge. Bake at 400 degrees F for 45 minutes or until golden brown.



Economics Homemaker

Education in Life Plan

All capable young students should put education beyond high school in their life plan.

There are road blocks in the way of some young people getting their higher education. Among these are shortage of living quarters, lack of necessary guidance at essential times when choices are made, and early marriage.

Girls with ability need to make plans to prepare themselves to work in professions which are challenging, interesting and which pay well.

Those who do not prepare themselves beyond their high school education will be limited to short-term, semi-skilled, sometimes monotonous jobs, with little hope for advancement. The salary will be definitely below average. Yet the chances are they will be working for pay about one-fourth of their lives.

Look for Best Possibilities

Young people who plan to go on to college should look into the possibilities available to them. Girls should consider the advantages of a degree in the field of home economics.

Home economics has developed an unusual educational program for those concerned with home and family. This, of course, means it is adapted to the particular interests and responsibilities of women.

All over the country there are shortages of people with specialized training in home economics. Openings occur in teaching; extension; business connected with food, clothing, and household equipment; dietetics; home economics and journalism; interior decoration; research; family counseling; and nursery school teaching.

Always Need Home Ec Agents

There is not one month of the year when all Kansas counties have a home economics agent. Right now 15 Kansas



Mrs. Mary Lou Gibbs, homemaker, mother and home economics agent (center), confers with a Pottawatomie county family on their plans for a new home. Mrs. Gibbs, a former 4-H'er, uses her home economics training both for a career as a homemaker and a home economics agent.

counties need a home economics agent. There are not enough Kansas graduating seniors considering becoming an agent to fill these vacancies.

Kansas is not the only state needing home ec agents. Other states write asking our graduates to consider positions on their staffs. Remember, home economics extension is only one of the many fields available for home economics graduates to consider.

High school home economics teachers are not graduating in sufficient numbers to fill the positions available. Every year Kansas State University has more requests than graduates.

Demand Ten Times Supply

The American Dietetics Association reports ten times as many demands as trained persons available for dietitians.

Home economists in business are always being sought by Kansas and other business firms.

The girl who earns a university degree in home economics will have the following advantages—

1. **Become aware of the Life Span Approach** to the pattern of today's living.

2. **Acquire a broad general education** along with a specialty of her choice.

3. **Become a creative homemaker**, a stimulating wife, and a well-trained mother.

4. **Equip herself for a career** as a home economist for immediate use or in the future after children are gone from home.

5. **May choose one of the many professions** in the expanding home economics field. One position is a stepping stone to advancement.

6. **Earn above average salary** as a home economist. This is true in Kansas and across the country. Average starting salary of home economists was \$4,040 in 1957-58. This was in the top three of women's occupations for starting salaries.

7. **Be warmly welcomed into the work field** . . . home economists often do not have to look for a job . . . the "job" looks for them . . . employers seek the graduate.

8. **May choose a field of interest** within home economics suited to her temperament—interior decoration for those interested in art; foods and nutrition or textiles research for those strongly interested in science; foods or equipment demonstrating for those interested in appearing before groups of people; child development for those interested in psychology; teaching or extension for those interested in working closely and directly with a group of people; clothing retailing for those interested in the merchandising field.

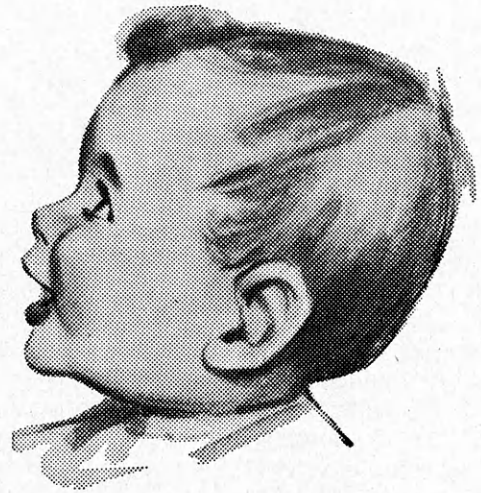


SOOOO ...
TINY
NOW

BUT A ...

BIG FUTURE TOMORROW

Prepare for his future **NOW** with a
SAFE-CONVENIENT-PROFITABLE
savings account at your nearest savings association.
Don't fail your children—prepare now for their Financial Future the best way possible—a savings account in your local savings association.



VISIT YOUR NEAREST *Progressive* **KANSAS** *Savings & Loan Association*

Arkansas City
First Federal Savings and Loan Ass'n of Arkansas City

Augusta
The Commercial Savings and Loan Assn.

Beloit
The Beloit Building and Loan Assn.
First Federal Savings and Loan Assn. of Beloit

Clay Center
Northwestern Federal Savings and Loan Ass'n. of Clay Center

Dodge City
First Federal Savings and Loan Ass'n. of Dodge City

El Dorado
Eureka Federal Savings and Loan Association
Mid-Continent Federal Savings and Loan Assn. of El Dorado

Emporia
The Columbia Building and Loan Assn.

Erie
The Erie Savings and Loan Assn.

Fort Scott
Liberty Savings and Loan Assn.

Garnett
The Garnett Savings and Loan Association

Goodland
Goodland Savings and Loan Assn.

Great Bend
The Prudential Building and Loan Assn.

Hays
The Hays Building and Loan Assn.

Hutchinson
First Federal Savings and Loan Assn. of Hutchinson

Iola
The Security Savings and Loan Assn.

Kinsley
The Kinsley Savings and Loan Assn.

Larned
The Larned Savings and Loan Assn.

Lawrence
Capitol Federal Savings and Loan Assn.

Leavenworth
The Leavenworth Mutual Building, Loaning and Savings Assn.

Liberal
First Federal Savings and Loan Assn. of Liberal

Lyons
The Lyons Savings and Loan Assn.

Medicine Lodge
The Barber County Building and Loan Association

McPherson
The Pioneer Savings and Loan Association of McPherson

Mission
Capitol Federal Savings and Loan Assn.

Newton
First Federal Savings and Loan Assn. of Newton

Norton
Norton County Savings and Loan Association

Ottawa
Ottawa Savings and Loan Assn.

Overland Park
The Overland Park Savings and Loan Assn.

Parsons
First Federal Savings and Loan Assn. of Parsons

Plainville
Rooks County Savings Assn. of Plainville

Pratt
The Western Savings Assn.

Salina
The Homestead Building and Loan Assn.

Topeka
Capitol Federal Savings and Loan Assn. at 6th and Kansas, and 12th and Topeka Blvd.

Wichita
The Commercial Savings and Loan Assn. at 4601 E. Douglas Avenue and 147 North Market Street

All Accounts in These Savings and Loan Associations



Insured by the Federal
Savings and Loan Insurance
Corporation
\$10,000 for each account
\$70,000 for a family of three

Kansas 4-H Journal 1961

Kansas Four-Year College and University Directory

CHEYENNE	RAWLINS	DECATUR	NORTON	PHILLIPS	SMITH	JEWELL	REPUBLIC	WASHINGTON	MARSHALL	NEMAH	BROWN	DONIPHAN
SHERMAN	THOMAS	SHERIDAN	GRAHAM	ROOKS	OSBORNE	MITCHELL	CLOUD	CLAY	RILEY	POTTA- WATOMIE	JACKSON	ATCHISON (12)
WALLACE	LOGAN	GOVE	TREGO	ELLIS (5)	RUSSELL	LINCOLN	OTTAWA	DICKINSON	GEARY (8)	WABAUNSEE (19)	SHAWNEE	JEFFERSON (14)
GREELEY	WICHITA	SCOTT	LANE	NESS	RUSH	BARTON	ELLSWORTH	SALINE (9/11)	MORRIS	LYON	OSAGE	DAVENS (15)
HAMILTON	KEARNY	FINNEY	HODGEMAN	PAWNEE	STAFFORD	RICE	McPHERSON (2)	MARION	CHASE (7)	COFFEY	FRANKLIN (13)	JOHNSON
STANTON	GRANT	HASKELL	GRAY	FORD (16)	EDWARDS	PRATT	RENO (17)	HARVEY (3)	BUTLER	GREENWOOD	WOODSON	MIAMI
MORTON	STEVENS	SEWARD	MEADE	CLARK	COMANCHE	BARBER	HARPER	SEDGWICK (20/21/24)	ELK	WILSON	NEOSHO	ANDERSON
								SUMNER	COWLEY (22)	CHAUTAUQUA	LABETTE	LINN
												BOURBON
												CRAWFORD (6)
												CHEROKEE

Index

1. Baker University, Baldwin	24	14. St. Benedict's College, Atchison	37
2. Bethany College, Lindsborg	25	15. St. Mary College, Xavier	40
3. Bethel College, North Newton	26	16. St. Mary of the Plains College, Dodge City	42-43
4. College of Emporia, Emporia	27	17. Sterling College, Sterling	41
5. Ft. Hays Kansas State College, Hays	28	18. University of Kansas, Lawrence	44-47
6. Kansas State College, Pittsburg	24	19. Washburn University of Topeka, Topeka	39
7. Kansas State Teachers College, Emporia	29		
8. Kansas State University, Manhattan	30-35	OTHER KANSAS FOUR-YEAR COLLEGES AND UNIVERSITIES	
9. Kansas Wesleyan University, Salina	36	20. Friends University, Wichita	
10. McPherson College, McPherson	37	21. Sacred Heart College, Wichita	
11. Marymount College, Salina	39	22. Southwestern College, Winfield	
12. Mount St. Scholastica College, Atchison	38	23. Tabor College, Hillsboro	
13. Ottawa University, Ottawa	38	24. University of Wichita, Wichita	

Airplane tires and wheel assemblies for combines, feed wagons, manure spreaders, trailers and dirt scoops.

Hey Machinery Co.

BALDWIN, KANSAS

Baldwin State Bank

Member F.D.I.C.
Capital \$300,000.00

Baldwin, Kansas
Phone 594-6421

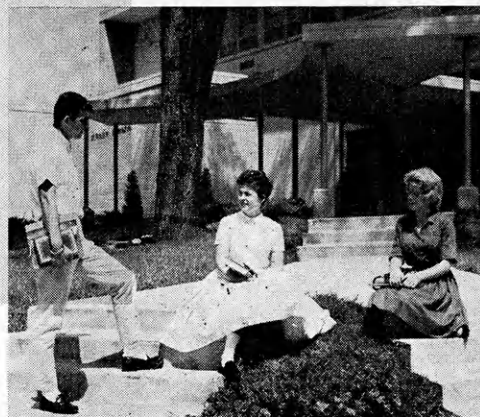
Business Directory

Betts Store
717 High
4 Winds Motel
Highway 56
Hitchcock Drug Co.
723 8th
Standard Oil
Lee Newman, Agent

Professional Directory

F. A. Gleason, D. C.
820 High

Students in front of the Student Union ... BAKER UNIVERSITY Baldwin, Kansas



Baker University was founded and is maintained as a Christian College of Liberal Arts. It is controlled and maintained by the Kansas Conference of the Methodist Church. In line with this tradition a threefold objective is set for student education and growth; to provide a liberal or general education, emphasize special attainment in one or more selected fields of study, and encourage greater promise of growth in Christian living.

The Curriculum

Humanities

Departments of English, Journalism and Speech, Foreign Languages, Philosophy and Religion
Social Sciences

Departments of Economics and Business Administration, Education, History and Political Science, Home Economics, Psychology, and Sociology

Natural Sciences and Physical Education

Departments of Biology, Chemistry and Geology, Health, Physical Education and Recreation, Mathematics and Pre-Engineering, and Physics

Fine Arts

Department of Art, and Music

THE HULL & DILLON PACKING COMPANY

* *

Quality Meats

Since 1885

* *

PITTSBURG, KANSAS

Wright's Greenhouse, Inc.

Friends of Kansas State College of Pittsburg

From its Beginning

Forest and Walnut ADams 1-6400

Professional Directory

Arthur M. Scott,
A. I. A. Architect
Hotel Besse Building
Keller, Wilbert & Palmer,
Attorneys at Law
204 National Bank Building

Business Directory

Beck & Hill Market
303 N. Broadway
Foodtown Super Markets Inc.
Pittsburg
Pittsburg Ice Cream Co.
301 W. Park
The Fadler Produce Company
112-114 N. Elm
The Overhead Door Company
Pittsburg

Build Your Future at Kansas State College of Pittsburg

Kansas State College of Pittsburg is a progressive multi-purpose educational institution offering a wide variety of opportunities from short-term technical courses to the Specialist in Education degree program. Since its organization in 1903, KSC has specialized in industrial arts and the preparation of teachers.

Degrees Granted

Bachelor of Arts, Science, Science in Education, Science in Business Administration, Science in Mechanical Arts, Science in Trade and Industrial Education, Fine Arts, Music, and Music Education.

Master of Arts in English, History, and Mathematics.

Master of Science in a variety of fields, and Master of Science in Art Education, Master of Science in Physical Education and Master of Science in Music Education.

Courses Offered

Kansas State College of Pittsburg offers courses in Arts, Business, Elementary Education, English, Foreign Languages, Home Economics, Industrial Arts, Journalism, Library Science, Mathematics, Mechanic Arts, Music, Physical Education, Psychology, Speech, Biological Sciences, Physical Sciences, and Social Sciences.

One-and two-year Industrial Arts Technical programs include work in architectural drafting, auto mechanics, industrial illustration, mechanical drafting, metalworking and printing.

Short-term business programs include 1-year clerical, 1- and 2-year secretarial and 2-year accounting courses.

Pre-professional curricula are offered in engineering, dental, medical, nursing, laboratory technician, veterinary medicine, law and social work.

This is the Kansas State College of Pittsburg campus in an air-view photograph that is rapidly becoming obsolete because of an extensive building program begun since it was taken.



How Many of Your H.S. Seniors Plan To Attend College

Nation-wide, a lower percent of farm boys and girls go to college than city boys and girls.

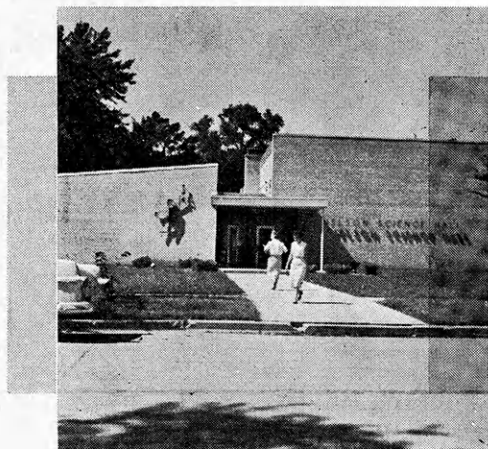
The Federal Census reports 34% of high school seniors who live on farms say they plan to go to college. This compares with 51% of those boys and girls living in cities.

How does your county compare with these nation-wide averages? The map at right shows the percentage of high

CHEYENNE	SAWLINS	DECATUR	NORTON	PHILLIPS	SMITH	JEWELL	REPUBLIC	WASHINGTON	MARSHALL	NEMAH	BROWN	DONIPHAN
49	54	52	38	41	48	35	37	18	21	25	43	32
SHERMAN	THOMAS	SHERIDAN	GRAHAM	ROOKS	OSBORN	MITCHELL	CLOUD	CLAY	RILEY	POTTER	JACKSON	ATCHISON
49	21	37	35	50	25	36	35	36	63	35	32	41
WALLACE	LOGAN	GOVE	TREGO	ELLIS	RUSSELL	LINCOLN	OTTAWA	HICKSON	GEARY	WARSAW	SHAWNEE	DOUGLAS
42	29	41	51	39	46	48	27	39	39	21	45	50
GREELEY	WICHITA	SCOTT	LANE	NEO	RUSH	BARTON	ELLSWORTH	SALINE	MORRIS	LYON	FRANKLIN	MIAMI
47	40	59	66	38	45	45	41	55	39	33	32	35
HAMILTON	KEARNY	FINNEY	HODGEMAN	FAWNEE	STAFFORD	KTNO	HARVEY	BUTLER	GREENWOOD	WOODSON	ALLEN	BOURBON
27	64	52	52	56	48	65	49	39	39	31	49	46
STANTON	GRANT	HASKELL	FORD	EDWARDS	PRATT	KINGMAN	SIDGWICK	ELK	WILSON	NEOSHO	CRAWFORD	
52	60	49	39	59	62	58	45	46	21	48	49	
MORTON	STEVENS	SEWARD	MEADE	CLARK	COMANCHE	BARBER	HARPER	SUMNER	COWLEY	CHAUTAUQUA	MONTGOMERY	LAMETTE
48	42	39	51	51	68	40	53	39	46	29	35	49
												CHEROKEE
												34

school seniors graduating in the spring of 1959 who actually started to college that fall. The

study was completed by Kansas State Teachers College, Emporia.



NELSON SCIENCE HALL

BETHANY COLLEGE

Bethany College is accredited by the North Central Association of Colleges and Secondary Schools and other accrediting agencies. It grants the B.A., B.S., B.M. and B.F.A. degrees. It sponsors special cultural events open to the community. A historical museum is open at specified times and by appointment.

Majors:

Christianity and
Philosophy
English Language and
Literature
Modern Languages and
Literature
Music (Bachelor of
Music Degree)
Art (Bachelor of
Fine Arts Degree)
Biology
Physical Education
Chemistry
Physics
Mathematics
History
Business-
Economics
Sociology
Elementary
Education

Cooperative Programs:

Engineering
Medical Technology
Nursing

* * *

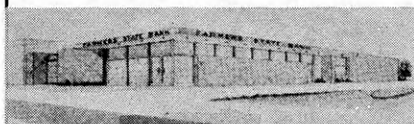
Costs & Student Aid:

About \$1,200 per school year, including tuition, room, board, fees and books.

Limited financial aid available to needy students. Application for aid should be made as early as possible.

Farmers State Bank

LINDSBORG, KANSAS



1886

1961

OUR 75th YEAR OF SERVICE
TO THE COMMUNITY

Member FDIC

Farmer's Union Elevator Co.

Lindsborg, Kansas



MARQUETTE - LINDSBORG - McPHERSON

Business Directory

Carlson Lumber Company
102 S. Lincoln
Davis Coffee House
King Oscar Coffee
Wayne's Market
129 N. Main

COLLEGE OF THE MESSIAH FESTIVAL

Bethany College

LINDSBORG, KANSAS

First National Bank

Newton, Kansas

Member F.D.I.C.

Farmers Feed Mill

1911 North Main

Newton

Kansas

Business Directory

Benfer Insurance Agency

109 E. 6th

Cookie's Bake Shop

622 Main

Enns Motor Service

1823 N. Main

First Federal Saving and Loan Ass'n. of Newton

Main and Broadway

Full Vision, Inc.

523 W. 1st

Guest House Cafeteria

610 Main

Midland Mutual Fire Insurance Co.

119 W. 6th

Miller's Quality Dry Cleaning

525 E. Broadway

Newton Elevator

220 E. 6th

Newton Skating Palace

130 E. 3rd

Randy's Steaks

115 S. Kansas

Robert Carroll's Hairdressing

219 Main

Toevs' Men's and Boy's Wear

517 Main

Virg's Standard Service

100 S. Main

Elmer P. Zehr, Brotherhood Mutual Life Ins. Co.

601½ Main

It's Aim . . .

**'to offer a thorough, Christian
liberal arts education'**

BETHEL COLLEGE

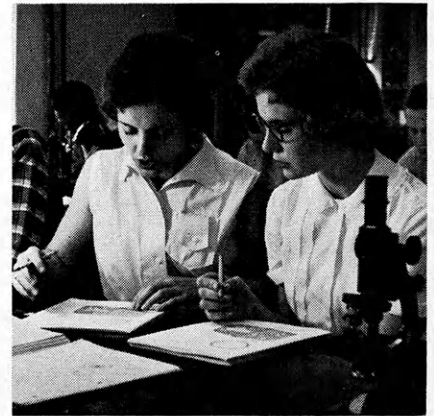
Bethel College is a Christian liberal arts college founded in 1887 by Mennonite pioneers. The college is fully accredited by the North Central Association of Colleges and Secondary Schools and the American Association of Colleges for Teacher Education.

Curriculum

Bethel College offers a four year program leading to the Bachelor of Arts and Bachelor of Science degrees, emphasizing general education in the basic intellectual disciplines of the arts and sciences, but with a definitely Christian emphasis. Professional preparation is available in such fields as teaching, business, industrial arts, and, in cooperation with the Bethel Deaconess Hospital, nursing. Provision is also made for pre-professional training in the ministry, medicine, dentistry, pharmacy, engineering, law, journalism, social work, and accounting.

Facilities

From the single stone Administration Building of the 19th century, the campus



has developed to include dormitories, laboratory facilities, and educational buildings for a student body of over 500 men and women.

Most students live in college dormitories and eat together in the dining hall. Special housing is provided for married students, in either apartments or mobile homes.

Activities

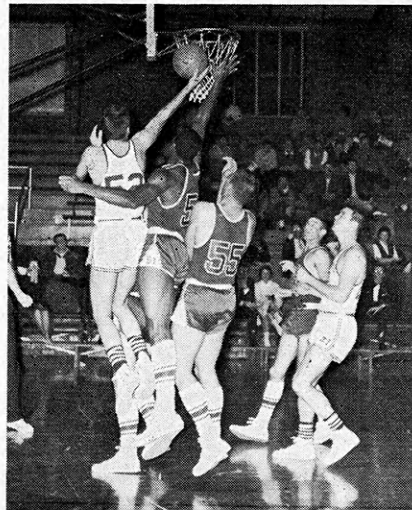
There are intercollegiate and intramural athletic events, social and recreational activities, cultural and musical programs, and class and special interest clubs.

Costs and Student Aid

The total cost for attending Bethel College for one year is approximately \$1,200. This includes tuition, \$600; board, \$330; and room, approximately \$180.

Four Outstanding Student Awards of \$2,000 each, as well as other honor scholarships, are available to high school graduates. A limited amount of student aid is available to others in the form of loans, scholarships, grants-in-aid, and employment.

* Subject to change without notice.



**For a bulletin of Bethel College and application
blanks, address the ADMISSIONS COUNSELOR,
BETHEL COLLEGE, NORTH NEWTON, KANS.**

Professional Directory

M. A. Claassen, M. D.

3118 Puckett, Kansas City 3, Kansas

Walter G. Haury, D. D. S.

124 W. 6th

F. E. Loose, D. O.

114 W. 5th

Delbert V. Preheim, M. D.

Bethel Clinic

Eldon S. Rich, M. D.

201 S. Pine

H. R. Schmidt, M. D.

201 S. Pine

Future in Agriculture

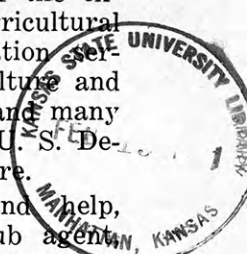
(Continued from Page 19)

products, the farm machinery factories, fertilizer plants, and oil refineries hire laborers, skilled laborers such as machinists, office personnel, chemists, engineers, and salesmen. The insurance companies and the banks who deal with farmers

need salesmen and office help. Second, the processing and distributing of the products produced on the farm requires some 11 million persons to take the product from the farm to the consumer. The millers, the packers, the canneries and freezing plants, the dairy processors, the trucker, and the railroads hire men and women of many skills. Third, in public service many farm youth find their career. These are the scientists who

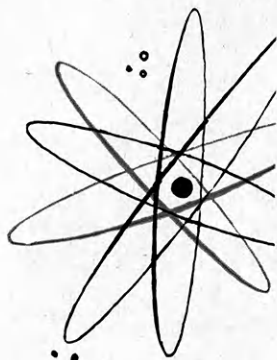
make up the staffs of the extension service, the agricultural colleges, soil conservation service, vocational agriculture and homemaker teachers, and many other services of the U.S. Department of Agriculture.

For information and help, talk to your 4-H Club agent, high school teacher, or local employment agency. They will be glad to visit with you and tell you where you may go for further information.

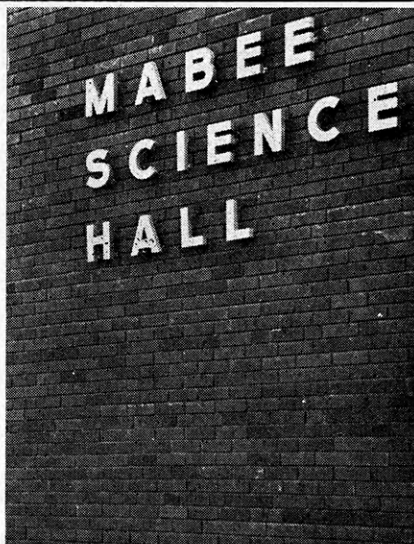


College of Emporia

EMPORIA,
KANSAS



Business and professional leaders agree that the liberal arts are on the threshold of the exploding mid-century! Prepare for the complexities and problems of tomorrow by planning to attend college! The College of Emporia is one of more than two score Kansas colleges that has faced this mid-century dilemma.



The science department of the College of Emporia, in line with a new school policy of establishing a strong Liberal Arts program within the framework of Christian principles, has established a strong basic curriculum for each department. During the past two years much new equipment has been installed to bring this school up to a high new level of higher education.

Curriculums

DIVISION OF HUMANITIES

Department of English
Department of Modern Language and Literature
Department of Religion and Philosophy
Department of Music and Art

DIVISION OF SCIENCE

Department of Biology and Geology
Department of Chemistry
Department of Mathematics
Department of Physics

DIVISION OF SOCIAL SCIENCE

Department of History
Department of Political Science
Department of Psychology
Department of Sociology

DIVISION OF APPLIED ARTS

Department of Business Education
Department of Education
Department of Homemaking
Department of Nursing Education
Department of Physical Education

Business Directory

Anderson Insurance Agency,
508 Commercial
Fox-Granada Theatre
807 Commercial

Giger Livestock Sales
Route 5

Kansas Soya Products
East Fifth Avenue

Richardson Produce
127 Commercial

1886

1961

THE CITIZENS NATIONAL BANK

Emporia, Kansas

75 years of service to the College of Emporia and the Kansas State Teachers College, its students, faculty and alumni.

Oldest Bank in Lyon County

Capital — Surplus — Profits
Over \$1,000,000.00

*"It Does Make A Difference
Where You Do Your Banking"*

Member of the Federal
Deposit Insurance Corp.

1886

1961

While in College
Let this bank be your
Emporia Bank

EMPORIA STATE BANK and AUTO BANK

Emporia, Kansas

Member of the Federal
Deposit Insurance Corp.

Roberts-Blue-Barnett
Funeral Home
Emporia, Kansas

Union News Company
SAVARIN RESTAURANTS
Kansas Turnpike

Professional Directory
C. E. Partridge, M. D.,
Surgery and Medicine
Citizens National Bank Building

The Farmers State Bank

Hays, Kansas

The Bank where you feel at home



CHANNEL MASTER TRANSISTOR RADIOS

See Your Local Channel
Master Dealer

Home Lumber Company

Complete Building Supplies
and Service
8th & Vine Street Hays, Kansas

Ft. Hays Alumni Ass'n., Inc.

Ft. Hays State College

Producers Gas Equities, Inc.

105 W. 13th Hays

Business Directory

Dillon's Food Market

109 W. 7th

Eastlack—Storm Agency

Box 635 MA 4-3515

Ed Dies, State Farm Insurance Co.

Box 212

Federal Land Bank Assn. of Hays

207 W. 12th

Hunter Construction Co., Inc.

503 E. 10th

Kansas Claims Service, Inc.

705 Fort

KAYS Broadcasting Station

2450 Hall

Lamer Hotel

Hays

Midwest Tobacco & Candy Co.

811 Fort

Northwestern Typewriter Co.

113 E. 12th

Oshants Dry Goods and Army Store

129 W. 10th

Ted Schulte Insurance Agency

117 W. 8th MA 4-4323

Varsity Bowl Drive-In

Red Wycoff, Manager

Professional Directory

Bernard J. Brungardt, Attorney

1203 Fort



The Campus of Fort Hays State College

Higher Education Means . . .

- **OPPORTUNITIES**
for a better future
- **FULFILLMENT**
of your capabilities
- **ENRICHMENT**
of your cultural background
- **UNDERSTANDING**
of your world

Fort Hays State

offers you the means to
reach these ends in the
field of your choice:

Agriculture

Art

Biology

Botany

Chemistry

Economics

Business

Secretarial

Commercial Education

Geography

Education

English

Literature

Biblical Literature

Journalism

Geology

General Science

Health

Physical Education

Recreation

History

Home Economics

Honors Program

Industrial Arts

French

German

Latin

Spanish

Library Science

Mathematics

Music

Applied Music

Nurse Education

Philosophy

Physics

Political Science

Sociology

Anthropology

Psychology

Speech

Zoology

THE CITIZENS NATIONAL BANK

Emporia, Kansas

75 years of service to the College of
Emporia and the Kansas State
Teachers College, their students,
faculty and alumni.

Oldest Bank in Lyon County

Capital — Surplus — Profits
Over \$1,000,000.00

*"It Does Make A Difference
Where You Do Your Banking"*

Member FDIC

1886

1961

WHILE IN COLLEGE

Let this bank be your
Emporia Bank

EMPORIA STATE BANK and AUTO BANK

Emporia, Kansas

Member FDIC

Pennington Chevrolet Inc.

Chevrolet—Oldsmobile—Cadillac

Sales and Service

628 Merchant

DI 2-2744

Roberts-Blue-Barnett Funeral Home

Emporia, Kansas

Business Directory

Anderson Insurance Agency

508 Commercial

Fox-Granada Theatre

807 Commercial

Giger Livestock Sales Co.

Route 5

Kansas Soya Products Co.

East Fifth Avenue

Union News Company,

SAVARIN RESTAURANTS

Kansas Turnpike

Professional Directory

C. E. Partridge, M. D.,

Surgery and Medicine

Citizens National Bank Building

teaching as a career

The major role of Kansas State Teachers College of Emporia since 1863 has been the education of teachers for the public schools of Kansas. Elementary, high school, and junior college teachers are prepared at the Teachers College. The Teachers College maintains elementary and secondary laboratory schools, in which future teachers receive teaching experience before graduation.

Library education

Today, many young people are planning careers in librarianship. For over 50 years the Teachers College has offered a program of library education for Kansas schools and public libraries. The education of a librarian involves the regular college course and specialized training in librarianship.

Curriculum

Major course offerings are made in the following fields—art, biology, business and business education, education, English, foreign languages, health, men's Physical education and recreation, home economics, industrial arts, library science, mathematics, music and music education, physical education and recreation for women, physical science, psychology, social sciences, speech.

Other programs

The Teachers College provides, in addition to teacher education and library education, higher education programs of study in liberal arts, pre-business, and pre-professional education.

Finances

A student may be helped financially in three ways—scholarships, loans and part-time employment.

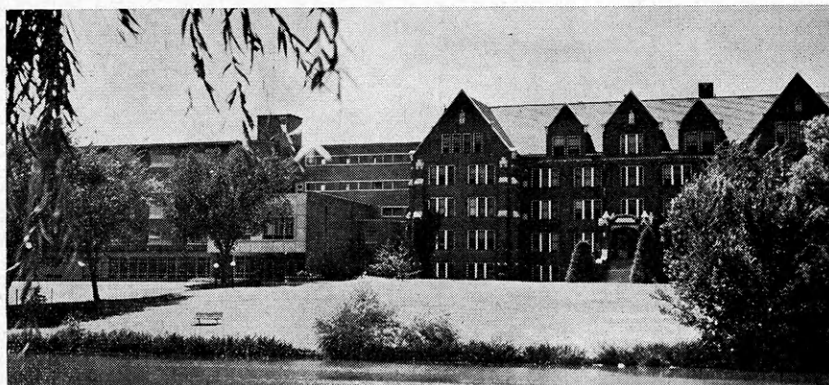
Degrees

Undergraduate—Bachelor of Science in Education, Bachelor of Science in Business, Bachelor of Music Education, Bachelor of Music and Bachelor of Arts.

Graduate—Master of Science, Master of Arts, and Specialist in Education.

Academic Advice and Personal Guidance

A student having difficulty selecting a major field of study, or perhaps adjusting to college life will find a friend in the Counseling Center. Graduates or near-graduates of the Teachers College receive excellent help from the Placement Office.



KANSAS STATE TEACHERS COLLEGE OF EMPORIA

ANDERSON CATTLE CO., INC.

Feeders of Livestock

PHONE DI 2-0330

EMPORIA, KANSAS

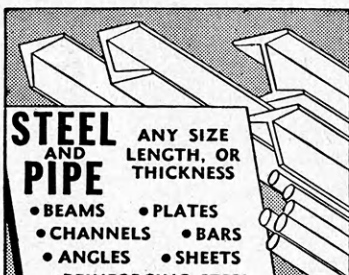
We are living in a changing world. May we urge you to attend Kansas State University to prepare yourself for the future.

You are cordially invited to use our downtown bank and our Motor Bank while you are living in Manhattan.

First National Bank

Manhattan, Kansas

Member F.D.I.C.



STEEL AND PIPE ANY SIZE LENGTH, OR THICKNESS

- BEAMS • PLATES
- CHANNELS • BARS
- ANGLES • SHEETS
- REINFORCING STEEL

Steel & Pipe Supply Co.
2ND & OSAGE
MANHATTAN, KANSAS
PR. 8-4440

Paul Dooley, Jeweler

Engraving — Repair

Aggieville Shopping Center
Since 1924

Be a Leader

Be a College Graduate

K-State has prided itself on the individual attention given its students, and for the contribution it has made through them and its staff to the development of Kansas. As it approaches a second century of service, that primary objective prevails.

It will soon be a century (in 1963) since Kansas State University was founded as the nation's first land-grant college.

In the near century since, the University has developed 52 departments in six Schools. The instruction offered has changed with the economy of Kansas,

Basic cost per year of a K-State Education can be from \$750 to about \$1,000. This cost includes \$208 enrollment fees (incidental, student health, student union and student activities fees), \$60 books, \$100 to \$200 for room and \$400 to \$550 for board. Clothing, laundry, travel and social activities costs will vary with the individual.

from primarily agricultural toward a more diversified and industrial society.

Today Kansas State graduates live in most of Kansas' communities, two or three generations of graduates in some of them. They are known as desirable citizens—competent in their professions and good neighbors. K-Staters have 4-H Club Agents and United States Senators;

one graduate helped direct construction of the Panama Canal; others are working in the development of atomic energy and in our state's booming aircraft industry.

K-State is ready to meet the challenge of the future and looks to the day when, in the words of President McCain, it can promise: "Show me any youth in our State with demonstrated ability to succeed in one of our courses and, regardless of his financial circumstances, we shall make it possible for him to attend this University."

School of Agriculture

Curriculums in

Agriculture

Options in

Agriculture Economics

Agromony

Animal Husbandry

Dairy Husbandry

Entomology

K-State's six staff member Student Counseling Center helps students with academic or vocational plans, effective study and learning habits, and ways to receive the optimum personal and social satisfactions from college experiences. Even before enrolling, prospective students may get help in deciding on courses.



Kansas State

BOOKS & SUPPLIES

FOR ALL CLASSES AND LABS

NICE THINGS HAPPEN TO
YOU

at

TED VARNEY'S

UNIVERSITY BOOK STORE

YOUR FRIENDLY BOOK STORE NEAREST THE UNIVERSITY
WITH THE GREEN SIDEWALKS



Commencement, the realization of a goal and the recognition of a new challenge and responsibility.

Horticulture
Poultry Husbandry

Agricultural Education
Agricultural Economics
Options in
Agricultural Administration
Rural Banking
Agricultural Business and
Industries

Technical Agricultural Economics

(Continued on page 32)

Write to the Director of Admissions,
Kansas State University, Manhattan, for
further information on available courses,
scholarships, part-time job opportunities,
and education costs at Kansas State Uni-
versity.

University, Manhattan

K. S. U. is the School for You

Denholm's
MATERNITY and
CHILDREN'S WEAR

427 Poyntz, Manhattan

Helpful and Near You

Since 1889

UNION NATIONAL BANK

Manhattan, Kansas

OFFICERS

Tom Griffith, Chairman of Board
J. E. Arnold, President
W. B. Glenn, Vice-President
Lloyd Carlson, Cashier

DIRECTORS

T. J. Griffith	W. F. Farrell
C. C. Brewer	Charles D. Green
J. E. Arnold	Charles S. Arthur
N. D. Harwood	Ward M. Keller
W. B. Glenn	R. P. Martin
J. Robert Wilson	Lloyd Carlson

**Make Reservations Now
For Your Banquets—
Wedding Receptions**

Seating Capacity up to 300
All banquet rooms air-conditioned

**Wareham Hotel
Food Service**

D. C. MARTIN, Catering Mgr.

BUZZELL'S OFFICE
EQUIPMENT
Corner 4th & Houston
SALES—SERVICE—RENTALS
Manhattan, Kansas

**Bradstreet's
R. D. Jewelry**

**Watches—Diamonds—Jewelry
Watch - Clock Repair**

Aggieville
Shopping Center
1208 Moro

GOOCH'S BEST

Feed Proved

Feeds

**Is Part of
Good Management**

Walters Sand Co., Inc.

(Since 1925)

Manhattan, Kansas

Griffith Lumber Co.

112 No. 2nd
PR 8-4477

Complete Line of Building Materials

**Olson's Aggieville
Shoe Repairs**

**College Cleaners
and Shirt Salon**

1216 Moro Ph. 8-2390



K-State students in front of Eisenhower Hall, which was named for one of the many famous Kansas State graduates

Notice
that
different
courses
at
Kansas
State
University,
Manhattan,
are
listed
on
pages
31
32
33
34
35
36
37
38

School of Agriculture

(Continued from page 31)

Technical Agronomy

Options in

Soil Science

Applied Agronomy and Soil
Conservation

Crop Science

Dairy Manufacturing

Options in

Dairy Plant Operation

Dairy Plant Management

Dairy Plant Technician

Horticulture

Landscape Design

Agriculture Education

Agricultural Journalism

School of Arts and Sciences

Curriculums in

Biological Science

Majors in

Bacteriology

Biogeography

Botany

Entomology

Psychology

Speech

Technical Journalism

Wildlife Conservation

Zoology

Pre-Professional Programs in

Medical Technology

Pre-Dentistry

Pre-Veterinary

Physical Science

Majors in

Chemistry

Geography



Kansas State

It's Smart to

Go on to College

Don't think you cannot afford to go to college. Part-time work, scholarships, and loan funds are used widely. Many more than formerly now are available. At K-State alone more than 400 scholarships totaling in excess of \$90,000 are awarded annually. \$325,000 in loan funds are available.

Geology
Geophysics
Mathematics
Physics
Statistics
Technical Journalism
Humanities
Majors in
Art
English
History
Mathematics
Modern Language
Music
Philosophy
Speech
Statistics
Social Science
Majors in
Economics
Geography
Government
History
Psychology
Sociology
Speech
Technical Journalism
Pre-Professional Programs in
Pre-Law
General
Majors in
Biological Science
Humanities

Physical Science
Social Sciences
Pre-Professional Programs in
Physical Therapy
Pre-Dentistry
Pre-Medicine
Pre-Law
Business Administration
Majors in
Business Administration
Accounting
Education
Majors in
Elementary Education
Music Education
Physical Education
Secondary Education
Art Education
Music
Major in
Applied Music

School of Engineering and Architecture

Curriculums in
Agricultural Engineering
Architectural Engineering
Architecture
Chemical Engineering
Civil Engineering
Electrical Engineering
Options in
Power
Communications and Electronics
Electrical Engineering and
Business Administration
Industrial Engineering
(Con. on Page 34)

A new 40-bed hospital and clinic, (newest, most modern in nation) plus the services of five physicians, 12 nurses and other professional help, are available for K-State students at anytime of the day or night. Cost of many services are included in the \$10 student health fee and charges for practically all other services are much below commercial rates.

WE SERVE
KANSAS STATE
UNIVERSITY
STUDENTS

WITH
NEW TEXTBOOKS
USED TEXTBOOKS
REFERENCE BOOKS
AND ALL
SUPPLIES

CAMPUS BOOK STORE

Commonwealth—
Manhattan
Theaters

Manhattan
Wareham
Campus
Sky-Vue Drive-In
Edgewood Drive-In

Perle Bottger's
Aggieville
Marine Center
Johnson Outboard Motors
Lone Star Boats
Sales & Service

Across the Alley
Bottger's IGA
Super Market

When in Manhattan
WARD M. KELLER
MANHATTAN'S STORE FOR WOMEN
—To Outfit You From Head to Toe—

University, Manhattan

4-H'ERS
ARE ALWAYS
WELCOME
AT
DUCKWALL'S
Downtown and Aggieville

**We Salute All
4-H Club Members**

—The Future Leaders
of this community
the state, and the
nation.

**THE DAILY
MERCURY**
Manhattan, Kansas

**DOEBELES IGA
FOODLINER**

Fruits—Vegetables—Groceries
and Meats

517 N. Third Phone 8-4923

Free Delivery
Every Day Low Prices

Stickel's Cleaners
714 N 12th

**WESTGATE
Wheel Aligning Co.**

114 S. 5th St. Phone PR 8-4350
James Hand James Soupene

COLE'S
INC.
DEPARTMENT STORE

**Palace Drug
Company**

We All Think

You're too Smart to Quit

Part-time jobs can be used to help defray some of the costs of a college education. One-half of the students at K-State earn some part of their expenses. The University itself employs 2,500 different part-time students. Manhattan, a town of 25,000, and nearby Ft. Riley offer other job opportunities.



Many agribusiness employers visit K-State each spring looking for young men with farm backgrounds and B. S. degrees. Opportunities have rapidly expanded in agribusiness.

**School of Engineering and
Architecture**

(Con. from Page 33)

Mechanical Engineering
Options in
Aeronautical
Design

Management
Petroleum
Nuclear Engineering

School of Home Economics

Curriculums in
Home Economics
Options in
Interior Decoration
Crafts
Costume Design
Teaching Art in High School



Kansas State



Frontiers of science waiting to be explored by youth of today are far more interesting and rewarding than were the land frontiers in our forefather's day.

Clothing Retailing
Clothing and Costume Design
Clothing and Textile Research
Nursery School Teaching

Family and Child Development
with Community Services

Homemaking

Family Economics and Finance
Household Equipment, Housing
and Home Management

Foods and Nutrition Research
Foods Demonstrating

Home Economics Extension Work
Teaching Home Economics in
High School

Dietetics and Institutional Manage-
ment

Restaurant Management

Home Economics and Journalism
Home Economics and Nursing

School of Veterinary Medicine

Six-Year Curriculum in Veterinary
Medicine

The Kansas State University Placement Cen-
ter offers five areas of assistance in job hunt-
ing for undergraduates, graduating seniors,
graduate students and alumni. Three full-time
professional people work with student part-time
employment, summer employment, teacher
placement, business and industrial, and alumni
placement.

Business Directory

Aggie Hardware & Electric
Co.

1205 Moro

B. C. Waddell Company,
Goodyear & Sinclair
6th and Riley

Bennington Plumbing and
Heating
105 S. 5th

Bird Music Company
126 Poyntz

City Rug and Carpet Cleaners
519 Pierre

Deluxe Cleaners and Shirt
Laundry
706 N. Manhattan

Diffley Truck Line
Topeka

Duell's Maytag Appliances
301-B Poyntz

Fair Oil Company
517 N. Third

Federal Land Bank Loan
Association
600 Humboldt

Ferrol E. Cowan
1616 Poyntz

Henton Plumbing & Heating
324 Fremont

Kimsey's Shoes
311 Poyntz

Lang's Credit Jewelers
The Diamond Store—419 Poyntz

Laramie Street Grocery
1601 Laramie

Lee Lodge Motel
Westwood & Ft. Riley Blvd.

Lindy's Dress for Less
Clothing and Army Store
231 Poyntz

Lumb's Hy-Klas Food Store
1407 Denison

Schwerdt Motor Company
1125 Moro

Seven-Up Bottling Company
120-22 Poyntz

Smith's 66 Service
11th and Moro

Town and Country Hardware
406 Poyntz

Village Motel
Highway 24

Professional Directory

Charles S. Arthur, Attorney
at Law
Ulrich Building

J. D. Coursen, D. C.
616 N. 12th

University, Manhattan

Chappell's

Dairy Foods

MANHATTAN, KANSAS

McCUNE BIRD STORAGE & SUPPLIES, INC.
254 NORTH SANTA FE
SALINA, KANSAS
PHONE: TA. 7-5432



Agent

Allied Van Lines

HAROLD J. URBANEK
PRESIDENT

Morrison Grain Co., Inc.

Bonded Storage
Grain Merchandisers

SALINA, KANSAS

EVANS GRAIN COMPANY

Board of Trade Building

Salina, Kansas

TAylor 7-4484

McCUNE PAPER CO.

Wholesale
Paper Products
and
Paper Specialists

254 Santa Fe

TA7-4444

Business Directory

Baer Radio and TV
306 E. Walnut

Barragree's United Rent-All
1200 W. Crawford

Brown Welding Supply, Inc.
7th and Elm

Carl Miller Trash Service
1321 N. 4th

Casebeer Supply
1007 W. North

Contractors Supply
620 E. 18th, Kansas City, Mo.

C. W. Lynn Abstract Co.
115 S. 7th

E. C. Wyatt Grain Company
Board of Trade Building

Endsley Car and Truck
Service

1202 W. Crawford

Frisbie Construction Co., Inc.
Gypsum

Hamilton Drug
5th and Iron

Hiway Retreading Service
North 81 Highway

Homestead Building and Loan
Association

104 E. Iron

Keith's TV and Radio Service
314 W. Cloud

Kriz-Davis, Inc.

232 N. 3rd

Log Cabin Motel

440 N. Broadway

Memorial Art Company
1608 S. 9th

Michaelsen Construction Co.
South Industrial Area

Michaelsen Lumber Company
612 S. Broadway

Riddle Concrete, Inc.
National Bank of America Building

Salina Implement Company
601 S. Broadway

Salina Rentals
251 N. 13th

Salina Sheet Metal Heating
and Air Conditioning

915 N. Broadway

Salina Testing Laboratory
139 S. 4th

Vernon Jewelers

123 N. Santa Fe

Wenger Agency

114 S. 7th

Wenthe Brothers 66 Service
701 S. 9th

Wm. O. Wenger, Manager
Metropolitan Life Insurance Co.

Wright-Lorenz Grain Co., Inc.
Board of Trade Building

Professional Directory

Kansas Engineering Society
Smokey Valley Chapter
Salina

Leckband & Woods, C. P. A.
Accounting Building

L. F. Eaton, M. D.
737 E. Crawford

Dr. Tom Brungardt
Optometrist

719 E. Crawford

Wilson and Co.
Engineers and Architects
631 E. Crawford

KANSAS WESLEYAN UNIVERSITY

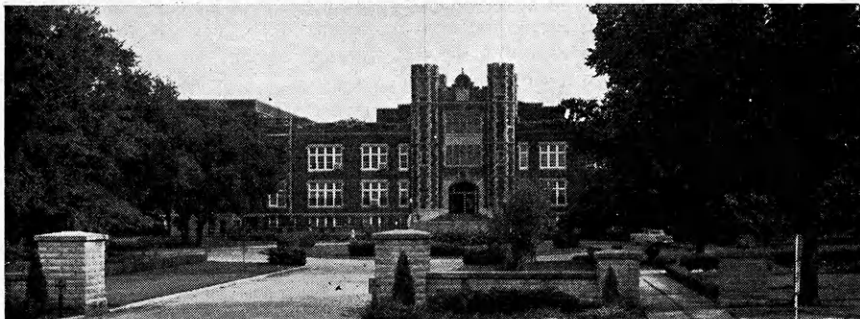
SALINA, KANSAS

Kansas Wesleyan University is a liberal arts college offering courses leading to an A.B. degree. It is fully accredited by the North Central Association of Colleges and Secondary Schools, the University Senate of the Methodist Church, and the State Department of Education. Kansas Wesleyan fosters high scholastic standards, Christian character, good citizenship, and sound training.

CURRICULUM

ART	MATHEMATICS
BIOLOGY	MUSIC
CHEMISTRY	PHYSICAL EDUCATION
ECONOMICS	POLITICAL SCIENCE
BUSINESS ADMINISTRATION	PHYSICS
EDUCATION	PSYCHOLOGY
ENGLISH	RELIGION and PHILOSOPHY
HISTORY	RELIGIOUS EDUCATION
HOME ECONOMICS	SOCIOLOGY
LANGUAGES	SPEECH and DRAMATICS

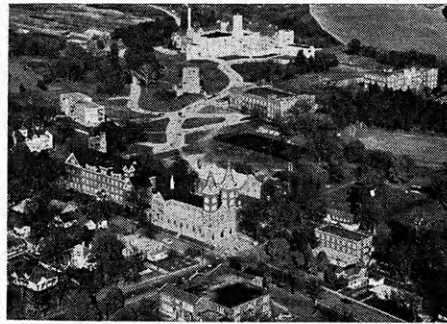
A full program of cocurricular activities helps to enrich the lives of all students at Wesleyan.



**Today We Are Preparing Leaders For
Tomorrow... For Kansas, Our Nation,
and The World!**

ST. BENEDICT'S COLLEGE

Atchison, Kansas
under the direction of
The Benedictine
Fathers



Dedicated to preparing young men for the Art of Living as well as for Earning a Livelihood in their Fields of Science, Law, Agriculture or Business Special Attention to the Pre-Professional Preparation and Education of Kansas' Future Physicians, Lawyers, Dentists, Farmers and Business Men.

Rt. Rev. Cuthbert McDonald,
O.S.B., A.M., L.L.D.,
Chancellor
Dom Brendon Downey,
O.S.B., M.A., Oxon.,
President

As a Kansan, you should take pride in the achievements of the College and the fine national recognition it is gaining. Your inquiries and comments will be promptly acknowledged.

● Consider these Advantages:

... Excellent faculty: 30 Ph.D.'s and 21 Masters, to whose learning 45 different leading universities, both in America and abroad, have attested ... Accredited and recognized nationally ... Graduates have continued their education with distinction in leading Professional Schools ... Varsity athletic competition balanced by an excellent intramural program ... Special attention to personality development for discovering leadership potential in students ... Under Catholic Administration yet welcomes students of all faiths who will feel at home in the Benedictine Family atmosphere.

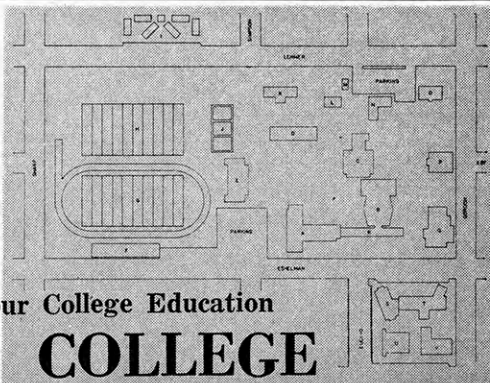
C-G-F Grain Company, Inc.
Grain Merchants — Bonded Storage
Phone 357 Atchison, Kansas

Gerardy Supply Co., Inc.
Automotive Parts and Machine
Shop Service
ATCHISON, KANSAS

HOTEL ATCHISON
Fire Proof (80 Modern Rooms) With
Bath
Coffee Shop and Dining Room
Private Parties and Banquets

Business Directory
Mullins Bros. Hardware Co.
819 Main
The Lockwood Co., Inc.
125 N. Fifth
Tonsing's Stationery and
Book Store
427 Commercial
Van Liew Bros.
926 N. Fifth
Professional Directory
Robert O. Brown, M. D.
N. 2nd at O St.

McPherson College is located in central Kansas, in the county seat town of McPherson (10,000). McPherson is a 4-year liberal arts church-related college. Bachelor of Arts and Science degrees, pre-professional training in dentistry, engineering, law, medicine and nursing are offered. As in other Kansas colleges the arts have been liberated to help youth see the vistas in learning!



Begin Now Planning Your College Education McPHERSON COLLEGE

Curriculums

Professional and Pre-Professional
Pre-Agriculture
Pre-Engineering
Law
Library
Pre-Medical
Pre-Dental
Pre-Medical Technology
Pre-Nursing
Social Work
Pre-Theological

Humanities Area
Art
English
Foreign Languages
Music
Philosophy and Religion

Natural Sciences Area
Biology
Chemistry
Mathematics
Physics

Social Sciences Area
Economics and Business Administration
History
Sociology

Practical Arts and Applied Sciences Area
Education and Psychology
Health, Physical Education and Recreation
Home Economics
Industrial Arts Education
Rural Life

McPHERSON COLLEGE CAMPUS

- | | |
|-------------------------------------|--------------------------------|
| A. Mohler Adm. Bldg. | O. Fahnestock Hall |
| B. Jessie Brown Memorial Auditorium | P. Beeghly Library |
| C. Sharp Hall | Q. Student Union |
| D. Harnly Hall | R. Art Lobby |
| E. Phys. Ed. Bldg. | S. Addition to Dotzour Hall |
| F. Stadium | T. Dotzour Hall |
| G. Athletic Field | U. Church of Brethren |
| H. Practice Field | V. Church Educational Building |
| I. College Courts | President's Home |
| J. Tennis Courts | 1000 East Euclid |
| K. Frantz Hall | Vaniman Hall |
| L. Kline Hall | 1130 East Euclid |
| M. Forney Heating Plant | |
| N. Arnold Hall | |

**McPherson County Farm
Bureau Association and
Insurance Services**
600 W. Kansas McPherson

Compliments
The W-R Milling Company
McPherson, Kansas

**KING'S
Moving & Storage**
McPherson, Kansas

Professional Directory
Cassler, Johnson & West
Attorneys at Law
Peoples State Bank Building
Business Directory
Harry A. Sprague
625 W. Kansas
Hawley Hardware
219 N. Main
J. C. Penny Company, Inc.
119 N. Main
McPherson Terminal Elevator
Company

Mid-Kansas Produce
310 N. Oak
The Pioneer Savings and Loan
Association
114 N. Main

FARMERS CO-OP ASSN. of McPHERSON

Petroleum

Feed

Seed

Fertilizer

Groceries

Hardware

Grains

Business Directory
Mullins Bros. Hardware Co.
 819 Main
Tonsing's Stationery and Book Store
 427 Commercial
United Department Stores
 6th and Commercial
Van Liew Bros.
 926 N. 5th

Professional Directory
C. H. Jacobs, O. D.
 507 Commercial
Robert O. Brown, M. D.
 North Second at O St.

It's
Time
To
Think
About
College



Located at Atchison, Kansas, Mount St. Scholastica College is a Catholic College for women conducted by the Sisters of the Order of St. Benedict. A cultural tradition of more than 1400 years enriches today's educational program. Students know the joys of home away from home through the informal sharing of big and little moments in student life.

Special Programs

Music
Nursing

Teacher Education
Dietetics

Other Major Programs

Biology
Chemistry
Economics
Education
Health and Physical
Music
Philosophy
English
French

History
Home Economics
Latin
Mathematics
Education
Political Science
Psychology
Sociology
Spanish

Mount St. Scholastica College
 Atchison, Kansas

Compliments

**Peoples
National Bank**

Ottawa, Kansas

Member F. D. I. C.

**THE BENNETT
CREAMERY CO.**

"Better Dairy Products"
For Over 55 Years

**THE OTTAWA CO-OPERATIVE
ASSOCIATION**

Retail - Wholesale

Feed-Grain-Fertilizer-Farm Supplies

Gasoline Tires-Paint Propane

Gen. Office Tire & Paint Office

Ph. CH 2-5170 Ph. CH 2-5171

Ottawa, Kansas

**Ottawa Savings & Loan
Association**

109 East Second Street

Serving This Area Since 1889

Business Directory
Cement Brick Products Co.,
 North Locust

Price Ford Sales
 113-119 W. 3rd

The Kansas State Bank
 236 N. Main

Ottawa University Ottawa

a four-year university —

emphasizing general education and preparation
for professions and other vocations. Students
come from 34 states and eight other nations.

Scholarships and Work

Eighteen Ottawa University Citizenship Scholarships totaling \$8,000 and Honor Scholarships of \$200 each are awarded annually to high school seniors.

Advanced student assistantships, employment in the city or at the University are available to students. Applications for any aid or work should be made to the Admissions Office.

Buildings and Equipment

The University has 15 buildings, including three men's and one women's residence halls, plus apartments for married students.

Accreditation

Ottawa University has been continuously accredited by the North Central Association of Schools and Colleges since 1914. It is a member of the Ass'n. of American Colleges and of the American Council on Education. It is fully approved by the Kansas Department of Public Instruction.

Ottawa Plan of Education

The University aids students in acquiring personal efficiency, general understanding, and specialized education essential to careers.

General Education: Students aim at a general understanding in each of seven divisions: Natural Sciences and Mathematics; Health, Physical Education, and Recreation; Mind, Personality, and Education; Social Sciences; Language and Literature; Fine Arts and Religion and Philosophy.

Specialization: Students major in a selected department of one of the divisions: mathematics, physics (including radio and other electronics), botany, zoology, chemistry, physical education, education and psychology, history and government, business administration, economics, sociology, English, foreign languages, speech and dramatics, music, home arts and management, religion and philosophy, and art.

Pre-Professional Work: Students working toward careers in medicine, dentistry, nursing, medical technology, law, engineering, theology, as well as other fields, take two to four years of pre-professional work at Ottawa.



For A Fine Education

Ottawa University

For Fine Banking Service

The First National Bank of Ottawa, Kansas

(Oldest Bank in Franklin County — Since 1870)

Washburn University

Topeka

Ask a Washburn student why he likes his university and he is likely to enroll on one of these reasons:

Its moderate size. Washburn with an enrollment of approximately 2,500 in its day college, evening college and law school is large enough to include men and women of many interests and is still small enough to be a friendly community.

Its excellent instruction. Washburn has a highly qualified and talented faculty. Its location. Topeka as a site for a university offers many advantages: good libraries, museums and other cultural contributions; areas for supplementary study in such fields as government, law and psychology.

Degrees Offered

Bachelor of Arts with major field in art, commerce, economics and business administration, education, English, history, modern foreign language, music, philosophy, political science, psychology, and sociology.

Bachelor of Science with major field of study in biology, chemistry, home economics, mathematics, physics and astronomy.

Pre-professional education in dentistry, medicine, and theology.

Other degrees are offered in fine arts, law, medical technology, music education, and physical education.

Part Time Employment

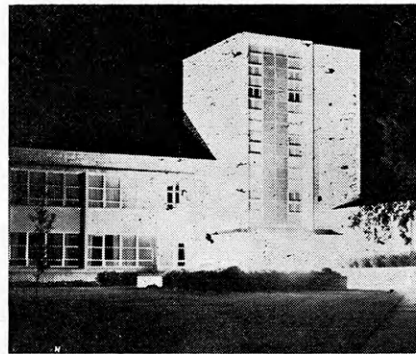
For students who must earn part of their expenses or who wish to acquire vocational experience, Topeka with its metropolitan population offers unusual opportunities. An employment office, operated by the university, assists students in finding work in the business community and in various areas on the campus.

Over half of the student body is employed in some type of work. Pay rates vary from 75 cents to \$1.50 or more. The average rate in 1959 was \$1.23.

Scholarships

The Washburn University scholarship committee extends a helping hand to many worthy young persons who seek more education. From current gifts and income from endowed funds the committee each year awards 300 to 350 scholarships and grants-in-aid.

Washburn's Morgan Hall, opened during the 1955 school year, provides spacious quarters for the college library and administrative offices.



Marymount College

salina,
kansas

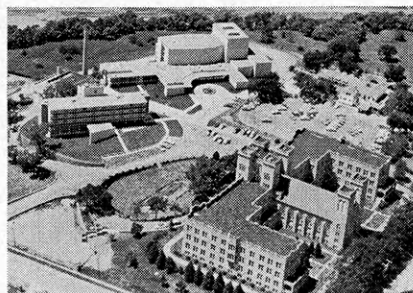
Marymount is a Catholic liberal arts college for women operated by the Sisters of St. Joseph of Concordia, Kansas. Founded in 1922, Marymount facilities include a new residence hall and a new Fine Arts Building.

Curriculum

The college offers a broad program in the liberal and fine arts and confers these degrees: Bachelor of Arts, Bachelor of Science, Bachelor of Music, Bachelor of Music Education, and Bachelor of Nursing. Students may major in any of these departments at Marymount:

Music	History
Art	Economics and Commerce
Speech and Dramatics	Psychology
English	Education
Mathematics	Philosophy
Chemistry	Ancient Languages
Biology	Modern Languages
Home Economics	Nursing
Physical Education	
Sociology	

The new Fine Arts building completed in 1957 features a beautiful auditorium seating 1,100, a Little Theatre, Ballroom, and offers outstanding facilities for Music, Art and Drama.



Professional Directory
Leckband & Woods, C. P. A.
Accounting Building

L. F. Eaton, M. D.
737 E. Crawford

**Compliments of
Kansas' Largest
Home Furnishers**

the 3

**ED MARLING
STORES**

Furniture — Appliances
TOPEKA

**Congratulations
To A Fine 4-H Program**

Penney's

109 W. 6th
Topeka, Kansas

Business Directory
F. W. Woolworth & Co.
627 Kansas
Williams Bros. Mfg. Co.
1405 W. 15th

**The
Lee Hardware Co.**

Salina, Kansas
Serving Kansas Dealers
Over 58 Years

Business Directory
Baer Radio and TV
306 E. Walnut
Brown Welding
Supply, Inc.
7th and Elm
Homestead Building and Loan
Association
104 E. Iron
Low's Drug Store
109 N. Santa Fe
Michaelsen Construction Co.
South Industrial Area
Michaelsen Lumber Co.
612 S. Broadway
9th Street Cafe
1222 N. 9th
Riddle Concrete, Inc.
National Bank of America Building
Salina Implement Co.
601 S. Broadway
Salina Rentals
251 N. 13th
Vernon Jewelers
123 N. Santa Fe
Dr. Tom F. Brungardt,
Optometrist
719 E. Crawford

First National Bank of Leavenworth

Oldest Bank In Kansas Est. 1856

MEMBER F.D.I.C.

J. C. Penney Co.

Outfitters for the Entire Family

Leavenworth, Kansas



Leavenworth, Kansas

Leavenworth National Bank

401 Delaware

MU 2-0951

Leavenworth, Kansas

Business Directory

A & W Root Beer Drive-In

1912 S. 4th

Baker's Ladies & Children's
Apparel

414-416 Delaware

Basel Heating and Roofing
Inc.

612 Cherokee

Bell Laundry Inc.

405 Cherokee

Crystal Cleaners

102 S. 5th

Ed Reilly Agency,

Good Insurance

113 S. 5th

Mr. and Mrs. Eugene Helm
Route 2

International Paper Company,
Long-Bell Division

Lansing

Julius Kaaz Construction

Company, Inc.

716 Cherokee

Leavenworth Appliance & Ace
Hobby Shop

516 Cherokee

Leavenworth Mutual Build-
ing, Loaning and Savings

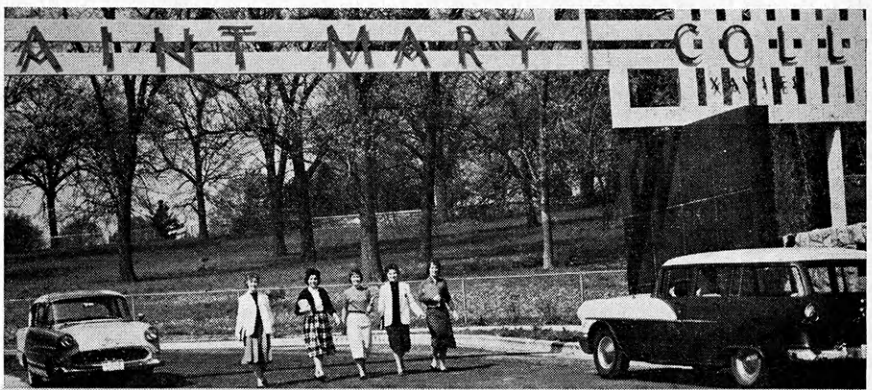
Association

4th and Shawnee

Radio Station KCLO
1410 kc

Professional Directory

W. W. Thompson, DVM
601 Maple Ave.



Entrance to the college campus reveals wide lawns, shaded drives, and all types of natural beauty to contribute to the cultural and aesthetic life of the Saint Marian.

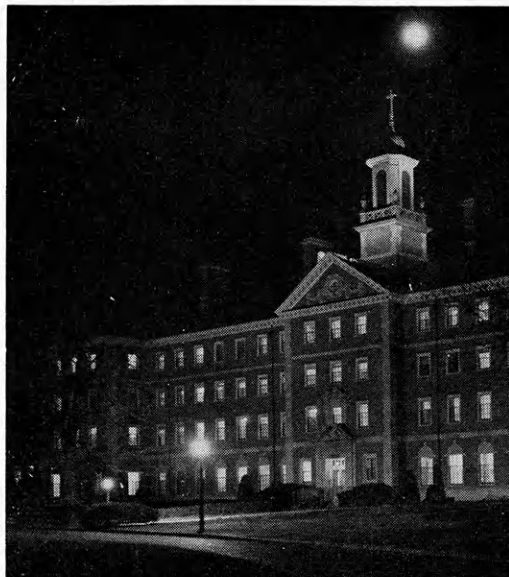
SAINT MARY COLLEGE CONFERS THESE DEGREES:

Bachelor of Arts
Bachelor of Science
Bachelor of Music Education
Bachelor of Music

CHOOSE YOUR MAJOR IN:

Art	French	Physical Education
Biology	History	Sociology
Business	Home Economics	Spanish
Chemistry	Mathematics	Theology
Dietetics	Medical Librarianship	
Drama	Medical Technology	
Drama and Speech	Music	
Education	Music Education	
Elementary	Nursing	
Secondary	Nursing Education	
English	Philosophy	

For additional information, write to
the Dean, Saint Mary College.



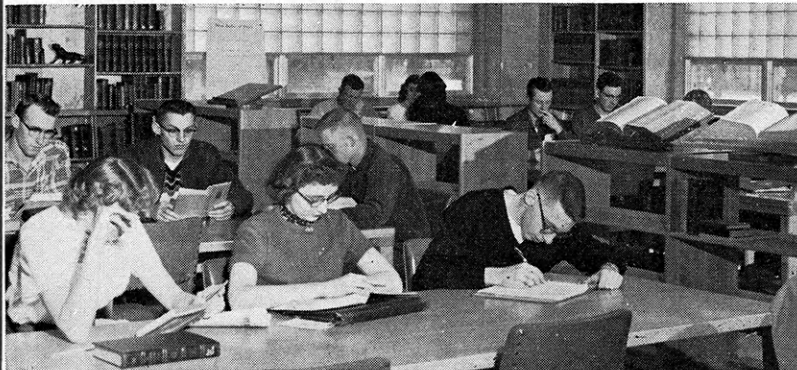
Laboratory work, study, discussions,
all mark the student life at Saint
Mary, because first of all, college
signifies learning.

The college residence hall for upper-
classmen is up-to-date, fully equipped
—a real home away from home.

SAINT MARY COLLEGE

XAVIER,
KANSAS

For Your Future Success



STERLING COLLEGE

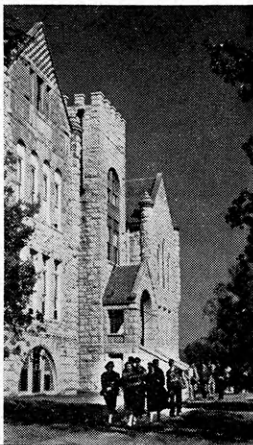
**A Quality Education, With Emphasis on
Christian Living...at a Reasonable Cost.**

Sterling College, a Christian Liberal Arts College, is affiliated with the United Presbyterian Church. Sterling offers a complete liberal arts program and also allows the student to major in one of a number of areas. A full and active sports program is followed although sports are not a major emphasis. Prospective students are encouraged to investigate Scholarship and work opportunities available at Sterling College.

Courses in

Liberal Arts
Business
Administration
Home Economics
Biology
Chemistry

Cooper Hall, one of the nine major buildings on the Sterling campus, contains classrooms and chemistry labs. On the 36 acre campus are found modern and adequate facilities for this Christian Liberal Arts College.



**For Further Information
Write to Admissions Counselor**

STERLING COLLEGE

Sterling, Kansas

**YOU ARE
ALWAYS
WELCOME
IN
STERLING**

**THE
FARMERS STATE
BANK**

Sterling, Kansas

Deposits Insured by F.D.I.C.

Congratulations

to

Sterling College

on their

Continued Growth

and for their

Contribution to the

Sterling Community

**FARMER'S
CO-OP UNION**

Sterling

Business Directory

Caywood's Cleaners
109 S. Broadway

Cooper & Son Seeds

309 S. Broadway

Dora's Cafe

111 S. Broadway

Hawkins Hardware

121 S. Broadway

The Peoples Savings and

Loan Association

211 S. Broadway

Randall Manufacturing Co.

Sheet Metal and Welding

736 N. Broadway

Sterling Cafe

124 S. Broadway

Sterling College Cafeteria
College Campus

Sterling Drilling Company
E. Cleveland

Sterling Laundry and Dry
Cleaning

115 W. Main

Trostle

Construction Company

"A Sterling College

Booster."

Nickerson, Kansas

Gill's IGA Food Store

Sterling, Kansas

The Sterling Bulletin

A Friend of the College
for 73 Years

Through the years this bank has been an active booster for 4-H. We urge local members to consider the Dodge City College to further their education after High School.

FIDELITY STATE BANK

Dodge City, Kansas

Member FDIC
Member Federal Reserve System

Southwest Tire Service

Mitch Ferguson, Owner

Goodyear Tires

200 S. Second

Dodge City

Western Clothing for the entire family

The

BRANDING IRON

LOCATED AT MCKINLEY-WINTER

Box 803

Dodge City, Kansas

L. B. Hancock, Inc.

Realtors — Insurance — Loans

See the New Onebaugh Addition

1300 West Wyatt Earp Blvd.

Dodge City

the distinctive difference a catholic coeducational four-year liberal arts college

conducted by the sisters of saint joseph

SIGNIFICANT ASPECTS:

The objective of the College is to develop the student morally, intellectually, culturally, and physically.

Enrollment is open to all races and creeds.

The athletic program includes basketball, football, baseball, and track.

DEGREES:

Bachelor of Arts

Bachelor of Science

Bachelor of Music

FOR INFORMATION WRITE TO:

The Registrar

St. Mary of the Plains College

Dodge City, Kansas

saint mary of the pl

Business Directory

Brady Implement Co., Inc.
IHC Implement and Truck Sales

Burks Plumbing and Heating
609 W. Wyatt Earp

Central Grocery and Market
108 E. Oak

Dodge City Implement Company
Your John Deere Dealer

J. C. Penny Company
618 Second

John Stickney, Inc.
1409 Wyatt Earp

Lembright Glass Shop
214 Woodland

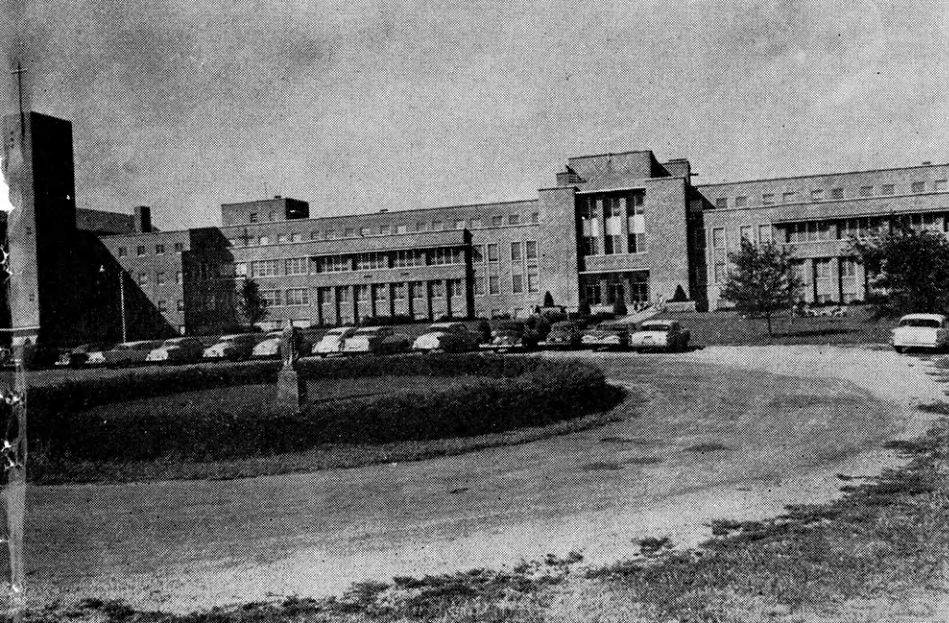
Lester Butler Agency
407 Second

Pennington Sporting Goods Inc.
207 W. Wyatt Earp

Plaza Lanes, Inc.
2200 First

Sam's Shoe Shop
409 Second

Silver Spur Lodge
14th and Wyatt Earp



CURRICULUM:

Biology
 Business Administration
 Chemistry
 Education: Elementary and Secondary
 English
 French and Spanish
 History and Social Science
 Home Economics
 Mathematics
 Medical Technology
 Music: Music Education, Piano, Voice
 Nursing
 Philosophy and Religion
 Physical Education
 Speech and Drama

s college, dodge city

Business Directory

Silver Spur Restaurant
1510 W. Wyatt Earp

Steele Sales and Erection
Highway 56

Ted Page, General Contractor
Haggard Addition

Western Auto Associate Store
212 Gunsmoke

Professional Directory

Dodge City Medical Center
2020 Central

Dr. Lewis E. Mock,
Optometrist
First National Bank Building

Louis G. Weide, Dentist
1806 Hart

Dr. R. M. McCosh
902 Second

Scheib's Bookkeeping Service
610 Second

First National Bank

Dodge City, Kansas

Drive in and Walk Up
Facilities

Free Parking While Banking

Member of
Federal Deposit Insurance Corporation

FRONTIER HYBRIDS

Sponsoring College Scholarships
each year for 4-H Sorghum
Project Program.

**Casterline and Sons
Seeds, Inc.**
Dodge City, Kansas
Distributor

Southwest Milk Producers Association

"All We Have We Owe to Udders"

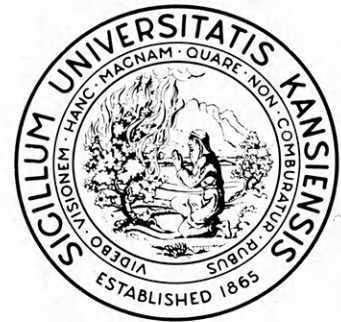
F W. Woolworth Co.

America's Family Store
Satisfaction Guaranteed or Money Refunded
706 Second Ave

THE COMPLETELY
AIR CONDITIONED

Lora Locke Hotel
Dodge City

THE PURSUIT OF EXCELLENCE

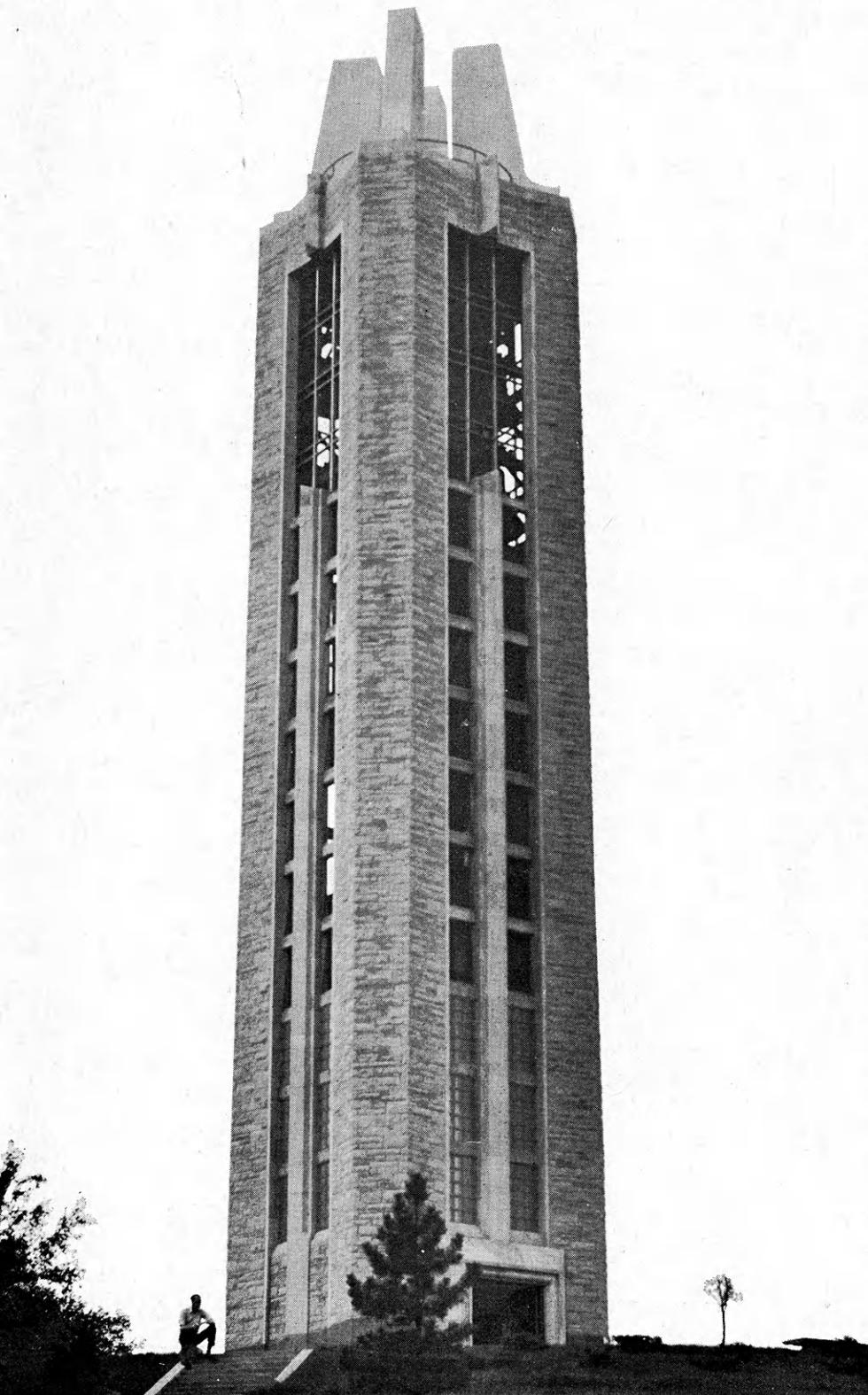


The University of Kansas is a small city in itself, with its own daily newspaper, radio stations, and magazines, hospital, residences, restaurants, theaters, museums, recreational facilities, power plant, telephone system The main campus of 700 acres is on Mount Oread in the town of Lawrence (population: 33,000), which is located among the green, rolling hills of eastern Kansas. Lawrence is about 25 miles from the state capital of Topeka and 42 miles from the metropolitan center of Kansas City. The great K.U. Medical Center is at Kansas City, Kansas. In ten University of Kansas schools a thousand teachers give 2,500 different courses to about 10,000 students. The ten schools are the College of Liberal Arts and Sciences, the Graduate School, and the Schools of Business, Education, Engineering and Architecture, Fine Arts, Journalism, Law, Medicine, and Pharmacy. All of this has one purpose—your education.

There are larger universities, but none can offer the student more challenge and greater opportunity. There are smaller universities and colleges, but none are more concerned with the student's individual welfare, his particular needs and problems. The fact that K.U. is the largest institution of higher education in Kansas means maximum opportunity for him to identify his particular talent, to develop his abilities as far as they will go, and to participate in a wealth of cultural opportunities.

K.U. is big, however, because it is the sum of many small parts. Most classes consist of 20-25 students or less. The living group is 50 students or less, even in the largest residence hall. There are about 14 students for each fulltime faculty member. In a residential university, students find it easy to meet other students with similar interests and form lasting friendships.

K.U. is a cross section of Kansas, of the nation, and of the world. K.U. students meet students from the farms and cities of every Kansas county, from each of the 50 states and from 60 foreign countries. K.U. Jayhawkers come from Pittsburg, Kans. and Pitts-



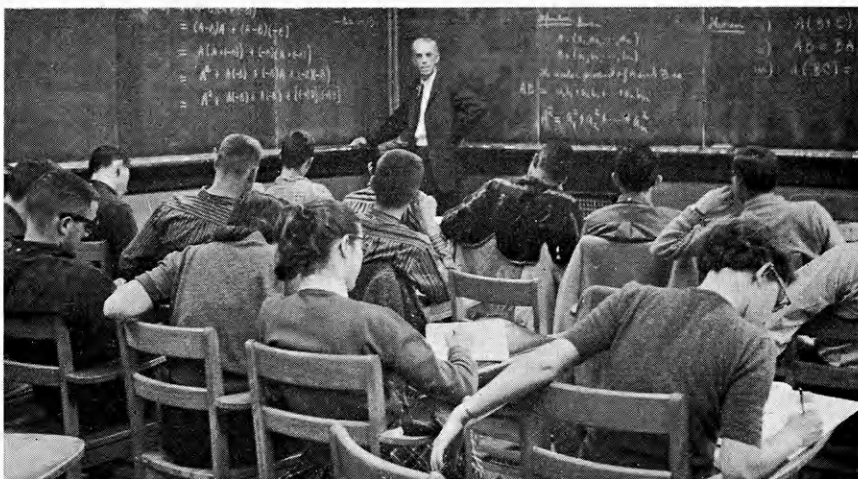
burgh, Pa.; from Lyons, Kans. and Lyon, France.

The orientation of new students by now is a fine art at K.U., and they soon consider the University their second home. Before the student enrolls in classes, he receives thorough instructions and helpful explanations by faculty and staff members. He receives a physical check-up and takes placement tests to help find his proper level of class work, whether in specific remedial areas, in regular academic instruction, or in K.U.'s nationally famous gifted student program. He is assigned an individual faculty adviser to help analyze his high school record and his placement scores and to help him plan an individual course schedule. Personnel offices, counselors, tutors, clinics for improving reading, writing, and study skills, psychologists, and physicians will help make the transition to college an easy one. If the student is uncertain what career to prepare for, the Guidance Bureau will help him inventory his interests and talents. When he nears graduation, placement offices will put him in contact with prospective employers. All these services are free, part of the student's K.U. heritage, reflecting the desire of Kansas citizens to provide the best in education.

All men and women find suitable living quarters. Almost all women and about half the men live in residence halls, scholarship halls, fraternities, or sororities. Freshman women live in University-operated residence halls. At present the University residence hall system has space for 1,000 women students and 1,300 men.

Not all education is in the classroom. A K.U. varsity athletic team will represent the students in Big Eight intercollegiate competition, and he has the opportunity to contribute his skills or his cheers to a glowing sports tradition. A vigorous intramural program, for both men and women, provides additional opportunity for athletic competition. Internationally known personalities speak at convocations, and experts in every field give special lectures to groups of all sizes. Student audiences meet great music artists through the K.U. Concert Course. More than 200 groups, running the gamut from serious to just-for-fun, bid for the free time of students, and offer opportunities for leadership. Drama, politics, science, literature, music, sports, debate—no matter what a student may like, he or she can find a group with the same interests. There is time for friendships, old and new, and dates, too. The student soon learns to budget his time.

More than half of K.U. students, men and women, earn at least part of their expenses. About one third hold



part-time jobs during the school year; men's and women's employment offices help them find jobs. Many students are entirely self-supporting, although this is a big task that should seldom be tackled by a first-year student. After he has been at K.U. a semester he will be able to judge his financial and work capabilities; there are innumerable ways to make resources stretch farther. Substantial loan funds are available; K.U. students borrow more than \$1½ million a year. Nearly as much goes to students each year as scholarships, many to freshmen. K.U. students with the will to learn seem to find a way. Helping hands smooth the path. The Aids and Awards Office is the student's source of information.

The student's health is the sole concern of seven full-time doctors and a large staff of nurses and technicians at K.U.'s Watkins Memorial Hospital. Besides its 62 beds, this modern hospital has complete laboratory, clinic, operating rooms, and physical therapy facilities. Hospitalization insurance is available at minimum cost. You couldn't find better medical care anywhere.

At K.U. the student can take courses leading to twelve different degrees in Engineering; four-year courses for the degree of Bachelor of Science in Aeronautical, Chemical, Civil, Electrical, Geological, Industrial, Mechanical, Metallurgical, Petroleum, and Sanitary Engineering; Engineering Physics; and a five-year course in Architectural Engineering. Another five-year program leads to the degree of Bachelor of Architecture. New facilities keep the study of engineering ahead of advancing technology; equipment recently acquired serves in studies of liquified gases at very low temperatures, of high speed flows, and of incredibly fast electronic equipment; a new atomic reactor and associated laboratories is being built; and a major new laboratory building will be completed by the fall of 1963.

The K.U. School of Engineering and Architecture has a distinguished

history and reputation. Its graduates include presidents of major corporations and one of the four scientist-engineers cited for the first successful launching of a satellite by the United States. Eight recent graduates currently hold the highly prized scholarship granted by the National Science Foundation in support of their graduate study here and at other leading universities. Course offerings now encompass such topics as nuclear power, shell structures, space travel, and soil mechanics—subjects which are new or have all developed greatly within the past few years.

A privately supported Center for Research in Engineering Science is attracting nationally known research engineers and providing research opportunities at all student levels.

The list of honors earned by K.U. scientists ranges from national awards for excellence in undergraduate teaching to the editorship of international treatises. Work is offered in 15 physical and biological sciences: anatomy, astronomy, bacteriology, biochemistry, radiation biophysics, botany, chemistry, entomology, geography, geology, mathematics, pharmaceutical chemistry, physics, physiology, and zoology.

New laboratory facilities include Malott hall for the physical sciences, Snow hall for the life sciences with its \$1 million addition to be completed by the fall of 1961, and the new Hall Laboratory for Mammalian Genetics. Research opportunities are available to the undergraduate as well as the graduate student.

Economists, political scientists, psychologists, sociologists, social workers, anthropologists—at K.U. they are teachers, researchers, and consultants to public groups, devoted to the search for answers to the everlasting problems that beset man in his relations with his fellow man. Each of these departments offers undergraduate work. The bachelor of arts degree also is available in international relations and personnel administration.



J. R. PEARSON MEN'S RESIDENCE HALL

Literature, philosophy, history, arts, music, the theater—the vast riches of man's past experience are here. In languages and literatures K.U. offers a constantly growing variety; the student may earn degrees in Latin and Greek, in French, Spanish, German, Russian, and Chinese. Work also is available in Swedish, Portuguese, Italian, and Hebrew. Linguistics provides foundations for the pursuit of the less-common tongues. Folklore courses are offered in the English department.

Several cross-departmental programs give the student opportunity to take what he wants from many areas: American Civilization, Humanities, History and Philosophy of Science.

In addition to K.U.'s nearly one-million volume library—a principal teaching tool for the humanities—the Art Museum is adding an art reference collection. A distinguished lecture series brings scholars of world renown to the campus to add their contribution to those of K.U.'s own famous teachers.

Music and art are the divisions of the School of Fine Arts, which freshmen may enter directly. Bachelor of Music degrees may be earned in piano, voice, violin, viola, cello, organ, harp, trumpet, French horn, trombone, clarinet, flute, bassoon, music history and literature, theory, and composition; Bachelor of Fine Arts degrees, in drawing and painting, design, commercial art, fashion illustration, illustration, interior design, industrial design, ceramics, sculpture, print making, jewelry and silversmithing, history of art, theater and voice, and theater design. Occupational therapy, growing in importance as a career for men and women, also is a degree course. The student may enroll in School of Fine Arts courses either for professional preparation or for general appreciation. K.U. is famous for the quality, size, and versatility of its instrumental and vocal music opportunities. The

new \$21½ million Music and Dramatic Arts building provides unexcelled facilities. K.U.'s Concert Course and its student and faculty recitals mean rarely equalled opportunities for the student interested in education for living as well as for earning a living.

K.U.'s School of Education, housed in newly remodeled Bailey hall, offers high standards of training for elementary and secondary school teachers in any of the academic subjects or such specialties as art, business, foreign language in elementary grades, home economics, journalism, music, physical education, recreation, speech and drama, and special education such as speech correction and teaching of the deaf. The student may prepare for administrative and supervisory positions. Seniors do seven weeks of full-time student teaching in the public schools of nearby cities. The School is conducted at the junior-senior level, except for the 4-year physical education course. Graduate degrees are offered as a Master of Education, Master of Arts, Master of Science in Education, Master of Music Education, Specialist in Education, Doctor of Education, and Doctor of Philosophy.

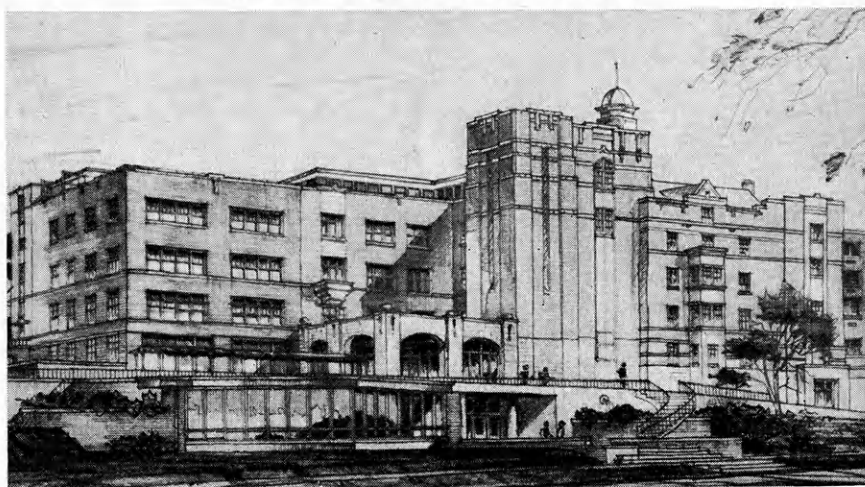
The School of Business enrolls students at the junior-senior level after two years of liberal arts study including certain basic pre-business subjects. Bachelor of Science in Business is the degree; the School also offers the Degree of Master of Business Administration.

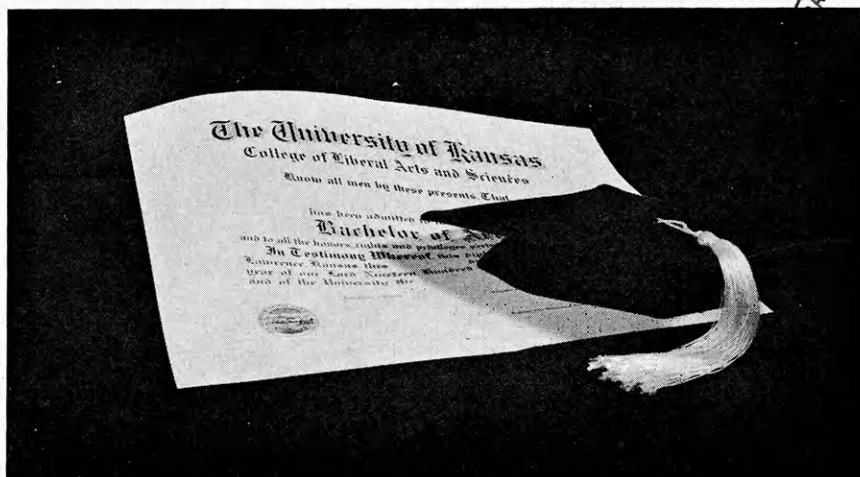
All undergraduate students take a "core" of courses to guarantee familiarity with the business tools of accounting, statistics, and communications; with the functional areas of finance, marketing, and production; and with business administration practices. Advanced work is taken in these areas or others such as industrial administration, insurance, personnel, secretarial, small business, or transportation. Personnel representatives from the nation's finest corporations, as well as Kansas employers, seek K.U.'s business seniors because their education has emphasized ideas, analysis, and problem solving, rather than routine memorization of data soon to be outmoded. The case method of instruction, in the School's model case-study rooms in Summerfield hall, has replaced the traditional lecture.

The School of Business prepares its graduates for swift and effective advancement into middle and top management positions.

K.U. is the only school in the state where a man or woman may prepare to become a registered pharmacist. The School of Pharmacy offers a 5-year course leading to the Degree of Bachelor of Science in Pharmacy. Students take two years of liberal arts and sciences, including pre-pharmacy courses, then study three years in the School of Pharmacy. Many opportunities exist within the drug manufacturing industry in production, research, and sales, as well as drug store prescription work for which salaries have become most attractive. With the growing importance of new and spectacular drugs and chemotherapies, pharmacy is a

KANSAS MEMORIAL UNION





vital field, and the School is a center of sponsored pharmaceutical research.

Doctors-to-be are admitted to the School of Medicine after receiving a Bachelor of Arts or Science Degree. All four years of the medical course will be offered at the K.U. Medical Center in Kansas City beginning with the Fall semester of 1962. Nursing is a 4-year course leading to the Degree of Bachelor of Science in Nursing and Certificate of Nursing. Excellent courses in physical therapy, laboratory and x-ray technology, and hospital dietetics prepare the much-in-demand technician. The "Careers in Medicine" newsletter will help the student plan his courses.

Law affects everyone's daily life directly or indirectly, and as civilization becomes more complex the lawyer's work becomes more vital. The K.U. School of Law has the highest standing. Four years of pre-law study, leading to a bachelor's degree, are required; the student may choose any undergraduate major he wishes. With summer sessions, the three-year law course may be completed in about two calendar years. Law students publish the School's distinguished *Law Review*.

Firmly rooted in the traditions of the great Emporia editor and K.U.

alumnus for which it is named, the William Allen White School of Journalism and Public Information offers majors in news-editorial, advertising, radio and television, and home economics-journalism. Students write and edit news and editorial content and lay out and sell advertising for the *University Daily Kansan*. The School has a modern building and in recent years has enlarged its offerings in all phases of journalism, particularly in radio and television, thus including all media of public information. Advanced reporting students serve on daily papers in nearby cities as part of their course requirements; radio and television majors work on one of three K.U. radio stations or prepare programs for transmission to commercial television stations or film distribution. Students enroll in the School as juniors after two years in the College. The William Allen White Foundation brings exceptional professional speakers and programs to the campus.

Many students waver among several choices. Perhaps they know only that they want a college education but have no plans beyond that. Nearly half the students who enter the College of Liberal Arts and Sciences as freshmen check "undecided" on their application. For them the College offers the

chance to explore areas and challenges, to enlarge their fields of vision. About one of every twelve students in Liberal Arts and Sciences is working toward a double major; some are doing triple majors. A few are enrolled simultaneously in two schools, such as Engineering and Liberal Arts. A wide range of choices is the student's opportunity.

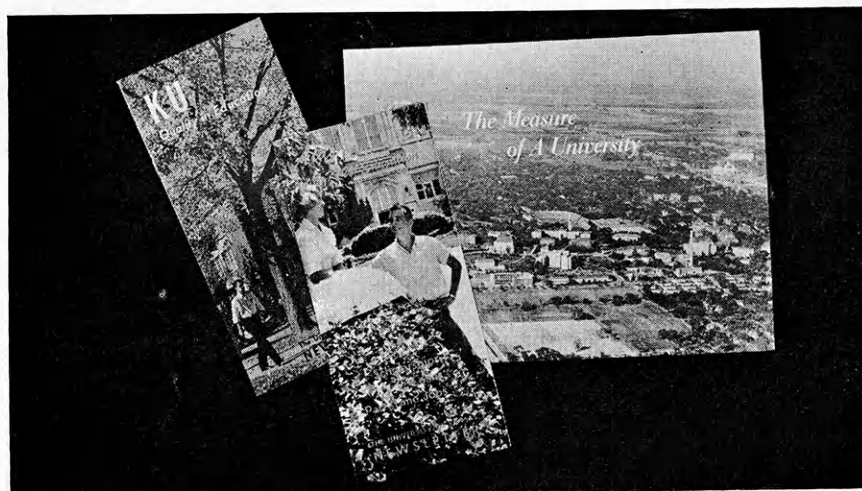
At the end of two years in the College the student's decision is clearer. He may then decide to enter the Schools of Business, Education, Journalism, and Pharmacy—or continue in the College for a degree in the natural or social sciences or the humanities.

The West Point, Annapolis, and Air Force Academy of Kansas—that's K.U., the only school in the state with Reserve Officer Training Corps programs leading to commissions in all military services—the regular Air Force, Army, Navy, and Marine Corps, and their reserves.

Men integrate R.O.T.C. courses with their academic work and receive professional credit toward graduation. All are volunteers. Military training is not compulsory at K.U. In the advanced courses, students receive the equivalent of valuable scholarships.

Men doing satisfactory work in their R.O.T.C. units are permitted to earn their degrees before joining the armed forces as officers. By R.O.T.C. enrollment a student may complete his university work before being called to the armed forces. For details write the Army, Navy, or Air Force commandant at K.U.

All regular academic courses are open to women. Increasingly all professions are welcoming the contributions that women can make.



PUBLICATIONS which describe the University of Kansas and its financial aids to students, pictured at left, are available from University Relations.

"The Whole Family Shares My Interests In Electric Projects"

Says JAMES CORMODE
1960 State Electric Winner

A Shannon 4-H Club member, Atchison County, for nine years and enrolled in the electric project for four years, Jim Cormode has seen his own interest spread to other members of the family. Each member, for example, enjoys operating the ham short wave radio set. Jim's do-it-yourself electric training has also saved money for the Cormodes. He has done wiring in the home and has installed a new circuit breaker to allow for nine regular circuits and one circuit for the kitchen range.

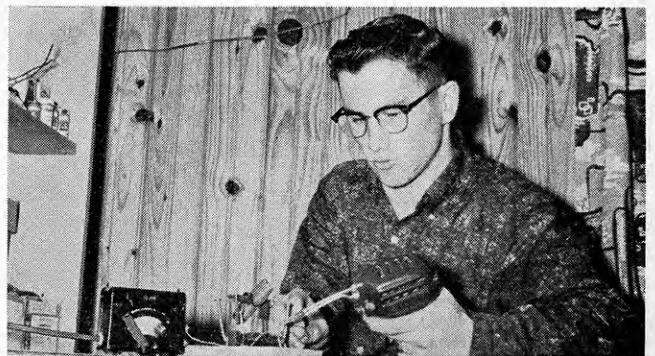
Jim has an impressive award winning record. He was the winner of two trips to the Electric Achievement program in Wichita in 1959 and 1960. For a two-way switch exhibit, he was awarded a blue ribbon at the Mid-America Fair in Topeka. In 1960, Jim was chosen winner of the State Electric project and received an all-expense trip to Chicago for the National 4-H Club Congress. Jim is the second member of his family to be awarded this trip. His mother was also a delegate to the National Congress at the time she was a 4-H member.

Today, Jim is a freshman enrolled at the University of Kansas and says, "My early interest in ham radio work and the 4-H Electric project ties in very closely with my future goals. I plan to get a PhD in nuclear physics which in turn is tied in closely with electricity."

Jim was selected as one of the seventy five students to attend the Summer Science and Mathematics Camp at the University of Kansas in 1958. His project involved setting up this apparatus (magnetic coils) to conduct experiments at temperatures near absolute zero.

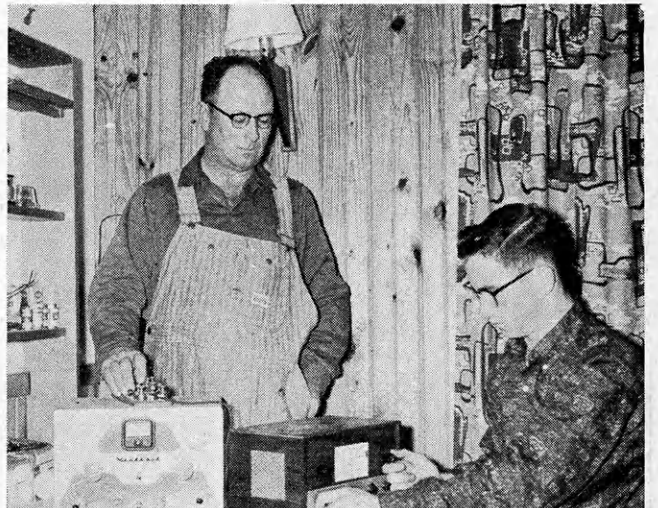


"Through the 4-H Electric project I gained a better understanding of the safe farm-and-home uses of electricity. Here, I'm doing the wiring of my photographic darkroom in the basement."



"This soldering iron that I'm using was given me as an award for my electric activities by the Kansas Power suppliers."

"We get many hours of enjoyment from this ham radio set. Dad shares my interests and has encouraged me in electric projects."



**WATCH THIS
PAGE FOR IDEAS
ON FARM AND
HOME ELECTRIC
PROJECTS**

Electric Light and Power Companies in Kansas

The Kansas Power and Light Company

Central Kansas Power Company

Kansas City Power & Light Company

Kansas Gas and Electric Company

Western Light & Telephone Company