

K-165
Salem
11/2

February 1965
15 Cents

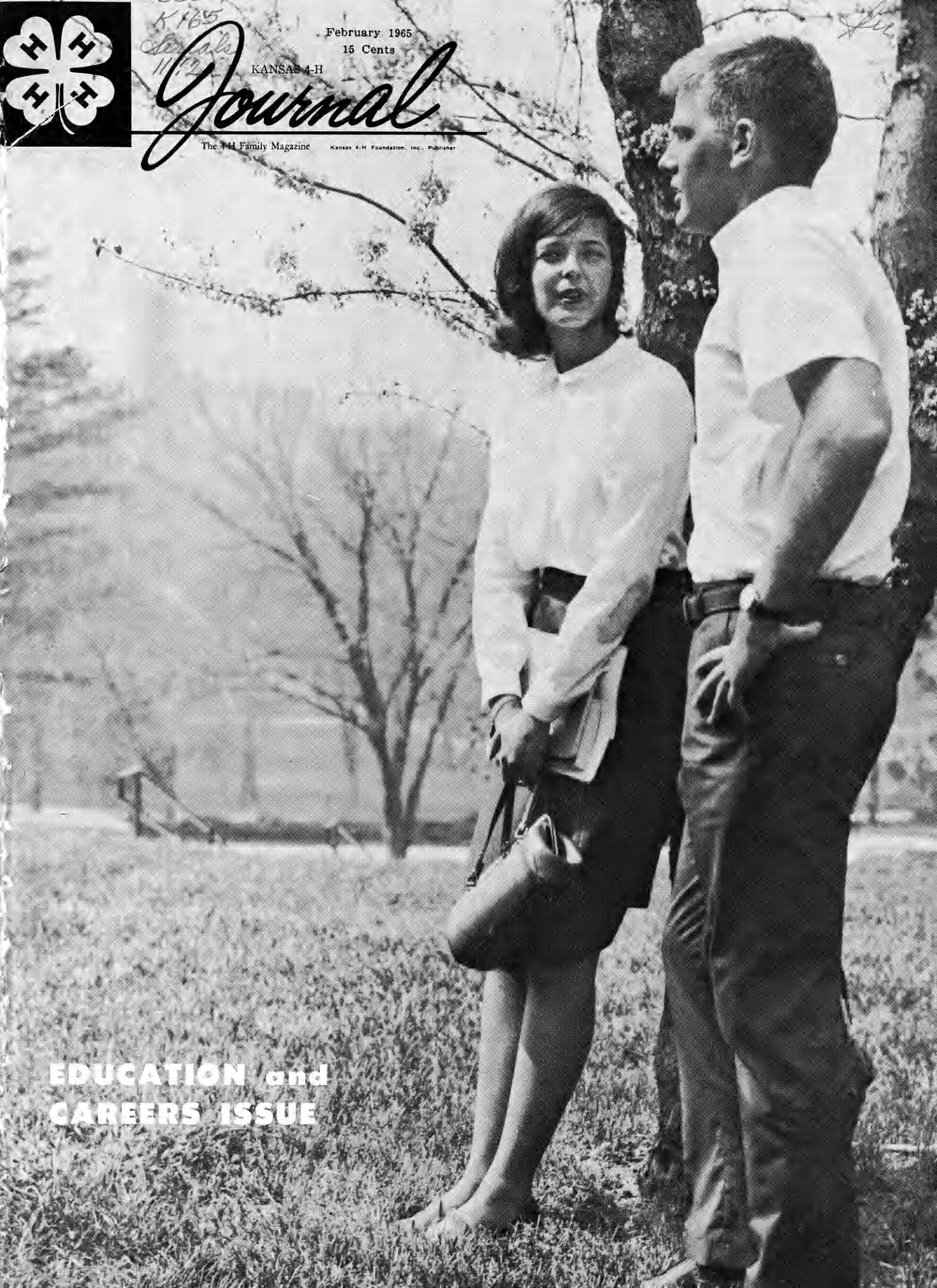
KANSAS 4-H

Journal

The 4-H Family Magazine

Kansas 4-H Foundation, Inc., Publisher

**EDUCATION and
CAREERS ISSUE**



OPPORTUNITY KNOCKS AT KANSAS STATE UNIVERSITY

TOP CAREERS FOR FEED TECHNOLOGY GRADUATES

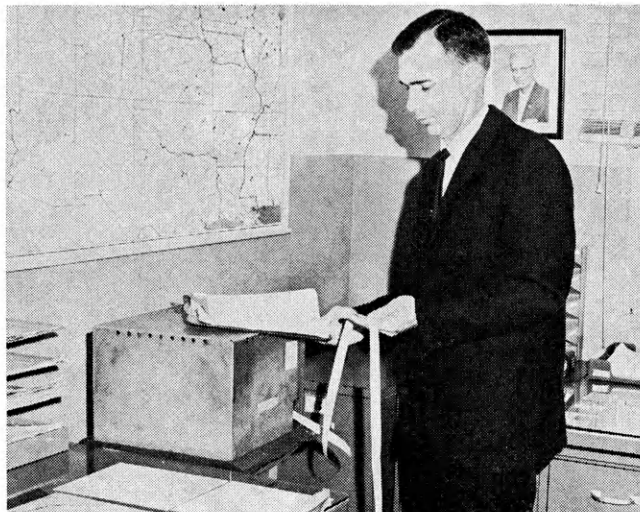
Take advantage of your agricultural background, start planning NOW for an interesting, productive and rewarding career in America's great and growing Formula Feed Industry.

The Feed Technology curriculum at KSU is based upon a solid foundation of science, mathematics and humanities. It is designed to train students in fundamentals needed for work in a scientific field.

At the same time, the student has the opportunity to apply theory learned in the unique feed tech facilities at KSU.

Here are careers you can train for:

FEED PRODUCTION
MILL ENGINEERING
NUTRITION
QUALITY CONTROL
PURCHASING
SALES & ADVERTISING
MANAGEMENT



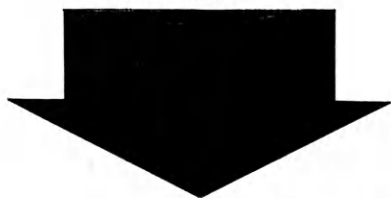
BILL BOWER, As Manager of Purchasing for his company he keeps a close check of the prices of ingredients to be used in the commercial manufacturing of feeds. This work is among several careers for which the feed technology program will prepare you.

The Dynamic FORMULA FEED INDUSTRY Invites You To Consider These Facts:

- The demand for feed tech graduates far exceeds supply.
- Technical and scientific options give a variety of career opportunities.
- Continued growth puts formula feed production among the largest industries in the United States.
- Kansas State University is the only school in the world with its own complete feed plant.

**SCHOLARSHIPS AVAILABLE
TO QUALIFIED APPLICANTS**

FILL OUT COUPON
AND MAIL IT IN
RIGHT NOW.

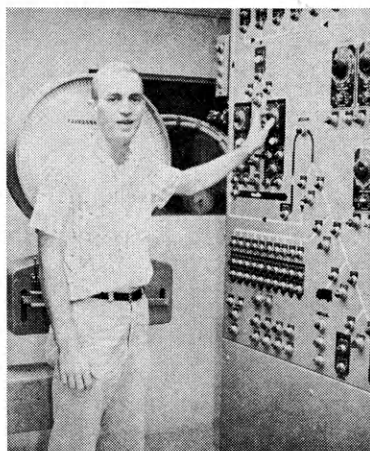


Dr. Duane Acker, K.S. University, Manhattan, Ks.
Please mail free brochure about the Feed Tech
program and information about jobs in Agribusi-
ness.

Name

Address

School



WAYNE SCHOPE is operating a panel to control the weighing and mixing of poultry feeds in a commercial feed milling operation.



LOWELL ALLEY, As Quality Control Manager for a large midwestern feed manufacturer he is responsible for maintaining high quality products.

Sponsors of this ad are members of

KANSAS FORMULA FEED MANUFACTURERS

Arrow Feed Mills
Junction City

Becker Feed & Supply, Inc.
Galva

Blair Milling & Elevator Co.
Atchison

Buhler Feed Mills
Halstead

Circle B Feeds
Concordia

Gooch Feed Mills
Salina

Harvest Brand, Inc.
Pittsburg

Humbolt Elev. Mills
Humbolt

Kansas Soya Products Co.
Emporia

Kelso Milling Co., Inc.
Pittsburg

Key Milling Co.
Clay Center

Naturich Mills
Abilene

Plush Mills
Glasco

Supersweet Feeds
Salina

Winterscheidt Milling Co.
Seneca

Walnut Creek Milling Co.
Great Bend



KANSAS 4-H *Journal*

Vol. XI, No. 2

February, 1965

CONTENTS

Continuing Education	5
<i>By Dr. John E. King</i>	
The Kansas Picture, Where 1963 High School Grads Went	8
Cartoon Contest	9
What Former 4-H'ers Say About College	10
Job Wanted	12
<i>By H. L. Snell</i>	
A Future In Nursing	18
Statistical Reference on Kansas Four-Year Colleges and Universities	20
Kansas Junior College Directory	22
Job Opportunities	24
Vocational Education of a Changing World of Work	35
<i>By John Lacey</i>	
Kansas Beauty Schools Directory	40
College Life in Pictures and Words	41

Advertiser Index

Alliance Insurance Companies, McPherson ..	42	Kansas Medical Society, Topeka	37
Atchison Advertisers	38, 39	Kansas State Nurses Association, Topeka ..	18
Baldwin Advertisers	8	Kansas Pepsi Bottlers Association	42
Bar Association of the State of Kansas, The, Topeka	8	Kansas Petroleum Industries Committee, Wichita	13
Cessna Manufacturing Company, Inc., The, Wichita	24	Lansing Advertisers	43
Coleman Company, Inc., The Wichita	25	Leavenworth Advertisers	43
Consumers Cooperative Association, Kansas City, Mo.	34	Lindsborg Advertisers	36
Dillion & Son J. S., Hutchinson	27	Lumber Dealers of Kansas	45, 46, 47
Dodge City Advertisers	19	Manhattan Advertisers	30, 31, 32, 33
Electric Light and Power Companies of Kansas	48	McPherson Advertisers	14
Emporia Advertisers	17	Newton Advertisers	44
Folger Coffee Company, The Kansas City ..	4	Ottawa Advertisers	22
Hays Advertisers	36	Pittsburg Advertisers	13
Junior Colleges of Kansas	22, 23	Salina Advertisers	6, 7
Kansas Beauty Schools	40	Savings and Loan Associations	28
Kansas Electric Cooperatives, Inc., Topeka ..	37	Southwestern Bell Telephone Company, Topeka	38
Kansas Farm Bureau and Insurance Services, Manhattan	15	State Department of Social Welfare, Topeka	39
Kansas Formula Feed Manufacturers	2	Sterling Advertisers	43
Kansas Independent Oil and Gas Association Wichita	27	Topeka Advertisers	14
		University of Kansas	29
		Winfield Advertisers	16
		World Company, The, Lawrence	42

Don EsslingerEditor

Editorial and Business Office

Phone JE 9-2211 Ext. 208
Manhattan, Kansas

Published Monthly By

KANSAS 4-H FOUNDATION, INC.

J. Harold Johnson.....Executive Director
Merle Eyestone.....Associate Director

BOARD OF TRUSTEES

Governor William H. Avery
Honorary Chairman

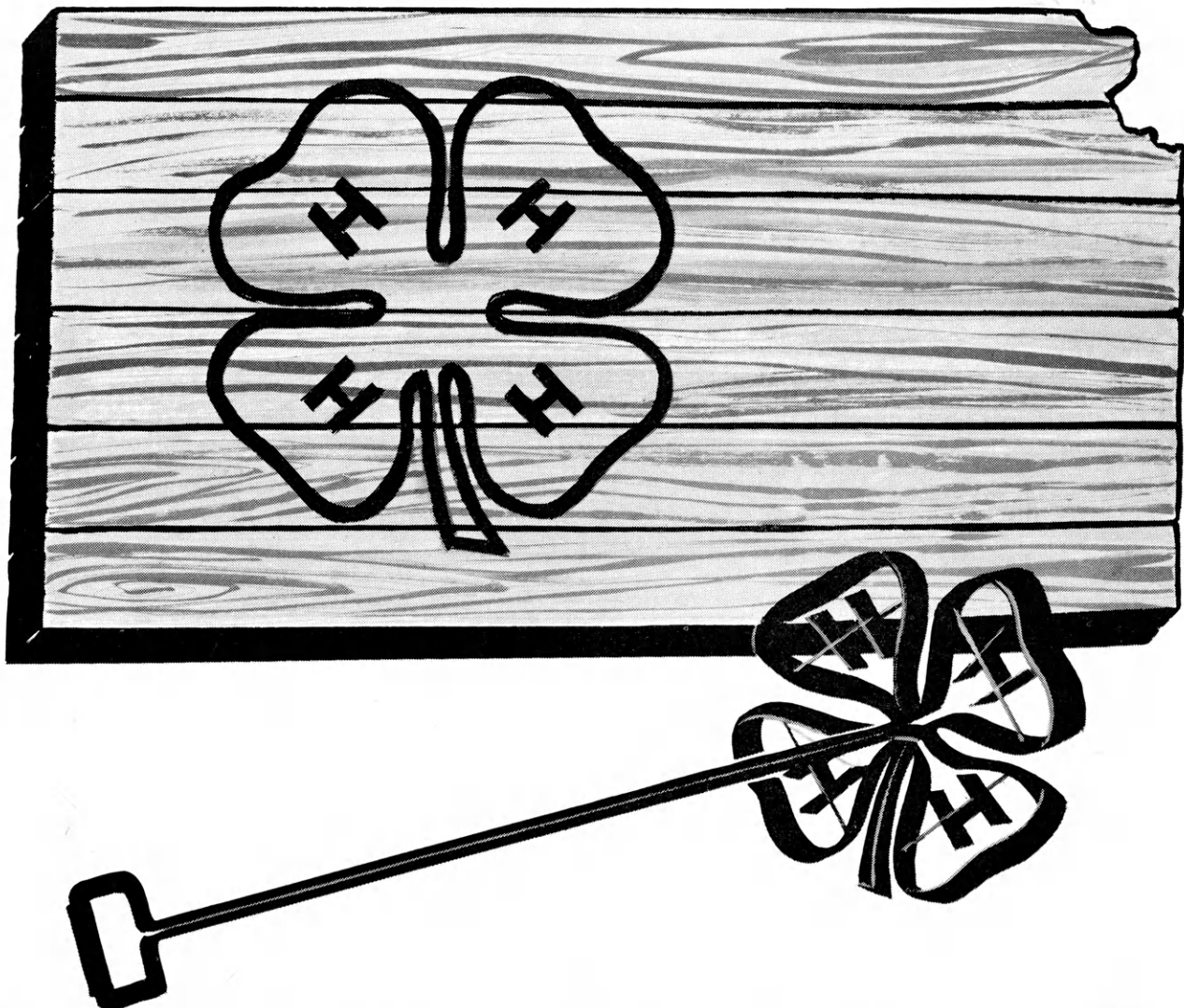
W. Dale Critser, Chrm.Wichita
E. B. Shawver, Vice Chrm.Wichita
D. J. Atha.....Shawnee Mission
*Harry Darby.....Kansas City
Mrs. Olive Garvey.....Wichita
Clifford Hope.....Garden City
A. D. Jellison.....Junction City
Harold E. Jones.....Manhattan
J. J. Moxley.....Council Grove
George B. Powers.....Wichita
Roger E. Regnier.....Manhattan
Dolph Simons.....Lawrence
*Lester Weatherwax.....Wichita
*Fred D. Wilson.....Andover
*Advisory Members

Second Class Postage Paid at Lawrence,
Kansas. Return Form 3579 to Kansas 4-H
Journal, Manhattan, Kansas.

Advertising rates and circulation data
on request.

Group subscriptions \$1.00 per year.
Individual subscription \$1.50 per year.
Single copy 15 cents.

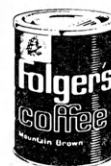
Use of the 4-H name and symbol ap-
proved by the Secretary of Agriculture of
the United States, January 23, 1951,
under the provisions of the law as
reenacted by Sec. 707 of the Act of June
25, 1948 Public Law No. 772. 80th Con-
gress (10 USC 797)



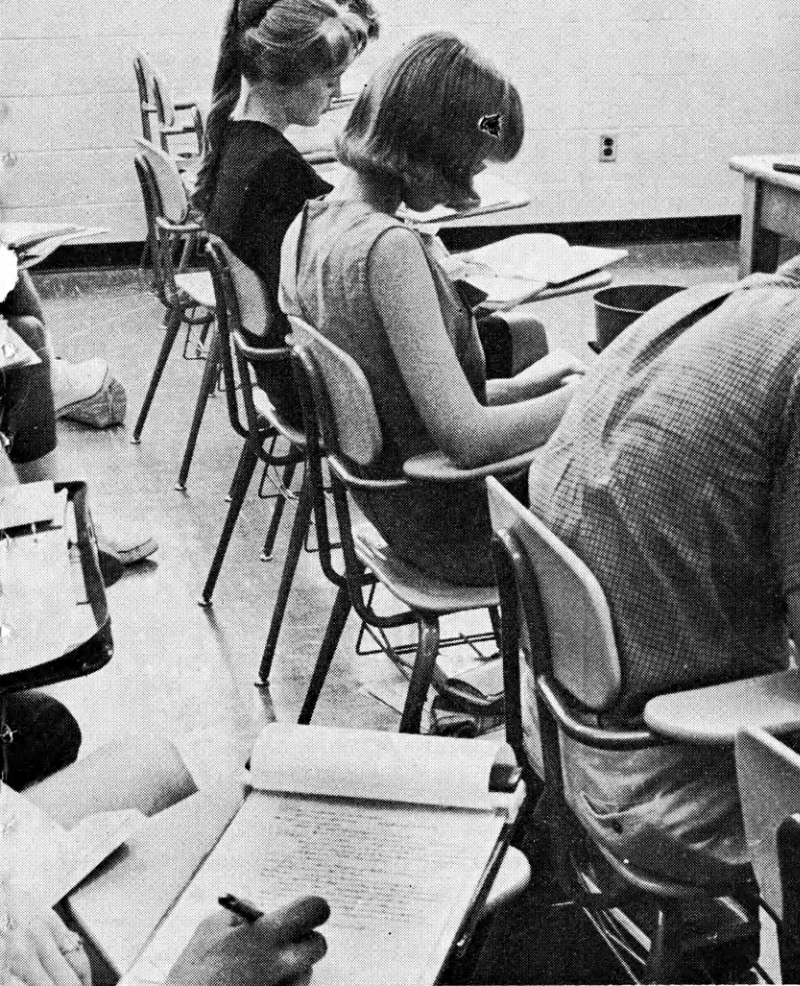
IT LEAVES A LASTING MARK

Hands are stronger and more skillful. Heads are wiser and sounder. Hearts are warmer and more understanding. Bodies are sturdier. All this because thousands of young Kansans devote thousands of hours to active 4-H Club work.

The 4-H Club "brand" leaves a lasting mark upon all who participate. That this good work may continue to grow and prosper is our sincere wish.



THE FOLGER COFFEE CO., Kansas City



CONTINUING EDUCATION Is In Our Future

The Opportunity Gives A Challenge

By Dr. John E. King, President
The Kansas State Teachers
College of Emporia

Dr. King received his Doctor of Philosophy degree in 1941, for study in rural education, from Cornell University, New York. He has been President of Kansas State Teachers College, Emporia, since 1953.

Prior positions held by Dr. King include Academic Dean and Provost at the University of Minnesota, Duluth campus; a graduate faculty position at Cornell; and teacher, coach and principal at high schools in Texas, Oklahoma, and Arizona. He served in the Navy in World War II and is presently in the Naval Reserve.

In 1932, Dr. King received his Bachelor of Arts degree from North Texas State College, where he studied Latin and English and served as editor of campus newspaper. His Master of Science degree was awarded by the University of Arkansas in 1937. He is a member of several honorary societies including Phi Kappa Phi, honorary scholarship fraternity.



The high regard of Kansans for education has always been a source of gratification and strength to college and university faculty members. Even before there was a state of Kansas, two colleges were established in the Territory—Baker University in 1858 and St. Benedict's College in 1859. State institutions were established soon after Kansas achieved statehood.

A larger percentage of Kansas high school seniors go on to college than in most other states. Kansans read more than the average. There are more newspapers per capita in Kansas than in most states. Kansas people have always shown a desire for learning for themselves and their children. Kansans have always supported education at every level and have been willing to make the sacrifices necessary to provide it for their young people.

We are fortunate that Kansas has been able to continue its policy of offering all graduates of accredited high schools the opportunity to continue their education. This has been possible in spite of growing enrollments, and in contrast to trends in other state where facilities



Kansas Wesleyan University coeds gather in the lounge of the new dormitory for women.

KANSAS WESLEYAN Invites YOU

1. To visit its friendly campus in Salina
2. To learn more about its quality liberal arts curriculum
3. To meet members of its outstanding faculty

GRAVES
TRUCK LINE
INC.

Serving the Middlewest
Since 1935

EVANS GRAIN COMPANY

Board of Trade Building

Salina, Kansas

Taylor 7-4484

**FIRST STATE BANK
OF SALINA**

Salina's most convenient bank

GROVER M. SIMPSON

Oil • Cattle • Investments

P. O. Box 540 SALINA, KANSAS

An Admissions counselor will help you plan your program to fill your individual needs.

For further details:

See pages 20 and 21
and/or

Write:

Director of Admissions

KANSAS WESLEYAN UNIVERSITY
Salina, Kansas

These Firms Proudly Recommend
Marymount and Kansas Wesleyan
University.

Salina Mercantile Company

104-106 N. Santa Fe

Salina Rentals

251 N. 13th

The Salina Supply Co.

300 N. Santa Fe

Salina Tractor Co., Inc.

Chicago & 81 Overpass

Spaeth Office Service

Olivetti-Underwood Agents

114 E. Iron

Stevenson Clothing Co.

112 N. Santa Fe

Stiefel's Department Store

Downtown Salina

exist for only a portion of the high school graduates.

At the present time, there are six state-supported institutions of higher education in Kansas. There is a municipal university in Topeka, and there are 17 four-year colleges and universities which are privately supported. In addition, there are 14 public and five private two-year colleges. As important as it is to give our young people a solid start in their careers, it is equally important that they continue their education throughout their adult years. A number of our Kansas colleges and universities provide a wide variety of formal educational programs for adults. The present school systems, from kindergarten through college, occupy 16 years, leaving another 30 or 40 years for learning. We must continue to educate ourselves, beyond college, if we are to learn to live and work together and to survive as a free people.

The number of educational opportunities in Kansas is a source of strength to our economy. Educated manpower is essential to the growth and development of Kansas and the nation, and the bulk of this manpower must come from the colleges and universities.

The variety of institutions in Kansas also is a positive factor in the state's social structure, and one of importance to all who are concerned with the welfare of young people. Any high school graduate in Kansas can find a college or university that will attempt to meet his academic, vocational, social and personal needs. It may appear that the number and variety of collegiate - level institutions in Kansas lead to duplication and waste, but in reality, all are necessary if Kansas is to meet adequately the needs of its people.

Today's high college enrollment may increase by as much as 50 per cent by the year 1970. The education of today's students, and those of 1970, will have been made possible by planning and special effort by college and university officials, the Kansas Board of Regents, the Legislature, the Department of Administration in Tope-

ka, and by private trustees and planners as well. Many faculty members serve in private and state institutions of higher education in Kansas at lower salaries than they would receive in other states.

If the enrollment increases 50 per cent by 1970, as expected, the financial support for higher education should increase 100 per cent. Kansas colleges and universities in general are now below the level of support they should receive.

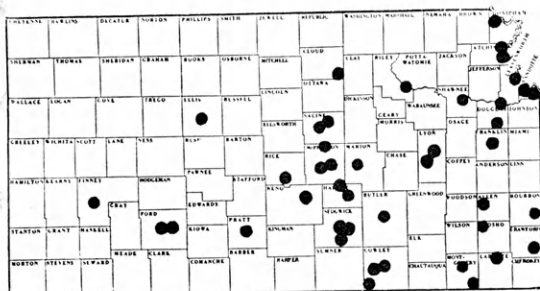
It is especially important to develop adequate support for the junior colleges as they constitute a "safety valve" of higher education in a time of booming enrollments.

It is also necessary to maintain the health and vigor of private colleges. Losing them in Kansas and elsewhere would move us a long way toward becoming totalitarian.

Much remains to be done, of course, if Kansans are to provide adequate opportunities for higher education for all qualified citizens. Financial support for all institutions—public and private — must be increased. Traditional concepts of curriculum and instruction must be evaluated, and changed if necessary.

If Kansans meet this challenge—and I am sure they will—there will be educated manpower, productive research, and leadership in Kansas adequate to carry the state forward to economic and cultural goals which will enrich each citizen.

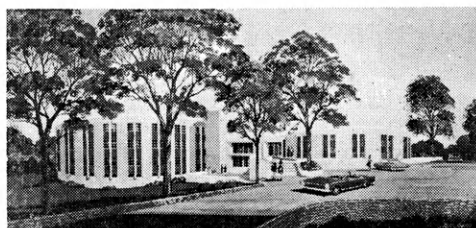
Location Map



Location map of Kansas Colleges and Universities. Forty-three in all, this includes State Colleges and Universities, a Municipal University, Private Colleges and Universities, Public Junior Colleges, and Private Two-year (Junior) Colleges. For a more complete reference on these please turn to pages 20, 21, 22, and 23 of this issue.

MARYMOUNT COLLEGE

Salina, Kansas



Antoinette Hall, new Marymount College 174-bed residence for freshmen and sophomores, has just been completed. It is believed that this is the first circular college residence in the United States.

* Marymount was founded in 1922 and was the first four-year liberal arts college exclusively for women in Kansas.

* Marymount strives to develop Christian women of strong moral character and sound judgement, women who will be an uplifting influence in their homes, in their church, and in their community.

* Over 500 students are enrolled from 25 states and several foreign lands.

* Your Marymount education is a personalized education beginning with your first contact with the director of admissions. The unique feature of a Marymount education is individual classroom instruction with personal counseling available at all times.

Also See—

Pages 20 and 21

Write to:

The Director of Admissions
Box No. 6
Marymount College

Everitt
LUMBER CO., INC.

SALINA, KANSAS

The Lee Hardware Co.

Salina, Kansas

Serving Kansas Dealers
Over 60 Years

Morrison Grain Co., Inc.

Bonded Storage
Grain Merchandisers

SALINA, KANSAS

**THE PLANTERS
STATE BANK**

Salina, Kansas

Member F.D.I.C.

These Firms Proudly Recommend
Kansas Wesleyan University and
Marymount.

Barragree's United Rent-Alls
1200 W. Crawford

Bell Motor Company
Rambler Sales and Service
325 N. Santa Fe

**Consolidated Printing &
Stationery Co.**
113 North Santa Fe Ave.

Globe Sheet Metal Works
South Industrial Area

The Homestead Bldg. & Loan Ass'n.
104 East Iron

Linck Drug Co.
104 S. Santa Fe

Memorial Art Company, Inc.
1608 S. 9th

Salina Implement Co.
601 S. Broadway

Baker University

**Oldest 4-year liberal arts college
in Kansas . . .**

**BAKER BUILDS
CHARACTER**

Also see pages 20 and 21

Baker University
Baldwin, Kansas

BALDWIN STATE BANK

Capital \$400,000.00

Member F.D.I.C.

Baldwin City, Kansas

Phone 594-6421

PLANNING TO STUDY LAW?

Students looking forward to the study of law in graduate school and admission to practice this learned profession can prepare for a successful career by selecting basic courses in high school and college. For the student and their faculty advisors, the following courses are recommended:

I. INFORMATION STUDIES

A. Social Studies

1. History

- a. High School—World History, American or U. S. History
- b. College—8 to 12 hours, including European History, English History, and English Legal History

2. Political Science

- a. High School—1 year
- b. College—8 to 12 hours, including American Government, Comparative Government, and International Relations.

3. Economics

- a. High School—1 year (if given)
- b. College—8 to 12 hours, including Economic Principles, Money and Banking, and 6 hours of accounting.

4. Sociology (Survey course in College)

B. Natural Sciences:

1. Biological Sciences

- a. High School—1 year (Biology)
- b. College—8 to 10 hours, including Physiology, Zoology or Bacteriology.

2. Physical Sciences

- a. High School—1 year of Physics or Chemistry
- b. College—10 hours, including Chemistry, Physics, or Geology (2 out of 3).

II BASIC THOUGHT COURSES:

1. Mathematics

- a. High School—2 years
- b. College—5 to 10 hours, including Algebra, Trigonometry, Analytic Geometry

2. Philosophy

- a. High School—
- b. College—6 hours, General Psychology and Abnormal Psychology

III STUDIES DESIGNED TO GIVE ACCURACY AND CLARITY OF EXPRESSION:

1. English

- a. High School—All courses offered
- b. College—20 to 25 hours, including the basic Rhetoric and English Literature courses (i.e. 10 hours), Advanced writing courses (5 hours), Shakespeare (4 hours), Classic Literature (3 hours), Public Speaking (2 hours) and Bible (3 hours).

2. Ancient Language

- a. High School—2 or more years of Latin.
- b. College—2 semesters (if course was not taken in high school)

3. Modern Languages

- a. High School—2 years
- b. College—10 hours

The Kansas Picture

The Kansas population will continue to increase as it has in the past several years. It is growing at an increasing rate. By 1970 there will be nearly 300,000 more people in our state than there were in 1960.

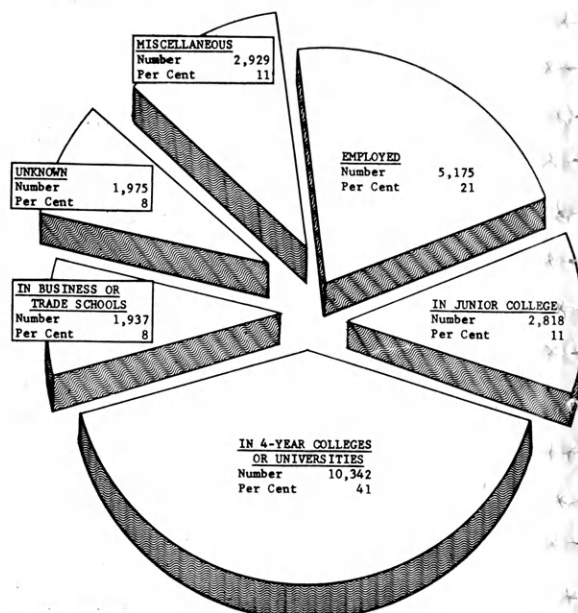
There is a rapid increase in the number of youth reaching 18 years of age in Kansas. This means the high school graduate will be finding more competition in whatever he chooses to do.

In the face of changes mentioned above will be an increase in size of the Kansas labor force, a younger labor force, and more education held by those entering the labor force.

In general, those people who have more schooling have higher earnings. Another comparison between people with varying amounts of education, shows that unemployment is much higher among those with least education.

(This material is from, Manpower In Kansas, The Challenging '60's, Employment Security Division, Kansas Department of Labor, Topeka.)

Where did 1963 Kansas High School Graduates go?



The total number of graduates was 25,177. Source of this material is State Department of Public Instruction, Topeka, from reports of High School Principals, 1963.



**THE BAR ASSOCIATION
of the STATE OF KANSAS**

COLUMBIAN BLDG. — TOPEKA

Easy to Enter

4-H CARTOON CHARACTER CONTEST

Anyone can Enter

Just make a simple sketch
of a cartoon character you
think Kansas 4-H'ers would
enjoy.

\$110 in PRIZES

to top 10 entries

Sponsored by

KANSAS FARM BUREAU

AND AFFILIATED INSURANCE SERVICES

and

KANSAS 4-H JOURNAL

***GET DETAILS and entry forms at your County
Farm Bureau Office or County Extension Office***

What former 4-H'ers say about college...

We asked eighteen college students—all with 4-H backgrounds—their opinions and advice on college. We selected three of each one's five answers to these five questions:

- 1) What high school subjects have been most helpful to you in your college work?
- 2) What difference(s) do you notice between high school and college?
- 3) What advice would you give high school students planning to attend your college?
- 4) How did you decide where to go to college and why did you decide on this school?
- 5) What do you like most about college life?



COLLEGE OF EMPORIA

Fred Mueller

Junior-Elem. Ed.
Montgomery County

- 2) The biggest difference I notice is the type of tests. In high school most test were objective. In college most are essay which require one to organize his thoughts and express them very thoroughly and clearly.
- 3) A student thinking of going to college should take all the English and literature classes he can. Another important thing to develop is good study habits and the habit of getting assignments in on time.
- 4) I chose College of Emporia because they were able to give me the necessary financial aid which enabled me to attend college. My second reason was the friendliness of the students when I visited during my senior year.



BETHEL COLLEGE

Larry E. Goering

Sophomore-Agric. Ed.
Harvey County

- 2) In college studies are more concentrated and more detailed in depth than all courses of study in high school. Lectures are supplementary to text books. The lectures are more formal and may not concern the text material.
- 3) Don't take snap courses in high school or college. Learn to take good lecture notes. Shorthand does not seem to be necessary for this.
- 5) I particularly like the discussions which are continually arising whenever two or three students come together. You are able to discuss important issues with intellectuals—this is a privilege in itself.



KANSAS STATE COLLEGE OF PITTSBURG

Carolyn Winders

Junior-Home Ec. Ed.
Johnson County

- 1) Every class helped me in some way. General education requirements in college touch most classes in high school. Probably my home economics classes were most beneficial to me because of my major.
- 2) College life gives you more opportunities to meet people from different social levels and from different parts of the world. You are treated like an adult and are expected to conduct yourself as one.
- 4) I graduated from a small high school and thought I would have a bigger adjustment to make if I chose a large school. Cost was a definite factor. This college offered what I wanted and I had heard many fine comments about it from high school faculty and students already attending.



KANSAS WESLEYAN UNIVERSITY

Jacqueline K. VanRiper

Junior-Home Economics
Rice County

- 3) Take all the math, science and English you can get in high school. Learn how to study while in high school. Don't play around, but get the most you can out of high school—learn all you can, don't just skim the surface.
- 4) My father influenced me while I was still an underclassman in high school to attend Kansas Wesleyan. He came here to school and my sister came here. I wanted to go to a church related college and I liked the campus.
- 5) Others learn to know you for who you are and not for who your parents are or were. I enjoy the freedom of living away from home and making decisions and taking responsibility on the dorm, the social aspect, and most everything about college life—living in the dorm, the social aspect, and most of my classes.



KANSAS STATE UNIVERSITY

Deanna McCracken

Senior-Home Ec. Ed.
Osage County

- 2) There's a need for conservation and budgeting of time. Competition is stiffer within classes and activities. A wider range of classes and activities from which to choose gives a confused feeling. More self discipline is necessary and more effective study habits.
- 3) Take college preparatory courses. Have a serious interest in chemistry and physics classes if planning to be a home ec. major. When in college choose an activity to excel in and perhaps a few auxiliaries, but don't spread yourself too thin at first.
- 5) The variety of classes and activities available, each person is more free to choose his own interests than in high school. The variety of personalities encountered and experiences in public relations. The opportunity for each person to excel in some field if he desires to.



FORT HAYS KANSAS STATE COLLEGE

Merle D. Witt

Junior-Agriculture
Rush County

- 1) For me, math (four years), physics, chemistry, general science and biology have provided quite helpful in my college days so far.
- 2) In college a person is more on his own. You must learn that you cannot leave everything up to your parents but must make decisions on your own. I think you can be more of an individual in college, while in high school there's more of a chance to follow the crowd because "everyone else is doing it."
- 5) I like being on my own and having to take on new responsibilities such as finances. I'm presently taking, among other interesting courses, Genetics. We carry out various experiments on our own and this provides interesting factual material. It makes this knowledge more interesting to find it out personally, rather than just reading about it.



MCPHERSON

Vernon L. Mathes

Freshman-Agriculture
Harper County

- 3) I would advise any high school student to study harder. Learn to dig it out for yourself and take all the chemistry, English and math you can get in high school. Take part in some school activities but not so much your grades will be affected.
- 4) I decided to attend McPherson College because I was interested in agriculture and they offer an outstanding field in this. It is a small school and I thought I would receive more personal help.
- 5) I like college life because it gives me an opportunity to associate with students from other parts of the country. College has helped me to learn self-discipline and to get along with other people. You not only are getting an education but are preparing yourself to get along in life.



KANSAS STATE TEACHERS COLLEGE

Donald Berrie

Freshman-Biology
Lyon County

- 1) Each high school course has been helpful, especially English, biology, psychology, chemistry and math.
- 2) In college hard studying is necessary. The outcome on examinations depends upon how well you take notes and read the text book. Material is covered much faster than in high school since it must be covered in one semester.
- 4) I chose KSTC because it is close to my home which will cut down on expenses. It will help me prepare for my major as I would like to go into forestry and wildlife.



BETHANY COLLEGE

Carole Koreger Noah

Sophomore-Elem. Ed.
Trego, Ellis Counties

- 1) English and psychology helped me most. I wish I had taken two years of a modern foreign language.
- 3) Take two years of a modern language and a good English composition course. Visit the campus and apply early.
- 4) I wanted to go to a church college and when I visited this campus, the students showed a personal interest in me.



STERLING COLLEGE

Terry Woodbury

Freshman-Math
Wichita County

- 1) Being a mathematics major I have been helped most by algebra, geometry and trigonometry courses which I took in high school. A good high school English background has also been helpful since English is required in college.
- 4) I wanted to attend a small college where I wouldn't be simply a name and a number. I felt a spiritual emphasis was vital. I have found that Sterling College meets both needs completely.
- 5) College life offers an opportunity for one to be what he couldn't be "back home." It gives a student a chance to do many of the things which he has long desired to do. Here at Sterling, the fact that everything has a spiritual connection—including classes and the professors—causes me to enjoy college life more and more every day.



BAKER UNIVERSITY

Duane Chanay

Junior-Biology
Douglas County

- 2) There is more free time in colleges and no one's there to remind you to study. It's the whole idea of forcing yourself to do the required work.
- 3) Take a well rounded high school program with an emphasis on math, science and English. When you get to college, get into a regular routine of studying. Have a special place and time to study.
- 5) I enjoy the various activities, such as varsity sports, various programs sponsored by the college, and the chance to make new friends. I think college life is more interesting because one has a choice of subjects.



MARYMOUNT COLLEGE

Janice Blecha

Sophomore-Nursing
Republic County

- 3) Set a goal for yourself and never lose sight of it. It is often only this goal that keeps you plugging. Budget your time wisely and associate knowledge learned from day to day and class to class.
- 4) I decided to attend Marymount College because it was one of two collegiate schools of nursing in Kansas.
- 5) Learning to live with persons of all types of personalities can be very enjoyable if one will let it. The out of class activities are very enjoyable and are often an experience one would never have outside of college.



SAINT BENEDICT'S COLLEGE

Raymond Ring

Sophomore-Physics
Marshall County

- 1) Since my major is physics all of my science and mathematics courses have proved very helpful. English composition and typing are especially valuable since many papers are required in college.
- 2) One difference is the greater amount of work required, especially outside of class on the student's own time. Another is the increased amount of independence and free time. Competition is much stiffer in college.
- 4) I wanted to attend a college where I would get a good education in my chosen field and where I would be introduced to other areas of study and have a chance to develop spiritually and physically as well.



UNIVERSITY OF KANSAS

Charlotte Almquist

Junior-English & German
Saline County

- 1) I can't stress enough the importance of sampling a wide variety of courses while in high school. English, mathematics, and the sciences were most helpful. Take as many years of a foreign language as your school offers.
- 3) Make up your mind to work hard from the very beginning. The first semester is usually the most difficult. Cultivate good study habits and be eager to learn. Find out how to use odd minutes wisely.
- 5) The wonderful friendships, opportunities for cultural and intellectual advancement, challenge, meaningful relationships with faculty members, spiritual growth—all these things have made college life a wonderful exciting adventure.



MOUNT SAINT SCHOLASTICA COLLEGE

Mary Grame

Sophomore-Home Ec.
Atchison County

- 1) English and typing have been most helpful in all my classes where composition and analysis are stressed. A strong foundation in history has been beneficial for a wider viewpoint and understanding of present day situations.
- 2) Classes in college are largely lecture courses. College courses give me a wider view of the world. I like having classes on alternate days in two and three hour credit courses because I have time to study between sessions.
- 4) Because I attended Mount St. Scholastic Academy I was familiar with the excellent offerings of the college. I was happy to enroll in a college near my home.



SAINT MARY OF THE PLAINS

Lawrence McCoy

Sophomore-Chemistry
Reno County

- 2) In college you must make your own decisions. More time must be spent on preparing college work.
- 3) Learn how to budget your time and how to study. Get a good background in your field of major interest. Send applications for admission early.
- 5) I enjoy the opportunity to be on my own. One has a chance to see where he is going and why. He meets people from many different places.



SOUTHWESTERN COLLEGE

Steve Alford

Senior-Bus. & Econ.
Grant County

- 1) A college preparatory course in English with emphasis on composition writing is helpful. Typing helped me to improve the appearance of themes and papers.
- 2) The real difference is that you are on your own and it is up to you whether you will succeed or not. You have a chance to study the field you are most interested in without outside interference of other courses.
- 4) I decided to go to Southwestern College by talking to friends who have attended college, advice from my parents and talking to college officials. I decided on Southwestern because I felt it was a college which would prepare me for life—not just a certain field.



WASHBURN UNIVERSITY

Robert White

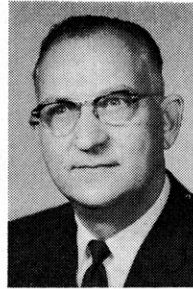
Junior-Pre-law
Chautauqua County

- 2) College courses demand a great deal more time for study. One is responsible for covering much material without prodding, supervision or regular check-up testing. Outside the classroom there is greater freedom and greater personal responsibility.
- 3) Learn how to study—to allot one's time, to review, to test one's knowledge. This ability will ease the transition from high school and will prove the best "tool" you can bring to college.
- 5) I like the freedom of college life—the right to explore new areas of knowledge and to weigh new ideas. I like the feeling of responsibility which grows as one begins to establish a way of life or a new attitude that is wholly his own and to think independently without undue influence from other persons.

Job Wanted

By H. L. Snell

Area Personnel Relations
Supervisor, Southwestern
Bell Telephone Company



H. L. Snell, Area Personnel Relations Supervisor for Southwestern Bell Telephone Company, has been employed with Bell since 1930 following his graduation from the University of Kansas. He has held various line and staff positions including District Plant Superintendent at Dodge City, Hutchinson, Topeka and Wichita. Snell assumed his present position in 1950 following service in St. Louis as Personnel Supervisor in the General Personnel Office. He is a member of the State Employment Security Advisory Council, the State Manpower Advisory Committee, and Topeka and Kansas State Chamber of Commerce and is a past president of the Kaw Valley Personnel Association.

There comes a time in the life of almost everyone when they must find a job. This new and different experience raises many questions, misgivings and uncertainties.

We have attempted in these notes to anticipate some of the more pressing questions and to suggest some answers or solutions.

Let us consider first the question of **where?**

"Where do I look for a job?" will probably be your first question. A moments reflection on this question will lead to a closely related and more searching question:

What Can I Do?

You may be inclined to answer—**nothing**.

This is obviously not true.

There are many things you can do. Make a list of them:

- Drive a car
- Drive a truck (with proper instructions)
- Operate a variety of machines (with proper instructions)
- Wait on trade
- Make change
- Type
- Take shorthand, etc.

These are examples—we will not attempt to list them all. You know what they are. Take enough time to make the list complete.

The Dilemma of "Experience"

Most firms are looking for people with "experience."

How can an inexperienced person get "experience" if he must

have "experience" to get a job so that he can get "experience?"

This is the dilemma.

Although it is a real problem, it is not insurmountable:

- Not all firms require experience.
- There are jobs where you can start from scratch.
- Young people can obtain some experience while attending school:
- Summer work
- After hours work
- These jobs can give you some valuable experience.
- If you have had some of this experience, be sure to add it to your list.
- If you have not, try to get some before you finish school. It will be well worth your while.

We return to our original question, "Where do I look for a job?"

We have listed what we can do. Now we must list the companies that use people with talents and "experience" similar to those shown on our list.

Obviously, there is one more question which must be answered before we can make a list of companies. This question has to do with location.

Where Do I Want To Work?

There are numerous factors to be considered in answering this question:

- Obviously, there are more firms in the larger cities.
- Generally this would mean more job opportunities. Heavy unemployment in a particular location can, however, materially increase the competition for many of these job opportunities.
- Living costs are generally higher in the larger cities.
- Living arrangements are important.
 - Where would you live?
 - Would the arrangement be permanent?

It might be wise to study a number of locations and select several which would be acceptable in the event you found a suitable job.

Where Do I Look For A Job?

Having decided upon a location or locations which are acceptable as a place to live, we are now in a position to prepare our list of firms. In preparing this list, the following suggestions are offered:

- Do not be concerned as to whether the companies are hiring new employees or not. Until you have actually made application, you can never be sure that a firm does not have a job for you.

KANSAS STATE COLLEGE

OF PITTSBURG, KANSAS

—See: Pages

20 and 21

—Write

Office of Admissions for further information.

FOODTOWN SUPER MARKET

1806 N. Broadway
612 S. Broadway
312 W. 4th

Wright's Greenhouse, Inc.

Friends of Kansas State College of Pittsburg
From its Beginning

Forest and Walnut ADams 1-6400

James B. Wright



GET IN THE PICTURE

BILL OSWALD, Hutchinson petroleum marketer, likes to tell of the unlimited career opportunities in Kansas' second largest industry.

Oswald, a business college graduate, has been an oil marketer more than 33 years as the Vickers Jobber in Hutchinson. He is owner of the O.K. Service Company.

An active participant in community work, he is past president of the Kansas Oil Mens Association and presently on the Board of Directors; is State Chairman of the Kansas Petroleum Industries Committee; and is on the Roads and Highways Committee of the local Chamber of Commerce.



Several young people who worked for him have later gone into business for themselves. "One in particular has been especially successful locally," says Oswald.

Above, Oswald talks careers with Doug Queen, who plans a career in the oil business, and at right, looks on as Doug serves a customer.



Act now—

Investigate the varied careers offered you in the petroleum field.

Write to—

Kansas Petroleum Industries Committee

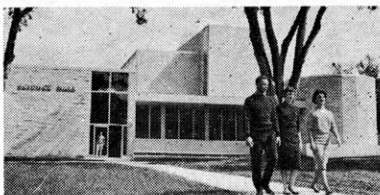
204-A Insurance Building, Wichita

WASHBURN UNIVERSITY OF TOPEKA

Washburn's atmosphere is one of friendliness among students and faculty. It is large enough to provide a variety of courses, but not so large that a student feels "lost in the crowd."

In addition to classes and campus activities, students may attend cultural and athletic events in Topeka.

See pages: 20 and 21



Stoffer Science Hall

These Firms Proudly Recommend Washburn University.

Blaylock Drug Company

4 Convenient Locations

Ira Price Cafe

Hi-Way 24 & N. Kans.

Topeka Chamber of Commerce

Box 640

Whelan's Inc.

715 E. 4th



MCPHERSON COLLEGE

- Accredited
- Four year coeducational
- Church related

Also see pages 20 and 21

For further information, Write

Mr. Guy Hays
Director of Admissions
McPherson College, McPherson

SAN-ORE CONSTRUCTION CO., INC.

McPherson, Kansas

National Cooperative Refinery Association

Refiner—Transporter—Producer
of Kansas Crude Oil
McPherson, Kansas

The W-R Milling Company

McPherson, Kansas

McPherson County
Farm Bureau Assn. and
Insurance Services

920 W. Kansas

McPherson

- Talk to friends about their jobs.
- The friends of your parents —for whom do they work.
Talk to them about their work.
- Check through the yellow pages of the telephone book. If you are not sure of a particular company, put it down anyway. They might have a **job for you.**
- The list should be as long as you can make it. However, you should be realistic. Do not list any firm or business which obviously would have no use for your services.

Check Your List — Make Your First Selections

If you have done a good job of making your list, you will have many more firms than you can reasonably handle during your initial job hunting effort. We suggest, therefore, that you carefully study the list of firms:

- Which ones have a special appeal to you?
 - The type of business
 - The reputation of the company
 - The location (down-town—suburban—etc.)
 - A friend or relative is now employed
- Which ones seem to have objectionable features?

You will probably end up with a list of ten or fifteen firms. These should be companies in which you are sincerely interested. You would be thrilled to have a job with any one of them.

Having decided where we plan to apply, the question naturally arises,

How Do I Apply For A Job There Are, Of Course, Various Ways:

- In Person
- By letter
- By telephone

— Through a third person, etc.

The first two are the only ones worthy of consideration.

Application by telephone or through a third person are generally of little or no value.

Learn as much as you can about the company before you apply:

- Talk to any friends who might work for the company.
- The local library may have some information.
- Check the local Chamber of Commerce. Tell them what you are doing. Show them your list of firms. The chances are that they will be delighted to help you.

What Is The Employer Looking For?

One final suggestion in connection with your efforts to find a job:

- If you know what the employer is looking for, you are in a better position to "put your best foot forward".

This knowledge will help whether you are applying by letter or in person.

You will recall our suggestion that you find out as much as you can about each firm before you apply for a job. This investigation very likely will give you some clues as to any special requirements the firm might have. This knowledge should assist you during the employment interview and in asking questions.

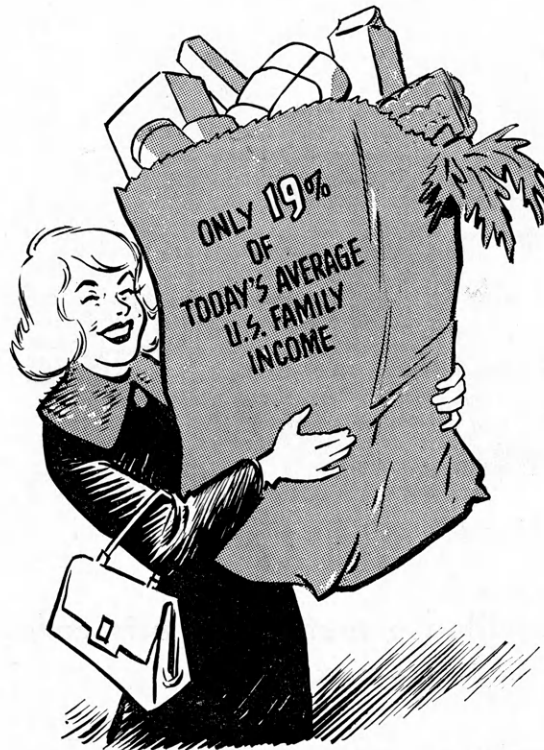
Following are a few general qualifications that most all employers are looking for:

I. Job Experience

This was discussed previously. We will re-emphasize these points:

- Not all jobs require previous experience.
- If you can get some experience while attending

STILL THE WORLD'S BEST FOOD BARGAIN ...



Food is a Bargain!

It might surprise our city friends to know that Americans work fewer hours now to earn a month's supply of food than ever before. It took 60 hours of labor to pay a month's food bill 15 years ago but it only takes 37 hours today.

Americans in big cities, little towns, and rural areas share in the bounty of our farms. Nowhere else on earth does a people have more food abundance, variety, freshness, quality, and convenience.

Americans today are taller, healthier, and can expect to live longer. One important reason is the food they eat.

Today, each farm worker produces food for twice as many people, compared to 15 years ago . . . one of many reasons that Americans eat better today on a smaller percentage of their income than ever before.

Kansas Farm Bureau

105 County Farm Bureaus
Working Together

SOUTHWESTERN COLLEGE

Winfield, Kansas



New \$500,000 Student Center

A fully accredited 4-year liberal arts college.

Also See: Pages 20 and 21

First National Bank

Winfield, Kansas

Full
Service
Bank

Member F.D.I.C.

For Your Building Needs
Dial CA 1-0250

A. B. Everly
Lumber Co.

210 W. 9th Winfield, Kansas

Calvert's
DEPARTMENT STORE

We Are Proud to Be
the Home of
Southwestern College
CHAMBER OF COMMERCE
Winfield, Kansas

Quality Brand
Meats

Sheneman

Market & Packing Plant

Winfield, Kansas CA 1-2610

BIRD'S REXALL DRUGS
YOUR PRESCRIPTION STORE

Russell Stover Candies
Phone CA 1-0450

These Firms Proudly Recommend
Southwestern College.

Banks Insurance
CA 1-9510 915 Millington

Collier's Lanes
Highway 160 East

Dungey & Son
Main at Welfelt Drive

school, this is very desirable.

II. Potential Ability

Employers recognize that most job knowledge and skills are acquired by the employee after he is hired. The employer, therefore, is looking for **potential** ability in an applicant for employment.

The employer is asking this question — Does the applicant's school record and job experience indicate the ability and desire to learn and develop?

III. Motivation

Interviewers frequently sort applicants into two groups

— Motivated

— Maintenance Minded

The Motivated applicant appears to be interested in working hard, learning all he can about his job and advancing in the business.

The Maintenance Minded applicant appears to be looking for someone to "maintain" or take care of him. He sees his job as a means of "getting by" with the least amount of thought and effort.

IV. Good Attendance

Companies do not hire people unless they need them. If an employee is not consistently on the job he is not performing the basic purpose for which he was hired. It is not unreasonable, therefore, that the employer tries to hire those applicants who give every indication of being consistently on the job. School records and previous employers are frequently checked.

A Successful Journey

May we wish you every success in locating a job where you can use your talents and abilities and where you will obtain a real sense of satisfaction and accomplishment.

"Almost every Kansas student is taught at sometime or another by a graduate of the Teachers College."

The Kansas State Teachers College

EMPORIA

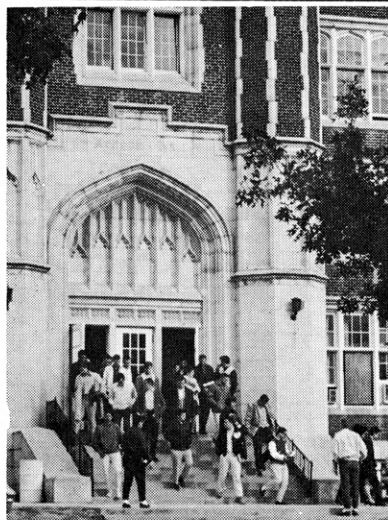
Also See: Pages 20 and 21

These Firms Proudly Recommend Kansas State Teachers College.

Giger Sales Co.
Route 5

Emporia State Bank and Auto Bank
601 Commercial and 8th & Merchant

IN
EMPORIA



dent; yet it is large enough to offer a full program of advanced learning to prepare students for a lifetime career.

Founded in 1882, the College of Emporia is affiliated with the United Presbyterian Church in the U.S.A. It has students of many faiths, and its enrollment includes students from many sections of the nation. In addition to a strong Liberal Arts program, the college offers pre-professional training in many different areas, and is affiliated with other universities and colleges in these programs.

Also See: Pages 20 and 21

COLLEGE OF EMPORIA

INSIST ON QUALITY PROTEIN
44% SOYBEAN MEAL



SUNFLOWER BRAND
By

Kansas Soya Products Co.
Emporia, Kansas DI 2-7270

ANDERSON CATTLE CO., INC.

Feeders of Livestock
Emporia, Kansas

Phone DI 2-0330 P. O. Box 399

These Firms Proudly Recommend
the College of Emporia

Emporia State Bank and Auto Bank
601 Commercial and 8th & Merchant

Giger Sales Co.
Route 5

One of the fastest-growing colleges in the midwest, the College of Emporia equips young men and women with the higher education needed for full, meaningful lives. This is accomplished by a strong, up-to-date curriculum, a distinguished and learned faculty, and a full extra-curricular program.

Although it has more than doubled in enrollment in the past three years, the College of Emporia still is small enough to provide individual attention to each student.

Our hats are Off to the
Kansas State Teachers College
of Emporia

**THE CITIZENS
NATIONAL BANK
&
AUTO BANK**

6th & Commercial St.
Emporia, Kansas

The Bank with the
Time & Temperature Sign

Member Federal Deposit
Insurance Corp.

**Roberts-Blue-Barnett
Funeral Home**
Emporia, Kansas

The Welcome Mat is out
at

**THE CITIZENS
NATIONAL BANK
&
AUTO BANK**

6th & Commercial St.
Emporia, Kansas

For all College of
Emporia Students.
Remember the Bank
With the Time &
Temperature Sign.

Member Federal Deposit
Insurance Corp.

**Roberts-Blue-Barnett
Funeral Home**
Emporia, Kansas

Nursing Career Opportunities Are Bright

Opportunities are unlimited for the professional nurse of today and tomorrow. A rapidly increasing population requires more nurses than ever before, and in a field where the demand exceeds the supply now.

In addition to hospital and home nursing, new careers are limitless in public health nursing, industrial nursing, health services in foreign countries, nursing education, nursing administration, and writing and editorial positions on nursing publications.

Kansas offers three types of nursing schools, designated by the type of program offered.

Baccalaureate Degree Program:

Kansas City Kansas: University of Kansas School of Medicine, Department of Nursing Education

Diploma Program:

Emporia: Newman Hospital School of Nursing

Ft. Scott: Mercy School of Nursing

Great Bend: Dominican School of Nursing

Halstead: Halstead Hospital School of Nursing

Hays: Ft. Hays Kansas State College Division of Nurse Education

Kansas City: Bethany Hospital School of Nursing
St. Margaret's Hospital School of Nursing
Sisters of Charity School of Nursing

Newton: Bethel Deaconess Hospital School of Nursing

Pittsburg: Mt. Carmel Hospital School of Nursing

Salina: Asbury Hospital School of Nursing
Sisters of St. Joseph School of Nursing

Topeka: Stormont-Vail Hospital School of Nursing

Wichita: St. Francis Hospital School of Nursing
Wesley Hospital of Nursing
Wichita-St. Joseph Hospital School of Nursing

Winfield: William Newton Memorial Hospital School of Nursing

Practical Nurse Programs:

Dodge City: Dodge City College, Department of Practical Nurse Education

Kansas City: Florence Cook Department of Practical Nurse Education, University of Kansas Medical Center

Topeka: Topeka Public School of Practical Nursing

Wichita: Wichita Public School of Practical Nursing

Look Ahead to the

Nursing



Profession

Thinking About Your Future?

The young men and women who choose nursing and emerge as professional nurses are highly selected persons. They will enjoy special prestige which will remain with them throughout life.

Professional Training Lasts for Life!

There are always opportunities unlimited in the Nursing profession. The need is great for young people who are willing to work hard and are devoted to service to others.

K.S.N.A. is a professional organization . . . Purposes

The purposes of the Kansas State Nurses' Association shall include support of the American Nurses' Association in fostering high standards of nursing practice, promoting the professional and educational advancement of nurses, and promoting the welfare of nurses to the end that all people may have better nursing care. These purposes shall be unrestricted by considerations of nationality, race, creed, or color.

Kansas State Nurses' Association

SAINT MARY OF THE PLAINS COLLEGE

Dodge City, Kansas

the
distinctive
difference



A CATHOLIC COEDUCATIONAL FOUR- YEAR LIBERAL ARTS COLLEGE

- Fully accredited member of North Central Association of Colleges and Secondary Schools
- Approved by the University of Kansas
- Accredited by the Kansas State Department of Public Instruction

B. A., B. of Music, B. S. in Medical Technology, B. S. in Nursing and B. S. in Education offered

DEGREES

Degrees in Liberal Arts, Music Education, Medical Technology, Nursing

PREPROFESSIONAL PROGRAMS

Two-year programs in Agriculture and Engineering

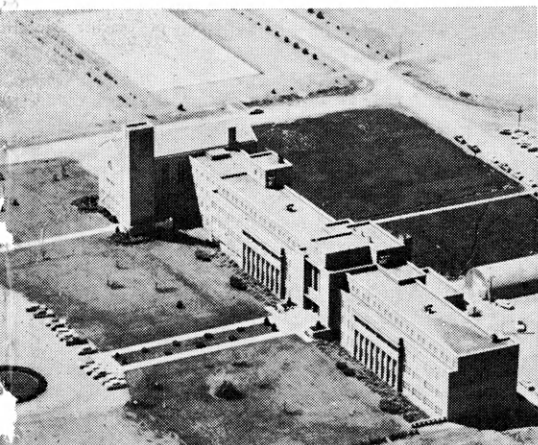
Residence facilities for
Men and Women

120 Acre Campus

Also See: Pages 20 and 21

Write —

Director of Admissions
St. Mary of the Plains College,
Dodge City,



These firms proudly recommend St.
Mary of the Plains College.

Central Grocery & Market
108 E. Oak

Crane Motor Service
Phone HU 3-4031
400 Military

Dodge City Implement Company
310 W. Trail

Lembright Glass Shop
214 Woodland Ave.

Pepsi-Cola Bottling Company
1103 W. Wyatt Earp Blvd.

Sam's Shoe Shop & Hat Works
409 2nd Ave.

Silver Spur Lodge & Restaurant
1510 W. Wyatt Earp Blvd.

John Stickney, Inc.
1409 W. Wyatt Earp Blvd.

PENNINGTON ATHLETIC GOODS

"WESTERN KANSAS' FINEST
WHOLESALE TEAM OUTFITTERS"
Phone HU 3-5221

409 W. Wyatt Earp Box 688
Dodge City, Kansas

PlazaFanes
INC.
NORTH of MUNICIPAL AUDITORIUM
Phone HU. 3-6443

2200 First Ave.
DODGE CITY

"Welcome Students"
"Let's Go Bowling"

THE RIGHT CO-OP ASSOCIATION

Wright, Ness City & Wilroads

First National Bank

Dodge City, Kansas

Drive-in Walk-up

Free Parking While Banking

MEMBER F.D.I.C.

Through the years this bank has
been an active booster for 4-H. We
urge local members to consider the
Dodge City College to further their
education after High School.

FIDELITY STATE BANK

Dodge City, Kansas

Member FDIC

Member Federal Reserve System

L. B. Hancock, Inc.

Realtors—Insurance—Loans
FHA Approved Mortgagee
1300 W. Wyatt Earp Blvd.
Dodge City

The Southwest Milk Producers Association

"All We Have We Owe to Udders"

SCHOOL	Location	Enrollment	Type	Affiliation	Accreditation
Baker University	Baldwin	726	Coed	Methodist	Kansas State Department of Public Instruction*
Bethany College	Lindsborg	528	Coed	Lutheran	Kansas State Department of Public Instruction*
Bethel College	Newton	492	Coed	Mennonite	Nat'l. Council for Accred. Teacher Education*
College of Emporia	Emporia	722	Coed	Presbyterian	American Association of University Women*
Fort Hays Kansas State College	Hays	3,685	Coed	State	Nat'l. Coun. for Accred. of Teacher Education; Nat'l. Ass'n. of Schools of Music; American Association of University Women*
Friends University	Wichita	505	Coed	Soc. of Friends	Nat'l. Council for Accred. of Teacher Education; Nat'l. Association of Schools of Music*
Kansas State College of Pittsburg	Pittsburg	4,121	Coed	State	Nat'l. Council for Accred. of Teacher Education; Nat'l. Association of Schools of Music; Nat'l. University Extension Association; American Association of Colleges for Teacher Education*
Kansas State Teachers College	Emporia	5,216	Coed	State	Nat'l Council for Accred. of Teacher Education
Kansas State University	Manhattan	9,706	Coed	State	Professional Accred.; Arch.; Chem.; Engineering; Journalism; Music; Veterinary Medicine*
Kansas Wesleyan	Salina	619	Coed	Methodist	University Senate of the Methodist Church*
Marymount College	Salina	451	Women	Catholic	Nat'l Council for Accred. of Teacher Education*
McPherson College	McPherson	610	Coed	Brethren	Nat'l Council for Accred. of Teacher Education*
Mt. St. Scholastica	Atchison	496	Women	Catholic	Nat'l Council for Accred. of Teacher Education*
Ottawa University	Ottawa	809	Coed	Baptist	American Baptist University*
Sacred Heart	Wichita	277	Coed	Catholic	Kansas State Department of Public Instruction*
St. Benedict's College	Atchison	812	Men	Catholic	Nat'l. Catholic Education Association*
Saint Mary College	Xavier	591	Women	Catholic	Nat'l. Council for Accred. of Teacher Education; Nat'l. Association of Schools of Music*
Saint Mary of the Plains College	Dodge City	483	Coed	Catholic	University of Kansas and Kansas St. Department of Public Instruction*
Southwestern College	Winfield	646	Coed	Methodist	Nat'l. Council for Accred. of Teacher Education; Nat'l. Association of Schools of Music*
Sterling College	Sterling	543	Coed	Presbyterian	American Medical Association as pre-medical school*
Tabor College	Hillsboro	357	Coed	Mennonite	University of Kansas and Kansas State Board of Education
University of Kansas	Lawrence	13,493	Coed	State	Nat'l. Council for Accred. Teacher Education*
Washburn University	Topeka	3,026	Coed	Municipal	Nat'l. Council for Accred. of Teacher Education; Association of American Law Schools; American Bar Association; American Association of Univ. Women; Nat'l. Ass'n. of Schools of Music*
Wichita State University	Wichita	6,649	Coed	State	Nat'l. Council for Accred. Teacher Education*

* Is accredited by North Central Association of Colleges and Secondary Schools.

Tuition Per Sem.	Room & Board Per Sem.	Estimated total yearly cost for a student (including tuition, room & board, books, supplies & per- sonal expenses	On Campus Housing Capacity	SCHOLARSHIP No.	Average Amount	WRITE FOR INFORMATION TO
400	350	1650.00	425	50	\$250	Director of Admissions, Baker University, Baldwin City, Kansas.
315	270	1630.00	400			Director of Admissions, Bethany College, Lindsborg.
250 (quarter)	205	1650.00	420	106	\$250	Admissions Counselor, Bethel College, North Newton.
367.50	375	2000.00	400	40	\$400	Raymond H. Elbert, Director of Admissions, the College of Emporia, Emporia.
102	325	1100.00	1,300	125	\$175	News and Publications Office, Fort Hays Kansas State College, Hays.
400	315	1500.00	188	100	\$200	Office of Admissions, Friends University, Wichita.
104	350	1200.00	1,343	300	\$160	Office of Admissions, Kansas State College of Pittsburg, Pittsburg.
100	285	1000.00	1,175	200	\$175	Dr. J. J. Weigand, Director of Field Services, Kansas State Teachers College, Emporia, Kansas.
137	350	1300.00	3,130	723	\$256	Dean of Admissions and Records, Kansas State University, Manhattan.
375	350	1800.00	413	\$50,000 for new students, ranging from \$840 to \$4,000 for four years.		Director of Admissions, Kansas Wesleyan University, Salina.
325	400	1510.00	300	scholarships granted by need and ability		Admissions Director, Marymount College, Salina.
392.50	294-331.50	1823.00	500	80-100	\$300	Guy Hayes, Director of Admissions, McPherson College, McPherson.
250	280-290	1200.00	near 400	20	\$350	Director of Admissions, Mount St. Scholastica College, Atchison, Kansas.
single fee \$1,490			650	many available		Admissions Office, Ottawa University, Ottawa.
250	325	1200.00-1300.00	120 (for women only)	40-50	\$150 per sem.	Director of Admissions, Sacred Heart College, Wichita, Kansas.
400	330-380	2000.00	675	83	\$635	Registrar, St. Benedict's College, Atchison.
250	625	1400.00	500	40	\$1,400 for 4 years	Director of Admissions, Saint Mary College, Xavier.
250	375	1500.00	427	94	\$150	Director of Admissions, Saint Mary of the Plains College, Dodge City.
388	310	1500.00	464	250	\$250	Director of Admissions, Southwestern College, Winfield.
375	325	1400.00	580	54	\$150	President William McCreary, Sterling College, Sterling.
325	325	1400.00	300	50	\$150	Director of Admissions, Tabor College, Hillsboro, Kansas.
137	362		5,200			Director of Admissions of Aids & Awards Office, KU, Lawrence, Kansas.
10-11 per credit hour plus \$14 activity fee per semester	360	1500.00	339	448	\$200	Registrar and Director of Admissions, Washburn University, Topeka.
\$6 per hour incidental fee \$2.25 per hr, campus privilege fee	350	1410.00	449	413	\$120	Dr. Worth Fletcher, Registrar, Wichita State Univ. Wichita.

OTTAWA UNIVERSITY

OTTAWA, KANSAS

Ottawa's widely recognized program of education enables students to gain breadth of understanding and a comprehensive knowledge in specialized fields.

Students may prepare for careers in business, teaching, law, medicine, the sciences, agribusiness, government service, music, art, the ministry, writing and other professions. Also a unique honors plan is available.

A University Union was completed in 1963 and the Myers Library and Mammel Art Center are recent additions. Residence halls for both men and women and apartments for married students are available.

See: Pages 20 and 21

For more information write—

Tom Dillen
Director of Admissions

Ottawa Savings & Loan Association

109 East Second Street
Serving This Area Since 1889

**BOOSTING
OTTAWA
and
OTTAWA UNIVERSITY**
Since 1871

Peoples National Bank

Ottawa, Kansas

Member F.D.I.C.

KANSAS JUNIOR

Public Junior Colleges

	Address	Enrollment
Arkansas City Jr. College	Arkansas City	565
Butler County Jr. College	El Dorado	423
Chanute Jr. College	Chanute	232
Coffeyville College	Coffeyville	709
Dodge City College	Dodge City	435
Fort Scott Jr. College	Fort Scott	319
Garden City Jr. College	Garden City	330
Doniphan County Jr. College	Highland	362
Hutchinson Jr. College	Hutchinson	1,242
Independence Community College	Independence	481
Iola Jr. College	Iola	349
Kansas City Kans. Jr. College	824 State St. Kansas City, Kansas	845
Parsons Jr. College	Parsons	340
Pratt County College	Pratt	323

Two Year Colleges (Private Jr. Colleges)

Central College	McPherson	156
Donnelly College	1236 Sandusky Ave. Kansas City, Kansas	595
Hesston College	Hesston	279
Miltonvale Wesleyan College	Miltonvale	158
St. John's College	Winfield	284

HESSTON COLLEGE

Hesston, Kansas

"A Christian Private Junior College of Distinction"

Fully accredited member of North Central Association of Colleges and Secondary Schools. Accredited by Kansas State Department of Public Instruction.

Hesston College was established by the Mennonite Church in 1909.

Enrollment: 287

Teaching Faculty: 21

Tuition: \$392 per semester

Board and Room: Men—\$310 Women—\$290 (per semester)

Scholarships, Grants, Aid and Loan Funds: Available and awarded on the basis of need and scholastic ability.

Work Opportunities: On campus as well as off campus. Students have opportunity to work approximately 15 hrs. per week and earn \$200-300 or more a year.

Curriculum: The student may select a liberal arts program, courses from art to zoology, to lay a foundation for the last two years of college.

Athletics: Member of the Prairie Christian College Conference.

For further information, write:

Admissions Counselor
Hesston College
Hesston, Kansas

This space sponsored by Hesston College and HESSTON MANUFACTURING COMPANY, INC., Hesston, Kansas
EXCEL INDUSTRIES, INC., Hesston, Kansas.

COLLEGES

MILTONVALE WESLEYAN COLLEGE

Miltonvale, Kansas



Hall of Science completed in 1964

EDUCATION IN DEPTH

A wholesome balance between academic excellence and forthright Christian purpose.

JUNIOR COLLEGE CURRICULUMS: General Education, Teacher Training, Business, Music Education, Pre-Science, Pre-Engineering, Pre-Nursing, Pre-Ministerial Training.

ACCREDITED by the Kansas State Board of Education and the University of Kansas.

STUDENT AIDS include scholarships ranging from \$10-\$650 per year, the NDSL program with loans varying from \$100-\$500 per year, and student work opportunities.

FOR ADDITIONAL INFORMATION WRITE:

OFFICE OF ADMISSIONS
MILTONVALE WESLEYAN COLLEGE
Miltonvale, Kansas

Central College

McPherson, Kansas

Central College celebrated its fiftieth anniversary during 1964. As Kansas' oldest accredited junior college, it has a proud tradition of offering basic general education courses to students interested in a distinctly evangelistic, Christian college.

Enrollment: Co-education. Freshman class of 90-100 and sophomore class of 60. 70% of the students live on campus.

Tuition and fees: Tuition \$18 per semester hour. A year's expenses would be approximately \$550 tuition, and \$550 board and room.

Scholarship, loan, and student work: Scholarships range from \$50 to \$400 per year. NDEA loan available, varying from \$100-\$600 per year. Campus work \$150-\$200 per year.

Curriculum: Associate in Arts Degree at the completion of two years, General education courses leading to most professional areas. Associate in General Studies Degree for students in terminal program. For further information, write

Director of Admissions
Central College
McPherson, Kansas

Arkansas City Junior College

Fully Accredited Two-Year Programs in Liberal Arts, Pre-Professional, Secretarial, Vocational and General Education Areas.

DATES TO REMEMBER

August 27, 8:30 a.m.—Orientation for new students.

August 30—Final Registration, Sophomores

August 31 & September 1—Registration, Freshmen
(Pre-registration Conference Advised)

Registration Charges: \$30 per semester

WRITE FOR FREE CATALOG

Contact: Dr. Paul M. Johnson, Dean

Fifth Avenue at Second

Phone HI 2-0430

Arkansas City, Kansas

The Quest for Excellence is Our Constant Aim

Pratt Junior College

Pratt, Kansas

Fully Accredited by State Department of Education—
Two Years—Associate of Arts Degree

Pratt County College is a two-year, non-profit college that was organized in 1938. It is controlled by the Pratt Board of Education and the County Board of Regents. The college is fully accredited by the State Board of Education which means that work taken at the college is recognized by other colleges and universities. The work is transferred without difficulty or loss of credits. Eighty per cent of the 1964 graduates are continuing their education this year in higher institutions in fourteen different states.

The specific advantages of being a Pratt County College student are: an excellent faculty; friendly, informal atmosphere; small classes and personal attention; outstanding student personnel services; economical cost for course and registration fees about \$80 a year; convenient location to transportation and shopping center; services of trained counselors; access to a five-building campus, including an excellent new cafeteria; student honors program; opportunity for leadership and social development in many activities.

Pratt is a friendly city of 8500 people with many opportunities for students to find employment. The merchants and citizens are pleased to welcome the students to the community and are proud to recommend the college to Kansas boys and girls.

Scholarships, grant-in-aid, and loan funds are available and are awarded on the basis of need and scholarship ability.

Programs of Study:

College Parallel Division: Art, Agriculture, Business Administration, Dentistry, Engineering, Forestry, Game Management, Home Economics, Law, Liberal Arts, Medicine, Medical Technology, Mortuary Science, Music, Pharmacy, Physical Education, Radio Broadcasting, Veterinary Medicine, Teacher Education.

Terminal Division (Vocational & Semi-Professional): Accounting, Agriculture, Industrial Arts, Laboratory Technician, Secretarial Training, Vocational Office Training (on the job training).

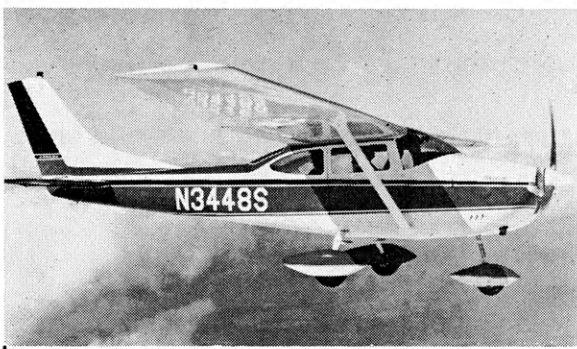
For further information, Write

The Office of Admissions
Pratt County College
Pratt, Kansas

This space sponsored by Pratt Junior College and

The First National Bank, Pratt, Kansas
Member F.D.I.C.

The People's Bank, Pratt, Kansas
Member F.D.I.C.



We're Growing Strong

Cessna Aircraft Company now employs more than 6,000 persons in Kansas. To meet the personnel needs of our growing organization, we must have a continuing supply of well educated, well trained people capable of growing into positions of responsibility.

A wide variety of professional and technical skills is required in the conduct of Cessna's business.

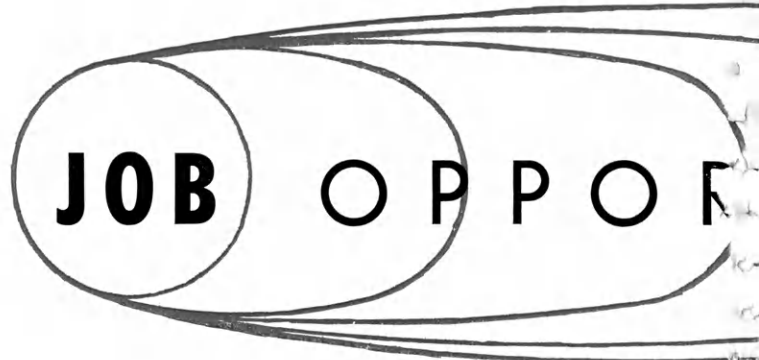
In Wichita, where Cessna annually produces more airplanes than any other manufacturer in the world, approximately 5,000 persons are engaged in producing and marketing a 14-model line of single and twin-engine commercial aircraft, a military jet trainer, and components for various military aircraft.

In Hutchinson, Cessna's Industrial Products Division manufactures hydraulic valves, pumps and cylinders used on products made by all major producers of farm machinery, mobile industrial equipment, and materials handling equipment. Approximately 1,200 persons are employed by this division.

Operations in both Wichita and Hutchinson have been growing steadily, and indications are that they will continue to grow.

Looking into the future, we see opportunities at Cessna for people in numerous professions, including engineering, accounting, sales, marketing, administration, and manufacturing.

We urge all young people to obtain as much education and training as possible in these and other fields in order to prepare themselves for a start in industry or business.



You, as a young man or woman, planning for a career in our rapidly changing world, will face many questions about your job selection. Many factors will influence your choice—your own abilities and interests, your financial situation, your knowledge of occupational fields and the availability of jobs.

It is important that you take stock of yourself and of the job situation while you are still in school and can plan ahead.

Schooling is very important. A high school diploma is a near-essential in most business, industrial and government jobs. And remember, the job you plan for today may not exist in the future. You may possibly change occupations five or six times before reaching retirement age. For this reason, while in school, you need to acquire a good background in reading and writing skills as basic in future training situations.

One of the most puzzling problems facing you is the sheer numbers of young people arriving at working age and striving to get established in an occupation. This problem will increase in the near future. This situation is further complicated by automation and technological changes—many **entry jobs** are disappearing each month. These are the jobs that have provided young people like you the opportunity to get a foothold in industry and business. They require little in the way of training or experience.

The greatest increase in employment during the remainder of the 1960s and early 1970s will occur in occupations requiring the most education and training. There will be increased needs (growth) and replacement needs. Replacement needs will be high in occupations with a large percentage of women workers who leave jobs to take family responsibilities, and older workers. New jobs will appear in rapidly growing occupations filled mainly by young men.

Let us suppose that your aspiration is to become a member of a **Professional** group and you have the ability, interest, resources and stick-to-it-iveness to achieve your goal. What are your prospects? While it is possible here to touch upon only a few professional occupations, generally the opportunities in this area for well prepared young people are excellent.



Teaching and engineering are the largest professional occupations and teaching is the largest of all. School and college enrollments are increasing, so opportunity for new

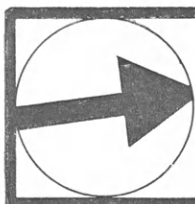
UNITIES

teachers will be greater. Replacement needs for elementary and secondary school teachers is higher than for most professional occupations.

Closely related to the teaching profession and part of the educational system is the **counseling and guidance** field. More and more schools are adding school counselors to provide guidance to young people. Opportunities are available also in government service as vocational counselors and rehabilitation counselors.

Occupations in the **Scientific and Technical Field** are expected to increase much more rapidly than the professional group as a whole. Included here are engineers, scientists and their technicians. Requirements for engineers, scientists and technicians will be high in the future. Educational requirements for technicians are not as high as for the other two groups. The demand for mathematicians, physicists, medical scientists and biological scientists will be very strong.

If you are interested in the **Health Service Field** opportunities are unlimited. Some of the occupations require years of preparation, others are available which require less extensive training. Among the former are professional nurses, physicians, pharmacists, dentists, optometrists, veterinarians and others. The occupations requiring less training are practical nurses, hospital attendants, nursing aides, assistants in dentists and physicians offices and other health technicians.



MANAGERS* (Nonfarm)

In the field of **Management and Business**, the trend seems to be upward in salaried managers, down in self-employed proprietors. Many independent businesses are being purchased by large corporations and operated as branches. This brings about many opportunities for college trained specialists as salaried managers in such fields as advertising, banking, hotel and restaurant management and business and professional services. Others included occupations such as department store buyer, industrial purchasing agent, industrial traffic manager and sales manager.

Some other growing professions you may

Kansas Born and Bred

From its outing products to its heating and air conditioning equipment, Coleman is *all* Kansas.

Coleman is interested in other Kansas products too—especially educated young men and women who desire to be members of a modern team.

Your Kansas background plus a good Kansas education help make you a prime prospect for Coleman.

A growing corporation with world-wide marketing, Coleman has a strong interest in the man-to-man level of its organization.

You can grow with Coleman in a friendly atmosphere where your ideas have a chance to be heard. You can be a part of a management that is already ahead and staying ahead in methods, modernization, ideas and policies.

Come to Wichita and look over our offices and plants—meet us and discuss your future.



250 N. St. Francis
Wichita, Kansas

wish to consider are accounting, law, the clergy, architecture, forestry, home economics, library science and social work. The performing arts such as actors, actresses, musicians and dancers continue to be overcrowded.



SALES and CLERICAL WORKERS*

If you are a girl (although boys are not excluded) you may wonder about your chances in **Clerical Work**. Clerical occupations are the second largest major occupational group in the country. They include stenographer, bookkeepers, telephone operators, shipping and receiving clerks, postal clerks and mail carriers, cashiers, and office machine operators. In spite of changes brought about by automation, the number of clerical workers is expected to increase. Many openings will occur each year due to turnover. A high percent of these workers is in the under-25-years-of-age category.

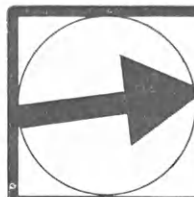
Do you like to meet people? **Sales Work** offers many employment opportunities for both men and women. In retail trade, three-fifths of the salespeople are women. They are in the majority, particularly in variety and other general merchandise stores, apparel and accessory stores, and drug stores. Outside of retail trade — in wholesale trades, manufacturing, insurance, real estate, and other industries—nine-tenths of the salespeople are men. Sales work offers an opportunity for part-time employment since more than one-fourth of the workers are employed for fewer than 35 hours per week. In addition, there is much seasonal work available, particularly around the Christmas holidays. Employment in sales work will increase moderately the balance of this decade.



SERVICE WORKERS*

One of every nine workers in the United States in 1962 was in the **Service Occupations**. Service jobs are in two main areas, private households and others. Rapid growth is shown here, especially in the number of service workers outside private homes. There is a great deal of difference between jobs in service occupations outside of private homes but they have one common bond, the service they provide to business and private individuals. Classified in this group are such diverse occupations as FBI agents, fashion models, practical nurses, waitresses, janitors, barbers and restaurant cooks. As these jobs are so different in character, they provide opportunities for persons with entirely different backgrounds and personal qualifications. Many require considerable skill and training; others comparatively little. Opportunities in service occupations are

very widespread geographically and perhaps you can find several to choose from in your community.



CRAFTSMEN: Foremen and Kindred Workers*

The nation has a great need for **Skilled Workers**. Employment in these occupations is expected to increase by about 2.5 million by 1975. Replacement needs for those who retire, die or enter other work will more than double this figure. If you have mechanical ability, manual dexterity and do not intend to go to college you may wish to consider one of the skilled trades as a career.

Over 5 million skilled workers are employed in maintenance and repair, or construction jobs. Of these workers, more than 2¾ million are mechanics and repairmen—about one-fourth are automobile mechanics. The remainder are employed in a great variety of occupations, including maintenance electrician, airplane mechanic, farm equipment mechanic, TV and radio serviceman, appliance serviceman and business machine servicemen. Nearly 2½ million men—more than one out of every four skilled workers—are employed in the building trades. These include carpenters, bricklayers, plumbers, and cement finishers among others. Carpenters account for about a third of all building trades craftsmen.

In addition to skilled workers is maintenance and repair, and construction jobs, more than one million skilled workers are in the machining occupations. These workers make the molds, models, tools, dies, machines and equipment without which industry could not operate.

Young men who acquire a good basic education in high school (including courses in mathematics and science) will be best able to obtain entry jobs in the skilled trades and to advance in their specialties. A great many of these trades offer apprenticeships and many Kansas employers are happy to get promising young men directly from high school and provide on-the-job training.



OPERATIVES*

The nation's largest occupational group is found in **Semi-skilled Jobs**, containing over 12 million workers. This group will not increase rapidly, but there will be continual need, and good opportunity, for workers to enter as replacements.

Semi-skilled jobs are found in both manufacturing and nonmanufacturing industries. Approximately 7½ million semiskilled workers are employed in such industries as men's and women's clothing, automobile, food processing, textiles, machinery, and electrical and electronic equip-

ment to list a few. These workers operate machinery and equipment; assemble parts to make a final product; inspect finished products; help skilled workers; etc. As is the case with skilled workers, many industries offer on-the-job training to young people with a high school or vocational high school background. The recently established and proposed area vocational-technical schools in Kansas should provide you with basic skills to enable you to compete for an entry job in this field.

Over half of the semi-skilled workers, employed by other than manufacturing, are operators of motor vehicles. Others operate laundry and dry cleaning equipment, work in service stations; operate power stations; work in coal mines; etc.

Driving occupations include local truckdrivers, over-the-road truckdrivers, routemen, taxicab drivers, local transit bus drivers, intercity bus drivers and various others. Opportunities are expected to increase substantially in over-the-road truckdrivers, with lesser increases in other driver occupations. Local bus drivers may actually decline in number. Because of the high turnover among taxicab drivers, there will be many opportunities to enter this occupation. This is an especially popular occupation for those seeking part-time jobs.



While the number of **Laborers** employed in the economy is not expected to decrease in the next few years, neither will they increase despite the fact that the labor force as a whole will increase significantly. These are the jobs that require mainly the ability to perform physical tasks. There is little opportunity for advancement, they are generally poorly paid, and work is quite often of an intermittent nature. If you have the ability to do better, stay in school so that you will not only improve your own chances but you will not deprive someone less fortunate of the only job he is capable of handling.



You may be interested in opportunities in which you can utilize skills learned on the farm and in which your farm background can be used to advantage. The number of workers employed in **Agriculture** on farms including operators, unpaid family workers and hired workers has been declining for years. By 1975, the number of persons employed on the farm may be a fifth less than the 5.2 million employed in 1962. As a consequence, only a small proportion of the million or more farm youth will have the opportunity

WILL YOU QUALIFY?

Few jobs in the petroleum industry are filled today by young people who lack a college education.

Petroleum, next to agriculture, is Kansas' most important industry. Positions include geologists, engineers, geophysicists, land men, draftsmen, chemists, clerks, typists, secretaries, stenographers, office machine operators, lawyers, accountants, bookkeepers, file clerks, drilling and production crews, earth movers, transporters, pipeline operators, plant maintenance operators, salesmen, service station operators and attendants, wholesalers, jobbers, lease brokers, abstracters, and economists.

For further information, contact Tom Schwinn, Executive Vice President, Kansas Independent Oil & Gas Association, FO 3-7297, 226 Union Center Building, Wichita, Kansas.

DILLONS ARE LOOKING FOR—

BRIGHT YOUNG MEN WHO FIND OUR BUSINESS WORTH GETTING EXCITED ABOUT

The young men we want must be more interested in building a solid business future than driving a car on an expense account. They must be willing to put on a grocery apron to learn the business. Those with the ability and desire to do a good job will have the opportunity to move up to a rewarding position.

We're part of one of the world's leading industries—the food business. In less than 50 years we've grown into over a 100 million dollar a year company. We span 29 communities with 78 retail outlets. And we're growing every day.

We need young men to grow with us.

Interested? If so, pay a visit to the manager of your nearest Dillon store . . . He'll be happy to talk with you.



**J.S. DILLON & SONS
STORES CO., INC.**



Watch Your Savings Grow!

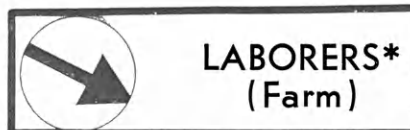
IN AN INSURED SAFE SAVINGS ACCOUNT

at Your Nearest Kansas *Savings & Loan*

- | | |
|--|--|
| Arkansas City
First Federal Savings and Loan
Ass'n. of Arkansas City | Newton
First Federal Savings and Loan
Ass'n. of Newton |
| Augusta
American Savings Association | Ottawa
Ottawa Savings and Loan Ass'n. |
| Beloit
First Federal Savings and Loan
Ass'n. of Beloit | Parsons
First Federal Savings and Loan
Ass'n. of Parsons |
| Clay Center
Northwestern Federal Savings and
Loan Ass'n. of Clay Center | Pittsburg
First Federal Savings and Loan
Ass'n. |
| Dodge City
First Federal Savings and Loan
Ass'n. of Dodge City | Plainville
Rooks County Savings Ass'n. of
Plainville |
| El Dorado
Mid-Continent Federal Savings and
Loan Ass'n. of El Dorado | Pratt
The Western Saving Ass'n. |
| Fort Scott
Liberty Savings and Loan Ass'n. | Salina
The Homestead Building and Loan
Ass'n. |
| Garnett
The Garnett Savings and Loan
Association | Shawnee-Mission
Capitol Federal Saving & Loan
Ass'n. at 5251 Johnson Dr.,
95th & Nall and
Meadow Lake Shopping Center |
| Great Bend
The Prudential Building and Loan
Ass'n. | Topeka
Capitol Federal Savings and Loan
Ass'n. at 700 Kansas Ave,
12th and Topeka Blvd. and
2100 Fairlawn Rd. |
| Hays
The Hays Building and Loan Ass'n. | Wellington
First Federal Savings and Loan
Ass'n. of Sumner County |
| Hutchinson
First Federal Savings and Loan
Ass'n. of Hutchinson | Wichita
American Savings Association of
Wichita, 4601 E. Douglas Avenue
and 147 North Market Street |
| Iola
The Security Savings and Loan
Ass'n. | |
| Larned
The Larned Savings and Loan
Ass'n. | |
| Lawrence
Capitol Federal Savings and Loan | |
| Leavenworth
Leavenworth Mutual Savings and
Loan Ass'n. | |
| Liberal
First Federal Savings and Loan
Ass'n. of Liberal | |
| McPherson
The Pioneer Savings and Loan
Association of McPherson | |



of becoming operators of farms large enough to support their families without income from other sources.



Although the overall number of openings in farming is decreasing, a considerable number of desirable and rewarding opportunities occur from time to time. For more detailed information on farm or farm management opportunities consult your county extension agent or write the Extension Service, Kansas State University.

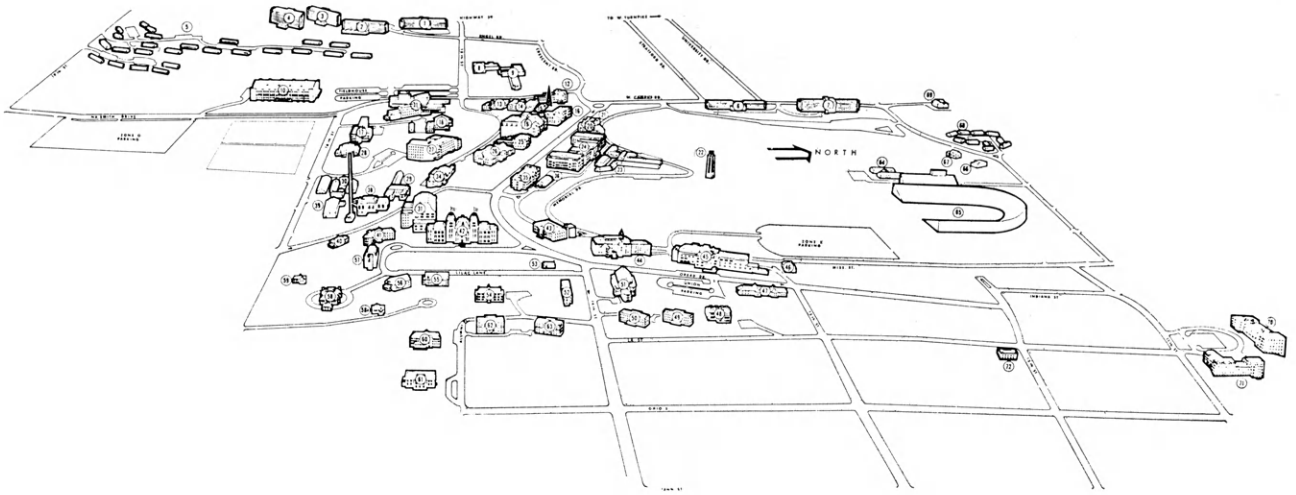
For the farm youth who can go to college there are many professional agricultural opportunities available. These include among others, Agricultural Extension Service Workers, Soil Scientists, Soil Conservationists, Biochemists, Farm Management, Plant and Animal Husbandry, Bacteriologists, Agricultural Research Specialists, etc.

Probably as many persons as those who make their living on farms are employed in farm related occupations—often called "Agri-Business". These include the workers in feed mills, fertilizer plants, farm machinery industries, farm supply stores, food processing plants and many other businesses that process, distribute, or transport farm products and farm supplies. You may find your farm experience an excellent background for entry into this segment of the economy.

A very good source for additional information on occupational trends is the OCCUPATIONAL OUTLOOK HANDBOOK, 1963-64 Edition, published by the Bureau of Labor Statistics, United States Department of Labor. You may wish to spend some time reading about the many jobs that are described in this volume. A copy is probably in your city or school library or you will find one at your local Kansas State Employment Service office.

Employment Security Div.
Kans. Department of Labor
December 1964

*Trends in Kansas Employment by Job Classification, 1950 to 1960 U.S. Censuses, compiled and illustrated by Kansas State Board for Vocational Education, Thaine D. McCormick, Director; 1964.



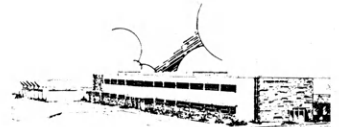
u-ni-ver-si-ty (u'ne-vur'se-ti), *n.* [*pl.* UNIVERSITIES (-tiz)], [ME. *universite*; OFr. *universite*; L. *universitas*, the whole, universe, society, guild < *universus*; see UNIVERSE], 1. an educational institution of the highest level, typically with one or more undergraduate schools, or colleges, together with a program of graduate studies and a number of professional schools, and authorized to confer various degrees, as the bachelor's, master's, and doctor's . . .

U-ni-ver-si-ty of Kan-sas (kan'zes), *n.* 1. the state university of Kansas; an educational institution of the highest level. 2. consists of seven undergraduate schools: the College of Liberal Arts and Sciences and the professional Schools of Business, Education, Engineering and Architecture, Fine Arts, Journalism, and Pharmacy; and three schools of graduate studies: the Graduate School, the School of Law, and the School of Medicine. 3. authorized to confer six different bachelor's degrees in 75 different major fields, eleven master's degrees, and the degrees of specialist in education, doctor of education, doctor of medicine and doctor of philosophy . . .



fresh-men (fresh'men), *n.* 1. at the University of Kansas have 5,255 modern living spaces available to them. 2. may be awarded scholarships or loans, or hold

jobs. 3. have many counseling services available, including an individual adviser, the Guidance Bureau, the Reading and Study Clinic . . . 4. are assigned to classes according to their ability and preparation. 5. have opportunities to extend themselves to the limits of their abilities in academic work and in extracurricular activities. 6. pay fees of \$137 a semester, if resident of Kansas; \$337, if non-resident.



stu-dents (stoo'd'ntz), *n.* 1. who are interested in the widest possible choice in courses, majors, and careers. 2. who would like to earn a degree second to none in the state or the nation. 3. who welcome the possibility of summer study, or a junior year, abroad. 4. who desire the best chance at such post-graduate educational opportunities as the Woodrow Wilson and Danforth Fellowships, and Rhodes Scholarships. 5. who wish to join some 50,000 K. U. alumni who have earned one or more degrees from K. U. should . . .



write (rit), *v.t.* 1. for further information to the Director of Admissions and 2. ask for *K.U.—Quality in Education*. 3. *Student Financial Aids*, or 4. *the catalog* of one of the ten schools.

U-ni-ver-si-ty of Kan-sas

Law-rence

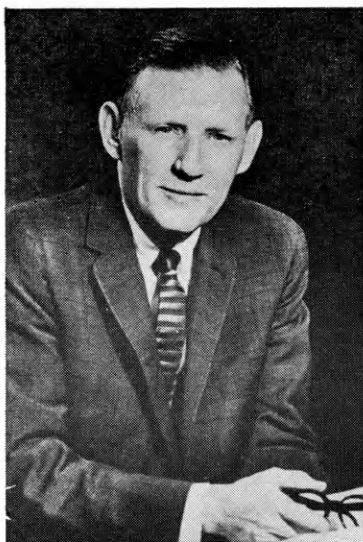


Haberdashers for Kansas State University

Gentlemen and Ladies please write for information Concerning Dress at
Kansas State University.

Aggieville

Manhattan



James A. McCain
President

Kansas State University

at Manhattan

An Open Letter . . .

Whether to attend a university and what university to choose are among the most crucial decisions of a lifetime. To make such decisions wisely, one should be informed about higher education generally and characteristics of the particular institution under consideration.

Kansas State University, the nation's first land-grant institution, is a center of intellectual activity charged with the responsibility of conserving knowledge, disseminating new knowledge, and teaching students useful information, and teaching students enrolled on the campus. We at K-State consider the education of students to be our primary obligation.

Kansas State with its library collection of a quarter of a million books, a dynamic research program, and a system of resident instruction involving more than 9,000 students and 500 teachers is, of course, a complete university and one of distinction. We commend the information in this article to your thoughtful consideration.

James A. McCain
President

... about the University

Friendly and democratic atmosphere long has prevailed on the campus and in the classroom.

Personal attention to the individual needs and problems of the student is a matter of pride with a faculty and administration. A basic goal is to insure an "individualized" education for students enrolled at K-State.

High quality of instruction is available at all levels—from the freshman class through the graduate school. Nationally and internationally-known specialists share with students in the classroom their extensive knowledge and experience in basic and applied research.

Wide variety of academic offerings in many fields contributes to the best liberal and professional education.

One of the finest counseling services in the Mid-West, staffed by highly-trained professional counselors, is available to students at all times to assist with their personal and academic problems.

The most modern health service, rated as one of the finest in the nation, is available to all students, day and night. For many students, medical facilities at K-State are more readily available than in their own home town.

Low-cost education is a principle to which land-grant institutions such as Kansas State are dedicated. In addition, scholarships, loans, and part-time jobs assist hundreds of worthy and needy students.

Prestige of being a K-State graduate grows through the years. Among its graduates are distinguished leaders in the sciences, education, agriculture, industry, and the military—in fact in every field of human endeavor.

International affiliations, such as the cultural exchange arrangement with Justus Liebig University at Giessen, Germany, and the technical assistance programs in India and Nigeria, offer the student an enriched life on the campus as well as eventual opportunities to study and work abroad.

(Continued on next page)

For Further Information, write—

Dean of Records and Admission
Kansas State University
Manhattan, Kansas

Employment opportunities are excellent in all fields through one of the best university placement services anywhere. This service is available without cost to K-Staters throughout their lives.

K-State doesn't forget its students. Constant contact is maintained with graduates through the alumni association, job placement service, departmental publications and activities—to mention only a few of the lifetime advantages enjoyed by graduates of Kansas State University. To them, K-State will be their second home.

HAYS FURNITURE UPHOLSTERY

716 Galaxy Dr.

PR 8-5594



MANHATTAN, KANSAS

SAM SAROFF, President

C. E. NELSON, V. P. & Gen. Mgr.

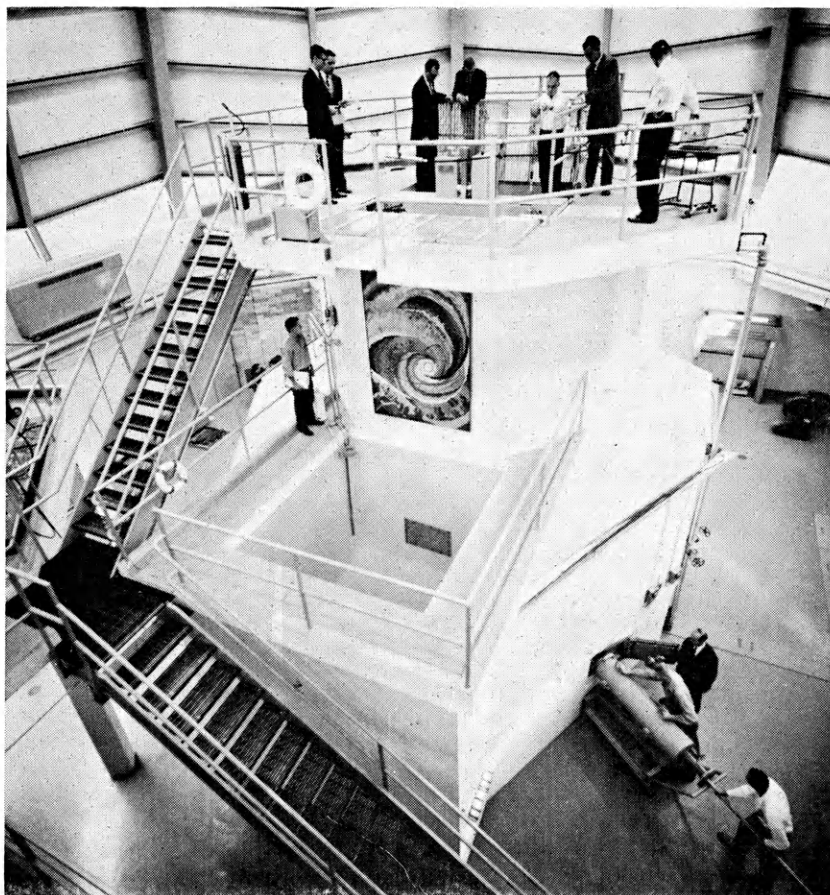
Phone PRescott 8-4446

Third and Yuma Streets

SAM SAROFF & CO., INC.

Quality fresh and frozen
fruits and vegetables

MANHATTAN, KANSAS



ONE OF THE MOST VERSATILE facilities in the world, the TRIGA MARK II Reactor is installed in Kansas State University's Department of Nuclear Engineering Laboratories. The facility is used for teaching and research for undergraduate and graduate programs.

Nuclear Reactor Offers Opportunities For Graduate and Undergraduate Study

The Nuclear Engineering Department at Kansas State University offers

Kansas students an outstanding undergraduate curriculum. The first and only accredited undergraduate Nuclear Engineering program in the United States, the curriculum is directed toward shaping the awesome source of nuclear energy for the benefit of mankind.

Top notch facilities and equipment are available to assist in carrying out a rigorous and dynamic teaching and research program in the department. In addition to up-to-date laboratories and equipment valued at approximately \$1 million, the most impressive facility available to students is the TRIGA MARK II Reactor. Housed in a 3700 sq. ft. bay, the reactor provides an excellent source of neutrons for research during steady state operation.

Another unique capability comprises the Nuclear Engineering Shielding Facility, located on 160 acres of land, which is available for full-scale radiation shielding experiments.

Undergraduates also work with staff members on research projects sponsored by various federal agencies. These projects, amounting to over \$¼ million in outstanding contracts, provide many employment opportunities for students during their college careers.

TEXT BOOKS NEW & USED

REFERENCE BOOKS
PAPERBACK BOOKS
AND ALL
SCHOOL SUPPLIES



CAMPUS BOOK STORE

These Firms Are Proud To Recommend Kansas State University to Kansas Boys and Girls.

Aggie Hardware & Electric Company
1205 Moro

Bradstreet's Jewelry
1208 Moro

Coca-Cola Bottling Co.
120 Poyntz

Norton Rexall Drug Store
331 Poyntz

Olson's Aggieville Shoe Service
1214 Moro

Screen's Mobil Service
1630 Poyntz

Seven-Up Bottling Company
120 Poyntz

Waddell Tire Company
6th & Riley

DOEBELES IGA FOODLINER

Fruits—Vegetables—Groceries
and Meats

517 N. Third Phone PR 8-4923

Free Coffee

Every Day Low Prices

Free Delivery

Joe Doebele, Prop.

Roy Hull BUSINESS MACHINE

1212 Moro in Aggieville
SALES—SERVICE—RENTALS
Royal Typewriters
Victor Adders & Calculators

Stickel Cleaners

714 N. 12th



MANHATTAN, KANSAS

BUZZELL'S OFFICE EQUIPMENT

Corner 4th and Houston
SALES—SERVICE—RENTALS
Manhattan, Kansas

CALL PR 8-2005

for
MILK—HALF and HALF
Whipping Cream
Buttermilk—Chocolate Drink
Cottage Cheese—Ice Cream

Serve

CITY DAIRY PRODUCTS
313 S. 4th Street

ALL OFFICIAL TEXT BOOKS

at

Ted Varney's

UNIVERSITY BOOK STORE

Where you get the best deal.

Griffith Lumber Co., Inc.

112 North 2nd

PR 8-4477

Tom Griffith, Pres.

Complete Line of
Building Materials

These Firms are Boosters of Kansas State University

Here's Your School

KANSAS STATE UNIVERSITY

Our special student representative will be here at the bank to welcome you and to give you FREE personalized checks . . . from the bank that wants to serve you!

Here's Your Bank

UNION NATIONAL BANK

Bank at time and temperature Corner!

TOM GRIFFITH
Chairman of the Board

**4-H'ERS
ARE ALWAYS
WELCOME
AT**

DUCKWALL'S

Downtown and Aggieville

**Manhattan
Typewriter Co.**

"Complete Sales & Service
Organization"

217 So. 4th

Phone: PR 8-4174
PR 8-4241

Remington Rand Agency

WAREHAM MOTOR HOTEL

Downtown Manhattan

The Complete Shopping Center

You Can Count on Us . . .
Quality costs no more at Sears

**Sears, Roebuck
and Co.**

Manhattan

Kansas

Now is the time to begin making plans to attend college next year.

We extend an invitation to the future students of Kansas State University to make the 1st National Bank of Manhattan, your bank while attending college.

The 1st National Bank has a special checking account designed for students.

THINK **1st**
National Bank

Manhattan, Kansas



FEEDS PARADE OF CHAMPIONS

All over the Midwest, this past show season, livestock and poultry fed CO-OP Feeds kept winning the awards. Pictured here are only a few of these winners — the total runs into hundreds and represents practically every fair and livestock show in the Midwest.

It takes a good animal to win show honors — plus good management — and good feed. A solid factor in all these results is the quality of CO-OP Feeds — complete Blue Ribbon nutrition and nutritional balance. This same nutritional quality means efficient, low-cost gains in commercial livestock and poultry enterprises.

Whether you raise to show or sell, CO-OP Feeds give you Championship results!

AK-SAR-BEN 64.

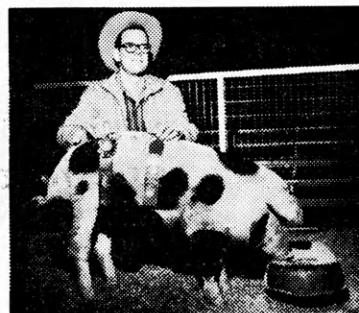


• **IOWA** — Scott Thompson of Eagle Grove won Reserve Grand Champion Steer and Angus Champion Steer at Ak-San-Ben show, Omaha.

IOWA — Thomas Wilhelm of Villisca won Champion Shorthorn Steer award at Ak-San-Ben show, Omaha.

OKLAHOMA — Dale Ross of Dacoma won Champion Duroc Market Hog, FFA division, at American Royal, Kansas City. He also won the Reserve Champion Market Hog award.

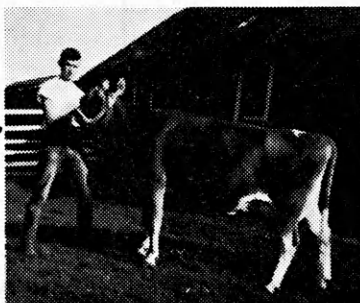
• **OKLAHOMA** — Randy Murrow of Dacoma won Champion Spotted Poland China Market Hog, FFA Division, at American Royal, Kansas City.



OKLAHOMA — Kerry Egner of Dacoma won Champion Yorkshire Barrow award, open division, at the American Royal, Kansas City.

OKLAHOMA — the Leslie Brothers of Dacoma won Champion pen-of-three Hampshire Barrow award, open division, at the American Royal, Kansas City.

• **IOWA** — Jerry Schmidt of Holland won Grand Champion, FFA Division, and Grand Champion, open show, at the Iowa State Fair. He also won fourth at Dairy Cattle Congress, Waterloo.



• **NEBRASKA** — Susan Eberspacher of Beaver Crossing won Grand Champion Market Lamb award at Nebraska State Fair, Lincoln. She also won Grand Champion award for pen-of-three market lambs.

• **NEBRASKA** — Kenneth Holstein of Colon won Reserve Grand Champion Market Lamb award at Nebraska State Fair, Lincoln.

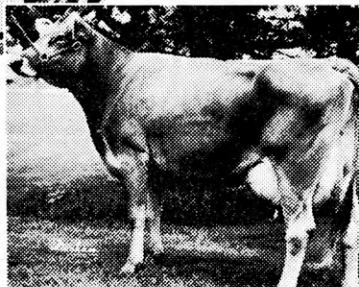


OKLAHOMA — Ronnie Bliss of Carmen won Champion Chester White Barrow award, open division, at the American Royal, Kansas City.



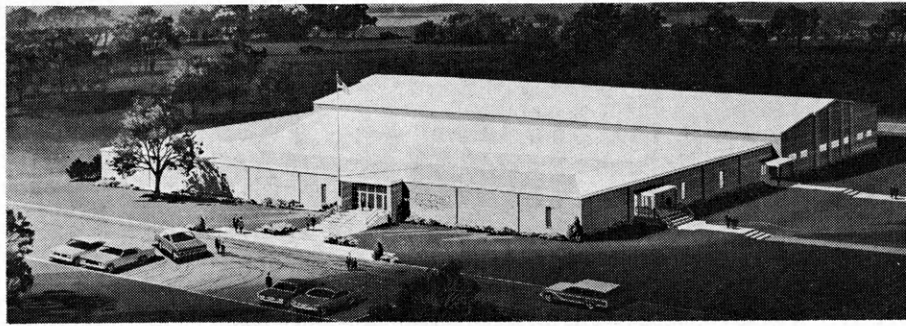
• **TEXAS** — David Brown of Lexington won Grand Champion pen-of-four Hens, Junior Market Turkey Show, Texas State Fair, Dallas. He also won Reserve Champion pen-of-two Toms.

KANSAS — Jim Wilson of Prairie Village won Senior Champion and Grand Champion female, Mid-America Fair, Topeka.



CONSUMERS COOPERATIVE ASSOCIATION

KANSAS CITY, MISSOURI



New Flint Hills Vocational Technical School Building at Emporia now under construction.

Vocational Educational

for A Changing World of Work

By John Lacey
State Supervisor



John Lacey is State Supervisor of the Area Vocational-Technical School program. He received bachelor and master of science degrees from Kansas State University, then taught vocational agriculture at Hill City and Hillsboro. Lacey was Assistant State Supervisor of Vocational Agriculture for nine years. During 1962-64, he served as Executive Secretary of the Kansas Association of Future Farmers of America and was awarded an honorary State Farmer degree and honorary American Farmer degree.

On August 31, 1964 the doors opened to students for the first time in seven area vocational-technical schools in Kansas. These seven schools provide a new horizon on the Kansas educational scene. They are designed specifically to equalize the educational opportunity for all Kansas youth and adults, whether they choose to pursue a program in higher education or to vocationally prepare themselves with occupational competencies necessary to meet the needs and demands of the dynamic Kansas labor market.

At the dedication ceremony of the new vocational-technical school building at Goodland, Governor John Anderson stated that the opening of these schools is a "bold bid" to meet the challenge of providing education and training for productive employment as technicians and skilled workers.

Many 4-H members, with a rich experience of rural life, will have a built-in advantage to train for gainful employment in the broad field of agriculture occupations. The State Director of Vocational Education, Thaine D. McCormick, said, "Kansas always has been and is still basically an agricultural State. Most of Kansas' industrial growth is based on agriculture either in the manufacture of farm equipment, the processing of farm products, or in supplying goods and services

Current Program Offerings

Goodland

Farm Machinery and Farm Power Maintenance and Repair
Vocational Agriculture
Auto Body Repair
Auto Mechanics
Business Education
Office Education
Technical Drafting
Electricity

Dodge City

Farm Machinery Operation (short course in spring)
Vocational Agriculture
Business Education
Office Education
Machine Shop
Auto Mechanics
Electricity
Waitress Training (short course)

Emporia

Vocational Agriculture
Business Education
Office Education
Trade and Industrial Cooperative Program

Topeka

Cooperative Agriculture Business Training
Auto Mechanics
Welding
Radio and T. V. Repair
Business Education
Vocational Agriculture
Printing
Machine Shop
Electricity
Photography
Office Education

Beloit

Farm Welding (adults)
Vocational Agriculture
Auto Mechanics
Heavy Equipment Operation
Carpentry
Office Education

Southeast Kansas

(Coffeyville, Columbus, Caney, Howard, Elk City)

Farm Machinery Repair
Farm Business Analysis
Cooperative Farm Business Training
Vocational Agriculture
Office Education
Drafting Technology
Electronics Technology
Auto Mechanics
Machine Shop
Auto Body Repair
Carpentry
Printing
Commercial Food Service
Clothing Alterations

Central Kansas

(Hutchinson-Newton-McPherson)

Farm Welding (adult)
Vocational Agriculture
Electricity and Electronics
Machine Shop
Printing
Auto Mechanics
Technical Drafting
Trade and Industrial Cooperative Program

BETHANY COLLEGE

Lindsborg, Kansas

★ A Four Year Liberal Arts College ★ Scholarship Deadline April 1st

Write: Director of Admissions

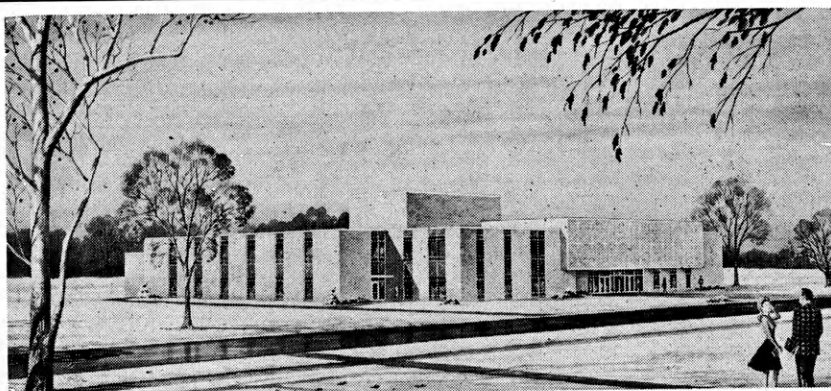
Also see pages 20 and 21

Farmers Union Elevator Co.

Co-op Products and Grain Storage

Branches at Falun and Bridgeport

LINDSBORG, KANSAS



Malloy Hall, new speech and music building.

FORT HAYS KANSAS STATE COLLEGE

Fort Hays State has distinctive educational programs in the sciences, business, music, industrial arts and education. Largest division of the College is teacher education. The College is world-renowned for its program and research on grasslands and range management.

Also See: Pages 20 and 21

Write—News & Publications Office, Fort Hays Kansas State College, Hays

Midwest Tobacco & Candy Co.

811 Fort

Hays, Kansas

Producers Gas Equities, Inc.

HAYS, KANSAS

Serving the Oil Industry
in Western Kansas

These Firms Proudly Recommend
Fort Hays Kansas State College

Al's Bootery
809 Main

Farmers Insurance Agency
718 Main

Jack & Jill Shop
1100 Main Street

Ted Schulte, Insurance
117 W. 8th

The Farmers State Bank

Hays, Kansas

The bank where you feel at home



MA 4-6542

S. E. Shade & Son Contractors
418 E. 9th

State Farm Insurance Co.—Ed Dies
MA 4-4041 2204 Vine St.—Box 212
Hays, Kansas

needed by farmers in their businesses. Agriculture today in Kansas is much more than farming alone."

The seven area vocational-technical schools now operating are located at Goodland, in northwest Kansas; Beloit, in north central Kansas; Topeka, in northeast Kansas; Coffeyville and Columbus, in southeast Kansas; Dodge City, in southwest Kansas; and a multi-centered unit at Hutchinson-Newton-McPherson, in south central Kansas. An area voca-

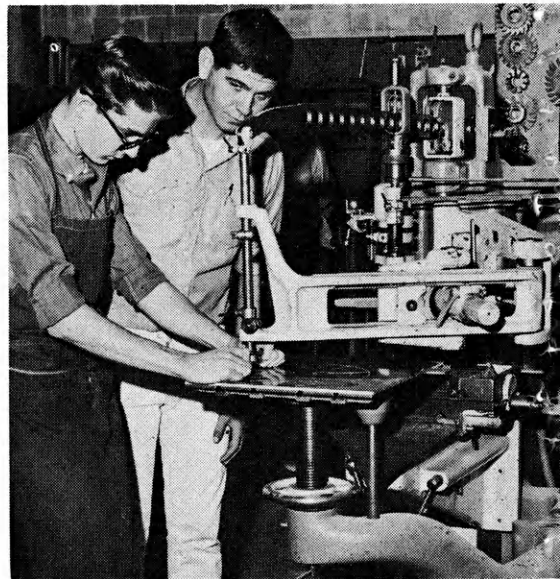


Photo courtesy of J. A. Boone, Coffeyville

tional-technical school has been approved for operation at Salina, but will not begin until September of 1965.

Who Is Eligible for Enrollment?

The area vocational-technical school is designed to serve all those who want, need, and can benefit from vocational training and is designed to provide them with the occupational skills necessary to obtain employment in the labor market.

Training opportunities are focused on three groups:

1. The high-school-age youth who is preparing for placement in the labor force. This group may include those who are enrolled in a high school as well as those who are not enrolled in any high school. Training for this group is designed principally for the junior-and senior-year levels.

2. The immediate posthigh-school-age group who are preparing themselves vocationally for entrance into the labor force.

3. Adults who are in need of retraining themselves for a specific occupational area or for upgrading themselves in their present positions.

The only entrance requirements to area vocational-technical schools are a desire and a need for occupational training. It is emphasized that a high school diploma is not a requirement, but that the program is designed to provide educational opportunity at all levels to meet the needs of the labor market.

Program Offerings

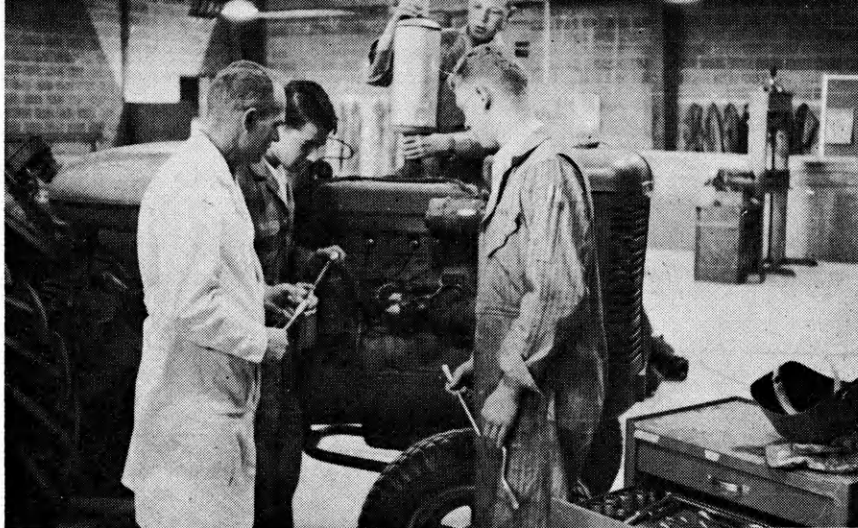
In addition to programs being offered in the agricultural occupations, training programs are provided in trade and industrial occupations, business and distributive education, office education, home and community service occupations, and health occupations.

A complete list of current program offerings is on the lead page of this article.



A State System

Emphasis is placed on the fact that a State system of vocational education within commuting distance of all students is the ultimate objective of the area school program. Expensive programs with limited needs for



CAREER OPPORTUNITIES UNLIMITED



The variety of careers in health offers rich scope for the inquiring mind, as well as the excitement and gratification of helping advance man's progress in dealing with himself and his environment.

In spite of the growing number of persons in the health professions, the supply has not kept pace with the demand for services. The opportunities are truly unlimited! Whatever your choice—medicine, dentistry, nursing, public health, pharmacy, medical technology, biophysics, biochemistry, bacteriology, to mention only a few—*your* prospects will be what you make them, determined by *your* interest and capacity, *your* training, *your* decisions, *your* work.

The Kansas Medical Society

315 West 4th

Topeka, Kansas

a simple flip of the switch

Every member of the rural family can now have electricity with just a flip of the switch, thanks to Electric Cooperatives.

This ample supply of low-cost power didn't come easily. It is the result of forward-thinking people working together to build and develop Electric Cooperatives to get the electrical power they could not buy elsewhere.



THE ELECTRIC



420 West 9th, Topeka, Kansas

CE 5-5321

ST. BENEDICT'S COLLEGE

Atchison, Kansas



A Catholic Liberal Arts college for men conducted for more than a hundred years by monks of the Order of St. Benedict.

See: Pages 20 and 21

For detailed information write the Registrar.

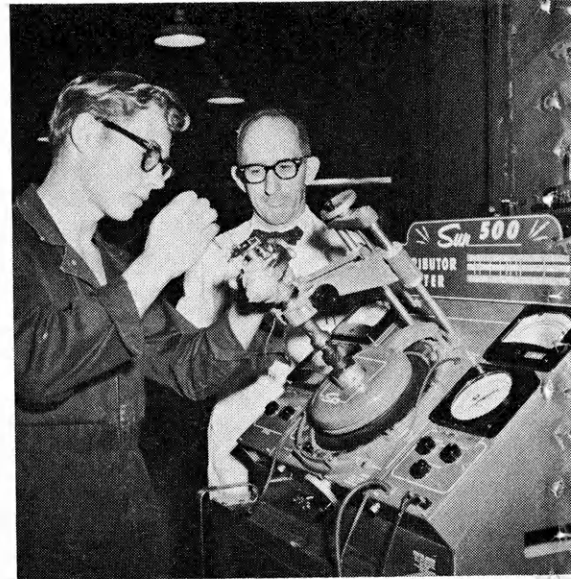
These Firms Proudly Recommend St. Benedict's and St. Scholastica Colleges.

Ball, Lowry, Stillings & Caplinger
Blair Bldg.
Bartlett Seed Co.
800 Main
Wm. E. Block, A.I.A.
318 Commercial

Van Liew's Super Market

Groceries and Meats
Frozen Food Lockers
926 North Fifth Street

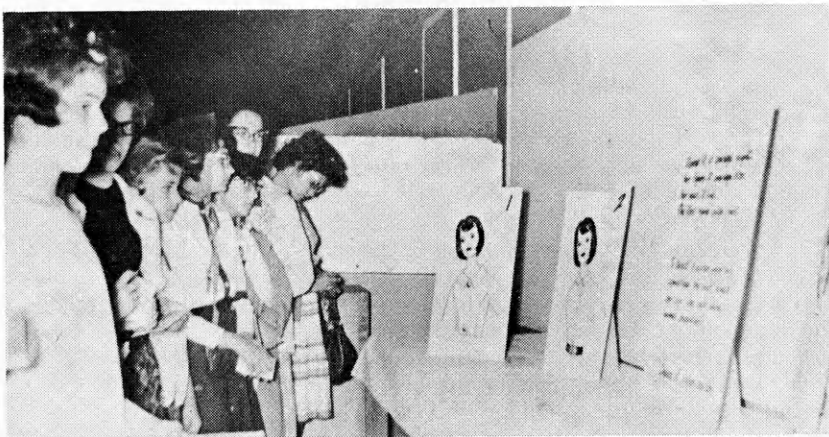
training will not be duplicated in all areas of the State. Examples of this are the heavy equipment operators program now operating at Beloit and the proposed dental assistant program to be located at Emporia. Students will be accepted from any area of the State in any



program which is a part of the State system of vocational education.

Future Development

It is anticipated that several additional area vocational-technical schools will be approved to begin operation in September of 1965. Program offerings will be expanding in each of the schools now operating to include a program of training for the cluster of occupations in the horticulture, greenhouse, and florist area at the Newton center; a dental assistant program at Emporia; business data processing at Hutchinson; small engine repair at Coffeyville; cosmetology at Dodge City; and heavy equipment overhaul at Beloit, as well as others. Programs will be developed wherever there is an actual or anticipated need for employees. Many programs will be offered where there are known national shortages of trained workers.



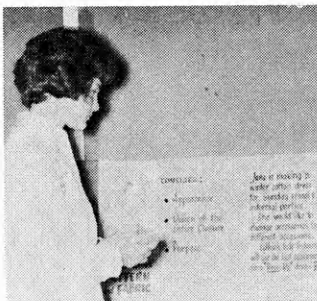
JUDGEMENT?

What does it mean to have judgement?

4-H girls pictured here are learning judgement at a home economics school and contest.

Judgement is used when we say the 4-H Personal Development Project will team with many of your other projects. It is a winner among teenage 4-H'ers.

The Personal Development Project is a natural to team with Clothing. Judgement in selection of material and accessories will effect your overall appearance. Appearance is one of the most popular phases of the Personal Development Project.



Expression and Manners phases bear a close relationship to clothing work, especially when you are wearing or modeling your garments.

TEAM UP—you'll enjoy it!

The people at Southwestern Bell Telephone Company are proud to have a part in this 4-H project by sponsoring awards for outstanding work.

SOUTHWESTERN BELL



TELEPHONE COMPANY

How to Enter

Programs of instruction in most area schools are open to high school students in the area on a half-day basis and to post-high students on a half-day or full-day basis. High school students within commuting distance of an area school attend the vocational program of their choice for one-half day, then return to their parent high school to receive training in the academic subjects necessary for graduation.

Credits from the area vocational school are applied toward graduation requirements.

If a high school student completes a vocational course while he is in high school, he will be eligible to receive a vocational credential along with his high school diploma.

Enrollment fees vary somewhat due to the divergent lengths of the courses offered and the cost of materials involved.

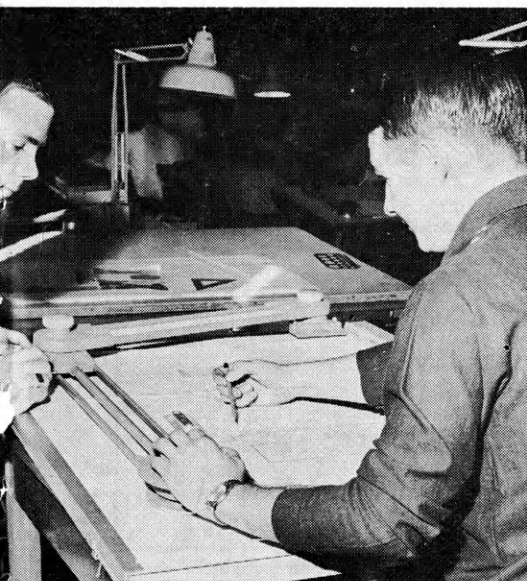


Photo courtesy of J. A. Boone, Coffeyville

High-school-age students, whether in school or out, should make inquiry of the administrator or counselor in the local high school. A posthigh school student or adult should contact the county superintendent or the director of the nearest area vocational-technical school or write directly to the State Board for Vocational Education, State Office Building, Topeka, Kansas.

FEBRUARY, 1965

MOUNT ST. SCHOLASTICA COLLEGE

Atchison, Kansas



Feeney Memorial Library houses 150,000 volumes.

C-G-F Grain Company, Inc.

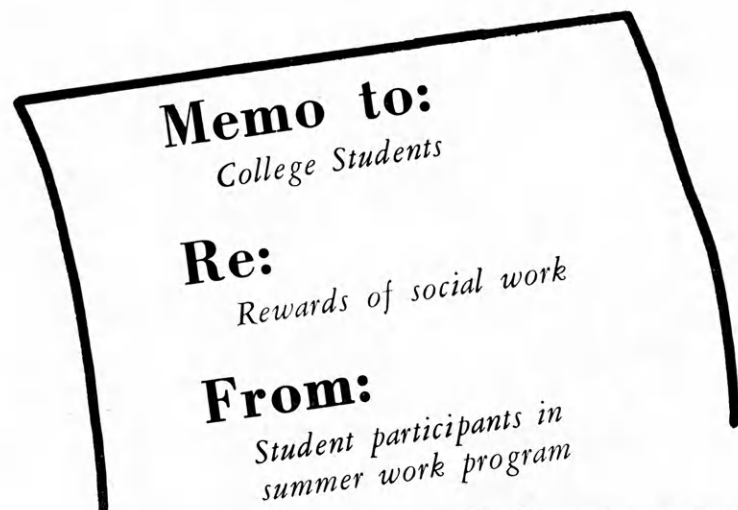
Grain Merchants — Bonded Storage
Phone EM 7-1621 Atchison, Kansas
HA 1-7343 Kansas City, Mo.

Mount Saint Scholastica College is a Catholic liberal arts college for women conducted by the Benedictine Sisters. First established as an academy, it has been a senior college since 1930. The Mount has twin college advantages, associated with St. Benedict's College for men.

See—Pages 20 & 21.

These Firms Proudly Recommend Mt. St. Scholastica and St. Benedict's Colleges.

Henderson Drug Store
930 N. 5th
Mullins Bros. Hardware Co.
819 Main
O'Keefe, Ball, McKelvy,
O'Keefe & O'Keefe
503 Commercial Street
Tonsings Stationery & Book Store
719 Commercial



A student says . . .

"In social work you will find a lasting sense of satisfaction which can come only from working at something really worthwhile. It makes you a better citizen and a more sympathetic person."



Still another . . .

"A social worker gives of himself so others may be happy and enjoy life more. He cares what happens to his fellow men. To me social work is a good way to continue this task of helping others to help themselves."

Find out by trying out . . .

Kansas has a paid summer work experience program for potential social workers. This is an opportunity for college students to test their interest in social work through first hand work experience. It's a growing field with opportunities unlimited. The supply of trained people does not come close to meeting demands. Won't YOU give social work a try this summer?

For more information . . .

On this program write: Director of Staff Development, State Department of Social Welfare, Topeka, Kansas.

The future is promising to beauty school graduates. The demand for trained operators exceeds the supply. After sufficient experience, developed by shop training, many beauticians open their own businesses.

VERNON'S SCHOOL OF COSMETOLOGY



EXPERT TRAINING
TO QUALIFY GRADUATES
TO PERFORM A HIGHER GRADE
OF BEAUTY SERVICE

Wichita, Kansas

AM 5-2150

For School Brochure

WRITE —

303-305 W. Douglas Ave.

Wichita, Kansas

Hays

HAIRDRESSING SCHOOL, Inc.

A FULLY ACCREDITED SCHOOL



NO CONTRACT TO SIGN

No interest or carrying charges on our monthly payments.

One of Midwests Finest Schools of Cosmetology

Write for Free Brochure

5855 Beverly
Mission, Kansas

Area Code 913
HE 2-1111

CRUM'S BEAUTY SCHOOL

Manhattan, Kansas

State Approved

9 months course

Classes starting each month

Write us for FREE brochure

Dormitory room & board available

Fully Accredited Hairdressing College

TWO LOCATIONS TO SERVE YOU
Hutchinson & Hays
7 W. B 121 E. 11

Sidney's

HAIRDRESSING COLLEGE, Inc.

— Financing Available —

* We Train Hairdressers *

Continental School of Hair Styling

Expert Training

State Accredited

Visitors Welcome Any Time

622 Kansas Ave.

Ph. CE 3-8220

Topeka, Kansas

Be sure to consider our school
where we offer —

Better Training for Less

Complete 9-month course
including basic and high fashion instruction.

Write or Call —

SALINA BEAUTY ACADEMY

124 N. Santa Fe

Ph TA 7-0021

Same location 30 years

Wichita School of Cosmetology

Expert Professional Training

Easy Terms

CLASSES START EACH MONTH

Placement Guaranteed

Write for BROCHURE

121 W. Douglas

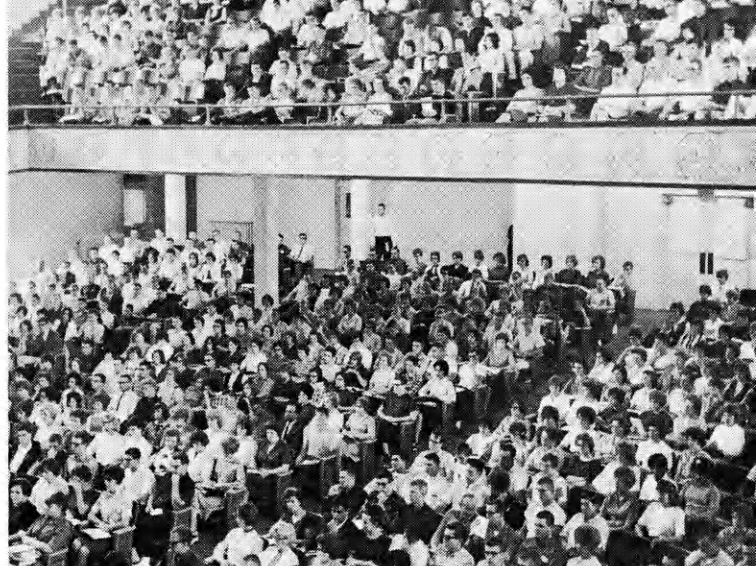
AM 2-1241

Wichita, Ks.





Frosh-Soph tug-of-war at McPherson College



Opening assembly at KSC, Pittsburg

Southwestern debate champs



Auction at Bethel for German Exchange.



Washburn students dine with Denmark Semester hosts

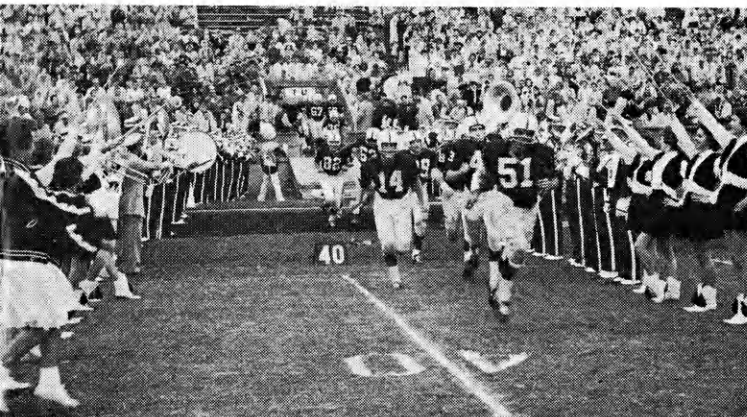
College Life

What is college like? Every student sees it differently but here's a number of things we think most would agree are a part of college life.

Eight o'clock classes, three hour labs, 20-page research papers, innumerable freshman composition themes, required reading cards, library reference books and the card catalogue. Unharnessed enthusiasm at basketball games, a football rally with bonfire, tennis court activity on Saturday mornings, Shakespear productions, sounds of the glee club practicing. Rebuilt roadsters, low-slung sports cars, bus trips home, cars packed with students leaving for the weekend, a perpetual lack of

parking space, brave souls on bicycles, hundreds of pedestrians. Homecoming dance, crowd at the movies, pizza after the game, coffee at the Union. Dormitory rooms, institutional food, do-it-yourself laundry, roommates, Arguing with instructors, planning with an advisor, gab session with friends. Pop quizzes, chemistry experiments, language tape recordings. The yearbook, President's assembly, tapping for honor societies, campus church centers, Greek Week, intramural volleyball, queen contests, grade cards, Harried, hectic, exhaustive, thorough. Learning, growing, enjoying. Diploma, graduation, class ring.

K-State fans greet Wildcat Football team





**ALLIANCE INSURANCE
COMPANIES**
McPherson, Kansas
FIRE — CASUALTY — LIFE
Serving Kansas Since 1888

How About The Newspaper Business?

If you are thinking about following a business or professional career, why not spend an hour visiting with your home town editor and learn about the possibilities in journalism?

The newspaper business offers an opportunity for a most interesting and rewarding life for the young man or woman who has a broad educational background, a liking for people, courage, and a desire to have an active part in the American way of life.

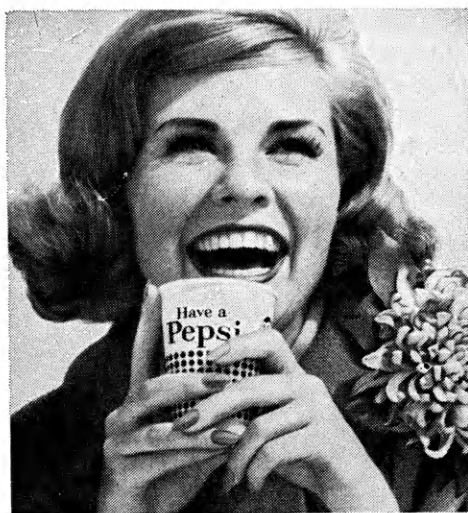
A good newspaper man has the satisfaction of knowing that he is helping others to a better life. He remembers that "The People Have The Right To Know" and, that there is no better way to have a well informed Democracy than through the printed word.

Before you make up your mind on your life's work, please think seriously about journalism. Thousands have found it a most enjoyable and rewarding career. Maybe you?

The Journal-World

Lawrence, Kansas

"The HOME Newspaper for 13,000 Families"



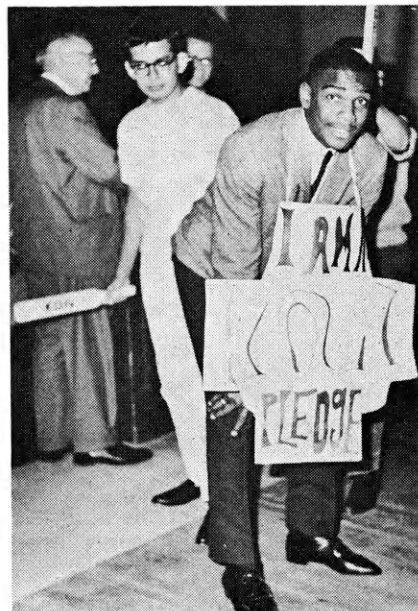
**now
it's
Pepsi**
for those who
think young



caps off to KANSAS 4-H MEMBERS from
KANSAS PEPSI BOTTLERS ASSOCIATION



Homecoming queen and attendants at Sterling

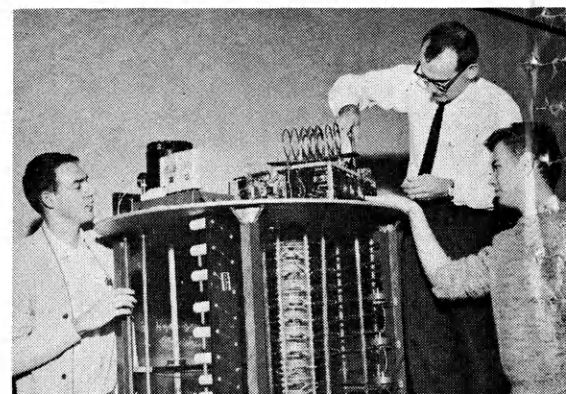


Greek fraternity pledge at Friends



Mt. St. Scholastica and St. Benedicts present Shakespeare

Student constructed proton accelerator at Baker





Miss Marymount and her attendants

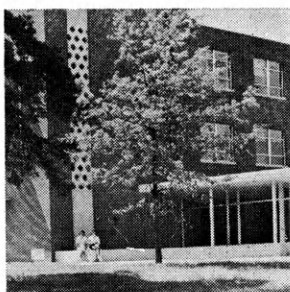


Kansas University coed selects a book at library

SAINT MARY COLLEGE

Xavier, Kansas

Saint Mary College offers purposeful, intelligent, Christ-centered living to young women desirous of developing their intellectual and artistic gifts.



A beautiful new dining hall was opened in 1963, and a new dormitory in 1964. A modern and well equipped science building and language laboratory are recent completions.

Also see pages 20 and 21

Long-Bell Lumber Co.

Division of International Paper

Home of
Quality Building Materials
Lansing, Kansas

These Firms Proudly Recommend
Saint Mary College.

Christy's Auto Salvage
Route 1

A. M. Geiger Cement Co.
1411 S. 2nd St.

Ed Reilly & Sons, Insurers-Realtors
Reilly Bldg., 5th and Delaware

First National Bank of Leavenworth

Oldest Bank In Kansas Est. 1856

Member F.D.I.C.

STERLING COLLEGE

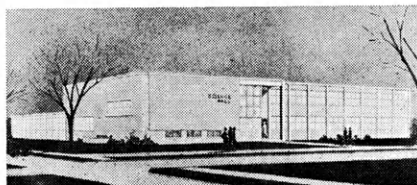
Sterling, Kansas

You Are
Always Welcome
in Sterling

THE FARMERS STATE BANK

STERLING, KANSAS

DEPOSITS INSURED BY F.D.I.C.



THOMPSON HALL OF SCIENCE

Academic excellency in a
Christian Atmosphere

Pride in the Past . . .

78 years of quality education; hundreds of graduates in responsible positions; faithful to the Presbyterian heritage.

Faith in the Future . . .

Growing enrollment; an expanding campus; significant support from Church and Alumni; greater academic excellence in qualified faculty, superior students, and challenging honors program. Write: Dr. William McCreery, President, Sterling College, Sterling, Kansas.

Also See: pages 20 and 21

This Firm Proudly Recommends
Sterling College.

Gamble Store
141 S. Broadway

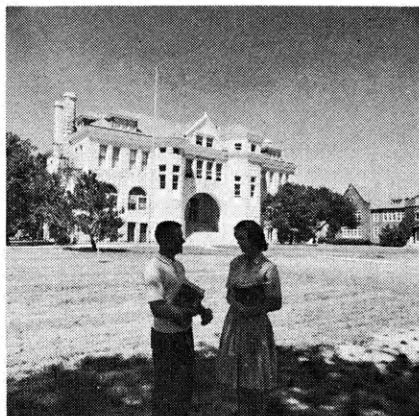
Congratulations
to
Sterling College

on their
Continued Growth
and for their
Contribution to the
Sterling Community

FARMER'S CO-OP UNION

Sterling

BETHEL COLLEGE



Newton, Kansas

Bethel College is a Christian liberal arts college founded in 1887 by Mennonite pioneers.

A new modern women's and a new men's residence hall with an additional wing to both dormitories have been completed.

In the Knapp and Greenbaum study of 1953, Bethel ranked 32nd among 562 accredited U. S. Colleges and universities in the production of scholars (those receiving graduate fellowships, scholarships or PhD degrees).

Bethel emphasizes general education in the basic intellectual disciplines of the arts and sciences, but with a definitely Christian emphasis.

For Further Information, Write—

Admissions Counselor
Bethel College
North Newton

Also See: Pages 20 and 21

MIDLAND NATIONAL BANK

NEWTON, KANSAS

Full Service Banking

Use Our Television
Drive-Up Service

Member F. D. I. C.

"Heart of the Nation
Station"

KJRG AM 950KC
FM 92.3MC
Newton, Kansas

MAKE
BETHEL COLLEGE
at
NEWTON, KANSAS
YOUR CHOICE

First National Bank
Newton, Kansas

THE BETHEL CLINIC

Newton, Kansas

These Firms Proudly Recommend
Bethel

First Federal Savings & Loan Assn.
100 E. Broadway
Frey's
Quality Jeweler
133 W. 6th
Meadowlark Homestead
Route 4
Wilson Drug Store
525 Main
Elmer P. Zehr, Insurance
601½ Main



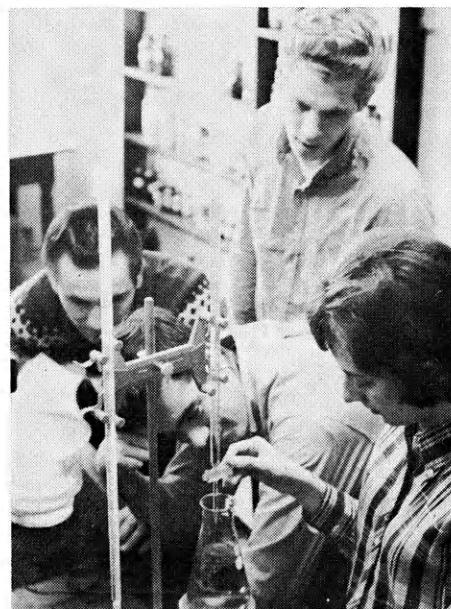
"Hamlet" enacted at St. Mary of the Plains



President's Dining Room at Bethany College Union



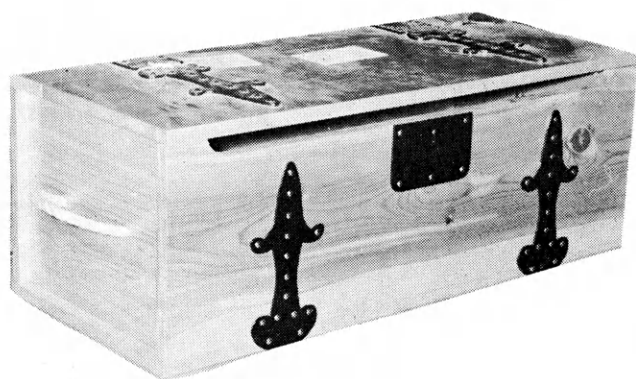
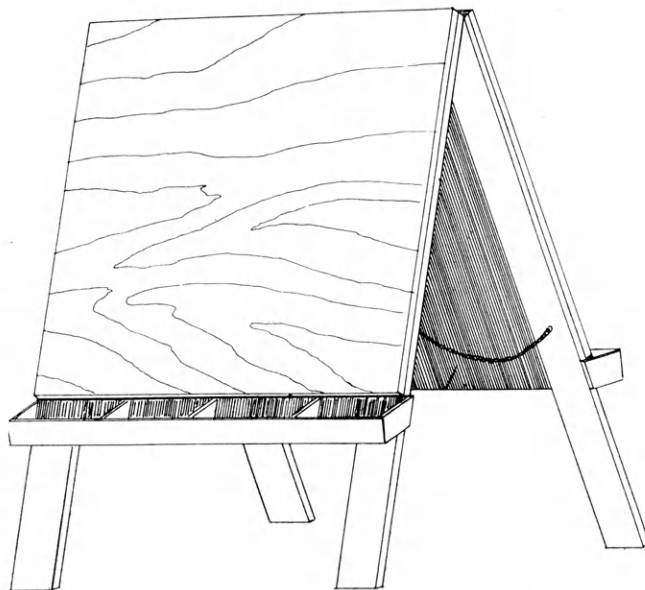
Coeds leave Women's Dorm at Kansas Wesleyan
Chemistry lab on College of Emporia campus



FREE!!

New 4-H Woodworking Plans

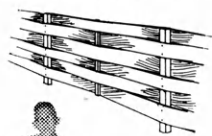
DOUBLE EASEL



TOY CHEST

*Plans for These Projects Are
Available At The Lumber Dealers
Listed on These Pages. Ask For Them.*

**Insect
Display Box**

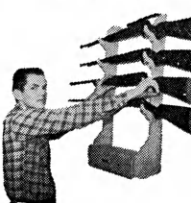


**Yard Fence
No. 3**



End Table

**Handy
Gun Rack**



**Rotating Selection
Tool Rack**



Shoe Shine Kit



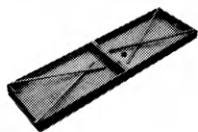
**Cart with
Removable
Trays**



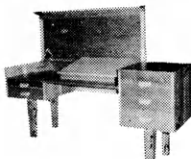
Study Center



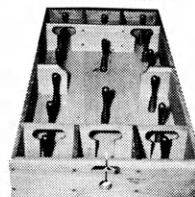
Box Hockey



Hobby Desk



Devil Game



Indoor Planter



For other FREE 4-H woodworking plans, see the next pages.

Always on hand... YOUR LUMBERMAN

is your best friend when
you need good material



Abilene
Central Lumber Company

Agra
Agra Lumber Company

Alton
Alton Lumber and Coal Company

Asherville
Asherville Lumber and Coal Company

Ashland
Don Spotts Lumber Company
Home Lumber and Supply Co.

Atchison
Hixon Lumber Company

Beloit
Peoples Lumber and Coal Company

Bern
Bern Lumber Company

Bird City
The Bird City Equity Mercantile
Exchange
Griffin Lumber Company

Brownell
Richolson Lumber and Hardware
Company, Inc.

Cawker City
Cawker City Lumber Company

Chanute
Smith Lumber Company

Chapman
Sanborn Lumber Company

Colby
Hardman Lumber and Coal Company
Hess Lumber Company

Coldwater
Home Lumber and Supply Co.

Concordia
Sanborn Lumber Co.

Cottonwood Falls
Burgner-Bowman-Mathews Lumber Co.

Denison
Denison Lumber and Hardware
Company

Denton
C. H. Gish Company

Elkhart
Elkhart Lumber Co.
The Star Lumber Company

Emporia
Home Lumber and Supply Co.
The Smith Lumber Company

Eureka
A. C. Houston Lumber Company

Everest
Alexander Lumber Company

Fredonia
The Home Lumber & Supply Co.

Garnett
Star Grain and Lumber Company

Gaylord
Hardman Lumber Company

Glen Elder
Dickinson Lumber Company

Goodland
Hardman Lumber Company
Rasure Lumber Company

Great Bend
Whitesell Lumber Company

Greensburg
Home Lumber and Supply Co.

Hartford
Thomas Lumber Company

Hays
Hardman Lumber Corporation, Inc.

Healy
Healy Co-op Elevator Company

Hill City
Hardman Lumber Company

Holton
Holton Lumber Company

Holyrood
Home Lumber and Supply Co.

Hugoton
The Star Lumber Company

Iola
Klein Lumber Company

Johnson
Seyb-Tucker Lumber and Implement
Company

Kinsley
Kinsley Co-op Exchange Lumber Yard
Home Lumber and Supply Co.

LaHarpe
Diebolt Lumber and Supply

Lakin
Hart and Company
Lakin Lumber Company, Inc.

Lancaster
T. E. Snowden Lumber Company

Lansing
T. E.
International Paper Co., Long-Bell Div.

Larned
Clutter-Lindas Lumber Company

Lawrence
Woods Lumber Company
Logan-Moore Lumber Company

Lebanon
Lebanon Lumber Company

Lenora
Lenora Lumber Company

Liberal
The Star Lumber Company

Macksville
Home Lumber and Supply Co.

Madison
Madison Lumber Company

Manhattan
Griffith Lumber Company
Ramey Brothers

Mankato
Mankato Lumber Co.

Meade
Home Lumber and Supply Co.

Moundridge
Clayton Vogt Lumber Co., Inc.

Neodesha
O. E. Woods Lumber Company

Ness City
Rock Island Lumber Co.

Norton
Norton Lumber Company

Nortonville
Alexander Lumber Company

Oakley
Oakley Lumber Company
Golden Belt Lumber Company

Looking for Woodworking Ideas?



See Any of These Lumber Dealers for a Free 4-H Woodworking Plan

Oberlin
Building Supply Headquarters

Offerle
Offerle Co-op Lumber Co.

Olathe
Cowley Lumber and Hardware Company

Onaga
Onaga Lumber & Grain Co.

Oswego
Home Lumber and Supply Co.

Ottawa
Hubbard Lumber Company, Inc.

Paradise
Paradise Lumber Company

Parsons
O. E. Woods Lumber Co.

Phillipsburg
Hardman Lumber Company

Plains
Home Lumber and Supply Co.

Prescott
Prescott Lumber Company

Pretty Prairie
The George W. Ulth Lumber Company

Protection
Home Lumber and Supply Co.

Russell
Hardman Lumber Company of Russell Inc.

St. Francis
St. Francis Equity Exchange

St. Marys
St. Marys Lumber Company

St. John
Home Lumber and Supply Co.

Salina
Everitt Lumber Company, Inc.

Seneca
Koelzer Lumber Company
Seneca Lumber Company

Severy
Tolman-Gibbon Lumber Company

Smith Center
Smith Center Lumber Company

Stafford
Home Lumber and Supply Co.

Stockton
Stockton Lumber Company
The Golden Belt Lumber Co.

Syracuse
Everitt Lumber Company, Inc.

Wakeeney
Hardman Builders Supply Company

Wathena
Farmers Grain and Lumber Company

Wichita
Lawrence Lumber Company
Stockyards Cash and Carry Lumber Co.
Alexander Lumber Company

Wilson
Hoch Lumber Company

Winfield
A. B. Everly Lumber Company

Woodbine
Kohler Lumber Company

Zenda
The George W. Ulth Lumber Company

Missouri

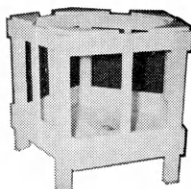
Independence
The George W. Ulth Lumber Company, 11432 Truman Road

Ask For Your 4-H Woodworking Plans.

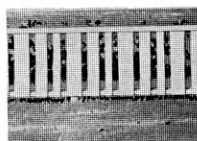
**Folding
Lawn Chair**



**Self Feeder
for Sheep**



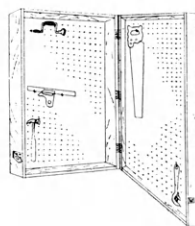
Yard Fence, No. 2



**Closet
Storage
Cabinet**



Tool Storage



Yard Cart



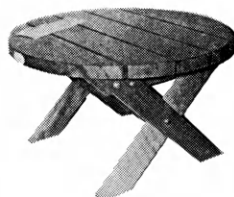
**Simple Work
Bench**



**Patio
Planter**



Patio Table



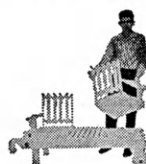
**Child's Step
Stool and Chair**



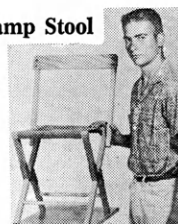
**Wheel Barrow
Planter**



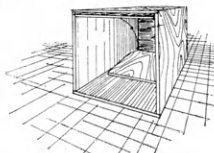
Lawn Set



Camp Stool



Small Animal Trap



OTHERS

Two-Level Coffee Table

Fishing Rod Rack	Walnut Chest
Book Case	Football Game
Baseball Rack	Steptable
Magazine Rack	Pounding Board
Bedside Stand	Two Games
Vertical Shoe Rack	Sewing Cabinet
Gate Sign	Coffee Table
Martin House	Back Yard Fence
Tete-A-Tete	Lazy Susan
Toy Stove	Holding Gate
Dog House	Wall Cabinet
Picnic Table	Sandbox
Picnic Bench	Blue Bird House
Hanging Flower Box	Funny Book Rack
Bookcase Headboard	Mail and Memo Board
Collapsible Visual Aid Stand	Christmas Tree Gifts
Typing Desk and Bench	Automatic Bird Feeder

We SALUTE Electric Project Winners

The Investor-owned electric companies of Kansas proudly salute the Electric Project winners listed below. These worthy 4-H'ers have received Westinghouse Medals for their fine work. If you are not currently enrolled, join the many 4-H'ers in this project to learn more about electricity and the proper care and use of electrical equipment. Contact your club leader for more information.

Kansas Champion: Galen Neher, Gove County
County-wide Electric Program: Labette County

1964 Electric Winners

LABETTE

Ronnie Tullis*
Dannie Eisenbrandt
Claude Brownnewell
Terry Tullis

LANE

Wesley Berger
Roger Yost
LEAVENWORTH
Ira Lee Grabeal
Chris Sargent

LINCOLN

Rand D. Scott
Larry Tromble
John Harlow

LINN

Pat Concannon*
Mike Eastwood
Richard Long

LOGAN

Glenn Kemp
Tim Hays

LYON

Kenny DeDonder*
Larry DeDonder
Bill Seefeldt
James Leonard

McPHERSON

Dick Russell
Lynn Krom
Eugene Bryan, Jr.

MARION

Dennis Buethe
Warren Hett
Ira Don Schroeder
William Thomas

MARSHALL

Steve Bargmann
Jack Kongs

MEADE

Greg Borth
Kevin Hageman
Steve Sobba

MIAMI

Bill Stanchfield

MONTGOMERY

Steve Mueller

MORRIS

Virgil Wigle
Benita Prochaska

NEMAHA

Charles Schlaegel
Daniel Ronnebaum
Bob Nordhus
Dennis Talley

NEOSHO

Jim Womeldorff

NESS

Kenneth Schuler
Harold Schwien
Kent Blocksom
Larry Horacek

OSAGE

Bryce Romine
Frank Niles
Kent Gragg
Eddie Tucker

OSBORNE

Roy Roenne
Virl Gregory
Rita Chatham
Terry Murphy

OTTAWA

Larry Neaderhiser
Neal Kindall
Brion Rensink
Tina Tasker

PAWNEE

Jack Merkel
Jon Deege
Jeanne Tombaugh
David Gore

PHILLIPS

Greg Wallgren

POTTAWATOMIE

Carolyn Olson
Randy White
Dan Pugh

PRATT

Alan McFall

RAWLINS

Doug Kacirek
Dennis McWilliams
Bob Burk
Brad Wilkinson

RENO

Jim Bill Pattinson
David Schuster
Charles Newcom
David Childs

REPUBLIC

David Kasl*
Lyle Bergstrom
Juanita Bergstrom

RICE

Roger Leonard*
Howard Partington
Jim Mehl
Martin Hathaway

RILEY

Mike Briggs

ROOKS

Charles Lambert
Keith Teasley
Gene Hackerott

RUSH

Richard Acker
Doyle Kirby
Robert Schraeder

RUSSELL

Albert Clow
Gary Harbaugh
Lilly Dumlér
Galen Berry

SALINE

John Summers
M. J. Banker
Bruce L. Johnson

SCOTT

Darrell Rodenberg
Norval Gruver
Norma McReynolds
Billy Huseman

SEDGWICK

James McMinn
Melvin Applegate

SHAWNEE

Kent Palmberg*
Ted Appelhanz

SHERIDAN

John Sapp
Alfred Campbell
David Taylor
Jonny Jamison

SHERMAN

Donald Snethen
Larry Todd

SMITH

Lauren Dean Libby
Marie Woods

STAFFORD

Dennis Walker

STEVENS

Jim Kuharic

SUMNER

Wayne Petrik
Paul Blankinship
Dorothy Evans
James Buresh

THOMAS

Harold Murphy
Roy Murphy
Ralph Duffey

WABAUNSEE

Ronald Hatfield
Jerry Hatfield
Jim Gehrt
John Kobiskie

WASHINGTON

Glenda Odgers*
Harvey Lundquist
Bill Hoffman
Ronnie Kloppenberg

WILSON

Sam Atherton
Lee Kidd
Steve Smith
Barbara Crabb

WOODSON

Bill Robertson

WYANDOTTE

Tom Dennis

*Received an educational trip to the annual Wichita Recognition Event.



✱ Watch This Page For Ideas On Farm And Home Electric Projects
ELECTRIC LIGHT and POWER COMPANIES in KANSAS

The Kansas Power and Light Company

Kansas City Power & Light Company

Western Light & Telephone Company

Central Kansas Power Company

Kansas Gas and Electric Company