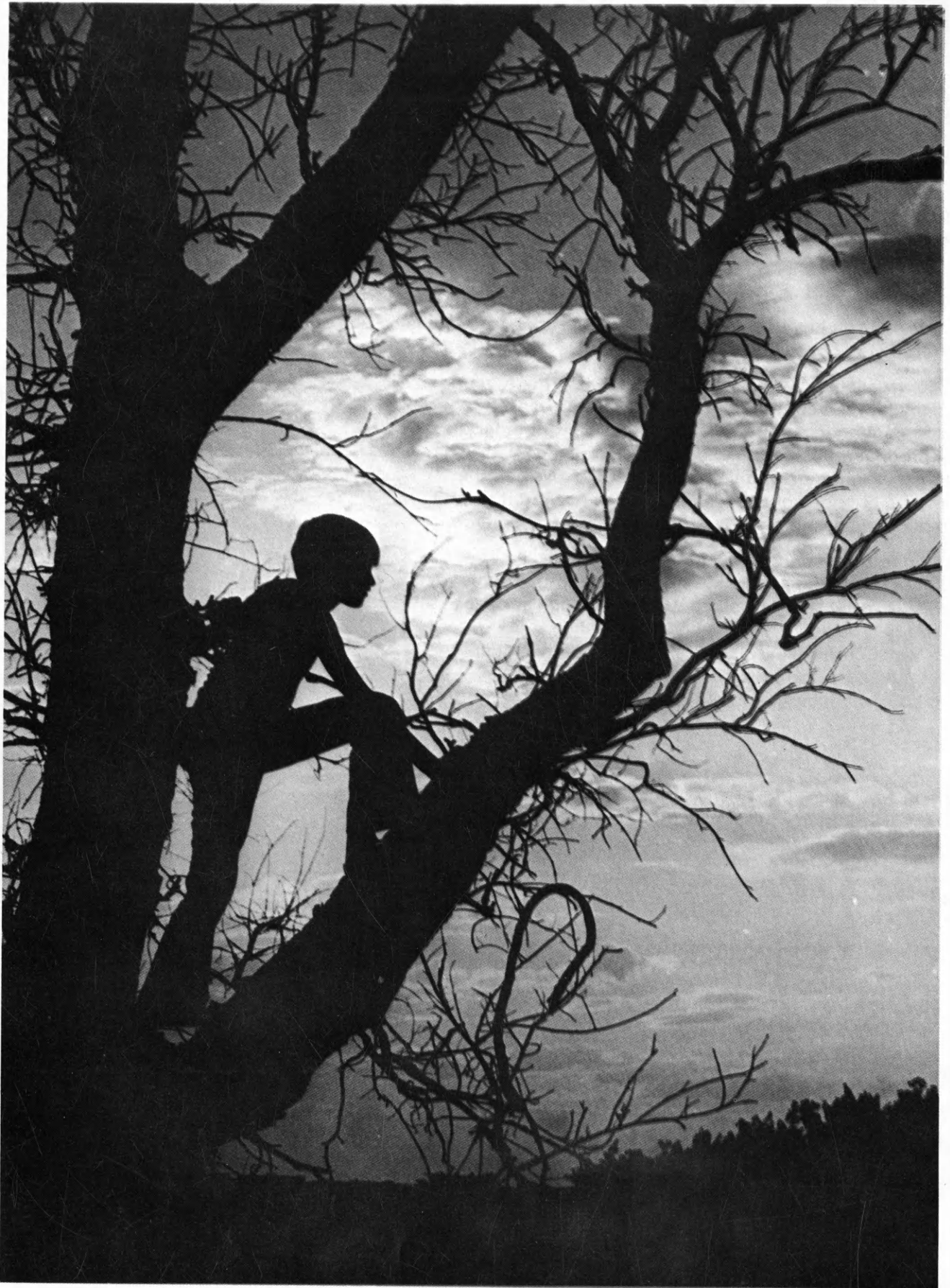


Kansas 4-H Journal

The 4-H Family Magazine



March, 1974

The crisis year in agriculture:

NEW: Atrafine brand of atrazine from CO-OP

Now a new brand of atrazine-80w. Atrafine. It's from your double-circle CO-OP exclusively and it's available now!

Atrazine itself has a long record for effective weed control, of course. It's the number one broadleaf control used in America today. But now you can get it with this added plus:

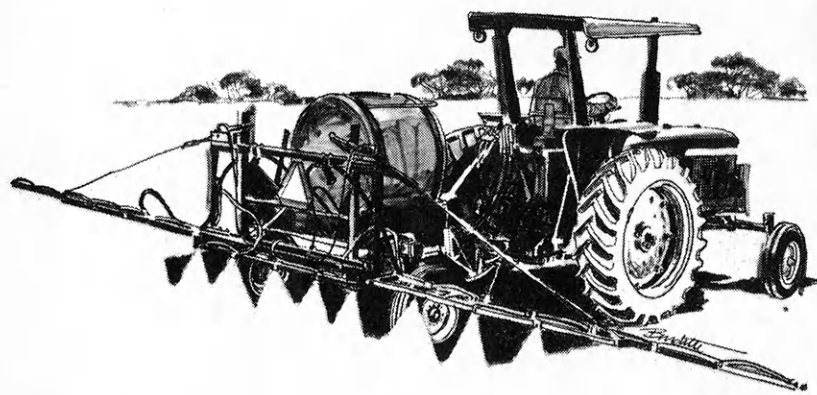
The atrazine you buy under the Atrafine label is CO-OP formulated and subject to continuing CO-OP *quality control*. Quality you've learned to trust.

This 80% wettable powder herbicide is the heart of a good and complete weed control program. It gives you season-long control in corn and sorghum. Works effectively with other grass control products such as Lasso or Sutan to broaden your spectrum of control, or with liquid fertilizers to give you the convenience of one-shot application. And you can fit it to your agronomic practices: pre-plant, pre-emerge, or post-emerge.

With the pressure on for bigger and better crops, a better weed control program just makes good sense. Your double-circle CO-OP is all set to help you with a growing list of ag chemicals that now includes dependable Atrafine.

Another way CO-OP quality, service and your participation add up to the best deal in the country.

CO-OP. Your headquarters for ag chemicals.



CO-OP ag chemicals
Best deal in the country



FARMLAND INDUSTRIES, INC.
KANSAS CITY, MISSOURI 64116

Journal

VOL. XX No. 3 March 1974

Dairy goat project	4
Getting the most from your family garden	5
Ideas and news	6, 10, 14
KP&L president on 4-H board	7
Exceptional children learn by doing .	7
4-H activities in pictures	8, 9
Ass't. director at RSR promoted ...	11
National conference delegates chosen	13
Family Fun Page	15

Wm. M. RileyManaging Editor
Marie RuppAssociate Editor
Glenna Wilson.....Production Editor
Kathy Barthel Secretary

Address all correspondence:
Kansas 4-H Journal
Umberger Hall, KSU
Manhattan, Kansas 66506

Phone 913-532-5881

Kansas 4-H Journal is published monthly by

KANSAS 4-H FOUNDATION, INC.

Merle Eyestone.....Executive Director
William Riley Jr.....Associate Director
J. Harold JohnsonField Representative
Marilee Gilman.....Secretary

BOARD OF TRUSTEES

Governor Robert Docking
Honorary Chairman

Dolph Simons, Chrm.....Lawrence
Balfour S. Jeffrey, Vice-Chrm.....Topeka
Ross Beach, Treas.....Hays
Robert A. BohannonManhattan
Robert Brock.....Topeka
Glenn M. Busset.....Manhattan
W. Dale Critser.....Wichita
Mrs. Olive Garvey.....Wichita
J. J. Moxley.....Council Grove
George B. Powers.....Wichita
N. T. Veatch.....Kansas City
Mrs. Dwane Wallace.....Wichita
*Sen. Frank Carlson.....Concordia
*Harry Darby.....Kansas City
*Harold E. Jones.....Manhattan
*Roger E. Regnier.....Manhattan
*E. B. Shawver.....Wichita
*Advisory Member

Second Class Postage Paid at Manhattan, Kansas
and additional mailing offices. Return Form 3579
to Kansas 4-H Journal, Manhattan, Kansas 66506.

Advertising rates and circulation data on request.

Group subscriptions \$1.40 per year. Individual subscription \$2.15 per year. Single copy 30 cents.

Use of the 4-H name and symbol approved by the Secretary of Agriculture of the United States, January 23, 1951, under the provisions of the laws as reenacted by Sec. 707 of the Act of June 25, 1948 Public Law No. 772 80th Congress (10 USC 797).

MARCH 1973

"Your opportunity to help Kansas youth"— A campaign to raise \$700,000 in 4-H funds

By Dr. Glenn Busset
State Leader, 4-H and Youth

For a long time it has been apparent that if the Kansas 4-H program is to go forward on three fronts—

Leadership development — — —

Program enrichment — — —

Educational center improvement — — —

there needs to be a major influx of money. The most recent 4-H fund raising effort, now more than a decade past, resulted in the completion of Williams Dining Hall at Rock Springs Ranch, state 4-H center. Without appreciable income from any other source, we have determined upon a course of action that will require the cooperation of every 4-H club, 4-H member, and leader in Kansas.

The pronoun "we" is used in a collective sense to identify the many people who have contributed to this decision—President James A. McCain, KSU; Director of Extension, Robert Bohannon; Kansas 4-H Foundation Executive Director, Merle Eyestone; a large, vigorous ad hoc committee¹; a County Planning committee²; the state 4-H staff, the area 4-H specialists, area directors, and home economists—all acting with the advice and counsel of Dolph Simons, Chairman, Kansas 4-H Foundation, Board of Trustees.

"Money made the mare go" in our grandparent's time, and today money is needed to make the 4-H program go and grow. The largest portion of the need, \$450,000, is required to fully develop and implement a broadened camping (outdoor education) concept featuring renovation of the High Plains Camp northeast of Dodge City, and development of the beautiful 470 acre site on Lake Perry. Development of these two major facilities is essential to the future of the Kansas 4-H program, as we look ahead past the 70s into the 1980s. Rock Springs Ranch, already booked to capacity through the prime season, offers somewhat inflexible facilities for innovative, small group camping. Besides their obvious geographical advantages, High Plains and Lake Perry can be developed into locations for outdoor education in its most desirable sense. Another portion of this allotment is designed to initiate and expand mobile camping facilities, utilizing other existing outdoor sites.

The leadership development portion of the budget, \$150,000, is a long overdue acknowledgement of the need to help volunteer

(Continued on page 4)

¹Sy Nyhart, Phillips; Lucille Leach, Osborne; Bob Bozworth, Franklin; Alexis Ebert, Osage; Jim Carson, Stevens; John Radke, Haskell; Art Johnson, Jefferson; Margaret Hund, Jackson; Herb Bulk, Shawnee; Ray Studer, McPherson; Eldon Weaver, Cowley; Bill Borst, Area Specialist; Mariellen Appleby, Area Home Economist; Ray Mann, Area Director; Lawrence Cox, Area Director.

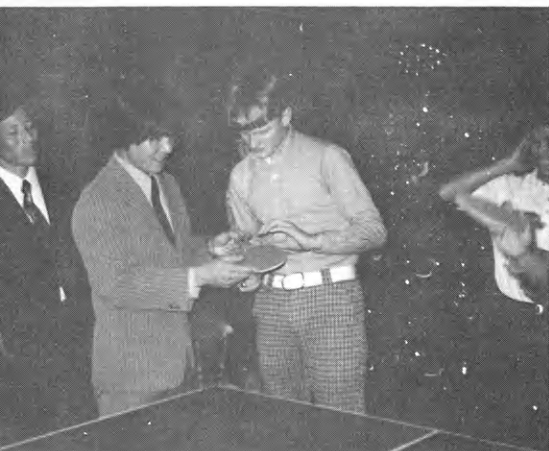
²Art Johnson, Chairman, Jefferson; Bill Cox, Sedgwick; Keith Fish, Trego; Jack Wilson, Wichita; Ray Mann, Area Director, S. W.; Juanita Johnson, Crawford; Beverly Kindler, Norton; Carol Young, Sumner County; Ken McGinness, Johnson; Benny Robbins, Area 4-H Specialist, S. E.

About the cover

"Silent Lookout" is the name John Pendleton chose for his prize winning picture shown on the cover. John, the state 4-H photog-

raphy winner in 1972, is from Lawrence.

Maybe the boy in the tree is looking for signs of spring!



When eight young Koreans in this country under the Korean Agricultural Training Program were guests of the Nearman 4-H Club, Wyandotte County, Man Soo An presented the club with a banner and pin and in turn the eight guests were made honorary members of the club. After the meeting adjourned, the 4-H'ers were treated to a championship ping-pong contest. "This sport is probably the national sport of Far Eastern countries so the 4-H'ers saw real pros in action," Jim Swanson reports. "It was a very interesting meeting for both guests and members, one that will never be forgotten."



With the help of a Citizenship-in-Action grant from Southwestern Bell Telephone Company, members of Winners 4-H Club, Ellis County, bought 16 heavy duty folding chairs and three walnut-topped folding tables for use of the 10 4-H clubs in Ellis County. Seventeen 4-H'ers and leaders Mrs. Richard Arnhold and Don Branda collected Coors cans and bottles, recycled glass, and held a slave auction to raise money to match the grant, Ken Arnhold reports.

Your opportunity—

(Continued from page 3)

adult leaders with the financial costs of providing their own training. Within the past year, leaders in

the horse, dog training, and geology projects have had a portion of their expenses paid to development clinics. Additional funds will make it possible to greatly increase this training, assisting leaders with their costs at training clinics, and providing a much greater choice of projects and training locations.

Program enrichment for the 4-H members simply means doing what we have always done, but with money we can do it better. A good start was made three years ago with the Invitational Conference and 4-H Ambassadors. A great deal more can be done with \$100,000 available for teen-led innovative educational experiences. Much greater youth involvement at both ends of the age spectrum can be made possible with the use of workshops, incentives, seminars, and special projects.

Carefully worked out plans, developed under the guidance of consultant Robert Wood of North Carolina State University, call for \$350,000 to be raised by the 4-H clubs and their friends. A select committee in each county will consider that county's determination to participate and will decide the extent of participation. Whether the county goal is at the \$1,000 level for a very small county or approaches \$20,000 for a large, affluent county is to be determined within the county. A large gifts committee, being organized to function statewide, will have the responsibility to match the 4-H club efforts for another \$350,000.

This is the most extensive, imaginative resource development effort that Kansas State University's Extension educational program for youth has undertaken in many years. Reinforced by a fine reputation as a unique youth educational program and with enthusiastic cooperation of 13,000 volunteer leaders in more than 1,000 4-H clubs, the task can be done quickly. Besides the needed money, there are great advantages of strengthening our club and county organizations by energetic work programs, and bringing the needs and obvious advantages of 4-H before the public eye.

Surely every 4-H club will want to have a part in this statewide effort to provide better facilities for 4-H members and leaders. Working together, we can do it.

Joan Schriber, Huron, was crowned queen at the annual Halloween parade in Atchison. As a member of Friendly Farmer Fellows 4-H Club, her projects have been clothing, cooking, knitting, forestry, and photography. Martha Scholz is club leader.



Pamela Davis, Kansas City, won six county awards at the Wyandotte County achievement banquet. A Key Award winner, she is helping with the organization of a new club, the Wyandotte Pioneers. Pamela is a freshman in music education at Kansas State Teachers College at Emporia.

Photograph by Buford Erwin

Dairy goat project

Have you thought of a dairy goat for a project?

The Kansas Dairy Goat Council has announced that it will assist 4-H'ers in eastern Kansas to find does for lease. Does will then be bred to top quality bucks on loan from a Wisconsin breeder. Upon returning the owner's choice of kid, the 4-H'er will then become the owner of the doe.

If you are interested, talk with your county extension agent.

Attention—4-H leaders and extension staff!

Here's an opportunity for volunteer leaders and extension staff members to learn about 4-H in other countries by joining travel seminars. The first is to Turkey and Greece, April 21-May 17. The second is to Europe (Sweden and Germany are tentatively programmed) September 29-October 25. Brochures are available through the Kansas 4-H Office, Umberger Hall, KSU, Manhattan, Kansas 66506, or through the National 4-H Foundation, 7100 Connecticut Avenue, Washington, D.C. 20015.

Getting the most from your family garden

By Dr. Chuck Marr
KSU Extension Horticulturist

As I think back on the years I spent as a 4-H gardener, I remember the goal of having vegetables for my collection exhibit at the 4-H fair. Without this exhibit, my project couldn't be completed, so I geared my entire effort to having blue ribbon vegetables in that basket. There is nothing wrong with having a goal like this, but there are many other goals a 4-H gardener should reach for as well. How about setting another goal for yourself this year—to get the most out of your family garden.

With high food costs, your garden can not only provide a supply of fresh nutritious vegetables, but can produce valuable savings in the food bill. A well planned and properly tended garden can supply a continuous flow of vegetables from April to November. The secret is planning.

Many "cool loving" vegetables such as radishes, peas, lettuce, onions, greens, and potatoes can be planted in the early spring and will thrive during the cool weather. As these vegetables mature and are removed, use this same space for plantings of sweet corn, tomatoes, or beans later in the season. These same "cool loving" vegetables can be planted again in August or early September for fall. The bright, cool fall days are ideal for these crops and, in many years, we can enjoy lettuce, radishes, beans, cabbage, and turnips into November.

Another means of keeping a garden producing over a long period of time is to harvest the produce as it matures rather than leaving it on the plants. Cucumbers, for example, will stop growing and will stop producing more "fruit" if cucumbers are allowed to remain on the vines. Keeping the produce harvested keeps the plants vigorous and productive over a long period of time.

Finally, the most basic factor in keeping a garden productive after you have planned for a full year's garden is the care and attention that the plants require. Many things need to be done, each equally important. Good gardening practices are like the chain whose weakest link determines its strength. In addition to proper planning, what are some of the chain links in a successful garden?

- Fertilize and prepare the soil. The soil is the foundation for success in growing plants. Till the soil properly, determine the needs for fertilizer, and protect your garden soil.
- Use good seeds and plants. Fresh, viable seeds and strong healthy plants are one of the best investments a gardener can make. Use varieties that you know will produce well in your area and that will give you the type of vegetables you want.
- Water if necessary to make sure your garden gets the equivalent of about one inch of rainfall per week throughout the entire season. Watering lightly and often can be as bad as not watering at all, so water thoroughly when you irrigate. Mulches, straw, old hay, grass clippings, plastic, or paper around plants help to reduce the water needed.
- Eliminate the competition. Weeds compete for space, water, and nutrients, so don't let weeds have a chance. Also make sure plants are thinned or spaced properly so each will have room to grow.
- Watch for pests. After insects or diseases have taken their toll there is no way to bring plants "back to life" or to replace the damage they have done. If you stop the pest, the plant will continue to grow and develop to replace the damaged areas, however. You should be alert for the first sign of insects or disease. Your leaders, parents, or county agent will help you identify pests and will advise you how to control them.

All these steps are important if your garden is to be successful and produce vegetables for the entire season.

Your 4-H garden can not only provide the goal of completing your 4-H horticulture project, but can also provide a valuable source of food for the family. In addition, you will learn much about the exciting and challenging world of plants and how they grow. So this year set your goal to get the most from your family garden.

IDEAS & News

Congratulations to several safety award winners!

One Kansas organization and one Kansas individual were recipients of the National Safety Council's Youth Activities Conference Awards. The **Tiny Toilers 4-H Club, Pawnee County**, received the Award of Commendation for giving talks and demonstrations on safety. **Mary Smith**, a **Pottawatomie County 4-H member**, won the Citation for Meritorious service for her work in the safety project.

81-Hustlers 4-H Club, Saline County, was state winner in the safety project. The State Safety Council rewarded the club with \$200 to use on further safety projects. **Jennifer Bensman** is reporter for the **81-Hustlers**.

The second-place club was the **Rustlers 4-H Club, Nemaha County**.

A 4-H safety leader was named winner of the Farm Bureau safety award for the second district. She is **Mrs. Ralph Boehm** who keeps members of **Sharon 4-H Club, Johnson County**, safety minded by encouraging the giving of talks and demonstrations on safety by club members and by keeping them informed on safety in a variety of ways. **Lorna Troutman** is club reporter.

The Halstead PRIDE committee recognized **Cloverleaf 4-H Club** for painting playground equipment in the South Park. The city provided paints and the 4-H'ers provided the labor. Also in **Harvey County**, the Walton PRIDE committee has two 4-H members as representatives on the committee.

New officers of the **Pottawatomie County 4-H Council** are: president, **Mary Jane Smith**; vice-president, **Jenni Edwards**; and secretary-treasurer, **Haddie Burrow**.

Finney County junior leaders found an old-fashioned box supper to be a fun way to raise funds for their ski trip to New Mexico in March. 4-H'ers from **Ford** and **Haskell** counties also plan to go on the trip.

Officers of the **Finney County** junior leaders are president, **Mark Henry**; vice-president, **Jolene McGraw**; secretary-treasurer, **Elaine Mayo**; and reporter, **Joyce Dechant**.

A progress report on a Citizenship-in-Action grant comes from **Rustlers 4-H Club, Nemaha County**. **Mrs. B. H. Engelken** writes that a flagpole was

erected in front of Goff City Hall and the flag was waving proudly on Veterans Day.

Another such progress report comes from **Debra Miller** of **Paw Paw Lucky Clovers 4-H Club in Elk County**. These 4-H'ers are working with other groups to raise money for a tennis court. **Debra** says that "the grant money was just the big PUSH we needed to get going." Some 4-H activities have been a bake sale and cleaning an old cemetery.

For the first time the **Happy Hustlers 4-H Club of Finney County** has elected a historian. Historian **Mike Jameson** will keep a scrapbook with the history of the

club and the awards and ribbons won by the club. Reporter is **Donna Smith**.

5.25% Passbook Interest
Compounded Daily - Day In to Day Out

Capitol Federal Savings

OVER 700
MILLION DOLLARS SAFE

TOPEKA GREATER KANSAS CITY OLATHE
LAWRENCE MANHATTAN EMPORIA

Be Good To Your Money

SAVE with PROFIT and SAFETY



at your nearest savings and loan. There your money will receive generous high returns . . . and will be insured safe too. Right Now . . . this month for sure . . . Visit these Progressive

Kansas Savings & Loan Associations

Arkansas City

First Federal Savings and Loan Assn.

Clay Center

Northwestern Federal Savings and Loan Assn.

Colby

Colby Savings and Loan Assn.

Dodge City

First Federal Savings and Loan Assn.

El Dorado

Mid-Continent Savings and Loan Assn.

Eureka

Eureka Federal Savings & Loan Assn.

Fort Scott

Liberty Savings and Loan Assn.

Garnett

The Garnett Savings and Loan Assn.

Hutchinson

Valley Federal Savings & Loan Assn.—1020 North Main

Leavenworth

Citizens' Mutual Building and Loan Assn.
Leavenworth Mutual Savings and Loan Assn.

Liberal

First Federal Savings and Loan Assn.

Manhattan

Home Savings and Loan Assn.
Manhattan Federal Savings and Loan Assn.

McPherson

Pioneer Savings and Loan Assn.

Medicine Lodge

The Barber County Savings and Loan Assn.

Newton

First Federal Savings of Newton

Ottawa

Franklin Savings Assn.

Parsons

First Federal Savings and Loan Assn.

Plainville

Rooks County Savings Assn.



KP&L prexy serves as vice-president of 4-H trustee board

Balfour Jeffrey, president of Kansas Power and Light, is vice-chairman of the Board of Trustees of Kansas 4-H Foundation. He became a member of the board in 1965.

In 1928 Mr. Jeffrey was graduated from the University of Kansas as honor man of the class. He was graduated from the Harvard University School of Law in 1932 and returned to Topeka to practice.

For a number of years he was a teacher and lecturer at Washburn University Law School, Topeka. During World War II he served in Judge Advocate General Headquarters, Washington, D.C., and was released from the service with the rank of major.

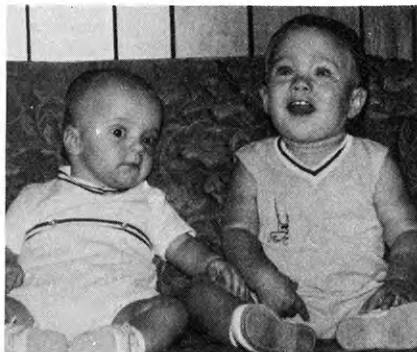
He is a director of First National Bank of Topeka, Kansas Development Credit Corporation, and of the Southwest Power Pool, and a member of the American, Kansas, and Topeka Bar Associations and of numerous other organizations.

He is listed in compilations of distinguished persons, including Who's Who in America and Who's Who in Commerce and Industry. Honors he has received include a Distinguished Service Citation from the University of Kansas, a Citation of Outstanding Achievement in Business, Distinguished Citizenship Citation from Washburn University, the Marquis Award from the American Institute of Management and the publishers of Who's Who in America for "out-

standing citizenship and competent management," and the Citation for Outstanding Service to 4-H.

Mr. Jeffrey and his wife, Margaret, live in Topeka. They have a married daughter, Ann, Mrs. Douglas Kay, and three grandchildren, Fredrick, Lynn, and Jeffrey Kay.

"Howdy, Folks!"



I'm Heath Funston, right, son of Mr. and Mrs. Carl Funston of rural Abilene and I'm 10 months old. This is my friend, Eric Romberger, and he is 6 months old. We are the reason Talmage Progressive 4-H Club in northern Dickinson County had to secure new leaders last year. You see, our folks were the club leaders and they thought we would be in the way of their being good leaders.

Already Eric and I have found we have many things in common besides our parents being club leaders.

Our dads went to grade school at Talmage together and also to Sunday School and church. Our parents went to high school at Chapman together. They belonged to 4-H clubs of Dickinson County and were in 4-H activities when they were teenagers. Both of our families are engaged in farming and community affairs. We can't wait until we're big enough to join 4-H too. Already we know what projects we will enroll in. I'll enroll in Berkshire and Poland China hogs just like my daddy did when he was a 4-H'er and Eric will enroll in Hereford cattle as his daddy did. After 4-H we can join the association called Young Farmers just like our parents did.

—By Nancy Shetter, Abilene

HARMONY HOLLOW BELL WORKS

Stock Bells

Light Duty \$1.00—Heavy Duty \$1.50

Route 1, Riley, Kansas 66531



Mark Henry's lamb is the center of attention for members of Happy Valentine 4-H Club. Mark, state winner in the sheep project, is at left, Cole Range is closest to the lamb, and club president Nils Anderson is at right. Children with backs to camera are Tina Jacobs, Gerald Garcia, and Wayne Stefan. The club is at Garden City in Finney County.

Exceptional children learn by doing

Finney County has a new 4-H club called the Happy Valentines. Its membership includes four girls and four boys who are students at Valentine School for Exceptional Children near Garden City.

Mrs. Peter Thorpe, a Garden City 4-H leader, assisted Ron Faulds, Finney County extension 4-H agent, in organizing the club. And the Beacon Boosters 4-H Club, who adopted the new group as a sister club, provided \$10 for the new club to purchase materials to use in project work. The veteran 4-H'ers also help the new officers at meetings.

Mrs. Trisha Geis, the Valentine School teacher, describes the 4-H club as an opportunity for the students to have opportunities and experiences offered other youth. She and Mrs. Marie Kraus, a teacher aide for five years at the school, help the children with their project work in crafts, sewing, and food-nutrition.

Each of the members has something to do on the first Friday afternoon of the month when Finney County Happy Valentine 4-H Club comes to order for a meeting. Music, demonstrations, recreation, and reports of officers appear on the agenda. In keeping with basic 4-H philosophy, the Valentines learn by doing.

Other counties with 4-H clubs for exceptional children are Morton, Sedgwick, Kingman, and Miami.



From left, Neil Libertus, Jeff Shamburg, and Bart Hatcher are pictured on a tree stump estimated to be about 58 million years old. The boys were enrolled in geology. Hamilton County leader for the project was Elton Simpson, whose hobby for many years was geology.



Canned food, articles of clothing, bedding, small appliances, and Christmas presents—enough to fill a small pickup truck—were collected by members of Sasnak 4-H Club, Saline County, for the Willie Thomas family whose home was gutted by fire three weeks before Christmas. The family, including seven children, escaped with their lives and little else. Kim Glasgow writes that the 4-H'ers "care about the welfare of their fellow Salinans."



Little angels—101 of them—were delivered by members of Warren Star Busy Bees 4-H Club, Sherman County, to patients in the hospital in Goodland and to residents in the Good Samaritan Rest Home and in Sparks Tower, a home for older persons. Reporter Traci Price reports that the 4-H'ers enjoyed delivering the favors personally to the residents. In the picture, cooks in the hospital in Goodland receive the angels from 4-H members.



A Wichita County 4-H'er won a sheep pelt for her knitting entry at the 1973 Kansas State Fair. Each year the Kansas Sheep and Wool Growers Auxiliary presents this award to the 4-H'er with the most outstanding knitting entry made of 100 per cent wool. Janet Berend,

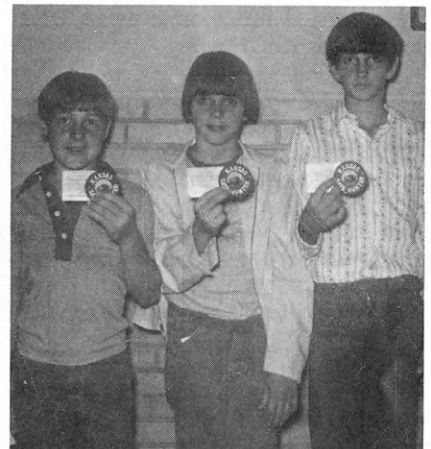


Marienthal, receives the pelt from Mrs. Gail Woodward, Maize, president of the auxiliary. Janet holds her afghan and purple ribbon she won at the fair. She is the daughter of Mr. and Mrs. Harold Berend and is a member of the Wichita County Marienthal Meadowlarks 4-H Club.

Secretary Debbie Kreutzer holds the club charter of Go-Getters 4-H Club, Finney County, while president Susan Mark places the 18th seal, a purple one for 1973, on the charter. Club leaders of the 18 year old group are Mrs. Paul Ven John and Lowell McGraw, reports Sharon Dechant, Garden City.



Three of the 40 boys who took the hunter's safety course in Dickinson County this past fall are pictured with their safety patches and certificates. From left are Kent Whitehair, Kevin Harris, and Thaine Pryor. The course was sponsored by the Newbern Wide-awakes and the Holland Sunflower 4-H clubs, who took turns serving refreshments at the sessions, Janet Pryor, Abilene, reports. Instructors for the course were Max Wendall, Dick Elliott, and John Porter.



The Finney County publicity committee, made up of 4-H club reporters, past county award winning reporters, and a leader appointed by the county council, makes plans for publicity of 4-H events. Local newspapers and radio and television stations support the program. Pictured at the first committee meeting are, from left, Diana Dummiller; Raymond Ellis, council adviser; Sharon Dechant; Jorita Henry; Mrs. Marion Lobmeyer, adviser; and Mark Lobmeyer. Not shown clearly is Judy Schweer.



IDEAS * & News

Outdoor Living is a project for 17 boys and girls of **Riverside 4-H Club** in **Shawnee County**. Three project leaders will help members with hunting, archery, tracking, cooking, fishing, and camping at Lake Perry.

The **Rolling Hills** horse project club of **Sedgwick County** is the largest ever this year with 30 members. Project leader is **Sherry Morgan**. Plans for the year include three field clinics, seminars, a "Horse Bowl," and monthly project meetings.

In **Graham County**, the **Penokee 4-H Club** received awards at the county achievement party in ecology and in people-to-people. The projects are being carried for another year. Club president is **Kay Hoeting**.

Five new 4-H'ers brought membership to 15 for the **Cloverleaf 4-H Club** of **Mapleton** in **Bourbon County**. In December club members gave a Christmas party for older persons in Mapleton. Reporter **Jay VanBuskirk** writes that members were saddened by the death of their last year president, **David Beckford**, in a car wreck in November.

About 100 persons heard **Tokko Onogawa** of Japan speak to **Ruleton Eager Beavers 4-H Club**, **Jolly Workers 4-H Club**, and **State Line Telstar 4-H Club**. **Tokko** is an American Field Service student at Goodland High school in **Sherman County**.

Because people-to-people was a club project for **Gem 4-H Club** in **Thomas County**, the group had a Spanish Christmas party. "We made a pinata and filled it," secretary **Kay Gilbert** writes, "then at the party it was broken open and all the goodies fell out. It was a lot of fun for all."

Officers for the **Kansas Junior Polled Hereford Association**, now in its second year, are: president, **Crandall McLean**, **Piedmont**; vice-president, **Beverly Watson**, **Barnard**; secretary-treasurer, **Julie Pitts**, **Mound City**; reporter, **Kevin Jensen**, **Republic**; and scrapbook editor, **Randy Tosh**, **Valley Falls**.

The **Kansas Junior Polled Hereford Association Field Day** will be May 4 at the **Serrien Double S Polled Hereford Ranch**, **Lincoln**. Type demonstrations, hoof trimming, and weight guessing are planned for that day. The second annual **KJPHA** spring show will be May 11 at **Kenwood Park**, **Salina**.

We have to cover Kansas with a super job...

It's the only territory we have!



**AUTO • FIRE & WIND • TRUCK • HAIL
TRACTOR • HOMEOWNERS • COMBINE
LIABILITY • BOAT • LIFE INSURANCE**

FARM BUREAU INSURANCE

Ass't. director promoted at Rock Springs Ranch; over 26,000 visit center

The promotion of Leslie Harrod to resident director of Rock Springs 4-H Ranch as of January 1, 1974, has been announced by Bill Riley, director of Rock Springs Ranch. Mr. Harrod, assistant director since the spring of 1972, will have increased responsibility for the daily operation of the center.

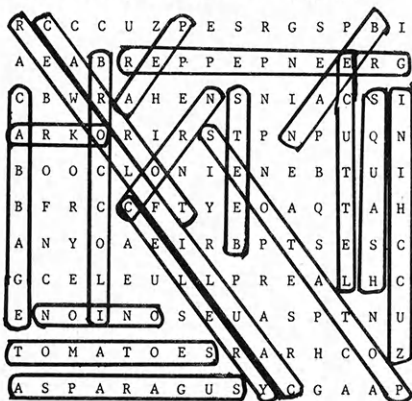
In 1973 Rock Springs Ranch served 22,814 people for registered events, Mr. Riley also reported. The average length of stay for registrants was 2.14 days. Another 3,495 were served for special events during the year, and 288 days were scheduled with programs at the center.

Lake Perry 4-H camp served four registered groups in 1973. A forestry camp used the facilities in the early summer. The Leavenworth junior leaders spent a July work weekend at the site, and in August a five day backpacking and canoeing camp enjoyed the opportunity for outdoor education. In November, a trapping and fur preparation program made winter use of the camp.



Clint Rusk, a Barber County 4-H'er from Sun City, is shown receiving his championship trophy for exhibiting the top Hereford heifer in the junior division at the Arizona National in Phoenix. He earned the same honor in 1973. Making the presentation is Harold Webb of Hebbard & Webb in Phoenix. In eight years in the beef project, Clint has carried baby beef, breeding heifers, and cowherd phases. He has cared for 126 head of his own calves in addition to assisting with the family operation. In the livestock judging contest at Kansas State Fair in 1973, Clint was high individual.

Answer to vegetable puzzle on page 15:



Money For Your Treasury

OVER 2 MILLION

Sunflower Dishcloths

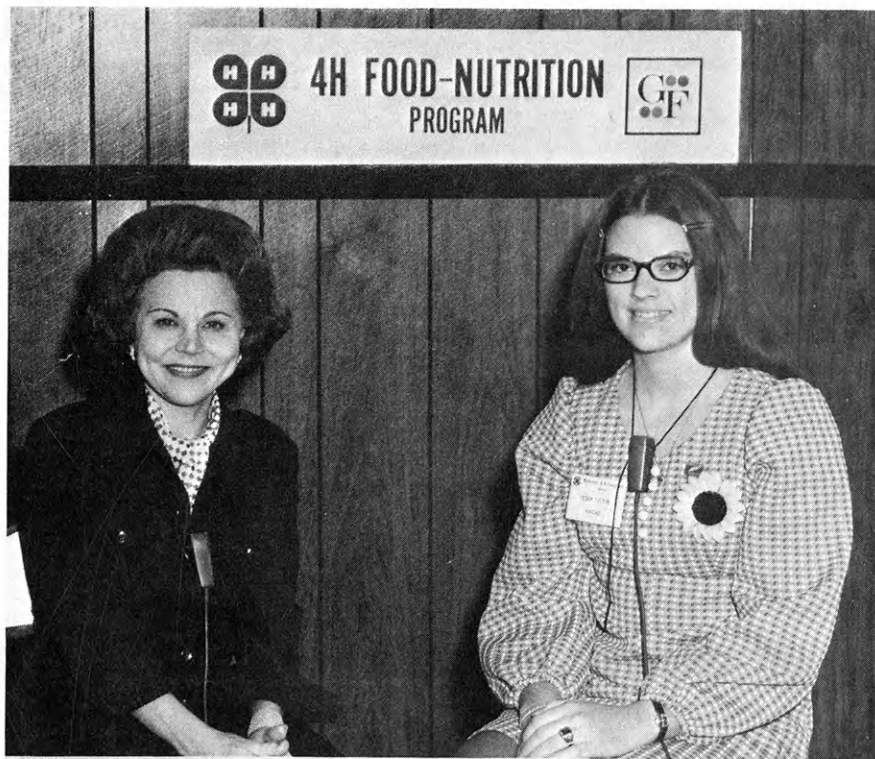


WERE SOLD LAST YEAR BY MEMBERS OF GROUPS, SOCIETIES, CLUBS, ETC.

THEY ENABLE YOU TO EARN MONEY FOR YOUR TREASURY AND MAKE FRIENDS FOR YOUR ORGANIZATION

Sample FREE to Official.

SANGAMON MILLS, INC., Cohoes, N. Y. 12047
Established 1915



Peggy Tilton, Sharon Springs, state winner in the food-nutrition project, chats with Ann Landers, nationally syndicated columnist and lecturer, at the National 4-H Congress in Chicago. Peggy, a member of the Wallace County Smoky Valley 4-H Club, has enrolled in food-nutrition projects for seven years. During the past year, working in the Foods with an International Flavor phase, she made 21 different foods from other countries.

Here are your:

1974 County Farm Bureau Safety Chairmen

Allen Edna Elmenhorst R.R. 1, Moran 66755	Doniphan Joyce Rush R.R., Bendena 66008	Jefferson Darlene Wheeler Rt. 3, Lawrence 66044	Morris Mr. & Mrs. Dale Disberger R.R. 2 Council Grove 66846	Saline Charles W. Kelley Falun 67442
Anderson Mrs. Kenneth (Agnes) Alexander Greeley 66033	Douglas Mrs. Eleanor Armstrong Rt. 2, Lawrence 66044	Jewell Mrs. Myrna Keeler Montrose 66957	Morton Phil Yoder Richfield 67953	Scott Alta Krebs RFD 3, Scott City 67871
Atchison Mrs. Fred (Emma) Fuhrman Cummings 66016	Edwards Mrs. Edgar Crockett Rt. 2, Kinsley 67547	Johnson Mrs. Tom (Margaret) Ewing Rt. 2, Box 34 Olathe 66061	Nemaha Ronald Korber Bern 66408	Sedgwick Mrs. Don Aves Milton 67106
Barber Mrs. Huber Farney Kiowa 67070	Elk Delbert Ford Fall River 67047	Kearny Ida McKinney Rt. 3, Ulysses 67880	Neosho Mrs. Richard (Linda) Reinhardt Rt. 1, Erie 66733	Seward Mrs. E. C. (Joe) Kapp Rt. 1, Moscow 67952
Barton Mrs. Dorothy Panning 500 West 4th Ellinwood 67526	Ellis Mrs. Maurice J. Rohr 2709 Willow St. Hays 67601	Kingman Mrs. Helen Coon Murdock 67111	Ness Mrs. Francis Thornburg Utica 67584	Shawnee Mr. Elwin Niccum 517 N. E. Indian Creek Tapeka 66617
Bourbon Pearl Collins Rt. 3, Ft. Scott 66701	Ellsworth Mrs. Alex Vodraska Wilson 67490	Kiowa Virginia Hammond Haviland 67059	Norton Joyce Lofgreen Rt. 1, Norton 67654	Sheridan Virginia Ziegler Park 67751
Brown Jere Bruning R. F. D. White Cloud 66094	Finney Mrs. Elmer Richmeier Rt. 1, Garden City 67846	Labette Mrs. Jimmie (Lucille) Johnston Rt. 1, Edna 67342	Osage Mrs. Betty Bremer Lyndon 66451	Sherman Mrs. Floyd Kemp RR 3, Goodland 67735
Butler Mrs. Lloyd Wilhite Rt. 1, Leon 67074	Ford Mrs. Don Nau Spearville 67876	Lane Vernon Williams Healy 67850	Osborne Marge Walters Portis 67474	Smith Mrs. Burdette (Janet) Hermanns Gaylord 67638
Chase Dick Patton Cottonwood Falls 66845	Franklin Mrs. Don Schamle Rt. 2, Wellsville 66092	Leavenworth Mrs. Ruth Ryan Rt. 3, Leavenworth 66048	Ottawa Ralph Larson Tescott 67484	Stafford Mrs. Richard Newell Stafford 67578
Chautauqua Mrs. Elton Bowman Rt. 1, Sedan 67361	Geary Adeline Kramer Rt. 3, Junction City 66441	Lincoln Suzanne Wehrman Rt. 1, Box 57 Sylvan Grove 67481	Pawnee Mrs. Dallas Wells Larned 67550	Stanton Mrs. Janet Shore Johnson 67885
Cherokee Frieda Lucian Rt. 3, Columbus 66725	Gove Mrs. Lloyd Webster Quinter 67752	Linn Gary Creager LaCygne 66040	Phillips Lois Hickman Rt. 1, Phillipsburg 67661	Stevens Mrs. Fay James Star Rt. 2 Hugoton 67951
Cherokee Mrs. Grace Zwegardt St. Francis 67756	Graham Mary Seeger Hill City 67642	Logan Mrs. Steve (Diane) Schertz Monument 67747	Pottawatomie Mrs. Carol (Rose) Wahl Wheaton 66551	Sumner Mrs. Neil Lauterback Mayfield 67103
Clark Mrs. Ellen Harrington Englewood 67840	Grant Mrs. Derald (Bette) Winger Rt. 2, Ulysses 67880	Lyon Mrs. Kenny (Terry) DeDonder Rt. 1, Reading 66868	Pratt Betty Kenworthy Coats 67028	Thomas Kathy Calliham Rt. 2, Box 111 Colby 67701
Clay Mrs. Don (Carol) Sutter Longford 67458	Gray Barbara McFarland Cimarron 67835	McPherson Mr. & Mrs. David Rupp Rt. 2, Moundridge 67107	Rawlins Pattie Walters R.R. 2, Atwood 67730	Trego Mrs. Daniel (Marcia) Hayes Box 134, Ogallah 67656
Cloud Mr. & Mrs. O. G. Doyen R.R., Concordia 66901	Greeley Matilda Kleymann Tribune 67879	Marshall Mrs. Terry Nanninga Axtell 66403	Reno Mrs. Mary K. Trostle R.R. 1, Nickerson 67561	Wabaunsee Mrs. Neal Corpening Eskridge 66423
Coffey Mary Shultz Rt. 1, Waverly 66871	Greenwood Sharon Beeman Rt. 3, Madison 66860	Meade John H. Harder Meade 67864	Republic Mrs. Norman Erickson Courtland 66939	Wallace Don McWilliams Sharon Springs 67758
Comanche Linda Swayze Coldwater 67029	Hamilton Joe Shorter Kendall 67857	Miami Mr. & Mrs. Ralph Kettler Rt. 2, Paola 66071	Rice Mrs. Ralph Hathaway Route, Chase 67524	Washington Mrs. Paul Hansen Greenleaf 66943
Cowley Mr. & Mrs. DeWitt Ahlerich R.R. 1, Winfield 67156	Harper Marilyn Albright Attica 67009	Mitchell Mrs. Clifford Campbell Star Route Beloit 67420	Riley Ronald Peter Randolph 66554	Wichita Doreen Reimer Silkirk 67873
Crawford Alice Murdock Rt. 1, Girard 66743	Harvey Dick Randall Rt. 2, Burrton 67020	Montgomery Mrs. Walter (Virginia) Austin Rt. 1, Liberty 67351	Rooks Linda Melton Stockton 67669	Wilson Mrs. James (Mary Lea) York Rt. 1, Thayer 66776
Decatur Mrs. Floyd Lotker Oberlin 67749	Hodgeman Darrell Craghead Jetmore 67854		Rush Betty West Rush Center 67575	Wyandotte Steve Rosenthal 8900 Parallel Kansas City 66112
Dickinson Mrs. James (Wilna) Gaskill Rt. 4, Abilene 67410	Jackson Mabel Harris Soldier 66540		Russell Mary Lois Gross Rt. 2, Waldo 67673	

Contact Your County Safety
Chairman for Information and
Demonstration.

Kansas Farm Bureau Safety Department

National conference delegates chosen

Kansas will be represented at National 4-H Conference by Curtis Willhite, Leon; Gary Sinn, Mahaska; Barbara Roe, Superior, Nebraska; and Patty Russell, Olathe. Delegates are selected for their achievements in leadership, service, and the quality of their project work.

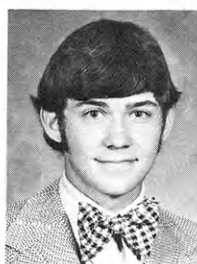
National 4-H Conference, an annual event, will be in Washington, D.C., April 20-25. All 50 states and Puerto Rico send delegates.

Curtis Willhite, a member of Flint Hills 4-H Club in Butler County, has made a profit of almost \$10,000 in the nine years he has been enrolled in the swine project. Other projects have been wheat, junior leadership, safety, milo, baby beef, beef cow, and garden. President of the Butler County 4-H Council and a Key Award winner, Curtis is a senior at Flint Hills High School. His parents are Mr. and Mrs. Ellsworth Willhite.

Gary Sinn was the 1973 state winner in the woodworking project. An 11 year 4-H member, his club is Mahaska Merry Makers, Washington County. In his 4-H work he has carried 138 projects, among them poultry in which he was state winner in 1972, beef, swine, crops, conservation, photography, electric,



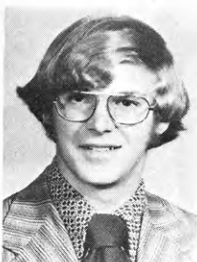
Barbara Roe
Jewell County



Curtis Willhite
Butler County



Patty Russell
Johnson County



Gary Sinn
Washington County

and animal and veterinary science. Valedictorian of his high school class, Gary is a freshman at Kansas State University in agricultural mechanization. He is the son of Mr. and Mrs. Albert Sinn.

Clothing is the favorite project for Barbara Roe, and she won a trip to Chicago as state winner in clothing in 1972. In her eight years as a 4-H member, she has also been en-

rolled in public speaking, reading, safety, photography, meat utilization, management for youth, and knitting. She attended the first Kansas 4-H Invitational Conference and was a 1972 Key Award winner. Her parents are Mr. and Mrs. Lauren Roe. A freshman at Kansas State University, Barbara is majoring in home economics. She was valedictorian of her high school class. Her 4-H club is Webber Wide Awake, Jewell County.

Junior leadership has been the most rewarding project for Patty Russell. She enrolled in clothing all nine years she has been a 4-H member; other projects have been personal development, home improvement, electric, photography, public speaking, landscaping, reading, meat utilization, and food preparation. In 1972 Patty attended Kansas 4-H Invitational Conference and was a Key Award winner. Valedictorian of her senior class, she is a freshman at Kansas State University. The daughter of Mr. and Mrs. William Russell, she is a member of Sharon 4-H Club, Johnson County.

The Kansas Bankers Association provides the trips through the Kansas 4-H Foundation awards program.

Coming events—

Electric Leaders

A clinic to train leaders in the Kansas 4-H electric project will take place at Rock Springs Ranch March 7-8. Charles Bates and Flwyn Holmes of the Kansas Cooperative Extension Service are coordinators of the event.

For information, contact your county extension office. Scholarships are provided by power suppliers of the state for adult leaders.

Registration is from 7:30 to 8:30 a.m. on March 7 with the first session beginning at 8:30, not 9 as stated previously in the Journal.

Recreation Workshop

Adults involved in recreation for organizations and communities may attend the Kansas Recreation

Workshop, March 25-29, at Rock Springs Ranch. Outdoor activities, cultures of the Americas, crafts, recreation and human relations are some of the topics to be explored. Cost of the workshop is \$50 with \$15 and \$25 scholarships available. LaRita Neeley, R. 1, Silver Lake, Kansas 66539 can supply registration forms and other information.

For a brochure describing the workshop, contact your county extension home economist or 4-H agent.

Board of Trustees

On April 9, the Kansas 4-H Foundation Board of Trustees will meet at Rock Springs Ranch for their annual meeting. Business will include consideration of the budget for 1974, progress of Heritage Hall exhibits, and the fund drive which is now underway. (See editorial, page 3.)

Teen Weekend

Teen Weekend at Rock Springs Ranch will be April 20-21. Members of Kansas nine collegiate 4-H clubs and junior leaders are invited for two days of fun, learning, and work.

International Festival

Special exhibits by returning delegates from Venezuela, Italy, Mexico, Japan, and Denmark will be featured at the International Festival sponsored by the Kansas IFYE Association April 27 at Rock Springs Ranch. A buffet of foods representing other cultures will be served at 4 p.m. Clubs taking the people-to-people project or involved with the project Foods with an International Flavor may wish to spend an afternoon at International Festival. For information and reservations write State 4-H Office, Umberger Hall, Manhattan, Kansas 66506.

IDEAS & News

Jan Mills, a junior in home economics education from Enterprise, is president of the **Kansas State University Collegiate 4-H Club** for the spring semester. Among the other officers are: vice-president, **Richard Cott**, Clay Center; secretary, **Cathy Carswell**, Alton; and reporter, **Deryl Waldren**, Tribune.

Jim Huschka is president of the **Garden City Community Junior College Collegiate 4-H Club**, with **Jolene McGraw** as secretary-treasurer. The organization is new this year. Both **Jim** and **Jolene** are from Garden City.

Some of the other collegiate 4-H presidents are **Doug Zillenger** at Colby Community College, **Kenna Giffin** at the University of Kansas, and **Nina Kuykendall** at Kansas State Teachers College.

In **Russell County** the 4-H Ambassadors are an active group. In February, a group of 14 of them visited the Kansas State University Campus, Manhattan, and attended the basketball game between K-State and Oklahoma State University.

A ski trip to the Rocky Mountains was a holiday highlight for 83 4-H members, leaders, and extension personnel from northwest Kansas. Persons on the trip were from **Decatur, Sheridan, Logan, Smith, Thomas, Rooks, Wallace, Graham, Norton, Phillips, and Rawlins** counties.

A livestock judging team from **Labette County** placed second in a contest during the National Western Stock Show in Denver. Team members are **Doug Higginson, Steve McKinzie, and Kevin Kite, Parsons; and Doug Paul, Edna.**

A Pennsylvania Dutch dinner was prepared and served to mothers of the international foods group of the **Cheery Cherokee 4-H Club, Montgomery County**. Members are **Debbie Buchanan, Carrie Hamilton, Denise Patterson, and Stephanie McGovney.**

Lucky Leaf 4-H Club, Marion County, has increased its membership from 10 to 17, **Jerry Winkley** writes. A new member, **Chris Backman, Hillsboro**, won \$40 in a state fertilizer and chemical slogan contest.

So that children attending the Blue Ridge School in **Dickinson County** might enjoy the beauty of trees grow-

ing and their shade, members of **Harmony Hustlers 4-H Club** purchased and planted trees in the schoolyard.

Reporter **Brad Hartenstein** writes that **Jack Sexton**, leader of the **Harmony Hustlers 4-H Club**, retired as a leader after 16 years. Jack grew up as an active member of the same 4-H club.

Want a mind-expanding experience? Host an IFYE! The first step is to fill out an application and submit it to the State 4-H Office by April 1.

Ask at your county extension office for an application. IFYE exchangees will be in Kansas from May 1 to July 14.

Now serving as presidents in Kansas 4-H clubs are: **Laura Sue Wilcox, Harmony Hustlers 4-H Club, Shawnee County; Gary Whetstone, Pawnee Indians, Finney County; Gay Fox, Bluestem, Butler; and in Harvey County, Betty Kasitz, Hesston Union Champions and Jill Depew, Macon Happy Hour.**

These sponsors will provide your Kansas 4-H Journal subscription for the coming year. Be sure to thank them!

BOURBON

Citizens National Bank, Fort Scott
Farmers Co-op Assn., Fort Scott
Liberty Savings & Loan Assn., Fort Scott
Security State Bank, Fort Scott
The Bank of Bronson, Bronson
Union State Bank, Uniontown

CHEROKEE

American National Bank, Baxter Springs
Baxter State Bank, Baxter Springs
Columbus State Bank, Columbus
First National Bank of Columbus, Columbus
The Citizens Bank of Weir, Weir
Cherokee County 4-H Council

CLARK

Citizens State Bank, Ashland
Peoples State Bank, Minneola
Stockgrowers State Bank, Ashland

COWLEY

The First National Bank, Winfield
The Home National Bank of Arkansas City, Arkansas City

ELK

Exchange State Bank, Moline
First National Bank, Howard
Home State Bank, Longton
Howard National Bank, Howard

ELLIS

*Ellis State Bank, Ellis
*Farmers National Bank, Victoria
Farmers State Bank, Hays
Federal Land Bank Assn. of Hays, Hays
*First National Bank, Hays
Hays National Bank, Hays

ELLSWORTH

Ellsworth County 4-H Council

GRANT

*Grant County State Bank, Ulysses
Grant County 4-H Council

HAMILTON

*First National Bank, Syracuse
*The Valley State Bank, Syracuse

HODGEMAN

*Farmers State Bank, Jetmore
*Hanston State Bank, Hanston
Hodgeman County 4-H Council

JACKSON

Jackson County Farm Bureau, Holton

LABETTE

First State Bank, Edna

MITCHELL

*Farmers & Merchants State Bank, Cawker City
*Farmers State Bank, Simpson
*Farmers State Bank, Hunter
*First National Bank, Beloit
*The Guaranty State Bank, Beloit
*Tipton State Bank, Tipton
*Traders State Bank, Glen Elder
Mitchell County 4-H Council

OSBORNE

Downs National Bank, Downs
Farmers National Bank, Osborne
First National Bank of Natoma, Natoma
First State Bank, Osborne

*These banks have sponsored Kansas 4-H Journal for 20 or more years.

State Bank of Downs, Downs
The First State Bank of Portis, Portis
Osborne County 4-H Council

PAWNEE

Pawnee County 4-H Council

POTTAWATOMIE

Kaw Valley State Bank of Wamego, Wamego

RICE

Alden State Bank, Alden
Burke Grain Co., Little River
Central Kansas Elev. Co., Lyons
Farmers Co-op Union, Sterling
Farmers State Bank, Sterling
First National Bank, Sterling
Home State Bank, Little River
Lyons Co-op Assn., Lyons
Lyons Savings & Loan Assn., Lyons
Otasco Store, Lyons
Palace Drug, Geneseo
Pepsi-Cola Bottling Co., Lyons
Raymond State Bank & Miller-Price Agency, Raymond
Rice County State Bank, Chase
Stowitz IGA Store, Lyons
The Chandler National Bank, Lyons
The Chase Co-op Union, Chase

RILEY

Farmers Union Co-op Assn., Leonardville
H.I.C.O. Construction & Hill Realty, Manhattan
Kansas State Bank, Manhattan
Riley State Bank, Riley

ROOKS

Rooks County 4-H Council

RUSSELL

Farmers State Bank, Lucas

Russell State Bank, Russell

SHERIDAN

Farmers State Bank, Selden
First National Bank, Hoxie
Hoxie State Bank, Hoxie
Mickey's Hardware, Hoxie
Sheridan County 4-H Council

SHERMAN

First National Bank of Goodland, Goodland

WASHINGTON

Barnes Co-op Assn., Barnes
Farmers Co-op Oil, Barnes
J & J Market, Barnes
State Exchange Bank, Barnes
Washington County Farm Bureau, Washington

WICHITA

*First State Bank, Leoti

WYANDOTTE

Brotherhood State Bank, Kansas City
Coleman Implement Co., Bonner Springs
Commercial National Bank, Kansas City
Commercial State Bank, Bonner Springs
Home State Bank, Kansas City
Melba's Fabrics, Kansas City
Tower State Bank, Kansas City
Turner State Bank, Turner
Vesta Lee Lumber Co., Bonner Springs
Westgate State Bank, Kansas City
Wyandotte County State Bank, Kansas City
Wyandotte County 4-H Council

Family Fun Page

Employer: For a man with no experience, you're certainly asking a high wage.

Applicant: Well, sir, the work's so much harder when you don't know what you're doing.

Deanna Mears, Kansas City

Why did the little boy run the steamroller over his potato patch? Because he wanted mashed potatoes.

Raymond Hammarlund, St. Marys

Mr. Green is a butcher and wears a size ten shoe. What does he weigh?

Meat!

Janice Hammarlund, St. Marys

One guy to another: Everybody's trying to find a car that will quit smoking;

I'm trying to find one that will quit drinking.

Susan Allen, Fort Scott

Q. Who can raise things without lifting them?

A. A farmer.

Kim Kelly, Chapman

What did the tablecloth say to the table?

Don't move, I've got ya covered.

Kelley Alexander, Hazelton

Mix-a-word

2/5 of chalk

3/5 of stamp

1/2 of it

2/5 of phone

Clue: A winner

Answer: Champion

Shari Fiene, Newton

Grandpa: If I gave you 2 cents and your father gave you three, how much money would you have?

Grandson: 7 cents.

Grandpa: How on earth could you have 7 cents?

Grandson: I have 2 in my pocket already!

Jerry Winkley, Marion

Q. What is black and white and red?

A. A penguin with a high fever.

Linda Steinhauer, Rosalia

Gloria: What did the big chimney say to the little chimney?

Vickie: What?

Gloria: You're too young to smoke.

Debbie Knapp, Easton

What is the difference between a train and a teacher?

A train says "Choo choo" and a teacher says "Spit out your gum."

Leslie Clark, Claflin

Q. What's worse than finding a worm in your apple?

A. Finding a half of a worm.

Lon James, Clay Center

Q. How could you survive in a room with no doors and no windows if the only things in the room were a bed and calendar?

A. Drink from the springs of the bed and eat the dates from the calendar.

Kristy Thompson, Courtland

Son: Mom, what happened to your finger?

Mom: It got run over while walking through the Yellow Pages.

Pam Lowe, Manhattan

Can you find these vegetables?

BEAN PEA CARROT OKRA SQUASH ZUCCHINI CORN
POTATOES TOMATOES BROCCOLI CAULIFLOWER ONION
ASPARAGUS BEETS CABBAGE LETTUCE CELERY GREEN-
PEPPER

Answer is on page 12.

R	C	C	C	U	Z	P	E	S	R	G	S	P	B	I
A	E	A	B	R	E	P	P	E	P	N	E	E	R	G
C	B	W	R	A	H	E	N	S	N	I	A	C	S	I
A	R	K	O	R	I	R	S	T	P	N	P	U	Q	N
B	O	O	C	L	O	N	I	E	N	E	B	T	U	I
B	F	R	C	C	F	T	Y	E	O	A	Q	T	A	H
A	N	Y	O	A	E	I	R	B	P	T	S	E	S	C
G	C	E	L	E	U	L	L	P	R	E	A	L	H	C
E	N	O	I	N	O	S	E	U	A	S	P	T	N	U
T	O	M	A	T	O	E	S	R	A	R	H	C	O	Z
A	S	P	A	R	A	G	U	S	Y	C	G	A	A	P

Carrie Pope, Mullinville

Each person sending material used on the Fun Page will receive a 4-H notebook, unless he previously received a prize. When jokes are duplicates, the one postmarked earlier wins the prize.

Answer is on page 11.

Boy: Mom, my stomach hurts.

Mother: That's because your stomach's empty; you're hungry.

Boy: Is that why my uncle's head always hurts, because his head's empty?

Bryan Steffen, Manchester

"I'm on a government diet. The more taxes I pay, the less I can afford to eat!"

Robin Styles, Edwardsville

Silly: Did you hear about the fight at the candy store?

Milly: No! What happened?

Silly: A lollipop got licked!

Brenda Zahm, Iola

Mary had a little lamb

As dirty as a hog:

I asked her how he got that way; She simply answered "Smog."

Lisa Hodges, Stilwell

Q. What are three kinds of horses you can drive?

A. Thoroughbred, mustang, and pinto.

Lois Dowler, Arkansas City

Q. What happens when a cat eats a lemon?

A. He becomes a sour puss.

Brian Clugston, Pittsburg

Q. What table has no legs?

A. The multiplication table.

Clara Gaydusek, Mahaska

WE SALUTE ELECTRIC WINNERS



The Investor-owned Electric Companies of Kansas proudly salute the Electric Project winners listed here. These worthy 4-H'ers received Westinghouse Medals for their fine work. If you are not enrolled, join the many 4-H'ers in this project to learn more about electricity and the proper care and use of electrical equipment. Contact your club leader for more information.

State Winner: Rodney Hammarlund, Wabaunsee County, received a trip to National 4-H Congress in Chicago as Kansas winner of the electric project. Donor of the trip is Westinghouse Electric Corporation.

Electric Winners

Linn
Alan Charley
Mark Haupt
Roger Lewis
Richard Parks

Lyon
Terry Cox

McPherson
Jeff Johnson

Marion
Eric Unruh
Bennett Cott

Marshall
Mike Gress*
Robert Stock
David Nordhus
Robert Christener

Mitchell
Thayne Thompson

Montgomery
Steve McGovney

Morton
Dan Martin

Nemaha
Joe Huerter
Joe Schmalzle
Mike Skoch

Neosho
Joe Simmons

Ness
Ray Wierman
Everett Burdett

Norton
Mike McMulkin*

Osage
Jeff Kuykendall
Stan Park

Pawnee
Michael Steffen*
Virginia Mostrom

Phillips
Wyatt Pumphrey
Gary Flanigan
Scott Nyhart
Lloyd Schneider

Pottawatomie
Mark Goehring
Donald Honig
Charles Sauvage
Bart Garrett

Pratt
Phillip Goyen

Rawlins
Brian Kantor

Reno
Jerome Oborny
Joe Horton
Lyndon Zielke
Billy Geist

Republic
Frank Shoemaker

Rice
Richard Hiss
Larry Hoover

Riley
Jim Cox
Alvin King
Roy Duer

Rooks
Gregg Gartrell*
Larry Timmons
Darrell Brockett
Greg Thyfault

Rush
Steve Misegadis
Jeff Keener

Saline
Charles Lindshield*

Scott
Randy Scheuerman
Tom Beaton
Steve Patton

Sedgwick
Troy Horine*
Diane Ziegler

Shawnee
Bill Riley
Alan Sage
Curtis Klamm

Sheridan
David Bergmeier
David Rietcheck

Sherman
Larry Winter

Smith
Steve Kirchhoff
Michael McCleery

Stafford
Spencer White
Kim Hullman
Greg Thole
Kenneth Miller

Stanton
Troy Moore

Stevens
Randy White
Galen Hancock

Sumner
Terry Zabel

Trego
Kelly Hadley
John Nilhas

Wabaunsee
Rodney Hammarlund
Karon Hammarlund
Sharon Hammarlund
Robert Hatfield

Wallace
Larry McWilliams

Washington
Gary Sinn
Rellen Goebel

Wichita
James Bergh*
Brad Glanville
Diran Barr

Wilson
Danny Apollo
Brad Stephens
Vienna Thompson

Wyandotte
Russell Thogmartin
Ronald Stierly
Patrick Shaw

*Received an educational trip to the Kansas 4-H Congress.



✱ Watch This Page For Ideas On Farm And Home Electric Projects

ELECTRIC LIGHT and POWER COMPANIES in KANSAS

The Kansas Power and Light Company Central Kansas Power Company
Kansas City Power & Light Company Kansas Gas and Electric Company
Western Power Division of Central Telephone & Utilities Corporation