

S
534
.K2
C64
1933

UNIV.
ARCHIVES



the WHO'S WHOOT



1933



the WHO'S WHOOT



1933

Published by

THE COLLEGIATE 4-H CLUB

KANSAS STATE COLLEGE OF AGRICULTURE AND APPLIED SCIENCE

Manhattan, Kansas

for

The Who's Who 4-H Club of Kansas

Blank page in original document

univ
S
534
.K2
C64
1933



SOUTH ENTRANCE, K. S. C. CAMPUS



4-H Club Work

TRAINS HEAD TO—

Think
Plan
Reason

TRAINS HEART TO BE—

Kind
True
Sympathetic

TRAINS HANDS TO BE—

Useful
Helpful
Skillful

TRAINS HEALTH TO—

Resist Disease
Enjoy Life
Make for Efficiency

CLUB PLEDGE

I pledge my head to clearer thinking, my heart to greater loyalty, my hands to larger service, and my health to better living for my club, my community, and my country.

CLUB MOTTO

"To make the best better."





Who's



Whoot



Dedication

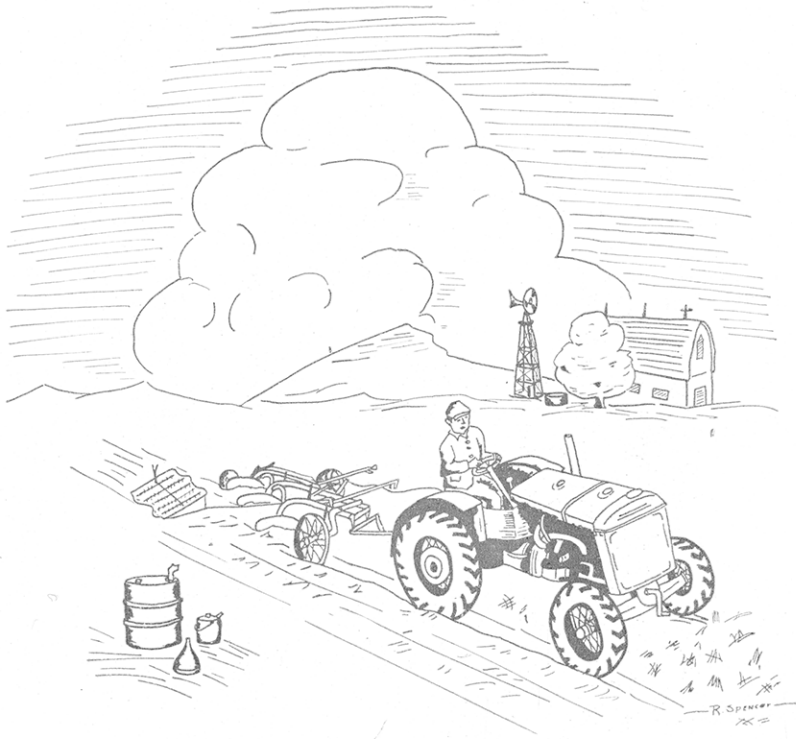
To our parents, who have so willingly supported 4-H Club work, we dedicate this book.

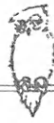




FAMILIAR VIEW, K. S. C. CAMPUS

INTRODUCTION



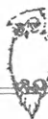


College Executives



F. D. FARRELL (Center)	President of K. S. C.
J. T. WILLARD	Vice President of K. S. C.
H. UMBERGER	Dean of Extension
L. E. CALL	Dean of Agriculture
E. L. HOLTON	Dean of Summer School
MARGARET M. JUSTIN	Dean of Home Economics
R. A. SEATON	Dean of Engineering
R. R. DYKSTRA	Dean of Veterinary Medicine
J. E. ACKERT	Dean of Graduate Study
R. W. BABCOCK	Dean of General Science





Advisory Members



Right to Left—

M. H. COE *State Club Leader*

AMY KELLY *State Home Demonstration Leader*

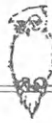
Right to Left—

LORA HILYARD *Assistant State Club Leader*

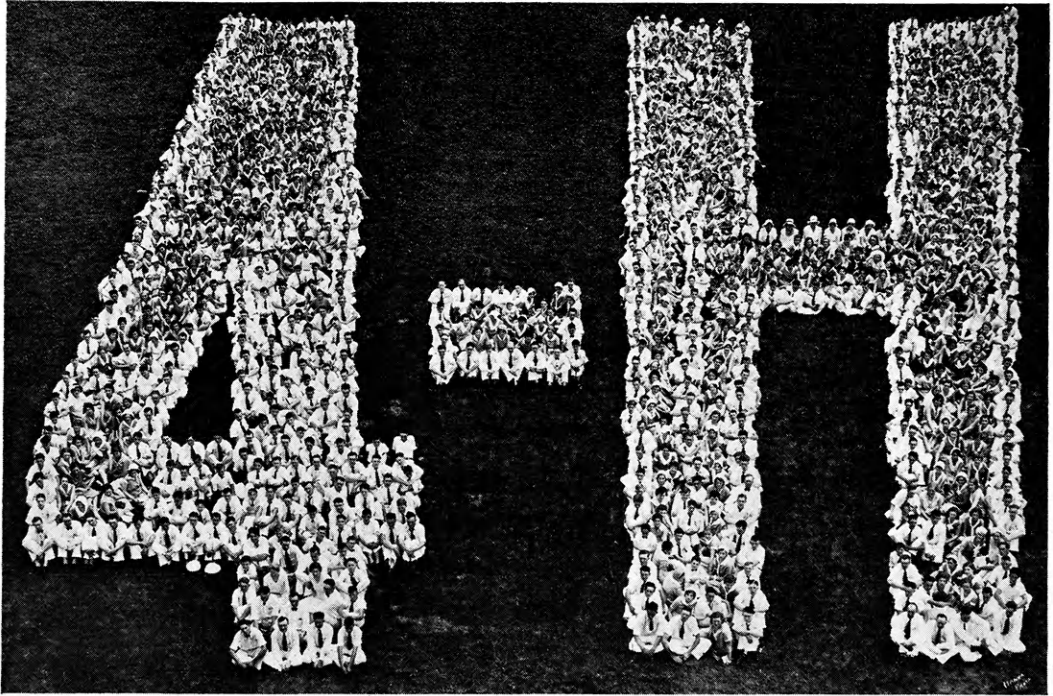
A. J. SCHOTH *Assistant State Club Leader*

MABEL SMITH *Assistant State Club Leader*





Round-Up



Delightful: Instructive: Strenuous: Inspiring: Perhaps these four words may be used better than any others to describe the most outstanding Round-Up ever held in Kansas.

Approximately 1200 club members, representing 83 counties, attended the ninth annual Round-Up held at Kansas State College in Manhattan, June 6-11, 1932. The delegates were divided into 17 divisions. There were eight groups of boys, eight groups of girls, and one group of leaders.

Miss Margaret Streeter, formerly of the R. C. A. Victor Company of Camden, New Jersey, was present to give instruction in music. Mr. Carberry of Milwaukee, Wisconsin, was the leader of group singing during the week.

The Who's Who Club, the Honorary 4-H organization of the State, initiated 96 new members. This organization originated nine years ago at the first Round-Up.

The Collegiate 4-H Club acted as host to the large group of visitors. It was in charge of the "Sunflower," printed daily; the post office; the lost and found department; swimming, and entertainment.

The delegates were instructed in their class work each morning by faculty members of the college. Winners in some of the contests featured during the week were:

Health—Lois Hooper, Sherman County; Ned Monroe, Coffee County.

Stunt—Edwards County.

Chorus—Crawford County.

Music Appreciation Contest—Lyon County; high individual, Lois Carpenter, Sedgwick County.

Demonstration—Home Economics, Sedgwick County; Agriculture, Leavenworth County.

Orchestra—Amateur, Harper County; Advanced, Geary County.

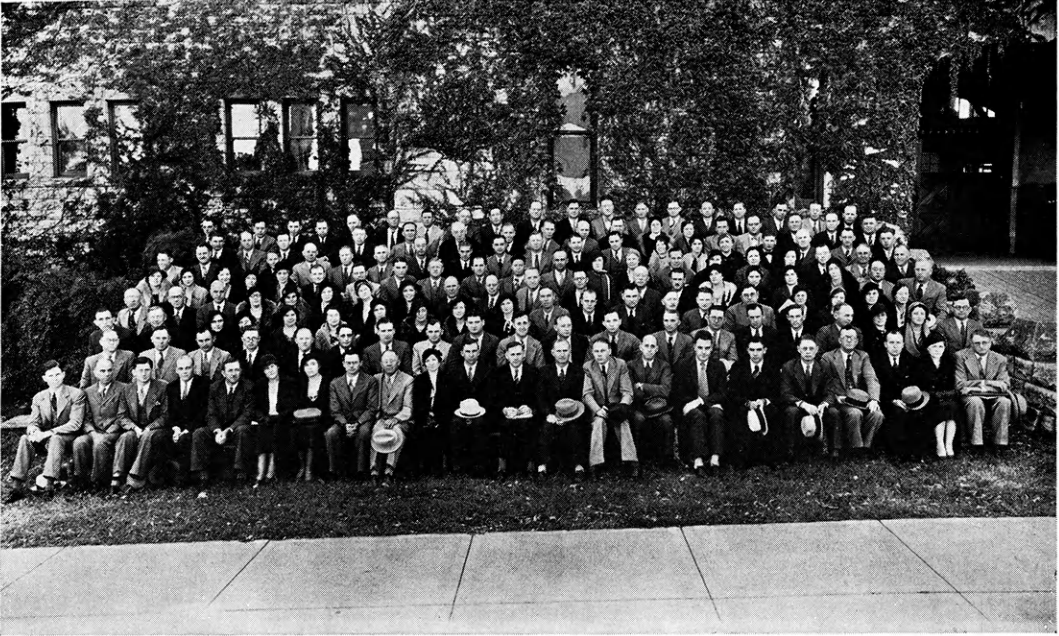
Judging—Canning, Clay County; Dairy, Brown County; Grain, Edwards County; Poultry, Geary County; Livestock, Harvey County; Clothing, Morris County; Baking, Montgomery County.

The afternoons were spent in sight-seeing trips, the greatest of which was the trip to Fort Riley. Recreation, under the supervision of trained leaders, was conducted each evening. The banquet on the last evening was the crowning event of the week. Morris Humes was toastmaster of the evening program.





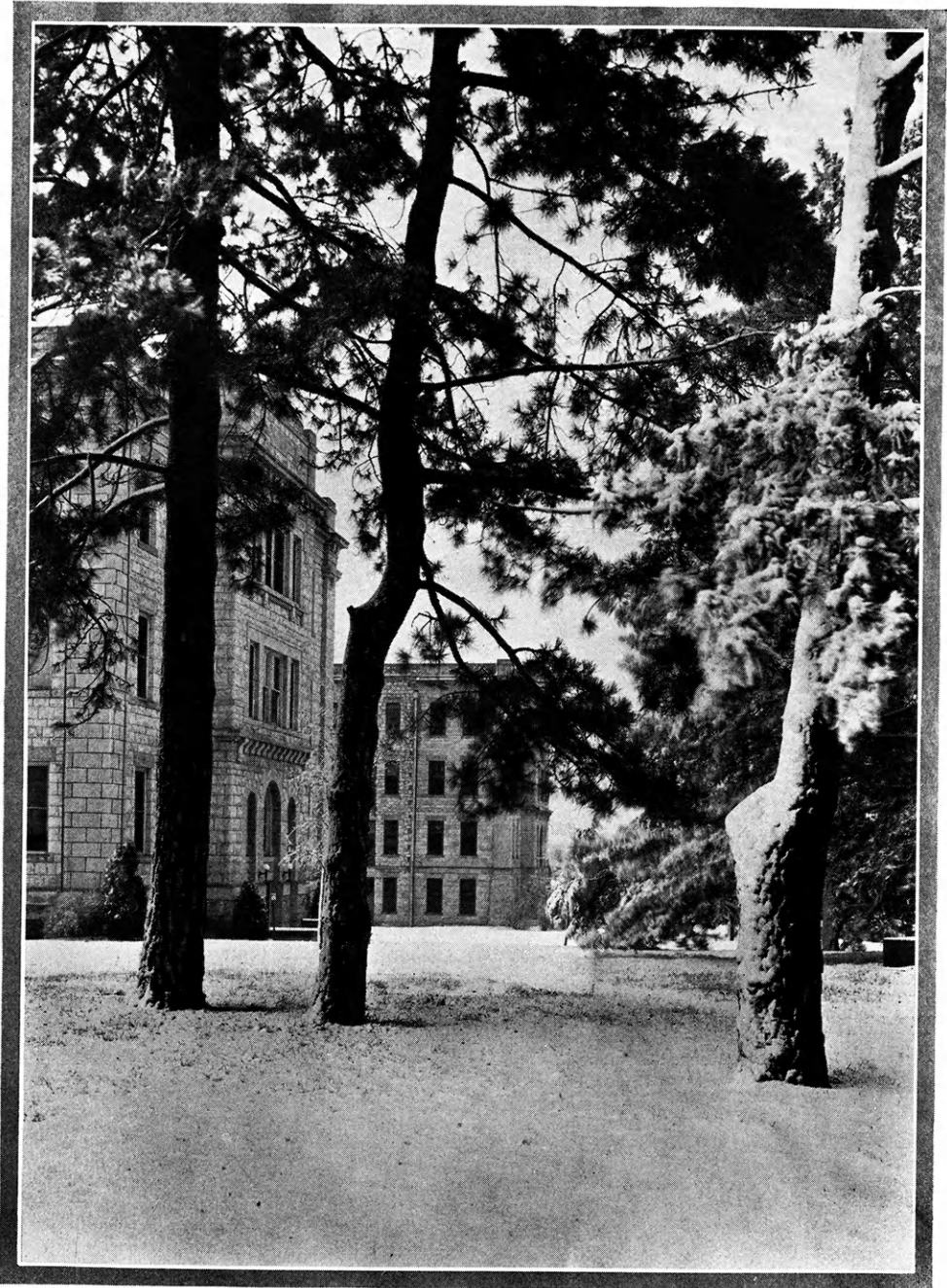
Extension Workers



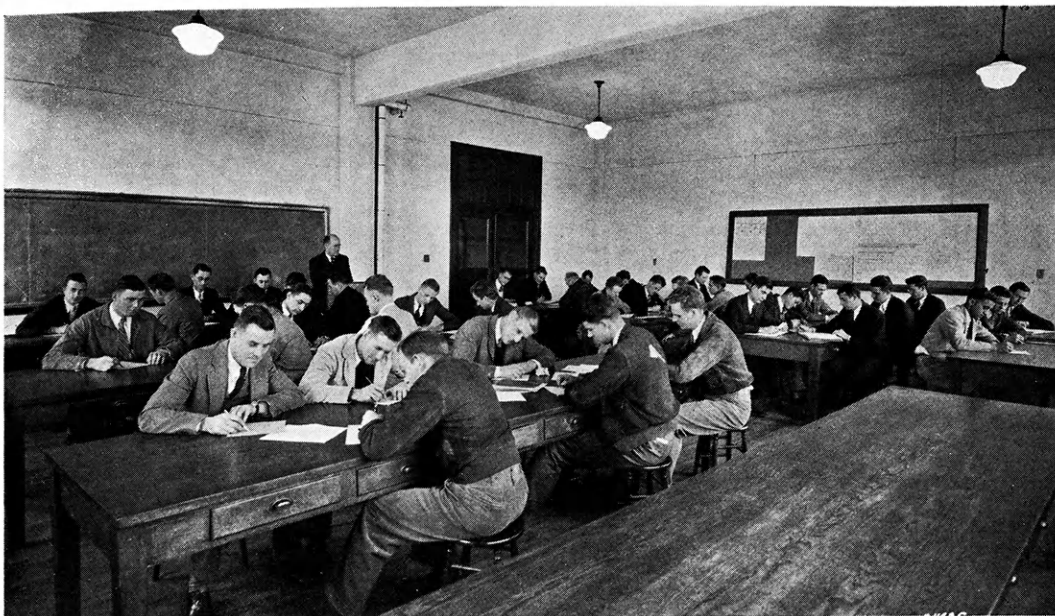
The 78 county Agriculture agents, the 26 Home Demonstration agents, and one club agent in the State deserve a lot of credit for placing 4-H club work in Kansas on its present high standard. However, we realize that back of all this work we have: Mr. M. H. Coe, State 4-H Club Leader; Miss Lora Hilyard, Assistant State Club Leader; Mr. A. J. Schoth, Assistant State Club Leader, and Miss Mabel Smith, Assistant State Club Leader, who deserve more credit for the assistance and success of the 4-H clubs than most other persons in the State.

Speaking for all the Kansas 4-H club members, we also wish to express our appreciation to the entire extension force of the college for their untiring and unselfish help in all of our activities.





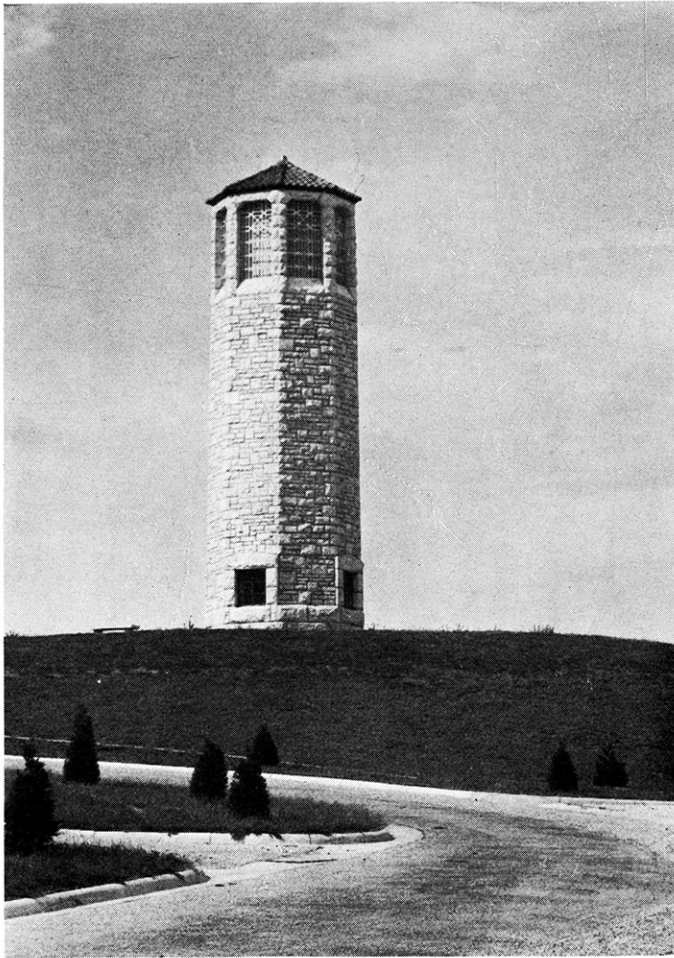
WINTER SCENE—FRONT VIEW OF THE AGRICULTURAL BUILDINGS
FROM THE SOUTHWEST



COLLEGE CLASS IN FARM ORGANIZATION

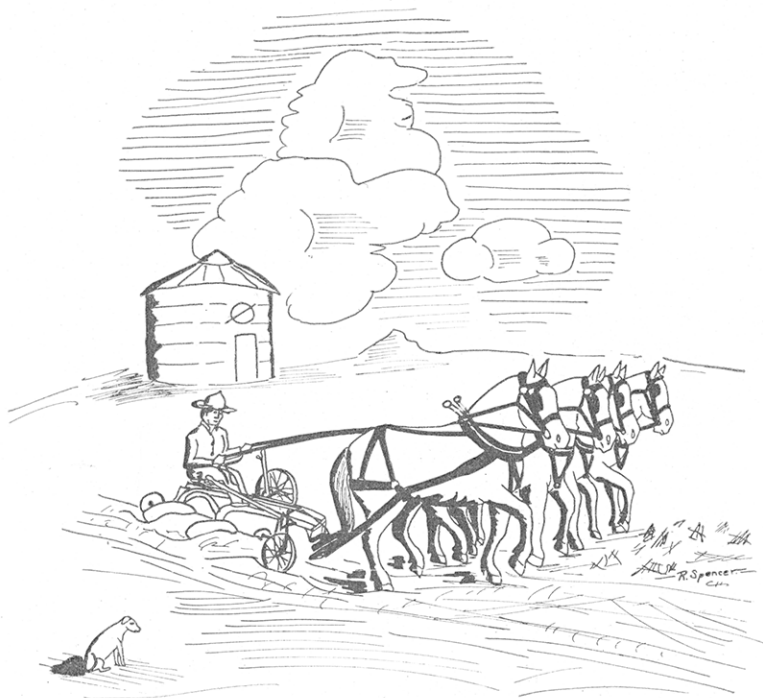


COLLEGE CLASS IN LIVESTOCK JUDGING



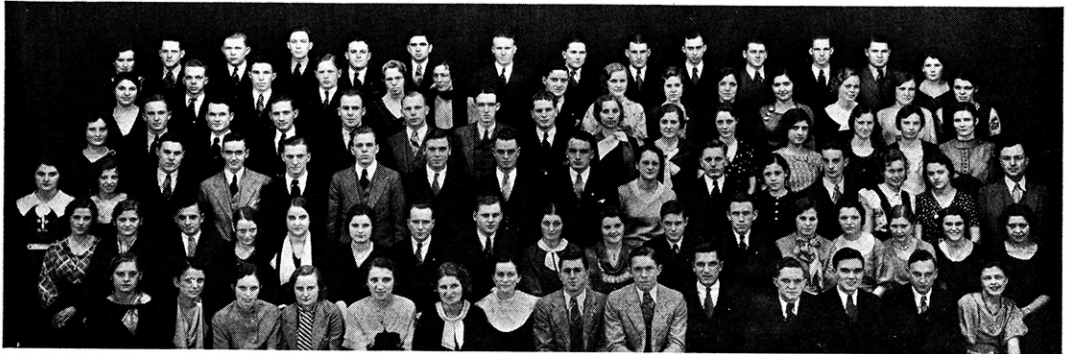
THE SINGING TOWER
Sunset Park, Manhattan

COLLEGIATE 4-H CLUB





Kansas Collegiate 4-H Club



One of the most outstanding organizations at Kansas State College is the Kansas State Collegiate 4-H Club which was organized in 1927. This group, composed of about 150 members for 1932-33, meets twice a month for a regular business meeting and once a month for a social meeting. The Collegiate 4-H Club desires to keep former 4-H Club members in college interested in 4-H Club work and to provide for the social needs of its members. The Collegiate 4-H Club assists with the Round-Up, has charge of the 4-H club radio programs from station KSAC and, as one of its greatest undertakings, edits the *Who's Whoot*. A loan fund of \$1500, available to 4-H boys and girls attending college, has been established by this organization from the profits realized from the editing of this annual.

OFFICERS

FALL SEMESTER 1932-33

PresidentGaylord Munson
Vice PresidentFlorence Melchert
Secretary-Treasurer Mary Jordan
Corresponding SecretaryPenn Thompson
MarshalWilfred Pine

SPRING SEMESTER 1932-33

PresidentHerbert Clutter
Vice PresidentMary Jordan
Secretary-TreasurerMartha Lou Perkins
Corresponding SecretaryGrace Burson
MarshalFrank G. Parsons

FALL SEMESTER 1933-34

President Frank Burson
Vice PresidentFrank G. Parsons
Secretary-TreasurerHelen Hanson
Corresponding SecretaryWilma Cook
MarshalWalter Lewis





Who's Whoot Staff



As its main contribution to the furtherance of 4-H Club work, the Collegiate 4-H Club edits the *Who's Whoot*. This annual is published to depict the year's advancement made by Kansas 4-H Clubs and their members.

The members of the 1933 *Who's Whoot* staff are as follows:

Editor Penn Thompson
 Assistant Editor Florence Melchert
 Business Managers Jessie Dean and Lloyd Davies

Album:

Frank Burson
 Ellen Blair
 Marjorie Blythe
 Helen Hanson
 Herbert Niles

Counties:

Willett Taylor
 Lebert Shultz
 Marvin Vautravers
 Walter Lewis
 John Latta

Jokes:

Herbert Clutter
 Wayne Herring
 Wilfred Pine
 Marie Antrim

Snapshots:

Frank G. Parsons
 Walter Babbitt
 Marcus Bergsten
 Opal Bowers
 Claude C. Uhrig
 Lucille Herndon
 Blanche Tomson
 Gertrude Greenwood
 Julia Ellen Crow

Features:

Pius Hostetler
 Dwight Thompson

Campus Scenes:

Olga Larsen
 Lowell Myler
 Ethel Bellis
 Raymond Wagner

Art Work:

Mary Jordan
 Florence Melchert
 Robert Spencer

Stenographers:

Beulah Frey
 Leonice Fisher
 Loren Elliott
 Grace Burson

The 1933 staff wishes to thank all who have co-operated in the editing of this year's *Who's Whoot*. The fact that 4-H Club members really co-operate is well shown by the splendid co-operation the staff has received this year. We are especially indebted to Mr. Albert Pease, editor of last year's *Who's Whoot*, for many helpful suggestions throughout the year.



Kansas 4-H Club Radio Programs



Through its radio programs, which are broadcast from station KSAC, the Collegiate 4-H Club is able to keep in close contact with 4-H club members throughout the state. These regular half-hour programs are broadcast every Monday, Tuesday, Thursday, and Friday afternoons from 4:30 to 5:00 o'clock.

On Tuesday and Thursday afternoons the programs are devoted to music appreciation and book reviews. Jessie Dean has conducted the music appreciation programs and Ethel Bellis has been in charge of the book reviews.

Mondays and Fridays feature a variety program including music, readings, and educational talks made by Collegiate 4-H Club members and others interested in 4-H club work. Penn Thompson, Robert Paige, Pius Hostetler, and Herbert Clutter have conducted these programs. All of these announcers are Collegiate 4-H Club members.

These 4-H Club half-hours are familiar to thousands of boys and girls in Kansas as a time when they can "listen in" to their own programs and feel intimately related to the announcers and others participating in the programs.

Collegiate 4-H Club Banquet and Dance



The fourth annual Collegiate 4-H Club banquet and dance was held December 10, 1932, at Thompson Hall. This evening of good food, a good program, and a good dance was one of the events which is looked forward to every year by Collegiate 4-H Club members.

An important feature of the evening was an address by Chancellor E. H. Lindley, of the University of Kansas. Other numbers on the program were:

- Violin Solo—"The Old Refrain" Florence Melchert
- Reading—"The Mason Family on Exhibition" Mildred Gibbs
- Collegiate 4-H Club Trio—"Drum Major"
 "By the Waters of Minnetonka"
 Opal Bowers, Lucille Piper, Ruth Parcels
- Xylophone Solo—"A Perfect Day"
 "The World Is Waiting For the Sunrise"
 Harold Kugler
- Collegiate 4-H Club Quartette—"A Little Close Harmony"
 "Colorado and You"
 Dale Edelblute, Orville Ruth, Dudley Flint, Norris Nelson

Pius Hostetler was master of ceremonies. The hall was beautifully decorated and a tiny china doll, found at each cover, made an excellent souvenir.

Collegiate 4-H Club Quartette and Trio



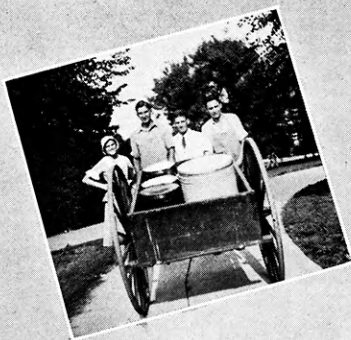
The members of the Collegiate 4-H Club trio are Lucille Piper, Sherman County, first soprano; Opal Bowers, Brown County, second soprano; Ruth Parcels, Brown County, alto.

This trio, which was organized this year, grew out of the sextette of last year. The girls made their first appearance on the National 4-H Achievement program broadcast from station WREN, Lawrence. They have sung at the 1932 Collegiate 4-H Club Banquet and Dance, The Spring Party, Farm and Home Week programs, Collegiate 4-H Club meetings, and over 4-H radio broadcasts. Ethel Rosey, Geary County, their accompanist, has contributed much to their success.

The Collegiate 4-H Club Quartette is composed of Dudley Flint, Crawford County, first tenor; Norris Nelson, McPherson County, second tenor; Dale Edelblute, Riley County, baritone; Orval Ruth, Crawford County, bass. This popular quartette has appeared on the 4-H Achievement program broadcast from WREN at Lawrence, at the Farm and Home Week Banquet, Annual Collegiate Banquet and Dance, and Spring Party. The quartette has been accompanied also by Ethel Rosey, Geary County.



Collegiate Snaps



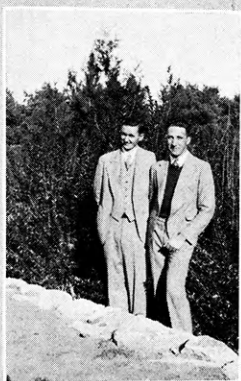
CHUCK WAGON



"K" HILL



"CHISELERS"



INNOCENT



EDITORS



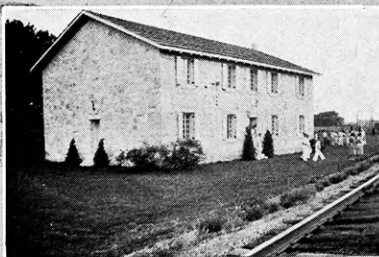
NECKING?



LOADED?



CLOVIA CARPENTERS



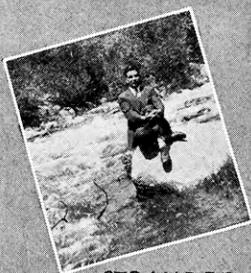
"YE OLD CAPITOL"



SHALL WE?



Collegiate Snaps



STRANDED



THE 4-H HIKE



CENTER OF U.S.



THE GAY NINETIES



THE GOLD DUST TWINS



"PI" AND "LINDY"



WHITE LEGHORNS



THE GOOD OLD DAYS



SOME HAT



SEZ YOU!



AREN'T WE CUTE?



SHE CAN'T TAKE IT



Collegiate Snaps



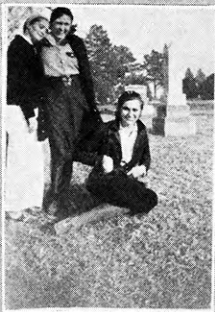
BROTHERLY LOVE



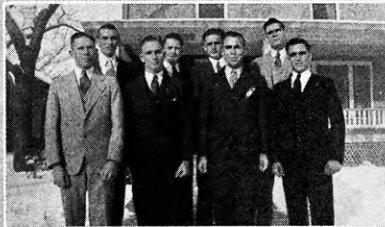
THREE MUSKETEERS



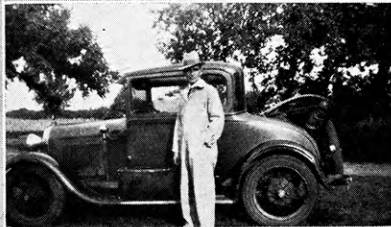
11 MORE MONTHS



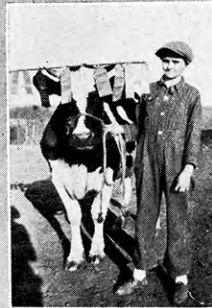
RESTING PLACE



LEAVENWORTH COUNTY CLUB



"KUG"



SOME COW



'TWEEN MEALS



PALS

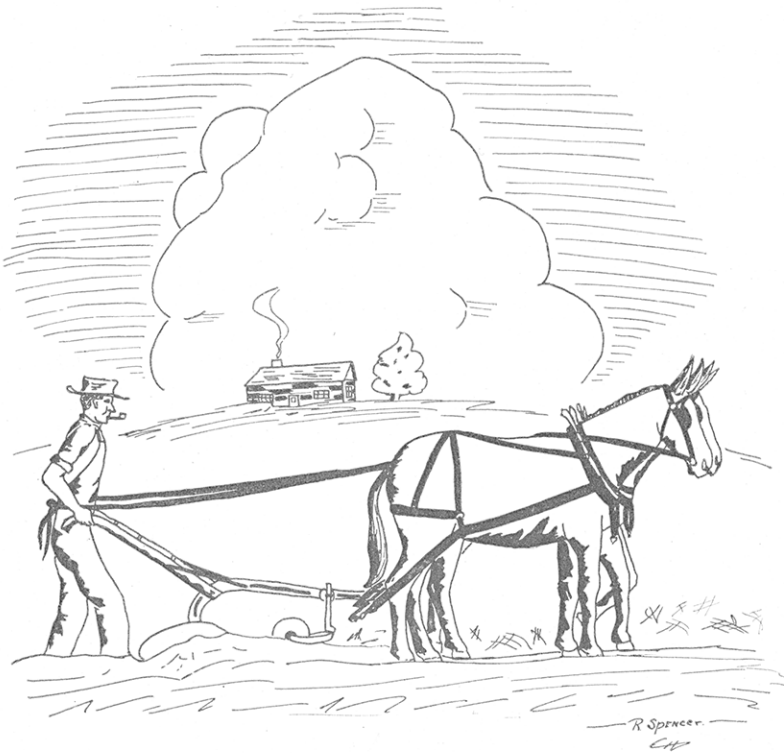


AT EASE ?

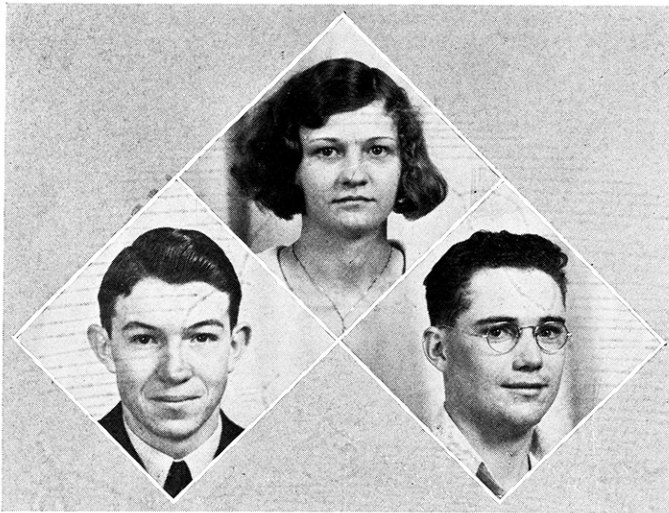


Blank page in original document

WHO'S WHO 4-H CLUB



The Who's Who Club



The Who's Who 4-H Club is a State honorary 4-H Club that has been organized for nine years. Its membership is made up of boys and girls in Kansas who have been most outstanding in their project work and leadership activities. The club has been very effective in promoting better 4-H Club work throughout the State and especially in assisting the leaders with various programs during the Annual 4-H Round-Up.

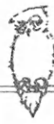
To be eligible for membership one must have had three years of club work, be fifteen years old, and must have done some very outstanding work in his 4-H Club projects.

At the present time the Who's Who Club has a membership of 730. Last year 98 new members were initiated.

The officers of the club serve for a one year term. The present officers are: President, Robert Holmes, Sedgwick County; Vice-president, Merlin Griswold, Marshall County; and Secretary-Treasurer, Virginia Wagner, Franklin County.

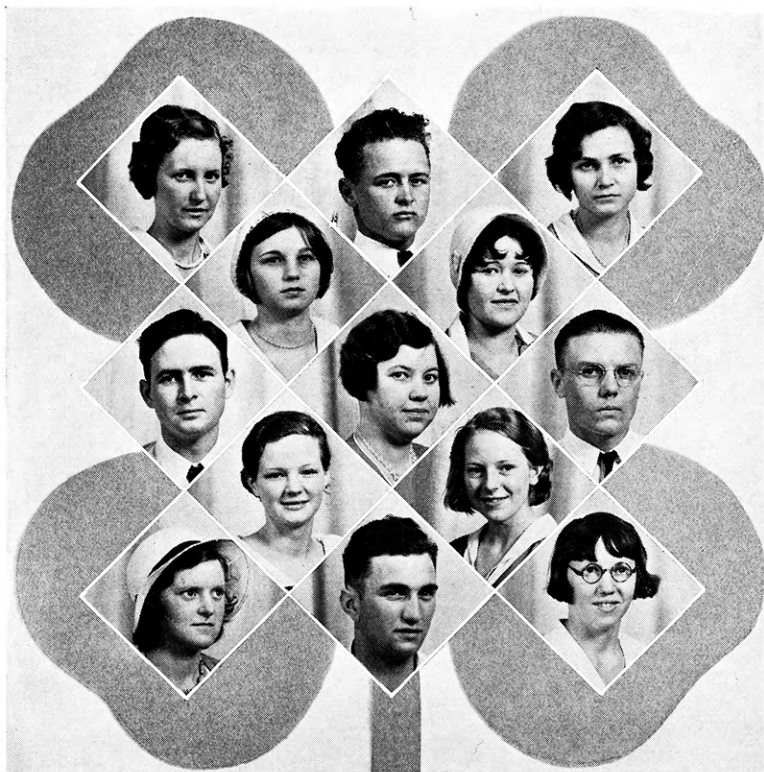


- MATTIE TALLY, Morris County. Clothing, Baking, Canning, Supper Club, Room Improvement, Leadership, Judging and Demonstration team work, Round-Up 1929-30-32.
- EMMETT MURPHY, Grant County. Sorghum, Round-Up 1931-32.
- MARTHA MINER, Sedgwick County. Clothing, Baking, Round-Up, Leadership camp at Wichita, County Health Champion, St. Posture Champion, County Music Appreciation Champion.
- LUCILLE HALL, Stafford County. Clothing, Sheep, Baking, Baby Beef, Thomas E. Wilson medal, County Health Champion 1932, Round-Up 1932.
- GERALDINE COOK, Russell County. Baking, Supper Club, Round-Up 1930, 1932, County Health Champion 1930.
- CHARLES W. CAME, Saline County. Corn, Baby Beef, Swine, First Livestock Judging Team at Wichita 1931-32, American Royal, Round-Up 1931-32.
- ROYCE P. MURPHY, Norton County. Corn, Baby Beef, Swine, Leadership, Round-Up 1928, 1932, National Club Congress 1931, County Swine Champion, County Leadership Champion.
- JOE SPENCER, Leavenworth County. Corn, Swine, Baby Beef, Leadership, Round-Up 1928 and 1932.
- MILDRED WILSON, Saline County. Swine, Baby Beef, Clothing, Canning, Baking and Canning judging work, Round-Up 1930, 1932.
- FRANCES E. PERKINS, Douglas County. Baking, Supper Club, Clothing, Sheep, Demonstration and Judging team work, Round-Up 1931-32.
- MARIANNA STEVENS, Stafford County. Baking I and II, Clothing I, II and III, Clothing Judging.
- PHILIP HORNEY, Wilson County. Sheep, Swine, Corn, Wheat, Leadership, Round-Up 1931-32, American Royal 1930-31.
- MARGUERITE WILSON, Morris County.



- VERDIE MADELINE BOLE, Allen County. Room Improvement, Round-Up, Clothing.
- ARTHUR R. BLYTHE, Morris County. Baby Beef, Round-Up, Encampment—Hutchinson.
- ELLEN FRIEDERICK, Neosho County. Clothing, Baking, Round-Up.
- FLORENCE E. JOHNSON, Barton County. Baking, Demonstration and Judging Team Work, Round-Up 1930, 1932, County Health Champion 1932.
- MARY LUCILLE MCNOWER, Crawford County. Leadership, Demonstration and Judging Team Work, Round-Up, Encampment, County Clothing and Leadership Champion.
- GEORGE INSKEEP, Riley County. Sheep, Leadership, Round-Up, County Health Champion, County Sheep Champion, 1931.
- CLAUDE BELL, Rawlins County. Swine, Dairy Heifer, National Dairy Show, C. B. and G. or Q. trip on leadership.
- SIDNEY MCFALL, Crawford County. Round-Up 1931-32, American Royal 1930, County Corn Champion.
- LUCILLE CARPENTER, Jewell County. Clothing, Leadership, Round-Up 1931-32.
- CLAIR WILES, Pawnee County. Clothing, Round-Up, Canning, Baking.
- IRENE ROBISON, Woodson County. Leadership, Round-Up 1931-32, Gardening.
- NORMAN HALL, Brown County. Baby Beef, Round-Up 1929-30-31, Union Pacific Scholarship 1931.
- ISABEL FELL, Edwards County. Canning, Baking, Round-Up 1932.





ALICE MARIE SMITH, Saline County. Clothing, Baking, Canning, Round-Up 1931-32, State Champion Canning Team 1931.

KEITH DONNIFER, Jewell County. Round-Up, County Health Champion 1932.

JEAN NIXON, Riley County. Poultry, Gardening, Canning, Swine, Baking, Supper Club, Leadership, Round-Up 1926-29-32, County Clothing Champion 1931, U. P. Scholarship 1931.

DOROTHY THEYE, Lyon County. Clothing, Poultry, Round-Up 1932, County Baking Champion 1930.

LENA LYONS, Bourbon County. Room Improvement. Clothing Demonstration Team, First at Hutchinson, 1931, Clothing Judging Contest 1931.

FRANK BURGESS, Franklin County. Leadership, Round-Up 1932, State Champion Poultry Judging Team 1932, National Club Congress 1932.

DORA LARSON, Lincoln County. Supper Club, Clothing, Leadership, Demonstration Work.

ORAN TALBOT, Riley County. Poultry, Demonstration and Judging Teams, Round-Up 1932.

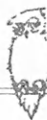
MARJORIE E. WILLIAMS, Marshall County. Clothing, Round-Up 1929-30-32, Demonstration Team, American Royal 1929.

RUBY MAXINE BOWLES, Jewell County.

BETTY BROWN, Lyon County. Swine, Clothing, Round-Up, Clothing Champion 1928.

KENNETH CUNNINGHAM, Franklin County. Baby Beef, Leadership, Livestock Judging Team.

EDNA HARNESS, Jewell County. Clothing, Room Improvement, Round-Up, National Club Congress 1932.



MARJORIE MOYER, Grant County. Baking, Clothing, Round-Up 1932.

FREDERICK KILIAN, Dickinson County. Baby Beef, Swine, Corn, Poultry, Sheep, American Royal 1931, Round-Up 1932.

VERA MAY HAYNES, Dickinson County. Clothing, Baking, Poultry, Round-Up 1932.

FERNE ENOCHS, Shawnee County. Baby Beef, Clothing Gardening, Leadership, Union Pacific Scholarship 1932, Demonstration Team Work, Round-Up 1929-30-32, National Club Congress 1931, Canning, Poultry, Baking.

PHILIP FROTTMAN, Neosho County. Swine, Round-Up 1932, County Health Champion 1930.

RICHARD BARRETT, Chase County. Poultry, Baby Beef, Swine, Round-Up 1932.

VERNON RUDEEN, Lyon County. Corn, Swine, Kafir, Round-Up 1931-32, American Royal 1931, County Corn Champion 1931, National Club Congress 1932.

FRANCES STRYKER, Marshall County. Canning, Baking, Clothing, Round-Up 1931-32, Leadership.

ETHEL STEWART, Leavenworth County. Clothing, Baking, Canning, Room Improvement, Leadership, Round-Up 1929-30-32, Demonstration and Judging, County Style Review Champion 1931.

ANNA BERNICE OLSON, Russell County. Clothing I, Baking I and II, Demonstration, Encampment at Hutchinson 1931, Alternate for U. P. Scholarship 1931.

ALBERT SCHINSTOCK, Edwards County. Sorghum, Wheat, Round-Up 1932.

JEWELL NOTT, Morris County. Baking, Canning, Room Improvement, Poultry, Demonstration and Judging, Round-Up 1930-31-32.





ROSE DREHER, Allen County. Poultry, Baking, Canning, Clothing, Supper Club, Round-Up 1929-32.

LEO MCCLOUD, Marshall County. Baby Beef, Poultry, Swine, Round-Up 1930-31-32, American Royal 1930-31.

MARGARET MCCOLM, Lyon County. Sheep, Poultry, Baking, Clothing, Junior Champion Fat Lamb, American Royal 1930, County Sheep Champion 1927-30, Round-Up 1932.

OPAL V. RICHARDSON, Douglas County. Canning, Baby Beef, Baking, Clothing, Round-Up 1930-31-32.

MYRA OGG, Franklin County. Clothing, Baking, Leadership, First Demonstration Team at Hutchinson 1931, Round-Up 1930-31-32, State Style Review Champion 1930, National Club Congress 1930.

ERNEST DEINER, Dickinson County. Baby Beef, Leadership, Round-Up 1931-32, American Royal 1926-31, National Club Congress 1929.

DWIGHT HENRY, Douglas County. Swine, Baby Beef, Round-Up 1930-31-32, American Royal 1930.

RALEIGH J. PETERSON, JR., Geary County. Poultry, Corn, Swine, Sorghum, Leadership, Demonstration and Judging, Round-Up 1931, Second in State News Writing Contest.

MYRTLE TURNER, Thomas County. Clothing, Sow and Litter.

WANDA TEWELL, Bourbon County. Clothing, Canning, Baking, Round-Up 1932.

BERNICE PRESTON, Ford County. Clothing, Leadership, Round-Up 1931-32, Clothing Judging.

EDWARD CASSIDY, Marshall County. Baby Beef, Judging Team, Round-Up 1932, Beef Production Medal, County U. P. Scholarship.

GRACE MCWILLIAM, Linn County. Canning, Clothing, Demonstration Team Work.



- MAURINE KNOUSE, Lyon County. Judging, Demonstration, Round-Up 1926-32, National Club Congress 1928, 1932, State Encampment 1929, 1930, American Royal 1924-27, State Clothing Champion, State Leadership Champion 1932, National Club Camp, National Moses Leadership Trophy 1932.
- LLOYD FORSSEE, Saline County. Baby Beef, Dairy, Leadership, Round-Up 1931-32, State Health Champion 1931, State Champion Dairy Judging Team 1932, Dairy Cattle Congress 1932, National Club Congress 1931.
- JACK CARLIN, Saline County. Baby Beef, Dairy, State Champion Dairy Judging Team 1932, Dairy Cattle Congress 1932, Round-Up 1928, 1931-32, State Encampment, National Dairy Show 1931, American Royal 1931.
- RUBY CORR, Sedgwick County. Clothing, Baking, Baby Beef, Leadership, Judging and Demonstration, Round-Up 1932, State Champion Home Economics Demonstration Team, National Club Congress 1932, State Champion News Reporter 1932, County Baby Beef Champion 1931.
- GORDEN A. CARTER, Russell County. Swine, Judging and Demonstration, Round-Up 1931, Encampment 1931, U. P. Scholarship 1931, Thomas E. Wilson Medal 1931.
- DONALD K. LONG, Montgomery County. Corn, Baby Beef, Crops, State Encampment 1931, Round-Up 1929, 1932, Demonstration and Judging Team, Dairy Essay Award in N. H. S.
- MAGDALENE WENGER, Brown County. Poultry, Baby Beef, Clothing, Baking I and II, Supper Club, Round-Up 1931-1932.
- MILDRED STARTUP, Shawnee County. Clothing, Poultry, Baking, Leadership, Demonstration and Judging Team, Round-Up 1932, State Style Review Champion 1932, National Style Review Champion 1932.
- VERA MCBRATNEY, Sedgwick County. Baking, Supper Club, Canning, Poultry, Leadership Canning and Supper Club Demonstration, Round-Up 1927-28-32, National 4-H Club Congress 1927, National Club Camp 1932.
- VERNAL ROTH, Lyon County. Poultry, Kafir, Corn, Swine, Leadership, Garden, First Demonstration Team at Topeka and Hutchinson 1931, State Champion Demonstration Team, National Club Congress 1931, Round-Up 1931-32.





MAURINE SPENCER, Saline County, Round-Up 1932, County Champion, Baking Demonstration Team.

DON W. MUSIL, Marshall County. Baby Beef, Round-Up 1932, County Swine Champion.

ESTHER LOVE HECKMAN, Montgomery County.

LUCILLE O'NEILL, Ness County. Poultry, Baking, Round-Up 1932, State Encampment.

BERTHA SCHIPPER, Montgomery County. Clothing, Baking, Leadership, Round-Up 1932, State Encampment 1932, State Baking Judging Champion.

CYLVIS HAMMETT, Marshall County. Baby Beef, Swine, Livestock Judging Team, Round-Up 1930-31-32, American Royal 1929-30-31.

BILLY CARVIN, Riley, Baby Beef, Leadership, Round-Up 1932, National Club Congress 1931.

HORACE LAMBORN, Leavenworth County. Leadership, Round-Up 1929-30-31-32.

LOIS CARPENTER, Sedgwick County. Clothing, Poultry, Round-Up 1932, National Club Congress 1932.

DOROTHY TEETER, Grant County. Clothing, Leadership, Round-Up 1931-32.

HELEN MONFORT, Allen County. Canning, Room Improvement, Supper Club, Leadership, Dairy and Clothing Judging Work, Round-Up 1930-32, National Club Congress 1930.

CEDRIC JOHNSON, Barton County. Round-Up 1930-31-32, County Health Champion 1931.

EDLA HOSTETLER, Harper County. Round-Up, Demonstration and Judging Team Work.



RUTH PHILLIPS, Lyon County. Clothing, Baking, Canning, Supper Club, Leadership, Round-Up 1929, 1932.

JOHN ARY, Edwards County. Poultry, Crops, Round-Up 1929, 1932, National Club Congress 1929.

MAUDE WHITMORE, Lyon County. Canning, Clothing, Baking, Supper Club, Round-Up 1928, 1930-32.

LORENA LAMBERTSON, Saline County. Clothing, Baking, Round-Up 1932.

GRACE VARNEY, Rice County. Clothing, Swine, Canning, Potatoes, Clothing and Baking Judging, Baking, Room Improvement, Garden, State Encampment, Round-Up 1932.

MERLIN GRISWOLD, Marshall County. Leadership, Judging and Demonstration Team Work, Round-Up 1929-32, American Royal.

ROBERT W. WEESE, Linn County. Sheep, Baby Beef, Leadership, Corn, Round-Up 1928, 1932, County Health Champion 1932.

WILLIAM RICE, Franklin County. Baby Beef, Leadership, Swine, Crops, Livestock Judging Work, Round-Up 1929-30-31-32, American Royal 1929, National Club Congress 1931.

RUTH BOWER, Neosho County. Demonstration and Judging Team Work, Round-Up 1932.

VIRGINIA WAGNER, Franklin County. Gold Medal for High in Livestock Judging Contest at Topeka, 1932, National Club Congress 29, 32, National Dairy Show at St. Louis 1930, American Royal '31, '32, State Baby Beef Champion 1932, Champion Showman of Junior Division at American Royal 1932, County Style Revue Champion 1932, Best Kansas Hereford and Best Kansas Angus at American Royal 1932.

MARIAN HAY, Saline County. Clothing, Baking, Demonstration and Judging Team Work, Round-Up 1931-32.

C. C. KNUDSON, Morris County. Corn, Swine, Baby Beef, Kafir, Leadership, Dairy Judging Work, County Corn Champion 1931, Round-Up 1930-31-32, National Dairy Show 1931.

HELEN BLYTHE, Morris County. Clothing, Baking, Supper Club, Leadership, Baby Beef, Demonstration and Judging Team Work, Round-Up 1930-31-32, American Royal 1931.





WAYNE D. TRAIL, Thomas County. Dairy, Swine, Round-Up 1932, Union Pacific Scholarship.

VIRGIL MCKEE. Swine, Baby Beef, Round-Up 1932.

JAMES F. BOOTH, Brown County. Baby Beef, Dairy, Swine, Judging Team, Round-Up 1930-31-32.

HELEN HAYWARD, Jefferson County. Clothing, Poultry, Round-Up 1930-31, U. P. Scholarship 1931.

FRIEDA MYER, Doniphan County. Baby Beef, Dairy, Clothing, Swine, American Royal 1925, 1930, Round-Up 1932.

NOEL ROBB, Ford County. Swine, Baby Beef, Gold Medal for Judging.

FAY LJUNGDAHL, Thomas County. Baby Beef, Clothing, Canning, Round-Up 1930, 1932, Clothing Judging.

DONNELL LANGVARDT, Geary County. Baby Beef, Corn, Leadership, Livestock Judging, National Club Congress, American Royal, State Corn Champion 1930, Round-Up 1931-32.

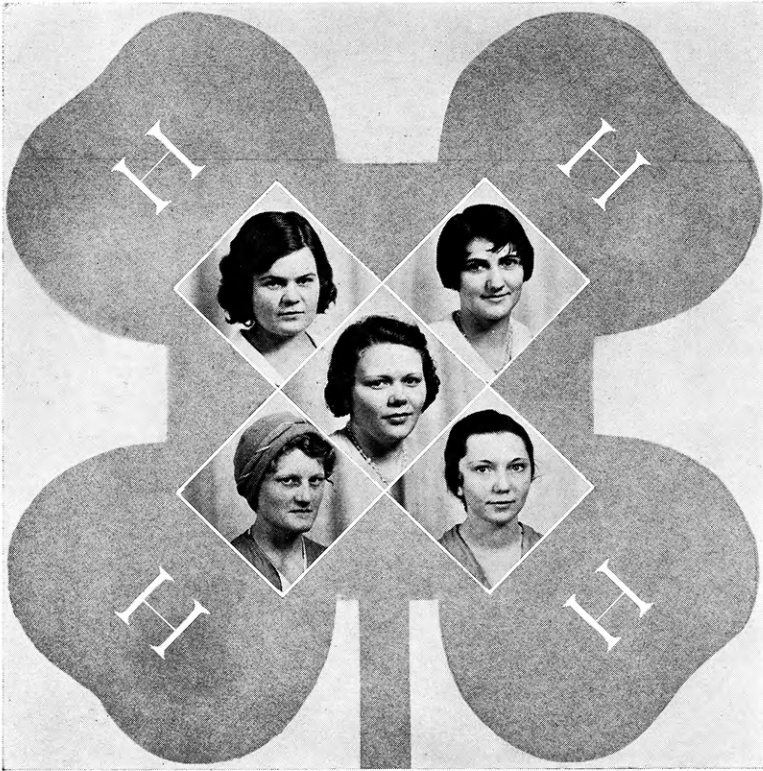
FRANCES HARSHMAN, Butler County. Baby Beef, Swine, Sheep, Baking, Judging Team Work, National Club Congress 1932, Round-Up 1931-32.

HATTIE MCDOWELL, Butler County. Poultry, Clothing, Baking, Leadership, Round-Up 1931-32.

JAMES BOYER, Butler County. Dairy, Baby Beef, Swine, Leadership, Round-Up 1930-31-32, State Encampment 1931, National Club Congress 1931.

DALE J. SHURTZ, Mitchell County. Baby Beef, Union Pacific Scholarship 1931.

CLARENCE BELL, Rawlins County. Swine, Baby Beef, Dairy, State Champion Dairy Judging Team 1931, National Dairy Show 1931, Round-Up 1929, 1931-32, Champion Swine Member 1929.



ESTELLE DENT, Saline County. Clothing, Dairy, Baking, Canning, Leadership, Hays Round-Up, Demonstration and Judging Work, American Royal 1930, State Encampment, Round-Up.

ALMA BOEHM, Miami County. Poultry, Canning, Clothing, Leadership, Round-Up 1930-32, American Royal 1931, Baking, Demonstration Team.

GLORENE BECK, Franklin County. Dairy, Clothing, Baking, Dairy Judging Teams, Round-Up 1930-31-32.

ETHEL IRIS COLLINS, Geary County. Clothing, Baby Beef, Canning, Poultry, Baking, Room Improvement, Demonstration and Judging Work, Round-Up 1926-27-30-31, American Royal.

EVELYN LOEWEN, Marion County. Clothing, Baking, Leadership, Round-Up 1931-32.

WHO'S WHO MEMBERS INITIATED AT HUTCHINSON ENCAMPMENT

ARTHUR GRILLOT, Labette County. Dairy, Swine, Corn, Soybeans, Demonstration and Judging Work, Round-Up 1930, State Encampment 1930-31-32, American Royal 1929.

HARBAUGH BEELEY, Comanche County. Poultry, Baby Beef, Round-Up 1929, State Encampment 1932, County Livestock Champion, National Club Congress 1932.

CLARENCE BROOKS, Montgomery County. Baby Beef, Swine, Kafir, Corn, Demonstration and Judging Teams, Round-Up 1930, American Royal 1931, National Club Congress 1932.

HELEN GUY, Montgomery County. Clothing, Baking, Poultry, Judging Team.

RAYMOND DUMLER, Russell County. Baby Beef, Corn, Kafir, Demonstration Teams, Round-Up 1931, Encampment 1932.

MARTHA ANN FREIDLINE, Montgomery County. Clothing, Canning, Baking, Gardening, Judging Work, Round-Up 1929, State Encampment 1931-32, National Club Congress, County Champion Canning Judging Team.

KENNETH HEAD, Montgomery County. Dairy, Garden, Demonstration and Judging Teams, Round-Up 1931, State Encampment 1931-32.

BILLY GUY, Montgomery County. Poultry, Dairy, Swine, Demonstration Team, Round-Up, State Encampment.

KENNETH WARD, Russell County. Baby Beef, Demonstration and Judging Work, Round-Up, State Encampment.





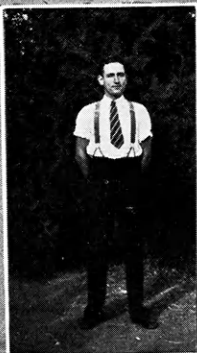
Who's



Whoot



Hutchinson Encampment Members



ARTHUR GRILLET
LABETTE CO.



HARBAUGH BEELEY
COMANCHE CO.



CLARENCE BROOKS
MONTGOMERY CO.



HELEN GUY
MONTGOMERY CO.



RAYMOND DUMLER
RUSSELL CO.



MARTHA FREIDLINE
MONTGOMERY CO.



KENNETH HEAD
MONTGOMERY CO.



BILLY GUY
MONTGOMERY CO.

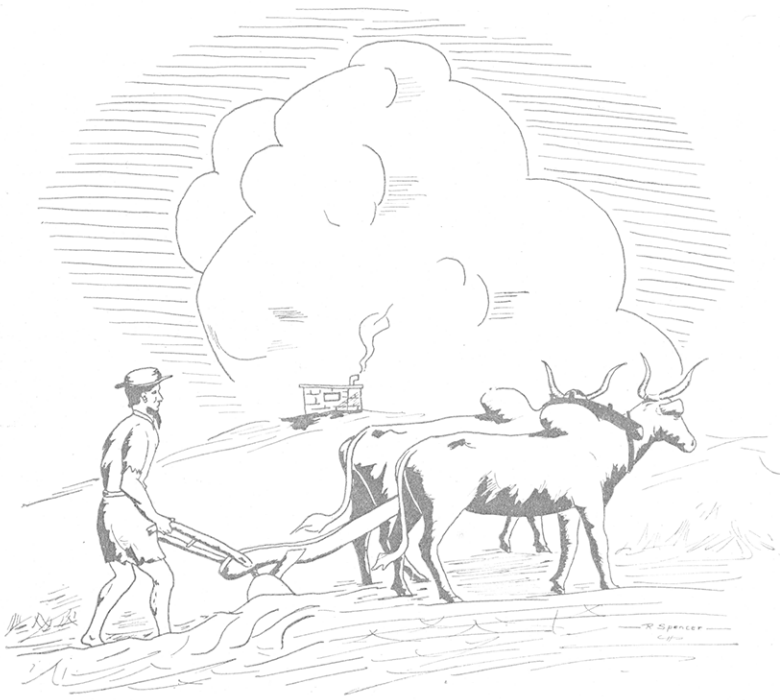


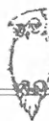
KENNETH WARD
RUSSELL CO.



Blank page in original document

CHAMPIONS





The Master 4-H Club



The Master 4-H Club, organized at Manhattan in June, 1929, is composed of those boys and girls who have won the outstanding leadership awards in 4-H Club work or those who have won trips to the National 4-H Club Encampment held in June each year.

During the State Round-Up each year the club has a meeting to discuss leadership problems, to renew friendships, and to initiate the new members.

The officers of the Master 4-H Club for the year 1932-33 are: President, Florence Melchert; Secretary-Treasurer, Ellen Blair.

This organization now has a membership of 21 boys and girls. The following is the list of members and the year they won their membership.

1927—Mary Tilton, Mitchell County; Frank Parsons, Sherman County; Frank Zitnik, Cherokee County; and Louise Lumb, Clay County.

1928—Nola McCormick, Sedgwick County; Lois Starbuck, Sherman County; Leonard Rees, Dickinson County; and Lloyd Davies, Lyon County.

1929—Ellen Blair, Franklin County; Ben Kohrs, Dickinson County; Mary Hellmer, Lyon County; and Boyd Worthington, Harper County.

1930—Gaylord Munson, Geary County; Jeanette Gamble, Montgomery County; Olga Larsen, Lincoln County; and Albert Pease, Bourbon County.

1931—Florence Melchert, Franklin County; Milton Kohrs, Dickinson County; Veva Crespin, Jewell County; George McColm, Lyon County; and Pius Hostetler, Harper County.

1932—Maurine Knouse, Lyon County; Morris Humes, Mitchell County; Vera McBratney, Sedgwick County; and Merle Crespin, Jewell County.

The 1933 delegates to the National Encampment in June will be: Lottie Keasling, Cowley County; Virginia Wagner, Franklin County; Ronald Robb, Ford County; and Joe Wetta, Sedgwick County.

Some of the boys and girls are attending K. S. C., some have graduated and others are at home; but no matter where they are, we may be assured that they are supporting the best type of 4-H Club work.



State and National Champs



JACK CARLIN
LIVESTOCK TEAM SALINE CO.



MARIE BOBBER
CLOTHING NEOSHO CO.



HUGH WILSON
LEADERSHIP MORRIS CO.



LOIS HOOPER
HEALTH SHERMAN CO.



VIRGINIA WAGNER
BEEF FRANKLIN CO.



MAURINE KNOUSE
LEADERSHIP LYON CO.
(NATIONAL CHAMP)



RUBY CORR
DEMONSTRATION TEAM AND NEWS
REPORTER SEDGWICK CO.



ARTHUR BELL
CROPS BOURBON CO.



NED MONROE
HEALTH COFFEY CO.



LOIS CARPENTER
DEMONSTRATION SEDGWICK CO.



ROY FREELAND
SWINE ATCHISON CO.



VINZEL SUNDGREN
LIVESTOCK TEAM SALINE CO.



HAZEL MANNING
CANNING MARION CO.



MILDRED STARTUP
STYLE REVUE SHAWNEE CO.
(NATIONAL CHAMP)



WIANETA GUTHRIE
CANNING BOURBON CO.
(NATIONAL CHAMP)



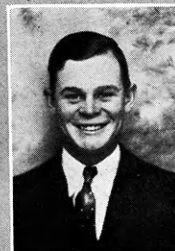
FRANK MARCEY
SHEEP GEARY CO.



NELSENE FROMAN
BAKING SEDGWICK CO.



MARGARET KOHL
HOME ECONOMICS SEDGWICK CO.



RALPH DENT
LIVESTOCK TEAM SALINE CO.

Leader of Merit



Maurine Knouse, Lyon County, has been a 4-H Club member for 10 years and leader of her club since 1929. She has completed projects in clothing, baking, canning, poultry, room improvement, baby beef, and leadership. She has made an unusual record in exhibition thus winning 117 ribbons, included among which are champions, reserve champions, as well as many firsts and seconds.

She won a trip to Chicago in 1928 as State clothing champion, and she has won county championships in both baking and canning.

In 1931 she became State 4-H Leadership champion and was awarded a trip to Washington, D. C., to attend the National Club Camp by the Kansas Bankers' Association.

She has participated in judging and demonstration team work and has trained many successful judging and demonstration teams.

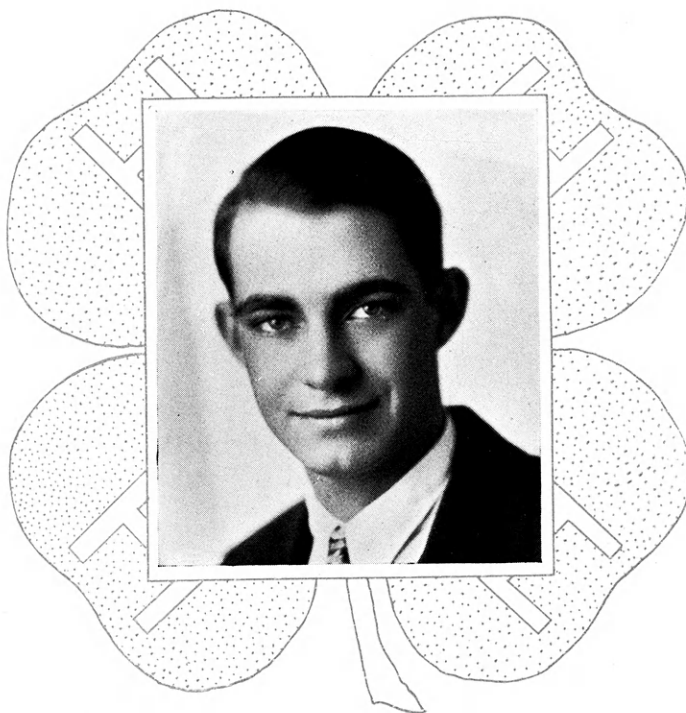
She co-operates and participates in Farm Bureau Work, Church, Y. W. C. A. and Girl Reserves.

In 1931 she won first prize on her essay "Highway Safety," in a contest sponsored by the Grange.

She has kept 4-H Club organization and community ahead of her personal gain and has developed leadership that will carry on when she leaves her community. In view of this fact, in 1932 she received the premier honor in 4-H Club leadership—the Moses Leadership Trophy.



Leader of Merit



Lloyd Gugler, Dickinson County, has been a 4-H Club member for seven years and leader of his club since 1928. He has completed projects in baby beef, poultry, sheep and leadership. He has been a member of livestock judging teams that have made a very creditable showing at State Fairs and County shows.

Lloyd won a trip to Chicago in 1927 as State baby beef champion. He has also won trips to the American Royal Conference and to the State 4-H Club Round-Up.

Lloyd has been an exceptional 4-H Club leader. His club has always made a very creditable showing in the number of projects carried and the high per cent of completions made each year. The judging and demonstration teams he has trained have won honors at both state and county fairs. His club plans in advance a yearly program which includes all the various activities that are sponsored in 4-H club work. The tours, picnics, and achievement days of which he is in charge are always successful, indicating efficient leadership.

Besides his club work he is much interested in community activities which include, church and school. He is treasurer of the Lyon Epworth League, secretary of local Civic Service League, vice-president of the Dickinson County Teachers' Association, and teacher of a Sunday School class of boys. He is held in high esteem by all who know him.

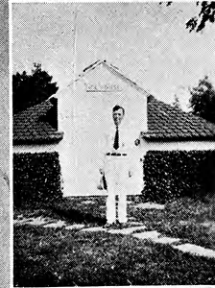
National Camp Snaps



MERLE AND MORRIS



MONUMENT AT ARLINGTON



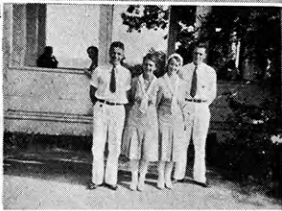
COOLING OFF



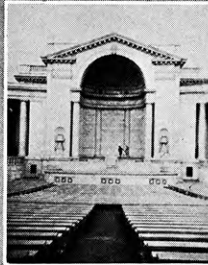
MT. VERNON



"KANSAS" AT WASHINGTON



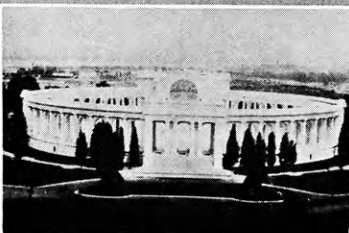
1932 DELEGATION



AMPHITHEATER PLATFORM



BACK OF MT. VERNON



ARLINGTON AMPHITHEATER



THE MALL



THE FIRST GLIMPSE



National Encampment



Maurine Knouse, Lyon County; Vera McBratney, Sedgwick County; Morris Humes, Mitchell County, and Merle Crispen, Jewell County, together with Miss Mabel Smith and Mr. M. H. Coe, participated in the sixth National 4-H Club Encampment at Washington, D. C., in 1932.

Attendance at this camp, together with the trip, is an honor bestowed each year on 4-H Club members who have excelled in their 4-H leadership work.

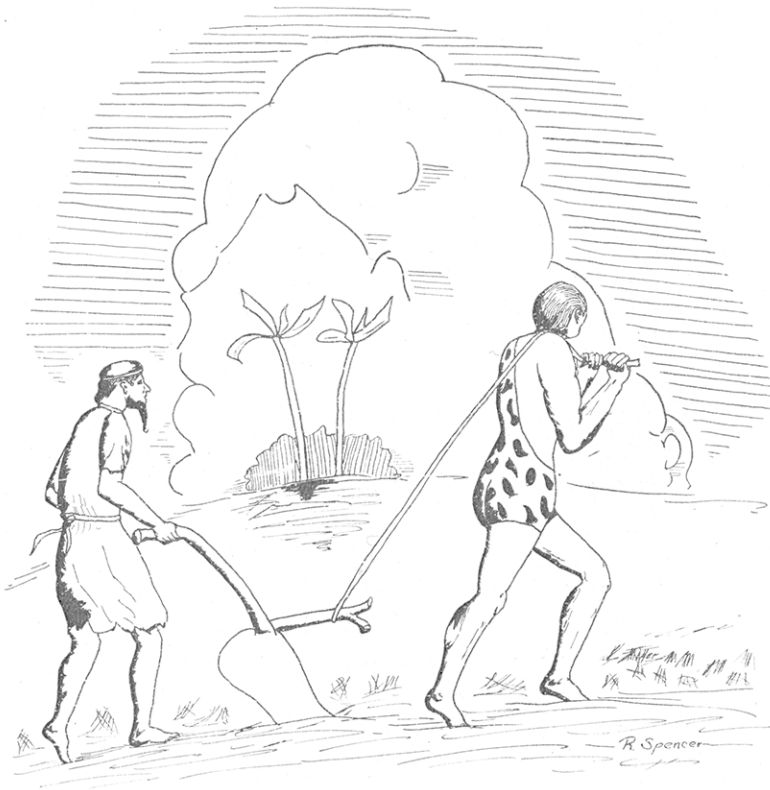
The camp was held on the grounds of the Smithsonian Institution. The program consisted of inspirational discussions, assemblies, campfire programs, and tours. Some of the places visited were: Beltsville Experimental Farm, Library of Congress, White House, Capitol Building, Mount Vernon, Arlington Cemetery, Washington Monument, Lincoln's Memorial, Bureau of Printing and Engraving, and the Smithsonian Institution.

After camp was over the Kansas delegation went to Philadelphia. Here they visited many historic places including Independence Hall. From Philadelphia an overnight trip was taken to Niagara. In the afternoon of that day all enjoyed a trip that took them through Canada to Detroit, by evening. They went from Detroit to Chicago, spent a day in Chicago, and came home after two weeks of inspirational fellowship.



Blank page in original document

COUNTIES

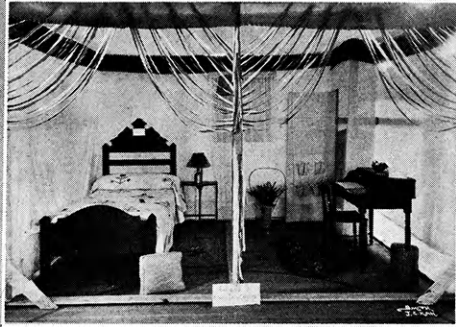




Geary



JUDGING BEEF CATTLE
BETTER LIVESTOCK DAY



ROOM IMPROVEMENT BOOTH
AT STATE FAIR



ATTENDING -
STATE ROUND-UP



COUNTY WHOS WHO CLUB



COUNTY
ORCHESTRA



STUDYING HOW TO
LANDSCAPE



COUNTY CAMP



4-H BOY TURNS UNDER
SWEET CLOVER



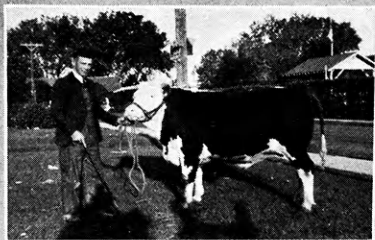
MARGARITE GISH
PRESENTS HER WORK



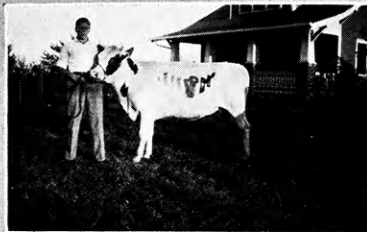
HOW TO -
CREEP FEED CALVES



Rice



RUSSELL HODYSON AND HIS CALF



ERWIN HAHL AND HIS AYRSHIRE



CANNING JUDG. TEAM



HIGH CLOTHING JUDGE HUTCHINSON



HEALTH CHAMPIONS POULTRY PROJECT



CLOTHING JUDG. TEAM, 1ST TOPEKA



COUNTRY PALS



BAKING DEM. TEAM



BON AMI- 4-H CLUB



JOLLY PEPPERS



BEEF FEEDING DEMONSTRATION



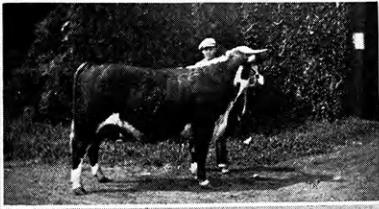
CO. 4-H PARADE



HEALTH DEMONSTRATION



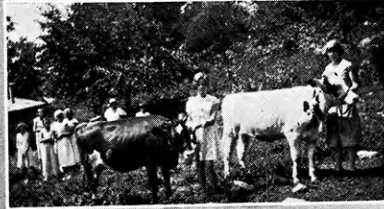
Douglas



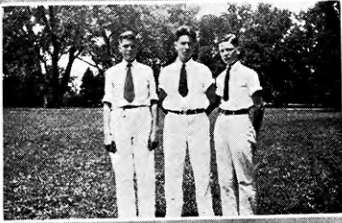
GEORGE HAVERSTOCK AND HIS CALF



CHICAGO
TRIP
WINNER



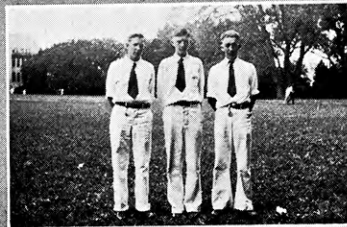
PRIZE WINNING HEIFERS



ROUND-UP GRAIN
JUDGING TEAM



UNION PACIFIC
SCHOLARSHIP
WINNER



ROUND-UP DAIRY
JUDGING TEAM



FIFTH IN STATE HEALTH
CONTEST



ROUND-UP DELEGATES



HIGH INDIVIDUAL
CANNING JUDGE
AT FREE FAIR



LEWIS DEITZ' CHAMPION DUROC



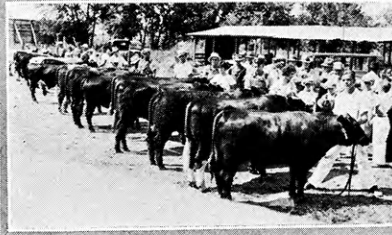
LONE STAR 4-H TOUR



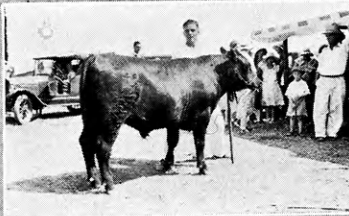
Crawford



BUSY BEE GARDEN TOUR



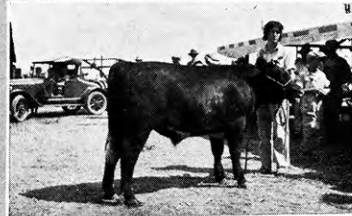
JUNIOR YEARLINGS AT CO. FAIR



BILL BEEZLEY'S PRIZE ANGUS STEER



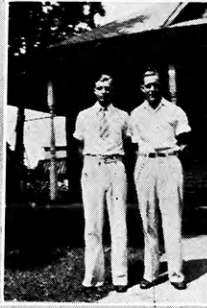
ESTHER
ENDICOTT



COUNTY BABY BEEF CHAMPION



SALLIE FLINT STATE
MUSIC APP. CHAMPION



MONMOUTH CONCRETE
DEM. TEAM



HEALTH CHAMPIONS



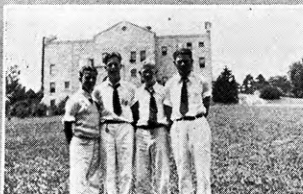
STATE FAIR POTATO CHAMP



EXERCISE AT CAMP



ROUND-UP TEAM



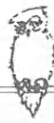
BOYS QUARTETTE



BERNICE SHAFFER



COUNTY POULTRY TOUR



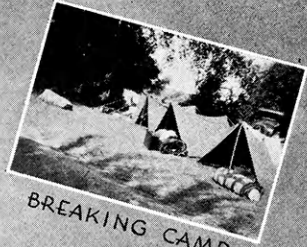
Russell



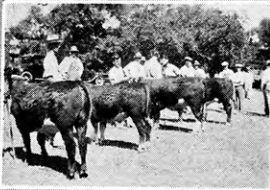
MAT MAKING AT CAMP



COVBOY SINGERS



BREAKING CAMP



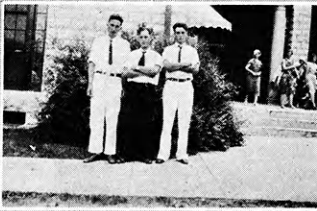
EXHIBITING AT THE
COUNTY 4-H FAIR



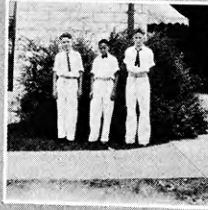
BANKERS, AWARD TO
HORNVIEW AS BEST
CLUB OF COUNTY



A STOP ON THE
COUNTY TOUR



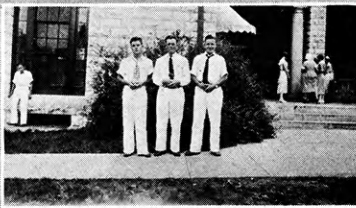
"WATCHING"



HAPPY
AFTER LUNCH



"WAITING"



LIVESTOCK JUDGING
TEAM AT ROUND-UP



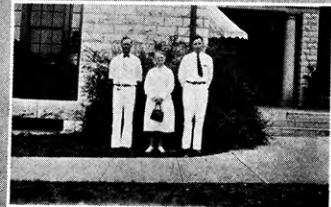
CLOTHING JUDGING
TEAM AT ROUND-UP



GIRLS AT ROUND-UP



COUNTY HEALTH
CHAMPIONS



ROUND-UP CHAPERONS



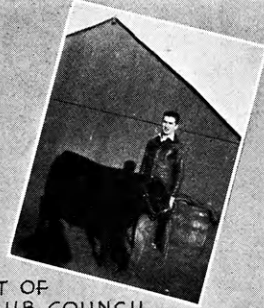
Shawnee



FREE FAIR
POULTRY CHAMPION



BOOSTER CLUB



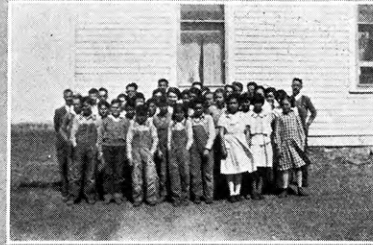
PRESIDENT OF
4H CLUB COUNCIL



SHAWNEE DELEGATION
AT THE ROUND-UP



WINNERS AT
ROUND-UP



KAW VALLEY 4H CLUB



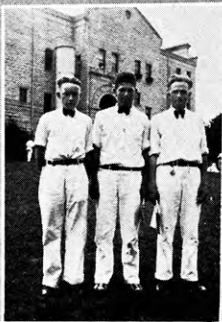
SILVER LAKE COMMUNITY CLUB



NATIONAL CLOTHING
CHAMPION



A GAME AT THE PICNIC



CROPS JUDGING TEAM



WORKERS AND WINNERS



GOOD-BETTER-BEST CLUB



CROPS JUDGING WINNER





Mitchell



MELVIN WILLIAMS
CHICAGO TRIP WINNER



MARTHA Mc MAHAN
COUNTY HEALTH CHAMPION



FRANK JORDAN
COUNTY HEALTH CHAMPION



ROUND-UP-TEAM



WATERMELONS AT CAMP



AT COUNTY CAMP



GRAND CHAMPION GROUP
AT KANSAS STATE FAIR



FIRST PRIZE BARROWS MITCHELL COUNTY
4-H SHOW



CHAMPION HEREFORD
GROUP KANSAS STATE
FAIR



CHAMPION SHORTHORN
KANSAS STATE FAIR



EUREKA CLUB FLOAT MITCHELL COUNTY 4-H SHOW



ELOISE PETERSON
COUNTY STYLE
REVIEW CHAMPION



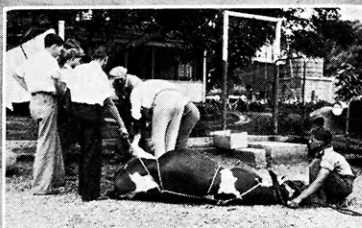
Cowley



ROUND-UP GROUP-1932



MABEL BAIRD
CHICAGO TRIP
WINNER



SPECIALIST DEMONSTRATES
ON DAIRY TOUR



LONE OAK MODEL CLUB
MEETING GROUP



LOTTIE KEASLING
WASHINGTON
TRIP WINNER



EARLY MORNING
EXERCISE



LOTTIE MOTHERS TWO LAMBS



LOTTIE'S POULTRY PROJECT



WINNER HOLIDAY SEASON
PARADE



BABY BEEF SHOW-BURDEN



GLEASON PARSONS' CHAMPION
TON LITTER

Saline



CAMBRIA CAMP



"PETE" SUNDGREN



CAMBRIA CAMP



BETTY MUIR



THE TRIO



THE DENTS



MARJORIE HOCKING

ALICE SMITH
MAURINE SPENCER

THE 1933 PLEASANT VALLEY CLUB



BAVARIA-LIVE WIRE 4H TOUR

Linn



WOOLIES & JERSEYS



TALL CORN GROWERS



COUNTY CHAMPIONS



COUNTY WINNERS



LOLA MAE WARD
JUNIOR LEADER



HARMONICA CHAMPION



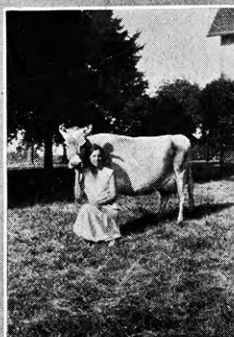
MAKE 'EM AND WEAR 'EM



MANTY 4-H CLUB JUDGERS



PEPPY WORKERS CLUB



ALWAYS CHAMPION



A PRIZE WINNER



Sherman



COUNTY PICNIC



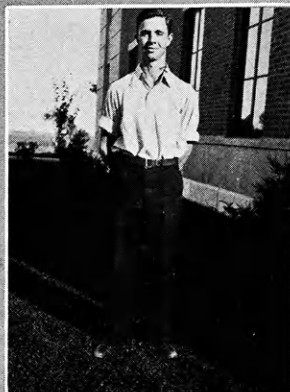
SINGING GRACE
AT CO. WIDE 4-H CAMP



HELEN SHANER
STYLE SHOW CHAMP



LOIS HOOPER
STATE HEALTH CHAMP



LOWELL DUELL
HIGHEST IN SWINE PROJECT



PEARL GERNHEART
HIGHEST IN CANNING PROJECT



GLEN SHELTON
- AND HIS RESERVE GRAND CHAMPION



DENVER CHAMPIONS





Ford



PRES. OF
CO. WHO'S WHO CLUB



CHICAGO TRIP WINNER



CO. SWINE CHAMP



CARL, EARL, HELEN
AND CALVES



RONALD ROBB
WASHINGTON TRIP WINNER



OUT OUR WAY OFFICERS



LINCOLN JAYHAWKER QUARTETTE



CATHERINE EVANSON



NOEL ROBB HEALTH CHAMP
AND ROBERT MCCONELL



THE "SWEETHEART" OF
MUSIC APPRECIATION



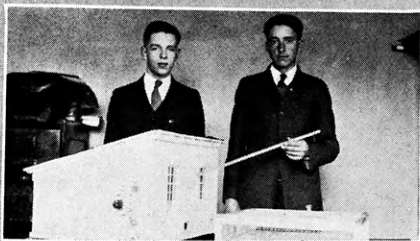
HIGH SELLER AT KANSAS NATIONAL



CO. CLOTHING CHAMPION



Bourbon



POULTRY DEMONSTRATION TEAM
FIRST IN CLASS AT TOPEKA



CLOTHING DEMONSTRATION TEAM
SWEEPSTAKES AT TOPEKA



LOUISE BLUBAUGH
STATE LEADERSHIP
GOLD PIN AWARD



CLAIR BLUBAUGH
AMERICAN ROYAL
TRIP WINNER



ARTHUR BELL
STATES CROPS
CHAMPION



WANETA GUTHRIE
COUNTY, STATE, REGIONAL AND
NATIONAL CANNING CHAMPION



KATHREEN HOWARD
STYLE SHOW CLASS
WINNER



KATHLEEN CONNOLLY
DANFORTH SCHOLARSHIP



GAYLE VAN SICKLE
DANFORTH SCHOLARSHIP





Lyon



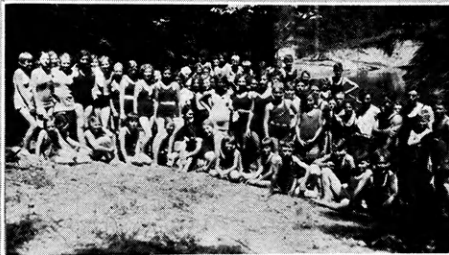
AT CAMP



MAURINE KNOUSE
MOSES TROPHY
WINNER



MARGARET MCOLM
AND CHAMP LAMBS



BATHING AT COUNTY CAMP



STATE BOY MUSIC
APPRECIATION
CHAMP



TOM ANDERSON
AND CHAMPION PIG

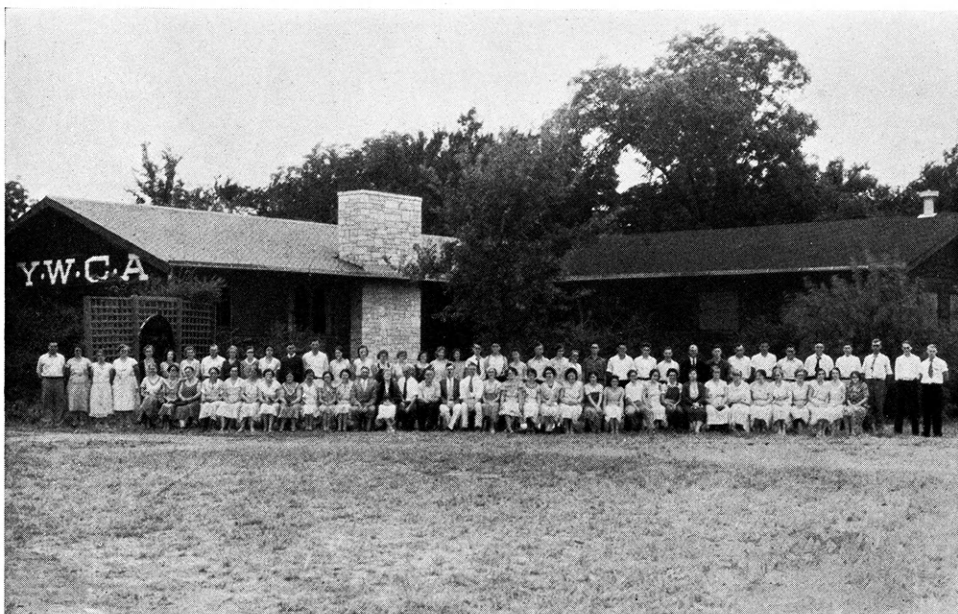


MARIE PETERSON
MUSIC
APPRECIATION





Sedgwick



DEDICATED TO THE FURTHERANCE OF 4-H CLUB
WORK IN KANSAS

Second Annual 4-H Leaders Training Camp

August 29-31, 1932

INSTRUCTORS

M. H. Coe, "Organization."

R. A. Turner, "Singing and Extension Development."

Margaret Streeter, "Music Appreciation."

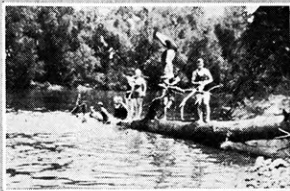
George Gemmell, "Community Problems."

Albert Pease, "Recreation."

Charlotte Lee, "Dramatics."



Montgomery



CO. CAMP AT
MOODY ROTH



ALMA RICHMIRE



LOVENIA WARNER



HELEN GUY CO. STYLE SHOW CHAMP
2ND AT HUTCHINSON



CLARENCE BROOKS
CHICAGO TRIP WINNER



BERTHA SCHIPPER



CAROLINE

AROUND THE CALENDAR

January

300 club members enrolled in 14 4-H Clubs. All clubs organized on community basis.

February

All clubs built yearly programs and set goals.

March

County model club meeting contest held with 13 clubs taking part. Double C Club won gavel for county championship.

April

Montgomery County entered model club meeting contest winning first place at Cherryvale and third in the district.

May

County health contest held. Jack and Helen Featheringill won county championships and free trip to Round-Up. 4-H Club girls served dinner for 200 mothers at annual Coe-Day.

June

20 Montgomery county members at the Round-Up. They won first on baking judging, second on chorus, second on demonstration, and eight were selected for the State Who's Who 4-H Club.

July

County 4-H Camp at Moody-Roth. Wideawake 4-H Club held their annual business men's night.

August

12 4-H Club booths at the county fair. Held County contests in judging and demonstration teams to pick Hutchinson trip winners.

September

28 Montgomery County 4-H members at the State Fair Encampment. Five booths, and a judging and demonstration team at the Topeka Fair, and eight booths, 5 judging teams, and 5 demonstration teams at the Hutchinson Fair.

October

Farm Bureau Fair in Independence. Eleven 4-H Club booths. 4-H clubs assisted with township meetings and held local achievement programs.

November

County-wide 4-H Club achievement banquet as guests of Coffeyville Chamber of Commerce. 300 in attendance. Three leadership pins, 32 achievement pins, 4 charters and 4 gold seals awarded.

December

Clarence Brooks won Chicago trip.





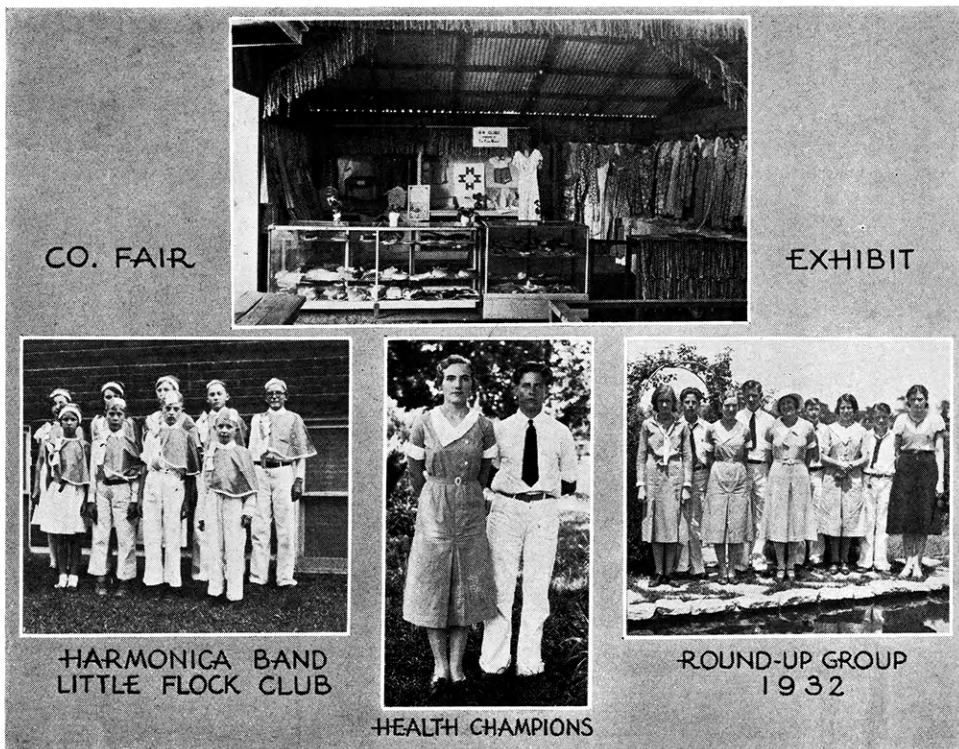
Who's



Whoot



Greenwood



CLUBS

Spring Creek Farmers, Little Flock, Highland Lads and Lassies, Flint Hill Workers, Catalpa Hustlers, Madison, Shell Rock, Quincy Cheerful Workers, Severy Boosters, Honey Creek Bees.

PROJECTS OFFERED

Clothing I, II, III, IV
Baking I, II
Supper Club
Room Improvement I, II
Canning I

Garden (varieties specified)
Corn (Pride of Saline and Midland Yellow)
Soybeans (A K variety)
Pig (Barrow, gilt, sow and litter)
Beef (Heifers, and steer calves)

ACTIVITIES

4-H Council of older members
County Adult Committee
Delegation to State Round-Up
Garden Show
County Fair Exhibits
Health Contest
Achievement Day
Achievement Pins presented by the Farm Bureau to the 25 highest ranking members in the county.

AGENTS

Mr. J. W. Farmer, County Agricultural Agent.
Miss Ethel Watson, Home Demonstration Agent.



County Snaps



FIRST AID INSTRUCTION AT CAMP



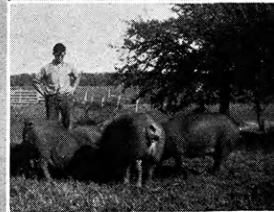
LINN CO. PEPPY WORKERS



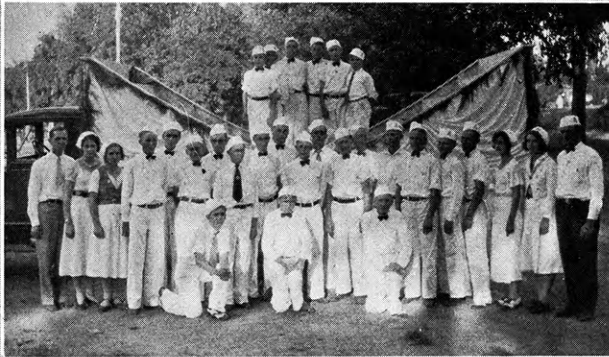
EDGAR GREEN'S START OF A JERSEY HERD



VIRGINIA WAGNER AND HER FAT LAMB



KENNETH UNGEHENER, LINN CO. WITH HIS 2640LB. LITTER



TIPTON 4-H CLUB BAND MITCHELL CO. 4-H SHOW



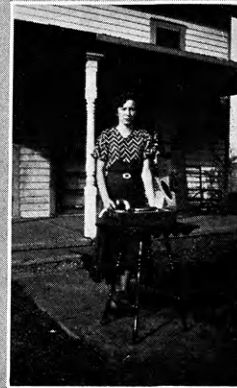
LINN CO. BAKING JUDGES



KICKAPOO BALL TEAM LEAVENWORTH CO.



SEDGWICK CO. BAKING DEMONSTRATION TEAM



DOROTHY COX MUSIC APPRECIATION LEADER





County Snaps



BEEVER VALLEY CHAMP BEEF GROUP



MITCHELL CO. PICNIC



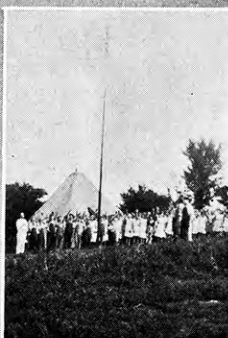
ROSES AND ROMANCE



JANETTE MALONE
AND HER LAMB



SPENCER BROS. LEAVENWORTH CO.



FLAG RAISING AT
TONGANOXIE CAMP



GREENWOOD CO. LEADERSHIP MEETING



CRAWFORD COUNTY
AREN'T WE HAPPY



SALINE COUNTY
DAIRY JUDGING TEAM



RICE CO. POULTRY CHAMP



"LINN GINGERBREAD GIRLS"



OUR ADVERTISERS





Capper's

DESIGNERS
ENGRAVERS

FOR *more than thirty years* **WE**

have been the designers and engravers for a discriminating clientele who appreciate the quality of fine workmanship. Have kept a rigid standard for fine printing plates made possible by trained craftsmen.

TOPEKA, KANSAS



KEEPING STEP WITH THE 4-H YOUTH OF KANSAS

WE HAVE THE EQUIPMENT—

To help you in the sale of your livestock at the 4-H auctions and—
later with the carload from your own farm.

NATIONAL LIVE STOCK COMMISSION COMPANY

Stock Yards

Kansas City

A Sunday School teacher went to Chicago to get a banner for the class room in the church. On arriving, he discovered that he had lost the inscription and the size of the banner. He sent a telegram to his wife to find out the wording of the inscription and the size of the banner. The telegram he received read as follows: "Unto us a child is born, 3 feet wide and 8 feet long." It is reported that the husband never came back.

* * *

Mary Jordan received a letter from New York today, but she was unable to read parts of it. Someone explained that it was so mushy that it all ran together.

* * *

Lebert Shultz: "My girl's ancestors came over on the Mayflower."

John Latta: "That's nothing to brag about, they didn't have immigration laws then."

Jessie Dean is going with a boy who is quite bashful. One time he slipped up behind her and held his hands over her eyes. "I'll give you three guesses and if you don't guess who it is I'll kiss you." "King Solomon, King George IV, or Rudy Valee," Jessie replied.

* * *

Ethel Bellis seems quite attached to a certain young man who was heard to remark that "Kissing a girl is just like opening a bottle of olives. The first one is hard to get but it's a cinch you'll get the rest."

* * *

George Rogler to his roommate, Walter Lewis, who was tossing around in bed and seemed very nervous about 1:30 early one Sunday morning: "What is the matter with you anyway? Why don't you go to sleep?"

Walter Lewis: "Let me give you some advice. If you don't want to marry a girl, don't ask her."



—Wire Fencing—Barbed Wire—Gates—
 —Wall Board—Cream Separators—Paints—Wagon Boxes—Scales—
**MAKE YOUR DOLLAR
 BUY
 MORE!**
 We Save You Money by Dis-
 tributing All Kinds of
**Farmer and
 Stockmen's
 Supplies**
 Direct from Factory to You
 Send for FREE Catalog
**Western Mercantile
 Company**
 H. S. Bachelor, Pres. and Mgr.
**TWO BLOCKS EAST OF
 LIVE STOCK EXCHANGE
 1600 LIBERTY
 KANSAS CITY, MO.**
 —Grain Bins—Feed Grinders—Hog Oilers—Fence Posts—Bale Ties—
 —Harness—Shingles—Roofing—Nails—

Junior Coe (asking for third helping of potatoes): "Mother, pass the potatoes."

Mrs. Coe: "Junior, you're a little pig."

Mr. Coe: "Junior, you know what a pig is, don't you?"

Junior: "Sure, a pig is a hog's little boy."

* * *

Walter Babbit, speaking to a farmer with a large orchard who was engaged at the time in spraying a tree.

Walter: "Your methods of cultivating are hopelessly out of date. Why, I would be surprised if you even got 10 bu. of apples from that tree."

Farmer: "So would I. It's a pear tree."

* * *

"The story of Jonah and the whale Is one that's reached renown And the moral of that good tale is: You can't keep a good man down."

Milton Kohrs says that love is like drinking bootleg liquor. You don't know whether or not it is the real thing until you go blind.

* * *

The coup was parked at the side of the road and I drew near. I could hear noises of a struggle within. I could hear the rustle (probably of silk) and the muffled talking of a man. The body of the car swayed to and fro. I heard a curse and then again the muffled panting. I crept softly around to the side; looked in the window and saw—Wilfred Pine trying to fold a road map the same way it had been folded.

* * *

Mary Jordan: "When you tell a man something it goes in one ear and out the other."

Duke Regnier: "Yes, but when you tell a woman something it goes in both ears and out the mouth."

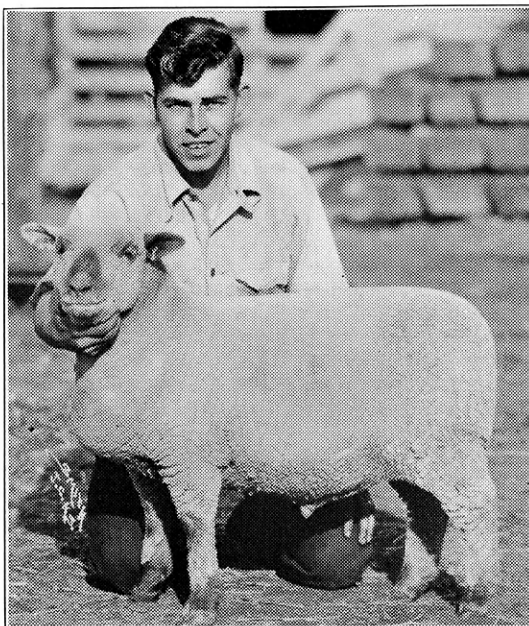


GREETINGS

*When visiting Kansas City
 make yourself at home with
 your own firm, Producers'
 Commission Assoc., Room
 100, Livestock Ex. Bldg.,
 Kansas City, Missouri.*

O. O. Wolf, Sec'y-Treas.

W. T. Angle, Manager



Champion Fat Wether of junior divisions 1932 American Royal Show. Shown by Harry Crandall, Jr., Cass City, Mich. Sold by John Clay & Co. at \$45 per cwt. to Nance Cafe, Kansas City; weight 110 lbs.

CATTLE—HOGS—SHEEP

*When you have them to ship
or want stockers and feeders*

IT PAYS TO DEAL WITH
JOHN CLAY & COMPANY
KANSAS CITY STOCK YARDS

We also have our own completely equipped offices at Chicago,
Omaha, St. Joseph, St. Louis, Ft. Worth, Denver, Sioux City,
St. Paul, Ogden.

Established in 1886

LIVE STOCK PRODUCTION

is closely allied with

LIVE STOCK MARKETING

The success of one depends upon the efficiency of the other

Livestock production methods have taken great strides in the past quarter century. Institutions of agricultural learning have taken their place among the foremost specialized educational agencies.

Methods of meat processing have made similar progress. A vast meat industry has been founded that supplies fresh meat daily to a great nation.

To keep abreast of such monumental developments the Kansas City Stock Yards Company has built marketing facilities to meet the needs of the industry.

As the years roll by and new generations take over the multiple reins of the livestock industry, rest assured that the Kansas City Stock Yards Company and the American Royal Live Stock Show will carry on!

***The Open Competitive System of Selling Live Stock
Brings the Highest Prices***

4-H CLUB MEMBERS

THE KANSAS CITY STOCK YARDS CO.
and
AMERICAN ROYAL LIVE STOCK SHOW
Are YOUR Institutions



COMPLIMENTS OF

John Deere Plow Company

Kansas City, Mo.

When Ruby Corr was at her home one summer, she had charge of the flock of chickens. She couldn't understand why the roosters always died, but after a time it was discovered she was feeding the flock "Lay Eggs or Bust".

* * *

Frank G. Parsons: "O' Doctor, I feel awful! I can't eat, can't sleep, can't concentrate on my studies, and other work is a nightmare. What do you prescribe?"

Doctor: "Propose to the girl and get it over with."

* * *

"Don't blame the editorial staff,
If they fail to make you laugh,
If they have not obtained the news,
To tickle you and amuse;
If they have given you an ancient jest,
Try to remember they did their best."

New Way to Catch Fish

John Latta has discovered a new way to catch fish. He leaves all hooks and lines at home; takes his good sized plug of tobacco and a club and, boy, does he catch fish! How? Why he feeds the tobacco to the fish and when they come up to spit, he cracks them over the head with the club.

* * *

"Why is a kiss over a telephone like a straw hat?"

"Because it isn't felt!"

* * *

"Did you enjoy your visit to church last night?"

Wayne Jacobs: "No, I never sleep well the first time I'm in a strange place."

* * *

Edwin Lamb thought that Long Island Sound came from a saxophone.

COMPLIMENTS OF Capper Printing Company

Training, such as that received through 4-H Club work, is worthy of the highest praise.

We congratulate the boys and girls, making up the membership of the 4-H Clubs, for the fine work they have done and are doing.

The services of our organization are at your disposal—we invite you to make use of them.

**FARMERS UNION LIVE
STOCK COMMISSION CO.**

Kansas City and Wichita

G. W. Hobbs, General Mgr.

Herbert Clutter: "I always kiss the stamps on your letters, because I know that your lips have touched them."

The girl at Larned: "Oh dear! And to think that I always dampen them on Fido's nose."

* * *

Doctor Siever: "Put out your tongue—more than that—all of it."

Helen Hanson: "But, doctor, I can't. It's fastened at the other end."

* * *

Found on a registration card:

Question—"Give the names of your parents."

Harold Kugler's answer: "Mamma and papa."

* * *

Irishman, just getting in at New York, observes two men fighting in the street. He hurriedly finds a policeman and asks in a most inquiring voice, "Is this a private fight or can anyone take part?"



KNIGHT & TICE SHEEP COMMISSION COMPANY

Stock Yards, Kansas City, Mo.

We handle nothing but sheep and those on strictly a commission basis, neither speculating nor feeding on our own account.

**Always a Salesman in the
Truck-in Division.**

**Laurence E. Tice
Vint Shalkoski**

HOTEL SAVOY NINTH & CENTRAL STS. KANSAS CITY, MO.

First class in every respect. Located conveniently to street cars and amusement places in the downtown district. Catering especially to 4-H Club. Rates —For large double rooms with bath, 2 full-size beds accommodating four to the room, 60c per person. Rooms with bath with one full-size bed accommodating two to the room, 75c per person. The above prices are for 4-H boys in groups of two or more only.

Coffee Shop in Connection

Pius Hostetler: "Is this the first time a boy ever kissed you?"

Marie Antrim: "Sure! Why do you boys all ask that same question?"

* * *

Frank Burson was going to the dance the other night in a taxi. Suddenly the driver stopped in the center of the street..

Frank: "What is the matter?"

Driver: "I thought the lady said, stop."

Frank: "Well, she wasn't talking to you."

* * *

Theophilus Whifflebaum had recently become the father of twins. The minister stopped him on the street to congratulate him. "Well Whifflebaum," he said, "I hear that the Lord has smiled on you."

"Smiled on me?" repeated Whifflebaum. "He laughed out loud."

19th Annual KANSAS FREE FAIR TOPEKA

**MAURICE W. JENCKS
Executive Secretary**

An All-State Institution
standing squarely behind
the 4-H Boys and Girls
of Kansas.

**SEPT.
11 to 16
1933**

**See the 4-H
Premium
Book for
1933**



Marie Antrim: "Ethel, why is it you call your sweetie Pilgrim?"

Ethel Belus: "Cause every time he comes he makes more progress."

* * *

Instructor: "What do you think of Mussolini?"

Grace Burson: "I've never been out with him."

THE
GUIDE
TO



HIGH
GRADE
FOODS

QUALITY

IS THE FIRST REQUISITE
OF SOUND ECONOMY

The *Best Foods* you can buy are the most economical in the end. The *Lee Trade Mark* is your assurance of *Highest Quality*, the pleasure of good living—sound economy!

The Lee Trade Mark is the Guide to More than 300 High Grade Foods

WE ARE 4-H CLUB BOOSTERS

If you want good sales

TRUCK

Your sheep and lambs

To

**The W. M. LEITCH SHEEP
COM. CO.
Kansas City**

40 years of highest quality production has enabled Columbian to grow to unquestioned leadership among manufacturers of sheet metal products.

Write for the
Columbian
Farm Equip-
ment catalog.
It's free!

COLUMBIAN STEEL TANK COMPANY
EST'D 1893
1401-1621 W. 17TH STREET
KANSAS CITY, U.S.A.



The name
"Columbian" is
your guarantee
of satisfaction
in every way.

Howard Moreen: "Do you play golf?"

Florence Melchert: "Oh, dear, no; I don't even know how to hold the cad-die".

* * *

First little boy: "Dr. Jones brought our baby."

Second little boy: "We take from him too."





Who's



Whoot



Sears, Roebuck and Co. Mail Order Plant and Retail Store—15th at Cleveland,
Kansas City, Mo.

***Sears Brings
the World's Markets
as Near to You
as Your Mailbox!***

IT'S such a delightful convenience to shop by mail! To sit down . . . in
your own home . . . and make your selections from our wonderfully
complete catalog! With your family right there to consult if you wish! No
hurried shopping! Time saved! **MONEY SAVED!** And we pride ourselves
on the record short time it takes to deliver your order to your home!

**4-H Club Members Are
Always Welcome at Sears!**

When You Come to Kansas City, come to Sears! We'll take you through the Mail
Order Plant! We'll show you how mail orders are filled and speeded on their way!

Sears, Roebuck and Co.

15th St. at Cleveland

Kansas City, Mo.

Retail Stores in These Kansas Towns:

WICHITA

TOPEKA

HUTCHINSON

KANSAS CITY



Commonwealth
HOTEL

12TH AND BROADWAY

400
BEAUTIFULLY FURNISHED
ROOMS
EACH WITH BATH
\$2. AND UP
SERVICE SUPREME
APARTMENTS & KITCHENETTES
GARAGE AND PARKING
Popular Priced COFFEE SHOP

RADIO
IN EVERY ROOM
• • • •

H.C. KYLE *Manager*

KANSAS CITY

"4-H Headquarters"

**RULES OF HAZEL-ATLAS GLASS COMPANY'S NATIONAL
CANNING CONTESTS OPEN TO 4-H CLUB MEMBERS
WILL BE MAILED UPON REQUEST**

**Write Georgia W. Hess, Director Educational Department For
Complete Information.**



"ATLAS" JARS

"Atlas" Mason Strong Shoulder

"Atlas" E-Z Seal

"Atlas" Mason (square style)

"Atlas" Good Luck

"ATLAS" WHOLEFRUIT (Wide Mouth)

**Manufactured by
HAZEL-ATLAS GLASS COMPANY, Wheeling, West Virginia**

Miss Hogue (to Mr. Schoth as he entered the office): "Oh, Mr. Schoth—do you know what just arrived this morning?"

Mr. Schoth: "A new baby?"

Miss Hogue: "Oh! goodness! no! We weren't even expecting one."

* * *

Carmey Page, the would-be cowboy of the club, entered the hardware store and asked to buy a single spur.

The clerk let his curiosity get the better of him so he asked why he wanted only one spur.

"Because," Carmey replied, "If I can get one side of the horse to go the other side will follow."

* * *

Dean Call: "How many hours of work are you carrying?"

Ben Kohrs: "I am carrying three and dragging thirteen."

Nevlyn Nelson seated in the parlor at his girl's home. He said to the light,

"Either you or I, old fellow,

Will get turned down tonight."

The light flickered, faded, and went out.

* * *

Esther Johnson drove up to a filling station: "I want two quarts of oil," she said.

"What kind, heavy?" asked the attendant.

"Say, young man, don't get fresh with me," she replied.

* * *

Blanche Tomson: "You must not kiss me in sight of my parents."

Marvin Vautravers: "Why-er-ah—I have never kissed you."

Blanche: "I know, but just in case you do."

AUTOGRAPHS

□ □ □