

S

439 @ 24.50
 -501 @ 24.45
 -480 @ 24.40
 -543 @ 24.20
 -335 @ 24.10
 -515 @ 24.00
 -537 @ 24.00
 -496 @ 24.00
 -550 @ 24.00
 -510 @ 23.60
 -430 @ 23.10
 -425 @ 22.00

VS
 -837 @ 20.10
 -1060 @ 18.00
 -1360 @ 17.90
 -1145 @ 17.50
 -1475 @ 17.10
 -1195 @ 17.10
 -925 @ 17.00
 -1030 @ 16.70
 -1240 @ 16.60
 -1148 @ 16.60
 -1095 @ 16.50
 -1020 @ 16.10
 -1300 @ 16.10
 -1020 @ 15.70
 -992 @ 15.60
 -850 @ 15.60
 -762 @ 15.50
 -780 @ 15.10
 ----- 241.00
 ----- 241.00
 ----- 237.50
 ----- 237.50

MISSION

Marys,
Kans.

Salina

only

2:00 a.m. Cattle
 they are consign-

ogs 218 @ 21.30
 ogs 212 @ 21.05
 ogs 219 @ 21.15
 ogs 209 @ 21.55
 ogs 219 @ 21.45
 pigs @ 14.75
 pigs @ 14.50
 d pigs @ 14.50
 d pigs @ 13.75
 d pigs @ 14.00
 pigs @ 11.25

chers
 ON CO.
 40

11
used

Gardening Project

Judy Hlaus of Wilson had a landscape and gardening 4-H project to tend this summer. This is the first year the Hlaus children have not had cattle to take to fairs, says Mrs. Frank Hlaus, mother of Judy.

Bloom In Range Shape

Present condition of range feed in the western two-thirds of Kansas is the best for this time of year since 1962, according to the Kansas Crop and Livestock Reporting Service.

Ranges in some western areas are becoming dry and the feed reserve is low, the report stated.

Range feed in the western two-thirds of the state August 1 was 89 percent of normal, up 24 percentage points from a year earlier and eight points above the 1961-65 average.

Condition of cattle and calves August 1 was reported to be 87 per cent of normal in the western two-thirds of Kansas.

The condition of the animals was up 10 percentage points from a year earlier and two points above the 1961-65 average.

Good range feed condition has enabled stockmen to maintain their cattle in good condition, the report stated.

Dutch Get Most Milk Per Cow

The U. S. is still the biggest dairy producer in the world, but Holland gets more production per cow.

The Dutch got an output per cow of 9221 pounds, best in the world, according to a recent world dairy survey which included the 18 major dairy producing countries.

The U. S. had greatest total production at 120 billion pounds. France was second and West Germany third.

Dairy conditions were good in Western Europe the past year and not only was output up but consumption of fluid milk rose too.

Milk for cheese gained about 5%, but milk for butter production went down 2%.

Of the expected fall marketings of cattle and calves, 10 per cent were sold or contracted by Aug. 1 compared with 17 per cent a year earlier. The 1961-65 average is 10 per cent.

Sheep condition Aug. 1 was reported at 87 per cent of normal, nine points above the date last year and two points above average.

Beef Supplies Still Too Heavy, Warns Association

Beef supplies are still running too heavy, concluded a committee of the American National Cattleman's Assn. at Denver last week, recommending again that the industry would be more profitable with a quick reduction in beef tonnage of at least 5%.

"Any price rise that we have seen or will see in coming weeks will be relatively short lived unless production is slowed down to let effective demand catch up," a committee spokesman said.

The committee's analysis of the most recent cattle-on-feed report focused on two points: the number on feed was down only 15% from a year earlier, but the "heavyweight" groups were up substantially. Cattle weighing between 900 and 1100 pounds were 7% more in numbers than a year ago, while those weighing over 1100 pounds showed a 12.2% increase.

"Those cattle must go thru the meat pipeline yet so it is most unlikely that there'll be any sort of a price 'bounce' to bail out those feeders waiting for a much better market," the committee advised.

GRASS

& GRAIN

13th year no. 25

August 22, 1967

Average Feeder Still Losing, Says USDA

The Agriculture department said an average Mid-Western corn belt cattle feeder fell 42 cents short of covering his out-of-pocket production costs in buying, feeding and fattening a cow for the consumer slaughter market during the first half of this year.

A study of prices and costs showed that, under average conditions, a steer that involved an investment of \$269.42 brought \$269, a deficit of 42 cents. These figures were given in a livestock situation report.

By comparison, a year earlier the investment averaged \$251.78 and the animal brought \$277.30, a net of \$25.52. But in 1962, the deficit was \$13.36 a head and in 1963 \$13.85 a head.

These figures, the department said, did not include overhead costs, cost of pasture and death loss.

The estimates were described as fairly representative of an average feeding experience in the corn belt but do not necessarily coincide with the experience of individual feeders.

This year's decline in cattle feeding returns is being reflected in a cutback in such operations and prospects for a somewhat smaller consumer supply of quality beef later

this year and early next.

The department said that, on the average, a 700-pound feeder steer cost the cattle feeder \$173.95 this year.

His costs in transforming the animal into a 1,050-pound choice slaughter steer were said to have included: Transportation from market to feed lot \$4.62; 45 bushels of corn for feed \$56.25; three fourths ton alfalfa hay \$16.57; 150 pounds soybean meal \$6.30, and transportation and marketing expenses \$11.73 — all totaling \$269.42.

Ohio Feeders Touring State

About 50 livestock feeders from Ohio are in Kansas this week, touring Kansas ranches and feeder operations from Medicine Lodge to Topeka.

The Kansas Livestock Association is in charge of the tour.

Monday the group toured in Barber and Comanche counties, staying in Medicine Lodge for the night. Today (Tuesday) they will visit ranches in Clark County before touring Finney County.

Wednesday's tour will be in Finney and Ford counties with an overnight stop at Dodge Ci-

ty. Thursday plans call for tours of operations in Pratt and Kingman counties before an overnight stop in Wichita.

After the Wichita stop, the group will visit ranches from the Oklahoma border north to Abilene where they will tour the Eisenhower Center. The tour ends at the Ramada Inn in Topeka Friday night.

Name A Group To Halt Farming By Corporations

The Kansas Farmers Union has named a group of eight to lead a fight against legislation that would allow unlimited corporation farming in Kansas.

Announcing the committee was Dwight Wilson, organizational director of the Kansas Farmers Union, who said the bill would allow corporations to force thousands of farm families off the land within two years.

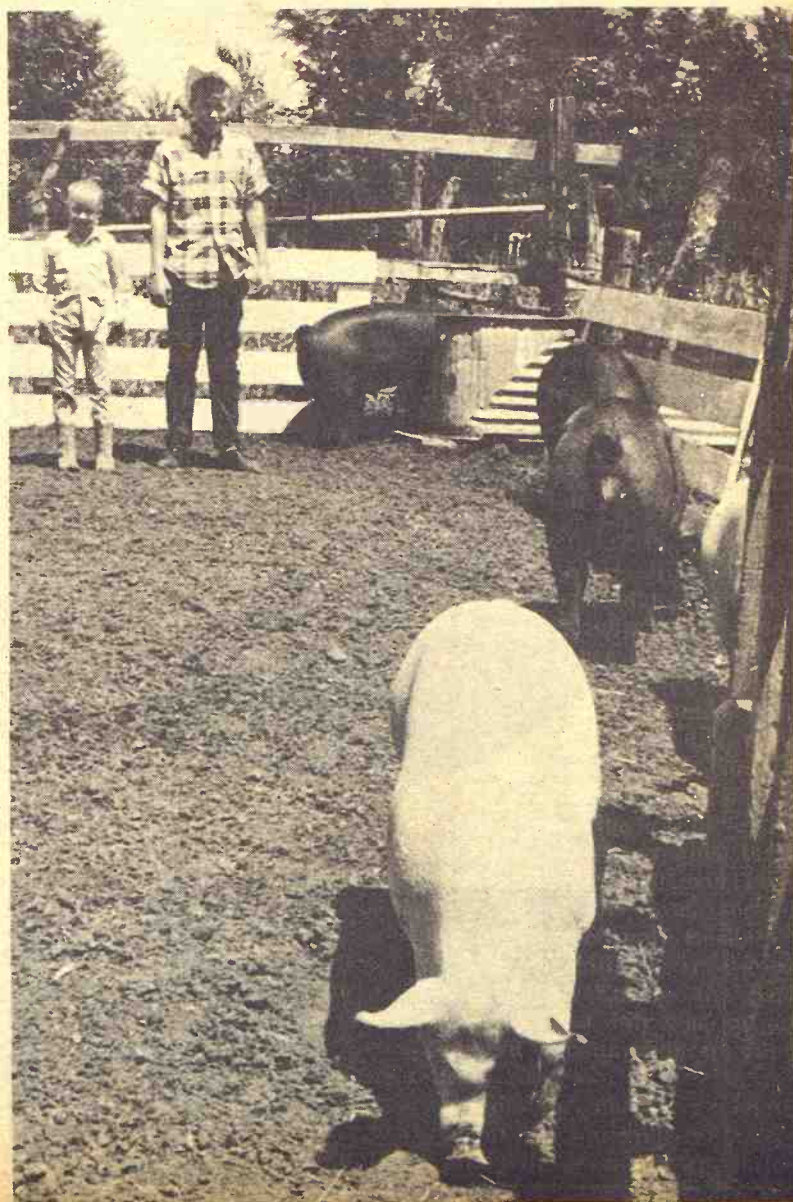
Passed by the Senate last session, the bill now is before the House agriculture committee.

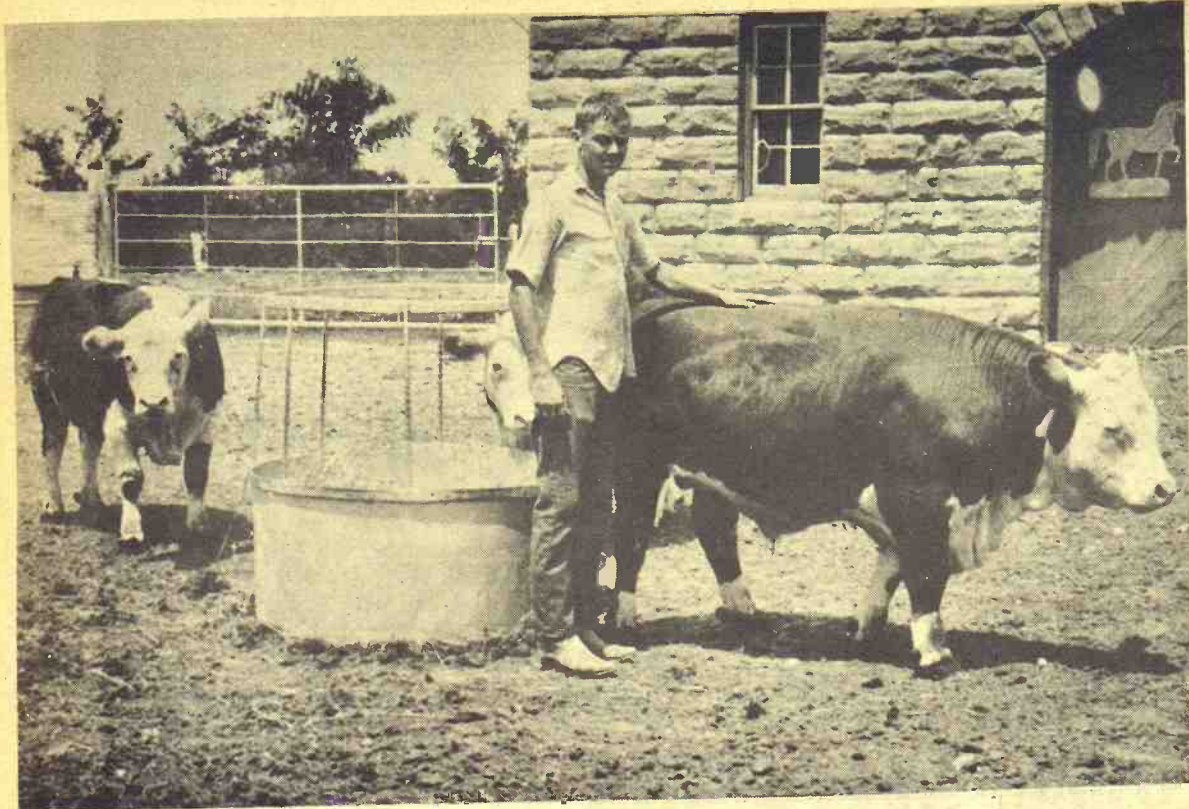
The committee plans to meet this week in Topeka to discuss their plans.

Committee members are: Howard Rajewski, Victoria Ivan Stotts, Byers William Overmiller, Bollaie Robert Anderson, Kinsley Weldon Otte, Osborne Glen Strnad, Munden Cyril Habiger, Bavaria Ivan Wyatt, Clements

Many Projects

The Anderson boys — Dennis, 17, Daryl, 14, and Deanne, 9 — have many livestock projects going for them on the Floyd Anderson farm near Lindsborg. Angus and Hereford cattle, Yorkshire and Duroc hogs keep the Anderson kids busy.





Ready To Show

Bruce Bohnen, 17, of Dorrance, had three steers ready for 4-H fair showings. He's been a winner in past years. He lives a short distance west of Dorrance.

See Lower Slaughter Rate This Fall

WASHINGTON — Fall slaughter rates at a lower figure than last year were foreseen in an Agriculture Department report issued in mid-August.

At the same time, the report said that producer prices for most classes of livestock are expected to be higher. The change reflects the price decline in late 1966 and earlier

this year, and adjustments to curtail production.

USDA's report guessed that the nation's cattle inventory will decline in 1967 for the third consecutive year. The decline was forecast at 500,000 head or more from the 108.5 million on hand the first of the year.

The report said hog producers are cutting back production because of higher feed costs

and lower hog prices during the last fall and winter. It said hog prices this fall are expected to average a little above last year's October-December average of \$20.37 per 100 pounds.

The agency said lamb prices likely will show some seasonal

decline this fall. However, prices are expected to be a little above average of \$23.14 during the October-December period last year.

NEW PIG FACTORY NEAR COMPLETION

MINNEAPOLIS — Max Hoesli is completing a large farrowing and pig nursery on his farm near here and plans an open house September 8.

August 22, 1967

GRASS & GRAIN

The Mid-Kansas news weekly. Published each Tuesday at 1207 Moro, (Box 1009) Manhattan, Kansas, 66502 by

AG PRESS

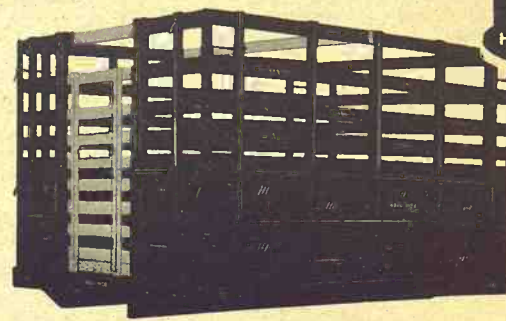
Dean Coughenour

E. R. Woodward

Second class postage paid at Manhattan, Kansas

Subscription: \$3 year

CIRCULATION 11,108



HAUL-MOR, INC.

COMPARE
CONSTRUCTION
ADAPTABILITY
PRICE

Grain Body with Combination Lift-Off Rack.

7'x80" wide
8'x80" wide
9'x93" wide
10'x93" wide
12'x93" wide

13'6"x93" wide
15'6"x93" wide
16'6"x93" wide
18'x93" wide

- Regular grain body
- Hardwood lift-off rack
- Racks added to grain body give 66" height
- Perfect fit
- Furnished with 2 gates
- One for grain, one for stock rack

Special sizes easily manufactured to your requirements

When Ordering Specify Make, Model, Size of Bed

HAUL-MOR, INC. valley falls, kansas • phone 945-3211



BACK-TO-SCHOOL BEST SELLERS LAZY-BONES

Reg. U. S. Pat. Off. and Canada • Made in U. S. A.



\$7.50 to \$12.99

Others from \$5.99



McCall's

"Put Yourself in our Shoes"

312 POYNTZ, DOWNTOWN MANHATTAN

Something different is brewing for you at our feed mill

And, we're pretty excited... What's brewing is a whole new line of Master Mix feeds and services! Master Mix feeds are famous for quality and performance from Texas to the coast of Maine, and from Canada to the Gulf of Mexico. In fact, they've gained the reputation of being "America's fastest growing brand of feed."

There's a reason. Master Mix feeds are formulated by Central Soya, "The Foodpower People," world's largest processors of vegetable proteins. Every Master Mix feeding program is designed with your profit as the first objective.

And, Master Mix service includes expert help with feeding, management, financing, and marketing.



So, if you're feeding livestock or poultry... there is something special brewing at our feed mill. We'll be glad to supply you with full details on a Master Mix program to fit your feeding operation. Stop by soon. The coffee's on us!



Hines Farm Center

Wamego, Kansas



Fifth Set of Twins

A cow owned by Jim Cherry of Bennington shows off her fifth set of twins. The cow, Old Nig, is 11 years of age.

Lindsborg Adds To Old Mill

LINDSBORG — Construction has begun on an addition to the Old Mill museum here. The 40x60-foot structure will be on two levels, containing 4,800 square feet. It will tie into the present structure which is a converted warehouse. The fireproof structure will be concrete.

It is being built at an estimated cost of \$30,000. The general contractor is Wesley Burk, McPherson.

McClintock Wins At Delphos

DELPHOS — A Simpson farmer rode his chestnut mare to victory here in the Five Gaited (open championship) class at the Delphos Horse Show, and took home the coveted challenge trophy.

Claude McClintock, frequent entry at the Delphos show, won over Dr. Haskell B. London of Oklahoma City, Okla., who returned the trophy after a win last year.

The trophy, given by Mrs. James A. Davis, Hutchinson, is

one of the largest ever to be given at any horse show. Rules state that it must be won by the same owner three times in succession for permanent possession.

The late James A. Davis also was a founder of the Delphos show.

A crowd of 2500 watched the finals here Saturday night.

Smallest Cotton Crop Since 1921

The U.S. this year is expected to produce the smallest cotton crop since 1921.

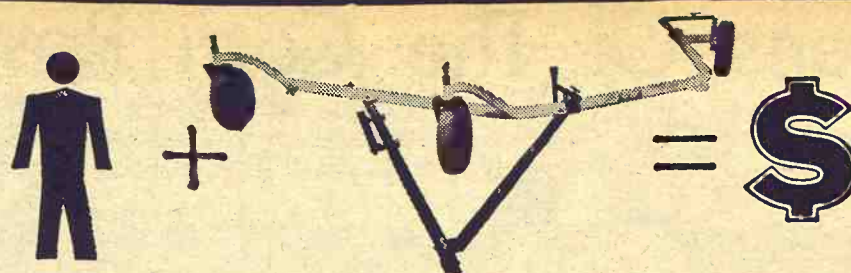
USDA figures the crop at about 8.3 million bales, based on the condition of the crop as of August 1.

Poor weather and increased land diversion has forced the reduction. The 1966 crop was 9.6 million bales and the 5-year average is 14.9 million bales.

About 12% of the 9.7 million acres have been abandoned because of weather.

NEW MANAGER AT SABETHA CO-OP

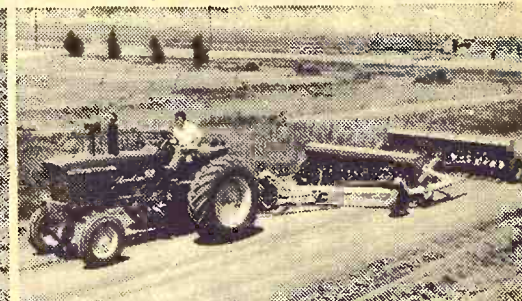
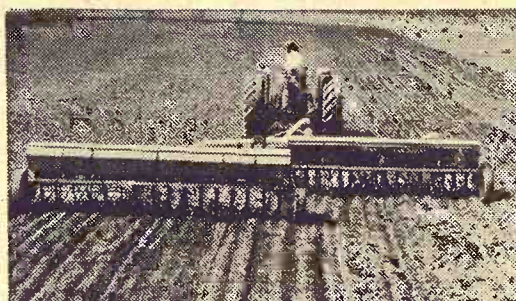
SABETHA — Keith Oakley is the new manager of the Farmers Co-op Elevator here. Oakley came from the Lincoln, Ks. branch of the Mitchell Co. Coop.



A WALDON DOUBLE IMPLEMENT DRAWBAR PUTS MONEY IN YOUR POCKET!

Large or small scale farmers save time and money using the Waldon double implement drawbar because it:

- Specially built for light draft implements (grain drills, etc.)
- Changes from road to field position in minutes . . . without unhitching tractor or implements.
- Turns right or left in road and field position.
- Can pull various size implements.
- Is easily operated by one person.
- Takes only 18" more space in road position than implement being pulled.



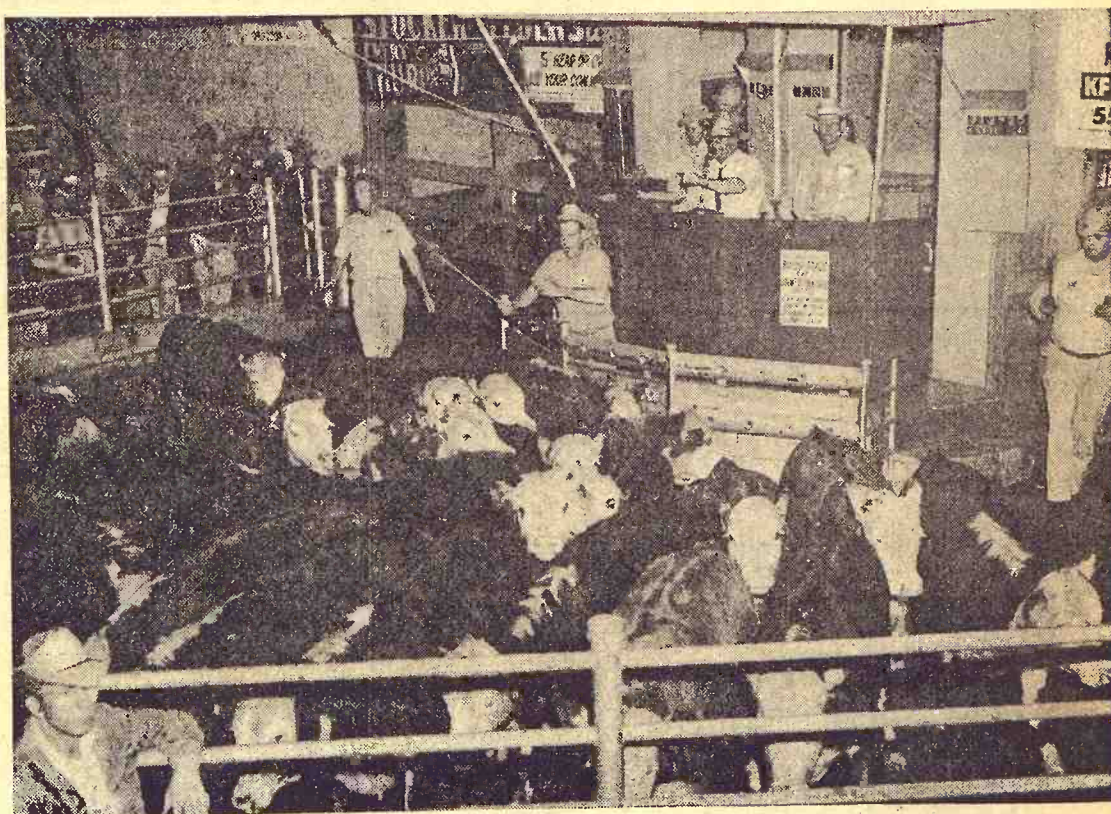
Put extra money in your pocket! See your local Waldon dealer today or write for further information.

WALDON SALES & SERVICE



W. W. SMITH

Phone ME 2-3148
Clay Center, Kans.



Announcing... NEW BREED AUCTIONS of STOCKERS and FEEDERS

Angus and Herefords will be offered at four special stocker-feeder events:

Angus
Hereford
Angus
Hereford

Wednesday, August 30
Wednesday, September 6
Wednesday, September 27
Wednesday, October 4

Each auction will begin at 10 A.M. and will be held in the air-conditioned sales pavilion at the Kansas City stockyards. Black/white face cattle or calves will be handled on the same Wednesdays as the Angus.

If you need quality feeders or herd replacements — or if you have choice to good animals to sell — these special breed auctions are events you cannot afford to miss!

Kansas City is the country's top spot stocker-feeder market. Regular stocker-feeder auctions will continue to be held on Thurs-

days as usual in the Kansas City yards. These auctions have been so successful that more than a quarter million stocker and feeder cattle are expected to change owners in Kansas City during the year ahead.

At Kansas City you have two ways to buy or sell stocker and feeder cattle and calves: by auction every Thursday, or private treaty every day of the week. Either way you deal you can have the services of a skilled pro, a Kansas City Livestock Marketing Specialist, to represent you.



KANSAS CITY LIVESTOCK MARKET

STORMOR DOES MORE



"SAVE BUSHELS,
INCREASE PROFITS WITH

STORMOR

DRY-O-MATION"

A STORMOR Dry-O-Mation System allows early harvest to avoid field losses — efficient drying — easy filling, unloading, transferring of grain.

■ STORMOR bins range from 14 to 60 ft. in diameter, 1,000 to 66,400 bushels in drying capacity.

■ STORMOR Dry-O-Mation Systems are engineered and field tested to put your grain on the market at premium prices.

MIX MILL SYSTEMS

JAMES WAHLE A/C 913 CE 8-7660
RT. 2 JUNCTION CITY, KANSAS

• Dry-O-Mation • Clear-Span Steel Buildings • Crib •
• Batch Dryers • Oxygen-Free Storage • Bulk Feed Bins

STORMOR Inc., Fremont, Nebraska

Queens Of The Corn Rows



Crews of young girls detasseling hybrid corn by hand is a not uncommon sight at several points of the G&G area, but it is something new in Clay county.

Ned McMahon started hybrid corn growing this year for the first time southwest of Clay Center, and a crew of girls, 14 to 19 years of age, drew the attention of passers-by in the Republican river bottomlands between Clay Center and Concordia.

Garst & Thomas Seed Corn Co., a division of Pioneer Seed, Coon Rapids, Iowa, is buying corn off 700 acres of irrigated land in the area, and the job of the girls is to pull tassels off the "female" rows of corn so the hybrid seed could be produced.

Besides the Clay Center location, the seed company also has locations at Highland, Troy, and Hiawatha. Similar projects by other hybrid seed companies are not uncommon in the northeast corner of the G&G area, but there have been few major projects west of St. Marys.

The kids work in bikinis, chopped off jeans, dungarees, anything that may afford them some comfort or protection in a job noted for mud, bugs, chiggers and mosquitos.

Hybrid corn is raised on a 6-row plan. This means the farmer plants two "male" rows of corn, leaving space for four rows of "female" then another two rows of "male."

After the plants have grown thru the soil and a good stand can be seen, the "fe-

male" is planted. The "female" plants are two rows of "female fertile" and two rows of "female sterile."

The farmer does the planting, applies the fertilizer, tillage and water, and does the harvesting. Harvesting is done when the corn is at a given high moisture level, and delivered to the "end of the row" where company trucks pick it up, deliver it to warehouses where it is treated and sorted for selling over the midwest.

The farmer gets a \$50 per acre from the seed company for the special handling, plus the regular market price for the corn. For two or three weeks at midsummer though, it gets pretty rough for the youngsters doing the detasseling. Timing for detasseling is critical, so they work seven days a week up to eight hours a day.

Youngsters working in the Clay Center area came from as far south as Milford and Wakefield, Kans., and from as far northwest as Concordia.

Each group included the regular tassel pickers plus four checkers, a bus driver and an overseer. Mrs. Allen Lard, a Clay Center school nurse and farm wife, had charge of a group of 35 girls.

The girls take the job fairly seriously for \$1.25 an hour. The "checkers" responsible for seeing that the corn is detasseled properly received 10 cents an hour more.

They all treated it like an "experience" but they all looked tired, too, about 2 p.m. after eight hours walking in mud.

Boaters Face Army Engineer Fee For Docks

August 22, 1967
Grass & Grain

The Army Corps of Engineers has told owners of some 12,000 boat docks, fishing piers and similar installations on 230 lakes across the nation either to tear down the facilities by Jan. 1 or start paying rent to the government.

The Corps' decision to cancel the hitherto free permits and implement a fee schedule has brought protests from boat owners and Congressmen. Twenty-five House members have introduced legislation to block the new policy.

Affected are docks, piers, boathouses, swimming and diving platforms, duck blinds, mooring facilities, ski-jump floats, rafts and the like on lakes and reservoirs under control of Army engineers.

\$10 Fee Set

The fees—a minimum of \$10 a year plus 7.5 cents for each square foot of space over 200 square feet—are designed to give "adequate compensation to the government for granting private interests a valuable right to use public property," a Corps spokesman said.

In a form letter to the owners, the Corps also said growing use of the reservoirs by the public had brought increases in administrative costs.

The moring fees are in addi-

tion to admission fees charged at some reservoirs. Entrance fees also are charged at hundreds of other federal recreation areas.

The Boat Owners Association of The U.S. has not taken a stand on the Corps' new fees, although a spokesman said the association has consistently opposed users' fees.

He estimated there now are 8.2 million boats of all types in the United States.

NEW MANAGER AT McPHERSON CO-OP

Don Wilson has been promoted from assistant manager to manager at the Farmers Cooperative at McPherson. Wilson came to the McPherson co-op in 1965.



Don Wilson

MIDWEST RENDERING & SUPPLIES BELLEVILLE, KANS.

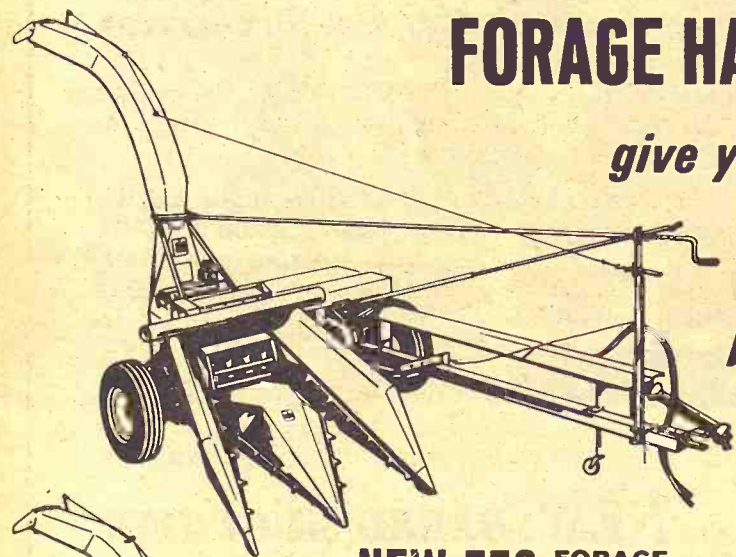
We sell meat scraps and fat for feed. We pick up materials from butcher shops, locker plants and fresh dead animals.

For service call Belleville: JA 7-5545 or your local number.

Beloit	738-3731	Jamestown	439-2655
Cawker City	781-4711	Leonardville	99
Clay Center	632-3424	Lincoln	524-9990
Clyde	446-3621	Mankato	378-3771
Downs	454-9527	Marysville	443-3726
Fairbury, Nebr. 402	729-2147	Miltonvale	427-3015
Glasco	568-2636	Minneapolis	392-3043
Hanover	337-2291	Morganville	926-3674
Hebron, Nebr. 402	768-6221	Washington	325-2911
Hunter	529-2145	Smith Center	282-3751

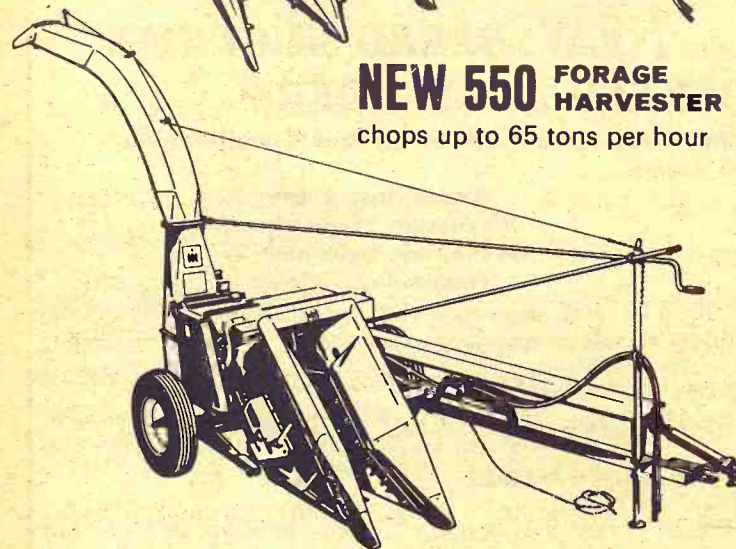
NEW 350 & 550 INTERNATIONAL FORAGE HARVESTERS

give you more
reliability
big capacity
better floatation



NEW 550 FORAGE HARVESTER

chops up to 65 tons per hour



- More simple design and lighter weight makes nine knife cutter head more resistant to damage ... easier to adjust.
- Tungsten carbide-faced knives and shear bar for extra acres of clean, fine chopping.
- Chops fine, medium or long— $\frac{1}{4}$ to $1\frac{1}{2}$ ". No need for a screen.
- Built-in power sharpener re-hones blades razor sharp without removing cutter head.
- Heavy-duty main frame, spindles and hubs.
- New high floatation tires get you in and out of rough fields—even after a rain.
- Harvesting units attach in 10 minutes or less.

COUNCIL GROVE
Macha-Revere

BELLEVILLE
Chapman's On US hwy. 81

GYPSUM
Kuhn Impl. — OW 6-4411

WAKEFIELD
Auld Chevrolet

MARYSVILLE
Bruna Brothers

FALUN
Dauer Impl. Co.

HANOVER
Hanover Impl. Co.

LEONARDVILLE
Kendall Garage

HERINGTON
Pioneer Service & Sales

MINNEAPOLIS
Chapman Impl. Co.

CLAY CENTER
Norquist's Inc.

ABILENE
Abilene Truck & Tractor

Prevent that "Summer Slump"...



See Your
NATURICH Dealer...

PASTURICH Grass Supplement by Naturich

In addition to the extra gain you can expect from your PASTURICH PROGRAM you'll find your fiesher cattle will command a premium at the market. Restore the missing "Spring Factor" to your summer and fall pasture rations. See your Naturich Dealer for 18% PASTURICH CUBES or 37% PASTURICH BLOCKS.

NATURICH MILLS
Abilene, Kans.

22, 1967

Grain

ssion fees charged
ervoirs. Entrance
e charged at hun-
ner federal recrea-

Owners Association
has not taken a
Corps' new fees.
pokesman said the
as consistently op-
fees.

ted there now are
oats of all types in
states.

AGER AT
Y CO-OP

n has been promot-
stant manager to
the Farmers Coop-
McPherson. Wilson
McPherson co-op in

Don
Wilson

SUPPLIES

We pick up mater-
resh dead animals.
our local number.

n 439-2655
ille 99
..... 524-9990
..... 378-3771
e 443-3726
..... 427-3015
lis 392-3043
lle 926-3674
on 325-2911
nter 282-3751

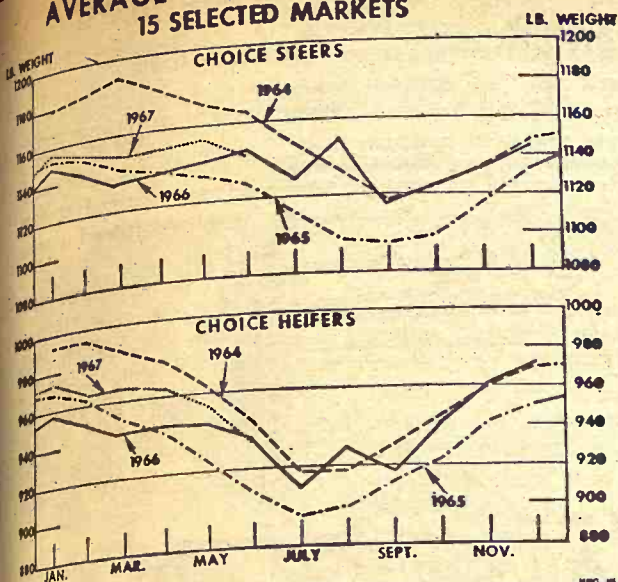
ummer
mp'...

JURICH
upplement
turich

o the extra gain
from your PAS-
GRAM you'll find
cattle will com-
at the market.
um at the Spring
missing "Spring
our summer and
ations. See your
er for 18% PAS-
ES or 37% PAS-
CKS.

LS

AVERAGE SLAUGHTER WEIGHTS 15 SELECTED MARKETS



WEIGHTS — Marketing weights of fed cattle continue heavy at about year earlier levels. The chart has weights for steers and heifers. Weights of all steers at 15 markets are heavier than last year because of a smaller proportion of low and standard grade steers.

FARM & RANCH LOANS

One of the most important features of a Federal Land Bank Loan is the element of time for re-payment . . . time to work out financial difficulties without the pressure of recurring loan terminal dates.

R. STANLEY PARSONS, Mgr.

SEE ME AT

604 HUMBOLDT PR 8-2971
Res. Phone PR 6-9044

MANHATTAN

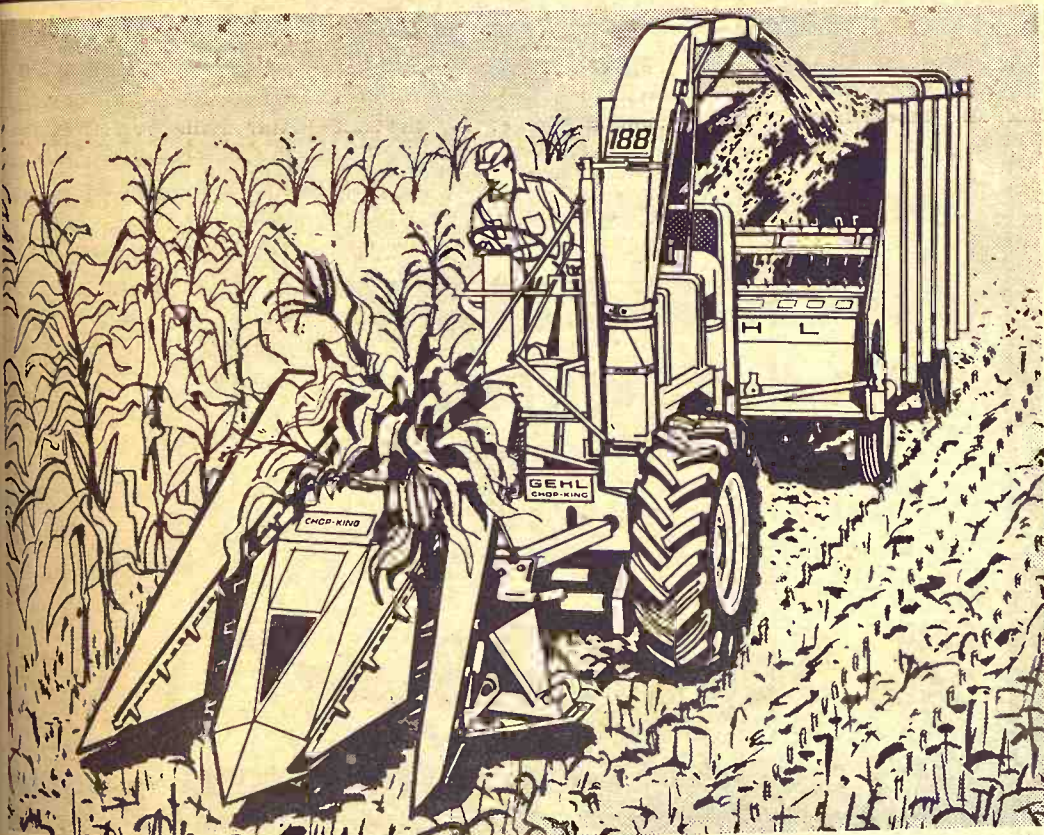
Open Mon. through Fri.

8 a.m. to 5 p.m. (closed 12-1)

Branch Offices: CLAY CENTER & JUNCTION CITY

Federal
LAND BANK Assn. of
MANHATTAN

Serving Clay,
Pottawatomie & Riley counties.



Biggest Chopper Built!

unmatched capacity and finest chopping

It's the biggest, brawniest of them all . . . the Gehl Self-Propelled Chop-King. Chops more tons per hour than any other chopper! Owners report over 700 tons in a day . . . 11,000 tons a season. Eight tungsten carbide faced knives short-chop even the toughest crop to a fine 1/4-inch. Select-A-Cut Transmission changes cutting lengths in seconds. Rear-wheel power steering gives you a 10-ft. turning radius, perfect tracking. Floating heads adjust to field contours, even at full speed. See the new Gehl Chop-King today! Financing available. (*Optional equipment)

NEW! 10,000 RPM PORTABLE KNIFE SHARPENER.* Lightweight, gas or electric models. Gives minute-per-knife sharpening on the machine—in the field or at the machine shed. Adjustable guide insures proper beveling of knife cutting edges.



Make us Prove it with
a Demonstration!



SENECA
SENECA IMPL. CO.

HERINGTON
TRI-COUNTY SALES

CLAY CENTER
TOBUREN IMPL. CO.

VALLEY FALLS
VALLEY IMPL. CO.

SALINA
LINDQUIST IMPL. CO.

LINCOLN
RHUDY & SONS, INC.

WAMEGO
WAMEGO TRUCK
& TRACTOR, INC.

MARYSVILLE
BRUNA IMPL. CO.

August 22, 1967

CAKE FLOUR FROM HARD WINTER WHEAT?

Can cake flour be made from hard winter wheat, grown in Kansas, instead of from soft wheat? The Kansas State University Grain Science Department has a \$7500 grant to make such a study. A manufacturer who makes pulverizing equipment has made the grant to K-State.

Move To Standardize Time Zones

The Department of Transportation has announced proceedings to change time zone boundaries in Kansas, Nebraska, North Dakota and Indiana.

Summaries of the four proposals include:

Kansas — To place the entire state in the Central Standard Time zone. It now is split in the Mountain and Central Time zones.

Nebraska — To move the western boundary for Central time to conform with county boundaries of the state. The change would eliminate all county divisions and bring into the Central zone the counties of Brown, McPherson, Thomas, Blaine, Logan, Lincoln, Hays and Hitchcock.

The department also announced proceedings to establish four new Standard Time zones: Yukon Standard Time, Alaska-Hawaii Standard Time, Bering Standard Time, and Atlantic Standard Time.



WE MANUFACTURE AUGERS, CONVEYORS, STEEL BINS AND FUEL TANKS FOR PICKUPS.

Stop in . . . we'll gladly show you samples of our work & other ways in which we are fully equipped to serve you!

- * FUNNEL-TYPE CHUTE FOR SILOS
- * WE MANUFACTURE & REBUILD WENGER MANURE LOADERS
- * WE BUILD HYDRAULIC HARROW CARRIERS, BALE LOADERS AND SLED CURLERS
- * WE DO STEEL FABRICATION
- * STEEL RAFTERS FOR FARM BUILDINGS
- * ROLL SHEET METAL
- * DO MACHINE WORK
- * LENGTHEN TRUCK FRAMES

BROCKHOFF MFG. CO.

PH. AV 4-3012 SABETHA, KANS.

Treasure Chest



TREASURE CHEST

We Buy & Sell
Coins, Stamps
Old Guns, Antiques

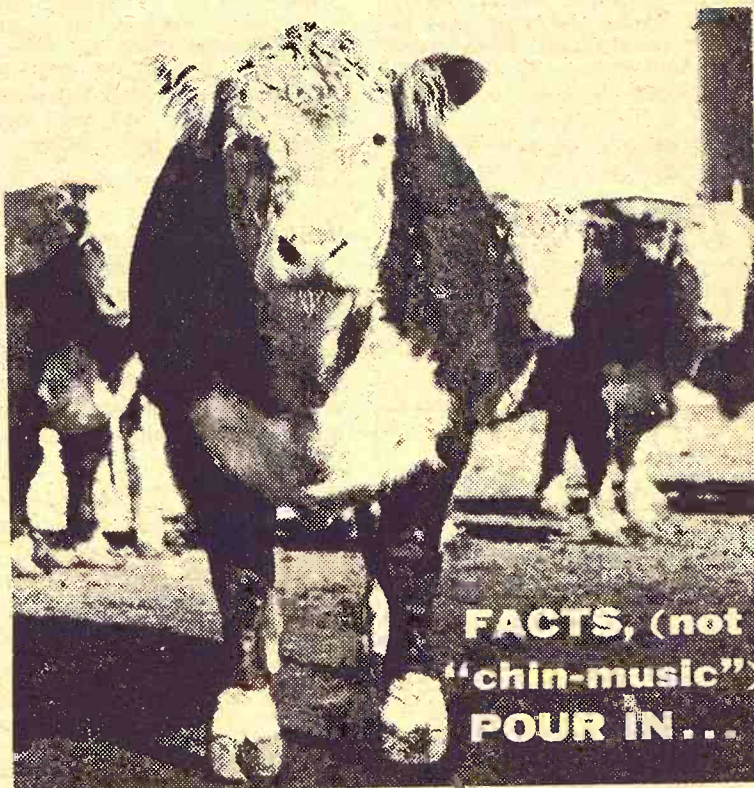
Imports

Gifts And Jewelry

Phone 913 PR 8-5233

P. O. Box 304 308 Poyntz Ave.

MANHATTAN, KANSAS



**FACTS, (not
"chin-music")
POUR IN...**

...about Purina's "Built-in Roughage" Cattle Program

Wherever cattle are fed, cattlemen sing the praises of Purina's "Built-in Roughage"™ self-feeding program with new Special Steer Fatenas.

They didn't take to this new idea overnight. Cattlemen, like all good business men, buy on FACTS. And that's exactly why "Built-in Roughage" feeding keeps on winning friends among cattle feeders . . . they keep getting FACTS from cattle fed in Purina Demonstrations.

They note the gains and efficiency of "Built-in Roughage"-fed cattle. They see how this program works with self-feeders, which offers big savings in labor and equipment.

Purina Special Steer Fatenas are the original "Built-in Roughage" supplement. They hold the secret to this giant step forward in cattle feeding. We have one that's "Built-to-Fit" your cattle and feed supplies.

Flint Hills Feed & Grain . . . PR 8-5322 Manhattan
Farmers Union Feed Mill . . . 437-2434 St. Marys
Mor-Kan Elevator . . . 349-2214 White City
Reading Grain & Lumber . . . AN 9-3842 Reading
Bartlett Grain Co. CE 8-5134 Junction City
Americus Grain Co. 884-3465 Americus
Gorden Mark Elevator . . ME 2-3381 Clay Center
Western Grain Mill 767-5933 Council Grove

LOW COST PRODUCTION...
the reason more cattlemen feed **PURINA**



OUR DAILY BREAD

— by G&G Area Cooks

Mrs. Mabel Keim, Minneapolis, Is Winner Of Prize

Winner this week is Mrs. Mabel G. Keim, R1, Minneapolis, who writes that her cake recipe is "perfect for a picnic; there's no frosting to melt in the hot sun."

POLKA DOT CAKE

- 1 1/4 cup chopped dates
- 1 cup hot water
- 3/4 cup butter or margarine
- 1 cup sugar
- 2 eggs
- 2 cups sifted flour
- 1 teaspoon baking soda
- 1/2 teaspoon salt
- 1 teaspoon vanilla
- 1 6-ounce package chocolate chips
- 1/2 cup chopped nuts

Mix chopped dates and hot water; set aside to cool. Cream together butter and sugar; add eggs; beat until fluffy. Sift together flour, soda and salt. Add to creamed mixture alternately with date mixture. Mix well after each addition. Stir in vanilla and 1/2 cup chocolate chips. Spread batter in a greased (13x9x2-inch) baking pan. Top with rest of chocolate chips and the nuts. Bake in a moderate oven (350 degrees) for about 35 minutes.

How about fried chicken without bones?

CHICKEN DELIGHT

Remove meat from frying chicken; cut into 2-inch cubes. Dip cubes in beaten egg then into a prepared biscuit mix. Use a spoon and drop into hot fat or cooking oil. One fryer will yield a huge platter of fried chicken.

Marmalade adds a touch of something different to a nut bread:

MARMALADE NUT BREAD

- 3 cups sifted flour
- 4 teaspoons baking powder
- 1 teaspoon salt
- 1 cup chopped nut meats
- 2 eggs, beaten well
- 1/2 cup orange juice

The Latest 'Daily Bread' Prize

GARLIC PRESS

NEW IMPROVED! For juicing garlic, onion and mint. One squeeze adds zest to meats, soups, salads and sauces. Sturdy two-piece construction for easy cleaning. Another fine product by Ekco.

The winner each week is drawn by lot from the recipes printed.

Win one by sending us your favorite recipe — this can be main dish, leftover, salad, side dish, dessert or what have you.

1. Check your recipe carefully to be sure all ingredients are accurate and accounted for.

2. Be sure your name and address are on the entry.

3. Only one recipe at a time, please.

4. Send it to Woman's Page Editor, Grass & Grain, Box 1009, Manhattan, Kansas.

2 tablespoons melted shortening

1 1/4 cups orange marmalade

Sift flour, baking powder and salt together into mixing bowl. Add nuts. Combine eggs, juice, melted shortening and marmalade. Add to dry mixture and stir only until well blended. Turn into greased 9x4x4-inch loaf pan. Bake at 350 degrees about one hour or until done. Let stand 24 hours before slicing.

Cleans Coffee Pots

To clean coffee pots, put about two tablespoons of automatic dishwasher detergent into the pot and fill with water. Allow to boil five minutes, then drain and wash pot as usual. Use a coffee pot brush to clean the spout.

Neater Drawers

A strip of elastic tacked at intervals of several inches across the front of dresser drawers will hold bottles and the like. This prevents possible spilling and keeps the drawers neat.

We're fussy when we fix your watch

Fastest Service In Town. Work done in our shop. All watches electrically timed and guaranteed to be as accurate as new.

HOLIDAY JEWELERS

OF MANHATTAN
425 Poyntz—PR 6-7821
Across from the Courthouse

Cool Eggs Quickly

Cooling hard-cooked eggs in speedy fashion helps to prevent the formation of a green ring at the point where the yolk meets the white.

Tasty Chops

Try brushing lamb chops (before they are broiled) with garlic-flavored salad oil. To prepare, let the oil stand for several hours with a peeled clove of garlic in it.

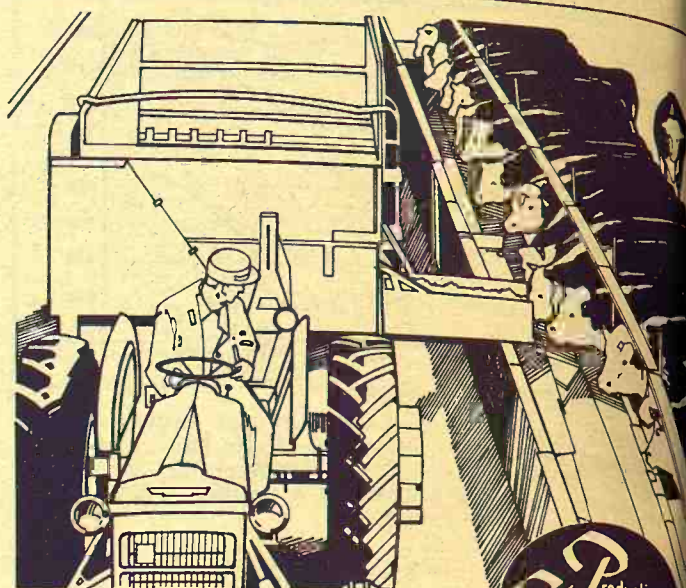
August 22, 1967

Removes Hem Mark

Rub white vinegar on the mark left on dresses when the hem is lowered. Then press out with a warm iron.

Solution For Window Washing

Mix vinegar and ammonia with water and pour into spray-top bottle for washing windows. Polish with a sheet newspaper.



You Can Have a FAST GAIN with a PCA Loan

If you're in the cattle business, why not talk over your production finance problems with people who know what the problems are all about?

Your Production Credit Association understands. Get a cattle or feeder loan from the rancher-owned local PCA. Pay only simple interest...and set up a repayment plan that fits your marketing plan.

SEE YOUR LOCAL PCA MAN

CONCORDIA James D. Ganson (North Central Kansas PCA)
COUNCIL GROVE Charles E. Graham (Council Grove PCA)
HOLTON Robert O. Green (Holton PCA)
MANHATTAN Floyd A. Rutherford (Manhattan PCA)
SALINA Curtis Syring (Salina PCA)

ORDER YOUR GRANDSTAND NIGHT SHOW TICKETS TODAY!

See the Spectacular . . . Jack Benny Two-Hour Stage Revue

This greatest of all showmen brings an all-star cast of great names in show business to Topeka for the 1967 Mid America Fair . . . An outdoor show, unsurpassed in color and beauty. Make your reservations early.

FAIR DATES **Sept. 8-13**

NITE . . . **GRANDSTAND ATTRACTIONS** . . . 7:40 P.M.
★ Friday, Sept. 8 The Grand Ole Opry ★
Saturday, Sept. 9 The Jack Benny Show
Sunday, Sept. 10 The Jack Benny Show
Monday, Sept. 11 The Jack Benny Show
Tuesday, Sept. 12 The Jack Benny Show
Wednesday, Sept. 13 Joie Chitwood Thrill Show

Team Pulling — Monday Aft., Sept. 11
(Free . . . In Front of Grandstand)

Quarter Horse Show — 9 A.M., Wed., Sept. 13
(Free . . . In Front of Grandstand)

4H-Livestock Sale — Wed. Nite, Sept. 13
(7:30 . . . Main Judging Arena)

AUTO RACES (SPEEDWAY CARS)

SAT. AFT. **SEPT. 9-10**
SUN. AFT.

CLIP AND MAIL

Order Reserve and Box Seats Now!

SEE THE **Jack BENNY** STAGE SHOW
BOX SEATS \$3.50 TRACK SEATS \$2.50
GRAND. RESERVE \$3.00
SAT. NITE (SEPT. 9) MON. NITE (SEPT. 11)
SUN. NITE (SEPT. 10) TUES. NITE (SEPT. 12)
(Check Date of Performance Desired)

NAME ADDRESS TOWN

Send check or money order with self-addressed stamped envelope to Ticket Department, Mid America Fair, P. O. Box 945, Topeka, Kansas 66601. Order early. Be sure to specify date of performance.

**MID AMERICA FAIR
TOPEKA**

OVER "30"

DANCE

SAT. AUG. 8:30-12:00

VAUGHN BOLTON
AND HIS 7-PIECE ORCHESTRA

"the
MAGNIFICENT SEVEN"

ME AND ED'S PR 6-5225

300 NORTH 3rd MANHATTAN

Delicious Pickles Can Be Made From Zucchini Squash



During the five months of its availability (May to October), zucchini is grand... sauteed, fried and stuffed. But this squash variety can be enjoyed when it is no longer available to the consumer market in the fresh form... by pickling.

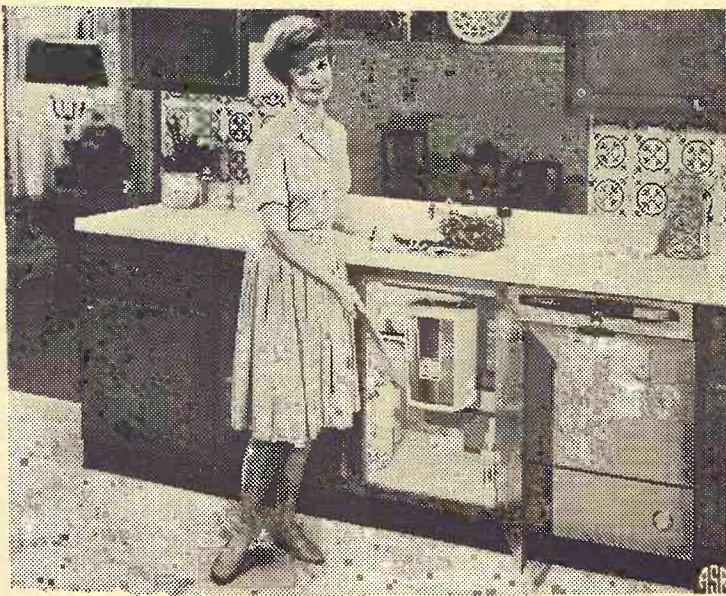
Zucchini Pickles are made by slicing zucchini, unpeeled, and thinly sliced on a hot solution of distilled white vinegar, sugar, celery seed, tumeric and dry mustard. The mixture is brought to a boil and immediately into hot sterilized jars and sealed. What a delightful way to enjoy tasty, zucchini squash later in the year, or right now!

ZUCCHINI PICKLES
1 quart distilled white vinegar

2 cups granulated sugar
¼ cup salt
2 teaspoons celery seed
2 teaspoons ground tumeric
1 teaspoon dry mustard
5 pounds zucchini (5-6 inches long), unpeeled, sliced ¼ inch thick (4 quarts)
1 pound onions, thinly sliced (1 quart)

Bring vinegar and next five ingredients to a boil. Pour hot liquid over zucchini and onions; let stand one hour, stirring occasionally. Bring to a boil; simmer three minutes. Continue simmering while quickly packing in one hot sterilized jar at a time. Fill to within ¼ inch from top, making sure vinegar solution covers vegetables. Seal each jar at once. Makes six to seven pints.

New Food Waste Disposers Last Longer; Work Harder



Two new food waste disposers being introduced across the country feature "space-age" interior coatings which will provide an extra margin of wear and long life for today's quality-conscious homeowner.

The exclusive interior coatings in the disposers include pure heat-fused epoxy, rugged and extremely resistant to corrosive and abrasive action, in the grind chamber. The drain chamber is coated with teflon so finely-ground food waste is flushed away easily.

Tough, durable parts are being used in the new disposers to provide the ultimate in grinding power and convenience for the homemaker. Hard beef bones, stringy vegetables and fibrous corn cobs are ground away with ease. An extra-thick blanket of beaded styrene insulation

combined with a special sound absorbing sink mounting, muffles grinding noise to a whisper. The all-new disposers are available in two models: Super-

ba for batch feed and Imperial for continuous feed application. The decor-designed exterior makes this brand of disposer an integral part of the kitchen, rather than a hidden-away unattractive appliance.

To Cook Spinach

When cooking fresh spinach use only the water that clings to the leaves after washing and add ½ teaspoon salt to several pounds of the vegetable.

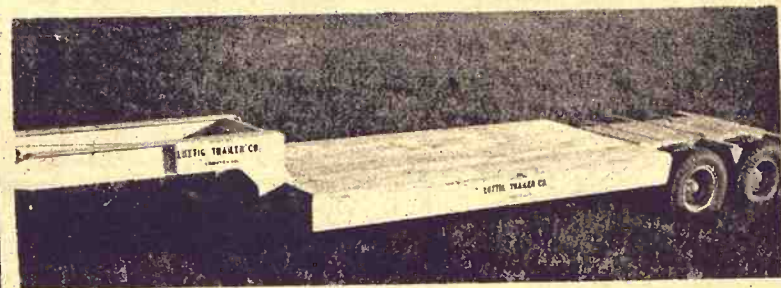
To Clean Lavatories

A paste of cream of tartar and peroxide applied with a stiff brush will help remove the discoloration left by a drippy faucet.

Removes Starch

Moistened nylon net will remove starch from the bottom of an electric iron.

LUTTIG LoBoy TRAILER



New & Used Lo Boy Trailers
Also Custom-Built Trailers

LUTTIG TRAILER CO.

Enmett, Kans.

phone 535-2610

G&G Directory

AUCTIONEERING

Lawrence E. Welter

AUCTIONEER
REAL ESTATE BROKER
Your Sale Solicited
Large or Small
EAST HIGHWAY US 24
MANHATTAN PR 8-3455
Real Estate
And General Sales

DAIRY SUPPLIES

DeLaval Clay

All Makes
Service & Repair
Dairy Equipment

Joe McClure

Ph. 229-5284

Alta Vista

Ed Reimer -AUCTIONEER-

We Specialize in Selling
DAIRY CATTLE

"A complete Sale Service"
Phone or write for sale dates.
Telephone 367-2373
GOESSEL, KANSAS
"Marion County"

ROBT. G. "BOB" WILSON
Auctioneering Sales Mgr.

All Types of Sales

Phone 494-2552
Box 118 St. George, Kans.

Wamego

Dairy Supply

your authorized
DELAVAL & CLAY
Dealer

MILK MACHINES
New & Used
BULK TANKS
New & Used

CLAY Beef, Dairy & Hog
Feeding Systems.

For estimates or service,
phone
913-456-7200, WAMEGO
913-AV 4-2958, SARETHA

Memorials

Cody Memorials

Homer Rundle, Owner
Stones designed and cut by
experienced craftsmen in our
own plant.

Office & Display
4th & Grant
ME 2-2323
CLAY CENTER

PEOPLE READ

The G&G Directory

Just as You are Now

There's something crooked in the Hog Business



Sure, crooked noses are ugly. But worse, they eat into hog profits. Atrophic rhinitis wastes feed in at least half the herds. And most damage is done long before they show up with crooked noses.

Now you can fight back. There's a new drug combination, Tylan and Sulfamethazine, which keeps weight gains steady

even in the presence of atrophic rhinitis. Plus they control vibronic dysentery, another costly disease.

We have Tylan and Sulfa in complete pig feed to protect your investment

up to 75 pounds. And we can add Tylan to promote growth all the way to market. Fight back. We can help.

COOP PIG FEEDS with Tylan and Sulfa



Junction City Farmer-Stockman Co-op Assn.
Council Grove
Junction City CE 8-4158



Manhattan Farmers Cooperative Assn.
Manhattan-Alta Vista
Westmoreland-Onaga



Alma Farmers Union Co-op
Alma Ph. 765-3612
Eskridge Ph. 449-2291



St. Marys Farmers Union Co-op
Business Assn.



Clay Center Farmers Union Co-op
Clay Center-Bala
Miltonvale-Leonardville



Greenleaf Farmers Co-op Elevator Assn.
Greenleaf-Linn
Washington



Carlton Farmers Union Co-op
CARLTON
TELEPHONE 31

olution For
indow Wash
mix vinegar and
h water and am
ay-top bottle for
indows. Polish with a
paper.



During the five months of its
availability (May to October),
zucchini is grand... sauteed,
fried and stuffed. But this
squash variety can be
enjoyed when it is no longer
available to the consumer mar-
ket in the fresh form... by
pickling.

Zucchini Pickles are made by
slicing zucchini, unpeeled,
and thinly sliced on-
a hot solution of distill-
white vinegar, sugar, celery
seed, tumeric and dry mustard.
The mixture is brought to
a boil and immediately into hot
sterilized jars and sealed. What
a delightful way to enjoy tasty,
zucchini squash later in
the year, or right now!

ZUCCHINI PICKLES
1 quart distilled white vinegar

...7:40 P.M.

RACES

WAY CARS

EPT. 9-10

SEATS NOW!

STAGE

SHOW

SEATS

WITE (SEPT. 11)

WITE (SEPT. 12)

(Desired)

WN

ed stamped envelope to

Box 945, Topeka, Kansas

performance.

Cash Your good late grass into EXTRA CATTLE GAINS!

You can with a few pounds
of



Gooch HEP provides cattle

* HIGH ENERGY PROTEIN

* GBA-65-the digestive aid
that helps cattle recover
more beef building values
from the grass they eat.

Call us for immediate deliv-
eries of GOOCH HEP (High
Energy Protein Pasture Sup-
plement) in Cubes or Blocks.

CK Processing Co.

Manhattan, Kansas
Telephone PR 6-9269

Clay Center Alfalfa Mill

Clay Center, Kansas
Telephone ME 2-3401

Docking Names New Milk Board

A milk advisory committee,
created by the 1967 legislature,
had members named to it last
week by Governor Docking.

The appointments:
Norman Barker, Pratt
Pius Hostettler, Hillsboro
Ben Zarda, Shawnee
James F. Aiken Jr., Wichita
Mrs. Robert Stroud, Topeka
Barker and Zarda are dairy-
men, and Hostettler is manager



Mower Knives

AC smooth heavy	10.69
AC underserrated heavy	11.15
JD smooth heavy	9.99
JD smooth chrome heavy	12.95
JD underserrated heavy	10.69
JD underserrated chrome heavy	13.89
Ford smooth heavy	10.19
Ford underserrated	10.75
IHC smooth heavy	10.19
IHC underserrated hvy	10.75
New Idea smooth heavy	11.69
New Idea underserrated heavy	12.29
Smooth heavy sections	15c ea.
Underserrated heavy sections	16c each
Rock guards	\$1.05
Rake teeth	29c up
AC round baler belts laced	7.39-9.59

POLY SALE

16x50	10.66
16x100	20.37
20x50	13.15
20x100	26.74

HOLT FARM SUPPLY

Next To Sale Barn
MANHATTAN PR 8-4343

of the Tip-Top co-op dairy at
Hillsboro. Aiken is with the
Sedgwick County department of
public health, and Mrs. Stroud
is the wife of a dentist.

Hostettler and Mrs. Stroud
have 1-year terms; Barker and

Aiken, 2; Zarda, 3.

The legislation setting up the
committee requires that four of
the five members be active in
the milk industry or associated
with milk regulatory agencies.

August 22, 1967

8

Grass & Grain



**hogs put on
extra pounds of
profitable pork
with nature's richest
source of protein**

Kansas Soya's 40% Hog Supplement contains
highly digestible and palatable Sunflower
Brand Soybean Meal. This assures you of
extra pounds of profitable pork on every
hog you raise.

For maximum gains ask for it by name: Kansas
Soya's **Sunflower Brand 40% Hog Supple-
ment**. It's yours medicated with Auero-SP
250, or unmedicated.

Kansas Soya also offers Grain Bank facilities,
automated custom-mixing and fast, in-and-
out loading with automated equipment. Call
or write for additional information, today.

KANSAS SOYA PRODUCTS CO., INC.
PHONE DICKENS 2-7270 • EMPORIA, KANSAS



Manhattan Commission Co., Inc. Sale Every Thursday

We sold over 1400 head of
cattle at our sale last Thursday.
Buyers from 4 states were com-
peting very strongly against
each other on all classes.
Our market held steady and
very active on all classes.
The following is a partial
listing of the sale:

FAT CATTLE & FEEDERS

1 black steer	625 @	28.80
1 blkwhif steer	615 @	28.10
39 whiface steers	631 @	27.30
3 whiface steers	667 @	27.10
3 charolais steers	608 @	27.00
18 whiface steers	819 @	26.70
5 whiface steers	654 @	26.65
11 whiface steers	774 @	26.50
31 whiface steers	852 @	26.30
1 whiface steers	620 @	26.30
1 whiface steer	750 @	26.70
3 whiface steers	656 @	26.20
1 spotted steer	665 @	26.10
15 whiface steers	843 @	26.05
1 whiface steer	720 @	26.00
49 black steers	827 @	25.80
3 whiface steers	693 @	25.80
4 shthorn steers	608 @	25.80
2 black steers	615 @	25.70
1 black steer	780 @	25.60
10 whiface heifers	694 @	25.60
1 blkwhif steer	625 @	25.50
1 blkwhif steer	925 @	25.40
17 mixed steers	638 @	25.40
12 mixed heifers	706 @	25.40
1 black heifer	640 @	25.30
15 whiface steers	940 @	25.30
13 black steers	812 @	25.25
15 black steers	1036 @	25.20
1 brofwhif steer	975 @	25.20
3 blkwhif heifers	653 @	25.10
21 whiface heifers	609 @	25.10
2 black steers	947 @	25.10
1 blkwhif heifer	650 @	25.00
1 whiface steer	925 @	25.00
5 whiface heifers	692 @	24.90
2 shthorn steers	702 @	24.80
2 black steers	965 @	24.80
4 whiface heifers	752 @	24.60
1 whiface heifer	665 @	24.60
4 blkwhif steers	725 @	24.50
2 w; iface steers	870 @	24.40
3 whiface steers	753 @	24.25

STEER CALVES

2 blkwhif steers	258 @	35.75
1 black steer	280 @	34.00
4 black steers	366 @	32.25
3 whiface steers	366 @	31.75
1 blkwhif steer	440 @	31.50
1 blkwhif steer	250 @	31.25
1 shthorn steer	355 @	31.25
10 black steers	580 @	31.10
1 whiface steer	325 @	31.00
1 black steer	490 @	30.90
1 whiface steer	395 @	30.75
3 blkwhif steers	573 @	30.75
1 black steer	435 @	30.60
2 whiface steers	492 @	30.50
1 black steer	370 @	30.50
8 black steers	577 @	30.10
1 blkwhif steer	505 @	30.10
13 black steers	528 @	30.10
1 whiface steer	350 @	30.00
15 black steers	536 @	29.60
5 black steers	554 @	29.60
2 black steers	557 @	29.50
8 whiface steers	568 @	29.45
12 whiface steers	569 @	29.40
1 blkwhif steer	430 @	29.30
2 black steers	430 @	29.10
1 roan shthrn str	515 @	29.10
1 whiface steer	430 @	29.00
2 whiface steers	457 @	29.00
4 b&wif steers	580 @	28.75
1 black steers	535 @	28.75
5 black steers	580 @	28.70
5 black steers	510 @	28.60
2 whiface steers	558 @	28.60
13 whiface steers	570 @	28.40
1 whiface steer	435 @	28.30
46 black steers	573 @	28.30
7 whiface steers	530 @	28.30
10 black steers	484 @	28.15
2 red steers	555 @	28.10
1 black steer	485 @	28.10
16 whiface steers	564 @	28.00

2 shthorn steers	512 @	28.00
1 shthorn steer	425 @	28.00
2 black steers	305 @	27.80
3 blkwhif steers	583 @	27.70
1 whiface steer	500 @	27.50
2 whiface steers	592 @	27.25
1 whiface steer	535 @	27.20
3 black steers	541 @	27.20
3 whiface steers	478 @	26.60
5 whifrednk steers	540 @	26.50
3 whiface steers	470 @	26.40
2 whiface steers	507 @	26.25
1 whiface steer	460 @	26.10
13 whiface steers	422 @	25.95
2 whiface steers	587 @	25.70
2 black steers	510 @	25.60
1 holstein steer	365 @	23.70

HEIFER CALVES

4 whiface heifers	470 @	26.90
2 blkwhif heifers	502 @	26.40
8 black heifers	470 @	26.40
13 black heifers	572 @	26.40
4 black heifers	521 @	26.30
3 whiface heifers	313 @	26.25
23 black heifers	542 @	26.20
1 roan heifer	485 @	26.20
7 black heifers	434 @	26.20
8 whiface heifers	502 @	26.20
3 blkwhif heifers	358 @	26.10
49 black heifers	586 @	26.10
6 black heifers	512 @	26.00
8 whiface heifers	360 @	26.00
3 black heifers	488 @	26.00
12 whiface heifers	540 @	25.95
2 blkwhif heifers	515 @	25.90
10 whiface heifers	544 @	25.80
1 blkwhif heifer	535 @	25.80
4 whiface heifers	457 @	25.70
10 whiface heifers	534 @	25.60
11 whiface heifers	512 @	25.60

2 1/4 MILES EAST OF MANHATTAN ON US 24

2 whiface heifers	552 @	24.40
1 blkwhif heifer	475 @	25.30
6 black heifers	469 @	25.30
16 whiface heifers	503 @	25.30
4 blkwhif heifers	546 @	25.20
5 whiface heifers	554 @	25.00
5 black heifers	446 @	24.10
4 whiface heifers	511 @	24.00
10 whiface heifers	534 @	23.50
2 black heifers	517 @	23.10
1 whiface heifer	545 @	23.00
5 black heifers	529 @	22.50

BULLS

1 whiface bull	1335 @	22.90
1 whiface bull	1480 @	22.80
1 black bull	1330 @	22.25

COWS

1 black cow	795 @	19.40
1 whiface cow	935 @	19.00
1 holstein cow	1375 @	18.60
1 brnswiss cow	1295 @	18.30
1 whiface cow	785 @	18.20
1 black cow	1075 @	18.20
1 holstein cow	1375 @	18.10
1 blackwhif cow	1225 @	18.00
1 roanblk cow	870 @	17.80
1 blkwhif cow	990 @	17.80
3 holstein cows	1255 @	17.80
1 black cow	980 @	17.70
1 whiface cow	1155 @	17.40
1 charlaiswf cow	1015 @	17.40
1 whiface cow	970 @	17.40
1 roanblk cow	990 @	17.40
1 whiface cow	1030 @	17.30
3 whiface cows	1196 @	17.30
1 whiface cow	1100 @	17.20
1 spotted cow	1200 @	17.10
1 whiface cow	875 @	17.10

FOR ESTIMATES

W. E. DUGAN ----- Alta Vista, 229-6430
JOE RAINE ----- Maple Hill, MI 3-2226
DON WELLS ----- Manhattan, JE 9-3744
MERVIN SEXTON ----- Abilene, CO 3-3449
C. J. WENTZ, bus. mgr. Manhattan, JE 9-5561

BARN PHONE ----- Manhattan, PR 8-4415

Consignment Reports
WIBW radio 6 30 A.M. Thursdays
WIBW-TV 12:15 Noon Wednesdays

**The Manhattan Commission
Co., Inc.**



MANHATTAN, KANSAS

East On US 24

Auctioneer: Joe Raine

BUYING FAT HOGS

We buy fat hogs daily at
the Manhattan Commission
Co., Inc. sale barn. We buy
direct with no commission to
the seller.

BUYING HOURS:

Mondays thru Fridays
8 a.m. to 4 p.m.
Saturdays 8 a.m. to 2 p.m.
Manhattan PR 8-4415

**WE ARE ALSO BUYING
FAT HOGS AT THE
W. E. DUGAN YARDS
ALTA VISTA**

SATURDAYS & MONDAYS
8 a.m. to 3 p.m.
Phone Alta Vista 229-6430
or Manhattan PR 8-4415

**AT ALMA & ESKRIDGE
EVERY WEDNESDAY**
From 8 a.m. to 1 p.m.

Please do not bring hogs in
for sale on Thursday after-
noon, as we will be having
large runs of cattle and you
might not be able to unload
and they will get hot on you.
For information call the
barn in Manhattan, PR 8-4415.
In Alma, Oscar Nelson 785-
3861. In Alta Vista, W. E. Du-
gan, 229-6303. Or you may
call Joe Raine at Maple Hill,
MI 3-2226 or Eskridge Yard
449-2347.

Silage

With cattle feeding
looking for cheap
flesh to
of them are in
ing silage as the
feed supply avail-
The result is a
products that h
eased and which
creasing sales e
G&G area in pa
Basically, the
age preservative
ers" or "improv
application style
them prefer not
comparisons wi
not all have as a
make better use
ing beef produc
In recent week
Grain, there ha
companies adv
wares. Among t
Kalozyne, pro
Co. of Qui
which James Yea
is a G&G dis
while ensiling,
claimed by its m
work on either



Clarence Faidl
ford shows first
silage which has
erry Wolf and
of Junction City
the distributors
several silage tr
lets being mar
G&G area.

silage or alfalfa
vantage over
age, promising b
small, good app
cattle cleaning u
without waste.
Fresh Cut, pro
Feeds of Des
number of farm
the G&G area, in

KEY
AGGIE HAI
1965 Moro

Com
Farmer &
Supp
Biologics
Pharmac
Show E
Instruments
Iter

Kinyon D
844 N. Kans
TOPEKA, KA

MATT
BOX SE
Specials
New Lo
Buy
Also Comple
Ser

Manh
Mattr
414 S. 4th

Silage Improvers Proliferate In G&G Area

With cattle feeders regularly looking for cheaper means of adding flesh to their stock, many of them are increasingly testing silage as the lowest-cost feed supply available.

The result is a proliferation of products that have been developed and which have seen increasing sales efforts in the G&G area in past months.

Basically, the products are silage preservatives or "conditioners" or "improvers." Time and application styles vary, most of them prefer not to make direct comparisons with each other, but all have as a general aim to make better use of silage in cutting beef production costs.

In recent weeks in Grass & Grain, there have been several companies advertising their wares. Among them:

Kalozyme, produced by the Kalo Co. of Quincy, Ill., for which James Yearout of Emporia is a G&G distributor. Added while ensiling, Kalozyme is claimed by its manufacturer to work on either immature corn

Habluetzel and Gilbert Tessen-dorf of Wamego, Norman Ober-helman of Maple Hill, and John George of Green. Fresh Cut, say its dealers, works on silages, new hay or grain. The grain ap-plication is for high moisture grain to be fed to livestock. Red-ucing hot spots, smells and waste, conserving nutrients, and increasing flavor to livestock are among the claims.

Monsanto's Seal-Vac vacuum silage has Vic Barnes as a dealer in Washington County. This silage preserver proposes to cut off air from the silage with a sealed storage system, conserv-ing feed at high nutrition values at a very low cost.

Another product that says it can save on wet alfalfa, silage and grain by treating it at low cost and preserve a high de-gree of feed value is one distri-buted by Crossroads Feed Spe-cialties at Belleville, with Herb Rogers a dealer at Alta Vista.

Hy-Si, produced by Shafer For-mula Co. at Cleghorn, Iowa, has Loren Thorpe of Junction City and Eugene Frigon of Wake-field as district distributors. Hy-Si, says Shafer, keeps high moisture feed in good shape and it contends that high moisture silage, or alfalfa hay cut in pre-bloom stage, and high moisture grain have advantages in put-ting on gain, and in increasing digestibility and palatability.

Thorpe and Frigon, the Hy-Si distributors, share the opinion that silage is the lowest cost feed supply available to most feeders and they expect a grow-ing trend toward silage feeding in order to beat cost-price squeezes on the feeding industry.

The Hy-Si Improver practical-ly eliminates loss of ensilage thru shrinkage and spoilage, and increases its nutritional value by retaining more of the plant's natural juices and vita-mins, they contend.

With the improver, they feel that silage not only gives them the low cost feeders want, but also produces a desirable beef animal while holding down their total farming and feeding costs.

Alfalfa haylage loses its nat-ural vitamins when wilted in the field and if put up too wet, vitamins are lost thru ensiling heat. There is also the problem of run-off and spoilage with too-green alfalfa haylage.

Thorpe and Frigon think their Hy-Si treatment licks this prob-lem, and the distributors of the others make equal conten-tions for their products. All can cite tests and satisfied custo-mers which back up their prod-uct.

Basically the customers say that treated silage retains al-most all of the moisture it con-tains when green. It has a mini-mum of shrinkage, they say, and remains sweet-smelling. Some say they have used the

products for two years or more without spoilage.

John Stigge of Washington says he has used Hy-Si for two years and wouldn't put up any silage without it. He used it on wheat silage this year and has used it on sorghum and corn.

Another Hy-Si customer is Clarence Faidley Jr. of Long-ford Faidley milks about 50 cows and drylots them the year around. He says he has been giving them treated alfalfa en-silage and has noticed an in-crease in production with a cut-back in grain.

Grange Asks For Grain Reserve

A spokesman for the National Grange spoke in favor of a strategic reserve of wheat, grains and soybeans before a House subcommittee last week.

Harry Graham, Grange legis-lative representative, said, "The argument for the reserve has always been disregarded in the belief there would always be a surplus."

"This concept has evaporated and now we are faced with the realities of living and providing for ourselves in the modern world."

HAVE YOUR CROPS HAD THEIR ANNUAL HEALTH CHECK-UP?



RECEIVE YOUR FREE CHECKUP HERE

Let us help you, through tissue testing, see how well your fertil-izer program is meeting the crops needs and then help you plan for next year's crops.

HOURS: 1 to 5
DATE: MONDAY AUG. 28
LOCATION: GORDEN MARK ELEVATOR

TISSUE TESTING

Our Ortho-Agronomist Will Be Here To Make Tissue Tests On One Of Your Crops, Such As Corn, Milo, Soybean or Alfalfa. He Will Analyze For Levels Of Major Plant Nutrients.

Here's what you do:

1. Select 3 plants that represent the one field. (Avoid abnormal plants and soil conditions.)
2. Cut the plants off right at ground level.
3. Bring the freshly cut plants to us.

AND

CROP COUNSELING

Helping The World Grow Better

Helping The World Grow Better



BILL DICKINSON
Agronomist

WHAT: Corn, Milo and Wheat Fertility Clinic To Help You Plan For Next Year's Crop

WHERE: Gorden Mark Elevator, Clay Center, Ks.

WHEN: Monday, August 28 at 8:00 P.M.

WHY: For Increased Yields Of Corn, Milo and Wheat

COME IN — DISCUSS YOUR FERTILITY PROBLEMS

FREE COFFEE AND DONUTS

Gorden Mark Elevator

ME 2-3381

Clay Center, Kans.

"Helping The World Grow Better"

PRICES REDUCED

ON ALL SIZES

Example:

Rear Tractors

13.6-38 — \$59

All other sizes similarly reduced.

Plus Fed. Ex. Tax and Resalable Ex. Tire

FINK

TIRE SERVICE

Wamego, Kans. 456-2575

50 New Chevrolet Trucks Used Trucks

- 1967 GMC 1/2 ton pickup, 3 speed
- 1966 IHC 1/2 ton pickup with stock racks
- 1966 Chevrolet 1/2 ton pickup, V-8, 3-speed
- 1966 Chevrolet 1/2 ton pickup, 6, 3-speed
- 1965 Chevrolet 1-ton grain box and rack
- 1965 Chevrolet 1/2 ton pickup, 6, 4-speed
- 1965 Chevrolet 1/2 ton pickup, 6, 3-speed
- 1964 Chevrolet 3/4 ton pickup, 6, 4-speed
- 1964 IHC Carry-all
- 1962 Chevrolet 1/2 ton pickup, V-8, 3-speed
- 1961 IHC 13 1/2 ft. grain bed and hoist, nice
- 1961 Chevrolet 70 series tractor
- 1961 Chevrolet 1 1/2 ton van with aluminum van body
- 1960 Chevrolet 1 1/2 ton cab and chassis
- 1960 Ford tractor
- 1960 GMC 1/2 ton pickup
- 1959 Ford 3/4 ton pickup
- 1957 Ford tractor trailer and crane
- 1950 Ford 1/2 ton pickup
- Plus many more dollar saving VAN-T trucks

Open 8:00 a.m. til 9:00 p.m. Week Days

Closed Sat. 6:00 p.m. & Sunday

Service & Parts Open 7:00 a.m. til Midnight



Clarence Faidley Jr. of Long-ford shows first cutting alfalfa silage which has been treated to Jerry Wolf and Loren Thorpe of Junction City, who is one of the distributors of one of the several silage treatment prod-ucts being marketed in the G&G area.

silage or alfalfa hay silage at an advantage over untreated sil-age, promising better taste, no smell, good appearance, with cattle cleaning up the silage without waste.

Fresh Cut, produced by Triple F Feeds of Des Moines, has a number of farmer dealers thru the G&G area, including John

KEYS made while you wait
AGGIE HARDWARE
1205 Moro MANHATTAN

Complete Farmer & Stockman Supplies
Biologics - Vaccines
Pharmaceuticals
Show Equipment
Instruments and Related Items
Kinyon Distributing
844 N. Kansas Box 8105
TOPEKA, KANS. FL 4-1553

MATTRESS & BOX SPRINGS
Specials Every Day
New Low Prices
Buy Direct
Also Complete Rebuilding Service
Manhattan
Mattress Co.
414 S. 4th PR 8-5302

BUYING
AT HOGS
y fat hogs daily at
unhattan Commission
c. sale barn. We buy
with no commission to
er.
BUYING HOURS:
ndays thru Fridays
8 a.m. to 4 p.m.
rdays 8 a.m. - 2 p.m.
hattan PR 8-4415

ARE ALSO BUYING
T HOGS AT THE
E. DUGAN YARDS
ALTA VISTA
RDAYS & MONDAYS
a.m. to 3 p.m.
e Alta Vista 229-6430
Manhattan PR 8-4415

do not bring hogs in
e on Thursday after-
as we will be having
uns of cattle and you
not be able to unload
y will get hot on you
information call the
Manhattan, PR 8-4415
a, Oscar Nelson, 765
Alta Vista, W. E. Du-
9-6303. Or you may
Raine at Maple Hill
26 or Eskridge Yard

Commission
Co., Inc.
MANHATTAN, KANSAS
East On US 24
Joe Raine

Computers Here Now For Farm Use Say Data Processors

Are computers just around the corner in farming?

Not really. The corner has already been turned, and computers not only are used in compiling agricultural statistics and in processing formulas for massive feeding operations, but data processors are being used right now in the G&G area for record keeping on family sized farms.

There are a number of fledgling companies in the U.S. selling computer services for farm record-keeping, and several of them operate in Kansas and Nebraska. The early leader in this area is called Computer-Ease Farm Systems, an auxiliary of Agri Research of Manhattan.

Presently Computer Ease offers its services thru the Union State Bank of Clay Center, the First National of Pittsburg, the First National of Pratt, the First National of Medicine Lodge, and the Peoples National Bank of Ottawa. The Home National Bank of Ark City will start the program soon. Computer-Ease also has sold its service to about 10 banks in Iowa, including the Branton group.

Gary Rumsey of Computer-Ease says what his company offers beyond some of the computer accounting services available elsewhere is specific accounting by farm enterprise.

If the farmer is careful in coding his checks and deposits, we can draw some specific financial conclusions about each of the farmer's enterprises — beef, corn, etc. — from which management decisions can be made."

If farmers were often negli-



Farm Manager Gary Beck

gent in keeping financial records before, why would one think farmers will carefully code checks and bank deposits so that the computers get valid information?

Gary Beck, farm service director at the Union State at Clay Center, the first bank in the G&G area to initiate the Computer-Ease system, thinks farmers will see the need for better financial information.

"If they're keeping their own record books now, a farmer and his wife will find it less troublesome to make a mark on a check or perhaps to write a few more checks than he did before. It's easier than posting into a journal, and if a farmer is going to pay for better records he's going to see he's getting his money's worth by doing what he has to do in the way of coding checks and deposits."

It's not just the farmer who wants better records. The banker will also.

With credit needs increasing

at a tremendous rate, bankers are going to need more information from their customers to wisely administer this credit," says Beck. "It is entirely possible that we may someday have to tell our customers 'no records, no credit.'"

All of the farm systems processing financial records thru computers work thru the customer's checking account and give monthly statements. Checks and deposit tickets are coded when filled out by the customer. Then at the end of the month the cancelled checks, deposit tickets, and bank statement are sent by the bank to the firm for processing, and the customer receives his records by mail in a few days.

An income tax summary is prepared by the customer at the end of 10 month's business and at the end of the business year. The 10-month summary allows the farmer to make some year-end adjustments in his sales or purchases which would result in a tax savings to him.

Customers receive three detailed reports each month. A bank statement summary lists all transactions for the month and groups them according to tax category. A farm enterprise summary gives a breakdown of income and expense for each farm enterprise. This report will indicate the net cash income from farming operations at any given period along with capital and mortgage and loan transactions. A personal budget is also supplied.

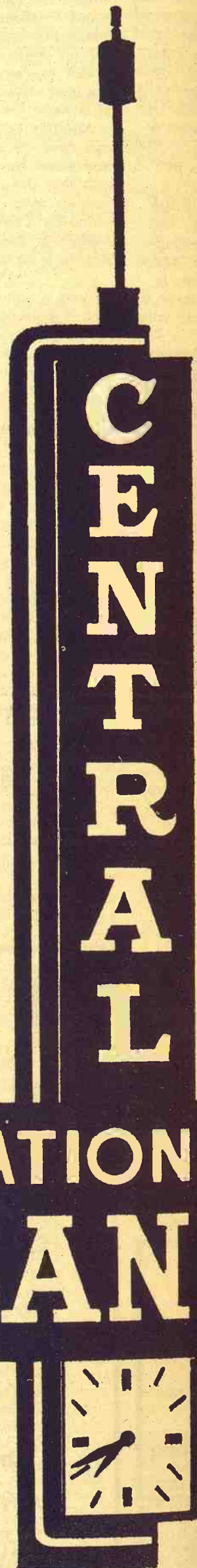
Keeping individual farm records of course hardly makes even the simpler computers hum heavily. The companies in the field gang up the records so that the hourly costs of computer time are divided by a great number of accounts. Thus, the cost of the programs may not be any more than the farmer was already spending in dollars and time to keep his own records. At least the costs are within what other businesses

may spend for record-keeping.

"A farmer can afford to spend 1% to 2% of his gross sales for records. If he's grossing \$10,000 to \$25,000, he can afford to spend \$200 a year for this service," Beck quotes a farm economist.

Already several dozen farmers in the G&G area figure the cost can be borne by possible income tax savings and the chance to make clearer management decisions to increase income.

A Bank Preferred by Farmers And Livestockmen



5%
ON CERTIFICATES OF DEPOSIT
Junction City, Kans.

COMPUTER-EASE SYSTEMS P. O. BOX 334, 200 RESEARCH DRIVE MANHATTAN, KANSAS 66502		DEPOSIT TICKET D 066
DATE 12-10-67	AMOUNT \$ 35.34	03-124
CASH	CHECK	1011
SUB TOTAL		
LESS PAYMENT CASH		
NET DEPOSIT	\$ 35.34	

QUANTITY 427 Cwt. DESCRIPTION Milk

UNION STATE BANK
Clay Center, Kans.

1011-0124: 00 0876

YOUR PROFESSIONAL MARKET AGENCIES ...

- American
238-1723
- Cecil Baker
238-2427
- Burlington
238-0605
- John Clay
238-0637
- Colt - Wall - Bethel
238-0618
- Dutton
238-4536
- Farmers Union
238-0631
- Fletcher
238-1786
- Gregory
238-0211
- Heady & Fannen
238-0054
- Lamborn - Murray - Davis
238-0633
- Midwest - Roe - Kelly
238-0647
- Minor - Hunter - Boswell
238-0440
- Missouri
238-0695
- National
238-2476
- Poe Bros.
238-0198
- Producers
238-1793
- Rush
238-1138
- St. Joseph
238-2459
- Swift & Henry
238-3314

**MARKETING---
STOCKERS
and
FEEDERS
---by AUCTION
EACH
THURSDAY
10:30 A.M.**

**ST. JOSEPH
STOCKYARDS**

CL
RA
CL
rat
(25)

WANT
FEEL
40 to 100 lbs
J. D.
130 Grant A
Phone CE 8

FOR SALE
Yorkshire bo
so open gilts
for C & E.
Son, 6 mi. S
hwy. 77. Ph
ST 5-2784.

MEAT TYPE
credited SP
Serviceable a
Harvey Herri
phone DI 8-2

FOR SALE
tion tested d
full brothers
of half broth
ing & indexi
University te
following rec
gain 244, ave
Feed efficien
200 lbs, 122 c
dex 170. Hay
City, CE 8-60

REG. HAMP
cass data. F
Yearout, Em
2424597.

FOR SALE
boars & gilts
had. Few bre
ate sale. If i
lect: ST 5-276
thur & Gail F
Kansas.

FOR SALE
production te
boars. A fe
& a large sele
ers to the to
ing boars at l
station with
ord. Average
average back
clency 2.80. A
days. Indivi
Hayes Beck,
Kans. CE 8-6

FOR SALE
of eleven go
cows. All to
September 1s
years. Some
a day. Virgil
Kans. 1 East,
TW 5-4924.

FOR SALE
stein heifers,
Dams on DH
Ready, Hanov

FOR SALE
ted boars and
Handsome Pr
tested boar g
probed 92. A
Mainline Styl
at Topeka and
Fair. Most d
braska Colon
J. V. Cundiff
Kans. (4 1/2 m
mage) Teleph

7 DUROC G
a registered h
farrowing date
G. Benyshek,
38F1.

FOR SALE
heifers and c
make your se
grades remain
Anderson Bro
ks, Phone 9

FOR SALE
Hampshire bo
Kenneth Schle
sas. Ph. 28F0

FOR SALE
heifers, 2 4-yr
in Sept. Tom
ene, RI, Phon

FOR SALE
heifers to fr
Sept. 25. Cur
Lyman Schur
tan, Phone R
ter 6:00 p.m.

GRASS & GRAIN

CLASSIFIED ADVERTISING

RATES: \$1 a week for 15 words or less. Add 5c a word for additional words. SPECIAL: Four weeks for the price of three. Boxed ads: \$1.68 an inch per issue, flat rate. Send your ads to Ag Press, 1207 Moro, Manhattan, Kansas. Phone PR 8-4458 (25c handling charge if cash not with order.)

Livestock

WANTED TO BUY FEEDER HOGS
40 to 100 lbs. Top prices paid.
J. D. SIMPSON
130 Grant Ave., Junction City
Phone CE 8-3754 or CE 8-3939

FOR SALE — Reg. Spotted & Yorkshire boars 150-225 lbs. All open gilts, both breeds, vac. for C & E. D. T. Lindquist & Son, 6 mi. So. of Waterville, Hwy. 77. Phone ST 5-2358 or ST 5-2784. SB27

MEAT TYPE Nationally Accredited SPF Yorkshire boars. Serviceable age, guaranteed. Harvey Herrs, Linn, Kans., phone DI 8-2252. x27

FOR SALE — Reg. SPF production tested Duroc boars, a few full brothers & a large selection of half brothers to the top selling & indexing boars at KS University test station with the following record. Average daily gain 2.44, average backfat 1.18. Feed efficiency 2.58. Age at 290 lbs, 122 days. Individual index 170. Hayes Beck, Junction City, CE 8-6064. SB25

REG. HAMPSHIRE boars, carcass data. Feed EFF. James Yearout, Emporia, Ks. AC 316 342-4597. x26

FOR SALE — Duroc & Hampshire boars & gilts. Best we've ever had. Few bred gilts for immediate sale. If interested, call collect: ST 5-2765 or ST 5-2766. Arthur & Gail Roepke, Waterville, Kans. SB26

FOR SALE — Registered SPF production tested Yorkshire boars. A few full brothers & a large selection of half brothers to the top selling & indexing boars at KS University test station with the following record. Average daily gain 2.20, average backfat .93, feed efficiency 2.80. Age at 200 lbs., 128 days. Individual index 163. Hayes Beck, Junction City, Kans. CE 8-6064. SB25

FOR SALE — My entire herd of eleven good Holstein dairy cows. All to freshen around September 1st. Ages two to six years. Some will give 10 gal. a day. Virgil Deters, Baileyville, Kans. 1 East, 2 1/2 North. Phone TV 5-4924. SB25

FOR SALE — High grade Holstein heifers, freshening now. Dams on DHIA records. Elvin Reedy, Hanover, Kans. x25

FOR SALE — Registered Spotted boars and gilts sired by Handsome Prince, Ames, Iowa. Tested boar gained 2.14 and probed .92. Also some sired by Mainline Style first place boar at Topeka and Hutchinson State Fair. Most dams sired by Nebraska Colonel, certified boar. J. V. Cundiff, Manchester, Kans. (4 1/2 miles north Tallmage) Telephone 913 388-2369. x27

7 DUROC GILTS, all bred to a registered boar. Approximate farrowing dates Sept. 15. Joseph G. Benyshek, Cuba, Kans. Ph. 38F1. x25

FOR SALE — Holstein springer heifers and cows. You may make your selection from the grades remaining in our herd. Anderson Bros., White City, Ks. Phone 913-349-2967. x28

FOR SALE — Registered Hampshire boars and open gilts. Kenneth Schlessner, Hope, Kans. Ph. 28F02. x25

FOR SALE — 4 Reg. Holstein heifers, 2 4-yr. old cows, freshen in Sept. Tom Woolverton, Abilene, R1, Phone Buckeye 921. x27

FOR SALE — Purebred Jersey heifers to freshen starting Sept. 25. Curtis bred & sired. Lyman Schurle, Rt. 1, Manhattan, Phone Riley HU 5-2383 after 6:00 p.m. weekdays. x26

SERVICEABLE AGE purebred Duroc boars. John D. Erickson, Olsburg, Kans., Phone 468-3329. x27

NATIONALLY ACCREDITED SPF purebred Yorkshire boars. Open crossbred gilts. Floyd Meyer, Phone 308, Palmer, Ks. x29

TEN HEAD of choice Duroc gilts for sale. February and March farrowed. Certified bloodlines. Backed by forty years of state fair winners. Also purebred Duroc and spotted boars of top quality. See our hogs at the Mid-America, Nebraska, and Kansas State Fairs. Wayne L. Davis, Mahaska, Ks. Phone 3403. x27

FOR SALE — Charolais bulls, purebred and percentage guaranteed. McFadden Bros., Riley, Kans. Phone HU 5-2688. x26

Dairymen — Buy The Best For Less

We have for your selection at all times the largest supply of

**FRESH SPRINGER
HOLSTEIN — GUERNSEY
JERSEY
SWISS and MILKING
SHORTHORN COWS &
HEIFERS**

Financing available—up to 24 mos.

SPECIALS

100 Holstein Hfirs. to freshen in 60 to 90 days \$275
50 Holstein Heifers, bred 3 months \$250

CALVES! CALVES!

We will have 400 to 500 calves beef cross, 2 weeks to 450 lbs. At our barn every week for the next several months.

W. G. WIEBE

Phone CI 4-7625
Summerfield, Kansas

FOR SALE — Duroc boars, nationally accredited SPF, Fred Germann, Dwight, Kans., Phone J.C. CE 8-4382. SB25

NATIONALLY ACCREDITED SPF Hampshires, March boars & open gilts. Quality. H. Wayne Shirley, Horton, Kans. Phone Powhattan 474-3349. x30

SERVICEABLE AGE Hampshire boars with backfat probe, loin sonoray all over 500 inches, age at 200 pounds. Progress with Performance at Balthrop Farms. 11220 E. Central, Wichita. x27

FOR SALE — 2 yearling bulls. 1 registered Polled Hereford, 1 Horned, Donald Osbourn, Green, Kans. Phone 944-2727. x27

KINGMAN COUNTY feeder pig sale, September 5, 1967. Quality pigs in large and small lots, weighing from 40 to 100 lb. Dick Strohl, President, Cunningham, Kans. Phone 298-2332. SB25

SEE OUR Reg. spotted boars at Mid-America Fair. They are for sale. Roy Keller, Berryton. x28

FOR SALE — Holstein cows good milkers: some springers, some just fresh. Two year old Jamesway bulk tank. Dwight — 482-3230. x26

FOR SALE — Nationally accredited SPF registered Hampshire and Duroc boars & gilts. Test station figures available. Phone CE 8-7258, Harold R. Brumm, RR3, Junction City, Kansas 66441. x26

FOR SALE — 19 Purebred large Angus cows and calves. Bud Turner, Kanopolis, Kans., NE 4-5428. x28

FOR SALE — 125 head of beef cross and Holstein steer calves 200 to 300 lbs. Marvin Johnson, Brookville, Kansas, Phone 225-4575. SB26

WANTED TO Buy — Feeder pigs. Riney Junghans, Junction City, phone CE 8-2039 or CE 8-4341. SB26

WANTED TO Buy — 2 good Holstein milk cows, just fresh or to freshen soon. A. H. Carlson, Olsburg, Kans., ph. 468-3576. SB26

Feed & Seed

DAIRY PELLETS, range pellets and all kinds of fertilizers. Manhattan Milling Co., 107 Pierre, Manhattan. TF Chg

CERTIFIED PARKER and Scout seed wheat. Sidney Johnson, Lindsborg, Kans. Route 2, Phone AC 7-2532. x25

GOLDEN 50 seed wheat, now ready. Lower prices: Sundays thru Fridays. Clarks Better Wheat Farms, Sedgwick, Kans. 67135. Phone 316 PR 2-5210. x27

FOR SALE — Registered Gage Wheat. Must order by Sept. 1. Gerald Gerdes, Wymore, Nebr., Phone 402-674-3376. x27

WANTED — TO buy damaged wheat for hog feed. Gordon R. Sh, Geneseo, Kans. 67444. Ph. 824-5456. x25

Poultry

POULTRY & EGGS wanted. Deliver or we'll pick up, Wed. Fri-Sat. Kochs Produce, 702 Elm, Marysville, HI 3-3510. SB37

Automotive

GMC

TRUCKS

1/2 Ton - 60 Ton
Sales & Service

TRI-COUNTY MOTORS
307 N. 3rd MANHATTAN

Bearman Eqpt. Co.

ALLIS-CHALMERS
MINNEAPOLIS MOLINE
Phone 456-2310
East US 24
WAMEGO, KANSAS

Used Trucks

1966 IH Scout 4x4, new \$2300
1963 IH 1600 2-ton 2-speed axle \$1595
1957 IH 170 2 1/2 ton 2-speed axle \$875
1950 IH L150 w/ bed and hoist \$845
1950 IH L150, good \$250
1950 IH L160 2 ton, 2 speed axle, w/ bed & hoist, O.H. \$945
1962 Studebaker 3/4 ton pick up \$550
1948 Chev. 1 1/2 ton w/ bed & hoist, good \$550
1951 Jeep 4 wheel drive \$295
1960 Ford F100 4 wheel drive \$875

Schumacher's Inc.



Highway 36

EA 5-2316

WASHINGTON, KANS.

FAIRBURY FORDS
CLOSE-OUT PRICES

1962 Ford F-600, 2-ton 18' fold down box & Anthony hoist, 2-speed axle \$2395
4 new 1967 Ford F-100's Pickups, 6 or V-8, choice of color
3 New 1967 Ford 3/4-ton pickups 6 or V-8, choice of color, Priced for quick sale
1 New 1967 Ford F-600 2-ton, will handle 15 1/2' box, 2-speed 330 V-8 engine.
If you are looking for a deal on a new Ford truck or car, come to

Rileys Ford Cntr.



Phone 729-5346
Fairbury, Nebr.

SKAGGS (FORD) MOTORS

CLEAN-UP

SALE

ON NEW '67

FORDS!

SAVE HUNDREDS OF DOLLARS — make the best deal ever! We need good, clean used cars NOW!

Get the Buy Of The Year while we still have a good selection of fall '67 models of Fords, Falcons, Fairlanes.

Why Wait?

Buy your new 1967 FORD NOW... during our Big Clean-Up Sale!

Your present car will NEVER be worth more on a trade-in than it is RIGHT NOW! TO DAY!

Anyway you look at it, it will cost you more to delay TRADING FOR A NEW 1967 FORD!

OPEN EVENINGS

BANK RATE FINANCING

SKAGGS (FORD) MOTORS

"Where Customers Send Their Friends"

2nd & Houston Phone 8-3525
MANHATTAN

AULD'S

IN WAKEFIELD FOR

USED TRUCKS

1963 Ford 1/2 T pickup, V-8, overdrive
1963 Chevrolet 1/2 ton, 4-wheel drive, 6-cylinder, 3-speed
1959 International 1/2 ton, 6-cylinder, 4-speed
1949 Ford 1-T SWB with bed & hoist
1949 Dodge 1 1/2 ton with bed, 6-cyl., 4-speed
1947 Ford 1 1/2 T w/ bed & hoist
1940 Chevrolet 1/2 ton, 4-speed, 6 cylinder

AULD

CHEVROLET

HO 1-5414
WAKEFIELD

FOR SALE — 1946 Ford 1 1/2 ton truck with 13'6" bed and grain side. Four 14-24 tractor tires and one 14-12 tractor tire. Ivan Freeman, RR2, Chapman, Kansas. x28

FOR SALE or trade — 1951 IHC 1 1/2 ton truck with fold down racks and hoist. Low mileage on 2MH or 2MHD corn picker. Prefer with sheller attachment. Everett Livengood, Morganville, Kans. x26

AUTO-LITE Spark plugs 60c. Auto-lite shocks \$4.95. 12 volt battery \$16.95 exchange three year guarantee. 6 volt battery \$7.95 exchange. Oil and air filters 50% discount. SCT additive 65c. Sharp Oil Co. Willis Griffee, manager. East Hwy 24 by Kecks Steakhouse. x25

Real Estate

Fulmer Real Estate

CATHERINE J. FULMER
REALTOR

Office 456-7696

Res. 456-9281

WAMEGO

Good Farms

Several good farms for sale. One bottomland farm of 440 acres, leveled for flood irrigation, 2 miles from county seat.

Earl Stoffer

Realtor — Olsburg, Kans.

WANTED TO RENT or buy small well improved farm near Milford Dam or trade for extra good 240 acres near Lucas. A. C. Klusener, Lucas, Kans. Phone 525-7335. SB26

Farms For Sale

277A good land, near Manhattan, 210A cultivation, 67A pasture, good water, improved. \$45,000.

240A near flush, 140A cultivation, 100A pasture, good improvements. \$36,000.

1,352A stock ranch, near Manhattan, 4 BR modern home, barn, machine shed, silos and other improvements.

240A farm near Longford, 150A cropland, bal. pasture, well improved. \$32,000. Present owner will carry contract.

320A stock farm, near Fostoria, about 100A broke, rest pasture, improved, two sets of dwellings on place.

320A near Olsburg, all electric modern home, about 100 A broke and well terraced.

All of the above farms are on good roads. We also have good homes and income property in Manhattan.

Call or write us.

Hervey Real Estate

1231 Laramie or phone
W. H. & Freda G. Hervey 83683
Elmer L. Kistler 93403
MANHATTAN, KANS.

Farms & Ranches

sold privately or
AT AUCTION

(your choice)

You can profit from our years of experience and wide acquaintance in purebred livestock auctions and in the livestock brokerage and farming business.

(we go anywhere in Kansas)

GENE WATSON
REAL ESTATE

Gene Watson, Auct.-Broker
316 663-3174 14 Hillcrest

Doug Wildin, Salesman
316 662-7543 Rt. 1
HUTCHINSON, KANSAS

FARMS FOR SALE

Very well improved 692 acre farm, on oil, new 3 bedroom modern home, full basement, outbuildings new, 35 1/2 crop land, balance excellent grass, all at \$108,000 with only \$10,000 down & \$10,000 March 1 1968, \$10,000 Aug. 1, 1968. If you are looking for a cattle ranch you can look at this and then quit looking.

Unimproved 84 acres, 18 grass, balance cultivated, at \$11,000.

Unimproved 160 with 120 creek bottom cultivated, all under irrigation, excellent water rights, \$45,000.

Nicely improved 240, good road, modern home, 112A very good cultivated land, high producer, balance grass. \$42,000.

I have found buyers for over \$700,000 worth of farm land in 24 days from July 11 to Aug. 4. Land is selling; people are buying it. If you want land don't wait any longer. Call collect and come take a look.

Kvasnicka Realty

GERALD A. KVASNICKA
Realtor

HADDAM, KANS.
Ph. FR 6-2874

FOR SALE — Good clean quarter section in Pottawatomie County, Clearcreek Township. Last year of ten (10) year conservation reserve. Thick, heavy cover of native grasses. Ideal for pasture — approximately 140 acres tillable — approximately 80 acres wheat allotment — can be left in grass for pasture or rebroken for cultivation — one small pond — approximately ten (10) acres prairie hay. For further information or inquiry, contact Robert Welliever, 16 Luhrs Arcade, Phoenix, Ariz. Telephone 252-8955. SB27

SELLING REAL ESTATE at auction. It is experience and performance that counts. Dain's Real Estate, Silver Lake, Kansas, Ph. 582-2770. SB30

FOR SALE — 240 acres, south of Greenleaf, 143 acres cropland, balance pasture, 3 good ponds, wheat allotment 77.8 acres. John Curtis, Clay Center, Kans. x25

160 TO 590 ACRE FARMS
470 acres, 188 now under cultivation, balance seeded to grass at present, the very best of buildings and livestock equipment, plus a new home, Nemaha Co., Ks.

400 acres, 300 acres of good grass, 100 acres of cultivated land along a creek, Cloud County.

320 acres near Clay Center, 190 acres broke and 130 acres of grass. This land lays real good.

320 acres, 80 acres cultivated, balance good grass, good farm buildings and an abundance of water. 24 miles from Topeka.

160 acres, well improved, located within 3 miles of Clay Center.

590 acres, 1000 ton silo, concrete floor and sides, farrowing house, two large hay barns, large machine shed, three bedroom home and a double car garage. Good fences, abundance of water, located on an all weather road in Clay County. 333 acres of grass and 259 acres broke, of which 100 acres is creek land. Please call for appointments.

Eldon Thorman

Real Estate & Auction Service
CLAY CENTER, KANS.
Ph. 913 ME 2-2148

"HALF SECTION 4 miles Lincoln, Kans., gravel road. 170 acres broke, balance pasture with pond and well. Half broke land creek bottom. Quarter grass across road can be rented. Qualifies family farm or investment. \$145 acre." C. A. Ramsey Agency, 111 West Bowland, Lincoln, Kans., 67455. SB25

E. H. Shane Real Estate REALTOR

Office 112 West 7th St.
Ph. CE 8-3641

Residence 224 S. Madison St.
CE 8-2439

List your farms and property with us.
E. H. SHANE Junction City

Farm Equipment



- 1 JD No. 6 2-row harvester
- 1 JD No. 12 2-row harvester
- 1 JD No. 34 2-row harvester
- 2 Gehl 2-row harvesters
- 1 Gehl 5-ft. pickup attach.
- 2 JD No. 14T PTO balers
- 1 Case 140W eng. baler
- 1 IHC 50T eng. baler
- 1 IHC 55 W PTO baler
- 2 JD No. 9 3-pt. mowers
- 1 Ferguson 3-pt. mower
- 1 JD mower, like new
- 3 JD No. 810 4-16 plows
- 1 JD No. F120 4-14 plow
- 1 JD No. F125 5-14 plow
- 1 JD No. F45 4-16 plow
- 8 pull type 3-bottom plows
- 3 pull type 4-16 plows
- 1 Borrell 6-section hitch
- 1 JD No. 15A 12' disk tiller
- 8 4-sec. springtooth harrows
- 1 JD R std. diesel, hyd.
- 2 JD 80 std. diesel, hyd.
- 1 JD 870 std. diesel, hyd.
- 1 JD 720 RC D, 3-pt., hyd.
- 1 IHC 300 RC, gas, hyd., PTO
- 1 IHC 400 RC D, hyd., PTO
- 1 IHC 450 RC D, hyd. PTO
- 1 MF 65 gas w/ hyd. loader
- 1 Case 800 RC gas, hyd., 3-pt.
- 1 Waldon WD-8 angle dozer

Finance your new or used tractors, combines, balers with us — NO interest until spring 1968.

Salina Impl. Co.

Box 1029 Ph. TA 3-2206
SALINA, KANS. 67401

FOR SALE — Ford 9N Horace Case, Phone HO 1-5540, Wakefield, Kans. x25

FOR SALE — Two John Deere RB drills on low rubber, one with fertilizer attachment \$295 and one with fertilizer attachment and alfalfa seeder, \$325. Steve Rupert, Minneapolis, Ks. x25

FOR SALE — New Idea corn picker, good condition. 913 EX 2-2595, Wyburn J. Boucek, Ada, Kansas. x28

- 1 1965 JD 4020 dsl., R/C, 3-pt. hitch
- 1 1965 JD 2010 gas, 3-pt. hitch
- 1 1960 JD 830 diesel, A-1
- 1 1953 JD 60 gas, R/C, wide front
- 1 1952 MM "G" LP gas
- 1 1955 MM "UTS" LP gas
- 1 1955 IH F400 gas, R/C, TA, IPTO
- 1 12-ft. Flex King, V-plow, like new
- 1 15-ft. Flex King V-plow
- 1 12-ft. JD "RW" disc

CRUSTBUSTER HARROWS

Blanding Impl. Co.



PE 8-3066

BELOIT, KS.

See Us

At The Fair

- 1964 Hesston 260 SP swather, good
- 1962 IH No. 201 swather w/ cond., 14-ft.
- 1964 NH 268T PTO baler
- 1955 NH Super 66T PTO baler, New Rustler
- 1962 NH 818 industrial cutter, 2-row
- 1966 pickup for above, very little use
- 1959 sickle bar for WH 800 cutter No. 838
- AC forage harvester w/ sickle bar, pickup attachment
- Case table blower, reasonable
- JD 13-ft. RW wheel disc, good
- MM 9' tandem disc
- IHC 3x16" pull plow on rubber, hyd. lift, good
- AC No. 50 3x14" plow, good
- David Bradley 7-ft. trail mower, good
- JD 400 disc tiller, 6 to 9-ft. cut, good
- 1953 WD w/ mounted cult., good rubber, clean
- 1951 WD, new paint
- 1951 WD w/ late model belly mower
- 1952 IH M, wide front, P.S., live two-way hyd., new overhaul, cream puff
- Late model Gamble riding mower
- 1966 Red Rider, 6 h.p., riding mower, clean

SPECIAL, due in — 1960 Krause SP forage harvester 285A, w/ No. 292 Ford industrial engine, well maintained.

Remember, extended farm delivery plans w/ interest free until June 1, 1968, on purchase of A-C & N-H equipment. See you at the fair.

Wright Impl. Co.



South Highway 15

Phone CO 3-2061

ABILENE, KANS.

Nites, Harris Clark
Salina TA 3-6690

- IH No. 16 field cutter, used one season \$1395
- Gehl 2-row cutter \$995
- IH 46T hay baler \$995
- Ford hay baler \$495
- IH 100 mower with hay conditioner hitch \$85
- IH No. 2 hay conditioner \$95
- MH spec. 80 12' combine
- IH 167 fertilizer grain drill \$375
- JD 12' springtooth harrow \$150

Macha-Revere

Impl. Co.



767-5014

COUNCIL GROVE

FOR SALE — Good corn binder. Edward N. Nelson, Rt. 2, Manhattan. Phone 6-8415. SB25

FOR SALE — Fox field cutter, LeRoy engine, single row, \$275. 1950 Chev. 1 1/2 ton bed & hoist. 1956 Ford 1 ton bed & hoist. Harold Ross, 1201 East Cloud St. Salina, Kans. x26

WANTED — GOOD used De Laval pipeline milker & milk pump; also 400-gal. bulk tank. Wesley Heilman. WI 4-2233, Green, Kansas. SB25

Used Tractors

- 1964 F706D Farmall, new tires, overhauled \$5750
- 1959 F506D Farmall, overhauled \$3450
- 1964 D-17 Allis, diesel, series III, good \$3550
- 1959 MF 65 gas, extra good \$1945
- 1955 F300 gas, overhauled, fast hitch, new tires \$1145
- 1953 Massey-Harris 44 gas \$545
- 1952 Super M Farmall, extra good, power steering \$1350
- 1951 Farmall MD, good \$875
- Farmall H \$295

USED COMBINES

- No. 101 IH overhauled, extra good \$2950
- No. 80 Massey-Harris \$945
- No. 12 Case SP combine \$450
- No. 125 SPVC IH \$250

USED HAY MACHINERY

- Case automatic baler \$145
- IH No. 46 PTO baler, extra good \$950
- IH No. 45 PTO baler \$250
- Ford No. 250 baler \$445
- New Holland baler No. 6 \$245
- John Deere No. 5 mower, extra good \$235
- John Deere No. 5 mower, good \$175
- NH No. 30 mower \$50
- IH No. 25V mower \$95
- New Holland No. 400 hay conditioner \$395
- IH No. 27 mower \$125

USED CULTIVATORS

- IH No. 461 4-row cultivator \$575
- IH No. 261 2-row cultivator, F. H. rear section \$235
- John Deere 2-row cultivator \$65
- AC two row cultivator \$75
- AC two row cultivator, late type \$145
- IH F35 2-row Go-Dig lister, cultivator \$95

USED TILLAGE

- MACHINERY
- No. 50 IH 10-ft. chisel \$550
- Ford 3-14 3-point plow \$395
- IH No. 37 12-ft. wheel disk \$525
- Case 1-ft. wheel disk, good \$525
- Krause 11-ft wheel disk, good \$535
- M-M 8-ft. 3-point tandem, extra good \$275
- Allis 4-14 mounted plow, good \$465
- IH No. 30 3-14 F.H. plow \$145
- IH No. 30 2-16 F.H. plow \$125
- John Deere 6-ft. oneway \$145
- Krause 3-pt. oneway \$135
- John Deere RW 11-ft. wheel disk \$495
- John Deere KBA 11-ft. wheel disk \$295
- IH No. 309A 3-pt. plow, like new \$375
- Ford 3-pt. tandem disk \$225
- John Deere 3-16 plow \$145
- Cockshutt 3-14 plow \$65
- IH No. 10 4-14 plow \$375
- AC 2-14 mounted plow \$65
- Oliver 15-ft. spring tooth harrow \$65
- IH 4-section spring tooth harrow \$75
- IH No. 400 12-ft. spring tooth harrow \$175
- IH 10-ft. power set Spring tooth harrow \$125

OTHER USED MACHINES

- IH No. 20C ensilage harvester \$575
- Case ensilage harvester \$445
- Allis-Chalmers ensilage harvester \$595
- Massey-Harris ensilage harvester \$495
- John Deere ensilage harvester \$150
- Case windrow attachment \$125
- Case blower with pipe \$75
- Case manure spreader \$195
- IH No. 30 manure loader \$175
- Farm Hand manure loader, good \$225
- IH 10-C hammer mill \$75
- Easy Way post-hole digger \$75
- Ford 3-pt. post-hole digger \$95
- End gate seeder, new \$50
- Bear Cat 10" hammer mill \$65

Schumacher's, Inc.



Highway 36

EA 5-2316

WASHINGTON, KANS.

DAUER IMPLEMENT CO.

1967 IH 403 combine 16-ft., low acreage.

Innes pickup atts. for 101 IH combine, nearly new

1958 F450 tractor, gas

1941 M tractor

McCormick No. 35 13 ft. wheel disk

McCormick No. 35 10'9" wheel disk

1960 F-460 tractor, 1300 hrs.

1957 McCormick 46T twine baler

1962 McCormick 46T twine baler

1964 McCormick 46W wire baler

1966 McCormick 47W wire baler

McCormick No. 100 mower, 2 pt. hitch

1950 W6 McCormick tractor

One nearly new tractor tire 13.6x36 4 ply \$60

McCormick 16x8 MF drill, low rubber & rubber press



Falun

Phone 1011

AULD'S

IN WAKEFIELD
IS THE PLACE TO TRADE

Used Tractors

- 1966 IHC 656 gas tractor
- 1959 Ford 971-D, with cover
- 1952 International M
- 1951 International WD-6
- 1950 Massey Harris 30
- 1947 International M-D
- 1947 International M
- 1947 Allis WC with cult.
- 1936 Allis U

TRAILERS

Used 4-wheel trailer w/ bed

COMBINES

- 1959 John Deere 12' Model 45
- 1955 International 141 with cab
- International 125 self propelled
- 1963 No. 50 field cutter

DISKS

- IH 8' No. 35 wheel disk
- IH No. 37 12" wheel disk
- Case 10'9" wheel disk
- IH No. 36 fast hitch

BALERS

- IH 45T baler
- 1956 International 45T baler
- 1955 International 55W baler with engine

MOWERS

- IH mower for C tractor
- IH 25V mower
- Ferguson 3 pt. hitch bar
- International 9A mower
- Self propelled lawn mower

PLOWS

- New IH 309A 3-pt. 3-14
- New IH 311 3-16 FH
- John Deere 2x14 plow
- MM 2x14 plow
- IH No. 8 3x16 plow
- Case 3x16 plow
- International 8L 4x14 plow
- IH no. 400 3-sec. springtooth
- M-M 3-sec. pegtooth



AULD

CHEVROLET

HO 1-5414

WAKEFIELD

- 1966 Oliver 1650 gas row crop with adjustable front. Full hydraulics, 3-point hitch & draw bar, power steering, Deluxe seat & hydra power drive \$5275
- 1948 M&M Model U tractor on good rubber & mechanical-ly good \$575
- Old VAC Case tractor & cultivator. Tractor good. Cult. poor \$195

New tractors on hand Oliver 1550 gas — 1750 dsl. — 1850 dsl.

Wissing Motor Co.



Ph. CO 3-2592

ABILENE, KS.

FOR SALE — H.D. 11 AC hyd. dozer, reconditioned motor, tree cab, 50% undercarriage. Cat 4 with a new hyd. dozer top condition, shedded, electric start. price \$3,500. Cat 7-9G series cable dozer, motors fair, good undercarriage \$1,500. Evening phone 456-7364, Paul Hill, Belvue, Kans. x25

HERINGTON



USED TRACTORS

- 1966 JD 2510 gas, 300 hrs.
- 1966 AC D-15
- 1964 JD 3020 gas, low hrs.
- 1962 JD 2010 utility
- 1960 MM M 5 LP; 1960 AC D-14; 1958 JD 620
- 1958 JD 720 diesel
- 1956 IHC 300 with 3-pt.
- 1956 Oliver Super 55D
- 1952 MM U; 1948 IHC M; 1941 IHC H

HAY MACHINERY

- 1964 JD 215A windrower
- 1959 JD 14T baler
- 1958 IHC 45T baler, extra nice
- 1958 NH 68 baler; 1956 NH 66 baler
- JD & IHC spring tooth harrows 16' with carriers
- JD 414 F-145 plow demo, like new
- JD 414 4-16 plows; JD 55 3-14 plows
- Ford 514 semi-mounted plow
- AC 3-14 mtd. plow

FORAGE HARVESTERS

- 1965 JD No. 12 2-row
- 1963 Gehl SP Harvester
- 1964 Gehl 2-row, good
- 1962 Gehl 2-row
- 1961 Papec 32A
- 1958 Gehl w/ 2-row and mower bar
- Papec No. 45 blower
- Gehl No. 81 blower with pipe
- Farm Hand forage wagons

Tri-County Sales

George Munkres
Phone Collect
BL 8-2249 or BL 8-2991
HERINGTON, KANSAS

QUALITY USED TRACTORS

- 1964 3020 diesel JD
- 1961 4010 diesel JD
- 1962 3010 gas JD
- 1961 2010 gas JD
- 1960 560 gas IHC
- 1961 D-15 diesel AC
- 1958 520 JD
- 1958 420 JD
- 1955 60 JD
- 1955 50 JD
- 1954 33 MH
- 1950 A JD
- 1951 B JD

COMBINES

- 1966 JD 55 combine & cab
- 1964 JD 40 combine

USED DRILLS

- 17x7 FB JD fertilizer
- 16x7 EE JD fertilizer
- 14x7 EE JD grain

FORAGE HARVESTERS

- 1959 Fox 2-row row crop
- 1959 JD No. 8 w/ 1-row row crop
- 1957 Gehl w/ 1 or 2-row row crop
- 1955 Case w/ 1-row row crop

MOWERS

- No. 10 JD for 2-cyl. tractors
- No. 5 JD Q.T. or reg.

Todd Tractor Co., Inc.

Junction Hwys. 35 & 63
Melvin Gustin, Sales
Store Phone DE 6-2138

SPECIAL

- NEW 1x14 Knaphiede flat bed re. \$186

USED MACHINES

- Case blower \$150
- 2-row Gehl (center gatherer) \$875
- No. 50 2-row IH field harvester \$1650
- New Holland baler 1961, No. 69 twine \$875

Neuman Hdw. & Imp.



Phone TU 3-2128

WHITEWATER, KANS.

FOR SALE — Late 1958 720 John Deere diesel, fully equipped, real sharp and in excellent condition. Jerry Platt, Lincolnville, Kans. Phone 26-38. SB25

USED TRACTOR BARGAINS

- 65 Ford 4000 Selecto gas
- 65 Ford 4000 4sp. trans. gas
- 64 Ford 4000 gas 4sp. trans.
- 63 Ford Selecto diesel
- 63 Ford 2000 gas 4sp. trans.
- 63 Ford 841 diesel O-U trans.
- 62 Ford 5000 diesel LPTO
- 62 Ford 841 diesel
- 61 Ford 841 gas 4sp. trans.
- 61 Ford 860 gas live PTO
- 61 Ford 850 gas 5sp. trans.
- 61 Ford 850 LP 5sp. trans.
- 61 Massey 55 std. gas model
- 61 Ferg 30 live PTO
- 61 Case D w/ Davis loader
- 61 Case 1C row crop
- 61 Ford 8N good tires
- 61 Case 1A LP fuel
- 61 Massey 55 std. diesel
- 61 Massey 101 row crop
- 61 Ford 8N good shape
- 61 John Deere D St & Lts.
- 61 IHC H Farmall
- 61 M&M KTA
- 61 Ford 9N, fair shape
- 61 USED BALERS
- 61 Ferguson 10 PTO twine
- 61 New Holland S66 PTO
- 61 New Holland S66 motor
- 61 New Holland S77 motor
- 61 IHC 45 PTO twine
- 61 Case 135 PTO wire
- 61 New Holland 55 rake

McPherson Tractor Company

"Ford Tractor — New Holland Dealer" Ph. CH 1-2900, McPherson, Ks.

For The Best Deals See Us

Twine: High quality, long fiber: 3-bale lots, per bale \$7.75

TRACTORS

- 88 Ford tractor, good condition, good rubber \$550
- 861 Ford, 5-speed, live PTO, gas \$1850
- 881 Ford, 10-speed, Live PTO \$2000
- 841 Ford diesel, over/under drive \$1750
- 861 Ford diesel, live PTO \$2250
- UB MM, hydraulic, foot clutch, good \$1650
- 77 Oliver, good \$550
- U MM disc brakes, live PTO \$750
- Forlison Major, live PTO, hydraulic, 3-point hitch \$1500

NEW AT D&D

The New Idea Uni-Harvester.

MACHINERY

- Used Case forage harvester, row crop, heavy duty \$450
- 10 horsepower brush hog with 42" mower, power take off \$900
- New Holland forage harvester with motor, row crop head, good \$550
- New Holland blower, low hopper, 50 ft. pipe \$350
- Kewanee 14" wheel disc, sealed bearings \$600
- Ford 7 ft. lift disc, white iron bearings \$100
- New Idea ground drive rake, parallel bar \$560
- Coby PTO feed wagon, 8x16, all metal box, complete reverse unloading, also side with trailer \$1650
- Dempster duckfoot tiller, pull type \$150
- Krause discs & chisels on hand

D & D Farm Eqpt.

Phone 913 ME 2-5212 CLAY CENTER, KANS.

FOR SALE — Habco 200 bu. grain dryer. Complete with controls, PTO shaft, LP gas line, and moisture tester. Excellent condition. \$1200. Contact Leo Berry, Rossville, 584-4230. SB25

FOR SALE — No 37 IHC 11' disk, like new, \$500. IHC M grass seeder, A-1 shape, \$500. IHC hydraulic 3-section No. 400 springtooth, like new, \$180. Ralph Meyer, 100 No. Bunker Hill, Junction City, Kans. CE 8-3087. x27

FOR SALE — 1963 two-row Gehl field cutter and pickup unit. Used three seasons, Jof. Bros. Tel. LA 44758 or LA 44559, Lincoln, Kans. x27

SPECIALS, No carrying charge until June 1968 on new or used Case tractors & combines. Priced to sell.

2 800 Case combines, 1 with cab, 2-row corn head; 700 Case combine; 90 MH; 141 IH; 127 IH; yr. 59 JD 45 with 210 corn head; yr. 60 IH 22 corn head.

USED BALERS — yr. 64 N.H. wire; 2 N.H. 68, yr. 60; 214 wire W.S. yr. 64; 135 W Case; 200 Case; 2 NH 66 w/ motor; 50 Oliver & 45 IH for parts.

No. 6 NH silage wagon, bargain; Farm hand ensilage wagons \$99; 33 NH chopper; 210 Case chopper with sickle bar;

New 4-16 Case pull type plow, G.R.; New G RA 6-16 semi-mount.

USED TRACTORS — DC propane, S.C.; 101 MH; Ford 9N; 801B Case, 3-pt.; 2 trail mowers; MM side delivery rake; Ford 5-ft. cutter, like new.



Ells Impl. Co.

Phone 768-6320

Hebron, Nebr.

ALL EQUIPMENT RECONDITIONED—PAINTED FIELD READY COMBINES

- 5 JD 55's 1955-61
- 1 JD 95 1964
- 2 MF S92 1962-1963

TRACTORS

- 1964 JD 3020 RC dsl., Pshift, 3-pt. ohl.
- 1958 JD 820L PTO, hyd., o'hd.
- 2 1959 JD 730 dsl. RC & std., 3-pt.
- 3 1958 JD 720 dsl., RC & std., 3-pt.
- 1959 JD 630 LP std.
- 1959 JD 730 LP std.
- 1961 J D2010 RCU, gas, 3-pt.
- 1956 JD 70 RC, LP, 3-pt.
- 1953 JD 60 RC gas, 3-pt.
- 4 JD A & AR Powr-Trol
- 1965 Case 530 RC, gas, hyd. ldr., 200 hrs.
- 1957 IH 250C dsl., ohld., L PTO, w-fit.
- 1959 IH 340 RC, gas, L PTO, w-fit.
- 1958 MH 555 dsl., hyd., ohld.
- 1958 MF 50 RC L PTO, 3-pt.

HAY & FORAGE

- JD 214 W baler D-Whl.
- 2 Gehl 2-row chopper
- Papec 6-ft. flail chopper
- JD 12 2-row chopper
- JD 214 WS baler
- Dearborn rake
- IH 25V mower
- AC 7-ft. mower
- JD 29 9-ft. mower

MISC. EQUIPMENT

- 2 10-ft. disk, harrow
- 19 3 & 4 B&M plow
- 6 10-15-ft. field cultivator
- 6 4 & sect. sprg. th. harrow
- JD 12B fine th. 4-sect. harrow
- 11 16x8 grain drills, fert.
- IHC wagon gear
- Wilson dozer blade atmt.
- 2 8-row sprayers
- 2 165-bu. manure spreaders
- 2 feed mills
- JD 300 spin spreader

INDUSTRIAL EQUIPMENT

- 2 JD 440 IC crawler ldrs.
- JD 1010 dsl. crawler ldr.
- Case 600 crawler ldr.
- AC HD 5 crawler ldr.
- AC HD 7 crawler dozer
- AC HD 11 crawler dozer
- JD 1010 whl. loader hoe
- 2 JD 2010 whl. loader hoe
- IH 340 whl. loader hoe
- 2 Ford 641 whl. loader hoe
- 5 JD backhoes
- 1 Davis 100 backhoe
- Heil 6-yd. scraper
- JD 5010 840 scraper
- JD Gearmatic winch
- 2 tandem trailers

Western Impl. Co.



2256 So. West St.

Phone WH 3-4261

WICHITA, KANSAS

FIELD HARVESTER SPECIALS

- 1963 No. 50 2-row IH
- 1965 No. 50 2-row IH
- 1964 No. 35A 2-row Papec
- 1965 No. 677 2-row N.H.
- 1962 F560 D FH
- 1961 F460 gas FH
- 1958 F450 D FH
- 1956 F400 gas FH

SPECIAL on 201

14-ft. windrower dual auger

Abilene Truck & Tractor, Inc.



714 So. Buckeye

CO 3-4727

ABILENE, KANS.

TRACTORS

- 1965 Ford 2000, only 570 hours
- 1962 Deere 4010D, looks nice
- 1961 Deere 4010D, overhauled, new tires
- 1959 Deere 730D, good tires, good shape
- 1959 Ford 871 gas, slick
- 1959 IHC 460 utility w/ hyd. bucket loader
- 1954 IHC Model MTA, full eqpt.
- 1950 Ford 8N w/ cultivator w/ plow
- 1962 Deere 2010 gas, overhauled
- 46 JD A: 1946 Deere G; 50 Case DC; 42 Deere B; 52 Deere G; Case VAC; 50 Deere AR
- 51 IHC WD-9 w/ hydraulics, good tires
- 1956 Deere 70D standard, new pistons

SILAGE EQUIPMENT

- 1962 IHC 16 PTO, single row Case blower w/ 45' pipe
- 1961 JD 12 single row PTO cutter
- 1962 Fox 2-row PTO cutter
- 1958 Deere 8 w/ single row hyd.
- Gehl forage box w/ 963 running gear

PLOW MTD.

- Ford 3x14; Deere 3x14; Case 4x4 semi-mtd.; Deere 5x14, 4x14 & 4x16

PLOW WHEEL

- Case 3x14; JD 650, 4x16

MISCELLANEOUS

- 1962 JD 45 combine
- 1955 JD 55 combine
- 210 corn head for 55 combine
- 1956 Massey 60 combine drive w/ new cutter bar
- No. 8 mower w/ conditioner
- Cab for Deere 45 combine
- 2-way disk on wheels, 7' cut
- Quite a few older good used drills w/ fert.
- Good used 4-section IHC spring tooth
- Some good used JD spring tooth
- 1-row New Idea wheel corn picker, real good
- 227 JD corn picker, bargain
- 24C IHC mtd. picker
- Good R Deere manure spreader
- 22 John Deere subsoiler
- Used 953 JD running gear, idler o/l; A5; xi t

BALERS

- 1956 IHC 55; JD 14T w/ bale thrower & engine; 65 JD 224 WS; NH 66; Massey No. 3; Deere 114W w/ JD motor

See us at the Abilene Fair.



SHOUSE

IMPL. CO. Abilene, Kans.

Store Ed Shouse Ron Shouse CO 3-3051 CO 3-1066 CO 3-4515

NEARLY NEW Tox-Wix grain dryer. 250 bushels. Price \$1000. Robert Chaffee, Green, Kans. WI 4-2432. x27

FOR SALE — 1964 Fox self-propelled field cutter, 427 gas engine, full vision cab, electric motor to turn spout, hitch to two chopper on road. Chopper rebuilt, ready for field. Price \$4950. Rex Logan, Eskridge, Kans. Phone Dover PR 5-6334. x27

FOR SALE — John Deere 4-section springtooth, 3-point, levelers. Dixon Law, Longford, Kans. x27

FAIR WEEK SPECIALS

- 1961 460 D, just overhauled, new tires, w/ mounted plow
- Good Fox field cutter
- 8N Ford w/ loader
- Used plows from 2-16 thru 5-14
- Used Noble plow
- 4-ton Farmhand feed wagon

Be sure to stop by our Fair Display and see the new Moline Vista 110 h.p. tractor. As in the past we give a special discount on anything bought at the fair.

Jorden Impl. Co.

ABILENE

Day Phone CO 3-2041

Night Phone CO 3-2057



FORAGE EQUIPMENT IN STOCK

- 717 NH w/ one row head
- 717 NH w/ 2-row head
- 35 Papec, one row
- Ford 612 w/ 2-row head
- Used No. 8 John Deere w/ one-row head
- 611 NH w/ motor, single row
- 610 NH chopper, parts only
- NH No. 6 crop carrier wagon, new
- Papec ensilage wagon, new

USED TRACTORS

- 61 971 D, loaded w/ extras, SOS
- 62 1010 John Deere, low hours, good
- 2 8N Fords
- 1 9N Ford

Burns-Salisbury



315 So. 3rd

Ph. PR 8-5731

MANHATTAN

Store Hours:

7 a.m.-5:30 p.m. Sat. 7 a.m.-noon

Trade now — no interest — or carrying charge on new & used tractors till March 1st, 1968; combines to June 1, 1968; hay balers to May 1st, 1968. Free property & life insurance.

USED MACHINERY

- AC 1965 XT 190 LP with cab & wide front
- JD 1965 3020 dsl., wide front
- JD 1962 4010 dsl., wide front
- JD 1961 3010 dsl.
- JD 1953 60 with P.S.
- JD 1962 2010 gas
- IHC 1959 560 dsl.
- IHC 1957 450 dsl.
- IHC 1956 300gas
- IHC 1953 Super M, PS, real good
- 3 IHC Model M
- MH 1954 444 with P.S.
- MH 1953 44 special
- MH 1952 44
- MH 1954 33
- Ford 1959, Selecto speed
- Lots more to choose from.

The new JD forage harvester is selling good, works even better than it looks. Here's some used ones that we've traded for. 1963 2-row Fox, real good 1962 Model 12, single row JD 1 No. 6 JD single row 1 used AC forage cutter Several used self-propelled combines in stock. One just traded for 1965 Model 95 with 16' header with 434 corn head I just returned from vacation and still a little sleepy. Now's a good time to come in.

Farmers Union Hdw. & Implement



Everett Hoobler

Mgr.

Ph. 437-2913

ST. MARYS, KANS.

FOR SALE — JD 112 feed wagon. William Stevens, Maple Hill, Kans. Phone 437-2925, St. Marys. x25

1957 FOX pull type field chopper with single row corn unit, good condition, \$500. Not a custom machine. Warren Roepke, Rt. 3, Manhattan, Kans. PR 6-5986. x28

ROTARY CUTTER HEADQUARTERS

- New Mono 4-ft. lift type, less tires (list \$250) our price \$185
- Mono 4-ft. pull type with tires (list \$300), our price \$230
- 5-ft. lift type with tires (list \$380) our price \$250
- 5-ft. pull type with tires, (list \$380) our price \$275
- 6-ft. heavy duty lift type (list \$495) our price \$350
- 6-ft. heavy duty pull type with tires (list \$530) our price \$375
- 8-ft. heavy duty lift type with rear wheel (list \$710) our price \$475
- 8-ft. heavy duty pull type with tires (list price \$730) our price \$495
- See 12 different models on display.

USED EQUIPMENT SPECIALS

- 1946 JD Model H, extra good with new tires and 3-point hitch, complete with new Mono 4-ft. rotary cutter, starter lights, live hyd. \$495
- 1952 JD Model MT, A-1 condition, new tires and paint with new 3-point hitch \$695
- 1955 Cockshutt Model 50 diesel, real good condition, fully equipped, new tires \$1195
- 1955 AC Model 66 combine, above average, near new canvas \$275
- Brillion seeder with fertilizer, 3-point lift type, good condition \$195
- Dearborn 3-pt. blade, average \$35
- Massey Ferguson 3point disk, 8-ft. reconditioned \$175
- MF 122 2-row front mounted cultivator, used one season, like new \$250
- Servis box scraper with 5 scarifier teeth, 3-point hitch, excellent condition \$195
- John Deere No. 5 mower, H.D., 7-ft. with 3-point hitch, extra good condition \$150
- Ferguson 7-ft. mower, 3-point hitch \$75
- IH one-bottom, one way plow, 18-in. for Super C or 200 Farm, good condition \$45

This Week's Special

- New Winpower 6-ft. blades, 3-point, 6 angle positions, reversible, regular \$99. Sale price \$69. Limited supply.
- Massey-Ferguson • Du-Al
- Winpower • Dempster
- Kewanee • Mono

Wenger Impl. Co.



Boys Industrial School Road off US 24 Call CE 4-8198 North Topeka

FOR SALE — Used AC Field Harvester. About 10 years old. New knives. \$295. New Gehl field harvester, row crop attachment. Four belt drive. Ready to go. Good cash discount or will trade. Seyler Farm Supply, Ph. 597-3370, Perry, Kans. SB25

FOR SALE — 1958 New Holland blower in good condition. Edgar Strase, Alma, Kans., Ph. 765-3438. x25

FOR SALE — One 1965 E Baldwin combine, 13 ft., price \$3600. One 1957 John Deere combine with cab, 55 Series, \$1500. One 40" blade disc plow, 3 point, \$85 Roscoe Czarnowsky, Lincolnville, Ks. x27

FOR SALE — Grain-O-Vator self unloading wagon (60 series) Excellent condition. Raymond Burch, Phone 2330, Roxbury, Kans. x28

FOR SALE — Farrowing crates, pig feeders, cattle feeders, waterers, oilers. Authorized representative for Dolly Enterprises, Inc. for this area. Hoyt Woodbury, Clifton, Kans. x27

FOR SALE — Nearly new John Deere power corn binder Shedd. Cut less than 100 acres. Louis Vanda, Ravenna, Nebr. 69869. x26

WANTED — Corn heads for Gleaner Baldwin combines. By letter state year, serial, price & condition. Jerry Kamler, Kamler Impl. Co., Geneva, Nebr. SB26

FOR SALE — 32 ft David Bradley wide trough elevator, four row Hasson corn head. Raymond Engle, Abilene R4, CO 3-3139. x27

TRACTORS

1964 4020 dsl.
1947 LA Case
1954 Jubilee Ford
1963 3010 gas
1959 630 JD
1961 4010 dsl.
1962 3010 gas
1954 JD 60
1961 3010 dsl.
1952 A JD
1961 3010 dsl.
1959 861 Ford dsl.
1961 4010 dsl.
6 M IH's
1961 560 diesel IH tractor

TILLAGE TOOLS

16' JD wheel springtooth
16' JD lever springtooth
13' 10" JD AW disk
11' Krause wheel disk
11' 2" RW A JD disk
13' 4" RW JD disk
13' Case wheel disk
17' Massey springtooth
16' IH springtooth
No. 55 IH chisel 10'

PLOWS

4x14 F125 JD
4x14 F145 JD
4x14 F120 JD
5x14 F120 JD
4x14 semi-mounted IH plow

HAY TOOLS

1964 24T JD baler
1956 45T IH baler
No. 3 MF PTO baler
214T JD heavy duty baler
1958 14T JD baler
1956 14T JD baler
AC PTO rake
MM rake
David Bradley rake
No. 858 JD rake
IH rake on rubber
JD rake on rubber
JD rake on steel

Washington Impl.



EA 5-2301

WASHINGTON

FOR SALE — 1950 IHC C tractor, hydraulic control, PTO. Belt, extra good shape, on excellent rubber. Smith Stiles, 912 Kearney. Phone PR 6-4186, Manhattan. SB

FOR SALE — 1965 Gehl self-propelled 2-row King. Bernard Fehr, 1166 Prospect, Salina, Kans. TA 5-4715. x25

FOR SALE — 1952 A John Deere tractor with 3-pt. hookup and power trol. New tires, front and rear. Real good shape. John Deere plow and John Deere 10 ft. disc. 2-row lister. Hydraulic cylinder. Phone CO 3-3449, Abilene. SB25

FOR SALE — Good 227 corn picker; 13 disc one way; 2 Burdens hydraulic wagon cylinder. Donald Hartner, R. R. 2, Manhattan, Kans. Phone PR 6-7425. x27

FOR SALE — John Deere 12-ft. 3-point chisel with gauge wheels. Nearly new John Deere 11-ft. field cultivator, very good. Gus Ingerly, Frankfort, phone CA 6-7308. x25

WANTED — Late model pickup attachment for No. 6 John Deere cutter. Donald Bechard, Clifton, Kans. x27

TO TRADE — Morridge grain drier, bought new in 1966. Dried less than 2000 bu. Fully automatic — on a 560 or 450 IHC tractor in A-1 shape. Everett Liven-good. Morganville, Kans. x26

EVERSMAN SCRAPERS — 1 4 to 6 yd., used very little; 1 2 1/2 yard new. Eversman heavy duty 14-ft. wheel disk. Phone McPherson CH 1-1764. Leebert Johnson, Conway, Kans. x25

WANTED — AN Allis roto-baler, immediately. Clarence Bergmeier, Longford, Kans. Phone 388-2538. SB25

Miscellaneous

WATER WELL drilling; gravel packed wells. Write or call collect CA 6-7276. Strader Drilling Co., Blue Rapids. x32

ARMY SURPLUS OUTSIDE WHITE

PAINT

\$2.93

Per Gallon

Kimberly Washable Vinyl Latex Wall Paint

FAITH'S

Furniture

East US 24 PR 8-3786
MANHATTAN

FOR THE ride of your life, ride a Big Horn saddle from Key Milling. Clay Center, Kans. SB TF

FOR SALE or Rent — Starcraft trailer & pickup campers, for hunting or fairs, Visser Radiator & Marine. Herington, Kans. x28

Pets

FOR SALE — Purebred Spitz puppies, \$25. Phone Manhattan PR 6-7479. x26

Help Wanted

WANTED — Someone to mow, rake, bale prairie hay or will let out on share basis. Large acreage. Contact Dale Miller, Milford, Phone CE 8-7354, Junction City or Howard Miller, Manhattan, Phone JE 9-6917, Manhattan. x25

HELP WANTED — Farm foreman, general farm work. Living quarters furnished. Box 1009 J. R., Manhattan. SB26

WANTED — Farm hand, married, permanent, good salary, modern home plus extras. Must have livestock experience. Call or write Ed Burt, Washington, Kans. Phone EA 5-2393. SB26

POSITION OPEN now for partsman. Prefer aggressive man with military service behind him. Jantz-Kaufman, Inc., McPherson, Kans. SB27

MARKET RESEARCH TRAINEES

For The
A. C. NIELSEN
COMPANY

(World's Largest
Market Research Company)

APPLICANTS MUST:

Have 2 years college; be 21-35 years old; be free of military obligation; attend company school. Earn \$575 month while in school; married men with children will receive additional \$50 per month housing allotment while attending school; after graduating relocate to given area within U.S. performing market research for major food and drug manufacturers in pre-designated grocery and drug stores; all relocation expenses paid by company; limited overnight travel; receive \$600 per month upon completion of school; car necessary; car expenses will be paid including license, insurance, mileage, and depreciation.

PLUS ALL TRAVEL EXPENSES AND LIBERAL BENEFITS.

Applicant Interviews
Will Be Conducted By
Earl D. Pratt, Jr.

at the
HOLIDAY INN
MANHATTAN, KANSAS
Monday, August 21, 1967
from 4:00 p.m. to 9:00 p.m.

FOR SALE — Shetland sheep-dog male pups, registered 4 mo. old. William Gatz, Route 1, Newton, Kans. x25

Notices

SONG WRITERS OR INVENTORS

Sheet music from your tape recordings. Cash for your ideas. Free brochure. Write Dept. U, Box 906, Pomona, Calif. 91769.

Brand New — Full Services — Private or Semi-Private Rooms Total electric comfort in suburban setting. Write or call Leonardville Nursing Home P.O. Box 217 (Phone 29) Leonardville, Kansas

Mobile Homes

FOR SALE or Trade — Good clean used House Trailer. Good condition. Allen Travelute, Waterville, Kans. x26

Boar Sale Date Is August 28

MANHATTAN — Sixty performance tested boars will go on the auction block Monday, August 28, at 7:00 p.m. in the Weber Hall arena on the Kansas State University campus. A 6:15 p.m. pork chop barbecue will precede the sale.

Duroc, Hampshire, and Yorkshire boars that have been on feed since April are included in the current sale group, reports Wendell A. Moyer, KSU Extension livestock specialist, who is secretary of the Kansas Swine Improvement Association. The sale animals are eligible for registry.

KSIA operates the swine testing station on the K-State research farm and starts performance tests each year in April and October. The basic test group is a pen of three pigs —

two litter-mate boars and a full or half-brother barrow.

They are placed on feed as weanlings and fed to an average weight of 200 pounds to determine feed efficiency. Rate of growth figures are kept on each animal.

Moyer explains that the barrows are slaughtered before the sale so that carcass length, backfat, loin eye area, and percent of lean cuts can be reported. Boars are probed for backfat and sonority tested for loin eye area.

All of this pertinent information about the test boars is assembled in a catalog for potential buyers before each sale. For a copy of the current catalog, write to Robert Hines, KSU Animal Husbandry Department, Weber Hall, Manhattan, Kansas, 66502.

The fact that many of the tested boars from past sales have been added to commercial herds is proof that producers recognize the value of the KSIA testing program in identifying top quality animals, Moyer says.

Any purebred breeders who would like to place animals in the next KSIA test, starting in October, should make application through their local county Extension offices.

John Deere-GMC

TRACTORS

1964 Ford 5000, Super Major diesel tractor, very low hours, good rubber, 3-point hitch, very good \$2995

1962 CASE J30 Triple-Matic drive, 3-point hitch, and very low hours \$2195

1949 JOHN DEERE "G" tractor with power-trol .. \$695

1957 IHC 350, pr. steering, fast hitch, power ad-just rear wheels, 3-point hitch adapter, good .. \$1295

1949 IHC M, clean \$795

SELECT TRUCKS

IHC 1/4 ton, HD tires & good for lots of miles \$195

1964 Ford 1/2 ton 4-speed transmission, good tires, local, good \$1095

1963 Chevrolet 1/2 ton Van, locally-owned, ideal for plumbers, etc. \$795

GMC 1 ton Panel, dual wheels, a heavy duty enclosed truck \$695

1965 Model GMC 1/2 ton Panel, local one owner, with rear bumper, good \$1295

1964 Chevrolet 1/2 ton, local, custom cab and lots of good miles \$1195

MACHINERY

1961 John Deere 14T PTO twine baler \$695

IHC 12-ft. springtooth harrow, with smoothing attachments \$150

IHC No. 37 11' wheel disc \$295

Case 3-14 plow on rubber, hyd. lift, good condition \$175

Case Blower with distributor buckets & blower pipe \$250

John Deere 16-8 Van Brunt drill, FBA, good \$590

We are dealers for Grain-O-Vator and Blair silage wagons — will trade.

Call Us Collect CE 8-4103

BOWMAN'S

Your Manhattan Area John Deere Dealer
GMC 240 Eo 8th JUNCTION CITY, KANS.

ate hoars and a
ther barrow.
e placed on feed
and fed to an average
200 pounds to dete
efficiency. Rate of
ures are kept on

explains that the ha
laughed before the
at carcass length.
in eye area, and per
n cuts can be report
are probed for bac
moray tested for int

is pertinent inform
the tes thors is as
a catalog for pol
before each sale. For
the current catalog
Robert Hines, KSU An
andry Department,
Manhattan, Kansas.

that many of the
s from past sales
added to commercial
roof that producers
the value of the KSA
gram in identifying
animals, Moyer says.
that net farm income
down 10 per cent this
year last year's record
high of \$14 billion.

Forecasts of record
crops in wheat, soybeans
and grain sorghums, or
milo, are already
depressing the price of
grain, which could result
in a further drop in income.

NFO members, who
jammed the mammoth audi
torium, with overflow
filling the huge room
to watch the meeting
closed circuit television
and the steps outside
to loudspeakers, also
voted to allow the lead
ers to call for two or
four-day strikes in
milk or livestock wh
enever they thought
necessary.

In addition, the m
embers agreed to est
ablish a National Farmers
Organization grain
bank to hold back whe
at, corn and soybeans
until the market re
turns to certain min
imum levels.

GMC

very
very \$2995

hitch, \$2195

\$695

rol... \$695

er ad- \$1295

good. \$795

\$195

tires, \$1095

ideal \$795

ty en- \$695

owner, \$1295

d lots \$1195

\$695

\$150

\$295

\$175

\$250

\$590

4103

N'S

Dealer
CITY, KANS.

NFO Rumbling Again

DES MOINES, Iowa — More than 35,000 cheering members of the National Farmers Organization last week to call for withholding of all farm products from the market.

The farmers, who arrived in hundreds of buses and planes from almost every state for a special five-hour action meeting, set no date for the action.

The all-out holding action would be the first of its type by the militant organization, whose goal is collective bargaining for farmers. Earleir this year, it staged a two-state strike and in 1962 and 1963 it held back livestock production in an attempt to force prices up.

The organization's action comes in the face of sharply falling farm profits, as a result of falling prices and rising production costs. The Department of Agriculture is predicting that net farm income will drop 10 per cent this year from last year's record high of \$14 billion.

Forecasts of record crops in wheat, soybeans and grain sorghums, or milo, are already depressing the price of grain, which could result in a further drop in income.

NFO members, who jammed the mammoth auditorium, with overflow filling the huge room to watch the meeting closed circuit television and the steps outside to loudspeakers, also voted to allow the leaders to call for two or four-day strikes in milk or livestock whenever they thought necessary.

In addition, the members agreed to establish a National Farmers Organization grain bank to hold back wheat, corn and soybeans until the market returns to certain minimum levels.

very
very \$2995

hitch, \$2195

\$695

rol... \$695

er ad- \$1295

good. \$795

\$195

tires, \$1095

ideal \$795

ty en- \$695

owner, \$1295

d lots \$1195

\$695

\$150

\$295

\$175

\$250

\$590



Johnny Kau
Says:

Experience may be the best
school but it may be too late
when you graduate.

**Rear Mt. Blades
For Year-Round Use**

We have on hand a supply of
rear mount blades in 6, 7
and 8 ft. sizes that will pay
for themselves in extra use.
Landscaping, terracing, snow
blowing, many uses in feed-
lots. Wherever this type of
blade can work.

These can be offset 12
inches and are completely
reversible. These are big la-
bor savers at silo filling
time.

Weights start at 400 lbs. on
6-ft. size.

Prices 6-ft. \$100—7-ft. \$110—
8-ft. \$120.

Manufactured by:
FORGY WELDING
Phone 857-3241
CENTRALIA, KANS.

Under this plan, a farmer would put 50 per cent of his grain into the NFO bank and allow the organization to sell the rest of it at the market price to he would have funds to pay his bills.

The organization voted not to sell the remaining 50 per cent until corn reached \$1.50 a bushel, wheat \$2.00 a bushel and soybeans \$3.00. The price of corn in central Iowa, for ex-

ample, is now between \$1.04 and \$1.10 a bushel. Soybeans are between \$2.53 and \$2.58. Wheat has been bringing about \$1.35.

Oren Lee Staley, NFO president, emphasized before the vote was taken that it was not to be an idle threat, anymore than approval for selective holding actions in the past had been.

"Everybody who is watching agriculture knows," he declared, "that there are 35,400 NFO members at this meeting who did not come just for a joy ride."

AUCTION SALE

**Saturday
SEPTEMBER 2**

Starts 1:00 p.m.

REAL ESTATE AUCTION

101-acre farm located east edge of Olsburg, consisting 20 acres of farm land, balance pasture. Modern home, barns, sheds. City water by property line, large frontage along Highway 16, near Tuttle Creek Lake.

SOLD BY CARLSON AGENCY

For More Information Contact:
Lawrence Welter, Auctioneer, PR 8-3455
Harold Carlson, Broker, PR 8-3083

VERNON HOLT, Owner

AUCTION SALE

**Wednesday
AUGUST 30**

Sale Starts 2:00 p.m.

REAL ESTATE

402 West Court Street, Clay Center, Kans.

Legal Description:
Lots 16, 17, 18, 19 and 20 in Block 9 of Riverview Addition to the City of Clay Center, Clay County, Kansas.

Has a 1-story, 7-room frame house, good roof, large porch, has bathroom; there is a small garage, a wash house; city lights, gas and water; T.V. antenna, and fine shade trees. These are level corner lots, there is ample room for another building site on these lots.

TERMS OF SALE

25% to be paid day of sale, balance in 30 days or when abstract is delivered. Written contract containing terms of sale to be signed day of sale, to be deposited in escrow in the PEOPLES NATIONAL BANK. Seller to pay 1966 and all prior years taxes and furnish abstract and deed.

House will be open for inspection in the forenoon of Saturday, August 26, and from 10:00 o'clock in the morning of sale day. You are cordially invited to look this property over.

ROGNATE ESTATE

OSCAR FRIGON TRUSTEE

Auct: Foster Kretz, Clay Center
Phone Morganville WA 6-4422.

Jones & Ryan
Attnys. for Trustee.

RADER ANGUS FARM

First Angus Production Sale

Saturday, Sept. 2, 1967

12:30 p.m.

Paola, Kansas

3 miles north of Paola to Highway 68, then 6 miles west to farm sign and 1/2 mile south or; 17 miles east of Ottawa on Highway 68 to sign, then 1/2 mile south.

SELLING 85 HEAD AS 71 LOTS

Selling 10 bulls, including 1 four old herd sire that will weigh 1800 lbs. in breeding condition. Many of the cattle selling are sired by him. If you need some extra size, stretch, and smoothness, come see this bull. Sired by Eileenmere 1703. Selling 4 other bulls ready for service and 5 yearling bulls.

Selling 14 cows with calves and 14 cows to calve this fall. Selling 33 bred heifers, about to calve this fall and the rest in early spring.

This herd originated with the purchase of 4 heifers almost 25 years ago from Johnson Workman, pioneer Angus breeder from Russell, Kansas. Very few females have been added since. Many, many half and three quarter sisters selling. Featuring the Get and Service of:

Burgess Eileenmere — The big 4 year old bull. He Sells! Ballot 6 of Bomford — Son of Ballot of Belladrum Bomford 3575 8 — A son of Ankonian 3575.

Ray Sims, Auctioneer

Write for catalog or for further information, contact:
John Barton, Sale Manager, Kansas Angus Association
2505 Lundman Drive, Hutchinson, Kansas, or

WILMER RADER, Owner
Route 1, Paola, Kansas

Annual Registered

Quarter Horse Consignment Sale

SALINA, KANS. FRIDAY NIGHT, OCT. 20

Selling 50 cataloged Registered Quarter Horses. Now accepting consignments. Catalog closes Sept. 20, 1967. \$10 Catalog Fee due with consignment. 5% selling commission. To consign horses to this highly advertised sale, contact **Bernard Ireton**, Sale Mgr. RFD 1, Salina, Kans., Bill James, Clay Center, Kans., or the auctioneers: Bob Perry and Roger A. Johnson, Salina.

Consign Your Horses Now; Catalog Is Filling Fast.

AUCTION SALE

**Saturday
SEPTEMBER 2**

Starts 1:30 p.m.

Real Estate — Manhattan, Kansas

Located two miles east of Manhattan on US24 highway

LEGAL DESCRIPTION: Lots 11 and 12 in Lee subdivision. SW 1/4 of Sec. 10, Twp. 10 South, Range 8 East.

GENERAL DESCRIPTION: This new duplex located on tract 200 ft. x 200 ft. with brick & stone construction. Side by side duplex, 2 bedrooms, large living room, bath & shower, attractive kitchen bar with built in oven, table top range, large double garages, breeze way.

Convenient, new fire station located in area. Gas line located along property line. City convenience plus country living.

TERMS: 20 percent of purchase price day of sale, sign contract. Balance due upon approval of title.

POSSESSION: Given when final settlement made.

TAXES: 1966 and all prior years paid by sellers. 1967 prorated as of 1966 taxes.

Real Estate Sold By Carlson Agency

For more information call or see:
LAWRENCE WELTER, Auctioneer PR 8-3455
HAROLD CARLSON, Broker PR 8-3083

Earl & Edith Tyson

AUCTION SALE

**Saturday
AUGUST 26**

Sale starts 9:30 a.m.

Obsolete and surplus material, Hesston Corporation, Hesston, Kansas. Location NE corner of pasture lot east of Plant 2.

100 Series windrower, 14 ft.	Windrower bat reels, 12 ft.
18 ft. grain windrower, shift-able header, with V9 engine, good running condition	Innes pickup, 12 ft.
Tractor hydraulic loader, live pump, good	10 and 12 used pickup reels
5 flat truck beds, steel string-ers	12-ft. bat reel
	2 VH 4D Wisconsin air cooled engines
	V9 4D Wisconsin air cooled engine

4, 5, 6 in. I beams to 20 ft. long — 3/8 to 1 1/8 round and square shafting — 3 in. pipe — square tubing 5x6 1/2, 11-ga., 20 ft. long — 6 in. tubing — 60 sheets 16-ga. hot roll steel, 4x10

Several thousand feet of hydraulic tubing (steel) — sheet metal — prefabricated metal — expanded metal — old lot of channel iron — Balcony Posts, 3 to 4-in., various lengths — Steel fence posts — gear boxes — hydraulic cylinders — hose hydraulic pump — universal joints — bearings — sheaves and pulleys — sprockets and roller chain — assortment of springs — V and round belts and pulleys — many lots of channel, angle, rod and flat iron, various gauges and weights sheet metal — pipe and tubing, various lengths up to 6 in. — assortment of sickles, 12, 14, 16 ft., new — gas tanks — 15 and 30-gal. augers — U-joints — housings — air cleaners — spring tines — overhead door — sump pump — 16 ft. metal table — 5 metal shelves, 10 to 16 ft. — 6x6 & 6x8 timbers — several hundred 18x54 rubber flaps — 50 5.90x15 tires mounted on trail wheels with shank, new — 2 7.50x16 rib implement tires, new — 2 6.70x15 rib implement tires, new — 1 13.50x16 tire, new — several hundred pounds of new bolts and nuts — many items not mentioned. Most of the items in this sale are new, never used.

AUCTIONEER'S NOTE: Due to the many items in this sale, we must start at 9:30 a.m. Farmers, dealers, etc., it will pay you to attend this sale. All sales cash. Pallets and steel tubs will not sell. All sales final and merchandise sold as is. Merchandise to be removed by September 2, 1967.

May Be Inspected At Will **Lunch on Grounds**

NOT RESPONSIBLE FOR ACCIDENTS

HESSTON CORPORATION

Aucts: Ted Krehbiel, McPherson
Floyd Gehring, Moundridge

Clerk: Leland Boesker

U.S. Hybrids No Success Overseas



Dolores Hoffman

SHE'S DICKINSON DAIRY PRINCESS

Dolores Ann Hoffman has been named Dairy Princess for Dickinson county. She's 20, a junior at K-State, and the daughter of Mrs. Verland Hoffman, Abilene. The Hoffman farm has 50 cows. The district competition for Dairy Princess will be held in Abilene.

TRUCK PRICES TO RAISE SEPT. 1

International Harvester has announced it will raise the sticker prices on trucks by about 3% to 4% Ford Motor Co. had already confirmed that it will raise truck prices. The hikes are scheduled for September 1.

GENE WATSON'S GROWTH STOCK POLLED HEREFORDS



ALF BEAU PERFECT

1967 Fort Worth champion, bred by Gene Watson & Son, shown by John M. Lewis & Sons. His dam and his full-brother sell! Also, 30 half-sisters and a dozen good half-brothers sell!

HERD DISPERSAL
LABOR DAY • SEPT. 4
SOUTH HUTCHINSON, KAS.
86 LOTS • 119 HEAD
40 COWS AND BRED HEIFERS

for catalog write
GENE WATSON & SON
14 HILLCREST
HUTCHINSON, KAS. 67501
PHONE: 316/443-3174

AUCTION FRI., SEPT. 1

Sale Starts 1:30 p.m.

The Clay ASC County Committee acting as agent for CCC will offer for sale the following by public auction.

38 steel circular bins, manufactured by BS&B, 18 feet in diameter. Rated capacity 3250 bushels. Bins have horizontal aeration tubes and are erected on foundation rings which are all considered part of the structure and will sell accordingly. Each bin will be sold separately.

Bins may be inspected by appointment or from 9:00 a.m. until time of sale at 1:30 p.m. on September 1, 1967. Sale will be held at CCC Site 2 located at the NE corner of the fairgrounds in the SE part of Clay Center. Terms and Conditions of Sale are available from the Clay ASCS county office, 610 5th Street, Clay Center, Kansas, Phone (913) 632-3550.

Clay County ASC Committee

Dr. Ivan L. Bennett, Jr., the chairman of a panel formed by President Johnson last year to assess the world food problem, has reported that the pride of American agriculture, hybrid corn, has proved a dud to food production in underdeveloped countries.

What has succeeded, instead, he added, is American skill in producing new and better strains.

Bennett is the deputy director of the President's office of science and technology. He said a major weakness in American

aid to the less developed areas was the deeply ingrained idea that American farm practices can be exported intact.

This is manifest, for example, in the "farmer-to-farmer" program that has been enacted into law, he said. Without the scientific and technological backup available to him at home an American farmer, he added, would be helpless to change conditions in a country with different climate, soils and customs.

What the beneficiaries of our aid need are men trained in the

FOR SALE 2 FARMS WALTER PRICE ESTATE

1. **160 ACRES, WELL IMPROVED** — Located 1½ miles East, 1½ miles North, ½ mile East and ½ mile North of Louisville, Kansas; described as E½ of SW¼ of Section 2 and E½ of NW¼ of Section 11, all in Township 9, Range 10 in Pottawatomie County, Kansas. Some creek bottom land. (Approximately 93 acres cultivated).
2. **80 ACRES IMPROVED** — Located across road from above tract; described as W½ of NE¼ of Section 11, Township 9, Range 10 in Pottawatomie County, Kansas. Some creek bottom land. (All farm land).

For Sale by Richard M. Pugh, Executor of the Estate.
Wamego, Kansas Telephone 456-9377 (office hours)
456-7297 (residence)

AUCTION SALE

Saturday
AUGUST 26

Starts 1:00 p.m.

To settle the estate of Loyd Q. Murphy, the following real estate and goods will be sold at 1426 Poyntz, Manhattan, Ks., by auction.

Real Estate 1426 Poyntz, Manhattan



GENERAL DESCRIPTION: 3 bedroom home, full basement, living room, dining room, kitchen, fireplace. Modern, in good condition; good forced air furnace. New roof 1 yr. old, paint good, oak floors. Located on full city lot in choice location on Poyntz Avenue..

TERMS: Sold on contract with 50 percent of purchase price day of sale. Balance due upon closing of estate. Full terms and condition of sale given sale day. For prior information contact either:

Lawrence Welter, Auctioneer — PR 8-3455
Harold Carlson, Broker — PR 8-3083

TAXES: 1966 and prior years paid by sellers. 1967 taxes prorated based on 1966 taxes. Possession stated day of sale.

HOUSEHOLD GOODS

Montgomery Ward 6½ cu. ft. refrigerator; Frigidaire 4 burner electric range; 2 Maytag square tub washers, 2 single tubs, 1 double tub; divan & chair; electric toaster; upholstered chair.

Oak round table, 6 matching chairs; vanity antique; oak breakfast table; 3 odd chairs; Kenmore sweeper & attachments; recliner chair, antique; small stand tables.

Wood bed & springs; iron bed & springs; 2 chests draw-

ers; small mirror; 3 piece cherry wood love seat & 2 matching chairs; small stand; 1 lot disks; cooking utensils; Singer sewing machine.

Old trunk; some bedding & blankets; small scales; walnut table; 3 kitchen cabinets; electric lawn mower; step ladder; 12 ft. ladder; old radio; lumber. Large offering of small hand tools and other articles too numerous to mention.

Terms on Household: Cash

LOYD Q. MURPHY ESTATE

Loyd F. Murphy, Adm., Margaret Connet, Admx.
Aucts: Welter & Applegate Clerk: Harold Carlson

scientific method. He cited the recent discovery that American hybrid corn, despite its worldwide reputation, is far from being the ideal corn for other lands. In fact it may not even be best for American conditions.

Bennett spoke at what, in a sense, is the birthplace of American hybrid corn. He gave the

Samuel W. Johnson memorial lecture during the annual open house, or "science at work" program of the Connecticut agriculture experiment station. It honored the memory of a Yale professor who in 1875 was instrumental in the founding of this, the oldest such station in the country.

NEBRASKA SALE AUCTION SALE

Monday
AUGUST 28

Sale Starts 1:00 p.m.
Lunch Served

As we have sold our land, we will sell our complete line of machinery and some miscellaneous items at Public Auction located ½ mile south of the southeast edge of Byron, Nebr., 2 miles west, 1 mile south and 1¼ miles west on gravel road, or 1¼ miles east of Superior, Nebr., on black top, 3 miles south and ¼ mile west, or 3 miles north of the northeast edge of Republic, Kans., and ¼ mile west

TRACTORS & TRUCKS

- 1965 Minneapolis Moline "G" 1000 with less than 1,000 hours and fully equipped
- 1951 Minneapolis Moline "U" with adjustable front end and hydraulic
- 1951 Minneapolis Moline "ZA" with adjustable front end and hydraulic
- 1956 John Deere "60" with power steering and fully equipped
- 1951 Minneapolis Moline "ZA" row crop with Power Life
- 1948 Minneapolis Moline "Z" row crop with Power Lift
- 1949 Allis Chalmers "WC"
- 1953 Chevrolet 1½ ton long wheel base with 1966 Gehl No. BU 710 — 7x16 feed box with front and rear end bunk delivery, and in good shape
- 1952 Chevrolet 2 ton with 2-speed, combination 15½ foot bed, Harsch twin cylinder hoist and good rubber
- 1948 Chevrolet 1½ ton, combination 10½ foot bed and Perfection hoist, good rubber
- 1946 Chevrolet 1½ ton with PTO, no bed
- 1940 Chevrolet 1½ ton with a 1964 hoist, 12 foot bed and good rubber

MACHINERY

- 1965 Hesston No. 110 8-foot self propelled windrower with 90-inch crimper, has been used on 400 acres
- 1965 Minneapolis Moline 5x16 semi-mounted plow with coverboards and rippled rolling cutters with sealed bearings
- 1965 John Deere wheel tandem "BW" 13 foot, 10-inch disc with 20-inch discs and 9-inch spacings
- 1965 John Deere "FB & B" grain drill with fertilizer box, hydraulic sealed disc bearings, rubber press wheels, and on rubber
- 1965 John Deere No. 68 — 90 bushel auger feed wagon with PTO and mtd. on heavy duty axle and 8:25 rubber
- 1962 John Deere "CCA" 14 field cultivator with hydraulic on rubber
- 1964 John Deere No. 300 — 44 foot grain and hay elevator with PTO
- 1965 New Holland No. 717 field cutter with row crop head
- 1965 New Holland hay pick-up attachment for No. 717 field cutter
- 1958 Case 28 foot grain and hay elevator with 5 horse Wisconsin gas motor
- Kelly Ryan combination feed wagon and manure spreader on rubber with PTO
- 1962 Ford 3-point hook 2-row shredder
- 1964 Ford 3 point hook post hole digger
- 1960 International No. 450 4-row corn planter with fertilizer and insecticide attachments, hydraulic lift, on rubber

- 1965 Dempster 16 foot tool bar with 3 point hook, 5 disc ridgers and gauge wheels
- Minneapolis Moline 18 foot tool bars
- 2 complete sets of shanks, shovels, ridgers and sweeps for above tool bar
- 1962 portable grain dryer with 110 attachment
- Case 3x14 plow with power lift on rubber
- Minneapolis Moline 3x16 plow with power lift, on steel
- International 2-14 plow with power lift and on rubber
- Oliver 2x14 3-point hook mtd. plow
- John Deere 4-section rotary hoe
- 2-wheel irrigation pipe trailer on rubber, in good shape
- International 4-section, 16-foot spring tooth harrow
- John Deere 4-bar side delivery hay rake
- Case 3-section, 10-foot spring tooth harrow
- International 2-row pull-type go dig
- 2 International 8-foot tandem discs
- International 10-foot tandem with hydraulic controls
- 2 Minneapolis Moline 2-row mtd. cultivators
- 1961 John Deere No. 227 2-row mtd. corn picker. Has mounting for "A, 60 or 70"
- 1959 John Deere No. 227 2-row mtd. corn picker. Has mounting for "A, 60 or 70"
- Allis Chalmers 2-row mtd. corn picker
- M-M 2-row pull type corn picker on rubber
- 1940 Baldwin 6-foot pull type combine
- 2 4-wheel rubber tire trailers with new 5-ton Quaker hoists and 6x12 boxes
- Machinery trailer on rubber
- Small IHC cylinder corn sheller
- Manure spreader on steel
- 4 Minneapolis Moline lister bottoms
- International 7-foot hydraulic one way
- International 10-foot single disc
- Speedy sprayer with booms and 7 drops

Feed Lot Equip. & Miscellaneous

- 6 wood cattle feed bunks, 3 to 26-foot lengths, all 2 inch lumber; several cattle oilers
- 5 mineral feeders; 9-foot stock tank; 5", 12" grain auger; ¾ h.p. electric motor; several electric motors from ½ to ¾ h.p.; 300 electric fence posts with insulators; 4 miles of electric wire;
- Several Hiline and battery fence chargers; several hundred hedge posts, several steel posts, Sioux 60 bushel metal hog feeder, K-line hog water tank; hog feeding pans
- 3 stock saddles; gas lawn mower with 1½ h.p. engine
- 4-wheel trailer with 26-inch wood box; cement mixer with electric motor; 120 gal. tank with 2 hand pumps; some scrap iron and other useful items.

Terms: CASH.

MR. & MRS. CLARENCE LARKINS and DALE LARKINS, Owners

Aucts: Eugene Waring, Belleville, Nebr.
Harlan Jensen, Superior, Nebr.

Clerk: Farmers State Bank, Superior, Nebr.

el W. Johnson... during the annual... or "science at... am of the Connecti... ure experiment... ed the memory of... sor who in 1875... ental in the founda... he oldest such statu... country.

Which Is
ggest Reservoir?
keep hearing that Milford
is bigger than Tuttle
Creek. No, Tuttle Creek is
bigger than Milford. Per-
haps it's built, will be big-
ger than either one. No, Perry
is a large dam by com-
parison with other Corps of
Engineers dams. What's right?
What do you mean, bigger?
Terms of sheer flood protec-
tion storage, Tuttle is
a bit larger than the oth-
ers. Federal dams in the state, but
Tuttle has a slightly larger
operation pool and more
storage. Tuttle has the highest
but Kanopolis has the
most one.

Here are the facts:
Length, in feet: 15,360
Kanopolis 7,750
Tuttle 7,500
Moline 6,300
Height, in feet from valley
floor: 139
Kanopolis 131
Tuttle 126
Moline 96
Volume, in miles: 165
Kanopolis 159
Tuttle 112
Moline 41
Operation pool, in acres: 16,189
Kanopolis 15,800
Tuttle 12,200
Moline 3,550
Storage, in acre feet: 2,346,000
Kanopolis 1,160,000
Tuttle 770,000
Moline 450,000

ometimes We
Republicans...
have read with interest
in G&G and other news-
papers about Governor Dock-
ing's appointments to the
Wheat Commission and
the Great Plains Wheat.
I am a Republican, but I
don't think G&G's story didn't dig
deep enough.

uction
ur., Aug. 31
Beginning at 10:00 a.m.
1226 Sherman
CLAY CENTER, KANSAS
Tract No. 1 located at 1226
Sherman:
10:00 o'clock
Lot 9 and 10 in Morgans 2nd
addition in Clay Center, Clay
County, Kans.
1 room, 2 story frame
house, bath, porch, near new
furnace, part in linoleum
carpet livin' room, 2 bed-
rooms down and 2 up, good roof.
Kitchen has builtins, newly
painted small barn, chicken
house, single garage, nice shade
tree, small orchard, 4 acres,
more or less, buildings all in a
repair, lay along Clay Cen-
ter brought oil road. Close to
highway, will make a wonderful
home for someone.

Lot Equip.
Miscellaneous
and cattle feed bunks, 2
lot lengths, all 2nd
several cattle oilers,
al feeders; 9-foot steel
tank; 5", 12" grain aug-
er; p. electric motor; set
electric motors from 1
p.; 300 electric fence
insulators; 4 miles
electric wire;
al Hi-line and battery
chargers; several hun-
dred posts, several steel
sijoux 60 bushel metal
der, K-line hog water-
als; hog feeding pans;
saddles; gas lawn
with 1 1/2 h.p. engine
trailer with 26-inch
motor; cement mixer with
with 2 hand pumps;
rap iron and other use-
ful items.

CE LARKINS
Owners
Clerk: Farmers
State Bank,
Superior, Neb.
Vern Hitsman
Clerk: Peoples National Bank
Clay Center.
Auctioneer: Foster rKetz,
Clay Center, Kans. Phone Mor-
risonville WA 6-4422.

from the G&G Area
far enough. In the first place,
the appointments have been de-
layed before. Since the original
appointments, the members of
KWC have all been Republicans,
and Governor Anderson in par-
ticular was very slow about ap-
pointments.
Kansas isn't going to lose any
voice on Great Plains Wheat.
We have four men on the 13-
man board and the vice presi-
dent of GPW is Carl Dumlér of
Russell. Moreover, Kansas con-
tributes 40% of the Great Plains
budget, and I'm sure money
doesn't talk any quieter than be-
fore.
The criticism of Mr. Docking
has come mostly from Ralph
Ball, a Republican who was
stepping out as president of
Great Plains Wheat, and George
Meeker, also a Republican and
a man of some political ambi-
tion. Sometimes the trouble
with us Republicans is that we
forget we don't win all the elec-
tions.

Name Withheld
SALINA
What's Slate
Of Bin Sales?
In the August 8 Grass &
Grain you have a news item on
the sale of 5000 grain bins. We
at the Beaver Grain Corp., Bea-
ver, Ks., Barton County, are in-
terested in buying a bin of 2500
to 3250 bushel capacity. Where
is the closest place where we

may buy one of the large steel
grain bins?
Herman Rome
BEAVER
No county ASCS offices real
close to Barton County plan
sales of surplus grain bins.
Most of the 43 counties which

have bins to sell are in eastern
Kansas. Closest to Barton Coun-
ty with a sale planned soon is
Phillips County, which will sell
some bins at Long Island Aug-
ust 29. Mitchell County will sell
55 bins at Hunter on August 24.
The Osborne ASCS plans a sale

August 22, 1967
of surplus bins at Portis, on the
Osborne-Smith county line, but
the date has not definitely been
set. It'll probably be in late
September or early October.

BIG MACHINERY & TRUCK

Clearance SALE

TRACTORS	TRUCKS	Combines & Corn Eqt.
1 - FARMALL 806 DIESEL, ONE OWNER, EXCELLENT CONDITION, GUARANTEED	1964 INTERNATIONAL WITH 18 FOOT BED, FOLD DOWN, REAL GOOD	1 - INTERNATIONAL 1966 403 COMBINE, 13 FOOT, CAB, NEW WARRANTY
1 - FARMALL 706 GAS, FULLY EQUIPPED, LOW HOURS, GUARANTEED	1963 INTERNATIONAL CAB AND CHASSIS, FOR 16 FOOT BED, 2 SPEED	2 - INTERNATIONAL 403 COMBINES, 14 AND 16 FOOT, CABS, GUARANTEED
1 - FARMALL 560 DIESEL WITH BLOWER, WIDE FRONT, 18 INCH TIRES	1963 INTERNATIONAL WITH 8 FOOT DUMP BODY, EXCELLENT	1 - GLEANER C-41 COMBINE, 14 FOOT HEAD, ROBOT, AND 4 ROW CORN HEAD
1 - FARMALL 560 DIESEL, FULLY EQUIPPED, EXCELLENT CONDITION	1965 CHEVROLET 2-TON, 2 SPEED, ONE OWNER, LIKE NEW CONDITION	3 - INTERNATIONAL 101 COMBINES, ALL RECONDITIONED, GUARANTEED
2 - FARMALL 560 GAS TRACTORS, BOTH WITH NEW MOTOR OVERHAULS	1961 CHEVROLET 2-TON, 2 SPEED, V-8 EN- GINE, GOOD CONDITION	1 - 1965 INTERNATIONAL 203 COMBINE, 13 FOOT, HAS NEVER HAD CORN HEAD
1 - FARMALL 400 GAS, NEW STYLE HITCH, POWER STEERING, REAL GOOD	1961 CHEVROLET 2-TON, 2 SPEED, V-8 EN- GINE, GOOD CONDITION	1 - JOHN DEERE 45 COMBINE, 10 FOOT, ONE OWNER, GOOD CONDITION
1 - FARMALL 350 PROPANE, FULLY EQUIP- PED, GOOD TIRES, SLICK	1959 CHEVROLET 2-TON, 2 SPEED, 16 FOOT BED AND HOIST, 50,000 MILES	1 - JOHN DEERE 55 COMBINE, 12 FOOT WITH CORN HEAD, WHILE IT LASTS...\$775.00
1 - MASSEY 65 DIESEL, FULLY EQUIPPED, REAL NICE TRACTOR	1956 GMC 1-TON WITH 10 FOOT BED AND HOIST, ONE OWNER, GOOD SHAPE	1 - IHC 2 MH PICKER, WITH 806 OR 706 MTGS. GOOD CONDITION
1 - MINNEAPOLIS 4 STAR, WIDE FRONT, 3 POINT HITCH, LIVE PTO	1958 INTERNATIONAL WITH 13 FOOT BED, NICE CLEAN TRUCK	1 - JOHN DEERE 227 PICKER, REAL GOOD CONDITION (WITH SHELTER IF WANTED)
1 - OLIVER 77 GAS, GOOD TIRES, LIVE PTO, LIVE HYD., REAL SLICK	1955 INTERNATIONAL WITH 16 FOOT GRAIN BED AND HOIST, 2 SPEED AXLE	1 - JOHN DEERE NO. 50 SHELTER ATTACH- MENT FOR 227 PICKER
1 - JOHN DEERE 50, LIVE PTO, WIDE FRONT AXLE, NEW TIRES	1960 INTERNATIONAL CAB AND CHASSIS, ONE OWNER, REAL NICE TRUCK	1 - IHC NO. 15 SHELTER FOR 2-MH PICKER, THIS IS A REAL SHELTER
1 - JOHN DEERE (A), GOOD OLD TRACTOR WORTH THE MONEY		1 - IHC 4-ROW CORN HEAD NO. 429 FOR 403 OR 151 COMBINE
3 - FARMALL (M) TRACTORS, SOME WITH WIDE FRONT, SOME POWER STEERING		4 - IHC 228 CORN HEADS FOR 303 OR 101 COMBINES, ALL REAL GOOD
		5 - IHC NO. 22 CORN HEADS, FOR 303 OR 101

★★★★
We Finance!
We Deliver!

OTHER IMPLEMENTS

1 - IHC NO. 48 HEAVY DUTY WHEEL DISC, LIKE NEW, WILL TAKE WINGS	1 - IHC 5-14 STEERABLE PLOW
2 - IHC NO. 37 WHEEL DISCS, REAL GOOD	1 - IHC 4-16 STEERABLE PLOW
1 - OLIVER 13 FOOT WHEEL DISC, REAL GOOD	1 - M-4-16 PULL TYPE PLOW
	4 - FAST HITCH MOUNTED PLOWS
	10 - 3 BOTTOM PULL TYPE PLOWS, \$50 to \$75

N. E. K. MOTOR & IMPL.

PHONE 742-2171 YOUR INTERNATIONAL HARVESTER DEALER HIAWATHA, KANSAS

"LABOR DAY SPECIAL"

REGISTERED ANGUS
Joint Production Sale
Bar B Angus Farm
and
Mormon Springs Angus Farm
Monday, September 4
12:30 p.m. Central Daylight Time
WASHINGTON, KANSAS
Washington County Fairgrounds

A Select Offering From Two of Kansas' Outstanding Herds — Featuring Championship Breeding — Both
Scotch and Domestic bloodlines.

SELLING 68 LOTS

Bulls	Cows & Calves	Bred Cows and Heifers	Open Heifers
BAR B ANGUS FARM 8 BULLS Two are herd bull prospects from the show herd held especially for this sale. 6 YEARLING BULLS Ready for service this fall. They are half-brothers to several of the top selling bulls in Kansas sales the past several years. 6 COWS AND CALVES Top producing cows with some very select calves at side and related to one of the top young bulls in Kansas. 8 BRED COWS AND HEIFERS An excellent group of top producing cows that are bred to one of the top herd sires at Bar B Farm. 2 OPEN HEIFERS A very select pair of young "foundation type" heifers that will do well in any herd.	MORMON SPRINGS ANGUS FARM 11 BULLS A very uniform group of young bulls ready for service this fall, grown and developed to do an excellent job for you. 13 COWS AND CALVES An especially good group of cows with a real top set of calves. These are sure to be a profitable investment as the cows are rebred. 27 BRED COWS AND HEIFERS They will please the buyer planning to invest in good cows of proven breeding—carrying the service of one of the top young herd sires in Kansas. 2 SHOW HEIFERS SELL 4-H heifers belonging to the Nutsch girls—really top heifers that sell bred to the sensational new sire, S W Centurian 275.		

This is the first production sale these herds have offered, and they hope to make it an annual event. In this sale you will find the get and service of several top bulls who have already sired many select bulls and females. A Special Offering is the service of S W Centurian 275, a son of the International grand cham- pion, Dor Macs Bardoliermere 100. He is a great bull—see him sale day.—Phil Ljungdahl.

Auctioneer: Roy G. Johnston
Sale Headquarters: Park Hill Motel, Washington, Kansas
Sale Manager: Phil Ljungdahl, Box 1209, Dodge City, Kansas 67801—Phone: 316/HU 2-2735

Bar B Angus Farm
Glen Bowdish & Barbara B. Houghton
Washington, Kansas 66968
Phone: 913/325-2383

Mormon Springs Angus Farm
F. R. & Shirley Nutsch
Washington, Kansas 66968
Phone: 913/ EA 5-2879

G&G Calendar

- Aug. 23 — Herd dispersal northwest of Colby, Kans., HG Hereford Farms, Mr. & Mrs. Howard Grover.
Aug. 26 — Real estate & household sale, 1426 Poyntz, Manhattan. Lloyd Q. Murphy Estate. Lawrence Welter, auct.
Aug. 28 — Farm sale near Washington, Kans., George Pannacker est. Auct Foster Kretz.

Earl Becker & Son Grade A Holstein DISPERSAL

At farm 2 miles north of Milford, Nebraska on Highway No. 6, then 1/2 mile east.



"Valla Vista Remember Rhoda" Grand Champion Cow and Best Udder Cow Award 1963. Granddam of many females selling.

**Wednesday
AUGUST 30**

Starts 12:30 Noon
Lunch Served

77 — HOLSTEINS — 77

Health Reasons Make This Sale Necessary
(70 Grades, 7 Registered)

- 43 matured cows, mostly Aug. & Sept. fresheners
10 first calf springers — 14 open and bred heifers
5 six months heifers — 4 heifer calves — registered 7 mo. bull
T.B. & Bangs Tested

Almost all of the young cattle are sired by a son of "Valla Vista Remember Petrus." The dam of "Petrus," "Valla Vista Remember Rhoda" classified excellent Grand Champion All State B&W Show 1963, 4 yr. old record 281 D, 14,870 M., 613 F. Maternal sister to "Romona Smoky," Ex. 94, 6 Y, 365 D., 21,717 M., 818 Fat.

Registered cattle include daughters of "Gray View Crystalizer," Pawnee Farm Reflection Supreme, "Carnation Madcap Magistrate."

Financing, 3 years to pay. State Securities Co., Lincoln, Neb.

EARL BECKER & SON, Owners
Milford, Nebraska

Paul W. Rolfsmeier, Sale Mgr., Seward, Nebraska, Phone 6143
Art Leitner, Auctioneer, Herndon, Kansas

Ronald Rice Motors, Inc.

CHEVROLET OLDSMOBILE CADILLAC
North Kansas' Largest Volume Dealer
NW 2nd Phone CO 3-4000 ABILENE, KANS.

Big Parade Of New And Used Cars

At the Central Kansas Free Fair, Abilene
Through Aug. 25. Plan To Attend.

New Cars—3 Camaros—1 Corvair—2 Chevy II's
10 Chevelles—4 Biscaynes—5 Bel Airs
2 Caprices—10 Impalas 9 Oldsmobiles
2 Cadillacs—14 Special Company Cars
and Demonstrators. Discounts up to \$1000

USED CARS

- 1967 FORD Galaxie 500\$2995
2 dr. hardtop. Radio, heater, automatic transmission, power steering.
1967 OLDSMOBILE F-85\$3295
4 dr. Deluxe. Radio, heater, automatic transmission, power steering, power brakes, air conditioner.
1967 CHEVROLET Impala\$3095
4 dr. V-8. Radio, heater, automatic transmission.
1966 CHEVROLET Impala\$2495
2-dr. V-8, hardtop. Radio, heater, automatic transmission, power steering, power brakes.
1966 TEMPEST Custom\$2495
4 dr. Radio, heater, automatic transmission, power steering, power brakes, air conditioner.
1966 CHEVROLET Impala\$2495
2 dr. V-8, hardtop. Radio, heater, automatic transmission, power steering, power brakes.
1966 CHEVY II\$1695
2 dr. Heater, stick shift.
1966 OLDSMOBILE Delta 88\$3295
2 dr. hardtop. Radio, heater, automatic transmission, power steering, power brakes, air conditioner.
1966 FORD Ranch Wagon\$2495
Heater, automatic transmission.
1965 CHEVROLET Impala\$2195
V-8. Conv. Radio, heater.
1965 CHEVROLET Impala\$2095
2 dr. V-8 hardtop. Radio, heater, 4 speed, big engine.
1965 CORVAIR Monza\$1795
Radio, heater, 4 speed.
1964 OLDSMOBILE Luxury Sedan\$2295
Radio, heater, automatic transmission, power steering, power brakes, air conditioner.
1964 VOLKSWAGEN\$1595
2 dr. Radio, heater, stick shift, over drive.
1964 PONTIAC Catalina\$1895
4 dr. Hardtop. Radio, heater, automatic transmission, power steering, power brakes, air conditioner.
1963 CHEVROLET Impala\$1595
4 dr. V-8 Hardtop. Radio, heater, automatic transmission, power steering, power brakes.
1963 PONTIAC Grand Prix\$1895
2 dr. Hardtop. Radio, heater, automatic transmission, power steering, power brakes, air conditioner.
1963 FALCON Futura\$1095
4 dr. Radio, heater, stick shift.
1963 CADILLAC Hardtop\$2995
4 dr. Radio, heater, automatic transmission, power steering, power brakes, air conditioner, electric seat and windows.
1962 T-BIRD Conv.\$1495
Radio, heater, automatic transmission, power steering, power brakes.

Aug. 28 — Performance tested boar sale at K State University, Manhattan, Kansas Swine Improvement Assn., Dr. R. H. Hines, sale mgr.

Aug. 28 — Geo. H. Pannacker farm mehry, Washington Co. Fair Grounds, Washington. Foster Kretz, auct.

Aug. 28 — Performance tested boar sale in Manhattan, Ks. Dr. R. H. Hines, KSU, sec.

Aug. 30 — Holstein dispersal sale, Milford, Nebr. Auct: Rolfsmeier.

August 30 — Phillip A. Hedrick-con Estate, real estate north of Clay Center. Foster Kretz, auct.

August 30 — Rogniat Estate, Clay Center, Kansas. Real estate. Foster Kretz, auct.

Aug. 20 — Land sale north of Clay Center, Kans., Henderson estate. Auct Foster Kretz.

Aug. 30 — House in Clay Center, Kans., Rogniat estate. Auct Foster Kretz.

August 31 — Real estate in Clay Center, Vern Hitsman. Foster Kretz, auct.

Aug. 31 — Real estate in Clay Center, Kans., Vern Hitsman. Auct Foster Kretz.

Sept. 1 — Government grain bins in Clay Center, Kans. Auct Foster Kretz.

Sept. 2 — Allan Smith Holstein Dispersal, Salina, Kans. E. D. Dawdy, sale manager.

Sept. 2 — Real estate east of Manhattan. Earl & Edith Ty-Lawrence Welter, auct.

Sept. 2 — Angus production sale northwest of Paola, Kans., Wilmer Rader. Sale mgr. John Barton; Auct. Ray Sims.

Sept. 2 — Registered Holstein dairy dispersal sale northwest of Salina, Allen Smith herd of milk cows and bred heifers. Sale mgr. E. A. Dawdy.

Sept. 4 — Registered Angus joint production sale, Washington, Kans.; Glen Bowdish & Barbara B. Houghton; and F. R. & Shirley Nutsch. Sale mgr. Phil Ljungdahl; auct. Roy G. Johnston.

Sept. 4 — Joint production sale in Washington, Kans., Bar B Farm, Hanover, Kans.; and Mormon Springs Angus Farm, Francis & Shirley E. Nutsch.

Sept. 7 — Farm sale at Barnard, Kans., Mae Laity. Aucts Frank Harz and Bob Perry.

September 8 — Real estate & household in Clay Center. Clara Boyle Schurle Estate. Foster Kretz, Auct.

Sept. 8-9 — Service Station Appliance Store and Personal Property west of Blackwolf, Kans. G&H Auction Service.

Sept. 9 — Real estate sale at 906 Osage, Manhattan. Rea Muir Estate, W. G. Glenn, adm. Lawrence Welter, auct.

Sept. 11 — Mrs. Millard Anderson. NW of Clyde. Lagasse & Lagasse, auct.

Sept. 11 — Farm sale west of Barnes, Kans., James Reece. Auct Foster Kretz.

Sept. 11 & 12 (2-day sale) — Post office buildings in Blue Rapids, Waterville and Hanover, Kans; 4 farms and several town properties in Blue Rapids. Kester Hammett estate. Auct. & real est. broker Don Roche.

Sept. 15 & 16 — Antiques and personal property at Marysville, Omar Hawkins Est.; Howard Funk, owner. Auct. Don Roche.

Sept. 16 — Nemec Brothers farm sale southwest of Hanover, Ks. Marvin L. Heck and Lawrence Welter, aucts.

September 18 — Farm sale south of Hanover, Dedrick Hillmer. Jim Dickson & Foster Kretz, Auctioneers.

Sept. 19 — Schwertizer Estate Land Auction south of Clay Center. Foster Kretz Auctioneer.

Sept. 20 — Land and farm machinery west of Frankfort Mr. and Mrs. Marc Knudsen.

Auct. Don Roche.

Sept. 25 — Household goods and Antiques, Arthur Rosenberg estate, Olsburg, Kans. Ed L. Fritz, Auctioneer.

Sept. 23 — Real estate at Olsburg. Vernon Holt. Lawrence Welter, auct.

Sept. 30 — Household & antiques sale at Olsburg. Mrs. Hillmer. Vogue. Lawrence Welter, auct.

Oct. 3 — Arthur Hay Estate Miltonvale, farm sale. Paul Pruitt, auctioneer.

Special Stocker & Feeder Sale

Friday, Sept. 1 — 1 p.m.

We will begin our regular day sales
Wednesday, September 6, 1 p.m.
Night sale thru August, starts 8 p.m.

Onaga Community Sale

Marvin Cottrell, Phone 889-4461 or 889-4665, ONAGA, KS.

The Growing Hog Market Is At

WASHINGTON SALES CO.

TRY US SOON

**HOGS every TUESDAY
CATTLE every WEDNESDAY**

A Growing Market
for Finished Cattle

All Sales
Start 1:00 p.m.

ED BURT

Barn Phone EA 5-2266

Residence EA 5-2393

Washington, Kans.



We had an awfully good sale last week, and we have prospects for an exceptionally good run this week. We have several choice consignments already, and have more to look at thru the week. Many of our cattle last week went into Nebraska and Iowa, and these buyers will all be back this week.

Some of our best early consignments: o60 head of strictly choice whiteface calves, weighing 475 to 500 lbs.; o32 blacks, weighing 500 to 550; o34 cows with 34 calves; o100 head of shoats, about 80 lbs., already vaccinated.

There is a good demand for hogs, with four packer buyers here. There's a horse sale set her for August 25, 7:30 p.m.

The following is a sampling of our last sale:

STEER CALVES			COWS		
18 black steers	584 @	27.80	There was a good cow market.		
3 whiface steers	306 @	34.75	They ran generally from \$16.00		
32 blk bull clvs	305 @	35.25	to \$17.50, with heiferettes up		
3 whiface bl clvs	328 @	32.70	to \$21.00. Other cows ran		
6 black steers	494 @	28.70	\$15.00 to \$16.00.		
1 whiface steer	380 @	30.40			
5 black steers	599 @	27.30	HOGS		
15 whiface steers	540 @	29.20	18 mxd butchers	221 @	21.00
			16 hamp hogs	246 @	21.00
			17 mixed hogs	209 @	21.00
			19 red butchers	199 @	20.00
			9 hamp hogs	218 @	21.00
			26 mixed hogs	228 @	21.00
			18 mixed hogs	227 @	21.00
			26 white sows	208 @	21.00
			8 white sows	385 @	19.00
			1 hamp sow	330 @	18.00
			6 mixed sows	362 @	18.00
			1 white sow	550 @	16.00
			1 hamp sow	365 @	19.00

FAT CATTLE & FEEDERS

20 mixed steers	880 @	24.95	PIGS Pigs were higher last		
2 black steers	740 @	24.50	week, with good pigs running		
11 black heifers	590 @	24.80	to 80 lbs. selling as high as		
10 blkwhif hfrs	735 @	24.90	\$18.00 to \$20.50 by the head.		
12 whiface hfrs	800 @	24.45	Other pigs ran \$16.00 to \$18.00		
1 whiface steer	980 @	24.75	Little pigs, by the head, were		
			for \$12.50 to \$16.00.		

LICENSED AND BONDED

BARN PH. JUNCTION CITY CE 8-1471

If you have livestock to appraise, call:

**VERN LANGVARDT, Manager, 502 UPLAND
HOWARD LANGVARDT, Auctioneer, 520 UPLAND
HERB NEUMEYER, White City, Phone 349-2863**

**TEX REAL
ONWARD 95th**

Cow Herd —
Royal Essar
CKato, Heir
Apparent

**SERVICEABLE BULLS
WITH WEIGHT RECORDS**
Priced . . . \$300 to \$500

**GRANT POOLE
MANHATTAN, KANS.**
Located 4 mi. south of I-70-K177
intersection, 2 mi. west on Mc-
Dowell Creek Rd. Ph. PR 6-8315.

Monday
AUGUST 28

Sale Starts 1 p.m.
Lunch Served

AUCTION SALE

Washington County Fairgrounds, Washington, Kansas.

Farm Machinery

- 1953 John Deere model 50 tractor, LPO, L. hyd., cast wheels, good rubber, good
1947 caterpillar, D-4 tractor, with Balderson hyd. dozer, runs good
1 M.M. 16x8 grain drill on steel press & fluted feed, good shape
1 MM 3x16 plow on rubber, hyd. lift, good
1 Snowco bale loader on rubber
1 John Deere No. 5 mower, quick tach, good
1 John Deere low wheel rake, on rubber, good
1 John Deere wagon hoist, new type with electric mtr., good
1 John Deere No. 44, 2x16 plow on rubber, good
1 John Deere A. B. G. 2-row cultivator, 50, 60 or 70
1 John Deere 6-ft. oneway on steel, hyd. lift, good
1 M.M. 9-ft. disc, pull type, good
1 M.M. 4-section spring tooth & evenor
1 front mounted hay buck, fit John Deere
1 Castwell front end manure loader, hook up for John Deere
1 Letz 10-in. brrr mill with dust collector
1 4-in 12-ft. grain auger with mtr.
- 1 trailer type weed sprayer on rubber, Jet
1 Staldmer 10-ft. fertilizer spreader on rubber, good
1 Case 4-wheel trailer with 7x14 flatbed, grain and silage sides, good
1 David Bradley 4-wheel trailer with flatbed, grain & silage sides, good
Drag harrow (old)
1 antique 2 1/2 h.p. John Deere gas engine
- Several feed bunks; 300-gal. fuel tank, stand, hose & nozzle; winter fronts; JD mower sickles; McCulloch 33 B chain saw; good stock saddle & bridle; Black & Decker electric drill & stand; saws;
Small platform scale; 40-ft. drive belt; hand corn sheller; oil tank heater; Will Weld 180 Amp. welder; welding table; screw jacks; John Deere 2 way hyd. cylinder; several electric motors; scoop, shovels; forks; vise; log chains; hand tools; and many misc. items too numerous to mention.

Feeder, Shop Tools Misc.

RICHARD G. PANBACKER

Administrator of G. H. Pannbacker Estate
Auct: Foster Kretz & Elmo Steffen, Clay Center
Clerk: First National Bank Washington, Kansas

and is controlled from the cab while the cutting process is underway.

Cutting three rows at a time, it can cut and load 80 tons an hour.

Pott-mie SCS Staff Change

WESTMORELAND — Bernard G. Fickel has been named work unit conservationist for the U.S. Soil Conservation Service here to serve the Pottawatomie County Soil Conservation District.

He succeeds Kenneth T. Sherrill who will retire at the end of August after directing conservation work in the district for 21 years.

Fickel has been a soil conservationist at Manhattan since

This Year Put Up MONSANTO SEAL-VAC VACUUM SILAGE

- * Sealed Storage . . No Air.
- * Unheard of Low Cost
- * Next to No Spoilage
- * Highest Feeding Value of All
- * Proven Performance

For more information, call your SEAL-VAC Dealer,

Victor Kruse
Phone 2609
Barnes, Kans.

fruition by being placed on the market. It recently came off the assembly line in St. Paul. He sold his invention two years ago

All 10 of the cutters that Plett and his brother, George Plett, built over the last 17 years are still in operation in the immediate Inman area.

Now farmers in other parts of the country can have them.

Hydraulically powered, the loader revolves about the cab, loading ensilage like a fork,

Land Auction

Wednesday
AUGUST 30

Sale Starts 10:00 a.m.

AUCTION SALE

The children of the late PHILIP A. HENDRICKSON, after the settlement of their father's personal estate, mutually agreed to offer for sale and sell at public auction their farm located 10 1/2 miles north of Clay Center, Kansas, on Highway 15.

Legal Description
NE 1/4 of Section 18, Township 6 South, Range 3 East of the 10th P.M., Clay County, Kansas.

This farm has a 7-room 2-story frame house with porch, a good big barn, machine shed; chicken house, cattle shed, a double garage, and several small buildings, and 2 wells, it has water supply by Rural Water District No. 1, and has electricity by C & W Coop. Most all terraced and lays along State Highway No. 15. Approx. 55 acres grass and lots; balance broke, 29 3/4 wheat allotment, 15 acre feed grain, 10 acres alfalfa.

TERMS OF SALE

25% to be paid day of sale, balance in 30 days or when abstract is delivered. Written contract containing terms of sale to be signed day of sale, to be deposited in escrow in the PEOPLES NATIONAL BANK. Seller to pay 1966 and all prior years taxes, and furnish abstract and deed. Buyer to get possession subject to tenant's rights which will be announced at beginning of sale.

You are cordially invited to inspect this property.

OWNERS

Everett Lee Hendrickson Rosemarie Rogic
Della Petterson Alvena Swenson
Delbert Hendrickson

Auct: Foster Kretz, Clay Center
Phone Morganville WA 6-4422. Jones & Ryan
Attorneys for Owners.

Reynolds Sale Barn

ABILENE, KANS. CO 3-3394

SELLING EVERY FRIDAY
Starting At 1:00 p.m.

Consign your cattle now
to our 2nd

special stocker and feeder auction in conjunction
with the regular Sale Friday, August 25 starting
at 1:00 P.M.

Already listed:

- 40 Choice whiface and blkwhiface steers 750 lbs.
- 31 Choice whiface steers and heifers 550 lbs.
- 29 Choice whiface steers 600 lbs.
- 20 Choice shorthorn steers 800 lbs.
- 75 Outstanding shorthorn steers 850 lbs.
- 26 Choice black and blkwhiface heifers 650 lbs.
- 16 Choice black and blkwhiface steers 600 lbs.
- 28 Fancy angus steers and heifers 500 lbs.
- 15 Choice angus steers 550 lbs.

For information, requests for appraisals at no obligation, or inquiries regarding coming sales, call me any time, day or night.

DUDE REYNOLDS Abilene, Kans.
CO 3-3394

Bring your cattle
in at any time day
or night; we'll handle them for you at
your request.

Sale Every Thursday

Hogs 11:30 a.m.
Cattle 1 p.m.

We had a good run of cattle at our sale Thursday. Prices were generally steady on all classes and in good demand. The fat hog market was up 25¢ from a week ago. Weaning and feeder pigs were steady on a very light supply. The following is a sampling of our consignments.

FAT CATTLE & FEEDERS

- 10 whiface steers --- 541 @ 28.20
- 50 whiface steers --- 737 @ 27.50
- 4 black steers --- 500 @ 27.10
- 3 blkwhif steers --- 500 @ 26.90
- 2 blkwhif steers --- 600 @ 26.20
- 4 holstein steers --- 555 @ 25.25
- 45 whiface heifers --- 659 @ 25.20
- 21 whiface heifers --- 675 @ 25.05
- 7 whiface heifers --- 580 @ 24.90
- 26 black heifers --- 656 @ 24.25
- 10 black heifers --- 586 @ 24.10
- 4 red heifers --- 615 @ 23.90
- 7 red heifers --- 747 @ 23.60
- 4 red heifers --- 780 @ 22.70

- 5 holstein steers --- 357 @ 26.75
- 1 whiface steer --- 245 @ 26.00
- 1 whiface blcalf --- 325 @ 25.75
- 2 holstein steers --- 400 @ 25.10
- 1 black steer --- 485 @ 25.00

HEIFER CALVES

- 1 whiface heifer --- 205 @ 32.00
- 1 bluroan heifer --- 195 @ 29.50
- 4 whiface heifers --- 347 @ 26.90
- 3 whiface heifers --- 460 @ 25.40
- 1 whiface heifer --- 295 @ 24.00
- 1 red heifer --- 440 @ 23.10
- 3 black whiface hfrs 466 @ 23.00

HOGS & PIGS

- 89 white fats --- 244 @ 21.05
- 29 mixed fats --- 232 @ 20.85
- 12 hamp fats --- 234 @ 20.80
- 16 mixed fats --- 289 @ 20.00
- 3 mixed sows --- 290 @ 19.50
- 7 mixed sows --- 349 @ 18.50
- 1 white sow --- 440 @ 17.70
- 1 hamp boar --- 530 @ 14.20
- 1 hamp boar --- 660 @ 13.50
- 5 mixed pigs --- @ 15.25
- 4 white pigs --- @ 13.50
- 12 hamp pigs --- @ 11.75
- 4 red pigs --- @ 11.75

COWS

- 1 blk cow & calf --- @ 194.00
- 7 holstein heifers --- @ 152.50
- 1 charolais cow --- 765 @ 20.80
- 1 black cow --- 1095 @ 18.70
- 1 holstein cow --- 1375 @ 17.90
- 1 whiface cow --- 1140 @ 17.70
- 1 jersey cow --- 890 @ 16.80
- 1 guern cow --- 860 @ 15.50

BULLS

- 1 whiface bull --- 1150 @ 22.30

BULL & STEER CALVES

- 1 whiface blcalf --- 215 @ 35.00
- 1 black steer --- 340 @ 31.00
- 1 blk bull calf --- 185 @ 30.50
- 4 whiface steers --- 485 @ 27.80
- 3 blk bull calves --- 447 @ 27.75
- 2 blk bull calves --- 212 @ 27.25

RALEIGH BREEDING, MANAGER

barn HI 3-3671; home HI 3-3547
Auctioneer: Larry Lagasse,
Ph. Concordia, Kans. CH3-1714

MARYSVILLE LIVESTOCK & COMMISSION CO.
MARYSVILLE, KANSAS.

Sell At St. Marys

Sell
Or Buy

Cattle & Hogs

By
Auction

Tuesdays

On receipts of 1204 cattle we had a good active market. All classes of stockers and feeders were fully steady with some fleshy feeder cattle 25¢ higher. Our cow market was 50¢ to \$1 higher.

STOCKER AND FEEDER STEERS

8 whifce steers	559 @	28.50
23 whifce steers	629 @	28.00
3 whifce steers	606 @	27.35
38 whifce steers	622 @	27.30
4 whifce steers	562 @	27.10
9 whifce steers	676 @	27.10
9 black steers	614 @	26.85
10 black steers	650 @	26.70
19 black steers	606 @	26.60
25 mixed steers	653 @	26.55
6 whifce steers	721 @	26.50
5 black steers	699 @	26.40
32 mixed steers	912 @	26.20
33 black steers	732 @	26.20
7 whifce steers	711 @	26.10
36 black steers	779 @	26.05
30 black steers	795 @	26.05
11 black steers	777 @	26.05
5 whifce steers	815 @	25.80
6 black steers	610 @	25.70
25 mixed steers	901 @	25.70
7 whif & blk steers	705 @	25.65
15 mixed steers	793 @	25.65
21 short horn steers	764 @	25.60
34 short horn steers	902 @	25.60
12 whif&blkwhif str	1094 @	25.55
10 whifce steers	974 @	25.50
8 whifce steers	762 @	25.40
19 mixed steers	822 @	24.30
6 whifce steers	948 @	25.00
6 black steers	936 @	24.90
16 black steers	870 @	24.80
1 holstein steer	755 @	23.40
1 holstein steer	645 @	23.10
5 holstein steers	1009 @	22.35

STEER CALVES

1 whifce steer	285 @	32.50
8 whifce steers	415 @	31.60
1 whifce steer	490 @	30.30
5 whifce steers	476 @	30.30
3 whifce steers	413 @	30.30
5 black steers	417 @	30.10
17 whifce steers	495 @	29.90
11 black steers	428 @	29.60
4 whifce steers	485 @	29.50
2 whifce steers	460 @	29.10
5 whifce steers	464 @	28.70
18 black steers	523 @	28.60
14 whifce steers	542 @	28.60
2 black steers	477 @	28.60
2 black steers	545 @	28.50
6 whifce steers	502 @	28.10
6 black steers	539 @	28.20
14 black steers	502 @	28.10
3 black steers	535 @	28.10
9 black steers	484 @	27.95
2 whifce steers	460 @	27.80
6 short horn steers	550 @	27.00
3 whifce steers	510 @	26.90

STOCKER AND FEEDER HEIFERS

7 black heifers	590 @	25.80
4 whifce heifers	556 @	25.70
3 whifce heifers	568 @	25.70
14 black heifers	553 @	25.60
2 black whifce hfrs	575 @	25.40
7 mixed heifers	575 @	25.40

18 whifce heifers	706 @	25.15
22 whifce heifers	717 @	25.15
5 black heifers	553 @	25.10
2 whifce heifers	587 @	25.00
2 whifce heifers	597 @	25.00
1 blkwhifce heifer	760 @	24.90
3 black heifers	558 @	24.90
8 mixed heifers	730 @	24.60
7 whifce heifers	681 @	24.50
1 black heifer	625 @	24.25
3 whifce heifers	620 @	24.00
3 whifce heifers	643 @	24.00
5 whifce heifers	643 @	23.75
1 black whif heifers	885 @	23.30
2 red heifers	570 @	22.60
3 mixed heifers	626 @	22.60

HEIFER CALVES

1 black heifer	220 @	28.50
12 whifce heifers	434 @	27.25
10 black heifers	392 @	27.20
4 whifce heifers	392 @	27.20
6 black heifers	405 @	27.05
7 whifce heifers	402 @	27.00
6 black heifers	466 @	25.95
2 whifce heifers	370 @	25.90
19 whifce heifers	474 @	25.00
9 black heifers	482 @	25.70
4 black heifers	500 @	25.70
16 black heifers	533 @	25.60
4 whifce heifers	540 @	25.40

13 whifce heifers	506 @	25.40
5 whifce heifers	522 @	25.30
2 short horn heifers	535 @	25.30
3 blkwhifce heifers	505 @	25.10
3 black heifers	505 @	25.10
6 whifce heifers	546 @	25.10
4 whifce heifers	463 @	25.10
22 whifce heifers	488 @	24.90
24 black heifers	458 @	24.85
7 whifce heifers	492 @	24.70
2 black heifers	335 @	24.30
4 whifce hn hfrs	522 @	23.80
15 black heifers	470 @	23.60
2 whif & roan heifers	392 @	23.20
11 whifce heifers	524 @	23.20

COWS

1 red cow	1125 @	18.10
2 black cows	1100 @	18.00
1 black cow	1170 @	18.00
1 red cow	1250 @	17.50
1 whifce cow	4310 @	17.50
1 blue roan cow	945 @	17.30
2 whifce cows	1175 @	17.20
1 whifce cow	915 @	17.10
1 whifce cow	1190 @	17.10
1 whifce cow	1210 @	17.10
1 holstein cow	1140 @	17.00
1 holstein cow	1135 @	17.00
1 whifce cow	930 @	16.80
1 black cow	925 @	16.70
1 whifce cow	990 @	16.50
1 whifce cow	1030 @	16.40
1 whifce cow	840 @	16.10
1 whifce cow	910 @	16.10
1 whifce cow	1185 @	16.10

For Information or Estimates

Rezac Barn	St. Marys 437-2999
Delaine Rezac	St. Marys 437-6266
Elmer Imthurn	Maple Hill MI 3-2440
Paul Kramer	St. Marys 437-2993

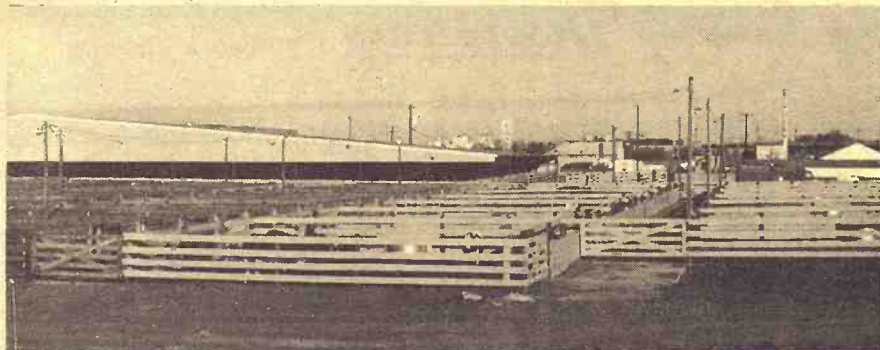
Auctioneers: Lawrence Welter, Gene Toby & Verlin Green



LIVESTOCK COMMISSION COMPANY

St. Marys, Kans.





We sold 616 cattle and 572 hogs last week. Our hog top was \$21.50, about the same as the week before. The cattle market was higher on all classes. Here is a few of the sales made.

CATTLE

Linda Winter, Durham	2 blkwhif str	790 @	25.40
Linda Winter, Durham	1 blk hfr	675 @	25.00
Forest Cowfort, Wills	6 blk str	578 @	26.85
Walace Gust, Kanopolis	6 whif hfrs	584 @	25.20
John Gust, Ellsworth	1 whif bull	1495 @	21.90
John Gust, Ellsworth	1 whif cow	1125 @	16.40
Clinton Jensen, Brkville	4 whif str	565 @	27.20
Clinton Jensen, Brkville	4 whif str	525 @	25.30
Wayne Bohl, Ellsworth	7 whif str	515 @	28.20
Wayne Wing, Minn.	10 whif str	580 @	27.80
Wayne Wing, Minn.	1 whif bull	1555 @	21.60
Frank Kosar, Ada	6 blk,bwf hfs	515 @	25.50
Albin Nelson, Falun	6 whif hfrs	585 @	24.50
Albin Nelson, Falun	5 whif hfrs	712 @	24.70
Albin Nelson, Falun	6 blk hfrs	646 @	22.60
Amos Katzenmeier, Ells.	11 blk str	540 @	27.80
Amos Katzenmeier, Ells.	11 blk str	666 @	26.00
Bill Whitehair	31 whif hfrs	661 @	24.95
Jerald Hader, Ellsworth	7 whif hfrs	578 @	24.60
Jerald Hader, Ellsworth	2 whif str	663 @	26.60
Emil Hubele, Gypsum	1 blk bull	1075 @	22.10
William Wacks, Ells.	9b&bw hfs	486 @	25.50
William Wacks, Ells.	2 whif hfrs	487 @	24.20
Ray Boster, Bern	1 whif cow	955 @	19.00
Ray Boster, Bern	1 whif cow	820 @	16.80
Clarence Nienke, Ells.	4 whif str	619 @	27.10
John Atkinson, Marg.	8 b&bw hfrs	709 @	23.85
Earl Van Meter, Carlton	9 whif str	850 @	26.00
Gerald Schrist, Ada	12 wf&bk str	746 @	25.75
Charles Schur, Minn.	1 char bull	1370 @	22.70
Gene Wainholst, Wilson	1 blk bull	1140 @	22.00
S & H Ranch, Minn.	1 whif bull	1290 @	22.40
S & H Ranch, Minn.	1 whif bull	1610 @	22.70
Ronald Soeken, Lorrane	1 whif cow	1145 @	17.65

Lyle Webb, Tescott	1 blk cow	985 @	17.90
Bud Nelson, Gypsum	1 holstein	150 @	17.50
Virgil Cline, Ada	1 holsteincw	225 @	19.50
D. L. Cooper, Wills.	1 whif cow	970 @	17.75
George Frisbie, Gypsum	1 whif Cow	1135 @	19.90
Ray Nelson, Tescott	1 bkwhif hf	545 @	23.80
Alyward Bros. Salina	1 whif str	1015 @	25.30
Andy Woods, Gypsum	1 hol str	660 @	22.50
Robert Larson, Marg.	1 whif str	825 @	25.50
Lyle Larson, Marg.	1 whif str	865 @	25.40
Darris Larson, Marg.	1 whif str	755 @	25.30
Kenneth Martin, Salina	1 hol str	460 @	24.40
P. Martin, Salina	1 whif str	575 @	26.80
Paul Martin, Salina	1 hol str	465 @	24.40
Patty Martin, Salina	1 hol str	580 @	23.60
Laurence Mayer, Gypsum	1 hol str	1215 @	18.20
Laurence Mayer, Gypsum	1 hol str	1150 @	18.60
Erick Etzold, Sylvan Grv.	6 whif str	720 @	26.30
Erick Etzold, Sylvan Grv.	5 whif hfrs	729 @	24.00
Emory Berry, Minn.	13 wf&bw str	866 @	25.50

James A. Griffin, Abilene	9 belt hogs	229 @	21.30
Dean Stauffer, Salina	8 mix hogs	206 @	21.35
I. R. Zumburn, Chapman	13 mx hogs	213 @	21.30

FOR INFORMATION OR ESTIMATES

LAURENCE CLEMENCE	Abilene	Phone CO 3-3091
MERRILL CHRISTIANSEN	Durham	Phone 732-3371
BOB MUIR	Salina	Phone TA 3-2963

Market Reports

Radio Station KSAL, Salina
6:45 a.m. Every
Monday, Wednesday & Friday
KFRM
6:55 a.m. Mon. through Fri.

Central Kansas Most
Modern Livestock Auction . . West Side Of **Salina**
TWO SALES EVERY WEEK

MONDAY

Hogs & Cattle

Hogs sell at 11:00 a.m. followed by our regular cattle sale as they are unloaded.

THURSDAY

Cattle Only

Selling starts at 12:00 a.m. Cattle will sell in the order they are consigned on the books.

Dahlstein, Marquette	8 blk hogs	221 @	21.35
George Wagner, Bkville	6 white hogs	223 @	21.45
Leonard Stirn, Tescott	8 belt hogs	233 @	21.20
Lyle Cline, Lincoln	10 belt hogs	207 @	21.45
Palmer Price, Salina	9 mixed hgs	208 @	21.45
Kenneth Erickson, Marq.	23 blk hogs	222 @	21.30
W. E. Sherikson, Ells.	1 wh boar hg	475 @	11.90
Larry Sherikson, Ells.	1 spt sow	450 @	16.50
Larry Sherikson, Ells.	1 spt sow	500 @	17.05
Mrs. R. Turnbull, Jct. Cy.	12 blt hgs	205 @	21.40
Lowell Larson, Lincoln	12 white hgs	229 @	21.15
Mary Streckfus, Salina	1 red sow	400 @	17.80
Randy Lee, Minn.	3 mixed sws	405 @	18.00
Randy Lee, Minn.	3 mixed sws	486 @	17.10
Walt Hannebaum, Tesc	15 wht pigs	@	16.25
Walt Hannebaum, Tesc	17 wht pigs	@	13.00
Albert Peterson, Concord.	20 mixed pigs	@	12.25
Gourley Bros., Lincoln	9 belt pigs	@	12.75

Hiram Larson, Lindsboro	15 belt pigs	@	12.50
Don Esping, Lindsboro	10 white pigs	@	17.50
Max Boss, Bennington	16 spotted pgs	@	15.25
Max Boss, Bennington	10 spotted pgs	@	12.50
Richard Mortimer, Gyp.	24 hmp pigs	@	13.75

Farmers & Ranchers
LIVESTOCK COMMISSION CO.
West On Old US 40
Salina, Kansas
Barn Phone TA 5-0211
Bonded • Licensed