

GRASS

&

GRAIN

13th year no. 19

July 11, 1967

Sees Problems, But More Soybean Use

Increased competition for U.S. soybeans in export markets combined with the nation's first billion-bushel soybean crop expected this fall will face the American Soybean Association's 47th annual convention at Peoria, Ill., Aug. 14-16, with some hard problems, says Chet Randolph, acting executive secretary-treasurer.

Many countries have increased production of fats and oils — most notable being Russia's record sunflowerseed crop last year — and have contributed to a world fats and oils surplus, according to Randolph. Russia and other East European countries have become net exporters of fats and oils instead of importers as they have been in the past.

Soybeans have long been the nation's No. 1 agricultural growth industry, Randolph says, but neither domestic nor foreign markets have shown the expected growth this year. As a result, the United States is faced with a carryover of over 100 million bushels this September. At the same time, farmers planted a record acreage to soybeans last spring and a billion-bushel crop is predicted.

Randolph believes the long-term growth in the markets for soybeans will continue. "Increasing population and a rising standard of living in most parts of the world, the demand for enough to eat by developing countries, and expanding live-

stock populations which will increase the demand for soybean meal for livestock feed provide a growing long-term demand for the oil and protein which are furnished by the soybean at such reasonable cost," says Randolph. "The difference from the past is that we will now have to work harder for our markets."

KANSAS TEACHERS NOW AVERAGE \$6270 YEARLY

Average annual teaching salary in Kansas in 1966-67 was \$6270, about 88 percent of the national average according to the National Education Assn. This percentage of the national average has remained about the same for two decades. In 1950 the Kansas average \$2628, 87 percent of the then national average. The current average in Missouri is about \$130 above the Kansas average. The Oklahoma average is about \$90 less than the Kansas one.



Ready For Big Sandy Jubilee

Workers at Alexandria, Nebr., prepare a float for their Big Sandy Jubilee July 10-11-12. Local celebrations such as this one proliferate in Nebraska, tying in with the state's centennial year celebration. Paul Davidson, Mrs. Davidson, Bill Apking, Leonard Rossmann, and Dary Easley do the work here.

From A Tiny Grain of Wheat —

Much Controversy, and A Very Large Plant

An unusual wheat plant growing in the Fred Prymek residence at Cuba, Kansas, has caused a great deal of interest in wheat circles all over the U.S. and Canada. The five foot plant with the large heads grew

from a single grain planted by Prymek last January.

Television stations and newspapers from a wide area, as well as calls from Canada, Texas, California, Colorado, and all over the Kansas wheat area,

have been pouring in the Prymek residence, wanting to know the story of the wheat. If it is for sale, and thousands of other questions.

The beginning of the story according to Prymek began for him several years ago while on vacation in Canon City, Colorado. He noticed the neighbor who lived next to the relatives he was staying with had a very good crop of dipper gourds. He asked the neighbor what he would take for one of the gourds. This is how he met Joseph Javourek, who showed him the unusual wheat and told this story. Javourek's brother-in-law from Little Rock, Arkansas, had been on a hunting trip in northwest Alaska a few years ago. During this trip he shot a wild goose. When the bird was cleaned they found eleven berries of this wheat in it. He brought the berries home and in the following November planted five of them. There was no sign of any wheat and he decided that the goose's digestive system had ruined the germination. In January he decided to plant the remaining six grains, these grew, and the yield from the six was thirteen pounds and eight ounces.

This was planted the following year and the yield was about sixty bushels. It was at this time the brother-in-law passed away and Javourek received the wheat. And it was from Javourek that Prymek has the single grain that is now the plant in his garden.

There is much speculation as to what kind and where it came from, this strange cereal that produces one hundred eighty to one hundred eighty seven kernels per head, on a five to six

foot plant with stems that vary from five-eighths to three-eighths inches in diameter, and a fully stooled plant that will produce over eleven thousand berries, according to Prymek.

There are some who say the wheat is a hybrid the goose picked up from a field in Canada. There are many who question the protein content and the adaptability of it. There are many who are quite enthusiastic about it, and are eager to see if it can be developed.

Prymek has some questions of his own about the wheat, its origin and the kind. He has done a lot of research trying to identify the species, and claims that there was a type of wheat referred to in an old set of Encyclopedia Britannica, that has all the characteristics of his plant, called Grey Mummy Wheat. This was alleged to have grown in Egypt thousands of

years ago, but had been lost through the ages.

It would be physically impossible for a goose to fly the distance from Egypt and retain grain in its digestive system. Therefore Prymek theorizes that if this is one, and the same wheat, it had to have been growing somewhere within the goose's flying range. Was it possible that some ancient seaman landed along the Alaskan shores and caused the seed to be left there, perhaps birds and animals carried it inland and it is still growing wild on some remote plateau.

Many questions will probably never be answered for Prymek, but he said this is the most fascinating project he has ever had, and he is certainly going to go to great lengths to find out all he can, and if at all possible develop this strange wheat.



Fred Prymek and his wheat



For a size comparison —

St. Louis Co-op Bank Retires Federal Loan

St. Louis — The St. Louis Bank for Co-operatives has

made the last payment on federal capital invested in the institution when it was organized nearly 35 years ago.

W. Russell Boniface, bank president, presented a \$595,000 check to Glen E. Heitz, deputy governor and director of the farm credit administration's co-

operative service bank. Heitz will deliver the check to the Treasury department.

The bank is now owned completely by farmers co-operatives in Missouri, Illinois and Arkansas. The bank was organized August 9, 1933, to provide a reliable source of credit for farmer co-operatives and to perform related credit services. It is one of 12 district banks for co-operatives.

The initial U. S. government stock subscription in the bank was 5 million dollars. A franchise tax was paid on the invested capital.

Since it was established, the bank has loaned more than \$2,400,000,000 to 645 co-operatives in its 3-state area. About 241 farmer co-operatives used the bank's services during the last year.

GRASS & GRAIN

The Mid-Kansas news weekly. Published each Tuesday at 1207 Moro, (Box 1009) Manhattan, Kansas, 66502 by

AG PRESS
Dean Coughenour
E. R. Woodward
Second class postage paid at Manhattan, Kansas
Subscription: \$3 year
CIRCULATION 11,108

ONLY
\$325

Fully Guaranteed
Completely
Installed



The Hydraulic Hoist Anyone Can Use
At A Price Everyone Can Afford!

PTO operated hydraulic hoist for 10' and smaller beds!
Six ton hoisting power. Can be used on 1 ton and smaller trucks.

NOW — Even small trucks can have hydraulic hoisting.

Fingertip Control From Cab
Chrome Plated Piston Gives You Smooth, Positive Power

- Durable
- Practical
- Convenient



HAUL-MOR, INC. valley falls, kansas • phone 945-3211

Another 1st...
to serve the farmer

Hydrostatic Drive 656 Tractor

from
INTERNATIONAL HARVESTER

The Farmall 656 Hydrostatic — All-Speed Drive — is the first big farm tractor to give you any speed you want from 9 in reverse to 20 mph forward... Change on the go, under load or with no load — no clutch, and without touching the throttle.

Here's how it works

Just push the Speed Ratio (SR) control forward to move forward. The farther you push it, the faster you go — from zero mph to 20 mph. To stop, move the SR control back to zero mph and have smooth, safe, controlled stopping. To back up, move the control rearward into reverse ratio and pick any speed to 9 mph in reverse.

That's it. No clutch to use. You're propelled by smooth IH hydrostatic power! At any speed from "9 below to 20 above."

For plowing or other heavy tillage, just select your speed with the SR control. Check it on the accurate new speedometer and mark that setting with the adjustable "stop" sign on the SR control quadrant. Then, if you hit hard ground and begin to lose headway you can move the speed control rearward to slow down and get more drawbar pull to lug through. As soon as you're through the tough spot you can return to the original speed setting as marked by the adjustable stop. Or you can bypass it if conditions call for faster speed.

As valuable as Hydrostatic All-Speed Drive is to plowing, think of the advantage when baling, chopping, loading, or mowing... to be able to make immediate, no-clutch, on-the-go speed changes without touching the throttle. And to always have the exact speed needed for planting or chemical application.

It follows that no matter what the crop or conditions, this Hydrostatic All-Speed Drive provides the ideal speed for getting the most out of both tractor and equipment.

Let us tell you more...

HERINGTON
Pioneer Service & Sales

MINNEAPOLIS
Chapman Impl. Co.

CLAY CENTER
Norquist's Inc.

ABILENE
Abilene Truck & Tractor

MARYSVILLE
Bruna Brothers

FALUN
Dauer Impl. Co.

HANOVER
Hanover Impl. Co.

LEONARDVILLE
Kendall Garage

WAKEFIELD
Auld Chevrolet

COUNCIL GROVE
Macha-Revere

BELLEVILLE
Chapman's On US hwy. 81

GYPSUM
Kuhn Impl. — OW 64411



Big Business In Sabetha

Hot weather causes lemonade and koolade stands to pop up all over the countryside. Already in operation is this one in Sabetha. Mike Shraye, Kurt Van Hynning, Mike Bitterman, Neal Grasfield, (kneeling), Spot, co-operators Tomilee Bitterman and Nancy Hildwein, and Nancy Beard.

MIDWEST RENDERING & SUPPLIES

BELLEVILLE, KANS.

We sell meat scraps and fat for feed.

We pick up materials from butcher shops.

Locker plants, and Fresh Dead animals.

For service call Belleville: JA 7-5545
or your local number:

Beloit	738-3731	Leonardville	99
Cawker City	781-4711	Lincoln	524-9900
Clay Center	632-3424	Marysville	443-3726
Clyde	446-3621	Miltonvale	427-3015
Glasco	568-2636	Minneapolis	392-3043
Hanover	337-2291	Morganville	926-3674
Hunter	529-2145	Washington	325-2912
Jamestown	439-2655		

Condensed Statement as of the close of business June 30, 1961

Serving This Community

Over 79 Years

RESOURCES

Loans and Discounts	\$11,012,185.98
U.S. Bonds	3,610,867.89
Municipal, County and State Bonds	3,414,858.48
Stock in Federal Reserve Bank	30,000.00
Bank Premises Owned	449,557.15
Furniture and Fixtures	10,000.00
Real Estate Owned	89,000.00
Other Assets	1,868.21
Cash and Due from Banks	1,757,144.39

Total Resources\$20,375,482.10

LIABILITIES

Capital Stock	\$ 500,000.00
Capital Notes	500,000.00
Surplus	800,000.00
Undivided Profits	658,174.15
Reserve for contingencies	274,427.69
Deposits	17,642,880.26

Total Liabilities\$20,375,482.10

The above statement is correct

ALVIN A. HOSTETLER, Pres.

MOTOR BANK CUSTOMER PARKING
Juliette and Houston 414 Humboldt

THINK FIRST

The First National Bank of Manhattan

Member F. D. I. C.

GOOD
BE

FRID

A \$300 GOOCH SCHOLARSHIP
THE GRAND ACHIEVEMENT
First place winners
(alternate) in each of
Award Classes will
Grand Award. This
Scholarship is valid
of colleges. Also se
alternate winner of
Gooch Scholarship.

Special

2 Yearling Qu

PICTURED IS ONE OF
ALLIES THAT WILL
ACTION.

AND BUY YO

Hereford - Shorthorn

Registered Hereford

Registered Duroc &

Morse Electric Sewing

Holstein Heifers

Ewe Lambs

Yearling Quarter Hor

Council Grove

Vic Pykiet, ma

COUNCIL GROVE

Clay Center

Harlan Rundle,

AY CENTER

Morrison Grain

Ruth Gfeller, m

CTION CITY

**GOOCH'S
BEST**

Over 100 top quality offerings go on the auction block for Red Circle Stamps at the **RED CIRCLE AUCTION** July 21-22 at the CK Ranch, Brookville, Kan.

FRIDAY - JULY 21 IS FAMILY DAY

A \$300 GOOCH SCHOLARSHIP IS THE GRAND ACHIEVEMENT AWARD:
First place winners (or designated alternate) in each of the 6 Achievement Award Classes will compete for the Grand Award. This \$300 Gooch Scholarship is valid at the winner's choice of colleges. Also selected will be an alternate winner of this most coveted Gooch Scholarship.

FUN AND GAMES:

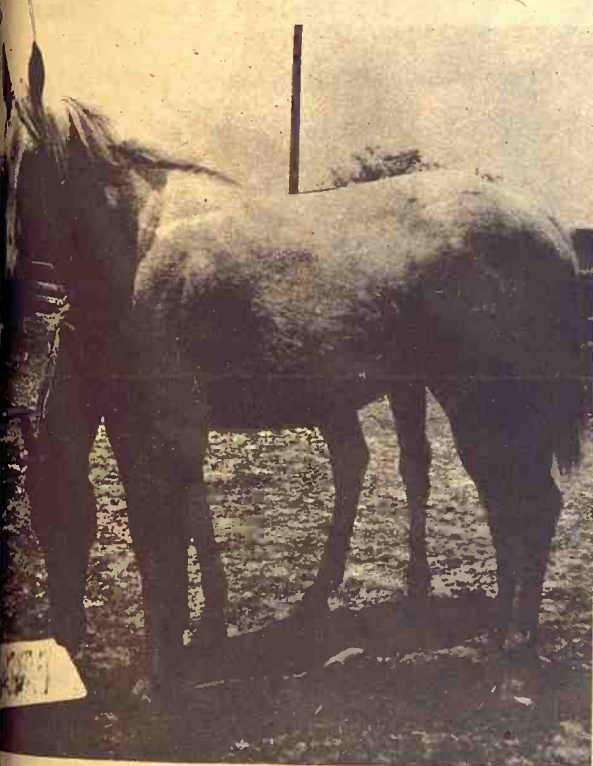
Three legged racing; cardboard racing; sack racing; suitcase racing—whatever your specialty—train into a sharp edge. Friday before the square dancing, you'll have the chance to win special prizes in the Red Circle Auction Fun and Games.

4-H SQUARE DANCING CONTEST:

Square dancing closes Friday's busy, busy schedule of activities. Decked out in colorful costumes—the 4-H clubs entering the Red Circle Contest "do-si-does" and "alemande left" for \$150 in cash awards and the top prize of \$75. Your Gooch Representative will gladly help your 4-H club enter the Square Dancing Contest.

Special addition

'2 Yearling Quarter Horse Fillies'



PICTURED IS ONE OF THE QUARTER HORSE FILLIES THAT WILL BE OFFERED AT THE AUCTION.

BID AND BUY YOUR CHOICE OF...

- 40 Hereford - Shorthorn - Angus Steer Calves
- 5 Registered Hereford Heifers
- 40 Registered Duroc & Hampshire Gilts
- 10 Morse Electric Sewing Machines
- 5 Holstein Heifers
- 10 Ewe Lambs
- 2 Yearling Quarter Horse Fillies

No Money — only GOOCH RED CIRCLES can be used to bid & buy the animal of your choice!

Boys and Girls — you will have a better than ever opportunity to bid and buy a club project at this year's 16th Annual Red Circle Auction.



BOYS . . . GIRLS

SEE THE BANKER
For Credit Red Circle
Stamps to Bid & Buy.

He'll be available up to Auction Time Sat. July 22 to help you arrange credit Red Circle Stamps to supplement your total. Your credit is rated by the number of Circles you will have at sale time.

Cloud County Livestock Comm. Co.
Joe Sheets, manager
CONCORDIA CH 3-1181

The Farmers Elevator Co.
Everett Harris, manager
MINNEAPOLIS EX 2-3118

C K Processing Co.
Jim Ryan, manager
MANHATTAN PR 6-9269

Emmett Elevator Co.
Pat Hutley, manager
EMMETT 535-2460

Farmers Cooperative Assn.
Clifford Prell, manager
HANOVER ED 7-2222

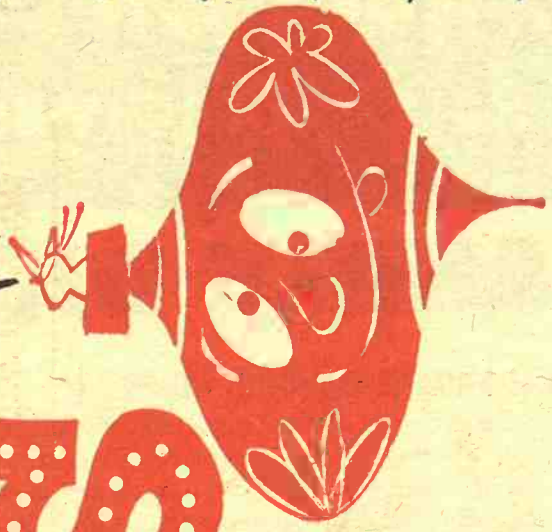
Council Grove Elevator
Vic Pykiet, manager
COUNCIL GROVE 767-5534

Clay Center Dehy Co.
Harlan Rundle, manager
CLAY CENTER ME 2-3401

Morrison Grain Co., Inc.
Ruth Geller, manager
FUNCTION CITY CE 8-6118

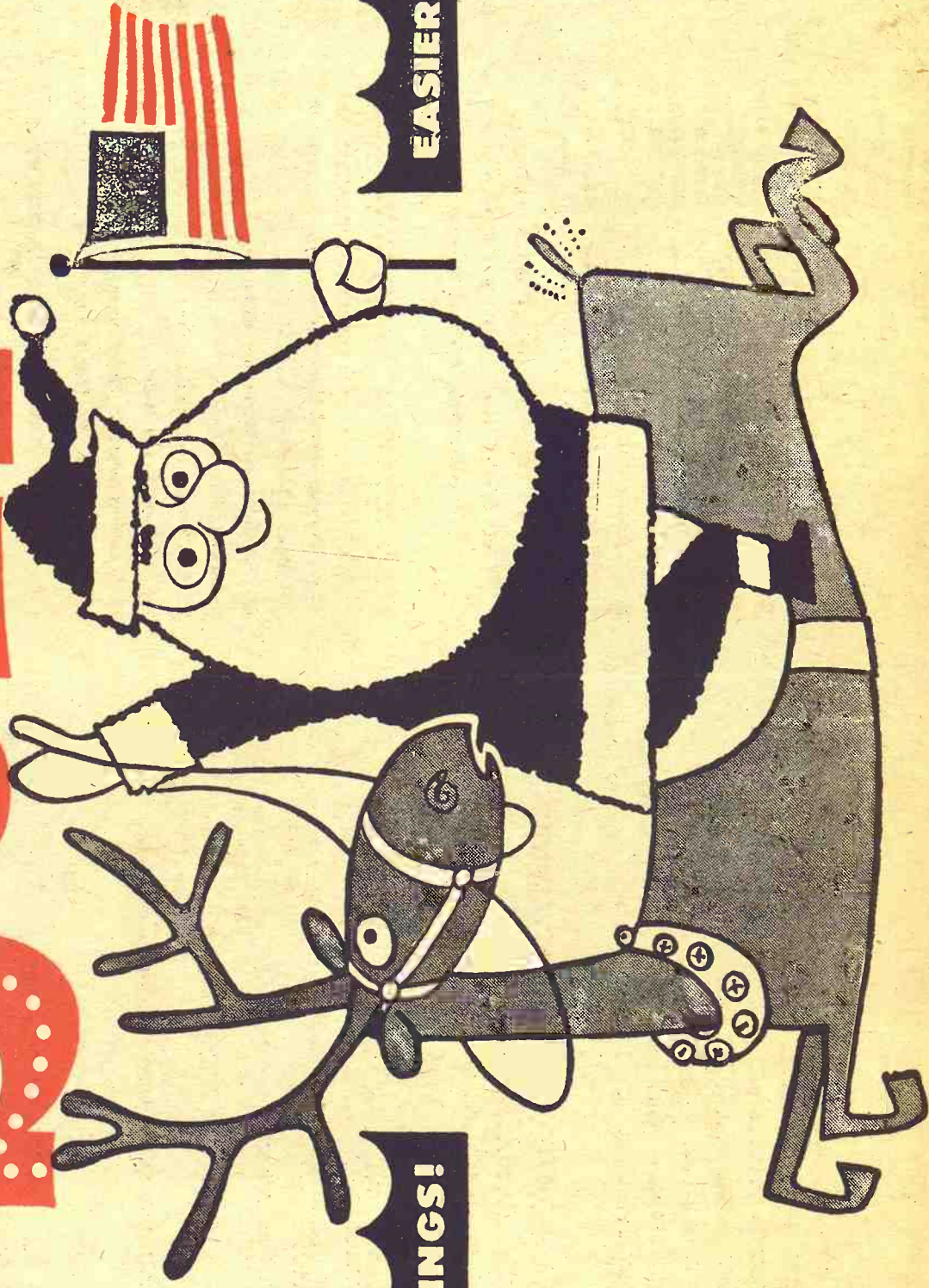
THE PRICE SHATTERING EVENT OF THE YEAR . . . DON'T MISS IT!

CHRISTMAS IN JULY



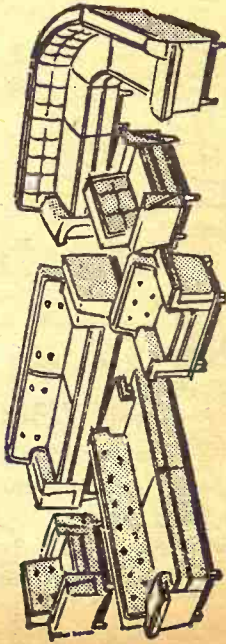
Thousands of Dollars worth of Stock, Floor Samples, One-Of-A-Kind Items and Odds-And-Ends that We've Got to move. It will pay you to drive miles to this sale!

OVERWHELMING SAVINGS!



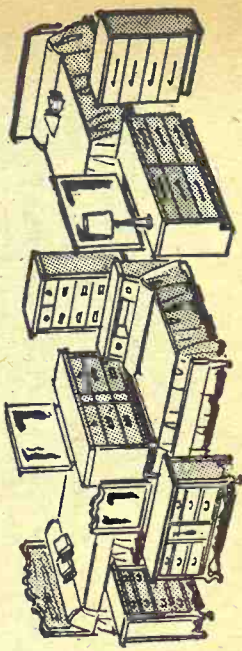
These savings are so terrific . . . it seems like Christmas! Furnish your entire home . . . or get the odd pieces you have been wanting NOW . . . at these "gift" prices! Terrific savings throughout our store!

EASIER-THAN-EVER TERMS!



living room buys

\$139.95 2-pc. Foam Reversible Cushions . . . \$89.88
\$159.95 2-pc. Green Living Room Suite . . . \$109.88
\$169.95 2-pc. Beige Nylon Cover . . . \$119.88
\$229.95 2-pc. Green Moulded Back, Nylon Cover . . . \$149.88
\$239.95 Modern Davenport & Chair, Narrow Arms, Nylon Cover . . . \$169.88



bedroom suites

\$119.95 4-pc. Bedroom Suite; Dresser, Mirror, Chest & Panel Bed . . . \$79.88
\$149.95 4-pc. Bedroom Suite; Double Dresser, Mirror, Chest and Book Case Bed . . . \$99.88
\$189.95 3-pc. Triple Dresser, Mirror and Bed . . . \$119.88
\$179.95 4 pc. Double Dresser, Mirror, Chest and Panel Bed . . . \$139.88
\$189.88 4-pc. Walnut Double Dresser, Mirror, Chest and Panel Bed . . . \$149.88

OVER 100 BEDROOM SUITES TO CHOOSE FROM

Sale Starts Wednesday July 12th

Listed in this ad is just a sample of the tremendous Buy We have to offer you. Free

tables & desks

\$8.95 Coffee Tables, Walnut . . . \$3.88
\$8.95 Walnut Sten. Tables . . . \$3.88

bedding bargains

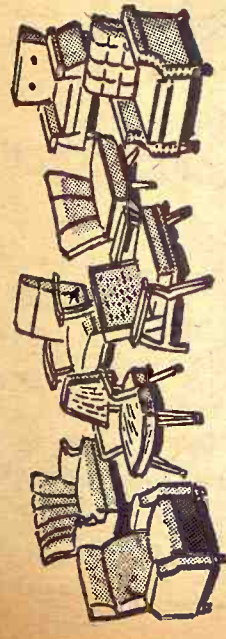
MATTRESSES AND BOX SPRINGS
\$19.95 Full Size Cotton Mattress . . . \$10.88

appliance values

\$139.95 Double Drain Kitchen Sink & Cabinet with Drawers . . . \$109.88



\$139.95 2-pc. Foam Reversible Cushions \$89.88
\$159.95 2-pc. Green Living Room Suite \$109.88
\$169.95 2-pc. Beige Nylon Cover \$119.88
\$229.95 2-pc. Green Moulded Back, Nylon Cover \$149.88
\$239.95 Modern Davenport & Chair, Narrow Arms, 30 in. Cover \$199.88
Reversible Area Rug 5' x 7' 1/2' - without exception



chairs—all kinds

Wal. Dining Room Chairs \$7.88
Platform Rockers \$17.88
\$39.95 High Base Platform Rockers \$19.88
\$39.88 Rocker Nylon Cover, Solid Walnut Arms \$24.88
\$49.95 Kroehler Murphy-Miller Reversible Foam Cushions \$39.88
\$59.95 Kroehler Murphy-Miller Modern Turn About Rocker, High Back Nylon Cover \$44.88

ONE OF THE LARGEST SELECTIONS OF CHAIRS, ROCKERS AND RECLINERS

STUDIO AND SOFA SLEEPERS

\$59.95 Studio Couch, Makes into a Bed \$39.88
\$69.95 Studio Couch Nylon Cover \$59.88
\$89.95 Thin-Line Design Studio Couch \$69.88
\$169.95 2-pc. Studio with Matching Chair in Rich Nylon Cover \$119.88
\$159.95 T.V. Lounger Heavy Cover \$99.88
\$199.95 2 pc. Studio Couch with Matching Chair in Vinyl Cover \$129.88
\$219.95 2-pc. Ranch Style Studio Couch with Matching Chair, Wagon Wheel Arms \$169.88

SEE OUR LARGE SELECTION YOU WILL SURE BUY ONE

Prices subject to merchandise on hand. Some are one or two of a kind. Some slightly damaged. First come, first served.

Sale Starts Wednesday July 12th



tables & desks

\$8.95 Coffee Tables, Walnut \$3.88
\$8.95 Walnut Step Tables \$4.88
\$12.95 Maple Lamp Tables \$6.88
\$26.95 Crown-Italian Prov. Table \$16.88
\$39.95 Student Desk, Wal. \$29.88
\$44.95 Wal. Desk \$32.95
\$49.95 7 Drawer Maple Finish \$37.88
\$72.95 Solid Maple Desk \$54.88

dinette set buys

\$39.95 Drop-Leaf Table, Heat Resistant Top \$19.88
\$7.95 Dinette Chairs, Vinyl Covered \$4.88
\$62.95 5-pc. Dinette Set, Table and 4 Chairs \$39.88
\$69.95 5-pc. Dinette Set, Table Self-Edged and 4 Chairs \$49.88
\$79.95 5-pc. Round Extension Table Self-Edge with 4 Padded Chairs \$59.88
\$89.88 7 pc. Dinette Set, Large Table and 6 Chairs \$69.88
\$109.95 42-inch Round Table with Pedestal Base and 4 Chairs \$59.88

LARGEST SELECTION TO CHOOSE FROM

DINING ROOM SUITES

\$69.95 Bassett Extension Table \$34.88
\$9.95 L. O. Dining Room Chairs \$6.88
\$189.95 L. O. Drop Leaf Table with 4 Matching Chairs, A Real Buy \$119.88
\$75.00 42-Inch Round Walnut Table by Stanley \$49.88
\$129.95 Walnut Stanley Hutch with Sliding Glass Doors \$99.88

THE LARGEST SELECTION OF DINING ROOM FURNITURE YOU EVER SAW.

SEDLACEK'S

Phone ED 7-2345

Hanover

Kansas

bedding bargains

MATRESSES AND BOX SPRINGS
\$19.95 Full Size Cotton Mattress \$10.88
\$29.95 Twin-Size Innerspring Mattress \$14.88
\$39.50 Full-Size Innerspring Mattress \$17.88
\$49.50 Tufted Innerspring Mattress (disc. ticking) \$19.80
\$39.50 Sealy Innerspring mattress (disc ticking) \$24.88
\$89.50 Foam Mattress and Box Spring \$49.88
\$179.95 1674 Coil Comfort, Mattress and Box Spring \$119.88

OVER 4 CARLOADS OF QUALITY BEDDING SEALY, KING KOIL, SERTA, ENGLANDER, SIMMONS AND OTHERS.

miscellaneous

\$1.19 Ironing Board Pad and Cover 59c
59c Bowl Cover Set (set of 5) 39c
98c Kitchen and Barbecue Mitts, Pr. 39c
79c Food Mixer Covers 39c
\$19.95 52inch Steel Wall Cabinets \$12.88
\$24.95 Wood Panel Beds \$14.88
\$8.95 Ladies Electric Hair Dryers \$4.88
\$10.95 Fernery Stand (for 3 ferns) \$5.88

MANY MORE BARGAINS NOT LISTED HERE

SEDLACEK'S

FLOOR COVERING

\$39.95 9x12 Rugs \$16.88
\$69.95 9x12 Nylon Carpet \$49.88
\$109.95 12x18 100% Nylon Carpet \$74.88
9x12 Rug Pad \$7.88
Nylon Carpet, Long Wearing sq. yd. \$4.88

Save Many Dollars On Carpet By The Yard
A large group of odds and ends on remnant acrolon linoleum, at discount prices.

appliance values

\$139.95 Double Drain Kitchen Sink & Cabinet with Drawers \$109.88
\$209.95 G. E. Coppertone Refrigerator, Family Size \$169.88
\$249.95 2-Door G. E. Refrigerator, White Automatic Defrost \$189.88
\$199.95 Admiral Chest Food Freezer with Built-In Lock \$159.88
\$269.95 23 Cu. Ft. Chest Food Freezer with Al Liner \$199.88
\$119.95 G. E. Automatic Electric Dish Washer \$96.88
\$199.95 G. E. Automatic Washer Filter-Flo 14, 3 Wash Temperature \$169.88
\$119.95 G. E. Clothes Dryer, Automatic \$79.88
\$59.95 Hoover Upright Carpet Sweeper \$34.88
\$199.95 Admiral Deluxe Electric Range \$159.88
\$179.95 G. E. Pushbutton Electric Range \$139.88
\$120.00 Eagle Deluxe Apartment Size Gas Range \$99.88
\$157.95 30-Inch Eagle Gas Range (Family Size) \$129.88
\$186.95 37-inch Eagle Gas Range with Storage Space \$149.88
\$119.88 Admiral Air Conditioners \$89.88

THIS IS A SMALL SAMPLE OF APPLIANCES THAT AWAIT YOU WHEN YOU VISIT

EARLY AMERICAN

\$99.95 Round Oval Extension Maple Table \$59.88
\$219.95 Buffet and Hutch with Drawers and Doors \$179.88
\$22.95 Contoured Seats on Maple Chairs \$16.88
\$219.95 Early American Davenport, Reversible Cushions \$169.88
\$119.95 Wing Back Chair, Heavy Grade Nylon Cover \$79.88
\$89.88 Solid Maple Tea Cart \$59.88

VISIT OUR GIGANTIC EARLY AMERICAN DEPARTMENT BARGAINS

Open Wednesday and Saturday Nights Till 9:00 P.M.

Free Delivery Easy Terms

OUR DAILY BREAD

— by G&G Area Cooks

Mrs. W. J. Kerwitz, Alma, Wins 'Daily Bread' Prize

Prize winner, Mrs. W. J. Kerwitz, Alma, describes her recipe as "a delicious way to prepare one of our old, faithful vegetables."

CRISP COOKED CABBAGE

- 1½ cups milk
- 4 cups cabbage, shredded
- 1½ tablespoons flour
- 1½ tablespoons butter
- 2 tablespoons cream (optional)
- Salt and pepper

Heat the milk in a heavy saucepan or skillet. Stir in the cabbage and simmer for about two minutes. Cream the flour and butter together and add a little of the hot milk. When smooth and creamy, stir the flour mixture into the hot milk in the pan. Cook three or four minutes or until the mixture thickens. Stir this constantly. Season with salt and pepper and add a little cream if desired. The cabbage should still be crisp and yet heated through.

Mrs. M. E. Rice, Emmett:
"When the Grass & Grain comes I always go for the recipes. I have been experimenting for 46 years to find a fine-grained cake made from our own mixing. At last I have found it and I want to shout it from the housetops."

FINE-GRAINED CAKE (Never a Failure)

- 1 cup flour
- 2 teaspoons baking powder
- ½ teaspoon salt
- Sift dry ingredients several times
- ½ cup milk
- 3 tablespoons oleo
- Heat milk and oleo

2 whole eggs
Beat eggs until lemon-colored and thick
¾ cup sugar
1 teaspoon vanilla, lemon or whatever flavoring preferred
Beat eggs four or five minutes. Add sugar gradually. Beat five more minutes. Sift flour, salt and baking powder. Add to the egg and sugar mixture. Add hot milk and oleo mixture. Beat two minutes more. Add flavoring. Bake in an 8x8-inch greased loaf pan or it makes 12 cupcakes. Bake at 325 degrees until done (when brown and Shrink from edges of pan). Frost with favorite icing.

Mrs. L. A. Lohrengel, Washington: "I don't know if you have had this recipe. I save your page every issue and try a lot of recipes. They are so good. This pie is really a prize-winning recipe."

RHUBARB PIE

- 4 cups rhubarb
- 1¼ cup sugar
- 3 tablespoons flour
- 3 tablespoons melted butter
- ¼ teaspoon salt
- 1 egg, beaten
- Second Group:
- ½ cup sugar
- ½ cup flour
- ½ cup butter
- ½ teaspoon salt
- Put rhubarb in pie shell. Mix first group of ingredients and

pour rhubarb. Mix second group of ingredients to crumble. Pat down on rhubarb. Bake at 425 degrees about 40 minutes.

Mrs. Marshall L. Gump, Carlton: "Enclosed is a favorite recipe of mine which I enjoy making. It's different and very good. If you want to save time—try this."

PIE CRUST

- Sift into a pie pan:
- 2 cups flour
- 2 teaspoons sugar
- ¼ teaspoon salt
- Measure into a measuring cup:
- ¾ cup cooking oil
- 3 tablespoons milk

Blend together well with fork and mix into flour mixture and make a dough. Divide into halves for two one-crust pies and push into place with hands as in a graham cracker crust. For a two-crust fruit pie save half of the mixture and crumble on for the top crust. Bake as any other pie crust. "This is a good hurry-up pie crust with no mess to clean up or dishes to wash — a wonderful time-saver."

We're fussy when we fix your watch

Fastest Service In Town. Work done in our shop. All watches electrically timed and guaranteed to be as accurate as new.

HOLIDAY JEWELERS
OF MANHATTAN
425 Poyntz—PR 6-7821
Across from the Courthouse

July 11, 1967

6

Grass & Grain

Soak Mats In Bleach

Soak rubber sink and stove mats in bleach water for a couple of hours to remove grime and stains.

The Latest 'Daily Bread' Prize Teflon Egg Poacher

NO MORE trouble with poached eggs sticking to pan. This no-stick, no-scor pan may double as a baby food warmer, making it possible to heat three different foods at one time. Finished with Du Pont teflon, this product is manufactured by the Mirro Aluminum Company.

The winner each week is drawn by lot from the recipes printed.

Win one by sending us your favorite recipe — this can be main dish, leftover, salad, side dish, dessert or what have you.

1. Check your recipe carefully to be sure all ingredients are accurate and accounted for.
2. Be sure your name and address are on the entry.
3. Only one recipe at a time, please.
4. Send it to Woman's Page Editor, Grass & Grain, Box 1009, Manhattan, Kansas.

Now You Can

Improve All Silage The Natural Way With

KALOZYME Silage Maker

What Is KALOZYME? SILAGE MAKER

KALOZYME is a product of controlled fermentation of sugars by a living organism which is known to produce over 25 different organisms.

It is added while ensiling to inoculate the silage with these pre-fermented sugars to provide, at the start of fermentation, the kind of natural preservative and protective material that should be produced through the normal fermentation period in good silage under normal conditions.

48 TO 72 HOURS

KALOZYME helps to promote quick low temperature fermentation completed in 48 to 72 hours without giving undesirable organisms time to multiply—the organisms that cause bad odors, sourness, mold, etc.

NATURAL REACTIONS

The reactions activated by KALOZYME take place in 48 hours and produce large quantities of the proper ensiling enzymes and pre-fermented silage sugars. These pre-ferments and enzymes deprive the undesirable silage bacteria and oxygen and limit their growth. Silo temperatures are lowered, and the destruction of protein, fat, vitamins, and N. F. E. is minimized. The ability of the ensilage enzymes to break down high-fibre materials into valuable nutrients increases during this period.

You Stop Silage Stink and add Special Fragrance and Taste Appeal. Make Better Silage the Normal Way With Kalozyne!!!

COMPARATIVE TESTS 3 WEEKS AFTER ENSILAGE

Ensilage Assay	Alfalfa Hay Silage		Immature Corn Silage	
	Untreated	Treated	Untreated	Treated
Moisture %	78.70	69.10	86.01	84.26
Ash %	2.22	2.90	1.18	1.04
Ether Extr. %	.83	.69	.82	.78
Protein %	7.88	8.85	5.05	5.82
Fibre %	5.50	3.80	3.75	2.05
Carbohydr. %	4.80	15.37	3.19	6.06
pH	5.00 (Acid)	4.50 (Acid)	5.00 (Acid)	4.50 (Acid)
b. Carotene	6.00 mg/lb.	13.00 mg/lb.	8.50 mg/lb.	14.00 mg/lb.
Tocopherol	1.08 mg/100 gms.	4.50 mg/100 gms.	4.00 mg/100 gms.	6.80 mg/100 gms.
Odor	Acetic	Lactic	Acetic	Lactic
Taste	Sour Acetic	Sweet Lactic	Sour Acetic	Sweet Lactic
Color	Silage Green	Natural Green	Silage Green	Natural Green

After three months storage the KALOZYME SILAGE was still of good appearance and had a fine aroma and taste. The untreated hay silage had a stinky, rancid odor and there was a strong musty odor in the corn silage. After 12 months storage the treated silage was still completely preserved, but the untreated silage had turned to compost.

SOME RESULTS TO BE EXPECTED

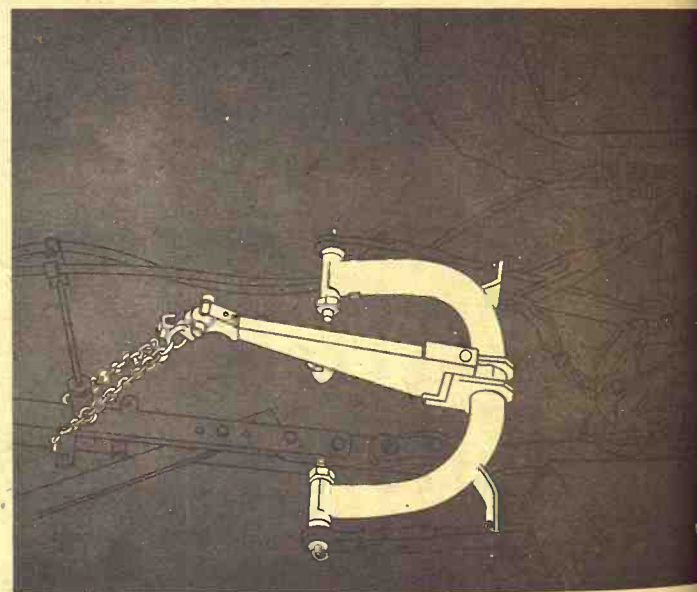
No silage stink; no signs of mold, rancidity, or putrefaction; silage that is cleaned up without waste; less top spoilage, silage that keeps longer when exposed to air; 200% more beta carotene; 200% more carbohydrates; 10% more protein; more dry matter, less leakage, and less fibre; more nutritious silage enriched with vital enzymes and unidentified factors produced by this process . . . to help increase feeding profits.

ECONOMICAL TO USE — Kalozyne is concentrated, so that you use only ½ pound per ton in all kinds of silage.

JAMES L. YEARTOUT Rt. 1, Emporia, Kans. Ph. AC 316 342-4597

or
Kalo Company - WCU Building - Quincy, Ill. 62301
DEALER INQUIRIES INVITED.

LAST CALL Buy a Massey-Ferguson Tractor With Pressure Control before July 31



and get the hitch free!

Your MASSEY-FERGUSON Dealers

- SWIERCINSKY BROS. Belleville
- BRAUCHI BROTHERS Marysville
- BROWN MOTOR CO. White City
- CIRCLE T IMPL. CO. Clay Center
- GILLEY'S IMPL. CO. Minneapolis
- KUHLMAN MOTOR CO. Linn
- PFISTER-RHODES IMPL. CO. Jamestown
- SALINA FARM SUPPLY Salina
- WINIFRED IMPL. CO. Winifred

July 11, 1967

Short-cho a l



NEW!
LIGHTWEIGHT 10,000
PORTABLE KNIFE SHARPENER
Gives you minute-sharpening on the machine in the field or at the shed. Adjustable guide proper beveling of knife edges. Available in gas models.

1. Chop-All row corn head; narrow
2. Chrome-edged knives; tons of fine-cut for
3. Select-A-Cut trans or long length for
4. Easy-Swing draw lever controlled f
5. Also available: 5 Financing availab (*Optional equipment)

Make us Prove it
Demonstration

SENECA
SENECA IMPL. CO.

HERINGTON
TRI-COUNTY SALE

CLAY CENTER
TOBUREN IMPL. CO.

VALLEY FALLS
VALLEY IMPL. CO.

G&G

AUCTIONEERING

Lawrence E. Welt

AUCTIONEER
REAL ESTATE BROKER

Your Sale Solicited
Large or Small

EAST HIGHWAY US 24
MANHATTAN PR 8-345

Real Estate
And General Sales

Ed Reimer
AUCTIONEER.

We Specialize in Selling
DAIRY CATTLE

A complete Sale Service

Phone or write for sale date

Telephone 367-2373

GOESSEL, KANSAS

"Marion County"

CONSERVATION

Land Improvement

Soil Conservation Doesn't
Cost—It Pays!

Ponds, terraces, water-

ways, and leveling,

drainage ditches, clear-

ing, landscape grading.

ROGGENDORFF

Conservation Construction

Arthur Roggendorff

Phone JE 9-3984

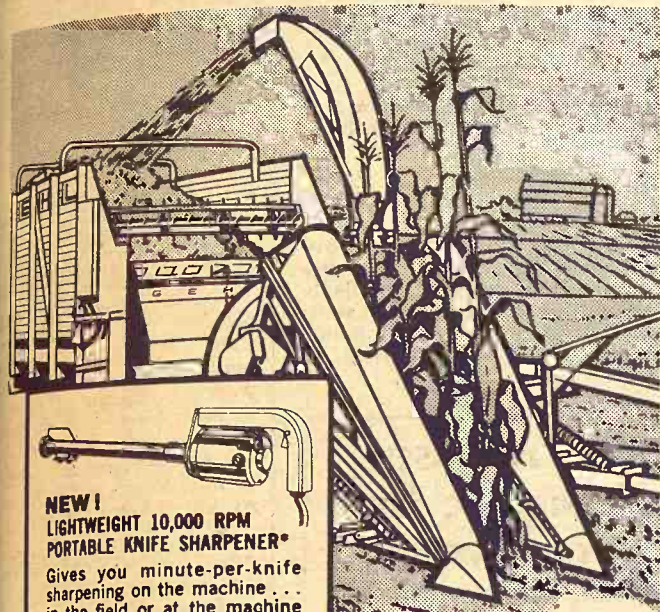
1800 Osage - Manhattan

July 11, 1967

Grass & Grain

7

Short-chop your corn with a GEHL Chop-All



NEW!
LIGHTWEIGHT 10,000 RPM
PORTABLE KNIFE SHARPENER*

Gives you minute-per-knife sharpening on the machine... in the field or at the machine shed. Adjustable guide insures proper beveling of knife cutting edges. Available in electric or gas models.

- 1 Chop-All row crop attachments include: 1-or 2-row corn head; narrow row (2-row) corn head.
- 2 Chrome-edged knives stay sharp... chop more tons of fine-cut forage.
- 3 Select-A-Cut transmission gives you short, medium or long length forage with the push of a lever.
- 4 Easy-Swing drawbar and forward-neutral-reverse lever controlled from tractor seat.
- 5 Also available: 5-ft. Hay Pick-up, 6-ft. Mower Bar.

Financing available.

(*Optional equipment)

Make us Prove it with a Demonstration!

SENECA
SENECA IMPL. CO.HERINGTON
TRI-COUNTY SALESCLAY CENTER
TOBUREN IMPL. CO.VALLEY FALLS
VALLEY IMPL. CO.SALINA
LINDQUIST IMPL. CO.LINCOLN
RHODY & SONS, INC.WAMEGO
WAMEGO TRUCK
& TRACTOR, INC.MARYSVILLE
BRUNA IMPL. CO.

G&G Directory

AUCTIONEERING

Lawrence E. Welter

AUCTIONEER
REAL ESTATE BROKER
Your Sale Solicited
Large or SmallEAST HIGHWAY US 24
MANHATTAN PR 8-3455Real Estate
And General SalesEd Reimer
AUCTIONEERWe Specialize in Selling
DAIRY CATTLE

"A complete Sale Service"

Phone or write for sale dates.
Telephone 367-2373
GOESSEL, KANSAS
"Marion County"

GON Dealers

Belleville

Marysville

White City

Clay Center

Minneapolis

Linn

Jamestown

Salina

Winifred

CONSERVATION

Land Improvement
"Soil Conservation Doesn't
Cost—It Pays!"
Ponds, terraces, water-
ways, and leveling,
drainage ditches, clear-
ing, landscape grading.

ROGGENDORFF

Conservation Construction
Arthur Roggendorff

Phone JE 9-3984

1630 Osage - Manhattan

DAIRY SUPPLIES

DeLaval Clay

All Makes
Service & Repair
Dairy Equipment

Joe McClure

Ph. 229-5284

Alta Vista

Wamego

Dairy Supply

your authorized
DELAVAL & CLAY
Dealer

MILK MACHINES

New & Used

BULK TANKS

New & Used

CLAY Beef, Dairy & Hog
Feeding Systems.For estimates or service,
phone913-456-7200, WAMEGO
913-AV 4-2958, SABETHA

Memorials

Cody Memorials

Homer Rundle, Owner
Stones designed and cut by
experienced craftsmen in our
own plant.Office & Display
4th & Grant

ME 2-2323

CLAY CENTER

Cookware Now Comes In Decorator's Rainbow Of Shades

Years ago, kitchens came in any color as long as it was white. Then later on, yellow was in... in so long it began to turn brown. Finally, it seemed like everyone had a green kitchen.

Today, the one-color kitchen is as obsolete as the coal stove. Floors, cabinets, new wall surfaces and major appliances are now offered in a decorator's rainbow of shades. The latest addition to the trend to colors is that absolute kitchen necessity, cookware.

Several manufacturers have recently introduced brilliant new lines of aluminum cookware in rich exciting tones. A kaleidoscope of colors is the result—deep rich orange, peacock blues blending into royal blue tones, strong chocolate shades, luscious avocado or a pale sea-foam green are available to the homemaker. Basic black and pristine white, anodized gold and glinting metallic shades round out the spectrum.

The popularity poll for aluminum cookware will no doubt rise sharply, though it already outsells all other types of cookware materials. Noted for its even heat distribution and cooking efficiency, aluminum utensils became even more popular with the advent of non-stick finishes.

The color surge in cookware does create one problem, though, it will be more difficult to quickly identify the cookware

material. Unless it is clearly tagged or labeled, the shopper may not know what basic material is underneath those beautiful colors. The smart shopper will make it a point to check basic materials, for the color of a utensil won't help a bit toward making a recipe turn out right.

The new colored cookware does have a practical side,

though. Virtually all of the new colored aluminum ware is available with non-stick interior finishes which make light work of cleaning. The colored exteriors, whether porcelanized, enameled or anodized, also come clean quickly.

When you purchase new cookware, be certain to read the manufacturer's instructions before use, follow them to the letter and file them for reference. With proper care your new colored cookware will last for years and bring joy to your cooking and excitement to your kitchen.

Shifts To Retain Popularity During The Summer Months

It isn't June 21st or a sudden 90 degrees in the shade that makes summer fashion official. It's any shopping hour from now on when you breeze in and out of a fitting room with a flock of summer dresses to call your own.

Just possibly you're giving up trying to figure out how soon skirts will get longer and heels higher... but here's good news. The shift you and everyone else loves is something you don't have to give up. Furthermore, it now deserves the description "as you like it." It's sleeveless and short-sleeved, straight and princess-flared to tent-like. It's also first prize in all fabrics. The shift belted just a little above the waistline is a fresh new look.

You could live in shifts all summer, but probably won't.

And some of the reasons are shirt-dresses, coat-dresses and new editions of the over-blouse dress.

The newest shirt-dresses have long, cuffed sleeves and vary in type from workaday and gad-about cottons to airy white organdy for Sundays and parties. Coat-dresses include the sleeveless and are often buttoned down the side or part-way down.

Something in cotton knit is a natural among your summer dresses and a first thought for travel. Inexpensive choices include the simple sweater dress with a round or squared neck and small sleeves in both neutral and slightly-dizzying stripes. Like lots of other dresses, some have tie belts to wear low or not at all.

Naturich Sow Pre-Farrowing Ration MEDICATED

As an aid in the prevention of bacterial enteritis (scours), vibronic dysentery, bloody dysentery and salmonellosis (necro or necrotic enteritis) when fed as directed.

ACTIVE DRUG INGREDIENT

Oxytetracycline 50 Gram/Ton
Neomycin Sulfate (providing
35 gram neomycin base) 50 Gram/Ton

GUARANTEED ANALYSIS

Crude Protein not less than 15.00%
Crude Fat, not less than 3.00%
Crude Fiber, not more than 7.00%
Vitamin A, U.S.P. Units/Lb. 10,000
Vitamin D-2, U.S.P. Units/Lbs. 2,000

INGREDIENTS

Ground Corn, Ground Oats, Ground Grain Sorghums, Soybean Meal, Meat and Bone Meal, Linseed Meal, Dehydrated Alfalfa Meal, Wheat Middlings, Cane Molasses, Salt, Defluorinated Phosphate, Calcium Carbonate, Vitamin A Palmitate (stability improved), D-Activated Plant Sterol (source of Vitamin D-2), Riboflavin Supplement, Niacin, Choline Chloride, Calcium Pantothenate, Vitamin B-12 Supplement, Manganese Sulfate, Zinc Oxide, Iron Carbonate, Iron Sulfate, Magnesium Oxide, Copper Oxide, Ethylene Diamine Dihydriodide, Colbate Carbonate, Ethoxyquin (a preservative).

DIRECTIONS: Feed to sows 10-14 days prior to farrowing and for one (1) week after farrowing. Feed 1½ lbs. per 100 lbs. body weight.

Manufactured by
NATURICH MILLS
ABILENE, KANSAS 67



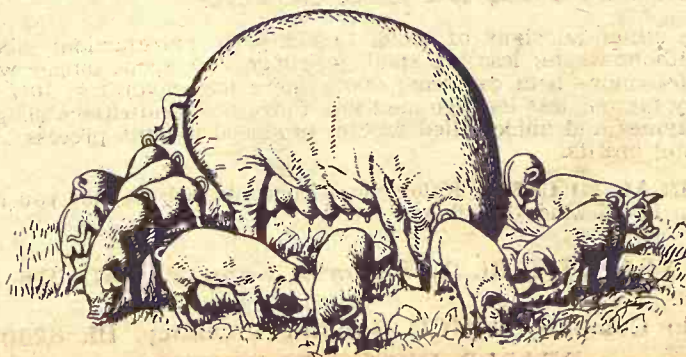
DR. RALPH P. SOULE, JR., Ph. D.

Recommends

New Sow Pre-Farrowing Ration
In Your
Swine Program

This Sow Ration is specially developed to fit the needs of the sow during this important period.

A ration that is palatable, vitamin-fortified and well-balanced to meet the sow's needs during her critical period. Available now at your Naturich dealer.



"A Finer Feed For Every Need"

Experts Offer Guides To Quality In Furniture

There are a few easy ways to recognize quality in buying furniture.

Getting to know furniture quality and recognizing it is a learning experience. Smart buyers study the home furnishings pages of their newspapers, visit model homes and rooms and even look over friends' homes with a critical eye.

Construction, woods, finish and hardware are factors of quality, say the experts.

Many people believe that "solid wood" is a sterling quality mark. There is no arguing this point, but with modern adhesives, heat and pressure veneers can compete successfully in terms of stability and endurance.

Some of the carving and moulding on furniture, as well as mirror frames, today are substitute materials finished to look like wood. Learn to recognize these imitation components. Tap them with your fingernail. They don't sound like wood.

Finish is a good quality indicator. It should enhance the wood and bring out its best

characteristics. Two commonly used finishes today are oil finish and distressed finish.

Oil finish is a suede-like, close-to-the-grain finish. It is widely used on furniture made of American black walnut.

Distressed finish on wood has a speckled, antique, mellow look and is seen on reproductions as well as on contemporary styles of furniture.

Another way to tell quality is the hardware on a piece of furniture. The better the hardware, the heavier and more solid it will be.



50,000 SQ. FT. ON HAND 6 Mil-Polyethylene Black Plastic Sale

16x50 Reg.	11.84	Sale	10.66
16x100 Reg.	23.74	Sale	20.37
20x50 Reg.	14.58	Sale	13.13
20x100 Reg.	29.71	Sale	26.74
24x100 Reg.	35.69	Sale	32.13

MOWER PARTS

Guards	1.05
Sections heavy smooth	15c
Sections heavy serrated	16c
Sections, chrome	22c-24c
Full length wear plate	2.69
7 knives	9.99 up
Rake teeth	29c up
IHC baler knives (45)	9.45
IHC baler knives (46)	10.45
Few air tanks left at	15.95
Air compressors	89.95

HOLT FARM SUPPLY

Next To Sale Barn
MANHATTAN PR 8-4434

Small Vacuum No Substitute

Small vacuum cleaners are good for light vacuuming and for special jobs such as cleaning the car or stairsteps. A small cleaner isn't built for heavy-duty cleaning on floors. Suction isn't enough and the bags don't hold much soil. A small cleaner is a useful accessory but not a substitute for a regular vacuum cleaner.

Electrifying Your Patio

Portable electric aluminum cooking appliances are a big help in broadening patio menus. If you don't have outdoor out-

July 4, 1967

lets convenient to your patio, make sure you use heavy-duty rubberized extension cords to supply adequate power safely.

Clean Skin With Cold Cream

After grubby chores outdoors and indoors, try cleaning your skin with cold cream. It lubricates and softens as it cleans.

Kansas Soya provides complete services for feedlot operators...



plus scientific supplements from nature's richest source of protein

Kansas Soya services include formula guidance; automated custom-mixing; fast, automated, in-and-out service; on-time delivery; Grain Bank facilities. And, of course, 32% and 40% feedlot supplements from nature's richest source of protein. Call collect. Let us know how we can serve you.

KANSAS SOYA PRODUCTS CO., INC.
Phone Dickers 2-7270 • Emporia, Kansas



Manhattan Commission Co., Inc. Sale Every Thursday

New crop calves have started and are finding a real good outlet at our sale. We again had good consignments of new crop calves and had customers for them. People continue to call us and come to the auction wanting to buy cattle, so if you have cattle to sell please contact us. The following is a partial listing of our sale:

FAT CATTLE & FEEDERS

1 blkwhif steer	655 @	26.10
1 black steer	600 @	26.00
2 bwfRed steers	727 @	24.20
1 red steer	695 @	24.10
1 blkwhif heifer	665 @	23.50

STEER CALVES

31 black steers	495 @	31.85
42 black steers	485 @	31.85
7 black steers	419 @	28.95
4 black steers	536 @	28.00
1 whifrednk steer	370 @	27.80
1 blkwhif steer	320 @	27.20
1 black bull	350 @	26.30
1 black steer	375 @	25.25

HEIFER CALVES

1 whiface heifer	255 @	28.00
38 black heifers	472 @	27.15
24 black heifers	459 @	27.15
1 whiface heifer	285 @	26.70
4 black heifers	436 @	26.05
1 red angus heifer	375 @	26.00
1 black heifer	505 @	25.60
1 black heifer	530 @	25.50

1 red heifer	365 @	25.10
1 blkwhif heifer	595 @	24.70
1 black heifer	510 @	23.10

BULLS

1 whiface bull	1630 @	24.00
1 red bull	1915 @	22.30

COWS

1 holstein cow	1380 @	19.10
1 holstein cow	1365 @	19.00
1 holstein cow	1290 @	18.80
1 brown cow	1205 @	18.70
1 spotted cow	1160 @	18.60
1 holstein cow	1520 @	18.60
1 holstein cow	1060 @	18.40
1 holstein cow	1380 @	18.30
1 holstein cow	1345 @	18.10
1 whiface cow	1145 @	18.00
1 whiface cow	1185 @	17.90
1 whiface cow	915 @	17.80
1 whiface cow	980 @	17.60
1 holstein cow	1240 @	17.50
1 jersey cow	1085 @	17.10

2 1/4 MILES EAST OF MANHATTAN ON US 24

BUYING FAT HOGS

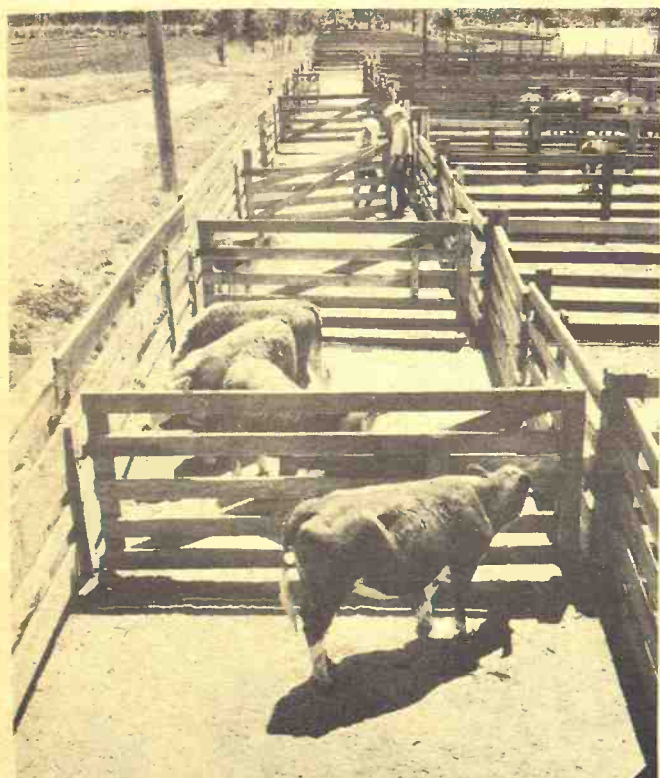
We buy fat hogs daily at the Manhattan Commission Co., Inc. sale barn. We buy direct with no commission to the seller.

BUYING HOURS:
Mondays thru Fridays
8 a.m. to 4 p.m.
Saturdays 8 a.m. to 2 p.m.
Manhattan PR 8-4415

WE ARE ALSO BUYING
FAT HOGS AT THE
W. E. DUGAN YARDS
ALTA VISTA
SATURDAYS & MONDAYS
8 a.m. to 3 p.m.
Phone Alta Vista 229-6430
or Manhattan PR 8-4415

AT ALMA & ESKRIDGE
EVERY WEDNESDAY
From 8 a.m. to 1 p.m.

Please do not bring hogs in for sale on Thursday afternoon, as we will be having large runs of cattle and you might not be able to unload, and they will get hot on you. For information call the barn in Manhattan, PR 8-4415. In Alma, Oscar Nelson, 765-3861. In Alta Vista, W. E. Dugan, 229-6303. Or you may call Joe Raine at Maple Hill MI 3-2226 or Eskridge Yard 449-2347.



Light sales are expected until harvest is over, but the Manhattan Sale will run every Thursday as usual, on schedule.



Joe Raine

FOR ESTIMATES

W. E. DUGAN ----- Alta Vista, 229-6430
JOE RAINE ----- Maple Hill, MI 3-2226
DON WELLS ----- Manhattan, JE 9-3744
MERVIN SEXTON ----- Abilene, CO 3-3449
C. J. WENTZ, bus. mgr. Manhattan, JE 9-5561

BARN PHONE ----- Manhattan, PR 8-4415

Consignment Reports
WIBW radio 6:30 A.M. Thursdays
WIBW-TV 12:15 Noon Wednesdays

The Manhattan Commission
Co., Inc.



MANHATTAN, KANSAS

East On US 24

Auctioneer: Joe Raine

kin
old Cream
bby chores outdoors
try cleaning your
old cream. It lubri
oftens as it cleans.

plete
rs...

from
tein

rsday

AN ON US 24

UYING
HOGS

t hogs daily at
tan Commission
le barn. We buy
no commission to

NG HOURS:
s thru Fridays
n. to 4 p.m.
s 8 a.m. - 2 p.m.
n PR 8-4415

ALSO BUYING
OGS AT THE
UGAN YARDS
A VISTA
S & MONDAYS
to 3 p.m.
ta Vista 229-6430
hattan PR 8-4415

A & ESKRIDGE
WEDNESDAY
a.m. to 1 p.m.

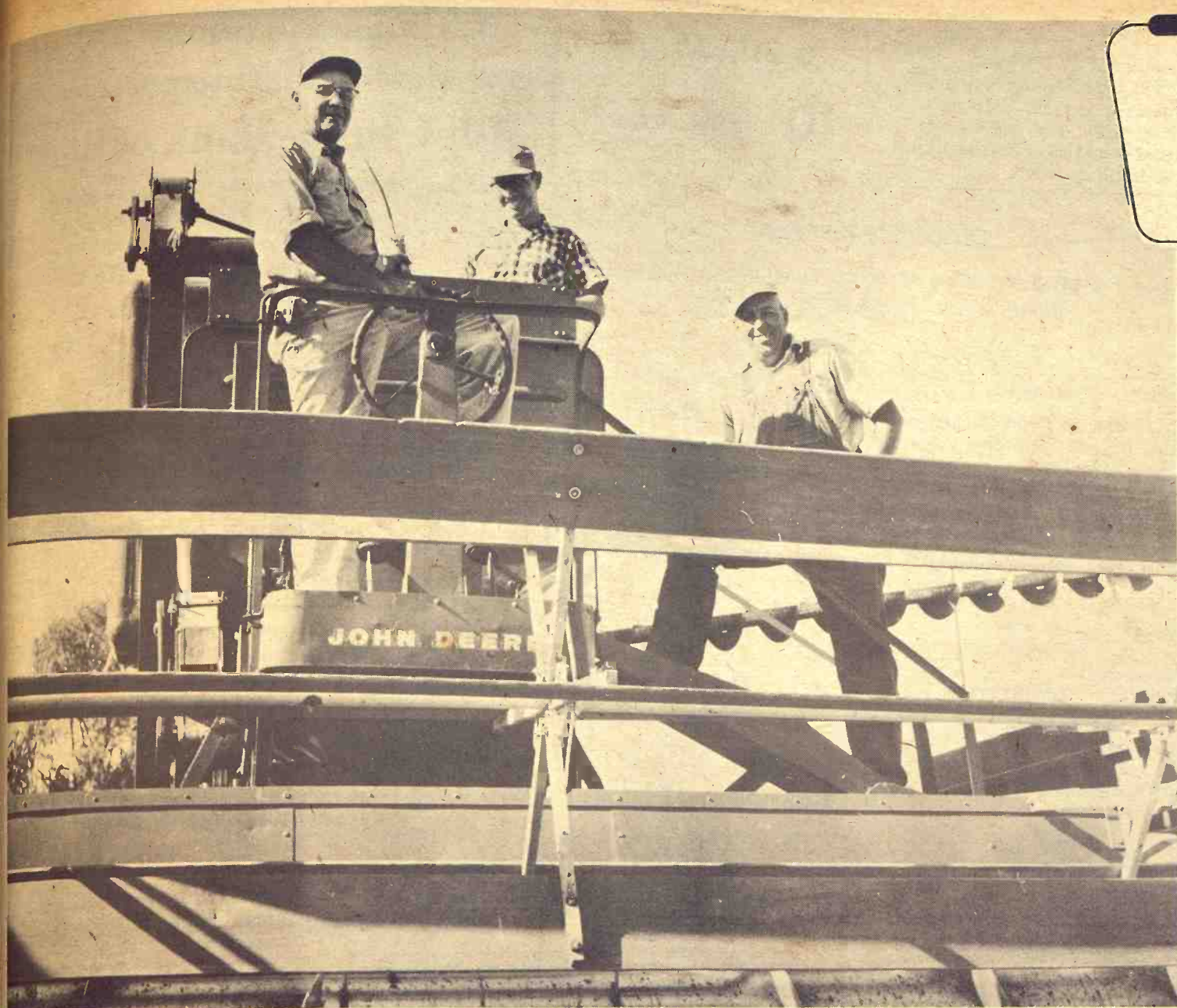
not bring hogs in
Thursday after-
e will be having
of cattle and you
e able to unload,
ll get hot on you.
rmation call the
hattan, PR 8-4415
scar Nelson, 765-
Vista, W. E. Du-
3. Or you may
ne at Maple Hill
or Eskridge Yard

Commission
., Inc.

ATTAN, KANSAS

East On US 24

e Raine



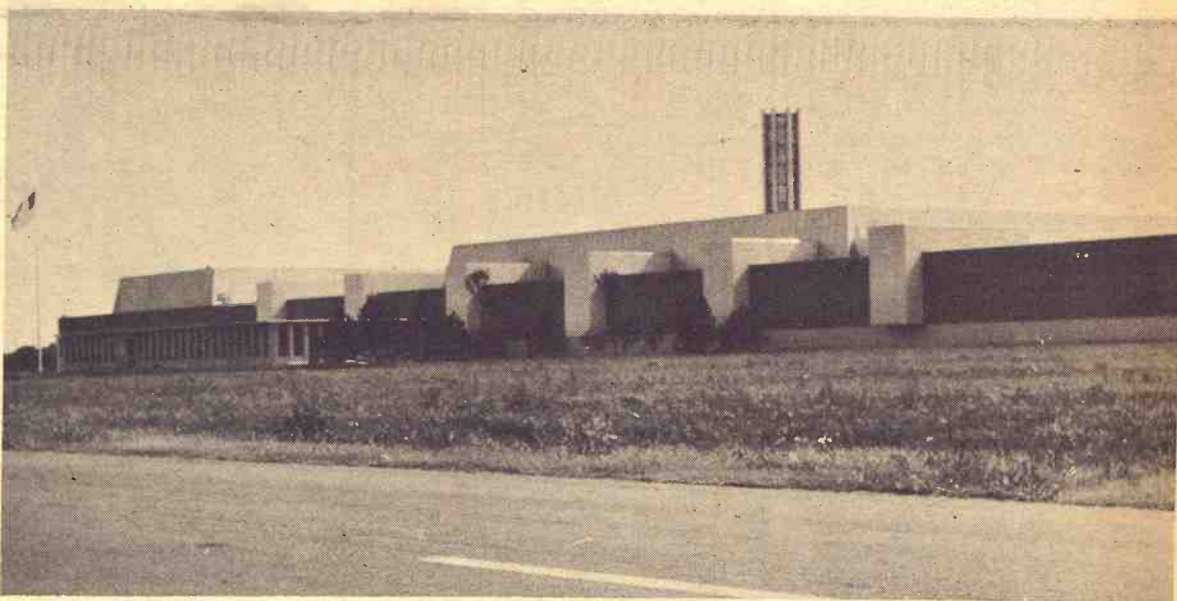
'On Top'

Harvey Markley, Ernest Hamilton and Harry Putnam, all of Bennington work from the very tip-top of their machines to make sure they are in proper working order for combining this harvest.

GRASS

& GRAIN

July 11, 1967



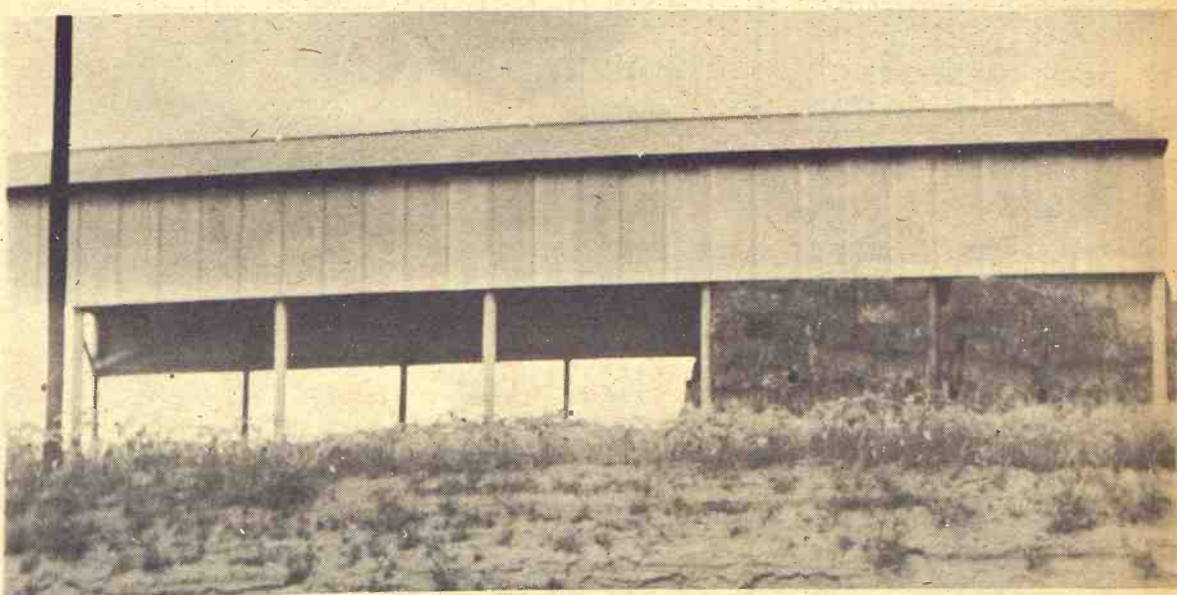
Industry For Salina

The new Westinghouse Plant at the south edge of Salina is now selling its products — bulbs. The plant is not yet in full production but will be soon, giving employment to several hundred. It is a most attractive building on the east side of Hiway 81.



Nearing 100 Years

Just five years away from its 100th year, the famous old hotel at Brookville still serves its chicken dinners famous over the midwest. Cal Martin, son of the late Helen Martin who forged the reputation of its kitchen over three decades, manages the outstanding eating places.



Half and Half

A hay barn north of Roxbury five miles provides a look into the west for passersby in that it is half full of hay — most unusual this year because most barns are full of new mown hay.

Just What Is A Soil Test?

By Charles R. White
Extension Agricultural Agent
(Riley County)

A soil test is nothing more than a chemical method for determining the nutrient supplying power of the soil. Several methods may be used for determining the nutrient supplying power and may be equally reliable if they have been calibrated to field response.

Reliable fertilizer recommendations are developed by calibrating, or correlating, laboratory soil test values with crop responses from fertilizer-rate experiments. Without this calibration to field response, soil test results still can be only "best guesses."

Many people believe that a soil test measures the total amount of a nutrient present in the soil. This is not true. Total amount of a nutrient is normally a very poor measure of plant available nutrient supply. For example, chemical analysis on most Kansas soil of medium texture would show at least a thousand pounds of phosphorus present in the surface six inches. Nevertheless, in many cases a good response to phosphorus fertilizer would be possible. Only a very small fraction of this total amount of phosphorus is readily available for use by the plants. So there's a little relationship between the total amount of nutrients in a soil and the amount of nutrients that plants can get from that same soil.

What, then, do soil tests measure? Basically, present soil testing methods measure a part of the total nutrient supply that is related to what plants can take from the soil.

A "low" soil test value for a particular nutrient means that plants won't get enough of that nutrient to produce highest quality yield possible under normal or better prevailing soil and climatic conditions for the area. The addition of fertilizer containing that nutrient can remove the possibility of that nutrient being the yield limiting factor. However, it does not assure that a response in a particular year will be obtained, for some other soil, climatic or management factor may be more limiting on yield. Over several years, significant responses will be obtained in enough years that it is economical to apply the nutrient. The amount of the nutrient that needs to be added for a given soil test value is

determined by fertilizer-rate experiments.

Soil tests are not absolutely unerring, but soil test results along with yield expectations are a sound basis for determining fertilizer needs.

July 11, 1967

10

Grass & Grain

OLSBURG, KANSAS

Report of Condition Of Union State Bank, Olsburg,
Kansas at close of business June 30th, 1967.

ASSETS

Cash & Sight Exchange	\$ 327,442.64
U. S. Government Securities	208,824.88
Kansas Municipal Bonds	74,766.86
Other Bonds & Securities	23,980.00
Loans & Discounts	811,463.37
Bank Building	6,000.00

TOTAL \$1,452,477.75

LIABILITIES

Capital Stock	\$ 50,000.00
Surplus	100,000.00
Undivided Profits	64,382.84
Reserve For Taxes	1,564.99
Deposits	1,236,529.92

TOTAL \$1,452,477.75

This statement is correct
J. W. Yantiss
Vice-President

Union State Bank

OLSBURG, KANSAS

Member Federal Deposit Insurance Corporation.

CONDENSED STATEMENT

OF THE FINANCIAL CONDITION OF THE

Riley State Bank of Riley

The Bank With The \$1,000,000 Excess Coverage Bond
RILEY, KANSAS

Close of Business June 30, 1967

RESOURCES

Loans and Discounts	\$ 955,227.16
Bonds, U.S. Government	856,754.50
Bonds, State and Municipal	487,568.64
Other Notes and Debentures	507,831.96
Building and Fixture Account	18,669.60
Cash and Sight Exchange	254,656.74
TOTAL ASSETS	\$ 3,080,708.60

LIABILITIES

Demand Deposits	\$ 1,182,107.63
Savings and Certificates	1,628,368.92
Capital	50,000.00
Surplus	120,000.00
Undivided Profits	93,581.00
Reserve for Loans	6,651.05
TOTAL LIABILITIES	\$ 3,080,708.60

The above statement is correct

Harold B. Holmes, President
Herman Sylvester, Vice-President
Russell Chamberlain, Cashier

Other Directors:

W. L. Meyer Ivan Sand
Donald Hassebroek Lloyd Jahnke

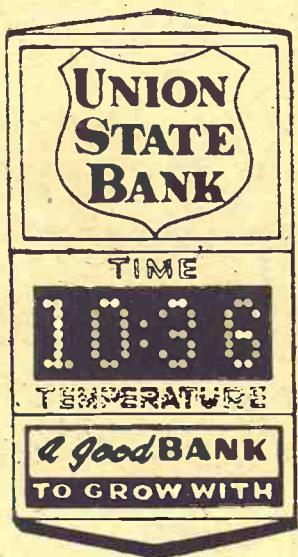
Bookkeepers:

Erma Chamberlain and
Shirley Carlson

Member F.D.I.C.

AT THE SIGN

OF THE



DOUBLE "T"

OFFICERS

CHESTER W. OBERG
President
KENNETH G. STROM
Vice President & Cashier
R. D. HINKLE
Ass't. Vice President
CLARA ROSE
Assistant Cashier
MRS. IRENE MARSHALL
Assistant Cashier
LARRY DAVIDSON
Assistant Cashier
GARY W. BECK
Assistant Cashier &
Farm Service Director

DIRECTORS

DR. LLOYD E. ALQUIST
Chairman
WM. G. AMSTEIN, JR.
GLENN V. DITTMAR
CHESTER W. OBERG
FRANK D. OBERG
FOSTER R. SMITH
KENNETH G. STROM

UNION STATE BANK



CLAY CENTER, KANSAS

Statement of Condition at Close of Business June 30, 1967

RESOURCES

Loans and Discounts	\$5,250,833.92
Overdrafts	2,444.08
Bank Building	\$ 75,000.00
Furniture, Fixtures & Equipment	45,000.00 120,000.00
Federal Reserve Bank Stock	24,000.00
U.S. Government Securities	1,800,118.71
State and Municipal Securities	1,374,824.08
C.C.C. Certificates of Interest	101,118.79
Cash and Sight Exchange	\$1,132,004.21 4,408,065.79
TOTAL	\$9,805,343.79

LIABILITIES

Capital Stock	\$ 200,000.00
Surplus	600,000.00
Undivided Profits	352,727.40 1,152,727.40
Reserves	138,703.33
Deposits	8,513,913.06
TOTAL	\$9,805,343.79



The above Statement is correct

KENNETH G. STROM, Vice President & Cashier

Member Federal Deposit Insurance Corporation



made
while
you
wait

AGGIE HARDWARE

1205 Moro MANHATTAN

Paper Back

25c - 35c
50c - 75c

Books

Largest Stock
In Town



University
Book Store

623 N. Manhattan Manhattan

MATTRESS &
BOX SPRINGS

Specials Every Day
New Low Prices
Buy Direct

Also Complete Rebuilding
Service

Manhattan
Mattress Co.

414 S. 4th PR 8-5302

Business Coordination Comes To Agriculture

By Milton L. Manuel
Kansas State University
One of the least publicized, but most significant changes in agriculture is the effort toward business coordination in the production and processing of farm products.

"Contract farming" is a technique often employed to achieve business coordination. It is quite



common for producers of some agricultural commodities to contract with a processing company to process and market their products. In the act of con-

tracting, certain functions are coordinated which previously had been handled separately.

Business coordination may also be achieved by ownership. For example, a producing firm may acquire a processing firm and operate it as part of its own assets. In such instances, one company would be making both production and processing management decisions.

A third kind of business coordination is the cooperative ownership form. Here a group of producers might jointly own a processing plant on a cooperative basis. By having the plant owned and controlled by producers, there would be a close coordination between production and processing management decisions.

A great deal of this type of business coordination is taking place in U.S. agriculture today. A Purdue University study shows that 95 percent of the broilers, 50 percent of the turkeys, 25 percent of the eggs, 70 percent of the vegetables, 75 percent of the hybrid seed corn, 75 percent of the sugar crop, 15 percent of the fed cattle, and less than 10 percent of the hogs are produced under some form of business coordination. Trends show that this type of operation will become even more common in the future.

CONDENSED STATEMENT OF CONDITION

Citizens STATE BANK

MANHATTAN, KANSAS

Close of business June 30, 1967

RESOURCES

Loans and Discounts	\$ 5,795,062.55
Bank Premises	93,831.01
Furniture & Fixtures	48,880.18
U.S. Bonds and Notes	1,353,148.44
Municipal Bonds	2,713,834.21
Cash and Sight Exchange	842,280.41
TOTAL	\$10,847,036.80

LIABILITIES

Capital Stock	\$ 200,000.00
Surplus	300,000.00
Undivided Profits	201,265.87
Reserves	96,919.18
Accounts Payable	20,000.00
Total Deposits	10,028,851.75
TOTAL	\$10,847,036.80

The above statement is correct.

W. H. BELL, President

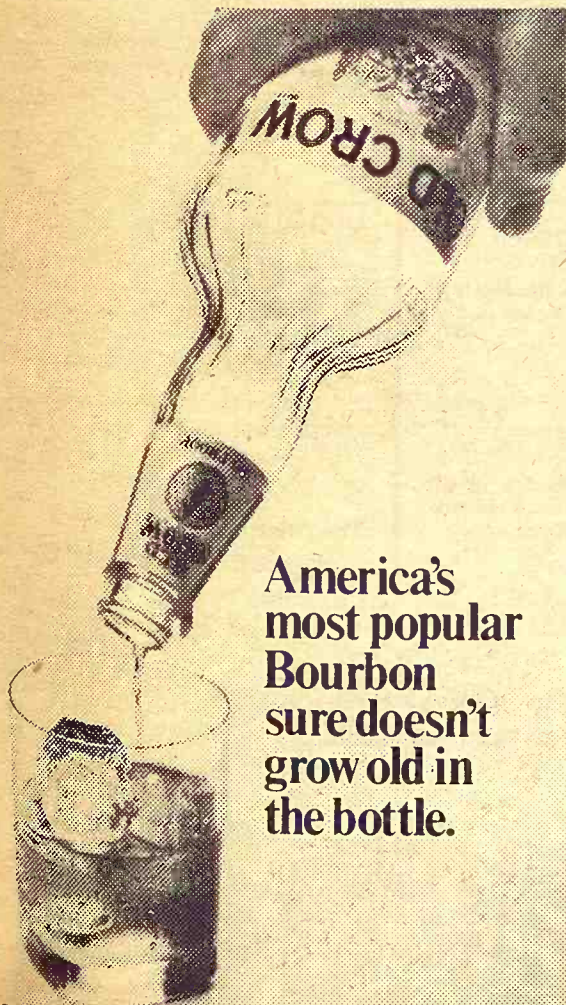
DIRECTORS

W. H. Bell
Byron Brooks
Donn J. Everett
Ralph Rothlisberger
M. James Ryan
R. T. Sheldon
C. M. Skaggs
A. W. Torluemke
Arthur D. Weber
Ward Wright
John Means

OFFICERS & TELLERS

W. H. Bell, President
Byron Brooks,
Chairman of the Board
John Means,
Executive Vice President
R. T. Sheldon, Vice President
H. Alan Bell, Cashier
Twila Ericson, Assistant Cashier
David Murphy, Assistant Cashier
Marilyn Andes, Secretary
Golda Abshire, Teller
Donna Flohr, Teller
Phyllis Dawson, Teller
Dorothy Moser, Teller
Helen Roe, Teller
Michael Toy, Teller

MEMBER FEDERAL DEPOSIT INSURANCE CORPORATION



America's
most popular
Bourbon
sure doesn't
grow old in
the bottle.

Tasted any Old Crow lately?

GENUINE STRAIGHT BOURBON WHISKEY 86 PROOF. DISTILLED AND BOTTLED BY FAMOUS OLD CROW DISTILLERY CO., FRANKFORT, KY.

the Peoples national bank

CLAY CENTER, KANSAS

Established 1885

CLAY CENTER, KANSAS

At the close of business June 30, 1967

RESOURCES

Loans and Discounts	\$5,192,337.71
Fixed Assets	119,140.00
Federal Reserve Bank Stock	18,000.00
U. S. Government Securities	\$1,119,680.06
Kansas Municipal Bonds and Warrants	1,017,856.57
CCC Certificates of Interest	571,305.02
Cash and Due From Banks	1,361,028.44
TOTAL	4,069,870.09

LIABILITIES

Capital Stock	100,000.00
Surplus	500,000.00
Undivided Profits	308,907.60
Reserves	114,732.61
Deposits	1,023,640.21
TOTAL	8,375,707.59

The above statement is correct

R. R. SMITH, Cashier

OFFICERS AND DIRECTORS

D. E. McIntosh, Jr., President
W. F. McIntosh, Exec. Vice-President
Wayne W. Ryan, Vice-President
R. R. Smith, Cashier
Arlene Hileman, Asst. Cashier
James H. Schulze, Asst. Cashier
Wade A. Bauer, Farm Representative
H. E. Valentine
Ada Leach Bisenius
Elsie Cowell Held
George W. Fullington

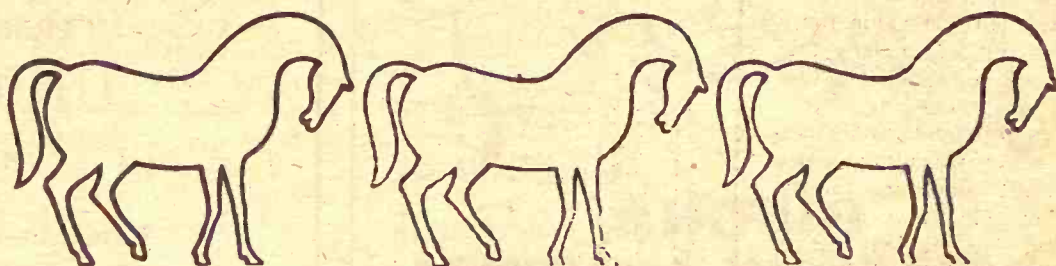
Member F.D.I.C. and Federal Reserve Bank

NEW Leonardville Nursing Home

OPEN HOUSE

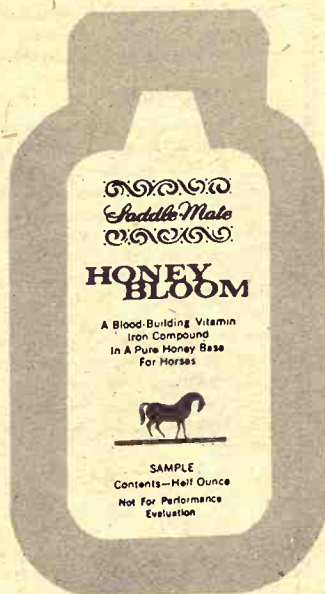
July 29 & 30

For information concerning
residency, write
Box 217, Leonardville, Kans.



NEW HONEY BLOOM...

Product of
HESS & CLARK



The New
Blood Building
Vitamin/Iron Compound

Write for Samples — Any Key
dealer or to the distributor



Ph. ME 2-2141
CLAY CENTER, KS.



Homemade Mobile Home

Myrtle Zachariason and her partner Roy Moss stand in front of a 'homemade' mobile home, a remodeled school bus. They live north of New Cambria and both like antiques.



PURINA LIVESTOCK MINERAL IS CHEAP INSURANCE

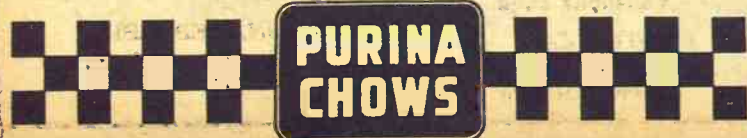
Purina Livestock Mineral is cheap insurance against mineral deficiencies. For just a few cents per head per year you can be sure livestock get the minerals needed to produce and reproduce efficiently.

Purina Livestock Mineral is now available in two easy-to-use forms—meal or blocks.

The meal form is ideal for free-choice feeding of feedlot cattle, hogs, and sheep. The weather resistant blocks are handy for use on range or pasture. Don't take chances with livestock health and profits—feed Purina Livestock Mineral.

Flint Hills Feed & Grain PR 8-5322 Manhattan
Farmers Union Feed Mill 437-2434 St. Marys
Mor-Kan Elevator 349-2214 White City
Reading Grain & Lumber AN 9-3842 Reading
Bartlett Grain Co. CE 8-5134 Junction City
Americus Grain Co. 884-3465 Americus
Gorden Mark Elevator .. ME 2-3381 Clay Center
Western Grain Mill 767-5933 Council Grove

LOW COST PRODUCTION...
the reason why more farmers feed **PURINA**



OREGON TO VALUE PROPERTY AT 100%

A new Oregon law that goes into effect next January 1 will require property in the state to be assessed for tax purposes at 100 percent of "true" cash

value, instead of 25%, currently. Oregon is said to be one of the first states to enact such a switch. Similar 100 percent tax valuations have long been required in many states, but the laws frequently are ignored.

12

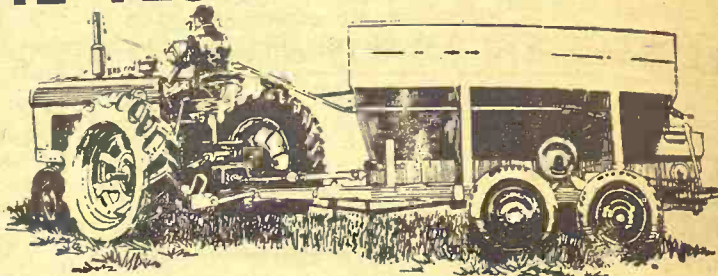
Grass & Grain

July 11, 1967

Riley County Area Fertilizer Dealers Announce

SOIL TESTING WEEK

JULY 10
thru
JULY 15



SOIL TESTING MEANS PROFIT FOR YOU

Riley County farmers could average \$2344 more income per farm next year by using recommended amounts of fertilizer.

Additional information, and soil sample cartons available at your County Extension Office or one of the following Riley County fertilizer dealers:

Manhattan Milling Company	Manhattan, Kansas
Flint Hills Feed & Grain Company	Manhattan, Kansas
Farmers Co-op Assn.	Manhattan, Kansas
Tri-County Skelgas Service	Manhattan, Kansas
C-K Processing Company	Manhattan, Kansas
Riley Co. Elevator Inc.	Riley, Kansas
Farmers Union Co-op Assn.	Leonardville, Kansas
M. O. Fertilizer Service	Leonardville, Kansas
Farmland Industries Inc. Fert. Center	Manhattan, Kansas

Soil samples will be tested by K.S.U. — \$1 per sample

PROGRESSING WITH MANHATTAN SINCE 1889

UNION NATIONAL BANK

MANHATTAN, KANSAS

Condensed Statement of Condition June 30, 1967

OFFICERS

T. J. Griffith, Chairman of the Board
J. E. Arnold, Vice Chairman & Trust Officer
W. B. Glenn, President
Lloyd Carlson, Senior Vice-President
Thos. R. Lee, Vice-President & Cashier
Evelyn Hannagan, Vice-President
Phil Howe, Vice-President
L. W. Stolzer, Vice-President
J. Robert Wilson, Trust Officer
W. V. Morton, Assistant Cashier
Grace A. Davies, Assistant Cashier
Donna Faurot, Assistant Cashier
Bonnie Nespor, Assistant Cashier
Hazel Netson, Assistant Cashier
Helen A. O'Neil, Assistant Cashier
Minnie A. Taylor, Assistant Cashier
Betty Wiechmann, Assistant Cashier

DIRECTORS

J. E. Arnold, Vice-Chairman of the Board
Charles S. Arthur, Partner, Arthur & Green Attorneys
C. C. Brewer, President, Brewer Motor Co., Inc.
Lloyd Carlson, Senior Vice-President
W. F. Farrell, President, Farrell's Inc.
W. B. Glenn, President
Charles D. Green, Partner, Arthur & Green Attorneys
T. J. Griffith, Chairman of the Board
N. D. Harwood, President, Manhattan Milling Co., Inc.
Phil Howe, Vice-President
Ward M. Keller, President, Ward M. Keller Dept. Store
O. W. Kershaw, President, Kershaw Sand & Ready Mix
L. W. Stolzer, Vice-President
J. Robert Wilson, President
Carlson & Wilson Abstracting and Insurance

RESOURCES

Loans and Discounts	\$12,733,138.12
U.S. Government Bonds	3,149,230.87
Municipal Bonds	5,299,741.19
Stock in Federal Reserve Bank	75,000.00
Cash and Sight Exchange	2,223,817.79
Bank Premises	65,000.00
Furniture and Fixtures	94,121.00
Leasehold Improvements	17,923.42
Other Real Estate Owned	203,596.40
	\$23,861,568.79

LIABILITIES

Capital Stock	\$ 350,000.00
Surplus	2,150,000.00
Undivided Profits	104,822.57
	\$ 2,604,822.57
Total Capital Accounts	\$ 2,604,822.57
Reserves	157,572.12
Deposits	21,099,174.10
	\$23,861,568.79

The above statement is correct.

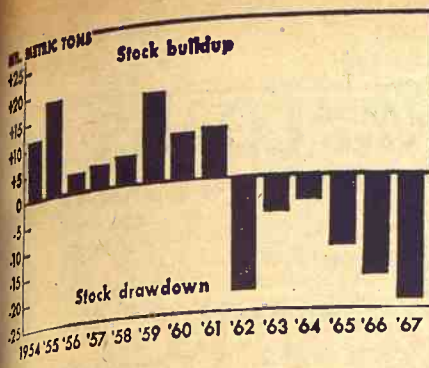
THOS. R. LEE, Vice-President & Cashier

Motor Bank and Parking Lot
at Third and Humboldt

Union National Bank
MANHATTAN, KANSAS

MEMBER OF FEDERAL DEPOSIT INSURANCE CORPORATION





Grain Stock Change

From 1954 thru 1961 world grain production exceeded demand. Since then demand has been greater than the amount produced. Result: diminished supplies, increased wheat allotments, slightly higher feed grain prices.

Angus Association Adds Performance To Pedigrees

The American Angus Association will offer performance pedigrees to members participating in the association's herd improvement record program after August 1.

On the face of the new pedigree form will be three generations of ancestry. Individual measurements for weaning weights and grades, yearling weights and grades, weight ratios, and herd classification scores of all animals will be shown when this information is available. The pedigree form also will list the progeny record of the animal's sire and dam which can include carcass evaluation measurements, too.

On the reverse side of the pedigree are spaces for a complete production record of the animal's progeny. If a cow, it will list the important production measure results and conformation scores of all her calves and yearlings. This may be updated each year to show her produce of dam record. If a sire, the bull's progeny averages will be listed and these also may be brought up-to-date each year.

LIST NEW MEMBERS OF HEREFORD ASSN.

New members of the American Hereford Association from the G&G area are Keith Hendrickson of Fredonia and Dale Zibell of Holton.

TREASURE CHEST

We Buy & Sell
Coins, Stamps
Old Guns, Antiques
Imports
Gifts And Jewelry
Phone 913 PR 8-5233
P. O. Box 304 308 Poyntz Ave.
MANHATTAN, KANSAS

I didn't know how pleasant and convenient banking could be until I opened an account at the Central National Bank.

Junction City, Kansas

MEMBER FEDERAL DEPOSIT INSURANCE CORPORATION



Your Co-op can save you money on your total feed bill, because the CO-OP Feed Program fits your operation to a "T". Quality, ingredients and service are set and controlled by you and your neighbors. CO-OP Feeds and feeding programs are tested under typical conditions at the farmer-owned CO-OP Demonstration and Research Farm. It's the only complete feeding program built 100% to farmers' requirements, and controlled 100% by farmers — all the way from the laboratories and testing farm, through farmer-owned central feed mills — to your own Co-op at the two-circle sign of better living, better farming.

- | | |
|---|--|
| Abilene
Abilene Co-op Assn.
Abilene CO 3-1660 | Carlton
Farmers Union Co-op
CARLTON
TELEPHONE 31 |
| Manhattan
Farmers Cooperative Assn.
Manhattan-Alta Vista
Westmoreland-Onaga | Alma
Farmers Union Co-op
Alma Ph. 765-3612
Eskridge Ph. 449-2291 |
| St. Marys
Farmers Union Co-op
Business Assn. | Junction City
Farmer-Stockman Co-op Assn
Council Grove
Junction City CE 8-4158 |
| Greenleaf
Farmers Co-op Elevator Assn
Greenleaf-Linn
Washington | Clay Center
FARMERS Union Co-op
Clay Center-Bala
Miltonvale-Leonardville |

Coppersmith To Cattle Conference

Dr. Robert L. Coppersmith, Kansas State University, Manhattan, is among thirty outstanding animal scientists, stockmen and meat industry leaders who will deliver talks at the fourth Coordinated Beef Improvement Conference in Denver.

The July 27-28 event is sponsored by the American National Cattlemen's Association with the American Society of Animal Science as co-sponsor.

Nearly 1,000 stockmen are expected to participate in group discussions to consider improving the economic position of the beef cattle industry through increased efficiencies in marketing, production and feeding.

NEW AREA MEMBER OF CHAROLAIS ASSN.

A new member of the American Charolais Association from the G&G area is Lloyd Shearer of Wilsey.

BALER TWINE AND WIRE

Low Prices

Golden Supreme Twine . . . \$8.75
Roto Baler Twine \$8.95
6500 Wire — \$9.65
3150 Wire — \$9.55

ADDITIONAL DISCOUNT TO QUANTITY BUYERS

Manhattan Hatchery

EAST US 24 PR 8-3412 MANHATTAN, KANS.

graves

BALE LOADERS

GIVE YOU AN EXTRA HAND WITH YOUR HAY!

BALE LOADER FEATURES:

- Adjustable from 6'6" to 10'3"
- One point hook up
- Lubricated for life ball bearings
- One-man operation with grain sides
- No. 62 chain with HB-4 attachment links every 12 inches.

ELEVATOR FEATURES:

- 18' long x 22" wide with special reduction gear and motor mount
- 7/8" shafts with factory lubricated ball bearings
- 1" cold drawn square tubing construction

Manufactured by: **graves MANUFACTURING CO.** CLINTON, OKLAHOMA

Distributed in Northern Kansas by **Beaver Valley Supply** Atwood, Kans.

YOUR NORTHERN KANSAS DEALERS ARE:

Jones & Knopp	Chapman	Weilert's	Hays
Richard Rafferty	Wamego	Farm Implement Supply	Plainville
Tom Miller Implement Co.	Highland	Kaser Implement	Osborn
Kansas Farm Machinery Company, Inc.	Topeka	Downs Implement	Downs
Rossville Implement	Rossville	Grainfield Salvage	Grainfield
Valley Implement Co., Inc.	Valley Falls	Fredde Implement	Norton

Is HIGH-TORQUE POWER what you need?

WE HAVE THE ANSWER!

One hour in your fields and you'll see what we mean

930 Row Crop-Adjust. Axle

6-plow power for large acreage farming. Hard-lugging high-torque engine power. Job-matched, 8-speed transmission. Positive-action hydraulics handle large implements easily.

530 Row Crop-Adjust. Axle

Big-tractor design . . . small-tractor economy. Case high-torque power that lugs through tough spots. 4 or 8-speed transmission.

CLAY CENTER Porter Eqpt. Co. 1121 Crawford ME 2-5202	CHESTER, NEBR. Grabau Impl. Co.	MARION Longhofer Supply
LINN Kuhlman Motor Co.	SALINA Vahsholtz Impl. Co.	HEBRON, NEBRASKA Ells Implement Company Phone 768-6320
MARYSVILLE Brauchi Brothers	CENTRALIA McBratney Impl. Phone 857-3815	

Answer To Bale Handling Labor Cost

MANHATTAN — How would you like to double your baled hay handling capacity? Do you need to mechanize to compensate for a shortage of labor?

Of course, there are other factors to consider, and the additional mechanization will cost money, John True, Extension agricultural engineer at Kansas



Introducing our new John Deere Sales & Service Center, Sabetha, Kansas
The former Sabetha Implement Co. is now the
Todd Equipment Co.
DON CLOSE, MANAGER



TODD EQUIPMENT CO.
Sabetha, Phone AV 4-2129 Kansas

NOW MONSANTO Seal-Vac Vacuum Silage



Low, Low Cost . . . Utmost In Feed Value

We would like to show you how to save up to 50% or more, of your feed value from your hay and forage crops, how to save dollars per ton in harvesting costs, how to save still more dollars per ton on storage costs and how to make more profit than you ever hoped for from every acre.

You've probably read a lot about this revolutionary new concept in low cost vacuum pressed sealed storage in some of the recent farm publications. Hundreds have been successfully used since its introduction last year.

Give us a call . . . we'd like to explain more.

VIC KRUSE
Phone 2609 Barnes, Kansas

State University, says. But some innovations in hay handling bear looking at.

Complete mechanization of bale handling, from field to storage, is available for the large operator who handles around 1000 tons of hay per year. The not-so-large operator may greatly reduce the labor required, at the expense of slightly higher per-ton machinery costs. The small operator should weigh carefully the costs of hiring custom work against owning a limited amount of equipment, True explains.

The bale handling system used should fit the established storage and handling facilities, True points out. Also, the system may be determined by the work load demand by other crops at hay harvesting time and anticipated future changes in the farming program.

The familiar bale-loader and flat-bed wagon system, requiring considerable manual labor, has been mechanized by the addition of the bale accumulators pulled behind the baler. The accumulator devices gather the bales into packs of 4 to 8 and drop them on the ground in the field.

The bales are picked up by a special tractor-mounted fork in a separation operation and placed on a wagon or carried directly to the stack. One tractor may be used to operate the fork and pull the wagon, making this a one-man operation.

The accumulator and fork system will handle 5 to 7 tons per hour. The fork can keep pace with the baler in the field. It removes the bales from the wagon, stacks them, and also removes the bales from the stack for feeding.

Accumulator-fork systems substitute mechanical muscle for human muscle, but require manpower to operate the machine. Field capacity is less than automatic and semi-automatic systems, but about twice that of hand-labor and conveyor systems.

Although the tractor-mounted fork uses manpower in stacking, it takes the drudgery out of the operation. The added use of the fork for removing bales from the stack for feeding completes the mechanization of bale handling right to the feedbunk, True points out.

Semi-automatic or automatic bale wagons are available in both self-propelled and tractor-drawn models. Handling capacity can be 6 to 9 tons per hour. Storage systems may limit the use of some of the bale handling systems.

True adds that the choice of a system will depend on the amount of labor and capital available, the volume handled annually, type of storage used, and the feeding system.

Vote To Keep Registry Rules

BRATTLEBORO, Vt. — Following two days of discussion on bylaw proposals, delegates to the 82nd annual convention of Holstein Friesian Association of America voted to reject any changes to current requirements for herd book registration of their purebred dairy cattle.

Among the measures defeated were a liberalization of traditional color marking requirements, authorization to establish a separate herd book for red and white Holsteins and a proposal for a provisional registry for off-color Holsteins. There were several amendments and counter proposals offered from the floor as discussion progressed toward the showdown votes.

July 11, 1967

14

Grass & Grain



FARM & RANCH LOANS

One of the most important features of a Federal Land Bank Loan is the element of time for re-payment . . . time to work out financial difficulties without the pressure of recurring loan terminal dates.

R. STANLEY PARSONS, Mgr.
SEE ME AT

604 HUMBOLDT PR 8-2971
Res. Phone PR 6-9044

MANHATTAN

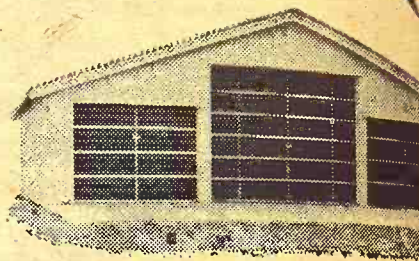
Open Mon. through Fri.
8 a.m. to 5 p.m. (closed 12-1)

Branch Offices: CLAY CENTER & JUNCTION CITY

Federal
LAND BANK Assn. of
MANHATTAN

Serving Clay, Geary, Pottawatomie & Riley counties.

STORMOR DOES MORE



"BUY MORE SPACE PER DOLLAR WITH

STORMOR

CLEAR-SPAN BUILDINGS"

STORMOR Clear-Span Buildings are durable — easy to erect — versatile.

■ STORMOR Buildings are available in three grades: Light Utility, Utility, Heavy Duty — options in color, insulation, doors and windows.

■ Clear-Span Buildings give you standard units with wall heights of 8-10-12-14-16 ft., widths of 30-40-50-60 ft. in any length — special sizes to order.

KLEINSORGE Stormor Sales

A/C 316 BR 7-6912

COTTONWOOD FALLS, KANSAS

• Batch Dryers • Oxygen-Free Storage • Dry-O-Mation
• Bulk Feed Bins • Cribs • New Speed Tanks • Bins

STORMOR Inc., Fremont, Nebraska

We're your Headquarters for the way to

STEP UP

your grass cattle's gains $\frac{3}{4}$ to 1 pound per day!



HEP

HIGH ENERGY PROTEIN
PASTURE SUPPLEMENT

JUDGE FOR YOURSELF:
Yearling cattle fed Gooch HEP in a Gooch Field Trial out-gained yearling cattle on grass only by $\frac{3}{4}$ pound per head per day.

Call Us! We can supply you Gooch HEP (High Energy Protein) in either Cubes or Blocks.

C K PROCESSING CO.

Manhattan, Kansas Telephone PR 6-9269

CLAY CENTER ALFALFA MILL

Clay Center, Kansas Telephone ME 2-3401

Plaza Changes Races To Friday

JUNCTION CITY — Plaza Speedway has changed its racing dates for the balance of the racing season. Races will be held on Friday nights beginning July 14, according to Marvin Berroth, manager. Weekly races had been scheduled on Sunday nights.

Successful Step In Whooper Project

Efforts to save the whooping crane from extinction have taken another step forward. Five whooper eggs have been successfully hatched at the Bureau of Sport Fisheries and Wildlife research center near Laurel, Maryland, following collection in Wood Buffalo Park in central Canada. The report states that all five chicks are doing nicely and are taking food well.

The eggs were picked up from six different nests on June 2 by wildlife biologists of the Canadian Wildlife Service and the U.S. Bureau. One of the eggs began hatching in flight but the chick died before the flight reached the research center. Now that the five remaining eggs have hatched, conservationists have high hopes that a breeding flock of whooping cranes can be established in captivity. This is but the first step since it normally requires from four to five years for whoopers to reach mating maturity. Future offspring from the captive flock will be used to bolster the wild population.

At last count, only 43 whoopers are alive in the wild. In addition to the five new cranes, there are seven other whoopers in captivity.

Army Cuts General Orders To Three

All military veterans will remember at least snatches of the 11 General Orders which soldiers for years had to memorize before going on guard duty. A change, set for August 1, will be welcome to today's soldiers.

Starting then, the Army will drop the 11 General Orders and substitute these three:

1. "I will guard everything within the limits of my post and quit my post only when properly relieved."

2. "I will obey my special orders and perform all my duties in a military manner."

3. "I will report violations of my special orders, emergencies and anything not covered in my instructions, to the commander of the relief."

The General Orders have been part of Army life at least since 1882. A soldier then had to memorize 22 separate requirements. By 1893 the number of orders was reduced to 12. There was little change then for at least 40 years until the 11 orders which are now passing into history became standard.

Complete Farmer & Stockman Supplies

Biologics - Vaccines

Pharmaceuticals

Show Equipment

Instruments and Related Items

Kinyon Distributing

844 N. Kansas Box 8105
TOPEKA, KANS. 66601

Citizens State Bank



Waterville, Kansas

Condensed Statement

At Close of Business June 30, 1967

RESOURCES

Loans	915,090.22
Bank Premises	14,000.00
Municipal Bonds	521,510.16
United States Obligations	\$796,418.71
Federal Agency Securities	274,854.81
Cash & Sight Exchange	273,445.26
Total	1,344,718.78
	\$2,795,319.16

LIABILITIES

Capital Stock	\$ 75,000.00
Surplus	85,000.00
Undivided Profits	73,695.21
Reserves	10,436.92
Total Capital Accounts	244,132.13
Deposits	2,551,187.03
Total	\$2,795,319.16

The above statement is correct.

G. T. Arganbright Jr., Vice-Pres. & Cashier

OFFICERS & DIRECTORS

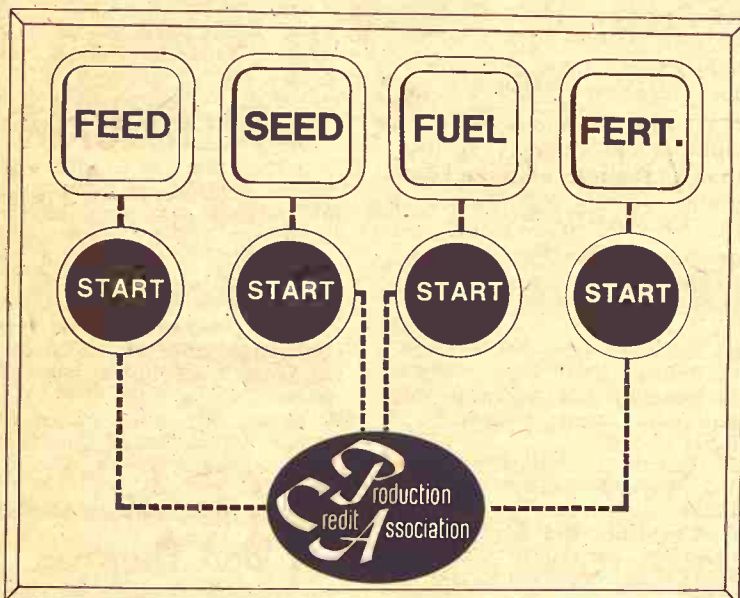
J. A. Thompson, Chairman of the Board

G. T. Arganbright, Pres. Joyce N. Stryker, Asst. Cashier

G. T. Arganbright Jr., V.P. & Cash. L. M. Arganbright

Sophie Musil, Asst. Cashier J. T. Thompson

The Bank With a \$1,000,000.00 Fidelity Bond
Member Federal Deposit Insurance Corporation



All Systems "GO" . . . with PCA Loans!

No Matter how you farm—with 30 or 90 horsepower tractors—four row or eight row equipment—scoop shovel or automated feeding—whether you try for 50 bushels per acre or 200—credit can be the key to success. And no matter how you operate, your local Production Credit Association has a line of credit to put the "Go" in your system—to help you grow safely and profitably and keep costs at a minimum.

There's a bonus, too. When you get a PCA Loan, you automatically become a member and part-owner of your local association. That's why service is a byword at the PCA . . . why the manager takes a personal interest in your welfare . . . and it's one of the reasons why PCA Loans cost less.

Membership in Production Credit Associations is growing. Stop at the red-and-white oval—find out why.



Manhattan

Production Credit Assn.

5th & Humboldt PR 8-2226

Serving Marshall, Clay, Riley, Geary, Pottawatomie & Wabaunsee Counties. Branch offices at Clay Center, Marysville. Fieldmen: Owen Duer, Asst. mgr.; Ray Cohorst, Marysville, HI 3-4005; W. R. Eddy, Havensville, 889-4159. Floyd Rutherford, mgr.

Residence — PR 6-5683



Council Grove

Production Credit Assn.

315 W. Main — 767-5515

Serving Dickinson, Marion, Morris, Chase & Lyon Counties. Branch offices at Abilene, Hillsboro, Marion. Fieldmen: Bill Alsop, asst. sec.-tr.; James Peters, Lehigh; Wilfred Elliott, White City. Charles E. Graham, mgr.

Residence — 767-5578

The reason GRASS & GRAIN has

More Readers

of its classified advertising and sales section than any newsweekly in the state is that Grass & Grain has

More Classified

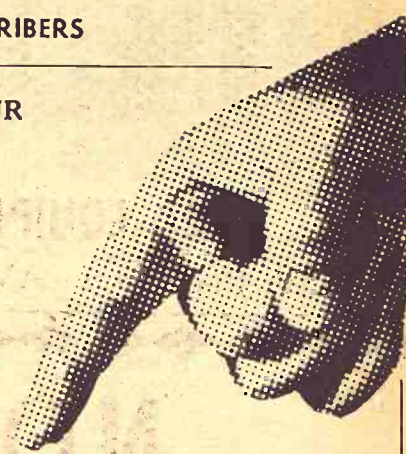
advertising for readers to read. Last year Grass & Grain ran 25,084 inches (314 pages) of classified ads and sales. This year volume is running 24% over last year.

Sell Land, Livestock, Implements, Cars & Trucks, Furniture, Feed & Seed, Antiques, Services. Find a Good Buy. The Way to Tell the Most — for the least cost — is thru G&G Classified.

\$1 A WEEK
15 words or less
5c word, additional

REACH 11,100 SUBSCRIBERS

WRITE YOUR
AD HERE



Don't forget to include name, address and/or phone.

FIGURE YOUR COST HERE.

TOTAL NO. OF WORDS

RATE: (Minimum) 15 words or less . . . \$1.00

Additional words @ 5c each (Example, a 20-word ad has 5 more words than 15. Five words @ 5c each would be 25c)

COST FOR 1 WEEK
(Add figures above) \$

Multiply one-week cost times number of weeks you want ad to run.

LESS DISCOUNTS
(See below)

I ENCLOSE \$

RUN THIS AD CONSECUTIVE WEEKS

DISCOUNTS: (with cash orders only) deduct 10% if ad runs 2 weeks. Deduct 25% if ad runs 4 weeks. REFUNDS: you may collect a refund at the Ag Press office for any unused amount paid if an ad is cancelled.

CLASSIFIED DISPLAY (boxed ads) \$1.68 a column inch.

CASH: Ads not accompanied by cash have a 25-cent billing charge added.

MAIL TO:
AG PRESS — 1207 MORO —
MANHATTAN, KANSAS
P.O. BOX 1009 —

CLASSIFIED ADVERTISING

RATES: \$1 a week for 15 words or less. Add 5c a word for additional words. **SPECIAL:** Four weeks for the price of three. Boxed ads: \$1.68 an inch per issue, flat rate. Send your ads to Ag Press, 1207 Moró, Manhattan, Kansas. Phone PR 8-4458 (25c handling charge if cash not with order.)

Livestock

WANTED TO BUY FEEDER HOGS
40 to 100 lbs. Top prices paid.
J. D. SIMPSON
130 Grant Ave., Junction City
Phone CE 8-3754 or CE 8-3939

FOR SALE — National accredited SPF Hampshire gilts, and boars ready for service. Galen Wiethorn, Axtell, Kans. Phone 736-2777. x21

L. H. RUMSEY

Livestock Dealer
Order Buyer — Bonded

I am now buying cattle for immediate delivery, and on contract for later delivery in August, September, and October.

I have orders from small and large feeders, and commercial feed lots in Nebraska and Iowa. Whether you have one load or several hundred cattle, I have orders for them.

Call Collect: 767-5335
If no answer try 767-5386
or 767-5536. Area Code 316
COUNCIL GROVE, KANSAS

FOR SALE — Serviceable age Hereford bulls. Coutermarsh Bros., Leonardville. Phone 1112 on 10. x20

FOR SALE — Nine registered Zato Hereford heifers, 500 lbs. Cleo Brunkow, Wamego, Phone 456-2407. x20

FOR SALE — SPF Duroc bred gilts. Nationally accredited. Phil Adrian, Moundridge, Kansas 316-345-6469. x19

FOR SALE — Holstein heifers, heavy springers, Glenn Kandt, Woodbine, Kans. Phone 53. x19

370 good western ewes, few 2's 3's, mostly 4's, 5's, none broken, running with Reg. Hamp rams, \$16.50 150 choice 2's; 680 big short solids; few yearlings. Call Doug Wildin, 316-662-7543, Hutchinson, Kansas. SB19

FOR SALE — Serviceable age Duroc boars. One 500 lb. herd sire, a good buy for someone with sows. Nationally accredited SPF. Fred Germann, Dwight, Kans. 66849. Phone Junction City CE 8-4382. x20

GOOD 8-YR. old cowhorse, gentle for anyone to ride. Gentle, broke team ponies, wt. 500, dapples. White mares & tails, colts by side, broke to ride. Also complete show harness. D. B. Grutzmacher, Westmoreland. SB22

FOR SALE — Registered Polled Hereford bull, 6 yrs. old. Domino breeding. 12 Yorkshire cross weaning pigs, castrated. Melvyn Miller, Marysville, Kans., Phone HI 3-3812 or ST 5-2376. x19

HAVE PASTURE for 75 cows or 200 yearling cattle. Phone Salemsburg 1541. x19

FOR SALE — Purebred Poland China boar. Phone Wamego 456-2567. Evenings. x19

FOR SALE — Hampshire boars, ready for service. Roth Bros., Green, Kans. SB19

CHAROLAIS BULLS, guarantee. Percentage & pure breed. McFadden Bros., HU 5-2688, Riley, Kansas. x21

FOR SALE — Good and choice feeder lambs and ewes for sale at all times. I can furnish you any amount from 1 to 1,000 on a few days notice. Will deliver to your farm or you can pick them up at our yards. We are one of the oldest sheep order buying firms in Kans. Bonded for your protection and we guarantee satisfaction. Call or write Col. Carson E. Hansen, Hansen Livestock Auction, Inc., Phone Area Code 316, MO 5-7771, Hutchinson, Kans. SB22

CHESTER WHITE Jan., Feb. boars, good selection now, vaccinated. Cole Farm, Auburn, Kans. Phone ORI-2232. x20

FOR SALE — Purebred Short-horn bulls, 16 months old. Sired by Sportsman Lord, Allen Lord, 1 mile east of Clay Center, Kans. on Hiway 24. x19

REGISTERED QUARTER horses for sale; also well-broke ponies, saddles and bridles. W. E. Dugan, Alta Vista, Kans., phone 229-6430. SB20

EXCELLENT YORKSHIRE & Hampshire boars, carcass data. Also 50 crossbred gilts, 20 Hampshire gilts. Don Gronau, 316-AT 3-6571, Newton. x22

NATIONALLY ACCREDITED Yorkshire and Hampshire boars. Open Yorkshire, Hampshire and crossbred gilts. Eligible for registry. Floyd Meyer, Palmer, Kans. Phone 308. x22

FOR SALE — 50 head Hampshire pigs, 40 pounds, Andrew Prockish, St. George, Phone Wamego 456-2386. SB19

FOR SALE: 25 nice whitefaced open heifers. Ready for feedlot. Joe Odgers, Belleville, Ks. Phone 62F15, Cuba, Kans. x19

CROSSBRED FEEDER pigs, 130 head for sale. Castrated. Ronald Wohler, Clay Center, Ks., ME 2-3031. sb19

FOR SALE: 30 head good quality feeder pigs. Wilson Welter, phone 456-7885, Wamego, Ks. sb19

FOR SALE: Purebred Yorkshire boars born Dec. 196, sired by tested boars that weighed 200 lbs. in 127 days, vaccinated. Guaranteed breeders, \$90 a head, take your pick. 6 North, 2 east of Frankfort. Wm. Bramlage & Sons, Frankfort, Ks. Beattie phone 1121E. x19

FOR SALE: Young York male hogs. Eligible to register. Charles Carlson R. 1, Alta Vista, Ks. Phone 229-5217, Alta Vista. x19

Feed & Seed

WANTED — 500 bales prairie, brome or alfalfa hay; in field or not. Phone Manhattan, Kansas after 5:30 p.m. PR-64462. SB19

DAIRY PELLETS, range pellets and all kinds of fertilizers. Manhattan Milling Co., 107 Pierre, Manhattan. TF Chg

WE ARE in the market for an unlimited amount of good, dry brome seed. Mason Flora, Harveyville Seed Co., Harveyville, Kans., Ph. 589-2497. Harveyville Seed Co., Harveyville, Kans. 66431. SB23

ALFALFA and prairie hay for sale. Phone Manhattan, Kans., PR 6-8103. SB20

Automotive

GMC

TRUCKS
½ Ton - 60 Ton
Sales & Service

TRI-COUNTY MOTORS
307 N. 3rd MANHATTAN

AUTO-LITE Spark plugs 60c. Auto-lite shocks \$4.95. 12 volt battery \$16.95 exchange three year guarantee. 6 volt battery \$7.95 exchange. Oil and air filters 50% discount. SCT additive 65c. Sharp Oil Co. Willis Griffee, manager. East Hiway 24 by Kecks Steakhouse. x25

CHEVY TRUCK, '47, 1½ ton, hoist; good tires; Manhattan 913 PR 6-8104. x19

FOR SALE — 61 Chevrolet pickup, 61 Ford tractor, 350 Farmall, 340 Farmall, H Farmall, New Holland baler. Jack Quinn, Wamego. x21

1966 CHEVROLET ½ ton pickup for sale. V-8, 4-speed, long Fleetside bed; 8 ply tires, overloads. 8000 miles. Roger Whelchel, Rt. 1, Solomon, Kans., phone 913 OL 5-7773. SB21

Good Used Pickups

AT OBERMEYER'S, HERINGTON

1963 Chevrolet ½ ton Fleetside 6 cylinder, 4-speed, 8-foot bed, radio, heater, wrap around bumper \$1395

1963 Chevrolet ½ ton Fleetside V-8, 3-speed, 8-foot bed, radio and heater \$1295

1960 Ford ½ ton Styleside, 6-cylinder, 4-speed, 8-foot bed \$895

1959 Chevrolet ½ ton Fleetside, V-8, 3-speed, camper cover and deluxe equipment \$795

1959 Ford ½ ton Styleside, 6-cylinder, 3-speed, new engine overhaul \$695

1957 Chevrolet ¾ ton Stepside, 6-cylinder, 4-speed, 8-foot bed \$695

1954 Chevrolet ½ ton, 6-cylinder, 3-speed, camper cover, radio and heater. Just traded for, too early to price. See this one for fishing and hunting.

Open Evenings At 1st & Main
OBERMEYER

Marvin Obermeyer, Owner
Ph. BL 8-2421 Open to 9 p.m.
HERINGTON, KANSAS

Call BL 8-2421 For
Evening Appointment

FOR SALE: 1965 Bonneville Triumph motorcycle, excellent condition, used very little. Edward Dettmer, Green, Ks. x19

Only Skaggs

SELLS TRUE

A-1 Used Cars

IN MANHATTAN

1965 Plymouth Fury III, 2-dr. hardtop, V-8, automatic trans., p-steering, factory air, R&H \$2195

1965 Rambler 4-dr. V-8, automatic trans. \$1395

1963 Mercury 2-dr. hardtop, V-8, automatic trans., p-steering, R&H \$1395

1963 Galaxie 2 dr. hardtop XL, V-8, 4-speed, bucket seats, R&H \$1395

1963 Chevrolet Bel Air 4 dr. 6-cylinder, automatic trans., R&H, local one owner, beautiful car \$1295

SKAGGS (FORD) MOTORS

"Where Customers
Send Their Friends"
2nd & Houston PR 8-3525
MANHATTAN

AULD'S

IN WAKEFIELD FOR
USED TRUCKS

1963 Ford ½ T pickup, V-8, overdrive

1963 Chevrolet ½ ton, 4-wheel drive, 6-cylinder, 3-speed

1959 International ½ ton, 6-cylinder, 4-speed

1949 Ford 1-T SWB with bed & hoist

1949 Dodge 1½ ton with bed, 6-cyl., 4-speed

1947 Ford 1½ T w/ bed & hoist

1940 Chevrolet ¾ ton, 4-speed, 6 cylinder



AULD

CHEVROLET
HO 1-5414
WAKEFIELD

Real Estate

FOR SALE — Houses in Riley. One-bedroom modern in heart of town, \$6,000; one 2-bedroom, 2-garage \$4500. Also 62 acres near town, near blacktop & pasture. Ben Heer, Riley. x20

FOR SALE — 10-room house in Randolph, Kans. Needs some repair. Jack Quinn, Wamego, Kans. x21

FOR SALE — 336 acres of land 12 miles SE Alta Vista. Contact H. R. or A. L. Orton. x21

ALFALFA LAND for lease. 20 acres southeast of Riley, Kans. Richard Martin, R1, Riley, Kansas. x19

FOR SALE — House at 917 Kearney, Manhattan. Contact owner, Tracy Hardy, Alma, or Phone 765-3722 Alma. x21

Fulmer Real Estate

CATHERINE J. FULMER
REALTOR

Office 456-7696

Res. 456-9281

WAMEGO

FARMERS — INVESTORS

98 acres at I-70 & Chapman interchange. Wonderful motel or filling station site. Large modern home, barn & impl. shed. New well & water system. See at once, \$30,000.

Retirement dream 1½ miles from Milford Lake; 1½ acres with 5 room modern home & large metal storage building; black top road. Store nearby. \$15,750.

C. W. "Bill" Crites

REALTOR

339 West 6th Street
JUNCTION CITY, KS.

160 TO 590 ACRE FARMS

590 acres, 1000 ton silo, concrete floor and sides, farrowing house, two large hay barns, large machine shed, three bedroom home and a double car garage. Good fences, abundance of water, located on an all weather road in Clay County. 333 acres of grass and 259 acres broke, of which 100 acres is creek land

320 acres near Clay Center, 190 acres broke and 130 acres of grass. This land lays real good

160 acres, well improved, located within 3 miles of Clay Center

470 acres, 188 now under cultivation, balance seeded to grass at present, the very best of buildings and livestock equipment, plus a new home, Nemaha Co., Ks.

320 acres, 80 acres cultivated balance good grass, good farm buildings and an abundance of water. 24 miles from Topeka.

400 acres, 300 acres of good grass, 100 acres of cultivated land along a creek, Cloud County.

Please call for appointments.

Eldon Thorman

Real Estate & Auction Service
CLAY CENTER, KANS.
Ph. 913 ME 2-2148

REAL ESTATE FOR SALE

BY
THE MOORE AGENCY
LINN, KANSAS

Washington County Farms

Unimproved 240 acre farm in Lowe Township, 120 acres in cultivation, balance grass.

Improved 240 acre farm in Franklin Township, 110 acres in cultivation.

BUSINESS OPPORTUNITIES

Combination filling station and hardware and drygoods store in good community, doing a good business. Purchase stock and equipment and rent building or purchase building also. Can be purchased on contract.

Grocery store in small town. Equipment in good condition. Doing a good business. Only grocery store in town. \$3500 plus inventory.

See us or call collect for information on these and other listings. We also have homes for sale in Washington County, Ks. Call:

J. R. MOORE
Linn DI 8-3101 or
MARVIN L. HECK
Washington EA 5-2538

HOME & BLDGS. and 800 acres farm land for rent. Immediate possession. Willis Truhlicka, Barnes, Kans., 2½E & 2 N. SB19

NEAR MARLATT SCHOOL IN MANHATTAN

3-bedroom home — fully carpeted, 1 living & dining room, dining area kitchen, built-in range, oven & dishwasher, 1½ baths, full basement, double garage. \$26,000.

West of University — Like new, 3 spacious bedrooms, 2 full baths, central entrance in quarry tile, living & dining room carpeted, extra large kitchen, built-in dishwasher, range & oven, dinette space, central air conditioned, full basement, attached garage, \$25,500.00

Only \$450 Down — Brick home, full basement, 3 bedrooms, near grade school, large yard. Less than FHA appraisal. Only \$14,500.

Split Level, 4-Bedroom Home — 2 baths, family room, central air conditioning, double garage. Owner moving out of state. \$30,000.

Will Sell On Contract — 3-bedroom Brick Home — Near Marlatt School, attached garage, \$1000 down.

Maurice McNeil

Realtor

Suite No. 11

Union National Bank Building
Office PR 8-4401 Res. JE 9-5164
MANHATTAN

FARMS FOR SALE

Improved 320, with 280 acres cultivated, 40 acres meadow, 280 acres allotment. 215A growing wheat. Only \$52,000

Unimproved 160, with 28.7 wheat allotment, 88 feed grain, only \$17,600.

Improved 200A, modern home, 120 cultivated, 80 pasture, a highly productive farm, \$40,000, excellent contract

Improved 360, modern home, 60 cultivated, 200 pasture, \$52,000 with \$5000 down, \$5000 March 1, then \$1000 per year plus interest.

If you want a farm to operate next year, now is the time to find it. Call me collect. I have several other listings over a 2000 mile area. I will help you.

Call Collect for Appointment

Kvasnicka Realty

GERALD A. KVASNICKA
Realtor

HADDAM, KANS.

Ph. FR 6-2874

Farms & Ranches

sold privately or

AT AUCTION

(your choice)

You can profit from our years of experience and wide acquaintance in purebred livestock auctions and in the livestock brokerage and farming business.

(we go anywhere in Kansas)

GENE WATSON

REAL ESTATE

Gene Watson, Auct.-Broker
316 663-3174 14 Hillcrest

Doug Wildin, Salesman
316 662-7543 Rt. 1

HUTCHINSON, KANSAS

FOR SALE — Eighty acres, three-bedroom modern house, good barn, other outbuildings. New fences, three good wells and pond, all grass on all weather school bus route. Ph. 913 349-2945. E. Longan, RR2, Council Grove, Kans. x19

Farm Equipment

Fairbanks Motor

& Elec.



FORD MCHRY.

EX 6-2481

WHEATON, KS.

FOR SALE — John Deere No. 21 hay crimper (like new condition). 1941 John Deere B tractor (good). R. M. Tyler, Olathe, Kans., or Phil's Repair Shop, Kansas, or Phil's Repair Shop RFD 3, Manhattan. x21

FOR SALE — John Deere No. 2 bale ejector with hydraulic lines, like new. Willis Harline, Enterprise, WE 4-2793. x19

me — fully carpeted, dining room, kitchen, built-in range, washer, 1 1/2 baths, double garage.

University — Like new, bedrooms, 2 full bathrooms, entrance in rear, dining room, kitchen, built-in range, built-in oven, central air conditioning, attached garage, \$100.00

own — Brick home, 3 bedrooms, near large yard. Less appraisal. Only \$100.00

Bedroom Home — 3 bedrooms, central air conditioning, double garage, out of state.

Contract — 3-bed home — Near Manhattan, attached garage.

McNeil Realtor
ite No. 11
onal Bank Building
4401 Res. JE 9-5164
NHATTAN

S FOR SALE
0, with 280 acres
40 acres meadow,
allotment 215A
wheat. Only \$52,000
160, with 287
acres, 88 feed
units, \$17,600.

JOA, modern home,
ated, 80 pasture,
oductive farm,
cellent contract
0, modern home,
ted, 200 pasture,
with \$5000 down,
ch 1, then \$1000 per
interest.

ant a farm to oper-
ar, now is the time
all me collect. I have
listings over a 2000
will help you.

t for Appointment

icka Realty
A. KVASNICKA
Realtor
DAM, KANS.
FR 6-2874

& Ranches
privately or
AUCTION
our choice)

profit from out-
perience and wide
in purebred live-
ons and in the live-
erage and farming

ewhere in Kansas)

WATSON
AL ESTATE
tson, Auct.-Broker
74 14 Hillcrest
Wildin, Salesman
543 Rt. 1
NISON, KANSAS

USED TRACTORS
HHC F706G, low hours, ex-
cellent condition
HHC 560G, very good condi-
tion w/ big rubber
HHC F460G loaded w/ ex-
cellent condition very good
HHC F400G w/ PS, FH, TA,
new rubber & reconditioned
HHC M, new motor, excel-
lent condition

Heiman-Warnicka
DE 6-2111
SENECA, KANS.

SALE: Good 1940 JD B
tractor, with quick tach & cul-
tivation, \$250. Keith Alquist,
Center, Kans., phone be-
tween 8 a.m. ME 2-2078. sb19

WANTED TO BUY — Fast
attachment for Super C
tractor. Also 7' or 8'
disc (fast hitch). Also,
small IHC power
from 6' combine or baler.
Sankey, Republic, Kans.
x19

John Deere No.
uper (like new condi-
tion) John Deere B tractor.
R. M. Tyler, Ols-
burg, Kansas or Phil's Repair
Shop, 3, Manhattan, Kan.
x21

John Deere No.
tractor with hydraulic
new. Willis Har-
ter, Enterprise, WE 4-7881.
x19

Good Choice Of Combines & Tractors

USED COMBINES

1965 JD 95 16', cab
1956 JD 55, 14'
1954 MM SP168 14'
1961 JD 55 13', pickup reel
1956 JD 45 10'
1962 JD 55 14' PS
1957 JD 45 10', Hume reel

JOHN DEERE TRACTORS

1961 3010 dsl.; 1963 3010 gas
1964 4020 dsl.; 1959 730 dsl.
1961 4010 dsl.
1962 No. 901 Ford dsl.
1959 No. 861 Ford dsl.

PLOWS

4x14 JD semi-integral
3x14 Case with hi-speed shares
3x14 JD 55A, on rubber
5x14 JD F120 3 point
3x16 IH chisel point
3x14 Oliver with trip beams
3x16 IH fast hitch

MISCELLANEOUS

Two 14T JD balers
No. 858 JD 2-wheel rake
13 sections of No. 14 hoe
4 IH 2-row cultivators
No. 115 JD chuckwagon
No. 30 Grainovator
1956 MM field cutter
No. 611 New Holland cutter

Washington Impl.



EA 5-2301

WASHINGTON

FOR SALE

USED WINDROWER

14' John Deere windrower, us-
ed very little. Ready to go.

Jorden Impl. Co.



ABILENE

Day Phone
CO 3-2041

Night Phone
CO 3-2057

DAUER IMPLEMENT CO.

1965 McCormick F806 gasoline
tractor, 900 hours.

1941 M tractor

McCormick No. 311 3-16 plow

McCormick No. 37 13 ft. wheel
disk

McCormick No. 35 13 ft. wheel
disk

McCormick No. 35 10'9" wheel
disk

Krause 12 ft. wheel disk

1960 F-460 tractor, 1300 hrs.

1959 Case 800B tractor

1954 Super MTA tractor

1957 McCormick 46T twine baler

1962 McCormick 46T twine baler

1964 McCormick 46W wire baler

1966 McCormick 47W wire baler

McCormick No. 60 3-16 plow

McCormick No. 100 mower, 2 pt.
hitch

1950 W6 McCormick tractor

One nearly new tractor tire
13.6x36 4 ply \$60

McCormick 16x8 MF drill, low
rubber & rubber press



Falun

Phone 1011

FOR SALE: TRACTORS

1959 JD45 combine, 12'

1959 770 Oliver

1958 444 M-H p.s., 3-pt.

1958 Super 88 Oliver diesel

1954 77 Oliver diesel, overhauled

1950 88 Oliver

5540 5-14" or 16" Oliver Semi
plow

640 4-row Oliver cult.

Several other plows all makes
& sizes

Plow shares for all plows, \$2.50
& up

Peschel Bros.



304 Center

HI 3-4377

MARYSVILLE, KANS.

1945 JD B tractor for sale;
starter, lights, good tires and
condition. \$295. Oliver 2-16 plow
on rubber, \$35. Riney Junghans,
Junction City, Kansas CE 8-2039
or CE 8-4341. SB19

All Equipment Reconditioned - P'nted

COMBINE BARGAINS

1955 JD 55, 14' header .. \$1300
1957 JD 55, 14' header .. \$1500
1958 JD 55, 14' header .. \$2450
1961 JD 55, 14' header .. \$4250
1961 JD 55, 14' header .. \$4300
1964 JD 95, 16' header .. \$6900
1962 MF S92, 14' header .. \$3300
1963 MF S92, 14' header .. \$3700
12' Universal pickup reel

TRACTORS

1959 JD 630 LP std. \$2200
1959 JD 730 LP std. \$2800
1959 JD 730 dsl. std. \$2950
1959 JD 730 dsl. std. \$2800
1957 JD 720 dsl. std. \$2500
1957 JD 720 dsl. std. with 3 pt.
..... \$2750

1957 JD 720 gas RC with 3 pt.
..... \$2650

1961 JD 2010 gas, RCU with 3
pt. \$2600

1956 JD 70 LP RC with 3 pt.
..... \$1650

1953 JD 60 gas, RC with 3 pt.
..... \$1250

3 JD A's with power trol
..... \$350 to \$625

1951 JD B with power trol \$300

1946 JD D elec. start \$100

1965 Case 530 gas, RC with
hyd. loader \$3250

1957 IHC 350 dsl. RC, loaded,
overhauled \$1250

1959 IHC 340 gas, RC, loader
..... \$1675

1958 MH 555 dsl. hyd., overhau-
led \$1500

1958 MH 50 gas, RC, Live PTO
..... \$1400

1949 AC WD gas with 3 btm.
plow \$750

HAY TOOLS

JD No. 6 2-row chopper .. \$800

Case 200T baler \$675

JD No. 5 mower \$25

IHC 25V mower \$25

IHC 27V mower \$50

IHC 31V mower \$75

JD 110 chuckwagon \$825

Gehl 2-row chopper \$450

IHC 50 2-row chopper .. \$1500

Western Impl. Co.



2256 So. West St.

Phone WH 3-4261

WICHITA, KANSAS

USED TRACTORS

IH 560; IH Super C with culti-
vator; Case SC; Moline H;
Oliver STD 70

MACHINERY

1962 Oliver No. 40 combine with
down grain reel and power
steering, real good

Owatonna swather

Gehl hay conditioner, Gehl
shredder, Gehl harvester with
mower bar

Case one-row harvester

Peerless roller mixer

M-H side rake; IH side rake

Oliver side rake

Spring tooth harrows, 12 and 16
ft. 3-point

Oliver No. 64 grain and fertiliz-
er drill

Oliver 16x8; Moline 16x8, both
with fertilizer attachments

PLOWS

New IH 3-14 mounted, new

Moline 3-16; Moline 3-14

IH 3-16 pull type

Massey Harris 3-14, 3-point

AC 4-14; Oliver 216; Case 3-14

New Crust Busters

New Oliver hay conditioners
and swathers

Toburen Impl. Co.



ME 2-2288

CLAY CENTER, KANS.

IMPLEMENT TILT BED FOR SALE

Used Schwartz 18' with 2' fold
down extension ramp; double
acting with hyd. winch, cab
protection plate, hold down hooks.
Complete with PTO drive. We
are replacing this with a larger
unit & will sell right.

May be bought with 1960
Chev. Model 60 truck.

W. W. Smith & Sons

Phone ME 2-3148

CLAY CENTER, KANS.

FOR SALE — AC round baler;
Ford scoop, blade, spring tooth
harrow, cultivator, lister, trail-
er sprayer. R. M. Tyler, Ols-
burg, Kansas or Phil's Repair
Shop, RFD 3, Manhattan, Kan-
sas. x21

AULD'S

IN WAKEFIELD
IS THE PLACE TO TRADE
TRACTORS

Used Tractors

1959 Ford 971-D, with cover
1951 International WD-6
IH Model C with mower
1950 Massey Harris 30
1949 IH M
1947 International M-D
1947 International M
1940 International M
1936 Allis U

TRAILERS

Used 4-wheel trailer w/ hyd.
lift & bed

Used 4-wheel trailer w/ bed

COMBINES

1955 International 141 with cab
International 101 combine
International 125 self propelled
1966 International No. 55 field
harvester cutter
1963 No. 50 field cutter
20-C field cutter

BALERS

IH 45T baler
1956 International 45T baler
1955 International 55W baler
with engine

MOWERS

IH 25V mower
Ferguson 3 pt. hitch bar
International 9A mower
Self propelled lawn mower

CULTIVATORS

IH mower for C tractor
Allis 2-row cultivator with rear
section

PLOWS

John Deere 2x14 plow
MM 2x14 plow
IH No. 8 3x16 plow
Case 3x16 plow
MM 3x16 plow
International 8L 4x14 plow
IH no. 400 3-sec. springtooth
M-M 3-sec. pegtooth

AULD

CHEVROLET

HO 1-5414

WAKEFIELD

SEE THESE AT ABILENE

BMB 5' pull type rotary mower

1961 Deere 4010 diesel, new R
tires

1961 Deere 3010 diesel, new R
tires

9N Ford w/ 2-row cultivator

JD 2-row DL2 weeder, 2-yr. old

1959 Deere 730 diesel, new R
tires

1954 IHC 300 utility TA & LPTO

1958 JD 214T baler, overhauled,
PTO

1965 JD 224 WS baler, nice

1962 Fox Industrial 2R PTO cut-
ter

Case blower w/ pipe

IHC 16 one row PTO field cut-
ter

Hawk Bilt 145 spreader

3-14, 4-14, 4-16 mtd plows

2-sec. IHC rotary hoe

210 Corn head for 55

2-row Dempster & JD lister

New Holland 6 baler, o'hauled

1966 JD6 field cutter, 2-row

1957 IHC 55W baler, good

1958 JD 214W baler, ready

JD 20 series cultivator for late

A tractor

JD 20 series cultivator for 60,
620, 70, 720 tractors

1946 JD model G old but slick

1956 Massey 60 combine w/ 12'
cutter bar

1951 Case SP12 combine

JUST TRADED FOR:

Real clean 1962 JD55 combine
w/ p. steering & 14' head,
cut less than 1000 acres of
wheat

Real clean 1962 JD 45 w/ 12'
head, low acres

Also JD belt pickup attachment
for 55 combine w/ gauge
wheels, 88"



SHOUSE

IMPL. CO.

Abilene, Kans.

Store

Ed Shouse

Ron Shouse

CO 3-3051

CO 3-1066

CO 3-4515



67 Ford 3000 live PTO .. \$2995

67 Ford 4000 live PTO .. \$3750

67 Ford 5000 diesel \$4850

67 Ford 6000 diesel \$5950

F80 Ford garden tractor .. \$695

F100 garden tractor \$750

65 Ford 4000 Selecto, P strg.

65 Ford 400 4-spd., p strg.

64 Ford 4000 4-spd., gas

Hurry-Up Hay Tools

1965 N-H no. 460 Haybine, 9-ft. swather - conditioner, wind-row shields, used two seasons, local machine

1962 IH no. 201 windrower, 14-ft. draper machine, conditioner, good water cooled engine. N-H no. 827 sickle bar, 7-ft. used only one season, for 818 or SP 818

Late style Fox 6-ft. sickle bar, used very little, will fit Fox machines 1954 & up

David Bradley trail mower, good

1966 Hesston 500 swather, 14-ft. auger machine, conditioner lights

Due in - WD tractor w/ good belly mower, N-H no. 402 crimper on unit

AC WD-45 tractor, wide front, complete new overhaul, new rubber rear, wts.

IHC 3x16 pull plow on rubber w/ hyd.

Several older pull plows

SPECIAL Dempster no. 402-52 four row cultivator, new w/ extras, 28 to 42" row spacing

COMPLETE STOCK OF HAY TOOLS, ALLIS & N-H.

Wright Impl. Co.



South Highway 15
Phone CO 3-2061
ABILENE, KANS.
Nites, Harris Clark
Salina TA 3-6690

GOOD TRADING at Alta Vista

USED TRACTORS

1962 IHC 460 utility Farmall; has loader with hyd. bucket

1951 AC WD; 1949 B JD

1941 B JD; 1949 C Farmall

1946 WC Allis

2 loaders for AC D-14

USED BALERS

2 AC roto; 45T IHC

56W IHC

OTHER MACHINERY

Nearly new side mount mower for AC D-14 or D-15

80R mounted Allis mower

JD 8; N-I trail mowers

No. 10 Farmhand stacker

Real slick A-C 66 All Crop

1957 M-H 82 SP combine

Front mtd. cult. for D series

USED TRUCKS

1952 IHC Scout 4-wheel drive, full top

1958 4x4 Jeep with cab

1952 Jeep 4x4 station wagon

1960 IHC 3/4 ton 4x4

1966 IHC B110 3/4 pickup

Two 1960 IHC pickups

1952 IHC; 1957 GMC; 1957 Chev. & 1960 Ford pickups

Buchman Farm Sply.

A-C DEALER IH TRUCKS
Phone 229-6619
ALTA VISTA, KANS.

SALINA



1-New JD 95 16' combine

1-1961 JD 55 14' combine

1-1958 JD 55 14' combine

1-1953 JD 55 14' combine, cab

1-1952 MH 27 16' combine

1-1959 MF 82, 14' combine

1-MH 80" pickup attachment

1-JD 88" belt pickup attach.

1-JD no. 6 forage harvester

1-IHC no. 50 2-row harvester

1-JD no. 34 2-row harvester

1-Gehl 2-row harvester

2-JD no. 14T PTO balers

6-7-ft. mowers

2-JD 80 std. D, hyd., PS

4-Ford 8N gas, PTO, 3-pt.

1-IHC 400 RCD, PTO, TA, hyd.

1-IHC 450 RCD, PTO, TA, hyd.

1-IHC 460 RC D, PTO, TA, hyd.

1-MM, UB RC gas, PTO, hyd.

1-Cockshutt 560 std. D, clean

3-2 bottom plows

11-3 bottom plows

9-4 bottom plows

JUST RECEIVED:

New JD no. 38 harvesters

New JD 480 mower-conditioner

Salina Impl. Co.

Box 1029 Ph. TA 3-2206
SALINA, KANS. 67401

HUME REELS - 12', 14', 16', 18'. Cheap combines, 1952 Case, 1951 MM, 1952 Co-op, choice, \$350. JD combine cab. 10 good tractors. New 3-point 60" rotary mower, \$360, take \$295. Straw chopper for C. Adjustable axle for JD. Nickel Brothers, Buhler. x19

USED COMBINES

1959 John Deere 55, 14-ft., big tires, straw chopper

1957 John Deere 55, 14-ft., power steering, reconditioned.

Will have 1966 C II, 18-ft. coming soon.

TRACTORS

1966 AC "190", 260 hrs., like new

1962 AC D-17, PS, nice

1960 AC D-17D, good tractor

1957 AC WD-45, PS

HAY MACHINES

1965 N.H. 905, swather, Ford eng., hay cond.

1966 IH No. 16 side rake 1/4

1966 AC 80T mower, 9-ft.

AC hay conditioner, demo.

SEE US FOR THE ALL NEW FIELD-MASTER SPRING-TOOTH.

Jost Impl. Co.



Phone 947-3182
HILLSBORO, KS.

HERINGTON



USED TRACTORS

1956 Oliver 55

1966 A-C D15, 170 hours

1963 JD 3010 gas, 1750 hrs.

1960 AC D14, wide front end, power strg.

1958 John Deere 720 diesel

57 Ferg. 35; 56 JD 70 dsl.

52 M-H 44 dsl.; 43 IH M

1956 IHC 141, 14' 14' header complete for John Deere 95

Used Pickup att. for JD

Used 12' pickup reels

MACHINERY

1960 John Deere 214W baler

1959 John Deere 14T baler

1957 NH No. 66 baler

International 45T baler

JD Nos. 5, 8, 9 & 10 mowers

IHC 4-row curler, extra good

JD and IHC 4-section spring-tooths with carriers

JD 4-sec. 3-pt. tine tooth harrow

Tri-County Sales

George Munkres
Phone Collect
BL 8-2249 or BL 8-2991
HERINGTON, KANSAS

SOME REAL BARGAINS AT LONGHOFFER'S IN MARION

New twine tie baler \$1499

New wire tie baler \$1699

New 4 plow tractor, 58 hp \$4650

1966 Demonstrator 930 Case, L.P. row crop, big tires, all equipped \$5250

55 model no. 70 Massey combine \$1195

New 5-ft. rotary mowers. . \$269

New Wix bale loader \$385

5 bottom John Deere mounted plow \$495

4 bottom Allis semi-mounted plow, like new \$595

Used 4-bottom Allis mounted plow \$375

1965 John Deere 55 combine, like new \$4995

(Demo) Schafer 14-ft. wheel disc 20" blades \$795

Used Case A series plow, 4-16 new mold boards \$625

40 new & used plows in stock: 2 bottom, 3 bottom, 4 bottom, 5 bottom & 6 bottom; mounded, semi-mounted & wheel type.

1963 Case 930 Comfort King tractor, low hrs., new tires, diesel \$4150

1962 M-5 Moline, new tires, 2-700 lb. weights \$2450

1963 Case 830 gas tractor, very clean \$3250

1964 Ford 6000 series, like new \$3750

4 or 5 bottom semi-mounted plow to fit At \$550

Allis roto baler, rebuilt .. \$775

LONGHOFFER SUPPLY CO.

J. I. Case & A-C
Phone EV 2-2620
MARION, KANS.

HAY ELEVATOR, John Deere 17" with 9' extension. See at 1925 Ft. Riley Blvd., Manhattan. x20

FOR SALE - NuWay bale handling outfit, both pieces \$475 Phone 104, Simpson, Kansas, 67478. Arthur McClure. x19

Special of the week!

New MF 37 side delivery rake, 6-bar. (List price \$665). Our price \$520.

ROTARY CUTTER HEADQUARTERS

New Mono 4-ft. lift type, less tires (list \$250) our price \$185

Mono 4-ft. pull type with tires (list \$300), our price \$230

5-ft. lift type with tires (list \$360) our price \$250

5-ft. pull type with tires, (list \$280) our price \$275

6-ft. heavy duty lift type (list \$495) our price \$350

6-ft. heavy duty pull type with tires (list \$530) our price \$375

8-ft. heavy duty lift type with rear wheel (list \$710) our price \$475

8-ft. heavy duty pull type with tires (list price \$730) our price \$495

See 12 different models on display.

1960 IH91 combine, 10-ft., with cab, one owner, excellent condition \$2275

1946 JD H tractor with 3-point hitch, A-1 condition, new tires \$325

1955 AC model 66 combine, extra good condition \$275

1961 MF 82 combine, 12 or 14 ft., extra good condition, with cab \$2275

1956 IH wire baler, reconditioned and ready to go \$275

IH 18-in. one-bottom, one-way mounted plow for Super C Farmall \$45

Brillion seeder, good condition, with fertilizer attachment \$225

Dearborn 3-pt. blade, average condition \$45

Ferguson 8-ft. disk, 3-pt. hitch \$150

M-F 221 front mounted 2-row cultivator for M-F 50 or 65 tractor \$275

IH 91 combine

1956 IH wire baler

Modern Box scraper with scarifier teeth, demonstrator (list \$370), our price \$275

JD 2x14 mounted plow for MT tractor \$75

M-H 2-row cultivator, 2 each, good condition

Graham Hoeme 7-ft. chisel plow, had lift \$250

Ford 7-ft. mower with 3-pt. hitch \$75

Ferguson 7-ft. mower with 3-pt. hitch \$75

F12 Farmall on rubber with 7 ft. mounted mower, OK \$75

Ferguson 2-row lister w/ rotary moldboards & fert. att., extra good condition \$175

Large selection of new and good used tractor tires.

Wenger Impl. Co.



Boys Industrial
School Road
off US 24
Call CE 4-8198
North Topeka

FOR SALE - 12 foot windrower, runs good. Price \$100. Dale Steward, Clay Center, Kansas. x19

HUME REELS, new & used, 12', 14', 16', 18'. Cheap combines, \$200 to \$500. TRACTORS - 1960 930 Case. 1955 GB. John Deere G, 60, 70. 1948 Ford. Excellent LP LA Case. International 45T baler. Cultivators, discs. New International 14' wheel disc, \$750. Quick-tach cultivator. New 60" rotary mower, 3-pt., tail wheel, \$360, take \$295. JD ad justable axle. Nickel Brothers Buhler. x19

HUME REEL for sale, fits 5-ft. AC combine. Nearly new. L. C. Day, Council Grove, Ks. phone 767-5829. sb19

FOR SALE: John Deere 3-14 plow with 3-point hitch. Price \$150.00. Waldemar Hanke, Waterville, Ks. x20

FOR SALE or trade for smaller RD 7 cat cable dozer, good undercarriage. 456-7364, Paul Hill, Belvue, Kansas. x20

FOR SALE - 5010 JD elevating scraper, good condition, \$11,000 Phone Area Code 913, 792-4195. SB20

FOR SALE - AC forage harvester. Grasshead on A1. Always shedded. \$250. Ernest Fulhage, Beloit, Kans. PE 8-2096. SB19

Miscellaneous

FOR SALE - Leather bale aprons \$9.95 post paid. Write Dick's Ranch Supply, Olsburg, Kans. 66520. x22

ARMY SURPLUS OUTSIDE WHITE

PAINT

\$2.93

Per Gallon

Kimberly Washable
Vinyl Latex Wall Paint

FAITH'S

Furniture

East US 24 PR 8-3786
MANHATTAN

FOR THE ride of your life, ride a Big Horn saddle from Key Milling. Clay Center, Kans. SB TF

Open Soon . . .

Write for free descriptive brochure.

LEONARDVILLE NURSING HOME

P.O. Box 217
Leonardville, Kans. 66449

WATER WELL Drilling; gravel packed wells, write or call collect CA 6-7276. Strader Drilling Co., Blue Rapids. x24

NATIONAL ZIP Code Directory - Over 35,000 listings. \$1.00 plus 25c for mailing. Includes all of U.S. and territories. Allied Sales & Printing Co., Box 890, Manhattan, Kans. 66502. SB19

TAKE OVER payments on near new brand name spinet piano. Equity free. No back payments due. Write Credit Manager, P.O. Box 236, Manhattan, Kans. SB19

Stud Service

STUD SERVICE - Ben Shasul A 42 266, registered grey Arabian. Rosalie and Earl Clymer, RR2, Council Grove, Phone 316-767-6291. x21

STANDING - POCO Motive - Buckskin registered Quarter Horse stallion, outstanding cowhorse. Phone 456-9425, Wamego. x19

STALLION FOR SERVICE - Perm. reg. Quarter Horse by Wimpy II. Excellent conformation and disposition which he passes on to his colts. Fee \$35. Pasture for mares. Dwayne Turner, Belleville, Kans. 913 JA7-2828.

Help Wanted

OPENING IN MANHATTAN FOR AUTO MECHANIC - Auto mechanic, automatic transmission and general auto repair work. We think we have one of the best jobs of this type in Manhattan to offer.

Good commission, benefits, equipment and conditions. Plenty of work.

See or call Leo Bradley, Service Mgr., Goetsch-Irvine Motor Co., Manhattan, Kans. Ph. PR 8-3591.

REGISTERED NURSE wanted full or part time. Leonardville Nursing Home, Box 217, Leonardville, Kans. sb19

1967 Model Starcraft 15 ft. Bahama ski-boat with 650 el. Mercury Engine, 65 hp., electric start. Thunderbolt Ignition, \$1495. This outfit lists for \$1995. Has been run but few hours (demonstrator), plus trailer.

New Starcraft 14 ft. Explorer for fishing or skiing, with 35 HP Mercury. \$1095. Lists for \$1395, plus trailer.

Used Lone Star 15 ft. boat with 70 HP Mercury engine, well equipped, new trailer, \$810.

New 14f Mariner Deluxe fishing boat with steering wheel, 9 HP Mercury engine. \$795.

We still have a few new Mercury engines in stock, 6 HP, 9.8 HP, 20 HP, 35 HP, 50 HP. Larger sizes available.

Will Trade For Boats or Good Used Tractors
Or Late Farm Equipment

LONGHOFFER SUPPLY

J I CASE - ALLIS-CHALMERS
STARCRAFT BOATS - MERCURY ENGINES
Phone 316 EV 2-2620
MARION, KANSAS

July 11, 1967

18

Grass & Grain

WANTED For Poultry Farm

To the man who will take over full responsibility for the operation of a large turkey-chicken farm, we have a most attractive offer. This is permanent, year-around work. Modern 6-room home near Manhattan, Kans. to live in and very generous compensation. Family man only, and he must have a background of poultry farming. Telephone for appointment:

MANHATTAN, KS.
Area Code 913 PR 8-3412

Wanted: Production Workers

All phases of mobile home production including Saw Operators, Rough Carpenters, Material Handlers, Welders, Plumbers & Finish Trim. Starting rate based on qualification and experience with immediate opportunity of being full incentive worker. Benefits include vacation, paid holidays, group insurance, year around employment. Apply between 3:30 and 5:30 Monday thru Friday.

Pacemaker Mobile Homes
2711 Amherst Ave.
Manhattan, Kansas

Equal opportunity employer

MAN WANTED to manage parts department in IHC dealership. Experience preferred. Macha-Revere, Council Grove, Kans., phone 316 767-5014. SB19

Coins & Stamps

We Buy & Sell
Coins, stamps, old guns, old maps & misc. items of value. Treasure Chest
308 Poyntz Phone 913-783-1111
MANHATTAN, KANSAS

Mobile Homes

FOR SALE - Used 27-foot Trailer House. Ideal for side camping or vacation home. Has electric refrigerator and stove with two gas bottles. Priced for quick sale. See at Manufacturing, Inc. Clay Center, Kans. Phone ME 2-5611.

WANTED TO BUY - A good mobile home, or would trade John Deere farm tractor. Write Woolsoncroft, Centralia, Kans. 66415.

Pets

FOR SALE - 10 week old registered Brittany pups. Priced for quick sale. Write Bruce L. Gerger, RFD 1, Marysville, Kansas, Hillcrest 3-3895.

LETTERS

Reservoirs Built For Flood Control

It is quite apparent that the reservoirs of commerce and industry are being built around the world. The fact that the water is being stored in the reservoirs is a good thing. It is a good thing that the water is being stored in the reservoirs. It is a good thing that the water is being stored in the reservoirs.

FOR SALE

FOR SALE - 10 week old registered Brittany pups. Priced for quick sale. Write Bruce L. Gerger, RFD 1, Marysville, Kansas, Hillcrest 3-3895.

FOR SALE

FOR SALE - 10 week old registered Brittany pups. Priced for quick sale. Write Bruce L. Gerger, RFD 1, Marysville, Kansas, Hillcrest 3-3895.

FOR SALE

FOR SALE - 10 week old registered Brittany pups. Priced for quick sale. Write Bruce L. Gerger, RFD 1, Marysville, Kansas, Hillcrest 3-3895.

FOR SALE

FOR SALE - 10 week old registered Brittany pups. Priced for quick sale. Write Bruce L. Gerger, RFD 1, Marysville, Kansas, Hillcrest 3-3895.

FOR SALE

FOR SALE - 10 week old registered Brittany pups. Priced for quick sale. Write Bruce L. Gerger, RFD 1, Marysville, Kansas, Hillcrest 3-3895.

FOR SALE

FOR SALE - 10 week old registered Brittany pups. Priced for quick sale. Write Bruce L. Gerger, RFD 1, Marysville, Kansas, Hillcrest 3-3895.

WANTED
r Poultry Farm
e man who will take
sponsibility for the
of a large turkey
i, we have a most
er. This is perman
ound work. Modern
home near Manhat
o live in and very
mpensation. Family
nd he must have a
of poultry farming
for appointment:
MANHATTAN, KS
Code 913 PR 504

nted: Production
Workers

ases of mobile home
including Saw
ough Carpenters, Ma
ddlers, Welders, Plumb
Finish Trim. Start
ased on qualification
nce with immediate
ty of being full inc
rker.
s include vacation,
s, group insurance,
employment
between 3:30 and 5
y thru Friday.

emaker Mobile Homes
2711 Amherst Ave.
Manhattan, Kansas
l opportunity employ

WANTED to manage
partment in IHC de
Experience preferred
Revere, Council Gro
phone 316 767-5044, S

oins & Stamps

We Buy & Sell
stamps, old guns,
& misc. items of
Treasure Chest
Phone 913-788-
NHATTAN, KANSAS

Mobile Homes

SALE — Used 2700
House. Ideal for
amping or vacation
electric refrigerator and
with two gas bottles.
quick sale. See at
ns. Phone ME 2-388

ED TO BUY — A
home, or would tra
eere farm tractor,
icroft, Centralia, K

Pets

SALE — 10 week old
Brittany pups
unting stock. Bruce
RFD 1, Marysville,
lcrest 3-3895.

ski-boat with 650 el
art, Thunderbolt Ig
1995. Has been run
is trailer.

hing or skiing, with
95, plus trailer.

HP Mercury engine,
boat with steering

ines in stock, 6 HP,
r sizes available.

Used Tractors
ment

APPLY
ALMERS
MERCURY ENGINES
RION, KANSAS



Reminiscence

Lawrence Bloyd and Roy Trow of Bennington chat about old times on a bench in Bennington. This was the time of year they used to "head" wheat and Bloyd says he's looking for a job with a heading crew.

Early Wheat High In Protein

Additional quality tests of wheat arriving at terminal elevators from southern and a central Kansas counties showed protein content well above last year and average, with test weight below last year but near average, according to the Kansas Crop and Livestock Reporting Service and the Kansas and Missouri Grain Inspection Departments. Tests on 1253 cars from 30 counties showed average protein content at 12.9 percent compared with 11.9 percent in the same areas last year and the 5-year average of 11.6 percent. The weight per bushel averaged 61.4 pounds this year compared with 62.1 pounds a year earlier and the 5-year average of 61.6 pounds.

Dockage was below 1.0 percent for nearly all cars tested and 91 percent showed less than 0.5 percent. Grade defects included 0.1 percent foreign material, 0.8 percent damaged kernels and 1.5 percent shrunken and broken kernels, for a combined 2.4 percent total defects.

Moisture content of the cars sampled, which were mostly early cuttings of new crop wheat, averaged 13.8 percent. Of all cars sampled, 81 percent graded No. 8, while 18 percent graded No. 2 and 1 percent graded No. 3 or lower.

The accompanying table shows the early results by county of origin.

WINTER WHEAT:		Average Test Weight, Protein Content and Moisture							
County and District	Samples Tested 1967	Test Weight			Protein Content 1/			Moisture	
		Average 1961-65	1966	1967	Average 1961-65	1966	1967	1966	1967
	Number	Pounds per Bushel			Percent			Percent	
Southwest									
Clark	11	61.7	62.2	62.1	12.1	12.6	13.1	13.1	13.4
Ford	11	61.8	61.8	62.3	12.1	12.3	13.0	13.2	12.9
Gray	16	61.6	60.6	60.6	12.4	13.4	14.0	13.0	14.5
Meade	16	61.0	60.2	62.0	12.6	13.3	13.1	13.6	13.4
Seward	22	61.1	60.8	60.9	12.4	12.6	12.3	12.9	13.6
Stevens	7	61.8	60.3	61.1	12.2	13.1	12.3	13.0	13.9
Wtd. Av.	83	61.5	61.1	61.5	12.3	12.8	13.2	13.1	13.6
Central									
McPherson	7	62.0	62.6	62.3	11.6	12.0	13.8	12.7	13.4
Rice	12	61.8	62.6	61.2	11.7	12.0	14.0	12.7	13.5
Wtd. Av.	19	61.9	62.6	61.9	11.6	12.0	13.9	12.7	13.4
S. Central									
Barber	137	61.3	62.7	61.1	11.4	11.8	13.5	12.5	13.2
Comanche	19	61.3	62.5	61.8	12.1	12.3	12.8	13.1	13.8
Edwards	26	61.5	61.4	60.9	11.5	12.2	12.9	13.4	14.0
Harper	103	61.4	62.4	60.3	10.9	11.2	13.9	13.1	14.2
Kingman	128	61.9	62.3	60.0	11.2	11.6	13.4	13.7	13.7
Kiowa	6	61.7	61.8	62.6	11.8	12.2	12.7	12.9	13.4
Pawnee	5	61.0	60.9	60.7	12.2	13.4	14.0	13.6	15.0
Pratt	37	61.9	61.9	62.3	11.7	12.4	12.2	13.0	13.7
Reno	56	61.9	62.2	60.9	11.4	12.1	13.2	13.0	13.6
Sedgwick	66	61.7	62.7	60.6	11.1	11.0	13.7	13.4	13.4
Stafford	35	62.0	61.8	62.2	11.4	11.8	12.4	13.0	13.7
Sumner	107	62.0	62.7	60.8	11.1	11.1	13.4	13.4	13.6
Wtd. Av.	725	61.7	62.2	61.1	11.4	11.7	13.2	13.2	13.7

1/ Protein content of the 1967 crop represents wheat of the moisture content as tested while for 1966 and the 5-year average protein content was on a 14 percent moisture basis.

Reynolds Sale Barn

ABILENE, KANS. CO 3-3394

Selling Every Friday

Night Sales 8:00 P.M. Thru Harvest

Although most farmers and stockmen were in the harvest fields, a very good run of cattle arrived for the sale last Friday night. Several out-of-state buyers made a very active auction throughout, and prices looked strong to higher on all classes offered.

Following is a presenative listing of the sale last Fri. night:

COWS				18 blkwf			
1 cow	1075	@	19.60	5 Shorthorns	459	@	28.10
1 Holstein	1150	@	18.90	2 wf	812	@	25.90
1 Holstein	1495	@	18.70	1 wf	940	@	25.60
1 Holstein	1340	@	18.40	2 blkwf	690	@	25.50
1 Holstein	1210	@	18.10	11 wf horned	535	@	27.05
1 Holstein	1360	@	18.50	15 wf	580	@	28.10
1 cow	1080	@	18.50	1 blkwf	410	@	30.90
1 cow	1090	@	17.50	STOCKER & FEEDER HEIFERS			
1 cow	1150	@	17.50	2 wf heifers	640	@	25.00
STOCKER & FEEDER STEERS				1 black heifer	600	@	25.40
8 blk str	342	@	34.00	7 mixed	732	@	24.80
8 wf	375	@	32.20	2 mixed	795	@	25.00
16 wf	509	@	30.05	2 Charolais	700	@	24.70
15 wf	482	@	30.05	1 black	365	@	26.75

BRING YOUR CATTLE IN AT ANY TIME DAY OR NIGHT; WE'LL HANDLE THEM FOR YOU AT YOUR REQUEST.

For information, requests for appraisals at no obligation, or inquiries regarding coming sales, call me at any time, day or night.

DUDE REYNOLDS Abilene, Kans.
CO 3-3394

George Wesson
TOPEKA

NIGHT SALES Every Wednesday

START 8:00 P.M. — THRU HARVEST

Onaga Community Sale

Marvin Cottrell — Phone 889-4461 or 889-4665

AUCTION SALE

Thurs. Evening
JULY 13

Starts 6:00 p.m.
(Note Sale Time)

Having sold my home and leaving Clay Center, I will sell at public auction at the house located 1120 Clarke St.

Household Goods & Antiques

GE 9 ft. refrigerator, good
IHC 15 ft. chest type deep freeze, good
Drop leaf dining table and 6 chairs, cherry wood, nice
Small table, 2 card tables; 4 steel folding chairs.
Antique trunk; old library table.
Maytag washing machine; 2 round tubs on stand.
Antique rockers
TV trays; throw rugs; kero lamp.
Antique milk glass lamp; antique picture frame; large picture; yard and garden tools; yard hose and sprinklers.
Antique iron kettles, small; luggage; wood folding clothes dryer; bird bath and stand; large galv. wash tub.
20 in. electric fan; electric oven with 3 oven dishes; elec-

tric fans; electric coffee pots; large coffee maker; stone jars; fruit jars.

Antique coffee grinder with lamp; foot stools; electric waffle iron; food chopper; large teakettle, nickel plated, good; Presto cooker, good; a lot pots pans, dishes and other small household items.

YARD TOOLS, HAND TOOLS AND MISCELLANEOUS

20-in. Sears lawn mower, good; 2 step ladders; box rubber shingles; rubber door mats; 3 sacks white sun rock.
Horse collar; pipe fittings; 6 steel posts; nails; good tool chest; trouble light; saws; wood clamps; hammers; wrenches.
A lot real good small hand tools; electric motors; meat saw; knife sharpener; other small misc items too numerous to mention.

MRS. ELMER KUNZE, Owner

Aucts: Foster Kretz & Elmo Steffen Clerk: John E. Meredith
Clay Center, Phone WA 6-4122 Morganville Clay Center

John Deere-GMC

TRACTORS

1960 John Deere 3010, adj. front axle, 3-point, fully equipped, overhauled, new paint	\$3295
Ford 1964 5000 diesel Super Major, very clean, one owner	\$3195
John Deere 1951 A, power-trol, good	\$695
1947 John Deere B, starter, lights, power trol, good condition	\$395

USED TRUCKS

1961 Jeep Pickup, front wheel drive, very low mileage, exceptionally good rubber, slick and clean	\$1095
1962 Ford 350 1 ton, V-8, flat bed and grain sides, dual wheels	\$995
1949 Chev. 2-ton, 2-speed, grain bed, stock rack, underbody hoist, good rubber, clean	\$895

MACHINERY

IHC 12-ft. springtooth harrow, with smoothing attachments	\$150
IHC No. 37 11' wheel disc	\$295
IHC No. 350 3-14 plow, very good	\$395
John Deere 55 3-14 plow, on rubber, hydraulic lift, good	\$195
3-section Rotary hoe, 3 point hitch	\$150
NEW, SHOP WORN 18 ft. portable hay elevator	\$89

Call Us Collect CE 8-4103

BOWMAN'S

Your Manhattan Area John Deere Dealer

GMC
840 E. 8th

JUNCTION CITY, KANS.

POLLED HEREFORD TOUR SET FOR AUGUST 4-5
RUSSELL — The third annual Kansas Polled Hereford Assn. tour begins at the Baugh-

man Ranches near here August 4, and ends August 5 at the Vernon Kolarik farm west of Caldwell.

Lost or Stolen

Large Liver & White Pointer FROM CEDAR RIDGE KENNELS Onaga, Kansas

Answers to name of "BUCK"

Name Plate on Collar

REWARD FOR RECOVERY

Call ME 2-2296

CARL BLAKE

CLAY CENTER, KANSAS.

Quitting Business

AUCTION SALE

Thursday
JULY 13

Starts 9:00 a.m.

JOHN DEERE DEALERSHIP
Sabetha, Kansas

TRACTORS

JD 3010 1961, wide front
 JD 2010 1963 gas, wide front
 JD 70, '55 gas, new eng., pr. steer., new tires
 JD 50 gas, power steering, clean
 Case SC; JD 435 1959 diesel, P. S.
 JD B 1949; Oliver 880, p.s., gas
 JD B 1950; AC B, wide front
 IHC H, new pistons; Ford 8N 1950
 Oliver 770, gas; Ford 961, 1959, p.s.
 Tug HD mover, tractor, Chrysler

Oliver 2-row cultivator for 77
 2-row cultivator for IHC "B"
 4-section JD rotary hoe
 4-section Ford hoe, 3-point
 AC cultivator for "C"
 3-section JD hoe, 3-point

SPRAYERS

JD 29A 8-row trailer, like new
 2 Cont. 6-row sprayers, trailer type, 150 gal.
 Trailer sprayer with 8-row boom
 3 3-point mtd. sprayers with booms
 6x12 Big Bin wagon box
 7x14 Electric wagon box
 IHC 4-wheel trailer

LISTER & PLANTERS

IHC No. 460 4-row mtd. fast hitch planter
 JD 540 lister, disk bottom
 2 JD 540 listers, reg. bottoms
 Dempster lister, 3-point, rubber press
 Ferguson 3-point, disk bottom
 Ford lister 3-point, disk bottom
 Oliver lister mtd. for 77
 4-row Ford planter for 4-row cult.

MANURE LOADERS

Wenger loader
 AC loader for WD, AC
 JD 35 loader with hyd. bucket

RAKES

IHC 4-bar, rubber tire, high wheel
 JD 594 LW rake on rubber
 JD 594 4-bar, steel

MISCELLANEOUS

Wagon hoist, hyd. for AC tractor
 Ford 1/2-ton pick up; 300 gal. tank
 6 chain saws; wagon hoist
 Letz PTO 220X feed mill
 Continental post hole digger, 3-point
 Twin Draulic post hole digger
 Junk tractors and iron
 Ensilage bunk feeder wagon w/ tandem axle
 Midwest spring tooth att. for 494A planter
 4-section Kewanee harrow with steel evener
 12-ft. spring tooth harrow

CORN PICKERS & CORN HEAD

JD 227 picker with 630 mountings
 JD 227 picker with 3010 mountings
 JD 200 pull picker, 2-row
 JD 101 semi-mtd. picker
 JD 210 corn head, like new
 2M IHC picker
 Single row New Idea corn picker

DRILLS

JD 17x7 FB fertilizer, seeder, lifts, low rubber
 IHC 16x7 fertilizer seeder, hyd. lift, low rubber, press wheels
 16x7 MM drill, high wheels

MOWERS & CONDITIONERS

1965 JD 38 mower, 9-ft. bar
 JD No. 8 mower, 7-ft., semi-mtd.
 Oliver 7-ft., semi-mtd., mower
 MH 7-ft., semi-mtd. mower
 JD No. 10 side at. mower for 630
 2 JD hay conditioners
 3 JD No. 5 mowers; IHC 25V mower

CULTIVATORS & HOES

3 JD 2-row mtd. cultivator

**SAM COOK, JOHN DEERE DEALER
SABETHA IMPLEMENT**

Sale Mgr. Gene Toby,
 Aucts: Wayne Aeschliman,
 George Ackerman.

Clerk: Farmers
 State Bank
 Sabetha.

List Three Measures For Barn Fly Control

MANHATTAN — Barn flies are a real nuisance to Kansas stockmen this time of year.

Extension entomologists at Kansas State University recommend a three-point program for effective control of these pests.

First, practice good sanitation. Remove fly breeding places such as manure, wet hay, and feed at least once a week. Wet weather in Kansas has brought more of these problems than usual, Leroy Brooks, Extension entomologist, points out. By spreading wet material to dry, you make it unsatisfactory for flies, he says.

Second, apply a barn spray to the ceilings and walls of all livestock buildings. You can use a mixture of water and dimethoate, diazinon, or ronnel. These chemicals can be safely used in dairy barns or in beef barns. Baytex is also recommended for use in beef barns.

Be sure to remove all animals and cover feed and water troughs before spraying your buildings, Brooks says. Spray should be applied to the point of run-off on the walls and ceiling.

Third, use a bait material to supplement good sanitation and barn spraying. Spray baits will stick to vertical surfaces and can be applied heavily to favorite fly-roosting places.

This three-point program should give you good barn fly control. Be sure to read and follow the directions on the chemical containers carefully to insure best results and safety for you and your livestock.

Paul Swaffar To Leave American Hereford Post

Paul Swaffar, longtime executive secretary of the American Hereford Association, will retire in the spring of 1968. He will continue to serve as advisor and consultant to the organization after that time.

Dr. W. T. (Dub) Berry Jr., of Morrilton, Ark., will join the association September 1st and replace Swaffar when he steps down. Berry has been operations manager of Winrock Farms since 1961.

SILVER MEDAL SIRE FOR A PALMER BULL

TOPEKA — A Holstein bull owned by Glenn Palmer, Topeka dairyman, has been honored as a silver medal type sire by the Holstein-Friesian Association of America.

AUCTION

Farm Equipment

In conjunction with Flint Hills Truck & Tractor Liquidation Auction

Thurs., July 13

at Emporia, Kansas, the remaining used equipment belonging to the Cochenet Equipment will be sold:

Allis W.C. tractor
 Allis Model 60 PT combine
 Hesston 2 row corn harvester
 No. 5 Oliver 1-row corn picker
 Axle, wheels, tires & tongue with high speed Timken bearings — Ideal for implement trailer.

West of Emporia on 50 Highway at 9:30 a.m. Thursday, July 13.

**COCHENET
EQUIPMENT CO.**

(Former A-C Dealer)
 EMPORIA, KANSAS

Selling at AUCTION

SATURDAY, JULY 29

Starts 12:00 Noon

Suburban Home & 2 Acres East of Manhattan, Kans.



As I am moving away, I will sell my home and household goods at public auction at my home located 6 miles east of Manhattan, Kans., on highway 24; or 9 miles west of Wamego on highway 24

For full information see Grass & Grain July 4

MRS. R. P. RIDGEWAY, Owner

Aucts: Lawrence Welter & Glen Applegate.

Clerk: Harold Carlson

AUCTION SALE

Wednesday
JULY 26

Starts 10:00 a.m.

Lunch Served

Since I am going into the ministry I will sell the following land and equipment at public auction. Location: 6 miles south and 1/2 mile east of Simpson, Kansas. Land will sell at 1:30 p.m. at the premises, following equipment sale.

160 ACRES LAND

LEGAL DESCRIPTION: Northeast Quarter of Section Seven, Township Nine, Range Five, Ottawa County, Kansas. (NE 1/4 of 7, 9-5)

Farm consists of 160 acres: 103 acres crop land, 53 acres grass land, 4 acres buildings.

ALLOTTED ACREAGE: 54 acres wheat base, 16 acre corn base, 9 acres sorghum, 31 acre barley base.

The farm has a six-room house, 30'x80' building converted to a machine shed, large barn and a few other buildings.

THE FARM ALSO HAS AN EXTRA GOOD WELL

TERMS ON FARM: 25% down on day of sale, balance due when merchantable title of abstract is furnished.

POSSESSION OF COMPLETE FARM: When buyer accepts title and pays full purchase price. Unpaid balance of 54% loan can be assumed.

For appointment to see farm contact either Col. Bob Sahlfeld, PE 8-5211, Beloit, or Reiter Land Co., PE 8-3777, Beloit.

Machinery

1949 1 1/2 IHC truck with lift and stock racks, good rubber

5 ft. Allis Chalmers combine with PTO and topper

Four 14 ft. 21A Massey Harris combines

1974 A John Deere tractor

1949 G John Deere tractor with hydraulic power — dual wheels sell separately

1949 IHC Cultivision Farmall tractor

1976 D John Deere tractor

1937 A John Deere tractor with 7 ft. mower

11-ft John Deere tandem disc 10 ft duckfoot rigged for hyd.

15-7" gear driven auger

16-4" auger with electric motor

11-6" auger, Briggs & Stratton engine, 9 hp, good question

Two cultivators for John Deere tractors. A-B-G

Two 12-ft. John Deere spring tooth, good condition

1949 8-16 John Deere drill with fertilizer box

John Deere 2-row lister with packer

Manure loader for John Deere G tractor, with power

IHC manure spreader

1949 3-16 John Deere plow, with hydraulic

Two 3-14 John Deere plows

Homemade 30-ft. bale elevator, on rubber

No Ko bale loader

IHC Model 45 hay baler, with PTO

Six 4-wheel hay trailers

John Deere side delivery rake, on rubber

12 ft Krause oneway

John Deere oneway with wheel lift

Two corn binders in running condition

2-wheel home made sprayer

5-section drag harrow

Combine grain bin on wheels

good condition

1946 Chevrolet 1/2 ton pickup

good rubber

MISCELLANEOUS

260 gal. gas barrel with stand; 300-gal. gas barrel; 10 gal. gas barrel with hand pump; 230-gal. gas barrel with hose and stand; tractor mounted buzz saw; several

and 50-gal. barrels; 2 bu. buckets; several 1/2 bu. buckets; 1 1/2 horse power electric motor; air bubble with gauge and hose; homemade post hole digger, fits John Deere home made garden tractor; Fairbanks scale No. 11 on 4 wheels and many other miscellaneous items.

ANTIQUES

Corn sheller; International wheat binder; Case threshing machine; 4 horse scraper; several frames.

CATTLE EQPT. & HAY

Approx. 800 bales straw, approximately 500 bales hay; 200 gal. oblong stock tank; three 1/2 barrel calf feeders; on stand; electric fence; wire approximately 100 posts; wire stretchers; 14 ft. home made iron fence gate; several gates.

GRAIN BINS

1000 bu. Columbian steel bin, 3 yrs. old; 1000 bu. Columbian steel bin, 5 yrs. old.

HOUSEHOLD GOODS

Mr. & Mrs. Raymond Matyas

SIMPSON, KANSAS

Aucts: Col. Bob Sahlfeld, Beloit, Ph. PE 8-5211, & Vern Moore, Cawker City

Clerk: Max Reiter, Beloit

Classify Holstein Herds By Type

Herds of registered Holstein breeders in the Grass & Grain area have been scored for body type by Roger P. Denney, Fredrick, Maryland, staff classifier for the Holstein-Friesian Association of America. Many of the animals also received ratings under the new Descriptive Type classification program, which went into effect this year. Type classifications were excellent, very good, good plus and good. In the following list area breeders the first digit is the number of animals classi-

fied and the last four digits the number of animals in each of the above ratings.

ABILENE — Joe N. Engle — 36-0-6-13-11. Noble O. Frey, 26-0-3-15-8. Galen Kubin, 13-0-0-7-4. ALTA VISTA — Herbert M. Olson, 26-0-7-12-6. Harris E. Ramsour 9-0-1-6-2. BALDWIN — Dee Ann Shuck & Nancy Crawford 3-0-0-2-1. BAVARIA — Floyd Olson & Son 22-3-14-4-1. BUCYRUS — Walter W. & Welby E. Knop 24-0-1-11-11. ENTERPRISE — Delbert L. Smith 38-0-2-15-15. GYPSUM — Lawrence May-er 51-1-5-24-19. LAWRENCE — Robert R.

Biggsby 34-0-9-17-8. Francis R. Wempe 26-1-18-7-0. LINWOOD — Robin Dee & Lana Mae Leach 23-0-5-11-6. MANCHESTER — Quinn B. Steenbock & Sons 48-0-6-27-14. MANHATTAN — Kansas Artificial Breeding Service Unit 13-2-8-3-0. MENTOR — Forsberg Bros. 53-0-13-30-10. NEW CAMBRIA — D. E. & Gary E. Winslow 25-0-4-12-8. OSAWATOMIE — George W. Pretz 40-0-12-22-6. OTTAWA — E. Wayne Anderson 44-0-9-25-10. PAOLA — Allen Kettler 28-0-2-17-6. Alfred Wendte 6-0-0-1-5. RILEY — Elry Beninga 43-0-3-17-20. SALINA — E. A. Dawdy 25-12-11-2-0. Schneider Brothers 45-3-17-21-4. Allen E. Smith 84-0-11-41-26. SMOLAN — Brown Bros. 24-1-0-1-4. J. W. Carlin & Son 36-5-20-11-0. TALMAGE — Jack Sexton 25-1-3-21-0. TOPEKA — Joseph M. Koch 42-0-8-23-10. Floyd W. Moran 29-0-4-13-11. Glenn A. Palmer 35-6-19-10-0. VASSAR — Glenn R. Bauck 36-0-1-14-18. WAMEGO — Thomas E. Maguin 22-0-1-9-7. WELLSVILLE — Yvonne M. & Roger A. Thorn 39-0-6-20-10. WHITE CITY — Andvacres Holstein Farm 47-0-5-19-20. Classification has been in continuous operation since 1929 as the official type program of the breed. It measures the physical conformation of dairy animals through comparison with the True-Type models, which represent theoretical perfection. The program received a major change in 1967 with the addition of descriptive type informa-

tion. Data made available by the program provides detailed reference material for Holstein breeders in all parts of the country.

Grass & Grain

21

July 11, 1967

LAND AUCTION

real estate formerly owned by FRANK HOULTON, SR., now deceased, tax rolls show

159.68 acres in all three tracts

TRACT NO. 1: All that part of the W½ of the SE¼ of the SE¼ of 33-13-2, Dickinson County, Kansas, lying west of the center line of Kansas Highway No. 15, subject to easements of record (located approximately ½ mile south of K-15 bridge)

TRACT NO. 2: All that part of the W½ of the SE¼ of 33-13-2, Dickinson County, Kansas, lying east of the center line of Kansas Highway No. 15, subject to easements of record (located approximately ½ mile south of K-15 bridge)

TRACT NO. 3: The NE¼ of the NE¼ and one acre in the SE¼ of the NE¼ and the W½ of the SE¼ of the NE¼ and irregular tracts in Lots 2 and 8, all in 34-13-2, Dickinson County, Kansas (known as Frank Houlton farm and being described as containing 88 acres more or less on the tax rolls of Dickinson County, Kansas (located approximately ½ mile east of the KP&L plant)

POSSESSION of wheat and spring crop ground immediately after 1967 harvest; buildings and balance of land at the time contract closed.

1967 TAXES, based upon last year's tax payment, paid by Seller and Seller retains 1967 crops and ASC benefits.

WARRANTY DEED and abstracts, showing merchantable title, except sold subject to easements of record.

ASC INFORMATION: wheat allotment 64.5; feed grain base 4 acres; barley base 54 acres. Further information concerning ASC program available on separate tracts from ASC office. Sale will be held at South front door of Court House in Abilene, Kansas, on

JULY 13, 1967, 10 o'clock A.M.

TERMS 25% down on date of sale and balance when title is approved

For particulars contact Carl Schnell and Ray Wilson, Auctioneers and Brokers; Chas. J. Stapf, Administrator W.W.A. or Lehman, Romine & Guilfoyle, Attorneys for Estate, all of Abilene, Kansas.

Dissolving Partnership

AUCTION

Weekly Livestock Auction Market

NEWTON, KANSAS

20 Miles North of Wichita

FORMERLY KNOWN AS THE COW PALACE

Sat., July 15, 2:00 p.m.

Ten acres. Additional land leased from ATSF Railroad. Beautiful main building of masonry construction with brick veneer, 125 ft. x 125 ft. New in 1960. Arena seating for 522. Pens for 12,000 cattle and 700 hogs. Best of facilities throughout. See to appreciate. Regular livestock sales on Wednesdays. Ideal location with unlimited possibilities. Gateway to southwest wheat fields. Flint Hills. Cattle feeding. Sells complete. Escrow agent: Kansas State Bank, Newton. For descriptive brochure call

JIM KIRKEMINDE, Auctioneer and Real Estate Broker
185 East 29th St., Topeka, Kansas 66605. Phone: AM 6-4590

CLIFFORD JAY HOLSTEIN SALE

Wednesday, July 26

LEOTI, KANS.

Complete Dispersal of Milking Herd and Bred Heifers

85 Head — 30 Reg.; 55 Grade

Rolling IBM Herd Ave. 13,970 3.8531
Sale at Farm 5½ mi. N. and ½ E. of Leoti, Kans.

Sale Starts at 12:30 p.m. Under Cover

For information write John Carlin, Sale Mgr., Smolan, Kans. 67479.

2-DAY WAREHOUSE SALE

FRI., JULY 14

10 a.m.-12:15 p.m.; 7-9 p.m.

SAT., JULY 15

10 a.m. to sell-out

MANHATTAN, KANS.

SALE

I am retiring and permanently closing out the business I opened in Aggieville, Manhattan, Kansas, in 1937. The merchandise is now located in my warehouse facing the alley between Moro and Laramie, west of 12th St. I was a Westinghouse dealer for many years. All remaining new merchandise, many serviceable used appliances, all store fixtures, wall shelving, etc. will be sold to empty the building for sale. There are too many items to list, but a sampling is indicated below.

New & Used Appliances And Used Furniture

Wall to wall selling of a very large accumulation including washers, dryers, refrigerators, ranges, fans of all types. Musical instruments, new & used; new and used radios, record players & used TVs. Small appliances such as sweepers, irons, sewing machines. Large stock of radio tubes.

Many new & used electric motors, new & used antennas.

New & used compressors.

Pipe fittings and plumbing supplies & fixtures, copper tubing, fluorescent lights, shelves, tables, small cabinets.

A great many pieces of used furniture from apt. houses, mostly one of a kind, and some antiques.

ALL ITEMS SUBJECT TO PRIOR SALE

G. W. SALISBURY, Owner

Salisbury Appliance & Music Warehouse

Auctioneers: Lawrence Welter and Glen Applegate

Clerk: Harold Carlson



Johnny Kaw

Says:

The only way to keep our axles from dragging is to stay out of the ruts.

FURNITURE

AUCTION

Friday, July 14

5:00 p.m.

324 W. 2nd Street

Junction City, Kansas

A complete household of fine old furniture & misc. articles. Adams mahogany dining room suite with round table, 5 chairs & host chair with needlepoint seats. Buffet & china cabinet, governor w/inthrop desk, 2 leaded front sectional book cases, several antique rockers, early american sectional divan, hundreds of other articles too numerous to mention. Large sale come early.

Mahogany bedroom suite, victorian hand carved chair, 5 star cut clean crystal goblet set, Singer hemstitching machine w/ attachments, picture frames.

Eva Lena Ely Est.

C.W. "Bill" Crites, Auct.

AUTO RACES

REGULAR SUNDAY RACES CHANGED TO FRIDAY NIGHT — 8 p.m.

STARTING FRIDAY, JULY 14

PLAZA SPEEDWAY

Junction City

ONE MILE EAST ON J-HILL

RACE RESULTS, SUNDAY, JULY 9

Semi-Late Model 1st Heat Time: Bob Springer; Wayne Meredith; Larry Sartain

Modified Class 1st Heat Time: Dick Pollard; Hoppenstedt; Roger Thompson.

Semi-Late Trophy Time: Wayne Meredith

Modified Class Trophy Time: Roger Thompson

Semi-Late Semi Time: Larry Sartain; Schoenrock; Ron Walsh

Semi-Late Model Class Feature Time: Bob Springer; Shelley Stinson; Schoenrock; Bill Mayes; Meredith; Ray Gfeller.

Modified Semi: Dick Pollard; Bill Wilson; Roger Thompson

RACES EVERY FRIDAY NIGHT AND HOLIDAYS

Finest And Fastest Quarter Mile Track In The Country

NOTICE OF SALE OF THE WAKEFIELD LAKE AND PARK

JULY 17 AT 10:00 a.m.

Notice is hereby given that the Board of County Commissioners of Clay County, Kansas, by unanimous vote, adopted a Resolution on June 19, 1967, which determined that the county recreational facility commonly known as the "Wakefield Lake" be sold at private sale on July 17, 1967. The tract which consists of both a lake and adjoining ground contains approximately 43.06 acres, more or less.

The sale is open to all the general public that desire to submit sealed bids with the County Clerk on or before 10 o'clock a.m., July 17, 1967, and said bids will be opened in the Commissioners' Room of the Clay County Court House, Clay Center, Kansas, at that time. The Board of County Commissioners reserves the right to reject any and all bids. A deposit in the amount of One Hundred Dollars (\$100.00) shall accompany each bid, said sum to be returned all unsuccessful bidders at the time the bids are opened.

Clay County will furnish to the successful bidder, a certificate of title as evidence of the marketability of title to the above described premises and will, within a reasonable time after July 17, 1967, furnish a Warranty Deed to the successful bidder and purchaser of the above described premises, the balance of the purchase price due upon delivery of said deed. Any persons with questions regarding the tract to be sold or procedure of sale should contact either the County Engineer or County Attorney,

The Board Of County Commissioners

STORMOR DOES MORE

"SAVE BUSHELS,
INCREASE PROFITS WITH

STORMOR

DRY-O-MATION"

A STORMOR Dry-O-Mation System allows early harvest to avoid field losses—efficient drying—easy filling, unloading, transferring of grain.

■ STORMOR bins range from 14 to 60 ft. in diameter, 1,000 to 66,400 bushels in drying capacity.

■ STORMOR Dry-O-Mation Systems are engineered and field-tested to put your grain on the market at premium prices.

MIX MILL SYSTEMS

JAMES WAHLE A/C 913 CE 8-7660
RT. 2 JUNCTION CITY, KANSAS

• Dry-O-Mation • Clear-Span Steel Buildings • Cribs
• Batch Dryers • Oxygen-Free Storage • Bulk Feed Bins

STORMOR Inc., Fremont, Nebraska

AUCTION SALE

**Thursday
JULY 13**

Starts 9:30 a.m.
Lunch Served

**COMPLETE LIQUIDATION OF
Flint Hills Truck & Tractor Inc.**
IHC DEALER

Located on WEST HIGHWAY 50 just west of Transport Inn
EMPORIA, KANSAS

For Complete Listings Of
Tractors, Trucks, Machinery
& Misc. Items see Grass & Grain
Issue of July 4

Flint Hills Truck & Tractor Co., Inc.

Evert Smith & Jim Barr, Auctions. Claybourne Smith, Clerk
ALL DEALERS ARE WELCOME

Ronald Rice Motors, Inc.

CHEVROLET OLDSMOBILE CADILLAC
North Kansas' Largest Volume Dealer
NW 2nd Phone CO 3-4000 ABILENE, KANS.

— Year-End —

New Model Car Sale

Now is the time to trade while you can get a better deal. Some of the General Motors dealers are already nearly out of 67 models. We have a fine selection to choose from.

1 CORVAIR	8 BISCAYNES
10 CHEVELLES	3 CAMAROS
10 BEL AIRS	14 IMPALAS
8 OLDSMOBILES	3 CADILLACS

**15 DEMOS & COMPANY CARS
AT HUGE DISCOUNTS**

From all indications the new 68 models will be taking a price increase.

**Stop in soon while we
have this fine selection
for you to choose from.**

**You'll Never Make A Better
Buy Than Right Now**

AT NO. CENTRAL KANS. LARGEST VOLUME DEALER
Open Evenings Till 9 p.m.
Sunday Opening 1-5 p.m.

G&G Calendar

July 12 — Bankrupt sale in St. Joseph, Mo., Shockey Dodge Inc. Auct: Hagel Auction Co.

July 12 — Farm sale southwest of Hope, Mrs. Clarence Rock. Aucts. Schnell Bros. and Lee Remy.

July 13 — Sale of remaining machinery of the former A-C dealer in Emporia, Kans., Cochenet Eqpt. Co.

July 13 — Quitting business in Sabetha, Kans., Sam Cook, Sabetha Implement Co., John Deere dealer. Sale mgr. Gene Toby; aucts Wayne Aeschliman and George Ackerman.

July 13 — Household goods in Clay Center, Mrs. Elmer Kunze. Auct. Foster Kretz.

July 13 — Complete liquidation of the Flint Hills Truck & Tractor, Inc., Emporia. Aucts Evert Smith and Jim Barr.

July 13 — Land sale in Dickinson County, sale in Abilene, Kans. Frank Houlton Sr., deceased. Aucts & brokers Carl Schnell and Ray Wilson; Chas. J. Stapf, adm.; Lehman, Romine & Guilfoyle, attorneys.

July 14 & 15 — Two-day sale of new and used household appliances, musical instruments and miscellaneous, in Manhattan, Salisbury's Appliance & Music warehouse. Auct. Lawrence Welter.

July 15 — Furniture, antiques & real estate in Gorham, Kans., Auct. Marvin Mayers.

July 15 — Partnership dissolution sale in Newton, Kans., Newton Livestock Auction. Auct. & real estate broker, Jim Kirkemine.

July 15 — Land auction northeast of Manhattan, Mr. & Mrs. Vernon Reyes. James P. Reagan, broker; Loren Johnson, auct.

July 15 — Farmland west of Ellsworth, Kans. & house in Holyrood, Maria Tappendick Est. Auct Victor Bros. Sales.

July 15 — Household furnishings & antiques in Abilene, Kansas, heirs of Mrs. D. W. Tappen. Aucts Carl Schnell, Lee Remy & Wm. Schnell.

July 17 — Opening of bids for the sale of Wakefield Lake & Park, Clay County, Kans., courthouse, Clay Center, Ks. Board of County Commissioners. Bruce Wingert, county attorney.

July 19 — Household goods in Clay Center, Edith Musselman Est. Auct. Foster Kretz.

July 20 — High grade Holstein dairy herd dispersal southeast of Seneca, Kans., Mr. & Mrs. Lawrence Hermes. Aucts Gene Toby and Vern Groff.

July 20 — Household goods in Clay Center, George Bisenius. Auct. Foster Kretz.

July 21 — Furnishings in Manhattan, Crum's Beauty School dormitory. Auct. Foster Kretz.

July 22 — Antique auction in Washington, Kans., Ivan Thompson. Auct. Don Roche.



**TEX REAL
ONWARD 5512**

Cow Herd —
Royal Essar
C Kato, Heir
Apparent

**SERVICEABLE BULLS
WITH WEIGHT RECORDS**
Priced . . . \$300 to \$500

**GRANT POOLE
MANHATTAN, KANS.**
Located 4 mi. south of I-70-K177
intersection, 2 mi. west on Mc-
Dowell Creek Rd. Ph. PR 6-8315.

July 22 — Furniture sale in Junction City, Kans., Dr. L. W. Stewart. Auct. C. W. Crites.

July 22 — Hardware store close-out in Wilson, Kans., Keim-Gamble store. Auct. Victor Bros. Sales.

July 25 — Dairy cattle dispersal southeast of Lucas, Kans., Mr. & Mrs. Joe Klaus. Auct. Marvin Mayers.

July 25 — Brown's drug store in Wilson, Kans., Aucts Victor Bros. Sales.

July 26 — Farmland and equipment southeast of Simpson, Ks., Mr. & Mrs. Raymond Matyas. Aucts Bob Sahlfeld and Vern Moore.

July 26 — Farm sale northwest of Detroit, Kans., Mrs. Gail Betts. Changed from July 12. Auct. Foster Kretz.

July 26 — Complete dispersal of Holstein cows & bred heifers in Leoti, Kans. Sale mgr. John Carlin, Smolan.

July 27 — Household sale in Clay Center. Foster Kretz, auct.

July 28 — Land auction south of Blue Rapids, Kans., Katherine Wuethrick estate. Auct. Don Roche.

July 28 — Household goods in Leonardville, Charles Burkman. Auct. Foster Kretz.

July 29 — Real estate and household sale east of Manhattan, US24, Mrs. R. P. Ridgeway. Lawrence Welter, auct.

Aug. 1 — Furniture & miscellaneous southwest of Upland,

C. G. Weller. Auct. C. W. Crites.

Aug. 5 — Farm sale northwest of Beverly, Kans., Geo. Achterberg Est. Auct. Victor Bros. Sales.

Aug. 5 — Furniture sale in Junction City, Ronald Coop. Auct. C. W. Crites.

Aug. 15 — Sealed bids opening for farmland in Wabaunsee county estates of Clarence and Irene T. Hund. M. M. Mucenthaler, St. Marys, Kans. agent. Richard P. Royer, St. Marys, atty.

Sept. 4 — Joint production sale in Washington, Kans., Bar B Farm, Hanover, Kans.; and Mormon Springs Angus Farm, Francis & Shirley E. Nutsch.

Oct. 9 — Fall hog sale in Newton, Kans., Balthrop Farms of Wichita.

Oct. 21—25th annual Kansas Guernsey sale in Hutchinson, W. G. Ransom, Williamsburg, co-chairman sale committee.

Oct. 28 — Kansas Milking Shorthorn society state sale in Hutchinson, Freg Rogers, sale mgr. Dick Sears, auct.

Nov. 4 — All breed calf sale in Manhattan, Olson, Fagerberg & Hawkinson, joint sale.

Nov. 3 — 5th annual Hammanlund-Shamrock Angus sale. St. Marys, Kansas.

Nov. 15, 1967 — Registered Hereford sale, Smolan, Johnson Hereford Farms; Elmer L. Johnson & Sons.

Nov. 18 — Kocher Hereford production sale in Onaga, Herman Kocher & Sons.

Nov. 18 — State ewe sale in Hutchinson, Kans. Purebred Sheep Breeders Assn., V. E. McAdams, sec.

The Growing Hog Market Is At

WASHINGTON SALES CO.

TRY US SOON

**HOGS every TUESDAY
CATTLE every WEDNESDAY**

A Growing Market
for Finished Cattle

All Sales
Start 1:00 p.m.

ED BURT

Barn Phone EA 5-2266 Residence EA 5-2393
Washington, Kans.



Cattle were in short supply Saturday, due to wet grounds and harvesting, but prices were good. Fat hogs were in great numbers again, with out regular packer buyers running the prices on No. 1 fats to a 22.90 to 23.20 range. There were about 200 feeder pigs on hand, the better ones going at 17.00 to 19.00 by the head; and the thinner ones at 14.00 to 17.00.

There was a good market on fat cattle. We had quite a few selling at 25.65, which was tops. We also had a pretty good run of Holstein steers, those in the 550 lb. range going at 23.40 and the 1050 weights at 22.25.

We are badly in need of feeder cattle to supply our buyers, so if you have some you want to sell, call us and we'll appraise them for you.

We are expecting a good sale this coming Saturday. Already consigned are 70 head of real choice whitefaces weighing 600 to 700 lbs.; and a few black steers 500 to 600 lbs.

If you are looking for feeder pigs, we have 109 vacc. shoats due in Saturday; and 52 mixed vacc. shoats.

**LICENSED AND BONDED
BARN PH. JUNCTION CITY CE 8-1471**

If you have livestock to appraise, call:

**VERN LANGVARDT, Manager, 502 UPLAND
HOWARD LANGVARDT, Auctioneer, 520 UPLAND
HERB NEUMEYER, White City, Phone 349-2863**

der. Auct. C. W.
arm sale northwest
Kans., Geo. Acht
Auct. Victor Bros.
Furniture sale in
City, Ronald Coop.
V. Crites.

Sealed bids opening
and in Wabau
ates of Clarence
T. Hund. M. M.
er, St. Marys, Kans.
chard P. Royer, St.
y.

joint production sale
ngton, Kans., Bar B
nover, Kans., and
Springs Angus Farm,
Shirley E. Natsch.

all hog sale in New
Balthrop Farms of

th annual Kansas
ale in Hutchinson,
nson, Williamsburg,
an sale committee.

Kansas Milking
n society state sale
son, Freg Rogers,
Dick Sears, auct.

All breed calf sale in
n, Olson, Fagerberg
nson, joint sale.

5th annual Hammon
mrock Angus sale.
s, Kansas.

1967 — Registered
sale, Smolan, John
ford Farms; Elmer
on & Sons.

Kocher Hereford
on sale in Onaga,
Kocher & Sons.

State ewe sale in
son, Kans. Purebred
reeder Assn., V. E.
s, sec.

ket Is At

0.

Y All Sales
Start 1:00 p.m.

ED BURT

ence EA 5-2393

ns.

due to wet grounds
Fat hogs were in
packer buyers run
2.90 to 23.20 range
and, the better ones
and the thinner ones

cattle. We had quite
ps. We also had a
hose in the 550 lb.
ights at 22.25.

cattle to supply our
to sell, call us and

s coming Saturday
ul choice whitefaces
ck steers 500 to 600

we have 109 vacc.
vacc. shoats.

ED TY CE 8-1471

ise, call:

02 UPLAND
520 UPLAND
hone 349-2863

to hunters on July 14, reports
Dave Coleman, Pratt, chief of
the game division of the Forest-
ry, Fish and Game Commission.
Application blanks, available
from county clerks and most
license vendors, must not be
postmarked before Monday,
July 17.

July 11, 1967

"For the first time, different
applications will be used for
the two seasons," Coleman said.
"A blue application blank will
be used to apply for an archery
permit while a buff-colored one
will be required for gun hunt-
ing in the management units,"
Coleman added.

Accompanying each applica-
tion blank will be a brochure
outlining all regulations and a
special mailing envelope. Each
applicant must use the special
envelope for mailing in order
for the application to receive
proper attention.

Firearms permit applicants
are reminded that permits are
to be issued on a first-come,
first-served basis. A total of
6450 permits will be issued for
sixteen firearms management
units. The archery season will
be state wide with no limit on
the number of bow hunters par-
ticipating. Each applicant must
possess a 1967 hunting license.
The license number will be in-
cluded on the application.

The deadline for applications
for both archery and firearms
permits will be September 1.
Any postmarked after this date
will not be considered.

The 1967 firearms deer sea-
son in Kansas has been set for

PRICES REDUCED

ON ALL SIZES

Example:

Rear Tractors

13.6-38 — \$59

All other sizes similarly
reduced.

Plus Fed. Ex. Tax and
Resalable Ex. Tire

FINK

TIRE SERVICE

Wamego, Kans. 456-2575

December 8-12; the archery sea-
son will extend for 57 days,
from October 1 through Novem-
ber 26.

**AMA FAVORS MORE
LIBERAL ABORTION LAWS**
The American Medical Asso-

ciation has taken an unequivo-
cal stand in favor of liberalizing
abortion laws. California, Colo-
rado and North Carolina this
year modified their statutes in
regard to abortion, and similar
legislation was introduced in 20
other states.

AUCTION SALE

**Saturday
JULY 15**

Starts 12:30 Noon

We will sell at auction the personal effects of the late Mrs.
W. Tappen located at 221 East First St. in Abilene, Kansas.

Household Goods

Large Westinghouse refriger-
ator with crosstop freezer;

Good refrigeration air
conditioner for 4-room house

Small maple desk & chair;

Antique
Square oak table with large
round legs & 6 oak chairs;

Good
Large library table

Good
Console Columbia Graphonola;

Antique
Albums of records

Oak bedroom suite with
double dresser, large chest,

Box spring & mattress, like
new; maple bedroom suite

With dresser, commode, spring
mattress, antique; brass

Bed complete; several other
items complete.

2 piece divan set, rose beige
in color; console Zenith TV;

Automatic portable sewing
machine, good; console Singer

sewing machine (antique);

Combination desk and book-
case; 2 small sewing stands;

Brushing divan & chair; an-
tique buffet; several trunks;

several high backed chairs.

Table model Zenith TV; heavy
oak center table; several

radio; studio couch; radio cabin-
small stands; Zenith table ra-

et; large walnut coffee table,
good; 2 blonde step tables;

TV trays and stands.

Antique mirror & frames;

antique picture frames; Frig-
idaire refrigerator; gas range;

dining room table with 6
chairs; wood base cabinet;

utility cabinet; approx. 150
salt and pepper shaker collec-

tion; large squirrel cage air
conditioner; small squirrel

cage air conditioner; Dormey-
er 10 speed mixer, good.

Antique dishes; miscellan-
eous items & other dishes.

Cooking utensils; floor
lamps; small book stand; flow-

er stand; small sewing rock-
er; 4 good small oak rockers;

2 large oak rockers; 2 9x12
rugs; hat rack; several card

tables; several mirrors; suit-
cases; books; bottom part of

old kitchen cabinet, antique;
old ice box; bedding; linens;

and many more miscellaneous
items.

HEIRS OF

Mrs. D. W. Tappen

Carl Schnell, Lee Remy & Wm. Schnell, Auctioneers
Carl Harshman, Clerk United Trust Co., Abilene, Cashier

Sale Every Wednesday

Hogs 1:00 p.m.

Cattle Follow Hogs

NOTICE! Sales Held As Usual

There will be no interruption of sales at this barn during partnership
dissolution transaction. SEE YOU WEDNESDAY, JULY 12.

Note Time
of Sale

HOGS 1:00 p.m.

**CATTLE
Immediately follow
Hog Sale**

See you July 5th.

Due to the heavy rain and
the fact that announcement
of partnership dissolution
proceedings misled some of
our customers, our first
sale after harvest was light.

BARN PHONE AT 3-5566

There is someone at the barn
all day Tuesday & Wednesday &
Thursday morning. Otherwise
call:

AUCTIONEER:

Floyd Gehring
Moundridge Phone 345-8195



NEWTON

LIVESTOCK &
COMMISSION CO.

NEWTON
KANSAS

Sale Every Thursday

Hogs 11:30 a.m.

Cattle 1 p.m.

Thursday, June 22nd was our last sale before the
wheat harvest. We had a big run of butcher hogs
and pigs and a rather small run of cattle. The
extreme top on butcher hogs was \$22.15 with the
bulk going for \$21.80. Weaning pigs were \$1.00
to \$2.00 per head higher. The market on stocker
and feeder cattle was strong to \$1.00 higher.
Cows were 50¢ higher and bulls were \$1.00 to
\$2.00 higher. There is a strong demand for all
kinds of livestock.

We are expecting a large run of both cattle and
hogs at our first sale after the wheat harvest
which will be by July 13th.

The following is a sampling of our consignments
for the June 22nd sale:

FAT CATTLE & FEEDERS

1 blackwhif steer	--- 540 @	28.75
3 whiface steers	--- 817 @	27.40
2 whiface steers	--- 903 @	25.70
2 red steers	--- 710 @	25.10
1 black steer	--- 580 @	25.10
3 blkwhif steers	--- 830 @	24.30
1 whiface steer	--- 885 @	23.90
2 black steers	--- 622 @	23.80
1 black bull	--- 630 @	23.70
6 black heifers	--- 550 @	23.60

COWS

1 holstein cow	--- 1375 @	19.50
1 whiface cow	--- 1350 @	19.10
1 holstein cow	--- 1070 @	18.90
1 whiface cow	--- 995 @	18.90
1 red cow	--- 1270 @	18.80

BULLS

1 whiface bull	--- 1610 @	24.00
1 whiface bull	--- 750 @	23.20
1 black bull	--- 1455 @	23.00

BULL & STEER CALVES

1 blkwhif steer	--- 320 @	34.00
1 whiface bull	--- 305 @	31.75
1 whiface bull	--- 495 @	30.00
1 blkwhif steer	--- 385 @	29.75

HEIFER CALVES

26 whiface heifers	--- 488 @	26.75
1 whiface heifer	--- 490 @	26.40
2 blkwhif heifers	--- 373 @	24.80
1 whiface heifer	--- 425 @	24.00
1 blkwhif heifer	--- 280 @	23.00
1 whiface heifer	--- 450 @	22.00
2 whiface heifers	--- 410 @	21.60

HOGS & PIGS

61 mixed fats	--- 235 @	21.85
35 hamp fats	--- 230 @	21.80
46 red fats	--- 217 @	21.70
50 hamp fats	--- 205 @	21.65
12 mixed fats	--- 232 @	21.60
1 white sow	--- 325 @	20.40
2 mixed sows	--- 388 @	18.60
4 red sows	--- 429 @	17.60
1 white gilt	--- @	71.00
1 hamp boar	--- 440 @	13.90
1 hamp boar	--- 435 @	13.10
1 red boar	--- 555 @	12.50

RALEIGH BREEDING, MANAGER

barn HI 3-3671; home HI 3-3547

Auctioneer: Larry Lagasse,
Ph. Concordia, Kans. CH3-1714

MARYSVILLE

LIVESTOCK & COMMISSION CO.
MARYSVILLE, KANSAS

Sell At St. Marys

Sell
Or Buy

Cattle & Hogs

By
Auction

Tuesdays

Due to the harvest season our receipts this week were light. The market on all classes of hogs were 50¢ to \$1.00 higher. Cattle of all kinds were steady to strong. The following is a sampling of the sale.

Sale of 1st of July
Regular following
Repeat the 1st of July
for the 1st of July

STOCKER & FEEDER STEERS

1 blkwhifac steer	615 @	27.10
8 black steers	688 @	26.75
2 whifac steers	700 @	26.60
1 whifac steer	720 @	25.00
1 whifac steer	80 @	25.50
1 black steer	600 @	24.70
1 blkwhif steer	570 @	25.50
1 black steer	620 @	24.75
1 whifac steer	72 @	24.60
1 black steer	58 @	24.75
1 black steer	70 @	24.00
1 black steer	770 @	24.00

STEER CALVES

1 black steer	420 @	30.00
1 blackwhifac steer	360 @	28.80
1 whifac steer	520 @	28.80
1 whifac steer	465 @	28.75
1 whifac steer	470 @	28.00
3 whifac steers	49 @	27.80
1 whifac steer	400 @	27.75
1 blackwhifac steer	440 @	27.00
7 black steers	551 @	28.85
2 whifac steers	375 @	26.50
9 whifac steers	539 @	26.40
1 red steer	350 @	25.00

STOCKER & FEEDER HEIFERS

1 whifac heifer	560 @	25.00
4 black heifers	602 @	23.00
3 black heifers	646 @	23.00
1 holstein heifer	1260 @	21.00
1 whifac heifer	640 @	19.30

HEIFER CALVES

1 black heifer	350 @	27.75
2 whifac heifers	545 @	26.75
3 black&blkwhif heifers	426 @	24.65

6 black heifers	550 @	24.60
1 black heifer	445 @	24.00
1 black whifac heifer	455 @	24.00

COWS

2 holst on cows	148 @	18.25
2 whifac cows	140 @	18.05
1 holst on cow	370 @	17.75
1 black cow	980 @	17.60
1 holst on cow	1545 @	17.50
2 black cow	1142 @	17.00
1 whifac cow	1105 @	16.60
1 whifac cow	1465 @	16.10
1 red cow	145 @	16.00
1 jersey cow	840 @	16.00
1 jersey cow	810 @	15.50
1 whifacbrind cow	620 @	15.50
1 red cow	1410 @	15.00

BULLS

1 red bull	1500 @	22.70
1 whifac bull	380 @	380.00
1 charolai bull	327 @	327.50
1 charolai bull	305 @	305.00
1 whifac bull	205 @	205.00

PIGS

1 white shoat	21.50
3 white pigs	19.25
3 mixed pigs	18.75
10 hamp pigs	11.25
7 spotted pigs	11.00
15 hamp pigs	10.25
4 hamp pigs	9.00
1 black pig	7.50



LIVESTOCK COMMISSION
COMPANY

Rezac



St. Marys,
Kans.

Auctioneers: Lawrence Welter and Gene Toby



The cattle run was light Monday at our regular sale. However, we sold 305 hogs and 36 cattle. The hog market was very active and \$1.00 higher than the previous week. The top being \$23.30. As of July we are starting our 2nd year at the Farmers & Ranchers. During the first year we sold 89,044 cattle and 20,416 hogs. The management wants to thank each and every one who sold stock here during the past year. Whether you sold one head or several hundred, each consignment was deeply appreciated. We hope to continue to serve you with your livestock marketing in the year coming up. When you have cattle to sell, call one of the owners, or call the office -- TA 5-0211, collect, for an appraisal of your livestock. The following is a sampling of our Monday sale:

CATTLE

Virgil Linder, Hope	1 blk cow	845 @	15.50
Virgil Linder, Hope	1 bwf str	345 @	27.50
Geo. Boles, Herington	1 hol cow	980 @	15.60
CK Ranch, Brookville	1 wf cow	1240 @	18.05
CK Ranch, Brookville	1 wf cow	1005 @	18.00
CK Ranch, Brookville	1 wf cow	1025 @	17.90
CK Ranch, Brookville	1 wf cow	970 @	18.00
CK Ranch, Brookville	1 wf cow	935 @	17.80
Behnke Bros., Bushton	9 mix hfrs	837 @	23.50
Albert Frantz, Linds	1 brn hfr	580 @	22.70
Leonard Unruh, Tampa	1 grn cow	845 @	17.40
Leonard Unruh, Tampa	1 grn cow	1180 @	17.90
Terry Unruh, Tampa	1 blk str	800 @	24.40
A. C. Perry, Tescott	1 blk hfr	695 @	17.80
A. C. Perry, Tescott	1 hol cow	1035 @	18.30
Jay Krause, Gypsum	1 ayr cow	1000 @	15.80
August Krause, Gypsum	1 blk cow	1180 @	17.90
Harlow Peterson, Ada	1 red cow	1055 @	16.00

HOGS

F. A. VanMeter, Ada	10 mix hogs	195 @	22.85
F. A. VanMeter, Ada	2 mix hogs	162 @	21.30
Arthur Reed, Kanopolis	9 mix hogs	195 @	23.20
Dean Stauffer, Salina	5 mix hogs	185 @	22.90
Larry Nestler, New Camb.	6 mix hogs	181 @	22.35
Larry Nestler, New Camb.	2 mix hogs	170 @	21.60
Eldon Arpin	9 mix hogs	227 @	23.25
Jerry Barta, Junction City	3 mix hogs	172 @	21.60
Jerry Barta, Junction City	2 mix hogs	138 @	21.80
Lowell Larson, Lincoln	11 mix hogs	208 @	23.30
Art Guy, Abilene	10 whi hogs	206 @	23.35
Ray Altenbaumer, Bushton	4 blk hogs	235 @	23.10
Ray Altenbaumer, Bushton	2 belt hogs	210 @	23.10
Harry Bradley, Bennington	2 spt sows	440 @	17.50
Charles Shelton, Salina	3 mix hogs	187 @	22.70
Dahlsten Farms, Marquette	10 mix hogs	222 @	23.30
Alfred Mayer, Gypsum	6 mix hogs	225 @	23.25
Gothi & Selleck, Culver	27 mix hogs	197 @	23.25
Charles Nelson, Lincoln	9 mix hogs	202 @	23.30
E. W. Norman, Niles	1 blk sow	345 @	18.30
Gus Isaacson, Niles	1 boar	460 @	13.70
Dennis Graham, Bennington	1 whi boar	655 @	13.20
Mildred Gray, Salina	1 red sow	690 @	13.30

FOR INFORMATION OR ESTIMATES

LAURENCE CLEMENCE
Abilene Phone CO 3-3091

MERRILL CHRISTIANSEN
Durham Phone 732-3371

BOB MUIR
Salina Phone TA 3-2963

Market Reports
Radio Station KSAL, Salina
6:45 a.m. Every
Monday, Wednesday & Friday
KFRM
6:55 a.m. Mon. through Fri.

Central Kans. Most Modern Livestock Auction
WEST ON OLD US 40

Salina

MONDAY SALE ONLY THRU HARVEST

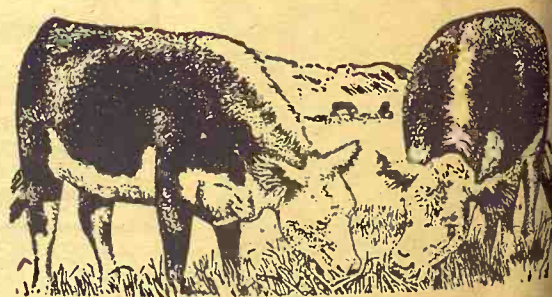
MONDAY
Fat Cattle 9 a.m.

Hogs sell at 11:00 a.m. followed by our regular cattle sale as they are unloaded.

THURSDAY
Cattle Only

Selling starts at 11:00 a.m. Cattle will sell in the order they are consigned on the books.

Art Weis, Minneapolis	13 mix hogs	219 @	23.30
Emery Frost, Smolan	25 mix hogs	246 @	22.70
Art Nelson, New Camb.	9 spt pigs	@	14.75
L. Nelson, Lincoln	5 mix hogs	188 @	23.00
Bob Nelson, Lincoln	7 hamp hogs	194 @	23.30
Herb Brown, Bennington	6 blk pigs	@	15.25
Emery Frost, Smolan	22 mix hogs	237 @	22.80
B. Walker, Lorraine	1 whi boar	350 @	14.10
Bill Walker, Lorraine	2 whi sows	507 @	17.05
Loyal Rathbun, Beverly	25 mix pigs	@	15.00
Loyal Rathbun, Beverly	1 bu hog	225 @	23.00
Gayle Leister, Salina	9 mix pigs	@	14.70



Farmers & Ranchers
LIVESTOCK-COMMISSION CO.



Barn Phone
913-TA 5-0211 SALINA, KS.

Bonded • Licensed