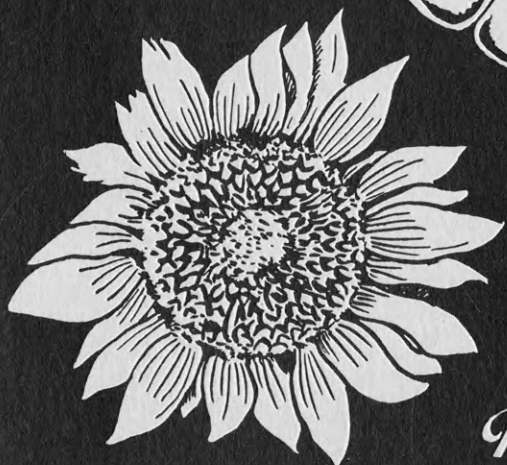
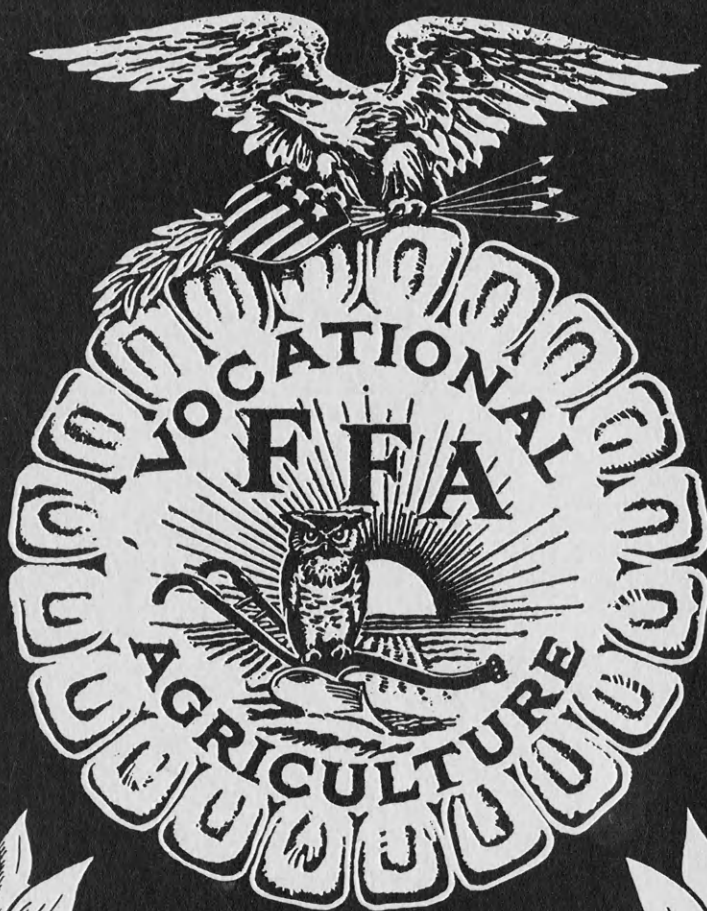


SEP 15 1965

# *The* KANSAS Future Farmer



*Published by*  
**THE KANSAS ASSOCIATION  
FUTURE FARMERS OF AMERICA**

# NATIONAL OFFICERS, FUTURE FARMERS OF AMERICA

1964 - 1965

Constituting the

## NATIONAL BOARD OF STUDENT OFFICERS

PRESIDENT . . . . .	Kenneth H. Kennedy
Cadiz, Kentucky	
VICE-PRESIDENT, NORTH ATLANTIC REGION . . .	Joseph E. Perrigo
Weare, New Hampshire	
VICE-PRESIDENT, SOUTHERN REGION . . . . .	Robert Franklin Page
Hoboken, Georgia	
VICE-PRESIDENT, PACIFIC REGION . . . . .	Ivan Ray Hunt
Litchfield, Arizona	
VICE-PRESIDENT, CENTRAL REGION . . . . .	Larry Ray Prewitt
Thayer, Missouri	
STUDENT SECRETARY . . . . .	Evan J. Green
Ft. Morgan, Colorado	
ADVISOR . . . . .	A. W. Tenney
Washington, D. C.	
EXECUTIVE SECRETARY . . . . .	William Paul Gray
Washington, D. C.	
TREASURER . . . . .	J. M. Campbell
Richmond, Virginia	

- - - FFA - - -

## NATIONAL FFA BOARD OF DIRECTORS

A. W. TENNEY, Chairman, U. S. Office of Education, Washington, D. C.

E. J. JOHNSON, U. S. Office of Education, Washington, D. C.

M. C. GAAR, U. S. Office of Education, Washington, D. C.

H. N. HUNSICKER, U. S. Office of Education, Washington, D. C.

H. F. DUIS, U. S. Office of Education, Washington, D. C.

T. L. FAULKNER, State Supervisor of Agricultural Educ., Montgomery, Ala.

PERCY KIRK, State Supervisor of Agricultural Education, Cheyenne, Wyo.

C. C. EUSTACE, State Supervisor of Agricultural Education, Topeka, Kansas

NEAL ANDREW, State Supervisor of Agricultural Education, Concord, N. Hamp.

univ  
5533  
.F8  
K3  
v. 36

THE KANSAS FUTURE FARMER  
Harold Shoaf, Editor  
OFFICERS OF THE KANSAS ASSOCIATION  
FUTURE FARMERS OF AMERICA

Roger Barr, President  
Manhattan

Mike Ankenman, Reporter  
Norton

Donald Barkman, Vice President  
Winfield

Bernard Hansen, Sentinel  
Peabody

Loren Dru Richard, Secretary  
Ellsworth

Harold Shoaf, Exec. Secretary  
Topeka

Stanley Buss, Treasurer  
Holton

C. C. Eustace, Advisor  
Topeka

---

Volume XXXVI

September 15, 1965

No. 1

---

TABLE OF CONTENTS

Page

1965 FFA Camp	1
A Letter to Fellow Future Farmers	5
Call for National Convention	7
Kansas Entries in National Competition	8
1965 National FFA Band	9
National FFA Convention Registration	9
National Better Chapter Entries	10
Tentative Program of the 38th National Convention	11
Dues, Subscriptions, and Program of Work	13
District Leadership Training Schools	14
FFA Information Test	14
New Supervisors in State Office	15
Schedule of FFA Leadership Schools	17
Report of Officers	19
Nationwide Beautification Program	20





photo-  
Booa  
3416

**FUTURE FARMERS OF AMERICA LEADERSHIP CONFERENCE  
ROCK SPRINGS RANCH — AUGUST 14-17 1965.**

## FFA CAMP

## "Keys to Leadership"

Mr. Thomas H. Lawrence, Management Consultant, Kansas City, Missouri, received the FFA Distinguished Service plaque award from Stanley Buss, State Treasurer. Mr. Lawrence brought an unusually keen insight into the qualities and techniques that make for vital and stimulating leadership. The inspiration and direction given by his keynote address on "Keys to Leadership" will be felt Statewide in FFA Chapters.

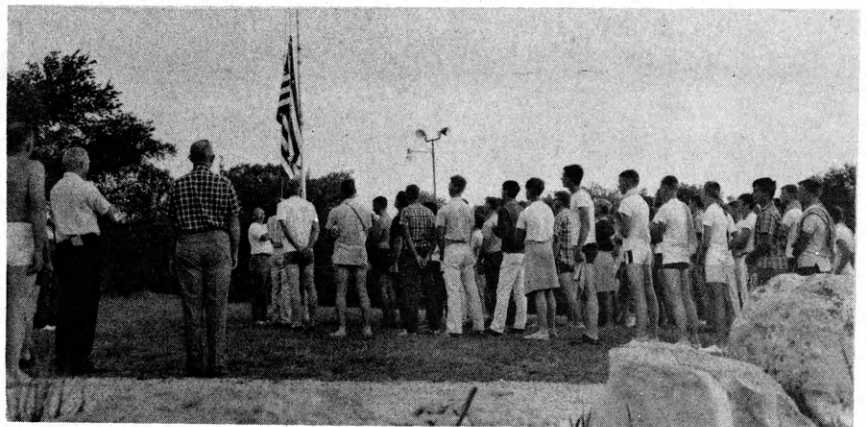


## Crawford Edie in his Scottish Kilts

Crawford in his Scottish kilts receives the Honorary State Farmer degree from Dru Richard, State Secretary. Crawford is the first FFA exchange student in the United States.



6:10 a.m. and here  
we are!

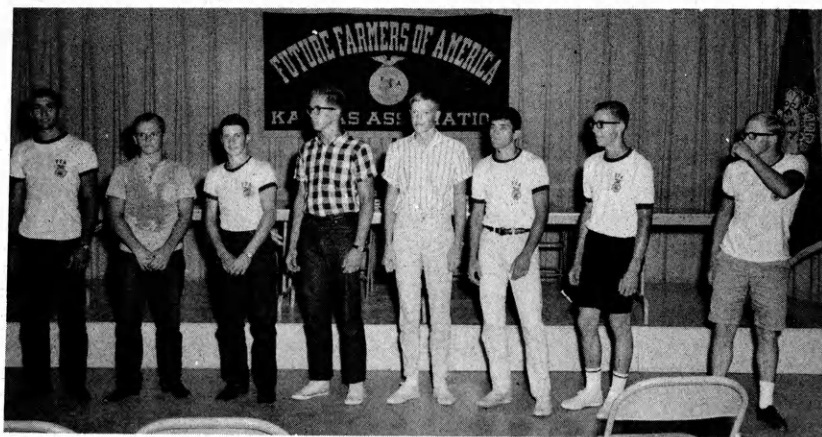


## Camp Officers



FFA Camp officers left to right: Don Kastle, Advisor; Neal Corpening, reporter; Orvill Sigg, president; Charles Casey, vice president; Lester Priest, secretary; John Peden, treasurer; and Ronnie Quint, sentinel.

Each FFA member was assigned to a herd. Each herd had an FFA leader called a Wrangler. The eight Wranglers are: l. to r.: Larry Bailey, Longhorns, Girard; Alan Flaming, Herefords, Goessel; John Steir, Durhams, Haddam; Sam Hands, Galloways, Garden City; Bob Wiles, Brahmas, Leoti; Wayne Garrett, Red Polls, Colby; Dennis Wenger, Short-horns, Powhattan; and Oliver Krannawitter, Angus, Hoxie.



By all pulling together, the camp proved a success!





**LARGEST ATTENDANCE AT CAMP!**

Record attendance at the 1965 FFA Camp of 294 members and advisors from 48 chapters attended the 6th Annual State FFA Leadership Training Camp at Rock Springs Ranch, August 14-17. This was the largest number of FFA members ever to participate in a State FFA Camp. The camp got off to a good start with the address of Thomas Lawrence on the topic "Keys to Leadership."

Activities at the camp included contests in parliamentary procedure, ritual performance, extemporaneous speaking, FFA officer leadership training, talent show, hog calling contest, and rodeo. Recreational activities included ping pong, swimming, badminton, softball, volleyball, steer wrestling, track meet, archery and trap shooting. State officers assisting in the supervision of the camp were Dru Richard, State Secretary, Stanley Buss, State Treasurer, Mike Ankenman, State Reporter, and Bernard Hansen, State Sentinel.

**1965 CAMP AWARDS**

Camp Officers: President, Orvill Stigge; Vice President, Charles Casey; Treasurer, John Peden; Sentinel, Ronnie Quint; Secretary, Lester Priest; Reporter, Neal Corpening.

Wranglers: Angus, Oliver Krannawitter; Brahmas, Bob Wiles; Durhams, Sam Hands; Galloways, Alan Fleming; Herefords, Larry Bailey; Red Polls, Wayne Garrett; Shorthorns, Dennis Wenger.

Winning Herd: Durhams

Spelldown: Orvill Stigge

Speaking: Kent Carmichael, Owen Mooney, Joe Giersch.

Herd Test: Ronald Stucky and Doyle Saddler, tied for first; Charles Holste and Fred Gatlin, tied for third.

Hog Calling: Myron Ammeter, Paul Keller, Ken Conway

Flashlight Relay: Sam Hands, Barry Rokkers, Bobby Duey, Mark Stearns

**Swimming Events**

Beauty Contest: Dean Bailey

Clown Dive: Robert Carlson, Bobby Duey

Treasure Hunt: Jerry Bryan

Free Style: Tom Smith

Balloon Contest: Joe Giersch

Underwater: Galen Biery

Swim Relay: Chet Douthit

**Track Events**

Horseshoes: Jerry Bryan

Ping Pong: Mark Stearns

Badminton: John Schonfeldt

100-yard Dash: Lynn Lightner

Football Throw: Gail Kueser, 141 feet

Standing Broad Jump: Lonnie Hedstrom, 16 1/2 feet

Shot-Put: Richard Lightner, 40'10 1/2"

Trap Shooter: Lester Priest

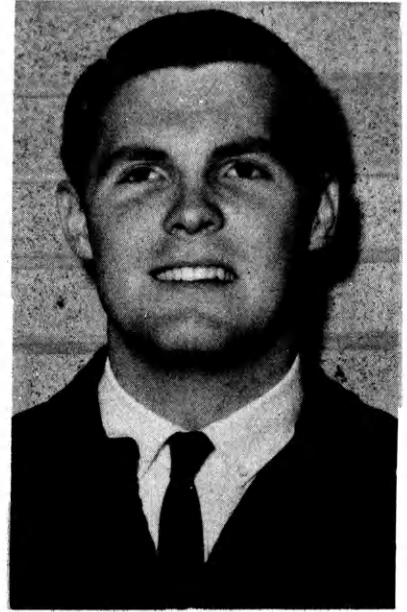
Archery: Jim Gray, Dave Stevens

**Talent Contest**

Oliver Krannawitter and Lex Ford

## A LETTER TO FELLOW FUTURE FARMERS

As president of the Kansas Association of FFA, it is my pleasure to look forward to the 1965-66 year of FFA activities with you. I know many of our chapter officers are busily preparing for the District Leadership Schools. Other FFA members are actively involved in various judging contests, as well as planning the Programs of Work. I believe an FFA calendar of activities is essential. If you will set your goals high from the beginning and work at a steady pace from the start, high standards will follow your work in FFA throughout the year.



Roger Barr

1965-66 State FFA Pres.

The leadership and scholarship that evolves from our work in FFA does more than improve the individual. The educated men that FFA produces are the leaders that agriculture needs. My thoughts are in accordance with the title of James Klassen's winning speech, "Education--Essential to America's Agricultural Advancement." If our generation is to advance agriculture as much as our forefathers would expect of us, we must have the tools of a solid education and capable leadership.

The success of our Future Farmers of America organization is easy to understand when one takes into account the high standards our organization has, the massiveness of agriculture in our economy, and the great challenges that agriculture offers. Our FFA is involved with a giant of our economy--agriculture. Agricultural industry in Kansas alone generates more than \$4 billion in economic activity annually. Agriculture is certainly important to Kansas, being the sixth ranking farm State in the nation. Agricultural income in Kansas is two and one-half times greater than the next largest income. Two of every five workers in Kansas are employed in farming or related industries. Agricultural colleges report that thirty-five to fifty percent of each graduating class find employment in the broad field of agricultural business and industry. As I said before, farming offers some of the most challenging career opportunities in America. Today's farmers certainly have been meeting these challenges.

In the past eighteen years, farmers have improved their efficiency more than in the preceding one hundred and twenty. They have increased the per acre yield of eighteen leading field crops by seventy-one percent in less than twenty years. An American farmer today feeds himself and twenty-six others.

The reason for the great career opportunities in agriculture and the tremendous progress farming has made is stated very simply in the theme for 1966 National FFA Week, "Agriculture--More Than Farming." Farmers produce products which must then be processed and distributed. Machinery, chemicals, credit, and other such tools must be made ready for the farmer's use. The question, "why and how much to produce?" must also be answered. Somewhere in the broad range of agriculture there is a job to suit every interest.



Considering the great opportunities and challenges that await each of us in agriculture, it is important that we make the most of our educational opportunities in America's fine educational institutions and the judging, leadership, and citizenship experiences ahead of us in FFA work. The pace each of us sets in our FFA work we will carry with us throughout our individual careers in agriculture. What will your pace be?

I want to urge all of you to attend the 38th National Convention in Kansas City. It is a tremendous way to start the year. Many changes in the FFA will be considered this year at the convention. So many, in fact, that a National FFA Study Committee has been formed to review the changes. This, in addition to the many speakers Kenneth Kennedy foretells of in his "Call for National Convention," should make for a very interesting convention.

I challenge each of you to work at your full potential this year. One never knows his full potential until he tries to reach it. The more we can do for our FFA organization this year, the more our generation will do for agriculture in future years.

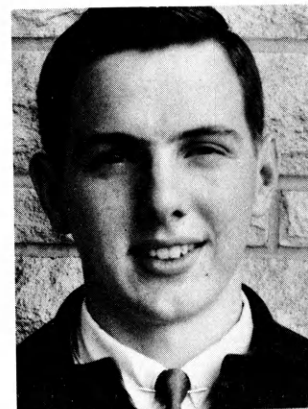
Roger Barr, State President  
Kansas Association of FFA

\* \* \* \* \*

#### DETRIXHE CANDIDATE FOR NATIONAL OFFICE

Joe Detrixhe of the Concordia FFA Chapter will be the Kansas recommendation for a National office. Joe has proven to be a competent, aggressive and enthusiastic leader of the Kansas Association of FFA. He served with distinction as president of the Kansas Association and has continued to assert leadership in the FFA.

Kansas' last National officer was George Stelter of Abilene who was appointed during the spring of 1943 to the office of Third Vice President, representing the North Central Region, taking the place of Willard Visek, of Nebraska, who resigned to enter the armed services of the United States.



Joe Detrixhe

The Kansas Association feels that Joe Detrixhe could serve the National organization as an outstanding leader of the Future Farmers of America.

\* \* \* \* \*

The National FFA membership on July 1, 1964, was 401,468. In July 1965 the membership had increased to 454,516.

\* \* \* \* \*

CALL FOR NATIONAL CONVENTION!

To Members of the Future Farmers of America:

As your National FFA President, I am issuing a call for all State Associations to send delegates to the 38th National Convention, which will be held in the Municipal Auditorium, Kansas City, Missouri, October 13 - 16, 1965.

This year your convention has been planned to serve as an especially inspirational and informative experience for all in attendance. A Vespers Program will provide a fitting introduction on Tuesday evening, October 12, and the convention will embrace a matinee performance of the American Royal Live Stock and Horse Show on Friday, October 15. Offering many highly respected personages and inspirational speakers, the convention sessions are planned to execute business, recognize outstanding achievements, demonstrate and promote leadership training, elect new officers for next year, set new goals, and to leave every Future Farmer and adult with a renewed dedication to the aims and purposes of vocational agriculture and the FFA.

All chartered State associations in good standing with the national organization are expected to send two official delegates and two alternates from the active membership. It is urged that official delegates arrive in Kansas City in time for the 10:00 a.m. delegate registration, which will be followed by the Officer-Delegate Luncheon at 11:45 a.m. on Tuesday, October 12. Convention committees will be announced and will meet immediately following the luncheon. State associations should also have in attendance at the convention those candidates recommended for the American Farmer Degree, candidates for national office, those members

who are to receive awards and others who have official business at the convention.

Local chapters are encouraged to send representatives to the national convention. Any local chapter of the FFA is entitled to have a maximum of six, or 10% of the total membership, whichever is the greater, of carefully selected members to attend the convention, provided they come to Kansas City with properly completed official registration cards. This number does not include national or regional award winners, members on official status, such as band, judging team, Courtesy Corps, ushers, or special program participants. When you receive your brochure "You. . . And Your National FFA Convention", I encourage you to review it with your advisor. It will help you come to Kansas City better prepared to serve your State association and your local chapter.

The 38th Annual National Convention will be the highlight of our FFA year. I urge all Future Farmers who attend the convention to be present for all sessions from Wednesday morning, October 13 through Friday evening, October 15. With the help and cooperation of all present our convention can be of great success. I look forward to seeing you in Kansas City.

Sincerely yours,

Kenneth H. Kennedy  
National President

R. R. #2  
Cadiz, Kentucky

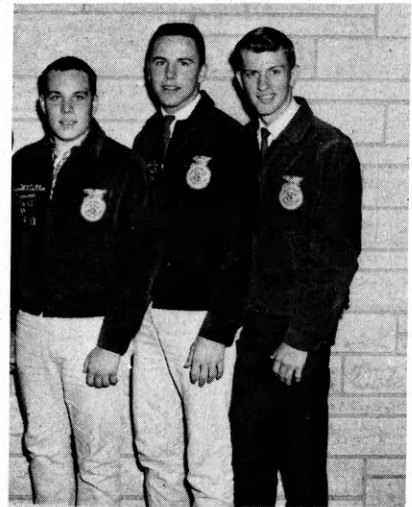
KANSAS ENTRIES IN NATIONAL COMPETITION

Dairy Products



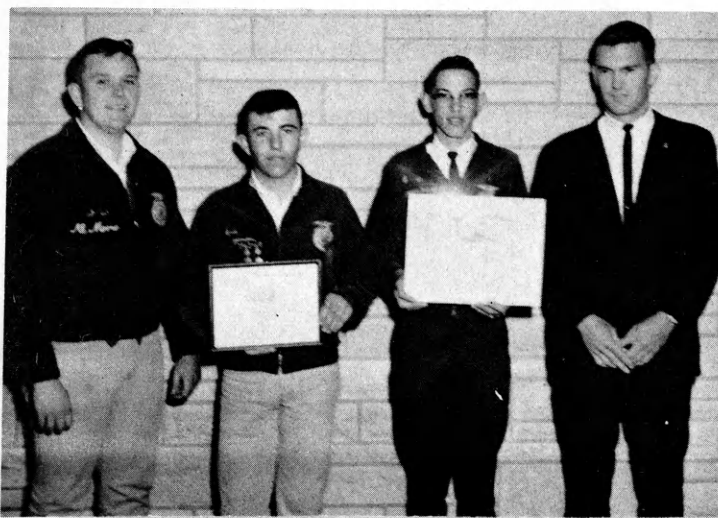
L. to R.: Merwin Stearns, Advisor; James Goff, Everett Everson, and Mark Stearns, from Manhattan Chapter FFA.

Dairy Judging



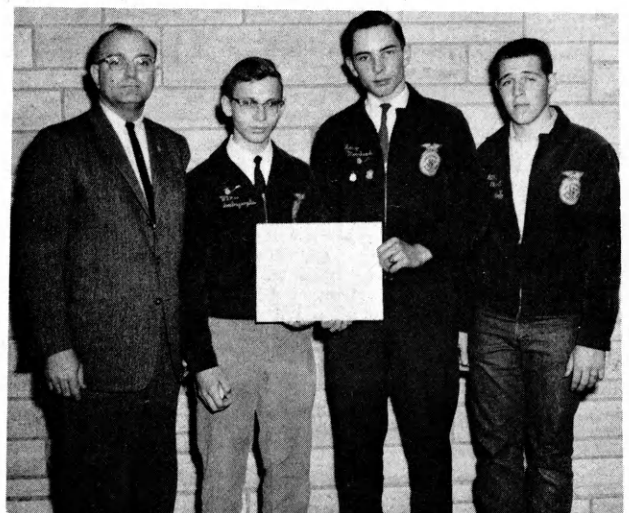
L. to R.: Merrill Kistler, Dennis Shurtz, and Cleo Rogers, Arkansas City

Livestock Judging



L. to R.: Raymond Baugher, Richard Calonder, Russell Bussman, and Hollie Thomas, Advisor, Labette County Community High School.

Poultry Judging



L. to R.: Merwin Stearns, Advisor; Mike Dalrymple, Gary Morehead, and Bill Ebert, Manhattan FFA Chapter.



### 1965 NATIONAL FFA BAND

The National FFA Band will again be under the direction of Mr. R. Cedric Anderson of Cedar Rapids, Iowa. The band, known as the "Suitcase Band", will furnish music for the National FFA Convention. Nine Kansas FFA members have been selected to serve with the National FFA Band. In addition to the Convention, the Band will perform during the opening sessions of the American Royal and will march in the American Royal parade on Saturday, October 16. All Kansas FFA members can be proud of the following young men who have been selected for the National FFA Band:

Jim Anschutz, Russell  
Dale Carter, Ft. Scott  
Dennis Fisher, Peabody  
Bill Korinek, Ellsworth  
Warren Park, Oakley  
Stan Penner, Hillsboro  
David Peterson, Oakley  
Jim Schraeder, Jetmore  
John Wohlgemuth, Peabody

\* \* \*

### NATIONAL FFA CONVENTION REGISTRATION

Registration will be by chapters except for official delegates, band members, American Farmer candidates, student teachers, State staff members, parents and guests. Registration cards are available upon request. The registration card will provide space for the names of the representatives of each chapter plus the signatures of the vocational agriculture teacher and the local school administrator.

Attendance at the National Convention will be limited to not more than six carefully selected members and one

advisor from any given chapter or ten percent of the chapter membership whichever is greater.

The following members will not be counted in the local chapter quota: official State delegates, American Farmer Degree candidates, contestants in the National Public Speaking and Judging Contests, Regional and National FFA Foundation Award winners, and members of the National FFA Band. The following procedures will be followed:

1. Each FFA member attending the convention must have signed a registration card before leaving home.
2. Chapter pre-registration cards may be obtained from the State FFA advisor on request by local teachers.
3. Upon arrival in Kansas City the advisor or chaperon of each chapter will present the completed registration card of his group at the registration desk in the Municipal Auditorium.
4. Each member will receive an identification card. This ID card will be required of all members as an admission pass to evening sessions.
5. No registration cards for chapters will be available in Kansas City. They must be obtained and completed before the member leaves home.

The advisor in charge of the FFA group will present registration cards at the registration desk and will receive an identification card, a program and other material for each member and himself. ID cards will be required of all members as an admission pass to evening sessions.

### KLASSEN ENTERS CENTRAL REGIONAL PUBLIC SPEAKING CONTEST

The Kansas Association will be represented in the Central Regional Public Speaking Contest by James R. Klassen of the Lebanon Chapter. The Public Speaking Contest will be on Tuesday afternoon, 1:00 p. m., October 12, Music Hall, Municipal Auditorium, Kansas City, Missouri. The winner of the Central Regional Contest will be one of the four finalists in the National Public Speaking Contest, Wednesday evening, October 13, in the Municipal Auditorium, Kansas City, Missouri.

\* \* \* \*



James R. Klassen  
Lebanon

### NATIONAL BETTER CHAPTER ENTRIES

Arkansas City and Garden City will represent Kansas in the National Better Chapter Contest. The National gold emblem chapters will receive recognition Wednesday, October 13, at the National Convention. Kansas has two strong entries represented by these outstanding chapters.

\* \* \* \*

### OFFICIAL DELEGATES TO THE 38th NATIONAL FFA CONVENTION

Roger Barr, State FFA President, Manhattan Chapter and Donald Barkman, State FFA Vice President, Winfield Chapter, will represent the Kansas Association as official delegates to the National FFA Convention, October 12 to 15, 1965. Stanley Buss, State FFA Treasurer, Holton Chapter and Bernard Hansen, State FFA Sentinel, Peabody Chapter, will serve as alternates.

\* \* \* \*

### DATES TO REMEMBER

Kansas State Fair, Hutchinson, Kansas  
1965 National FFA Convention, Kansas City  
1965 Kansas FFA Leadership Schools

September 18-23, 1965  
October 12-16, 1965  
September 27-29, 1965

TENTATIVE PROGRAM OF THE  
38th NATIONAL FFA CONVENTION, October 12 - 16

Tuesday, October 12

Morning	Early Registration
11:45 a.m.	Officer-Delegate Luncheon
Afternoon	Early Registration
1:00 p.m.	Tours to Points of Interest Committee Meetings Officer Candidate Meeting Regional Public Speaking Contests(Pacific, Central) Audition for FFA Talent Meeting of Advisors
Evening	
7:00 p.m.	Meeting of Courtesy Corps
8:00 p.m.	Vespers Program Practice for American Farmer Degree Ceremony Practice for Star Farmer Program Meeting for Farm Proficiency Award Winners Meeting for National Chapter Award Winners

Wednesday, October 13

Morning	Registration Opening Session Posting of Colors Address of Welcome-- Mayor Ilus W. Davis Nomination of Honorary American Farmers Address Meats Judging Contest
Afternoon	Conferring of Honorary American Farmer Degrees Address American Farmer Degree Ceremony Awarding of Service Plaques Poultry Judging Contest

## Evening

National FFA Band Concert  
National FFA Public Speaking Contest  
Presentation of National Gold Emblem  
Chapter Awards

Thursday, October 14

## Morning

Presentation of National Awards --  
Silver and Bronze  
Presentation of Farm Proficiency Awards  
Presentation of Distinguished Service Awards  
Symposium--Vocational Education  
Youth Groups  
Address  
Movie--"The Challenge--Leadership--The Answer--FFA"  
Livestock Judging Contest

## Afternoon

1:00 p.m. Tours to Points of Interest  
2:00 p.m. Business Session

## Evening

7:00 p.m. FFA Talent Show  
Introduction of Representatives of Donors to National FFA Foundation, Inc.  
Recognition of 15-Year Donors  
1965 "Four Star Farmer"  
Presentation of Star Farmer of America

---more



Friday, October 15

Morning Awards Breakfast for Judging Teams and Officials  
 Leadership Training  
 Demonstrations  
 We Salute our Foreign Guests  
 Address  
 Election of new National Officers

11:30 a. m.

Recess for Special Session--  
 FFA Day at American Royal  
 Live Stock and Horse Show  
 American Royal Arena

Evening Special Talent Program  
 National FFA Officers'  
 Night  
 Installation of 1965-66  
 National Officers  
 Firestone Show

Saturday, October 16

Morning American Royal Parade--  
 Led by National FFA Band

\* \* \*

TICKETS AND TOURS

Tickets for the American Royal Horse Show Matinee on Friday afternoon, October 15, will be sold at the registration desk in the Auditorium on Thursday from 9:00 a. m. to 5:00 p. m. Price of tickets are 50¢ each.

Tickets for the FFA Educational Tour of Kansas City scheduled for 1:00 p. m. on Tuesday, October 12 and 1:00 p. m. on Thursday, October 14, will be sold at the registration desk from 9:00 a. m. to 12:45 p. m. on the respective days. Price 60¢ each.

\* \* \*

REGISTRATION OF JUDGING TEAMS

1. Judging teams, members and coaches will register on the FFA chapters' official (group) registration card.
2. Team coaches will re-confirm the names of all contestants in advance of the respective contests at the registration desk from 10:00 a. m. to 2:30 p. m. on Tuesday and Wednesday, October 12 and 13.

No registration cards for chapters will be available in Kansas City. They must be obtained and completed before the chapters leave home.

The following members will not be counted in the local chapter quota: Official State delegates, American Farmer Degree candidates, Contestants in the National Public Speaking and Judging Contests, regional and national FFA Foundation award winners and members of the National FFA Band.

\* \* \*

1965 KANSAS APPLICANTS  
FOR AMERICAN FARMER  
DEGREE

Seven of Kansas' most outstanding FFA members have been approved by the National Board of Student Officers and the National Board of Directors as candidates for the American Farmer Degree for 1965. The action of the Board of Directors must be confirmed by the official delegates to the 1965 National FFA Convention. The American Farmer Degree ceremony will be held on Wednesday afternoon, October 13 in the Municipal Auditorium,

----more

Kansas City, Missouri. Each American Farmer Degree winner will receive a certificate, a gold key symbolizing the degree, and a check for \$75 from the Future Farmers of America Foundation, Inc. Candidates must be present in order to receive the \$75 check. Candidates who have been nominated from Kansas are: Dennis Dechert, Colby; Joe Detrixhe, Concordia; Kenneth E. Riffe, Stockton; Gerald Machin, Russell; William Sutton, Lawrence; Victor Stade, Haven; and Steve Krispense, Marion.

\* \* \*

#### DUES, SUBSCRIPTIONS, AND PROGRAM OF WORK

October 31 IMPORTANT  
DATE

A great leader has said: "Plan your work and work your plan." A Program of Work need not be long to meet the needs of a local chapter. Programs of Work are due in the State office October 31. A chapter must submit a Program of Work by October 31 to be eligible for participation in District and State FFA events during 1965-66.

The State FFA dues for 1965-66 will remain at 40¢ per member; the National FFA dues are 10¢ per member. The yearly subscription rate for the National Future Farmer Magazine is 50¢. Adding these three items together gives a total of \$1 which should be sent to the State Office for each FFA member. FFA Chapter Treasurers are urged to collect dues by September 15 from 100% of the vocational agriculture students. Chapters collecting dues at the beginning of the school term have found this a convenient time.

It is suggested that the three items--dues, subscriptions, and Programs of Work be sent to the State Office to-

gether. Program of Work report forms along with magazine subscription blanks will be supplied to the local chapters no later than Sept. 15.

If a member's magazine subscription extends through 1965, a new subscription will begin where the old one expires. Each subscriber is guaranteed to receive six issues for one year's subscription. Be very careful that complete addresses are supplied on the magazine subscription blanks. If any new subscriber fails to receive his copy of the magazine, he should notify the State Office immediately.

\* \* \*

#### "A PROGRAM OF WORK IS IMPORTANT!"

Ira J. Mann, Jr.

Why should we have a Program of Work? This question may be raised in your chapter this fall. If so, how would you answer?

A good Program of Work is essential to chapter success. To achieve success we must have a plan--the Program of Work is such a plan. A Program of Work constitutes the basis of fundamental, worthwhile undertaking for our FFA chapters. A Program of Work is a means whereby we fulfill our objectives of the FFA "to develop rural agriculture leadership and cooperation." An acceptable Program of Work is required for chapter participation in State sponsored activities and contests.

In order to be successful, a Program of Work must represent the thinking and efforts of a majority of the members. The plan must be based on a definite need of the members and community. . . . the plan must have the interest of the members.

---more

A good plan does not "just happen." It requires work by all concerned. All members should be placed on committees with the responsibility of developing one or more areas of the Program of Work. The plan must be started early in the school year. The plan must be approved by all the members at a regular chapter meeting. These are just a few ideas about developing a Program of Work. How you do it in your chapter is not so important as the fact of developing a plan and letting the members work on the actual planning.

After your program is developed, evaluate the program by asking the following questions about the plan. Is it educational? Will it contribute to leadership development? Will it provide for participation of a majority of the members? Is it possible to carry out? Will it provide interest? Is there justification for the program? Will it develop pride in the members? Is there a need? Will it promote FFA in the community? Does it represent the thinking of a majority of the members?

To start work on the Program of Work, place all members on committees, review last year's program, review Programs of Work from neighboring chapters, contact school officials, bankers, leading farmers, business men, Chamber of Commerce officials, and others, to get their ideas for worthwhile items. Then develop your Program of Work from these ideas. Remember a good idea doesn't care who has it.

\* \* \*

#### DISTRICT LEADERSHIP TRAINING SCHOOLS

The 1965 Leadership Schools provide a means for local FFA officers to serve their chapters more effectively. Eleven District FFA Leadership Schools will be held over the State on September 27-28-29.

#### FFA INFORMATION TEST

The FFA Information Contest will consist of 50 questions. The test should not take over 20 minutes.

1. Questions will be taken from the official FFA Manual and the last four issues of the Kansas Future Farmer newsletter including September 1965 issue.
2. The test will not include winners of District, State, or National Livestock, Dairy, Poultry, or Entomology contests.
3. The test will not include names of home chapters of American Farmers or candidates for American Farmer.
4. The test will not cover names of Regional Vice Presidents or Board of Directors of the National Organization.
5. The test will not cover early history not included in the cited references above.

\* \* \*

#### FEDERAL LAND BANK OF WICHITA WILL RECOGNIZE WINNERS!

A representative from the Federal Land Bank of Wichita will present a statuette trophy to the chapter with the highest total score in the three combined contests.

\* \* \*



WELCOME -- To Two New Supervisors in the  
State Office

Earl Wineinger, formerly of the Kingman Chapter, and Wilbur Rawson of the Concordia Chapter, have joined the State Supervisory Staff. Both teachers have had outstanding FFA programs. Their leadership in the State office will strengthen the Kansas Association of FFA.

\* \* \*



Earl Wineinger

"One of the major highlights I anticipate in my position as Assistant Supervisor of Agricultural Education is a direct relationship with the Kansas Association of the Future Farmers of America and the State FFA officers. My entire life has been developed around farm youth organizations--from attending meetings attended by older brothers; to a member; as a Kansas State University student preparing to teach vocational agriculture; as a vocational agriculture instructor and FFA advisor at Florence, Columbus, and Kingman; and now as Assistant Supervisor on the State staff. I can think of no other line of work which I would consider more important or gain more self satisfaction than the building of youth--especially farm youth.

"Your parents, school, and advisors are also concerned and interested in your future and your abilities. You are the key figure and objective of this triangular team. You are limited only by your own imagination.

"Sometimes because the headlines get so preoccupied with the weeds we forget to give thanks for the harvest. If you read of some misfit young product of our big city prosperity shooting up a tavern for "kicks," it's just because his one gunshot makes more noise than two thousand prayers. But, it wasn't really more important--not really. For every young hoodlum hiding a switch blade, I can show you ten riding tall on a tractor. For every young rascal sowing wild oats, I can show you ten planting the tame kind. For every one who makes of himself an enemy of men--ten make friends with them and with the God of the sun and the soil.

"One of the things I miss most about the automatic washer and drier in the basement is the way the pillowcases used to smell when they had been sun dried. Talking to today's FFA leaders of the croplands, I recall that sun-washed freshness in the way they talk and the easy way they laugh and the way they look and act.

"In this world of riots, wars, and misunderstanding, you as a member of the Future Farmers of America are a resource and a hope of this "freshness of youth" which we so greatly need."

Earl Wineinger, Asst. Supervisor  
Agricultural Education

\* \* \*

In the old days, the man who saved money was a miser; nowadays he's a wonder.



Wilbur Rawson

"As another school year gets underway, I am sure you as a Future Farmer have set some high goals to attain and some plans to help you attain them.

"As you go along remember that this year will never be repeated. You will not have these opportunities again, no time for false starts, no time to relive these experiences. Make the most of every opportunity and do the things now that will make today a stepping stone toward your goal. Remember that the Future Farmer organization can help you only if you help it. You can make a contribution toward making the FFA an even greater youth organization.

"I am happy to be associated with the Kansas Future Farmers and I am looking forward to working with you and your chapter in making this a banner year for the FFA."

Wilbur Rawson, Asst. Supervisor  
Agriculture Education.

\* \* \* \*

STATE FAIR AT HUTCHINSON: FFA chapters attending the Hutchinson Fair should contact Mr. C. C. Eustace on arrival if lodging in tents is needed. Each chapter will stay in their individual tent with their instructor. Students must be with their instructors and identified in order to be admitted to the afternoon and evening performance on Monday, which is FFA Day.

\* \* \* \*

The Kansas Association of FFA had 6,748 members in 1964. In 1965 the total membership numbered 6,695. This is a decrease of 53 members.

\* \* \* \*

1965 KANSAS FFA LEADERSHIP SCHOOLS

<u>Date</u>	<u>Time</u>	<u>Place</u>	<u>Teacher</u>	<u>Administrator</u>	<u>Teacher Trainer or State Office Staff</u>
Sep. 27	3:00 p. m.	Buhler	Julian Johnson	Robt. Burkholder	Earl Wineinger Roger Earr
27	3:30 p. m.	Emporia	Eugene Walker	F. H. Taylor	Harold Shoaf Don Barkman
27	4:00 p. m.	Lawrence	Roy K. Cropp	Wm. Medley	C. C. Eustace Mike Ankenman
27	4:00 p. m.	Plainville	M. Hachmeister	Nilwon Kraushaar	Wilbur Rawson Stanley Buss
27	4:00 p. m.	Clay Center	Earl Wright	Ed Butterfield	Howard Bradley Dru Richard
28	3:30 p. m.	Neodesha	Wayne Coltrain	Edwin Lyon	Harold Shoaf Don Barkman
28	4:00 p. m.	Jewell	H. Severance	Leo Bass	C. C. Eustace Mike Ankenman
28	4:00 p. m.	Harper	Daryl Haegert	F. W. Briner	Earl Wineinger Roger Barr
28	4:00 p. m.	Oberlin	Don Guinn	John Nettleton	Wilbur Rawson Stanley Buss
28	4:00 p. m.	Holton	Chas. Smith, Jr.	Jack Sloan	Howard Bradley Bernard Hansen
29	4:00 p. m.	Dodge City	Allen Starosta	Dean Wagaman	Earl Wineinger Roger Barr

\* \* \*

LAWRENCE: September 27, Monday, 4:00 p. m.

Blue Mound, Garnett, Highland Park, LaCygne, Lawrence, Louisburg, Paola, Parker, Rossville, Seaman, Williamsburg, Silver Lake, Wellsville

BUHLER: September 27, Monday, 3:30 p. m.

Buhler, Claflin, Ellinwood, Ellsworth, Florence, Goessel, Great Bend, Haven, Hillsboro, Inman, Lindsborg, McPherson, Moundridge, Newton, Partridge, Peabody, Salina, Stafford.

EMPORIA: September 27, Monday, 3:30 p. m.

Alma, Alta Vista, Burlingame, Burlington, Cottonwood Falls, Council Grove, Emporia, Eskridge, Harveyville, Herington, Kincaid, Lebo, Lyndon, Marion, Osage City.

PLAINVILLE: September 27, Monday, 4:00 p. m.

Alton, Ellis, Hays, Hill City, Herington, Kensington, LaCrosse, Morland, Natoma, Palco, Paradise, Phillipsburg, Plainville, Quinter, Russell, Stockton, WaKeeney, Wilson.



- CLAY CENTER:** September 27, Monday, 4:00 p.m.  
Abilene, Barnes, Chapman, Clay Center, Clifton, Greenleaf, Haddam, Hanover, Hope, Linn, Longford, Manhattan, Marysville, Miltonvale, Morrowville, Randolph, Riley, Solomon, Washington, Waterville
- JEWELL:** September 28, Tuesday, 4:00 p.m.  
Belleville, Beloit, Beverly, Concordia, Courtland, Delphos, Jewell, Lebanon, Mankato, Minneapolis, Osborne, Scandia, Smith Center
- HARPER:** September 28, Tuesday, 4:00 p.m.  
Arkansas City, Attica, Cheney, Harper, Kingman, Udall, Medicine Lodge, Mulvane, Oxford, Pratt, Preston, Pretty Prairie, Winfield
- OBERLIN:** September 28, Tuesday, 4:00 p.m.  
Almena, Atwood, Bird City, Brewster, Colby, Goodland, Hoxie, Jennings, Long Island, McDonald, Norcatur, Norton, Oakley, Oberlin, St. Francis
- HOLTON:** September 28, Tuesday, 4:00 p.m.  
Centralia, Effingham, Frankfort, Highland, Holton, Hoyt, Meriden, Onaga, Powhattan, Sabetha, St. Marys, Troy, Valley Falls, Wamego, Westmoreland
- NEODESHA :** September 28, Tuesday, 3:30 p.m.  
Altamont, Altoona, Caney, Chanute, Cherryvale, Coffeyville, Columbus, Elk City, Erie, Eureka, Fort Scott, Fredonia, Girard, Howard, Humboldt, Iola, McCune, Neodesha, Riverton, St. Paul, Severy, Uniontown, Yates Center
- DODGE CITY:** September 29, Wednesday, 4:00 p.m.  
Bazine, Dodge City, Ensign, Ford, Fowler, Garden City, Hanston, Holcomb, Hugoton, Jetmore, Kinsley, Lakin, Leoti, Mullinville, Ness City, Southwestern Heights (Plains)

- FFA -

### MATERIALS HANDLING EXPOSITION

An unusual exhibition of farm materials handling equipment will be held October 26-27 in Kenwood Park's Agriculture Hall at Salina, Kansas. The event is sponsored by the Agriculture Committee of the Salina Chamber of Commerce in cooperation with the Kansas Farm Electrification Council, and Successful Farming magazine.

Admission will be free to the exposition which will feature the latest equipment and methods for incorporating labor saving, time saving, and efficiency into the handling, storing, and processing of farm materials and products. More than 40 manufacturers and distributors are expected to display many items.

Salina Lions Club members will serve their famous open pit barbecue during both days of the exposition in the adjoining 4-H buildings. Invitations are extended to all educational groups, potential exhibitors, and farm owners, operators, and managers, to attend this two-day event.

CO-OP CAMP

Co-op Camp, which it was my pleasure to attend, was very interesting and inspiring. We were divided into groups of different animals and birds. Each camper competed in these groups in the recreation periods. A council and canteen representative was chosen from each group to organize the camp and the canteen (the refreshment stand).

The council's duty was to organize the talent program on the last night. Also the council was responsible for seeing that the camp was run smoothly. The canteen was organized and shares were for sale on a voluntary basis. Members of the canteen Co-op, only owners of stock, received patronage refund at the end of the week. Refunds were paid out at the rate of 15% on the amount of patronage to the canteen if you were a member.

Through the week speakers discussed many subjects and questions on Co-ops. The topic of "Why Have a Co-op" and how they help the people as a whole, not just farmers, was discussed. Many businesses or firms that we think of today are really Co-ops in a sense.

There are basically eight Co-op principles--continuously expanding; open membership; one member--one vote; patronage refund on purchases; limited interest on capital; educate constantly; neutrality in race, religion and politics; and sell for cash at market prices. These principles were stressed during the camp period. Also the three basic Co-op ideals are fair play, democracy, and freedom.

The camp wasn't all lecture and sessions, for many new recreation ideas were presented to the campers. Several crafts were performed as well as parliamentary procedure in the afternoons.

Following the craft session was a recreational period of swimming, softball, etc.

I wish to express my thanks for the opportunity to attend the Co-op Camp. It's a very inspiring and educational period for anyone.

Stanley Buss  
State Treasurer.

\* \* \*

During the week of June 13-18 I had the opportunity of attending the Co-op Camp at Liberty, Missouri, on a scholarship provided by the Consumers Cooperative Association. The camp started with a get-acquainted session on Sunday evening. The main purpose of the camp was to demonstrate the campers' cooperation among themselves. During the week's activities, a class on Co-op principles was held to give a better understanding of the Co-op in the local community. In the morning we had recreation for about two hours consisting of folk dancing and quieter games. The recreation period was not only to provide entertainment but to provide ideas to use with our own local groups. During the week, we had classes on parliamentary procedure and different crafts in the afternoon. The evening sessions consisted of a program, speaker, followed by folk dancing and vespers.

On the last day we toured the Co-op research farm and the CCA headquarters in Kansas City. During the week I met many fine people from Kansas and surrounding States. I feel my week was well spent and I am grateful for the opportunity to attend.

Dru Richard  
State Secretary

\* \* \*

## NATIONWIDE BEAUTIFICATION PROGRAM

The National officers of the Future Farmers of America called on President Lyndon B. Johnson at the White House on July 29, to personally endorse his nationwide beautification program.

The resolutions are as follows:

WHEREAS, the President of the United States has assumed leadership in promoting and developing a program of beautification and restoration for American roads, waterways, public facilities, and private property, and

WHEREAS, such a program includes many kinds of activities that have been performed by members of the Future Farmers of America in community service and home improvement, and

WHEREAS, because of their rural background and training in Vocational Agriculture, members of the Future Farmers of America are particularly well qualified to do much of the work involved in beautification, and,

WHEREAS, as young people, members of the Future Farmers of America look forward to the Greater American Society and are willing to work in attaining it;

NOW, THEREFORE WE, The National Board of Student Officers and Board of Directors of the Future Farmers of America, do resolve to recommend to the delegates at the 1965 National FFA Convention that the organization embrace in its program of activities greatly expanded work in the area of national beautification. Such work to be conducted

at local, State, and national levels.

APPROVED this Twenty-Ninth Day of July, 1965

National FFA Board of Student Officers  
Kenneth Kennedy, Cadiz, Kentucky,  
President,

(Signed) Kenneth H. Kennedy

National FFA Board of Directors  
A. W. Tenney, Washington, D. C.,  
Chairman

(Signed) A. W. Tenney.

\* \* \*

Two additional Foundation programs have been approved by the Board of Trustees beginning in 1966. These are in the areas of ornamental horticulture and home improvements. Applications for these are now being developed.

\* \* \*