

**Kansas 4-H**

# **Journal**

February, 1970

# **education and careers**

50 Cents

# CO-OP has a complete line of food storage centers

There's a style for any need  
...any budget



JFF15



JSS22

CO-OP has the food storage center that's right for you. Our brand new collection includes family size refrigerators, big frost-free combinations, and side-by-side combinations.

All of these attractive units are compact yet roomy, with more useful features than ever before. Automatic ice maker, frost-free refrigerator/freezer sections, and thermostatic temperature controls . . . just to mention a few.

CO-OP Food Storage Centers are available with as much as 335-pounds of freezer storage space and 12-cubic feet of refrigerator storage space. Many styles available with white, coppertone, or avocado exterior.

See Co-op for all your appliance needs.



JGR15



JMR12



## Appliances

FARMLAND INDUSTRIES, INC.  
KANSAS CITY, MISSOURI 64116

No man can reveal to  
you aught but that which  
already lies half asleep in  
the dawning of your  
knowledge.

By Kahlil Gibran, *The Prophet*.  
1923.



Vol. XVI, No. 2 February, 1970

Wm. M. Riley.....Managing Editor  
Marie Rupp.....Associate Editor  
Susanne Johnson.....Production Editor

Published Monthly By

**KANSAS 4-H FOUNDATION, INC.**

J. Harold Johnson.....Executive Director  
Merle Eyestone.....Associate Director  
William Riley, Jr.....Assistant Director  
Erna Bly.....Sec. Asst. Treasurer

#### BOARD OF TRUSTEES

Governor Robert Docking  
Honorary Chairman

W. Dale Critser, Chrm.....Wichita  
Dolph Simons, Vice Chrm.....Lawrence  
Balfour S. Jeffrey, Treas.....Topeka  
Robert A. Bohannon.....Manhattan  
Glenn M. Busset.....Manhattan  
\*Sen. Frank Carlson.....Concordia  
\*Harry Darby.....Kansas City  
\*Ray E. Frisbie.....McDonald  
Mrs. Olive Garvey.....Wichita  
Clifford Hope.....Garden City  
†A. D. Jellison.....Junction City  
\*Harold E. Jones.....Manhattan  
J. J. Moxley.....Council Grove  
George B. Powers.....Wichita  
\*Roger E. Regnier.....Manhattan  
N. T. Veatch.....Kansas City  
E. B. Shawver.....Wichita  
†Fred D. Wilson.....Andover  
\*Advisory Member  
†Trustee Emeritus

#### Editorial and Business Office

Phone 913-532-6621

Umberger Hall  
Kansas State University  
Manhattan, Kansas 66502

Second Class Postage Paid at Lawrence,  
Kansas. Return Form 3579 to Kansas 4-H  
Journal, Manhattan, Kansas 66502.

Advertising rates and circulation data  
on request.

Group subscriptions \$1.00 per year.  
Individual subscriptions \$1.50 per year.  
Single copy 15 cents.

Use of the 4-H name and symbol ap-  
proved by the Secretary of Agriculture of  
the United States, January 23, 1951,  
under the provisions of the law as  
reenacted by Sec. 707 of the Act of June  
25, 1948 Public Law No. 772 80th Con-  
gress (10 USC 797).

Computers—a going thing! .....	Page 5
Choosing a career .....	9
Kansas vocational-technical schools .....	10
Vocational education— opportunity for the majority .....	11
Community can aid career search .....	13
Are you ready for junior college? .....	15
Many factors influence career .....	16
Kansas two-year colleges .....	17
Plan your future carefully .....	19
Agriculture careers promising .....	21
Jobs after high school .....	23
Kansas four-year colleges .....	24-25
Home economics has a career for you .....	27
Do you qualify to be a hairdresser? .....	31
Good habits lead to better grades .....	32
Neatness opens doors to job .....	33
MONEY is the name of the game .....	35
Adults guide youth's exploration of careers .....	39
Careers in nursing .....	42
Advertiser's index .....	47

# Go Where The Action Is . . .

---

## WASHBURN U.

---

come to Topeka—Capital of Kansas

**Where the "Action" includes a quality education, sports,  
campus life . . . and YOU are part of it!**

### YOU'LL LIKE WASHBURN . . .

Here's a school where learning is fun. Large enough to provide all of the swinging excitement of a modern university, yet small enough that every student can take an active part in campus life.

### YOU'LL "LIVE" IN TOPEKA . . .

There's more to see, more to do, and more to learn in Topeka, the Capital City. The legislature, the State offices, big industry, and "home offices" create an active employment market for students who want part-time jobs. Topeka has all of the "big city" fun and excitement, but small-town hospitality.

### YOU'LL LEARN AT WASHBURN . . .

Washburn is rich in tradition—not the ivy-covered kind—but the kind that constantly generates improvement. Plan your future — business, law, education, art—Washburn stands ready to help you prepare for it.

### COME WHERE THE ACTION IS . . .

If you would like to be a part of a University that is really going places—come where the action is. Write to the:

DIRECTOR OF ADMISSIONS  
WASHBURN UNIVERSITY  
TOPEKA, KANSAS 66621

*These active supporters of Washburn University are located  
in dynamic DOWNTOWN TOPEKA . . . where the action is:*

Ray Beers Clothing  
Briman's Leading Jewelers  
Roy Clark's Men's Wear  
Crosby's  
Dickinson Theatre  
Garry's Restaurant

Gerry's  
Gibbs Clothing Co.  
Frank Griggs Men's Wear  
Helzberg's Jewelers  
Hillmer Leather Shop  
Jenkin's Music Store

Karlan's Furniture Co.  
Leed's Shoe Store  
Lyle's Shoes  
Macy's, Topeka  
Ed Marlings Stores  
Montgomery Ward

Palace Clothing  
Robinson's Shoes  
Union Clothing  
Wolf Jewelers  
F. W. Woolworth  
Zale's Jewelers



# *Computers--a going thing!*

**Persons entering this career will be where the action is.**

**By N. E. Capps**

Like it or not, the computer is a very tangible part of our world. In less than the life time of high school seniors who will graduate this year, the computer industry has grown from the experimental stage to become the third largest industry in America. The importance of the computer in our economy and technology is being described historically as the "Computer Revolution": The most dynamic event since the "Industrial Revolution."

The computer definitely is **not** a brain. It has no ability to think for itself. It can do only what it is told to do and does it only as well as the instructions which it receives from people. There is an old saying in the computer field "GIGO" which means 'garbage in - garbage out.' Thus, a com-



**N. E. Capps**

Capps is president of the Electronic Computer Programming Institute schools in Kansas City, Topeka, Wichita and Oklahoma City. E.C.P.I. is an international organization with 100 specialized schools. Capps also is president of the Data Processing Management Association of Kansas City and is active in other computer industry association and civic affairs. He is a graduate of the University of Kansas.

puter follows the logic that is programmed into it. When it is built, its circuits are wired to perform certain functions in a manner prescribed by the computer instruction. It may be programmed to reject erroneous information. It can be taught to recognize human error, but all of this information must be provided initially to the machine by trained and competent people.

A very important part of programming to avoid GIGO is to

analyze the problems that are to be fed into the machine. This is accomplished in the form of a Flow Chart . . . a preparatory logic device used prior to programming.

With this increased usage of computer equipment has come an insatiable need for trained personnel to fill positions as systems analysts, programmers, computer operators and a wide variety of other related jobs. The

(Continued to page 8)

# CAREER POWER...

**THROUGH ELECTRONIC COMPUTER PROGRAMMING  
INSTITUTE**

Thousands of E.C.P.I. graduates have gone on to executive careers in the Computer Programming field. They have gained career power through E.C.P.I.—the oldest and largest school of its kind in the world. We teach you Computer Programming and we teach it to you well. If you have received your high school diploma, mail back the postage paid card today, for further information without obligation.

- E.C.P.I. TRAINS MORE STUDENTS • EMPLOYS MORE INSTRUCTORS
- FIRST ACROSS THE NATION IN COMPUTER PROGRAMMING TRAINING



# ELECTRONIC COMPUTER PROGRAMMING INSTITUTE

**KANSAS CITY**—722 Walnut, Kansas City, Mo.  
**TOPEKA**—Lower Level White Lakes Shopping Center  
**WICHITA**—Garvey Building, 300 W. Douglas

To: E.C.P.I.  
Walnut Towers  
722 Walnut  
Kansas City, Missouri 64106

● I'm interested in a career in computer programming. Please send me more information.

☐ Kansas City    ☐ Topeka    ☐ Wichita

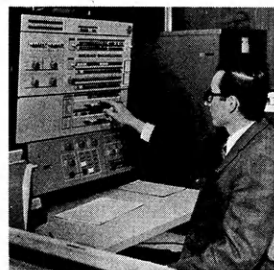
☒ Kansas City    ☐ Topeka    ☐ Wichita

Name \_\_\_\_\_

Address \_\_\_\_\_

City \_\_\_\_\_ State \_\_\_\_\_

Age \_\_\_\_\_



**HOUSING ACCOMMODATIONS AVAILABLE  
DAY, EVENING OR SATURDAY CLASSES  
"CAREER POWER BEGINS AT E.C.P.I."**

# Bank on Youth!

The Full Service Banks of Kansas take the occasion of "Bank Week," 1970, to honor youth. We believe that the best of today's young people are the best the world has ever seen, and in that belief, we salute youth. Everyone is invited to join with us in this special week of recognition for the young.

Boys, girls, teenagers are especially welcome in our banks this week. Most banks have prepared special recognition features and events. Bank on youth ... with your Full Service Kansas Banks.

**KANSAS BANKERS ASSOCIATION**

★ **KANSAS  
BANK  
WEEK**  
February 8 thru 14

# When you're planning For a lifetime career, Don't cut corners! Except now.

1. Choose the TOP profession: Computer Programming and Data Processing. Go right to the top for interesting work with bright, on-the-go people, excellent starting salary, rapid promotion.

2. Prepare yourself for success: compare, and you'll choose the Institute of Computer Systems to provide needed skills and competence . . . with an eminent faculty of computer specialists, latest IBM 360 Computer System on premises for students' exclusive use, a placement service . . . licensed by the State of Kansas.

This is the corner to cut for more information on a future for you.

**INSTITUTE OF COMPUTER SYSTEMS**  
Suite 1, Commerce Plaza Building  
104 North Main, Wichita, Kansas 67202  
316-267-3308  
Name \_\_\_\_\_  
Street \_\_\_\_\_  
City \_\_\_\_\_  
Zip Code \_\_\_\_\_  
Phone \_\_\_\_\_  
Age \_\_\_\_\_  
4-H \_\_\_\_\_



# Computers — a going thing!

(Continued from page 5)

majority of those who have accepted the challenge of this new career field are young people recently graduated from either high school or college who have no preconceived fears about an "electric brain" but who have seen the exciting opportunities that mastery of the machine can offer.

The most common entry level job is that of programmer trainee. This is a person who is actually beginning to "talk with computers." He has already learned the basic language of the computer and is learning to put the language to work in practical problems. On the job he has an opportunity to refine his ability to use the computer languages that he has learned. By increased application he develops a fluency similar to a foreign language student who now has an opportunity to use his language on a daily basis. Both the student and the practicing programmer find a great deal of personal satisfaction in the creative aspects of computer programming.

These rewarding careers are open to those who have the necessary aptitude, who think logically, who enjoy puzzles, problems and games, and who avail themselves of good training program designed to prepare them for entry level jobs in the computer field.

Any qualified person entering this career area today will find him-or-herself "where the action is." Computers will become more predominant in industry during the next 10 years. New technology will improve the equipment and the "in-people" will continue to be in a learning environment if they are to keep abreast of the rapidly changing "state of the art."

By 1975 the U. S. Labor department predicts nearly one in three young workers beginning their careers in the U. S. will have had at least some college education vs. a little more than one in four today. By 1975, only 29 per cent will have had less than a high school education vs. 36 per cent today.



**CAPS OFF TO  
KANSAS 4-H**

FROM

**KANSAS PEPSI BOTTLERS ASSOC.**

## Independence Community Junior College

Education for the Individual  
Independent Study—Audio-Tutorial Biology,  
Programs in Accounting, English, Math, Reading  
Psychology designed for students needing training  
in basic skills

Degree program in Data Processing and Civil Technology

For more specific information, write or call:

Director of Admissions

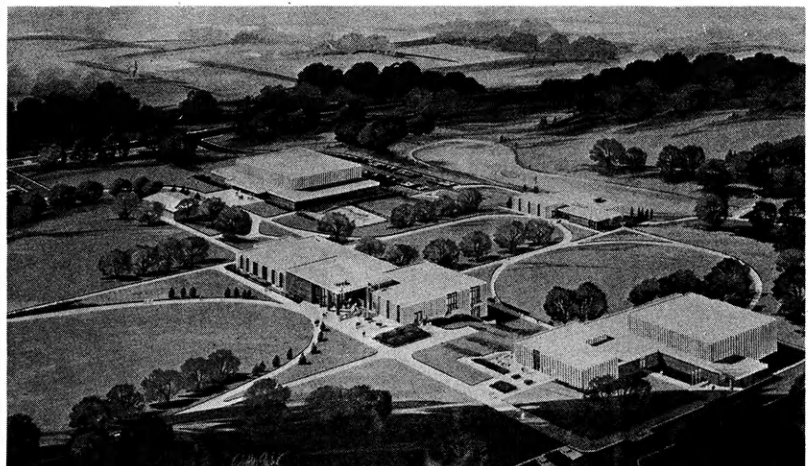
Independence Community Junior College

Independence, Kansas 67301

Phone: Area Code 316 ED-1-4100

Moving to a new campus for Fall 1970

(See artists conception below)





# Choosing a Career

Choosing a career is more than making just one decision. You will change your choice from time to time as you gain more information about certain careers that interest you and as you learn more about your own wants.

**Look at yourself.** What are your interests, abilities and aptitudes? Talk to your parents,

teachers and counselors. Remember that family, friends and even tests cannot make any decisions for you. They only give direction or help you understand yourself. You make the final decision.

**Be honest with yourself about you.** Admit you have weaknesses; it is the first step toward overcoming them. Look carefully at your strengths and determine

to strengthen them. Your strengths and weaknesses, once you have really looked at them, will give you clues for certain career ideas.

**What do you want out of life — What contributions do you want to make?** This is your decision! Is it money, fame, happiness, friendship, service to fellow men, or what? Write them down so you can refer to them often.

Now you can begin to group, in broad areas, the types of careers you might be suited for or ones in which you feel you have greatest interest. Go over the above points carefully as you do this. Write examples down and think about them.

**Read about careers or jobs you want to consider.** An interesting plan is to read biographies of men who have been successful in the career areas you are considering. Selected magazines will be a good source to keep informed of new developments and expanding areas of opportunity. You could compile a scrapbook of clippings and leaflets on certain areas of interest.

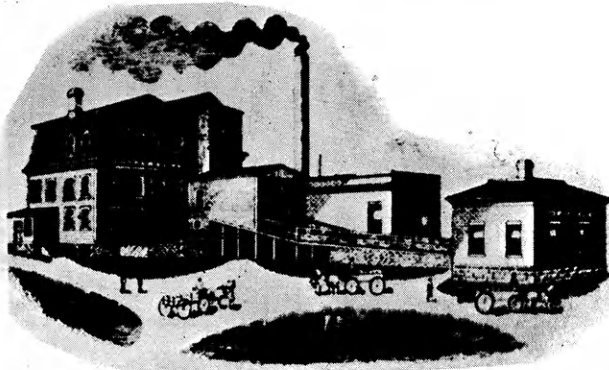
**Personally visit with men and women in your community.** This will give you first-hand information in various occupations or professions. Consider friends of your family, people recommended by your principal or counselor, or seek community civic leaders.

**Visit actual work surroundings.** These visits will take you to factories, hospitals, museums, laboratories — any place you can observe people doing work in which you are interested. Ask about pay, responsibilities or duties and observe working conditions.

**Make a tentative choice.** Based on what you have determined to date, make a choice of career area to study further. Keep the subject ever-open for examination.

**Put yourself in the shoes.**

(Continued to page 10)



## IT'S THE NEXT 90 THAT REALLY COUNT.

The year is 1879. Rutherford B. Hayes is President of the 38 states.

In the southeastern corner of the territory-turned-37th state, young O. A. Cooper risks a hard-earned "Grubstake" to build a flour mill in a tiny hamlet.

From those modest beginnings in Humboldt, Nebr., The O. A. Cooper Co., which entered the feed business in 1928, has grown into the largest Nebraska-based feed firm.

Our mills at Humboldt, Beatrice, Cozad and South Sioux City, Nebr., produced 106 thousand tons of Cooper "Quality-Guarded" Feeds in 1968.

Fortunately, we have much more than mere size to recommend us, since we are dwarfed by a number of national feed firms.

Leadership, innovation, bringing new feed developments first to our thousands of midwest feed customers are among our proud hallmarks, which include: CRUNCHIES, first granular feed; ARSANILIC ACID, nation's number 1 permit; RUMEN, first feed designed for utilization of roughages;

ANIMAL FAT, first to use fat for high energy feeds; STILBESTROL, first in the field with synthetic hormones; S&H GREEN STAMPS, first to offer S&H Green Stamps with feed; M.G.A./100%, first to file for permit to incorporate in cattle feed for heifers; HI-ENERGY BEEF MEDICATED (Bloat Preventive), issued nation's first permit to incorporate Poloxalene in cattle feed.

We're proud of these accomplishments and many others, sure. Yet, it is sobering to realize they will be hollow and meaningless if American agriculture cannot meet the tremendous challenges ahead in furnishing food and fibre for the exploding populations of our land and others.

For our part, we mean to be equal to those challenges as three generations of Cooper together with hundreds of resourceful, hard-working employees and dealers have been to those of the past.

That's why we say it's the next 10, 20, 30, 40 . . . 90 years that really matter—for everyone.

### THE O. A. Cooper Co.

MILLS AT HUMBOLDT, BEATRICE, COZAD AND  
SO. SIOUX CITY, NEBR.  
HOME OFFICE: HUMBOLDT, NEBRASKA 68376



We Don't Compete With Our Customers

#### FREE! "Challenging Horizon"

Colorful booklet about career opportunities in agriculture and Agribusiness.

The O. A. Cooper Co.  
Humboldt, Nebr. 68376

Name

Address

Town  State  Zip

# Kansas Area

## Vocational-Technical Schools

Cowley County Community Junior College, division of Area Vocational Technical School

Director—A. F. Buffo  
125 South Second Street  
Arkansas City, Kansas 67005

Northeast Kansas Area Vocational-Technical School

Director—Melvern Beckard  
Sixth and Atchison  
Atchison, Kansas 66000

North Central Area Vocational-Technical School

Director—Bob Severance  
Box 626, 114 North Hersey  
Beloit, Kansas 67420

Southeast Kansas Area Vocational-Technical School

Director—George Varley  
Administrative Center  
McFarland Trade School  
Coffeyville, Kansas 67337

Southwest Kansas Area Vocational-Technical School

Director—Ralph Dellinger  
1000 Second Avenue  
Dodge City, Kansas 67801

Flint Hills Area Vocational-Technical School

Director—Richard Metcalf  
3015 West 18th Avenue  
Emporia, Kansas 66801

Northwest Kansas Area Vocational-Technical School

Director—Larry Keirns  
Box 269  
Goodland, Kansas 67735

Kansas City Area Vocational-Technical School

Director—Harry Falgren  
831 Minnesota Avenue  
Kansas City, Kansas 66101

Liberal Area Vocational-Technical School

Director—Clovis Weatherford  
Liberal, Kansas 67901

Manhattan Area Vocational-Technical School

Director—Darrell Brensing  
3136 Dickens Avenue  
Manhattan, Kansas 66502

Central Kansas Area Vocational-Technical School

Director—Dale Brooks  
218 East Seventh  
Newton, Kansas 67114

Salina Area Vocational-Technical School

Director—Eugene Lundgrin  
Building 658, Salina Airport Industrial Center  
Salina, Kansas 67403

Kaw Area Vocational-Technical School

Director—Lester Sanders  
620 Harrison  
Topeka, Kansas 66603

Wichita Area Vocational-Technical School

Director—Richard Ladd  
301 S. Grove  
Wichita, Kansas 67214

## Choosing—

(Continued from page 9)

Your decision is the best you can make with the information you presently have. Project this further. What are your chances of attaining this goal—or, what must you accomplish to attain it? Be as honest and realistic as you can.

**Begin now! Today!** This is really your first decision. Make a firm commitment to yourself that will direct your activities, study, and your time, toward your goal.

... if  
your grade average  
is A or B  
McPherson College  
has a scholarship  
for you ...

\* \* \*

For details, write:

Director of Admissions  
McPherson College  
McPherson, Kansas 67460  
See listing page 24



**The McPherson &  
Citizens State Bank**

**National Cooperative  
Refinery Association**

Fuels for the Farms  
of Mid-America  
McPherson, Kansas

**The W-R Milling  
Company**

McPherson, Kansas

# Vocational education *opportunity for the majority*

By John E. Snyder

Asst. Commissioner of Education  
Kansas State Dept. of Education

The Founding Fathers of our country believed in the dignity of honest work and so expressed themselves while writing our Constitution. And yet today vocational education is available to only 19 per cent of the Kansas high school youth — while our Kansas high schools prepare 81.7 per cent of them in college entrance courses. But only 13 per cent of Kansas youth entering our schools today will graduate from a four-year college.

Kansas has made provisions for the more than 80 per cent of our students who will not go on to college to train for, succeed in and hold up their heads in the pride of honest work correctly performed. For these students — high school and postsecondary — there are many diversified and well paying opportunities to prepare themselves for entry-level or advanced positions in all vocational fields: production, manufacturing or distribution.

Vocational courses in Kansas are offered through many of the comprehensive high schools, through 14 area vocational-technical schools and through the community junior colleges. Salaries of their graduates are often equal to or greater than in some of the professions. Vocational preparation in a wide variety of occupations is available to girls as well as boys.

The new and emerging occupation as well as the older ongoing ones are represented in the vocational services. For example, in agriculture modern training in production farming, agri-business courses in grain feeds, fertilizers, horticulture, and irrigation technology are offered. Graduates of these programs are in great demand and even beginning salaries are high, with opportunity to progress into management levels.

In addition to its well-known training for home management, vocational home-making now trains for wage-earning occupations in the food field and others



Students of the ag chemical program at the Liberal AVTS check their hydroponics plants for parasites. Many other phases of ag chemicals also are studied and experienced by students of this two-year postsecondary program. The demand for this type of technician is great with the recent increase in the use of fertilizers, pesticides, and numerous other chemicals in agriculture.

in which that training is applied to employment outside the home.

The older well-paid trade occupations such as welding, carpentry, machine shop, auto mechanics, printing and drafting have been supplemented with newer courses in line with modern technology. Courses in cosmetology, civil technology, aircraft instrumentation, jet engine maintenance, radio and television, diesel mechanics, heavy equipment operation, police science, air conditioning and refrigeration, technical writing and machine tool technology are now offered.

Through the cooperative industrial training programs, girls as well as boys may train for miscellaneous trade field represented in the local community such as photography, hospital work, machine operation and others.

Graphic arts and commercial art are newer phases of printing occupations that are growing in employment opportunities for both boys and girls and are now offered in some schools like Wichita and Salina.

The need for workers in the health occupations below the registered nurse level grows daily more critical—but is being met through programs in practical nursing, dental assisting (dental hygiene, preventive dentistry, dental health, etc), medical secretary, medical records transcribers, laboratory assistants and others.

Business occupations include curricula in office work but also in the marketing and merchandising areas. Forty-year based projections show the two areas as the fastest growing fields of employment in Kansas. High school, area vocational-technical school and community junior college offerings are trying to keep pace with the growth in the business areas.

In the office area, the ongoing curricula in stenographic-secretarial, accounting and related and office machines and general clerical are offered in many schools. Emerging needs are being met with curricula in data

(Continued to page 12)



# Vocational education

(Continued from page 11)

processing, computer science, and office management and supervision.

The marketing area includes the marketing of services such as banking and insurance and specialties such as traffic and transportation, hardware marketing, etc. It includes in distributive education not only training for sales positions but both boys and girls may specialize in areas such as fashion modeling and merchandising, advertising and display, buying, personal management, department head, and mid-management training. This is the only vocational field training specifically for the management area. It includes marketing both goods and services and wholesale, retail and manufacturing phases of the merchandising field.

All programs, whether in a high school, a community junior college or an area vocational school, have the guidance of advisory committees. These men and women are selected from the leaders in the occupations for which training is offered in the community. Their knowledge and experience, plus cooperation with the Kansas Employment Service keep the schools constantly informed of the needs for trained people in the various occupations in the local community, in the state as a whole and the Nation. Existing courses are modified in terms of new developments and fresh courses are added to meet emerging needs or changes in emphasis. Consequently, students succeeding in any of the vocational courses can look forward confidently to entry-level employment in the occupation for which they are trained or toward having a strong foundation for advanced courses in the field of their choice.

Those who have left school for full time employment can also obtain upgrading studying the newer applications of the com-

petencies necessary to advance on their jobs.

The dignity of all honest work builds pride and confidence for the majority who avail themselves of vocational training offered through the Vocational Education Division of the State Department of Education. Vocational guidance counselors in local schools can assist students in identifying area vocational-tech-

nical schools or community junior colleges in the state that offer approval vocational programs in line with their interests and abilities.

Tuition to schools outside the local district will be paid by the home district if the student is accepted by the area vocational-technical school or community junior college for the program in which he is interested.



## ALLIANCE INSURANCE COMPANIES

McPherson, Kansas

FIRE — CASUALTY — LIFE

Serving Kansas Since 1888

## WICHITA AREA VOCATIONAL-TECHNICAL SCHOOL

Wichita, Kansas

### OFFERING OCCUPATIONAL TRAINING

#### ENGINEERING TECHNOLOGY

Drafting & Design  
Electronics  
Mechanical

#### HEALTH

Certified Lab Assistant  
Dental Assistant  
Dental Hygienist  
Licensed Practical Nurse

#### HOME ECONOMICS

Child Day Care Services  
Clothing Services  
Drapery Construction  
Food Services  
Ind. Sewing Machine Op.

#### HORTICULTURE

Nursery & Lawn Care

#### OFFICE & DISTRIBUTION

Bookkeeping  
General Clerical  
Copy Design & Prep.  
Key Punch  
Machine—  
Calculating & Posting  
Medical Secretary  
Secretarial  
Stenographic  
Cashier-Checker  
Fashion Merchandising

#### TRADE & INDUSTRY

Air Conditioning & Ref.  
Airframe & Powerplant (FAA)  
Auto Body Repair  
Auto Mechanics  
Carpentry  
Drafting  
Electrical—  
Wiring, TV Repair  
Industrial Plastics  
Machine Shop  
Machine Tool  
Mill & Cabinet Working  
Metal Fabrication  
Printing  
Welding  
Coop. Occup. Training

Length of enrollment varies to meet the demands of the course and the needs of the student.  
Age: 16 years through adult. Day and evening courses available. Summer session available.  
Certificate of Completion Awarded. Veterans Administration Approved. Visitors welcome.

Additional Information:

STUDENT SERVICES, W.A.V.T.S., 301 S. Grove, Wichita, Kansas 67211

Phone 316-265-0771

## COLLEGIATE PROGRAMS IN TECHNOLOGY

for

YOUNG MEN AND WOMEN



leading to the

ASSOCIATE OF TECHNOLOGY DEGREE

For information contact:

Director of Admissions  
Kansas Technical Institute  
Salina, Kansas 67401  
Phone: (913) 625-0275

### LIKE SWEET ONIONS?

#### NEW BLUE RIBBON ASSORTMENT

600 sweet onion plants with free planting guide \$3.60 postpaid fresh from Texas Onion Plant Company, "home of the sweet onion," Farmersville, Texas 75031



# Community can aid career search

What is your community doing to assist youth in learning about vocational possibilities, and making the important decision of which career to choose?

Do the young people in this county have opportunities to learn satisfactory work habits—at home, at school, church, or through youth group activities?

What about opportunities for part-time and summer employment? Are these job opportu-

ities adding to a storehouse of knowledge or skills and attitudes that prepare youth for employment?

Are these jobs available in the county for young people as they reach maturity, drop out of school, or complete their formal education?

Are these sufficient career exploration programs, vocational guidance service, and other aids to help teenagers make the

transition from school to work?

Are the youth of this county equipped to enter the labor market and expanding industrial service areas on a fully competitive basis with youth from other areas?

Do they have enough opportunity to learn about the nature of modern business, industry, and agriculture?

Parents and all adults in the community can consider these questions as they assist youth in identifying special talents in light of future careers. 4-H'ers learn through projects to develop work habits and attitudes that will strengthen them in the employment market.

Projects in entomology, wood-working, electricity, livestock, foods, clothing, and photography are examples of projects stimulating young people to seek more information on careers in these areas, and possibly prepare themselves for such a vocation.

## COLORFUL BUSINESS TRAINING

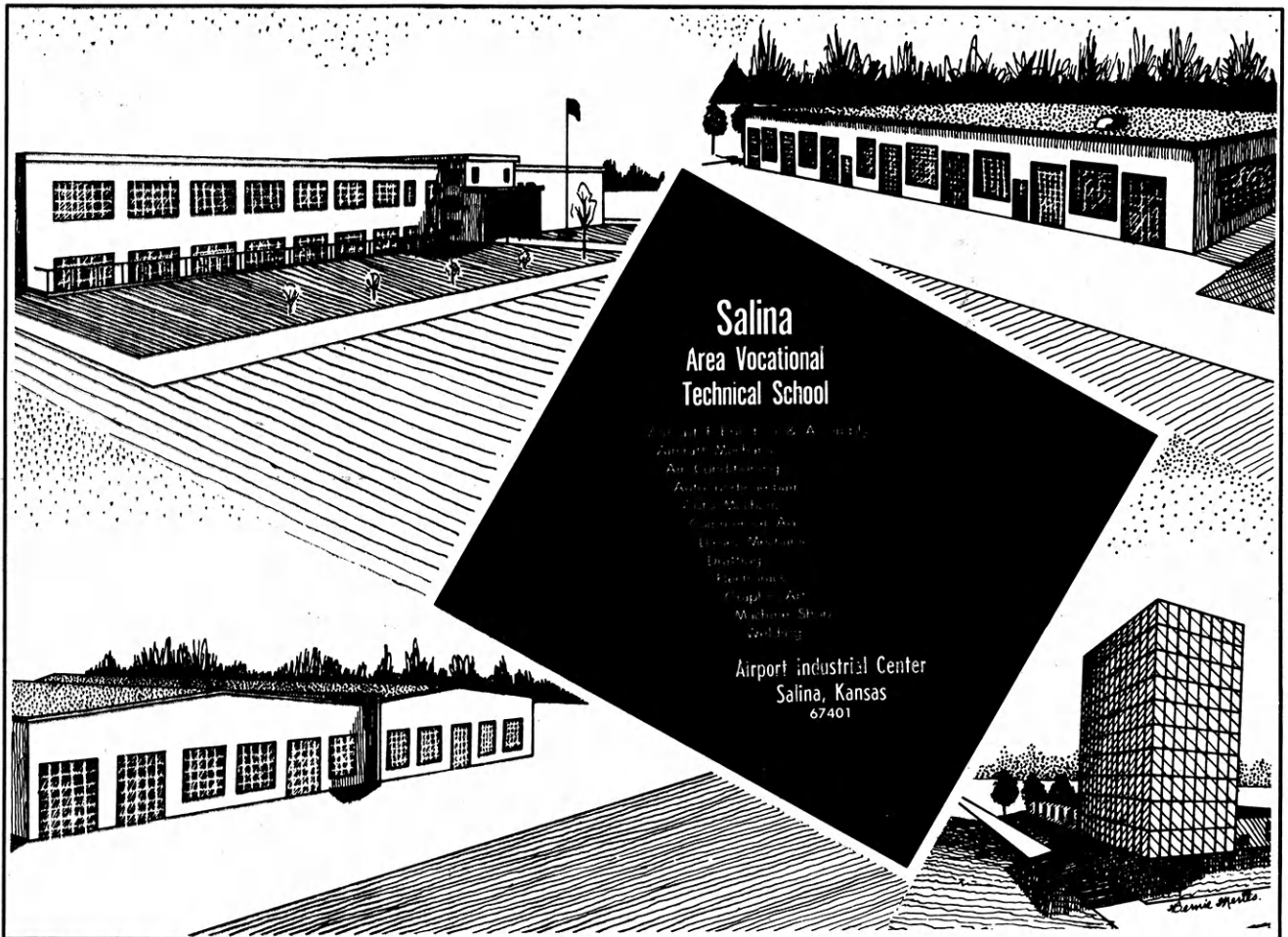


By movies, music, office visits, speakers, machines • 1-2 Year Courses; Refresher; Charm; Personality

- Coeducational
  - Active Placement
    - Accredited A.C.B.S.
      - Student Loans

**ADELA HALE BUSINESS CAREER SCHOOL**

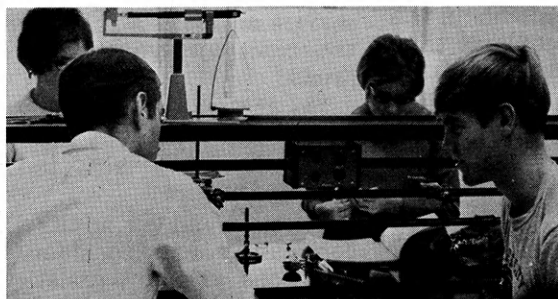
FIRST AND PLUM HUTCHINSON, KANSAS 67501 MOhawk 3-4419



## THE GARDEN CITY COMMUNITY JUNIOR COLLEGE

1919 - 1970

Fifty-one Years of Service



The Garden City Community Junior College Takes  
Pride in **GOOD TEACHING WITH EMPHASIS ON  
SOUND STUDENT ADVISEMENT**

**A College in a friendly and progressive area—**

**GARDEN CITY, FINNEY COUNTY, KANSAS**

Write: Director of Admissions  
The Garden City Community Junior College  
821 Campus Drive  
Garden City, Kansas 67846  
Phone BR 6-7611

## FLINT HILLS AREA VOCATIONAL TECHNICAL SCHOOL

Emporia, Kansas

**PROTECT YOUR FUTURE and LEARN A TRADE  
in one of twelve different occupations:**

- |                            |                              |
|----------------------------|------------------------------|
| 1. Auto Mechanics          | 7. Welding                   |
| 2. Building Trades         | 8. Machine Tooling           |
| 3. Dental Assisting        | 9. Office Occupations        |
| 4. Distributive Education  | 10. Trades and Industry      |
| 5. Electricity-Electronics | 11. Agricultural Occupations |
| 6. Graphic Arts            | 12. Practical Nursing        |

The above programs are offered during the day, and Adult Evening Classes are available in Speedwriting, Office Occupations, Supervisory Management, Blueprint Reading, Electronics, Welding, Auto Mechanics, Young Farmers, and others. Both day and evening classes are approved by the Veterans Administration for Veterans training. Applicants who have been accepted into our school may apply to the Superintendent of the Unified School District in which they reside for their day school tuition to be paid by that district. Student loans are available.

**For Admission write:**

Mr. Richard Metcalf, Director  
Box 279  
Emporia, Kansas 66801  
or  
Phone DI 2-6404 or DI 2-6405

## Kansas City Kansas COMMUNITY JUNIOR COLLEGE

Fully accredited by the North Central Association of Colleges and Secondary Schools and by the Kansas Department of Public Instruction.

### CURRICULAR AREAS:

Pre-Professional  
Liberal Arts  
Vocational-Technical  
Adult Basic Programs

Semester plan with extended day and evening classes as well as a six weeks summer program.

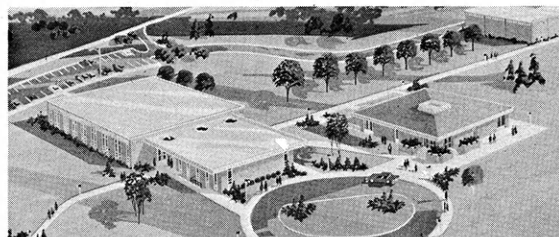
**For more specific information, contact the:**

**Director of Admissions**  
Kansas City Kansas Community  
Junior College

**824 State Ave. 66101**

**Phone DR 1-4460**

## Colby Community College Colby, Kansas



### REPRESENTING NORTHWEST KANSAS

- Low cost
- Quality education
- Associate of Arts and Applied Science Degree programs
- Accredited
- New campus: carpeted and air-conditioned
- Financial assistance available in grants, grants-in-aid, loans, scholarships, and work programs
- Friendly student-faculty relationship
- One or two-year secretarial and business program

**FOR ADDITIONAL INFORMATION WRITE:**

Registrar  
Colby Community College  
Colby, Kansas 67701

# Are you *ready* for junior college?

Dr. Br. Raymond A. Slattery  
Executive Secretary, Kansas Assoc.  
of Public Comm. Colleges

Are you ready for this?

Are the public community junior colleges of Kansas a means by which you can settle your personal problems about education beyond high school or for a career? If you are interested in getting the kind of education you want in the way you want to get it, the junior colleges of Kansas are waiting for you. But, if you are a person who must be forced to do the course work required, the junior college is definitely not the place for you to seek higher education.

If you are interested in developing your advanced education or occupational skills so that you can cope, NOW, and in the future, with the social and economic systems of the present world, Kansas public community junior colleges will make room for you on their campuses. The public community junior colleges of Kansas are in a constant process of change. Here the learning environments are continually restructured so that each student may be educated to the end that he is economically more competent, politically more wise, and socially more understanding than when he entered the college.

If you are ready to become a participant in shaping your personal education to cope with the ever-changing present and future, the junior colleges of Kansas will not only make room for you; they will structure an educational program just for you on your own terms.

Are you ready for this?

Educational programs can be structured for you individually. Even individual courses can be segmented and adapted to your personal needs. That is, if you indicate by your in-college behavior that you are responsible for your education.

Assumptions which govern the Kansas state plan for community junior colleges is state law. They are:

- The public community junior colleges must offer post high school educational opportunities to the citizens of Kansas. The ultimate decision about what educational opportunities to offer is the privilege of the potential students.

- The junior college educational system is divided into four semesters over two years. This is a legal requirement for administrative and fiscal accounting convenience.

- Educational offerings must be available to all potential students at a reasonable cost.

- Kansas public community junior colleges are committed to offering a comprehensive program which usually falls into five general classifications: college or university parallel; occupational, which includes technical and vocational training; adult education, including general education and re-education courses; guidance and counseling services; and community services.

These five general classifications of junior college programs are merely for administrative convenience. You may mix and match them to meet your needs, once you have established the fact of your educational responsibility.

Kansas established most of its junior colleges by the high school extension method. The high school academic program was simply extended two years. Program details were intensified for the single purpose of preparing students for senior colleges.

Two junior colleges vie for the distinction of being Kansas' oldest. They are Garden City and Highland. Garden City is celebrating its 50th anniversary in

1969 with the opening of a new campus. Highland has continued to add new buildings to its original campus, which was established in 1857 as a separate college.

Over that span of years, the state has recognized public community junior colleges have a more comprehensive and unique educational function than just college prep. That uniqueness was defined in the Community Junior College Act of 1965. This act encourages junior colleges to separate from their parent high school buildings and charges them with responsibility to develop into comprehensive, two-year educational institutions.

What is the relevance of comprehensive educational programs and you? A comprehensive program provides you with the option to mix and match academic transfer subjects, general cultural development courses, and vocational-technical training into one college program.

You can elect to study and practice such academic courses as English, mathematics, education, fine arts the sciences, philosophy, irrigation technology, business, police science, secretarial training, professional pilot and stewardess training, medical technologies, nursing and cosmetology. This is an extremely limited notation from the complete program offering from only one, moderate-sized Kansas junior college. Even the smallest Kansas public community junior college is prepared to offer you 20 programs of study. In that school you can prepare yourself for college transfer and engineering, forestry, salesmanship, mortician, veterinary medicine. One community junior col-

(Continued to page 16)



# Many factors influence career

As a young man or woman planning for a career in our rapidly changing world, you will face many questions about yourself and your job or career choice.

Many factors will influence your choices—your abilities and interests, financial situation, knowledge of occupational fields and the availability of jobs.

Now is an opportune time, while you are still in school, to

consider answers to these questions—to view job situations and make plans based on your findings. The situations will change and you will change, so be prepared to change your plans.

Schooling is very important. A high school diploma is a near-essential in most business, industrial and government jobs. And remember, the job you plan for today may not exist tomorrow. You may change occupations five or six times before reaching retirement age. For this reason, while in school, you need to acquire a good background in reading and writing skills as basic in future training situations.

One of the most puzzling problems facing you is the sheer numbers of young people arriving at working age and striving to get established in an occupation. This problem will increase

in the near future. This situation is further complicated by automation and technological changes — many entry jobs are disappearing each month. These are the jobs that have provided young people like you the opportunity to get a foothold in industry and business. They require little in the way of training or experience.

The greatest increase in employment during the remainder of the 1960s and early 1970s will occur in occupations requiring the most education and training. There will be increased growth and replacement needs. Replacement needs will be high in occupations with a large percentage of women workers who leave jobs to take family responsibilities, and older workers. New jobs will appear in rapidly growing occupations filled mainly by young men.

## Are you ready

(Continued from page 15)

lege and area vocational-technical school in southeast Kansas wants you to know that it is the only institution in the state designated as an area vocational school.

Up to this point, the discussion has been limited to the learning and earning phase of the public community junior colleges. Are you ready to assume responsibility for community activities and participation in the operation of the school which you choose to attend? If you are an individual who, because of world, state, community, or personal developments, desires specialized education or training in special service endeavors, a Kansas public community junior college is the place for you to pursue higher education.

### NEOSHO COUNTY COMMUNITY JUNIOR COLLEGE Chanute, Kansas

#### Offering Quality Education

- Liberal Arts
- College Transfer
- Practical Nursing
- Occupational Training
- Adult Education

- Approved Veteran Training
- Complete new air-conditioned facilities
- 5 buildings on 50 acre Campus
- Adequate housing in a friendly community
- Individualized instruction—minimum cost

**Apply now for fall term of 1970—write:**

Director of Admissions  
Neosho County Community Junior College  
Chanute, Kansas 66720

## SERVING THE COMMUNITY

With a wide variety of curricular courses  
and extra-curricular activities.

### LABETTE COMMUNITY JUNIOR COLLEGE

PARSONS, KANSAS 67357

### LOOK TO HIGHLAND FOR A QUALITY EDUCATION

## Highland Community Junior College

HCJC offers an ideal answer to the difficult transition from high school to college...

- An outstanding teaching faculty
- A curriculum that is fully accredited — along with extensive opportunities for extra-curricular interests.
- A new Library — Student Union — Classroom complex.
- Low tuition costs — Yearly average less than \$130.00.

For Additional Information, Write or Call:

Director of Admissions  
Highland Community Junior College  
Highland, Kansas 66035  
Phone: Area Code 913 442-3661





# KANSAS TWO-YEAR COLLEGES

## Public Community Junior Colleges

	Location	(Equated Full-Time) Enrollment	Tuition Per Sem.	Room & Board Per Sem.	On Campus Housing Capacity	WRITE FOR INFORMATION TO
<b>Allen County Community Jr. College</b>	Iola	450	\$4 credit hr. \$185 sem. (out of state)	\$375	96	Allen County Community Jr. College, 300 E. Jackson, Iola, Kans. 66749.
<b>Barton County Community Jr. College</b>	Great Bend	585	\$4 sem. hr.	\$420		Dean of Student Services, Barton County Comm. Jr. College, Great Bend, Kans. 67530.
<b>Butler County Community Jr. College</b>	El Dorado	1,470	\$4 sem. hr.	\$350	56 men 56 women	Leonard McKinney, Registrar, Butler County Community Jr. College, El Dorado, Kans. 67042.
<b>Cloud County Community Jr. College</b>	Concordia	465	\$4 hour (Kans. res.)	\$400-\$425		James E. Douglass, Director of Admissions and Registrar, Cloud County Community Jr. College, Concordia, Kans. 66901.
<b>Coffeyville Community Jr. College</b>	Coffeyville	627	\$4 credit hr. (Kans. res.)		40 men 40 women	Coffeyville Community Jr. College, Coffeyville, Kans. 67337.
<b>Colby Community College</b>	Colby	670	\$5 credit hr.	\$410	120 men 80 women	Robert Burnett, Director of Admissions, Colby Community College, Colby, Kansas. 67701.
<b>Cowley County Community Jr. College</b>	Arkansas City	604	\$5 credit hr.	\$315		Miss M. M. Williams, Admissions Officer, Cowley County Community Jr. College, Arkansas City, Kans. 67005.
<b>Dodge City Community College</b>	Dodge City	804	\$4 hour	\$375		V. James Sherer, Director of Admissions and Records, Dodge City Community College, Dodge City, Kans. 67801.
<b>Fort Scott Community Jr. College</b>	Fort Scott	608	\$4 hour	\$420		Registrar, Fort Scott Community Jr. College, 2108 S. Horton, Fort Scott, Kans. 66701.
<b>Garden City Community Jr. College</b>	Garden City	769	\$4 hour	\$375	60 men 62 women	Charles D. Michael, Registrar, Garden City Community Jr. College, Garden City, Kans. 67846.
<b>Highland Community Jr. College</b>	Highland	630	\$4 credit hr.	\$300-\$350	35 men 75 women	Douglas L. Fitch, Director of Admissions & Counseling, Highland Community Jr. College, Highland, Kans. 66055.
<b>Hutchinson Community Jr. College</b>	Hutchinson	2,088	\$4 credit hr.	\$335	355	Miss Reba Anderson, Director of Admissions, Hutchinson Community Jr. College, Hutchinson, Kans. 67501.
<b>Independence Community Jr. College</b>	Independence	476	\$4 credit hr. (Kans. res.)			Director of Admissions, Independence Community Jr. College, Independence, Kans. 67301.
<b>Johnson County Community Jr. College</b>	Merriam	961	\$7 credit hr.			Director of Admissions, Johnson County Comm. Jr. College, Merriam, Kans. 66200.
<b>Kansas City Kansas Community Jr. College</b>	Kansas City	1,540	\$6 sem. hr.			Director of Admissions and Registrar, Kansas City, Kans. Community Jr. College, 824 State Ave., Kansas City, Kans. 66101.
<b>Labette Community Jr. College</b>	Parsons	397	\$4 sem. hr.	\$350		Labette Community Jr. College, 200 South 14th St., Parsons, Kans. 67357.
<b>Neosho County Community Jr. College</b>	Chanute	285	\$4 credit hr.	\$350-\$375		W. H. McMurray, Director of Admissions, Neosho County Community Jr. College, Chanute, Kans. 66720.
<b>Pratt Community Jr. College</b>	Pratt	448	\$4 credit hr.	\$350	48 men 48 women	Director of Admissions, Pratt Community Jr. College, Pratt, Kans. 67124.
<b>Seward County Community Jr. College</b>	Liberal	234	\$4 sem. hr. (Kans. res.)	\$350		Director of Student Services, Seward County College, Liberal, Kans. 67901.

## Private Two-Year Colleges

<b>Central College</b>	McPherson	162	\$475	\$375	165	Director of Admissions, Central College, McPherson, Kans. 67460.
<b>Donnelly College</b>	Kansas City, Ks.	639	\$200			Donnelly College, 1236 Sandusky, Kans. City, Kans. 66102.
<b>Hesston College</b>	Hesston	420	\$495	\$380	550	Director of Admissions, Hesston College, Hesston, Kans. 67062.
<b>Miltonvale Wesleyan College</b>	Miltonvale	188	\$375	\$350	200	Wesley L. Knapp, Director of Admission, Miltonvale Wesleyan College, Miltonvale, Kans. 67466.
<b>St. John's College</b>	Winfield	291	\$215-\$315	\$330	340	Wallace Behrhorst, Admissions Counselor, St. John's College, Winfield, Kansas, 67156.

## State Technical Institutes

<b>Kansas Technical Institute</b>	Salina	228	\$135	\$420	400	Director of Admissions, Kansas Technical Institute, Salina, Kansas 67401
-----------------------------------	--------	-----	-------	-------	-----	--

*It's time  
to*

**SAVE**

Arkansas City  
First Federal Savings and Loan Assn.

Clay Center  
Northwestern Federal Savings and Loan Assn.

Dodge City  
First Federal Savings and Loan Assn.

El Dorado  
Mid-Continent Federal Savings and Loan Assn.

Fort Scott  
Liberty Savings and Loan Assn.

Garnett  
The Garnett Savings and Loan Assn.

Hays  
The Hays Building and Loan Assn.

Hutchinson  
Valley Federal Savings & Loan Assn.—1020 North Main

Leavenworth  
Leavenworth Mutual Savings and Loan Assn.

Liberal  
First Federal Savings and Loan Assn.

McPherson  
The Pioneer Savings and Loan Assn.

Newton  
First Federal Savings and Loan Assn.

Ottawa  
Ottawa Savings and Loan Assn.

Parsons  
First Federal Savings and Loan Assn.

Plainville  
Rooks County Savings Assn.

**Kansas  
Savings & Loan  
Associations**

## OTTAWA UNIVERSITY

Ottawa, Kansas

Also See page 26

### Ottawa Savings & Loan Association

109 East Second Street

Serving This Area Since 1889

## Kansas Bible Colleges

### Friends Bible College

Haviland, Kansas 67059

### Manhattan Bible College

Manhattan, Kansas 66502

## Mid-America Nazarene College

Olathe, Kansas



## American Heritage Education

... Four year Bachelor of Arts, Bachelor of Science, and Bachelor of Music Education Degrees.

... Certificate in Secretarial Science and Certificate in Biblical Studies.

... Nursing Diploma and Degree in Medical Technology in Cooperation with Trinity Lutheran Hospital, Kansas City, Missouri.

For more specific information, contact the:

### Director of Admissions

Mid-America Nazarene College,

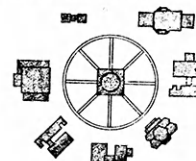
P.O. Box 1776

Olathe, Kansas 66061

See listing page 24.

## At BCCJC

the STUDENTS come FIRST



The curriculum of the Barton County Community Junior College is designed to meet the needs of all students. This includes those who desire to complete a four-year college education and who wish to obtain the first two years in our college, as well as those who desire terminal education leading toward immediate employment in a vocational or technical field. Subjects are offered in nearly every field enabling the student to take the first two years of professional and pre-professional curricula toward the bachelor's degree.

For more information contact:

## BARTON COUNTY COMMUNITY JUNIOR COLLEGE

Great Bend, Kansas 67530

# Plan your future carefully

If you are a senior in high school, then you are a member of the "What should I do?" group. And in these troubled times it is worthwhile to stop and think and listen. You are faced with some weighty decisions.

Only those who are really interested in advancing their education should attempt college. Without a present goal, students may have little ambition to keep going when the going gets tough, and may well "drop out."

How do you know what you

want? "It is a safe rule to follow your natural bent. Stop to consider the things you enjoy most. You will devote more energy and more enthusiasm to the field that is most convenient to you, and consequently achieve more in it. Though some students know what they want to do, because they have a special talent, like art or wizardry in math, or an ever-since-they-can-remember ambition to become a doctor, nurse or reporter.

Before you settle on a final career choice, look over the literally hundreds of different occupations which will be open to you in the years ahead. Find out in advance which occupations within each career field that interests you will offer you the most promising job opportunities.

Parents and young people need to become aware of the changes taking place. This may be done by exploring two or three careers. This exploration may help you realize the lack of opportunities for those who are not trained for **something**.

To help you decide about a career, a personal interview with someone engaged in a career that you like can be helpful. Asking the following questions may help you make your decision.

(1) What is your present position?

(2) How long have you held your position?

(3) What are the duties of your career?

(4) How much education is required for this career?

(5) What special training is needed for your career?

(6) What is the average annual income for persons in your career?

What is the top income expected for your career?

Is your job covered by Social Security?

By other retirement?

(7) What will be the need for a person in this career 25 years from now?

(8) What do you like most about your career?

(9) What are some of the most satisfying aspects of your career?

(10) What aspect do you like the least about your career?

(Continued to page 20)

## BUTLER COUNTY COMMUNITY JUNIOR COLLEGE

"A Comprehensive Community College"

**Academic Transfer — Terminal — Vocational Technical**

New campus; fully air-conditioned; full accreditation.

A Truly Comprehensive Community Junior College

**For Information Apply:**

Director of Admissions

Butler County Community Junior College

El Dorado, Kansas 67042

**—Meeting  
The Needs  
of Today  
With an Eye  
Towards Tomorrow—**



SEWARD COUNTY COMMUNITY JUNIOR COLLEGE  
POST OFFICE BOX 340 - LIBERAL, KANSAS 67901  
TELEPHONE (316) 624-4481



# Plan your future carefully

(Continued from page 19)

Training for a career means that you will follow carefully-made plans. Employers are looking for specific abilities and traits. Regardless of the career choice, certain requirements must be met. These steps are fundamental in most careers.

The school drop-out and the person who just slides by will have few opportunities in this highly technical society of ours. Unskilled jobs are getting fewer, and competition for these jobs is keen. This is the major area of unemployment. They are the first employees laid off and the last rehired.

Today the average person cannot learn a single trade and be fixed for life. Trades and jobs become obsolete at an ever-increasing rate.

What is yet to be unlocked in the future is as fabulous as the genius of man's mind can dare to dream. You can become an active part of this great challenging life, or you can drift along with vain hopes of "lady luck" to smile on you.

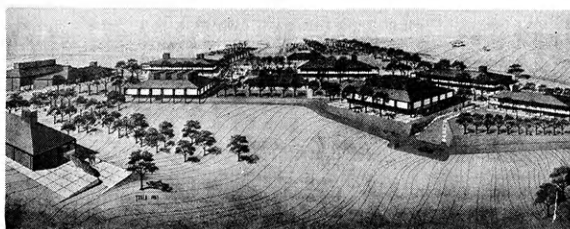
Remember opportunities are made by being prepared.

## Many choices in agriculture

The undergraduate in a college of agriculture may choose from many, diverse areas of study. Kansas State offers 21 degree options. They are: agricultural economics, agricultural education, agricultural journalism, agricultural mechanization, agronomy, animal science and industry, bakery science and management, biochemistry, dairy foods processing, dairy production, entomology, feed science and management, milling science and management, horticulture, natural resources conservation and use, plant pathology, poultry science, pre-veterinary medicine and two-year programs in retail floriculture, nursery and landscape management and pre-forestry. Advanced degrees only are offered in animal breeding, animal nutrition, Extension education, food science and genetics.

## DODGE CITY COMMUNITY COLLEGE

- Three Degree Programs
- Occupational Education
- Continuing Education
- Complete Counseling Services
- Financial Aids



- New Campus — 1970
- Fully Accredited by North Central Association of Colleges

Contact: Mr. V. James Sherer  
Director of Admissions and Records  
Dodge City Community College  
Dodge City, Kansas 67801

## Hesston's new 4-1-4

FALL TERM 4 COURSES



A new emphasis—learning by observation, involvement, experiment, self-evaluation.

Less emphasis on strictly factual aspects; on final exams.

... all in the context of a Christian College.

INTERTERM 1 COURSE



JANUARY



SEPTEMBER-DECEMBER

Growing Along With  
Hesston College

SPRING TERM 4 COURSES



FEBRUARY-MAY

"A Junior College of Distinction"

WRITE:  
Admissions  
Hesston College  
Hesston,  
Kansas, 67062

HESSTON CORPORATION  
Excel Industries, Inc.,  
Hesston, Kansas 67062

An exciting new concept

# Ag careers promising

These Firms Proudly Recommend  
Kansas Wesleyan University and  
Marymount College.

Graves Truck Line, Inc.  
739 N. 10th

Salina Merchantile Company  
104-106 N. Santa Fe

Sellers Tractor Co. of Salina, Inc.  
Chicago & 81 Overpass

Stevenson Clothing Co.  
112 N. Santa Fe

## KANSAS WESLEYAN UNIVERSITY

combines

Historic Tradition  
and

Modern Relevance

For Information on  
KWU's Excellent  
Liberal Arts Program —

Write:

Director of Admissions  
KANSAS WESLEYAN UNIVERSITY  
Salina, Kansas 67401

See listing page 24

Jobs available  
and top salaries  
lure youth  
into agriculture

These Firms Proudly Recommend  
Marymount College and Kansas Wes-  
leyan University.

Barragree's Rent-Alls  
1500 S. Broadway (US 81 By-Pass)

Consolidated Printing &  
Stationery Co.  
113 North Santa Fe Ave.

The Lee Hardware Co.  
248 N. Santa Fe

Stiefel's Department Store  
Downtown Salina

## THINK MARYMOUNT

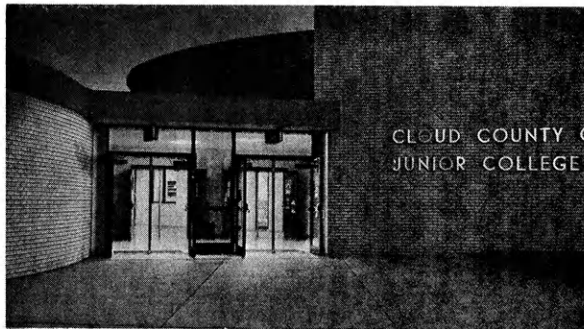


That's what Salina 4-H'er  
Mary Roesner did!

See listing page 24

## AN OPEN DOOR TO YOUR FUTURE AT CLOUD COUNTY COMMUNITY COLLEGE

Concordia, Kansas



### Curriculum:

College Parallel  
Agri-Business (terminal and transfer)  
Business  
Accounting  
Business Administration  
Secretarial Training  
General Office Training

### Financial Assistance:

Apply by March 10 for fall semester

### Further Information Contact:

Director of Admissions  
Cloud County Community College  
Concordia, Kansas 66901

Job outlook for college gradu-  
ates in agriculture continues on  
the upswing. More positions are  
available per graduate than five  
years ago. And graduates com-  
mand top salaries in fields as  
diverse as journalism to gen-  
etics.

Twice the number of jobs per  
graduate is especially significant  
when one considers agricultural  
enrollment at Kansas State Uni-  
versity, for example, has doubled  
in the same five-year period.  
Starting salaries for B.S. agri-  
cultural graduates at K-State  
last year averaged more than  
\$8100, according to Dr. David J.  
Mugler, assistant to the dean of  
agriculture at K-State. A sur-  
vey of K-State ag students who  
graduated in 1963, Mugler said,  
shows they progressed from an  
average starting salary of \$5800  
in 1963 to a 1968 salary of  
\$10,200.

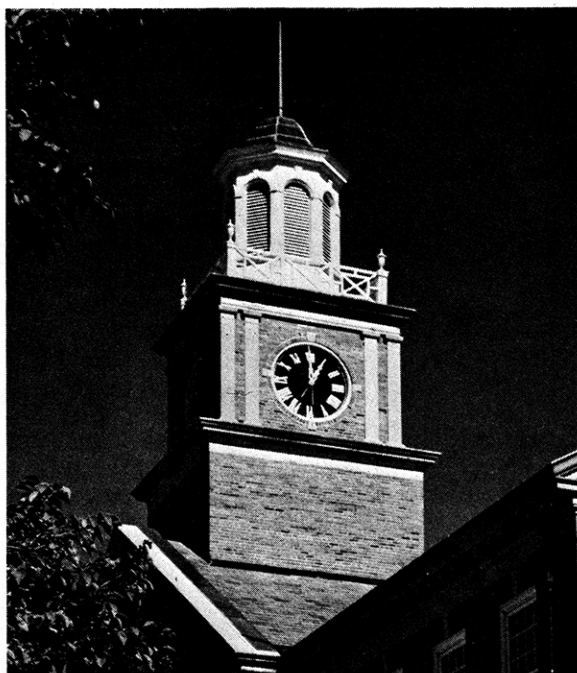
Mugler said 155 firms recruit-  
ed K-State graduates last year  
by campus visits.

Recent changes in curricula at  
K-State include making Pre-  
Veterinary Medicine an option in  
either the College of Arts and  
Sciences or Agriculture. Compe-  
tition for admission to the Col-  
lege of Veterinary Medicine is  
keen, Mugler said, and enabling  
a student to enroll in the College  
of Agriculture as a freshman  
eliminates the problems of hav-  
ing to switch colleges if he is not  
accepted to Vet School. Former-  
ly, pre-vet was offered only in  
Arts and Sciences.

A new curriculum at K-State  
is Natural Resources Conserva-  
tion and Use. The importance of  
this curriculum, Mugler said, is

(Continued to page 26)

# Wichita State University



- Fairmount College at Liberal Arts & Sciences
- Engineering
- Education
- Fine Arts
- Business Administration
- University College
- Graduate School
- Continuing Education



Send me more  
information about  
**WICHITA  
STATE  
UNIVERSITY**

- ☐ Application for Admission
- ☐ Scholarship Information
- ☐ Loan Information
- ☐ Student Employment Opportunities
- ☐ Housing

Other

---

---

---

Name (please print)

Address

Zip Code

Clip & Mail to:

DEAN OF ADMISSIONS & RECORDS  
Wichita State University  
Wichita, Kansas 67208



# Jobs after high school

A guide to the best opportunities for those who don't go to college\*

**O**f every ten youngsters who graduate from high school this spring, about five will go on to college. But suppose you are one of those who don't—because of lack of money, poor grades, no interest, or simply because you want to find a job and start earning your keep. What does the future look like for you?

## Where to get help

For every job listed on the accompanying chart, there are dozens of others that may be worth considering. You'll need all the help you can get in picking the right one and landing it.

Talk to your high school counselor.

Visit the nearest office of your state employment service. Ask about openings and aptitude tests.

Find out from the local school board what vocational courses will be available to you after high school.

Go to the school or public library and study the **Occupational Handbook**, put out by the U.S. Department of Labor. Also see **Job Guide for Young Workers**, which is available for 45 cents from the Superintendent of Documents, Washington, D. C. 20402.

Which jobs would be the easiest to get? Which would offer the

best advancement and the best pay?

The outlook for the teen-ager entering the job market right from high school is dark in some ways, bright in others. Landing your first job may turn out to be comparatively easy. But before you've been on it very long you are likely to find it disappointing. And then comes the period that most young job-holders go through — the moving about from position to position as you feel out the employment market and test your own abilities and interests. It's at this point that you run head-on into facts like these:

- There are more teen-age job seekers now than ever before, and the number coming for the first time into the job market gets bigger every year.

- Unemployment among teen-agers in the work force is more than twice the national rate, and it's rising steadily. "One out of every five of today's unemployed," says the Secretary of Labor, "is in the 16-to-19-year-old age group."

- Competition for advancement will come more and more from young people who have contin-

ued their education after high school. So even if you do land a good position at the start, you'll probably find that you need more training yourself, either on the job or at night school, to get ahead.

There's a bright side of the picture, though. For one thing, business in general looks pretty good for the years just ahead. The steady growth of the population and of the economy means that there will be more jobs in industries and occupations for which you may be able to qualify.

Moreover, the fact that you did finish high school and get your diploma will give you at least a two-to-one advantage over those who don't stick it out. And that diploma will open a great many new opportunities for further training that are being offered by companies and communities to high school graduates who want to improve themselves.

The chart that follows shows some of the jobs for which high school graduates can qualify. Look for the kind that will give you a chance for advancement.

the job	the qualifications	the outlook
secretary, stenographer	High school. Business course helpful. Ability to take dictation at 80 words a minute; type 40 words a minute. Competence in spelling and grammar. Neatness required.	Excellent for women in most industries and government agencies. Try professional offices, too. Openings for men in railroads, oil, trucking and construction firms, courts, education services. Pay averages \$75-\$95 a week.
typist	High school preferred. Business course helpful. Type 40-50 words a minute. Accuracy and neatness required.	Excellent, as above. Pay averages \$70-\$85 a week. Prospects improve if you learn to operate office machines and take shorthand.
office clerk	High school preferred. Typing and ability to operate simple office machines helpful. So is business arithmetic and knowledge of filing. On-the-job training available.	Large firms will need file, billing, payroll, production, timekeeper and stock clerks. Advancement depends on personal characteristics, willingness to take training. Pay averages \$61-\$112 a week.

\*Condensed by permission from Changing Times, the Kiplinger Magazine, (March 1964 issue). Copyright 1964 by The Kiplinger Washington Editors, Inc., 1729 N.W., Washington, D.C. 20005.

(Continued to page 46)

# Kansas 4-Year Colleges

School	Location	(Equated Full-Time) Enrollment	Type	Affiliation	Accreditation
<b>Baker University</b>	Baldwin	955	Coed	Methodist	Kansas State Department of Public Instruction; Nat'l. Council for Accred. of Teacher Education; University Senate of the Methodist Church; American Assoc. of Univ. Women*
<b>Bethany College</b>	Lindsborg	734	Coed	Lutheran	Kansas State Department of Public Instruction; North Central Regional Assn.*
<b>Bethel College</b>	North Newton	549	Coed	Mennonite	Kansas State Department of Public Instruction*
<b>College of Emporia</b>	Emporia	1,116	Coed	Presbyterian	North Central Regional Assn.; Kansas Department of Public Instruction; American Association of University Women*
<b>Fort Hays Kansas State College</b>	Hays	5,181	Coed	State	Nat'l. Council for Accred. of Teacher Education; Nat'l. Ass'n. of Schools of Music; American Association of University Women*
<b>Friends University</b>	Wichita	1,025	Coed	Soc. of Friends	Nat'l. Council for Accred. of Teacher Education; Nat'l. Association of Schools of Music*
<b>Kansas State College of Pittsburg</b>	Pittsburg	5,914	Coed	State	Nat'l. Council for Accred. of Teacher Education; Nat'l. Association of Schools of Music; Nat'l. University Extension Association; American Association of Colleges for Teacher Education*
<b>Kansas State Teachers College</b>	Emporia	6,675	Coed	State	Nat'l. Council for Accred. of Teacher Education; Nat'l. Library Association; Nat'l. Association of Schools of Music*
<b>Kansas State University</b>	Manhattan	12,943	Coed	State	Professional Accred.; Arch.; Chem.; Engineering; Journalism; Music; Veterinary Medicine; Nat'l. Council for Accred. of Teacher Education*
<b>Kansas Wesleyan</b>	Salina	725	Coed	Methodist	University Senate of the Methodist Church; AAUW and Kans. State Dept. of Education
<b>Marymount College</b>	Salina	610	Coed	Catholic	Nat'l. Council for Accred. of Teacher Education; Nat'l. League for Nursing*
<b>McPherson College</b>	McPherson	712	Coed	Brethren	Kansas State Department of Education; Kansas Assn. of Colleges and Universities*
<b>Mid-America Nazarene College</b>	Olathe	502	Coed	Nazarene	Correspondent Status*
<b>Mount St. Scholastica</b>	Atchison	606	Women	Catholic	Nat'l. Council for Accred. of Teacher Education; State Dept. of Public Instruction; Nat'l. Association of Schools of Music*
<b>Ottawa University</b>	Ottawa	1,011	Coed	Baptist	American Baptist University*
<b>Sacred Heart</b>	Wichita	705	Coed	Catholic	Kansas State Department of Public Instruction*
<b>St. Benedict's College</b>	Atchison	1,025	Men	Catholic	Kansas State Department of Public Instruction; Nat'l. Catholic Education Association*
<b>Saint Mary College</b>	Xavier	591	Women	Catholic	Nat'l. Council for Accred. of Teacher Education; Nat'l. Association of Schools of Music; AAUW and Kans. State Dept. of Education*
<b>Saint Mary of the Plains College</b>	Dodge City	713	Coed	Catholic	Kansas State Department of Public Instruction*
<b>Southwestern College</b>	Winfield	666	Coed	Methodist	Kansas State Department of Public Instruction; Nat'l. Association of Schools of Music*
<b>Sterling College</b>	Sterling	625	Coed	Presbyterian	Kansas State Department of Public Instruction; American Association of University Women*
<b>Tabor College</b>	Hillsboro	424	Coed	Mennonite Brethren	Kansas State Department of Public Instruction*
<b>University of Kansas</b>	Lawrence	19,001	Coed	State	Various National and State Associations in Law, Medicine, Architecture, Pharmacy, Art in Fine Arts, Journalism, Business, Music, Education and Engineering*
<b>Washburn University</b>	Topeka	3,570	Coed	Municipal	Nat'l. Council for Accred. Teacher Education; Association of American Law Schools; American Bar Association; American Association of Univ. Women; Nat'l. Ass'n. of Schools of Music*
<b>Wichita State University</b>	Wichita	9,196	Coed	State	Nat'l. Council for Accred. Teacher Education; Nat'l. Association of Schools of Music; Engineers, Council for Professional Development; American Chemical Society Committee for the Professional Training of Chemists*

\* Is accredited by North Central Association of Colleges and Secondary Schools.

Tuition Per Sem.	Room & Board Per Sem.	Estimated total yearly cost for a student (including tuition, room & board, books, supplies & personal expenses)	On Campus Housing Capacity	SCHOLARSHIPS		WRITE FOR INFORMATION TO
				No.	Average Amount	
\$625	\$450	\$2300	800	250	\$500	Director of Admission, Baker University, Baldwin City, Kansas 66006.
525	375	1875	450	50	\$475	Director of Admissions, Bethany College, Lindsborg 67456.
Single Fee \$1978-2052			600	113	\$400	Office of Admissions, Bethel College, North Newton 67117.
395	476.50	1950	420	40	\$400	Raymond H. Elbert, Director of Admissions, The College of Emporia, Emporia 66801.
181.50	375	1300-1500	1,300	125	\$200	News and Publications Office, Fort Hays Kansas State College, Hays 67602.
350 per quarter	305 per quarter	2000	188	150	\$300	Office of Admissions, Friends University, Wichita 67213.
181	390 \$20 application fee non-refundable	1500	1,700	325	\$150	Office of Admissions, Kansas State College of Pittsburg, Pittsburg 66762.
182	450	1800	1,200	200	\$200	Office of Admissions, Kansas State Teachers College, Emporia, Kansas 66801.
231	450	1650	5,000	723	\$256	Dean of Admissions and Records, Kansas State University Manhattan 66502.
Single Fee \$2400 average on guaranteed cost plan			600	\$68,000 for new students, ranging from \$400 to \$4,000 for four years.		Director of Admissions, Kansas Wesleyan University, Salina 67401.
Single Fee \$2200		2500	350	185	\$300	Admissions Director, Marymount College, Salina 67401.
535 for 15 hrs.	360-420	1950	714	Unrestricted number available, up to \$675 per year.		Gene Myers, Director of Admission, McPherson College, McPherson 67460.
325	345	1500-1700	306	Available on basis of need		Director of Admissions, Mid-America Nazarene College, Box 1776, Olathe, Kansas 66061.
405	400	2000	590	85	\$350 (renewable for 4 years)	The Director of Admissions, Mount St. Scholastica College, Atchison, Kansas 66002.
Single Fee \$2060 to \$2150			768	many available		Dick Powell, Director of Admission, Ottawa University, Ottawa 66067.
375	425	1900	348	70	\$287 per yr.	Director of Admissions, Sacred Heart College, Wichita, Kansas 67213.
600	400-500	2500	900	100	\$900	Director of Admission, St. Benedict's College, Atchison 66002.
450	385	1800	450	70	\$350	Director of Admissions, Saint Mary College, Xavier 66098.
450	400	1900	488	100	\$250 renewable each semester	Director of Admissions, Saint Mary of the Plains College, Dodge City 67801.
630	360	2030	565	280	\$350	Director of Admissions, Southwestern College, Winfield 67156.
Single Fee \$1710		1785	575	40	\$472	Director of Admissions, Sterling College, Sterling 67579.
500	362	1900	300	120	\$200	Director of Admissions, Tabor College, Hillsboro, Kansas. 67063.
230.50	362	1650	5,200	1,200	\$300	Office of Admissions & Records, University of Kansas, Lawrence, Kansas 66044
3-20 per credit hour plus \$20 activity fee per semester	396	1520	339	448	\$200	Registrar and Director of Admissions, Washburn University, Topeka 66621.
222.25 (15 hour load)	450	1600	391	532	\$228	Dr. Carl Fahrbach, Dean of Admissions and Records, Wichita State Univ., Wichita 67208.

Two private residence  
halls adjacent to campus  
will accommodate  
1,550 students)

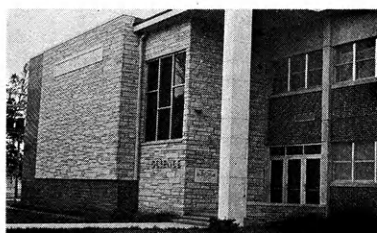


# Ag careers promising future

(Continued from page 21)  
evidenced by the ever-growing concern over air and water pollution.

A dynamic industry, agriculture offers challenging oppor-

tunities in business, industry, research and development, education, communications, and conservation and recreation, as well as farming and farm management.



Thompson Hall of Science  
**STERLING COLLEGE**  
STERLING, Kansas

A member of the Associated Colleges of Central Kansas and affiliated with the United Presbyterian Church, Sterling College offers an ever expanding academic opportunity to Kansas high school graduates as well as to students from twenty-eight other states and five foreign countries. A four year, coeducational liberal arts college, Sterling College seeks for academic excellence in an atmosphere of Christian friendship, concern and social involvement. Address inquiries to Dr. William McCreery, President, Sterling College, Sterling, Kansas 67579.

See listing page 24.

You Are  
Always Welcome  
in Sterling

**THE FARMERS  
STATE BANK**  
STERLING, KANSAS

DEPOSITS INSURED BY F.D.I.C.

Agricultural research and development in education institutions and businesses allied with agricultural need nearly 2,000 new scientists each year. Research in agricultural experiment stations and in private laboratories with further development of new products by industrial firms, has made the American farmer the most proficient in the world.

More agricultural college graduates enter the educational field that return to farming, surveys show. Agricultural educators number 37,000 and more than 2,000 recruits are needed annually. The Cooperative Extension Services hires many young men upon graduation and put them to work interpreting and helping put to practical use what agricultural research scientists find. Many industries need capable instructors to train their employees.

Farmers in one year spend \$29 billion for supplies and equipment. Firms handling such commodities as tractors, motor vehicles, feed, seed and pesticide look more and more to agricultural colleges for employment of professional and technical men. Demands far outnumber graduates.

More persons are employed in transportation, distribution and marketing of farm products than are engaged in their production. Still other services essential to successful farming — such as banking, insurance, credit, land appraisal, public utilities and market reporting — represent businesses that look to agricultural colleges for trained technicians and executives.

Thousands of agricultural college graduates are employed in private and governmental service agencies; the U.S. Department of Agriculture alone employs 62,000 persons. Conservation of natural resources is a national requisite. Demands in these fields will grow, soil must be saved, crops must be more abundant, timber must be preserved and wisely utilized. Water, a vital necessity, is becoming a subject of greater concern each year.

Farm magazines and paper,

(Continued to page 30)

## How About The Newspaper Business?

If you are thinking about following a business or professional career, why not spend an hour visiting with your home town editor and learn about the possibilities in journalism?

The newspaper business offers an opportunity for a most interesting and rewarding life for the young man or woman who has a broad educational background, a liking for people, courage, and a desire to have an active part in the American way of life.

A good newspaper man has the satisfaction of knowing that he is helping others to a better life. He remembers that "The People Have The Right to Know" and, that there is no better way to have a well informed Democracy than through the printed word.

Before you make up your mind on your life's work, please think seriously about journalism. Thousands have found it a most enjoyable and rewarding career. Maybe you?

## The Journal-World

Lawrence, Kansas

"The HOME Newspaper for 16,495 Families"

# Home economics has a career for *you*

**FASHION  
MERCHANDISING**

**COMMUNITY  
SERVICES**

**NUTRITION &  
DIETETICS**

**INTERIOR  
DESIGN**

**RESTAURANT  
MANAGEMENT**

**HOME EC  
COMMUNICATIONS**

**HOME EC  
EDUCATION**

**HOME EC &  
BUSINESS**

From the glittering world of fashion merchandising to the hard basics of nutrition and dietetics lies a home economics career tailored to meet **your** wishes.

And the job outlook is excellent! There are not enough college graduates in home economics to fill the business world's demands for more and more professionals. There is no time in the foreseeable future that supply of home economics graduates will meet the demand.

Major fields of study within the framework of home economics are fashion merchandising, community services, nutrition and dietetics, interior design, restaurant management, home economics and communications, home ec education and home economics and business.

Fashion retailing students are in the know on the fashion scene. With a flair for the dramatic, a love of fashion and a sixth sense for the business world, these students have the ingredients to move to the top. The clothing retailing major at Kansas State University, for example, does not spend four years buried under the books. She gains practical experience by working five to eight weeks in a department store in cities such as Kansas City, St. Louis and Dallas. Majors take many courses in liberal arts, business and clothing and textiles.

Community services offers an opportunity for the home economist to work with people through Extension and social welfare with programs for the aging, community nutrition, consumer interests, housing, pre-school children and youth. Interest in the family is a prerequisite. Focus for the community services major might be credit buying and money management, teaching youth about home and family life through scouting or other youth work, advising other professionals on community pro-

grams in health and nutrition, or serving as a consultant to social or community action programs.

Nutrition and dietetics offers jobs in nursing homes and hospitals, airlines, hotels, country clubs, universities, industrial cafeterias, armed forces, government institutions, or with health departments and community-related services. Emphases within this broad field include the public health or community nutritionist, administrative dietitian, therapeutic dietitian, clinic dietitian, research dietitian or the teaching dietitian.

Interior design also offers a varied field of special interests for the college graduate: be an interiors consultant in a department store, edit the home furnishings section of a newspaper or magazine, work in a museum, manage a showroom or work in furniture design. Ingredients for a successful interior designer are creative ability, patience, perseverance and a flair for the dramatic.

The food profession is big business — the fourth largest business in the United States, in terms of gross revenue. To prepare the graduate to keep pace with this ever-changing field, he takes courses in business law, accounting, administration, personnel management, as well as quantity food production and service, and basic courses in the chemistry and physiology. Graduates are in demand by college and university food centers, food service management companies, hotels and motels, industrial cafeterias, restaurants and vocational schools.

As a home economics journalist, you can be a powerful influence on public opinion. You may find your niche in newspaper, magazine, radio, television, public relations or advertising work. Everything that's going on — that's what concerns you!

(Continued to page 30)

C. E. NELSON, President  
Phone PRescott 6-4846  
Third and Yuma Streets

## SAM SAROFF & CO., INC.

Quality fresh and frozen  
fruits and vegetables

MANHATTAN, KANSAS

## TEXTBOOKS AND LOTS OF OTHER BOOKS

Ted Varney's  
UNIVERSITY BOOK STORE  
Where Nice Things Happen to You



## DOEBELES IGA FOODLINER

Fruits—Vegetables—Groceries  
and Meats

517 N. Third Phone PR 6-5013

Free Coffee  
Every Day Low Prices

Free Delivery Joe Doebele, Prop.

## THE KANSAS STATE BANK

1010 Westloop

Manhattan, Kansas 66502

913 539-7506

*The young bank...with new ideas...  
designed for you!*

## Stickel's

Cleaners & Shirt Laundry

714 N. 12th

## Aggieville Record Shop

Tapes • Acces.

1113 Moro

Manhattan

## CITIZENS STATE BANK AND TRUST CO.

6th & Humbolt

Manhattan

Now Paying 5%  
On Certificates of Deposit

## DOOLEY'S UNIVERSITY DIAMOND SHOP

Featuring

Keepsake Registered  
Diamond Rings

714 No. Manhattan

JE 9-8631

## BUZZELL'S OFFICE EQUIPMENT

SALES—SERVICE—RENTALS

511 Leavenworth  
Manhattan, Kansas

# KANSAS

The 315 acre campus of native limestone buildings is located in the northern part of the city of Manhattan. Established February 16, 1863, as the nation's first land grant college, Kansas State University now has 13,149 students and 1,283 faculty members.

### INDIVIDUAL DEVELOPMENT

At Kansas State University you will be regarded as an individual and will have the right and privilege of individual expression, decision making and action. University life is a time and place for personal development as well as academic achievement and KSU offers assistance instead of restriction to every individual in his pursuit of personal goals.

### REWARDING ASSOCIATIONS

Kansas State University has long had a realistic "open door" policy for its students. Personal visits by students are encouraged by President James A. McCain and all other faculty members of the university community. From these visits, students and faculty members alike can exchange ideas and achieve some understanding of each other's views and problems.

### DISTINGUISHED FACULTY

Members of the faculty of Kansas State University have been recognized and honored by government, business and the academic world for their contributions to both science and society. Several KSU professors have held posts as Presidents of National and International Organizations, Fulbright Lecturers and Researchers and numerous other positions of national eminence.

### WILDCAT PRIDE

Kansas State University has an outstanding and diversified athletic program. As a member of the Big Eight Conference, KSU competes in all major and many minor sports. Competition in varsity sports creates a feeling of confidence and pride in the individual and the entire university.

### ACADEMIC OPPORTUNITIES

Students at Kansas State University

**These Firms Are Proud To Recommend Kansas State University to Kansas Boys and Girls.**

Aggie Hardware & Electric Co., Inc.  
1205 Moro

Bradstreet's Jewelry  
1208 Moro

First National Bank  
701 Poyntz

Olson's Aggieville Shoe Service  
1214 Moro

Waddell Tire Company  
6th & Riley

You Can Count on Us . . .  
Quality costs no more at Sears

Sears, Roebuck  
and Co.

Manhattan

Kansas



# STATE UNIVERSITY

## *An Opportunity To Grow*

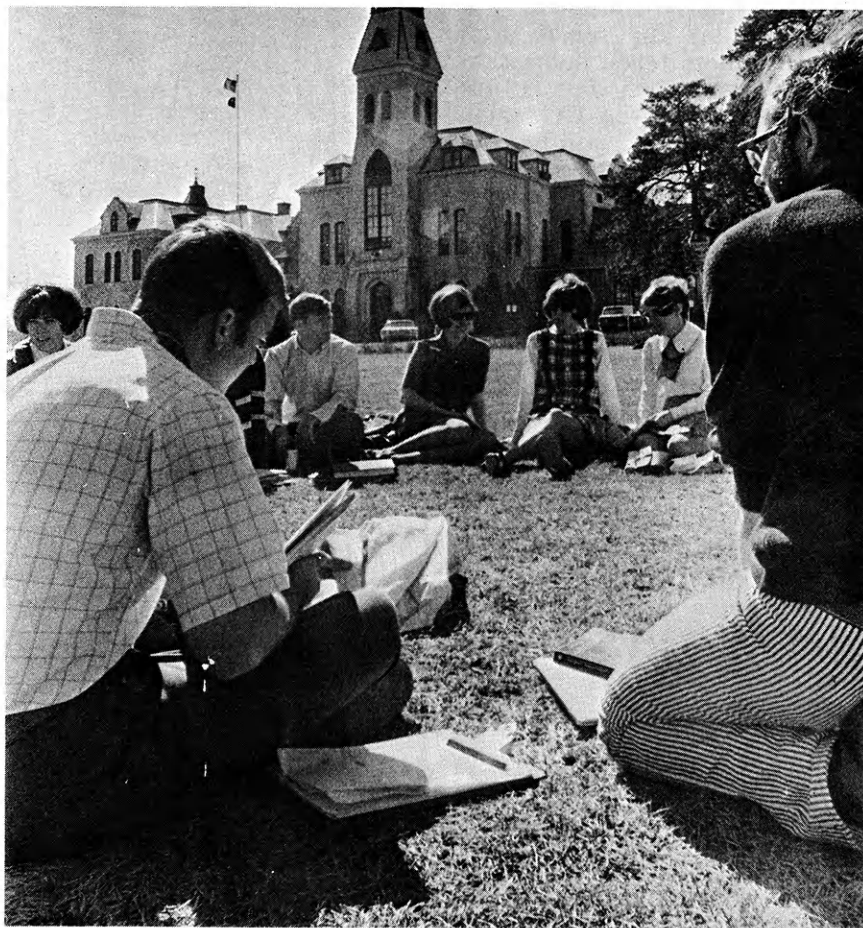
have the opportunity to enter curriculums ranging from Military History to Milling Technology. There are eight colleges plus the Graduate School at KSU offering students fields of study in many vital areas. Successful students may be awarded the Bachelor of Arts or the Bachelor of Science degrees plus the post graduate degrees of Master of Arts, Master of Science, Doctor of Philosophy or Doctor of Veterinary Medicine degrees. More than 50,000 diplomas have been awarded in the school's 106 year history.

### CAREER GOALS

Any Kansas State University student or alumni has at his disposal the services of the Career Planning and Placement Center to aid him in planning his career and acquiring a position suitable to his qualifications and ambitions. Job opportunities for KSU graduates have been both excellent and abundant in the past and, in all probability, will continue to be.

### AFTER COLLEGE

Kansas State University alumni may enjoy a life long friendship with the university through the Alumni Association. Channels of communication are always open between alumni and the university providing a free flow of ideas and information. Great pleasure is realized by many alumni as they reflect upon how their university "was then" and "how it is now." Kansas State University has never remained static nor has it ever gone backward; it has always been, and is now, a university striving today to improve tomorrow.

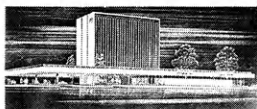


#### For Further Information write:

Dean of Records and Admission  
Kansas State University  
Manhattan, Kansas 66502

The classroom is not necessarily the only place that classes meet at Kansas State University. Here, a class meets on a warm spring day on the lawn by Anderson Hall. Many discussion groups and classes not formally associated with the university are available to interested students. One organization at KSU is The University of Man that offers discussion groups open to everyone with no tuition, no grades and the only prerequisite for enrollment is curiosity.

#### Here's Your School . . . KANSAS STATE UNIVERSITY



#### Here's Your Bank . . . UNION NATIONAL BANK and OFFICE TOWER

TOM GRIFFITH — Chairman of the Board

**KSU College of**  
Agriculture  
Architecture and Design  
Arts and Science  
Commerce  
Education  
Engineering  
Home Economics  
Veterinary Medicine

## Home economics

(Continued from page 27)

Home economics educators are in demand at nursery schools, junior and senior highs and in Extension work. Jobs are available in the smallest town to the largest city. Nursery school teachers instruct young children or administer early childhood programs; junior and senior high school teachers teach homemaking as preparation for future family roles and the Extension worker works with youths and adults to extend home economics research findings into home and family life.

Home economics in business offers study in several major areas, including foods and nutrition in business, home economics and journalism with a foods or equipment concentration, household equipment and institutional management. Be a member of the team working with people in marketing, packaging, personnel, public relations, sales promotion and in research and development. Together you sell the company's product and services to the consumer.

## Ag careers

(Continued from page 26)

newspapers both rural and metropolitan, radio and television stations, farm cooperatives, Extension service, experiment stations and government agencies as well as private businesses are looking for men and women with such a combined broad education. Ag journalism is interesting work with good salaries.

Production is the backbone of the agricultural industry. Six and a half million workers find a living on the land, but 90 per cent of the food, fiber and timber of America is produced by only 20 per cent of the farm operators.

For further information in your area of interest, contact the dean of agriculture at the college of your choosing.

Read the  
Kansas 4-H Journal

STILL THE WORLD'S GREATEST SUCCESS STORY..



We believe in the American capitalistic, private, competitive enterprise system in which property is privately owned, privately managed, and operated for profit and individual satisfaction.

We believe in a competitive business environment in which supply and demand are the primary determinants of market prices, the use of productive resources, and the distribution of output.

We believe in the right of every man to choose his own occupation; to be rewarded according to his contribution to society; and to save, invest, spend, or convey to his heirs his earnings. These rights are accompanied by the responsibility that each man has to meet the financial obligations he has incurred.

## Kansas Farm Bureau

105 County Farm Bureaus  
Working Together

# Do *you* qualify to be a hairdresser?

By Lee E. Stewart

The choosing of a career is one of the most important steps in your life. It will affect your personal life, your income, your happiness.

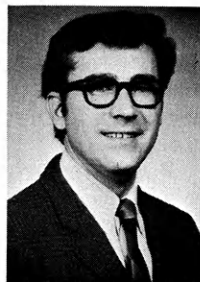
Cosmetology appeals to many persons because it is not so routine as other fields and the predicted growth pattern is better than ever. In Kansas alone there are over 4,000 beauty salons. This fact creates a vast career opportunity for newcomers. And the financial outlook for the coming years is good, supported by the trend of more and more women working to assist family income. These women feel it is no longer an occasional privilege but their right to have a weekly visit to her hairdresser.

Though base salary is low, from \$40-\$60 for newcomers, the 50-55 per cent incentive commission can rapidly add up to a weekly total of \$85-\$150 per week and more. Salon managers and owners often earn more than this.

Ask yourself these two important questions: What is required, and Will I be a success?

Contrary to popular belief, cosmetology, or hairdressing, is largely a profession of learned skills. A 'knack' or "being a natural with hair" is not so important as a desire to succeed. This desire is part of your personal-

•  
Lee  
E.  
Stewart  
•



Lee E. Stewart is president-treasurer of the Stewart Beauty Academy, Inc., in Topeka. He is a member of the National Hairdressers Cosmetologist Association. Stewart is vice president of the Kansas Cosmetology School Owners, and secretary-treasurer of the Kansas Cosmetologist Cooperative Association.

ity. Do you like people? Do you have an interest in fashion? Do you desire financial success? Do you want a career that can give you personal satisfaction? If you answered "yes" to two or more of these questions, hairdressing could be your "thing." This desire to be a successful hairdresser is the first requirement. If you are given the desire, the skills can be learned—to be a stylist, haircoloring specialist, manufacturers representative, salon owner, permanent wave specialist, or cosmetics specialist.

The second requirement is

ability. Your hairdressing ability is the skills you have learned and how you apply them. For example: one important, but often forgotten service is shampooing. If the shampoo you give is done firmly, rhythmically, and thoroughly—you have told your patron that you know what you are doing and for her to relax—she can have confidence in you. But if your shampoo is rough and incomplete, she will have doubts in your abilities for the balance of her visit with you—no matter how nice you are to her. The way that you use your skills is a guide to your success—and your clients will know this.

The third personal requirement is called appearance. When this is mentioned as a personal requirement, don't start asking yourself am I pretty enough? Do I have a figure for it? Am I too tall? The appearance requirement is in the thought of your personal pride. Do you wear proper make up? Will you wear professional hairstyles? Do you take pride in correct posture, and clothing styles?

Only you can decide if you have the personal requirements. Other requirements are: Education—high school diploma or passing score on GED test for applicants under 25 years of age. (In Kansas the GED test is not

(Continued to page 32)

## **Capitol City Barber College**

812 N. KANSAS AVE., TOPEKA, KANSAS 66608

**Promoting Better Barbering  
Thru Proper Training**

**"Applicants Accepted At Any Time"**

H. H. WOOSTER, Owner

Telephone 234-5401

## **Continental School of Hair Styling**

Expert Training

State Accredited

**Visitors Welcome Any Time**

Call or Write —

622 Kansas Ave.

Topeka, Kansas Ph. CE 3-8220



# Good habits lead to better grades

Low grades the first semester in college is a major cause of college drop-outs. Here are a few tips which may help entering freshmen make good grades from the start:

- Freshmen should be prepared to spend more time studying than upperclassmen.

- Prepare every day as if a test will be given in class.

- Learn to make every minute count; studies come first, activities second.

- Treat every exam like a final, because exams in most courses come few and far between and it is difficult to raise a low grade.

- The quickest and easiest way to flunk a course is to cut it.

- Read assignments as soon as possible so as not to get behind.

- Good note taking is essential for good grades. Go over your notes and in some cases even recopy them, every night.

- Think of college as an 8 to 5 job and study all this time. It

may be necessary to study evenings, too, but if a student studies during the day he will not need to stay up so late at night.

- The study habit is studying at the same time every day. Study the same length of time every day; study in the same area—and never get comfortable.

- Set up a routine; eventually it will become a habit. Short periods of concentrated study often are more productive than prolonged periods. Take a ten minute break between subjects. Study two or three subjects a night, rather than spending a whole evening on just one course.

- Gloomy dark rooms should be avoided, as well as roommates who are adverse to studying.

- Watching TV is a bad habit that should be broken.

- Don't let some problem bug you. Either get it taken care of, or forget it; that's the only way you really will accomplish

something.

College is like a savings account. You can expect to get out of it about what you put into it.

## Do you qualify?

(Continued from page 31)

administered to persons under 20 years of age, so stay in school!) Applicant must be a minimum of 17 years of age.

The course of training lasts for 1,500 hours (9 months) and is based on an 8-hour day, 5 days per week. Since July, Kansas law has permitted part-time students with a minimum of four hours daily. However, attending school only four hours per day can detain you from working in a salon as long as 18 months. Further, with the State Exams given nine times a year it could be as long as 20 months before you finally have a full license to practice hairdressing.

# Crumm's



## beauty school

512 ponitz ave. manhattan, kansas 66502

LUCILLE CRUM, OWNER  
CHARLES CRUM, DIRECTOR

MOST MODERN and BEAUTIFUL BEAUTY CULTURE  
TRAINING FACILITIES in KANSAS

Reasonable Tuition • Terms Available

Complete Supervised Dormitory Facilities Available

Fully State Approved and Nationally Accredited

Member of



Write For Free Brochure

Accredited by





# Neatness opens doors to jobs

# Hays

HAIRDRESSING SCHOOL, INC.



**A FULLY ACCREDITED SCHOOL**

NO CONTRACT TO SIGN



No interest or carrying charges on our monthly payments.

*One of Midwests Finest Schools of Cosmetology*

**Write or Call for Free Brochure**

5855 Beverly  
Mission, Kansas 66202

Area Code 913  
HE 2-1111

G. I. APPROVED

## Wouldn't You Rather Have an Exciting Career?



- JOB PLACEMENT SERVICE
- STEWART'S 33 YEAR RECORD OF CONTINUOUS TEACHING
- COMPETENT INSTRUCTORS
- WIGGERY—CLASSROOM AND PERSONAL INSTRUCTION ON WIGS AND HAIRPIECES
- HAIR STYLING—BEGINNING THRU ADVANCED
- DEMONSTRATIONS—LIVE DEMONSTRATIONS WITH EACH PHASE

*Visiting Hours:*  
10:00 a.m.  
3:00 p.m.  
Tuesdays thru  
Saturdays

**MEN AND WOMEN  
STUDENTS**

*Summer Classes Starting June 2, July 7, Aug. 4 and Sept. 1*

## Stewart Beauty Academy, Inc.

529 JACKSON ST. Phone 232-0497 TOPEKA, KANSAS 66603

Many girls and boys work on jobs related to their career objectives. This can be a valuable work experience in your chosen field, or the experience may help you decide whether the career you plan is really the right choice for you.

Before you start out job hunting, know something about the company, store or office. What do they do? What products do they make? How can your talents make you a good employee?

First, learn about as many prospects as possible. Consult newspaper want ads, friends who have worked in past summers, school counselors, youth opportunity centers and local state employment offices. These are good sources for leads to summer employment.

You should carry with you your birth certificate, social security card, job references, draft card, work permit and personal references.

Miniskirts and working girls just don't mix—not in the business world. This is a business interview, not a party or picnic. Going to the extreme — with either too much or too little — in clothes, make-up or accessories is about first on most bosses "don't" list. No lipstick is better than too much. Excessive jewelry particularly the type that jangles, and long straight hair, especially when it falls over the eyes, score big zeros.

The well-groomed look is the one most sought by employers. Neatness and good taste get the nod over expensive clothes and elaborate hairdos. Modesty in necklines as well as hemlines, also rate high.

Why are employers concerned with their girls' appearance? One businessman we interviewed pointed out a secretary or receptionist often is the customer's first contact with a firm and the image she presents can be vital. This employer also believed a girl's appearance is a good indication of how she does a job—if she is sloppy looking, chances are she puts out sloppy work. That's why a person who makes a poor first impression on

(Continued to page 40)



For further information, write: Office of Admissions, University of Kansas, Lawrence, Kansas 66044



# MONEY

## is the name of the game

By Joseph A. Wettstein  
U.S. Office of Education, Region VI

Education for all who seek it is a unique characteristic of America. From our earliest history, education has been supported by ever larger numbers up to the present time when nearly everyone is expected to complete high school.

In the very recent past, em-

phasis has been on higher education. Today we strive for "education beyond high school" which includes vocational and other technological skills as well as the B.A. and higher degrees.

This has come about because we as a nation are and must continue to be more concerned that all become capable participants in our technological civilization,

creative members of our culture, and active and concerned citizens. We have learned that securing a B.A. degree does not by itself insure reaching that goal. Rather, each must have a marketable skill which will secure for its holder and his family the dignity of achievement, whether this be in the so-called skill areas or the professions through the B.A. and advanced degrees.

Is education beyond high school, then, a privilege, a right or a duty? Or is it all three?

It is a privilege certainly to have access to the training and knowledge when it is financially attainable.

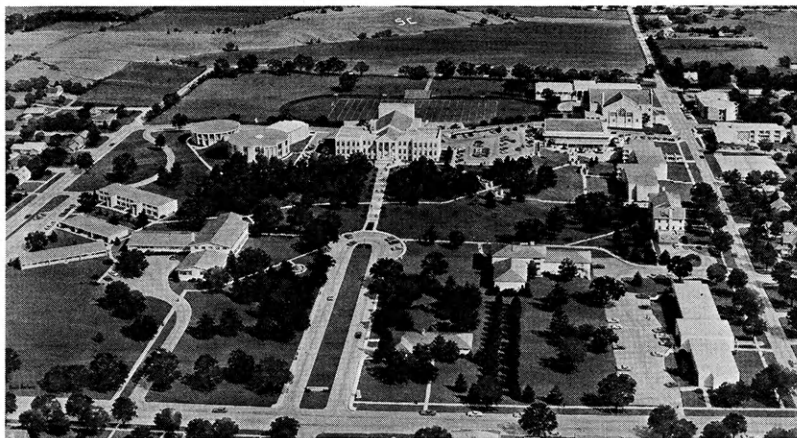
It is a right, certainly, if the recipient has the desire and will put forth the required effort to attain his personal goals.

It is a duty as well to prepare to participate as an active and concerned citizen.

At the present time nearly two-thirds of the high school graduates in Kansas continue educational pursuits. Student financial assistance programs continue to be expanded to make education beyond high school financially attainable for all whose

(Continued to page 38)

### Four Year Liberal Arts



### First National Bank

Full  
Service  
Bank

Member of F.D.I.C.

Winfield, Kansas

### SOUTHWESTERN COLLEGE

WINFIELD, KANSAS 67156  
See listing page 24

Quality Brand  
Meats

Sheneman

Market & Packing Plant  
Winfield, Kansas CA 1-2610

This Firm Proudly Recommends  
Southwestern College.  
Hartley

CA 1-9510 915 Millin

### SAINT MARY COLLEGE

Xavier, Kansas

See listing page 24

These Firms Proudly Recommend  
Saint Mary College.

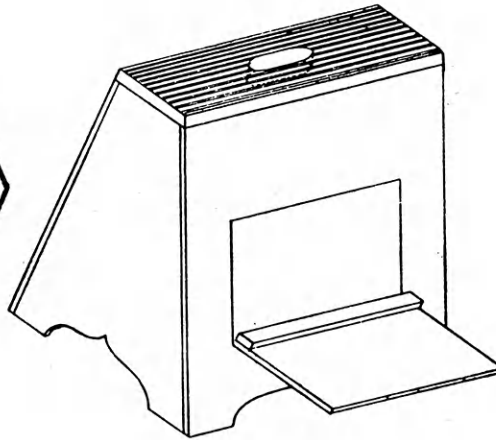
Christy's Auto Salvage  
Route 1

Julius Kaaz Construction Co., Inc.  
716 Cherokee

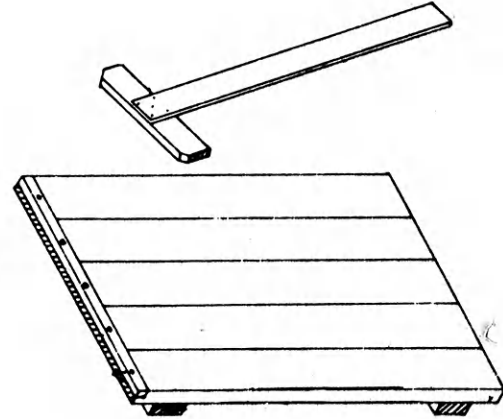
# Free!

## 4-H Woodworking Plans from YOUR LUMBER DEALER

**TWO NEW  
PROJECT  
IDEAS NOW  
AVAILABLE**



**SHOESHINE BOX**



**DRAWING BOARD and T SQUARE**

*See these Lumbermen for your FREE Plans — they  
are your best friend when you need good material*

**Argonia**  
Mack-Welling Lumber Co.

**Ashland**  
Don Spotts Lumber Company  
Home Lumber and Supply Co.

**Bern**  
Bern Lumber Company

**Burden**  
Alexander Lumber Co.

**Chanute**  
Gray Lumber Company

**Clay Center**  
Fullingtons

**Clyde**  
Geo. W. Hays & Son, Inc.

**Coldwater**  
Home Lumber and Supply Co.

**Ellinwood**  
Home Lumber & Supply Co.

**Ellsworth**  
Ellsworth Lumber

**Emporia**  
Home Lumber and Supply Co.

**Eureka**  
A. C. Houston Lumber  
Company

**Fredonia**  
The Home Lumber & Supply  
Company

**Garden City**  
McAllister-Fitzgerald Lumber  
Co.

**Gardner**  
Gardner Lumber Company

**Garnett**  
Star Grain and Lumber  
Company

**Goodland**  
Rasure Lumber Company  
Foster Lumber Company

**Hanston**  
Halling Hardware & Supply

**Healy**  
Healy Co-op Elevator  
Company

**Hiawatha**  
Motsinger Lumber Co.

**Hillsboro**  
Hillsboro Lumber Co.

**Holton**  
Holton Lumber Company

**Hugoton**  
The Star Lumber Company

**Independence**  
Sandott Lumber, Inc.

**Iola**  
Klein Lumber Company

**Johnson**  
Seyb-Tucker Lumber and  
Implement Company

**Junction City**  
Builders Lumber Inc.

**Kechl**  
Buck Alley Lumber

**Kinsley**  
Kinsley Co-op Exchange  
Lumber Yard

**LaHarpe**  
Diebolt Lumber and Supply

**Lakin**  
Tate and Company

**Lansing**  
Lansing Lumber, Inc.

**Larned**  
Clutter-Lindas Lumber Co.

**Lawrence**  
Logan-Moore Lumber Co.  
McConnell Lumber Company

**Liberal**  
The Star Lumber Company

**Lyons**  
Antrim Lumber

**Macksville**  
Home Lumber and Supply Co.

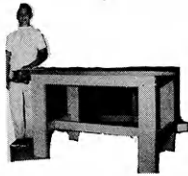
**Manhattan**  
Ramey Brothers



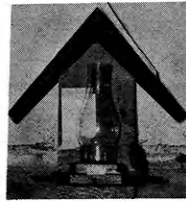
**Closet Valet**



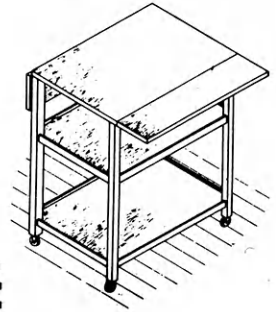
**Woodworking Bench**



**Bird Feeder**



**Serving Cart**



## THESE PLANS ARE AVAILABLE



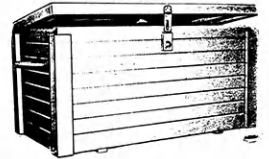
**Tool Caddy**

Mail Box  
Portable Towel Rack  
Lazy Susan  
Box Hockey  
Holding Gate  
Sail Boat  
Dog House  
Sand Box  
Comic Book Rack  
Childs Step Stool  
& Chair  
Collapsible Visual  
Aid Stand  
Back Yard Fence

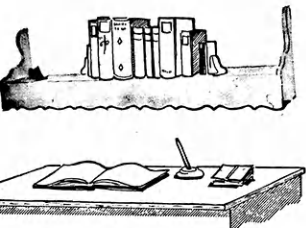
Cart with  
Removable Trays  
Magazine Rack  
Sheep Blocking Box  
Child's Desk  
Hobby Horse  
Rabbit Carrier  
Camp Kitchen  
Chick Feeder  
Garden Trellis  
Bicycle Rack  
Hog House  
Open Top Sawhorse  
Insect Display Box

Dairy Barn Desk  
Wishing Well Planter  
Coffee Table  
Salt and Pepper Set  
Colonial Bookcase  
and Cabinet  
Lawn Lounge  
Porch Swing  
Canoe Sailing Rig  
Tail Gate Kitchen  
Chest of Drawers  
Table Lamps

Desk  
End Table  
Wren House  
Picnic Table  
& Benches  
B-B Gun Rack  
Redwood Planter  
Drafting Table  
Child's Picnic Table  
Shoe Rack  
Tool Box  
Book Case  
Colonial Foot Stool  
Sleeve Board



**Show Box**



**Bookshelf Light**



**Patio Planter**



**Tennis Padl-Pak**



**Night Table**

**Mankato**  
Mankato Lumber Company

**Marysville**  
Howell Lumber Company

**Meade**  
Home Lumber and Supply Co.

**Minneapolis**  
Dingee Lumber Co.

**Moundridge**  
Clayton Vogt Lumber Co.  
Inc.

**Newton**  
Antrim Lumber Company

**Norton**  
Norton Lumber Company

**Nortonville**  
Alexander Lumber Company

**Oberlin**  
Building Supply Headquarters

**Offerle**  
Offerle Co-op Lumber Co.

**Olathe**  
Cowley Lumber and  
Hardware Company  
Hodges Bros. Lumber Co.

**Osage City**  
Martin Material Co., Inc.

**Osborne**  
Lewis A. Hardman Lumber  
Co.

**Oswego**  
Home Lumber and Supply Co.

**Ottawa**  
Hubbard Lumber Company,  
Inc.

**Parsons**  
O. E. Woods Lumber Co.

**Pittsburg**  
Broadway Lumber Co., Inc.

**Plains**  
Home Lumber and Supply Co.

**Pratt**  
W. R. Green Lumber Co., Inc.

**Pretty Prairie**  
The George W. Ulth Lumber  
Company

**Protection**  
Home Lumber and Supply Co.

**St. Francis**  
St. Francis Equity Exchange

**Salina**  
Esterday-Boster Lumber Co.

**Scott City**  
McAllister-Fitzgerald Lumber  
Co.

**Seneca**  
Seneca Lumber Company

**Spearville**  
Farmers Grain & Supply  
Lumber Dept.

**Syracuse**  
Foster Lumber Co. Inc.

**Tribune**  
Foster Lumber Company, Inc.

**Ulysses**  
T. M. Deal Lumber Co.

**Wichita**  
Stockyards Cash and Carry  
Lumber Co.  
Alexander Lumber Company  
Inc.  
Star Lumber & Supply Co.

**Wilson**  
Hoch Lumber Company

**Winfield**  
A. B. Everly Lumber Co.  
Everitt Lumber Co., Inc.

**Wright**  
Right Coop. Assn.

**Zenda**  
The George W. Ulth Lumber  
Company

### Missouri

**Independence**  
The George W. Ulth Lumber  
Company, 11432 Truman  
Road

# MONEY is the name of the game

(Continued from page 35)

families cannot meet all of the costs.

Nearly all educational institutions in Kansas participate in one or more of the four basic federal aid to students programs which in varying combinations make a "financial aid package." They are:

**National Defense Student Loan Program:** A student may borrow up to \$1,000 per year based on determined need. No interest accrues while the borrower is a student nor for nine months thereafter. The loan then must be repaid over a period not to exceed 10 years together with three per cent simple interest. If the borrower teaches, a portion of the principal and interest may be cancelled.

**College Work-Study Program.** A student can earn part of the costs (based on determined need) by working on-campus for the institution he is attending or on an off-campus project administered by the institution. Work may be secured during the summer and vacation periods as well as during the academic year. He may work 15 hours per week while classes are in session and 40 hours per week during the summer months when he is not enrolled in school.

**Educational Opportunity Grants.** This program does not require repayment of the grant and is designed for students from exceptionally needy families

(income of \$6,000 or less before taxes). The amount of the grant may vary from \$200 to \$1,000 based on determined need.

The educational institution will determine the amounts and combinations of awards according to individual circumstances.

**The Federally Insured Loan Program.** A student may borrow up to \$1,500 per year regardless of need but not to exceed educational costs as designed by the enrolling institution. If the adjusted gross income of the family is \$15,000 or less, the Federal government will pay the interest charges while the borrower is a student and for nine to 12 months thereafter. The borrower then must repay the loan at a

monthly rate together with seven per cent interest. The repayment period may not exceed 10 years. If the family adjusted gross income exceeds \$15,000 the borrower must pay the interest costs even while a student.

Each educational institution will administer its own sources of financial assistance in addition to these. In many instances the institution's sources will exceed the federally sponsored programs and will be available either separately or in combination with them on the basis of its own criteria.

Specific information on financial assistance about sources and amounts should be secured

(Continued to page 40)



## TABOR COLLEGE

### CHRISTIAN-LIBERAL ARTS

- \* Accredited
- \* Inter-collegiate Athletics
- \* 20 majors offered

- \* Air Conditioned Dorms
- \* 4-1-4 Calendar
- \* Social Work Major

Write to:  
Director of Admission  
Hillsboro, Kansas  
See listing page 24

## Can We Help You?

If you are a student seeking to serve God and man, we can offer you some unusual help:

- Four-year degree programs in:  
MINISTRIES                      MISSIONS  
CHRISTIAN EDUCATION        CHURCH MUSIC
- Joint degree program with Kansas State University combining SECONDARY EDUCATION and CHRISTIAN EDUCATION with two degrees
- Opportunity to take Bible and related courses while attending KSU regardless of your major.

Nationally accredited by Accrediting Association of Bible Colleges



Write: Admissions Office  
Manhattan Bible College  
1407 Anderson  
Manhattan, Kansas 66502



## SKY JOBS



### AIRLINES NEED

Young Men & Women

- RESERVATIONISTS
- PASSENGER and TICKET AGENTS
- COMMUNICATIONISTS
- OPERATIONS AGENTS

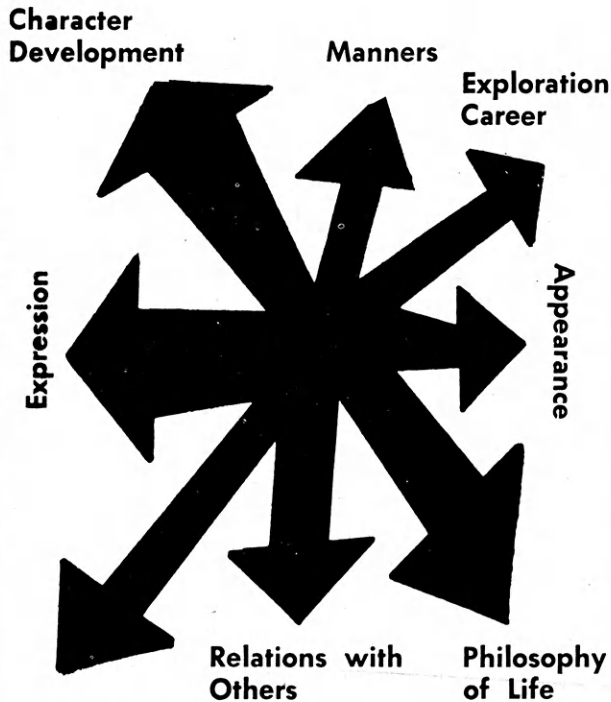
Good Pay... Travel... Glamour... Advancement. Preliminary preparation need not interfere with your present position. H.S. grads, 17 to 35, see if you can qualify. For FREE facts, mail coupon now.

### WEAVER AIRLINE PERSONNEL SCHOOL

3521 Broadway, Dept. 000, Kansas City, Mo. 64111  
Send free information on Sky Jobs to

Name \_\_\_\_\_  
Address \_\_\_\_\_  
City \_\_\_\_\_ State \_\_\_\_\_ Zip \_\_\_\_\_  
Age \_\_\_\_\_ Phone \_\_\_\_\_

# PERSONAL DEVELOPMENT



## FOR YOU...

Through Personal Development you can enroll in career exploration, character development, manners, relationship with others, appearance, expression, and philosophy of life. Begin now and explore plans for your future while giving it a firm base with the 4-H Personal Development project.

*The people at Southwestern Bell Telephone Company are proud to have a part in this 4-H project by sponsoring awards for outstanding work.*



**Southwestern Bell**

## Adults guide youth's exploration of careers

How can parents and other adults who influence youth assist in the important decision of a career?

Mrs. Marjorie Area, Extension 4-H specialist, Kansas State University, offers these suggestions:

- Give freely any information that you have. 4-H'ers involved in career exploration are urged to interview adults about job skills, future needs in the vocation, and attitudes desirable in the work. Proceed together to find answers to questions you can't answer.

- Close the generation gap by working as a team and by using outside resources. Make it a fun experience. Many commercial companies invite people to tour their facilities and see many professions in action.

- Encourage part-time employment as a means of exploring possible future careers. Many nurses gain knowledge of their future profession as a candy striper. Boys can learn the daily routine of a mechanic during a summer job in a garage.

- Making it possible for youth to see films, read booklets, interview people in different vocations is time well spent. You'll get to know the teenagers as you help them make decisions that will have lifelong influence.

- On the list of don'ts is a reminder to never laugh or in any way ridicule a child's vocational choice no matter how unrealistic it may seem to you. The choice, no matter how "tentative," is real to the young person grappling with this matter.

## Employment future holds fairly bright

Despite often-voiced fears about automation creating widespread joblessness, the employment picture for the foreseeable future holds fairly bright. In a four-volume study entitled "Tomorrow's Manpower Needs," the Bureau of Labor Statistics estimates that about three and a half million job openings will materialize annually through the mid-1970's. That wouldn't eliminate unemployment, but it would lower the rate from the present 3.8 to an even 3 per cent.

Almost two-thirds of the total of 17.5 million jobs would be new ones created by industrial growth.

A more promising career—from the standpoint of statistics—would be teaching, for which there is the largest annual need. The report states the nation will need an additional 200,000 elementary and secondary teachers every year. For the more manually inclined, there is truck driving. About 129,000 new drivers will be needed each year. The list of examples could go on and on, for the study is the most comprehensive manpower projection ever compiled by the Labor department. It can prove to be an invaluable guideline in the planning of job training programs to meet the needs of the future. It will also be a source book for youths who are in the process of choosing a career.



# Neatness opens doors to jobs

(Continued from page 33)

a prospective boss seldom gets a second chance.

Most employers interviewed said they "definitely" will not hire a boy or girl, regardless of qualifications, if they appear at a job interview dressed in a manner they consider inappropriate.

One employer said "I like them to look stylish and up-to-date. If a boy or girl doesn't

have enough judgement to dress properly for an interview, I doubt that they would have enough judgement to do the job."

"Good grooming and good taste are the best rules to follow for getting a job or keeping it," one employer said. He went on to say, "No one minds dressing a little unconventional, but not to the extreme; we want our help to appeal to the customers."

Another employer allows his

after-school help to wear short skirts "if they wear the proper accessories."

During the interview, be alert, pay attention and concentrate on what is being said. Be honest and polite as you answer questions and ask for information you need to know before accepting a job. Try to combat nervousness.

Don't be discouraged if your first interview doesn't result in a job. Keep looking.

## MONEY

(Continued from page 38)

from the financial aid director at the institution to which you are applying or if enrolled, the institution in which you plan to continue.

### Photo pointers

4-H'ers in the photography project learn the causes of unsuccessful pictures, and how to correct them. If the picture is too light with details not clear in the lightest areas, the film was overexposed. Perhaps high-speed film was used with fixed-speed shutter camera. Maybe the flash was too close to subject, or was aimed directly at shiny surface. The reason could be wrong settings of an adjustable camera. Use faster shutter speed or smaller lens opening.

## BAKER UNIVERSITY

Students Not Numbers

Quality Education  
Since 1858

Write Today!

Baldwin City, Kan. 66006

See listing page 24

## BALDWIN STATE BANK

Capital \$400,000.00

Member F.D.I.C.

Baldwin City, Kansas

Phone 594-6421

## CENTRAL COLLEGE IS NOT

Big - Old - Impersonal.

Secular - Sectarian.

Big Eight or Ten.

An NCAA Champ.

Irrelevant.

But if you are looking for a Christian Education in a Junior College with both a transfer and terminal program and with a faculty of 20 leading a student body of 200 in Kansas' most attractive community — If you are looking for a college like that and you don't write for our brochures and catalog you're not exploring all the possibilities.

## CENTRAL COLLEGE

McPherson, Kansas 67460



IT TAKES ALL TYPES ...



For growth and diversity . . .

With an enrollment growth of 124% over the past five years, Sacred Heart College is brimming with alert, creative and responsive young people.

To assure the continued success of this college-with-an-exciting-future, we are determined to provide you with the type of background you will need in becoming a mature, responsible educated adult.

Come grow with us . . .

For information contact the Director of Admissions

## SACRED HEART COLLEGE

Wichita, Kansas 67213

See listing page 24



# **MOUNT ST. SCHOLASTICA COLLEGE** and **SAINT BENEDICT'S COLLEGE** Atchison, Kansas

These firms proudly recommend St. Benedicts and Mount St. Scholastica Colleges

**Mullins Bros. Hardware Co.**  
819 Main

**O'Keefe, Ball, McKelvy,  
O'Keefe & O'Keefe**  
503 on The Mall

## **The Kansas State Teachers College**

# **IN EMPORIA**

INSIST ON QUALITY PROTEIN  
44% SOYBEAN MEAL



SUNFLOWER BRAND

By

**Kansas Soya Products Co.**

Emporia, Kansas

DI 2-7270

## **COLLEGE OF EMPORIA**

## ***Yourself, career should match up***

"Look at yourself, look at many careers, and match the two as well as possible," suggests Mrs. Marjorie Area, Extension 4-H specialist, Kansas State University.

In the 4-H personal development project, career exploration is one topic, and the material includes these questions to answer:

- What are my interests?
- What are my aptitudes?
- What are my needs, including emotional?
- What temperament do I have?
- What about my personality?
- What about my health?
- What are my acquired skills?
- What is my ability to finance future training?
- What are my family's desires for me?
- What are my achievements at school and at work?
- What about my personal values?

(Continued to page 30)

### **A CAREER OPPORTUNITY**

The rapidly expanding retail variety store field offers attractive career opportunities to young men possessing the proper desire and qualifications. The A. L. DUCKWALL STORES CO., a Kansas based regional variety store chain, with a successful sixty-nine year history, invites you to investigate the above average possibilities for the individual willing to invest his time and talents to achieve future success.

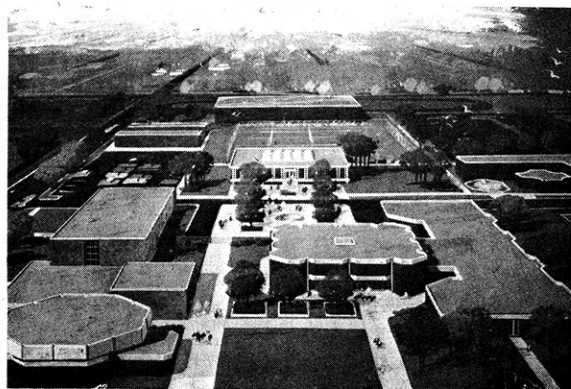
The A. L. DUCKWALL STORES COMPANY has a program designed to provide the knowledge and practical experience to equip a young man in a relatively short time for a position as a store manager.

Why not pay a visit to the Manager of your nearest DUCKWALL store. He'll be glad to visit with you.

## **DUCKWALL'S**

Serving 51 Kansas Communities  
with 65 Stores

## **Coffeyville Community Junior College**



Complete Student Activities Program—the Only Junior College to Win National Championships in Five Different Activities. College Union Now Open.

**Coffeyville Community Junior College**  
**COFFEYVILLE, KANSAS**

# Careers in nursing

Careers in nursing offer many opportunities to become involved in understanding and helping people. Kansas offers four kinds of nursing programs for both men and women.

**Baccalaureate Program in Nursing** is conducted by a college or university and the curriculum is coordinated so nursing students have the opportunity to share courses with other college students. Graduates with a baccalaureate degree in nursing are prepared to progress rapidly to positions of leadership in which they demonstrate and teach nursing and health care to others. They also have the basic preparation for advanced study in nursing practice, administration, teaching and research and can enter such fields as public health nursing, schools and industry.

**Associate Degree Program in Nursing** generally is established in a junior college and is designed to fill the educational needs

of qualified men and women who wish to prepare for a nursing career in a relatively short time. Graduates usually work in hospitals, physicians' offices, home care programs, clinics or private duty.

**Diploma Program in Nursing** usually is hospital controlled and extends through three calendar years although some schools have shortened their program to three academic years or less. Graduates usually work in the

same areas as the associate degree graduate.

**Practical Nurse Program** usually is one year in length and prepares the student to be a Licensed Practical Nurse. Graduates usually work in hospitals, physicians' offices, home care programs, nursing homes under the supervision of a registered nurse.

A large number of people are needed in the health services to

(Continued to page 43)

## ST. LUKE'S HOSPITAL OF KANSAS CITY SCHOOL OF NURSING



A thirty-three month diploma program, Accredited by the National League for Nursing, Affiliation with Avila College for 33 hours college credit. Federal scholarships and loans available.

For information write: Director, School of Nursing  
JE. 1-8500, Ext. 2239

4426 Wornall Road

Kansas City, Mo. 64111



## Look Ahead to the Nursing Profession

### ARE YOU THINKING ABOUT THE FUTURE?

Become a REGISTERED NURSE!

A nurse is a special person who has an opportunity to live a meaningful life contributing to the health and well-being of mankind.

The nurse can enjoy the challenge of working in the world of medicine, the opportunity of helping the sick and the handicapped, the satisfaction of promoting health by teaching and example.

### ARE YOU WONDERING WHAT IT IS LIKE TO BE A STUDENT NURSE?

Your days will be divided between academic study and learning to give health care to patients. There also will be time for fun, such as sports, dances, and dates. Your years as a student will rush by filled with rich experiences.

TO OBTAIN A LIST OF EDUCATIONAL PROGRAMS IN NURSING IN KANSAS ASK YOUR COUNSELLOR FOR "A PLACE FOR YOU IN NURSING IN KANSAS"

OR WRITE TO:

## Kansas State Nurses' Association

820 Quincy Street

Topeka, Kansas 66612

Phone 913 CE 3-8638

# Kansas offers four nursing plans

(Continued from page 42)

meet the increasing health needs of society.

For information about scholarships and loans write to the school of your choice.

## BACCALAUREATE DEGREE PROGRAMS

HAYS, KANSAS 67601

**Ft. Hays Kan. State College**, Division of Nurse Education

Agency Control: Kansas State College

KANSAS CITY, KANSAS 66103

**\*University of Kansas School of Medicine**, Department of Nursing Education.

Rainbow Boulevard at 39th St.

Agency Control: University of Kansas

SALINA, KANSAS 67401

**\*Marymount College**, Department of Nursing,

East Iron Avenue and Marymount Road

Agency Control: Sisters of St. Joseph

## ASSOCIATE DEGREE PROGRAMS

EL DORADO, KANSAS 67042

**Butler County Community Junior College**, Department of Nursing,  
Towanda Ave. & Harverhill Rd.

Agency Control: Butler County Community Junior College

HESSTON, KANSAS 67062

**Hesston College**, Division of Nursing

Agency Control: Mennonite College

PARSONS, KANSAS 67357

**Labette Community Junior College**, Department of Nursing

Agency Control: Labette Community Junior College

## DIPLOMA PROGRAMS

EMPORIA, KANSAS 66801

**\*Newman Hospital School of Nursing**

West 12th St. and Chestnut

Agency Control: County Hospital

FT. SCOTT, KANSAS 66701

**\*Mercy School of Nursing**

801 Burke St.

Agency Control: Sisters of Mercy

HUTCHINSON, KANSAS 67501

**\*Grace Hospital School of Nursing**

815 North Walnut

Agency Control: Methodist Hospital

KANSAS CITY, KANSAS

**\*Bethany Hospital School of Nursing**

51 North 12th St. 66102

Agency Control: Methodist Hospital

**\*St. Margaret Hospital School of Nursing**

759 Vermont Avenue 66101

Agency Control: Catholic Hospital

NEWTON, KANSAS 67114

**\*Bethel Deaconess Hospital School of Nursing**

411 Southeast Second St.

Agency Control: Mennonite Hospital

PITTSBURG, KANSAS 66762

**\*Mt. Carmel Hospital School of Nursing**

30th & Mt. Carmel Rd.

Agency Control: Catholic Hospital

SALINA, KANSAS 67401

**\*Asbury Hospital School of Nursing**

400 South Santa Fe

Agency Control: Methodist Hospital

TOPEKA, KANSAS 66606

**\*Stormont - Vail Hospital School of Nursing**

10th and Washburn

Agency Control: Private Corp.

WICHITA, KANSAS

**\*St. Francis Hospital School of Nursing**

512 East 9th 67214

Agency Control: Catholic Hospital

**\*Wesley School of Nursing**

515 North Holyoke 67214

Agency Control: Methodist Hospital

**\*Wichita-St. Joseph Hospital School of**

(Continued to page 44)

## Nursing Is:



Learning  
about people



Caring about  
people



Working with  
people



Knowledge,  
compassion  
and skill to  
help people  
with their  
health needs

IF YOU ARE INTERESTED WRITE OR CALL:

Mary E. Helm, Director School of Nursing

**KANSAS CITY GENERAL HOSPITAL and MEDICAL CENTER (H)**

24th and Cherry St., Kansas City, Missouri 64108 A.C. 816 421-8060 Ext. 345

# Nursing

(Continued from page 43)

## Nursing

1121 South Clifton 67218

Agency Control: Catholic Hospital  
**PRACTICAL NURSE PROGRAMS**

CHANUTE, KANSAS 66720

**Chanute Public School of Practical Nursing**

400 South Evergreen St.

Agency Control: Chanute Board of Education

COLBY, KANSAS 67701

**Colby Community Junior College**, Dept. of Practical Nursing Education

DODGE CITY, KANSAS 67801

**Dodge City Community Junior College**, Dept. of Practical Nurse Education

1000 Second St.

Agency Control: Dodge City Board of Education

EMPORIA, KANSAS 66801

**Flint Hills Area Vocational Technical School**, Practical Nurse Program

3015 W. 18th Ave.

Agency Control: Emporia Board of Education

KANSAS CITY, KANSAS 66103

**Florence Cook Department of Practical Nurse Ed.**, University of Kansas Medical Center

Rainbow Blvd. at 39th St.

Agency Control: University of Kansas

LAWRENCE, KANSAS 66044

**\*\*Haskell Institute**, Practical Nurse Program

Agency Control: Bureau of Indian Affairs

MANHATTAN, KANSAS 66502

**Manhattan Area Vocational Technical School**, Dept. of Practical Nursing

3136 Dickens St.

Agency Control: Manhattan Board of Education

McPHERSON, KANSAS 67460

**McPherson School of Practical Nursing**  
P.O. Box 484, Room 302, Peoples Bank Bldg.

## Clothing dollar

One suggestion to 4-H girls on how to divide their clothing dollar is: 50 to 55 cents for major items, wraps, and other garments—dresses, skirts, blouses, sweaters, and suits; 15 to 20 cent for lingerie and nightwear—slips, pajamas, and robes; 15 to 20 cents for accessories—shoes, hose, bags, belts, scarfs, and jewelry; and 10 to 15 cents for incidentals.

Agency Control: Area Voc.-Tech. School, Board of Control and McPherson Board of Education

TOPEKA, KANSAS 66604

**Kaw Area Vocational-Technical School**, Department of Practical Nursing

5724 Huntoon

Agency Control: Topeka Board of Education

WICHITA, KANSAS 67202

**Wichita Public School of Practical Nursing**

324 North Emporia

Agency Control: Wichita Board of Education

\*—National Accreditation

\*\*—Admission requirement: At least one-fourth Indian blood.

## We're Young and Different

- ★ New Ideas—New Approaches
- ★ Small enough to know each student
- ★ Recognized for quality education
- ★ Financial aid programs available
- ★ Newest member of the Kansas college athletic conference
- ★ 4-year co-educational liberal arts curriculum
- ★ An exciting Christian atmosphere

### Contact

## ST. MARY OF THE PLAINS COLLEGE

DODGE CITY, KANSAS

New residence halls available for men and women

See listing page 24

Through the years this bank has been an active booster for 4-H. We urge local members to consider the Dodge City College to further their education after High School.

## FIDELITY STATE BANK

Dodge City, Kansas

Member FDIC

Member Federal Reserve System

## First National Bank

Dodge City, Kansas

Drive-in Walk-up

Free Parking While Banking

MEMBER F.D.I.C.

This firm proudly recommends St. Mary of the Plains College.  
John Stickney, Inc., 1409 W. Wyatt Earp Blvd.



## FARMERS STATE BANK

Lindsborg, Kansas

Member of FDIC

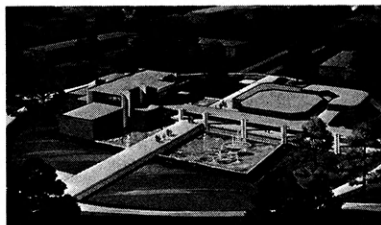
These firms are proud to recommend  
Bethany College:

**Anderson Funeral Home**  
Corner Washington and Lincoln

**Swedish-American Insurance Co.**  
101 N. Main

**Farmers Union Elevator Co.**  
320 E. State  
Lindsborg, Falun and Bridgeport

# Bethany College



Architect's drawing  
of the  
Wallerstedt Learning Center,  
now under construction.

Write—

**Director of Admissions  
Bethany College**

Lindsborg, Kansas 67456

See listing page 24.

*Look to the  
future.  
Choose  
a career.*

## Bethel College



- Four year liberal arts
- 24 major fields of study including industrial arts and home economics
- 4-1-4 academic calendar with January interterm
- Financial aid available

Write or call:

Office of Admissions  
Bethel College  
North Newton, Kansas 67117  
Telephone 316-283-2500

See listing page 24.

## FORT HAYS KANSAS STATE COLLEGE

Fort Hays State holds to one overall objective: To provide the opportunities for students to prepare themselves for constructive and responsible living in a democratic society. The college attempts to develop understanding of man in his natural and social environment, understanding of human relations, appreciation of cultural values, skills for acquiring additional knowledge and learning of basic facts and skills necessary in vocations and professions.

## The Farmers State Bank

Hays, Kansas

The bank where you feel at home



Phone 625-6542

Write—Office of Information Service,  
Fort Hays Kansas State College,  
Hays, 67601  
See listing page 24.

## Producers Gas Equities, Inc.

HAYS, KANSAS

Serving the Oil Industry  
in Western Kansas

These Firms Proudly Recommend  
Fort Hays Kansas State College.

**State Farm Insurance Co.—Ed Dies**  
Phone 625-9041 2204 Vine St. Box 212  
Hays, Kansas

**Ted Schulte, Insurance**  
117 West 8th

**FULL SERVICE  
PARTNER  
of  
BETHEL COLLEGE  
STUDENTS  
(and Grads)**



NEWTON, KANSAS

F.D.I.C.

**Read the Kansas 4-H Journal**

the job	the qualifications	the outlook
office machine operator (billing, adding, calculating, duplicating, tabulating)	High school or business school with training on machines and some business arithmetic. Typing desirable. On-the-job training available.	Excellent outlook, especially in large manufacturing firms, insurance and banking firms, retail and wholesale companies, government agencies. Also check "service centers" which handle paper work of many companies. Pay averages \$78-\$113 a week.
electronic data-processing personnel (console operator, tape librarian, converter operator)	High school is minimum; a good record in all subjects, especially math and bookkeeping, helps. Some firms require college. On-the-job training available.	Excellent future in large organizations: government agencies, insurance firms, banks, public utilities, publishers, manufacturing firm. Pay averages \$101-\$180 a week.
cashier	High school preferred. Business courses and typing may be helpful. Neatness and accuracy required. On-the-job training available.	Very good, especially for women. Try retail stores, theaters, supermarkets, utilities, restaurants and cafeterias, small-loan firms, hotels. Advancement is limited.
bank teller	High school required. Business courses helpful. Mathematical aptitude needed. Also speed, accuracy.	Very good, particular for women. Good advancement opportunities for those who learn to use automation equipment. Pay averages \$50-\$100 a week.
airline ticket agent	High school usually required; college preferred. Pleasant appearance and courtesy essential.	Fair prospects for men and women, though mechanized equipment is assuming some of the work. Pay averages \$97-\$109 a week.
salesperson	High school preferred; college sometimes required. Business and distributive education courses helpful. Many employers help high schools with these courses and hire graduates. Neat appearance required.	Fairly good because of high turnover. Advancement limited except for well-educated men in large wholesale and retail establishments. Pay averages \$64-\$120 a week. Best pay in selling autos, major appliances, furniture, and in wholesale firms. Benefits.
policeman	High school usually required. Local civil service regulations usually require mental and physical tests. Candidates must usually be 21.	Pretty good, especially for those capable of taking specialized training. Pay averages \$60-\$130 a week.
barber	Apprentice usually licensed by exam on graduation from state-approved barber school, which you can enter after eighth grade. Courses run 6 to 9 months.	Fair prospects, especially in growing suburbs. Pay averages \$110-\$150 a week.
beauty operator	License usually obtained by exam and after completion of cosmetology course, which is offered by many public, vocational and private schools.	Very good outlook for women because of heavy turnover. Beginning \$60-\$80+, depending on commissions, tips and type of shop.
practical nurse	License obtained by exam after one-year course at state-approved school. Many public school systems offer courses. Two years high school usually required.	Excellent prospects for both full-time and part-time work. Pay averages \$71-\$82 a week.
junior draftsman	High school courses in mechanical drawing, math and physical sciences needed. On-the-job training available.	Good outlook for beginners. Advancement offered to those who get additional training. Pay averages \$92-\$145 a week.
laboratory assistant	High school preferred. Courses in chemistry, biology and general science. Post-high school training required for many positions.	Very good prospects, especially for those with good training. Some employers, such as chemical, drug, food and cosmetic firms, may pay cost of part-time schooling. Pay averages \$125 a week.
carpenter	High school plus 4-year apprenticeship preferred. But many carpenters have learned on their own.	Very good outlook for skilled workers. Jobs available on new construction and in maintenance of factories, office buildings, schools, etc. Union averages \$192 a week for journeymen and cabinetmakers. Apprentices average about half that at the start, with steady increases.
plumber, pipe fitter	High school plus 5-year apprenticeship preferred. Many learn the craft informally on the job. Some localities require license.	Very good prospects for skilled. Pay averages \$150-\$220 a week and is among best in building trades. Apprentices start at about half, get regular increases.
operating engineer (construction machinery)	Apprenticeship program and on-the-job training available. High school helpful.	Very good outlook for those who learn to operate a broad range of construction machinery. Pay averages \$110-\$280 a week, depending on equipment. Apprentices start at about two-thirds of that, get regular increases.
business machine serviceman	High school usually required. On-the-job instruction from equipment manufacturers available.	Excellent future, especially for service of electronic equipment. Pay ranges \$95-\$130 a week.

## Advertisers' Index

A. L. Duckwall Stores Co., Abilene	41
Adela Hale Business Career School, Hutchinson	13
Alliance Insurance Companies, McPherson	12
Atchison Advertisers	41
Baldwin City Advertisers	40

Barton County Comm. Jr. College, Great Bend	18
Butler County Comm. Jr. College, El Dorado	19
Capitol City Barber College, Topeka	31
Central College, McPherson	40
Cloud County Comm. Jr. College, Concordia	21

Coffeyville Comm. Jr. College, Coffeyville	41
Colby Comm. College, Colby	14
Continental School of Hair Styling, Topeka	31
Crums Beauty School, Manhattan	32
Dodge City Advertisers	44
Dodge City Comm. Jr. College, Dodge City	20
Electric Light and Power Companies of Kansas	48
Electronic Computer Programming Institute, Kansas City, Mo.	5
Emporia Advertisers	41
Farmland Industries, Kansas City, Mo.	2
Flint Hills Area Voc.-Tech. School, Emporia	14
Garden City Comm. Jr. College, The, Garden City	14
Hays Advertisers	45
Hays Hairdressing School, Inc., Mission	33
Hesston College, Hesston	20
Highland Comm. Jr. College, Highland	16
Independence Comm. Jr. College, Independence	8
Institute of Computer Systems, Wichita	7
Kansas Bankers Association, Topeka	6
Kans. City General Hospital & Medical Center, Kans. City, Mo.	43
Kans. City, Kans. Comm. Jr. College, Kans. City	14
Kansas Farm Bureau and Insurance Services, Manhattan	30
Kansas Medical Society, Topeka	47
Kansas Pepsi-Cola Bottlers Assn. of Kansas	8
Kansas State Nurses Association, Topeka	42
Kansas Technical Institute, Salina	12
Labette Comm. Jr. College, Parsons	16
Leavenworth Advertisers	35
Lindsborg Advertisers	45
Lumber Dealers of Kansas	36-37
Manhattan Advertisers	28-29
Manhattan Bible College, Manhattan	38
McPherson Advertisers	10
Mid-America Nazarene College, Olathe	18
Neosho County Comm. Jr. College, Chanute	16
Newton Advertisers	45
O. A. Cooper Co., The, Humboldt, Nebr.	9
Ottawa Advertisers	18
Sacred Heart College, Wichita	40
Salina Advertisers	21
Salina Area Voc.-Tech. School, Salina	13
Savings and Loan Association of Kansas	18
St. Luke's Hospital of Kans. City School of Nursing, Kans. City, Mo.	42
Seward County Comm. Jr. College, Liberal	19
Southwestern Bell Telephone Company, Topeka	39
Sterling Advertisers	26
Stewart Beauty Academy, Inc., Topeka	33
Tabor College, Hillsboro	38
Texas Onion Plant Co., Farmersville, Texas	12
Trinity Lutheran Hospital School of Nursing, Kansas City, Mo.	47
University of Kansas, Lawrence	34
Washburn University, Topeka	4
Weaver Airline Personnel School, Inc., Kans. City, Mo.	38
Wichita Area Voc.-Tech. School, Wichita	12
Wichita State University, Wichita	22
Winfield Advertisers	35
World Company, The, Lawrence	26

### CAREER OPPORTUNITIES UNLIMITED



The variety of careers in health offers rich scope for the inquiring mind, as well as the excitement and gratification of helping advance man's progress in dealing with himself and his environment.

In spite of the growing number of persons in the health professions, the supply has not kept pace with the demand for services. The opportunities are truly unlimited! Whatever your choice—medicine, dentistry, nursing, public health, pharmacy, medical technology, medical assistance, biophysics, biochemistry, bacteriology, to mention only a few—*your* prospects will be what you make them, determined by *your* interest and capacity, *your* training, *your* decisions, *your* work.

### *The Kansas Medical Society*

315 West 4th

Topeka, Kansas



## BE A NURSE — working with people

Trinity offers . . .

- Diploma in Nursing to high school graduates — Leading to Eligibility for RN exam
- One Year College at Metropolitan Junior College
- Accredited by National League for Nursing
- Scholarships and federal loans available
- Next class begins September 1970



Write today for FREE booklet or call  
PLaza 3-4600

Trinity

Lutheran Hospital  
School of Nursing

3151 AND WYANDOTTE STREETS  
KANSAS CITY, MISSOURI 64108

Trinity — Please send me free booklet

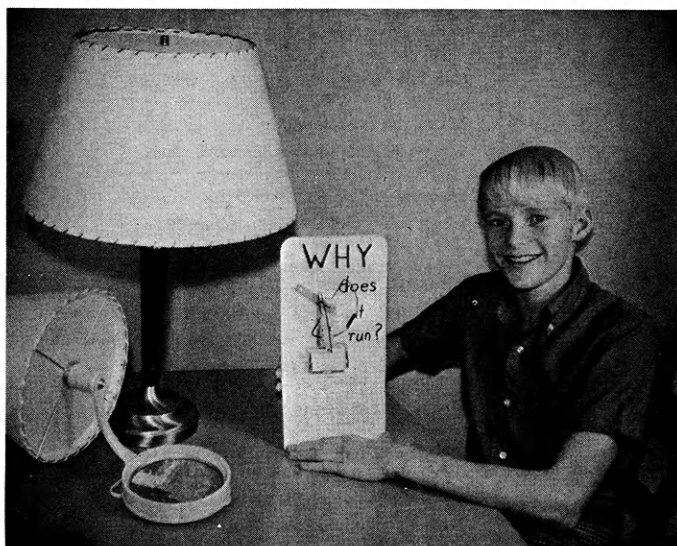
Name. ....

Address. ....

City. .... Zip. ....



# *Lamps spotlight Hodgeman County winner*

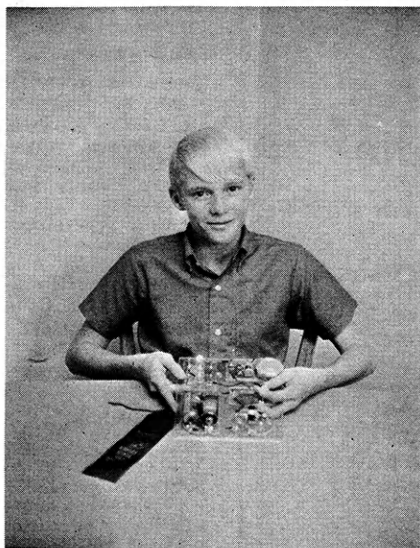


(Editor's note: Thirteen-year-old Larry Guthrie has been a member of the Hodgeman County 4-H Silverlake Hustlers two years and has enrolled in the electric project both times. He also is enrolled this year. He won a purple ribbon on a circuit plan at the Kansas State Fair, Hutchinson.)

**By Larry Guthrie  
Hodgeman County 4-H'er**

I have been in 4-H two years and both of these years I enrolled in electricity. I've always been interested in electricity, so I went ahead and took it as project work.

During the first year I studied basic electricity. I learned to check cords and re-wire appliances correctly. In addition, I made a splice board and wired and assembled a wall lamp for my bedroom. (see top photo) I did many electrical repairs on small household appliances.



This year (1969) I concentrated more on how electricity works. I studied how circuits and motors work. For part of this study, my project leader ordered a kit for me to use for circuit experiments. After working with it, I selected a final circuit plan and entered it in the Hodgeman County Fair, earning a blue ribbon and later a purple ribbon at the Kansas State Fair. (see bottom photo) For motor study I did a motor display titled "Why Does It Run?" with the explanation following (top photo). I also earned a county fair blue ribbon on this display. This year I also assembled and wired a table lamp (top photo).

My past experiences in electricity have been so interesting and fun that I enrolled in the 4-H electric project for this year.



**\* Watch This Page For Ideas On Farm And Home Electric Projects**  
**ELECTRIC LIGHT and POWER COMPANIES in KANSAS**

**The Kansas Power and Light Company  
Kansas City Power & Light Company  
Western Power Division of Central Telephone & Utilities Corporation**

**Central Kansas Power Company  
Kansas Gas and Electric Company**