

LETTERS—

She's Against Price Control

Four reasons why I am forever against price controls:

1) Any price is unfair with government having the power to import.

2) Government price controls make possible cheap products with no limit to spending and taxation.

3) Production depends on nature in its many, many ways.

4) Liberty implies to the individual, not organization. Without liberty, we have no security.

Mrs. George D. York
JUNCTION CITY

It's NFO Ship That Is Sinking

Thanks, Mr. Drapal, for your opinion in the Grass & Grain May 2. As for Leonard Berger, who wrote May 16 that too many farmers of today are sleeping in selfish pride and not aware that the agricultural ship is sinking, Mr. Berger's NFO is sinking too. How long are NFO members going to listen to the leader and pay dues so faithfully?

F. J. F.
CONCORDIA

ANGUS SUMMER TOUR TO BE IN OSAGE COUNTY

The major tour by the American Angus Association in the midwest this summer will be held in the Oklahoma Osage — the continuation of the Kansas Flint Hills' Bluestem country. Dates are June 22-23-24. Last

GRASS & GRAIN

The Mid-Kansas news weekly. Published each Tuesday at 1207 Moro, (Box 1009) Manhattan, Kansas, 66502 by

AG PRESS
Dean Coughenour
E. R. Woodward
Second class postage paid at Manhattan, Kansas
Subscription: \$3 year
CIRCULATION 11,108

year's tour, in West Texas, drew 550 cattlemen from 21 states. Gathering point will be at Bartlesville, Okla.

May 23, 1967

2

Grass & Grain

FLOWERS FOR MEMORIAL DAY....

TUESDAY, MAY 30

Peonies, All Colors

Petunias and Geraniums

Mixed Plant Baskets

Artificial Wreaths

Sprays and Bokays



Order now and be assured that your Decoration Day flowers will be ready when you want them.

Wamego Floral Co. Greenhouses

Phone 456-7447
Wamego, Kansas

Advance's High-Tonnage Champion



ADVANCE 14

ADVANCE 14 is one of the most important developments in hybrid sorghum in recent years. Yields of from 15 to 31% over RS-608 and RS-610 are not uncommon. Although Advance 14 was first introduced only three years ago, consistently high yields in all sorghum-producing areas have pushed it to the forefront faster than any sorghum in our experience. Highest yields will be obtained on good soil where rainfall is ample, or under irrigation, but it also produces excellent yields under dry-land farming.



FARMERS COOPERATIVE ASSN.
MANHATTAN, KANS. PR 6-9467



A Marcella Domme



B Helen Gore



C Elinor Reynolds



1 Sylvia



2 Joan



3 Sandra



D Minnie Potter



E Thelma Douglass



F Jo Upton



4 Christina



5 Janice



6 Billie



G Adah Crabtree



H Joyce Nagel



I Alice Wiruth



7 Vickie



8 Cindy



9 Laurene

Can You Match These Mothers and Daughters?*

Mother
A. Marcella Domme, Topeka
B. Helen Gore, Topeka
C. Elinor Reynolds, Wichita

Daughter

Mother
D. Minnie Potter, Dodge City
E. Thelma Douglass, Garden City
F. Jo Upton, Independence

Daughter

Mother
G. Adah Crabtree, Colby
H. Joyce Nagel, Great Bend
I. Alice Wiruth, Concordia

Daughter

Mother-daughter and father-son combinations aren't unusual at Southwestern Bell.

There are many reasons for this happy state of affairs. For one thing, ours is a good company to work for. For another, we offer a real opportunity for serving the public, an opportunity that calls for a true "spirit

of service." We're pleased and proud so many of our Kansas employees suggest a telephone career to their children. By doing so, they help insure the business will be in good hands for many years to come. We

think this is a good thing for Southwestern Bell and for our customers.



Southwestern Bell

*Answers: A-1, B-6, C-2, D-3, E-5, F-4, G-9, H-7, I-8

Why Soybeans Lost Their Bloom

Less than four months remain in this soybean marketing year. It will end with the last of August. Stocks of soybeans remaining on hand seem to be more adequate to meet processing and export needs until the new crop becomes available.

New-crop prospects are already influencing market prices, but these prospects may have less influence this summer than they did last year. There are two reasons: (1) The carryover will be much larger. (2) The 1967 crop is expected to be larger than that of 1966.

Supplies of soybeans remaining on hand April 1 were estimated at 460 million bushels — 10 per cent more than last year. At this total farm stocks were estimated at 219 million bushels — up 46 per cent. Nonfarm stocks were listed at 241 million — up 7 per cent.

When we subtract the beans remaining on hand April 1 from the total supply available last fall, we get an indicated disappearance of 507 bushels. The amount processed during the seven months was 319 million. Exports totaled 163 million. Some beans were fed to livestock; some were lost in storage and transportation.

The amount of soybeans crushed during the first seven months of this marketing year was only 1 per cent more than the year before. The amount exported was 2 per cent less than last year.

It now appears that the carryover of soybeans next September 1 will exceed 100 million bushels. The carryover last fall was only 36 million bushels.

Farmers have put a comparatively large amount of the 1966 soybean crop under price-support loans. By the end of March they had placed 147 million bushels under loan — 71 per cent more than the previous year; they had rapid loans on 29 million bushels — 30 per cent less than the year before. The amount of soybeans remaining under price-support loans on March 31 was 118 million bushels — nearly three times as much as a year earlier. The supply of beans not under

loan at the end of March apparently was 342 million bushels — about 3 per cent more than last year.

Prices for soybeans in early May were about 20 cents a bushel lower than a year ago. The value of the meal obtainable from a bushel of beans was about \$1.70 — down 19 cents; the value of the oil was about \$1.10 — down 12 cents. The value of both products, oil and meal, was about \$2.80 — 31 cents less than last year.

Since the value of soybean oil and meal has dropped more than the price of soybeans, the processing margin is smaller. In turn this small margin has restricted the volume of soybeans crushed.

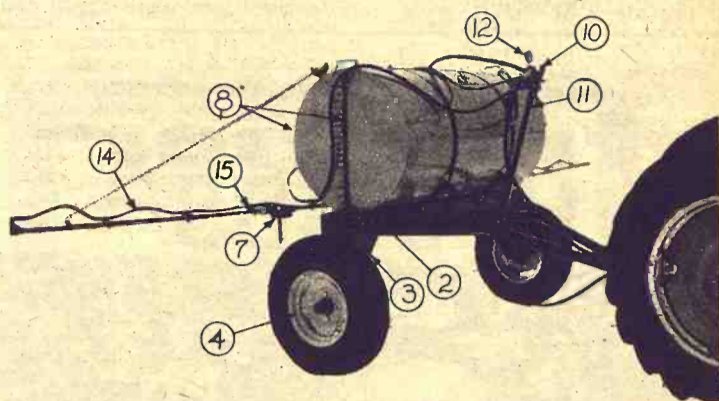
Though only a few soybeans have been planted, it's a good bet that the 1967 crop will be larger than the one harvested last fall. A USDA survey in March indicated that farmers intended to plant 41 million acres of soybeans — 9 percent more than last year.

Recent developments favor a large acreage of soybeans this

year. Since corn planting has been delayed, some acreage previously intended for corn may be planted with soybeans.

L. H. Simerl
Univ. of Illinois

FIELD SPRAYERS AT DISTRIBUTOR'S PRICES



CHECK THESE FEATURES:

- ADJUSTABLE FRAME
- 8-ROW WITH RUBBER HOSE BOOMS TO ADJUST ROW SPACING
- 230 GAL. EPOXY LINED TANK
- 8 ROLLER NI-RESIST PUMP

NOW CHECK THE PRICE —

(List \$525) **Our Price \$335**

Why do we have such a low price on these sprayers? In the first place we are distributors of these sprayers, and we sell direct to farmers. This is our way of doing business — to save you money.

Buy At Distributor's Prices From

BRUNA IMPL. CO.
HANOVER IMPL. CO.

MARYSVILLE
HANOVER

MANHATTAN SALE BARN Cafe

SUMMER
HOURS }

7 a.m. to 4 p.m.
Except Thurs. to 10 p.m.
Closed Sunday

East US 24 — Sale Barn — Manhattan

Come One! Come All 30th Annual FLINT HILLS Strong City Kansas RODEO

R. C. A. Professional

June 2, 3, 4

Midwest's Greatest Rodeo

Thrilling Rodeo Fans for 30 Years
This Year Greater Than Ever
Five Major Professional Events
Over \$7500 In Prize Money
See Most Of Nation's Top Cowboy
Parades Dance
Bar-B-Que

Tommy Steiner Stock, From Austin, Texas
Never Seen Before in this Area
Clowns John Routh & Kajun Kid

Friday, June 2, 12:30 p.m. Miss Rodeo Kansas Queen luncheon and judging of Queen.
5:30 p.m. Flint Hills Rodeo Board Chamber of Commerce of Cottonwood Falls & Strong City will host everyone to a big free barbeque.
7:30 p.m. First performance featuring Sid Moore & wife rodeo team. Music by cowboy organist Dick Warner.

Saturday June 3 9:00 a.m. Miss Rodeo Kansas Horsemanship Contest
FREE TO PUBLIC
2:30 p.m. Parade leaves Swope Park for Strong City
7:30 2nd performance. 150-200 cowboys and girls trying for purse
9:30 p.m. Dance western style, music by Bar-Ques of Wichita.

Sunday, June 4, 2:00 p.m.
Final performance.
Miss Rodeo crowned.



Elmore Stout, President
Flint Hills Rodeo Association

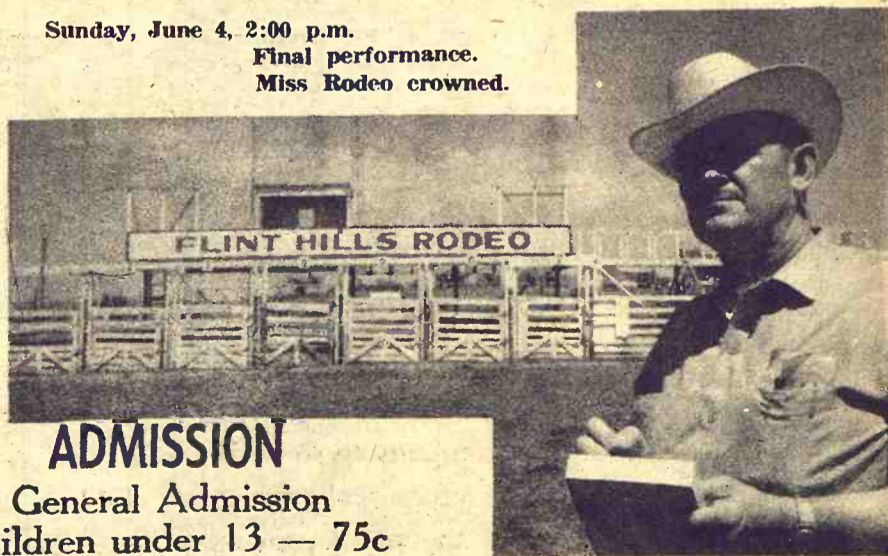
MISS RODEO KANSAS QUEEN

Winner will represent Kansas in Las Vegas this fall in national competition. Any girl 17 thru 24 years old, single, and has never been married, is eligible. She must have neat appearance, personality, and horsemanship ability.
Deadline for application is 6:00 P.M. May 31.

PARADE ENTRIES

Over 200 cowboys & girls. Stagecoaches, wagons, antique cars, floats. Any individuals, 4-H clubs, HDU units, civic clubs, may enter parade. Free tickets to parade entries as long as the entry is non-commercial.
Contact Secretary Ken Clark, Strong City, Kans.

The Flint Hills Rodeo Board and its stockholders strive each year to bring you a bigger and better professional rodeo. This is the first in Kansas. You will be thrilled at the scenic beauty of the Flint Hills.
Plan now to bring the family.



ADMISSION

General Admission
Children under 13 — 75c
Adults \$2.50

BOX SEATS ADVANCE \$2.50 AT GATE \$3.00*
*If Available

For Advance Tickets Call or Write Ken Clark, Strong City BR 3-6656 or Jim Bell Cottonwood Falls BR 3-6381.



GOOCH'S
BEST

STEER PREMA

You can ask your cattle for EXTRA gains ... feed conversion and carcass quality!

We can supply you Gooch Steer Prema — the feedlot supplement that puts more work — delivers more cattle performance to feed in more margin.

C K Processing Co.
Manhattan, Kansas
Telephone PR 6-9289

Clay Center
Alfalfa Mill

Clay Center, Kansas
Telephone ME 2-3401

Geisert Heads

Area Angus Assn.

Leon Geisert of Hope was elected president of the Geary-

Dickinson County Angus Association at its annual meeting.

Other officers named were Clyde Albers of Chapman, vice-president; Leonard Black, Hope, secretary; Dean Felbush, Abilene, treasurer.

The group discussed next year's Better Livestock Day but no committees were appointed.

frontier HYBRIDS



See Your Frontier Authorized Dealer Soon

Robinson Farmers Un. Co-op	Robinson, Kansas
Biester Feed & Grain	Soldier, Kans.
Farmers Union Co-op	Vermillion, Kans.
Jefferson County Co-op	Valley Falls, Kans.
Karst Soil Service	Wamego, Kans.
Willard Grain Co.	Willard, Kans.
Moss Grain Co.	Willis, Kans.
Farmers Grain & Supply Co.	Westfall, Kans.
Osborne County Farmers Union	Corinth, Kans.
Agenda Co-op Business Assn.	Agenda, Kans.
Havel Feed & Seed	Cuba, Kans.
Cuba Implement Co.	Cuba, Kans.
Hlatt Grain & Feed	Munden, Kans.
Cerny Brothers	Narka, Kans.
Horkman Grain & Supply	Wayne, Kans.
Co-op Elevator	Belleville, Kans.
Maier Grain Co.	Courtland, Kans.
Norway Elevator	Norway, Kans.
Republic Grain Co.	Republic, Co.
Rydal Grain Co.	Rydal, Kans.
Clifton Grain Co.	Clifton, Kans.
Farmers Co-op Elevator	Barnes, Kans.
Barnes Feed & Supply	Barnes, Kans.
Lloyd Anderson	Brantford, Kans.
Farmers Co-op Elev. Assn.	Greenleaf, Kans.
A. R. Hoffman & Son Hdwe.	Haddam, Kans.
Hollenberg Grain Co.	Hollenberg, Kans.
Farmers Union Co-op Assn.	Mahaska, Kans.
Palmer Grain Co.	Palmer, Kans.
Continental Grain Co.	Morrowville, Kans.
Linn Co-op Exchange	Linn, Kans.
Farmers Co-op Elevator Assn.	Washington, Kans.
Farmers Union Co-op	Frankfort, Kans.
Thompson Seed Service	Axtell, Kans.
Baker Produce	Blue Rapids, Kans.
Herkimer Co-op Business Assn.	Herkimer, Kans.
Roy Lewis Seed Store	Home, Kans.
Brauchi Brothers	Marysville, Kans.
Farmers Union Co-op	Vliets, Kans.
Henry Rahe Seed Co.	Waterville, Kans.
Farmers Co-op Grain Assn.	Waterville, Kans.
Golden Rule Produce	Waterville, Kans.
Winifred Elevator	Winifred, Kans.
Burger Grain Co., Inc.	Marietta, Kans.
Bern Seed Co.	Bern, Kans.
Wittmer Grain Co.	Berwick, Kans.
Ward Hardware	Centralia, Kans.
Boeding Seed House	Corning, Kans.
Goff Grain Co.	Goff, Kans.
Graham Grain Co.	Oneida, Kans.
Hartter's Seed Store	Sabetha, Kans.
Farmers Elevator Co.	Seneca, Kans.
Mark Stallbaumer	Seneca, Kans.
Farmers Union Elevator	Cawker City, Kans.
C G F Grain Co.	Hunter, Kans.
Solomon Rapids Grain Co.	Solomon Rapids, Kans.
Hake Grain Co.	Tipton, Kans.
Estes Motor Farm Service	Atchison, Kans.
Carl Mangelsdorf Seed Co.	Atchison, Kans.
Johnson Hardware & Elevator	Assaria, Kans.
Bendena Grain Co.	Bendena, Kans.
Joseph Thorn	Beattie, Kans.
Raymond O'Neil	Beattie, Kans.
Aurora Co-op Grain Co.	Aurora, Kans.
Clyde Co-op Elevator	Clyde, Kans.
Bowman Seed Co.	Concordia, Kans.
Decker Grain Co.	Hollis, Kans.
Farmers Union Co-op Produce	Clay Center, Kans.
Co-op Mercantile	Green, Kans.
Idana Grocery	Idana, Kans.
Morganville Grain Co.	Morganville, Kans.
Farmers Co-op Elevator Assn.	Morganville, Kans.
Wakefield Farmers Co-op	Wakefield, Kans.
Central States Seed	Manhattan, Kans.
Manhattan Milling Co. Inc.	Manhattan, Kans.
Riley Grain & Supply	Riley, Kans.
Farmers Union Co-op	Leonardville, Kans.
Duluth Mercantile	Duluth, Kans.
Alexander Lumber Co.	Havensville, Kans.
Onaga Lumber & Grain	Onaga, Kans.
Kufahl Hardware	Wheaton, Kans.
Karst Soil Service	St. Marys, Kans.
Goodman-Nightingale Grain	Delia, Kans.
Farmers Union Co-op	Denison, Kans.

Other Frontier Dealers Will Be Listed Next Week

THE BOWMAN SEED CO.

CONCORDIA

KANSAS

Move To Show Parity By Income, Not By Price

Look for a new statistical term on farm parity to pop up more frequently.

Both Secretary of Agriculture Orville Freeman and his predecessor Ezra Taft Benson often found fault with using a price parity to use as a guide of the farm economy.

Both Freeman and Benson favored more emphasis on a parity standard of income instead.

The price parity is based upon a standard that set 1910-14 as a period in which farm prices and consumer prices were in "balance," that is, farmers had about the same level of prosperity as did the rest of the economy at that time.

At that level, price parity was at 100 percent. If consumer prices went up more proportionately than did prices paid to farmers for their crops and livestock, the parity index dropped below 100 percent, as it has most of the years since the 1930's. If farm prices went up more than other prices — as they did briefly after World War II — the farm index goes over 100 and theoretically farmers are better off than the rest of the economy.

Just prices don't reflect farm prosperity, contend Freeman and Benson, and they have favored an income parity figure which would be influenced by farm production and government payments as well as by prices.

After Freeman took office this parity-of-income standard has been figured once a year.

Last month, however, USDA started to figure the income figure each month. It seems likely that farm officials will try to shift to this standard, although it is bound to have opposition from organized farm groups.

Allowing for government payments, the income parity last year averaged 86 percent, compared to the 80 percent price parity gauge.

The income parity figure could be lower than the price parity figure in years in which production is down, by reason of poor crops or slow livestock marketings, even though prices would go up.

"A STEEL FACTORY ON WHEELS" It Impresses Visitors During Stop at Hoerman Supply Company, a Major Distributor of Steel Products

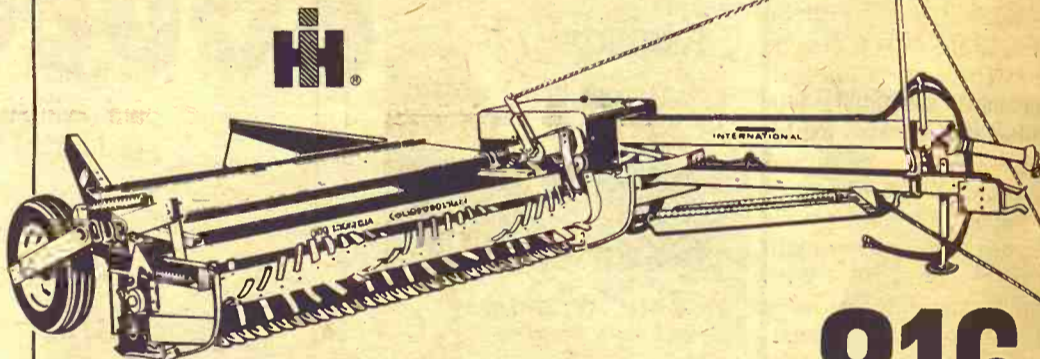


Lone Star Steel Company, a major manufacturer of Iron and Steel and Fine Tubular Products, extended a two-hour visit with its Exposition-On-Wheels at the Hoerman Supply Company warehouse at Zeandale on Thursday, May 11.

The 40-ft. mobile display showed a scale model of Lone Star's modern steel plant which covers 600-acres, including ore mines, blast furnace with molten metal flowing into ladles, and mills rolling electric weld pipe ready for shipment to distributors over the world.

Over 100 persons visited the Exposition from 9:00 a.m. to 11:00 a.m. while it was at Zeandale. The unit has covered 22 states the past year.

NOW IT'S HERE



The NEW International® 816 MOWER-CONDITIONER with POWER FLICK-BAR More aggressive feeding action

- Cleans cutter bar with sweeping action
- Assists in feeding material into the conditioning rolls
- Automatically adjusts to the volume of incoming crops
- Replaceable rubber teeth
- Simple in design
- Braking of flick-bar from tractor seat enables downed crops to be partially lifted for better mowing
- Sturdy trouble-free construction
- Three operating positions to match crop height
- You control flick-bar from the tractor seat

Available in 7 or 9 foot models with a choice of the conventional flick-bar, or the NEW Power Flick-Bar.

STOP IN AND SEE IT SOON AT

HERINGTON
Pioneer Service & Sales

MINNEAPOLIS
Chapman Impl. Co.

CLAY CENTER
Norquist's Inc.

ABILENE
Abilene Truck & Tractor

MARYSVILLE
Bruna Brothers

FALUN
Dauer Impl. Co.

HANOVER
Hanover Impl. Co.

LEONARDVILLE
Kendall Garage

WAKEFIELD
Auld Chevrolet

COUNCIL GROVE
Macha-Revere

BELLEVILLE
Chapman's On US hwy. 81

GYPSUM
Kuhn Impl. — OW 64411

Make
Tedious

Thoughts of
clearing needn
ing if there is
organization and
ment.

Half the battle
List the individ
two separate c
column list the
such as taking
clearing out cl
other, the light
such as mending
tifying bureau

MATT
BOX SI
Specials J
New Lo
Buy

Also Comple
Ser

Manh
Mattre

414 S. 4th



Changes
The Bee

The 54th
stock Feeder
sas State U
ded many to
to cattlemen
couraged by
changes that
coming in th

Dr. Harol
State meat
phasized that
ation has be
segment of t

try and in t
more and mo
be buying f
cutability and
rather than y

During my
beef packing
seemed so
place so muc
yield when t
ned out to be
had to be tr
the retailer.

Furthermore
make much
ers to feed c
fat, but as lo
continue to d
degree of fin
has no other

been pointed
specialists th
imals finishe
ter weights 1
percentage of
as soon as th
begin paying
price for the
able cattle th

supply them
would this res
gains for fee
automatically
pounds of be
market and i
the consumer
able product.

Deposits insur
depositor by t
ance Corporati

UNIO

Member Fee

Make Housecleaning Less Tedious By Proper Planning

Thoughts of spring housecleaning needn't be so frightening if there is some proper organization and the right equipment.

Half the battle is the planning. List the individual tasks under two separate columns. In one column list the standup chores such as taking up rugs and cleaning out closets and in the other, the lighter sit-down jobs such as mending slipcovers or tidying bureau drawers. In doing this you can budget your energy, doing the toughest jobs when you're full of zip. Allow enough time to do each job properly and allow enough time for relaxation.

Group jobs to be done in any one area. For example, you'll probably want to wash down kitchen cupboards and straighten out food-pantry shelves on the same day.

After you've finished the first steps such as removing and storing storm windows and perhaps removing, cleaning and storing draperies to make way for lighter summer curtains and dusting thoroughly, you'll want to banish musty odors and make your home germ-free by deep-cleaning walls, floors and storage shelves. To deep-clean, wash with a solution of warm, soapy water to which a disinfectant has been added. This will deodorize and disinfect simultaneously.

MATTRESS & BOX SPRINGS

Specials Every Day
New Low Prices
Buy Direct

Also Complete Rebuilding Service

Manhattan
Mattress Co.

414 S. 4th PR 8-5302

Corner Post Comments

Changes Coming In The Beef Industry!

The 54th Annual Livestock Feeder's Day at Kansas State University provided many topics of interest to cattlemen but I was encouraged by the overdue changes that may be forthcoming in the beef industry.

Dr. Harold J. Tuma, K-State meat specialist, emphasized that carcass evaluation has been a neglected segment of the beef industry and in the near future more and more packers will be buying fat cattle with cutability and grade in mind rather than yield and grade. During my tenure in the beef packing industry it seemed so ridiculous to place so much emphasis on yield when this usually turned out to be excess fat that had to be trimmed off by the retailer.

Furthermore, it doesn't make much sense for feeders to feed on this excess fat, but as long as packers continue to demand a high degree of finish the feeder has no other choice. It has been pointed out by meat specialists that younger animals finished out at lighter weights have a higher percentage of lean cuts and as soon as the industry will begin paying an incentive price for these more desirable cattle the feeder will supply them. Not only would this result in cheaper gains for feeders, it would automatically reduce the pounds of beef going to market and in return give the consumer a more desirable product.



GARY W. BECK
Farm Service
Director

Dr. R. A. Long, University of Georgia Animal Husbandry Department, strongly urged producers to change their sights and begin looking for the meat type, more useful animals in their herds. He challenged both commercial and purebred breeders who are not performance testing to find and breed the right kind of cattle that will have desirable quality at a lighter weight with a minimum amount of waste. It will take years to develop these desirable meat type strains but we must get going if we want to maintain the beef business as a profitable enterprise.

If you're trying to develop your business why not drop in the Union State Bank and test our performance. We are always ready to serve you.



Deposits insured up to \$15,000.00 for each depositor by the Federal Deposit Insurance Corporation.

UNION STATE BANK



CLAY CENTER, KANSAS

Member Federal Deposit Insurance Corporation

As you clean, open the windows and air the rooms. Vacuum mattresses and wash blankets in a disinfectant solution. Air mattresses while you wash down and disinfect the slats and coils of the bedsprings. To freshen mattresses, brush with a solution of disinfectant and soap.

Rearrange items on storage shelves for greater convenience with frequently used objects at waist or shoulder level.

Once your house is in the best order, try to keep it that way by giving systematic attention to individual areas throughout the summer.

Don't Overdry

Avoid overdrying nylon fabrics in your automatic drier. This causes a resultant static electricity which causes them to cling.

Letter Of Thanks

A thank you note was received from Mrs. Lois Stohr of Hutchinson:

"Thank you for my teflon egg poacher which arrived today. This is my first piece of teflon and poached eggs are a favorite around our house, but I put off cooking them very often because they stick to the pan and make it such a chore to clean. I have heard teflon is so easy to

clean and use — so I know we're going to use it often and get a lot of enjoyment out of our new egg poacher.

"Thanks again."

Bathroom Safety

Bathroom safety always is an important feature of any home. Slip-proof floors, such as ceramic tile with embedded abrasive

particles and single control faucets, which prevent accidental scalding, are being used in both new homes and remodeling projects.

May 23, 1967

Grass & Grain

5

AUTO RACES Memorial Day

MAY 30

NIGHT RACES: 8:00 p.m.
SPECIAL & EXCITING

PLAZA SPEEDWAY

Junction City

ONE MILE EAST ON J-HILL

2 CLASSES JALOPIES (305 cu. in. motors)
SEMI-LATE MODEL STOCK CARS — '49 Thru '60

RACES EVERY SUNDAY
NIGHT AND HOLIDAYS

Finest And Fastest Quarter
Mile Track In The Country

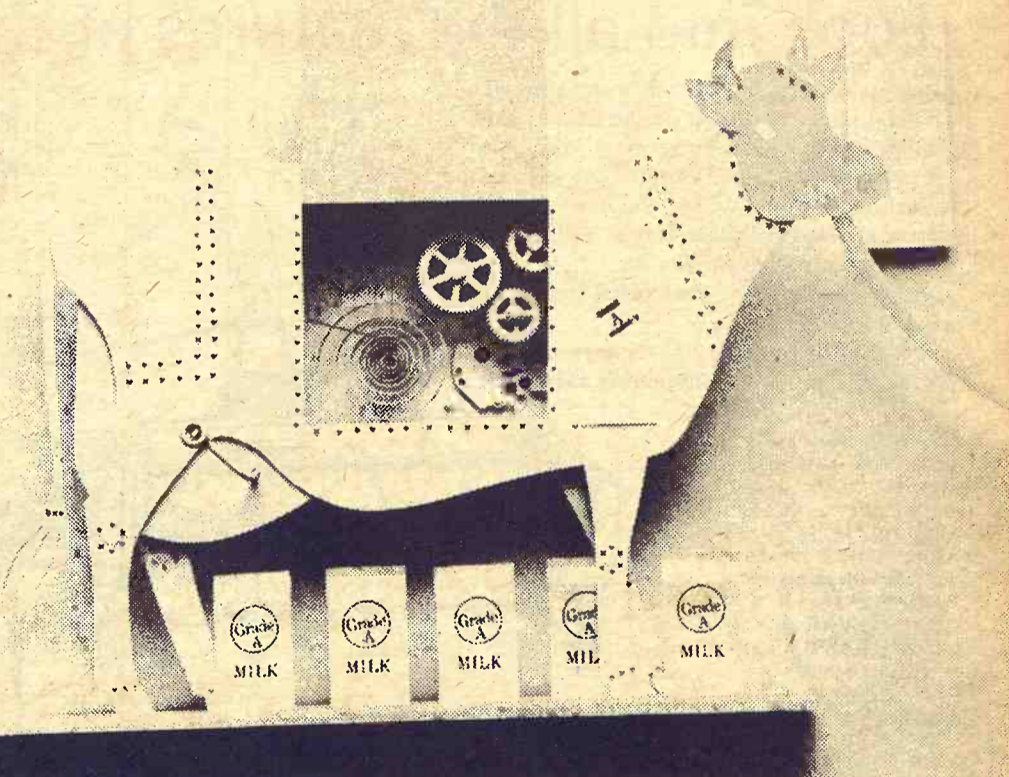
Mechanical Cow? There would be one nice thing about it, You wouldn't have to be a feed specialist.

Like to think less about feeding? And still give the herd a balanced diet? Then look into our dairy feeding program. We've eliminated the guesswork.

Compare notes with our feed man. Discuss your production goals, your available feedstuffs. He might have a simple answer to your needs. The cheapest possible way.

See if you don't like the way he talks - and listens.

COOP dairy feeding program



Junction City
Farmer-Stockman Co-op Assn
Council Grove
Junction City CE 8-1158

Manhattan
FARMERS Cooperative Assn.
Manhattan-Alta Vista
Westmoreland-Onaga

Alma
Farmers Union Co-op
Alma Ph. 765-3612
Eskridge Ph. 449-2291

St. Marys
Farmers Union Co-op
Business Assn.

Clay Center
FARMERS Union Co-op
Clay Center-Bala
Miltonvale-Leonardville

Greenleaf
Farmers Co-op Elevator Assn
Greenleaf-Linn
Washington

Carlton
Farmers Union Co-op
CARLTON
TELEPHONE 31

OUR DAILY BREAD

— by G&G Area Cooks

Mrs. Clarence Hummelgaard Of Boone, Iowa, Contest Winner

An Iowan is the contest winner this week. Mrs. Clarence Hummelgaard of Boone sent the following recipe:

RAW CARROT & PINEAPPLE CAKE

- 1 cup liquid shortening
- 2 cups white sugar
- 3 unbeaten eggs
- 2½ cups flour
- 1 teaspoon soda
- 1 teaspoon cinnamon
- 1 teaspoon salt
- Sift these four dry ingredients together.
- 1 teaspoon vanilla
- 2 cups grated raw carrots
- 1 cup nuts, pecans preferred
- 1 slender can crushed pineapple and juice

Mix well shortening, sugar and eggs; blend in flour mixture and vanilla and beat well. Add 2 cups grated carrots, pineapple and nuts and beat. Bake in oblong cake pan for one hour at 325-350 degrees. If used for cup cakes, less baking time is required. Frost with favorite frosting.

Mrs. Victor Blevins, Oak Hill: "The people I have served these cookies have all enjoyed them so thought I would pass them on."

CATHEDRAL WINDOWS

- 2 tablespoons butter
- 1 cup chocolate chips
- 1 beaten egg
- 1 cup powdered sugar
- 3 cups miniature marshmallows
- ½ cup chopped nuts
- Belt butter and chocolate chips over low heat. Add slowly your egg to which has been added the powdered sugar. Stir quickly together and remove from heat. When cooled to hand test on bottom of pan, fold do not stir until all are coated the marshmallows (the colored

miniature marshmallows are attractive). Spread on chopped nuts which have been placed on waxed paper. Form a log 18 inches long. Roll and put in refrigerator. Slice off as needed when cool.

Mrs. Ray Messenger of Tampa sent the following:

GRAHAM CRACKER CUSTARD

- 6 graham crackers
- 3 cups scalded milk
- 4 eggs
- 4 tablespoons sugar
- 12 marshmallows
- ¼ teaspoon salt
- Crumble crackers in buttered baking dish. Pour scalded milk over crumbs. Beat eggs. Add sugar and salt. Add to milk with

crumbs. Add quartered marshmallows. Bake in 325-degree oven for 30 minutes.

Mrs. Lloyd Shuck, R2, Baldwin, sent the next recipe:

CHOCOLATE FUDGE COOKIES

- 1 cup brown sugar
- 1 cup white sugar
- 1 cup soft shortening
- 2 eggs
- ¼ cup milk
- 1 teaspoon instant coffee

The Latest 'Daily Bread' Prize Teflon Egg Poacher

NO MORE trouble with poached eggs sticking to pan. This no-stick, no-scour pan may double as a baby food warmer, making it possible to heat three different foods at one time. Finished with Du Pont teflon, this product is manufactured by the Mirro Aluminum Company.

The winner each week is drawn by lot from the recipes printed.

Win one by sending us your favorite recipe — this can be main dish, leftover, salad, side dish, dessert or what have you.

1. Check your recipe carefully to be sure all ingredients are accurate and accounted for.

2. Be sure your name and address are on the entry.

3. Only one recipe at a time, please.

4. Send it to Woman's Page Editor, Grass & Grain, Box 1009, Manhattan, Kansas.

May 23, 1967

6

Grass & Grain

- ½ cup cocoa
- 1 6-ounce package of chocolate bits
- 1 teaspoon soda
- 2½ cups flour
- 1 teaspoon salt
- 2 cups oatmeal (quick)
- ¼ cup cooking oil
- 1 teaspoon vanilla
- Mix sugar, shortening, eggs, cocoa, vanilla, coffee and milk with mixer until smooth. Beat with a spoon add flour, oil, soda, chocolate bits and rolled oats. Chill one hour and bake at 400 degrees for 10-12 minutes. Drop from spoon.

Mrs. Mabel G. Keim, R1, Minneapolis: "Delicious dessert and easy to make."

CAKE 'N PUDDING

- 1 cup brown sugar
- ½ cup cocoa
- 2 cups water
- 12 marshmallows (regular size)
- 1 package devil's food cake mix
- ½ cup chopped nuts
- In an oblong pan, 13x9x2, mix brown sugar and cocoa; stir in 2 cups water. Snip marshmallows into quarters and scatter over this mixture. Prepare cake mix according to package directions and spoon over the above mixture: spread nuts over top. Bake according to the cake mix directions. This will have a rich pudding under the cake. Marshmallows will blend, some will rise to top. Have plenty of whipped cream or ice cream to use as topping.

Mrs. Lyle Stallbaumer, 212 Branch, Seneca: "Here is a recipe that is one of our family's favorites and is a good way to use sour cream."

SURPRISE PUDDING

- 2 tablespoons butter
- ¼ cup sugar
- ½ teaspoon vanilla
- 1 egg, beaten
- 1 cup sifted flour
- 1½ teaspoons baking powder
- ¼ teaspoon salt
- ½ cup milk
- For topping:
- ¾ cup sour cream
- ¾ cup brown sugar
- Cream together butter and sugar. Add vanilla and egg. Beat until light and fluffy. Sift together flour, baking powder and salt. Add alternately to creamed mixture with milk. Divide in six greased custard cups. Top each with 2 tablespoons sour cream and 2 tablespoons brown sugar. Bake at 350 degrees for 30 minutes. May be eaten warm in custard cups or cool turned upside down in sauce dishes topped with whipped cream.

Beet Salad

For a different salad, marinate cooked beet slices in an oil and vinegar dressing and serve on salad greens.

Neatness Aid

To help keep the sewing room neat, attach a small paper bag to the machine drawer knob. Drop into it bits of material, thread, etc., as you sew. No cleaning up will be necessary when you finish sewing.

PROWLERS DON'T LIKE LIGHT

Protect your home with a YARDLIGHT

FOR AS LITTLE AS

\$1⁹⁵ MONTH



KPL offers you a choice of a gas or electric yardlight including normal installation —for as low as \$1.95 per month. For complete information call your nearest KPL office. This offer limited to KPL electric or gas retail customers.

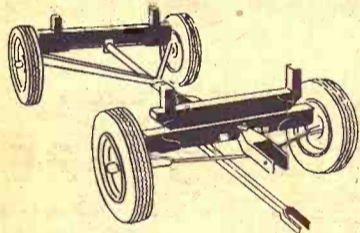


For larger areas you may wish to rent a Space Lite for as low as \$4²⁵ mo.



See Any KPL Employee

Be an Early Bird



BUY ANY **CASE**® FORAGE HARVESTING EQUIPMENT AND GET A

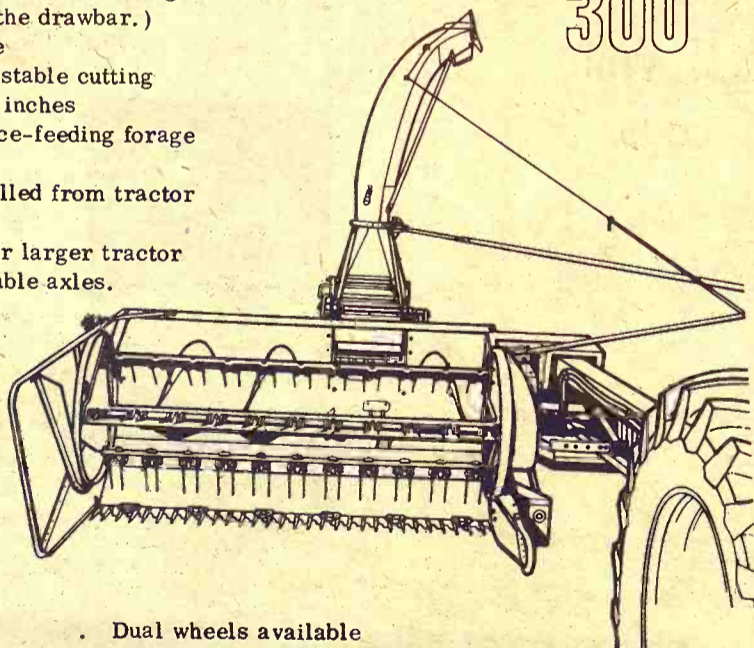
SIX-TON Wagon Gear AS A FREE BONUS

DURING MAY AND JUNE

Look into all the features of the

300

- Structurally rugged without excessive weight (Built-in brawn. Light on the drawbar.)
- Roller chain and gear drive
- Heavy-duty cylinder. Adjustable cutting length from 13/64 to 2-1/8 inches
- Spring-loaded rolls for force-feeding forage
- Built-in knife sharpener
- Cutting and delivery controlled from tractor seat
- Hook the 300 to any 50 hp or larger tractor
- Swinging drawbar. Adjustable axles.



- Dual wheels available
- Direct cut, 1-row, 2-row corn heads and windrow pickup are all available for the CASE 300

Now It's "Case Wagon Days" — See A Dealer Today Buy on Case Crop Way And Get Your Gear Now

LINN
Kuhlman Motor Co.
CHESTER, NEBR.
Grabau Impl. Co.
MARYSVILLE
Brauchi Brothers

CENTRALIA
McBratney Impl.
Phone 857-3815

CLAY CENTER
Porter Eqpt. Co.
1121 Crawford

ESKRIDGE
Hogue Farm Service
MARION
Longhofer Supply
SALINA
Vahsholtz Impl. Co.

ME 2-5202

Bread With Hint Of Lemon Sparks Any Meal



This fanciful quick bread combines lemon tang with the crunch of poppy seeds in an enticing way. Easy to make — this picture-pretty bread is especially delightful served as a warm accompaniment for fresh spring salads.

Lemon Poppy Seed Bread is made with enriched flour, containing the essential B-Vitamins, thiamine, niacin and riboflavin and the mineral, iron. The nutritional advantages of using enriched flour in all baking is an important consideration to the wise homemaker.

LEMON POPPY SEED BREAD

(one loaf)

- 1/2 cup milk
- 1 tablespoon poppy seed
- 2 cups sifted enriched flour*

- 1 tablespoon baking powder
- 1 teaspoon salt
- 3/4 cup shortening
- 3/4 cup sugar
- 2 eggs
- 1 tablespoon grated lemon rind

Combine milk and poppy seeds. Sift together flour, baking powder and salt. Cream shortening and sugar until light and fluffy. Beat in eggs and lemon rind. Blend flour mixture into creamed mixture alternately with milk and poppy seeds, beating well after each addition. Turn into 8 1/2 x 4 1/2 inch greased loaf pan. Bake in preheated 350-degree oven one hour and 10 minutes, or until golden brown. Cool on wire rack five minutes before removing from pan.

*If you don't sift and in absence of other directions, spoon flour directly from container into a 1-cup dry measure, level off, then remove 2 tablespoons according to USDA recommendations.

NOTE: If self-rising flour is used, omit baking powder and salt.

Wide Choice Of Dahlias

With such an infinite variety of shapes, sizes and colors of dahlias, every homeowner or gardener is sure to find a favorite among the selection from Holland. Your favorite may be among the tiny pompons no more than an inch in diameter. Or perhaps your taste is for the shaggy flowers as big as dinner plates.

Plant dahlias directly in the garden in the spring when the soil has warmed up. Prepare the soil for each root by digging a hole a foot wide and deep and working in a half cup of bone-meal and some organic matter such as compost or peat moss. Mix these ingredients thoroughly with the soil.

Set the tuber in this prepared soil so that it is about two inches deep. Be sure to place it with the growing tip pointed upward. It is a good idea to drive a stout stake into the ground before the tuber planted. Damage to the tuber can result if it put in after planting.

Convert Shirts

Most boys grow in height before width so there may be a

problem of school sport shirts that have become too short to tuck into their trousers but fit the child elsewhere.

If so, convert the shirt to a jac style. Make a wide hem and add buttons and a buttonhole to the sides, forming a fold like you find on ready-made jac shirts.

Handy

An old spray-top bottle filled with turpentine is handy to have around when cleaning hands of paint or grease. Be sure to label bottle properly.

B.F. Goodrich

SILVERTOWN Combine Tires



SALE

To help YOU and US, we offer these very special pre-harvest prices through June 3 only.

SPECIAL PRICES

- 14.9-26 6-ply \$74
- 16.9-26 6-ply \$93
- 18.4-26 6-ply \$105

Prices plus Fed. Ex. Tax & Re-Salable Tire

SLIGHTLY BLEMISHED BUT GUARANTEED SILVERTOWNS

- 14.9-26 6-ply \$59
- 16.9-26 6-ply \$73
- 18.4-26 6-ply \$85

Plus Fed. Ex. Tax & Re-Salable Tire



REX KOPPEL, Owner

TIRE STORE



PHONE ME 2-2167

OK Rubber Welders



813 6th STREET

CLAY CENTER, KANS.

G&G Directory

AUCTIONEERING

Lawrence E. Welter

AUCTIONEER
REAL ESTATE BROKER
Your Sale Solicited
Large or Small

EAST HIGHWAY US 24
MANHATTAN PR 8-3455

Real Estate
And General Sales

DAIRY SUPPLIES

DeLaval Clay

All Makes
Service & Repair
Dairy Equipment



Joe McClure

Ph. 229-5284

Alta Vista

Memorials

CEMETERY MEMORIALS

54 Year Continuous Service
Display Located on US24
East of City Limits

SCHAUBEL

MONUMENT CO., INC.
RR 3 Box 20 ME 2-3531
Clarence Blanc, President
CLAY CENTER

MONUMENTS

MANHATTAN
MONUMENT CO.

J. J. BEAUDET

Office and Display

123 No. 3rd

Office Phone
PR 8-5137

Res. Phone
PR 8-4978

MANHATTAN, KANS.

CONSERVATION

Land Improvement

"Soil Conservation Doesn't
Cost—It Pays"

Ponds, terraces, waterways, and leveling, drainage ditches, clearing, landscape grading.

ROGGENDORFF

Conservation Construction

Arthur Roggendorff

Phone JE 9-3984

1630 Osage - Manhattan

These Pullets Fed On NATURICH Will Develop To Lay Lots Of Big Eggs

The NATURICH PLAN offers you a choice of feeds tailored to your needs. Complete pullet growing feeds, or the feeding of your ground grain, mixed with NATURICH POULTRY CONCENTRATE brings pullets into lay slow and easy. So they lay more big eggs and fewer small ones. Helps you make more money.

Keep costs down low, and raise those hardy, heavy-laying pullets that come only from good feeding.

Call or stop in at your NATURICH DEALER for low-cost high-quality service.

NATURICH MILLS

Abilene Kansas

"A finer feed for every need"



Brown Spots On Lawn

According to experts, the vast majority of all so-called "brown spots" in lawns are caused by dogs. And apart from training Fido to go behind the bushes, there really isn't effective preventative or cure. Instead of trying to reseed an unsightly brown spot, replace it with a plug of good sod from the edge of the lawn.

IMPLEMENT • TRACTOR
ITCO
PARTS • ACCESSORIES

MOWER KNIVES

AC smooth heavy	\$10.69
AC underserrated heavy	\$11.15
JD smooth heavy	\$9.99
JD underserrated heavy	\$10.69
Ford smooth heavy	\$10.19
Ford underserrated heavy	\$10.75
IHC smooth heavy	\$10.19
IHC underserrated heavy	\$10.75
Ned Idea smooth heavy	\$11.69
New Idea underserrated heavy	\$12.29
Rock guards	\$1.05
7" wear plate	\$2.69
Regular smooth sections	.13 each
Heavy smooth sections	.15 each
Regular underserrated sections	.14 each
Heavy underserrated sections	.16 each
Crome heavy smooth sections	.22 each
Crome underserrated heavy sections	.24 each
Parallel bar rake teeth	.29 each
David Bradley rake teeth	.33 each

See us for your sprayer needs. We try to carry full line of parts. Also Continental sprayers.
1 used 235C IHC cultivator \$100

HOLT FARM SUPPLY

Next To Sale Barn
MANHATTAN PR 8-4343



IN MANHATTAN



See Floyd Woodworth and Carl Oliver
For Sales & Service of all Your Farm Needs

Your Tire and Battery

HEADQUARTERS

Nylon Rears For Only:

Size	Price	Fed. Tax
• 12.4/28	\$49 4 Ply	4.25
• 12.4/38	\$58 4 Ply	5.39
• 13.6/38	\$77 6 Ply	6.57
• 15.5/38	\$84 6 Ply	7.73

12 Volt Batteries

Low As 12.95

STOP IN BETWEEN 2:30 & 4:00 P.M. SAT., JUNE 3

For Free Coffee and Meet The People

You've been talking to on your C-B Radio.

Open Mon. & Thurs. 9:30 til 9:00 ... Other Days 9:30 til 5:30

SHOP PENNEYS NEW CATALOG ... Phone PR 6-4711

Manhattan Commission Co., Inc. Sale Every Thursday

We had a very light run of cattle at last Thursday's sale and will continue to be until after harvest; but we will continue to have our sale every Thursday to take care of the people who have some livestock to sell. We sold quite a number of pigs last Thursday, and they sold for good prices. If you have any livestock to sell don't hesitate to bring it in as we always have plenty of buyers. You can depend on a proven and reliable auction for top prices at all times. The following is a partial listing of our sale.

FAT CATTLE & FEEDERS

1 brofwhif steer	645 @ 25.10
1 black steer	665 @ 25.00
1 black steer	660 @ 24.30
4 whiface heifers	601 @ 24.10
4 black heifers	635 @ 23.60
5 mixed heifers	912 @ 23.50

1 whiface heifer	670 @ 21.70
1 whiface heifer	880 @ 19.75

STEER CALVES

1 whiface steer	200 @ 32.25
1 whiface steer	300 @ 31.10
1 black steer	335 @ 30.80
1 blkwhif steers	400 @ 29.90
10 black steers	489 @ 28.70
1 blkwhif steer	415 @ 28.60
2 black steers	470 @ 28.50
1 blkwhif steer	510 @ 28.25
2 black steers	525 @ 28.10
9 charolais steers	520 @ 27.30
1 whifrdnk steer	375 @ 26.75
9 black steers	595 @ 26.60
2 charolais steers	505 @ 26.10
1 blkwhif steer	445 @ 25.90
1 black steer	405 @ 25.80
1 black steer	500 @ 25.50
1 whifrdnk steer	440 @ 25.10
1 black steer	480 @ 24.20
1 whiface steer	500 @ 23.40
1 whiface steer	470 @ 23.25
4 whiface steers	@ 108.00

HEIFER CALVES

4 whiface heifers	276 @ 27.25
1 brofwhif heifer	295 @ 25.75
2 blkwhif heifers	332 @ 25.50
5 black heifers	449 @ 25.40
1 whiface heifer	355 @ 25.10
5 black heifers	473 @ 24.30
2 black heifers	470 @ 24.25
1 blkwhif heifer	455 @ 24.10
2 black heifers	537 @ 23.60
1 blkwhif heifer	545 @ 23.60
1 blkwhif heifer	510 @ 23.50
1 blkwhif heifer	540 @ 23.10
1 black heifer	575 @ 23.00
1 whiface heifer	475 @ 22.60
1 whiface heifer	575 @ 22.50
1 whiface heifer	540 @ 21.30
1 spotted hfr&clf	@ 211.00

BULLS

1 whiface bull	1485 @ 22.60
1 whiface bull	1350 @ 22.60
1 charolais bull	1575 @ 22.60
1 whiface bull	1920 @ 22.10

COWS

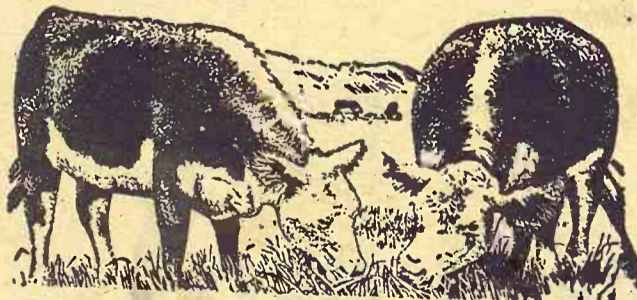
1 brnswiss cow	1115 @ 19.20
1 holstein cow	1360 @ 18.90
1 black cow	1580 @ 18.90

2 1/4 MILES EAST OF MANHATTAN ON US 24

1 holstein cow	1735 @ 18.80
1 holstein cow	1705 @ 18.70
1 brindred cow	1230 @ 18.40
1 whiface cow	960 @ 18.40
1 holstein cow	1230 @ 18.30
1 black cow	1175 @ 18.20
1 red cow	1015 @ 17.90
1 black cow	1165 @ 17.90
1 whiface cow	855 @ 17.80
1 whifrdnk cow	1015 @ 17.70
1 whiface cow	1305 @ 17.70
1 whiface cow	1125 @ 17.70
1 brnswiss cow	1055 @ 17.60
1 black cow	940 @ 17.60
1 whiface cow	850 @ 17.50
1 black cow	1090 @ 17.50
1 whiface cow	1375 @ 17.40
1 roan cow	940 @ 17.30
1 whiface cow	1035 @ 17.20
1 black cow	820 @ 17.00

CALVES, by the head

1 whiface calf	@ 54.00
1 blackwhif calf	@ 51.00
1 black calf	@ 48.00
1 black calf	@ 44.00



FOR ESTIMATES

W. E. DUGAN ----- Alta Vista, 229-6430
JOE RAINE ----- Maple Hill, MI 3-2226
DON WELLS ----- Manhattan, JE 9-3744
MERVIN SEXTON ----- Abilene, CO 3-3449
C. J. WENTZ, bus. mgr. Manhattan, JE 9-5561

BARN PHONE ----- Manhattan, PR 8-4415

Consignment Reports
WIBW radio 6:30 A.M. Thursdays
WIBW-TV 12:15 Noon Wednesdays

BUYING FAT HOGS

We buy fat hogs daily at the Manhattan Commission Co., Inc. sale barn. We buy direct with no commission to the seller.

BUYING HOURS:

Mondays thru Fridays
8 a.m. to 4 p.m.
Saturdays 8 a.m. - 2 p.m.
Manhattan PR 8-4415

WE ARE ALSO BUYING FAT HOGS AT THE W. E. DUGAN YARDS ALTA VISTA

SATURDAYS & MONDAYS
8 a.m. to 3 p.m.
Phone Alta Vista 229-6430
or Manhattan PR 8-4415

AT ALMA & ESKRIDGE EVERY WEDNESDAY From 8 a.m. to 1 p.m.

Please do not bring hogs in for sale on Thursday afternoon, as we will be having large runs of cattle and you might not be able to unload, and they will get hot on you. For information call the barn in Manhattan, PR 8-4415. In Alma, Oscar Nelson, 765-3861. In Alta Vista, W. E. Dugan, 229-6303. Or you may call Joe Raine at Maple Hill MI 3-2226 or Eskridge Yard 449-2347.

The Manhattan Commission Co., Inc.



MANHATTAN, KANSAS

East On US 24

Auctioneer: Joe Raine

MAY FURNITURE SPECTACULAR 20% BONUS SALE

3 BIG DAYS & NIGHTS
THURSDAY — FRIDAY — SATURDAY
SALE STARTS
MAY 25th thru MAY 27th
OPEN EACH EVENING
For Your Shopping Convenience

HERE'S HOW IT WORKS—

With any purchase you make during this sale we will allow you to select 20% of the Purchase Price Amount in a FREE GIFT of your own selection. There is NO CERTAIN gifts you must take in selecting your 20% Free Gift Bonus. You may select any merchandise in our store.

FOR EXAMPLE:

\$10 Bonus on Every \$50 Purchase
\$20 Bonus on Every \$100 Purchase
\$100 Bonus on Every \$500 Purchase
\$200 Bonus on Every \$1000 Purchase

HERE'S HOW THE 20% BONUS BENEFITS YOU

BONUS DOES NOT APPLY TO
PREVIOUS PURCHASES AND
MUST BE TRADED OUT IN
MERCHANDISE.

Sold to (Mr. and Mrs. Customer)

1	2 Pc. Living Room Suite	\$199.95
1	3 Pc. Bedroom Suite	169.95
1	7 Pc. Dinette Set	79.95
1	Cedar Chest	49.95

YOU PAY

499.80
Your Bonus of Purchase
100.00
Cocktail Table
\$ 20.00
2 Step End Tables
40.00
1 Lounge Chair
40.00
N/C
\$100.00

SPECIAL—

GLASS SALAD BOWL
11^{ea.} While They Last



A crystal clear glass, Swedish shaped, 5 1/2" diameter bowl. Can be used as an individual salad bowl or candy dish.

JUST A FEW OF THE HUNDREDS OF BARGAINS

★ DINETTES
★ DINING ROOM
★ TABLES ★ LAMPS

with
\$179⁵⁰
**COLONIAL
SOFA**
Your
20% Bonus
\$36⁰⁰
In Free Merchandise

SPECIAL PURCHASE LUXURY SOFAS

Colonial — Modern — Traditional
At Huge Savings
also included in this sale

Many With Foam Rubber Cushions, Arm Caps and Self Seat Decks

with
\$189⁵⁰
**Traditional
SOFA**
Your 20% Bonus
\$38⁰⁰
In Free Merchandise

★ BEDROOM
★ MATTRESSES
★ ROLLAWAY BEDS

with
**Perma-Rest
SOFA SLEEPER**
Famous Restonic Mattress
\$239.95
Your 20% Bonus
\$48.00
In Free Merchandise Of Your Choice

SPECIAL SIMMONS MATTRESS and BOX SPRING SET \$89⁰⁰

Your 20% Bonus
\$17⁰⁰
In Free Merchandise Of Your Choice

with
SOLID MAPLE BEDROOM SUITE
Double Dresser, Framed Plate Glass Mirror,
Chest and Bed
PLASTIC TOPS
\$239.95
Your 20% Bonus
\$48.00
In Free Merchandise Of Your Choice

with
\$79.95
5-Pc. Drop Leaf
DINETTE SET
Your 20% Bonus
\$16.00
In Free Merchandise Of Your Choice

with
ROCKER
\$79⁹⁵
Your
20% Bonus
\$16⁰⁰
In Free Merchandise

with
RECLINER
\$89⁹⁵
Your
20% Bonus
\$18⁰⁰
In Free Merchandise

with
**ROCKER-
RECLINER**
\$99⁹⁵
Your 20% Bonus
\$20⁰⁰
In Free Merchandise

with
\$129.00
BUNK BEDS
Solid Hardwood — Bolt on Link Springs
Your 20% Bonus
\$25.80
In Free Merchandise Of Your Choice

QUANTITIES LIMITED — SALE POSITIVELY ENDS
SAT. EVENING MAY 27th

Furniture City
IN CLAY CENTER

CONVENIENT TERMS
FREE DELIVERY

"The Furniture Fashion Center Of The Midwest"

For This Event
We Will Be Open
From 9:00 a.m. to 9:00 p.m.
Thursday — Friday — Saturday

an Commission
Co., Inc.
MANHATTAN, KANSAS
East On US 24
r: Joe Raine



FARM & RANCH LOANS

TIME is on your side with a FEDERAL LAND BANK loan. Time to plan and time to secure your future.

R. STANLEY PARSONS, Mgr.
SEE ME AT

604 HUMBOLDT PR 8-2971
Res. Phone PR 6-9044

MANHATTAN

Open Mon. through Fri.

8 a.m. to 5 p.m. (closed 12-1)

Branch Offices: CLAY CENTER & JUNCTION CITY

Federal

LAND BANK Assn. of
MANHATTAN

Serving Clay, Geary, Pottawatomie & Riley counties.



ONLY
\$325

Fully Guaranteed
Completely
Installed



The Hydraulic Hoist Anyone Can Use
At A Price Everyone Can Afford!

PTO operated hydraulic hoist for 10' and smaller beds! Six ton hoisting power. Can be used on 1 ton and smaller trucks.

NOW — Even small trucks can have hydraulic hoisting.

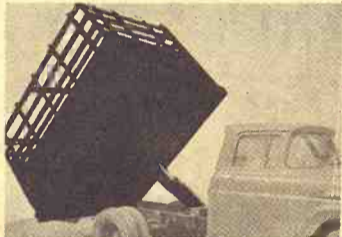
Fingertip Control From Cab

Chrome Plated Piston Gives You Smooth, Positive Power

• Durable

• Practical

• Convenient



HAUL-MOR, INC. valley falls, kansas • phone 945-3211

NEW!

10,000 RPM KNIFE SHARPENER*
gives minute-per-knife sharpening
right on the
Chop-All



Gehl now offers a new, lightweight, portable knife sharpener* to give you load after load of fine-cut chopping. Available in gas or electric models, the 10,000 RPM Gehl knife sharpener provides minute-per-knife sharpening on the machine — in the field or at the machine shed. Adjustable guide insures true beveling.

Come in today for a review of the Gehl Chop-All. Look for these quality features:

- **Select-A-Cut Transmission** lets you change forage lengths — short, medium or long — by pushing a lever.
- **Easy-Swing drawbar** adjusts from tractor seat for easy maneuvering.

If you can't make it today . . . call us now to set up a demonstration!

Financing available.
(*Optional equipment)

Make us Prove it with
a Demonstration!



CLAY CENTER
TOBUREN IMPL. CO.

SENECA
SENECA IMPL. CO.

HERINGTON
TRI-COUNTY SALES

VALLEY FALLS
VALLEY IMPL. CO.

LINCOLN
RHUDY & SONS, INC.

GYPSUM
KUHN IMPL. CO.

HANOVER
HANOVER IMPL. CO.

WAMEGO
WAMEGO TRUCK
& TRACTOR, INC.

May 23, 1967

10 Grass & Grain

Cuban Sugar Crop Improves

Cuba is grinding toward the end of what should be the island's best sugar crop since 1961.

Sugar experts believe the 1967 yield will top 6 million tons and probably beat the 6,407,000 tons produced in 1965.

With world sugar prices fractionally higher than a year ago — when the crop totaled only 4,500,000 tons — it could mean a limited measure of relief for Cuba's acute foreign exchange situation.

Sugar sales normally account for about 80 per cent of the island's foreign exchange.

The current sugar crop has surpassed 5.6 millions tons according to Havana radio broadcasts monitored in Miami. The harvest is expected to continue into June. About 65 of the island's 150 mills are still grinding.

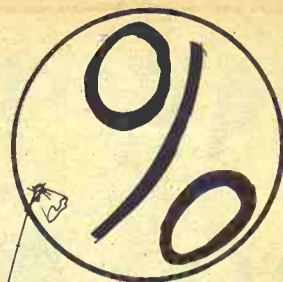
The 5.6 million tons exactly equal Cuba's estimated 1967 sugar commitments to Communist bloc countries and that needed for its own consumption.

The Communist commitments include 4 million tons to the Soviet Union at an inflated 6 cents a pound (world spot price is about 2 cents) under a barter agreement.

There are no assurances, however, that Cuba gets its 6 cents worth in Soviet goods.

The Soviets, as they have done in the past, are likely to release the Cubans from a part of their commitment, enabling the Castro regime to acquire foreign exchange by selling on the world market.

The 6.7 million tons produced in 1961 is the best crop under Fidel Castro and second best in Cuban history. The 1952 crop went above 7 million tons.



*When
Interest Rates
Go Down...
Will You Be
Left Up
in the Air?*

What interest rate will you be paying in 1970? With a Federal Land Bank Loan, it could be less. Interest rates on existing loans have been voluntarily reduced several times in the past when economic conditions permitted. This is one of many advantages of a Land Bank Loan. For a long-term, low-cost loan on your land to pay debts, buy land, make improvements or for other farm and family needs, see us today.



TOPEKA

Office: 1717 Gage Blvd.
Wm. H. Snyder, Manager
Serving Jackson, Shawnee
and Wabaunsee Counties

EMPORIA

Office: 115 West 5th
O. E. Roberts, Manager
Serving Chase, Coffey, Lyon
and Osage Counties

HERINGTON

Office: 107 N. Broadway
Richard L. Worley
Serving Marion, Morris
and Dickinson Counties

MANHATTAN

Office: 6th and Humboldt
R. Stanley Parsons
Serving Pottawatomie, Riley,
Clay and Geary Counties

MARYSVILLE

Office: 211 South 10th St.
Allen L. Holeman, Manager
Serving Washington, Marshall
and Nemaha Counties



*hogs put on
extra pounds of
profitable pork
with nature's richest
source of protein*

Kansas Soya's 40% Hog Supplement contains highly digestible and palatable Sunflower Brand Soybean Meal. This assures you of extra pounds of profitable pork on every hog you raise.

For maximum gains ask for it by name: Kansas Soya's **Sunflower Brand 40% Hog Supplement**. It's yours medicated with Auero-SP 250, or unmedicated.

Kansas Soya also offers Grain Bank facilities, automated custom-mixing and fast, in-and-out loading with automated equipment. Call or write for additional information, today.

KANSAS SOYA PRODUCTS CO., INC.
PHONE DICKENS 2-7270 • EMPORIA, KANSAS



COW POKES

"If you desire a
about

**PERFO
REDU**

New and far m
Chows reduced
of testing at th
how the saving

STAR

A 4% reduction i
sumption duri
weeks resulted i
per dozen of....

GROV

A 15% average
feed required fro
weeks made a s
dozen of.....

LAY

Extra eggs produc
increase in feed u
another saving pe

PAY

Added together th
saving per doz
amounted to.....

PLUS

When new 15%
Eggena is fed, the
another saving per
up to.....
Total saving p

Savings of 9/10
Think how much
Check with us
these new Chows

Flint Hills Feed &
Farmers Union Fe

Mor-Kan Elevator

Reading Grain & I

Bartlett Grain Co.

Farmers Co-op Ele

Americus Grain C

Gorden Mark Elev

Western Grain Mil

LOW CO






the reason why



"If you desire a place that's quiet and has a dry climate, there's about two million acres here you'll love!"

LEAST-COST PERFORMANCE CHOWS REDUCED EGG COST

New and far more exact formulation of Purina Poultry Chows reduced production costs as shown by 5 years of testing at the Purina Farm and Laboratories. Here's how the savings added up:

START		
A 4% reduction in feed consumption during first 8 weeks resulted in a saving per dozen of.....	.04¢	
GROW		
A 15% average saving in feed required from 8 to 22 weeks made a saving per dozen of.....	.15¢	
LAY		
Extra eggs produced with no increase in feed used made another saving per dozen of.....	.5¢	
PAY		
Added together the average saving per dozen eggs amounted to.....	.69¢ = 7/10¢	
PLUS		
When new 15% Pro-Lay Eggena is fed, there is still another saving per dozen of up to.....	2/10¢	
Total saving per dozen	9/10¢ or virtually 1¢	

Savings of 9/10¢ per dozen are worth going after. Think how much saving this would be with your flock. Check with us today for more information about these new Chows.

Flint Hills Feed & Grain	PR 8-5322	Manhattan
Farmers Union Feed Mill	437-2434	St. Marys
Mor-Kan Elevator	349-2214	White City
Reading Grain & Lumber	AN 9-3842	Reading
Bartlett Grain Co.	CE 8-5134	Junction City
Farmers Co-op Elev. & Supply	157	Hope
Americus Grain Co.	884-3465	Americus
Gorden Mark Elevator	ME 2-3381	Clay Center
Western Grain Mill	767-5933	Council Grove

LOW COST PRODUCTION...
the reason why more farmers feed **PURINA®**

**PURINA
CHOWS**

Government Still Buying Wheat

The government continues to be buyer in the wheat market.

Considered a significant move when USDA first became a buyer in the open market when its first purchase was recorded March 15, the purchases by the government now total a dozen, totaling over 5.6 million bushels.

This wheat is being used by the government under Title 1 of the PL480 program. It falls in the category of "famine relief and other assistance to friendly nations." The grain is given outright to people of needy nations, often thru such societies as CARE and the Catholic Relief organization.

The big contributions of wheat and other grains to needy nations have been under Title II of the 480 law. Under this program, the government takes payment in the currencies of the nations involved.

Since the currencies are not good outside the countries of issue, the sales are called non-dollar or soft-currency transactions. Most of the currencies are lent back to nations buying the wheat. Actually, the United States gets little in return, even tho the countries do pay. Under Title I there is no payment.

Recent purchases on the market for Title I have included wheat for Afghanistan, Algeria, Nationalist China, India, Morocco, Korea and Syria.

The government has bought most of this wheat for delivery in bulk at the Gulf, but in some instances the grain should be in jute bags. On the bags, words both in English and in the language of the recipient country state that the wheat is from the United States and is not for sale.

Meanwhile, as the government buys wheat on the market for Title I gifts, it is selling very little from its stocks for any purpose.

USDA still has about 125 million bushels of wheat in stock but apparently doesn't want to empty its bins further at this time.

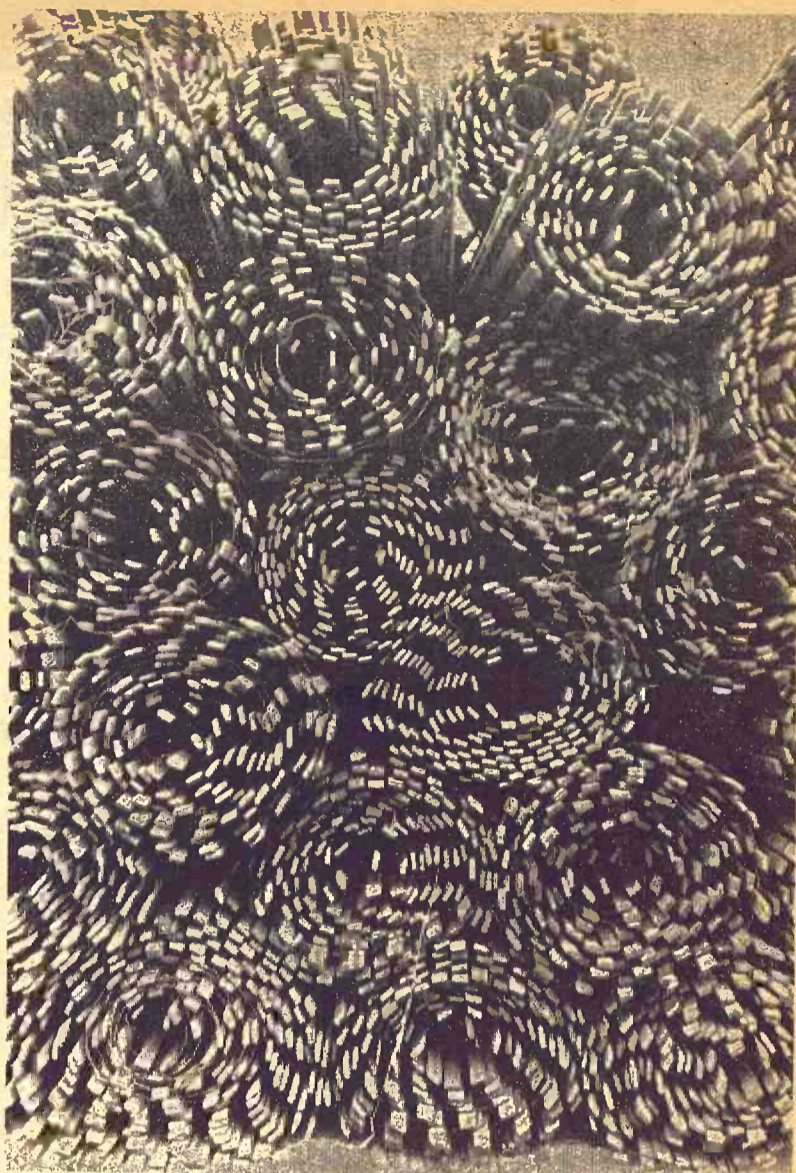
JUNCTION CITY REMOVES SOME PARKING METERS

JUNCTION CITY — Three downtown off-street parking lots are to be free lots, instead of metered. Financed by 10-year revenue bonds in 1957, the lots will have meters removed from the posts. Meters remain on on-street parking.



WE CAN FIT YOU

Justin • Acme • Texas,
Nocoma and Tony Lama
On US 24 — 2 Blocks East
of Cloverleaf on US 24
TOPEKA, KANS.



End Of Winter

How does one know when winter is over? Why, when the county and state highway departments put away the snow fence, that's how.



Don't Fence Yourself In

if you're feeding cattle

Be sure the money you'll need will BE THERE for each stage of your cattle operations. There are successful cattlemen in the Great Flint Hills grazing country that will tell you they "feel comfortable" about their association with other stockmen and farmers wrestling with the common problem of financing. The two farmer-owned, farmer-managed Production Credit Associations in an 11-county area have the capacity for unlimited credit. And PCA financing has "built-in" features to safeguard your interests.

Manhattan
Production Credit Assn.

5th & Humboldt PR 8-2226

Serving Marshall, Clay, Riley, Geary, Pottawatomie & Wabaunsee Counties. Branch offices at Clay Center, Marysville. Fieldmen: Owen Duer, Asst. mgr.; Ray Cohorst, Marysville. HI 3-4005; W. R. Eddy, Havensville. 889-4159. Floyd Rutherford, mgr. Residence — PR 6-5683



Council Grove
Production Credit Assn.

315 W. Main — 767-5515

Serving Dickinson, Marion, Morris, Chase & Lyon Counties. Branch offices at Abilene, Hillsboro, Marion. Fieldmen: Bill Als paw, asst. sec-tr.; James Peters, Lehigh; Wilfred Elliott, White City. Charles E. Graham, mgr. Residence — 767-5978

200 ACRES NEBRASKA FARMLAND

AUCTION SALE

Thursday
JUNE 1

Sale Starts 1:30 p.m. DST

In order to settle the estate of Jennie Ahrends, we will sell at Public Auction located 2 1/4 miles south of Diller, Nebr., on State Highway 103; or 4 miles east of Steele City, Nebr. Cemetery & 1 1/4 miles north; or 8 miles west & 1 1/4 miles north of Odell, Nebr.

200 Acres Land

South Of Diller, Nebraska, and

3-BEDROOM HOME IN FAIRBURY, NEBR.

120 ACRE IMPROVED FARM

24 acres wheat, 57 acres milo, 22 acres conserving, balance pasture. Farm is rented to Melvin Beran for this year. 40% of wheat and milo goes to purchaser. Purchaser will have right to plow for wheat this summer.

80 ACRE PASTURE

With pond, and 2 dugouts, also cross fenced. Pasture is rented till October 1, 1967, of which pasture rent will go to purchaser. The amount and government payment will be announced day of sale.

Farms will be offered separately and as a unit and sell the way they bring the most money.

Farms positively sell to the highest bidder.

For more information contact Harry H. Ahrends, Diller, Neb., Phone 793-5567; or auctioneers Harold Proctor, Phone 488-9574, Lincoln, Nebr.; or Harold R. Siegel, Phone 729-3651, Fairbury, Nebraska.

3 BEDROOM HOME

1117 C Street, Fairbury, Nebraska

Sells Thursday, June 1, at 7 p.m. D.S.T.

3 bedroom home, utility room, floor furnace, living room, dining room, part basement, bath, gas hot water heater, garage

1966 & all back taxes paid by seller, also prorated 1967 taxes as of 1966 price, till possession.

Terms: 20% down night of sale, balance of payment upon completion of Abstract and Deed. Possession on or before July 15, 1967.

House shown by appointment by calling 729-5592 or 729-3651

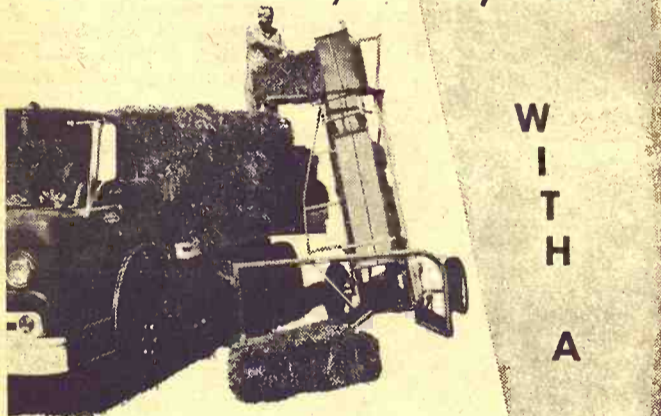
JENNIE AHREND'S ESTATE

Harry H. Ahrends, Administrator

Harold R. Siegel, Auct. & Real Estate Broker, 1582 F Street, Fairbury, Neb. Ph. 729-3651. Harold Proctor, Real Est. Broker, Phone 488-9574, Lincoln, Nebraska.

Mr. Hay Producer . . .

You can increase your Hay Profits!



HENRY BALE LOADER

How can a bale loader make you money? . . . New and Better design eliminates time consuming and costly "in-the-field" maintenance and repair work. Positive Ground Drive eliminates any digging out of jammed bales . . . just move the loader in reverse and the bale is removed. And to move from field to field just release the spring loaded pins on the wheels and you are ready for Free Wheeling Highway Towing. An Adjustable Pressure Panel allows for easy pick up of Round or Square, Small or Large, Long or Short bales. To assure that these features will continue to save you money the people at Henry have built you a rugged machine . . . it weighs 650 pounds. Heavier materials and quality workmanship assure you many, many years of trouble-free service . . . More money in your pocket. Make yourself more money this Haying Season—

buy a **HENRY BALE LOADER**

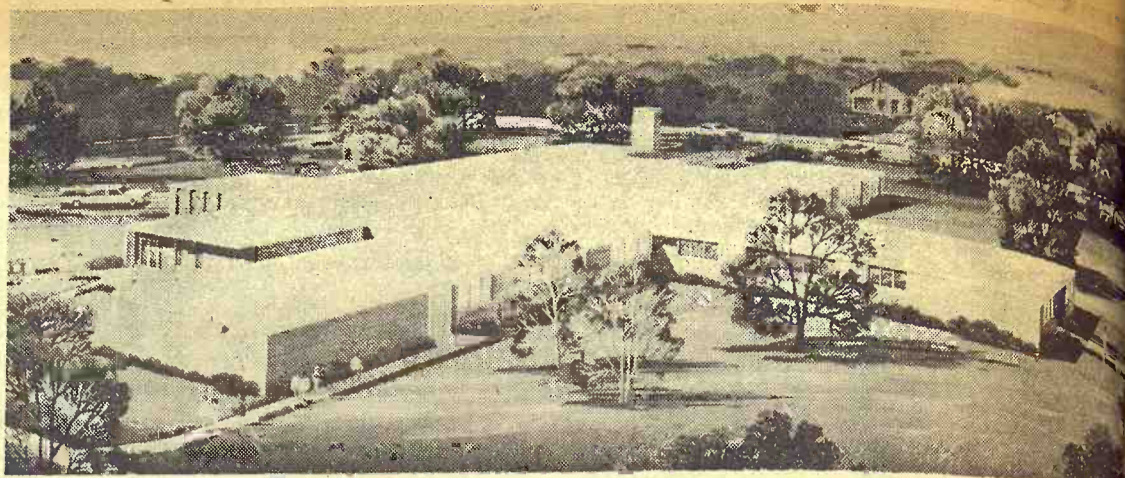
New
Another Henry Plus Feature . . .
Self-Aligning Ball-Bearing Drive.
This is NEW to give your Loader
Greater Traction and Positive Drive.

STOCKED
& READY
FOR DELIVERY

Henry Sales & Service

East Hwy. 24 FL 4-7641

TOPEKA, KANSAS



To Vote On Clay Hospital Wing

A 20-bed addition will be constructed at Clay County Hospital if voters approve at \$250,000 bond issue in a special election next month.

The County Hospital Board last week asked the Clay County Commission to call the election. The board earlier had announced it would issue the bonds subject to a protest petition but found the move illegal.

A new Kansas law permits county hospital expansion without a bond election, but, according to Robert Londerholm, Kansas attorney general, the original hospital must have been established by a bond election.

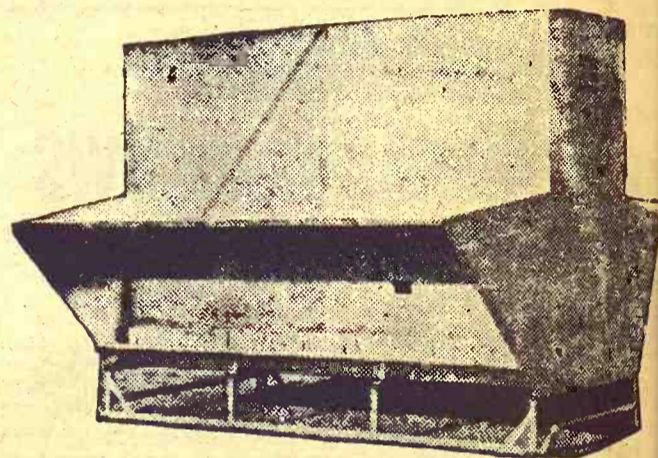
The hospital here was established by the city voting to give its facility to the county

and the county voting to accept. Later, bonds were issued to build the new hospital.

Hospital officials said the present one-mill county hospital tax levy would not have to be increased. The tax funds, heavier patient load and Medi-

care payments are expected to be adequate to retire the bonds.

The present 37-bed hospital has housed 48 patients at times in recent months. Average occupancy has been running over 90 percent. Last year the average occupancy was 44 percent.



Use a LUTTIG metal all-welded self-feeder to self-feed your cattle. Will not leak or rot, and feeds down good, reasonable in price.

Capacities of 150, 250, and 350 bushels.

LUTTIG TRAILER COMPANY

Telephones: Office 535-2610—Res.: 535-2350
EMMETT, KANSAS

Donald Pagel, Netewaka, New On State ASCS

The state ASCS committee has a new member.

He is Donald Pagel of Netawaka, Jackson County, whose appointment was effective May 1.

Pagel succeeds John H. Becker of Sylvan Grove, Lincoln County, who had resigned.

Pagel has farmed in Jackson County for 25 years. He raises wheat and corn and has a diversified livestock program on his 1500-acre farm.

The change is the second on the state ASCS committee in the last 15 months. Last year W. Howard Elrod of Burden replaced Roy Anderson of Scranton on the committee. Other members are Gilbert Egbert of Ingalls and Harold Jones of Manhattan.



VIGOR TESTED
WINTER TESTED
FIELD PROVEN

EXTRA CARE PUTS THE + IN



SEED CORN

Order From

Farmers Co-op
Manhattan, Kans.

No expensive
fresh meat
needed..when you feed



HUNTSMAN
DOG FOOD



The meat's already in it! Huntsman is a vitamin and mineral-rich food. In two forms—chunks or meal—for easy feeding. Tasty. Economical. Builds health and vitality. Come in and pick up a bag of Huntsman today!



HUNTSMAN
DOG FOOD

MARK GRAIN & LUMBER
Dunlap

ELMDALE ELEVATOR
Elmdale

ELMO GRAIN COMPANY
Elmo

LOCKARD IMPL. CO.
Herington

MORRISON GRAIN
Junction City

WAKEFIELD
CO-OP ELEVATOR
Wakefield

GALVA FEED MILL
Galva

CLAS

RATES: \$1
Boxed ads:
Moro, Manh
if payment

Livestock

WANTED TO
FEEDER HO
to 100 lbs. Top p
J. D. SIMPSON
133 Grant Ave., Jun
Phone CE 8-3754 or

EXCELLENT YORK
Shire and Hampshire
cross data, big, ru
able. Don Grona
1964, Newton.

FOR SALE — Pure
Northern bulls, 15 m
Lard, Clay Cen

MR. CATTLE

SHEEP FEED

Alfalfa-Molasses P

Produce Better G

Lower Feed Co

Waste — Easy To

Contact

PRESTON MILL

INDUSTRIES

Home of SUR-GAIN

Fairbury, Nebraska

Phone 729-6145

FOR SALE — 7 He

525 lbs., Klock

Manh, Kans., Ph. S

erville.

DAIRYME

FARMERS

With advancing mil

is the time to start

add to your pre

Believe we have i

the best selection

Guernsey, Jersey

and Milking Sh

and springer co

COME, HAVE A LO

You'll be glad you

financing available on

heifers.

Calves-Calves-Ca

also have those go

beef cross calv

to 400 lbs. A

bull and heifer c

shipments in eve

SPECIAL

Red fall freshening

heifers.

open Holstein heifer

Holstein heifer calves

ideal thing to p-t

W. G. Wiebe

Phone CI 4-7625

SEMERFIELD, KAN

NEED an Angus

3 twos & comin

old bull. Also will s

herd sires, one weigh

Phone 437-2774

Angus Farm,

SALE — Universal

bone stalls, g

gaining, good. Cattle

easy, anyone can

Allison, RR1, D

NATIONALLY CREDIT

registered Hampshire

for sows, 3 to far

3 weeks. One open

Flowd Meyer, Phone

collect.

SALE — Two yr. o

geling. Three sock f

in face. From reg

pure-bred Quarter

would make good

horse. Keith Hamil

Manh, Kans. Phone 868

SE SALE at Sylvan

on barn Friday, May 2

will have plenty of b

good broke saddle

or any kind

913-526-3605, Syl

Kansas

SALE — Spotted Po

boars. John Siverli

Manh, Kans.

CLASSIFIED ADVERTISING

RATES: \$1 a week for 15 words or less. Add 5c a word for additional words. Boxed ads: \$1.82 an inch per issue, no discount. Send your ads to Ag Press, 1207 Moro, Manhattan, Kansas 66502, PO Box 1009. Phone PR 8-4458 (25c handling charge if payment does not accompany ads charged by the word.

Livestock

WANTED TO BUY FEEDER HOGS
60 to 100 lbs. Top prices paid.
J. D. SIMPSON
130 Grant Ave., Junction City
Phone CE 8-5754 or CE 8-3939

EXCELLENT YORKSHIRE,
Duroc and Hampshire boars,
carcass data, big, rugged, ser-
viceable. Don Gronau, AT
15684, Newton. x12

FOR SALE — Purered Red
Shorthorn bulls, 15 months old,
Allen Lard, Clay Center, Kans. x13

MR. CATTLE & SHEEP FEEDER

Alfalfa-Molasses Pellets
Produce Better Gains
Lower Feed Costs
No Waste — Easy To Handle

Contact
PRESTON MILLING INDUSTRIES
Home of SUR-GAIN Feeds
Fairbury, Nebraska
Phone 729-6145

FOR SALE — 7 Hereford
steers, 525 lbs., Kloeche Bros.,
Randolph, Kans., Ph. ST 5-2279,
Waterville. x12

DAIRYMEN FARMERS

With advancing milk prices,
now is the time to start a dairy
or add to your present one.
We believe we have in all of
Kansas the best selection of Hol-
stein, Guernsey, Jersey, Brown
Swiss and Milking Shorthorn
fresh and springer cows and
heifers.

COME, HAVE A LOOK—
You'll be glad you did.
Financing available on cows &
heifers.

Calves-Calves-Calves
We also have those good fast
gaining beef cross calves from
4 weeks to 400 lbs. Also Hol-
stein bull and heifer calves.
New shipments in every Sat-
urday.

SPECIAL
We breed fall freshening Holstein
heifers.
All open Holstein heifers
and Holstein heifer calves
are ideal thing to put on pas-
ture.

W. G. Wiebe
Phone CI 4-7625
SUMMERFIELD, KANSAS

STILL NEED an Angus B..
Sale 3 twos & coming two
old bull. Also will sell 2 of
herd sires, one weighs over
1000 lbs. Phone 437-2774, Ham-
mond Angus Farm, St.
Lays. SB12

FOR SALE — Universal Double
Herringbone stalls, good: 6
year old bull. Good. Cattle horse,
easy, anyone can ride.
John Allison, RR1, Delphos,
Kans. x12

NATIONALLY CREDITED
77 registered Hampshire sec-
ond litter sows, 3 to farrow
within 3 weeks. One open to be
sold. Floyd Meyer, Phone Palm-
308, collect. SB12

FOR SALE — Two yr. old sor-
rel gelding. Three sock feet,
white in face. From reg. Quar-
ter horse, purebred Quarter mare,
white horse. Would make good saddle
horse. Keith Hamilton,
Lawrence, Kans. Phone 868-2982.
x12

FOR SALE at Sylvan Grove
farm barn. Friday, May 26 8
am. Will have plenty of buyers.
Use good broke saddle horse
or killers of any kind. Joy
Kane, Kansas. 913-596-3605, Sylvan
Grove, Kansas. x12

FOR SALE — Spotted Poland
chickens. John Siverling,
Lawrence, Kans. x13

FOR SALE — 8 head Hereford
cows and calves, 2 months old.
Extra good big cows. 1 WF vull,
registered, 6 yrs. old, good
breeder. Tom Baldwin, Hunter,
Kans. Phone 913-529-2603. x12

FOR SALE: Meat type Duroc
boars. Nationally accredited
SPF test station figures avail-
able. Fred Germann, Dwight,
Kans. Phone Junction City CE
8-4382. x15

FOR SALE: 2 registered Arabi-
an yearling stud colts, 1 grand-
son of Razlind, runner-up in
Tevis cup race last two years.
Also 3-year old Appaloosa geld-
ing, broke; and one part Arabi-
an gelding, well broke. Rev.
Stanley Leaf, Box 416, Hanover,
Kans. 66945, ph. 913/ED 7-2278.
sb12

MEAT TYPE Nationally Accred-
ited SPF Yorkshire boars. Ser-
viceable age, guaranteed. Har-
vey Herrs, Linn, Kans. phone
DI 8-2252. x15

REGISTERED HORNED Here-
ford bulls for sale, serviceable
age, big heavy boned bulls, rea-
sonable, Pioneer Shadow blood-
line. L. B. Herefords, Hanover,
Kansas. Phone ST 5-2394. SB12

FOR SALE — 14 Hampshire
rams, purebred. Yearling & 2 yr.
old. Leonard Barleen, Concor-
dia, Kansas. x13

FOR SALE — Yearling Hamp-
shire rams, Mervin Deschner,
RFD 1, Halstead, Kans. Tele-
phone Hesston, Ks., EA 7-4898.
x13

FOR SALE — Bred Yorkshire
gilts eligible to register. Also
weanling Yorkshire gilts. Lar-
ry Ryan, Enterprise, Kansas,
Phone WA 2-6729. SB13

14 LARGE HOLSTEIN heifers
for sale: ready to freshen.
Phone collect Marysville, Kans.,
days HI 3-3361, nights HI 3-4251
SB12

REGISTERED BERKSHIRES
and Poland Chinas. Serviceable
age boars and breeding age
gilts. Good selection, reasonable.
Delbert Hollinger, half mile
south Lyons. x12

FOR SALE — Registered An-
gus bulls, 2 years old, Eileen-
mere breeding, extra good.
Ralph Latzke, Chapman, Kans. x13

FOR SALE — 24 head register-
ed Angus heifers, 11 head 2
year olds, balance 3. Bred to
Viscount EM3. Johnson Angus
Farm, Concordia, Kans. Phone
CH 3-4182. x12

THREE GUERNSEYS for sale.
Excellent grade, freshen in two
months. August H. Wille, Rt. 1,
Wamego. x12

FOR SALE — 2 year old regis-
tered Holstein bull from excel-
lent sire and very good dam
with over 80,000 lbs. milk in
1st lactation. Serviceable age
registered Holstein bull from
Paclamar Astronaut and Good
Pl's Dam with over 600 B.F. as
a 2 year old. 3 grade heifers
from Excellent Gold Medal Sire
milkling over 50 lbs. first lacta-
tion. 2 registered heifers still
milkling over 40 lbs. in 7 months.
Lawrence Mayer, Gypsum,
Kans., OW 6-4707. x12

FOR SALE — 15 Beef Short-
horn heifers. Top quality and
will make good replacement
cows H. P. Jensen, Hunter,
Kans. 67452. Phone 529-3305. x12

Feed & Seed

DAIRY PELLETS, range pellets
and all kinds of fertilizers.
Manhattan Milling Co., 107
Pierre, Manhattan. TF Chg

SADDLE MATE — Honey
Bloom, a blood building vitamin
iron compound in a pure honey
base for horses. Key Milling,
Clay Center, Kansas. SB16

FOR SALE — Ford soybean
seed. Certified last year, \$3.25
per bu. bin run. Phone 455-3604,
Lyle Beaumont, Clifton, Kans. x14

FOR SALE — Certified Clark
63 soybeans. Germ. 85. Purity
99.47. Grown from College seed.
Wesley Heilman, Green. Ph.
WI 4-2233. x14

CLARK 63 soybeans. Bert
Funk, Phone Talmage No. 34.
SB12

SOYBEAN SEED, certified
Kent & Wayne. Albert Klientz,
Rt. 1, Wamego, Kans. Phone
456-9831. SB13

FOR RENT — 570 acres of
Brome grass, divided into 4
pastures. Excellent fences, wa-
ter and working pens. Contact
Kenneth Newell, MO 2-9380,
Hutchinson, Kans. SB12

Poultry

Started Chicks

MANHATTAN HATCHERY
U.S. 24 near Sale Barn
Manhattan, Kans.

Automotive

GMC

TRUCKS

½ Ton - 60 Ton
Sales & Service

TRI-COUNTY MOTORS
307 N. 3rd MANHATTAN

Business Is Great In Ford Country

AROUND MANHATTAN
SKAGGS (FORD) MOTORS

1966 Mustang 2-dr. hardtop,
V-8, automatic trans., p-steer-
ing, air conditioning, new
car warranty \$2595

1966 Fairlane 500 2 dr. hardtop,
V-8, automatic trans., p-steer-
ing \$2295

1964 Chevrolet Station wagon,
V-8, automatic trans., p-steer-
ing, R&H, factory air, local
one owner, low mileage \$2395

1963 Mercury 2 dr. hardtop, V-8,
automatic trans., R&H, power
steering, breezeway rear win-
dow, real sharp \$1395

1955 Chevrolet 4 dr. 6 cylinder,
automatic trans., R&H, extra
clean \$2395

THIS IS FORD COUNTRY
WHAT ARE YOU DRIVING?

Open Evenings Till 9

SKAGGS (FORD) MOTORS

"Where Customers
Send Their Friends"
2nd & Houston PR 8-3525
MANHATTAN

FOR SALE — 61 Chevrolet
pickup, 61 Ford tractor, 350
Farmall, 340 Farmall, H Farm-
all, New Holland baler. Jack
Quinn, Wamego. x15

FOR SALE — 1951 Ford 2 ton
6 cylinder truck, 2 speed axle.
New 750-20 front tires, 825-20
rears, fair. No bed, runs good,
\$300. W. C. Abels, R1, Clay Cen-
ter, Kans. x12

FOR SALE: 1954 Chevrolet 2-
ton truck, \$200. 1956 Ford F7
truck \$500. 1952 Super M and
cultivator, \$600 (new sleeves &
tires). 1961 Chevrolet 4 door,
6 cylinder stick shift, \$650. Will
trade any useable machinery.
Wanted: industrial loader. El-
mer Schmidt, R2, Peabody, Ph.
Goessel 367-2267. SB12

WHEAT TRUCK SPECIALS

63 Ford F600 Chassis, 2-speed,
262, 6-cyl., 84" CA, real good
61 Chevy 60 Series cab-chassis,
261, 6-cyl., 2-speed, 84" CA,
recent motor overhaul, tires
80% tread

60 Chevy 60 Series cab-chassis,
261 motor, 2-speed, rears 75%
tread

59 Chevy 60 Series, Garwood
hoist, new 15½' box, 4-speed,
2-speed, new paint. Tires 90%,
recent motor overhaul

59 Chevy Series 60, Marion
hoist, new 13½' Tradewind
box, new paint, 8M on motor
overhaul, tires 80% tread

58 IHC 180 Chassis 102" CA,
5-speed, 2-speed, 308 engine,
18,000 rear axle, 7000 front ax-
el, new paint, tires 90% tread

57 Ford 750 Chassis, 108" CA,
302 V-8, 13M on rebuilt motor,
5-speed, 2-speed, 18,000 rear
axle, 7000 front axle, new
paint, 80% rubber

20 other used 2 & 2½ tons —
used underbody hoists.

AMES

CHEVROLET CO.
Phone 316 MI 7-3251
MOLINE, KANSAS

FOR SALE — 13½ ft. truck
bed, complete with stock rack
and grain sides. Sylvester Um-
scheid, St. George, Ks. Phone
494-2264. x14

FOR SALE — 1956 IHC truck
equipped with utility body and
28' Utility hydraulic and manual
operated ladder with platform.
Can be inspected at any time.
Sealed bids will be opened at
8:00 p.m. June 6, 1967. Reserve
right to reject any or all bids.
City of Minneapolis, Kans. SB7

FOR SALE — 1963 Chev. truck,
2-ton, 2-speed. New 16-ft. Omaha
Standard fold down box & new
double cylinder hoist. 33,000 ac-
tual miles. Duane Snyder, Re-
public, Kans. x12

FOR SALE — 1963 Chevrolet
2-ton truck, very good, low mile-
age, grain bed, 16 foot long
fold down bed, under bed hoist,
Valentin Duensing, Herkimer,
Kans., Phone RI 4-2810, Oketo.
SB12

Real Estate

Fulmer Real Estate
CATHERINE J. FULMER
REALTOR



Office 456-7696

Res. 456-9281

WAMEGO

1280 ACRES GRASSLAND

FOR SALE: Two full sections
of choice pasture, not previous-
ly listed. Excellent fences, ponds,
located in the area, and 1½
miles apart. One section has
about 100 acres of cropland
with good growing wheat.
JUST LISTED: Two quarters of
excellent level land with irriga-
tion potential. Water rights
have been obtained. Located in
Wichita County near Leoti.

J. E. Chisholm

SHEETS-ADAMS-REALTORS
107 West Marlin
MCIPHERSON, KANSAS
Office CH 1-3648, Res. CH 1-1094

NO PUNCHES PULLED

For the needs of your family
in this 3-bedroom home with 3
baths, central air, large finished
basement with living quarters,
unusually large garage, beauti-
ful yard which has constant lov-
ing care. The present owner
has done a great deal for this
home with everything in tip-top
shape, even though it is on the
market, he recently put down a
new kitchen floor. Come see, we
enjoy showing this! Shown by
appointment only.

LOREN E. LAW

907 Sixth St. ME 2-3159
CLAY CENTER, KANSAS
"If It's A Home, See Loren"

WANT TO BUY 80 to 160 acres
near Manhattan with modern
home. Prefer mostly grassland.
Phone Manhattan JE 9-3335. x12

FARMS FOR SALE

Unimproved 160 between Clifton
and Palmer, 104 cultivated, 46
wheat, 56 feed grains, bal-
ance good pasture with never
failing spring, \$35,000.

Improved 320, lights, school
bus, 280 cultivated, 61 wheat,
225 feed grain, 215 acres
growing wheat on farm now,
\$52,000.

Nicely improved 240 with 5
bedroom modern home, 112A
very good cultivated land, 48
wheat, 40 feed grain, \$42,000.
Will carry \$20,000.

Unimproved 160, irrigated, 90A
leveled, 150 cultivated, 73.6
wheat, 72 corn & milo, \$60,000
Call collect for appointment. I
have found farms for 12 pro-
spective buyers since Jan. 1. I
can find one for you if you will
let me know what you want.

Call Collect for Appointment

Kvasnicka Realty
GERALD A. KVASNICKA
Realtor

HADDAM, KANS.
Ph. FR 6-2874

Hervey Real Estate

IMPROVED FARMS

240A, 115A cultivation, 78A
wheat, about 40A other grain,
bal. pasture, several stock
ponds, near Longford, Ks.,
on black top hiway, \$31,500
will sell on contract.

240A, 140A cultivation, 100A
pasture, lays good, near
Flush, good roads, \$36,000
Will sell on contract.

Two 320A farms, on black top,
near Olsburg, each about 100A
cultivation, bal. pasture, plen-
ty of water.

Ph. PR 8-3683 1231 Laramie St.
MANHATTAN, KANS.

Farm For Sale

320 acres, just listed, near
Niles, Kansas, on good road. A
choice upland farm with just
about everything done that
needs done. Has 175A wheat
this year, 12A milo, 90A grass.
1½ miles new 5-wire fence, new
pond. You'll have to see to ap-
preciate it.

Wilson Real Estate

ph. CO 3-1812 or CO 3-2400
ABILENE, KANSAS

FOR SALE — 3 bedroom 2 sto-
ry modern home in Wamego,
wall to wall carpet, central air
conditioning. Roy Reiser, 1206
W. 7th, Wamego. Phone 67225.
x13

435 WICKHAM ROAD: few
blocks from KSU, Manhattan's
best buy \$32,000.00. Call Hal-
don Howse to see, PR 6-7760,
and make your best offer to
Fred Howse, 2130 N. Cascade,
Colo. Springs, 80907. x13

FIVE ACRES with service sta-
tion-garage and 3 bedroom
home on 56 Highway between
Council Grove and Herington,
and straight south of White
City. Contact Jim Kirkemine,
auctioneer-broker, 135 East
29th, Topeka, Kans. Phone AM
6-4590. SB13

Farm Equipment

Fairbanks Motor & Elect.



FORD MCHRY.

EX 6-2481

WHEATON, KS.

FOR SALE — 2 Model 55 JD
combines. 1 International grain
truck. Phone Abilene CO 3-4449
SB12

FOR SALE — JD 10¼' mount-
ed field cultivator \$295. Also JD
12½' mounted individual tool
bar shanks. Demo. \$485. Case
T48 16' springtooth harrow
\$225. AC 4-row snaw compuler
rear cultivator \$675. JD 45 com-
bine 10' header, 1957 \$1500. Jo-
hanning Bros. Impl. Co., Law-
rence, Kans. Ph. VI 3-8011. x13

FOR SALE — Forty 10 gal.
cream cans, grade A. Cheap.
Sanitary Dairy, Lincoln, Kans
x13

2-ROW CORNHEAD
FOR JOHN DEERE 45
\$425

Hogue Farm Serv.
Case Dealer 449-2631
ESKRIDGE, KANS.

1950 IH Cub

Excellent condition :starter,
lights, mower, plow, lister, culti-
vator, all for
\$550

MARC LAMOREAUX
Waterville, Ks. ST 5-2382

USED AC MACHINERY

1952 Allis Chalmers WD tractor,
quick hitch coupler with
mounted 3-bottom plow \$645
1949 Allis Chalmers WD tractor
with loader attachment \$545
Above loader attachment alone
..... \$100
Allis-Chalmers semi-mounted
mower, good \$75

JOHN WEIDLER
Minneapolis EX 2-2284

MRS. CHAS. WEIDLER
Minneapolis EX 2-2090

USED COMBINES

2 1966 C II Gleaners, 16'
1963 C Gleaner, 14', with cab
1961 IHC 101 Gleaner, 12' with
cab
1954 IHC 141, 14'; 1955 90 Mas-
sey, 14'; 1952 R Gleaner, 14';
1952 27 Massey, 14'; 1950 IHC
125, 14'; 1952 M-M, 14'
1954 100 All Crop, 12 ft
1955 66 All Crop
2 1950 60 All Crop

OTHER MACHINERY

1964 Hesston 500
2 John Deere No. 5 mowers
John Deere hay conditioner
IHC hay conditioner
IHC 45T baler
1964 AC roto baler
3 JD 12' spring tooth
JD 12' spring tooth, 3-point
2 AC mounted listers

Marysville Mchry.

East US 36
HI 3-4746
MARYSVILLE, KANSAS

USED PIPE

IN ALL SIZES
Also used valves & pipe fittings

HOERMAN SUPPLY CO.
Phone Manhattan PR 6-9253
Warehouse ZEANDALE, Ks.

PRESS WHEELS & FERT. UNITS FOR LISTERS & PLANTERS

We have rubber press wheels
for pull type and mounted list-
ers. These put greatest pres-
sure directly over the seed and
help conserve moisture.

Also, we have all-steel ferti-
lizer units for listers and plan-
ters, with capacity of approx.
200 lbs. These will adapt to the
flex type beams, such as John
Deere 540. We have a number
in the fields mounted both on
wheel type & sled curlers for
side dressing at the first culti-
vation.

We can mail you heavy duty
Kirlin knives at \$10 plus tax.
We also have a few high speed
cult. shields at \$40 per set plus
tax.

FORGY WELDING

Phone 857-3241
CENTRALIA, KANS.

EQUIPMENT BARGAINS IN DELAVAN, KANS.

1952 IHC 3/4 T, overloads, bar-
gain \$225
MM 4 ft. wheeled plow, new
rubber \$275
1948 UTU tractor, MM, wide
front. Ready to go \$475
HM 2-row planter, extra good,
openers, 3 pt. \$140
MM 7' mower, extra good \$125

Delavan Farm Sply.

Tel. 466-2225
DELAVAN, KANS.

"TRADER'S DAYS"

AT HUNTER SALES
IN COUNCIL GROVE

Asking Price vs. Your Offer

USED TRUCKS

1966 Chev. 60 Series 2 1/2-ton
truck, fully equipped, V-8,
new tires
1963 Chev. V-8, 1/2-ton LWB, 4-
wheel drive, R&H, overloads,
r/ bumper
1962 Chev. 6-cyl., 1-ton, 9-ft.
steel stepside bed, 4-speed, R
&H, overloads
1961 Chev. 6-cyl. 3/4-ton flat bed,
new paint, 4-speed, grain &
stock
1959 Ford 6-cyl. 1/2-ton S.W.B.
Fleetside, 3-speed, R & H
1958 Chev. 6-cyl. 1/2-ton stepside,
3-speed, R&H, new tires
1952 Chev. 6-cyl., 3/4-ton pickup,
4-speed, R&H
1950 Chev. 1 1/2-ton truck, less
bed, 6-cyl., 4-speed, heater
1950 GMC 3/4-ton pickup, 4-speed,
heater

USED CARS

1966 Chev. Bel Air V-8, 4-dr. se-
dan, R&H, A, PS, PB, positive
trac., new tires
R&H, A, PS, PB, air cond.,
positive trac., new tires
1965 Chev. Impala V-8, 2-dr.
hardtop, R&H, std. tran., air
conditioning, new tires
1966 Chev. Bel Air V-8, 4-dr. sed.
R&H, A, PS, PB, Positive trac.,
new tires
1965 Ford Galaxie V-8, 2-dr.
hardtop, R&H, std. tran., low
mileage
1965 Chev. Bel Air 4-dr. sedan,
R&H, A, 6-cyl., air cond.
1965 Olds Dynamic 88, 4-dr. se-
dan, R&H, A, air cond., PS,
PB
1964 Pontiac Catalina Ventura,
4-dr. sedan, R&H, A, PS, lea-
ther trim
1964 Olds. Dynamic 88, 2-dr.
hardtop, R&H, A, PS, PB,
slick
1963 Pontiac Catalina 4-dr. se-
dan, R&H, PS, A, PB, low
mileage
1962 Chev. Bel Air 6-cyl., 4-dr.
sedan, R&H, std. tran., new
tires
1962 Chev. Bel Air 6-cyl. 2-dr.
sedan, R&H, std. tran.
1961 Ford V-8 Fairlane 500, 4-dr.
sedan, R&H, A
1961 Chev. Biscayne 6-cyl., 4-dr.
sedan, R&H, A
1961 Chev. Impala 6-cyl., 4-dr.
sedan, R&H, std. tran.
1961 Pontiac Catalina 4-dr. hard-
top, R&H, std. tran.
1961 Chev. Corvair Monza Coupe
R&H, 3-speed on floor, new
tires
1961 Ford Galaxie V-8, 4-dr. se-
dan, R&H, A, power steering
1961 Pontiac Catalina 4-dr. hard-
top, R&H, A, PS, PB, air
cond., new tires

14 OLDER MODEL CARS
SOME PRICED BELOW \$100

Hunter Sales

Ph. 767-5147

COUNCIL GROVE



NEW TRACTOR BARGAINS

F80 garden tractor \$695
F100 garden tractor \$780
2000 gas 4-speed trans. .. \$2655
2000 gas 8-speed LPTO .. \$2975
3000 gas 4-speed trans. .. \$2895
3000 gas 8-speed, LPTO .. \$3167
4000 gas 8-speed LPTO .. \$3887
4000 gas Selecto speed .. \$3995
4000 diesel Selecto \$4423
5000 diesel 8-sp LPTO .. \$4995
5000 diesel Selecto \$5301
6000 diesel selecto \$6395
30 used Ford tractors for sale
Bank financing, 4 crop years

McPherson Tractor Company

"Ford Tractor —
New Holland Dealer"
Ph. CH 1-2900, McPherson, Ks.

New Machines

SOME REAL SPECIALS AT WHITEWATER

F656 diesel tractor, list \$7100,
special \$5300
I 424 tractor with power steer-
ing, list \$3300. Special \$2598
201 SP windrower, 14 ft. dual
auger hay conditioner with
pickup reel, dual wheels, list
\$6128 Special \$4723

Neuman Hdw. & Imp.



Phone TU 3-2128

WHITEWATER, KANS.

1964 IHC 806 dsl. std., PS, hyd.,
independent PTO & TA, with
Du-All loader

300 IHC with loader
670 MM gas RC, PS, 3 pt. hitch,
PTO, less 300 hrs.

1957 GTB MM, hyd., extra good
1956 Oliver 99 Super dsl., LPTO,
hyd.

New Idea 10 ft. mower, like
new \$265

2 415 Oliver 7 ft. mowers, will
sell at cost

1963 Model 25 Oliver combine,
12 ft., good

Model 27 M-H 16-ft. combine
..... \$365

New Way accumulator &
clamp, new \$550

WOLFE'S

OLIVER • M-M
Rt. 1 Box 81A AT 3-4476
South Meridian
NEWTON, KANS.

USED TRACTORS

1961 Ford 961D, live PTO, 5-
speed, wide front axle
1959 Ford 861D, live PTO, 5-
speed, new short block
1959 Ford 841 gas, new rubber
1948 8N Ford, Davis loader,
Scout backhoe
1956 Fordson Major Diesel
1947 IHC "M"
1947 IHC "H"; 1948 Massey 44
1948 Oliver 88, good condition

USED IMPLEMENTS

Ford Model 250 baler, twine, A-1
Dempster 2-row rotary lister
Ford 309, 2-row planter
John Deere mower No. 5
2 11-ft. wheel tandem disc
2-row cultivator; Bear Cat
grinder; IHC grinder

George Motor Co.

Ford Tractor & Equip.
Dodge Cars & Trucks
Versatile Swathers
Nu Way Hay Equip.
Clyde, Kansas 446-3340

USER BALERS & COMBINES

COME IN AND DEAL

IHC 181-18'; Gleaner A-14; Oli-
ver 33-14'; Cockshutt 428-15'

HAYING EQUIPMENT

PTO balers: N-H 270; N-H 68;
M-H No. 3; Case 135
N-H 905 auger swather w/ wat-
er cooled engine and hay con-
ditioner

N-H No. 460 Haybine
Several mowers and rakes
Gehl FH No. 188 harvester w/
2-row head & pickup att.

USED TRACTORS

All Are Very Good
IHC M; Oliver 880; M-M U; M-
M GB

NEW EQUIPMENT

We'll deal on these:
N-H 269 and N-H 268 PTO bal-
ers
N-H No. 1035 bale wagon
N-H No. 450 3-pt. mower
Oliver 3-point mower
Gehl 9 ton gears
Wik bale loaders

LINDQUIST IMPL.



TA 3-2451

808 N. 10th

SALINA, KANSAS

FOR SALE — John Deere tractor
in good shape. Several good
broke saddle horses. Saddles &
bridles. W. E. Dugan, Alta Vis-
ta, Kansas 66834. x12

COMBINE M&M Model L Uni-
tractor, \$100. Cut wheat last
year. Ideal for spare parts.
Phone St. George 494-2422.

SB12

ROW CROP TOOLS

494A JD planter, with new ferti-
lizer attach.
No. 406 planter without fert.
No. 406 planter with dry fert.
Two 3-section No. 14 hoes
4-section No. 14 hoe
Ford front, new style, 4-row cul-
tivator
4 2-row IH cultivators
2 3-point Ford cultivators
IH 2 row weeder
JD No. 823 2 row weeder

HAY TOOLS

24T JD baler, PTO
14T JD baler, PTO
NH 66 PTO twine baler
45T IH baler
IH rake on rubber
JD rake on rubber
Two JD rakes on steel

TRACTORS

1960 560 diesel IH
1963 JD 3010 gas
1964 JD 4020 diesel
1964 JD 3020 diesel
1959 730 diesel John Deere
1962 901; 1959 861 Ford diesels
1961 JD 4010 diesel

MISCELLANEOUS

10' MM tandem
13'4" RW JD disk
10' KBA wheel disk
13' Case wheel disk
4x14 semi-integral plow
4x16 semi-integral plow
Kim trailer sprayer

Washington Impl.



EA 5-2301

WASHINGTON

FOR USED COMBINES COME TO WATERVILLE

1966 C II Gleaner, 16'
1965 C II Gleaner, 16'
1960 A Gleaner, 14'
1959 A Gleaner, 14'
1954 MH 90, 14'
1950 MH Super 26, 12'
1952 John Deere, 14'

OTHER MACHINERY

AC 4-row 400 planter
2 used crust busters, 28' & 32'
2-row AC lister
2-row D-14 cultivator
4-row 500 cultivator
4-row AC dull planter

Waterville Motor Co.



Phone ST 5-2731

WATERVILLE

GOOD SELECTION OF USED EQUIPMENT

1964 Massey 65 Diesel, multi-
Power with weights and dual
hydraulic
1959 Massey 85 gas, new tires
1963 John Deere 3010 diesel,
full equipment inc., wide
front axle
1958 John Deere 620, overhaul-
ed, good tires and painted
1957 John Deere 620, good tires,
three-point, hyd. and painted
1957 John Deere 720 good tires,
three-point, hyd. hose and cyl-
inder, painted

MACHINERY

RWA JD 12'6" disk harrow
AW JD 12'6" disk harrow with
new disk
14T John Deere baler
46T IHC baler
66 JD 4-16 plow
13-7 Van Brunt fertilizer drill
with new disk, ready to go
16-8 IHC fertilizer grain drill
4 section wheel type springtooth
harrow
No. 6 John Deere single row
field cutter
No. 6 John Deere double row
field cutter
Ford front mounted two row
cultivator
JD 8' flex tiller with hydraulic
lift
John Deere No. 5 mower
Massey Ferguson three point 3-
16 plow, new condition
John Deere F120 3-16 three
point plow
John Deere F120, 4-16 three
point plow
Case 4-14 Hyd. pull type plow
Oliver 4-section springtooth har-
row
Henry bale loader
820 John Deere weeder
Self-Selection Parts Department

W. W. Smith & Sons



ME 2-3148

CLAY CENTER

USED COMBINES Gleaner Baldwins

1966 C-II 18 ft.
1966 C-II 16 ft.
1965 C-II 18 ft.
1965 C-II 16 ft.
1962 C-II 16 ft.
1959 A 14 ft.
1955 A 14 ft.
1954 A 14 ft.
1952 27 MH extra good
1952 26 MH

Fuller Chevrolet Co.



Ph. PE 8-2281

BELOIT, KANS.

BLAST GRAIN Blower, 5H
electric motor on stand. Move-
on rubber tires. Extra pipes for
elevation. Phone 623-4297, De-
phos, Kans. M. A. Childs. x12

FOR SALE — Ausherman com-
bine bars. Airport Service, Clay
Center, Phone ME 2-2785. x12

HERINGTON



USED TRACTORS

1963 JD 3010 gas, 1750 hrs.
1962 M-H 65 disk, o'hld.
1960 John Deere 435 dsl.
1960 AC D14, wfe. pwr. strg.
1958 JD 720, gas & dsl.
1957 Ferg. 35; 1954 JD 60; 1954
IHC Super MTA
1956 IHC 300 w/ 3-pt. hitch
1954 WD45; 1952 WD, AC
COMBINES
John Deere 55 Hi-Lo, 14-ft., like
new; w/ factory cab & straw
chopper
1954 John Deere No. 55, 14'
Used Full Vision cab for JD
or 95

MACHINERY

JD BWS 12 1/2' disk, like new
Case 10' whl. disk, sld. brgs.
Schaffer 12' wheel disk
IHC 16' springtooth on wheel
carrier
IHC 3-16 semi-mtd. plow
Ford 5-14 semi-mtd. plow
IHC 2 & 4 row front mount
cultivators
Windrowers: JD 215A; '61 Cat
BALERS: 1960 JD 214W; 1954
JD 14T; 1957 NH 66; IHC 45
AC rotary baler, like new
John Deere 36' hay & grain ex-
vator

Tri-County Sales

George Munkres
Phone Collect
BL 8-2249 or BL 8-2991
HERINGTON, KANSAS

THEY'RE PRICED RIGHT AT BELOIT

1963 Case 930 diesel Comb-
King, a good clean low hour
tractor \$1200
1962 JD 4010 dsl. std., in ex-
lent condition
1955 Moline UTS, LP gas,
hyd. & cyl. \$1100
1954 F400 gas R/C, TA, 12'6"
..... \$1200
1953 JD 60 gas R/C, wide front
..... \$1100
1952 LA Case w/ Charlynn
pump & cyl. \$1100
1958 & 59 JD No. 55 combi-
w/ 14-ft. headers, local farm-
er owned
12-ft. JD Surflex tiller, like new
..... \$1100
IHC 1610 drill w/ sealed
& fert. & seeder \$1100
Dempster hoe drills, make good
maize planter

Blanding Impl. Co.



PE 8-3068

BELOIT, KS

ATTENTION: Tractor owners
Does your tractor need
overhauling? Save money and
time with our machine shop
completely rebuilt short block
assemblies. Expert craftsman-
ship is assured at reasonable
prices. Large stock on hand for
John Deere, International, Case,
Allis-Chalmers, Ford, Massey,
Harris, and others. Write for
prices. Joe Goodman Tractor
Parts Company, Box 748, Lin-
coln, Nebraska.

TRACTOR

1966 John Deere
wide front
1962 John Deere
1962 John Deere
exhausted
1965 Allis Chalmers
cab, LP, just ca-
1962 MH 85 diesel
ing, good
1968 MH 65 gas,
1968 MH 20-55 di-
ed
1955 MH 33, gas
1951 MH 44, gas
1967 MH 444 gas
1967 Ford 871, sel-
1969 IH 460 gas,
1961 IHC M & lo-
1949 IHC M
1946 IHC M
1951 IHC H good,
1966 IHC Super C
Most of the
haven't been h-
if you want
take a look. V
sell.

COMBIN

1969 John Deere
steering
1967 John Deere
1968 John Deere 4
1968 John Deere 4
1967 John Deere 4
1967 John Deere 5
1966 MH 80, spec-
4-row HT1 rotary
lister with fertil-
seedicide attachm-
hitch
Almost new 6-row
pull-type planter
zer attachment.
planted 250 acre-
shedded. Priced r-
I've got new
in ahead of pr-
Better try me,
WE HAVE lots of
ery in stock Over-
tractors to pick fr-
shedded.
LOTS of new a-
machinery. Maybe
find what you need
take a look.
We are glad t-
BUD KEAT
formerly
Wamego John Deere
working with
Bud would like to
all his friends from
to come in an

Farmers U Hdw. & Im



ST. MARYS, K

DAUE IMPLEMEN

1960 F460 tractor, 1
1959 Case 800B tra-
1954 Super MTA tra-
McCormick No. 412
mounted plow
1967 McCormick 46T
1962 McCormick 46T
1964 McCormick 46W
1966 McCormick 47W
1962 Massey Harris
combine
Windpower 4 sect. ro-
McCormick No. 60
McCormick No. 100
hitch
John Deere No. 6 c-
row crop & cutt-
machines
1949 W6 McCormick
1950 W6 McCormick
1955 R160 Internati-
with bed & hoist
One nearly new tra-
13.6x36 4 ply
McCormick 16x8 MF
rubber & rubber p-
IH 6' peg harrow se-



Ph

FOR SALE — 40-ft.
hay and grain eleva-
ter shallow well p-
& pipe. Roy W. Ni-
254, Manhattan.

FOR SALE — 9N F
with overdrive, good
land wire baler with
ready to go. Clyde
2409, Washington, F

USED COMBINES
Gleaner Baldwin
C-II 18 ft.
C-II 16 ft.
C-II 18 ft.
C-II 16 ft.
C-II 16 ft.
A 14 ft.
A 14 ft.
A 14 ft.
27 MH extra good
26 MH

Miller Chevrolet Co.

Ph. PE 8-222

BELOIT, KAN.

ST GRAIN Blower, 500
e motor on stand, 100
rubber tires. Extra pipe
to be had. Phone 623-4271
Kans. M. A. Childs

SALE — Ausherman
bars. Airport Service
er, Phone ME 2-2785

HERINGTON



USED TRACTORS

JD 3010 gas, 1750 hrs.
M-H 65 disk, o'hld.
John Deere 435 dsl.
AC D14, wfe. pwr. strg.
JD 720, gas & dsl.
Ferg. 35; 1954 JD 80;
C Super MTA
IHC 300 w/ 3-pt. hitch
WD45; 1952 WD, AC
COMBINES
Deere 55 Hi-Lo, 14-1/2
w/ w/ factory cab &
opper
John Deere No. 55, 14
Full Vision cab for JD
95

MACHINERY

BWS 12 1/2" disk, like
10' whl. disk, sld. brg.
ffer 12' wheel disk
16' springtooth on
rier
3-16 semi-mtd. plow
5-14 semi-mtd. plow
2 & 4 row front mtd.
ltivators
drawers: JD 215A, 14-1/2
ERS: 1960 JD 214W;
D 14T; 1957 NH 66; IHC
rotary baler, like new
Deere 36' hay & grain

Tri-County Sales

George Munkres
Phone Collect
BL 8-2249 or BL 8-2250
HERINGTON, KANSAS

HEY'RE PRICED RIGHT
AT BELOIT

Case 930 diesel Comb
ing, a good clean low
JD 4010 dsl. std. in
nt condition
Moline UTS, LP gas
d. & cyl.
F400 gas R/C, TA, 14-1/2
JD 70 dsl. std. very
JD 60 gas R/C, wide

LA Case w/ Chalmers

ump & cyl.
3 & 59 JD No. 55 com
/ 14-ft. headers, local
owned
JD Surflex tiller, like

One nearly new tractor tire

13.6x36 4 ply \$60

McCormick 16x8 MF drill, low

rubber & rubber press

IHC 6' peg harrow sections

Blanding Impl. Co.

PE 8-306

BELOIT, KS

ENTION: Tractor owner

has your tractor need

rehauling? Save money

er shallow well pump, tank

pletely rebuilt short

embles. Expert cranes

o is assured at reason

Large stock on hand

n Deere, International,

is-Chalmers, Ford, Mas

ris, and others. Write

es. Joe Goodman Trac

ts Company, Box 748

n, Nebraska.

TRACTORS

1966 John Deere 4020 diesel,
wide front
1962 John Deere 4010 diesel
1962 John Deere 2010 gas, ov-
erhauled
1965 Allis Chalmers XT190 w/
cab, LP, just came in
1962 MH 85 diesel, power steer-
ing, good
1963 MH 65 gas, standard
1969 MH TO-35 diesel, overhaul-
ed
1965 MH 33, gas
1951 MH 44, gas
1967 MH 444 gas
1969 Ford 871, select-o-speed
1960 IH 460 gas, good
1951 IHC M & loader
1949 IHC M
1946 IHC M
1951 IHC H good, painted
1966 IHC Super C, like new
Most of these tractors
haven't been here too long.
If you want to buy, come
take a look. We'll trade or
sell.

COMBINES

1959 John Deere 55, power
steering
1957 John Deere 55
1958 John Deere 45, overhauled
1958 John Deere 45, good
1957 John Deere 45, real sharp
1957 John Deere 55, good
1956 MH 80, special
4-row HT1 rotary moldboard
lister with fertilizer and in-
secticide attachment and 3-pt.
hitch
Almost new 6-row 3-inch MH
pull-type planter with fertili-
zer attachment. Has only
planted 250 acres. Always
shedded. Priced right.
I've got new 95s and 55s
in ahead of price increase.
Better try me, anyway.
WE HAVE lots of machin-
ery in stock Over 25 new
tractors to pick from. All
shedded.
LOTS of new and used
machinery. Maybe you can
find what you need. Come
take a look.

We are glad to have

BUD KEATING,

formerly of

Wamego John Deere dealership,

working with us now.

Rod would like to welcome

all his friends from that area

to come in and visit.

Farmers Union

Hdw. & Implement

Everett Hoobler

Mgr.

Ph. 437-2913

ST. MARYS, KANS.

DAUER

IMPLEMENT CO.

1949 F460 tractor, 1300 hrs.

1959 Case 800B tractor

1964 Super MTA tractor

McCormick No. 412 4-16 semi-

mounted plow

1957 McCormick 46T twine baler

1962 McCormick 46T twine baler

1964 McCormick 46W wire baler

1966 McCormick 47W wire baler

1962 Massey Harris Super 27 16'

combine

Windpower 4 sect. rotary hoe

McCormick No. 60 3-16 plow

McCormick No. 100 mower, 2 pt.

hitch

John Deere No. 6 cutter with

row crop & cutter bar at-

tachments

1949 W6 McCormick tractor

1950 W6 McCormick tractor

1955 R160 International truck

with bed & hoist

One nearly new tractor tire

13.6x36 4 ply \$60

McCormick 16x8 MF drill, low

rubber & rubber press

IHC 6' peg harrow sections

Falun

Phone 1011

FOR SALE — 40-ft. Kewanee

hay and grain elevator; Demp-

ster shallow well pump, tank

& pipe. Roy W. Nixon, JE 9-

654, Manhattan. x14

FOR SALE — 9N Ford tractor

with overdrive, good condition,

USED MACHINERY

Tractors

IH Model C mower & cult.

1951 Farmall M, w/ remote

control

1947 WC Allis, w/ cult.

1959 Ford 971 dsl. with Comfort

cover, selecto

IH WD 6; 1950 MH 30; 1947 IH

MD; 1947 IH M; 1940 IH M;

1936 Allis U

1955 Farmall 300, new sleeves

& hyd. pump, std. drawbar

(could have fast hitch, extra

charge)

COMBINES — PLANTERS

IH No. 260 2-row planter, fast

hitch with fert. & rubber

press

IH 141 with cab, 14 ft.

IH 125 SP 12', IH 101 'combines

OTHER MACHINERY

IH No. 15 side del. rake

JT 44 mill type weeder

Allis 2-row cult. w/ rear sect.

Ili 45' baler

IH 55 wire baler with engine

No. 80 baler

Bear Cat hammer mill

IH 4-bar rake

Co-op 7 mower

JD Model B 16-8 grain drill, all

new blades

JD FBB drill with fert.

John Deere 12-8 drill

IH 16-8 fert. drill with press

wheels

IH 6-18 & 12-10 plain drills

IH No. 35 wheel disc, 8'

IH 37 wheel disc 12'

IH 36 fast hitch disc

MF 3 sec. peg tooth

New Nu-way hay handling

equipment at special price

PLOWS

IH No. 412 FH 4-16

IH No. 512 fast hitch, 5-16

A selection of 2-14; 3-14; 3-16;

4-14 pull plows.

USED TRUCKS

1963 Chev. C-1534 pickup, 1/2

ton, V-8, aut. trans., pwr. strg.

1964 Chev. El Camino, clean,

one owner

1963 Chev. 4-whl. dr. pickup

1959 IH 1/2 pickup, 6, 4-sp.

1955 Chev. 1/2 pickup, V8, 4 spd.

1953 Ford 3/4 T w/ grain sides

and rack

1947 Chev. wrecker truck

1952 Chev. 1/2 T 3-speed

1949 Dodge 1 1/2 T, w/ bed and

grain sides

COME TO AULD'S FOR

GOOD USED & NEW CAR

DEALS. TRY US

AULD

CHEVROLET

HO 1-5414

WAKEFIELD

TRACTORS

1959 D-17 Allis-Chalmers

Case 900, propane

IHC 400 diesel

COMBINES

1966 C Gleaner, 16 ft.

1965 C Gleaner, 16 ft.

1962 C Gleaner, 16 ft.

1962 C Gleaner, 18 ft.

1965 A Gleaner, 14 ft.

1964 A Gleaner, 14 ft.

1959 Massey Harris 92

1959 Massey Harris 82

John Deere no. 5 mower

Allis Chalmers no. 3 mower

Ostlund Implement

CH 3-4088

CONCORDIA

NEW & USED MACHINES

Used 4 row No. 406 John Deere

planter with fert. att.

Used 10-ft. 9 No. 37 wheel disk

Used 12-ft. No. 37 wheel disk

Used 1961 New Holland hay

baler S H 69 P.T.O.

Used 1960 D17 AC tractor

Used 1954 UB M-M tractor

New F656 D tractor

New 4-row IH lister

New 6-row IH planter

Neuman Hdw. & Imp.

Phone TU 3-2128

WHITEWATER, KANS.

FOR SALE — MM 4 section ro-

tary hoe, 3 pt. carrier, good

condition. Fred. Hegele Jr.,

Longford, Kans. Phone 388-2372.

x12

MACHINERY BARGAINS

TRACTORS

1 Farmall 806 diesel, fully

equipped, low miles, guar-

antee

1 Farmall 706 Gas tractor, ful-

ly equipped, one owner, real

good

4 Farmall 560 gas tractors,

some wide front, all excellent

shape

1 Farmall 450 diesel, fully

equipped, completely over-

hauled

2 Farmall 400 gas tractors, fast

hitch, power steering, one

owner

1 Farmall 350 gas, this tractor

fully equipped and like new

5 Farmall M tractors, one with

wide front, all in good condi-

tion

2 Farmall H tractors, both run

real good, cheap second trac-

tors

1 Minneapolis 4 star, 3 point,

wide front, power steering,

like new

1 Allis WD tractor, new sleeves,

good tires, ready to go

COMBINES

2 used 403 combines, both with

cabs, both in excellent condi-

tion

3 used 101 combines, these ma-

chines are one owner, corn

heads if needed

1 used 303 combine, fully equip-

ed, cab, 228 corn head, like

new

1 used 91 combine, this machine

is one owner, and like new

condition

1 Used 1964 Gleaner E, robot

control, one owner, no corn

head, excellent

1 used John Deere 45 12 foot,

good tires, has never had

corn head

Come See The Largest

FOR SALE — JD Model 30 7', very good. Phone Manhattan PR 6-8454. x12

FOR SALE — 8N Ford tractor and equipment, extra good condition. 1941 B John Deere and No. 55 New Holland rake. Phill's Repair Shop, RR3, Manhattan, Kans. x14

FOR SALE — 8x20 ft. flat bed for trailer. Melvin Allison, RR1, Delphos. x13

FOR SALE — New Holland No. 77 twine baler with good VF-4 Wisconsin motor, \$75. Easy-Flo silage distributor for 16-24 foot silos, including goose neck, good \$60. 6x6 dimension lumber. Eldred Schaefer, Bremen, Kans., Phone 767-4926, Odell, Nebraska. x15

FOR SALE — JD 730 diesel, 2100 hours, original tires. Edw. Sedlacek, Frankfort. x12

FOR SALE — 1961 Case 140 with baler. Good. Bill Reed, Morganville, Kans. Phone 926-4438. x12

FOR SALE — 1964 Case No. 200 hay baler, twine, with bale chute and wagon. Has baled less than 2000 bales. Kept in shed since being used. Contact White & Ellis Drilling, Inc., Box 448, Phone DA 1-5050, El Dorado, Kansas. SB14

REAR TRACTOR TIRES, 13.6x38, 4 ply — \$49 plus second resalable tire and Fed. Excise Tax. Fink Tire Store, Wamego, Kansas. tf

WANTED — 600 gallon or larger bulk milk tank. For Sale — 200 gal. McHale and 200 gal. Dairy Kool. Harold Rohling, White City, Kans. Phone 913-349-2632. SB12

TRACTORS — 731D Case (new) below dealer cost; 631 Case diesel; 400 Case gasoline; 411B Case gasoline; Massey 35 diesel; Ford 901 gasoline; Massey 65 diesel. COMBINES — 1966 410 Massey (2) Super 92's; Massey 72 10-ft.; Massey 35 8-ft.; Case 800 14-ft. Ottawa Farm Impl. Co., Inc., Ottawa, Kans. One half mi. so., Ottawa Hwy. 59. x12

1957 AC SP100 12-ft. combine, good condition, \$400. Dennis Ens, Hillsboro, Kans. 947-3688. SB13

FOR SALE — 14 ft. 3 pt. JD rotary hoe. Lawrence Evins, Rt. 3, Manhattan. Ph. PR 6-8442. x15

FOR SALE: Almost new 13'6" Knapheide bed. 40" steel sides, 26" wood stock sides. Also Heil hoist. Sell separate. Elmer Schmidt, R2, Peabody, Ph. Goessel 367-2267. x12

PRICED FOR quick sale. Good 58 model John Deere 55 14 ft. combine. Walt Hiebert, Marion, Kans. x13

FOR SALE — New AC combine pickup attachment. Will trade for alfalfa hay. Jonas Eitel, Durham, Kans. x12

4 ROW front mounted cultivator, Massey Ferguson 65 or 85, very good. David Brown 990 tractor, 860 hrs. Earl Kuntz, Abilene, Kans. x12

SEE VALLEY Equipment at Lindbergh for used combines. 9 to choose from at \$195 to \$5850. SB12

PROTECT ALL cash for Gleaner A combine, near new. Two year old Palomino filly, halter broke. Wm. Murphy, Minneapolis EX 2-9691. x12

FOR SALE — One set rubber press and fertilizer unit for IHC 46 lister, \$100. Lloyd Olson, Morganville, Kans. x12

FOR SALE — Antique 22 volt Delco light plant, shadded, good condition. Charlie Wirth, Lincoln, Kans. x15

Miscellaneous

HEDGE CORNER — Line or drive posts. All sizes, lengths. Willard Bitts, Pomona, Kans. Phone 913 566-3403. x15

FOR SALE — 14' aluminum Lone Star boat & tilt trailer, 35 HP Mercury motor, good condition. Roger Colby, Concordia, CH 3-2267. x13

ARMY SURPLUS OUTSIDE WHITE PAINT

\$2.93

Per Gallon

Kimberly Washable
Vinyl Latex Wall Paint

FAITH'S Furniture

East US 24 PR 8-3786
MANHATTAN

FOR THE ride of your life, ride a Big Horn saddle from Key Milling, Clay Center, Kansas. SB 17

RAILROAD TIES for sale at tracksite. You load, we load or we will deliver. Ph. AT 5-3711 for Paul Sauer, Fairways Motel, Larned, or 855-3943 for Charles Burns in Cimarron. x14

USED SPRINKLER irrigation system consisting of 8"x6 Marlon centrifugal pump, 2900' of 7" and 6" main line pipe, 2400' of 4" sprinkler line, all accessories. Make offer. Mrs. T. J. Rhodes, 1300 Fillmore, Topeka, Kans. CE 5-2945. x15

CARMEAN IMPROVED martin house entries martins plans. \$1.00. Hutchinson, Kans. 67501. SB12

FOR SALE: Automatic washer (new motor) \$10. Cream separator, \$10. Antique books, jars, buttons, etc. McFadden, phone HU 5-2688, 8 m west Tuttle Dam new 24, then 3/4 mile west graveled. sb12

Stud Service

STUD SERVICE — Ben Shasul A 42 266, registered grey Arabian. Rosalie and Earl Clymer, RR2, Council Grove, Phone 316-767-6291. x21

QUARTER-BRED Palomino stallion at service, gentle well-mannered. Jim Cravens, PR 6-7481, Manhattan, after 6. x12

Help Wanted

SALESMEN WANTED for new Gold Standard animal nutrition products. Excellent income opportunity for full or part time. Call Jud Weaver, phone 18 on 2, Admire, Kansas. SB18

MEN OR BOYS capable of running combines or driving trucks. Work starts around June 1 and continues to fall. Duane Lund, Phone 111 on 9, Leonardville. x12

Mobile Homes

FOR SALE — 1962 Kit Olympia mobile home, 10x50. 2 bedroom, front kitchen, good shape. Arlyn Peterson, Waterville, Phone ST 5-2446 or ST 5-2418. x13

FOR SALE — House trailer 14x8 furnished. 1 1/2 bedroom, natural gas furnace. Clean, see to appreciate, \$500. Storage tank, 1000 gal. used for fuel oil. Good as new \$50. Harvey Sommer, Alma, Kans. Box 25, Phone 765-3610. SB13

LETTERS

Wants Both Sides Of Story Told

In the May 2 issue, Grass & Grain went all out in making a big blow about milk income being a 14-year high. You gave many large figures for the public to read about milk income. Why didn't you go all the way



Hizzoner, The Mayor

H. D. Morley of Dillon (Dickinson County) prepares a seed bed with a 38 year old GP John Deere.

Auctioneers Meet At Hays

HAYS — Kansas auctioneers will convene here Sunday May 28, for the 12th annual convention of the Kansas Auctioneers Association.

Lawrence Welter of Manhattan, vice president of the organization, is convention chairman.

The meeting will get underway the night previous to the business sessions, with a buffet lunch and fun auction on Saturday night, May 27. The Ramada Inn is the location of the convention.

Speakers at the Sunday morning session will be Ted McKinley, Dodge City; Joe Gingerich, Hutchinson; and Bernie Hart, secretary of the National Auctioneers Association.

Speaker at the noon luncheon will be B. L. Wooley, NAA president. Bill Crites of Junction City

and Jesse Scott of Garden City will be afternoon speakers.

Marvin Mayers of Russell has been 1966-67 KAA president. R. M. Dick Brewer of Hope is secretary treasurer. Directors are Paul Hurst, Wilson Hawk, Jack Sheets, Fred Sherlock, L. L. Peninger, Don Legere, Bill Crites, Joe Gingerich and George Worrell.

CATTLE SALE EVERY MONDAY

HOG SALE EVERY WEDNESDAY (Sale Time 12:00 Noon) BEATRICE, NEBR.

Beatrice 77
LIVESTOCK SALES CO.
2 miles north of Beatrice,
Nebr., opposite the airport.

Phone 223-3571
CLARENCE TEGTMEIER
DELMAR JURGENS
J.B. THIMM

Livestock Supply Headquarters



ANIMAL HEALTH PROTECTION

Let Us Discuss With You—Your Needs for
VACCINES & BACTERINS INSECTICIDES
INSTRUMENTS - TREATMENTS REMEDIES

A FULL-SERVICE STORE
FOR ANIMAL MEDICINE
PHONE ME 2-3272

HELD'S STORE

CLAY CENTER, KANS.

SPECIALS SAVE \$ \$ \$ SAVE

NEW GLEANER A-II, 14-ft., oversize tires, fully equipped, cash \$6950

NEW GLEANER C-II, 16-ft., Straw Chopper, rotary rack screen, fan shields, cyl. belt drive, fully equipped, cash \$9150

NEW HESSTON 500 Swather, 14 ft. auger hdr., w/ cond. lights, fully equipped, cash \$4850

NEW 905 NEW HOLLAND SWATHER, 14-ft. auger machine, lights, water cooled engine, Spirol conditioner, cash \$5350

1958 GLEANER, 14-ft., exceptionally clean

1965 2A IHC CRUSHER, good

N-H No. 827 Sickle Bar, 7-ft., used only one season

A-C Forage Harvester, sickle bar w/ pickup installed, good cond. Ready for use

David Bradley 7-ft. Trail Mower, good

1965 New Holland No. 460 Haybine, two seasons use, clean, don't miss this one!

Late Model No. 940-20 Kewanee Wheel Disc, 13'5" cut, new 20" blades front

NEW PLANTERS IN STOCK NOTE!!

All Current Model A-C & N-H Hay Equipment
IN Stock — No Reasonable
Offer Passed. Give Us A Try
All This Machinery Can Be Financed

WRIGHT IMPL. CO.

S. Highway No. 15

Phone CO 3-2061

Night Phone, Harris Clark, Salina TA 3-6690

ABILENE, KANSAS

Another Mark Against Fred

What Mr. Drapal of Cuba stated in a recent letters column in Grass & Grain about the letters from Fred Kilian expresses the feeling of at least a few of us. In order to be brief, my only comment is: an empty wagon makes the most noise.

Arnold Ringel
ALMA

ANGUS JUNIOR DAYS SET IN JULY

The Kansas Angus Association will have five Junior Field Days in July. Dates and locations: July 17-Larned; July 18-McPherson; July 19-Norton; July 20-Ottawa; and July 26-Holton.

GEORGE BLYTHE, FLINT HILLS RANCHER, DIES

WHITE CITY — George Blythe, longtime Flint Hills cattleman, died last week at the age of 80. Blythe lived in the White City area all his life and was president of the first national Bank here. Long active in Republican politics, Blythe has three sons — Ross, John, and Albert — all of White City and two brothers, Lawrence and Harry, who also live in the area.

WESTERN SADDLE SUPPLY

J. J. RITTEL & SONS
WESTERN WEAR
In Mid-Kansas

Largest Saddle Selection
for the Entire Family

BOOTS • HORSE TRAILERS
Square Dancers Supplies
HOPE, KANSAS PHONE 43



Chicken Soup

These two r...
ing outside Bob...
village of Morgan...
soup.

JO

Ford, 1964 5000 d...
one owner ...

John Deere 1951 A...

1941 John Deere A...

Jeep 4-wheel drive...
ally clean, new

IHC 1 1/2 ton truck...
tires, underbody

1961 GMC 2-Ton, C...
overhauled, soun

New Holland 56 sic...

N-Holland PTO mo...
clean

Allis Roto Baler, ...

IHC 12-ft. springtoe...
tachments

IHC 2-row surface...
disk openers, rub...

IHC no. 37 11' whe...

IHC no. 530 3-14 p...

John Deere 2-row

1958 John Deere 45...
shedded, extra cl

1956 John Deere 45...

1956 IHC 141, 14-ft...
ded, very good co

Call

BO

Juncti

May 23, 1967

Farmers Limiting Acreage On Own

For years an argument for government crop control has been the contention that farmers if left alone would overplant recklessly and bury themselves and the farm economy with price-depressing surpluses.

There are signs, note national farm experts, that farmers can restrain their plantings without government planning.

This year's prospective crop-production pattern indicates such.

Recent USDA reports indicate several million fewer acres of important livestock feed grains than the government suggested.

This year's federal feed grain program sought an increase in production because big surpluses of recent years have been used. Under the program, farmer participants get government payments and price supports. The prospective cotton acreage also is below the level farmers could plant under controls.

Likewise, department surveys indicate that the total acreage devoted to crops this year may be 15 million acres short of the 330 million which officials had said could be planted.

Why?

The most likely explanation appears that farmers fear new surpluses. Having gotten out from under the price-depressing supplies of the past decade, producers apparently do not want a return of economics problems that come in the wake of surpluses.

The farmer reaction may not mean that they are ready to go it alone, without government programs. But there are indications of more restraint than farm planners once thought possible.

BEST MARION BEEF SHOWN BY DONAHUE

MARION — A heavy Angus calf belonging to Dudley Donahue was grand champion at the annual Marion Spring Beef Show. Best Hereford was shown by Van Peters. Rusty Hinde had the Shorthorn champion.

AUCTION

Sat., June 3

At 1416 Humboldt Street
MANHATTAN, KANSAS

Tools And Contracting Eqt.

Complete Close-Out of All
Construction Tools by
Joe R. Pakan, Contractor

Delta radial arm 9" saw, good
Atlas 6" jointer
9" table saw, Craftsman
6" miter box, Stanley
David White transit
3 rubber tire wheelbarrows
2 Simplex jacks, No. 29
2 Simplex jacks, No. 15
Bottle jacks
8 post jacks, basement type
Belt sander 2" Skil
Sander, Miller Falls 3", like new
Electric motors

Various cement tools; various ladders; ladder jacks; extendable walking boards. Numerous carpenter hand tools. Large selection of dimension lumber; ceramic tile; paint; electrical fixtures; plumbing equipment; lavatories; tubs; stools; sinks; room heaters & etc.
Office equip.; adding machine; desks; files cabinets, etc.

Joe Pakan Const.

Lawrence We. er, auct.
Harold Carlson, Clerk

EARLY SUMMER SALE OF CASE TRACTORS

Longhofer Supply Co. - Marion, Kans.

930 Comfort King, Case, diesel

931 Comfort King, Case, LPG's

1030 Comfort Kings, Case, the 100 + h.p. tractor, in the field.

830 Comfort King Case tractors in gas, diesel & LPG's

730 Case Comfort King, rowcrops, diesel, gas & LPG tractors

We must sell 15 tractors in the next 15 days:

There are many models of used tractors. We are out of stock on; we need, to trade for more, preferably late models.

We can sell you outright, at a lower price than for over a year.

We are attempting to hold prices down in spite of price increases.

We have in stock 25 new tractors to choose from; these are all current models, not old stock.

WE WILL DO OUR BEST TO TRADE WITH YOU.

NO REASONABLE OFFER WILL BE TURNED DOWN

For a period of the next two weeks we will give free delivery on any new or used tractor.

FINANCING CAN BE ARRANGED

Don't be afraid of warranty. We will give you efficient service on pickup & return

Call us at once; we will drive to see you: You don't have to drive to see us.

Remember this is a 15 Day Sale.

LONGHOFER SUPPLY

ON HIGHWAYS 77 AND 56
STORE PHONE EV 2-2620

NIGHTS CALL:

Ray Longhofer EV 2-2527 Rusty Longhofer EV 2-3272
MARION, KANSAS

COMPLETE CLOSE-OUT OF NEW & USED MACHINERY

THESE REMAINING ITEMS
MUST SELL IMMEDIATELY

NEW

- 3 sections of No. 7 peg tooth harrow with draw bar \$210
- 1 No. 300 8 ft. rear mounted 3 pt. blade \$215
- 1 No. 7 12 ft. fertilizer spreader, 20" wheels and land measure \$350
- 1 Minnium tillage spring tooth harrow to mount on IHC planter
- 2 No. 47 wire tie balers, bale chute & trailer hitch, jack stand, choice \$290
- 1 No. 47 twine tie baler, bale chute & trailer hitch, jack stand \$1725

USED

TRACTORS

- 2 Farmall 460 diesel tractors, both fully equipped, choice \$2175
- 1 Farmall 560 gas tractor fully equipped, good shape .. \$2675
- 1 Farmall 350 propane power steering, fast hitch, live shaft, torque amplifier, a real good buy at \$975
- 1 good John Deere A late model, Power trol, cheap \$500

PLOWS

- 1 IHC 2-16 pull type slat moldboard, looks like new \$50
- 1 IHC 4-14 No. 411 fast hitch plow, just like new \$350
- 2 No. 30 3-14 fast hitch plows, both good \$115
- 1 IHC No. 211 2-14 fast hitch like new \$195
- 1 Oliver 3-14 pull type, good condition \$90
- 1 Minneapolis Moline 2-14 pull type plow O.K. \$25
- 1 John Deere 3-14 pull type high clearance plow, cylinder lift \$130
- 1 Massey Harris 3 pt. plow, 3-14, real good \$65
- 1 Allis Chalmers 3-14 snap coupler plow, good \$60

DISCS

- 2 Oliver 11 foot sealed brg. discs, both ready to use \$225
- 1 John Deere 11 ft. RW rigid disc, real good \$250

OTHER CHEAP BUYS

- 3 IHC No. 45 balers priced to sell, take your pick \$100
- 4 IHC No. 50 field choppers reconditioned, ready to chop. these are real buys at \$1175
- 1 IHC No. 16 single row field chopper, like new condition, a bargain \$1075
- 2 IHC No. 460 planters, mounted, fast hitch, one with fertilizer, one with Gandy \$225 each
- Grain-o-Vator wagon, good shape \$150
- 1 No. 263 two row rear mounted fast hitch cultivator, looks good \$80
- No. 250 two row front mounted cultivator, good shape .. \$75
- Allis cultivator to fit WD two row \$100

IHC Baler Twine \$7.75 a box while they last.
We are selling out. This equipment must move

FLINT HILLS TRUCK & TRACTOR
Phone DI 2-4756 EMPORIA, KANS.

Chicken Soup

These two roosters had a few days of glory strutting outside Bob's Cafe, in the western Clay County village of Morganville. They soon ended up in chicken soup.

JOHN DEERE — GMC

TRACTORS

Ford, 1964 5000 diesel, Super Major, very clean, one owner **\$3195**

John Deere 1951 A, power-trol, good **\$695**

1941 John Deere A, runs good **\$225**

TRUCKS

Deep 4-wheel drive pickup, 1961 model, exceptionally clean, new tires, a real buy **\$1095**

IHC 1 1/2 ton truck, 12 ft. bed, 2-speed axle, good tires, underbody hoist, all **\$995**

1961 GMC 2-Ton, Cab & Chassis, 2-speed, recently overhauled, sound **\$1195**

MACHINERY

New Holland 56 side delivery rake, 5 bar, good .. **\$365**

N-Holland PTO model 68 baler, twine, very very clean **\$850**

Allis Boto Baler, 1958 model **\$595**

IHC 12-ft. springtooth harrow, with smoothing attachments **\$175**

IHC 2-row surface planter, runner openers, 16" disk openers, rubber press, fert. attach., insecticide attach., fit on H or M tractor **\$275**

IHC no. 37 11' wheel disc **\$295**

IHC no. 530 3-14 plow, very good **\$395**

John Deere 2-row quick tach, cultivators **\$95up**

COMBINES

1958 John Deere 45, 10-ft. bar, one owner, always shedded, extra clean **\$2350**

1956 John Deere 45, 10-ft. bar **\$1695**

1956 IHC 141, 14-ft. bar, one owner, always shedded, very good condition **\$1750**

Call Us Collect CE 8-4103

BOWMAN'S

JUNCTION CITY

Your

Junction City - Manhattan Area
John Deere Dealer



Season of the "Fever"

With the warm days, fishing fever runs high. Judy, Jimmy, and John, children of Mr. and Mrs. Joe Prokup of Enterprise, try their luck on the Smoky Hill river which runs by the home.

STARTED CHICKS

700 Welp-Line Pullets	3 wks. old
190 Welp-Line Pullets	2 wks. old
100 Calif. White Pullets	2 wks. old
300 Top Cross Pullets	2 wks. old
430 Calif. White Pullets	2½ wks. old

Started Cockerels to go with pullets.

THE HOERMAN HATCHERY

Phone DI 8-2661

Linn, Kansas

**Keep
Manhattan
beautiful...
drive a
'67 Ford**

Enjoy a trouble-free vacation . . . travel with the strongest, quietest Ford ever built.



Ford better ideas for sale!
SKAGGS MOTORS, INC.

SECOND & HOUSTON

MANHATTAN, KANS.

Drop Back On Wheat Acres

If wheat farmers get higher prices, will they have to take a cut in wheat acreage?

The New York Times last week reported that a 12 percent cut in acreage is likely for next year.

The indication came out of a meeting of Secretary of Agriculture Orville Freeman's grain advisory committee.

The Times said Freeman will hold off an announcement until the June 10 crop report gives a more precise figure on the size of this year's wheat harvest which now is expected to be a record 1.5 billion bushels, despite drouth in much of the midwest.

Even with a cut of 12 percent, USDA officials estimate the 1968 crop would equal this year's peak. Obviously they are figuring on higher yields next year.

One of the major elements influencing the decision is an apparent willingness by producers to forego a rise in the carryover on reserve.

The advisory panel, made up of 32 wheat producers representing all types and areas of grain production, were described by officials as nearly unanimous in urging that the reserve be held at about 400 million bushels. This compares with the 600 million bushels that many officials believe is most desirable. The 600 million bushel level amounts to about one year's supply to guard against a shortage. The reserve was depleted by foreign aid shipments and increased commercial sales.

Major farm officials agreed with the committee that the 600 million bushel reserve might tend to depress prices unduly. They said that no formula was yet in sight to effectively insulate larger stocks from the market.

Another element discussed is the fact that the 1968 wheat crop will be affecting wheat prices about the time of the 1968 presidential election. The Administration already is trying to reassure farmers that they are not the "forgotten men" as farm prices slip. Farm prices have dropped about 9.6 per cent since last summer because of a build-up of supplies in some commodities.

President Johnson, in effect, admonished a group of visiting farm officials to carry the message back home that "This Administration is determined that the parity of income he deserves." The officials were Administration-appointed Agriculture Conservation and Stabilization Service workers who administer farm programs on the state and local levels.



Jameson



Sowers



Breidenthal

New Chamber Officers

New officers of the Kansas Chamber of Commerce are Henry Jameson, Abilene editor, president; Wesley H. Sowers, Wichita management consultant, chairman of the board; and Maurice Breidenthal Jr., Kansas City banker, senior vice president.

Consignment HORSE SALE

At The WEST Barn
CONCORDIA, KANSAS

FRI., MAY 26 6:30 p.m.



Expecting 50 to 75 Head

For Information Or To Consign, Contact:

TOM WALKER — CONCORDIA — CH 3-1674
ROLLIE LAGASSE — CONCORDIA — CH 3-2215
LARRY LAGASSE — CONCORDIA — CH 3-1714

QUESTION:

What did it cost for baler twine last year?

ANSWER:

I dunno!

With a set of record books from our complete line you will know at a glance the exact cost of all farm expenses. You can tell exactly where your profit margin is. Let us help you set up your farm record system now.

Manhattan Typewriter Co., Inc.

The most complete line of office equipment and furniture.

Office Supplies • Typewriters

217 S. 4th St. PR 8-5902 Manhattan, Kansas

We CLEAN & INOCULATE Soybeans with LIQUID culture.

*Beans cleaned & treated each Wednesday and Thursday, now through June 7th.

*You can "pre-inoculate" your soybean seed up to three weeks before planting.

*"Pre-inoculated" soybeans provide extra bushels at harvest time.

*Each bean coated properly and evenly . . . no mess with old style black powder. Costs only pennies more.

*Treated seed can be sold or fed to livestock.

MORRISON ELEVATOR

Ph. CE 8-6118

JUNCTION CITY, KS.

40 Years Since

A replica of the tower on Sunday. It is the anniversary of Charles

More E

How M

Consumers will find bills higher by the Department of

AUCTION

Antiques & Collector's It

3 BIG DAYS IN CLIFTON, KAN.

Due to death of my will sell at Public Auction Shop, located in Clifton, Kan.

Wedn., May

Thurs., May

& Fri., May

Will Sell From 9:30 Each Day

ANTIQUES AND COLLECTOR'S IT

Organ; rockers; water furniture; beds; a lot of cast iron items; lamps; a lot of ker; trees; pictures; fire; press; wood & baby buggy; stone; a lot of dishes; radios; clothes racks; lard press; clock; churns; butter mold; pulleys; flower pots; jars; food grinder; plows; harrows; single trees; neck yoke.

Lard presses; lantern; tables; old grindstone; saddle; coffee; paper rack; cherry; apple peelers; ho; Old recorders; straight; a lot of dishes; 3033 small antiques numerous to mention.

MISC. ITEMS

Small gas heaters; stoves; electric motors; machine; drop cords; 4; hammers; saws; shovels; bolts; nuts; brass fittings; chains; block & tackle many small items not (Nothing sold prior to

Clair Schuma

Owner

Clerk, John Meredith, C. Auctioneer, Foster Kretz, Steffen, Clay Center, N. 6-4422.

Acres

resident Johnson, in
onished a group of vi
n officials to carry the
x home that "This
tion is determined th
farmer) can achieve
ty of income he des
ne officials were Adm
appointed Agriculture
ation and Stabilizati
workers who admini
n programs on the sta
l levels.



Breidert
Chamber of Commerce
resident; Wesley H. S
Chairman of the board
y banker, senior vice



75 Head
onsign, Contact:
RDIA — CH 3-1674
ORDIA — CH 3-233
ORDIA — CH 3-1710

er twine last year

our complete line you
all farm expenses. You
gin is. Let us help you

riter Co., Inc.
equipment and furniture
Typewriters
2 Manhattan, Kans

LATE Soybeans
culture.

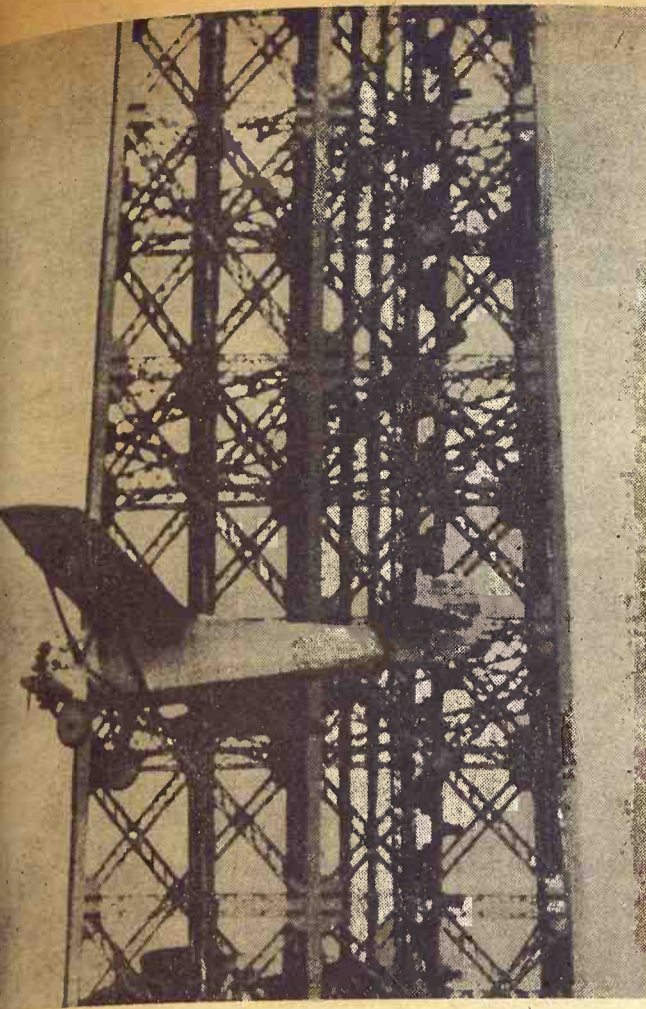
each Wednesday and
June 7th.

our soybean seed
lanting.

and evenly ...
powder. Costs only

or fed to livestock

ELEVATOR
CTION CITY, KS.



40 Years Since Lindy's Flight

A replica of the Spirit of St. Louis flies around the Eiffel Tower on Sunday. It was part of a ceremony marking the 40th anniversary of Charles Lindbergh's 1927 flight.

More Bucks For Food— How Much Will Farmers Get?

Consumers will find their food bills higher by this summer, the Department of Agriculture has said.

Antiques & Collector's Items

3 BIG DAYS
IN CLIFTON, KANSAS
Due to death of my father I will sell at Public Auction at his Antique Shop, located on Main Street in Clifton, Kansas.

Wedn., May 24
Thurs., May 25
& Fri., May 26

Will Sell From 9:30 to 4:30
Each Day

ANTIQUES AND COLLECTOR'S ITEMS

Organ; rockers; dressers; wicker; furniture; beds; chairs; a lot of cast iron items; brackets; a lot of kero lamps; ball trees, pictures, frames. Cider press; wood & coal heaters; baby buggy; stone jars; eggs; a lot of dishes; sweepers; clothes racks; foot warmers; lard press; clocks. Churns; butter molds; well buckets; flower pots; dated fruit jars; food grinders; sod sipping plows; harness; barrels; single trees; double trees; neck yoke. Lard presses; lanterns; mops; brooms; tables; old banjo; gramophone; saddle; coffee grinders; paper rack; cherry pitters; apple peelers; horse. Old recorders; straight edge razors; a lot of dishes; pots; pans & 3033 small antique items too numerous to mention.

MISC. ITEMS
Small gas heaters; steel utility cabinets; hamper; refrigerator; electric motors; sewing machine; drop cords; 4 wheel trailer; hammers; saws; forks; shovels; bolts; nuts; plumbing items; brass fittings; log chairs; block & tackle & many many small items not listed. (Nothing sold prior to sale)

Clair Schumaker
Owner
Clerk, John Meredith, Clay Center, Auctioneer, Foster Kretz & Elmo Steffen, Clay Center, Morganville 64422.

Rumblings In Wheat Futures Play

Speculative fever, coming in large measure from amateur traders, hopeful of easy money, has turned the nation's lethargic wheat futures market into a booming \$15.5 billion operation.

Housewives, students, salesmen, doctors, dentists, teachers, lawyers, engineers, bankers, business executives, social workers, clerks, stenographers, bricklayers, carpenters and farmers have joined professional traders in building up a business volume not seen since the early 1930s.

This speculative surge got its inspiration mainly from threats of a possible world food shortage. It got an assist from the disappearance of this country's long-held wheat surplus — a supply that had held prices close to a government price floor.

This trading is taking place mainly in commodity futures markets which serve to provide millers, exporters, grain merchants, food processors, seed dealers and others protection against price fluctuations. This protection is provided by speculators who assume the risk of price changes. Into the ranks of the speculators came thousands of amateurs hoping price changes would break their way.

Agriculture Department reports indicate that the volume of trading in wheat futures delivery contracts — the device through which hedgers of those seeking price protection transfer risks to speculators — are running at an annual rate of \$15.5 billion compared with \$9.9 billion last year and \$4.4 billion two years ago.

Speculative trading thrives on price fluctuations but starves when there is little or no price movement. During much of the 1950s and the first half of the 1960s there was little change in wheat prices — and hence little speculative activity — because surpluses tended to keep prices chained to the government support level.

The department's commodity exchange authority, the agency which polices the markets against possible price manipulation, has prepared a profile on the major wheat futures market, the Chicago board of trade. It is based on brokers' reports as of last Sept.

Springer Tops At Speedway

JUNCTION CITY — Bob Springer won three firsts in the second weekly Plaza Speedway races last Sunday night. He was first in semi-modified, modified and stock class.

Tom Miller and Bill Maze were first, second in semi-late model; Don Hart ran first in the modified class, first heat, with Roland Crocker and Dick Pallard behind. Hart also took first in the extra event. France Hornstad won the modified in 1.24.10. He was second in the extra event.

May 23, 1967

AUCTION

Sat. June 3

Starts 12:30 sharp at 1416 Humboldt St., Manhattan, Ks.

Household Goods

Early American sofa, near new; Early American swivel rocker; maple coffee table & step tables; maple hutch; maple drop-leaf dining table & 2 leaves, 3 chairs & 2 captain chairs.

2 French Provincial occasional chairs; 2 leather-topped French provincial end tables; 2 9x12 oval braided rugs; 4x6 oval braided rug; 2 9x12 cotton foam-backed rugs; antique end table; 5 piece antique birds-eye maple bedroom suite; 2 double mattresses with matching box springs.

Danish modern occasional chair; modern desk; 2 wood desks; maple bunk beds with mattresses; maple chest of drawers; 4-drawer chest of drawers; roll-away single bed.

6-year crib with mattress; stroller; baby walker; infant seat; kitchen table; 3 ice cream chairs; hide-a-bed.

Office equipment; adding machine; file cabinet; small appliances; several framed pictures; refrigerator-freezer, 15 cub. ft.; automatic washer; clothes dryer; assorted curtains & bedspreads.

Dishes & glassware; misc. kitchen equipment; old-fashioned wooden cupboards; dry kitchen; several chairs; 2 Mediterranean hanging lights; milk glass hanging fixture; milk glass pole lamp; vacuum cleaner, Electrolux.

Joe Pakan

Lawrence Welter, Auct.
Harold Carlson, Clerk

Juniper Hill Angus Farm

Complete Dispersion

SATURDAY, MAY 27

12:30 p.m. Daylight Saving Time at

LAWRENCE, KANSAS

Juniper Hill Farm, located 2 miles north, 1/2 mile east of Lawrence Municipal Airport

18 BULLS - 52 FEMALES - A TRULY GREAT OFFERING

For complete details see GRASS & GRAIN May 16 & May 9

Ray Sims, Auct.

Phil Ljungdahl, Sale mgr.

OWNERS: STEWART NEWLIN AND GORDON S. KAY

AUCTION SALE

Thursday
MAY 25

Starts 9:00 a.m.
Lunch Served

We are closing out our entire stock, without reservation.

Complete stock of builders hardware & accessories
Minnesota paints & varnishes
Many other items too numerous to list

Yard & Office Equipment
Sells Approximately 1 p.m.

1961 Dodge pickup
1952 Ford 1 ton truck
1949 Ford 1 1/2 ton truck
90-ft. roller conveyor, 5 & 10 ft. lengths
Power & hand tools
Underwriters Class A safe, 40"x80"x28"
Executive office desk & chair

Secretary desk & chair
Victor electric adding machine
Revolving bolt rack
Fairbanks 250-lb. scale
Panel display rack
Nail bins
Display counters, etc.

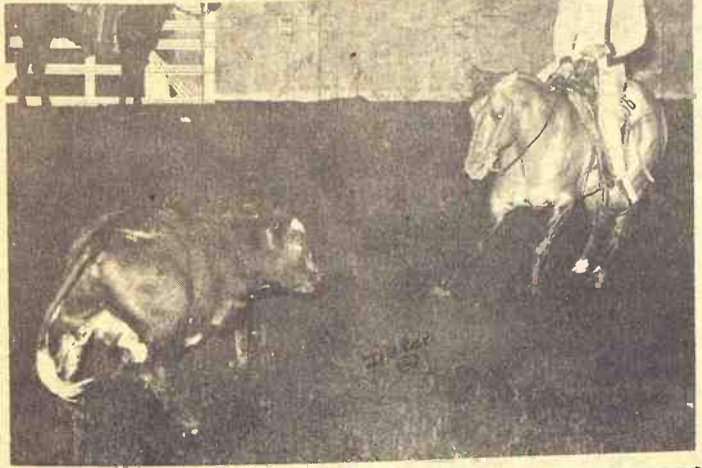
Attention: Farmers, contractors, dealers and general public, if you are planning a garage, porch, an extra room or remodeling of any kind, or if you need new stock in your lumberyard or hardware store, this is the place to buy it.

TERMS: CASH — ALL SALES FINAL

McLucas-Wiebe Lumber Co.

Owner's Phone 729-2185, Fairbury, Nebr.
Siegel & Schultis, Aucts. First Nat'l. Bank, Fairbury, Clerk

Champ's Bucky was ridden by Linda Wells to win cutting contest at the 4-H rodeo, Alma, Kans.



CHAMP'S BUCKY
Sire: Poco Champ
P-83,839
Dam: Que Dee

Champ's Bucky is standing for service to outside mares at the ranch 8 miles east Manhattan, on Highway 24; then 1/2 mile south. Good cutting horse, disposition and is passing it onto his colts.

Stop by and see his colts, evenings and weekends.

Merle and Marlene Flinn

Phone A/C 913-494-2685 — St. George, Kans.

We're fussy when we fix your watch

Fastest Service In Town.
Work done in our shop. All
watches electrically timed
and guaranteed to be as ac-
curate as new.

HOLIDAY
JEWELERS

OF MANHATTAN
425 Poyntz—PR 6-7821
Across from the Courthouse

AUCTION

We Will Sell At
600 NORTH OHIO STREET
Salina, Kansas

10 house trailers, furniture,
miscellaneous and antiques

FRI., MAY 26

Commencing 9:30 a.m.

- No. 1 — trailer, 1945 model, 1 bedroom with bedroom built on
- No. 2 — trailer, 1951 model, is a travel trailer
- No. 3 — trailer, 1951 model, 2 bedrooms, with built on living room
- No. 4 — trailer, 1954 model, 35 ft., one bedroom
- No. 5 — trailer, 1953 model, 32 ft., one bedroom
- No. 9 — trailer, 1957 model, 48 ft., 2 bedrooms
- No. 12 — trailer, 1949 model, 1 bedroom with built on bedroom
- No. 13 — trailer, 1955 model, 48 ft., 2 bedroom
- No. 14 — trailer, 1948 model, 1 bedroom
- No. 15 — trailer, 1948 model, 1 bedroom with extra room attached.

(All above trailers are equipped with bathrooms)
The following is only a partial list — tile cutter, floor roller, plastic cutter, linoleum track, tool boxes, wall roller, jeep roller, davenport, apartment stove, refrigerators, sled, shallow well pump, baby swing and bed, play pen; horse blankets; heaters; iron wheels; roller iron bed; coffee table; service table; race cart; pony harness; express wagon; dirt slip 2 Coleman furnaces; wagon; trailer; hitching post; harness; collars; tables; chairs; electric fans; horse shoes; apple cider press; dental chair; bed springs; saddle; antique bell; wood wheels; wagon frame; automobile wheels and other articles too numerous to mention.
Terms Cash — no property removed from premises until settled for.

Murial Van Horne
Owner

Arlo Gruenthal, Clerk
Aucts. Frank Harz & Bob Perry

Competition for prize-winning exhibits, previews of new farm products and machinery, and midway and grandstand experiment spell fair time across Kansas.

The most activity will be at the Mid-America Fair in Topeka Sept. 8-13 and the Kansas State Fair in Hutchinson Sept. 16-21.

The dates and locations for the local and county fairs:

Allen County Fair, Iola, Aug. 9-13.
Anderson County Fair, Garnett, Aug. 22-25.
Anderson County-Kincaid Farmers Fair, Kincaid, Sept. 21-23.
Atchison County Fair, Effingham, Aug. 15-18.
Barber County Fair, Hardtner, Aug. 7-9.
Barton County 4-H Fair, Great Bend, Aug. 1-3.
Bourbon County Fair, Fort Scott, Aug. 1-5.
Brown Tri-County Fair, Horton, Aug. 21-24.
Butler County Fair, El Dorado, Aug. 16-19.
Chase County Fair, Cottonwood Falls, Aug. 15-17.
Chautauqua County Fair, Sedan, Aug. 4-6.
Cheyenne County Fair, St. Francis, Aug. 3-5.
Cherokee County—American Legion Fair
Columbus, Aug. 21-26.
Clark County Fair, Ashland, Aug. 2-5.
Clay County Fair, Clay Center, Aug. 21-23.
Clay County—Wakefield Farmers Fair,
Wakefield, Sept. 28-29.
Cloud County Fair, Glasco, July 27-29.
Coffey County Fair, Burlington, Aug. 26-28.
Cowley County Fair, Burden, July 27-29.
Cowley County Free Fair, Winfield, Aug. 22-25.
Comanche County 4-H Fair, Protection, Aug. 3-4.
Crawford County Fair, Girard, Aug. 7-10.
Decatur County Fair, Oberlin, Aug. 24-26.
Dickinson County Central Kansas Free Fair,
Abilene, Aug. 21-25.
Dickinson, Marion, Morris Tri-County 4-H Fair
Herington, Aug. 2-5.
Doniphan County 4-H Fair, Troy, Aug. 9-12.
Douglas County Free Fair, Lawrence, Aug. 10-12.
Douglas County Vinland Grange Fair, Vinland, Aug. 24-26.
Edwards County Fair, Kinsley, July 26-28.
Elk County-Howard Fair, Howard, Aug. 3-5.
Elk County Free Fair, Longton, Aug. 24-26.
Ellis County Free Fair, Ellis, Aug. 23-26.
Ellis County 4-H Fair, Hays, Aug. 13-16.
Finney County Free Fair, Garden City, Aug. 22-24.
Ford County Fair, Dodge City, Aug. 7-10.
Franklin County-Lane Fair, Lane, Aug. 14-16.
Franklin County Agricultural Fair, Ottawa, Aug. 22-25.
Franklin Co.-Richmond Fair, Richmond, Aug. 17-19.
Geary County 4-H Fair, Junction City, Aug. 16-18.
Graham County Free Fair, Hill City, July 31-Aug. 2.
Grant County Free Fair, Ulysses, Aug. 17-19.
Greeley County Fair, Tribune, Aug. 10-12.
Greenwood County Fair, Eureka, Aug. 10-13.
Harper County Fair, Harper, Aug. 10-12.
Harper County-Anthony Race Meet, Anthony, July 18-22.
Hamilton County Free Fair, Syracuse, Aug. 6-9.
Harvey County Fair, Newton, Aug. 21-24.
Haskell County Fair, Sublette, Aug. 10-12.
Hodgeman County Fair, Jetmore, Aug. 7-9.
Jackson County Fair, Holton, Aug. 21-23.
Jefferson County 4-H Fair, Valley Falls, Aug. 8-10.
Jewell County 4-H Fair, Mankato, Aug. 1-3.
Johnson County Free Fair, Gardner, Aug. 9-12.
Kearny County Fair, Lakin, Aug. 8-10.
Kingman County Fair, Kingman, Aug. 21-23.
Labette County Fair, Oswego, Aug. 2-5.
Lane County Free Fair, Dighton, July 26-28.

SCHURLE ENTRIES TOP ABILENE JERSEY SHOW

ABILENE — David Schurle of Manhattan had four first places in the annual spring Jersey show here recently. Schurle entries won bull calf, junior yearling heifer, get-of-sire, and senior yearling heifer competition. Other top entries in other classes were shown by Mike Frey, Everet Comp, Lyle Hanschu, and Glenda Schurle.

Dairymen Move To Grade A

The number of dairy farmers in Kansas is decreasing, but sales of Grade A milk produced in the state are higher than ever before, according to a new Kansas State University Extension Service publication.

Authored by Roger H. Wilkowske, dairy marketing economist, the publication examines the changing market for Grade A milk between 1962 and 1965.

Grade A milk is the No. 1 dairy product in Kansas in volume, value and economic contribution, says Wilkowske. Kansas dairy farmers marketed 991 million pounds of Grade A milk in 1965, up 71 million pounds from 1962. Cash receipts from the farm sale of Grade A milk were \$44 million in 1965, up \$5 million in 4 years.

Most other trends in Grade A milk production were up during the period. But the number of dairy farmers decreased from 3010 in 1962 to 2509 in 1965.

Offsetting the drop in numbers, however, has been an increase in marketings per farm. Producers sold an average of almost 395,000 pounds per farm in 1965, an increase of 29 percent during the 4-year period.

Income per dairy farm increased at an even faster rate. Average cash receipts per producer rose from \$12,951 in 1962 to \$17,693 in 1965 — an increase of 37 percent.

Kansas is a net exporter of Grade A milk. The publication notes these trends:

- Sales of bulk milk for Class I use by Kansas cooperatives to out-of-state markets — up 38 million pounds.

- Sales of Class I fluid products in other states by Kansas handlers — up 18 million pounds.

- Producer sales direct to out-of-state handlers — up 13 million pounds.

The increase in out-of-state sales resulted in an increase in net out shipments from 100 million pounds in 1962 to 134 million pounds in 1965.

Paper Back
Books
Largest Stock
In Town

25c - 35c
50c - 75c

**University
Book Store**

623 N. Manhattan Manhattan

**HARDWARE
FOR EVERY
NEED**

Tools
Too

AGGIE
HARDWARE
1205 Moro
Manhattan, Ks.

IHC Reports Profit Down

International Harvester reports its earnings for the first half of the year fell 19.5%. Sales were about 2%. Total IHC sales for the first six months of the current fiscal year were \$1.24 billion with earnings at \$47.8 million.

President Harry Bercher said for the third quarter, "the farm equipment market, while perhaps not quite so strong as had been expected, remains good. This market would probably be strengthened if farm prices should improve as some observers are now forecasting."

Farm equipment sales hit a record during the period reported, but sales of trucks and services and construction equipment were down markedly.

THE DON BERNASEK REGISTERED HOLSTEIN SALE Wednesday May 24 Axtell, Ks.

Selling At The Farm

12:30 P.M., DST

5 miles west, 1 mile north and a half east of Axtell, Ks., or 4 miles east, 1 mile north and a half east of Beattie, Ks., or 8 miles south and a half east of Summerfield, Kansas.

62 REGISTERED HOLSTEINS

- 26 Registered Holstein cows due to freshen from May to Sept.
- 12 Registered Holstein cows due to freshen in May & June. Some of the better cows will be heavy springers
- 20 Registered Holstein Heifers

MILKING EQUIPMENT
& MACHINERY

For complete details see Grass & Grain May 16

Health Papers Furnished
E. A. Dawdy, Salina, Ks., Sale Mgr.
DON BERNASEK, Owner
AXTELL, KANSAS

An Anti-Freeze For Orchards

Has a Colorado fruit grower found a better way to protect orchards against late frosts? Guy Gilbertson, a Colorado fruit grower, may have, and Colorado city agronomists are studying his methods.

Orchard owners pull out smudge pots there is a danger of burning the trees. The thick, black smoke from the smudge pots is not particularly successful in protecting trees from frost. This spring another

160 A T

**AUCTION
SALES**

Mr. &

Location:

18 1/2 miles northwest of day Inn Motel at Manhattan on #24 and #177 Highway County Road #390, then east, then north 1 mile (east corner) (The Union water tower is 1/2 mile this point); or, south 3 1/2 miles on #177 to Road #390, then east 1 mile to the south pasture.

To view the north section, go north on #24 to the Riley County line, then east 2 miles, then the 1 acre field is 1/2 mile. Watch for sale signs.

Description

The E 1/3 of the S 1/2 of the S 1/2 of Section 11, Township 11N, Range 10E, in Riley County.

All in one pasture. Water in creek which runs through the northwest corner. Appraised value of cropland lays side of Baldwin Creek.

Easement:

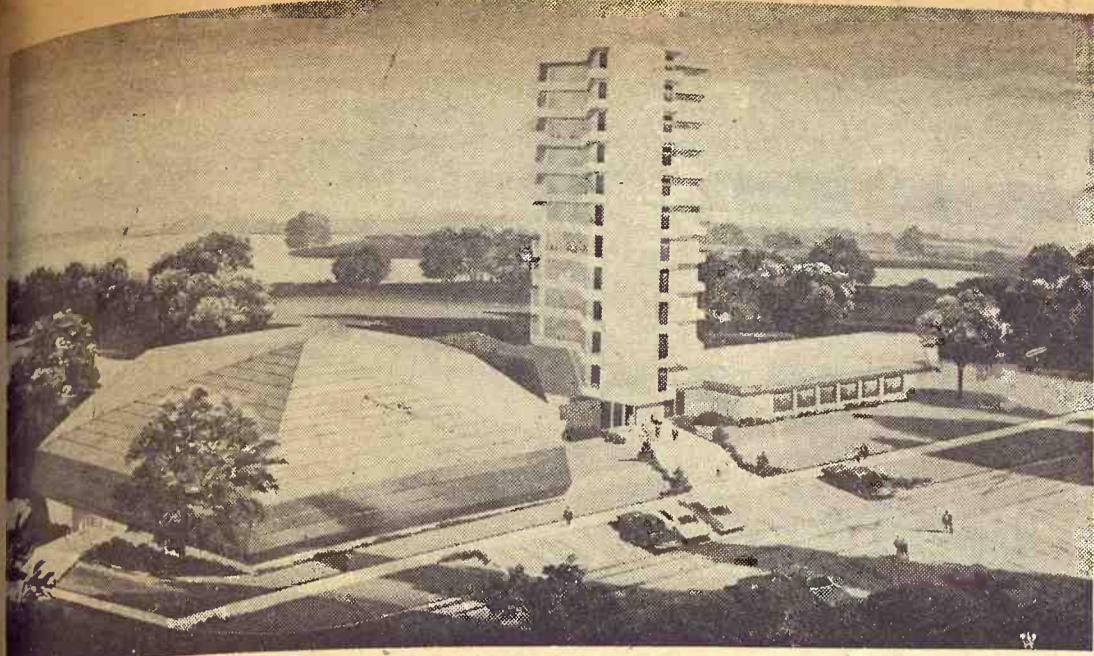
To be sold subject to an easement of 23.80 acres in connection with the Creek Reservoir.

For

Jim Kirk

135 East 29th

Aug. 16-19.
an Grove, Aug. 21-22
8-12.
1-24.
ow,
24-26.
Aug. 3rd week.
9.
ffeyville, Aug. 15-20.
edence, Aug. 8-10.
g. 15-17.
27.
19.
Aug. 10-12.
Thayer, Sept. 7-9.
12.
Aug. 15-17.
24-26.
10-12.
Aug. 7-11.
14-16.
7-9.
Phillipsburg, Aug. 8-10.
17-20.
atwood, Aug. 7-9.
11.
s Fair,
8-10.
ug. 14-19.
26.
8-11.
eo, Salina, Aug. 7-11.
g. 7-9.
stock Show,
7-19.
Meet,
nd, July 20-22.
r, Auburn, Oct. 6-7.
on, Aug. 17-19.
2.
ir.
ly 31-Aug. 3.
-28.
g. 14-16.
25.
-9.
uth Haven, Sept. 12.
0-13.
9-11.
July 27-29.
Aug. 14-16.
5.
Aug. 17-19.
Aug. 2-5.
Aug. 10-12.



Milford Lake Proposal

Holders of a lease for a marina on Milford Lake say then envision a 10-story hotel and convention center along the east side of the reservoir as pictured here. Dr. L. W. Wisby, president of Thunderbird Resort Inc. of Junction City, says the development would be located in the Curtis Creek area on high ground south of the former Alida, Kans., townsite. The cost says Wisby would be \$2 million and he said he "hoped" the project could be in operation by the summer of 1969.

An Anti-Freeze For Orchards?

Has a Colorado fruit grower found a better way to protect orchards against late freezes? Guy Gilbertson, a Palisade, Colo., fruitgrower, thinks he may have, and Colorado university agronomists are studying his methods.

Orchard owners ordinarily pull out smudge pots when there is a danger from freezing. The thick, black smoke from the smudge pots is supposed to hang over the orchard, protecting trees from the cold. It's moderately expensive and not particularly successful. This spring another bad

freeze in western Colorado destroyed perhaps 90 per cent of the western slope fruit crop. Except for Gilbertson's orchard.

He had sprayed his trees while they were still dormant with a mixture of black strap molasses and rock salt.

Gilbertson says he thinks his spray works by keeping the sap from rising to the surface as fast in warm weather, thereby leaving the trees less vulnerable to cold snaps.

New Sorghum Inbreds Released

Fifteen new inbred lines of sorghum are ready for release to breeders, Dr. Floyd W. Smith, director of the Kansas Agricultural Experiment Sta-

tion, has announced at Kansas State University, Manhattan.

The inbreds were developed cooperatively by the Kansas Agricultural Experiment Station and the Crops Research Division of the Agricultural Research Service, U. S. Department of Agriculture.

Seed for the inbred lines, developed at Manhattan and the Fort Hays Branch Agricultural Experiment Station, can be obtained from the KSU agronomy department at Manhattan in germ plasm amounts of 200 seeds or fewer, Smith said. The USDA will have no seed for distribution.

The 15 inbred lines, numbering from KS9 through KS23, have one or more characteristics superior to their parental varieties, such as good combining ability, stiff stalk, or resistance to insects and diseases.

Both K-State and its Fort Hays branch station will maintain the inbred lines for future breeding programs.

AUCTION

We are leaving Clay Center and will sell at public auction our home and household goods at the house located 1110 Harriet St.

Wednesday, May 31

Starts 1:00 p.m.

Household Goods

Magic Chef apartment size gas range, good; Coronado 65,000 gas heater; Coldspot 9-ft. refrigerator; Frigidaire 6-ft. refrigerator; wood kitchen drop leaf table;

Divan and chair; chest drawers; buffet; wardrobe with double bed, spring and mattress; power lawn mower, other misc. items.

REAL ESTATE TO SELL AT 2 O'CLOCK

Legal Description: East 46 ft. of the 92 ft. in lot 30 of Morgan Division in Clay Center, Clay County, Kans.

Has 4 room frame house and bath, city lights, gas, water and sewer, built-ins, stucco covered, garage and small utility building; linoleum covered floors, fenced front yard.

Terms on Real Estate: 30% down day of sale, balance in 30 days or when abstract and deed are delivered. Possession upon signing of contract.

Down payment to go in escrow in Peoples National Bank in Clay Center, Kans.

This home will be sold to highest bidder sale day.

Alfred Gordine, owner
Clery: Peoples National Bank of Clay Center.

Auct.: Foster Kretz, Clay Center, Kans. Phone WA6-4422 Mor-

ganville.

CORN AND MILO SEED

- FUNK'S Seed Corn
- NORTHROP KING Milo — Trudan 2 — Sordan and Forage Sorghums
- LINDSEY Milo and Forage Sorghums
- FRONTIER Milo — HyDan — Forage Sorghums

MORRISON GRAIN ELEVATOR

231 E. 8th JUNCTION CITY, KANS CE 8-6118

CLAY CENTER SALES CO.

Hog Sale Every Monday

Starts 1:00 p.m.

Cattle Sale Every Tuesday

Starts 12:30 Noon

SALE AS USUAL MAY 30

Market Report May 15 & 16

HOGS

NO. 1 Butchers	21.75 to 23.45
Heavies	21.00 to 21.50
SOWS	17.85 to 20.95
Breeding Boars, by the head	45.00 to 57.50
Feeders, top 22.50; piggies by hd.	17.50 to 21.25

CATTLE

Feeder steers	25.80 to 27.50
Feeder Heifers	23.50 to 25.75
Steer Calves	30.00 to 31.00
Cows	17.50 to 19.50
Holstein steers	23.00 to 24.70
Bologna Bulls	21.90 to 22.80

H. P. Robbins, Clay Center, ME 2-3210
R. A. Brueggemann, Clay Center, ME 2-2761
Horace Ware, Longford, Phone 72
CLAY CENTER, KS.

AUCTION SALE

Saturday JUNE 3

Starts 11:00 a.m.
Lunch Served

Due to my child's health, I am compelled to move to another climate and will sell at public auction one block west of The American Legion Hall in HOPE, KANSAS

HOUSE AND LOTS

2 story house and 7 lots, four bedrooms, kitchen, living room, dining room, full bath, utility room, partial basement; front yard gas light, hot water heater, like new. All modern house.

Anyone wishing to inspect this home may call Col. Carl Schnell, Real Estate broker, Ph. CO 3-1883, Abilene, Kans.; or call or see Evelyn Graves, owner, Hope, Kans. (Home will be sold at 3:00 p.m.)

Terms on real estate 25% down day of sale, balance when merchantable title is approved or within 30 days. Hope Bank, Escrow agent. Cols. Carl Schnell & Lee Remy, auctioneers & Real Estate brokers.

HOUSEHOLD FURNITURE & MISCELLANEOUS

18 cu. ft. Philco chest type deep freeze, like new
Coronado refrigerator w/ crosstop freezer, like new (deluxe)
Coronado 30-in. gas range w/ full view oven, like new (deluxe)
A.B.C. automatic washer, like new
Gas auto. clothes dryer, good
3-sp. record player
3-pc. bedroom suite, full size; 2-pc. bedroom suite, full size; maple bed, full size; metal bed, full size; new mattress; 5-drawer chest; Hollywood bed, twin size; rollaway bed, twin size;

Heavy duty sewing machine for upholstery & light leather work; studio couch, like new; western style studio couch w/ matching platform rocker; coffee table; 2 end tables; 2 boot table lamps; 2 recliners, good; 2 old TVs w/ stands; 2 older divans; 4 occ. chairs, newly upholstered; Vanity magazine lamp; sm. mag. rack; 2 buffets; sideboard; round oak table w/ 2 leaves; 4 dinette chairs; lots of kitchen chairs; old fashioned cabinet w/ flour & sugar bin;

metal cabinet; Singer canister type sweeper comp.; Casco metal high chair; 2 cold pack canners; 16-qt. Presto pressure cooker; canning jars; 20-ft. exten. ladder; 7-in. 20-ft. exten. ladder; 10-ft. ladder; 5-ft. step ladder; lot of home canning! 4 candelairs; 7-in. power saw, used 2 times; 6 1/2-in. power saw; elec. sander, like new; large gas space heater; charcoal grill, like new; Cosco serving table on wheels; typewriter stand on wheels large; tool box for pick-up truck; 2 room size water coolers; large swing set w/ slide; 20-in. girl-boy bike w/ basket & training wheels; 22 single shot rifle; 2 gun racks, 1 w/ ammunition drawer; 20-gal. gas hot water heater, good; G.E. auto. washer, no motor, but good; large wheel barrow; large coaster wagon; hand tools of all kinds; lots of water hose & sprinklers; Dishes; cooking utensils; some antique items; lots of paint, assorted colors & sizes; flower seeds; lots of quilt tops & quilt pieces; lots of toys & dolls; lots of knick-knacks; other items too numerous to mention.
2 5-gal. aquariums, complete & heavily stocked

EVELYN GRAVES' Owner

Aucts: Carl Schnell, Lee Remy
Wm. Schnell

Clerk: First National Bank, Hope

160 A TUTTLE CREEK PASTURE

Sat., May 27

Starts 2:30 p.m.

At entrance of Riley County road No. 390.

WEST SIDE TUTTLE CREEK RESERVOIR

AUCTION SALE

Mr. & Mrs. Vernon Berggren

CLAY CENTER, KANS.

Location:

18 1/2 miles northwest of the Holiday Inn Motel at Manhattan, Kansas on #24 and #177 Highways to Riley County Road #390, then east 2 miles, then north 1 mile to the southeast corner (The University Park water tower is 1/2 mile north of this point); or, south of Randolph 1 1/2 miles on #177 to Riley County Road #390, then east 2 miles and north 1 mile to the southeast of the pasture.

To view the north side of the 160 acres, go north on #177 Highway from the Riley County Road #390, then east 2 miles. The north side and the 1 acre field is 1/4 mile south. Watch for sale signs.

Possession:

Immediate possession on day of sale.

Terms:

10% of purchase price to be paid as earnest money on day of sale and balance upon delivery of Warranty Deed and Merchantable Abstract of Title.

Escrow Agent:

Union State Bank
Clay Center, Kansas

Inspection:

You are invited to inspect this property at your convenience.

The auctioneer-broker or his representative will be on the land on Wednesday, May 24 from 2:00 P. M. until 7:00 P. M.

For further information, please contact Jim Kirkemide, Auctioneer-Broker, 135 East 29th, Topeka, Phone AM 6-4590, or A. J. Blake, Associate Broker, Clay Center, Kansas. Phone ME 2-2801.

Description:

The E 1/3 of the S 1/2 and the E 1/2 of the S 1/2 of the N 1/2 of Section 11, Township 8, Range 6 in Riley County.

All in one pasture. Watered by Baldwin Creek which runs across the southwest corner. Approximately 1 acre of cropland lays on the north side of Baldwin Creek.

Easement:

To be sold subject to an easement of 23.80 acres in connection with Tuttle Creek Reservoir.

Sale to be held at the south-east corner, 1/2 mile south of University Park water tower.

For Further Details Write or Call

Jim Kirkemide, Auctioneer - Broker
135 East 29th St., Topeka.
Phone AM 6-4590

de A

Sales of bulk milk for I use by Kansas cooper to out-of-state markets - 3 million pounds.

Sales of Class I fluid milk in other states by Kansas - up 18 million lbs.

Producer sales direct to state handlers - up 10 million pounds.

The increase in out-of-state shipments from 100 million pounds in 1962 to 180 million pounds in 1965.

er Back

ooks

est Stock

Town

University Book Store

Manhattan Manhattan

RDWARE

R EVERY

NEED

AGGIE

HARDWARE

1205 Mon

Manhattan, Kas

Tools Too

G&G Calendar

May 23, 1967

22

Grass & Grain

May 24 — Registered Holstein sale north of Beattie, Kans., Don Bernasek. Sale mgr. E. A. Dawdy.

May 24, 25, 26 — Antiques, household and misc. items in Clifton, Kans., Carl Schumaker est. Auct. Foster Kretz.

May 25 — McLucas Wiebe Lumber Co. sale in Fairbury, Nebr. Auct. Siegel and Schultis.

May 26 — Mrs. Muriel Van Horne, Salina. House trailer and furniture. Aucts. Frank Harz & Bob Perry.

May 26 — Special horse sale in Concordia, Tom Walker.

May 27 — Pasture west of Tuttle Creek Reservoir northeast of Manhattan, Kans., Mr. and Mrs. Vernon Berggren. Auct-broker, Jim Kirkemide.

May 27 — House and lots in Abilene, Mr. & Mrs. E. D. Wood. Auct. & real est. broker Carl Schnell.

May 27 — Household goods in Salina, Jack Wilson. Aucts.

Frank Harz and Bob Perry.

May 27 — Complete dispersion sale northeast of Lawrence, Ks., Juniper Hill Farm, Stewart Newlin and Gordon S. Kay. Phil Ljungdahl, sale mgr. Ray Sims, auctioneer.

May 29 — House and furnishings in Fairbury, Nebr., Mrs. Neva Bales est. Auct. Harold R. Siegel.

May 31 — Real estate and household goods in Clay Center, Alfred Gordine. Auct. Foster Kretz.

June 1 — Household goods in Clay Center, Mrs. Warren Young Auct. Foster Kretz. Date changed from May 29.

June 1 — Land sale south of Diller, Nebr., and house in Fairbury, Nebr., Jennie Ahrends estate. Auct-Real Est. broker Harold R. Siegel.

June 3 — House, lots and furnishings in Hope, Kans., Evelyn Graves. Aucts. Carl Schnell, Lee Remy & Wm. Schnell.

June 3 — Furniture & antiques,

Salina. Uphoff & Nethaway. Aucts. Frank Harz & Bob Perry.

June 3 — Household goods northwest of Abilene, Jack Burdick. Auct. Foster Kretz.

June 3 — Contractors eqpt. & household sale in Manhattan, Joe Pakan. Lawrence Welter, auct.

June 5 — Furniture & antiques in Fairbury, Nebr., Mrs. Myrtle C. Bloyd. Auct. Harold R. Siegel.

June 6 — Quitting business auction in Waterville, Kans., Barleen Chevrolet Co. sale mgr. & auct. Jim Kirkemide.

June 8 — Furniture & tools in Fairbury, Nebr., Pearly and Edna Lemmon. Auct. Harold R. Siegel.

June 10 — Complete dispersal sale of registered Quarter horses, Elmer & Evelyn Zeckser, Alma, Kans.

June 12 — House & furniture in Hiawatha, Kans., Elmer Lohman. Auct. Harold R. Siegel.

June 17 — Household & antiques at Manhattan. Mrs. Ella Smith Estate. Lawrence Welter, auct.

Oct. 28 — Kansas Milking Shorthorn Society state sale in Hutchinson, Freg Rogers, sale mgr. Dick Sears, auct.

Nov. 3 — 5th annual Hammarlund-Shamrock Angus sale. St. Marys, Kansas.

Nov. 4 — All breed calf sale in Manhattan, Olson and Fagerberg., joint sale.

Nov. 15, 1967 — Registered Hereford sale, Smolan, Johnson Hereford Farms; Elmer L. Johnson & Sons.

Nov. 18 — Kocher Herefords production sale in Onaga, Herman Kocher & Sons.

Nov. 18 — State ewe sale in Hutchinson, Kans. Purebred Sheep Breeders Assn., V. E. McAdams, sec.

Nov. 21 — Hereford production sale in Marysville, Peterson's Herefords. Elmer Peterson & Son.

Nov. 22 — Hereford production sale in Marysville, Peterson's Herefords. Elmer Peterson & Son.

Nov. 25 — Fall sale of Arbuthnot Herefords, Haddam, Ks. Bob Arbuthnot.

Jan. 20, 1968 — Rebenstorf Herefords Production sale, Elmer Rebenstorf, Sylvan Grove, Kans.

VANDALS SHOOT A COW NEAR MCPHERSON
MCPHERSON — A cow valued at \$350 was shot, apparently by vandals, on the Cleve Hull farm recently. Hull said he saw the cow down and went out to investigate and discovered the animal had been shot thru the stomach.



TEX REAL
ONWARD 951b

Cow Herd —
Royal Essar
CKato, Heir
Apparent

SERVICEABLE BULLS
WITH WEIGHT RECORDS
Priced . . . \$300 to \$500

GRANT POOLE
MANHATTAN, KANS.
Located 4 mi. south of I-70-K177
intersection, 2 mi. west on McDowell Creek Rd. Ph. PR 6-8315.



A Little Better This Year

Bert Jost and Harold Kasper stand by a load of Jost's hay. Last year the yield on this 20-acre field was about 100 bales. This year the yield was about 360. Jost and Kasper both farm near Hillsboro.



While receipts were lighter, as expected, our sale last Saturday was an outstanding one. We had an especially outstanding fat hog market, with a top of \$23.60. Cattle were higher on all classes.

We expect lighter sales now through harvest, but we are anxious to keep our four major hog buyers supplied. If you have fat hogs coming due for market, we think you'd be wise to take time out and bring them to this sale.

Regardless of the fall-off during the harvest season, YOU CAN DEPEND ON THIS BARN OPERATING WITHOUT INTERRUPTION EVERY SATURDAY. This is a service to our patrons, and we mean to keep our service best for you.

***** SPECIAL CONSIGNMENTS *****

75 Choice Feeder Shoats, weighing 70 to 80 lbs.
1 Choice Guernsey Milk Cow, will calve by sale date.

The following is a sampling of our sale:

STEER CALVES

4 whiface steers	615 @	25.80	\$18.50; others from \$15.50 to
1 whiface steer	240 @	31.25	\$17.00.
9 whiface steers	450 @	28.90	
4 whiface steers	520 @	28.60	
22 blkwhif steers	510 @	27.00	
1 whiface steer	340 @	28.50	

HEIFER CALVES

17 black heifers	490 @	23.90	
4 whiface heifers	505 @	24.10	
10 whiface heifers	390 @	25.00	
3 whiface heifers	360 @	25.00	
3 whiface heifers	280 @	27.00	
11 whiface heifers	445 @	24.00	

FAT CATTLE & FEEDERS

2 whiface heifers	640 @	22.30	
2 blkwhif steers	690 @	25.20	
11 blkwhif steers	1190 @	23.90	
12 whiface steers	925 @	25.50	
1 whiface steer	815 @	24.60	
1 whiface steer	1025 @	24.30	

COWS

We had a real good cow market. Good cows sold from \$17.00 to

2 sows	400 @	18.40
2 red sows	515 @	17.80
1 spotted sow	420 @	18.70
1 hamp sow	280 @	20.70
1 white sow	390 @	19.00
1 red sow	610 @	17.10

PIGS

Good pigs, 50 lbs. and up -- \$18.50 to \$21.50; others from \$16.00 to \$18.00; and the real small ones from \$13.00 to \$16.00.

LICENSED AND BONDED
BARN PH. JUNCTION CITY CE 8-1471
If you have livestock to appraise, call:
VERN LANGVARDT, Manager, 502 UPLAND
HOWARD LANGVARDT, Auctioneer, 520 UPLAND
HERB NEUMEYER, White City, Phone 349-2863

The Growing Hog Market Is At

WASHINGTON SALES CO.

TRY US SOON

HOGS every TUESDAY

CATTLE every WEDNESDAY

A Growing Market for Finished Cattle

ED BURT

Barn Phone EA 5-2266 Residence EA 5-2393

Washington, Kans.

Ronald Rice Motors, Inc.

CHEVROLET OLDSMOBILE CADILLAC

North Kansas' Largest Volume Dealer

NW 2nd Phone CO 3-4000 ABILENE, KANS.

VACATION-READY LIKE NEW USED CARS

Enjoy a worry free vacation in one of these late model used cars.

66 OLDSMOBILE D-88 4-dr. hardtop	\$2895
Sedan. Radio, heater, automatic transmission, power steering, power brakes, air conditioner.	
66 CHEVROLET Impala 2-dr. V-8	\$2095
Sports Coupe. Radio, heater, stick shift.	
66 OLDSMOBILE 88 Jetsar 4-dr.	\$2995
Hardtop. Radio, heater, automatic transmission, power steering, power brakes, air conditioner.	
66 CHEVROLET Impala 2-dr. V-8	\$2895
Hardtop. Radio, heater, automatic transmission, power steering, power brakes, 16,000 miles.	
66 PONTIAC Custom 2-dr. V-8	\$2395
Hardtop. Radio, heater, automatic transmission, power steering, power brakes, air conditioner.	
66 OLDSMOBILE Delta 4-dr. Holiday Sedan	\$2795
Radio, heater, automatic transmission, power steering, power brakes, air conditioner.	
65 OLDSMOBILE Conv. Starfire	\$2895
Radio, heater, automatic transmission, power steering, power brakes, air conditioner.	
64 CHEVROLET Impala 2-dr. V-8 Hardtop	\$1695
Radio, heater, automatic transmission.	

ONLY A FEW DAYS LEFT!
To go-go Oldsmobile with Ronald Rice.
Big Go Oldsmobile promotion ends June 10.

63 CHEVY II 2-dr., 6-cyl.	\$1095
Radio, heater, automatic transmission.	
63 DODGE 4-dr., V-8	\$1095
Sedan. Radio, heater, stick shift.	
62 CHEVROLET Bel Air	\$1195
Radio, heater, automatic transmission, power steering, power brakes.	
62 T-BIRD Conv.	\$1295
Radio, heater, automatic transmission, power steering, power brakes, air conditioner.	
61 OLDSMOBILE F-85	\$1095
4-dr. Radio, heater, automatic transmission.	
61 RAMBLER 4-dr. 6-cyl.	\$695
Radio, heater, stick shift.	
61 CHEVROLET 4-dr. 6-cyl.	\$895
Radio, heater, automatic transmission.	
61 FORD Falcon 4-dr. 6-cyl.	\$595
Station wagon. Radio, heater, stick shift.	
60 PONTIAC 4-dr. Hardtop	\$1095
Radio, heater, automatic transmission, factory air conditioner.	



Weather
Warm and dry is area forecast by the Bureau for the next week. Their maps show normal precipitation and normal temperatures.

10,000 Gallons Of Fertilizer Down The River

ABILENE — Ten thousands of gallons of liquid fertilizer poured into the Smoky River last week but apparently were enough diluted to cause any serious damage to livestock.

The fertilizer was from the Abilene cooperative probably accidentally dumped by a vandal.

The stuff was 28 percent nitrogen and valued at \$1.00 a gallon. It ran into an Abilene storm drain and then into Mud Creek, which presently flows into the Hill.

Sale Every



As expected, Wednesday, a The market, and hogs. T and they bro shaved a goo of the sale:

1 wf cow	---10
1 wf cow	---10
1 wf cow	---10
1 wf cow	---
1 wf cow	---
1 wf cow	---
2 hol cow	---12
1 hol cow	---10
1 hol cow	---16
7 cows&cfs	---
1 wf str	---
3 wf str	---
1 wf str	---
1 wf str	---
1 bwf hfr	---
1 bwf hfr	---
1 wf str	---
1 blk str	---
1 ron str	---
3 hol str	---
1 hol str	---
1 bwf str	---
2 hol str	---

NEW T

FARM TIRE CENTER Junction City, Kans.

Save Time And Your Money
with RIVERSIDE

HI-WAY TRACTION

A replacement tire for almost any type of service, on the field or on the road. Rugged Nylon cord body protects against bruises. The wide tread and flat profile put more stabilizing mileage-giving rubber on the road. Come see the Truck Tire Man at Wards for the deal that suits your need. NO MONEY DOWN.

\$37⁸⁸

8.25-20
& recappable tire
Plus Fed. Ex. Tax

FOR ONLY \$5 MORE
HI-TRAK NYLON

\$42⁸⁸

8.25-20
Plus Fed. Ex. Tax
& recappable tire.

Tread is wide & flat with deeply slotted lugs & vented buttress for wet going. Tough Nylon cord body resists scuffs.

RIVERSIDE SUPER OE BATTERY

Super O.E. means better than original equipment. Reg. exchange price \$21.95. Other 12Vs as low as \$9.88.

\$16⁸⁸

12V, 245
Exchange
36 Month
Guarantee



Riverside Hi-Way
Traction **\$14⁸⁸**
6.00x16

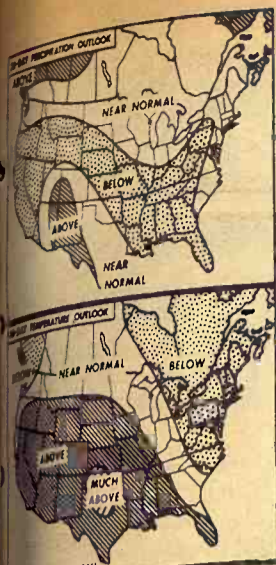


6.00-16. Wards replacement level tire has a wide, flat road imprint, giving 9-row tread traction. Rugged Nylon cord body. Other sizes: 6.70-15 @ 15.88; 6.50-16 @ 16.88; 7.00-15 @ 18.88. All prices plus F.E.T. & recappable tire.

1010 West 6th

JUNCTION CITY

Phone Collect CE 8-4350



Weather

Warm and dry is the G&G forecast by the Weather Bureau for the next 30 days with their maps showing below normal precipitation and above normal temperatures.

10,000 Gallons Of Fertilizer Down The River

ABILENE — Ten thousand gallons of liquid fertilizer were poured into the Smoky Hill River last week but apparently were enough diluted to not do any serious damage to fish or livestock.

The fertilizer was released from the Abilene cooperative, probably accidentally believes manager Herb Wetzel, altho possibly by a vandal.

The stuff was 28 percent nitrate and valued at \$2700. It ran into an Abilene storm sewer and then into Mud Creek which presently flows into the Smoky Hill.

Sale Every Wednesday

Hogs 12 noon
Cattle 1 p.m.



As expected, receipts were light for the sale last Wednesday, as farmers have been busy in the field. The market, however, was strong, both on cattle and hogs. There was a pretty fair run of cows, and they brought up to \$1.00 higher. Young steers showed a good gain. Following is a partial report of the sale:

1 wf cow	1000 @	18.80	2 hol str	358 @	27.25
1 wf cow	1010 @	18.70	2 red bulls	382 @	25.40
1 wf cow	1030 @	17.25	1 blk str	615 @	26.60
1 wf cow	845 @	18.00	1 wf hfr	525 @	26.30
1 wf cow	965 @	18.90	1 wf bull	275 @	29.25
1 wf cow	1215 @	17.75	1 wf bull	375 @	28.90
2 hol cows	1370 @	18.20	1 wf bull	600 @	23.60
1 hol cow	1090 @	18.80	1 bwf hfr	620 @	19.50
1 hol cow	1610 @	18.90	2 wf str	275 @	29.60
7 cows&cfs		215.00	7 fat hogs	197 @	23.30
1 wf str	615 @	23.50	12 fat hogs	208 @	23.10
3 wf str	345 @	27.50	5 shoats	150 @	21.80
1 wf str	400 @	23.90	5 hamp shts	100 @	20.00
1 wf str	460 @	24.50	1 red boar	355 @	12.30
1 bwf hfr	405 @	25.75			
1 bwf hfr	540 @	23.20			
1 wf str	690 @	25.10			
1 blk str	680 @	25.40			
1 ron str	645 @	24.00			
3 hol str	363 @	25.80			
1 hol str	330 @	25.80			
1 bwf str	290 @	28.50			
2 hol str	425 @	25.25			

BARN PHONE AT 3-5566

There is someone at the barn all day Tuesday & Wednesday & Thursday morning. Otherwise call:

AUCTIONEER:

Floyd Gehring
Moundridge Phone 345-8195

NEWTON

LIVESTOCK & COMMISSION CO.

NEWTON KANSAS

Sale Every Thursday

Hogs 11:30 a.m.
Cattle 1 p.m.

The cattle market at our sale Thursday was steady on all classes of cattle with the exception of feeder cattle which was 50¢ to \$1.00 higher, and in strong demand. The extreme top on butcher hogs was \$24.00 with the bulk going at \$23.80. Feeder and weaning pigs were down 50¢ to \$1.00 a head. The following is a partial listing of our consignments:

FAT CATTLE & FEEDERS

13 whifce steers	618 @	26.85
15 whifce steers	656 @	26.65
1 red steer	560 @	26.20
6 whifce steers	841 @	26.00
14 whifce steers	748 @	24.95
100 mixed steers	799 @	24.70
18 shorthorn steers	733 @	24.50
6 black steers	714 @	24.45
46 mixed steers	765 @	24.40
1 blkwhifce steer	690 @	24.00
11 whifce heifers	668 @	23.95
16 shorthorn heifers	622 @	23.70
8 whifce heifers	654 @	23.60
3 mixed heifers	660 @	23.20

COWS

1 holstein cow	1470 @	18.90
2 black cows	925 @	18.30
1 guemsey cow	1020 @	18.10
1 whifce cow	790 @	17.90
1 brownswiss cow	1125 @	17.70
1 holstein cow	1525 @	17.10

BULLS

1 whifce bull	1160 @	23.75
1 holstein bull	1390 @	22.70
1 whifce bull	1900 @	21.80
1 holstein bull	935 @	20.30

BULL & STEER CALVES

1 whifce steer	165 @	31.50
1 whifce bull cf	215 @	30.25
1 whifce steer	355 @	29.75
2 black steers	227 @	29.75
4 black steers	295 @	28.00
3 black steers	352 @	26.75
5 mixed bcfs	406 @	26.60
3 blkwhifce steers	395 @	23.75

1 black steer	300 @	23.75
1 whifce bull cf	435 @	22.90

HEIFER CALVES

1 black heifer	220 @	27.50
1 black heifer	255 @	24.75
1 whifce heifer	365 @	24.30
1 black heifer	340 @	24.00
1 broface heifer	480 @	22.90
1 black heifer	445 @	22.90
1 blkwhifce heif	350 @	22.60
2 whifce heifers	440 @	21.80
1 whifce heifer	360 @	21.70
3 black heifers	262 @	21.00

HOGS & PIGS

10 mixed fats	238 @	24.00
11 white fats	223 @	24.00
14 black fats	221 @	23.85
7 mixed fats	256 @	23.70
3 hamp fats	320 @	23.00
1 white sow	330 @	19.30
2 hamp sows	400 @	18.60
1 red sow	580 @	18.10
2 mixed boars	318 @	15.20
1 hamp boar	595 @	14.50
9 white feeders	166 @	22.60
7 mixed feeders	159 @	22.50
15 red pigs		19.25
20 white pigs		18.25
53 spotted pigs		17.25
28 white pigs		14.25
25 mixed pigs		12.25

RALEIGH BREEDING, MANAGER

barn HI 3-3671; home HI 3-3547

Auctioneer: Larry Lagasse,
Ph. Concordia, Kans. CH3-1714

MARYSVILLE

LIVESTOCK & COMMISSION CO.
MARYSVILLE, KANSAS

Sell At St. Marys

Sell
Or Buy

Cattle & Hogs

By
Auction

Tuesdays

Memorial Day
TUES., MAY 30
OUR REGULAR SALE DAY
NO SALE

Our market this week was very active. Stockers and feeders were 50¢ to \$1.00 higher. Fat steers and heifers were \$1.00 higher. All grades of killing cows were 25¢ to 50¢ higher. Don't forget we will hold NO SALE MEMORIAL DAY. Following is a partial listing of our sale:

STOCKER & FEEDER STEERS		
10 whiface steers-----	633 @	27.70
2 whiface steers-----	640 @	26.75
5 whiface steers-----	597 @	26.70
1 charloais steer-----	620 @	26.20
1 black steer-----	625 @	26.20
2 whiface steers-----	617 @	25.80
2 whiface steers-----	795 @	25.70
1 roan steer-----	620 @	25.30
4 whiface steers-----	1100 @	24.80
2 whiface steers-----	825 @	24.60
4 whiface steers-----	1437 @	24.50
5 whiface steers-----	956 @	24.30
3 whiface steers-----	816 @	24.20
4 black steers-----	716 @	24.10
6 black steers-----	721 @	24.10
2 black steers-----	700 @	23.50
1 broface steer-----	680 @	23.50
1 blkwhiface steer-----	840 @	23.30
1 red steer-----	745 @	23.10
1 whiface steer-----	680 @	23.10
1 blkwhiface steer-----	830 @	22.90
1 whiface steer-----	690 @	22.80
1 black bull-----	705 @	22.80
1 black steer-----	615 @	22.70
2 holstein bulls-----	567 @	22.60
1 holstein steer-----	745 @	22.20
1 whiface steer-----	655 @	22.10
1 charloais steer-----	870 @	21.70

STEER CALVES		
1 whiface steer-----	130 @	38.00
1 whiface steer-----	185 @	37.50
1 whiface steer-----	260 @	33.75
1 blkwhiface steer-----	210 @	33.50
1 whiface steer-----	270 @	31.50
8 whiface steers-----	353 @	30.30
10 black steers-----	424 @	29.40

8 whiface steers-----	392 @	29.25
1 whiface steer-----	255 @	29.25
4 blk & blkwhif steers--	438 @	28.60
2 blkwhiface steers-----	440 @	28.50
3 blk & blkwhif steers--	431 @	28.20
3 whiface steers-----	465 @	28.20
7 whiface steers-----	473 @	28.10
6 whiface steers-----	445 @	27.90
3 blkwhiface steers-----	491 @	27.80
2 blkwhiface steers-----	527 @	27.70
1 blkwhiface steer-----	385 @	27.50
8 whiface steers-----	507 @	27.20
4 black steers-----	325 @	27.10
7 whiface steers-----	488 @	27.10
1 whiface steer-----	420 @	26.50
1 whiface steer-----	525 @	26.50
2 blkwhiface steers-----	545 @	26.50
1 blkwhiface steer-----	500 @	26.40
1 blkwhiface bull-----	485 @	26.30
2 black steers-----	525 @	26.30
1 whiface steers-----	400 @	26.20
1 blkwhiface steer-----	460 @	26.10
1 blkwhiface steer-----	340 @	26.10
1 whiface steer-----	405 @	26.00

For Information or Estimates

Rezac Barn	St. Marys 437-2999
Delaine Rezac	St. Marys 437-6266
Elmer Imthurn	Maple Hill MI 3-2440
Paul Kramer	St. Marys 437-2993

Auctioneers: Lawrence Welter and Gene Toby

STOCKER & FEEDER HEIFERS		
1 whiface heifer-----	600 @	24.30
7 whif & blkwhif heifs--	993 @	24.00
2 whiface heifers-----	610 @	23.95
1 black heifers-----	630 @	23.90
8 whiface heifers-----	660 @	23.90
1 whiface heifers-----	645 @	23.70
8 whiface heifers-----	802 @	23.50
3 whiface heifers-----	576 @	23.40
1 whiface heifer-----	660 @	23.35
3 whiface heifers-----	760 @	23.30
1 whiface heifer-----	690 @	23.30
7 whiface heifers-----	620 @	23.20
10 whif & blk heifers--	948 @	23.15
1 whifaceroan heifer--	560 @	23.00
1 blkwhiface heifer-----	620 @	23.00
5 blkwhiface heifers-----	701 @	22.90
4 blk & blkwhif heifs--	562 @	22.90
13 whiface heifers-----	590 @	22.80
1 black heifer-----	810 @	22.60
3 black heifers-----	708 @	22.60
1 black heifers-----	650 @	22.50
5 whiface heifers-----	841 @	22.50
1 whifaceroan heifers--	580 @	22.30
1 whifaceroan heifers--	625 @	22.10
2 whiface heifers-----	570 @	22.10
6 whiface & blk heifs--	961 @	22.00
3 whiface heifers-----	590 @	21.80
1 whiface heifer-----	690 @	21.70
3 black heifers-----	603 @	21.60
3 black heifers-----	815 @	21.60

HEIFER CALVES		
1 blackwhiface heifer -	240 @	26.70
2 black heifers-----	365 @	26.00
2 whiface heifers-----	335 @	25.80
4 blkwhiface heifers-----	466 @	24.70
1 whiface heifer-----	430 @	24.60
4 black heifers-----	482 @	24.20
2 black heifers-----	420 @	24.10
6 whiface heifers-----	530 @	24.10
3 black heifers-----	458 @	24.10
1 whiface heifer-----	295 @	24.00
2 black heifers-----	397 @	23.30
1 whiface heifer-----	540 @	23.25
3 whiface heifers-----	546 @	23.20
1 black heifer-----	400 @	23.20
3 charloais heifers-----	540 @	23.00

COWS		
1 whiface cow-----	940 @	20.00
1 whiface cow-----	1080 @	18.90
1 whiface cow-----	1010 @	18.90
1 whiface cow-----	1100 @	18.80
1 whiface cow-----	1070 @	18.70
1 whiface cow-----	980 @	18.70
1 holstein cow-----	1270 @	18.60
1 holstein cow-----	1400 @	18.30
1 whiface cow-----	1145 @	18.30
1 broface cow-----	1360 @	18.40

LIVESTOCK COMMISSION COMPANY

Rezac

St. Marys, Kans.

CERTIFIED



With a higher market on all classes we sold 1599 cattle and 793 hogs the past week. The feeder cattle Thursday looked \$1.00 higher with a very active demand. The fat steer top Monday was \$24.45 and a hog top of \$23.10. There will be no Thursday sales held until after harvests. Regular Monday sales for all classes continues thru harvest.

**MONDAY SALE ONLY
THROUGH HARVEST**
Selling all classes of cattle and hogs on Monday.

CATTLE		
Clayton Johnson, Brdg	79 wf str	895 @ 25.30
Paul Crandall, LtRiver	13 wf str	523 @ 28.60
Duane Drown, Miltva	3 wf hfrs	472 @ 24.40
Paul Crandall, LtRiver	5 blk str	688 @ 25.20
Howard Crowther, Sal	5 red hfrs	707 @ 23.40
Jake Leo Heinz, Ellin	9 wf str	473 @ 29.20
Jake Leo Heinz, Ellin	7 wf hfrs	439 @ 25.70
Ted Rumold, Hope	1 wf bull	1285 @ 22.80
Thail Bros, Gypsum	17 wf str	796 @ 25.90
Thail Bros, Gypsum	4 bfw str	877 @ 25.80
Thail Bros, Gypsum	7 wf hfrs	724 @ 24.30
Tom Wikoff, Brookv	12 wf str	588 @ 28.30
Geo Behnke, Bushton	8 wf str	799 @ 25.50
Geo Behnke, Bushton	3 wf str	963 @ 24.75
W Schwerdtfeger, Ells	7 lwf str	812 @ 25.60
Russell Peppial, Ells	6 char str	538 @ 27.30
L Kasber, Ellinwood	3 wf str	780 @ 26.00
M Kasher, Niles	5 bfw str	665 @ 25.35
Wallace Gust, Kanop	5 wf str	468 @ 27.90
Leo Bloomberg, Assar	10 bfw hfrs	552 @ 23.60
E Alquist, Tescott	1 blk bull	1235 @ 23.10
W Writer, Hillsboro	6 wf hfrs	511 @ 25.10
Harry Root, McPhers	5 bfw bulls	231 @ 32.60
Howard Constable, De	8 blk hfrs	595 @ 24.10
Dave Ensy, Inman	1 wf str	1045 @ 24.10
Ben Ensy, Inman	2 bfw str	1042 @ 24.10
Ray Miller, Solomon	3 wf hfrs	425 @ 24.30
Leonard Valenta, Lorr	2 bfw hfrs	388 @ 24.90

E Macek, Ellsworth	1 hol cow	1085 @ 17.90
L Copple, Bennington	1 hol cow	1225 @ 18.80
N Bengston, Lindsbor	1 wf cow	850 @ 17.30
N Bengston, Lindsbor	1 wf hfr	755 @ 23.50
E Wanshoff, Lorraine	3 wf hfrs	397 @ 25.30
Michael Karber, Gyps	1 blk cow	1320 @ 17.00
Chester Johnson, Gal	1 ron str	775 @ 24.80
Leonard Hall, Linc	1 blk cow	1235 @ 18.40
A C Perry, Tescott	p hol cow	1220 @ 18.20
Glen Schoff, CounGr	1 hol cow	1130 @ 18.90
Glen Schoff, CounGr	1 hol cow	1145 @ 18.60
Art Lancaster, Barnard	1 ang cow	1145 @ 17.60
Art Lancaster, Barnard	1 guer cow	1195 @ 18.70
Roy Anderson, Gypsu	1 wf bull	1235 @ 21.90
Sun Ranch, Falun	1 wf bull	1650 @ 22.20
Alvin Adey, Wells	1 blk bull	1290 @ 22.50
Richard Matthews, Tes	1 hol cow	1385 @ 18.75
Richard Matthews, Tes	1 hol cow	1350 @ 19.00
Richard Matthews, Tes	1 hol cow	1650 @ 19.10
John Hughs, Marquette	1 wf cow	1340 @ 17.30
John Hughs, Marquette	1 wf cow	1095 @ 18.70
John Hughs, Marquette	1 wf cow	1420 @ 17.80
D H Bruning, Ellswor	4 shthn str	465 @ 27.80
D H Bruning, Ellswor	5 shthn str	521 @ 27.40
Earl Mattison Jr, Sal	1 hol cow	1375 @ 18.70
Earl Mattison Jr, Sal	1 hol cow	1340 @ 18.70
Earl Mattison Jr, Sal	1 hol cow	1200 @ 18.90

FOR INFORMATION OR ESTIMATES

LAURENCE CLEMENCE	Abilene	Phone CO 3-3091
MERRILL CHRISTIANSEN	Durham	Phone 732-3371
BOB MUIR	Salina	Phone TA 3-2963

Market Reports
Radio Station KSAL, Salina
6:45 a.m. Every
Monday, Wednesday & Friday
KFRM
6:55 a.m. Mon. through Fri.

Central Kansas Most
Modern Livestock Auction . . West Side Of **Salina**
TWO SALES EVERY WEEK

MONDAY

Fat Cattle 9 a.m.

Hogs sell at 11:00 a.m. followed by our regular cattle sale as they are unloaded.

THURSDAY

Cattle Only

Selling starts at 11:00 a.m. Cattle will sell in the order they are consigned on the books.

Cover Bros, Abilene	15 bfw str	634 @ 25.05
Jack Parks, Solomon	45 wf str	837 @ 25.00
Jack Parks, Solomon	20 wf str	891 @ 24.35

FATS		
Orvin Lundquist, Lind	4 bfw str	935 @ 24.45
Keth Kempke, Lyons	7 shthn hfrs	927 @ 23.80
Clemence Feed, Abi	28 wf hfrs	926 @ 23.75
Carl Nichols, Solo	23 bfw str	1018 @ 24.20
Everett Shogren, Assar	24 wf str	1028 @ 23.55

HOGS		
A Traulsen, Lincoln	10 hogs	229 @ 22.70
George Korinek, Ells	15 hogs	222 @ 22.55
Mrs Bid Kissick, Tesc	10 hogs	244 @ 22.10
Herb Brown, Benning	4 hogs	218 @ 23.35
Harold Knoche, Ada	15 hogs	228 @ 22.60
John Lomax, Minnea	7 hogs	233 @ 23.35
Ray Shank, NewCam	4 hogs	201 @ 23.35
Dale Peters, Minnea	5 hogs	231 @ 23.05
W M Day, Lincoln	3 hogs	215 @ 23.10
Kenneth Erickson, Mar	14 hogs	225 @ 23.10
Alfred Mayer, Gypsu	12 hogs	223 @ 23.00
Melvin Sunberg, Linds	13 hogs	223 @ 22.35
Harry Bachman, Russ	45 pigs	@ 16.75
Tom Andrews, Salina	12 pigs	@ 17.50
Willy Palmer, Abilen	10 pigs	@ 18.00
Herb Brown, Benning	20 pigs	@ 15.00
Berle Neaderhiser, Nil	10 pigs	@ 18.00
Tom Andrews, Salina	16 pigs	@ 21.50

Farmers & Ranchers
LIVESTOCK COMMISSION CO.
West On Old US 40
Salina, Kansas
Barn Phone TA 5-0211
Bonded • Licensed

Just Getting
Kay Weber
planter box. We
have about 300

Flint Hills R
Is June 2-4

STRONG CITY
annual Flint Hills
be held June 2-4 at 5
with evening perform
day and Saturday an
matinee.

Well-Known rodeo
expected to vie for
\$5,000 in prize money
major events of cal
saddle bronc riding, s
ling and Brahma bul
Special attractions
rodeo will be a fre



Dr. Eu
(center) sl
some stag
K.State.

Five English millers
Kansas last week, sta
enough to be impress
the size of the state, b
viously still had some
tions about U.S. wheat.
The British group wa
U.S. at the invitation o
Pains Wheat and the I
Wheat Commission, wh
to increase English pur
of U.S. grain.
English millers prese
port about 2.2 million
wheat a year — about