



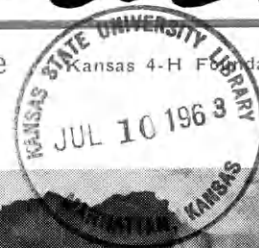
63017
K165
Linn

July, 1963
15 Cents

KANSAS 4-H

Journal

The 4-H Family Magazine



Kansas 4-H Foundation, Inc., Publisher



BANK LOANS COST LESS!

Your **HOMETOWN KANSAS BANK** loans cost you less because banks are the prime source of money. You are not dealing with a middleman, but directly with a bank, the place where most other lenders get their money to reloan to the consumer. □ □ □ Only a bank makes so many kinds of loans . . . at such low interest rates. When you need money for a vacation, for higher education, for agricultural and livestock operations, to buy a car, farm machinery, appliance or furniture, to remodel

your home, to expand your business, or for any good reason, see your banker. □ □ □ □ □ □ □ □ Whether you have immediate need to borrow money now or not, you will be better off doing all of your financial business through your banker. No one else has so many services to offer you. No matter what you do for a living, your relationship with your banker is an important part of your future. At some time or other everyone has need for financial advice. See how many bank services can benefit you. □ □ □ □ □ □ □ □ □ □ □ □



When Money Matters...see your Home Town Kansas Banker

Prizes Awarded by 4-H Journal

Here is how you can contribute to the Kansas 4-H Journal and what we will send you if your material is selected for publishing.

Features - A limited number of features are accepted each year. Some are written by request and others are submitted on approval.

"Ideas That Work" Department - These are the short stories and pictures. Each one selected for print is awarded a prize.

"This Is Kansas 4-H" Department (Pictures) - Each contribution by a 4-H'er, parent or leader is awarded a prize.

Recreation Column - The sender of each game accepted for print will receive a set of three game booklets.

Contributors of features, idea stories and pictures have a choice of one of the following:

- * A one-year subscription to the National 4-H News
- * A roll of film - 120, 35 mm, 616 or 620
- * Photograph album
- * 4-H Loose-leaf Notebook

A Letter

Mr. J. Harold Johnson
Kansas 4-H Foundation

On my desk today is the June 1963 KANSAS 4-H JOURNAL which contains the beautiful gold tribute in the form of a salute to Kansas banker's fifty years on continuous support of 4-H club work. This is a remarkable tribute the Journal has made and we are most appreciative, also for the resolution on page 4.

Carl A. Bowman
Executive Secretary
Kansas Bankers Association

OUR COVER



Pam Long and Ronnie Altendorf enjoy a few minutes relaxation away from the crowd and activities of the Kansas 4-H Round-up. Of course getting acquainted is one of the main activities of the event. Pam is from Cherryvale and Ronnie is from Independence.



KANSAS 4-H
Journal

Vol. IX, No. 7

July, 1963

IN THIS ISSUE

FEATURES

<i>A Snapping Good Tour</i>	6
By Sue Hansen	
<i>Recreation Feature</i>	7
By Dick Tomkinson	
<i>4-H'ers Set the Pace, Cast their Future</i>	8
Pictorial Souvenir of Round-Up	

DEPARTMENTS

<i>Music Appreciation</i>	5
About Music Tours	
<i>This Is Kansas 4-H</i>	12
Pictures of Round-Up	
<i>Ideas That Work</i>	14

SPECIAL

<i>Puzzle Page</i>	11
--------------------------	----

Don Esslinger..... Editor

Editorial and Business Office

Phone JE 9-2211 Ext. 208 — Manhattan, Kansas

Published Monthly By
KANSAS 4-H FOUNDATION, INC.

J. Harold Johnson..... Executive Director

BOARD OF TRUSTEES

W. Dale Critser, Chrm.	Wichita
E. B. Shawver, Vice Chrm.	Wichita
D. J. Atha.....	Shawnee Mission
*Harry Darby.....	Kansas City
Mrs. Olive Garvey.....	Wichita
Clifford Hope.....	Garden City
A. D. Jellison.....	Junction City
Harold E. Jones.....	Manhattan
J. J. Moxley.....	Council Grove
George B. Powers.....	Wichita
Roger E. Regnier.....	Manhattan
Dolph Simons.....	Lawrence
*Lester Weatherwax.....	Wichita
*Fred D. Wilson.....	Andover
*Advisory Members	

Second Class Postage Paid at Lawrence, Kansas. Return Form 3579 to Kansas 4-H Journal, Manhattan, Kansas.

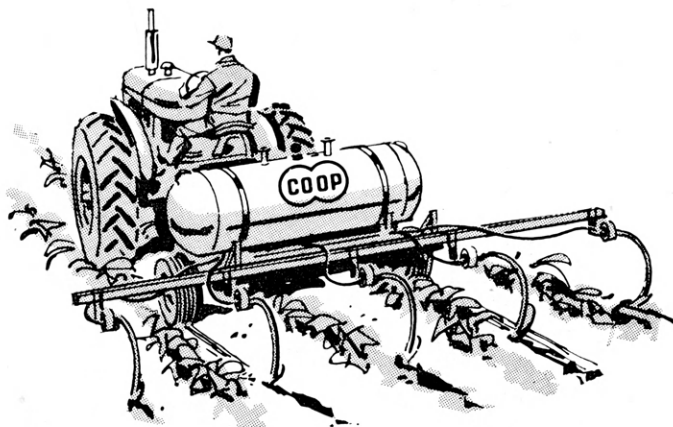
Advertising rates and circulation data on request.

Group subscriptions \$1.00 per year. Individual subscription \$1.50 per year. Single copy 15 cents.

Use of the 4-H name and symbol approved by the Secretary of Agriculture of the United States, January 23, 1951, under the provisions of the law as reenacted by Sec. 707 of the Act of June 25, 1948 Public Law No. 772, 80th Congress (10 USC 797)

THIS FALL Put the Profit
in Next Year's
Wheat Crop
with

COOP ANHYDROUS AMMONIA



Put Grow-Power Back in Your Land

CO-OP Anhydrous Ammonia is 82% nitrogen and builds nitrogen depleted soils to high fertility levels. Returns \$4.00 for every \$1.00 invested where nitrogen is a limiting factor.

FARMERS REPORT THESE ADVANTAGES:

Releases Nitrogen as your wheat needs it. Plants grow strong and sturdy. You get bumper crops. Easy to apply; one man and a tractor can do the job. Plowed under organic matter decomposes faster. It's the lowest cost source of commercial nitrogen fertilizer.

COOP anhydrous ammonia

CONSUMERS COOPERATIVE ASSOCIATION

KANSAS CITY, MISSOURI

Song of the Month Feature

Why not plan a tour for the members of your club who are interested in music? Here are some ideas that most any club can use.

One club visited a music store and was surprised how much there was to see and learn. The club members were shown different styles of pianos and why some were inexpensive and other pianos that looked almost the same were much more costly. They learned why some pianos stay in tune much longer than others. This trip takes careful planning.

If you plan such a tour, ask the store manager to plan with you. His suggestions will be of help and he can learn something about 4-H. Your host may request you come to his store after closing hours. Be sure to take your best 4-H manners with you. Always stay in a group while in the store and don't wander around. Don't touch any instrument unless given permission by the store manager, and never, never lean on the pianos. A rough sleeve or a damp hand wiped across the finish can damage it beyond repair.

Another interesting trip might be to a church where there is a real honest to goodness pipe organ. Again arrange with the organist to give you a demonstration. You may see a part of the church that you never dreamed existed if you are asked to go into the room where the large pipes are housed. Again, watch your manners. You will want to remember that you are in a church even though there is no service at the time.

If you live close to a college town, be sure to attend an opera performance. Even the youngest members will love this. College operas are nearly always chosen for their beautiful costumes and gay, lilting melodies. This trip can turn out to be your most successful one. You will find you need not know anything about the opera before you go as it will be sung in English, and the plot will usually be so simple that anyone can follow it.

To Give Your Every

DOLLAR

SAFETY

STRENGTH

PROFIT

VISIT YOUR NEAREST
KANSAS *Savings & Loan*

Arkansas City First Federal Savings and Loan Ass'n. of Arkansas City	Mission Capitol Federal Savings and Loan Ass'n.
Augusta The Commercial Savings and Loan Ass'n.	Newton First Federal Savings and Loan Ass'n. of Newton
Beloit First Federal Savings and Loan Ass'n. of Beloit	Oberlin Reserve Building and Loan Association of Oberlin
Clay Center Northwestern Federal Savings and Loan Ass'n. of Clay Center	Ottawa Ottawa Savings and Loan Ass'n.
Dodge City First Federal Savings and Loan Ass'n. of Dodge City	Parsons First Federal Savings and Loan Ass'n. of Parsons
El Dorado Mid-Continent Federal Savings and Loan Ass'n. of El Dorado	Pittsburg First Federal Savings and Loan Ass'n.
Fort Scott Liberty Savings and Loan Ass'n.	Plainville Rooks County Savings Ass'n. of Plainville
Garnett The Garnett Savings and Loan Association	Pratt The Western Savings Ass'n.
Great Bend The Prudential Building and Loan Ass'n.	Salina The Homestead Building and Loan Ass'n.
Hays The Hays Building and Loan Ass'n.	Topeka Capitol Federal Savings and Loan Ass'n. at 6th and Kansas, and 12th and Topeka Blvd.
Hutchinson First Federal Savings and Loan Ass'n. of Hutchinson	Wellington First Federal Savings and Loan Ass'n. of Sumner County
Iola The Security Savings and Loan Ass'n.	Wichita The Commercial Savings and Loan Ass'n. at 4601 E. Douglas Avenue and 147 North Market Street
Larned The Larned Savings and Loan Ass'n.	
Lawrence Capitol Federal Savings and Loan	
Leavenworth The Leavenworth Mutual Building Loaning and Savings Ass'n.	
Liberal First Federal Savings and Loan Ass'n. of Liberal	
McPherson The Pioneer Savings and Loan Association of McPherson	



A Snapping Good Tour

By Sue Hansen
Flint Hills 4-H Club Reporter
Chase county

4-H clubs have been thinking about their annual tour. The Flint Hills 4-H Club, Chase county, would like to share with you a different tour their photography members take every year.

Last year the members decided to travel to Council Grove to see the town's many photo-

graphic spots. The parents were persuaded to use their cars for transportation. Cameras and swimming suits were slung over arms. The threat of rain did not dampen enthusiasm as fifteen excited persons set out for Council Grove.

The members participating were Kim Remy, Kathy Beaver, Jim Schwilling, Joyce and Larry Jackson, Sue Hansen, Sharon Bullock, Mary Ann Brown, Debbie Bullock, and Connie Slauson.



Sue Hansen and Jim Remy are heading down to the lake and the fire to cook some marshmallows. This ended the fun packed day for the Flint Hills 4-H'ers.

They were transported by Mr. and Mrs. Charles Klamm, leaders, and Mr. and Mrs. George Beaver and David, all of Strong City. Connie Slauson joined the group at the destination.

The caravan toured, and took pictures of, all the historical sights in and around Council Grove. These include The Madonna of the Trail, Council Oak, Hermit's Cave, and the Kaw Indian Mission. The sun shone as we reached the Council Oak and from then on we had excellent picture taking situations.

After everyone (and in most cases, two rolls of film) was



Fun and joking ran high on the photographic tour, and these three were out to prove it. From left, they are Sharon Bullock, Jim Scheilling and Joyce Jackson.

exhausted with picture taking, the caravan moved on to Council Grove Lake. There we all went swimming, except sponsors, and enjoyed a wiener roast as a perfect end to a wonderful day.

Doesn't this sound like fun? Don't you think your photography members would like to have a tour like this?



Dorothy Reeves, left, and Jeannie Kygar, National 4-H Conference delegates, give some of their views on the value of the 4-H PERSONAL DEVELOPMENT PROJECT.

Question: How does it help 4-H'ers who are delegates and representatives of their club, county, or state?

Dorothy—"It has given me more confidence in expressing ideas and talking to people I don't know."

Jeannie—"To get a lot out of a conference, you have to talk to people from other areas."

Dorothy—"In our club we talked about whatever we wanted to—politics, un-American activities, and current school problems."

Jeannie—"The experience makes us more unafraid to express how we feel."

Dorothy—"Personal Development helps you learn to think—you end up thinking

deeper—relaxing and expressing yourself."

Jeannie—"We all have deep feelings about things."

Question: Would you change the Personal Development Project any?

Jeannie—"There is a real opportunity for team demonstrations and illustrated talks."

Dorothy—"Give responsibility to members and let them work it out, do role playing and other techniques."

Jeannie—"The key to the whole Personal Development Project is getting and presenting things on the level of the participants."

SOUTHWESTERN BELL



TELEPHONE COMPANY

RECREATIONAL INTERESTS VARY

Each game selected for print in this column will be awarded a set of 3 game booklets.

By
Dick Tomkinson
Specialist in 4-H

Game To Share

Marquerite Bishop, 4-H leader, Douglas County shared these "Hike" ideas with us at our 1963 Kansas Recreation Workshop. The idea of hikes should not be to see how far or fast the group can walk, but try to sharpen the 4-H members senses toward observing nature and her beauty.

Progressive Supper Hike - A three stop hike with different food and recreation at each stop, probably ending at a campfire with songs, stunts, and a popcorn feast.

Stop, Look and Listen Hike - Object - Hike for designated time or distance. Stop and write down all the objects you see or all the sounds you hear. Five stops are enough for this hike.

A. B. C. Hike - The unit is divided into groups which attempt to find natural objects beginning with each letter of the alphabet. The group finding the most wins.

Bird Walk - Group writes down the characteristics of each bird they see along the way to identify back at the site.

Nature Trails - One group lays a trail identifying trees, flowers, etc., with small notes along the way.

Treasure Hike - A trail laid with a treasure at the end.

Cook-outs, outings at lakes and picnics are always popular with young folks in the summer time.

For more good nature ideas, cook-out recipes, craft and nature craft ideas, quizzes, games, song leadership, vesper and ceremonies, etc. copies of our 1963 Kansas Recreation Workshop handbook are for sale at \$1.50 each. Write State 4-H Club Office.

Recreation is but a means to an end. The end or purpose of club recreation may be to help members become better acquainted, to make members feel welcome, to involve and help them enjoy the meeting more, or to learn to appreciate the fine arts.

The means to these ends or purposes of recreation can be starters and mixer activities, group singing, active or quiet games, folk dances, stunts or skits, crafts, etc.

As leaders, I think we should first consider the purpose (end) or reason we want recreation for our club members. Secondly, we should consider the 4-H members themselves. What are

their ages, characteristics, physical, mental, or emotional make-up, their interests—then choose recreation activities that appeal to them and that will meet the purposes you or the recreation committee have in mind.

We won't get into the discussion on the purposes for recreation in this article, but the following chart shows the age group characteristics and implications for recreation choices.

I feel if leaders understand their 4-H members better, they will be better leaders. Thus, this chart should help you in leading 4-H members not only in recreation but with their project interests, too.

Chart of Age-Group Characteristics and Recreation Needs

Age	Special Characteristics	Implications for Recreation
9-11 (Junior)	Beginning sex differences; like best to be with friends of own sex. Emerging ability to make own decisions, solve problems. Greater creative ability.	Fewer activities involving physical contact between boys and girls. A continued interest in nature and outdoor activities. Desire to help plan own group activity. Folk songs and two-part songs challenging. Skill games such as box hockey, table tennis; table games such as Chinese checkers; active games, like dodge ball, relays.
12-14 (Junior-Hi)	Sex differences more pronounced. Spurt of rapid physical growth, girls maturing earlier than boys. Emerging power to organize; team spirit. Specialization of interests. Rapid change in moods. Strong group feelings and peer-group consciousness.	Socials, parties for co-ed groups. Some separate activities for boys and girls, with rough-and-tumble play for boys and less active games for girls. Team games requiring skill. Group singing, choral groups, creative and informal drama. A recreation program that provides for a broad range of interests and also specialization. Big-muscle recreation essential.
15-17 (Senior-Hi)	Period of self-determination. Interest in opposite sex among both boys and girls; budding romances. Attractiveness of the spectacular and dramatic. Desire to do things, go places. Peer groups more flexible and heterogeneous. Boys more interested in sports; girls interested in social activities.	More complex team games enjoyed. Co-ed activities very important. Democratic planning of recreation program necessary. Church recreation center can fill important need-place to meet friends. Need for a recreation program that will build loyalty to the highest and best and includes everyone. Much variety in recreation program—socials, dramatics, service activities, hikes, picnics, folk games, arts and crafts, music, literature, active sports and athletics.
18-23 (Older Youth)	Mating age. Physical, mental, and emotional powers approaching maturity. Recreation beginning to share the spotlight with other interests. Great interest in sports among boys.	Recreation program that will provide atmosphere for normal, healthy friendships between the sexes; direction of of sex drives into wholesome expression. Mental challenges especially enjoyed: e.g., tricks, charades, discussions, and bull sessions. Increase in cultural and creative types of recreation—literature, drama, art, music. Recreation encouraging types of experiences that will have continuing value in adulthood.

This chart was taken from the book "Recreation and the Local Church" by Clemens, Tully, and Crill, and others. If leaders want more information on other age group characteristics, consult this book, Chapter 8, Recreation and the Age Groups; or "The Recreation Leader" by E. O. Harbin, Chapter 5, "Age Group and Sex Differences".

4-H'ERS SET THE PAC

It's a fact. The 39th Annual Kansas 4-H Round-Up was a memorable event. The theme, "Forecast For Your Future", was right in step.

PACK, LOAD, UNLOAD

Many of the interesting and vitally important discussion topics will long be remembered by the more than 1,100 delegates to this event.

Recreation, campus life, meeting new friends, meeting IFYE's, special dinners, talking with guest speakers, singing, and just being a part of this large group of representatives of our future strength will be the topic of discussion across the state for weeks to come.

EAT OUT

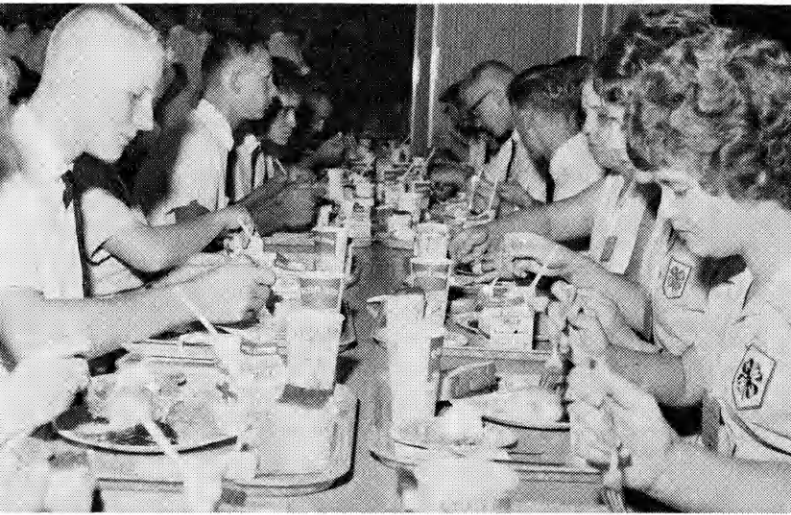
Each individual will have his own "highlight" to tell and many delegates will have pictures to show. These pictures and some important quotes of the guest speakers are a souvenir for you.

In keeping with the theme of Round-Up Dr. Duane Acker, Associate Dean of Agriculture, Kansas State University said to an assembly audience, "My appeal to you is that the primary, single incentive to **building** your future is to fully develop the **resources** you have—head, heart, health and hands. You can then be happy and successful in any one

MEET NEW FRIENDS



LEARN NEW THINGS



CAST THEIR FUTURE

of many occupations."

In a special session on "The Career Decision-Making Process," Dr. C. Clyde Jones, Dean, School of Commerce, Kansas State University, advised, "A clearly thought-out philosophy of life can be of immeasurable value in withstanding the cross-currents which one encounters every day."

Another special session speaker, Gene Ross, Extension Specialist in Area Development, said, "One of these days you are going to have to sell yourself to the world - convince people that you have a useful talent that someone else needs - and you simply cannot sell your-

**GO
PLACES**

**TAUGHT
BY
EXPERTS**



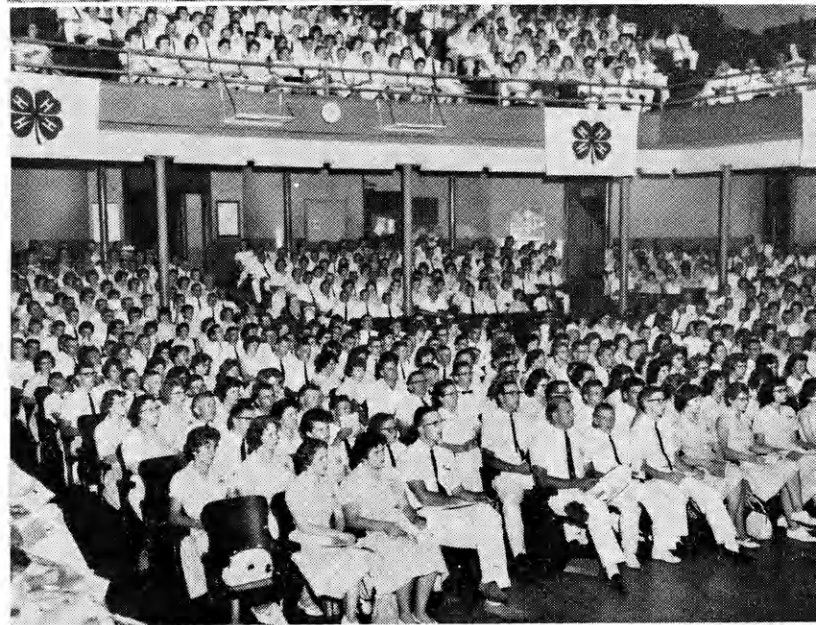
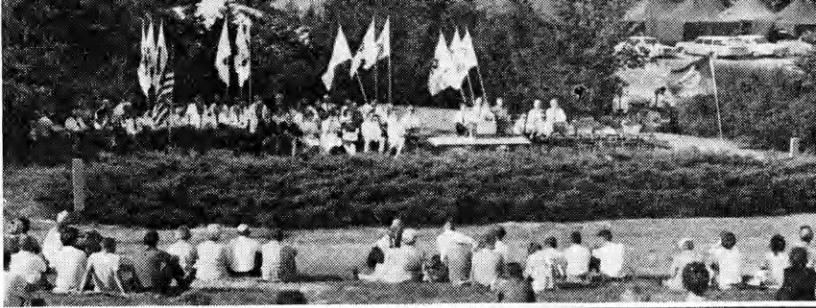
self in any situation in which you are not interested."

F. R. Carpenter, Assistant Dean Resident Instruction, School of Agriculture, Kansas State University, cautioned, "Regardless of the steps you take toward employment, your effectiveness as an employee will depend on some personal traits as well as on being able to do the required skill."

Dr. Martha Peterson, Special Assistant to the President, University of Wisconsin, and a popular speaker at the Round-Up, encouraged us to, "Dream in terms of what you are - in terms of the contributions you can make," in her presentation, "Dreams vs. Reality".

SING WITH FRIENDS

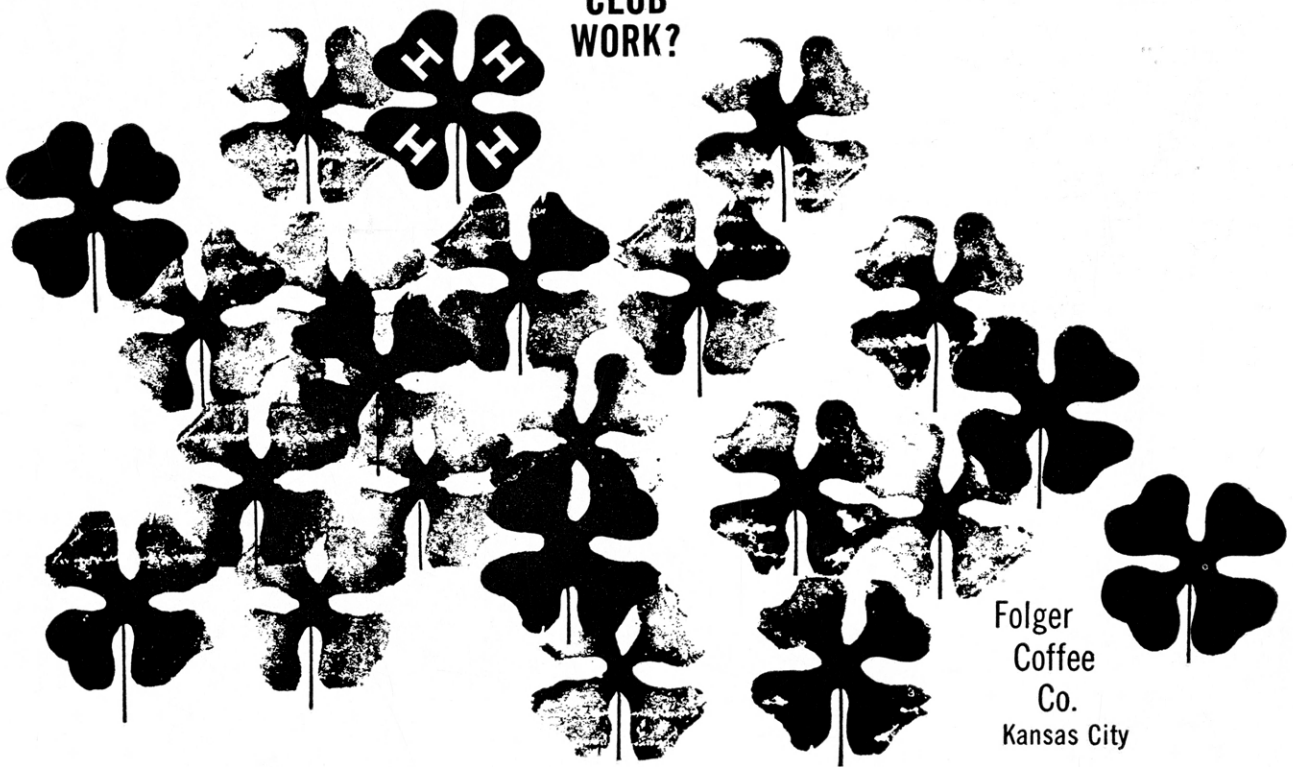
**FUN,
FUN!**



**WOULDN'T IT
BE WONDERFUL
if EVERY**

young Kansan
could share
in the high ideals
and standards . . .
the worthwhile,
varied activities . . .
the "learning
through doing" . . .
which mean so
much to those
who are active

in
**KANSAS
4-H
CLUB
WORK?**



Folger
Coffee
Co.
Kansas City

RIDDLE OF THE MONTHS

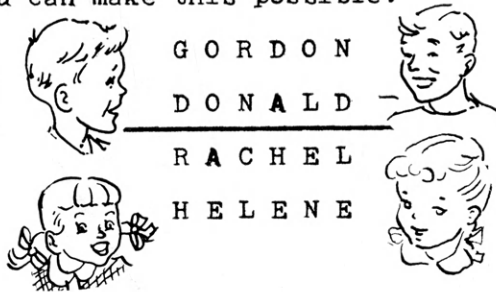


JULY 1963						
Sun	Mon	Tue	Wed	Thu	Fri	Sat
	1	2	3	4	5	6
Months are made of days and dates,						
Their numbers often vary.					12	13
Some months go to thirty-one,						
For instance—January.					19	20
Other months may drop a day						
And end at ten times three.						
But how many months number twenty-eight,						
Could someone please tell me?						
28	29	30	31			

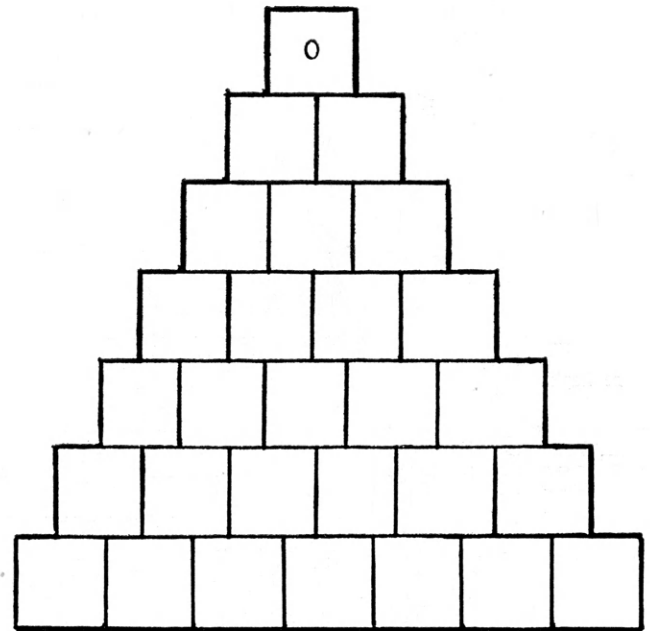


ROOM DIVIDER

Mr. and Mrs. Jones have four children. The boys share a bedroom and so do the girls. They would each like a room of their own. By adding one straight line you can make this possible.



BUILDING BLOCKS



A - S - O - M - N - O - R

MIXED NUTS

Each phrase below contains the name of a member of the nut family. The nuts are all plural except the one marked with a star.

- such tents - - - - -
- an upset - - - - -
- old man's - - - - -
- she caws - - - - -
- stun law - - - - -
- felt ribs - - - - -
- on cars - - - - -
- * it is a chop - - - - -

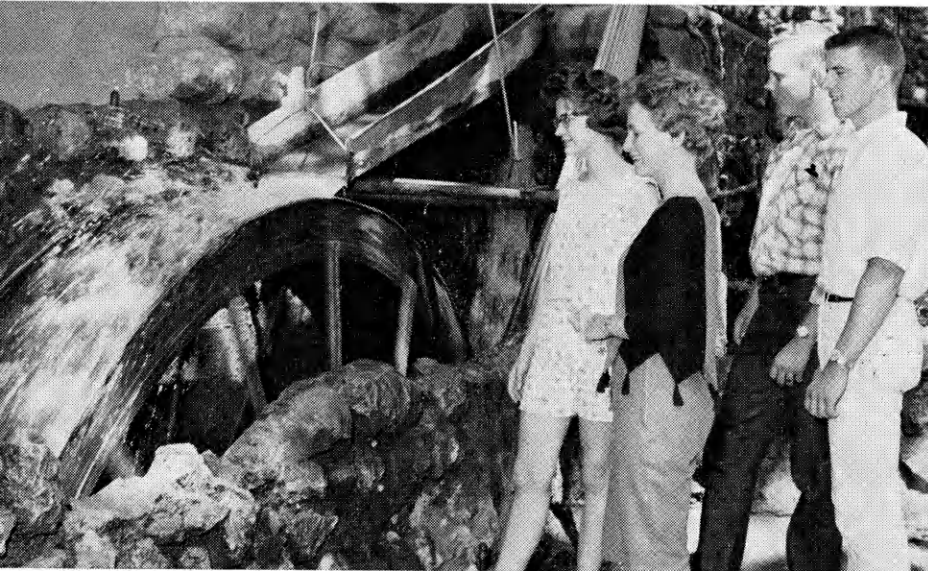
The seven letters above will make seven different words. Starting at the top square which contains the word "O", work on down adding a letter to "O" to make a two letter word, then add a letter to the two already used to make a three letter word and so on to the bottom row. You may not use a letter oftener than it is listed. For instance—you may have a word with two o's because this letter appears twice, but you cannot use two r's because there is only one listed.

(Answers on Page 15)

This Is Kansas 4-H



This is the State 4-H Chorus, featured at the final assembly of 4-H Round-Up.



Always an enjoyable spot to gather is the water wheel area at Rock Springs Ranch. From left, are Marilyn Green, Manhattan; Memory Marlow, Alma; Lyle Bergstrom, Kackley; and Jerry Stump, Blue Rapids.

SEND IN YOUR PICTURES

We want pictures taken by Kansas 4-H'ers. Prizes will be given for all pictures used in this department.

The picture need not be on 4-H Club work, but pictures with subjects related to 4-H Clubs are preferred. Action pictures are desired.

All pictures should be glossy prints at least five by seven inches in size unless accompanied by the negative.

Photographs should be accompanied by a short statement explaining the picture and including the names of persons shown.

Entrants should designate their choice of (1) a years subscription to the National 4-H News, (2) a hard cover 4-H loose leaf notebook, (3) Photograph album or (4) Roll of film—size 120, 35 mm, 616 or 620.

4-H members, parents, leaders, county agents or friends of 4-H may send in pictures.



Brenda Darnall, left, Larned, and Ruth Tonbaugh, Burdette, enjoy the cool stream at Rock Springs during Round-Up. Both are from Pawnee county.

These Kansas 4-H Journal Sponsors Have Renewed Their County Support

Bourbon

Bank of Bronson, Bronson
Citizens National Bank, Ft. Scott
Farmers Co-op Association, Ft. Scott
Federal Land Bank Association of
Ft. Scott, Ft. Scott
Liberty Savings & Loan Association,
Ft. Scott

Union State Bank, Uniontown

Crawford

Farmers State Bank, Walnut
First National Bank, Girard
First State Bank, Arma
First State Bank of Pittsburg,
Pittsburg

Girard National Bank, Girard
Hepler State Bank, Hepler
Home State Bank, Arcadia
McCune State Bank, McCune
Miners State Bank, Frontenac
National Bank of Pittsburg,
Pittsburg

Ellsworth

Citizens State Bank, Ellsworth
Lorraine State Bank, Lorraine
The Bank of Holyrood, Holyrood
Wilson State Bank, Wilson

Finney

The Fidelity State Bank, Garden City
The Garden National Bank,
Garden City

Graham

Farmers and Merchants Bank,
Hill City

Gray

Farmers State Bank, Ingalls
First National Bank in Cimarron,
Cimarron
The Montezuma State Bank,
Montezuma

Greenwood

Citizens National Bank, Eureka

Eureka Federal Savings & Loan
Association, Eureka
Freeman's Tire & Appliance,
Eureka

Home National Bank, Eureka
Race Parks Oil Company, Eureka
The A. C. Houston Lumber
Company, Eureka
Ward A. McGinnis, Eureka

Harvey

Harvey County Bankers'
Association, Newton

Haskell

Haskell County State Bank,
Sublette

Jewell

First National Bank, Formoso
First National Bank in Mankato,
Mankato
The Burr Oak State Bank, Burr Oak
The Citizens State Bank, Jewell
The Randall National Bank,
Randall
The State Bank of Esbon, Esbon
The State Exchange Bank,
Mankato

Johnson

DeSoto State Bank, DeSoto
Farmers Bank of Gardner, Gardner
Farmers State Bank, Lenexa
First National Bank, Olathe
Patrons Cooperative Bank, Olathe
Shawnee State Savings Bank,
Shawnee
State Bank of Spring Hill,
Spring Hill
State Bank of Stanley, Stanley

Kearny

Farmers Cooperative, Lakin and
Kendall

Lincoln

Sylvan State Bank, Sylvan Grove

Logan

Farmers State Bank, Oakley
Farmers State Bank, Winona

Marshall

Citizens State Bank, Marysville

Norton

Fredde Equipment Co., Norton
C & H Implement Co., Norton

Phillips

First National Bank, Phillipsburg

Rawlins

Farmers National Bank, Atwood
Farmers State Bank, Ludell
Peoples State Bank, McDonald
State Bank of Atwood, Atwood
State Bank of Herndon, Herndon

Seward

Citizens State Bank, Liberal
Peoples National Bank, Liberal

Washington

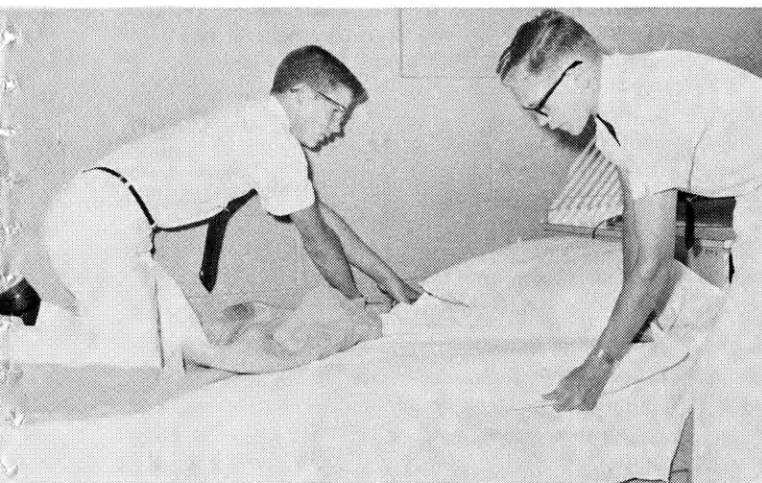
Farmers Co-op Elevator Association,
Greenleaf
First National Bank, Washington
Lull Oil Company and Skelly
Station Outlets, Washington
Washington County Cooperative
Creamery Company, Linn
Washington County Farm Bureau
Association, Washington

Wyandotte

Bishop Lumber Co., Munice
Coleman Implement Company,
Bonner Springs
Commercial State Bank,
Bonner Springs
Home State Bank of Kansas City,
Kansas
State Tractor & Implement
Company, Kansas City
The Brotherhood State Bank,
Kansas City



These delegates get acquainted with Cecil Eyestone of the State 4-H Staff while they check the program. From left, are Cecil; Chuck Parnell, Topeka; Margaret Seested, Stanley; and James Whitehill, Latham.



Making a bed isn't always the easiest thing. Dillard Ungeheuer, Centerville, left, and Tim Hughs, Ashland, try their hands at it.



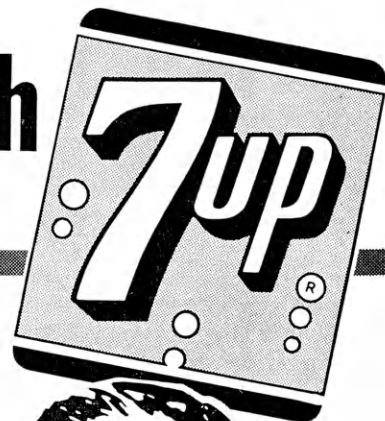
Above—An outstanding session for the boys at Round-Up was presented by Jay Yancey of Woody's Men's Shop in Manhattan. From left, are Jay; John Grisham, Butler county; Jim Whited, Chautauqua; and Greg Eicker, Thomas.

Below—A novelty act presented by these boys from Ford county was part of the talent show during Round-Up.



Good food tastes better

with



Kansas Seven-Up Bottlers Association

Ideas That Work

County 4-H Day Camp

(This reported adapted from a story in the Wyandotte county Extension News, June 1963)

The day camp is for 4-H members who are old enough for camping at Rock Springs Ranch. It is a two day camp.

The camp is under the supervision of the 4-H Council's camp committee. It features handicraft, cook-out lunches, nature study, sports and music. Transportation to and from the area is the responsibility of the campers' parents. The camp is held at the Wyandotte County Lake park.

Total cost per camper is \$2.50. This covers insurance, lunches both days, refreshments, and part of the handicraft supplies.

Club Billboard

This is our club's billboard for National 4-H Week. It is located on 56



Highway as you enter Hugoton from the east.

The name of the club is the Maple-leaf Rustlers 4-H Club of Stevens county.

The sign was painted by Jim Mothes, Kieth Ford, and David Cutter and the



lettering was done by Jane Mothes, Cathy Marquardt and myself shown in the picture.

Karen Timmons
Reporter

World Friendship and 4-H

In honor of 4-H Week Eastridge 4-H club of Sedgwick county had a window display at the Eastgate shopping center. The theme was "Art for World Friendship" our People-To-People project.

Our club decided to draw pictures about their lives, their homes, their friends, or just their ideas. These pictures were sent to an address obtained from our 4-H People-To-People pamphlet, "Art for World Friendship", Media, Pa. From here the pictures were sent to other areas in other countries. In return, each of the 4-H'ers received a picture drawn by a child of his or her own age.

These pictures were displayed, repre-

Reporter's Notice: The Kansas 4-H Journal would like to print interesting stories of your local club events, activities, members and leaders.

Local club meeting stories, if submitted, should contain something unusual or of interest to people outside your county.

Outstanding projects, services or events of your club, or stories of individuals within your club that would give ideas to other 4-H'ers would make excellent stories.

Prizes will be awarded all blue award stories each month. Please state your choice (1) a year's subscription to the National 4-H News, (2) a hard cover loose leaf 4-H notebook, (3) Photograph album or (4) Roll of film—sizes 120, 35 mm, 616 or 620.

senting eight countries, along with a letter received as a result of the exchange of pictures.

Eastridge 4-H'ers have shown the display in six elementary schools and also in the Boulevard Library Branch.

The display also represented Sedgwick county at the Leaders conference in Hutchinson in March.

Sally Cocking
Reporter

Ideas In Brief

Dale Musil talked about tornadoes in his activity talk at the meeting of the Home City Hustlers, **Marshall** county . . . Junior leaders of the Manning Jayhawkers, **Scott** county, are assigned jobs to help younger members at the county judging schools . . . Community leaders of the Riverview club, **Sedgwick** county, are inviting other club leaders to dinner in groups so they may get better acquainted . . . "One pair must last you a lifetime, so take care of them" was the opening statement of Mrs. Duffey's talk about foot care at the Country Pals club parents meeting, **Thomas** county . . . Robert Sperling showed a safety film at the meeting of the Jayhawkers club, **Harvey** county . . . Members of the Halstead Clover club, **Harvey** county, held a picnic following their 4-H Sunday observance . . . "Why I Joined a 4-H Club" was the roll call of the Nearman Busy Bees, **Wyandotte** county . . . Hornet 4-H members, **Wyandotte** county, had another garage sale . . . The North Reno club members, **Reno** county, have been active in health and safety activities by making 600 bandages for the Red Cross and 1000 "Cancer Flats" from materials furnished by the American Cancer Society . . . Glenn Oleen gave a health number, "Sunburn" at the meeting of the Falun club, **Saline** county . . . First year foods girls of the Manning Jay-

hawkers, **Scott** county, studied the correct methods of washing dishes at their project meeting . . . Members of the Gem-Go-Getters, **Harvey** county, heard about Myron Stucky's hobby of raising mink at their meeting . . . Roll call of the Pleasant club, **Harvey** county, was "One Good Turn I Did This Week" . . . Leaders of the Brauer Beavers, **Wyandotte** county, plan to visit each member's home and view projects and records . . . Members of the newest "thot 'n talk" club in **Wyandotte** county, heard from Cheri and Harry Morrison about their trip to Washington, D. C. and New York . . . Mrs. Guy Lamb gave a talk "Snap To It" on photography at the parents meeting of the Bird City Go-Getters, **Cheyenne** county . . . "Accent on Youth," a film on Communism, was shown to members of the Stony Point club, **Wyandotte** county . . . Kinlee and Gaylord Kincaid gave a team demonstration on "How to Transplant Tomatoes" at the meeting of the Nearman club, **Wyandotte** county . . . The Hazel Grove club members, **Wyandotte** county, purchased three eight-foot oak trees and planted them at the fair grounds . . . **Reno** county personal development project members are meeting each Saturday evening this summer . . . A note from **Reno** county reminds us to let our records be a rudder which will steer our ship of club work down a straight course . . . The Macon Happy Hour club, **Harvey** county, voted to send flowers to the First Baptist Church on a recent Sunday . . . Beth Lanb gave a talk on "How the Indians Cooked" at the meeting of the Richland Livewires, **Harvey** county . . . The Burrton Western **Harvey**



Alliance Companies

McPherson, Kansas

FIRE — CASUALTY — LIFE

Serving Kansas Since 1888

Boosters presented an exchange program for the Campus Champions, **Harvey** county . . . Dennis Reed gave a demonstration, making a flower bed from an old tire, at the meeting of the Cloverleaf club, **Saline** county . . . Members of the Maverick 4-H Club, **Decatur** county, put up five posters in observance of clean-up week and three members entered the safety poster contest . . . Smokey Valley, **Wallace** county, club members planned a basket dinner and swimming party in conjunction with their club tour . . . Miss Sigi Sloan from West Germany was a guest at the Advance club meeting, **Wyandotte** county . . . Mr. Ray Conard showed members of the Shawnee Spitfires, **Wyandotte** county, how to print a picture from a negative . . . Marla Dunlap gave a talk on "Really Knowing Insects" at the meeting of the Newton City Slickers, **Harvey** county . . .

ANSWER TO RIDDLE OF THE MONTHS

12—All the months have twenty-eight days

ANSWER TO ROOM DIVIDER

G	O	R	D	O	N
D	O	N	A	L	D
R	A	C	H	E	L
H	E	L	E	N	E

ANSWERS TO MIXED NUTS

1. Chestnuts
2. Peanuts
3. Almonds
4. Cashews
5. Walnuts
6. Filberts
7. Acorns
8. Pistachio

ANSWER TO BUILDING BLOCKS

O						
O	R					
O	A	R				
S	O	A	R			
A	R	S	O	N		
R	A	N	S	O	M	
M	A	R	O	O	N	S

WHY DO PEOPLE BUY LIFE INSURANCE?

When some people speak of Life Insurance, they say you have to die to beat it . . .

Perhaps this was true years ago, but in today's modern programs, Life Insurance wins 3 ways . . .

1. IF YOU DIE:

The surviving family will continue their standard of living — It means clothing, food, shelter and education without interruption.

2. IF YOU LIVE:

It means future money for retirement, travel or simply living out the years in comfort.

3. IF YOU QUIT:

It means getting the part of your policy that is paid for. Over the years, cash values accumulate which can be drawn out.

FOR DETAILS OF A GUARANTEED
FUTURE FOR YOU—

See Your Farm Bureau Insurance Agent



KANSAS FARM LIFE
INSURANCE COMPANY, INC.
MANHATTAN, KANSAS



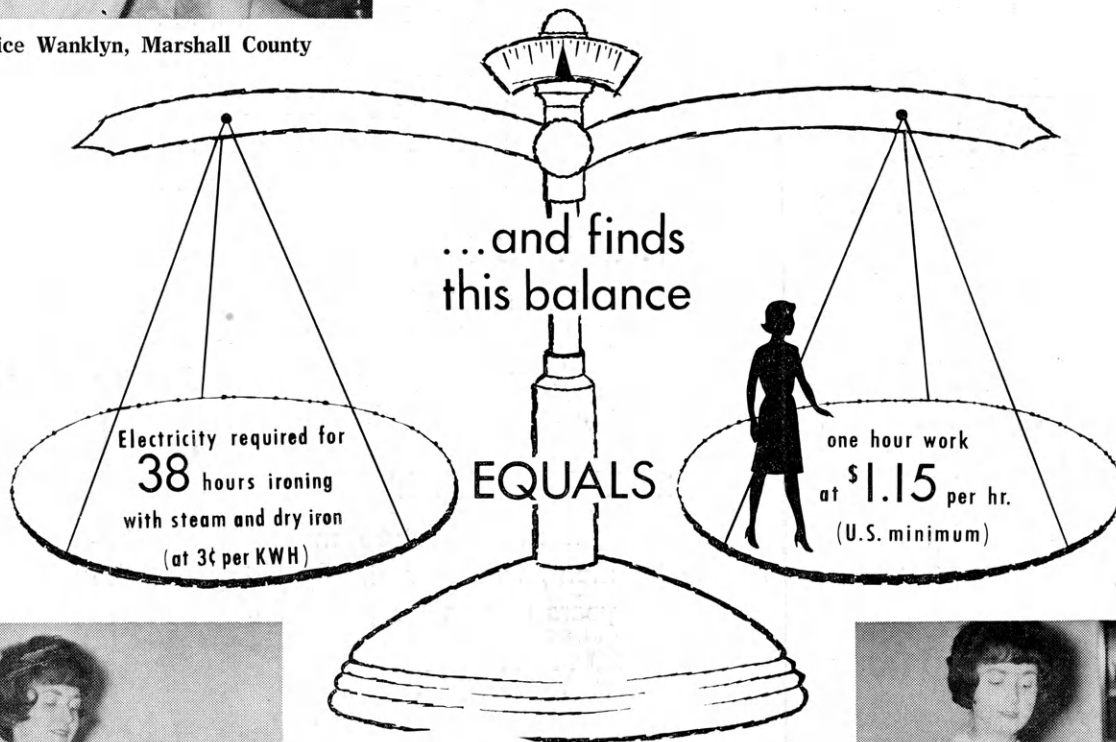
Janice Wanklyn, Marshall County

CIRCULATION DESK
LIBRARY

KANSAS STATE COLLEGE
MANHATTAN, KANSAS

MISC KSC

4-H'er works with cost of electricity in household tasks . . .



Janice is shown as she irons with the watt meter close by to record the usage.

Janice has lived in the Ellen Richards Lodge for 8 weeks as have many other home economics majors at Kansas State University.

The girls share the household tasks in shifts of four days each. Records of electricity usage for the laundry shift were kept this year.

An evaluation is completed at the end of each shift. This is accomplished in the laundry shift by figuring the total wattage and the cost of operating the hand iron. Kilowatts must be converted to watts to achieve this.

Most power supply companies will cooperate with your 4-H Club group to formulate the cost of any electrical operation you may wish to record.



Keeping records is an important part of rating the cost of electricity. This work also represents the type work for which the above wage is paid.

**WATCH THIS
PAGE FOR IDEAS
ON FARM AND
HOME ELECTRIC
PROJECTS**

Electric Light and Power Companies in Kansas

The Kansas Power and Light Company Central Kansas Power Company
Kansas City Power & Light Company Kansas Gas and Electric Company
Western Light & Telephone Company