

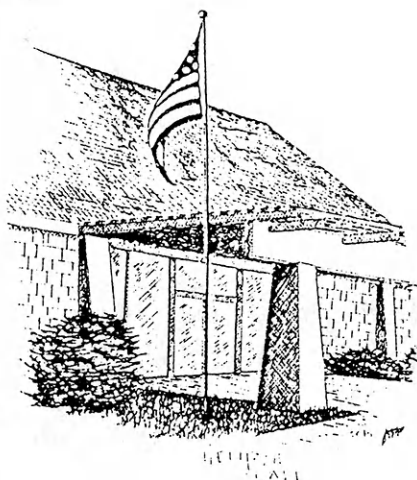
**1988
Discovery
Days**

KANSAS 4-H JOURNAL

The Family Magazine

February/March 1988





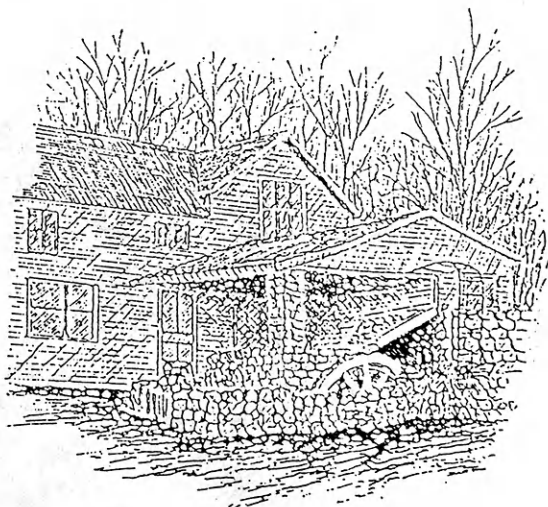
Rock Springs 4-H Conference Center

RETREAT ... Faculty and staff members, student organizations and campus living groups ... get away from the everyday routine to Rock Springs Ranch for your next educational retreat. Rock Springs provides a perfect "hide-away" for productive planning.

RELAXED ATMOSPHERE ... Sit back, relax and enjoy the drive through the scenic Flint Hills. Use the drive time for reflecting on the day's events. Once you arrive at Rock Springs Ranch, you will discover a picturesque, secluded site for your educational retreat.

SPACIOUS CONFERENCE

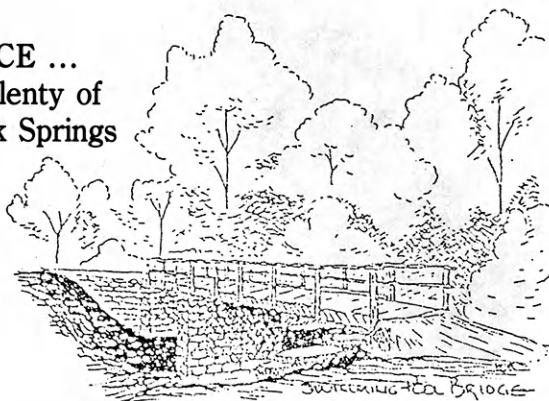
ROOMS ... Heritage Hall features a 400-seat auditorium, exhibit and Gallery areas and eight seminar rooms. Also available is a 150-seat auditorium and over 20 indoor meeting rooms with seating capacities ranging from 10 to 550.



COMFORTABLE HOUSING ... Gather around a cozy fireplace in the lounge area of the cottages. Our sleeping cottages are for rest, small group discussions and reading so we do not have room telephones or televisions. They are quiet and fitted to your needs and the Rock Springs Ranch atmosphere.

QUALITY FOOD SERVICE ...

Family-style meals with plenty of wholesome food is a Rock Springs tradition. However, our food service can handle everything from banquets to picnics.



For more information
Contact: Teri Springer
Kansas 4-H Foundation
RM 116, Umberger Hall
Kansas State University
Manhattan, KS 66506



KANSAS 4-H JOURNAL

VOLUME XXXIII NO. 11
February/March 1988

Rhonda Wessel Atkinson ... Editor
Linda Akin ... Secretary

Address all correspondence:
Kansas 4-H Journal
116 Umberger Hall, KSU
Manhattan, Kansas 66506
Phone (913) 532-5881

Single subscriptions are \$4 per year.
Group subscriptions are available upon request.

Kansas 4-H Journal is published
10 times a year by
KANSAS 4-H FOUNDATION, INC.

Bill Riley Executive Director
Trisha Cash Secretary
Ann Carr Asst. Treasurer

BOARD OF TRUSTEES

Governor Mike Hayden
Honorary Chairman
Glee S. Smith, Chrm. Larned
Martha Wreath Streeter
Vice-Chrm. Manhattan
John Junior Armstrong,
Treas. Muscotah
Ross Beach Hays
Richard Dillon Hutchinson
Marilyn Pence Galle Moundridge
Mrs. Olive Garvey Wichita
Balfour S. Jeffrey Topeka
J. Harold Johnson Manhattan
Wilbur E. Levering Topeka
Bernard E. Nordling Hugoton
Thomas M. Potter Wichita
C.R. Salmon Manhattan
Tom Shirley Dodge City
Walter Woods Manhattan
Robert Wagstaff Shawnee Mission
Mrs. Dwane Wallace Wichita
*Glenn M. Busset Manhattan
*Roger E. Regnier Manhattan
*Dolph Simons, Sr. Lawrence
*Advisory Member

Use of the 4-H name and symbol approved
by the Secretary of Agriculture of the United
States, January 23, 1951, under the provisions
of the laws as reenacted by Sec. 707 of the Act
of June 25, 1948, Public Law No. 772 80th Con-
gress (10 USC 797).

In This Issue

Congratulations National 4-H Conference Delegates	4-5
Judging Teams Place High Nationally	6-7
4-H Project Club Holds Tri-State Show	8
Discovery Days Catalog	9-19
Looking For a Job or an Occupational Hazard	20-21
Rock Springs Receives \$114,000 Estate Gift	22
4-H Journal Subscriptions - A Gift from County Sponsors	23
Special Notes	24
Enter the Cycling Contest During Discovery Days	25
1988 Kansas State Fair - Showcase of Stars	26
Shooting Sports Leader Training	27
State Horse Events for 1988	27
Submit Woodworking Plans	29
Featuring Winning 4-H Photography	32

Advertisers' Index

Rock Springs 4-H Conference Center	2
Southwind Invitational Club Lamb Sale	25
Anchor Savings	25
Valley Park Arabians	25
Kansas Lumber Dealers	28-29
Cedar Valley Ranch	29
Kansas Savings and Loan	29
Kansas Farm Bureau	30
Clovio 4-H Cooperative House	31

Cover photograph by Julie Mersmann, Douglas County Meadowlark 4-H Club.



Congratulations 4-H Conference Delegates

THE J. CLIFTON AND HELEN F. RAMSEY 4-H JOURNAL ENDOWMENT recognizing the National Conference delegates is made possible from the estate gift of J. Clifton and Helen F. Ramsey. The Lawrence couple had no children, but fostered a deep affection for young people. Their estate left to Kansas 4-H the largest single gift ever received, the 9-Mile Ranch. The ranch was 891 acres near Reno and Tonganoxie northeast of Lawrence.

Four Kansas 4-H'ers have been selected to receive one of the highest forms of recognition in the 4-H program ... to be named a National 4-H Conference Delegate.

Delegates are: Dari Ashworth, Reno Co.; Jeff Douthit, Cheyenne Co.; Tim Oswalt, Rice Co. and Craig Murphy, Riley Co. Murphy will serve as the National 4-H Ambassador representing Kansas.

The National 4-H Conference, which emphasizes citizenship and leadership began in 1927. Delegates, at that time, were housed on the grounds in front of the west wing of the Department of Agriculture.

The boys wore khaki uniforms with knickers and black ties, and the girls wore jade green dresses with white collars and cuffs and white caps.

The first conference was called the National 4-H Club Camp, and its three main purposes were:

- To reward and develop outstanding junior leaders in club work;
- To acquaint club members with their government and to acquaint Washington with 4-H club work;
- To provide a convenient time and place for a meeting of all state leaders. This has since been dropped from the list of objectives for the present conferences.

The 4-H motto and the 4-H pledge, written by Otis Hall, the first state 4-H leader in Kansas, were officially adopted at this time.

The name was changed to the National 4-H Conference in 1955, and the conference delegates have stayed at the National 4-H Center since 1959. There have been 57 national conferences. During World War II, however, the National 4-H Conference didn't take place, and the Kansas delegates went to Camp Miniwanca instead of Washington D.C.

Dari Ashworth is a 10 year member of the Southwest Reno 4-H Club holding the office of both president and vice president, and also serving as a member of the 4-H Council.

Ashworth has served as the photography and ceramics leader for the club for the past two years. Other activities include: the Washington D.C. Citizenship Focus Trip, the Kansas City 4-H Conference, Discovery Days, county camp counselors and the state fashion Revue.

She is also interested in judging, and has been a member of the Reno Co. home economics, horticulture and photography judging teams that competed at the state fair. In addition, she was a member of the senior quiz bowl team, and was eighth high individual at the state photography judging contest.

Jason Douthit is a 10 year member of the Plum Creer 4-H club in Cheyenne Co. and is interested in geology.

Douthit sums up his 4-H experience: "As I am nearing the end of my 4-H career, I can look back and remember a young child who began 4-H with a somewhat apprehensive attitude but with much enthusiasm and a heart of will ... Throughout all my years in 4-H, I have really had many learning experiences. Sure, there were also times when things became pressing and I wished I didn't have all those things to do. But I am glad that I have stuck with it ... I have been able to easily carry these skills over into my school work and into my relationships with others. I believe I have truly learned the meaning of how to live by the standards of the 4-H pledge."

Tim Oswalt is a nine year member of the Country Pals 4-H club in Rice Co. He has held these offices: president, council member, reporter, parliamentary and recreation leader.

Oswalt's favorite projects are leadership, clothing strategy, beef and swine, and project leader in leadership, swine and shooting sports.

He was a delegate to the Kansas City Heart of America 4-H Conference and was selected to go to Steamboat Springs, Colo., by the Kansas Rural Electric Cooperatives and was designated senate president of the camp. "The parliamentary procedure skills I have learned through my 4-H years helped greatly throughout the entire week of the camp," he said.

Oswalt plans to attend Kansas State University next fall and major in agriculture engineering.

Craig Murphy is a senior at Manhattan High School and has been active in 4-H for the past eight years.

The highlight of his 4-H involvement was being selected as a county ambassador. "Through this program I am able to use the skill I enjoy most, public speaking, he said.

Other highlights include being able to attend the Washington D.C. focus trip, livestock judge at the State Fair, serve as president of my club (Be-Busy), and compete in regional club days.

After graduating from high school Murphy plans to major in mechanical engineering at Kansas State University. Eventually he would like to start his own engineering firm.

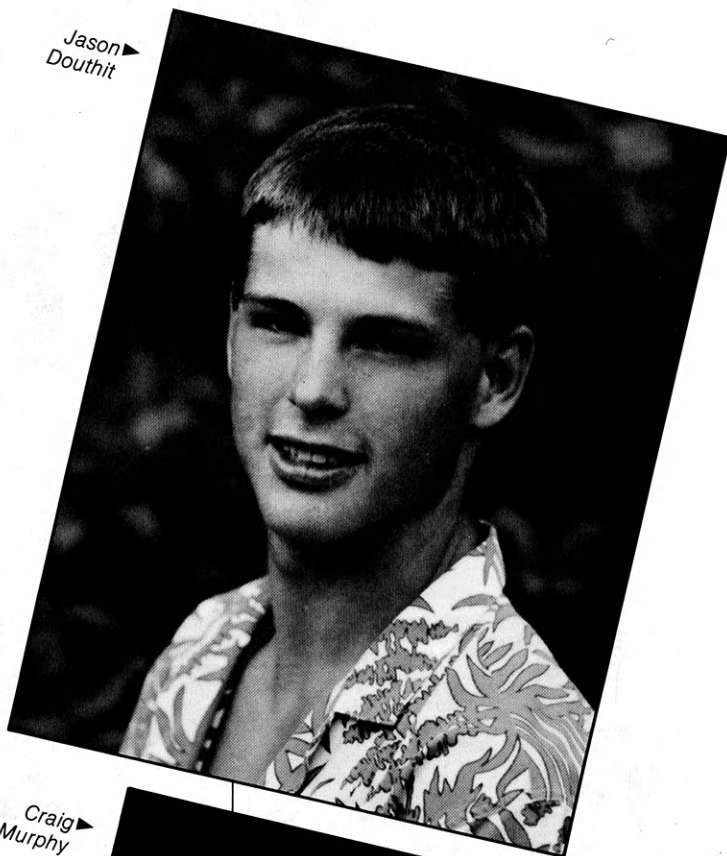


Honoring National 4-H Conference Delegates

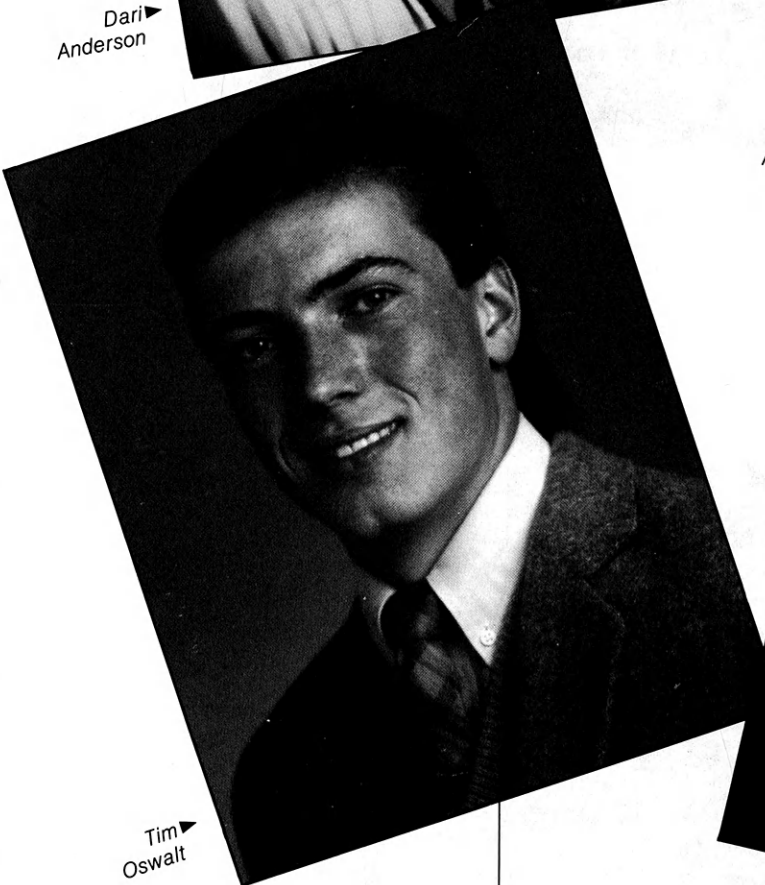
This special recognition is made possible through a 4-H Journal Endowment by the J. Clifton and Helen F. Ramsey estate gift administered by the Kansas 4-H Foundation.



Dari ▶
Anderson



Jason ▶
Douthit



Tim ▶
Oswalt



Craig ▶
Murphy



Kansas 4-H Foundation Publications

Feature 4-H Photography

The Kansas 4-H Foundation publications will feature state fair purple and blue ribbon photographs taken by 4-H'ers enrolled in the photography project.

Watch for these outstanding photographs on the cover of the Kansas 4-H Journal and throughout the soon to be published Kansas 4-H Cookbook. The quality and composition of the photographs submitted will be a nice addition to the publications published by the Foundation.

The cover and back cover of this issue and the following is just a sample of the photographs received!



◀ Jami Krusemark
Reno County
Union Valley 4-H Club
Age 14

◀ Star Hildenbrand
Reno County



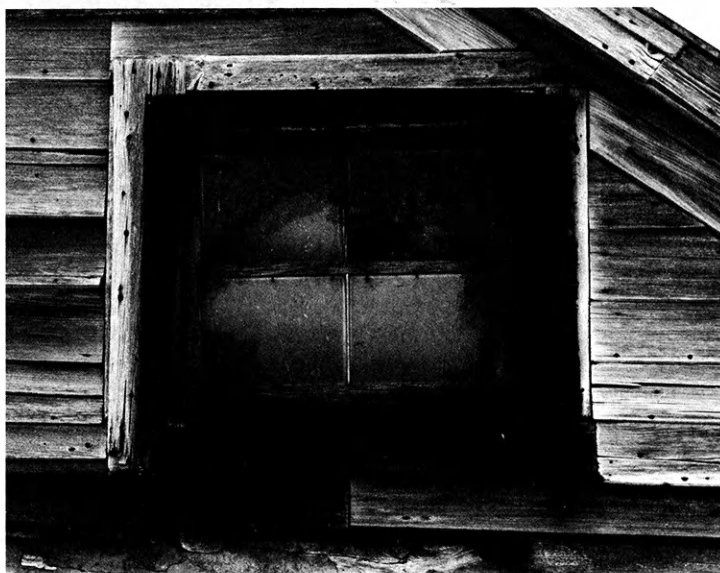
◀ Todd Black
Franklin County
Rambling Ranchers 4-H Club
Age 13



◀ Dana L. Hibbard
Harper County
Sunnyside 4-H Club
Age 17



◀ Dru Saddler
Thomas County
Gem 4-H Club
Age 13



◀ Dustin Jackson
Ellis County
Big Creek Astros 4-H Club
Age 13



4-H Project Club Holds Tri-State Show

The Haskell County Rabbit Club was formed in January of 1987. The Club was started to help us 4-H'ers become more informed about rabbits, promote our breeds and also to encourage other 4-H'ers to become involved in rabbits. We discuss problems with breeding, any diseases we may encounter and we have learned Showmanship. The members for 1987 were Clint and Chris Alexander, Brant Norman, Michelle Avritt, Steven and Bradley Zimmerman, Dusty and Chasity Nichols, Daniel and Tiffany Meairs, David and Jonathan Middlebrooks, Mae Wells and Alon and Nathan Morrison. The new members are Jerod Dailing and Eric Willimon. The 1987 Club Officers were Clint Alexander, President; Brant Norman, Vice-President; and Michelle Avritt, Secretary-Treasurer.

Our rabbit project has really grown in the last three years. This year we had 130 rabbits shown at the Haskell County Fair. The Overall Champion was Clint Alexander with a Red Rex Jr. Doe and the Overall Reserve Champion was Daniel Meairs with a Red New Zealand Sr. Buck. We also had Showmanship and the Senior Showmanship Grand Champion was Clint Alexander with the Reserve Champion award going to Michelle Avritt. The Junior Showmanship Grand Champion was Brant Norman with Bradley Zimmerman winning Reserve Champion. We range in projects that have only a few rabbits to Clint and Chris Alexander who have 200+ rabbits. It is because of 4-H that their project has grown to the size it has.

The Tri-State 4-H Rabbit Show, sponsored by the Haskell County Rabbit Club, was held on November 7, 1987. There were 169 rabbits entered with twenty 4-H'ers participating in the event. The following is a list of the winners: Jr. Showmanship - Amber

Ebert, Pratt, KS; Sr. Showmanship - Daniel Ebert, Pratt, KS; Overall Champion - Champagne D'Argent, Emily Gigot, Garden City, KS; Overall Reserve Champion - Dutch, Brant Norman, Sublette, KS; B.O.B. NZW - Daniel Ebert, Pratt, KS; B.O.B. Holland Lop - Zephyrus White, Pratt, KS; B.O.B. Champagne D'Argent - Emily Gigot, Garden City, KS; B.O.B. Himalayan - Kraus, Garden City, KS; B.O.B. Mini Lop - Daniel Meairs, Sublette, KS; B.O.B. Standard Chinchilla - Michelle Avritt, Sublette, KS; B.O.B. Palomino - Mae Wells, Copeland, KS; B.O.B.

French Lop - Clint Alexander, Satanta, KS; Best Meat Pen - Palominos - Mae Wells, Copeland, KS; B.O.B. Rex - Clint Alexander, Satanta, KS; B.O.B. Satin - Chris Alexander, Satanta, KS; B.O.B. Netherland Dwarf - Chris Alexander, Satanta, KS; B.O.B. Dutch - Brant Norman, Sublette, KS; B.O.B. Silver Martin - Clint Alexander, Satanta, KS; and B.O.B. Tans - Emily Gigot, Garden City, KS.

Clay and Sandy Walker of Mulvane, Kansas were judges for the show.

We hope to see our 4-H Club grow even more in the next year.



*Judge
Clay Walker
at Tri-State
Rabbit
Show with
Clay
Alexander
assisting.*



1988 Discovery Days Catalog

Here's your opportunity for fun and adventure on the K-State Campus May 31 - June 2, 1988. Look over this class listing. You have over 170 classes to choose from — hobbies, sports, careers, 4-H projects, and many more. If you choose the Full Course Option you will take one in-depth course held all three days. Or maybe you'd rather sign up for the Triple Option and take three different classes.

Get the feel of what it's like to go to

college. You will have a chance to experience college life both in and out of the classrooms.

There are many exciting things to do in addition to going to classes at Discovery Days — dances, swimming, games, bowling, shopping at the K-State Bookstore and many more. A picnic the last day will wrap things up.

Those wanting to attend Discovery Days need to be 12 years of age or older as of January 1, 1988. Adults are welcome, too. Cost is \$65.00. In some

classes where you will be making things to take home or doing something extra, there is a class fee to cover costs. These fees are listed at the end of the class description.

Hurry and get registered for Discovery Days by sending your registration to your County Extension Office. Classes are assigned on a first-come, first-served basis. All registrations must be received in the State 4-H Office in Manhattan by April 15. Late registrations will not be accepted.

1988 DISCOVERY DAYS REGISTRATION INSTRUCTIONS— May 31 - June 2

Cost:

\$65.00 for Discovery Days Delegate

\$72.00 for first-time Ambassadors and Ambassador Advisors

Age:

Youth attending Discovery Days must be 12 years of age or older as of January 1, 1988.

Who Should Register:

Everyone — *youth - adults - agents - instructors* - must use the registration form to register this year.

CLASS REGISTRATION PROCEDURES:

Youth:

All youth, regardless of reason for attending, must send in a registration form. *Everyone, except first time Ambassadors*, must rank at least 12 choices in all FOUR categories of classes - (1) Full Option, (2) Tuesday, (3) Wednesday, (4) Thursday. Classes are assigned on a first come, first served basis. Youth members of the Discovery Days Committee DO NOT send the \$30.00 non-refundable pre-registration fee. Youth registration forms must be signed by parent/guardian. Ambassadors and advisors will be assigned Ambassadors training classes. They do not check class choices.

Note:

Youth who are scholarship nominees still register for all classes. If selected for interview, finalists will not be assigned a Tuesday afternoon class.

Adult:

All adults regardless of duties (agents, instructors, adult delegates) must send in a registration form. Agents must rank (1-12) classes you would like to host. Those adults who DO NOT send the \$30.00 non-refundable pre-registration are listed below:

- Volunteer instructors teaching on Tuesday & Thursday
- Volunteer instructors teaching on Wednesday
- Volunteer instructors teaching all three days
- Volunteer members of the Discovery Days Committee
- Nurse

Non-Refundable Registration Fee:

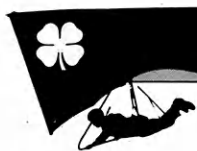
A \$30.00 non-refundable pre-registration fee must accompany each registration. Make checks payable to the Kansas 4-H Foundation.

Health / Code of Conduct Form:

The Health and Code of Conduct forms, signed by parent/guardian, must be received from each youth attending Discovery Days with their registration form.

Due Date:

The registration form, \$30.00 non-refundable pre-registration fee, and the Health and Code of Conduct Forms are due **in THE STATE 4-H OFFICE** in Manhattan, Kansas by April 15. Late registrations will not be accepted.



Special Announcements

Emerald Circle Banquet For 1988: The Emerald Circle will be after Discovery Days (Friday, June 3) because of a scheduling conflict with the Holidome. The reception will begin at 5:30 p.m. and the banquet will begin at 6:30 p.m.

State Award Nominee Finalist: Finalists can attend Discovery Days as full-time regular par-

ticipants. They must complete the regular Discovery Days registration form. A separate interview form will be sent to those who qualify. Interviews will be Friday morning, June 3, the day after Discovery Days.

State Scholarship Nominee: They should complete and return the Discovery Days registration

form just as any regular delegate would. If selected, interview finalists will not be assigned a Tuesday afternoon class. (They **cannot** sign up for a Full Option class).

Health Form Must Be Notorized: Manhattan hospitals and medical centers **will not** treat patients without a notarized health form.

*This class will help you supplement your income. You'll learn how to be successful at getting/keeping a job or how to make something to sell.

Animals

Advanced Dairy Goat Care

We will visit a goat herd and participate in the daily care of the animals. Nutritional and preventive medicine as well as grooming will be discussed. The advanced group will cover the health and medical aspects in greater detail. *Wednesday.*

Beginning Dairy Goat Care

We will discuss the daily care of the dairy goat from newborn kids to the milking doe. Important nutritional and health concerns will be covered. You will visit a dairy goat herd and experience milking, feeding, and some health procedures. *Thursday.*

Dairy Cattle Judging

Dairy cattle judging techniques will be explained with demonstrations. Students will participate in actual judging exercises and prepare a set of written reasons. Oral reasons will be presented by instructor. *Tuesday.*

Entomology I

Go on a collecting field trip. Techniques for collecting will be illustrated. You will collect specimens of your own. *Tuesday.*

Entomology II

Class time will be spent on learning to mount, identify and label insects. You may wish to enroll for Entomology I also. *Thursday.*

Equine Sports Medicine and Exercise

You will learn about a new program at KSU. The objectives are to reduce injuries and disease in the equine athlete and to improve performance of horses in competitive events. A demonstration will be given of a horse running on a high-speed treadmill. *Tuesday.*

Exploring the Zoo *

You'll go behind the scenes of the Sunset Zoo to discover how a zoo operates — this includes handling some zoo animals. Discussion will include career opportunities in zoos and aquariums and the role of conservation education in zoos. *Tuesday or Thursday.*

Getting Your Cat Ready For Show

In this class you will learn important steps to get your cat ready for the cat show. Learn everything from health, to grooming, etc. *Wednesday.*

Handling & Restraint of Large Animals

Learn the proper way to handle and restrain large animals without injury to the animals or yourself. You will also learn soothing techniques to keep animals under control. Hands-on experience will be given. *Wednesday.*

Intro to English Horsemanship

Learn the basics of riding English style. There might be some jumping over a few low poles. For Beginners. Send in your registration early. These classes always fill up quickly. Tuesday class won't return to campus until 5:30 p.m. You won't miss supper. Thursday class will leave for the horse arena at 8:00 a.m. Eat breakfast early. \$12 additional class fee. *Tuesday or Thursday.*

Jump for Joy

Learn and practice the beginning steps of English riding and jumping. **YOU MUST HAVE A MINIMUM OF 2 YEARS RIDING EXPERIENCE. THIS CLASS IS FOR THE EXPERIENCED HORSEMAN.** \$17 additional class fee. *Wednesday.*

Managing the Market Lamb

This course will include discussions on selecting, feeding, managing, fitting and showing a lamb. Time will be allocated for hands on fitting and showing experience. *Full Option.*

Market Swine Project

This class will be an overview of the selection, care, feeding, and showing of your 4-H pig. *Tuesday.*

Poultry Judging

Participants will have an opportunity to judge production hens, dressed poultry, interior eggs, exterior eggs, and broken out eggs. Special emphasis will be placed on preparing and giving oral reasons. *Tuesday.*

Setting Up A Cat Project In Your County

Learn how to start a cat project in your county. You will also be given tips on how to get items free — from literature to pet food. *Tuesday or Thursday.*

Using New Tools in Beef Selection

Specification beef production will be stressed in a "hands-on setting" for beef selection. National cattle evaluation, EPD's, frame scores, ultrasonics, and visual appraisal will be covered. *Thursday.*

When to Call the Vet

Learn to give shots, take temperatures, and different signs of illness. Films for small and large animals will be shown. *Wednesday.*

Arts

Americana Copper *

You will learn to transfer and punch design on-to copper and antique copper. Finished design will be moulded into 3 dimensional form or placed in a frame. \$2 additional class fee. *Wednesday.*

Basic Drawing *

Have fun learning the basic fundamentals of drawing taught by a professional artist. Emphasis will be on contour lines. Some perspective will be involved. This class will help you learn to draw anything. \$4.50 additional class fee. *Wednesday.*

Basic Tole Painting *

Learn the various brush strokes and spend more time practicing and completing a project than in Beginning Tole Painting. You will complete a larger item or more than one in this class. **ENROLL IN ONLY ONE TOLE PAINTING CLASS.** \$3 additional class fee. *Wednesday.*

Basic Wheatweaving *

Learn the ancient craft of straw work, known in Kansas as wheatweaving. Five items, including "hearts of wheat," an Aztec design, will be completed to take home. **ENROLL IN ONLY ONE WHEATWEAVING CLASS.** \$7 additional class fee. *Wednesday.*

Beginning Brush Calligraphy *

Learn how to make professional looking posters with just a brush and tempera paint. You will acquire the skill of making clean dimensional looking strokes in this class. *Tuesday or Thursday.*

Beginning Tole Painting *

We will learn various brush strokes and complete a small project during the class time. **ENROLL IN ONLY ONE TOLE PAINTING CLASS.** *Tuesday or Thursday.*

Beginning Wheatweaving *

Learn the ancient craft of straw work, known in Kansas as wheatweaving. Three items will be completed to take home. Several techniques will be learned. **ENROLL IN ONLY ONE WHEATWEAVING CLASS.** \$2 additional class fee. *Tuesday or Thursday.*



1988 4-H Discovery Days

Christmas Ornaments*

The class will be a "hands-on" time for making Christmas ornaments such as a quilted Christmas ball, a pop-up Christmas card and teddy bears made from brown paper and marshmallows. *Tuesday or Thursday.*

Cornhusk Doll*

Cornhusk will be formed onto a cone to make a doll approximately 9" tall. Bring a hand towel to class. \$1.50 additional class fee. *Tuesday or Thursday.*

Cornhusk Wreath*

Cornhusks will be formed on a straw wreath, decorated with a bow and flowers for Christmas or fall use. \$4.50 additional class fee. *Wednesday.*

Creative Crocheting*

Learn to follow a filet crochet pattern and make a small article using filet crochet. Then, learn to design your own pattern. Bring a size "I" crochet hook. Yarn will be furnished. *Wednesday.*

Decorating Grapevine Wreaths*

Decorate a grapevine wreath with ducks and hearts in a country style for your room or a gift for a special friend. \$3.50 additional class fee. *Tuesday or Thursday.*

Discovery Stenciling

Learn different ways to decorate your life with color. Stenciling can be used on many different projects. Basic stenciling techniques will be taught. Take home a finished product. *Thursday.*

Drama: Inside and Out

This class will deal with acting techniques as well as costumes, makeup, and set building. Learn about drama from the inside and out. *Wednesday.*

Fun With Gingerbread Houses*

Bake and decorate a gingerbread house, while learning a few basics of using an icing bag. These skills could be transferred to basic cake decorating. Gingerbread houses can be stored for a Christmas decoration. \$2.00 additional class fee. *Wednesday.*

Metal Punch*

Learn the pioneer art of metal punch with tin and copper. Each member will complete one large and two smaller projects, or four small projects. \$3.00 additional class fee. *Tuesday or Thursday.*

Padded Photo Album*

Learn to make a padded photo album. Take home a finished product. Makes great gifts or extra income. \$7.00 additional class fee. *Tuesday and Thursday.*

Texanna's Troupe

This special 4-H entertainment troupe will learn to sing with the group using movement and simple, effective routines for public performance. The group will possibly perform at the picnic or other events at Discovery Days. *Full Option.*

The Theater ... Be All That You Can Be*

Different aspects of acting will be dealt with: such as mime, solo, duet, serious, humorous, and improvised acting. Students will be given scripts and/or different situations, and then act them out. Emphasized in the class will be how acting can increase one's self-confidence on and off the stage. *Tuesday or Thursday.*

Foods and Nutrition

Basic Cake Decorating*

This is the same class as Beginning Cake Decorating, except more in-depth time is spent learning how to decorate. For beginners. ENROLL IN ONLY ONE CAKE DECORATING CLASS. \$1.00 additional class fee. *Wednesday.*

Beginning Cake Decorating*

If you've always envied cooks who produce gorgeous cakes, here's your opportunity to learn borders, writing, stars, and flowers. For beginners. ENROLL IN ONLY ONE CAKE DECORATING CLASS. \$1 additional class fee. *Tuesday or Thursday.*

Breads Around the World*

Come and create different international breads and recipes. *Wednesday.*

Candy Making*

Learn to make your own candies. Everything from peanut clusters, fudges, mints for weddings, to suckers. Make your own chocolates: turtles, caramels, bon bons, almond joys, etc. \$2 additional class fee. *Tuesday or Thursday.*

Creative Bread Shaping*

Learn some basic skills in handling and storing yeast bread dough. Then let your creativity take over. The designs taught have many fun applications for holidays, school parties, and theme decorating for your family table. Bring your own ideas also. \$2.00 additional class fee. *Tuesday.*

Developing New Meat Products

"Hands-on" participation in developing a new meat product. Discussion will focus on selecting appropriate animal types for meeting new consumer demands and for development of new meat products. Career opportunities in the livestock and meat industry will be explored. *Thursday.*

It's a Matter of Taste

Students will participate in exercises which are similar to the procedure a trained sensory panel would use in evaluating a food product. Included will be an odor analysis of various compounds, a hardness ranking of product texture, and a computer scaling of flavor intensity. *Tuesday or Thursday.*

Kookie Kutter Kraze*

We will cut out cookies that are made from a cookie dough that doesn't stick to the counter top or the cookie cutter, and that even small children can manage. Decorating will be done by egg yolk paint, baked on decorator frosting, and an icing glazing. *Tuesday or Thursday.*

Meet Me At The Meat Counter

Basic principles to use in meat buying. Versatility, nutritive value, options for successfully using meat in meals or as a snack food in a smart diet. Brief discussion on meat-related careers. *Tuesday.*

Smart Teens Don't Diet

The original Greek meaning of the word "diet" is "way of living." This class will involve many activities to introduce normal eating guidelines which can become part of the teen "way of living." \$2 additional class fee. *Wednesday.*

Wok Cookery

Learn the art of cooking with an oriental Wok. It's fast, fun and nutritious. Try your luck eating with chopsticks and sipping Chinese tea, too. *Tuesday or Thursday.*

Machines

Computer Explorations

Plan to explore PC Blue Public Domain Software. We will have fun with games, word processing, etc. Bring blank diskettes with you to take some software home. *Tuesday or Thursday.*

Darkroom Techniques*

4-H'ers will develop their roll of black and white negative film and print a few of their favorite pictures. 4-H'ers should bring a roll of exposed film, 24 exposures maximum, 35 mm of BLACK AND WHITE FILM (T-MAX 100, PLUS X or TRI X). All pictures are to be natural light, no flash, of animals, people, buildings, scenery, etc. \$3.00 additional class fee. *Wednesday.*

Diesel Engine Testing

Measure and calculate the performance characteristics of a farm tractor diesel engine, including horsepower and fuel consumption. The engine will be "operated" by class members under supervision of the instructor. The resulting data will be plotted in the form of performance curves. *Tuesday or Thursday.*

Discover the Financial Calculator

How long will it take to accumulate a down payment for a stereo or car? What will the interest be if I pay for the car on a time payment? Now, regardless of your mathematical skill and training, you can make such calculations quickly and easily. *Tuesday or Thursday.*

Exploring Engineering

Classes will tour the various Kansas State Engineering Departments and investigate an Engineering problem to obtain a solution through the use of computers. *Tuesday or Thursday.*

Farm and Home Electricity

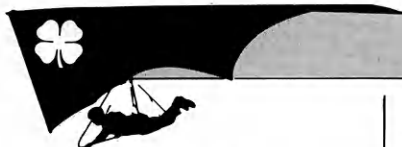
The fundamentals that make electricity work will be presented with emphasis on the connection of electrical circuits. Participants will obtain hands on experience in safely wiring switching and receptacles in electrical circuits. *Wednesday.*

Intermediate Rocketry

In this class you will actually build a rocket and learn to measure distance and speed. We will have a rocket shoot-off in the afternoon. *Wednesday.*

Kansas 4-H Computer Contest

This contest is designed as a demonstration of computer knowledge and basic programming skills. Four to five hours will be required to complete the contest including a written exam, program troubleshooting, program development and parts identification. Participants are encouraged to bring their own computers for the contest. Contestants should obtain a copy of Kansas 4-H Computer Contest rules and regulations (4-H 536) from their county Extension office prior to the contest. *Wednesday.*



1988 4-H Discovery Days

Kansas Small Engine Contest

This contest is designed as a demonstration of skills and knowledge acquired by 4-H members participating in the 4-H Small Engines unit. The winner will advance to compete in the National Small Engines Contest. Contestants should obtain Kansas 4-H Small Engine Contest Rules and Regulations (4-H 526) from their County Extension Office or Extension Agricultural Engineer prior to the contest. *Wednesday.*

Meet Mr. Fix It*

Bring something small, such as a lamp, small appliance or small electronic item from home that is broken. Mr. Fix It will help you repair it. If your problem is with something large, write down what you think is wrong, and he will help you solve your problem. Mr. Fix It will contact you to find out what you are bringing. *Wednesday.*

Microcomputer for Business Planning

An introduction to microcomputers and data management will be presented with emphasis placed on business applications of a spreadsheet. Each participant will have their own computer. *Tuesday.*

News Journalism*

Participants and instructor will cover a news story at Discovery Days. They will learn how to take pictures for a news story, select pictures and crop them for printing. Students must bring a 35mm camera. NOTE: THIS IS A SPLIT CLASS ON TUESDAY AND THURSDAY. STUDENTS WILL BE ASSIGNED ON BOTH DAYS. THEY WILL BE ABLE TO SIGN UP FOR A DIFFERENT CLASS ON WEDNESDAY ONLY. \$2 additional class fee. *Tuesday-Thursday.*

Nuclear Reactor Operations

A short introduction to radiation measurement, control, and impact, followed by a lab exercise involving the KSU TRIGA reactor. *Tuesday or Thursday.*

Photo Judging

Learn how to conduct county photo judging contests that will help 4-H'ers select and critique 4-H photos. REQUIREMENT: MUST BE ENROLLED IN PHOTO PROJECT. *Wednesday.*

Put Together Your Own Computer

See and learn what must be purchased for putting together a personal computer for a much lower price than buying it already assembled. A computer will be assembled during class. *Tuesday or Thursday.*

Reading, Writing, 'Rithmetic and More — Computer Style*

Learn the basics of computer technology. Covered topics include DOS, word processors, data bases, and spreadsheets. After completion of this course students will have learned how to use three software tools: PC-Write - a word processor, FileExpress - a data base, and ExpressCalc - a spreadsheet. \$15 additional class fee. *Full Option.*

Small Gas Engines - Tuneup & Maint.*

A brief look at what makes an engine run followed by actual hands-on experience of performing tune-ups and simple repairs on a small gasoline engine. *Wednesday.*

Taking & Critiquing 4-H Photos

4-H'ers in this class will learn essentials of composition for pictures, take pictures of buildings, people, and/or animals with slide film, and critique their slides. THIS CLASS IS ON TUESDAY AND WEDNESDAY! Participants must bring their own 35mm camera. \$8.00 additional class fee. *Tuesday-Wednesday.*

Outdoors

Backpacking

Learn about the type of food and equipment needed. Back packs will be provided for a three to five mile hike in the afternoon. Come prepared with the proper footwear. *Wednesday.*

Bird Watching in the Flint Hills

A full day of bird-watching will take place in Riley and Geary counties. We will visit a variety of ecosystems to view species in the Flint Hills. Bring your own binoculars and bird book. *Wednesday.*

Bow Hunter Education

Deer hunting will become very real as you explore the Tuttle Creek area. You will look at the selection of archery equipment, hunting safety, ethics, hunting practices, tree stands, anatomy, blood trails, and landowner relations. \$2.00 additional class fee. *Wednesday.*

Fishing Kansas

This class will be put on by two expert fishermen, with a world of knowledge on catching fish in Kansas. We will spend a day in the Flint Hills of our state and will try to catch numerous different fish. This is a quality class with good information on many species of fish, such as bass, walleye, catfish, and many others. *Full Option.*

I Tried Scuba

The class is designed to introduce the world of scuba diving. This will be a hands on experience in the use of masks, fins, snorkel, and the scuba equipment itself. Equipment will be provided. Participants must be able to swim in deep water. Bring swim suits and towels. Be prepared to enter the water. *Tuesday or Thursday.*

Intermediate Canoeing

We will review strokes and canoeing tips on Tuttle puddle below the dam. Then we will canoe down the Kaw River. *Wednesday.*

Kansas 4-H Bicycle Contest

Participants will demonstrate bicycle riding skills on closed courses; demonstrate knowledge of traffic rules; identify bicycle parts and their functions; and trouble-shoot mechanical problems on selected bicycles. Participants must supply bicycle. Top contestant, 14 or older, will represent Kansas at the Western Region 4-H Contest in Omaha. *Wednesday.*

Land Judging & Homesite Evaluation

This class will provide the basic skills for 4-H and FFA land judging and homesite evaluation contests. Students should wear appropriate clothing and footwear. *Wednesday.*

Learn to Earn Lawn Care*

Learn how to earn extra money by starting your own lawn care business. You will learn the tools of the trade to start your growing industry. The course will teach grass culture, proper landscape care, lawn mower maintenance and safety. Join the fun and learn how to turn the green grass into green cash. *Full Option.*

Racketball

You'll learn, practice, and put to use the fundamentals of one of the country's fastest growing forms of exercise and leisure sport. Equipment will be provided. You must wear white-soled tennis shoes. For Beginners Only. *Tuesday or Thursday.*

Recreational Games for All

Have your recreational games gone flat? Join up to discover new activities and new ways to organize activities to provide for maximum participation of all your members. Come dressed to participate in activities. *Thursday.*

Riflery

Instruction in Basic Rifle Marksmanship to NRA standard. Includes fundamentals, safety, equipment, 3 position and lots of practice. *Full Option.*

Shotgun Maintenance & Reloading Techniques

The class will include shotgun types, operation, cleaning and maintenance, ammunition, reloading, and shooting. Safety will be stressed throughout. All shooting and reloading will be with 12 gauge shotguns and shells. All materials will be provided. \$4.50 additional class fee. *Wednesday.*

Shotgun Shooting Fundamentals

You will receive on-range instruction in shotgun shooting. Information will be given on shotgun fit, gauges, chokes, reloading, and safety. \$12.00 additional class fee. *Wednesday.*

Soil & Water Conservation

This class will introduce you to soils, plants, and water quality. In the field, you will see how soils, plants, erosion, and water quality are related. You will also learn about career possibilities in the Soil Conservation Service. NOTE: Scholarships are available. Contact your county Extension office for details. Applications must be submitted by March 15. *Wednesday.*

Strength Training

Principles of strength training. Learn exercise techniques, safety in the weight room, and spotting techniques. Students will learn how to design their own program. Free weights and machines will be used. This class is instructed by the KSU Intercollegiate Athletics Strength and Conditional Coach. Class is coed. *Tuesday or Thursday.*

Taxidermy*

Learn the basic techniques of skinning and mounting birds. Each student will mount and get to take home a bird which will be provided. \$4 additional class fee. *Full Option.*

Wildlife Potpourri

Join the American sportsman blazing new trails in the great outdoors. Explore adventures in trophy deer hunting, strategies in trapping and calling wooly coyotes, shooting ducks and geese, and techniques in calling big Tom turkeys. Share in the thrills of this wildlife expedition, including a game-calling contest and "big game stories." *Full Option.*



Plants

Beginning Bonsai

This will be an introduction to Bonsai - the art of training plants which has been done by Chinese and Japanese for centuries. The basic materials, plant shapes, plant cultivars, and training methods will be discussed. Each student will start a plant which he can take home. *Thursday.*

Crop and Weed Identification

Identification of grain and forage crops grown in Kansas and weeds that commonly are found in these crops. Emphasis on plants to assist in preparation for the 4-H Crop Contest. *Tuesday.*

Crop and Weed Seeds

Examining the variation of crop and weed seeds — their colors, shapes, sizes, and unique features such as spines, wings, etc. Also identification and grain analysis techniques useful for the 4-H Crop Contest. *Thursday.*

Devel. Crop Var. for Kansas Farmers

This class will review the basic techniques used to improve crops for Kansas agriculture. A tour of campus research facilities and field trip to research plots will enable students to interact with plant breeders and learn how problems facing Kansas farmers are being solved. *Thursday.*

Growing Well With Plants

Learn how to build and plant vertical gardens, raised beds, and container gardens in the Horticulture Therapy Garden. These adaptive gardening methods are useable by elderly and physically disabled gardeners. *Thursday.*

Herbs & Things

All about herbs. This class will take you on a garden tour plus decorative uses for herbs, culinary, fragrant, perfume and potions. Each student takes a bottle home. \$5 additional class fee. *Thursday.*

Propagation by Budding and Grafting *

In this class you will learn by doing how to start a new plant by budding and grafting. All new fruit trees and many ornamental shrubs and trees are propagated by one of these methods. Budding and grafting is both an art and a science. *Tuesday.*

Textiles & Clothing

Beginning Quilting *

Introduction to piecing and quilting. Piecing will be done by machine, quilting by machine or hand. Learn how to stitch accurately, cut using a rotary cutter and use accuracy in construction. Finished product can be used as a pillow top or a mini-quilt. \$2 additional class fee. *Wednesday.*

Ins & Outs of Knitting Cable Patterns *

This class is designed for 4-H'ers who have some knitting experience. You must know how to knit and purl. We will learn the basics of knitting cables and explore some of the many wonderful variations of cable patterns. Bring a small amount of scrap yarn and a pair of knitting needles (any size you are comfortable using). *Thursday.*

Machine Applique *

Bring your own T-shirt or sweatshirt to class and learn to machine applique a design on it. Skills used may be used to make appliqued towels, wall hangings, and other utility items. *Tuesday.*

Mirror, Mirror on the Wall *

Take a closer look at all the needed information to be a top notch model. Participants will get a chance to see a fashion show, have their colors analyzed and see the effects that accessories can have on clothes. You will also get a chance to practice modeling in front of a video camera. Garment line and design as well as the proper way to apply make-up may also be covered. *Wednesday.*

Padded Heart *

Make an attractive heart to hang on your bedroom wall. You can hang chains and lots of other items on the hook of the heart. \$1.00 additional class fee. *Tuesday or Thursday.*

Pattern Darning *

Actually a form of weaving, pattern darning is an ancient technique you'll see in handcrafts all over the world. It's decorative without being complicated and adapts to a wide variety of uses and materials. It won't take long to create an attractive, finished home accessory. \$2.00 additional class fee. *Tuesday or Thursday.*

Seminole Patchwork *

We'll study techniques of the Seminole Indians and make various strips of fabric. They can be used for garments, decorating rooms, pillows, linens, cornices, etc. This class is sponsored by the Kansas Quilters Organization. \$2 additional class fee. *Wednesday.*

Sewing With A Serger *

This is a hands on workshop where you can actually sew with a Serger. You will learn various techniques as you construct two or more garments of your choice. *Full Option.*

Tatting *

Tatting, a centuries-old process of making lace by looping and knotting a single thread with a small shuttle, is making a comeback in the U.S. You will learn the basic knot and picot, and receive a shuttle and patterns. *Wednesday.*

You & Other Things

Academics & Wildcat Athletics

This class will focus on integrating academic preparation with athletic potential. Guest speakers will include coaches and KSU varsity athletes. Taught by the KSU intercollegiate academic counselor. *Tuesday.*

4-H International Exploration

4-H International programs give an opportunity to "explore" other countries and learn about other people. This class will involve current and past representatives of 4-H international exchange programs. Together we will learn about different cultures with slides, songs, folk dances, games and international snacks. This glimpse into the lives of people from other lands will let you discover its a small world after all. *Thursday.*

4-H Night At the Movies

Free movies, new friendships, great food. All this, plus a chance to learn more about yourself and some of the issues that face teenagers every day. *Full Option.*

Agriculture - Opportunity Knocking

Career opportunities will be explored. Visits will be made to 2-3 departments that open doors to "nontraditional" job possibilities in the dynamic industry of agriculture. *Wednesday.*

Babysitting

Learn how to be an effective babysitter. You will see videotapes, complete worksheets, and discuss how to handle different situations. Upon completion of this Red Cross course, you will receive a certificate. \$2 additional class fee. *Wednesday.*

Basic Public Speaking

Pick up some helpful hints on the art of public speaking. You will have a chance to prepare and give different types of speeches. *Thursday.*

Basic Wardrobe & Color

Learn your best colors, how to put a wardrobe together and how to model. *Tuesday or Thursday.*

Become a P.I. (Perceptive Individual)

Do you have a friend who is depressed or who has serious family problems? Maybe you feel you could make a difference in the life of one of your friends. Learn more about helplessness and hopelessness. Explore the ways to help friends cope with rough times in their lives. It's o.k. to talk about feelings. Practice becoming a good observant listener. *Tuesday or Thursday.*

Citizenship & Voting

While featuring a mock debate among people representing the leading presidential candidates in each party, we will learn what a presidential election means for all of us and the responsibility each of us has in being an informed citizen and voter. Get involved in a mock election among the class. *Wednesday.*

Clowning Around

Be ready for a session of clowning around. Not only will we learn about the art of clowning but also make up techniques. Make up provided. *Tuesday or Thursday.*

Dating & Intimate Relationships

Ask questions about dating and intimate relationships. Delve into the secrets of intimate relationships to uncover how and why they work. Focus will center on the progression from casual dating to steady dating and more intimate relationships. Taught by Dr. Tony Jurich. *Tuesday or Thursday.*

Easier Said Than Done - Public Speaking

Participants will learn the fine points on four types of public speaking: conversations, interviews, public addresses and extemporaneous speeches. You will get experience while working with a VCR. *Full Option.*

Family Ties: Teen-Parent Connections

Do you ever feel like your parents don't listen? Like they don't understand you? Or sometimes, like they don't even care? Teen-parent conflicts do not have to be inevitable. During this session, we will examine your concerns regarding your relationship with your parents. We will also discuss how to improve relationships with parents and how you can help them understand you. Youth only. *Tuesday.*

Find It At K-State

Recent K-State graduates will give you a fun and unique orientation to K-State as well as some hints on everything from contacting a college to making a final decision. This class includes a unique scavenger hunt. *Thursday.*



1988 4-H Discovery Days

Fun at Farrell

A large college library can sometimes be a mystifying place: computer technology, large card catalogs, and thousands of books and magazines to choose from. This class will introduce you to the inner workings of Farrell Library and show you just how easy and fun learning to use a large library can be. *Tuesday or Thursday.*

Gavel Games

Tired of long boring club meetings? Why not try gavel games. Gavel games are a creative, fun and exciting way to learn basic parliamentary procedure. Gavel games can be an alternative to model meetings and everyone gets involved. This is a "hands-on" workshop with fun in mind. *Tuesday or Thursday.*

Human Ecology: Discover the Diversity

Explore the work of food and textile scientists, interior designers, hotel and restaurant managers, apparel designers and marketers, and child care and family service professionals. *Thursday.*

Kids Court

Learn basic information about the justice system in America. Join us as we look at court procedures and their effectiveness. Participate in a mock trial as a judge, an attorney, a juror, the accused, the plaintiff or witness! Judge Wapner ain't seen nothin' yet! *Thursday.*

Know You - Alcohol, Drugs & Youth

An introduction to the new 4-H program on drugs. This class will cover such topics as what drugs are, how they are used, and how they affect those who use them. Members taking leadership may be especially interested in this class as well as club and community leaders. *Tuesday.*

Leader Training - Phase I

(Spotlighting Training, Leader Learning Lab, Organizational Leader Training) Leaders will learn group building, self-esteem, and listening and responding skills. Ideas for enrollment, project fairs, and officers training will be discussed. The use of volunteer trainers and coordinators in 4-H clubs and counties will be covered. Bring a group of leaders from your county or area and start your training here and now. Adults only. *Wednesday.*

Leader Training - Phase II

(Spotlighting Training, Leader Learning Lab, Organizational Leader Training) Skills for leaders to use in teaching goal-setting and decision making will be taught. Learn to involve the entire club in the process. Club ceremonies, the 4-H awards system, and opportunities for 4-H'ers will be highlighted. Adults only. *Wednesday.*

Leader Training - Phase III

(Spotlighting Training, Leader Learning Lab, Organizational Leader Training) Learn to help the 4-H'er and the club identify and clarify their values. How and when values are formed and the importance of self-esteem and a positive 4-H experience in this process. 4-H Days, Parent's Nights, Judging schools, Discovery Days, State Fair, Fair Showcase, and project or activity committees will be defined and discussed. Adults only. *Wednesday.*

Leader Training - Phase IV

(Spotlighting Training, Leader Learning Lab, Organizational Leader Training) Quick celebrations and creative ceremonies will be demonstrated. Learn to measure and evaluate the progress of the club, project club, or committee. County and state fairs and camps will be discussed as well as other competitive events. Adults only. *Wednesday.*

Meditation

Meditation is important in order to get rid of mental tiredness, tensions, boredom, etc. Meditation is purely a scientific technique to relax and enjoy life. *Tuesday or Thursday.*

National Report Form

Helpful suggestions on how to fill out the National 4-H Report form. *Thursday.*

News Writing *

Who? What? Why? Where? When? This class will discover how to put together a good story. *Tuesday or Thursday.*

Non-Alcohol Wet-Bar *

Be one of the new crowd. Learn how to have a good party without alcohol. We will discuss and participate in making recipes and special drinks. Come join us. *Wednesday.*

Okinowan Karate History

Hands on training of basic self defense application. This is an interesting active class for all ages, male and female. Not a strenuous workout. Be sure to wear loose fitting clothes. All instructors ranking black belt with International Ryukyu Kempo. \$7 additional class fee. *Full Option.*

Permanent Record

Let us motivate you and show you how to fill out the 4-H permanent record and answer questions about other project record keeping. *Tuesday.*

Rich Man - Poor Man

This class deals with earning, investing, and spending money. Participants will have an opportunity using play money to make choices which will determine their financial gains and losses. Experience will include obtaining a loan and investing for profit and/or retirement while surviving in the real world. *Wednesday.*

Swing Dance

Get ready to have fun and dance with instruction in the basics as well as the more intricate swing dance steps. Learn to two-step. *Wednesday.*

Things Your Dating Partner Never Told You

We will explore the communication of dating relationships. What are the things girls and guys never talk about with each other? Why is it hard to talk about these things? Is it better not to talk about them? Find out what doesn't get said and why. Very interesting class for gals and guys. *Wednesday.*

Using Parliamentary Procedure

Students will have an opportunity to learn the principles of effective parliamentary procedure and then practice them in a club meeting setting. *Tuesday.*

Why Knot?

This class will be a lab where various knots will be taught that are used in the handling of livestock. The participants will also have the opportunity to make a rope halter which can be purchased at the conclusion of the class. *Tuesday or Thursday.*

Working In A Fast Food Restaurant *

Visit a fast food drive-in restaurant and see it from "behind the scenes." Learn how to apply for a job, then walk through the job. *Tuesday or Thursday.*

Your First Go On Radio *

An opportunity to try your hand at announcing on the radio, by producing public service announcements for Kansas 4-H ... featuring your Voice! Your announcements will be taped, fully produced, and sent home with you to take to your local radio station for possible airplay in your home area. *Tuesday.*

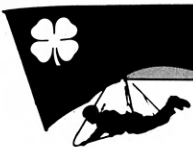
DISCOVERY DAYS REGISTRATION CHECKLIST:

Refer to page 9 for registration instructions.

- | | |
|---|---|
| <input type="checkbox"/> Registration form completed | <input type="checkbox"/> 12 class choices per day and option |
| <input type="checkbox"/> Registration form signed by parent/guardian | <input type="checkbox"/> Code of Conduct form signed by youth |
| <input type="checkbox"/> \$30.00 non-refundable pre-registration fee enclosed | <input type="checkbox"/> Code of Conduct form signed by parent/guardian |
| <input type="checkbox"/> Chose Single or Triple Option Program | <input type="checkbox"/> Health Form signed by parent/guardian |
| <input type="checkbox"/> Health Form notarized | |

SEND ALL FORMS (PAGES 15-19) TO YOUR COUNTY EXTENSION OFFICE.

YOUR AGENT WILL SIGN THE FORMS AND SEND THEM TO THE STATE 4-H OFFICE.



1988 4-H Discovery Days

May 31-June 2

REGISTRATION DEADLINE APRIL 15, 1988

Cost: \$65.00. You must be 12 or older as of January 1, 1988 to attend.

\$72.00 for first time ambassadors and advisors.

Ambassadors and Advisors do not check class choices.

Name _____
First _____ Last _____

County _____ Address _____
Street City State Zip

Home Phone (_____) _____

ADULTS ONLY:

Work Phone (_____) _____

Staying in Residence Hall during Discovery Days? Y/N _____

If yes, which nights? Tues. _____ Wed. _____

CHECK ALL THAT APPLY

ADULTS ONLY

Instructor _____

Do you work:
on KSU campus _____

Agent _____

Area Specialist _____

Ambassador Advisor _____

DD Committee Member _____

Delegate
(taking classes only) _____

None of the above
(please specify) _____

YOUTH ONLY

Delegate _____

First time Ambassador _____

Assistant Instructor _____

DD Committee Member _____

Scholarship Nominee _____

**Do not write
in this space**

Key

--	--	--	--

CN # _____

M/F _____

Status _____

Dep. _____

Dt. Rec. _____

Schol. _____

Seccat. _____

CLS: _____

HS: _____

Attach a \$30.00 non-refundable pre-registration fee check, payable to the Kansas 4-H Foundation, and the Discovery Days Health/Code of Conduct Forms with this form. Please send pages 15-19 to your County Extension Office — not to the State 4-H Office. If all sections of the registration form are not completed and the Health/Code of Conduct forms attached, it will be returned to the County Extension Office.

Parent/Guardian Signature

County Agent Signature of Approval



1988 4-H Discovery Days

I prefer FULL or TRIPLE Option Program. (Circle one)

Although you circle the option you prefer, you must fill out 12 choices per day in the event the option is filled. The State 4-H Office reserves the right to assign delegate to classes if all 12 of his/her choices are filled.

Full Course Option - One in-depth course held all three days. You must rank 12 choices.

ANIMALS

___ 1001 Managing the Market
Lamb

ARTS

___ 1002 Texanna's Troupe

MACHINES

___ 1003 Reading, Writing,
'Rithmetic & More -
Computer Style

OUTDOOR

___ 1004 Fishing Kansas
___ 1005 Learn to Earn Lawn
Care

___ 1006 Riflery
___ 1007 Taxidermy
___ 1008 Wildlife Potpourri

TEXTILES & CLOTHING

___ 1009 Sewing With A Serger

YOU & OTHER THINGS

___ 1010 4-H Night At the
Movies
___ 1011 Easier Said Than Done
— Public Speaking
___ 1012 Okinowan Karate
History

Triple Option - Tuesday, Wednesday and Thursday. Different classes each day.

Tuesday Classes - You must rank 12 choices each day

ANIMALS

___ 2001 Dairy Cattle Judging
___ 2002 Entomology I
___ 2003 Equine Sports
Medicine and Exercise
___ 2004 Exploring the Zoo
___ 2005 Intro to English
Horsemanship
___ 2006 Market Swine Project
___ 2007 Poultry Judging
___ 2008 Setting Up A Cat
Project In Your County

ARTS

___ 2009 Beginning Brush
Calligraphy
___ 2010 Beginning Tole
Painting
___ 2011 Beginning
Wheatweaving
___ 2012 Christmas Ornaments
___ 2013 Cornhusk Doll
___ 2014 Decorating Grapevine
Wreaths
___ 2015 Metal Punch
___ 2016 Padded Photo Album
___ 2017 The Theater ... Be All
That You Can Be

FOODS & NUTRITION

___ 2018 Beginning Cake
Decorating

___ 2019 Candy Making
___ 2020 Creative Bread
Shaping
___ 2021 It's a Matter of Taste
___ 2022 Kookie Kutter Kraze
___ 2023 Meet Me At The Meat
Counter
___ 2024 Wok Cookery

MACHINES

___ 2025 Computer Explorations
___ 2026 Diesel Engine Testing
___ 2027 Discover the Financial
Calculator
___ 2028 Exploring Engineering
___ 2029 Microcomputer for
Business Planning
___ 5030 ** News Journalism
___ 2031 Nuclear Reactor
Operations
___ 2032 Put Together Your
Own Computer
___ 6033 *** Taking & Critiquing 4-H
Photos

OUTDOOR

___ 2034 Academics & Wildcat
Athletics
___ 2035 I Tried Scuba
___ 2036 Racketball
___ 2037 Strength Training

PLANTS

___ 2038 Crop and Weed
Identification
___ 2039 Propagation by
Budding and Grafting

TEXTILES & CLOTHING

___ 2043 Basic Wardrobe &
Color
___ 2044 Become a P.I. (Percep-
tive Individual)
___ 2045 Clowning Around
___ 2046 Dating & Intimate
Relationships
___ 2047 Family Ties: Teen-
Parent Connections
Fun at Farrell
___ 2048 Gavel Games
___ 2049 Know You — Alcohol,
Drugs & Youth
___ 2051 Meditation
___ 2052 News Writing
___ 2053 Permanent Record
___ 2055 Using Parliamentary
Procedure
___ 2056 Why Knot?
___ 2057 Working In A Fast
Food Restaurant
___ 2058 Your First Go On
Radio

**This class meets on Tuesday and Thursday.

***This class meets on Tuesday and Wednesday.

****Adults Only.



1988 4-H Discovery Days

Wednesday Classes - You must rank 12 choices

ANIMALS

- ___ 3001 Advanced Dairy Goat Care
- ___ 3002 Getting Your Cat Ready For Show
- ___ 3003 Handling & Restraint of Large Animals
- ___ 3004 Jump For Joy
- ___ 3005 When to Call the Vet

ARTS

- ___ 3006 Americana Copper
- ___ 3007 Basic Drawing
- ___ 3008 Basic Tole Painting
- ___ 3009 Basic Wheatweaving
- ___ 3010 Cornhusk Wreath
- ___ 3011 Creative Crocheting
- ___ 3012 Drama: Inside and Out
- ___ 3013 Fun With Gingerbread Houses

FOODS & NUTRITION

- ___ 3014 Basic Cake Decorating
- ___ 3015 Breads Around the World
- ___ 3016 Smart Teens Don't Diet

MACHINES

- ___ 3017 Darkroom Techniques
- ___ 3018 Farm and Home Electricity
- ___ 3019 Intermediate Rocketry
- ___ 3020 Kansas 4-H Computer Contest
- ___ 3021 Kansas Small Engine Contest
- ___ 3022 Meet Mr. Fix It
- ___ 3023 Photo Judging
- ___ 3024 Small Gas Engines - Tuneup & Maint.

OUTDOOR

- ___ 3025 Backpacking
- ___ 3026 Bird Watching in the Flint Hills
- ___ 3027 Bow Hunter Education
- ___ 3028 Discover the Konza Prairie
- ___ 3029 Intermediate Canoeing
- ___ 3030 Kansas 4-H Bicycle Contest
- ___ 3031 Land Judging & Homesite Evaluation
- ___ 3032 Shotgun Maintenance & Reloading Techniques

TEXTILES & CLOTHING

- ___ 3035 Beginning Quilting
- ___ 3036 Mirror, Mirror on the Wall
- ___ 3037 Seminole Patchwork
- ___ 3038 Tatting

YOU & OTHER THINGS

- ___ 3039 4-H International Exploration
- ___ 3040 Agriculture — Opportunity Knocking
- ___ 3051 Babysitting
- ___ 3041 Citizenship & Voting
- ___ 3042 **** Leader Training — Phase I
- ___ 3043 **** Leader Training — Phase II
- ___ 3044 **** Leader Training — Phase III
- ___ 3045 **** Leader Training — Phase IV
- ___ 3046 Non-Alcohol Wet-Bar
- ___ 3048 Rich Man — Poor Man
- ___ 3049 Swing Dance
- ___ 3050 Things Your Dating Partner Never Told You

Thursday Classes - You must rank 12 choices

ANIMALS

- ___ 4001 Beginning Dairy Goat Care
- ___ 4002 Entomology II
- ___ 4003 Exploring the Zoo
- ___ 4004 Intro to English Horsemanship
- ___ 4005 Setting Up A Cat Project In Your County
- ___ 4006 Using New Tools in Beef Selection

ARTS

- ___ 4007 Beginning Brush Calligraphy
- ___ 4008 Beginning Tole Painting
- ___ 4009 Beginning Wheatweaving
- ___ 4010 Christmas Ornaments
- ___ 4011 Cornhusk Doll
- ___ 4012 Decorating Grapevine Wreaths
- ___ 4057 Discover Stenciling
- ___ 4013 Metal Punch
- ___ 4014 Padded Photo Album
- ___ 4015 The Theater ... Be All That You Can Be

FOODS & NUTRITION

- ___ 4016 Beginning Cake Decorating

- ___ 4017 Candy Making
- ___ 4018 Developing New Meat Products
- ___ 4019 It's a Matter of Taste
- ___ 4020 Kookie Kutter Kraze
- ___ 4021 Wok Cookery

MACHINES

- ___ 4022 Computer Explorations
- ___ 4023 Diesel Engine Testing
- ___ 4024 Discover the Financial Calculator
- ___ 4025 Exploring Engineering
- ___ 4026 Nuclear Reactor Operations
- ___ 4027 Putting Together Your Own Computer

OUTDOOR

- ___ 4028 I Tried Scuba
- ___ 4030 Racketball
- ___ 4031 Recreational Games for All
- ___ 4032 Strength Training

PLANTS

- ___ 4033 Beginning Bonsai
- ___ 4034 Crop and Weed Seeds
- ___ 4035 Devel. Crop Var. for Kansas Farmers
- ___ 4036 Growing Well With Plants
- ___ 4037 Herbs & Things

TEXTILES & CLOTHING

- ___ 4038 Ins & Outs of Knitting Cable Patt.
- ___ 4039 Padded Heart
- ___ 4040 Pattern Darning

YOU AND OTHER THINGS

- ___ 4041 Basic Public Speaking
- ___ 4042 Basic Wardrobe & Color
- ___ 4043 Become a P.I. (Perceptive Individual)
- ___ 4044 Clowning Around
- ___ 4045 Dating & Intimate Relationships
- ___ 4046 Find it At K-State
- ___ 4047 Fun at Farrell
- ___ 4048 Gavel Games
- ___ 4049 Human Ecology: Discover the Diversity
- ___ 4050 Introduction to Hospitality & Food Service
- ___ 4051 Kids Court
- ___ 4052 Meditation
- ___ 4053 National Report Form
- ___ 4054 News Writing
- ___ 4055 Why Knot?
- ___ 4056 Working In A Fast Food Restaurant



Kansas 4-H Events

CODE OF CONDUCT FORM

As a participant in 4-H events, you have the responsibility of representing all 4-H members to the public. Therefore, you are expected to conduct yourself in a manner that reflects well on your state, county, and club, as well as yourself.

1. You will attend all sessions in the planned program. Inform the adults if you are not feeling well or have a schedule conflict.
2. Observe hours established by the leaders for being in your room. Boys are not allowed in girls' rooms nor girls in boys' rooms.
3. Dress to fit the occasion. (Example: Press conference — a suit and tie for boys, dress or suit for girls.) At all times be courteous and clean and use good manners. Language must be controlled and appropriate for a 4-H member. Swearing is not considered appropriate.
4. Participants are expected to remain in the assigned program area. (Example: dormitories, cabins, campus, campsite, etc.) They may leave only with written permission from the adult in charge.
5. No smoking or using smokeless tobacco at program events, in living or hazardous areas, or when it may be offensive to others.
6. Participants will refrain from use of drugs, including alcohol (except those directed by doctor) or from being where drugs are in use.
7. Avoid unnecessary abuse of room furnishings, furniture, equipment, etc. Towels, ashtrays, etc., are not to be taken as souvenirs. Occupants of a room or conveyance are responsible for any damage or misconduct.
8. Avoid boisterous behavior in motel/hotel hallways.
9. 4-H events encourage interaction among all members of the group, rather than formation of cliques or couples. Necking, kissing, and other inappropriate displays of affection should be avoided.

VIOLATORS MAY EXPECT:

1. To have the opportunity to explain actions to staff in charge.
2. Unsuitable behavior will be noted with a letter sent to Extension agents, parents, and county 4-H councils.
3. Violation may result in being sent home at parental expense.
4. Anyone participating in a state-sponsored 4-H activity who is caught in the act of theft or vandalism or caught with illegal drugs, including alcohol, or who is involved in other serious offenses shall immediately be sent home at his/her parents' expense. If it is determined by persons in charge that the offense warrants it, the offender may be turned over to the proper authorities.

I have read the Code of Conduct and agree to follow the expectations.

Member's Signature _____ County _____

As the parent or guardian of _____, I have read the Code and I'm in support. I give my permission to the staff in charge to administer the Code.

Parent or Guardian Signature _____



Return this form to your county agent. _____

County _____

Consent of Parents — Medical Care and Treatment**THIS FORM MUST BE NOTORIZED (For youth only — not adults)**Name _____ Birth Date _____ Age _____
Last First Yr. Mo. Day

Parent or Guardian _____

Phone: Home _____ Office _____
(Area Code) (Area Code)Home Address _____
Number and Street City State (Zip)

Name and Address of Family Doctor _____

If you or the doctor cannot be contacted — In emergency notify _____

Phone _____ Address _____
(Area Code) Number and Street City State (Zip)**4-H HEALTH STATEMENT**

Health History: (Check, giving appropriate dates)

Bronchitis _____

Convulsions _____

Fainting _____

Kidney Trouble _____

Serious Ivy, Oak, or Sumac Poisoning _____

Diabetes _____

Recent Operations or Injuries _____

Heart Condition _____

Allergic to any food? What? _____

Ear Infection _____

Explain Reaction _____

Allergic to any drug? Penicillin _____ Aspirin _____ Tetanus _____

Other drugs? _____ What is the reaction? _____

Present special dietary regulations _____

Present medications _____

Any specific activities to be restricted? _____

IMMUNIZATIONS:

Tetanus: Date of last treatment: _____

I understand that the 4-H'ers will be closely supervised and that if a serious illness or injury develops medical and/or hospital care will be given; however, the 4-H staff is not responsible in case of accidental injury or illness. I further understand that in case of medical emergency, we will be notified. In the event I cannot be reached, I hereby give permission to the attending physician to hospitalize, secure proper treatment for and to order injection, anesthesia, or surgery for my child, as named above.

Signature of Parent or Guardian _____ Date _____

Medical insurance coverage will be the No. 3 Plan from American Life Insurance Company, Indianapolis, Indiana 46250. Hospital coverage is up to \$3,000

Sworn to me before this _____ day of _____ 19 _____. My commission expires: _____

Notary Signature



Looking for a Job or an Occupational Hazard?

The selection of an occupation is one of the most important decisions in a person's life. For the young jobseeker, questions abound as to what skills are required in each field and how those skills may be attained or refined. Furthermore, while jobseekers may be aware of their own interests and abilities, they face the perplexing choice of selecting a field which promises the greatest economic and personal satisfaction. (*Occupational Outlook Handbook, U.S. Department of Labor, 1986-87 edition*)

Kirk A. Astroth

Southeast Area 4-H Specialist

If finding the right job is the most important decision you will probably make in your life, what's a good way to begin your occupational search? The first step you should go through is some career goal-setting — job hunting starts with goal-setting. Find yourself a quiet, private place. Grab a blank sheet of paper and a pen. And now use the following form to help you better identify what kind of career you might find most satisfying. Remember: "A goal not written down is only a wish."

Career Goal-Setting Steps Form 1

- Step 1. Write 10 words or phrases that describe yourself. For each, write what you like or dislike about being that way.
- Step 2. Identify some "peak experiences" of the past. What are the things you have enjoyed doing the most?
- Step 3. What are some things you've always wanted to do but never done? Include experiences you would like to have in life and things you would like to be able to do. Begin each with the words "I wish...."

Step 4. Thinking about present and/or past jobs (if you've had any), imagine times when you were satisfied and write some words or phrases that describe factors that led you to feel that way.

Step 5. Imagine times when you were *not satisfied* with your job and write some words or phrases that identify factors that led you to feel that way (e.g. lack of independence, task vague, inadequate supervision, required uniforms).

Step 6. Prioritize the following list of characteristics based on what you want most from a career. Number from 1 to 12 with 1 being the most important to you. For instance, if your life could be characterized by one of these qualities, which would it be? If it could be characterized by two of these, which would the second be? Prioritize the entire list based on your own feelings, not on the values others might place on them. No one will see this list but you.

- Belonging: to be accepted as a part of a group
- Duty: to fulfill life's moral obligations
- Expertness: to be an authority
- Independence: to have freedom of thought and action
- Independence: to have freedom of thought and action
- Leadership: to be followed and depended upon by others
- Pleasure: to enjoy and take happiness from life's various experiences
- Power: to control or exercise great influence over others
- Prestige: to be well known and highly regarded
- Security: to have a safe and stable position
- Actualization: to develop personal abilities to the fullest
- Service: to contribute to the betterment of others
- Wealth: to have a great deal of money.



Step 7. The answers to the first six questions give you some criteria to use in deciding what you want from life and a career. For example, the likes and dislikes you listed in item 1 are indicative of values you hold in what you want to be.

Now, without thinking of the real world or of any particular jobs, use the values you have uncovered in the first six steps to build the ideal job description for yourself. It is important that you do this without being restricted by your perception of what is realistic. If the world would allow you to do what you want, what kinds of things would you like to be paid to do?

Step 8. Now, thinking about real jobs, about things people get paid to do, identify *one* which meets as many of your criteria and comes as close to your ideal as possible.

Education	Knowledge	Skills	Experiences	Memberships

Educational Training	Knowledge	Skills	Experiences	Memberships

Career Planning Steps Form 2

1. The job you'd eventually like to have is _____.

2. If you were hiring a person for that job, what qualities would the ideal applicant have?

3. Rate yourself in relation to the idea applicant. Put a check next to the various qualities in the above table that you possess.

4. Next, decide how you can get the attributes you will need to be the ideal applicant. Put a star next to those qualities above that you can reasonably develop in the next couple of years.

5. List other jobs or positions that could help you get the qualities you identified above for the ideal applicant.

6. For which of these jobs could you best prepare yourself now?

7. If you were hiring a person for that job, what qualities would the ideal applicant have? (be specific)

8. Which of these qualities do you not possess now? Place a check mark next to them.

9. Which of the checked qualities will not be developed in what you are currently doing?

10. List educational or volunteer opportunities you could pursue in order to develop these qualities.

If you will take the time to go through these goal-setting steps, you will find the answers rewarding and revealing. You will also find yourself on the way to grooming yourself for a satisfying career — not just another occupational hazard.



Rock Springs Receives \$114,000 Estate Gift



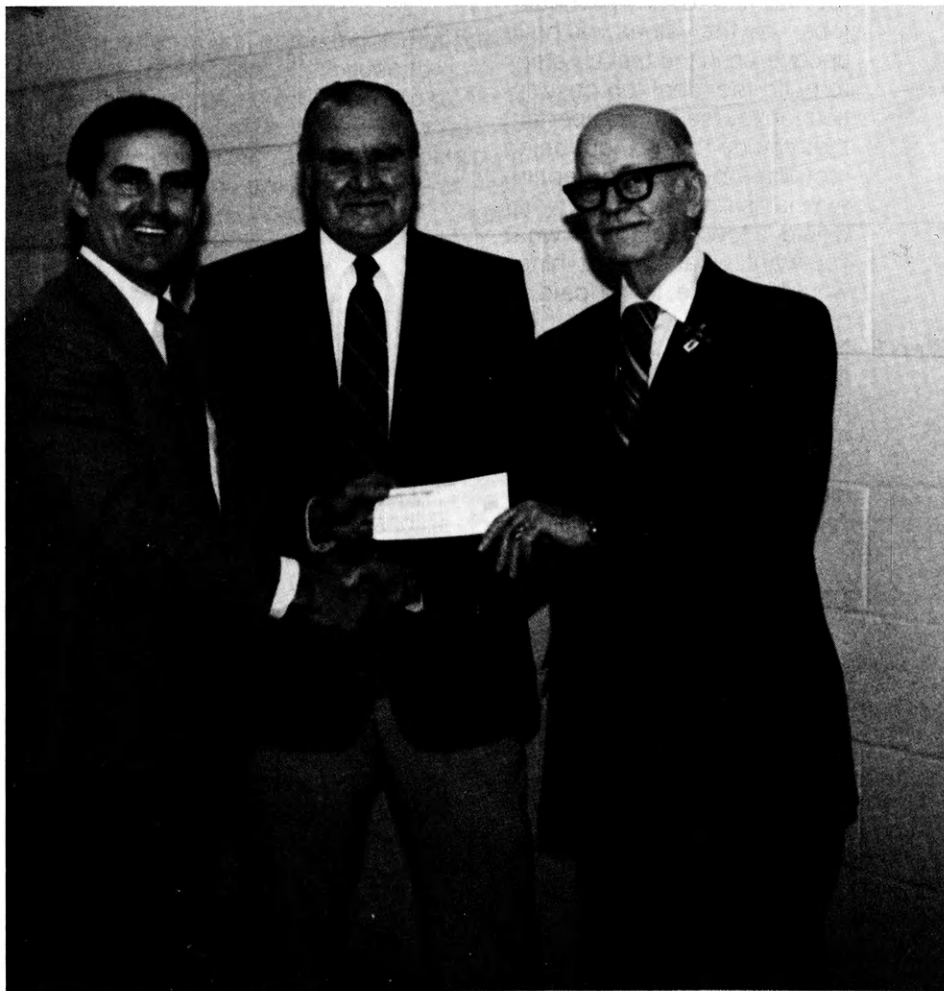
Alberta Ellis

Rock Springs 4-H Center recently announced a memorial gift of \$114,000 from the estate of Alberta Ellis to enhance and maintain the year-round 4-H camping and conference center near Junction City which is owned and operated by the Kansas 4-H Foundation.

Ellis was a retired high school economics teacher from Junction City active in many community organizations and projects.

She is survived by her husband, Roy Ellis, Junction City; a brother, Vinson Pullins, Council Grove; and a sister, Darleen Ayres of Iowa.

As Ellis presented the gift, he described his wife as a well-liked and respected member of the community. "Alberta loved to teach, but she also loved to learn. She continued to help students learn to sew in her home after she retired. She never turned down someone interested in learning," he said.



Bill Riley, Executive director of the Kansas 4-H Foundation, accepts the gift from Roy Ellis as Vince Pullins, Mrs. Ellis' brother, looks on.

"We know Mrs. Ellis had a deep commitment to the growth and development of young people, and her generous gift will continue to benefit Kansas youth," said Bill Riley, executive director of the Kansas 4-H Foundation.

"The contribution will be used in various Rock Springs projects, primarily in the construction of the new Rock Springs 4-H Center Education Building and for permanent maintenance as a

part of the Rock Springs sustaining endowment," Riley said.

In addition to the Rock Springs 4-H Center, the Kansas 4-H Foundation owns and operates scholarship houses at Fort Hays State and Kansas State Universities, publishes the Kansas 4-H Journal and makes available over \$100,000 annually in awards and scholarships for the 92,000 youth involved in Kansas 4-H.



4-H Journal Subscriptions: A Gift From County Sponsors

The Kansas 4-H Journal is provided to Kansas 4-H families by individuals, businessmen and 4-H councils participating in the 4-H Journal sponsorship program.

Through the sponsors generosity, the Kansas 4-H Journal is the only statewide 4-H magazine of its kind in the nation and is allowed to remain in this unique status as a direct result of the participation of county Journal sponsors.

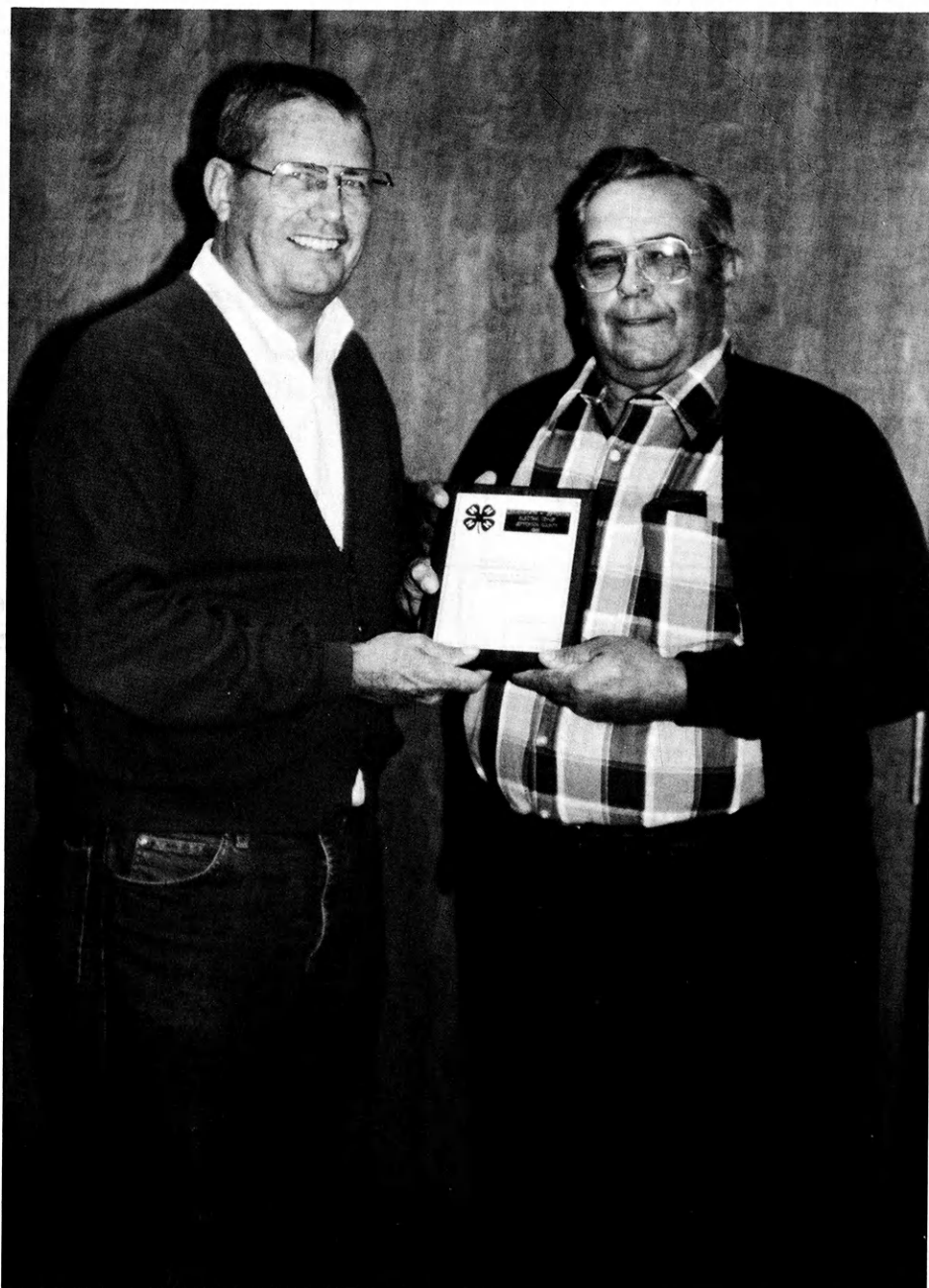
Although the 4-H Journal is received by 4-H families in all 105 Kansas counties today, the 4-H Journal began as a 16 page newsprint publication for Jefferson County 4-H club members in March of 1950.

Elizabeth Pettit and her husband Frank gave the 4-H Journal to the Kansas 4-H Foundation in 1956. The Journal remains a major project of the Foundation serving over 15,500 4-H families, through 10 issues a year and four million printed pages.

Many counties honor their county sponsors during their annual achievement nights, bake cookies, cakes and rolls during National 4-H Week in addition to writing individual thank you letters.

The Kansas 4-H Foundation also has a recognition system for county sponsors which includes a special invitation to Kansas Friends of 4-H Day and presentation of a plaque for 25 years of sponsorship. In some cases, the county chooses to also present the 25 year plaque at their achievement night.

Each sponsor of the 4-H Journal is listed in the June and Nov/Dec issues by county. If you would like to write your sponsor or stop in for a visit, contact your county Extension office for a current listing of your sponsors.



Arthur R. Johnson, County Extension Director and Agricultural Agent presents 25 year plaque to Henry Pohl, Chairman of the Board of the Leavenworth-Jefferson REA.



1988 IFYE Ambassador Deadline Extended

The application deadline for the 1988 International 4-H Youth Exchange (IFYE) program has been extended to March 15, according to Eldon Weaver, Kansas 4-H International Programs Coordinator.

The IFYE Ambassador Programs are designed to help 15 to 19 year old youth to learn more about other countries and cultures and develop an appreciation of the social, economic, political and cultural contribution of all people. It involves a five week stay with host families in a foreign country from late June through early August.

The programs have been redesigned this year to complement the 4-H curriculum. Each exchange includes an in-depth study tour developed around a theme of the visit. The program offered for 1988 are as follows:

Country	Title	Seminar/Topic
THE AMERICAS:		
Mexico	Mexico and My World: Mysteries of a Shrinking World	Issues in Economic Development
Costa Rica	A Tropical Expedition Into 4-H	Youth Leadership
USA-Alaska	An Adventure Through America's Last Frontier	Natural Resource Conservation
EUROPE:		
France	The Flavor is French!	Food and Nutrition
Germany	Biking the Backroads of Germany	Physical Fitness and Bicycle Safety
Germany	Market to Market, German Style	German Agribusiness in a Global Economy
Ireland	From Clovers to Shamrocks	Irish Agribusiness in a Global Economy
Sweden	Endless Summer in Sweden	Camping and Natural Resource Conservation
The Netherlands	Every Bloomin' Thing in The Netherlands	Horticulture/Plant & Soil Science
Belgium	Belgian Cuisine: A Blend of European Flavors	Food and Nutrition
Switzerland	Swiss Cheese from Swiss Cows?	Dairy
Denmark	Conserving a Nordic Tradition	Natural Resource Conservation
England	"My World's a Stage" ... Arts in England	The Fine Arts
Italy	Taking Off on Italy's Fashion Runway	The Italian Fashion Industry and Trade
Spain & Morocco	An Adventure Together Through the Iberian Crossroads	Communication and Group Dynamics
ASIA and AUSTRALIA:		
China	Glimpses of the Picture-Perfect Orient	Photography
Australia	Herding the Flock in "Aussieland"	Sheep Industry
Taiwan	Isle Beautiful by the China Sea	Cultural Arts
Thailand	The Treasures of Thailand ... The Land of Smiles	Community Development and Youth Programs

Application due March 15.

Contact your county Extension office for more information.

Nomination Due For Kansas 4-H Family of the Year

By March 1, submit a letter or notebook to the State 4-H Office explaining why this family is deserving of this honor. To be eligible, at least one member of the family must be a current 4-H member or 4-H volunteer. Criteria for selection includes:

- * Balance of total family involvement in 4-H.
- * Contributions family has made to the 4-H program. (Most weight given to the club and county level.)
- * Years of service to 4-H.
- * Involvement and contributions given to community.
- * Evidence that family has benefited from 4-H.

Applications due March 1.
Contact your county Extension
office for more information.

Nominations Due for Citation Award for Outstanding Service to Kansas 4-H

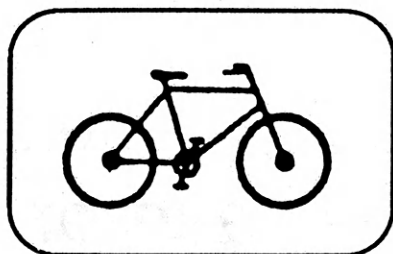
1. This award is being offered to recognize and celebrate what organizations, businesses or individuals do to support 4-H with materials, time, facilities, or financial support.
2. The award can be presented to anyone except a 4-H member or extension staff member.
3. There is no limit on the number of awards given in any one year.
4. Efforts of awardees must go beyond the county level. They could include multi-county, district, state, or multi-state activities of which Kansas is a part.
5. Involvement of the awardee must be for a minimum of 3 years.
6. Once the award is given, the awardee cannot be reconsidered for another award for at least 6 years.
7. Selection Procedure
 - A. Any individual or group, including extension or volunteer staff, may submit a letter of reference. The letter must indicate what the awardee has, 1) contributed in materials, time, facility, or financial support, 2) for how long a period of time, and 3) what benefit has come to Kansas youth or adults in the 4-H program. This information will be used in the press release when the award is made.
 - B. Letters of reference can be submitted at any time to the State 4-H Office. The selection will be made annually by the State Awards Committee.
8. Method of Presentation. Since the award is on behalf of the Kansas 4-H Program, it should be presented by the Assistant Director for 4-H and Youth Programs or his designee, at an appropriate time.
9. The award shall be a special plaque, sponsored by the Kansas 4-H Foundation.

Applications due March 1.

Contact your county Extension office for more information.

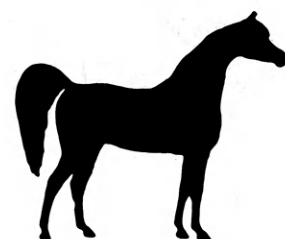
LABO EXCHANGE

4-H'ers interested in the Japanese exchange program LABO have until March 1 to complete an application. Contact your county Extension office for additional information.



**Enter the
"Cycling" Contest
During
4-H Discover Days**

Here's your chance to have fun, demonstrate your bicycle riding skills, display your knowledge of traffic rules, identify bicycle parts and their functions and trouble-shoot bicycle mechanical problems. The top 14 or older contestant will represent Kansas at the Western Regional 4-H Engineering competition in Omaha! Enter this exciting statewide bicycle contest by using the regular Discovery Days class enrollment procedure.



Horse Sale

**March 26, 1988
9:00 a.m.**

Topeka Expo Center

Valley Park Arabians will give away a three year old bay gelding to a 4-H'er accompanied by a parent and who has adequate facilities to care for a horse.

For More Information Contact

Jim Klausman

Valley Park Arabians

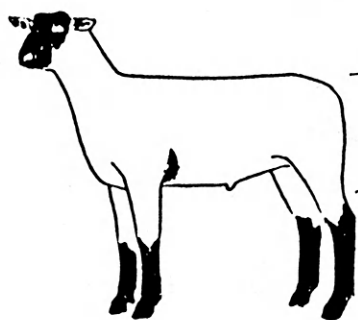
RR 2, Box 89

Valley Falls, KS 66088

(913) 945-3831

SOUTHWIND INVITATIONAL CLUB LAMB SALE

**Sunday, April 24, 1988
2 P.M. - Franklin County Fairgrounds
Ottawa, Kansas**



OTTAWA

Catalog:
J&R Compton
Rt. 4, Box 79
Ottawa, KS 66067
(913) 255-4532

BUY, BUILD, SAVE WITH US

- Competitive rates on savings and loans
- High-yielding C.D.'s
- 17 offices statewide





1988 Kansas State Fair Showcase of Stars

Showcase 1988 will provide members the opportunity to display and enhance their talents in the performing arts at the Kansas State Fair.

"Showcase provides 4-H'ers an opportunity to use a microphone and perform before a unique kind of audience," said Marcia McFarland, state 4-H and youth programs specialist and Showcase coordinator.

The program is designed to be a learning experience so there is no qualifying contest to be able to perform at the state fair.

All ages are welcome to participate on an indoor stage in acts such as: vocal and instrumental groups, dancers, soloists, magicians, skits, readings, ventriloquists, puppet shows, aerobics, dramatics and bands.

Adult and junior leader volunteers are needed as the stage crew to help things run smoothly and to MC the performance.

Contact your county Extension office concerning county eligibility requirements.

To register as a volunteer or participant, return the registration form to:

Marcia McFarland
200 Umberger Hall
Kansas State University
Manhattan, KS 66506

County _____

Phone _____

Address _____

Volunteer status _____

Act description _____



DESIGNING environments that enhance human growth, development, productivity ...
MANAGING new technology on a human scale ...
DEVELOPING better products and services for the people who use them ...
HELPING people build better relationships with each other ...

Whether your interests lie in business, industry, social services, design, or health care professions, the College of Human Ecology has a degree program to suit your interests and professional aspirations.

Come explore the many opportunities available through a degree program at the College of Human Ecology.

KSU Open House, March 26, 1988

college
of
human
ecology

kansas state university

Name _____

Address _____

Telephone (____) _____

Please send me information about undergraduate programs leading to careers in:

- | | |
|--|--|
| <input type="checkbox"/> Hotel and restaurant management | <input type="checkbox"/> Pre-law in family studies |
| <input type="checkbox"/> Dietetics | <input type="checkbox"/> Health and Nutrition |
| <input type="checkbox"/> Apparel and textile marketing | <input type="checkbox"/> Human ecology and mass communications |
| <input type="checkbox"/> Interior design and housing | <input type="checkbox"/> Nutrition and exercise sciences |
| <input type="checkbox"/> Early childhood education | <input type="checkbox"/> Foods and nutrition |
| <input type="checkbox"/> Human development and family services | <input type="checkbox"/> Vocational home economics education |
| <input type="checkbox"/> Family life and community services | <input type="checkbox"/> Home economics extension |

Mail to: Dean's Office

College of Human Ecology
119 Justin Hall
Kansas State University
Manhattan, Kansas 66506
(913) 532-5500

Wherever You Live in the Sunflower State....



*City or Country...
We've got Kansas covered!!*

**WITH A FULL LINE OF INSURANCE PLANS
AND OVER 400 AGENTS STATEWIDE.**

Outstanding coverage.
Rates that are right. And
with agents in every
county and over 70 claims
adjustors statewide, we'll
be there — fast
— when you need us.

Why not discover how
we can make you — or
your piece of Kansas —
more secure.



Farm Bureau Insurance

FARM BUREAU MUTUAL • KANSAS FARM BUREAU LIFE • KFB INSURANCE COMPANIES

Shooting Sports Leader Training

The William M. McDonald Memorial Camper Fund for Rock Springs will reduce the cost of the annual shooting sports workshop.

The seminar is scheduled for April 29 - May 1 at Rock Springs 4-H Center, and although the workshop is free, there is a \$48 charge to cover room, board and refreshments.

Participation is limited to adult leaders exclusively.

Participants will receive 4-H and National Rifle Association Instructor Certification. The classes offered include: air rifle, air pistol, archery, black powder rifle, county coordinator training, shotgun and hunting techniques (different from the hunter safety course).

County teams and counties not yet in the shooting sports program should send a county coordinator and an instructor for one or two disciplines. Counties already in the program can send instructors for any of the disciplines, and new county coordinators may also be trained.

Contact your county Extension office for more details and registration information. Registration forms are due in the state 4-H office on April 15.

State Horse Events for 1988

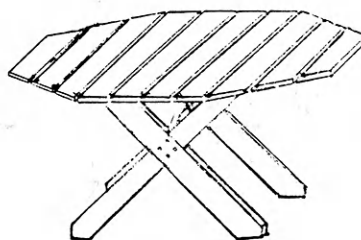
The State 4-H Horse Panorama will no longer be held because of low participation for the past several years. Staff resources can't be justified for the less than ten contestants in the demonstration and talks divisions.

The State 4-H Quiz Bowl contest will be rescheduled to July 15 at KSU; the state 4-H horse judging contest will be July 14. A special horse demonstration class will be offered at the 1988 State Fair to select a candidate for the National Western 4-H Horse Demonstration Contest.

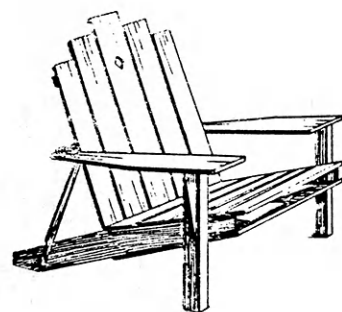
Free!

4-H Woodworking Plans from YOUR PARTICIPATING LUMBER DEALER

**These plans
are available:**



PICNIC TABLE



LAWN CHAIR

For your free plans, see your participating lumber dealer; he will also help you select the material you need.

ABILENE
Abilene Lumber, Inc.

ASHLAND
Don Spotts Lumber Company

ATCHISON
Beverly Lumber Co., Inc.

BELOIT
Peoples Lumber Co.

BURLINGTON
Burlington Lumber & Supply

CIMARRON
Stephens Lumber of Cimarron

CLAY CENTER
Fullington's

CONCORDIA
Mid-West Lumber Company

EL DORADO
Home Lumber & Supply Co.

EMPORIA
Fleming Lumber & Material Co.
Mark II Lumber

ERIE
Johnson & Son Lumber Co.

EUREKA
Home Lumber & Supply Co.

FREDONIA
Schoolcraft Lumber Co.

GALVA
Galva Lumber, Inc.

GARDEN CITY
Fankhauser, Inc.

HUTCHINSON
Davis Home Center
Kightlinger's

INDEPENDENCE
Sandott Sentry Home Center

IOLA
Klein Lumber Company

JOHNSON
Seyb-Tucker Lumber and
Implement Company

JUNCTION CITY
Builders Lumber, Inc.

KINGMAN
Kingman Lumber Co.

LaHARPE
Diebolt Lumber and Supply

LANSING
Lansing Lumber, Inc.

LARNED
T.M. Deal Lumber Co.

MANHATTAN
Cash Lumber & Hardware

NEWTON
Claassen Hardware &
Lumber Co.

NICKERSON
The Home Lumber &
Supply Co.

NORTONVILLE
Nortonville Lumber, Inc.

OTTAWA
Hubbard Lumber
Company, Inc.

PAOLA
Miami Lumber, Inc.

PARSONS
Woods-Seward Lumber Co.

PITTSBURG
Broadway Lumber Co., Inc.
True Value Home Center

PRATT
W.R. Green Lumber, Inc.

Woodworking Plans Available:

Accent Table
Bluebird House
Book Rack
Bulletin Board
Cherry Wood Cabinet
Child's Toy Wagon
Child's Rocker
Computer Desk
Cutting Board
Darning Doll
Deacon's Bench
Dog House
Dresser Valet
Easel
Garden Seat
Key Rack
Letter Holder
Mantel Clock
Martin Bird House
Novelty Rocking Horse
Pedestal Desk
Pet Food Bin
Plant Stand
Planter-Mailbox
Porch Swing
Redwood Cart
Revere Coat Rack
Roll Top Desk
Rolling Pin
Stereo Case
Tennis Rack
Towel Storage Rack
Wall Book Shelf
Walnut Headboard
Wren House

Submit Woodworking Plans; Receive 4-H Journal Recognition

The 4-H Journal publishes woodworking plans submitted by 4-H members, leaders and parents in the ad featuring Kansas working dealers.

To submit your plans for consideration of publication, send a detailed copy of the plan along with a drawing to use in the woodworking dealers ad.

In addition to the ad, the Journal staff creates a brochure for each plan used in the Journal and mails them to the participating woodworking dealers to distribute to their customers.

You may also want to send a photograph of your finished product along with your plans, and be sure to clearly write your name, age, address, county

and club on the plans so you will receive the appropriate recognition if your plan is selected for publication.

By participating in the woodworking plan program, you can provide new plans to other 4-H'ers enrolled in the woodworking project, and receive recognition for your work. Please remember to submit a variety of plans so younger members will have a project they can tackle easily, and older members will find a project that will challenge their woodworking skills.

Send your plans to:

The Kansas 4-H Journal
116 Umberger Hall
Manhattan, KS 66506

RUSSELL

Schwaller Lumber

SALINA

Easterday-Boster Lumber Co.

SHARON SPRINGS

Hennick Lumber & Supply Co.

ST. JOHN

English Lumber &
Supply Co., Inc.

SYRACUSE

Hess Lumber Co.

TOPEKA

Whelan's Inc.

ULYSSES

Sunflower Lumber Co., Inc.

WASHINGTON

Washington Lumber Co.

WILSON

Hoch Lumber Company

WINFIELD

A.B. Everly Lumber Co., Inc.
Everitt Lumber Co., Inc.

WRIGHT

Right Co-op Assn.

HORSES FOR SALE

40% off regular asking price to a 4-H member
currently enrolled in the horse project.

- Two year old registered paint filly - sorrel and white tobiano
- Two year old registered Quarter Horse filly - black, star and three socks
- Two year old registered Quarter Horse colt - black

Contact:

Cedar Valley Ranch
R.R. 1

Cedar Point, Kansas 66843
(316) 274-4433

More money for post-high school education comes
from family income and savings than from any other
source. Be prepared; early in life start a savings
account at your

Kansas Savings and Loan

Hutchinson

Valley Federal Savings
& Loan Assn.

Leavenworth

Citizens Mutual Savings
& Loan Assn.

Lyons

Lyons Savings &
Loan Assn.

Manhattan

Manhattan Federal Savings
& Loan Assn.

Medicine Lodge

The Barber County
Savings & Loan Assn.

Plainville and Stockton

Rooks County Savings
Assn.

Kansas 4-H'ers: "Tomorrow's Leaders"



Farm Bureau salutes all county, state and national award winners. Congratulations and good luck in 1988.

—May your participation in 4-H harvest a lifetime of success.



Kansas Farm Bureau, Inc.

2321 Anderson Avenue, Manhattan, Kansas 66502 / (913) 537-2261

We Relish Your Business!



**CONSOLIDATED
Printing Salina**
1-800-432-0266
SERVING ALL OF KANSAS

Collingwood

GRAIN INC.

Serving Kansas
Since 1890

Country Elevators
and Terminals

Capitol Federal Savings



TOPEKA
GREATER KANSAS CITY
MANHATTAN LAWRENCE OLATHE
EMPORIA SALINA WICHITA

Money For Your Treasury

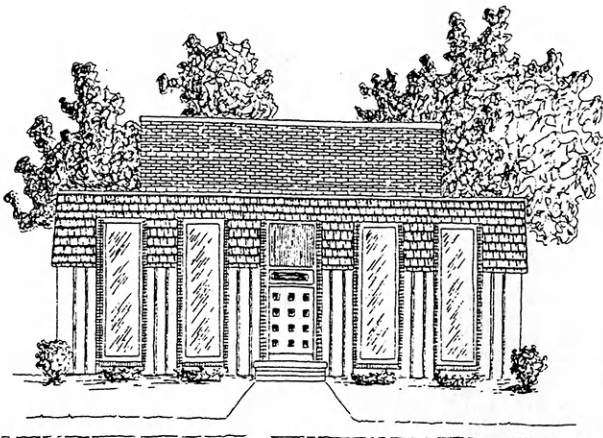
OVER 2 MILLION
Sunflower Dishcloths



WERE SOLD LAST YEAR BY MEMBERS OF
GROUPS, SOCIETIES, CLUBS, ETC.

THEY ENABLE YOU TO EARN MONEY FOR
YOUR TREASURY AND MAKE FRIENDS FOR
YOUR ORGANIZATION.

Sample FREE to Official.
SANGAMON MILLS, INC., Cohoes, N.Y. 12047
KJ Established 1915



Clovia 4-H Cooperative House

ENJOY ... College life among others with interests and experiences like your own. Single female students with a 4-H or similar background.

Fort Hays Clovia

SAVE ... up to \$600 as compared to residence hall living by assisting with house operations and management. Clovia is one of the most economical organized living groups at Kansas State and Fort Hays State Universities.

HAVE FUN ... Traditional Clovia social activities include formals, semi-formals, functions and exchange dinners with fraternities. Clovia members participate in intramural sports and other extra-curricular events. Clovia provides the opportunity for you to meet others and get involved in campus activities.

HURRY ... Space is limited! Complete and mail attached form to:

Kansas State University

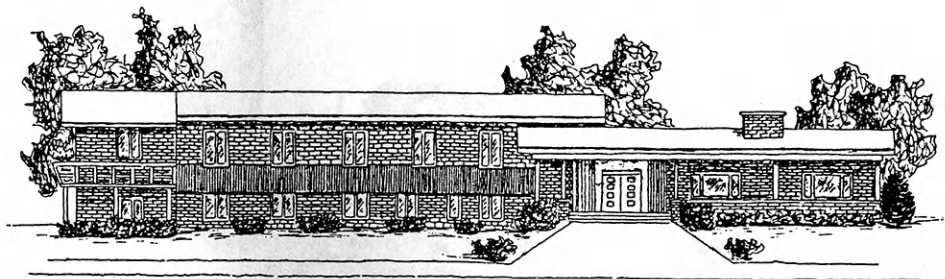
Clovia 4-H Cooperative House
1200 Pioneer Lane
Manhattan, KS 66502
(913) 539-3575

-or-

Fort Hays State University

Clovia 4-H Cooperative House
209 W. 5th
Hays, KS 67601
(913) 625-4052

Manhattan
Clovia



Please send me more information about the Clovia 4-H Cooperative House unique college-living option.

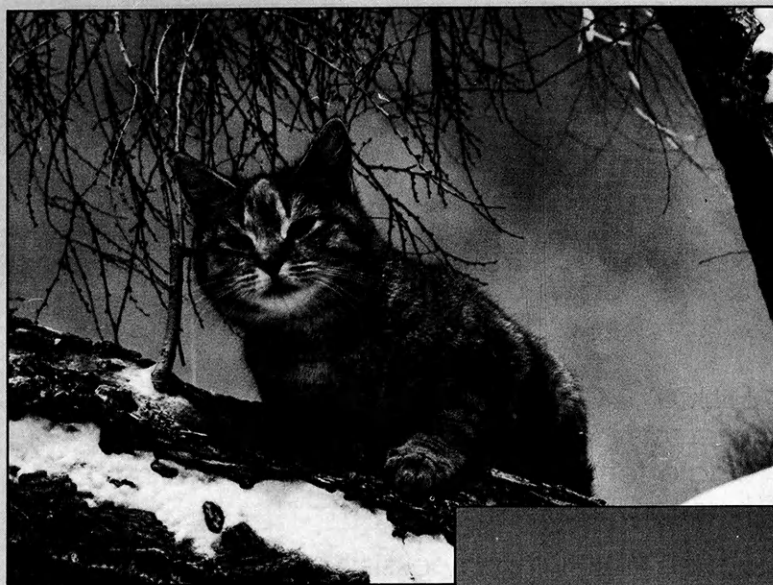
Name _____ County _____

Address _____ City _____

State _____ Zip _____

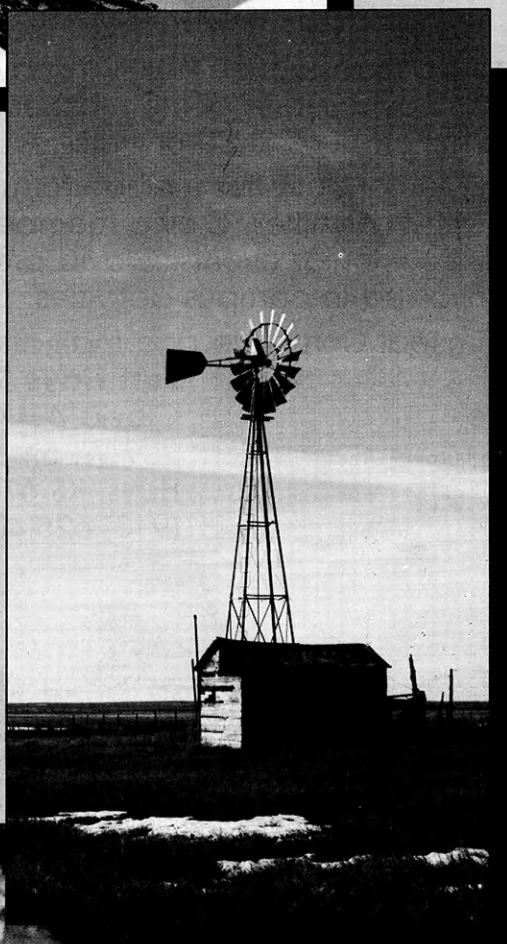
Year in school: ☐ Freshman ☐ Sophomore ☐ Junior ☐ Senior

Clovia: A project of the Kansas 4-H Foundation.



*Duty Ormiston
Kingman County
Cunningham
4-H Club*

*Featuring
Winning
4-H
Photography*



*Rusty Schertz
Logan County
Monument
4-H Club*



*Cheri Sis
Republic County
Ryday Rustlers
4-H Club*

Non-Profit Organization
U.S. Postage
PAID
Permit No. 86
Salina, Kansas