

# Decision Making for a Healthier Community

Riley County Council of Social  
Service Agencies

Wednesday, November 10, 2021  
12:00 pm  
Via Zoom

Cheyenne Brunkow  
Intern  
Master of Public Health Student

Debbie L. Nuss, Chair  
Flint Hills Wellness Coalition  
Co-Chair  
Pathways to a Healthy Kansas –  
Manhattan / Riley County



A Blue Cross and Blue Shield of Kansas Initiative



Opportunities  
to shape the  
health of our  
community



PATHWAYS to a  
**HEALTHY  
KANSAS**

A Blue Cross and Blue Shield of Kansas Initiative

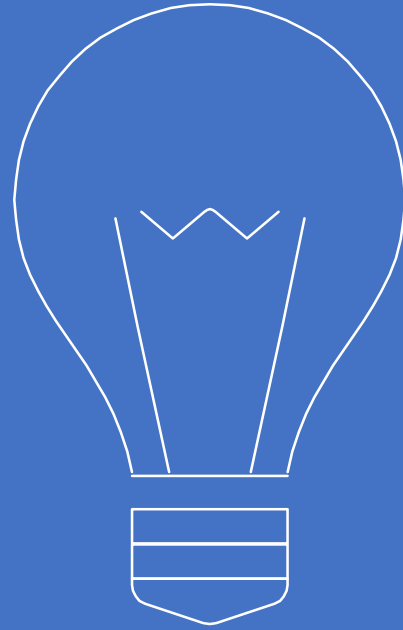






**Health Matters....**  
in all the places we live, learn,  
work, and play in our community

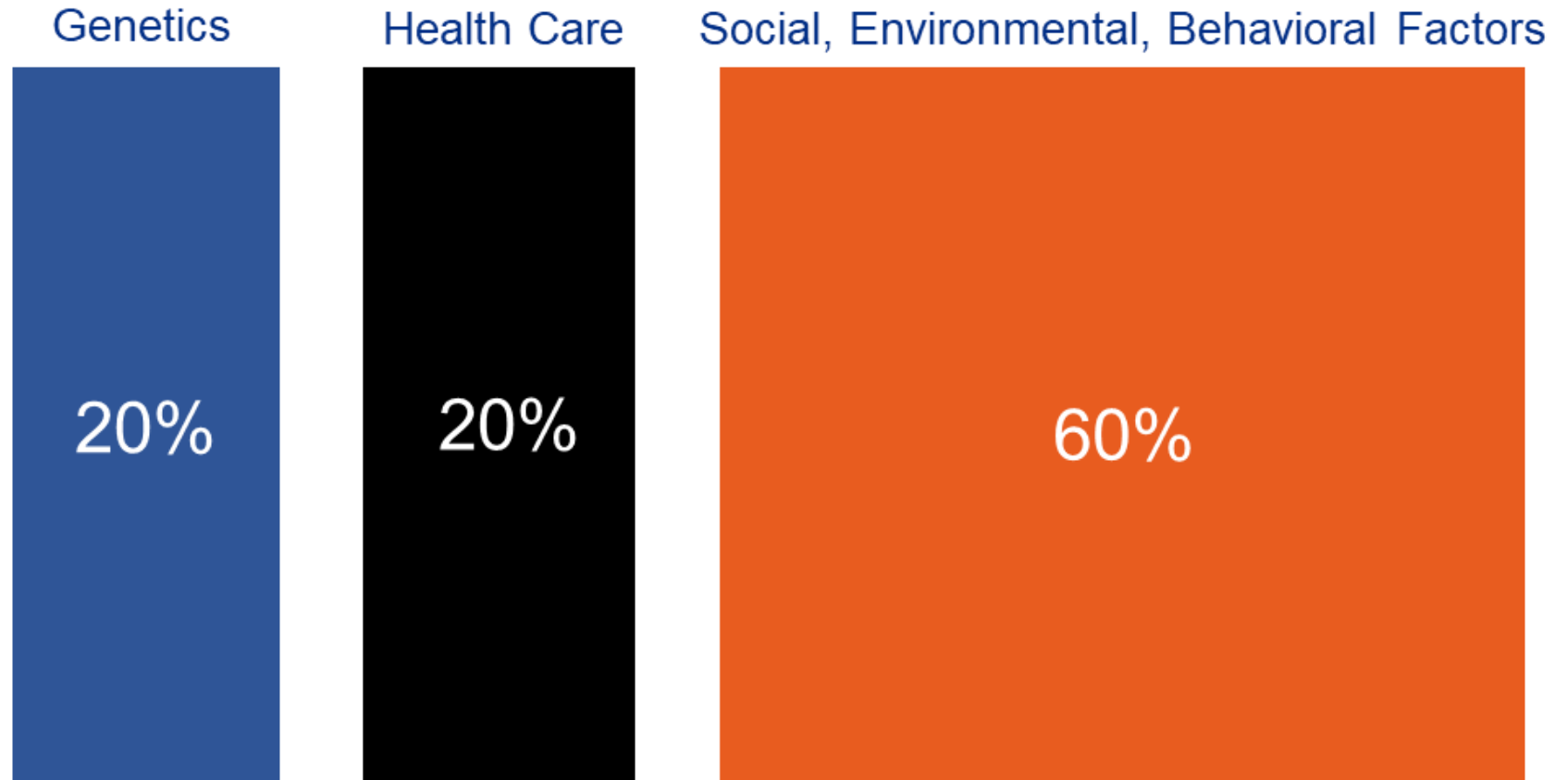




# WHY HIAP?

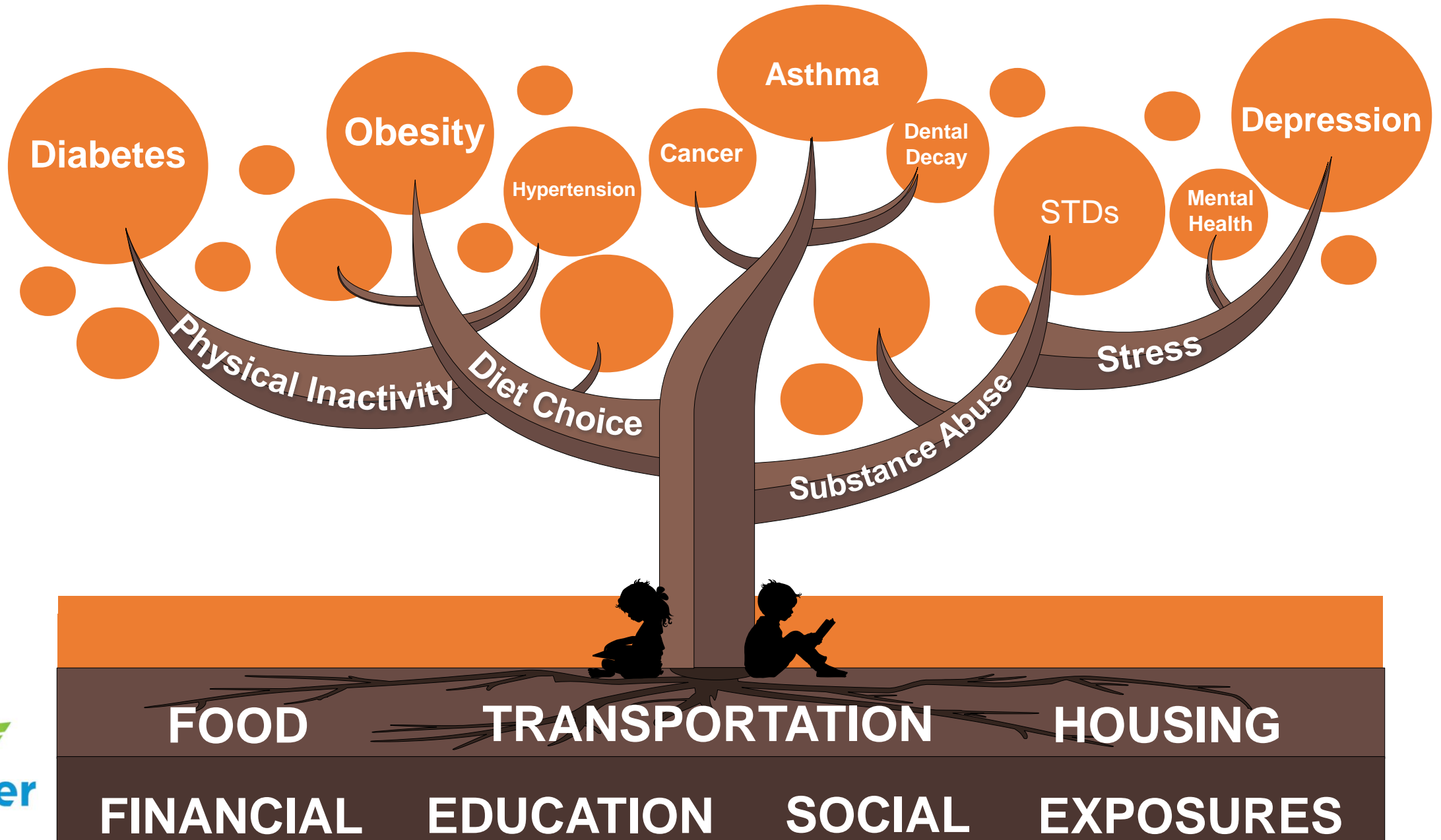
## Reason #1

Health happens outside the doctor's office and policies shape factors that impact our health.



Source: Bradley & Taylor, *The American Healthcare Paradox*.

# *Determinants of Health*

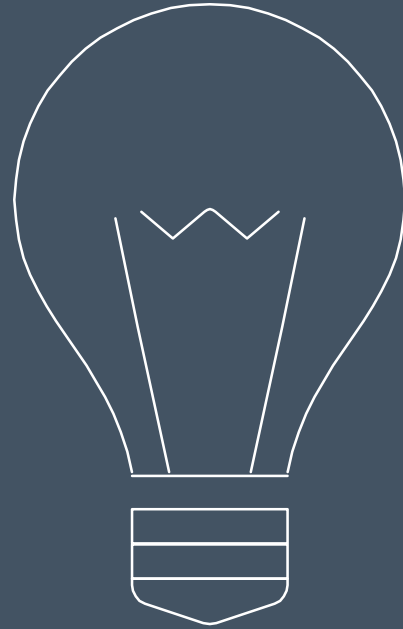




## Reason #2

Many decisions that shape community environments might not routinely consider health.





# DEFINING HIAP



---

“

*HiAP is a collaborative approach that integrates and articulates health considerations into policy making across sectors, and at all levels, to improve the health of all communities and people.*

---

Source: Association of State and Territorial Health Officials (ASTHO) available at <http://www.astho.org/Programs/HiAP/>

# WHAT DOES HIAP MEAN IN PRACTICE?

**Promote Health,  
Equity and  
Sustainability**

Case-by case  
(specific  
policies,  
programs, and  
processes)

**Support  
Intersectoral  
Collaboration**

Work with  
agencies that  
impact social  
determinants of  
health

**Benefits  
Multiple  
Partners**

Look for win-  
wins with  
potential  
partners

**Engage  
Stakeholders**

Identify  
approaches to  
jointly tackle  
issues

**Create  
Structural or  
Process  
Change**

Consider  
health and  
equity  
routinely

*Source: Public Health Institute. Health in All Policies: A Guide for State and Local Governments.*

[https://www.phi.org/uploads/files/Health\\_in\\_All\\_Policies-A\\_Guide\\_for\\_State\\_and\\_Local\\_Governments.pdf](https://www.phi.org/uploads/files/Health_in_All_Policies-A_Guide_for_State_and_Local_Governments.pdf)



*The **Health Impact Checklist (HI-C)** is a tool that asks several questions to help understand how a decision might impact health.*

<http://www.khi.org/policy/article/HI-C>



# KEY QUESTION

*How does the  
proposed  
project, plan,  
policy*



*affect*

Housing  
Air quality  
Noise  
Safety  
Social networks  
Nutrition  
Parks and natural space  
Private goods and services  
Public services  
Transportation  
Livelihood  
Water quality  
Education  
Inequities



*and lead to  
health  
outcomes?*

Note: Adapted from Health Impact Project, HIAP related work.

# WHY USE HEALTH IMPACT CHECKLIST?

## Potential Topics for the Health Impact Checklist



- Understand potential positive and negative impacts of policies on health
- Identify impacted populations
- Create practical recommendations
- Can be completed relatively quickly
- Can be built into other community efforts

# Local Example of HiAP in Practice

---

- **Current city policy in place -**

City ordinance prohibiting smoking/vaping in public places, including outside city owned spaces (parks/trails)

*Exemption – Restaurant/bar outdoor patios*

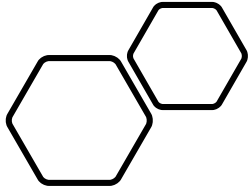
- **Recent County Commission action –**

Prohibit smoking in all county parks



**This Is A  
No Smoking  
Area**





## Local example of public issue

*No publicly supported indoor  
swimming pool available at  
low-cost fees.*

*Only current option is  
privately owned with a  
membership fee prohibitive  
for many community  
members with limited  
income.*



# Health in All Policies Potential Impact



## HiAP Principles

- ☒ Promote health
- ☒ Promote equity
- ☐ Support cross-sector collaboration
- ☐ Defining mutually beneficial goals
- ☐ Engage stakeholders
- ☐ Create structural or procedural changes





# Opportunities for HiAP Trainings

---

- 2- hour customized session for your designated team
- Practical application to inform your work
- Current policies can be reviewed
- Current draft policies, projects, or plans can be reviewed
- Sessions will be offered **until December 2021**  
(Online or in-person TBD)
- Schedule a session now! Send your information to:  
[info@flinthillswellness.org](mailto:info@flinthillswellness.org)
  - Include: Name of group
  - Key Contact Information
  - Preferred date/time options
- A trainer will contact you to design your session with you!





# QUESTIONS

---

[info@flinthillswellness.org](mailto:info@flinthillswellness.org)

