

33  
B  
3  
1  
46

# Kansas 4-H Journal

The Family Magazine

June 1978



RECEIVED

JUN 20

THE LIBRARY

KANSAS STATE UNIVERSITY

# The 4-H Program

Second in a Series

## 4-H club meetings

### What are the purposes of 4-H club meetings?

The purposes of 4-H meetings are to help boys and girls:

1. acquire new information,
  2. learn creative use of leisure time,
  3. develop social skills, and
  4. acquire desirable leadership and citizenship traits.
- 4-H members are given the opportunity to learn and practice decisionmaking in group situations by using the knowledge and skills acquired at these meetings. 4-H members are expected to attend the monthly meetings. PARENTS ARE ENCOURAGED TO ATTEND MEETINGS WITH THEIR 4-H'ERS. 4-H is a family affair.

### How often does the club meet?

Most clubs hold monthly meetings, normally the same weeknight each month (2nd Monday, 3rd Tuesday, etc.) Check with your community leader as to the meeting night for your child's club.

### What is a club meeting like?

The 4-H meeting includes business, educational program, and recreation. 4-H meetings normally don't last over 1½ hours, with the time divided about equally among the three parts. Regular monthly meetings should adjourn by 9 p.m. or shortly after on school nights.

### What is the educational program?

This part of the program is designed to help members learn more about subjects of general interest in the entire 4-H program. 4-H teaching is unique — it is "learning by doing." Good 4-H teaching employs seeing, hearing, and doing.

Generally, the educational program will include talks and demonstrations by the 4-H'ers. Outside speakers may present programs for 4-H meetings.

### How are good monthly meetings accomplished?

**Planning** — this is the key word. It takes considerable thought, initiative, creativeness, and the making of plans well ahead of time. Most clubs outline their educational programs for each month early in the 4-H year. Program planning is often done on a calendar year basis rather than the 4-H year. This allows the officers and leaders to get their feet on the ground before starting the new programs.

Generally, program planning is done by the club officers and junior leaders with guidance from community leaders and the adult advisory committee. The exact program planning committee will vary from club to club.

### Who is responsible for conducting the club meetings?

Each club normally elects the following officers each fall at the start of the 4-H year: president, vice president, secretary, treasurer, reporter, and recreation leaders. Parliamentarians, historians, song leaders, and pianists may also be elected depending upon the desires of the club.

(Continued on page 4)

## A 4-H meeting may have:

### Demonstrations

Demonstrations are "show and tell" type presentations where the 4-H'ers share some of the fun things they've learned in their 4-H projects. Actual articles are used to show the steps necessary for a finished product. Most demonstrations consist of three parts:

1. **introduction**—explains the purpose of the demonstration,
2. **body**—outlines subject step-by-step, and
3. **summary**—reviews important points and gives opportunity for questions.

### Illustrated talks

Illustrated talks differ from demonstrations in that they **tell** how rather than show how. Charts, models, and other visuals are important for illustrated talks.

### Project talks

Project talks are given about the member's projects. The project talk can relate things experienced in the project or give information relating to the project.

### Business sessions

The business portion of the meeting should be short and snappy. It should be a small democracy in action.

### Recreation session

The recreation portion of the meeting distinguishes the 4-H meeting from other educational activities, e.g., school classes. Recreation may include challenges, group singing, dodge ball, relays, guessing games, table games, singing games, active games, and quiet games.

### Refreshments

Some clubs serve refreshments at meetings, although this is not essential. Most often different members are hosts each month. The learning experience for the members who select, prepare, and serve the refreshments is the prime concern. Club members should learn how to select simple, nutritious, inexpensive refreshments and how to serve them graciously. Parents can and should help by giving suggestions and guidance.

# Journal

Vol. XXIV, No. 6

June 1978

## Looking sharp in the horse

show arena .....	5
4-H Calendar .....	6
Summer games with animal names ..	7
My experiences with commodity marketing .....	8
Kansas 4-H Foundation Honor Roll 9-16	
"Queen! Me?" .....	17
Ideas and news .....	18, 19, 21
Friends of 4-H Day .....	21
Family Fun Page .....	23

Glenna Wilson .....Editor  
Debbie Doebele .....Secretary

Address all correspondence:  
Kansas 4-H Journal  
Umberger Hall, KSU  
Manhattan, Kansas 66506

Phone 913-532-5881

Kansas 4-H Journal is published  
10 times a year by

## KANSAS 4-H FOUNDATION, INC.

Merle Eyestone .....Executive Director  
John Bolan .....Associate Director  
J. Harold Johnson .....Field Representative  
Trisha Cash .....Secretary  
Ann Walker .....Treasurer

## BOARD OF TRUSTEES

Governor Robert Bennett  
Honorary Chairman

Ross Beach, Chrm. ....Hays  
Richard Dillon, Vice-Chrm. ....Hutchinson  
Mrs. Charles Streeter, Treas. ....Manhattan  
John Junior Armstrong .....Manhattan  
Glenn M. Busset .....Manhattan  
W. Dale Critser .....Wichita  
Max Dickerson .....Kansas City  
John O. Dunbar .....Manhattan  
Mrs. Olive Garvey .....Wichita  
Bill House .....Cedar Vale  
Balfour S. Jeffrey .....Topeka  
J. Harold Johnson .....Manhattan  
William M. McDonald .....Kansas City, Mo.  
John D. Montgomery .....Junction City  
George B. Powers .....Wichita  
Glee Smith .....Larned  
Mrs. Dwane Wallace .....Wichita  
\*Sen. Frank Carlson .....Concordia  
\*Harry Darby .....Kansas City  
\*Harold E. Jones .....Manhattan  
\*J. J. Moxley .....Council Grove  
\*Roger E. Regnier .....Manhattan  
\*E. B. Shawver .....Wichita  
\*Dolph Simons, Sr. ....Lawrence  
\*John T. Stewart .....Wellington  
\*Advisory Member

Use of the 4-H name and symbol approved by the secretary of Agriculture of the United States, January 23, 1951, under the provisions of the laws as reenacted by Sec. 707 of the Act of June 25, 1948 Public Law No. 772 80th Congress (10 USC 797).

# Opportunities, not problems

By Richard W. Dillon  
Executive Vice President  
Dillon Companies, Inc.  
Hutchinson

Speaking recently to the graduating class of the University of Southern California, former Secretary of State Dean Rusk told the graduates that they should be grateful to members of his generation because "We have gone to special pains to save some interesting problems for you to solve." While these "interesting problems" are not generally viewed as something to be thankful for, the ability of an individual to solve problems when they arise is oftentimes dependent on the attitude with which one approaches the situation.

There are times when these "interesting problems" seem almost insurmountable. Articles appearing in the newspaper or on TV referring to local, state, and even national problems can be very discouraging and upsetting to any individual. There are even days when it seems like everything involved in one's personal life and that of one's family is going wrong. These are the days when we need to say to ourselves, "These are opportunities, not problems."

Think back over the past few years to what seemed at the time to be a major problem in your life. These problems could have been associated with your school work, your involvement in one of the many 4-H projects, your family, or any number of things affecting your personal life. In the majority of these situations your solution to the problem gave you the opportunity to change an unpleasant circumstance into a resulting situation that was better for your having gone through a "crisis point" and survived. You may not have realized at the time just what was taking place, but in retrospect I am sure you can see where the problem turned into an opportunity to make things better.

As you grow older, life will be full of what is oftentimes referred to as "personal problems." As you reach the place in life where you have your own family, you will undoubtedly be faced with more "family problems." As these situations arise, take the positive approach that they are presenting you with an opportunity to better your individual life or that of your family. Even though the situation may seem impossible at the time, there is always a solution which will result in an improvement.

Remember, "We have gone to special pains to save some interesting problems for you." Take this opportunity to utilize your 4-H training, your education, and your experience with your family to solve future situations in ways so that you and those associated with you will have a better life.

## About the cover

"High Diver" is the name Leon Unruh gave his prize winning pic-

ture. Leon, a former Pawnee County 4-H member, is now a student at the University of Kansas.

## CASH FOR NEWSPAPERS

\$25 per ton

Large Quantities picked up  
when our truck is in your area.  
Approximately 10 ton or more

## Thermal Shield, Inc.

1001 North Kauffman Road  
Hesston, Kansas 67062  
Call 316/327-2131

## Money For Your Treasury

OVER 2 MILLION

## Sunflower Dishcloths



WERE SOLD LAST YEAR BY  
MEMBERS OF GROUPS, SOCIETIES, CLUBS, ETC.

THEY ENABLE YOU TO EARN  
MONEY FOR YOUR TREASURY  
AND MAKE FRIENDS  
FOR YOUR ORGANIZATION

Sample FREE to Official.

SANGAMON MILLS, INC., Cohoes, N. Y. 12047  
KJ Established 1915



## 4-H club meetings

(Continued from page 2)

### Who provides leadership?

Parents are usually the best source of adult leaders — but not the only source. Other friends of 4-H such as parents of former 4-H'ers, retired people, and young adults are often willing to help the 4-H'ers. Leadership for monthly club meetings is provided by the community leaders.

### What are local club advisory committees?

Club advisory committees are made up of three adults plus the club president and vice president (community leaders are ex-officio members). They assist the club primarily by securing community and project leaders and setting club policies. Also they may be called upon to lend some ideas and guidance in planning the yearly program and other club activities.

### What is a 4-H agent?

The 4-H agent provides leadership for the 4-H youth activities on a countywide basis — conducting leader training planning activities, and just keeping everything organized. In addition, the 4-H agent provides leadership and support for

special interest youth programs throughout the county. The 4-H agent is available to answer any questions you might have concerning the 4-H youth programs.

### What is the secret of 4-H leadership?

The secret of community leadership lies not so much in finding a few outstanding people who have the knack of making things happen as in the development of a pattern of cooperative effort in which the talents of every person find opportunity for expression.

### This we believe—or do we?

It is not what we know but what we believe that determines what we do. 4-H leaders and parents can make their best contribution to the basic development of 4-H boys and girls if they understand 4-H objectives and principles.

As 4-H parents, we might compare our 4-H club objectives and beliefs with the ones listed here:

- The 4-H club boy and girl are more important than the project.
- Project work is one of the best devices for developing boys and girls. To "Learn by Doing" is fundamental in any sound educational program and is characteristic of the 4-H club program.

• 4-H is not trying to replace the home, church, or school — only to supplement them. This does not mean that 4-H should avoid areas touched by school or church. 4-H music, dramatics, etc., may give additional opportunity for participation, and bring enjoyment in these experiences to additional communities.

• 4-H'ers should be their own best exhibit. This means in manners, attitudes, and courtesy, as well as appropriate dress and physical appearance.

• Competition is part of the American democratic way of life and should be recognized in 4-H work as a human trait, but competition requires careful planning and safeguards when used as an educational device. Care must be taken to prevent boys and girls from being placed in adult competition.

• No 4-H award is worth sacrificing the reputation of a 4-H member or leader.

• A blue ribbon 4-H boy with a red ribbon dairy animal is more desirable than a red ribbon boy with a blue ribbon dairy animal.

• Many things are caught rather than taught.

• Every 4-H member needs to be noticed, to feel important, to win (or achieve some degree of success), and to be praised.

• Our job is to teach 4-H members how to think, not what to think.

If a child lives with hostility, he learns to fight.

If a child lives with fear, he learns to be afraid.

If a child lives with pity, he learns to feel sorry for himself.

If a child lives with jealousy, he learns to hate.

If a child lives with encouragement, he learns to be confident.

If a child lives with praise, he learns to be appreciative.

If a child lives with love, he learns to love.

If a child lives with recognition, he learns to have a goal.

If a child lives with fairness, he learns justice.

If a child lives with honesty, he learns what truth is.

If a child lives with friendliness, he learns that the world is a nice place in which to live.

(More about the 4-H program next month)



**... As much a  
part of  
Kansas as  
Sunflowers & 4-H!**

WITH FOOD STORES SERVING 28  
COMMUNITIES THROUGHOUT THE STATE.



# Looking sharp in the horse show arena

By Kelee Van Hooser  
Junior Member of the State 4-H  
Horse Advisory Committee  
Wyandotte County

As one of the fastest growing 4-H projects in the state of Kansas, the horse project offers many opportunities, including that of horse show competition. Members and parents alike need to be aware of the many easy ways of economizing and simplifying the expenses of competing at the county fair, district or state levels of horse show competition without sacrificing a well-fitted and groomed look for both horse and rider. Expensive and yet unnecessary new tack and clothing are purchased every year with the false belief that looking sharp in the arena costs money.

The 4-H handbook, **A Guide for 4-H Light Horse Shows and Events**, states that in a Showmanship at Halter class, 20 points are allotted for the Appearance and Merits of the Exhibitor and in Equitation classes, 15 points to the Appointments of Horse and Rider. The difference between grand and reserve or a blue and a red can depend on these points. Therefore a winning look is essential.

## Be neat and clean

The first step to a well-groomed show ring appearance is virtually free to anyone who is willing to make the personal effort. It is simply neatness: basic, general cleanliness of yourself and your clothing.

Whether your hat is straw or felt, it should be clean and well shaped. For cleaning a straw hat, a damp but not wet cloth can be used to wipe away mud and dirt. If the hat is white, shoe polish is usable to cover stubborn stains. A felt hat can be freed of dust by using a small brush and lightly brushing with the grain of the felt. Don't brush too hard or you will brush the dirt into the hat permanently.

All exhibitors' hair should be neat and suitably worn. For girls, long hair is a constant problem because, if it is worn in a pony tail or braid, it moves or gives a look of motion while riding. A bun, the most workable solution, holds hair tightly in place and gives a tailored look to the showmanship or horsemanship exhibitor.

All clothing should be pressed and not excessively faded. Boots are to be clean and polished.

In the state of Kansas, a dress code applies to all 4-H'ers who compete on the county, district, or state levels of competition. The code calls for a long-sleeved white blouse or shirt with convertible collar, blue jeans, a hat, belt, and boots. The color of the hat, belt, and boots is optional. Scarves, ties, and gloves may be worn.

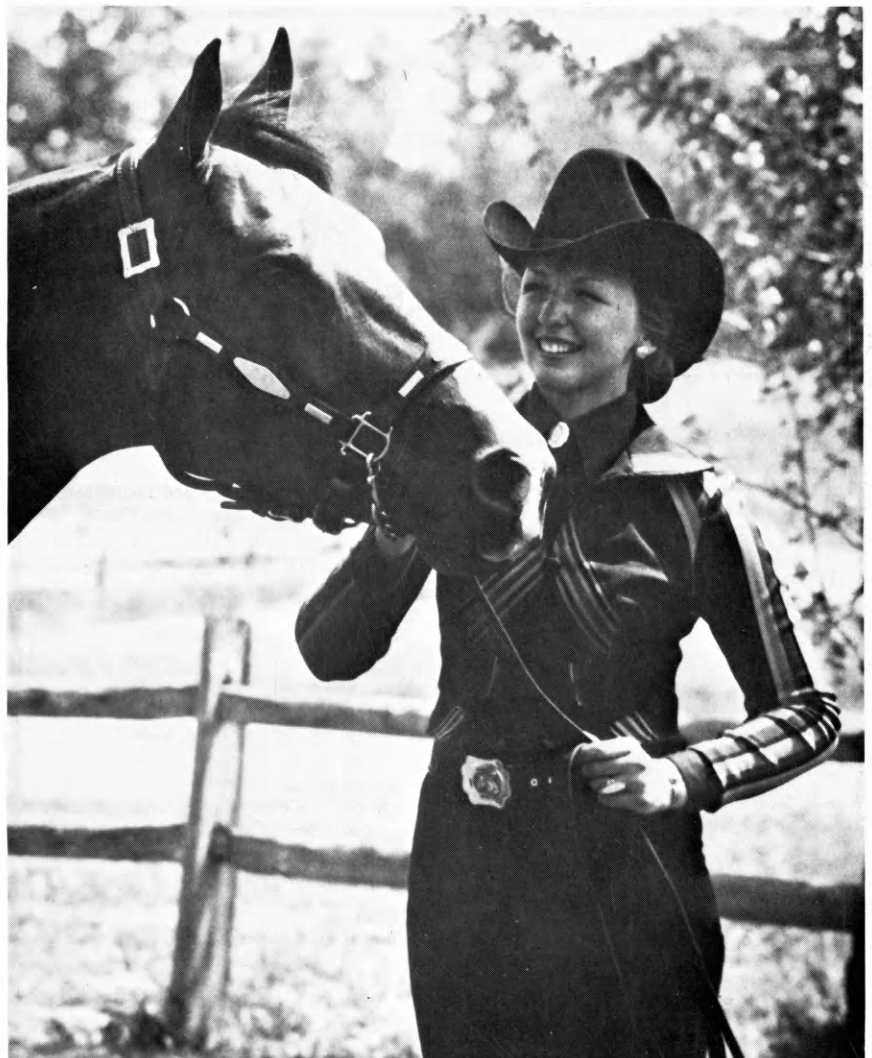
A suitable white blouse or shirt can be purchased at any local discount store for \$6 or \$7. It need not have western yokes or a lot of ruffles. The simpler the pattern, the neater the look. Sew or alter the garment for that good snug bump-and-buckle-free fit. Bodyshirts are excellent for keeping tails in and a tailored fit. Famous name western-brands are more expensive and unnecessary.

For blue jeans, true denium material is a must; knits or other fabrics are not acceptable. Bootcut jeans are recommended because they fall with the contour of the leg. Length is important. Remember that when you climb into the saddle your pants tend to ride up three to four inches, so be sure to buy your jeans with extra length. Mitten grips can be purchased for about fifty cents, to hold your pants down while riding. Pieces of elastic can be sewn to the bottom of pants also, but do not look as neat.

## Clean and polish belts and boots

Most belts can be polished with shoe polish and cleaned with saddle soap. Boots can be resoled; resoling can be done for a fraction of the cost of a new pair.

(Continued on page 6)



## Looking sharp

(Continued from page 5)

The options given you in the dress code should be taken advantage of and used in good taste. Color coordinating scarves and ties are available to accent the color of your hat. They give an individual look and a tailored flair. When picking a color remember that you want to make you and your horse look like a unit, so take advantage of your horse's color by accenting it.

### Wear a scarf or tie

Many ways of wearing a scarf or tie don't allow it to fly around and detract from a neat look. For girls and guys alike, a simple scarf worn under the collar and knotted at the front button adds a nice touch. If a regular tie is worn, a tie clip should be used to secure it in place. An ascot can be worn at the neck and held in place with a stylish pin.

Clean tack is as important to the

grooming of the horse as clean clothing is to the exhibitor. Leather wear should be kept in top working condition. A good cleaning with an inexpensive saddle soap and a rub-down of mineral oil will bring out the richness of color in the leather. There are many lacquer-type products on the market that claim to give your tack a shiny finish. These are not advisable because they tend to turn any light-colored area such as buckstitching yellow. Girths should be clean and in good repair. Saddle pads are being sold in a variety of colors to match your outfits; keep in mind that a pad serves the purpose of protecting your horse's back and make sure that yours is doing just that. Silver on tack should be cleaned and free of tarnish at all times.

As you can see, the money is not on the horse's back, it is in your pocket when you utilize these easy shortcuts. The true keys to a well groomed horse and rider are free or inexpensive: neatness, fit, individuality, and accessorization.

## 4-H Calendar

- June 1—Ness County Horse Show
- June 6-9—State 4-H Youth Conference, Manhattan
- June 6-8—Kester clinic for beginners, (horse project), Logan County
- June 7-8—State 4-H Youth Advisory, Manhattan
- June 8—State 4-H Advisory, Manhattan
- June 10—Lyon County Horse Show
- June 11—Friends of 4-H Day, Rock Springs Ranch
- June 12—Southwest Junior District Horse Show, Scott City
- June 13-15—Kester Clinic for advanced, (horse project), Logan County
- June 15-16—Agents Overnight, Lake Perry
- June 17—Decatur County 4-H Horse Show, Oberlin
- June 26—State of Kansas 4-H Horse Show, Garden City
- July 1-3—State 4-H Family Camp, Rock Springs Ranch
- July 9—Open House for 4-H clubs: 15 year contributors, Rock Springs Ranch
- District 4-H Horse Shows
  - July 10—Garden City
  - 11—Hoxie
  - 12—Salina
  - 13—Manhattan
  - 14—Wyandotte County
  - 17—Miami County Fairgrounds
  - 18—Fredonia
  - 19—Winfield

The State 4-H Family Camp will be July 1-3 at Rock Springs Ranch. For information, write to Merle Eyestone, Kansas 4-H Foundation, Umberger Hall, KSU, Manhattan, KS 66506.

For show books and entry forms for the State of Kansas 4-H Horse Show write to: Charyl Larson, County Extension Office, 9th & Frederick, Garden City, KS 67846. Most of the 11 classes are divided into three age groups.



### Congratulations, graduates!

If you receive money for graduation gifts, be sure to deposit some of it in your



## Kansas Savings and Loan

Arkansas City  
First Federal Savings and Loan Assn.

Clay Center  
Northwestern Federal Savings and Loan Assn.

El Dorado  
Mid-Continent Federal Savings and Loan Assn.

Eureka  
Eureka Federal Savings & Loan Assn.

Fort Scott  
Liberty Savings and Loan Assn.

Garnett  
The Garnett Savings and Loan Assn.

Hutchinson  
Valley Federal Savings & Loan Assn.

Leavenworth  
Citizens' Mutual Savings and Loan Assn.  
Leavenworth Mutual Savings and Loan Assn.

Liberal  
Frontier Federal Savings and Loan Assn.

Lyons  
Lyons Savings and Loan Assn.

Manhattan  
Manhattan Federal Savings and Loan Assn.

McPherson  
Pioneer Savings and Loan Assn.

Medicine Lodge  
The Barber County Savings and Loan Assn.

Ottawa  
Franklin Savings Assn.

Parsons  
Mid-America Federal Savings and Loan Assn.

Plainville and Stockton  
Rooks County Savings Assn.

state-wide services,  
border-to-border

COLUMBUS • COUNCIL GROVE  
GOODLAND • JUNCTION CITY • KANSAS  
CITY (2) • LAWRENCE • LEAWOOD  
MISSION • OLATHE • OTTAWA  
OVERLAND PARK • SHAWNEE

ONE QUARTER BILLION DOLLARS STRONG  
**anchor**  
SAVINGS ASSOCIATION  
HOME OFFICE • KANSAS CITY, KANSAS

INSURED SAFE

# Try summer games with animal names

By Cathy Karst  
Intern, State 4-H Department

For recreation this month, let's look at outdoor games, played either at home or with your club, that feature animal names as far out as snakes, sardines, and caterpillars! Perhaps they will inspire new projects for next year! Well, ah . . . maybe we should start out with an ice breaker with fairly traditional animals. Are you ready?

## Barnyard

Before the get-together, hide peanuts, or candy wrapped in paper. Divide the crowd into equal groups. Appoint one member of each group as leader and give each group a name of a bird or an animal whose call is easily imitated, as sheep, donkey, dog, crow, cat, duck, cow, or pig. Only the leader can pick up the nuts, so when the signal is sounded to begin the hunt, the players in each group run and hunt and then stand beside the nuts and sound their group call until the leader comes to get the nuts. At the end of ten minutes, each group

counts the booty and the one with the most wins. If it is good to eat, every group must give its findings to the winners and they get to eat it all.

## Driving the Pig to Market

Give the first player in each line a stick and an empty can, "the pig." On the signal, the players drive the pigs (rolling the tin cans with the sticks) up to the designated goal, around it, and back again. The second player repeats the process, and so on until every member of the team has had an opportunity to play.

\* Stay tuned for more "animal antics" next month!

## "Superar le mejor"

Want a chance to practice your Spanish? Here's a letter for you to read. It's from the executive director of 4-C in Paraguay to Dr. Busset, 4-H leader in Kansas. You can check your interpretation against the one on page 21.

7 de Abril de 1978

Señor

Glenn M. Busset

Universidad del Estado de Kansas  
MANHATTAN, KANSAS U.S.A.

De mi mayor consideración

Recibí su muy atenta nota de fecha 3 de Marzo del corriente año en la que manifiesta el envío del saludos y felicitaciones - de los 50.000 Socios y Lideres, a los Socios de los Clubes Agrarios Juveniles 4-C del Paraguay en la semana de festejo de sus - Bodas de Plata.

Debo informarle que el Dr. Carlos María Ocampos Arbo, Iresidente del Comité Paraguay Kansas y su dignísima Senora esposa—nos honraron con su -resencia en el acto central del cierre de lfestejo de los 25 anos de creacion de los Clubes Agrarios Juveni les 4-C. En dicha oportunidad el Señor Ocampo hizo entrega de una plaqueta que nos enviaron los companeros de Kansas lo cual fué - un gesto muy simpático.

Agradezco muy sinceramente en nombre mio y de la Asociación por tan amble gesto, invocando nuestro lema "Superara lo mejor."

Reciba un cordial saludo,

Andres Penayo  
Secretario Ejecutivo



These sponsors have recently paid for Kansas 4-H Journal subscriptions for another year.

Be sure to thank them!

### BOURBON

\*Union State Bank, Uniontown

### BUTLER

Augusta State Bank, Augusta  
Exchange State Bank, Douglass  
\*Mid-Continent Federal Savings & Loan Assn., El Dorado  
\*Potwin State Bank, Potwin

### CHASE

\*Exchange National Bank, Cottonwood Falls  
\*Strong City State Bank, Strong City  
\*The Peoples Exchange Bank, Elmdale  
Chase County 4-H Council

### CLAY

\*Union State Bank, Clay Center  
Clay Center 4-H Council

### COWLEY

\*The Home National Bank of Arkansas City, Arkansas City  
\*The First National Bank, Winfield

### DICKINSON

\*Farmers National Bank, Abilene

### ELLIS

\*Ellis State Bank, Ellis  
\*First National Bank, Hays  
Hays National Bank, Hays  
Heritage Savings Association, Hays

### GOVE

\*First National Bank, Quinter  
\*Peoples State Bank, Grinnell  
Grainfield Elevator, Inc., Grainfield

### GRANT

Grant County 4-H Council

### GREELEY

\*First National Bank, Tribune

### LINN

\*Bank of Pleasanton, Pleasanton  
\*Centerville State Bank, Centerville  
\*Farmers & Merchants Bank, Mound City  
\*Linn County Bank, LaCygne  
\*Prescott State Bank, Prescott  
Linn County 4-H Council

### NESS

\*Citizens State Bank, Utica  
\*First State Bank of Ransom, Ransom  
Ness County 4-H Council, Ness City

### OTTAWA

\*Hoover of Minneapolis, Inc., Minneapolis  
Ottawa County 4-H Council  
4-H Boosters Club, Minneapolis

### RICE

\*Central Kansas Elevator, Lyons  
The Chandler National Bank, Lyons  
Bushton Grain & Supply, Chase  
Rice County State Bank, Chase  
Farmers Co-op of Alden, Lyons, Sterling, & Pollard, Sterling  
First National Bank, Sterling  
\*Farmers State Bank, Sterling  
Home State Bank, Little River  
\*Collingwood Grain, Inc., Little River  
Miller-Price Agency & Raymond State Bank, Raymond  
Otasco Store, Lyons  
Palace Drug, Geneseo  
\*Pepsi-Cola Bottling Co., Lyons  
Lyons IGA Store, Lyons  
Alden State Bank, Alden  
Lyons Savings & Loan Assn., Lyons

### RILEY

\*Leonardville State Bank, Leonardville  
Cowan-Edwards-Yorgensen Funeral Home, Manhattan  
The Riley State Bank, Riley  
Kansas State Bank, Manhattan  
Citizens State Bank & Trust Co., Manhattan

### RUSH

Rush County 4-H Council

### RUSSELL

\*Russell State Bank, Russell

### SEDGWICK

\*The Fourth National Bank & Trust Co., Wichita

### STAFFORD

\*Farmers & Merchants State Bank, Macksville  
\*First National Bank & Trust Co., St. John  
\*Hudson State Bank, Hudson  
\*St. John National Bank, St. John

### WYANDOTTE

\*Coleman Implement, Inc., Bonner Springs  
\*Commercial State Bank, Bonner Springs  
Turner State Bank, Kansas City  
The Wyandotte Bank, Kansas City  
Wyandotte County 4-H Council

\*These sponsors have provided Kansas 4-H Journal for 4-H members for 20 or more years.



# My experiences in commodity marketing

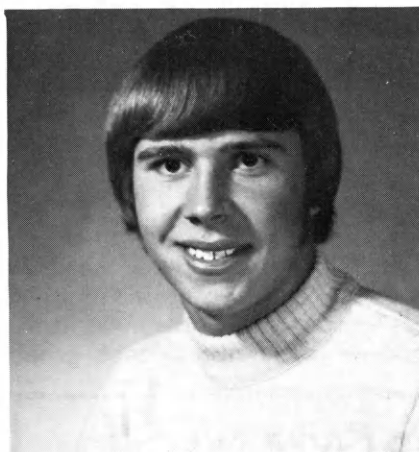
By Randall Scheuerman  
Healy  
Scott County

You may ask yourself why does tableware cost what it does or how can I understand how food is priced? Can I market my grain with less risk? What factors cause such wide fluctuations in cattle prices? Many of you boys and girls have such questions about the commodities you purchase or the products you consume.

Because I was interested in the marketing of livestock and crops, I enrolled in the commodity marketing 4-H project. I live on a 6,000 acre dryland farm with my parents in Scott County. A ten-year member of the Manning Jayhawkers 4-H Club, I have enrolled in commodity marketing as a project the last three years.

I first became interested in the wheat marketing process after helping to harvest our wheat crop by operating a combine during harvest six years ago. I have operated either a combine or truck during harvest each year since.

This past year I planted 80 acres



**Randall Scheuerman**  
1977 State Winner in Commodity Marketing

of Eagle wheat and obtained a yield of 47 bushels per acre on dry land. I have hauled wheat to two elevators and learned how it was tested, weighed, and graded — and how this can affect the price. I have also tested a lot of wheat varieties of my own and I feel I have benefited our farm through these tests. I have kept a daily price of wheat on a

graph over a three-year period and studied the wheat marketing process. This price of wheat was taken each day from the Hutchinson News and put on a graph in my notebook.

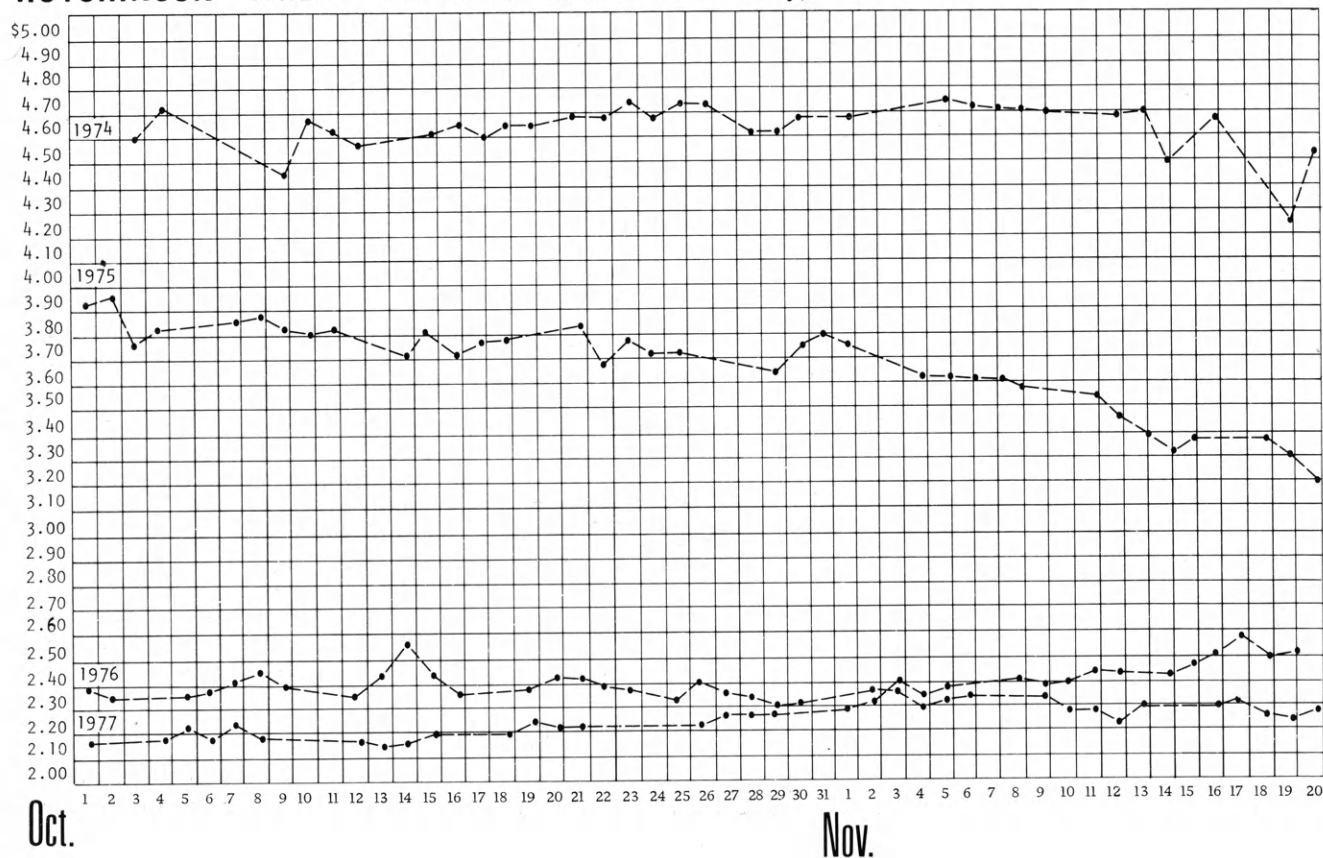
I have made a map to locate all the grain market terminals in Scott and Lane counties. I visited with each elevator manager about transporting and storing grain, and about the protein content and the increased price of high protein wheat. I also recorded the number of bushels each elevator in the county took in, the average test weight, and average moisture. I compared our county with the final wheat quality test of the state, by the number of acres harvested, yield per acre, and the productive bushels of all counties of Kansas.

I have toured the experiment stations at Garden City and Colby, visited the state grain inspection office at Dodge City, and toured Beltsville Farms, a U.S.D.A. research farm at Washington, D.C.

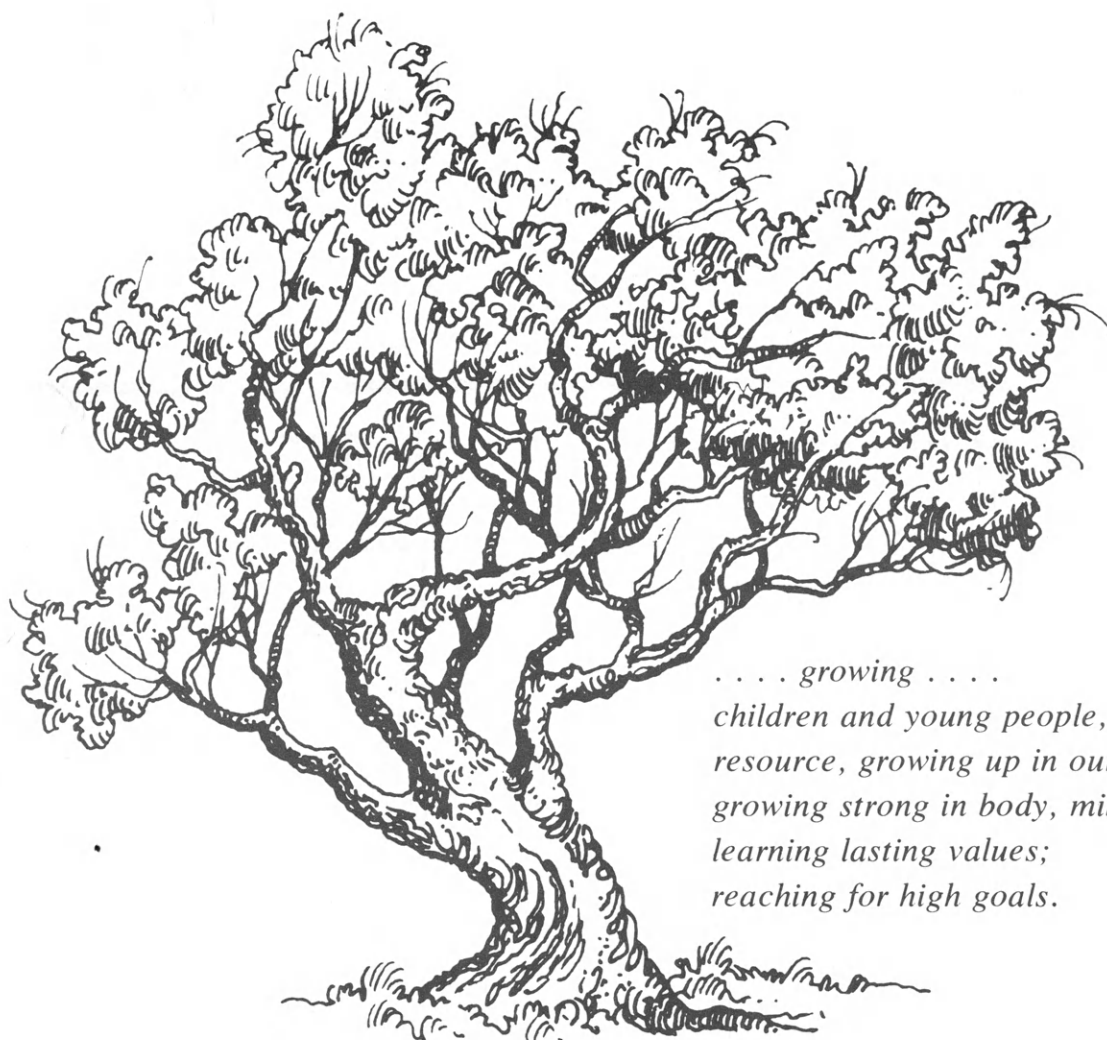
(Continued on page 17)

This is one of Randall's graphs showing wheat prices for October 1 to November 20 in 1974, '75, '76, and '77. The use of such a graph to keep track of price trends gives a wheat grower a sense of direction which is difficult to achieve by any other method, Leonard Schruben, agricultural economist at Kansas State University, commented.

## HUTCHINSON WHEAT MARKET



# Kansas 4-H Foundation — Helping 4-H Grow



*..... growing .....  
children and young people, our greatest  
resource, growing up in our communities;  
growing strong in body, mind, and spirit;  
learning lasting values;  
reaching for high goals.*

*..... helping them to grow .....  
the individuals, businesses, and groups  
who assist youth  
by contributing to Kansas 4-H Foundation . . .  
more than 1,700 in 1977 . . .  
we honor them . . .*

# Remarks from the Executive Director of the Kansas 4-H Foundation:

To Our Honor Roll of Friends:

1977 marked the 25th anniversary of the Kansas 4-H Foundation. During the Foundation's first 25 years, thousands of friends, including 4-H clubs, have received our membership certificates and seals. However, as announced earlier, we have changed our recognition plan; beginning in 1978, no more membership certificates will be issued or seals presented unless you have requested us to continue the the old plan.

The Honor Roll again lists all contributors with the number of years of donations. Special recognition will go to 1st-10th-25th year donors. Now, a 4-H memento will be presented for 1st year contributors, an object for desk or household for 10th year donors, and a plaque for those firms, businesses, clubs and individuals contributing 25 years.

Annual memberships with the Foundation remain the same . . . \$25 for an

individual or family, \$100 for firms and foundations, and \$1 per member for 4-H clubs, EHU or civic groups.

Beginning with the 1978 Honor Roll (published in the June 1979 Kansas 4-H Journal) special donor categories will be as follows:

\$ 500-\$ 999	Friend Honor Roll
1,000- 4,999	Patron Honor Roll
5,000- 24,999	Sponsor Honor Roll
25,000 or above	Executive Honor Roll

Medallion Award—lifetime gift of \$250,000 or more

We are most pleased to have you among the 1,777 contributors in 1977. The nearly 50,000 4-H youth in Kansas are proud of the private support which has helped develop our 4-H program.

Our special thanks to you,

Merle L. Eyestone  
Executive Director  
Kansas 4-H Foundation, Inc.



**Merle  
Eyestone**

## *This honor roll of friends of 4-H lists the good citizens who contributed to 4-H work in 1977*

- 2 A.A.U.W.—Chanute
- 1 A.A.U.W.—Chase
- 1 A.A.U.W.—General
- 1 A.A.U.W.—Halstead
- 1 A.A.U.W.—Hays
- 1 A.A.U.W.—Horton
- 1 A.A.U.W.—Independence
- 1 A.A.U.W.—Leavenworth
- 1 A.A.U.W.—Liberal
- 2 A.A.U.W.—Newton
- 2 A.A.U.W.—Topeka
- 3 A.A.U.W.—Wichita
- 2 Abel, John O.
- 1 Adair, John A. and Grace S.
- 1 Ahnert, Mr. and Mrs. Louis A.
- 4 Ahsmuhs, Mr. and Mrs. William K.
- 2 Albers, Mr. and Mrs. Clyde
- 1 Allen, Boyd
- 1 Allen, Donald
- 1 Allen, Elton
- 1 Allen, Harvey
- 1 Allen, Martin
- 1 Allen, Nora Helen
- 1 Allen, Raymond
- 2 American Legion Auxiliary, Hanover
- 2 American Saddlebred Assoc. of Kansas
- 2 American State Bank, Osawatimie
- 1 Anderson County Farm Bureau
- 5 Anderson, Esther V.
- 1 Anderson, Mr. and Mrs. Hilding
- 1 Anderson, Russ B.
- 19 Apel, Dale and Mary Dean
- 15 Appleby, Mr. and Mrs. Thomas
- 1 Archer, Mr. and Mrs. Rex
- 10 Area, Donald and Marjorie
- 1 Ark Valley Feeders
- 2 Assaria State Bank
- 2 Atchison County Farm Bureau Association
- 3 Atchison County Livestock Association

- 4 Atkinson, Daisy E.
- 3 Avery, Mrs. Thomas B.
- 1 Bahner, Darrel
- 3 Baker, Kirk
- 15 Baker, Louis A.
- 1 Baker, Mary F. and Albert Memorial Trust
- 3 Baker, Mrs. Russell
- 3 Balding, Mr. and Mrs. James L.
- 2 Barger, Rose E.
- 2 Barker, Dr. Patrick
- 15 Barr, Mr. and Mrs. Bernard
- 1 Barry, Mr. and Mrs. Willard
- 12 Bates, Kay L.
- 3 Bathurst, Mr. and Mrs. Dale R.
- 3 Beardmore, Heber
- 1 Beason, Don
- 8 Becker, Joe
- 4 Beems, Mr. and Mrs. Harold M.
- 2 Beesley Farms Inc.
- 2 Beesley, Rodger
- 11 Beninga, Mr. and Mrs. C. T.
- 3 Berg, LaVerne
- 1 Bergsten, Mr. and Mrs. Ralph
- 7 Bert, Mr. and Mrs. Raymond
- 3 Bertram, Mr. and Mrs. Galen
- 2 Beyer, Roscoe A.
- 9 Bird, Byron G. and Donna M.
- 2 Bird, Don
- 1 Bird, Mrs. Elmer
- 3 Blanck, Raymond D.
- 1 Blue, Gordon
- 25 Bly, Ema
- 1 Bockhaus, Mr. and Mrs. Ray
- 2 Bogle, T. Roy and Carol
- 6 Bohannon, Robert A. and Vera Jean
- 1 Bolan, John and Erma
- 7 Bolt, W. Fred
- 4 Bonewitz, Ralph and Cora Jane
- 3 Boone, Mr. and Mrs. W. I.
- 8 Booth, Arden
- 3 Booth, James C. and JoAnne
- 8 Border, Mary Elsie
- 8 Borst, Mr. and Mrs. William H.
- 2 Brack, Mr. and Mrs. Morris
- 2 Bradley, Dr. and Mrs. Bill
- 4 Brady, Elaine
- 4 Brink, Mr. and Mrs. William H.
- 2 Bromley and Sons Concrete, Inc.
- 2 Brookover Feed Yards, Inc.
- 4 Brooks, Miss Blanche
- 16 Brown, Mr. and Mrs. Ralph E.
- 4 Brulez, Isadore
- 2 Bryant, E. A.
- 1 Bundy, Mr. and Mrs. A. T.
- 3 Burkhard, Kenneth and Maxine
- 5 Burlington Northern Foundation
- 10 Busset, Dr. and Mrs. Glenn M.
- 2 Butterfield, Max (Family)
- 1 Caldwell State Bank
- 4 Campbell, Clifford
- 4 Cantrell, Dale L. and Wanda
- 11 Carpenter, (William) 4-H Foundation, Inc.
- 1 Carr, Dale and Linda
- 12 Carr, Francis E.
- 1 Carr, Merle and Beth
- 14 Carroll, Mrs. Violet J.
- 1 Carter, Louis and Lola
- 1 Casey, Edwin M.
- 3 Cash, Walter and Trisha
- 9 Caspar, Mr. and Mrs. Charles L., Sr.
- 2 Cathcart, Don
- 3 Caul, Jean F.
- 3 Cessna Foundation, Inc.
- 4 Champion, Mr. and Mrs. Harold
- 4 Chandler, Lois and Jerome
- 2 Chapman State Bank
- 11 Chapman, William and Claudine
- 2 Cheyenne County Farm Bureau
- 6 Citizens State Bank, Cheney
- 5 Citizens State Bank, Manhattan
- 2 Citizens State Bank, St. Francis
- 6 Citizens State Bank and Trust Co., Ellsworth



- 5 Clawson, Mr. and Mrs. Eldon L.
- 13 Clemence, Mr. and Mrs. Joe
- 6 Coberly, Miss Goldie
- 1 Cole, Mr. and Mrs. Robert
- 12 Cole, Dr. and Mrs. Ward M.
- 1 Colgin, Harold and Ruth
- 4 Colglazier, Ronald and Elin
- 2 Collingwood, Edna E.
- 2 Collingwood Grain, Inc.
- 4 Combes, Keith (Family)
- 1 Conover, Mrs. Margaret
- 3 Conrad, Mrs. J. R.
- 3 Cook, James and Muriel
- 2 Cooksey, Mr. and Mrs. James L.
- 2 Cooley, Mrs. Vera
- 5 Cooper, Mrs. Margaret
- 3 Corah, Larry
- 15 Counter, Mr. and Mrs. Perry
- 2 Covenant Women, Vliets
- 1 Cox, Esther
- 5 Cox, Lawrence J. and Jessie V.
- 2 Crase, Frank E.
- 1 Cray, Cloud L. Foundation
- 3 Crist, Rosemary
- 25 Critser, W. Dale
- 2 Cross, Richard and Rita K.
- 19 Cubit, James and Helen
- 2 Cudney, Ray E. and Joy
- 2 Culver, Mr. and Mrs. William H.
- 12 Darby, Harry
- 1 Dawes, J. D.
- 2 Deckinger, James and Marilyn
- 4 DeVore, Mr. and Mrs. Jasper
- 13 Diacon, Dr. and Mrs. James L.
- 2 Dibben, Mr. and Mrs. Don
- 5 Dickerson, Mr. and Mrs. Edward
- 5 Dickman, Claire
- 16 Dies, Mr. and Mrs. Edgar
- 3 Dillard, Dean I.
- 3 Dillon, Mr. and Mrs. C. J.
- 4 Dillon, Richard W.
- 1 Doebele, Debra
- 5 Doggett, Mr. and Mrs. Keith
- 2 Drouhard, Leo
- 6 Dubbs, Clara L.
- 3 Duckwall Stores, Inc.
- 1 Dukelow, Mrs. Howard
- 3 Dulaney, Johnston and Priest
- 2 Dunbar, John O.
- 2 Eckerman, Louis and Vera
- 4 Edwards, Mrs. John E.
- 1 Efken, Harvey
- 4 Eicher, Mr. and Mrs. Harry
- 2 Elder, Mr. and Mrs. Neal
- 5 Ellis State Bank
- 3 Ellsworth County Farm Bureau
- 4 Enochs, Richmond M., Jr.
- 4 Ernest, Felix H.
- 1 Essmiller, W. D.
- 2 Etherton, Mr. and Mrs. Robert
- 16 Eyestone, Cecil L. and Phyllis
- 17 Eyestone, Mr. and Mrs. Merle
- 1 Faelber, Mr. and Mrs. George
- 1 Far-Mar-Co
- 1 Farm Bureau Association, Oberlin
- 1 Farm Bureau Mutual Insurance Co., Inc., Manhattan
- 1 Farm Bureau Women's Comm., Sedan
- 2 Farmers and Merchants State Bank of Argonia
- 1 Farmers Cooperative Association, Hays
- 2 Farmers Cooperative Association, Lawrence
- 4 Farmers Cooperative Elevator Company, Mt. Hope
- 1 Farmers State Bank, Sabetha
- 1 Farmers State Bank, Westmoreland
- 18 Farmland Industries
- 25 Federal Cartridge Corporation
- 13 Federal Intermediate Credit Bank, Wichita
- 17 Federal Land Bank of Wichita
- 15 Felt, Esther L.
- 15 Felt, Sylvia S.
- 3 Fent, Dr. and Mrs. Lee
- 4 Filley, Dr. and Mrs. Vernon
- 3 Fink, Ben J. and Dorothy
- 1 Fink Foundation
- 1 Finley, Philip and Jacquelin
- 3 First National Bank, Fredonia
- 4 First National Bank, Hoxie
- 4 First National Bank of Lawrence
- 4 First National Bank, Madison
- 1 First National Bank, Olathe
- 2 First National Bank, Sedan
- 1 First National Bank, Wellington
- 3 First State Bank of Healy
- 4 First State Bank, Tonganoxie
- 1 First United Presbyterian Church, Great Bend
- 2 Fischer, Rex and Alice
- 1 Fixtures Manufacturing Corporation
- 4 Flanders, Raleigh B.
- 1 Fleming Jackson Seever Post 6—American Legion, Atchison
- 4 Flinchbaugh, Dr. and Mrs. B. L.
- 4 Flory, Virgil H.
- 25 Folgers Coffee Company
- 16 Fooshee, Mr. and Mrs. Claude
- 6 Foreman, Mr. and Mrs. Alanson
- 2 Fornelli, Richard and Linda
- 3 Fortenberry, Mr. and Mrs. Ralph
- 6 Fourth National Bank and Trust Company, Wichita
- 25 Fox, (Elmer) Westheimer and Company
- 4 Francis, Mr. and Mrs. Ernest
- 1 Franklin, Paul T.
- 1 Franzini, Mr. and Mrs. Robert
- 6 Frey, Mrs. Lester
- 1 Frisbie, Mr. and Mrs. Robert L.
- 10 Fry, Mr. and Mrs. Ralph A.
- 10 Frye, Mr. and Mrs. Raymond
- 3 Funk, Miss Genevieve
- 4 Gallagher, Harold G.
- 5 Galle, Dale S. and Bertha
- 7 Garden City Coop Equity Exchange
- 4 Garden Plain State Bank
- 1 Gard'N—Wise—Robert S. Wise Co., Inc.
- 4 Garfield Cooperative Co., Inc.
- 19 Garten, Mr. and Mrs. Frank
- 18 Garvey Foundation, Inc.
- 1 Geary County Board of Commissioners
- 3 Germann, Mrs. G. F.
- 8 Gfeller, Mr. and Mrs. Harvey
- 1 Gilliland, Mr. and Mrs. Charles H.
- 16 Gillmore, Ralph E.
- 6 Givens, Mr. and Mrs. Don
- 1 Glasco Drugs, Inc.
- 3 Gleason, Maurice (Family)
- 2 Goetsch—Irvine Motor Co., Inc.
- 3 Goetsch, Lee
- 3 Goff, Mr. and Mrs. Harold A.
- 1 Good, Craig and Amy
- 4 Gove, Mr. and Mrs. Keith E.
- 5 Goyen, Mr. and Mrs. Lester
- 4 Graham, Ralf O. and Aileen
- 4 Grant County Conservation Dist.
- 3 Grant County State Bank
- Grider, Mr. and Mrs. James
- 3 Griffith, Mr. and Mrs. James
- 3 Griffin, Mr. and Mrs. James
- 1 Griffith, Theo R.
- 6 Groene, Mrs. Edith
- 2 Gross, Mr. and Mrs. Ralph L.
- 14 Gugler, Mr. and Mrs. Don P.
- 15 Gwin, Mr. and Mrs. Paul B.
- 2 Haberer, Donald J. (Family)
- 13 Haines, Joe D.
- 5 Halbleib, Mr. and Mrs. George J.
- 17 Hamilton, Mrs. Dean
- 2 Hamon, Charles
- 2 Hamon, Mr. and Mrs. John
- 3 Hanhardt, Mr. and Mrs. Kenneth
- 2 Hanks, Mr. and Mrs. E. Joe
- 4 Hanna, Mr. and Mrs. John B.
- 13 Hansen, A. S., Inc.
- 1 Hardin, Mr. and Mrs. Warren
- 1 Harding, Mr. and Mrs. Warren
- 1 Harper County Farm Bureau, Inc.
- 1 Harris, M. L. and Ann
- 1 Hartford State Bank
- 6 Haskin, Mr. and Mrs. Glenn
- 5 Hatfield, Mrs. J. R.
- 4 Hayse, Nathan B.
- 4 Haysville State Bank
- 1 Head, Mrs. Dollie
- 2 Heifner Nursery, Inc.
- 5 Heintz, Max E. and Kayann
- 1 Heise, John C.
- 2 Hemphill, Mr. and Mrs. Dean
- 2 Hendrickson, Malfred and Nellie
- 2 Henricks, Mr. and Mrs. Edgar
- 1 Herndon, May Beth
- 5 Hesston Foundation
- 2 Hesston State Bank
- 22 Hicks, Mr. and Mrs. W. H.
- 3 High Plains Publishers, Inc.
- 1 Hildebrand, Mr. and Mrs. Don
- 4 Hill, Bob
- 2 Hiller, Mr. and Mrs. Charles
- 4 Hlxson, Mr. and Mrs. Larry
- 4 Hobbie, Kermit
- 5 Hoffer, Mrs. Chester
- 1 Holmes, Ethel D.
- 2 Holsts, Mr. and Mrs. Clifton J.
- 23 Holstein-Friesian Association of Kansas
- 6 Honstead, Arliss
- 1 Hook, Maynard C.
- 17 Hoover, Mr. and Mrs. Laurence J.
- 4 House, Mr. and Mrs. Kenneth
- 2 Hoxie High Kayettes
- 5 Hoxie State Bank
- 1 Hoyt, Mr. and Mrs. Gordon E.
- 11 Hubbard, C. R.
- 19 Huff, Miss Ruth K.
- 1 Hulse, Jason
- 9 Humboldt National Bank
- 2 Hummel, Mr. and Mrs. Charles
- 4 Humphreys, L. P. and Son
- 1 Hund, Phillip
- 1 Hunt, Mr. and Mrs. Walter
- 2 Hutchinson, Darrell and Connie
- 3 Huyett, George L.
- 1 Imig, Mr. and Mrs. David
- 1 Indian Creek Grange
- 6 Ingle, Donald W.
- 1 Irvin, Mr. and Mrs. Harley
- 16 Ives, H. M. and Sons
- 1 Jackson County Farm Bureau
- 3 Jackson, Dwight S. and Janice
- 3 Jackson, Mr. and Mrs. M. E.
- 1 Jarrell, Dorothy Rogers
- 2 Jefferson County Farm Bureau Association
- 2 Jefferson County 4-H Development Committee
- 6 Jeffrey, Mr. and Mrs. Balfour S.
- 2 Jenner, Mrs. Hazel M.
- 8 Jensen, Miss Mabel
- 3 Jepsen, Mr. and Mrs. Richard
- 1 Johnson, Esther L.
- 1 Johnson, Gordon and Natalie
- 2 Johnson, Mr. and Mrs. Harold
- 25 Johnson, J. Harold and LaVerne
- 2 Johnson, Mervin and Martha
- 5 Johnson, Mr. and Mrs. Raymond
- 2 Johnson, Dr. Robert L.
- 9 Jones, Harold and Alice
- 2 Jordan, Dr. and Mrs. F. W.
- 1 Judy, Hal E.
- 7 Kansas Arabian Horse Club, Inc.
- 3 Kansas Association of Nurserymen
- 4 Kansas Ayrshire Breeders Association
- 25 Kansas Bankers Association
- 1 Kansas Beef Promotion Council
- 22 Kansas Brown Swiss Association, Inc.
- 3 Kansas City Implement, Hardware and Tractor Club
- 1 Kansas Dinner Club
- 14 Kansas Electric Cooperatives, Inc.
- 25 Kansas Cooperative Electric Power Suppliers
- 3 Kansas Extension Homemakers Council
- 25 Kansas Farm Bureau
- 4 Kansas Farm Bureau, Second District Women
- 1 Kansas Farm Life Insurance Co., Inc.
- 4 Kansas Federation of Women's Clubs
- 9 Kansas IFYE Alumni Association
- 2 Kansas Independent Oil and Gas Association
- 1 Kansas Livestock Association
- 2 Kansas Master Farm Homemakers Guild
- 19 Kansas Milking Shorthorn Society

- 1 Kansas Pigeon Association
- 2 Kansas Pork Producers Council
- 1 Kansas Poultry Association
- 25 Kansas Power  
& Light, Topeka
- 6 Kansas Quarter Horse Association
- 8 Kansas Saddle Horse Association, Inc.
- 4 Kansas Soybean Association
- 2 Kansas State Dairy Herd Improvement  
Association
- 2 Kansas State Navy Mothers Club
- 1 Kappa Kappa Iota Gamma State
- 3 Kaw Valley State Bank
- 8 Keller, Mrs. Earl
- 2 Kerr-McGee Corporation
- 3 Key Industries, Inc.
- 1 Kientz, Albert
- 5 King Travel Service
- 3 Kingman County Farm Bureau
- 3 Kinkaid, Roy C.
- 18 Kirkwood, Frances
- 2 Kiwanis Club of Marysville
- 1 Kiwanis Club of Sabetha
- 5 Klenda, Mr. and Mrs. Albert
- 2 Knabe, Cheryl, Janet, Karen and Chris
- 2 Knop, Mr. and Mrs. E. C.
- 2 Knorr, Mr. and Mrs. Eric T.
- 2 Konzem, Raymond
- 3 Kramer, Mrs. Willard
- 6 Krause, (Henry) Charitable Foundation
- 1 Kreigsman, Dr. Helen
- 4 Krull, Leslie E.
- 2 Laipple, Mr. and Mrs. Ed
- 4 Lambert, Mr. and Mrs. Duane
- 4 Langemeier, Dr. Larry N.
- 3 Lantz, Kenneth G.
- 2 Larson, Thaine
- 4 Lauer, Mr. and Mrs. Clarence
- 2 Laughridge Insurance Agency
- 4 Leach, Hugh V. and Glinda
- 13 Lear, J. T.
- 5 Lee Company
- 3 Legg Company, Inc.
- 9 Lemon, J. C.
- 1 Lenhardt, Mrs. Ora
- 4 Leonard, Mrs. Ralph
- 3 Levering, Wilbur
- 4 Lewis, Mrs. Grace, Sr.
- 3 Lewis, Robert L.
- 5 Lewis, Mr. and Mrs. Walter M.
- 1 Lillieqvist, Mrs. Matilda
- 4 Linder, Mrs. Lee
- 1 Lindquist, James L.
- 3 Litwin's, Atchison
- 4 Lizer, Earl and Ann—Real Estate
- 3 Longabach, Mr. and Mrs. Clarence
- 3 Lotker, Mr. and Mrs. Floyd Lee
- 4 Loughridge, Wayne
- 1 Lucian, Mr. and Mrs. John, Jr.
- 1 Lyndon State Bank
- 3 Lyon County Farm Bureau
- 5 McCiallign, Velma E.
- 9 McClung, Irvin A. (Family)
- 1 McCormick, Dr. Eugene C.
- 11 McGinness, Kenneth E.
- 5 McGuire, Mr. and Mrs. Jim
- 1 McKain, Mrs. Gertrude
- 1 McNair, Kathryn Rogers
- 4 McReynolds, Kenneth
- 3 Mackey, Mr. and Mrs. Frank
- 3 Makalous, Ray
- 4 Marr, Charles W.
- 2 Marshall County Farm Bureau
- 1 Martin, Mary Elizabeth Scholarship Trust
- 3 Martin Oil Company, Inc.
- 5 Massey, Bessie A.
- 2 Matney, Aaron
- 1 Matney, Gina Marie
- 17 Matney, Kenneth and Peggy
- 4 Matson, Leonard
- 8 Maxson, Mr. and Mrs. Dale D.
- 7 Mayall, J. R. and Alice H.
- 3 Merrill Incorporated
- 3 Meyer, Ella M.
- 4 Meyer, Katherine L.
- 1 Miami County National Bank of Paola
- 8 Mickey, Mr. and Mrs. Vernon L.
- 5 Mid-America Dairymen, Inc.
- 6 Midland United Dairy Industry Association
- 3 Midwest Cooperative
- 3 Miller, John
- 1 Miller, Mr. and Mrs. Lowell
- 2 Miller, Mr. and Mrs. Marshall F.
- 13 Mills, Mr. and Mrs. Lambert D.
- 4 Molz, Dixie
- 1 Monroe, Miss Day
- 5 Montgomery, Mr. and Mrs. Aurel W.
- 2 Montgomery, Mr. and Mrs. Don
- 1 Morgan, Fred G.
- 5 Morgan, Mr. and Mrs. L. D.
- 3 Moridge Manufacturing, Inc.
- 2 Morris County Farm Bureau
- 4 Morrison Grain Elevator
- 8 Mott, Mrs. C. C.
- 4 Mott, Nora
- 6 Muchnic Foundation
- 6 Mull, Mr. and Mrs. Keith
- 1 Mulvane State Bank
- 1 Mundhenke, Mr. and Mrs. Merle
- 3 Munson, Charles and Deanna
- 13 Munson, Gaylord R.
- 13 Munson, Ralph C.
- 2 Muret, Mr. and Mrs. Raymond
- 5 Murrey, Chester and Pearl
- 2 Myers, George M., Inc.
- 2 Myzer, Sandy
- 3 National Bank of Commerce, Wellington
- 4 National Bank of Wichita
- 5 National 4-H Council
- 2 Nelson, Steven and Gloria
- 1 Nemaha County Free Fair
- 3 Neosho County Farm Bureau
- 4 Newsome, Bob and Mary Lou
- 3 Niccum, Mr. and Mrs. Elwin W.
- 1 Nicholas, Dorothy
- 19 Nitsch, John C.
- 11 Nixon, Mr. and Mrs. Robert S.
- 12 Norby, Oscar
- 3 Nunemaker, Mr. and Mrs. Eugene W.
- 2 Nunemaker, Mr. and Mrs. Wesley
- 1 Ohnemiller, Alma L.
- 3 Olsen, Betty
- 17 Orsborn, Mr. and Mrs. Lawrence J.
- 15 Ottaway, Lois M.
- 13 Otte, Mr. and Mrs. Alvin
- 3 Otto, Raymond
- 1 Oxford Bank
- 4 Page, Mr. and Mrs. Dean
- 1 Page, Mr. and Mrs. J. C.
- 2 Park, Mrs. Emmet B.
- 5 Pawnee County Co-op Association
- 4 Peirce, Mr. and Mrs. Walter C.
- 3 Pendleton, Mr. and Mrs. Al (Family)
- 4 Peterson, E. Jack
- 1 Phillips, Mr. and Mrs. Austin
- 2 Pike, Gerald W.
- 1 Plessy Inc.—Welco Division
- 4 Plested, Mr. and Mrs. William, Jr.
- 4 Poister, Mrs. Emmett
- 4 Poole, Mrs. Grover
- 3 Potter, Mr. and Mrs. Thomas M.
- 1 Powell Family Foundation
- 25 Powers, George
- 3 Pratt Feedlot, Inc.
- 4 Prawl, Mr. and Mrs. Warren L.
- 15 Presnal, Glade C.
- 14 Presnal, Mr. and Mrs. Ross
- 4 Pressgrove, Dale and Betty
- 1 Pressgrove, Martin S.
- 2 Pruter, Douglas
- 2 Pruter, Kevin
- 2 Pruter, Orville and Betty
- 2 Pyle, Dr. and Mrs. L. R.
- 25 Quinlan, L. R.
- 2 Quinn, Lloyd and Patricia
- 4 Rahjes, Mr. and Mrs. Doyle D.
- 1 Rainsberger, Mr. and Mrs. Ellis
- 5 Ramsour, Mr. and Mrs. W. A.
- 3 Randle, Ed
- 5 Randle, Mr. and Mrs. Herb
- 2 Redden, Mr. and Mrs. Hubert
- 3 Reed, Mr. and Mrs. Wendell
- 16 Regnier, Roger E. and Thelma
- 6 Reitz, Dr. and Mrs. Leland
- 5 Reusser, Rae and Athol
- 2 Reynolds, Mr. and Mrs. Bill
- 4 Rice, (Ethel and Raymond F.) Foundation
- 2 Richards, Mr. and Mrs. Lawrence
- 1 Ridge Road Bowl, Inc.
- 1 Riffel, Mr. and Mrs. Leon D.
- 10 Riley, Mr. and Mrs. William M., Jr.
- 4 Ringler, Dr. and Mrs. Wilber E.
- 4 Robbins, Benny
- 2 Roberts, Ivan L.
- 2 Roberts, Mr. and Mrs. Marvin
- 1 Robertson, John F.
- 5 Robinson, Elsie
- 5 Robson, Mrs. Marie A.
- 3 Rockwell International Corporation
- 1 Rodgers, John E.
- 3 Rogers, Mrs. Ames P.
- 10 Rogers, Irene
- 4 Rogers, Mrs. Pauline F.
- 1 Rogler, Wayne
- 1 Rosser, Frank
- 7 Rost, F. J.
- 4 Rowland, Mrs. Jack
- 1 Roy's Rexall Drugs
- 12 Ruhnke, Mr. and Mrs. John
- 5 Rupp, Mr. and Mrs. Clarence
- 3 Rusk, Ray and Roberta
- 1 Ryan, Jim
- 1 S and H Feeders, Inc.
- 3 Sackrider, Mrs. Juanita
- 25 Safeway Stores, Inc.
- 15 Samuelson, Mr. and Mrs. Armin
- 4 Sanford Cooperative Grain and Supply  
Company
- 5 Sanford, Dr. Paul E.
- 4 Schendel, Robert R.
- 1 Schiller, Betty Hutchinson
- 1 Schirmer, David
- 3 Schlender, John R.
- 2 Schneider, Mr. and Mrs. Lewis
- 3 Schneider, Mr. and Mrs. S. W.
- 2 Scholz, Martha C.
- 6 Schroeder, Dr. Gail B.
- 2 Scott, Mrs. Thelma
- 1 Seaboard Allied Milling Corporation
- 2 Sebellius, Keith G.
- 1 Second District Farm Bureau Women
- 9 Security Benefit Life Insurance Company
- 13 Security State Bank, Wellington
- 1 Seefeldt, Charles and Genevieve
- 3 Schattuck, Dan L.
- 2 Shaw, Mr. and Mrs. Lawrence
- 5 Shaw, Mr. and Mrs. Willard
- 18 Shepherd, Mr. and Mrs. Ronald
- 3 Shipman, Larry and Judy
- 1 Shrewder, R. V.
- 2 Sigley, Mr. and Mrs. Allen
- 1 Simmons, Clyde
- 21 Simons, Dolph, Sr.
- 1 Simpson, Rod
- 9 Six, Gladys
- 13 Slaten, Mr. and Mrs. J. M.
- 4 Slinkman, Zoe E.
- 1 Smerchek, Mrs. Margaret
- 1 Smith, Betty Jo
- 3 Smith County State Bank and Trust  
Company
- 1 Smith, Layne
- 4 Sohlberg, Dr. Robert, Jr.
- 8 Sourk, Ed
- 8 Sourk, Helen
- 14 Sourk, Mr. and Mrs. Ward
- 18 Southwestern Bell Telephone Company
- 1 Spray, Carl and Miriam
- 3 Stadler, Mr. and Mrs. David
- 10 Starkey, Mr. and Mrs. R. M.
- 1 State Bank of Bern
- 4 State Bank of Colwich
- 1 State Bank of Conway Springs
- 3 State Bank of Lancaster
- 1 State Bank of Santanta
- 3 Steinbauer, Dr. Robert A.
- 1 Stephens, Charley and Goldie
- 8 Stephens, Mary Lee Sourk
- 11 Stewart Properties
- 1 Stock Exchange Bank, Caldwell
- 1 Stoskopf, Wayne
- 1 Stover, Barbara

- |   |   |   |
|---|---|---|
| 1 Streeter, Brad and Karen                  | 4 Vacin, Gary L. and Elizabeth                      | 9 Wiedemann Foundation                        |
| 15 Streeter, Charles and Martha             | 1 VanBlaricum, Mr. and Mrs. Kenneth                 | 4 Wilburn, Hugh and Ruth                      |
| 1 Strickler, Dixie E.                       | 4 Veltman, Floyd                                    | 1 Wilcher, Mrs. Herschel                      |
| 15 Strickler, Mr. and Mrs. Ivan K.          | 7 Vieux, Cecil                                      | 1 Wiles, Don K.                               |
| 2 Stutz, Mr. and Mrs. W. V.                 | 8 Vissar, Edward W. and Martha                      | 1 Williams, H. Randolph                       |
| 4 Sucht, Mr. and Mrs. Leon A.               | 1 Vista at Lawrence                                 | 4 Willis, Paul M.                             |
| 1 Sumner-Cowley Electric Co-Operative, Inc. | 4 Vogel, John H.                                    | 2 Wilson, Mr. and Mrs. Dean                   |
| 1 Sunflower Navy Mothers Club No. 75        | 4 Vogt, Mr. and Mrs. Roland                         | 15 Wilson, John L.                            |
|   |   | 1 Wilson, Johnetta (Estate)                   |
| 11 Taylor, Miss Ethel M.                    | 35 Walker, Mr. and Mrs. Howard R.                   | 5 Wilson State Bank                           |
| 5 Taylor, P. Richard                        | 1 Walker, Mildred                                   | 4 Wilson, W. John and Glenna                  |
| 14 Teagarden, Mr. and Mrs. E. H.            | 1 Walker, Thomas and Ann                            | 2 Wing, Mark and Karen                        |
| 1 Teagarden, Mr. and Mrs. Robert            | 1 Wall, E. A.                                       | 5 Wingert, Mr. and Mrs. George D.             |
| 8 Tennant, Marjorie Ann                     | 12 Wallace, Mr. and Mrs. Dwane L.                   | 4 Winter, Winton A.                           |
| 1 Terrell, Eldon                            | 3 Wasserman, Gilbert and Edith                      | 8 Wolfenbarger and McCulley, P. A. Architects |
| 7 Texas Educational Association             | 6 Wear Foundation                                   | 21 Woolworth's, F. W., Co.                    |
| 3 Thomas, Mr. and Mrs. Charles F.           | 3 Weathers, Mrs. George                             | 1 Wootton, Dick and Karen                     |
| 1 Thompson, James                           | 1 Weaver, Eldon                                     | 3 Works, Mr. and Mrs. George                  |
| 2 Thompson, Mr. and Mrs. John               | 4 Wehrman, Claude                                   | 1 Wrampe, Melvin                              |
| 3 Thorman, Eldon and Erma                   | 2 Weller, Bernard E.                                | 1 Wray, Russell                               |
| 4 Thorpe, Dr. and Mrs. F. A.                | 9 Wellington Daily News                             | 3 Wright, Mrs. George L.                      |
| 6 Tillotson, Raymond and Amy                | 1 Wellington Implement Company                      | 3 Wright, Mr. and Mrs. Quenten                |
| 5 Tjaden, Mr. and Mrs. Wayne                | 1 Werner, Mr. and Mrs. Dale                         | 3 Wulfskuhle, Mr. and Mrs. Clarence           |
| 1 Tocha, Karolyn K.                         | 4 Wertzberger, Georgia                              | 10 Wyckoff, Maurice I. and Thelma             |
| 6 Todd, Mr. and Mrs. Charles C.             | 9 Westside Dairy, Inc.                              |   |
| 2 Tonar, Mr. and Mrs. Ed                    | 4 West, Mr. and Mrs. Roland                         | 1 Zabel, G. Loren                             |
| 4 Trayer, Danny D. and Charlene             | 3 Western Retail Implement and Hardware Association | 3 Zabokrtsky, Mr. and Mrs. Billy Bob          |
| 4 Truax, Mr. and Mrs. L. L.                 | 2 Westinghouse Electric Corporation                 | 1 Zane, Miss Irene                            |
| 15 Truman, Maxine                           | 6 Wetta, Joseph L.                                  | 17 Zweifel, Barbara                           |
| 4 Tubach, Patsy and Jim (Family)            | 1 Wheat State Morgan Horse Association              | 19 Zweifel, Bernice                           |
|   | 4 Whippes, Mr. and Mrs. Loren E.                    | 2 Zweifel, Jeremiah                           |
| 1 Umbarger, Mr. and Mrs. Vennie             | 1 Whitehair, Mr. and Mrs. Raymond                   | 19 Zweifel, Robert                            |
| 4 Utermohlen, Mr. and Mrs. Ralph E.         | 14 Wichita Bank for Cooperatives                    | 17 Zweifel, Mr. and Mrs. Robert, Jr.          |

Note: The figures preceding the name indicate the number of years of support since the Kansas 4-H Foundation Membership and Share Recognition Plan was started in 1953. Please call omissions to our attention.



As a service project, Master Farmers-Master Homemakers are renovating and furnishing the ranchhouse at Rock Springs Ranch. The house was built in 1890.

## Extension home economics and 4-H and other groups —

Many Kansas 4-H clubs and extension homemaking units and other organizations regularly contribute to 4-H work by sending a donation to Kansas 4-H Foundation. Those who contributed in 1977 are listed here as more friends of 4-H.

### ALLEN COUNTY

- 1 Allen County 4-H Council

### ANDERSON COUNTY

- 1 Lucky 13 4-H Club  
7 Seekers Not Slackers 4-H Club

### ATCHISON COUNTY

- 2 Atchison County Homemakers Council  
3 Effingham Community 4-H Club  
4 Farmerette EHU  
3 Friendly Farmer Fellows 4-H Club  
6 Good Intent 4-H Club  
5 Independence EHU  
4 Night Owl Unit EHU  
4 Prairie View 4-H Club  
3 Shannon 4-H Club

### BARBER COUNTY

- 3 Barber County 4-H Council  
7 B-Square 4-H Club  
1 Lone Eagle 4-H Club  
11 Stateline 4-H Club  
2 Sunflower 4-H Club



**BARTON COUNTY**

- 4 Cleveland 4-H Club
- 7 Comanche EHU
- 2 El Caballo 4-H Club
- 6 Fairview Scouts 4-H Club
- 6 Ft. Zarah 4-H Club
- 2 Lakin Go-Getters 4-H Club
- 8 Logan EHU
- 3 Modernette EHU

**BOURBON COUNTY**

- 1 Bourbon County EHU
- 2 Eastside 4-H Club
- 1 Hiatville 4-H Club
- 1 Southeast Scott 4-H Club

**BROWN COUNTY**

- 1 Brown County Extension Homemakers Council

**BUTLER COUNTY**

- 2 Blue Stem 4-H Club
- 2 Burns Go-Getters 4-H Club
- 3 Cassoday Boosters 4-H Club
- 2 Cole Creek Unit
- 9 Elm Creek Emeralds 4-H Club
- 14 Flint Hills 4-H Club
- 16 Hickory Helpers 4-H Club
- 5 Lily Lake 4-H Club
- 7 Rose Hill Rustlers 4-H Club
- 3 Sunflower EHU
- 12 Towanda Rustlers 4-H Club

**CHAUTAUQUA COUNTY**

- 1 Sunshine EHU

**CHEROKEE COUNTY**

- 2 All Star 4-H Club
- 1 Cherokee County Extension Homemakers Council
- 2 Harmony EHU
- 1 Midway 4-H Club
- 4 Neutral EHU
- 4 Sheridan 4-H Club
- 2 Weir Merry-makers EHU

**CHEYENNE COUNTY**

- 8 Happy Lark 4-H Club
- 1 Plum Creek 4-H Club

**CLARK COUNTY**

- 2 Acres 4-H Club
- 4 Bearcreek Boosters 4-H Club

**CLAY COUNTY**

- 5 Clay County 4-H Council
- 1 Grant Go-Getters 4-H Club
- 3 Hayes Boosters 4-H Club
- 3 Mulberry Busy Bees 4-H Club
- 1 Washington Headliners 4-H Club

**CLOUD COUNTY**

- 1 Clyde Roadrunners 4-H Club
- 3 Fairview Hilltoppers 4-H Club
- 4 Hollis Hustlers 4-H Club
- 6 Hopewell Corners 4-H Club
- 7 Jolly Jayhawks 4-H Club
- 7 Republican Valley 4-H Club
- 1 Spirit of 76 4-H Club
- 4 Sunny 4-H Club

**COFFEY COUNTY**

- 6 Smilin' Thru 4-H Club
- 5 Tip-Top 4-H Club

**COMANCHE COUNTY**

- 1 Comanche County 4-H Council

**COWLEY COUNTY**

- 4 Burden 4-H Club
- 3 Cameron 4-H Club
- 1 City Achievers 4-H Club
- 6 Cowley County 4-H Council
- 2 East Bolton 4-H Club
- 5 Evening Star 4-H Club
- 6 Floral 4-H Club
- 4 Liberty 4-H Club
- 4 Martha Washington 4-H Club
- 2 Otto 4-H Club
- 5 Pleasant Valley 4-H Club
- 1 Polo 4-H Club

- 4 Theaker Busy Beavers 4-H Club
- 5 Tisdale 4-H Club
- 11 Udall 4-H Club
- 4 Valley View 4-H Club
- 4 Walnut Valley 4-H Club

**CRAWFORD COUNTY**

- 1 Crawford County EHU
- 1 Prairie Ramblers 4-H Club
- 2 Washington EHU

**DECATUR COUNTY**

- 2 Jennings Community EHU
- 4 Maverick 4-H Club
- 2 Rock Island Rockets 4-H Club
- 5 Sappa Valley 4-H Club
- 6 Star Valley 4-H Club

**DICKINSON COUNTY**

- 3 Abilene Trailblazers 4-H Club
- 3 Chapman Shamrock 4-H Club
- 4 Detroit Ramblers 4-H Club
- 5 Harmony Hustlers 4-H Club
- 6 Holland Sunflowers 4-H Club
- 9 Jolly Jayhawkers 4-H Club
- 7 Lyons Prospectors 4-H Club
- 1 Mt. Ayr 4-H Club
- 3 Solomon Wranglers 4-H Club
- 4 Swenson Creek Rustlers 4-H Club
- 3 Talmage Progressive 4-H Club

**DONIPHAN COUNTY**

- 1 Doniphan County Extension Homemakers Council
- 3 Highland 4-H Club

**DOUGLAS COUNTY**

- 4 Buffalo Booster 4-H Club
- 4 Cheechaka's EHU
- 7 Clinton EHU
- 14 Cottonwood 4-H Club
- 7 Eudora 4-H Club
- 7 Four-Leaf Clover 4-H Club
- 19 Kanwaka 4-H Club
- 1 Lone Star 4-H Club
- 5 Marion Boosters 4-H Club
- 3 South Douglas EHU
- 16 Stull Busy Beavers 4-H Club
- 11 Vinland Valley 4-H Club

**EDWARDS COUNTY**

- 4 Northern Star 4-H Club

**ELLIS COUNTY**

- 2 Ellis County 4-H Jr. Leadership Club
- 3 Gemini Jrs. 4-H Club
- 3 Meadowlarks 4-H Club
- 14 Saline River Satellites 4-H Club
- 1 Victory Vikings 4-H Club
- 19 Winner's 4-H Club

**ELLSWORTH COUNTY**

- 4 Elkhorn 4-H Club
- 2 Ellsworth EHU

**FINNEY COUNTY**

- 2 Beacon Boosters 4-H Club
- 1 Buffalo Kids 4-H Club
- 1 Busy Badgers 4-H Club
- 1 Busy Bugs 4-H Club
- 1 Eager Beavers 4-H Club
- 1 Finney County 4-H Council
- 1 Finney County Jr. Leaders
- 1 Friendly Friends 4-H Club
- 4 Go Getter 4-H Club
- 3 Happy Hustler 4-H Club
- 2 Happy Valentines 4-H Club
- 1 Lincoln Livewires 4-H Club
- 1 Pawnee Indian 4-H Club
- 1 Prairie Pride 4-H Club
- 2 Sherlock Strivers 4-H Club
- 1 Wide Awake 4-H

**FORD COUNTY**

- 1 Ford County Extension Homemakers Council
- 8 Happy Hour Homemakers EHU
- 2 Valley Boosters 4-H Club
- 2 Wilburn EHU
- 3 Wright Wonder Workers 4-H Club

**FRANKLIN COUNTY**

- 3 Clover Leaf 4-H Club
- 2 Franklin County Homemakers Council
- 8 Full O'Pep 4-H Club
- 3 Jr. Judgers 4-H Club
- 1 Town and Country 4-H Club

**GEARY COUNTY**

- 4 Brookside 4-H Club
- 2 Carry Creek Rustlers 4-H Club
- 3 Humboldt EHU

**GOVE COUNTY**

- 1 Cloverleaf 4-H Club
- 1 Golden Plains 4-H Club
- 2 Gove County Extension Homemakers Council
- 10 Hackberry 4-H Club
- 9 Meadowlark 4-H Club
- 5 Quinter 4-H Club

**GRAHAM COUNTY**

- 4 Cherry Lynn EHU
- 4 Eastside Community 4-H Club
- 5 Happy Crickets 4-H Club
- 7 Solomon Valley 4-H Club

**GRANT COUNTY**

- 1 Bear Creek Boosters 4-H Club
- 1 Clover Leaf 4-H Club

**GRAY COUNTY**

- 9 Charleston Astronauts 4-H Club
- 1 Cimarron Rustlers 4-H Club
- 6 Ensign Boosters 4-H Club

**GREELEY COUNTY**

- 11 Go-Getters 4-H Club
- 11 Golden Opportunities 4-H Club
- 9 Greeley County 4-H Council
- 1 Greeley County Homemakers Council
- 10 Straight Ahead Strivers 4-H Club
- 12 Thrifty Thrivers 4-H Club

**GREENWOOD COUNTY**

- 4 Climax Swingers 4-H Club
- 1 Greenwood County Extension Homemakers Council
- 4 Lamont Boosters 4-H Club
- 2 Union Community EHU
- 3 Union Shockers 4-H Club
- 6 Upper Fall River Jayhawkers 4-H Club

**HAMILTON COUNTY**

- 1 Busy Bears 4-H Club
- 3 Coolidge Straight Shooters 4-H Club

**HARPER COUNTY**

- 4 Sunnyside 4-H Club

**HARVEY COUNTY**

- 2 Harvey County Unit Affairs Council
- 1 Hesston Union Champion 4-H Club
- 3 Macon Happy Hour 4-H Club
- 5 Newton City Slickers 4-H Club
- 7 Richland Livewires 4-H Club
- 11 Sedgwick Sunflowers 4-H Club

**HASKELL COUNTY**

- 9 Colusa Go-Getters 4-H Club
- 4 Sehasco 4-H Club

**HODGEMAN COUNTY**

- 1 Southwest Ramblers

**JACKSON COUNTY**

- 2 Circleville EHU
- 3 Delia Early Birds 4-H Club
- 2 Delia EHU
- 2 Delia Up and Atom EHU
- 1 Jackson County Extension Homemakers Council
- 1 Jackson County Home Economics Advisory Committee
- 5 Pleasant Valley 4-H Rustlers
- 3 Whiting Beavers 4-H Club

**JEFFERSON COUNTY**

- 7 Billtown Go-Getters 4-H Club
- 6 Clover Power 4-H Club

- 1 County Line EHU
- 6 Fairview 4-H Club
- 1 Grantville EHU
- 2 Homemakers Unit Council
- 7 Jolly Juniors 4-H Club
- 2 Lucky 4 4-H Club
- 2 Lucky Lake 4-H Club
- 6 Mooney Creek Cowboys 4-H Club
- 7 Prosperity 4-H Club
- 15 Rock Creek Boosters 4-H Club
- 6 Valley Victors 4-H Club
- 2 Winchester O'Possums 4-H Club

#### JEWELL COUNTY

- 14 Formosb Willing Workers 4-H Club
- 2 Jewell County 4-H Council
- 7 Webber Wide Awake 4-H Club

#### JOHNSON COUNTY

- 4 Busy Bees 4-H Club
- 4 Cedarwoods 4-H Club
- 4 Greenwood Meadowlarks 4-H Club
- 1 Johnson County Home Economics Advisory Council
- 7 Morning Glory 4-H Club
- 12 Oxford Hustlers 4-H Club
- 7 Pioneer 4-H Club
- 2 Prairie Star 4-H Club
- 5 Ridgeview Rockets 4-H Club
- 2 Roeland Park Bobcat 4-H Club
- 14 Sharon 4-H Club
- 4 Spring Hill Rustlers 4-H Club
- 8 Stanley Buccaneers 4-H Club
- 11 Sunnyside 4-H Club
- 15 Zion Zippers 4-H Club

#### KINGMAN COUNTY

- 3 Adams Happy-Go-Lucky 4-H Club
- 5 Alameda EHU
- 1 B.A.R. EHU
- 12 Belmont 4-H Club
- 1 Busy Bee 4-H Club
- 4 Cleveland EHU
- 9 Galesburg 4-H Club
- 4 Harmony EHU
- 10 Hawk 4-H Club
- 3 K.B.B. EHU
- 1 Modern Homemakers EHU
- 1 Town and Country EHU
- 2 Vinita EHU
- 8 Vinita 4-H Club
- 5 Whispering Willow 4-H Club

#### KIOWA COUNTY

- 4 Southwestern Royals 4-H Club
- 2 Sunflower EHU
- 2 Unique Rustlers 4-H Club
- 11 Upward Strivers 4-H Club

#### LABETTE COUNTY

- 3 Altamont Rooters 4-H Club
- 4 Angola Hustlers 4-H Club
- 1 Foland Fliers 4-H Club
- 2 Happy Hustlers 4-H Club
- 9 Leib 4-H Club
- 1 Meadowlark Fliers 4-H Club
- 2 101 Go Getters 4-H Club

#### LEAVENWORTH COUNTY

- 5 Jolly Workers 4-H Club
- 1 Leavenworth County Development Fund
- 1 Leavenworth County Extension Homemakers Council
- 10 Lucky Clover 4-H Club
- 1 Mayginnis Hustlers 4-H Club
- 8 Nine Mile 4-H Club

#### LINCOLN COUNTY

- 6 Beverly Boosters 4-H Club
- 1 Lincoln County Extension Homemakers Council
- 6 Lincoln Sunrise 4-H Club
- 3 Modern Mrs. EHU
- 5 Salt Creek 4-H Club
- 3 Westfall Winners 4-H Club

#### LINN COUNTY

- 2 Homemakers EHU

#### LOGAN COUNTY

- 3 Annie Oakley 4-H Club
- 2 Logan County 4-H Council
- 6 Monument 4-H Club
- 7 Winona 4-H Club

#### LYON COUNTY

- 11 Admire 4-H Club
- 1 Logan Avenue 4-H Club
- 7 Riverside 4-H Club

#### McPHERSON COUNTY

- 14 Empire Best 4-H Club

#### MARION COUNTY

- 4 Friendly EHU
- 9 Goessel Goal Getters 4-H Club
- 16 Happy Hustlers 4-H Club
- 3 Jolly Workers EHU
- 8 Lucky Leaf 4-H Club
- 7 Marion County 4-H Council
- 8 Willing Workers 4-H Club

#### MARSHALL COUNTY

- 4 Beattie Musketeers 4-H Club
- 5 Bremen Hustlers 4-H Club
- 2 Go Getters 4-H Club
- 5 Jolly Farmers 4-H Club
- 8 Sunflower 4-H Club
- 5 Waterville Busy Beaver 4-H Club
- 1 Wide Awake 4-H Club

#### MEADE COUNTY

- 2 Meade County EHU Council

#### MITCHELL COUNTY

- 1 Asherville Achiever 4-H Club
- 11 Cloverleaf 4-H Club
- 1 Tipton 4-H Club
- 3 Waconda Winners 4-H Club

#### MONTGOMERY COUNTY

- 8 Banks-Ever-Ready EHU
- 5 Cherry Chums EHU
- 5 Drum Creek EHU
- 10 Elk River Homemakers EHU
- 2 Fawn Creek 4-H Club
- 7 Gingham Aprons EHU
- 1 Havana Cherry-Go-Getters 4-H Club
- 6 Loyal Workers EHU
- 2 Lucky 13 EHU
- 2 Old Parker Pals EHU
- 8 River Rangers EHU
- 4 Sunflower Workers EHU
- 3 Sunrise Pals EHU
- 10 Sycamore Valley EHU
- 2 Tyro Home Improvement
- 1 Up and Coming 4-H Club
- 1 Valley Victors 4-H Club
- 4 West Side Workers EHU

#### MORRIS COUNTY

- 7 Burdick Hustlers 4-H Club
- 5 Busy Workers 4-H Club
- 4 Dizzy Dames EHU
- 12 Dwight Sunflowers 4-H Club
- 7 Flint Hills 4-H Club
- 2 Modern Mrs. EHU
- 12 Neosho Valley 4-H Club
- 9 Willing Workers 4-H Club
- 7 Wilsey Busy Bees 4-H Club

#### MORTON COUNTY

- 1 Watch Us Grow 4-H Club

#### NEMAHIA COUNTY

- 3 Busy Jayhawkers 4-H Club
- 3 Centralia Aces 4-H Club
- 1 H.H.H.H. 4-H Club
- 12 Nemaha 4-H Council
- 4 Red Vermillion 4-H Club
- 1 Woodlawn Unit

#### NEOSHO COUNTY

- 1 Eager Beavers 4-H Club
- 1 Neosho County Extension Homemakers Council
- 5 Willing Workers 4-H Club

#### NESS COUNTY

- 1 Jr. Farmers 4-H Club
- 2 Ness County Home Economics Extension Council
- 4 Schoharie 4-H Club
- 4 Utica Meadow Larks 4-H Club

#### NORTON COUNTY

- 1 Livewires 4-H Club

#### OSAGE COUNTY

- 23 Carbondale Rustlers 4-H Club
- 3 North Osage 4-H Club
- 1 Osage County Extension Homemakers Council
- 4 Vassar Blue Ribbon 4-H Club

#### OSBORNE COUNTY

- 4 Coronado EHU
- 5 Eager Beavers 4-H Club
- 3 Harmony EHU
- 4 Jolly Janes EHU
- 2 Oak Creek 4-H Club
- 5 Sumner EHU
- 5 Utopia EHU

#### OTTAWA COUNTY

- 11 Culver Livewires 4-H Club
- 5 Delphos 4-H Club
- 9 Ottawa County 4-H Council
- 6 Solomon Valley 4-H Club

#### PAWNEE COUNTY

- 4 Burdett Blue Ribbons 4-H Club
- 2 Conkling Cubs 4-H Club
- 6 Rozel Rockets 4-H Club
- 7 Tiny Toilers 4-H Club

#### PHILLIPS COUNTY

- 17 Deer Creek 4-H Club
- 2 Lone Prairie 4-H Club
- 6 Phillips County 4-H Council
- 4 Sunnyside 4-H Club

#### POTTAWATOMIE COUNTY

- 24 Blackjack 4-H Club
- 2 Cottonwood EHU
- 1 Cottonwood 4-H Club
- 1 Pottawatomie County Home Economics Advisory Committee
- 9 Triple V 4-H Club

#### PRATT COUNTY

- 2 Golden Valley EHU
- 12 Golden Valley 4-H Club
- 7 Lincoln Climbers 4-H Club
- 6 Pratt County 4-H Council
- 11 Preston 4-H Club
- 14 Richland Rustlers 4-H Club
- 10 Sawyer Hustlers 4-H Club
- 6 Southwest 4-H Club

#### RENO COUNTY

- 3 Haven 4-H Club
- 10 Huntsville Helpers 4-H Club
- 3 Mitchell 4-H Club
- 2 Nickerson Womens Club
- 1 North Reno 4-H Club
- 1 Partridge Upstreamers 4-H Club
- 13 Plevna Sunflower 4-H Club
- 1 Progressive EHU
- 1 Prosperity EHU
- 1 Reno County Extension Homemakers Council
- 2 75th EHU
- 2 Southwest Reno 4-H Club
- 3 Sylvia EHU
- 3 Union Valley 4-H Club
- 3 Westprise EHU

#### REPUBLIC COUNTY

- 1 Lincoln EHU
- 1 Merry Meadowlarks 4-H Club
- 1 Republic Pioneers 4-H Club

#### RICE COUNTY

- 7 Chase We Willing Workers 4-H Club
- 10 County Pals 4-H Club
- 18 Fairplay 4-H Club
- 4 Genesee Go-Getters 4-H Club
- 6 Lyons Learners 4-H Club

- 6 Midland Lucky Clovers 4-H Club
- 11 Pleasant View 4-H Club
- 1 Rice County Extension Homemakers Council
- 3 Sterling Meadowlarks 4-H Club
- 1 Trying Tommies 4-H Club
- 18 Valley Bluebirds 4-H Club

#### RILEY COUNTY

- 4 Ashland 4-H Club
- 9 Bonfire 4-H Club
- 3 Cico Shamrocks 4-H Club
- 7 Cloverleaf 4-H Club
- 8 College Hill 4-H Club
- 4 Collegiate 4-H Club
- 2 Domestic Dames EHU
- 3 Gingham Gals EHU
- 9 Happy Go Lucky 4-H
- 9 Kaw Valley EHU
- 1 Lady Bugs EHU
- 9 Lee Hilltoppers 4-H Club
- 1 Pillsbury 4-H Club
- 3 Prairie Rose EHU
- 6 Randolph Ramblers 4-H Club
- 2 Riley County EHU
- 8 Riley County 4-H Council
- 11 Strong 4-H Club
- 3 Wildcat EHU
- 11 Zeandale 4-H Club

#### ROOKS COUNTY

- 2 Bow Creek 4-H Club
- 5 Eager Beaver 4-H Club
- 5 Livewire's 4-H Club
- 7 Mt. Pleasant 4-H Club
- 14 Rooks County 4-H Council
- 19 Star 4-H Club
- 6 Stockton Jayhawker 4-H Club

#### RUSH COUNTY

- 1 Alexander Whippets 4-H Club
- 1 LaCrosse Dynamiters 4-H Club
- 4 Lone Star Rangers 4-H Club
- 1 Otis Go-Getters 4-H Club
- 1 Prairie Valley 4-H Club
- 1 Rush County Extension Homemakers Council
- 2 Walnut City 4-H Club

#### RUSSELL COUNTY

- 3 Big Creek 4-H Club
- 4 City Slickers 4-H Club
- 3 East Wolf 4-H Club
- 3 Jayhawk 4-H Club
- 3 Russell County Homemakers Council

#### SALINE COUNTY

- 6 Bavaria Live Wires 4-H Club
- 8 Brookville 4-H Club
- 8 Cloverleaf 4-H Club
- 8 81 Hustlers 4-H Club
- 8 Falun 4-H Club
- 9 Friendly Valley 4-H Club
- 7 Gypsum Valley 4-H Club
- 10 Kipp Wide Awake 4-H Club
- 11 Mentor 4-H Club
- 9 Saline County 4-H Council
- 11 Saline Valley 4-H Club
- 6 Sasnak 4-H Club
- 11 Smoky View 4-H Club
- 3 Sod Busters 4-H Club
- 5 Space Agers 4-H Club
- 10 Sunny Valley 4-H Club
- 3 Swinging 4-Her's 4-H Club
- 18 Willing Workers 4-H Club

#### SCOTT COUNTY

- 10 Go-Getters 4-H Club
- 11 Lucky Clover 4-H Club
- 9 Town and Country 4-H Club

#### SEDGWICK COUNTY

- 4 Achievers 4-H Club
- 1 Aerojets EHU
- 3 Andale 4-H Club
- 6 Andover Aces 4-H Club
- 3 Bonanza EHU
- 2 Central Ladybees 4-H Club
- 6 Colwich 4-H Club
- 1 Crosstowners EHU
- 15 Delano 4-H Club
- 13 Derby 4-H Club
- 1 Dodgerettes EHU
- 1 East Side Eagles 4-H Club

- 2 Eureka Go Getter EHU

- 7 Goddard 4-H Club

- 3 Laugh and Learn EHU

- 4 Maize 4-H Club

- 10 Mt. Hope 4-H Club

- 2 Nite 'N Gals EHU

- 1 Northeast Extensioners

- 1 Oakview EHU

- 2 Peck Ramblers 4-H Club

- 1 Quail Valley 4-H Club

- 15 Riverview 4-H Club

- 2 Rockford EHU

- 2 Rolling Hills 4-H Club

- 3 St. Joe EHU

- 11 Sedgwick County Activity Fund

- 1 Sedgwick County EHU

- 2 Shadybrook EHU

- 2 Southern Belles EHU

- 13 Sunnydale 4-H Club

- 1 Sunset Heights EHU

- 9 Valley Victors 4-H Club

- 4 Waco Extension Unit

- 2 Wichita Sunflower 4-H Club

- 1 Working Sals EHU

#### SHAWNEE COUNTY

- 2 Bethel EHU
- 10 Dover 4-H Club
- 4 Elmont Wildcats 4-H Club
- 4 Harmony Hustlers 4-H Club
- 2 Pleasant Hill EHU
- 17 Pleasant Hill 4-H Club
- 19 Riverside 4-H Club
- 21 Rochester Heights 4-H Club
- 4 Shawnee County EHU Advisory Council
- 1 Shawnee County 4-H Committee
- 4 Shawnee County 4-H Council
- 18 Shunga Valley 4-H Club
- 3 Silver Lake EHU
- 11 Silver Lake 4-H Club
- 15 Wanamaker 4-H Club

#### SHERIDAN COUNTY

- 12 Hi-Plains 4-H Club
- 2 Hoxie Go-Getters 4-H Club
- 3 Solomon Valley 4-H Club

#### SHERMAN COUNTY

- 3 Beaver Valley 4-H Club
- 18 Glendale Livewires 4-H Club
- 3 Llanos 4-H Club
- 6 Ruleton Eager Beavers 4-H Club

#### SMITH COUNTY

- 1 4-Oaks 4-H Club
- 4 U.S. Center 4-H Club

#### STAFFORD COUNTY

- 8 Antrim Streamliners 4-H Club
- 8 Cloverleaf 4-H Club
- 6 Corn Valley 4-H Club
- 7 Eden Valley Hustlers 4-H Club
- 5 Jolly Workers 4-H Club
- 4 Stafford County 4-H Council

#### STANTON COUNTY

- 4 Sunflowers 4-H Club

#### STEVENS COUNTY

- 6 Cloverleaf Cowboys 4-H Club
- 4 Maple Leaf Rustlers 4-H Club

#### SUMNER COUNTY

- 4 Drury Millers 4-H Club
- 5 Jolly Workers 4-H Club
- 2 Milan Dragons 4-H Club
- 2 Sumner County Extension Homemakers Council

#### TREGO COUNTY

- 3 Lone Star 4-H Club
- 10 Ogallah 4-H Club
- 1 Trego County EHU
- 9 Wakeeney Willing Workers 4-H Club

#### WABAUNSEE COUNTY

- 2 Blue Ridge 4-H Club
- 3 Cottonwood 4-H Club
- 3 Maple Hill Hustler 4-H Club
- 1 Merry Mixers EHU
- 2 Newbury 4-H Club
- 4 Wabaunsee 4-H Club

#### WALLACE COUNTY

- 9 Harrison Endeavor 4-H Club

#### WASHINGTON COUNTY

- 2 Brantford EHU
- 17 Busy Bee 4-H Club
- 1 Hanover 4-H Club
- 5 Happy-Go-Lucky 4-H Club
- 1 Happy Homemakers EHU
- 1 Happy Workers 4-H Club
- 3 Linn Livewires 4-H Club
- 3 Mahaska 3H Merry-makers EHU
- 1 Modern Homemakers EHU
- 1 Washington County EHU

#### WILSON COUNTY

- 2 Chetopa Sunbeams EHU
- 1 Sunny Stone EHU
- 3 Thornburg EHU

#### WOODSON COUNTY

- 3 Three-In-One 4-H Club

#### WYANDOTTE COUNTY

- 3 Nearman 4-H Club
- 5 White Church 4-H Club

## Memorials

Memorials to honor the memory of relatives and friends and to express affection and respect for living persons have been established through Kansas 4-H Foundation.

Some memorial gifts are for specific items; some are unrestricted for use in the Foundation wherever there is need. Some are for scholarships or for equipment or buildings.

Below are listed persons honored with memorials during 1977:

Emil Holgerson  
Grover Poole  
Mrs. Jess Taylor  
Edna May Bratton  
Dinah Sue Crockett  
Mrs. Otto Bunjes  
Carl Richard  
Mrs. R. D. Wyckoff  
Lucile Rust  
Ed Pierce  
Preston A. Waln  
Mrs. Raymond E. Parcel  
Mrs. Olga Doll  
Mr. and Mrs. G. F. Germann  
Tommy J. Davis  
H. F. Roepke  
Raenetta Jean Billings  
and Allison Paige  
Royal Clark Hendershot  
Kay L. Bates  
Marion Lynn and Hazel Russell  
Erwin J. Mauler

Unfortunately, because of the limits of space, we are unable to list the large number of persons who contributed to memorials during 1977, but their generosity is as appreciated as if their names were listed.



In June of 1977 she was elected fair queen candidate of the Admire 4-H Club. She was honored, but scared stiff as she bravely, proudly, accepted the job, the duty.

At the beginning of July pictures were taken and tickets were handed out with wishes for the best of luck to every young woman who was a queen candidate.

To be queen of the Lyon County Fair is not given to you for your beauty or personality, but for how many dollars worth of tickets you and your club sold.

With a bang the race began. Her goal was \$100 every day for a month which was approximately the time limit on selling tickets.

She can remember the hot July days as she slipped into her white dress pants and a colorful blouse and put a smile on her face. Her smile broadened as she shook hands and gave her introduction speech.

But pain crept into her feet from miles of pavement walking. Her cheeks ached from constantly smiling. Her hands ached from shaking so many hands. Her head especially ached with trying to keep track of all the money and tickets, down to the last penny.

## “Queen! Me?”



*Editor's note: Ann Lowder writes of herself: "I'm the No. 1 cowboy type. This wasn't my bag, my image, to be a queen, but this is what I became. It wasn't your image that counted anyway in this story; it was your determination to become."*

Altogether the queen candidate and the club sold \$3,123.50 worth of tickets. The club sold a little over \$300 worth. The club also got 10 per cent of the ticket money.

That night, that wonderful night, she walked out in her white summer dress and proudly took the title of Lyon County Fair Queen!

She was crowned queen, 12 roses were handed to her, a plaque, a necklace, and what nots.

For the past 20 years, or for that matter in the history of the Admire 4-H Club, there had never been a fair queen before.

Her feet ached, she was tired, and those headaches that had pounded her head! But the short moments of being queen were brilliant, were a heartbeat skipped. Meeting people, learning about people, is the best experience to be given a young person. She'll never regret being queen candidate; she'll never do it again, though.

She laughs as she remembers how they announced her name wrong. Or how clumsy she must have looked as she tripped over the hogs that ran between her feet.

She remembers how tears burned the rims of her eyes when Mr. Wise proclaimed:

“We proudly announce Miss Ann Lowder of the Admire 4-H Club to be the 1977 Lyon County Fair Queen!”

## Commodity marketing

(Continued from page 8)

In the past, our farm exports were most significant when we produced far more than we needed — or when our storage bins and warehouses were overflowing. Things are different now because of the size of the export market — a vital factor in projecting the amount of crops to be produced — and farm commodity prices have become increasingly sensitive to international market factors.

In 1977 I was named state winner in commodity marketing, and in February 1978, I was awarded a trip to the Chicago Board of Trade. This was an exciting and learning experience. Twenty-seven 4-H members from 24 states went behind the scenes at the Chicago Board of Trade for a look at the nation's oldest and largest commodity exchange in action. We toured the exchange trading floor with board

(Continued on page 21)

BEST WISHES TO ALL 4-H MEMBERS



FRESH - GRADE A  
DAIRY FOODS

SINCE 1882



STEFFEN DAIRY FOODS CO. / 700 E. CENTRAL / WICHITA, KANSAS

From the Southeast Area:

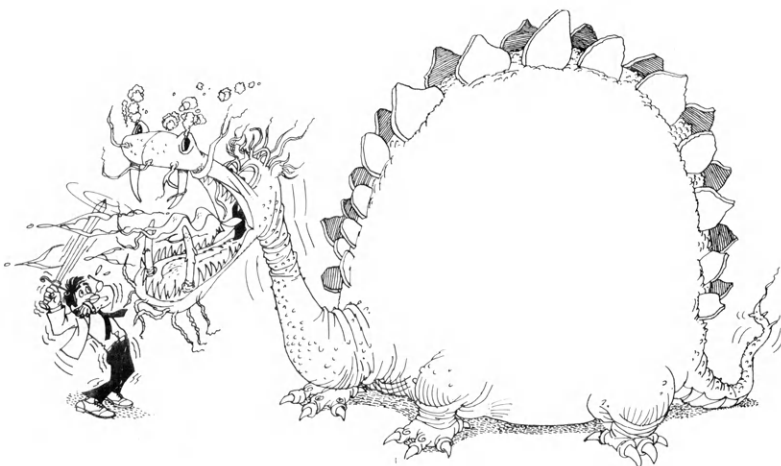
**Franklin County:** Reporter **Sheri Garber** sent the Journal several clippings with news of **Junior Judges 4-H Club** activities. The group was recently given a large American flag by the VFW auxiliary. At Parents Night, **Roberta Compton** demonstrated foot care of horses, and **Donald Wilford** talked about dogs, introducing a white sled dog to the 4-H'ers. On May 13, members of the club participated in a walk-a-thon to earn money to fight fibrosis, a disease that affects lungs and digestive systems of children who have the ailment.

**Miami County:** With emergency preparedness as the club project, **Wagstaff Warriors 4-H Club** sponsored a cardiopulmonary resuscitation class for the community. The two four-hour sessions were taught by **Berry Wilson**, a navy corpsman and a licensed Red Cross instructor. A total of 33 4-H members, their parents and families, and persons employed in local nursing homes, hospitals, and schools participated, **Karie McGinnis** reports . . . The **Miami County** entomology group visited the Museum of Natural History at the University of Kansas for a project tour. In the afternoon the group was greeted by **George Byers** of the department of entomology. **Malea Husted**, project junior leader, writes: "We were taken to the entomology laboratory, where **Professor Byers** demonstrated and explained the steps of collecting, preserving, mounting, and curating insect specimens. He had on display, in the laboratory, all kinds of equipment, several displays of large and beautiful tropical insects, life cycles and three microscopes showing the antenna of a male moth, the compound eye of a housefly, and the wing scales of a butterfly, which was all very interesting. We viewed all the insect displays in the halls of the museum, which included one display of termites from Brazil. In the display was a preserved queen termite, the size of a small potato, approximately three inches or more in length, that when she was alive, laid an egg every six seconds of her life. The queen's life cycle is between 10-15 years. We're all still trying to figure how many young termites she was responsible for. The Snow Entomological Museum is the largest one between Chicago and San Francisco and rates just below them and ones in New York and Washington, D.C., in size: In some fields of entomology, it has the largest collections of anywhere in the world. It has over three million insects in the museum. Needless

# Make a Stand AGAINST INFLATION

When our government spends more money than it receives, it prints more money . . .

By printing more money, the U.S. dollar becomes cheaper and cheaper.



## KANSAS FARM BUREAU

to say, we did not see them all, as they are stored in giant filing cabinets in glass cases, but **Professor Byers** did take us into the museum and showed us some of the displays, so we could have an idea of how they were filed and stored. He told us of his travels all over the world in collecting insects. He, himself, located one insect here in the United States, that has never been found again, here or anywhere else in the world. He was given the privilege of naming it and writing the entomology journal on it. We all enjoyed our tour very much and came home excited about collecting our own insects, much wiser from our experiences of the day."

#### From the South Central Area:

**Butler County:** The April meeting of **Bluestem 4-H Club** was Junior Officers Night. **Mary Tighe** is the junior president. The club was one of 10 honored in the state for its safety program, receiving a check for \$25 from Kansas Farm Bureau, and a certificate from General Motors. One member of the club will have an expense-paid trip to Kansas Farm Bureau Youth Safety Seminar at Rock Springs Ranch in June. The junior leaders continue to publish **Bluestem Gazette**, a monthly newsletter which goes to all members and leaders of the club.

**Harper County:** The model meeting and the chorus of **Tip Top 4-H Club** won blue ribbons at the Pratt regional, **Kim Yandell** reports. The club tour took place in April. For Parents Night the club had a covered-dish dinner.

**Pratt County:** **Leigh Ann Rose** of **Richland Rustlers 4-H Club** has been asked to be on the Student Advisory Council for patterns for the Simplicity Pattern Company. **Tom Black** reports that the J. C. Penney Company of Wichita gave the club a mannequin to present to the **Pratt County Historical Museum**.

#### From the Southwest Area:

**Finnéy County:** **Fanci Horton**, **Kearney County 4-H'er**, was high individual at the district home economics judging contest in Garden City in April. Of the 130 4-H'ers who judged classes dealing with home improvement, foods, and clothing, others in the high ten following Franci were: **Elinor Spitzer**, **Scott County**; **Cindy Griffith**, **Scott**; **Kim Byerly**, **Greeley**; **Jeri Hooker**, **Scott**, and **Mary Kay Baker**, **Wichita**, tie for 5th; **Cindy Swank**, **Kearney**; **Janell Grinstead**, **Hamilton**; **Kara White**, **Stevens**; and **Gisele McMinimy**, **Clark**. . . **Randy McCabe**, **Elk City**, was the official judge for the 3rd Annual Spring Livestock Show sponsored by **Finnéy County 4-H**. In the sheep show, **Mark Gillen** had the champion lamp with **Craig Adam** showing the reserve champion. Both are from **Finney County**. **Wayne** and **Gay Goss**

from **Finney County** showed the champion and reserve champion hogs. In the steer show, **Gaylen** and **Lance Huck**, **Scott County**, showed the champion and reserve champion steers. In the judging contest, **Lake Wide Awake** from **Scott County** won first in the senior division, with **Cimarron** from **Grant County** second. **Dennis Landgraf** from **Scott County** was high individual. In the junior division, **Lucky Clover** from **Scott County** was first.

#### From the Northwest Area:

**Decatur County:** The horse program has grown from 6 to 7 active members last year to almost 30 this year! County

leader **Jackie Wasson** had indoor meetings during the winter, and one clinic where advanced members helped beginners with basic showmanship and horsemanship. Fundraising projects were a horse sale and rummage sales. Their horse show will be June 17 at Oberlin.

#### From the Northeast Area:

**Shawnee County:** **Harmony Hustlers 4-H Club** hosted the **Shawnee 76'ers 4-H Club** for their exchange meeting. About 50 members and guests were present, **Nancy Wilcox** reports.

(More on page 21)

## KANSAS 4-H MEMBERS

Have you entered a poster in the Kansas 4-H Dairy Poster contest? Members in Grades 2 through 7 eligible.

For information, contact your County Extension Office. State winner in each division will be awarded a camera, county winners a plaque.

Contest Sponsored by

**MIDLAND UNITED DAIRY INDUSTRY ASSOCIATION**

Ankeny, Iowa

# TRUCKS

Help Bring  
Better Living  
To Kansas Farms,  
Homes, Industries

If You've Got It — A  
Truck Brought It!



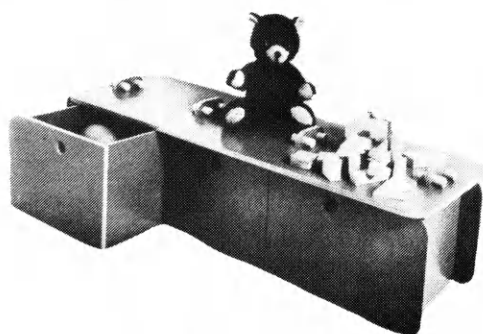
**KANSAS MOTOR CARRIERS ASSOCIATION**  
2900 S. Topeka Blvd.  
TOPEKA, KANSAS 66611



# Free!

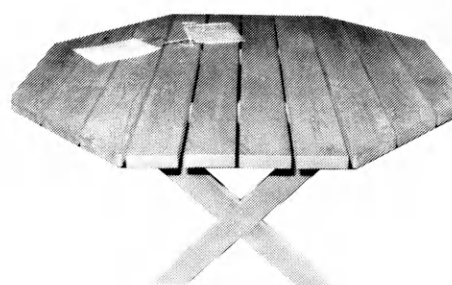
## 4-H Woodworking Plans from YOUR LUMBER DEALER

**These plans  
are available**



**Toy Storage Bench**

Courtesy American  
Plywood Association



**Picnic Table**

Made by Lyle Blockcolsky  
Olsburg

**For your free plans, see your lumber dealer; he will also help you select the material you need.**

**Ashland**  
Don Spotts Lumber Company

**Atchison**  
J. B. Russell, Inc.

**Basehor**  
Basehor Lumber

**Belleville**  
Belleville Lumber Co.

**Beloit**  
Peoples Lumber Co.

**Blue Rapids**  
Blue Rapids Lumber Company

**Burrton**  
Burrton Lumber & Development,  
Inc.

**Caldwell**  
Home Lumber & Supply Company

**Chapman**  
Hyder Building Materials

**Cherryvale**  
Woods-Ringstaff Lumber Co.

**Clay Center**  
Fullingtons

**Coldwater**  
Home Lumber and Supply Company

**Derby**  
The Trading Post

**Dodge City**  
T. M. Deal Lumber Co.

**Downs**  
Downs Lumber Company

**Easton**  
Easton Lumber Co.

**Ellinwood**  
Home Lumber & Supply Co.

**Emporia**  
Flaming Lumber & Material Co.  
Mark II Lumber

**Erie**  
Johnson & Son Lumber Co.

**Eureka**  
A. C. Houston Lumber Co.

**Frankfort**  
Fox Lumber Co.

**Garden City**  
Cash & Carry Lumber Co., Inc.

**Great Bend**  
Everitt Lumber Co., Inc.

**Greensburg**  
Hildinger's Lumber & Hardware  
& Ready Mix Inc.

**Harper**  
Town & Country Lumber Co.

**Hiawatha**  
Motsinger Lumber Co.

**Hillsboro**  
Hillsboro Lumber Co.  
The Lumberyard Inc.

**Holton**  
Holton Lumber Company, Inc.

**Hoxie**  
Hoxie Lumber Co.

**Hugoton**  
The Star Lumber Company

**Independence**  
Sandott Lumber

**Iola**  
Klein Lumber Company

**Johnson**  
Seyb-Tucker Lumber and  
Implement Company

**Junction City**  
Builders Lumber Inc.

**Kechi**  
Buck Alley Lumber

**Kingman**  
Wegerer Lumber Co.

**Kinsley**  
The Kinsley Cooperative Exchange

**La Cygne**  
La Cygne Lumber and  
Ready Mix, Inc.

**LaHarpe**  
Diebolt Lumber and Supply

**Lakin**  
Hammons Lumber &  
Hardware Inc.

**Lansing**  
Lansing Lumber Inc.

**Larned**  
T. M. Deal Lumber Co.

**Lebo**  
Lebo Lumber & Hardware

**Liberal**  
The Star Lumber Company

**Louisburg**  
Louisburg Lumber Co.

**Manhattan**  
Ramsey Brothers

**Mankato**  
Mid-West Lumber Company

**Marion**  
Mack-Welling Lumber & Supply

**Marysville**  
Howell Lumber Company

**Minneapolis**  
Moore Lumber Company, Inc.

**Newton**  
National Building Centers  
Home Care Center

**Nickerson**  
The Home Lumber & Supply Co.

**Norton**  
Norton Lumber Company

**Nortonville**  
Nortonville Lumber Inc.

**Oberlin**  
Nichols Building Supply, Inc.

**Offerle**  
Offerle Co-op Grain & Supply Co.

**Olathe**  
Cowley Lumber & Hardware Co.

**Olsburg**  
Blue Valley Electric and  
Building Supply

**Osage City**  
Martin Material Co., Inc.

**Osborne**  
Lewis A. Hardman Lumber Co.

**Ottawa**  
Hubbard Lumber Company, Inc.  
Ottawa Lumber Co.

**Parsons**  
Woods-Seward Lumber Co.

**Pittsburg**  
Broadway Lumber Co. Inc.

**Plains**  
Home Lumber and Supply Co.

## OTHER PLANS AVAILABLE

Chess Table	Child's Table & Seats
Portable Planter Screen	Wind Vane
Ply-Tent	Porch Swing
Storage Divider	Doghouse
Dairy Barn Desk	Gable Roof Cupola
Bedside Nightstand	Vertical Step Fence
Sidestep storage	Table Soccer
Table Podium	Martin Bird House
Garden Entrance Trellis	Salt Box
Colonial Table	Hourglass
Food Drying Tray	Pigeon Cage
Picnic Table	Bed
Christmas Card Display	Redwood Mailbox
Extension Dining	Utility Table
Room Table	Hanging Shelves
Bicycle Rack	Meat Mallet
Entry Closet	Padded Hassock
Clock	Bluebird Box
Laundry Shelves	Peg Game
Truck Utility Box	Toss Game
Colonial Magazine Stand	Ladder
Chair	Coffee Table
Pigeon Feeder	Storage Chair
Wheelbarrow	Step Ladder

## Friends of 4-H Day



Donald J. Johnson, director of development of the National 4-H Council, will be the speaker at Friends of 4-H Day, June 11, at Rock Springs Ranch.

As a 4-H member in his native Georgia, Donald Johnson was a national citizenship winner, a member of the 4-H Report to the Nation team, an IFYE to France, a delegate to the Third World Rural Youth Conference, and a member of a fact-finding team sent to North Africa for the United States Youth Council. He had a one-year appointment to work in the office of Senator Richard Russell.

In 1971 Mr. Johnson became an associate of the National 4-H Service Committee, working with this group until 1977 when he became director of development when the service committee and the National 4-H Foundation combined to form the National 4-H Council.

Friends of 4-H Day will also highlight tributes to more than 130 25-year 4-H leaders, 25-year donors, and 25-year sponsors of Kansas 4-H Journal, Merle Eyes-tone, executive director of Kansas 4-H Foundation, announced.

### Commodity marketing

(Continued from page 17)

members, and we attended seminars on pit trading, futures contracts, hedging, speculation, and international trade. This annual symposium is designed to help delegates understand the basic principles of

commodity selling in cash markets and trading in futures markets at major commodity exchanges.

This project has helped me to better understand the complicated marketing procedures. Experiences like these prepare one for life and its decisions. I realize the hard work that goes into a good crop, including field work, harvesting, and marketing, and this project has made the process a little easier to understand. I feel that this project is very beneficial in helping me prepare for my future in whatever I do.

### Interpretation of letter, page 7

7 April 1978

Senor  
Glenn M. Busset

Of (with) my high regard.

I received your very courteous note dated March 3 of the current year, which sent greetings and congratulations from the 50,000 members and leaders, to the members of the Young Farmers 4-C Clubs of Paraguay in the week of celebration of their 25th anniversary.

I should inform you that Dr. Carlos Maria Ocampos Arbo, president of the Kansas Paraguay committee, and his most worthy wife, honored us with his presence in the main function of the closing of the festival of the 25 years of organization of the Young Farmers 4-C Clubs.

On this happy occasion Senor Ocampo made delivery of a (plaqueta) which the partners of Kansas sent us, which was a very friendly gesture.

To appreciate a favor very sincerely, in my name and from the Association for so kind a gesture, I am invoking our motto "To surpass the best."

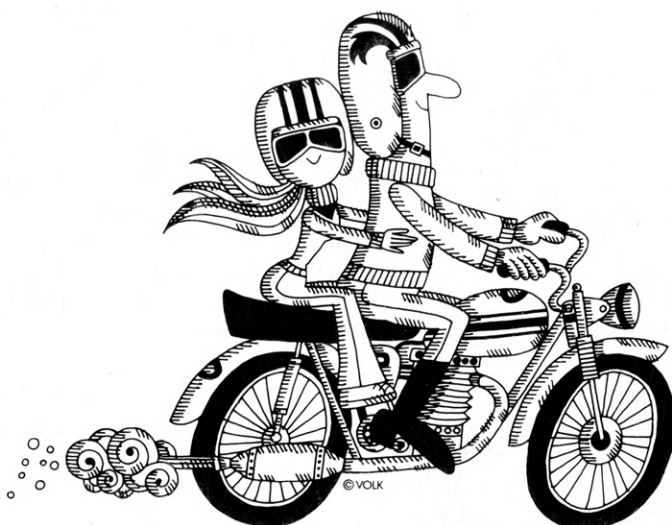
Receive a cordial greeting,

Andres Penayo  
Exec. Sec.

### Ideas and news

**Jewell County:** Sherri Gardner of Formoso Willing Workers 4-H Club combined her interest in two 4-H projects, breeding heifers and photography, when she took pictures of a cesarean section on a cow at the Beef Genetics Research Ranch at Montrose. The group of pictures, which she'll use as a sequence for photography, shows the incision, the calf's delivery, the herdsman pushing the calf's chest to get it to breathe, and the sewing up. "The cow was then untied and then got up and walked away," Sherri writes.

**Pratt**  
W. R. Green Lumber Co., Inc.  
**Redfield**  
Redfield Lumber Company  
**Rossville**  
Hesse Lumber Company, Inc.  
**Russell**  
Houston Lumber Company  
**St. Francis**  
St. Francis Mercantile Equity Exchange  
**Salina**  
Easterday-Boster Lumber Co.  
**Scott City**  
Scott City Building Materials  
**Stafford**  
T. M. Deal Lumber Co.  
**Sublette**  
T. M. Deal Lumber Co.  
**Syracuse**  
Hess Lumber Co.  
**Tampa**  
Hajek Lumber & Hardware  
**Topeka**  
Whelan's Inc.  
**Tribune**  
Foster Lumber Company, Inc.  
**Waterville**  
Waterville Lumber  
**Wichita**  
Alexander Lumber Co., Inc.  
Star Lumber & Supply Co.  
**Wilson**  
Hoch Lumber Company  
**Winfield**  
A. B. Everly Lumber Co.  
Everitt Lumber Co., Inc.  
**Wright**  
Right Co-op Assn.



**It's time to start — (if you haven't already) to promote safety among your 4-H members and in your community.**

With summer near, safety is important every day, when you're doing field work, helping with harvest, working with animals, driving or riding on the highway. Your 4-H club's safety program can help build a safer community; it can also win a trip to Kansas 4-H Congress next year.

Keep records of the things your club does to promote safer habits of living, working, and playing; then in September submit your records for safety judging.

**The club with the top safety record program will win:**

**A trip to Kansas 4-H Congress in the spring of 1979 for eight members and two leaders of the club.**

**The next nine 4-H clubs will win:**

**a \$25 cash award, and**

**a trip to the Farm Bureau Youth Safety Seminar at Wa Shun Ga south of Junction City in the summer of 1979 for one member.**

**It's time to start; make it your goal for everyone in your 4-H club to become a safe citizen!**

To find out how to enter, go to your county extension office or write:  
Kansas Farm Bureau, Safety Division, Manhattan, Kansas 66502.

DONOR OF AWARDS FOR THE 4-H SAFETY PROGRAM

# KANSAS FARM BUREAU

SAFETY DIVISION

MANHATTAN



# Family Fun Page



"DO YOU THINK I'M READY FOR  
ROCK SPRINGS RANCH?"

Brian Higgins, Osawatomie



"THE INHABITANTS SEEM TO BE INTELLIGENT. THEY HAVE SERVANTS WAITING ON THEM!"

Two Englishmen were out hunting one day.

All of a sudden something moved in the bushes. One of the men shot at it.

“Watch out, old man, you almost shot my wife!” exclaimed the other.

"Dreadfully sorry, fellow. Do have a shot at mine," came the reply.

Sam: Did you hear the joke about the skunk?

Tammy: No.

Sam: Forget it. It stinks.

Tina: Did you hear about the guy who climbed up a tree and couldn't get down?

Bob: No.

Tina: Never mind, he was stuck-up.

Julie McClure, Salina

Teacher: Please give me a sentence using the word politics.

Student: A parrot named Polly swallowed a clock and now Polly ticks.

**Pedestrian:** (Standing in the street) Officer, can you tell me how to get to the hospital?

Officer: Just stand where you are.

Q: What fruit is found on every American coin?

A: A date.

Donna Schmits, Seneca

## Prize Winner

What did the mother dog say  
when her puppy fell off the cliff?

Doggone!

Mark Stehno, Munden

## Tongue twister

Six silly shoulderless soldiers stoutly started stomping solidly soiled shirts and stark raving colorful shoestrings into starchy steel-like soil!

A farmer was watching a city man  
plant potatoes.

The farmer said, "You should wrap your spuds in burlap first."

"Why?" asked the city man.

“So they don’t get dirt into their eyes!” replied the laughing farmer.

Kim Gabel, Hays

*4-H members are invited to contribute jokes, riddles, puzzles, or cartoons to Family Fun Page. Each month the fun page item selected as best by a committee will receive \$1.*

## Exotic lamps brighten recreation room

Lamps from Mexico add an exotic touch in the recreation room of the Kenneth Schoen family at Downs. 4-H member Kevin wired the lamps, using black iron curtain rods for poles, with a block of solid wood, stained walnut, for a base. The lamps were purchased in a souvenir shop on vacation.

This past year Kevin won a purple ribbon at the Osborne County Fair for a transistor radio which he made from a kit. Among other things he's done during three years in the electric project are helping his father wire a machine shed and making extension cords.

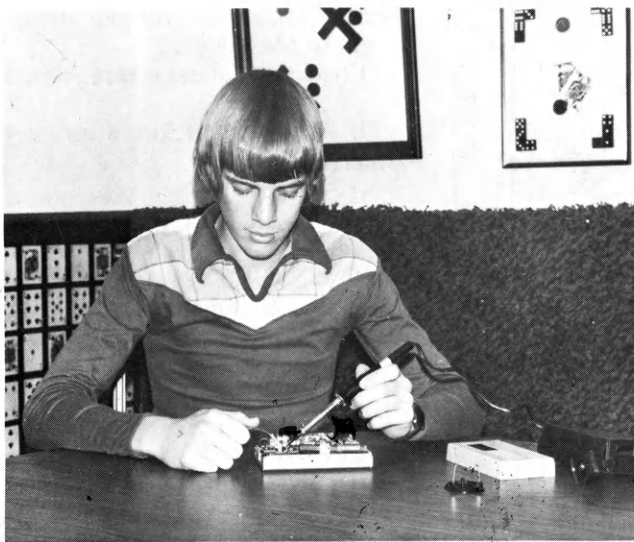
This year he's making a digital indoor-outdoor thermometer which will record both Fahrenheit and Celsius temperatures. He's worked on it more than 100 hours.

Other 4-H projects Kevin is enrolled in are room improvement, swine, woodworking, crops, photo-

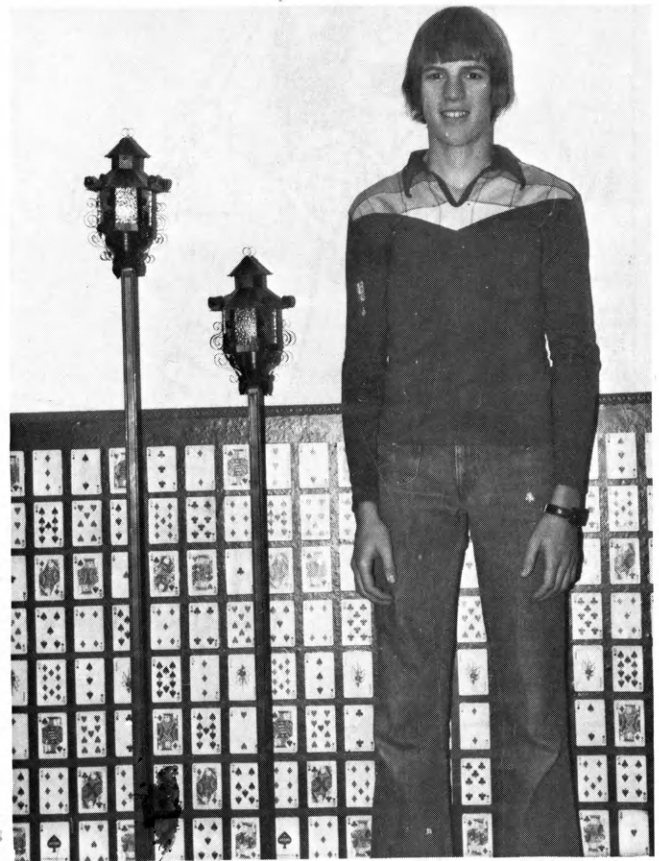
graphy, leadership, and public speaking. He's a member of Solomon Valley 4-H Club.

A freshman at Downs High School, he is a member of FFA and he plays basketball and football.

Kevin hopes to explore the field of electronics more extensively, and is considering a career as a computer analyst.



Kevin works on his radio.



In the recreation room which Kevin improved as a room improvement project, the lamps from Mexico make an attractive accent.

*What are you or your family doing to conserve energy? Please send your ideas, with illustrations if possible, to Electric Page, Kansas 4-H Journal, Umberger Hall, KSU, Manhattan, Kansas 66506.*

**Watch This Page For Ideas On Farm And Home Electric Projects**

### ELECTRIC LIGHT and POWER COMPANIES in KANSAS

The Kansas Power and Light Company      Central Kansas Power Company  
Kansas Gas and Electric Company  
Western Power Division of Central Telephone & Utilities Corporation

