

VS

heifers -540 @ 23.70
410 @ 23.75
545 @ 22.80
410 @ 22.80
320 @ 22.70
448 @ 22.70
COWS
1100 @ 18.00
805 @ 17.80
835 @ 17.80
1285 @ 17.80
990 @ 17.80
cows -1170 @ 17.80
cow -1140 @ 17.80
-1170 @ 17.80
-1270 @ 17.80
-1160 @ 17.80
-775 @ 17.80
-780 @ 17.80
-765 @ 16.80
-1160 @ 16.80
-1105 @ 16.80
-1080 @ 16.80
-1090 @ 16.80
-795 @ 16.80
-4380 @ 15.80
-795 @ 15.80
clf -197
clfs -190

BULLS
1410 @ 23.50
1370 @ 23.50
430 @ 22.50
450 @ 22.50

MISSION
Y

Marys
Kans.

Salina
HARVEST

Only

11:00 a.m. Cattle
er they are consi

hogs 223 @ 22.50
hogs 217 @ 22.50
hogs 215 @ 22.50
hogs 218 @ 22.50
hogs 213 @ 22.50
hogs 231 @ 22.50
hogs 206 @ 22.50
pigs @ 13.50
pigs @ 17.50
pigs @ 15.50
pigs @ 18.00
pigs @ 17.50
pigs @ 14.75
pigs @ 14.25
pigs @ 18.25

sows 512 @ 17.00
sows 485 @ 17.50
sows 445 @ 17.25
sows 460 @ 17.10
sows 320 @ 18.15
sows 350 @ 18.20
sows 405 @ 17.50
sows 355 @ 18.25
sows 450 @ 17.50
sows 260 @ 19.75
sows 445 @ 17.40
sows 505 @ 17.50

anchers
SION CO.
5 40
0211
ensed



300 Acres of Popcorn

One of the largest acreages of popcorn in the G&G area is worked by Jack Lill of Kanopolis.

State Farm Report Notes Ninth Straight \$1 Billion Output

For the ninth consecutive year, Kansas farm income exceeded \$1 billion, according to Roy Freeland, Kansas Board of Agriculture secretary.

Freeland, writing in the recently issued 49th KSBA report, indicated the 1966 fiscal year was the ninth straight year of record-breaking farm production and income.

He said three new records were set during the year — July 1, 1965, to June 30, 1966. The records were: 5.5 million-plus head of cattle and calves registered; a sorghum crop which averaged 48 bushels per acre and the soybean crop which totaled 21 million bushels.

The average soybean yield of 22 bushels equaled the previous record. The 1966 sugar beet crop of more than 340,000 tons was the second highest of record, he said.

Commercial feeding of cattle and processing of red meat increased materially during fiscal 1966. The state now has 92 commercial lots, each with a capacity of 1,000 head or more.

Total cattle in feed lots numbered 433,000 head. Cattle feeding was up approximately 40 per cent from fiscal 1965. Processing of red meat was up six per cent.

Fertilizer Use Grows

Use of commercial fertilizers by Kansas farmers is evidence that the state's agriculture is a scientific profession," Freeland said. At mid-year, 1966, farmers were purchasing fertilizers at the rate of 960,000 tons per year. This was 535 times greater than the tonnage used in 1932. It is estimated that the rate will exceed 1 million tons annually before 1970, he said.

"With livestock enterprises, crop production and farm income at record high levels, it is somewhat startling to note that records of the U.S. Weather Bureau show the first six months of 1966 to be the driest six-month period on record in terms of precipitation," Freeland said.

All of the state's 105 counties were declared disaster areas for

livestock grazing and hay harvesting on land diverted from crop production under U.S. Dept. of Agriculture programs, he said.

Rain and favorable weather at mid-year 1966 brought new life to crops and pastures and renewed prospects for a favorable year, he said.

Freeland declared 1966 a year of agricultural transition in the United States. He said one of the most obvious transitions was the disappearance of the wheat surplus.

He said USDA officials have predicted the U.S. carry-over of wheat this June 30 will be reduced to less than 400 million bushels — about one-third the surplus.

"It would be only two-thirds of the 600 million bushels considered by experts as carry-over needed for a safe reserve supply," Freeland said.

For the past seven years, he said, the world has been using more wheat than was produced. "At present, use of wheat is increasing 300 million bushels a year with prospects for still higher rates of increase."

He said U.S. exports of wheat now exceed the amount used domestically.

Food Deficiency Soon

The transition, he said, "seems to call for an end to the era of American agriculture oriented largely to 50 states and the market within those states. It looms as a change from the worries of a surplus food producing nation to those of a deficient world."

Serious attention to the transition could signal an end to the era of so-called surplus crops, bulging government storage bins, low exports, rigid acreage controls and price supports, he said.

The era seems to be giving way to an era of reduced grain supplies, increasing exports and a relaxed production restriction, he said.

"Kansas, as one of the six major agricultural states of the nation, possesses the resources and know-how to participate ac-

tively in any emphatic transition toward full-scale production of food," Freeland said.

Approximately 6,500 free copies of the new KSBA report will soon be distributed to legislators, state government officials and the general public.



Clean Up

Darrel Diehl, A. W. Christenson and Ralph Pierce of Tescott do a real cleanup job on trees in front of the Diehl home. Diehl is the man with the saw.

GRASS & GRAIN

13th year no. 16

June 20, 1967

New Farm Import? This One Is A Weed From Nebraska

McPHERSON — Kansas may be gaining another noxious weed.

Curtis L. Walline, McPherson county noxious weed supervisor, has discovered a giant variety of Scotch thistle in three townships in McPherson county.

Walline said the plants, found

in Canton, Empire and Delmore townships, stand up to seven feet tall.

Yellow blooms appear in early spring but the color deepens quickly to a dark purple.

The leaves are glabrous, deeply lobed and three to six inches in length.

Scotch thistles produce from 10,000 to 100,000 seeds on each plant and may spread rapidly if not checked.

Walline had difficulty identifying the plant.

"The thistle, up to now uncommon in this area, is much taller than the musk or 'nodding' thistle. It stands straight, too, not as the musk thistle.

"I had seen Scotch thistles before but never this large," he explained.

Walline sent one of the plants to Kansas State university for identification.

Officials there said it indeed was a Scotch thistle.

"In Nebraska, Scotch thistles are considered noxious weeds," Walline said.

In Kansas, there haven't been enough of them to be considered noxious.

"I expect the thistles in McPherson county came in from Nebraska on a load of hay or by some other similar means."

Walline believes there may be a serious danger of it becoming established in this area.

"We've got to get on them and stay on them until they are killed out."

He suggests that farmers who notice plants resembling Scotch thistles notify their respective county noxious weed supervisor.

He said he didn't know why the Scotch thistles in McPherson county were growing so large. This is not normal.

In Nebraska, these thistles usually grow much smaller.

"I guess McPherson county land is just fertile," he added.

Work Toward A Sales Tax Past With Nebraska

Kansas is negotiating with Nebraska for a reciprocal agree-

ment on collection of sales taxes.

James T. McDonald, Kansas revenue director, said he hopes an agreement can be reached by mid-summer.

An agreement between Kansas and Missouri is already

complete and Kansas officials estimate it will mean a million additional dollars revenue for Kansas annually.

McDonald said he thinks an agreement with Nebraska would increase Kansas revenues by an equal amount or

more, since the Nebraska sales tax is 2½ per cent and both the Kansas and Missouri tax is 3 percent. He said the lower tax in Nebraska might tempt more Kansans to make purchases in Nebraska.

McDonald also plans to seek a similar agreement with Oklahoma, which has a 2 per cent rate.

Under the pact with Missouri,

June 20, 1967

when a purchase is made in a Kansas store for shipment to Missouri, the Missouri use tax of 3 percent will be added to the sale.

Conversely, sales made in Missouri for delivery to Kansas will require the Kansas 3 percent tax.

WOODMAN Motor Grader Booms for All Makes and Models of Motor Graders

PATENTED 3,145,015
OPENINGS FOR DEALERS
PROTECTED TERRITORIES

MANUFACTURED BY

BIGBEE MFG. CO., INC.

Route 3

MANHATTAN, KANSAS 66502



ALLIS-CHALMERS MODEL "D"

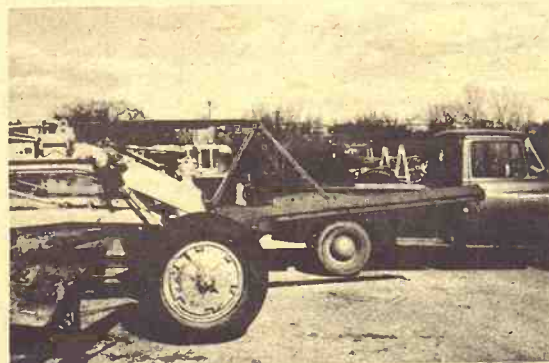


CATERPILLAR WITH CATERPILLAR LIFT GROUP.
OWNED BY MANHATTAN TOWNSHIP,
MANHATTAN, KANSAS



ALLIS-CHALMERS MODEL "D"

FOR FREE DEMONSTRATION WRITE OR PHONE
DAYS: PR 8-5172 or PR 6-5274 NIGHTS: PR 8-5857
ROUTE 3



BOOM MOUNTED ON CATERPILLAR

The Woodman Motor Grader Boom is a new low cost, time saving, lifting device adaptable to all motor grader units with scarifier or snow plow lift groups. The boom is manufactured in two sections for standard 10' or 12' lengths. The type "B" boom (B210, B212) lifts a rated 4 tons.

The boom folds into a convenient carrying position that does not obstruct normal operation of the grader.

FARMERS OUTLOOK

L.H. Simer

The Why Of The Sudden Hog Jump

Hog prices rose spectacularly from mid-April to late May. The rise totaled around \$7 a hundred pounds in about 6 weeks. This was one of the biggest price increases on record in such a short time. It has stirred a lot of comment — and a few questions.

Sudden advances in livestock prices have occurred many times in the past. As in this case, the price advances usually came after a rather long period of unexpectedly large supplies and low prices.

What usually happens is that retailers cut prices and put on big sales to move the large volume of meat. Retail prices are set and advertising is prepared 1 or 2 weeks in advance. Then, whenever market supplies fall short of consumer demand, retailers and packers bid

strongly to get enough meat to keep the women happy.

Each retailer — chain or independent — does not want to be the first to raise prices. He knows that he won't get much business if he boosts prices while others hold the line. Another point: A retailer, like a farmer, is never sure that prices won't be lower next week.

When retailers are finally convinced that they are going to have to pay more for their meat, they raise the prices in the retail counters. The higher prices slow consumer buying. But if shortages persist, retail prices are raised further.

Eventually, say after 4 to 6 weeks, retail sales are slowed so that there is no shortage of meat at the wholesale level. In fact, temporary surpluses often appear, and prices of live animals are cut back somewhat.

Pork production was much greater earlier this year than most people expected. Output in the first 4 months exceeded 43 billion pounds. This was one-fifth more than a year before and one-tenth more than the average output in the previous 8 years (two hog cycles).

Low prices for pork encouraged consumers to buy freely. They bought so freely that retailers — then packers, too — began to bid up for supplies. The bidding became much stronger in May; over a four-week period, pork output (under Federal inspection) shrank from 225 million pounds a week to only 177 million pounds. The shrinkage of output, 21 percent, was unusually severe.

The weekly pork output usually decreases during June and in the first week of July, and prices climb correspondingly. This year, the seasonal shrinkage in receipts and advance in prices may already have occurred.

Hog marketings usually begin to increase in the second week in July. Typically, weekly receipts increase more than one-fourth from July to November. A part of this growing supply is offset by a strengthening of demand for pork with the coming of cooler weather.

The official Pig Crop Report issued last March, pointed out market supplies about 4 percent larger than last year during the summer and fall. If marketings are increased correspondingly, pork supplies per person will be about 4 percent larger than the average for the past 8 years.

The larger supplies of pork may be offset, at least in part, by some cut in beef production. Hog prices may nearly equal those of last year when the average for barrows and gilts as central markets for the last 6 months was about \$22.50. But there are far more uncertainties than usual in the outlook this year.

GRASS & GRAIN

The Mid-Kansas news weekly. Published each Tuesday at 1207 Moro, (Box 1009) Manhattan, Kansas, 66502 by

AG PRESS

Dean Coughenour

E. R. Woodward

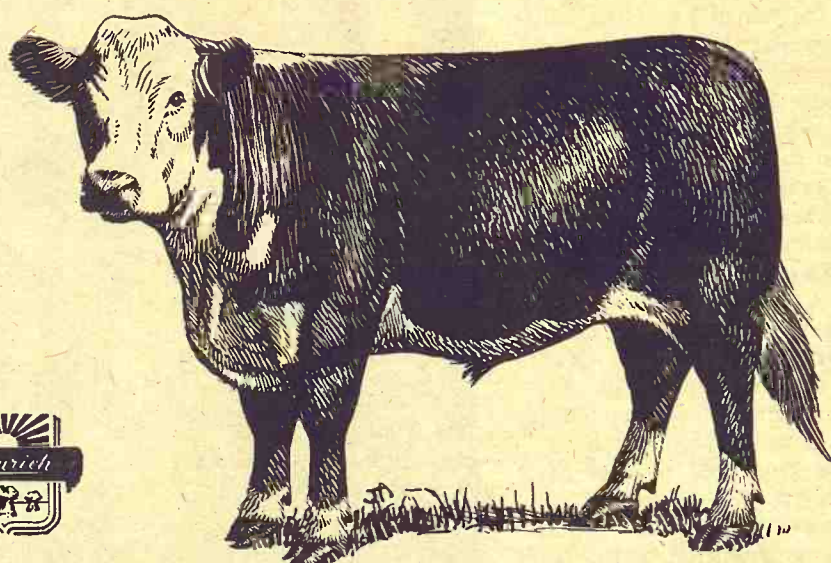
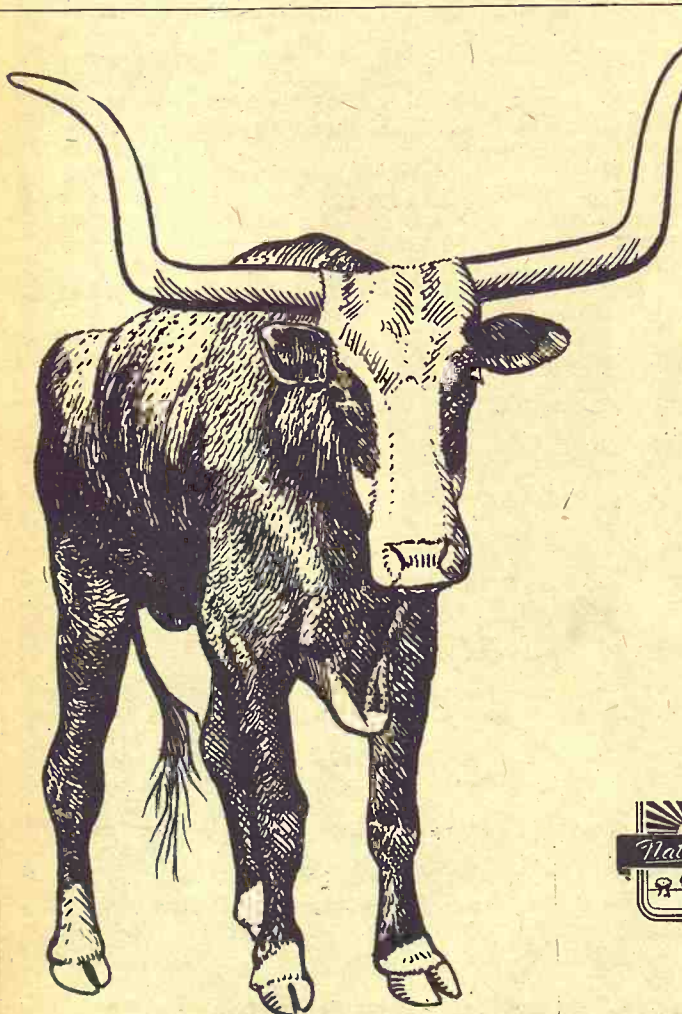
Second class postage paid at Manhattan, Kansas

Subscription: \$3 year

CIRCULATION 11,108

Cattle Have Come A Long Way Over The Last Several Decades

from the "Chisholm Trail" steer to our present day feedlot steer.



Just as it was with the steer, formula feed manufacturing has come a long way since the scoop shovel mixing days. One such Kansas industry, Naturich, has become one of the best known and one of the most respected in this highly competitive field. When it comes to total feeding results . . . no brand of feed offers a better return on your feed dollar than Naturich. In the feedlot, you'll profit from Naturich "KNOW-HOW" by including Stock-Maker Cattle Supplement in your ration. See your Naturich dealer real soon.

NATURICH MILLS

Abilene Kansas

Bluestem Poorest In A Decade

The condition of pasture feed in the bluestem area of Kansas was in its poorest June 1 condition in a decade, the Kansas Crop and Livestock Reporting Service says.

"Pasture grasses were slow starting this year as the result of dry winter and early spring weather and cool temperatures in May," it said.

Nevertheless, the service said, demand for bluestem pastures was strong this year with 97 per cent of the pastures filled by June 1.

The June 1 pasture feed condition was placed at 70 percent of normal as of June 1. This was eight percentage points below the comparable date last year and 13 points below the 1961-65 average.

"Substantial rains throughout the area in early June and the coming of warmer weather should result in significant improvement in pasture feed in coming weeks," the service said.

Condition of cattle in the bluestem area was placed only moderately below average, but this was the lowest for June 1 in 37 years. The reported condition was 81 percent of normal, two percentage points below last year and five points below average.

June 20, 1967

Grass & Grain

3

LARGE CAPACITY GRAIN STORAGE

LARGE LEG TO FACILITATE FAST UNLOADING

Storage Space for All Grains
Cash or Loan for Your Wheat

Solomon Co-op Assn.

GORDON COOK, MGR.

GRAIN — FEED — FERTILIZER

HARDWARE — APPLIANCES — FUEL

Solomon

Phone OL 5-3961

Kansas

Floor Sample Sale

SALE POSITIVELY ENDS AT 9 P.M. SAT., JUNE 24

Free Delivery Within 200 Miles • Credit • Open Eves. Wed. & Sat.

BEDROOM SUITES

\$119.95 4-pc. Bedroom Suite Dresser, Mirror, Chest & Panel Bed	\$79.88
\$149.95 4-pc. Bedroom Suite Double Dresser, Mirror Chest and Bookcase Bed	\$99.88
\$189.95 3-pc. Triple Dresser, Mirror and Bed	\$119.88
\$179.95 4-pc. Double Dresser, Mirror, Chest and Panel Bed	\$139.88
\$189.88 4-pc. Walnut Double Dresser, Mirror, Chest & Panel Bed	\$149.88
\$199.95 4-pc. Bedroom Suite, Early American	\$159.88
\$299.95 Italian Prov., Double Dresser, Mirror, Chest & Bed	\$179.88
\$299.95 4-pc. French Prov. Double Dresser, Mirror, Chest & Bed	\$199.88

Over 700 Bedroom Pieces To Choose From

DINETTE SETS

\$39.95 Drop-leaf Table, Heat Resistant Top	\$19.88
\$7.95 Dinette Chairs, Vinyl Covered	\$4.88
\$62.95 5-pc. Dinette Set, Table and 4 Chairs	\$39.88
\$69.95 5-pc. Dinette Set, Table Self-edged, and 4 Chairs	\$49.88
\$79.95 5-pc. Round Extension Table, Self-edge With 4 Padded Chairs	\$59.88
\$89.88 7-pc. Dinette Set, Large Table and 6 Chairs	\$69.88
\$109.95 42-in. Round Table With Pedestal Base and 4 Chairs	\$59.88

Largest Selection To Choose From.

APPLIANCES

\$139.95 Double Drain Kitchen Sink & Cabinet With Drawers	\$109.88
\$209.95 G.E. Coppertone Refrigerator Family Size	\$169.88
\$249.95 2-door G.E. Refrigerator, White Automatic Defrost	\$189.88
\$199.95 Admiral Chest Food Freezer With Built-In Lock	\$159.88
\$269.95 23-cu. Ft. Chest Food Freezer With Al. Liner	\$199.88
\$119.95 G.E. Automatic Electric Dish Washer	\$96.88
\$199.95 G.E. Automatic Washer Filter-Flo 14, 3 Wash Temperature	\$169.88
\$119.95 G.E. Clothes Dryer, Automatic	\$79.88
\$59.95 Hoover Upright Carpet Sweeper	\$34.88
\$199.95 Admiral Deluxe Electric Range	\$159.88
\$179.95 G.E. Pushbutton Electric Range	\$139.88
\$120.00 Eagle Deluxe Apartment Size Gas Range	\$99.88
\$157.95 30-inch Eagle Gas Range (Family Size)	\$129.88
\$186.95 37-inch Eagle Gas Range With Storage Space	\$149.88
\$119.88 Admiral Air Conditioners	\$89.88

This Is A Small Sample Of Appliances That Await You When You Visit Sedlacek's

CHAIRS AND ROCKERS

\$39.95 High Base Platform Rockers	\$19.88
\$39.88 Rocker Nylon Cover Solid, Walnut Arms	\$24.88
\$49.95 Kroehler Murphy-Miller Reversible Foam Cushions	\$39.88
\$59.95 Kroehler Murphy-Miller Modern Turn About Rocker High Back Nylon Cover	\$44.88

One Of The Largest Selections Of Chairs, Rockers And Recliners

MATTRESSES & BOX SPRING

\$19.95 Full Size Cotton Mattress	\$10.88
\$29.95 Twin-Size Innerspring Mattress	\$14.88
\$39.50 Full-Size Innerspring Mattress	\$17.88
\$49.50 Tufted Innerspring Mattress	\$19.88
\$39.50 Sealy Innerspring Mattress (disc. ticking)	\$24.88
\$89.50 Foam Mattress and Box Spring	\$49.88
\$179.95 1674 Coil Comfort, Mattress and Box Spring	\$119.88

Over 4 Carloads Of Quality Bedding
Sealy, King Koil, Serta, Englander, Simmons
And Others.

EARLY AMERICAN

\$99.95 Round Oval Extension Maple Table	\$59.88
\$219.95 Buffet and Hutch With Drawers and Doors	\$179.88
\$22.95 Contoured Seats on Maple Chairs	\$16.88
\$219.95 Early American Davenport, Reversible Cushions	\$169.88
\$119.95 Wing Back Chair, Heavy Grade Nylon Cover	\$79.88
\$89.88 Solid Maple Tea Cart	\$59.88

Visit Our Gigantic Early American Department

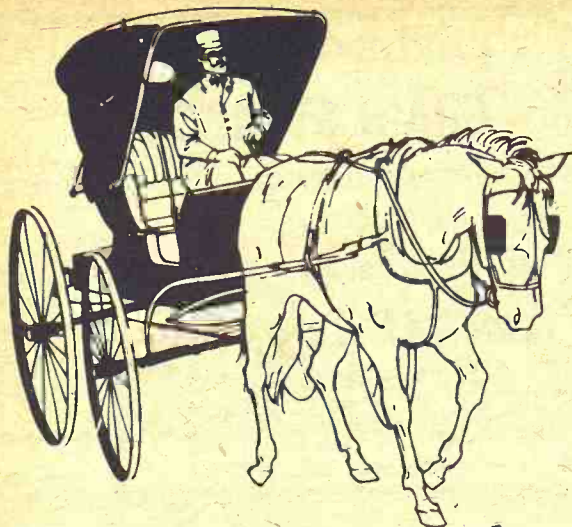
SEDLACEK'S

Hanover

Phone ED 7-2345

Kansas

APPLIANCES • TV • RADIOS • HARDWARE • STEREO'S



Are you operating with a HORSE & BUGGY LOAN?

Is your long-term financing as up-to-date as your farming operations? Does your present loan on land provide for **LONG TERM...LOW INTEREST RATE...PAYMENT IN ADVANCE WITHOUT PENALTY?** If not, stop in and get full information on the many advantages of a Land Bank Loan.

FEDERAL LAND BANK LOANS

Federal LAND BANK Association

TOPEKA

Office: 1717 Gage Blvd.
Wm. H. Snyder, Manager
Serving Jackson, Shawnee
and Wabaunsee Counties

EMPORIA

Office: 115 West 5th
O. E. Roberts, Manager
Serving Chase, Coffey, Lyon
and Osage Counties

HERINGTON

Office: 107 N. Broadway
Richard L. Worley
Serving Marion, Morris
and Dickinson Counties

MANHATTAN

Office: 6th and Humboldt
R. Stanley Parsons
Serving Pottawatomie, Riley,
Clay and Geary Counties

MARYSVILLE

Office: 211 South 10th St.
Allen L. Holeman, Manager
Serving Washington, Marshall
and Nemaha Counties



Bergsten



Davies



Fickel



Sprecker

Riley County Princess Candidates

One of several June Is Dairy Month observances in the G&G area, the Riley County Dairy Princess contest, will be held in Manhattan at the Kansas Farm Bureau Building Friday, June 23, at 8 pm. County dairymen are sponsoring the program, which will include refreshments and door prizes. Mrs. Wayne Bailey and Mrs. Wesley Nauwerth, both of Manhattan, are chairmen. Queen candidates are Charlene Bergsten, Blue Rapids; Elaine Davies, Leonardville; Maureen Fickel, Manhattan; and Vicki Sprecker, Leonardville.

Federal Permits Needed At Two Area Dams

Due to a large number of inquiries from Kansas sportsmen, the Kansas Forestry, Fish and Game Commission reports three Federal recreation areas at two Kansas reservoirs require entrance admission fees.

According to the 1967 Directory of Federal Recreation Areas, compiled by the Bureau of Outdoor Recreation, designated areas in Kansas are Neosho Park and Richey Cove at Council Grove Reservoir and Wolf Creek at Pomona Reservoir.

A valid \$7 annual Golden Eagle Passport will admit the purchaser to these areas and to more than 2,500 Federal recreation areas throughout the United States for an unlimited number of times through March 31, 1968.

Persons using the Kansas areas who do not desire to purchase the annual passport may either purchase a one-day individual 50-cent daily permit; a \$1 daily carload permit or a \$3 to

\$5 permit which is valid for a specified period of time not to exceed six months. Children under 16 years of age are exempted from entrance or admission fees at the designated Federal recreation areas.

The Kansas Forestry, Fish and Game Commission said today the entrance or admission fee is for the specified Federal

controlled areas only and stressed that no fees are charged for use of land or water areas under jurisdiction of the Commission. All areas, owned or leased by the Fish and Game Commission, are open to the public free of charge.

The Commission also emphasized the Golden Eagle Passport does not provide for admittance of vehicles to areas under control of the Kansas Park and Resources Authority, 801 Harrison St., Topeka, is required for use of these areas.

All moneys received from the sale of the \$7 Golden Eagle Passports, along with other Federal recreation entrance and user fees, go into the Land and Water Conservation Fund to help provide more state, local, and national outdoor recreation facilities.

SHORTHORN ASSN. SETS FALL SHOW, SALE DATES

The Kansas Shorthorn Association has set November 23 as the dates for its 2-day show and sale at Hutchinson.



WHEAT HARVEST

Serving you in three locations
Cash or Loan for Your Wheat

**FAST UNLOADING
AMPLE STORAGE CAPACITY**

Phone 364-3161

FARMERS UNION COOP ASS'N'

Marvin Decker, Manager.
HOLTON — MAYETTA — VALLEY FALLS

B.F. Goodrich

SILVERTOWN Combine Tires



SALE

To help YOU and US, we offer these very special pre-harvest prices through June 3 only.

SPECIAL PRICES

14.9-26 6-ply \$74
16.9-26 6-ply \$93
18.4-26 6-ply \$105

Prices plus Fed. Ex. Tax
& Re-Salable Tire

**SLIGHTLY BLEMISHED
BUT GUARANTEED SILVERTOWNS**

14.9-26 6-ply \$59
16.9-26 6-ply \$73
18.4-26 6-ply \$85

Plus Fed. Ex Tax & Re-Salable Tire



REX KOPPEL, Owner

TIRE STORE



PHONE ME 2-2167

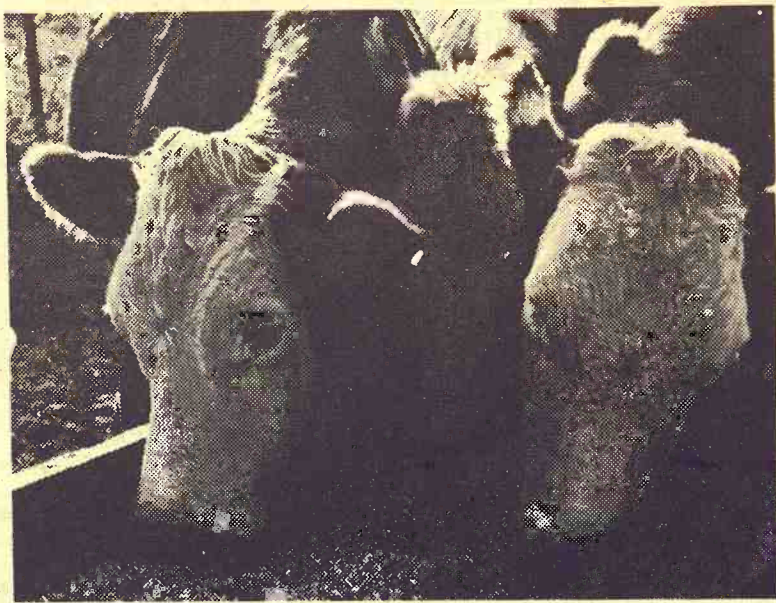
OK Rubber Wholesaler

B.F. Goodrich

813 6th STREET

CLAY CENTER, KAN.

Kansas Soya provides complete services for feedlot operators...



plus scientific supplements from nature's richest source of protein

Kansas Soya services include formula guidance; automated custom-mixing; fast, automated, in-and-out service; on-time delivery; Grain Bank facilities. And, of course, 32% and 40% feedlot supplements from nature's richest source of protein. Call collect. Let us know how we can serve you.

KANSAS SOYA PRODUCTS CO., INC.

Phone Dickens 2-7270 • Emporia, Kansas



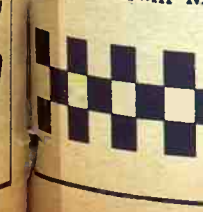
New Styling
That Chair



At the
Checkerboard

Right! Brand-new
ina can end your
et) combines the
redients in just
amounts... can
search for quality
hay is no problem,
for Purina Omole
write for fine hors
most 50 years.
these great hor
from Checkerboard
are available in
handle 50-lb. b
ours today at
with the Chec
Sign.

Flint Hills Feed &
Farmers Union Fe
Mor-Kan Elevator
Reading Grain &
Bartlett Grain Co
Americus Grain
Gorden Mark Ele
Western Grain M



0, 1967

Grass & Grain

s only and stress-
s are charged for
water areas un-
n of the Commis-
s, owned or leas-
n and Game Com-
pen to the public
s.
sion also empha-
en Eagle Passport
de for admittance
areas under con-
sas Park and Re-
rity, 801 Harrison
s required for use
s.
received from the
\$7 Golden Eagle
ong with other
ation entrance and
into the Land and
vation Fund to
more state, local,
outdoor recreation

N ASSN. SETS
SALE DATES
s Shorthorn Assn-
set November 23
for its 2-day show
Hutchinson.

T
e locations
heat
NG
ACITY
ASS'N'
LEY FALLS

h
WN
ires

ALE

U and US, we of
very special pre-
ces through June

AL PRICES

6-ply \$74
6-ply \$93
6-ply \$105

us Fed. Ex. Tax
Sable Tire

HED
ERTOWNS

59

73

35

le Tire

TORE

OK Rubber Weller

813 6th STREET

ENTER, KA

New Styling Disguises Fact That Chair Is Recliner



Delicious comfort and beautiful slim styling have finally been combined in a chair that won't admit it's a recliner unless you want to.

The full range of fashionable styles and fabrics now available in reclining chairs have sure fire eye appeal. And dad's favorite chair can finally come out of hiding and take a prominent place in most any room of the house. Without sacrificing comfort, the trimmer silhouette fits neatly into the scaled down interiors of today's living rooms, dens, recreation rooms and va-

cation homes.

A leading company has created a recliner to suit the height of fashion in both people and furniture. The rising trend in bamboo has touched every facet of home furnishings and is reflected in the turnings of arms and legs in this particular style. Cane side panels camouflage the fact that the chair reclines to both t.v. and full lounge positions.

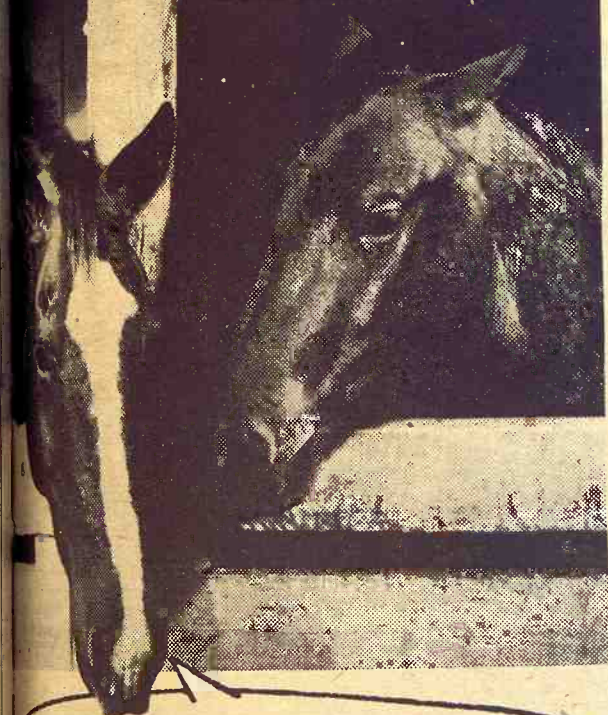
Gone from the scene are those bulky, unsightly recliners of a few years ago. Today's models can take their places

June 20, 1967

with pride in any room setting or conversation grouping, whether Early American, traditional or modern. It can be dainty and trim for living room, hearty and casual for family room or den, or rugged and functional for vacation homes.

It's covering can be as elegant as the homemaker wishes with velvets and sateens or informal with rough-textured fabrics or downright practical with a vinyl plastic that can be wiped clean with a damp cloth.

Hey...where can
I get some Purina
Horse Chow
Checkers?



At the store with the
Checkerboard sign, of course

Right! Brand-new Horse Chow Checkers from Purina can end your search for hay. This Checker (pellet) combines the grain with hay and other vital ingredients in just the right amounts... can end your search for quality hay! If hay is no problem, then ask for Purina Omolene — famous for fine horses for almost 50 years. Both of these great horse feeds are available in easy-to-handle 50-lb. bags. Get yours today at the store with the Checkerboard sign.



Hills Feed & Grain PR 8-5322 Manhattan
Farmers Union Feed Mill 437-2434 St. Marys
Kan. Elevator 349-2214 White City
Reading Grain & Lumber AN 9-3842 Reading
Corlett Grain Co. CE 8-5134 Junction City
Americus Grain Co. 884-3465 Americus
Gordon Mark Elevator .. ME 2-3381 Clay Center
Western Grain Mill 767-5933 Council Grove

**PURINA
CHOWS**



STORAGE

We Will Have

Ample Facilities For WHEAT

Fast Weighing and Unloading

Farmers Cooperative Ass'n

Elevators at MANHATTAN, ALTA VISTA and ONAGA

- Sleek modern styling
- Dual 60-bushel capacity, grain tanks
- IH 61 horsepower engine
- 10 and 13-foot grain platforms, 2-row wide and 3-row narrow corn heads
- 42-inch wide threshing, separating, and cleaning
- Fin-and-wire type rotary straw racks
- Opposed-action cleaning
- Big 5x8-inch top-driven elevators



INTERNATIONAL

205 Self Propelled COMBINE



Whether you're talking price, capacity or efficiency, the new 205 is one machine that really invites comparison.

When it comes to platforms, the 205 offers deep-ledge design that cuts cutterbar loss to the bone and eliminates the need for an expensive cutterbar extension for sorghums and soybeans.

Compare corn heads. The 205 offers both 2-row wide and 3-row narrow heads that are field-proven to be the most efficient in the business.

Take horsepower, and you have a big 61 horsepower 6 cylinder 221 cubic inch engine.

Match separators with the 205's wide 42-inch threshing, separating, and cleaning.

Compare straw-racks with IH fin-and-wire rotary

design that avoids plugging in even the wettest corn... that in all crops and conditions permits faster ground speeds without losing the crop.

Compare the total separating area of 4441.5 square inches, and cleaning area of 3411 square inches.

Check the 205's big 60-bushel grain tank capacity... and the dual tanks that provide increased traction in soft going—unmatched stability on slopes.

Yes, there's a lot to talk about in the new 205. And there's the kind of power, capacity, and efficiency that any farmer has a right to expect in a moderately-priced family-sized machine.

The new 205 was designed to outrank all other machines in its price range. The specifications say so—performance in the field will prove that specifications don't lie.

HERINGTON
Pioneer Service & Sales

MINNEAPOLIS
Chapman Impl. Co.

CLAY CENTER
Norquist's Inc.

ABILENE
Abilene Truck & Tractor

MARYSVILLE
Bruna Brothers

FALUN
Dauer Impl. Co.

HANOVER
Hanover Impl. Co.

LEONARDVILLE
Kendall Garage

WAKEFIELD
Auld Chevrolet

COUNCIL GROVE
Macha-Revere

BELLEVILLE
Chapman's On US hwy. 81

GYPSUM
Kuhn Impl. — OW 6-4411

OUR DAILY BREAD

— by G&G Area Cooks

Mrs. Jesse Coup Of Hope Wins Daily Bread Prize

Prize winner, Mrs. Jesse J. Coup, Hope: "Enclosed is a favorite recipe of mine which is very good with all meats. Now with people having their own gardens they will find this good to the last bite. Hope everyone who tries it will enjoy it as we have."

24 HOUR CABBAGE SLAW

- 1 medium head cabbage
- 1 small onion
- 1 green pepper
- 1/2 cup sugar

Grind all together and add 6 stuffed olives, if desired.

DRESSING

- 1 cup white vinegar
- 1 teaspoon salt
- 1 teaspoon celery seed
- 1/2 cup salad oil
- 1/8 teaspoon pepper

Boil these ingredients three minutes. Add while hot to the vegetables. Let stand in refrigerator 24 hours before serving. Put in a bowl which can be covered tightly. Will keep indefinitely. Can be used to the last bite.

The following recipe is from Wanda Wedel, Langdon, Mo.: **CHOCOLATE SCOTCH BARS**

- 1/4 cup oleo or butter
- 4 cups miniature marshmallows or 40 large ones
- 1/4 cup peanut butter
- 1 package (small) Rice Krispies
- 1 6-ounce package chocolate chips
- 1 6-ounce package butter-scotch chips

Melt butter in a 3-quart saucepan. Add marshmallows and stir until melted. Stir in peanut butter. Add Rice Krispies and stir until all are coated. Press into buttered 13x9-inch pan. Melt all the chips in

same saucepan, stirring constantly. Spread over the Krispie mix. Cool and cut into 1x2-inch bars.

The next recipe was sent by Mary Seley, R 3, Junction City:

SUPPER ON A BREAD SLICE

- 2 pounds ground beef
- 2/3 cup evaporated milk
- 1/2 cup cracker meal
- 1 egg
- 1/2 cup chopped onion
- 1 tablespoon prepared mustard
- 1 1/2 teaspoons salt
- 1/8 teaspoon pepper
- 1 loaf French bread
- 2 cups American cheese, grated

Combine beef, milk, cracker meal, egg, chopped onion, mustard, salt and pepper. Cut the loaf of French bread in half, lengthwise. Spread meat mixture evenly over top surface of bread. Wrap foil around crust side of each half, leaving top uncovered. Place on cookie sheet. Bake in 350-degree oven for 25 minutes. Garnish with cheese. Bake five minutes longer. To serve, cut in slices diagonally. "This is a wonderful hurry-up meal if unexpected guests drop in. We like it a lot for a hot Saturday night lunch."

Mrs. Herbert Abitz, Wheaton: "We enjoy Grass & Grain very much."

FRENCH DRESSING

- 2 teaspoons paprika
- 2 teaspoons mustard
- 1 teaspoon garlic powder
- 1/2 teaspoon tabasco sauce
- 2 teaspoons salt
- 1 1/2 cups sugar
- 1 cup salad oil
- 2/4 cup catsup
- 2/3 cup vinegar

Put all ingredients in a quart jar and shake well until mixed.

Mrs. Clyde Chayer, Palmer: "Thought someone might like this recipe as it's so different. I enjoy the new ones I get from Grass & Grain. This is a real old recipe."

CRANBERRY ICE

Cook 1 pound cranberries in 2 cups of boiling water until skins pop. Put through strainer.

1 tablespoon plain gelatin dissolved in 1/4 cup cold water. Mix and add to cranberry juice. Now add 2 cups of sugar, stir till dissolved and cool.

Add 1 pint gingerale or Seven-up. Freeze in trays until mushy. Turn into bowl and beat with mixer. Put in ice cube trays using the sections and

freeze. "This is good served with meat."

SPEEDY SCALLOPED POTATOES

- 2 tablespoons of Pillsbury blending flour
- 1 teaspoon salt
- 1/2 teaspoon pepper
- 4 cups thinly sliced raw potatoes
- 2 tablespoons butter
- 1 1/4 cups cold milk

Sprinkle flour and seasoning over potatoes in a greased one and half quart casserole, dot with butter. Add milk. Bake uncovered at 350 degrees for one and half or 2 hours. Serves 6.

Mrs. Gwilyn Williams, Waterville: "I enjoy recipes from Grass & Grain. I'm enclosing a quick, easy meat casserole."

QUICK, EASY MEAT CASSEROLE

- 1/2 pound minced lunch meat, cubed
- 6 slices bread cut into cubes
- 4 hard-cooked eggs, chopped
- 1/2 teaspoon salt
- Dash of pepper

Alternate the bread, meat and eggs. Pour cream over the top

June 20, 1967

and bake in a 350-degree oven for one hour or until set. Grated cheese can be added last 15 minutes, if desired.

We're fussy when we fix your watch

Fastest Service In Town. Work done in our shop. All watches electrically timed and guaranteed to be accurate as new.

HOLIDAY JEWELERS

OF MANHATTAN
425 Poyntz—PR 6-7821
Across from the Courthouse

FAST SERVICE
FAST UNLOADING
TWO DRYERS
AMPLE CAPACITY



CASH OR LOAN

On Your Wheat

HERKIMER COOPERATIVE BUSINESS ASSOCIATION

Delmar Schotte, Mgr.
Phone HI 3-3824

Herkimer

Kansas

It's a bigger bargain today than ever before

Your telephone gives you more for your money today than at any time since Mr. Bell invented it.

Pretty big statement. But it's true.

There are more telephones in more places today than ever before. Two hundred million in the world; one million of them here in Kansas.

On the average, there are almost twice as many telephones in each of our Kansas exchanges as there were 20 years ago. So it figures you can reach more people, get more things done by phone than ever before.

And what about Long Distance rates? They've been going down while the cost of almost everything else has been climbing up. There've been eight Long Distance rate reductions in Kansas during the past 10 years.

Another thing. The quality of service has never been better. Today's phone users can talk as though they were four feet apart. Back in the early 1930's, it was 35 feet.

Better service to more places at lower cost. We think that's a winning combination.



Southwestern Bell



Three-way Will Delight



Today's sophisticated are expressing tastes and preferences with more enthusiasm than any previous generation. The 'grown-up world' of today is listening. A leading furniture producer has produced a new line of girls' furniture that is like a responsive chameleon—vibrant, eager-fitting different teen-age practical economy parents. Mexico was the ins



HERCULES TIRES



NATION DOUBLE G
Passenger Tires
1. Guaranteed A
Hazards... res
wear and tea
under normal
Passenger and Ty
2. Guaranteed A
...in workman
for the life of
without lim
mileage.

ke in a 350-degree
hour or until set.
se can be added last
s, if desired.

We're fussy
when we fix
your watch

est Service In Town
done in our shop. All
shes electrically timed
guaranteed to be as new.
as new.

OLDMAN
JEWELRY

OF MANHATTAN
5 Poyntz-PR 6-7221
ss from the Court

COOP

AN
heat
PERATIVE
CIATION
Mgr.
824
Kansas

Three-way Vanity Table Will Delight Teen-age Girl



Today's sophisticated teen-agers are expressing their opinion on tastes and preferences more enthusiasm and confidence than any previous generation." And the "up world" of merchandising is listening.

Leading furniture company has produced a new collection of furniture that will be a responsive chord in to vibrant, eager-for-some-different teen-ager and practical economy-minded parents.

was the inspiration

for the designs and colors in the collection, created to appeal to the gay spirit. Everything, even the scaling, is different from anything designed for young people before. Unrestrained color for the hearts tuned to its special magic is achieved in the use of caliente, a warm shade of crimson accented by tiny stripings of hushed magenta, mustard and green.

One basic unit that can be applied in a variety of ways, is a vanity table. It can stand alone, or be put to extra use by adding a box of drawers and

tilt mirror. Either of the pieces can be used separately. Without the vanity box the basic unit can be used as a table or desk, making it adaptable to individual teen-age needs. The matching chair is a copy of a Mexican slatback bench.

But once you've installed it in daughter's bedroom, it might be wise to nail it down. Otherwise, it might keep popping up in the most unexpected places — hallways, living rooms or dining rooms. The imaginative homemaker will find she can't resist using it as an "unanticipated accent" in any room she pleases.

Zesty Sour Cream Dressing

Old-fashioned Sour Cream is a zesty topping for a favorite salad. Prepare it by mixing ¼ cup sugar, 1 teaspoon dry mustard, 1½ tablespoons flour, 1 teaspoon salt and a dash of cayenne together in the top part of a double boiler.

Add 1 cup commercial sour cream and gradually add 2 tablespoons lemon juice. Place over hot water and stir constantly until thick and smooth. Remove from heat and cool in refrigerator.

Beauty Plan For Rugged Cuticles

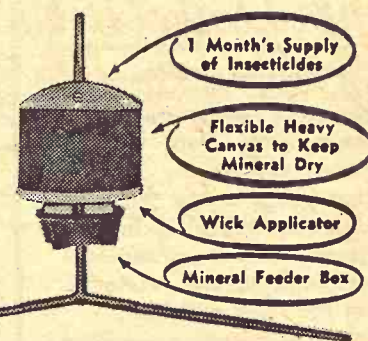
If your cuticles always seem to look rough and are constantly ripping, they need an intensive softening program to restore them to beauty. Every night for a week, buff your entire nail with baby oil. Rub the baby oil into the cuticle area, to soak overnight.

To keep cuticles — and your hands — soft, immerse them in a pan of warmed baby oil once or twice a week. Allow them to soak for five or ten minutes.

put on clean white cotton gloves and allow the baby oil to do its work overnight.

POSITIVE FACE FLY CONTROL

WITH THIS



New TOX-O-WIK Combination FACE FLY FIGHTER and MINERAL FEEDER

Every time cattle use the mineral feeder they automatically apply Face Fly Insecticide as they raise the canvas weather shield with its wick applicator around the bottom. You get economical, safe and complete protection.

A wick enclosed in a tube feeds insecticide to the applicator from a tank holding a 1 month supply of Tox-O-Wik Face Fly Insecticide. The tank is inside the 36" diameter heavy duty steel cone above the canvas hood. Positive flow is assured without wasting. There are no valves, pumps or jets to clog. A circular steel rod just above the applicator keeps the wick round.

Hood cone and flexible thick water-proof canvas keep mineral dry from rain or snow. Sturdy—cattle can't upset it. This new addition to the famous Tox-O-Wik line rids your cattle of face flies.

Cattle eat better—gain more. Find out now about this low cost unit.

SEE A NEARBY
AUTHORIZED
TOX-O-WIK DEALER

AVAILABLE with the FAMOUS TOX-O-WIK CATTLE
OILERS FOR ALL OTHER INSECT CONTROL



FRANK WERNER Manhattan, Kans.
CIRCLE T IMPLEMENT CO. Clay Center, Kansas
MELVIN TROST Concordia, Kans.
SUMMERFIELD IGA Summerfield, Kans.
HOYT FARM SUPPLY, INC. Hoyt, Kans.
JULIUS BALLAGH Oskaloosa, Kans.
WINIFRED GRAIN CO. Winifred, Kans.

DEALERS: We have several open territories. Write:
Ernest Myers, Troy, Kans. Ph. 913-985-3817

G&G Directory

AUCTIONEERING

Lawrence E. Welter

AUCTIONEER
REAL ESTATE BROKER
Your Sale Solicited
Large or Small
EAST HIGHWAY US 24
MANHATTAN PR 8-3455
Real Estate
And General Sales

Ed Reimer -AUCTIONEER-

We Specialize in Selling
DAIRY CATTLE

"A complete Sale Service"
Phone or write for sale dates.
Telephone 367-2373
GOESSEL, KANSAS
"Marion County"

CONSERVATION

Land Improvement
"Soil Conservation Doesn't
Cost—It Pays"
Ponds, terraces, water-
ways, and leveling,
drainage ditches, clear-
ing, landscape grading.
ROGGENDORFF
Conservation Construction
Arthur Roggendorff
Phone JE 9-3984
1630 Osage - Manhattan

DAIRY SUPPLIES

DeLaval Clay

All Makes
Service & Repair
Dairy Equipment
Joe McClure
Ph. 229-5284 Alta Vista

Wamego Dairy Supply

your authorized
DELAVAL & CLAY
Dealer
MILK MACHINES
New & Used
BULK TANKS
New & Used
CLAY Beef, Dairy & Hog
Feeding Systems.
For estimates or service,
phone
913-456-7900, WAMEGO
913-AV 4-2958, SABBETHA

Memorials

CEMETERY MEMORIALS

54 Year Continuous Service
Display Located on US24
East of City Limits

SCHAUBEL
MONUMENT CO., INC.
RR 3 Box 20 ME 2-3531
Clarence Blanc, President
CLAY CENTER

MONUMENTS

MANHATTAN
MONUMENT CO.
J. J. BEAUDET
Office and Display
123 No. 3rd

Office Phone Res. Phone
PR 8-5137 PR 8-4978
MANHATTAN, KANS.

PEOPLE READ

The G&G Directory
Just as You are Now



HERCULES FULL CAPS TRUCK TIRES

Size	Price	fed. ex. tax
825x20	\$24.00	\$1.10
900x20	\$26.00	\$1.65
1000x20	\$29.95	\$1.75

Plus Re-cappable Tire

ALL NYLON CORD CONSTRUCTION



H.D.T.L.	FET
6 ply 670x15 — \$25.28	\$2.82
6 ply 700x15 — 28.74	3.33
8 ply 700x15 — 32.01	3.74
6 ply 710x15 — 26.48	2.66
6 ply 600x16 — 25.23	2.68

H.D.T.L.	FET
6 ply 650x16 — \$26.01	\$2.95
6 ply 700x16 — 30.40	3.39
8 ply 750x16 — 34.96	4.34
8 ply 700x17 — 39.30	4.58
8 ply 750x17 — 42.05	5.05

NOTICE

We Are An Adjustment
Center For
U.S. ROYAL TIRES



HERCULES TIRE SALES
OF MANHATTAN, INC.
610 N. 3RD PR 6-9453

JIM ALLEN
RES. PR 6-7080

PASSENGER - FARM - FLEET
GIANT EARTHMOVER
24 Hour Road Service

RECAPPING ALL SIZES SPECIALIZING IN ALL MAJOR BRANDS



**NATIONWIDE
DOUBLE GUARANTEE:**
1. Guaranteed Against All Road
Hazards...resulting from usual
wear and tear in road service
under normal conditions.
2. Guaranteed Against All Defects
in workmanship and materials
for the life of the original tread,
without limit as to time or
mileage.

Frost Sherbet Glasses

When you are serving fruit compote, you might like to put the compote in frosted sherbet glasses. Dip the edge of each sherbet glass in lemon juice, then in granulated sugar. Chill in the refrigerator so the frost will "set."



SPRAYER PARTS

Nozzle tips most all sizes 55c
Nozzle strainer screen assemblies 48c
Nozzle strainer screens only 15c
Pressure gauges from 1.59-2.29
Room drop kits, 7 row 24.95
High pressure brass hand guns 8.99
Regulators from 4.98 up
Jet agitators 1.95
3/4" hose 19c per ft.
1/2" hose 24c per ft.
3/8" hose 39c per ft.
Suction strainers 3.98

COMBINE PARTS

Combine sections, regular 16c
Combine sections, chrome 23c
AC 60-66 canvas, top treated 13.29
AC 60-66 canvas, rubberized 16.69
AC 60-66 canvas, lower, treated 31.59
AC 60-66 canvas, lower, rubber, rubberized 39.95
AC 60-66-72 HD cylinder bars 24.50
Combine guards 1.95 to 2.85
We have belts for most popular combines at good savings. Let us know your needs early.

HOLT
FARM SUPPLY

Next To Sale Barn
MANHATTAN PR 8-4343



IN MANHATTAN



See Floyd Woodworth and Carl Oliver
For Sales & Service of all Your Farm Needs

Large Selection
Of
Citizen Band
Radio's — Crystals — Accessories

Open Mon. & Thurs. 9:30 til 9:00 . . . Other Days 9:30 til 5:30
SHOP PENNEYS NEW CATALOG . . . Phone PR 6-4711

Your Tire
and Battery
HEADQUARTERS

Nylon Rears For Only:

Size	Price	Fed. Tax
• 12.4/28	\$49 4 Ply	4.25
• 12.4/38	\$58 4 Ply	5.39
• 13.6/38	\$77 6 Ply	6.57
• 15.5/38	\$84 6 Ply	7.73

12 Volt Batteries
Low As 12.95

RED
FENCE AND BARN
PAINT

Non-Leaded Only \$3.44
Gal.

Manhattan Commission Co., Inc. Sale Every Thursday

Our sale this week was much larger than we had expected. While we didn't have a run of cattle like we have in the fall, there were quite a number of livestock. The market was real active throughout the sale. We have people coming week after week, wanting to buy cattle and several leave without getting all that they want, so if you have cattle of any kind to sell contact us.

SPECIAL CONSIGNMENT

150 Black Angus Calves. These are Choice calves and will sell in lots to suit the buyers. Weight: 425-450 lbs.

The following is a partial listing of our sale:

FAT CATTLE & FEEDERS

4 blk&wfbk str 638 @ 27.80
2 whifce steers 692 @ 26.70
1 black steer 655 @ 26.00
1 charolais steer 665 @ 25.75
1 black steer 695 @ 25.50

4 whifce steers 766 @ 25.30
1 whifce steer 995 @ 25.00
1 whifce steer 820 @ 24.80
1 whifce steer 960 @ 24.70
1 black heifer 635 @ 24.10
1 whifce steer 995 @ 24.00
1 shthorn steer 805 @ 24.00
1 whifce heifer 725 @ 23.90
1 whifce heifer 625 @ 23.80
1 whifce heifer 770 @ 23.50
3 whifce heifers 863 @ 23.50
1 whifce heifer 715 @ 23.50
1 black heifer 600 @ 23.40
1 whifce heifer 970 @ 23.30
1 blkwhif heifer 905 @ 23.10
1 brofwhif steer 900 @ 23.00
1 shthorn heifer 660 @ 22.70
1 blkwhif heifer 710 @ 22.60
1 whifce heifer 825 @ 22.60
1 shthorn heifer 825 @ 21.75

STEER CALVES

1 whifce steer 230 @ 32.25
1 whifce steer 360 @ 30.50
1 black bull 280 @ 30.00
2 whifce steers 437 @ 29.25
1 blkwhif steer 510 @ 28.50
1 black bull 330 @ 27.50
2 blkwhif steers 587 @ 27.50

1 black steer 525 @ 27.40
1 blackwhif steer 550 @ 27.00
2 whifce steers 512 @ 26.00

HEIFER CALVES

1 black heifer 295 @ 25.50
17 b&wheifers 545 @ 24.80
4 blkwhif heifers 558 @ 24.50

BULLS

1 whifce bull 1060 @ 23.80
1 blkwhif bull 700 @ 23.40
1 whifce bull 1595 @ 23.20
1 black bull 1390 @ 23.15
1 whifce bull 1540 @ 22.95
1 whifce bull 1365 @ 22.85
1 whifce bull 1395 @ 22.70
1 black bull 1405 @ 22.65
1 whifce bull 1560 @ 22.65
1 whifce bull 1405 @ 22.65
1 black bull 950 @ 22.40
1 whifce bull 1280 @ 22.00
1 black bull 1220 @ 21.70

COWS

1 black cow 1040 @ 21.30
1 black cow 800 @ 20.00
1 black cow 1135 @ 19.30
1 black cow 920 @ 19.10
1 black cow 1045 @ 18.90
1 holstein cow 1175 @ 18.80
1 black cow 955 @ 18.70
1 holstein cow 1155 @ 18.60
1 brownswis cow 1340 @ 18.60
1 holstein cow 1655 @ 18.40
1 holstein cow 1325 @ 18.40
1 whifce cow 1125 @ 18.40
1 whifce cow 1035 @ 18.30
1 black cow 1210 @ 18.20
1 black cow 1105 @ 18.10
1 black cow 1245 @ 18.00

2 1/4 MILES EAST OF MANHATTAN ON US 24

1 shthorn cow 985 @ 18.00
1 black cow 885 @ 17.90
1 whifce cow 890 @ 17.90
1 black cow 1030 @ 17.80
1 holstein cow 1295 @ 17.80
1 whifce cow 1000 @ 17.80
1 black cow 1030 @ 17.70
1 red cow 1000 @ 17.70
1 whifce cow 1145 @ 17.60
1 whifce cow 1005 @ 17.60
1 black cow 1010 @ 17.60
1 whifce cow 1105 @ 17.60
1 black cow 1220 @ 17.50
1 whifce cow 1080 @ 17.50
1 black cow 945 @ 17.40
1 whifce cow 1005 @ 17.40
1 whifce cow 815 @ 17.40
1 whifce cow 1220 @ 17.35
1 whifce cow 1230 @ 17.30
1 whifce cow 1010 @ 17.30
1 whifce cow 1070 @ 17.10
1 holstein cow 1135 @ 17.10
1 black cow 1175 @ 17.10
1 whifce cow 1095 @ 17.10
1 whifce cow 1275 @ 17.00
1 black cow 935 @ 17.00
1 black cow 1015 @ 16.90
1 whifce cow 1060 @ 16.90
3 black cows 751 @ 16.50
1 whifce cow 1160 @ 16.50
1 red cow 950 @ 16.20
2 shthorn cows&clfs @ 240.00
2 shthorn cows&clfs @ 235.00
2 shthorn cows&clfs @ 230.00
2 red cows&clfs @ 221.00
2 shthorn cows&clfs @ 220.00
3 black cows&clfs @ 218.00

BUYING

FAT HOGS

We buy fat hogs daily at the Manhattan Commission Co., Inc. sale barn. We buy direct with no commission to the seller.

BUYING HOURS:

Mondays thru Fridays
8 a.m. to 4 p.m.
Saturdays 8 a.m. - 2 p.m.
Manhattan PR 8-4415

WE ARE ALSO BUYING
FAT HOGS AT THE
W. E. DUGAN YARDS

ALTA VISTA
SATURDAYS & MONDAYS
8 a.m. to 3 p.m.
Phone Alta Vista 229-6434
or Manhattan PR 8-4415

AT ALMA & ESKRIDGE
EVERY WEDNESDAY

From 8 a.m. to 1 p.m.

Please do not bring hogs for sale on Thursday afternoon, as we will be having large runs of cattle and you might not be able to unload, and they will get hot on you. For information call the barn in Manhattan, PR 8-4415. In Alma, Oscar Nelson, 763-3861. In Alta Vista, W. E. Dugan, 229-6303. Or you may call Joe Raine at Maple Hill, MI 3-2226 or Eskridge Yard, 449-2347.



Light sales are expected until harvest is over, but the Manhattan Sale will run every Thursday as usual, on schedule.

FOR ESTIMATES

W. E. DUGAN ----- Alta Vista, 229-6430
JOE RAINE ----- Maple Hill, MI 3-2226
DON WELLS ----- Manhattan, JE 9-3744
MERVIN SEXTON ----- Abilene, CO 3-3449
C. J. WENTZ, bus. mgr. Manhattan, JE 9-5561

BARN PHONE ----- Manhattan, PR 8-4415

Consignment Reports

WIBW radio 6:30 A.M. Thursdays
WIBW-TV 12:15 Noon Wednesdays

The Manhattan Commission
Co., Inc.



MANHATTAN, KANSAS

East On US 24

Auctioneer: Joe Raine

Johnson
Mr. and Mrs.
and John,



Always
Farmers look
the major rep.
Seneca, one
like owned by
vehicle.

Tire
tery
TERS

r Only:

Fed
Tax
Ply 4.25
Ply 5.39
Ply 6.57
Ply 7.73

ies
5

ARN

Only \$344

il 5:30

711

hursday

AT HOGS

BUYING
AT HOGS

buy fat hogs daily
Manhattan Commission
Inc. sale barn. We
t with no commission
seller.

BUYING HOURS
Mondays thru Friday
8 a.m. to 4 p.m.
Saturdays 8 a.m. to 4 p.m.
Manhattan PR 8-4444

WE ARE ALSO BUYING
FAT HOGS AT THE
V. E. DUGAN YARD
ALTA VISTA
TUESDAYS & MONDAYS
8 a.m. to 3 p.m.
phone Alta Vista 234-4444
or Manhattan PR 8-4444

T ALMA & ESKRIDGE
EVERY WEDNESDAY
From 8 a.m. to 1 p.m.

use do not bring hogs
sale on Thursday after
noon, as we will be holding
runs of cattle and
might not be able to
they will get hot on
or information call
in Manhattan, PR 8-4444
Alma, Oscar Nelson, 234-4444
In Alta Vista, W. E. Dugan
229-6303. Or you may
Joe Raine at Maple Hill
3-2226 or Eskridge 234-4444.

Man Commission
Co., Inc.

MANHATTAN, KANSAS
East On US 24

eer: Joe Raine

GRASS & GRAIN

13th year no. 16

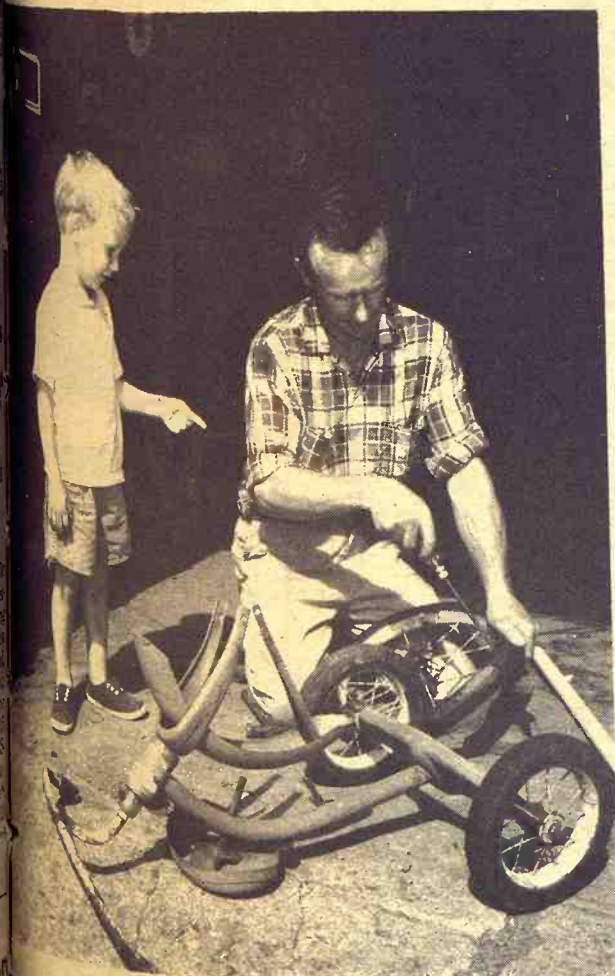
June 20, 1967



The Johnson Family and Melvin

Mr. and Mrs. Leland Johnson and children Ann, John, and John, with their dog Melvin, live on the

north edge of Brookville in Saline county. Farmers all their lives, the Johnsons have an outstanding home and a prosperous-appearing diversified farm.



Always Comes Off, Dad!

Farmers look forward to rainy spells to do much of the major repair work needed around the farm. Near Seneca, one major repair job was being done on a vehicle owned by David Kramer. Dad Wilbur is fixing

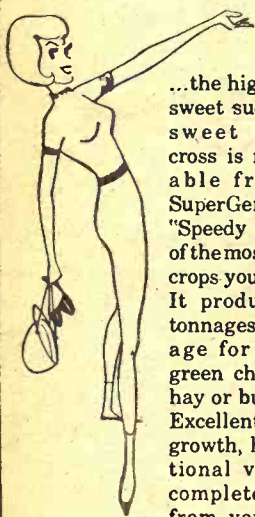


Down At the Ole Swimming Hole

Still in use, this abandoned sandpit near Endicott, Nebr., is a favorite of many local kids. In the air is Rick Ellis. Waiting his turn is Ben Bedlan. Both are from Fairbury.

Amazing new
forage crop now
available locally!

Super Gene "SPEEDY SU"



...the high-yielding sweet sudan grass-sweet sorghum cross is now available from your SuperGene Dealer. "Speedy Su" is one of the most versatile crops you can grow. It produces huge tonnages of roughage for pasture, green chop, hay or bundle feed. Excellent, fast regrowth, high nutritional value. Get complete details from your SuperGene Dealer:

Super Gene

for a bigger yield in every field

GOOD SUPPLY OF
EARLY MILOS
ON HAND

See or Call:

HOYT, KANS.
Hoyt Farm Supply Inc.

MANHATTAN, KANSAS
Frank Werner

CLAY CENTER, KANS.
Circle T Impl. Co.

CONCORDIA, KANS.
Harold Trost

HADDAM, KANS.
Chas. Hardenburger

WINIFRED, KANS.
Winifred Grain Co.

SUMMERFIELD, KANS.
Don Mitchell

BAILEYVILLE, KANS.
Aloy Haverkamp, Jr.

DEALERS: Several territories
open. Write or call:

Ernest Myers, Distr.
Troy, Kans., Ph. 913-985-3817



Just In Time For The Rain

Dr. A. E. Vitt, with the aid of Tommy Stallbaumer, Randy Olberding and Danny McGinty, cleans debris from the spillway of pond that empties into a pond below on the Vitt farm just east of Seneca. Dr. Vitt has a feeding operation and has a dental practice in Seneca.

FARMERS OUTLOOK

L.H. Simerl

Bright Beef View

Prices of beef cattle crept up a dollar or two in April and May. It was about time for

some price advance, since the market had been depressed for an unusually long period. We expect further price advances during the next few months — though we do not advise holding finished cattle with the expectation that prices will move up quickly.

Looking back, we see that all major price-making forces in the cattle market were on the price-depressing side during most of 1966 and in early 1967. For 15 months now, beef output has been at a record level —

averaging 6 percent more than 12 months earlier.

During the past 8 months, pork output topped year-before levels by 17 percent. (The January output was up one-third from the 1966 volume!)

Poultry production was 10 percent greater in 1966 than in 1965 — and there has been a further increase this year.

Imports of meats also increased in 1966 (but they still made up only about 4 percent of our total supply of red meats and poultry.)

Consumer demand for meat was not as strong as it might have been. Although only a few housewives staged public protests about prices, many became especially price conscious. In addition, a group of important segments in the economy have been in a recession of sorts for several months.

Looking ahead, some of these price-making forces should become price-lifting in the next few months. Beef output is expected to level-off or decrease during the remainder of this year. The movement of cattle into the Corn Belt has dropped off in recent months. Pork output will be seasonally low in July and August, and may shrink below year-before figures next fall and winter. Low broiler prices have discouraged further expansion of production, for a while at least. Meat imports into the United States may be restricted by reduced supplies in exporting countries and by stronger demands in other importing areas. Consumers seem to be stepping up their spending for some things, and this trend may provide some added support for beef prices.

While none of these factors alone is very impressive, two or more of them working together could give cattle prices a good lift. There is no reason to expect any great shortage of beef — unless ranchers and farmers hold back large numbers of heifers to increase breeding herds. According to official estimates there were 85.6 million beef cattle and calves on farms and ranches at the first of this year — 1 percent more than a year before. Steers numbered 12.7 million — the same as the previous year. Heifers were listed at 9.2 million — up 3 percent; calves, at 27.3 million — up 1 percent.

Back on April 1 the number of cattle on feed (in 32 states) was estimated at 10.5 million — 3 percent more than a year earlier. Most of the increase con-

10 Grass & Grain
June 20, 1967

sisted of heavy cattle. Shipments of stockers and feeders into the Corn Belt in April totaled 388,000 — 17 percent less than last year.

L. H. Simerl
Univ. of Illinois

Say Wild Turkey Flocks Increasing

MCPHERSON — Kansas now has a population of at least 891 wild turkeys, according to a report just issued by the Kansas Forestry, Fish and Game Commission.

Steve Capel, big game biologist for the Commission, said a total of 80 turkey flocks were censused in January and February of this year in all areas of the state with an average flock size of 11.2 birds. This represents an increase of 397 birds since a similar survey in 1966. Included in the census were 36 Rio Grande wild turkeys obtained from Oklahoma and transplanted in Kansas in March.

Only three years ago, in 1964, ten flocks were counted with a total of 145 turkeys. Early in 1966, 125 turkeys were obtained in Texas and released in the Sunflower State. Since that time, these flocks have more than doubled.

Capel reports that in all possible instances, the turkeys were actually counted by department personnel. In some instances, local observers provided reliable estimates of flock counts.

Included in the censused wild turkeys were 597 native birds. Most of these are located along the southern border of Kansas.

Call PR 6-9269
for the answer to
make yourself

EXTRA PORK
PROFITS!

Gooch's
BEST

SUPER 40
HOG CONCENTRATE

Hog Supplement
Less than a pound of Super 40 per head daily plus your grain
* makes hogs ready early!
* finishes them meaty!
* balances grain for more efficiency!
* cuts feeding costs!
We can deliver your Gooch Super 40 — call us.

CK Processing
Company
Manhattan, Kansas
Telephone PR 6-9269
Clay Center
Alfalfa Mill
Clay Center, Kansas
Telephone ME 2-3401



MR. FARMER...

Plant the

High - Yielding,
Early Maturing
R-94 grain sorghum.

May be planted safely after harvest.

Available at your

LOCAL TOMCO DEALER

or

CARL BLAKE & SON

Dist. Sales Mgrs.

PH. ME 2-2296 or ME 2-2886, CLAY CENTER

The Only Mower in the World

Guaranteed

5 Full Years

WEGELE

SCOOTER
MOWER

Proven performance since 1948. 7 1/4 HP Engine, 24" Cut, power for all conditions. Best maneuverability. Wheels do not run on uncut grass. 3 speeds forward and reverse. Mowing speeds to 6 MPH, traveling speed 12 to 15 MPH. Also 36", 10 HP model.



The Mower Everyone Wants

HARDY Supply Co. Macksville, Kansas 67557

Wheat
Cash or Storage

NEW UNLOADING FACILITIES
CAPACITY DOUBLED

We Appreciate Your Business

An Independent Business

Hines Farm Center

Hiway 24 Phone 456-9575

WAMEGO KANS.

heavy cattle. Some
stockers and feeders
Corn Belt in April
1,000 — 17 percent less
year.

L. H. Simon
Univ. of Illinois

Wild Turkey
s Increasing

PERSON — Kansas
population of at least
keys, according to a
t issued by the Kansas
Fish and Game Dept.

Capel, big game warden
the Commission, said
80 turkey flocks were
d in January and Feb.
f this year in all areas
state with an average
ize of 11.2 birds. This
nts an increase of 30
nce a similar survey was
cluded in the census
Rio Grande with turkeys
tained from Oklahoma
isplanted in Kansas.

three years ago, in 1964
ks were counted with
145 turkeys. Early in
5 turkeys were observed
s and released in the
er State. Since then
ese flocks have
bled.

reports that in all areas
ances, the turkeys were
counted by department
el. In some instances,
rvers provided reliable
es of flock counts. In
ed in the census, there
were 597 native birds
f these are located in
thern border of Kansas.

all PR 6-9269
the answer to
make yourself

EXTRA PORK
PROFITS!

DOCH'S
BEST

UPER 40
CONCENTRATE

Log Supplement
than a pound of Sup
er head daily plus you
akes hogs ready early
ishes them meaty
ances grain for
more efficiency
s feeding costs!
can deliver your grain
r 40 — call us.

CK Processing
Company
Manhattan, Kansas
Telephone PR 6-9269
Clay Center
Alfalfa Mill
Clay Center, Kansas
Telephone ME 2-8401



Doughnut Rock

Still privately owned, Rock City near Minneapolis shows many unusual rock formations like this one.

Less Farm Impact On Whole Economy

A poor year in agriculture is less likely to dampen the nation's economy than it would have 50 years ago, according to a Kansas State University economist.

E. S. Bagley believes that, while there may be interaction between agriculture and the economy as a whole, the cyclical fluctuations in general business

are not due to the weather-induced cycles of agricultural output.

It is true, he says, that poor crops reduce activity in agriculturally related industries engaged in transporting, storing, and processing farm products. Also, farmers purchase fewer non-farm products and services during a bad year.

Bagley says, however, that the nonagricultural sector of the economy has grown relative to the farm sector. Storage and world trade in farm products is expanding. These factors have helped to reduce the effects of a poor year for farmers on the total economy.

He notes that the drought period of 1952-56, a period of falling farm prices and incomes, was in general a period of business prosperity. In 1930-32, crop production was good, but this time was a period of business depression. During 1934-36, however, drought and business depression coincided.

Confusing the issue, says Bagley, is the fact that prosperity in agriculture is not simply a matter of output. Nor is output due entirely to natural conditions. Decisions concerning acreage planted and what kind of crops and livestock to produce also affect output. Farm prosperity is affected by prices and costs as well as output.

Farmers cannot be prosperous without products to sell, but bumper crops may be associated with low prices. Net farm income is also affected by costs of production which may be high when farm prices are high. Output decisions in response

to market conditions seem to vary in different industries, he says. The crop farmer tends to maintain the same acreage in production even in the face of low prices. Manufacturers and merchants adjust output more readily in response to changing profit prospects.

Aside from nature-induced fluctuations, agricultural output tends to be more stable than nonagricultural output. This probably has a stabilizing effect on the economy as a whole, and may reduce the tendency for agricultural depression to spread to the entire economy.

Bagley believes, however, that high levels of business activity and prosperity in the economy as a whole cannot be maintained while any major sector, such as agriculture, continues to experience depressed conditions.

Nine Counties In Area Hog Producers Assn.

BELOIT — The North Central Kansas Pork Producers Association, headed by Max Porter of Mitchell County has been organized here to promote the best interests of swine producers and to improve swine production.

It was organized by farmers of nine counties — Mitchell, Smith, Jewell, Republic, Cloud, Osborne, Russell, Lincoln and Ottawa.

Herman Dohl, Lincoln County, is vice president; Melvin Shipley, Jewell County, secretary; and Emery Berry, Ottawa County, treasurer. They and the following are directors: Larry Yost, Osborne County; Everett Berry, Russell County; Leland Roush, Smith County; Sidney Johnson, Cloud County; and Andy Olson, Republic County.

FARM & RANCH LOANS

Many family farms remain family operations where dads and sons get together on business-like partnerships. If you have this in mind, maybe we can help you.

R. STANLEY PARSONS, Mgr.

SEE ME AT

604 HUMBOLDT PR 8-2971

Res. Phone PR 6-9044

MANHATTAN

Open Mon. through Fri.

8 a.m. to 5 p.m. (closed 12-1)

Branch Offices: CLAY CENTER & JUNCTION CITY

Federal LAND BANK Assn. of MANHATTAN

Serving Clay, Geary, Pottawatomie & Riley counties.

MATTRESS & BOX SPRINGS

Specials Every Day
New Low Prices
Buy Direct

Also Complete Rebuilding Service

Manhattan
Mattress Co.

414 S. 4th PR 8-5302

June 20, 1967

Grass & Grain

11

SCS MAN KEN MUSE TO RETIRE AT MARION

MARION — Kenneth Muse, soil conservationist in the Marion County district since it was organized in 1946, will retire



Ken Muse

this month. Kruse came to Marion from SCS work in McPherson, and the Marion SCD has been one of the most active in the G&G area. He will continue to live in Marion following his retirement.

60 CENTS IN AREA TO BUY N.Y. TIMES

It takes 40 cents now to buy a Sunday New York Times. That's in New York. Outside the metropolitan area the Sunday price has been raised to 60 cents. Both increases were for a dime and were effective this week. The Times had a local raise of five cents last October.

Paper Back

25c - 35c
50c - 75c

Books

Largest Stock
In Town



University
Book Store

623 N. Manhattan Manhattan



Tools
Too

AGGIE
HARDWARE
1205 Moro
Manhattan, Ks.



WE CAN FIT YOU

Justin • Acme • Texas
Nocona and Tony Lama

On US 24 — 2 Blocks East
of Cloverleaf on US 24
TOPEKA, KANS.



WHEAT
STORAGE

3 Large Elevators at Beattie
2 Elevators at Frankfort

No Long Wait To Unload

Cash or Loan for Your Wheat

Beattie Farmers Union Coop Ass'n.

R. D. Easton, Gen. Mgr.

Beattie, Phone 240

Frankfort



NOTICE



The Solomon Coop Ass'n. has purchased the Solomon Hardware and Appliance Store. See us for special prices on paint and many other outstanding values.

Hardware & Appliance Store

SOLOMON COOP ASS'N.

Solomon, Kansas

IF

You Are Looking For A Good Market For
Your Wheat, Bring It To

Agriculture Service Center, Inc.

(Formerly Sigle-Nagely Grain)

Where You Can . . .

- Sell Your Wheat
- Place on Open Storage
- Receive Local Warehouse Receipt

WE ARE EQUIPPED TO DRY YOUR GRAIN!
"GOOD HARVESTING"

Agriculture Service Center Inc.

Phone BL 8-2412 HERINGTON, KANS. H. J. Riffel, Mgr.

ONLY
\$325

Fully Guaranteed
Completely
Installed



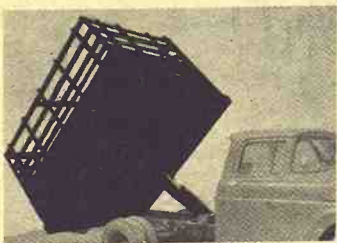
The Hydraulic Hoist Anyone Can Use
At A Price Everyone Can Afford!

PTO operated hydraulic hoist for 10' and smaller beds!
Six ton hoisting power. Can be used on 1 ton and
smaller trucks.

NOW — Even small trucks can have
hydraulic hoisting.

Fingertip Control From Cab
Chrome Plated Piston Gives
You Smooth, Positive Power

- Durable
- Practical
- Convenient



HAUL-MOR, INC. valley falls, kansas • phone 945-3211

We'd Like To Handle Your

Wheat Storage

Cash

Loan

Up-To-Date Facilities

Fast Handling

Refreshments if You Have Time

Flint Hills Feed & Grain

MANHATTAN

4th & RI Tracks

PR 8-5322

**IT'S YOUR TURN
HOG RAISERS!**

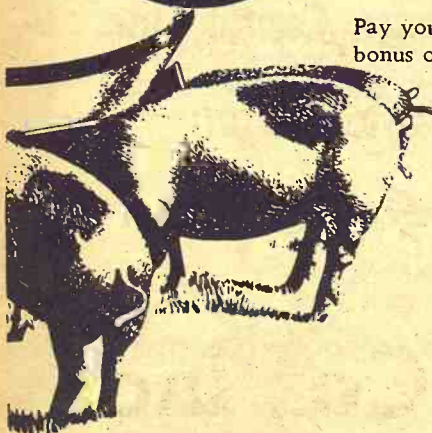
CASH IN JUNE 19 TO JUNE 24 ON

**GOOCH'S BEST
SPECIAL DOLLAR
SAVING WEEK!**

This week only your Gooch Dealer is passing along Big Dollar
Savings per ton on

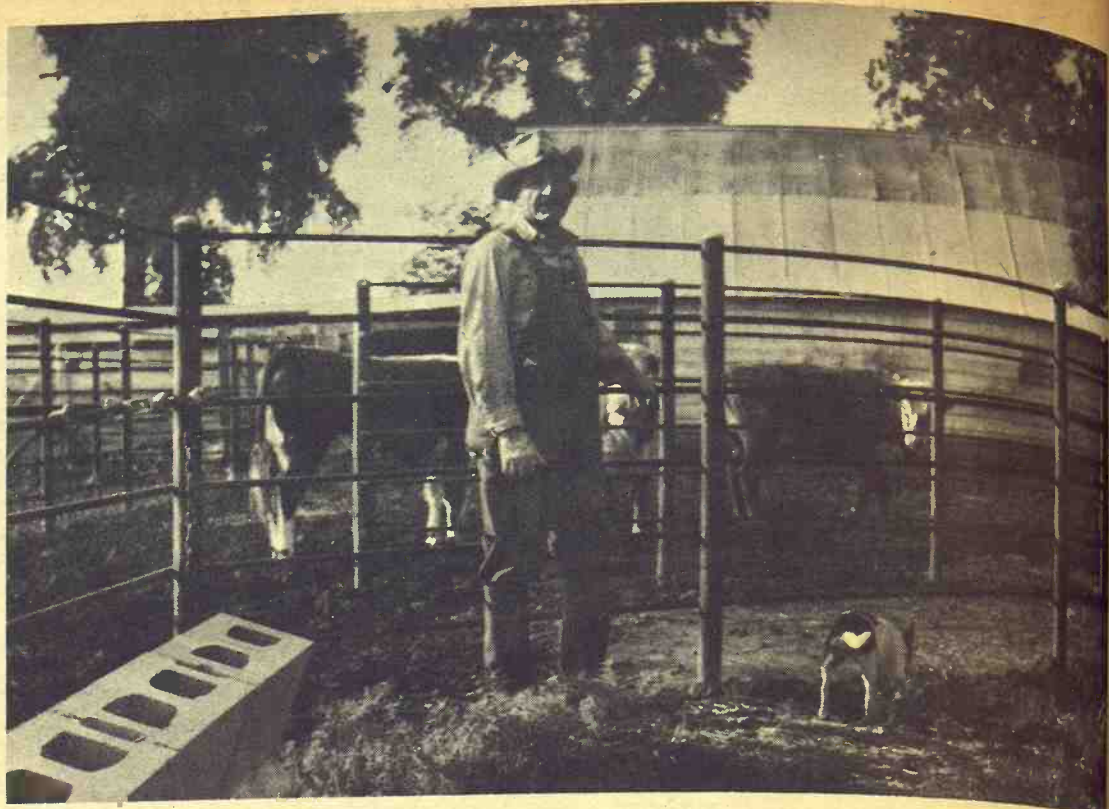
**GOOCH'S
BEST**

**SUPER 40
HOG CONCENTRATE**



Pay yourself the extra hog raising
bonus of lower feed costs -- make
your grain do more -- fin-
ish your hogs into market
toppers days earlier.
Stock up this week
(June 12 through June
17) on Gooch's Best 40
Hog Supplement to get
big dollar savings on
every ton.

See Your Gooch Dealer! Or contact the Gooch Feed Mill
Company — Salina, Kansas.



New Pens and Chute

New steel fence for pens for 500 head of cattle and a new cattle
chute were recently erected by W. L. Wilhelm on his farm west of Sa-
lina.

Stockman To Africa For Peace Corps

DORRANCE — Kenneth Ma-
honey, who has been farming
1200 acres near Dorrance since
graduation from Kansas State
University, will report August
15 in Sierra Leone in the west-
ern part of Africa, to spend
three years in the Peace Corps.

He will be in charge of a pro-
ject to improve cattle breeding
and care, and to encourage ef-
ficient use of cattle products.
He will have 125 young associ-
ates.

Mahoney is regarded as an
animal husbandry expert. With
an associate, he developed and
sold a Guernsey-Holstein dairy
several years ago.

He will take his wife and five
children, ages 4 to 17, with him.

They will live in Freetown,
the capital.

Mahoney will spend most of

his time covering 70 chiefdoms.
The Peace Corps chose Ma-
honey after the Sierra Leone gov-
ernment asked for a project di-
rector.

STORMOR DOES MORE



"INVEST IN GREATER
PROFITS WITH

STORMOR

DRY-O-MATION"

With a STORMOR Dry-O-Mation System, you harvest earlier, avoid
field losses, and profit from highest market prices.

■ STORMOR Dry-O-Mation is an engineered system proved by
field tests on farms like yours.

■ Channelair steel drying floors, fans and heat units, fill, unload,
and transfer augers—all components of a STORMOR System are
designed to function smoothly in any size bin.

MAX MILL SYSTEMS

JAMES WAHLE A/C 913 CE 8-7660
RT. 2 JUNCTION CITY, KANSAS

- Dry-O-Mation • Clear-Span Steel Buildings • Cribbs
- Batch Dryers • Oxygen-Free Storage • Bulk Feed Bins

STORMOR Inc., Fremont, Nebraska

GRAIN STORAGE

4 LOCATIONS

MILTONVALE

BALA

CLAY CENTER

LEONARDVILLE

Your Storage Solicited

USE FACILITIES MOST CONVENIENT FOR YOU

**THE FARMERS UNION
COOPERATIVE ASSOCIATION**



Home Office: Clay Center

Telephone ME 2-5321

\$\$\$ - No Cure For Medical Bills

Medical men continue to make big gains in combating sickness. But they're not doing much about the illness the patient feels when he sees his bills.

Hospital expenses are rising 10% to 12% a year, and experts fearfully expect the average daily cost eventually to exceed \$100 (already it's more than \$70 at some highly sophisticated centers).

Physicians charges are climbing 8% a year. Drug costs are also escalating as the use of expensive medications increases, altho the price of many prescriptions has declined.

Much of the inflation appears to be built into the big new Federal health care programs, Medicare and Medicaid.

Medicare is the Social Security Administration's health insurance for the aged; Medicaid is the Welfare Administration's system of Federal-state support for medical expenses of all low-income citizens.

Unless remedies to rising costs are found, the Federal health-care outlays will need to be drastically increased or the benefits considerably curtailed in the years ahead.

Either alternative is politically unpalatable.

Payment provisions of the new programs, particularly Medicare, invite inflation. Hospitals and nursing homes receive their full costs of care for the aged, along with an added percentage or "plus factor" for improvement and modernization.

A physician is encouraged to charge his "usual" fees, the only limitation being the restraint of his associates.

Thus, the more a hospital spends to care for the aged, the higher its "plus" payments. To avoid Government complaints of excessive Medicare fees, a physician need only raise his charges for all patients.

"Over the long pull, can any government say, 'We'll pay what is charged' without any attempt to set reasonable prices?" asks Herman Somers, a Princeton University health insurance expert.

Despite vast increases in Federal financing (Medicare alone will eventually furnish more than \$6 billion a year), Congress remains convinced that physicians and hospitals should exercise full authority over their services.

Many experts insist solutions to the medical cost problem could come most quickly if the boards of local hospitals and nonprofit health insurance plans include more consumer representatives.

Others would like the Federal Government to encourage more regulation of hospital operations by state health departments. Some think public dissatisfaction will eventually generate political pressure for more sweeping Federal reform.

NOW COMPLETED

Our Remodeling Program
To Insure Faster Service

Grain Storage

Cash Wheat
Loan Wheat

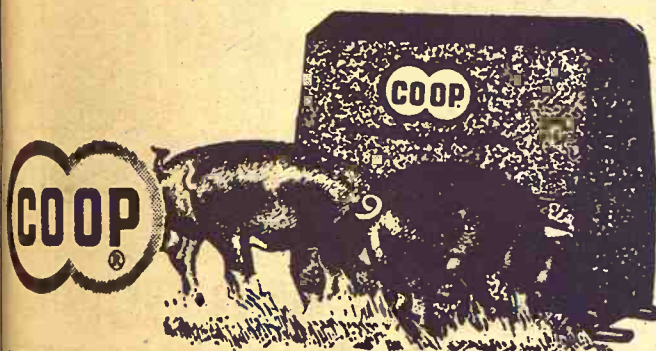
ALL THE EXTRA SERVICES YOU EXPECT

Gorden Mark Elevator
CLAY CENTER KANS. ME 2-3381

Mr. Hog Feeder

SAVE \$6 to \$8 Feeding Cost per Hog!

RESEARCH has shown that you can save \$3.60 per cwt. gain by feeding a properly balanced ration over straight corn-only feeding!



HOG CONCENTRATES

Especially Formulated to Help You
Get Fast, Low-Cost Gains ... Top Profits!

EXTRA HIGH FORTIFICATION LEVELS produce economical, well balanced ration when mixed with your farm grains. CO-OP Hog Concentrates have the vitamins, minerals, antibiotics, other necessary elements which your farm grains cannot supply.

YOUR CO-OP FEED MIXING FACILITIES, plus CO-OP Hog Concentrates, will put the finest quality feed on your farm more economically than any other method.

SEE YOUR CO-OP RIGHT AWAY



DAIRY MONTH

We Congratulate The Dairy Farmers For Outstanding Contributions To Agriculture

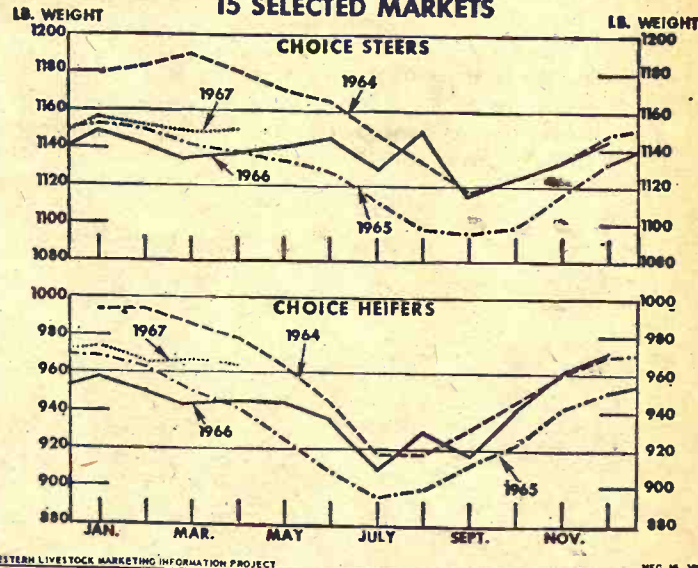
- Carlton Farmers Union Co-op
CARLTON
TELEPHONE 31
- Alma Farmers Union Co-op
Alma Ph. 765-3612
Eskridge Ph. 449-2291
- Manhattan FARMERS Cooperative Assn.
Manhattan-Alta Vista
Westmoreland-Onaga
- St. Marys Farmers Union Co-op
Business Assn.
- Clay Center FARMERS Union Co-op
Clay Center-Bala
Miltonvale-Leonardville
- Greenleaf Farmers Co-op Elevator Assn.
Greenleaf-Linn
Washington

June 20, 1967

Grass & Grain

13

AVERAGE SLAUGHTER WEIGHTS 15 SELECTED MARKETS



AUTO RACES

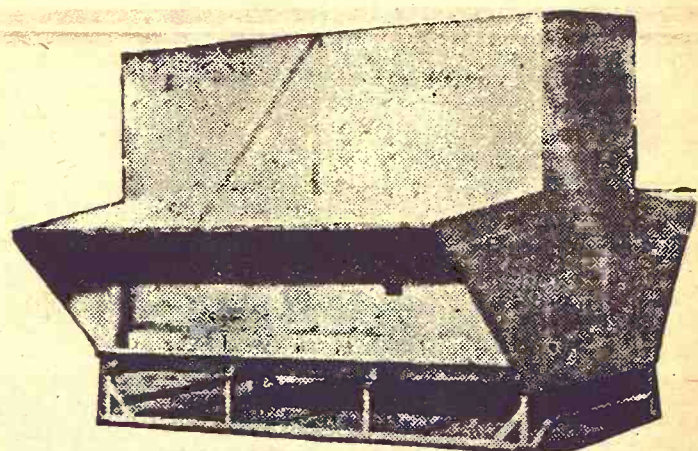
Sun. Nite - 8 p.m.
PLAZA SPEEDWAY
Junction City

ONE MILE EAST ON J-HILL

MECHANICS' RACE
SEMI-LATE MODEL CARS
NOVICE MECHANICS

RACES EVERY SUNDAY
NIGHT AND HOLIDAYS

Finest And Fastest Quarter
Mile Track In The Country



Use a LUTTIG metal all-welded self-feeder to self-feed your cattle. Will not leak or rot, and feeds down good, reasonable in price.

Capacities of 150, 250, and 350 bushels.

LUTTIG TRAILER COMPANY

Telephones: Office 535-2810—Res.: 535-2350
EMMETT, KANSAS

CASH WHEAT and STORAGE

We Solicit Your Grain Business for
the Sky-High Elevator at Manhattan



Gooch's Best Feeder-Proved Feeds

FOR LIVESTOCK AND POULTRY

CK Processing Co., Inc

2 1/2 Miles East of Sale Barn

Phone PR 6-9269

MANHATTAN



Readying the Combine

Fred Steinbrock and son Dana of Minneapolis repair combine for approaching harvest. They were near farm located five miles east of Ada.

Expect Federal Grain Payments In July

Many G&G area farmers will get their wheat and feed grain payments from ASCS a month earlier than a year ago.

Last year it was the last of August before payments were received, but county ASCS office managers say they may get some checks out early in July

and most farmers should have received their federal money by late July.

The checks cannot be made out until the certificate value for wheat is set on July 1.

Computations will be made by USDA computers immediately following the time when the

certificate value is set.

Payments due one person on a farm will be in one sight-draft. This means that payment information cannot be submitted until final certification of feed grain and designation of diverted acreage is made.

Farmers are urged to report their feed grain acreage to the ASCS office as soon as their feed is planted.

The payment system is not geared to handle payments to anyone other than the individual earning the payment. An amount subject to setoff from program payments will hold up the payment. Such payments will be made later at county ASCS offices.



This chair is for farmers who plan ahead to make money



You'll like this chair. It's comfortable. You talk your plans out with PCA men who are experienced. They are agricultural specialists . . . in money. They provide counseling for hundreds of farmers like yourself who plan ahead to make money.

Looking ahead, your plans may require some money to carry out the productive ideas you have.

Bounce your ideas off trained PCA men. Test their soundness. You'll find PCA can match your ideas with equally imaginative financing. Remember, PCA serves no one but farmers.

If you are planning ahead for the future of your farm and your family, isn't NOW the most profitable time for you to sit in this chair?

Salina
Production Credit Assn.

730 N. 9th TA 7-4313
Serving Lincoln, Ottawa, Ellsworth, Saline, Rice and McPherson Counties. Fieldmen: Lowell Letourneau, Salina, TA 7-5906; Wilfred Elliott, White City. Curtis W. Syring, mgr. Residence — TA 5-0317



North
Central Kansas
Production Credit Assn.

301 W. 7th Concordia
Serving Jewell, Republic, Washington, Mitchell and Cloud Counties. Fieldman: Darwin Household, Courtland. Phone FE 5-2592. James Ganson, mgr. Office Phone CH 3-4184 Res. Phone CH 3-3397

ADEQUATE Storage Space

for Your

WHEAT

Also Cash Buyers of All Grains
PROMPTEST SERVICE

Manhattan Milling Co.

107 Pierre Manhattan PR 8-3217



New!

Big, Rugged, Powerful, Economical

The David Brown 1200

You've been asking for it and here it is . . . big tractor perfection from David Brown . . . the 1200, 67 h.p. Selectamatic diesel with all the special features you liked so well in the 770, 880 and 990 plus . . .

8200 lb. drawbar pull • fully independent multi-speed P.T.O. operation • choice of 6 or 12 speed transmission • exclusive exhaust brake for smooth, extra safe downhill braking • 21.5 gal. fuel tank • heavy duty Selectamatic Hydraulic System • full lighting • spacious operator comfort.



MANNSCHRECK IMPLEMENT

14th & K Streets Phone 729-6152
Fairbury, Nebraska



HEITMANN OIL & SUPPLY CO.

Phone DI 8-2222
Linn, Kansas

CARLSON CONSTRUCTION & SALES CO.

4958 N. Maize Road Phone RO 6-0265
Wichita, Kansas



WILBECK MACHINE & MANUFACTURING

418 North Popular Phone MO 2-6311
South Hutchinson, Kansas

SENECA IMPLEMENT CO.

West US36 Phone DE 6-2621
Seneca, Kansas



EDDIE'S SERVICE

Phone 636-8395
Paxico, Kansas

Born and Raised
Charles Came
and raised in Saline
The Came farm is
where he stands in
an alfalfa field.

We will have out
for harvest.

C
LARGE C
N

CLYD



Get 'em
on the egg
FASTER
with K

17% C
Grow

In granules or mash, K
with your own grains
chicks at six weeks and
develop strong bones
layers . . . quicker. T
price.

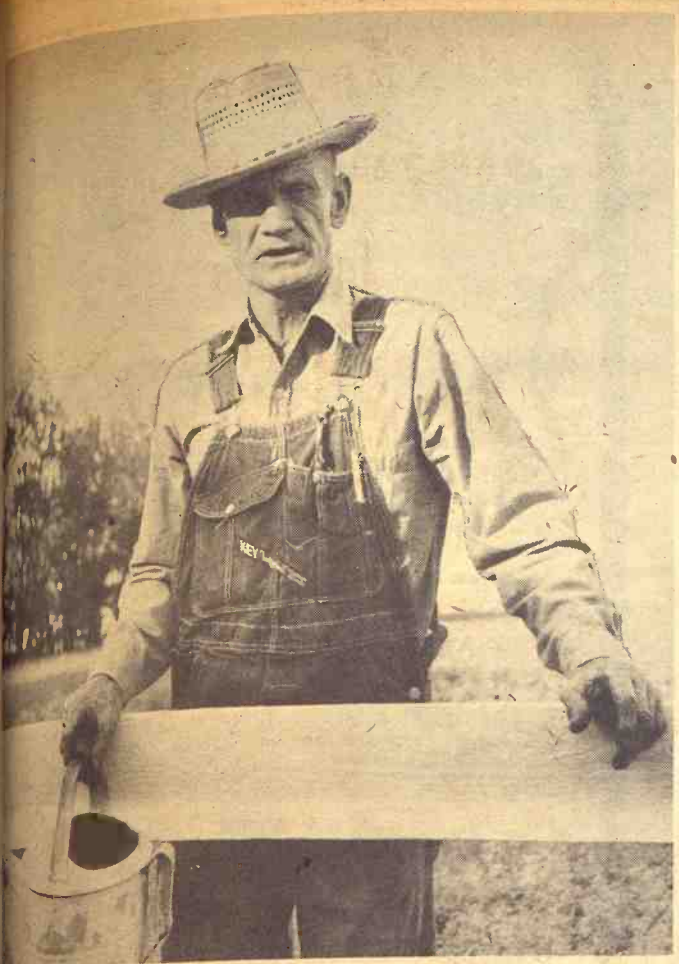
KEY SPE
17% C

PER TON

AN ADDI
DISCOUNT
PLUS: KEY AI
OFFER FOR ONE W
See A KEY De

KEY
Clay

E
 ace
 T
 Grains
 VICE
 ng Co.
 PR 8-3217
 200
 DB
 DB
 CTURING
 CE



Born and Raised There
 Charles Came works the farm where he was born and raised in Saline county, 10 miles west of Salina. The Came farm is nicely landscaped and well kept. Here he stands inside a white fence that surrounds an alfalfa field.

NOTICE

We will have our new elevator repaired and ready for harvest.

**CASH OR LOAN
LARGE CAPACITY HANDLING
No Waiting To Unload**

CLYDE COUNTY COOP

Eldon Bergstrom, Mgr.

Phone 446-3544

Clyde Kansas

Get 'em on the eggs **FASTER** with **KEY** 17% Chick Grower

In granules or mash, KEY 17% CHICK GROWER can be fed with your own grains for most economical results. Take chicks at six weeks and put them on KEY 17% and they will develop strong bones and tissues to make them superlative layers... quicker. Try this better grower at a very special price.

KEY SPECIAL OF THE WEEK

17% CHICK GROWER

PER TON \$5 DISCOUNT

AN ADDITIONAL \$4 PER TON DISCOUNT ON BULK ORDERS

PLUS: KEY Allows an additional 2% for cash.

OFFER FOR ONE WEEK — EXPIRES AFTER JUNE 27
See A KEY Dealer or Call ME 2-2141 Collect

KEY MILLING CO.
Clay Center, Kansas

Good Year For Ewe Flocks

Spring lamb market reached a 15-year peak in May. A farm ewe flock can answer a need for a livestock enterprise to increase income or better utilize labor, V. E. McAdams, Extension animal husbandryman at Kansas State University, says.

Ewes will utilize a high percentage of roughage in the form of grass or hay direct from the land. They also require a minimum of grain, McAdams points out.

Sheep numbers are down 6 percent in Kansas and 4 percent for the nation compared to a year ago. The 377 thousand head now on Kansas farms is small compared to the reported 1½ million sheep in the state in the 1880's, the specialist says.

McAdams says Kansas is well adapted to farm ewe flock production, with available pasture crops, native grass, and grain supply. Kansas climate is favorable for fall lambs that go to market in late April, May, or early June.

A 400-head ewe flock should gross 10 to 12 thousand dollars. This is an economical family farm unit that will utilize available labor.

Yearling ewes of top quality and size can be bought in the Southwest and delivered to Kansas farms for \$21 or \$22 a

A GAIN IN POPULATION FOR CONCORDIA
 CONCORDIA — Concordia's population moved up about 2 per cent in the past year, according to assessor figures, which list the town's population for 1967 at 7799. The Cloud county population was up to 14,718.
 Populations of other county towns: Clyde 978, Glasco 841, Miltonvale 679, Jamestown 462, Aurora 140, Simpson 2.

head.
 A year from now prices for the yearling ewes are expected to be higher and spring lamb prices are also expected to exceed those of 1967, McAdams explains. So, the outlook for the good ewe flock manager is bright.

Kansas farm ewe flocks are increasing in size, and 300- to 500-head flocks are common. This trend will continue as farmers manage for greater efficiency, McAdams says. Automated equipment to save labor and time are in use by large flock owners.

**ENJOY GREAT OUTDOOR LIVING
WITH KPL'S GAS & ELECTRIC**

GRILL

ELECTRIC

AS LOW AS

\$3.95

A MONTH

GAS

AS LOW AS

\$2.49

A MONTH

You can enjoy the charcoal grilled flavor of outdoor cooking with none of the mess or expense by installing one of the new outdoor patio grills available at The Kansas Power and Light Company. These handsome outdoor barbeque grills are completely self cleaning and will make outdoor cooking the convenient pleasure you want. The new grills are easy to own, too, with no down payment and low monthly rates.

While you're at it, take advantage of KPL's special "Patio Pair" price and buy a beautiful yardlight with your outdoor grill.

Offer good to KPL retail gas or electric customers only.

**CONTACT YOUR
KPL OFFICE OR
ASK ANY
KPL EMPLOYEE**

THE KANSAS POWER AND LIGHT COMPANY

Be an

Early Bird

BUY A **CASE®**
300 FORAGE HARVESTOR — GET A

SIX-TON Wagon Gear

AS A FREE BONUS IN JUNE

Look into all the features of the 300

300

- Structurally rugged without excessive weight (Built-in brawn. Light on the drawbar.)
- Roller chain and gear drive
- Heavy-duty cylinder. Adjustable cutting length from 13/64 to 2-1/8 inches
- Spring-loaded rolls for force-feeding forage
- Built-in knife sharpener
- Cutting and delivery controlled from tractor seat
- Hook the 300 to any 50 hp or larger tractor
- Swinging drawbar. Adjustable axles.

HEBRON, NEBRASKA
Ells Implement Company
Phone 768-6320

ESKRIDGE
Hogue Farm Service

MARION
Longhofer Supply

CLAY CENTER
Porter Eqp. Co.
1121 Crawford ME 2-5202

LINN
Kuhlman Motor Co.

MARYSVILLE
Brauchi Brothers

CHESTER, NEBR.
Grabau Impl. Co.

SALINA
Vahsholtz Impl. Co.

CENTRALIA
McBratney Impl.
Phone 857-3815

Why Farm Unions To Develop Slowly

By Edward W. Tychniewicz
Kansas State University

The day will come when farm workers successfully organize and bargain collectively for higher wages. But unionization

unions for agricultural workers. Direct action by churches, other unions, minority groups and civil rights organizations will influence significantly the attitudes and actions of farm workers and farm employers.

Another factor favoring unionization is that existing unions in agricultural processing may influence management's attitude towards farm workers. Large-scale operations integrated by ownership or contract would be a likely path for the expansion of unionization.

Congress may amend the Na-

16

Grass & Grain

June 20, 1967

tional Labor Relations Act to remove the present exclusion of farm workers. Although various farm organizations opposed this move during recent Congressional hearings, the subcommittee concluded that benefits of collective bargaining should be extended to agricultural workers.

None of these factors are likely to generate a great wave of labor unionization in the near future, however. There are several factors that would hinder this type of development.

Farm employment will continue in small, broadly scattered units. Although farms have grown in average size, employment per farm has remained fairly stable because of advances in technology.

Seasonal workers are not generally responsive to unionization appeals. Many workers expect to be in farming only temporarily. They do not regard an improved future in farm labor as a goal worth striving for. Those who see a future in farm labor are typically neither well-prepared nor strongly motivated toward purposeful collective action.

Another factor slowing the development of farm unions is the high cost of organization without coverage from the National Labor Relations Act. If farm labor continues to be excluded from coverage under the Act, efforts at unionization must depend on force and pressure which are expensive and uncertain. Thus, efforts to organize would likely be limited to selected situations where the prospect of success appears most favorable.

Even if the Act did cover farm workers, the legislation would have to be adapted considerably to accommodate farm employment. New legislation for farm workers under the Act, on the other hand, would take time to develop.

The impact of limited unionization may be greater indirectly than directly. For example, farm organizations are already appealing to their members to upgrade employment practices and conditions to prevent union organization.

Junior Hereford Day At Doering Ranch In July

GARNETT — The Kansas Junior Hereford Association will hold its annual field day at Double H Hereford Ranch located near Garnett, on Friday, July 7.

The popular junior event is being co-sponsored by the Kansas City Hereford Club. All adults and juniors in Kansas and surrounding states who are interested in good Hereford cattle are cordially invited to attend.

H. H. Doering and his son, H. B., are owners of the well-known Kansas Hereford farm. The senior member of the operation also currently serves as president of the Kansas City Hereford Club. Field day visitors will have an opportunity to see an outstanding herd of registered Herefords at Double H and participate in a well-planned educational field day program.

The grand prize will be a registered Hereford heifer given by Double H Hereford Ranch to the high individual in the judging contest who is a member of the Kansas Junior Hereford Association.



in agriculture will take time and its development will be quite spotty.

More active public interest will hasten the formation of

WESTERN SADDLE SUPPLY

J. J. RITTEL & SONS
WESTERN WEAR

In Mid-Kansas

Largest Saddle Selection for the Entire Family

BOOTS • HORSE TRAILERS

Square Dancers Supplies

HOPE, KANSAS PHONE 43



GRAIN STORAGE

FOR WHEAT HARVEST

CASH OR LOAN

FAST UNLOADING FACILITIES

AMPLE STORAGE

Phone 61



BARNES
COOPERATIVE
ASSOCIATION

Alva Zeller, Mgr.
Barnes, Kansas

Big Gehl Chop-King with 6-foot Hay Pick-up

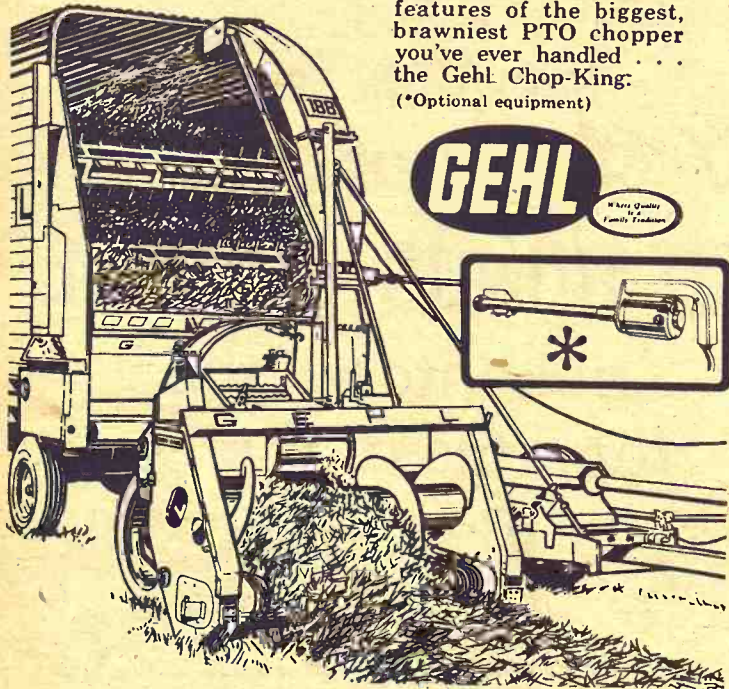
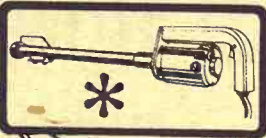
breezes through toughest windrowed crops

The brawny, Gehl Chop-King is the only chopper built to make full use of today's big-tractor horsepower. Short-chops more forage per hour than other choppers . . . even in haylage.

BIG IN FEATURES TOO:

- New! 10,000 RPM Portable Knife Sharpener! (See illustration) gives minute-per-knife sharp cutting edge to flywheel mounted knives. Use right on the machine in the field — or at the machine shed. Gas or electric models.
- Rugged 8-knife flywheel. Knives chrome-edged. Tungsten carbide faced knives also available.
- Select-A-Cut Transmission changes forage lengths with push of a lever.
- Big 127 sq. in. throat area. Floating heads adjust to field contours.

STOP IN SOON. See all the features of the biggest, brawniest PTO chopper you've ever handled . . . the Gehl Chop-King. (*Optional equipment)



Make us Prove it with a Demonstration!

SABETHA
FLENTIE'S, INC.

HANOVER
HANOVER IMPL. CO.

PERRY
SEYLER FARM SUPPLY

GYPSUM
KUHN IMPL. CO.

ROSSVILLE
ROSSVILLE
TRUCK & TRACTOR

WATERVILLE
WATERVILLE MOTORS

LINN
KUHLMAN MOTOR CO.

MINNEAPOLIS
CHAPMAN IMPL. CO.

The reason GRASS & GRAIN has

More Readers

of its classified advertising and sales section than any newsweekly in the state is that Grass & Grain has

More Classified

advertising for readers to read. Last year Grass & Grain ran 25,084 inches (314 pages) of classified ads and sales. This year volume is running 24% over last year.

Sell Land, Livestock, Implements, Cars & Trucks, Furniture, Feed & Seed, Antiques, Services. Find a Good Buy. The Way to Tell the Most — for the least cost — is thru G&G Classified.

\$1

A WEEK

15 words or less

5c word, additional

REACH 11,100 SUBSCRIBERS

WRITE YOUR
AD HERE



Don't forget to include name, address and/or phone.

FIGURE YOUR COST HERE.

TOTAL NO. OF WORDS

RATE: (Minimum) 15 words or less . . . \$1.00

Additional words @ 5c each (Example, a 20-word ad has 5 more words than 15. Five words @ 5c each would be 25c)

COST FOR 1 WEEK
(Add figures above) \$

Multiply one-week cost times number of weeks you want ad to run.

LESS DISCOUNTS
(See below)

I ENCLOSE \$

RUN THIS AD CONSECUTIVE WEEKS

DISCOUNTS: (with cash orders only) deduct 10% if ad runs 2 weeks. Deduct 25% if ad runs 4 weeks. REFUNDS: you may collect a refund at the Ag Press office for any unused amount paid if an ad is cancelled.

CLASSIFIED DISPLAY (boxed ads) \$1.68 a column inch.

CASH: Ads not accompanied by cash have a 25-cent billing charge added.

MAIL TO:
AG PRESS — 1207 MORO —
MANHATTAN, KANSAS
P.O. BOX 1009 —

CLASS

RATES: \$1 a
CIAL: Four
rate. Send you
(25c handling)

Livestock

WANTED TO B
FEEDER HOG
100 lbs. Top pri
J. D. SIMPSON
Grant Ave., Junct
CE 8-3754 or C

MR. CATTLE
SHEEP FEED

Alfalfa-Molasses Pe
Produce Better G
Lower Feed Cos
Waste — Easy To

Contact
PRESTON MILL
INDUSTRIES
State of SUR-GAIN
Fairbury, Nebrash
Phone 729-6145

SALE: Nationa
SF Hampshire g
ready for servic
Axtell, Kans

SALE — Register
bulls widely recogn
satisfactor
prices. Locate
north and 2 east of
ways 15 & 18. Jon
Farms, Abilene.

REGISTERED YORKS
serviceable age boars.
individuals, p
line. Neill R. Wal
Pherson, Kans. CE

SALE — Good ro
Hereford bull, 6 y
Drunkow, Wamego

SALE — Purebred
boars and bred
E. Miller, Verm

100 lb. Polled Heref
year old Polled He
15 Hereford cows.
Junction City,

NATIONALLY ACCRE
Yorkshire boars
serviceable age. I
Phone 308, Pa

WING BREEDING ev
ing at bargain pri
like a good time
and I'll have more
Also few rams. Ca
316-662-7543, Hu

SALE — Register
rams, yearlings. Ha
Box 327, Belle
66335. Phone JA

DAIRYMEN
FARMERS

With advancing mil
is the time to start
or add to your pres
believe we have in
the best selection
Guernsey, Jersey,
and Milking Sh
and springer cov

COME, HAVE A LOC
You'll be glad you d
financing available on c
heifers.

Calves-Calves-Cal
also have those go
breed cross calves
weeks to 400 lbs. Al
bull and heifer ca
shipments in eve

SPECIAL

Bred fall freshening F
open Holstein heifer
Holstein heifer calves
deal thing to put c

W. G. Wiebe
Phone CI 4-7625
SCHMERFIELD, KAN

GRASS & GRAIN

CLASSIFIED ADVERTISING

RATES: \$1 a week for 15 words or less. Add 5c a word for additional words. SPECIAL: Four weeks for the price of three. Boxed ads: \$1.68 an inch per issue, flat rate. Send your ads to Ag Press, 1207 Moro, Manhattan, Kansas. Phone PR 8-4458 (25c handling charge if cash not with order.)

Livestock

WANTED TO BUY
FEEDER HOGS
100 to 100 lbs. Top prices paid.
J. D. SIMPSON
130 Grant Ave., Junction City
Phone CE 8-3754 or CE 8-3939

MR. CATTLE &
SHEEP FEEDER

Alfalfa-Molasses Pellets
Produce Better Gains
Lower Feed Costs
No Waste — Easy To Handle

Contact
PRESTON MILLING
INDUSTRIES
Home of SUR-GAIN Feeds
Fairbury, Nebraska
Phone 729-6145

FOR SALE — National accredited
SPF Hampshire gilts, and
boars ready for service. Galen
Wickham, Axtell, Kans. Phone
8-2777. x21

FOR SALE — Registered Here-
ford bulls widely recognized for
quality and satisfaction — rea-
sonable prices. Located 2 mi.
north and 2 east of Junction
Highways 15 & 18. Jones Here-
ford Farms, Abilene. SB16

REGISTERED YORKSHIRE
Serviceable age boars, out-
standing individuals, proven
bloodline. Neill R. Walker, Rt.
2, McPherson, Kans. CH 1-2599.
SB16

FOR SALE — Good registered
Hereford bull, 6 years old.
Obo Brunkow, Wamego, Phone
6-2407. x16

FOR SALE — Purebred Hamp-
shire boars and bred gilts.
Glen E. Miller, Vermillion,
Kans. x17

2000 lb. Polled Hereford bulls
2-year old Polled Hereford
bulls. 15 Hereford cows. Delbert
Johnson, Junction City, Kans.
x17

NATIONALLY ACCREDITED
SPF Yorkshire boars & open
pigs, serviceable age. Floyd
Meyer, Phone 308, Palmer,
Kans. SB17

YOUNG BREEDING ewes are
selling at bargain prices—this
looks like a good time to buy
them and I'll have more in this
week. Also few rams. Call Doug
Wildin, 316-662-7543, Hutchin-
son. SB16

FOR SALE — Registered Suf-
folk rams, yearlings. Harold D.
Johnson, Box 327, Belleville,
Kans. 66335. Phone JA 7-5030.
x16

DAIRYMEN
FARMERS

With advancing milk prices,
now is the time to start a dairy
and add to your present one.
We believe we have in all of
Kansas the best selection of Hol-
stein, Guernsey, Jersey, Brown
Swiss and Milking Shorthorn
fresh and springer cows and
heifers.

COME, HAVE A LOOK —
You'll be glad you did.
Financing available on cows &
heifers.

Calves-Calves-Calves
We also have those good fast
gaining beef cross calves from
4 weeks to 400 lbs. Also Hol-
stein bull and heifer calves.
New shipments in every Sat-
urday.

SPECIAL
To breed fall freshening Holstein
heifers.
To open Holstein heifers
to Holstein heifer calves
The ideal thing to put on pas-
ture.

W. G. Wiebe
Phone CI 4-7625
SUMMERFIELD, KANSAS

MEAT TYPE National Accred-
ited SPF Yorkshire boars. Ser-
viceable age, guaranteed. Har-
vey Herrs, Linn, Kans. Phone
DI 8-2252. x18

FOR SALE — 3 choice Holstein
heifers to freshen in August, ar-
tificially sired. Phone 944-2072.
Lyle Haller, Randolph, Kans.
x16

FOR SALE — 150 open West-
ern ewes. Terry Mitchell, Phone
Miltonvale 427-2896 after 7 p.m.
x16

APPROXIMATELY 60 Hamp-
York cross pigs. David Dema-
ray. Phone 7-3527, Burr Oak,
Kans. x16

For SALE — One two-year old
purebred eHeredford bull. SPF
Duroc boars 5 to 9 months old.
A few bred gilts and second lit-
ter sows to farrow middle of
June into July. Priced reason-
able. Arlan Argo, Wymore, Ne-
braska. x17

MEAT TYPE Nationally Accred-
ited SPF Yorkshire boars. Ser-
viceable age, guaranteed. Har-
vey Herrs, Linn, Kans., phone
DI 8-2252. x18

FOR SALE — SPF Duroc bred
gilts. Nationally accredited.
Phil Adrian, Moundridge, Kan-
sas 316-345-6469. x19

60 HEAD Hamp. pigs for sale,
50 lbs. Albert Lee, Olsburg,
Kans. x16

FOR SALE — Purebred Short-
horn bulls, 16 months old. Sired
by Sportsman Lord, Allen Lord,
1 mile east of Clay Center,
Kans. on Hiway 24. x19

FOR SALE — One reg. Polled
Hereford bull. Extra good. 4
years old. Junior Breymeyer,
Route one, Wamego, Kans. Ph.
456-9878. x16

FOR SALE — 5 milk cows, 250
gal. DeLaval bulk tank, 2 unit
DeLaval magnetic milker, 1951
14 ft. Baldwin combine with
cab, 1958 Dodge 2 ton truck
with hoist and fold down stock
racks. 4 row John Deere corn
disc, one row Case field cutter.
Telephone: 50, Narka, Kansas.
x16

50 HEAD spotted Poland and
York cross pigs for sale. Castra-
ted & weaned, ready to go. Ar-
no Samuelson, Rt. 1, Randolph,
Kans., phone Waterville ST
5-2417. x16

FOR SALE — Tex-Flow irriga-
tion gated and plain pipe, tow-
lines and Berkeley pumps. Qual-
ity with economy prices. Check
your irrigation needs now. Ri-
chardson irrigation furrowers,
best available. 20 serviceable
age Registered Hereford bulls,
CK Bloodlines. Warren St. Pi-
erre, 1 west, 1/2 north Ames,
Kansas, Phone 446-3631. SB18

REG. YORKSHIRE bred gilts.
Neill R. Walker, Rt. 2, McPhers-
on. CH 1-2599. SB16

THIN STOCK cows available
now at about \$125 per head
FOB range loading point, load
lots: Bangs Tested. Call Doug
Wildin, 316 662-7543, Hutchin-
son. SB17

FOR SALE — Hampshire
boars, ready for service. Roth
Bros., Green, Kans. SB19

Feed & Seed

DAIRY PELLETS, range pellets
and all kinds of fertilizers.
Manhattan Milling Co., 107
Pierre, Manhattan. TF Chg

SADDLE MATE — Honey
Bloom, a blood building vitamin
iron compound in a pure honey
base for horses. Key Milling,
Clay Center, Kansas. SB16

CERTIFIED KENT, Clark 63
and Wayne soybeans. Also non-
certified Shelby beans, Rox or-
ange cane and Siberian Millet.
Call collect JA 7-2484, Sis Seed,
Belleville. x18

FOR SALE — Certified Clark
63 soybeans. Germ 85. Purity
99.47. \$3.85 a bushel. Wesley
Heilman, Green. Ph. WI 4-2233.
x18

WAYNE SOYBEAN seed, early
maturing & high yielding, Al-
bert Kientz, Wamego, Kans.
Phone 456-9831. x18

FOR SALE — No. 1 yellow ear
corn. \$1.30. Carl Johnson, Phone
771-3378, Delia, Kansas. x18

Poultry

FOR SALE — 100 DeKalb lay-
ing hens, laying 6 months. Ex-
cellent. Phone 767-5222, Council
Grove, Kans. SB16

Automotive

JUNE
PACE-SEITER SALE
Open Sun. 1-5 p.m.

USED TRUCKS

1963 Ford 1/2 T pickup, V-8, ov-
erdrive
1963 Chev. 1/2 T V-8, aut. trans.,
pwr. strg.
1963 Chevrolet 1/2 ton, 4-wheel
drive, 6-cylinder, 3-speed
1959 Chev. 2T w/ 15 1/2' bed &
hoist, real clean
1959 International 1/2 ton, 6-cyl-
inder, 4-speed
1952 Chevrolet 1/2 ton 3-speed
1950 Chevrolet 3/4 ton, 6-cyl., 4-
speed
1949 Ford 1 1/2 T SWB with bed
& hoist
1949 Dodge 1 1/2 ton with bed.
6-cyl., 4-speed
1940 Chevrolet 3/4 ton, 4-speed,
6 cylinder



AULD
CHEVROLET
HO 1-5414
WAKEFIELD

GMC
TRUCKS

1/2 Ton - 60 Ton
Sales & Service

TRI-COUNTY MOTORS
307 N. 3rd MANHATTAN

USED TRUCKS
GET 'EM AT PAXICO

1954 Ford 1 1/2 T V-8; grain bed
1949 IHC w/ grain bed, stock
rack, hoist, 2 speed. New tires
1961 Chevrolet 2 ton w/ grain
bed & stock rack. 54,000 ac-
tual miles.
1948 GMC 2 1/2 T w/ 16' grain
bed & stock rack.
1956 GMC 1 1/2 T w/ grain bed,
stock rack & underbody hoist.

Eddie's Service



Phone 636-8395
PAXICO, KANS.

Harvest Trucks
In Clay Center, Kans.

1960 Chevrolet 2 ton, new short
block, underbody hoist, 13'6"
grain box. Real good rubber;
truck ready to roll \$2095
1952 Chev. 2 ton, 2 spd., 13'6"
giant box \$895
1948 Ford 1 1/2 T w/ 11' grain
box & stock rack, V-8 engine,
freshly painted. A good old
truck \$395
1946 IHC 1 1/2 T SWB, 9' grain
bed & stock rack; freshly
painted, a good old truck sell-
ing at a good old price.

Skinner Chev. Co.
625 Lincoln
ME 2-2101
CLAY CENTER, KANS.

FOR SALE — 1949 1-ton pick-
up. Elmer Kolle, Linn, Kans
DI 8-2331. x16

Business Is Great
In Ford Country

AT MANHATTAN

1965 Galaxie 500 4 dr. V8, aut.
trans., R&H, power steering,
factory air, one owner \$2045

1963 Galaxie 2 dr. HT XL, V8, 4-
speed, R&H \$1395

1963 Ford 2 dr. HT V8, std.
trans., R&H \$1095

1961 Hillman Convertible, nice
transportation \$495

1939 Plymouth 4-dr. sedan, 6
cyl., standard trans & heater,
in original condition. Collect-
ors item Price ????

THIS IS FORD COUNTRY
WHAT ARE YOU DRIVING?

Open Evenings Till 9

SKAGGS
(FORD) MOTORS

"Where Customers
Send Their Friends"
2nd & Houston PR 8-3525
MANHATTAN

Truck Sale

INVENTORY REDUCTION

NEW 1967 Chevrolet 1/2 ton
pickup, 6, 4-speed, 8 ft. Fleet-
side bed \$2614
1965 Chevrolet 1/2 ton Fleetside
pickup, 6, 3-speed, column
shift, radio, heater, 8 ft. bed
..... \$1595
1963 Chevrolet 1/2 ton Fleetside
pickup, 6, 4-speed, radio, heat-
er, 8 ft. bed \$1395
1963 Chevrolet 1/2 ton Fleetside
pickup, V-8, 3-speed, radio,
heater, 8 ft. bed \$1295
1960 Chevrolet 1/2 ton Fleetside
pickup, 6, 4-speed, radio, heat-
er, 8 ft. bed \$995
1960 Ford 1/2 ton Styleside pick-
up, 6, 4-speed, new finish, 8-ft.
bed \$895
1959 Chevrolet 1/2 ton pickup, 6-
deluxe cab and other extras
..... \$795
1959 Ford Styleside 1/2 ton pick-
up, 6, 3-speed \$695
1957 Ford 1/2 ton Styleside pick-
up, 6, 4-speed, extra clean \$495
1958 IHC Pickup, 6, 3-speed
..... \$595
1948 Chevrolet 3/4 ton pickup, 6-
4-speed \$195
1959 Chevrolet 2-ton V-8, 2-spd.,
chassis length for 13 1/2 ft.
bed \$1195
1957 Chevrolet 1 1/2 ton, 6, 4-spd.,
chassis length for 13 1/2 ft. bed
..... \$995

Open Evenings At 1st & Main

OBERMEYER

Marvin Obermeyer, Owner
Ph. BL 8-2421 Open to 9 p.m.
HERINGTON, KANSAS
Call BL 8-2421 For
Evening Appointment

WANTED — ARMY surplus
6x6 truck. State year, price and
condition. Rudolph Laas, Brook-
ville, Kans. x17

BARGAIN TIRES — Two new
Firestone Champion 18.4x26
combine tires. Pair \$139. Wis-
sing Motor Co. Abilene, Kans.
SB16

FOR SALE — 1950 GMC 1/2-ton,
4-speed, grain sides, new 7.00x
15 6-ply tires. \$250. John Gutsch,
Lincolnville, Kans. x18

TIRES! TIRES! Tires! Lowest
prices anywhere. Tractor,
Truck, Implement, Auto. Fink
Tire, Wamego, Kansas. x18

FOR SALE — 2 15x26 combine
tires on wide rims for mud.
Fits Gleaner, J.D. or Massey.
Vogler Bros., Waterville, Kans.
ST 5-2578 after 8:30. x17

1951 FORD fuel delivery truck
equipped with 550-gal. tank,
power takeoff, pump & meter;
some 300-gal. fuel tanks. Man-
hattan, Kans. JE 9-3271. x16

Real Estate

FOR SALE — Cafe, 1124 Moro,
Manhattan, Kans. Immediate
possession. SB16

Fulmer Real Estate

CATHERINE J. FULMER
REALTOR

Office 456-7696

Res. 456-9281

WAMEGO

RETIRING? SEE at your con-
venience this low priced subur-
ban. Well landscaped. Garden
space. Fenced yard. Designed
for efficiency. Redecorated. 220
wiring. One mile from Manhat-
tan. Phone PR 6-8192.

Samarrai Realty

1st Natl. Bank Bldg.
MANHATTAN, KANSAS

NEW ON MARKET

Horse Training Stables — 160
acres good pastures, near
Clay Center, Kans. Large in-
door arena; 2 lighted outdoor
arenas; stud barn; 3 stud
pens, 4-horse walker, hay
barn, broodmare pastures and
breaking pen. Large 4 bed-
room modern home. A real
set-up! \$65,000.

Section of good grass. Plenty of
water & good fences. \$65,000
880 acre Cattle Ranch. 550 acres
in pasture, the rest broke
land. Good spring fed ponds.
\$115,000. Could be divided;
make offer.

Close to Manhattan, Kans., 36
acres, pond, nice large build-
ing. \$30,000.

Locker and Meat Processing
Business — Near Manhattan.
Ideal for retired couple.
\$14,500.

Suburban Manhattan — 2 bed-
room house with small acre-
age. Barn, corral and double
garage. \$15,000.

Call Collect For Appointment
(MRS.) DOLLY MOORE
Office: PR 8-5805
Home: PR 6-8104
MANHATTAN, KANS.

Carlson Agency
MANHATTAN, KANS.

Farm—480-acre farm, 110 acres
farmland. Balance, pasture.
Modern home. Barns, sheds, si-
lo, good livestock farm, located
in trade area of Manhattan.

Farm—320-acre farm with 100
acres creekbottom farmland,
120-acres pasture, located in
Pottawatomie county. Near a
good highway.

Farm—100 acres with modern
home and other buildings. On
main highway, wonderful place
for someone wanting to retire.

Farm—Choice 80-acre farm
with modern home. Impl. sheds.
Fronts on a good highway.

Farm—200 acres creekbottom,
near all in one field. Modern
home, silo, sheds and barns.

Farm—200 acres creekbottom,
near all in one field. Modern
home, silo, sheds and barns.

160-acre farm—110 acres ex-
tra good pasture and meadow.
45 acres crop land, plenty water.
By highway.

1-acre Suburban near Manhat-
tan with nice 2-bedroom home,
large garage, attractive buy at
\$7,500.

July 29, the Carlson Agency
will sell Mrs. R. P. Ridgeway's
2-acre suburban and household
goods at auction, located east
of Manhattan on Highway 24.

For more information on these
properties, contact—

Lawrence Welter ... PR 8-3455
(Auctioneer)

Harold Carlson ... PR 8-3083

FOR SALE — 80 acres all
grass. Modern house, three car
garage. All other good improv-
ed buildings, plenty of water.
Half mile east of Carneiro, Ks.
1211 Spring St., Ellsworth, Kan-
sas, Phone GR 2-3817, Mrs. Ray
Slaight. x16

FOR SALE — 10-room house in
Randolph, Ks. Needs some re-
pair. Jack Quinn, Wamego, Ks.
x17

FOR SALE — 2 bedroom house,
1 floor, range, cabinets, 707 Oak,
Wamego. \$6,000.00. Phone 456-
7287 evenings. x17

Charlie Wirth,

SALINA
USED TRACTORS
1964 4020 dsl., WF, PS, 3-pt.
1964 3020 dsl., WF, PS, 3-pt.
1964 730 dsl., WF, PS, 3-pt.
1960 620 gas, with 4-row culti-
vator
1962 D19 dsl., Allis
1963 620 gas, trycle
1961 Ford dsl., Major
1962 Ford dsl.
USED COMBINES
1955 14-ft. combine
1957 MHE2, 12-ft. combine
1958 MHE6, 10-ft. combine
1962 Ford, 12-ft. combine
BALERS & OTHER MACH.
1955 IHC wire balers
1958 1400 wire balers
1958 IHC wire baler
1962 Gehl 2-row ens. harv.
1963 IHC ens. harv., 2-row
1964 JD 1-row ens. harv.
1965 12 JD ens. harv., 2-row
1965 12 JD ens. harv., 2-row
used implts. of all kinds
Emporia Imple. Co.
1923 W. 6th St. DI 2-3146
EMPORIA, KANS.
Pipe, Steel &
Shop Equipment
new bolts, 7/8, 3/4, 5/8,
several lengths
steel used standard pipe, exc.
d. 32, 36, 40, 42, 48, 60, 72, 84, 96, 108, 120, 144, 168, 192, 216, 240, 270, 300, 360, 420, 480, 540, 600, 660, 720, 780, 840, 900, 960, 1020, 1080, 1140, 1200, 1260, 1320, 1380, 1440, 1500, 1560, 1620, 1680, 1740, 1800, 1860, 1920, 1980, 2040, 2100, 2160, 2220, 2280, 2340, 2400, 2460, 2520, 2580, 2640, 2700, 2760, 2820, 2880, 2940, 3000, 3060, 3120, 3180, 3240, 3300, 3360, 3420, 3480, 3540, 3600, 3660, 3720, 3780, 3840, 3900, 3960, 4020, 4080, 4140, 4200, 4260, 4320, 4380, 4440, 4500, 4560, 4620, 4680, 4740, 4800, 4860, 4920, 4980, 5040, 5100, 5160, 5220, 5280, 5340, 5400, 5460, 5520, 5580, 5640, 5700, 5760, 5820, 5880, 5940, 6000, 6060, 6120, 6180, 6240, 6300, 6360, 6420, 6480, 6540, 6600, 6660, 6720, 6780, 6840, 6900, 6960, 7020, 7080, 7140, 7200, 7260, 7320, 7380, 7440, 7500, 7560, 7620, 7680, 7740, 7800, 7860, 7920, 7980, 8040, 8100, 8160, 8220, 8280, 8340, 8400, 8460, 8520, 8580, 8640, 8700, 8760, 8820, 8880, 8940, 9000, 9060, 9120, 9180, 9240, 9300, 9360, 9420, 9480, 9540, 9600, 9660, 9720, 9780, 9840, 9900, 9960, 10020, 10080, 10140, 10200, 10260, 10320, 10380, 10440, 10500, 10560, 10620, 10680, 10740, 10800, 10860, 10920, 10980, 11040, 11100, 11160, 11220, 11280, 11340, 11400, 11460, 11520, 11580, 11640, 11700, 11760, 11820, 11880, 11940, 12000, 12060, 12120, 12180, 12240, 12300, 12360, 12420, 12480, 12540, 12600, 12660, 12720, 12780, 12840, 12900, 12960, 13020, 13080, 13140, 13200, 13260, 13320, 13380, 13440, 13500, 13560, 13620, 13680, 13740, 13800, 13860, 13920, 13980, 14040, 14100, 14160, 14220, 14280, 14340, 14400, 14460, 14520, 14580, 14640, 14700, 14760, 14820, 14880, 14940, 15000, 15060, 15120, 15180, 15240, 15300, 15360, 15420, 15480, 15540, 15600, 15660, 15720, 15780, 15840, 15900, 15960, 16020, 16080, 16140, 16200, 16260, 16320, 16380, 16440, 16500, 16560, 16620, 16680, 16740, 16800, 16860, 16920, 16980, 17040, 17100, 17160, 17220, 17280, 17340, 17400, 17460, 17520, 17580, 17640, 17700, 17760, 17820, 17880, 17940, 18000, 18060, 18120, 18180, 18240, 18300, 18360, 18420, 18480, 18540, 18600, 18660, 18720, 18780, 18840, 18900, 18960, 19020, 19080, 19140, 19200, 19260, 19320, 19380, 19440, 19500, 19560, 19620, 19680, 19740, 19800, 19860, 19920, 19980, 20040, 20100, 20160, 20220, 20280, 20340, 20400, 20460, 20520, 20580, 20640, 20700, 20760, 20820, 20880, 20940, 21000, 21060, 21120, 21180, 21240, 21300, 21360, 21420, 21480, 21540, 21600, 21660, 21720, 21780, 21840, 21900, 21960, 22020, 22080, 22140, 22200, 22260, 22320, 22380, 22440, 22500, 22560, 22620, 22680, 22740, 22800, 22860, 22920, 22980, 23040, 23100, 23160, 23220, 23280, 23340, 23400, 23460, 23520, 23580, 23640, 23700, 23760, 23820, 23880, 23940, 24000, 24060, 24120, 24180, 24240, 24300, 24360, 24420, 24480, 24540, 24600, 24660, 24720, 24780, 24840, 24900, 24960, 25020, 25080, 25140, 25200, 25260, 25320, 25380, 25440, 25500, 25560, 25620, 25680, 25740, 25800, 25860, 25920, 25980, 26040, 26100, 26160, 26220, 26280, 26340, 26400, 26460, 26520, 26580, 26640, 26700, 26760, 26820, 26880, 26940, 27000, 27060, 27120, 27180, 27240, 27300, 27360, 27420, 27480, 27540, 27600, 27660, 27720, 27780, 27840, 27900, 27960, 28020, 28080, 28140, 28200, 28260, 28320, 28380, 28440, 28500, 28560, 28620, 28680, 28740, 28800, 28860, 28920, 28980, 29040, 29100, 29160, 29220, 29280, 29340, 29400, 29460, 29520, 29580, 29640, 29700, 29760, 29820, 29880, 29940, 30000, 30060, 30120, 30180, 30240, 30300, 30360, 30420, 30480, 30540, 30600, 30660, 30720, 30780, 30840, 30900, 30960, 31020, 31080, 31140, 31200, 31260, 31320, 31380, 31440, 31500, 31560, 31620, 31680, 31740, 31800, 31860, 31920, 31980, 32040, 32100, 32160, 32220, 32280, 32340, 32400, 32460, 32520, 32580, 32640, 32700, 32760, 32820, 32880, 32940, 33000, 33060, 33120, 33180, 33240, 33300, 33360, 33420, 33480, 33540, 33600, 33660, 33720, 33780, 33840, 33900, 33960, 34020, 34080, 34140, 34200, 34260, 34320, 34380, 34440, 34500, 34560, 34620, 34680, 34740, 34800, 34860, 34920, 34980, 35040, 35100, 35160, 35220, 35280, 35340, 35400, 35460, 35520, 35580, 35640, 35700, 35760, 35820, 35880, 35940, 36000, 36060, 36120, 36180, 36240, 36300, 36360, 36420, 36480, 36540, 36600, 36660, 36720, 36780, 36840, 36900, 36960, 37020, 37080, 37140, 37200, 37260, 37320, 37380, 37440, 37500, 37560, 37620, 37680, 37740, 37800, 37860, 37920, 37980, 38040, 38100, 38160, 38220, 38280, 38340, 38400, 38460, 38520, 38580, 38640, 38700, 38760, 38820, 38880, 38940, 39000, 39060, 39120, 39180, 39240, 39300, 39360, 39420, 39480, 39540, 39600, 39660, 39720, 39780, 39840, 39900, 39960, 40020, 40080, 40140, 40200, 40260, 40320, 40380, 40440, 40500, 40560, 40620, 40680, 40740, 40800, 40860, 40920, 40980, 41040, 41100, 41160, 41220, 41280, 41340, 41400, 41460, 41520, 41580, 41640, 41700, 41760, 41820, 41880, 41940, 42000, 42060, 42120, 42180, 42240, 42300, 42360, 42420, 42480, 42540, 42600, 42660, 42720, 42780, 42840, 42900, 42960, 43020, 43080, 43140, 43200, 43260, 43320, 43380, 43440, 43500, 43560, 43620, 43680, 43740, 43800, 43860, 43920, 43980, 44040, 44100, 44160, 44220, 44280, 44340, 44400, 44460, 44520, 44580, 44640, 44700, 44760, 44820, 44880, 44940, 45000, 45060, 45120, 45180, 45240, 45300, 45360, 45420, 45480, 45540, 45600, 45660, 45720, 45780, 45840, 45900, 45960, 46020, 46080, 46140, 46200, 46260, 46320, 46380, 46440, 46500, 46560, 46620, 46680, 46740, 46800, 46860, 46920, 46980, 47040, 47100, 47160, 47220, 47280, 47340, 47400, 47460, 47520, 47580, 47640, 47700, 47760, 47820, 47880, 47940, 48000, 48060, 48120, 48180, 48240, 48300, 48360, 48420, 48480, 48540, 48600, 48660, 48720, 48780, 48840, 48900, 48960, 49020, 49080, 49140, 49200, 49260, 49320, 49380, 49440, 49500, 49560, 49620, 49680, 49740, 49800, 49860, 49920, 49980, 50040, 50100, 50160, 50220, 50280, 50340, 50400, 50460, 50520, 50580, 50640, 50700, 50760, 50820, 50880, 50940, 51000, 51060, 51120, 51180, 51240, 51300, 51360, 51420, 51480, 51540, 51600, 51660, 51720, 51780, 51840, 51900, 51960, 52020, 52080, 52140, 52200, 52260, 52320, 52380, 52440, 52500, 52560, 52620, 52680, 52740, 52800, 52860, 52920, 52980, 53040, 53100, 53160, 53220, 53280, 53340, 53400, 53460, 53520, 53580, 53640, 53700, 53760, 53820, 53880, 53940, 54000, 54060, 54120, 54180, 54240, 54300, 54360, 54420, 54480, 54540, 54600, 54660, 54720, 54780, 54840, 54900, 54960, 55020, 55080, 55140, 55200, 55260, 55320, 55380, 55440, 55500, 55560, 55620, 55680, 55740, 55800, 55860, 55920, 55980, 56040, 56100, 56160, 56220, 56280, 56340, 56400, 56460, 56520, 56580, 56640, 56700, 56760, 56820, 56880, 56940, 57000, 57060, 57120, 57180, 57240, 57300, 57360, 57420, 57480, 57540, 57600, 57660, 57720, 57780, 57840, 57900, 57960, 58020, 58080, 58140, 58200, 58260, 58320, 58380, 58440, 58500, 58560, 58620, 58680, 58740, 58800, 58860, 58920, 58980, 59040, 59100, 59160, 59220, 59280, 59340, 59400, 59460, 59520, 59580, 59640, 59700, 59760, 59820, 59880, 59940, 59980, 60040, 60100, 60160, 60220, 60280, 60340, 60400, 60460, 60520, 60580, 60640, 60700, 60760, 60820, 60880, 60940, 61000, 61060, 61120, 61180, 61240, 61300, 61360, 61420, 61480, 61540, 61600, 61660, 61720, 61780, 61840, 61900, 61960, 62020, 62080, 62140, 62200, 62260, 62320, 62380, 62440, 62500, 62560, 62620, 62680, 62740, 62800, 62860, 62920, 62980, 63040, 63100, 63160, 63220, 63280, 63340, 63400, 63460, 63520, 63580, 63640, 63700, 63760, 63820, 63880, 63940, 64000, 64060, 64120, 64180, 64240, 64300, 64360, 64420, 64480, 64540, 64600, 64660, 64720, 64780, 64840, 64900, 64960, 65020, 65080, 65140, 65200, 65260, 65320, 65380, 65440, 65500, 65560, 65620, 65680, 65740, 65800, 65860, 65920, 65980, 66040, 66100, 66160, 66220, 66280, 66340, 66400, 66460, 66520, 66580, 66640, 66700, 66760, 66820, 66880, 66940, 67000, 67060, 67120, 67180, 67240, 67300, 67360, 67420, 67480, 67540, 67600, 67660, 67720, 67780, 67840, 67900, 67960, 68020, 68080, 68140, 68200, 68260, 68320, 68380, 68440, 68500, 68560, 68620, 68680, 68740, 68800, 68860, 68920, 68980, 69040, 69100, 69160, 69220, 69280, 69340, 69400, 69460, 69520, 69580, 69640, 69700, 69760, 69820, 69880, 69940, 69980, 70040, 70100, 70160, 70220, 70280, 70340, 70400, 70460, 70520, 70580, 70640, 70700, 70760, 70820, 70880, 70940, 71000, 71060, 71120, 71180, 71240, 71300, 71360, 71420, 71480, 71540, 71600, 71660, 71720, 71780, 71840, 71900, 71960, 72020, 72080, 72140, 72200, 72260, 72320, 72380, 72440, 72500, 72560, 72620, 72680, 72740, 72800, 72860, 72920, 72980, 73040, 73100, 73160, 73220, 73280, 73340, 73400, 73460, 73520, 73580, 73640, 73700, 73760, 73820, 73880, 73940, 74000, 74060, 74120, 74180, 74240, 74300, 74360, 74420, 74480, 74540, 74600, 74660, 74720, 74780, 74840, 74900, 74960, 75020, 75080, 75140, 75200, 75260, 75320, 75380, 75440, 75500, 75560, 75620, 75680, 75740, 75800, 75860, 75920, 75980, 76040, 76100, 76160, 76220, 76280, 76340, 76400, 76460, 76520, 76580, 76640, 76700, 76760, 76820, 76880, 76940, 77000, 77060, 77120, 77180, 77240, 77300, 77360, 77420, 77480, 77540, 77600, 77660, 77720, 77780, 77840, 77900, 77960, 78020, 78080, 78140, 78200, 78260, 78320, 78380, 78440, 78500, 78560, 78620, 78680, 78740, 78800, 78860, 78920, 78980, 79040, 79100, 79160, 79220, 79280, 79340, 79400, 79460, 79520, 79580, 79640, 79700, 79760, 79820, 79880, 79940, 79980, 80040, 80100, 80160, 80220, 80280, 80340, 80400, 80460, 80520, 80580, 80640, 80700, 80760, 80820, 80880, 80940, 81000, 81060, 81120, 81180, 81240, 81300, 81360, 81420, 81480, 81540, 81600, 81660, 81720, 81780, 81840, 81900, 81960, 82020, 82080, 82140, 82200, 82260, 82320, 82380, 82440, 82500, 82560, 82620, 82680, 82740, 82800, 82860, 82920, 82980, 83040, 83100, 83160, 83220, 83280, 83340, 83400, 83460, 83520, 83580, 83640, 83700, 83760, 83820, 83880, 83940, 84000, 84060, 84120, 84180, 84240, 84300, 84360, 84420, 84480, 84540, 84600, 84660, 84720, 84780, 84840, 84900, 84960, 85020, 85080, 85140, 85200, 85260, 85320, 85380, 85440, 85500, 85560, 85620, 85680, 85740, 85800, 85860, 85920, 85980, 86040, 86100, 86160, 86220, 86280, 86340, 86400, 86460, 86520, 86580, 86640, 86700, 86760, 86820, 86880, 86940, 87000, 87060, 87120, 87180, 87240, 87300, 87360, 87420, 87480, 87540, 87600, 87660, 87720, 87780, 87840, 87900, 87960, 88020, 88080, 88140, 88200, 88260, 88320, 88380, 88440, 88500, 88560, 88620, 88680, 88740, 88800, 88860, 88920, 88980, 89040, 89100, 89160, 89220, 89280, 89340, 89400, 89460, 89520, 89580, 89640, 89700, 89760, 89820, 89880, 89940, 89980, 90040, 90100, 90160, 90220, 90280, 90340, 90400, 90460, 90520, 90580, 90640, 90700, 90760, 90820, 90880, 90940, 90980, 91040, 91100, 91160, 91220, 91280, 91340, 91400, 91460, 91520, 91580, 91640, 91700, 91760, 91820, 91880, 91940, 91980, 92040, 92100, 92160, 92220, 92280, 92340, 92400, 92460, 92520, 92580, 92640, 92700, 92760, 92820, 92880, 92940, 92980, 93040, 93100, 93160, 93220, 93280, 93340, 93400, 93460, 93520, 93580, 93640, 93700, 93760, 93820, 93880, 93940, 93980, 94040, 94100, 94160, 94220, 94280, 94340, 94400, 94460, 94520, 94580, 94640, 94700, 94760, 94820, 94880, 94940, 94980, 95040, 95100, 95160, 95220, 95280, 95340, 95400, 95460, 95520, 95580, 95640, 95700, 95760, 95820, 95880, 95940, 95980, 96040, 96100, 96160, 96220, 96280, 96340, 96400, 96460, 96520, 96580, 96640, 96700, 96760, 96820, 96880, 96940, 96980, 97040, 97100, 97160, 97220, 97280, 97340, 97400, 97460, 97520, 97580, 97640, 97700, 97760, 97820, 97880, 97940, 97980, 98040, 98100, 98160, 98220, 98280, 98340, 98400, 98460, 98520, 98580, 98640, 98700, 98760, 98820, 98880, 98940, 98980, 99040, 99100, 99160, 99220, 99280, 99340, 99400, 99460, 99520, 99580, 99640, 99700, 99760, 99820, 99880, 99940, 99980, 100040, 100100, 100160, 100220, 100280, 100340, 100400, 100460, 100520, 100580, 100640, 100700, 100760, 100820, 100880, 100940, 100980, 101040, 101100, 101160, 101220, 101280, 101340, 101400, 101460, 101520, 101580, 101640, 101700, 101760, 101820, 101880, 101940, 101980, 102040, 102100, 102160, 102220, 102280, 102340, 102400, 102460, 102520,

USED EQUIPMENT
 Demo Gehl grinder Mix-All (new warranty)
 Gehl 2-row self-propelled forage harvester
 Gehl hay conditioner
 New Holland 2-row 818 forage harvester
 Gehl 1-row chopper
 Gehl 6-ft. mower bar and chopper
 IHC 7-ft. 100 mower
 IHC loader
 32-ft. Viking elevator
 Gehl demo 6-ft. rotary mower

NEW EQUIPMENT
 Gehl flail chopper
 4½-ton wagon gears
 Hesston windrowers
 New Idea & Hesston


Theno Farm Supply

Phone HA 2-1059
 BONNER SPRINGS, KAN.

Mid Season Sale

1962 Ford self-propelled combine, power steering, cab, variable drive, real clean, with corn head \$4000
 Habco Dryer, 250 bu., PTO drive, save your crop \$1750
 Fordson major tractor, wide front \$1500
 44 Massey tractor, hydraulic, add power sleeve kit \$550
 1952 Ferguson TO 30, clean, good condition \$750
 Oliver 77 tractor, live PTO, now \$550
 Minneapolis Moline tractor, now \$750
 TE 30 Cockshutt tractor, live PTO, good, with Farm Hand loader \$850
 801 Ford diesel tractor, 12 speed now \$1750
 1962 Rowcrop 901 Ford diesel tractor, now \$2250
 Front mount Ford cultivator, good \$250
 3-14 Ford plow \$150
 2-16 Ford plow \$125
 3-16 Oliver plow on rubber \$150
 2-row Ford monitor, used on 30 A \$250
 Ferguson Dyna-Balance mower, 7' rear mounted, good \$175
 14' Kewanee disc, good .. \$600
 Other good used equipment on hand and coming in daily.
 See us for your needs

D & D Farm Eqpt.

Phone 913 ME 2-5212

 CLAY CENTER, KANS.

Say It With Cash

GET THIS NEW GLEANER AND HESSTON AT SAVINGS
 NEW Gleaner A II, 14-ft. hdr., oversize tires, fully equipped Cash \$6995
 NEW Hesston 500 Swather, 14-ft. auger hdr., conditioner, lights, fully equipped, Cash \$4890
 1951 Gleaner A, 14-ft., engine overhauled, new bars and concaves \$1350
 1953 Oliver 35 S.P., 14-ft. \$550
 1965 N-H No. 460 Haybine, clean \$1575
 1965 IH 2A crusher, clean \$415
 No. 940-20 13'5" cut, current model Kewanee wheel disc, new 20" blader, ready to go \$799
 David Bradley trail mower, off-set wheel design \$185
 Late style Fox 6x954 6-ft. sickle bar, used very little \$475
 Late style No. 827 7-ft. sickle bar, N-H, excellent condition \$695

SPECIAL

Dempster No. 402-52 four-row cultivator, 28 to 42" spacing, NEW w/ extras \$795
 Late model Gambles riding mower \$75
 See us for your needs, well stocked. Note! We have Sept. dating for farm delivery plans, new Gleaner combines.

Wright Impl. Co.

South Highway 15
 Phone CO 3-2061
 ABILENE, KANS.
 Nites, Harris Clark
 Salina TA 3-6690



1962 4010 D w/ super charger, new tires; 1960 730 D R/C, wide frt., 3-pt.; 1954 70D Rowcrop; 1952 E4 Co-op, live PTO; 1952 Super W6; 1949 WD Allis w/ Jayhawk loader; 1945 IH "M"; 1948 "LA" Case, new pistons & sleeves; 1950 JD "G".

JD 4-sec. rotary hoe; several 3B16" plows; 4B14" JD plow; 730 JD lister; 4-row 3-pt. Ford cult.; 2-row Case listed corn cult.; 6 LH1040 Haro-Sec., \$50 each;

AW 13' 10" disc haro; 1963 24T JD, good and 45 IH balers; 2 77 New Holland balers w/ motors; 851 JD, New Idea & Co-op side rakes;

125 IH combine in good shape, airplane tires, retractable finger auger \$250, cheaper than hiring wheat cub.

1955 Chev. truck 2 ton, new platform and hoist; New RL4 Integral weeder \$625.

We are salvaging 1947, 1948, 1952 JD combines.

Wolf Impl. Co.

Phone 568-2349



GLASCO, KANS.

COMBINE TIRES AND MACHINERY

Set of 56 SC combine tires, complete
 Used & new flotation tires & regular tires for rear duals on combines
 1958 IH 101 12' combine
 1959 John Deere 45 12' Speed King 34' grain auger
 12' Hume reel for 101 IH
 14' Universal for M-H
 1961 JD 666 plow 4-16
 1959 Case 4-16 plow
 1957 Case 3-16 plow
 IH No. 120 oneway 11½', like new
 JD No. 15 oneway 12' Jayhawk V plow
 IH 4-row pull type curler

Lott Impl., Inc.

EX 2-3110



MINNEAPOLIS, KANS.

USED COMBINES AT MARYSVILLE, KANS.

1 1966 C II Gleaner, 16-ft.
 1 1963 C II Gleaner, 14-ft.
 1 1962 A Gleaner, 14-ft.
 1 1960 A Gleaner, 14-ft.
 1 1961 IHC 101, 12-ft.
 1 1955 John Deere 45, 10-ft.
 1 1954 M-H 90, 14-ft.
 1 1952 M-H 27, 14-ft.
 1 1952 M-H 26, 12-ft.
 1 1952 Minneapolis, 14-ft.
 1 1950 IHC 25, 6-ft.
 1 1955 66 All Crop, 5-ft.
 2 1951 60 All Crop, 5-ft.

Marysville Mchry.

East US 36



HI 3-4746

MARYSVILLE, KANSAS

CHECK THESE PRICES ON COMBINES & BALERS

2 Oliver combines, Model 33, 14', one real good
 IHC No. 181, 18', o'hld.
 1965 Oliver 430, 14'

A-1 BALERS

New Holland 68T \$795
 New Holland 270T \$895
 New Holland 68W \$895
 Several used rakes, different makes, priced from \$100 to \$150
 Like new Oliver 4340 plow, 4-btm.
 Extra good Oliver 880, 1958
 Good Moline GB
 Extra nice IHC Model M
 Fordson Major diesel

AUTOMOTIVE

1952 Chev.; 1949 GMC trucks
 A good house trailer

LINDQUIST IMPL.



TA 3-2451

808 N. 10th

SALINA, KANSAS

FOR SALE - 3-14 John Deere hydraulic plow on rubber \$200.
 Ed Malir, Wilson, Kans. Phone 658-4125. x16

Reynolds Sale Barn

ABILENE, KANS. CO 3-3394

Selling Every Friday

Night Sales 8:00 P.M. Thru Harvest

An exceptionally large run of cattle for this time of year moved through the ring last Friday night. A good sized crowd watched many buyers pay strong to higher prices for all classes offered.

ALREADY CONSIGNED FOR FRIDAY, JUNE 23—
 50 "weigh-up" cows.
 40 mixed feeder heifers 650-800 lbs.

Following is a listing of a representative sales June 16:

BULLS					
1 bull -----	1650 @	24.20	25 blkwhif steers	545 @	29.00
1 charolais bull -----	1730 @	24.00	4 whiface steers	566 @	28.00
1 angus bull ----	1485 @	23.30	31 whiface steers	668 @	27.05
			35 whiface steers	655 @	26.95
			29 wff&char steers	722 @	26.85
COWS			11 crossbreed str	603 @	26.90
1 cow-----	1030 @	20.00	12 whiface steers	703 @	26.75
1 cow-----	1220 @	19.00	2 whiface steers	880 @	25.10
1 cow-----	1175 @	19.00	2 whiface steers	812 @	25.10
1 holstein cow --	1355 @	19.00			
1 holstein cow --	1400 @	18.75	STOCKER & FEEDER HEIFERS		
1 holstein cow --	1255 @	18.85	3 black heifers	350 @	27.10
1 holstein cow --	1170 @	18.90	3 blkwhif heifers	443 @	26.20
1 holstein cow --	1235 @	18.50	3 shthorn heifers	445 @	25.50
1 holstein cow --	1330 @	18.25	11 blkwhif heifers	570 @	25.10
1 holstein cow --	1550 @	18.10	36 whiface heifers	619 @	25.05
1 cow-----	1045 @	18.65	5 black heifers	568 @	24.70
1 cow-----	1015 @	18.40	4 black heifers	520 @	25.60
1 holstein cow --	1270 @	18.40	12 crossbreed hfrs	720 @	24.50
			7 crossbreed hfrs	637 @	24.25
STOCKER & FEEDER STEERS			2 black heifers	535 @	25.00
29 whiface steers	522 @	30.05	2 whiface heifers	550 @	25.10

OUR FRIDAY NIGHT SALE HAS BROUGHT NEW BUYERS TO THE BARN.

BRING YOUR CATTLE IN AT ANY TIME DAY OR NIGHT; WE'LL HANDLE THEM FOR YOU AT YOUR REQUEST.

For information, requests for appraisals at no obligation, or inquiries regarding coming sales, call me at any time, day or night.

DUDE REYNOLDS Abilene, Kans.
 CO 3-3394

WANTED — PICKUP attachment for New Holland No. 610 or 611 field cutter. John Roesner, Route No. 3, Salina, Kans. Phone TA 7-6767. x17

FOR SALE — 1958 John Deere 55 combine, 14-ft. straw chopper, good condition. Albert J. Dietrich, Route 3, Junction City. Phone CE 8-3004. x17

FOR SALE — Nu-Way hay fork. Leonard Waters; Manhattan, Route 2, Phone PR 6-8437. x17

FOR SALE — 5 ft. Model 60 AC combine, PTO, dual wheels, many extras, good condition. Sam Euler, Dwight, Ks. Ph. 913 482-3364. x18

FOR SALE — 1966 New Holland swather, 14 ft., excellent condition, cut about 100 acres. Owner in service. Call 913 225-4575, Brookville. SB16

FOR SALE — Jamesway bulk tank, 630 gallons, 2 years old. John Svoboda, Dwight, Ph. 482-3230. x18

REAR TRACTOR TIRES, 13.6x38, 4 ply — \$49 plus second resalable tire and Fed. Excise Tax. Fink Tire Store, Wamego, Kansas. SB19

1948 MODEL 55 John Deere combine, always shedded & ready to go. Bill Graham, Mil-tonvale, Kans. x16

FOR SALE — Ausherman combine bars. Airport Service, Clay Center, Phone ME 2-2785. x16

TRACTORS

Ford, 1964 5000 diesel, Super Major, very clean, one owner \$3195
 John Deere 1951 A, powr-trol, good \$695
 1944 John Deere B, starter & lights, power trol, good hay tractor \$150
 1947 John Deere B, starter, lights power trol, good condition \$395
 Due In — 1960 John Deere 3010 Diesel, fully equipped, ad front axle.

MACHINERY

Allis Roto Baler, 1958 model \$495
 IHC 12-ft. springtooth harrow, with smoothing attachments \$150
 IHC no. 37 11' wheel disc \$295
 IHC no. 530 3-14 plow, very good \$395
 John Deere 2-row quick tach, cultivators \$750

COMBINE

1956 John Deere 45, 10-ft. bar, good \$1295

TRUCKS

1966 Ford F100, ½-ton V-8, long WB, wide bed, rear bumper, overdrive, custom cab, radio, lots of extras, clean, 6 ply tires \$1695
 1961 Jeep Pickup, front wheel drive, very low mileage, exceptionally good rubber, slick and clean \$1095
 1963 Chevrolet Corvan, panel, ideal for delivery, painters and contractors \$825
 1964 Ford ½-ton Pickup, 4-speed transmission, very clean and slick \$1195
 1962 Ford 350 1 ton, V-8, flat bed and grain sides, dual wheels \$995
 1963 GMC 1 ton Panel, dual wheels \$850
 1965 GMC ½-ton, 3 speed, wide bed, long W.B., radio, west coast mirrors, good \$1395

Call Us Collect CE 8-4103

BOWMAN'S

JUNCTION CITY
 Your
 Junction City - Manhattan Area
 John Deere Dealer

Miscellaneous

ARMY SURPLUS OUTSIDE WHITE PAINT

\$2.93

Per Gallon
 imberly Washable Vinyl Latex Wall Paint

FAITH'S Furniture

East US 24
 MANHATTAN

FOR THE ride of your ride a Big Horn saddle Key Milling. Clay Center, Kansas. SB17

FOR SALE — 6 and 7 inch beams and channel iron. Used pipe all sizes, new iron sizes. Airco Welders, cutting torches and supplies. Clay Center Salvage, Clay Center, Kansas.

FOR SALE — Used lumber, building tile, misc. building materials. William Ryan, Millersburg, Kansas. Phone IN 3-5357.

FOR SALE — 12 coils of 14 inch diameter 14½ gauge 55 ft. Sheffield baling wire. Give 2 baler boxes for wire. Herbert H. Berg, Frankfort, Kans.

Pets

SALE — 5 yr. old gelding. Phone J1 Manhattan.

Mobile Homes

BY 55' KIT Olym Home, unfurnished, space, styrofoam insulation, air-conditioning. Kitchen, bathroom, 2 rooms, large living room plumbed for water heater. 2 year old condition. 1964, Route No. 3, Manhattan.

Lost and Found

10x20 truck tire. Strong City area. Reward — Phone J1, Manhattan.

REMINDER

Due to reason of health, Degitz will sell contents of his business in Junction City, Kansas.

115 East 6th Street, JUNCTION CITY, KANS.

Wedn., June 2

Starts 12:30 Noon

Wrench repair bench, bolt cutter and sett, wheel rim shrinker, truck yoke, buggy, wagon wheel, Lit power hammer, Chas. Degitz & controls for f, 35 tongs every, smith hammers, s, and hundreds of items, collectors'

For Full Listings See Grass & Grain June 2

Chas. Degitz
 Aucts C. W. Crites
 and Ron Montgomery

Riley Soil Test Plan In Mid-July

MANHATTAN — "There is \$4 income for every \$1 invested in fertilizer," says Charles White, Riley County agricultural agent, emphasizing a point about the soil testing program being promoted in his county.

Figuring that a major increase in yields can be realized in Riley County with an effective program promoting increased fertilizing, White says that nearly complete soil tests must be made in the county to get best use of fertilizers without overspending for it.

White says a Soil Testing Week designated for July 10-15 is intended to get Riley County farmers to take soil samples from which tests can be made to determine fertilizing programs on a per-farm basis. The extension office, township representatives, or county fertilizer dealers can explain details of the program or receive soil samples.

Scorn From Nebraska On Bargaining Board

CHADRON, Nebr. — Some ideas currently being pushed by Secretary of Agriculture Orville Freeman relative to new laws protecting farmers rights to bargain collectively brought forth a "go slow" warning here at the annual convention of the Nebraska Stock Growers Assn.

Taking Freeman to task, especially for his advocacy of a government-directed National Farm Bargaining Board to operate much like the National Labor Relations Board, was E. H. Shoemaker Jr. of North Platte, president of the Nebraska Stock Growers.

"I believe that such a revolutionary idea in commodity marketing has many pitfalls and would lead to greater government control over the livestock industry and eventually push our industry into marketing and price controls under strict government regulation. Our collective action must be voluntary," Shoemaker declared.

"We must work collectively with other strong producer associations to carry out our own 'supply management' voluntarily, and I stress the point that we are now working closer than ever before with farm and feeder groups to achieve better communication and working plans to battle the problems of overproduction, 'phantom cattle' and overweight feeding," the NSA president remarked.

GEARY DAIRY PRINCESS IS GAIL LUTTMAN
JUNCTION CITY — Gail Luttman has been named Geary County Dairy Princess. She is from Wakefield, the daughter of Mr. and Mrs. Dallas Luttman.

Pollution Figure Resigns From Job

Mel Gray, one of the principal speakers for the state department of health in its continuing dialogue with state livestock interests over water pollution, has resigned. His new job, which he starts July 1, will be as chief of the surface water section in the technical services program at Ada, Okla.

The Water Research Center there is part of the Federal Water Pollution Control administration of the Department of Interior. Part of his district, which includes parts of 11 states, is the southern part of Kansas.

Gray has been with the state department of health for 11 years, commuting to his Topeka office from Salina.

RCA CUTS PRICES ON LOW END OF COLOR TV

Color television, with sales at less than thrilling levels to manufacturers, may get a bit more competitive. RCA said last week it suggested prices be lowered to \$369 on the low end of its 18-inch sets and priced all its 20-inch sets at less than \$500. Lowest price on a 20-incher is suggested at \$399.

REMINDER

AUCTION

As I have sold my farm I will sell at auction the following listed items located 4 miles west & 1 1/2 miles south of Industry or 5 miles north, 1 mile east & 1/2 mile north of Talmage, Kans.

Wedn., June 21

Starts 12:30 Noon

Farm Machinery

1954 JD Model 55 combine, 14 ft. cutting bar with 18-26 reg. tractor tires & large tires on rear wheels
JD pickup attach. for Model 55 combine
JD curler, good (2-row)
IHC grain drill, 8-16 with fert. attach., rubber press wheels
Van Brunt 12-10 grain drill, semi-deep furrow
IHC 8-16 grain drill
Other machinery, trucks, miscellaneous and some household goods.

For Full Listings See Grass & Grain June 13

R. S. Ausherman
Aucts. Schnell, Remy and Schnell.

Administrator's Sale on Saturday, June 24, 1967

at 12:30 P.M.

At 304 N. Olive Street, Abilene, Kansas, we will sell at public auction all of the household items belonging to the estate of Isaac Leshar Pyke, deceased.

Gold Columbia watch; gold watch band; silver Elgin ladies wrist watch; like new folding wheel chair; 3 rocking chairs; 2 lawn chairs; library table; stands; dining table and 7 chairs; buffet;

Electrolux sweeper; 3 electric fans; 3 gas heaters; step-table; gas range; gas refrigerator; kitchen table and 3 chairs; kitchen utensils and dishes; kitchen base cabinet; platform scales; vapor-cooler; 2 beds with springs; 1 roll-away bed; 2 dressers;

2 trunks; sewing machine; blender; tools; 2 pressure canners; pipe threaders; vise; rakes; hoes and shovels; 2 child wagons; antique wheelbarrow; canned goods; wall clock; coffee grinder; step ladders; mirrors; pictures and other miscellaneous items.

Among these items are a number of antiques.

Delbert V. Pyke Administrator

Carl Schnell, Lee Remy, Auctioneers.
Royer, Royer & Johnson, Attorneys.

Tornado Cuts Off Area Farm Power

CONCORDIA — About 725 farm customers were without electric power after the tornado which struck in Cloud County, pushing over 175 poles and doing other damage to equipment of NCK Electric Cooperative.

Crews from REA co-ops at Clay Center and Council Grove helped with repairs, with about 90 percent of the customers who had disrupted service having power restored within two days.

ORGANIZE A GEARY COUNTY FIRE DISTRICT
JUNCTION CITY — A rural fire district for Geary County has been approved by the board of county commissioners.

It will include all of Geary County with the exception of

Junction City, Milford and Grandview Plaza, and a part of Liberty Township, which is served by rural districts in Morris and Wabaunsee Counties.

CATTLE SALE EVERY MONDAY

HOG SALE EVERY WEDNESDAY

Sale Time 12:00 Noon
BEATRICE, NEBR.
Beatrice 77
LIVESTOCK SALES CO.
2 miles north of Beatrice, Nebr., opposite the airport.
Phone 223-3571
CLARENCE TEGTMEIER
DELMAR JURGENS
JB THIMM

Wednesday JUNE 21

Starts 6:15 p.m.
(Note Sale Time)

We will sell the following items at public auction at the old bank building located on Main St. in Green, Kansas.

Household Goods

Magnus electric organ, good Chest drawers with mirror, new
Gossip bench (new)
Occasional chair (new)
3 blonde coffee tables (new)
1 corner table (new)
Rocker; 3 metal lawn chairs; 3 kitchen chairs; metal kitchen cabinets; wooden cabinet; buffet and chairs; 2 library tables; lawn glider, metal; floor lamp; 7 table lamps; card table; 2 TV tables; 2 old trunks; divan and chair; TV rotor.
Cistern pump; kitchen sink; Electrolux sweeper; bathroom heater; oil heater; late type bath tub; dishes; hand made quilts and quilt tops; crochet table cloth and buffet cloth, large size, very nice.
Chest Tudor plate silverware; cafe pie case (glass); 4 electric irons; Daisy churn; 1 quart size thirst extinguisher; carbide gas light fixtures.
Antique silver butter dish,

very nice; antique tooth pick holder; antique flowered plate; antique pitcher and 6 glasses; gold trimmed.
Other antique items
5 new steel posts; post auger; jigsaw; 1/4 hp electric motor; grindstone, with motor; 3 ton hyd. jack; other misc. items too numerous to mention.

TRUCK

1953 Ford 3/4 ton pickup, V-8, 4-speed, good rubber, grain sides, overloads, good shape.

Real Estate

Lots 21 and 22 in Block 1 of Charles T. Miller's 1st addition in the town of Green, in Clay County, Kansas.
Has stone bank building 26x60; electricity, water, good roof and floors, well located, suitable for business or storage.
Terms and conditions given at sale time.
Not Responsible for Accidents

JOE & SUSIE SCHILTZ, Owners

Aucts: Foster Kretz & Elmo Steffen
Clerk: Chas Bigler,
Clay Center, Phone Morganville WA 6-4122
Green, Kansas

AUCTION SALE

Saturday JUNE 24th

Starts 9:30 a.m.
Lunch at Restaurant Nearby

In order to liquidate our former hardware and paint store and make more storage room for our antique shop we will sell at public auction at our store building in MILFORD, KANSAS, the following described items:

LEFTOVER FROM HARDWARE AND PLUMBING STORE

1/2 HP Burks deepwell pump and tank (nearly new)
New window screens
New 6' step ladder
Miscellaneous hardware
Lots of new paint
Pipe fittings
2 wheel trailer chassis
Lawn sweeper

FURNITURE AND HOUSEHOLD

Oak chairs, tables (all kinds), rocker, studio divan (good, makes bed);
German lamp table, small dining table w/ 4 chairs, radios, metal sink & cabinet, metal base cabinet, metal wall cabinet, wood base cabinet;

2 Kenmore automatic washers, very good Maytag wringer washer, 36" gas range, cooking utensils, dishes, fruit jars, garden & misc. tools.

ANTIQUES

Refinished maple school desk, double seat school desks, blackboard slate, springwagon seat, milk cans, stone jars & jugs, Daisy churns, oil lamps, phonograph, vacuum sweeper, copper boiler, shoe lasts, commodes, dressers, chest of drawers, oak bed, walnut pie safe, large oak mirror, sideboard, trunks, camelback trunk, lanterns, small wood stove, monkey stove, books, and many, many more items not listed.

Everything to sell, no reserve.

MELVIN and JOANNE WOOD

Aucts: C. W. "Bill" Crites, Ron Montgomery.
Aucts: C. W. "Bill" Crites, Clerk: Everett Sheets.
Ron Montgomery.

G&G Calendar

- June 20 — Holstein dispersal sale southeast of Wamego, Kans., Mr. & Mrs. Thomas E. Maguin. Auct-Sale mgr. Donald J. Bowman.
- June 21 — Complete close out of blacksmith shop, Junction City, Charles Degitz, owner. C. W. "Bill" Crites, Auct.
- June 21 — Real estate & household goods in Green, Kans., Joe & Susie Schiltz. Auct. Foster Kretz.
- June 21 — Farm sale northeast of Talmage, Kans., R. S. Ausherman. Aucts Carl Schnell, Lee Remy & Wm. Schnell.
- June 23 — Shop tools & miscellaneous. Beggs Fixit Shop, Salina. Aucts Frank Harz & Bob Perry.
- June 24 — Tractor, house trailer etc., Benson Estate. Aucts Bob Perry & Frank Harz.
- June 24 — Household & antiques at Manhattan. Mrs. Ella Smith Estate. Lawrence Welter, auct.
- June 24 — Cleanup sale of hardware stock in Milford, Melvin & Joanne Wood. Aucts C. W. Crites and Ron Montgomery.
- June 24 — Administrator's sale of household goods and antiques in Abilene, estate of Isaac Leshner Pike. Aucts. Schnell Bros. and Lee Remy.
- June 24 — Building material, household goods & antiques in Milford, Melvin & Joanne Wood. C. W. "Bill" Crites, auct.
- June 24 — Household goods, surplus building materials & antiques in Milford, Melvin and Joanne Wood. Auct. C. W. Crites.
- July 12 — Farm sale near Detroit. Mrs. Gail Betts. Foster Kretz, auct.
- July 12 — Farm sale southwest of Hope, Mrs. Clarence Rock. Aucts. Schnell Bros. and Lee Remy.
- July 26 — Complete dispersal of Holstein cows & bred heifers in Leoti, Kans. Sale mgr. John Carlin, Smolan.
- July 27 — Household sale in Clay Center. Foster Kretz, auct.
- July 29 — Real estate and household sale east of Manhattan, US24, Mrs. R. P. Ridgeway. Lawrence Welter, auct.
- Oct. 9 — Fall hog sale in Newton, Kans., Balthrop Farms of Wichita.

- Oct. 28 — Kansas Milking Shorthorn Society state sale in Hutchinson, Freg Rogers, sale mgr. Dick Sears, auct.
- Nov. 3 — 5th annual Hammarlund-Shamrock Angus sale. St. Marys, Kansas.
- Nov. 4 — All breed calf sale in Manhattan, Olson, Fagerberg & Hawkinson, joint sale.
- Nov. 15, 1967 — Registered Hereford sale, Smolan, Johnson Hereford Farms; Elmer L. Johnson & Sons.
- Nov. 18 — Kocher Herefords production sale in Onaga, Herman Kocher & Sons.
- Nov. 18 — State ewe sale in Hutchinson, Kans. Purebred Sheep Breeders Assn., V. E. McAdams, sec.
- Nov. 21 — Hereford production sale in Marysville, Peterson's Herefords. Elmer Peterson & Son.
- Nov. 22 — Hereford production sale in Marysville, Peterson's Herefords. Elmer Peterson & Son.
- Nov. 25 — Fall sale of Arbutnot Herefords, Haddam, Ks. Bob Arbutnot.
- Jan. 20, 1968 — Rebenstorf Herefords Production sale, Elmer Rebenstorf, Sylvan Grove, Kans.

RAMONA GIRL IS MARION DAIRY PRINCESS
HILLSBORO — Christine Schubert of Ramona has been selected as Marion County Dairy Princess.

FOUR AREA STUDENTS WITH CO-OP GRANTS

Four G&G area students at Kansas State University will hold \$400 scholarships from Farmland Industries at K-State next year. They are Larry Huston, Abilene; William Oswald, Little River; Ronald Strahm, Sabetha; and Eldon Trost, Concordia.

AUCTION

Household Goods
Estate of Mrs. Ella Smith
830 LARAMIE
MANHATTAN, KANS.

Sat., June 24

Commencing at 1:00 p.m.

1 Oakland white stove, gas; 1 G.E. refrigerator (like new); 1 Coldspot refrigerator (new); 1 G.E. electric fan; 1 G.E. electric iron; table and chairs; oak buffet & mirror; 2 kitchen-cabinets.

Gas heater; Wheeler-Wilson sewing machine; 1 overstuffed davenport; 1 overstuffed chair; electric Maytag washer; 1 old fashioned library table; 6 sturdy tables; 1 wool rug, large size; 9x12 rug; 3 beds, springs and mattresses; 2 bunk beds; 3 chests of drawers; vanity table and bench; 1 full mirror; Simmons bed, springs and mattress (twin size); 4 rocking chairs; 1 lot of chairs; old dresser; 5 dressers with mirrors; various lamps; bookcase with glass door; wardrobe for clothes; 1 set Borg scales; smoking stand; music cabinet; 2 coat racks; 2 old radios; 1 Hoover hand dustette; bed pillows; bed spreads; old fashioned trunk, oval top; 2 book racks; heavy winter quilts; 2 lawn mowers; step ladder.

Large offering of garden tools and hand tools and other articles too numerous to mention. This is a large offering of household goods in good condition.

TERMS—CASH.

Ella Smith Estate
Howard Fick, Admr.
Welter & Applegate, Aucts.
Harold Carlson, Clerk.

June 20, 1967

22

Grass & Grain

New Hog Cholera Vaccines Tested

Hog cholera is not licked in Kansas. Complete eradication is the goal, but producers are facing some unsolved problems yet, Dr. Homer Caley, Extension veterinarian at Kansas State University, reports.

Outbreaks of hog cholera are often associated with recent vaccinations. Kansas is currently conducting an eradication program, and efforts are hampered by frequent outbreaks, Caley says. However, these outbreaks have stimulated research for new vaccines that are compatible with the program.

Several vaccines that are relatively safe and effective have been tested by scientists at the United States Department of Agriculture. The Swine Disease Committee of the Kansas Livestock Association, composed of producers, regulatory officials, veterinarians, diagnosticians, and Extension specialists, is working to implement the cholera eradication program in Kansas.

The K.L.A. committee recommends that swine producers use only the tissue cultured modified live vaccines.

Serum should be used with the vaccine at the time of vaccination to give a short-term passive immunity in addition to the active immunity received from the vaccine, the veterinarian points out.

He recommends that producers check with county agents or local veterinarians for more information on vaccines.

BRITISH FORD UNVEILS AN ELECTRIC CAR

Ford Motor Company's British subsidiary has produced a prototype electric car called the Comuta which has a range of 40 miles between battery recharging and a top speed of 25 miles per hour and can accommodate two adults and two children. Ford says, however, it isn't considering going into production.

HORSE SALE
Thurs. — June 29, 7 p.m.
All Consignments Welcome
LYON COUNTY LIVESTOCK AUCTION
Emporia, Kansas

SERVICEABLE BULLS WITH WEIGHT RECORDS
Priced . . . \$300 to \$500

GRANT POOLE
MANHATTAN, KANS.

Located 4 mi. south of I-70-K intersection, 2 mi. west on Hwy. Dowell Creek Rd. Ph. PR 8-4323

The Growing Hog Market Is At

WASHINGTON SALES CO.

TRY US SOON

HOGS every TUESDAY
CATTLE every WEDNESDAY

A Growing Market for Finished Cattle

All Sales Start 1:00 p.m.

ED BURT

Barn Phone EA 5-2266

Residence EA 5-2393

Washington, Kans.

J.C. LIVESTOCK SALES
SALE EVERY SATURDAY

We had a few more cattle than we expected for this season, and they sold on a steady to strong market. The cow market was unusually good, prices ranging from \$17.50 to \$19.00. Heifer cows and heiferettes went at \$19.20 to \$21.00.

Steer calves weighing 350-450 brought \$28.50 to \$31.00; the 500 to 650 lb. class going at \$25.50 to \$27.50; and heifer calves at \$24.50 to \$26.00.

HOGS again showed in great numbers, around 1200 going through the ring last Saturday. The run on fat hogs and shoats was particularly heavy, and while prices were somewhat down as they were in all markets, we showed again that you'll always find a solid market for your swine at Junction City.

***** REMEMBER: SALE EVERY SATURDAY *****
***** AS USUAL THROUGHOUT THE HARVEST *****

Following is a sampling of the swine market:

HOGS					
59 mixed butchers	205 @	21.85	39 mixed butchers	231 @	21.70
26 mixed butchers	205 @	21.65			
25 mixed butchers	205 @	21.80			
12 hamp butchers	206 @	21.95			
42 mixed butchers	216 @	21.95			
10 mixed butchers	212 @	22.10			
8 mixed butchers	216 @	21.95			
			SOWS		
			4 white sows	495 @	16.50
			7 mixed sows	485 @	16.70
			3 hamp sows	395 @	18.50
			1 hamp sow	395 @	17.50

LICENSED AND BONDED
BARN PH. JUNCTION CITY CE 8-1471

If you have livestock to appraise, call:

VERN LANGVARDT, Manager, 502 UPLAND
HOWARD LANGVARDT, Auctioneer, 520 UPLAND
HERB NEUMEYER, White City, Phone 349-2863

Ronald Rice Motors, Inc.

CHEVROLET OLDSMOBILE CADILLAC
North Kansas' Largest Volume Dealer
NW 2nd Phone CO 3-4000 ABILENE, KANS.

June Truck Clearance

Call Or
See Us Today



Erv Eisenhauer
Truck Mgr. CO 3-1593

ONE OF THE NICEST SHOWINGS OF NEW & USED TRUCKS & PICKUPS

- 1966 CHEVROLET 1/2-Ton, LWB, 3 speed 6
Radio, heater, hitch, 2 to pick from.
- 1966 CHEVELLE El Camino, Nice
Radio, heater, V-8, automatic transmission.
- 1965 CHEVROLET 1/2-Ton V-8
Overdrive, heater, hitch, real clean.
- 1963 CHEVROLET, 1/2-Ton LWB, V-8, 4 speed
Heater, hitch, overloads, new paint, good tires, local one owner.
- 1963 FORD F-100 LWB, V-8, 4 speed.
Radio, heater, hitch, overloads, local one owner.
- 1963 CHEVROLET 3/4-Ton, 4 speed.
Heater, hitch, new paint. 700-15 tires, real clean.
- 1962 FORD F-100 1/2-Ton
Heater, hitch, V-8. Local one owner, low mileage.
- 1961 CHEVROLET Tandem H.D. Unit, with 12-ft. dump body
5 speed transmission, 2 speed axle, 348 motor, good tires, priced to sell.
- 1960 CHEVROLET 1/2-Ton C & C, V-8 motor.
84 C.A.-750 front-825 rear tires, would make a real good harvest unit.
- 1960 CHEVROLET 1/2-Ton LWB, 6
Radio, heater, hitch, real good.
- 1958 WILLYS Jeep, 6-cyl., 4-wheel drive
A real good used unit, good mechanically, priced to sell.
- 1957 CHEVROLET 1/2-Ton LWB
Radio, heater, hitch, nice.
- 1949 DODGE 1 Ton Power Wagon, 4-wheel drive
"Makes good feed wagon."

ALL THESE UNITS ARE PRICED RIGHT
WE ALSO HAVE A FEW OLDER UNITS

OVER 50 USED CARS
NOW SELLING ON JUNE CLEARANCE

to give a short-term immunity in addition to the vaccine, the veterinarian recommends that you check with county veterinarians for more information on vaccines.

SH FORD UNVEILS ELECTRIC CAR
Motor Company's subsidiary has produced a new electric car called the "Ford" which has a range of 100 miles between battery charges and a top speed of 40 miles per hour and can carry two adults and two children. Ford says, however, considering going into

HORSE SALE
— June 29, 7 p.m. Consignments Welcome
LYON COUNTY STOCK AUCTION
Emporia, Kansas

TEXAS STOCKMEN Plan Fall Show
— Tentative plans have been made by Greenwood County Cattlemen's Association to stage an annual cattlemen's banquet and banquet here on Oct.

GRANT POOLE
MANHATTAN, KANS. — 4 mi. south of I-70, section, 2 mi. west of I-70, Creek Rd. Ph. PR 8-2000

Market Is At CO.
All Sales Start 1:00 p.m.

ED BURTON
Residence EA 5-2393
ans.

K SALES TURDAY

ted for this season, t. The cow market \$17.50 to \$19.00. 20 to \$21.00.

28.50 to \$31.00; to \$27.50; and

ound 1200 going on fat hogs and prices were some- we showed again your swine at

TURDAY *** THE HARVEST *******

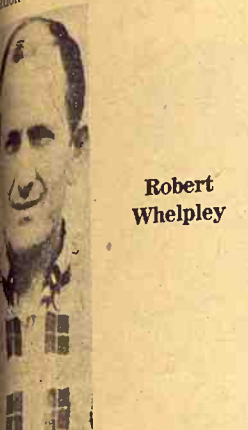
ker:

ed butchers 231 @ 24.00

DEED CITY CE 8-147

raise, call: 502 UPLAND 502 UPLAND Phone 349-2863

McPHERSON SOILS MAN COMES FROM HOLTON
McPHERSON — Robert Whelpley is the new head of the McPherston County Soil Conservation District. He comes from



Robert Whelpley

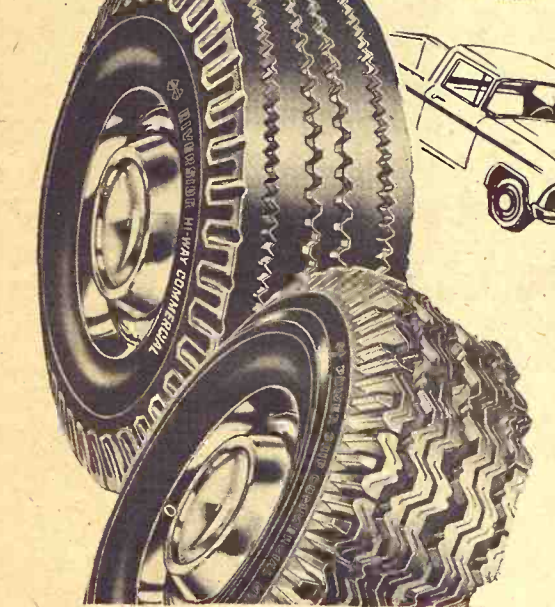
tion and has been in SCS for 16 years, heading the McPherston County district before coming here. He succeeds Gene Whelpley, who has become the SCS district supervisor.

Eureka Stockmen Plan Fall Show

EUREKA — Tentative plans have been made by Greenwood County Cattlemen's Association to stage an annual cattlemen's banquet and banquet here on Oct.

Committees have been appointed for activities when cattlemen, commission men, old-timers and friends congregate in the heart of the Flint Hills at the close of the grazing season. The Greenwood Hotel here has been a mecca for these meetings many decades.

The Cow Belles, auxiliary of the cattlemen's association, will have activities during the day for women.



1010 West 6th

Save on Pickup Tires at FARM TIRE CENTER Junction City, Kans.

No Money Down • Free Mounting

RIVERSIDE® HI-WAY COMMERCIAL

17⁸⁸ 6.00-16 Plus F.E.T. **17⁸⁸** 6.50-16 Plus F.E.T. **18⁸⁸** 7.00-15 Plus F.E.T. **19⁸⁸** 6.70-15 Plus F.E.T.

If initial cost is a major consideration, then this tire is for you! Look at the close zig-zag design that gives you the kind of traction you need. Look at the deep buttress grooves that cool the tire to give you greater safety on or off the road. Consider the number of recaps that it can take to give you longer service at a low cost!

ONLY \$2 MORE BUYS A MUD AND SNOW TIRE

RIVERSIDE® POWER GRIP COMMERCIAL

19⁸⁸ 6.00-16 Plus F.E.T. **19⁸⁸** 6.50-16 Plus F.E.T. **20⁸⁸** 7.00-15 Plus F.E.T. **21⁸⁸** 6.70-15 Plus F.E.T.

This powerful mud and snow tire combines smooth over-the-road service with deep-biting traction. This means that if you are in the delivery or farm business, where traction can mean time savings as well as fuel savings, this Power Grip is built for you! Its skid resistor tread is backed with recappable 6-ply rated nylon cord body.

NO MONEY DOWN • FREE MOUNTING

IMAGINE ! REPLACEMENT LEVEL TIRES AT THIS LOW PRICE

RIVERSIDE HI-WAY TRACTION
On or off the road, no more rugged, better performing replacement level tire. Nylon Cord body.

3766
8.25x20 Plus F.E.T. & Recappable Casing

Priced so low we can't show prices until we know your needs . . . so call or stop in your Ward truck tire center today.

JUNCTION CITY Phone Collect CE 8-4350

Sale Every Wednesday

Hogs 12 noon
Cattle 1 p.m.

EMPTY PENS UNTIL JULY 5
Hope You Have A Fine Harvest.



SEE
YOU
JULY
5
AT
NEWTON

BARN PHONE AT 3-5566

There is someone at the barn all day Tuesday & Wednesday & Thursday morning. Otherwise call:

AUCTIONEER:

Floyd Gehring
Moundridge Phone 345-8195

NEWTON

LIVESTOCK & COMMISSION CO.

NEWTON KANSAS

Sale Every Thursday

Hogs 11:30 a.m.
Cattle 1 p.m.

We had a larger run of cattle this week than last. Stocker and feeder cattle were 50¢ to \$1.00 higher with very good demand for all classes of stocker and feeder cattle. Cows were steady to strong. The extreme top on butcher hogs was \$22.15 with the bulk going for \$21.80. Feeder and weaning pigs were lower. The following is a sampling of our consignments:

NEXT THURSDAY, JUNE 22
Final Sale Before We Close for the Harvest.
No Sale June 29 and July 6, re-opening Sale July 13
We hope you'll have a good harvest.

FAT CATTLE & FEEDERS		HEIFER CALVES	
11 whiface steers	569 @ 29.75	4 black heifers	241 @ 28.00
13 whiface steers	722 @ 25.55	1 whiface heifer	280 @ 27.75
5 whiface steers	794 @ 25.50	1 whiface heifer	400 @ 27.75
2 whiface heifers	573 @ 24.10	1 whiface heifer	490 @ 24.50
1 whiface heifer	725 @ 23.90	1 whiface heifer	365 @ 23.00
1 holstein steer	750 @ 23.90		
1 blkwhif heifer	665 @ 23.90		
7 whiface heifers	729 @ 23.75		
1 whiface steer	600 @ 23.60		
1 blkwhif steer	770 @ 23.30		
1 whiface heifer	675 @ 23.10		
1 blkwhif steer	860 @ 22.60		
2 roan heifers	865 @ 22.50		
COWS		HOGS & PIGS	
1 whiface cow	865 @ 19.60	13 mixed fats	230 @ 22.15
1 holstein cow	1675 @ 19.10	53 mixed fats	204 @ 22.05
1 holstein cow	1320 @ 19.00	26 mixed fats	219 @ 21.95
1 whiface cow	1115 @ 18.90	15 hamp fats	229 @ 21.90
1 whiface cow	950 @ 18.60	20 mixed fats	222 @ 21.80
16 whiface cows	1055 @ 18.55	14 red fats	256 @ 21.45
		10 red sows	361 @ 18.40
		2 hamp sows	417 @ 17.10
		1 white sow	530 @ 16.10
		1 hamp boar	205 @ 22.50
		1 white boar	315 @ 17.75
		1 white boar	375 @ 13.40
		1 hamp boar	590 @ 13.20
		37 mixed pigs	@ 15.00
		5 white pigs	@ 13.75
		27 hamp pigs	@ 12.50
		8 red pigs	@ 10.25
		8 hamp pigs	@ 8.00
BULLS		BULL & STEER CALVES	
1 whiface bull	1470 @ 24.30	1 whiface steer	495 @ 31.00
1 whiface bull	1575 @ 23.60	1 black steer	490 @ 30.00
1 whiface bull	1180 @ 23.10	1 whiface bull calf	475 @ 30.00
		1 whiface steer	500 @ 28.10
		1 whiface steer	400 @ 28.00
		2 black steers	493 @ 26.20

RALEIGH BREEDING, MANAGER

barn HI 3-3671; home HI 3-3547

Auctioneer: Larry Lagasse, Ph. Concordia, Kans. CH3-1714

MARYSVILLE

LIVESTOCK & COMMISSION CO. MARYSVILLE, KANSAS

Sell At St. Marys

Sell
Or Buy

Cattle & Hogs

By
Auction

Tuesdays

Due to the flooding and muddy roads this week, our receipts were very light, not enough to test the markets. We thought of canceling the sale but decided there might be some in distressed conditions that would have to move some livestock. We had a good run of stock pigs. The following is a sampling of the sale:

STOCKER & FEEDER STEERS		
1 black steer	-----590 @	26.90
1 blkwhif steer	-----645 @	26.10
2 black steers	-----595 @	25.90
1 blackwhif steer	-----570 @	25.50
1 whiface steer	-----845 @	25.30
11 whiface steers	-----668 @	25.20
1 black steer	-----860 @	24.60
1 black steer	-----690 @	22.40
1 broface steer	-----875 @	22.20
5 holstein steers	-----1030 @	21.65
1 brownswiss steer	-----1020 @	21.30

STEER CALVES		
1 whiface steer	-----390 @	30.75
2 black steers	-----420 @	28.80
2 black steers	-----507 @	28.30
1 blackwhiface steer	-----290 @	27.50
1 whiface steer	-----415 @	26.70
2 black steers	-----532 @	26.60
6 whiface steers	-----523 @	26.40
1 roan steer	-----460 @	25.75
1 black steer	-----460 @	25.75
1 blackwhiface steer	-----530 @	25.30
1 black steer	-----370 @	25.25
1 whiface steer	-----476 @	24.75

STOCKER & FEEDER HEIFERS		
5 black heifers	-----600 @	24.50
8 whiface heifers	-----656 @	24.00

3 whiface heifers	-----686 @	23.80
1 blackwhiface heifer	-----780 @	23.25
1 whiface heifer	-----820 @	23.10
1 whiface heifer	-----650 @	19.40

HEIFER CALVES		
2 whiface heifers	-----267 @	28.90
5 whiface heifers	-----508 @	24.60
4 whiface heifers	-----542 @	24.50
2 black heifers	-----517 @	24.50
7 black heifers	-----483 @	24.40
1 whiface heifer	-----510 @	24.00
1 whiface heifer	-----490 @	23.80
2 black heifers	-----440 @	23.00
4 whiface heifers	-----418 @	22.90

COWS		
1 holstein cow	-----1090 @	17.20
1 holstein cow	-----1070 @	17.10
1 holstein cow	-----1255 @	17.10
1 holstein cow	-----1205 @	16.50
1 red cow	-----1025 @	15.70
1 roan cow	-----965 @	15.10
1 whiface cow	-----880 @	14.90
1 whiface cow	-----855 @	14.90
1 holstein cow	-----960 @	14.30
1 whiface cow	-----765 @	14.20
1 black cow&calf	-----@	233.00

BULLS		
1 black bull	-----1415 @	23.10
1 black bull	-----1405 @	22.80
1 black bull	-----@	225.00

For Information or Estimates

Rezac Barn St. Marys 437-2999
Delaine Rezac St. Marys 437-6266
Elmer Imthurn Maple Hill MI 3-2440
Paul Kramer St. Marys 437-2993

Auctioneers: Lawrence Welter and Gene Toby



Rezac

LIVESTOCK COMMISSION
COMPANY



St. Marys,
Kans.



Receipts last Monday included 698 hogs and 308 cattle. Stocker cattle were fully \$1.00 higher with feeder cattle strong to 50¢ higher. The hog market was about steady with a top of \$23.15 on 225# weight. Our regular Monday sale for cattle and hogs continues through harvest. The following is a partial listing of our sale:

CATTLE		
Kenneth Moore, Roxbury	1 blk cow 1080 @	18.00
Kenneth Moore, Roxbury	1 hol cow 1320 @	19.10
Charles Hanson, Windom	1 wf clf @	37.00
Tom Beleker, Brookville	1 wf clf @	67.00
Tom Beleker, Brookville	1 wf clf @	46.00
Geo. Wallerius, Salina	1 blk bull 1280 @	23.80
Joe Dolezal, Kanapolis	1 blk bull 1010 @	22.70
Kenneth Zachery, Scottsv.	2 hol clfs @	38.00
Kenneth Zachery, Scottsv.	1 hol clf @	35.00
Ollie Reese, Gypsum	1 wf str 685 @	26.00
Ollie Reese, Gypsum	1 wf str 710 @	26.40
V. Cedarholm, Marquette	1 blk cow 885 @	17.10
H. Oberg, Salina	1 red cow 1275 @	16.50
N. G. Rush, Culver	1 hol str 365 @	25.40
Beetch & Son, Carlton	1 hol cow 1405 @	18.00
M. Sparks, Ellsworth	1 blk bull 525 @	27.20
L. Klenda, Lincolnville	1 blk str 1190 @	23.90
Edgar Hendricks, Heringt.	1 hol cow 1140 @	17.80
L. Paugrae, Niles	1 rn str 445 @	28.50
R. C. Rolfs, Lorraine	1 wf cow 1120 @	17.70
Geo. Hamm, Ellsworth	1 wf cow 1130 @	17.50
Earl Pope, Roxbury	1 hol cow 810 @	18.90
Cline Marrs, Miltonvale	1 wf cow 950 @	17.20
Eugene Godsey, Salina	1 wf str 580 @	25.30
Eugene Godsey, Salina	1 wf hfr 505 @	24.60
W.L. Reinert&Son, Linc.	1 wf str 605 @	27.90
E. Nelson, Gypsum	1 hol cow 1365 @	18.30
Amos Nelson, Minneapolis	1 wf cow 1345 @	17.50
Carl Tilbert, Salina	1 red bull 1480 @	22.20
H. Herman, Hope	2 wf str 820 @	25.00
H. Herman, Hope	2 wf hfrs 737 @	24.30
James Herman, Brookville	2 wf hfrs 563 @	24.50
Melvin Johnson, Delphos	3 brof str 535 @	26.20
Melvin Johnson, Delphos	3 brof hfrs 581 @	24.10

Dean Hamilton, Minn.	2 wf str 428 @	29.50
Dean Hamilton, Minn.	1 wf hfr 300 @	26.50
Dean Hamilton, Minn.	1 wf cow 995 @	17.90
Lloyd Houska, Holyrood	2 wf&b str 560 @	27.40
Paul Aylward, Ellsworth	2 blk hfrs 830 @	21.50
Paul Aylward, Ellsworth	1 blk cow 1015 @	18.50
Leslie Wilkins, Lyons	5 red str 316 @	32.00
Leslie Wilkins, Lyons	6 red hfrs 367 @	24.90
Jr. Runnalls, Longford	7 hol str 903 @	22.85
Sun Ranch, Falun	4 wf str 400 @	32.00
Sun Ranch, Falun	11 wf str 460 @	29.50
Sun Ranch, Falun	13 wf hfrs 408 @	25.90
Archie Hartzell, Lincoln	7 wf hfrs 965 @	25.15
Reubin Galliant, Dorrance	2 wf hfrs 400 @	31.25
Reubin Galliant, Dorrance	3 wf hfrs 465 @	24.80
Marlin Bunker, Halstead	1 blk cow&calf @	190.00
Glen Malin, Wilson	3 wf str 392 @	29.50

HOGS		
Anthony Dolezal, Kanapolis	5 mix hog. 203 @	23.10
Ernest Nagely, Abilene	8 spt hogs 213 @	23.05
Milt Bickel, Gypsum	4 blt hogs 217 @	22.85
Charles Nelson, Denmark	6 mix hogs 194 @	22.75
Herb Brown, Bennington	4 blk hogs 220 @	22.90
A. Troulson, Lincoln	11 mix hogs 219 @	23.10
W.N. Day, Lincoln	4 whi hogs 209 @	23.05
Bob Akers, Abilene	23 whi hogs 241 @	23.00
E. C. Haines, Mentor	11 whi hogs 214 @	23.00

FOR INFORMATION OR ESTIMATES

LAURENCE CLEMENCE
Abilene Phone CO 3-3091

MERRILL CHRISTIANSEN
Durham Phone 732-3371

BOB MUIR
Salina Phone TA 3-2963

Market Reports
Radio Station KSAL, Salina
6:45 a.m. Every
Monday, Wednesday & Friday
KFRM
6:55 a.m. Mon. through Fri.

Central Kans. Most Modern Livestock Auction
WEST ON OLD US 40

Salina

MONDAY SALE ONLY THRU HARVEST

MONDAY

Fat Cattle 9 a.m.

Hogs sell at 11:00 a.m. followed by
our regular cattle sale as they are
unloaded.

THURSDAY

Cattle Only

Selling starts at 11:00 a.m. Cattle
will sell in the order they are consign-
ed on the books.

Jerry Lahr, Abilene	13 mix hogs 227 @	23.15
Ecklund & Son, Herington	15 whi hogs 247 @	22.40
Alfred Mayer, Gypsum	22 mix hogs 215 @	22.90
Melvin Sundberg, Lindsb.	11 mix hogs 220 @	23.00
Glen Gibbs, Manchester	15 mix hogs 210 @	23.05
F. T. Hartenstein, Solomon	10 blt hogs 208 @	22.85
Landis Larson, Lindsb.	34 blt hogs 222 @	22.85
Mrs. B. Kissick, Tescott	1 blk sow 510 @	16.90
John Hlaus, Wilson	1 whi sow 570 @	17.00
John Vanek, Wilson	1 whi sow 470 @	17.10
Dwight Sperry, Beverly	7 blt sows 461 @	17.45
Henry Jinicek, Wilson	1 whi sow 385 @	18.35
Ronnie Weibert, Durham	1 red sow 400 @	18.00
Dale Peters, Minn.	1 blk boar 165 @	14.50
Leonard Stiner, Tescott	1 whi boar 345 @	13.10
Harry Bachman, Russell	1 whi boar 610 @	12.60
Florence Shoemaker, Min.	1 blt boar 555 @	12.70
Betty Isaacson, Assaria	5 blt pigs @	15.75
Coppel Bros., Delphos	10 blt pigs @	12.25
Charles Soukup, Ellsworth	11 mix pigs @	14.50
Orville Greseh, Tescott	21 blt pigs @	14.25
Cecil Midley & Son, Tampa	12 mix pigs @	14.75
G. W. Lamb, Abilene	23 mix pigs @	17.00
Bob Johnson, Salina	10 mix pigs @	17.50
G. W. Lamb, Abilene	7 mix pigs @	18.25
Rick Johnson, Salina	6 mix pigs @	14.00

Farmers & Ranchers
LIVESTOCK COMMISSION CO.



Barn Phone
913-TA 5-0211 SALINA, KS.

Bonded

Licensed