
Kansas 4-H Journal

The Family Magazine

May 1987

State Fair '87

(See pages 4-7)



Wherever You Live in the Sunflower State....



*City or Country...
We've got Kansas covered!*

**WITH A FULL LINE OF INSURANCE PLANS
AND OVER 400 AGENTS STATEWIDE.**

Outstanding coverage.
Rates that are right. And
with agents in every
county and over 70 claims
adjustors statewide, we'll
be there — fast
— when you need us.

Why not discover how
we can make you — or
your piece of Kansas —
more secure.



Farm Bureau Insurance

FARM BUREAU MUTUAL • KANSAS FARM BUREAU LIFE • KFB INSURANCE COMPANIES



CONSOLIDATED
Printing & Stationery
SALINA, KANSAS

1-800-432-0266

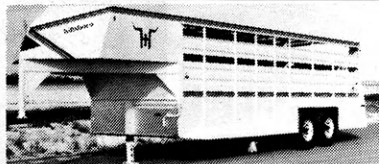
- ★ 4-Color Printers
- ★ Black & White and Letterpress
- ★ Authorized Minolta Copier Dealer
- ★ Office Supplies
- ★ Furniture
- ★ Scriptomatic Addressing Machines

SERVING ALL OF KANSAS
For All Of Your
Office & Printing Needs!

HILLSBORO PRODUCTS

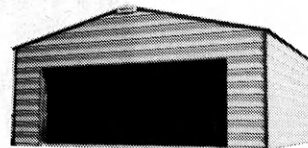


RIGHT ON THE MONEY!



STEEL - Distinctive aero-dynamic styling
 • Windbreaker front — pulls easy
 • Sizes - 6x16, 6x20, 7x16, 7x18, 7x20
 7x22, 7x24 and 7x28
 • Many standard features
 The stock trailer for people who want
 high quality and energy savings with rea-
 sonable prices.

HILLSBORO BUILDINGS



- All galvanized frame • Widths of 18'
and 24' • Sidewalls - 9' and 12'
- Lengths - 18' and longer

9 Bar 9 Trailer Sales

Steve Jackson
733-1106

13000 E. 47th St. So.
Derby, KS 67037

Kansas 4-H Journal

VOLUME XXXIII, NO. 4
May 1987

Rhonda Wessel Atkinson ... Editor
Glenda Eichman ... Secretary

Address all correspondence:
Kansas 4-H Journal
116 Umberger Hall, KSU
Manhattan, Kansas 66506
Phone (913) 532-5881

Single subscriptions are \$4 per year.
Group subscriptions are available upon request.

Kansas 4-H Journal is published
10 times a year by
KANSAS 4-H FOUNDATION, INC.

Bill Riley Executive Director
Merle Eyestone . . . Field Representative
Trisha Cash Secretary
Ann Carr Asst. Treasurer

BOARD OF TRUSTEES

Governor Mike Hayden
Honorary Chairman
Glee S. Smith, Chrm. Larned
Martha Wreath Streeter
Vice-Chrm. Manhattan
John Junior Armstrong,
Treas. Manhattan
Ross Beach Hays
Richard Dillon Hutchinson
Marilyn Pence Galle Moundridge
Mrs. Olive Garvey Wichita
Balfour S. Jeffrey Topeka
J. Harold Johnson Manhattan
Wilbur E. Levering Topeka
Thomas M. Potter Wichita
C.R. Salmon Manhattan
Tom Shirley Dodge City
Fred Sobering Manhattan
Walter Woods Manhattan
Robert Wagstaff ... Shawnee Mission
Mrs. Dwane Wallace Wichita
*Glen M. Bussett Manhattan
*Sen. Frank Carlson Concordia
*Roger E. Regnier Manhattan
*Dolph Simons, Sr. Lawrence
*Advisory Member

Use of the 4-H name and symbol approved
by the Secretary of Agriculture of the United
States, January 23, 1951, under the provisions
of the laws as reenacted by Sec. 707 of the Act
of June 25, 1948. Public Law No. 772 80th Con-
gress (10 USC 797).

In This Issue

From Your State 4-H Leader	3
State Fair Rule Changes	4-7
4-H Land Judging Team	8
Brown County 4-H Clubs	9
Master Club Meeting	9
Coming Attractions: Mort and Ginny	10
Interviewing	11
Camper's Budget Planning Guide	13
1987 Camp Schedules	15



Advertisers' Index

Farm Bureau Insurance	2
Consolidated Printing	2
J Bar J Trailer Sales	2
Make It With Wool	9
Wanted: Beef Show Equipment	11
Wanted: 4-H Memorabilia	11
Rock Springs 4-H Center	12
Manhattan Transit Charter Inc.	13
Rock Springs 4-H Center	13
Clovvia 4-H Cooperative House	14
Canoes, Backpacking and Camping Equipment	15
Kansas Savings and Loan	15
Sangamon Mills	15
Collingwood Grain	15
Anchor Savings	15
Grass & Grain	15

State Fair Age Lowered

Ten-Year-Olds to Participate in 1987 ...

By: C.R. Salmon

Many of you are aware that the issue of minimum 4-H age for competing at the Kansas State Fair has been up in the air for several years. After reviewing the pros and cons with the Kansas State Fair Board members, county Extension agents, and 4-H parents, we have lowered the minimum age for 4-H participants at the 1987 Kansas State Fair to "ten years of age by January 1, 1987."

The age for rabbit and poultry exhibitors will be increased annually until age 10 is reached (1989). Participants in the Tractor Operator's contest must be 14.

Some of the reasons for reaching this decision are:

- The Kansas 4-H club enrollment continues to be younger...80 percent of our current enrollment is 7-11 years of age and it is at age 10 years that members start dropping out. We need to provide new experiences and recognition earlier to keep boys and girls in 4-H.
- The minimum age for joining 4-H in Kansas is seven years. This means a youngster must be in his sixth year of 4-H before he can participate in the State Fair. We must accommodate families and

young people who are joining 4-H to participate in the State Fair before they lose interest and drop out.

- Boys and girls are maturing in all areas faster; therefore, some boys and girls and some families are better able to cope with competitive situations. Other youth organizations, including schools, offer competitive events. Other like activities (such as Kansas Junior Livestock Show, Regional 4-H club days, and judging contests) allow younger members to participate. Most state fairs allow all qualified 4-H members to participate. Also, we need to improve the quantity and quality of exhibits in the State Fair livestock shows.

Obviously, such a decision creates positive and negative comments. One concern is, "overcrowding of exhibits and participants." It appears that this age change will increase our participation by about 30-40 percent. At this point, the only overcrowding that we anticipate would be in the sheep, swine, woodworking, horse, and horticulture divisions.

There are some 4-H members and families who are not emotionally and socially prepared for

competitive events. We hope that all 4-H families seriously evaluate, "Are we ready for State Fair competition?" We believe the State Fair can be a very positive learning experience when boys and girls understand such things as: the decision represents that of one person or a small group of individuals on a given day; judges are evaluating the garment, exhibit or presentation and the decision should not be taken personally by the child and/or his family. We hope you will help families in your club and counties understand the benefits and possible dangers of State Fair competition. Perhaps a State Fair orientation for all newly qualified members and families would be appropriate.

It is our desire to showcase Kansas 4-H as the largest, youth development program in the state. The lowering of the Kansas State Fair age is one strategy for accomplishing this goal. See you at the State Fair in September.

C.R. Salmon
Assistant Director of Extension
4-H Youth Programs

IMPORTANT!

1987 State Fair

Ten-Year-Olds May Participate

Age classification as listed below is based on the age a 4-H'er was on **January 1, 1987**. All exhibits are now open to 10 to 18 year old 4-H'ers except minimum age for youth exhibiting in poultry and rabbits is 8 years of age.

Youth premium books will be available mid-summer. Contact your County Extension office.

Intermediate age --- 10 through 13

- Encampment attendance
- Home Ec judging contest
- Demonstrations and illustrated talks
- Fashion revue
- Crops judging contest
- Horticulture judging contest
- Dairy judging contest
- Poultry judging contest
- Photography judging contest

Senior age --- 14 through 18

- * Dairy judging contest
- * Poultry judging contest
- * Horticulture judging contest
- * Photography judging contest
- * Home Ec bowl
- Tractor driving contest
- Demonstrations and illustrated talks
- Fashion revues
- * Intermediate age can participate, if necessary, to complete a team, but cannot participate in both senior and intermediate contest.

Contests for Members 10-18

These are meant to be senior contests but there are no intermediate contests so intermediate age 4-H'ers are eligible to participate on the one county team.

- Livestock judging contest
- Meats judging contest
- Beef bowl
- Dairy bowl

7-8-9 Year Old Special Participation Activities

- Flower show
- Photo fun

7 through 18

- Show Case performances (September 12-13 and 19-20)
- Mini Style Shows (SUNDAYS ONLY, September 13 and 20)

HOME EC CHANGES

Clothing - No changes

Knitting

Add: Class -	10 year old knitters - an article
Class -	11 year old knitters - an article

Crochet

Add: Class -	10 year old crocheters - an article
Class -	11 year old crocheters - an article

Food-Nutrition

Rule 2 - Changed to:

A member may exhibit **only one baked product** and one educational display in this division. Members exhibit under the phase they are enrolled in. Recipes are required for Class-----
---International Foods; and recommended, but not required, for all other food-nutrition exhibits.

Rule 11 - Changed to:

Foods with custard-type fillings and frostings **MUST** not be exhibited for safety reasons.

Add Rule 12 -

All exhibits must be baked, and loaves must be whole and uncut. Cookies and rolls must be same shape and same recipe.

Add Rule 13 -

Definition for all classes except Advanced Foods. Educational Exhibits: can be a poster, notebook or other display showing and describing something learned, a project activity done, a food-nutrition community service program, etc. Should relate to things done in the project in which the member is enrolled.

State Fair Rule Changes

Food-Nutrition Classes Changed to:

Snacks and Mini Meals

- A. Three bar cookies
- B. Educational exhibit

All American Foods

- A. Whole coffee cake
- B. Three cookies
- C. Loaf quick bread
- D. Microwave whole loaf quick bread
- E. Educational exhibit

Fit It All Together I

- A. Quick bread--3 muffins, etc. OR coffee cake. Encourage use of whole grain flour, fruits, and/or nuts.
- B. Educational exhibit

Fit It All Together II

- A. Three bar cookies
- B. Loaf quick bread--whole grain, fruits and/or nuts encouraged
- C. Cake--may be unfrosted
- D. Educational exhibit

Foods With An International Flavor

(Must include country origin and recipe)

- A. International yeast bread
- B. International quick bread
- C. International baked cookies
- D. Any microwaved international baked product
- E. Educational exhibit

Yeast Breads

- A. Three yeast rolls
- B. Yeast loaf
- C. Speciality bread -- example, three pretzels, three bread sticks, a fruit bread, or tea ring
- D. Educational exhibit

Advanced Foods

- A. A baked food made from original recipe with improved nutritional value
- B. Food gift package--at least three different items in a suitable container
- C. A decorated food item
- D. Educational exhibit--to be an action plan for personal fitness -- a notebook to include food and exercise with plan, action, and evaluation included.

Food Preservation

Rule 4 -- Change to read: "Member may exhibit only in one or two classes."

Rule 8 -- Change to read: Classes 6230-6234 will require two jars each -- any combination, except cannot have two jars of the same product. Example: Class 6230-- One jar grape jelly and one jar raspberry jelly.

Home Environment

A member may make only one exhibit in this class.

Class - Single Exhibit--
An article made by the 4-H'er for the home. Include explanation of how it was made, cost, pictures, pattern, etc. Describe how it fits into the color and design scheme of the room. Explanation will be considered in total score.

Class - Poster

Class - Notebook
Poster or notebook may include swatches, colors, stories, photographs, and project records which detail what was accomplished this year with a given indication of long-term plans.

Arts and Crafts Display

The sentence "At least one half of the county quota or displays must be original work...." will be deleted. County will have more flexibility to send the best exhibits within their total quota.

Arts will be critiqued as in 1986. A merit of honor group will be selected. The Rock Springs

Ranch Art Committee will select RSR display exhibits from this merit award group. Red-White-Blue participation ribbons will be put in county sacks to be picked up at end of fair for all other arts and crafts displays. Merit of honor ribbons will be awarded.

Photography

Class 7228 will be dropped.

Rocketry

Division a - to be for ages 10-13

Major Changes for 4-H/FFA Livestock Show

- * Schedule - Sat., Sept. 12 - 8:00 a.m.
Beef heifers, followed by beef steers
Sat., Sept. 12 - 2:00 p.m.
Breeding sheep, followed by market lambs
Sun., Sept. 13 - 7:30 a.m.
Market hogs, followed by gilts
Sun., Sept. 13 - 10:00
4-H Livestock Judging Contest
- * ONE official livestock show t-shirt will be worn by both 4-H and FFA members. They will be for sale at the Fair.
- * In all breeding heifer classes, the youngest age class "junior heifer calves, calved after January 1 of the current year" will be eliminated.
- * For sheep classes, "The use of artificial coloring, except on hooves, is prohibited."

Dairy Cattle and Dairy Goats - No change

Horse

There will be two go-arounds for the 2-year-old snafflebit bit pleasure class. The first will be Friday, September 18, late afternoon or evening, between the County Team and Trail Classes. The second go-around will be held Saturday afternoon after the preliminary Western Horsemanship classes.

State Fair Rule Changes

Horse (cont.)

Halter Classes -- Halter classes for weanlings have been eliminated, thus no stallions can be shown. Horses in halter classes will no longer qualify at the county fair. No horse that is two years old or older may enter a halter class unless it has first qualified in any one of the 17 classes held at the Senior District 4-H Horse Shows in July. Yearlings may enter without prior qualification, just as roping and jumping performance classes. (We realize this is not an ideal situation for halter, but considering the fact that we already have a stall space problem, and with the additional exhibitors gained when lowering the age to 10, a management decision had to be made.) State Fair horse entries will be available in July at the District 4-H Horse Shows and NO entry will be accepted after August 3, 1987.

Poultry - It is *required* that all poultry be banded to insure proper identification. (Birds have been lost or stolen in the past.) Members must be 8 years old.

Rabbit - No changes, except age of members must be 8 years old.

Dog - The show will be held on *Saturday, September 19*. In 1986, it was held on the last Sunday. Location will still be the 4-H/FFA Livestock Barn.

Crops - The field crops division will also be open to FFA entries in 1987.

Horticulture - To properly identify your exhibit, attach a string to the entry form, and tape or tie the string to the plate or exhibit.

Flower division entries will be entered and conference judged between the hours of 10:00 a.m. and 12:00 noon, the first Sunday, September 13.

CONTESTS

Home Economics Judging Contest

Will be held for intermediate age group only. Will be held the second Saturday. Will judge and place and/or identify six classes.

Home Ec Bowl

Will be held for senior age group. County must have four team members. Intermediate age can participate, if necessary, to complete a team. (They cannot be in intermediate judging contest the same year.) Will be held the second Sunday. Questions will come from a variety of home economics 4-H publications and several adult home economics Extension publications. Support materials will be sent later. Participating counties will send in ten questions.

Fashion Revues

Senior -- this event will remain as 1986 -- no changes.

Intermediate -- will have same three classes as in senior contest judging. Approximately 15-20 will be judged together on Fairgrounds, and then a mini style show will be held on the Show Case stage for approximately 10 minutes each hour. Members will bring own script cards. Will be judged P-B-R-W, but no champions. Event will be held both week-ends. Nearby counties will be asked to come the first week-end without use of Encampment.

Booths and Banners

There will be 13 booths selected for the Show Case Building. Each county may bring TWO banners to State Fair.

Livestock Judging Contest

There will only be ONE livestock judging contest. It will be open for members 10 and older. Each county may enter a maximum of four members. Registration begins at 9:30 a.m., contest begins at 10:00 a.m., Sunday, September 13, in the 4-H/FFA Livestock Barn. There will NOT be a break for lunch, so eat a big breakfast.

Dairy Judging Contest

Time changed from 10:00 a.m. to 9:00 a.m., Tuesday, September 15. Intermediate Division -- 10-13 years of age -- will give ONE set of oral reasons.

Senior Division -- 14 and older -- will give FOUR sets of oral reasons. *Any member of a state dairy judging team who has competed in the National Dairy Judging Contest at Madison, Wisconsin, is ineligible to judge in the Kansas State Fair 4-H Dairy Judging Contest.

Dairy Quiz Bowl - Each county may have one team of 4 members. Quiz Bowl is 2:00 p.m., September 15, the same day as the dairy judging.

Poultry Judging Contest

Time changed from 8:00 a.m. to 1:30 p.m. on the last Saturday, September 19.

Intermediate Division - Ages 10-13

Senior Division - 14 and older

A county may enter one team of three or four members in each age division. Intermediate age members may judge in the senior division if needed to fill a team.

Crops Judging Contest - Age change only -- will have both intermediate and senior contest.

Horticulture Judging Contest - Age change only -- will have both intermediate and senior contest.

Meats Judging Contest - The packing company in Hutchinson is still closed, so the location and time of the contest is not finalized. Possibilities, if at the Fair, would be the last Sunday. If not during the Fair, late August or early September. ONE contest will be held for all members 10 and older. A county may enter one team of three or four members.

Beef Quiz Bowl - ONE contest will be held for members 10 and older.

Tractor - Also open to FFA. Each county may enter a 4-H'er in the 4-H Division, and each chapter may enter a FFA member in the FFA Division.

4-H Land Judging Team ...

Ford County Members Prepare for National Contest

By: Don K. Wiles

Ford County's 20th 4-H land judging team to qualify for participation in the national land judging contest is preparing for this year's contest to be held at Oklahoma City, Oklahoma on May 5th, 6th, and 7th.

Members are Kayla and Kristi Venters and Tony Flax of Dodge City, and Harold Bogner of Wright. All four of the members have had an older brother and sister participate in a previous national contest.

The national contest consists of two parts. One is land judging and the other is homesite evaluation.

In land judging the youths have to rate the land according to a productive scale of one to eight. If the land is not class one land, they must indicate why the land

is not class one land. The contestants then must select the best treatment for the site from a list of 24 possible choices.

In homesite evaluation, the youth must identify and evaluate nine different site characteristics. They then make a final evaluation with regard to building a house in the named site.

Previous contestants have found the acquired information helpful in numerous uses and occupations including farming, construction, buying a home, oil drilling, teaching conservation to youths, florist, lawn and garden work, landscaping, real estate, property appraisal and different agribusinesses.

The team is being coached by Don Wiles, Ford County Extension Agricultural Agent. It is the

25th team from Clark County and Ford County that he has coached to earn the right to participate in the national contest during the past 30 years. A number of the previous teams have taken national honors, and a number of the team members have received national recognition. The latest honor went to Mike Strodman of Bucklin who won the national land judging contest last year.

The national contest is sponsored by the Farm Credit System of Wichita. Expenses for the youths' trip is being paid for by the Ford County Conservation District, Ford County Extension Council, Ruffin Inc., Servi Tech, Casterline and Sons Seed Inc., Gigot Irrigation, Dodge City Optimist Club and New Holland.

Ford County Extension Agricultural Agent

Brown County 4-H Clubs

Host International Food Night

By: Morrill Tip Top Reporter, Rick Aberle

"Boy, this looks good! I'm going to try it. How about you?" This phrase was repeated again and again on March 26th from 6:30 to 7:30 p.m. at the Hiawatha High School in Brown County, Kansas.

Six countries and two geographic areas were represented at International Food Night with table displays and four or five different foods from each country or geographic area. This was a tasting supper with each club furnishing a meat, a vegetable, a salad, a bread, and a dessert from the following countries and geographic areas: Mexico, Norway, Hawaii, Germany, Italy, the Orient, Sweden, and France. The nine Brown County 4-H clubs had their club name, the country

or geographic area they were representing, and each food labeled so people would know what they were tasting. Approximately 200 plus people from the community and county sampled foods until they were filled. A handout with recipes of the different foods served that night was available for each family who attended.

The purpose of the International Food Night is to raise money for the IFYE (International Foreign Youth Exchange) program. There wasn't a set price but a free will donation was taken.

We had the privilege of having Gelane Clark from Barnard, Kansas, with us. She had been a 1986 IFYE representative. She

gave a slide presentation of her six-month stay with her five host families in Indonesia. Clark was quoted as saying, "The people are fantastic, so friendly, and they love Americans, white people. Have you ever noticed that when you look at these people in pictures, they look poor, but happy? They live a simple life based on sharing."

"I can't watch the world news anymore without getting involved. The Indonesian people have made me more aware of the scope of the world."

It was a special evening of learning, sharing and pledging clearer thinking, greater loyalty, larger service, and better health to our club community, country and world.

1987 Master Club Luncheon

Time:
Noon

Date:
June 2, 1987

Place:
K-State Union,
Manhattan

MAKE IT YOURSELF WITH WOOL

Create, Sew & Be A Winner

Trips - Scholarships - Bonds - Sewing Machines - Fabric - And More!

Pre Teen 7-13 yrs.	Seniors 17-21 yrs.
Juniors 14-16 yrs.	Adults Over 21 yrs.

Kansas Make It Yourself With Wool Competition

Martha Leonhard, State Director
Rural Route #1 - Leon, Kansas 67074

PLEASE SEND ME AN ENTRY FORM AND INFORMATION.

Name _____
Address _____
City _____ State _____ Zip _____



By: Bernadette Stiglich, Wyandotte County

LIGHTS ... ACTION ... CAMERA!

TAKE ONE - "Agriculture, U.S.A.," starring Dr. Russell Rasmussen of the American Association of Sheep and Goat Practitioners and Wyandotte County's own Ginny Swanson and Mort.

TAKE TWO - Swanson is an 11 year member of the Nearman 4-H club, and Mort is part of her 4-H sheep project.

TAKE THREE - It only took three attempts for Swanson and Mort to get it right on the meats segment of the program which was taped at Channel 19, KCPT, in Kansas City, Mo. and has aired in 20 states and 30 cities.

The American Veterinary Medical Association, the program sponsor, contacted Swanson's father, and because she

had sheep for a 4-H project, Swanson was able to participate in the show.

"A friend saw the show in Houston and recognized me. It's neat to hear people talking about me being on T.V.," she said.

Swanson and Mort was on the program about five minutes. She had to flip Mort over on his back so the veterinarian could demonstrate clipping his toenails.

"I could understand what the panel was talking about because of my past 4-H experiences. I had to do the nail trimming and vaccinations before taking my sheep projects to the fair," she said.

Swanson should understand what the veterinarians were talking about because she was a national 4-H veterinary science pro-

ject winner in 1985. She was awarded a \$1,000 scholarship by the Upjohn company.

She plans to use the scholarship at Kansas State University and will major in education.

"I would like to be a teacher of the deaf or an interpreter for them. I became interested in this after taking a sign language class at 4-H Discovery Days at K-State," she said.

Would Ginny Swanson encourage other youth to become involved in the 4-H program? "Yes, definitely. 4-H provides an opportunity for young people to meet and work with others."

The biggest challenge for the Kansas 4-H program ... recruitment. "We need to try and encourage more people to join the 4-H program."

Interviewing ...

Be Yourself Most Important

By: Jill Longer, Soph. Agricultural Journalism, K-State

Wow, another year of school has flown by and summer time is here. For many, this means interviewing for a summer job or as a state 4-H project finalist.

The interview often times scares a 4-H member simply because he doesn't know what to expect. Once he is prepared, the interview process can be educational ... and, yes, even fun.

"If you know you have a big interview coming up, ask members of your family to ask you questions about anything. This will help you to speak more clearly and help your communication skills," Jim Akin, associate director of the Career Planning and Placement Center at Kansas State University said.

The preparation should begin as soon as you know about the interview. Even if you don't have a specific interview in mind, you can still work on your interviewing skills.

"Your appearance adds a lot to your interview so make sure you look good. Your interviewing outfit should be one that you feel comfortable and confident in. If you feel like a million, you look like a million," Akin said.

Once it is actually time for the interview, the first thing to do is

relax. The interview is simply a time for others to learn more about you and your interests.

The interview process for state project finalist is quite simple according to Steve Fisher, Extension Specialist, 4-H — Youth programs.

"The interviewing committee is made up of three people," he said. "One person will be a county agent, the other a member of the K-State faculty and a third will be a 4-H volunteer."

Greet the interviewers with a smiling, confident face. Relax, the interview will last 20 to 25 minutes. You will be asked to talk about yourself and important things that you have learned in your 4-H project. These questions will be easy to answer ... just be yourself.

When the interview is over, thank those you have talked with and tell them you enjoyed meeting and visiting with them. You want to leave the interviewers with a positive impression of you.

The interview process can be fun. All you need to do is practice and prepare. But, the most important thing to remember in any interviewing situation is "to be yourself," Fisher said.

White House Photo by Terry Arthur



**"I CAN'T THINK OF AN
EXPERIENCE MORE ENRICHING
FOR OUR YOUNG PEOPLE."**

"It offers a unique blend of American traditions. It has its own special traditions of building responsible, capable citizens. It is building our country from the individual on up. It is one of the brightest examples of the American ideal of personal commitment. Dedicated adults working through 4-H have created a dynamic pathway to learning, achievement and good citizenship for America's young people."



**VOLUNTEER
TODAY**

Contact Your
County Extension Office

— Wanted —

The planning committee for the 75th state fair activities is looking for 4-H uniforms. The group is planning a display which will be watched by state fair security. Items needed include: solid green uniforms, green and white seersucker dresses and other 4-H memorabilia. If you have any of these items, please contact your local Extension office or the state 4-H office.

New 4-H'er wants to buy beef show equipment.

Items needed: blow dryer, clippers with regular blades and sheep heads, and a fitting chute. Call: (913) 827-5415.



Rock Springs 4-H Center

*Souvenir Price List

Rock Springs	
Plastic Cup	\$.75
Pencil	.25
Key Ring	.25
Comb	.25
4-H Pin	.25
Rain Gauge	2.00
Styrofoam Ball	.75
Treasure Bag	1.50
Rock Springs Stationery	3.50
#1 Kid Pin	.50
Shirt:	
Youth	5.00
Adult	6.00
Hat	5.00
Critter Cage	2.00
Windsock	3.00
Photo Album:	
Small	5.00
Large	7.50
Pom Pom Critter	.50
Popcorn Jar	.75
Fuzzy Pencil	.50
Bear Pencil	1.00

*Prices are subject to change.

*Snack Bar Price List

Pop	
Small	.45
Medium	.55
Large	.65
Popcorn	
Small	.40
Large	.50
Cotton Candy	.40
Candy Bars/Gum	.45
Nachos	1.25
Snow Cones	
Small	.45
Medium	.55
Large	.65
Ice Cream	
Bar	.40
Malt Cup	.50
Tea	
Small	.45
Medium	.55
Large	.65
Lemonade	
Small	.45
Medium	.55
Large	.65
Chips	.40

*Prices are subject to change.

1987 Summer Camp ...

Camper's Budget Planning Guide

Financial responsibility is one of the skills 4-H'ers can learn through the 4-H program, and summer camp at Rock Springs 4-H Center provides an excellent opportunity for members to manage money on their own without the direct supervision of their parents.

To help prepare your camper to successfully complete this task, you may want to sit down together and plan a budget sheet for the time he's at camp.

A current price list of snack bar and souvenir items is provided for your use as you plan a daily budget, and the prices are subject to slight adjustments.

DAY 1

Snacks _____

..... _____

..... _____

Souvenirs _____

..... _____

..... _____

Day 1

Total Expenditures . _____

DAY 2

Snacks _____

..... _____

..... _____

Souvenirs _____

..... _____

..... _____

Day 2

Total Expenditures . _____

Day 3

Snacks _____

..... _____

..... _____

Souvenirs _____

..... _____

..... _____

Day 3

Total Expenditures . _____

Day 4

Snacks _____

..... _____

..... _____

Souvenirs _____

..... _____

..... _____

Day 4

Total Expenditures . _____

Total Expenditures for
Snacks and Souvenirs _____

Total Camping Expense

Camping Fees _____

Travel Expense _____

Snacks and Souvenirs _____

Miscellaneous Expense _____

Total Expenses _____



MANHATTAN TRANSIT CHARTERS INC.

Clean, comfortable, air-conditioned motorcoach. All equipped with restrooms; safe, dependable, courteous drivers. Sleeper coach available.

225 McCall Rd. - Manhattan, KS 66502
(913) 539-0285

OLD FURNITURE?

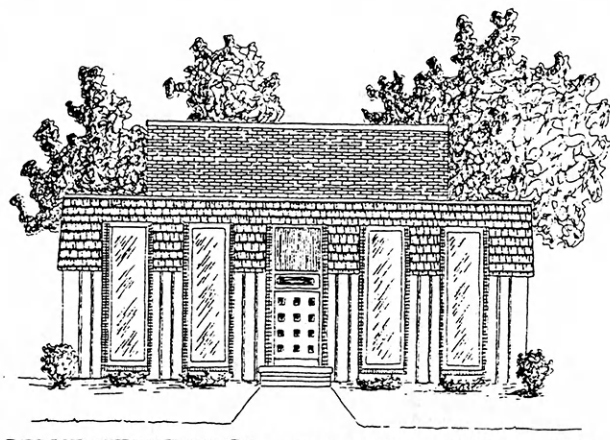
Not sure what to do with it?
Donate it to Rock Springs 4-H Center!

— Items Needed —

2 - 4'x4' Table
3 - Sofas or Divans

3-4 - Easy Chairs
2 - Floor Lamps

Call: Bob Pinkall, Director of Rock Springs,
R.R. 1, Box 55, Junction City, KS 66441, (913) 257-3221



Clovia 4-H Cooperative House

ENJOY ... College life among others with interests and experiences like your own. Single female students with a 4-H or similar background.

Fort Hays Clovia

SAVE ... up to \$600 as compared to residence hall living by assisting with house operations and management. Clovia is one of the most economical organized living groups at Kansas State and Fort Hays State Universities.

HAVE FUN ... Traditional Clovia social activities include formals, semi-formals, functions and exchange dinners with fraternities. Clovia members participate in intramural sports and other extra-curricular events. Clovia provides the opportunity for you to meet others and get involved in campus activities.

HURRY ... Space is limited! Complete and mail attached form to:

Kansas State University

Clovia 4-H Cooperative House
1200 Pioneer Lane
Manhattan, KS 66502
(913) 539-3575

-or-

Fort Hays State University

Clovia 4-H Cooperative House
209 W. 5th
Hays, KS 67601
(913) 625-4052

Manhattan
Clovia



Please send me more information about the Clovia 4-H Cooperative House unique college-living option.

Name _____ County _____

Address _____ City _____

State _____ Zip _____

Year in school: ☐ Freshman ☐ Sophomore ☐ Junior ☐ Senior

Clovia: A project of the Kansas 4-H Foundation.

1987 4-H Camp Schedules

June 8-11: Allen, Atchison, Anderson, Bourbon, Coffey, Linn, Jefferson, Nemaha, Neosho, Wilson, Woodson

June 11-14: Dickinson, Geary, Marion, McPherson, Rice, Saline

June 15-18: Douglas, Franklin, Johnson, Miami

June 18-21: Cheyenne, Decatur, Graham, Logan, Ness, Norton, Phillips, Rawlins, Rooks, Sheridan, Sherman, Smith, Thomas, Wallace

June 21-23: Clay, Cloud, Jewell, Lincoln, Marshall, Mitchell, Ottawa, Republic, Washington

June 24-27: Chase, Cherokee, Crawford, Haskell, Lyon, Morris, Scott, Sumner

June 27-30: Leavenworth, Shawnee, Osage, Sedgwick, Wyandotte

June 30-July 3: Brown, Doniphan, Jackson, Pottawatomie, Riley, Wabaunsee

July 7-10: Butler, Cowley, Elk, Greenwood, Harvey, Reno

July 10-13: Barber, Barton, Edwards, Ellis, Ellsworth, Harper, Kingman, Pawnee, Pratt, Osborne, Rush, Russell, Stafford

Money For Your Treasury

OVER 2 MILLION
Sunflower Dishcloths



WERE SOLD LAST YEAR BY MEMBERS OF GROUPS, SOCIETIES, CLUBS, ETC.

THEY ENABLE YOU TO EARN MONEY FOR YOUR TREASURY AND MAKE FRIENDS FOR YOUR ORGANIZATION.

Sample **FREE** to Official.
SANGAMON MILLS, INC., Cohoes, N.Y. 12047
KJ Established 1915

Collingwood
GRAIN INC.

*Serving Kansas
Since 1890*

**Country Elevators
and Terminals**

Canoes, Backpacking & Camping

Equipment for Rent

Canoes, canoe trailers, lifejackets, backpacks, backpack tents, backpack cook kits, camping supply trailer, 10-man tents, camp cooking equipment.

Rock Springs 4-H Center
R.R. #1 Box 55
Junction City, KS 66441
Phone: (913) 257-3221

Available to any organized group. Special rates for 4-H groups.

BUY, BUILD, SAVE WITH US

- Competitive rates on savings and loans
- High-yielding C.D.'s
- 17 offices statewide

anchor
savings
ASSOCIATION



GRASS

& GRAIN

A farmer's newsworthy
published each Tuesday

*Complete Agriculture News
& Advertising;
Featuring 4-H Stories & Photos*

Call or write today:
Box 1009, Manhattan, KS 66502
(913) 539-7558

More money for post-high school education comes from family income and savings than from any other source. Be prepared; early in life start a savings account at your

Kansas Savings and Loan

Fort Scott
Liberty Savings & Loan Assn.

Garnett
The Garnett Savings & Loan Assn.

Hutchinson
Valley Federal Savings & Loan Assn.

Leavenworth
Citizens Mutual Savings & Loan Assn.

Lyons
Lyons Savings & Loan Assn.

Manhattan
Manhattan Federal Savings & Loan Assn.

Medicine Lodge
The Barber County Savings & Loan Assn.
Plainville and Stockton
Rooks County Savings Assn.

4-H 1986 ...

The Kansas 4-H program is the largest youth organization in the state. Listed below is a summary of the 1986 Legacy Publication by the Cooperative Extension Service, Kansas State University, Manhattan, Kansas.

Non-Profit Organization
U.S. Postage
PAID
Permit No. 86
Salina, Kansas

Kansas 4-H — 1986

Youth Involved in Multiple Dimensions

4-H members in clubs — community and project	92,469
4-H members in special interest groups	22,293
4-H members in 4-H enrichment programs	11,159
	97,693

Where They Live

Farm	23.6%
Open country and towns with less than 10,000 population	26.2%
Towns and cities with 10,000-50,000 population	18.9%
Suburbs and cities with more than 50,000 population	31.3%

Boys and Girls

Boys	49.1%
Girls	50.9%

Age Distribution

Pre-Teens (7-11)	80.0%
Early Teens (12-14)	13.4%
Teens (15-19)	6.6%

Numbers of Clubs, Groups, and Enrichment Programs

	3,875
--	-------

1986 Kansas 4-H Members Enrolled in Projects

Supported by Kansas State University Faculty

Agriculture

Animal and Poultry Science	30,045
Horticulture	27,089
Agronomy	5,931
Entomology and Bees	5,884
Economics	2,391
Forestry	1,650

Home Economics

Nutrition	
Non-EFNEP	20,990
EFNEP	10,446
Arts and Crafts	16,375
Clothing	10,176
Youth/Law	2,778
Human Development	1,199
Health	565
Home Environment	409

Arts and Sciences

People-to-People and Intern'l	12,521
Safety	10,483
Wildlife, Ecology, Environment	7,236
Leadership	6,955
Communication	9,978
Recreation	6,206

Engineering

	10,937
--	--------

Veterinary Medicine

	6,818
--	-------

Community Resource Development

Citizenship and Government	3,976
----------------------------	-------

Miscellaneous and Events	4,976
--------------------------	-------

Total	216,014
-------	---------

**The Kansas 4-H Journal,
a Project of the Kansas 4-H Foundation**