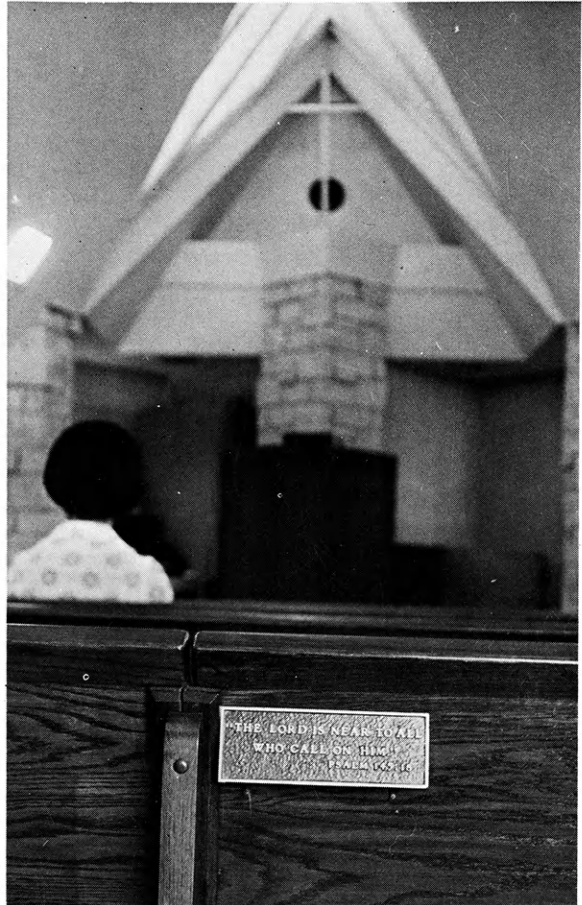


Kansas 4-H

June, 1969

Journal

The 4-H Family Magazine

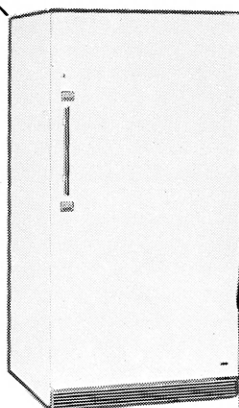


4-H opens doorways to thought

Save Time, Work, Money with a CO-OP Freezer

By owning a CO-OP Freezer you can enjoy extra-time away from the kitchen, buy when prices are lowest . . . flavor highest . . . serve your family a greater variety of nutritious foods, always be prepared for unexpected guests. CO-OP has the freezer that's right for you.

Model UF 209-1

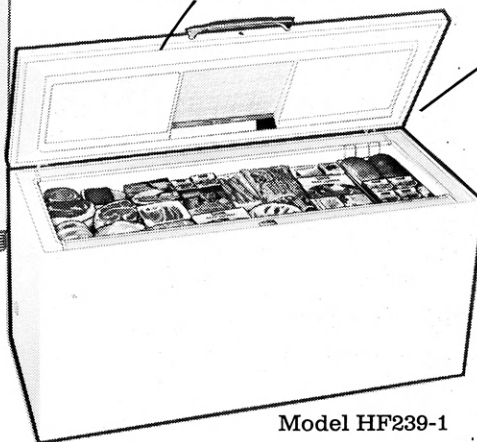


Store 714 Lbs. In
This Handsome Unit

20-cu. ft. upright beauty with 5 interior shelves and 5 door shelves. Other features include: door shelf, magnetic door seal, interior light, defrost drain and lock and key.

805 Lb. Capacity For
Medium To Large Families

23-cu. ft. chest freezer with sliding basket and bulk storage compartment. Other features include: interior lighting, magnetic door seal, defrost drain and lock and key.



Model HF239-1

See these two big capacity models and others at your **COOP** today.

FARMLAND INDUSTRIES

KANSAS CITY, MISSOURI

IN THIS ISSUE

Building blocks to better fair booths	4
Ideas for demonstrations	7
'Growth' is key to Round-up	9
Kansas 4-H Foundation honor roll	11-18
Electric, swine projects favorite of key winner	19
4-H opens doorways, a picture essay	22
In today's mail—	
4-H Foundation news	25
Ideas and news	26

Wm. M. Riley.....Managing Editor
Marie Rupp.....Associate Editor
Susanne Johnson.....Production Editor

Published Monthly By

KANSAS 4-H FOUNDATION, INC.

J. Harold Johnson.....Executive Director
Merle Eyestone.....Associate Director
William Riley, Jr.....Assistant Director
Erna Bly.....Sec. Asst. Treasurer

BOARD OF TRUSTEES

Governor Robert Docking
Honorary Chairman

W. Dale Critser, Chrm.....Wichita
Dolph Simons, Vice Chrm.....Lawrence
Balfour S. Jeffrey, Treas.....Topeka
Robert A. Bohannon.....Manhattan
Glenn M. Busset.....Manhattan
*Sen. Frank Carlson.....Concordia
*Harry Darby.....Kansas City
Mrs. Olive Garvey.....Wichita
Clifford Hope.....Garden City
†A. D. Jellison.....Junction City
*Harold E. Jones.....Manhattan
J. J. Moxley.....Council Grove
George B. Powers.....Wichita
*Roger E. Regnier.....Manhattan
N. T. Veatch.....Kansas City
E. B. Shawver.....Wichita
†Fred D. Wilson.....Andover

*Advisory Member
†Trustee Emeritus

Editorial and Business Office

Phone 913-532-6621

Umberger Hall
Kansas State University
Manhattan, Kansas 66502

Second Class Postage Paid at Lawrence,
Kansas. Return Form 3579 to Kansas 4-H
Journal, Manhattan, Kansas 66502.

Advertising rates and circulation data
on request.

Group subscriptions \$1.00 per year.
Individual subscriptions \$1.50 per year.
Single copy 15 cents.

Use of the 4-H name and symbol approved by the Secretary of Agriculture of the United States, January 23, 1951, under the provisions of the law as reenacted by Sec. 707 of the Act of June 25, 1948 Public Law No. 772 80th Congress (10 USC 797).

Poor Damn Ira

By Dr. Glenn M. Busset
State 4-H Leader

The first week of June is suggested as an appropriate time for 4-H people to express appreciation to their friends. A highlight of the week will be "Friends of 4-H Day" at Rock Springs Ranch June 4. In other parts of this Journal your club will find suggestions for appropriate means of expressing their appreciation for help and encouragement received.

There are "days" and "weeks" for almost any cause or purpose. Some of them may do little good but generally they have worthwhile purposes. We have never questioned the value of teaching children to show appreciation for favors received, so 4-H Appreciation Week seemed quite appropriate. Then we began to recall reading that someone else had publicly sneered at the unbelievable "squareness" of 4-H clubs teaching children to say "thanks."

Two years ago a book appeared¹ that said stinging, bitter words about almost everything in agriculture, including 4-H. No doubt some were deserved, but what we remembered from two-year-old reading were the incredible statements in relation to appreciation. You can read this yourself, if you have the stomach for it, on pages 46-48. If you can't borrow a book, as we did, here are two paragraphs for your enlightenment:

"The average teen has developed a sense of values that includes expressed appreciation for the gift item And most of all, he deeply resents being told that a "thank you" is due.

"Good manners are definitely an asset. But to make the teaching of this quality a part of 4-H training is downright silly. Teaching is the obligation of parents, not organizations. And in youth's eyes, this kind of emphasis is square beyond belief."

It may come as a real surprise to people who work closely with children to be told that the average teenager has somehow developed a built-in sense of values that includes expressed appreciation for the gift item. And it may well be that teaching good manners is the obligation of parents. Speaking as parents, most of us welcome all the help we can get from any youth-serving organization, to help us develop that "sense of expressed appreciation:" that Ira assures us is automatically a part of children's psychological equipment. More and more we seem to meet children whose parents have apparently failed in their obligation to teach them good manners. Perhaps they would have appreciated some help, like maybe a 4-H club?

Ira thought enough of his opinions to put them in a book, an act of considerable courage which in no way adds to the validity of the opinions. People with a reasonably normal level of blood pressure will admit there are many well-stated half truths in the book. The problem with a half-truth is that you may have gotten hold of the wrong half.

¹Poor Damn Janeth. Ira Dietrich, Bascom House Publishing Company, Madison, Wisconsin, 1967.

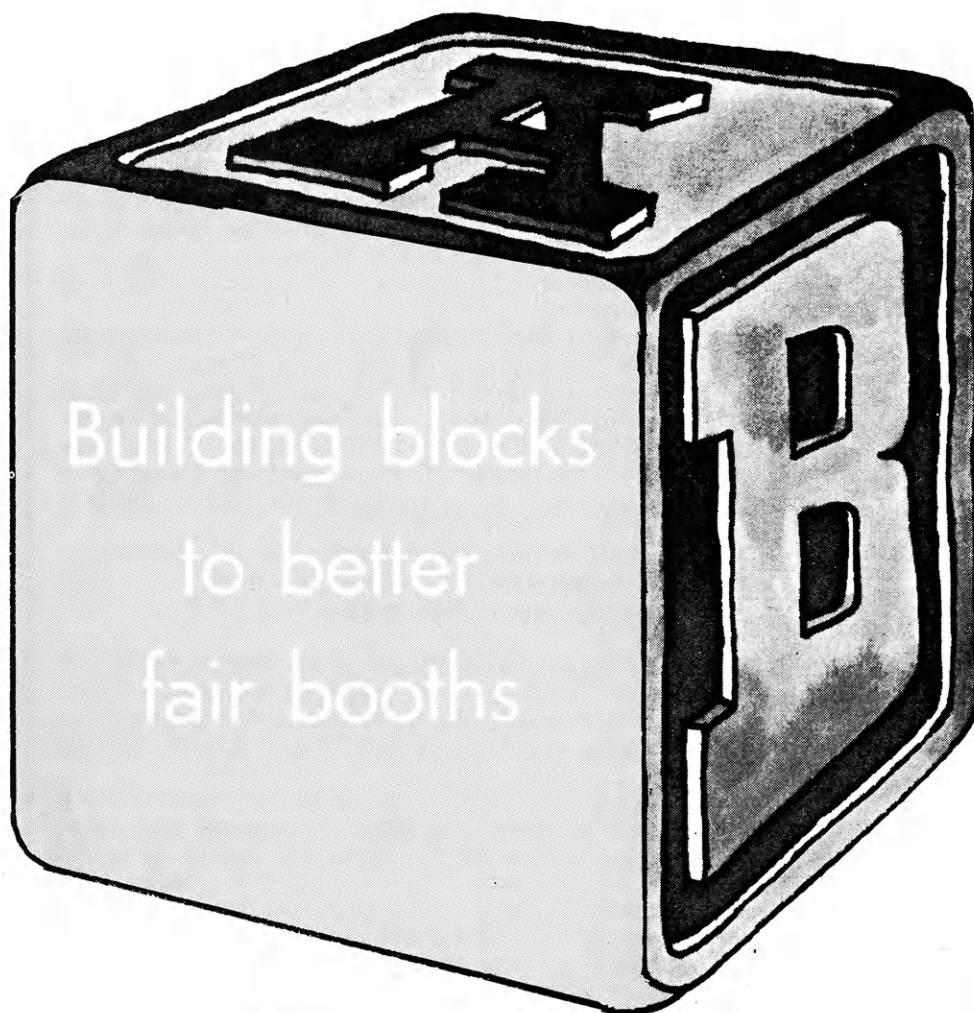
OUR COVER

"4-H opens doorways to thought," was a statement by Janet Sprang as she reflected on her nine years in 4-H work, during a picture-taking session at Rock Springs Ranch. "Are we really living fully?" Janet wondered, framed by a stone window, alone in Meditation Chapel,

captivated by the incessant babbling of Stoney Brook.

Additional pictures and a text by Janet appear on pages 22 and 23 of this issue.

Cover photographs and those on pages 22 and 23 were taken for the Kansas 4-H Journal by Eric Johnson, a student at Kansas State University.



By Charles Bates
Extension 4-H Specialist

Good 4-H booths do not just happen. They are the result of much planning and effort by both members and leaders.

The purpose of a 4-H booth is to show the public, in a graphic way, the story of 4-H work. It interprets 4-H to the viewers, who may or may not be acquainted with the program.

4-H booths may teach facts, show a process, promote or recognize.

PLANNING

Planning is the key to a successful booth. The biggest and most neglected part of most exhibit work is **planning**. Too many exhibits are made without detail planning.

Planning can best be accomplished by a committee of both members and leaders. The ingenuity of both get a terrific work-out in booth

preparation. The booth must be planned well in advance of exhibition time—so start your planning now. The committee should meet at least two months in advance of exhibition date to select a general theme.

All committee members should help in giving ideas. As they take shape, develop a schedule so materials will be ready and assembled on time. Use one clever idea and present it simply in telling your story.

Here are five key points for a successful booth—

- Keep it simple.
- Make it attractive.
- Use a minimum of words.
- Use color, light and motion.
- Use one idea and stay with it.

GET IDEAS

As you plan your booth, get ideas from as many club members as pos-

sible. With these suggestions, a committee meets and pools ideas of choice of subject matter and decides ways to display the materials and share the work. Be sure you know exactly the amount of space available.

Along about now it is easy to get bogged down in materials, cut-out color schemes, models and ideas. When this happens the end product tends to disappear from view and the booth becomes a hodge-podge "everything and nothing."

WHO, WHAT, WHY, HOW

Avoid this situation by looking at the who, what, why and how.

Who, of course, is the audience you wish to reach. What is the subject matter you wish to present? Why is the purpose of the booth? How is the way to express your message. Only when you have defined answers to who, what and why can you go to how.

When you have these answers make several rough sketches of the ideas, selecting the best one. Then build a scale model of the booth so you can see the idea in three dimensions.

Making a scale model may seem elementary but a model will help you see where you are crowding, where you are confusing separate elements and it helps to locate the center of interest.

Plan the background in the shape of a rectangle. Square shapes seldom are attractive.

CENTER OF INTEREST

A booth must have a main point of interest which should not be dead center. Put it in the upper left, upper right, lower left or the lower right areas. Most exhibitors use upper left as the first choice for point of interest or the upper right depending on the design.

It is much easier to locate point of interest when you make a sketch and scale model.

Call attention to your center point of interest by putting the items there. Use a strong color, different shape to add emphasis.

Place small items together, use various levels of position, avoiding clutter.

Open space will give the eye a chance to rest. Do not divide interest between two or three items. Keep only one major item of interest. A short, catchy title in an eye-catching place will help your booth.

COLOR

Colors may add to or detract from the booth. They help arouse interest.

est, stimulate thought and cause action. Choose them with care as they are emotional and convey feelings.

Warm colors such as red and orange advance and are gay and stimulating. Cool colors such as blue and green recede, and are calm and restful.

Usually it is best to select one color to go with your overall background color. A third color may be used in small amounts for accent and attention.

When considering color for exhibits, keep in mind the following:

—Use neutral backgrounds such as gray, greens, blues, in pastel shades.

—Limit to two or three colors.

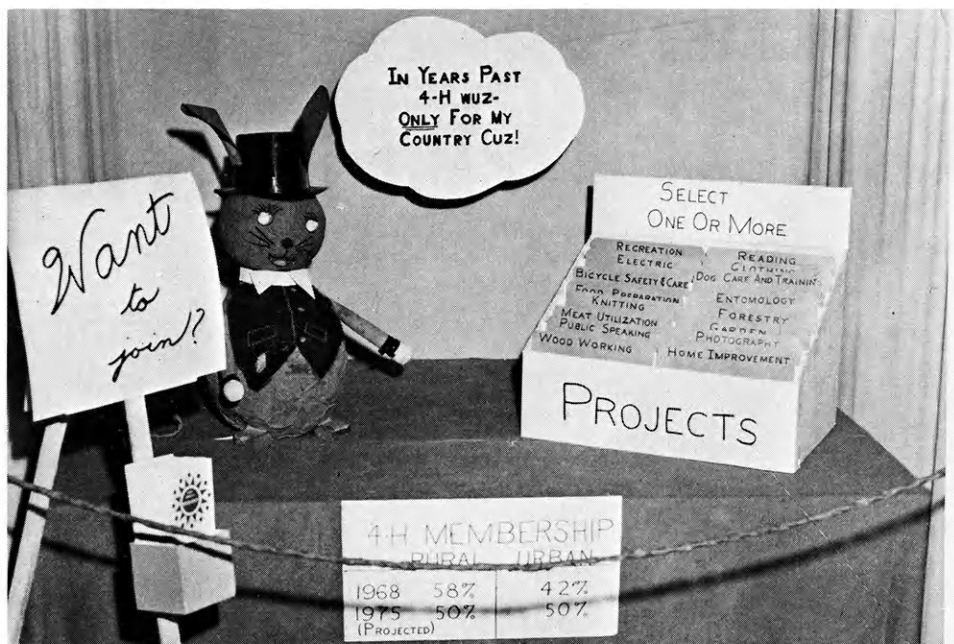
—Have one dominant color and use others for accent only.

Red is a good accent color. When using colors, use vivid colors sparingly on small areas and pastel colors on large areas.

Always consider the effect of lighting and its intensity when selecting a color. Different types of light affect color. Incandescent lights enrich reds and yellows but gray most others. Proper lighting can improve the appearance of your booth. Spotlights can highlight important areas of interest.

LETTERING

Lettering should be simple, clear and well spaced. In lettering a booth, you may wish to follow these few simple guidelines.



PROMOTES 4-H—Originality adds the spark to this promotional booth. Center of interest is focused off-center, an effective eye-catching device. Additional interest is created by the varying shapes of signs.

—Horizontal lettering is much preferred over vertical lettering. Vertical lettering is harder to design and to read.

—Be consistent in style of letters. Do not use different styles of type.

—Be sure lettering is large enough to be seen.

—Lower case letters are easier to read than capitals. Caps can be used for titles.

—The thickness of the lines which

form a letter also determine ease of reading. For safety, follow the rule that the line thickness should be about one-seventh the height of the letter.

—Do not mix colors in a message. Keep letters one color.

—Space letters with the eye and not by measurement when mounting them.

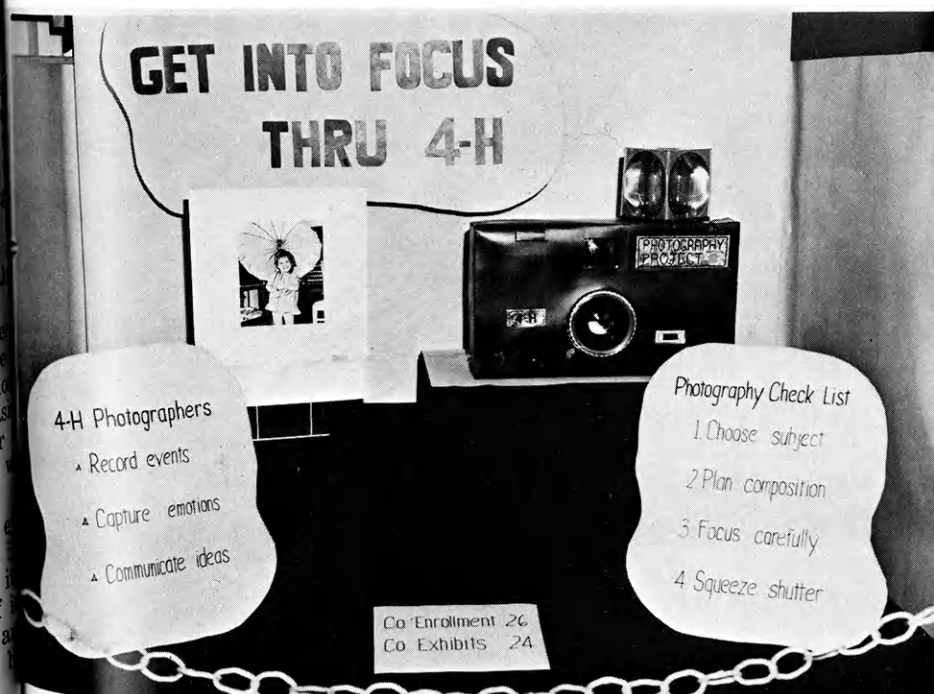
PICTURES

If you use photographs, they should be at least 8 x 10 inches in size. Matte finish pictures are better because they do not reflect light as readily as glossy prints. Photographs of faces or figures can be pasted on plywood or tempered card board and cut out with a jigsaw.

You can call attention to your booth with motion. Turn tables, color slides shown by an automatic projector, a flasher button behind a light bulb are but a few ways to create motion. Be sure, however, the motion is an integral part of the booth and not an afterthought.

Always remember a good booth interprets 4-H activities to the public who may or may not be acquainted with 4-H. The purpose of the booth is to tell the public, in a graphic way, the story of 4-H work. A clever idea, simply presented, is most effective.

The dividends you receive from your booth exhibit will depend upon how much time you and your committee spend on planning. Start now to plan and success will be yours with an effective, well-presented 4-H booth at the county fair.



FOCUS ON 4-H—An effective device is used in this booth by placing the center of interest off-center. The use of different shapes for signs creates additional interest. Good balance and motion add the finishing touches!

Enter the

4-H Survey of Safety

WIN A FREE TRIP TO CHICAGO

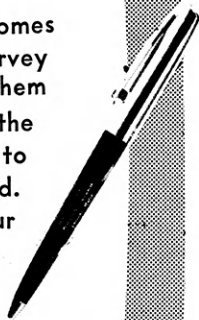


SAFETY SENIORS

Take an active part in club safety activities by assuming leadership on committees and assisting younger members with Surveys. Seniors are required to make Surveys also, but in addition make a plan of work and keep a record to show accomplishments. In addition to being eligible for a "Pen" award they may submit their records for consideration in awarding the education trip.

SAFETY STARTERS

Select one or more homes and farms and make a survey of safety hazards. Tag them and make plans with the owner for a return visit to check them after corrected. Your leader will report your accomplishment and you will win one of these safety Ballpoint Pens.



A Safety Program for All 4-H Members

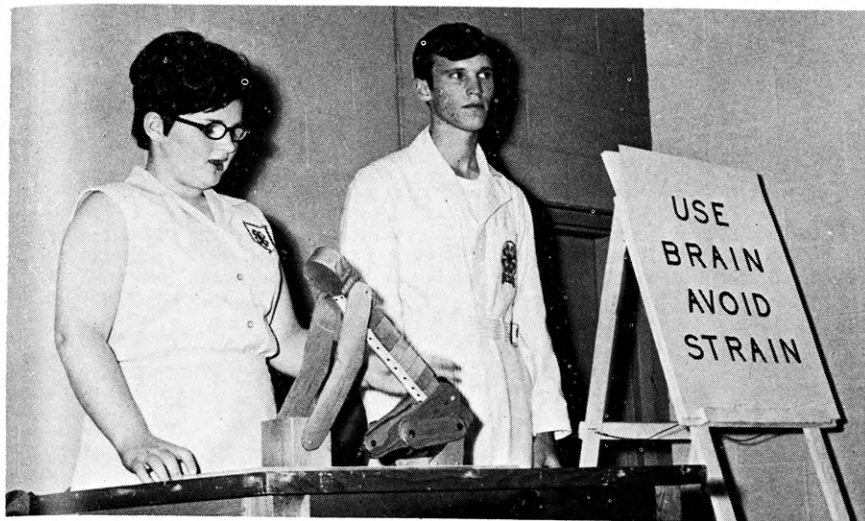
Every 4-H Club member, regardless of age, may participate and receive recognition in the different phases of this program. See your Extension for the necessary information.

DONOR OF AWARDS FOR THE 4-H SAFETY PROGRAM

KANSAS FARM BUREAU

SAFETY DEPARTMENT

MANHATTAN



SIMPLICITY IS KEY—Demonstrations must be simple enough for the audience to understand, and explained clearly enough so persons could go home and duplicate the demonstration. Here, Glenna Fridell and Mike Luster demonstrate, "Use Brain, Avoid Strain". Both are members of the Robinson Meadowlarks 4-H Club, Brown County.

Ideas for demonstrations

By John Hanna
Extension 4-H Specialist

Cut. Measure. Mix. Blend.
Saw.

"Words in action" has been used to define a demonstration, a real opportunity for a 4-H member to teach someone to do something.

Persons learn more and remember it longer when two senses are utilized: sight and sound. Demonstrations are an effective teaching method because they combine seeing and hearing.

In planning a demonstration, 4-H'ers should follow these steps: choose a subject, gather reliable information on the subject, study the information, work out a plan, make a list of equipment needed, start doing

the thing to be demonstrated, then fill in the explanation on the talk as it is practiced.

When planning a demonstration, keep two tests in mind: (1) Does the audience want to go home and do the thing you've shown? (2) Can they go home and do it? Sparking the interest of the audience and making the job look easy by practicing many times is the first test. The second means careful showing and thorough explanation of each step in full view of the audience.

The answer to, "What shall I demonstrate?" is the first step in planning a demonstration. It may be something the member already has done in his project work. It should be something the 4-H'er is interested in and

likes to do. Can it be easily seen by the audience? Is it within the ability of the 4-H'er? Does he have the skill to do it? The subject must be one which can be done completely and thoroughly in the time allowed. If too broad a subject is chosen, so much work may have to be done before that the value of the demonstration is lost, and the steps cannot be shown completely enough so that people can go home and do the thing that was demonstrated.

The next step in planning a demonstration is to gather reliable information on the subject. The demonstrator should study the information to it "becomes a part of him." The 4-H'er should know much more

(Continued to page 24)

Thrifty Thrivers Win Consecutive Years

It has been said that no one can win top placings in the project talk or demonstration and illustrated talk competition at County 4-H Day more than two consecutive years. But Aquila Redden and Doug Higginson of the Thrifty Thrivers 4-H Club of Labette County have accomplished this feat.

Aquila has won top playings for her demonstrations or illustrated talks for six consecutive years. Food projects were the topics for each.

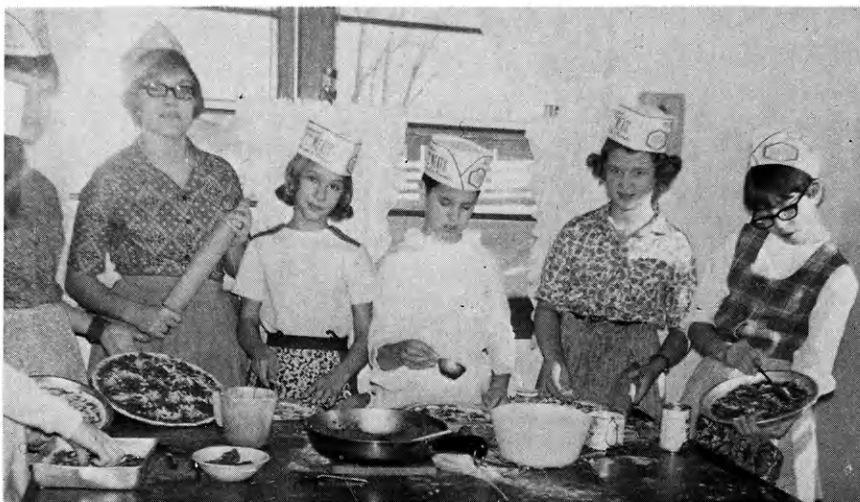
Eleven-year-old Doug has won top blue award in the project talk competition four consecutive years. All his winning talks have concerned safety. The four talks have been among nineteen various safety talks he has given at various 4-H events during his four years of 4-H work.—by Jack Sullivan, reporter.

Nortonville Boosts Writing 'Pen Pals'

The Nortonville 4-H Club of Jefferson County has participated in the People-to-People project by establishing pen pals.

Nortonville members exchange letters with young people in New Zealand, South Africa, Canada, England, Korea and other countries. But the United States is not being overlooked for finding good 'pen pals. People-to-People is a project designed to promote peaceful and friendly feelings among people so our own country can benefit from our best efforts too.

In the interest of this worthy project, we are sending an address where Korean pen pals may be obtained: Green Field Jang, International Cultural Alternate Association, P.O. Box 2255 International, Seoul, Korea —by Ernest Noll, reporter.



PIZZAS GALORE—"Supper Italian Style" was the theme of the picnics and suppers group of the Pleasant Hill 4-H Club of Shawnee County at a recent project meeting. Pictured, from extreme left, are Suzann Ryan, Linda Raab, Suzanne Shaw, Cindy McNorton, Lynn Hiebach, Kendra McNorton and Jill Roepke. Mrs. Don Hiebach is adult leader. Suzanne Shaw is Junior Leader.

Exercise, What You Eat Key to Successful Diet

Are you wondering if you are underweight or overweight? A girl's fastest growing years are ages 11-14 and the greatest gain in height on the average will be age 12. This chart shows where you stand on the height-weight chart:

HEIGHT	WEIGHT
Short-57.9 in. (4 ft. 10 in.)	79 lbs.
Average-60 in.	96 lbs.
Tall-62.9 in.	115½ lbs.

You should aim to improve your nutrition by shifting to "growing-tall" foods. Get with a good food habit without delay. A food plan that meets your requirements for energy and essential nutrients will give you the best chance to develop the way nature intended.

Here is a good guide to follow: 4 glasses milk (8 oz. each). To curb calories, drink 99% fat free, skim milk or buttermilk. Lean meat, fish or chicken: 2 servings, 3 oz. each, cooked weight, not counting bone.

Eggs: 1 daily or 5 per week. Protein alternates: Cheese, cottage cheese, dried beans, dried peas. Vegetables: 3 servings, one a dark green or deep yellow for Vitamin A. Fruits: 3 servings, one an orange or grapefruit or the juice, for Vitamin C. Bread-cereal group: Good quality bread, 3 to 4 slices. Cereal, cooked or dry, ¾ cup.

About eight out of ten girls who go on diets give up before they get thin. You don't need to give up all your favorite foods.

Don't give up breakfast. That is the worst possible way to start the day if you are serious about dieting and we are not saying that to please your mother. Your calories should be divided over the whole day into three meals, plus snacks.

Don't give up snacks. Figure a daily snack or two into your total calorie budget. But choose carefully. Choose fruits and milk. Exercise daily. Walk, jog, swim, dance and do exercises.

Don't give up dieting because you weaken now and then. Don't decide to eat like a vulture on Saturday night and start again dieting on Monday. Remember that old cliché "a minute on the lips, a year on the hips."



ALLIANCE INSURANCE COMPANIES

McPherson, Kansas

FIRE — CASUALTY — LIFE

Serving Kansas Since 1888

The 45th annual state 4-H Round-up seeks insights to citizenship and careers.

Approximately 1,100 4-H young people, 15 to 19, are attending the annual 45th State 4-H Round-up at Kansas State University.

Theme of Round-up is built around citizenship and personal development.

The first day is devoted largely to delegates registering and getting located in K-State dormitories and getting acquainted with the campus. The program officially opens with a general assembly Monday evening in Ahearn Field House. The official welcome will be extended by Dr. Robert A. Bohannon, director of Kansas Extension Service. The Manhattan High

terest sessions not to exceed 11 hours for both days. These sessions offer a wide range of interests to delegates. They include sessions on foods, biology, photography, horticulture, drama, leadership, landscape design, art of loving, computers and interior design.

The featured Wednesday evening program will be an informal "sing out" featuring the Rush County Sing Out group. Thursday evening's program will be Marilyn Van Derbur, Miss America of 1958, who will address the delegates on "Goals and Dreams." After this presentation will be the annual Round-up party which is to be held in the Ballroom of the Kansas State Union.

Friday, June 6, the Round-up program will be highlighted by a formal presentation of the state 4-H chorus in Ahearn Field House. Rod Walker, K-State music department, will direct the chorus. The Round-up program this year provides four days of personal growth for delegates, providing new insights in understanding the many different facets of citizenship and career opportunities. The program is dedicated to broadening the delegate's horizons, providing young people challenges as they explore the many avenues of citizenship and careers. The week will provide opportunities for young people to develop a keener appreciation of two phases of the 4-H program that contribute to helping young people become a happier, more useful citizen for tomorrow.

The Round-up program provides an opportunity for the resident staff at K-State to visit and work with young people and other 4-H youth from the 105 counties. Round-up this year should prove to be an enjoyable week.—by Charles Bates, Extension 4-H Specialist.

'GROWTH' IS KEY TO ROUND-UP

Pops Choir, under the direction of Darrell Buzan, will be the featured program.

Tuesday, June 3, has as its theme, "Education for Tomorrow." This program extends to the delegates an opportunity to visit two of the eight colleges within the university. The eight colleges and their faculties present an overview of their respective colleges to the delegates. The featured evening program Tuesday will be the Talent Program, which will be presented in the Ballroom of the K-State Union.

Wednesday and Thursday will feature two days for personal growth. Each delegate will have an opportunity to select special interest sessions consisting of one to six hours of instruction. Delegates may elect special in-

Horse Project Bigger in '69

The Kansas 4-H horse project this year includes the second state 4-H Horse Judging Contest and an expanded show at the Kansas State Fair.

Butler and Sedgwick counties' 4-H horse project leaders will host the judging school and contest on Tuesday, July 22, at the Barnard Arena, Douglas, according to Cecil L. Eystone, Extension 4-H specialist at Kansas State University. Classes will include six halter classes — two Quarter Horse, one each Arabian, Thoroughbred, one Welsh Pony, and Morgan. In the performance division there will be a class of Western Pleasure and perhaps one of bridle-hack.

With the lengthening of the Kansas State Fair to include the weekend of Sept. 20-21, the 4-H Horse Show is planned for these days in Exhibition Center, the open class horse arena, on the fairgrounds. A committee of county Extension agents assist in planning and conducting the show.

Almost 3,300 Sunflower State 4-H'ers are enrolled in the horse project.

State Paces Region In 4-H-CARE Plan

Kansas led a five-state region last year in participation in "Operation Counterpart", the 4-H Club-CARE program.

Working with CARE and 4-H club counterparts overseas, U.S. youth helped establish a food preservation program with Rural Youth Clubs in Greece by helping to furnish canning machines. 4-H clubs provided wheel barrows, cultivators, hoes, rakes and shovels to children in Sierra Leone; provided 100 day-old chicks for poultry production projects in South Vietnam; sent agricultural hand tool kits and seeds to the "counterpart" 5-D members in the Dominican Republic.



CAKE FANCIERS—Cake decorating has become the favorite pastime of girls in the Welborn 4-H Club of Wyandotte County. Mrs. Vera Mihelcic, center, offers instruction every week. Eight girls gather at Mrs. Mihelcic's home on Wednesdays and Saturdays for decorating lessons and practice sessions.

Kansas 4-H Journal Sponsors

These Sponsors Have Renewed Their County Support of the Kansas 4-H Journal

Brown Citizens State Bank, Hiawatha Farmers State Bank, Fairview Morrill State Bank, Morrill The Bank of Horton, Horton The Bank of Robinson, Robinson The Morrill & Janes Bank, Hiawatha The Union State Bank, Everest	Turner Chili Company, Marion Mrs. Bill Voth, Leader, Walton Agricultural Service Center, Ramona
Butler Andover State Bank, Andover	Morris Farmers Cooperative Assn., Alta Vista Farmers & Drovers Bank, Council Grove Flint Hills Rural Electric Co-op Assn., Inc., Council Grove Hunter Sales Company, Council Grove Mor-Kan Grain Company, White City Morris County Farm Bureau Association, Council Grove
Cheyenne Citizens State Bank, St. Francis	Nemaha Farmers Cooperative Elev., Sabetha Nemaha County Co-op Assn., Seneca Farmers Elevator Co., Seneca Wittmer Grain Co., Sabetha C-G-F Grain Co., Inc., Oneida
Franklin Peoples National Bank, Ottawa Wellsville Bank, Wellsville	Rawlins Farmers National Bank, Atwood Farmers State Bank, Ludell Peoples State Bank, McDonald State Bank of Atwood, Atwood State Bank of Herndon, Herndon
Geary Central National Bank, Junction City First National Bank, Junction City	Sherman First National Bank of Goodland, Goodland
Greenwood A. C. Houston Lbr. Co., Eureka Citizens National Bank, Eureka Eureka Federal Savings & Loan Assn., Eureka Freeman's Tire & Appliance, Eureka Home National Bank, Eureka Ward A. McGinnis, Eureka Race Parks Oil Co., Eureka	Sumner Wolcott & Lincoln, Inc., Wellington Coffel Feed & Grain, Belle Plaine Garretson Grain Company, Conway Springs Caldwell Elevator Company, Caldwell Wolcott & Lincoln, Inc., Milan McDaniel Grain Company, Geuda Springs Oxford Elevator-Bliss & Son, Oxford Oxford Milling Company, Oxford McDaniel-Waples, Inc., Wellington Howell Grain & Insurance Co., South Haven Ed Johnston Grain Company, South Haven Cyanamid Farm Supply, Belle Plaine Wolcott & Lincoln, Inc., Corbin Wolcott & Lincoln, Inc., Perth Wolcott & Lincoln, Inc., Riverdale
Kearny Farmers Cooperative, Lakin	Wabaunsee Alta Vista State Bank, Alta Vista Eskridge State Bank, Eskridge First National Bank, Alma First National Bank, Harveyville The Stockgrowers State Bank, Maple Hill
Leavenworth First National Bank, Leavenworth	
Marion Milk Producers, Inc., Hillsboro Cooperative Grain & Supply, Hillsboro Cooperative Grain & Supply, Marion Cooperative Grain & Supply, Lehigh Agri-Service, Inc., Hillsboro Peabody Co-op Equity Exc., Peabody Peabody Sausage House, Peabody Tampa Co-op Assn., Tampa Lincolnville Co-op Assn., Lincolnville Marion County Co-op, Durham Farmers Co-op Grain Assn., Durham Burns Farmers Co-op, Burns Crossroads Co-op Assn. of Goessel & Newton, Goessel Vogt Lumber Company, Goessel Ratzlaff Draperies, Goessel Aulne Grain Co., Marion Canada Grain Co., Marion Pierce Oil Co., & Fertilizer, Marion Wiens Farm Store, Marion Lynn's Truck & Tractor, Marion	

WHICH WAY TODAY?

THE 4-H WAY — YOUR WAY →

— As you have shown by your support through the Kansas 4-H Foundation —
The way of good citizens, happy homes,
faith in God and country.

*"The most beautiful sight in the world is a youth
going up a path after you have shown him the way."*



Your cooperation with the Kansas 4-H Foundation makes it possible for the Kansas Cooperative Extension Service to offer youth a more effective 4-H program. All who are working with this outstanding youth organization are most grateful to you.

1968 Donors

1968 HONOR ROLL*



An Open Letter

Now as never before, is a time for patriotism in America, a time for teaching boys and girls about the greatness of our Nation, and the story of what has made it great. Only as we realize what our Nation has stood for and means to us today can we really love it.

How fortunate we are as a Nation that we have in training and education millions of our finest youth actively participating in 4-H Club work. These 4-H'ers are under the guidance and direction of hundreds of thousands of 4-H leaders who give unstintingly of their time to our 4-H'ers in developing character and good citizenship.

I have followed closely the growth and development of 4-H work in Kansas which had its inception in the early 1900's. 4-H in Kansas has been fortunate to have had leaders in the Co-operative Extension Service and the 4-H Foundation that were dedicated to the development of our youth. It was and is under their leadership that Kansas has ranked high among the states of the Union in the field of club work. The young men and women who have represented our State at the National 4-H Conference and the National 4-H Club Congress have won the admiration and respect of leaders from over the Nation. During my thirty years of service in the United States Congress, I had an opportunity to meet and know these fine young people. I was proud of them and know that you are too.

The continued growth of 4-H work is so important to the future welfare of our State and Nation that it behooves those interested in our Nation, and the youth of our Nation to redouble our efforts at a time when patriotism and good citizenship are on trial.

We must not fail our youth or our Nation.

Frank Carlson
Former U.S. Senator, Member of the
Kansas 4-H Foundation Board of Trustees

Friends of 4-H — 1968

- | | |
|--|---|
| 9 Adams Business Forms, Inc. | 2 Coursen, Lenora |
| 1 Adams, Everett | 4 Cox, M. Lester |
| 1 Aicher, L. C. | 1 Craig, Floyd |
| 5 Allen, Mr. & Mrs. Elton | 14 Critser, W. Dale |
| 10 Allen, Mr. & Mrs. Harvey | 10 Cubit, James & Helen |
| 3 Allen, Mr. & Mrs. Martin W. | 2 Culver, Mrs. William H. |
| 2 Allied Farm Equipment, Inc. | |
| 2 Allied Mills, Inc. | |
| 3 Altman, H. C. | 15 Danuser Machine Co. |
| 1 Ames Shipping Assn. | 2 Davis, Mr. & Mrs. Fred L. |
| 10 Anderson Cattle Company | 9 Dewell, Mr. & Mrs. Carl V. |
| 3 Anderson, Dustan | 4 Diacon, Dr. James L. |
| 10 Apel, Dale | 1 Dickson, H. T. |
| 6 Appleby, Mr. & Mrs. Tom | 2 Ditmars, Mr. & Mrs. Ray |
| 4 Area, Mr. & Mrs. Donald | 3 Doebele's IGA |
| 1 Aschwege, Mrs. Don | 10 Dressler, H. A. |
| | |
| 6 Baker, Louis A. | 1 Eaton, Mrs. Shirley |
| 1 Balch, Don | 3 Ed Marling Stores, Inc. |
| 1 Balch, Glen | 3 Eli Bowen Ins. Company |
| 3 Bank of Palmer | 2 Elledge, Mrs. Verle |
| 1 Barnes Co-op Elevator | 4 Ervin Bros., Inc. |
| 1 Barnes, Roy | 7 Eyestone, Cecil |
| 3 Barrow, Mr. & Mrs. Vernon | 6 Eyestone, Mr. & Mrs. Merle |
| 3 Bates, Kay L. | |
| 3 Bayer, Burke | |
| 1 Beaty, E.M. | 2 Farmers Co-op Assn., Hanover |
| 6 Beezley Farm | 2 Farmers Co-op Oil Co., Barnes |
| 2 Behrens, John W. | 2 Farmers Co-op Shipping Assn., Clifton |
| 2 Ben Franklin Store, Washington | 3 Farmers Mutual Merc. Co., Greenleaf |
| 4 Benander, Lawrence E. | 1 Farmers Union Co-op Elevator, Mahaska |
| 2 Beninga, C. T. | 8 Farmland Industries, Inc. |
| 11 Bevelhymmer, H. C. | 15 Federal Cartridge Corp. |
| 2 Bird, Byron & Donna | 8 Federal Land Bank, Wichita |
| 2 Bird Music Company | 1 Fegan, T. B. |
| 1 Bittler, Morris | 6 Felt, Esther L. |
| 14 Bly, Erna | 6 Felt, Sylvia S. |
| 1 Bobbitt, Clyde P. | 1 Finlayson, Ernest |
| 8 Booth, Arden | 4 First National Bank, Junction City |
| 1 Bousfield Conoco | 1 First National Bank, Manhattan |
| 4 Bowman Farm Implement Co. | 1 First National Bank, Newton |
| 6 Boyce, Mr. & Mrs. Hugh | 2 First National Bank, Washington |
| 1 Brooks, Mr. & Mrs. Byron | 1 First National Bank, Wichita |
| 7 Brown, Ralph E. | 1 Flaming, Mr. & Mrs. Chester |
| 3 Butler Mfg. Co. | 7 Flint Hills Rural Electric Co-op |
| 4 Buzzell's Office Equip. | 15 Folger Coffee Company |
| | 9 Fooshee, Mr. & Mrs. Claude L. |
| 1 C & R Kennels | 1 Foreman, Mr. & Mrs. Alanson |
| 3 Carlson, M. Dale | 13 Fox & Company, Elmer E. |
| 4 Carr, Francis E. | 1 Frank Mackey & Sons Dairy Cattle Co. |
| 1 Carver, Homer | 2 Fry, Mr. & Mrs. Ralph A. |
| 4 Central National Bank, Junction City | 1 Frye, Raymond G. |
| 2 Chapman, William | 1 Frosty's Mobile Service |
| 18 Cities Service Oil Company | 5 Fullerton, Mrs. Averil |
| 3 Citizens National Bank, Greenleaf | |
| 1 Citizens State Bank, Haddam | |
| 2 Clary, Mr. & Mrs. Don | 7 Garrison, Mr. & Mrs. Donald |
| 3 Clifton Grain Co. | 10 Garten, Mr. & Mrs. Frank |
| 5 Cofer, Virgil S. | 9 Garvey Foundation |
| 4 Cole, Dr. Ward M. | 1 Geier, J. H. |
| 14 Collegiate 4-H Club, KSU | 1 Genes Cafe |
| 3 Community State Bank, Hanover | 1 Geo. M. Myers, Inc. |
| 13 Contractors Supply Co. | 1 George, Dr. Samuel S. |
| 1 Co-op Service Assn., Clifton | 8 Gillmore, Ralph E. |
| 7 Counter, Mr. & Mrs. Henry E. | 2 Goetsch-Irvine Motor Co. |
| 7 Counter, Mr. & Mrs. Perry | 3 Golightly, Mrs. Ernest |
| 4 Counter, Mr. & Mrs. Wayne | |
| 1 Corcoran, Charles | |

*Contributions received during calendar year 1968

HELPING TODAY

- 1 Grace, Cletus L.
- 2 Greenleaf Grain & Feed Co.
- 1 Greenleaf, Linn & Washington Co-op Elevator
- 1 Grieshaber, Robert
- 1 Griffin, Harry
- 3 Griffith Oil Company
- 7 Gross, Paul M.
- 7 Gugler, Donald P. & Evelyn
- 3 Gugler, M. C.
- 6 Gwin, Paul B.
- 15 Kansas Bankers' Assn.
- 13 Kansas Brown Swiss Breeders Assn.
- 15 Kansas City Power & Light Company
- 5 Kansas Electric Co-ops.
- 12 Kansas Farm Bureau & Insurance Services
- 15 Kansas Gas & Electric Company
- 1 Kansas IFYE Alumni Assn.
- 11 Kansas Jersey Cattle Club
- 15 Kansas Power & Light Company
- 3 Kansas Production Credit Assns. & Federal Intermediate Credit Bank
- 10 Kansas 7-Up Bottlers Assn.
- 1 Kaup, Charles K.
- 1 Keeler, Garry L.
- 1 Keller, Ward M.
- 2 Kelley, Mr. & Mrs. Richard
- 1 Kent, Nancy Jo
- 5 Kershaw, O. Willard
- 3 Kiers I.G.A. Store
- 3 Killian, Howard S.
- 1 Kindig, Mr. & Mrs. Paul E.
- 3 King Travel Service
- 9 Kirkwood, Frances
- 6 Kleymann, Mr. & Mrs. Fred
- 1 Klobenbacher, Cleo
- 4 Knappenberger, Dr. & Mrs. Joe
- 1 Knedlik, Chas.
- 1 Koch, Aloisius D.
- 1 Kongs, Mr. & Mrs. Joe
- 2 Koppes, Glenn V.
- 4 Kramer, Martha M.
- 2 Kuhlman Motor Co., Linn
- 1 Kuhlman Motor Co., Washington
- 1 Lallak, John W.
- 1 Learned's Prescription Shop
- 1 Lee Construction Co.
- 6 Leonard, Ralph M.
- 1 Lewis, Erwyl
- 6 Lewis, Joe W. & Margaret E.
- 1 Linn Booster Club
- 3 Linn State Bank
- 3 Linn Store
- 9 Lohmeyer, Mr. & Mrs. Louis
- 1 Lohmeyer Welding Shop
- 2 Low, Raleigh I.
- 1 Lowe, Geo. A.
- 1 Lowe, M. Pauline
- 1 Lull, Franklin
- 10 Lull, Linton C.
- 4 Lundstrom, Carolyn Myers
- 1 Mann, Paul
- 1 Manhattan Broadcasting Co.
- 2 Manhattan Wholesale Meat Co.
- 2 Martin, Mr. & Mrs. Ernest C.
- 3 McClung, Irvin A. Family
- 2 McGinness, Kenneth E.
- 4 McKnight, Virginia
- 1 McMillan, Jack K.
- 1 Menzies, Hubert
- 3 Merchants National Bank, Topeka
- 1 Mertz, Mr. & Mrs. H. D.
- 1 Mertz, Joe & Tom
- 1 Meyer Lumber Co.
- 4 Mid-Continent Elevators
- 8 Mills, Lambert & Rosalea
- 4 Mohn Implement Co.
- 1 Mohn, Melvin
- 1 Montgomery, Donald L.
- 3 Moore Agency
- 1 Moore, Earl R.
- 2 Moore Motor Co.
- 1 Morris, Mrs. Dale, Jr.
- 4 Morrison Grain Elevator
- 2 Morrowville Lumber Co.
- 1 Morton, Richard J.
- 4 Munson, Gaylord R.
- 4 Munson, Ralph C.
- 9 Murray, W. L.
- 7 Musil, Mr. & Mrs. Theo F.
- 1 Myers, Frank L.
- 14 National Dairy Products Corp.
- 1 Neuschwander, Mr. & Mrs. John A.
- 8 Nitsch, John
- 6 Nixon, Mrs. Robert S.
- 5 Norby, Oscar
- 1 Nutt, Donald O.
- 1 Ogden E.H.U.
- 9 Orsborn, Mr. & Mrs. Lawrence J.
- 2 Ouellette, Mr. & Mrs.* Roland
- 3 Overstreet, Ron
- 4 Packard, Bryan
- 1 Padgett, Gary
- 1 Page, Mr. & Mrs. Donald
- 3 Palmer Grain Co., Clifton
- 1 Palmer Grain Co., Palmer
- 3 Peine, Arthur
- 3 Peine, Caroline F.
- 1 Portable Cab Co.
- 2 Powell Bros., Inc.
- 3 Power Constructors, Inc.
- 5 Presnal, Glade C.
- 5 Presnal, Mr. & Mrs. Ross
- 1 Press, George
- 1 Price, Dr. P. G.
- 2 Priest, Frank
- 4 Pucket, Keith M.
- 2 Pugh Family, Ralph E.
- 15 Quinlan, L. R.
- 2 Radio Station KMAN
- 2 Ranklin, Mr. & Mrs. Scott
- 2 Rateuke, Mr. & Mrs. John
- 1 Rawlins, R. L.
- 3 Record Publishing Co.
- 7 Regnier, Roger E.
- 1 Reitz, T. Russell
- 1 Rencin, Bill
- 1 Rencin, Earl
- 1 Riley, Mr. & Mrs. Wm. M., Jr.
- 1 Robinson, Mrs. Bill
- 2 Rogers, Irene
- 4 Rolfs, E. W.
- 1 Ron's Standard Service
- 2 Rost, F. J.
- 1 Rouff, Christy
- 4 Rowland, Virginia Sourk
- 2 Rusk, Mr. & Mrs. Ralph
- 2 Rusk, Ray & Roberta
- 8 Russell, Mr. & Mrs. Marion L.
- 15 Safeway Stores, Inc.
- 7 Samuelson, Mr. & Mrs. Armin
- 1 Savage, Jerry
- 1 Savage's Locker
- 1 Sawyer, Margaret
- 3 Schendel Quality Pest Control
- 3 Schinerer, Clyde
- 9 Schmidt, Mrs. Rose
- 2 Schumacher's, Inc.
- 1 Schwartz, Dr. Willard C.
- 3 Security Benefit Life Ins. Co.
- 1 Sears, Robert E.
- 15 Sears-Roebuck Foundation
- 4 Security State Bank, Sumner County
- 2 Shelor, Mr. & Mrs. Ralph
- 9 Shepherd, Mrs. Ronald
- 12 Simons, Dolph
- 2 Simpson, Mr. & Mrs. Roderick H.
- 1 Singular, Chas. M.
- 6 Sites, Ralph E.
- 4 Slaten, Mr. & Mrs. J. M.
- 1 Snyder, Russell
- 2 Sourk, Ed
- 5 Sourk, Mrs. Ward
- 9 Southwestern Bell Telephone Co.
- 3 Spears, L. H.
- 8 Springlake Stock Farm
- 1 Squire Men's Store
- 1 Stanton, Robert
- 1 State Exchange Bank, Barnes
- 2 Stephens, Mary Lee Sourk
- 1 Sterling, Bob
- 2 Stewart, Neal
- 2 Stigge Clothing Co.
- 8 Streeter, Mr. & Mrs. Charles
- 1 Strong E.H.U.
- 1 Sundowners Lions Club
- 13 Sutherland Lumber Co.
- 1 Swanson, Arthur F. Estate
- 3 Taylor, Ethel
- 3 Taylor, Marie
- 5 Teagarden, Mr. & Mrs. E. H.
- 1 Tegmeier, Carl W.
- 1 Thomas, Millie
- 1 Thompson, Mr. & Mrs. Hugh F., Jr.
- 3 Timmons, Floyd
- 1 Truhlicka, Willis
- 8 Truman, Maxine
- 1 Trust Dept., 4th Nat'l Bank & Trust Co., Wichita
- 2 Turnbull, J. K.
- 1 Uhlik, Matthew
- 5 Unger, H. A.
- 3 Universal Securities Co.
- 1 VanSickle, Carol
- 8 Vanskike, Mr. & Mrs. Harry
- 7 Veatch, N. T.
- 6 Velthoen, Mr. & Mrs. Vernon
- 1 Vern Harris Drug
- 2 Waldren, Mrs. Lloyd
- 10 Walker, Mr. & Mrs. Howard R.
- 8 Walton, Mrs. Keith
- 1 Walton, Ruby E.
- 1 Warren, Dr. Roger
- 2 Washington County Co-op Creamery
- 1 Washington County Farm Bureau
- 2 Washington County News
- 1 Watts, Arnold G.
- 1 Weaver, Clyde
- 1 Welch, Floyd E.
- 2 Welch, Inc.
- 1 Wellington Daily News
- 6 Wells, Mrs. Norma Mae
- 4 Weside All Star Dairy
- 15 Western Power & Gas
- 2 Westervelt, Mr. & Mrs. Darrell D.
- 6 Wetta, Joseph L.
- 1 Whitley, J. B.
- 5 Wichita Bank for Cooperatives
- 1 Wichman, Raymond
- 1 Wiechman, Lavern
- 1 Wiggins, Harley
- 2 Wilbur E. Walker
- 7 Wilson, John L.
- 1 Winger, Mr. & Mrs. Dwight
- 1 Wolfenbarger & McCulley
- 1 Wolverton Hardware
- 3 Woods, David S.
- 13 Woolworth Company, F. W.
- 8 Wright, Mrs. Chester
- 7 Wyckoff, Maurice I.
- 1 Yates, Jack A.
- 6 Yingling Chevrolet Motor Co.
- 3 Yoder, Mr. & Mrs. Royal
- 2 Young, Mary Frances
- 2 Zarger, Mr. & Mrs. Robert
- 1 Zenger, Warren L.
- 1 Zimmerman, Virgil
- 8 Zweifel, Barbara
- 8 Zweifel, Peggy
- 10 Zweifel, Robert
- 8 Zweifel, Robert, Jr.

Note: The figure preceding the name indicates the number of years of support since the Kansas 4-H Foundation Membership and Share Recognition Plan was started in 1954. Please call omissions to our attention.

THE GREATEST PRIVILEGE OF A HUMAN

Extension 4-H and Home Economics — 1968

- | | | | |
|--|--|---|---|
| ANDERSON COUNTY
5 Lucky 13 4-H | DICKINSON COUNTY
2 Jolly Jayhawkers 4-H
1 Navarre 4-H | HODGEMAN COUNTY
7 Pawnee Valley Boosters 4-H | McPHERSON COUNTY
7 Andover 4-H
8 Better Farms 4-H
6 Cottonwood 4-H
3 Country Cousins 4-H
8 Empire Best 4-H
7 Friendly Fremont 4-H
7 Golden Opportunity 4-H
7 Good Luck 4-H
7 Green Valley 4-H
1 Lindsborg Golden '60 4-H
7 Livewire 4-H
10 Lucky Leaf 4-H
5 New Frontiers 4-H
1 Roxbury Jayhawkers 4-H
7 Smoky Valley 4-H
8 Sunflower 4-H |
| ATCHISON COUNTY
2 Shining Star 4-H
BARBER COUNTY
1 B-Square 4-H
2 Gyp Hills Pioneers 4-H
4 Lone Eagle 4-H
5 Mingona Boosters 4-H
3 Stateline 4-H | DOUGLAS COUNTY
7 Cottonwood 4-H
11 Kanwaka 4-H
6 Meadowlark 4-H
8 Stull Busy Beavers 4-H | JEFFERSON COUNTY
11 Grantville 4-H
9 Rock Creek Boosters 4-H | |
| BARTON COUNTY
2 Bartonettes EHU
2 Cheyenne EHU
2 Cleveland EHU
2 Comanche EHU
1 Eureka EHU
1 Evening Stars EHU
2 Heizer Livewires 4-H
1 Hoistington Harmonizers 4-H
1 Home Makers EHU
1 Meadowlark EHU | ELLIS COUNTY
11 Winner's 4-H | JEWELL COUNTY
5 Formoso Willing Workers 4-H
4 Mankato Eager Beavers 4-H
1 Waconda Winners 4-H
5 White Rock Hustlers 4-H | |
| BROWN COUNTY
2 Modern Sunflower 4-H
10 Robinson Meadowlarks 4-H | FINNEY COUNTY
1 Terry Toilers 4-H | JOHNSON COUNTY
3 DeSoto 4-H Adventurers
1 Harmony Homemakers EHU
3 Little Cedar Junior 4-H
3 Oxford Hustlers 4-H
3 Pioneer 4-H
2 Shamrock 4-H
6 Sharon 4-H | MARION COUNTY
10 Happy Hustlers 4-H
10 South Cottonwood 4-H |
| BUTLER COUNTY
7 Towanda Rustlers 4-H | FORD COUNTY
3 Cozy Corner 4-H
4 D.I.Y. Jrs. 4-H
2 Happy Hour EHU
1 Hopewell EHU
1 Northwest Hustlers 4-H
3 Westside Ramblers 4-H
4 Wilroad's Gardens 4-H | KEARNY COUNTY
6 Hi-Landers 4-H | MARSHALL COUNTY
2 Balderson Boosters 4-H
1 Beattie Musketeers 4-H
1 Blue Valley Hustlers 4-H
1 Breman Hustlers 4-H
1 Go-Getters 4-H
1 Happy-Go-Lucky 4-H
1 Happy Harvesters 4-H
2 Happy Horseshoe 4-H
1 Home City Hustlers 4-H
1 Jayhawkers 4-H
2 Jolly Farmers 4-H
3 Merry Makers 4-H
3 Richland Center 4-H
4 Sunflower 4-H
1 Waterville Busy Beavers 4-H
1 Wide Awake 4-H
1 Work To Win 4-H |
| CHASE COUNTY
7 Bazaar 4-H
3 Clements 4-H
6 Emerald 4-H
5 Toledo 4-H | FRANKLIN COUNTY
9 Pottawatomie Valley 4-H
4 Westerners 4-H | KINGMAN COUNTY
4 Cunningham 4-H
9 Hawk 4-H
5 Spivey Sunflower 4-H | |
| CHEROKEE COUNTY
5 Helmic Gingersnaps 4-H | GEARY COUNTY
3 Humboldt 4-H | KIOWA COUNTY
4 Upward Strivers 4-H | |
| CHEYENNE COUNTY
3 Cheyenne County Jr. Leadership Club
1 Happy Larks 4-H | GOVE COUNTY
5 Meadowlark 4-H | LANE COUNTY
1 Alamota Busy Bees EHU
1 Blaine EHU
1 Cheyenne EHU
1 Extension Home Units
1 Spring Creek EHU
1 Sutton EHU
1 Town & Country EHU
1 Wilson EHU | MEADE COUNTY
2 Plains Livewires 4-H |
| CLARK COUNTY
4 Acres 4-H
3 Sitka Hustlers 4-H | GRAHAM COUNTY
3 Hill City Centennial 4-H
3 Prairie Wildcats 4-H | LEAVENWORTH COUNTY
3 Basehor Rustlers 4-H
5 Busy Beavers 4-H
2 Lucky Clover 4-H
5 Nine Mile 4-H | MIAMI COUNTY
3 Mound Builders 4-H |
| CLAY COUNTY
1 Five Creek Jayhawkers 4-H | GRAY COUNTY
1 Charleston Astronauts 4-H | LINCOLN COUNTY
7 Sylvan Hustlers 4-H
4 Wide Awake 4-H | MITCHELL COUNTY
8 Asherville Achievers 4-H
5 Cloverleaf 4-H
6 Future Citizens 4-H
3 Hunter 4-H
4 Mitchell County 4-H Council
8 Tipton 4-H
4 Triangle Boosters 4-H
1 Waconda Winners 4-H |
| CLOUD COUNTY
1 Buffalo Valley 4-H
1 Elk Creek EHU
1 Elk Creek 4-H
1 Fairview Hilltoppers 4-H
1 Hill & Dale 4-H
1 Hollis Hustlers 4-H
1 Junior Leaders
1 Lyon Improvement EHU
1 Pleasant View EHU
1 Republican Valley EHU
3 Republican Valley 4-H
1 Sunflower EHU
6 Sunny 4-H | GREELEY COUNTY
1 Extension Home Units
3 Go-Getters 4-H
3 Golden Opportunities 4-H
1 Straight Ahead Strivers 4-H
4 Thrifty Thrivers 4-H | LOGAN COUNTY
1 Extension Home Units
1 Hi-Plains 4-H
5 Logan County 4-H Council
1 Lucky Diamond 4-H
2 Rainbow 4-H
3 Winona 4-H | MONTGOMERY COUNTY
2 Duck Creek Boosters 4-H
1 Montgomery County EHU Council |
| COMANCHE COUNTY
1 Loyal Hustlers 4-H | HARPER COUNTY
7 Freeport Trailblazers 4-H
2 Harper County 4-H Council
1 Sunnyside 4-H | LYON COUNTY
7 Busy Bees 4-H
9 Model Boosters 4-H
7 Reading 4-H | MORRIS COUNTY
7 Delavan 4-H
7 Dwight Sunflower 4-H
6 Neosho Valley 4-H |
| COWLEY COUNTY
3 Dexter 4-H
3 Liberty 4-H
3 Polo 4-H | HARVEY COUNTY
4 Sedgwick Sunflower 4-H
2 Town Toppers 4-H | | MORTON COUNTY
2 Richfield Best Yet 4-H |
| | HASKELL COUNTY
2 Cloverleaf 4-H
3 Colusa Go-Getters 4-H
2 Lakeview Livewire 4-H
1 Santa Fe Trail Blazers 4-H
1 Sehasco 4-H | | NEMAHA COUNTY
3 Rustlers 4-H |

BEING IS TO BE ABLE TO DO GOOD

NEOSHO COUNTY

- 2 Neosho County 4-H Boosters Club

NESS COUNTY

- 9 Prairie Schooner 4-H
- 4 Sunshine 4-H
- 1 Triple H EHU

NORTON COUNTY

- 5 Busy Beavers 4-H
- 5 Four Square 4-H
- 4 Golden Harvesters 4-H
- 5 Good Hope Boosters 4-H

OSAGE COUNTY

- 14 Carbondale Rustlers 4-H
- 3 North Osage 4-H
- 3 Vassar Blue Ribbon 4-H
- 6 Willing Workers 4-H

OSBORNE COUNTY

- 1 Coronado EHU
- 2 Cosmopolitan EHU
- 1 Kill Creek EHU
- 1 Modern Mrs. EHU
- 9 Osborne County 4-H Council
- 2 Penn 4-H
- 1 Utopia EHU

PAWNEE COUNTY

- 1 Lincoln Livewires 4-H
- 3 Zook Zippers 4-H

PHILLIPS COUNTY

- 8 Deer Creek 4-H
- 1 Sunnyside 4-H

POTTAWATOMIE COUNTY

- 14 Blackjack 4-H
- 3 LaCleda EHU
- 3 Onaga Home Workers Unit
- 3 Pottawatomie County Adv. Comm.
- 3 Rock Creek EHU
- 5 St. George HDU
- 8 Vermillion 4-H
- 4 Vermillion HDU

PRATT COUNTY

- 4 Glendale Reapers 4-H
- 7 Golden Valley 4-H
- 1 Lincoln Climbers 4-H
- 7 Richland Rustlers 4-H

RENO COUNTY

- 3 Arlington 4-H
- 2 Castleton 4-H
- 1 Haven 4-H
- 5 Huntsville Helpers 4-H
- 3 Hutchinson Merry Metros 4-H
- 10 Langdon 4-H
- 4 Mitchell 4-H
- 4 Minnescah 4-H
- 4 North Reno 4-H
- 1 Obee 4-H
- 6 Partridge 4-H
- 8 Plevna Sunflowers 4-H
- 4 Pretty Prairie 4-H
- 5 Prosperity 4-H
- 3 Reno 23 4-H
- 2 Thomodora 4-H
- 10 Walnut Willing Workers 4-H

REPUBLIC COUNTY

- 2 Munden 4-H

RICE COUNTY

- 10 Fairplay 4-H
- 5 Pleasant View 4-H
- 9 Valley Bluebirds 4-H

RILEY COUNTY

- 1 Ogden EHU
- 2 Randolph Ramblers 4-H
- 1 Strong EHU
- 5 Zeandale 4-H

ROOKS COUNTY

- 10 Star 4-H

RUSH COUNTY

- 1 LaCrosse Harmoniers 4-H

SALINE COUNTY

- 6 81 Hustlers 4-H
- 5 Saline County 4-H Council
- 7 Saline Valley 4-H
- 1 Sasnak 4-H
- 7 Sunny Valley 4-H
- 11 Willing Workers 4-H

SCOTT COUNTY

- 1 Extension Home Units
- 5 Go-Getters 4-H
- 5 Lake Wide Awake 4-H
- 5 Lucky Clover 4-H
- 5 Manning Jayhawks 4-H
- 5 Pence Busy Beavers 4-H
- 6 Scott County 4-H Council & Wm. Carpenter 4-H Foundation
- 5 Town and Country 4-H

SEDGWICK COUNTY

- 8 Bentley Eagles 4-H
- 8 Cheney Gremlins 4-H
- 9 Delano 4-H
- 8 Derby 4-H
- 6 Eastridge 4-H
- 7 Furley 4-H
- 7 Hilary 4-H
- 11 Kechi 4-H
- 7 Oatville 4-H
- 5 Peck Ramblers 4-H
- 10 Riverview 4-H
- 8 Rolling Hills 4-H
- 8 Sunnydale 4-H
- 3 Wichita Indians 4-H

SEWARD COUNTY

- 1 Sunset 4-H

SHAWNEE COUNTY

- 3 Decker 4-H
- 6 Dover 4-H
- 9 Highlander 4-H
- 4 Indian Creek 4-H
- 8 Kaw Valley 4-H
- 1 Northlanders 4-H
- 10 Pleasant Hill 4-H
- 12 Riverside 4-H
- 12 Rochester Heights 4-H
- 11 Shawnee Jayhawkers 4-H
- 11 Shunga Valley 4-H
- 9 Wanamaker 4-H
- 1 Willard Busy Beavers 4-H

SHERIDAN COUNTY

- 6 Hi-Plains 4-H

SHERMAN COUNTY

- 7 Beaver Valley 4-H
- 10 Glendale Livewires 4-H
- 1 Jolly Workers 4-H
- 5 Ruleton Eager Beavers 4-H

SMITH COUNTY

- 2 Athol Atoms 4-H
- 1 Meadowlark 4-H
- 2 Solomon Valley 4-H
- 1 Thornburg Cubs 4-H
- 1 U. S. Center 4-H

STANTON COUNTY

- 8 Big Bow 4-H
- 4 Jr. Sunflowers 4-H

STEVENS COUNTY

- 3 Jolly Jayhawkers 4-H

SUMNER COUNTY

- 6 Clippers 4-H
- 10 Perth 4-H
- 13 Rome Rockets 4-H
- 10 20th Malaby Pushers 4-H

THOMAS COUNTY

- 1 Prairie Gem 4-H

TREGO COUNTY

- 4 WaKeeney Willing Workers 4-H

WABAUNSEE COUNTY

- 3 Friendly Farmers 4-H
- 2 Harveyville 4-H
- WALLACE COUNTY
- 1 Extension Home Units

WASHINGTON COUNTY

- 11 Busy Bee 4-H
- 2 Sunshine 4-H

WICHITA COUNTY

- 1 Extension Home Units

WILSON COUNTY

- 6 Wilson County 4-H Council

WYANDOTTE COUNTY

- 5 Advance 4-H
- 4 Bonner 4-H
- 12 Horaniff Hustlers 4-H
- 4 Wolcott 4-H

Memorials

FOR FORD FULLERTON—

Frank Anderson, Jr. 4-H Family
N. E. Askew 4-H Family
Richard Button 4-H Family
Al Gerstner 4-H Family
Bob Harned 4-H Family
Merland Stout 4-H Family
George Wiseman 4-H Family

FOR BEATRICE LEMBRIGHT—

Mrs. Dean Hamilton
Mr. & Mrs. Eugene Jones
Richland Boosters 4-H

FOR MRS. CARL McKEE, JR.—

Cozy Corner 4-H
D. I. Y. Jrs. 4-H
Mrs. Dean Hamilton
Violet Bauer Lindon
Mr. & Mrs. Richard E. Maxwell

FOR KENNETH H. PETERS—

Conkling Cubs 4-H
Mr. & Mrs. Eugene Jones

FOR KATHLEEN ROSEBROOK—

Mr. & Mrs. Donald K. Scott
FOR E. C. SCHOCK
Coffman, Jones & Hederstedt

FOR HARRY VANSKIKE—

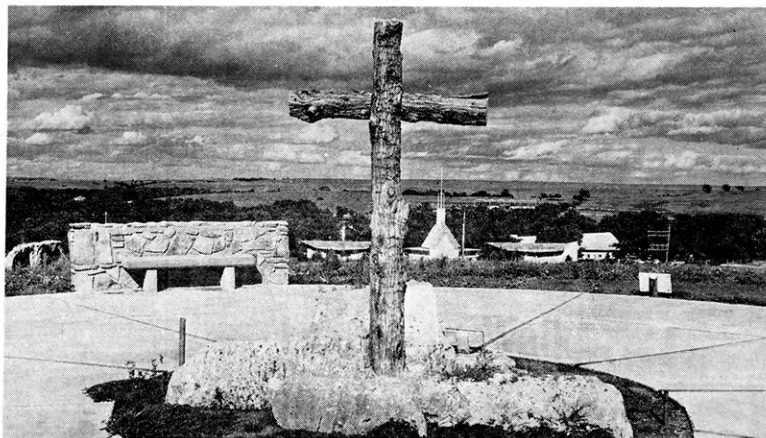
Balzer, Mr. & Mrs. Vance
Begwin, Mr. & Mrs. Willard
Bills, Mr. & Mrs. Lloyd
Chambers, Mr. & Mrs. A. C.
Chapter "G. H." of P.E.O.
Davis, Mr. & Mrs. Sam
Dermid, J. T. & Family
East Bolton 4-H
East Bolton Neighbors
Faidley Bros.
Harper, Mr. & Mrs. Dean
Herbert, Mr. & Mrs. Frank
Home National Bank
Hunt, Mr. & Mrs. Don
Hunt, Mr. & Mrs. Walter
Marrs, Mr. & Mrs. Bill
Mercer, Jack
Miller, Mrs. A. F.
Pratt, Mrs. Hazel
Reid, Mr. & Mrs. Paul
Robson, Mr. & Mrs. John
Sanford, Dr. & Mrs. Paul
Stanley, Kenneth
10th Street Neighbors
Vanskike, Mrs. Harry
Walker, Harold
Wright, Mr. & Mrs. Floyd
Yager, Mr. & Mrs. Otis

FOR LESTER F WEATHERWAX—

Sam Wallingford Bequest

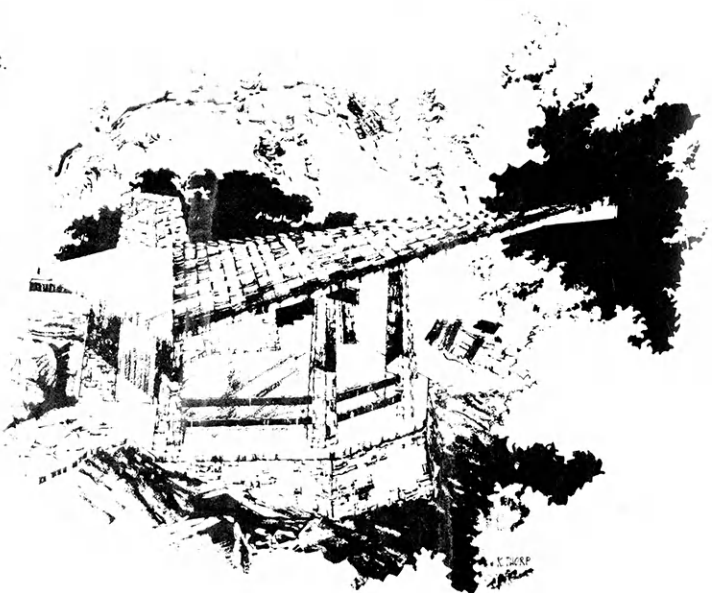
HONORING THURMAN WREN—

Sedgwick County 4-H Clubs



Vesper Lookout, Dedicated to Kansas 4-H Youth June 3, 1964

- | | | | |
|------------------------------------|--------------------------------------|-----------------------------------|-----------------------------------|
| 2 Alden, Mr. & Mrs. Verne W. | 1 Givens, Mrs. Harry | 4 Nicholas, Mrs. Arthur E. | 2 Stutz, Mr. & Mrs. W. V. |
| | 1 Gladfelder, Mrs. W. A. | | |
| | 1 Goff, Mr. & Mrs. Harold | | |
| 5 Baker, Mr. & Mrs. Russell J. | 1 Green, Mrs. George B. | 1 O'Brien, Mr. & Mrs. Peter, Jr. | 1 Teagarden, Mr. & Mrs. |
| 1 Baringer, Mr. & Mrs. Sylvester | 2 Griffing, Mr. & Mrs. Ward C. | 4 Otte, Mr. & Mrs. Alvin | Robt. R. |
| 4 Bloom, Mr. & Mrs. L. A. | 1 Grimes, Mr. & Mrs. Carl L. | | 1 Thompson, Mr. & Mrs. |
| 2 Blythe, Mr. & Mrs. Lawrence | | | Robt. E. |
| 1 Boles, Mr. & Mrs. Raymond A. | | | 3 Tillotson, Mr. & Mrs. |
| 5 Boller, Mr. & Mrs. Walter | 2 Hall, Mr. & Mrs. Wm. Carlton | 1 Paris, Mr. & Mrs. Glen | Raymond J. |
| 5 Boone, Mr. & Mrs. Wm. I. | 1 Hansen, Mrs. Albert C. | 1 Paulsen, Mr. & Mrs. Fred H. | |
| 2 Briggs, Mr. & Mrs. John W. | 2 Hatch, Mrs. Henry | 3 Peirce, Mr. & Mrs. Walter C. | 2 Tjaden, Mr. & Mrs. Wayne |
| 2 Brownlee, Mr. & Mrs. H. L. | 3 Hawk, Mr. & Mrs. Covell D. | 1 Pence, Mr. & Mrs. Lester B. | 1 Tuttle, Mr. & Mrs. Ralph W. |
| 2 Brownlee, Mr. & Mrs. Irving Earl | 1 Hegle, Mr. & Mrs. W. A. | 3 Poole, Mr. & Mrs. Grover C. | |
| 1 Bryant, Mr. & Mrs. Elmer A. | 2 Heinz, Mr. & Mrs. Kasper | 3 Praeger, Mrs. H. A. | |
| 1 Bunjes, Mr. & Mrs. Otto | 2 Hendrickson, Mr. & Mrs. Malferd N. | 1 Preston, Mrs. Adelbert E. | 5 Upham, Mr. & Mrs. Ralph E. |
| 2 Burtis, Mr. & Mrs. Orville B. | 2 Hildebrand, Mr. & Mrs. Don M. | 2 Preston, Mr. & Mrs. Clifford V. | |
| 1 Burton, Mrs. Clifford E. | 1 Hill, Mr. & Mrs. George | | |
| 5 Carroll, Mr. & Mrs. Nathan | 3 Hockens, Mr. & Mrs. Ralf E. | 2 Ramsey, Mr. & Mrs. John W. | 5 VanHorn, Mr. & Mrs. Harold |
| 2 Caspar, Mr. & Mrs. Chas. L. | 4 Hoover, Mr. & Mrs. Laurence J. | 1 Rawlins, Mr. & Mrs. Robert L. | 4 Visser, Mr. & Mrs. Ed |
| 1 Christiansen, Mrs. Arthur | 3 Houghton, Mr. & Mrs. James H. | 1 Reed, Mr. & Mrs. Ernest A. | |
| 1 Cochran, Mr. & Mrs. Chas. V. | 2 House, Mr. & Mrs. Kenneth B. | 3 Roepke, Mr. & Mrs. Herbert F. | 2 Walker, Mr. & Mrs. Joe M. |
| 1 Collins, Mrs. Lawrence | 2 Hunt, Mr. & Mrs. Walter A. | 1 Rogler, Mr. & Mrs. Henry | 1 Wallace, Mr. & Mrs. D. M. |
| 1 Cox, Mrs. Harvey C. | | 3 Rohrer, Mr. & Mrs. Milton E. | 1 Waln, Mr. & Mrs. Preston A. |
| 2 Crase, Mr. & Mrs. Frank | | 3 Ruhnke, Mr. & Mrs. John H. | 1 Wamser, Howard |
| 3 Crist, Mr. & Mrs. Harold H. | 2 Johnson, Mr. & Mrs. Mervin B. | 5 Russell, Mr. & Mrs. Marion L. | 1 Weaver, Mr. & Mrs. Ralph |
| 1 Cudney, Mrs. F. M. | 3 Jones, Mr. & Mrs. O. W. | 1 Schauvliege, Mrs. Louis C. | 1 White, Mr. & Mrs. Hugh |
| 1 Cudney, Herman L. | | 2 Schlagel, Mr. & Mrs. Chas. F. | 1 Williams, Mrs. Carrie F. |
| | | 2 Scott, Mr. & Mrs. Edward W. | 2 Windhorst, Mr. & Mrs. Ernest A. |
| | | 2 Seifert, Mr. & Mrs. Karl | 1 Wolf, Mrs. O. O. |
| 1 Dale, Mr. & Mrs. Frank | 1 Kaiser, Mr. & Mrs. Edward W. | 2 Shideler, Mr. & Mrs. Jay | 2 Works, Mr. & Mrs. George |
| 4 Dawes, Mrs. Joseph | 1 Kelsey, Mr. & Mrs. M. T. | 1 Smith, Mr. & Mrs. Harry | |
| 3 Deaver, Mr. & Mrs. Harlan | 2 Kraus, Mr. & Mrs. Carl W. | 3 Staadt, Mr. & Mrs. Harold E. | |
| 1 Deewall, Mr. & Mrs. Geo. W. | 4 Kugler, Mr. & Mrs. John M. | 3 Stephenson, Mr. & Mrs. John C. | |
| 2 DeLange, Mr. & Mrs. John | | | 3 Young, Mr. & Mrs. Frank L. |
| 3 Dickerson, Mr. & Mrs. Edward | | | |
| 1 Dickhut, Mr. & Mrs. Clarence W. | 5 Lauer, Mr. & Mrs. Clarence | | |
| 1 Dukelow, Howard M. | 3 Lear, J. T. | | |
| 1 Dusenbury, Mr. & Mrs. F. W. | 1 Lewis, Mr. & Mrs. Walter M. | | |
| 3 Duwe, Henry | 4 Lilliequist, Mr. & Mrs. W. R. | | |
| | 4 Lindholm, Mr. & Mrs. Ernest C. | | |
| 2 Eicher, Mr. & Mrs. Harry L. | 1 Lindholm, John | | |
| 1 Eulert, Mr. & Mrs. Otto C. | 2 Long, Mr. & Mrs. Wm. A. | | |
| | 1 Lorimer, Mrs. J. Scott | | |
| | 1 Lumb, Mrs. G. H. | | |
| 1 Ferguson, Mr. & Mrs. Earl E. | | | |
| 5 Fields, Mr. & Mrs. Samuel A. | 1 Magley, Fred | | |
| 1 French, Mrs. L. R. | 1 Martin, Mr. & Mrs. V. S. | | |
| 1 Frisbie, Mr. & Mrs. R. E. | 3 Mathes, Mr. & Mrs. Walter L. | | |
| 1 Fuhrman, George J. | 1 McGonigle, O. F. | | |
| 2 Fuller, Mr. & Mrs. John W. | 2 McMinimy, Mr. & Mrs. V. W. | | |
| | 1 Montgomery, Mr. & Mrs. Burl D. | | |
| 1 Galle, Mr. & Mrs. Dale S. | 2 Morgan, Mr. & Mrs. Fred G. | | |
| 2 Gardner, Mr. & Mrs. S. Ray | 1 Mundhenke, Mr. & Mrs. Merle G. | | |
| 2 Gehrke, Mr. & Mrs. John | | | |
| 2 Germann, Mr. & Mrs. Howard J. | 1 Munson, Mrs. Charles O. | | |
| 2 Gfeller, Mr. & Mrs. Harvey | 2 Murrey, Mr. & Mrs. Chester | | |
| 2 Gilliland, Mr. & Mrs. Chas. H. | 1 Mustoe, Mr. & Mrs. Melvin | | |



Shelter, Dedicated June 4, 1969



Awards In 4-H

A Spur To Higher Goals

Fifty years of 4-H membership—when we stop to count, this is the span of time that we and our three children were members of a 4-H club. We all count 4-H membership as one of the most important influences and aids in our youth.

During this time, we have been grateful to many people—our leaders, parents, agents, and the many supporters of 4-H: The Kansas Bankers Association, who made possible a memorable trip to National 4-H Camp (and a first trip for a farm girl on a railroad train); the Union Pacific Railroad for a college scholarship; Standard Brands, Inc. for a savings bond; Carnation Company for a watch; Riley County Farm Bureau and Farmers Union for trips to Rock Springs Ranch and support of the livestock sales. The list is not complete, but the idea we want to convey is that awards in 4-H are a spur to higher goals which, when realized, build a person more able to be a part of a useful society—as a teacher, a business man, a mother, a college student, and even an Air Force jet pilot.

In operating our restaurant, we are always glad to employ former 4-H members, because we find them to be people who know how to work, and can produce, as well as being able to cooperate in working closely with others.

Charles & Martha Streeter
Restaurateurs
Manhattan, Kansas



I DID NOT STAND ALONE

4-H is a household word in many families, but, to me, it has been a beacon of opportunity. This organization has taught me the dignity, sacredness, and importance of human labor; how that only by hard work can a project be carried to a successful conclusion. I have learned management, responsibility, and leadership traits which have developed my personal values and enhanced my knowledge of life. Thus, the 4-H project becomes the basic underlying foundation and training ground for this upward development.

Through 4-H I have learned to manage my time and resources wisely. We are taught to set goals, to examine our available resources, and to decide how we can best get from where we are to where we want to be. Therefore, 4-H has taught the value of planning ahead. Thus, with current and accurate records, one can check his management practices, and determine necessary changes. Actually I have learned that with a plan, the knowledge to manage it, and a diagram of its progress, one can carry the project to a successful conclusion.

It was my privilege to be elected president of my 4-H club and the responsibility of organizing and conducting the club meetings was mine. It was during this period that I discovered things did not always go as I expected them to, and I had the responsibility of making adjustments as were necessary to keep the meetings and programs progressing as they should. I am indebted to the 4-H leaders and members for my contacts with them in conducting meetings. They have impressed on me the importance of being responsible and dependable to my fellow man.

I believe that we are living in a changing world and that if this change is to be directed toward a worthwhile end, good leadership must be available. I believe that in order to be a good leader we must first learn to work with and assist other people. I am grateful to the leaders and my fellow 4-H'ers for the examples they have given me as I try to become a better leader.

In teaching the importance of democratic ways of thinking, feeling and acting in relation to others, 4-H has shown me that citizenship involves the understanding of our duties and responsibilities as citizens. Through 4-H I had the opportunity to see how our democratic way of thinking works in the operation of our national government, and I realized what a great heritage the older generation is leaving to my generation.

Values influence our every action. They guide us in choosing right or wrong, good or bad. Each 4-H leader chose values to lead by, and his actions greatly influenced the club members. The leader's willingness to help, to guide, to counsel, and to assist helps 4-H'ers to develop their own value system. For our leaders sincere and intelligent actions, I am grateful.

I have experienced many exciting and meaningful moments in my 4-H career, but the most thrilling was receiving the silver tray for top achievement boy in the nation. But as I look back on this particular moment, there are many people missing from the spotlight. The people who should have been standing there with me are my parents, leaders, fellow 4-H members, businessmen, and Extension personnel. I only wish that I could personally thank all who have helped me throughout my 9 years in 4-H, for the growth and development of any 4-H'er stems from the values he learns from the many great people associated with the program.

Gary Mogge
Kansas University Collegiate
4-H Club Member

A SPECIAL SALUTE —

To the Bankers of Kansas for service to 4-H Youth. Thousands of young people have been inspired to greater accomplishment, and are better citizens — serving community, state, and nation more effectively.

Good Wishes for the Bright Future of 4-H —

“One of the most productive actions of the six hundred banks of Kansas through the Kansas Bankers Association has been to provide support and encouragement for the 4-H youth of Kansas during the past fifty-five years!

“The 4-H youth of Kansas are one of our greatest resources! These youngsters and their leaders are a prime mover in developing better Kansans for a better Kansas.

“We would hope that every youngster in Kansas could have the benefits of being a 4-H member. If this were true, there would be no problems in understanding between young people and former young people now classified as adults!

“The Kansas Bankers Association commends the 4-H Foundation for its part in helping the people of Kansas grow in all good ways. We enthusiastically offer our great good wishes for the bright future of 4-H!”

The Kansas Bankers Association



Cottage built by the bankers of Kansas at Rock Springs Ranch in 1964

'Friends of 4-H' traditional fete

A day to recognize "friends of 4-H" has become a tradition at Rock Springs Ranch. A program of inspiration, fun and fellowship brings home to 4-H'ers and donors alike the importance of adults and youth working together in a constructive, sound approach to better living for the future.

This year, Wednesday, June 4, will be especially important to those whose periods of service to 4-H total 5, 10, 15 and each succeeding 5 years. These and certain special certificates will be presented to the following:

Anderson Cattle Company, Dale Apel, Danuser Machine Company, Mr. and Mrs. James H. Houghton, Henry A. Humphrey, Kansas Banker Association, Kansas Electric Co-ops, Knopke Brothers, Frank Priest, Mr. and Mrs. E. H. Teagarden, Wichita Bank for Cooperatives, Mrs. K. T. Wiedemann and Mrs. Fay Winter.

Electric, Swine Projects Favorite of Key Winner

Electric and swine are the favorite projects of Lynn Lahman, a member of the Quinter 4-H Club and a key award winner.

Extension cords and heat lamps to transistor radios and a shortwave set are some of the

articles he has made in the electric project. He has given many talks and demonstrations in the electric project. Twice he has been a county winner, taking his talk to regional 4-H club day. The Gove County champion and state award winner won two trips to Wichita.

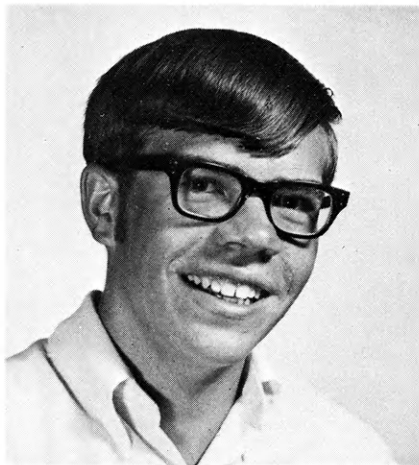
Lynn will be Quinter's electric project leader this year, assisted by an adult supervisor.

Can a young farmer make a profit raising livestock? Lynn has proven he can. He started with two market pigs and last year he had twenty head. This year Lynn is building a hog house to shelter his swine.

County and district judging, writing news stories, helping to promote safety, serving on committees, county council representative and helping at the rest stop on I-70 have been other special services Lynn has given to the Quinter 4-H Club. Fellow club members brag he also is quite an artist and designed the cover of the Gove County achievement program last fall.

Church and school activities also keep Lynn busy. He is an officer of his church's youth group, has been president of his school class, participates in sports and school plays and has been Gove County spelling champion.

Lynn, the son of Mr. and Mrs. Ivan Lahman, is a junior at Quinter high school. — by Shirley Daniels, Quinter 4-H Club reporter.



Lynn Lahman

Kansas 4-H Appreciation Week June 2-7, 1969

a time for 4-H'ers to say **thanks** to all
who support their work
and
an opportunity for adults to show
continued interest and support for
the 4-H program

The Kansas 4-H Foundation welcomes your financial support and will see that it is invested in Kansas' greatest resource — its **youth!**

Your Gift:

- *provides significant assistance in areas where other funds are not available
- *is used for the purpose you designate
- *places your name in the annual Honor Roll of loyal contributors
- *is tax deductible.

Make checks payable and send to:

Kansas 4-H Foundation
212 Umberger Hall, KSU
Manhattan, Kansas 66502

Ribbons Galore

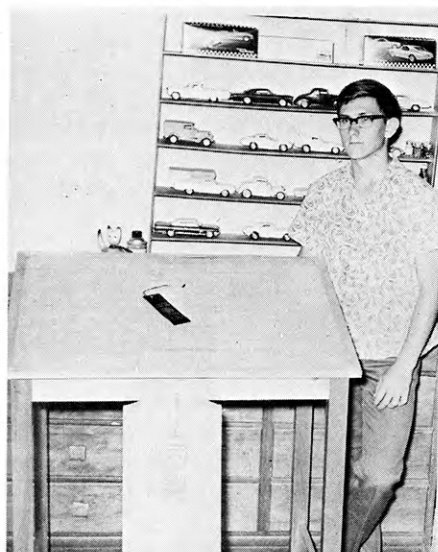
Ninety-three blue ribbons were won by Happy Helper 4-H'ers recently at Leavenworth County and regional 4-H Days. One red ribbon and two white ribbons also were among the prizes.

Debbie Kennedy has been initiated as a new member into the Happy Helpers, of Tonganoxie.

Free!

4-H Woodworking Plans from YOUR LUMBER DEALER

**TWO NEW
PROJECT
IDEAS NOW
AVAILABLE**



DRAFTING TABLE



CHILD'S PICNIC TABLE

*See these Lumbermen for your FREE Plans — they
are your best friend when you need good material*

Anthony
Valley Lumber Company

Argonia
Mack-Welling Lumber Co.

Ashland
Don Spotts Lumber Company
Home Lumber and Supply Co.

Atchison
Hixon Lumber Company

Bern
Bern Lumber Company

Burden
Alexander Lumber Co.

Chanute
Gray Lumber Company

Clay Center
Fullingtons

Clyde
Geo. W. Hays & Son, Inc.

Coldwater
Home Lumber and Supply Co.

Edna
Edna Lumber and Supply Co.

Ellinwood
Home Lumber & Supply Co.

Ellsworth
Ellsworth Lumber

Emporia
Home Lumber and Supply Co.

Eureka
A. C. Houston Lumber
Company

Fredonia
The Home Lumber & Supply
Company

Garden City
McAllister-Fitzgerald Lumber
Co.

Gardner
Gardner Lumber Company

Garnett
Star Grain and Lumber
Company

Goodland
Rasure Lumber Company
Foster Lumber Company

Greensburg
Home Lumber and Supply Co.

Hanston
Halling Hardware & Supply

Healy
Healy Co-op Elevator
Company

Hiawatha
Motsinger Lumber Co.

Hillsboro
Hillsboro Lumber Co.

Holton
Holton Lumber Company

Hugoton
The Star Lumber Company

Independence
Sandott Lumber, Inc.

Iola
Klein Lumber Company

Johnson
Seyb-Tucker Lumber and
Implement Company

Junction City
Builders Lumber Inc.

Kechi
Buck Alley Lumber

Kinsley
Kinsley Co-op Exchange
Lumber Yard

LaHarpe
Diebolt Lumber and Supply

Lakin
Tate and Company

Lancaster
T. E. Snowden Lumber
Company

Lansing
Lansing Lumber, Inc.

Larned
Clutter-Lindas Lumber Co.

Lawrence
Woods Lumber Company
Logan-Moore Lumber Co.
McConnell Lumber Company

Liberal
The Star Lumber Company

Longford
Longford Lumber & Grain
Company

Lyons
Antrim Lumber

Macksville
Home Lumber and Supply Co.

Manhattan
Ramey Brothers

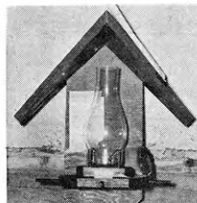
Closet Valet



Woodworking Bench



Bird Feeder



Utility Cabinet



THESE PLANS ARE AVAILABLE



Tool Caddy

Mail Box
Portable Towel Rack

Lazy Susan

Box Hockey

Holding Gate

Sail Boat

Dog House

Sand Box

Comic Book Rack

Childs Step Stool
& Chair

Collapsible Visual
Aid Stand

Cart with
Removable Trays

Back Yard Fence

Magazine Rack

Sheep Blocking Box

Child's Desk

Hobby Horse

Rabbit Carrier

Camp Kitchen

Chick Feeder

Garden Trellis

Bicycle Rack

Hog House

Open Top Sawhorse

Insect Display Box

Dairy Barn Desk

Wishing Well Planter

Coffee Table

Salt and Pepper Set

Colonial Bookcase
and Cabinet

Lawn Lounge

Porch Swing

Canoe Sailing Rig

Tail Gate Kitchen

Chest of Drawers

Table Lamps

Desk

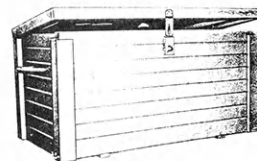
End Table

Wren House

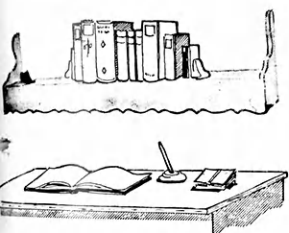
Picnic Table
& Benches

B-B Gun Rack

Redwood Planter



Show Box



Bookshelf Light



Patio Planter



Tennis Padl-Pak



Night Table

Mankato
Mankato Lumber Company

Marysville
Howell Lumber Company

Meade
Home Lumber and Supply Co.

Minneapolis
Dingee Lumber Co.

Moundridge
Clayton Vogt Lumber Co.
Inc.

Newton
Antrim Lumber Company

Nickerson
D. J. Fair Lumber Co., Inc.

Norton
Norton Lumber Company

Nortonville
Alexander Lumber Company

Oberlin
Building Supply Headquarters
Oberlin Lumber Company

Offerle
Offerle Co-op Lumber Co.

Olathe
Cowley Lumber and
Hardware Company
Hodges Bros. Lumber Co.

Osage City
Martin Material Co., Inc.

Osborne
Lewis A. Hardman Lumber
Co.

Oswego
Home Lumber and Supply Co.

Ottawa
Hubbard Lumber Company,
Inc.

Paola
Miami County Lumber Co.

Parsons
O. E. Woods Lumber Co.

Pittsburg
Broadway Lumber Co., Inc.

Plains
Home Lumber and Supply Co.

Pratt
W. R. Green Lumber Co., Inc.

Pretty Prairie
The George W. Ulch Lumber
Company

Protection
Home Lumber and Supply Co.

St. Francis
St. Francis Equity Exchange

Salina
Esterday-Boster Lumber Co.
Larson Building Center

Scott City
McAllister-Fitzgerald Lumber
Co.

Seneca
Seneca Lumber Company

Spearville
Farmers Grain & Supply
Lumber Dept.

Stockton
B & B Lumber & Supply

Syracuse
Foster Lumber Co. Inc.

Tribune
Foster Lumber Company, Inc.

Ulysses
T. M. Deal Lumber Co.

Wichita
Lawrence Lumber Company
Stockyards Cash and Carry
Lumber Co.
Alexander Lumber Company
Inc.
Star Lumber & Supply Co.

Wilson
Hoch Lumber Company

Winfield
A. B. Everly Lumber Co.
Everitt Lumber Co., Inc.

Wright
Right Coop. Assn.

Zenda
The George W. Ulch Lumber
Company

Missouri

Independence
The George W. Ulch Lumber
Company, 11432 Truman
Road

4-H



... to traditions



... to new experiences

"How many times do we stop to notice the beauty of a spider's web covered with dew, or the intricate petal arrangement of a rose?"

"So many times we see the field of hay to be put in the barn, but do we ever enjoy the heavy, sweet smell of freshly-cut alfalfa on a warm day?"

Paradoxical thoughts, perhaps, in today's shoving, pushing, always-on-the-go world, but reflections of a veteran of nine years in 4-H who asks thoughtfully, "Are we really living fully?"

Janet Sprang, 1969 Kansas Dairy Princess, looks beyond, to tomorrow, to the future, at the same time concentrating on today. The 20-year-old Kansas State University junior steps off a fast clip to keep up with her hectic schedule, at the same time tending to the smallest detail.

"When I'm home on our dairy farm in Atchison County, I like to take a walk back into the fields on our farm to a secluded pond where no one ever goes. . . ." As the sunlight no doubt reflects on the pond in myriad sparkles, so Janet, during a picture-taking session at Rock Springs Ranch, reflects on her 4-H years . . .

"4-H develops a total individual. An individual who will be a better citizen. And an individual who will live a fuller, richer life.

"I love people and what an opportunity to meet and get to know others!"

"4-H gives you a view of several areas of work that you might choose for a vocation. It makes you stop and think. That's an important decision each young person



... to new challenges

opens doorways

... to make at some time, and it definitely helps to be exposed to many walks of life.

"I cannot possibly list all the advantages I have gained from my 4-H work. It is a vast accumulation of factors. It is not one area of training, but instead, it develops a total individual who will be a better citizen."

"Life-long friends is one of the most valuable gains from belonging to 4-H."

"It's an educational experience. So much learning takes place! I've learned so many things from my 4-H work which will carry through the rest of my life. Not only homemaking skills but knowing how to work with people, to use parliamentary procedure, to keep records and to be a better citizen. The list never ends!"

"It's great to have individuals come up to me on campus and say they remember me from 4-H camp when I was a junior counselor—an opportunity then arises to renew an old acquaintance which may result in a growing friendship."

"4-H gives family members numerous opportunities to work together. Parents learn from 4-H work too. It pleases me to see parents working as club leaders and project leaders. Everyone including adults should discipline themselves to learn — there's always something to learn!"

"It gives every person an opportunity to achieve and receive recognition if he is willing and determined enough to strive for the very best, to make the best better."

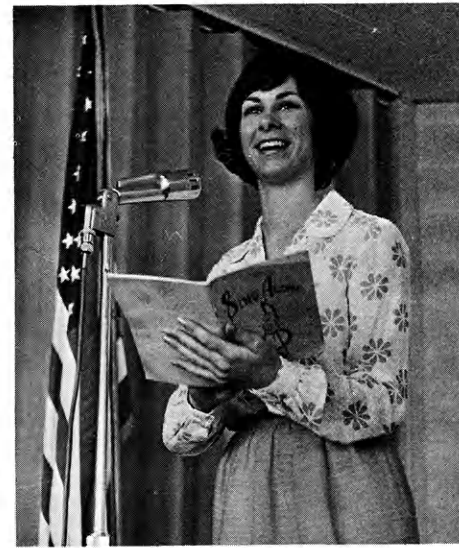
"4-H stimulates thinking. It opens doorways. . ."



... to the future



... to exploration



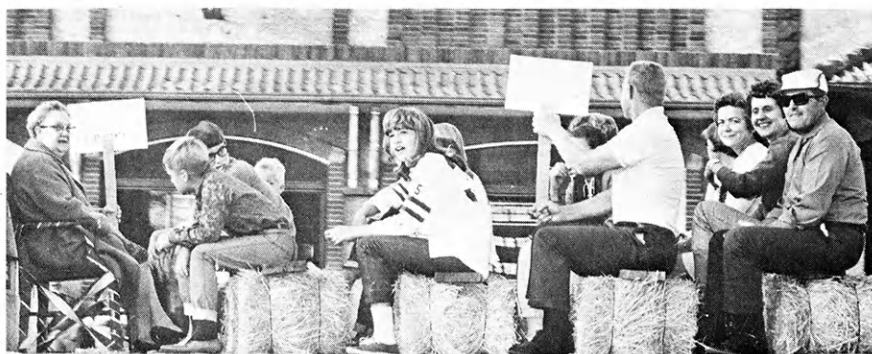
... to group fellowship



... to fun-filled activities



... to personal meditation



Jr Sunflower 4-H club
the oldest club in Lincoln Co.
on State of Kansas

OLDEST 4-H CLUB—"Our Aim Success—Our Hope To Win" was to become the motto of the oldest, continuous 4-H club in Kansas, the Junior Sunflowers of Lincoln County. Twenty-one girls, no boys were allowed, and their leaders met in 1923 to organize the club. A year later, the charter was granted. It was another five years before boys were allowed to join. This float depicting the history of Junior Sunflowers was entered in Lincoln's "Mardi Gras parade". Mrs. Martha Skov, far left, was one of the club's first leaders. Robert Nunn, holding sign, and Mrs. Leonard Heinze, behind him, are current leaders.

Ideas for

(Continued from page 7)

about the subject than he has time to use.

Making an outline helps get a clear picture on paper how to give the demonstration. A plan for the demonstration may be made on a sheet of paper divided into three parts: "What to talk about," "What to do," "Equipment needed." A plan for the arrangement and location of equipment to be used is helpful keep the area in front of the demonstration clear, so people can see what he is doing.

The demonstration should not be memorized except perhaps the introduction and summary. The speaker should talk freely and easily. The demonstrator should begin doing the thing he is showing and fill in the explanation or talk as he practices the demonstration.

Practicing the demonstration over and over gives the 4-H'er confidence and improves his skill in working with the materials and equipment. Practice also enables him to make the job look easy.

"Are you a victim of suitcase shambles?" was the opening statement in a demonstra-

tion on packing a suitcase. A girl demonstrated "Matching Plaids" started her demonstration with this question, "Have you ever gone shopping and passed up a pretty plaid, because you were afraid you couldn't match it?" The introduction should be attention-catching and make people want to listen.

The body or main part of the demonstration is the doing, showing and explaining. This is

the step-by-step procedure in logical order. Explaining why things are done helps convince the audience.

The summary is a chance to review or emphasize the main points of the demonstration. In concluding a demonstration on packing a suitcase, one girl stated, "It's as easy as stacking flapjacks." If there is a finished product, it should be shown during the summary.

The 4-H'er should wear neat and clean clothes suitable for the job he is doing.

Where can a 4-H member get help on his demonstration? The 4-H's project leader, community leader and demonstration leader are sources of help in planning a demonstration. Younger members may get help from junior leaders. Parents can help, too, as well as 4-H friends!

Wins Scholarship

A Lyons Conqueror 4-H'er in Rice County, Beth Brubaker, has been named winner of a \$1,200 honor scholarship to McPherson College.

Beth was named on the basis of high school grades, American College Testing program course, class rank, personal interviews and achievements in extracurricular activities.

"Beth has been a strong 4-H member in Rice County, getting a top blue in instrumental solos this last year at Regional Club Days.

you spell it

e-l-e-c-t-r-i-c-o-n-o-m-y

It means better living, more business, a greater economy because of the availability of electric power in rural areas of our state.

The evidence of Electriconomy is everywhere. In large cities, in smaller ones. In towns, on farms. The contributions made by rural people to the Kansas economy are a credit to the 37 Electric Cooperatives in our State . . . providing low-cost electric power to over 100,000 Kansas consumers.

THE ELECTRIC  **Cooperatives**
OF KANSAS



In Today's Mail

Time to say 'thanks'

4-H Foundation buys Camp Wa Shun Ga

The Kansas 4-H Foundation has purchased Camp Wa Shun Ga, which 4-H'ers will remember as the camp near the entrance to their own Rock Springs Ranch. Ownership is effective in October.

The 17-acre camp, which was owned by the Lutheran Association, will be added to Rock Springs Ranch property, which already borders Wa Shun Ga on three sides. The land, originally one tract, was separated in 1925 when the Lutheran Association purchased the site and establish-

(Continued to page 27)

4-H clubs and members have been commended highly for showing appreciation for the innumerable helps provided to their ever-growing program. It "comes naturally" that a period be designated to emphasize and implement the thanks which 4-H'ers feel in their hearts. Kansas 4-H Appreciation Week this year is June 2 to 7.

Appreciation has been shown in many ways. Some 4-H'ers have presented their donor a cake, or a bouquet, or have written a 'thank you' letter. Nothing, though, can take the place of a personal "thank you." Some clubs present a citation, a plaque or confer honorary membership upon long-time boosters. Picnics for donors, parents and friends also have been popular.

A "letter to the editor" of your local newspaper may be an especially appropriate way to thank all donors.

Not to be overlooked is the opportunity for friends of 4-H to show their appreciation for the work of 4-H members and leaders. Here again, this has been done in many different ways such as a 4-H program at civic club meetings, providing a "send-off breakfast" for Round-up delegates, an editorial or advertisement, or by making a regular contribution to the Kansas 4-H Foundation to mark the occasion.

Kansas 4-H Appreciation Week—a time to say "thanks". —by J. Harold Johnson, executive director, Kansas 4-H Foundation.

Sievers put stock in 4-H youth

Harold and Velma Sievers' ties to Rock Springs Ranch are caught up in one word: people.

Meeting and working with all kinds of people is the favorite aspect of Mr. Sievers, ranch supervisor,

and his wife. Mrs. Sievers still at the ranch attend Chapman schools. They're Sherry and Gene, and twins Randy and Sandy.

Young people who attend Rock Springs continually impress Mrs. Sievers, who says, "I believe the people going through here will be leaders of the country in the future." Mrs. Sievers recalls an incident which impressed her about the young people at Rock Springs: fifty Christian athletes were in the lobby of Williams dining hall and not one boy had a match to light the fireplace. "I thought that was really something, that not one of those young men smoked," Mrs. Sievers said, smiling.

Mr. Sievers counts his rewards at Rock Springs in terms of people, not money. Doing things for people is important to the former dairyman.

Mr. Sievers, former farmer and dairyman, operated his own

farm until 1960 when the family moved to Colby where he was foreman of a cattle ranch until 1964. The Sievers packed up and came to Rock Springs Oct. 1 of that year.

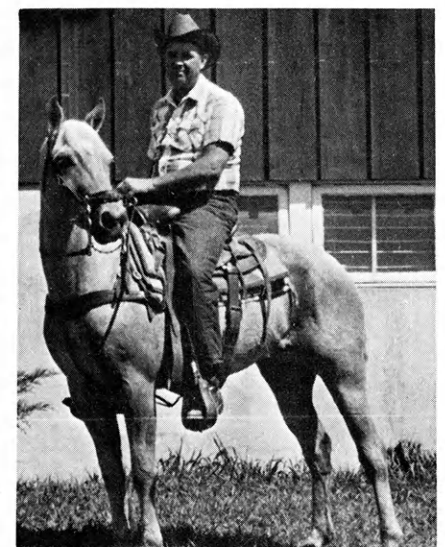
(Continued to page 27)

Velma
Sievers



ervisor, and his wife. Mrs. Sievers doubles as dining room supervisor in the winter and heads the snack bar and souvenir service during the busy, summer sessions.

The five Siever children also have taken an active interest in Rock Springs. The oldest, Mrs. Connie Bates, is a junior at Kansas State University. The four



Harold Sievers

IDEAS * & News *

The Sasnak 4-H'ers of Saline County met recently to pick up litter in Kenwood. Make your town litter free!

Verla Harms, IFYE to the United Kingdom, was the guest recently at the City Slickers 4-H Club of Harvey County. Verla talked and showed slides at the joint meeting of the City Slickers and the Kellas club. Is there an IFYE in your area? It would make a good program!

The Glenwood 4-H'ers of Wyandotte County recently voted to give handkerchiefs to persons at the Kaw Valley Nursing Home. **Debbie Kelly** was named chairman of the gift committee; **David Peterson**, **Maggie Mellot** and **Mike Rehm** will assist her. Biafra was the topic of an activity talk by **Judy Erbes**.

Mary Banker and **Steve Gierach** are Round-up delegates from the Saline Valley 4-H Club of Saline County. The club's health and safety committee recently sponsored a clinic for free tetanus shots. The Saline County Health Department furnished the serum. What has your club done lately to promote public health?

The **Mustard Seeds** of Saline County are involved in "Stash Your Trash", the club's effort of keeping America beautiful. Members voted to paint litter barrels and place them in shelter houses in the city park.

New members of the Sunny Valley club of Saline County are **Marilyn Heller**, **Marlene Heller** and **Martha Heller**. A 4-H welcome to the Hellers!

Kipp-Wide-Awakers of Saline County brought home many honors from county 4-H day recently. They won one top blue, one blue, ten reds and two whites. **Janice Seim** competed in regional club days and brought home a blue.

The **Falun 4-H'ers**, also of Saline County, gave a table and eight chairs to the Falun Lutheran Church. The club also announced plans to publish a newsletter to remind members of coming events. Does your club have trouble rounding people up at the right time? Consider a newsletter!

Four Round-up delegates represent the Sedgwick Sunflower 4-H Club of Harvey County. They're **Mike Porter**, **Lili Porter**, **Kathi Phillips** and **Joy Challenger**.

50th. Anniversary



1919 * 1969

Farm Bureau is the largest voluntary farm organization organized for legislative representation. There are 1,796,641 member families in the United States and 83,042 member families in Kansas.

Farm Bureau is political, but not partisan. The issue, not the politician or party, is the important factor. Farm Bureau leaders and officials are men and women of both political parties.

Farm Bureau policies originate at the grass roots. Elected leaders are farmers. Active farmers control Farm Bureau because voting membership is limited to those whose principal income is from farming.

Farm Bureau is a general farm organization working for the best interests of all farmers and producers of all agricultural commodities.

Farm Bureau owes allegiance to no one but its dues-paying members because membership dues are the only source of finances.

Farm Bureau is a strong, respected influence in the program to preserve our freedoms, the private enterprise system and the American Way of Life.

Kansas Farm Bureau

105 County Farm Bureaus

Working Together

Poison Weeds Are Camping Hazard

One of the hazards to a successful camping trip is poisonous weeds. An itchy rash is no fun on a trip!

Poison ivy and poison oak can be spotted easily by three leaves in a cluster. These leaves will have smooth, sometimes shiny surfaces and the edges may be smooth or toothed. Poison ivy often is found climbing trees or running along walls or fences. Poison oak usually grows in shrub form, but sometimes is found in vine form. Clusters of white berries appear in the fall.

If you come in contact with one of these plants, wash the exposed area with strong kitchen soap for several minutes. If the skin erupts, don't scratch! Scratching spreads the poison! Treatment includes Calamine lotion, which will stop the itching and dry up the infected areas. If large areas are involved, see a doctor.

If you camp near a swampy area, you may encounter poison sumac.

4-H Foundation

(Continued from page 25)

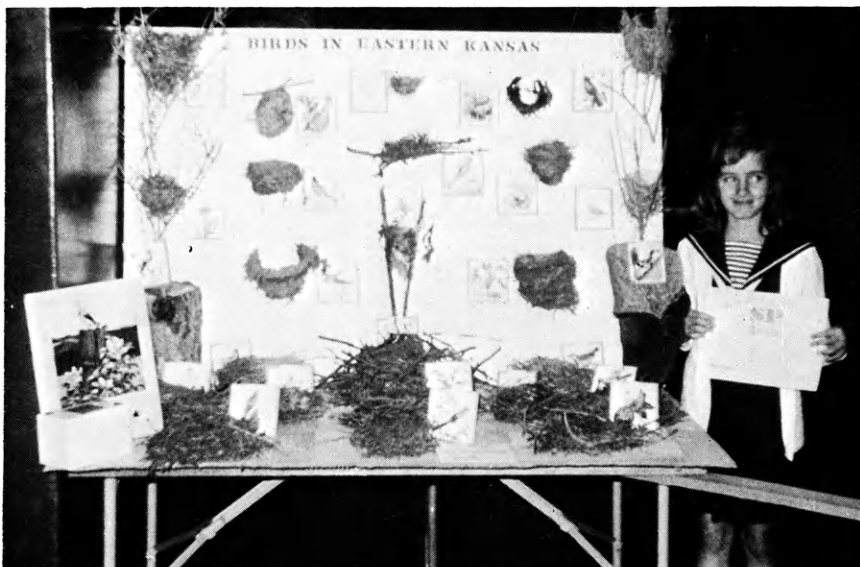
ed a camp.

Wa Shun Ga contains a well-kept, modern swimming pool, boating and other recreational areas, as well as a chapel and some housing units. More detailed plans concerning development of the Wa Shun Ga property will be announced later by trustees of the Kansas 4-H Foundation.

Sievers put

(Continued from page 25)

Horses are the favorite pastime of Mr. Sievers, who enjoys taking Rock Springs visitors on buggy rides and hearing of their childhood experiences with horses. The operation of Christy stables and supervision of the ranch's total horse program is another task Mr. Sievers wouldn't trade!



TRIPLE AWARD WINNER—A Johnson County girl, Leesa Ann Bottoms, member of the Morning Glory 4-H Club, made good use of her Bird Conservation 4-H project and went on to win three science awards. Leesa Ann collected 26 different bird nests, mounted them and made a bird notebook. She won a purple award at the school science fair in Gardner, a superior award at the Greater Kansas City Science Fair and an award from the Kansas City Burrough Nature Club. Johnson County's Fish and Game department gave Leesa Ann special permission to collect the nests.

A Good Leader Is . . .

A good leader, including Kansas 4-H junior leaders, like a good mechanic, needs good tools.

What are some of the tools youth can use to develop leadership in school, church, or any group?

Interest keeps you sticking to the job until it is finished satisfactorily.

Intelligence is the ability to understand a situation and then meet it with proper kind of behavior.

Initiative means you are a "self-starter." You understand what you should do and go ahead and do it without excuses, stalling, and putting off.

Integrity means you have self-respect and that you respect others.

Insight is the ability to analyze a problem and see what is needed to make things click the way they should.

Invention is the ability to produce some ideas. Leaders think things through and come up with good suggestions.

Classified Ads

Classified Rates — 12c per word, 5% discount for 6 annual insertions, 10% discount for 12 annual insertions. Payment in advance.

FARROWING STALLS—Complete \$26.75. Dealerships available. Free literature. **DOLLY ENTERPRISES**, 101 Main, Colchester, Illinois 62326.

CALF CREEP FEEDERS—30 Bu. Capacity \$92.50. Dealerships available. Free literature. **DOLLY ENTERPRISES**, 101 Main, Colchester, Illinois 62326.

LOANS ALL TYPES
\$10,000 to \$100,000,000
Anywhere in USA and Canada
FISHER Real Estate-Mortgage Corp.
Mortgage Brokers, Joy, Illn. 61260

PICK-UP TRUCK STOCK RACKS — All steel construction \$109.50. Dealerships available. Free literature. **DOLLY ENTERPRISES**, 101 Main, Colchester, Ill. 62326

PILLOWSLIP, Electrostatically correct, preserves hair-do. Best quality Satin, \$2.50 ppd. State color—Pink, Blue, Yellow. Marysville Mfg. & Dist., Marysville, Mo.

Antiques 'light up'

Franklin County teenager takes a dust collecting antique lamp and turns it into a thing of beauty for the home.

By Pete Sorenson
Rambling Ranchers 4-H Club

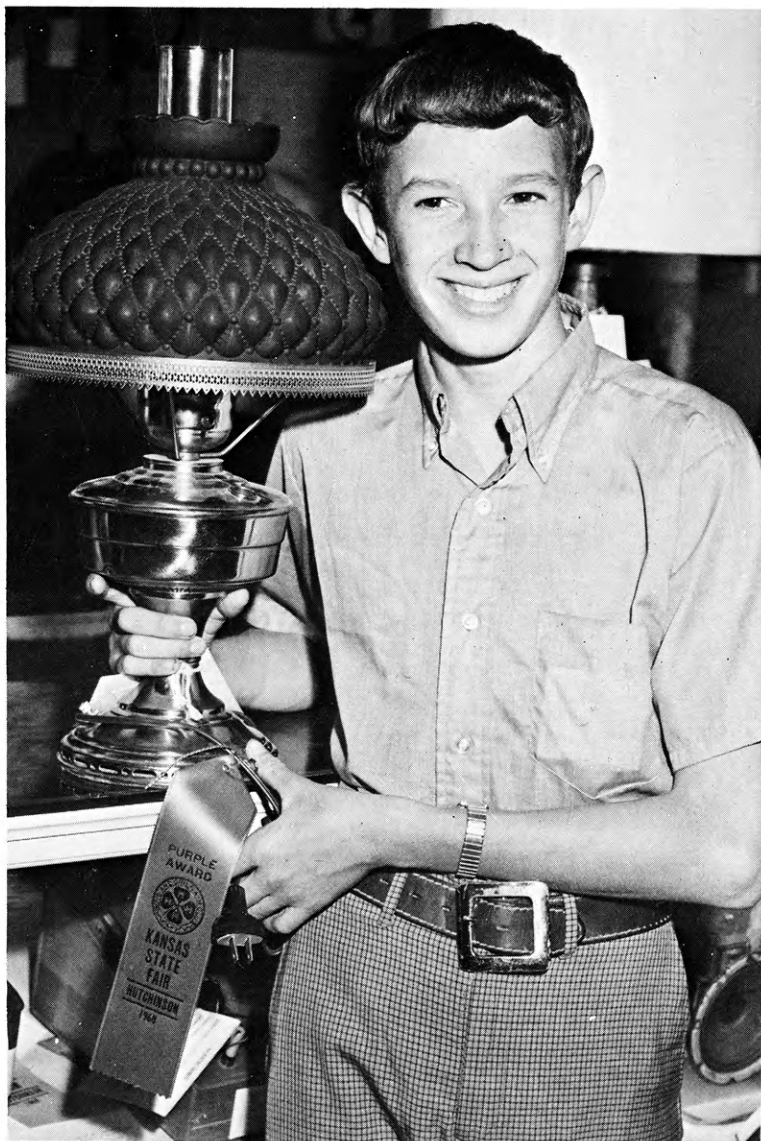
I got interested in electricity a couple of summers ago on our family vacation. On this vacation I went antique hunting with my parents. At many shops in Kansas and Missouri I saw alot of different kinds of lamps. They impressed me very much.

When I got home at the end of August it was time to enroll in 4-H for last year so I enrolled in basic electricity. I did not do much about it that winter but last summer my parents and I went antique hunting again in eastern Oklahoma and southern Missouri. We stopped at one shop that had an old nickle-plated alladin kerosene lamp and I bought it. It had to be dipped into nitric acid to take off the plating. After that it was dull brass. I spent about a week polishing it and when I was finished, it was bright and shiny.

Then the hard part was over and the tricky part began. I started electrifying it and found some difficulty. I had to round-up a switch, wire, bulb, socket, plug, shade and shade holder. When I gathered all this up, I assembled it according to 4-H specifications.

I entered the lamp in the Franklin County fair and won a state purple ribbon. From here, it went to Topeka to the Mid-America fair and won a blue ribbon. From Topeka, the lamp traveled to Hutchinson to the State fair and won a purple ribbon.

Well, when it was time to enroll in 4-H projects for this year, I chose intermediate electricity. What I am making is a secret!



PROUD RIBBON WINNER—Fourteen-year-old Pete Sorenson of Ottawa holds an antique lamp he "electrified" to win a blue and two purple ribbons on the fair circuit last summer. Pete became interested in the electric project during antique "hunts" with his parents. He bought this alladin-style lamp and made himself a winner!



✱ Watch This Page For Ideas On Farm And Home Electric Projects
ELECTRIC LIGHT and POWER COMPANIES in KANSAS

The Kansas Power and Light Company
Kansas City Power & Light Company

Central Kansas Power Company
Kansas Gas and Electric Company

Western Power Division of Central Telephone & Utilities Corporation