



June, 1964

15 Cents

KANSAS 4-H

Journal

The 4-H Family Magazine

Kansas 4-H Foundation, Inc., Publisher



BOYS & GIRLS, put yourself in this picture!



HERE'S HOW! Between now and July 17th and 18th, save all the Gooch Red Circle Stamps from Gooch's Best Feeds and Food Products you can. Red Circle Stamps are the only "legal tender" you can use to bid and buy one of the 40 steer calves, 40 gilts, 5 Hereford Heifers, 5 dairy heifers and 10 sewing machines that will be auctioned off July 17th and 18th at the 13th Annual "no-money" Red Circle Auction on the CK Ranch near Brookville, Kansas. Ask your Gooch Dealer or Mill Representative to help you. Ask them too—to write the nearest Gooch Feed Mill Office, Salina, Kansas; Dalhart, Texas; Lincoln, Nebraska or Vicksburg, Mississippi for the colorful brochure that describes the \$480 in Achievement Awards—the \$300 Gooch Scholarship—the 4-H Square Dancing Contest with \$100 prize money and other events planned for the 13th Annual Gooch Red Circle Auction.

EVERYONE IS WELCOME AT THE



RED CIRCLE AUCTION

July 17-18

CK Ranch Brookville,
Kansas



Beef Heifers



Gilts



Square Dance Contest



Holstein Heifers



Achievement
Award Contest



Sewing
Machines

JOURNAL FEATURE IN CONGRESSIONAL RECORD

Dear Editor:

The history of our Kansas 4-H program which appeared in the May issue of **Kansas 4-H Journal** was a most interesting article (Take A Time Trip in 4-H). To assure Senate attention for the story I inserted the material in the **Congressional Record** of May 8th.

Your work as editor with the Kansas 4-H Foundation, Inc., has been largely responsible for the outstanding recognition which our state now enjoys. The sense of duty you have shown for this program deserves the commendation of everyone and I send you my sincere best wishes for continuing success.

Very truly yours,

James B. Pearson
United States Senator

NEW BOOK

A new book, "This Was My Valley," written by Roy Wall of Wichita will be of special interest to 4-H'ers and all who love nature. Mr. Wall, a long-time 4-H enthusiast, writes of pioneering and outdoor life. Foreword includes this statement by J. Harold Johnson, Executive Director, Kansas 4-H Foundation—"Familiarity with and love of nature combined with a colorful vocabulary, give Roy Wall's writings great appeal. This inspiring author writes for all who love the outdoors. He will thrill the reader with his account of life with nature. This book will be an inspiration to every reader."

AUGUST FEATURE: COPY NEEDED

We would like to hear from you with pictures and story about how your county or club has promoted 4-H during National 4-H Week. Have you had special programs, service projects, or displays during the week? It will be September 26 to October 3, this year. We want your ideas to pass along to others. Let us hear from you.

OUR COVER



The water wheel at Rock Springs Ranch is a refreshing stop any time of year. In the warm seasons it holds special interest.

It is probably the most visited spot at the Ranch. The 1,000 gallon per minute flow of the "great spring of sweet water" provides ample force to turn the big wheel which some time ago powered a grist mill and now, on occasion, powers a 7 gallon ice cream freezer.

The wheel provides inspiration for all who visit there. Marilyn Green, Manhattan; Memory Marlow, Alma; and Lyle Bergstrom, Kackley; l-r, enjoy a refreshing look.



KANSAS 4-H
Journal

Vol. X, No. 6

June, 1964

IN THIS ISSUE

FEATURES

<i>Planning and Publicity: Key Points in Money-raising</i>	7
<i>4-H'ers Sponsor Health Clinic</i>	8
<i>County 4-H Council Operates New Way</i>	9
<i>Rock Springs Expands with New Features</i>	10
<i>Camping Is Real Fun</i>	11
By Dick Tomkinson	
<i>Club Makes 4-H Work — Fun</i>	14

DEPARTMENTS

<i>This Is Kansas 4-H</i>	5
Pictures from 4-H'ers	
<i>Kansas Puzzle Page</i>	13
<i>Ideas that Work and Ideas in Brief</i>	18

Don Esslinger.....Editor

Editorial and Business Office

Phone JE 9-2211 Ext. 208

Manhattan, Kansas

Published Monthly By

KANSAS 4-H FOUNDATION, INC.

J. Harold Johnson.....Executive Director
Merle Eyestone.....Associate Director

BOARD OF TRUSTEES

Governor John Anderson
Honorary Chairman
W. Dale Critser, Chrm.Wichita
E. B. Shawver, Vice Chrm.Wichita
D. J. Atha.....Shawnee Mission
*Harry Darby.....Kansas City
Mrs. Olive Garvey.....Wichita
Clifford Hope.....Garden City
A. D. Jellison.....Junction City
Harold E. Jones.....Manhattan
J. J. Moxley.....Council Grove
George B. Powers.....Wichita
Roger E. Regnier.....Manhattan
Dolph Simons.....Lawrence
*Lester Weatherwax.....Wichita
*Fred D. Wilson.....Andover
*Advisory Members

Second Class Postage Paid at Lawrence, Kansas. Return Form 3579 to Kansas 4-H Journal, Manhattan, Kansas.

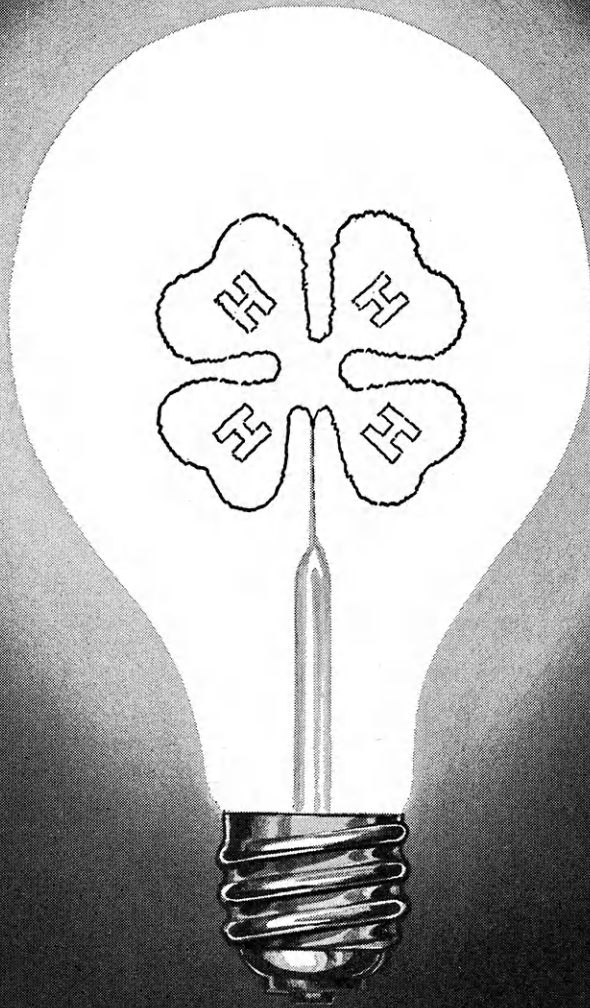
Advertising rates and circulation data on request.

Group subscriptions \$1.00 per year.
Individual subscription \$1.50 per year.
Single copy 15 cents.

Use of the 4-H name and symbol approved by the Secretary of Agriculture of the United States, January 23, 1951, under the provisions of the law as reenacted by Sec. 707 of the Act of June 25, 1948 Public Law No. 772, 80th Congress (10 USC 797)

If You Want To Be An IFYE, See Your County Agent, NOW

30,000 CANDLE POWER...



Every Kansas 4-H Club member is like a light shining to guide others toward a brighter tomorrow. In the active pursuit of self-betterment, you in 4-H better your community, your country and the world.

Multiply that single effectiveness by the more than 30,000 Kansas 4-H Club membership—united in a common effort—and you have a radiance of far-reaching benefits.

Our hopes are with Kansas 4-H.

THE FOLGER COFFEE CO.
KANSAS CITY



4-H'ers in Rice County express appreciation to Harold Snyder, President of the Lyons State Bank, for sponsoring their 4-H calendar. L. to R. are Bev Elright, Ann Smith, Dennis Fitzpatrick, and Roger Griffin. At right Ron Keys was one of six 4-H'ers in the United States which made the "Report to the Nation." Ron is a member of the Flint Hills 4-H Club in Morris County. He was named a national winner in the entomology project at 4-H Congress in Chicago last fall.



Exhibits at State Leader's Conference are just one way leaders and agents share and learn. Mrs. Jeanette McCollum, home economics agent of Chautauqua County, looks at a display by McPherson County where knitting is a pilot project.



4-H electric project leaders in Pawnee County meet to discuss project material and methods and procedures of holding club meetings. Marvin Finger, Rozel 4-H; Melvern Dirks, River Ramblers 4-H; and Spencer Smith, Larned area; 4-H make plans with Cecil Coddington, Burdett 4-H and county electric project chairman.

This Is Kansas



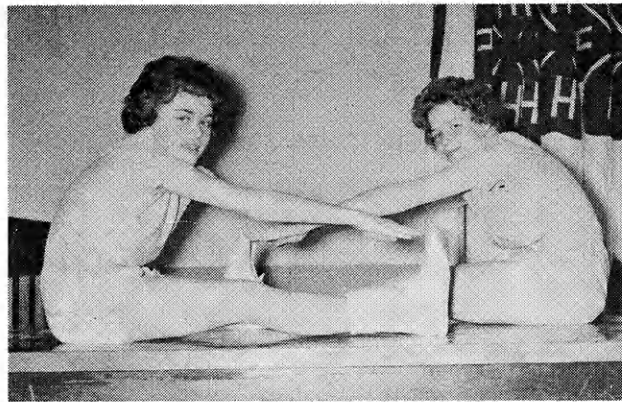
Used clothing was collected by Cherry Creek 4-H Club of Cheyenne County and packed in boxes. The county welfare department will distribute the clothing to the needy.



Mulvane 4-H Club recreation committee members built this house of cookies and then presented it to the Parents of Spastics School in Wichita. They are a Sedgwick County club.



Becky Jo Mayhew and Marsha DeHaven do one of the exercises they presented in a demonstration on physical fitness. Part of the Kraus test, this one requires "Lie on your back and rise to a sitting position without raising your legs." At left, they summarize demonstration by emphasizing 1. Tests (can you pass the Kraus tests?) 2. Good posture is necessary for good health, and 3. Exercise at least 15 minutes a day.





RESEARCHES
MORE
SO YOU'LL
PROFIT
MORE



with a beef program that cuts the cost of growing up!

Nutritionists at the CO-OP Demonstration and Research Farm formulate feeds to build beef that you'll market at a profit.

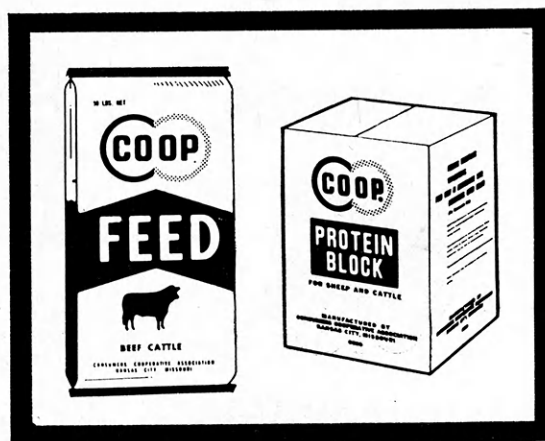
PROJECT
NINE

for instance, was designed to produce measurable results and it did! This self-fed CO-OP Beef Program produced an AVERAGE TOTAL GAIN of 473

pounds per animal from 7.51 pounds of FEED REQUIRED PER POUND GAIN.

You need to know the proper ratio of roughage, grain and CO-OP Beef Concentrate to use to realize the fastest, most efficient gains.

SEE YOUR CO-OP TODAY FOR THAT ANSWER!



Add CO-OP Minerals to your beef program for the important supplemental elements your cattle require to make a profit.



where it pays to buy from yourself

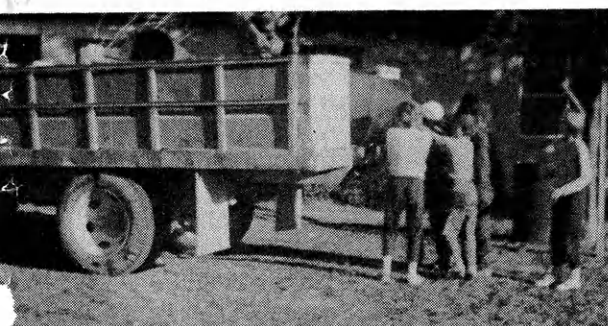
CONSUMERS COOPERATIVE ASSOCIATION

KANSAS CITY, MISSOURI

Planning and Publicity: Key Points in Moneyraising



Damar 4-H'ers in Rooks County earned \$50 when they launched a town clean-up campaign. Townspeople donated according to the cleaning task performed by the 4-H'ers. Washing windows was just one of the jobs which they completed.



Members hauled trash and cleaned yards. Damar members felt their project was twofold as they cleaned their community and earned money for club activities.



It wasn't all work and no play. A weiner roast climaxed the day of work for the 4-H'ers. They felt the project a big success as people commented on the improvements.

Like most organizations which have service projects and a recreation program 4-H clubs need money. Rather than solicit dues from members or depend entirely upon donations, many Kansas 4-H Clubs earn funds by special events or projects. Here are guidelines and suggestions for money raising.

Have something for which you need money. If you're planning to add to the club treasury, tell how you spend those funds. It may be scholarships to Round-up for two club members or buying food for a needy family at Christmas. Tell how the money will be used when you write your promotion material.

Plan

Plan your money-raising activity. Use committees generously. Junior leaders make good committee chairmen. Ask parents or leaders to serve in an advisory capacity to the general committee. Parent cooperation is essential to make the event run smoothly.

Old methods of money raising can be successful if they are a tradition. If you try new ways, examine each aspect of the project carefully to see that it will work in your community. Some of the best money raising events are those originated by members and leaders within their own community. Choosing an event appropriate to your community will have much to do with its success.

Make publicity a prominent part of your plans. An advertisement in the local newspaper will usually pay for itself several times. A poster-making party or contest can make the publicity job fun with effective results.

After the event is over, say thank-you. Those people who helped you earn will like to know that their contributions are appreciated and will be used for a good cause.

Ideas From Clubs

A carnival helps Doniphan County 4-H'ers raise money. Held at a national guard armory, it begins with a ham supper. Tickets are sold by members and leaders throughout the county. Other program features are crowning a carnival king and queen, drawing for prizes, bingo, country bazaar, and game booths.

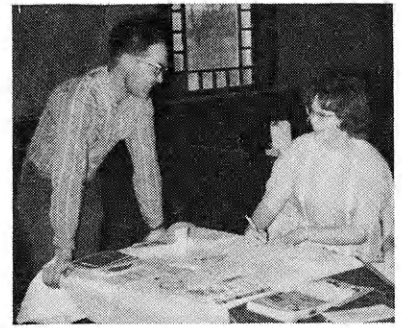
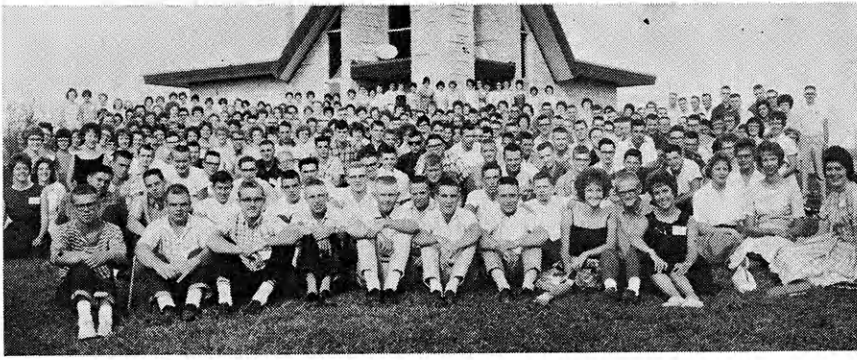
Shamrocks 4-H Club of Johnson County distributed Home Decorator booklets to all homes in Olathe. The club received \$35 from a local paint store for the service.

Younger and older members of the Advance Clubs in Wyandotte County began their club year with a corn picking bee. Each club, with the aid of two trucks, picked a field. Competition was added to the day's activities by seeing who could gather the most corn. Each club made a profit of \$17.

The Hodgeman County 4-H Council sells fireworks each year. Last year, profit from the stand was \$228.

Other Ideas

Other suggestions include suppers—chili or box; chicken-and-biscuit dinner; pancake and sausage feed; watermelon stand; concessions at school events, farm sales, livestock sales, county fair; auctions of miscellaneous items, rummage sales, slave auctions; food sales; a county 4-H cookbook consisting of prize-winning and favorite recipes of 4-H girls; a 4-H rodeo; or special order sales such as cakes for Father's Day or candy for Christmas.



George Alexander, adult leader of the Kanwaka 4-H Club in Douglas county, registers his name with Linda Stoneback at the community health clinic.

We Like Rock Springs

These pictures were taken at the first Farm Bureau sponsored citizenship seminar for high school students at Rock Springs Ranch in August 1962.

We like Rock Springs because it provides excellent accommodations for a conference like ours. The 4-H Foundation and the Ranch staff are very important members of our citizenship seminar staff. This splendid cooperation and fine facilities have made an important contribution to our program each year.

Last year, our voting delegates approved a policy statement which included the following:

"Young people have a special stake in the outcome of current attempts by some people to change our economic system and our form of self-government. They need to learn the great truths underlying our American system and participate actively in programs designed to strengthen it.

"We therefore commend our county Farm Bureaus for their splendid support of citizenship seminars for high school students conducted by Oklahoma Christian College in Oklahoma City and our own Kansas Farm Bureau Seminar held at Rock Springs Ranch this year. We ask that the board of directors of Kansas Farm Bureau establish the Rock Springs Seminar as an event to be conducted annually as a very important part of our citizenship program and urge continued county Farm Bureau participation in the support of both seminars."

Kansas Farm Bureau

105 County Farm Bureaus

Working Together



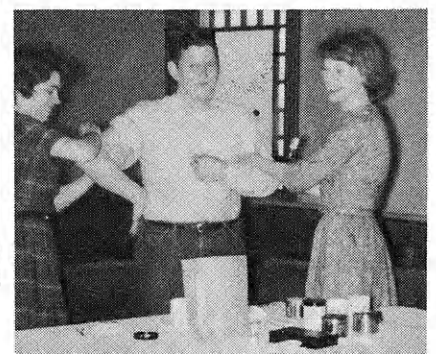
4-H'ERS SPONSOR HEALTH CLINIC

A Douglas County 4-H club conducted a community health clinic for the eighth consecutive year in April. The health committee of the Kanwaka 4-H Club and junior leaders work closely with City-County Health Director Dr. Dale Clinton, his staff and public health nurses.

With their cooperation and suggestions, a new and different service has been added each year. The first year, only tetanus immunizations were offered. The following years, polio, typhoid, DPT and smallpox immunizations were given. TB tests and clini-sticks for diabetes tests were also available. Family health record books were distributed as was literature on cancer, arthritis, tetanus, diabetes and the Red Cross blood program. This year, 47 tetanus, 20 smallpox, 7 DPT and 5 polio immunizations were given in addition to 4 tuberculosis and 15 diabetes tests.

Publicity for this project was conducted through news stories in the Lawrence Daily Journal World and local Radio Station KLWN.

Health committee chairman Joe Shultz gets the first shot from public health nurses Mrs. Martha Patterson and Margaret Kuglin.



County 4-H Council Operates New Way

The Ford County 4-H Council is operating in a new and unusual way. A change in organization was sparked by a desire to gain balanced participation by youth and adults.

The result has been the creation of two groups, a youth council and an adult council, to operate independently yet coordinated in one purpose as are all county 4-H councils.

County agent Monte Clark reports, "both councils have a 'two-way' street with each other." The youth council has selected a woman and a man community leader to serve as their advisors. The 4-H township representatives have been added to the membership of the adult council.

The councils meet at the same time, six times per year, but in separate groups with separate agendas. Only the minutes of the youth council are reported to the State 4-H Club Office as part of the County Council Merit Program, although both keep minutes.

Following the decision to divide in two councils the officers of each met together to plan and decide which would take the various responsibilities for developing activities during the year. This joint group of officers will meet on call in the future to handle policy decisions.

This new system was initiated in the 4-H council meeting last November. The two councils have had two meetings since the re-organization. The youth council is composed of two junior leader age members from each 4-H club in the county. Each council has a set of officers, but only the youth council has a treasurer, although joint action is required to make expenditures. Proposals may go from one council to the other as regular business items or reported by committees and action recommended. Where joint programs are planned and conducted

members of both councils serve on the committee.

An example of a meeting agenda of the adult council is the March meeting. This agenda called for a report on progress and plans for the 4-H Carnival, report on sale of fair catalog ads, nominations of state camp delegates from clubs, appointment of businessmens picnic committee, and plans for serving meals at coming events.

Here is the list of responsibilities of each council determined by the joint officer group.

Youth Council

- Increase Membership
- Awards
- Achievement Banquet
- Businessmen's Picnic
- Policy & Organization
- Finance
- 4-H Club Week



Three members of the youth council are working on the ad sales for the fair catalog, a responsibility of this group.

Adult Council

- Spring Show
- Landscaping, poultry, garden, dog, & livestock tour
- Awards
- Sears Home Improvement
- Judging Contests
- Home Ec. & Dairy
- Policy & Organization
- Finance
- Talent Show
- Cherry Pie Contest



Alliance Companies

McPherson, Kansas

FIRE — CASUALTY — LIFE

Serving Kansas Since 1888

a simple flip of the switch

Every member of the rural family can now have electricity with just a flip of the switch, thanks to Electric Cooperatives.

This ample supply of low-cost power didn't come easily. It is the result of forward-thinking people working together to build and develop Electric Cooperatives to get the electrical power they could not buy elsewhere.

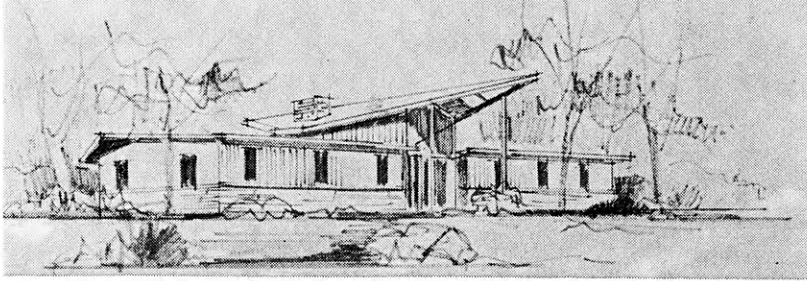


THE ELECTRIC



420 West 9th, Topeka, Kansas

CE 5-5321



New bankers cottage

Rock Springs Expands With New Features

Rock Springs Ranch is growing! New facilities are being developed to enlarge the leadership center and make it more enjoyable for the estimated 10,000 persons who are using it in 1964.

From the first 4-H camp held in the summer of 1946, the Ranch has progressed to a year-around training center open to all worthy organized groups. Eighty-one groups including church, school, Scouts, business and civic organizations used the facilities last year in addition to 4-H.

The major project planned for 1964 was undertaken by the Kansas bankers. A cottage for year-around use will be completed in August. (See No. 26 on the map.)

The cottage will be part of a group of three located east of the present Asa Payne and Co-op cottages and southwest of the stables. It will differ from the other cottages in floor plan as there will be four separate rooms for eight persons each.

A vesper center is to be built 300 yards west of the Jellison Chapel. (See No. 20 on the map) It is the project of the Master Farmers and Master Farm Homemakers of Kansas.

The center will be a circular slab of concrete inlaid with strips of redwood. The inner ten feet of the circle will be open and planted to buffalo grass. A rough-hewn limestone cluster and native wood

cross will be in the center of the circle. The center should be finished in early June.

A Nature Study Center will be part of the Joe Howe Memorial. The son of Mr. and Mrs. Fred Howe of Manhattan, Joe was a Riley County 4-H member when he lost his life by drowning.

The memorial will be an exhibit of native plants, flora, rocks of the area, insects, soil profiles and an Indian arrowhead collection. At the present time, the center will be in the lower level of Williams Dining Hall but will eventually be placed in a headquarters building.

Additions and improvements within the past year include the Herbert W. Clutter Family Memorial which is being used as a registration center and shelter. (No. 10) A staff trailer housing area has also been constructed. (No. 3)

The administration building has been partially torn down. A smaller building containing the store was remodeled from the barn. (No. 11)



1. Entrance
2. Caretaker's Home
3. Staff Housing
4. Picnic Area
5. Rifle Range
6. Machine Shed
7. Girls' Living Quarters
8. Crafts Center
9. Ranch House
10. Clutter Memorial
11. Store
12. Director's Cabin
13. Swimming Pool
14. Boy's Living Quarters
15. Collegiate 4-H Shelter—Archery Range
16. Amphitheater
17. Jellison Unit—Health Center, Chapel, Auditorium
18. Folger Drive
19. Sewage Treatment Plant
20. Vesper Circle (Under Construction)
21. Williams Dining Hall
22. Co-op Cottage
23. Asa Payne Cottage
24. Barbecue Picnic Area
25. Council Circle
26. Banker's Cottage (Under Construction)
27. Recreation Slab
28. Stables
29. Ball Diamond

Archery is a popular camp activity added recently.



Camping Is Real Fun

By Dick Tomkinson

What is Camping to You

If you ask a person what is camping, he or she may say, it's living in a tent, hiking in the woods, swimming, making new friends, learning to identify the call of a bird, feeling the cool water closing over you as you plunge into the pool on a hot summer day. It's looking at the stars and thinking, the feeling of fellowship around the campfire, the cleanness of the early morning at a sunrise. It's eating, doing dishes, canoeing on the river, playing games, dancing, broiling steak on coals, learning to use a buddy burner, learning to weave baskets, working with leather. It's learning to work with people, to share, to live together. It's getting away from the usual work at home. It's new experiences. Camping is fun.

Day Camps and 4-H

Day camping is the fastest growing type of organized camping according to many leading educators. One sage old teacher once said, "We should teach in a classroom that which can best be taught in a classroom and teach that in the out-of-doors which can best be taught in the out-of-doors." The indication is that each setting has its advantages. The day camp is sort of an "out-door classroom".

Eleven-year-olds are the largest single age group to participate in camping. Bill Borst, Wyandotte county Club Agent, says day camping is a wonderful experience for the 9, 10, and 11 year olds and junior leaders can actually take leadership roles with these younger members. Many leaders are finding that children should be introduced to the out-of-doors and the wonders of nature through some type of outdoor educational and recreational program. Day camping seems to satisfy these needs.

In the Wyandotte county day camp the junior leaders do not do chore jobs, they actually teach crafts, nature study and observation and help with cook-outs. Day camps, where children return home each evening, prepare the youngster for camping of longer duration later on.

In Russell county, junior leaders enjoy a week-end camping experience. Scott and Hamilton counties have found that older members enjoy pack trail camps in the mountains of Colorado.

Planning Is Important

I think there are three things 4-H leaders and parents should consider when setting up an outdoor educational and recreational type program, whether it be merely an outing, day camp experience or week-end camp-out. 1. Consider the objectives you wish to accomplish; 2. What program will meet these objectives; and 3. Secure the leadership to carry out the program to meet your objectives.

If one of your objectives is, "To develop a knowledge of the natural world," the program might include nature observation and identifica-

tion sessions. Here, young people would identify various trees and plants, learn to identify birds by sight and sound, and might even learn how to tell the signs of weather. The **right** leader is the important thing. You must find a leader who knows trees, birds, vegetation, etc., if you want to reach your objective.

Another objective might be, "To develop spiritual means and values." One part of the program might be nature crafts. The young people could gather various nature things, leaves, twigs, flowers, etc., and in the nature craft class they would make leaf prints, center pieces, seed or weed pictures, or carve objects of wood. The dual experience of creating from nature and having an object without spending money for it is rewarding.

Why Camp?

Why do young people like to camp? In a recent survey, the following reasons were given; 1. To get away from the city; 2. To have fun; 3. To get acquainted with new friends; 4. To learn to do new things; 5. For a vacation; and 6. Because their friends are going. These are good points for 4-H leaders and parents to have in mind.

The above reasons provide a basis for determin-

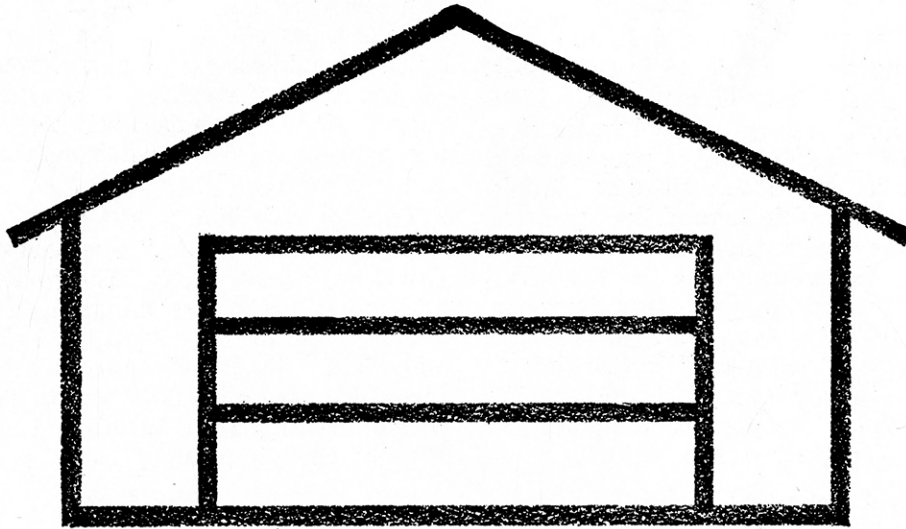


Swimming is the most popular camp activity. Horsemanship and crafts rank high. This is a scene from Rock Springs Ranch.

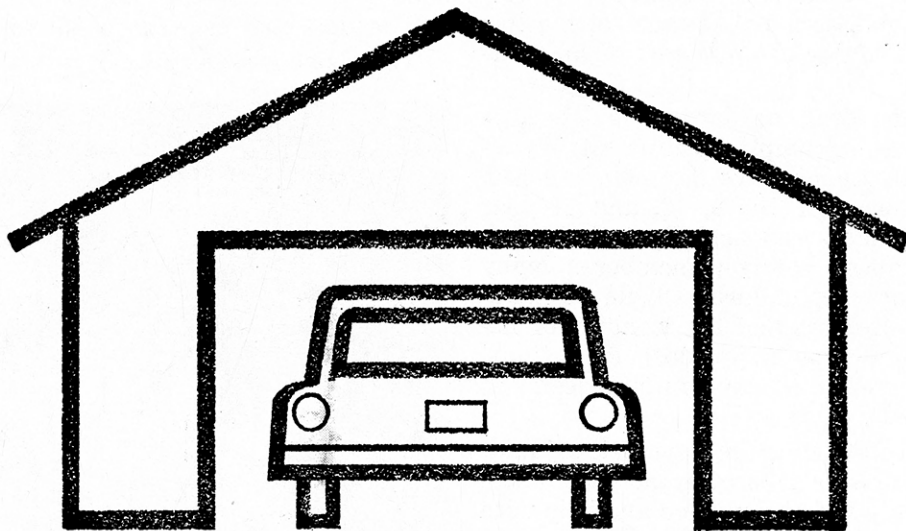
ing the objectives of a camp you might be planning. Other considerations might be the objectives of the group or those of the leaders. Perhaps some of the older children can help you plan the camp. You will want new experiences in the camp plans and stay away from the things done in the classroom. Give plenty of chances for fun and making new friends.

The leadership for the various parts of your camp program may come from outside the 4-H program. This is good to involve others—good for the program and good to give others a knowledge of 4-H.

Someone has said camping is like love, it is hard to define but you can sure see the effects of it.



building one



filling one



see your hometown kansas

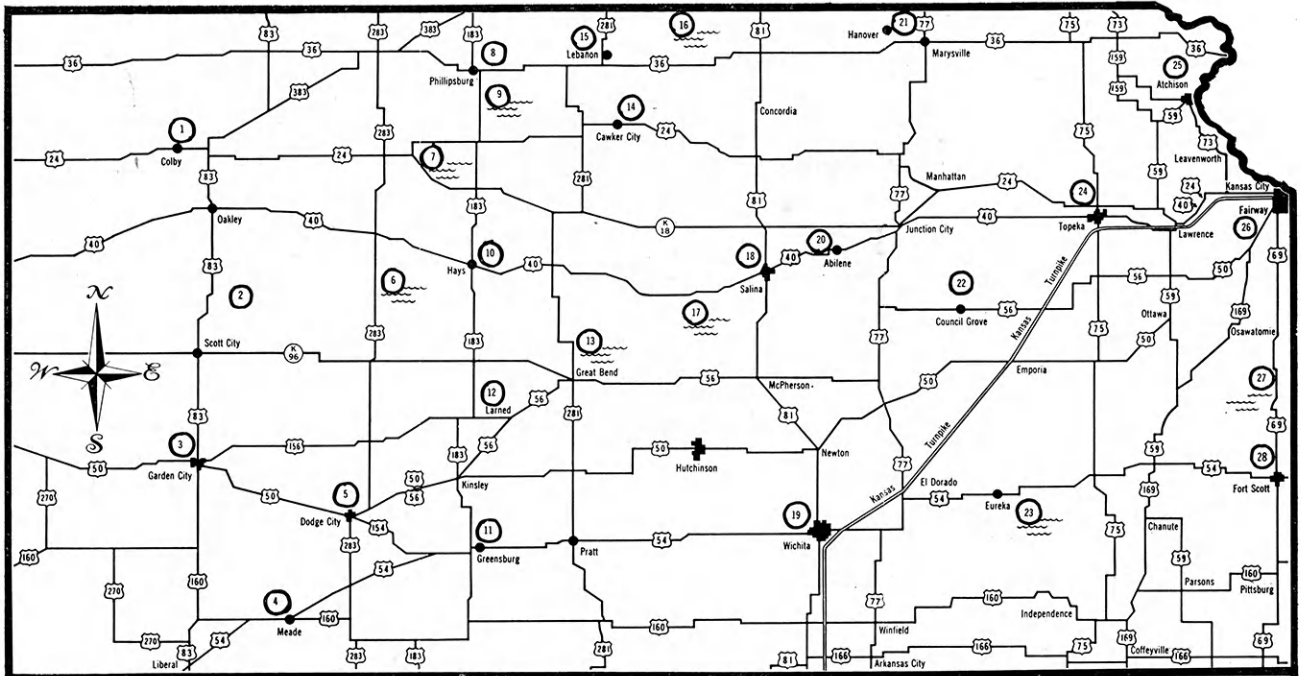
BANK

Kansas offers a multitude of things to see and do on a summer vacation. Many of these attractions are not well known. In every area of the state there are places to visit which have historical background or are of modern economic significance. If you're planning a short vacation (or even a lengthy one), why not consider Kansas as the place to start? The puzzles on this page have a dual purpose—have fun and learn about the Sunflower State. Answers are on page 14.

SCRAMBLED TOWNS

hiicawt
snaask yeti
eoptak
iasaln
ucnthiosnh
ravledon kpra
airprie livegal
rcwaleen
wevloaehnr
hantamnat

Wherever you're going — See Kansas First



1. Sod house at Colby is typical of the homes of some prairie Pioneers.
2. Monument Ricks between Oakley and Scott City are eroded chalk.
3. Buffalo herd south of Garden City still roams a 3,600 acre game refuge.
4. Dalton Gang Hideout of Meade has a secret escape tunnel to barn.
5. Dodge City is famous as the outstanding living symbol of the old West.
6. Cedar Bluff Reservoir is south-east of Wakeeney.
7. Webster Reservoir is southwest of Stockton.
8. Phillipsburg Rodeo attracts the country's finest ropers and riders.
9. Kirwin Reservoir is southeast of Phillipsburg.
10. Fort Hays blockhouse protected against Indian attacks in the 1860's.
11. Many visitors stop at world's largest hand-dug well in Greensburg.
12. Fort Larned is best preserved of old Santa Fe Trail military posts.
13. Cheyenne Bottoms wildlife refuge is northeast of Great Bend.
14. Indian legends are associated with Waconda Springs near Cawker City.
15. Exact center of U. S. (exclusive of Alaska and Hawaii) is near Lebanon.
16. Lovewell Reservoir is north-east of Mankato.
17. Kanopolis Reservoir is south-east of Ellsworth.
18. Indian burial ground near Salina reveals 146 prehistoric skeletons.
19. Wichita is one of the most important aircraft production centers.
20. Eisenhower Museum and boyhood home are in historic old Abilene.
21. Hollenberg Station is last remaining unaltered Pony Express station.
22. Several Santa Fe Trail landmarks may be seen in historic Council Grove.
23. Fall River Reservoir is between Fredonia and Eureka.
24. Kansas State Capitol is at Topeka, the third largest city in state.
25. Atchison's Jackson Park is one of the most scenic areas in Kansas.
26. Shawnee Mission near Kansas City served as a school for Indians.
27. Marais des Cygnes wildlife refuge is north of Pleasanton.
28. Carroll Plaza, in Fort Scott, was parade ground of old fort.

SIGHTSEEING IN KANSAS

Where are you in Kansas . . . when you are seeing . . .

1. The state fish and game preserve
2. The Territorial Capital of Kansas
3. The Council Oak
4. Castle Rock
5. Indian Peace Treaty monument
6. The oil museum

- a. Quinter, Gove County, off Hwy US40
- b. Hill City, Graham County, Hwys US 24 & US283
- c. Pratt, Pratt County, Hwy K64
- d. Medicine Lodge, Barber County, Hwys US160
- e. Fort Riley, Geary County, Hwy K18
- f. Council Grove, Morris County, Hwy US56

Club Makes 4-H Work—Fun

By Barbara Zweifel
Paradise Dell Reporter

A strong recreation program has helped make 4-H work fun in the Paradise Dell 4-H Club, Russell County. Members of this thirty-year-old club have learned that a little fun can make quick work of any task and have practiced this when building floats, booths, or in any project.

Twenty to thirty years ago, softball was the featured game at club meetings. The club com-

peted with other clubs in the county and parent vs. member games were sometimes featured.

Singing party games were often played at the meetings. Arithmetic, spelling, drawing, and geography matches were also used for recreation after the meetings.

When parties were scheduled for the regular monthly meeting



Paradise Dell 4-H club members of Russell county plan a party. Any successful event requires careful planning. Here Larry Fung, Carilyn Wilson, Peggy Zweifel and Lynn Welling plan a party in honor of the parents. They plan to serve a supper prepared by the girls and served by the boys.

night, club members found they were not enjoying themselves as they hurried through the meeting and still didn't have much time for recreation. Other activities interfered and attendance began to drop as "all work and no play" curtailed interest in 4-H.

To revive interest, the club set up parties for special occasions with at least six per year. Among these were skating parties, hayrack rides, and overnight outings at a lake.

A large recreational library to provide new games for club meetings and parties was established. Now the recreation leaders plan one relay and one quiet game for each meeting. They add a new game to the one played at the previous meeting for variety.

During the year, the club takes part in county activities by entering floats in parades, participating in the talent contest, presenting plays, a chorus, and folk games at 4-H Day.

As a result of their work in recreation, the Paradise Dell Club received top honors in the state for club recreation of all expense paid trips to Wichita for six members and two leaders. One member went to National 4-H Congress in Chicago for individual efforts in the recreation program.

"May I Help You"

Asks 4-H'er
Alexis Romine,
Ford county.



Personal Development

is important when you are meeting the public in a job such as Alexis has. She works as a receptionist and secretary for an accounting firm in Dodge City after school and Saturday,

a good test of what she has studied in the Manners, Relationships and Appearance phases of this 4-H project.

This work is helping Alexis accomplish another goal, to save money for college. She is also considering secretarial work as a career.

Alexis promoted county-wide meetings in this project among 4-H mem-



bers last year and was a State blue-award winner for her outstanding work in the project. She gave a talk on "teenage nutrition" this year at 4-H Day. Of this experience she says, "I learned a lot about how food is related to your feelings toward others and your appearance and how a good personality makes you more appealing to others."

The people at Southwestern Bell Telephone Company are proud to have a part in this 4-H project by sponsoring awards for outstanding work.

SOUTHWESTERN BELL



TELEPHONE COMPANY

PUZZLE ANSWERS

SCRAMBLED TOWN NAMES

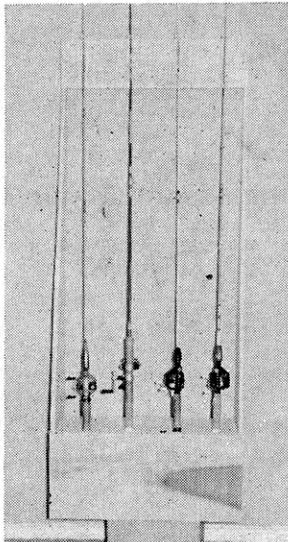
Wichita, Kansas City, Topeka, Salina, Hutchinson, Overland Park, Prairie Village, Lawrence, Leavenworth, Manhattan.

SIGHTSEEING IN KANSAS

1. c; 2. e; 3. f; 4. a; 5. d; 6. b.

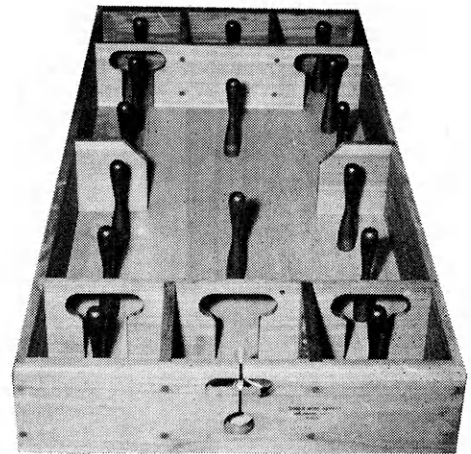
FREE!!

New 4-H Woodworking Plans



FISHING ROD RACK

A storage box for other equipment is included in this rack.

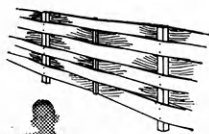


DEVIL GAME

A game for all the family and friends to enjoy.

*Plans for These Projects Are
Available At The Lumber Dealers
Listed on These Pages. Ask For Them.*

**Insect
Display Box**



**Yard Fence
No. 3**



End Table

**Handy
Gun Rack**



**Rotating Selection
Tool Rack**



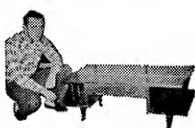
Shoe Shine Kit



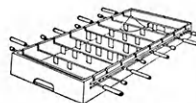
**Cart with
Removable
Trays**



**Two-Level
Coffee Table**



**Football
Game**



Book Case



Pounding Board



Magazine Rack



Walnut-Chest



For other FREE 4-H woodworking plans, see the next pages.

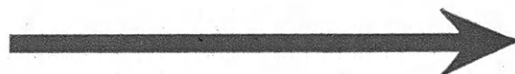
Always on hand... YOUR LUMBERMAN

is your best friend when
you need good material



Abilene Central Lumber Company	Eureka A. C. Houston Lumber Company	LaHarpe Blaker Lumber and Grain Company Diebolt Lumber and Supply
Agra Agra Lumber Company	Everest Alexander Lumber Company	Lakin Hart and Company Lakin Lumber Company, Inc.
Alton Alton Lumber and Coal Company	Fowler The T. M. Deal Lumber Company, Inc.	Lancaster T. E. Snowden Lumber Company
Asherville Asherville Lumber and Coal Company	Fredonia The Home Lumber & Supply Co.	Lansing International Paper Co., Long-Bell Div.
Ashland Don Spotts Lumber Company Home Lumber and Supply Co.	Garnett Star Grain and Lumber Company	Larned Clutter-Lindas Lumber Company
Atchison Hixon Lumber Company	Gaylord Hardman Lumber Company	Lawrence Woods Lumber Company Logan-Moore Lumber Company
Augusta The J. W. Metz Lumber Company	Glen Elder Dickinson Lumber Company	Lebanon Lebanon Lumber Company
Beloit Peoples Lumber and Coal Company	Goodland Hardman Lumber Company Rasure Lumber Company	Lenora Lenora Lumber Company
Bern Bern Lumber Company	Great Bend Whitesell Lumber Company	Liberal The Star Lumber Company
Bird City The Bird City Equity Mercantile Exchange Griffin Lumber Company	Greensburg Home Lumber and Supply Co.	Little River The T. M. Deal Lumber Company, Inc.
Brownell Richolson Lumber and Hardware Company, Inc.	Hartford Thomas Lumber Company	Macksville Home Lumber and Supply Co.
Cawker City Cawker City Lumber Company	Hays Hardman Lumber Corporation, Inc.	Madison Madison Lumber Company
Chanute Smith Lumber Company	Healy Healy Co-op Elevator Company	Manhattan Griffith Lumber Company Ramey Brothers
Chapman Sanborn Lumber Company	Hill City Hardman Lumber Company	Mankato Mankato Lumber Co.
Colby Hardman Lumber and Coal Company Hess Lumber Company	Hillsboro Hillsboro Lumber Company	Meade Home Lumber and Supply Co.
Coldwater Home Lumber and Supply Co.	Holton Holton Lumber Company	Minneola The T. M. Deal Lumber Company, Inc.
Concordia Sanborn Lumber Co.	Holyrood Home Lumber and Supply Co.	Moundridge Clayton Vogt Lumber Co., Inc.
Cottonwood Falls Burgner-Bowman-Mathews Lumber Co.	Hugoton The Star Lumber Company	Neodesha O. E. Woods Lumber Company
Denison Denison Lumber and Hardware Company	Iola Klein Lumber Company	Ness City Rock Island Lumber Co.
Denton C. H. Gish Company	Johnson Seyb-Tucker Lumber and Implement Company	Norton Norton Lumber Company
Dodge City The T. M. Deal Lumber Company	Kinsley Kinsley Co-op Exchange Lumber Yard Home Lumber and Supply Co.	Nortonville Alexander Lumber Company
Elkhart Elkhart Lumber Co. The Star Lumber Company	LaCygne Blaker Lumber and Grain Company	Oakley Oakley Lumber Company Golden Belt Lumber Company
Emporia Home Lumber and Supply Co. The Smith Lumber Company		

Looking for Woodworking Ideas?



See Any of These Lumber Dealers for a Free 4-H Woodworking Plan

Oberlin
Building Supply Headquarters

Offerle
Offerle Co-op Lumber Co.

Olathe
Cowley Lumber and Hardware Company

Onaga
Onaga Lumber & Grain Co.

Oswego
Home Lumber and Supply Co.

Ottawa
Hubbard Lumber Company, Inc.

Paradise
Paradise Lumber Company

Parsons
O. E. Woods Lumber Co.

Phillipsburg
Hardman Lumber Company

Plains
Home Lumber and Supply Co.

Pleasanton
Blaker Lumber and Grain Company

Prescott
Prescott Lumber Company

Pretty Prairie
The George W. Ulitch Lumber Company

Protection
Home Lumber and Supply Co.

Russell
Hardman Lumber Company of Russell Inc.

St. Francis
St. Francis Equity Exchange

St. Marys
St. Marys Lumber Company

St. John
English Lumber and Supply Company
Home Lumber and Supply Co.

Salina
Everett Lumber Co., Inc.

Satanta
The T. M. Deal Lumber Company, Inc.

Seneca
Koelzer Lumber Company
Seneca Lumber Company

Severy
Tolman-Gibbon Lumber Company

Smith Center
Smith Center Lumber Company

Stafford
The T. M. Deal Lumber Co., Inc.
Home Lumber and Supply Co.

Stockton
Stockton Lumber Company
The Golden Belt Lumber Co.

Sublette
The T. M. Deal Lumber Company, Inc.

Syracuse
Everitt Lumber Company, Inc.

Ulysses
The T. M. Deal Lumber Company, Inc.

WaKeeney
Hardman Builders Supply Company

Wakefield
Sanborn Lumber Company

Wathena
Farmers Grain and Lumber Company

Wichita
Lawrence Lumber Company
Stockyards Cash and Carry Lumber Co.
Alexander Lumber Company

Wilson
Hoch Lumber Company

Winfield
A. B. Everly Lumber Company

Woodbine
Kohler Lumber Company

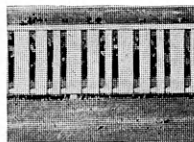
Zenda
The George W. Ulitch Lumber Company

Missouri

Independence
The George W. Ulitch Lumber Company, 11432 Truman Road

Ask For Your 4-H Woodworking Plans.

Yard Fence, No. 2



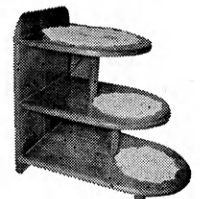
Closet
Storage
Cabinet



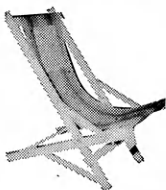
Indoor Planter



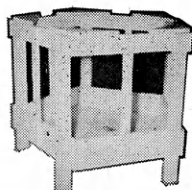
Stepstaple



Folding
Lawn Chair



Self Feeder
for Sheep



Bill's Baseball
Rack



Yard Cart



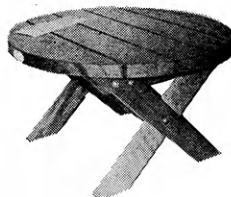
Simple Work
Bench



Patio
Planter



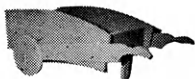
Patio Table



Child's Step
Stool and Chair



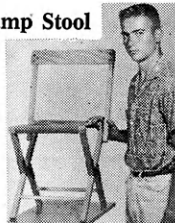
Wheel Barrow
Planter



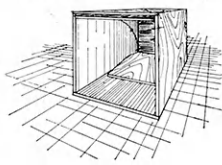
Lawn Set



Camp Stool



Small Animal Trap



OTHERS

Vertical Shoe Rack	Two Games
Bedside Stand	Sewing Cabinet
Gate Sign	Coffee Table
Martin House	Back Yard Fence
Tete-A-Tete	Lazy Susan
Toy Stove	Holding Gate
Dog House	Wall Cabinet
Picnic Table	Sandbox
Picnic Bench	Blue Bird House
Hanging Flower Box	Funny Book Rack
Bookcase Headboard	Mail and Memo Board
Collapsible Visual Aid Stand	Christmas Tree Gifts
Typing Desk and Bench	Automatic Bird Feeder
Sheep Blocking Box	Chest of Drawers

Ideas That Work

RIDING THE CIRCUIT

Cowboys spend their time riding the circuit participating in rodeos. The Busy Bugs 4-H Club in Linn County has been riding the circuit visiting other organizations. The first stop was at Wall Street Grange where twenty four 4-H'ers and parents were guests. They presented an hour program including talks, demonstration, and a play.

The second stop found thirty-three 4-H'ers and parents at the Wesley Chapel Community Meeting. After a delicious supper, everyone relaxed and enjoyed the play entitled "Cupid Advertises."

Fifty-five 4-H members and parents visited the Richland Grange for a third stop. After the hour and a half program was over, refreshments were served.

Each month a junior leader and several other members take turns visiting the Sugar Valley Nursing Home and entertaining the residents there with square dancing, readings, or singing.

We hope the cowboys have as pleasant memories when their season is over as the Busy Bugs 4-H'ers had at the end of their tour.

Eugene Lanham
Reporter

HEAR ABOUT POLICE DOGS

Grantville 4-H Club members heard an interesting program at their monthly meeting. Maj. Brill, Chief of Detectives and in charge of the Dog Division of the Topeka Police Force; Capt. Ed Bennett; Sgt. Gabe Ochoa, Head Dog Trainer; and Officer Ed Leo told about the training and work of Aggy, the oldest dog on the force.

Mrs. George Fritz
Leader

Editor's note: Puzzled for roll call topics when planning the year's program? Here are suggestions from Kansas 4-H Clubs:

Reno County . . . Salem 4-H—What have you done to help a fellow 4-H'ers?

Lane County . . . Manning Jayhawkers—Name a state official.

Saline County . . . Kipp-Wide-Awake 4-H—A good improvement for the club.

Harvey County . . . Halstead Go-Getters—A good book I've read recently.

Wyandotte County . . . Advance 4-H—The best 4-H event of the year.

Harvey County . . . Richland Livewires 4-H—Name a foreign nation with the 4-H Club program.

Reno County . . . Turon 4-H—A new word I have learned and its definition.

Reporter's Notice: The Kansas 4-H Journal would like to print interesting stories and pictures of your local club events, activities, members and leaders.

Prizes will be awarded all "Ideas that Work" blue award stories, all pictures printed in the "This Is Kansas 4-H" section, and all contributions used in feature stories. Please state your choice (1) a year's subscription to the National 4-H News, (2) a hard cover loose leaf 4-H notebook, (3) Photograph album or (4) roll of film-sizes 120, 35 mm, 616 or 620.

Ideas In Brief

Wyandotte County . . . White Church Challengers—Mrs. Donald Mather showed members how to arrange a musical scale with varying amounts of water in different glasses. Members had fun playing simple tunes with them.

Wyandotte County . . . Hazel Grove 4-H Club—Visitors to the county fair will find it easier to get there if they follow the street signs put up by Hazel Grove 4-H'ers.

Saline County . . . Willing Workers 4-H Club—Nineteen Members spent one Saturday working for the Multiple Sclerosis Society by putting up posters and soliciting funds.

FARMERS!

Protect your crop investment against loss in quality or yield from all natural hazards beyond your control

THE
ALL-RISK
WAY

* WHEAT *

Inquire about **NEW** rates and coverages in 90 counties . . . NOW!

Federal Crop Insurance Corp.

U. S. Dept. of Agriculture
Manhattan Kansas

Kansas 4-H Journal Sponsors

NEW SPONSORS

Nemaha
Centralia Grain Co., Centralia
Farmers Cooperative Elevator, Sabetha
Farmers Elevator Co., Seneca
Goff Grain Co., Goff
Graham Grain Company, Oneida
Lortscher Grain Co., Bern
Nemaha County Co-op Association, Seneca, Corning & Baileyville
Wittmer Grain Co., Berwick
Osage
Certified Seed, Carbondale

These Have Renewed Their County Support

Brown
Bank of Robinson, Robinson
Citizens State Bank, Hiawatha
Farmers State Bank, Fairview
The Bank of Horton, Horton
The Morrill & Janes Bank, Hiawatha
The Morrill State Bank, Morrill
The Union State Bank, Everest
Chase
Peoples Exchange Bank, Elmdale
Chautauqua
The Sedan State Bank, Sedan
Franklin
Peoples National Bank, Ottawa
The Wellsville Bank, Wellsville
Geary
Central National Bank, Junction City
First National Bank, Junction City
Morris
Farmers Cooperative Association, Alta Vista
Farmers and Drivers Bank, Council Grove
Flint Hills Rural Electric Cooperative Ass'n., Inc., Council Grove
Hunter Sales Co., Council Grove
McClintock Motor Company, Council Grove

Mor-Kan Grain Company, White City
Morris County Farm Bureau Ass'n., Council Grove
Wilsey Co-op, Wilsey
Nemaha
Winterscheidt Milling Co., Seneca
Osage
Bremer & Stanley Grain & Feed, Lyndon
Bulmer Grain Co., Michigan Valley
Burlingame Co-op Elevator and Feed, Burlingame
Farmers Union Co-op Association, Overbrook
Hoyt Farm Machinery, Overbrook Melvern
McNabb Hy-Klass Foods Store, Melvern
Melvern Lockers-Meat and Grocery, Melvern
Ross A. Coffman & Sons, Inc., Overbrook
Scranton Grain Co., Scranton
Williams Oil Co., Lyndon
Rawlins
Farmers National Bank, Atwood
Farmers State Bank, Ludell
Peoples State Bank, McDonald
State Bank of Atwood, Atwood
State Bank of Herndon, Herndon
Wabaunsee
Alta Vista State Bank, Alta Vista
Eskridge State Bank, Eskridge
First National Bank, Alma
First National Bank, Harveyville
The Stockgrowers State Bank, Maple Hill
These are corrections of errors in the May Sponsor listing, page 17
Morris
Farmers Co-operative Association, Alta Vista
Osage
Melvern Lockers-Meat and Grocery, Melvern
Rawlins
Peoples State Bank, McDonald
Rice
Raymond State Bank and Miller-Price Agency, Raymond
Wabaunsee
Alta Vista State Bank, Alta Vista

Sedgwick County . . . Mt. Hope 4-H Club—The last meeting was held in the City Library. Members were given a guided tour of the library and explanation of the filing, shelving, etc., and duties of the librarian.

Reno County . . . Salem 4-H Club—Margo Zimmerman played a selection from the Broadway musical and movie "South Pacific" for a music appreciation number. She narrated the story of the musical.

Wyandotte County . . . 4-H Sunday services—Members observed 4-H Sunday in the following ways: White Church Challengers had a breakfast at Wyandotte County Lake. Members of the Happy Clover 4-H attended mass at Christ the King Church. KC-OK 4-H'ers took part in the opening exercises at Wesleyan Methodist Church. Members and families of the Stony Point 4-H Club had a picnic following the worship service at Stony Point Christian Church. Advance and Vance 4-H clubs observed 4-H Sunday together at an outing at Wyandotte County Lake.

Shawnee County . . . Grantville 4-H Club—One of this club's community projects for the year is to beautify the Methodist Church Lawn. Members brought rakes to clean the yard after school one afternoon.

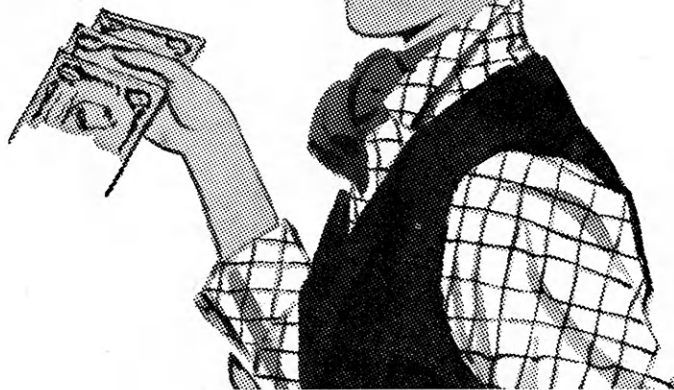
Harvey County . . . Kellas 4-H Club—In spite of falling down, 65 4-H'ers were able to get up again and have a good time at a skating party sponsored by the Kellas 4-H Club. Three other clubs from Harvey County—Campus 4-H, Macon 4-H, and Lucky 13 4-H, were invited.

Reno County . . . Salem 4-H Club—The health committee reports that more than 40 pairs of old eye glasses have been collected to be sent to a center to be repaired so they may be used by needy folks.

Edwards County . . . County Council—Officers of the County 4-H Council met with the extension agents to plan a yearly Calendar of Events. The mimeographed booklet which is the result of the planning, contains names of council officers, township representatives, council members and leaders from each club; a month-by-month listing of the program date, roll call, business to be discussed and announcements; and names of members on major council committees.

Reno County . . . At a rabbit project meeting, Mrs. Herb Jantzen demonstrated the use of rabbit fur in trimming clothing or making coats, jackets, for dolls, as well as for children and grownups.

YOUR SAVINGS GROW



AT YOUR NEAREST KANSAS Savings & Loan

Arkansas City
First Federal Savings and Loan
Ass'n. of Arkansas City

Augusta
American Savings Association

Beloit
First Federal Savings and Loan
Ass'n. of Beloit

Clay Center
Northwestern Federal Savings and
Loan Ass'n. of Clay Center

Dodge City
First Federal Savings and Loan
Ass'n. of Dodge City

El Dorado
Mid-Continent Federal Savings and
Loan Ass'n. of El Dorado

Fort Scott
Liberty Savings and Loan Ass'n.

Garnett
The Garnett Savings and Loan
Association

Great Bend
The Prudential Building and Loan
Ass'n.

Hays
The Hays Building and Loan Ass'n.

Hutchinson
First Federal Savings and Loan
Ass'n. of Hutchinson

Iola
The Security Savings and Loan
Ass'n.

Larned
The Larned Savings and Loan Ass'n.

Lawrence
Capitol Federal Savings and Loan

Leavenworth
The Leavenworth Mutual Building
Loan and Savings Ass'n.

Liberal
First Federal Savings and Loan
Ass'n. of Liberal

McPherson
The Pioneer Savings and Loan
Association of McPherson

Mission
Capitol Federal Savings and Loan
Ass'n.

Newton
First Federal Savings and Loan
Ass'n. of Newton

Ottawa
Ottawa Savings and Loan Ass'n.

Parsons
First Federal Savings and Loan
Ass'n. of Parsons

Pittsburg
First Federal Savings and Loan
Ass'n.

Plainville
Rooks County Savings Ass'n. of
Plainville

Pratt
The Western Savings Ass'n.

Salina
The Homestead Building and Loan
Ass'n.

Topeka
Capitol Federal Savings and Loan
Ass'n. at 700 Kansas Ave.,
12th and Topeka Blvd. and
2100 Fairlawn Rd.

Wellington
First Federal Savings and Loan
Ass'n. of Sumner County

Wichita
American Savings Association of
Wichita, 4601 E. Douglas Avenue
and 147 North Market Street



INSURED SAFE

CIRCULATION DESK

LIBRARY

KANSAS STATE COLLEGE

MANHATTAN, KANSAS

MISC KSC

LAWRENCE 4-H'er USES ELECTRIC PROJECT FOR HOME IMPROVEMENTS

Mike Lee, Lawrence 4-H'er, has 5 years in the Electric Project, and is now the electrical leader for his club. Here, Mike is making a minor repair on the heavy-duty extension cord he made for use in his electric shop. Notice how Mike's tools are kept at his side for ready use.

Mike is installing a ceiling light in the newly finished, enclosed porch at the rear of the Lee home. Mike has installed all the wiring for this room.

Mike is pointing to show the wiring leading to an outside light at the front of the garage. The switches shown are for the outside and inside lighting. All the wiring in the triple garage was installed by Mike.

L. to R.: Fred Lee, Mrs. Raymond Lee, Mike, Barbara Lee and Susan Lee in the family room in the basement. Mike installed the necessary wiring for this room. Included also in the basement is a bedroom and washroom which Mike wired for convenience outlets. Future plans for the reminder of the basement call for a rewiring and remodeling by Mike for a finished shop and work area.



Watch This Page For Ideas On Farm And Home Electric Projects

ELECTRIC LIGHT and POWER COMPANIES in KANSAS

The Kansas Power and Light Company

Kansas City Power & Light Company

Western Light & Telephone Company

Central Kansas Power Company

Kansas Gas and Electric Company