

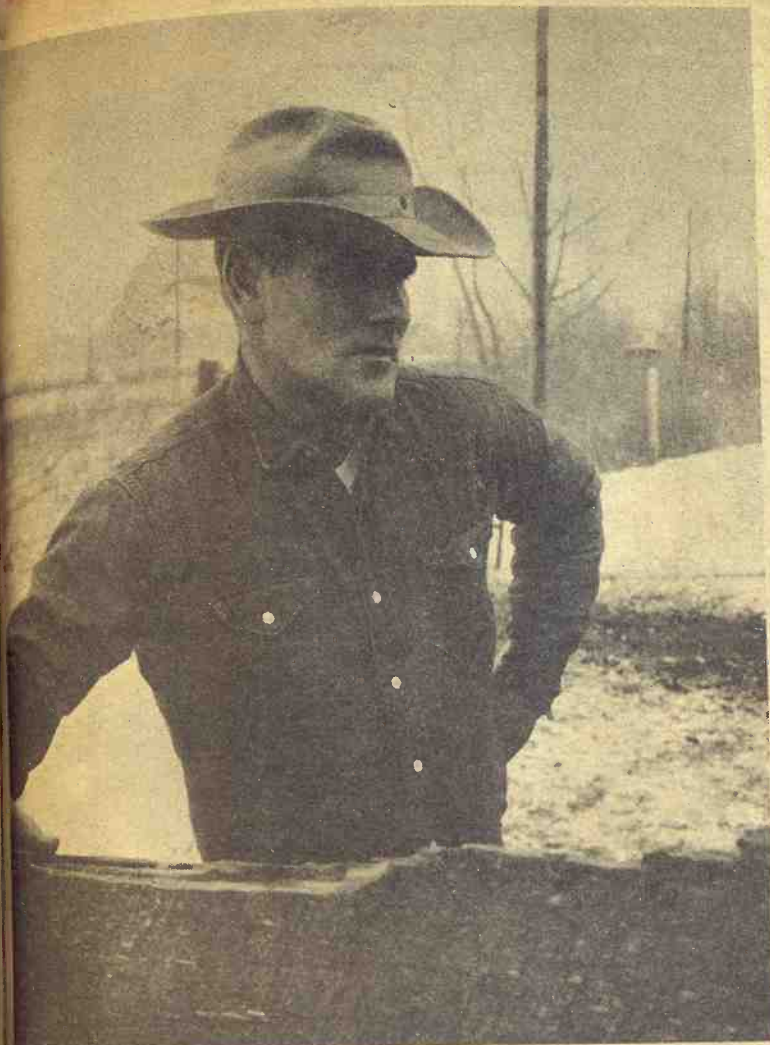
GRASS

& GRAIN

13th year no. 44

January 2, 1968

Cold Or Not, Work Goes On



Three inches of snow and 30-degree weather don't keep Tom Peddicord Sr. of Belvue from working. Tom and his brothers, Leo, Ellis and Bob own a large feedlot east of Wamego.



Tom Peddicord Jr. works at the feedlot with his father. It takes 60,000 pounds of milo a day to feed the 3700 head on the lot.



With a lot that holds up to 4000 head, the Peddicords have plenty to do. Tom Sr. and two high school boys de-horn cattle.

K-State Offers Nutrition Helps To Cattle Feeders

MANHATTAN — Every year Kansas surges to new peaks in agricultural production, and 1967 has been no exception. Agriculture is the state's largest industry, and a majority of Kansas agriculture's cash receipts comes from livestock.

Record numbers of livestock on Kansas farms are valued at more than 3/4 of a billion dollars. Because of the importance of the livestock industry to the state, Kansas State University took new steps in 1967 to strengthen its educational program. Dr. Don Good, head of the animal husbandry department, reports.

Stockmen look to the University for practical information based on applied research and result demonstrations, he explains. This is where the Extension Service comes in — getting practical information to those who can put it into practice.

"The livestock scene is changing with tremendous advances in production, feeding, and marketing over the past several years," Good says. There is expansion of cow herds, and calves are staying in Kansas to be finished more efficiently and at a younger age. The pace of livestock production has been quickened.

Large feedlots are growing in numbers and farmer-feeders now feed more cattle than ever before. Ten years ago commercial feeders handled 25 per cent of the grain-fed cattle and calves — 38,000 head, compared to 115,000 head by farm feeders.

Now commercial feeders feed at least 53 per cent of the cattle finished in Kansas. At the start of 1967, farmer-feeders had 275,000 head in feedlots, and commercial lots contained 311,000 head. So the Kansas cattle feeding industry increased nearly fourfold in the decade.

While agricultural production is becoming more complicated, the Kansas Extension Service is called upon to offer more specialized help to cattlemen, Good points out. In 1967 Extension livestock specialists were reassigned by class of livestock — beef, sheep, and swine. In addition, an animal husbandry nutrition and management specialist was added to the staff early in the year.

The nutrition specialist provides liaison between cattle feeders and the University in a two-way flow of research ideas and information. Working on a statewide basis to coordinate with other Extension livestock and meats specialists, the nutritionist brings the feeders' problems to the attention of the University so research personnel can assist in solving the problems.

"Exchange of information is vital to the dynamic cattle feeding industry to provide up-to-date results of experimental work and to give information on the application of new ideas and techniques," Good added.

"This new emphasis will play an important educational role as future adjustments continue in the Kansas livestock industry."

Hay and feed grain production formula feed manufacturing make Kansas a prime area

for even greater expansion of cattle feeding.

Kansas offers her cattle producers a great variety of livestock management possibilities. A rare combination of natural resources, climate, and human resources allow many different systems of beef cattle production.

Production systems well-suited to Kansas include (1) purebred cattle production, (2) deferred full feeding, (3) wintering and summer grazing, (4) summer grazing, (5) cow herd production, (6) growing stockers for commercial feeders, and (7) full feeding (commercial feedlots and nonfarmer-feeders). Cow herd production includes producing feeder calves or creep-fed calves.



Watching 'em Sell

J. W. Burr and Jack Chase, both of Dunlap, watch a ring full of cattle sell at a G&G area sale.

Some Changes In Fish-Game Rules In 1968

PRATT — New regulations involving various aspects of the outdoor scene will go into effect on January 1, 1968, according to an announcement from the Kansas Forestry, Fish and Game Commission.

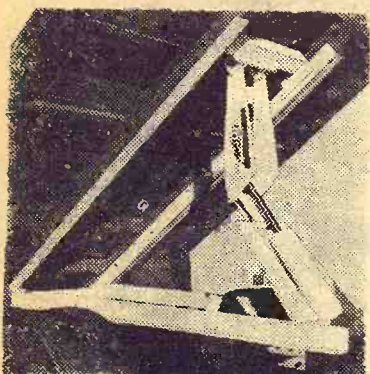
Of primary interest is one which restricts the taking and possession of bait minnows from public waters in the state. The new regulation places a possession limit of 500 on minnows taken from streams, rivers and lakes for use as bait.

Scuba diving activities, now subject to regulation by the Fish and Game Commission under a law passed by the legislature in its last session, will be limited to posted areas at certain impoundments.

At certain federal reservoirs, scuba divers may participate in their sport at designated locations. At county, municipal and other public-owned lakes as well as private lakes, scuba diving will be permitted only in such areas as are posted for this purpose by the controlling authority. At state lakes, operated and controlled by the Fish and Game Commission, scuba diving will not be permitted.

HANOVER HOIST

... A Truck Owner's Dream



Buy direct from the factory ... Save up to \$200.00!

- Powerful
- Light-weight
- Trouble-free
- Rugged

Built for long, dependable service, the Hanover Hoist is powered by a four-piston hydraulic pump. No excess strain on chassis or box. Small factory installation charge, or easy to do it yourself.

Only \$285.00

Plus Exise Tax

Write or Call ED 7-2821

Hanover Mfg. Co.

HANOVER, KANSAS

interested persons may obtain a copy of the law and regulations by writing the Forestry, Fish and Game Commission, Box 1028, Pratt, Kansas 67124. At the present time, the Kansas Forestry, Fish and Game

Commission is in the process of ascertaining the proper locations for the establishment of scuba diving areas. As soon as such areas have been designated, the public will be informed of their location.

2

Grass & Grain

January 2, 1968

LITTLE WINTER WEIGHTLIFTERS



Take prime soybeans, nature's richest source of protein. Then improve on nature through a closely controlled cooking process that safeguards the vital protein as it turns the beans into a remarkably digestible and palatable livestock feed supplement. The result is Sunflower Brand Soybean Meal and Pellets. Cattle love Sunflower Brand. Thrive on it. Even add weight in winter. Call us collect and ask for proof.



Sunflower Brand is available in 40%, Soybean Meal Pellets and 36%, 32% or 22% formulated range cubes. Also available with stilbestrol added.

Kansas Soya Products Co., Inc.
Phone Dickens 2-7270
Emporia, Kansas



SAVE BY MAIL ... IT'S EASY

Announcing New Banking Hours

MOTOR BANK
Weekdays 8:30-6:00
Saturday 9:00 - Noon

MAIN BANK
Weekdays 9:00-3:00
Friday till 7:00 p.m.

INSTALLMENT LOAN DEPARTMENT
Weekdays 9:00-5:00
Thursday till 7:00 p.m.

Union National Bank

M A N H A T T A N , K A N S A S

T. J. GRIFFITH, CHAIRMAN OF THE BOARD



January 2, 1968

Grass & Grain

At Gehl
Harry Olson
manager for t
returned from
sales meeting
pany, short lin
turer. He lives

No Big
'68 Whe
The Agricult
has forecast p
ter wheat to
year at 1,203,
decrease of o
this year's rec
The crop, g
ernment prog
reduction from
pares with th
al estimate o
els for the 19
the 1962-66 a
llion bushels.
Because this
to reserves a
decline in pr
ment set allo
million acres
of both winte
compared wi
year.
The repor
in a state-b
of acreage
wheat for 1
this acreage
year's crop p
licated prod
Figures f
12.0 million
239.3 million

Wint
AT "HO

2 buckle ove
4 buckle ove
5 buckle ove
Insulated ja
Insulated ru
Insulated su
Engine heat
Engine heat
Tank heater

Snow shov
Ensilage fo
Ensilage fo
Aluminum
Aluminum
Truck tire
Tractor hea
1/2 hp air co
Air tanks

FAR
Next
MANHA



At Gehl Plant

Harry Olson, district sales manager for the company, has returned from the national sales meeting of the Gehl company, short line farm manufacturer. He lives in Salina, Kans.

No Big Cut In '68 Wheat Guess

The Agriculture Department has forecast production of winter wheat to be harvested next year at 1,203,619,000 bushels, a decrease of one percent from this year's record.

The crop, grown under a government program calling for a reduction from this year, compares with the department's final estimate of 1.21 billion bushels for the 1967 crop and with the 1962-66 average of 970 million bushels.

Because this year's crop added to reserves and contributed to a decline in prices, the department set allotments totaling 59.3 million acres for the 1968 crop of both winter and spring wheat compared with 68.2 million this year.

The report had these figures in a state-by-state breakdown of acreage seeded to winter wheat for 1968, the percentage this acreage represents of this year's crop plantings, and the indicated production.

Figures for Kansas were 12.0 million; 91 percent and 239.3 million.

IMPLEMENT • TRACTOR
ITCO
EQUIPMENT • ACCESSORIES

Winter Needs AT "HOT" PRICES

2 buckle overshoes	5.59
4 buckle overshoes	6.09
5 buckle overshoes	8.19
Insulated jackets ..	8.25 & 12.85
Insulated rubber pacs ..	13.45
Insulated suits	10.45
Engine heaters, 850 watt ..	7.59
Engine heaters, 1500 watt ..	10.65
Tank heaters, electric	14.25 & 21.55
Snow shovels	2.25
Ensilage forks, 10 tine ..	10.49
Ensilage forks, 8 tine	9.49
Aluminum grain scoops, No. 14 ..	8.75
Aluminum grain scoops, No. 12 ..	8.59
Truck tire chains, most sizes ..	16.95 up
Tractor heater cabs	36.95
1/2 hp air compressors	89.95
Air tanks	15.95

**HOLT
FARM SUPPLY**

Next To Sale Barn
MANHATTAN PR 6-7943



LISTERINE
14 Oz.
\$1.15 Value

77¢

JERGENS LOTION
Family Size
\$1.59 Value

87¢



YORK ASPIRIN

200 Tablets
37¢ Value

27¢

SUPER STAINLESS
15 Blades
\$1.98 Value

\$1.17



POLIDENT
DENTURE CLEANSER
40 Tablets

\$1.59 Value

63¢

SAVE EVERY DAY - Shop Duckwall's everyday for low, low discount prices on Health and Beauty Aids.



FILLER PAPER

300 Sheets
Choose from wide or narrow rule, 5 hole punch.

53¢



RED HEART YARN

All staple and fashion colors.

4 Oz. Skein
83¢



HEAVY RUG YARN

A big assortment of popular colors.

70 Yd. Skein
23¢



9 VOLT TRANSISTOR BATTERIES

98¢ Value **57¢** Pkg. of 2



FLASHLIGHT BATTERIES
"C" or "D" CELL

50¢ Value **26¢** Pkg. of 2

LADIES' VINYL GLOVES

Choose from a big assortment of styles, in black and assorted colors. Laminated linings.



66¢

Values To \$1.00

DUCKWALL'S

TO START THE NEW YEAR RIGHT

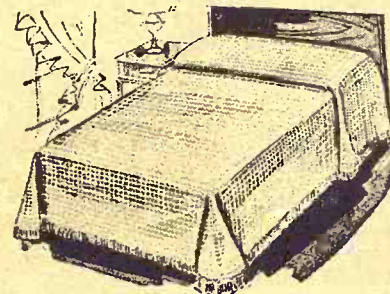
WE
RESOLVE
TO...

**SAVE YOU MORE
IN '68**



POLY FOAM
Mattress Topper

Add comfort to your bed. **77¢**



**100% Cotton Chenille
BEDSPREAD**

Honeycomb patterns in six decorator colors and white. Full and twin size.

\$4.33

\$4.99 Value

DAN RIVER®



FAMOUS DAN RIVER QUALITY

MUSLIN SHEETS

72 x 108 and Double Fitted Bottoms **\$1.97**

72 x 108 and Twin Fitted Bottoms **\$1.87**

PILLOW CASES 93¢ Pr.



PILLOW CASES

Stamped, ready to embroider with thread drawn hem. Assorted designs.

\$1.49 Value **97¢**



BALL POINT PENS

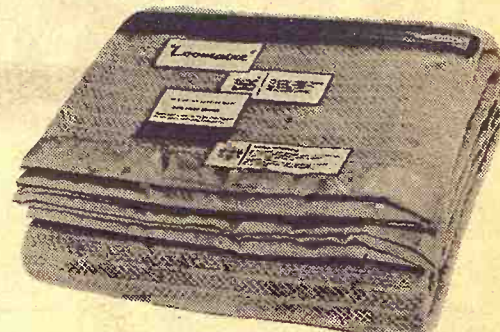
For home, office or school. Blue and colored inks. **67¢**



JERSEY GLOVES

9 oz. cotton jersey. Sizes to fit men, women and children.

39¢ Value **27¢**



NAPPED THERMAL BLANKET

70% Rayon, 24% Cotton, 6% Acrylic with Nylon binding. White and high style colors. **\$2.96**

\$3.49 Value



QUILT-FOAM PILLOW

Filled with fine shredded Polyurethane foam, soft and cushiony. Non allergenic.

\$1.97

\$2.44 Value



BATH TOWELS

Big 24" x 46" size. Assorted styles and colors. **77¢**

Values to \$1.49



EARRINGS

Assorted fashion styles and colors in pierced and pierced look.

\$1.00 Values **47¢**



THROW RUG ASSORTMENT

A big assortment of styles, sizes and shapes. All in new decorator colors. **\$1.66**

Values To \$2.49

THESE VALUES AT ALL DUCKWALL'S STORES

OUR DAILY BREAD

— by G&G Area Cooks

Mrs. Philip Novak, Blue Rapids, Wins Weekly Prize

Mrs. Philip Novak, Blue Rapids: "We enjoy the Grass & Grain so much and I enjoy the recipes."

CHERRY COCONUT BARS

Pastry:

1 cup sifted flour
1/2 cup butter
3 tablespoons powdered sugar

Filling:

2 eggs, beaten
1 cup sugar
1/4 cup flour
1/2 teaspoon baking powder
1/4 teaspoon salt
1 teaspoon vanilla
3/4 cup chopped nuts
1/2 cup coconut
1/2 cup quartered maraschino cherries

Heat oven to 350 degrees. With hands mix flour, butter and powdered sugar until smooth. Spread thin with hands in 8-inch pan. Bake this 25 minutes. Then stir rest of ingredients into eggs. Spread over top of the baked pastry, no need to cool. Bake 25 minutes more. Cool. Cut into bars. Rich and cheery with macaroon top and bright with cherries.

The following recipe was sent by Elsie Gabrielson of Onaga.

FRUIT CURRY SAUCE

1 can (NO. 305) fruit cocktail (low calorie)
1 tablespoon cornstarch
1/4 teaspoon curry powder
Brain cocktail, saving syrup.

In sauce pan, mix cornstarch and curry powder blending well. Cook on third heat or medium until mixture boils and thickens. Add fruit. Serve with chicken. Sauce serves six and has 29 calories per serving (Breast and sauce—239 calories).

The next recipe was sent by Mrs. J. B. Pendergast of Westmoreland.

FRESH APPLE CAKE

1/2 cup shortening
1/2 cup brown sugar
1 cup white sugar
2 beaten eggs
1/2 teaspoon salt
1 cup sour milk or buttermilk
2 level teaspoons soda
2 cups diced raw apples
2 1/4 cups flour
Cinnamon, cloves, nutmeg, sprinkle on to taste
Cream shortening and sugars; dissolve soda in sour milk. Add flour, eggs and spices. Mix well. Fold in apples. Place on top before baking; 1/4 cup brown sugar, 1/4 cup white sugar, 1/2 cup nuts, cinnamon. Bake at 350 degrees for 35 minutes.

Mrs. D. G. Boeckner of Moundridge sent the following recipe:

CREAM CHEESE PASTEL BONBONS

2 1/2 cups sifted confectioner's sugar
Few drops green food coloring or color preferred
1 package (3-ounce) soft cream cheese
1/4 teaspoon vanilla
1/4 teaspoon salt
Mix well. Refrigerate covered one hour. Shape into balls and roll in grated coconut.

Mrs. Glenn E. Frye, Haddam: "Here is a Brownie recipe that I use all the time. I enjoy your recipes so much."

BROWNIES

1/2 cup butter or oleo
1 cup sugar
1 teaspoon vanilla
1 envelope of no-melt unsweetened chocolate
3/4 cup cake flour
1/2 teaspoon baking powder
1/2 teaspoon salt
1 cup chopped nuts
Preheat oven to 350 degrees. Cream 1/2 cup butter or oleo with 1 cup sugar till light and fluffy. Add 2 unbeaten eggs and 1 teaspoon vanilla; beat till smooth. Blend in the no-melt chocolate. Sift together the flour and baking powder and salt. Gradually stir the flour into the creamed mixture and last add the nuts. Bake 30 minutes in a well greased 8-inch pan.

Mrs. Jerry Schwartz, R 2, Randolph: "Here is a very good recipe for Gingerbread Men. They can be decorated or eaten plain. A sure hit either way. It's a large recipe."

GINGERBREAD MEN

2 1/2 cups shortening

3 cups sugar, white
3 eggs
8 to 9 cups flour, sifted
1 1/2 cups molasses or sorghum
2 tablespoons vinegar
5 1/2 teaspoons soda
1 1/4 tablespoons ginger
2 teaspoons cloves
3 teaspoons cinnamon
1 teaspoon salt
Cream shortening and sugar. Mix in eggs, molasses and vinegar. Sift flour, soda, ginger, cinnamon, cloves and salt. Add and mix well. Chill several hours. Roll 1/8 to 1/4-inch thick on a board sprinkled with sifted powdered sugar instead of flour. Make sure the tops of the cookies are smooth (no wrinkles) for the best looking cookies. Bake in a 350-degree oven 8-10 minutes. Watch so they don't overbrown. Makes a chewy cookie.

Continued on next page . . .

MIDWEST RENDERING & SUPPLIES

BELLEVILLE, KANS.

We sell meat scraps and fat for feed. We pick up materials from butcher shops, locker plants and fresh dead animals. For service call Belleville: JA 7-5545 or your local number.

Beloit	738-3731	Jamestown	439-2655
Cawker City	781-4711	Leonardville	99
Clay Center	632-3424	Lincoln	524-9990
Clyde	446-3621	Mankato	378-3771
Downs	454-9527	Marysville	443-3726
Fairbury, Nebr.	402 729-2147	Miltonvale	427-3015
Glasco	568-2636	Minneapolis	392-3043
Hanover	337-2291	Morganville	926-3674
Hebron, Nebr.	402 768-6221	Washington	EA 5-2920
Hunter	529-2145	Smith Center	282-3751
Ruskin, Nebr.	226-2261		

Worth Driving Miles For Woodward's STORE-WIDE January Clearance — SALE —

Starts Wedn., Jan. 3, at 9:30 a.m.

We Guarantee You'll Save

1/4, 1/3, 1/2 off

REGULAR PRICES
on all sale items

- Ladies & Childrens Wearing Apparel
- Sportswear
- Ladies & Childrens Shoes
- Millinery
- Accessories
- Cosmetics
- Hosiery
- Piece Goods
- Home Needs
- Notion Items
- Curtains, Draperies
- Domestic
- Gift Dept. Items
- Holiday Jewelry

WOODWARD'S DEPT. STORE
MANHATTAN, KANS.
Open Thursday Nights Till 8:30



new!

ALLIS-CHALMERS ONE-SEVENTY

(53* HORSEPOWER)

- The best performance and comfort features of the hot One-Ninety XT, now in the low-profile, high-clearance One-Seventy tractor!
- Hydrostatic power steering!
- Power-shift rear wheels, roll-shift front axle!
- Triple hydraulics—3 hydraulic

- circuits optional, to let you call on several hydraulic functions at once, without fading.
- Wide, full protection fenders with dual lights.
- Automatic TRACTION BOOSTER acts like invisible wheel weights to take you smoothly through the tough spots.



MARYSVILLE
Marysville Machinery Co.

COUNCIL GROVE
Patterson Impl. Co.

WASHINGTON
Hinkle Impl. Co.

WAMEGO
Bearman & Son

HERINGTON
Lockard Impl. Co.

MARION
Longhofer Supply

ALTA VISTA
Buchman Farm Supply

EMPORIA - 1115 W. 6th
Schaefer Eqpt. Co.
Phone DI 2-3172

WATERVILLE
Waterville Motors

TOPEKA - East US 24
Henry Sales & Service

ABILENE
Wright Impl. Co.

... white
... flour, sifted
... sugar
... vinegar
... soda
... ginger
... cloves
... cinnamon
...
... and sugar
... and ginger
... and salt
... Chill several
... 1/4-inch thick
... instead of flour
... of the cook
... (no wrinkles)
... ing cookies
... green oven 8-10
... so they don't
... a chewy

... ext page ...

PLIES

... up mater
... ad animals
... al number
... 439-2655
... 99
... 524-9990
... 378-3771
... 443-3726
... 427-3015
... 392-3043
... 926-3674
... EA 5-2920
... 282-3751

For

nce

f

We have received a request to print a recipe for a white chocolate cake. The recipe appearing below was sent by Mrs. Charles Graham of Council Grove.

WHITE CHOCOLATE CAKE
1 cup grated white chocolate
1/2 cup boiling water
1 cup butter or margarine
2 cups sugar
4 egg yolks, unbeaten
1/2 cup whites, stiffly beaten
1 teaspoon vanilla
2 1/2 cups sifted cake flour
1/2 teaspoon salt
1 teaspoon baking soda
1 cup buttermilk
Melt chocolate in boiling water. Cool. Cream butter or margarine and sugar until fluffy. Add egg yolks, one at a time, and beat well after each. Add melted chocolate and vanilla. Mix well. Sift together flour, salt and soda. Add alternately with buttermilk to chocolate mixture; beat well. Beat until smooth. Fold in whites. Pour in 3 deep 8 or 9 inch layer pans, lined on bottoms with paper or you may use a flat cake pan

approximately 8"x12". (A teflon pan is very nice to bake this cake in as you do not use any shortening to grease your pans with regardless of the pans you bake it in and do not use the paper if you use teflon pan). Bake in moderate oven 350 degrees F. 30 to 40 minutes. Cool. Frost tops only.

RICH WHITE CHOCOLATE FROSTING
1 cup grated white chocolate
Dash of salt
2 tablespoons butter or oleo
3/4 cup confectioners' sugar
2 tablespoons hot water
1 egg yolk
1/2 teaspoon vanilla
Melt chocolate in top of double broiler over hot water. Blend in sugar, salt and hot water. Add yolk; beat thoroughly after each. Stir in vanilla. This is all to be done in top of double broiler over hot or broiling water and be sure to beat well. Makes about 3/4 cup or enough to frost tops of two layers or flat cake. Cherries if it is to be used during the Holiday season. * * * *

Unusual Recipe Received From Mrs. Cleo Schultz
We received a recipe from Mrs. Cleo A. Schultz, R 1, Alma, which we felt would be of interest to many G&G area cooks.

Mrs. Schultz wrote, "I got a chuckle out of this real old recipe. The book, Mrs. Fryer's cook book, was copyrighted in 1922, 16 years before my time."

CALF'S FOOT JELLY

The Latest 'Daily Bread' Prize

PATTY MOLDS

FOR TEMPTING, delicious desserts, salads and snacks you will be able to make your own crisp, tasty patty shells and individual waffles. Included with the molds is a recipe for shells to be used with creamed chicken, veal or vegetables and also there are directions for making a sweet patty for dessert dishes.

The winner each week is drawn by lot from the recipes printed.

Win one by sending us your favorite recipe — this can be main dish, leftover, salad, side dish, dessert or what have you.

1. Check your recipe carefully to be sure all ingredients are accurate and accounted for.
2. Be sure your name and address are on the entry.
3. Only one recipe at a time, please.
4. Send it to Woman's Page Editor, Grass & Grain, Box 1009, Manhattan, Kansas.

MATTRESS & BOX SPRINGS

Specials Every Day
New Low Prices
Buy Direct

Also Complete Rebuilding Service

Manhattan Mattress Co.

414 S. 4th PR 8-5302

4 calf's feet
3 quarts water
Whites of 2 eggs
1/2 pound powdered sugar
2 lemons

Clean the feet thoroughly and boil them slowly until the three quarts of water is one. Strain and set them away until cold. Remove the grease and place the jelly into a saucepan, being careful to avoid settlings. Add the sugar, lemon juice and whites of eggs. Let all boil a few minutes. Pour in bowls or glasses to cool.

January 2, 1968

Correction For Squash Recipe

Mrs. D. G. Boeckner of Moundridge sent in a correction for her Pickled Squash recipe which appeared in the December 12 issue of G&G.

Correction: Squash should be cooked in syrup until glazed before putting into hot sterilized jars.

Self-Feed Service for Your Cattle



ON GRASS DRY LOT OR SNOW

We are completely equipped to self-feed your cattle on grass, in dry lot or in snow.

We will either sell or rent you the feeders necessary, and then keep them filled for you.

We can include necessary roughage in ration or you may feed it free choice.

Call us collect, or stop in the next time you are in St. Marys.

FARMERS UNION FEED MILL

St. Marys, Kans. Phone 437-2434



DON'T STARVE THE PROFIT OUT OF YOUR RANGE CATTLE THIS WINTER

There is a wide variety of CO-OP BEEF FEEDS available in blocks, pellets or cubes. CO-OP Protein Blocks are ideal for "on ground" feeding and they are available in:

- 20% Protein Blocks - high energy for range cattle or sheep
- 28% Protein Blocks - balanced for cattle, sheep or horses
- 39% Protein Blocks - a supplement for low grade roughage for cattle and sheep on the range

BEEF UP YOUR FEEDLOT PROFITS BY MIXING CO-OP BEEF CONCENTRATES WITH FARM GROWN GRAINS

CO-OP BEEF CONCENTRATES provide the vital protein-vitamin-mineral balance cattle need to convert roughages and grain into extra pounds of beef. Many Co-ops offer self-fed rations (roughage included) and deliver it to your feedlot in bulk.

GET THE LATEST COST FIGURES AT YOUR CO-OP. THEY ARE BASED ON THE LATEST RESEARCH

The only aim of the CO-Op BEEF PROGRAM is to help you produce more beef for less money. Research is constant and improvements come often. Keep in touch with your local CCA member cooperative to make sure you have the latest in profitable beef management.



FOLLOW THE FARMER OWNED

COOP BEEF PROGRAM

Clay Center
FARMERS Union Co-op
Clay Center-Bala
-Miltonvale-Leonardville

St. Marys
Farmers Union Co-op
Business Assn.

Manhattan
FARMERS Cooperative Assn.
Manhattan-Alta Vista
-Westmoreland-Onaga

Carlton
Farmers Union Co-op
CARLTON
TELEPHONE 31

Junction City
Farmer-Stockman Co-op Assn.
Council Grove
-Junction City CE 8-4158

Greenleaf
Farmers Co-op Elevator Assn.
Greenleaf-Linn
-Washington

Abilene
Abilene Co-op Assn.
Abilene CO 3-1660

Alma
Farmers Union Co-op
Alma Ph. 765-3612
Eskridge Ph. 449-2291

GET THEM AT CLAY CENTER & ABILENE, KANS.

Remington or OK Truck Tires

1st Line — 1st Quality



Size	Ply	Highway Tread	Traction Tread	Size	Ply	Highway Tread	Traction Tread
6.70x15	6 ply	\$16.00	\$20.00	7.00x20	8 ply	\$32.00	\$36.00
7.00x15	6 ply	\$19.00	\$23.00	7.50x20	8 ply	\$33.00	\$37.00
7.00x15	8 ply	\$25.00	\$29.00	7.50x20	10 ply	\$35.00	\$42.00
6.00x16	6 ply	\$14.00	\$18.00	8.25x20	10 ply	\$37.00	\$44.00
6.50x16	6 ply	\$17.00	\$21.00	9.00x20	10 ply	\$51.00	\$58.00
7.00x16	6 ply	\$19.00	\$23.00	10.00x20	12 ply	\$61.00	\$68.00
7.50x16	8 ply	\$29.00	\$33.00	TUBELESS			
7.00x17	6 ply	\$24.00	\$28.00	6.70x15	6 ply	\$19.00	\$23.00
7.00x17	8 ply	\$28.00	\$32.00	6.50x16	6 ply	\$20.00	\$24.00
7.00x17	8 ply	\$33.00	\$37.00	7-17.5	6 ply	\$25.00	\$29.00
7.50x17	8 ply	\$33.00	\$37.00	8-17.5	8 ply	\$31.00	\$35.00

Plus Federal Excise Tax and Exchange Tire.

Protected By Written Road Hazard Guarantee

REX KOPPE'S
OK TIRE STORES

813 6th St.
CLAY CENTER, KANS.

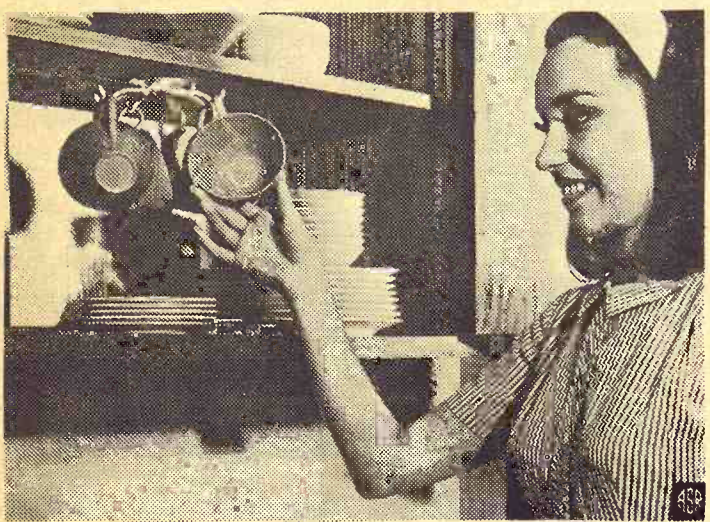
Phone ME 2-2167

FREE FAST MOUNTING
OK Rubber Workers
B.F. Goodrich

REX'S DEEP ROCK SERVICE

6th & Buckeye CO 3-9813
ABILENE, KANS.

Space Saving Conveniences Supply More Storage Area



Contrary to what most people think, the American homemaker, rather than our astronauts, was the first true master of space. While she has yet to be launched from the earth's sur-

face, crowded cupboards, closets, shelves, drawers and cabinets have compelled her to use her limited work and storage space more efficiently.

Helping her achieve her space

mastery is a housewares manufacturing company, originator of a host of different space-saving conveniences. They expand the storage contents of a small kitchen and increase the efficiency of older kitchens.

For example, stacker shelves multiply storage space by making cabinet shelves more versatile. Sliding and twirling cup racks utilize the undersides of shelves to safely store everything from plastic ware to fine china. With a twirl of a finger, cups can be stored in generally wasted cabinet areas.

Empty paper bags can clutter kitchen cabinets, drawers and closets. A new space saving paper bag holder eliminates the problem and accommodates different size bags attractively and conveniently.

Other kitchen space savers include stationary, revolving and sliding spice racks, a kitchen caddy for storing cleanser, detergent, soap pads and sponges. Compact racks "file" everything from lids to baking sheets and serving trays.

"One Friend Tells Another and HOME Grows"

For Our Rural Neighbors
Who Want To Strengthen Their Financial Positions

THE HOME SAVINGS PLAN

WILL Work For You . . . As It Does For Others

INSURED SAFETY OF SAVINGS

Save in person or by mail

BUSINESS HOURS
Monday through Thursday
9 a.m. - 4 p.m.
Friday
9 a.m. - 7 p.m.
Saturday
—Closed—

HOME
SAVINGS AND LOAN ASSOCIATION
107 NORTH FOURTH STREET
MANHATTAN, KANSAS

YOUR COMMUNITY HOME FINANCING CENTER

FOR CONVENIENCE AND ECONOMY TRY PURINA RANGE CATTLE MEAL

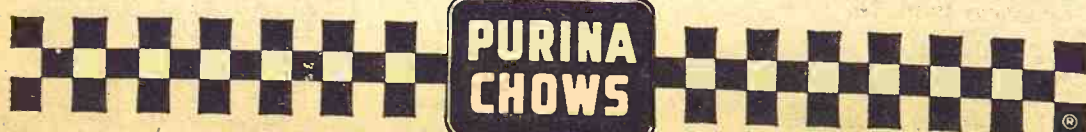


When daily feeding of cattle is impractical, turn to Purina Range Cattle Meal, the top Purina supplement for efficient salt-meal feeding.

With this economical supplement, you can keep track of salt and meal intake, and adjust the amount of salt to hold meal consumption at the recommended level. Purina Range Cattle Meal can help your cattle maintain good body condition during the tough winter months.

Bring 'em through to spring with the protein supplement built to do the job for you. Let Purina Research provide the products and programs to meet your feeding needs. Stop in to see us at our sign of the Checkerboard.

Flint Hills Feed & Grain PR 8-5322 Manhattan
Farmers Union Feed Mill 437-2434 St. Marys
Mor-Kan Elevator 349-2214 White City
Reading Grain & Lumber AN 9-3842 Reading
Bartlett Grain Co. CE 8-5134 Junction City
Americus Grain Co. 884-3465 Americus
Gorden Mark Elevator .. ME 2-3381 Clay Center
Western Grain Mill 767-5933 Council Grove



Blueberry Ribbon Pie Is Deliciously Different

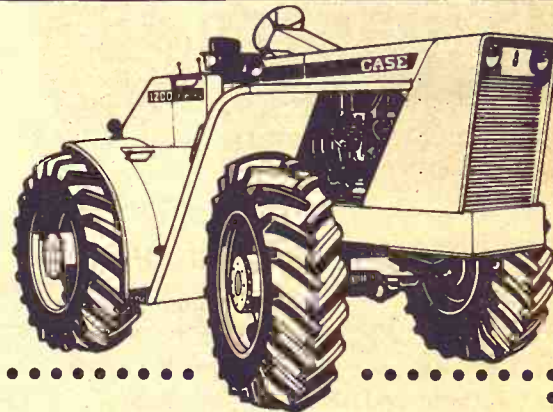


We've all heard the expression, "normal as blueberry pie." But this pie is not a normal blueberry pie. It is deliciously different due to a smooth cream cheese layer beneath the blueberries. Together, they make a delightful flavor combination. Since this pie is made with canned blueberries, it can be enjoyed anytime of the year.

BLUEBERRY RIBBON PIE
1 baked (9-inch) pastry shell
1 (1 pound) can blueberries
1 (8 3/4-ounce) can crushed pineapple
1 (8-ounce) package cream cheese, softened
2 tablespoons sugar
1/2 teaspoon vanilla
1/4 cup sugar
2 tablespoons cornstarch
1/4 teaspoon salt

1 tablespoon lemon juice
Whipped cream

Drain blueberries and pineapple separately, reserving syrup from each. Blend cream cheese, 2 tablespoons sugar, vanilla and 2 tablespoons pineapple syrup. Mix in drained pineapple. Spread in bottom of baked pastry shell. Chill. Blend 1/4 cup sugar, cornstarch and salt in saucepan. Combine blueberry syrup and remaining pineapple syrup; add water to make 1 1/2 cups. Blend into cornstarch mixture. Stirring constantly, bring to boil and boil one minute over medium heat. Stir in berries and lemon juice. Cool completely. Spoon over chilled cream cheese layer. Chill. Top with whipped cream before serving.

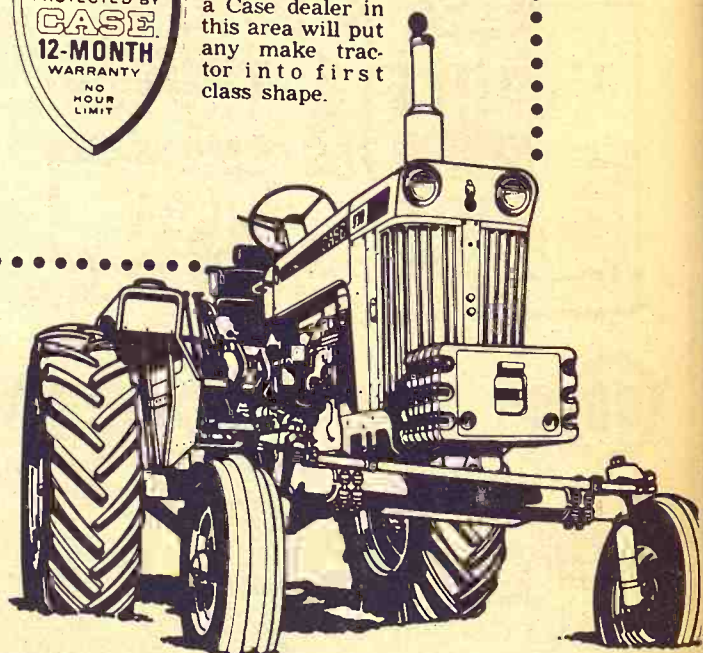


Bring Your Tractor
to a Case Dealer
Now, and Have It
Ready for Spring Work

CASE
TRACTORS



Noted for superior shop service, a Case dealer in this area will put any make tractor into first class shape.



MARION
Longhofer Supply
LINN
Kuhlman Motor Co.
MARYSVILLE
Brauchi Brothers
CHESTER, NEBR.
Grabau Impl. Co.

CLAY CENTER
Porter Eqpt. Co.
1121 Crawford ME 2-5202
SALINA
Vahsholtz Impl. Co.
CENTRALIA
McBratney Impl.
Phone 857-3815

Grain Bo
7x80" wide
8x80" wide
9x93" wide
10x93" wide
12x93" wide

Special sizes e
to your re

When Or
HAUL. MO

LOW
at p

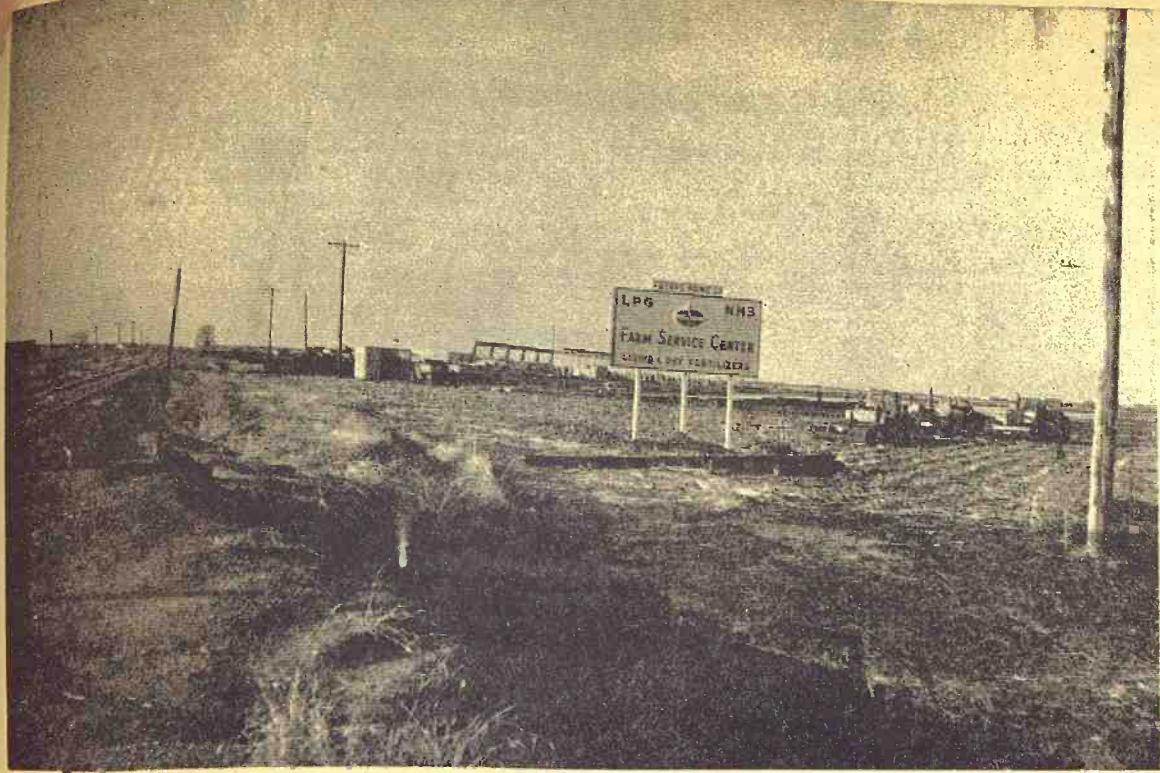
PIC

65 GMC
Heavy
64 GMC
59 GMC
New 1
59 GMC
Bed a
62 FOR
58 FOR
51 CHE

D

T

500 W. H



Standard Center Building At Newton

The G&G area is going to get one of the first Standard Oil farm centers in the U.S. Standard has operated experimental farm centers in Iowa and Minnesota and after a research program has planned several stores at what it considers major farm trading points. First to be set up in the G&G area is at Newton, where initial construction is shown along US81 at Anderson street. The Standard centers will handle oil products, farm chemicals, LP gas, and fertilizers.

Only Fair Year For Truck Farmers

Kansas had fair crops of fruit and vegetables in 1967 although production of most crops was below average, according to the Kansas Crop and Livestock Reporting Service. Apple production in 1967 was the smallest in the last decade.

Peach production was considerably larger than the 1966 production but was two-fifths below average.

Dry edible bean production was the same as a year ago and slightly above average but Irish potato and sweetpotato production were both below

the previous year and average.

The cantaloup crop was slightly smaller than the 1966 crop and one-fourth less than average.

Sweet corn production was down nearly one tenth from the previous year and was the smallest in a decade.

In 1967, an expanded acreage of processing tomatoes and cucumbers was harvested in southwest Kansas.

Fruit Crops

Commercial apple production in Kansas totaled 150,000 bushels in 1967. This was one-fifth below last year's production and was only three-fifths of the 5-year (1961-65) average production.

Jonathan was the leading variety produced in the state followed by Golden Delicious, Delicious, Winesap, Ben Davis and Gano varieties.

The 1967 Peach crop of 75,000 bushels was nearly 4 times larger than the small crop of 1966 but was only about three-fifths of the 5-year average production. Fair to excellent fruit crops were raised in the Wichita area and in portions of south-east Kansas. Elsewhere low wintertime temperatures and late spring freezes cut production of both apples and peaches.

Vegetable Crops

Dry edible bean production totaled 154,000 cwt. in 1967, the same as in 1966. Beans were harvested from 11,000 acres in western Kansas.

Production of Irish potatoes was 128,000 cwt., down 1 per cent from last year's production

Grass & Grain

January 2, 1968

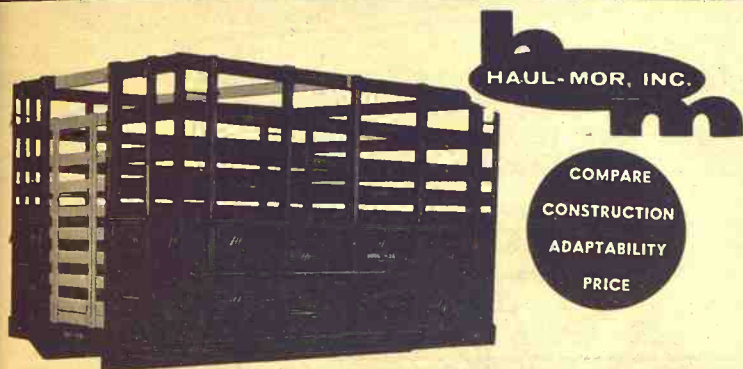
and 30 per cent below the 5-year average. The 1,600 acres planted and 1,500 acres harvested were both 100 acres less than a year earlier. The yield per acre of 85 cwt. was 5 cwt. below last year.

Sweetpotato production of 85,000 cwt. was 17 per cent below last year's crop and one-fourth less than the 1961-65 average. Yield per acre of 85 cwt. was the same as in 1966 but 200 fewer acres were planted and harvested in 1967.

Cantaloup production, at 81,000 cwt., was slightly below last year and 24 per cent below average. Some 1,000 acres of cantaloups were planted and 900 acres harvested in 1967. Yield per acre averaged 90 cwt. which was 10 cwt. above the low yield of 1966 but well below the recent 5-year average of 105 cwt. per acre.

Sweet corn production totaled 60,000 cwt. in 1967, down 9 per cent from a year earlier and 26 per cent below average. Yield per acre, at 60 cwt., was the same as in 1966 but 100 less acres were harvested in 1967.

Vegetable growers over most areas experienced a difficult planting season because of wet conditions. Hail storms over southwestern counties cut production of several crops. Harvest weather during the late summer and early fall generally was favorable and quality of most crops was good.



Grain Body with Combination Lift-Off Rack.

- | | | |
|--------------|----------------|---|
| 7'x80" wide | 13'6"x93" wide | • Regular grain body |
| 8'x80" wide | 15'6"x93" wide | • Hardwood lift-off rack |
| 9'x93" wide | 16'6"x93" wide | • Racks added to grain body give 66" height |
| 10'x93" wide | 18'x93" wide | • Perfect fit |
| 12'x93" wide | | • Furnished with 2 gates |
| | | • One for grain, one for stock rack |

Special sizes easily manufactured to your requirements

When Ordering Specify Make, Model, Size of Bed
HAUL-MOR, INC., Valley Falls, Kansas • phone 945-3211

LOW MILEAGES LATE MODELS
at prices you can afford

NEW & USED PICKUPS & TRUCKS

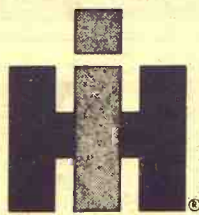
NEW 1968 GMC
1/2 Ton PICKUP \$1995

65 GMC 3/4 ton 4 speed	\$1195
Heavy duty wheels & tires, real clean.	
64 GMC 1/2 ton, good red paint	\$995
59 GMC Cab	\$1095
New 16' grain bed, real clean farm truck.	
59 GMC Dump Truck	\$1095
Bed and hoist, ready to haul	
62 FORD Econoline Van	\$795
58 FORD 1 ton Dual	\$795
51 CHEVROLET 1/2 ton	\$95

DALE SHARP TRUCK CENTER

600 W. Hiway 24 TOPEKA CE 4-8606

You are the world's toughest customer



First to serve the farmer

You should be. You've probably got the world's toughest job.

Because farming is a one-man job. The final decisions are all yours. Tough decisions about some things you can control—and some you can't. Weather. Crops. Livestock. Costs. Prices.

And equipment.

This is always your toughest decision. No matter how well you farm, how much better could you be? No wonder you consider so carefully—and judge so critically.

And that's our toughest decision, too. No matter how good our product, how much better could it be? That's why we listen to you. And make sure that your ideas show up in our equipment.

We can never be satisfied with good enough. You won't let us. No matter what we think of our products and our services—you've got the final vote. That's why we are determined to earn your belief that IH serves you best.

HERINGTON
Pioneer Service & Sales
MINNEAPOLIS
Chapman Impl. Co.
CLAY CENTER
Norquist's Inc.
ABILENE
Abilene Truck & Tractor

HANOVER
Hanover Impl. Co.
LEONARDVILLE
Kendall Garage
WAKEFIELD
Auld Chevrolet

MARYSVILLE
Bruna Brothers
FALUN
Dauer Impl. Co.
COUNCIL GROVE
Macha-Revere
BELLEVILLE
Chapman's On US hwy. 81

Soybean Supplies Exceed Needs

Rainy weather delayed the soybean harvest in several states, but more than 90 per cent of the crop had been combined by December 1. Field losses were larger than usual in Illinois and in some other areas.

Weather conditions varied greatly over different parts of the soybean country. The Soybean Belt is a very wide one. Soybeans are the leading cash crop in Minnesota (in the north), and they rank second in Mississippi (in the south). Thus,

soybeans range from the Canadian border to the Gulf of Mexico.

Soybeans are also grown intensively in the East, especially in the Carolinas where there was a 50-million-bushel crop this year. Soybeans have also pushed west to Nebraska and Kansas, where 40 million bushels were produced.

Illinois Still Leads. Illinois is still the leading soybean state. This year, our farmers produced a record crop, estimated at 184 million bushels — 19 per

cent of the national total. This is a big change from the situation 30 years ago, when Illinois farmers produced more than half of the nation's supply of soybeans.

The November estimate of the 1967 soybean production was 985 million bushels. (Field losses were heavier than usual, but let's take that into account when we consider disappearance).

The carryover of old beans last September 1 was listed at 91 million bushels. This carryover plus the new crop made a total supply of 1,076 million bushels. This amount seems to be enough to meet all needs, leaving well over 100 million bushels for carryover next fall.

The use and exports of soybeans will probably exceed last year's levels, but not by any large amount. In the 1966-67 marketing year (ending August 31), 551 million bushels of soybeans were crushed in U. S. mills.

Our need for soybean meal won't be much larger than last year. The poultry industry, which is the largest user of soybean meal, has had a bad year and will not expand in 1968. Hogs and cattle may need a little more. The supply of

cottonseed meal will be smaller than last year. Exports of soybean meal may increase. They have been trending upward.

At recent prices, the value of the soybean meal obtained from a bushel of soybeans was 24 cents less than it was a year earlier. Soybean oil prices are down, too. Recently, the oil obtained from a bushel of beans was worth 23 cents less than a year earlier. Soybean oil is meeting increasing competition from other vegetable oils in foreign countries.

The shrinkage in the value of soybean oil and soybean meal reduces the price that processors can pay for soybeans. On the other hand, the price-support loan rate is the same as last year — \$2.50 a bushel, plus premiums for quality and location.

During September and October, soybean crushings exceeded year-before levels by 14 per

cent. But this rate of difference is not expected to continue.

Exports of soybeans in the 1966-67 marketing year totaled 257 million bushels. The export movement was fast in September and October of this year, but has slowed to the year-before rate since then.

In the 1966-67 marketing year, about 68 million bushels of soybeans were used for seed and feed, or were lost. More may be lost this year, but the needs for seed will not increase.

It now appears that there will be more than 100 million bushels of soybeans left over next September 1. But most of them will be locked up under price support.

L. H. Simerl
Univ. of Illinois



FARM & RANCH LOANS

A Financial Service
For The Farmer
And By The Farmer

R. STANLEY PARSONS, Mgr.

SEE ME AT
604 HUMBOLDT PR 6-6931
Res. Phone JE 9-8725

MANHATTAN

Open Mon. through Fri.
8 a.m. to 5 p.m. (closed 12-1)

Branch Offices: CLAY CENTER & JUNCTION CITY

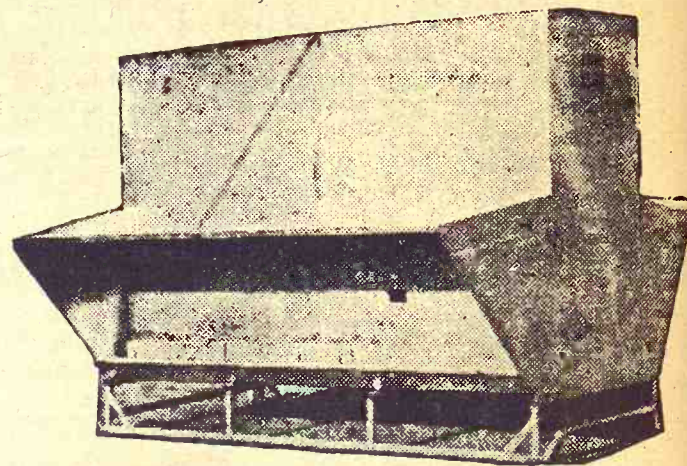
Federal
LAND BANK Assn. of
MANHATTAN

Serving Clay,
Geary, Pottawatomie & Riley counties.



WHEAT PASTURE REPORT RATING ONLY FAIR

Mid-December wheat pasture feed supplies over the western two-thirds of Kansas were rated as poor to fair, in the most report by the Kansas Crop and Livestock Reporting Service. Percentages of wheat acreage capable of providing pasture were up in all areas except the Northwest.



Use a LUTTIG metal all-welded self-feeder to self-feed your cattle. Will not leak or rot, and feeds down good, reasonable in price.

Capacities of 150, 250, and 350 bushels.

LUTTIG TRAILER COMPANY

Telephones: Office 535-2610—Res.: 535-2350
EMMETT, KANSAS

Oliver holds the line on farm machinery prices

Order at once and save on each new machine you buy.

Most other major farm equipment manufacturers have recently announced price increases. It's not surprising, with the whopping big increases in labor costs and the higher costs of material.

But you're in a cost-price squeeze, too. So, for the present, Oliver is not increasing prices.

You can still buy any new Oliver machine at the same price that has been current during 1967. Smart buyers are seeing their Oliver dealers at once. By buying now, you can be sure of current prices—even on machines delivered later.

Oliver Corporation, Chicago, Illinois 60606

Statement from Oliver's president:

We know that many of you are caught in the price squeeze. That's why our policy on price increase is to hold the line in your favor as long as we can—even though others have already found it necessary to raise prices.

We suggest that you see your Oliver dealer right away. Today. He will honor current prices on our machines purchased now, even though delivered later.

We don't know how long we can manage to maintain our present price level. But while we can, you have an opportunity for substantial savings.

Sam White, Jr., President

SEE A NEARBY
OLIVER DEALER

MARYSVILLE
Peschel Bros. Impl.

ALMA
Eberwein Garage

DURHAM
G&R Impl. Co.

ABILENE
Wissing Motor Co.

CLAY CENTER
Toburen Impl. Co.

LAWRENCE
McConnell Mchry. Co.

SALINA
Lindquist Impl. Co.

EMPORIA
Arndt Bros. DI 2-5262

OLIVER
FOR MEN WHO GROW



CAN MORE MONEY HELP YOU FARM BETTER?

Don't say
Yes too
quickly!



Almost everybody thinks that more money is the solution to every problem. But this is not necessarily true... especially in farming, and especially if you are borrowing the money.

When you borrow money for your farming enterprise, you should work with a lender who understands your special problems... who can point out pitfalls you may have overlooked... who can help you plan maximum profit from the money you borrow.

And that's where PCA comes in. PCA managers and fieldmen have farm backgrounds, plus a thorough training in farm credit. They can help you put your plans on paper so that you can tell exactly where you're going... and your chances of getting there.

You'll find PCA's special understanding takes a lot of the gamble out of farming.

Where
MONEY TALKS...
The FARMERS Language

Manhattan
Production Credit Assn.



Council Grove
Production Credit Assn.

5th & Humboldt PR 8-2226

315 W. Main — 767-5515

Serving Marshall, Clay, Riley, Geary, Pottawatomie & Wabaunsee Counties. Branch offices at Clay Center, Marysville, Fieldmen: Owen Duer, Asst. mgr.; Ray Cohorst, Marysville, HI 3-4005; W. R. Eddy, Havensville, 889-4159. Floyd Rutherford, mgr. Residence — PR 6-5683

Serving Dickinson, Marion, Morris, Chase & Lyon Counties. Branch offices at Abilene, Hillsboro, Marion. Fieldmen: Bill Alsop, asst. sec.-tr.; James Peters, Lehigh; Wilfred Elliott, White City. Charles E. Graham, mgr. Residence — 767-5574

Paper Back
Books
Largest Stock
In Town

Univer
Book S
23 N. Manhattan

Make s
you get
"LIVING
your co
well wi

Gooch
BEST

CK
Manh
Your bes
CLAY
Clay

Tighter Rein On Insurance Cancellation

Beginning this week, insurance companies that cancel liability insurance policies on private automobiles in Kansas must give specific reasons for their actions.

Frank Sullivan, state insurance commissioner, said the request for reasons for cancellation must be initiated by the insured.

The cancellation provision is contained in a statute enacted by the 1967 session of the legislature. The statute became effective Monday.

It also places certain limitations on reasons for canceling automobile liability policies.

Under present statutes, an insurance company can cancel a policy without telling the policyholder why the action was taken. Part of problem is that the insurance company could open itself up for a libel or slander suit by giving the reasons.

The new Kansas law gives insurance companies immunity from such litigation in cases where the insured requests reasons for cancellation.

Sullivan said the new limitations on a company's right to cancel auto policies does not apply to auto physical damage coverages (comprehensive and collision) and the new law does not affect the company's right to refuse to renew a policy.

The insurance commissioner said more than 50 per cent of the companies now writing auto liability insurance in Kansas already are using policies that contain restrictions on their right to cancel. These restrictions are similar to the ones contained in the new law.

With the new statute, all companies must include such

restrictions in their policies.

The state insurance department has fielded numerous complaints from Kansans in recent years concerning cancellation of their auto insurance contracts, Sullivan said.

"In many cases," the companies have 'just cause' for refusing coverage, but the inability of the companies to be able to explain why the person was canceled has led to the dissatisfaction of many of our people," Sullivan said.

In 1966, the department had 228 complaints concerning automobile insurance cancellations. This figure represented 12 per cent of the 1,768 fire and casualty complaints received. So far this year, the 147 complaints received represent 9 per cent of the 1,578 complaints on file for 1967.

About 22 other states have similar laws governing policy cancellations.

Sullivan said that in view of this trend "many insurance companies have voluntarily amended their policies to limit their right to cancel and fail to renew and some companies guarantee renewal for certain periods under certain conditions for both liability and physical damage coverages."

The insurance commissioner said the new law would aid in eliminating indiscriminate cancellations.

Reasons for policy cancellations, under the new statute, are limited to:

- Failure to pay the required premium.
- Obtaining the insurance through fraudulent misrepresentation.
- Violation of any of the terms and conditions of the policy.
- Revocation or suspension of a driver's license.
- Inability to operate a motor vehicle because of physical limitations.
- Convictions of a number of criminal violations.

Paper Back

25c - 35c
50c - 75c

Books

Largest Stock
In Town



University
Book Store

623 N. Manhattan Manhattan

Make sure
you get
"LIVING PROOF"
your cows are
well wintered!



Gooch's
BEST

See us for the complete calf building
nutrition built into Gooch's Best.

RANGE CUBES

- Full Protein plus Energy
- Guaranteed True Vitamin A
- Superior Phosphorus
- GBA-65, the Digestive Aid

CK PROCESSING COMPANY

Manhattan, Kansas — Telephone PR 6-9269
Your best place to buy and sell grain in the country.

CLAY CENTER ALFALFA MILL

Clay Center, Kansas — Telephone ME 2-3401

January 2, 1968

Grass & Grain

9

New Egg Plant At Iola

IOLA — An egg processing plant, Tyson's Pride of Kansas, is scheduled to open here in January and will employ 20 people.

Corbett Thompson, general manager of the plant, said it is being established by Tyson Industries, which operate egg and poultry production complexes in Arkansas, Oklahoma and Missouri.

The eggs processed in the plant will be sold through a distribution system established by Thompson Poultry and under the Thompson label.

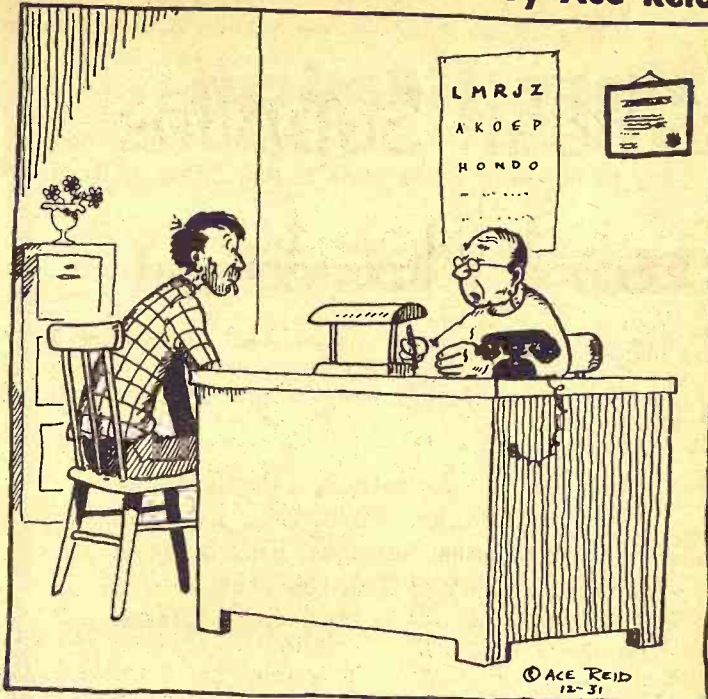
"We hope to stimulate egg production in this area within a year to the point where all of our needs can be met by local producers," Thompson said.

He estimated that the area's 50,000 laying hens could be increased to 300,000 under purchase contracts.

Automatic equipment to wash, grade and package up to 80 cases of eggs an hour is now being installed in a building

COW POKES

By Ace Reid



"You're bound to need glasses, Jake. Apparently you couldn't read the bill I sent you for your last examination!"

formerly occupied by James Implement Co.

Similar plants are being operated by Tyson Industries at Springdale, Ark., and Oklahoma City. The Springdale plant employs 200 and the Oklahoma City plant 40.

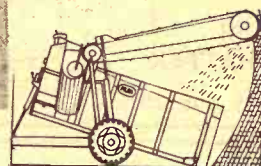


Tools
Too

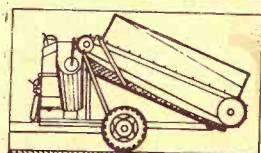
AGGIE
HARDWARE
1205 Moro
Manhattan, Ks.



"Best Hired Hand
a Farmer ever Had."
THE PARK SILAGER



Hydraulic cylinders control tilting, raise cutting head to 18-ft. Slat drag and pack silage. Loading time, 4 minutes.



Bed gradually rises for unloading through discharge auger and swinging spout. Discharge rates for all feeds controlled. Grain tank loads top or bottom.

SILAGERS are engineered to work without strain. Power requirements are low. The results are smooth, non-bucking operation; low upkeep costs and long life.

SEE IT NOW AND SAVE
AT THE FACTORY

**Al Hammersmith
& Son Mfg. Co.**

Day Phone
486-2121
South Central

Night Phone
486-2406
HORTON, KANS.

Preview tomorrow's agricultural techniques today at Farming Frontiers '68

SEE "Electronic Revolution in Agriculture"
SEE "Triticale—Small Grain of the Future"
SEE "Tall Returns from Short Corn"
SEE "Soybean Experts' Prescription for Top Yields"
PLUS many other Furrow on Film subjects
Attend Farming Frontiers '68—
You may win a John Deere Roll-Gard.

WEDN., JAN. 10

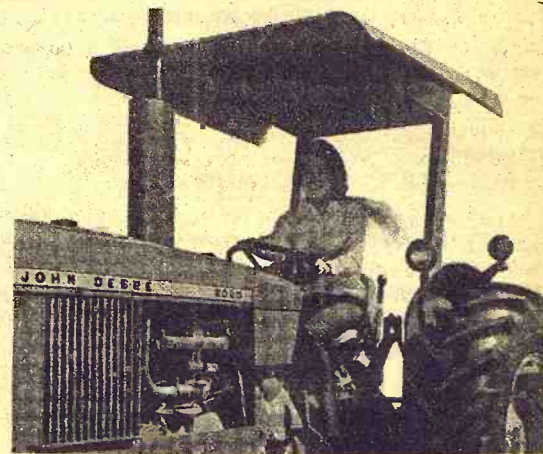
For Farmers & Families

MOVIE 1:30 P.M.

FREE LUNCH 11 a.m. - 1 p.m.

Come One! Come All!
ALL ACTIVITIES AT THE STORE

W.W. Smith & Sons
CLAY CENTER, KANS.



Win this Roll-Gard
at Farming Frontiers '68

Roll-Gard was pioneered and developed by John Deere to help save lives. To promote and encourage the use of this protective device throughout the United States and Canada, a Roll-Gard is being given away at each of some 3,000 Farming Frontiers '68 programs

The reason GRASS & GRAIN has

More Readers

of its classified advertising and sales section than any newsworthy in the state is that Grass & Grain has

More Classified

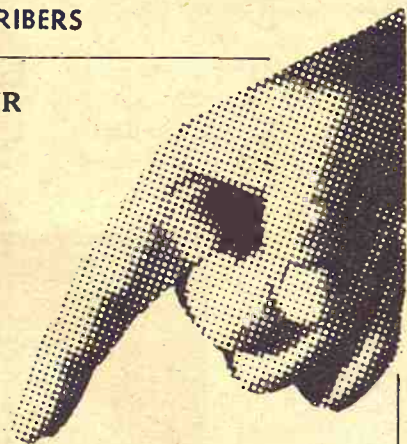
advertising for readers to read. Last year Grass & Grain ran 25,084 inches (314 pages) of classified ads and sales. This year volume is running 24% over last year.

Sell Land, Livestock, Implements, Cars & Trucks, Furniture, Feed & Seed, Antiques, Services. Find a Good Buy. The Way to Tell the Most — for the least cost — is thru G&G Classified.

\$1 A WEEK
15 words or less
5c word, additional

REACH 11,100 SUBSCRIBERS

WRITE YOUR
AD HERE



Don't forget to include
name, address and/or phone.

FIGURE YOUR COST HERE.

TOTAL NO. OF WORDS

RATE: (Minimum) 15 words or less \$1.00

Additional words @ 5c each (Example, a 20-word ad has 5 more words than 15. Five words @ 5c each would be 25c)

COST FOR 1 WEEK
(Add figures above) \$

Multiply one-week cost times number of weeks you want ad to run.

LESS DISCOUNTS
(See below)

I ENCLOSE \$

RUN THIS AD CONSECUTIVE WEEKS

DISCOUNTS: (with cash orders only) deduct 10% if ad runs 2 weeks. Deduct 25% if ad runs 4 weeks. **REFUNDS:** you may collect a refund at the Ag Press office for any unused amount paid if an ad is cancelled.

CLASSIFIED DISPLAY (boxed ads) \$1.68 a column inch.

CASH: Ads not accompanied by cash have a 25-cent billing charge added.

MAIL TO:
AG PRESS — 1207 MORO —
MANHATTAN, KANSAS
P.O. BOX 1009 —

GRASS & GRAIN

CLASSIFIED ADVERTISING

RATES: \$1 a week for 15 words or less. Add 5c a word for additional words. **SPECIAL:** Four weeks for the price of three. Boxed ads: \$1.68 an inch per issue, flat rate. Send your ads to Ag Press, 1207 Moro, Manhattan, Kansas. Phone JE 9-7558 (25c handling charge if cash not with order.)

Notices

AUCTIONEERING

Lawrence E. Welter

AUCTIONEER
REAL ESTATE BROKER

Your Sale Solicited
Large or Small

EAST HIGHWAY US 24
MANHATTAN PR 8-3455

Real Estate
And General Sales

Ed Reimer

AUCTIONEER

We Specialize in Selling
DAIRY CATTLE

"A complete Sale Service"

Phone or write for sale
dates.

Telephone 367-2373
GOESSEL, KANSAS
"Marion County"

For Complete Auction Service

Selling & Clerking
Call us collect for
sale dates & rates.

Morris Pollmann

765-3988 Alma, Ks.

George Pollmann

636-8531 Paxico, Ks.

FARMS

RANCHES · HOTELS · CAFES

Real Estate Selling At Auction

It's experience and performance that count. If you are looking for property, as an investment or for use, stop by and inspect our listings.

DAIN'S

REAL ESTATE
Silver Lake, Kans. 582-2770
6 miles west of Topeka
On US Highway 24

ROBT. G. "BOB" WILSON

Auctioneering Sales Mgr.

All Types of Sales

Phone 494-2552

Box 118 St. George, Kans.

Dwight L. Long And Co.

AUCTIONEER
SALES MANAGER

Anywhere

Anytime

Anything

Rt. 2

Phone 30F2

HOPE, KANS.

Don Bernasek

AUCTIONEER

All types of sales. Graduate of the Reich American School of Auctioneering, World's largest.

Ph. 1122-0, Beattie, Kans.
AXTELL, KANSAS 66403

DAIRY SUPPLIES

Wamego Dairy Supply

Located At
Bit-O-Gold Cheese Bldg.

Dave Doperalski

Authorized DeLaval Dealer

Rubber parts for all makes

Service for all makes

Used milk machines, all makes

We would appreciate being
of service to you.

Phone 456-7200
WAMEGO, KANSAS

Dale Wells

SURGE

Pipe Line Bucket Milkers
Stalls

324 Frederick ME 2-2811
CLAY CENTER, KANS.

CONSERVATION

LAND IMPROVEMENT

"Soil Conservation Doesn't
Cost—It Pays"

Ponds, terraces, waterways,
and leveling, drainage ditches,
clearing, landscape grading.

Roggendorff

Conservation Construction

Arthur Roggendorff

Phone JE 9-3984

1630 OSAGE-MANHATTAN

MEMORIALS

CEMETERY MEMORIALS

54 Year Continuous Service
Display Located on US24
East of City Limits

SCHAUBEL

MONUMENT CO., INC.

RR 3 Box 20 ME 2-3531

Clarence Blanc, President
CLAY CENTER

MONUMENTS

MANHATTAN MONUMENT CO.

J. J. BEAUDET

Office and Display

123 No. 3rd

Office Phone Res. Phone

PR 8-5137 PR 8-4978

MANHATTAN, KANS.

Livestock

WANTED TO BUY

FEEDER HOGS

40 to 100 lbs. Top prices paid.

J. D. SIMPSON

130 Grant Ave., Junction City
Phone CE 8-3754 or CE 8-3939

FOR SALE — Eighteen registered yearling Hereford heifers, blackleg & calfhood vaccinated. Merl Beach, 535-2238, Emmett, Kansas. x44

FOR SALE — Angus bulls, registered, mostly Eileenmore breeding, good selection of 21 month old, not highly grained. Ralph Latzke, Chapman, Kans. x44

Dairymen — Buy The Best For Less

We have for your selection
at all times the largest supply
of

FRESH SPRINGER
HOLSTEIN — GUERNSEY
JERSEY

SWISS and MILKING
SHORTHORN COWS &
HEIFERS

Financing available—up to 24
mos.

SPECIALS

100 head of open Holstein heifers
50 head Holstein heifer calves

CALVES! CALVES!

We will have 400 to 500 calves
beef cross. 2 weeks to 450 lbs.
At our barn every week for the
next several months.

W. G. WIEBE

Phone CI 4-7625
Summerfield, Kansas

CALVES

HEREFORDS, ANGUS
or Black Whiteface calves
coming from North Wyoming

Weights from 300 lbs. and up
Delivery can be made in one
week or less with only 20 hrs.
on the road.

These are good calves for a
good price. Straight from the
farm to you. See them at my
farm.

Norman Kahle

Phone 466-2855

DELAN, KANSAS

FOR SALE — Purebred Hamp
boars 8-11 months. Stanley
Cairns, Greenleaf, Kans. Ph.
747-5795. x44

REGISTERED APPALOOSA, 7
mo. old, Ralph Richardson, Rt.
1, Manhattan, Phone PR 6-7124.
x44

REGISTERED POLLED Here-
ford bulls 12 to 18 months old.
Phone Navarre. Harry Riffel,
Hope, Kansas. x46

AMSTEIN

HEREFORD RANCH

BULLS FOR SALE

with

bone, muscle, size

Select from a large group of
bulls on which we have gain in-
formation.

A few are two now and a
large group will be two this
spring.

Bulls for, and priced for, both
the farmer and the top com-
mercial herds.

Wm. G. (Bill) Amstein Jr.

4 miles south of Clifton, Ks.
Phone 913-455-3628

For Sale

Duroc & Yorkshire Boars

From herd that had top Duroc
& Yorkshire boars in KSIA
spring test. Half brothers to top
indexing and selling boar, with
following record:

avg. daily gain — 2.44 lbs.
avg. backfat — 1.18
feed efficiency — 2.58
age at 200 lbs — 124 days
individual index — 1.74

Nationally accredited SPF. Also
a few SPF Yorkshire gilts.

HAYES BECK, Junction City
Phone CE 8-6064

FOR SALE — 25 registered
coming 2 & 3 yr. old Angus
bulls. From \$225 to \$300. Leon-
ard Travelute, Waterville, Kans.
x44

NG

SPE
flat
558

Buy
For Less

your selection
largest supply

RINGER
GUERNSEY

MILKING
COWS &
RS

le-up to 24

LS
Holstein heifers

heifer calves

ALVES!
to 500 calves
to 450 lbs.
week for the
ns.

EBE
-7625
Kansas

ES
ce calves
a Wyoming

bs. and up
ade in one
only 20 hrs.

ahle
555
NSAS

bred Hamp
Stanley
ns. Ph.
x44

LOOSA, 7
rdson, Rt.
PR 6-7124
x44

ED Here-
moths old.
y Riffel,
x46

N
ANCH

SALE

ize

group of
e gain in

and a
vo this

for, both
top com-

ein Jr.
on, Ks.
28

shire

p Duroc
KSIA
s to top
ar, with

lbs.

days
4

F. Also
ts.

on City

tered
ngus
Leon-
Kans.
x44

HIGH QUALITY registered serviceable age Yorkshire boars for sale. Neill R. Walker, Rt. 2, McPherson, Kans., phone CH 1-2599. x44

CHESTER WHITE registered bred gilts, two suitable for 4-H or FFA projects, others commercial. Also Aug. & Sept. boar pigs and one Marsh herd boar. Cole Farm, Auburn, Kans., OR 1-2232. SB44

FOR SALE — Duroc boars. Gilts bred for February and March litters. Many bred to Waterloo II, by Waterloo SCMS, Waterloo test station & show boar. Great test station & show boar. Nationally accredited SPF. Fred Germann, Dwight, Kans., 66849. Phone Junction City CE 8-4382. x44

FOR SALE — 10 Registered Red Angus bulls. Call Area code 913 NEptune 4-5347, or write Elmer L. Donley, Ellsworth, Kans. x44

BIG GROWTHY 2 yr. old registered Hereford Bulls, Popular Tex Onward and CK bloodlines. August Carlson, Smolan, Kans. x45

40 HEAD Hereford heifers from Registered cows to calve starting March. OCV. Price \$225. August Carlson, Smolan. x45

FOR SALE — Registered Angus bull, 3 1/2 yrs. old, excellent breeder. Phone Palmer, Kans., 311, Mrs. Helen Bott. SB49

FOR SALE — Naturally accredited SPF Hampshire gilts. Galen Wietham, Axtell, Kansas. Ph. 736-2777. x49

FOR SALE — Several young gentle quarter horse mares. Plenty of quality and color, some in foal to Arab stud. L. Dalinghaus, Phone TW 5-2441. x44

FOR SALE — Two Pinto horses, age 5 and 6. Phone 636-2132. James Seele, Belvue, Kans. x45

REG. YORKSHIRE bred gilts. Bred like state sale & fair champions. Bred to boars with certification & testing records. Also serviceable age boars. Neill R. Walker, Rt. 2, McPherson, CH 1-2599. SB47

FOR SALE — Registered Angus bull, 19 months old. John Kummer Jr. CE 8-6515, route 2, Chapman, Kans. x45

FOR SALE — Purebred Hampshire bred gilts, some to farrow in January. Glenn E. Miller, Vermillion, Kans. x47

FOR SALE — Fifty 2 and 3 year old Angus cows beginning to calve in March. Pregnancy checked, guaranteed with calf. Olson & Deschner, Council Grove, Kans., phone 316 767-5820 or 767-6324. SB46

FOR SALE — Purerbred York boars, May & June farrowed, Purebred York bred gilts, hand mated to R-selkist Farms Boar, Weeping Water, Nebr. Have date on each one. All sired by Model Charm, vaccinated for cholera, Erysipelas, Lento. 6 miles north, 2 east of Frankfort. Beattie Phone 1121E. Wm. Bramlage & Sons. x45

FOR SALE — 12 Registered Angus heifers, open, good quality. Sired by son of Ermitre of Haymount. International Grand Champion. Blue line Angus Farm, Ralph Dietrich, Route 3, Junction City, Kans., Phone CE 8-6714. x45

1200 LB. HOLSTEIN heifers, 15 of them for sale. Ready to freshen; TB & Bangs vaccinated Ray Thornburrow, Marysville, Kans., phone collect days HI 3-3361; nights HI 3-4251. SB44

REGISTERED BULLS 12-24 months old. Dwarf free, large type, good heads. Located 3 mi. north, 2 1/2 east Junction Highways 15 & 18. Jones Hereford Farms, Abilene, Telephone Upland. SB47

FOR SALE — Purebred Red Shorthorn bulls, 18 months old, Sired by Braemar 48th by Edelyn Braemar by Beaufort Bull-dog. Allen Lard, Clay Center, Kans. x46

NATIONALLY ACCREDITED SPF registered Durocs. If you are interested in some good breeding stock. Please see these outstanding boars & gilts. Serviceable age. Guaranteed. Call collect CE 8-7253, Harold Brumm, RR3, Junction City, Kans. 66441. x45

Feed & Seed

WANTED — Alfalfa hay, suitable for pelleting, Alfred Saunders, Phone 359-4205, Leona, Ks. SB45

FOR SALE — 1200 round bales prairie hay 30c per bale or will feed here. Also alfalfa and baled milo. Need 1/4 section grass. Will trade wintering for summer pasture. Kenneth D. Nienstedt, Phone EV 2-2716, Area 316, RFD 3, Marion, Kansas 66861. x45

DAIRY PELLETS, range pellets and all kinds of fertilizers. Manhattan Milling Co., 107 Pierre, Manhattan. TF Chg

FOR SALE — About 50 or 60 tons of square wire tied bales of Sudex, for bedding or mulching, \$16. per ton. Jack Quinn, Wamego. x46

FOR SALE — Good crimped alfalfa hay, \$20 per ton. Henry Beichter, Rt. 1, Manhattan, JE 9-3117. x45

WANTED — SUMAC Cane, Kansas Orange or African Millet Seed. Send price P.O. box 45, Langdon, Kans. x47

Poultry

POULTRY & EGGS wanted. Deliver or we'll pickup, Wedn., Fri-Sat. Kochs Produce, 702 Elm, Marysville, Kans. HI 3-3510. SB49

Automotive

Only Skaggs

SELLS

A-1 USED CARS

IN MANHATTAN

1967 Falcon Futura 4-dr. sedan. 6 cylinder, automatic trans., R&H, white sidewall tires, new car warranty. \$1995

1966 Mustang 2-dr. Hardtop. V-8, standard trans. R & H. Local one owner. Low mileage \$1895

1965 Galaxie 4-dr. Hardtop. V-8, automatic trans., p-steering, R & H, factory air. Local one owner. Low mileage. ... \$1895

1962 Galaxie 500 4-dr. V-8, standard trans., R & H. \$595

1966 Chevrolet 1/2 ton. V-8, 4-speed, R & H \$1495

OPEN EVENINGS

BANK RATE FINANCING

Skaggs (Ford) Motors

"Where Customers Send Their Friends"

2nd & Houston Phone 8-3525

MANHATTAN, KANS.

FINAL DAYS USED TRUCKS

AT HERINGTON

1959 Chevrolet 1/2 T pickup, V-8 engine, 3-speed, 6 1/2-ft. bed with custom equipment

1958 Ford 3/4 T pickup, V-8 engine, 4-speed transmission, 8-foot bed with wrap around bumper

1958 Chevrolet 3/4 T pickup, V-8 engine, 4-speed, 8-ft. Fleet-side bed, radio, heater and wrap around bumper

1958 Ford 1/2 ton pickup, V-8 engine, 3-speed transmission. See this if you're interested in a low-cost pickup

BUY NEW NOW

Don't ask us why — but we're trading like mad.

OBERMEYER

Marvin Obermeyer, Owner
Ph. BL 8-2421 Open to 9 p.m.

HERINGTON, KANSAS

Call BL 8-2421 For
Evening Appointment

FOR SALE — Good 1952 Chev. lwb., 2T, 2-speed, extra good rubber. Ted Clark, Alma, Ks., Eskridge. Phone 449-2556. x45

70 Used Highway Trucks

58-59-60-61 CHEVY
60 SERIES DUMPS
261 engines, 5 speed, 2-speed rear axle.

60-61 CHEVY
70 SERIES DUMPS
348 V8 engines, 5 speed, 2 speed 18,000 lb. rear axles

59 DODGE D-700 Dumps
354 V-8 engines, 5 speed, 2-speed 18,000 lb. rear axles.

59 DODGE
D-700 WINCH TRUCK
With air brakes, 354 V8 engine just overhauled, 5 speed, 2 speed, 20,000 lb. winch and cable, headache rack, gin poles, rolling tail board.

60-61 FORD F-600 DUMPS
292 V-8 engines, 5 speed, 2-speed rear axle

57-58 IHC 180 DUMPS
308 engines, 5 speed, 2 speed 18,000 lb. rear axles.

60 FORD F-600
292 V8, 5 speed, 2 speed, Garwood Hoist and new 13 1/2 ft. Wheatking grain body.

60 CHEVY 60 SERIES
with 261 6 cyl. 5 speed, 2-speed, Garwood Hoist and new 13 1/2 ft. Wheatking grain body.

61 FORD F-600
292 V8, 5-speed, 2 speed, Anthony Hoist and new 13 1/2 ft. Wheatking grain body, choice of 2, one with 15 1/2 ft. grain body.

58 CHEVY 60 SERIES
261 6 cyl., 4-speed, 2-speed Garwood hoist and new 13 1/2 ft. Wheatking grain body.

2 1963 FORDS
One V8, one 6 cyl. F-600, 4-speed, 2-speed, 84" CA Top Rubber, good solid units.

Ames Chevrolet

Kansas' Oldest
Chevy Dealership
Phone 316 647-3251
MOLINE, KANSAS

USED CAR STOCK REDUCTION SALE

We have too many used cars and must cut our inventory. We have a good selection of nice used cars that you may purchase at tremendous savings. Priced from \$95 to \$3000. Come by and look them over. Some 1967 models with low mileage that are super buys.

1967 Plymouth Sport Fury 2-door hardtop, V-8, automatic, power steering, and other goodies, 22,000 miles ... \$2795

1967 Volkswagen Fastback, big engine, air conditioned, 4 speed, 32,000 miles \$2395

1967 Dodge Polara convertible, 16,000 miles, clean as new ... \$2795

1965 Buick Wildcat 4-door, air conditioned, low mileage, nice, locally owned \$2195

1964 Chevrolet 4-door, V-8, automatic \$1295

1963 Dodge Dart wagon, 6-cylinder, standard trans. \$895

1966 Plymouth Sport Fury, 383, 2 bbl., 4-sod, nice \$2495

1966 Ford Galaxie 500, 2-dr. hardtop, automatic, air conditioned \$2495

1964 Thunderbird 2-dr., a nice prestige car \$2495

1965 Plymouth 8 wagon, air \$1795

1964 Chevrolet Super Sport, 2-dr. \$1695

1965 Buick Wildcat, 4-dr. air cond., nice, local \$2195

1962 Chevrolet wagon, clean as new \$1195

AND MANY MORE
Come in and look around. You'll find a car you like.

OPEN EVENINGS

Goetsch-Irvine

Motors, Inc.

Chrysler-Plymouth-Imperial
4th & Leavenworth PR 8-3591
MANHATTAN, KANSAS

A-1 Auto Parts

324 East Poyntz
East Hwy. US 24
MANHATTAN, KANSAS
PR 8-3770 or PR 8-3700

Have

MOTORS

All Late Models

All parts on hand

GMC TRUCKS

1/2 Ton - 60 Ton
Sales & Service
TRI-COUNTY MOTORS
307 N. 3rd MANHATTAN

Used Trucks

AT WAKEFIELD

1951 Chev. 1/2 T pickup, grain sides & stock rack
1957 International 3/4 T pickup, grain sides & stock rack

1951 Ford three-quarter, 4 speed, 6 cyl.

1959 IH 1/2 ton pickup, 4 speed, 6 cyl.

1949 Dodge 1 1/2 T with bed

1949 Ford truck bed & hoist

1955 Chev. 1/2 ton, V-8, 3 speed

1955 Chev. 2 ton bed & hoist

AULD

CHEVROLET

HO 1-5414
WAKEFIELD

Real Estate

Fulmer Real Estate

CATHERINE J. FULMER
REALTOR

Office 456-7696

Res. 456-9281

WAMEGO

360A Upland grass, bottom crop land, excellent outbuildings. 5-yr. lease-buy option.

A-OK REALTY

HO 1-5691

Wakefield, Kans.

WANTED — FARM to lease. Married couple with farm equipment, want to rent farm with improvements. Prefer the Manhattan, Junction City area. Call PR 6-6889, Manhattan, Kans. x45

SELLING A Central Kansas Livestock Commission Co.

50% FINANCING

Live Stock Commission Company, Central Kansas. The present owner is past 70 and he would enjoy stepping out.

This Livestock Sales Company is located on five acres of land, many pens of lots of concrete to load cattle on.

The sale barn, ring, seating capacity and the lunch facilities are well above the average.

Their sales day is Saturday and for many years, they have enjoyed a very nice sales volume. The present owner knows that two or three younger men working the area could double the present sales volume.

At present we have 50% financing available.

We will work out the arrangements with one or more individuals, or we will incorporate the business and sell shares to several individuals. You pick who you would like to have in the corporation. Then call us and we will work out the details. As you can see, at this time we are in a position to let you in a new money making business.

Call collect for information

Eldon Thorman

Real Estate & Auction Service
CLAY CENTER, KANS.
Phone 913 ME 2-2148

LAKE FRONT Kansas State Endowment Association Tuttle Creek lots for sale. One-third acre. Each \$800. Contact William Sikes, Leonardville, Kans. TF

FOUR ROOM modern house in Newton, builtins, hardwood floors, 2 closets, utility room, large garage, garden spot. Walt White Realty, 1144 S. Broadway, Wichita. x44

FOR SALE — Good Wabaunsee County pasture, 205 acres & 160 acres. Elmer Zeckser, Alma, Ks., Phone 765-3420. x44

FARMS

Harold Carlson Agency, Manhattan

8th & Poyntz

160 acre pasture, new fence, good grass, located on highway, with modern home.

480 acre farm. 100 acre farm land, bal. pasture. Never failing water. Modern home. Barns, sheds, mailroute, school bus. This farm can be bought on contract, 5 1/2 per cent interest on unpaid balance. Let us show you this farm.

800 acre farm, 250 acre farm land, 80 acre wheat, near 100 acre alfalfa, bal. pasture, meadow, modern home, large hay shed, barns. This is a choice livestock farm. Located on good gravel road, mail route, school bus.

280 acre farm, with 65 acre pasture. A good producing farm, some improvements.

320 creek bottom farm. 100 acre pasture. Fair improvements.

Lawrence Welter — PR 8-3455

Harold Carlson — PR 8-3083

Farm Equipment

WICHITA



1968 COMBINE SPECIALS
1965 JD 95 19' combine, in like new condition
1964 JD 95 16' combine
1961 JD 55 Hi-Lo 14' combine
1966 IHC 303 14' combine, only used one season
1962 MF Super 92 14' combine, good condition at a bargain
1958 MF 92 16' combine
1957 JD 55 14' combine, fully reconditioned

Western Impl. Co.

2256 S. West St.
WICHITA, KANSAS
Call WH 3-4261

New Year Specials

New IH windrower, 14-Ft. w/ dual auger, floating platform, water cooled eng., dual wheels all around, hay conditioner, lights, reel end guards, skidshoes, shedded, ready to go. Harvester suggested retail \$5995. Our price ... \$4895

1964 IH No. 303 14-ft. combine, fully equipped, one owner, shedded, A-1 condition, a low acreage machine \$5195

1958 IH No. 141 14-ft. combine, reconditioned & painted, average retail \$2115. Our price \$1695

1952 JD No. 55 14-ft. combine, runs good, has pickup att. w/ ga. wheels \$995

1955 J Dbelt type pickup att. for 55 or 95 combine, near new condition, shedded. \$225

SEE US ON HIGHWAY 4

Kuhn Impl., Inc.

Days Nights
OW 6-4411 OW 6-4305
GYPSUM, KANS.

CATERPILLAR NO. 60

Pull type scraper, round bottom, good tires. This Cat is in real good shape. We'll deliver to the buyer.

It's Priced To Sell

KENDALL GARAGE & IMPL.

Phone 913-Number 122
LEONARDVILLE, KANS.

GOOD USED PARTS

Tractors, Combines & Farm Machinery. We buy wrecked or burned late model tractors & farm machinery.

North 81 Tractor Salvage
Route 1 PR 2-5491
SEDGWICK, KANS. 67135

WANTED — A small used ensilage wagon. Phone CH 3-2655. Carl Swenson, Concordia, Kans. SB44

Bearman Eqpt. Co.

Allis-Chalmers &
Minneapolis Moline
WAMEGO, KS. 456-2310

Tractors — Wagons

1965 F706G, fully equipped, FH, \$1400 down or trade-in will buy — No interest until Mar. 1, 1968.
1961 F460G, fully equipped, fast hitch
1962 Ford 901 D, Select-o-speed, 3 point
1957 JD 720D, overhauled, good tires, wide front end. PS, 3-pt., new Comfort cover.
1949 FM, good shape
Twin-Draulic loader for 901 series Ford tractor
JD Model L spreader w/ truck tires
Gehl feed wagon, 2 beaters w/ conveyor
Caterpillar No. 60 pull type scraper, good tires, round bottom, real good shape. Priced to sell. Will deliver.

Kendall Garage

& IMPLEMENT



Phone 122
Leonardville, Ks.

SAVE MONEY Come to Wakefield

1966 Farmall 656
1964 IH 706 dsl.; 1960 M-F 85
59 Ford 971D tractor, recently overhauled
1955 IH Farmall 460 tractor
IH 606 utility tractor
51 IH WD6; 51 IH W6 gas; 50 MH 30; 47 IH MD; 47 Allis with cultivator
MM ZTU tractor; 460 Farmall
IHC M tractor with live hyd.
36 Allis U tractor, recently overhauled
Case field cutter, single row
1967 IH 550 field cutter, used very little
IH 101 combine, 12 ft.
Allis 66 combine with motor in good shape
IH 125SP combine
67 Ford No. 612 field cutter with cutter bar and row crop, pick-up att.

DISCS

John Deere KBA 10'9" wheel disk
Case 10'9" wheel disk
IH No. 36 fast hitch disk
MM 3-section peg harrow
IH 3-section springtooth

NEW MACHINERY AT BIG SAVINGS

Waiver of interest into 1968 for much of the equipment, plus 1967 prices. For more information see our big year-end sale ad in Grass & Grain last week.



AULD
CHEVROLET
HO 1-5414
WAKEFIELD

SALINA



1 1949 IHC MRC gas, PTO
1 1959 Case 800 RC, G, 3-pt.
1 1962 JD 4010 RC D, 3-pt.
1 1952 Oliver 88 std. D, PTO
1 1950 JD R std. D, hyd.
1 1955 JD 60 RC G, w/ loader
1 1958 JD 420 RC, gas, 3-pt.
1 1961 JD 2010 RC G, 3-pt.
1 1958 JD 720 RC, D, 3-pt., hyd.
1 1958 MF65 gas w/ loader
1 1966 JD 2510 RC, gas, 3-pt.
1 1960 Case 730 RC D, 3-pt.
1 1963 JD 3010 RC gas, 3-pt.
1 1955 JD 80 std. D, hyd., P.S.
1 1966 JD 4020 RC D, 2-pt.
1 1959 Cockshutt 560 std., dsl.

Salina Impl. Co.

Box 1029 Ph. TA 3-2206
SALINA, KANSAS 67401

1957 FORD MAJOR diesel, live PTO & live hydraulic. \$650 or trade for cattle. 1959 GMC PU, 4-speed, nearly new stock racks, wide box & overload springs. \$650. Vernon Huffles, Seneca, Kans., Ph. DE 6-2726. x45

DAUER IMPLEMENT CO.

1964 McCormick F-806 gas tractor
1962 McCormick F-460 gas tractor
1966 McCormick F-796D, 735 hours
1954 McCormick Super MTA, excellent condition w/ power steering & wide front axle
1953 McCormick Super M
1961 McCormick F-560 D
1949 McCormick Farmall H tractor
1965 International Scout pick-up
McCormick No. 311, 3-16 plow
McCormick No. 60 3-16 plow
Nearly new 12-ft. 11-in. McCormick
37 wheel disk
Nearly new No. 16 McCormick side delivery rake
36-ft. Mayrath grain auger
1966 Oliver 1550 tractor, 360 hrs.
1959 IH I 560D tractor
1961 IH I 560D tractor
1940 Farmall M with factory J.P. gas
1960 MF 85D tractor
IH No. 10 16x8 grain drill
1967 IH 403 combine 16-ft., low acreage.
1959 IH 101 combine
1953 IH 101 combine
1941 M tractor
McCormick No. 35 13 ft. wheel disk
McCormick No. 35 10'9" wheel disk
1957 McCormick 46T twine baler
1962 McCormick 46T twine baler
1964 McCormick 46W wire baler
McCormick 16x8 MF drill, low rubber & rubber press



Falun

Phone 1011

Falun is located 20 miles southwest of Salina

SHOP EARLY

For good used swathers, new & used feed wagons, stop by, we may have that used machine you can use.
1964 Hesston 260 swather
1962 IH No. 201 14-ft. w/ conditioner
1967 Hesston PT-10 carryover pull, price reduced, new
1967 Hesston 500, 14-ft. auger w/ conditioner, Ford engine, price reduced
1967 NH 905 14-ft. auger w/ cond., For dengine, price reduced
New special Bear Cat grinder-mixer w/ feed roll, extra tall tank for storage
Special Blair single beater manure spreader \$475
163 bu. New Calhoun feed wagon, 20" tires & axle, terms, \$1200 list. Our price \$850
1964 N-H 268T PTO baler, excellent cond. Get this one now.
1959 AC D-H wide front, new rubber \$1195
1954 77 Oliver, live power, hyd., belt pulley, disc. brakes, runs out good \$750
1952 WD clean \$695
1951 WD, overhauled \$750
Interest waivers well into spring on new and used equipment. Give us a try. We may have what you are looking for.

Wright Impl. Co.



South Highway 15
Phone CO 3-2061
ABILENE, KANS.
Nites, Harris Clark
Salina TA 3-6690
H. L. Wright, Abilene CO 3-2274

USED WHEEL DISC

1 John Deere BW anti-friction bearings; also one Krause & one IH sealed bearings
Several older discs
See us and save money on new Krause wheel discs.

Gould Implement Co.



Phone CH 3-2609
CONCORDIA, KS.

WANTED — CAT 4, AC 5 or 6, TD 9 with hyd. dozer. Evening phone 456-7364, Paul Hill, Belvue, Kans. x45

USED TRACTORS

1956 Case 500D, slick
1962 Oliver 1800 with 3 point, with full equipment, overhauled
1966 Deere 2510 diesel, 500 hrs.
1962 Deere 4010D, only 2100 hrs.
1960 Deere 730D, looks like new
1958 Deere 520, well equipped
1964 Deere 3020D, about 2000 hrs.
1956 Deere 70D standard, very good
1956 Moline 445 utility with loader
1960 Ford 871 gas, Selecto Speed

OLDER TRACTORS

IHC 47 Model M; IHC 45 Model H; 50 Moline U; 50 JD AR; 51 JD Model G; 50 Case D
48 JD Model B; 44 JD Model A

MISCELLANEOUS

JD 406 loose ground lister with fert. & insect. atts.
1958 Deere 55 with 14' platform
1962 Deere 45 with 12' head
1960 Deere 45 with 12' platform
210 corn head Deere for 45
FBB 168 Deere grain drill, big fert.
New Idea loader for 400 or 450 IHC, hyd. bucket
Farmhand loader for narrow front tractor
11' Deere RW wheel disk, also 9'10"
Hawk Bilt spreader
LF 12' Deere fertilizer spreader used little
350A Deere 3 point 7' rake
14T Deere baler with mower & bale thrower
214WS Deere baler, good shape
Pickup & mower bar for Gehl JD 215A with 14' auger platform & hay conditioner
20 Series 2 row cultivator for 620
Old 220x portable PTO Letz mill
Hawk Bilt 145 spreader
Good Fox pickup & mower bar for old cutter
PLOWS — F120 3 pt. Deere; 4x16; 4x14; 5x14 & 3x14
66H Deere wheel 4x14
DL-2 weeder, 2 row, like new
B16-8 grain drill with fert. & rubber press
No. 3 Massey PTO baler; also Holland 66
JD No. 8 cutter, also pickup & mower bar
New Holland mower bar for old cutter
Gehl feed wagon on JD running gear
5 sec. JD wheel spring tooth, also a 3 point one
5 sec. IHC wheel spring tooth
Oliver 3x14 hyd. plow
Lots of other used equipment. Your inquiry is invited. We trade all the time so we may have just what you want. Our John Deere day will be Jan. 4. Look for you then.

SEE US FOR GR LOADERS GRAIN-O-VATORS



SHOUSE

IMPL. CO.
Abilene, Kans.

Store
Ed Shouse
Ron Shouse

CO 3-3051
CO 3-1066
CO 3-4515

Specials

JD 730 diesel
JD 310 gas
JD 830: AC WD 45
JD 60 gas; JD 70 gas

Good Price On
Carryover Combines

BULLS FOR SALE

20 Reg. Hereford 2 yr. old bulls

Hett's Imple.



EV 2-2102

MARION, KANS.

IHC equipped for full hyd. loader, wide front, live hyd., power steering, eight volt electrical system, perfect tractor for silo feeding operation, see to appreciate. \$1195

Wright Impl. Co.



South Highway 15
ABILENE, KANS.
Nites, Harris Clark
Salina TA 3-6690
H. L. Wright, Abilene CO 3-2274

HERINGTON



USED TRACTORS

1964 JD 4020 diesel
1960 JD 3020 gas
1960 IHC 560 gas
1957 JD 620; '56 60 LP
1951 & '46 JD A
1948 Ford 8N
1948 IHC Model M

USED MACHINERY

John Deere 45 loader
IHC 33 loader w/ hyd. bkt.
Twin-Draulic for 2010 or Ford
1966 Grain-O-Vator, like new, No. 55

No. 30 Grain-O-Vator
JD No. 22 roller mill

NEW EQUIPMENT ON HAND

See us for: Grain-O-Vators, Blair feed wagons, G-B loaders to fit all tractors.

Gehl feed machinery; Hesston windrowers; Crust Buster harrows; Danuser diggers.

CALL FOR SERVICE

Plan now to make your tractors, combines and balers ready for the new season. Call us for an appointment to do your overhaul work in our well equipped, well-manned shop.

We specialize in diesel work, and are equipped to haul your equipment into our shop and deliver it back.

Tri-County Sales

George Munkres
Phone Collect
BL 8-2249 or BL 8-2991
HERINGTON, KANSAS

FINAL DAYS

Pre-Inventory Sale

2 1959 D-17 tractors
1 1951 WD tractor
1 1950 C Farmall
1 1947 Ford tractor
1955 WD-45 with wide front
1945 M Farmall
Coming in 1964 series IV D-17
Still have some new Series IV D-17 at greatly reduced prices
3 AC 3-14 plows
1 IHC 3-14 fast hitch plow
2 43T IHC balers
1 66 New Holland baler
1 AC roto baler
1 F10 Farmhand stacker with attachments
1 Nearly new AC loader for WD or WD 45
1 F11 Farmhand loader
1 good Farmhand bale accumulator
1 good Farmhand bale fork
1 Nearly new 4-wheel wagon with rack

CARS & TRUCKS

1959 Chevrolet V-8, auto.
1960 IHC C1200 4 wheel drive
1963 IHC C120, 4 wheel drive
1960 ¾ ton IHC pickup
1960 ½ ton IHC pickup
1959 Chev. 1 ton dual wheel
1959 IHC 2 ton with bed & hoist
1955 and 1951 IHC pickups
1956 GMC pickup
1957 Chevrolet
1964 IHC 4 wheel drive Scout
1959 4-wheel drive Scout
1948 Jeep
1940 Chev.

Buchman Farm Sply.
A-C DEALER IN TRUCKS
Phone 229-6619
ALTA VISTA, KANS.

Thank You For Looking

We want to thank those who follow our G&G ad every week — especially those who have purchased used machinery from us — and look forward to doing business with you again in 1968.

Washington Impl.



EA 5-2301

WASHINGTON

FOR SALE — 3010 John Deere gas, 1963 price \$2695. Phone DE 6-2820. LeRoy Tangeman, Seneca, Kans. x45

WANT TO BUY — Used 4 row planter, state price and condition. Floyd Fisher, Cottonwood Falls, Kans. x46

GRAIN-O-VATOR Truck, 494 2-ton, has hitch to pull backwards Self unloads grain or silage. Phone 283-4756, Tescott, or 283-4776. SB45

FOR SALE — 1961 Case 800 combine, 14 foot, good condition, variable speed cylinder. Earl Deines, Chapman, Kansas. WA 2-6603. x46

WANTED — Trade 2 1967 Gleaner C-II 16 ft. platforms for 18 ft. 1967. Will pay difference. Fuller Chevrolet Company, Beloit, Kans., PE 8-2281. SB44

FOR SALE — 15 ft. Sunflower 3-section V blade used 1 year. Also Case 14 in. hammermill. Ralph Westerman, Star Route, Ellsworth, Kans. x45

WANTED TO RENT — Set of Roll-a-cones for 16' C II Gleaner. Ron Roesler, JE 9-3246, Manhattan, Kans. x44

FOR SALE — 1967 IH 470 disc, 19' 6"; 20 in. blades; duals; tongue extension. Contact LeRoy Sauer, Seneca, Kans. Phone DE 6-2872. SB44

FOR SALE — MM semi-mounted mower, 2 speed pitman, like new. Contact LeRoy Sauer, Seneca, Kans. Phone DE 6-2872. SB44

EXTRA GOOD 1964 3010 John Deere diesel, fully equipped, wide front axle, wheel weights, comfort cover, new 3020 M & W sleeves. Less than 1300 guaranteed hours. \$3,500. Marvin Maxfield, Admire, Kans. x47

TRACTORS — JOHN Deeres: 720 diesel, 70, 60, G. Multi-matic M-F 65. 1960 M MGVI, \$2250. 6 Fords, some w/ loaders. Combines — John Deeres: 1961, 1959 95s. 1961, 1957 (\$1495), 1956 55s. 1955 (\$1350), 1958 Gleaners. Used cabs for 95 and Gleaner. Nickel Brothers, Buhler, Kans. x44

FOR SALE — Used New Holland bale wagon; loads, unloads 80 bales automatically. Excellent condition, reasonable price. Phone Manhattan, JE 9-4237, after 6:00 p.m.

FOR SALE — 100 ft. of 10-inch silage roto-tube for feed bunk, and hopper. 30x50 Dodson silo. Priced reasonable. Sell any or all. Bob Laflin, Olsburg, 468-3529. SB44

3 1966 CHEVROLET 60 Series trucks, 15 ft. Knapheide grain boxes, Anthony hoists, 8'5" rubber, tin top sides. West Coast mirrors. 1 owner, 18,500 actual miles. The best in every way. Fuller Chevrolet Company, Beloit, Kansas. PE 8-2281. SB44

IRRIGATORS WINTER Special, Tex-Flow, plain, gated & towlines. Check our price before you buy to save some money. Warren St. Pierre, 10 miles east of Concordia, Kans. Phone 913 446-3631 before 8:00 a.m. SB47

Miscellaneous

FOR THE ride of your life, ride a Big Horn saddle from Key Milling. Clay Center, Kans. SB TF

Brand New — Full Services — Private or Semi-Private Rooms Total electric comfort in suburban setting. Write or call Leonardville Nursing Home, P.O. Box 217 (Phone 29) LEONARDVILLE, KANSAS

PROPANE TANKS, two 500 gal. tanks for sale. Howard Bigbee, Rt. 2, Manhattan, Kans., PR 8-5857 or PR 8-5172. SB44

GOVERNMENT SURPLUS

Field Jackets

This is the best shipment we have ever received. Supply of large jackets won't last long.

We also have a good supply of combat boots and overshoes, some as low as

97c

Per Pair

LLOYD'S SURPLUS SALES

St. Marys, Kansas

FOR SALE — Hammond Spin-it organ with Model 1760 Leslie tone cabinet and amplifier. 150 watts power with heavy duty J. B. Lansing speaker. Jim Leiszler, Linn, Kans. 66953. DI 8-2171. x44

Mobile Homes

FOR SALE — 1966 two bedroom Belmont mobile home, size 12x35, in excellent condition. Marvin Shum, Phone EA 5-2688, Washington, Ks. x45

FOR SALE — Spartan trailer house 8 by 35. 1959 Ford truck, 13'6" Giant new bed. 1957 Ford truck, 15'6" bed and hoist. 1961 Chevrolet panel truck. 1 mile north of Cuba, Ernest J. Bene, Cuba, Kans. 66940. x44

Pets

BLUE AUSTRALIAN Shepherd pups ready for Christmas presents. Buford Taylor, Palmer, Kans., Phone 1603. x45

Services

INCOME TAX Service — Special attention given to farmers reports. Offices at Delphos, Jamestown, and Concordia. Tel. 623-4514, Delphos, Dale Brown. SB44

State Short of Funds Again?

If you thought that the increase to 3 per cent sales tax and the substantial hike in Kansas income tax in 1965 would last the state a good long while, you'd better listen to some of the things the 1968 legislature will be hearing.

The legislature convenes January 9 and unless the members are unusually austere it appears they will have to make up about \$24 million — the amount expenditures appear likely to exceed income in the current fiscal year.

That's from the general fund budget, which currently is set to run on a \$269 million spending. Current requests to the legislature total \$302 million, and Governor Docking said at hearings in November that "it is obvious that these requests will have to be reduced substantially for the budget to be soundly financed."

A recent 5 per cent hike voted all state employees across the board by the Kansas finance council must be provided for.

The increase, scheduled to go

into effect in February, is estimated to cost \$1 million for the remainder of the current fiscal year and \$3 million annually thereafter.

The Kansas Teachers Association has recommended that state aid be increased an additional \$100 million over a 4-year period.

The teachers association has suggested that this be done at the rate of around 22 million dollars to start in the 1968 Legislature.

Preliminary estimates indicate that an additional 80 million dollars would be needed to finance programs already being sought from the Legislature by a variety of groups.

Such an increase in revenue demand, if financed exclusively from the sales tax, for instance, would mean an estimated rise in the collection from the present 3 per cent rate to a 5 per cent increase.

Demands on Winner

The demands for additional revenues are expected to have some political repercussions in

the coming 1968 elections. It is apparent that whoever is elected will be faced with providing additional revenues.

Budget experts point out that the present increasing demand for more revenues could have been avoided for two to three more years if the full package recommended by former William H. Avery had been passed.

Avery recommended as one of the points in his program that the retail sales tax be increased a full 1 per cent from the rate at that time of 2½ per cent. Instead, the Legislature could pass only a ½-cent hike bringing the rate up to the present 3 per cent.

Hillsboro Dairy Veteran Retires

A man associated with dairy operations for 31 years has retired. He is Ben Dalke, whose most recent job has been as producer quality control supervisor, for Southwest Dairymen Inc., formerly the Tip Top cop.



Ben Dalke

Dalke started with the dairy in 1936 when the Marion County Cooperative Creamery Association was formed. Later the name was changed to Central Kansas Cooperative Creamery, Tip Top Dairies, back to Tip Top Dairies, before the recent merger with Southwest Dairymen.

FFA Founder Leaves Large Estate In KC

One of the founders of the FFA has left an estate of \$1.3 million in Kansas City.

Raymond Lee Cuff, director of the Midwest Livestock Loss Prevention Board, died in October, just a month after his wife, and the combined estate totalled \$1.315 million.

Cuff attended the opening session of the annual FFA convention October 11, where the 10,000 FFA youths joined in a standing tribute to him and his late wife.

The FFA was founded in 1928 and in early years. Mr. and Mrs. Cuff helped register and find accommodations for the youths. After the ovation at the 1967 convention he collapsed in a parking garage and was taken to a hospital where he died.

He developed many new techniques for the prevention of disease in livestock.

CORN YIELD PICKUP IN COFFEY COUNTY

BURLINGTON — Kenneth Crotts of LeRoy took first place in a county corn contest, raising 159 bushels per acre of a 5-acre field. Never a major corn producer, Coffey county may become a 200 bushel yielding area, predicts county agent Bryce Orr.

Kenmore Sale Top At \$910

ELMDALE — The Kenmore Farms 5th Angus production sale here Dec. 12 grossed about \$41,000 with 37 bulls averaging \$524 and 66 females \$319.

Fred Willard of Madison took the top bull for \$910. Showalter Brothers of Hutchinson paid \$800 for another top bull, and Henry and Eugene Morgan of Greeley paid \$785 for another.

The volume bull buyer was R. S. McCoy of Cedarville.

Henry Schmidt & Son of Freeport took the top cow and calf combination at \$710. The cow had an April 1967 bull calf at side. Aristocrat Angus of Platteville, Colo., took 13 open heifers.

The sale was managed by Phil Ljungdahl with Ray Sims selling the offering.

Savings Returning From West Coast

Money is apparently flowing back to the G&G area and other parts of central and eastern United States, after several years' attraction to West Coast savings and loan associations.

Until last year, California savings and loan associations generally paid higher interest rates on deposits than Eastern competitors.

The money started to flow back in 1966, when banks and savings associations away from the West Coast hiked their rates. More recently high-yielding bonds have provided strong competition.

In the third quarter California's state-chartered S&Ls lost \$80 million a month in out-of-state withdrawals and the trend has continued in the final quarter of 1967.

Racing Funds To Nebraska Fairs

OMAHA, Nebr. — County fairs in Nebraska will receive a healthy revenue from the state's Thoroughbred racing season in 1967, says Harry J. Farnham of Omaha, chairman of the Nebraska State Racing Commission.

The commission will distribute a total of \$136,663.50 to all 93 counties in the state. The money, which is earmarked for the county fairs, comes from the state admissions tax and license fees at all seven of the Nebraska tracks. The figure was derived from 163 days of racing compared to 161 days in 1966.

Each county will receive \$1,469.50 for fair purposes.

Ottawa Dairy Goes In With Mid-America

OTTAWA — Merger of Bennett Creamery Co. of Ottawa, believed the oldest milk manufacturing firm in Kansas, with Mid-America Dairymen Inc., of Kansas City was announced last week.

Officials of the two firms said the merger would be effective Sunday, but the Ottawa plant will continue operating with present personnel.

About 80 persons work in the local plant producing milk powder, butter and ice cream. The facility was founded in 1905.

Mid-America, a cooperative which succeeded the old Pure Milk Producers Association, has a milk products plant in Sabetha, Kans., in addition to fluid milk facilities in Kansas City and Topeka.

Fifth Best Kansas Crop Year

Crop production in Kansas in 1967 ranks as the fifth best in records dating back to 1928, the Kansas Crop and Livestock Reporting Service said.

The 1967 crop summary said production was 133 per cent of the 1947-1949 average and compares with the 196 index of 122 per cent.

Sugar beet production of 404,000 tons set a record.

The year also saw the second largest crops of sorghum grain, soybeans and hay.

Total value of crops produced in 1967 totaled \$776 million compared with \$796 million in 1966.

Here is a crop-by-crop breakdown on 1967 production:

- **Wheat** — Production totaled 221.62 million bushels and was seeded on 13.14 million acres or an average yield of 20 bushels an acre. It was the ninth largest crop on record but the yield per acre was 3.4 bushels below average.

- **Sorghums** — Sorghum

grain production totaled 149.49 million bushels, the second largest crop on record. Acreage planted for all purposes totaled 4.33 million. The acreage harvested for an average yield of 46 bushels an acre, 5.6 bushels above average. Sorghum silage, harvested from 432,000 acres yielded 10 tons per acre to produce 4.32 million tons. Sorghum forage was harvested from 538,000 acres with a production of 1.23 million tons.

- **Corn** — Production of corn grain totaled 72.08 million bushels harvested from 1.06 million acres for an average yield of 68 bushels a record. The yield surpasses the previous record of 59 bushels an acre set in 1965.

- **Soybeans** — Production totaled 8.56 million bushels, the second longest crop on record, and was harvested from 846,000 acres for a yield of 22.5 bushels an acre. This yield equalled last year's record high.

- **Barley** — Barley was seeded on 119,000 acres and 80,000 acres were harvested for grain. Production totaled 2.16 million bushels, less than half the 1966 crop. But the yield per acre, at 27 bushels, topped last year's yield by two bushels.

- **Oats** — Production totaled 5.79 million bushels, the smallest crop since 1871. Oats were seeded on 218,000 acres, of which 161,000 acres were harvested for grain. Yield per acre, at 36 bushels was the highest per-acre yield since 1883.

- **Rye** — Production totaled 405,000 bushels, the smallest crop since 1953. Yield per acre averaged 13.5 bushels, 1.5 bushels lower than 1966. Rye was planted on 126,000 acres, of which only 30,000 acres were harvested for grain.

- **Hay** — Production of all hay totaled 5.28 million tons, the second largest crop on record. Hay was cut from 2.46 million acres, yielding an average of 2.14 tons an acre, a record yield.

- **Sugar beets** — Production totaled a record 404,000 tons harvested from 23,200 acres, 2,300 more acres than in 1966.

SEE CIGARETTE LEVEL UP AGAIN

USDA estimates that cigarette consumption in 1968 will go up to 552 billion, 11 million more than in 1966 and 41 billion more than in 1964, a year in which smoking declined because of reports connecting health and cigarette smoking.

Governor Skips A Beat In Livestock Scrap

Gov. Robert Docking says he has scuttled plans to appoint a new livestock sanitary commissioner before the 1968 Legislature.

But, he denied losing his battle with the Kansas Livestock Association.

The governor told a news conference he plans legislation to improve the appointment system, and if it fails he may take his case to the courts.

Docking said he made his decision after finding out the courts might take longer than the legislative route, and also after most of the possible appointees he contacted turned him down because of "personal or business reasons."

The chief executive has been in a row with the association since last summer over the appointment of a new commissioner to replace A. G. Pickett, whose term has expired. He has also been juggling an appointment of state brand commissioner.

Docking also said that he would not have an appointment to the brand commissioner post before the 1968 session.

Part of the battle between the governor and the association was over lists the group was supposed to submit to Docking. The lists were to include names of three possible appointees.

Docking felt the lists submitted by the association were not representative. Several months ago he named Ralph Warren, 65, of Wichita, to the post, but Warren's name was later withdrawn for apparently personal reasons.

The governor denied that his decision was a victory for the stockmen. "We haven't closed the door to possible court action," he said.

Docking also said his administration had played a hand in getting the association's private office out of the state office building.

He also implied that the heat engendered by the fight was partially responsible for the recent appointment of an association executive secretary.

Pickett, the current commissioner, is a vice-president and secretary of the association. Docking has implied that at times Pickett's duties at a state official and his duties in the association have overlapped. The new executive secretary would take over most of Pickett's duties in the association.

Docking said his proposal to the legislature would probably combine the posts of brand commissioner and livestock commissioner. He said he would also propose that the governor name a board which would appoint the commissioner.

"I would also hope that the board would be representative of all interests in the livestock industry," the governor said.

Docking said he didn't feel he was on dangerous ground going to the legislature with his proposal. He said he still can go to the courts if necessary.

The association has also proposed legislation for the session. It proposes that the present livestock sanitary commission employ a commissioner.

Remove 'Big Brother' Hint On 1970 Census Questionnaires

The census taker has decided to scuttle many of the controversial questions that were going to be asked one of every four American families in 1970.

The long-form questionnaires that will be sent to 25 per cent of the population, therefore, will not ask your Social Security number, telephone number, marital history or inquire how many persons share your bathtub.

This is the word from David L. Kaplan, a Census bureau official who addressed the annual meeting of the American Statistical association on 1970.

Even though Counting Day is more than two years away, Kaplan says the Census bureau is now in the dress rehearsal phase and no major changes are planned in the questionnaire until April 1, 1970.

Social scientists who use census figures pleaded with the government's headquarters to ask Social Security numbers, extent of vocational or college

training, job held five years ago and other items known as "socio-economic indicators."

The Census bureau tried to add questions to its long form, sent to 25 per cent of the public, in a test census in New Haven, Conn., last spring. The results were discouraging.

About 9 per cent fewer persons filled out the form and sent it back then completed the short form that will go to 75 per cent of the populace.

The questions asked in New Haven about the Social Security number have been "used as a weapon against the 1970 program," Kaplan said.

He did not say so but apparently referred to some members of Congress who oppose this as an invasion of privacy that could, with computer aid, turn the census files into a big brother snooping resource.

The New Haven residents were annoyed about the request for their telephone number, which was simply so clerks could check back for unanswered questions, Kaplan said. And inquiries about their plumbing arrangements — whether they shared a shower or bathtub — were resented too.

Anyway, the cautious census bureaucrats could sense that the additional questions meant trouble. Most were dropped because the extra burden on the citizen might become a serious obstacle in conducting the census.

As a compromise with the data-hungry social scientists, who want the information for antipoverty and manpower training programs, the Census bureau split its long-form questionnaire into two sub-samples. Questions on school enrollment, residence five years ago and number of bathrooms will be asked of 20 per cent. Other queries on vocational training, citizenship and second homes will be asked of the 5 per cent sample.

On another controversy over persons "missed" by the 1960 tabulation, the Census bureau is reserving judgment on two new methods to track everyone down in 1970. It seems cool to both. The bureau has admitted it

missed 10 per cent of the Negro men in the 1960 headcount — a remarkable gap in statistics. Most apparently lived in big cities.

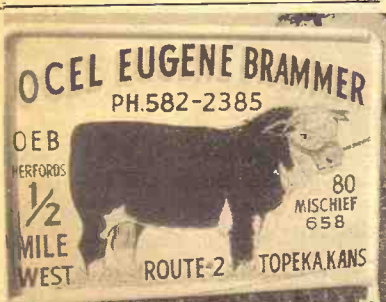
Kaplan said two techniques were tried in New Haven — developing checklists of those most likely to be missed and checking with the postoffice on those who moved a month be-

fore or after census-taking day. The first produced only 75 persons who would have been "missed" from 1,000 on the list and was not worth the time and cost, Kaplan said.

The second method, using postoffice records, showed that one out of seven in this category were not counted. That would increase the population by 2

per cent if the New Haven experience is true for the nation as a whole.

But Kaplan said this method of checking is costly and complex and there are questions about its validity. The bureau is reviewing the postoffice method to see if it should be used in 1970 if funds are available.



REMINDER

AUCTION

Having sold my farm and quitting farming, will hold clean sweep sale at farm located 4 1/2 miles northwest of Fostoria on Spring Creek Road.

SAT., JAN. 6

Starts 1:00 p.m.

Farm machinery and some misc. items. For listings see Grass & Grain Dec. 26.

G. A. EVERSMEIER

Aucts: Welter & Applegate

Can computers answer your farm management problems?

You'll see computers give "instant answers" to questions concerning fertility levels, soil-insect control, weed-killing methods and materials, and feedlot operations when you attend Farming Frontiers '68. It's a program designed to give you facts about the latest farming trends in this area—the facts for future profits.



Shouse Implement Co.

ABILENE, KANSAS

Shows at 10 A.M. and 2 P.M.

Thursday, Jan. 4

At The

Plaza Theatre

Lunch Served At Sterl Hall

FARMING FRONTIERS '68

30 TRACTORS

- 12 No. 806 gas & 3 No. 806 LP's
- 6 806's 1967 tricycle front end, 3-pt. hitch
- 4 806's 1966 wide front end, 3-pt. hitch
- 1 806 1965 wide front end, 3-pt. hitch
- 4 806's 1964 wide front end, 2-pt. hitch
- These 4 tractors have 18.4 x34 8 ply; all other 806's here have 15.5x, 6 ply.
- 3 560's LP
- 1 Super M LP 1953, tires 13.6x38 rear
- 6 M Farmalls, gas
- 1 H Farmall, gas
- 1 300 IHC 300 utility, gas
- 1 Massey Harris, gas
- 1 801 Ford, gas
- 1 720 John Deere, gas

21 Trucks & Pickups

- 4 1967 LCF Chev. 2-ton truck, hoist & hyd. lift 16' comb. beds
- 1 1961 Chev. 2-ton truck, hyd. lift 16 ft. comb. bed
- 10 farm trucks 1955 to 1960, IHC, Ford & Chev.; many of them equipped w/ hoist & lift beds
- 2 Willys Jeeps, 4 wheel drive
- 1 1966 Chev. pickup
- 1 1965 Chev. pickup
- 1 1962 Ford pickup
- 1 1960 International pickup

8 ELEVATORS

- 1 1966 Int. elevator mod. 21A, 52' long, 21' wide w/ PTO drive, hyd. lift
- 1 1966 JD elev. mod. 350 64' long, 21" wide, for elec. motor
- 1 Stan Hoist elevator mod. 21-64-58' long, 21" mode for elec. motor
- 1 Valley elev. 50' long, 18" wide, with Wisconsin motor, Model AHA
- 1 Farmers Friend elev. 48' long, 16" wide, for elec. motor
- 1 Koiker auger, 52' long, 10" diameter auger, with Wisconsin gas motor, model 11
- 1 Koiker elevator, 28 ft.

7 SPRAYERS

- 5 Broyhill sprayers, 200 gal coated tanks, 8-row trailer type
- 1 sprayer with 150 gal. tank
- 1 sprayer w/ 500 gal. stainless steel tank for liquid fertilizer

3 LOADERS — 1 BLADE

- 1 Westindorf WL 30 loader f/ 806 wide front end, with WL 84 industrial bucket
- 1 Industrial loader for 801 Ford tractor with manure bucket
- 1 rear mount blade for Ford tractor
- 1 Horn loader, mod. No. 50 w/ manure bucket

PROPANE EQUIPT.

- 1 IHC 1952 mod. L180; propane truck with 1200 gal. tank, meter and hose
- 1 1000 gal. propane tank on rubber tired trailer with PTO pump and hoses
- 2 1000 gal. propane tanks on

ONE MILE SOUTH OF ODEBOLT, IOWA

Phone Area 712 668-4297

rubber tired trailer with Blue Transfer pumps and hoses

GAS & FUEL EQUIPT.

- 1 500 gal. gas tank on rubber tired wagon with PTO pump and hose
- 1 15,000 gal. tank for fuel or fertilizer
- 1 12,000 gal. tank for fuel or fertilizer
- 1 1500 gal. tank
- 5 1,000 gal. tanks
- 2 500 gal. tanks
- 3 275 gal. tanks

17 CULTIVATORS

- 5 8-row cultivators, mod. 865, 40" spacing
- 5 8-row cultivators, mod. 865, 40" spacing
- 2 8-row cults. mod. 863, 30" spacing
- 5 4-row cults. mod. 461, 40" spacing

7 IHC COMBINES

- 1 1966 503 w/ cab, w/ No. 430 WNCB 4-row corn head
- 1 1965 503 w/ cab and No. 430 4-row corn head
- 1 1964 503 w/ cab & No. 430 4-row corn head and 14' grain platform w/ Hume reel
- 1 1966 303 w/ cab & 13' grain head, Hume type reel, Innes straw chopper w/ safety device
- 1 1961 151 Corn Special w/ No. 40 4-row corn head, 12' grain platform w/ Hume reel
- 1 No. 127 combine w/ 12' grain platform, w/ pickup attach.
- 1 No. 125 w/ 12' grain platform w/ pickup attach.

7 2-WAY RADIOS

- 6 Johnson Messenger II 12 volt system
- 1 Johnson Messenger TWO 6 volt system transistorized

4 CRAWLERS

- 1 TD 18 IH crawler w/ cable dozer & unit
- 2 TD 9 IH crawlers w/ hyd. dozers
- 1 400 diesel IH Ser. 1628

43 WAGONS & EQUIPT.

- 2 Int. w/ steel 6x10 box w/ Midwest hyd. hoists
- 2 Jets w/ steel 6x12 box with Midwest hoist
- 15 wagons w/ flare boxes and rubber tired gears
- 9 metal flare boxes
- 6 flat racks with rubber tired gears
- 2 shuck wagons with rubber tired gears
- 1 No. 10 125 bu. Grain-o-vator, auto. unloading
- 6 Stan hoist hyd. wagon lifts

45 PLANTERS — 2 ROW PACKERS

- 10 4-row No. 56 IHC liquid fert. tanks, herbicide spray attach., ro-wheels 1967
- 1 1967 IHC No. 58 1-row narrow row planter, liquid fert.
- 1 1966 JD 8 row, 30" row planter, liquid fertilizer
- 4 1966 No. 494 4-row, liquid fert. & herbicide attach.
- 7 John Deere 8-row hitches
- 12 John Deere 8-row markers
- 10 IHC 8-row markers
- 2 8-row packers — 30" & 38"

7 ROTARY HOES

- 6 1967 John Deere 4-row ro-

tary hoes

- 1 1967 Westindorf 6-row hoe
- 12 PICKERS & ATTACHTS.
- 4 1967 IHC mod. 234 w/ strip-per bars, mountings for 806 IHC tractor
- 6 IHC 2 MH corn pickers w/ 560 IHC mounts
- 2 Model No. 10 IHC corn sheller attachts. f/ 2 MH In. corn pickers

5 SHREDDERS

- 2 1966 Brady 4-row shredders
- 2 1966 Servis 4-row shredders
- 1 Servis 4 shredder

2 DRILLS

- 1 JD mod. B 24x7 single disc, grass seed attachment
- 1 JD mod. B516 20x7 double disc, grass seed attachment
- 22 PLOWS & ATTACHTS.
- 5 Model 560 IHC 6-16" plows
- 1 4-16" 2 way race over IHC, 3-pt. hitch, rigid beam
- 1 No. 459 Stump plow 20" cut, 30" coulters
- 4 No. 411 4-16 mt., 2-pt.
- 1 Rome disc plow, model TAW 10 ft.
- 10 Midwest harrow attacht. for plows

10 DISCS & ATTACHTS.

- 4 IHC 19 ft. 7" spacing No. 480 tandem discs
- 1 IHC 21 ft. 9" spacing No. 48 tandem disc
- 2 JD 14 ft. 7" spacing No. AW 4018 tandem discs
- 1 15 ft John Deere straight disc
- 1 21-ft. Midwest disc harrow attachment
- 1 19-ft. Midwest disc harrow attachment

18 HARROWS

- 3 1966 Emmert 21 ft. spring tooth
- 6 IHC Model No. 400, 12-ft. spring tooth
- 1 IHC Vibrashank cult. model 45, 18 1/2 ft.
- 4 1967 Noble 30" rigid spike tooth harrows, peg tooth
- 4 IHC model 15, hydr., implement carriers

COMPLETE SHOP EQUIP. to maintain this operation

SHOP EQUIPMENT: Disc sharpener, metal turning lathe, hydraulic press, table saw, bench and floor grinders & vises, acetylene welder, arc welders, valve grinder, electric drills, battery chargers, spark plug cleaner, chain hoists, portable air tanks, stationary & portable compressors.

MISCELLANEOUS

- 1 JD No. 6 corn sheller w/ Henke PTO
- 4 JD No. 8 mowers, 7 ft. cutting bar
- 2 Clark Anhydrous ammonia applicators, 21' tool bar, 7 rows, 2 or 3-pt. hitch 1966
- 1 Clark anhydrous ammonia applicator, 17' tool bar, 5 rows, 3-pt. hitch, 1967
- 1 rear mounted post hole digger
- 1 motor grader, BD3, AC with cab
- 1 Behlen 500 bu. grain dryer
- 1 Steinlite moisture tester
- 1 set dual wheel attachts. for 806 tractor
- Saddles, water tanks, portable stock chutes, tank heaters, etc.

TERMS: CASH. Complete Settlement Day of Auction. EVERY ITEM SELLS. No Reservations — No Minimum

AUCTION CONDUCTED BY

HAGEL AUCTION COMPANY INC.

AUCTIONEERS - ADVERTISING SPECIALIST - SALES MANAGEMENT

4210 North Elmwood-Kansas City, Missouri-Telephone: Gladstone 3-3762



Farm Credit Banks Plan Building

Here is the visualization of a 12-story office building which the Farm Credit Banks of Wichita plan. It is not expected to be built before 1972, and present estimates are that it will cost \$10 million. It will be on urban renewal land about a block from the just completed Civic Cultural Center.

The banks have been at the Central Building, Main at Douglas, since the 1930s. The Wichita farm credit banks supply funds for Federal Land Banks and Production Credit Associations. The seven-man board includes two men from the G&G area; James Isleib, Shawnee Mission, and Leo Paulsen, Concordia.

meet seasonal demands for loans.

January 2, 1968

**Sell Every Wednesday
AT ONAGA 1:00 P.M.**

**YOU'LL LIKE SELLING
AND BUYING
AT THE ONAGA BARN**

Onaga Community Sale

Marvin Cottrell, Phone 889-4461 or 889-4665, ONAGA, KS.

716 PUREBRED ANGUS CATTLE

(Not Registered)

John Deere Tractors & Implements

Monday

**AUCTION
SALE**

JANUARY 8

10:00 a.m. — Machinery

2:00 p.m. — Cattle

H. & P. LAND & CATTLE CO.

90 miles south of Des Moines; 125 miles east of Omaha, Nebraska; 150 miles north of Kansas City, Mo.; 17 miles west of Leon, Iowa, on Hwy. 2 to 294, 1 mile west or 22 miles east of Mt. Airy, Iowa, on Hwy. 2 to 294, then 1 mile north and 1 mile west.

GRAND RIVER, IOWA

Foundation Herd of 716 Angus Cattle

TRACTORS

- 2 4020 John Deere 1966
- 2 4020 John Deere 1964
- 1 4010 John Deere 1964
- 1 2010 John Deere 1966

These tractors are fully equipped — power lifts adjust wide front — lots of extras — all used very little — low hours.

John Deere Eqpt.

- 1 2-wheel feed wagon
- 3 4-bottom plows
- 2 5-bottom plows
- 2 14x2 wheel disc
- 1 14x4 wheel disc
- 1 8-row planter
- 1 6-row planter
- 1 214T baler, hydr. control
- 2 side delivery rakes
- 2 wagon & silage board, unloading
- 2 flat bed hay wagons
- 1 45 or 50' elevator w/ B.S. gas engine
- 1 wagon box & hoist
- 1 112 chuck wagon
- 1 hydr. loader for 4020
- 1 3-pt. sprayer
- 1 25-foot harrow
- 1 12' seeder & spreader
- 1 roller packer
- 1 5' gyro mower
- 1 7' trail mower
- 1 9' 3-pt. tractor mower
- 8 JD cylinders
- 2 harrows f/4-btm. plows
- 1 set hubs 4020 duals
- 1 set tires, wheels & tube (dual 4020)
- 12 JD wheel weights
- 2 JD back blades

- 1 1966 SPF Fox w/ corn head
- 1 Fox 10' hay head
- 1 Fox 6' pickup head

OTHER EQUIPT.

- 1 Farmall tractor 64M
- 1 Case tractor
- 1 A/C WD45 with scoop
- 1 D-4 Cat. w/ dozer blade, hyd.
- 1 old pull disc
- 1 A-C round baler
- 2 homemade lowboys
- 1 Hesston mower & windrower 500, 1967
- 1 12' auger 1/3 HP motor, new
- 1 600 gal. water wagon
- 1 500 gal. tank
- 1 portable loading chute
- 1 300 gal. sprayer, 4-row
- 1 450 gal. sprayer, 4-row
- 2 sprayer tanks, 85 gal.
- 1 3-sec. 15' harrow, homemade
- 1 fert. spreader wagon, 4 wheels, Tote
- 1 12' Gyro mower
- 1 American loader for 2010
- 1 14' Gyro mower
- 1 Farmall cylinder
- 1 Fox knife grinder & 1 HP motor
- 2 oxy. & gas carts, hoses & tip
- 1 180 AMP welder
- 2 Cat grease guns

MISCELLANEOUS

- 3 tractor umbrellas
- 1 6-roller pump
- 1 100 gal. tank
- 1 1/2 Case anti-freeze
- 1 set chain 2010
- 2 Fox knife sharpeners
- 1 22 stud gun
- 4 tires, tubes & liners 10 ply
- 1 harrow for disc
- 4 cases weed killer
- 1 chain saw
- 3 pump jack & motor
- 7 calf creepers, metal
- Several log chains & small items
- 1 front end f/ Farmall tractor
- 1 9 horse BS engine

TRUCKS

- 1 1966 3/4-ton Ford pickup
- 1 1966 Ford stock truck w/ rack
- 1 1964 3/4-ton Ford pickup
- 1 6x6 GMC feed truck, extra good
- 1 4x4 Chev. feed truck, extra good
- 1 6x6 GMC truck, extra good, w/ Kelly-Ryan self unloading feeder box
- 1 4x4 Chev. truck, extra good, w/ Kelly-Ryan self unloading feeder box

FOX S.P. CHOPPERS

- 1 1964 SPF Fox w/ corn head, wide row pickup

CATTLE

- 66 2-yr. old bred Angus heifers
- 330 Angus cows 3 to 8 yr. old bred springers
- 265 Angus heifers & steer calves (The heifer calves are bangs vaccinated)
- 14 Reg. Angus bulls 3 to 6 yr. old
- 16 Reg. Angus cows & 10 calves, 2 to 7 yrs. old
- All cattle TB & Bangs tested or Bangs vaccinated.

TERMS: CASH

Sale will be held under cover in case of bad weather.

SALE CONDUCTED BY

HAGEL AUCTION CO. INC.

AUCTIONEERS-ADVERTISING SPECIALISTS-SALES MANAGEMENT

4210 No. Elmwood, Kansas City, Mo. 64117 Ph. Area 816-453-3762

Oklahoma City Site Of Cattlemen Convention

OKLAHOMA CITY, Okla. — The 2,000 stockmen attending the 71st Annual Convention of the American National Cattlemen's Association here Jan. 21-24 will have a variety of topics to ponder in looking toward a prosperous future for the beef cattle industry.

C. W. McMillan, executive

vice president, announced today that the speaker's roster includes:

U. S. Senators Fred R. Harris (D-Okla.) and Roman L. Hruska (R-Neb.); Oklahoma Governor Dewey Bartlett Clarence T. Lundquist, administrator of the wage and hour division, U. S. Department of La-

bor; D. A. Williams, administrator of the U.S. Soil Conservation Service; and Dr. O. Burr Ross, vice president for research, Oklahoma State University.

A special feature will be a panel discussion on marketing topics by the 12-man Market Development Committee of ANCA, headed by Joe W. Entz, Glendale, Ariz., and Girdner Crofoot, Strong City, Kans. Also scheduled is a discussion of federal estate and income tax problems by Claude M. Maer Jr., Denver, Colo.

The convention, headquartered at the Skirvin Hotel, will also offer an unusual visit to the National Cowboy Hall of Fame and the unveiling of the Albert K. Mitchell private collection of Remington and Russell paintings and sculpture.

Meeting with the cattlemen will be the American National CowBelles and the Junior National Cattlemen's Association. Each organization has a special program of breakfasts, tours and meetings planned.

Several hundred delegates are expected to remain in the area Jan. 25 for a special tour of the new Live Animal Evaluation Center at Oklahoma State University, Stillwater. This unique facility uses several devices, including the "K40 counter" to measure carcasses of live animals.

Additional hundreds will take in the National Western Stock Show and Rodeo in Denver on their way to Oklahoma City, Jan. 20.

RURAL BANKS MAY GET FRB HELP

The Federal Reserve Board is reported to be studying the possibility of increasing loans to rural banks to help them

CATTLE SALE EVERY MONDAY

HOG SALE EVERY WEDNESDAY

Sale Time 12:00 Noon
BEATRICE, NEBR.

Beatrice 77

LIVESTOCK SALES CO.
2 miles north of Beatrice, Nebr., opposite the airport.
Phone 223-3571

CLARENCE TEGTMEIER
DELMAR JURGENS
JR. THIMM

AUCTION SALE

**Thursday
JANUARY 11**

Starts 10:00 a.m.

Lunch Served

I have decided to quit farming, and will sell at public auction on our farm located 3 1/2 miles south, 1 1/4 east of Vermillion, Kans.; or 4 south, and 6 1/4 west of Centralia, Kans., on all weather road.

MACHINERY

- D-17 AC tractor, 1959, A-1
- D-14 AC tractor, 1959, A-1
- CC Case with manure scoop
- AC 3-16 mounted trash plow
- AC 2-row, mounted lister with rotary mouldboards
- AC 13 1/2 ft. wheel disc, like new
- Massey-Ferguson, 1965
- Side delivery rake, like new
- Massey Ferguson, 1965, hay baler No. 12, like new
- Case mounted two row lister
- AC 1964, mounted mower
- AC 8-ft. mounted blade, with extensions
- Massey-Harris, 2-row self-propelled corn picker
- IHC 2 ME corn picker, 2-row with M mounting, A-1 shape
- Fertilizer spreader
- AC 2-row cultivator, fits D-17 or D-14
- AC 5-ft. combine
- JD 15 hole drill
- MM manure spreader
- Flat bed 8x18 trailer
- Wagon with 6x10 grain bed & 7x12 flat bed
- Wagon 7x14 grain box and hoist
- Peerless grinder mixer, 2 yrs. old
- 4-ft. Tumble bug
- Metal brawler calf creeper, 6-ft., new
- Comfort weed sprayer
- 8-ft. stock tank

Leroy Hanzlick
Consigns the following Massey Harris tractor 65-1960, Massey Ferguson 5-row planter, and a Massey Ferguson wheel disc, like new.

MR & MRS. L. D. AKIN

Aucts: W. B. "Bill" Bredemeier, Gene Toby and Marvin Cottrell.

Clerk: Vermillion State Bank.

DAIRY CATTLE

- 7 yr. old Holstein milking 6 gal.
- 6 yr. old Holstein, dry-fresh by date of sale
- 7 yr. old Wisconsin Holstein, milking 5 gal.
- 6 yr. old Guernsey, 6 gal., milking 4 gal.
- 7 yr. old Milking Shorthorn, 5 gal., milking 4 1/2 gal.
- 7 yr. old Black Holstein- 7 gal, 4 1/2 gal.

These dairy cattle are all TB and Bangs tested.

60 STOCK CATTLE

- 37 Hereford cows, half with calf by side, balance heavy springer, 2-7 yrs. old
- 4 yr. old Reg. Hereford bull, Belles Prince out of the Gideon herd
- 5 yr. old Reg. Hereford bull, Anxiety Lamp, out of Gideon herd
- 14 head of mixed steers and heifers 400-500 lbs.
- 1 smooth mouthed saddle horse

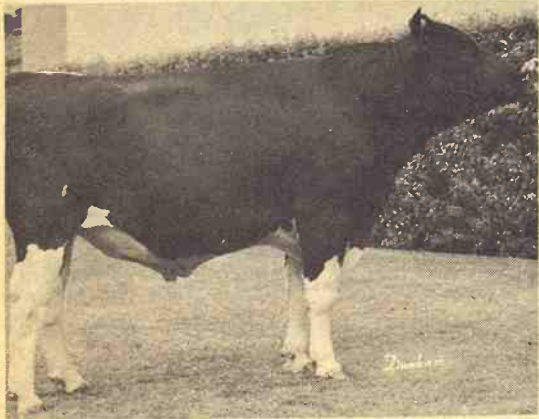
HAY

- 1500 bales of 2nd & 3rd cutting alfalfa
- 50 bales of wheat straw

MISCELLANEOUS

- 10 10-gal. milk cans; 1 stock saddle; 1 6-ft. drag, buzz saw, 1 Ram; 1 windrower, 30-ft. corn elevator;
- Box wagon, 2 IHC grinders; Case threshing machine 22-37; 6-volt electric fence; buckets, some tools, lot of old iron, lot of horse-drawn machinery, 1 post hole drill; pitch forks & scoops.

Undefeated In '67 Shows



Rock Home Sunshine, owned by three Marion

County dairy-men, had an undefeated 1967

show season, winning the Central Kansas Black & White Show at Hillsboro; the Kansas State Fair at Topeka; the Kansas Livestock Exposition; State Fair of Oklahoma at Oklahoma City; and the Pan American Livestock Exposition at Dallas.

The owners are Lauren Enns, Chester O. Unruh, and Lloyd A. Funk, all of Hillsboro.

LETTERS—

Another Shot From The Grange

My attention has been called, by a number of our members, to an article appearing in a recent issue of Grass & Grain, that the Grange was "Petering Out." I am quite sure this was not a National Grange release and appears to be the opinion of one un-identified correspondent.

If the principles and purposes of our organization, to develop a better and higher manhood and womanhood among ourselves, to enhance the comforts and attractions of our homes and communities, to foster mutual understanding by working with and cooperating with all others which seek to promote human welfare, showing loyalty to country and our creator by the flag and open bible being displayed in all Grange meetings, if these be signs of being "Fud-

dy-Duddy" I suppose we must plead guilty.

If our modern office building in the nation's capital, sixteen years of Community Progress sponsorship with one of the nation's large foundations, one of the ablest and most respected legislative staffs in Washington, sponsorship of one of the nation's largest projects in Women's Activities (The National Grange Sewing Contest), membership and active participation in the International Federation of Agriculture Producers, six hundred Youth participating in the Centennial National session at Syracuse, 3,900 taking the highest degree of our ritualism at the same session. If these be signs we are "Petering Out" perhaps we are.

At the state level we have doubled our membership in Kansas in the last twenty years, organized and annually conduct Youth and Junior camps, a Young Marrieds Conference, four out of the last five years had either the National Young Couple of the Year or the Runner-up Couple. This year the National Grange Princess was Lynn Aaron of Carbondale. We are presently planning the construction of a modern camp facility on the shores of Perry Reservoir on a site donated by Claude and Ina Brey, we have accumulated a substantial building fund and look forward to the construction of a modern headquarters building in the Topeka area. Our Patrons Insurance Association five years ago constructed a new modern office building and has just completed an addition to it.

I assure you we are not in these activities and projects with the idea of "Petering Out."

All these programs and projects are made possible by the loyalty and service of the members. Our dues are modest, averaging in Kansas only three dollars per member per year for the support of the subordinate (the local unit), state and National Grange.

Officers at the local level serve without pay and only two state officers draw modest monthly salaries. In the Grange the office seeks the individual and not the individual the office.

It is regrettable that a paper such as yours, which I am sure has the same purpose we have, promoting the welfare of agriculture and our communities, would use an article which belittles and casts many doubts on the future of an organization which has made so many contributions to agriculture and

community life, lived to celebrate its centennial and looks forward to continuing to serve in its second century.

James W. Ingwersen
Kansas Grange Master
Leroy, Kans.

After the national convention of the Grange, the New York Times and several other news sources reported that Grange leadership was concerned about its future. After a similar article appeared in G&G Dec. 5, an irate phone call from the state organization's membership chairman prompted us to invite letters from Grange members who were active farmers who felt the organization was viable and had a point of view.

The invitation has thus far brought five letters. Two were from state officers, two from members of several decades but not active farmers, one

from a person who did not sign the letter.

Part of Grange Master Ingwersen's letter has been edited because it repeats, even similar terminology, pointed out in the last two issues of Grass & Grain.

There has been no question in the original article or in the G&G's opinion that the Grange has been an organization of high purposes and other times one of considerable influence, to the betterment of farmers generally.

But in view of the Grange leadership's own question about its future, the article was neither unreasonable nor contemptuous. Surely, Grange Master Ingwersen does not mean to suggest that new and comment on any organization should come from the organization's new s release

from the G&G Area

AUCTION SALE

Saturday
JANUARY 6

Starts 12:00 noon

The undersigned, executor of the will and estate of the late Clarence Hauserman, will offer for sale and sell at public auction to the highest bidder for cash in hand at decedent's home in Vining, 1½ blocks south of the 4-way stop sign as west edge of Clinton, Kans., the following items to wit:

FURNITURE

2 old trunks; 1 camel back trunk; portable clothes closet; 2 full size beds, complete with spring and mattress; 1 ¾ size bed, complete; metal top cupboard; metal ironing board; all metal cupboard; old chest of drawers; 10 straight back chairs; gas range; new army cot;

Kelvinator refrigerator, with cross top freezer; small table; antique sewing machine; portable shelf rack; 4 medium size dressers; electric fans; clothes hamper; bathroom scales; brief case; several table lamps;

21" Zenith TV; knife set; coffee table; 3 antique straight back chairs with leather backs and bottoms; 1 overstuffed chair; blankets; bedding; pillows; wash tubs;

Water air conditioner; small gas stove; electric skillet; pop up toaster; waffle iron; Sunbeam Mix Master; 2 small bedroom lamps; smoking stand; several mirrors; glass pitcher set;

Lots of dishes, some real old odd shapes; several heavy cast aluminum skillets; ket-

tles, pots and pans; 2 suit cases; kerosene lamps; flat crocks.

SHOP & CARPENTER TOOL

12 gauge Remington pump gun; 22 Winchester bolt action rifle; 7¼ inch combination skill and table saw, good; David Bradley chain saw, like new; several hand saws;

Key hole saws set; brace and several wood bits; ¼ inch electric drill; 2 sets of iron bits; blow torch; pipe wrenches; cement trowels; shingling hatchet; several pairs of pinchers and pliers; several block planes; tool chest; scissor jack; spray gun; several ratchet screw drivers; draw knife; hack saws; square; tin snips; bench vise; shelves; forks; rakes; hoes axes;

Small metal mortar box; all metal 2 wheel dump trailer; saw manger for tractor saw horses; set of Stilton scales; tree saw; 3 step ladders; 12" drive belt; block and tackle; tow cable;

Firestone power mower; snow shovels; garden hose; 3 work benches; 1960 6 cylinder, 4-door Fairlane car, good; old F14 IHC tractor; bench vise; and numerous miscellaneous items.

WESLEY M. HAUSERMAN, Executor

Auct: Leo Crawford. Clerk: 1st National Bank, Clifton, Kans. Jones & Ryan, Attorneys For Estate.

REAL ESTATE

Immediately following the above sale, Mr. Wesley M. Hauserman in his individual capacity, will offer for sale at public auction his property legally described:

S/2 of Lot 8 and all of Lots 10 & 12 in Block 45 in Vining, Clay County, Kansas.

This is a 5-room 1½ story modern frame house, it is well located and will make someone a real nice home.

Your inspection is invited by appointment with Mr. Hauserman, or the auctioneer, both of Longford, Kans.

Down payment of 25% when property is knocked off, balance due in 30 days. Seller will pay 1967 and all prior years taxes, convey to buyer by warranty deed, furnish abstract of title and give possession upon payment of balance of sale price.

Other terms of sale will be announced at beginning of sale.

WESLEY HAUSERMAN, Owner

AUCTION

Having decided to quit the business will sell at public auction, fixtures and all stock at the store located at east edge of Main St. in Oak Hill, Kans.

MON., JAN. 8

Starts 10:00 a.m.

Lunch Served

Sale to be held inside if weather is bad.

Fixtures, Groceries Hardware & Misc.

Frigidaire 12-ft. freezer; Schaffer 12-ft. freezer; large meat block (maple); electric Coke pop cooler; 2 8-ft. meat display coolers; 10-ft. counter;

4 glass display cases; National Cash register; account file; Globe electric meat slicer (very good); 2 electric refrigerators; old kitchen cabinet; porcelain top table; 2 store scales; shelves; shelves with drawers; compressor & mtr. for walk in cooler;

Oil tank & pump; electric hot plate; odd chairs; nice lot of bolts, nuts & hardware items; good stock of groceries found in general country store; grocery carts; and other small misc. items too numerous to mention.

Your inspection invited with appointment with owners, nothing sold prior to sale.

Terms: Cash Day of Sale.

MR. & MRS.

CARL K. FENGEL

Clerk: Bull & Anderson, Clay Center, Kans.

Aucts: Foster Kretz & Elmo Steffen, Clay Center, Phone WA 6-4422, Morganville.

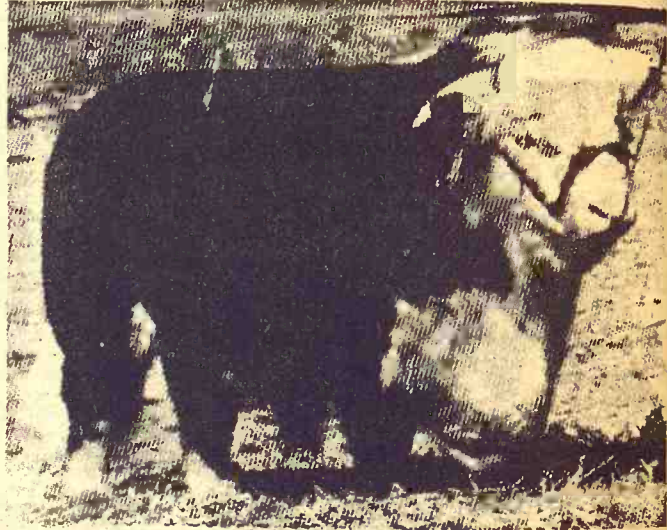
Rebenstorf Herefords

10th ANNUAL SALE

SAT. JAN. 20

1:00 P.M. — Beloit, Kans.

FEATURING THE GET & SERVICE OF



W. H. R. Vern Aster 29th

A very impressive big bull himself and the sire of several successful sale groups.



W. H. R. Pacesetter 47th

Selling 100 Lots • 126 Head
25 Serviceable Age BULLS
26 COWS and CALVES
19 BRED HEIFERS
30 YEARLING HEIFERS

The herd is now 28 years old, without ever straying from the original aim of breeding cattle with SIZE, BONE and MILKING ABILITY.

If roads are impassable, sale will be held Jan. 27

FOR CATALOG WRITE OR PHONE
Res. 913 526-4298 or Lucas, Kans. 913 525-3625

Elmer Rebenstorf
Sylvan Grove, Kansas

G&G Calendar

Jan. 6 — Personal & Real Estate, Clarence Hauserman Estate, Clifton, Kans. Auct. Leo Crawford.

Jan. 6 — Farm sale northwest of Fostoria, Kans., G. A. Exersmeier. Aucts Welter & Applegate.

Jan. 8 — Quitting business sale in Oak Hill, Kans., Carl Fengel, Jr. Auct. Foster Kretz.

Jan. 8 — Angus herd dispersal and farm machinery at Grand River, Iowa, H & P Land & Cattle Co. Aucts: Hagel Auction Co.

Jan. 12 — Real estate & hospital equipment near Fort Riley, Kans., Geary County Commissioners. Sale mgr. & auct. C. W. Crites, real est. broker.

Jan. 15 — Farm machinery, trucks and a large inventory of other machinery south of Odebolt, Iowa, Lakin Ranch, Charles E. Lakin. Auct: Hagel Auction Co.

Jan. 17 — Registered Hereford bull sale, Swenson Bros., Concordia, Kans.

Jan. 20, 1968 — Rebenstorf Herefords Production sale, Elmer Rebenstorf, Sylvan Grove, Kans.

Jan. 20 — Machinery and miscellaneous items in Manhattan, Kans., estate of Virgil F. Renz. Auct. Galen F. Morley.

Jan. 22 — Farm sale southeast of Clay Center, Kans., Howard Habluetzel. Auct. Foster Kretz.

Jan. 24 — Farm sale northwest of Manhattan, Kans., Richard D. Martin. Auct: Foster Kretz.

Jan. 27 — Farm sale south of Gibbon, Nebr., Ed Scheve. Aucts. Pierce and Siegel.

Jan. 31 — Sixth annual registered Polled Hereford production sale east of Corning, Ks., Carl J. Funk. Aucts. Jewett M. Fulkerson and Wesley Hays.

Feb. 2 — Farm sale northwest of Morrowville, Kans., Lorraine Lindsley. Auct. Harold R. Siegel.

Feb. 2 — Farm sale northeast of Leonardville, Kans., Lester Butler. Auct. Foster Kretz.

Feb. 3 — BFY bred Hampshire gilt sale in Emporia, Kans.

Feb. 3, 1968 — Annual 4-H & FFA annual swine judging school in Smith Center, Kans., Also Duroc auction. Albrecht and Popp.

Feb. 5 — Complete dispersion of Krotz Angus herd in Marysville, Kans., M. J. Krotz. Phil Ljungdahl: auct. Ray Sims.

Feb. 5 — Farm sale northeast of Enterprise, Guy Rider. Auct Foster Kretz.

Feb. 8 — Farm sale south of Cuba, Kans., Frank Juneke. Auct. Harold R. Siegel.

Feb. 9 — Farm sale north of Haddam, Kans., Ernest Chapp. Auct. Harold R. Siegel.

Feb. 10 — Spring special registered Angus sale, Salina, Kans., Willard Ericson. Sale mgr. Phil Ljungdahl; auct. Ray Sims.

Feb. 10 — Northeast Kansas Hereford Assn. sale in Waka-rusa, Kans., L. Eldon Gideon, secretary.

Feb. 12 — Farm sale northeast of Barnes, Kansas., Willis Truehliska. Aucts Foster Kretz and Don Roche.

Feb. 26 — Farm sale northwest of Clay Center, Walter

Schoening. Auct. Foster Kretz.

Feb. 26 — Farm sale west of Clay Center, Kans., Walter Schoening. Auct. Foster Kretz.

Mar. 11 — Farm sale west of Olsburg, Kans., Gilbert & Betty Olson. Auct. Foster Kretz.

Mar. 16 — Angus production sale southeast of Olsburg, Laflin Bros. Ralph Waite, auct.

Mar. 22 — Pohlman's Angus Ranch production sale, Natoma, Kans., Phil Ljungdahl, sale mgr.

Mar. 23, 1968 — Central Kansas Polled Hereford Assn. show & sale in Abilene, Kans., Arnold Wittorff, Inman, sec.

Apr. 13, 1968 — Polled Hereford dispersal at Clay Center, Ks., Frank E. Walker, Norton, Ks., admn. of the estate of the late Dr. Raymond Walker of Clay Center.

Nov. 13 — Annual production sale of registered Herefords, Marysville, Kans. Elmer Peterson & Son.



New Saline Fair Boss

George Wallerius, left, is the new president of the Saline County Fair association. Bruce Johnson, right, outgoing president, turns over the gavel.

New U.S. Interest IN Sunflower For Oil Output

The Agriculture department says the sunflower, a native American crop, is gaining new interests among U.S. farmers after having been made a huge success by the Soviet Union.

As an important source of vegetable oil, the sunflower has become a big Soviet money crop and is competing aggressively with the soybeans grown in this country after having been brought to the United States from the Orient.

"The sunflower's success abroad has renewed farmers' interest in growing it as an oil-seed crop," a department report said.

By hybridizing the sunflower, the Soviet Union has been able to bring sunflower oil yields up from around 30 per cent to as high as 44 per cent, the department said. Soviet farm authorities predict upcoming varieties will be yielding close to 60 per cent oil within a few years.

By comparison, the oil content of U.S. grown flaxseed is 36 per cent and for soybeans — this country's major source of vegetable oil — 20 per cent.

At present, sunflowers are grown on limited acreage in Minnesota and North Dakota. Officials said the crop could be grown in a much wider area.

"If sunflowers are to compete economically with soybeans in areas where both are grown, high yields are necessary," the department said. "Such yields can be obtained by planting adapted varieties and following recommended fertilizing and other cultural practices."

The report said sunflower seed hulls and stalks are used in this country mainly as poultry litter, fertilizer and fuel. It added, however, that the Soviets have developed a method for fermenting them into alcohol.

Set Dates For Hog Schools In Nebraska

FAIRBURY, Nebr. — Swine production costs, disease control, housing and management, artificial insemination, waste control and pork promotion will share top billing during the 1968 University of Nebraska Area Swine Days in January.

The series of three special swine educational programs gets underway with a session here Jan. 23. Programs with similar format but some changes in the cast of speakers will be held at Cozad Jan. 24, and Wausa Jan. 25.

Appearing on all three programs will be Robert Young, Tri-State Breeders Co-op, Platteville, Wisc. Dr. Leo Lucas, University of Nebraska livestock specialist; and Sandra Sims of the National Livestock and Meat Board, Chicago.

Exhibits will add to the interest of producers attending the Fairbury and Wausa sessions. All three programs are slated to get underway at 10 a.m. and conclude about 3 p.m.



Plug In Christmas Spirit

A Junction City lumber dealer had the Christmas spirit but he couldn't resist a commercial.

TEX REAL
ONWARD 951b

Cow Herd —
Royal Essar
C Kato, Heir
Apparent

SERVICEABLE BULLS
WITH WEIGHT RECORDS
Priced . . . \$300 to \$500

GRANT POOLE
MANHATTAN, KANS.
Located 4 mi. south of I-70-K177
intersection, 2 mi. west on Mc-
Dowell Creek Rd. Ph. PR 6-8315.

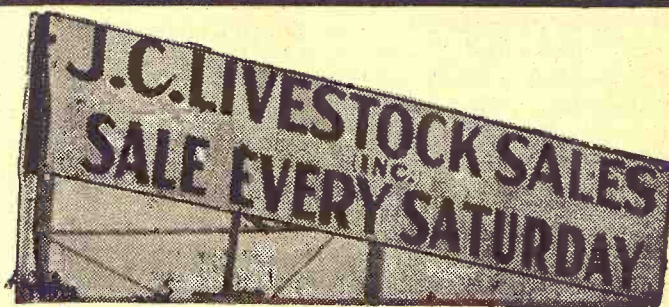
The Growing Hog Market Is At WASHINGTON SALES CO.

TRY US SOON
HOGS every TUESDAY
CATTLE every WEDNESDAY

YOU GET ACTION
AT THE WASHINGTON AUCTION

ED BURT

Barn Phone EA 5-2266 Residence EA 5-2393
Washington, Kans.



HOGS START AT 11:00 A.M. CATTLE AT 1:00 P.M.

Due to early press time for Grass & Grain, we can not give a full report on our sale last Saturday. However, we had one of the largest runs of hogs we've had in months, and they looked like they were selling on a pretty steady market.

The top on No. 1 butchers early in the sale was 17.90, a lot weighing 230 lbs.

Also, a large run of shoats which were selling at 19.00 per head and near that figure.

The cattle receipts looked pretty average, but we can not give you a market on them.

For this coming Saturday, Jan. 6, our first sale in the new year, we can assure our buyers of a very active sale. Consigned already last Saturday were 46 WF feeder steers weighing 775-825 lbs. Also consigned 60 head of white shoats 70-80 lbs., all vaccinated.

Next week you can expect our full market report as usual.

LICENSED AND BONDED
BARN PH. JUNCTION CITY CE 8-1471

If you have livestock to appraise, call:

VERN LANGVARDT, Manager, 502 UPLAND
HOWARD LANGVARDT, Auctioneer, 520 UPLAND
HERB NEUMEYER, White City, Phone 349-2863

Ronald Rice Motors, Inc.

CHEVROLET OLDSMOBILE CADILLAC
North Kansas' Largest Volume Dealer
NW 2nd Phone CO 3-4000 ABILENE, KANS.

RESOLVED . . .

You'll Trade Better
Every Day — Any Day at
North Central Kansas
Largest Volume Dealer

Like New — 1967 Demos

We are clearing the lots of all new demonstrator 1967 models that have low mileage and new car warranty left. We are selling these cars at LESS than our cost. This is your chance to own a like-new car at a used car price.

1967 CHEVROLET Caprice 4 Dr. Hardtop	\$2895
Radio, heater, automatic transmission, power steering, power brakes, air conditioner.	
1967 OLDSMOBILE Delta 88 4 Door	\$3295
Radio, heater, automatic transmission, power steering, power brakes, air conditioner.	
1966 OLDSMOBILE F-85	\$2295
Radio, heater, automatic transmission, power steering.	
1966 FORD Country Sedan 4 Dr. Wagon	\$2595
Radio, heater, automatic transmission, air conditioner.	
1964 VOLKSWAGEN 1500 Series	\$1495
Radio, heater, stick shift, with overdrive. This is a real economy car.	
1963 CHEVROLET Biscayne 4 Dr. 6 Cyl.	\$1095
Radio, heater, stick shift.	
1962 FORD Falcon Futura 2 Dr. Station Wagon	\$ 695
Radio, heater, automatic transmission.	

We Have Several
1968 Models IN Stock
FOR IMMEDIATE DELIVERY

Several Other Make And Models To Choose From
Also Plenty Of New Models

Open Evenings Till 9 p.m.
Sundays 1 to 5 p.m.

January 2, 1968



60 Years At Waterville Bank

G. T. Arganbright has completed 60 years at the Citizens State Bank at Waterville, Marshall County. He is now president of the bank.

Game Breeders Convention At Des Moines

SOLOMON — Several Kansas game breeders and shooting preserve operators will attend the 1968 annual convention and short course of the North American Game Breeders and Shooting Preserve Association, Jan. 8-10 at Des Moines, Ia.

The organization has members in 37 states and from provinces in Canada. The convention and short course will be open to the public, with main topics to center on game bird propagation, improved wildlife habitat, improved hunting, and increased recreation opportunities.

Bernie Janssen, Solomon hunting preserve owner, is a member of the Association's board of directors.

RIVERSIDE

HI-WAY TRACTION

37⁸⁸

8.25 x 20 PLUS 56.19 F.E.T. AND RECAPABLE CASING

RUGGED TREAD DELIVERS GOOD MILEAGE AT LOW INITIAL COST

A wise choice indeed! Tough nylon cord body resists bruises and flex fatigue to give you better performance and longer service. Extra-wide tread puts more rubber on the road for more mileage per dollar. Continuous tread rows with rib-slotting give your drivers 9-row traction efficiency without reducing wear.

HI-TRAK NYLON

42⁸⁸

8.25 x 20 PLUS 57.47 F.E.T. AND RECAPABLE CASING

REPLACEMENT LEVEL TIRE FOR ALMOST ANY KIND OF SERVICE

The old trucker recommends this tire for good traction at a low initial cost. It's made for heavy-duty work the year round. Modern tread design is wide and flat to deliver outstanding high-way mileage and amazing off-the-road performance. Buffering rim protects the rugged carcass for repeated recaps.

We have a good supply of used passenger tires at very reasonable prices.

825-20 Lug Tread, High Tread ONLY \$15.00

825-20 Hiway Type Fair \$5.00

900-24 Tractor Grader Tire — over 1/2 tread left ONE Only \$25.00

750-20 Cleet type truck tire — low tread TWO Only \$15.00

750-20 Truck tire, carcass only TWO Only \$5.00

900-20 Truck Tire — cross bar retread — 80% of tread left THREE Only \$25.00

8-22-5 Super all traction tread, new TWO Only \$25.00

750-16 8-ply Power Grip, High Tread \$25.00

700-15 — 6 ply Traction tread — 10% tread left TWO Only \$5.00

13-38 — 6 ply tractor tires — 30% tread left TWO Only \$25.00

16-9-34 — 6 ply tractor tires — 30% tread left TWO Only \$20.00

WARD'S TRUCK TIRE CENTER

1010 West 6th Junction City, Kan. CE 8-4350

Manhattan Commission Co., Inc. Sale Every Thursday

2 1/4 MILES EAST OF MANHATTAN ON US 24

Our last sale in 1967 ended very successfully with the market being higher on all classes of cattle. While the weather held back several consignments we still had a real good run of cattle for the holiday season, with the market being higher on all classes of cattle. We are expecting a good run of cattle for our first sale in January and will have plenty of buyers so if you have cattle to sell please contact some of us or bring them on in. Notice our cow market.

The following is a partial listing of our sale:

FAT CATTLE & FEEDERS		
6 whif steers	689 @	24.60
6 whiface steers	678 @	24.10
4 whiface steers	668 @	24.10
29 mixed steers	861 @	23.90
3 whiface steers	827 @	23.85
30 whiface steers	906 @	23.75
4 black steers	628 @	23.75
29 whiface steers	934 @	23.70
2 black steers	738 @	23.60
12 whiface steers	970 @	23.45
1 blkwhiface steer	845 @	23.30
2 whiface steers	825 @	23.25
2 blkwhiface str	898 @	23.20
3 black heifers	645 @	23.00
3 black heifers	643 @	22.50
6 whiface heifers	655 @	22.50
1 whiface steers	840 @	22.10
1 shthorn steer	870 @	22.00
3 black heifers	612 @	20.00
1 holstein steer	1120 @	19.50
1 holstein steer	1115 @	19.30

STEER CALVES		
1 holstein steer	595 @	20.30
3 black steers	467 @	23.50
4 black steers	569 @	24.00
4 whiface steers	563 @	25.35
5 black steers	539 @	26.20

1 whiface steer	495 @	26.20
3 whiface steers	448 @	27.25
1 whiface steer	430 @	27.00
1 whiface steer	380 @	28.75
12 black steers	349 @	30.80
5 whiface steers	367 @	30.00
2 whiface steers	403 @	30.00

HEIFER CLA		
HEIFER CALVES		
8 whiface heifers	404 @	26.00
4 whiface heifers	380 @	25.30
6 blkwhif heifers	339 @	25.10
6 black heifers	417 @	24.60
4 black heifers	375 @	24.40
5 black heifers	523 @	23.60
2 whiface heifers	380 @	23.60
6 black heifers	523 @	23.10

BULLS		
1 whiface bull	1305 @	20.80
1 whiface bull	755 @	23.75
1 black bull	1265 @	20.40

COWS		
1 holstein cow	1565 @	17.70
1 holstein cow	1450 @	17.70
1 holstein cow	1290 @	17.70
1 holstein cow	1170 @	17.70
1 holstein cow	1595 @	17.60
1 holstein cow	1385 @	17.50
1 holstein cow	1245 @	17.50
1 whiface cow	1220 @	17.40
1 holstein cow	1335 @	17.40
1 whiface cow	1225 @	17.40
1 whiface cow	1095 @	17.10
1 whiface cow	925 @	17.00
1 holstein cow	1375 @	16.90
1 whiface cow	1070 @	16.90
1 holstein cow	1330 @	16.80
1 whiface cow	1110 @	16.70
1 holstein cow	1300 @	16.70
1 holstein cow	1545 @	16.70
1 whiface cow	1005 @	16.70
1 whiface cow	890 @	16.70
1 whiface cow	1200 @	16.60
1 brindle wf cow	1050 @	16.60
1 holstein cow	1355 @	16.50
1 whiface cow	1085 @	16.50
1 black cow	1005 @	16.30

1 holstein cow	1145 @	16.00
1 whiface cow	1045 @	15.90
1 black cow	890 @	15.90
1 holstein cow	1330 @	15.90
1 black cow	935 @	15.80
1 holstein cow	1205 @	15.80

1 holstein cow	1410 @	15.60
1 whiface cow	1240 @	15.40
1 whiface cow	960 @	15.30
1 holstein cow	1185 @	15.30
1 holstein cow	1445 @	15.25
1 holstein cow	1390 @	15.10



FOR ESTIMATES

W. E. DUGAN — Alta Vista, 229-6430
JOE RAINE — Maple Hill, 663-2226
DON WELLS — Manhattan, JE 9-3744
MERVIN SEXTON — Abilene, CO 3-3449
C. J. WENTZ, bus. mgr. Manhattan, JE 9-5561

BARN PHONE — Manhattan, PR 6-4815

Consignment Reports
WIBW radio 6:30 A.M. Thursdays
WIBW-TV 12:15 Noon Wednesdays

BUYING

FAT HOGS

We buy fat hogs daily at the Manhattan Commission Co., Inc., sale barn. We buy direct with no commission to the seller.

BUYING HOURS:

Mondays thru Fridays 8 a.m. to 4 p.m.
Saturdays 8 a.m. to 2 p.m.
Manhattan PR 6-4815

WE ARE ALSO BUYING FAT HOGS AT THE W. E. DUGAN YARDS ALTA VISTA SATURDAYS 8 a.m. to 3 p.m.
Phone Alta Vista 229-6430 or Manhattan PR 6-4815

AT ALMA & ESKRIDGE EVERY WEDNESDAY

From 8 a.m. to 1 p.m.

Please do not bring hogs to for sale on Thursday afternoon, as we will be having large runs of cattle and you might not be able to unload and they will get hot on you.

For information call the barn in Manhattan, PR 6-4815. In Alta Vista, W. E. Dugan, 229-6303. Or you may call Joe Raine at Maple Hill MI 3-2226 or Eskridge Yard 443-2347.

The Manhattan Commission Co., Inc.

MANHATTAN, KANSAS

East On US 24

Auctioneers: Joe Raine and Dale Feil

Biggest Pig Crop Since '43

— And More Yet In 1968

The Kansas pig crop for 1967 is estimated at 2,463,000 head, an increase of 10 percent from 1966 and the largest since 1943, according to the Kansas Crop and Livestock Reporting Service.

The spring pig crop (December-May) totaled 1,265,000 head and the fall crop (June-November) was 1,198,000 head. The spring crop was 11 per cent above 1966 while the fall crop was up 8 percent.

Sows farrowed during the September-November quarter of 1967 totaled 86,000 head compared with 81,000 head a year earlier.

Pigs per litter averaged 7.56 compared with 7.51 last year and the 1961-65 average of 7.43 for this quarter. The pig crop for this quarter was 650,000

head, up 7 percent from a year earlier.

Intended spring farrowings of sows on Kansas farms during the December 1967-May 1968 period are forecast at 173,000 head compared with 168,000 head during the spring of 1967.

The December-February farrowings are forecast at 74,000 head, 6 percent more than in 1967 and the largest number for this quarter in records dating back to 1950.

For the March-May quarter, some 104,000 sows are expected to farrow, 6 percent over 1967 and the largest number since 1963. The indicated Kansas 1968 spring pig crop, at 1,344,000 head, if realized, will be 6 percent above the previous year and 15 percent above the 1961-65 average.

Hogs and Pigs

on Farms December 1

There were 1,578,000 head of hogs and pigs on Kansas farms on December 1, 1967. This is 5 percent more than a year earlier and 14 percent above the 5-year average.

Breeding hog numbers totaled 252,000 head while those being kept for market purposes totaled 1,326,000 head.

The weight distribution for market hogs was as follows: 530,000 under 60 pounds; 345,000 in the 60-119 pound range; 252,000 weighed 120-179 pounds; 146,000 in the 180-219 pound group; and 53,000 weighed 220 pounds or over.

United States

The 1967 National pig crop totaled 91,310,000 head, 4 per cent more than the 1966 crop of 87,563,000 head. The 1967 spring pig crop at 48,360,000 head was up 6 per cent and the fall crop at 42,950,000 head was up 2 percent compared with a year earlier. The number of pigs saved per litter this fall, at 7.38 compared with 7.25 a year ago.

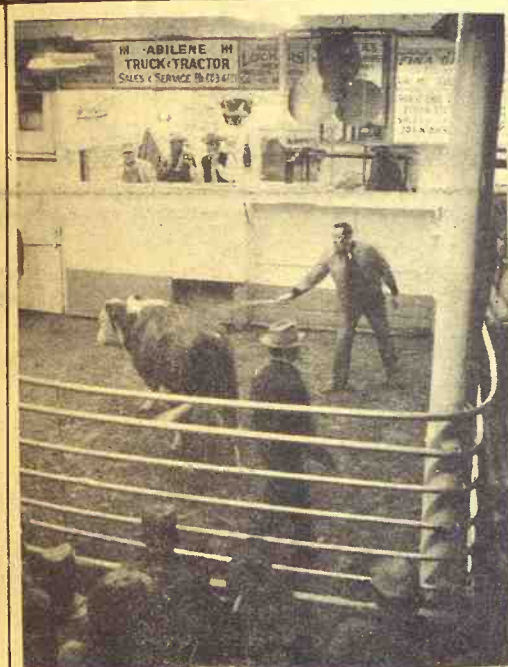
Farmer intentions point to the U.S. 1968 spring farrowings of 6,522,000 sows, 1 percent below 1967. If these farrowings materialize and if the number of pigs saved per litter is average, with allowances for up-trend, the nation's 1968 spring pig crop will total 47,900,000 head or 1 percent less than the 1967 spring crop.

Year	SPRING (Dec. through May)				FALL (June through Nov.)				Total
	Sows	Pigs	Pigs per Litter	Crop	Sows	Pigs	Pigs per Litter	Crop	
KANSAS	(1,000)	(1,000)	(1,000)	(1,000)	(1,000)	(1,000)	(1,000)	(1,000)	(1,000)
1961-65 Av.	160	7.29	1.166	132	7.38	974	2,140		
1966	153	7.45	1.140	150	7.39	1,108	2,248		
1967	168	7.53	1.265	159	7.53	1,198	2,463		
1968	178	7.55	2/1,344						
UNITED STATES									
1961-65 Av.	6,720	7.17	48,171	5,707	7.22	41,200	89,371		
1966	6,201	7.32	45,422	5,811	7.25	42,141	87,563		
1967	6,591	7.34	48,360	5,820	7.38	42,950	91,310		
1968	6,522	7.35	2/47,900						

1/ Spring farrowings indicated from breeding intentions reports.

2/ Average number of pigs per litter with allowance for trend used to compute indicated number of spring pigs.

3/ December previous year.



Reynolds Sale Barn

ABILENE, KANS.

Selling Every
FRIDAY AFTERNOON

Starting At 1:00 P.M.

An exceptionally good run of cattle and big crowd made the last sale of 1967 very successful all the way through. Prices looked steady to strong last week. The following is a sampling of the sale:

BULLS	
1 bull-----	1460 @ 21.50
1 bull-----	1515 @ 19.00
1 bull-----	630 @ 24.80
2 bulls-----	552 @ 24.05

COWS	
1 cow-----	830 @ 19.30
1 cow-----	1065 @ 17.00
3 cows-----	1006 @ 16.30
6 heiferettes-----	811 @ 19.70
1 heiferette-----	935 @ 21.20
1 heiferette-----	1010 @ 19.40
1 cow-----	1140 @ 16.10
7 cows-----	901 @ 15.10
1 cow-----	1210 @ 15.10
1 cow-----	1280 @ 15.00
1 cow-----	1300 @ 16.20
1 cow-----	1215 @ 16.20
2 cows-----	1057 @ 16.15
1 cow-----	1360 @ 16.20
1 cow-----	1590 @ 16.00
1 cow-----	1295 @ 16.00
1 cow-----	1520 @ 15.00
1 cow-----	1300 @ 16.50
2 cows-----	1265 @ 16.10
1 cow-----	1360 @ 16.40

STOCKER & FEEDER HEIFERS	
8 black heifers--	460 @ 24.60
5 black heifers--	432 @ 24.30
3 black heifers--	530 @ 22.90
2 whiface heifers	512 @ 23.50
3 black heifers--	528 @ 23.20
7 whiface heifers	640 @ 22.70
3 whiface heifers	645 @ 23.10

Already listed for Friday, January 5, 1968 are; 35 registered Angus heifers, 400 to 600 lbs.; 32 Angus steers, 400 to 700 lbs.; 2 registered coming 2 year old Angus bulls at 900 lbs.; 1 registered charlois bull; 56 mixed steers and heifers weighing 550 to 650 lbs.; 45 Angus and black-whiteface Angus at 500 lbs.; 85 feeder steers at 800 lbs.

STOCKER & FEEDER STEERS	
3 black steers---	478 @ 28.70
1 red steer-----	415 @ 28.20
3 whiface steers--	630 @ 25.20

For information, requests for appraisals at no obligation, or inquiries regarding coming sales, call me at any time, day or night.

CO 3-3394

DUDE REYNOLDS Abilene, Kans.

Bring your cattle in at any time day or night; we'll handle them for you at your request.

Fertilizer Now A Health Threat?

Certain nitrogen products from farm fertilizers may be getting into store-bought baby foods and killing some youngsters, a biologist has reported, but he's not certain.

"I am not a medical expert," said Dr. Barry Commoner of Washington University in St. Louis. "The hazards may be minimal but it ought to be looked into."

In a speech to the American Association for the Advance of Science, Commoner said the nitrogen product nitrate, which gets into foods via fertilizers, is considered usually harmless to the body. But under certain conditions, he added, bacteria in the intestines can change nitrate to nitrite, and that nitrite can decrease the ability of the blood factor hemoglobin to carry oxygen. This could lead to insufficient oxygen, especially in infants, causing them to take on a pale blue appearance, or even kill them, he said.

Weather Hazes Federal Farm Planners Too

Crop-control officials, like farmers, are finding that the weather can cause the best-laid plans to go awry.

And like the farmer, the officials do not hesitate to complain about the weather man when too much or too little rain, frosts, winds and other actions of the elements force farm production pattern out of line with official planning.

Such was the case this year with a weather-plagued cotton crop that turned out to be the smallest since 1895 and tossed a

monkey wrench into Agriculture Department planning for next year.

Reaction Given

Official reaction has come from Undersecretary of Agriculture John A. Schnittker who has direct supervision over government crop-control and production-adjustment programs.

Schnittker has taken sharp exception to news reports concerning the very short cotton crop and the possibility that the government may have to revise provisions of its already announced cotton-control program for 1968. The undersecretary says these news accounts have failed to put the proper amount of blame on the adverse effect this year's weather had on the crop.

There are at least two ways the weather factor can be viewed from the standpoint of its influence on results of government programs.

One, of course, is the position that the government should not be held accountable when the elements turn unfavorable and upset official calculations.

The other is the position that the government can be held accountable because the weather, along with market prospects, is a factor that the government must make a judgment on in telling farmers how many acres they should plant to help balance production demands.

SECOND ANNUAL Consignment MACHINERY AUCTION

Last week in January. Please arrange consignments by Jan. 10.

Don Ehram, Mgr.
BERN, KANS.

Sale Every Thursday

Hogs 11:30 a.m.
Cattle 1 p.m.

Our last sale of 1967 found a market steady on cows and feeders, but 25-50¢ lower on calves. Fat hogs were 25-50¢ higher than last week, with a top of \$18.35. Stock pigs were steady to strong. Following is a listing of some of our consignments:

FAT CATTLE & FEEDERS

1 black steer-----	560 @ 26.25
1 blkwhif steer-----	540 @ 25.80
1 blkwhif steer-----	560 @ 25.10
9 black steers-----	698 @ 25.00
1 whiface steer-----	625 @ 24.80
2 whiface steers-----	557 @ 24.60
1 whiface heifer-----	585 @ 24.10
2 black heifers-----	507 @ 24.00
1 whiface steer-----	505 @ 23.80
1 whiface steer-----	645 @ 22.80
4 black heifers-----	572 @ 22.60
1 blkwhif steer-----	595 @ 22.50
1 whiface heifer-----	505 @ 22.20
2 holstein steers-----	615 @ 20.50
3 holstein steers-----	750 @ 20.30
1 holstein steer-----	795 @ 19.80
1 whiface heifer-----	720 @ 15.10

HEIFER CALVES

1 roan heifer-----	415 @ 24.50
1 whiface heifer-----	400 @ 24.50
1 black heifer-----	355 @ 24.40
1 whiface heifer-----	470 @ 23.80
1 whiface heifer-----	390 @ 22.10

HOGS

2 berks hogs-----	240 @ 18.35
5 black hogs-----	211 @ 18.30
22 mixed hogs-----	241 @ 18.25
27 mixed hogs-----	237 @ 18.25
21 red hogs-----	233 @ 18.05
11 mixed hogs-----	206 @ 17.75
1 hamp hog-----	290 @ 17.50

SOWS

1 red sow-----	365 @ 14.55
8 white sow-----	396 @ 14.20
1 red sow-----	475 @ 13.70
2 mixed sows-----	505 @ 13.40
1 white sow-----	535 @ 13.20

BOARS & PIGS

1 hamp boar-----	335 @ 16.75
1 white boar-----	390 @ 11.70
1 white boar-----	455 @ 9.50
1 berk boar-----	495 @ 9.10
6 hamp feeders-----	138 @ 19.50
8 mixed feeders-----	126 @ 18.90
12 hamp pigs-----	16.75 hd
28 mixed pigs-----	16.50 hd
31 spotted pigs-----	13.50 hd
17 hamp pigs-----	13.50 hd

COWS

1 guernsey cow-----	1480 @ 17.10
1 blkwhif cow-----	1365 @ 16.20
1 whiface cow-----	1305 @ 16.00
1 holstein heifer-----	1305 @ 15.80
1 holstein cow-----	1055 @ 15.50
1 whiface cow-----	1070 @ 15.20

BULLS

1 black bull-----	1125 @ 18.80
-------------------	--------------

BULL & STEER CALVES

2 whiface steers-----	322 @ 27.75
2 whiface steers-----	450 @ 27.60
2 whiface steers-----	435 @ 26.60
2 whiface bulls-----	500 @ 26.10
1 blkwhif steer-----	285 @ 26.00
2 whiface steers-----	423 @ 25.50
1 black bull-----	425 @ 25.30
1 whiface steer-----	460 @ 25.00
1 whiface steer-----	460 @ 23.80

RALEIGH BREEDING, MANAGER

barn HI 3-3671; home HI 3-3547

Auctioneer: Larry Lagasse,
Ph. Concordia, Kans. CH 3-1714

Marysville

LIVESTOCK & COMMISSION CO.
MARYSVILLE, KANSAS

Sell At St. Marys

Sell Or Buy Cattle & Hogs By Auction Tuesdays

We had light receipts due to the Christmas Holidays. Stock cattle weighing 500 pounds adn down were steady. Feeder cattle weighing y00 to 900 pounds were 25¢ to 50¢ lower. All grades of killing cows were steady.

We would like to wish all of you a Very Happy New Year.

The following is a partial listing of our last sale.

STOCKER & FEEDER STEERS

3 black steers	640 @	24.70
7 whifce steers	694 @	24.40
2 blkwhif steers	557 @	24.10
14 mixes steers	644 @	24.00
14 bl&blkwhif steers	843 @	23.90
3 whifce steers	573 @	23.90
2 blkwhif steers	670 @	23.80
1 blkwhif steer	695 @	23.60
5 black steers	617 @	23.60
11 mixed steers	705 @	23.20
6 black steers	760 @	23.10
2 whifce steers	862 @	23.00
1 whifce steer	920 @	23.00
7 mixed steers	755 @	22.70
7 mixed steers	615 @	22.70
3 bl&blkwhif steers	946 @	22.60
1 whifce steer	745 @	22.50
2 black steers	937 @	22.50
6 black steers	830 @	22.50
3 black steers	640 @	22.10
1 whifce steer	920 @	21.70
1 blkwhifce steer	800 @	21.00
1 black steer	860 @	21.00

1 blkwhifce steer	565 @	20.30
1 guernsey steer	675 @	19.25
2 holstein steers	617 @	19.10
2 holstein steers	617 @	19.10
8 holstein steers	828 @	18.70

STEER CALVES

1 black steer	290 @	28.70
1 whifce steer	255 @	28.30
1 blkwhifce steer	410 @	27.80
1 whifce steer	285 @	27.60
1 whifce steer	495 @	26.80
5 whifce steers	480 @	26.60
2 black steers	390 @	26.50
1 blkwhifce steer	265 @	26.40
1 roan whifce steer	490 @	25.60
1 black steer	490 @	25.30
3 shorthorn steers	418 @	24.90
1 black steer	345 @	24.90
1 black bull calf	360 @	24.80
1 black steer	410 @	24.30
1 blkwhifce steer	400 @	22.70
1 black bull calf	440 @	22.10

STOCKER & FEEDER HEIFERS

1 whifce heifer	560 @	22.75
2 whifce heifers	595 @	22.20
16 mixed fat heifers	948 @	21.50
2 black heifers	590 @	20.70
1 whifce heifer	640 @	20.60

15 mixed heiferets	1041 @	20.50
6 whifce heifers	986 @	20.10
4 mixed heiferets	1221 @	19.00
3 black heifers	650 @	18.60
1 blwhifce heiferet	1040 @	17.10
1 whifce heiferet	1165 @	17.10
1 roan heiferet	1040 @	17.10
1 bri heiferet	1090 @	16.60
1 red heiferet	1105 @	16.60
1 whifce heiferet	1165 @	16.50
1 whifce heiferet	1190 @	15.60
1 blue roan heiferet	1060 @	15.80
1 roan heiferet	1150 @	15.10

HEIFER CALVES

1 black heifer	220 @	24.50
1 blkwhifce heifer	300 @	24.20
3 whifce heifers	351 @	24.00
5 black heifers	305 @	23.50
1 whifce heifer	395 @	23.00
4 whifce heifers	467 @	23.00
1 whifce heifers	470 @	22.80
4 whifce heifers	438 @	22.70
1 blackwhifce heifer	370 @	22.70
1 red heifer	415 @	22.50
1 black heifer	510 @	22.30
1 red heifer	545 @	22.10
1 whifce heifer	520 @	21.90
2 blackwhifce heifers	480 @	21.70
1 whifce heifers	520 @	21.25

2 black heifers	505 @	20.35
1 spotted heifer	550 @	20.25
1 black heifer	420 @	20.30
1 red heifer	480 @	20.00
1 whifce heifer	400 @	19.25
1 whifce heifer	520 @	19.10
1 whifce heifer	485 @	19.10
1 whifce heifer	420 @	18.10

COWS

2 whifce cows	1012 @	16.10
1 charlois cow	1260 @	16.00
1 holstein cow	1390 @	16.00
1 roan whifce cow	985 @	16.00
1 whifce cow	1020 @	16.00
1 black cow	980 @	15.80
1 whifce cow	1355 @	15.55
2 black cows	1162 @	15.55
4 whifce cows	1095 @	15.45
1 black cow	1180 @	15.40
1 whifce cow	1020 @	15.40
1 whifce cow	1080 @	15.05
1 holstein cow	1725 @	15.05
1 black cow	770 @	14.70
1 spotted cow	775 @	14.10
1 whifce cow	905 @	12.60
1 whifce cow & calf	@	220.00

For Information or Estimates

Rezac Barn	St. Marys 437-2999
Delaine Rezac	St. Marys 437-6266
Elmer Imthurn	Maple Hill MI 3-2440
Paul Kramer	St. Marys 437-2993

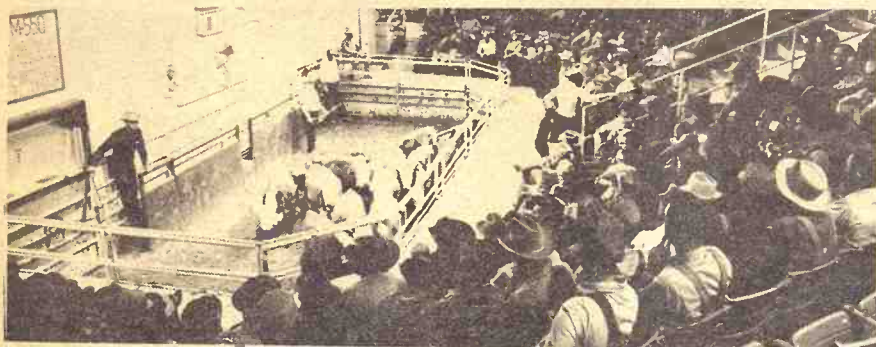
Auctioneers: Lawrence Welter, Gene Toby

LIVESTOCK COMMISSION COMPANY

Rezac



St. Marys, Kans.



Because of the Holiday on Monday, we had only one sale last week. We did sell 1058 cattle, despite the stormy weather, on Thursday. The market was very active on all classes and looked about steady with the week before. Wishing everyone a Happy and Prosperous New Year.

Here are some sales made last week:

Harvey Koehn, Canton	3 hol str	906 @	19.20
Oscar Rosebrook, Culver	1 whif cow	1315 @	14.50
Oscar Rosebrook, Culver	1 whif cow	1100 @	12.60
Robert Gepner, Morganvil	1 char str	1075 @	20.00
Robert Gepner, Morganvil	2 whif str	887 @	23.10
Ray Stoffer, Salina	1 br sws cw	1210 @	14.20
Larry Johnson, Assaria	1 whif cow	1100 @	13.50
Richard Burnison, Mrqt.	1 char cow	1490 @	16.20
Richard Burnison, Mrqt.	1 whif str	410 @	28.00
Richard Burnison, Mrqt.	1 whif str	515 @	26.80
W.D.Frey, Marquette	1 hol cow	1165 @	15.70
W.D.Frey, Marquette	1 hol cow	1275 @	15.80
Metford Hein, Hillsboro	56 mx hfrs	800 @	22.68
Wilber Daily, Solomon	2 red bulls	422 @	26.30
Wilber Daily, Solomon	3 red hfrs	462 @	23.00
L.J.Claussen, Ellsworth	1 whif cow	960 @	13.80
Dale Becker, Gypsum	7 blwf str	421 @	28.20
Merle Neaderhiser, Lngfd.	1 whif cow	1070 @	13.10
Merle Neaderhiser, Lngfd.	1 whif cow	1010 @	13.30
Riverside Angus Frms,Lds.	3 blk bulls	@	170.00
Riverside Angus Frms,Lds.	3 blk bulls	@	165.00
Deidrich Farms	6 hol bulls	533 @	21.00
Deidrich Farms	3 hol str	660 @	20.70
E.R.McCool	58 whif cows	@	197.00
Katy Jantz, Tampa	1 whif hfr	360 @	24.80
Katy Jantz, Tampa	2 whif hfrs	400 @	24.50
Ralph Vitah, Kanapolis	6 mixed str	640 @	25.30
Ralph Vitah, Kanapolis	4 blkwf str	702 @	23.60
D.G.Koons, Lindsburg	4 whif str	468 @	26.00
D.G.Koons, Lindsburg	3 whif hfrs	505 @	23.50

Hindrich Nelson, Burdick	11 hol str	608 @	21.30
Hindrich Nelson, Burdick	13 hol str	913 @	19.80
Roy Peterson, Burdick	1 hol str	940 @	22.50
Roy Peterson, Burdick	1 black str	920 @	23.00
Roy Peterson, Burdick	1 whit str	890 @	22.30
Johnny Nickle, Canton	3 hol str	466 @	23.50
Leonard Rudolph, L.Spgs.	5 hol str	639 @	21.30
Pete Rudolph, Marion	4 rd&rn str	678 @	23.90
Noel Croy, Ellsworth	7 blwf str	425 @	28.40
Noel Croy, Ellsworth	8 blwf hfrs	387 @	24.50
Dale Becker, Gypsum	7 blwf str	421 @	28.20
Vernon Applequist, Slmn	11 blwf str	632 @	25.50
Vernon Applequist, Slmn	4 blwf str	751 @	24.70
Leonard Belton, Tampa	21 blwf str	960 @	23.10
Leonard Belton, Tampa	9 blwf str	1087 @	22.60
Jack Parks, Salina	32 blwf str	811 @	24.05
Jack Parks, Salin	10 rd&rn str	684 @	24.65
Carl Shores, Culver	50 whif str	450 @	29.60
Carl Shores, Culver	26 whif hfrs	447 @	24.50
Carl Shores, Culver	43 whif hfrs	582 @	22.75
Wallace Todd, Oak Hill	9 whif str	788 @	23.90
Wallace Todd, Oak Hill	3 whif str	915 @	22.95
Schneider Bros., Salina	1 hol cow	1485 @	12.60

Schneider Bros., Salina	1 hol cow	1450 @	14.10
Billy Olson, Lincoln	1 whif cow	1025 @	13.10
Karl Klatt, Canton	1 whif str	420 @	26.90
Karl Klatt, Canton	1 whif str	335 @	26.50
Richard Pieschl, Minn.	1 hol cow	1465 @	15.30
John Gentry, Herrington	1 whif bull	1495 @	19.70
Carl Pichrell, Minn.	1 whif cow	1010 @	12.60
Carmen Siler, Wells	1 jer cow	1035 @	15.25
Carmen Siler, Wells	1 black cow	785 @	16.20
Bruce Boll, Delphos	1 red bull	585 @	22.60
Sammy Litte, Ellsworth	1 whif bull	1420 @	19.00
LeRoy Klatt, Canton	1 whif str	405 @	26.90
LeRoy Klatt, Canton	1 whif str	400 @	26.40
Ernest Mattas, Wilson	1 hol str	290 @	25.50
Marlin Pacinarreke, Tampa	3 wf str	333 @	30.00
Marlin Pacinarreke, Tampa	4 wf hfrs	340 @	24.60
Rocky Nickel, Canton	2 blk str	515 @	25.10
Emery Frost, Solomon	1 blk bull	1515 @	21.30
Charles Carlson, Burdick	6 whif str	686 @	24.30
Charles Carlson, Burdick	12 whif str	807 @	23.60
Charles Carlson, Burdick	7 blkwhif str	828 @	23.65
Charles Carlson, Burdick	11 red str	875 @	23.50
Albert Blythe, White City	31 whif hfrs	791 @	22.80

FOR INFORMATION OR ESTIMATES
LAURENCE CLEMENCE
Abilene Phone CO 3-3091
MERRILL CHRISTIANSEN
Durham Phone 732-3371
BOB MUIR
Salina Phone TA 3-2963

Market Reports
Radio Station KSAL, Salina
6:45 a.m. Every
Monday, Wednesday & Friday
KFRM
6:55 a.m. Mon. through Fri.

Farmers & Ranchers
LIVESTOCK COMMISSION CO.



West on old US 40
Barn Phone
913 TA 5-0211 SALINA, KS.

Bonded • Licensed