



RECEIVED

April, 1966

15 Cents

APR 11 1966
KANSAS 4-H

THE LEE-KE
KANSAS STATE UNIVERSITY

Journal

The 4-H Family Magazine

Kansas 4-H Foundation, Inc., Publisher



SUTHERLAND

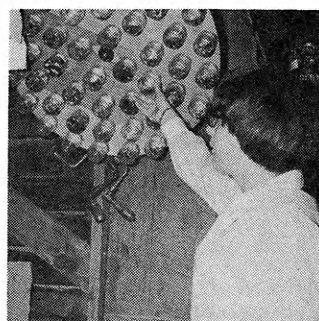
Salutes 4-H Woodworking

Let June Bechelmayr, Chase county, show you some of the many ways she has used her skills in woodworking to help with her 4-H home economics projects and for family enjoyment, to prove that 4-H Woodworking is

FOR

GIRLS

TOO!



WOODWORKING IS

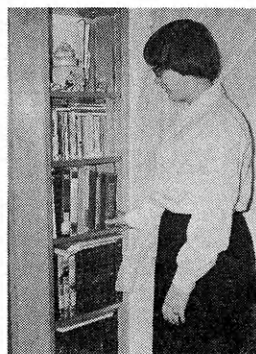
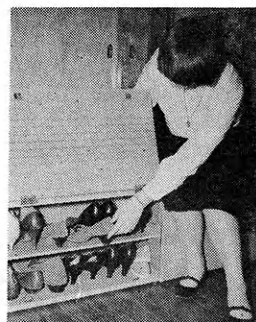
a project that teams well with other 4-H projects.

June shows, clockwise, a bulletin and memory board useful in her study center, a planter and patio bench for beautification and outdoor living, nail and screw storage for the shop, shoe storage for her closet, and bookshelves for her room.

On a tour of the Bechelmayr home one could also see a sewing stand, a visual aid stand for talk visuals, bathroom storage shelves, and a chopping board cabinet top in the kitchen, all made by June.

June has given talks on finishing wood and has been assistant superintendent in woodworking at the fair. She is president of the CWF 4-H Club.

Future projects planned by June include a walnut curio cabinet, trophy case and refinishing a love seat.



The Sutherland Lumber Company is indeed proud to be able to play a small part in the all important 4-H program and particularly in the woodworking division. It has been Sutherland's privilege to provide medals for county winners and sponsor the Kansas winner to the National 4-H Club Congress.

SUTHERLAND LUMBER CO.

1901 Wyoming
Kansas City, Missouri

522 East 21st Street
Wichita, Kansas

East across the street from the American Royal Building Just west across tracks from Live Stock Exchange Building

Letter

Dear Editor:

As a high school counselor, I wish to express my sincere thanks and appreciation for your annual Education and Careers issue—February, 1966. It contains a wealth of up-to-date information which is helpful to both counselors and students.

I am particularly interested in pages 26-27 titled Kansas 4-Year Colleges . . . I have Juniors and will continue with them through their Senior year, and I feel this information will be most helpful to them.

Lorene Stone
Counselor
South High School, Wichita



Vol. XII, No. 4

April, 1966

IN THIS ISSUE

FEATURES

<i>Teaching Boys and Girls in 4-H: Developing Values</i>	6
<i>State 4-H Leaders Conference Album</i>	10
<i>Find Out If You're Man Enough for the Peace Corps</i>	11
<i>Kansas Health Museum; Focus on Fourth "H"</i>	12
<i>Home Economics Hospitality Day at K-State</i>	13

DEPARTMENTS

<i>Family Fun Page</i>	5
<i>Recreation for 4-H Projects Meetings</i>	9
By Dick Tomkinson	
<i>Ideas That Work and Ideas In Brief</i>	18

Don Esslinger Editor

Editorial and Business Office

Phone JE 9-2211 Ext. 208
Manhattan, Kansas

Published Monthly By

KANSAS 4-H FOUNDATION, INC.

J. Harold Johnson.....Executive Director
Merle Eyestone.....Associate Director

BOARD OF TRUSTEES

Governor William H. Avery
Honorary Chairman

W. Dale Critser, Chrm.	Wichita
E. B. Shawver, Vice Chrm.	Wichita
Balfour S. Jeffrey, Treas.	Topeka
*Harry Darby	Kansas City
Mrs. Olive Garvey	Wichita
Clifford Hope	Garden City
A. D. Jellison	Junction City
Harold E. Jones	Manhattan
J. J. Moxley	Council Grove
George B. Powers	Wichita
Roger E. Regnier	Manhattan
N. T. Veatch	Kansas City
Dolph Simons	Lawrence
*Lester Weatherwax	Wichita
†Fred D. Wilson	Andover
*Advisory Members	
†Trustees Emeritus	

Second Class Postage Paid at Lawrence, Kansas. Return Form 3579 to Kansas 4-H Journal, Manhattan, Kansas.

Advertising rates and circulation data on request.

Group subscriptions \$1.00 per year.
Individual subscriptions \$1.50 per year.
Single copy 15 cents.

Use of the 4-H name and symbol approved by the Secretary of Agriculture of the United States, January 23, 1951, under the provisions of the law as reenacted by Sec. 707 of the Act of June 25, 1948 Public Law No. 772, 80th Congress (10 USC 797)

Our Cover

MY BOTTLE-FED BABIES

How would you like to feed nine extra always hungry mouths four times a day? Well, we did it.

The sudden death of a sow when her piglets were three days old left my Dad and I with the responsibility of raising the orphans.

Our veterinarian gave us a balanced formula of milk, lime water, cream and brown sugar. We were in luck for we milk cows and were separating so had the basic ingredients.

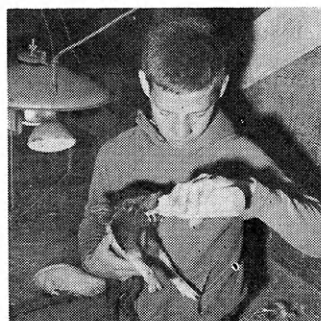
Wow! Talk about a pig's appetite—even at one week they were fighting for the first bottle. We needed gloves to protect us from their teeth when they fought to be fed. Chicken crates were useful pens for isolating them at feeding time.

With the arrival of my 4-H chickens we had to vacate the brooder house, so I caught them and moved them to the farrowing and weaning pens—but as fast as I put them in, they came out! They were still so tiny they crawled between the boards, so we corrected this and raised all nine of them in their new home.

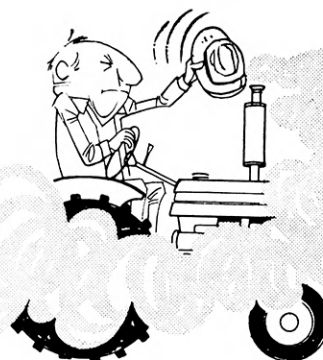
I purchased two additional pigs for my 4-H market pig project because I was afraid the bottle pigs might be stunted. I received champion of the breed with the substitutes, but the nine fat porkers brought top price at the market.

As a 4-H project, pigs have taught me a lot about their nature and how much fun they really can be if you can avoid their little sharp teeth.

Henry Diehl, Age 14
Brookville, Kansas



waste-deep in diesel smoke?



not if you're using CO-OP PINK DIESEL with MP-D



Excessive diesel exhaust smoke is a sign that sticky injectors are robbing your tractor of full productive power and you of precious fuel dollars. It also warns that serious maintenance problems may strike soon . . . perhaps in the middle of spring work.

But even if your diesel's not a heavy "smoker," your Co-op has proof that great things will happen when you switch to CO-OP Pink Diesel with MP-D. It's a free "showdown" demonstration with MP-D that has been astounding farmers. Your Co-op Petroleum Salesman just adds a few ounces of MP-D to the fuel that's already in your diesel's tank. Then you take your tractor twice around your field with regular spring plowing or planting.

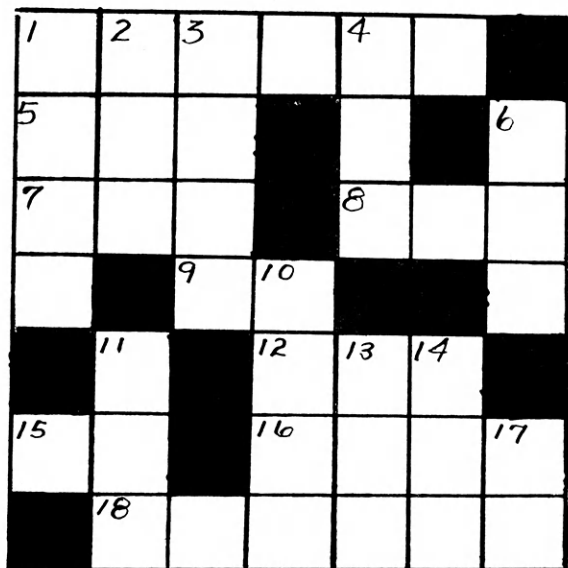
You'll know the results of this eye-opening test . . . and quick! You'll watch the black smoke vanish, and you'll feel the surge of renewed power as MP-D flashes to work, eliminating dirt, gum and varnish deposits from sensitive fuel injectors. You'll enjoy full, clean combustion . . . aggressive new engine power . . . vital dollar-saving efficiency. And these advantages continue for as long as you use CO-OP Pink Diesel with MP-D.

MP-D also lubricates as it cleans . . . builds a continuous, protective barrier against rust and corrosion. Engines perform many hours longer before injector cleaning or overhaul is needed. But see for yourself in your own engines. Call your Co-op today!



More Power Delivered where it counts

© 1966 CONSUMERS COOPERATIVE ASSOCIATION



CROSSWORD ACROSS

1. Polite request
5. Showed the way
7. Indian
8. Trap or snare
9. North Borneo (abbreviation)
12. Night bird
15. Musical note
16. Foot digits
18. Place of learning

DOWN

1. Fruit
2. Allow
3. Adam and Eve's home
4. Heavenly body
6. Pig's home
10. The two of them
11. Belonging to that boy
13. Seek to marry
14. Durocher
17. Santa Lucia (abbreviation)

Did you hear about the man who spent \$500 getting rid of his halitosis, only to find out he never had any friends in the first place?

Patty Douthit
Baxter Springs

Jill: Do you think anyone can predict the future with cards?

Will: My mother can. She takes one look at my report cards and then tells me exactly what will happen when my dad gets home.

Marc Porter
Wichita

An ancient tablet written in Sanskrit, circa 400 B. C., tells of a mystic who vowed to learn the secret of life-without-food. But, just as he was catching onto the trick of how to live without eating, he died.

Sign in a meat department of a supermarket:
"T-bone 25 cents—with meat \$3.

People are lonely because they build walls instead of bridges.

Editor's Note: Send in your favorite joke. We will give you credit for sending it in and we can let many others enjoy this joke and puzzle page. . . . Send to Kansas 4-H Journal, Manhattan, Kansas.

KANSAS TREE SCRAMBLE

About 150 different varieties of trees grow in Kansas. Most of them are native. See if you can unscramble the names of these trees:

- | | |
|-------------|------------------|
| 1. Sah | 7. Bedrud |
| 2. Pelam | 8. Wonototocd |
| 3. Kao | 9. Dowgodo |
| 4. Scutol | 10. Tapalac |
| 5. Breckahy | 11. Yenho Csuolt |
| 6. Mle | 12. Liowlw |

Jerry: What does Batman use when he writes letters?

Mark: Hmm Beats me.

Jerry: He uses the alpha-BAT

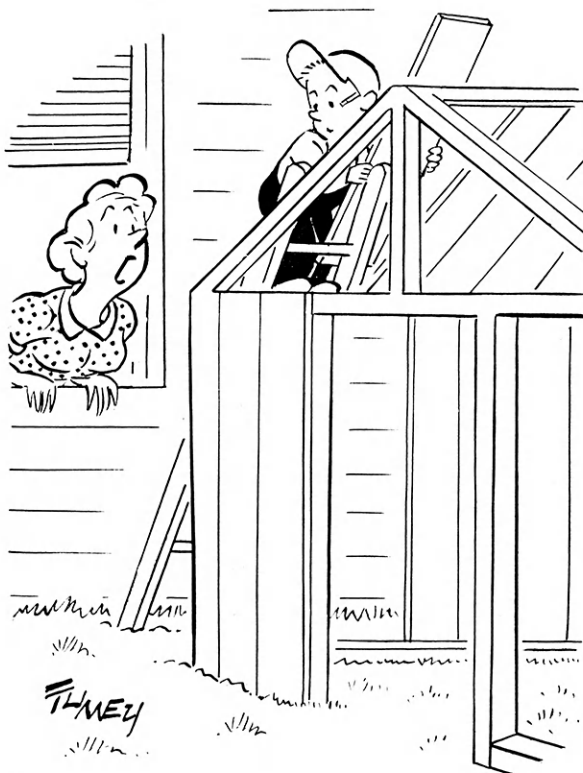
Virginia Woods
Mayetta

Worry is like a rocking chair—it keeps you busy, but it won't get you anywhere.

Will: Would you rather lose your life or your money?

Bill: My life of course, I need my money for old age.

John Barnes
Newton



"Just what kind of pet do you have in mind?"

A Series

Teaching Boys and

Part II

Helping Youth Develop A Set of Values

by Roger Hecht
County 4-H Club Agent
Shawnee County

This series, especially for parents, leaders and junior leaders, examines the 4-H program at the local level to consider answers to the question, "What can you teach boys and girls in 4-H?"

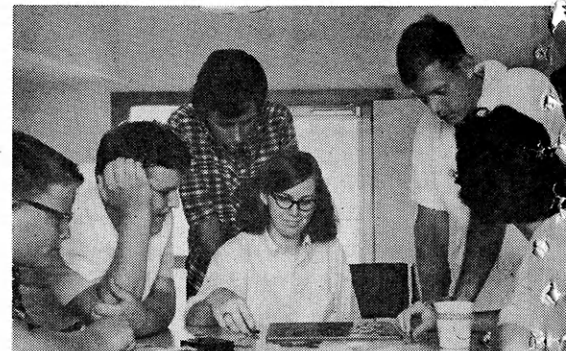
Developing a set of values by which to live is a little like watching a western on television. Like on TV, there are good guys and bad guys in life that help youth develop a basic set of values. Certainly a steady diet of adult movies and questionable paper back books come in the bad guy category. However, probably the real villain is the clique with low moral standards. Our purpose here, however, is to consider 4-H in the role of the good guy in influencing the moral values of boys and girls.

Just how do boys and girls develop a set of values and standards? This is, I am sure, quite a complex thing. We adults would like it very much if they would accept from us a neatly tied little package containing a set of moral standards by which they are to live the rest of their lives. Very often we can't understand why our young people can't profit from our past ex-

periences and accept our convictions. But the fact of the matter is that most of these values and codes of conduct must be examined, weighed and even experienced by the young people whether they will include them themselves before they know as a part of their personal conduct and basic core of values or if they will reject them. 4-H can provide an ideal workshop situation for young people making these decisions. Such an organization with high moral values will make it easy for them to reject many questionable values and codes of conduct.

There are many examples that prove an individual's standard of conduct and set of values deteriorate, when he loses the feeling of belonging to a group that expects him to act according to high standards. So this charges 4-H with two responsibilities, first to make the boy and girl to feel that he is really a member

of the group and secondly to help the group develop a high set of values and standards of conduct for those who belong to the organization. The club members should feel that they have a definite voice in running their club. In working with the older



A group of senior 4-H members at camp specially for the older group.

4-H members, I have found that the teenage group is very sensitive to any semblance of adult domination. This may well be

Girls in 4-H:



County-wide groups or clubs of teenage youth are popular in a number of counties. Discussions are held on many topics.

one of the reasons that we have problems keeping these older members in 4-H work. This is unfortunate too because the teenage period of life is the time when boys and girls have many decisions on moral issues to make. And it is the time when they are trying to break away from being too dependent upon their family. So as a result in many cases, they refuse to accept help from adult members of their family in making moral decisions and weighing values. This, I believe, points up again a real need for them to belong to a group with high standards and ideals to use as a reference point in making moral decisions. This also underlines the importance of leaders learning to work with the teenage group without seeming to dominate them. Although at this age they may want to be

treated as adults they are still teenagers and must have adult guidance. It must be adult guidance in a democratic way, if they are to accept it. So a discussion that began on developing values in boys and girls has turned into a discussion of democratic leadership. Now this isn't too far off base because democratic leadership itself is certainly an attribute to be desired in the member. A good democratic leader can effectively guide club members into setting up high values and standards for themselves and their club. Teenagers are idealistic and may well set a standards too high or rules of conduct too strict for they themselves to keep.

So, leaders need to help them set realistic goals and standards and then they must also help them to live up to the standard

which they set. It must be remembered that they are still teenagers and not mature adults and although they have made their own regulations and set their own standards they quite often will rebel at having to live with them. But if they are helped to adhere to these standards and are helped through their periods of rebellion they will achieve great satisfaction of the accomplishment of attaining these values and adhering to the standards of conduct. As a simple example: in setting up some guide lines for conduct in connection with a party or weekend camp, teenage club members will no doubt set for themselves a reasonable proper time for lights out or adjournment of their party but when the time comes, quite often they need a little encouragement from the adult sponsors to live up to these standards which they have set, but when they do they have a great satisfaction of accomplishment. There is no doubt in my mind that 4-H leaders, especially leaders that have the ability to work with teenagers in a democratic way, are second only to the family in helping young boys and girls develop high morals and standards and a set of values. This is accomplished not by preaching to them but by helping them in a real life situations to make the right decisions.

Mr. Hecht is a native of Smith county. He was graduated from Kansas State University in 1948 with a B.S. degree in Agricultural Journalism. He was a Veterans Farm Training instructor at Norton, Kansas and was County Club Agent in Miami county for eight years prior to coming to his present position six years ago.

He attended the Human Relations-Human Development Workshop at Cornell University, New York in 1955. He received the Master of Education degree from Colorado State University in 1963.

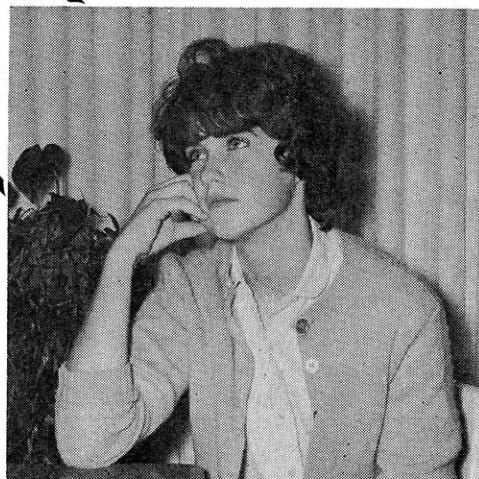
A member of Epsilon Sigma Phi, Extension honorary, Mr. Hecht is a past president of the Kansas Association of County Club Agents.





***She's
Thinking
Of Her
Future . . .***

And the 4-H Personal Development Project



Don't be a puzzled Jane or Tom. Explore possible plans for your future with the Personal Development project. Personal Development is the most popular 4-H project for teenagers.

Through personal Development you can enroll in career exploration, character development, manners, relationship with others, appearance, expression and philosophy of life.

Working on Personal Development in county or club wide groups enables members to learn from each other as they discuss goals, ideas and values.



Begin now to explore possible plans for your future with the 4-H Personal Development project.

The people at Southwestern Bell Telephone Company are proud to have a part in this 4-H project by sponsoring awards for outstanding work.

SOUTHWESTERN BELL



TELEPHONE COMPANY

Recreation for 4-H Project Meetings

by

Dick Tomkinson

Project meetings can be made more fun by using games to teach subject matter. Phyllis Kemp, assistant to the state home economics leader compiled some of the following games for the Foods and Nutrition project. You can adapt these games to the projects you are leading or taking.

BASEBALL

Divide the group into two sides. Set up chairs with "bases," a home plate, and a pitcher's mound. Ask questions of the members up to bat. Keep score as in baseball—each correct answer is a hit. The players move to the bases. Each wrong answer counts as an out.

Question examples:

1. To lose weight one should always skip breakfast.
2. A good meat shopper considers only the price per pound.
3. Milk is an excellent source of riboflavin — necessary for good health.
4. One should sit and rise from the left side of the chair.
5. When through eating, fold the napkin and place it on top of the plate.

FOOD IDENTIFICATION

Place small quantities of various foodstuffs in small jars or containers (baby food jars work fine). Label each jar with a number. Pass the jars so each member has a chance to examine each jar. Members may feel or smell the items but are not allowed to taste them. The player who identifies the most items correctly wins the game. A time limit may be imposed if the leaders desires. The following is a suggested list of items.

1. baking powder
2. flour
3. soda
4. tapioca
5. Cornmeal
6. salt
7. sugar
8. gelatin

SPELLING BEE

This resembles the old spelling bee contest. Line all the 4-H'ers up and see who the winner is after others have missed and sat down.

There are two ways of playing:

1. the traditional spell down using words found in the project.
2. Use questions you can make up from the project material and if a 4-H'er misses he is eliminated.

THE COOK'S QUESTIONNAIRE

Divide the group into teams. Leader reads statements and the team calling out the most correct answer first, wins. The answer to each statement should be a type of cake.

The brightest cake.....Sunshine,
Golden Glow
The saint's cake.....Angel food
The heaviest cake.....Pound
The hen's cake.....Layer
The cake that never pays its
waySponge
The football player's
cakeGriddle

FOOD FACTS (Crossword)

On a large piece of paper or a chalkboard, you may draw a crossword puzzle. Make it up by asking questions about different food values, vitamins, calories, or other information you desire to give them. It can be a good review and reminder.

HEALTH "CAT 'N RAT"

Each person is to draw a diagram similar to that given below. The leader will ask questions relating to personal health and food habits and if they can answer "yes," they mark a X in the designated area. When all questions have been asked, each person checks to see how many "wins" he has. Any line that can be drawn horizontally, vertically, or diagonally through 3 "X's" counts as a win. If the answer is "no," an O must be put in the area. The number of O's cuts on the wins.

Have you had two servings of meat, fish, eggs, or cheese today?	Did you have a serving of dark green or deep yellow vegetable today or yesterday?	Did you have a serving of Vitamin C rich food, such as citrus fruit or salad greens today?
Did you brush your teeth at least twice today?	Did you have three Cups or more of milk today?	Did you eat an additional serving of vegetable or fruit other than Vitamin C or dark green or yellow vegetable?
Did you have eight hours or more of sleep last night?	Did you have a bath or shower last night or this morning?	Did you eat four or more servings of bread or other cereal today?



**ALLIANCE INSURANCE
COMPANIES**

McPherson, Kansas

FIRE — CASUALTY — LIFE

Serving Kansas Since 1888

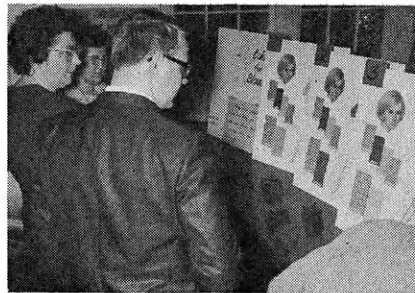
State 4-H Leaders Conference Album



In our "spare time" we enjoyed games and puzzles I could use at our own club meetings.



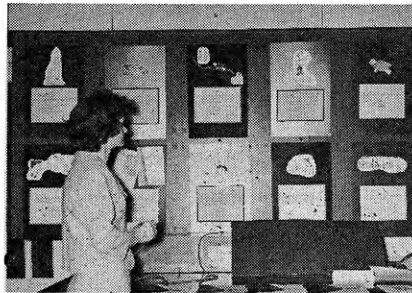
Hearing Dr. Robert Johnson speak on teaching boys and girls gave me ideas to put right to use.



"Scream-0" is a game enjoyed more than once at the conference.

Judging classes are interesting and challenging—this one was about blouse colors.

A quiz on career information was one of the big exhibits, I learned a lot from it.



"Pouring over the books" gave exciting ideas from those who have been selected as winners.



Science in 4-H, all projects, is new and gave me some ideas in working with the "why" on projects.

A new project, Leathercraft, is the answer for some members.



Identifying cuts of meat was a difficult but a real learning experience, and something I can use at home.



Sharing ideas seems to be one of the most popular activities among leaders at Conference.

Find out
if you're
man enough
for the
Peace
Corps



Even
if
your
name
is
Mary.

OPPORTUNITY FOR KANSANS

Have you ever thought of serving in the Peace Corps? Did you know there is a 4-H Peace Corps?

You can serve in the 4-H Peace Corps in Central America, a few hours flying time from Kansas. Look at a map and find El Salvador, where this project will be.

This 4-H Peace Corps project will be staffed by people like yourself, former 4-H members from Oregon, Colorado, Kansas, Wisconsin and Michigan.

The primary purpose of this project is to assist in the development and improvement of an extension service and 4-H clubs in that country.

Four-H Peace Corps projects have been successful in other countries, e.g. Brazil. We feel fortunate to be among these states to recruit for this special project.

The basic requirements for qualification in the Peace Corps are that a person be 18 years or older and a U.S. Citizen. Married couples are accepted if both qualify and have no dependents under 18 years of age.

Many people feel they have no special skills useful to the developing countries, but the Peace Corps finds use for most any talent. Our Kansas background is a premium quality in projects as these.

As one Marine was recently quoted in Viet Nam, "Just ten Kansas farmers could mean all the difference in the world to these people." Interna-

tional interest is high among Kansans; we have been leaders in the IFYE program since it started eighteen years ago. More than a hundred Kansans have served or are now serving in the Peace Corps.

In our highly developed agricultural society we have acquired talents which we take for granted but can make a great difference in the struggle for life to a person in Latin America.

As we have much to give, we also have much to receive from this project.

Our gain will be a greater awareness of the world in which we live, a tremendous boost to our 4-H People-to-People project, and the satisfaction of improving our world.

Application forms and other information about this special 4-H Peace Corps project are being sent to all County Extension Offices. You may also receive this material by writing:

To: Glade Presnal
State 4-H Office
Umberger Hall, Kansas State University
Manhattan, Kansas 66502

The due date is May 10. Don't let this pass if you are interested.

- ☐ Please send me information
- ☐ Please send me an application

Name

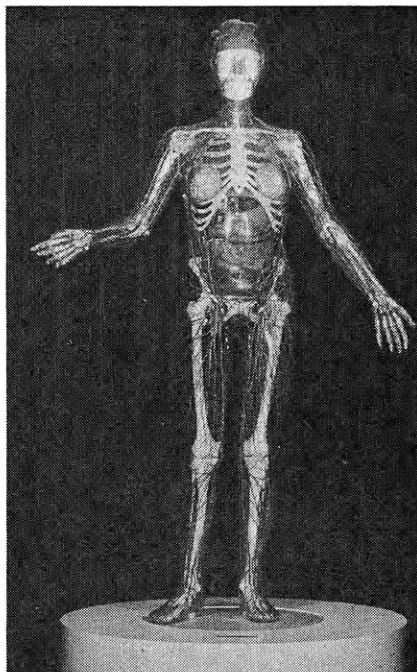
Address

City

State Zip Code

PICTURED ABOVE — Volunteer Beva Fegley, from North Dakota, is doing 'extension work' in rural El Salvador, as she shows two girls how to make fruit salad, in an effort to improve the local diet.

Focus On Fourth "H"



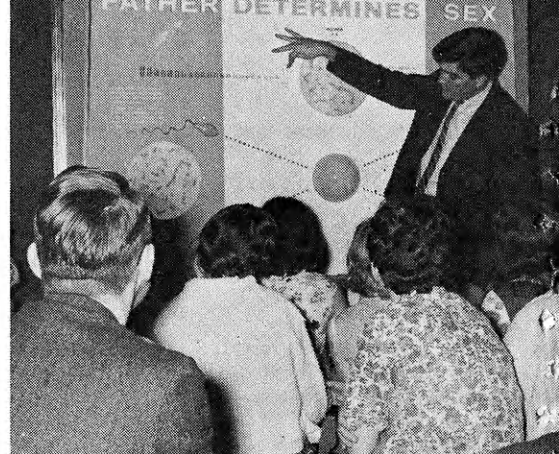
Valeda, that talking plexiglas lady, explains how internal organs of the human body work.

"My health to better living," this portion of the 4-H Pledge might be noted as the principle behind the founding of the Kansas Health Museum in Halstead.

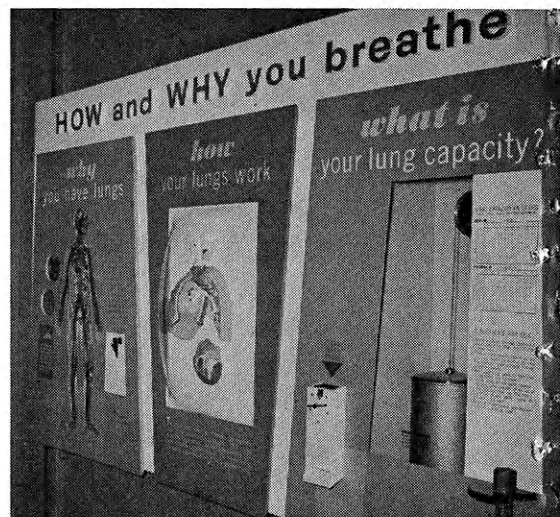
This museum, founded in 1965, houses twenty exhibits depicting different functions and parts of the human body. Health education is taught through the medium of these exhibits.

Since its opening last August, 19,000 people have toured the museum, according to Emmet Wright, museum supervisor.

Perhaps the most outstanding exhibit is that of Valeda, the talking transparent lady. Valeda is a striking plexiglas figure whose lifelike internal organs light up one by one as she herself describes how they work. Valeda tells her listeners that "the human body is the most miraculous and complicated machine ever created" and proceeds to prove this by describing most



Emmet Wright, supervisor of the Kansas Health Museum, explains the exhibit on how the sex of a child is determined to a group of visitors.



How and why the human respiratory system works is explained by these three displays.

of the body organs. Created in Germany, Valeda cost \$14,105.

Dispelling the popular notion that man is equipped with but five senses — vision, hearing, taste, smell and touch, the museum has created a series of exhibits on the body senses.

With a giant transparent tooth which lights up as a narrator explains it, the museum is able to show how the tooth works, why it is important, and why teeth can be straightened.

The respiratory system and how and why people breathe is represented by a group of three displays. They first explain why humans have lungs, then how lungs work, and finally what lung capacity is.

Tour reservations for groups of 30 to 40 may be made by writing to Kansas Health Museum, 309 Main, Halstead. Open seven days a week, the museum will furnish a speaker to conduct a tour of exhibits and a special lecture.

a simple flip of the switch

Every member of the rural family can now have electricity with just a flip of the switch, thanks to Electric Cooperatives.

This ample supply of low-cost power didn't come easily. It is the result of forward-thinking people working together to build and develop Electric Cooperatives to get the electrical power they could not buy elsewhere.



THE ELECTRIC  **cooperatives**
OF KANSAS

420 West 9th, Topeka, Kansas

CE 5-5321

Home Economics Hospitality Day

Can you keep up? If you do you will have to be on the go.

This is what College of Home Economics students at K-State are saying with their theme, "Mobilize Your Potential in Home Economics" of this year's Hospitality Day in Manhattan, April 16.

This annual event is popular among 4-H members, their parents and leaders because it gives an opportunity to view various fields of study and career opportunities.

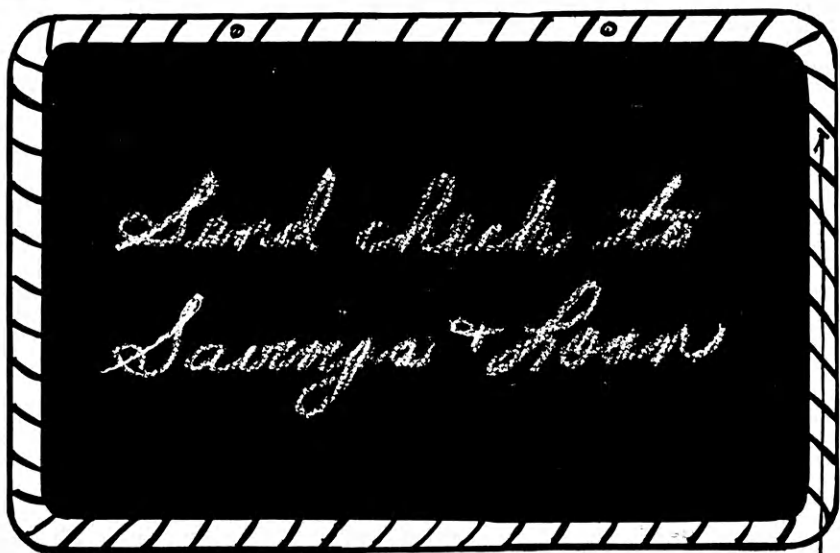
A fashion show and entertainment will greet those attending following registration from 8:30 to 10:30.

Exhibits in Justin Hall, the home economics building, will be open for inspection all day. Visitors will see the facilities of the College of Home Economics and learn of associated areas of study including nursing, art, clothing and textiles, family economics, research, journalism and foods and nutrition.

Future K-Staters may tour the women's residence halls during the afternoon.

This special day is planned and conducted by students in the College, most of them former 4-H members, with the assistance of the faculty.

Jane Sherer arranges the interior design display for Hospitality Day at Kansas State University, Manhattan. The display shows elevations, floor plans and fabric samples for each room. Miss Sherer, a senior in interior design at K-State, is from Mullinville.



A REMINDER! to PAY YOURSELF FIRST

Make sure that what you save earns high profit in complete insured safety . . . every time. That means save now at your nearest . . .

KANSAS *Savings & Loan Association*

Arkansas City

First Federal Savings and Loan Ass'n. of Arkansas City

Augusta

American Savings Association

Beloit

First Federal Savings and Loan Ass'n. of Beloit

Clay Center

Northwestern Federal Savings and Loan Ass'n. of Clay Center

Dodge City

First Federal Savings and Loan Ass'n. of Dodge City

El Dorado

Mid-Continent Federal Savings and Loan Ass'n. of El Dorado

Fort Scott

Liberty Savings and Loan Ass'n.

Garnett

The Garnett Savings and Loan Association

Great Bend

The Prudential Building and Loan Ass'n.

Hays

The Hays Building and Loan Ass'n.

Hutchinson

First Federal Savings and Loan Ass'n. of Hutchinson

Iola

The Security Savings and Loan Ass'n.

Lawrence

Capitol Federal Savings and Loan Association, 11th and Vermont Streets

Leavenworth

Leavenworth Mutual Savings and Loan Ass'n.

Liberal

First Federal Savings and Loan Ass'n. of Liberal

McPherson

The Pioneer Savings and Loan Association of McPherson

Newton

First Federal Savings and Loan Ass'n. of Newton

Ottawa

Ottawa Savings and Loan Ass'n.

Parsons

First Federal Savings and Loan Ass'n. of Parsons

Pittsburg

First Federal Savings and Loan Ass'n.

Plainville

Rooks County Savings Ass'n. of Plainville

Shawnee-Mission

Capitol Federal Saving & Loan Ass'n. at 5251 Johnson Dr., 95th & Nall and Meadow Lake Shopping Center

Topeka

Capitol Federal Savings and Loan Ass'n. at 700 Kansas Ave. 1201 Topeka Blvd. and 2100 Fairlawn Rd.

Wellington

First Federal Savings and Loan Ass'n. of Sumner County

Wichita

American Savings Association of Wichita, Home Office First and Main: East-4601 E. Douglas Ave.



INSURED SAFE

KANSAS



4-H JOURNAL SPONSORS

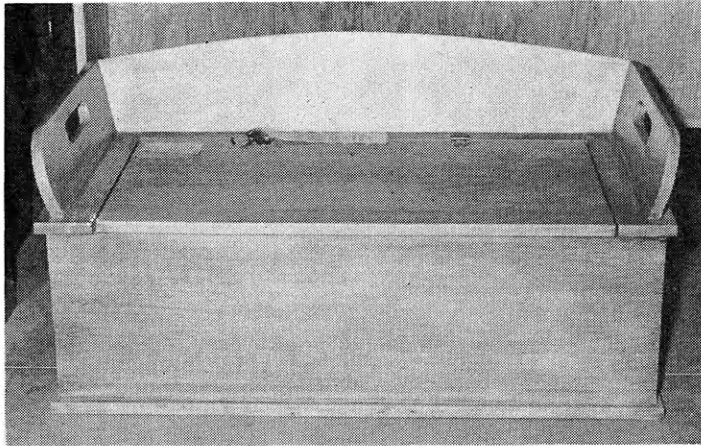
The Kansas 4-H Journal is sponsored in each of the counties by the business firms listed below. 4-H Club members and leaders might do well to express their appreciation to these sponsors for the contribution they are making.

- Allen**
Allen County State Bank, Iola
Humboldt National Bank, Humboldt
Iola State Bank, Iola
- Anderson**
Garnett State Savings Bank, Garnett
- Barber**
First National Bank, Medicine Lodge
- Barton**
The First National Bank, Great Bend
- Bourbon**
Bank of Bronson, Bronson
Liberty Savings & Loan Association, Ft. Scott
Union State Bank, Uniontown
Federal Land Bank Ass'n. of Ft. Scott, Ft. Scott
Citizens National Bank, Ft. Scott
Farmers Co-op Ass'n., Ft. Scott
- Brown**
Citizens State Bank, Hiawatha
The Bank of Horton, Horton
The Morrill & Janes Bank, Hiawatha
Farmers State Bank, Fairview
Morrill State Bank, Morrill
The Union State Bank, Everest
The Bank of Robinson, Robinson
- Butler**
Benton State Bank, Benton
The Walnut Valley State Bank, El Dorado
Andover State Bank, Andover
State Bank of Leon, Leon
El Dorado National Bank, El Dorado
Prairie State Bank, Augusta
Mid-Continent Federal Savings & Loan Ass'n., El Dorado
Rose Hill State Bank, Rose Hill
Potwin State Bank, Potwin
Bank of Whitewater, Whitewater
Citizens State Bank, El Dorado
Augusta State Bank, Augusta
The Exchange State Bank, Douglass
- Chase**
Exchange National Bank, Cottonwood Falls
Strong City State Bank, Strong City
The Peoples Exchange Bank, Elmdale
- Chautauqua**
Sedan State Bank, Sedan
- Cherokee**
Citizens Bank of Weir, Weir
American National Bank, Baxter Springs
Baxter State Bank, Baxter Springs
Columbus State Bank, Columbus
First National Bank, Columbus
- Cheyenne**
Citizens State Bank, St. Francis
- Clark**
Citizens State Bank, Ashland
Stockgrowers State Bank, Ashland
Peoples State Bank, Minneola
- Clay**
Union State Bank, Clay Center
- Cloud**
Fidelity State Bank, Concordia
First National Bank of Glasco, Glasco
Citizens State Bank, Miltonvale
Cloud County Bank, Concordia
Jamestown State Bank, Jamestown
- Coffey**
Peoples National Bank, Burlington
- Comanche**
Peoples State Bank, Coldwater
- Cowley**
Home National Bank of Arkansas City, Arkansas City
First National Bank, Winfield
- Crawford**
Farmers State Bank, Walnut
First National Bank, Girard
Girard National Bank, Girard
Hepler State Bank, Hepler
Miners State Bank, Frontenac
McCune State Bank, McCune
Home State Bank, Arcadia
National Bank of Pittsburg, Pittsburg
First State Bank of Pittsburg, Pittsburg
First State Bank, Arma
City National Bank of Pittsburg, Pittsburg
- Decatur**
Decatur Co-op Ass'n. Oberlin
- Dickinson**
Farmers National Bank, Abilene
- Douglas**
First National Bank, Lawrence
Rusty's Food Centers, Lawrence
Baldwin State Bank, Baldwin
- Edwards**
The Home State Bank, Lewis
- Elk**
Exchange State Bank, Moline
Howard National Bank, Howard
Home State Bank, Longton
First National Bank, Howard
- Ellis**
Ellis State Bank, Ellis
First National Bank, Hays
Farmers State Bank, Hays
Farmers National Bank, Victoria
Hays National Bank, Hays
- Ellsworth**
Citizens State Bank, Ellsworth
Wilson State Bank, Wilson
The Bank of Holyrood, Holyrood
Lorraine State Bank, Lorraine
Kanopolis State Bank, Kanopolis
- Finney**
The Garden National Bank, Garden City
The Fidelity State Bank, Garden City
- Ford**
First National Bank, Dodge City
Fidelity State Bank, Dodge City
The Farmers State Bank of Bucklin, Bucklin
Bucklin State Bank, Bucklin
Ford County State Bank, Spearville
- Franklin**
Wellsville Bank, Wellsville
Peoples National Bank, Ottawa
- Geary**
First National Bank, Junction City
Central National Bank, Junction City
- Gove**
First National Bank, Quinter
Citizens State Bank, Grainfield
People's State Bank, Grinnell
- Graham**
Farmers & Merchants Bank, Hill City
- Grant**
Grant County State Bank, Ulysses
- Gray**
Farmers State Bank, Ingalls
The Montezuma State Bank, Montezuma
First National Bank in Cimarron, Cimarron
- Greeley**
First National Bank, Tribune
- Greenwood**
Mr. Ward A. McGinnis, Eureka
Eureka Federal Savings Loan Ass'n., Eureka
A. C. Houston Lumber Co., Eureka
Race Parks Oil Co., Eureka
Home National Bank, Eureka
Citizens National Bank, Eureka
Freeman's Tire & Appliance, Eureka
- Hamilton**
First National Bank, Syracuse
The Valley State Bank, Syracuse
- Harper**
State Line Grain Co., Manchester, Oklahoma
Anthony Farmers Co-operative Elevator, Anthony
Farmers Co-op Business Association, Corwin
Danville Co-op Ass'n., Danville
- Harvey**
State Bank of Burrton, Burrton
Halstead Bank, Halstead
Hesston State Bank, Hesston
First National Bank, Newton
Kansas State Bank, Newton
Midland National Bank, Newton
Sedgwick State Bank, Sedgwick
Walton State Bank, Walton
- Haskell**
Haskell County State Bank, Sublette
- Hodgeman**
Farmers State Bank, Jetmore
Hanston State Bank, Hanston
- Jackson**
Lueck Grain Co., Netawaka
Holton Lumber Co., Holton
Farmers Union Co-op Ass'n., Holton
- Jefferson**
Leavenworth-Jefferson Electric Co-op, McLouth
Jefferson County Home Demonstration Units, Oskaloosa
- Valley Implement, Inc., Valley Falls
N. R. Hamm Quarry Inc., Perry
Kaw Valley Grain Co., Perry
Jefferson County Co-op, Oskaloosa
- Jewell**
First National Bank of Formoso, Formoso
Citizens State Bank, Jewell
Randall National Bank, Randall
State Bank of Esbon, Esbon
Burr Oak State Bank, Burr Oak
First National Bank, Mankato
State Exchange Bank, Mankato
- Johnson**
Johnson County Bankers Ass'n., Shawnee
- Kearny**
Farmers Co-operative, Lakin
- Kingman**
C. R. Calvert Company, Kingman
- Kiowa**
First State Bank, Mullinville
Greensburg State Bank, Greensburg
Haviland State Bank, Haviland
- Labette**
American State Bank, Oswego
Chetopa State Bank, Chetopa
First National Bank, Edna
First National Bank, Oswego
First National Bank, Parsons
Labette County State Bank, Altamont
Parsons Commercial Bank, Parsons
State Bank of Parsons, Parsons
- Lane**
First National Bank, Dighton
First State Bank, Healy
- Leavenworth**
First National Bank, Leavenworth
- Lincoln**
Sylvan State Bank, Sylvan Grove
- Linn**
First State Bank, Pleasanton
Prescott State Bank, Prescott
Farmers State Bank, Blue Mound
Bank of Pleasanton, Pleasanton
Linn County Bank, La Cygne
Centerville State Bank, Centerville
Farmers & Merchants Bank, Mound City
- Logan**
Farmers State Bank, Oakley
Farmers State Bank, Winona
- Lyon**
Citizens National Bank, Emporia
- McPherson**
The Farmers Co-op, McPherson
Farmers Union Elevator Co., Lindsborg
The Co-op Farmers Union Elevator Co., Marquette
Moundridge Co-op Elevator Ass'n., Moundridge
The Farmers Co-op Grain & Supply Co., Canton
- Marion**
Tip Top Dairies Co., Hillsboro
Peabody Co-op Equity Exchange, Peabody
Farmers Equity Union, Hillsboro
Farmers Co-op Grain & Mercantile Co., Lehigh
Tampa Co-operative Ass'n., Tampa
Lincolnton Cooperative Ass'n., Lincolnton
Marion County Co-op, Durham
Farmers Cooperative Grain Ass'n., Durham
Farmers Cooperative Ass'n., Marion
Ramona Co-op Elevator Co., Ramona
Burns Farmers Co-op, Burns
Crossroads Co-op Ass'n. of Goessel and Newton, Goessel
- Marshall**
Bremen State Bank, Bremen
Vermillion State Bank, Vermillion
State Bank of Blue Rapids, Blue Rapids
State Bank of Axtell, Axtell
First National Bank, Frankfort
Oketo State Bank, Oketo
First National Bank, Beattie
Exchange Bank of Schmidt & Koester, Marysville
Citizens State Bank, Marysville
First National Bank, Summerfield

Sponsors for the remaining counties will be listed in the May issue.

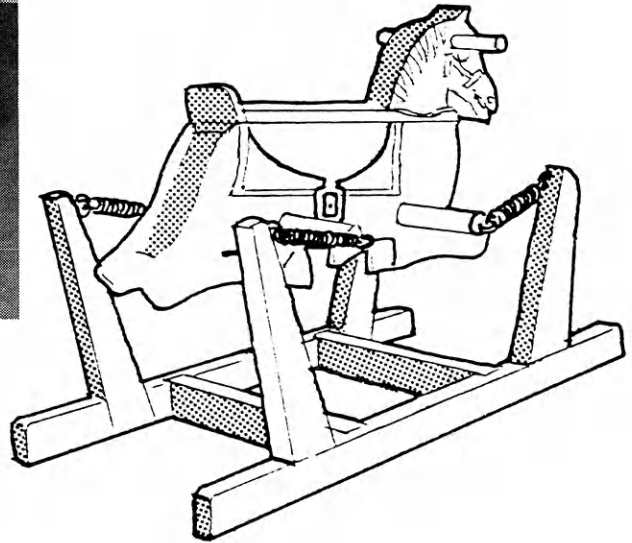
FREE!!

New 4-H Woodworking Plans



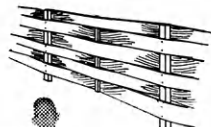
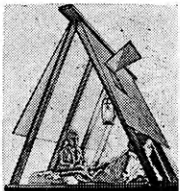
WINDOW SEAT

HOBBY HORSE



*Plans for These Projects Are
Available At The Lumber Dealers
Listed on These Pages. Ask For Them.*

**Wood
Play
Tent**

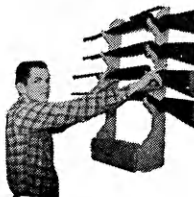


**Yard Fence
No. 3**



End Table

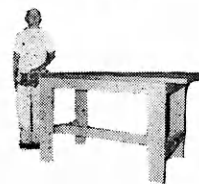
**Handy
Gun Rack**



**Rotating Selection
Tool Rack**



**Woodworking
Bench**



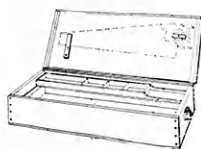
**Cart with
Removable
Trays**



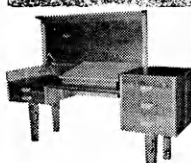
Study Center



Tool Chest



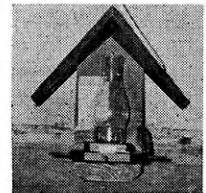
Hobby Desk



Insect Display Box



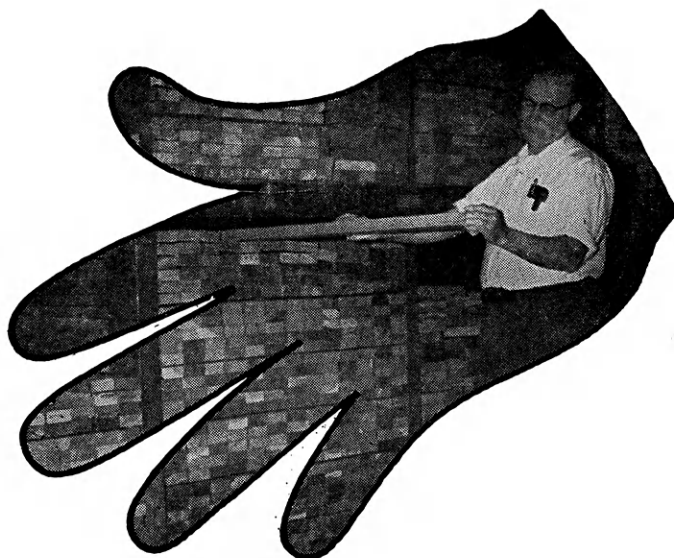
Bird Feeder



For other FREE 4-H woodworking plans, see the next pages.

Always on hand... YOUR LUMBERMAN

is your best friend when
you need good material



Agra
Agra Lumber Company

Asherville
Asherville Lumber and Coal Company

Ashland
Don Spotts Lumber Company
Home Lumber and Supply Co.

Atchison
Hixon Lumber Company

Beloit
Peoples Lumber and Coal Company

Bern
Bern Lumber Company

Brownell
Richolson Lumber and Hardware
Company, Inc.

Cawker City
Cawker City Lumber Company

Chanute
Smith Lumber Company

Chapman
Sanborn Lumber Company

Chase
Chase Cooperative Union

Colby
Hardman Lumber and Coal Company
Hess Lumber Company

Coldwater
Home Lumber and Supply Co.

Concordia
Sanborn Lumber Co.

Denison
Denison Lumber and Hardware
Company

Denton
C. H. Gish Company

Elkhart
Elkhart Lumber Co.
The Star Lumber Company

Ellsworth
Lake Superior Lumber Co.

Emporia
Home Lumber and Supply Co.
The Smith Lumber Company

Eureka
A. C. Houston Lumber Company

Everest
Alexander Lumber Company

Fredonia
The Home Lumber & Supply Co.

Garden City
McAllister-Fitzgerald Lumber Co.

Garnett
Star Grain and Lumber Company

Gaylord
Hardman Lumber Company

Glen Elder
Dickinson Lumber Company

Goodland
Hardman Lumber Company
Rasure Lumber Company

Great Bend
Whitesell Lumber Company

Greeley
Greeley Lumber Co.

Greensburg
Home Lumber and Supply Co.

Hanover
Burgner-Bowman-Matthews Lumber
Company

Hartford
Thomas Lumber Company

Hays
Hardman Lumber Corporation, Inc.
Schwaller Lumber Co., Inc.

Healy
Healy Co-op Elevator Company

Hill City
Hardman Lumber Company

Holton
Holton Lumber Company

Holyrood
Home Lumber and Supply Co.

Home
Home City Lumber & Hardware

Hugoton
The Star Lumber Company

Iola
Klein Lumber Company

Johnson
Seyb-Tucker Lumber and Implement
Company

Kinsley
Kinsley Co-op Exchange Lumber Yard

Kiowa
The J. W. Metz Lbr. Co.

LaHarpe
Diebolt Lumber and Supply

Lakin
Tate and Company
Lakin Lumber Company, Inc.

Lancaster
T. E. Snowden Lumber Company

Larned
Clutter-Lindas Lumber Company

Lawrence
Woods Lumber Company
Logan-Moore Lumber Company

Lebanon
Lebanon Lumber Company

Lenora
Lenora Lumber Company

Liberal
The Star Lumber Company

Linn
Rice-Johntz Lumber Co.

Longford
Longford Lumber & Grain Co.

Macksville
Home Lumber and Supply Co.

Madison
Madison Lumber Company

Manhattan
Ramey Brothers

Mankato
Mankato Lumber Co.

Marysville
Howell Lumber Co.

Meade
Home Lumber and Supply Co.

Moundridge
Clayton Vogt Lumber Co., Inc.

Neodesha
O. E. Woods Lumber Company

Looking for Woodworking Ideas?



See Any of These Lumber Dealers for a Free 4-H Woodworking Plan

Ness City
Rock Island Lumber Co.

Norton
Norton Lumber Company

Nortonville
Alexander Lumber Company

Oakley
Oakley Lumber Company

Oberlin
Building Supply Headquarters

Offerle
Offerle Co-op Lumber Co.

Olathe
Cowley Lumber and Hardware Company

Onaga
Onaga Lumber & Grain Co.

Oswego
Home Lumber and Supply Co.

Ottawa
Hubbard Lumber Company, Inc.

Parsons
O. E. Woods Lumber Co.

Phillipsburg
Hardman Lumber Company

Pittsburg
Broadway Lumber Co. Inc.

Plains
Home Lumber and Supply Co.

Pretty Prairie
The George W. Ulth Lumber Company

Protection
Home Lumber and Supply Co.

Russell
Hardman Lumber Company of Russell Inc.

St. Francis
St. Francis Equity Exchange

St. John
Home Lumber and Supply Co.

Salina
Everitt Lumber Company, Inc.

Seneca
Koelzer Lumber Company
Seneca Lumber Company

Severy
Tolman-Gibbon Lumber Company

Smith Center
Smith Center Lumber Company

Stafford
Home Lumber and Supply Co.

Stockton
Stockton Lumber Company
B & B Lumber & Supply

Wakeeney
Hardman Builders Supply Company

Wichita
Lawrence Lumber Company
Stockyards Cash and Carry Lumber Co
Alexander Lumber Company
Star Lumber & Supply Co., Inc.
Sutherland Lumber Company, 522 East 21st Street

Wilson
Hoch Lumber Company

Winfield
A. B. Everly Lumber Company

Woodbine
Kohler Lumber Company

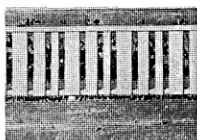
Zenda
The George W. Ulth Lumber Company

Missouri
Independence
The George W. Ulth Lumber Company, 11432 Truman Road

Kansas City
Sutherland Lumber Company, 1901 Wyoming

Ask For Your 4-H Woodworking Plans.

Yard Fence, No. 2



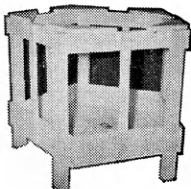
Closet
Storage
Cabinet



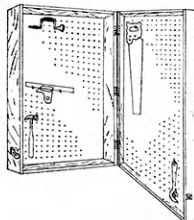
Folding
Lawn Chair



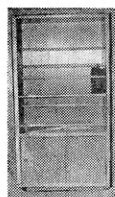
Self Feeder
for Sheep



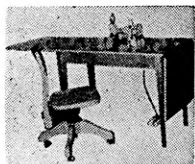
Tool Storage



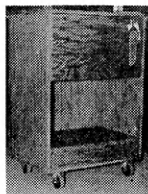
Closet
Valet



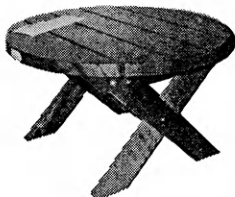
Sewing Machine
Table



Tool
Caddy



Patio Table



Closet
Valet

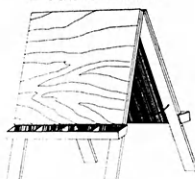


Picnic Table

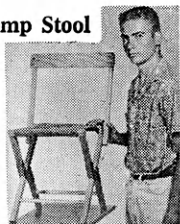
Toy Chest



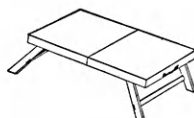
Double Easel



Camp Stool



Folding Table



OTHER PLANS AVAILABLE

Lawn Seat	Football Game
Lawn Chair	Baseball Rack
Mail Box	Martin House
Book Case	Blue Bird House
Gate Sign	Comic Book Rack
Step Table	Vertical Shoe Rack
Two Games	Small Animal Trap
Portable Towel Rack	Back Yard Fence
Chest of Drawers	Mail and Memo Board
Wheel Barrow Planter	Child's Step Stool & Chair
Lazy Susan	Fishing Rod Rack
Two-Level Coffee Table	Collapsible Visual Aid Stand
Coffee Table	Bookcase Headboard
Box Hocky	Magazine Rack
Picnic Bench	Indoor Planter
Holding Gate	Sheep Blocking Box
Sewing Cabinet	Christmas Tree Gifts
Sail Boat	Devil Game
Shoe Shine Kit	Child's Desk

Ideas That Work

"WHY'S" OF FOOD PRESERVATION STUDIED

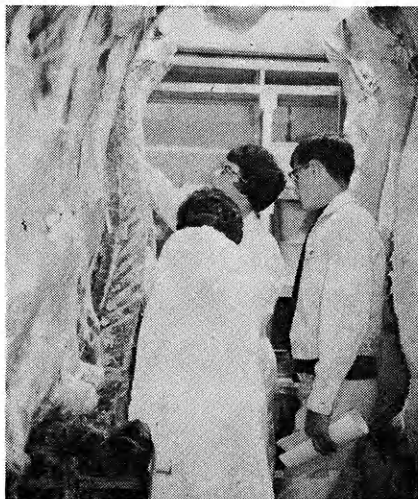
The six Rush County girls enrolled in food preservation this year pooled their demonstration talents to give a public meeting on "The Science of Food Preservation." Their objectives were to present up-to-date scientific information to homemakers on preserving food; to gain more confidence in their own ability to give demonstrations to adults; and to learn more about the "How and Why" of preserving foods for home use. Girls



shown left to right are Janet Bacus, Cecilia Jecha, Margaret Vesecky, Charlotte Brack, Linda Holopirek, and Debbie Nainald.

4-H'ers JUDGE BEEF CARCASSES

Judging carcasses was one activity



at a recent Saline County meat utilization project meeting. Here Judy and JoAnn Webber and Bruce Frost inspect a beef carcass.

CLUB DISPLAYS FIRE PREVENTION BOOTH

The Grantville Club, Jefferson County, observed National Fire Safety Week by placing a booth in the grade school and at the general store. The booth, with a large figure of Smokey, the fire prevention bear, offered several leaflets on home safety and fire hazards. More than a hundred booklets were distributed to school children and their families.

VETERINARY SCIENCE BECOMES PROJECT

Veterinary Science has become a part of the Kansas 4-H Club program this year.

Offered as an enrichment to the beef, swine, sheep, and dairy projects, the new program contributes to the emphasis on the "why" or scientific reasons for the recommendations and practices in projects.

During the current club year, the basic Unit One is available. Several counties are holding meetings using this new material.

Each member enrolled uses a workbook containing the requirements subject matter, and record sheets.

"The purpose of this project is to provide knowledge to equip members to handle animals in the most efficient manner in both health and disease.

Cecil Eyestone
Extension 4-H Club
Specialist

SENIOR CLUB HONORS IFYE

The Labette County Senior 4-H Club held a square dance party to acquaint their members with Dante Losco, an IFYE from Italy visiting in their county. This group of high school age 4-H'ers meets monthly with the boys furnishing refreshments one month and the girls the next.

Carl Johnson, reporetr
Route 2, Parsons

NEW CLUB BEGINS

Presenting a gavel to the president of the newly formed Northwest Hustlers Club, Ford County, is Penny Kilgore (left), vice president of the DIY Juniors



Club. Melissa McDaniel accepts the gavel for her club.

Christena Spencer
Dodge City

CLUB DISTRIBUTES COOKIES AS PROJECT

As a community project the Good Intent Club, Atchison County, asks each family to bring extra cookies and candy to their meetings. These are then delivered to older people in the community by three members and an adult.

Mrs. Ray Wohletz
Route 4, Atchison

CLUB IMPROVES STATE LAKE GROUNDS

The Stockton Jayhawkers Club, Rooks County spent several evenings cleaning up the Rooks County State Lake. The



group painted tables, latrines, and trim on the shelter house. They also dug catus and dandelions and picked up trash.

Kathy Daughty
Stockton

KANSAS

4-H Journal Sponsors

NEW SPONSORS

Wyandotte
Tower State Bank, Kansas City
Wyandotte County State Bank
Kansas City

These Have Renewed Their County Support

Chase
Exchange National Bank,
Cottonwood Falls
Strong City State Bank, Strong City
The Peoples Exchange Bank,
Elmdale

Greeley
First National Bank, Tribune
Kingman
C. R. Calvert Company, Kingman

Thomas
Farmers & Merchants State Bank,
Colby

Trego
Norris Grain Company, Collyer
Utica Grain Company, Utica
Schreiner Oil Service, Ogallah
Turman Chemical Co., WaKeeney
Harris Mobil Homes, WaKeeney

Woodson
Woodson County Co-op Association,
Yates Center
State Exchange Bank, Yates Center

Wyandotte
Home State Bank, Kansas City
Commercial National Bank,
Kansas City
Commercial State Bank,
Bonner Springs
Brotherhood State Bank,
Kansas City
Coleman Implement Co.,
Bonner Springs
Bishop Lumber Co., Muncie
Westgate State Bank, Kansas City
Turner State Bank, Kansas City
Melba's Fabrics, Kansas City

Ideas In Brief

LABETTE COUNTY—

A key with green and white streamers radiating to the sides was used for installation of officers of the Thrifty Thrivers Club, Labette County. As each officer was installed he took his place holding one of the streamers.

WYANDOTTE COUNTY—

Gary Schnick presented an exhibition square dance group at the Junior 4-H Council meeting, Wyandotte county. Shick and the group then taught 4-H club council representatives basic steps of square dancing.

CHAUTAUQUA COUNTY—

The Cedar Vale Go-Getters Club, Chautauqua county, made puppets as a part of their recreation project. The group presented puppet shows to several groups.

SALINE COUNTY—

Pen Pal names were distributed to 21 members of the 81-Hustlers Club, Saline county.

Robbie Morrison gave a talk on "Research Scientists" at the meeting of the Cloverleaf Club.

Five junior leaders of the 81-Hustlers Club formed a panel to interview Mrs. David Williams and daughter Sherry on "Honduras." The Williams are missionaries home on leave from Central America.

Members of the Mentor Club, have hung their blue bird houses this spring. This conservation program was begun last year to build and place bird houses in favorable surroundings in hope of attracting blue birds to stay in the Kansas area.

Fun Page Answers

KANSAS TREE SCRAMBLE ANSWERS

1. Ash, 2. Maple, 3. Oak, 4. Locust, 5. Hackberry, 6. Elm, 7. Redbud, 8. Cottonwood, 9. Dogwood, 10. Catalpa, 11. Honey Locust, 12. Willow.



IT WOULD DELIVER SOMETHING GOOD FOR EVERYBODY...



Farm Bureau is asking Congress to enact a "Marketing Food For Freedom" program which would both strengthen the income position of farmers and assist the people of friendly, less developed nations.

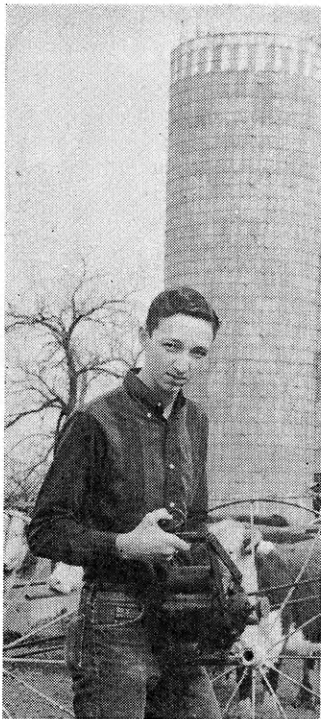
A gradual shift of funds now being spent for farm price supports, direct payments, and the "Food for Peace" program to the new program would permit both a substantial expansion in the present rate of food aid shipments and a gradual phase-out of existing price support and payment programs for food and feed commodities as the market system is strengthened.

Farm Bureau cannot support a policy of attempting to supply world food needs simply by superimposing a Food for Freedom program on current domestic price support and adjustment programs.

Kansas Farm Bureau

105 County Farm Bureaus

Working Together



A Boy and 4-H Electric Training, Handy Combination Around the Home & Farm

James McDaniel, Danville, Kansas, considers beef projects his main work in 4-H, but likes to tell how his Electric Project work helps him with all his projects.

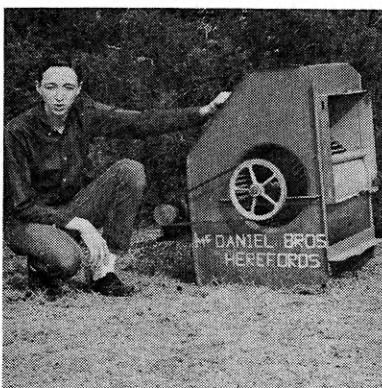
James has had five years experience in 4-H Electric and is now a Junior Leader helping younger members in his club, the freeport Trailblazers 4-H Club. Serving in the Electric Division at the county fair gives him an opportunity to work with many other 4-H members.

Of his Electric work he says, "It is something to tie in with other work and I have had a lot

of fun from it." James, a senior at Argonia High School, plans to attend college this fall. He was a state blue-ribbon-Winner in 4-H Electric last year and won a trip to the Wichita Recognition Event, sponsored by the Kansas Power Suppliers.

At top, right, James shows his portable motor exhibited at last year's State Fair.

James made this livestock fan from an old water-type air conditioner which comes in handy around the beef barn in summer.



James bought an antique lamp and electrified it for decorative lighting in the home. He installed a night light in the base.



In the farmyard James installed a yard light and brought new main wires to the farm buildings and home. He also brought the wires more direct from the source to the house.



✱ Watch This Page For Ideas On Farm And Home Electric Projects

ELECTRIC LIGHT and POWER COMPANIES in KANSAS

The Kansas Power and Light Company
Kansas City Power & Light Company

Western Power and Gas Company, Inc.

Central Kansas Power Company
Kansas Gas and Electric Company