



Fence Work

An inch and a quarter of rain last week got R. J. Cleverdon of Brookville out of the fields last week and onto some repair work on fences around his 80 acres west of Brookville.

Early Irrigation Ditch Scheme On Arkansas River A Spectacular Failure

GREAT BEND — Schemes to irrigate Kansas farmland with water from the Arkansas River have met a notable lack of success.

Some plans failed because of a lack of careful planning, while others were plagued with natural disasters or legal problems.

For some, it seemed nothing went right.

The Barton County Irrigation Company was organized in early spring, 1895. Its organizers planned to provide river water for irrigation on land west of the present city of Great Bend.

The organization hoped to raise potatoes, alfalfa, wheat, barley, melons and fruit. They also hoped to supply cane to the cane mill located at that time at Dundee, a community some eight miles southwest of Great Bend.

A board of directors was organized and authorization for capital stock of \$300,000 made.

But the company faced trouble from the start.

At the time, there were no laws in Kansas regarding the acquisition of rights-of-way, no special legislation was required before construction on the ditch to transport water could begin.

The ditch ranged in width from 50 to 100 feet, with landowners paying as much as \$20 an acre for land along the right-of-way.

But when the right-of-way was secured, another problem arose. Men, horses and equipment were so scarce that the company could not construct its canal, and the Barton County Irrigation Company withered.

Two years after the Barton County Irrigation Company began, a Colorado promoter, F. B. Koen, developed a plan to irrigate land northeast of Great Bend.

His plan was to divert water from the river to a holding basin in the then-dry Cheyenne Bottoms. He estimated that a lake 7 feet deep would be formed in the bottoms, and water from the lake could be fed thru a network of lateral canals to provide irrigation for thousands of acres in the area.

ands of acres in the area.

He organized the Grand Lake Reservoir Company in 1897 and brought men, horses and equipment from Colorado, where similar projects were under way.

Using a crew of about 60 men and over 200 horses and mules, he began work on the Koen Ditch.

The Koen Ditch ran from the Arkansas River northeast thru the present city of Great Bend to the bottoms, a distance of 13 miles.

Water flowed through the ditch to the Bottoms, but only reached a depth of two feet, not nearly enough to support the lake steamers Koen envisioned using his canal and the lake.

Then other disasters struck.

In 1898, the area received plentiful rainfall, and farmers lost interest in irrigation.

And in the upper Arkansas River region of Colorado, ditches and diversion structures were siphoning water from the river.

Had the canal system reached completion, it might have failed, for land in the area was not leveled for irrigation and at one time there were some 50 law suits pending in the courts, as farmers tried to collect for damages caused by water held on farms by the ditch.

The ditch was abandoned, but traces of the Koen Ditch that originally connected Cheyenne Bottoms with the Arkansas River can still be seen.

VLIETS CO-OP GROSS HITS \$888,901

VLIETS — The Farmers Union Cooperative Association here had sales of \$888,901 in the past year, with a savings of \$55,959. At the annual meeting members reelected Gerald Backman and Walter Surdez and elected Wendell Vandorn to the board. Leland Gerhardt is manager. The Vliets co-op purchased an anhydrous ammonia plant during the year.

GRASS

& GRAIN

14th year no. 18

July 2, 1968

K. C. Mirror To Big Packer Woes

The meat packing industry is celebrating its centennial in Kansas City, Kansas, by dying a little more.

It's just one more turn of the wheel in a quiet revolution within one of the nation's largest and most volatile businesses.

The sprawling old meat packing plants, once virtual trademarks of Kansas City and other Mid-Western rail centers, have almost vanished. Battling sharp new competition and saddled with outmoded facilities, the big packers are moving to small towns and modern, specialized plants close to livestock supplies.

Swift & Co. has announced it will sharply reduce operations at its Kansas City plant, which has been losing money for seven years. The work force will be slashed from 1400 to only about half that number.

The first meat-packing plant opened here in 1868, and before long others were built along the banks of the Kaw River to provide thousands of jobs.

But Cudahy company never re-opened its doors after a massive flood in 1951, and Armour & Co. shut down its huge operation in 1965. Wilson & Co., the other member of the old "big four," already has cut back to a comparatively small plant.

When Swift reduces its work force in August, the meat-packing industry in Kansas City will employ only about 2000 persons — fewer than worked in any of the big plants in the old days.

What's happening here is merely a repetition of what has taken place in Chicago, St. Louis, Omaha, Des Moines and other traditional Mid-Western meat-packing centers.

It's not that meat is going out of style. But the days of the sprawling, multi-storied packing plants are gone.

Until about 15 years ago, most packers operated much as they had for a century. Ranchers shipped their cattle, hogs and sheep by train to rail hubs.

There the animals were sold to packers who ran "full-line plants in which all types of livestock were slaughtered, processed and shipped to metropolitan areas — once again by rail. Work at the plants was seasonal.

But after World War II things gradually changed. Ranchers learned to spread production year-round to bring more stable prices, experts licked this problem of refrigerated trucks, highways were improved and populations shifted.

Soon new names appeared on meat-packer labels. Streamlined, one-story plants were built in the Mid-West and West. Operating close to the source of livestock supply, the newcomers used automation and specializing techniques which sharply reduced costs while increasing pro-

ductivity. The old-line meat packers awoke one day to find themselves outclassed in the field they had dominated for so long.

In 1950, the four largest meat packers accounted for more than 51 per cent of the nation's federally inspected cattle slaughter and 38 per cent of total commercial slaughter. By 1962 their share of the business had dropped to 29 and 23 per cent, respectively.

But eventually all packers came to the same conclusion: scrap the outmoded packing plants and decentralize — spread out in smaller, more specialized facilities away from metropolitan areas.

Swift, largest of the packers and listed among the top 15 U.S. industrial corporations, closed 259 plants and opened 260 new ones in the 10 years ended October, 1966.

Between 1958 and 1967 Swift cut its work force from 64,300 to 48,300. During approximately the same period its annual dollar sales per employee rose from \$35,400 to nearly \$60,000 through automation and improved processing methods.

At the same time, Swift spread into other fields. Although meat and meat-related products still account for 70 per cent of its \$2,800,000,000 annual sales, Swift now also deals in insurance, chemicals, fertilizer, artificial fireplace logs and two dozen other businesses.

Cudahy company in the last five years has closed its full-

line packing plant in Salt Lake City and reduced operations in Omaha. It will concentrate on the more profitable areas of the business and expand such nonmeat operations as salt mining, animal feeds and pharmaceuticals.

George A. Hormel & Co. plans to spend 15 million for capital additions and improvements this year.

George A. Hormel & Co. plans to spend 15 million for capital additions and improvements this year.

Unlike some of the other packers, Hormel says it plans to stick to the meat business. But it is concentrating on the more profitable products like wieners, sausages, bacon and canned meats and meals.

Meat packing, however, is a risky business at best.

The American Meat Institute says 18 of 113 packers surveyed lost money in 1966. The industry's earnings-to-sales ratio averaged only 0.7 per cent that year, compared with an average ratio of 5.58 per cent for all the nation's manufacturers.

While meat production has risen steadily, the number of employees required in U.S. packing plants has dropped. Meat production shot up from 27 billion pounds in 1956 to 32 billion pounds last year, while packing plant forces dropped from 238,000 to about 190,000.

The United Packinghouse, Food and Allied Workers union reports its membership declined from 71,532 in 1963 to about 65,000 at last count.



Helps Brother

When Mrs. Eva Carlson was hurt in a fall last week, E. W. Carlson of Salina came back to the farm to help. Carlson works for the U.P. railroad in Salina.

Find No Cases Of Starvation; 'Hunger USA' Report Disputed

The House agricultural committee has not been able to find a single instance of starvation in the United States, it has been reported.

There were many reports of malnutrition, it conceded, but these were attributed to local custom and ignorance.

The sources of the committee's information were county health officers who responded to a letter of inquiry signed by the committee chairman, Rep. W. R. Poage (D-Tex.)

The incentive for Poage's letter was a publication, "Hunger USA," based on a study by a group calling itself "Citizens Board of Inquiry into Hunger and Malnutrition in the United States." Its report cited 256 "emergency Hunger counties." The board was supported by church, union and civil rights groups and individuals.

Poage wrote to the health officers of each county on April 27 and went to press with replies from 181.

"Our committee," Poage wrote to the health officers, "is greatly concerned with any possible

lack of ability of our people to obtain an adequate supply of food."

He also made this point: "From my limited knowledge of nutrition I would assume that it was true that many Americans suffer from an improper diet, but the problem there is one of education and of personal decisions.

"It differs greatly from the inability of citizens to obtain the needed nutrients either through gainful employment or public relief.

Many of the replies were written in kind.

J. P. Chism, health administrator of Hale County, Alabama, wrote: "All our employees are of the opinion that there are those in the county who do not receive proper nutrition, but none knew of any starvation.

"Further, it was the unanimous feeling of each member of our staff that any malnutrition which may exist in this county is due to problems of education and personal decisions plus questionable ability to rationalize rather than any inability to buy food or receive public assistance."

Macon County, Alabama, was represented in the replies by Dr. Ruth Berree, who said:

"The public health nurses and I do see some children who do not have adequate diets. Often it is because the parents do not know how to get free commodities and cannot read the directions for preparing powdered milk and other foods they are not acquainted with."

GRASS & GRAIN

The Mid-Kansas news weekly. Published each Tuesday at 1207 Moro, (Box 1009) Manhattan, Kansas, 66502 by

AG PRESS
Dean Coughenour
E. R. Woodward
Second class postage paid at Manhattan, Kansas.
Subscription: \$3 year
CIRCULATION 12,710

Dr. O. R. Hunt, director of the Suwanee County (Florida) Health department, "wrote: 'Voltaire once said: 'A man has the right to kill himself any way he wishes.'"

"Americans who continue to smoke, drink and eat poor diets despite widespread knowledge of the consequences of such are apparently practicing that right. No one need go hungry in Suwanee County. An adequate diet

is available, but we cannot make them eat it."

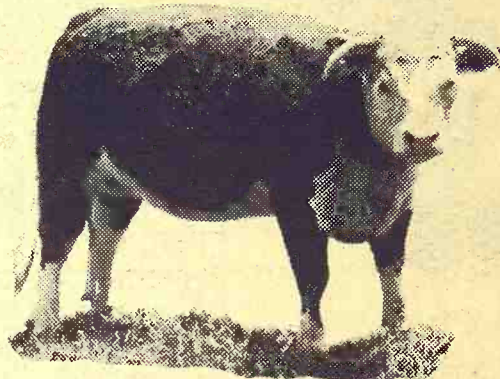
The summary in the committee document issued said: "While some criticism may be raised to the effect that these responses came from officials who are 'part of the establishment' and therefore might not be expected to fully disclose conditions over which they had a responsibility, the question may be voiced as to where can be

found citizens of greater responsibility, who can speak more knowledgeably as to the conditions into which we are looking."



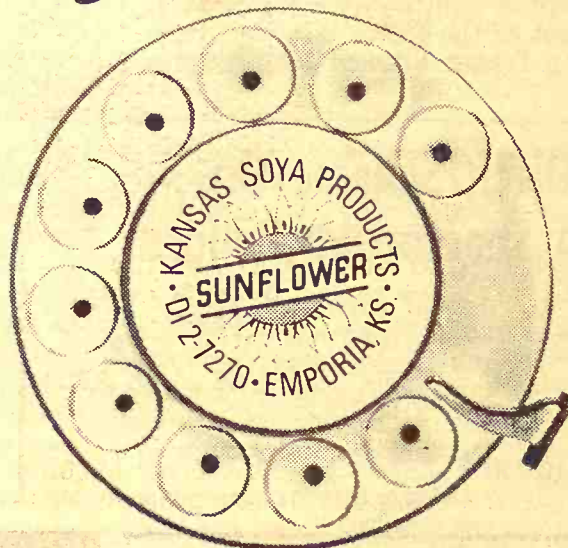
Tools Too

AGGIE
HARDWARE
1205 Moro
Manhattan, Ks.



How much nutrition does your forage contain?
Are your cattle getting enough protein?

call information



Just dial for formula guidance; for automated custom-mixing; for on-time delivery; and for Sunflower Brand Soybean Meal or Pellets (also 32% or 40% supplements) processed from nature's richest source of protein.



Kansas Soya Products Co., Inc., Emporia, Kansas, Phone Dickens 2-7270

BRING YOUR
WATCH
TO A SPECIALIST FOR
repairs

Good watches
deserve
expert care!
All others
need it!



The more expensive your watch, the more it needs the attention of experts. But ordinary watches need extra special care because keeping perfect time is not just built-in. It's the result of extra care.

SNYDERS JEWELRY

Phone: ME 2-5155
CLAY CENTER, KS.



HARVEST SALE

And With These Prices You Know We're Not Clowning

Purina Dog Chow

50-lb. Bags
Bags Have
Smoke Damage
Wholesale Price \$4.80
No Limit While Last
3.98

Stretch Jeans

& REG. DENIMS
Nationally Known Brand
Ladies, Men, Boys
Reg. \$5.00 to \$7.50
Our Price
3.49 Up

Hydraulic Hose

1/2 in., 1 wire, 2000 PSI, all lengths, plus fitting installation free

50c ft.

We Also Have 1/4" & 3/8"
Priced Accordingly

Carpet

Ozite Townair Carpet

12' Wide — Rubber

Back — Most Colors

3.75

Per Yd.

Rex

(made in US)
No. 50 - \$1.00 ft., No. 60 - \$1.20 ft., No. 80 - \$2.00 ft.
No. 50 Double . . \$2.00 No. 60 Double — \$2.40

Wire Rope

3 16 to 7 16

"Cable" Fiber Core — 3/16 to 7/16
3/16 — 6c ft 1/4 — 10c ft.
3/8 — 12c ft. 7/16 — 15c ft.

Moisture Meter

\$65.00

No. 200, batt. or elec. — Wholesale price \$74. Special now at

Sisal Rope

Carton Packed Empire 1/4" up to 1/2" **per ft. 2c**

Tool Box

Far-Mech 18"x6 1/2"x5 1/2"

\$2.98

2x4 — 8' Only

47c

1/4 AD Sanded Ply

\$2.72

See Us For Your Paneling & Building Supplies

Morrison Warehouse & Lumber

742 N. 13th

Salina, Ks.

TA 3-3001

Cross Hyd. Cylinders

3 1/2"x8" — 2500 PSI **\$33.95**

Cross Utility dbl. action, Utility 3"x8" 1500 PSI **\$19.95**

Prefinished

Lauan

Paneling

4x7 Lauan — 3 colors to choose from **2.98**

4x8 Lauan

3.69

4x8 Woodhue Pecan

3.59

**GOOCH'S
BEST**

Over 100 top quality offerings go on the
auction block for Red Circle Stamps at the
RED CIRCLE AUCTION
at the CK Ranch, Brookville, Kan.

FRI., JULY 19 ♦ Awards Day ♦ SAT., JULY 20 ♦ Auction Day



**\$300 GOOCH SCHOLARSHIP IS THE
GRAND ACHIEVEMENT AWARD:**

The 7 Class Winners of the Achievement Awards also compete for the Grand Award—a \$300 Gooch Scholarship valid at the winner's choice of colleges.

Shown on the left is Red Circle Auction Founder and Host, Mr. J. J. Vanier, presenting the \$300 Grand Achievement Award Gooch Scholarship to the 1967 Winner.

**SPECIAL RED CIRCLE AUCTION
OFFERING 15 REGISTERED CK
HEREFORD HEIFERS:**

Only at the Red Circle Auction can you buy with Gooch Red Circle Stamps your choice of 15 Registered Hereford Heifers carrying top CK Hereford bloodlines. You'll need both Feed and Food Red Circle Stamps to become the proud new owner of one of these Registered CK Hereford Heifers.

4-H SQUARE DANCING CONTEST: JULY 19

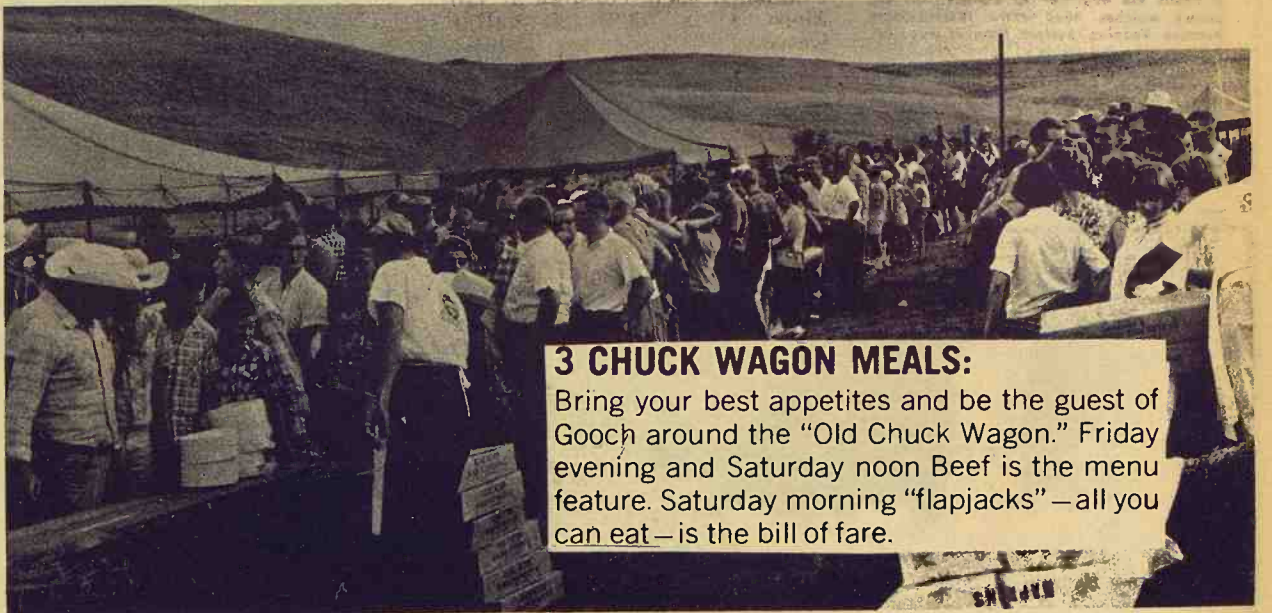
4-H Clubs sporting their Sunday-Best will Square Dance the evening away Friday, July 19. Square Dancing is fun to watch—even more enjoyable to participate. Ask your Gooch Representative to help your 4-H Club enter the Square Dance Contest. You'll be competing for \$150 in Cash Awards including a \$75 First Prize.

**GOOCH'S
BEST**



HOW THE BIDDING WENT AT THE 1967 RED CIRCLE AUCTION

| | Low Bid | Top Bid | Bidding Comments |
|------------------|---------|---------|----------------------|
| Steer Calves | 2,500 | 26,000 | 18 sold under 13,000 |
| Hereford Heifers | 21,000 | 49,500 | |
| Gilts | 1,000 | 16,500 | 12 sold under 8,250 |
| Quarter Horses | 36,000 | 50,000 | |
| Sewing Machines | 8,500 | 14,000 | |
| Holstein Heifers | 10,000 | 26,000 | 3 sold under 11,000 |
| Ewe Lambs | 200 | 4,600 | 10 sold under 1,600 |



3 CHUCK WAGON MEALS:

Bring your best appetites and be the guest of Gooch around the "Old Chuck Wagon." Friday evening and Saturday noon Beef is the menu feature. Saturday morning "flapjacks"—all you can eat—is the bill of fare.

BUY AND BID YOUR CHOICE OF:

- ★ 15 Registered CK Hereford heifers
- ★ 30 Steer calves, "show ring prospects"
- ★ 5 Holstein heifers
- ★ 10 Ewe lambs
- ★ 40 Registered Duroc and Hampshire gilts, many are daughters of Certified Meat Sires
- ★ 2 Registered yearling Quarter Horse fillies
- ★ 10 Electric portable Morse sewing machines

**No Money—only GOOCH RED
CIRCLES can be used to bid &
buy the animal of your choice!**

Boys and Girls—you will have a better than ever opportunity to bid and buy a club project at this year's 17th Annual Red Circle Auction.

FUN AND GAMES:

Three legged racing, cardboard racing, sack racing—whatever your specialty—train into a sharp edge. Friday, before the Square Dancing, you'll have the chance to win special prizes in the Red Circle Auction Fun and Games.

BOYS . . . GIRLS

SEE THE BANKER

For Credit Red Circle
Stamps to Bid & Buy.

He'll be available up to Auction Time Sat. July 20 to help you arrange credit Red Circle Stamps to supplement your total. Your credit is rated by the number of Circles you will have at sale time.

Council Grove Elevator
Vic Pykiet, manager
COUNCIL GROVE 767-5534

Clay Center Dehy Co.
Howard Habluetzel, manager
CLAY CENTER ME 2-3401

Morrison Grain Co., Inc.
Ruth Gfeller, manager
JUNCTION CITY CE 8-6118

Emmett Elevator Co.
Pat Hutley, manager
EMMETT 535-2460

Farmers Cooperative Assn.
Clifford Prell, manager
HANOVER ED 7-2222

Cloud County Livestock Comm. Co.
Gail Garton, manager
CONCORDIA CH 3-1181

The Farmers Elevator Co.
Everett Harris, manager
MINNEAPOLIS EX 2-3118

C K Processing Co.
Jim Ryan, manager
MANHATTAN PR 6-9269

No Slum Pattern In Food Prices

An Agriculture Department survey shows that food bought in supermarket chains varies little between high and low-income neighborhoods.

The survey was made in six major cities and involved a national and a local or regional chain in each.

There was "no identifiable pattern of differences between sample stores of the same chain operating in high and low-income areas," the report said. "Though uniform prices were the rule, there was some variation from store to store in prices of individual items."

Such differences were largely random, no definite pattern by income areas of the city, the survey showed.

The department said the survey was made with a thought to finding out more about the effectiveness of the food stamp program.

Government shoppers bought a variety of 17 items, ranging from milk and margarine to sugar, coffee, ground beef and frankfurters.

This buying was done on February 8-9, the department said, so that there would be a relatively high redemption of food stamps and issuance of welfare assistance checks.

Food stamp programs were operating in five of the six cities surveyed.

Though the survey did not list the cities, a department source identified them as Philadelphia, San Francisco, Denver, Detroit, Chicago and Dallas.

He also identified the chain stores as Safeway, A&P, Jewell, National Tea Company, Miller's, Kroger, Acme, Penn Fruit Company, and Purity.

Three of these were surveyed in more than one city, but the source did not say which were involved.

Some of the findings:

- Milk prices varied little from store to store within the same chain. Prices of margarine varied widely but part of this was due to the "uneven availability" of cents-off prices among stores of the same chain.

- There were several sources of price variations which management finds difficult to control, including some errors at the check-out counter. "Over-

all, however, checker errors favored customers more often than the store," the survey said.

- Fat content in ground beef was mostly within the 30 percent level of the federal standard. Of 47 products tested, only two exceeded 30 per cent.

- Of 244 samples of frankfurters, only 13 contained more water than specified by federal tolerances. Eight of the 13 were from stores in high-income areas.

- Fat content of pork chops showed a wider range among high-income stores, but averaged slightly higher in low-income stores.

Canadian Wheat Stores Bulge

REGINA, Saskatchewan — The wheat farmers of this breadbasket province the size of Texas are doing well. In fact, they have never done better.

A mild winter has permitted the earliest planting in 10 years and the crop reports so far are good.

But politicians and farm organization leaders warn farmers that a year from now, Canada's

July 2, 1968

wheat producers will be in trouble.

With wheat production up all over the world, Canada's exports are down sharply. Elevators bulge with more than 900 million bushels of unsold wheat, a record.

Paper Back

Books

Largest Stock In Town

University Book Store

623 N. Manhattan Manhattan

A Bank Preferred by Farmers And Livestockmen



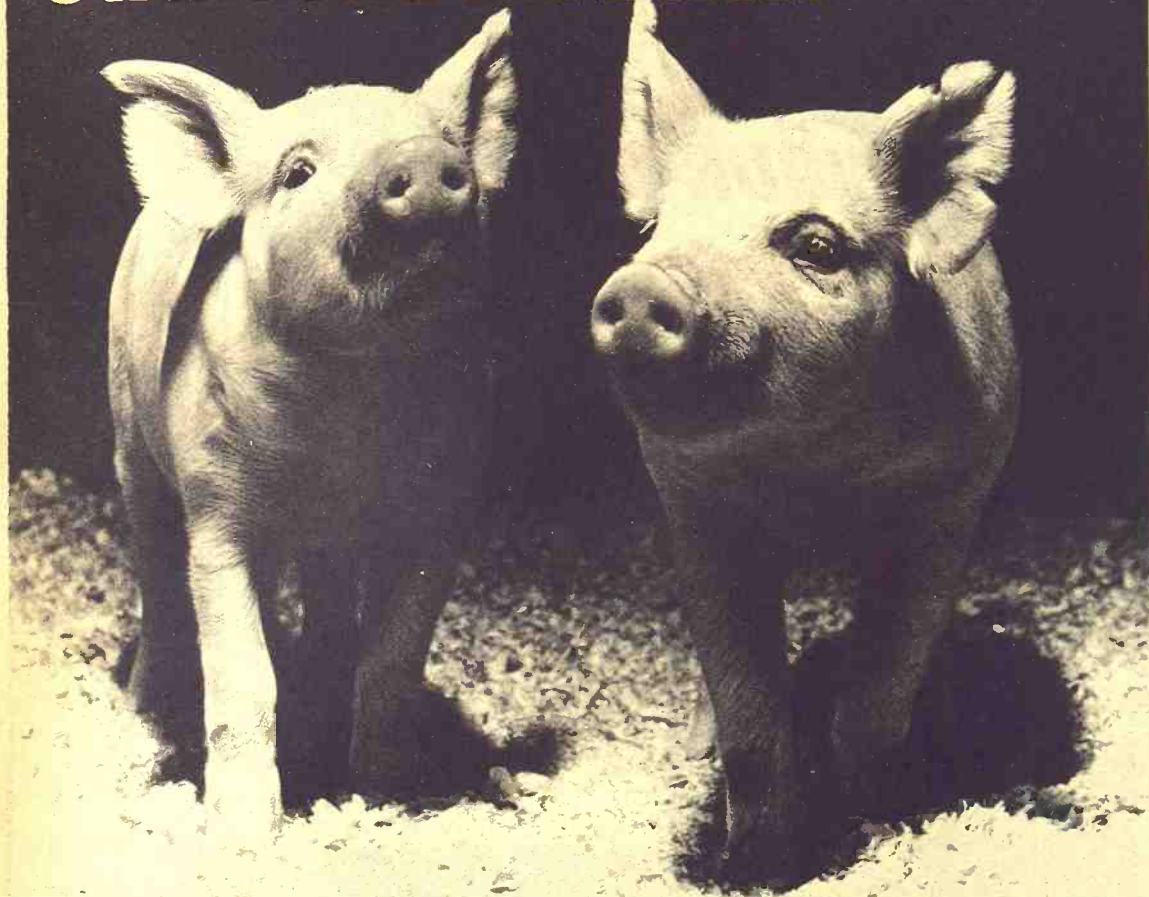
NATIONAL BANK

5%

ON CERTIFICATES OF DEPOSIT

Junction City, Kans.

PURINA HELPS PIGS START FAST...FINISH FIRST!



Every hog you own costs you money... every day from farrowing to finish. And days mean dollars—dollars in your pocket if hogs finish fast and bring the right price—or dollars down the drain if hogs make slow gains and convert feed poorly. Purina Hog Chows can help your hogs *start fast*... and *finish first*!

Purina Research Farm tests showed it took just 50 lbs. of "loaded with power" Pig Startena to stack an average of 25 lbs. of gain on a pig... in just 21 days!

*Purina Pig Growena kept pigs going and growing from 50 to 85 lbs. in 25 days... on as little as 86 lbs. total feed.

*New Purina Hi-Protena, designed to meet the special nutritional needs of hogs between 85 and 125 lbs., added an average of 40 lbs. of meat in 24 days—and

it took only 112 lbs. of Hi-Protena to make the gain.

Tests showed it took only 42 days and an average of 277 pounds of Hog Chow and grain to put 75 lbs. of gain on a pig.

Only 525 lbs. of Purina Hog Chows and grain put on 175 lbs. of pork in just 112 days. That's efficiency!

EXTRA PROTECTION AVAILABLE WITH TYLAN
Purina Pig Startena T1 contains Tylan* to help control bloody scours** during a pig's early starting days. Purina Hog Chow T4 with Tylan gives finishing hogs extra protection against costly scours.

Give Purina a try. See for yourself how your hogs "go to town" and how little it costs to produce pork the Purina way!

Mid-Continent Elevator CE 8-4177 Junction City
Americus Grain Co. 884-3465 Americus
Gorden Mark Elevator .. ME 2-3381 Clay Center
Western Grain Mill 767-5933 Council Grove
Flint Hills Feed & Grain PR 8-5322 Manhattan
Farmers Union Feed Mill 437-2434 St. Marys
Mor-Kan Elevator 349-2214 White City
Reading Grain & Lumber AN 9-3842 Reading

PURINA CHOWS

Corporate Farm In Missouri Closely Watched

With large corporation-owned farms feared by many family farmers all over the Midwest, a corporation farm that is getting plenty of attention is CBK Industries' big farm near Rich Hill, Mo. One quick conclusion by many observers of the operation is: a corporation farm isn't like any other farm, only bigger. The CBK operation near Rich Hill covers about 9000 acres, a

More Corn Under Loan

Corn from the 1967 crop planted under federal Price Support loans through May totaled 7,477,642 bushels, the department of agriculture says. This compares with 238,874,333 bushels under loan from the 1966 crop, and 211,041,012 for 1965. Wheat from the 1967 crop totaled 268,330,219 bushels under loan, compared with 131,857,054 bushels from 1966, and 169,411,777 bushels from 1965. Soybeans under loan from the 1967 crop totaled 195,252,239 bushels through May, compared with 149,686,587 bushels from 1966, and 86,514,595 bushels from the 1965 crop. The department said it had made a total of 401,800 price support loans on 1967 crops through May, compared with 2,111 a year earlier on 1966 crops. The price-support loan program permits a farmer to offer his production for security in return for guaranteed payment rates for his crops.

DD TO PIPELINE FACILITIES IN AREA

Two facilities in the G&G area owned by the Natural Gas Pipeline Co. of America are due for expansion. Natural Gas has proposed to construct 12,000 horsepower intermediate compressor stations in both Ellsworth and Washington counties, as well as Edwards County farther west.

big acreage to be sure but one that would not be too unusual in western Kansas. But it is size that seems the most startling thing about the Rich Hill farm.

The size is startling because the land has been laid to permit cultivation in huge blocks.

It's all heavy bottom land, but much of it had been swampy, timber land. There was a flood problem from the Marmaton and Little Osage rivers.

This was not the kind of land that was once dotted with small farms. It has taken tremendous capital and big machines, to change hard-to-farm acres into good land. It is something that can be done with today's big machines, but would have been extremely difficult in the days of horse and mule power.

This spring 8000 acres have been plowed. CBK didn't get possession of all the land until this winter and besides last fall was too wet for good plowing. The bottom certainly is not at its best in an overly wet season.

Drainage, not erosion, is the problem. Two big pumps are in place for pumping water from bar ditches over dikes into the Marmaton. These ditches were made in the construction of the dikes; that is, when dirt was taken to build a dike, a ditch resulted.

Water from fields drains into the ditches and if there is too much, it can be piped over the dikes into the stream.

Conversely, water can be trapped in the ditches and used for irrigation in the summer. The assumption is that irrigation will not be needed to a great extent, but it would be available to give corn the necessary moisture needed at just the right time for maximum yields.

The biggest wheel tractors available were used this spring to pull 8-bottom gang plows to cut 26-foot widths thru the black soil. Workers used these machines night and day.

Some 4000 acres were limed. All the land has been fertilized. An airplane has been used to spread soil insecticides and herbicides.

Only corn and milo will be grown — no other crops or livestock. The plan is to seed about 60 percent corn, 40 percent milo.

J. R. Dominick II, president of CBK, says, "We'll change this country in five years." He obviously thinks that big machinery, thorough cultivation, heavy use of fertilizer and addition of humus to the soil can make it productive far beyond other land not so intensively farmed.

The CBK land has been worked by 24 men, with Dominick figuring that one farm worker is required for every 500 acres. In addition there is a farm superintendent, a couple of mechanics and two or three other specialists.

All the workers are local men. The farm machines have been purchased from local dealers in Schell City, not far from Rich Hill. The workers are paid either by the hour or by the week. The plan is to keep them employed the year around.

CBK revealed a year ago it was selling several businesses with the intention of investing the money in farm land. The announced goal was 80,000 acres to be purchased in several states.

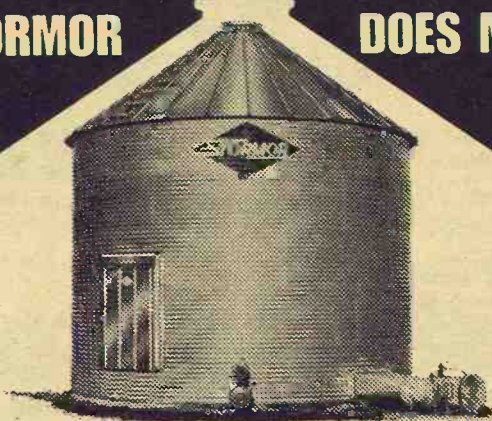
To date 14,500 acres in Texas and 3000 in California have been bought, besides the Missouri land. Some land is leased on long-term contracts.

The CBK operation will be watched closely by those who fear corporation farming as well as those who think it might have lessons for the area.

July 2, 1968

STORMOR

DOES MORE



Sign Of A Great Bin

STORMOR

There's good reason why you're seeing more Stormor bins go up every year. Stormor builds them strong — out of heavy full-galvanized sheets. Stormor builds them handy — with a choice of rugged doors and wide, easy-access hatches. And Stormor builds in versatility too. When your drying needs increase, your basic bin quickly converts to an efficient Dry-O-Mation System. See us today for any Stormor bin from 1,000 to 66,400 bu.

MIX MILL SYSTEMS

JIM WAHLE PHONE CE 8-7660
ROUTE 2
JUNCTION CITY, KANSAS

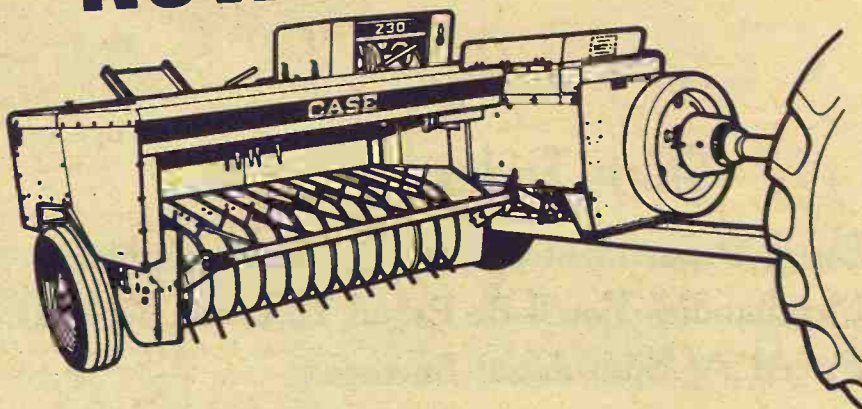
- Dry-O-Mation • Clear-Span Steel Buildings
- Batch Dryers • Bulk Feed Bins

STORMOR INC. P. O. Box 198, Fremont, Nebr. 68025

**PUT IN YOUR BID
FOR
higher
profits
NOW!**

**ALL FORMS OF
FINANCING
AVAILABLE**

Crop Way Purchase Plan takes the pain out of paying. Now you can own a baler or any Case equipment you need, easier than ever. Terms are arranged to suit any budget.



- Simplified design — smooth, easy operation
- Big-capacity baler in popular-priced class
- Gentle Sweep Feed saves protein-rich leaves and tips
- Makes firm 14"x18" sure-tied bales
- Easy on the hay, easy on you, easy on your pocketbook
- Available with plunger-powered bale thrower

Learn the secrets of beer cookery

Find out how to make delicious everyday dishes with beer — such as beer meat loaf, beer chicken, beer sausages and beer cake. And then there are such gourmet treats as rarebits and Carbonnades Flamandes.

Beer cookery is as traditional as yesterday... as modern as tomorrow. Beer adds a real flavor treat.

Send in this coupon for our pamphlet of free recipes on cooking with beer.



I'm interested in recipes for cooking with beer. Send me my free pamphlet.

Name _____

Street _____

City _____

State _____ Zip _____

UNITED STATES BREWERS ASSOCIATION, INC.
P.O. Box 1435, Topeka, Kansas 66601



CLAY CENTER
Porter Eqpt. Co.
1121 Crawford ME 2-5202

CENTRALIA
McBratney Impl.
Phone 857-3815

MARION
Longhofer Supply

CHESTER, NEBR.
Grabau Impl. Co.

SALINA
Vahsholtz Impl. Co.

LINN
Kuhlman Motor Co.

MARYSVILLE
Brauchi Brothers

CHAPMAN
Jones & Knopp WA 2-3241

OUR DAILY BREAD

— by G&G Area Cooks

Thelma Baldock Of Delphos Wins A Beverage Server

Thelma Baldock, Delphos: "Since this is fresh peach season thought the Grass & Grain area cooks might enjoy trying this recipe."

PEACH DELICIOUS

- 3 egg whites
- 1 cup sugar
- 14 rolled soda crackers
- 1/4 teaspoon baking powder
- 1 cup whipped cream, sweetened
- 1/2 cup chopped nuts
- 1 teaspoon vanilla
- sliced peaches, sweetened (fresh or canned)

Beat egg whites stiff; add sugar gradually. Mix crackers, baking powder and nuts together and add to egg white mixture. Add vanilla. Put into a buttered pie plate and bake 30 minutes or until golden brown. Cool. Top with thinly sliced peaches. Top peaches with whipped cream. Place in refrigerator and let stand at least six hours. Use 9 or 10-inch pie plate.

Mrs. George Faelber, Carlton: "This bread has a beautiful brown crust and good flavor."

BREAD

- 1/2 cup shortening (margarine)
- 1/2 cup sugar
- 1/2 cup non-fat milk
- 3 teaspoons salt
- 2 cups water
- 1/2 cup water, 1 teaspoon sugar, 1 package yeast
- 2 eggs

Flour enough to make stiff dough

Put 1 stick margarine in saucepan; add 2 cups water, heat until margarine is melted. Pour over sugar, salt and milk which are in a large bowl. Add 2 cups flour. Beat out lumps; add eggs and beat well. Let stand. Prepare 1/2 cup water, 1 teaspoon sugar and yeast and add to first mixture when it is barely warm. Add flour to stiff dough, knead and place in greased bowl. Place in warm place, let rise double, punch down. Let rise again until double. Bake at 375 degrees for about 45 minutes.

Mrs. Mary Lanning, 223 South 4th, Sabetha: "Don't let rhubarb go to waste! Eat it this winter."

RHUBARB JAM

- 5 cups rhubarb, cut into 1/2-inch pieces
- 4 cups sugar

Combine and let stand overnight. Stir occasionally. It will form its own juice. Bring to boil. Boil 15 minutes. Add 1 package raspberry gelatin (dry). Stir well; pour into glasses, cover with wax paper or seal.

Mrs. Dyril T. Koons, R 1, Lindsborg: "You can make this recipe ahead and refrigerate or put in freezer in case of last minute company. I enjoy reading all the recipes in the Grass & Grain and trying some of them ever so often."

CHICKEN LOAF

Cook, bone and cut into small pieces

- 1 hen or rooster

Add:

- 4 eggs, beaten
- 1 1/2 cups diced celery
- 1/2 cup diced onion
- 1/2 to 3/4 cup chopped longhorn cheese
- 2 1/2 cups crushed Ritz crackers
- 1 can mushroom soup

Mix well and add enough chicken broth to make real soupy and bake 45 minutes or one hour in 350-degree oven.

Mrs. Mark McHenry, R 3, Minneapolis: "This is a favorite summer Brownie recipe. Freezes well, too."

APPLESAUCE BROWNIES

- 1/2 cup shortening
- 1/2 cup sugar
- 1/2 teaspoon cinnamon
- 2 tablespoons cocoa
- 2 eggs

Cream above ingredients but not too much.

- 2 cups flour
- 1 1/2 teaspoons soda
- 1/4 teaspoon salt

Add flour, soda and salt to creamed mixture alternately with 1 1/2 to 2 cups applesauce. Spread in greased jelly roll pan. Sprinkle with 2 tablespoons sugar, 1/2 cup chopped nuts and 1 small package chocolate chips. Bake at 350 degrees for 20 minutes.

Light Up Switch

Dip a cotton swab in fluorescent paint and use as a tiny brush to outline the light plate switch. This will make it easier to find in a dark hall or room.

The Latest 'Daily Bread' Prize

Insulated Server

IDEAL FOR either hot or cold beverages. Shock resistant; dishwasher safe, one-quart size. This lovely bronze-tone with white trim server is perfect for either patio dining or in the home dining area. Lid lifts with the touch of a thumb; wide lip for easy pouring.

The winner each week is drawn by lot from the recipes printed.

Win one by sending us your favorite recipe — this can be main dish, leftover, salad, side dish, dessert or what have you.

1. Check your recipe carefully to be sure all ingredients are accurate and accounted for.

2. Be sure your name and address are on the entry.

3. Only one recipe at a time, please.

4. Send it to Woman's Page Editor, Grass & Grain, Box 1009, Manhattan, Kansas.

Home Economist Describes How Yogurt Is Made

There was a time when mention of "yogurt" brought forth visions of bearded beatniks reading poetry and consuming bowls of the product. Now the product, as well as the feeling toward it, has changed. It has emerged in new form, new flavors and with a brand new image, states Mrs. Nancy Hjetland, County Extension Home Economist.

What is it? Basically, yogurt is a cultured milk product, somewhat like sour cream — somewhat like buttermilk. But yogurt has been "dressed up." Processors have attempted to tickle the palate of many Americans by adding delightful fruit flavors.

The processor starts with raw milk. To this he adds more milk solids and sugar to bring out more flavor. If the yogurt is to have a fruit flavor, the fruit is added at this point. The next step is to preheat and concentrate the mix under vacuum, removing about ten percent of the

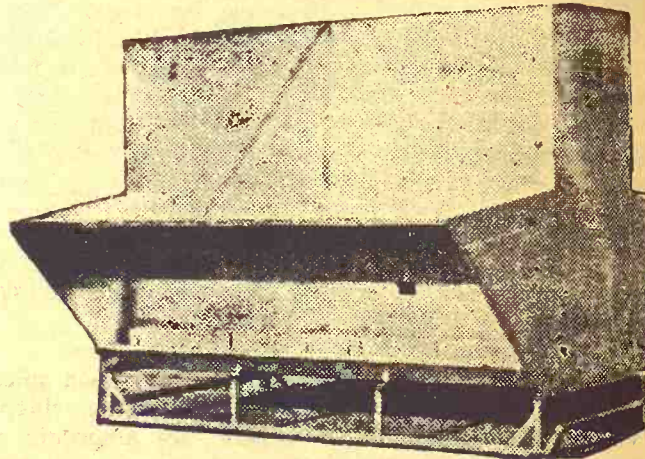
water and leaving a product with a thick, cream-like consistency. Then the processor mogenizes and pasteurizes. The essential ingredient is gurt, as in buttermilk and cream, is a special dairy culture that creates the pleasantly tangy taste that yogurt users find so appealing.

Removes Rust Stains

Rust stains may sometimes be removed from fabric with lemon juice. Just squeeze a little juice over the stain, let garment dry completely, then wash in the usual way.

To Wash Pillows

Pillows filled with feather down, Acrilan, Dacron or Orlon can be laundered and dried in a machine. Turn them over during washing to give both sides a thorough sudsing. Rinse well then dry in the drier at a low setting or hang them out on a breezy day. Shake and pump the pillows several times during drying to fluff the filling.



Use a LUTTIG metal all-welded self-feeder to self-feed your cattle. Will not leak or rot, and feeds down good, reasonable in price.

Capacities of 150, 250, and 350 bushels.

LUTTIG TRAILER COMPANY

Telephones: Office 535-2610—Res.: 535-2350
EMMETT, KANSAS

WESTERN SADDLE SUPPLY

J. D. RITTEL & SONS

WESTERN WEAR

In Mid-Kansas

Largest Saddle Selection for the Entire Family

BOOTS • HORSE TRAILERS

Square Dancers Supplies

HOPE, KANSAS PHONE 43



STORE WIDE SUMMER CLEARANCE SALE

Starts Friday, July 5th

Every Department Offers Quality Brand Name Merchandise You'll Be Proud To Own — Now Priced At Substantial Savings.

You'll See Savings Of

1/4, 1/3 & 1/2 OFF
Regular Prices

Woodward's

Manhattan's Fashion Dept. Store
Open Thursday Nights Til 8:30

YOUR PCA PROVIDES FARM LOANS TO FIT FARM NEEDS



working together farmers can solve the problems of today... prepare for a better tomorrow!

Your future — and your family's future — depend on sound financial management of your affairs. PCA is your best source of dependable credit for improvements that increase your efficiency — and income.

Manhattan

Production Credit Assn.

5th & Humboldt Ph. 776-7061

Serving Marshall, Clay, Riley, Geary, Pottawatomie & Wabaunsee Counties. Branch offices at Clay Center, Marysville. Fieldmen: Owen Duer, Asst. mgr.; Ray Cohorst, Marysville. HI 3-4005.

Floyd Rutherford, mgr.

Residence — Ph. 776-5483



Council Grove

Production Credit Assn.

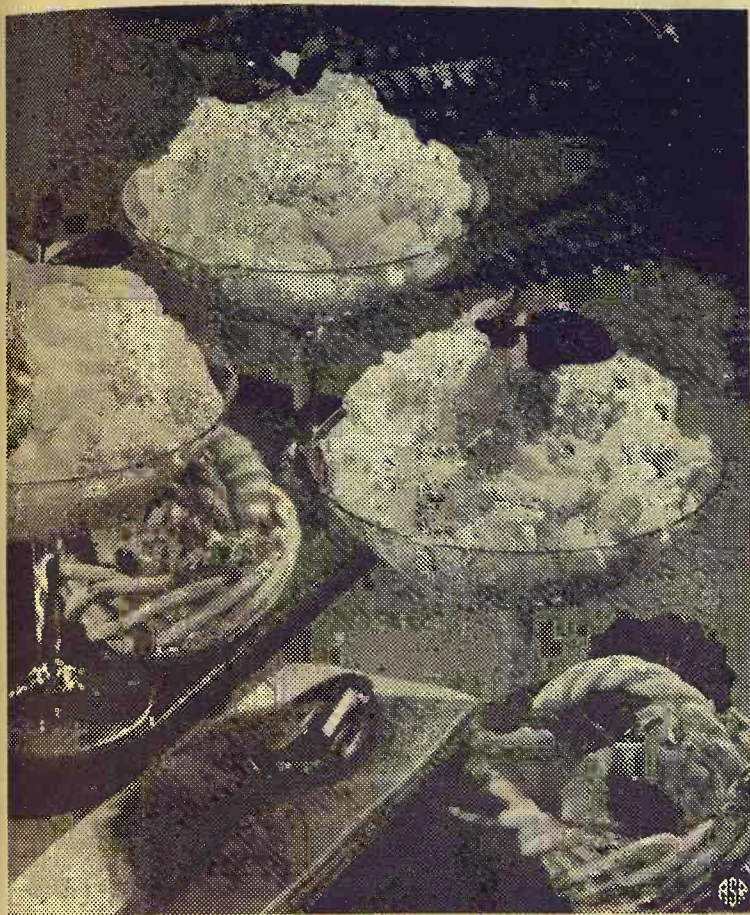
315 W. Main — 767-5115

Serving Dickinson, Marion, Morris, Chase & Lyon Counties. Branch offices at Abilene, Hillsboro, Marion. Fieldmen: Bill Abboro, Marion. sec-tr.: James Peterson, Asst. sec-tr.: James Peterson, Lehigh; Wilfred Elliott, White City.

Charles E. Graham, mgr.

Residence — 767-1115

Heavenly Rice Dessert Is Cool Perfection



How delectable! That's what they say when they spoon this refreshing, cloud-light dessert. The chief difference between this sophisticated treat and its simpler cousin — rice pudding — is that golden pineapple preserves have been added.

A chilled dessert, no baking is necessary. The fruit-rich, slightly tart pineapple preserves is a most satisfying accent to the bland flavors of rice, marshmallow and banana folded into a fluff of whipped cream. Easy to create, it suits parties large or small; its chilly richness is

memorable as a coffee sweet or as the perfect finale to a feast. It is a favorite of all ages, too — pretty enough for adult parties, nutritious and pleasing to the young ones.

HEAVENLY RICE

2 cups cooked rice
1 cup pineapple preserves
1 cup miniature marshmallows
1 ripe banana, sliced
2 tablespoons lemon juice
1 cup heavy cream, whipped
Prepare rice according to package directions. Combine rice, preserves and marshmal-

lows and mix well. Sprinkle banana slices with lemon juice and add to rice mixture; cool. Fold in whipped cream and chill. Makes six servings.

Plastic Skirt Protects Clothing

Messy or splashy household jobs such as polishing silver, washing windows, sudsing out hand-washables and scrubbing floors may play havoc with the housewife's clothes unless she wears a protective cover.

Good protection is provided by a washable plastic skirt that is easy to stitch. It takes just a length of inexpensive plastic and any simple, full-skirt pattern. Plain seams are adequate because plastic doesn't ravel or fray. Sew on strips of ready-made snap-on fasteners for a button-down-the-front skirt.

Then use a double-fold strip of the plastic as a waistband. The raw edge serves as a satisfactory hem. Just make sure to cut the skirt several inches larger than dress size for adequate protection, even when seated.

With this type of plastic cover-all, the wearer can sit down to polish silver or brass in her lap. The cover-all can also be slipped on over a party dress when there are last-minute kitchen duties to perform before guests arrive.

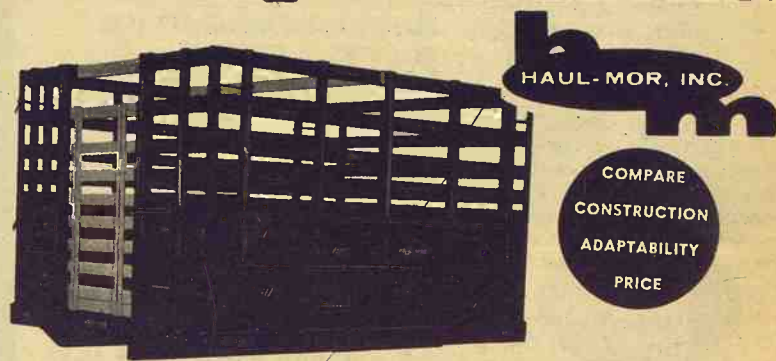
Recipe Correction

The June 11 issue of Grass & Grain carried a recipe for Cinnamon Coffee Bars, sent by Mrs. Jack Halst of Miltonvale. The recipe as printed called for 1/4 teaspoon soda and 1/2 teaspoon salt. This should read: 1/4 teaspoon salt and 1/2 teaspoon cinnamon. (No soda).

July 2, 1968

Use Care When Washing Mirrors

In washing hand mirrors, take care that no water seeps in under the glass. Just rub over the mirror with a sudsy cloth and wipe with a clean wet cloth. Polish until dry.



Grain Body with Combination Lift-Off Rack.

7'x80" wide
8'x80" wide
9'x93" wide
10'x93" wide
12'x93" wide

13'6"x93" wide
15'6"x93" wide
16'6"x93" wide
18'x93" wide

- Regular grain body
- Hardwood lift-off rack
- Racks added to grain body give 66" height
- Perfect fit
- Furnished with 2 gates
- One for grain, one for stock rack

Special sizes easily manufactured to your requirements

When Ordering Specify Make, Model, Size of Bed

HAUL-MOR, INC., valley falls, kansas • phone 945-3211

No other chopper can match it!

THE GEHL CHOP-KING is the biggest, brawniest chopper ever built! Bigger in size, bigger in capacity, bigger in value... the self-propelled Chop-King results from Gehl's more than a century of specialized chopping experience. In a Chop-King, you get reputable, value-packed features from the world's largest seller of forage harvesters.

EXCLUSIVE 3-ROW ATTACHMENT. Leadership! This year get Gehl one-step-ahead chopper leadership in the exclusive 3-row attachment. Unmatched capacity, famous Gehl field-proven performance in 28" to 32" narrow-row corn.



- *Eight tungsten carbide faced knives
- *Select-A-Cut transmission
- *Power steering
- *Floating heads
- *Optional Equipment

GEHL



Make us Prove it with a Demonstration!

HANOVER
HANOVER IMPL. CO. LINN
NORTONVILLE
WEISHAAR BROS., INC. KUHLMAN MOTOR CO.
ROSSVILLE
ROSSVILLE TRUCK & TRACTOR SABETHA
PERRY FLENTIE'S, INC.
SEYLER FARM SUPPLY WATERVILLE
MINNEAPOLIS WATERVILLE
CHAPMAN IMPL. CO. MOTOR CO.
GYPSUM
KUHN IMPL., INC.

YOU CAN BUY IT FOR LESS AT

WEEKS

THE WORLDS GREATEST PRICE WRECKERS

443-505 So. Santa Fe

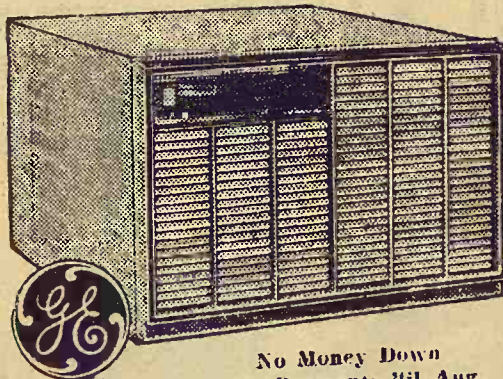
Salina, Kansas

Salina Store Hours 9-8 daily, Sun. 1-6

626 N. Main

Newton, Kansas

Newton Store Hours 8:30 to 6 daily
8:30 to 9 Thurs.



General Electric
Air Conditioners

\$114⁸⁸

No Money Down
No Payments 'til Aug.

No. RP300

Model RP301

5,000 BTU

Weeks

Price **138⁸⁸**

Model AGJE609

8,500 BTU

Weeks

Price **198⁸⁸**

Model RD910B

18,000 BTU.

Weeks

Price **269⁹⁵**

Model 110A

10,000 BTU.

Weeks

Price **208⁸⁸**

Model RD908

19,000 BTU.

Weeks

Price **289⁹⁵**

GE 22000 BTU

**Air
Conditioner**

299⁹⁵

©GEW, INC.

Ways To Use Worn Towels

Find new ways of using thin or worn towels.

The biggest portion of the best part can be quickly turned into a little girl's apron. A small square of about five inches makes the bib and a larger

piece makes the skirt. Just gather the skirt on to a tape or band of contrasting cotton and stitch on the bib. Add crossover straps of tape or cotton.

Your small son will not scorn a bath mitt if you make it to look like a catcher's mitt. Draw a simple outline on paper and use this as your pattern. Mach-

ine stitch around the outline. Cut out the mitt leaving a narrow seam. Turn the mitt inside out and stitch it again about half an inch from the edge. Crochet around the edge.

Early Morning Shower

To be really awake once you struggle out of bed, lather up well in a hot shower, give yourself a good rubdown with a brush and rinse with a cold shower to stimulate circulation.

To Remove Perspiration Stains

If a perspiration stain is a fresh one on a garment, sponge with a little water and vinegar solution before washing. If the stain is an older one, sponge with a little ammonia and water. Wash and rinse thoroughly.

Preserve Colors

Turn youngsters' bright-colored dresses, pants, shirts and blouses wrong-side-out when drying on the line, to help preserve colors.

Best Returns From High Expense Items

Land is the primary base for agricultural production. But many farmers are getting a better return for other resources such as fertilizer and machinery, according to a Kansas State University economist.

In a study of Farm Management Association farms, Dale A. Knight found that expense-type resources — seed, fertilizer, machinery, and feed — showed the highest earning power.

Farmers are buying these items in quantity and are paying high prices for them, often by borrowing, Knight says. They are doing this for a reason — these items are productive,

Earning power for land, on the other hand, was fairly low. Based on current land values, the rate of return was approximately equal to the rate of inter-

est.

Labor was another resource with a low earning power. It makes it easy to understand why many are leaving the farm, Knight says. It also explains why some farmers do not use much labor. Its earning power is less than what many farmers would have to pay for it.

This fact also helps explain why so many farmers are substituting machinery for labor in their farming operations.



FARM & RANCH LOANS

A Financial Service For The Farmer And By The Farmer

R. STANLEY PARSONS, Mgr.

SEE ME AT

604 HUMBOLDT PR 6-6931

Res. Phone JE 9-8725

MANHATTAN

Open Mon. through Fri. 8 a.m. to 5 p.m. (closed 12-1)



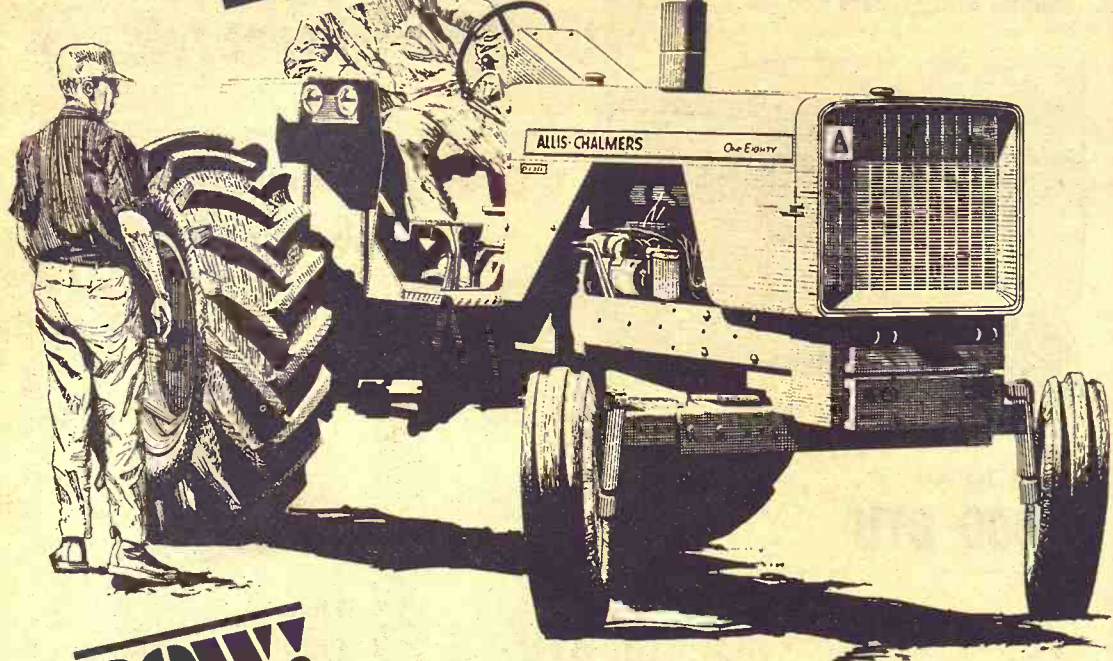
Branch Offices: CLAY CENTER & JUNCTION CITY

Federal LAND BANK Assn. of MANHATTAN

Serving Clay, Geary, Pottawatomie & Riley counties.



Loaded with IDEAS!



new!

ALLIS-CHALMERS ONE-EIGHTY

(63* HORSEPOWER)

- The best performance and comfort features of the hot One-Ninety XT, now in the full platform One-Eighty tractor!
- Hydrostatic power steering!
- Oil-smooth power clutch!
- Power-shift rear wheels, roll-shift front axle!
- Triple hydraulics—3 hydraulic

circuits optional, to let you call on several hydraulic functions at once, without fading.

- Wide, full protection fenders with dual lights.
- Automatic TRACTION BOOSTER acts like invisible wheel weights to take you smoothly through the tough spots.



*Mfr's estimated PTO hp.

See the ONE-EIGHTY at...

MARYSVILLE Marysville Machinery Co.

WAMEGO Meinhardt Farm Eqpt.

ALTA VISTA Buchman Farm Supply

TOPEKA - East US 24 Henry Sales & Service

WASHINGTON Hinkle Impl. Co.

MARION Longhofer Supply

WATERVILLE Waterville Motors

ABILENE Wright Impl. Co.

EMPORIA - 1115 W. 6th Schaefer Eqpt. Co.

Phone DI 2-3172

COUNCIL GROVE Patterson Impl. Co.

HERINGTON Lockard Impl. Co.



Your Co-op can save you money on your total feed bill, because the CO-OP Feed Program fits your operation to a "T". Quality, ingredients and service are set and controlled by you and your neighbors. CO-OP Feeds and feeding programs are tested under typical conditions at the farmer-owned CO-OP Demonstration and Research Farm. It's the only complete feeding program built 100% to farmers' requirements, and controlled 100% by farmers — all the way from the laboratories and testing farm, through farmer-owned central feed mills — to your own Co-op at the two-circle sign of better living, better farming.

Herkimer Herkimer Co-op Bus. Assn. Herkimer HI 3-3824 Oketo RI 4-2341

Holton Farmers Union Co-op Bus. Assn. Holton 364-3161 Denison 50-Mayetta 28

St. Marys Farmers Union Co-op Business Assn.

Carlton Farm Co-op Assn. Carlton Telephone 31

Manhattan Farmers Cooperative Assn. Manhattan-Alta Vista Westmoreland-Onaga

Greenleaf Farmers Co-op Elevator Assn. Greenleaf-Linn -Washington

Junction City Farmer-Stockman Co-op Assn. Council Grove Junction City CE 8-4191

Alma Farmers Union Co-op Alma Ph. 765-3612 Eskridge Ph. 449-2291

Clay Center Farmers Union Co-op Clay Center-Buena Vista -Miltonvale-Leonard

Harvest Reports Consistently Good

Better than expected just about sums up the harvest story in the Grass & Grain area.

Yields appear to be running 15 to 20 percent above last year and elevators report excellent test results. Moisture content held low, around 11 to 12 percent, with very little dockage. Test weights of 60 to 63 were general.

A feared shortage of combine crews never developed with practically all areas reporting a balance of men and machines. Highest reported yield, though not confirmed, was 72 bushels per acre by Julius Holle, Oketo.

A spot check of the area Monday morning gave the following results:

CLAY CENTER — Nearly completed. 40 bushel yield common, much near 50. Moisture not over 13% as rule. Weights 61 to 63.

COUNCIL GROVE — Council Grove Elevator reports yields way above average with 30 bushels common and many 40 to 50. Weight 61 to 62, dry with little dockage.

EMMETT — Emmett Elevator reports no yield under 30 bu., some up to 50. Average 38 bushel with 61 pound test and 13% or less moisture.

HERKIMER — Co-op Elevator reports average of 45-50 bushel yields with 60-64 pound weights and moisture about 11.5%.

MINNEAPOLIS — Farmer Elevator reports yields well over 30 bushel with 60-64 pound tests and latest receipts running 9-12% moisture.

MANHATTAN — Over half cut with 40-45 bushel yields. Average moisture 12.5%, one load 8.9%. Weights 61 and 62 pounds.

FARMERS UNION — Elevators at Holton, Mayetta and Valley Falls reports cutting about 30% complete with average yields over 30 bushel. Weights 61 and 62 pounds with current receipts under 13.5% moisture.

HERINGTON — Yields unusually good with 30-40 bu. common. Dry, with weights 60 pounds and better. Cutting over half done, though shower today (Monday).

ST. MARYS — Farmers Union Elevator reports average of 33-35 bushel with one yield of 64 bushel. Low moisture and weights up to 63 pounds.

BEATRICE, NEBR. — Yield and weight good with moisture down around 11 and 12. Harvest in this area just off to a good start.

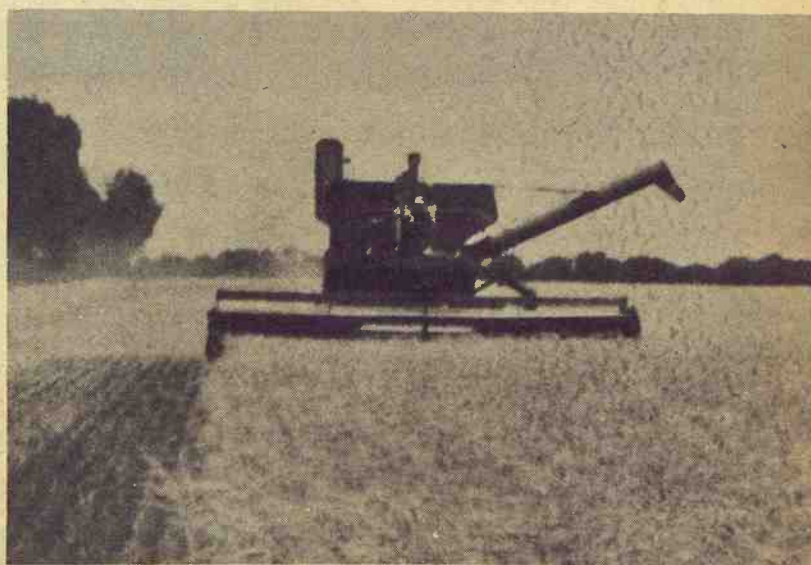
LINDSBORG — Thirty to 51 bushels reported with average 35-40. Late cutting is dry with weights 60 and better.

ODELL, NEBR. — Farmers Co-op Elevator reports unusual yields, much 50 bushel with average about 45 bushel. Moisture 11% and weight 62 pounds. Harvest more than half over.

GEARY COUNTY — Reports of 35-45 bushel yields with tests generally less than 13% and weights 60-63.

Among The Early Ones

Emery Frost, Smolan, checks, then cuts his field of Wichita. It tested 13.2 and yielded better than 30 bushels.



Manhattan Commission Co., Inc. Sale Every Thursday

2 1/4 MILES EAST OF MANHATTAN ON US 24

We had a very light run of cattle last Thursday due to harvest. Prices were real good on all classes. Our cow market was exceptionally good compared to the terminal markets.

We will not have our regional sale next Thursday, 4th of July. Our next sale will be July 11.

FAT CATTLE & FEEDERS

| | | |
|-------------------|-------|-------|
| 12 whifac steers | 708 @ | 27.30 |
| 1 whifac steer | 630 @ | 27.10 |
| 1 whifac steer | 605 @ | 27.00 |
| 1 black steer | 725 @ | 26.60 |
| 2 whifac steers | 627 @ | 26.50 |
| 1 whifac steer | 620 @ | 26.10 |
| 1 whifac steer | 810 @ | 26.00 |
| 1 mwhifac steer | 795 @ | 26.00 |
| 1 shorthorn steer | 830 @ | 26.00 |
| 1 whifac steer | 710 @ | 25.60 |
| 1 holst steer | 610 @ | 24.40 |
| 1 whifac heifer | 790 @ | 23.80 |
| 4 holst steers | 729 @ | 23.40 |
| 15 holst steers | 960 @ | 22.55 |
| 1 black heifer | 675 @ | 21.60 |
| 1 holst heifer | 985 @ | 20.60 |

STEER CALVES

| | | |
|-----------------|-------|-------|
| 1 whifac steer | 265 @ | 33.00 |
| 7 black steers | 568 @ | 26.50 |
| 1 whifac steer | 475 @ | 29.30 |
| 3 whifac steers | 550 @ | 28.40 |
| 1 whifac steer | 420 @ | 28.30 |
| 1 whifac steer | 470 @ | 27.00 |
| 1 black steer | 560 @ | 26.00 |
| 1 whifac steer | 595 @ | 25.90 |
| 1 whifac steer | 365 @ | 25.50 |
| 1 whifac steer | 550 @ | 25.30 |
| 1 holst steer | 520 @ | 24.60 |
| 1 swiss steer | 520 @ | 24.00 |

HEIFER CALVES

| | | |
|------------------|-------|-------|
| 1 whifac heifer | 575 @ | 25.50 |
| 2 whifac heifers | 547 @ | 25.40 |
| 2 whifac heifers | 915 @ | 24.30 |
| 1 whifac heifer | 575 @ | 24.10 |

BULLS

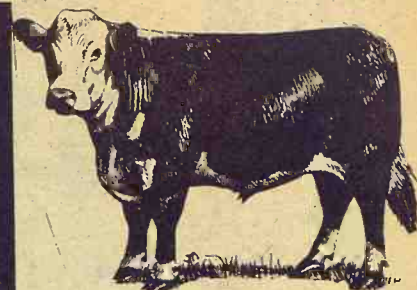
| | | |
|---------------|--------|-------|
| 1 whifac bull | 1450 @ | 23.75 |
| 1 whifac bull | 1815 @ | 23.30 |
| 1 whifac bull | 1565 @ | 23.10 |
| 1 whifac bull | 1225 @ | 23.00 |

COWS

| | | |
|-----------------|--------|-------|
| 1 whifac cow | 935 @ | 21.70 |
| 1 whifac cow | 1035 @ | 20.75 |
| 1 whifac cow | 1015 @ | 20.70 |
| 1 whifac cow | 870 @ | 20.50 |
| 1 whifac cow | 850 @ | 20.20 |
| 1 holst cow | 1330 @ | 19.60 |
| 1 holst cow | 1340 @ | 19.60 |
| 1 holst cow | 1230 @ | 19.60 |
| 1 holst cow | 1590 @ | 19.50 |
| 1 holst cow | 1185 @ | 19.40 |
| 1 holst cow | 1595 @ | 19.30 |
| 1 holst cow | 1360 @ | 19.30 |
| 1 holst cow | 1490 @ | 19.20 |
| 1 holst cow | 1265 @ | 19.20 |
| 1 red cow | 785 @ | 19.10 |
| 1 black cow | 1020 @ | 19.10 |
| 1 red cow | 915 @ | 19.10 |
| 1 holst cow | 1370 @ | 18.90 |
| 1 holst cow | 1465 @ | 18.80 |
| 1 whifac cow | 1200 @ | 18.70 |
| 1 whifac cow | 1355 @ | 18.60 |
| 1 holst cow | 1420 @ | 18.50 |
| 1 whifac cow | 1110 @ | 18.40 |
| 1 black cow | 1005 @ | 18.30 |
| 1 whifac cow | 1075 @ | 18.30 |
| 1 holst cow | 1170 @ | 18.20 |
| 1 shorthorn cow | 1060 @ | 18.20 |
| 1 whifac cow | 1130 @ | 18.20 |
| 1 whifac cow | 990 @ | 18.10 |
| 1 holst cow | 1610 @ | 18.00 |
| 1 whifac cow | 1025 @ | 17.90 |
| 1 whifac cow | 1150 @ | 17.90 |
| 1 whifac cow | 1220 @ | 17.90 |
| 1 whifac cow | 1130 @ | 17.80 |
| 1 whifac cow | 1070 @ | 17.80 |
| 1 whifac cow | 1215 @ | 17.70 |
| 1 holst cow | 1235 @ | 17.40 |
| 1 spotted cow | 1200 @ | 17.30 |
| 1 whifac cow | 1435 @ | 17.30 |
| 1 whifac cow | 1040 @ | 17.20 |
| 1 black cow | 1160 @ | 17.00 |
| 1 holst cow | 1075 @ | 16.90 |
| 1 whifac cow | 1290 @ | 16.50 |
| 1 whifac cow | 840 @ | 16.00 |

Due to the Holiday
NO SALE THURSDAY
JULY 4
Have a SAFE & SANE
FOURTH

We'll try — so we can see you at our next regular sale July 11.



BUYING FAT HOGS

We buy fat hogs daily at the Manhattan Commission Co., Inc., sale barn. We buy direct with no commission to the seller.

At Manhattan
Mondays thru Saturdays

BUYING HOURS

8 a.m. to 1:00 p.m.

At Alma & Eskridge
Every Wednesday

From 8 a.m. to 1 p.m.

For information call the barn in Manhattan, PR 6-4815. Or you may call Joe Raine at Maple Hill 663-2226 or Eskridge Yard 449-2347; or Alma Yard 765-3841.

FOR ESTIMATES

W. E. DUGAN ----- Alta Vista, 229-6430
JOE RAINE ----- Maple Hill, 663-2226
DON WELLS ----- Manhattan, JE 9-3744
MERVIN SEXTON ----- Abilene, CO 3-3449
C. J. WENTZ, bus. mgr. Manhattan, JE 9-5561

BARN PHONE ----- Manhattan, PR 6-4815

Consignment Reports
WIBW radio 6:30 A.M. Thursdays
WIBW-TV 12:15 Noon Wednesdays

The Manhattan Commission
Co., Inc.



MANHATTAN, KANSAS

East On US 24

Auctioneers: Joe Raine and Dale Feil

What The Tax Surcharge May Mean To You

These tables show the amount of additional income taxes a person will pay under the ten percent surcharge which was approved by Congress recently.

The figures are based on use of the standard deduction or minimum standard deduction for personal expenses, whichever produces the lower tax; a retroactive effective date of April 1, 1968, and an expiration date of June 30, 1969.

Figures are rounded to the nearest dollar.

| Annual Income | 1967 Taxes | 1968 Inc. | 1969 Inc. |
|---------------|------------|-----------|-----------|
| 1,000 | 16 | 0 | 0 |
| 1,900 | 147 | 11 | 7 |
| 2,000 | 163 | 12 | 8 |
| 3,000 | 333 | 25 | 17 |
| 5,000 | 671 | 50 | 34 |
| 7,500 | 1,168 | 88 | 58 |
| 10,000 | 1,742 | 131 | 87 |
| 12,500 | 2,398 | 180 | 120 |
| 15,000 | 3,154 | 237 | 158 |
| 20,000 | 4,918 | 369 | 246 |
| 25,000 | 6,982 | 524 | 349 |
| 35,000 | 11,627 | 872 | 581 |

| Married Couple With No Children | Married Couple With Two Children | Married Couple With Three Children |
|---------------------------------|----------------------------------|------------------------------------|
| 2,000 58 | 3,000 4 | 0 0 |
| 3,000 204 | 5,000 290 | 0 0 |
| 3,600 294 | 7,500 686 | 34 34 |
| 5,000 501 | 10,000 1,114 | 56 56 |
| 7,500 914 | 12,500 1,567 | 78 78 |
| 10,000 1,342 | 15,000 2,062 | 103 103 |
| 12,500 1,831 | 20,000 3,160 | 158 158 |
| 15,000 2,335 | 25,000 4,412 | 221 221 |
| 20,000 3,484 | 35,000 7,529 | 376 376 |

Field Day To Be Held Near Waldo

The annual Kansas Junior Hereford Association field day will be held July 5 at the Baughman Ranches near Waldo. Activities will include a dem-

onstration on "sound" beef cattle selection by Dr. Don Good, head of the Animal Science Department of Kansas State University; a showmanship contest featuring the top junior exhibitors from five states, a Hereford queen contest and public speaking contest.

Lazy-T Spread Brings \$156,000

MANHATTAN — Selling in five tracts, the 1350 acre Lazy-T Ranch southeast of Manhattan brought a total of \$156,000 at auction last Wednesday, an average of \$115.50 per acre.

The 160 acre homesite went to John Wilson, Riley, Kans., for \$41,750. Pasture land went to two Manhattan bidders, Calvin Drake and Ed Smith.

An unexpectedly large number of bidders were at the ranch. The property sold in tracts as follows:

| | |
|---------------|-----------|
| 160A homesite | \$41,750. |
| 160A pasture | \$24,500. |
| 160A pasture | \$14,000. |
| 480A pasture | \$35,500. |

412A pasture \$40,250.
The sale was handled by the Harold Carlson real estate agency of Manhattan, with Lawrence Welter the auctioneer.

Grain Storage To Girdle Sales

JUNCTION CITY, KANS. — Here's a "believe-it-or-not" for the several hundred patrons of the Junction City and Council Grove Co-op. Eldon Langvardt, for many years general manager of the co-op, realized a secret ambition when he resigned recently to buy and operate an exclusive women's ready-to-wear store in Mesa, Ariz.



Eldon Langvardt

His brother, Vern, manager of The Junction City Livestock Sales, said Eldon got the notion while serving in the Navy during World War II. On shore leave he frequently visited relatives who owned a fashionable dress shop in the East.

Born on a farm and manager of an elevator in Junction City before going to the co-op, Eldon's occupation had been in agriculture. Mesa is a city of about 50,000, a short distance east of Phoenix. Langvardt's new address was given at 1050 W. Fairway Dr.

FLOOR COVERING

Carpet - Inlaid
Tile - Draperies

Phone 8-3893

JUSTUS

121 POYNTZ Manhattan

For Our Rural Neighbors
Who Want To Strengthen Their Financial Positions

THE HOME SAVINGS PLAN

WILL Work For You . . . As It Does For Others

INSURED SAFETY OF SAVINGS

Save in person or by mail

BUSINESS HOURS
Monday through Thursday
9 a.m. - 4 p.m.
Friday
9 a.m. - 7 p.m.
Saturday
Closed

HOME

SAVINGS AND LOAN ASSOCIATION

107 NORTH FOURTH STREET

MANHATTAN, KANSAS

YOUR COMMUNITY HOME FINANCING CENTER



IHCC makes it a true family purchase

HOW? By providing the means to buy the equipment you need now without depleting family savings. IHCC simply arranges a way for you to pay for income-boosting equipment as the equipment earns for you. You can pay seasonally as crops and livestock are marketed. Or, if your income is on a regular monthly basis, you can arrange for monthly payments. Provision can be made to skip certain months when you know that your income will be reduced, or expenses will be high.

IHCC respects your privacy and values your patronage. All transactions are made in strictest confidence with your IH dealer, a man who's interested in satisfying you and keeping you as his customer. Through IHCC, he can finance all your IH farm equipment needs—large or small, new or used—as well as equipment overhaul and other service work. To protect your family from the unforeseen, physical damage and credit life insurance are also available—as well as crop failure protection for combine and cotton picker purchases.

See your International Harvester Dealer today and buy the equipment you need to make your operation more profitable. Make it a family purchase with the help of IHCC—with a personalized payment program that fits your budget and protects your family.



International Harvester
Credit Corporation

HERINGTON
Pioneer Service & Sales

MINNEAPOLIS
Chapman Impl. Co.

COUNCIL GROVE
Macha-Revere

WAKEFIELD
Auld Chevrolet

MARYSVILLE
Bruna Brothers

FALUN
Dauer Impl. Co.

BELLEVILLE
Chapman's On US hwy. 81

ABILENE
Abilene Truck & Tractor

HANOVER
Hanover Impl. Co.

LEONARDVILLE
Kendall Garage

10 Grass & Grain
July 2, 1968

Turnpike OK's More Asphalt

TOPEKA — The Kansas Turnpike Authority has voted to an additional \$250,000 from rent revenue to put an overlay of asphalt on 10 additional miles of the four-lane turnpike between Kansas City and Lawrence.

Turnpike officials said the will double the amount of work planned for this area next year.

When it is completed it will mean that all of the original concrete pavement will have been covered with an asphalt overlay from the eastern terminus to a point about two miles east of the East Lawrence interchange.

Livestock Expo Changes Rules

Some rules changes have been announced for the 69th International Livestock Exposition, which is to be held Nov. 25 to Dec. 7 in Chicago.

Steers entered in the open and junior steer classes, as well as in the quality beef contest, will be mounted by a committee of veterinarians to check any steer found to require change of two classes from the in which it is entered will be eliminated from the show.

Minimum weights for all steers entered in the Quality Beef Contest carcass show will be raised 50 pounds on each class, with a minimum weight of 850 pounds on senior carcasses and 975 on summer yearlings and 1,075 on junior yearlings.

Purebred Hereford and Registered Hereford cattle will be shown separately. Competition for Montadale wethers will be held, and the Cheviot Sheep Association plans a bred ewe sale immediately following judging of the breed.

Age limits for 4-H and FFA exhibitors will be lowered in the exposition's junior livestock feeding contest. Competitions now will be limited to owners who are between 11 to 18 years of age as of Jan. 1, 1968. Participation of 4-H and FFA member exhibitors in the national 1 open steer show will be limited to the champion and reserve champion winners of the junior show.

ITCO

NOW IN STOCK
Viking

Mower Guards
Sell \$45.50

These quality mower guards are available again. They feature the easy to change mounting plate. We have a large number of guards and ledger plates of guards and ledger plates hand now for all mowers. No. 1046A guard chrome plated 1.15
Replacement chrome ledger plates 22c

COMBINE ROLLER CHAINS

| | |
|-----------------|------|
| 80RC chain | 2.84 |
| 60 double chain | 4.50 |
| 60 reg. chain | 1.64 |
| 50 double chain | 2.83 |
| 50 Reg. chain | 1.22 |
| A2050 chain | 83c |
| A2060 chain | 99c |

This Week Special:

1 set 27A69 sleeve set for Farmall — Reg. 53.95

HOLT
FARM SUPPLY

Next To Sale Barn

MANHATTAN PR 6-7461

Sedlacek's MULTI-MILLION DOLLAR TRAINLOAD OF VALUES



Big freezer, fast ice!

Freezer holds up to 147 lbs.!



- Jet Freeze ice compartment —cubes freeze extra fast!
- Two Slide Out Shelves,
- Rolls out on wheels for cleaning!

\$279

'No Frost 16' Refrigerator-Freezer
15.6 cu. ft. • Model TBF-16DC

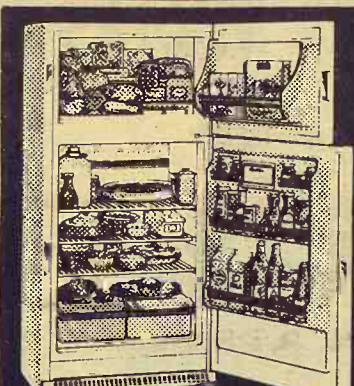


General Electric
'Dial Defrost 12' 11.5 cu. ft.

Only
28" wide!

Freezer holds up to 64 lbs.!
Chiller Tray for soft drinks, meats!

Model TA-12
Low, low cost
\$154



General Electric
'Two Door 14' 13.5 cu. ft.

Two Appliances in One!

Big zero-degree freezer
Holds up to 131 lbs.!
Automatic defrost refrigerator section.

Model TB-14S

\$209



General Electric
'Two Door 12' 11.8 cu. ft.

Two-Door convenience ...low cost!

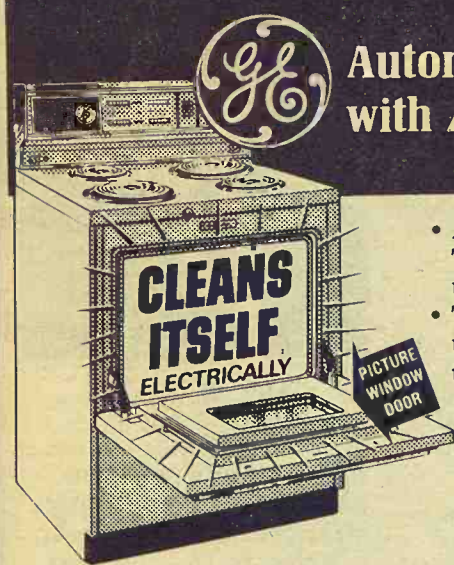
- Only 28" wide!
- Zero-degree freezer
- Automatic defrost refrigerator section!

Model TB-12

\$188

Automatic Rotisserie in Self-Cleaning Oven!

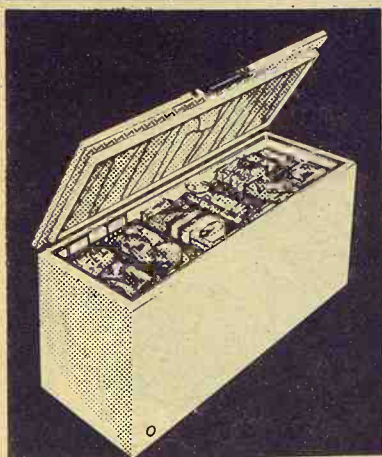
Even barbecue spatters won't matter in this 30" beauty!



Model J339

- Automatic Oven Timer, Clock, Minute Timer.
- Tilt-Lock surface units, removable trim rings.
- Lighted cooktop —2 convenience outlets; 1 timed.

\$279



NATIONAL
CHEST FREEZER

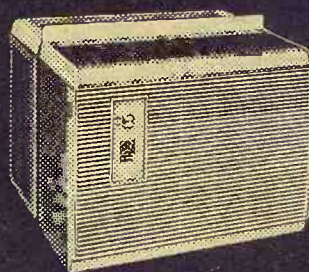
23 cu. ft.

Holds over 800 lbs.

- Dry Wall Condenser
- Counter-Balanced Lid
- Sealed Power Unit

\$199.95

Low-cost Cooling!



Rust Proof Case

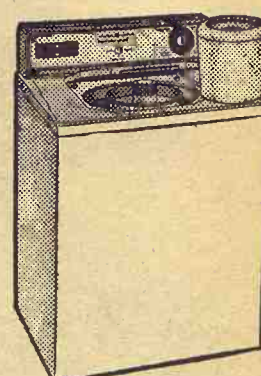
5000 BTU/Hr.
General Electric
'Fashionette'
Air Conditioner

- Installs in minutes.
- Duramold case of GE LEXAN® can't rust ever!
- Designed for efficient bedroom cooling.

Model AGKS105A

\$104

NEW!



G. E.
'DO EVERYTHING'
Washer
with Mini-Basket

- * Filter Flo® Washing System
- * Two Wash/Spin Speeds
- * Three Wash Cycles Including Permanent Press
- * 3 Wash/2 Rinse Temperatures

G. E. Washers as low as \$149.95

G. E. Dryer as low as \$79.95

YOUR G. E. HEADQUARTERS
IN THE MID-WEST

Open Every
Wed. & Sat. Night
Till 9 p.m.

Easy Payments
Finest Quality
Since 1890

FREE
Delivery
Within 200 Miles

Extra Special
Prices for
Newlyweds

FURNITURE
and
APPLIANCE
Sedlacek's
HANOVER, KANSAS

NAMES YOU KNOW AND TRUST
G. E., Norge, Admiral, Tappan,
Magic Chef, Whirlpool, Speed Queen,
Motorola, Sylvania, Kitchen Aid,
Gibson.

Phone ED 7-2345

\$750,000 For Lauright Ranch

DOUGLASS — One of the largest recent land sales in Southern Kansas has been re-

vealed with announcement that Dr. Owen R. Robinson, Wichita, purchased the Lauright ranch eight miles east of Douglass.

The Lauright ranch, known internationally for Charolais cattle breeding, was part of the estate of the late Dwight Shawver. It had been managed by Hershel Shawver for several years. The sale price was "approximately \$750,000." This included other terms in addition to the land, Bob Borlase, Wichita realtor who handled the sale, said.

Robinson also owns the Ed Adair ranch near Augusta, Ks., which he purchased last year.

Robinson, a breeder of Santa Gertrudis cattle, will conduct a 500-head operation on the 2680-acre Lauright ranch. The ranch contains 400 acres of farmland, 200 in alfalfa, with the remainder in native bluestem grass.

The ranch headquarters-home, which Robinson will occupy con-

tains 5500 square feet of space in a Silverdale stone building.

The Lauright ranch, operated since 1956 as a 9-member family partnership, gained international status when a yearling steer was declared to have reached the record weight of 1567 pounds in one year.

At the dispersal sale in April other records were set when the top price for Charolais bulls was offered in purchase of one-third interest in the top bull for \$85,000.

The dispersal sale receipts were \$771,400.

\$6 Million For I35W Extension

TOPEKA — Highway construction contracts totaling \$9,074,855 have been approved today by the Kansas Highway commission, with the major project scheduled for Interstate 35W in McPherson County.

The bids approved also cover 470 miles of bituminous sealing on primary and interstate routes in 28 counties at a total cost of \$984,438, said John D. Montgomery, state highway director.

The McPherson County job will total \$6,032,010 for 19.6 miles of concrete pavement from the Saline-McPherson County line south. San-Ore Construction company of McPherson

son was low bidder. Also included in the project are two bridges and ramp work to complete the section of superhighway.

Approved was a contract for modification of highway signs and delineations from the Shawnee-Wabaunsee County line east to the Kansas turnpike. Chaney Fence Company of Florissant, Mo., was low bidder at \$113,568.

In Jefferson County seven miles of concrete pavement will go down on U.S. 24 from west of Williamstown. Clarkson Construction company of Kansas City was low bidder at \$997,348.

Improvements are scheduled in the Manhattan area in connection with the Tuttle Creek state park. One contract calls for bituminous base and surfacing on K-113, a new highway from Manhattan north to K-13.

Prairie States Construction company of Wichita was low for that job at \$407,211. Improvement of 11.3 miles of interior roads in the park will be done by the George Myers firm, El Dorado, at \$46,556.

Sealing of 76 miles of roadways in Northeast Kansas will be done by Bowen Construction company of Kansas City, and Ritchie Brothers, Wichita. The work will be in Brown, Douglas, Shawnee, Pottawatomie, and Riley Counties with the contracts totaling \$140,089.

MANAGEMENT ASSN. ADDS ROSS OLSON

CONCORDIA — Ross Olson has moved to Concordia to be-



Ross Olson

12

Grass & Grain

July 2, 1968

come one of the fieldmen attached to the North Central Kansas Farm Management Association. He moved from Hutchinson, where he was assistant county farm agent. He is a native of Dwight.

Visit Our Retail Display Of Lighting Fixtures

Endacott Electric Co. 309 MORO — MANHATTAN

Combine CYL Bars

For Better Combine Efficiency Try the AUSERMAN Reversible Bar Your Area Dealer Airport Service Station

Clay Center, Kans.

ME 2-2785

Airport Corner W. 24 hwy.

Wanted

Time is running out to sell those silver certificates. Stop in soon for current market quotation! We are also buying all other silver coins.

Treasure Chest

Elden & Sylvia Leasure P.O. Box 304 308 Poyntz Phone 913 PR 8-5233 MANHATTAN, KANSAS 66502

1968 GMC PICKUP

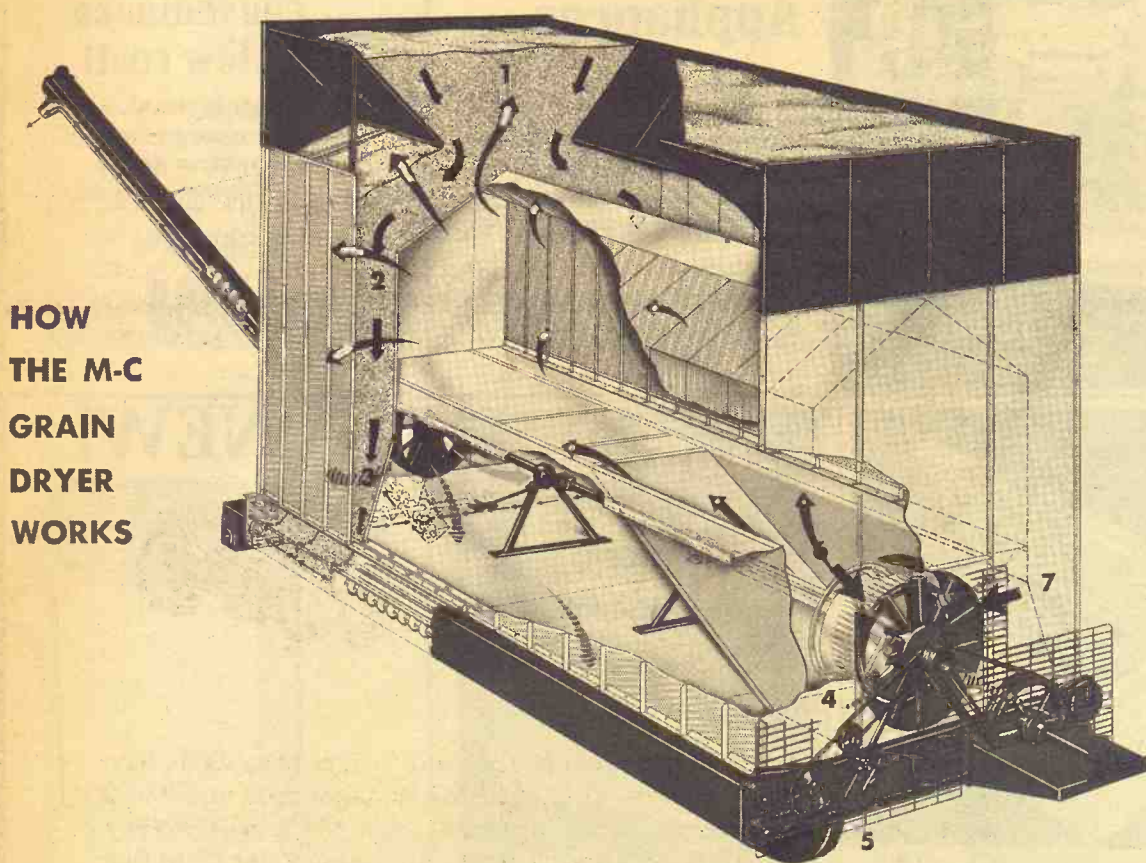
\$1995

Wide bed, 3-spd. transmission, fresh air heater and defroster.

Dale Sharp Trucks

TOPEKA, KANSAS 600 W. Hwy. 24 CE 4-8606

How The M-C Grain Dryer Works



HOW THE M-C GRAIN DRYER WORKS

1. Wet grain supply in top holding bin. Grain is preheated before going into drying columns.
2. Grain flows by gravity into 12" thick drying columns where forced hot air — arrows with white — passes through grain. Grain is contained in the 18 gauge galvanized steel perforated sheets. Large air flow possible because of 34% open area in perforations.
3. From hot air section grain passes through cooling — where additional moisture is removed and cold air — stripe arrows — brings grain temperature down to normal. Dust and dirt blown out through perforations.
4. Adjustable metering device gives exact control of grain flow out of dryer.
5. Simple, rugged construction. The base of the M-C Grain Dryer is very rigid and is the base from

which all operating parts are attached. Heavy gauge steel is used throughout the base and the grain columns themselves are made from 18 gauge galvanized sheets with reinforcing angles and bracing where needed. All parts are bolted together and any part may be replaced if necessary.

6. The burner of the M-C Grain Dryer is adapted for LP or natural gas. The burner is arranged in a circular ring placed in fan housing so that air and heat are thoroughly mixed for uniform temperature throughout drying section.
7. Fans — one 36" diameter 12 blade fan forces large volumes of hot air through the drying section. The 9 blade cooling fan powered from same shaft as the hot air fan forces air at outside temperature to cool the grain as it passes through dryer.

North Central Steel Co. Inc.

116 West Second

Minneapolis, Kans. 67467

EX 2-2077

Corner Post Comments

Harvest Dilemma

Bumper yields of wheat will help offset low market prices but farmers are still pondering what to do with their new crop. Using hindsight as a guide, the time to sell wheat was harvest time in 1966 and 1967. Will the 1968 market be a repeat of prior years?

Since cash prices during harvest are sure to be near or at loan level, many farmers plan to hold title to their wheat with a government loan or a bank loan secured by a warehouse receipt. Farm stored loans this year are attracting those who have adequate storage as this means another 11 cents per bushel. At any rate a lot of farmers are go-



GARY W. BECK
Farm Service
Director

ing to hang on and hope for some price strength after harvest. Bring in that harvest check and add to that savings account. If you don't have one why not open one now.



Deposits insured up to \$15,000.00 for each depositor by the Federal Deposit Insurance Corporation.

UNION STATE BANK



CLAY CENTER, KANSAS

Member Federal Deposit Insurance Corporation

Bill Asks End To Tax-Loss Farming

U.S. Sen. Jack Miller of Iowa has introduced legislation to close a tax loophole which permits non-farmers to write off losses resulting from farm operations.

In introducing the bill, Sen. Miller stressed that it would not prohibit farming operations by non-farmers:

"It would simply put an end to the use of farming as a tax avoidance mechanism by some individuals and corporations which results in unfair competition with the full-time farmer."

Sen. Miller, a member of the Senate Agriculture Committee and a tax attorney by profession, noted that such a recommendation had been proposed by minority members of the Joint Senate-House Economics Committee. Sen. Miller is also a member of that committee.

It was felt, the Iowan said, that "there is a need for updating the income tax laws to protect the commercial farmer against the unfair competition which results when those whose principal occupation is not farming write off losses from farming on their tax returns. With Uncle Sam picking up a large share of such losses, this

provides unfair competition to the taxpayer who is dependent on farming for his livelihood."

The bill would amend the Internal Revenue Code of 1954 to limit the losses allowable with respect to farming operations which are incurred by taxpayers whose principal business activity is not farming.

The limitation would not apply to losses attributable to a research or experimental farming operation conducted under a program approved by the U.S. or state department of agriculture, or an agricultural school of an accredited college or university.

Start A Futures Market In Broilers

A futures market in whole iced broilers has been approved by the Chicago Board of Trade.

According to Henry H. Wilson, board president, the start of trading in this commodity can come within the next two months.

According to U.S. Department of Agricultural statistics, 80% of all broilers processed in the United States are iced, a midpoint between chilled and frozen birds. In 1967, total production was more than nine billion pounds. During the first three months of 1968, production re-

mained relatively unchanged.

The iced broiler contract covers whole, eviscerated, broiler-fryer chickens, ice packed, ready-to-cook, and graded USDA Grade A. Individual birds must be in the 2½ to 3½ pound range, 25,000 pounds constituting a single contract.

Delivery will be made from authorized processing plants in Alabama, Arkansas, Georgia, or Mississippi. Shipping certificates issued by the broiler packing will serve as the instruments of delivery. Commissions on a single contract will be \$12.50 for board members and \$25 for non-members.

PEABODY CO-OP CHALKS UP A LOSS

PEABODY — The Peabody Cooperative Equity Exchange had sales of \$854,175 and a loss of \$16,493 during the past fiscal year. W. H. Klingenberg was reelected and Wilbur Hanneman elected to the board. Donald Herbert is the manager.

CHARLES CAME TRIES FOR SALINE COMMISSION

SALINA — Charles Came, Saline County livestockman, has filed for the Democratic nomination for county commissioner



Charles Came

from the 3rd district. He has no primary opposition and will face incumbent Frank Yost in the November election. Came has never run for elective office before.

See Big Incomes For Big Farmers

Within the next 10 years, farmers in Indiana will achieve incomes comparable to other segments of society, if they are big enough, a Purdue university

economist predicts.

Dr. John Kadlec says that the farmers producing cash crops should have high incomes, but they will need good land and substantial volume — 400 to 600 acres to the man. Investment per man will be about \$400,000.

Big livestock farmers, he thinks, probably will have to have some help, probably a minimum of two men. Kadlec expects that the swine enterprise will continue as the

July 2, 1968

major source of livestock income in Indiana. Top production units will handle about 200 2-litter sows per man and will produce 3000 hogs a year. The investment per fulltime man in such enterprises will be around \$150,000.

Top dairy units will handle about 80 cows per man with a \$100,000 investment for each. Two-man operations will handle 120 cows, plus feed production.

MIDWEST RENDERING & SUPPLIES

BELLEVILLE, KANS.

We sell meat scraps and fat for feed. We pick up materials from butcher shops, locker plants and fresh dead animals.

For service call Belleville: JA 7-5541 or your local number.

| | | | |
|----------------------|--------------|----------------------|--------------|
| Beloit | 738-3731 | Jamestown | 439-2655 |
| Cawker City | 781-4711 | Leonardville | 99 |
| Clay Center | 632-3424 | Lincoln | 524-9990 |
| Clyde | 446-3621 | Linn | 348-3411 |
| Concordia | CH3-4126 | Mankato | 378-3771 |
| Deshler, Nebr. | 40 | Marysville | 443-3726 |
| Downs | 454-9527 | Miltonvale | 427-3015 |
| Fairbury, Nebr. | 729-9931 | Minneapolis | 392-3043 |
| Glasco | 568-2636 | Morganville | 926-3674 |
| Hebron, Nebr. | 402 768-6770 | Ruskin, Nebr. | 402 226-2261 |
| Hunter | 529-2145 | Superior, Nebr. | 879-3235 |
| | | Washington | EA 5-2920 |

BMB HI-CAPACITY HAY SAVOR 12®



- Mows, aerates, windrows a 12' swath in one pass!
- Cuts close, clean; conditions, fluffs hay for fast curing; saves carotene, leaves, protein and color for finest quality — more valuable — hay!
- Converts to 4-row shredder by removing windrow formers and adding shredding kit.
- BMB Hay Savors® are available in 7-foot widths, too!
- Top performance — top economy.

See Your Local Dealer or Write, Wire, or Phone for Further Information



LEASING

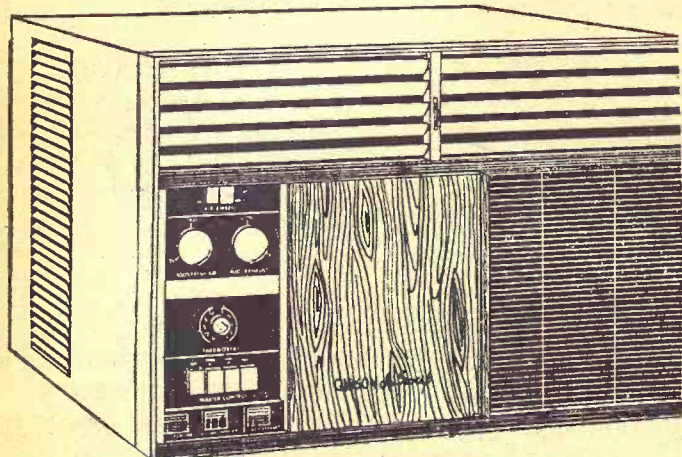
Farm and Industrial Machinery

If you can't buy it you can lease any piece of Allis-Chalmers machinery you may need, and at low rates. See Bob Martin for Industrial leasing, Jim Gates for Farm Equipment leasing.

HENRY SALES AND SERVICE

East Highway 24 and Meriden Road, Topeka, Kans. — FL 4-7641

Cool A Room or The Whole House With A Gibson Air Conditioner



With Exclusive "Air-Sweep"

Patent Gibson "Air-Sweep" gives you draft-free comfort because it has power-driven oscillating air vanes that automatically sweep cool air overhead and let it settle gently into every corner, from wall to wall, even room to room. Air sweep eliminates the icy drafts and hot spots of ordinary air conditioners that can blow cool air only in one direction.

Sizes From
5,000 to 28,000 B.T.U.

Prices Start At Only

\$139⁹⁵



We Service Everything We Sell!

Magnavox

HOME ENTERTAINMENT CENTER

Phone PR 6-5381

Convenient Credit For Everyone!

Low Monthly Payment To Suit Your Budget!
In The New Mall, 413 Poyntz, Manhattan

The Most of ... BIG HORN



Visit The Key Big Horn Leather Display Room

KEY MILLING CO.

CLAY CENTER, KANS.
PHONE ME 2-2141

New Interest In Walnut Trees

There's no danger of the black walnut tree becoming extinct in Kansas. Interest in walnut planting this spring surprised those in charge of the tree distribution program at Kansas State University this spring.

The total number of walnut seedlings ordered was 41,000, seven times last year's figure. At the same time, orders for stratified walnuts included 75,000, a figure which represented a 50 per cent increase. Stratified nuts are those that are specifically prepared over winter for spring planting.

The Scotch pine, however, was the most popular tree planted this year on the basis of orders, 180,000. These are popular for Christmas trees and represent a growing trend in providing trees for this market.

August 27 Set For Third Try By Watershed

JUNCTION CITY — An election on a two mill tax levy to finance construction in Lyons Creek Watershed District No. 41 will be held Aug. 27, President Hayes B. Beck said Wednesday.

It will be the third time the levy has been placed before the voters.

Each time protest petitions were filed with the board of directors. The levy was defeated in 1966 and 1967.

Lee Hornbaker, Junction City, attorney for the board of directors, said a petition filed by a protest group last month is valid and contains sufficient

signatures to force election.

Legal notice of the board's resolution adopting the tax levy was published in area newspapers on two dates. The petition was filed after the 30-day deadline in the first notice, but before the deadline in the second notice. Hornbaker said the latter prevailed.

Beck said polling places would be established in Geary, Dickinson, Morris, and Marion Counties. The watershed district encompasses 180,000 acres in the four counties.

State officials are holding up the district's application for federal funds to construct 23 water detention structures until a local method of financing is approved. According to Beck, the government will provide more than \$2 million toward the estimated \$4.1 million cost of the project.

DURHAM CO-OP SALES AT \$320,389

DURHAM — The Marion County Cooperative Association had sales of \$320,389 and a saving of \$25,095 during the past fiscal year. Members reelected Alvin Novak and elected Donald Ewert to the board. Marvin Rediker is the manager.

FORT SCOTT GETS CLOSER TO 10,000

FORT SCOTT — This town is gaining on its quest for 10,000 population. The latest census figure puts the Fort Scott count at 9786, up 136 from last year. The Bourbon County population is 17,193.

A WATER DISTRICT PROPOSED FOR TAMPA

TAMPA — A rural water district has been proposed for around this northern Marion County town. The district would not impose a general tax but would be supported by fees on users of the district's services.

NEW VETERINARIAN AT BLUE RAPIDS

BLUE RAPIDS — A new veterinarian has settled in Blue Rapids. He is Harry Steinfert, a



Harry Steinfert

native of Junction City and a recent graduate of the School of Veterinary Medicine at Kansas State University.

July 2, 1968

Best Buy on the Market in PINKEYE Remedies! Don't Let PINKEYE Shrink Your Cattle!



Treat Promptly for Quick Relief with Franklin PINKEYE POWDER — gives quick and sure results. It is easy to use, coming in a puffer tube with which you shoot the powder into the eye. Easy to carry in pocket or saddle bag.

A FULL-SERVICE STORE FOR ANIMAL MEDICINES PHONE ME 2-3272

HELD'S

STORE
CLAY CENTER, KANS.

For our CHILDREN'S SAKE — that's why

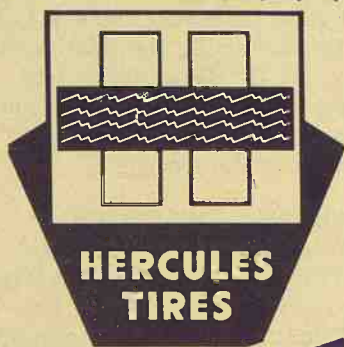


Just about Everybody is going to

Vote for

CRUTCHER
for GOVERNOR

Pol. Adv. Irl Yeo, Chmn.



Week of July 4

Special

New Truck 8.25x20 \$49.95*
Used Truck — \$10 & up

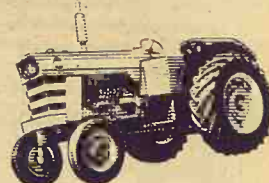
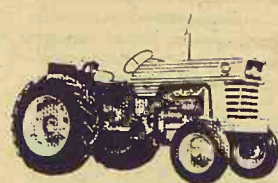
* All New Tire Prices Plus F.E.T. & Recappable Tire.

Hercules Tire Sales

601 N. Third Manhattan, Kans.
Where Prices Are Born and raised elsewhere

WE'VE GOT YOUR KIND OF TRACTOR

TAKE UP TO
4 CROP YEARS TO PAY



WE'VE GOT YOUR KIND OF TERMS

Because we offer 20 different Massey-Ferguson models and a wide range of options, the tractor we put on your farm is precisely right for your needs. Choose power plants from 26.5 to 120 hp. Diesel, gasoline, or LP gas engines. The kind of wheel arrangements, hydraulics, and hitches best for your kind of work. We say flatly: "The Massey-Ferguson tractor will outperform others in its class." Hard to believe?

Make us prove it.

We have just about as many finance plans as we have customers. That's because we tailor each installment purchase according to individual needs. With Massey-Ferguson's flexible financing, you can take up to four crop-years to pay—with payments arranged in any size and to fall due at just about any time you say. You may qualify to buy without cash down payment, make payments in uneven amounts, and even defer payments until a new crop year begins.

Just tell us when your cash will be coming in, and we will customize a program that works with the anticipated income. Come in and talk it over. We think you'll be surprised how easy it is to own the Massey-Ferguson tractor of your choice—with payments made in whatever way is most convenient for you.

ASK AN M-F DEALER ABOUT THE BETTER M-F FINANCE PLAN

**BRAUCHI BROTHERS
BROWN MOTOR CO.
CIRCLE T IMPL. CO.
GILLEY'S IMPL. CO.
KUHLMAN MOTOR CO.
PFISTER-RHODES IMPL. CO.
SALINA FARM SUPPLY
WINIFRED IMPL. CO.**

**Marysville
White City
Clay Center
Minneapolis
Linn
Jamestown
Salina
Winifred**

YOUR MASSEY-FERGUSON DEALER

JULY is
KANSAS
WHEAT
MONTH

EAT MORE BREAD FOR BETTER HEALTH

AUGUST is
SANDWICH
MONTH



Kansas Wheat Commission
1021 North Main Street
Hutchinson, Kansas 67501

Buy Now and Save Before The Fourth

- 1968 VOLKSWAGEN 2 door, deluxe, 4-speed, radio, clean, low mileage
- 1967 OLDSMOBILE Delta 88, 4-door hardtop, automatic, power steering, power brakes
- 1966 VOLKSWAGEN station wagon deluxe, 4-speed, radio, like new
- 1965 FORD Galaxie 500 2-door hardtop, V-8, std. trans.
- 1964 DODGE 330, 4-door sedan, standard trans., low cost transportation
- 1963 PONTIAC Catalina 4-door sedan, automatic trans., power steering

MANHATTAN MOTORS, INC.

BUICK — OPEL
NOW IN OUR 50th YEAR
Main Office 311-317 Houston
Used car lot at 214 Houston
Main Office, 8-3537,
Lot 6-4414
MANHATTAN, KANS.

TRUCKS

- 1966 Chev. 1/2 ton 6 cyl., 3 spd., wide box, 5 new tires, one owner, like new
- 1962 Chev. 1/2 T, 6 cyl., 4 spd., LW box, 4-wheel drive, one owner, low mileage
- 1967 IHC 2 ton, V8, 4 spd., 2 spd., axle, radio, 17' fold down stock racks, one owner, good tires, reasonably priced.
- 1958 IH 2-ton, 13 1/2' box, like new, good tires, 2-speed axle
- 1952 Dodge 1 1/2 ton truck, 2-spd.
- 1951 Chevrolet 3/4 ton, 4-speed, stock racks
- 1962 Chev. 2 ton, 2 speed, 6 cyl., cab & chassis, like new tires, 42,000 miles, one owner
- 1948 Chevrolet 1/2 ton, 4-speed

Myers Motor Co.

CHEVROLET — PONTIAC
— CADILLAC —
562-2383 562-2384
MARYSVILLE, KANSAS

TRUCKS FOR SALE

- 1967 F250, V-8, 4-speed, Styleside R&H, two-tone paint
- 1967 F100, 8 cyl., 4-speed, R&H
- 1964 F250 8-cyl., 4 speed
- 1964 F600, 5 spd direct, HD, V8
- 1964 Int. Load Star 1600, long wheel base, 5 speed, with 2 speed, PS & V8
- 1963 F700, 5 speed, with 2 speed, and new hoist & bed
- 1959 Int. tandem tractor diesel, in good shape
- 1955 F100, V8, 4 speed, stock racks
- 1949 Chevrolet 1 ton, in good shape
- Snowflake camper, 10'
- AC D21 tractor, 400 hr., big tires, cab
- Gleaner C-II like new
- Farmall Super M, 3 pt., real good cond. \$1000
- AC 716 rot. plow
- Case 600 combine, dsl.
- We need a loader and/or a backhoe for a JD 440
- Bridgestone 175, like new

Vern Bergman Ford

DE 6-2100
SENECA, KANSAS

FOR SALE — 1950 Chevy 1 1/2 ton, 13 1/2' bed, racks. 1958 Chevy 2 ton, 15 1/2' bed, fold downs, hoist. Hoyt Woodbury, Clifton, Ks. x18

FOR SALE — Furniture truck with complete 4 1/2' high side panels, round corners, 1 1/4" rock maple flooring. A nice truck always garaged, new V8 engine with under 2000 miles; strap & tie bars, extra heavy end gate. A. F. Pohlman, Natoma, Kans., ph. TU 5-4322 after 8 p.m. x20

1959 GMC diesel truck for sale. In line 6 cylinder 228 engine, 10 speed, road ranger transmission, tandem axle. Phone Clay Center, Kans., ME 2-2602 or see at 824 Bridge St. SB19

FOR SALE — 1951 Ford C.O.E. 1 1/2 ton truck. Extra good mechanically with good tires. 16' steel enclosed van equipped for hauling horses or other livestock. R. L. McMillen, 414 S. 4th, Manhattan, 778-5302. SB20



LARGE STOCK OF TRUCKS

- 65 Chev. tandem tractor, air, steering, brakes \$5750
- 1965 Chev. 1/2 T, 6-cyl., LWB, 4-speed \$1395
- 1964 Chev. 2-ton, LWB, 2-spd. \$2195
- 64 Ford tandem tractor \$3995
- 1960 Chev. 1/2 ton LWB .. \$695
- 1962 Chev. 2 ton, 2-spd., pony axle, dump \$2450
- 62 Int'l. 2 1/2 ton tandem 13 ft. dump \$2750
- 1964 Chev. 1/2 ton LWB, V8, aut., PS, PB \$1195
- 62 International 2 1/2 ton tandem 13' dump \$2750
- 1961 IH 5-spd., 2-spd., LWB \$1295
- 1961 IH tractor, 5-sp., 2-sp., LWB \$1295
- 1958 Chev. 2 ton LWB, new box & hoist \$1495
- 1960 Chev. 1/2-ton, V-8, auto. \$695
- 1958 IH 3/4 ton, 4wd \$895
- 57 American 38 ft. platform \$2250
- 1956 Chev. 1/2 ton, 4-spd. .. \$245
- 1956 GMC 1/2 ton \$295
- 55 Chev. 2 ton LWB—Junker
- 1955 Chev. 2 ton LWB, box & hoist \$795
- 1954 Chev. LWB 2 ton, hoist & box \$795
- 1951 36' all alum. air cond. mobile home \$945

Melton Motor Co., Inc.

16th and M Sts. JA 7-2201
BELLEVILLE

Real Estate

FOR SALE — 240 acre A-1 pasture. Good grass & good water. Buyer gets '68 lease money. 765-3517, Alma, Kans. x18

REAL ESTATE

Sales - Auctions

MARVIN COTTRELL,
salesman
ARMON BOSSE
Realtor
Your listings appreciated
ONAGA, KANSAS

480A Wabaunsee County
Approximately 140A under cultivation, balance extra good grass. Improvements good. Will sell on contract.

Shown by Appointment Only

Fulmer Real Estate

CATHERINE J FULMER
REALTOR



Office 456-7696

Res. 456-9281

WAMEGO

CENTRAL KANSAS FARMS

- 310 acres improved, 245 acres broke, 60 acres grass, 102 acres seeded to wheat, 67 milo. This is a very good Clay County farm. 10 year contract at 6%.
- 400 acres, 300 acres of grass, 100 acres creek land, Cloud County
- 5 acres, a good set of fram bldg., Clay County, contract sale.
- 2 acres at the edge of Clay Center, two bedroom home, double car garage.
- 2000 acre ranch, the best of grass & water.

Call for Appointment

Eldon Thorman

Real Estate & Auction Service
Office at Cedar Court Motel
CLAY CENTER, KANS.
Ph. 913 ME 2-3008

FOR SALE, Axtell, Kans. — Improved 160 acres, modern, all can be farmed, oil road. Price \$32,000, Nemaha Co. Also Modern Home, 600 acres, 1/2 bottom, oil road, price 150 thousand dollars, Nemaha county. Also 160 acres, no improvements, all black soil, price \$48,000 Also locker plant in Axtell, Ks. good business, new building, all equipment, Price \$8000. This is a bargain. If you want a business or town property or farm see Roy Christy, Axtell, Kans. or Phone 2778. SB19

FARMS FOR SALE

Very well improved 660, all buildings nearly new, very modern 3 bedroom home, on oil road, 350 acres cultivated, 310 good grass, price \$104,000 with good 10 yr. contract

A good investment — 160 with 154 acres cultivated, 35.4 wheat, 81 feed grain, 2 oats. Must sell to settle estate. \$32,000

Improved 160 on good road, modern home, built-ins, wall-to-wall carpet, same new outbuildings, half cultivated, only \$28,000 on good 10 yr. contract

Unimproved 80, all tillable, irrigation water on adjoining farm. Will sell subject to test well at \$12,000 on 10 yr. contract.

Now is the time of year to make your plans for 69. I have several good listings of various sizes. It would pay you to take a look.

Have made 16 farm sales this year. Call collect for appointment. You can be next.

Kvasnicka Realty HADDAM, KANSAS

Phone FR 6-2874
Gerald A. Kvasnicka, Realtor
Alice J. Kvasnicka, Secretary

FOR SALE — 20 acres 3 miles east Winchester on 192 highway, 5 room modern house, small but nice outbuildings, large pond. Lew Wiley Real Estate, Eldon Farris, Salesman & Auctioneer. Phone Winchester 774-2326. x18

FOR SALE or lease — Cafe. Good location. Close to two motels. East edge of Eureka, Kans., on 54 highway. Call evenings. By owner. Phone GI 3-6534, Eureka, Kans. x20

FOR SALE — 40 acres on highway, southeast corner of Winchester. 29 acres farmland completely terraced, some buildings, good location to build. x18

320 ACRES on highway, new home, ample buildings for livestock, plenty water. Chester Peterson, Osage City, Kans. 66523. x21

FOR SALE — 362 acre farm. 8 miles southeast of Alta Vista on gravel road. 3 miles from blacktop. Modern 7 room 2 story house. Mail route in front of door. School bus available. About 230 or 240 acres in pasture. 4 ponds in pasture. Will sell on contract. George Eberle, Alta Vista, Kans., phone 229-6407. SB18

FOR SALE — 1000 to 2000 acres irrigated land along hiway 270 South of Syracuse, Kans. Two 1400 gal. irrigation wells. Will rent to competent operator. Also have sale barn in county seat town for sale or lease. Dave Weaver, Milford, Kans. 66514. Phone Junction City 913 CE 8-5019. SB19

Farm Equipment

FOR SALE — No. 80 Massey Harris combine. Clean, shedded. Carl Thimmesch, Mt. Hope, Ks. Phone Andale HI 5-2266. x19

TRACTORS

- JD 4020 diesel
- JD 730 diesel, good
- JD 70 diesel, good
- JD 70 gas, good
- IH 424, like new
- MH 44 gas

MISCELLANEOUS

Hesston 500 12' self propelled windrower

COMBINES

- JD Hi 45 with cab
- JD Hi 55
- MH 72
- MH 35

Kansas Farm Mchy.



CE 3-1374

West 24
at Goodyear

TOPEKA

FOR SALE — 1960 No. 55 John Deere 14' platform, cab & fans. Hoyt Woodbury, Clifton, Kans. x18

FOR SALE — IH twin screw DCOF405, 6-71 GM engine, 5 plus 3 speeds, sleeper, good condition. Price \$5750. Evening ph. 456-7364, Paul Hill, Belvue, Ks. x18

THESE NEW COMBINES ARE PRICED TO SELL

Come Price These:

1962 Oliver 14', ready to cut IHC 101 10' combine
JD 45 12' combine
new IHC 205, 403 and 315 combines. All with cabs, all fully equipped, with power steering. We are pricing these for quick sales.

SEVERAL GOOD TRACTORS
1966 Farmall 806 dsl., fast hitch & fully equipped

1961 F560 gas, FH
1947 8N Ford
Farmall 450, FH, pwr. strg., completely overhauled
I300 Utility, fast hitch, 1955

MACHINERY

Farmhand stacker w/ hay bskt. Horn hyd. loader for IH RC or wide front end
Dempster 4-row rotary mold-board lister, rubber press, markers & insecticide
No. 56 IHC 6-row planter, large fert., dual wheels, field ready
Gandy insect.atts. for planters
M-M shovel drill for planting milo
John Deere 2-row cultivator
4-row IH No. 461 cult.
12'11" IH 37 whl. disk
B-G No. 760 hyd. controlled 4-wheel scraper w/ hyd. unit; for IH, Allis or Cat.

PLOWS

M-F 3-14 3-pt.: Case 3-14 pull type; MM 4-14 w/ hyd. life

HAYING TOOLS

IHC 47 wire baler, PTO
IHC 45T; Ford 250, both PTO
IH No. 100 balanced head, fast hitch mower

Kendall Garage

& IMPLEMENT



Phone 122
Leonardville, Ks.

COMBINES

- 1967 Gleaner C-II 16'
- 1963 Gleaner C, 16'
- 1962 Gleaner C, 18'
- 1959 IHC 151 14' combine
- 1965 Gleaner A-II, 16'
- 1964 Gleaner A-II, 14'
- 1958 Gleaner A 14'
- 1960 IHC 101 with cab, 12'

Ostlund Implement



CH 3-4088

CONCORDIA

GOOD USED PARTS

Tractors, Combines & Farm Machinery. We buy wrecked or burned late model tractors & farm machinery.

North 81 Tractor Salvage
Route 1 PR 2-5491
SEDGWICK, KANS. 67135

TRACTORS

- 1954 Ford Major dsl., overhauled \$895
- 1952 Ford 8N \$695
- 1947 Ford 8N overhauled, near new tires \$495
- 1961 JD 435 dsl., PS, live PTO \$1295
- 1950 JD MT gas with 2 row lister & cult. \$550
- Ford 414 3 pt. \$375
- 1959 MH 82 combine, 14', cab, good \$2425

Etherton Farm Eqpt.

604 Elm 913 562-3611
MARYSVILLE, KANS.



Vahsholtz Impl. Co.

145 S. 5th
TA 5-4521
SALINA

COMBINES

- 1962 Case 1000, 14, no custom, been shedded, ready to go
- 1962 Case 600, 13 with cab, legally owned, no custom
- 1968 Cockshutt 428 12'
- Allis Chalmers Model 90, good
- Special this week on new JR46 steerable plow, 4-16
- 26 1/2 Case field cultivator

FOR SALE — Silos. Preserve direct cut alfalfa or any other type of feed without sun-drying or wilting. Costs only 50c per treated ton. For more information on SILOS contact Triple G Farms, Courtland, Kans. 66939, Dealer inquiries welcome. x19

Field Machinery

- 1 6-16 Case wheel plow, close-out
- 4 5-16 Case wheel plows
- 4 4-16 Case wheel plows
- 1 4-14 Case wheel plow
- 1 4-14 John Deere plow
- 1 new Case 3-16 mounted
- 1 new Case 4-14 mounted
- 1 new 14-ft. Schafer wheel
- 1 new 14-ft. Schafer wheel
- 1 1963 D-19 Allis diesel tractor
- 1 1962 D-17 Allis diesel
- 1 1960 D-17 Allis gas tractor
- 3 used WD Allis tractors
- No. 461 row cultivator, front mounted
- Moline one-way, 8-ft., rubber tires
- Case 8 & 10-ft. oneway
- New Case 10-ft. wheel disc
- Davis loader, fits Ford
- No. 1000 Case combine, 62 el, 16-ft.
- 62 model Ford 6000 tractor
- 4-row cultivator
- 63 model Case 600 combine
- 10-ft. Case heavy duty wheel chisel
- Mo-Ridge 24-ft. spring wheel type
- Late model, clean WD 45
- 2 new D-17 Allis Series IV close out

Longhofer Supply

CASE — ALLIS CHALMERS
Phone EV 2-2620
MARION, KANSAS

NEW JD WINDROWER AT A USED PRICE

JD 215A 14', brand new, with hay crimper. Demonstrator only slightly, full year John Deere new warranty and at price that could be less than you'd pay for a used machine. Give yourself a break if need a windrower.

FARMERS UNION
HARDWARE & IMPL.
St. Marys, Ks. Ph. 437-6666

GUARANTEED Used Combines

- MF 410 with cab, like new cond.
- MF 300 13', like new cond.
- MF 300 13', with cab
- MF 82 12' with cab
- MF 80 12'
- 1967 410 MF unused with quick tach table
- New MF 510
- New MF 410

MACHINERY
1955 JD 500 PTO, 3-pt.
Used No. 26 side rake, MF 10' JD wheel disk

New 46 MF 6-row planter, equipped. Will sell at close price

See us for any Massey-Ferguson new equipment. — We know how to deal with you.

Kuckleman Impl.

SENECA, KANSAS
Phone Day or Nite DE 65-6565

Save on These

- Cub Cadet with mower & blower
- Massey Harris Super 80 combine, field ready
- 1961 460D Farmall, wide axle
- 1956 400D Farmall, power steering
- 1947 M Farmall
- 1942 H Farmall
- 1950 John Deere A, starter lighter
- IH 46 T hay baler
- IH No. 100 Fast Hitch mower with hay conditioner, hitch
- New 656 M Farmall tractor old price. You can save lots dollars on this tractor.

Macha-Revere Impl. Co.

767-5014
COUNCIL GROVE

HUME REELS — New and used for most makes combines. Straw chopper for C. Sever sets 13x26, 14x26 dual tires wheels for combines. Nickel Brothers, Buhler, Kans.

FOR SALE — No. 55 IHC harvester, wide-narrow two-row crop head, used 2 seasons, has new knives and chains. W. L. Hawthorne, Eureka, Kans. 66939, 67045, Phone 443-5339.

GRASS & GRAIN CLASSIFIED ADVERTISING

RATES: \$1 a week for 15 words or less. Add 5¢ a word for additional words. **DISCOUNTS:** (with cash orders only) deduct 10% if ad runs 2 weeks. Deduct 25% if ad runs 4 weeks. **REFUNDS:** you may collect a refund at the Ag Press office for any unused amount paid if an ad is cancelled. **CLASSIFIED DISPLAY:** (boxed ads) \$1.82 a column inch. **CASH:** ads not accompanied by cash have a 25-cent billing charge added.
Mail To: Ag Press - P.O. Box 1009 - 1207 Moro - Manhattan, Kansas 66502 - JE 9-7558

Notices

AUCTIONEERING

Lawrence E. Welter

AUCTIONEER
REAL ESTATE BROKER
Your Sale Solicited
Large or Small
EAST HIGHWAY US 24
MANHATTAN PR 8-3455
Real Estate
And General Sales

Ed Reimer

AUCTIONEER
We Specialize in Selling
DAIRY CATTLE
"A complete Sale Service"
Phone or write for sale
dates.
Telephone 367-2373
GOESSEL, KANSAS
"Marion County"

ROBT. G. "BOB" WILSON

Auctioneering Sales Mgr.
All Types of Sales
Phone 494-2552
Box 118 St. George, Kans.

DAIRY SUPPLIES

WAMEGO DAIRY SUPPLY

Your authorized dealer for:
DeLaval milkers
Clay push-button farm eqpt.
Mueller Bulk Tanks

Stores And Service From
Wamego & Sabetha, Kansas

For Free Estimates Call:

WAMEGO 456-7200 or
SABETHA AV 4-2958

DeLaval Clay

All Makes
Service & Repair
Dairy Equipment



Joe McClure

Ph. 229-5284 Alta Vista

MEMORIALS

CEMETERY MEMORIALS

54 Year Continuous Service
Display Located on US24
East of City Limits

SCHAUBEL

MONUMENT CO., INC.
RR 3 Box 20 ME 2-3531
Clarence Blanc, President
CLAY CENTER

Dale Wells



Pipe Line Bucket Milkers
Stalls
324 Frederick ME 2-2811
CLAY CENTER, KANS.

MONUMENTS

MANHATTAN MONUMENT CO.

J. J. BEAUDET
Office and Display

123 No. 3rd
Office Phone Res. Phone
PR 8-5137 PR 8-4978
MANHATTAN, KANS.

LAND IMPROVEMENT

LAND IMPROVEMENT
"Soil Conservation Doesn't
Cost—It Pays"

Ponds, terraces, waterways,
and leveling, drainage ditch-
es, clearing, landscape grad-
ing.

Roggendorff

Conservation Construction
Arthur Roggendorff
Phone JE 9-3984
1620 OSAGE-MANHATTAN

Livestock

Dairymen — Buy The Best For Less

We have for your selection at
all times the largest supply of

FRESH SPRINGER
HOLSTEIN — GUERNSEY
JERSEY
SWISS and MILKING
SHORTHORN COWS &
HEIFERS

Financing available — up to
24 mos.

SPECIALS
100 head of open Holstein hei-
fers
50 head Holstein heifer calves
CALVES! CALVES!
We will have 400 to 500 calves
beef cross. 2 weeks to 450 lbs.
At our barn every week for the
next several months.

W. G. WIEBE

Phone CI 4-7265
Summerfield, Kansas

WANTED TO BUY
FEEDER HOGS
40 to 100 lbs. Top prices paid.
J. D. SIMPSON
130 Grant Ave., Junction City
Phone CE 8-3754 or CE 8-3939

REGISTERED ANGUS
BREEDING STOCK
For sale at all times

LLOYD EDWARDS
Belvue, Kansas
Phone WAMEGO 456-7645

Pohlman's Angus Ranch NATOMA, KANSAS

Must Sell due to health

All Reg. Angus Cattle
Quality and pedigrees are tops.
Complete Herd
consists of
300 head of Angus

Phone TUXedo 5-4322 Natoma
after 8 p.m. any day

NATIONALLY ACCREDITED
S.P.F. Hampshire boars. Sep-
tember farrowing. H. Wayne
Shirley, Horton, Kans. Phone
Powhattan 474-3349. x21

2 YEAR OLD Registered Here-
ford bulls. August Carlson, Smo
lan. Phone Salemsborg 1017.
SB18

NATIONALLY ACCREDITED
SPF Yorkshire boars. From test-
ed bloodlines. Serviceable age.
Harvey Herts, Linn, Kans. Ph.
348-2252. x18

REGISTERED HEREFORD
bulls, Tex-Flow irrigation pipe,
Gorman-Rupp and Berkeley cen-
trifugal pumps, tool bars, disc
hillers, Richardson furrowers.
SPECIAL DISCOUNTS. Also
used 6" plain and 8" gated 20".
Warren St. Pierre, Ames, Kans.
(10 miles, east Concordia K-9)
Phone 913 446-3631. x19

FOR SALE — Nice group of
polled Hereford bulls ready for
light service. Roth Bros., Green,
Kans., Phone WI 4-2237 or WI
4-2238. SB18

PERFORMANCE & Production
tested nationally accredited
SPF purebred Hampshire and
Yorkshire boars and open gilts.
Can furnish backfat probes,
sonaroy loineye measurements,
carcass cutouts. Loineyes up to
7", backfat down to 0.75. Floyd
Meyer, Palmer, Kansas Ph. 308.
SB20

FOR SALE — Yearling filly
colt. Sire Big Man Go, son of
Go Man Go. Permanent regis-
tered. Virgil Jackson, Council
Grove, Kansas, Phone Americus
884-3130. x20

HOLSTEIN HEIFERS for sale,
some to freshen soon. Call R. J.
Taylor, 767-5986 Council Grove,
or Glenn Schoof, 767-6286 Coun-
cil Grove, or write 900 South
Neosho, Council Grove, Kansas.
SB18

FOR SALE — One Phillips
squeeze chute for cattle. Whole-
sale price. Joe Hicks, La Harpe,
Ks. SB20

FOR SALE — 5 York bred gilts
to farrow last of July. Calvin
Grover, Morrowville, Kans. x18

"GRAND-VIEW YORKS"—Reg-
istered Yorkshire boars, vaccin-
ated. W. J. Hays, Auburn, Kans.
OR 1-2448. x20

BROWN SWISS cows and hei-
fers for sale. Eldon Henton, RR3,
Manhattan, Kans. PR 6-8142. x19

WANTED TO BUY — 2 or 3
good Holstein milk cows, just
fresh or to freshen soon. A. H.
Carlson, Olsburg, Kans., 468-
3576. SB19

FOR SALE — 15 Southdown
ewes, mostly 2 and 3 yr. olds.
Some are registered. Also 5
crossbred ewes \$25 head. Ver-
non Reynolds, Cuba, Kans., ph.
28F9. x18

FOR SALE — Purebred Charo-
lais for sale — cows and hei-
fers. L. A. Clark, Wamego,
Kans., Phone 456-9544. SB20

Feed & Seed

DAIRY PELLETS, range pellets
and all kinds of fertilizers.
Manhattan Milling Co., 107
Pierre, Manhattan. TF Chg

WE HAVE a reasonable amount
of the New Early Victor wheat
planted from new seed last fall
from Peterson Seed Co. for sale
at \$2.25 per bu. bulk. Leo De
Donder & Sons, Reading, Kans.,
Phone AN 9-3445. x19

HOW ABOUT some good Hol-
land or Plymouth baler twine,
round or square bales? Both are
fully guaranteed and priced
right. Council Grove Elev. Co.,
Phone 767-5534. SB18

PIANT GOLDEN Acres T E 44
Milo after wheat is harvested or
Certified Wayne Soybeans —
both are short season crops.
Council Grove Elev. Co., Phone
767-5534. SB18

BROME SEED — Our service
and handling make it more pro-
fitable to deal with us. Come
in or call. Harveyville Seed Co.,
Harveyville, Ph. 589-2497. x20

Automotive

GMC TRUCKS

½ Ton - 60 Ton
Sales & Service

TRI-COUNTY MOTORS
307 N. 3rd MANHATTAN



FORD

1965 Ford F-600 330 V-8, HD, 4-
speed, 2-speed, 18' Obeco fold
down with Krause 2 ton
hoist, 35,000 miles.
1963 Ford F-600 174" W.B. chas-
sis cab, V-8, 4-spd. 2-spd.
1963 Chev. 2-ton, V-8, 4-speed, 2-
speed, new 13½' bed & hoist
1963 Ford F-600, 156" W.B. chas-
sis cab, V-8, 4-speed, 2-speed
1965 Chev. ½ ton pickup, 6 cyl.
1964 International Scout with
4 wheel drive
1950 Jeep 4 WD

Taylor Motor Co.

Phone EA 5-2202
WASHINGTON, KANSAS

ONLY YOUR FORD DEALER

Skaggs Motors

SELLS

A-1 USED CARS

IN MANHATTAN

1967 Mustang, 6 cylinder, 3-spd.,
R&H, new car warranty. One
owner \$2195
1967 Country Sedan, V8, auto-
matic trans., p-steering, R&H,
and factory air \$2695
1966 Mercury Comet convert-
ible, V8, automatic trans.,
R&H, power steering .. \$2095
1964 Impala Super Sport con-
vertible, V8, automatic trans.,
R&H, p-steering, factory air
..... \$1595

1957 Thunderbird Coupe, V8,
standard trans., R&H —
COLLECTORS ITEM!

BUSINESS IS GOOD
IN FORD COUNTRY

OPEN EVENINGS
BANK RATE FINANCING

Skaggs (Ford) Motors

Your Transportation
Headquarters
"Where Customers Send
Their Friends"
2nd & Houston Phone 8-3525
MANHATTAN, KANS.

1964 Chev. Impala
1965 Ford F100, custom cab, 4
speed, LWB
2 used Eldorado campers
1962 Volkswagen \$845
1 used Eldorado 14' camping
trailer
1939 Chevrolet four-door

FORD SALES & SERVICE Stenberg Motors

Ph. 446-3532 Clyde, Ks. 66938

Need A Pickup?

GET A NEW ONE
IN WAKEFIELD

We have a good selection of
½ & ¾ Ton Pickups
1965 Dodge ½ T V-8, clean
1957 International ¾ T pickup,
grain sides & stock rack
1949 Dodge 1½ T with bed



AULD

CHEVROLET
HO 1-5414
WAKEFIELD

TRUCKS

1966 GMC 4-speed, ½ ton
1963 Chev. ½ ton, 4-speed
1965 Chev ½ ton w/ camper, 3-
speed, V-8, like new
1962 Chev. ½ ton, 3 speed, blue
and white
1962 Ford ½ ton, green, 3 speed,
6 cylinder
1957 Ford ½ ton V8, 4 speed,
blue
1949 Chev. ½ ton, 3 speed, red
Stock Racks
We have many other cars to
choose from so feel free to come
in and visit with us.
1963 Glasscraft boat, 17-ft.,
Merc. big motor
Bank Rate Financing

C&C AUTO SALES

MANHATTAN, KANSAS
500 N. 3rd PR 6-5221
MARYSVILLE, KANSAS
US 36 East 562-3029

USED PICKUPS

1965 Chev. ½ ton, big 292 six,
radio & heater
1958 Chev. ½ ton 6, 3-speed,
Fleetside bed
1958 Chev. ½ ton V8, 4 speed,
Stepside bed
1958 Ford ¾ ton pickup, V-8
with 4-speed
1960 Chev. 2 ton with hoist &
bed

OBERMEYER



Marvin Obermeyer, Owner
Ph. BL 8-2255 Open to 9 p.m.
HERINGTON, KANSAS

New & Used CARS & TRUCKS

1968 Landau Thunderbird, fully
equipped
1968 F-100 6, 4-speed farm &
ranch special
1968 F-100 8, aut., CC, radio etc.
1967 Plymouth Fury II, V-8, 4
dr., fully equipped, one owner
1965 Rambler Classic, 4 dr. 6,
standard shift
1964 Galaxie convertible, V8,
radio, new paint, etc.
Plenty more new & used cars
F600 1½-2 ton, 159" wheel base,
V-8, 4 speed, 2 speed axle

Wamego Motors



456-9567

WAMEGO, KANSAS



1966 Ford F-600, V-8, 2-speed,
825 tires, one owner, 174"
WB, will handle 15½' box
..... \$2695
1965 Ford F-600 2 ton V8, 2-spd.,
825 tires, 194" WB, one own-
er, 18-20' box
er, 18-20' box \$2295
1963 Chevrolet ½ ton 4-speed, 4-
wheel drive, LWB
pæds-g 'uon ½ ton Ford 2961
1967 Honda cycle, 90cc, like new
..... \$395
1963 Mercury Sport HT, air
1965 Isetta \$195

Boss Motors

106 South 7th 913 562-3696
FORD-MERCURY DEALER
MARYSVILLE, KANSAS

1966 Pontiac 4-door, V-8, auto.,
air cond. \$2095
1966 Plymouth sports sedan,
V8, automatic, PS \$1995
1966 Chev. Coupe, V8, auto., PS,
PB, air \$2195
1965 Rambler wagon \$1495
1964 Corvair Monza coupe \$795

KEY PONTIAC INC.

305 Houston St. PR 6-9422
Used Car Lot:
231 S. 3rd St. PR 6-5021
Manhattan's Only Volume New
& Used Car Dealer.

HOME OF FINE SERVICE

USED TRUCKS

1967 Ford F-250, ¾ ton pickup,
6 cyl. engine, radio, HD rear
springs, very clean
1966 Ford Ranchero, V8 engine,
std. trans., radio, air cond.,
power steering, low mileage
1966 Ford F100 4-wheel drive, 4-
spd. trans., lockout hubs, very
clean, low mileage
1965 Ford F100 Styleside pickup,
6 cyl., 3-spd. trans.
1964 Ford F100 styleside pickup,
V-8 engine, 4-spd. trans., heavy
duty springs
1962 Ford F100 pickup, ½ ton,
long wide box, 6 cyl., 4-spd.
transmission
1961 Ford F100 Flareside pick-
up, 6 cyl., 4 spd. trans., HD
springs

McComas Motors

240 West 6th CH 3-3634
CONCORDIA, KANSAS

HARVEST SALE

1962 Ford combine w/ cab, pwr. strg., low acreage, 12' cutter bar & 2-row cornhead \$3500
Long fiber treated baler twine, per bale \$7.50
1962 Ford tractor, live PTO, power steering, live hyd., good rubber, real clean \$1950

Heavy duty Davis loader, hyd. bucket and blade \$750
1962 Ford Major tractor, PTO, good rubber, power steering & live hydraulic, aux. valve \$2250

971 Ford diesel tractor, LPTO, live hydraulic, power steering, 10 speed \$2000

UT Minneapolis Moline tractor, factory propane, clean, good rubber, PTO, turning brake \$450

U Minneapolis Moline tractor, LPTO, disc brakes, good rubber, row crop, or wide axle \$750

UB Minneapolis Moline tractor, LPTO, live hydraulics, row crop, weights, good rubber \$1250

1963 JD 45 combine, 12', pwr. strg., real clean \$3000

SAVE ON SPRAY

Use only 1/2 amount of Atrazine by using Crop Oil to spray post-emerge weeds in milo and corn, per gallon 90c

Fordson Major LPTO, live hyd., 3-pt hitch, raised PTO \$1150
10' Ford wheel disc, sealed bearings, flex model \$400

11'2" Kewanee sealed bearings wheel disc \$450
3-pt. tandem disc \$125

14' Kewanee wheel disc with outrigger spools \$600
New Roto weeder four row cultivator, rear mounted \$785

2-row Ford front mounted cultivator, \$250
Used Ferguson 3-pt. lister, rotary bottoms \$125

9' IHC mounted disc, quick hitch \$200
Cockshutt mower \$75

John Deere Rigid wheel disc, 11'4", 9" spacing, used \$450
8 1/2" pull type John Deere one way on rubber, real clean, used \$200

3-14 Ford radex plow, mounted, 3-pt. \$150
3-pt. rotary lister \$125

Made over John Deere used lister, 3-pt. \$75
Used 3-pt. mtd. lift disc, good \$125

Used 2-14 Ford plow, Radex lays \$125
Used 11'2" Krause disc, rigid, sealed bearings \$500

Used PTO post hole digger \$100
Used New Idea heavy duty loader with manure bucket and 80" material bucket hydraulic bucket control, fits several make tractors \$450

New Bush Hog, 10 horsepower tractor, PTO, automotive clutch gear drive with 42" mower \$850

See Us For Ford Tractor & Machinery Sales & Service
The Mow-Ditioner will save you money and time in haying. See it now.

D & D Farm Eqpt.

Phone 913 ME 2-5212
CLAY CENTER, KANS.

Machinery

12' Miller offset disk, 24" blades
1968 Oliver 1850, over & under, hyd. shift, 250 hrs.

1967 Oliver 1650 dsl. 285 hrs.
1961 Oliver 880
AT4 4 row JD cult., like new, 3010 mountings

1958 961 Ford tractor \$1295
1949 AC WD tractor
JD B tractor
IHC 560 dsl.

AC loader, only \$150
11'6" JD disk
Several 3 pt. 3-btm. plows, priced from \$100 & up

1100-16 tires & tubes \$75.00 pr.
MF 2-row cult., like new for an M 65
Tractor Radio \$58.95

Complete Line Of
Bolen Garden Tractors
Complete Car, Truck
Tractor Repair

Peschel Bros.

NEW LOCATION
400 Center
562-2377
MARYSVILLE, KANS.

HI BOY sprayer, 13 drops, ready to go. Vern Groff, Seneca, Kans., Phone 336-2143 or 336-2229. SB18

BUILDINGS & BINS
We offer Sales, Erection & Service for
BS&B Agri-Systems; Drying — Storage and Handling Systems
"Feed Hive" — Sealed Storage
"Bacon Bin" — Hog Confinement
Star Steel Buildings
Ames Irrigation
M-C Continuous Dryers

North Central Steel Irrigation, Inc.

P.O. Box 141 913 392-2077
MINNEAPOLIS, KANSAS

USED TRACTORS

1955 Ford 850, overhauled & painted
1957 IHC 450 diesel
1945 M Farmall, good
1952 G John Deere
1951 Ford 8N, backhoe & front blade

1951 WD Allis Chalmers
1950 Case DC & cultivator
1939 Oliver 70 & mower, as is
1957 640 Ford

USED MACHINERY

1966 Fury 80 H. BMB cutter
1967 BMB XL 5-3 cutter
BMB Special 5-3 cutter
BMB 6-3 XL cutter
Mono 5-3 cutter

7-ft. Dearborn mower, 3-pt.
7-ft. Massey Ferguson, bal. head mower
7-ft. IHC mower

503 3-pt. Ford rake
IHC 2-row monitor, pull type
8 1/2" Ford 3-pt. disc
Massey Harris 26 combine

Hudson sprayer
Dempster 2-row 3-pt. planter
Hanson sprayer 3-pt., no booms
John Deere rotary cutter, 5-ft., pull type

BMB 7-ft. rotary mower, pull type
Shawnee front end loader
New Idea pull type loader
John Deere T 14 baler

2-14 Ford plow, 3-pt.
Dealer for BMB cutter, Krause equipment, Birch, Hanson sprayers and Imco box scrapers.

M. B. Salisbury Co.

CE 3-7411
114 Quincy
TOPEKA, KANS.

USED TRACTORS

1964 Oliver 1800, gas
1962 Oliver 1800, gas
Oliver 770 gas
Oliver 880 diesel
John Deere B with cultivator

MACHINERY

Oliver Model 33 combine
John Deere 6-ft. oneway with hyd. cylinder
John Deere wheel disc
Case baler

PLOWS

Case 3-16 3-point
IH 3-14 3-point
AC 3-16 mounted
AC 4-14 mounted
JD 3-14; JD 4-14
Moline 3-14; Moline 3-16; IH 3-14

CCrust Buster, 24' and 28'

NEW MACHINERY
OLIVER — GEHL — AMERICAN CRUST BUSTERS —
BMB HAY SAVERS AND
SHREDDERS.

Toburen Impl. Co.

ME 2-2288
CLAY CENTER, KANS.

TRACTORS & TILLAGE

1964 J D4020 dsl. RC, 3 pt.
1961 JD 4010 dsl. std., reconditioned

1960 JD 730 dsl. std. 3 pt.
1958 JD 720 dsl. std., 3 pt.
1958 JD 720 LP RC, wide front

1951 JD R dsl., new rubber
IHC W6, good tractor
14' Miller offset disc
12' Krause disc

12' Krause oneway with keel
Broyhill trailer sprayer, like new
4 & 5 sec. 3 pt. Springtooth & carrier

15' Sunflower V-plow

Blanding Impl. Co.

BELOIT, KANS.
PE 8-3066

USED TRACTORS

1946 9N Ford w/ step-up
1951 8N Ford
1947 9N Ford, overhauled
1956 850 Ford, new pt., overhauled

1953 NAA Ford, good
1948 B Allis IN & tractor
1961 971 tricycle D, SOS, PS, A-1
1944 A J Deere, new pt., good

1946 A J Deere
1953 Model 60 JD, new rear tires
1962 Ford 1/2 ton 6-cyl. pickup
1961 Ford 1/2 ton 6-cyl. pickup

USED MACHINERY

1961 New Holland 69 Super Hayliner baler, string tie, PTO, A-1 condition

7-ft. IHC mower
1961 Ford 250 PTO baler, string tie, new pt., A-1

1957 Massey Harris PTO, string tie, good
1954 New Holland 66 w/ motor
7-ft. Dearborn 3-pt. mower, good

4-ft. tractor, Fresno
10-ft. 3-pt. tandem disc
11-ft. 3-pt. tandem MF disc
6-ft. 3-pt. disc

11-ft. JD wheel disc
Dearborn 3-16 3-pt. plow
IHC 3-14 mounted plow
AC 2-16 snap hitch plow

3 2-14 3-pt. plows
2-16 John Deere pull plow on rubber

NEW PLOWS IN STOCK
NEW DISCS — COMPLETE
STOCK OF NEW TRACTORS
ON HAND.

Twine and wire for sale

Burns-Salisbury

East US24
PR 8-5731
MANHATTAN

COMBINES

PRICED FOR IMMEDIATE SALE

1967 Gleaner C-II, like new, w/ cab \$7250
1966 Gleaner C-II combine \$6950
1967 Gleaner C-II combine \$1875

1967 Gleaner A-II, cut 5 acres \$395
John Deere No. 45 12-ft., 59 model, ready to go \$395
Massey Harris Super 26 combine \$395

Allis SP100 combine \$795
Massey Harris 55 year, series 70, 12-ft. \$595
Allis Chalmers, 59 model, 90-inch machine \$195

Allis Chalmers 6-ft. combine, 56 model \$975
John Deere 55 combine, 14-ft. \$2750
IHC 151 combine, 14-ft. \$1675

Case 900 diesel tractor \$2750
Case 400 diesel tractor, 56 model \$2695
Case 830 std. LP tractor, 63 model \$1500

John Deere 70 diesel \$595
Massey 55 LP \$475
W9 IHC, LP tractor hvyds. \$1850
600 Case LP tractor, 57 model

2 late model Allis roto-balers
5 used IHC M tractors
2 450 IHC LP row crop tractors
1 400 IHC diesel tractor
1 John Deere 60 gas tractor
1 John Deere 60 LP tractor

LONGHOFER SUPPLY CO.

J. I. Case & A-C
Phone EV 2-2620
MARION, KANS.

Complete Line Of Behlen Steel
FARM BUILDINGS, BINS, AUGER EQUIPMENT
Phone or write Mike Wayland at

Wayland Const. Co.

Phone EA 5-2134
Washington, Kansas 66968

USED COMBINES

IH 141 SP combine, 12' with cab
MF 82 SP combine, 12' with cab
MF 82 SP combine, 14' \$1500
MH 80 Special — good

AC 100 SP combine, 9', good
MH 26 SP combine; give us a bid
LOOK: New JD 12 ft. 215A SP windrower, loaded with extras
Got to GO — \$3850

Osage Farm Eq. Co.

OSAGE CITY, KANS.
Phone LA 8-1422

TRACTORS

1963 JD 3010 dsl. \$3750
1959 JD 630 gas, 3 pt. \$2300
1961 JD 4010 dsl. \$4150
1959 JD 630 gas WFE, 3 pt. \$2375

1957 IH 450 LP tractor, WFE \$1550

COMBINES

1965 JD 95 16' with cab .. \$6850
1965 MH 410, 16' \$6250

MACHINERY

1967 Dempster 6 row planter, like new \$1450
JD No. 6 planter \$125
IH 4 row corn disk with new Artmann bar \$275

1966 IH No. 55 2 row forage harvester \$1775
1965 JD No. 12 2 row forage \$1575

1957 Gehl with row crop unit \$650
1955 Papec No. 62 row crop & direct cut \$875

1965 JD 224 wire baler .. \$1675
1962 JD 214 wire baler .. \$1775
1957 JD 14T baler \$750
1957 IH 45T \$250

Belleville Impl. Co.

JA 7-2261
BELLEVILLE

Used Combines

We've got deals going on some of these, and are ready to close.
JD 1965 45, 12' with cab
JD 1962 55 12', with cab
MH 1957 82, 14'

MH 80 SP 14'
JD 1965 95, 14', really sharp
JD 1961 95, 14'

JD 1963 55, 12', real good, w/cab
JD 1958 55 12', good
JD 1957 55, 12'

MH 1965 410, 14'

USED TRACTORS

We had 9 JD 4020s. Only 2 left.
Oliver 1950 88, good
IHC 1957 450, overhauled, complete with new head

IHC 1950 M; IHC 1949 M
JD 1965 4020 dsl., p-shift, ps, wide frt.
JD 1961 3010 gas, overhauled, painted

JD 1961 2010 gas, overhaul, painted, wide front
JD 1961 2010 gas, wfe, real good, adj. wheel

JD 1959 730 dsl., with dual control
JD 1959 630 gas, good
JD 1957 620 gas, good

JD 1949 A
JD 1948 G
JD 1954 60 gas, painted
JD 1946 A

JD 1964 4020 dsl, p-shift, ps, wfe real good
JD 1946 R&G loader
JD 1954 MT, good, new tires

AC 1962 D15, wide front, sharp
M-H 1962 65 dsl. w/ front over-haul
MH 1950 44 gas

MH 1949 44 gas, wide front
Ford 1953 & Davis loader

LOTS & LOTS & LOTS MORE MACHINERY ON OUR LOTS

Farmers Union Hdw. & Implement

Everett Hoobler
Mgr.
Ph. 437-2913
ST. MARYS, KANS.

USED COMBINE

JD HiLo 45 with cab, 12'
1966 AC BB, low acreage
205 corn att. for 45 or 40 JD
80" belt pickup att. for 45 JD SP

Innes pickup att. for AC
MH pickup att. Super MH combine

USED BALERS

1964 JD 214 WS, wire
1960 JD 214 W, wire
1959 JD 14T, twine
AC Roto baler, a good one

1958 IHC 45T

USED HAY RAKES

1964 JD 894A, very good
Late Model New Holland No. 55
MH 4-bar
JD 4 bar on rubber

New Idea 4 bar on steel
JD 4-bar on steel

MELVIN GUSTIN, Salesman
DE 6-2945 after 6 p.m.

Todd Tractor Co., Inc.

Junction Hwys. 36 & 63
Store Phone DE 6-2138
SENECA, KANSAS

TRACTORS: THEY'RE READY

1960 Cockshutt 550 gas, wfe, pwr. strg., 3 pt.
1957 IH 350 dsl. with full power steering, pwr. adj. wheels

1962 Oliver 770 gas, 3 pt., adj. wheels., pwr. strg., booster. This tractor has overhauled and is in fine condition

No. 77 Oliver, overhauled, new clutch & new hyd. pump
2 Oliver 356 3 pt. mowers, 40' fold-up hay & grain elevators with electric motor

NEW OLIVER TRACTORS
SELLING AT 1967 PRICES

Eberwein Garage

ALMA, KANSAS

READY TO GO

1 1964 55 JD combine with 14' \$1450
1 1962 55 JD 14' with cab \$1450
2 1952 A Baldwins, 14', young choice

1 1951 Massey 27, 16', engine overhauled, near new, 16' tires

Byron Impl. Co.

402 236-4184
BYRON, NEBR.

WICHITA

1 66 JD 4020 dsl, 3 pt, PTO real clean
1 64 JD 4020 dsl., power shift
1 67 JD 3020 dsl., only 300 hrs.

1 61 JD 4010 dsl, 3 pt, PTO dual rear tires
1 62 AC D-19 LP with cab
1 66 JD 3020 gas, 3 pt, PTO low hrs.

1 57 JD 720 dsl. RC, 3 pt., good condition
1 59 IHC 340 gas, wide front fast hitch

1 57 JD 620 LP RC, 3 pt, PTO new tires
1 60 JD 730 dsl., 3 pt, PTO new tires

1 60 JD 630 RC gas, fully equipped
2 JD F145 four bottom 14' plows

1 JD 12'6" BU disk harrow
2 Parker Crust-busters, 26" JD No. 12 two-row forage harvesters

1 61 JD 55 14' combine, complete overhaul
1 60 MF 82 12' combine
2 57 JD 55 14' combines

TERMS AVAILABLE
Good Selection Of
Late Model Used Combines

Western Impl. Co.

2256 S. West St. WH 3-426
WICHITA, KANS.

After-Harvest Prices

1 1966 C-II Gleaner, 16' \$1450
1 1966 C-II Gleaner, 20' with bulk milk
1 1956 MH 60, 12', clean
1 1958 JD 55 14', cheap

Wanted — D-17 gas tractor
Will Trade And Finance

Bundy Eqpt. Inc.

A-C — WETMORE
WH 2-7261 942 S. W
WICHITA, KANSAS

COMBINES — COMBINES

1 1966 Gleaner C-II, clean
1 1965 Gleaner E-II
1 1960 Gleaner A, 12' plat.

1 No. 35 MH
1 H 92 MH, 12' platform
1 1966 45 JD, extra clean

1 1965 380 MH, clean
1 1960 151 w/ 4-row head
1 1959 101 w/ 12' plat.

We Rent — Trade or Sale

Henry Sales & Service, Inc.

E. Hwy. 24
& Meriden Rd.
FL 4-7641
TOPEKA, KANSAS

Summer Sales Buster

At Beatrice, Nebr.

TRACTORS

1967 JD 4020D, 550 hrs. Save \$\$\$
1966 JD 4020 D power shift \$5875
1965 JD 4020 D \$4995
1963 JD 3010 gas, 1400 hours \$3595
1962 JD 3010 gas, new paint \$2995
1961 JD 3010D, new paint \$2995
1961 Ford 961D, new tires \$1195
1958 JD 720 gas \$2395
1955 Ford Major D \$495
1957 JD 620 LPG \$1795
1959 JD 530 LPG \$1495
1953 JD 50 gas, new paint \$795
NEW 38 hp JD tractor with power steering & live shaft \$2995
New 54 HP JD tractor, demo., save \$\$\$

COMBINES

1965 JD 55, 14', factory cab \$6650
1964 JD 55 14', factory cab \$5750
1961 JD 45 12' Hi-Lo \$2875
1959 JD 45 12' with cab, Hume reel \$1495
1955 AC 100 12' \$495
1957 IHC 141 12' \$1195
1955 MH 80 Special, 14' \$1295
1952 MH S-26 12' \$595

BALERS

1963 New Holland S-69T \$995
1961 New Holland S-69T \$895
1957 Oliver 60W \$325

Klippenstein's



Phone 223-4052

Ph. 402 223-4052

BEATRICE, NEBR. 68310

COMBINES

1963 Massey 65 D with Multi-power, excellent \$2550
AC Roto Baler, original belt, excellent \$495
1963 Gleaner A, 2 40" cornhead
1964 Gleaner A, 3-30" cornhead
1964 Fox with row head \$1100
Gehl Chop King with 2-row hd. \$1875
Used Gehl & AC forage blowers

Frantz Farm Eqpt. Inc.



Hiway 77 North

Ph. 223-2317

BEATRICE, NEBR. 68310

COMBINES

1964 Gleaner A-II, 16-ft., clean
1957 IHC "141", shedded
1950 John Deere "55", cheap but good

TRACTORS

1964 AC D-19D, big rubber
1962 AC D-17D, clean
1967 NH 905 swather with conditioner, Ford engine
1963 NH S69T baler, clean
1954 Traveler trailer, 8'x40"
John Deere 3-pt., 4-row lister with fertilizer
New Gleaner combines in stock. Will give good trade on clean, late combines.

Jost Implement Co.



947-3182

HILLSBORO,

KANS.

NEW GLEANERS

F combines
New 1967 E combine
G combines

USED

1965 C-II Gleaner w/ cab, 18-ft.
314 IHC fast hitch plow
414 IHC pull type plow
12' IHC wheel disc
10' AC wheel disc
1967 Baldwin A, 14'
1963 303 IHC combine, 14' with cab
D-17 tractor, with PS
3-pt. New Holland mower
Used 3 & 4 bottom snap coupler plows
228 2 row IHC corn head

Cuba Impl. Co.



Phone 4F 7

Cuba, Kans.

1 BACKHOE TRACTOR-loader with trailer, Marysville Plbg. & Hng. Co., 507 N. 5th St., Marysville, Kans. 66508. SB18

TRACTORS

1962 JD No. 45 with cab
1962 2010 JD gas, completely recond. \$2595
1964 JD 1010 gas tractor \$1995
1958 MF 50 with loader \$1395
1957 JD 620 gas \$2250
1949 JD A, overhauled \$595
1962 JD 2010 gas \$2295

COMBINES

1956 JD No. 45, overhauled
1959 JD No. 45, with cab, good

Young & Son

Impl. Co.

Council Grove

Kans.

Ph. 767-5018



USED COMBINES

1967 Gleaner C-II w/ cab
1964 Gleaner A-II
1963 Gleaner A with cab
1962 E Gleaner, 13 ft.
1962 Gleaner C with cab
1962 Gleaner A
1952 IHC No. 127

See "Butch" Before You Buy

Waterville Motors



ST 5-2731

WATERVILLE, KANS.

TRACTORS

IH W9
F806 LP
660 LP
Super M LP
F560 diesel
F300 Farmall
F450 Farmall
W400 Farmall
CA Allis with cultivator

PLOWS

IH No. 70 3x14 pull
IH No. 70 3x16 pull
IH 3x14 2 pt.
IH 4x14 2 pt.
IH 4x16 2 pt.
JD 3x14 3 pt.
JD 4x14 3 pt. steerable
600 Case 3 pt.

CULTIVATORS

IH 2 row 3 pt. mounted
IH 2 row front mounted

MOWERS

IH 7' No. 100 2 pt.
BMB 7' hay saver, nearly new

Lynn's Truck



& Tractor Co.

EV 2-2210

MARION, KANS.

WRIGHT IMPLEMENT OFFERS —

MM 11' wheel disc
AC 80 side mounted mower
John Deere 3 point mower
Case 4 bar rake on rubber
New Idea spreader, rubber
1959 JD 45 combine, 12'
No. 12 Case combine, 12'
AC 100 SP 12' combine
1952 Gleaner combine, 14'
1953 MH 26 combine, 12 ft.
1958 Gleaner, good, large tires
AC 3-16 mounted plow
MM 3-14 plow on rubber
Dempster 4 row cultivator
Davis 10' roller mill, PTO
John Deere crimper, model 32
616 NH forage harvester with pickup attachment
Case 135 wire tie baler
D-17 tractor, 1958
D-17 diesel tractor, 1962
MM U tractor
AC forage harvester with sickle bar & pickup
Snowco feed wagon

Wright Impl. Co.



South Highway 15

ABILENE, KANS.

Nites, Harris Clark

Salina TA 3-6690

H. L. Wright, Abilene CO 3-2274

FOR SALE — 1952 Super 26 Massey combine in good shape & motor overhauled, \$600. Also 2 registered Hereford bulls \$750. Don Banahan, Steele City, Nebr. Phone 402 442-2530. x18

FOR SALE — 6' pull type, V-4 engine, Baldwin combine, new bearings and new parts. Threshes exceptionally clean, suitable for alfalfa seed or any fine grains. Pohlman Angus Ranch, Natoma, Kans. TU 5-4322 after 8 p.m. x20

DAUER IMPLEMENT CO.

1967 McCormick 201 windrower, 14', auger platform
1964 McCormick F-806 gas tractor
1966 McCormick F706D, 735 hours
1949 McCormick Farmall H tractor
1967 BSA motorcycle, 3000 miles, excellent condition
1965 International Scout pick-up
1956 IH I-300 utility with manure loader, under 1200 hours
Snowco feed wagon
No. 31 IH manure loader
8 ft. Knapheide truck bed complete with stock racks
IH side delivery rake on rubber, high wheel
McCormick No. 311, 3-16 plow
McCormick No. 60 3-16 plow
1940 Farmall M with factory LP gas
1941 M tractor
1962 McCormick 46T twine baler
McCormick 16x8 MF drill, low rubber & rubber press



Falun

Phone 1011

Falun is located 20 miles southwest of Salina

Gas & Diesel Shop Service

MOST up-to-date service shop in our area

Complete diesel testing equipment to take care of the majority of tractors.

Boring bars, line boring machine, welding, electrical, acetylene.

Valve equipment, rod alignment tools.

Competent factory trained personnel — in hydraulics, diesel, electrical and general mechanical work.

BOWMAN

Farm Impl. & Truck Co.

240 East Eighth

JUNCTION CITY, KANS.

SALINA



MF 90 gas, 3 pt., power steering
JD 70 dsl., power steering
Oliver 88 gas, PTO
JD 55 combine, 1959, 14' platform \$3320
JD 217 engine, completely rebuilt
JD 4020 dsl. RC, power shift, 3 pt., 66 model
IHC 806 gas, dual hyd., 67 model
JD 55 combine, 1960, 14' platform \$3450
JD 55 combine, 1958, 14' platform \$3300
MF 85 gas, 3 pt., live PTO
JD 4010 dsl., 3 pt.
JD 3020 dsl., 3 pt., diff. lock, like new
MF 82 Combine, 1958, 14' platform \$2500
JD 95 combine, 1962, 18' platform \$5600
Save \$\$\$ on new 4020 dsl. RC, 1967 model, 2510 gas demonstrator

Salina Impl. Co.

Box 1029 Ph. TA 3-2206
SALINA, KANSAS 67401

FIELD-READY COMBINES

2 1966 C-II Gleaners, 16'
2 1966 A-II Gleaners, 14'
1 1958 JD 55 14'
1 1960 A Gleaner, 14'
1 1965 No. 220 Case twine baler, like new
All are shop worked and field-ready.

Bundy Equipment

942 S. West St. WH 2-7261
WICHITA, KANSAS

FOR SALE — 1951 AC tractor with live power, new tires; 1948 1/2 ton International truck with flat bed. John E. Biehler, Enterprise, Kans. WE 4-2381. SB20

New 1967's Special Prices

50 MILES FREE DELIVERY
D-17 Ser. IV, 3-pt. \$4383.48
12' AC drill disc, demo \$825
11' AC whl. disc \$677.57
190 XTD, 70 hrs., demo., full warranty, without fr. & rear weights \$6603.67
302 baler \$1499.52
A 240 corn head \$1639.33
AC 30 6-row cult. \$768.68
Fert. conversion kit for 4-6 row AC 500 planter, incl. fert. & bar ext. \$248.13
AC 10 hp. garden tractor, demo AC 77 rake 5 bar steel teeth \$469.70
Emmett minimum tillage attachment for 4-row AC planter w/ hyd. lift & 42" mower \$795
New 68 combines, all models, ready to go

USED EQUIPMENT

1963 Ser. 11 D 15 tractor \$2495
1949 11' SP Cockshutt, runs good \$395
1951 IHC 125 SP combine \$295
NH hay baler \$245
WD 9 IHC tractor \$495
AC D-17 w/ fr. loaders, 4 new tires, excellent \$2695
1965 AC D-17, Ser. 4, 3 pt., 1800 hours
Financing available with normal down payments — up to 5 year terms on new tractors and combines and no carrying charges till 10-1-68.
SO — if you want to buy new farm equipment — See us LAST.

Hinkle's Impl. Co.



EA 5-2334

WASHINGTON, KANS.

Too Many Too Late

We went overboard in our purchases of new John Deere 5020 and 1020 tractors.

If you ever wanted the big powerhouse 5020, now's your chance to get it.

The 1020 is row crop, stored under cover.

Our bosses tell us we MUST move these tractors off our inventory.

Come in and see Everett Hoobler. He'll sell them straight out or on trade.

FARMERS UNION
HARDWARE & IMPL.
Authorized JD Dealer
St. Marys, Kans. 437-2913

COMBINES

1958 Gleaner A, 12 ft.
1958 JD 45 12'
1952 JD 55 w/ cab, 12-ft.
1956 MH 80 12-ft.
1950 JD 55 12-ft.

TRACTORS

1967 JD 3020 dsl. tractor with F145 4-14 semi-mtd. plow
1950 JD A, reconditioned
MF 35 tractor with loader
IHC 560 Gas
MF 30 tractor
1953 JD 60, good

MISCELLANEOUS

Mayrath trailer sprayer, 300-gal. tank
IHC No. 37 10'9" wheel disc, sealed brgs., good blades
F931 wheel cart 20' springtooth with smoothing att.
JD No. 6 forage harvester, used one season
JD hay conditioner
Gehl 2-row forage harvester
4-row MF cult. for 85, 90, or 180 MF tractor
JD T4 4 row cultivator
JD 851 two wheel rake, reconditioned
2 JD No. 9 mowers, completely reconditioned

Frankfort Impl.



913 292-4458

FRANKFORT, KANS.

FOR SALE — IHC 4-5 bottom 14" Semi mounted plow with hydraulic tail wheel. Two or three point hitch, shop built. Price \$300. Junior Breymeyer, Wamego, Kansas Phone 456-9878. x19

FOR SALE — 1963 John Deere 45 12' platform. Hoyt Woodbury, Clifton, Kans. x18

FOR SALE — Good used 14' Universal pickup reel. Left hand drive. Harold Sterling, Clay Center, Kans. ME 2-5043. x18

USED TRACTORS

IH I-330 w/ loader
1953 Ferguson 30 w/ loader & rear blade
1959 Farmall 460 gas
1953 JD 820 diesel
1952 Farmall Super C. Farmall 300
1951 Allis WD
51 IHC WD6 tractor
1951 Oliver 66, live PTO
51 IH W6 gas tractor
50 MH 30 tractor
Farmall 560 and 350 gas
1950 Oliver 77 LPTO
1945 IH H; 1944 JD A; 1941 IH H
1947 IH "M"
47 IH MD tractor
47 Allis tractor with cultivator
36 Allis U tractor, recently overhauled

MACHINERY

IH 4-row rear mounted cultivator, like new
Ford 2-row 3-pt. cult.
2 IH 2-row 250 cultivators, one w/ fast hitch, rear section
IH 261 2-row cultivator w/ fast hitch, rear sect.
IH 12' FH springtooth
Howard Rotovator
1 IH 2 row F-35 weeder
IH fast hitch disk
IH 260 2-row F.H. planter
Allis field cutter w/ windrow pickup att.
IH 45T, PTO baler
IH 55T PTO baler
1967 IH No. 550 2-row field cutter
Allis 6 combine with motor in IH 125SP combine
Allis 2R cultivator
John Deere KBA 10'9" wheel disk
Case 10'9" wheel disk
IH 4-section springtooth
JD 3-sect. springtooth
IH one-way disc plow
John Deere 2x14 plow
MM 2x14 plow
IH No. 70 4x16 pull plow
IH No. 8 3x16 plow
IH No. 8 3x14 plow
IH No. 8L 4x14 plow
See us for Lillison rolling cultivators.

Hours: 8:00 a.m. - 6:00 p.m.
Emergency Parts Ph. HO 1-5628 or HO 1-5811.



AULD

CHEVROLET

HO 1-5414

WAKEFIELD

COMBINES

1963 IH 403 with 14 ft. platform
1959 IH 101 12' platform
1955 JD 45 12' platform

USED EQUIPMENT

IH 463 cult.
1960 IH F340 tractor, fast hitch, WFA
1959 MM 5 Star

CHAPMAN'S IHC

BELLEVILLE, KANSAS

Phone JA 7-2273

Spring Clean-Up On New Equipment

IH 11'6" wheel disk, regreasable seal bearing, 18" blades

USED COMBINES

IH No. 403 14' combine
IH No. 303 14' combine demo, used by Chapmans last year

USED TRACTORS

Farmall 806 D tractor, fully equipped, 1300 hrs.
IH 706 D tractor, fully equipped, 800 hrs.
2 IH F560D tractors

Chapman Impl. Co.



Phone EX 2-2101

MINNEAPOLIS

Used Combines

1956 MH 80 14'; 1959 MH 92 14'; 1961 Super 92 MH 14'; 1967 MH 410; 1965 JD 45 12'. Will trade and finance.

Jim La Barge

AURORA, KANS.

464-3721

tion. Always shedded. Also 1961 Model 55 JD combine, FL 9-4623, Colwich, Kans. x19

FOR SALE — 1957 and 1959 14-ft. JD combines, cutting wheat now, but available anytime. Wolf Implement Co., Glasco, Kans., Phone 568-2349. SB18

Asks To Break Watershed Logjam

Rep. Robert Dole has urged Congress to break the watershed log jam created by President Johnson in a two-year long battle to pressure claims of constitutional right to authorize such projects.

Testifying before the House Agriculture committee, of which he is a ranking Republican member, Dole said 39 projects in Kansas are in a "state of suspended animation awaiting fed-

eral funding."

The lack of funding action on watershed projects is because the Johnson administration has declared that Public Law 566 is unconstitutional, he said.

This law authorizes congressional committees, instead of the executive branch of the federal government to approve watershed projects to which the government contributes \$250,000 or more to help defray costs.

testimony, "the president can be convinced to adopt a reasonable attitude toward the watershed programs which are vital to our national welfare and which have worked well for so many years."

Since May 1966, President Johnson has been playing "cat and mouse" with the House Agriculture and Public Works committees which authorize watershed projects under Public Law 566.

In May 1966, President Johnson announced there would be no more projects sent to Congress for approval until the laws had been changed to grant statutory authority to the executive branch to authorize such projects.

Under pressure from Congress, watershed projects have been sent to the two committees for approval.

But the administration has stuck by its guns not to approve any money to get the projects started.

"The effect," Dole told the committee, "is that the President decisively has derailed or refused to fund and implement projects approved by congressional committees."

Saying Public Law 566 was signed by former President Dwight Eisenhower and supported by the late President John F. Kennedy, Dole said no constitutional question is involved.

"The Congress quite simply and quite clearly has the power," he said.

July 2, 1968

"The real loser in this entire sad affair is rural America," Dole testified. "These projects awaiting help remain visible examples of the acute frustration caused by President Johnson's interpretation of his executive power."

"What is done for watershed is important to the future water supply of urban and rural areas, to alleviate floods, to control silt pollution and to develop and improve recreational resources."

"I hope," Dole concluded his

CLAY CENTER SALES CO.

Hog Sale Every Monday Starts 1:00 p.m.

Cattle Sale Every Tuesday Starts 12:30 Noon

SALES AS USUAL ALL THROUGH THE SUMMER

Bring your livestock any Monday or Tuesday to Clay Center.

H. P. ROBBINS, Clay Center, ME 2-3210

R. A. BRUEGGEMANN, Clay Center, ME 2-2761

HORACE WARE, Longford, ph. 338-2439

Barn Phone ME 2-2831

CLAY CENTER, KANS.

LAND AUCTION WASHINGTON COUNTY

527 acres valuable farm land belonging to the estate of Mrs. Maude Ward, deceased

Monday, July 8, 1968

Starting at 11:00 a.m.

— FARM NO. 1 —

To be sold at the premises at 11:00 a.m.

Location: Five and one half miles north and three miles west of Morrowville, Kansas

Legal Description: The Northwest Quarter (NW 1/4) of Section Thirty Three (33), Township One (1) South, Range Two (2) East of the Sixth Principal Meridian, in Washington County, Kansas.

General Description: This is an unimproved quarter, with 57 acres native grass pasture, good fences, good well and a small pond. Wheat allotment is 37.7 acres and a feed grain base of 62.3 acres and no conservation acres required.

— FARM NO. 2 —

To be sold at the premises at 2:00 p.m.

Location: Six miles south of Hanover, Kansas (1/2 mile west of Highway 15E).

Legal Description: The East Half of the Southeast Quarter (E 1/2 SE 1/4) of Section Eight (8), the West Half of the Southwest Quarter (W 1/2 SW 1/4) of Section Nine (9), and all that part of the East Half of the Southwest Quarter (E 1/2 SW 1/4) of Section Nine (9) which lies west of the Hanover Road and north of the Duston or Alexa road, all in Township Three (3) South, Range Five (5), containing 221.38 acres, more or less. All in Washington County, Kansas.

General Description: 29 acres of farm land on the tract; 6 acres alfalfa; 11 acres sweet clover and 12 acres wheat, approximately 39 acres excellent meadow. The remainder of the farm is native grass pasture, with a good dug well and fine pond. Has good efficient terraces with waterway.

— FARM NO. 3 —

To be sold on the premises at 3:00 p.m.

Location: Six miles south of Hanover, Kansas (1 mile west of Highway 15E)

Legal Description: Lot Two (2) in the West Half of the Northeast Quarter (W 1/2 NE 1/4), Lot Four (4) in the East Half of the Northwest Quarter (E 1/2 NW 1/4), and Lot Seven (7) in the Northwest Quarter of the Northwest Quarter (NW 1/4 NW 1/4), all in Section Seventeen (17), Township Three (3) South, Range Five (5) East of the Sixth Principal Meridian, in Washington County, Kansas.

General Description: Water diversion permit No. 2111 has been approved and recorded for diversion of water from the Little Blue River. There are 105 acres of land on this farm which can be irrigated. This irrigated land is in a high state of fertility and has averaged more than 140 bushels of corn per acre. There are 10 acres of alfalfa, and 10 acres of sweet clover.

IRRIGATION SYSTEM SELLS

There will also be sold a complete irrigation system consisting of Continental M330 power unit - propane, Pacific 4CD 800 GPM pump, both on rubber tired trailer; 500 gal. propane tank on rubber tired trailer; 1560 feet 7 in. Mainline; 780 feet 6 in. Mainline; 2 Tractove Move 1280 foot 4 in. sprinkler lines (66 sprinklers); pipe trailer; PTO winch, many extra parts. This system sets up for successful one man operation, all in excellent condition.

There is a dwelling house on this land and several other buildings.

The estate will retain the 1968 crops and will pay the 1968 taxes. Possession March 1, 1969.

TERMS: 20% date of sale. Balance January 2, 1969.

Mrs. Maude Ward Estate

Mrs. Eunice George, Administratrix
J. T. Dickson, Auct F. R. Lobaugh, Attorney for Estate

A Week For Broken Limbs

GENESEO — Some people have all the breaks, it seems to Francis Kratzer, a farmer living near here.

It all began when a 700 pound Angus heifer fell into a creek in the Kratzer pasture.

The heifer, which was being groomed for a 4-H program by Francis Kratzer Jr., fractured its left foreleg.

Unwilling to give up the animal, Kratzer carried the animal to the family farmstead on a tractor-pulled sledge. Then they called a veterinarian.

After all investigation, the veterinarian told Kratzer the animal could be saved, so he and Kratzer fabricated a splint out of plaster and welded metal.

"I never thought I'd ever be welding a brace for a heifer," said Kratzer.

A few days after the calf's accident, the Kratzer's daughter, Louise, 18, fractured a bone in her hand.

Then a pony belonging to Kratzer's three-year-old granddaughter Sheila Walker, daughter of Mr. and Mrs. Robert Walker of Simpson, fell into a hole and fractured a leg.

"It was our week for breaks," said Mrs. Kratzer.

Land Auction

FRIDAY, JULY 12

Starts 10:00 a.m.

480 acres all in Section 5, Twp. 17 Range 4E. Approximately 245A of crop land, approx. 235A pasture.

For full descriptions see Grass & Grain June 18

George Merilatt Est.
Neva Applegate & Lyall Shirk
Co-Executors

Has good water ponds and live water, cropland terraced and waterway, good pasture fencing, one of the better farms in northern Marion County.

Located 5 miles south on Hwy. 77, then 4 miles west on hard surface road or 2 miles east of Ramona. Sale will be held 2 1/2 miles east of Ramona.

In case of rain sale will be held in Ramona Grade School Gym.

Terms: 15% down day of sale, balance within 30 days or when title can be furnished.

Edwin G. Westerhaus, Marion, Kansas, Attorney
For more information call Carl Schnell, Auctioneer & Real Estate Broker, CO 3-1883, Abilene, Kansas. Carl Schnell, Auct.

Selling Livestock at Onaga, Kans.

EVERY WEDNESDAY NIGHT

STARTING TIME 8 P.M.

DURING SUMMER MONTHS

Onaga Community Sale

Marvin Cottrell, Phone 889-4461 or 889-4665, ONAGA, KS.

LAND AUCTION

80 acres of exceptionally good farm land — unimproved — belonging to the Estate of Lillian Throop, deceased

At 2 p.m.

Saturday, July 6, 1968

At the farm located two miles east and four miles north of Haddam, Kansas; and five miles north and four miles west of Morrowville, Kansas (Legal Description: 1 1/2 NE 1/4 Section 1, Township 2, Range 1, Washington County, Kansas)

All under cultivation except about 5 acres. The estate will retain the rent for 1968 and will pay the 1968 taxes. Tenant: Ray Russell

Possession March 1, 1969.

Terms: 15% on date of sale, 10% March 1, 1969, Balance June 1, 1969.

ESTATE OF LILLIAN THROOP, deceased

J. T. Dickson
Washington, Kans.
Real Est. Broker & Auct.

F. R. Lobaugh
Washington, Kans.
Attorney for the estate

AUCTION SALE

Saturday
JULY 6

Starts 9:30 a.m.

We will sell at public auction at the house located 1 1/2 blocks north of Highway 24 on North Broadway in Riley, Kans.

Household Goods

Frigidaire 30-in. electric range; Firestone refrigerator; Kelvinator refrigerator; Maytag square tub washing machine

Divan and chair, green; china cabinet; oval chair; dresser; wood burning heater; old coal cook stove; wash stand; washing machine; 3 tubs;

Library table; square table; floor lamp; kerosene lamp; rocker; porch swing; odd chairs; 100 lb. ice box;

Antique kitchen table and chairs; day bed; 2 burner oil stove; antique Coleman gas stove; old gas iron; G.E. electric iron; old books; 2 antique radios; trunk; garden hose; basement steel windows;

Odds and ends of dishes; pots, pans, and many other small household items not listed.

BINS, CHICKENS, RABBITS & MISCELLANEOUS

2 man saw; pump jack; 7 ft. tank; 500 bu. steel bin; 4 lawn mowers; 1/2 h.p. electric mot-

or; brooder stove; barn doors; wire & cable; Chicken feeders and waterers; chicken coop; grease guns; rabbit and rabbit hutches; laying hens.

CARS

1960 Volkswagen, new rebuilt motor, very good

1952 Chrysler Windsor, 4-door, radio, heater with automatic, runs good

SHOP EQUIPMENT & HAND TOOLS

Front end machine, very good

Marquette electric welder, heavy duty

Battery charger; 20-in. Century welder, double wound armature with cutting and brazing attachments; saw; grinder; carburetor bucket; bushing reamers; micrometers; wheel and bushing pullers;

Cable hoist; valve spring compressors; ring compressors; assortment large box end wrenches; paint;

Large assortment of hand tools; wrenches and small shop tools too numerous to mention.

TERMS: Cash Day Of Sale.

Mr. & Mrs. H. L. (Mac) McGowen,

Harold & Edith Carver,

Owners

Aucts: Foster Kretz & Elmo Steffen,
Clay Center, Kans.,
Phone WA 6-4422, Morganville.

Clerk: Riley
State Bank
Riley, Kans.

Combines

READY FOR THE FIELD

| | |
|--------------------------------------|--------|
| 1952 JD 55, 14' | \$995 |
| 1955 JD 55, 12' | \$1295 |
| 1961 HiLo 45 12', cab | \$2995 |
| 1966 A2 Baldwin 16', cab | \$5295 |
| 1963 JD 55 14', cab | \$4195 |
| 1958 No. 101 IHH 12' Hume reel | \$1975 |
| 1958 JD 45 12', cab | \$2195 |
| 1965 JD 95 16', cab | \$6995 |
| 1956 JD 55, 14', cell grate | \$1395 |
| 1956 JD 45 10', clean | \$1395 |
| 1952 SP MM 14' | \$295 |

Terms — Terms — Terms

TRACTORS

| | |
|------------------------------|--------|
| 1961 4010 dsl., OK | \$3895 |
| 1962 D-17 AC dsl. | \$2595 |
| 1964 JD 3020 dsl. | \$4250 |
| 1962 JD 3020 gas | \$3095 |
| 1961 JD 3010 dsl. | \$3195 |
| 1961 4010 dsl., wide axle .. | \$4395 |
| 1964 4020 dsl., new tires .. | \$5295 |
| 1961 560 IH dsl. | \$2750 |

MISCELLANEOUS

| | |
|-------------------------------------------------|-------|
| Kim trailer sprayer with fibre-glass tank | \$195 |
| row 3 pt. cult. | \$695 |
| row No. 40R cult. | \$550 |

PLOWS

| | |
|-----------------------------------|--|
| 145 4x14 — 4x16 F120 | |
| 145 55A — 3x16 No. 70 AC | |
| 145 55H — 5x14 F120 | |
| 145 810A — 3x16 No. 8 IH | |
| Chisel pt. 4x14 IH semi-mtd. | |
| Integral 4x16 F125 | |
| and several others | |

HARVEST TERMS ! !

Call EA 5-2089 After Hours

Washington Impl.



EA 5-2301

WASHINGTON

USED TRACTORS

| | |
|----------------------------------|--|
| 1965 Farmall 706D | |
| 1965 Farmall 706 | |
| 1964 Farmall 706D | |
| 1959 Farmall 560 | |
| 1954 Farmall Super MTA diesel .. | |
| 1951 Ferguson TO 20 | |
| 1951 Massey-Harris 44 | |
| 1948 John Deere A | |

USED EQUIPMENT

| | |
|----------------------------------|--|
| 1959 IH 101 combine, 12-ft. | |
| 1959 MH 92 combine, 12-ft. | |
| 1958 MH 92 combine, 16-ft. | |
| 1957 MH 60 combine, 12-ft. | |
| 1960 IH No. 46 baler | |
| 1960 NY No. 178 S.P. baler | |
| Richardson bale loader | |
| Meyers bale loader | |
| IH No. 311 316 F.H. plow | |

Rossville Truck

& Tractor Co.

Phone 584-3560

ROSSVILLE, KANS.

| | |
|--------------------------------------|--|
| COMBINE NO. 93 IH 10-ft., used .. | |
| 2 yrs., extra good, \$3400; | |
| combine No. 101 IH 14-ft., good, .. | |
| \$1800; swather IH No. 201, good, .. | |
| 14-ft., \$2100. Greenwood & Sons, .. | |
| Burns, Kans. SB18 | |

| | |
|--------------------------------------------------------------|--|
| FOR SALE — IHC No. 60 three-bottom 14-in. plow on rubber, .. | |
| pull type, good. 1 1953 Oliver 88 .. | |
| tractor, good. 1 1950 IHC H | |
| tractor with mower, good. 1 IHC .. | |
| No. 37 disk on rubber, 11 ft., | |
| good. Phone CE 8-3087, Ralph .. | |
| Meyer, Junction City, Kans. x21 .. | |

| | |
|-------------------------------------|--|
| FOR SALE — 250 gal. DeLaval | |
| bulk milk tank, 1961 model. | |
| Stainless steel wash vats. Phone .. | |
| 944-2625. Green, Kans. Delbert .. | |
| Evans. x19 | |

| | |
|---------------------------------------|--|
| FOR SALE — Massey Harris | |
| self propelled model 35 combine. | |
| John K. Blythe, Council Grove, .. | |
| phone 913 349-2932, call before .. | |
| 7 a.m. SB17 | |

| | |
|------------------------------------|--|
| FOR SALE — 1961 IHC B160, | |
| V8 truck, new box. 1946 Chevy .. | |
| 1½ ton truck with box, 1951 | |
| DC Case tractor with loader, | |
| standard front end. Owner in | |
| service. Phone 562-3900, Marys- .. | |
| ville, Kans. x20 | |

| | |
|---------------------------------------|--|
| WANTED — PTO shaft with | |
| bearings for John Deere 40 Util- .. | |
| ity, 1954 model, serial 60254; al- .. | |
| so weights. You wine makers, .. | |
| we have the grapes this fall. | |
| Fornton's Vineyards, Silver Lake, .. | |
| Kans. x19 | |

| | |
|-------------------------------------|--|
| FOR SALE — 1956 Super W-6 | |
| TA, live PTO, live hyd., belt | |
| pulley, low hours, one owner, .. | |
| shedded. J. M. Hart, Delphos, .. | |
| Kans., Ph. 623-4438. x21 | |

| | |
|------------------------------------|--|
| 1965 MODEL 16 L-H field cutter .. | |
| and 2 ensilage wagons with | |
| hoists. Eldon Henton, RR3, Man- .. | |
| hattan, Kansas PR 6-8142. x19 .. | |

| | |
|----------------------------------|--|
| FOR SALE — 7½' Noble blade | |
| plow. Duane Braden, Wake- | |
| field, 913 HO 1-5851. x19 | |

COMBINES

NEW IHC 403 with cab, 14' bar, trade now
Used Oliver Model 40 1958, 14' cut, clean local machine

TRACTORS

| | |
|------------------------------------|--|
| 1965 IH F706 wide front, PS, | |
| TA, INPTO, fast hitch, low | |
| hours \$4950 | |
| IH Farmall F-20 on good rub- .. | |
| ber, starter & lights \$150 | |
| 1959 Allis D-14, wide front, | |
| power steering, reconditioned .. | |
| \$1495 | |
| 1957 IH I-300 Utility with IH .. | |
| No. 34 loader \$795 | |
| 1950 IH Farmall H, fully equip- .. | |
| ped, 3 point hitch, with side .. | |
| mower \$650 | |
| IH 460 Utility, fully equipped, .. | |
| with IH No. 2000 HD loader .. | |
| IH Farmall 450, fully equipped, .. | |
| wide front, reconditioned | |

TRUCKS

| | |
|---------------------------------------|--|
| Chevrolet 2-ton, 2-speed axle, 12' .. | |
| platform, grain & stock sides, .. | |
| hoist \$795 | |
| International 1½ ton, duals, | |
| 13½ ft. platform, grain & | |
| stock sides \$550 | |
| 1958 IH ¾ ton pickup, clean lo- .. | |
| cal truck \$575 | |
| 1955 IH ¾ ton pickup \$350 | |

PLOWS & MISC.

| | |
|--------------------------------------|--|
| IH No. 209 2x14 3 pt. mtd. \$225 .. | |
| Allis 3x14 mounted \$175 | |
| IH No. 314 3x16 rollover plow .. | |
| \$695 | |
| IH 3x16 on rubber \$125 | |
| IH 550 5x14 steerable, be in soon .. | |
| JD No. 55 3x16 on rubber \$125 .. | |
| JD 9' wheel disk \$165 | |
| IH No. 463 4-row rear mount | |
| cultivator \$495 | |
| Oliver 2-row rear mount culti- .. | |
| vator, 3 pt. \$145 | |
| IH H&M 250 2-row cultivator | |
| \$40 | |
| IH No. 25V mower \$75 | |
| IH No. 27V mower \$125 | |
| Oliver 7' trailer mower \$75 | |
| IH No. 100 FH mower \$325 | |
| IH No. 46T hay baler \$795 | |
| IH No. 45T baler \$100 | |
| IH No. 5 4-bar side del. rake | |
| \$175 | |
| David Bradley 4-bar rake \$50 | |
| IH No. 311 3x14 FH plow, like .. | |
| new, \$550 | |
| IH No. 400 3-section springtooth .. | |
| with evenner \$145 | |

Mohn Implement Co.

Telephone CE 8-5101

Junction City, Kansas

FOR SALE — 1959 Model 45 JD combine, 12' header, good condition. Always shedded. Also 1961 Model 55 JD combine, good condition. A. P. Betzen, FL 9-4623, Colwich, Kans. x19

FOR SALE — No. 6 John Deer field cutter with heavy duty row crop head, 5 foot mower bar. Has chrome knives and late sickle drive. Russell Peterson, Randolph, Kans. Phone Leonardville 211-13. x17

WANTED — Usable small dozer, any make. Evening phone 456-7364, Paul Hill, Belvue, Ks. x18

FOR SALE — 1959 JD No. 45 12' combine with cab and No. 10 2-row corn head. JD 2-row mounted lister with fertilizer attachment. JE 9-8501, Manhattan, Kansas. x18

FOR SALE — Farmall 300, fast hitch, good rubber, new paint. IHC 250 cultivator. Fox 2-row cutter with pickup, will sell separately. Virgil Visser, Wakefield, Kans. x18

FOR THE ride of your life, ride a Big Horn saddle from Key Milling. Clay Center, Kans. SB TF

FOR SALE — International baler with motor, wire tie, good condition, \$150. Ernest Klau-mann, Republic, Kans. x18

OWATONNA WINDROWER, 1964 Model 80. Motor completely overhauled. Always shedded, \$2200. Keith Williams, Marysville, Kans. Phone 562-3914. SB18

COMBINES — 1955 GLEANER. 1959 John Deere 12' 45. 1954, 1949 John Deere 55s. 1951 Super 26 Massey. Tractors — 1962 MM GVL, low hours, new tires, paint. 1959 MF 65. Slick 1953 Ford 961. 1959 John Deere 730 diesel RC. 1958, 1955 Moline diesel RC. 1958, 1955 Moline 60, all LP. 1948, 1947 Ds. 1951 Massey 44. 2 Fords. Straw chopper for C. New 60' rotary mower, 3-point, \$295. Toolbars, 3-points. Ford cultivators, plows, T-discs. New 14½' JD mounted cultivator. Used Hume reels. Nickel Brothers, Buhler, Kans. x18

HERINGTON



COMBINES

1962 Massey 72, 12-ft.
1953 Baldwin, 14-ft.

MACHINERY

1964 JD 215A swather
1967 JD 214T baler
1960 JD 14T baler
1965 A-C side delivery rake
John Deere No. 10 mower
JD 810A 3-pt. 3 and 4 bottom 14" plows
JD 555 pull type plow, 4-14
Ford 4-14 plow

TRACTORS

1965 JD 2010 gas
1959 IHC 560 gas
1958 John Deere 620
1958 IHC 350 Utility
1952 JD G; 1948 IHC M

USED FIELD HARVESTERS

We have 15 used field harvesters of various makes. These harvesters all have been overhauled in our shop and are ready to work.

SEE US FOR

New Hesston swathers; Gehl feed machinery; Crust Buster Harrows; G-B loaders; Danuser diggers; Lilliston rolling cultivators; Grain-O-Vators.

Tri-County Sales

George Munkres
Phone Collect
BL 8-2249 or BL 8-2991
HERINGTON, KANSAS

FOR SALE — 1958 International 2-ton, new engine and 13½' combination grain to stock bed with cover. Jim Rowland, Wetmore, Kans. 866-4681. x18

Miscellaneous

FARMS FOR SALE

We have twelve farms, 80 to 320 acres in Dickinson County, both improved and unimproved, some part grass, some all cropland.

Can give possession of fall cropland on most of them. Also, two farms with small acreage, with very good improvements. Call:

Wilson Real Estate

ABILENE, KANSAS

LOANS ALL TYPES

\$10,000 to \$100,000,000

Anywhere in USA and Canada
FISHER Real Estate-Mortgage Corp.
Mortgage Brokers,
Joy, Ill., 61260

FOR SALE — Boat, motor and trailer. Pulls one skier, \$295. Art Carey, Alma, Kans. Phone 765-3611. x18

WANTED — 3-POINT hitch cement mixer. Call 924-2362, John or Richard Dugan, Circleville, Kans. x21

Help Wanted

WANTED — MANAGER for country elevator handling feed, grain and fertilizer. Experience preferred. Contact Farmers Grain and Supply Co., Westfall, Kans. Phone 913 436-7196. SB19

Pets

FOR SALE — Beautiful Collie puppies for stock or pets. Ready to go at reduced rates. Carl Jones, Jr., Box 36, White City, Kans., 349-2388. x19

FOR SALE — White German Shepherd stud, small Pekingese puppies. Stud service for both breeds offered. L. Porter, 437-2762, St. Marys, Kans. x18

FOR SALE — Registered German Shepherd pups. Lawrence Berg, Onaga, Kans., phone 889-4262. SB19

Kansan Named To New Post

Myron E. Hoft, a native Kansas career man, is moving upward in government service.

Hoft, born in Agra, has been appointed assistant director for administration of the Bureau of Outdoor Recreation by Interior Secretary Stewart Udall. Hoft has been chief, division of personnel, organization and accounts.

Hoft began federal service in December 1941. He attended Fort Hays State College at Hays and taught five years in Kansas.

OFFERS SCHOLARSHIPS

Reno County Soil Conservation District has announced its annual teachers-scholarship program for this summer.

The grants are to Reno County teachers, preferably fourth through eighth grade teachers. They will be for \$37.50 each to

help with expenses at summer workshops in soil and water conservation.

STOCKER-FEEDER

Auction

Every Thursday

At

10:30

At The

ST. JOSEPH
CENTRAL MARKET
ST. JOSEPH, MO.

Contact Your
Market Agency

or

The Market Foundation
AD 8-2440 For More Information

Overstock — Demonstrators —

— Shopworn —

| | |
|------------------------------------------------------------------------------------------|------------|
| 2510 John Deere gas, fully equipped, wide front axle, few hours, | SAVE \$800 |
| John Deere No. 39 mower, 3-point hitch, 7' HD bar, 2 sickles, shopworn | \$375 |
| John Deere No. 38 mower, 7-ft., 2 sickles, shopworn | \$450 |
| John Deere No. 127, 5-ft., 3-point hitch, Gyramor, slip clutch, rear control wheel | \$398 |
| John Deere No. 78 6-ft. rear mount blades | \$149 |

USED MACHINERY

| | |
|-------------------------------------------------------------------------------------|--------|
| 1960 Massey 92 combine, 14', power steering, Ansel cab | \$2750 |
| Ford, 1950 8N Tractor, good, good rubber | \$650 |
| IHC Farmall 350, 1958 Model, fast hitch, TA, good | \$1295 |
| John Deere 50, very good, new paint | \$895 |
| Ford Tractor with Wagner loader, motor completely overhauled, good tires, all | \$695 |
| IHC side delivery rake, on rubber | \$135 |
| 1958 IHC 55W baler, wire PTO, bale chute and hitch | \$795 |
| IHC cultivator, fast hitch | \$50 |
| 30-ft. Mulkey elevator with 4 H.P. Briggs engine, very good, for hay or grain | \$275 |
| PTO sprayer for two barrels, 8-row boom | \$75 |
| AC hay conditioner, good condition | \$375 |
| Oliver Side Rake, low wheel | \$150 |
| John Deere 7-ft. No. 8 mower, Quick tatch, hyd. lift, good | \$195 |
| 3-14 3-point hitch J Deere plow | \$175 |
| 3-16 3-point hitch John Deere plow | \$195 |

New Blair Feed Wagons — Grain-O-Vators
See Us For Your Farmhand Needs

Call Us Collect CE 8-4103

BOWMAN'S

JUNCTION CITY

Your
Junction City — Manhattan Area
John Deere Dealer

G&G Calendar

July 2 — Household goods in Morganville, Kans., Petermeyer estate. Auct Foster Kretz.

July 6 — Shop equipment and household goods in Riley, Kans., H. L. McGowal. Auct Foster Kretz.

July 6 — Household goods in Salina, Kans., Harry Stover. Aucts Frank Harz and Bob Perry.

July 6 — Farmland auction northeast of Haddam, Kans., estate of Lillian Throop. Auct J. T. Dickson, atty. for estate, F. R. Lobaugh, Washington.

July 8 — Farmland of the Mrs. Maude Ward estate northwest of Morrowville, Kans., Mrs. Eunice George, Admin., F. R. Lobaugh, attorney for the estate. J. T. Dickson, auct.

July 12 — Farmland auction southwest of Herington, Kans., George Merilatt estate. Co-executors Neva Applegate and Lyle Shirk. Auct & real estate broker Carl Schnell.

July 13 — Household furnishings and other items in Abilene, Kans., Luna R. Barclay. Aucts Carl & Wm. Schnell.

July 13 — Household goods in Trenton, Kans., Casey Spaulding. Auctioneers, Frank Harz and Bob Perry.

July 15 — Furniture in Fairbury, Nebr., Mr. & Mrs. Frank Simpson. Auct. Harold R. Siegel.

July 15 — Farmland auction southeast of Concordia, Kans., the Dinsmore estate. Auct Elton Thorman.

July 15 — Household goods in Clay Center, Kans., Drantman estate. Auct Foster Kretz.

July 19 — Antique sale, Bill Hatt, Fairgrounds, Beatrice, Nebr. Don Roche, auct.

July 22 — Farm sale southwest of Talmage, Kans., Ralph Marrs. Auct. Foster Kretz.

July 22 — Furniture in Fairbury, Nebr., Mr. & Mrs. Frank Simpson. Auct. Harold R. Siegel.

July 22 — ASC grain bins in Clay Center, Kans., a morning sale. Auct Foster Kretz.

July 23 — 1000 acres of Saline and Ottawa County land, Sheriff's sale in partition, east door of Saline County Court House. Aucts. Frank Harz and Bob Perry.

July 25 — Furniture in Fairbury, Nebr., Mrs. Edna Cooper. Auct. Harold R. Siegel.

July 26 — Farm sale southeast of Washington, Kans., Mrs. Arlen Mosteller. Auct. Harold R. Siegel.

July 27 — Morning — Land auction, Judith Rosedahl Est., North of Frankfort. Don

Roche, auct.

July 27 — Afternoon — Household goods, Gladys Wollenberg. Hanover, Kans. Don Roche, auct.

July 29 — Stremel Polled Hereford dispersal in Bison, Kans., Vic Roth, sale manager.

Aug. 3 — Antique and household sale, Julie Wiemers, Hanover, Kans. Don Roche, auct.

Aug. 17 — Household goods sale, Nina Modeen, Waterville, Kans. Don Roche, auct.

Oct. 7 — Polled Hereford dispersion, Otis, Kansas. Fritz Kerbs & Son. Sale mgr. Vic Roth.

Oct. 9 — Polled Hereford dispersion, WaKeeney, Kans., San-R-Ranch. Sale Mgr. Vic Roth.

Oct. 14 — Balthrop Farms Hampshire hog sale in Newton, Kans., John Balthrop, Wichita, Kans.

Oct. 31 — Angus production sale, Wymore, Nebr., Double "C" Angus Farm, Clement C. Jones.

Nov. 1 — Hammarlund & Shamrock annual Angus sale in St. Marys, Kans.

Nov. 11 — 23rd annual Hereford production sale southwest of Haven, Kans., W. H. and Harold Tonn, Auct. Harold Tonn.

Nov. 19 — Annual production sale of registered Herefords, Marysville, Kans. Elmer Peterson & Son.

Nov. 20 — Annual production sale of registered Hereford cattle, Elmer L. Johnson & Sons, Smolan, Kans.

Nov. 23 — Kocher Herefords production sale, Onaga, Ks.

Jan. 21, 1969 — Annual Rebenstorf Hereford production sale, Sylvan Grove, Kans., Elmer Rebenstorf.

Tighter Control On Housing Around Lakes

Dr. Hugh Dierker, state director of health, says planning is under way for implementing a new lake and reservoir sanitation zoning law.

The new law gives the State Health Department authority to set up sanitation zone boundaries but enforcement of sanitary regulations will be the responsibility of local reservoir sanitation officers.

The new law will apply to 20 federal reservoirs and 23 state lakes, Dierker said.

The local officers will enforce minimum standards for water supplies, sewage disposal and refuse disposal facilities.

"The tasks of surveillance of the area, about 2 million acres in 43 counties, is costly and almost manageable," Dierker said.

"The legislature felt that this would be done satisfactorily and more economically by a local reservoir sanitation officer appointed by the county commissioners.

Present law set boundaries to include all unincorporated land within three miles of the reservoir or lake. Under the law which becomes effective July 1, the state board of health may establish boundaries for only those areas found necessary to accomplish the intent of the law, provided no boundary is more than three miles from the edge of the reservoir or lake.

Dierker said sanitation permits will no longer be required. But he said no one can build any structure, except for agricultural purposes, on a site of five acres or less in a sanitation zone without the reservoir sanitation officer's approval.

er supply, sewage disposal, refuse disposal. Approval required for construction of single-family dwelling on larger than five acres.

No site of five acres can be sold after July 1 approved facilities have been installed or an acceptable guaranteeing such installation has been filed with the commissioners.

Dierker said state health department representatives are contacting county commissioners in 43 counties to discuss program and its operation.

Abilene Company To Sell Stock

ABILENE — A number of shares of common stock, representing the majority interest in the Vacu-Blast Corporation, will be offered to the public.

The announcement was recently by William W. Kurz, president, from the firm's manufacturing plant in Abilene.

The home office of the firm is in Belmont, Calif.

The sale of 176,244 shares of the general public representation of the company, approximately two-thirds of ownership of the company.

Kurz states, "in addition, planned to issue \$1½ million worth of convertible subordinated debentures at the same time."

"This financing program has been made possible by the favorable pattern of growth in recent years," Kurz said, "and been done at this time for the purpose of purchasing certain patent rights related to products currently manufactured and to build a broader financial base."

The company designs, manufactures and markets special industrial machinery, primarily abrasive blast machinery.



695 BALE
6500 WIRE
1050 per carton

Satisfaction Guaranteed



5th & Ash TA 7-4467

SALINA, KS.

Ronald Rice Motors, Inc.

CHEVROLET OLDSMOBILE CADILLAC
North Kansas' Largest Volume Dealer
NW 2nd Phone CO 3-4000 ABILENE, KANS.

THEY'RE MOVING

These are remaining June Sale valuees available to July 10 at old prices.

LUXURY USED CARS

1966 TORONADO 2 door hardtop Fully loaded. Was \$3495. \$3095

1967 CHEVROLET Impala 2 dr. hardtop, V8 Radio, heater, automatic transmission, power steering, air conditioned, nice. \$2595

1966 CADILLAC Sedan deVille 4 dr. hardtop Fully loaded and nice. \$3995

1967 CAPRICE 2 dr. hardtop Full power and air. Solid red. A real choice car. \$3095

1967 OLDS Luxury Sedan Fully loaded local Abilene car. Was \$3895. \$3395

1967 FORD XL Convertible Loaded with everything. Only 9000 miles. Sold new for over \$4400. Lots of new car warranty left. \$3195

HARVEST TRUCK SALE

1967 CHEVROLET ½ ton, LWB. Radio, heater, custom cab, automatic, real clean. \$2195

1966 CHEVROLET 2½ ton heavy duty 366 motor, 900x20 tires, full air brakes, 2 speed axle, 5 speed transmission, radio, west coast mirrors, ready to go \$3495

1966 GMC ½ ton, LWB, V-6 Radio, heater, hitch, bucket seats, one owner. \$1695

1965 CHEVROLET ½ ton, LWB 3-speed transmission, V-8, heater, hitch \$1495

1965 CHEVROLET ½ ton, LWB 3-speed 6, radio, heater, hitch \$1445

1961 CHEVROLET ¼ ton, LWB, 4 wheel drive Radio, heater, hitch, new paint. \$1445

1958 INTERNATIONAL ½ ton Real good older model pickup. \$395

Plenty of Older Model Used Trucks Plus A Complete Stock Of New Ones

Open Evenings Till 9 p.m.
Sundays 1 to 5 p.m.



SERVICEABLE BULLS WITH WEIGHT RECORDS
Priced . . . \$300 to \$500

GRANT POOLE
MANHATTAN, KANS.

Located 4 mi. south of I-70-K177 intersection, 2 mi. west on McDowell Creek Rd. Ph. PR 6-8315.



Sales Co., Inc.

Sale Every Wed.
Starting at 1:00 p.m.

CONCORDIA, KANSAS

Open Thru Harvest

Market Last Week

Butcher hogs steady \$20.45 to \$21.05 with top \$21.05; sows \$15.60 to \$16.40; feeder pigs, 145-lb. \$19.50; weaning pigs \$12.75 to \$20.25.

Cattle:
Calves \$39.00 to \$56.00
355 lb. WF bull . . . \$28.50
540 lb. BWF steer . . \$28.80
410 lb. WF bull . . . \$28.80
300 lb. SH bull . . . \$29.90
460 lb. BWF heifer . . \$25.10
525 lb. WF heifer . . \$25.25
Bull sold from \$21.30 to \$22.50
Cows at \$16.00 to \$18.80

Tom Walker, Owner
Phone 243-1674
Barn 243-1074

The No. 1 Hog Market In Kansas WASHINGTON SALES CO.

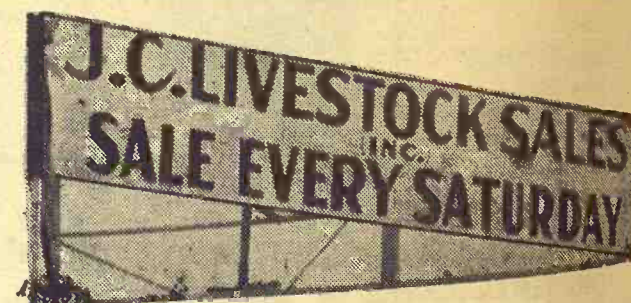
TRY US SOON
HOGS every TUESDAY
CATTLE every WEDNESDAY

YOU GET ACTION
AT THE WASHINGTON AUCTION

ED BURTON

Barn Phone EA 5-2266 Residence EA 5-2393

Washington, Kans.



HOGS START AT 11:00 A.M.
CATTLE AT 1:00 P.M.

Harvest being in full swing last Saturday, we notified most of our buyers that receipts would be light. There was a fair run of hogs, but not enough cattle to make a market. 200-250 lb. hogs topped at 21.35, and down to 21.10. Shoats brought 15.00 - 18.00 and smaller pigs 12.00 - 15.00.

All our regular buyers will be back this coming Saturday, and with harvest over, we expect a near-normal sale.

We need your fat hogs for our packers buyers. If you have some ready to go, we'd like to have them for this Saturday.

ANGUS BREEDERS, NOTE: We have a 3-year-old black Angus bull on consignment for this coming Saturday.

LICENSED AND BONDED
BARN PH. JUNCTION CITY CE 8-1471

If you have livestock to appraise, call:

VERN LANGVARDT, Manager, 502 UPLAND
HOWARD LANGVARDT, Auctioneer, 520 UPLAND
HERB NEUMEYER, White City, Phone 349-2863

Farming Still Biggest Industry In U.S.

By Frank Orazem
Kansas State University

It's true that the number of farmers in the U.S. has been decreasing during recent years. But farming still rates as the nation's biggest industry.

Roughly 5.2 million workers are employed in farming. This is more than the combined employment in transportation, public utilities, the steel industry, and the automobile industry.

Agriculture's assets total \$273 billion, or about two-thirds of the value of current assets of all corporations in the U.S., or three-fifths of the market value of all corporation stocks on the New York Stock Exchange.

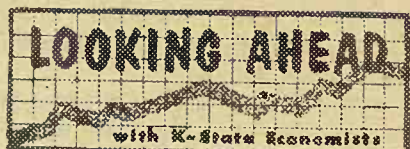
American farmers spend more than \$33 billion a year for goods and services used to produce crops and livestock. They spend another \$12 billion a year for food, clothing, drugs, furniture, appliances, and other products

and services.

Each year their purchases include:

—More than \$4.6 billion in farm tractors and other motor vehicles, machinery, and equipment.

—\$3.4 billion for fuel, lubricants, and maintenance of machinery and motor vehicles.



\$1.9 billion for fertilizer and lime.

—5 million tons of steel in the form of farm machinery, trucks, cars, fencing, and building materials.

Eight million persons have jobs in storing, processing, and merchandising agricultural products. Another 6 million are employed in jobs providing farm supplies. Some of these are as follows:

—Meat and poultry, including meat packing, prepared meats, and poultry dressing plants — 300,000 employees and a payroll of more than \$1.6 billion.

Dairy, including fluid milk, concentrated and dried milk, natural cheese, ice cream, and special dairy products — 257,000 employees and a payroll of more than \$1.4 billion.

—Baking, including bread and related products — 280,000 employees and a payroll of more than \$1.5 billion.

—Fruit and vegetable processing — 207,000 employees and a payroll of \$337 million.

—Cotton broadwoven fabrics — 209,000 employees and a payroll of \$772 million.

TOPEKA FAIR SIGNS
COMIC ALAN KING

Humorist Alan King has been signed to headline night shows



Alan King

at the Mid-America Fair at Topeka on September 6-8.

IHC Fights State Tax Laws

International Harvester company attorneys have filed a lawsuit in Denver District court in an attempt to declare unconstitutional a law under which the state collects income taxes from out-of-state corporations.

John H. Heckers, state revenue director, and the state of Colorado are named as defendants.

The complaint contends Colorado has jurisdiction only over income within the state's borders. The company attorneys say International Harvester, along with other out-of-state firms, must pay taxes on net income on a formula based on property owned in Colorado — compared with property in other states — and sales in Colorado, compared with sales in other states.

Hamp Sheepmen Shift To Higher Weights

Hampshire sheep breeders are taking a critical look at their product. Members of the American Hampshire Sheep Association have met at K-State in a national type conference.

About 100 people attending the conference started work to unify the thinking of sheepmen and establish patterns to guide the AHSA directors. "We hope to find a pattern for Hampshire sheep type and fit our sheep to it," Roy Gilman, Stuart, Iowa, Secretary of AHSA, said.

Included in probable changes in Hampshire sheep standards will be encouragement of larger size in general. Changes in size of the animal will come easier with greater acceptance of heavier market lambs by packers.

Evaluation of lamb carcasses helps explain differences in live conformation. Dr. Harold J. Tuma, researcher at KSU, told the group that carcasses differ in fat cover or finish, in leg conformation, and in kidney or internal fat.

He pointed out that 85 to 95 percent of the lamb value is in four cuts — leg, loin, rack and shoulder. "We look for thick, muscled leg because what we find in the leg carries through to the loin," he said. Leg and loin make up the majority value of the four cuts. Amount of muscling can be easily seen in the leg.

The Hampshire breed plays an important role in Kansas sheep production. Nearly all commercial ewes are westerns, purchased in southwest United States.

Wanda Heavy Duty motor oil, 15-gal. drums 72c gal. Case \$6.72
Wanda non-detergent motor oil, 15-gal. drums 59c gal. Case \$5.04
Wanda Heavy Duty Lithium grease, 1.98 per carton of 10 tubes; 35-lb. pail \$5.69
JT6 Super Duty grease 10 tubes \$3.89; 40-lb. pail \$13.95
15,000 Watt PTO alternator \$575
Combine Carrier Chains Massey Harris 90 & 92 \$37.50
Massey Harris 80 & 82 \$79.50
John Deere 55 \$39.50
John Deere 45 \$42.50
IHC 151-403 \$89.50
IHC 101-303 \$49.50

BLUESTEM
FARM-RANCH SUPPLY
Emporia
West Hwy. US 50

Hampshire rams are widely used to produce the kind of lamb desired at markets. Hampshire is a mutton-type breed, of medium wool grade, with rams weighing 250 pounds or more.

The ram provides the best way to improve market lamb quality. By using high quality rams, sheepmen can breed for such economically important, and highly heritable, traits as overall meatiness, fat thickness, loin eye area, and rate and efficiency of gain.

Lamb and wool production is a profitable business for Kan-

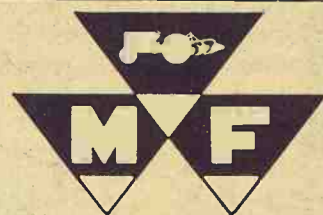
Grass & Grain
July 2, 1968

21

sas sheepmen, and the state is one of the leaders in registration of Hampshire sheep.

ANNUAL SHORTHORN PICNIC AT BURRTON

BURRTON — The Pete and Tom Schrag families were hosts for an annual picnic held for Shorthorn breeders at Willow Lake. The Schrag herds and the herds of Irven Ediger and Norman Roux were seen.

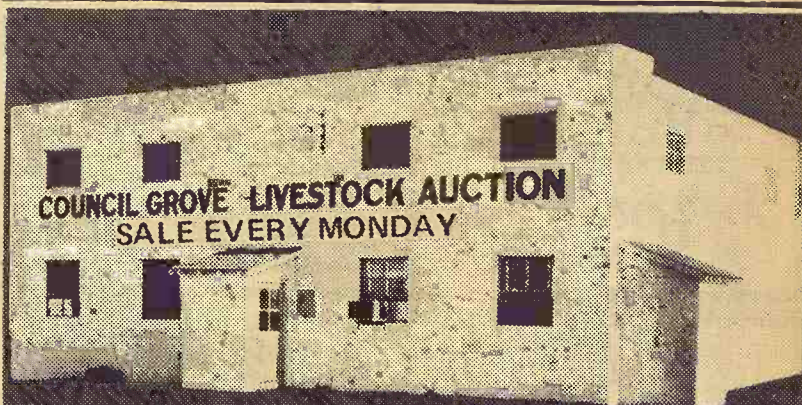


MASSEY-FERGUSON

World's largest manufacturer of tractors, self-propelled combines and diesel engines will franchise and help set up a profitable dealership for qualified party. Contact:

MASSEY-FERGUSON, INC.

P. O. Box 15160 Kansas City, Kans. 66115



COUNCIL GROVE LIVESTOCK AUCTION
SALE EVERY MONDAY

SELLING STARTS 12:30 NOON

Fat Hogs — Pigs — Cattle

In the order they are booked

TO BOOK CONSIGNMENTS OR FOR INFORMATION, CALL:

JERRY MOYLAN • PAT MOYLAN

767-5131 767-5435

WES SWENSON — 767-6388



on Highway US 56 East Edge of

Council Grove, Kans.

Bonded Livestock Dealers & Order Buyers

USED TRACTORS & TRUCKS

Refuse Truck

1960 International with 17 yd. Hyde Pack, Packer body, good unit, ready to go to work for only

\$1695

'67 GMC

1-ton. Dual wheels with 10 ft. bed. Real low mileage only

\$2295

'64 Ford

½ ton, automatic transmission

\$995

'60 Chevrolet

2-ton, 2-speed axle. Only

\$1195

'63 Chevrolet

½ ton, long wide bed with camper cover

\$1095

'63 Ford Falcon

Sedan delivery with new paint. Only

\$695

'65 Ford

2-ton with 2-speed axle. Ready to go.

\$1995

'62 Ford Falcon

Bus. All window, 2 seats for

\$695

'58 Ford

½-ton for

\$395

'52 Dodge

1½ ton with dual wheels. Ready to go.

\$195

We Have In Stock Many Good Road Tractors. Single axles and tandem. Diesel or gas

DALE SHARP
TRUCK CENTER

600 W. Hwy. 24 Topeka, Ks. CE 4-8606

CATTLE SALE EVERY MONDAY

HOG SALE EVERY WEDNESDAY

Sale Time 12:00 Noon
BEATRICE, NEBR.

Beatrice 77

LIVESTOCK SALES CO.
2 miles north of Beatrice, Nebr., opposite the airport.
Phone 223-3571

CLARENCE TEGTMEIER
DELMAR JURGENS
JR. THIMM

This Year Put Up
MONSANTO
SEAL-VAC
VACUUM SILAGE

NEXT TO
NO SPOILAGE

For more information, call
your SEAL-VAC Dealer.

Victor Kruse
Phone 2609
Barnes, Kans.

5% MAXIMUM RATE ALLOWED BY LAW 5%
ON CERTIFICATES OF DEPOSITS
\$500.00 to \$100,000.00

Available for Businesses, Individuals, or Joint Accounts.
Automatically renewable, guaranteed bank interest.

F.D.I.C. Insurance \$15,000.00
\$1,125,000 Fidelity Bond

Capital Surplus Reserves Exceed \$500,000.00

(SEND IN THIS COUPON)

I want to invest in a 5% Per annum Certificate of deposit of

\$_____ For

Name _____ or _____

Address _____ City _____ State _____

Social Sec. No. _____ Compound Int. ☐ Mail Int. ☐

MEMBER F. D. I. C.

BANK OF TESCOTT

Tescott, Kansas

OTTAWA COUNTY'S LARGEST

Manhattan

RACEWAY PARK FIREWORKS DISPLAY

1/4 MILE DRAG STRIP

OFF HWY 18 BETWEEN MANHATTAN & OGDEN • 1/2 MILE SOUTH OF AIRPORT ACROSS UP TRACKS • LOOK FOR SIGN.

Jet Cars
Camaro

VS
Mustang

Speeds up to 200 MPH
Be There By 7 p.m.

July 4th

Free Pepsi &
Admission for
Kids Under 12

Time Trials
at 3:00 p.m.
Admission \$1.50

THURSDAY, JULY 4
Starting at 9.30 p.m.



FOR INFORMATION OR ESTIMATES:

REZAC BARN St. Marys 437-2999
DELAINE REZAC St. Marys 437-6266
ELMER IMTHURN Maple Hill MI 3-2440
PAUL KRAMER, St. Marys 437-2993

Auctioneers: Lawrence Welter, Gene Toby & Dennis Rezac

NO SALE TODAY, JULY 2
Next Sale
Tuesday, July 9

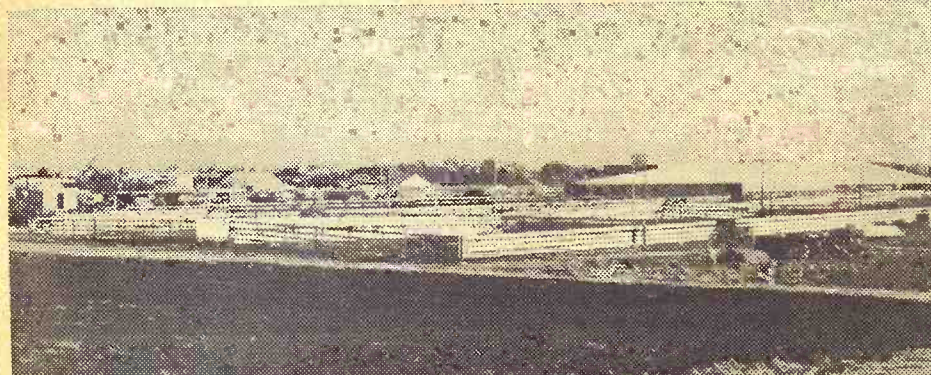
Thanks For Waiting

LIVESTOCK COMMISSION
COMPANY

Rezac



St. Marys,
Kans.



Central Kansas Most
Modern Livestock Auction... West Side Of **Salina**

TWO SALES EVERY WEEK

MONDAY

Hogs & Cattle

Hogs sell at 11:00 a.m. followed by
our regular cattle sale as they are
unloaded.

THURSDAY

Cattle Only

Selling starts at 11:00 a.m. Cattle
will sell in the order they are consign-
ed on the books.

NO MORE THURSDAY SALES UNTIL AFTER HARVEST

With the wheat harvest in full swing in this area, last Monday we had a light run of both cattle and hogs as expected. The fat hog top was \$22.10. The following is a partial listing of the sales made:

CATTLE

| | | | |
|---------------------------|-------------|--------|-------|
| Henry Steppe, Miltonvale | 1 blk calf | @ | 54.00 |
| Frank Jordon, Abilene | 1 wf calf | @ | 51.00 |
| Dale Benike, Salina | 1 red str | 780 @ | 23.90 |
| Lonnie Farmer, Asherville | 4 jer str | 377 @ | 17.00 |
| Lonnie Farmer, Asherville | 1 red str | 540 @ | 24.60 |
| Lonnie Farmer, Asherville | 1 black hfr | 745 @ | 22.10 |
| Mullen Bros., Brookville | 1 wf cow | 1160 @ | 19.00 |
| Mullen Bros., Brookville | 1 wf cow | 1395 @ | 18.10 |
| Mullen Bros., Brookville | 26 wf cows | 1226 @ | 18.20 |
| Mullen Bros., Brookville | 1 wf bull | 1605 @ | 23.40 |
| Henry Steppe, Miltonvale | 1 wf cow | 1080 @ | 17.40 |
| Henry Steppe, Miltonvale | 1 wf cow | 845 @ | 17.90 |
| D. F. Okeson, Clay Center | 3 char hfrs | 510 @ | 24.50 |
| Pat Kennedy, Waldo | 5 wf str | 361 @ | 28.30 |
| Pat Kennedy, Waldo | 6 wf str | 450 @ | 28.00 |
| Pat Kennedy, Waldo | 3 hol str | 515 @ | 23.10 |
| Pat Kennedy, Waldo | 5 bwf hfrs | 566 @ | 23.90 |
| Pat Kennedy, Waldo | 5 roan hfrs | 498 @ | 23.10 |
| CK Ranch, Brookville | 1 wf cow | 1020 @ | 18.80 |
| CK Ranch, Brookville | 1 wf cow | 1075 @ | 18.00 |
| CK Ranch, Brookville | 1 wf cow | 925 @ | 18.60 |
| CK Ranch, Brookville | 1 wf cow | 1035 @ | 18.20 |
| August Schlesener, Hope | 1 roan cow | 1145 @ | 14.25 |
| August Schlesener, Hope | 1 hol cow | 1180 @ | 18.20 |
| August Schlesener, Hope | 1 wf cow | 950 @ | 15.60 |
| Bill Schultz, Miltonvale | 4 blk str | 378 @ | 26.40 |
| Bill Schultz, Miltonvale | 2 blk str | 475 @ | 25.75 |

HOGS

| | | | |
|----------------------------|-------------|-------|-------|
| Walt Hannebaum, Tescott | 15 mix hog | 223 @ | 22.00 |
| Walt Hannebaum, Tescott | 8 mix hogs | 225 @ | 21.90 |
| George Bearnes, Culver | 12 mix hog | 205 @ | 22.10 |
| V. V. Owens, Gypsum | 3 spt sows | 370 @ | 16.60 |
| Bob Abel, Barnard | 7 whi hogs | 217 @ | 22.90 |
| Morrison Grain Co., Salina | 1 hamp boar | 545 @ | 12.50 |

Morrison Grain Co., Salina 7 mix sows 464 @ 16.60
Forest Clark, Minneapolis 6 hamp hog 202 @ 21.90
M. Hovander, Herington 22 mix hogs 216 @ 21.80
J. H. Koralek, Ellsworth 1 blk sow 340 @ 17.50
Emil Klima, Holyrood 1 whi sow 485 @ 16.00
Art Gery, Abilene 26 whi hogs 202 @ 21.95
Don Wilbur, Niles 5 hamp pigs @ 14.50

| | | | |
|---------------------------|-------------|-------|-------|
| Don Ewig, Abilene | 14 whi pigs | @ | 14.00 |
| Arnold Kroenlein, Lincoln | 13 whi hogs | 208 @ | 21.90 |
| Don Wilbur, Niles | 5 hamp pigs | @ | 11.75 |
| Eldon Appin, Salina | 4 whi hogs | 225 @ | 21.90 |
| Eldon Appin, Salina | 1 whi sow | 390 @ | 17.60 |
| Eldon Appin, Salina | 1 whi hog | 250 @ | 21.10 |
| George Taylor, Oak Hill | 1 whi hog | 225 @ | 21.80 |



FOR INFORMATION OR ESTIMATES:

LAURENCE CLEMENCE
Abilene Phone CO 3-3091
MERRILL CHRISTIANSEN
Durham Phone 732-3371
BOB MUIR
Salina Phone TA 3-2963

MARKET REPORTS
Radio Station KSAL, Salina
6:45 a.m. Every
Monday, Wednesday & Friday
KFRM
6:55 a.m. Mon. through Fri.

Farmers & Ranchers
LIVESTOCK COMMISSION CO.



Bonded

West on old US 40

Barn Phone

913 TA 5-0211 SALINA, KS

AUCTIONEERS:

Dean Moore, Lee Remy, Roger Johnson

Licensed

Kansas Harvest In Japanese Film

Scenes of the Kansas wheat harvest are to be featured in a Japanese movie.

According to G. C. Fowler, administrator of the Kansas Wheat Commission, a Japanese motion picture company filmed the harvest for a 30-minute film to be produced by a steel company in Japan.

"The theme will emphasize an expanded wheat trade and take up the subject of balance of trade, showing why there should be international trade back and forth between the United States and Japan," he said.

Drop In U.S. Wool Output

The production of shorn wool in the United States this year will be moderately less than last year's 188 million pounds, largely because of a 7 percent decline in January 1 sheep numbers, the Department of Agriculture said.

World supplies of wool at the start of the current season were up sharply over 1967, the department said. Some recovery in wool use is expected this year.

Prices of U.S. shorn wool in 1968 may average slightly above the 1967 national average price of 39.8 cents a pound, grease basis, but prices during January-March of this year averaged slightly less than a year ago.

"But April prices were stronger, and prices in the coming months of 1968 probably will continue above year-earlier levels," the department said.

Wool and mohair payment programs on 1967 marketing are expected to total about 68

million, up sharply from \$32,800,000 last year, primarily due to lower average market prices. The federal wool payments are designed to subsidize producers on the basis of market prices.

Domestic consumption of wool last year was 2.1 pounds a person compared with 2.5 pounds in 1966. Per capita domestic consumption of all fibers in 1967 was 2 percent less than the 1966 record. Use of all fibers, except noncellulosics, declined the department said. Noncellulosics, or synthetic fiber's, share of the market, rose to a record 29 percent.

Imports of raw wool this year probably will total 145 million to 150 million pounds, compared with 109 million pounds in 1967. Imports of semiprocessed and manufactured wool textiles also are expected to increase in 1968.

Mohair production in the United States during 1967 totaled 26,300,000 pounds, down 11 percent from a year earlier. World exports of mohair rose during 1967. The department said domestic and foreign demand for U.S. mohair in 1968 may improve slightly. But domestic stocks continue large, the department said, and prices this year are expected to average close to the 1967 national average of 40.9 cents a pound.

EXTEND DROUGHT AID

The U.S. Department of Agriculture offered haying and grazing privileges on reserve cropland taken out of production in three more Kansas counties where prolonged drought has severely affected pasture normally used to maintain livestock herds.

Counties designated were Barton, Wichita, and Rush, bringing to 45 the total number of Kansas counties offered this assistance program.

Donates 31 Head Of Angus To K-State

Thirty-one head of valuable Angus breeding cattle have been given to Kansas State University, Manhattan, by Mr. & Mrs. Ralph Smith of the Ralph Smith Farms of Kansas City, Mo., over the past two years.

According to Dr. Don Good, head of K-State's animal husbandry department, who accepted the breeding cattle for the university, the animals will be extremely valuable in providing new genetic material to improve the university's Angus herd.

Included in the gift were a herd sire, nine head of calves and 21 head of cows.

"Ralph L. Smith has been a breeder of livestock all his life and has done much for the betterment of the industry," Good

said. "This gift to Kansas State University is an indication of his interest, not only in better livestock, but also in the training of youth to carry on the improvement of livestock in the future."

Smith has given livestock to KSU on at least two other occasions. Following WW II he gave the department of animal husbandry a valuable Angus herd sire and back in the days of draft horses, presented the university with an important gift of Belgian horses.

Kansas Tops In Wheat Allotment

The Agriculture Department has announced state wheat acreage allotments for the 1969 crop. They are based on a national allotment of 51,600,000 acres.

Leading the nation is Kansas with an allotment of 9,670,690 acres compared with 11,117,320 this year and 12,785,718 last year.

This year the national allotment was 59.3 million acres and last year it was 68,195,000.

1968 Ford F100

1/2 TON PICKUP

\$2195.00

Ford Twin I-Beam, long-wide bed, 4 speed transmission, overloads, fresh air heater, standard and safety equipment.

Long-McArthur, Inc.

340 N. Santa Fe
SALINA, KS.

WOULD BAN CHOLERA VACCINE

Participants in four regional conferences on the eradication of hog cholera have urged that interstate shipments of all hog cholera vaccines be stopped by Jan. 1, 1969, the Department of Agriculture has announced.

The vaccines have been useful in helping control the disease, the department said, but they also can cause hog cholera.

JAPANESE LEAVING FARMS

Japan's farm population now is less than 20 percent. These farmers currently ply their trade on farms averaging only 2.4 acres.

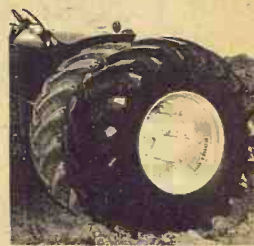
Most Japanese farmers are part-time farmers and their income from agricultural products is about \$1,014 compared with \$1,098 for non-agricultural profit.

July 2, 1968

DENNIS REZAC TOP AUCTIONEER

MIAMI, FLA. — Dennis Rezac, son of Mr. and Mrs. Dewayne Rezac, Marysville, placed first in the livestock auctioneering contest held here.

Hook - On Duals By Dietrich



Start At
\$106.00

B. F. Goodrich
119 N. 7th TA 3-2271
SALINA, KANSAS

BOOTS

MOST ALL BRANDS
Largest Display In Area

For Complete
Line of Western
Wear and Tack

DALE'S
WESTERN STORE

1710 M Street BELLEVILLE, KS. JA 7-2363
108 S. 3rd MANHATTAN, KS. PR 8-3466



Reynolds Sale Barn

ABILENE, KANS.

Selling Every
FRIDAY

NIGHT SALES

Starts 8p.m.

A very nice crowd watched a light run of cattle sold sharply higher last Friday night. Several order buyers gave each other a lot of competition for the meager supply on offer. The following is a sampling of the sale:

BULLS
1 bull ----- 540 @ 27.00
1 bull ----- 1230 @ 23.00
1 bull ----- 1100 @ 22.90

COWS
1 cow ----- 1160 @ 18.00
1 cow ----- 1255 @ 17.80
1 cow ----- 1010 @ 17.35

STOCKER & FEEDER STEERS
19 med wsteers 777 @ 27.25
11 bwf steers --- 800 @ 27.25
14 pl to medsts - 847 @ 26.00

7 wf steers-----890 @ 26.50
4 wf steers ---- 455 @ 31.00
9 bl steers ----- 492 @ 30.00
7 black steers -- 540 @ 29.20
4 whiface steers-590 @ 29.00
5 pl shorthorn sts 697 @ 25.90
1 holst steer ---720 @ 23.80

STOCKER & FEEDER HEIFERS
2 whiface heifers337 @ 30.00
4 whiface heifers 395 @ 28.00
5 blwf heifers--520 @ 26.20
15 whiface hdfs- 590 @ 26.10
11 mixed heifers 620 @ 25.00

**LISTED FOR FRIDAY NIGHT
JULY 5th**
42 choice feeder heifers 650 lbs.
35 choice argus & bwf steers & heifers 500 to 600 lbs.
36 mixed steers 700 - 800 lbs.
75 grain feed steers & hdfs 700-800 lbs.

YARDMEN ON DUTY 24 HOURS A DAY

CALL DUDE REYNOLDS COLLECT

For information, requests for appraisals at no obligation, or inquiries regarding coming sales, call me at any time, day or night.

**CO 3-3394
DUDE REYNOLDS Abilene, Kans.**

Bring your cattle in at any time day or night; we'll handle them for you at your request.

Sale Every Thursday

Hogs 11:30 a.m.
Cattle 1 p.m.

Be Seeing You Thursday, July 11

WE WERE CLOSED FOR THE 2-WEEK HARVEST.



RALEIGH

JIM

RALEIGH BREEDING, MANAGER

barn 562-3671; home 562-3547

Auctioneer: Larry Lagasse,
Ph. Concordia, Kans. CH 3-1714

Marysville

**LIVESTOCK & COMMISSION CO.
MARYSVILLE, KANSAS**